

Data Path : Z:\svoasrv\HPCHEM1\BNA_F\Data\BF082924\
 Data File : BF139223.D
 Acq On : 29 Aug 2024 16:07
 Operator : RC/JU
 Sample : SSTDI CV040
 Misc :
 ALS Vial : 11 Sample Multiplier: 1

Instrument :
 BNA_F
ClientSampleId :
 ICVBF082924

Quant Time: Aug 29 16:45:30 2024
 Quant Method : Z:\svoasrv\HPCHEM1\BNA_F\Methods\8270-BF082924.M
 Quant Title : ASP BNA STANDARDS FOR 5 POINT CALIBRATION
 QLast Update : Thu Aug 29 15:46:29 2024
 Response via : Initial Calibration

Compound	R. T.	QI on	Response	Conc	Units	Dev(Min)	Qvalue
Internal Standards							
1) 1,4-Dichlorobenzene-d4	6.887	152	99322	20.000	ng	0.00	
21) Naphthalene-d8	8.169	136	359609	20.000	ng	0.00	
39) Acenaphthene-d10	9.928	164	207366	20.000	ng	0.00	
64) Phenanthrene-d10	11.410	188	358790	20.000	ng	0.00	
76) Chrysene-d12	14.051	240	194113	20.000	ng	0.00	
86) Perylene-d12	15.521	264	168293	20.000	ng	0.00	
System Monitoring Compounds							
5) 2-Fluorophenol	5.498	112	493558	79.660	ng	0.00	
7) Phenol-d6	6.516	99	654649	79.650	ng	0.00	
23) Nitrobenzene-d5	7.451	82	624202	83.440	ng	0.00	
42) 2,4,6-Tribromophenol	10.716	330	172646	83.000	ng	0.00	
45) 2-Fluorophenyl	9.245	172	1046631	78.588	ng	0.00	
79) Terphenyl-d14	12.998	244	1061798	78.847	ng	0.00	
Target Compounds							
2) 1,4-Dioxane	2.669	88	105946	39.096	ng		99
3) Pyridine	3.422	79	277266	40.222	ng		99
4) n-Nitrosodimethylamine	3.381	42	147809	39.672	ng		98
6) Aniline	6.551	93	302299	39.931	ng		99
8) 2-Chlorophenol	6.675	128	246813	39.644	ng		99
9) Benzaldehyde	6.439	77	211900	40.428	ng		100
10) Phenol	6.528	94	346747	40.347	ng		99
11) bis(2-Chloroethyl)ether	6.628	93	252529	39.839	ng		99
12) 1,3-Dichlorobenzene	6.828	146	293277	39.795	ng		99
13) 1,4-Dichlorobenzene	6.904	146	295776	39.721	ng		99
14) 1,2-Dichlorobenzene	7.057	146	273201	39.195	ng		98
15) Benzyl Alcohol	7.028	79	257332	40.203	ng		98
16) 2,2'-oxybis(1-Chloropr...	7.163	45	357277	39.681	ng		100
17) 2-Methylphenol	7.134	107	210157	39.976	ng		98
18) Hexachloroethane	7.404	117	104349	40.461	ng		99
19) n-Nitroso-di-n-propyl a...	7.304	70	200844	39.272	ng		100
20) 3+4-Methylphenols	7.292	107	268968	39.477	ng		98
22) Acetophenone	7.298	105	367700	40.192	ng		99
24) Nitrobenzene	7.475	77	322214	41.186	ng		100
25) Isophorone	7.710	82	527910	40.717	ng		100
26) 2-Nitrophenol	7.786	139	125247	44.722	ng		99
27) 2,4-Dimethylphenol	7.822	122	166429	40.504	ng		99
28) bis(2-Chloroethoxy)met...	7.922	93	303951	40.264	ng		100
29) 2,4-Dichlorophenol	8.022	162	216317	40.926	ng		97
30) 1,2,4-Tri chlorobenzene	8.110	180	241584	39.829	ng		100
31) Naphthalene	8.192	128	733174	39.762	ng		100
32) Benzoic acid	7.934	122	163862	44.894	ng		99
33) 4-Chloroaniline	8.239	127	255356	40.399	ng		99
34) Hexachlorobutadiene	8.310	225	161545	40.403	ng		98
35) Caprolactam	8.610	113	65108	41.349	ng		97
36) 4-Chloro-3-methylphenol	8.716	107	239372	41.254	ng		99
37) 2-Methylnaphthalene	8.881	142	468279	40.308	ng		99
38) 1-Methylnaphthalene	8.980	142	457396	39.920	ng		100
40) 1,2,4,5-Tetrachloroben...	9.045	216	242250	39.307	ng		99
41) Hexachlorocyclopentadiene	9.033	237	89722	41.565	ng		100
43) 2,4,6-Tri chlorophenol	9.157	196	159898	40.789	ng		98

Data Path : Z:\svoasrv\HPCHEM1\BNA_F\Data\BF082924\
 Data File : BF139223.D
 Acq On : 29 Aug 2024 16:07
 Operator : RC/JU
 Sample : SSTDICV040
 Misc :
 ALS Vial : 11 Sample Multiplier: 1

Instrument :
 BNA_F
 ClientSampleId :
 ICVBF082924

Quant Time: Aug 29 16:45:30 2024
 Quant Method : Z:\svoasrv\HPCHEM1\BNA_F\Methods\8270-BF082924.M
 Quant Title : ASP BNA STANDARDS FOR 5 POINT CALIBRATION
 QLast Update : Thu Aug 29 15:46:29 2024
 Response via : Initial Calibration

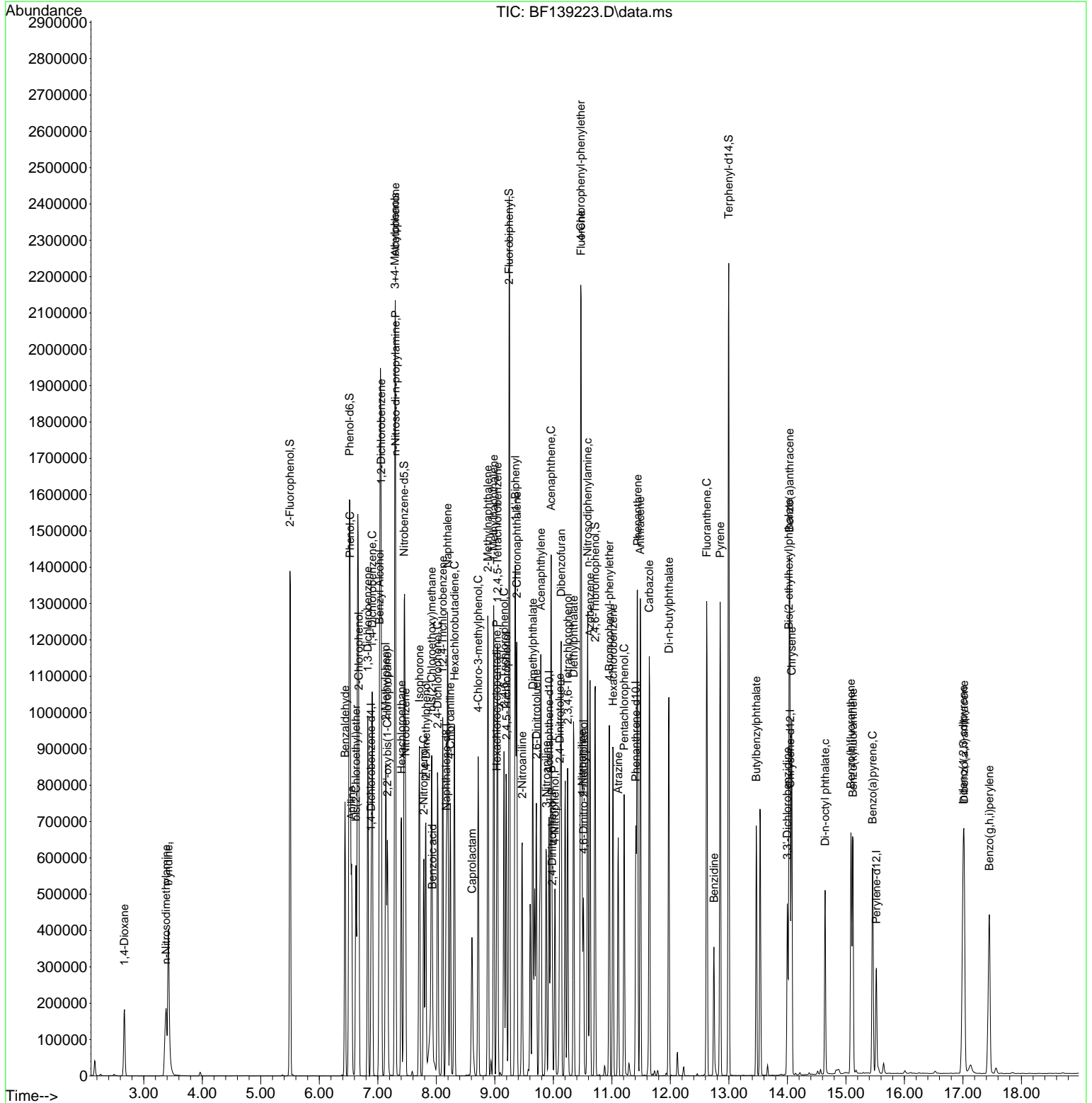
Compound	R. T.	QI on	Response	Conc	Units	Dev(Min)
44) 2, 4, 5-Tri chl orophenol	9.198	196	171180	40.576	ng	99
46) 1, 1' -Bi phenyl	9.351	154	595258	40.052	ng	99
47) 2-Chl oronaphthal ene	9.375	162	470458	39.878	ng	99
48) 2-Ni troani line	9.469	65	157425	43.335	ng	99
49) Acenaphthyl ene	9.786	152	676079	40.316	ng	100
50) Di methyl phthal ate	9.651	163	527553	40.629	ng	100
51) 2, 6-Di ni trotol uene	9.710	165	120652	42.993	ng	99
52) Acenaphthene	9.963	154	454222	40.569	ng	99
53) 3-Ni troani line	9.880	138	118291	42.792	ng	99
54) 2, 4-Di ni trophenol	9.980	184	57021	41.873	ng	99
55) Di benzofuran	10.133	168	647672	40.160	ng	100
56) 4-Ni trophenol	10.028	139	93314	44.147	ng	100
57) 2, 4-Di ni trotol uene	10.110	165	158084	44.718	ng	99
58) Fluorene	10.475	166	507722	39.783	ng	100
59) 2, 3, 4, 6-Tetrchl orophenol	10.245	232	138793	41.488	ng	99
60) Di ethyl phthal ate	10.345	149	503348	40.559	ng	99
61) 4-Chl orophenyl -phenyl e. . .	10.469	204	253409	39.573	ng	99
62) 4-Ni troani line	10.492	138	116577	42.948	ng	100
63) Azobenzene	10.627	77	551887	40.346	ng	99
65) 4, 6-Di ni tro-2-methyl ph. . .	10.516	198	81501	45.985	ng	98
66) n-Ni trosodi phenyl ami ne	10.586	169	423489	39.740	ng	99
67) 4-Bromophenyl -phenyl ether	10.957	248	156697	40.185	ng	99
68) Hexachl orobenzene	11.022	284	168472	39.502	ng	98
69) Atrazi ne	11.110	200	104114	39.280	ng	99
70) Pentachl orophenol	11.210	266	115602	42.837	ng	100
71) Phenanthrene	11.439	178	718173	39.796	ng	100
72) Anthracene	11.486	178	702394	39.874	ng	100
73) Carbazol e	11.639	167	639366	41.139	ng	100
74) Di -n-butyl phthal ate	11.974	149	711169	42.798	ng	100
75) Fluoranthene	12.621	202	742948	41.817	ng	100
77) Benzi di ne	12.745	184	183044	47.714	ng	99
78) Pyrene	12.851	202	740855	39.717	ng	100
80) Butyl benzyl phthal ate	13.468	149	201850	46.435	ng	99
81) Benzo(a)anthracene	14.039	228	519942	40.898	ng	99
82) 3, 3' -Di chl orobenzi di ne	13.998	252	134686	40.347	ng	98
83) Chrysene	14.074	228	463844	39.197	ng	99
84) Bi s(2-ethyl hexyl)phtha. . .	14.027	149	196202	41.954	ng	100
85) Di -n-octyl phthal ate	14.645	149	311640	35.232	ng	100
87) Indeno(1, 2, 3-cd)pyrene	17.004	276	486199	40.974	ng	100
88) Benzo(b)fl uoranthene	15.086	252	421404	41.807	ng	99
89) Benzo(k)fl uoranthene	15.121	252	357900	40.719	ng	99
90) Benzo(a)pyrene	15.457	252	350722	41.265	ng	100
91) Di benzo(a, h)anthracene	17.021	278	402358	40.747	ng	100
92) Benzo(g, h, i)peryl ene	17.451	276	410196	41.216	ng	99

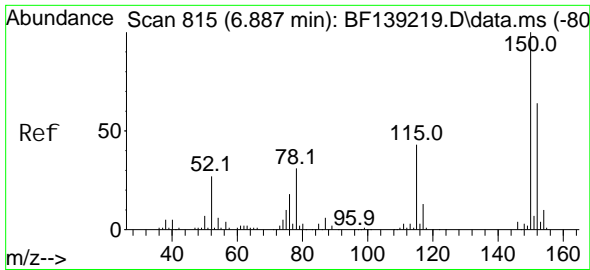
(#) = qual i fier out of range (m) = manual i ntegrati on (+) = signal s summed

Data Path : Z:\svoasrv\HPCHEM1\BNA_F\Data\BF082924\
 Data File : BF139223.D
 Acq On : 29 Aug 2024 16:07
 Operator : RC/JU
 Sample : SSTD1 CV040
 Misc :
 ALS Vial : 11 Sample Multiplier: 1

Instrument :
 BNA_F
Client Sample Id :
 ICVBF082924

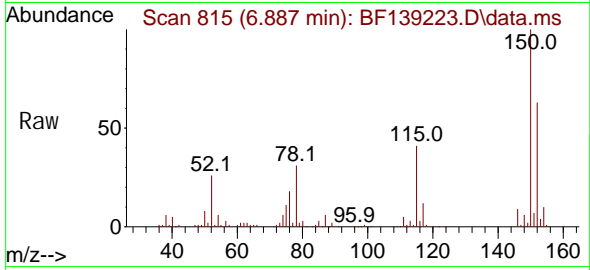
Quant Time: Aug 29 16:45:30 2024
 Quant Method : Z:\svoasrv\HPCHEM1\BNA_F\Methods\8270-BF082924.M
 Quant Title : ASP BNA STANDARDS FOR 5 POINT CALIBRATION
 QLast Update : Thu Aug 29 15:46:29 2024
 Response via : Initial Calibration



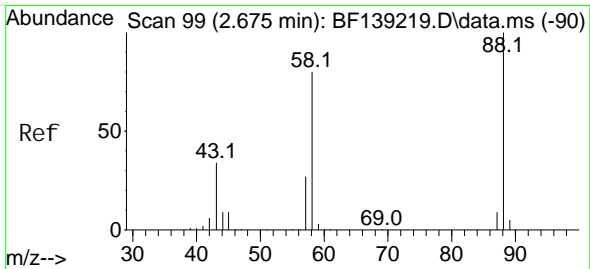
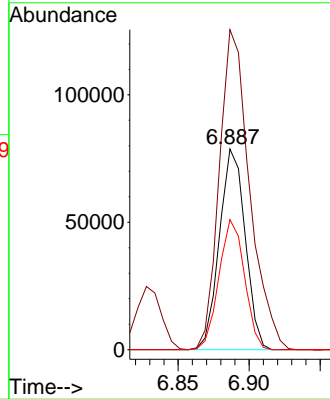
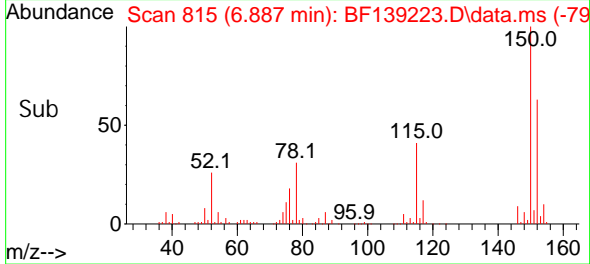


#1
 1, 4-Di chl orobenzene-d4
 Concen: 20.000 ng
 RT: 6.887 min Scan# 81
 Delta R.T. -0.000 min
 Lab File: BF139223.D
 Acq: 29 Aug 2024 16:07

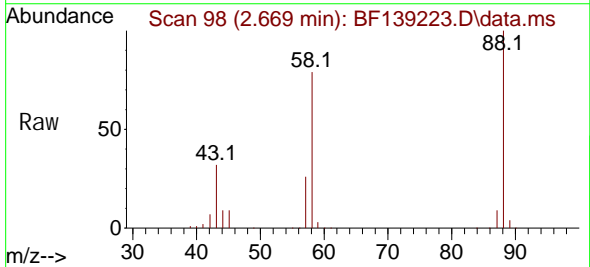
Instrument :
 BNA_F
 ClientSampleId :
 ICVBF082924



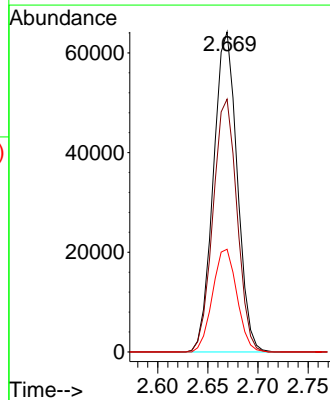
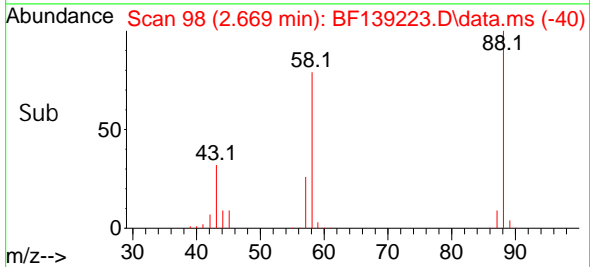
Tgt Ion: 152 Resp: 99322
 Ion Ratio Lower Upper
 152 100
 150 159.5 125.6 188.4
 115 64.9 54.2 81.4

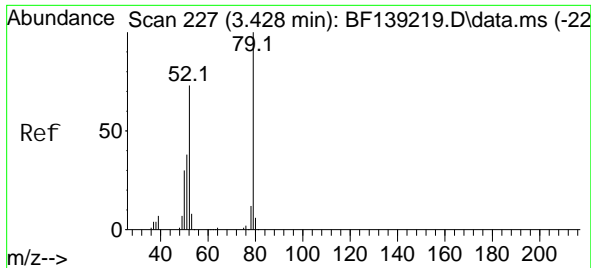


#2
 1, 4-Di oxane
 Concen: 39.096 ng
 RT: 2.669 min Scan# 98
 Delta R.T. -0.006 min
 Lab File: BF139223.D
 Acq: 29 Aug 2024 16:07



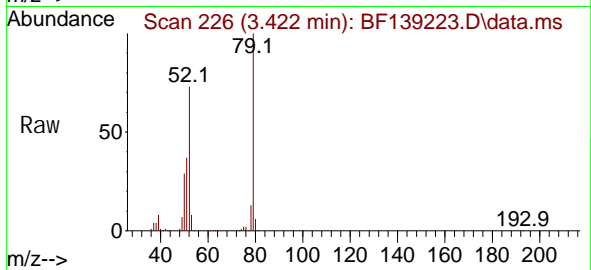
Tgt Ion: 88 Resp: 105946
 Ion Ratio Lower Upper
 88 100
 58 79.5 63.3 94.9
 43 33.0 27.1 40.7



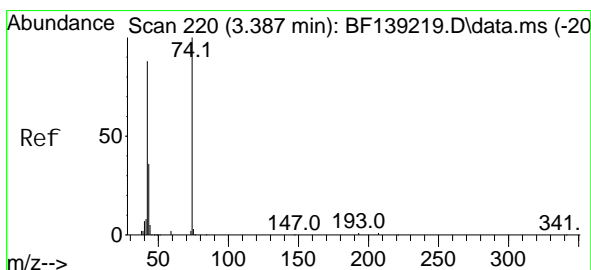
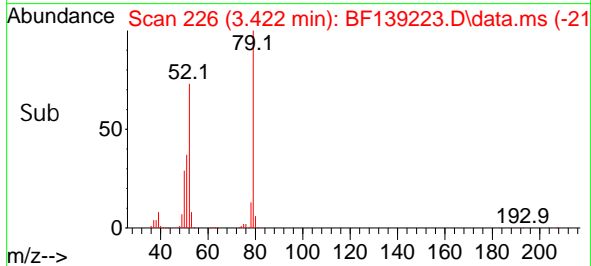
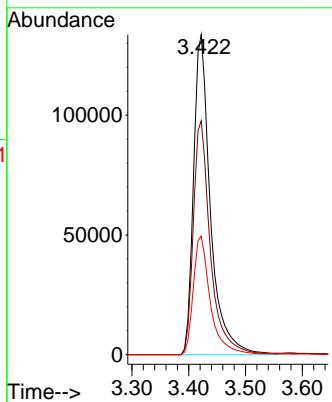


#3
 Pyri di ne
 Concen: 40.222 ng
 RT: 3.422 min Scan# 219
 Del ta R. T. -0.006 min
 Lab File: BF139223.D
 Acq: 29 Aug 2024 16:07

Instrument :
 BNA_F
 ClientSampleId :
 ICVBF082924

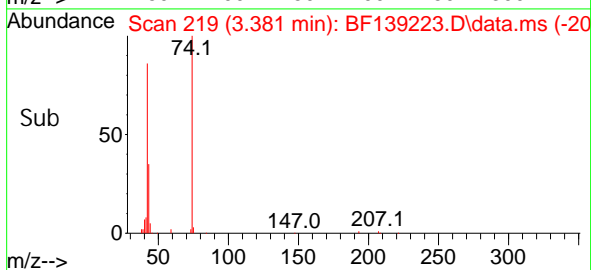
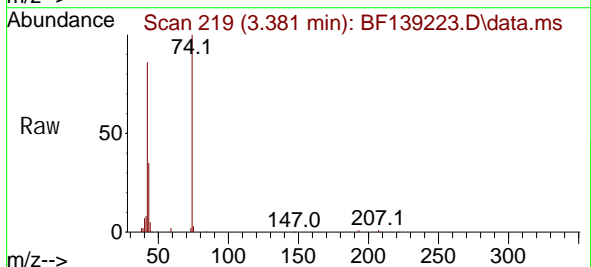
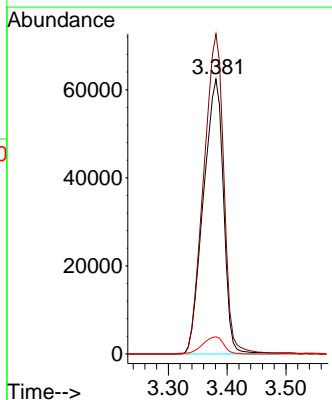


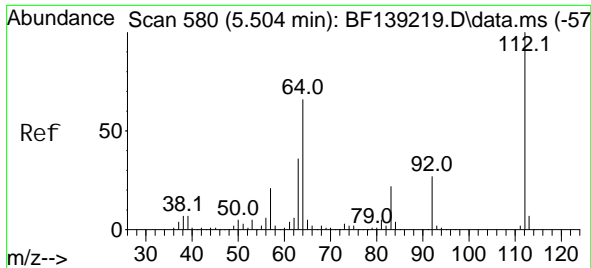
Tgt Ion: 79 Resp: 277266
 Ion Ratio Lower Upper
 79 100
 52 73.1 58.6 87.8
 51 37.1 30.6 46.0



#4
 n-Ni trosodi methyl ami ne
 Concen: 39.672 ng
 RT: 3.381 min Scan# 219
 Del ta R. T. -0.006 min
 Lab File: BF139223.D
 Acq: 29 Aug 2024 16:07

Tgt Ion: 42 Resp: 147809
 Ion Ratio Lower Upper
 42 100
 74 116.4 91.4 137.0
 44 6.2 4.8 7.2



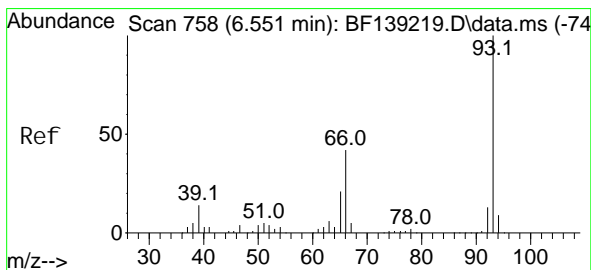
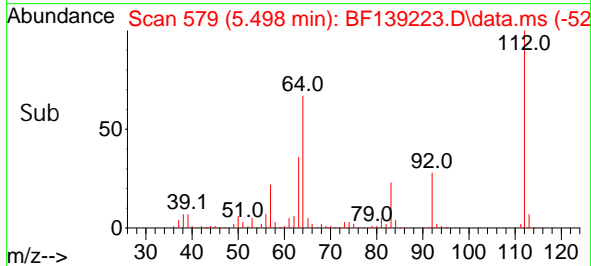
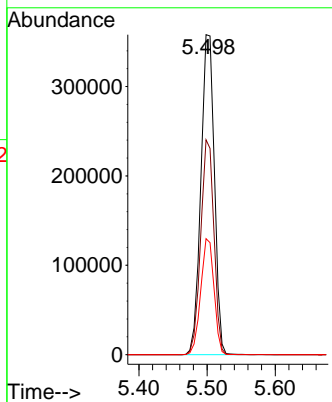
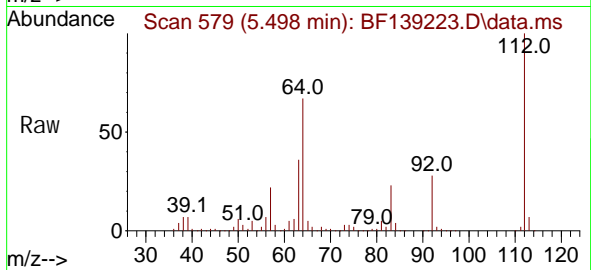


#5
 2-Fluorophenol
 Concen: 79.660 ng
 RT: 5.498 min Scan# 51
 Delta R.T. -0.006 min
 Lab File: BF139223.D
 Acq: 29 Aug 2024 16:07

Instrument :
 BNA_F
ClientSampleId :
 ICVBF082924

Tgt Ion: 112 Resp: 493558

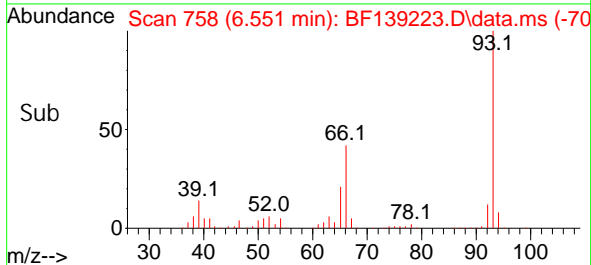
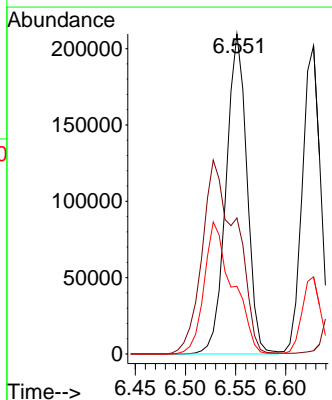
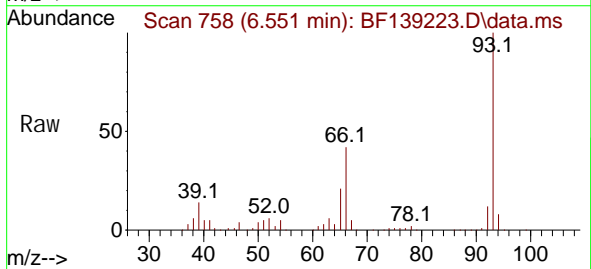
Ion	Ratio	Lower	Upper
112	100		
64	67.1	52.5	78.7
63	36.3	28.5	42.7

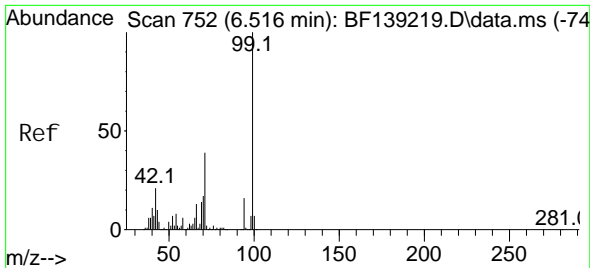


#6
 Aniline
 Concen: 39.931 ng
 RT: 6.551 min Scan# 758
 Delta R.T. -0.000 min
 Lab File: BF139223.D
 Acq: 29 Aug 2024 16:07

Tgt Ion: 93 Resp: 302299

Ion	Ratio	Lower	Upper
93	100		
66	42.5	34.2	51.4
65	21.1	17.1	25.7



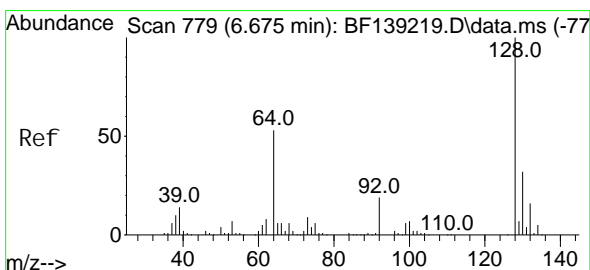
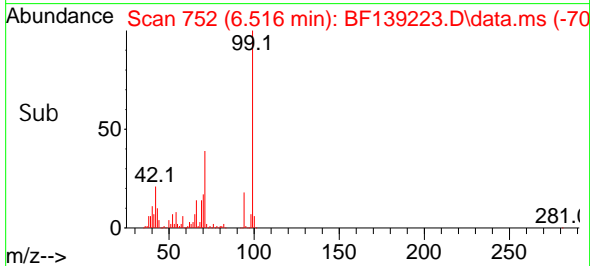
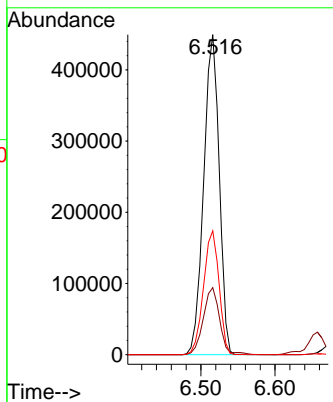
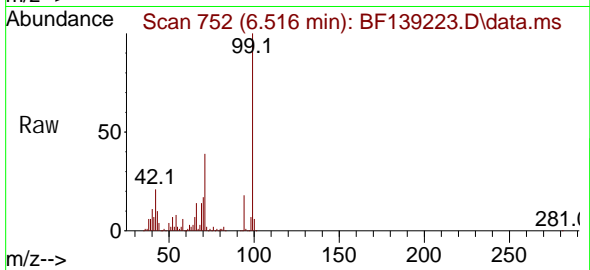


#7
 Phenol -d6
 Concen: 79.650 ng
 RT: 6.516 min Scan# 752
 Delta R.T. -0.000 min
 Lab File: BF139223.D
 Acq: 29 Aug 2024 16:07

Instrument :
 BNA_F
 ClientSampleId :
 ICVBF082924

Tgt Ion: 99 Resp: 654649

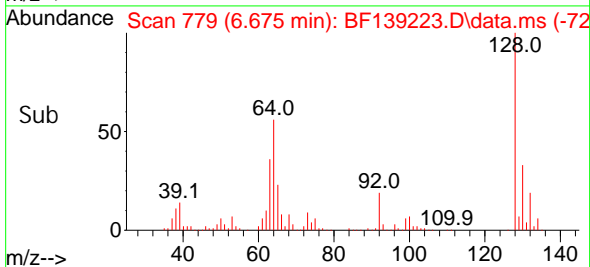
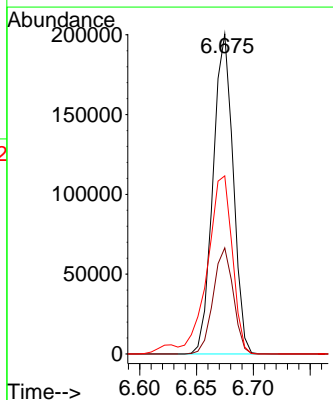
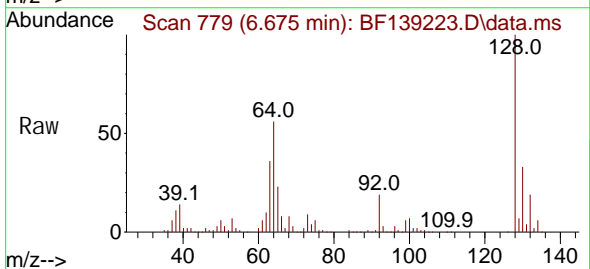
Ion	Ratio	Lower	Upper
99	100		
42	20.9	16.8	25.2
71	38.7	31.3	46.9

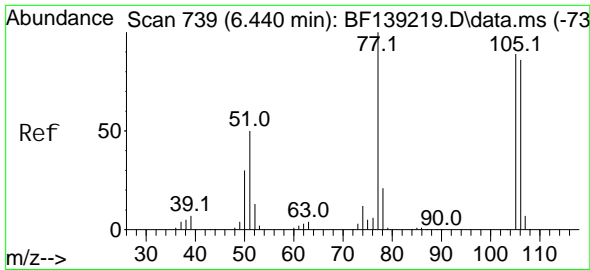


#8
 2-Chlorophenol
 Concen: 39.644 ng
 RT: 6.675 min Scan# 779
 Delta R.T. -0.000 min
 Lab File: BF139223.D
 Acq: 29 Aug 2024 16:07

Tgt Ion: 128 Resp: 246813

Ion	Ratio	Lower	Upper
128	100		
130	33.2	12.0	52.0
64	55.7	35.5	75.5





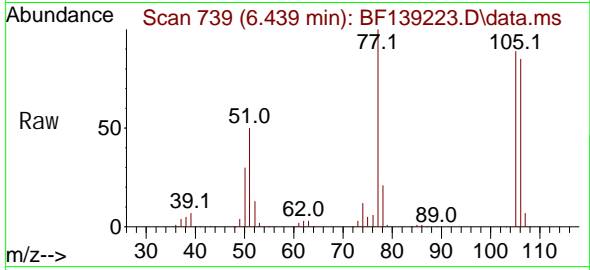
#9
Benzaldehyde
Concen: 40.428 ng
RT: 6.439 min Scan# 711
Delta R.T. -0.001 min
Lab File: BF139223.D
Acq: 29 Aug 2024 16:07

Instrument :

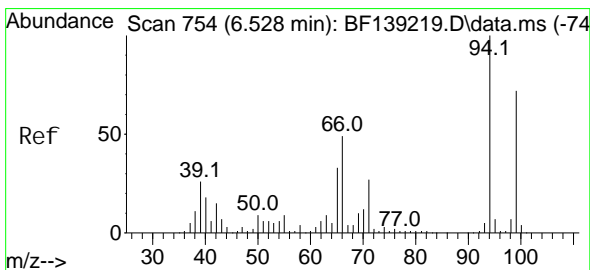
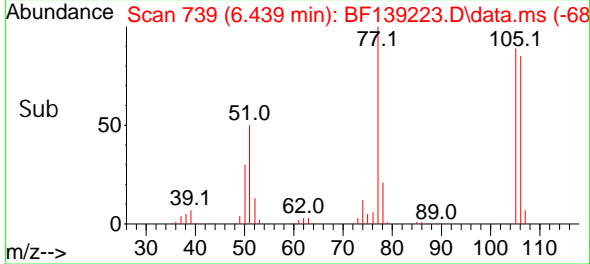
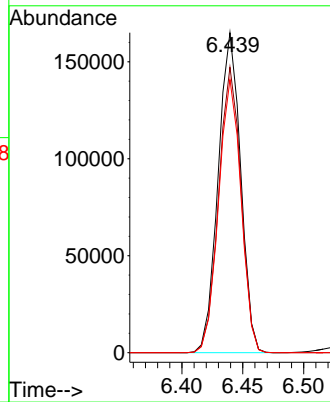
BNA_F

ClientSampleId :

ICVBF082924

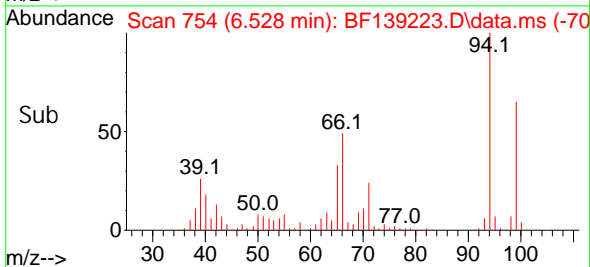
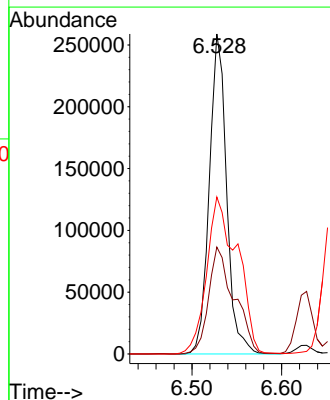
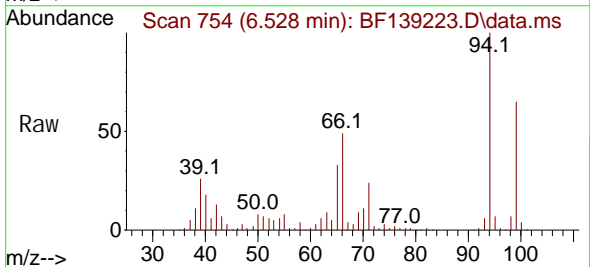


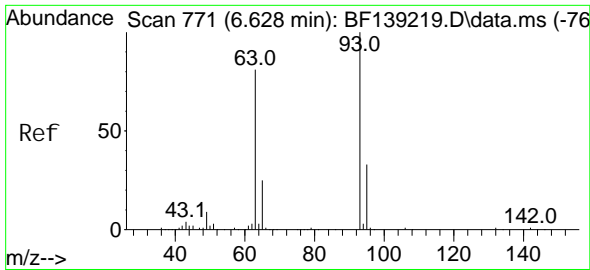
Tgt Ion: 77 Resp: 211900
Ion Ratio Lower Upper
77 100
105 89.2 69.3 109.3
106 85.4 65.8 105.8



#10
Phenol
Concen: 40.347 ng
RT: 6.528 min Scan# 754
Delta R.T. -0.000 min
Lab File: BF139223.D
Acq: 29 Aug 2024 16:07

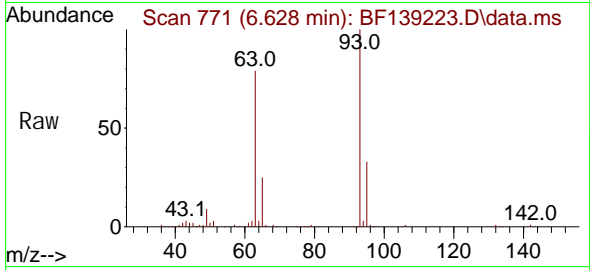
Tgt Ion: 94 Resp: 346747
Ion Ratio Lower Upper
94 100
65 33.4 12.8 52.8
66 49.1 29.3 69.3



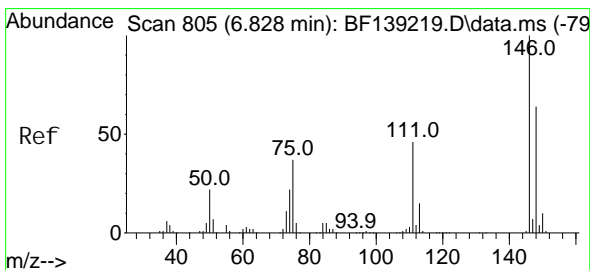
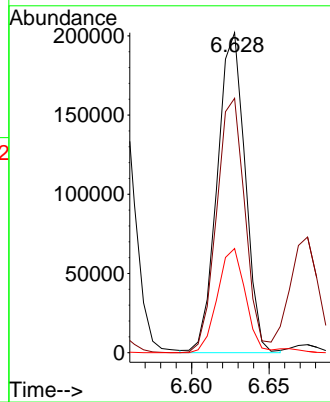
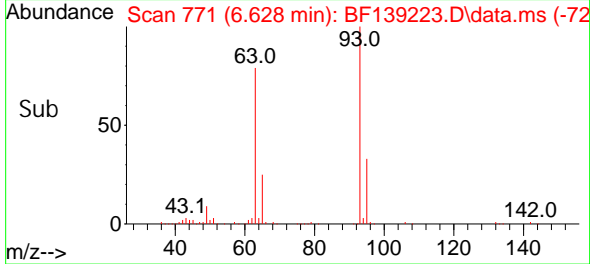


#11
 bis(2-Chloroethyl) ether
 Concen: 39.839 ng
 RT: 6.628 min Scan# 771
 Delta R.T. -0.000 min
 Lab File: BF139223.D
 Acq: 29 Aug 2024 16:07

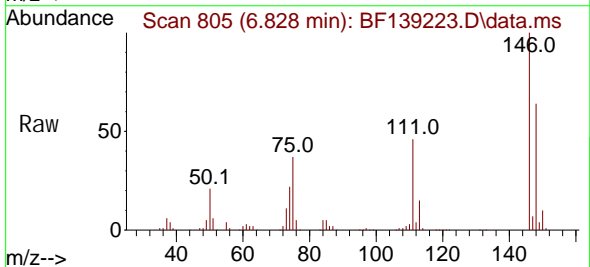
Instrument :
 BNA_F
 ClientSampleId :
 ICVBF082924



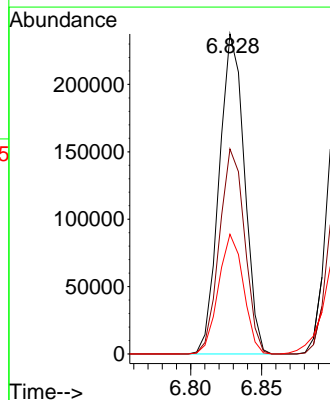
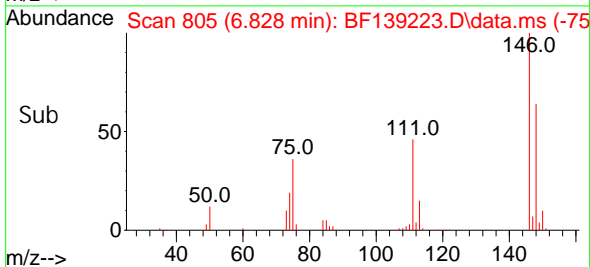
Tgt Ion: 93 Resp: 252529
 Ion Ratio Lower Upper
 93 100
 63 79.5 60.8 100.8
 95 32.6 12.7 52.7

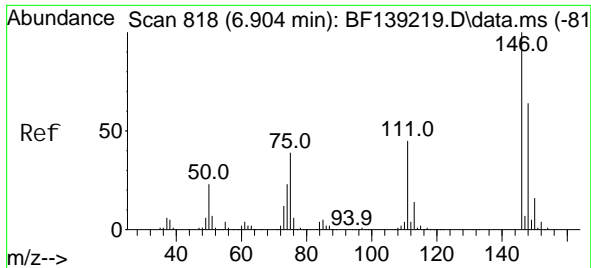


#12
 1,3-Dichlorobenzene
 Concen: 39.795 ng
 RT: 6.828 min Scan# 805
 Delta R.T. -0.000 min
 Lab File: BF139223.D
 Acq: 29 Aug 2024 16:07



Tgt Ion: 146 Resp: 293277
 Ion Ratio Lower Upper
 146 100
 148 64.0 50.9 76.3
 75 37.4 29.4 44.0

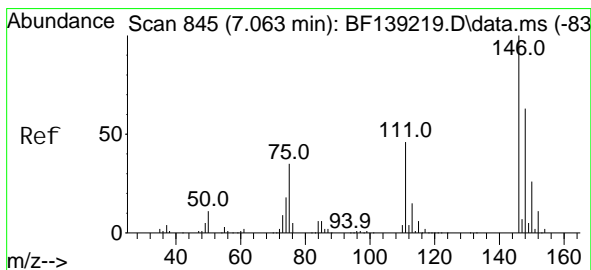
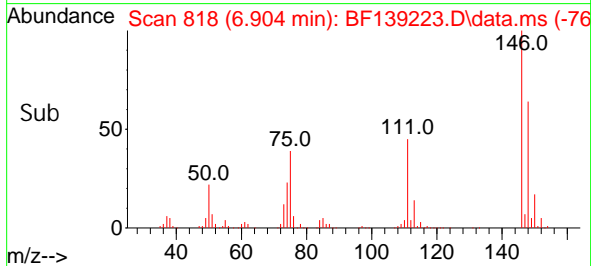
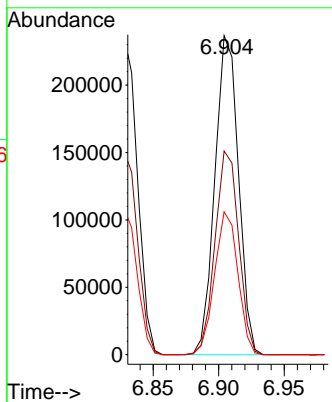
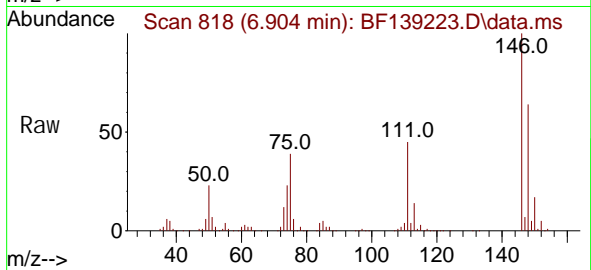




#13
 1,4-Di chl orobenzene
 Concen: 39.721 ng
 RT: 6.904 min Scan# 81
 Delta R.T. -0.000 min
 Lab File: BF139223.D
 Acq: 29 Aug 2024 16:07

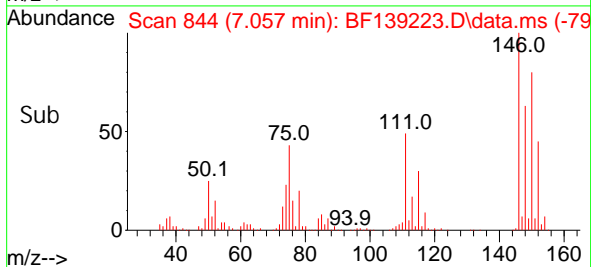
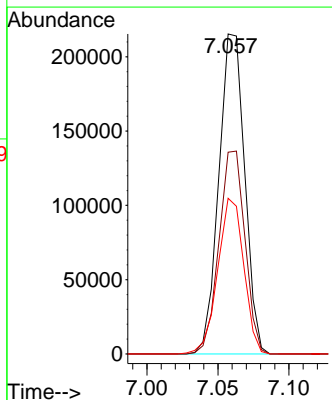
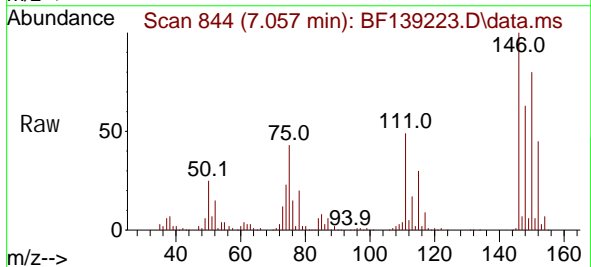
Instrument :
 BNA_F
 ClientSampleId :
 ICVBF082924

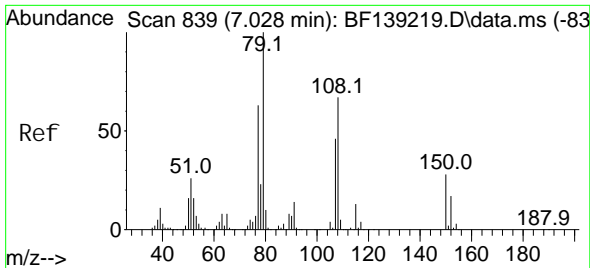
Tgt Ion: 146 Resp: 295776
 Ion Ratio Lower Upper
 146 100
 148 63.8 51.5 77.3
 111 44.8 35.6 53.4



#14
 1,2-Di chl orobenzene
 Concen: 39.195 ng
 RT: 7.057 min Scan# 844
 Delta R.T. -0.006 min
 Lab File: BF139223.D
 Acq: 29 Aug 2024 16:07

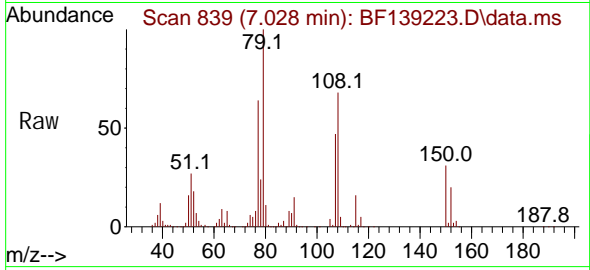
Tgt Ion: 146 Resp: 273201
 Ion Ratio Lower Upper
 146 100
 148 63.0 50.7 76.1
 111 48.6 37.0 55.6



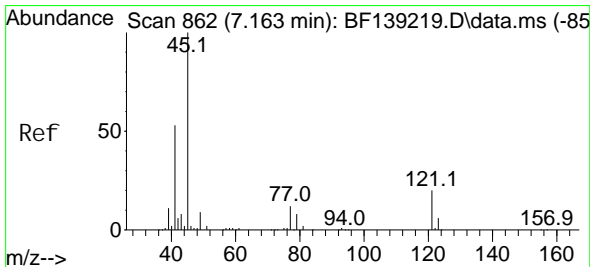
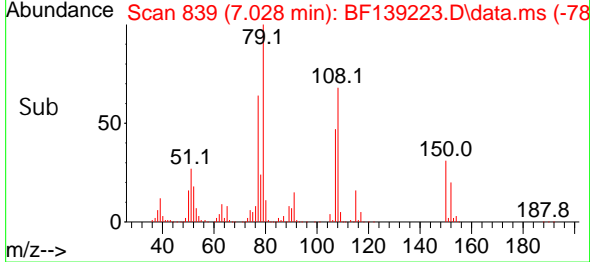
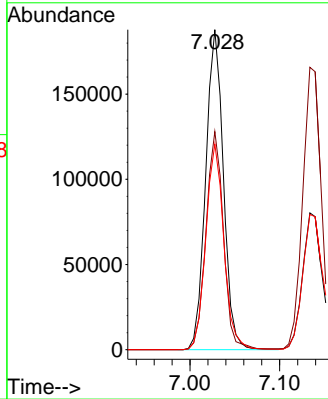


#15
 Benzyl Alcohol
 Concen: 40.203 ng
 RT: 7.028 min Scan# 810
 Delta R.T. -0.000 min
 Lab File: BF139223.D
 Acq: 29 Aug 2024 16:07

Instrument :
 BNA_F
 ClientSampleId :
 ICVBF082924

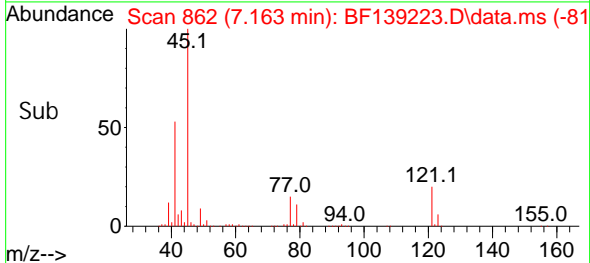
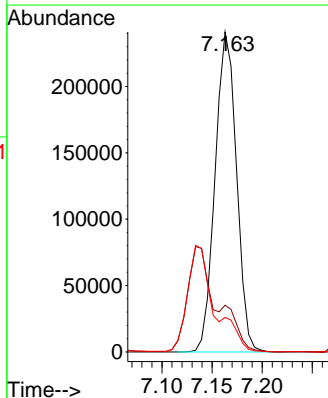
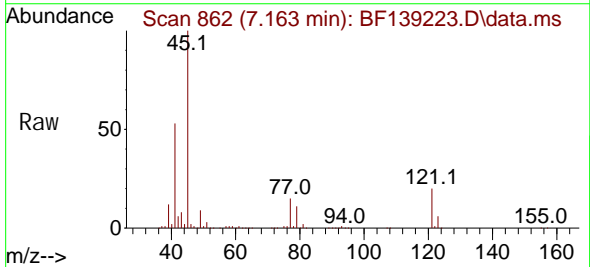


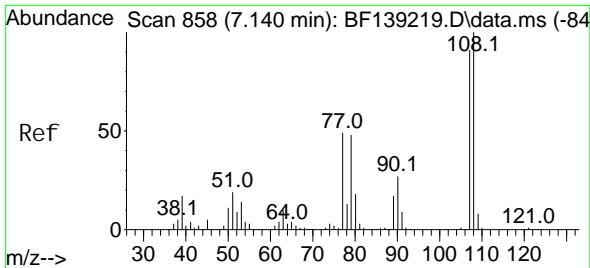
Tgt Ion: 79 Resp: 257332
 Ion Ratio Lower Upper
 79 100
 108 68.1 53.4 80.2
 77 64.2 50.4 75.6



#16
 2,2'-oxybis(1-Chloropropane)
 Concen: 39.681 ng
 RT: 7.163 min Scan# 862
 Delta R.T. -0.000 min
 Lab File: BF139223.D
 Acq: 29 Aug 2024 16:07

Tgt Ion: 45 Resp: 357277
 Ion Ratio Lower Upper
 45 100
 77 14.6 0.0 34.7
 79 10.8 0.0 31.0





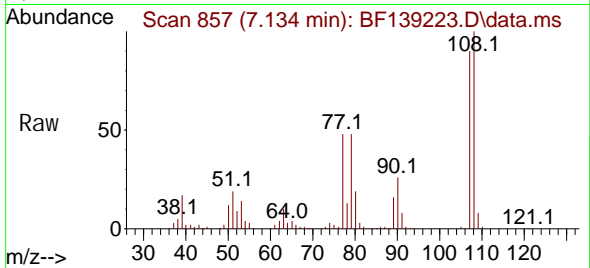
#17
 2-Methyl phenol
 Concen: 39.976 ng
 RT: 7.134 min Scan# 857
 Delta R.T. -0.006 min
 Lab File: BF139223.D
 Acq: 29 Aug 2024 16:07

Instrument :

BNA_F

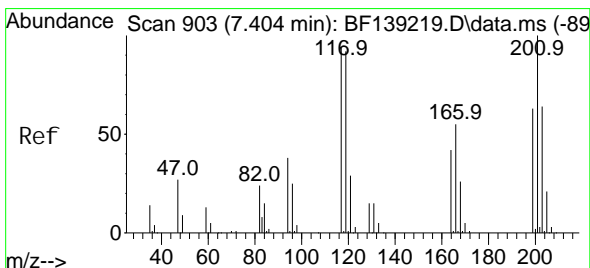
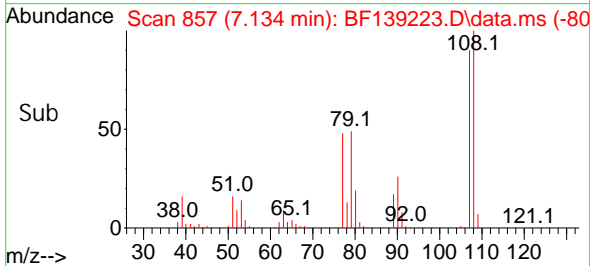
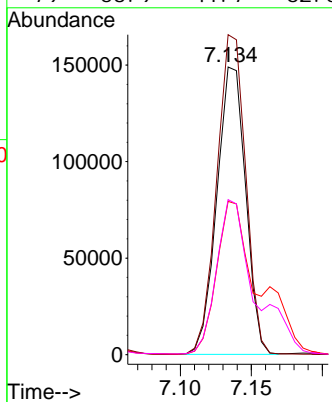
ClientSampleId :

ICVBF082924



Tgt Ion: 107 Resp: 210157

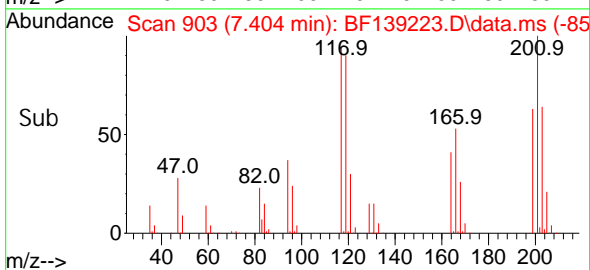
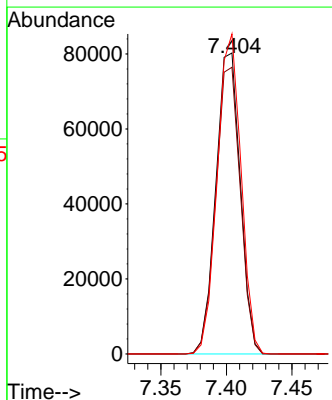
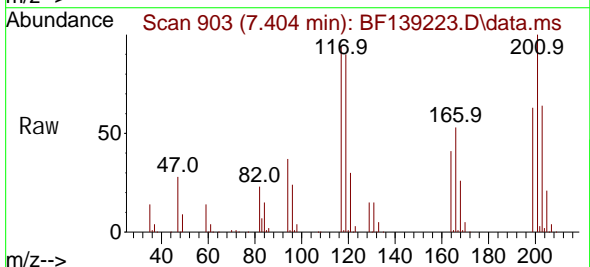
Ion	Ratio	Lower	Upper
107	100		
108	111.3	87.6	131.4
77	53.3	43.2	64.8
79	53.9	41.7	62.5

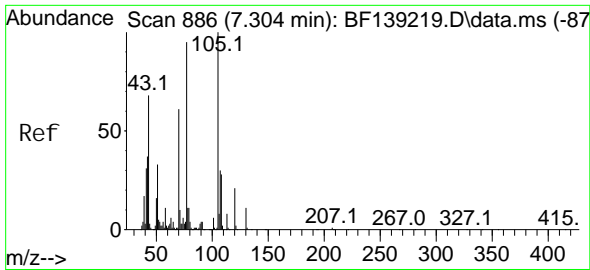


#18
 Hexachloroethane
 Concen: 40.461 ng
 RT: 7.404 min Scan# 903
 Delta R.T. -0.000 min
 Lab File: BF139223.D
 Acq: 29 Aug 2024 16:07

Tgt Ion: 117 Resp: 104349

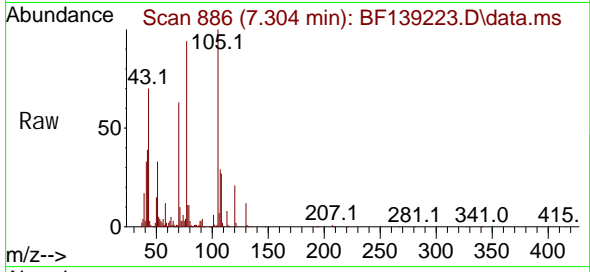
Ion	Ratio	Lower	Upper
117	100		
119	95.2	78.3	117.5
201	106.3	85.4	128.0



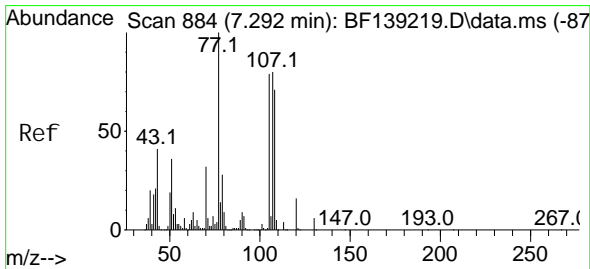
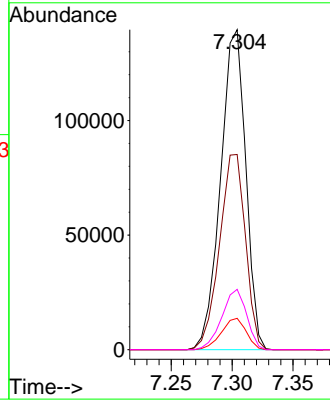
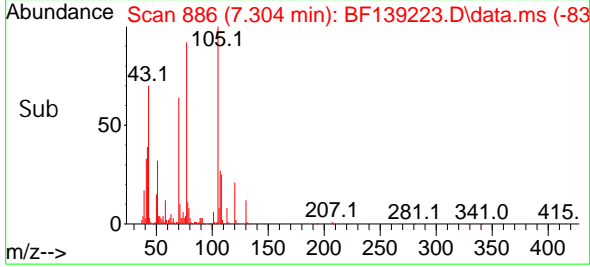


#19
 n-Nitroso-di-n-propylamine
 Concen: 39.272 ng
 RT: 7.304 min Scan# 886
 Delta R.T. -0.000 min
 Lab File: BF139223.D
 Acq: 29 Aug 2024 16:07

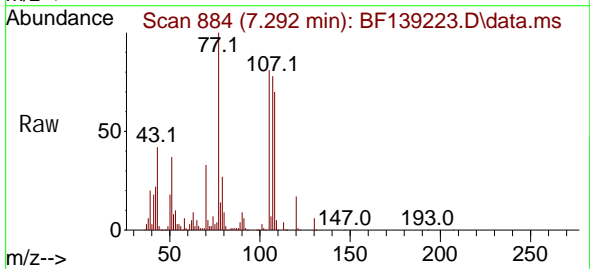
Instrument :
 BNA_F
 ClientSampleId :
 ICVBF082924



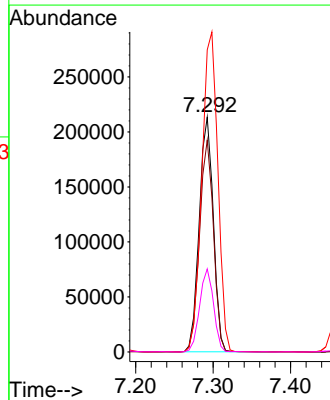
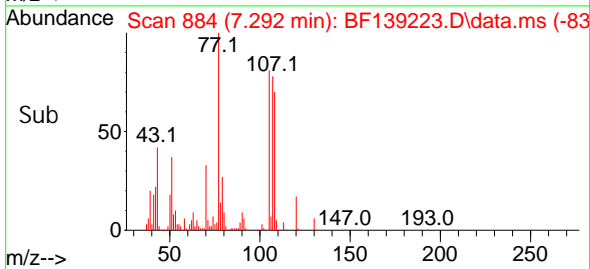
Tgt Ion: 70 Resp: 200844
 Ion Ratio Lower Upper
 70 100
 42 61.0 49.0 73.4
 101 9.8 7.6 11.4
 130 18.9 15.0 22.6

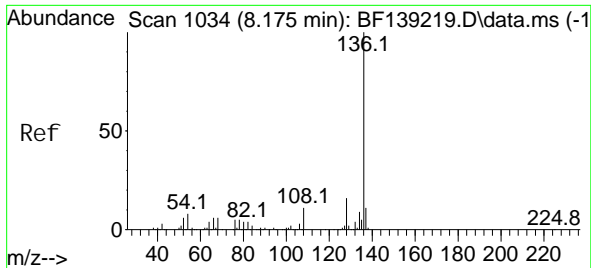


#20
 3+4-Methylphenols
 Concen: 39.477 ng
 RT: 7.292 min Scan# 884
 Delta R.T. -0.000 min
 Lab File: BF139223.D
 Acq: 29 Aug 2024 16:07



Tgt Ion: 107 Resp: 268968
 Ion Ratio Lower Upper
 107 100
 108 90.3 69.2 109.2
 77 128.7 105.6 145.6
 79 35.4 14.6 54.6



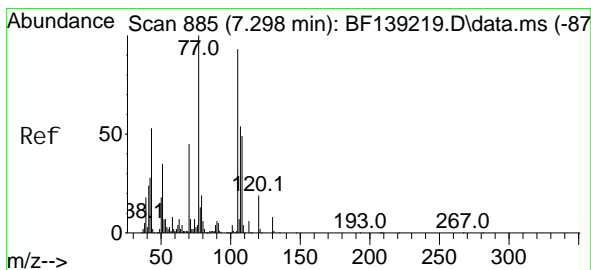
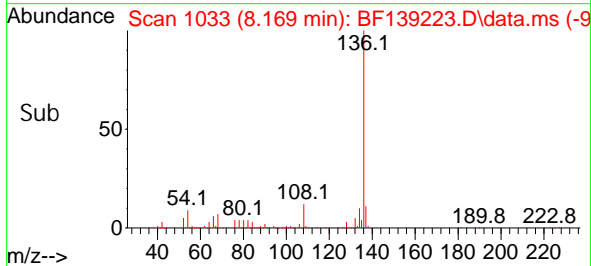
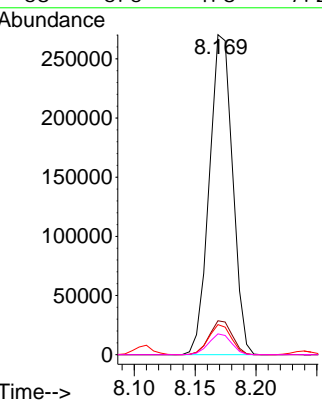
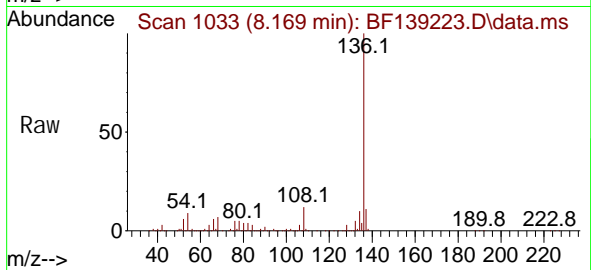


#21
 Naphthalene-d8
 Concen: 20.000 ng
 RT: 8.169 min Scan# 1033
 Delta R.T. -0.006 min
 Lab File: BF139223.D
 Acq: 29 Aug 2024 16:07

Instrument : BNA_F
 ClientSampleId : ICVBF082924

Tgt Ion: 136 Resp: 359609

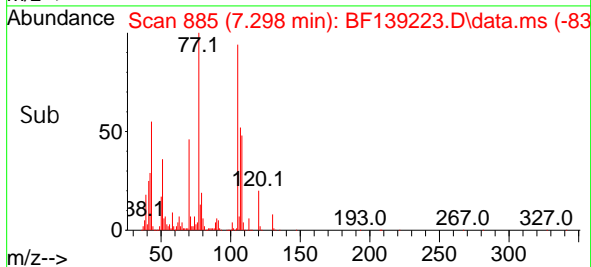
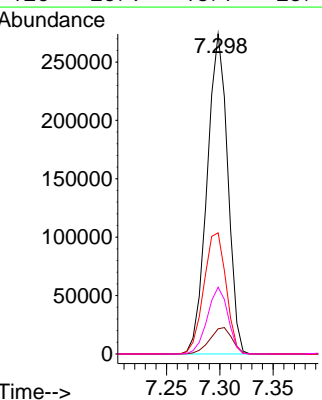
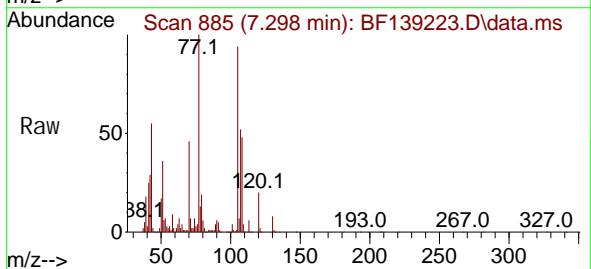
Ion	Ratio	Lower	Upper
136	100		
137	10.6	8.7	13.1
54	9.4	6.9	10.3
68	6.5	4.8	7.2

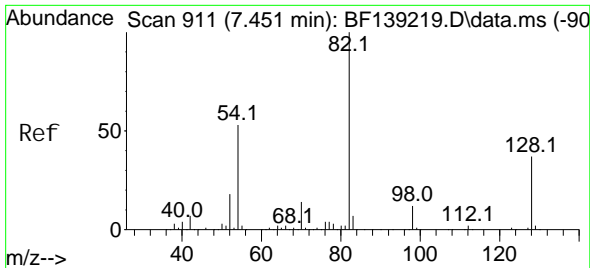


#22
 Acetophenone
 Concen: 40.192 ng
 RT: 7.298 min Scan# 885
 Delta R.T. -0.000 min
 Lab File: BF139223.D
 Acq: 29 Aug 2024 16:07

Tgt Ion: 105 Resp: 367700

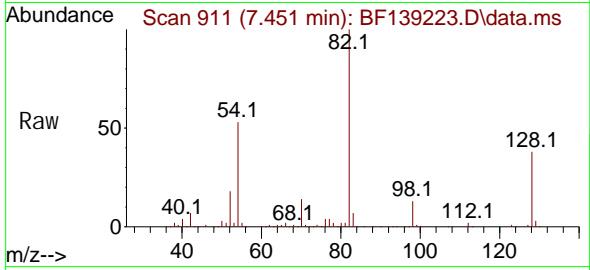
Ion	Ratio	Lower	Upper
105	100		
71	7.9	6.5	9.7
51	37.8	30.7	46.1
120	20.9	16.7	25.1



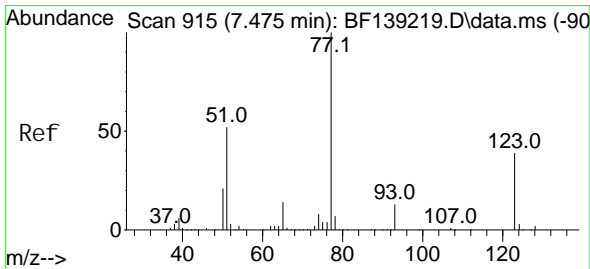
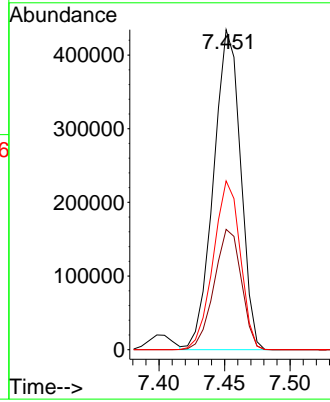
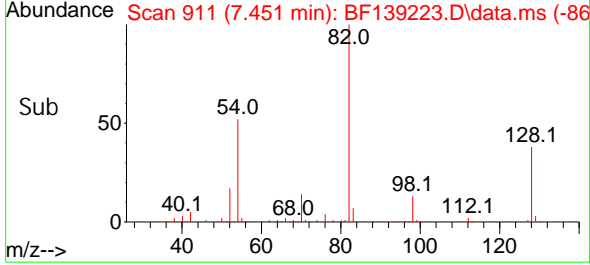


#23
 Ni trobenzene-d5
 Concen: 83.440 ng
 RT: 7.451 min Scan# 911
 Delta R.T. -0.000 min
 Lab File: BF139223.D
 Acq: 29 Aug 2024 16:07

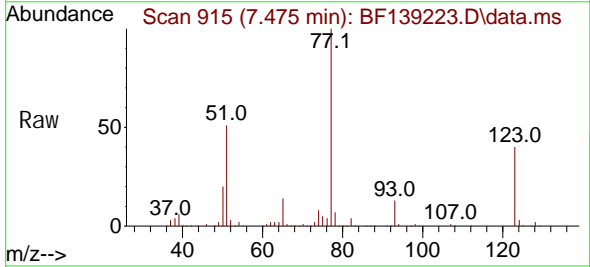
Instrument : BNA_F
 ClientSampleId : ICVBF082924



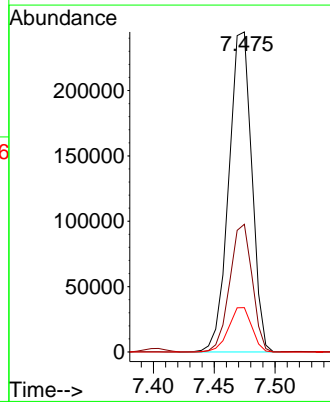
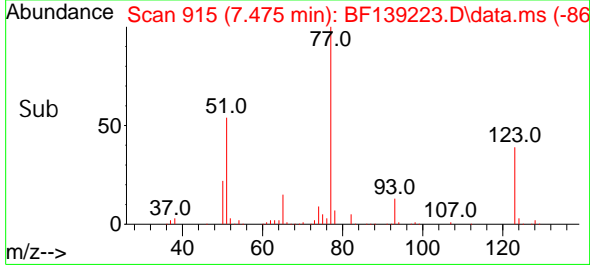
Tgt Ion: 82 Resp: 624202
 Ion Ratio Lower Upper
 82 100
 128 37.6 29.4 44.2
 54 52.7 42.4 63.6

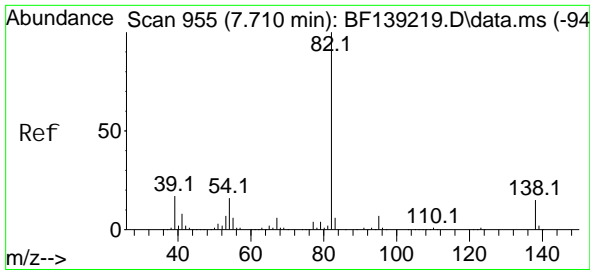


#24
 Ni trobenzene
 Concen: 41.186 ng
 RT: 7.475 min Scan# 915
 Delta R.T. -0.000 min
 Lab File: BF139223.D
 Acq: 29 Aug 2024 16:07



Tgt Ion: 77 Resp: 322214
 Ion Ratio Lower Upper
 77 100
 123 39.9 32.0 48.0
 65 13.9 11.1 16.7

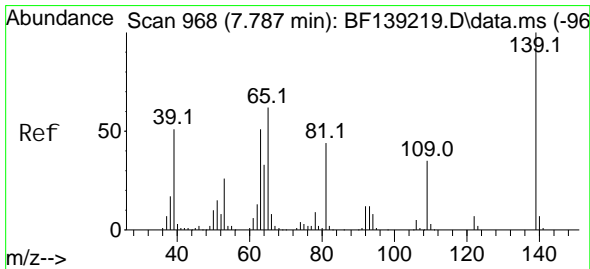
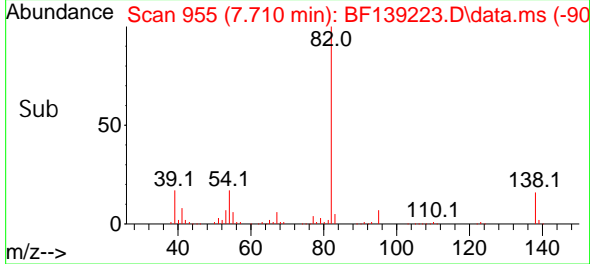
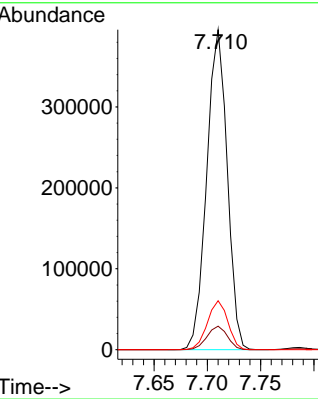
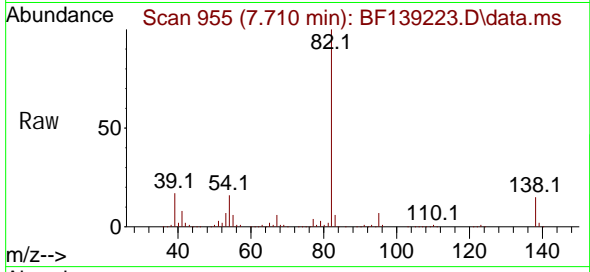




#25
 Isophorone
 Concen: 40.717 ng
 RT: 7.710 min Scan# 910
 Delta R.T. -0.000 min
 Lab File: BF139223.D
 Acq: 29 Aug 2024 16:07

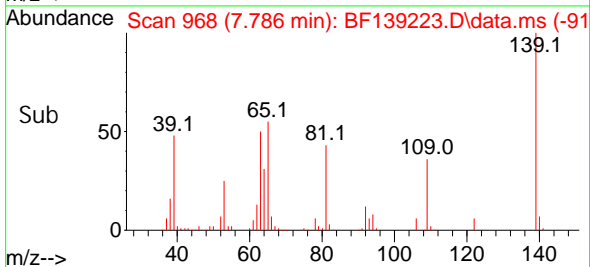
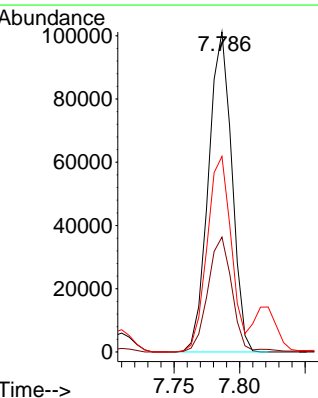
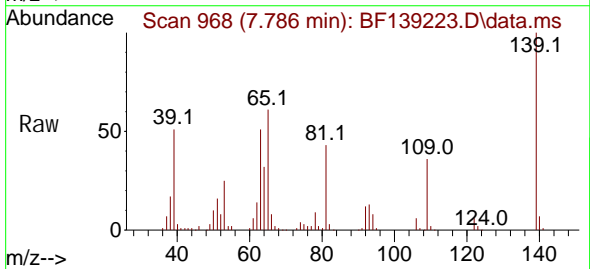
Instrument :
 BNA_F
 ClientSampleId :
 ICVBF082924

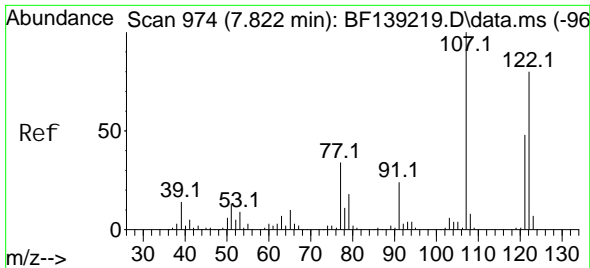
Tgt Ion: 82 Resp: 527910
 Ion Ratio Lower Upper
 82 100
 95 7.4 5.8 8.8
 138 15.3 12.3 18.5



#26
 2-Nitrophenol
 Concen: 44.722 ng
 RT: 7.786 min Scan# 968
 Delta R.T. -0.001 min
 Lab File: BF139223.D
 Acq: 29 Aug 2024 16:07

Tgt Ion: 139 Resp: 125247
 Ion Ratio Lower Upper
 139 100
 109 35.9 28.2 42.2
 65 61.1 49.6 74.4





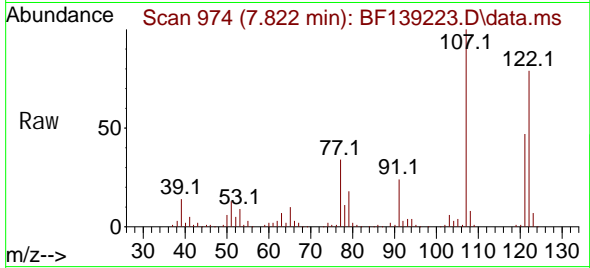
#27
 2, 4-Di methyl phenol
 Concen: 40.504 ng
 RT: 7.822 min Scan# 91
 Delta R.T. -0.000 min
 Lab File: BF139223.D
 Acq: 29 Aug 2024 16:07

Instrument :

BNA_F

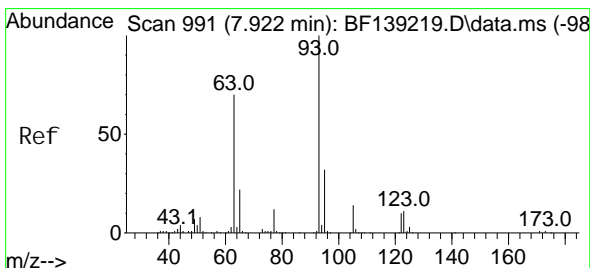
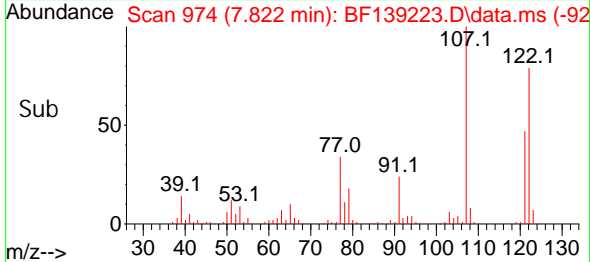
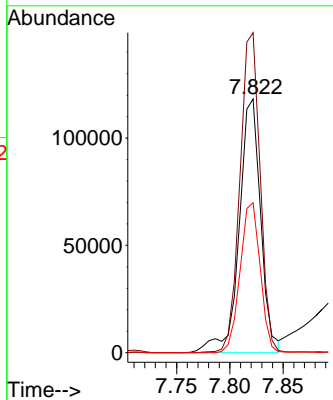
ClientSampleId :

ICVBF082924



Tgt Ion: 122 Resp: 166429

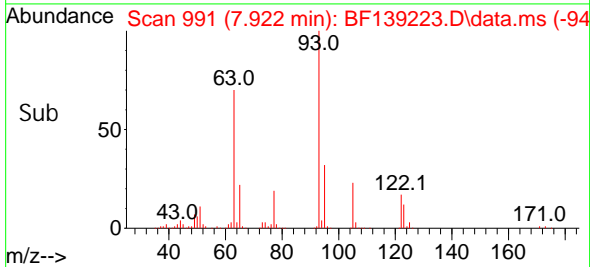
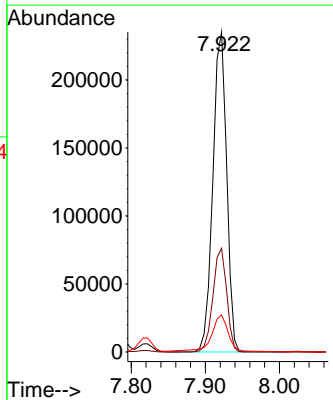
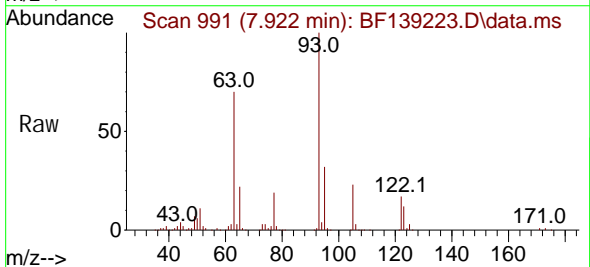
Ion	Ratio	Lower	Upper
122	100		
107	126.1	99.8	149.8
121	59.1	47.5	71.3

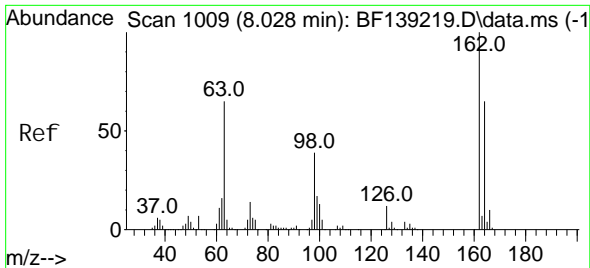


#28
 bis(2-Chloroethoxy)methane
 Concen: 40.264 ng
 RT: 7.922 min Scan# 991
 Delta R.T. -0.000 min
 Lab File: BF139223.D
 Acq: 29 Aug 2024 16:07

Tgt Ion: 93 Resp: 303951

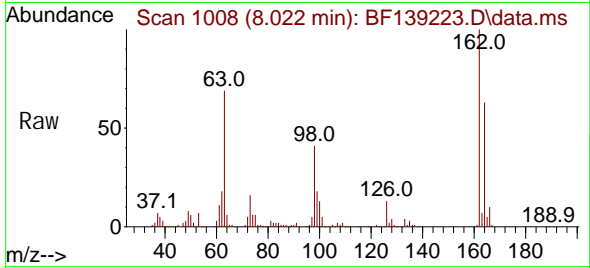
Ion	Ratio	Lower	Upper
93	100		
95	32.4	26.0	39.0
123	11.6	9.4	14.0



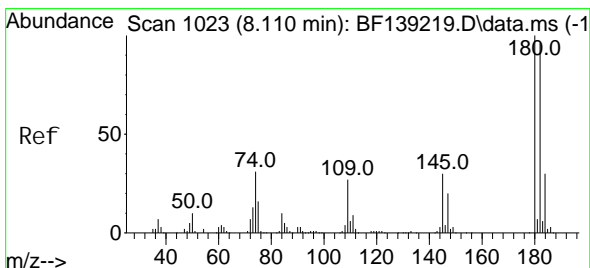
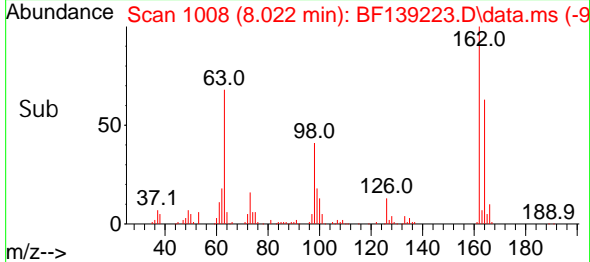
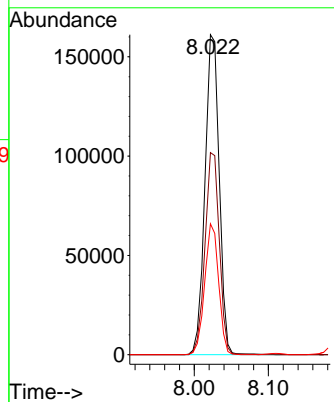


#29
 2, 4-Di chl orophenol
 Concen: 40.926 ng
 RT: 8.022 min Scan# 1008
 Delta R.T. -0.006 min
 Lab File: BF139223.D
 Acq: 29 Aug 2024 16:07

Instrument :
 BNA_F
 ClientSampleId :
 ICVBF082924

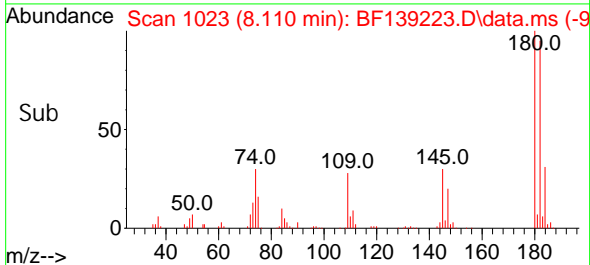
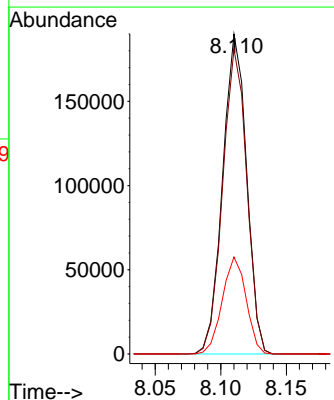
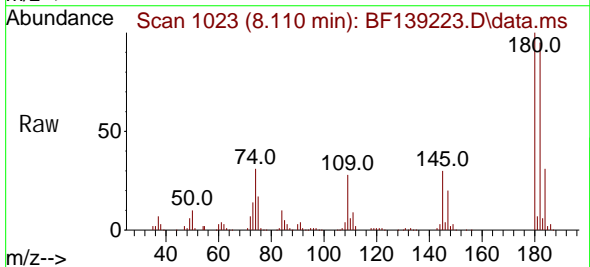


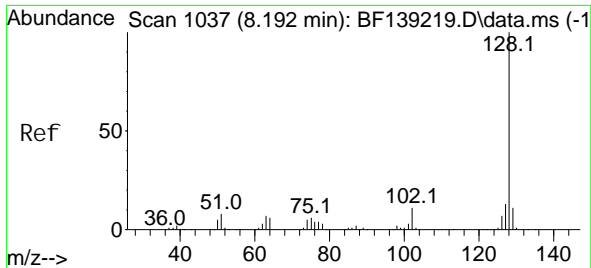
Tgt Ion: 162 Resp: 216317
 Ion Ratio Lower Upper
 162 100
 164 63.2 45.3 85.3
 98 40.9 19.1 59.1



#30
 1, 2, 4-Tri chl orobenzene
 Concen: 39.829 ng
 RT: 8.110 min Scan# 1023
 Delta R.T. -0.000 min
 Lab File: BF139223.D
 Acq: 29 Aug 2024 16:07

Tgt Ion: 180 Resp: 241584
 Ion Ratio Lower Upper
 180 100
 182 95.3 76.5 114.7
 145 30.3 24.2 36.2





#31
 Naphthalene
 Concen: 39.762 ng
 RT: 8.192 min Scan# 1037
 Delta R.T. -0.000 min
 Lab File: BF139223.D
 Acq: 29 Aug 2024 16:07

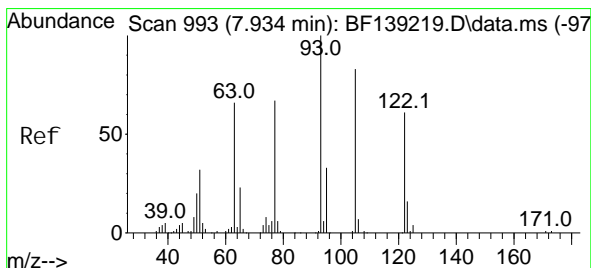
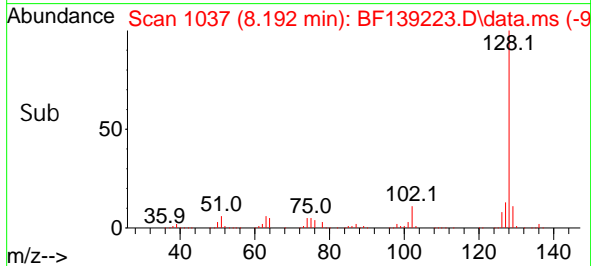
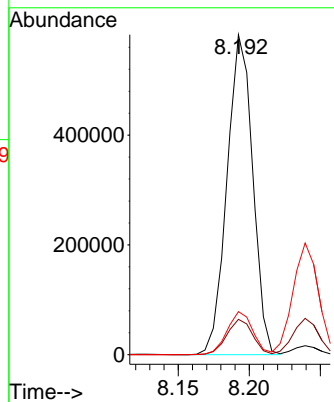
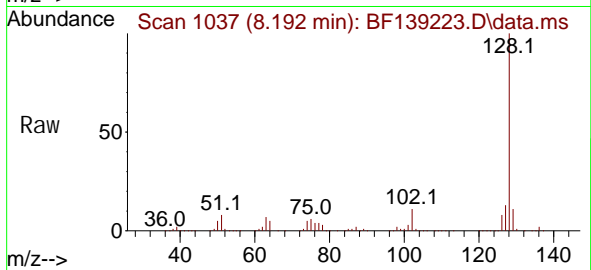
Instrument :

BNA_F

ClientSampleId :

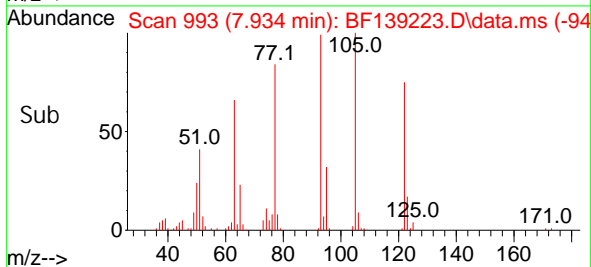
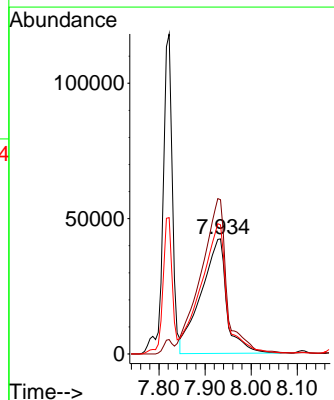
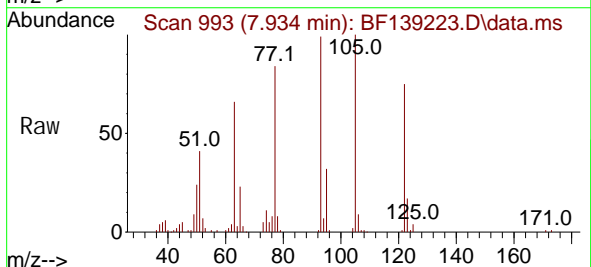
ICVBF082924

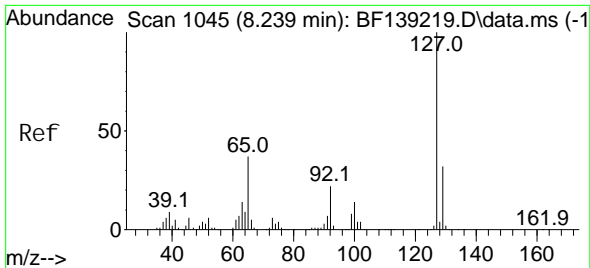
Tgt Ion: 128 Resp: 733174
 Ion Ratio Lower Upper
 128 100
 129 11.1 8.8 13.2
 127 13.4 10.7 16.1



#32
 Benzoic acid
 Concen: 44.894 ng
 RT: 7.934 min Scan# 993
 Delta R.T. -0.000 min
 Lab File: BF139223.D
 Acq: 29 Aug 2024 16:07

Tgt Ion: 122 Resp: 163862
 Ion Ratio Lower Upper
 122 100
 105 134.1 115.3 155.3
 77 112.3 91.0 131.0





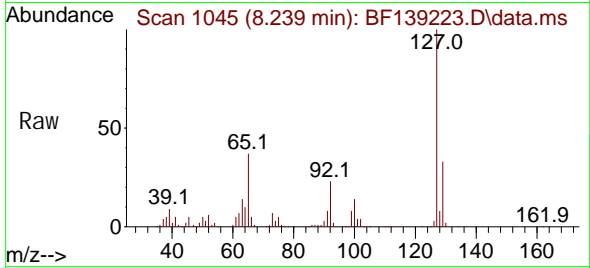
#33
 4-Chloroaniline
 Concen: 40.399 ng
 RT: 8.239 min Scan# 1045
 Delta R.T. -0.000 min
 Lab File: BF139223.D
 Acq: 29 Aug 2024 16:07

Instrument :

BNA_F

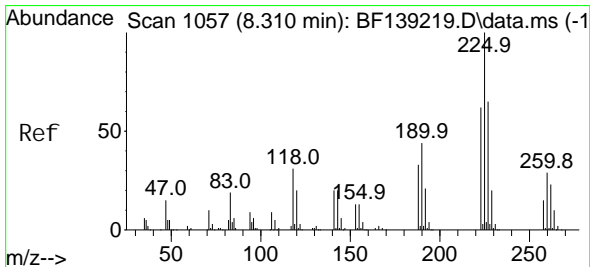
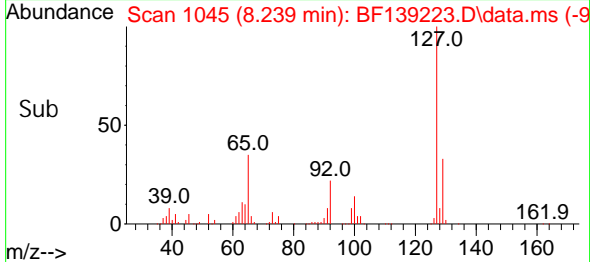
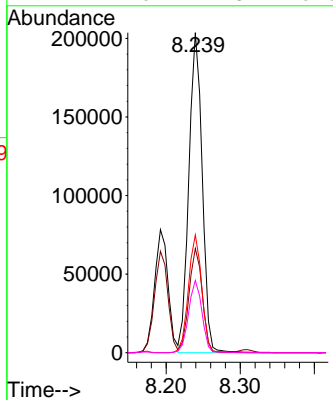
ClientSampleId :

ICVBF082924



Tgt Ion: 127 Resp: 255356

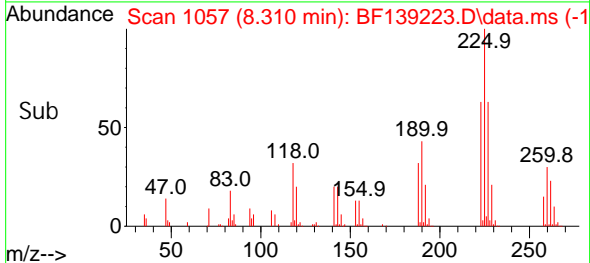
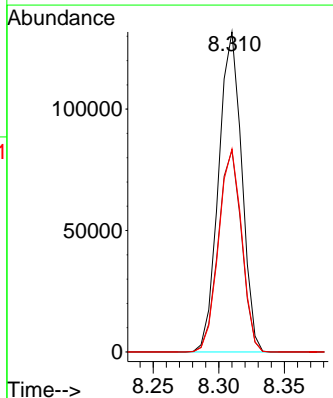
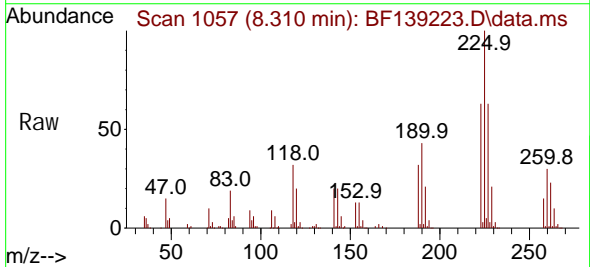
Ion	Ratio	Lower	Upper
127	100		
129	32.6	25.5	38.3
65	36.8	29.3	43.9
92	22.5	17.8	26.6

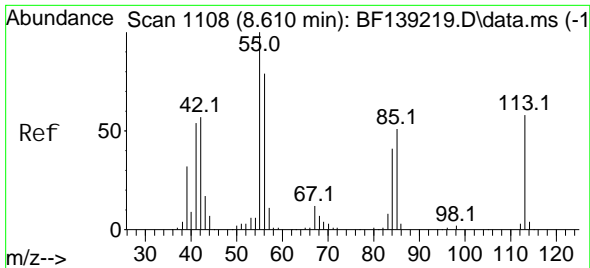


#34
 Hexachlorobutadiene
 Concen: 40.403 ng
 RT: 8.310 min Scan# 1057
 Delta R.T. -0.000 min
 Lab File: BF139223.D
 Acq: 29 Aug 2024 16:07

Tgt Ion: 225 Resp: 161545

Ion	Ratio	Lower	Upper
225	100		
223	63.0	49.4	74.0
227	63.5	51.7	77.5



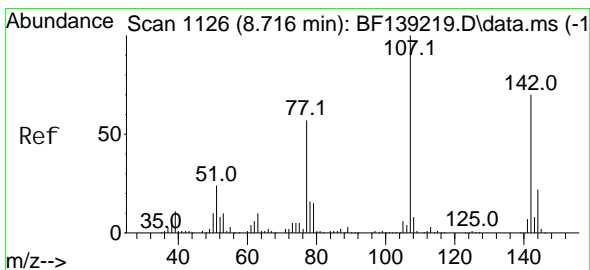
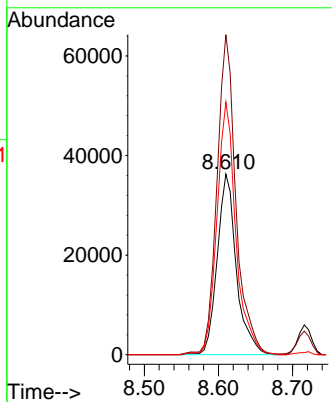
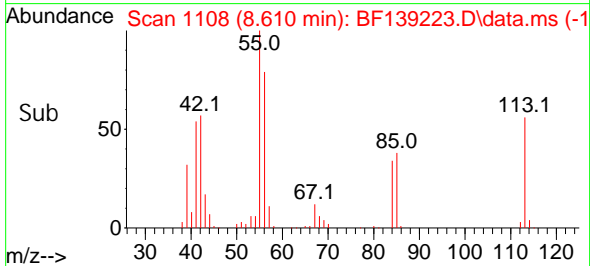
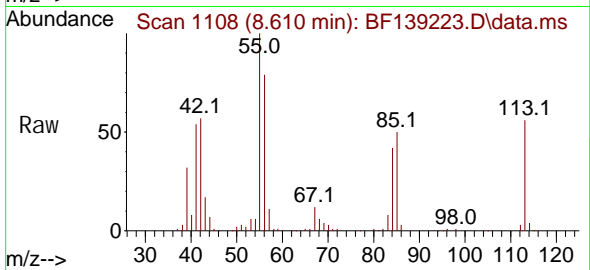


#35
 Caprolactam
 Concen: 41.349 ng
 RT: 8.610 min Scan# 1108
 Delta R.T. -0.000 min
 Lab File: BF139223.D
 Acq: 29 Aug 2024 16:07

Instrument :
 BNA_F
ClientSampleId :
 ICVBF082924

Tgt Ion: 113 Resp: 65108

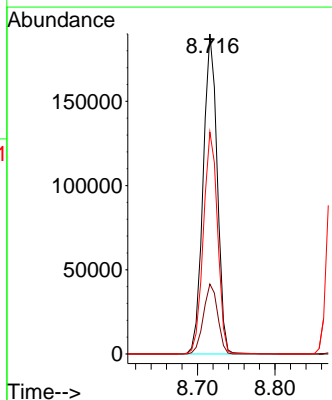
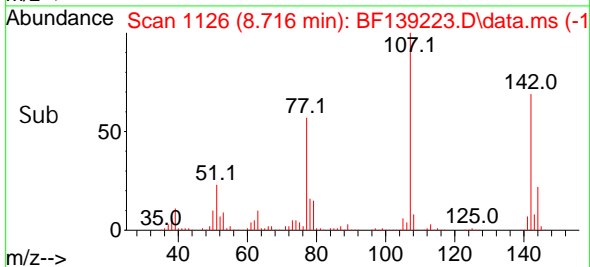
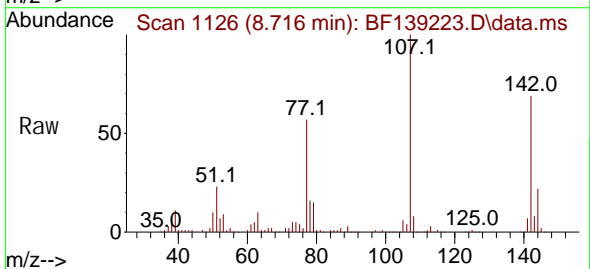
Ion	Ratio	Lower	Upper
113	100		
55	177.2	153.2	193.2
56	139.9	116.8	156.8

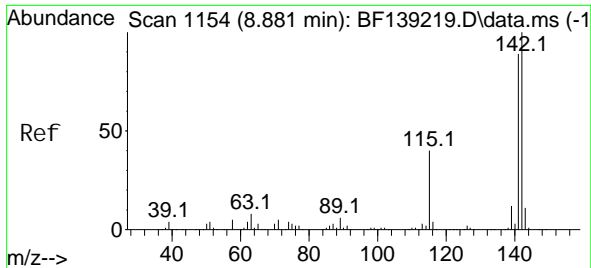


#36
 4-Chloro-3-methyl phenol
 Concen: 41.254 ng
 RT: 8.716 min Scan# 1126
 Delta R.T. -0.000 min
 Lab File: BF139223.D
 Acq: 29 Aug 2024 16:07

Tgt Ion: 107 Resp: 239372

Ion	Ratio	Lower	Upper
107	100		
144	21.8	17.8	26.8
142	69.3	55.8	83.8





#37
 2-Methyl naphthalene
 Concen: 40.308 ng
 RT: 8.881 min Scan# 1115
 Delta R.T. -0.000 min
 Lab File: BF139223.D
 Acq: 29 Aug 2024 16:07

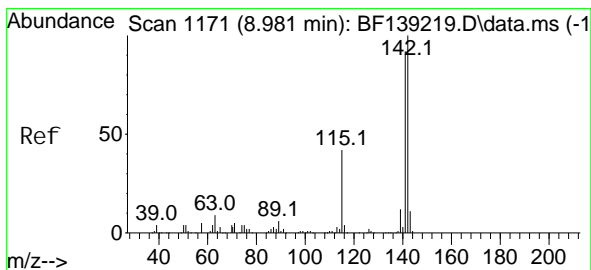
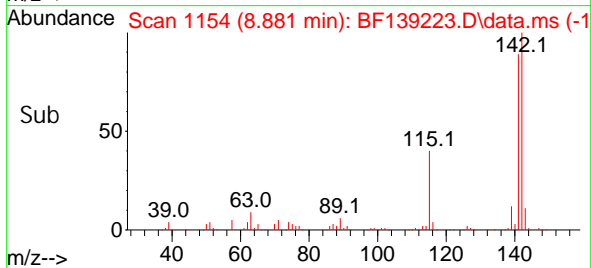
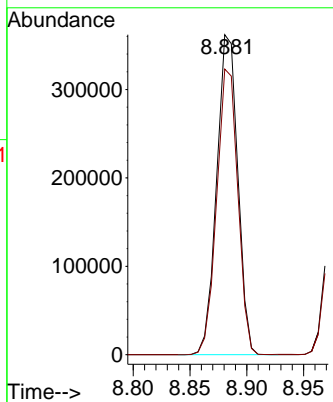
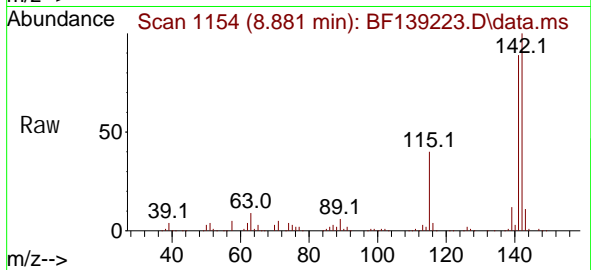
Instrument :

BNA_F

ClientSampleId :

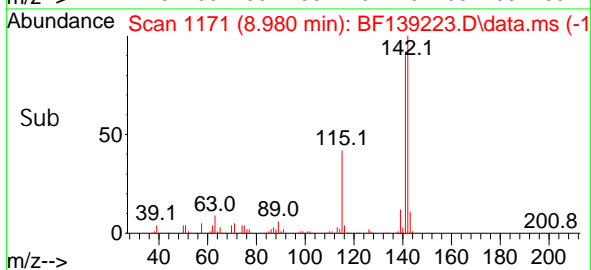
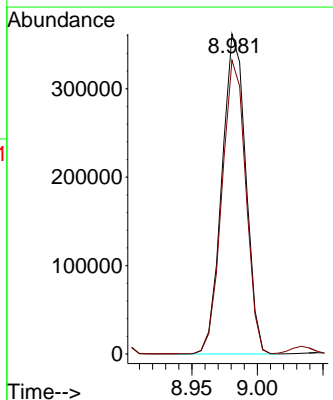
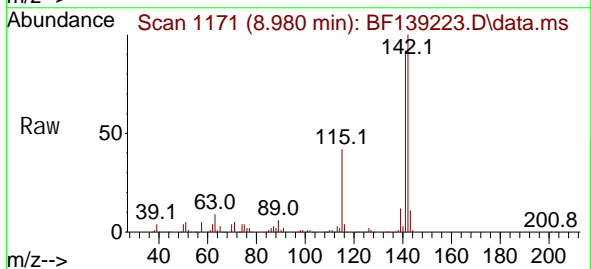
ICVBF082924

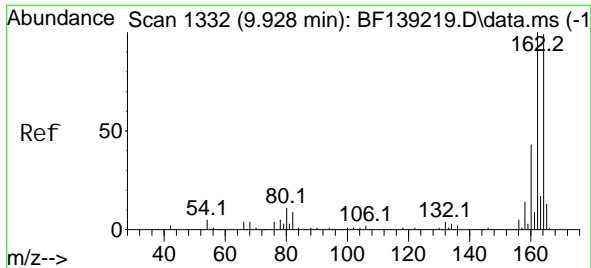
Tgt Ion: 142 Resp: 468279
 Ion Ratio Lower Upper
 142 100
 141 89.2 70.9 106.3



#38
 1-Methyl naphthalene
 Concen: 39.920 ng
 RT: 8.980 min Scan# 1171
 Delta R.T. -0.000 min
 Lab File: BF139223.D
 Acq: 29 Aug 2024 16:07

Tgt Ion: 142 Resp: 457396
 Ion Ratio Lower Upper
 142 100
 141 91.8 73.4 110.2





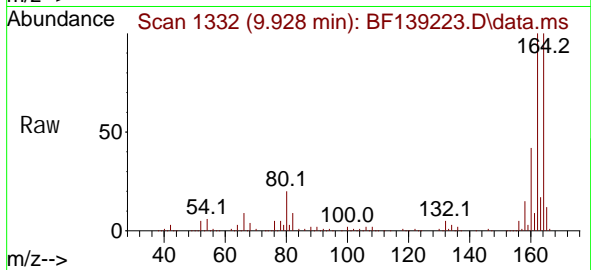
#39
 Acenaphthene-d10
 Concen: 20.000 ng
 RT: 9.928 min Scan# 1111
 Delta R.T. -0.000 min
 Lab File: BF139223.D
 Acq: 29 Aug 2024 16:07

Instrument :

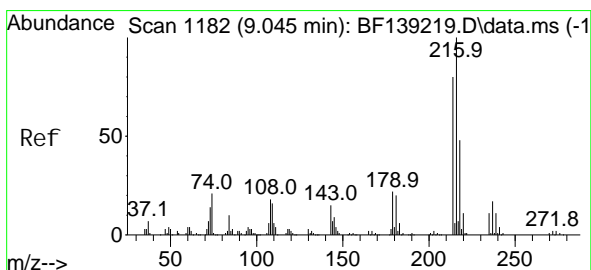
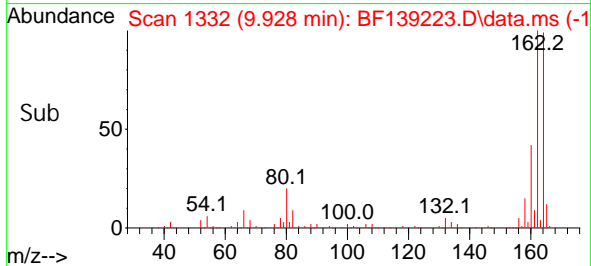
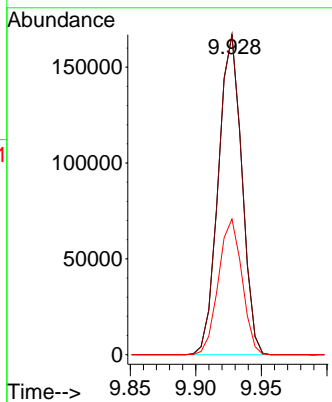
BNA_F

ClientSampleId :

ICVBF082924

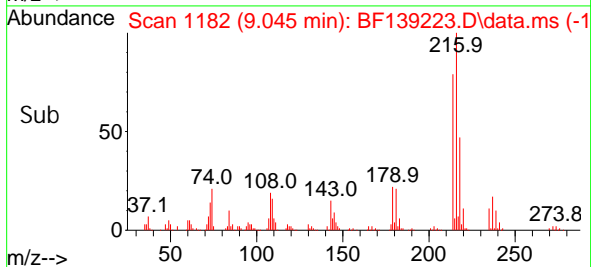
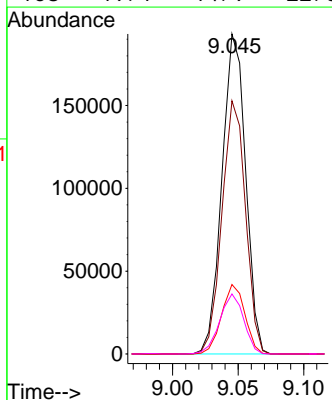
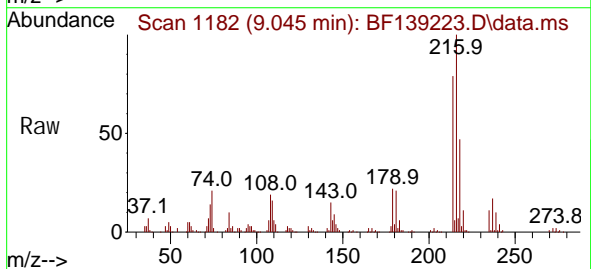


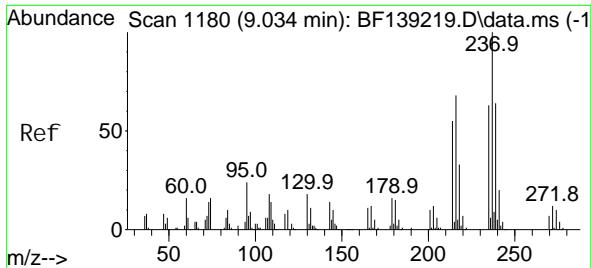
Tgt Ion: 164 Resp: 207366
 Ion Ratio Lower Upper
 164 100
 162 100.1 80.8 121.2
 160 42.5 34.4 51.6



#40
 1,2,4,5-Tetrachlorobenzene
 Concen: 39.307 ng
 RT: 9.045 min Scan# 1182
 Delta R.T. -0.000 min
 Lab File: BF139223.D
 Acq: 29 Aug 2024 16:07

Tgt Ion: 216 Resp: 242250
 Ion Ratio Lower Upper
 216 100
 214 78.8 63.6 95.4
 179 21.5 17.1 25.7
 108 19.1 14.9 22.3



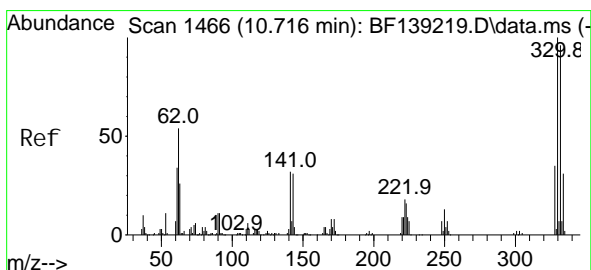
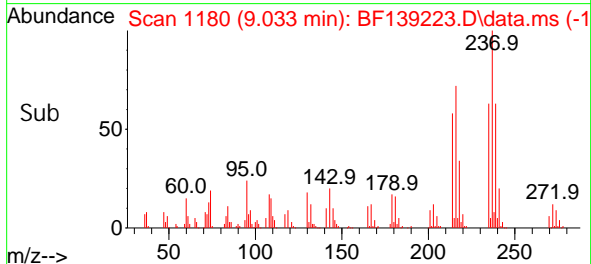
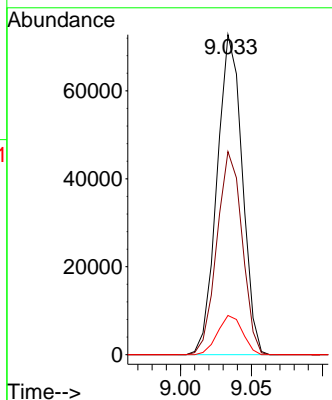
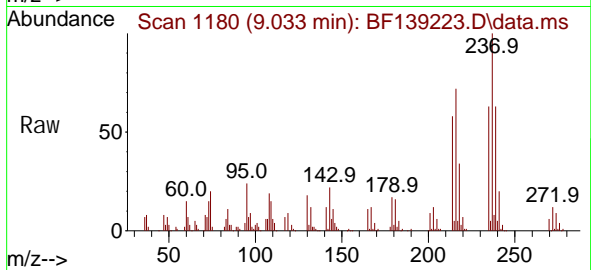


#41
 Hexachlorocyclopentadiene
 Concen: 41.565 ng
 RT: 9.033 min Scan# 1180
 Delta R.T. -0.000 min
 Lab File: BF139223.D
 Acq: 29 Aug 2024 16:07

Instrument : BNA_F
 ClientSampleId : ICVBF082924

Tgt Ion: 237 Resp: 89722

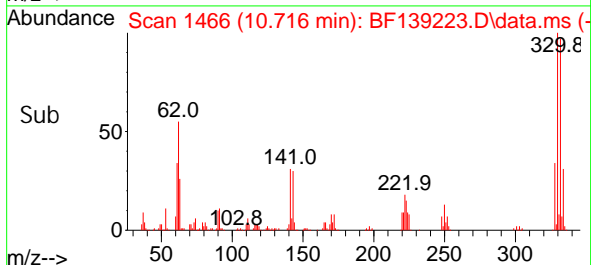
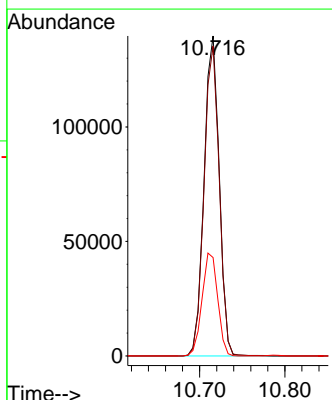
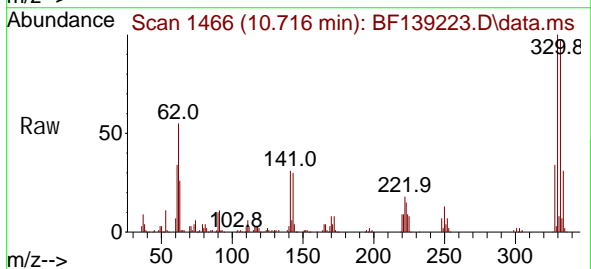
Ion	Ratio	Lower	Upper
237	100		
235	63.4	43.2	83.2
272	12.3	0.0	32.1

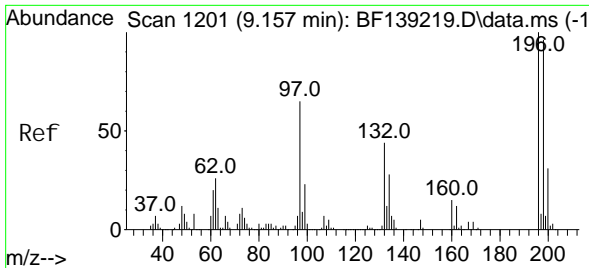


#42
 2,4,6-Tri bromophenol
 Concen: 83.000 ng
 RT: 10.716 min Scan# 1466
 Delta R.T. -0.000 min
 Lab File: BF139223.D
 Acq: 29 Aug 2024 16:07

Tgt Ion: 330 Resp: 172646

Ion	Ratio	Lower	Upper
330	100		
332	97.0	76.6	114.8
141	33.1	26.9	40.3





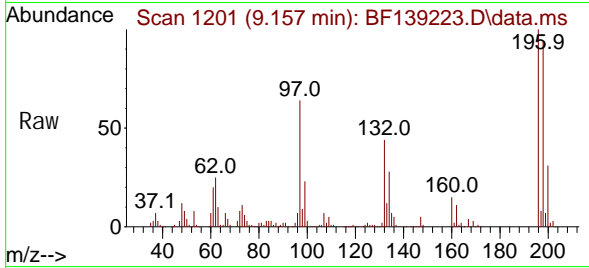
#43
 2, 4, 6-Tri chlorophenol
 Concen: 40.789 ng
 RT: 9.157 min Scan# 1111
 Delta R.T. -0.000 min
 Lab File: BF139223.D
 Acq: 29 Aug 2024 16:07

Instrument :

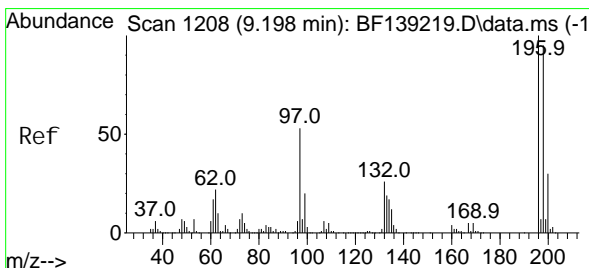
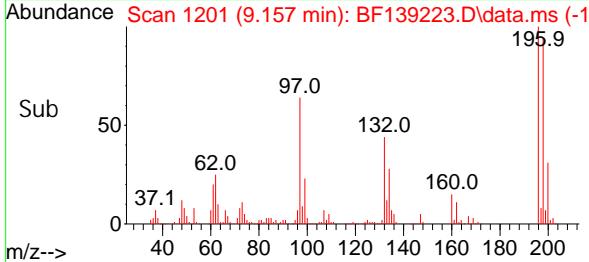
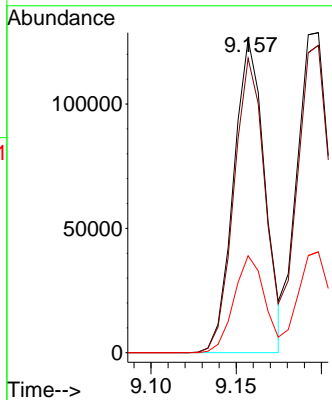
BNA_F

ClientSampleId :

ICVBF082924

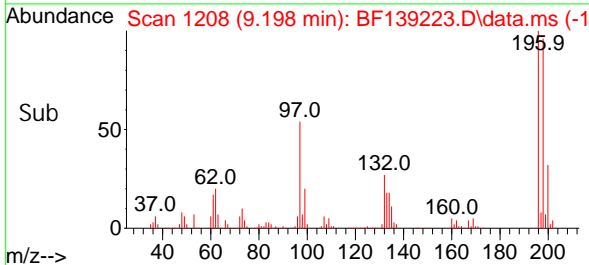
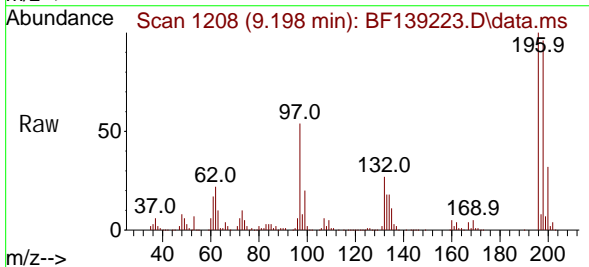
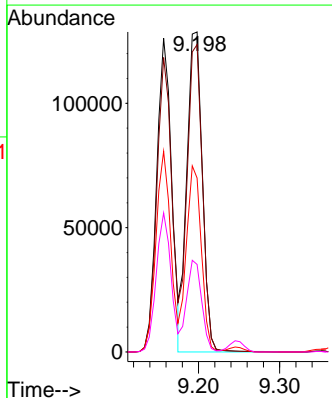


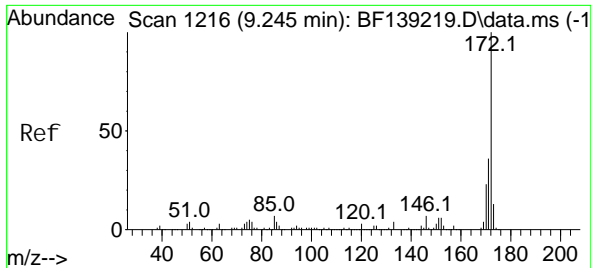
Tgt Ion: 196 Resp: 159898
 Ion Ratio Lower Upper
 196 100
 198 93.8 76.6 115.0
 200 30.9 24.7 37.1



#44
 2, 4, 5-Tri chlorophenol
 Concen: 40.576 ng
 RT: 9.198 min Scan# 1208
 Delta R.T. -0.000 min
 Lab File: BF139223.D
 Acq: 29 Aug 2024 16:07

Tgt Ion: 196 Resp: 171180
 Ion Ratio Lower Upper
 196 100
 198 96.0 76.2 114.4
 97 54.4 43.0 64.4
 132 27.4 21.8 32.6

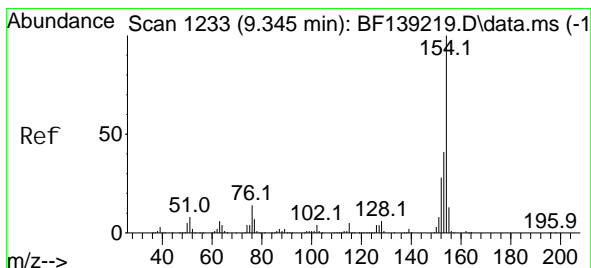
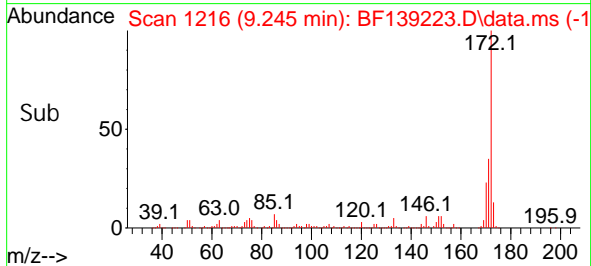
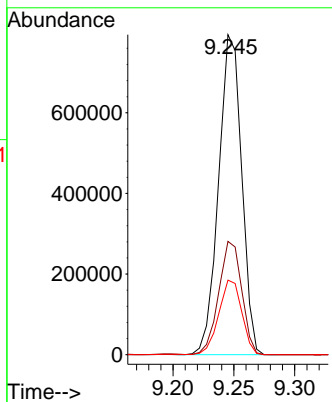
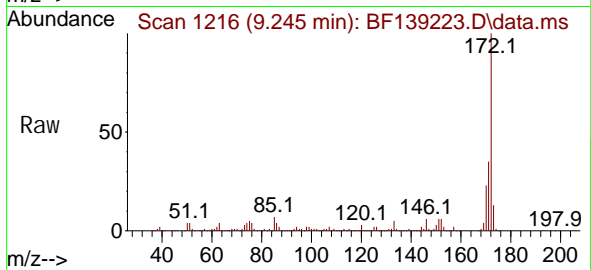




#45
 2-Fluorophenyl
 Concen: 78.588 ng
 RT: 9.245 min Scan# 11
 Delta R.T. -0.000 min
 Lab File: BF139223.D
 Acq: 29 Aug 2024 16:07

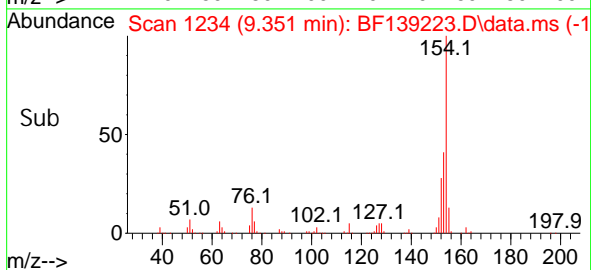
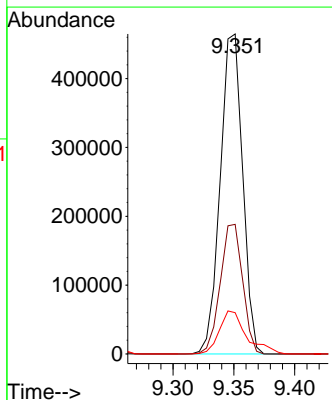
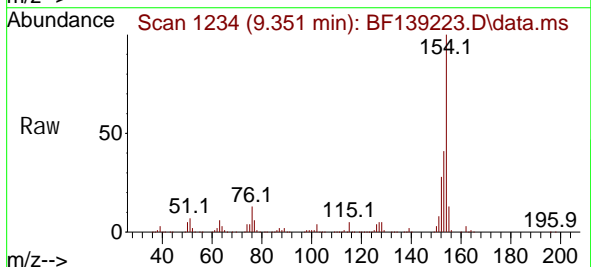
Instrument :
 BNA_F
 ClientSampleId :
 ICVBF082924

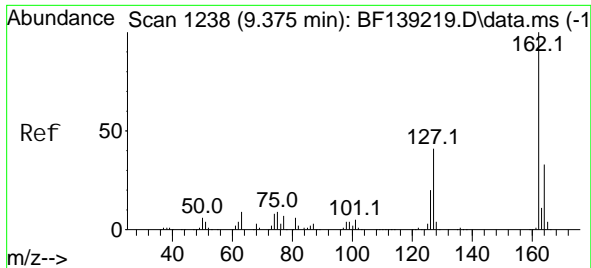
Tgt Ion: 172 Resp: 1046631
 Ion Ratio Lower Upper
 172 100
 171 35.4 28.7 43.1
 170 23.3 18.7 28.1



#46
 1,1'-Bi phenyl
 Concen: 40.052 ng
 RT: 9.351 min Scan# 1234
 Delta R.T. 0.006 min
 Lab File: BF139223.D
 Acq: 29 Aug 2024 16:07

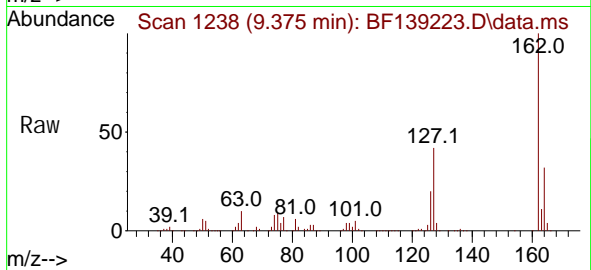
Tgt Ion: 154 Resp: 595258
 Ion Ratio Lower Upper
 154 100
 153 40.5 20.8 60.8
 76 12.9 0.0 33.9



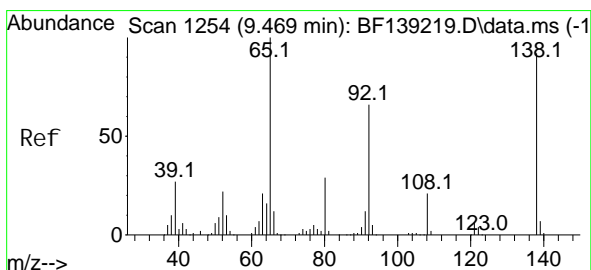
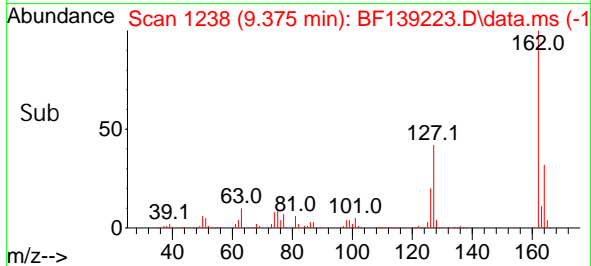
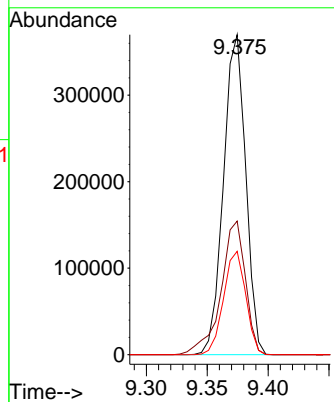


#47
 2-Chloronaphthalene
 Concen: 39.878 ng
 RT: 9.375 min Scan# 1238
 Delta R.T. -0.000 min
 Lab File: BF139223.D
 Acq: 29 Aug 2024 16:07

Instrument : BNA_F
 ClientSampleId : ICVBF082924

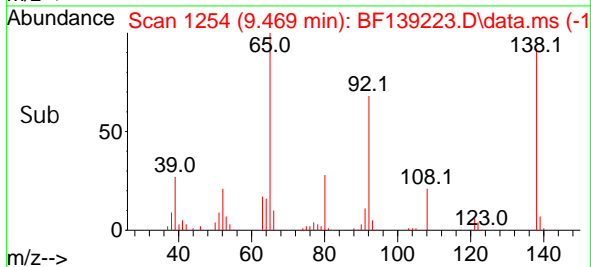
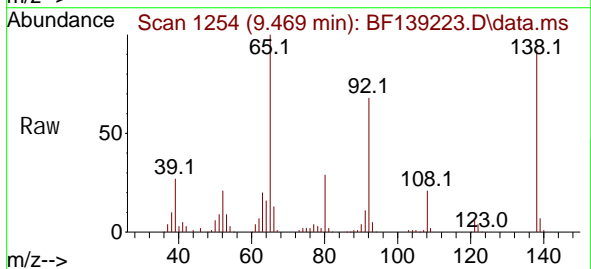
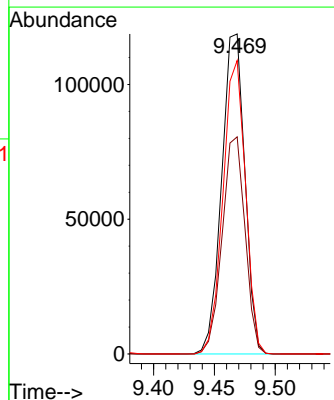


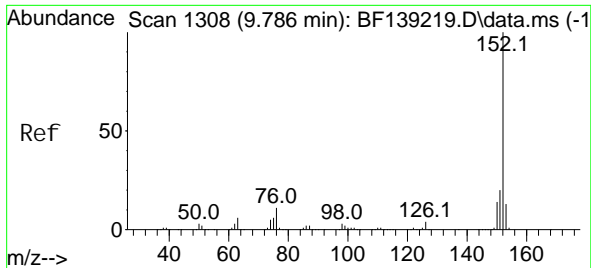
Tgt Ion: 162 Resp: 470458
 Ion Ratio Lower Upper
 162 100
 127 41.7 33.0 49.4
 164 32.3 26.2 39.4



#48
 2-Nitroaniline
 Concen: 43.335 ng
 RT: 9.469 min Scan# 1254
 Delta R.T. -0.000 min
 Lab File: BF139223.D
 Acq: 29 Aug 2024 16:07

Tgt Ion: 65 Resp: 157425
 Ion Ratio Lower Upper
 65 100
 92 67.9 52.7 79.1
 138 91.7 73.4 110.0





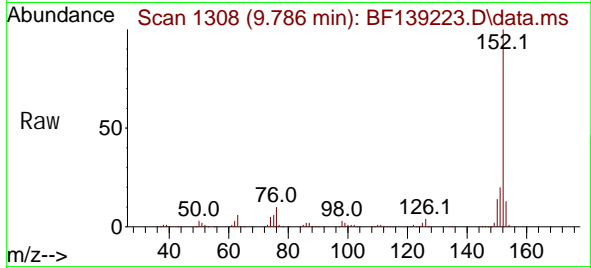
#49
 Acenaphthylene
 Concen: 40.316 ng
 RT: 9.786 min Scan# 111
 Delta R.T. -0.000 min
 Lab File: BF139223.D
 Acq: 29 Aug 2024 16:07

Instrument :

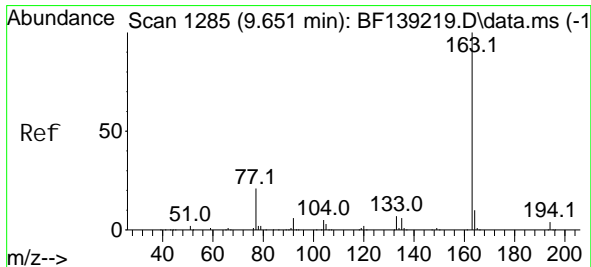
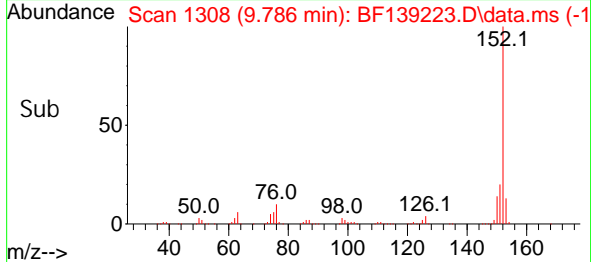
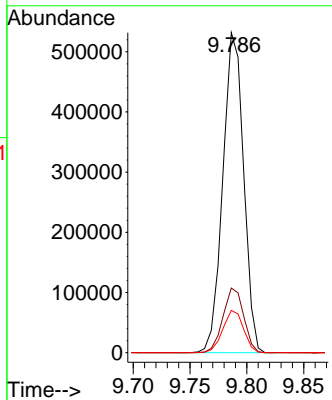
BNA_F

ClientSampleId :

ICVBF082924

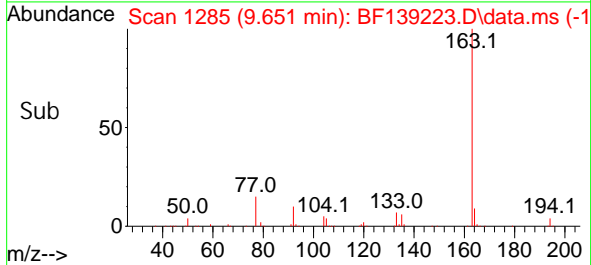
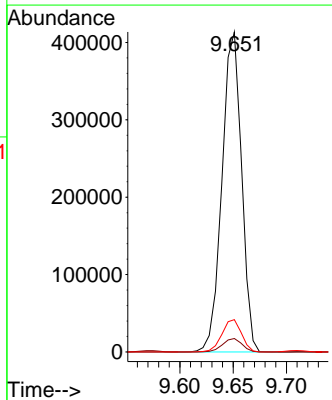
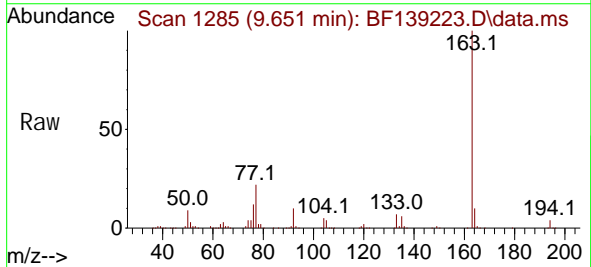


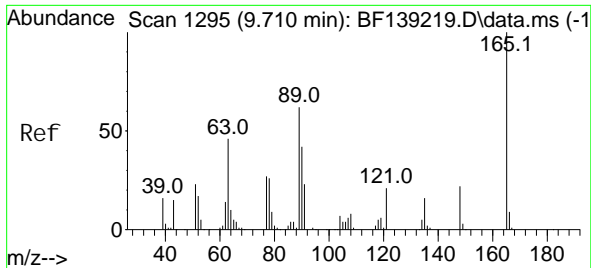
Tgt Ion: 152 Resp: 676079
 Ion Ratio Lower Upper
 152 100
 151 20.2 16.2 24.2
 153 13.2 10.3 15.5



#50
 Dimethyl phthalate
 Concen: 40.629 ng
 RT: 9.651 min Scan# 1285
 Delta R.T. -0.000 min
 Lab File: BF139223.D
 Acq: 29 Aug 2024 16:07

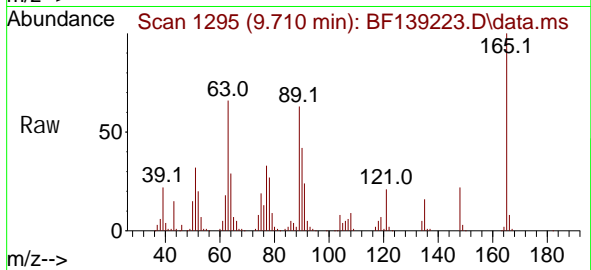
Tgt Ion: 163 Resp: 527553
 Ion Ratio Lower Upper
 163 100
 194 4.2 3.2 4.8
 164 10.1 8.0 12.0



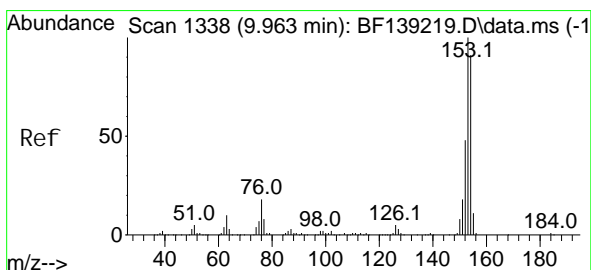
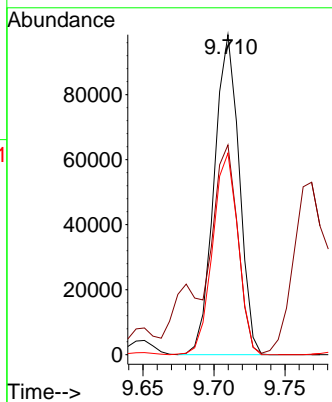
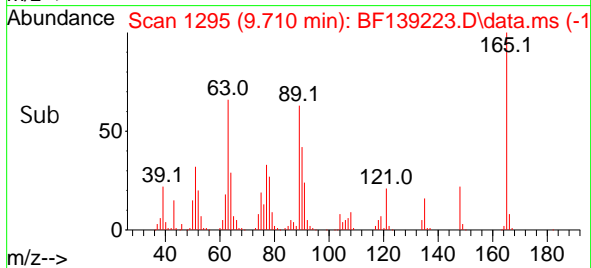


#51
 2,6-Dinitrotoluene
 Concen: 42.993 ng
 RT: 9.710 min Scan# 1111
 Delta R.T. -0.000 min
 Lab File: BF139223.D
 Acq: 29 Aug 2024 16:07

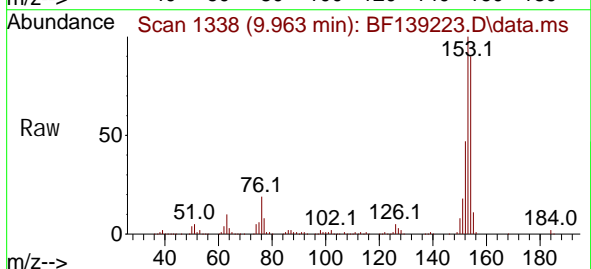
Instrument :
 BNA_F
 ClientSampleId :
 ICVBF082924



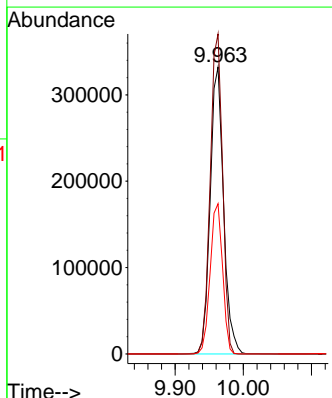
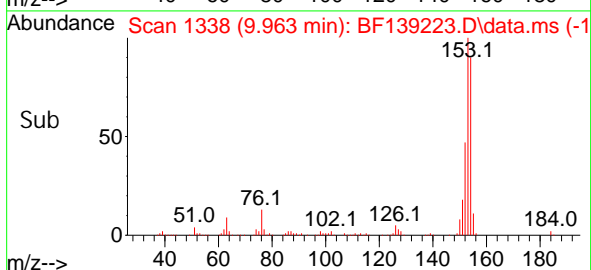
Tgt Ion: 165 Resp: 120652
 Ion Ratio Lower Upper
 165 100
 63 65.5 52.1 78.1
 89 62.9 49.7 74.5

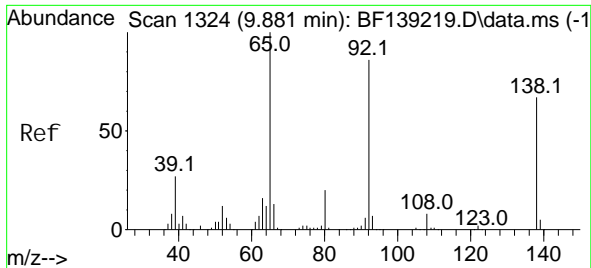


#52
 Acenaphthene
 Concen: 40.569 ng
 RT: 9.963 min Scan# 1338
 Delta R.T. -0.000 min
 Lab File: BF139223.D
 Acq: 29 Aug 2024 16:07



Tgt Ion: 154 Resp: 454222
 Ion Ratio Lower Upper
 154 100
 153 111.5 88.2 132.2
 152 52.3 42.2 63.4





#53
 3-Nitroaniline
 Concen: 42.792 ng
 RT: 9.880 min Scan# 1324
 Delta R.T. -0.000 min
 Lab File: BF139223.D
 Acq: 29 Aug 2024 16:07

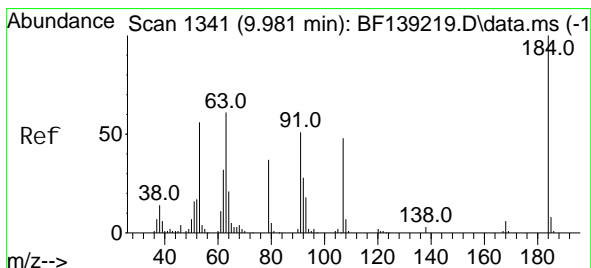
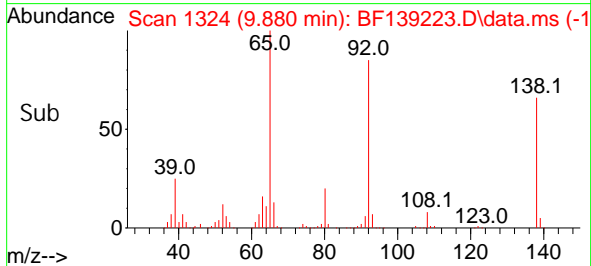
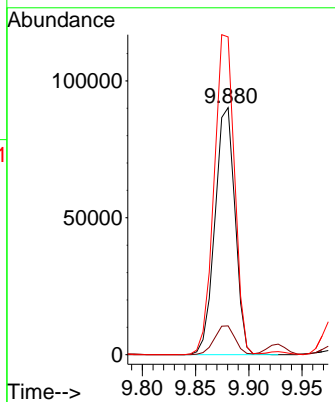
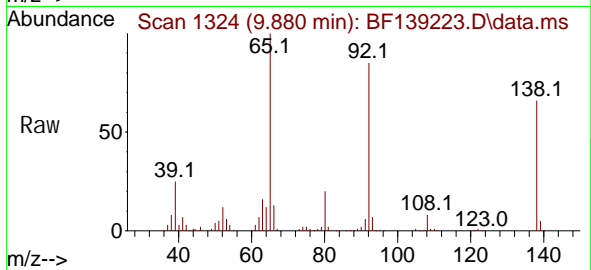
Instrument :

BNA_F

ClientSampleId :

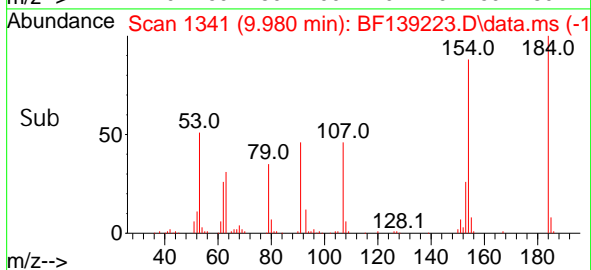
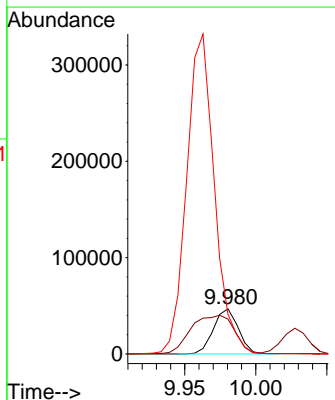
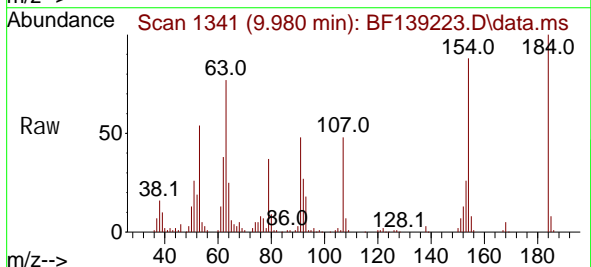
ICVBF082924

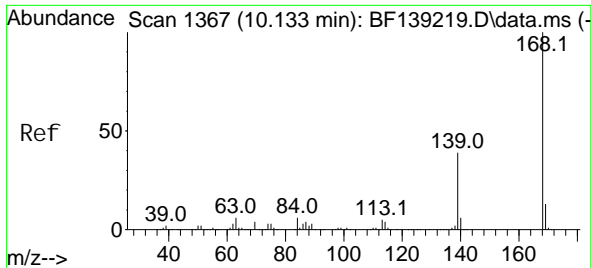
Tgt Ion: 138 Resp: 118291
 Ion Ratio Lower Upper
 138 100
 108 11.7 9.4 14.0
 92 128.6 102.0 153.0



#54
 2,4-Dinitrophenol
 Concen: 41.873 ng
 RT: 9.980 min Scan# 1341
 Delta R.T. -0.001 min
 Lab File: BF139223.D
 Acq: 29 Aug 2024 16:07

Tgt Ion: 184 Resp: 57021
 Ion Ratio Lower Upper
 184 100
 63 77.3 61.9 92.9
 154 87.7 70.9 106.3





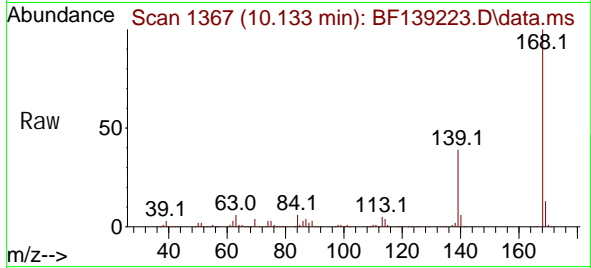
#55
 Di benzofuran
 Concen: 40.160 ng
 RT: 10.133 min Scan# 11
 Delta R.T. -0.000 min
 Lab File: BF139223.D
 Acq: 29 Aug 2024 16:07

Instrument :

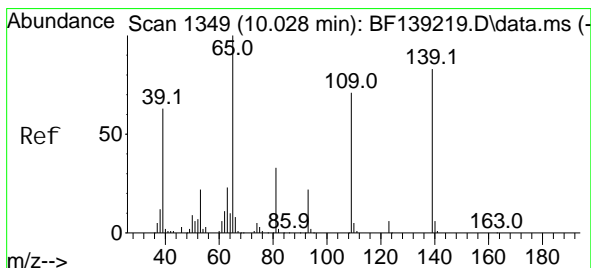
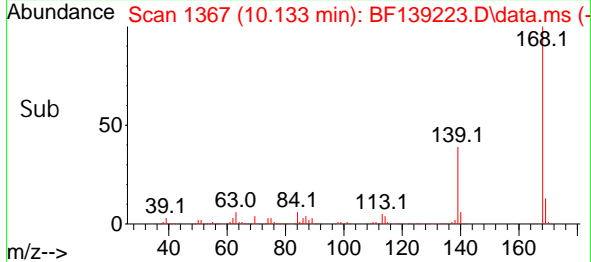
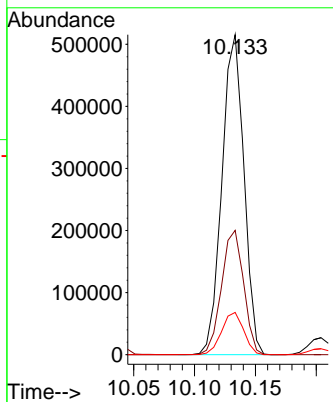
BNA_F

ClientSampleId :

ICVBF082924

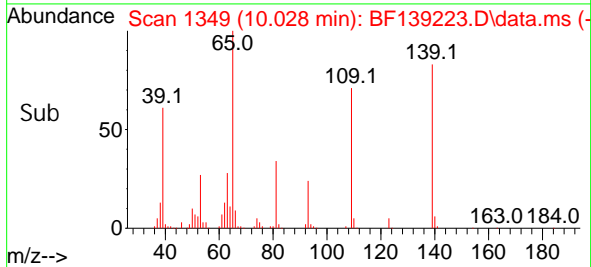
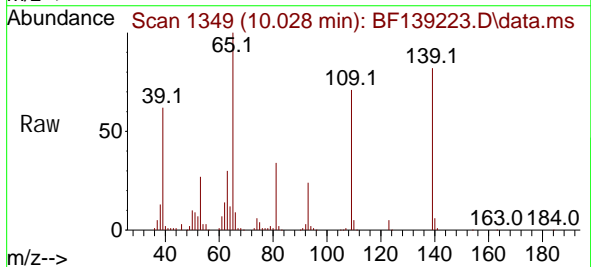
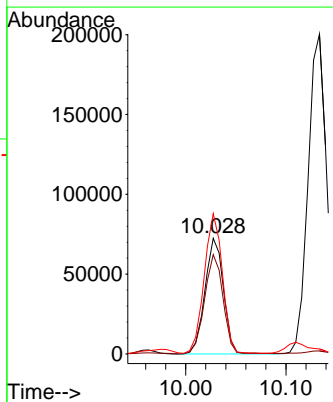


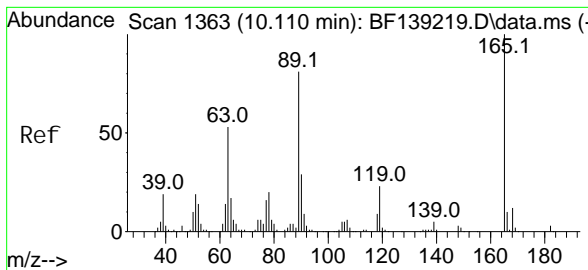
Tgt Ion: 168 Resp: 647672
 Ion Ratio Lower Upper
 168 100
 139 38.9 31.3 46.9
 169 13.2 10.6 16.0



#56
 4-Nitrophenol
 Concen: 44.147 ng
 RT: 10.028 min Scan# 1349
 Delta R.T. -0.000 min
 Lab File: BF139223.D
 Acq: 29 Aug 2024 16:07

Tgt Ion: 139 Resp: 93314
 Ion Ratio Lower Upper
 139 100
 109 85.9 65.8 105.8
 65 121.3 101.4 141.4





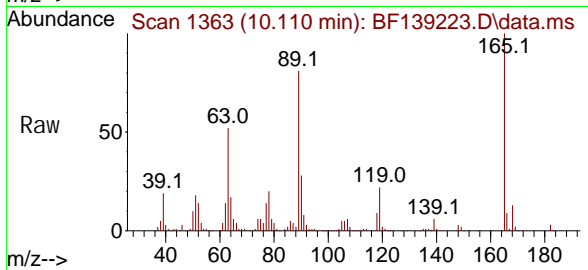
#57
 2, 4-Di nitrolo uene
 Concen: 44.718 ng
 RT: 10.110 min Scan# 11
 Delta R.T. -0.000 min
 Lab File: BF139223.D
 Acq: 29 Aug 2024 16:07

Instrument :

BNA_F

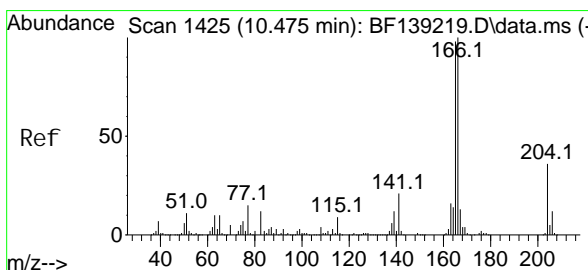
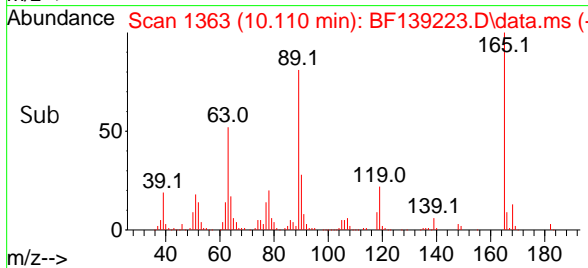
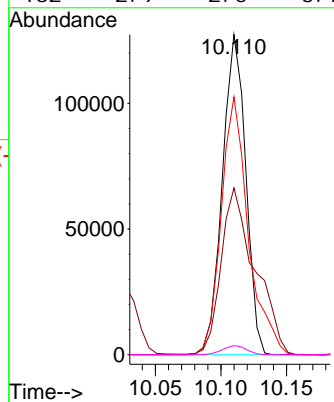
ClientSampleId :

ICVBF082924



Tgt Ion: 165 Resp: 158084

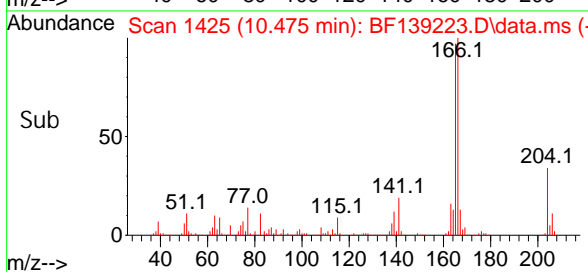
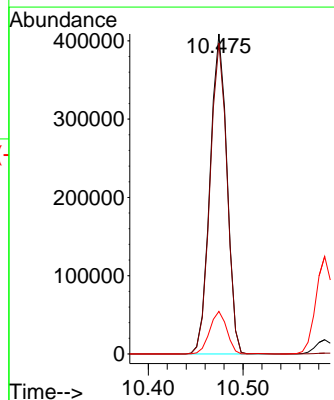
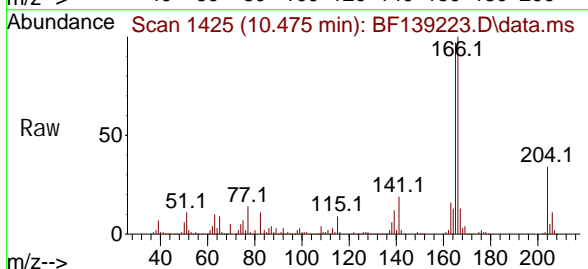
Ion	Ratio	Lower	Upper
165	100		
63	52.1	42.2	63.4
89	80.5	64.7	97.1
182	2.9	2.5	3.7

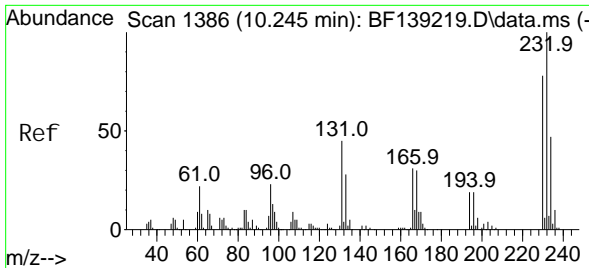


#58
 Fluorene
 Concen: 39.783 ng
 RT: 10.475 min Scan# 1425
 Delta R.T. -0.000 min
 Lab File: BF139223.D
 Acq: 29 Aug 2024 16:07

Tgt Ion: 166 Resp: 507722

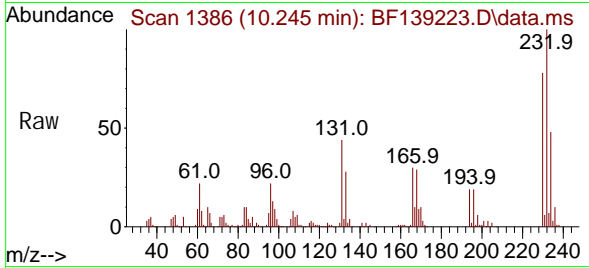
Ion	Ratio	Lower	Upper
166	100		
165	97.1	78.0	117.0
167	13.3	10.7	16.1



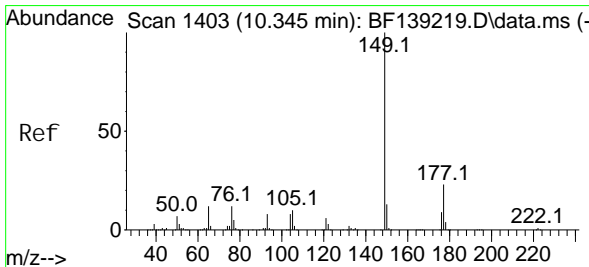
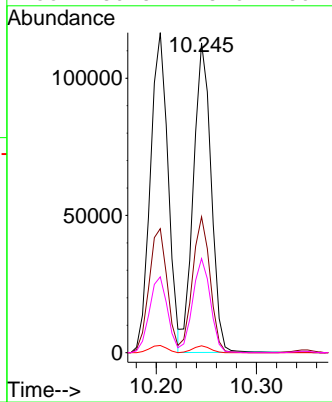
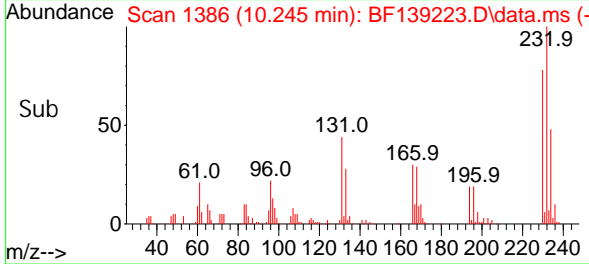


#59
 2, 3, 4, 6-Tetrachlorophenol
 Concen: 41.488 ng
 RT: 10.245 min Scan# 1386
 Delta R.T. -0.000 min
 Lab File: BF139223.D
 Acq: 29 Aug 2024 16:07

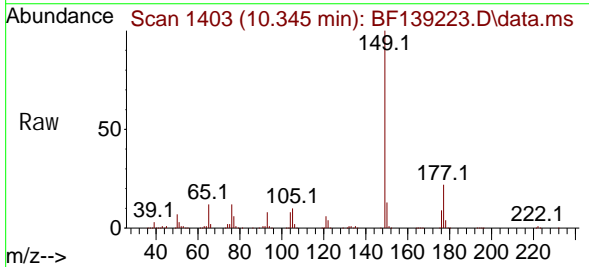
Instrument : BNA_F
 ClientSampleId : ICVBF082924



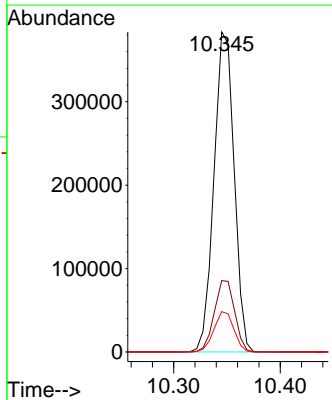
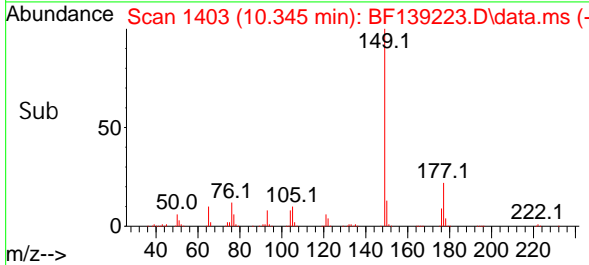
Tgt Ion: 232 Resp: 138793
 Ion Ratio Lower Upper
 232 100
 131 43.5 34.6 52.0
 130 2.2 1.8 2.8
 166 30.3 23.6 35.4

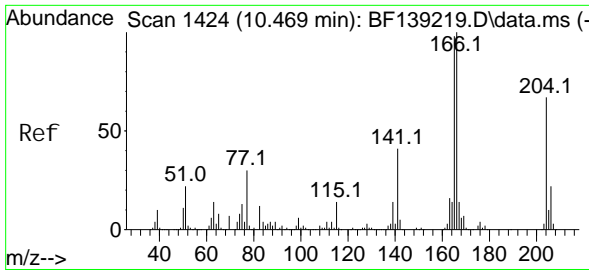


#60
 Diethyl phthalate
 Concen: 40.559 ng
 RT: 10.345 min Scan# 1403
 Delta R.T. -0.000 min
 Lab File: BF139223.D
 Acq: 29 Aug 2024 16:07



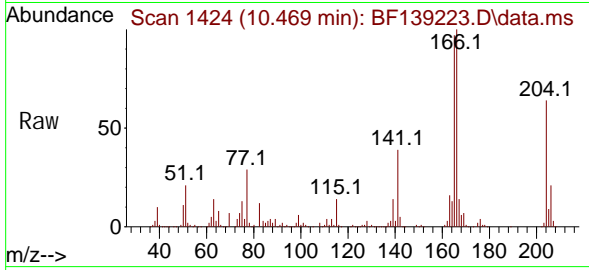
Tgt Ion: 149 Resp: 503348
 Ion Ratio Lower Upper
 149 100
 177 22.3 18.2 27.4
 150 12.6 10.1 15.1



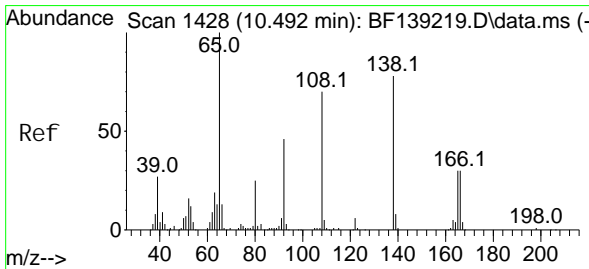
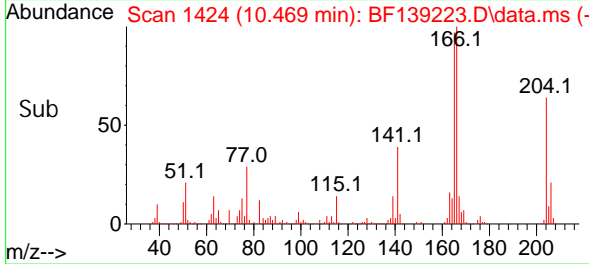
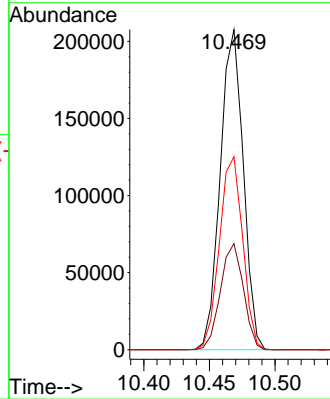


#61
 4-Chlorophenyl-phenyl ether
 Concen: 39.573 ng
 RT: 10.469 min Scan# 1424
 Delta R.T. -0.000 min
 Lab File: BF139223.D
 Acq: 29 Aug 2024 16:07

Instrument : BNA_F
 ClientSampleId : ICVBF082924

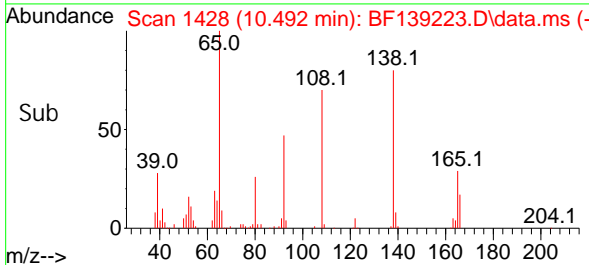
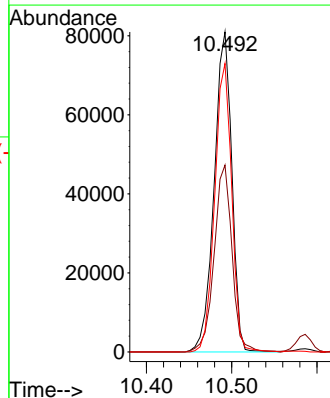
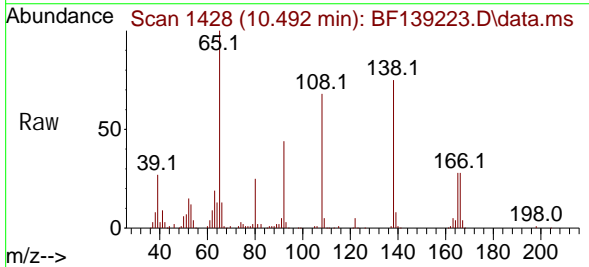


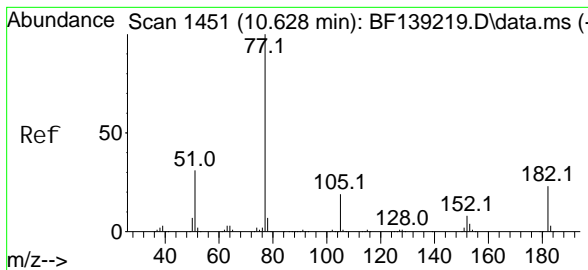
Tgt Ion: 204 Resp: 253409
 Ion Ratio Lower Upper
 204 100
 206 33.2 26.2 39.2
 141 60.3 49.1 73.7



#62
 4-Nitroaniline
 Concen: 42.948 ng
 RT: 10.492 min Scan# 1428
 Delta R.T. -0.000 min
 Lab File: BF139223.D
 Acq: 29 Aug 2024 16:07

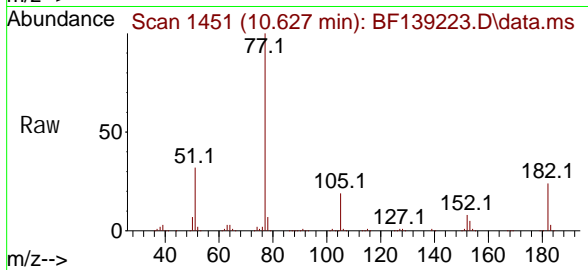
Tgt Ion: 138 Resp: 116577
 Ion Ratio Lower Upper
 138 100
 92 58.4 38.5 78.5
 108 90.1 69.5 109.5





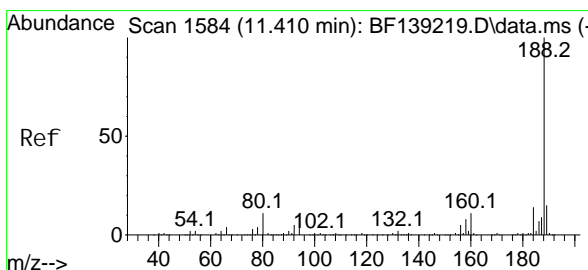
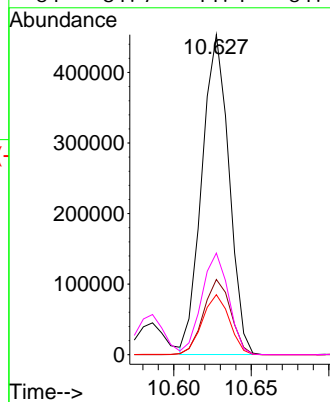
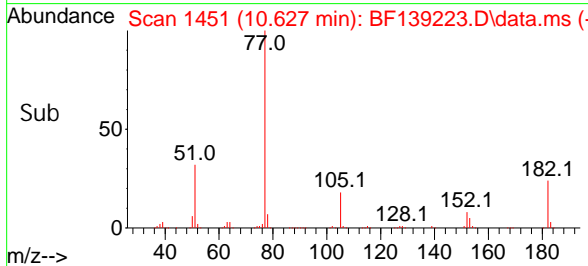
#63
 Azobenzene
 Concen: 40.346 ng
 RT: 10.627 min Scan# 1451
 Delta R.T. -0.000 min
 Lab File: BF139223.D
 Acq: 29 Aug 2024 16:07

Instrument : BNA_F
 ClientSampleId : ICVBF082924

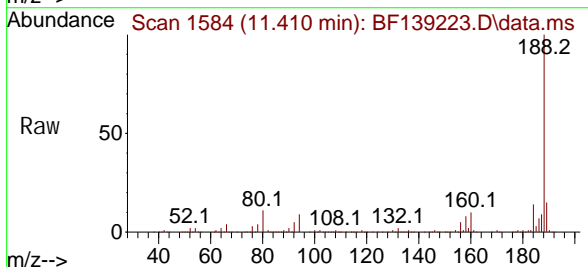


Tgt Ion: 77 Resp: 551887

Ion	Ratio	Lower	Upper
77	100		
182	23.5	3.2	43.2
105	18.7	0.0	38.8
51	31.7	11.1	51.1

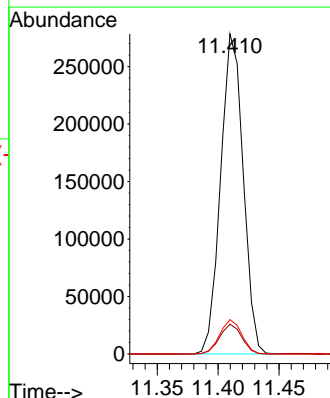
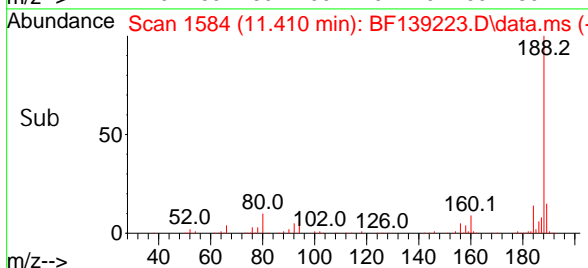


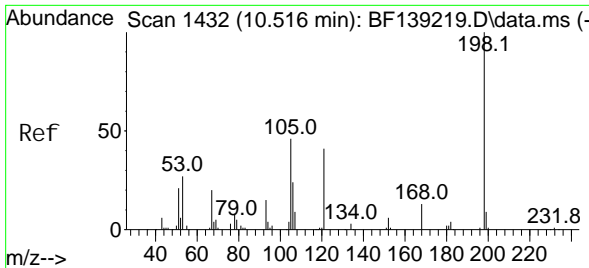
#64
 Phenanthrene-d10
 Concen: 20.000 ng
 RT: 11.410 min Scan# 1584
 Delta R.T. -0.000 min
 Lab File: BF139223.D
 Acq: 29 Aug 2024 16:07



Tgt Ion: 188 Resp: 358790

Ion	Ratio	Lower	Upper
188	100		
94	9.3	7.4	11.2
80	10.8	8.6	12.8





#65
 4,6-Di ni tro-2-methyl phenol
 Concen: 45.985 ng
 RT: 10.516 min Scan# 1432
 Del ta R. T. -0.000 min
 Lab File: BF139223.D
 Acq: 29 Aug 2024 16:07

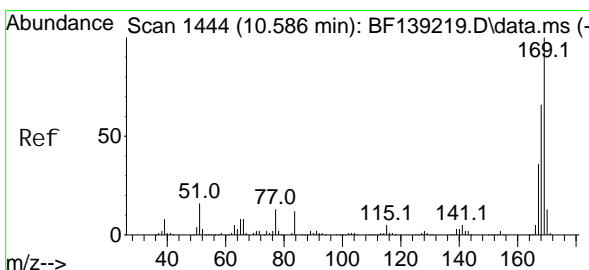
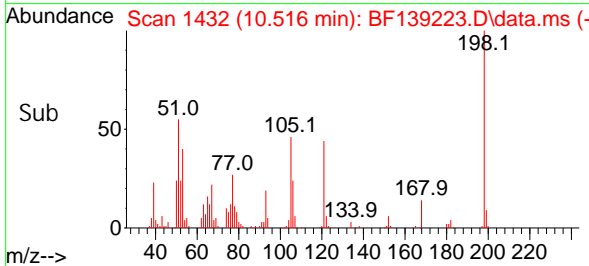
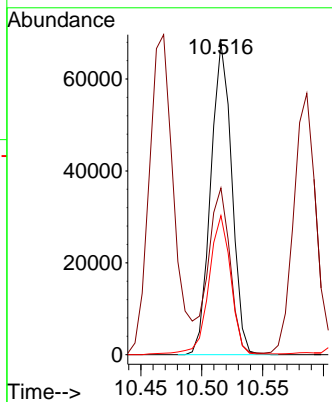
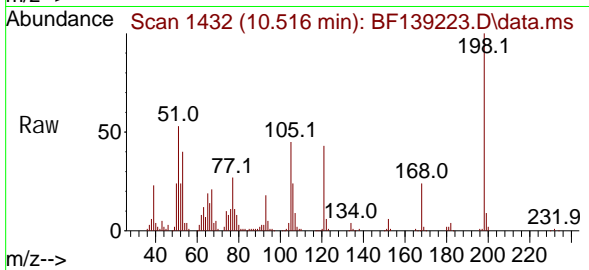
Instrument :

BNA_F

ClientSampleId :

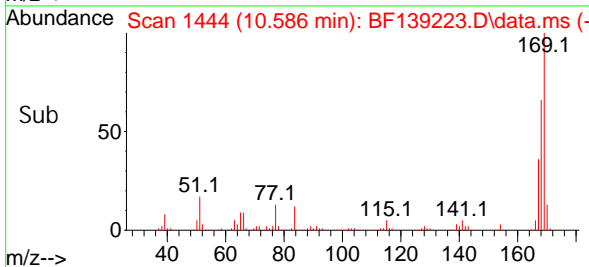
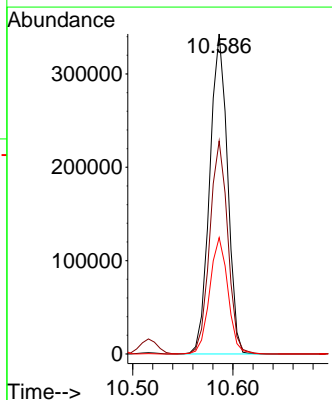
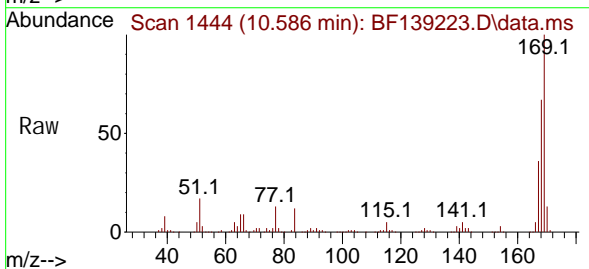
ICVBF082924

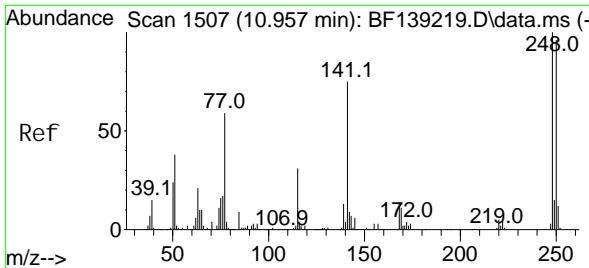
Tgt Ion: 198 Resp: 81501
 Ion Ratio Lower Upper
 198 100
 51 53.5 34.4 74.4
 105 44.6 27.1 67.1



#66
 n-Ni trosodi phenyl ami ne
 Concen: 39.740 ng
 RT: 10.586 min Scan# 1444
 Del ta R. T. -0.000 min
 Lab File: BF139223.D
 Acq: 29 Aug 2024 16:07

Tgt Ion: 169 Resp: 423489
 Ion Ratio Lower Upper
 169 100
 168 66.5 53.0 79.6
 167 36.4 28.6 42.8





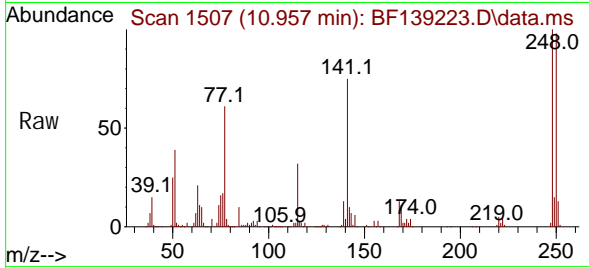
#67
 4-Bromophenyl -phenyl ether
 Concen: 40.185 ng
 RT: 10.957 min Scan# 1507
 Delta R.T. -0.000 min
 Lab File: BF139223.D
 Acq: 29 Aug 2024 16:07

Instrument :

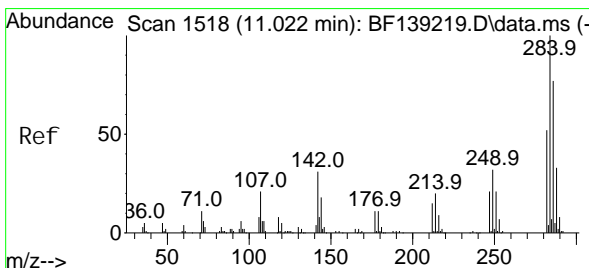
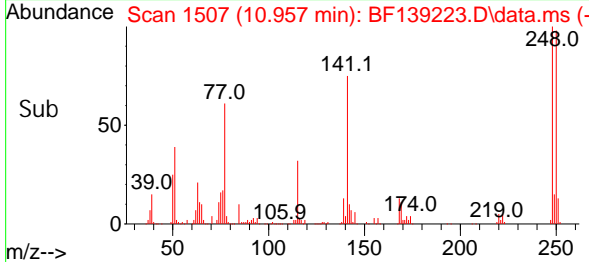
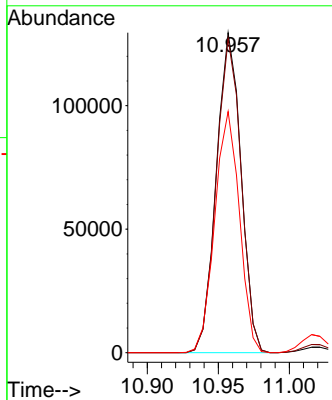
BNA_F

ClientSampleId :

ICVBF082924

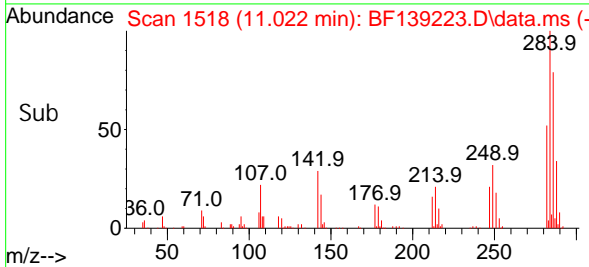
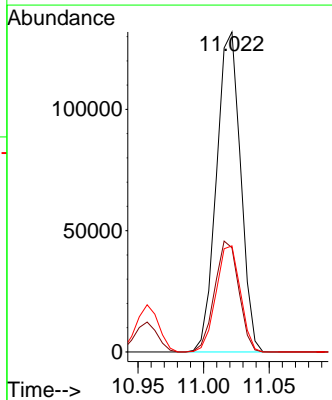
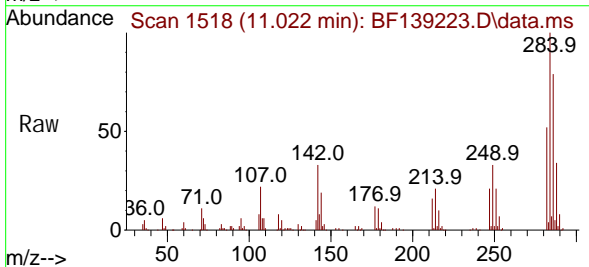


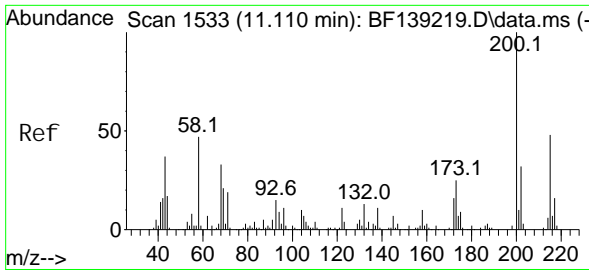
Tgt Ion: 248 Resp: 156697
 Ion Ratio Lower Upper
 248 100
 250 98.2 77.1 115.7
 141 75.3 60.0 90.0



#68
 Hexachlorobenzene
 Concen: 39.502 ng
 RT: 11.022 min Scan# 1518
 Delta R.T. -0.000 min
 Lab File: BF139223.D
 Acq: 29 Aug 2024 16:07

Tgt Ion: 284 Resp: 168472
 Ion Ratio Lower Upper
 284 100
 142 32.5 24.7 37.1
 249 33.1 25.8 38.6





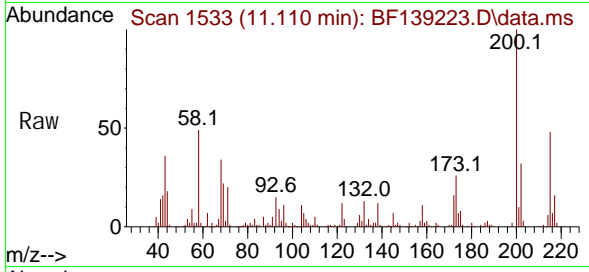
#69
 Atrazine
 Concen: 39.280 ng
 RT: 11.110 min Scan# 1533
 Delta R.T. -0.000 min
 Lab File: BF139223.D
 Acq: 29 Aug 2024 16:07

Instrument :

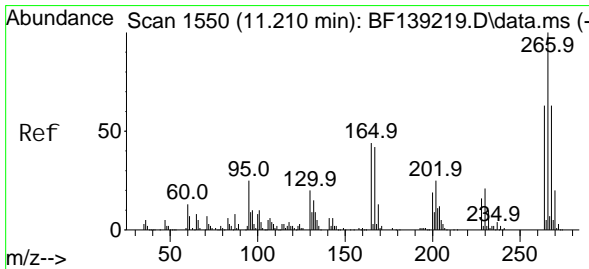
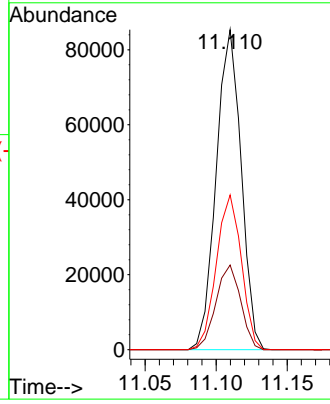
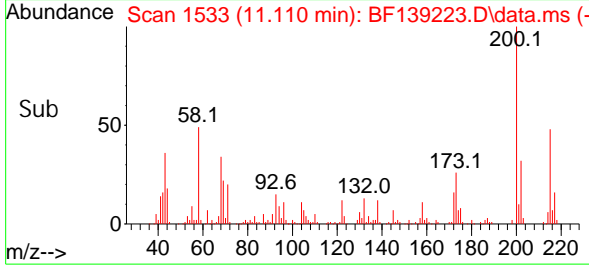
BNA_F

ClientSampleId :

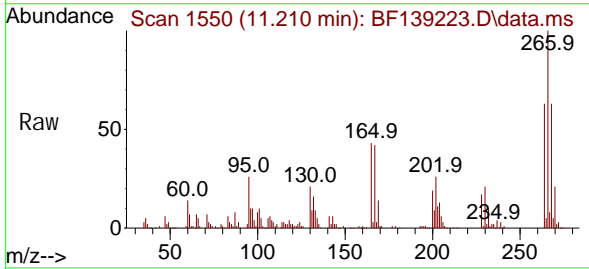
ICVBF082924



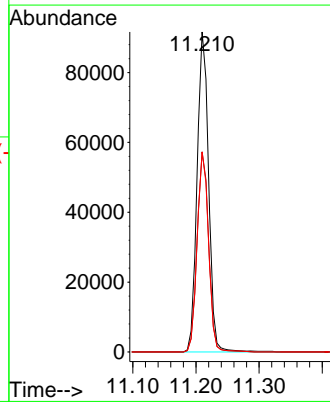
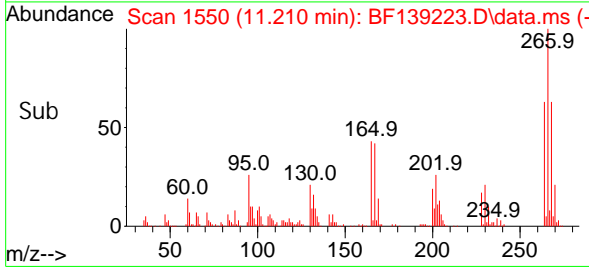
Tgt Ion: 200 Resp: 104114
 Ion Ratio Lower Upper
 200 100
 173 26.4 4.7 44.7
 215 48.4 28.1 68.1

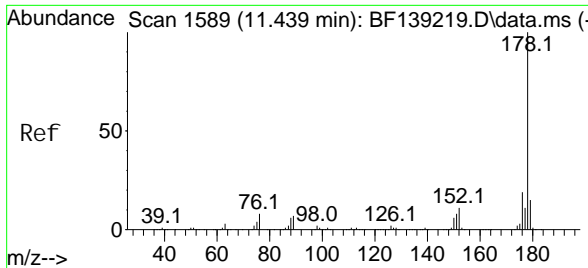


#70
 Pentachlorophenol
 Concen: 42.837 ng
 RT: 11.210 min Scan# 1550
 Delta R.T. -0.000 min
 Lab File: BF139223.D
 Acq: 29 Aug 2024 16:07



Tgt Ion: 266 Resp: 115602
 Ion Ratio Lower Upper
 266 100
 268 62.5 50.1 75.1
 264 62.5 50.2 75.4





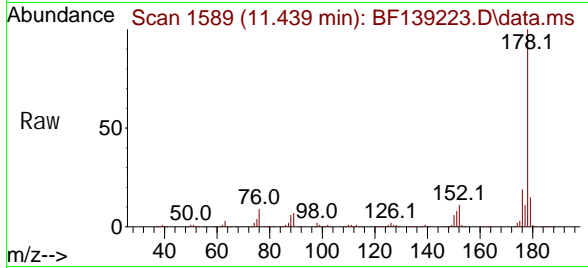
#71
 Phenanthrene
 Concen: 39.796 ng
 RT: 11.439 min Scan# 11439
 Delta R.T. -0.000 min
 Lab File: BF139223.D
 Acq: 29 Aug 2024 16:07

Instrument :

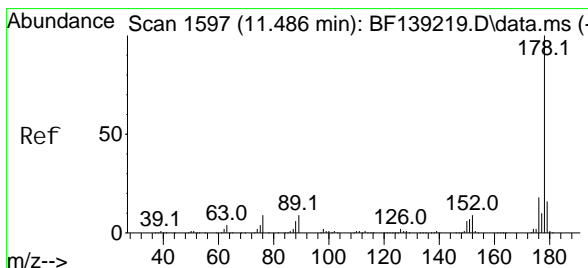
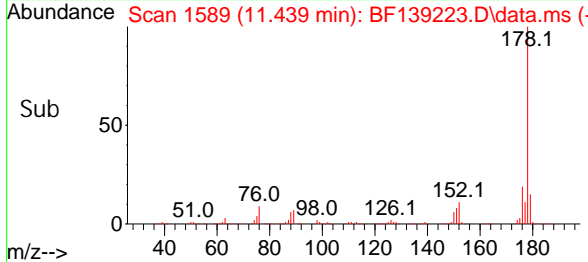
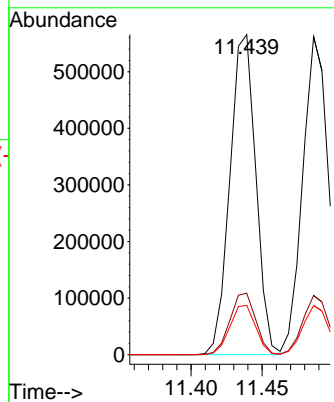
BNA_F

ClientSampleId :

ICVBF082924

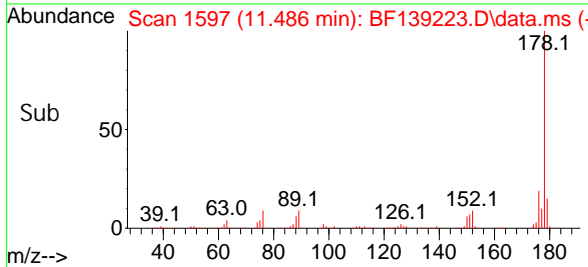
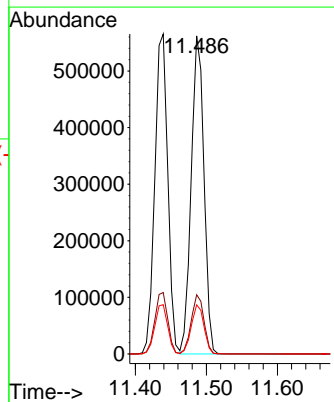
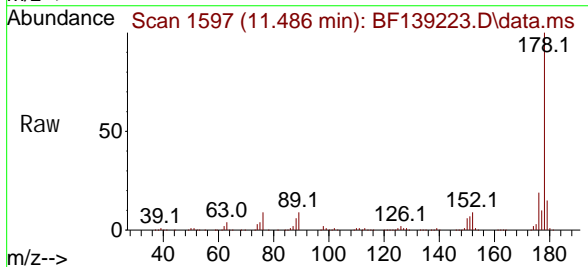


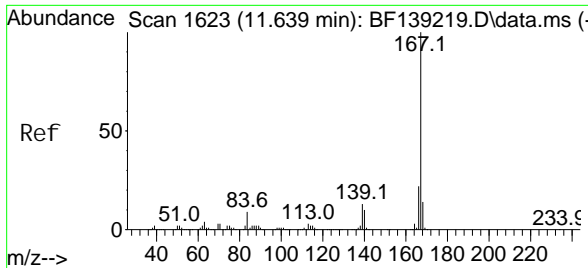
Tgt Ion: 178 Resp: 718173
 Ion Ratio Lower Upper
 178 100
 176 19.2 15.3 22.9
 179 15.4 12.3 18.5



#72
 Anthracene
 Concen: 39.874 ng
 RT: 11.486 min Scan# 1597
 Delta R.T. -0.000 min
 Lab File: BF139223.D
 Acq: 29 Aug 2024 16:07

Tgt Ion: 178 Resp: 702394
 Ion Ratio Lower Upper
 178 100
 176 18.6 14.7 22.1
 179 15.4 12.4 18.6





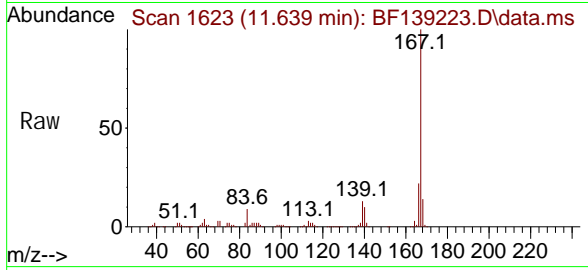
#73
 Carbazol e
 Concen: 41.139 ng
 RT: 11.639 min Scan# 1623
 Delta R.T. -0.000 min
 Lab File: BF139223.D
 Acq: 29 Aug 2024 16:07

Instrument :

BNA_F

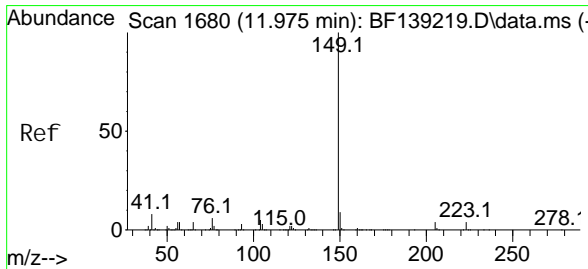
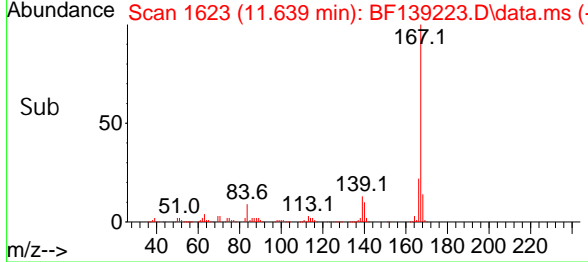
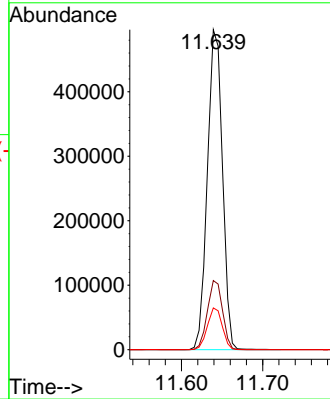
ClientSampleId :

ICVBF082924



Tgt Ion: 167 Resp: 639366

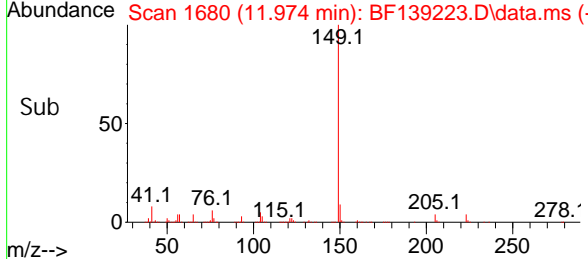
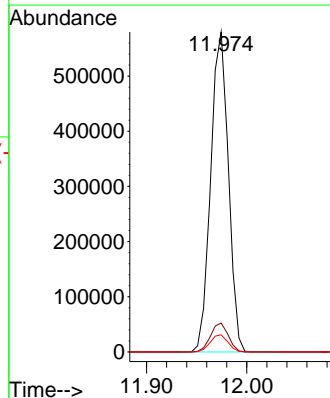
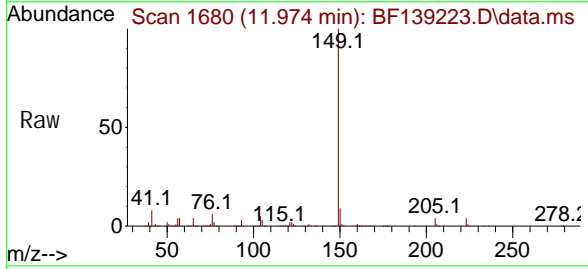
Ion	Ratio	Lower	Upper
167	100		
166	21.6	17.3	25.9
139	13.1	10.4	15.6

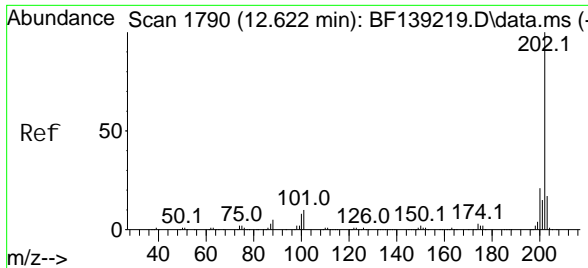


#74
 Di -n-butyl phthal ate
 Concen: 42.798 ng
 RT: 11.974 min Scan# 1680
 Delta R.T. -0.000 min
 Lab File: BF139223.D
 Acq: 29 Aug 2024 16:07

Tgt Ion: 149 Resp: 711169

Ion	Ratio	Lower	Upper
149	100		
150	9.0	7.3	10.9
104	5.4	4.2	6.2





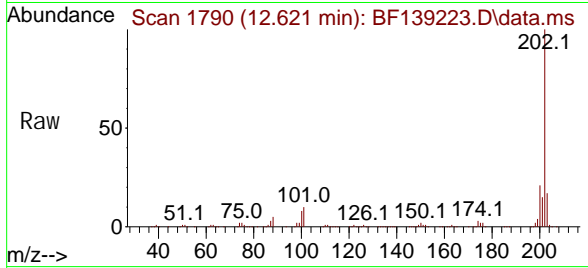
#75
 Fluoranthene
 Concen: 41.817 ng
 RT: 12.621 min Scan# 1790
 Delta R.T. -0.000 min
 Lab File: BF139223.D
 Acq: 29 Aug 2024 16:07

Instrument :

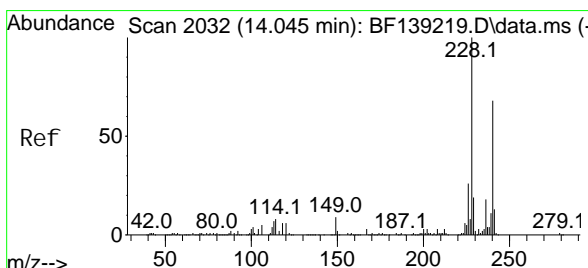
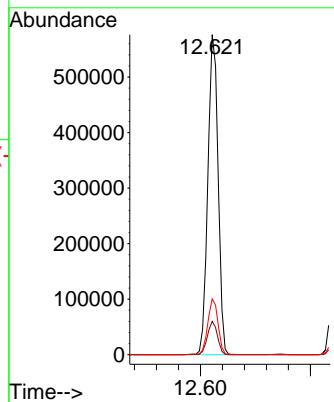
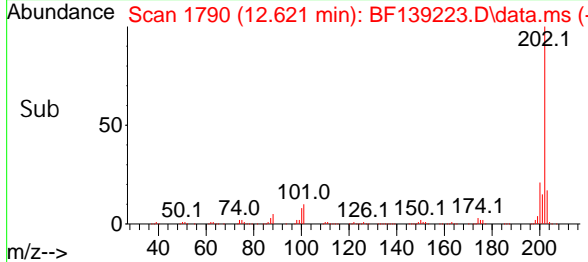
BNA_F

ClientSampleId :

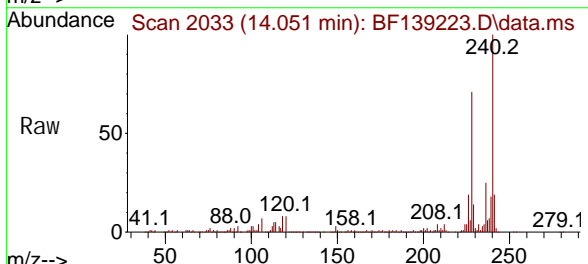
ICVBF082924



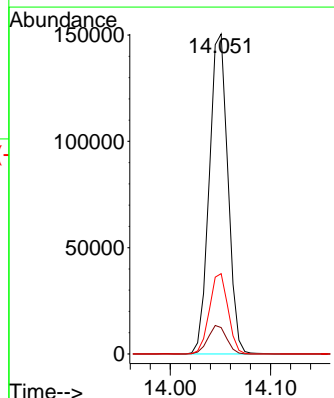
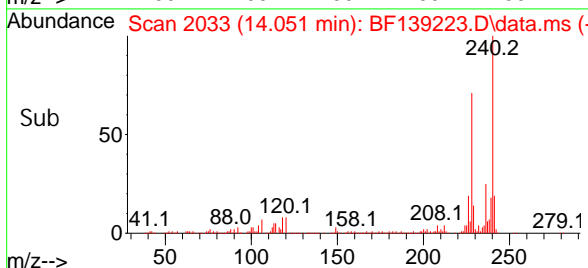
Tgt Ion: 202 Resp: 742948
 Ion Ratio Lower Upper
 202 100
 101 10.4 0.0 30.2
 203 17.5 0.0 37.4

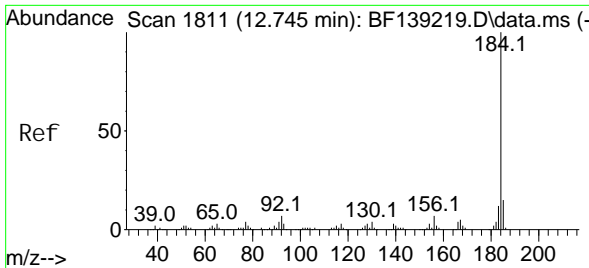


#76
 Chrysene-d12
 Concen: 20.000 ng
 RT: 14.051 min Scan# 2033
 Delta R.T. 0.006 min
 Lab File: BF139223.D
 Acq: 29 Aug 2024 16:07



Tgt Ion: 240 Resp: 194113
 Ion Ratio Lower Upper
 240 100
 120 8.3 7.4 11.2
 236 25.1 20.9 31.3





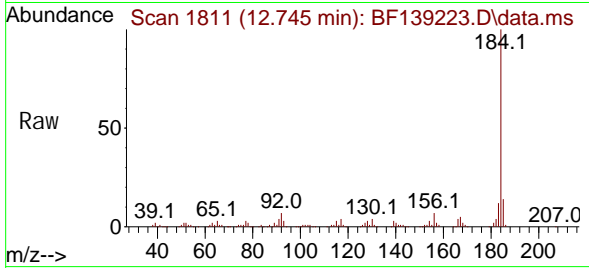
#77
 Benzidine
 Concen: 47.714 ng
 RT: 12.745 min Scan# 1811
 Delta R.T. -0.000 min
 Lab File: BF139223.D
 Acq: 29 Aug 2024 16:07

Instrument :

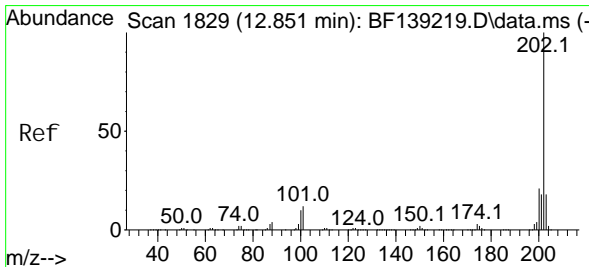
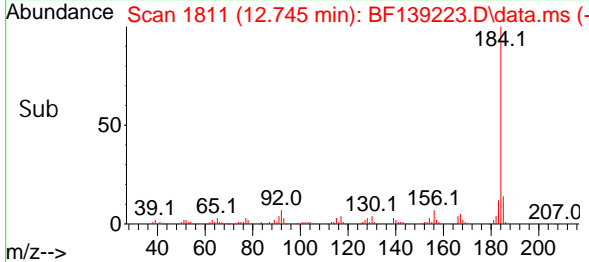
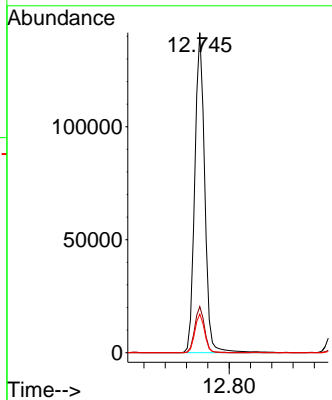
BNA_F

Client Sample Id :

ICVBF082924

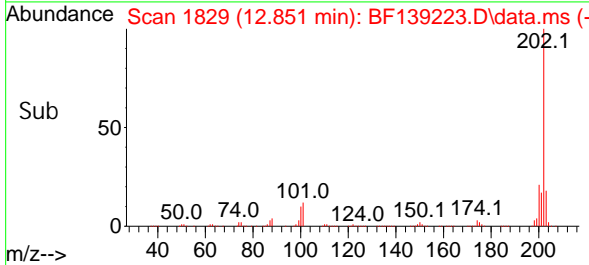
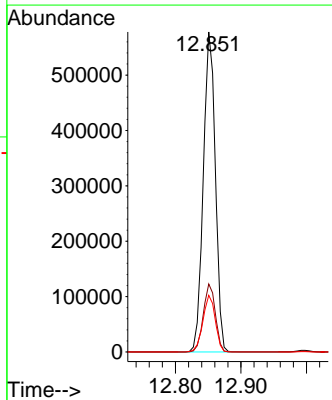
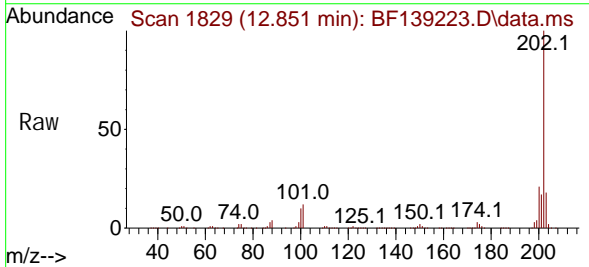


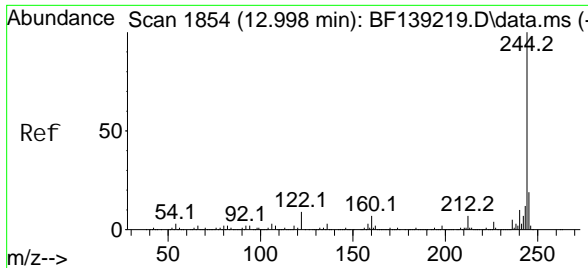
Tgt Ion: 184 Resp: 183044
 Ion Ratio Lower Upper
 184 100
 185 14.4 12.0 18.0
 183 12.1 9.5 14.3



#78
 Pyrene
 Concen: 39.717 ng
 RT: 12.851 min Scan# 1829
 Delta R.T. -0.000 min
 Lab File: BF139223.D
 Acq: 29 Aug 2024 16:07

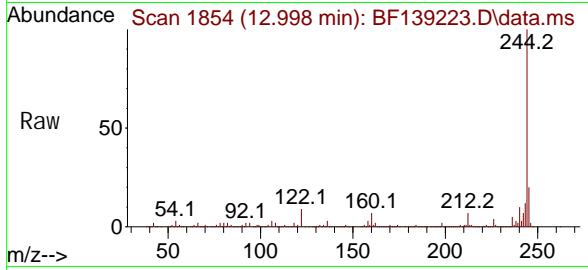
Tgt Ion: 202 Resp: 740855
 Ion Ratio Lower Upper
 202 100
 200 21.3 17.0 25.6
 203 17.7 14.2 21.2



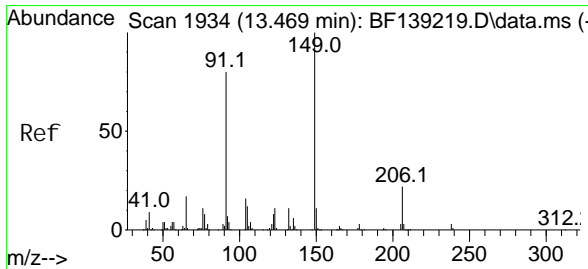
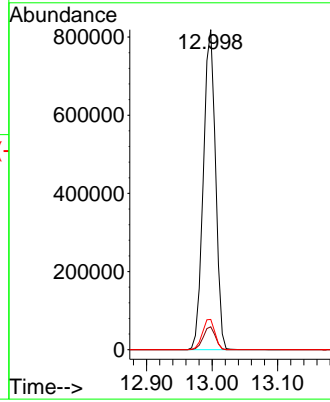
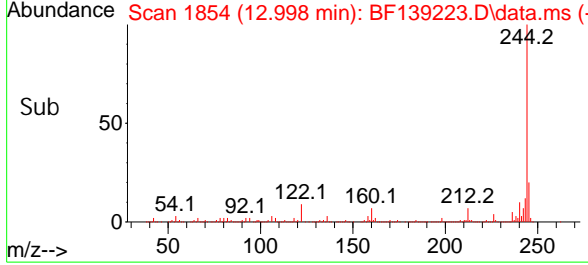


#79
 Terphenyl -d14
 Concen: 78.847 ng
 RT: 12.998 min Scan# 1854
 Delta R.T. -0.000 min
 Lab File: BF139223.D
 Acq: 29 Aug 2024 16:07

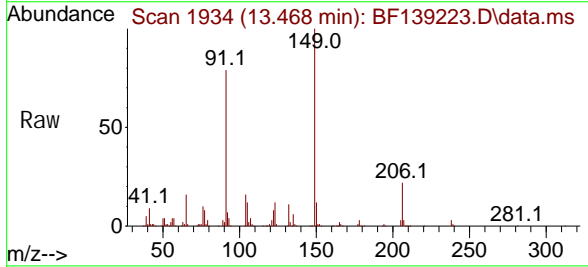
Instrument : BNA_F
 ClientSampleId : ICVBF082924



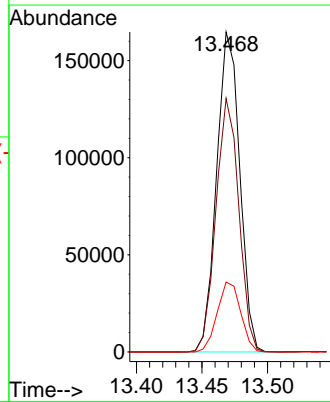
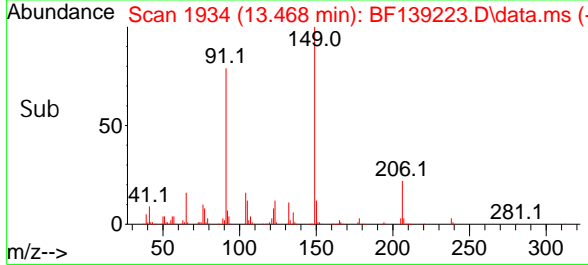
Tgt Ion: 244 Resp: 1061798
 Ion Ratio Lower Upper
 244 100
 212 7.2 5.7 8.5
 122 9.5 7.4 11.2

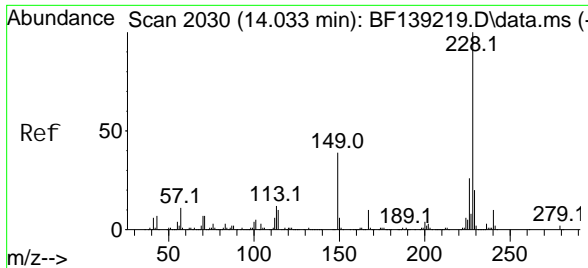


#80
 Butyl benzyl phthal ate
 Concen: 46.435 ng
 RT: 13.468 min Scan# 1934
 Delta R.T. -0.000 min
 Lab File: BF139223.D
 Acq: 29 Aug 2024 16:07



Tgt Ion: 149 Resp: 201850
 Ion Ratio Lower Upper
 149 100
 91 79.2 64.0 96.0
 206 21.8 17.8 26.6



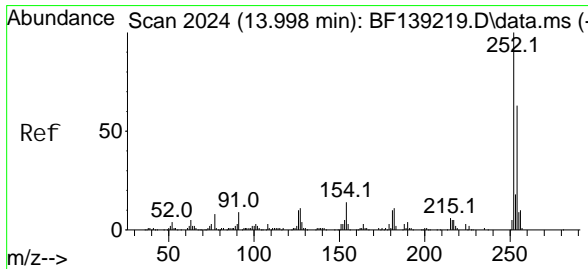
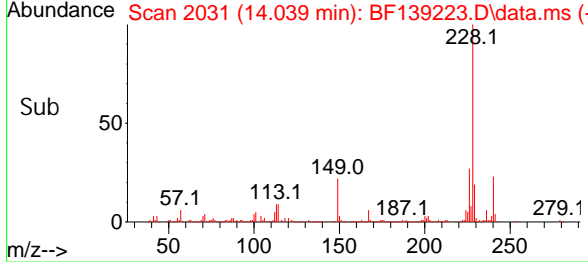
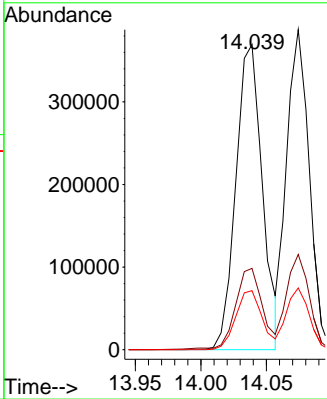
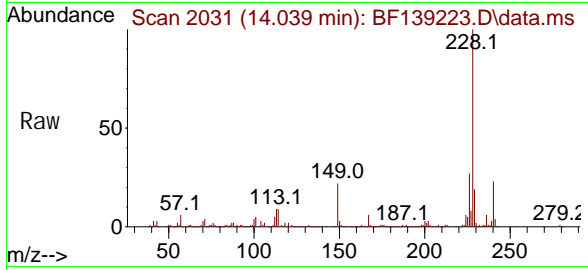


#81
 Benzo(a)anthracene
 Concen: 40.898 ng
 RT: 14.039 min Scan# 2030
 Delta R.T. 0.006 min
 Lab File: BF139223.D
 Acq: 29 Aug 2024 16:07

Instrument : BNA_F
 ClientSampleId : ICVBF082924

Tgt Ion: 228 Resp: 519942

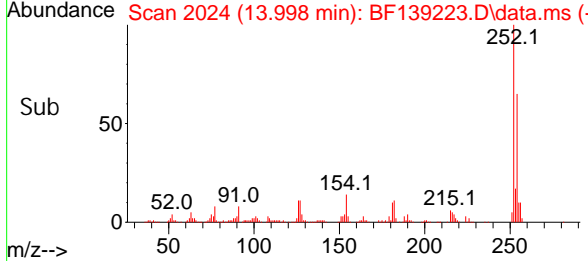
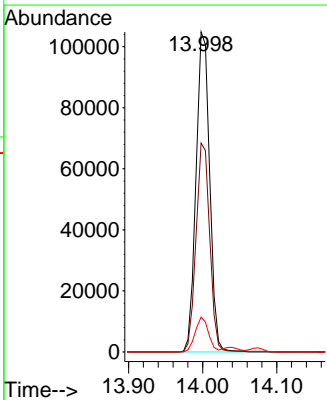
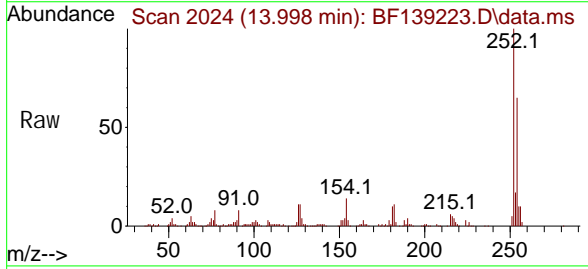
Ion	Ratio	Lower	Upper
228	100		
226	26.6	21.2	31.8
229	19.3	15.8	23.8

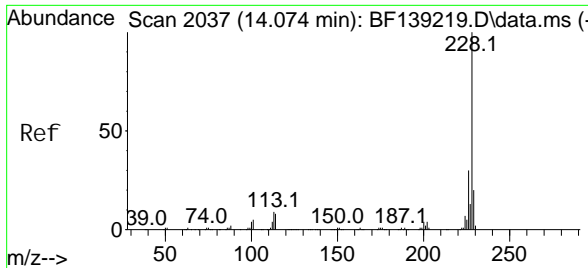


#82
 3,3'-Dichlorobenzidine
 Concen: 40.347 ng
 RT: 13.998 min Scan# 2024
 Delta R.T. -0.000 min
 Lab File: BF139223.D
 Acq: 29 Aug 2024 16:07

Tgt Ion: 252 Resp: 134686

Ion	Ratio	Lower	Upper
252	100		
254	65.3	50.6	76.0
126	10.9	8.3	12.5



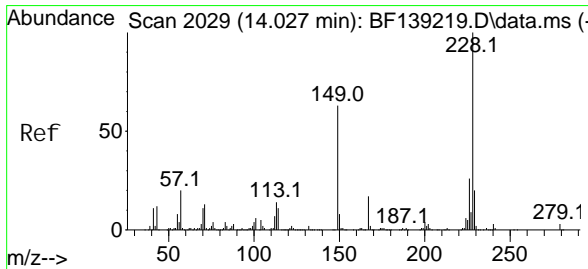
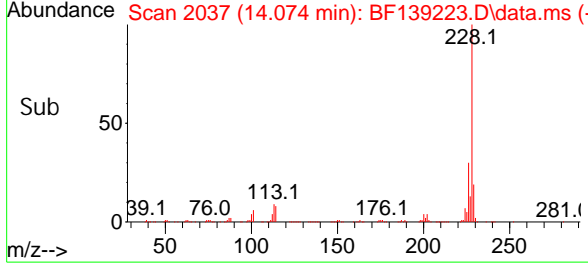
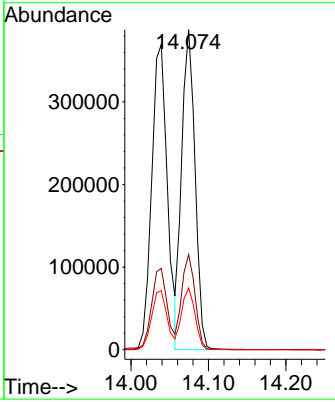
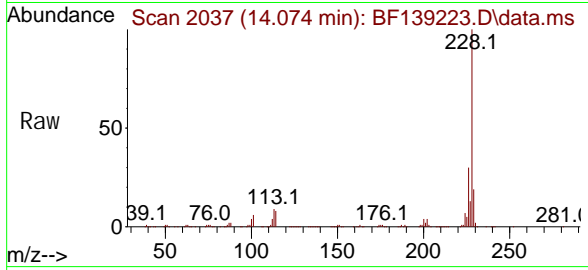


#83
 Chrysene
 Concen: 39.197 ng
 RT: 14.074 min Scan# 2037
 Delta R.T. -0.000 min
 Lab File: BF139223.D
 Acq: 29 Aug 2024 16:07

Instrument : BNA_F
 ClientSampleId : ICVBF082924

Tgt Ion: 228 Resp: 463844

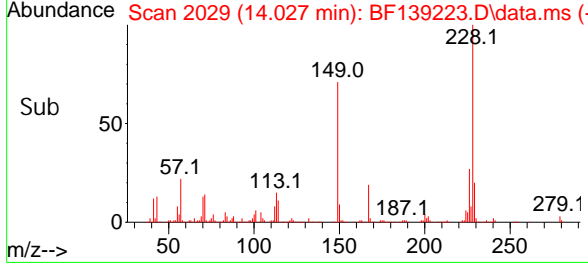
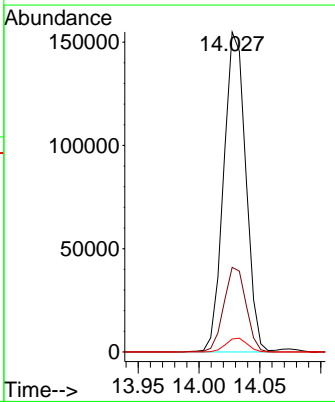
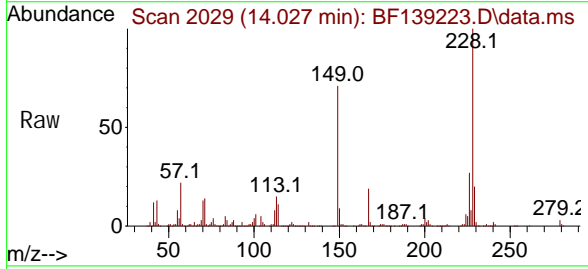
Ion	Ratio	Lower	Upper
228	100		
226	29.8	24.1	36.1
229	19.3	15.8	23.6

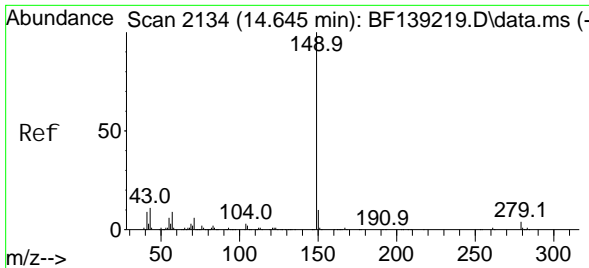


#84
 Bis(2-ethyl hexyl)phthalate
 Concen: 41.954 ng
 RT: 14.027 min Scan# 2029
 Delta R.T. -0.000 min
 Lab File: BF139223.D
 Acq: 29 Aug 2024 16:07

Tgt Ion: 149 Resp: 196202

Ion	Ratio	Lower	Upper
149	100		
167	26.5	21.0	31.6
279	4.0	3.4	5.2





#85
 Di-n-octyl phthalate
 Concen: 35.232 ng
 RT: 14.645 min Scan# 2134
 Delta R.T. -0.000 min
 Lab File: BF139223.D
 Acq: 29 Aug 2024 16:07

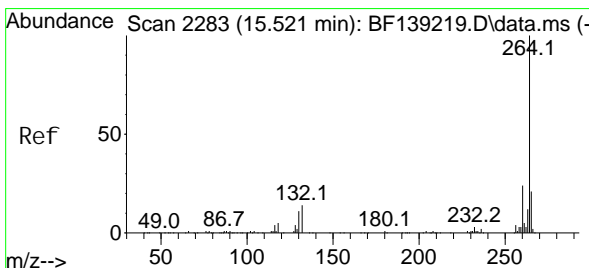
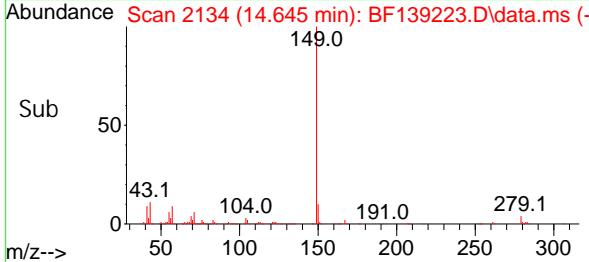
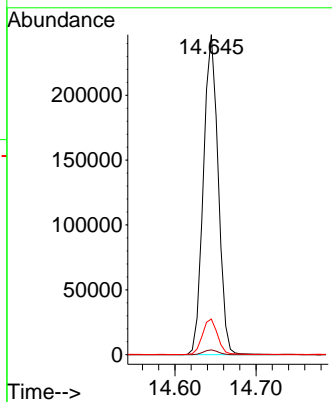
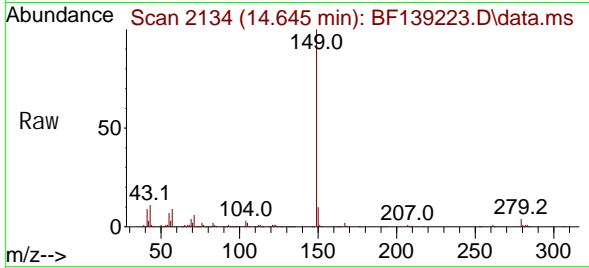
Instrument :

BNA_F

ClientSampleId :

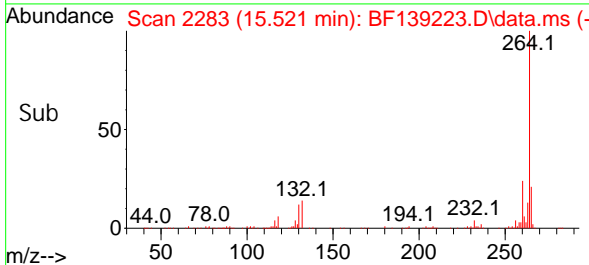
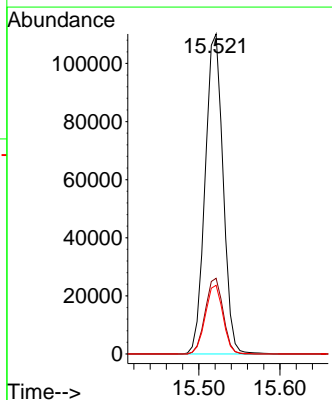
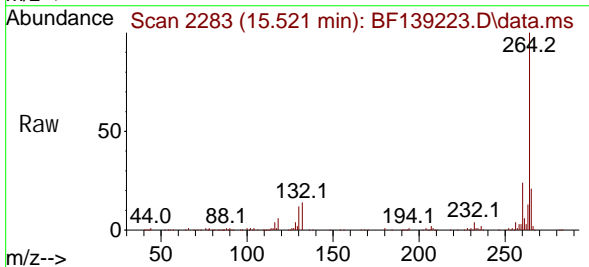
ICVBF082924

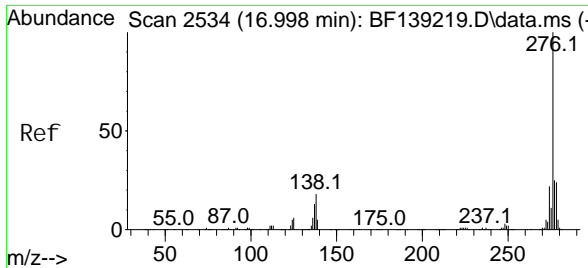
Tgt Ion: 149 Resp: 311640
 Ion Ratio Lower Upper
 149 100
 167 1.5 1.1 1.7
 43 11.4 9.2 13.8



#86
 Perylene-d12
 Concen: 20.000 ng
 RT: 15.521 min Scan# 2283
 Delta R.T. -0.000 min
 Lab File: BF139223.D
 Acq: 29 Aug 2024 16:07

Tgt Ion: 264 Resp: 168293
 Ion Ratio Lower Upper
 264 100
 260 23.7 18.8 28.2
 265 21.5 16.9 25.3



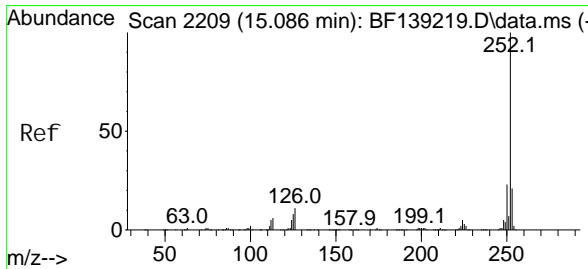
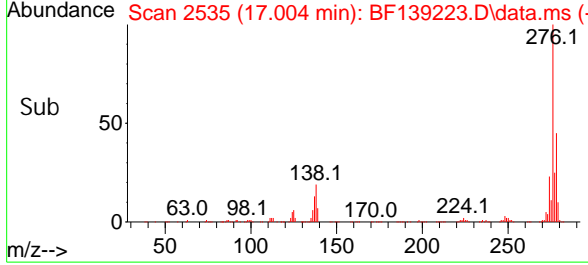
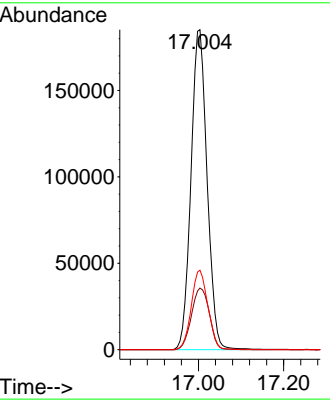
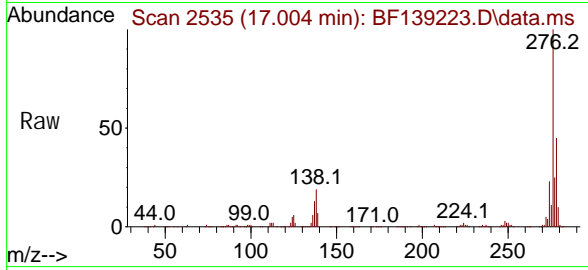


#87
 Indeno(1, 2, 3-cd)pyrene
 Concen: 40.974 ng
 RT: 17.004 min Scan# 2535
 Delta R.T. 0.006 min
 Lab File: BF139223.D
 Acq: 29 Aug 2024 16:07

Instrument : BNA_F
 Client Sample Id : ICVBF082924

Tgt Ion: 276 Resp: 486199

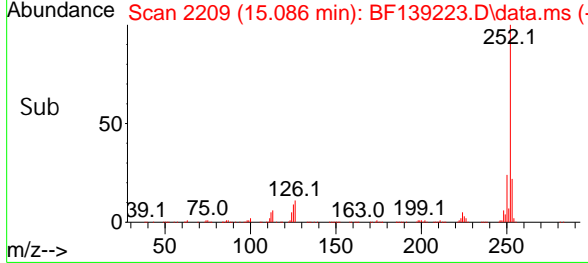
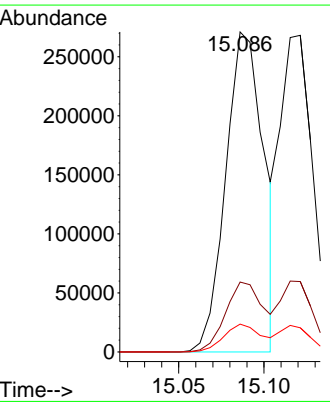
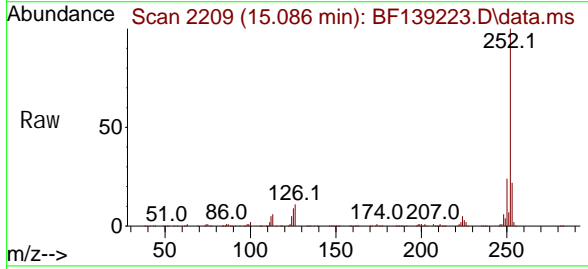
Ion	Ratio	Lower	Upper
276	100		
138	21.4	17.0	25.6
277	25.5	20.6	31.0

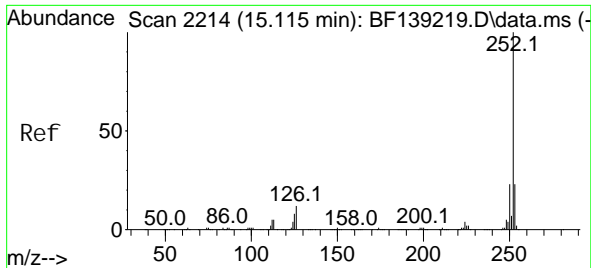


#88
 Benzo(b)fluoranthene
 Concen: 41.807 ng
 RT: 15.086 min Scan# 2209
 Delta R.T. -0.000 min
 Lab File: BF139223.D
 Acq: 29 Aug 2024 16:07

Tgt Ion: 252 Resp: 421404

Ion	Ratio	Lower	Upper
252	100		
253	21.8	17.0	25.6
125	8.7	6.8	10.2





#89
 Benzo(k)fluoranthene
 Concen: 40.719 ng
 RT: 15.121 min Scan# 21
 Delta R.T. 0.006 min
 Lab File: BF139223.D
 Acq: 29 Aug 2024 16:07

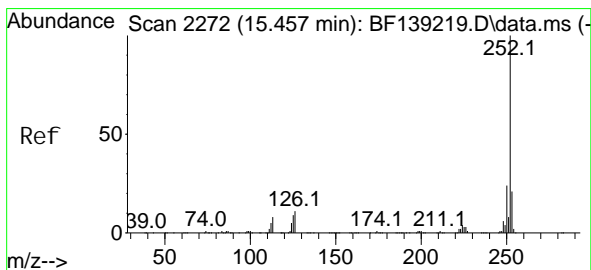
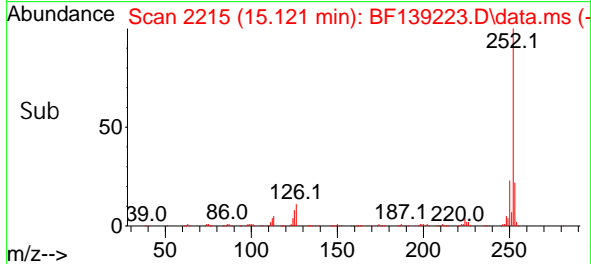
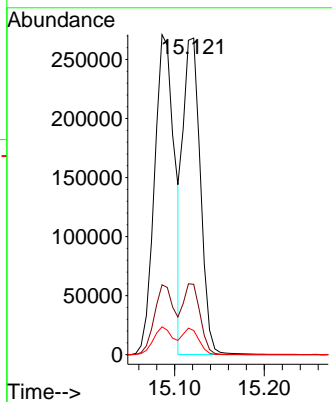
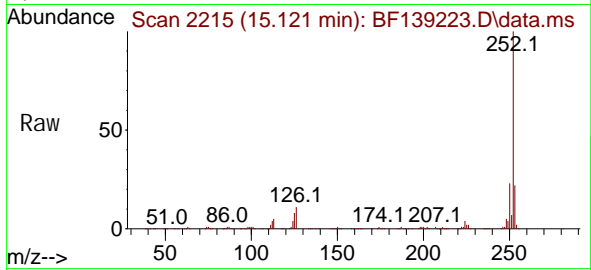
Instrument :

BNA_F

ClientSampleId :

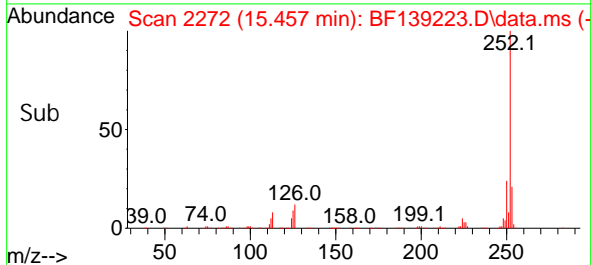
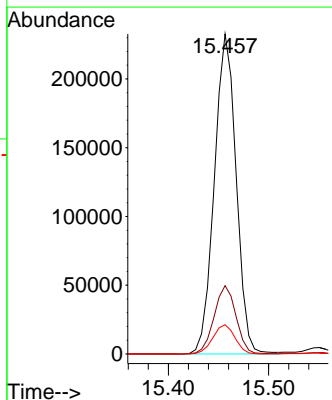
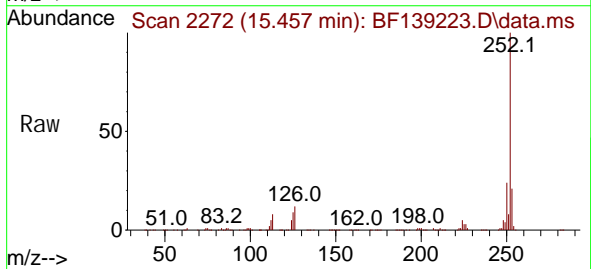
ICVBF082924

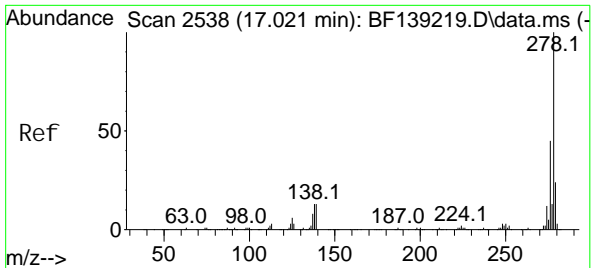
Tgt Ion: 252 Resp: 357900
 Ion Ratio Lower Upper
 252 100
 253 22.2 17.5 26.3
 125 7.6 6.8 10.2



#90
 Benzo(a)pyrene
 Concen: 41.265 ng
 RT: 15.457 min Scan# 2272
 Delta R.T. -0.000 min
 Lab File: BF139223.D
 Acq: 29 Aug 2024 16:07

Tgt Ion: 252 Resp: 350722
 Ion Ratio Lower Upper
 252 100
 253 21.3 17.2 25.8
 125 9.1 7.4 11.2





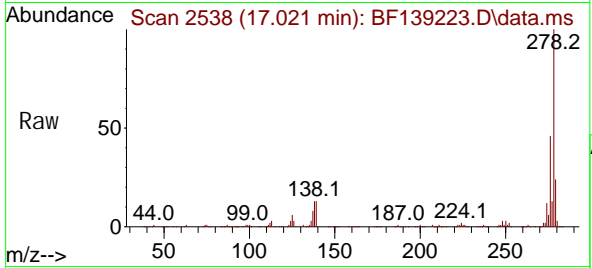
#91
 Di benzo(a, h)anthracene
 Concen: 40.747 ng
 RT: 17.021 min Scan# 2538
 Delta R.T. -0.000 min
 Lab File: BF139223.D
 Acq: 29 Aug 2024 16:07

Instrument :

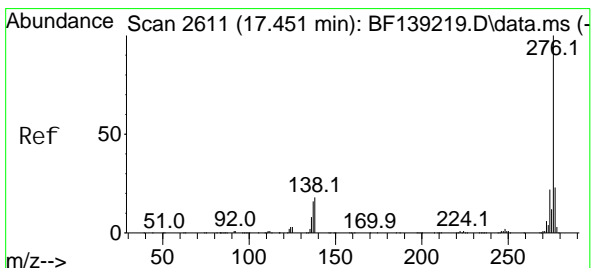
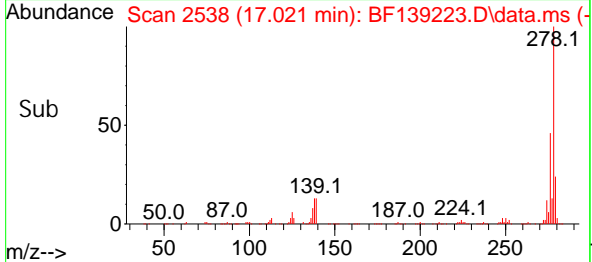
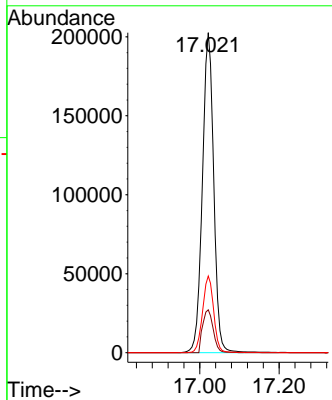
BNA_F

ClientSampleId :

ICVBF082924



Tgt Ion: 278 Resp: 402358
 Ion Ratio Lower Upper
 278 100
 139 13.4 10.8 16.2
 279 24.0 19.0 28.6



#92
 Benzo(g, h, i)perylene
 Concen: 41.216 ng
 RT: 17.451 min Scan# 2611
 Delta R.T. -0.000 min
 Lab File: BF139223.D
 Acq: 29 Aug 2024 16:07

Tgt Ion: 276 Resp: 410196
 Ion Ratio Lower Upper
 276 100
 277 23.4 18.6 27.8
 138 17.8 14.5 21.7

