

Data Path : Z:\HPCHEM1\BNA F\DATA\BF090117\
 Data File : BF098233.D
 Acq On : 1 Sep 2017 18:13
 Operator : SJ/JU
 Sample : I5050-01
 Misc :
 ALS Vial : 21 Sample Multiplier: 1

Instrument :
 BNA_F
 ClientSampleId :
 RT4651-1540

Quant Time: Sep 01 22:52:58 2017
 Quant Method : Z:\HPCHEM1\BNA F\METHODS\8270-BF081517.M
 Quant Title : ASP BNA STANDARDS FOR 5 POINT CALIBRATION
 QLast Update : Mon Aug 21 15:59:04 2017
 Response via : Initial Calibration

| Internal Standards | R.T. | QIon | Response | Conc | Units | Dev(Min) |
|---------------------------|-------|------|----------|-------|-------|----------|
| 1) 1,4-Dichlorobenzene-d4 | 6.72 | 152 | 121991 | 20.00 | ng | -0.03 |
| 21) Naphthalene-d8 | 8.00 | 136 | 466651 | 20.00 | ng | -0.03 |
| 38) Acenaphthene-d10 | 9.75 | 164 | 176730 | 20.00 | ng | -0.04 |
| 63) Phenanthrene-d10 | 11.24 | 188 | 260379 | 20.00 | ng | -0.02 |
| 75) Chrysene-d12 | 13.87 | 240 | 252352 | 20.00 | ng | -0.03 |
| 86) Perylene-d12 | 15.29 | 264 | 189603 | 20.00 | ng | -0.02 |

System Monitoring Compounds

| | | | | | | |
|--------------------------|-------|-----|---------|--------|----|-------|
| 5) 2-Fluorophenol | 5.33 | 112 | 913559 | 113.91 | ng | -0.02 |
| 7) Phenol-d6 | 6.37 | 99 | 1220149 | 111.97 | ng | -0.02 |
| 23) Nitrobenzene-d5 | 7.29 | 82 | 746521 | 86.91 | ng | -0.04 |
| 41) 2,4,6-Tribromophenol | 10.55 | 330 | 157875 | 102.96 | ng | -0.03 |
| 44) 2-Fluorobiphenyl | 9.08 | 172 | 1010337 | 83.99 | ng | -0.03 |
| 78) Terphenyl-d14 | 12.82 | 244 | 639580 | 52.85 | ng | -0.03 |

Target Compounds

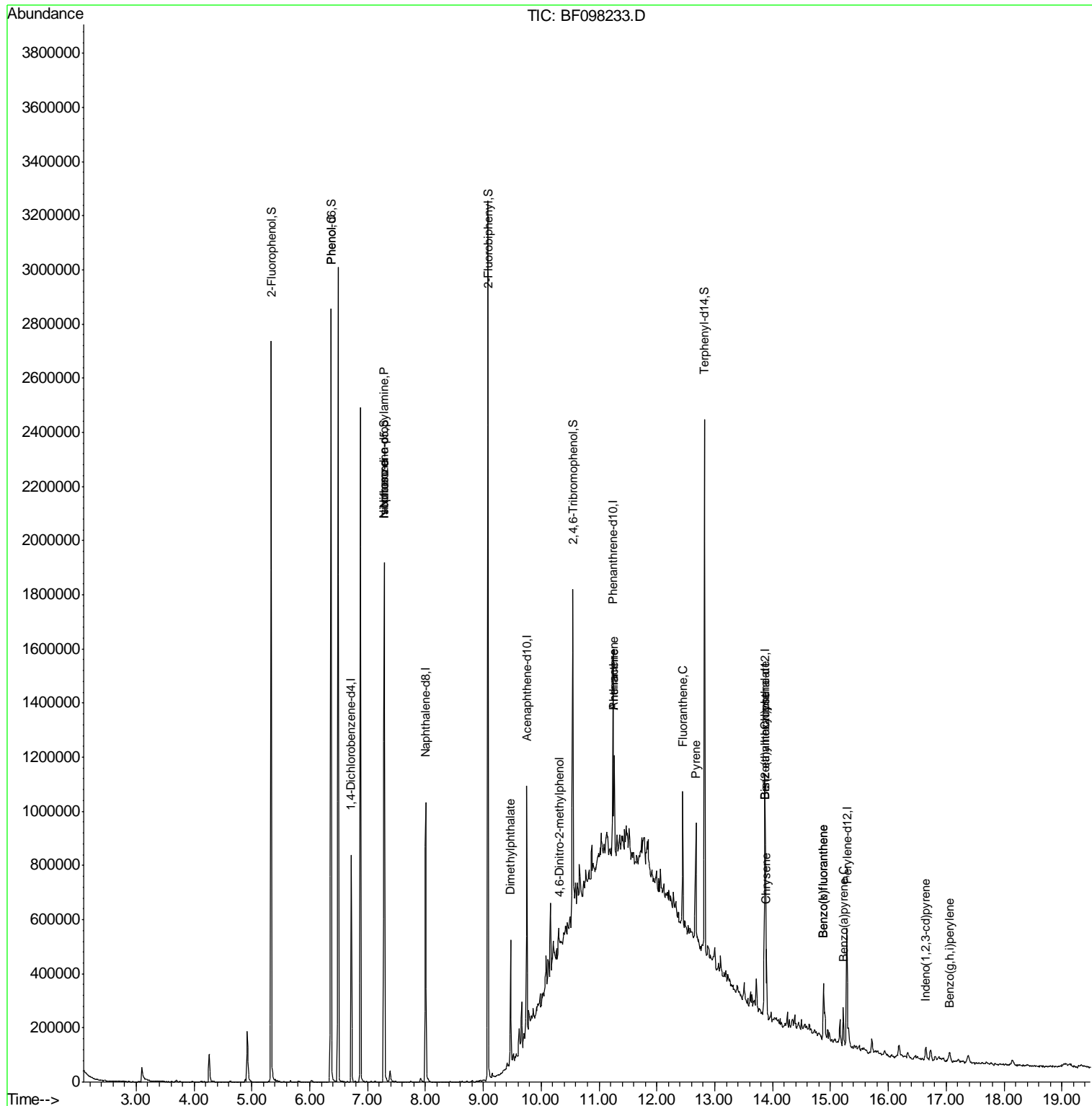
| Target Compounds | R.T. | QIon | Response | Conc | Units | Qvalue |
|--------------------------------|-------|------|----------|--------|-------|--------|
| 10) Phenol | 6.37 | 94 | 30416 | 2.387 | ng | # 61 |
| 19) n-Nitroso-di-n-propylamine | 7.29 | 70 | 96379 | 12.920 | ng | # 73 |
| 25) Isophorone | 7.29 | 82 | 739475 | 41.400 | ng | # 67 |
| 49) Dimethylphthalate | 9.47 | 163 | 169743 | 13.140 | ng | 97 |
| 64) 4,6-Dinitro-2-methylphenol | 10.32 | 198 | 302 | 8.524 | ng | # 1 |
| 70) Phenanthrene | 11.26 | 178 | 132052 | 9.517 | ng | 99 |
| 71) Anthracene | 11.26 | 178 | 132052 | 9.383 | ng | 99 |
| 74) Fluoranthene | 12.45 | 202 | 202219 | 13.963 | ng | 99 |
| 77) Pyrene | 12.67 | 202 | 173897 | 8.425 | ng | 99 |
| 80) Benzo(a)anthracene | 13.86 | 228 | 107676 | 7.119 | ng | 98 |
| 82) Chrysene | 13.89 | 228 | 98077 | 6.519 | ng | 97 |
| 83) Bis(2-ethylhexyl)phthalate | 13.86 | 149 | 28718 | 3.275 | ng | # 99 |
| 85) Indeno(1,2,3-cd)pyrene | 16.65 | 276 | 29126 | 2.632 | ng | 91 |
| 87) Benzo(b)fluoranthene | 14.88 | 252 | 130237 | 10.897 | ng | 98 |
| 88) Benzo(k)fluoranthene | 14.88 | 252 | 130237 | 11.599 | ng | 97 |
| 89) Benzo(a)pyrene | 15.22 | 252 | 60954 | 5.761 | ng | 99 |
| 91) Benzo(a,h,i)perylene | 17.06 | 276 | 25087 | 2.791 | ng | 94 |

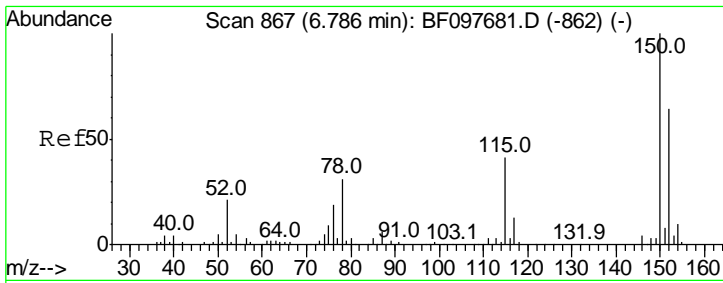
(#) = qualifier out of range (m) = manual integration (+) = signals summed

Data Path : Z:\HPCHEM1\BNA F\DATA\BF090117\
 Data File : BF098233.D
 Acq On : 1 Sep 2017 18:13
 Operator : SJ/JU
 Sample : I5050-01
 Misc :
 ALS Vial : 21 Sample Multiplier: 1

Instrument :
 BNA_F
 ClientSampled :
 RT4651-1540

Quant Time: Sep 01 22:52:58 2017
 Quant Method : Z:\HPCHEM1\BNA F\METHODS\8270-BF081517.M
 Quant Title : ASP BNA STANDARDS FOR 5 POINT CALIBRATION
 QLast Update : Mon Aug 21 15:59:04 2017
 Response via : Initial Calibration



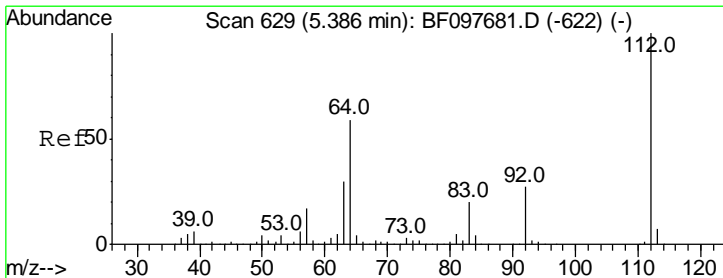
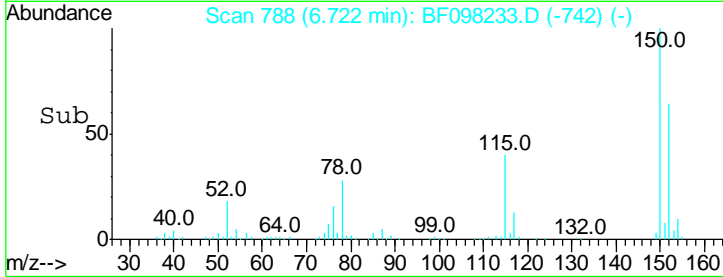
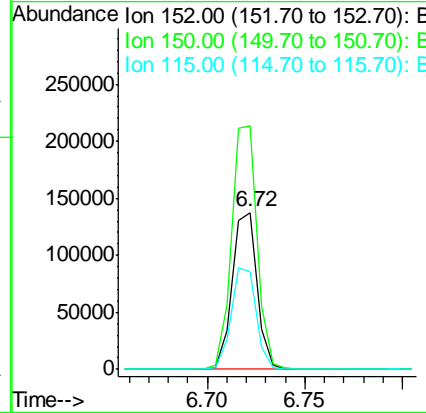
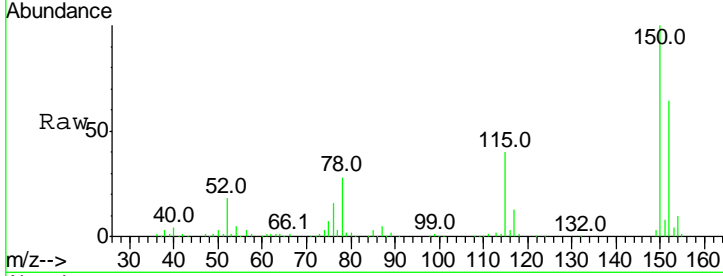


#1
 1,4-Dichlorobenzene-d4
 Concen: 20.000 ng
 RT: 6.72 min Scan# 788
 Delta R.T. -0.03 min
 Lab File: BF098233.D
 Acq: 1 Sep 2017 18:13

Instrument :
 BNA_F
 ClientSampleID :
 RT4651-1540

Tgt Ion:152 Resp: 121991

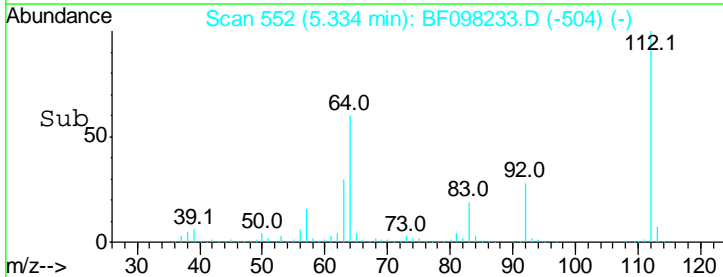
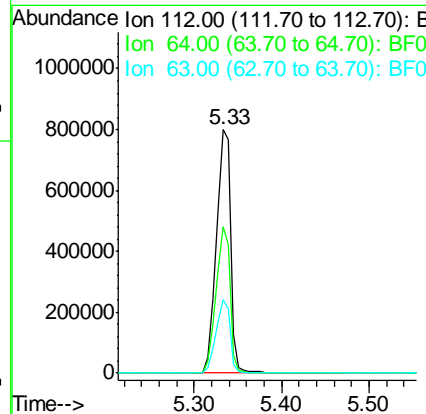
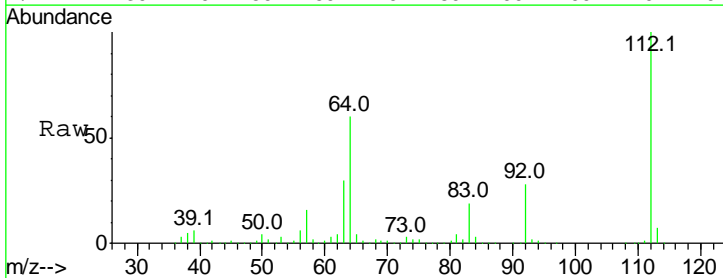
| Ion | Ratio | Lower | Upper |
|-----|-------|-------|-------|
| 152 | 100 | | |
| 150 | 155.1 | 126.2 | 189.2 |
| 115 | 62.0 | 52.2 | 78.2 |

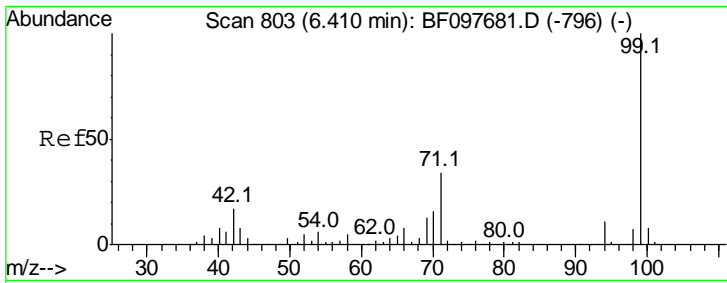


#5
 2-Fluorophenol
 Concen: 113.909 ng
 RT: 5.33 min Scan# 552
 Delta R.T. -0.02 min
 Lab File: BF098233.D
 Acq: 1 Sep 2017 18:13

Tgt Ion:112 Resp: 913559

| Ion | Ratio | Lower | Upper |
|-----|-------|-------|-------|
| 112 | 100 | | |
| 64 | 60.1 | 46.0 | 69.0 |
| 63 | 29.9 | 23.4 | 35.0 |

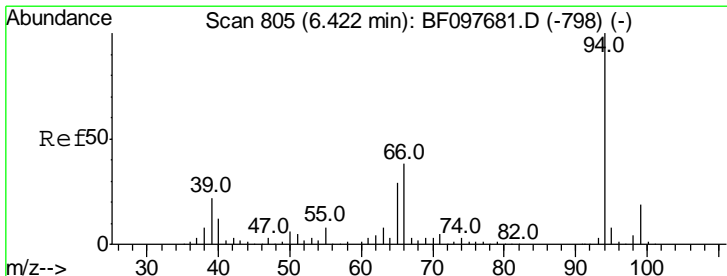
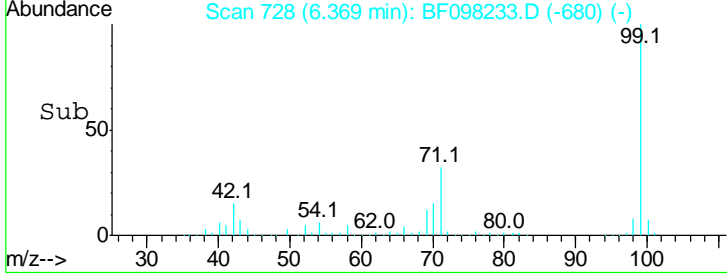
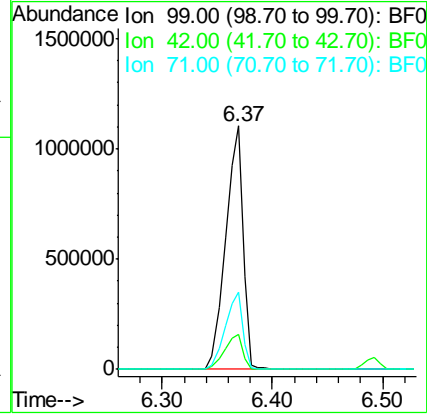
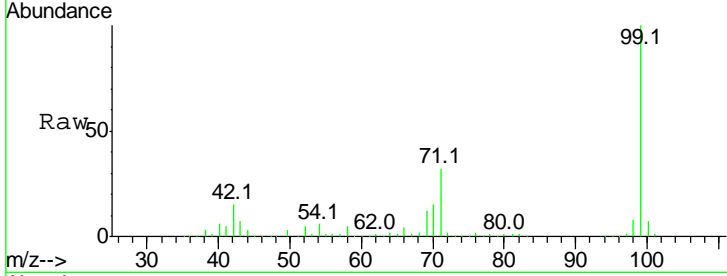




#7
 Phenol-d6
 Concen: 111.972 ng
 RT: 6.37 min Scan# 728
 Delta R.T. -0.02 min
 Lab File: BF098233.D
 Acq: 1 Sep 2017 18:13

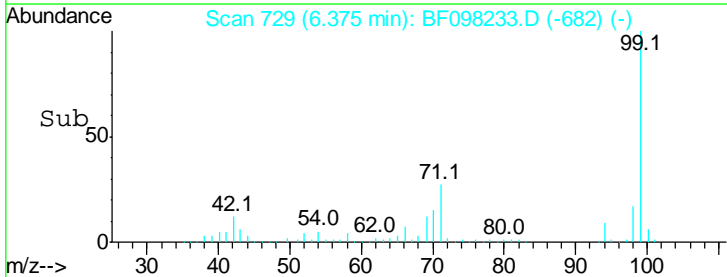
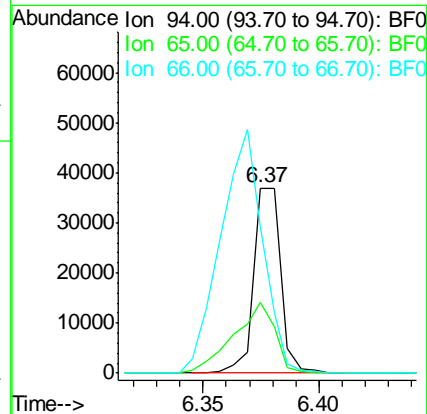
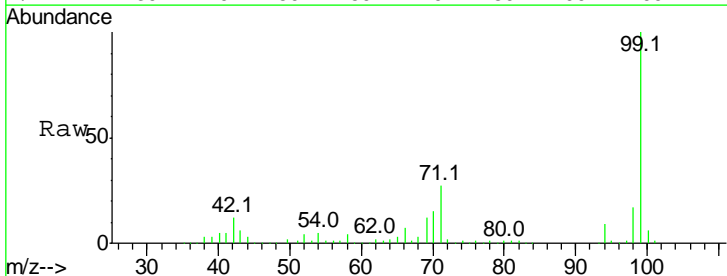
Instrument :
 BNA_F
ClientSampled :
 RT4651-1540

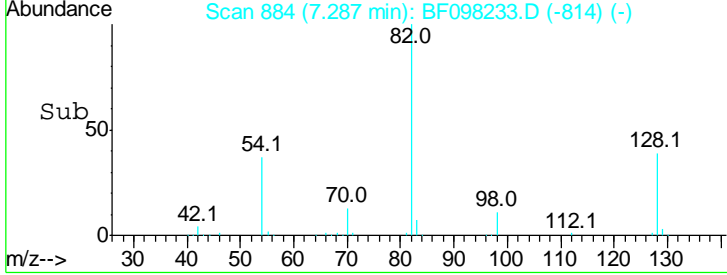
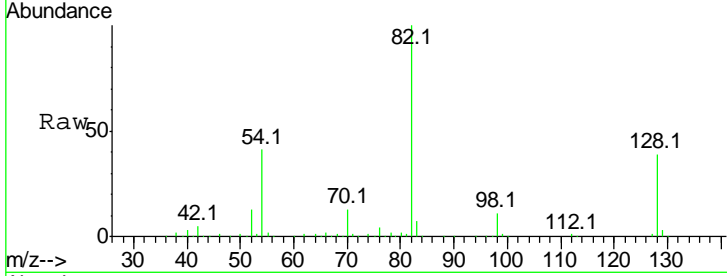
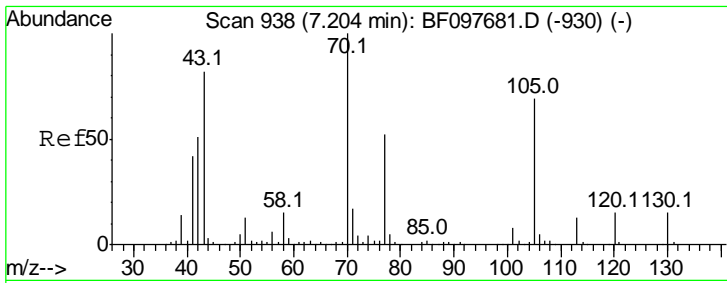
| Tgt Ion | Resp | Lower | Upper |
|---------|---------|-------|-------|
| 99 | 1220149 | | |
| 99 | 100 | | |
| 42 | 14.5 | 13.5 | 20.3 |
| 71 | 31.8 | 24.5 | 36.7 |



#10
 Phenol
 Concen: 2.387 ng
 RT: 6.37 min Scan# 729
 Delta R.T. -0.02 min
 Lab File: BF098233.D
 Acq: 1 Sep 2017 18:13

| Tgt Ion | Resp | Lower | Upper |
|---------|-------|-------|-------|
| 94 | 30416 | | |
| 94 | 100 | | |
| 65 | 38.1 | 9.9 | 49.9 |
| 66 | 78.7 | 23.1 | 63.1# |

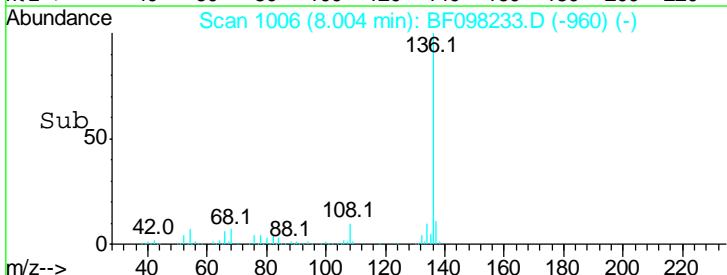
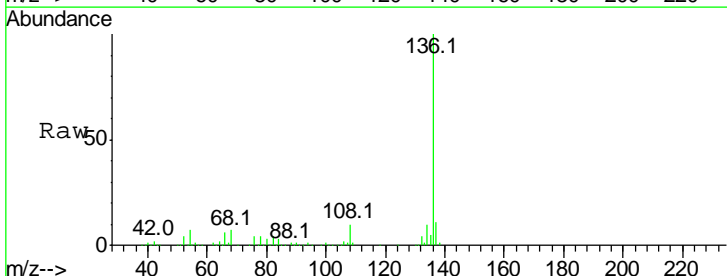
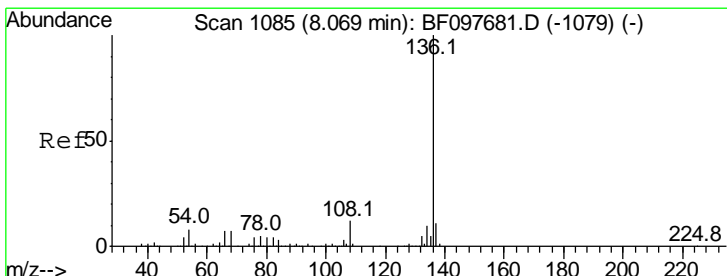
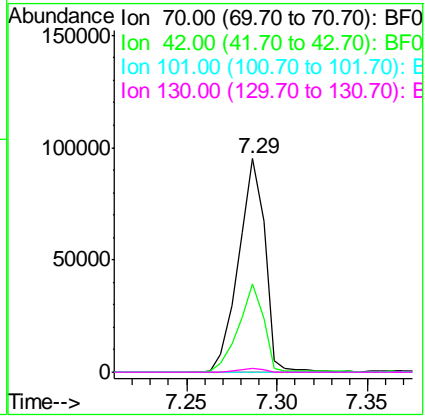




#19
 n-Nitroso-di-n-propylamine
 Concen: 12.920 ng
 RT: 7.29 min Scan# 884
 Delta R.T. 0.11 min
 Lab File: BF098233.D
 Acq: 1 Sep 2017 18:13

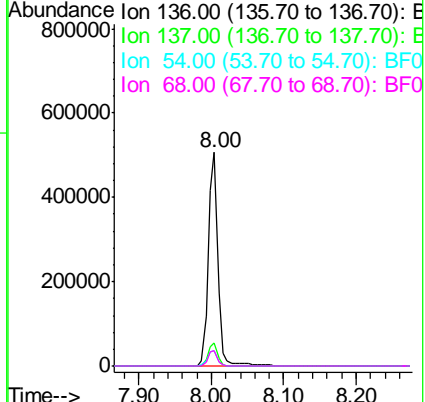
Instrument :
 BNA_F
 ClientSampleId :
 RT4651-1540

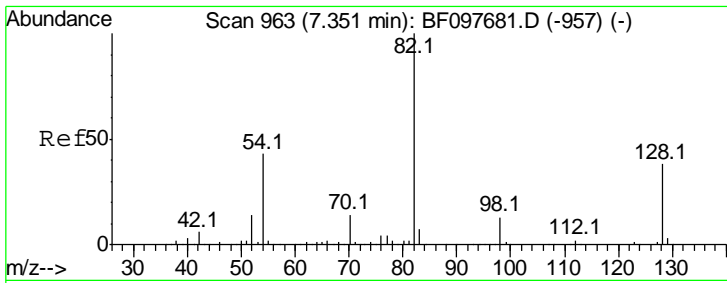
| Tgt Ion | Resp | Lower | Upper |
|---------|------|-------|-------|
| 70 | 100 | | |
| 42 | 41.3 | 47.2 | 70.8# |
| 101 | 0.0 | 7.2 | 10.8# |
| 130 | 2.0 | 15.9 | 23.9# |



#21
 Naphthalene-d8
 Concen: 20.000 ng
 RT: 8.00 min Scan# 1006
 Delta R.T. -0.03 min
 Lab File: BF098233.D
 Acq: 1 Sep 2017 18:13

| Tgt Ion | Resp | Lower | Upper |
|---------|------|-------|-------|
| 136 | 100 | | |
| 137 | 10.6 | 8.5 | 12.7 |
| 54 | 7.2 | 4.9 | 7.3 |
| 68 | 7.0 | 4.1 | 6.1# |

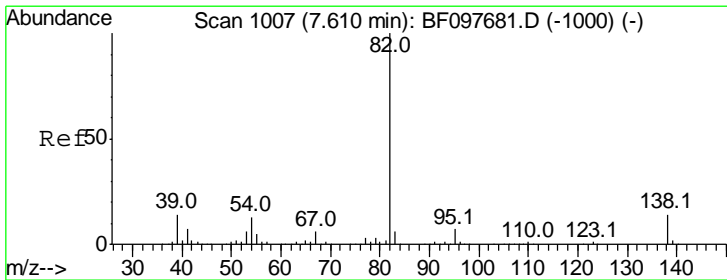
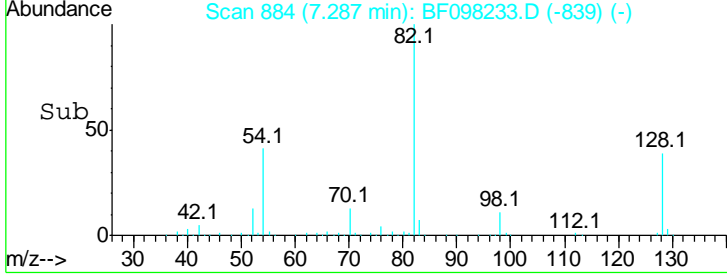
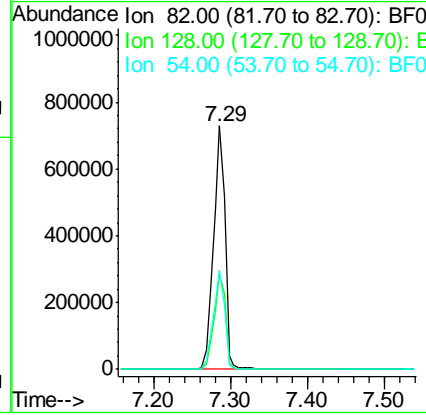
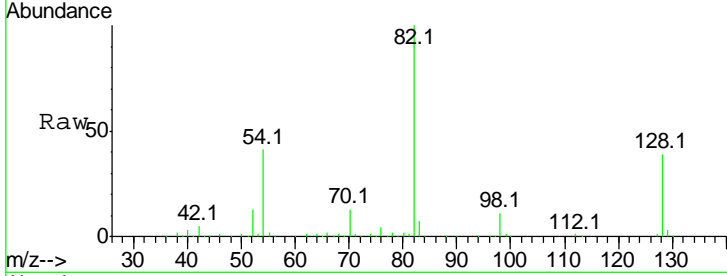




#23
 Nitrobenzene-d5
 Concen: 86.905 ng
 RT: 7.29 min Scan# 884
 Delta R.T. -0.04 min
 Lab File: BF098233.D
 Acq: 1 Sep 2017 18:13

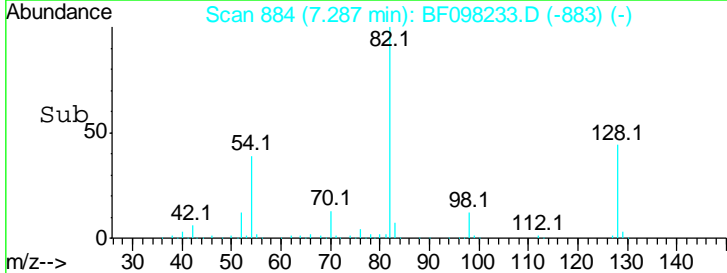
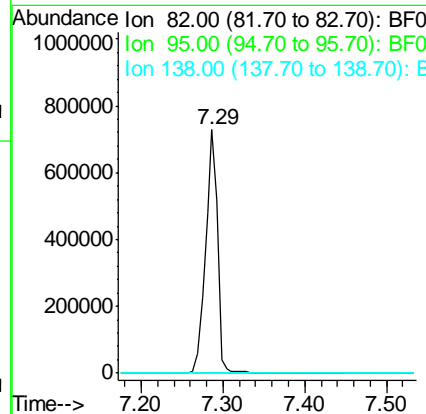
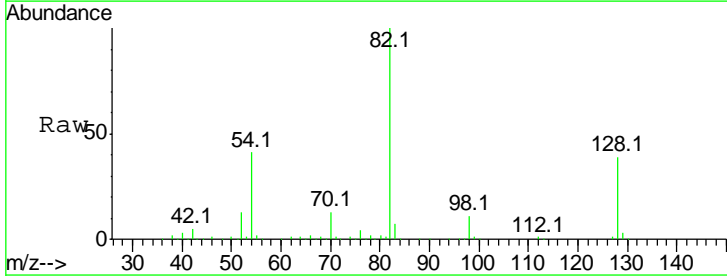
Instrument :
 BNA_F
ClientSampled :
 RT4651-1540

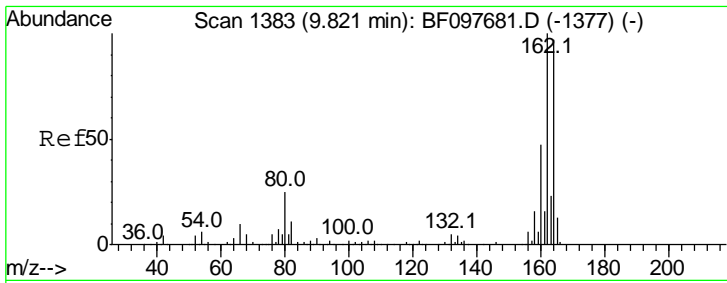
| Tgt Ion | Resp | Lower | Upper |
|---------|------|-------|-------|
| 82 | 100 | | |
| 128 | 39.2 | 34.0 | 51.0 |
| 54 | 40.7 | 42.2 | 63.2# |



#25
 Isophorone
 Concen: 41.400 ng
 RT: 7.29 min Scan# 884
 Delta R.T. -0.29 min
 Lab File: BF098233.D
 Acq: 1 Sep 2017 18:13

| Tgt Ion | Resp | Lower | Upper |
|---------|------|-------|-------|
| 82 | 100 | | |
| 95 | 0.0 | 5.3 | 7.9# |
| 138 | 0.0 | 13.1 | 19.7# |

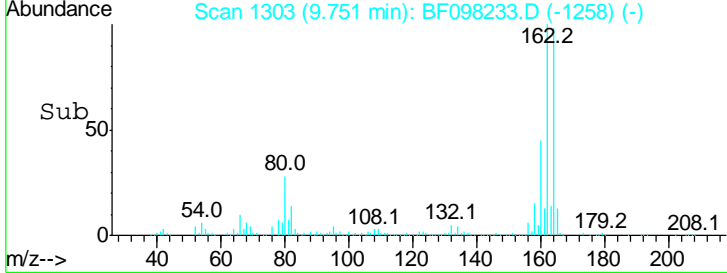
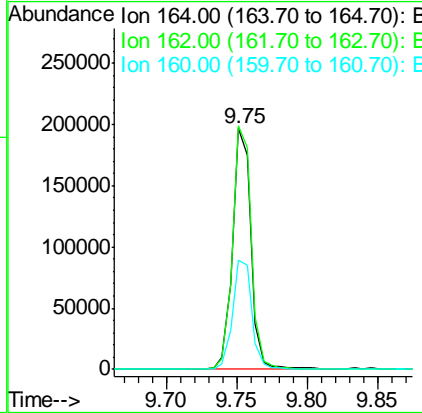
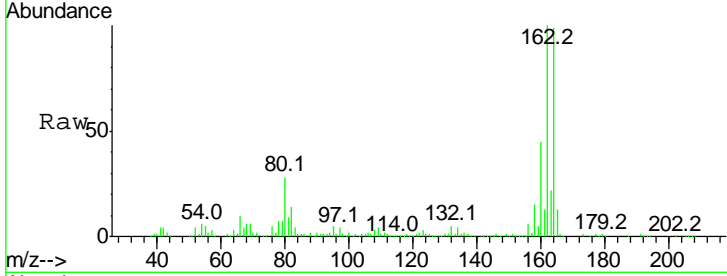




#38
 Acenaphthene-d10
 Concen: 20.000 ng
 RT: 9.75 min Scan# 1303
 Delta R.T. -0.04 min
 Lab File: BF098233.D
 Acq: 1 Sep 2017 18:13

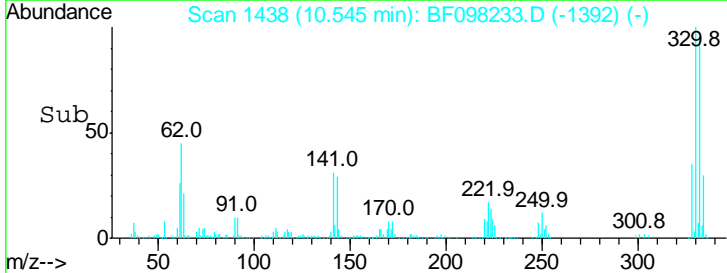
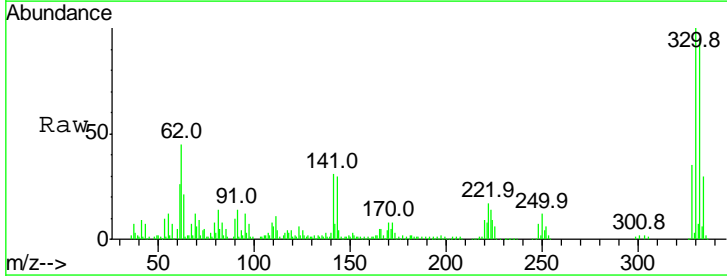
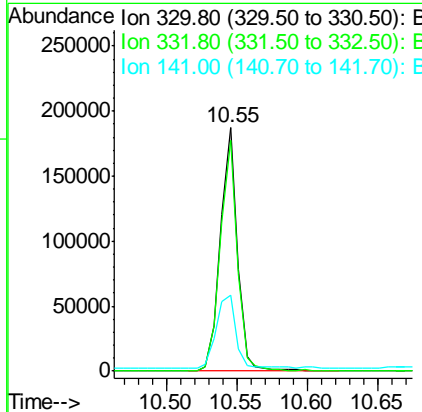
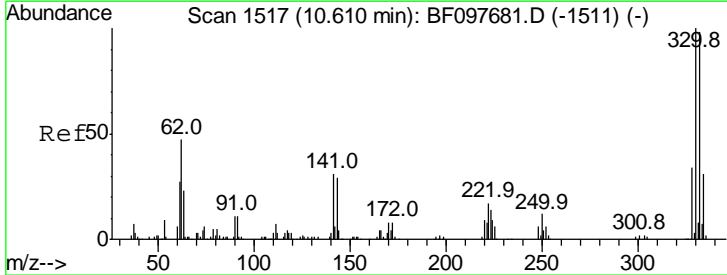
Instrument :
 BNA_F
ClientSampled :
 RT4651-1540

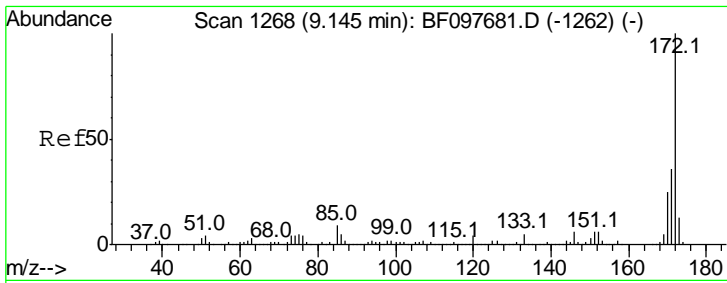
| Tgt Ion | Resp | Lower | Upper |
|---------|-------|-------|-------|
| 164 | 100 | | |
| 162 | 101.0 | 82.6 | 123.8 |
| 160 | 45.5 | 36.2 | 54.2 |



#41
 2,4,6-Tribromophenol
 Concen: 102.956 ng
 RT: 10.55 min Scan# 1438
 Delta R.T. -0.03 min
 Lab File: BF098233.D
 Acq: 1 Sep 2017 18:13

| Tgt Ion | Resp | Lower | Upper |
|---------|------|-------|-------|
| 330 | 100 | | |
| 332 | 95.8 | 76.6 | 115.0 |
| 141 | 34.9 | 31.4 | 47.2 |



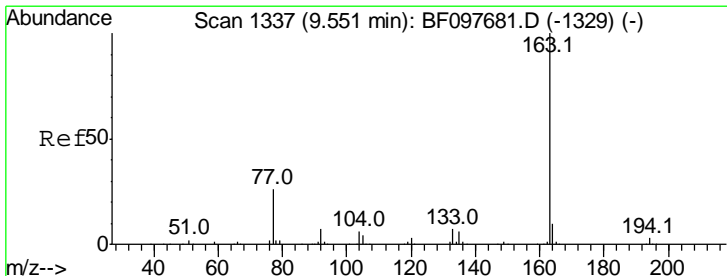
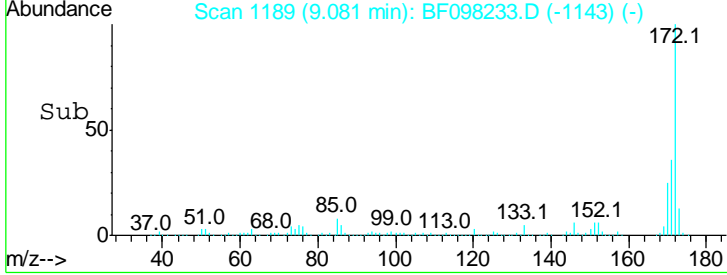
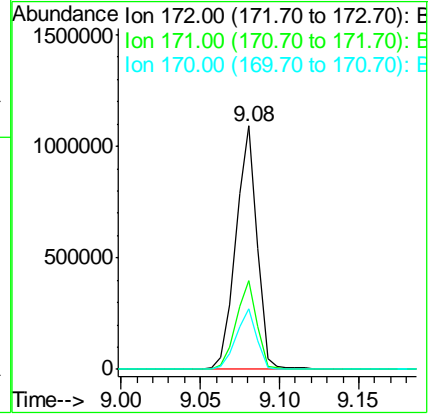
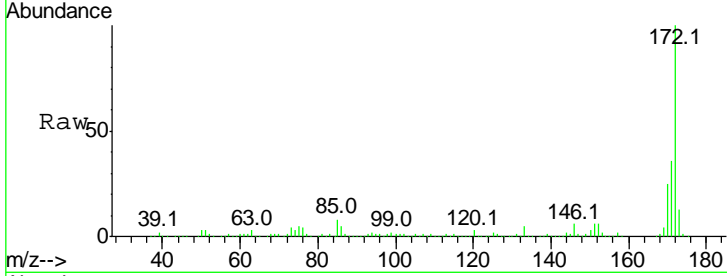


#44
 2-Fluorobiphenyl
 Concen: 83.992 ng
 RT: 9.08 min Scan# 1189
 Delta R.T. -0.03 min
 Lab File: BF098233.D
 Acq: 1 Sep 2017 18:13

Instrument :
 BNA_F
 ClientSampleID :
 RT4651-1540

Tgt Ion:172 Resp: 1010337

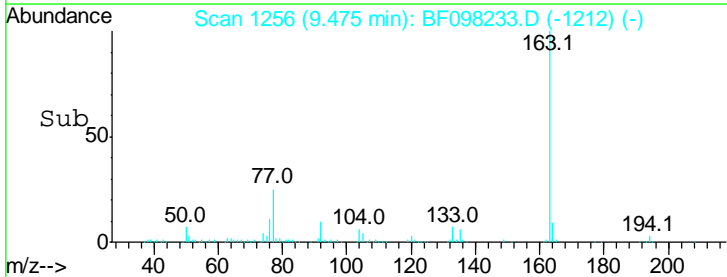
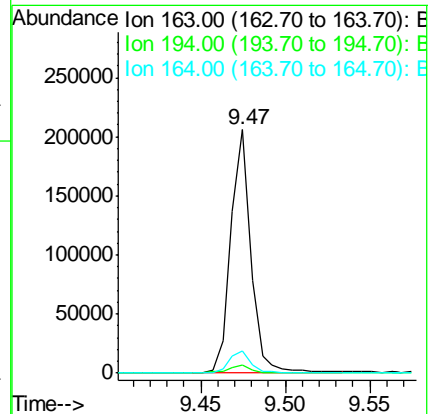
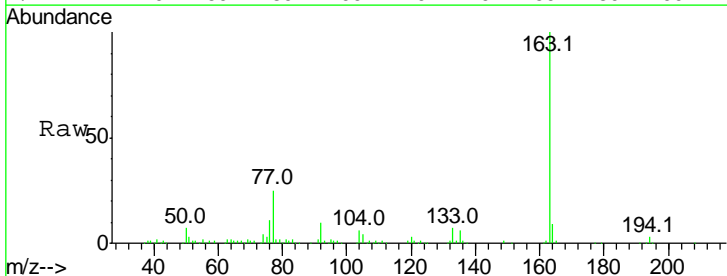
| Ion | Ratio | Lower | Upper |
|-----|-------|-------|-------|
| 172 | 100 | | |
| 171 | 36.3 | 29.6 | 44.4 |
| 170 | 24.7 | 19.8 | 29.8 |

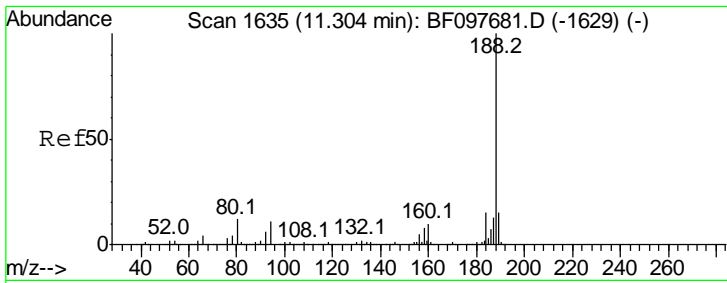


#49
 Dimethylphthalate
 Concen: 13.140 ng
 RT: 9.47 min Scan# 1256
 Delta R.T. -0.04 min
 Lab File: BF098233.D
 Acq: 1 Sep 2017 18:13

Tgt Ion:163 Resp: 169743

| Ion | Ratio | Lower | Upper |
|-----|-------|-------|-------|
| 163 | 100 | | |
| 194 | 3.5 | 2.6 | 4.0 |
| 164 | 9.0 | 8.4 | 12.6 |

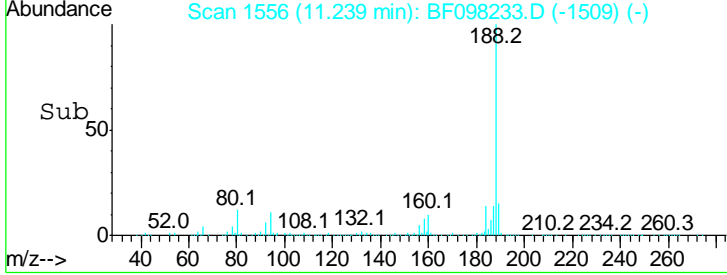
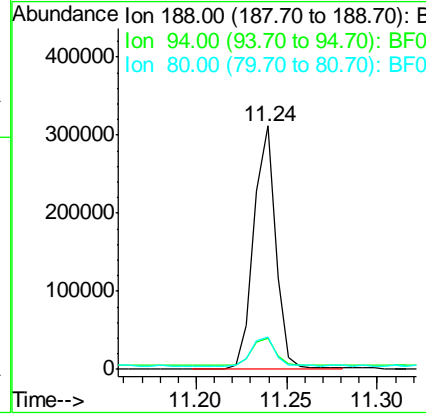
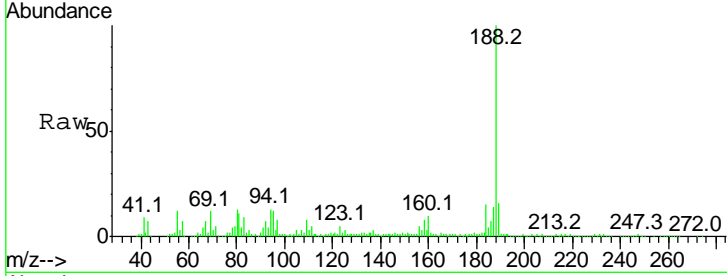




#63
 Phenanthrene-d10
 Concen: 20.000 ng
 RT: 11.24 min Scan# 1556
 Delta R.T. -0.02 min
 Lab File: BF098233.D
 Acq: 1 Sep 2017 18:13

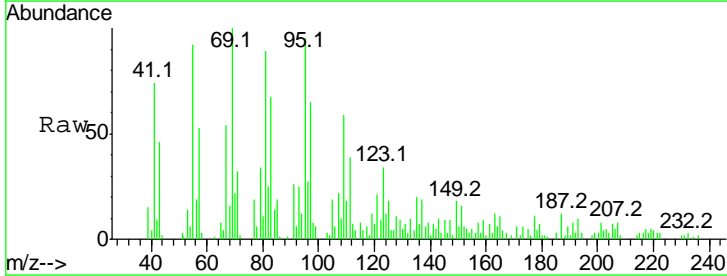
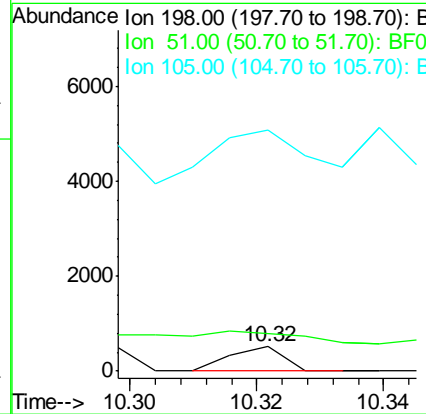
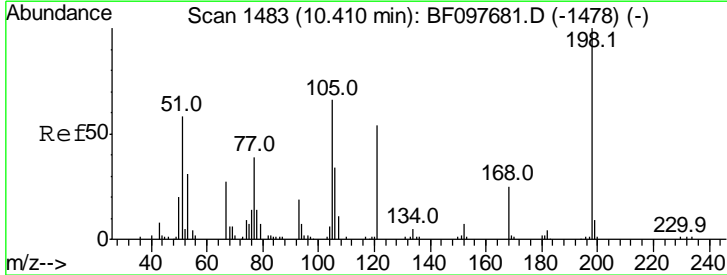
Instrument : BNA_F
 ClientSampleId : RT4651-1540

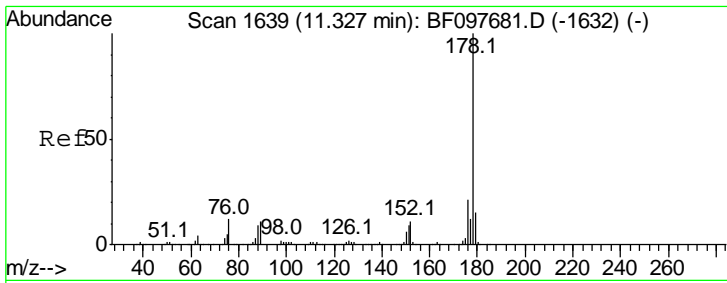
| Tgt Ion | Resp | Lower | Upper |
|---------|------|-------|-------|
| 188 | 100 | | |
| 94 | 12.7 | 9.4 | 14.2 |
| 80 | 13.3 | 10.2 | 15.2 |



#64
 4,6-Dinitro-2-methylphenol
 Concen: 8.524 ng
 RT: 10.32 min Scan# 1400
 Delta R.T. -0.06 min
 Lab File: BF098233.D
 Acq: 1 Sep 2017 18:13

| Tgt Ion | Resp | Lower | Upper |
|---------|-------|-------|-------|
| 198 | 100 | | |
| 51 | 155.6 | 53.2 | 93.2# |
| 105 | 986.4 | 45.8 | 85.8# |

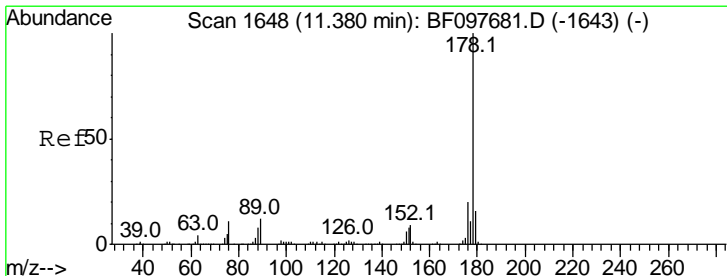
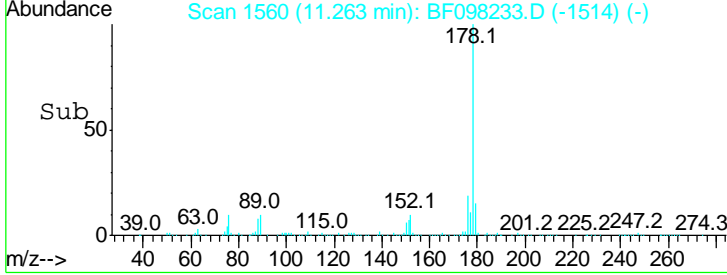
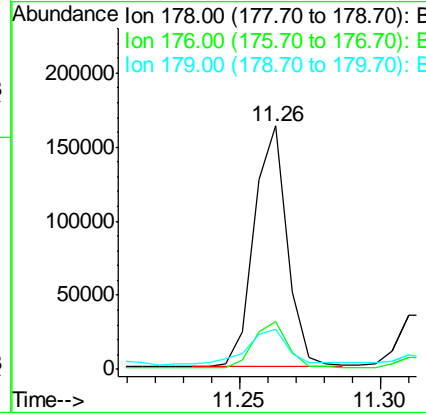
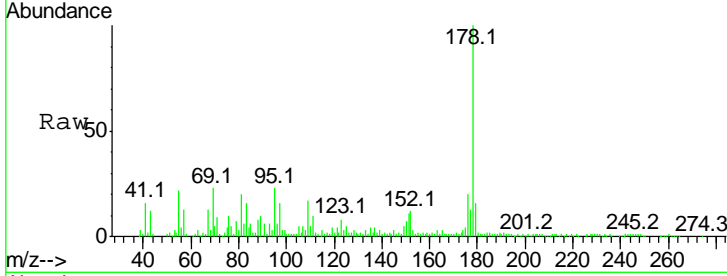




#70
 Phenanthrene
 Concen: 9.517 ng
 RT: 11.26 min Scan# 1560
 Delta R.T. -0.03 min
 Lab File: BF098233.D
 Acq: 1 Sep 2017 18:13

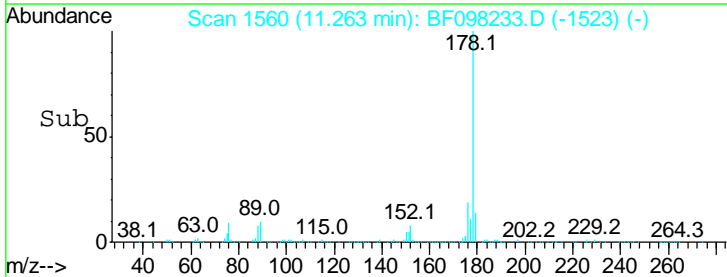
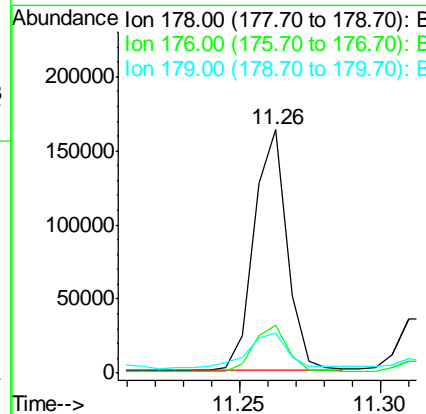
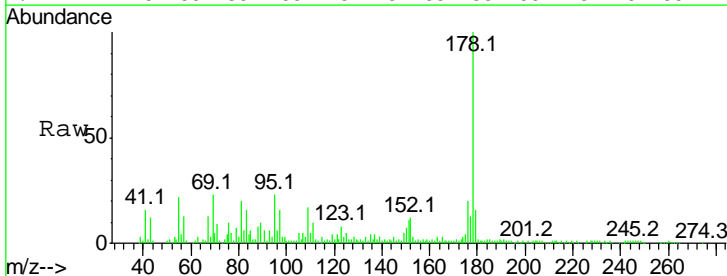
Instrument :
 BNA_F
ClientSampled :
 RT4651-1540

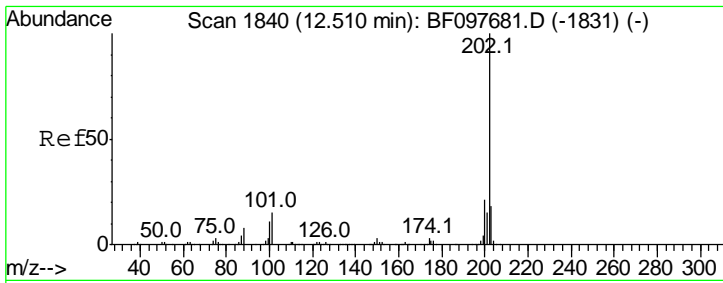
| Tgt Ion | Resp | Lower | Upper |
|---------|------|-------|-------|
| 178 | 100 | | |
| 176 | 19.7 | 16.2 | 24.4 |
| 179 | 16.4 | 12.6 | 19.0 |



#71
 Anthracene
 Concen: 9.383 ng
 RT: 11.26 min Scan# 1560
 Delta R.T. -0.08 min
 Lab File: BF098233.D
 Acq: 1 Sep 2017 18:13

| Tgt Ion | Resp | Lower | Upper |
|---------|------|-------|-------|
| 178 | 100 | | |
| 176 | 19.7 | 15.8 | 23.8 |
| 179 | 16.4 | 12.7 | 19.1 |

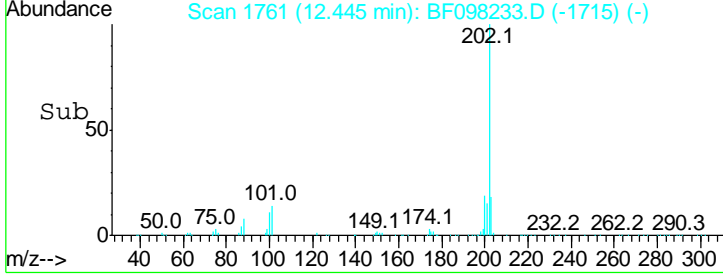
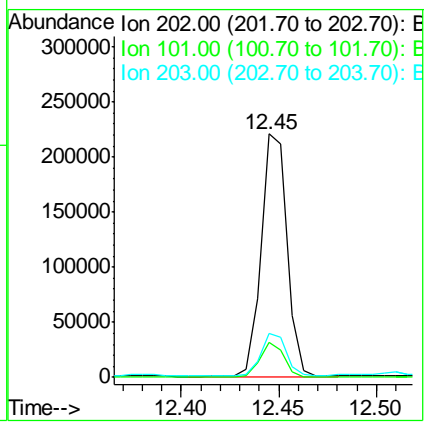
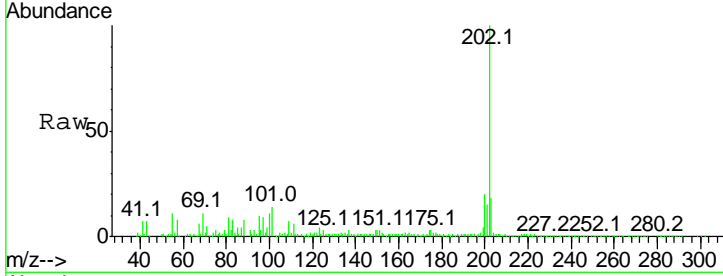




#74
 Fluoranthene
 Concen: 13.963 ng
 RT: 12.45 min Scan# 1761
 Delta R.T. -0.03 min
 Lab File: BF098233.D
 Acq: 1 Sep 2017 18:13

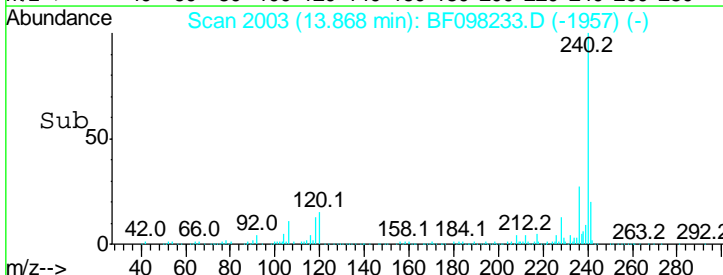
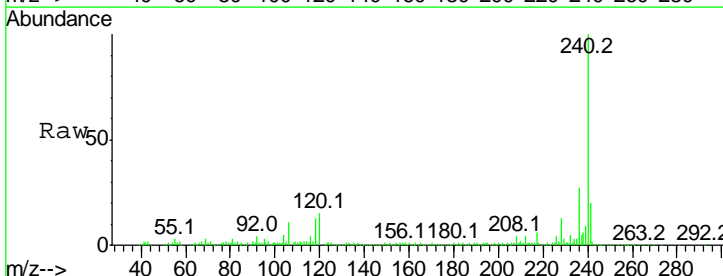
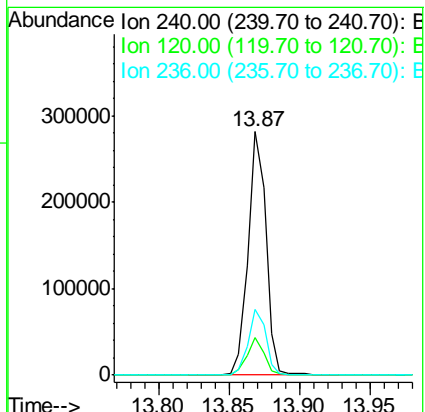
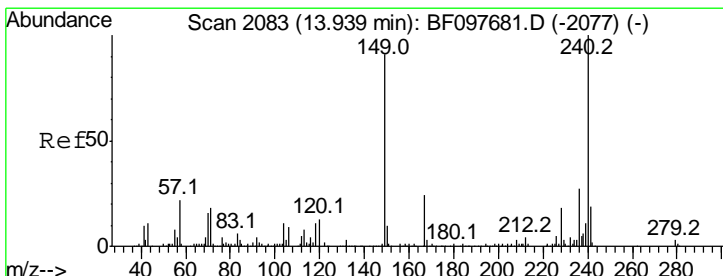
Instrument :
 BNA_F
 ClientSampled :
 RT4651-1540

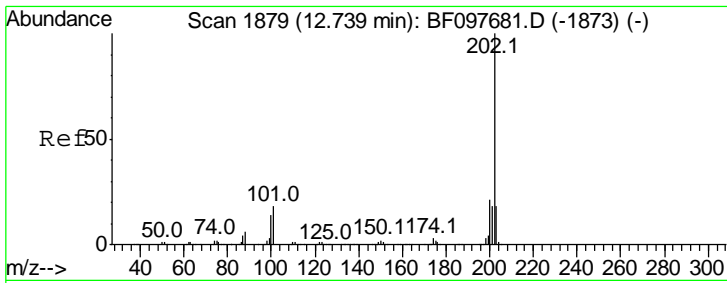
| Tgt Ion | Resp | Lower | Upper |
|---------|------|-------|-------|
| 202 | 100 | | |
| 101 | 14.3 | 0.0 | 33.2 |
| 203 | 18.2 | 0.0 | 38.1 |



#75
 Chrysene-d12
 Concen: 20.000 ng
 RT: 13.87 min Scan# 2003
 Delta R.T. -0.03 min
 Lab File: BF098233.D
 Acq: 1 Sep 2017 18:13

| Tgt Ion | Resp | Lower | Upper |
|---------|------|-------|-------|
| 240 | 100 | | |
| 120 | 15.4 | 5.8 | 8.8# |
| 236 | 26.7 | 20.5 | 30.7 |

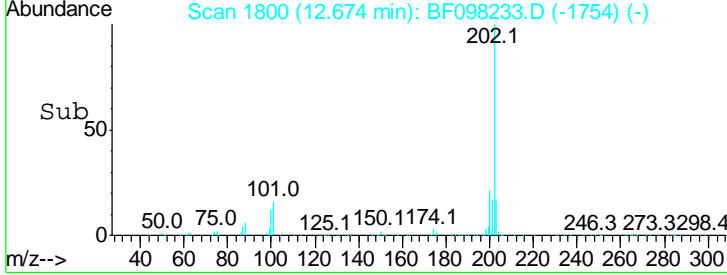
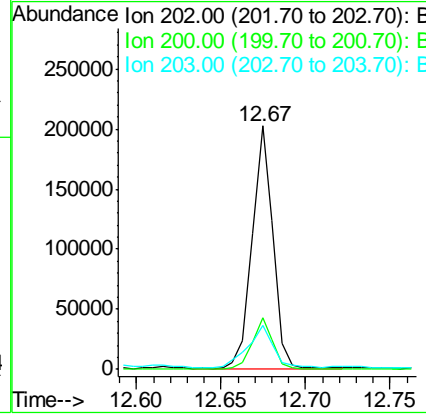
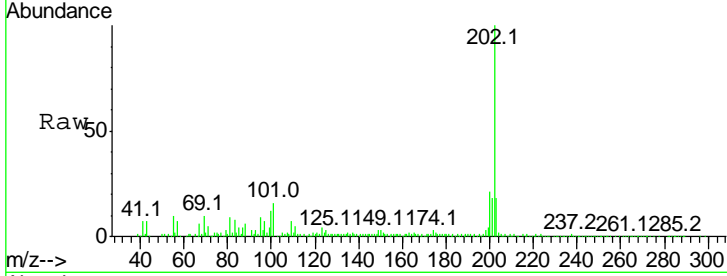




#77
 Pyrene
 Concen: 8.425 ng
 RT: 12.67 min Scan# 1800
 Delta R.T. -0.03 min
 Lab File: BF098233.D
 Acq: 1 Sep 2017 18:13

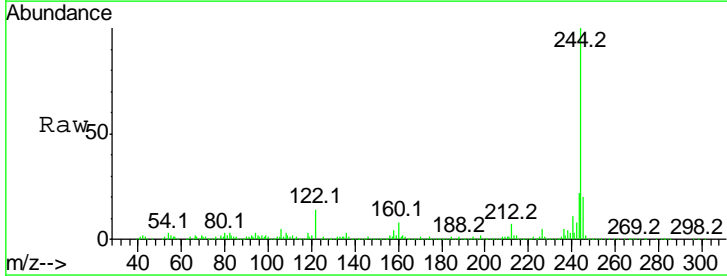
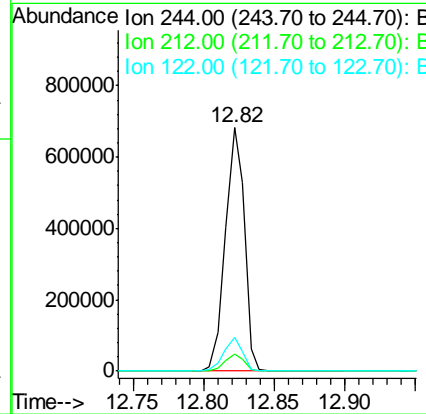
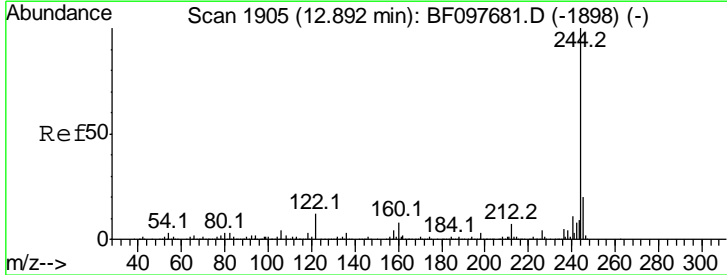
Instrument : BNA_F
 ClientSampled : RT4651-1540

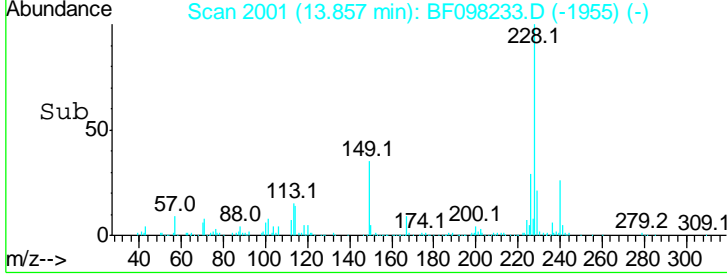
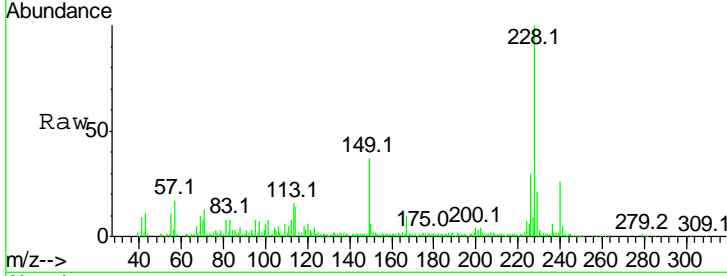
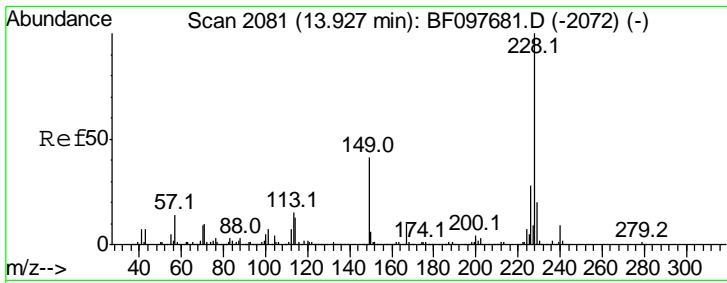
| Tgt Ion | Resp | Lower | Upper |
|---------|--------|-------|-------|
| 202 | 173897 | | |
| 200 | 21.0 | 17.6 | 26.4 |
| 203 | 17.8 | 14.4 | 21.6 |



#78
 Terphenyl-d14
 Concen: 52.852 ng
 RT: 12.82 min Scan# 1825
 Delta R.T. -0.03 min
 Lab File: BF098233.D
 Acq: 1 Sep 2017 18:13

| Tgt Ion | Resp | Lower | Upper |
|---------|--------|-------|-------|
| 244 | 639580 | | |
| 212 | 7.2 | 6.0 | 9.0 |
| 122 | 13.7 | 10.3 | 15.5 |

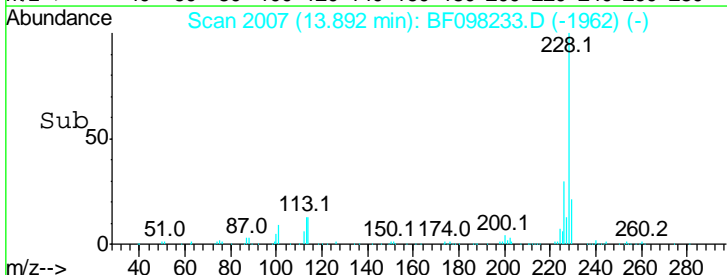
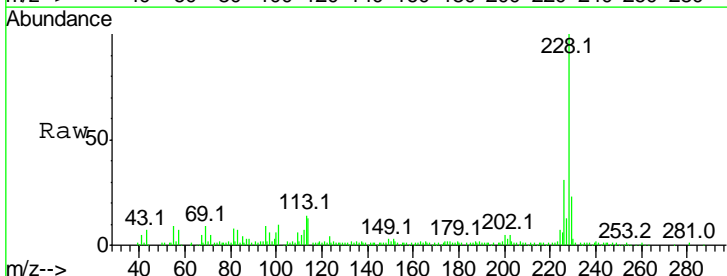
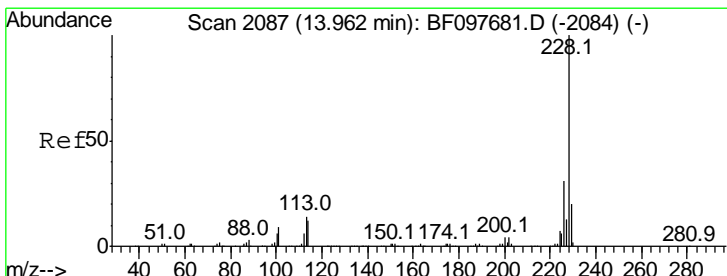
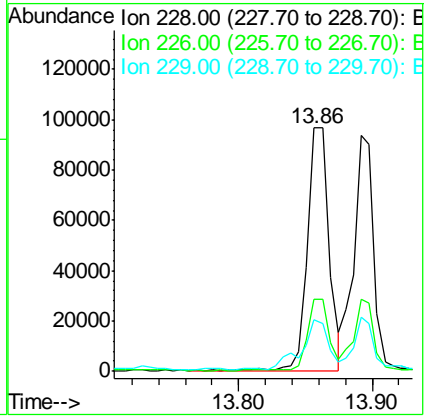




#80
 Benzo(a)anthracene
 Concen: 7.119 ng
 RT: 13.86 min Scan# 2001
 Delta R.T. -0.03 min
 Lab File: BF098233.D
 Acq: 1 Sep 2017 18:13

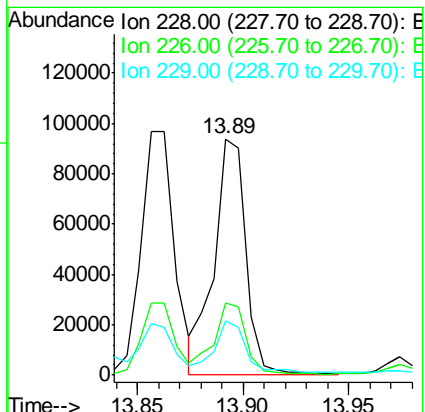
Instrument : BNA_F
 ClientSampleId : RT4651-1540

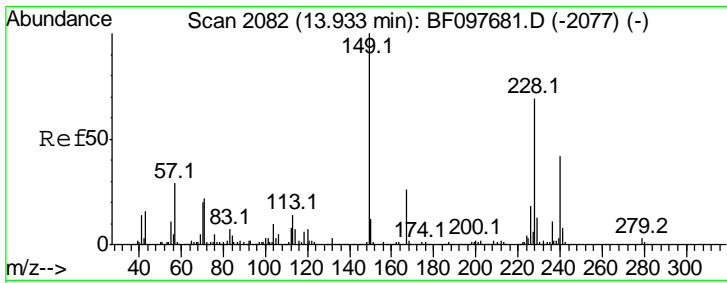
| Tgt Ion | Resp | Lower | Upper |
|---------|--------|-------|-------|
| 228 | 107676 | | |
| 226 | 29.5 | 22.6 | 33.8 |
| 229 | 21.3 | 16.3 | 24.5 |



#82
 Chrysene
 Concen: 6.519 ng
 RT: 13.89 min Scan# 2007
 Delta R.T. -0.04 min
 Lab File: BF098233.D
 Acq: 1 Sep 2017 18:13

| Tgt Ion | Resp | Lower | Upper |
|---------|-------|-------|-------|
| 228 | 98077 | | |
| 226 | 30.5 | 24.9 | 37.3 |
| 229 | 23.0 | 15.8 | 23.6 |

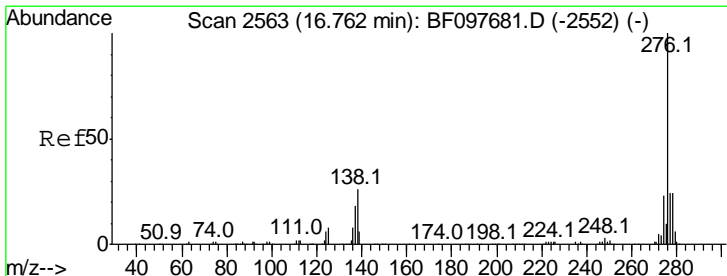
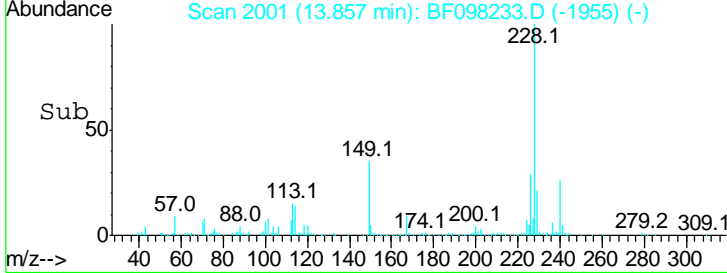
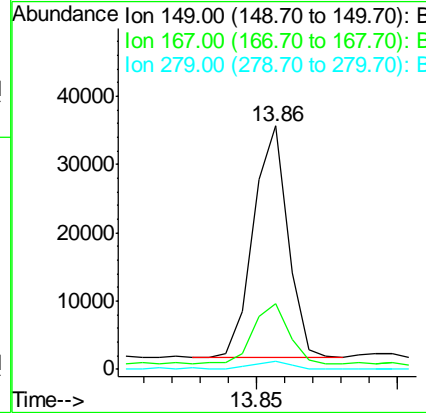
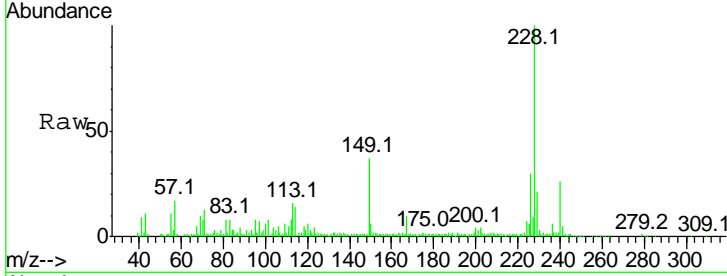




#83
 Bis(2-ethylhexyl)phthalate
 Concen: 3.275 ng
 RT: 13.86 min Scan# 2001
 Delta R.T. -0.03 min
 Lab File: BF098233.D
 Acq: 1 Sep 2017 18:13

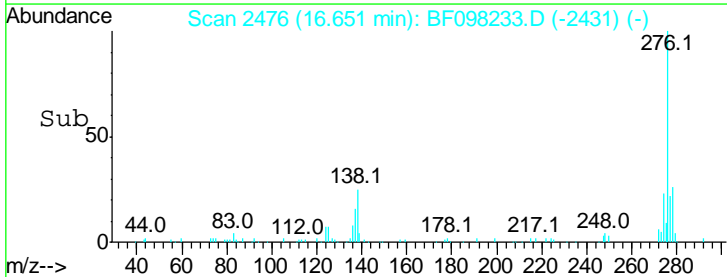
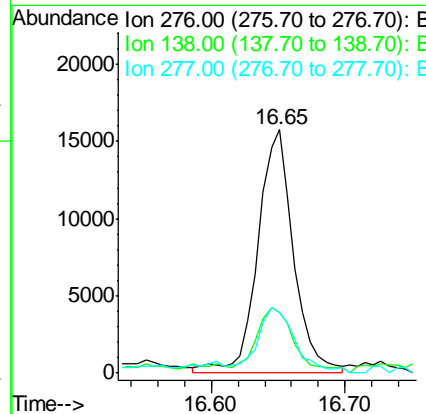
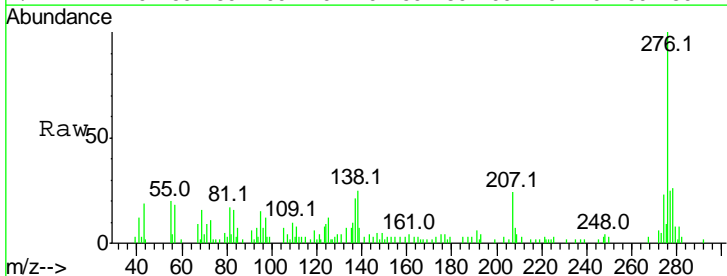
Instrument :
 BNA_F
 ClientSampleID :
 RT4651-1540

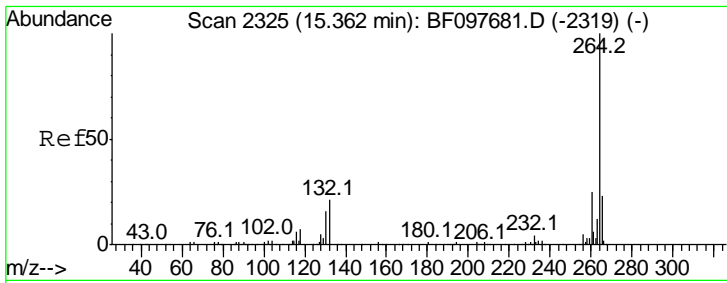
| Tgt Ion | Resp | Lower | Upper |
|---------|------|-------|-------|
| 149 | 100 | | |
| 167 | 26.9 | 21.0 | 31.4 |
| 279 | 3.5 | 1.9 | 2.9# |



#85
 Indeno(1,2,3-cd)pyrene
 Concen: 2.632 ng
 RT: 16.65 min Scan# 2476
 Delta R.T. -0.04 min
 Lab File: BF098233.D
 Acq: 1 Sep 2017 18:13

| Tgt Ion | Resp | Lower | Upper |
|---------|------|-------|-------|
| 276 | 100 | | |
| 138 | 28.6 | 27.8 | 41.6 |
| 277 | 28.3 | 20.2 | 30.4 |

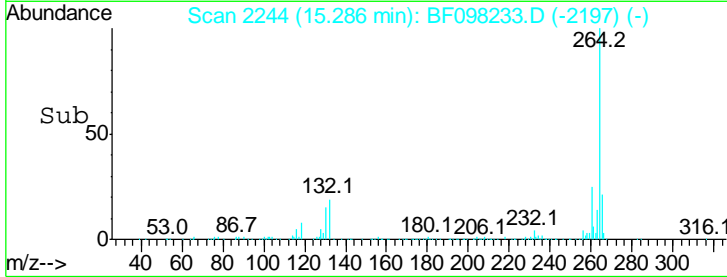
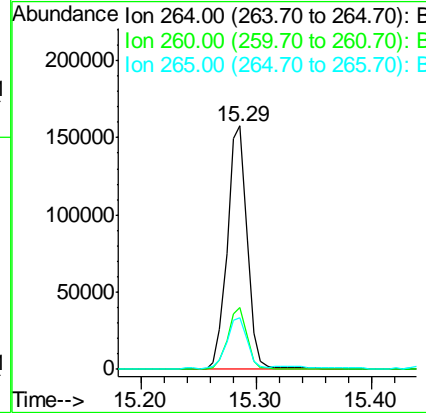
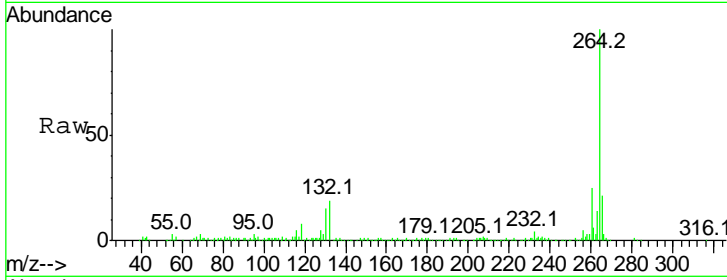




#86
 Perylene-d12
 Concen: 20.000 ng
 RT: 15.29 min Scan# 2244
 Delta R.T. -0.02 min
 Lab File: BF098233.D
 Acq: 1 Sep 2017 18:13

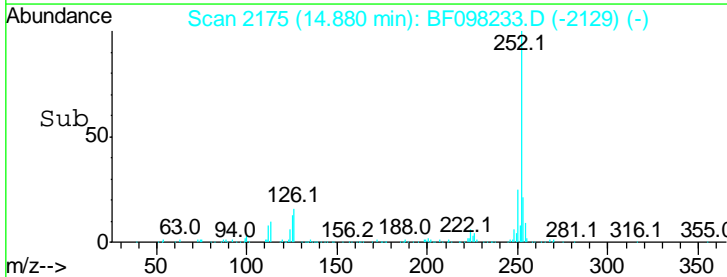
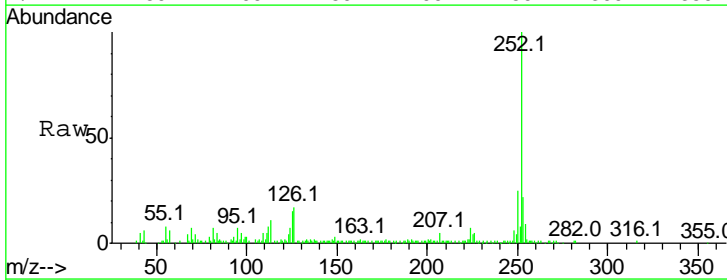
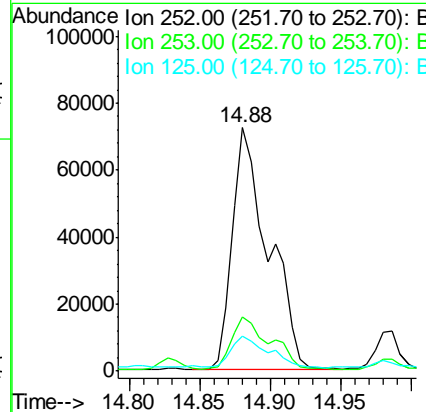
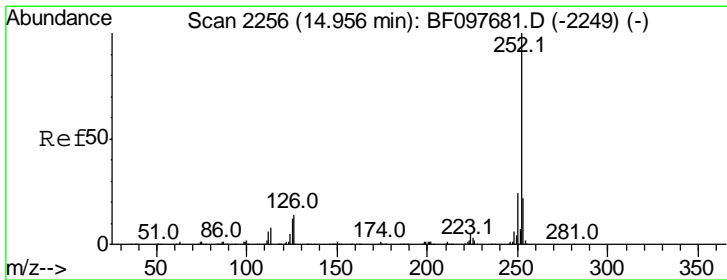
Instrument :
 BNA_F
 ClientSampleId :
 RT4651-1540

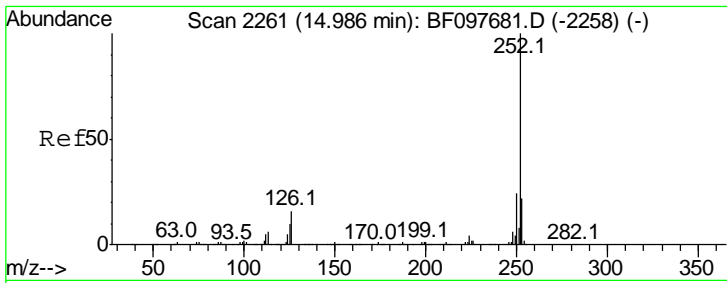
| Tgt Ion | Resp | Lower | Upper |
|---------|------|-------|-------|
| 264 | 100 | | |
| 260 | 25.3 | 19.5 | 29.3 |
| 265 | 21.3 | 17.2 | 25.8 |



#87
 Benzo(b)fluoranthene
 Concen: 10.897 ng
 RT: 14.88 min Scan# 2175
 Delta R.T. -0.03 min
 Lab File: BF098233.D
 Acq: 1 Sep 2017 18:13

| Tgt Ion | Resp | Lower | Upper |
|---------|------|-------|-------|
| 252 | 100 | | |
| 253 | 22.3 | 18.1 | 27.1 |
| 125 | 14.5 | 9.8 | 14.8 |

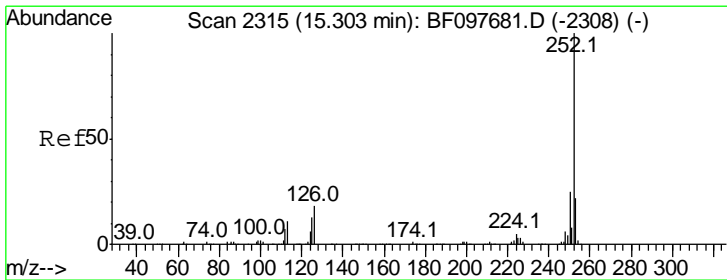
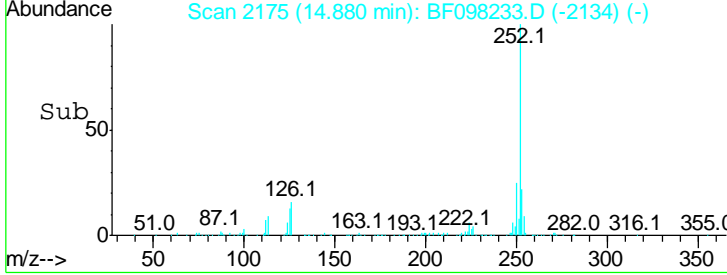
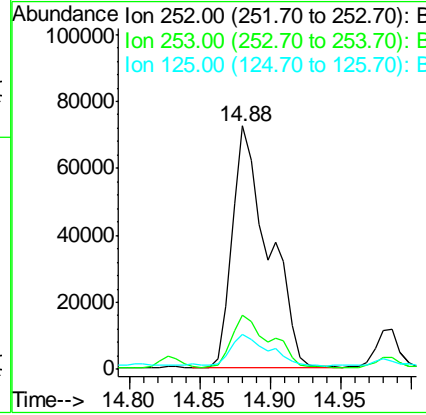
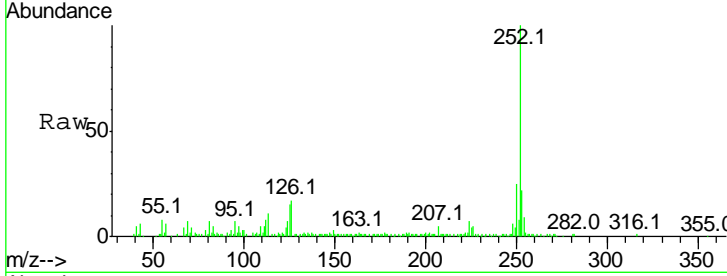




#88
 Benzo(k)fluoranthene
 Concen: 11.599 ng
 RT: 14.88 min Scan# 2175
 Delta R.T. -0.06 min
 Lab File: BF098233.D
 Acq: 1 Sep 2017 18:13

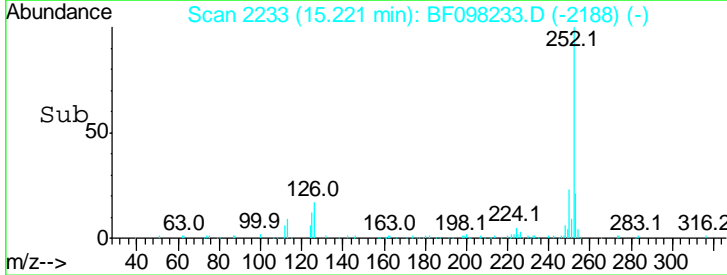
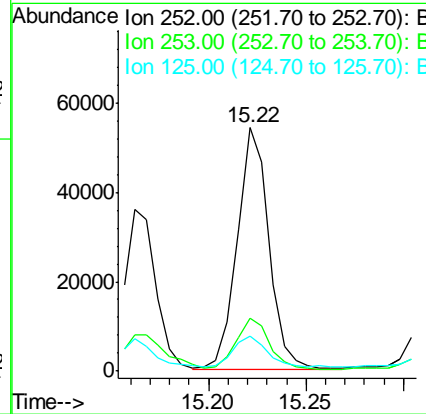
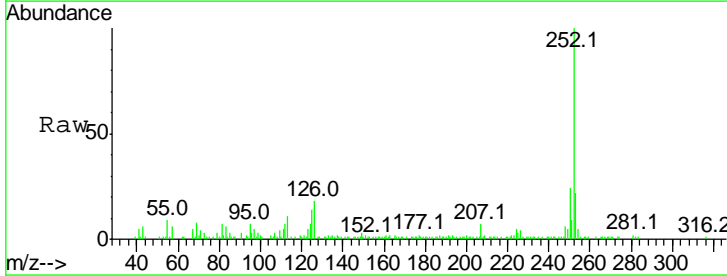
Instrument :
 BNA_F
 ClientSampled :
 RT4651-1540

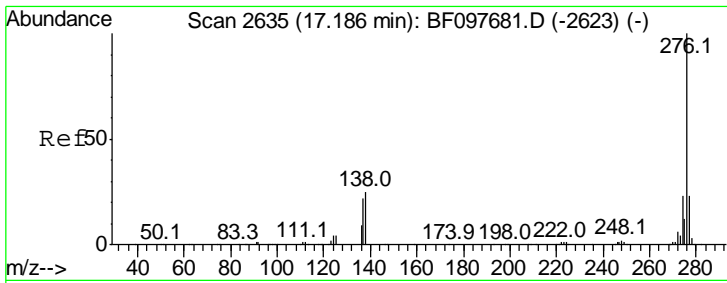
| Tgt Ion | Resp | Lower | Upper |
|---------|--------|-------|-------|
| 252 | 130237 | | |
| 253 | 22.3 | 18.4 | 27.6 |
| 125 | 14.5 | 13.1 | 19.7 |



#89
 Benzo(a)pyrene
 Concen: 5.761 ng
 RT: 15.22 min Scan# 2233
 Delta R.T. -0.04 min
 Lab File: BF098233.D
 Acq: 1 Sep 2017 18:13

| Tgt Ion | Resp | Lower | Upper |
|---------|-------|-------|-------|
| 252 | 60954 | | |
| 253 | 21.7 | 17.5 | 26.3 |
| 125 | 14.3 | 11.0 | 16.4 |





#91
 Benzo(a,h,i)perylene
 Concen: 2.791 ng
 RT: 17.06 min Scan# 2545
 Delta R.T. -0.05 min
 Lab File: BF098233.D
 Acq: 1 Sep 2017 18:13

Instrument :
 BNA_F
 ClientSampleID :
 RT4651-1540

Tot Ion: 276 Resp: 25087

| Ion | Ratio | Lower | Upper |
|-----|-------|-------|-------|
| 276 | 100 | | |
| 277 | 27.3 | 18.6 | 28.0 |
| 138 | 29.1 | 25.4 | 38.0 |

