

Data Path : Z:\svoasrv\HPCHEM1\BNA_F\Data\BF090325\
 Data File : BF143626.D
 Acq On : 03 Sep 2025 14:41
 Operator : RC/JU
 Sample : SSTDICC010
 Misc :
 ALS Vial : 5 Sample Multiplier: 1

Instrument :
 BNA_F
 ClientSampleId :
 SSTDICC010

Quant Time: Sep 03 18:38:39 2025
 Quant Method : Z:\svoasrv\HPCHEM1\BNA_F\Methods\8270-BF090325.M
 Quant Title : ASP BNA STANDARDS FOR 5 POINT CALIBRATION
 QLast Update : Wed Sep 03 18:35:49 2025
 Response via : Initial Calibration

Compound	R.T.	QIon	Response	Conc	Units	Dev(Min)	
Internal Standards							
1) 1,4-Dichlorobenzene-d4	6.893	152	87939	20.000	ng	0.00	
21) Naphthalene-d8	8.169	136	345803	20.000	ng	0.00	
39) Acenaphthene-d10	9.928	164	195808	20.000	ng	0.00	
64) Phenanthrene-d10	11.410	188	317066	20.000	ng	0.00	
76) Chrysene-d12	14.045	240	187848	20.000	ng	0.00	
86) Perylene-d12	15.521	264	178940	20.000	ng	0.00	
System Monitoring Compounds							
5) 2-Fluorophenol	5.499	112	99328	20.010	ng	0.00	
7) Phenol-d6	6.498	99	124569	20.219	ng	-0.01	
23) Nitrobenzene-d5	7.445	82	81262	16.516	ng	-0.01	
42) 2,4,6-Tribromophenol	10.710	330	27120	16.563	ng	0.00	
45) 2-Fluorobiphenyl	9.245	172	262821	21.444	ng	0.00	
79) Terphenyl-d14	12.992	244	237222	21.042	ng	0.00	
Target Compounds							
2) 1,4-Dioxane	2.669	88	23397	9.990	ng		98
3) Pyridine	3.440	79	62555	10.081	ng		97
4) n-Nitrosodimethylamine	3.369	42	25105	9.742	ng		99
6) Aniline	6.546	93	88371	10.305	ng		100
8) 2-Chlorophenol	6.669	128	47328	9.207	ng		96
9) Benzaldehyde	6.440	77	43971	9.606	ng		99
10) Phenol	6.510	94	67284	9.961	ng		98
11) bis(2-Chloroethyl)ether	6.622	93	53980	10.204	ng		99
12) 1,3-Dichlorobenzene	6.834	146	65774	10.367	ng		98
13) 1,4-Dichlorobenzene	6.910	146	65522	10.297	ng		99
14) 1,2-Dichlorobenzene	7.057	146	62316	10.348	ng		99
15) Benzyl Alcohol	7.022	79	44709	9.550	ng		98
16) 2,2'-oxybis(1-Chloropr...	7.157	45	87359	10.493	ng		99
17) 2-Methylphenol	7.128	107	45861	10.203	ng		98
18) Hexachloroethane	7.404	117	18789	9.465	ng		97
19) n-Nitroso-di-n-propyla...	7.293	70	39240	10.002	ng		96
20) 3+4-Methylphenols	7.281	107	57489	10.161	ng		93
22) Acetophenone	7.293	105	80767	10.328	ng		96
24) Nitrobenzene	7.463	77	46395	8.819	ng		95
25) Isophorone	7.704	82	110868	10.000	ng		99
26) 2-Nitrophenol	7.781	139	12227	9.260	ng		96
27) 2,4-Dimethylphenol	7.810	122	46296	9.591	ng		100
28) bis(2-Chloroethoxy)met...	7.916	93	67535	9.964	ng		100
29) 2,4-Dichlorophenol	8.016	162	43809	9.249	ng		98
30) 1,2,4-Trichlorobenzene	8.110	180	51406	9.958	ng		98
31) Naphthalene	8.192	128	172262	10.184	ng		99
32) Benzoic acid	7.869	122	12473	11.107	ng		98
33) 4-Chloroaniline	8.234	127	59524	10.163	ng		98
34) Hexachlorobutadiene	8.310	225	33631	10.016	ng		96
35) Caprolactam	8.569	113	9691	7.634	ng		99
36) 4-Chloro-3-methylphenol	8.704	107	46759	9.427	ng		95
37) 2-Methylnaphthalene	8.881	142	117908	10.306	ng		100
38) 1-Methylnaphthalene	8.981	142	112510	10.286	ng		98
40) 1,2,4,5-Tetrachloroben...	9.045	216	55463	10.249	ng		99
41) Hexachlorocyclopentadiene	9.039	237	20964	7.978	ng		99
43) 2,4,6-Trichlorophenol	9.157	196	28020	8.404	ng		100

Data Path : Z:\svoasrv\HPCHEM1\BNA_F\Data\BF090325\
 Data File : BF143626.D
 Acq On : 03 Sep 2025 14:41
 Operator : RC/JU
 Sample : SSTDICC010
 Misc :
 ALS Vial : 5 Sample Multiplier: 1

Instrument :
 BNA_F
 ClientSampleId :
 SSTDICC010

Quant Time: Sep 03 18:38:39 2025
 Quant Method : Z:\svoasrv\HPCHEM1\BNA_F\Methods\8270-BF090325.M
 Quant Title : ASP BNA STANDARDS FOR 5 POINT CALIBRATION
 QLast Update : Wed Sep 03 18:35:49 2025
 Response via : Initial Calibration

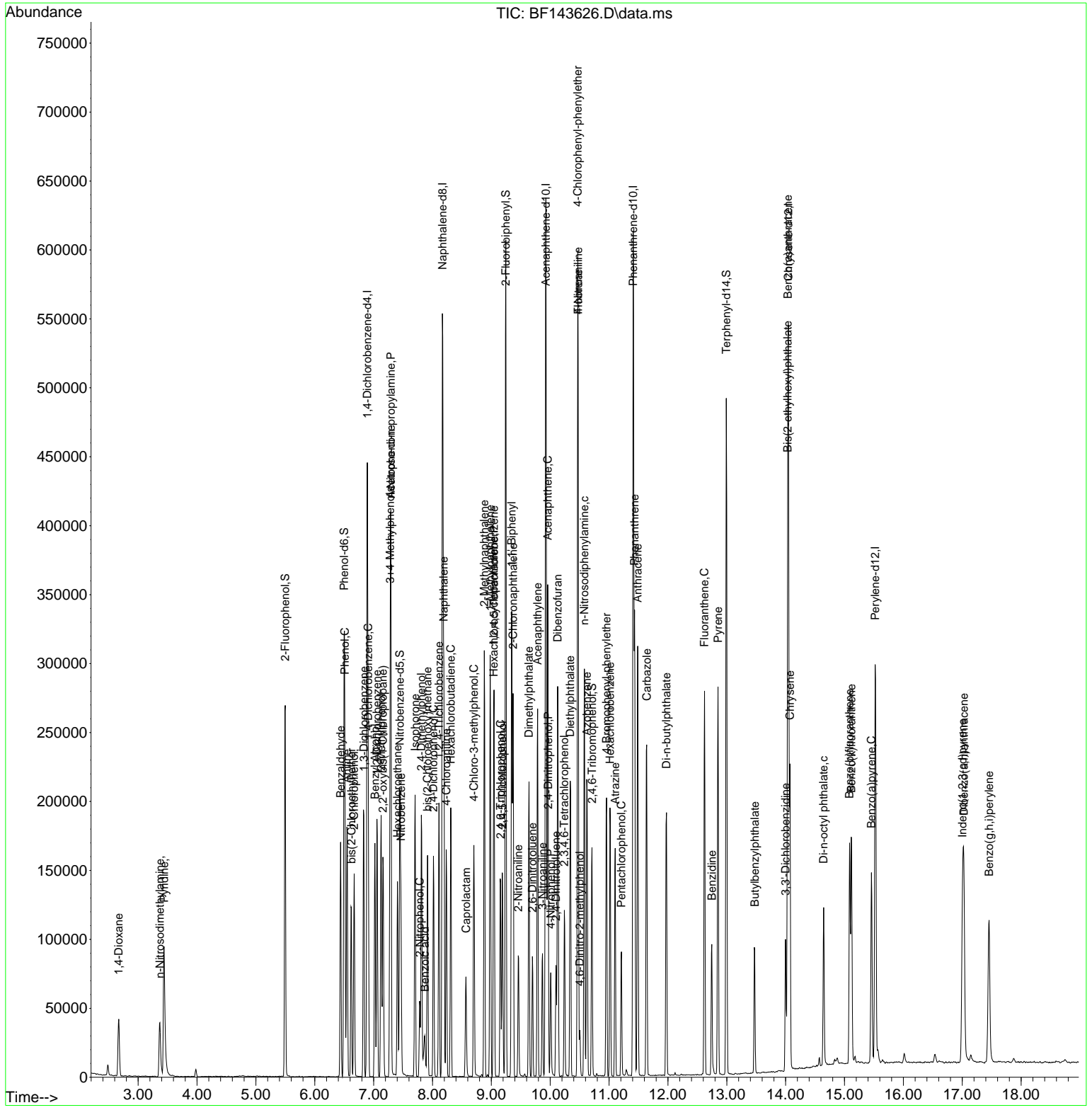
Compound	R.T.	QIon	Response	Conc	Units	Dev(Min)
44) 2,4,5-Trichlorophenol	9.187	196	31552	9.167	ng	98
46) 1,1'-Biphenyl	9.345	154	145017	10.413	ng	99
47) 2-Chloronaphthalene	9.369	162	111888	10.267	ng	98
48) 2-Nitroaniline	9.457	65	18409	8.990	ng	95
49) Acenaphthylene	9.786	152	161301	10.270	ng	99
50) Dimethylphthalate	9.639	163	123659	9.973	ng	99
51) 2,6-Dinitrotoluene	9.698	165	12534	8.910	ng	# 82
52) Acenaphthene	9.957	154	108019	10.281	ng	99
53) 3-Nitroaniline	9.869	138	16493	9.203	ng	# 96
54) 2,4-Dinitrophenol	9.969	184	3186	10.659	ng	# 1
55) Dibenzofuran	10.128	168	159831	10.471	ng	98
56) 4-Nitrophenol	10.010	139	12107	6.586	ng	99
57) 2,4-Dinitrotoluene	10.098	165	17184	9.044	ng	# 93
58) Fluorene	10.475	166	123027	10.420	ng	99
59) 2,3,4,6-Tetrachlorophenol	10.239	232	21475	8.215	ng	97
60) Diethylphthalate	10.339	149	115772	9.836	ng	98
61) 4-Chlorophenyl-phenyle...	10.469	204	61456	10.432	ng	98
62) 4-Nitroaniline	10.475	138	15629	8.851	ng	95
63) Azobenzene	10.622	77	111692	10.067	ng	98
65) 4,6-Dinitro-2-methylph...	10.504	198	4634	11.369	ng	# 73
66) n-Nitrosodiphenylamine	10.581	169	102131	9.980	ng	100
67) 4-Bromophenyl-phenylether	10.957	248	36232	9.853	ng	97
68) Hexachlorobenzene	11.016	284	38089	9.861	ng	98
69) Atrazine	11.104	200	27819	9.093	ng	97
70) Pentachlorophenol	11.210	266	15322	7.061	ng	98
71) Phenanthrene	11.433	178	175548	10.239	ng	99
72) Anthracene	11.486	178	172671	10.042	ng	99
73) Carbazole	11.639	167	143469	9.899	ng	99
74) Di-n-butylphthalate	11.975	149	140158	8.613	ng	100
75) Fluoranthene	12.622	202	156766	9.956	ng	99
77) Benzidine	12.745	184	55793	12.982	ng	100
78) Pyrene	12.851	202	159982	10.321	ng	100
80) Butylbenzylphthalate	13.474	149	29504	8.863	ng	99
81) Benzo(a)anthracene	14.039	228	121266	9.967	ng	100
82) 3,3'-Dichlorobenzidine	13.998	252	29643	8.937	ng	99
83) Chrysene	14.074	228	109586	10.020	ng	99
84) Bis(2-ethylhexyl)phtha...	14.033	149	47628	9.352	ng	97
85) Di-n-octyl phthalate	14.645	149	76107	6.829	ng	97
87) Indeno(1,2,3-cd)pyrene	17.004	276	122861	9.849	ng	99
88) Benzo(b)fluoranthene	15.086	252	104333	9.677	ng	100
89) Benzo(k)fluoranthene	15.116	252	91382	9.801	ng	99
90) Benzo(a)pyrene	15.457	252	88250	9.523	ng	99
91) Dibenzo(a,h)anthracene	17.027	278	102946	10.033	ng	99
92) Benzo(g,h,i)perylene	17.457	276	97725	9.887	ng	99

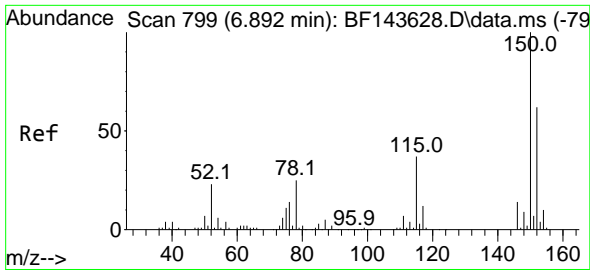
(#) = qualifier out of range (m) = manual integration (+) = signals summed

Data Path : Z:\svoasrv\HPCHEM1\BNA_F\Data\BF090325\
 Data File : BF143626.D
 Acq On : 03 Sep 2025 14:41
 Operator : RC/JU
 Sample : SSTDICC010
 Misc :
 ALS Vial : 5 Sample Multiplier: 1

Instrument :
 BNA_F
 ClientSampleId :
 SSTDICC010

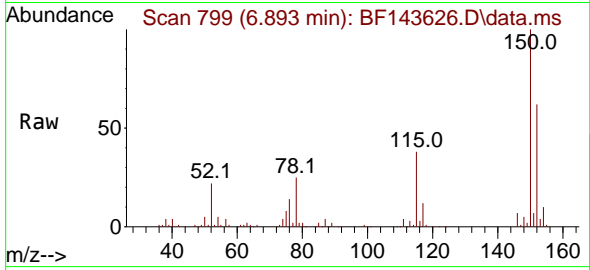
Quant Time: Sep 03 18:38:39 2025
 Quant Method : Z:\svoasrv\HPCHEM1\BNA_F\Methods\8270-BF090325.M
 Quant Title : ASP BNA STANDARDS FOR 5 POINT CALIBRATION
 QLast Update : Wed Sep 03 18:35:49 2025
 Response via : Initial Calibration



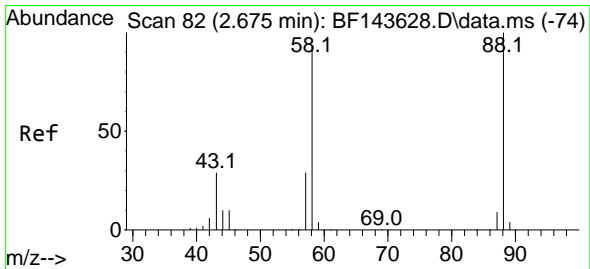
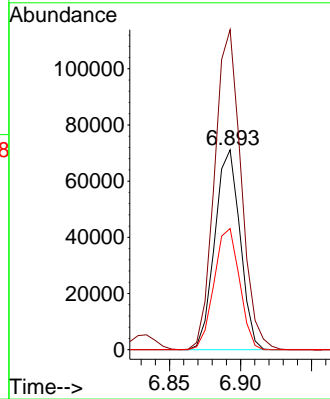
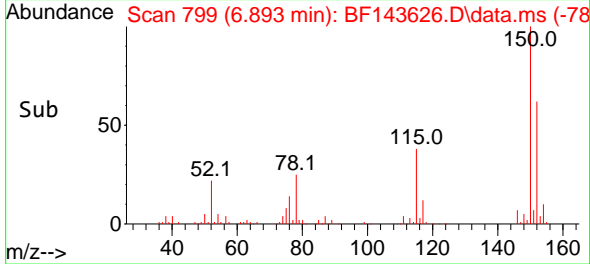


#1
 1,4-Dichlorobenzene-d4
 Concen: 20.000 ng
 RT: 6.893 min Scan# 79
 Delta R.T. 0.001 min
 Lab File: BF143626.D
 Acq: 03 Sep 2025 14:41

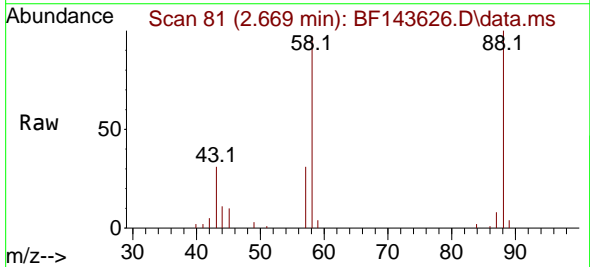
Instrument :
 BNA_F
 ClientSampleId :
 SSTDICC010



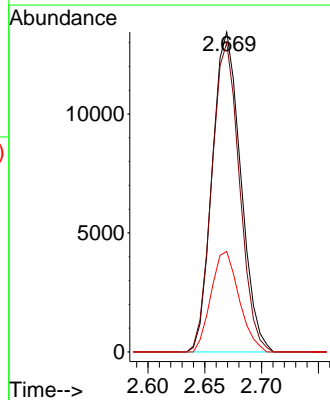
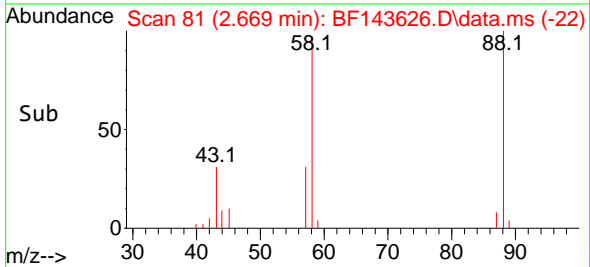
Tgt Ion:152 Resp: 87939
 Ion Ratio Lower Upper
 152 100
 150 160.1 128.4 192.6
 115 60.6 47.9 71.9

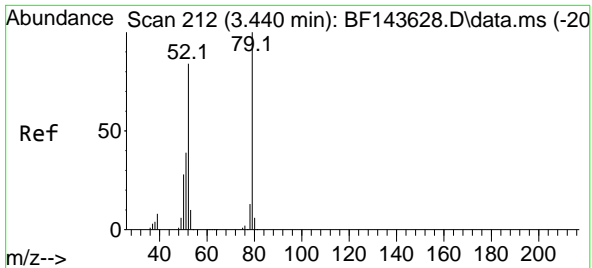


#2
 1,4-Dioxane
 Concen: 9.990 ng
 RT: 2.669 min Scan# 81
 Delta R.T. -0.006 min
 Lab File: BF143626.D
 Acq: 03 Sep 2025 14:41



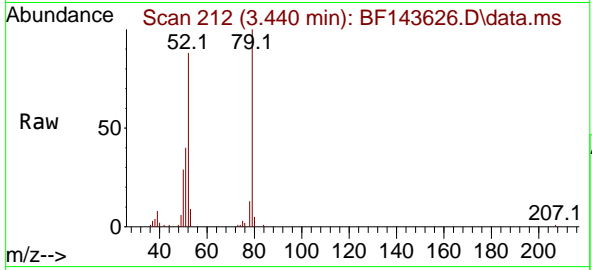
Tgt Ion: 88 Resp: 23397
 Ion Ratio Lower Upper
 88 100
 58 93.8 73.9 110.9
 43 31.0 23.4 35.2





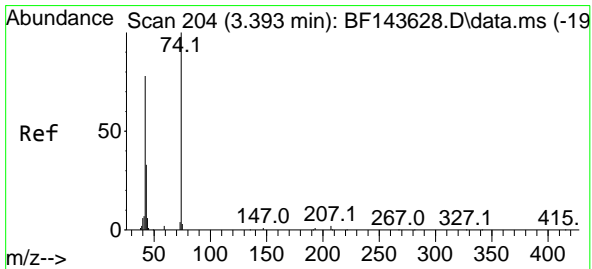
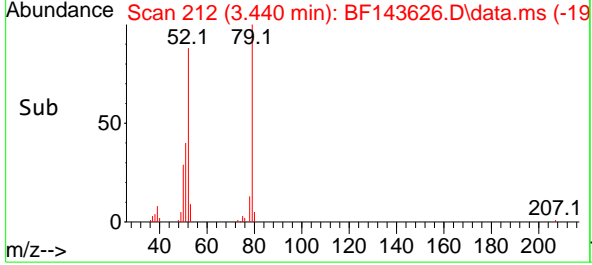
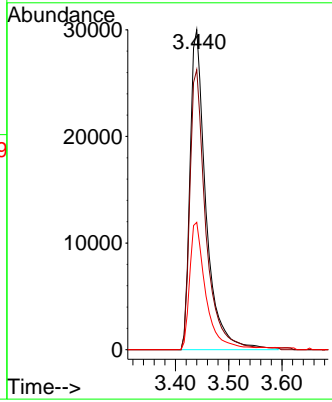
#3
 Pyridine
 Concen: 10.081 ng
 RT: 3.440 min Scan# 21
 Delta R.T. 0.000 min
 Lab File: BF143626.D
 Acq: 03 Sep 2025 14:41

Instrument :
 BNA_F
 ClientSampleId :
 SSTDICC010



Tgt Ion: 79 Resp: 62555

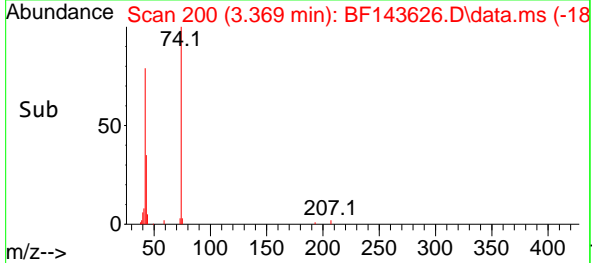
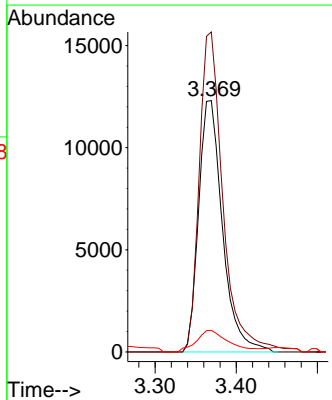
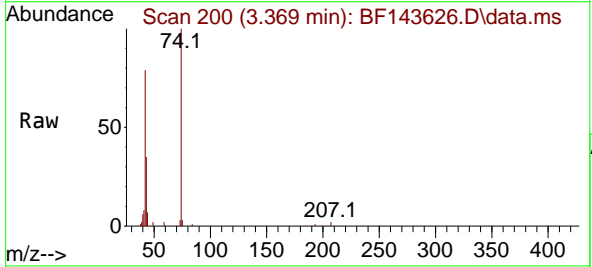
Ion	Ratio	Lower	Upper
79	100		
52	87.5	67.4	101.2
51	39.8	31.0	46.6

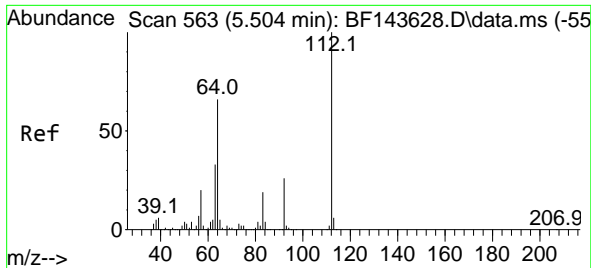


#4
 n-Nitrosodimethylamine
 Concen: 9.742 ng
 RT: 3.369 min Scan# 200
 Delta R.T. -0.023 min
 Lab File: BF143626.D
 Acq: 03 Sep 2025 14:41

Tgt Ion: 42 Resp: 25105

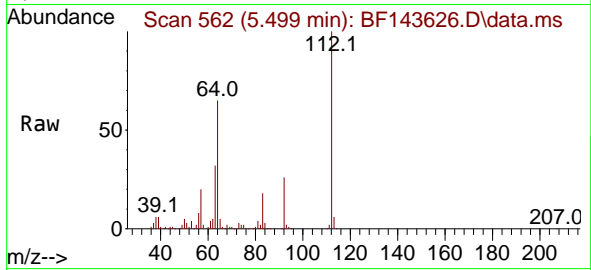
Ion	Ratio	Lower	Upper
42	100		
74	127.3	102.9	154.3
44	8.6	6.5	9.7



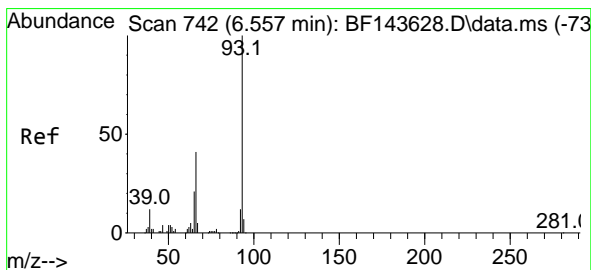
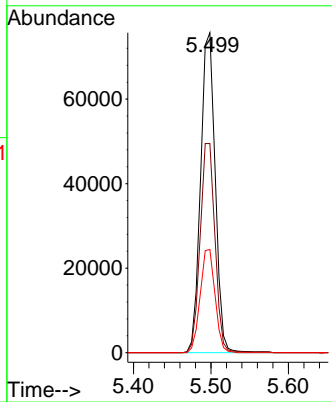
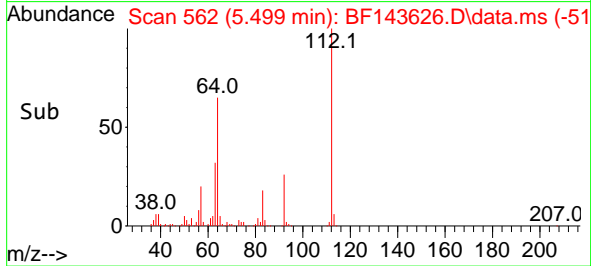


#5
 2-Fluorophenol
 Concen: 20.010 ng
 RT: 5.499 min Scan# 50
 Delta R.T. -0.006 min
 Lab File: BF143626.D
 Acq: 03 Sep 2025 14:41

Instrument : BNA_F
 ClientSampleId : SSTDICC010

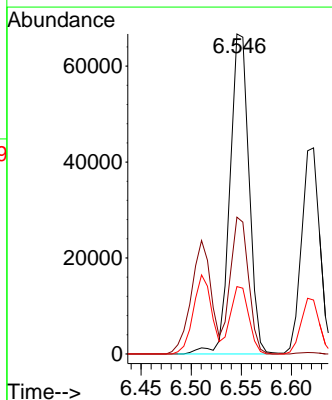
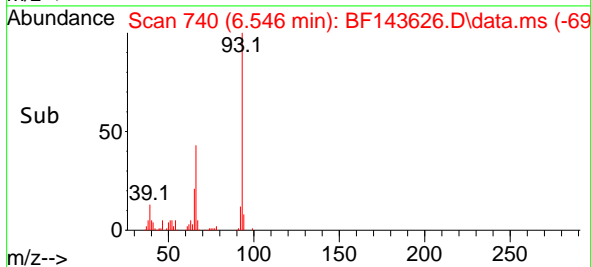
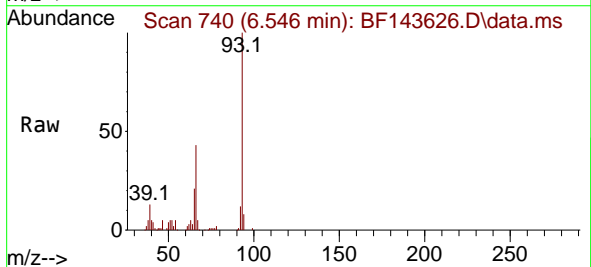


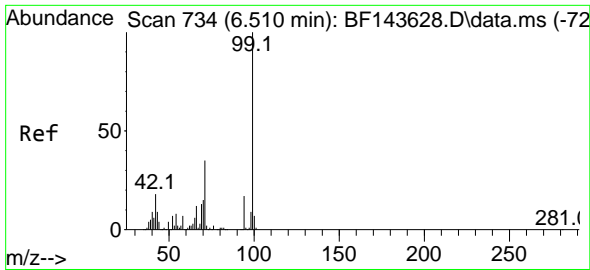
Tgt Ion: 112 Resp: 99328
 Ion Ratio Lower Upper
 112 100
 64 65.4 52.7 79.1
 63 32.2 26.5 39.7



#6
 Aniline
 Concen: 10.305 ng
 RT: 6.546 min Scan# 740
 Delta R.T. -0.012 min
 Lab File: BF143626.D
 Acq: 03 Sep 2025 14:41

Tgt Ion: 93 Resp: 88371
 Ion Ratio Lower Upper
 93 100
 66 42.8 34.6 51.8
 65 21.1 16.9 25.3

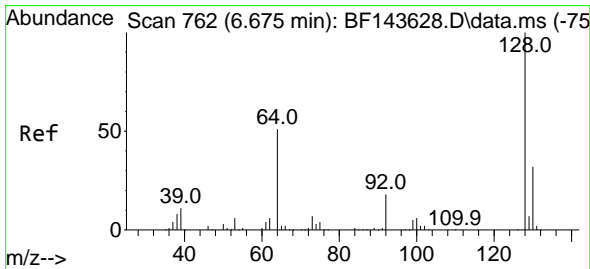
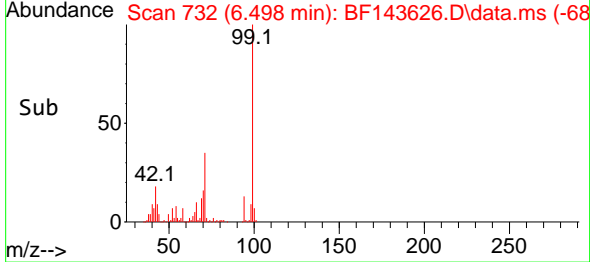
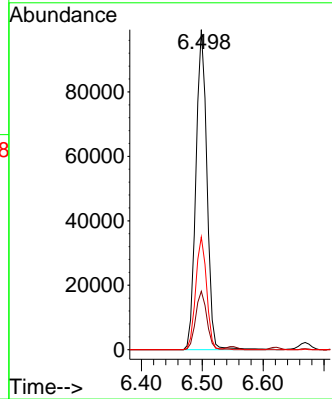
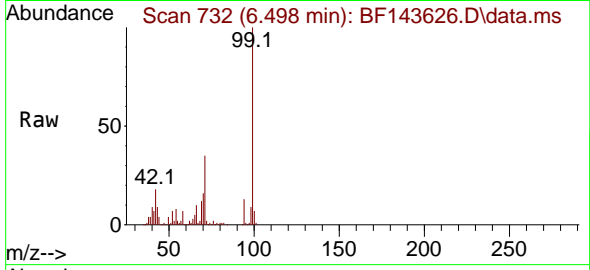




#7
 Phenol-d6
 Concen: 20.219 ng
 RT: 6.498 min Scan# 711
 Delta R.T. -0.012 min
 Lab File: BF143626.D
 Acq: 03 Sep 2025 14:41

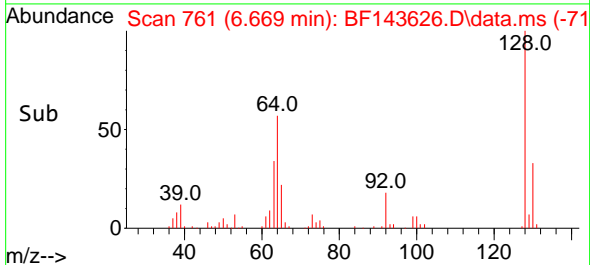
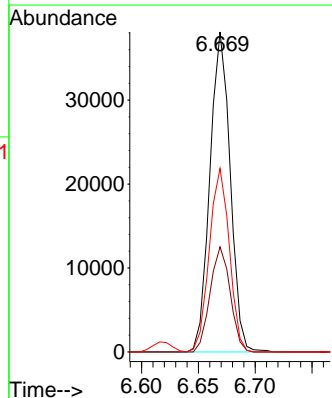
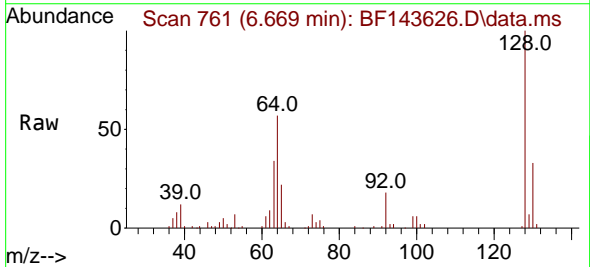
Instrument :
 BNA_F
 ClientSampleId :
 SSTDICC010

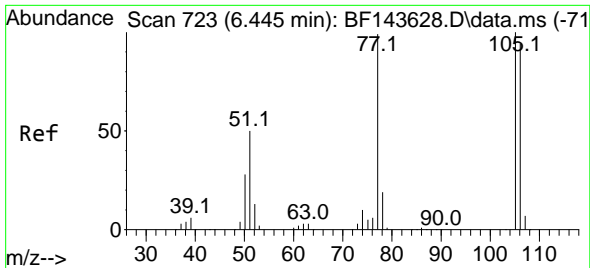
Tgt Ion: 99 Resp: 124569
 Ion Ratio Lower Upper
 99 100
 42 18.2 14.6 22.0
 71 35.2 28.0 42.0



#8
 2-Chlorophenol
 Concen: 9.207 ng
 RT: 6.669 min Scan# 761
 Delta R.T. -0.006 min
 Lab File: BF143626.D
 Acq: 03 Sep 2025 14:41

Tgt Ion: 128 Resp: 47328
 Ion Ratio Lower Upper
 128 100
 130 32.9 12.3 52.3
 64 57.3 32.9 72.9

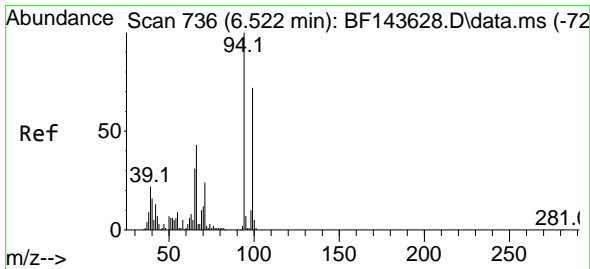
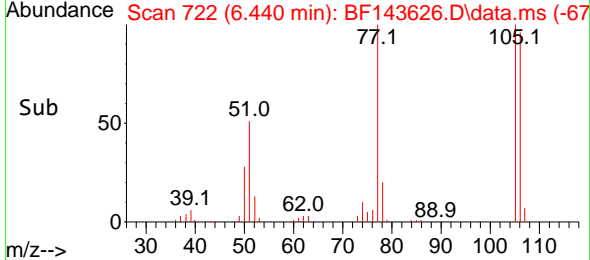
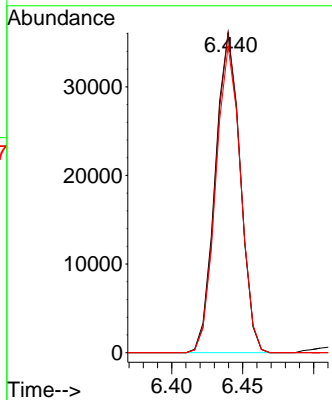
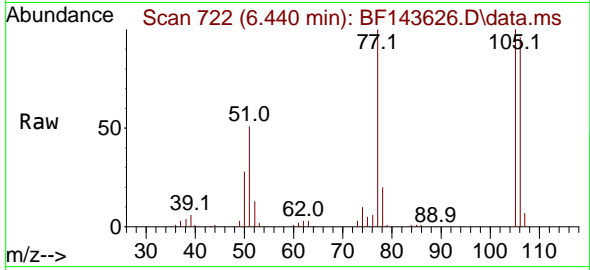




#9
 Benzaldehyde
 Concen: 9.606 ng
 RT: 6.440 min Scan# 711
 Delta R.T. -0.005 min
 Lab File: BF143626.D
 Acq: 03 Sep 2025 14:41

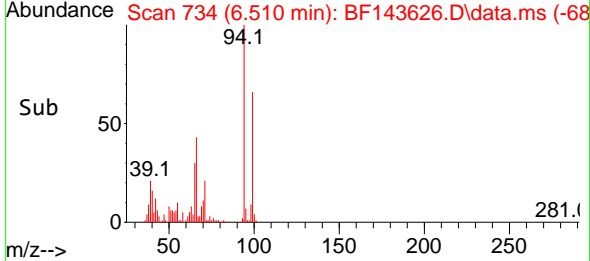
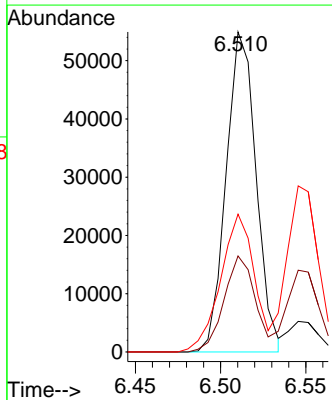
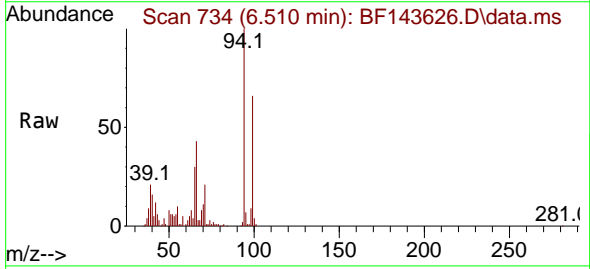
Instrument : BNA_F
 ClientSampleId : SSTDICC010

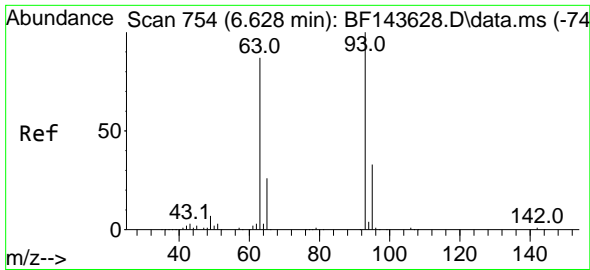
Tgt Ion	Resp	Lower	Upper
77	100		
105	99.9	80.9	120.9
106	95.9	75.1	115.1



#10
 Phenol
 Concen: 9.961 ng
 RT: 6.510 min Scan# 734
 Delta R.T. -0.012 min
 Lab File: BF143626.D
 Acq: 03 Sep 2025 14:41

Tgt Ion	Resp	Lower	Upper
94	100		
65	30.0	11.4	51.4
66	43.0	23.7	63.7





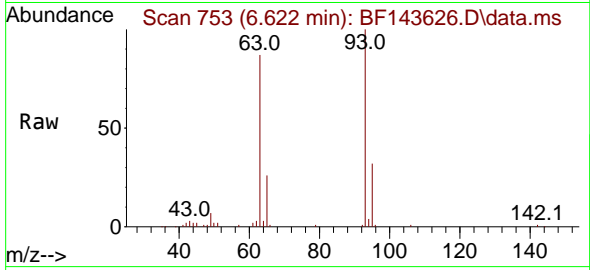
#11
 bis(2-Chloroethyl)ether
 Concen: 10.204 ng
 RT: 6.622 min Scan# 753
 Delta R.T. -0.006 min
 Lab File: BF143626.D
 Acq: 03 Sep 2025 14:41

Instrument :

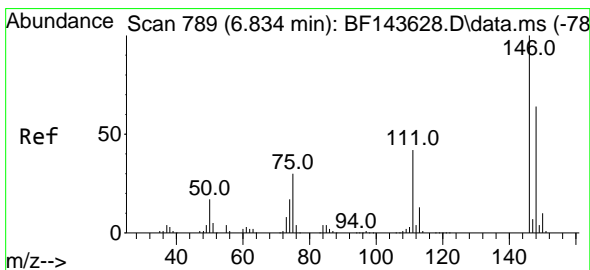
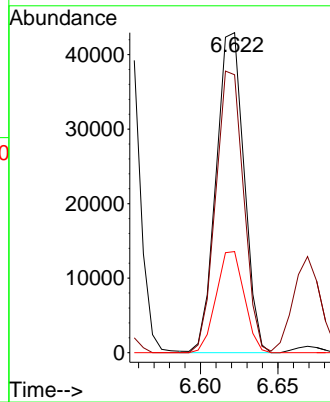
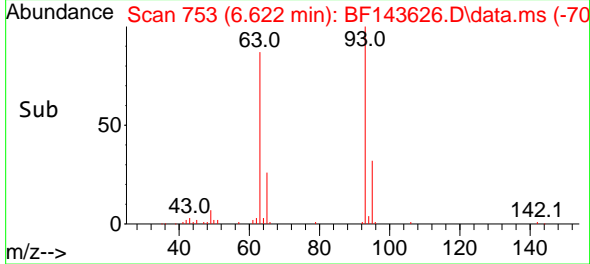
BNA_F

ClientSampleId :

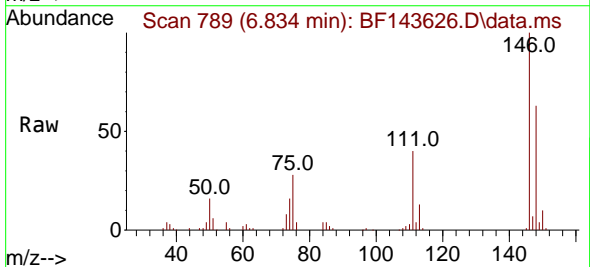
SSTDICC010



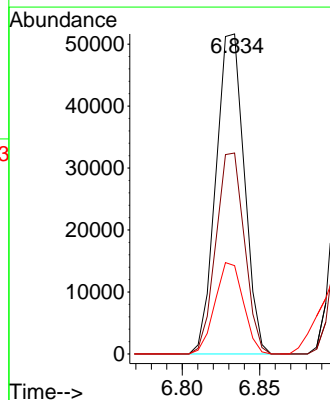
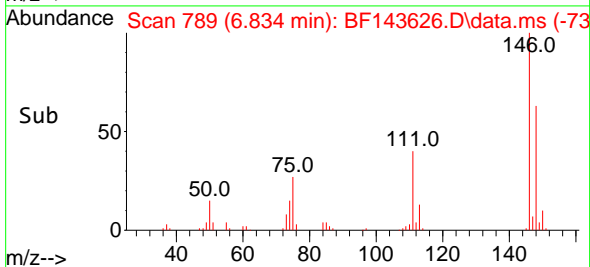
Tgt Ion: 93 Resp: 53980
 Ion Ratio Lower Upper
 93 100
 63 86.9 66.5 106.5
 95 31.6 12.7 52.7

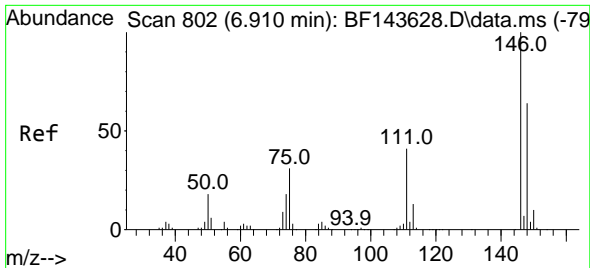


#12
 1,3-Dichlorobenzene
 Concen: 10.367 ng
 RT: 6.834 min Scan# 789
 Delta R.T. 0.000 min
 Lab File: BF143626.D
 Acq: 03 Sep 2025 14:41



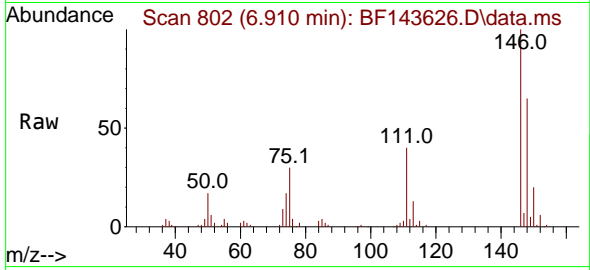
Tgt Ion: 146 Resp: 65774
 Ion Ratio Lower Upper
 146 100
 148 62.8 50.9 76.3
 75 27.6 24.2 36.2



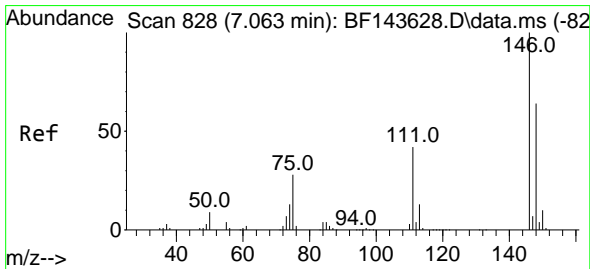
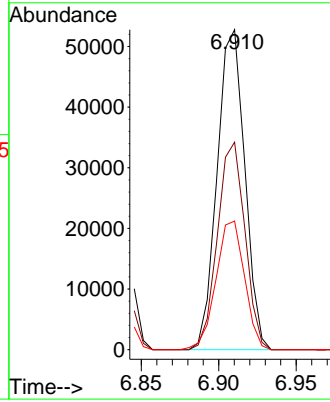
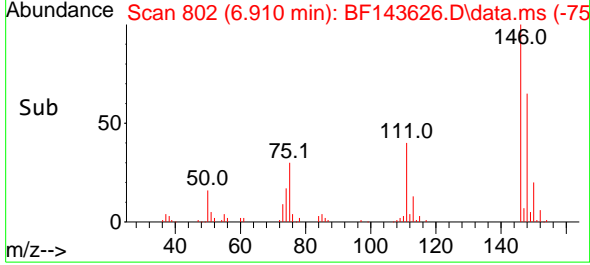


#13
 1,4-Dichlorobenzene
 Concen: 10.297 ng
 RT: 6.910 min Scan# 801
 Delta R.T. 0.000 min
 Lab File: BF143626.D
 Acq: 03 Sep 2025 14:41

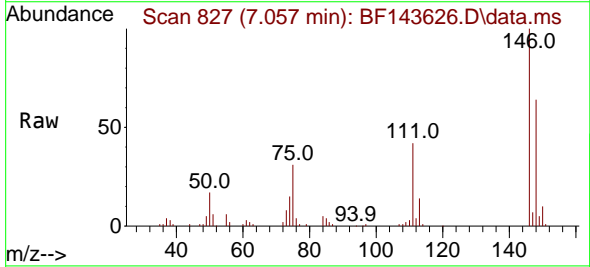
Instrument :
 BNA_F
 ClientSampleId :
 SSTDICC010



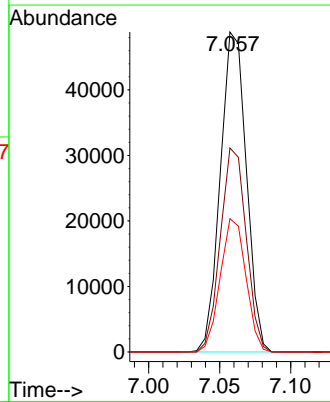
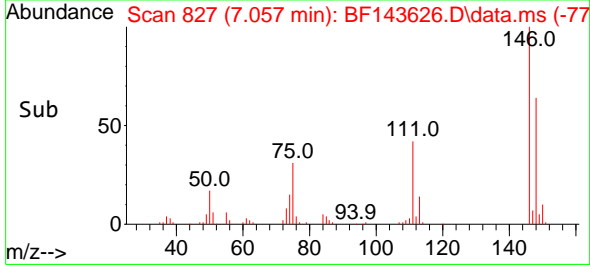
Tgt Ion:146 Resp: 65522
 Ion Ratio Lower Upper
 146 100
 148 64.8 51.4 77.2
 111 40.2 33.1 49.7

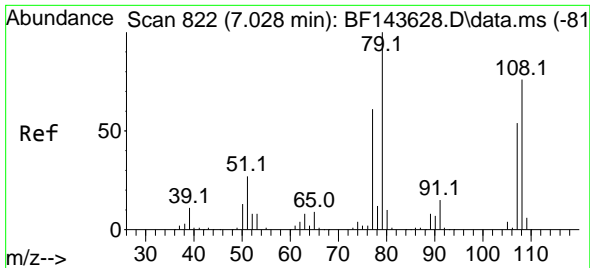


#14
 1,2-Dichlorobenzene
 Concen: 10.348 ng
 RT: 7.057 min Scan# 827
 Delta R.T. -0.006 min
 Lab File: BF143626.D
 Acq: 03 Sep 2025 14:41



Tgt Ion:146 Resp: 62316
 Ion Ratio Lower Upper
 146 100
 148 63.8 51.2 76.8
 111 41.6 33.9 50.9

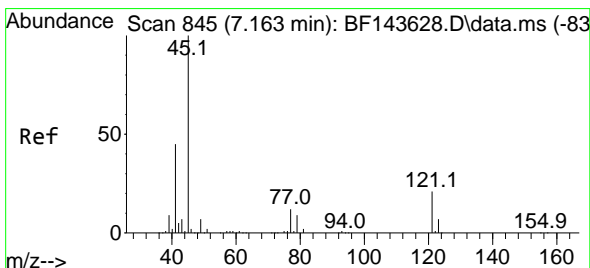
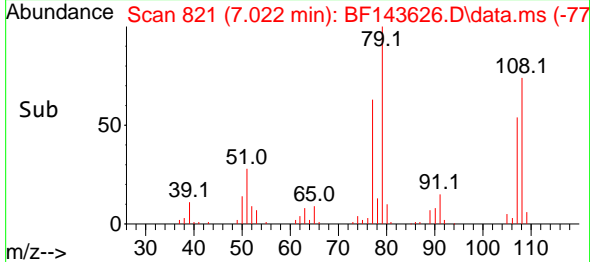
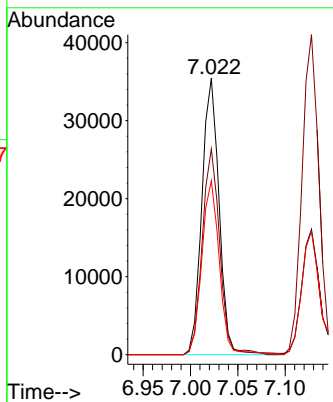
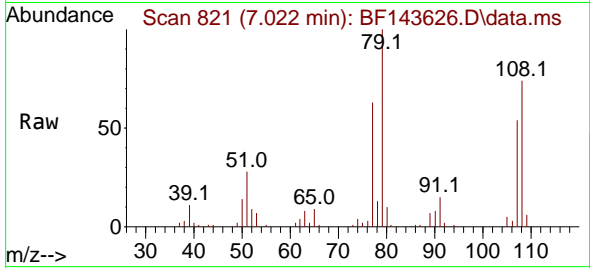




#15
 Benzyl Alcohol
 Concen: 9.550 ng
 RT: 7.022 min Scan# 81
 Delta R.T. -0.006 min
 Lab File: BF143626.D
 Acq: 03 Sep 2025 14:41

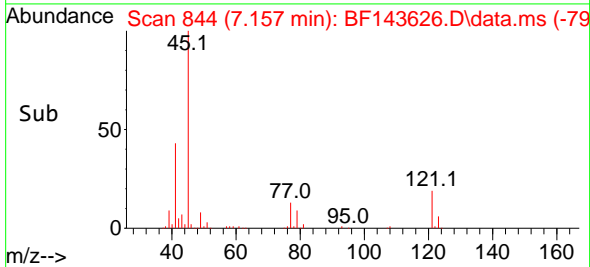
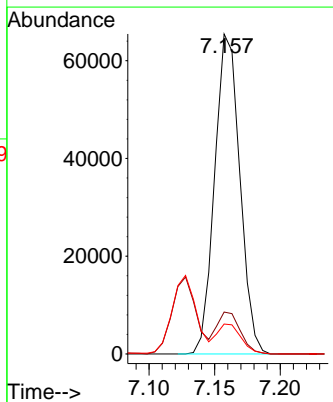
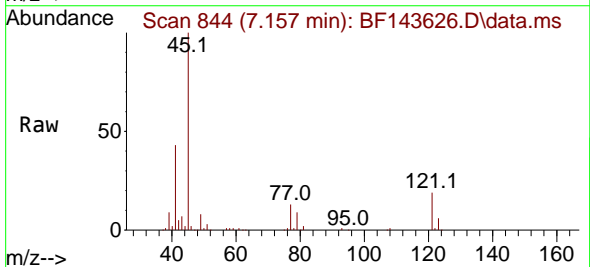
Instrument :
 BNA_F
 ClientSampleId :
 SSTDICC010

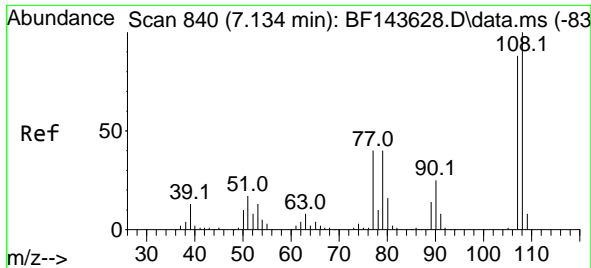
Tgt Ion: 79 Resp: 44709
 Ion Ratio Lower Upper
 79 100
 108 74.5 60.9 91.3
 77 63.0 48.4 72.6



#16
 2,2'-oxybis(1-Chloropropane)
 Concen: 10.493 ng
 RT: 7.157 min Scan# 844
 Delta R.T. -0.006 min
 Lab File: BF143626.D
 Acq: 03 Sep 2025 14:41

Tgt Ion: 45 Resp: 87359
 Ion Ratio Lower Upper
 45 100
 77 13.1 0.0 33.5
 79 9.3 0.0 29.8

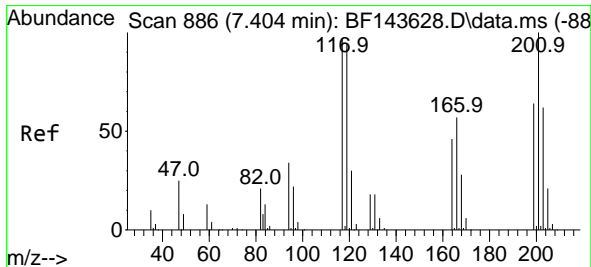
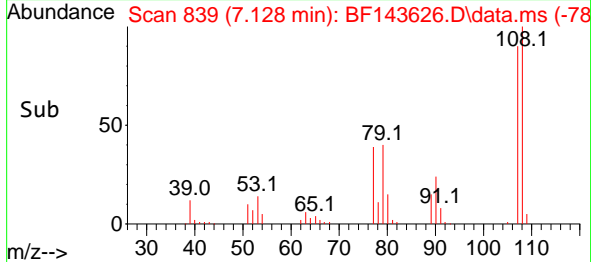
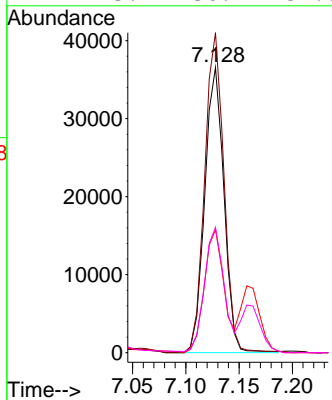
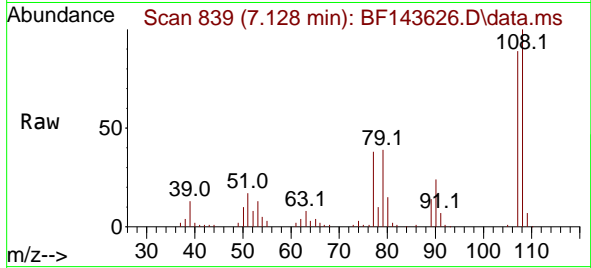




#17
 2-Methylphenol
 Concen: 10.203 ng
 RT: 7.128 min Scan# 811
 Delta R.T. -0.006 min
 Lab File: BF143626.D
 Acq: 03 Sep 2025 14:41

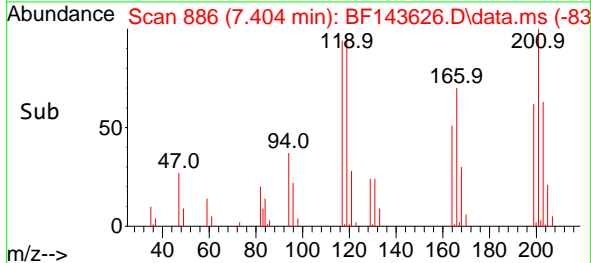
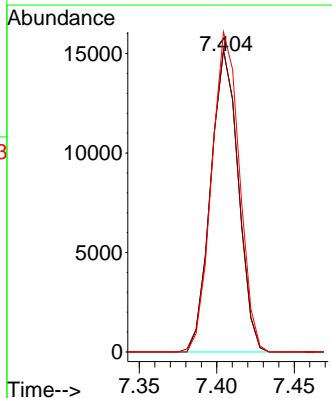
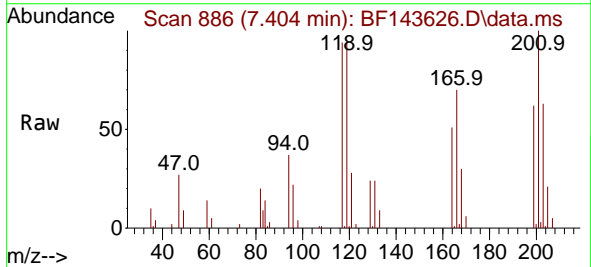
Instrument : BNA_F
 ClientSampleId : SSTDICC010

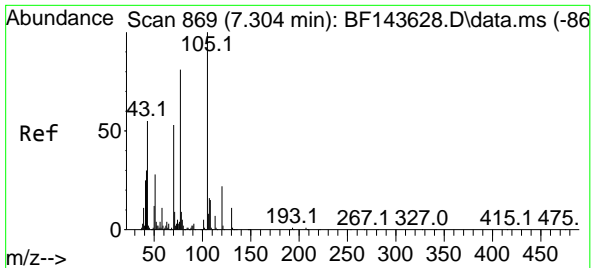
Tgt Ion	Resp	Lower	Upper
107	45861		
108	112.2	90.5	135.7
77	43.1	35.9	53.9
79	43.9	36.4	54.6



#18
 Hexachloroethane
 Concen: 9.465 ng
 RT: 7.404 min Scan# 886
 Delta R.T. 0.000 min
 Lab File: BF143626.D
 Acq: 03 Sep 2025 14:41

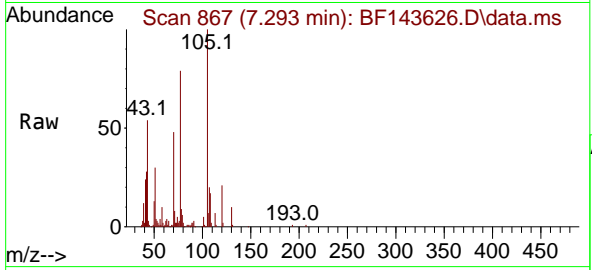
Tgt Ion	Resp	Lower	Upper
117	18789		
119	99.9	77.7	116.5
201	105.9	82.7	124.1





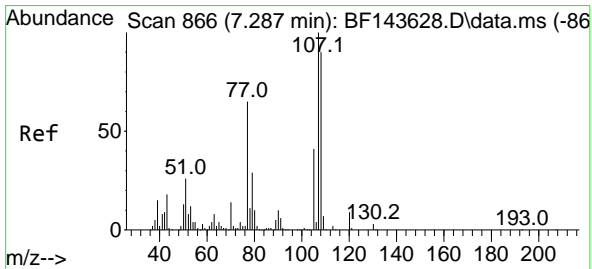
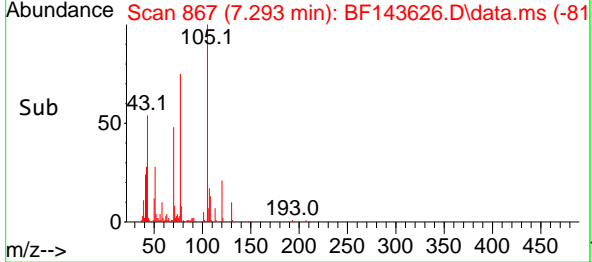
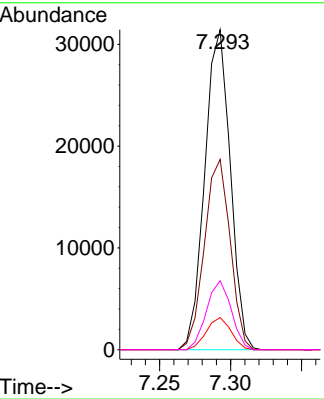
#19
 n-Nitroso-di-n-propylamine
 Concen: 10.002 ng
 RT: 7.293 min Scan# 80
 Delta R.T. -0.012 min
 Lab File: BF143626.D
 Acq: 03 Sep 2025 14:41

Instrument :
 BNA_F
 ClientSampleId :
 SSTDICC010

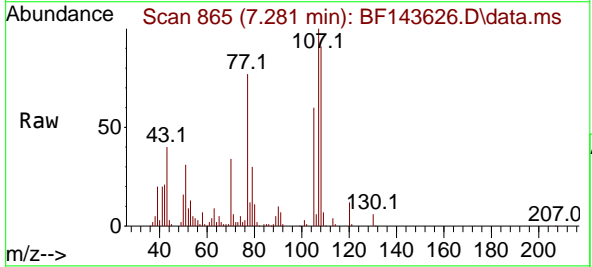


Tgt Ion: 70 Resp: 39240

Ion	Ratio	Lower	Upper
70	100		
42	59.4	45.2	67.8
101	10.0	7.6	11.4
130	21.5	16.0	24.0

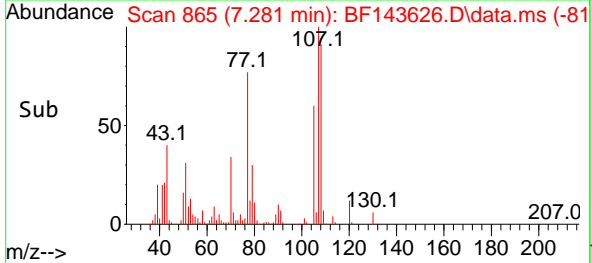
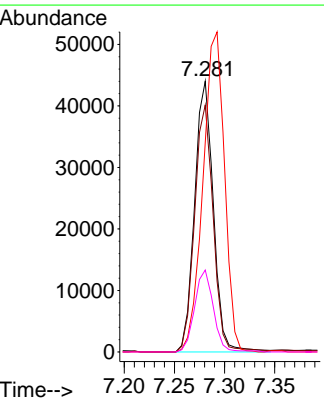


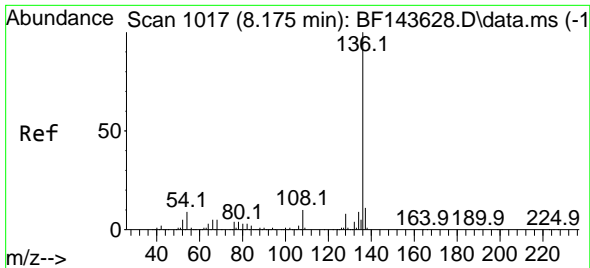
#20
 3+4-Methylphenols
 Concen: 10.161 ng
 RT: 7.281 min Scan# 865
 Delta R.T. -0.006 min
 Lab File: BF143626.D
 Acq: 03 Sep 2025 14:41



Tgt Ion: 107 Resp: 57489

Ion	Ratio	Lower	Upper
107	100		
108	91.2	69.6	109.6
77	77.3	45.5	85.5
79	30.3	9.0	49.0



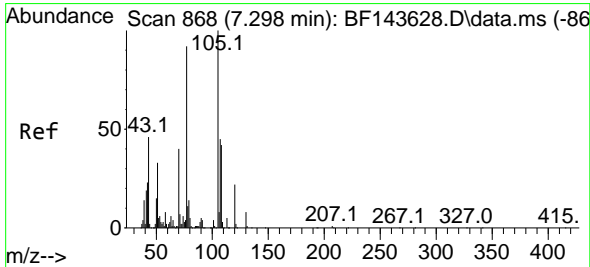
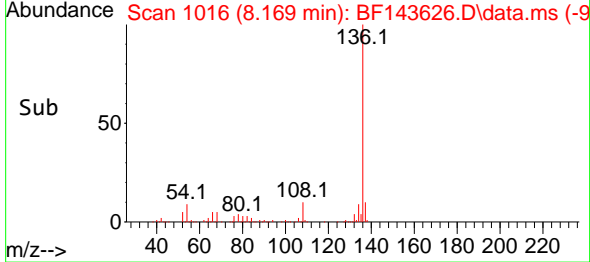
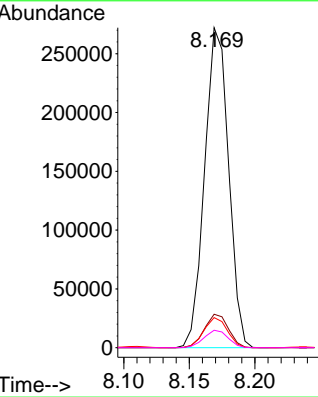
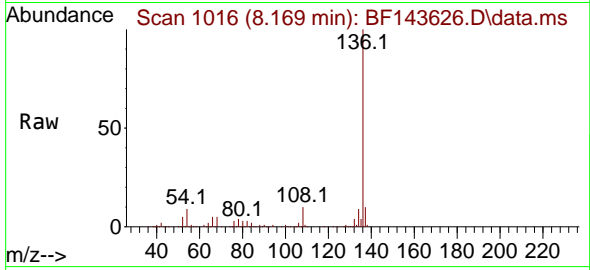


#21
 Naphthalene-d8
 Concen: 20.000 ng
 RT: 8.169 min Scan# 1016
 Delta R.T. -0.006 min
 Lab File: BF143626.D
 Acq: 03 Sep 2025 14:41

Instrument : BNA_F
 Client Sample Id : SSTDICC010

Tgt Ion:136 Resp: 345803

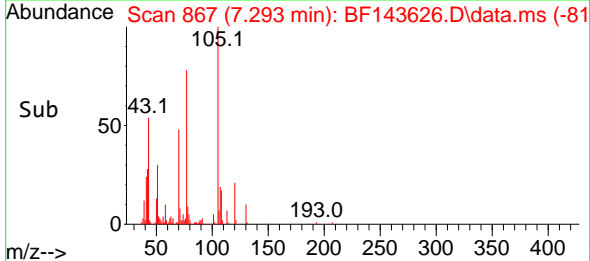
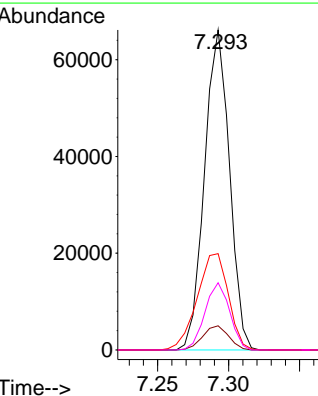
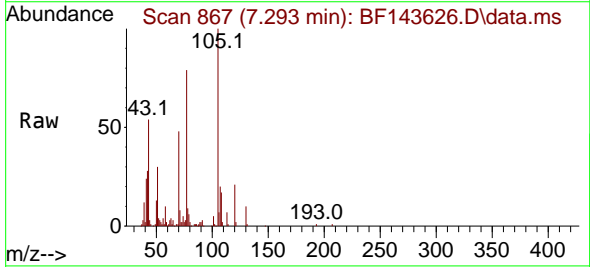
Ion	Ratio	Lower	Upper
136	100		
137	10.5	8.6	12.8
54	9.4	7.3	10.9
68	5.4	4.4	6.6

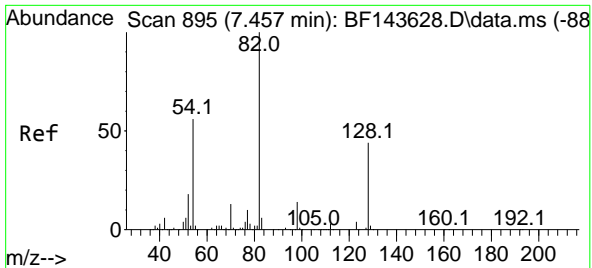


#22
 Acetophenone
 Concen: 10.328 ng
 RT: 7.293 min Scan# 867
 Delta R.T. -0.006 min
 Lab File: BF143626.D
 Acq: 03 Sep 2025 14:41

Tgt Ion:105 Resp: 80767

Ion	Ratio	Lower	Upper
105	100		
71	7.6	5.3	7.9
51	30.1	26.7	40.1
120	21.0	17.5	26.3





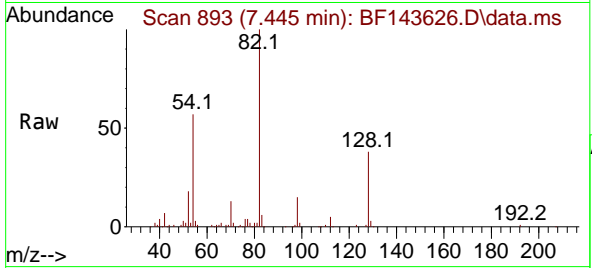
#23
 Nitrobenzene-d5
 Concen: 16.516 ng
 RT: 7.445 min Scan# 893
 Delta R.T. -0.012 min
 Lab File: BF143626.D
 Acq: 03 Sep 2025 14:41

Instrument :

BNA_F

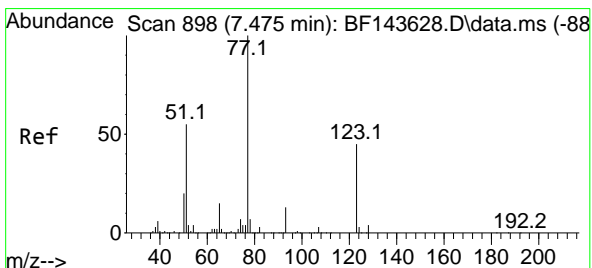
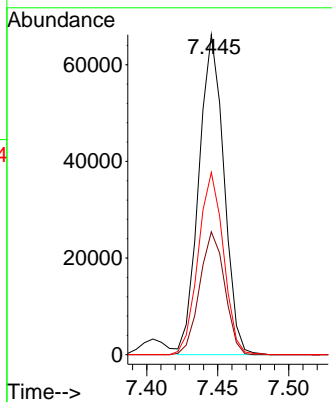
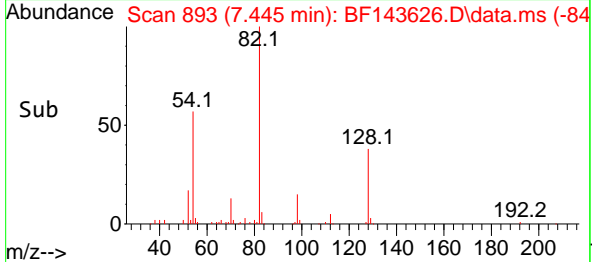
ClientSampleId :

SSTDICC010

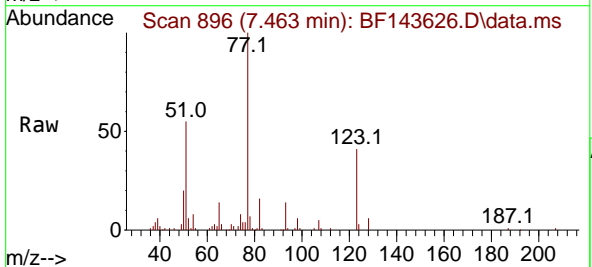


Tgt Ion: 82 Resp: 81262

Ion	Ratio	Lower	Upper
82	100		
128	38.4	34.7	52.1
54	56.9	44.8	67.2

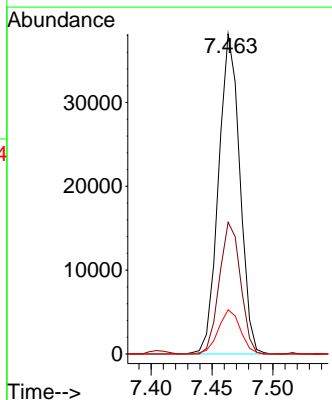
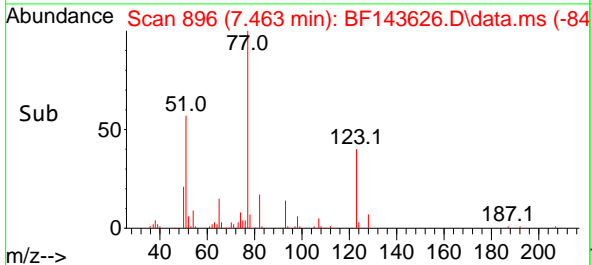


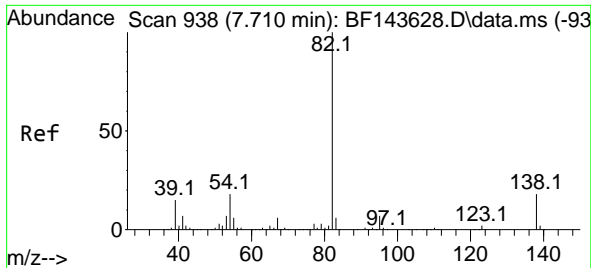
#24
 Nitrobenzene
 Concen: 8.819 ng
 RT: 7.463 min Scan# 896
 Delta R.T. -0.012 min
 Lab File: BF143626.D
 Acq: 03 Sep 2025 14:41



Tgt Ion: 77 Resp: 46395

Ion	Ratio	Lower	Upper
77	100		
123	41.2	36.2	54.4
65	13.8	11.8	17.8

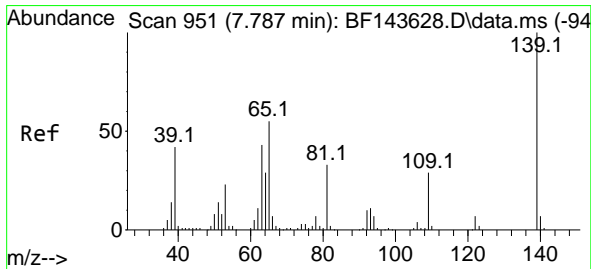
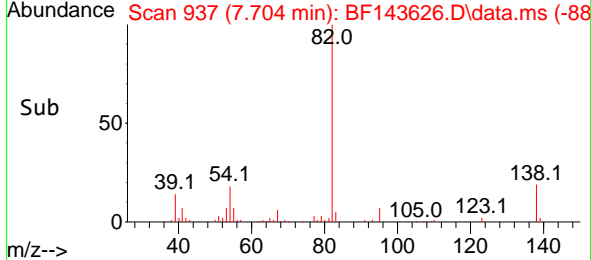
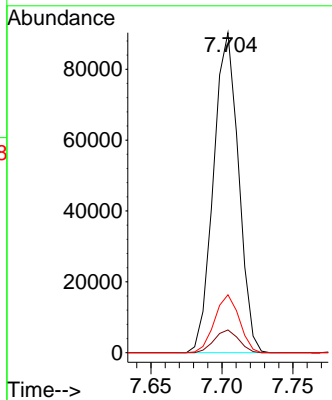
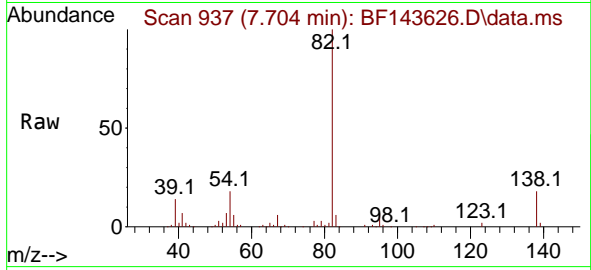




#25
 Isophorone
 Concen: 10.000 ng
 RT: 7.704 min Scan# 91
 Delta R.T. -0.006 min
 Lab File: BF143626.D
 Acq: 03 Sep 2025 14:41

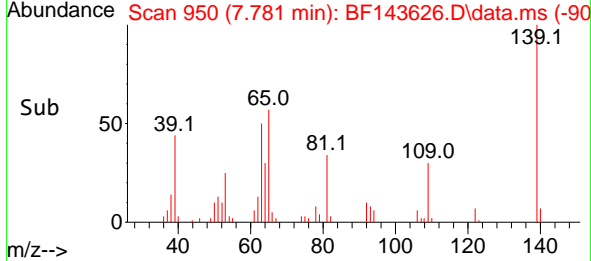
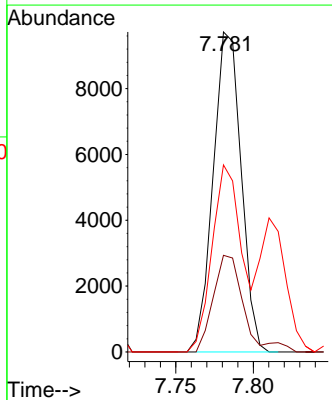
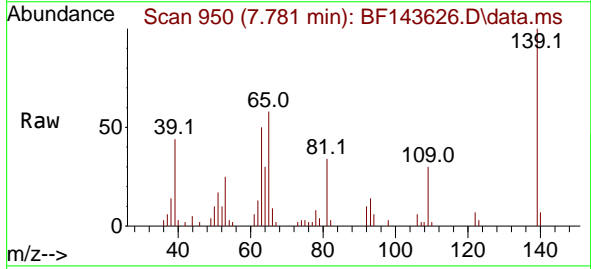
Instrument : BNA_F
 ClientSampleId : SSTDICC010

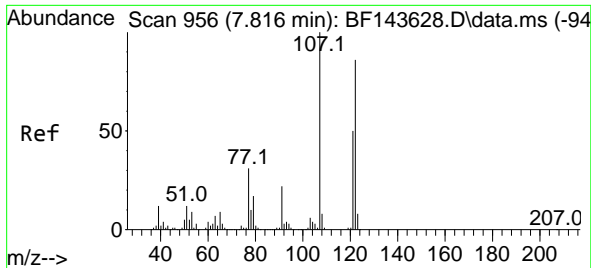
Tgt Ion	Resp	Lower	Upper
82	110868		
95	7.1	5.8	8.8
138	18.1	14.2	21.2



#26
 2-Nitrophenol
 Concen: 9.260 ng
 RT: 7.781 min Scan# 950
 Delta R.T. -0.006 min
 Lab File: BF143626.D
 Acq: 03 Sep 2025 14:41

Tgt Ion	Resp	Lower	Upper
139	12227		
109	30.2	23.5	35.3
65	58.4	44.1	66.1





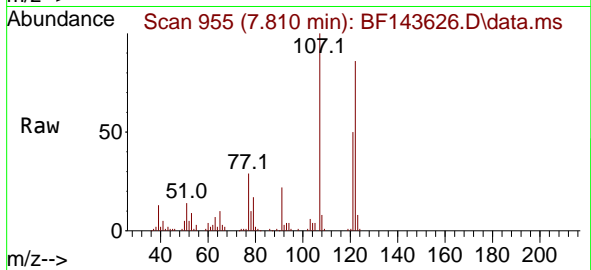
#27
 2,4-Dimethylphenol
 Concen: 9.591 ng
 RT: 7.810 min Scan# 911
 Delta R.T. -0.006 min
 Lab File: BF143626.D
 Acq: 03 Sep 2025 14:41

Instrument :

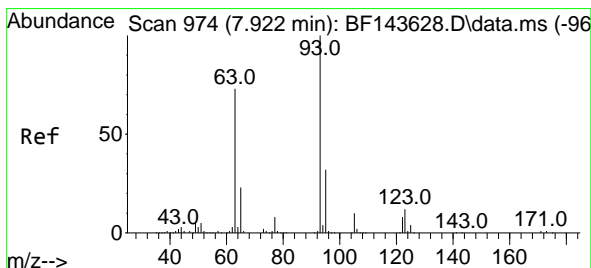
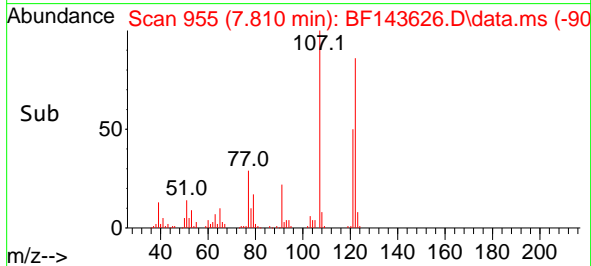
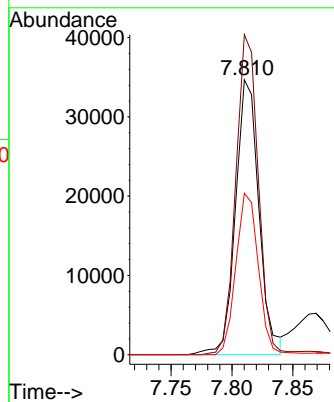
BNA_F

Client Sample Id :

SSTDICC010

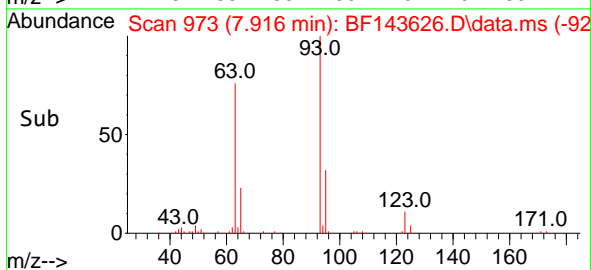
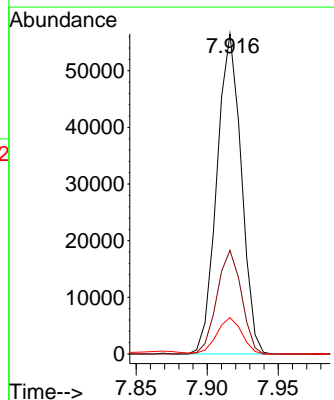
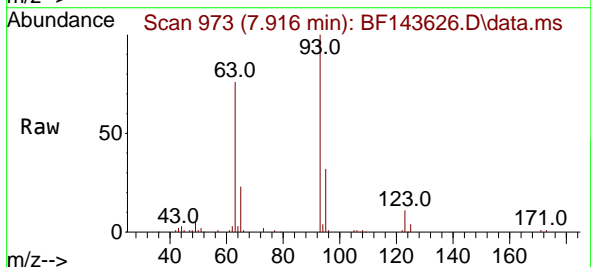


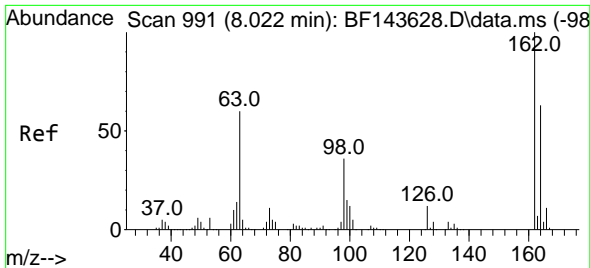
Tgt Ion:122 Resp: 46296
 Ion Ratio Lower Upper
 122 100
 107 116.4 93.4 140.0
 121 58.7 46.9 70.3



#28
 bis(2-Chloroethoxy)methane
 Concen: 9.964 ng
 RT: 7.916 min Scan# 973
 Delta R.T. -0.006 min
 Lab File: BF143626.D
 Acq: 03 Sep 2025 14:41

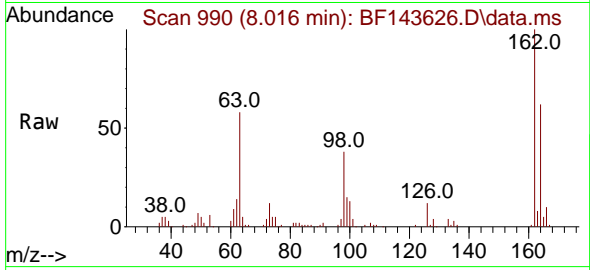
Tgt Ion: 93 Resp: 67535
 Ion Ratio Lower Upper
 93 100
 95 32.3 25.8 38.8
 123 11.4 9.6 14.4



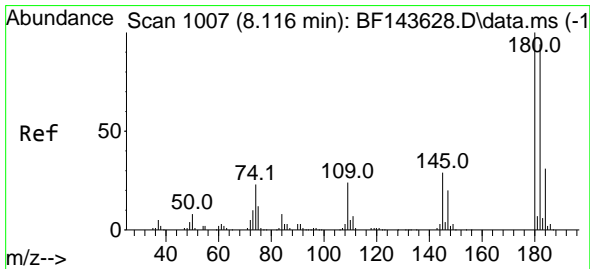
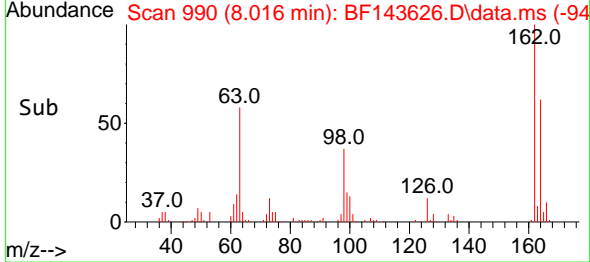
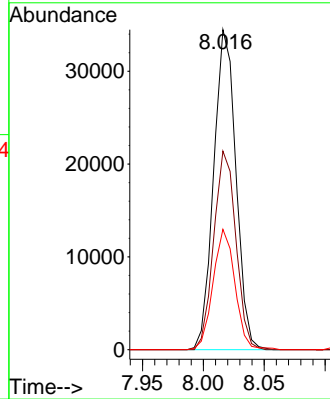


#29
 2,4-Dichlorophenol
 Concen: 9.249 ng
 RT: 8.016 min Scan# 991
 Delta R.T. -0.006 min
 Lab File: BF143626.D
 Acq: 03 Sep 2025 14:41

Instrument :
 BNA_F
 ClientSampleId :
 SSTDICC010

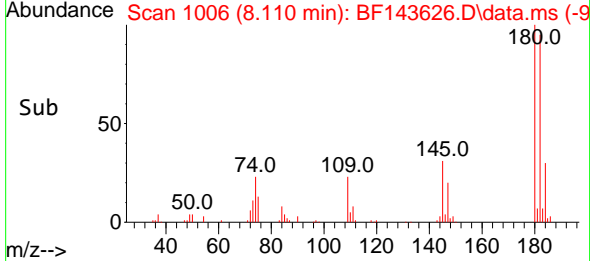
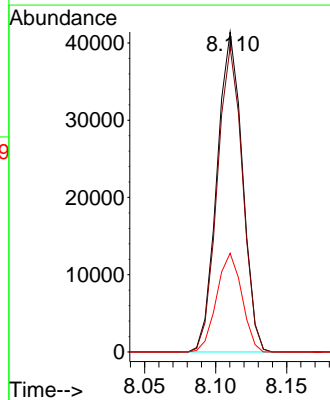
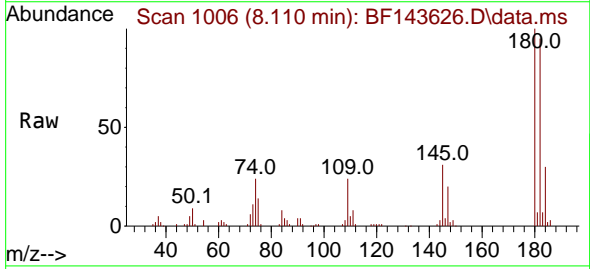


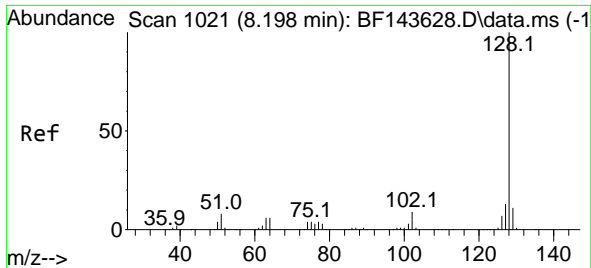
Tgt Ion:162 Resp: 43809
 Ion Ratio Lower Upper
 162 100
 164 62.1 42.9 82.9
 98 37.6 15.9 55.9



#30
 1,2,4-Trichlorobenzene
 Concen: 9.958 ng
 RT: 8.110 min Scan# 1006
 Delta R.T. -0.006 min
 Lab File: BF143626.D
 Acq: 03 Sep 2025 14:41

Tgt Ion:180 Resp: 51406
 Ion Ratio Lower Upper
 180 100
 182 95.2 75.2 112.8
 145 30.9 23.6 35.4





#31
 Naphthalene
 Concen: 10.184 ng
 RT: 8.192 min Scan# 10
 Delta R.T. -0.006 min
 Lab File: BF143626.D
 Acq: 03 Sep 2025 14:41

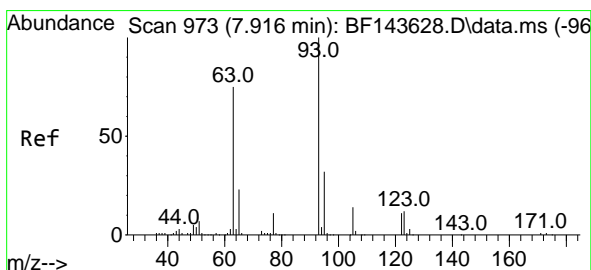
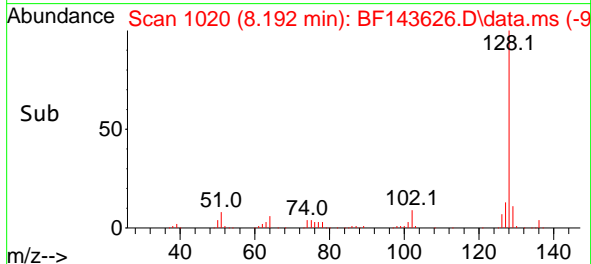
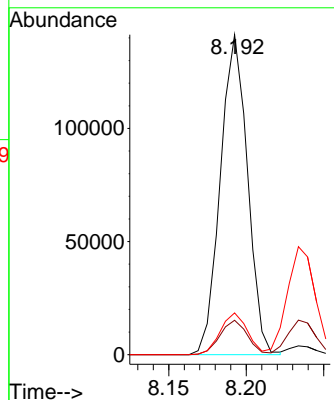
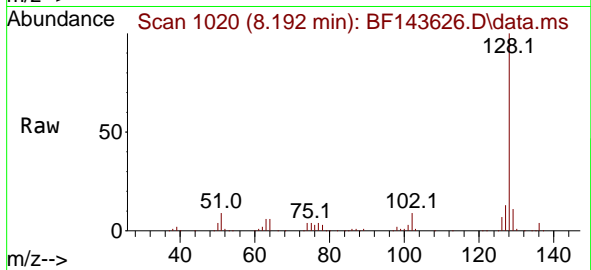
Instrument :

BNA_F

ClientSampleId :

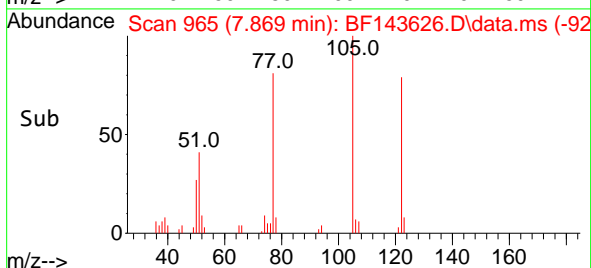
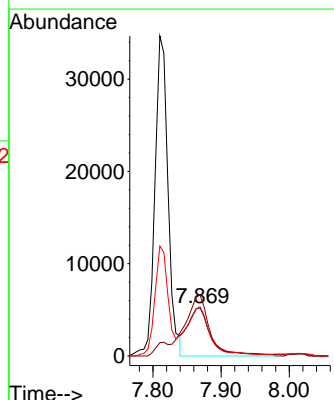
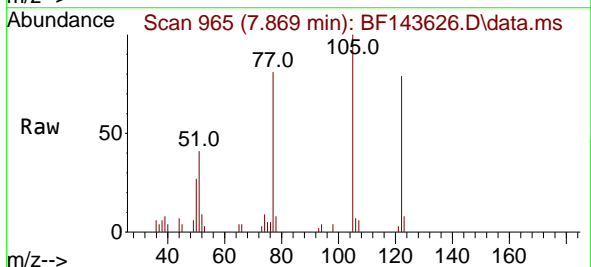
SSTDICC010

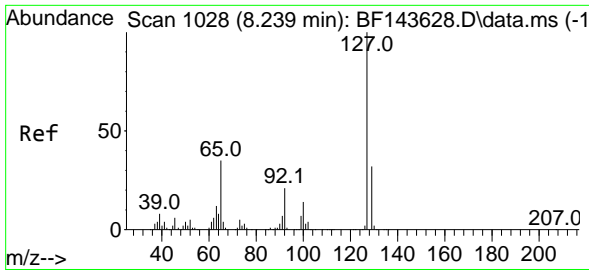
Tgt Ion:128 Resp: 172262
 Ion Ratio Lower Upper
 128 100
 129 10.8 9.0 13.6
 127 13.0 10.6 16.0



#32
 Benzoic acid
 Concen: 11.107 ng
 RT: 7.869 min Scan# 965
 Delta R.T. -0.047 min
 Lab File: BF143626.D
 Acq: 03 Sep 2025 14:41

Tgt Ion:122 Resp: 12473
 Ion Ratio Lower Upper
 122 100
 105 126.2 105.9 145.9
 77 101.7 78.6 118.6





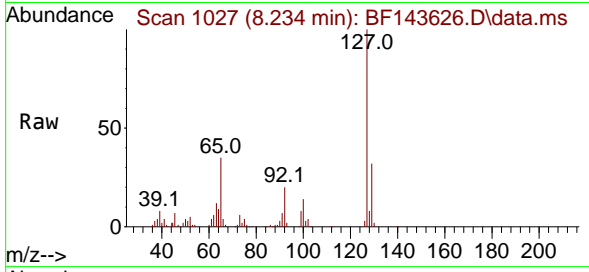
#33
 4-Chloroaniline
 Concen: 10.163 ng
 RT: 8.234 min Scan# 1027
 Delta R.T. -0.006 min
 Lab File: BF143626.D
 Acq: 03 Sep 2025 14:41

Instrument :

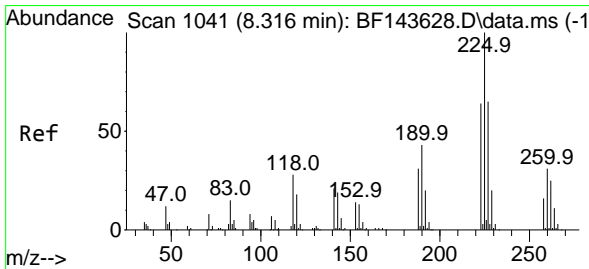
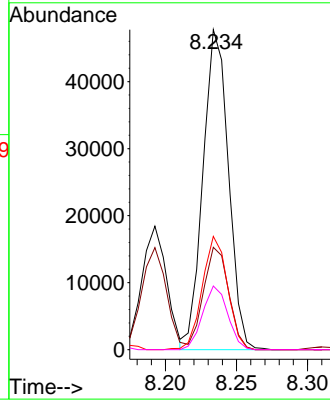
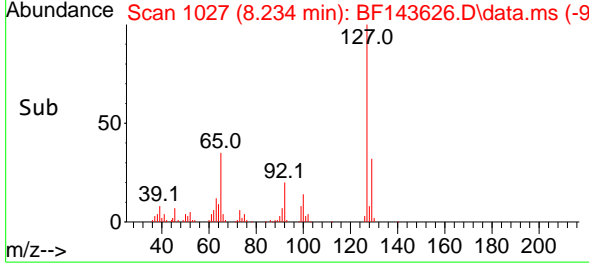
BNA_F

ClientSampleId :

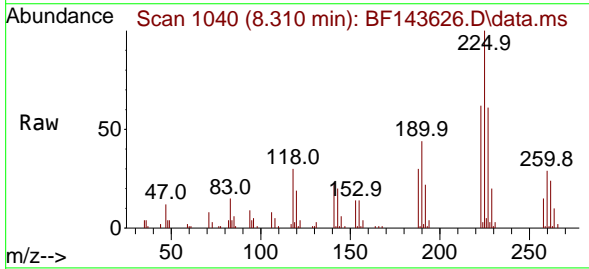
SSTDICC010



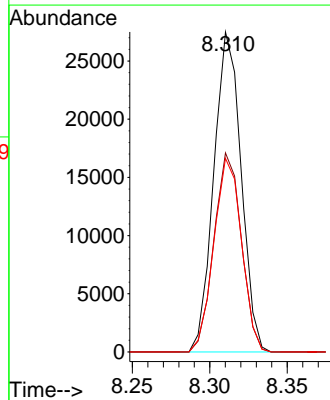
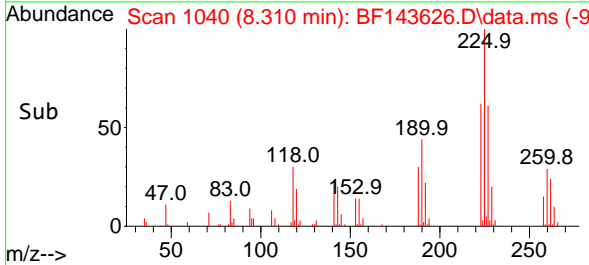
Tgt Ion:127 Resp: 59524
 Ion Ratio Lower Upper
 127 100
 129 32.0 26.2 39.2
 65 35.4 27.6 41.4
 92 19.9 16.8 25.2

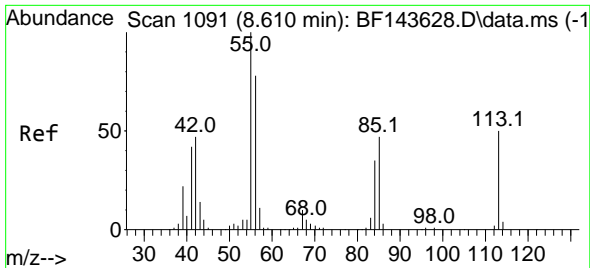


#34
 Hexachlorobutadiene
 Concen: 10.016 ng
 RT: 8.310 min Scan# 1040
 Delta R.T. -0.006 min
 Lab File: BF143626.D
 Acq: 03 Sep 2025 14:41



Tgt Ion:225 Resp: 33631
 Ion Ratio Lower Upper
 225 100
 223 62.2 51.3 76.9
 227 60.5 51.7 77.5

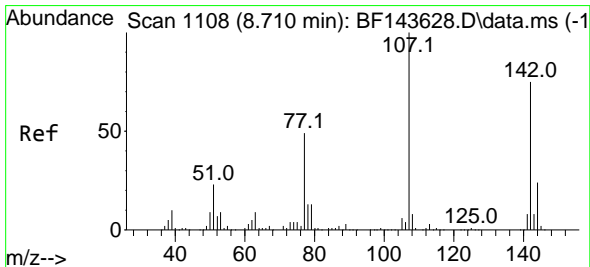
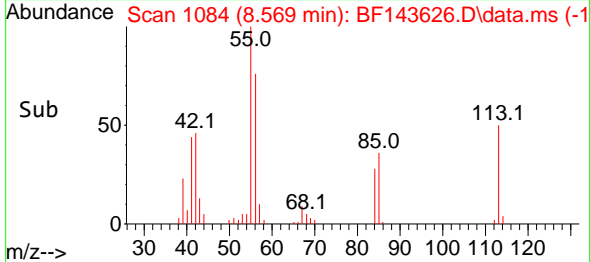
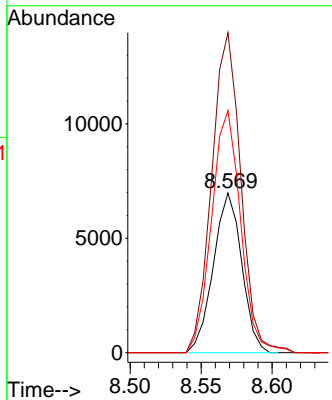
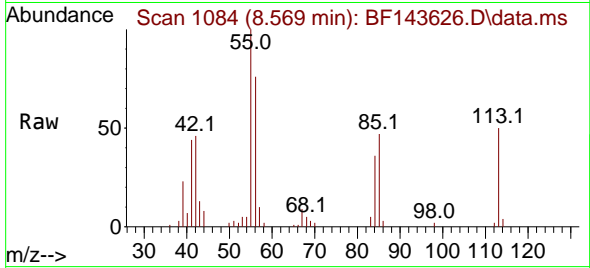




#35
 Caprolactam
 Concen: 7.634 ng
 RT: 8.569 min Scan# 1091
 Delta R.T. -0.041 min
 Lab File: BF143626.D
 Acq: 03 Sep 2025 14:41

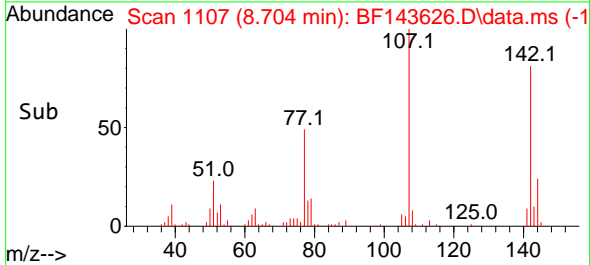
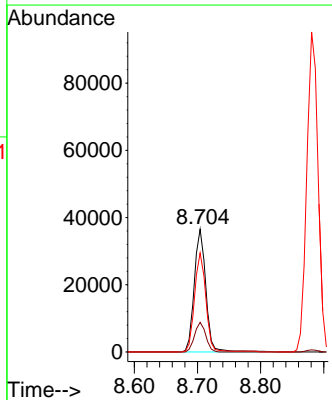
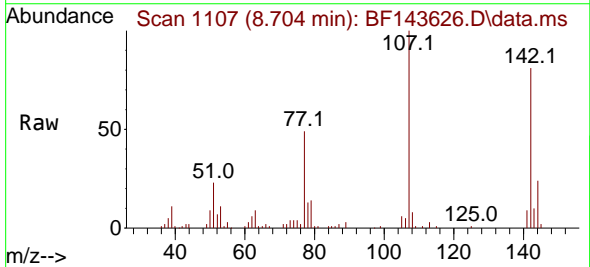
Instrument :
 BNA_F
 ClientSampleId :
 SSTDICC010

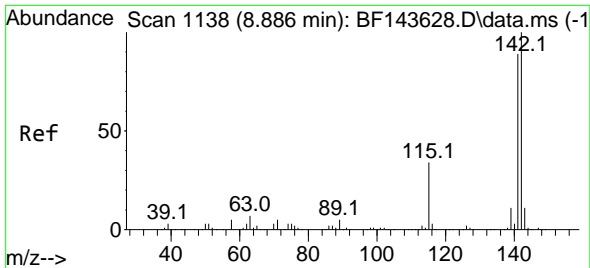
Tgt Ion:113 Resp: 9691
 Ion Ratio Lower Upper
 113 100
 55 200.4 180.5 220.5
 56 151.6 134.8 174.8



#36
 4-Chloro-3-methylphenol
 Concen: 9.427 ng
 RT: 8.704 min Scan# 1107
 Delta R.T. -0.006 min
 Lab File: BF143626.D
 Acq: 03 Sep 2025 14:41

Tgt Ion:107 Resp: 46759
 Ion Ratio Lower Upper
 107 100
 144 24.1 19.0 28.6
 142 80.7 60.3 90.5

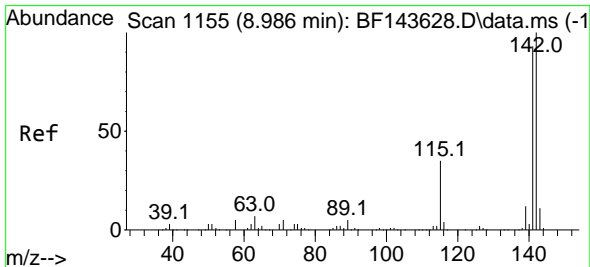
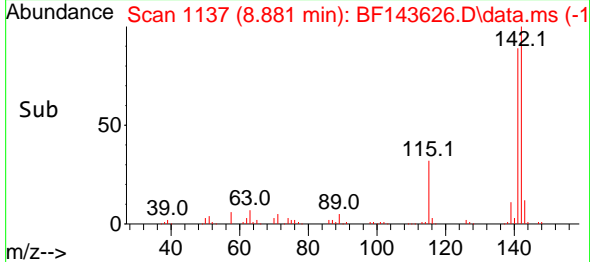
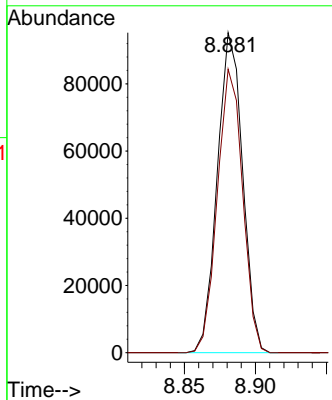
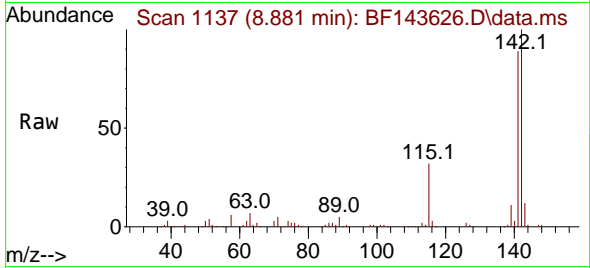




#37
 2-Methylnaphthalene
 Concen: 10.306 ng
 RT: 8.881 min Scan# 1137
 Delta R.T. -0.006 min
 Lab File: BF143626.D
 Acq: 03 Sep 2025 14:41

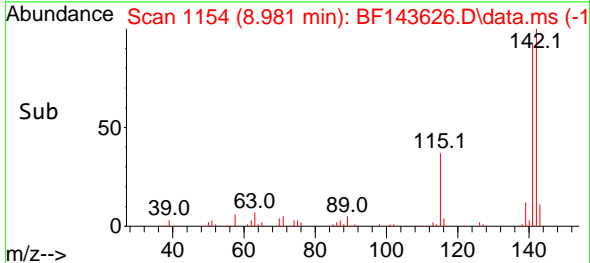
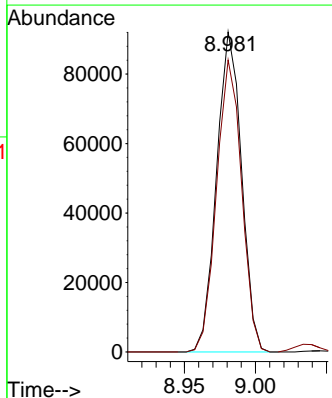
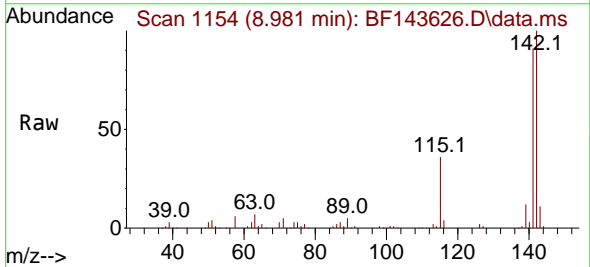
Instrument : BNA_F
 ClientSampleId : SSTDICC010

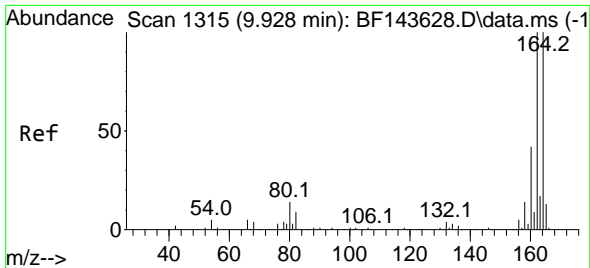
Tgt Ion:142 Resp: 117908
 Ion Ratio Lower Upper
 142 100
 141 88.6 70.8 106.2



#38
 1-Methylnaphthalene
 Concen: 10.286 ng
 RT: 8.981 min Scan# 1154
 Delta R.T. -0.006 min
 Lab File: BF143626.D
 Acq: 03 Sep 2025 14:41

Tgt Ion:142 Resp: 112510
 Ion Ratio Lower Upper
 142 100
 141 91.2 74.5 111.7





#39
 Acenaphthene-d10
 Concen: 20.000 ng
 RT: 9.928 min Scan# 1115
 Delta R.T. -0.000 min
 Lab File: BF143626.D
 Acq: 03 Sep 2025 14:41

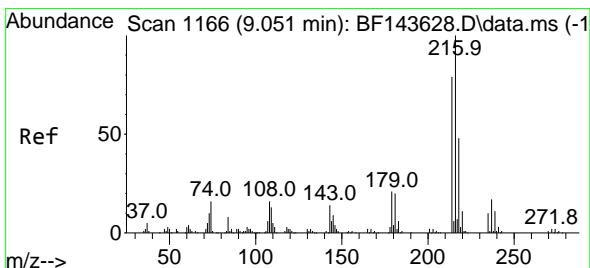
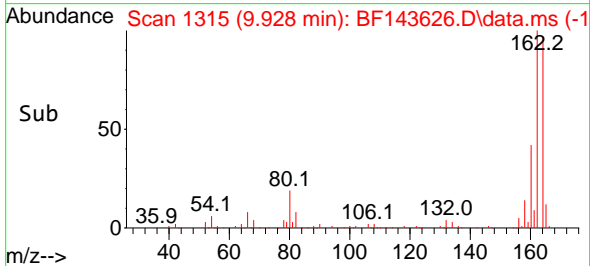
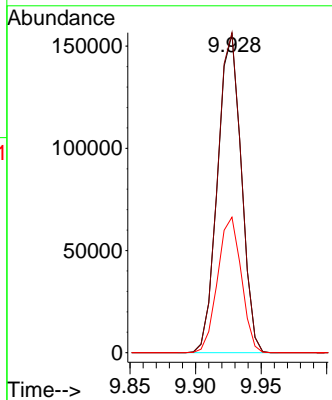
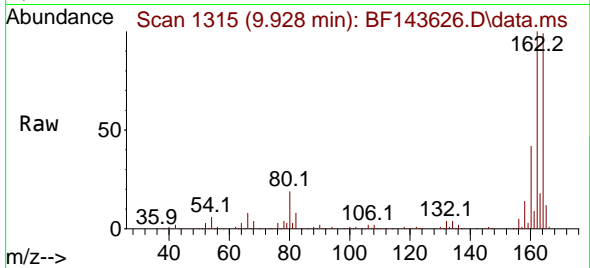
Instrument :

BNA_F

ClientSampleId :

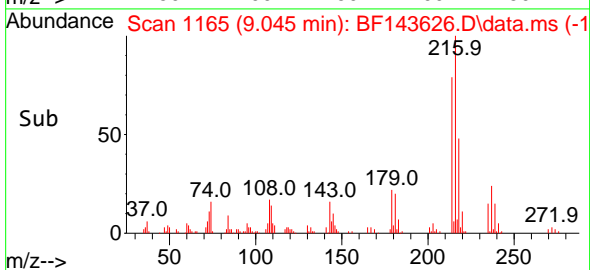
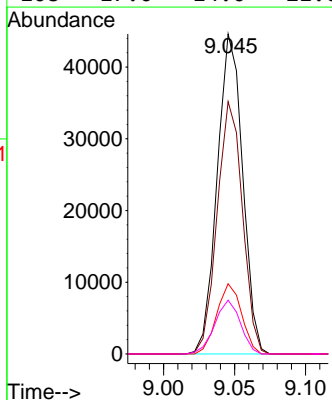
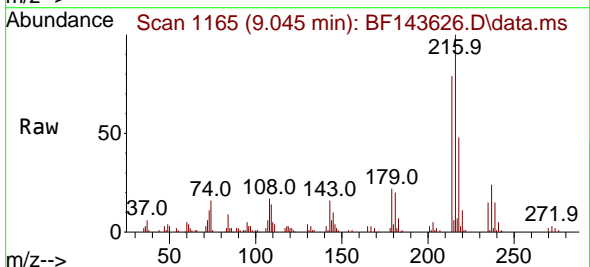
SSTDICC010

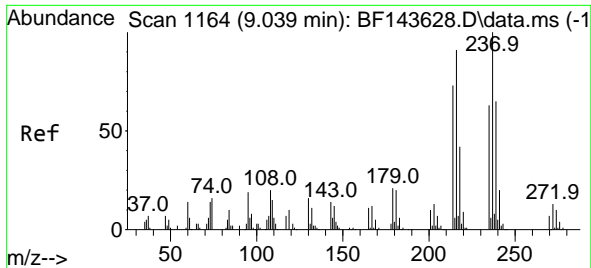
Tgt Ion:164 Resp: 195808
 Ion Ratio Lower Upper
 164 100
 162 100.5 80.3 120.5
 160 42.6 34.0 51.0



#40
 1,2,4,5-Tetrachlorobenzene
 Concen: 10.249 ng
 RT: 9.045 min Scan# 1165
 Delta R.T. -0.006 min
 Lab File: BF143626.D
 Acq: 03 Sep 2025 14:41

Tgt Ion:216 Resp: 55463
 Ion Ratio Lower Upper
 216 100
 214 78.3 63.3 94.9
 179 21.4 17.2 25.8
 108 17.0 14.0 21.0

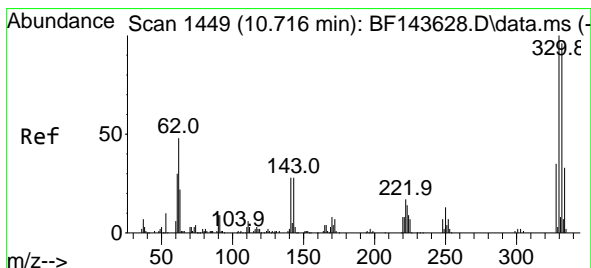
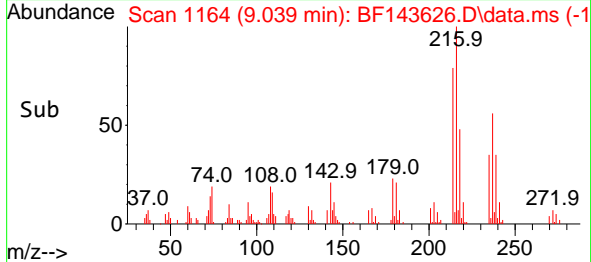
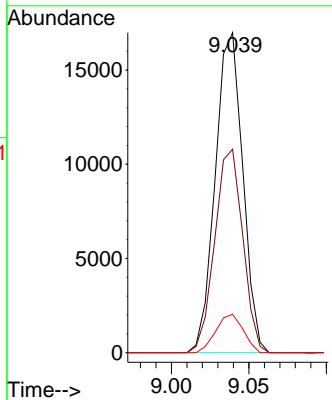
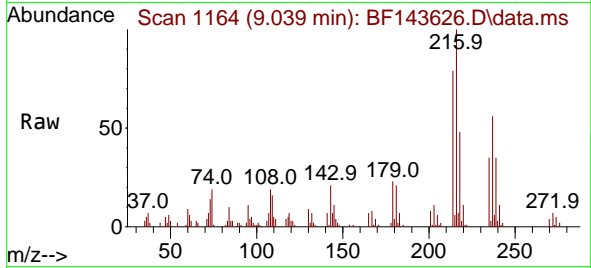




#41
 Hexachlorocyclopentadiene
 Concen: 7.978 ng
 RT: 9.039 min Scan# 1114
 Delta R.T. 0.000 min
 Lab File: BF143626.D
 Acq: 03 Sep 2025 14:41

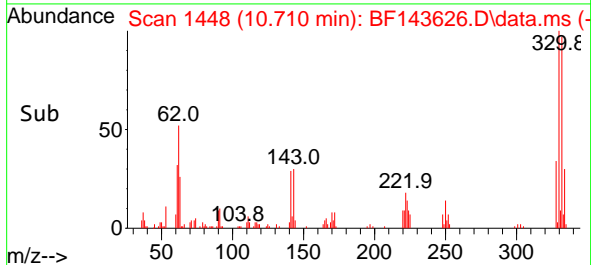
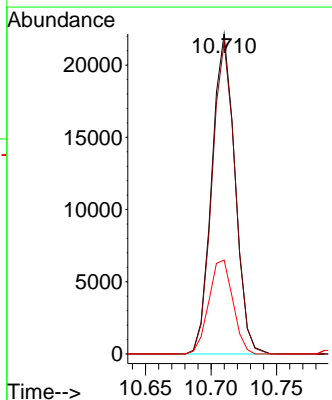
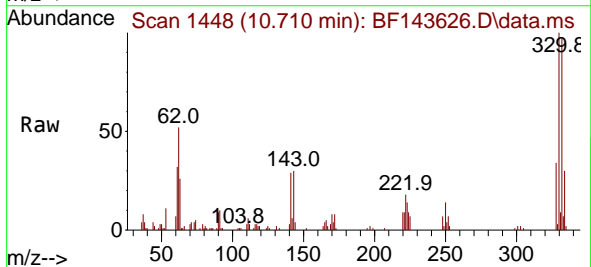
Instrument :
 BNA_F
 ClientSampleId :
 SSTDICC010

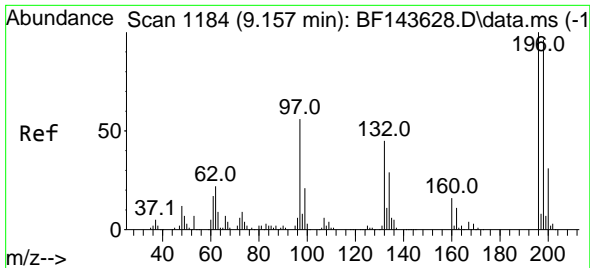
Tgt Ion	Resp	Lower	Upper
237	100		
235	63.6	43.0	83.0
272	12.0	0.0	32.9



#42
 2,4,6-Tribromophenol
 Concen: 16.563 ng
 RT: 10.710 min Scan# 1448
 Delta R.T. -0.006 min
 Lab File: BF143626.D
 Acq: 03 Sep 2025 14:41

Tgt Ion	Resp	Lower	Upper
330	100		
332	97.5	77.0	115.6
141	30.6	23.5	35.3



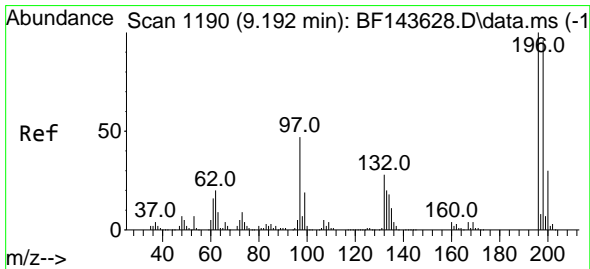
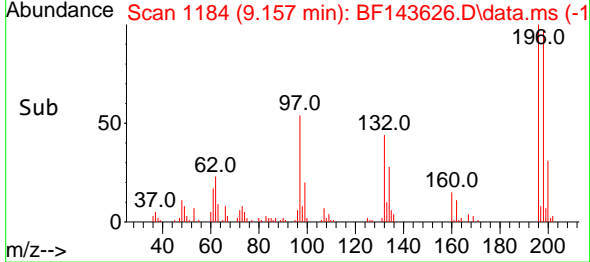
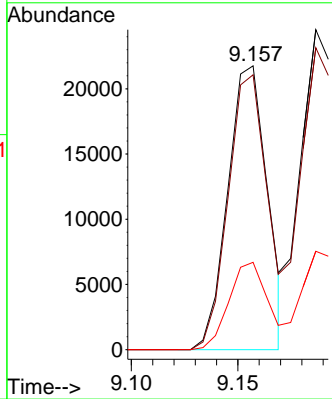
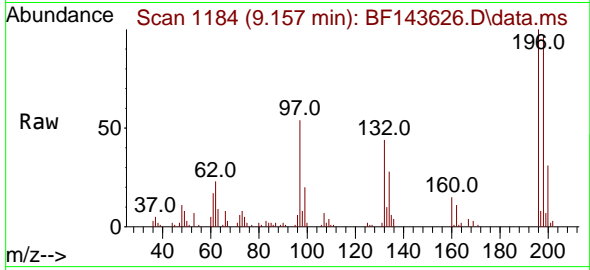


#43
 2,4,6-Trichlorophenol
 Concen: 8.404 ng
 RT: 9.157 min Scan# 1184
 Delta R.T. 0.000 min
 Lab File: BF143626.D
 Acq: 03 Sep 2025 14:41

Instrument : BNA_F
 ClientSampleId : SSTDICC010

Tgt Ion:196 Resp: 28020

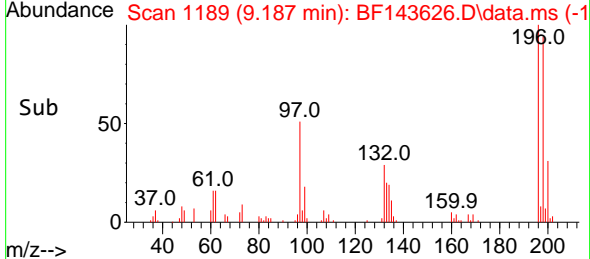
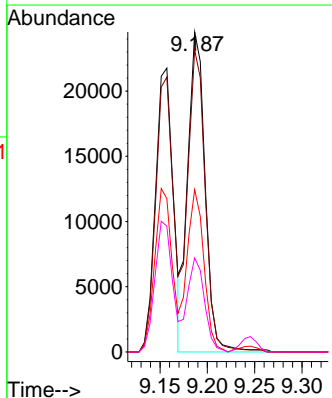
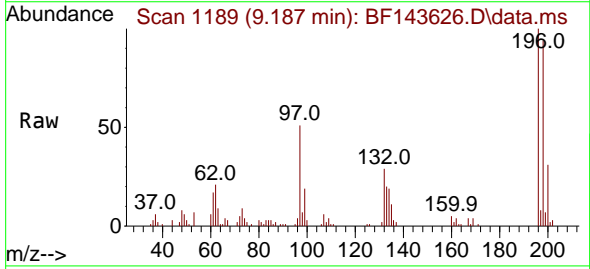
Ion	Ratio	Lower	Upper
196	100		
198	96.8	77.1	115.7
200	30.8	24.7	37.1

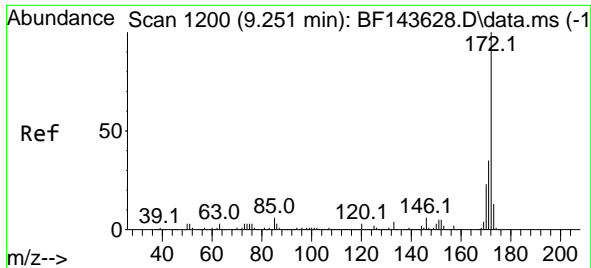


#44
 2,4,5-Trichlorophenol
 Concen: 9.167 ng
 RT: 9.187 min Scan# 1189
 Delta R.T. -0.006 min
 Lab File: BF143626.D
 Acq: 03 Sep 2025 14:41

Tgt Ion:196 Resp: 31552

Ion	Ratio	Lower	Upper
196	100		
198	94.3	76.6	115.0
97	50.7	38.2	57.2
132	29.4	23.3	34.9



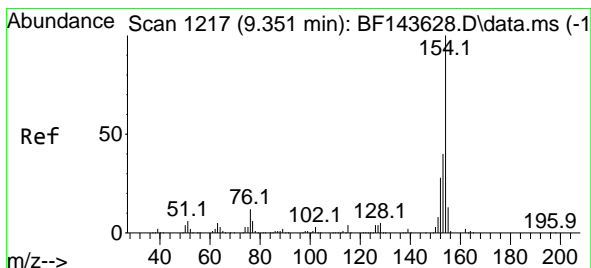
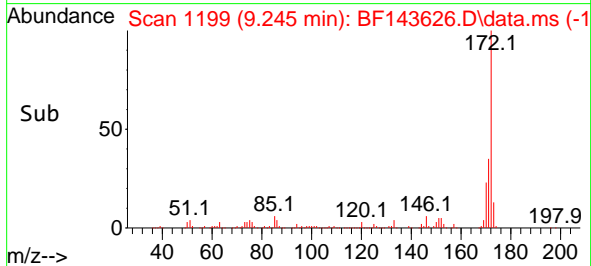
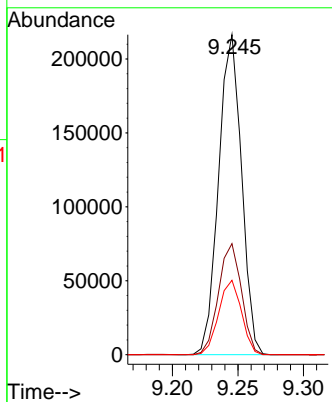
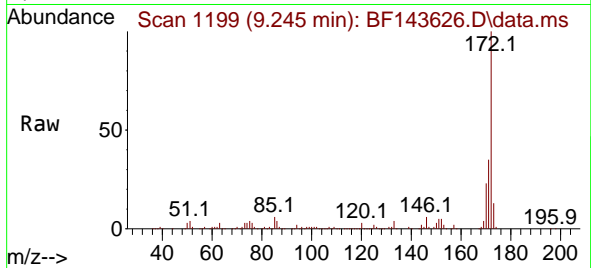


#45
 2-Fluorobiphenyl
 Concen: 21.444 ng
 RT: 9.245 min Scan# 1199
 Delta R.T. -0.006 min
 Lab File: BF143626.D
 Acq: 03 Sep 2025 14:41

Instrument : BNA_F
 ClientSampleId : SSTDICC010

Tgt Ion:172 Resp: 262821

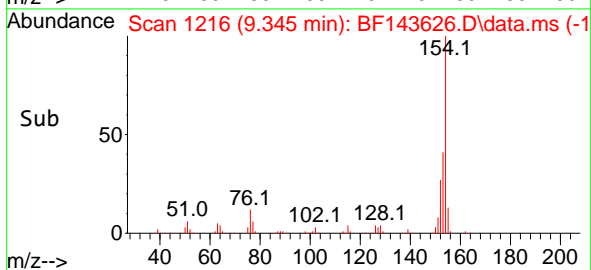
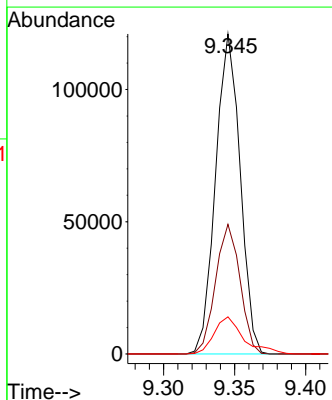
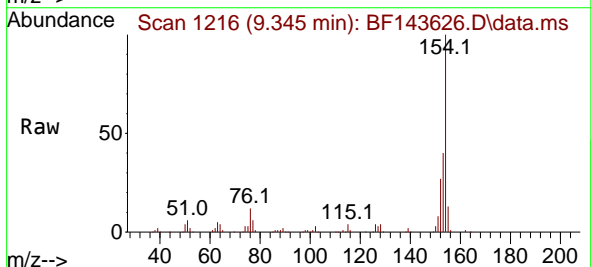
Ion	Ratio	Lower	Upper
172	100		
171	34.7	28.1	42.1
170	23.2	18.6	28.0

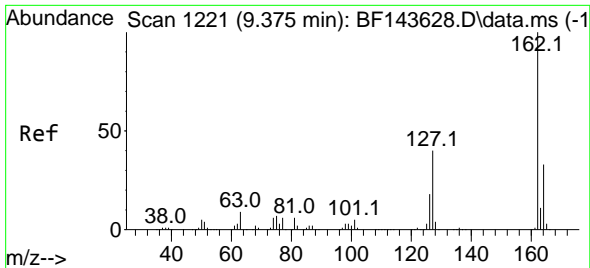


#46
 1,1'-Biphenyl
 Concen: 10.413 ng
 RT: 9.345 min Scan# 1216
 Delta R.T. -0.006 min
 Lab File: BF143626.D
 Acq: 03 Sep 2025 14:41

Tgt Ion:154 Resp: 145017

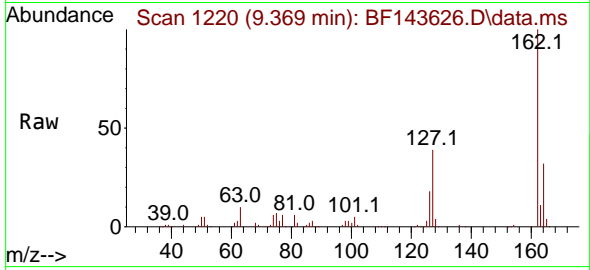
Ion	Ratio	Lower	Upper
154	100		
153	40.5	20.1	60.1
76	11.6	0.0	31.9



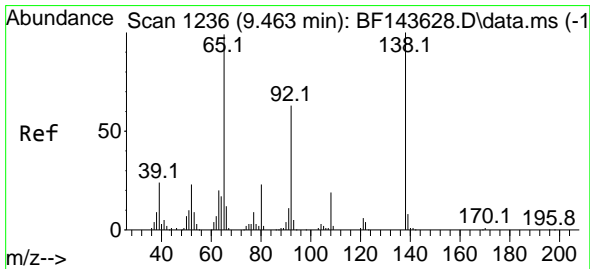
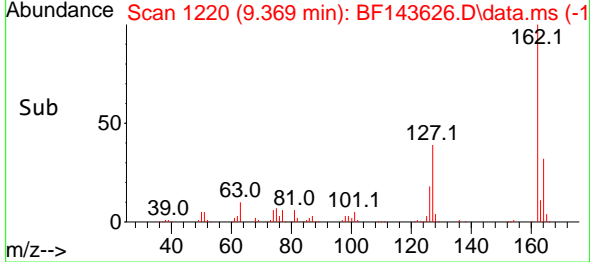
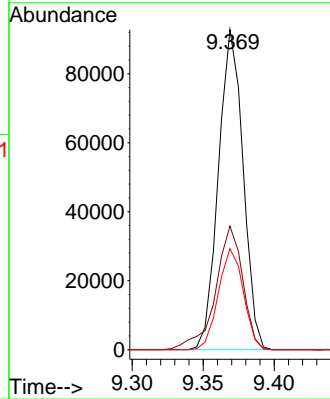


#47
 2-Chloronaphthalene
 Concen: 10.267 ng
 RT: 9.369 min Scan# 111
 Delta R.T. -0.006 min
 Lab File: BF143626.D
 Acq: 03 Sep 2025 14:41

Instrument :
 BNA_F
 ClientSampleId :
 SSTDICC010

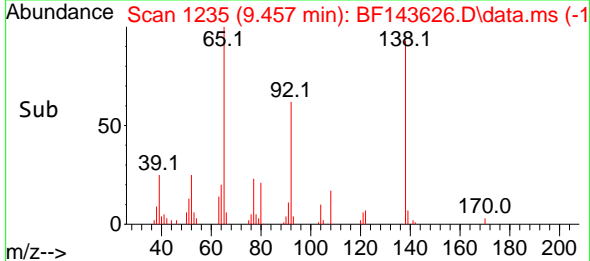
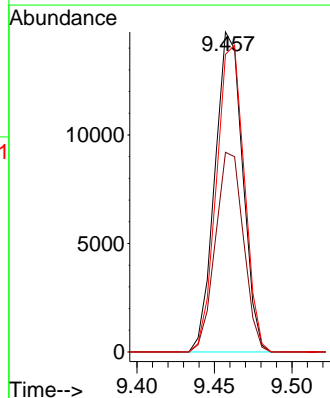
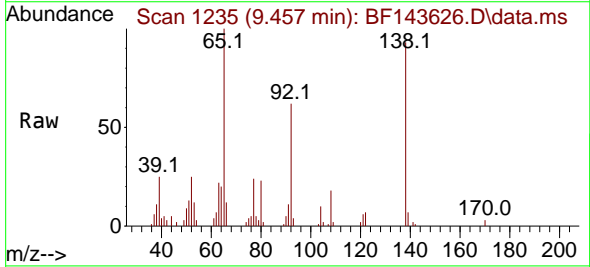


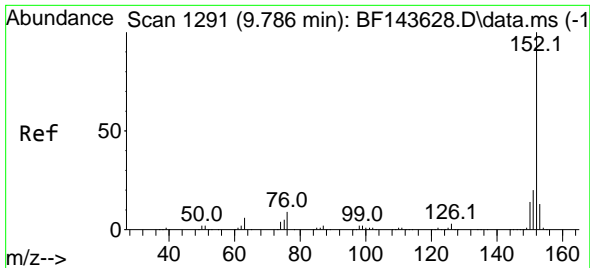
Tgt Ion:162 Resp: 111888
 Ion Ratio Lower Upper
 162 100
 127 38.6 31.9 47.9
 164 31.6 26.0 39.0



#48
 2-Nitroaniline
 Concen: 8.990 ng
 RT: 9.457 min Scan# 1235
 Delta R.T. -0.006 min
 Lab File: BF143626.D
 Acq: 03 Sep 2025 14:41

Tgt Ion: 65 Resp: 18409
 Ion Ratio Lower Upper
 65 100
 92 62.4 50.9 76.3
 138 93.0 80.6 120.8

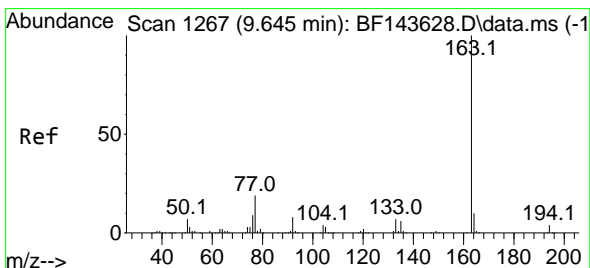
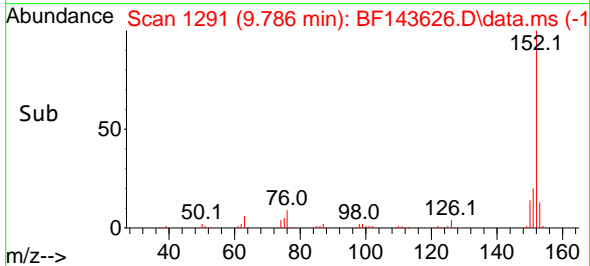
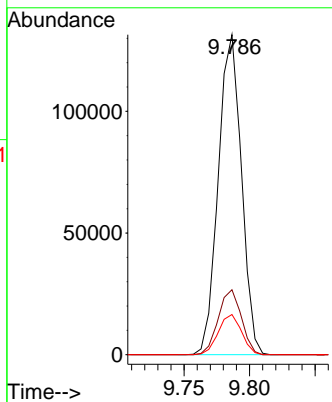
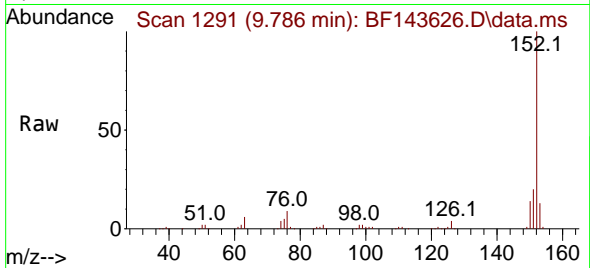




#49
 Acenaphthylene
 Concen: 10.270 ng
 RT: 9.786 min Scan# 11
 Delta R.T. 0.000 min
 Lab File: BF143626.D
 Acq: 03 Sep 2025 14:41

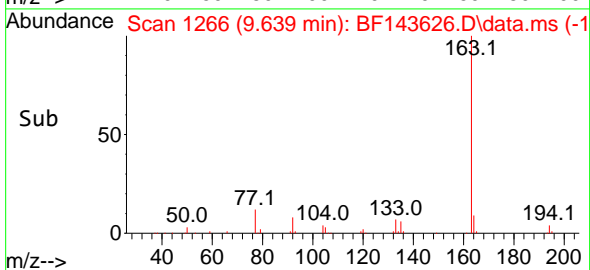
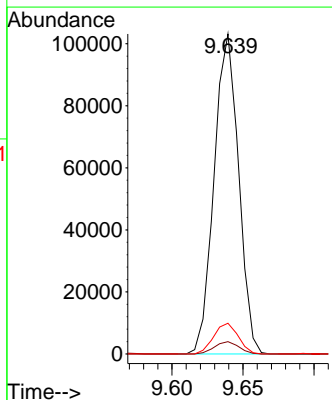
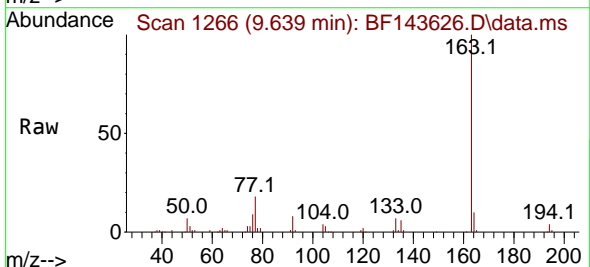
Instrument :
 BNA_F
 ClientSampleId :
 SSTDICC010

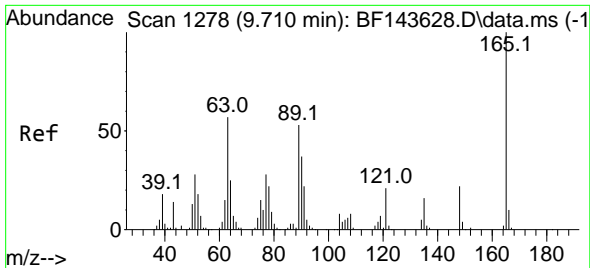
Tgt Ion:152 Resp: 161301
 Ion Ratio Lower Upper
 152 100
 151 20.3 16.1 24.1
 153 12.6 10.6 15.8



#50
 Dimethylphthalate
 Concen: 9.973 ng
 RT: 9.639 min Scan# 1266
 Delta R.T. -0.006 min
 Lab File: BF143626.D
 Acq: 03 Sep 2025 14:41

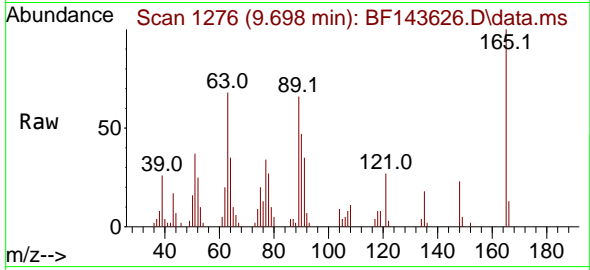
Tgt Ion:163 Resp: 123659
 Ion Ratio Lower Upper
 163 100
 194 3.9 3.1 4.7
 164 9.6 8.1 12.1



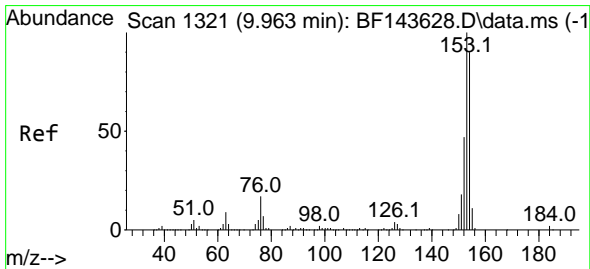
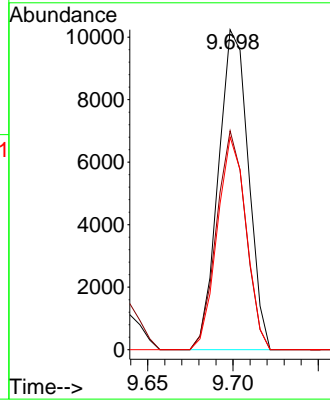
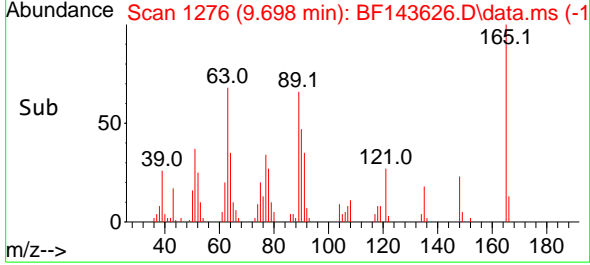


#51
 2,6-Dinitrotoluene
 Concen: 8.910 ng
 RT: 9.698 min Scan# 11
 Delta R.T. -0.012 min
 Lab File: BF143626.D
 Acq: 03 Sep 2025 14:41

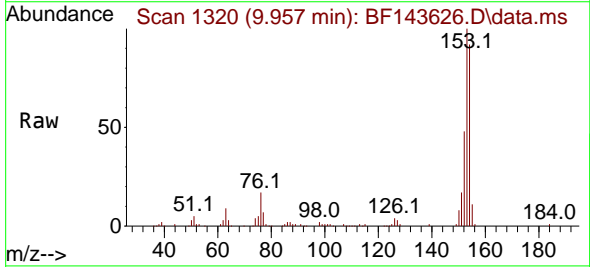
Instrument :
 BNA_F
 ClientSampleId :
 SSTDICC010



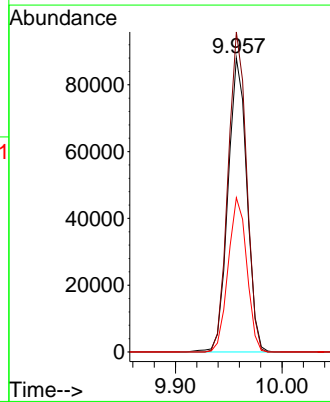
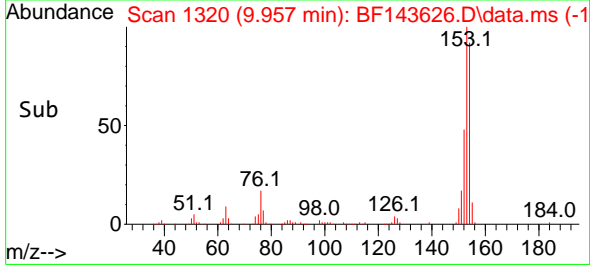
Tgt Ion:165 Resp: 12534
 Ion Ratio Lower Upper
 165 100
 63 68.4 45.4 68.0#
 89 66.4 42.1 63.1#

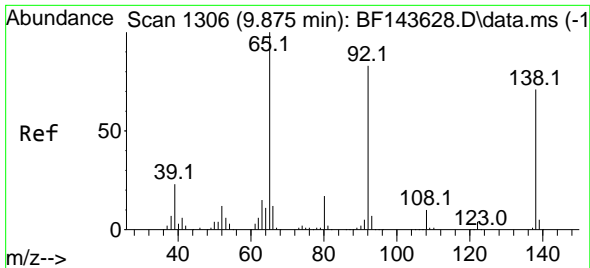


#52
 Acenaphthene
 Concen: 10.281 ng
 RT: 9.957 min Scan# 1320
 Delta R.T. -0.006 min
 Lab File: BF143626.D
 Acq: 03 Sep 2025 14:41



Tgt Ion:154 Resp: 108019
 Ion Ratio Lower Upper
 154 100
 153 108.8 88.6 132.8
 152 52.5 41.8 62.8





#53
 3-Nitroaniline
 Concen: 9.203 ng
 RT: 9.869 min Scan# 11
 Delta R.T. -0.006 min
 Lab File: BF143626.D
 Acq: 03 Sep 2025 14:41

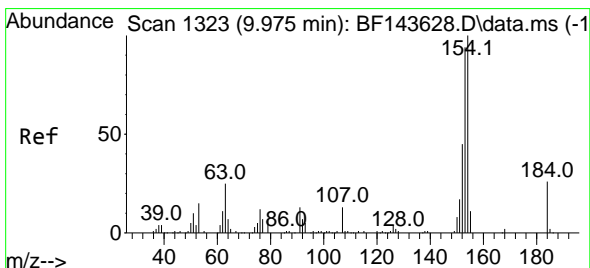
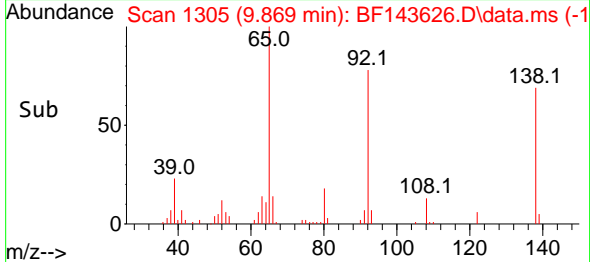
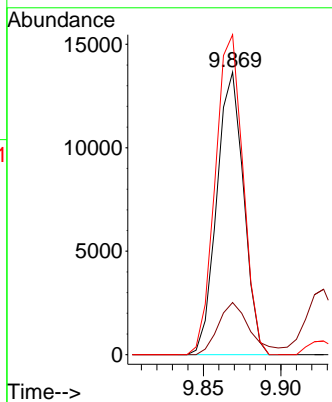
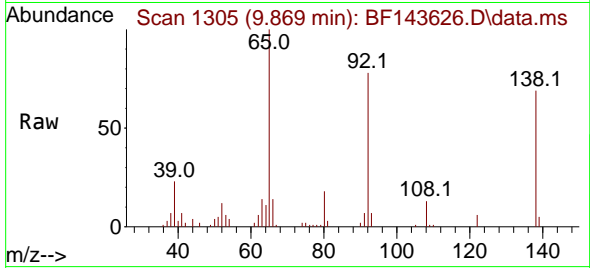
Instrument :

BNA_F

ClientSampleId :

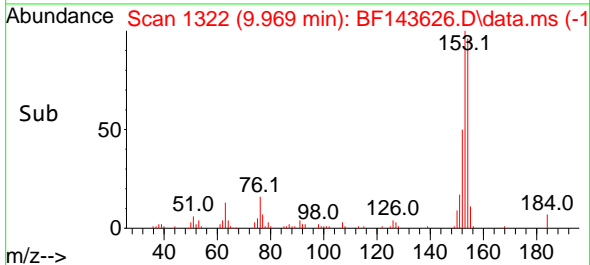
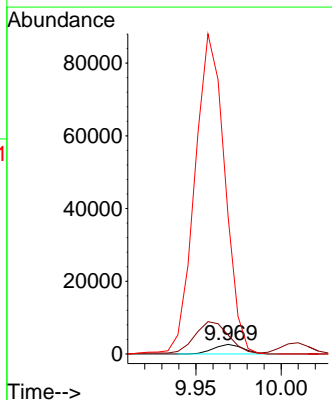
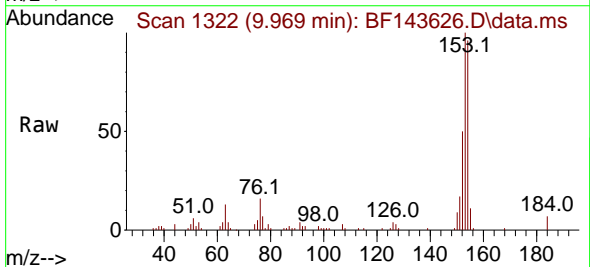
SSTDICC010

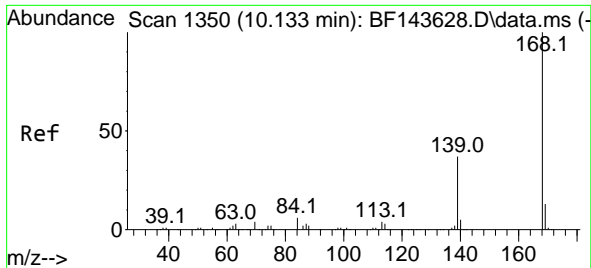
Tgt Ion:138 Resp: 16493
 Ion Ratio Lower Upper
 138 100
 108 18.5 10.7 16.1#
 92 113.2 93.4 140.2



#54
 2,4-Dinitrophenol
 Concen: 10.659 ng
 RT: 9.969 min Scan# 1322
 Delta R.T. -0.006 min
 Lab File: BF143626.D
 Acq: 03 Sep 2025 14:41

Tgt Ion:184 Resp: 3186
 Ion Ratio Lower Upper
 184 100
 63 198.4 81.8 122.8#
 154 1440.2 348.3 522.5#

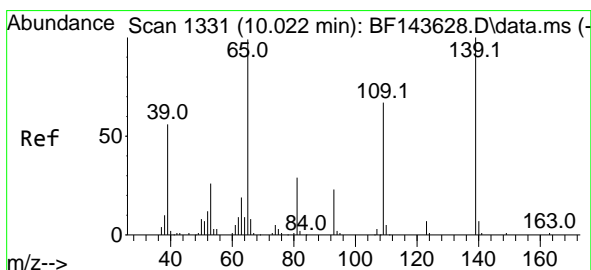
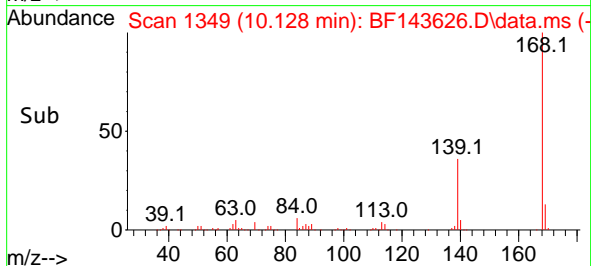
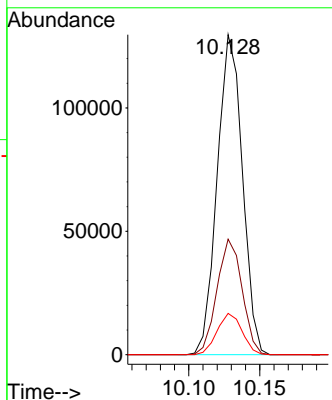
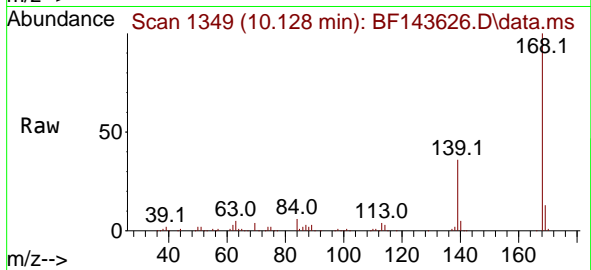




#55
 Dibenzofuran
 Concen: 10.471 ng
 RT: 10.128 min Scan# 11
 Delta R.T. -0.006 min
 Lab File: BF143626.D
 Acq: 03 Sep 2025 14:41

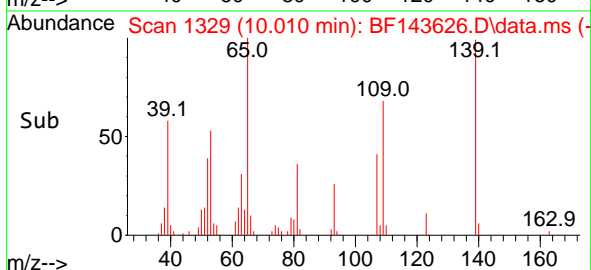
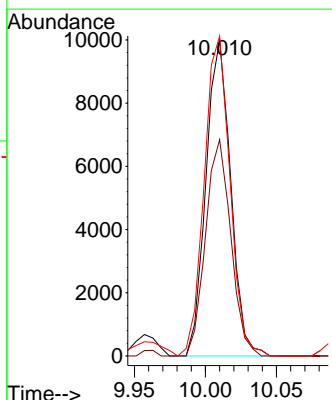
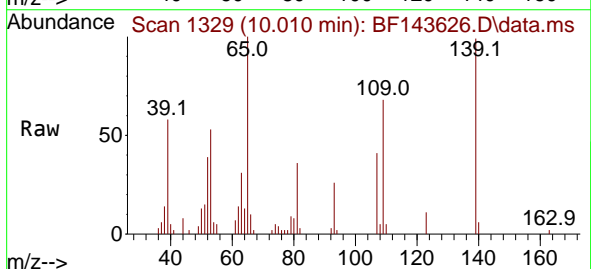
Instrument :
 BNA_F
 ClientSampleId :
 SSTDICC010

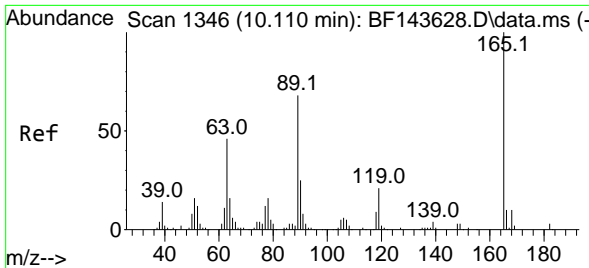
Tgt Ion:168 Resp: 159831
 Ion Ratio Lower Upper
 168 100
 139 36.1 29.8 44.8
 169 12.9 10.6 16.0



#56
 4-Nitrophenol
 Concen: 6.586 ng
 RT: 10.010 min Scan# 1329
 Delta R.T. -0.012 min
 Lab File: BF143626.D
 Acq: 03 Sep 2025 14:41

Tgt Ion:139 Resp: 12107
 Ion Ratio Lower Upper
 139 100
 109 68.5 47.6 87.6
 65 101.3 80.5 120.5





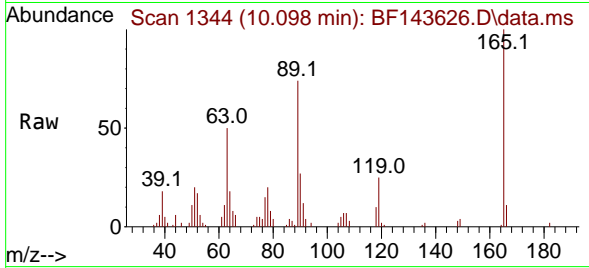
#57
 2,4-Dinitrotoluene
 Concen: 9.044 ng
 RT: 10.098 min Scan# 11
 Delta R.T. -0.012 min
 Lab File: BF143626.D
 Acq: 03 Sep 2025 14:41

Instrument :

BNA_F

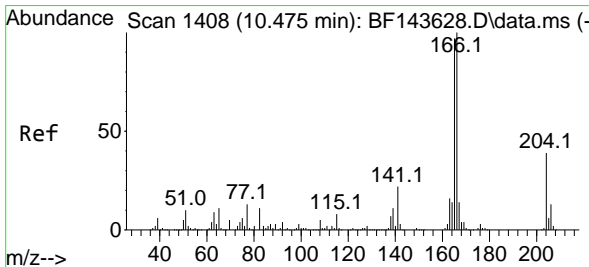
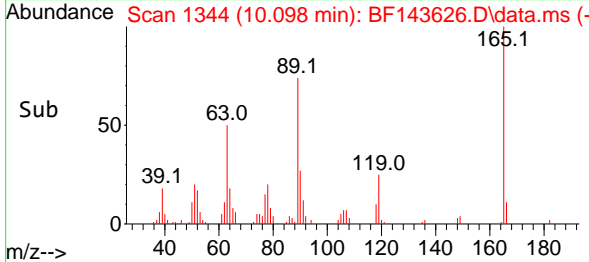
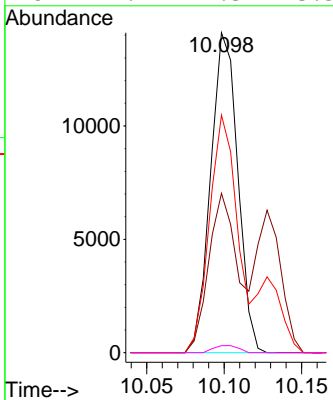
ClientSampleId :

SSTDICC010



Tgt Ion:165 Resp: 17184

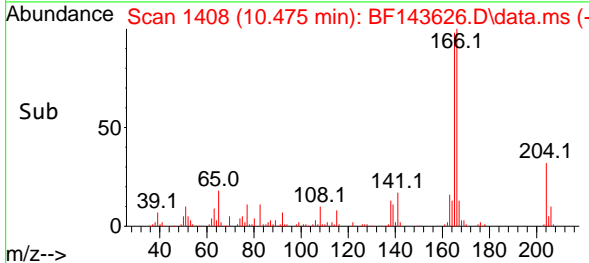
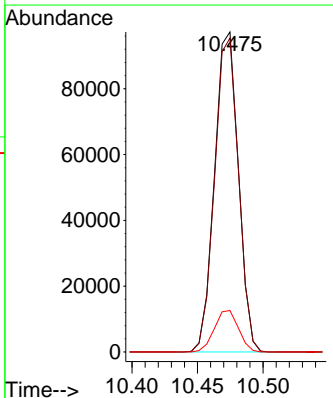
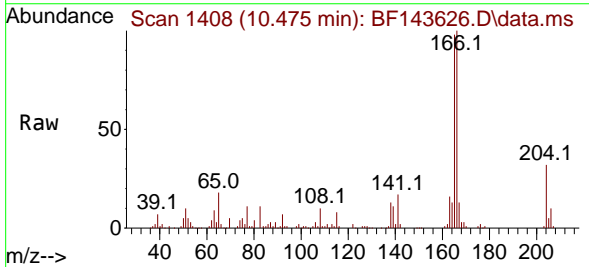
Ion	Ratio	Lower	Upper
165	100		
63	49.8	37.0	55.6
89	74.3	54.1	81.1
182	2.2	2.3	3.5

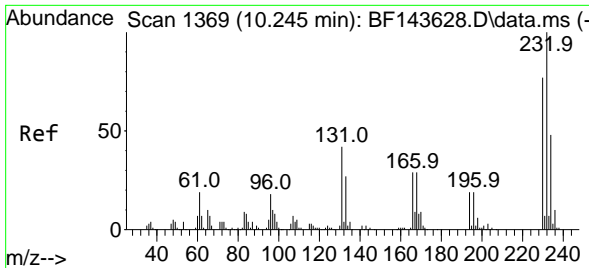


#58
 Fluorene
 Concen: 10.420 ng
 RT: 10.475 min Scan# 1408
 Delta R.T. 0.000 min
 Lab File: BF143626.D
 Acq: 03 Sep 2025 14:41

Tgt Ion:166 Resp: 123027

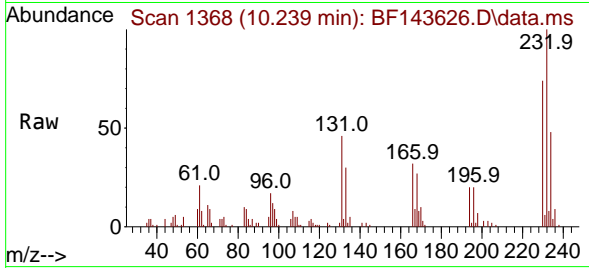
Ion	Ratio	Lower	Upper
166	100		
165	98.1	77.6	116.4
167	13.0	10.9	16.3



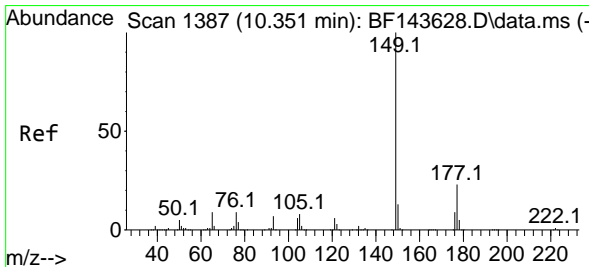
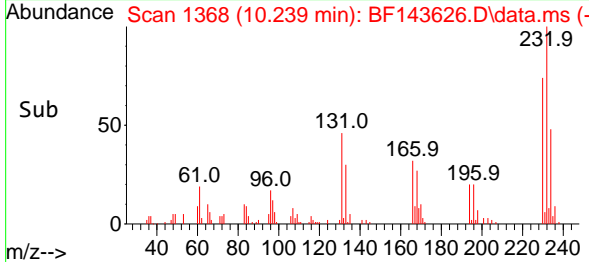
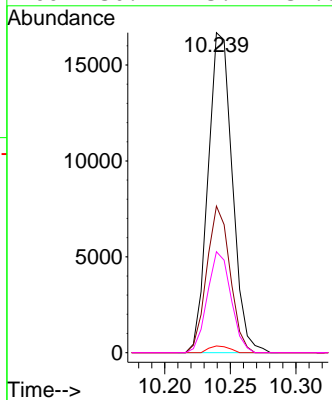


#59
 2,3,4,6-Tetrachlorophenol
 Concen: 8.215 ng
 RT: 10.239 min Scan# 1368
 Delta R.T. -0.006 min
 Lab File: BF143626.D
 Acq: 03 Sep 2025 14:41

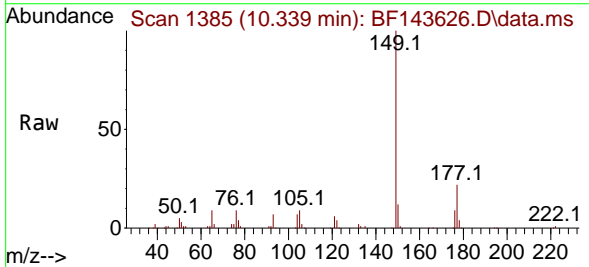
Instrument : BNA_F
 Client Sample Id : SSTDIC010



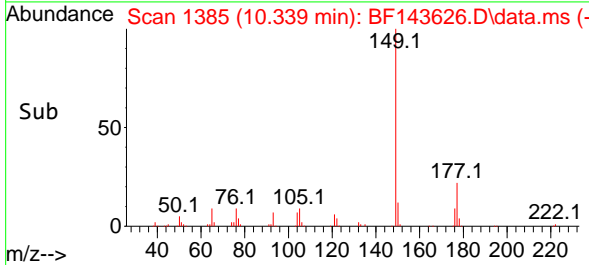
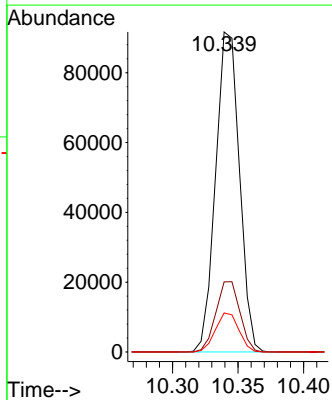
Tgt Ion: 232 Resp: 21475
 Ion Ratio Lower Upper
 232 100
 131 44.1 33.7 50.5
 130 1.8 1.5 2.3
 166 30.7 23.2 34.8

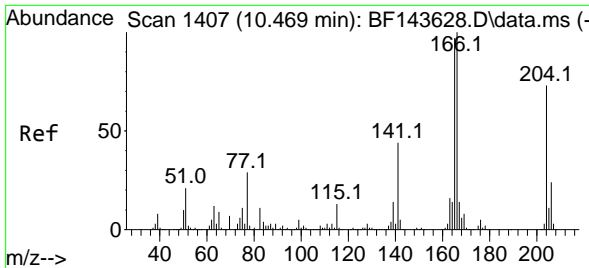


#60
 Diethylphthalate
 Concen: 9.836 ng
 RT: 10.339 min Scan# 1385
 Delta R.T. -0.012 min
 Lab File: BF143626.D
 Acq: 03 Sep 2025 14:41



Tgt Ion: 149 Resp: 115772
 Ion Ratio Lower Upper
 149 100
 177 21.9 18.6 28.0
 150 12.2 10.3 15.5

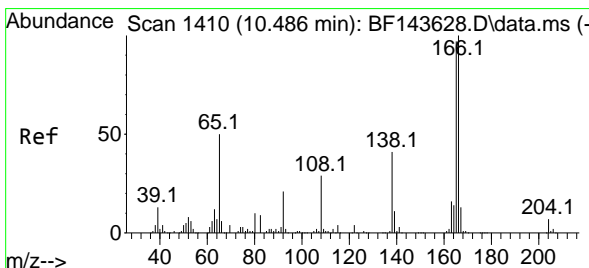
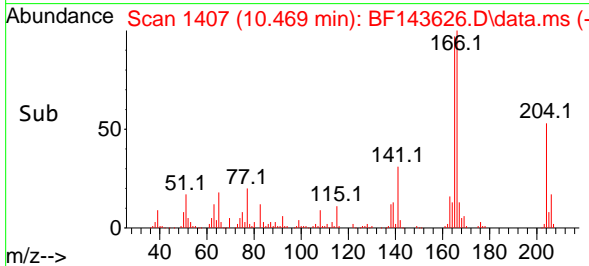
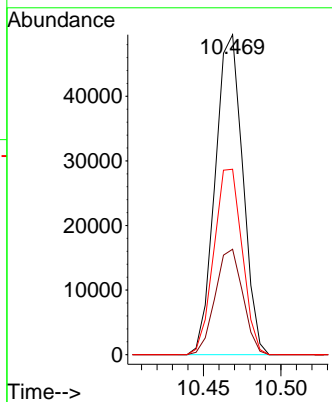
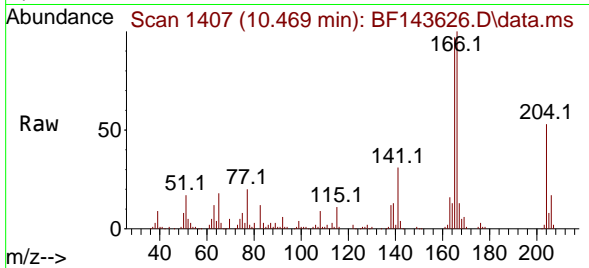




#61
 4-Chlorophenyl-phenylether
 Concen: 10.432 ng
 RT: 10.469 min Scan# 1407
 Delta R.T. 0.000 min
 Lab File: BF143626.D
 Acq: 03 Sep 2025 14:41

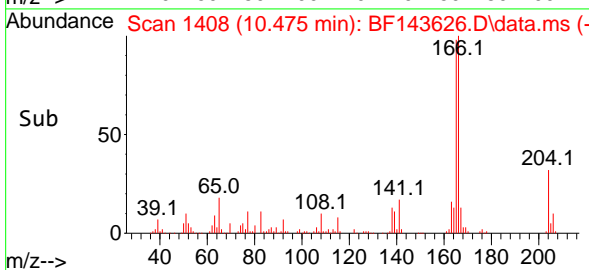
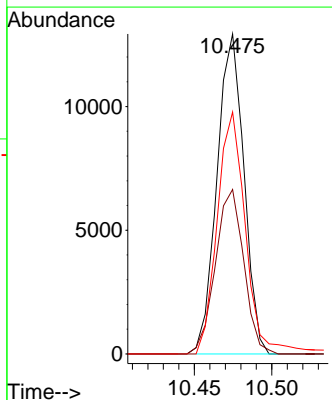
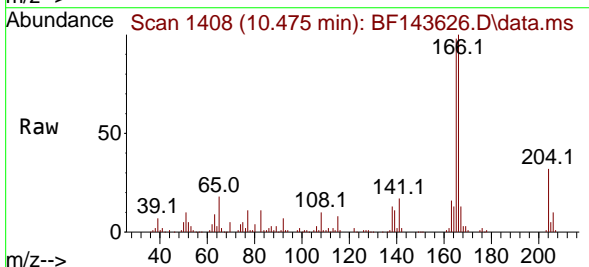
Instrument : BNA_F
 ClientSampleId : SSTDICC010

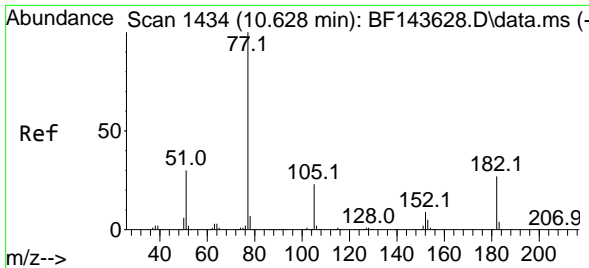
Tgt Ion	Resp	Lower	Upper
204	100		
206	32.9	26.6	40.0
141	57.9	47.8	71.6



#62
 4-Nitroaniline
 Concen: 8.851 ng
 RT: 10.475 min Scan# 1408
 Delta R.T. -0.011 min
 Lab File: BF143626.D
 Acq: 03 Sep 2025 14:41

Tgt Ion	Resp	Lower	Upper
138	100		
92	51.4	30.5	70.5
108	75.6	49.1	89.1





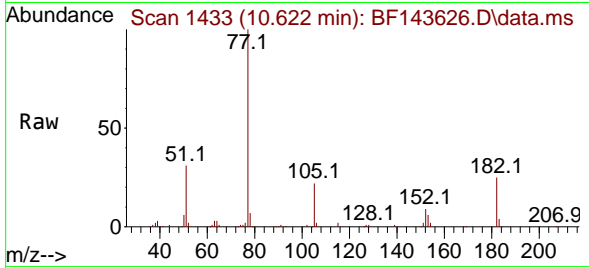
#63
 Azobenzene
 Concen: 10.067 ng
 RT: 10.622 min Scan# 14
 Delta R.T. -0.006 min
 Lab File: BF143626.D
 Acq: 03 Sep 2025 14:41

Instrument :

BNA_F

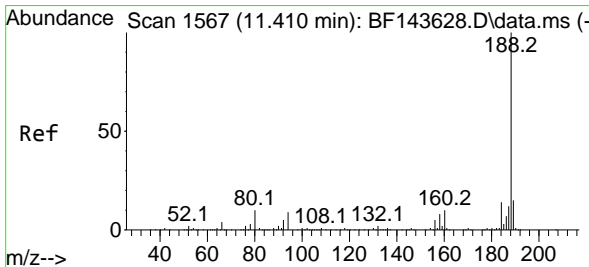
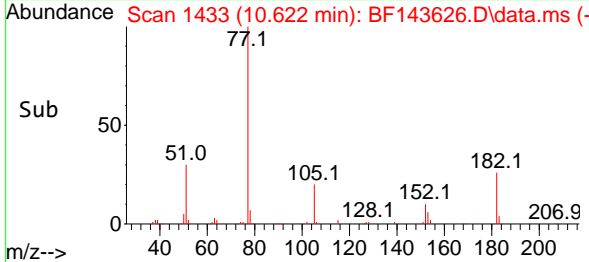
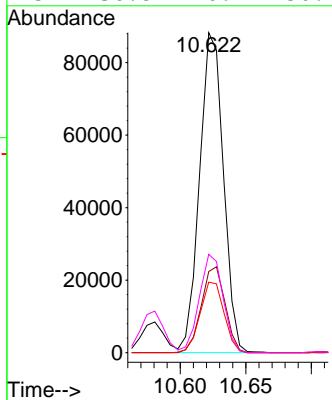
ClientSampleId :

SSTDICC010



Tgt Ion: 77 Resp: 111692

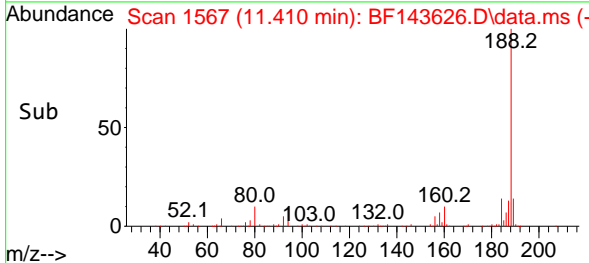
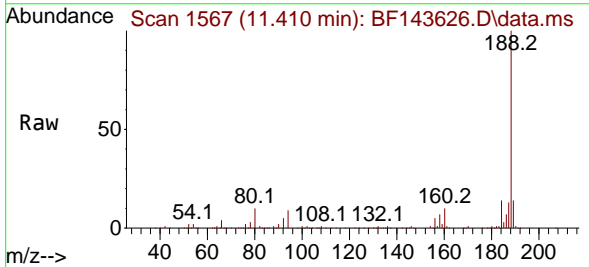
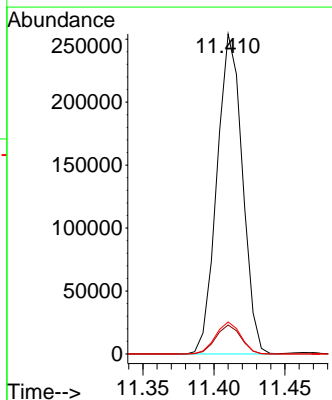
Ion	Ratio	Lower	Upper
77	100		
182	25.4	6.8	46.8
105	22.1	2.8	42.8
51	30.8	10.4	50.4

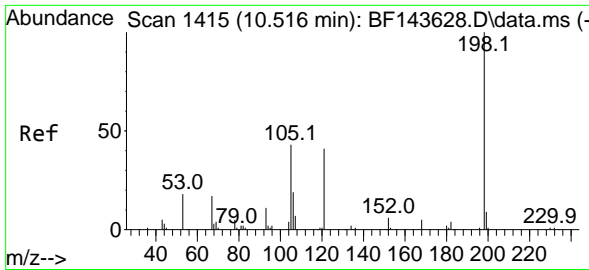


#64
 Phenanthrene-d10
 Concen: 20.000 ng
 RT: 11.410 min Scan# 1567
 Delta R.T. 0.000 min
 Lab File: BF143626.D
 Acq: 03 Sep 2025 14:41

Tgt Ion: 188 Resp: 317066

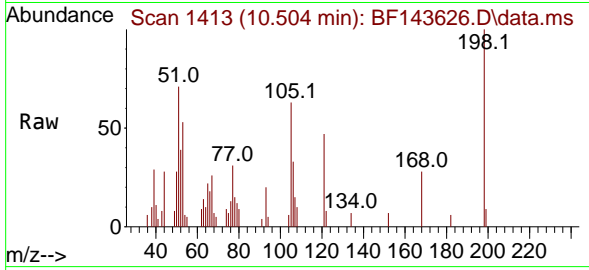
Ion	Ratio	Lower	Upper
188	100		
94	9.0	7.5	11.3
80	10.0	8.4	12.6



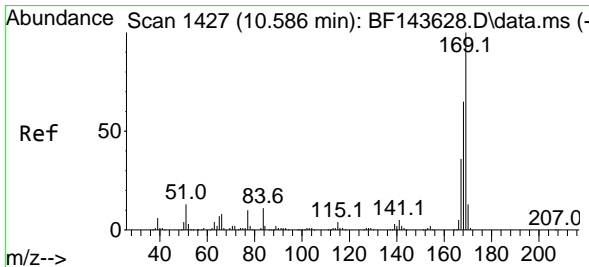
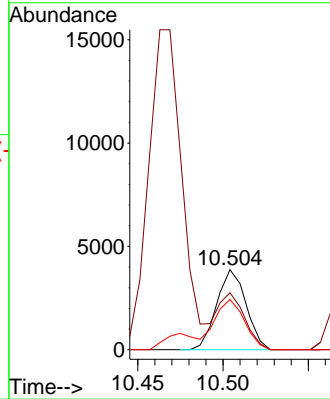
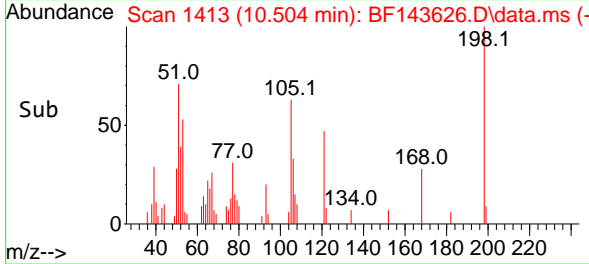


#65
 4,6-Dinitro-2-methylphenol
 Concen: 11.369 ng
 RT: 10.504 min Scan# 1413
 Delta R.T. -0.012 min
 Lab File: BF143626.D
 Acq: 03 Sep 2025 14:41

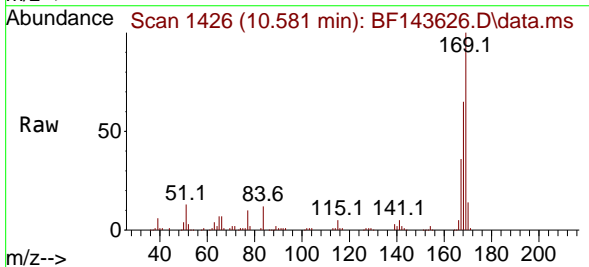
Instrument :
 BNA_F
 ClientSampleId :
 SSTDICC010



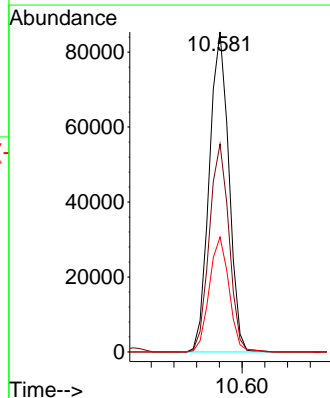
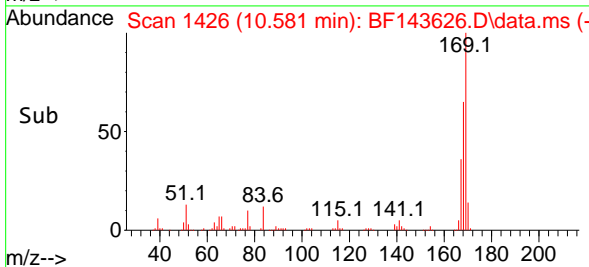
Tgt Ion:198 Resp: 4634
 Ion Ratio Lower Upper
 198 100
 51 71.1 30.7 70.7#
 105 62.8 26.0 66.0

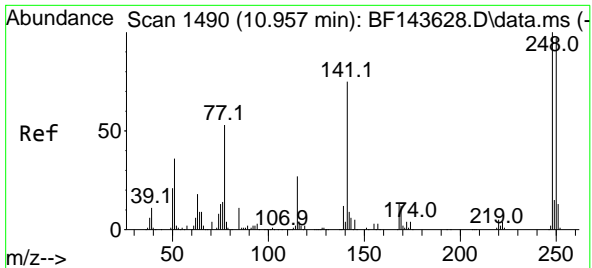


#66
 n-Nitrosodiphenylamine
 Concen: 9.980 ng
 RT: 10.581 min Scan# 1426
 Delta R.T. -0.006 min
 Lab File: BF143626.D
 Acq: 03 Sep 2025 14:41



Tgt Ion:169 Resp: 102131
 Ion Ratio Lower Upper
 169 100
 168 65.0 52.2 78.4
 167 35.9 28.5 42.7



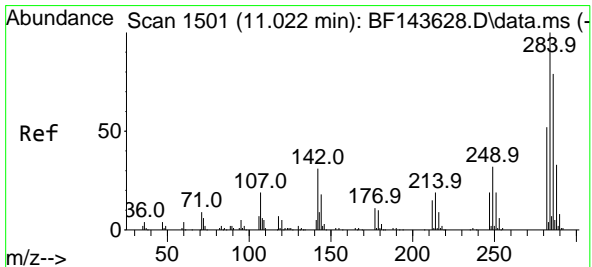
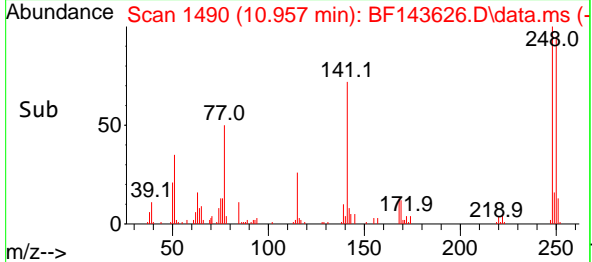
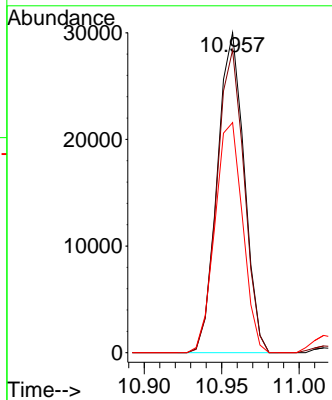
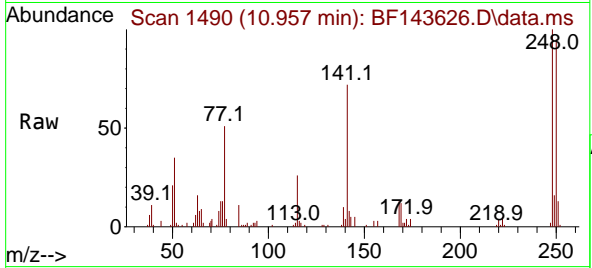


#67
 4-Bromophenyl-phenylether
 Concen: 9.853 ng
 RT: 10.957 min Scan# 14
 Delta R.T. 0.000 min
 Lab File: BF143626.D
 Acq: 03 Sep 2025 14:41

Instrument :
 BNA_F
 ClientSampleId :
 SSTDICC010

Tgt Ion:248 Resp: 36232

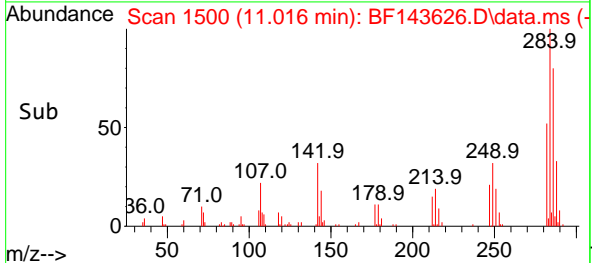
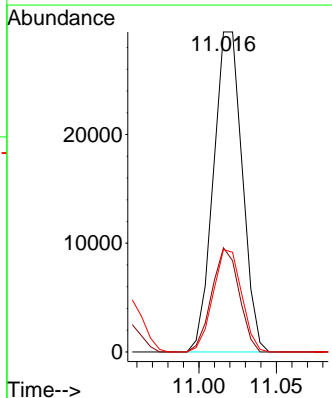
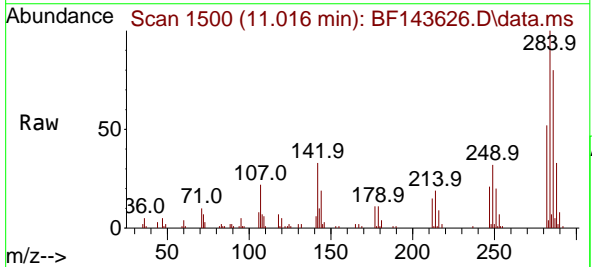
Ion	Ratio	Lower	Upper
248	100		
250	94.6	77.6	116.4
141	71.9	60.1	90.1

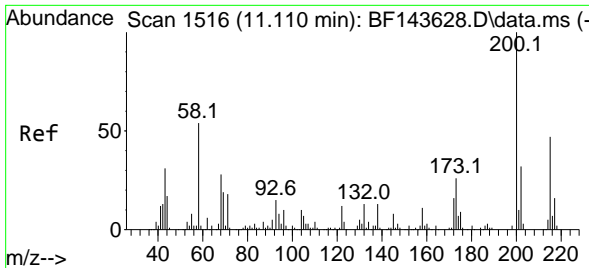


#68
 Hexachlorobenzene
 Concen: 9.861 ng
 RT: 11.016 min Scan# 1500
 Delta R.T. -0.006 min
 Lab File: BF143626.D
 Acq: 03 Sep 2025 14:41

Tgt Ion:284 Resp: 38089

Ion	Ratio	Lower	Upper
284	100		
142	32.6	24.7	37.1
249	32.0	25.4	38.2





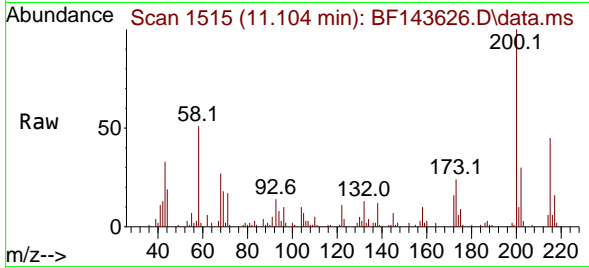
#69
 Atrazine
 Concen: 9.093 ng
 RT: 11.104 min Scan# 11
 Delta R.T. -0.006 min
 Lab File: BF143626.D
 Acq: 03 Sep 2025 14:41

Instrument :

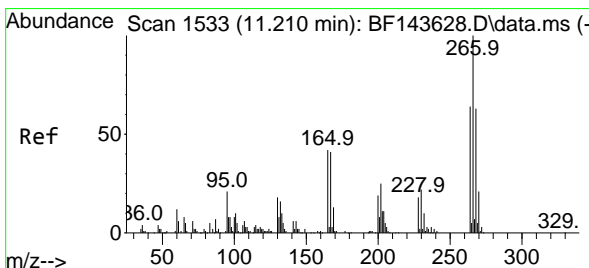
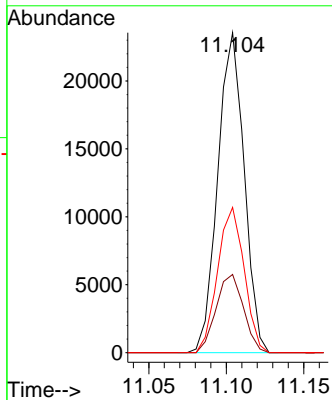
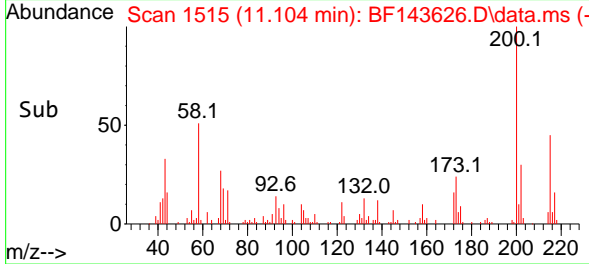
BNA_F

ClientSampleId :

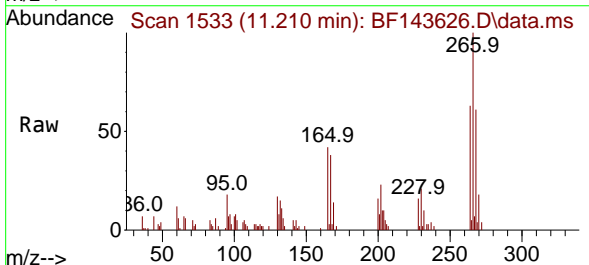
SSTDICC010



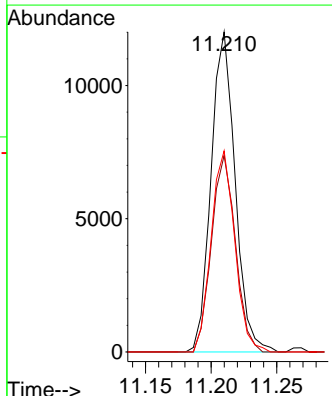
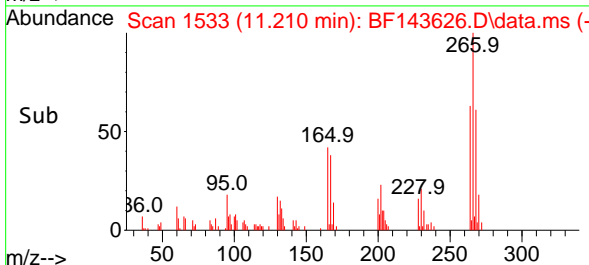
Tgt Ion:200 Resp: 27819
 Ion Ratio Lower Upper
 200 100
 173 24.5 6.4 46.4
 215 45.4 26.9 66.9

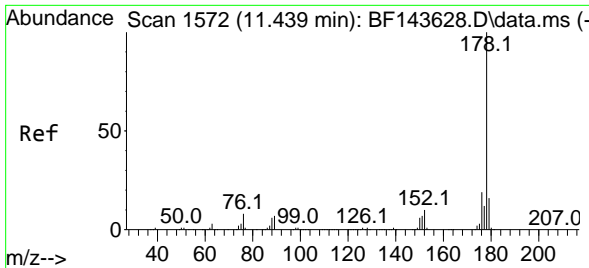


#70
 Pentachlorophenol
 Concen: 7.061 ng
 RT: 11.210 min Scan# 1533
 Delta R.T. 0.000 min
 Lab File: BF143626.D
 Acq: 03 Sep 2025 14:41



Tgt Ion:266 Resp: 15322
 Ion Ratio Lower Upper
 266 100
 268 61.4 50.6 76.0
 264 62.9 51.2 76.8





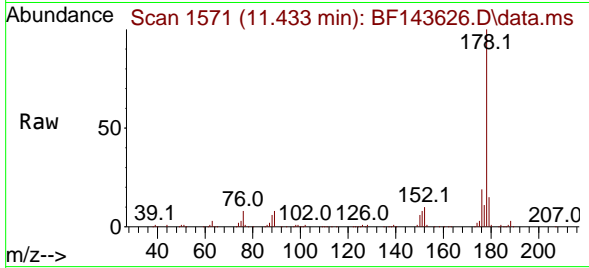
#71
 Phenanthrene
 Concen: 10.239 ng
 RT: 11.433 min Scan# 11
 Delta R.T. -0.006 min
 Lab File: BF143626.D
 Acq: 03 Sep 2025 14:41

Instrument :

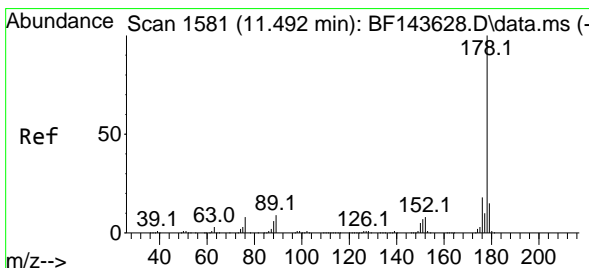
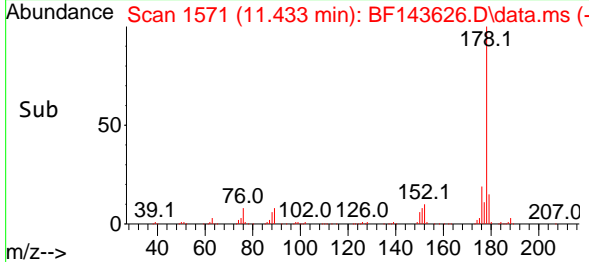
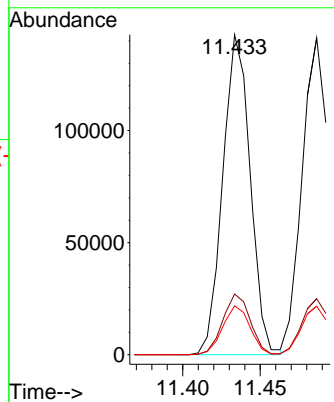
BNA_F

ClientSampleId :

SSTDICC010

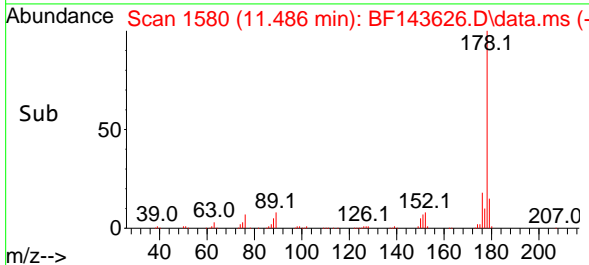
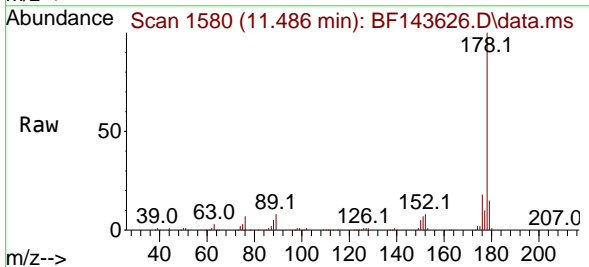
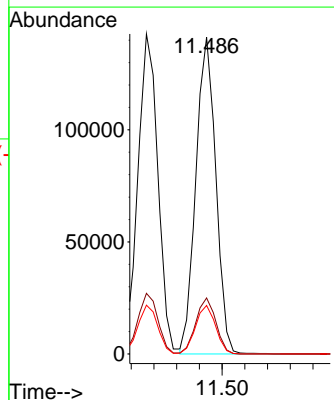


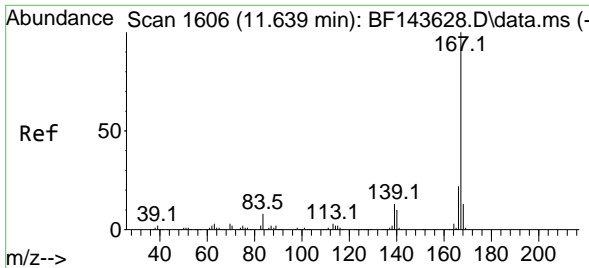
Tgt Ion:178 Resp: 175548
 Ion Ratio Lower Upper
 178 100
 176 18.9 15.4 23.2
 179 15.3 12.4 18.6



#72
 Anthracene
 Concen: 10.042 ng
 RT: 11.486 min Scan# 1580
 Delta R.T. -0.006 min
 Lab File: BF143626.D
 Acq: 03 Sep 2025 14:41

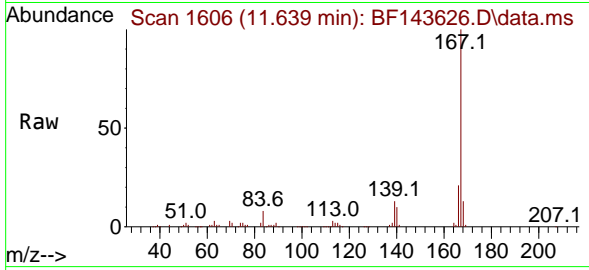
Tgt Ion:178 Resp: 172671
 Ion Ratio Lower Upper
 178 100
 176 17.7 14.6 22.0
 179 15.3 12.3 18.5



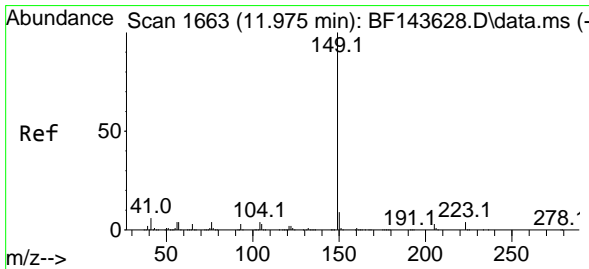
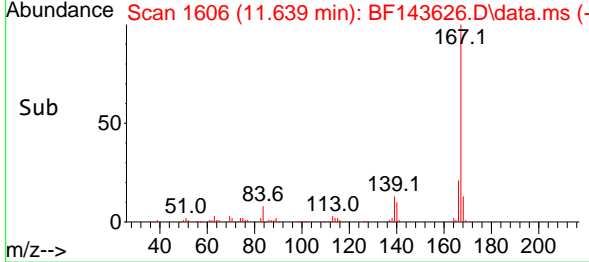
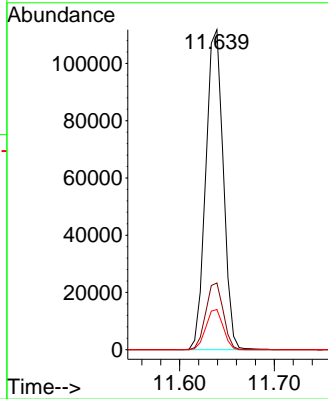


#73
 Carbazole
 Concen: 9.899 ng
 RT: 11.639 min Scan# 1606
 Delta R.T. 0.000 min
 Lab File: BF143626.D
 Acq: 03 Sep 2025 14:41

Instrument : BNA_F
 ClientSampleId : SSTDICC010

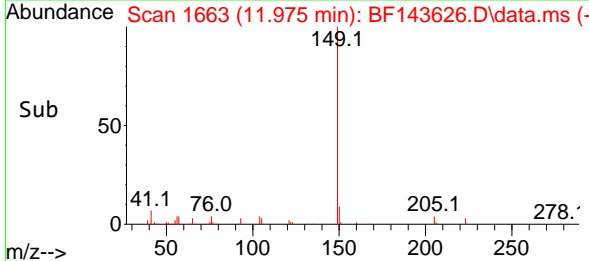
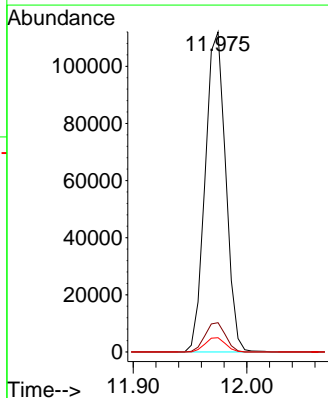
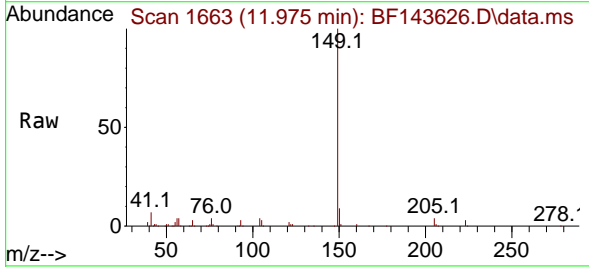


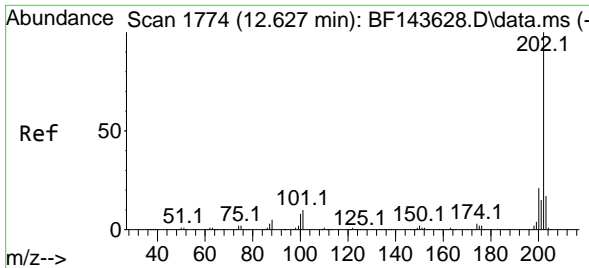
Tgt Ion:167 Resp: 143469
 Ion Ratio Lower Upper
 167 100
 166 20.8 17.3 25.9
 139 12.6 10.3 15.5



#74
 Di-n-butylphthalate
 Concen: 8.613 ng
 RT: 11.975 min Scan# 1663
 Delta R.T. 0.000 min
 Lab File: BF143626.D
 Acq: 03 Sep 2025 14:41

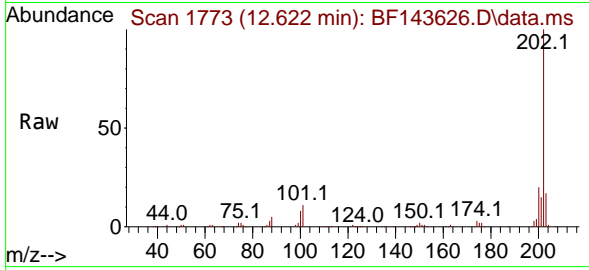
Tgt Ion:149 Resp: 140158
 Ion Ratio Lower Upper
 149 100
 150 9.2 7.4 11.0
 104 4.5 3.5 5.3





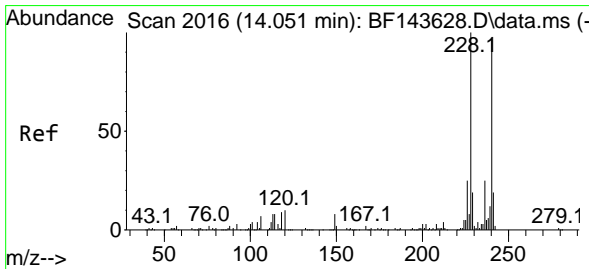
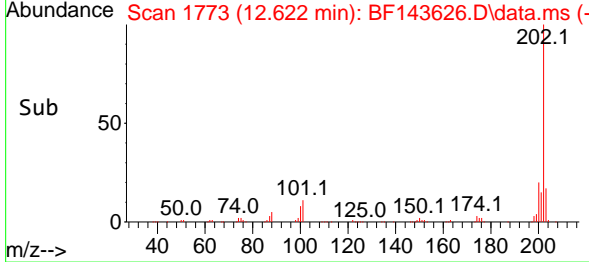
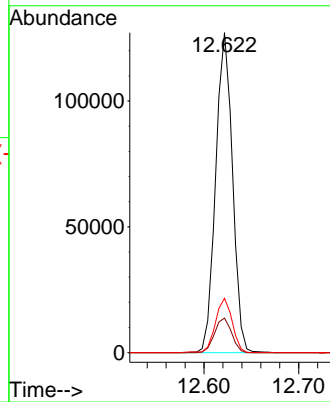
#75
 Fluoranthene
 Concen: 9.956 ng
 RT: 12.622 min Scan# 11
 Delta R.T. -0.006 min
 Lab File: BF143626.D
 Acq: 03 Sep 2025 14:41

Instrument : BNA_F
 Client Sample Id : BF143626.D
 SSTDICC010



Tgt Ion: 202 Resp: 156766

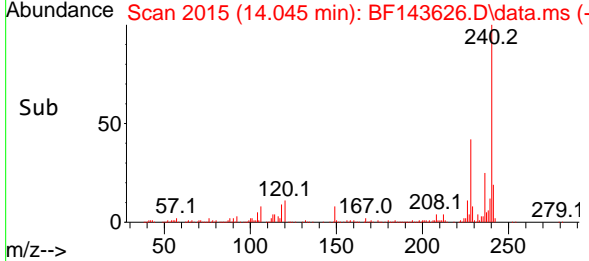
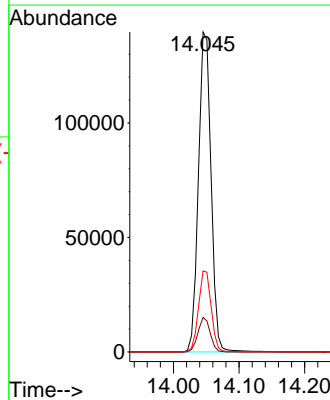
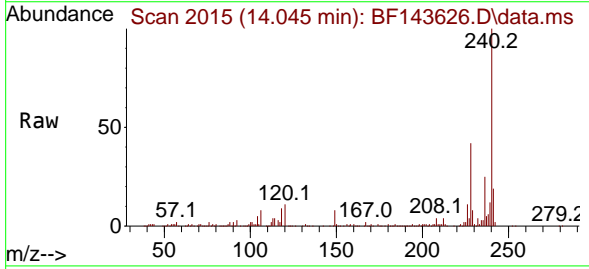
Ion	Ratio	Lower	Upper
202	100		
101	10.8	0.0	30.3
203	17.0	0.0	37.3

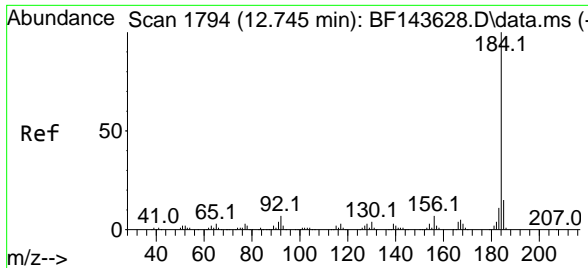


#76
 Chrysene-d12
 Concen: 20.000 ng
 RT: 14.045 min Scan# 2015
 Delta R.T. -0.006 min
 Lab File: BF143626.D
 Acq: 03 Sep 2025 14:41

Tgt Ion: 240 Resp: 187848

Ion	Ratio	Lower	Upper
240	100		
120	10.8	8.0	12.0
236	25.3	20.5	30.7





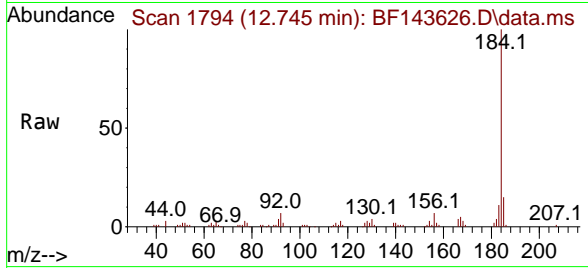
#77
 Benzidine
 Concen: 12.982 ng
 RT: 12.745 min Scan# 11
 Delta R.T. 0.000 min
 Lab File: BF143626.D
 Acq: 03 Sep 2025 14:41

Instrument :

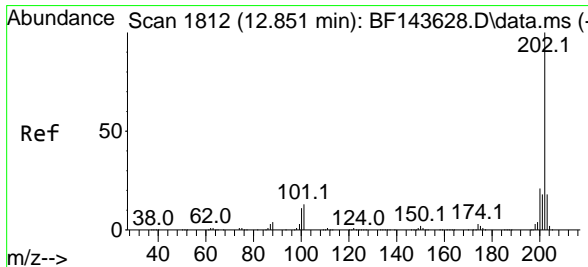
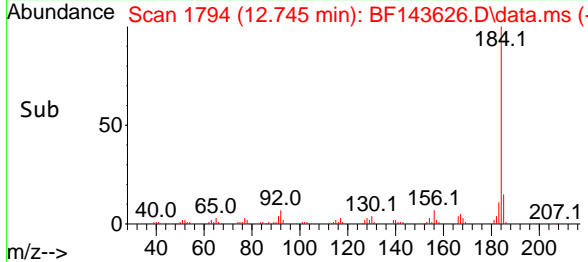
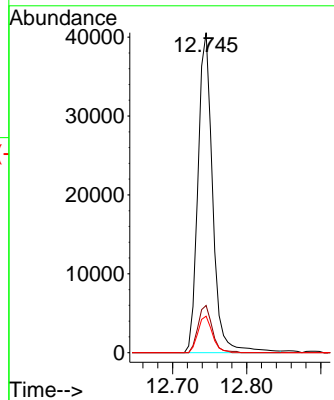
BNA_F

ClientSampleId :

SSTDICC010

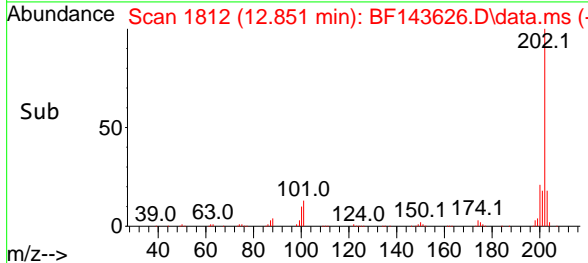
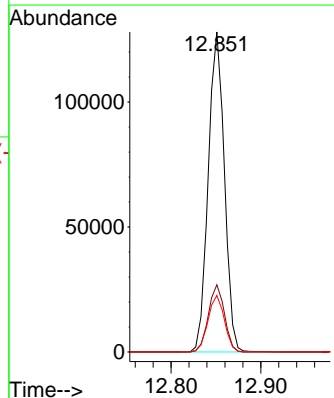
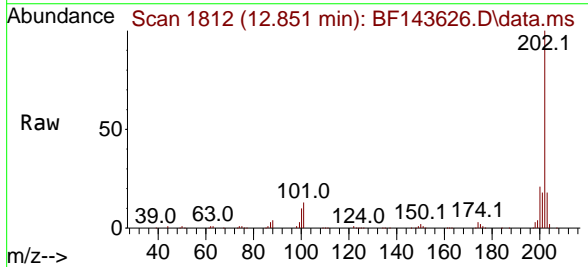


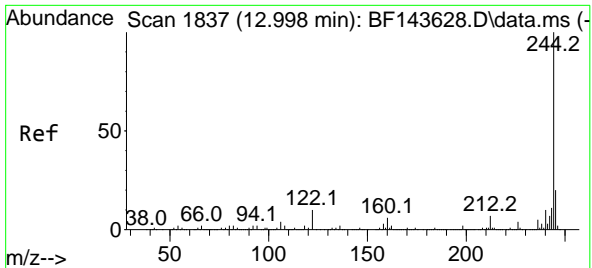
Tgt Ion:184 Resp: 55793
 Ion Ratio Lower Upper
 184 100
 185 14.7 11.8 17.6
 183 11.4 9.0 13.6



#78
 Pyrene
 Concen: 10.321 ng
 RT: 12.851 min Scan# 1812
 Delta R.T. 0.000 min
 Lab File: BF143626.D
 Acq: 03 Sep 2025 14:41

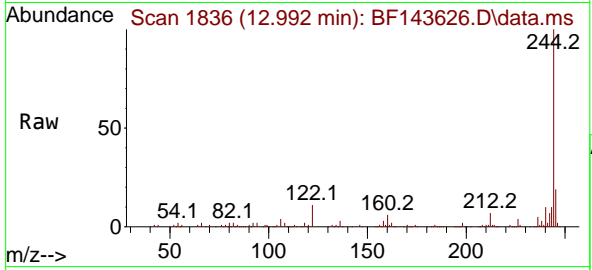
Tgt Ion:202 Resp: 159982
 Ion Ratio Lower Upper
 202 100
 200 21.0 16.7 25.1
 203 17.6 14.0 21.0



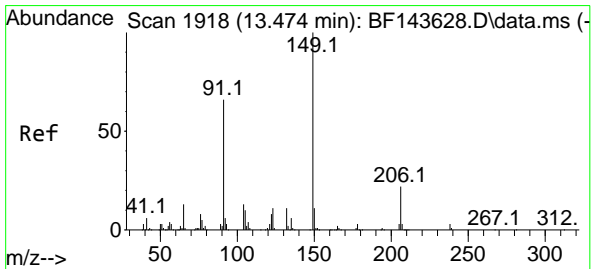
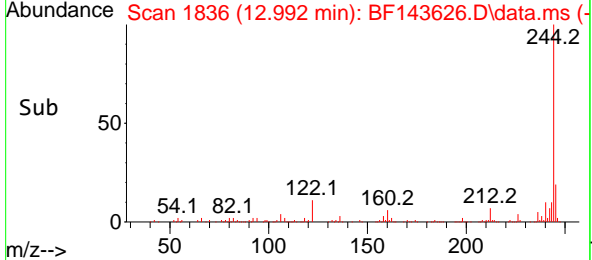
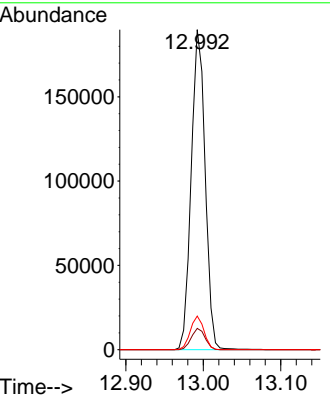


#79
 Terphenyl-d14
 Concen: 21.042 ng
 RT: 12.992 min Scan# 1836
 Delta R.T. -0.006 min
 Lab File: BF143626.D
 Acq: 03 Sep 2025 14:41

Instrument : BNA_F
 ClientSampleId : SSTDICC010

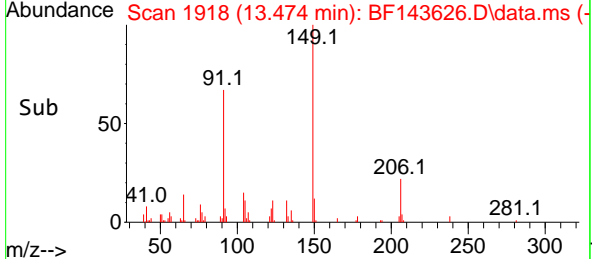
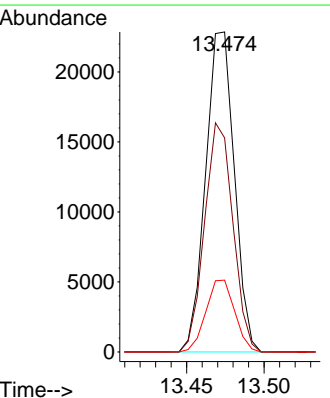
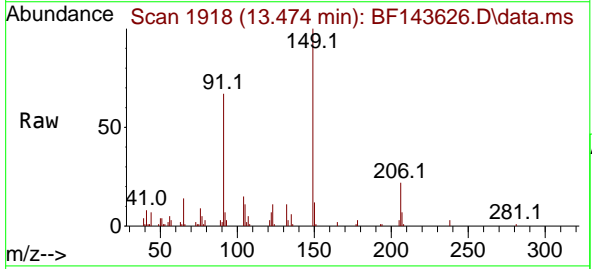


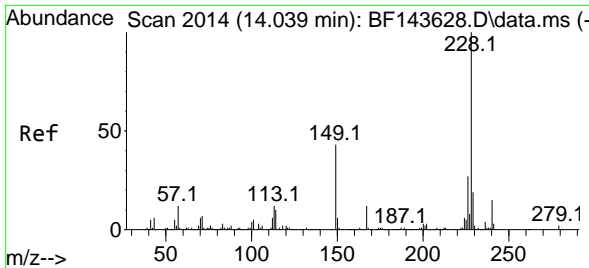
Tgt Ion:244 Resp: 237222
 Ion Ratio Lower Upper
 244 100
 212 6.6 5.3 7.9
 122 10.5 8.3 12.5



#80
 Butylbenzylphthalate
 Concen: 8.863 ng
 RT: 13.474 min Scan# 1918
 Delta R.T. 0.000 min
 Lab File: BF143626.D
 Acq: 03 Sep 2025 14:41

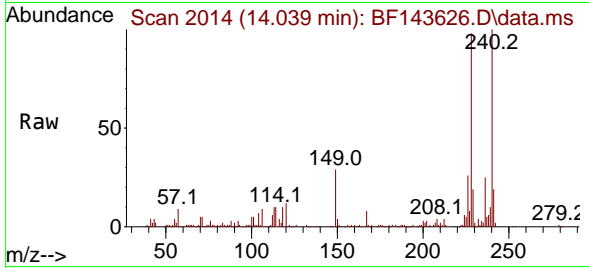
Tgt Ion:149 Resp: 29504
 Ion Ratio Lower Upper
 149 100
 91 66.9 53.0 79.4
 206 22.5 17.4 26.2



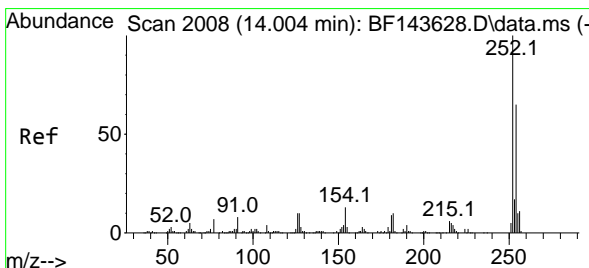
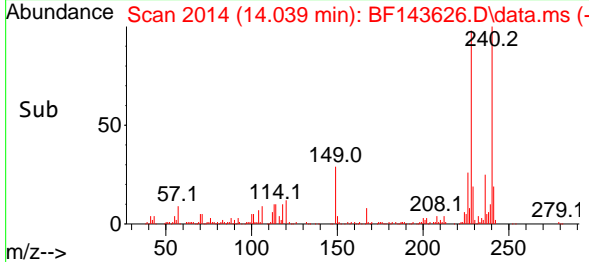
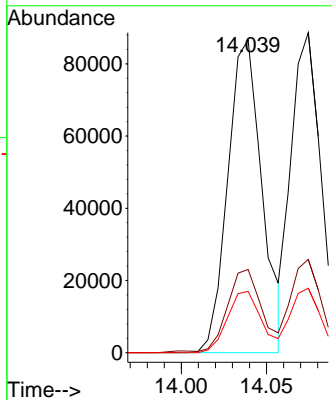


#81
 Benzo(a)anthracene
 Concen: 9.967 ng
 RT: 14.039 min Scan# 2014
 Delta R.T. 0.000 min
 Lab File: BF143626.D
 Acq: 03 Sep 2025 14:41

Instrument :
 BNA_F
 ClientSampleId :
 SSTDICC010

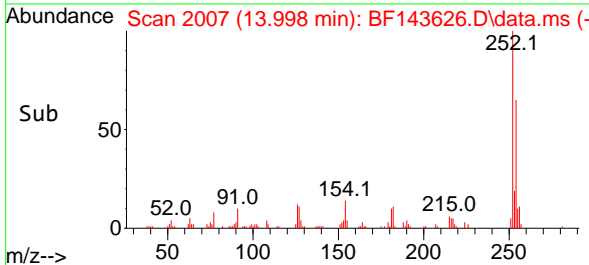
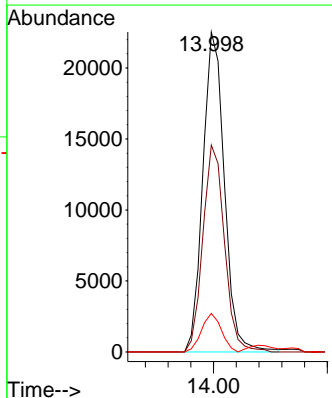
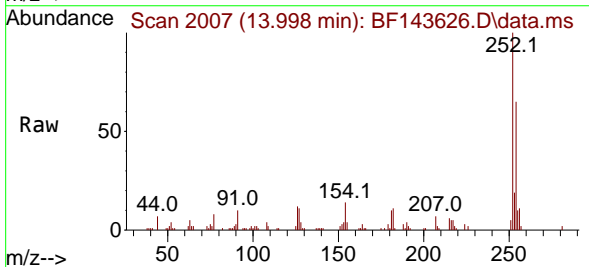


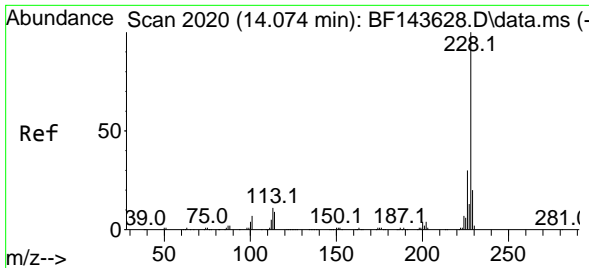
Tgt Ion:228 Resp: 121266
 Ion Ratio Lower Upper
 228 100
 226 26.6 21.4 32.2
 229 19.6 15.5 23.3



#82
 3,3'-Dichlorobenzidine
 Concen: 8.937 ng
 RT: 13.998 min Scan# 2007
 Delta R.T. -0.006 min
 Lab File: BF143626.D
 Acq: 03 Sep 2025 14:41

Tgt Ion:252 Resp: 29643
 Ion Ratio Lower Upper
 252 100
 254 64.6 52.2 78.2
 126 12.1 8.1 12.1



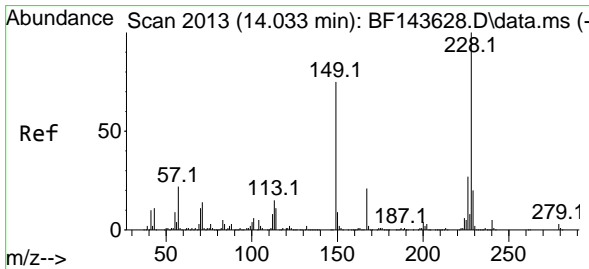
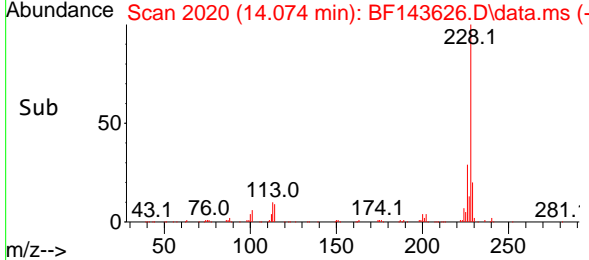
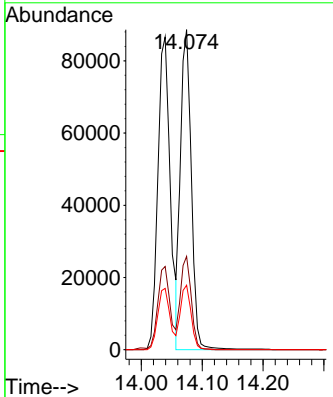
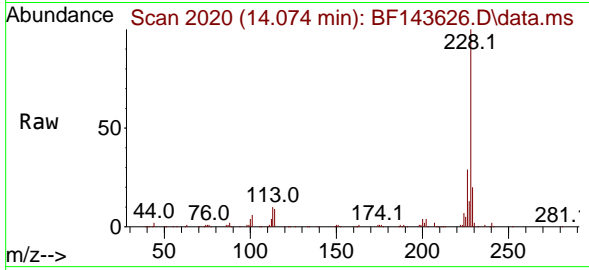


#83
 Chrysene
 Concen: 10.020 ng
 RT: 14.074 min Scan# 20
 Delta R.T. 0.000 min
 Lab File: BF143626.D
 Acq: 03 Sep 2025 14:41

Instrument : BNA_F
 ClientSampleId : SSTDICC010

Tgt Ion: 228 Resp: 109586

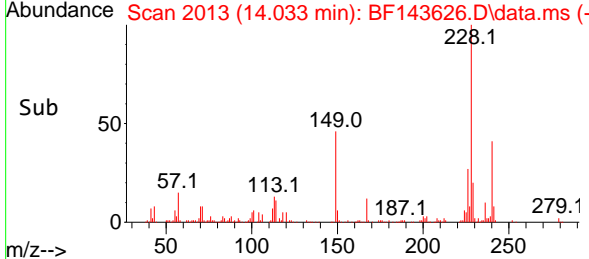
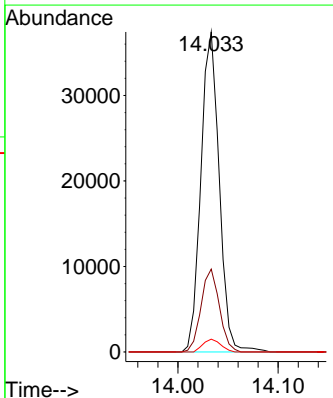
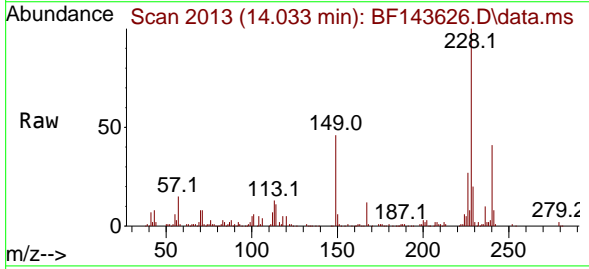
Ion	Ratio	Lower	Upper
228	100		
226	29.2	23.8	35.6
229	20.1	15.8	23.6

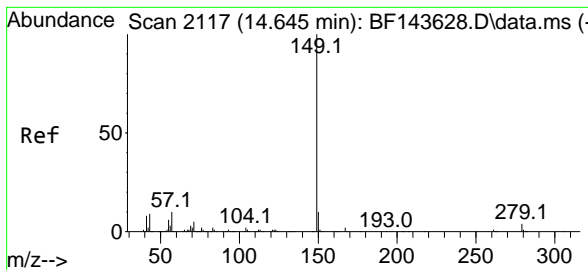


#84
 Bis(2-ethylhexyl)phthalate
 Concen: 9.352 ng
 RT: 14.033 min Scan# 2013
 Delta R.T. 0.000 min
 Lab File: BF143626.D
 Acq: 03 Sep 2025 14:41

Tgt Ion: 149 Resp: 47628

Ion	Ratio	Lower	Upper
149	100		
167	25.9	22.1	33.1
279	4.0	3.4	5.2





#85
 Di-n-octyl phthalate
 Concen: 6.829 ng
 RT: 14.645 min Scan# 2117
 Delta R.T. 0.000 min
 Lab File: BF143626.D
 Acq: 03 Sep 2025 14:41

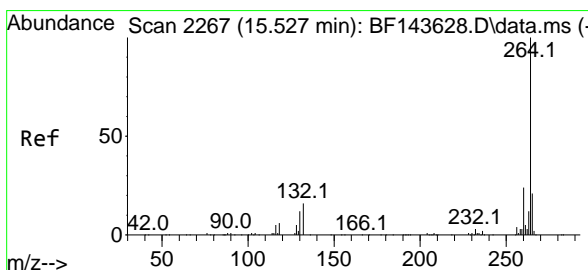
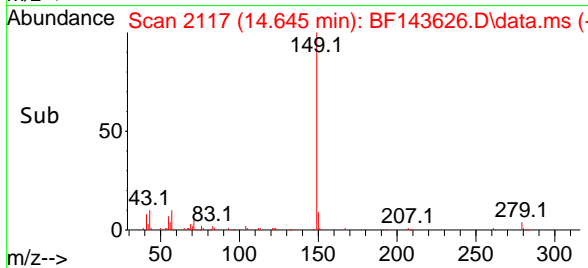
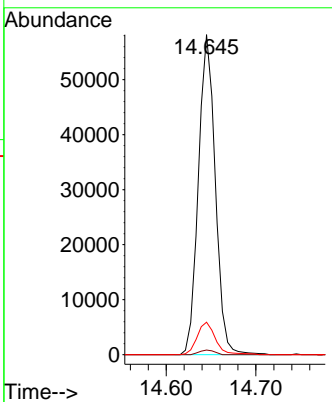
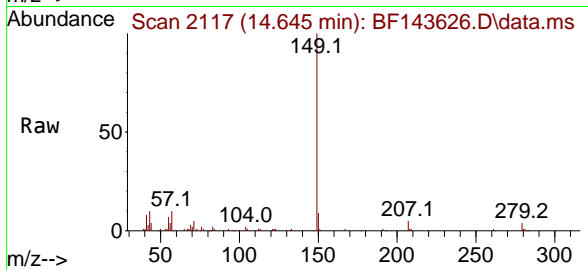
Instrument :

BNA_F

ClientSampleId :

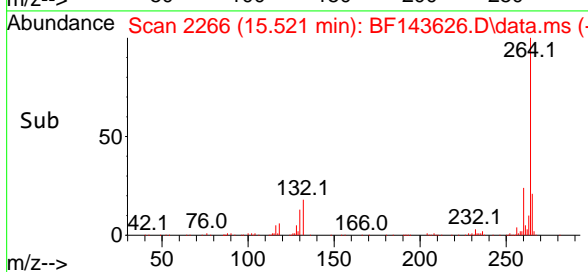
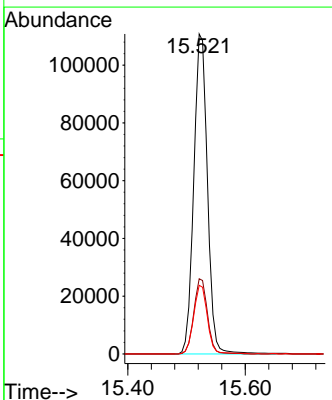
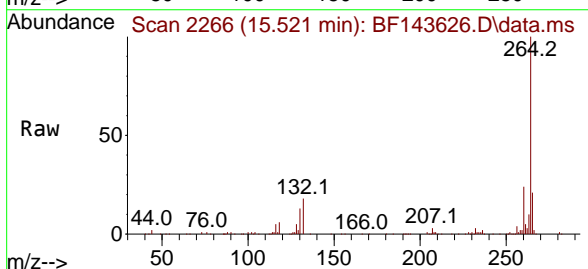
SSTDICC010

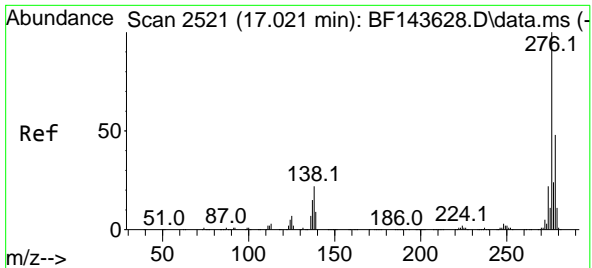
Tgt Ion:149 Resp: 76107
 Ion Ratio Lower Upper
 149 100
 167 1.3 1.2 1.8
 43 11.0 7.8 11.8



#86
 Perylene-d12
 Concen: 20.000 ng
 RT: 15.521 min Scan# 2266
 Delta R.T. -0.006 min
 Lab File: BF143626.D
 Acq: 03 Sep 2025 14:41

Tgt Ion:264 Resp: 178940
 Ion Ratio Lower Upper
 264 100
 260 23.5 18.9 28.3
 265 21.5 17.1 25.7





#87
 Indeno(1,2,3-cd)pyrene
 Concen: 9.849 ng
 RT: 17.004 min Scan# 2119
 Delta R.T. -0.018 min
 Lab File: BF143626.D
 Acq: 03 Sep 2025 14:41

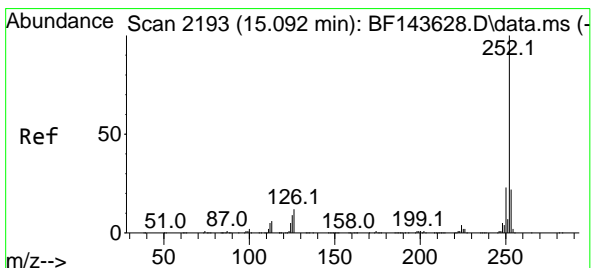
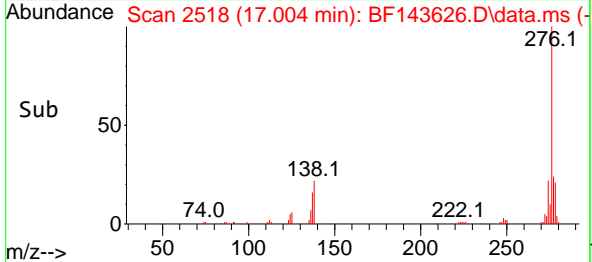
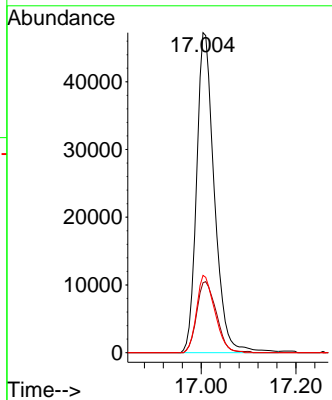
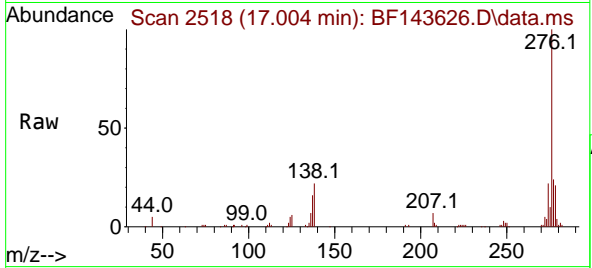
Instrument :

BNA_F

ClientSampleId :

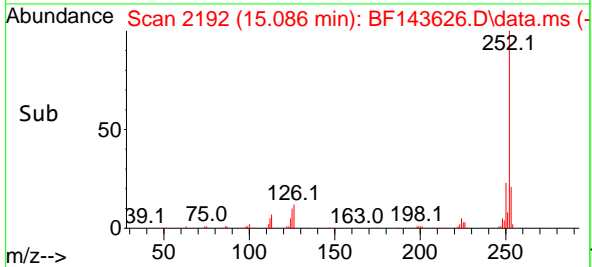
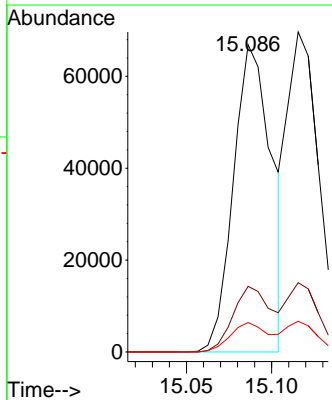
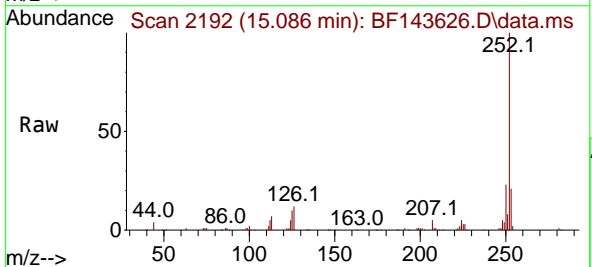
SSTDIC010

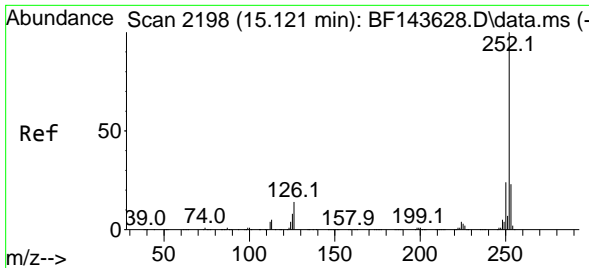
Tgt Ion:276 Resp: 122861
 Ion Ratio Lower Upper
 276 100
 138 24.4 19.8 29.6
 277 24.8 20.1 30.1



#88
 Benzo(b)fluoranthene
 Concen: 9.677 ng
 RT: 15.086 min Scan# 2192
 Delta R.T. -0.006 min
 Lab File: BF143626.D
 Acq: 03 Sep 2025 14:41

Tgt Ion:252 Resp: 104333
 Ion Ratio Lower Upper
 252 100
 253 21.3 17.2 25.8
 125 9.6 7.4 11.2





#89
 Benzo(k)fluoranthene
 Concen: 9.801 ng
 RT: 15.116 min Scan# 2197
 Delta R.T. -0.006 min
 Lab File: BF143626.D
 Acq: 03 Sep 2025 14:41

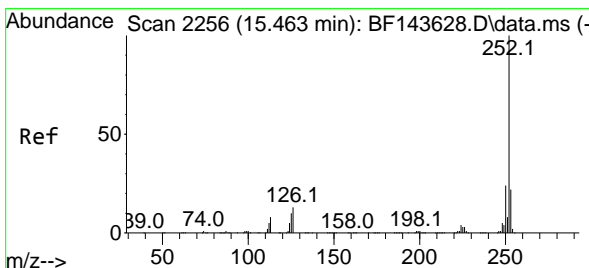
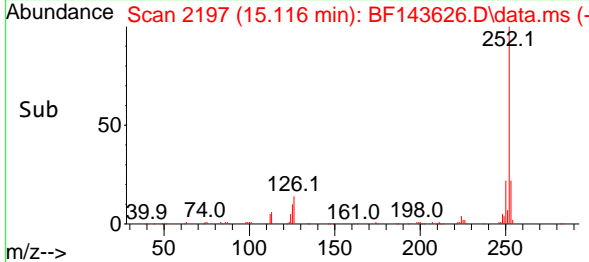
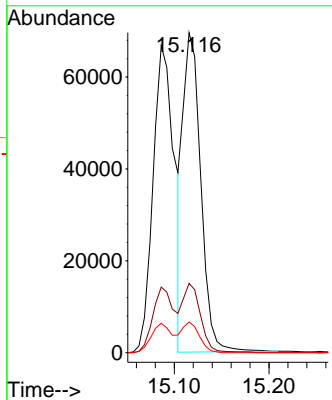
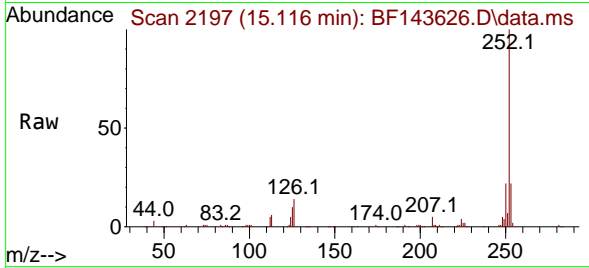
Instrument :

BNA_F

ClientSampleId :

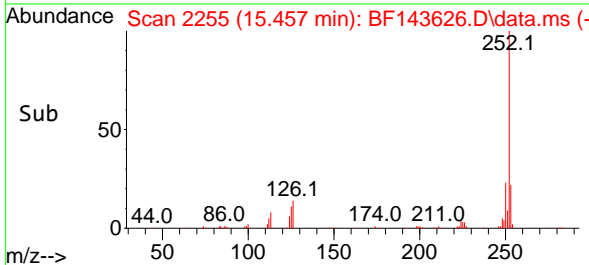
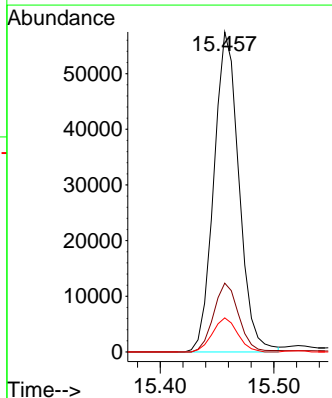
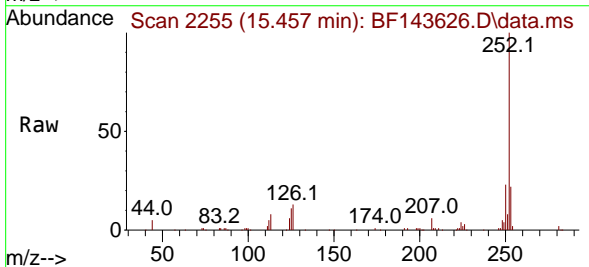
SSTDICC010

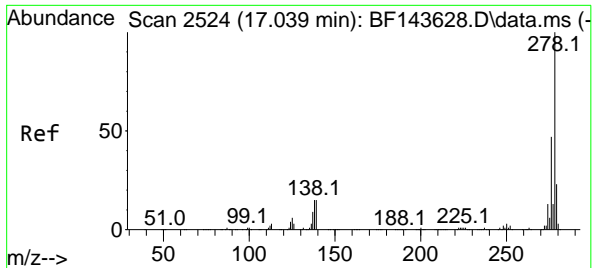
Tgt Ion:252 Resp: 91382
 Ion Ratio Lower Upper
 252 100
 253 21.7 17.8 26.6
 125 9.6 7.3 10.9



#90
 Benzo(a)pyrene
 Concen: 9.523 ng
 RT: 15.457 min Scan# 2255
 Delta R.T. -0.006 min
 Lab File: BF143626.D
 Acq: 03 Sep 2025 14:41

Tgt Ion:252 Resp: 88250
 Ion Ratio Lower Upper
 252 100
 253 21.5 17.4 26.2
 125 10.6 8.3 12.5





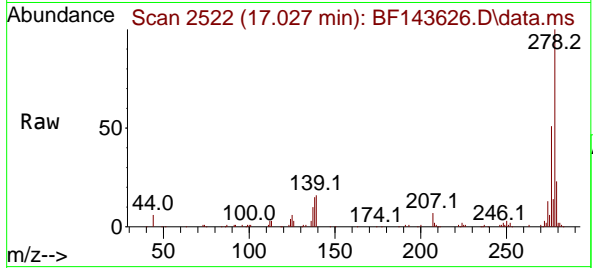
#91
 Dibenzo(a,h)anthracene
 Concen: 10.033 ng
 RT: 17.027 min Scan# 21
 Delta R.T. -0.012 min
 Lab File: BF143626.D
 Acq: 03 Sep 2025 14:41

Instrument :

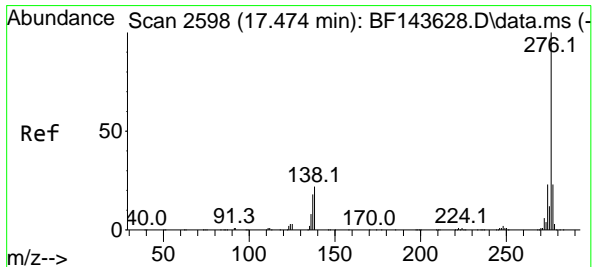
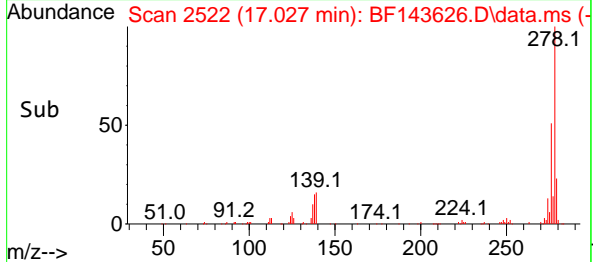
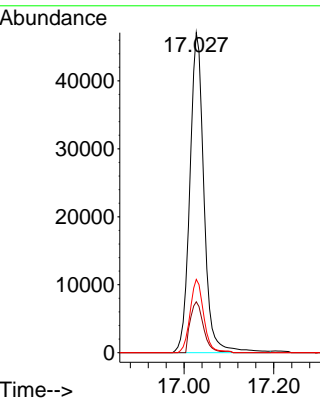
BNA_F

ClientSampleId :

SSTDIC010



Tgt Ion:278 Resp: 102946
 Ion Ratio Lower Upper
 278 100
 139 15.9 12.4 18.6
 279 22.9 18.7 28.1



#92
 Benzo(g,h,i)perylene
 Concen: 9.887 ng
 RT: 17.457 min Scan# 2595
 Delta R.T. -0.018 min
 Lab File: BF143626.D
 Acq: 03 Sep 2025 14:41

Tgt Ion:276 Resp: 97725
 Ion Ratio Lower Upper
 276 100
 277 24.4 18.7 28.1
 138 21.4 17.2 25.8

