

Data Path : Z:\HPCHEM1\BNA F\DATA\BF090415\
 Data File : BF081468.D
 Acq On : 5 Sep 2015 16:50
 Operator : UM/IZ
 Sample : G3559-02
 Misc :
 ALS Vial : 47 Sample Multiplier: 1

Instrument :
 BNA_F
 ClientSampleId :

Quant Time: Sep 07 02:51:01 2015
 Quant Method : Z:\HPCHEM1\BNA F\METHODS\8270-BF090115.M
 Quant Title : ASP BNA STANDARDS FOR 5 POINT CALIBRATION
 QLast Update : Mon Sep 07 02:47:26 2015
 Response via : Initial Calibration

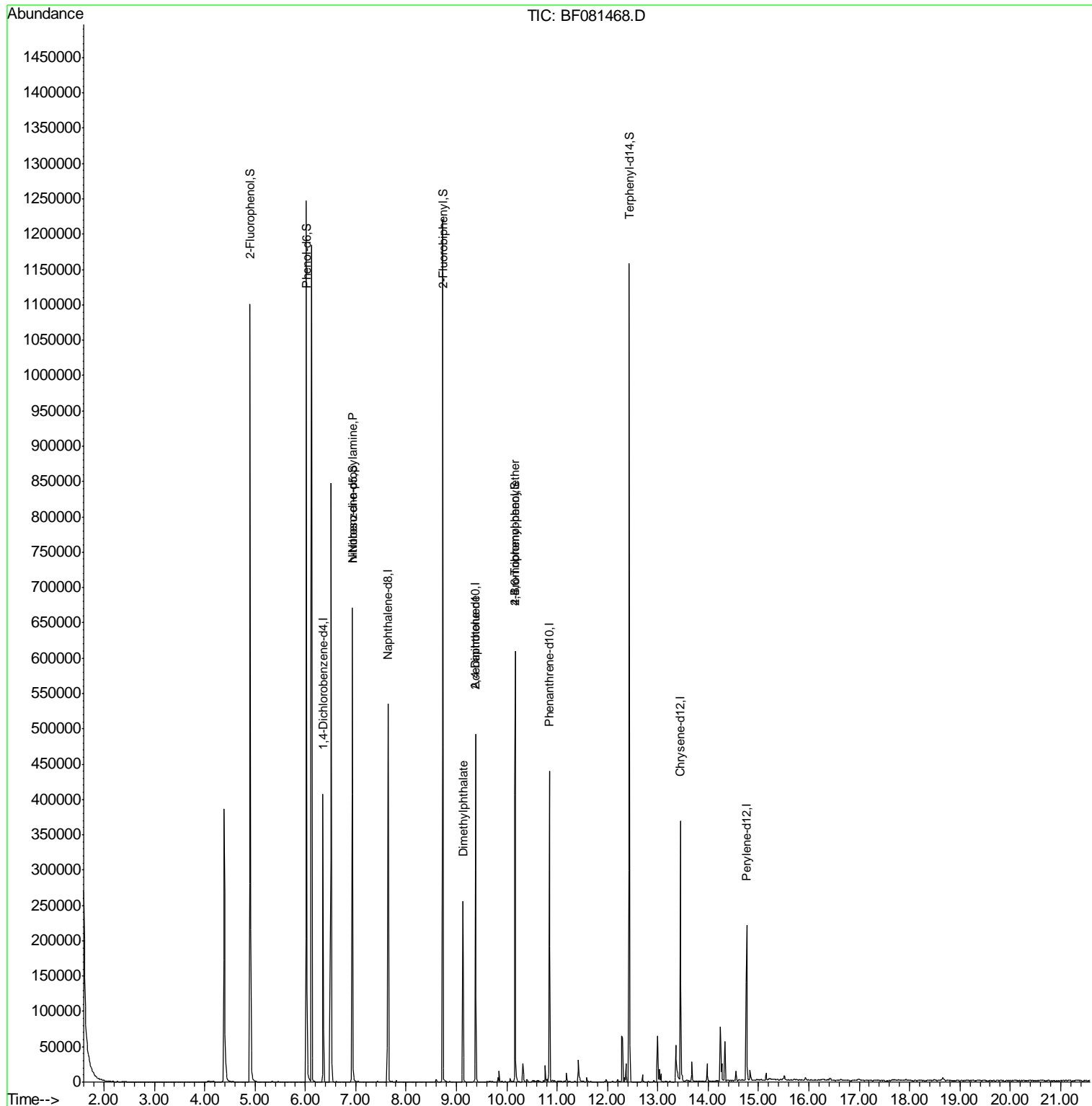
Internal Standards	R.T.	QIon	Response	Conc	Units	Dev(Min)
1) 1,4-Dichlorobenzene-d4	6.35	152	53846	20.00	ng	-0.01
21) Naphthalene-d8	7.64	136	209844	20.00	ng	-0.01
38) Acenaphthene-d10	9.38	164	95174	20.00	ng	-0.01
63) Phenanthrene-d10	10.85	188	181767	20.00	ng	-0.01
75) Chrysene-d12	13.45	240	140478	20.00	ng	-0.01
86) Perylene-d12	14.77	264	105740	20.00	ng	0.00
System Monitoring Compounds						
5) 2-Fluorophenol	4.90	112	291312	83.94	ng	0.01
7) Phenol-d6	6.02	99	367232	79.94	ng	-0.01
23) Nitrobenzene-d5	6.94	82	257422	59.19	ng	-0.01
41) 2,4,6-Tribromophenol	10.17	330	79877	94.26	ng	-0.01
44) 2-Fluorobiphenyl	8.73	172	409890	55.19	ng	0.00
78) Terphenyl-d14	12.43	244	336694	55.79	ng	0.00
Target Compounds						
19) n-Nitroso-di-n-propylamine	6.94	70	33578	10.74	ng	# 60
49) Dimethylphthalate	9.13	163	89420	12.09	ng	# 97
56) 2,4-Dinitrotoluene	9.38	165	12017	5.62	ng	# 31
66) 4-Bromophenyl-phenylether	10.17	248	5634	3.07	ng	# 1

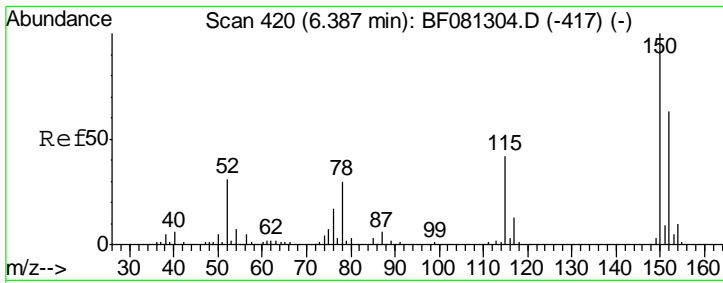
(#) = qualifier out of range (m) = manual integration (+) = signals summed

Data Path : Z:\HPCHEM1\BNA F\DATA\BF090415\
 Data File : BF081468.D
 Acq On : 5 Sep 2015 16:50
 Operator : UM/IZ
 Sample : G3559-02
 Misc :
 ALS Vial : 47 Sample Multiplier: 1

Instrument :
 BNA_F
 ClientSampled :

Quant Time: Sep 07 02:51:01 2015
 Quant Method : Z:\HPCHEM1\BNA F\METHODS\8270-BF090115.M
 Quant Title : ASP BNA STANDARDS FOR 5 POINT CALIBRATION
 QLast Update : Mon Sep 07 02:47:26 2015
 Response via : Initial Calibration

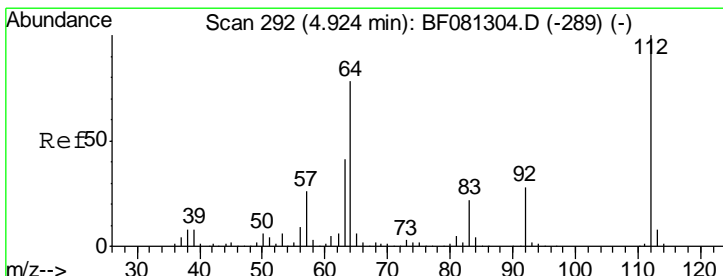
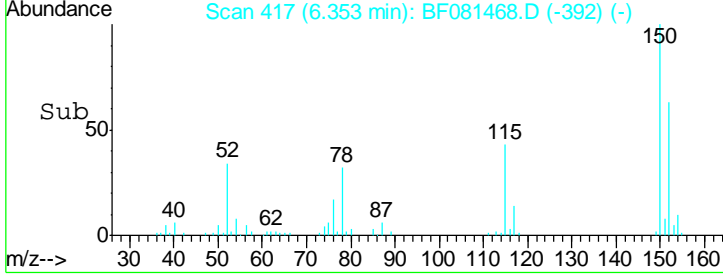
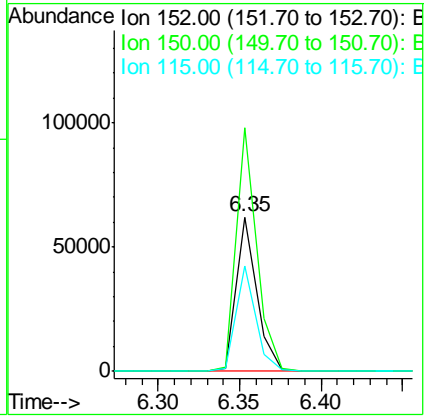
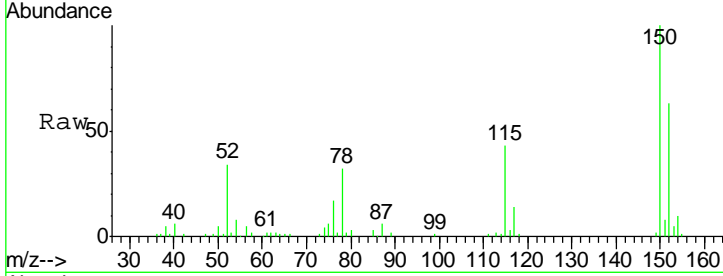




#1
 1,4-Dichlorobenzene-d4
 Concen: 20.00 ng
 RT: 6.35 min Scan# 417
 Delta R.T. -0.01 min
 Lab File: BF081468.D
 Acq: 5 Sep 2015 16:50

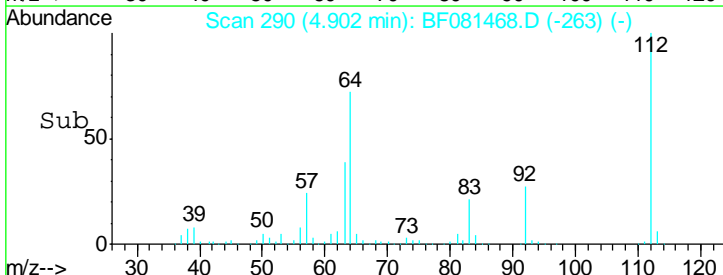
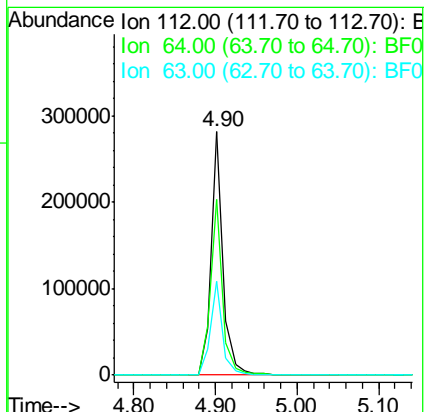
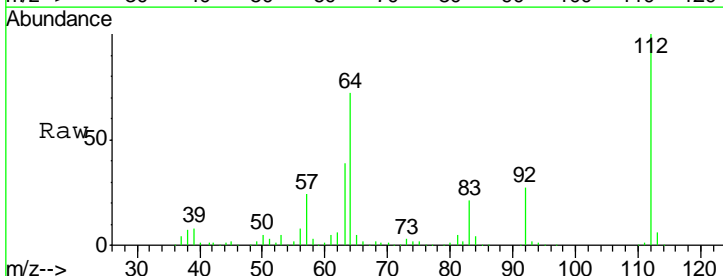
Instrument :
 BNA_F
 ClientSampled :

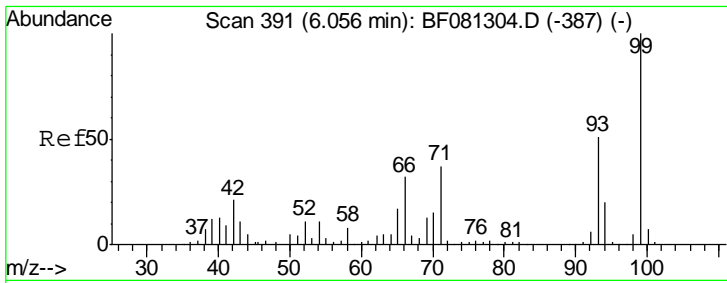
Tgt Ion	Resp	Lower	Upper
152	53846		
150	157.9	124.7	187.1
115	68.2	39.0	58.4



#5
 2-Fluorophenol
 Concen: 83.94 ng
 RT: 4.90 min Scan# 290
 Delta R.T. 0.01 min
 Lab File: BF081468.D
 Acq: 5 Sep 2015 16:50

Tgt Ion	Resp	Lower	Upper
112	291312		
64	72.0	39.7	59.5
63	38.8	17.4	26.0

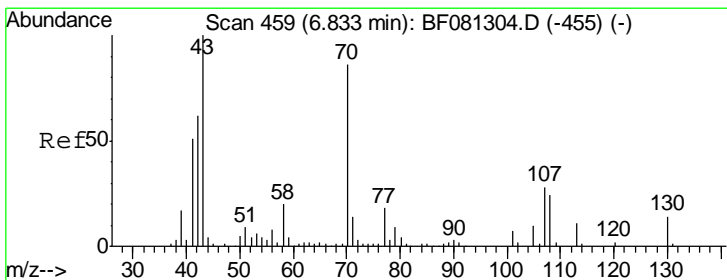
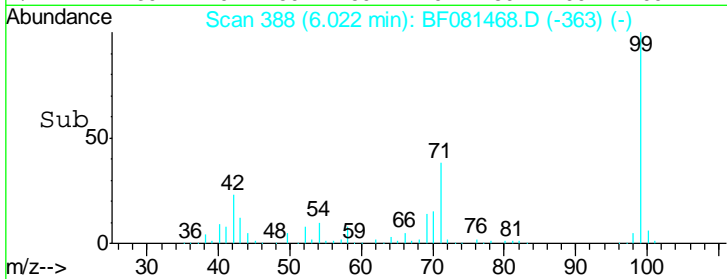
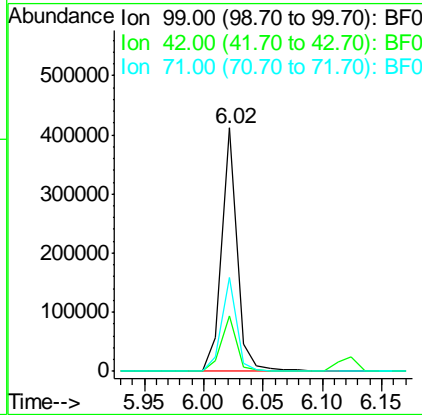
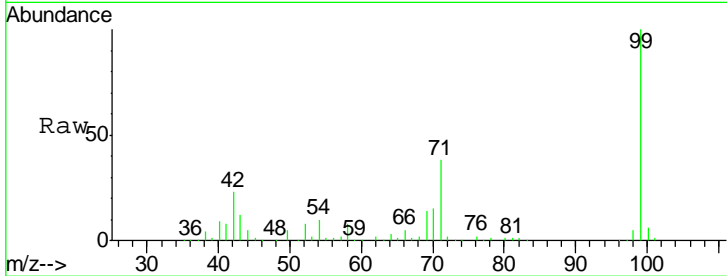




#7
 Phenol-d6
 Concen: 79.94 ng
 RT: 6.02 min Scan# 388
 Delta R.T. -0.01 min
 Lab File: BF081468.D
 Acq: 5 Sep 2015 16:50

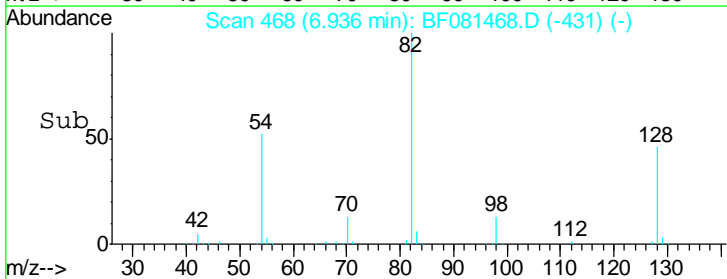
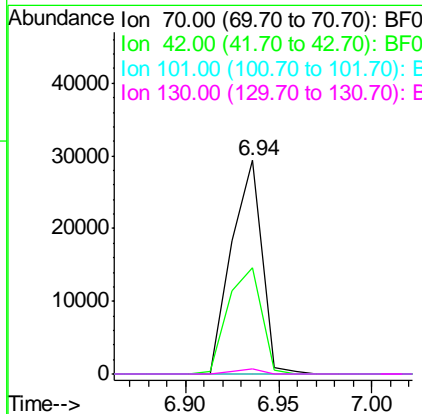
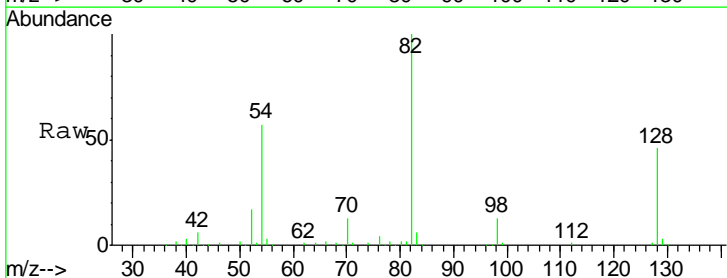
Instrument :
 BNA_F
 ClientSampled :

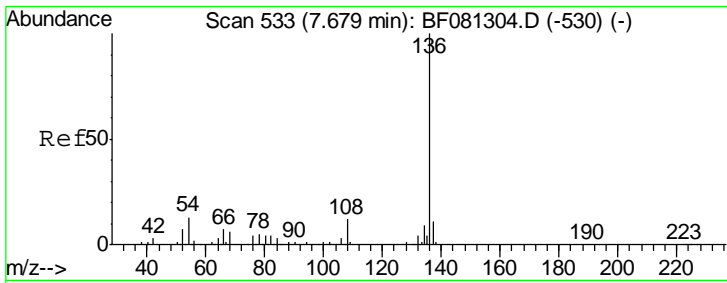
Tgt Ion	Resp	Lower	Upper
99	367232		
42	23.0	13.7	20.5#
71	38.3	14.2	21.2#



#19
 n-Nitroso-di-n-propylamine
 Concen: 10.74 ng
 RT: 6.94 min Scan# 468
 Delta R.T. 0.13 min
 Lab File: BF081468.D
 Acq: 5 Sep 2015 16:50

Tgt Ion	Resp	Lower	Upper
70	33578		
42	49.5	63.8	95.6#
101	0.0	9.2	13.8#
130	2.2	27.3	40.9#

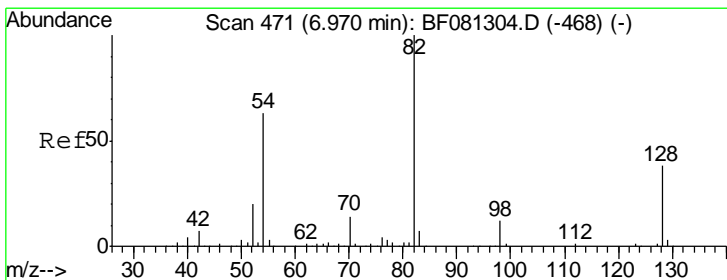
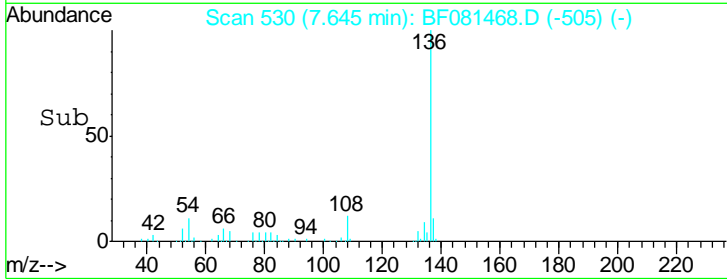
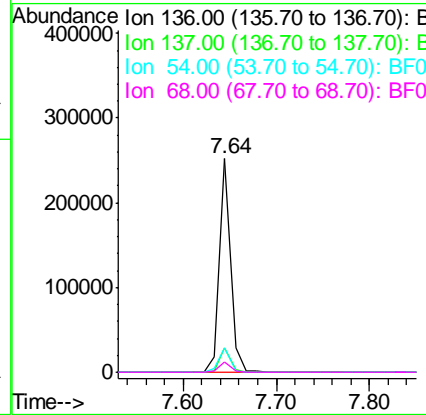
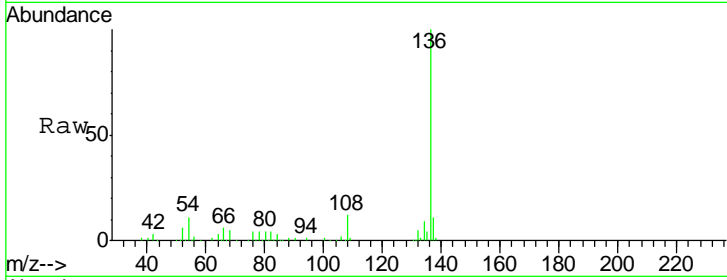




#21
 Naphthalene-d8
 Concen: 20.00 ng
 RT: 7.64 min Scan# 530
 Delta R.T. -0.01 min
 Lab File: BF081468.D
 Acq: 5 Sep 2015 16:50

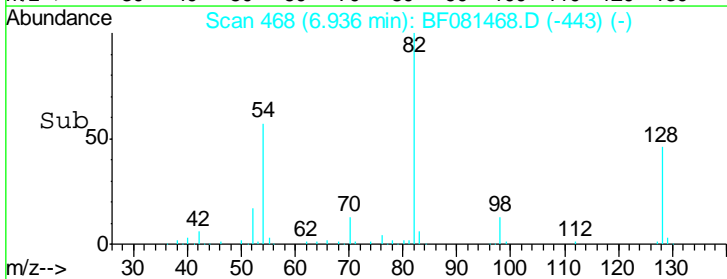
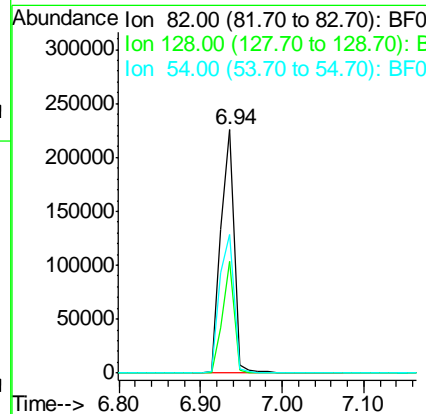
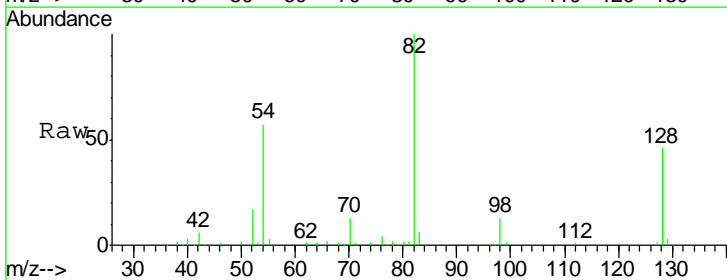
Instrument :
 BNA_F
 ClientSampled :

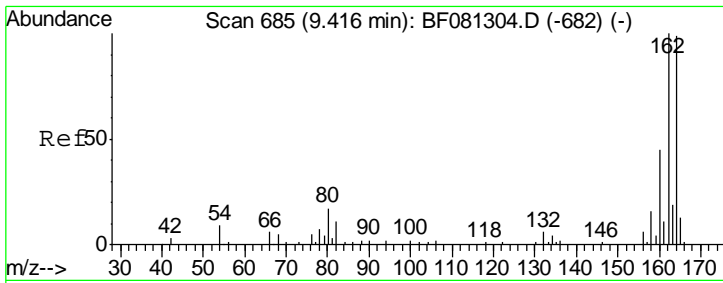
Tgt Ion	Resp	Lower	Upper
136	100		
137	11.2	9.0	13.6
54	11.4	8.2	12.2
68	5.0	5.8	8.6#



#23
 Nitrobenzene-d5
 Concen: 59.19 ng
 RT: 6.94 min Scan# 468
 Delta R.T. -0.01 min
 Lab File: BF081468.D
 Acq: 5 Sep 2015 16:50

Tgt Ion	Resp	Lower	Upper
82	100		
128	45.9	51.0	76.6#
54	57.1	47.5	71.3

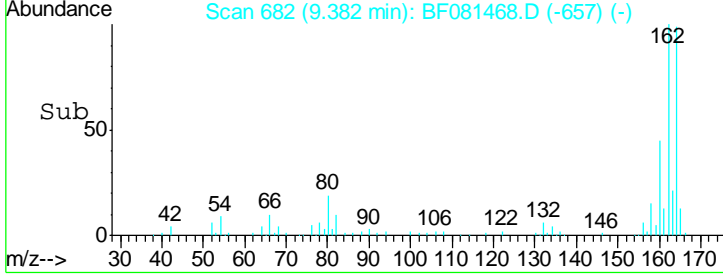
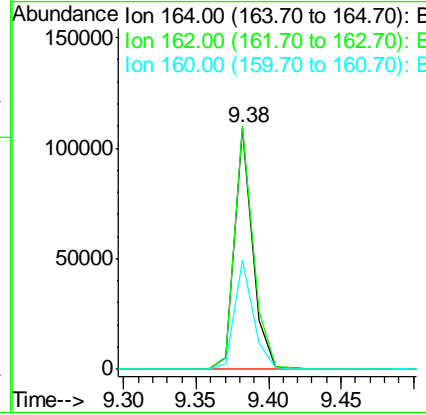
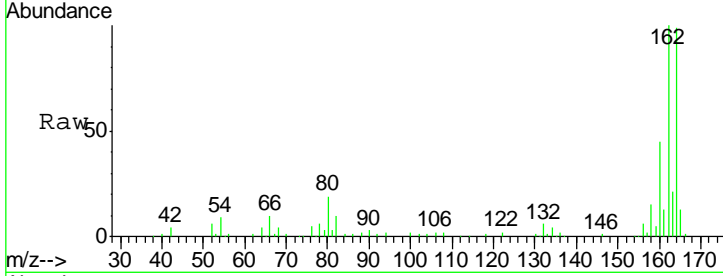




#38
 Acenaphthene-d10
 Concen: 20.00 ng
 RT: 9.38 min Scan# 682
 Delta R.T. -0.01 min
 Lab File: BF081468.D
 Acq: 5 Sep 2015 16:50

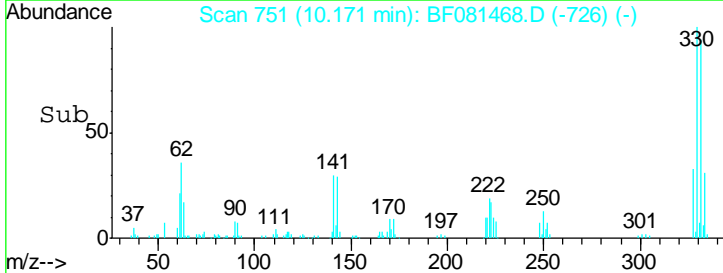
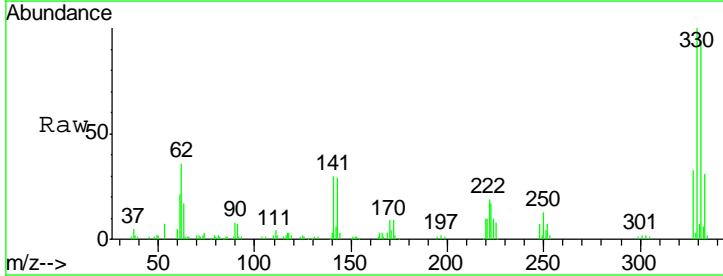
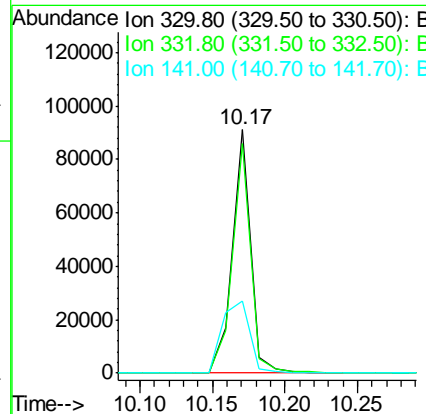
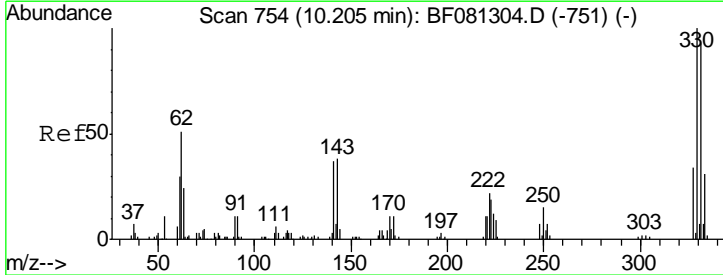
Instrument :
 BNA_F
 ClientSampled :

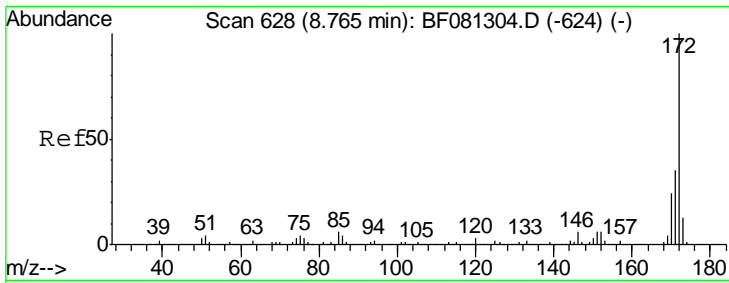
Tgt Ion	Resp	Lower	Upper
164	100		
162	101.0	75.2	112.8
160	45.2	31.5	47.3



#41
 2,4,6-Tribromophenol
 Concen: 94.26 ng
 RT: 10.17 min Scan# 751
 Delta R.T. -0.01 min
 Lab File: BF081468.D
 Acq: 5 Sep 2015 16:50

Tgt Ion	Resp	Lower	Upper
330	100		
332	94.3	76.6	114.8
141	44.3	29.7	44.5

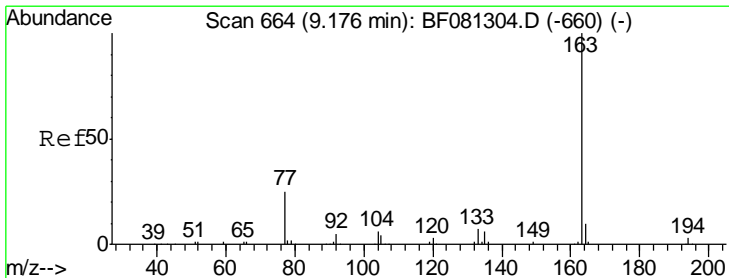
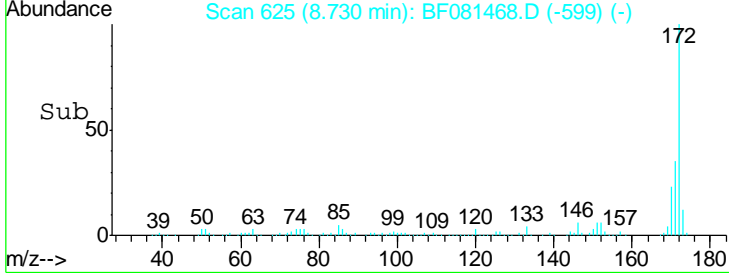
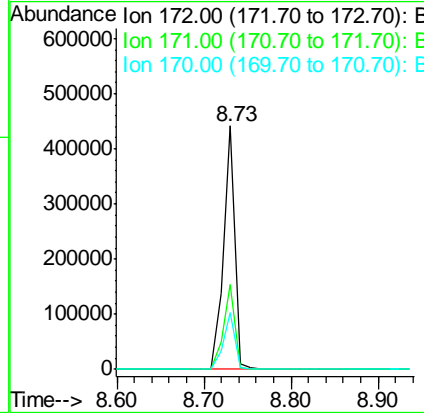
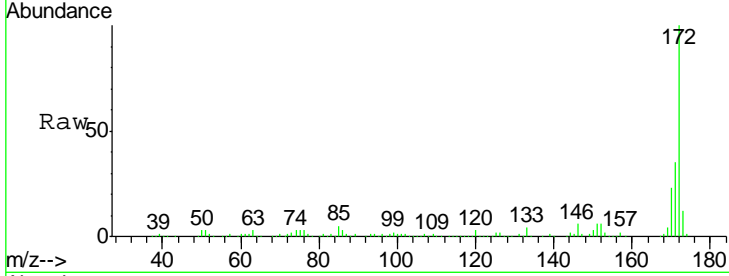




#44
 2-Fluorobiphenyl
 Concen: 55.19 ng
 RT: 8.73 min Scan# 625
 Delta R.T. 0.00 min
 Lab File: BF081468.D
 Acq: 5 Sep 2015 16:50

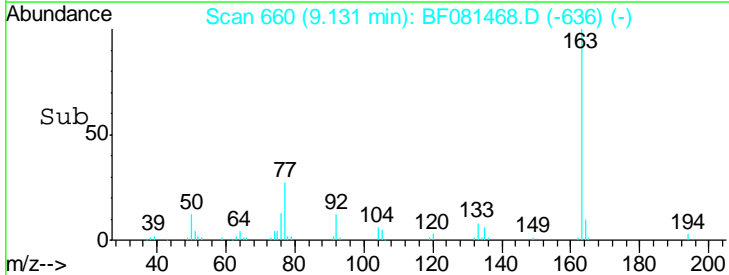
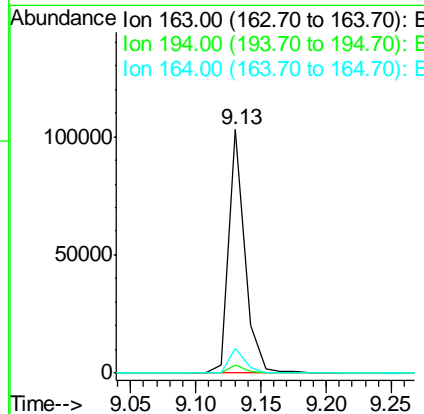
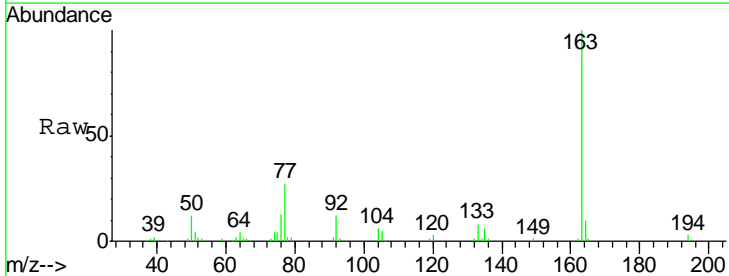
Instrument :
 BNA_F
 ClientSampled :

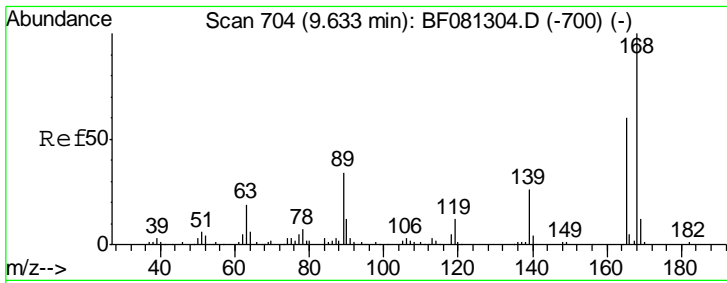
Tgt Ion	Resp	Lower	Upper
172	409890		
171	100	26.1	39.1
170	34.8	17.4	26.2



#49
 Dimethylphthalate
 Concen: 12.09 ng
 RT: 9.13 min Scan# 660
 Delta R.T. -0.02 min
 Lab File: BF081468.D
 Acq: 5 Sep 2015 16:50

Tgt Ion	Resp	Lower	Upper
163	89420		
194	100	4.4	6.6#
164	3.3	8.3	12.5

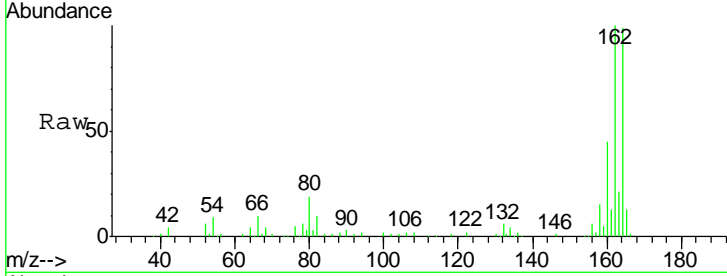




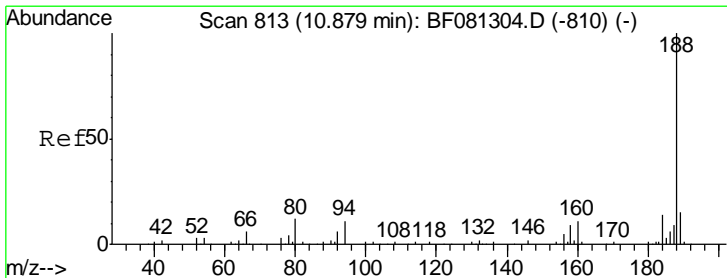
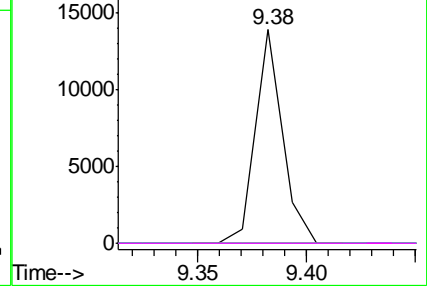
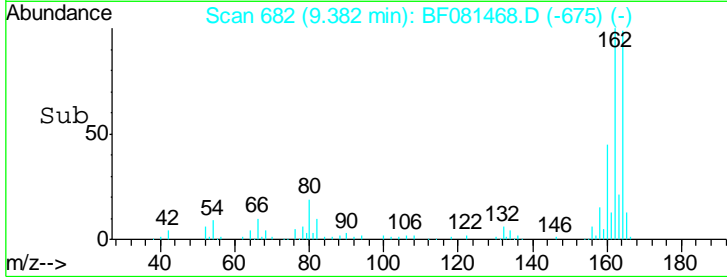
#56
 2,4-Dinitrotoluene
 Concen: 5.62 ng
 RT: 9.38 min Scan# 682
 Delta R.T. -0.22 min
 Lab File: BF081468.D
 Acq: 5 Sep 2015 16:50

Instrument :
 BNA_F
 ClientSampled :

Tgt Ion	Resp	Lower	Upper
165	100		
63	0.0	29.8	44.6#
89	0.0	44.5	66.7#
182	0.0	3.0	4.4#

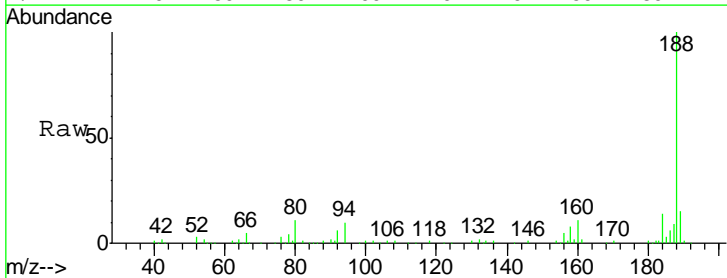


Abundance Ion 165.00 (164.70 to 165.70): E
 Ion 63.00 (62.70 to 63.70): BF0
 Ion 89.00 (88.70 to 89.70): BF0
 Ion 182.00 (181.70 to 182.70): E

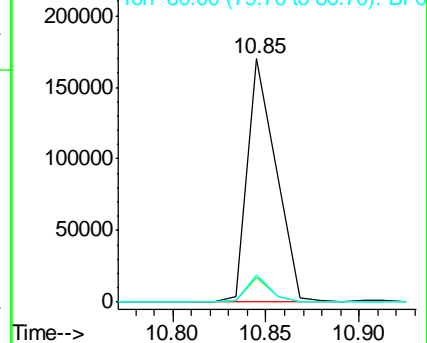
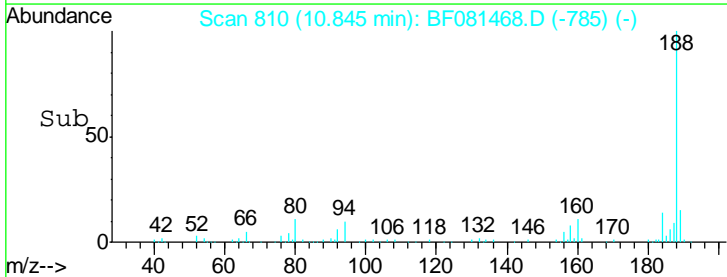


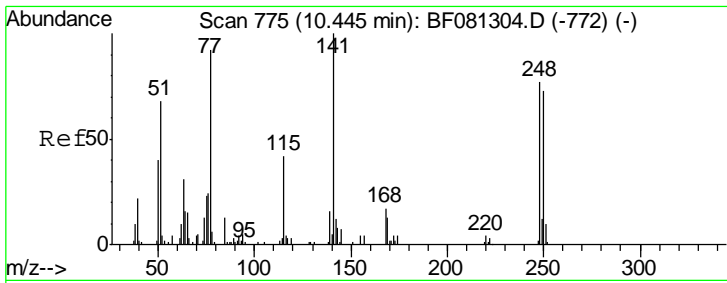
#63
 Phenanthrene-d10
 Concen: 20.00 ng
 RT: 10.85 min Scan# 810
 Delta R.T. -0.01 min
 Lab File: BF081468.D
 Acq: 5 Sep 2015 16:50

Tgt Ion	Resp	Lower	Upper
188	100		
94	10.3	11.1	16.7#
80	11.4	11.0	16.4



Abundance Ion 188.00 (187.70 to 188.70): E
 Ion 94.00 (93.70 to 94.70): BF0
 Ion 80.00 (79.70 to 80.70): BF0

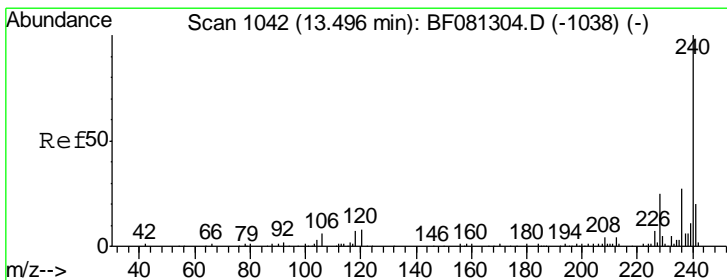
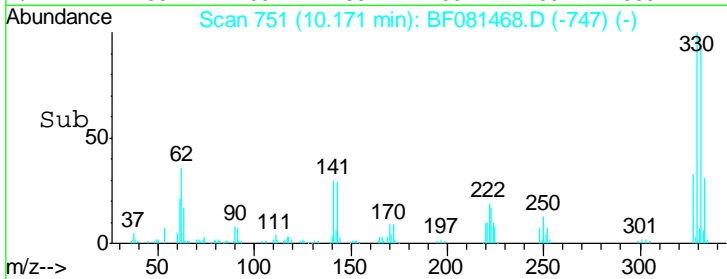
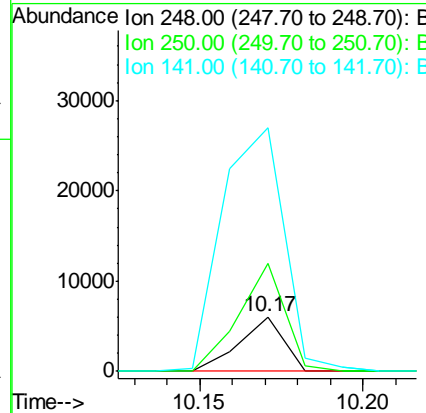
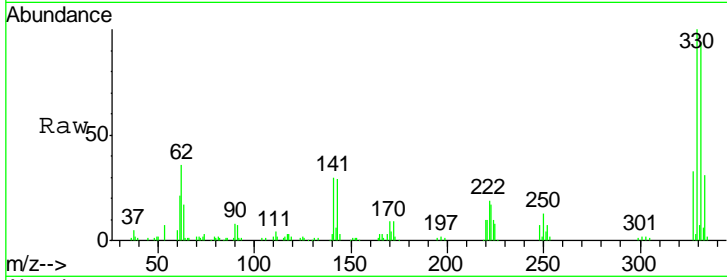




#66
 4-Bromophenyl-phenylether
 Concen: 3.07 ng
 RT: 10.17 min Scan# 751
 Delta R.T. -0.25 min
 Lab File: BF081468.D
 Acq: 5 Sep 2015 16:50

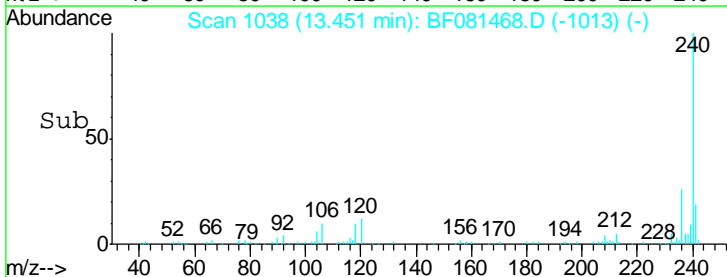
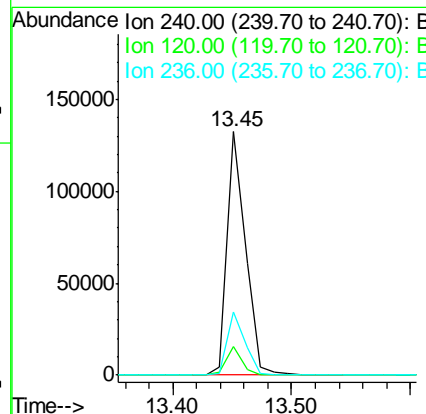
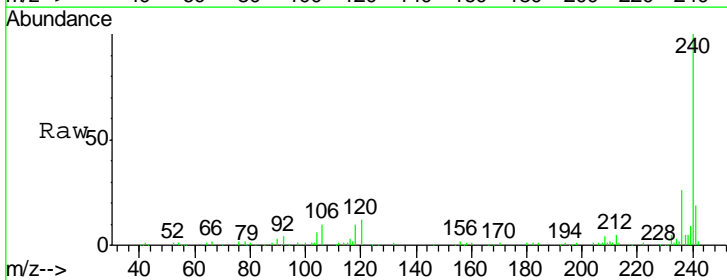
Instrument :
 BNA_F
 ClientSampled :

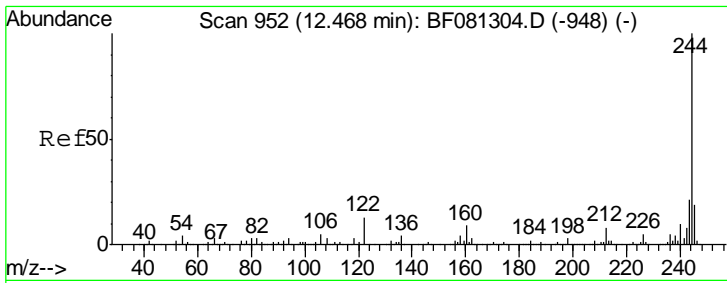
Tgt Ion	Resp	Lower	Upper
248	5634		
248	100		
250	198.5	78.5	117.7#
141	448.3	59.0	88.6#



#75
 Chrysene-d12
 Concen: 20.00 ng
 RT: 13.45 min Scan# 1038
 Delta R.T. -0.01 min
 Lab File: BF081468.D
 Acq: 5 Sep 2015 16:50

Tgt Ion	Resp	Lower	Upper
240	140478		
240	100		
120	11.9	16.2	24.2#
236	25.9	18.4	27.6

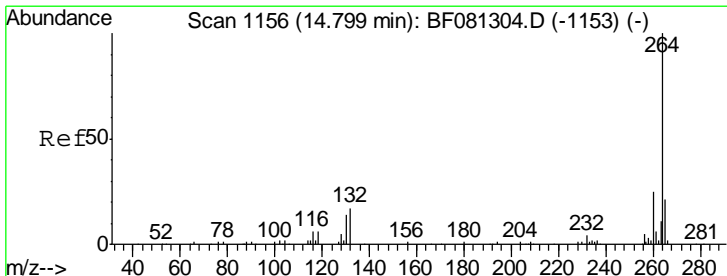
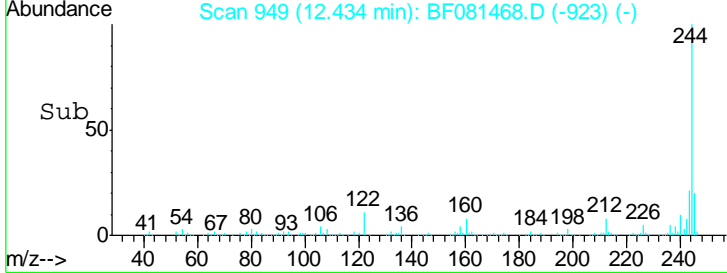
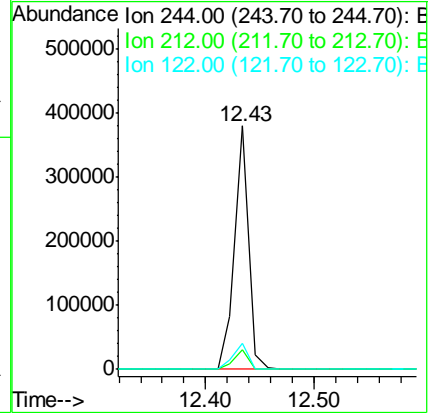
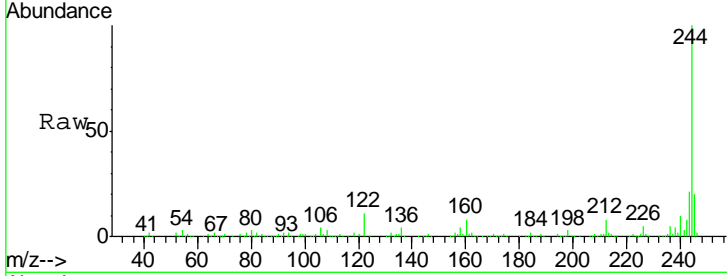




#78
 Terphenyl-d14
 Concen: 55.79 ng
 RT: 12.43 min Scan# 949
 Delta R.T. 0.00 min
 Lab File: BF081468.D
 Acq: 5 Sep 2015 16:50

Instrument :
 BNA_F
 ClientSampled :

Tgt Ion	Resp	Lower	Upper
244	100		
212	7.9	4.3	6.5#
122	10.6	17.4	26.2#



#86
 Perylene-d12
 Concen: 20.00 ng
 RT: 14.77 min Scan# 1153
 Delta R.T. 0.00 min
 Lab File: BF081468.D
 Acq: 5 Sep 2015 16:50

Tgt Ion	Resp	Lower	Upper
264	100		
260	23.0	16.7	25.1
265	21.0	17.2	25.8

