

Data Path : Z:\svoasrv\HPCHEM1\BNA_F\Data\BF090525\
 Data File : BF143650.D
 Acq On : 05 Sep 2025 09:54
 Operator : RC/JU
 Sample : SSTDCCC040
 Misc :
 ALS Vial : 2 Sample Multiplier: 1

Instrument :
 BNA_F
 ClientSampleId :

Quant Time: Sep 05 12:05:42 2025
 Quant Method : Z:\svoasrv\HPCHEM1\BNA_F\Methods\8270-BF090325.M
 Quant Title : ASP BNA STANDARDS FOR 5 POINT CALIBRATION
 QLast Update : Wed Sep 03 18:35:49 2025
 Response via : Initial Calibration

Compound	R.T.	QIon	Response	Conc	Units	Dev(Min)	
Internal Standards							
1) 1,4-Dichlorobenzene-d4	6.892	152	59176	20.000	ng	0.00	
21) Naphthalene-d8	8.175	136	227983	20.000	ng	0.00	
39) Acenaphthene-d10	9.927	164	134300	20.000	ng	0.00	
64) Phenanthrene-d10	11.410	188	215097	20.000	ng	0.00	
76) Chrysene-d12	14.051	240	135681	20.000	ng	0.00	
86) Perylene-d12	15.521	264	134145	20.000	ng	0.00	
System Monitoring Compounds							
5) 2-Fluorophenol	5.498	112	255652	76.535	ng	0.00	
7) Phenol-d6	6.504	99	310623	74.924	ng	0.00	
23) Nitrobenzene-d5	7.451	82	276153	85.134	ng	0.00	
42) 2,4,6-Tribromophenol	10.716	330	97707	87.001	ng	0.00	
45) 2-Fluorobiphenyl	9.245	172	613014	72.925	ng	0.00	
79) Terphenyl-d14	12.998	244	631118	77.504	ng	0.00	
Target Compounds							
2) 1,4-Dioxane	2.657	88	55788	35.398	ng		Qvalue 99
3) Pyridine	3.422	79	150114	35.952	ng		96
4) n-Nitrosodimethylamine	3.369	42	58788	33.900	ng		89
6) Aniline	6.551	93	209693	36.337	ng		99
8) 2-Chlorophenol	6.669	128	138571	40.058	ng		99
9) Benzaldehyde	6.439	77	121623	39.484	ng		99
10) Phenol	6.522	94	172583	37.969	ng		95
11) bis(2-Chloroethyl)ether	6.622	93	128925	36.217	ng		98
12) 1,3-Dichlorobenzene	6.833	146	158724	37.179	ng		98
13) 1,4-Dichlorobenzene	6.910	146	158624	37.045	ng		99
14) 1,2-Dichlorobenzene	7.063	146	149532	36.899	ng		99
15) Benzyl Alcohol	7.028	79	116740	37.057	ng		99
16) 2,2'-oxybis(1-Chloropr...	7.163	45	187802	33.520	ng		99
17) 2-Methylphenol	7.133	107	114403	37.824	ng		98
18) Hexachloroethane	7.404	117	52901	39.601	ng		97
19) n-Nitroso-di-n-propyla...	7.298	70	96905	36.705	ng		98
20) 3+4-Methylphenols	7.286	107	150318	39.481	ng		95
22) Acetophenone	7.298	105	188664	36.593	ng	#	94
24) Nitrobenzene	7.469	77	143536	41.385	ng		99
25) Isophorone	7.710	82	261700	35.802	ng		98
26) 2-Nitrophenol	7.786	139	68498	46.209	ng		95
27) 2,4-Dimethylphenol	7.816	122	123135	38.692	ng		98
28) bis(2-Chloroethoxy)met...	7.916	93	163473	36.582	ng		99
29) 2,4-Dichlorophenol	8.022	162	124581	39.893	ng		99
30) 1,2,4-Trichlorobenzene	8.110	180	126806	37.259	ng		98
31) Naphthalene	8.192	128	412856	37.023	ng		99
32) Benzoic acid	7.904	122	71473	38.668	ng		97
33) 4-Chloroaniline	8.239	127	146638	37.977	ng		98
34) Hexachlorobutadiene	8.310	225	83137	37.554	ng		98
35) Caprolactam	8.598	113	33849	40.446	ng		90
36) 4-Chloro-3-methylphenol	8.710	107	125263	38.305	ng		98
37) 2-Methylnaphthalene	8.886	142	277130	36.740	ng		99
38) 1-Methylnaphthalene	8.980	142	270684	37.535	ng		97
40) 1,2,4,5-Tetrachloroben...	9.051	216	135884	36.610	ng		99
41) Hexachlorocyclopentadiene	9.039	237	70787	39.274	ng		99
43) 2,4,6-Trichlorophenol	9.157	196	92962	40.652	ng		98

Data Path : Z:\svoasrv\HPCHEM1\BNA_F\Data\BF090525\
 Data File : BF143650.D
 Acq On : 05 Sep 2025 09:54
 Operator : RC/JU
 Sample : SSTDCCC040
 Misc :
 ALS Vial : 2 Sample Multiplier: 1

Instrument :
 BNA_F
 ClientSampleId :

Quant Time: Sep 05 12:05:42 2025
 Quant Method : Z:\svoasrv\HPCHEM1\BNA_F\Methods\8270-BF090325.M
 Quant Title : ASP BNA STANDARDS FOR 5 POINT CALIBRATION
 QLast Update : Wed Sep 03 18:35:49 2025
 Response via : Initial Calibration

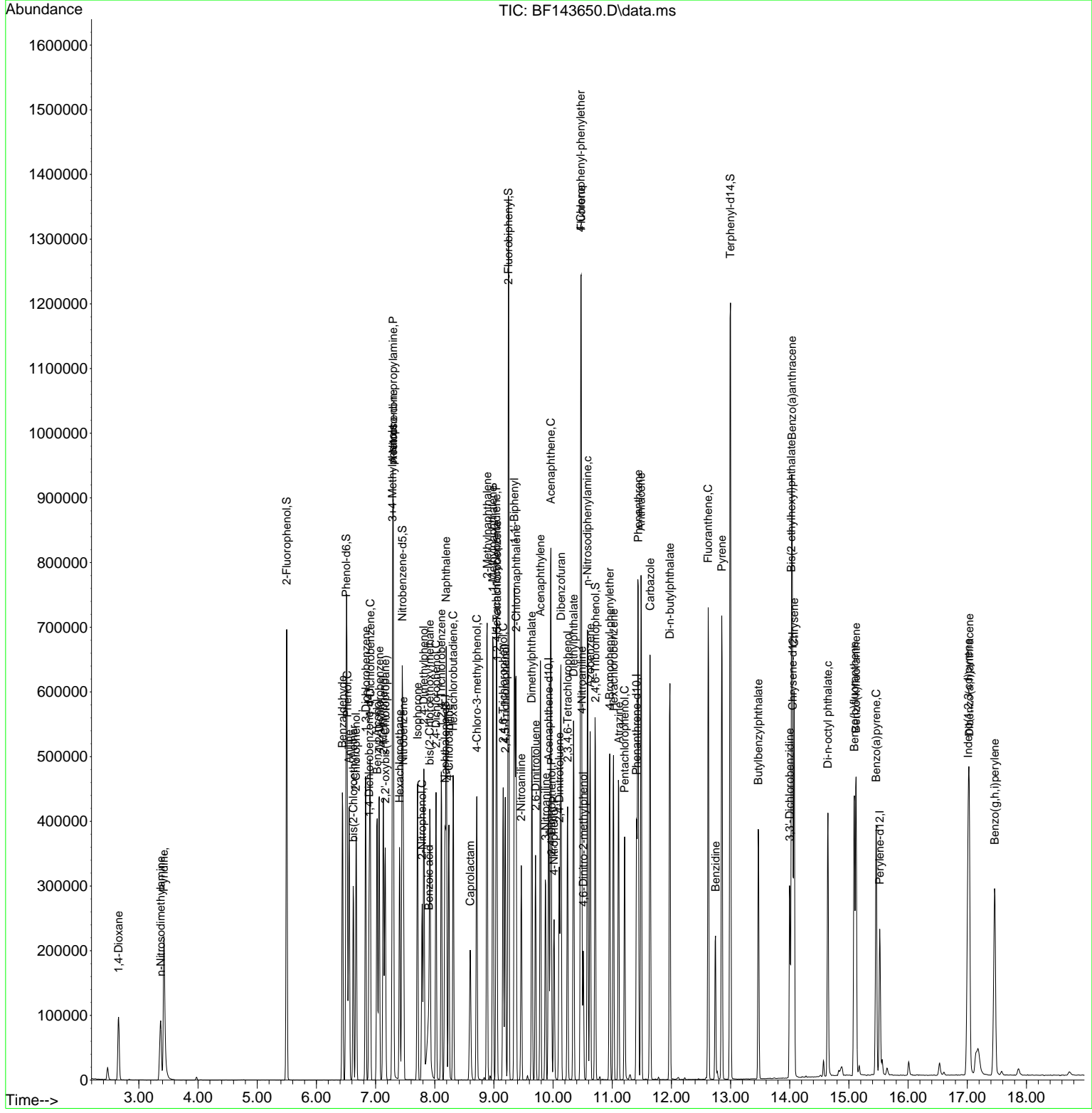
Compound	R.T.	QIon	Response	Conc	Units	Dev(Min)
44) 2,4,5-Trichlorophenol	9.192	196	92538	39.197	ng	99
46) 1,1'-Biphenyl	9.345	154	347518	36.384	ng	99
47) 2-Chloronaphthalene	9.375	162	268309	35.895	ng	99
48) 2-Nitroaniline	9.463	65	76707	38.502	ng	96
49) Acenaphthylene	9.786	152	386722	35.899	ng	100
50) Dimethylphthalate	9.639	163	312946	36.800	ng	99
51) 2,6-Dinitrotoluene	9.704	165	62683	41.123	ng	98
52) Acenaphthene	9.963	154	265291	36.815	ng	99
53) 3-Nitroaniline	9.874	138	67394	39.862	ng	94
54) 2,4-Dinitrophenol	9.974	184	24970	45.662	ng #	30
55) Dibenzofuran	10.133	168	382432	36.530	ng	98
56) 4-Nitrophenol	10.016	139	53708	42.596	ng	99
57) 2,4-Dinitrotoluene	10.104	165	84230	40.861	ng	97
58) Fluorene	10.474	166	298253	36.832	ng	99
59) 2,3,4,6-Tetrachlorophenol	10.245	232	76935	42.910	ng	100
60) Diethylphthalate	10.345	149	304120	37.670	ng	99
61) 4-Chlorophenyl-phenyle...	10.469	204	150629	37.278	ng	98
62) 4-Nitroaniline	10.486	138	65098	39.512	ng	97
63) Azobenzene	10.627	77	267205	35.112	ng	98
65) 4,6-Dinitro-2-methylph...	10.510	198	38813	43.527	ng	95
66) n-Nitrosodiphenylamine	10.580	169	253082	36.453	ng	98
67) 4-Bromophenyl-phenylether	10.957	248	92629	37.131	ng	98
68) Hexachlorobenzene	11.021	284	98068	37.424	ng	98
69) Atrazine	11.110	200	84238	40.585	ng	98
70) Pentachlorophenol	11.210	266	62946	42.762	ng	98
71) Phenanthrene	11.439	178	436618	37.539	ng	99
72) Anthracene	11.486	178	439388	37.666	ng	100
73) Carbazole	11.639	167	378457	38.490	ng	100
74) Di-n-butylphthalate	11.974	149	455292	41.240	ng	99
75) Fluoranthene	12.621	202	419560	39.277	ng	100
77) Benzidine	12.745	184	124799	40.203	ng	99
78) Pyrene	12.851	202	418885	37.414	ng	99
80) Butylbenzylphthalate	13.468	149	131554	37.647	ng	99
81) Benzo(a)anthracene	14.039	228	323072	36.762	ng	100
82) 3,3'-Dichlorobenzidine	13.998	252	93268	38.932	ng	98
83) Chrysene	14.074	228	294650	37.298	ng	99
84) Bis(2-ethylhexyl)phtha...	14.027	149	178116	36.314	ng	99
85) Di-n-octyl phthalate	14.645	149	299152	37.162	ng	97
87) Indeno(1,2,3-cd)pyrene	17.015	276	350871	37.520	ng	100
88) Benzo(b)fluoranthene	15.092	252	283317	35.055	ng	100
89) Benzo(k)fluoranthene	15.121	252	269791	38.599	ng	99
90) Benzo(a)pyrene	15.462	252	257238	37.027	ng	99
91) Dibenzo(a,h)anthracene	17.033	278	292406	38.015	ng	100
92) Benzo(g,h,i)perylene	17.462	276	279076	37.664	ng	100

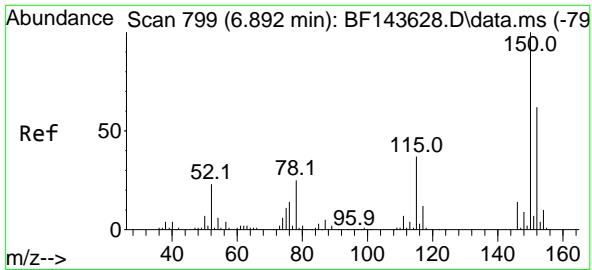
(#) = qualifier out of range (m) = manual integration (+) = signals summed

Data Path : Z:\svoasrv\HPCHEM1\BNA_F\Data\BF090525\
 Data File : BF143650.D
 Acq On : 05 Sep 2025 09:54
 Operator : RC/JU
 Sample : SSTCCCC040
 Misc :
 ALS Vial : 2 Sample Multiplier: 1

Instrument :
 BNA_F
 ClientSampleId :

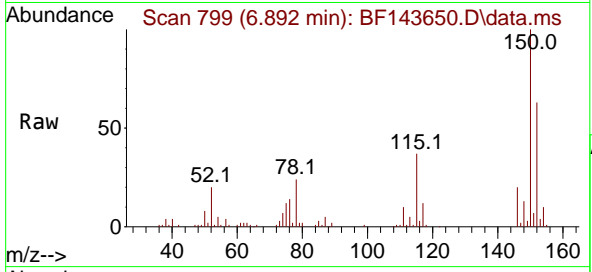
Quant Time: Sep 05 12:05:42 2025
 Quant Method : Z:\svoasrv\HPCHEM1\BNA_F\Methods\8270-BF090325.M
 Quant Title : ASP BNA STANDARDS FOR 5 POINT CALIBRATION
 QLast Update : Wed Sep 03 18:35:49 2025
 Response via : Initial Calibration



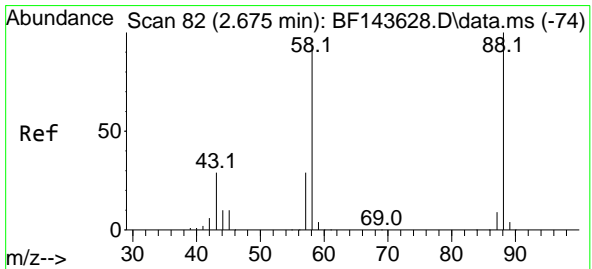
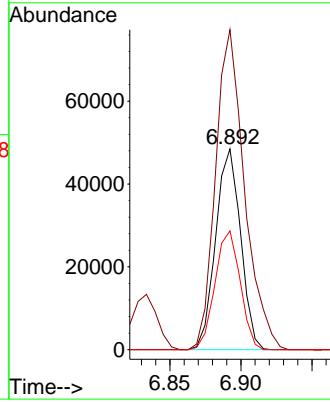
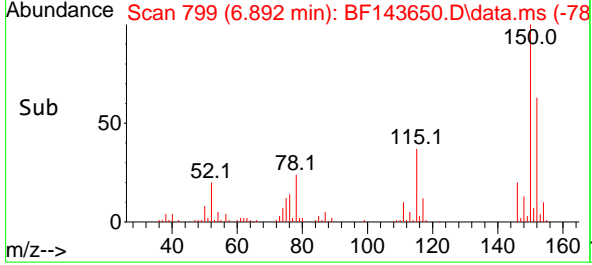


#1
 1,4-Dichlorobenzene-d4
 Concen: 20.000 ng
 RT: 6.892 min Scan# 79
 Delta R.T. 0.000 min
 Lab File: BF143650.D
 Acq: 05 Sep 2025 09:54

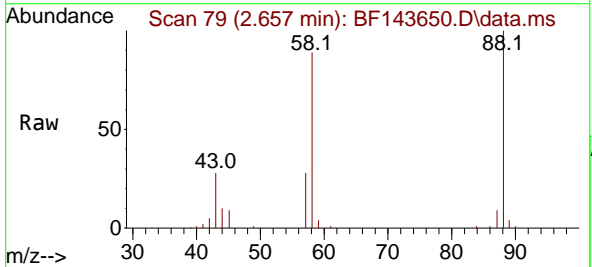
Instrument :
 BNA_F
 ClientSampleId :



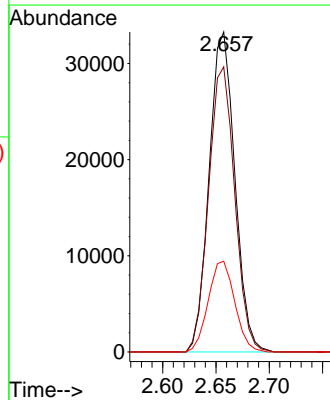
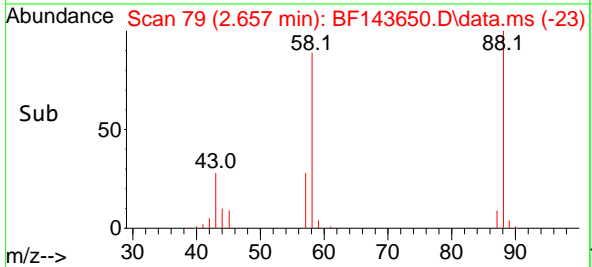
Tgt Ion:152 Resp: 59176
 Ion Ratio Lower Upper
 152 100
 150 159.3 128.4 192.6
 115 59.2 47.9 71.9

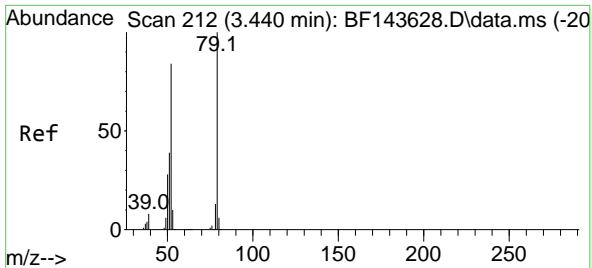


#2
 1,4-Dioxane
 Concen: 35.398 ng
 RT: 2.657 min Scan# 79
 Delta R.T. -0.018 min
 Lab File: BF143650.D
 Acq: 05 Sep 2025 09:54



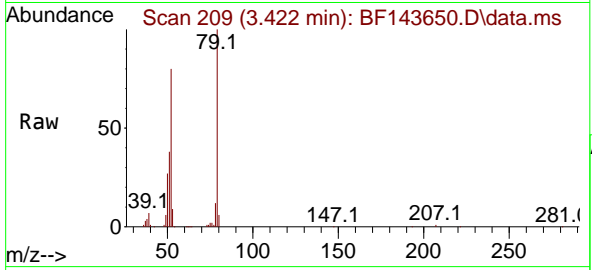
Tgt Ion: 88 Resp: 55788
 Ion Ratio Lower Upper
 88 100
 58 90.7 73.9 110.9
 43 29.3 23.4 35.2



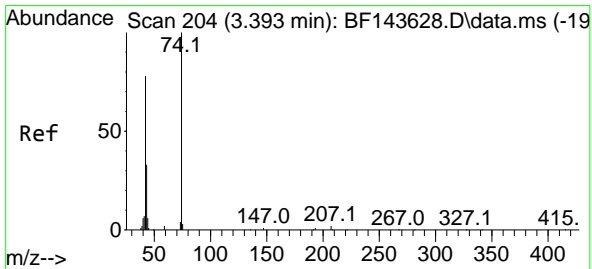
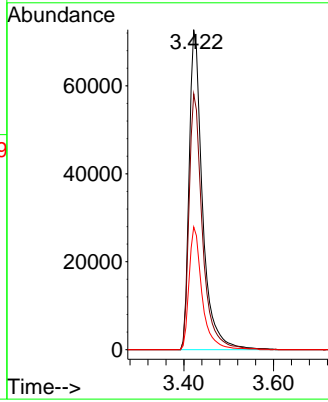
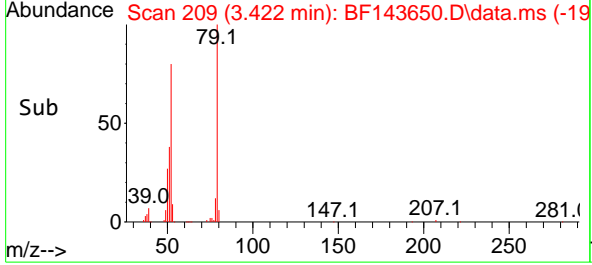


#3
 Pyridine
 Concen: 35.952 ng
 RT: 3.422 min Scan# 20
 Delta R.T. -0.018 min
 Lab File: BF143650.D
 Acq: 05 Sep 2025 09:54

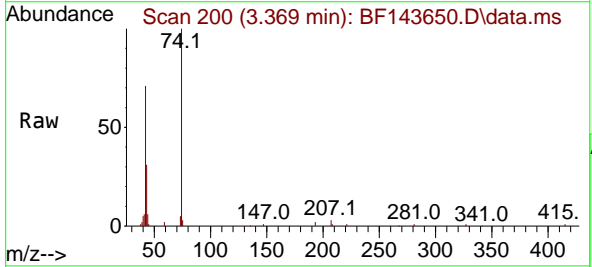
Instrument :
 BNA_F
 ClientSampleId :



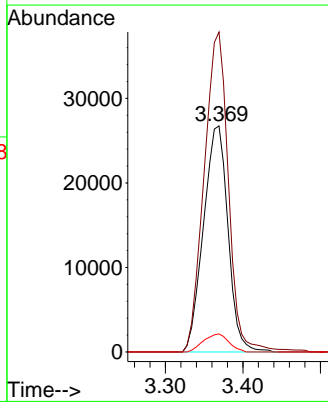
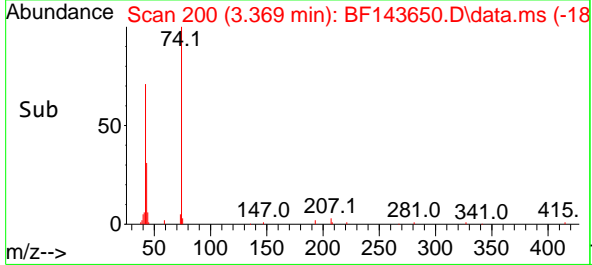
Tgt Ion: 79 Resp: 150114
 Ion Ratio Lower Upper
 79 100
 52 79.9 67.4 101.2
 51 38.4 31.0 46.6

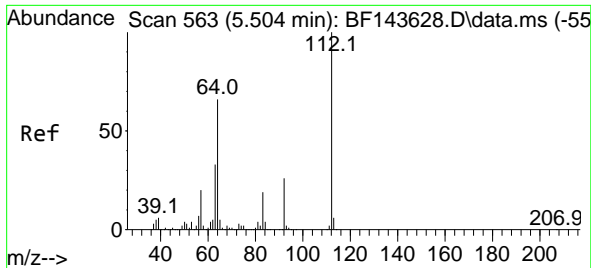


#4
 n-Nitrosodimethylamine
 Concen: 33.900 ng
 RT: 3.369 min Scan# 200
 Delta R.T. -0.024 min
 Lab File: BF143650.D
 Acq: 05 Sep 2025 09:54



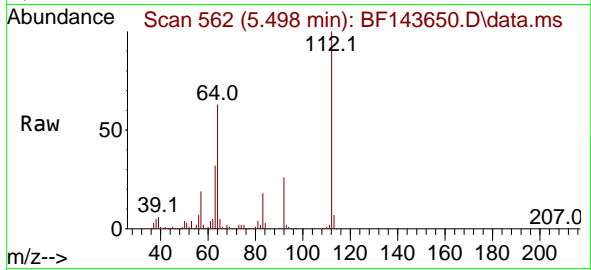
Tgt Ion: 42 Resp: 58788
 Ion Ratio Lower Upper
 42 100
 74 141.6 102.9 154.3
 44 8.0 6.5 9.7



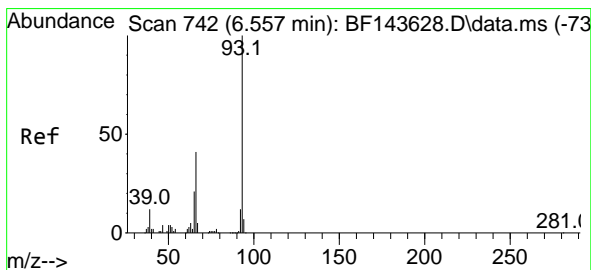
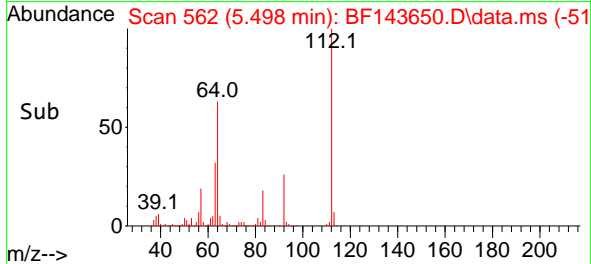
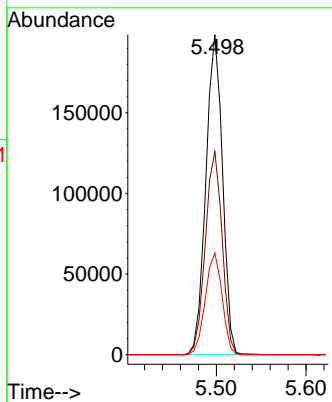


#5
 2-Fluorophenol
 Concen: 76.535 ng
 RT: 5.498 min Scan# 50
 Delta R.T. -0.006 min
 Lab File: BF143650.D
 Acq: 05 Sep 2025 09:54

Instrument :
 BNA_F
 ClientSampleId :

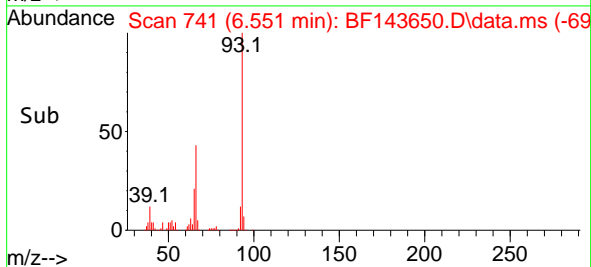
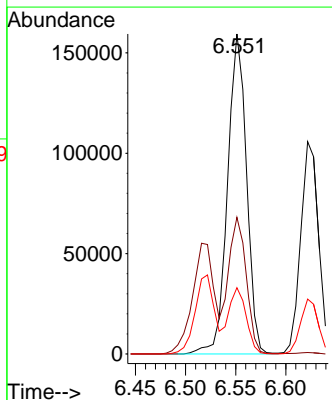
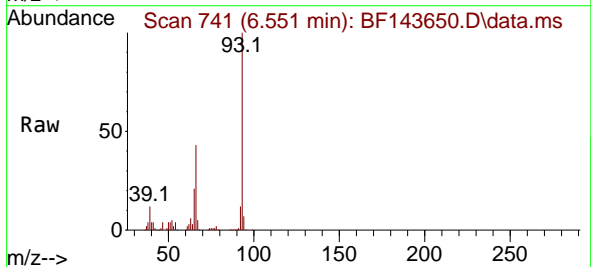


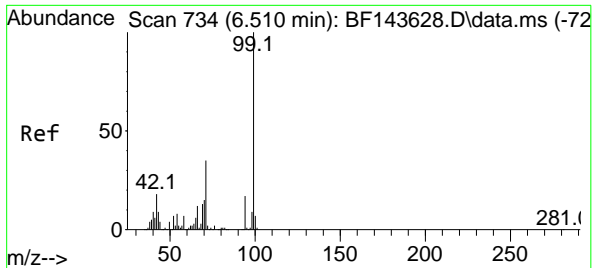
Tgt Ion: 112 Resp: 255652
 Ion Ratio Lower Upper
 112 100
 64 63.5 52.7 79.1
 63 31.8 26.5 39.7



#6
 Aniline
 Concen: 36.337 ng
 RT: 6.551 min Scan# 741
 Delta R.T. -0.006 min
 Lab File: BF143650.D
 Acq: 05 Sep 2025 09:54

Tgt Ion: 93 Resp: 209693
 Ion Ratio Lower Upper
 93 100
 66 42.7 34.6 51.8
 65 20.7 16.9 25.3

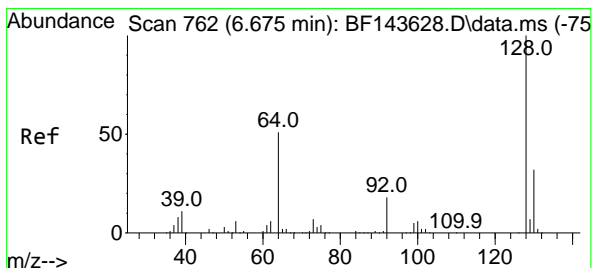
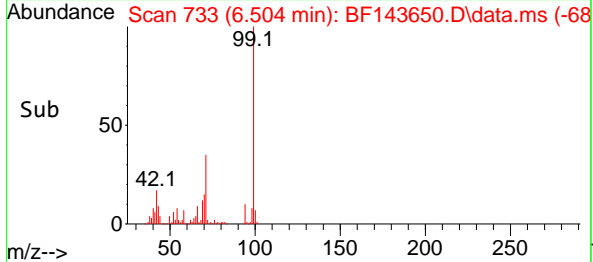
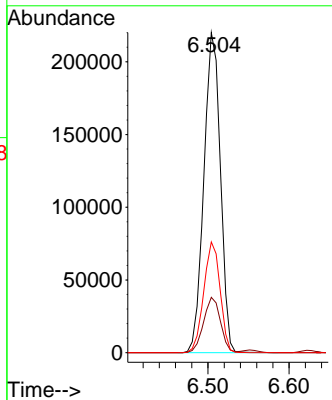
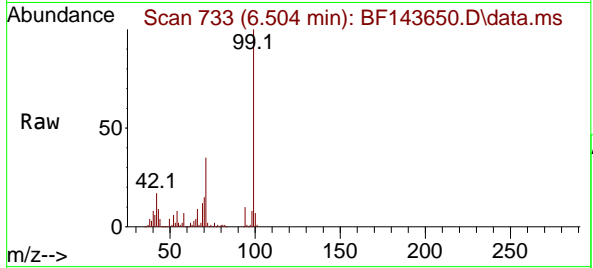




#7
 Phenol-d6
 Concen: 74.924 ng
 RT: 6.504 min Scan# 711
 Delta R.T. -0.006 min
 Lab File: BF143650.D
 Acq: 05 Sep 2025 09:54

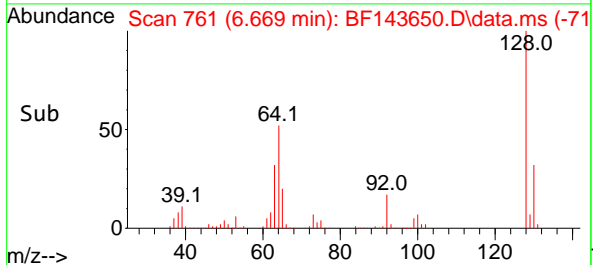
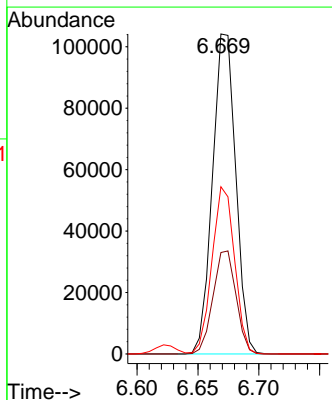
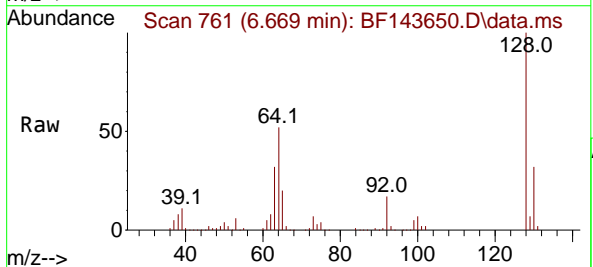
Instrument :
 BNA_F
 ClientSampleId :

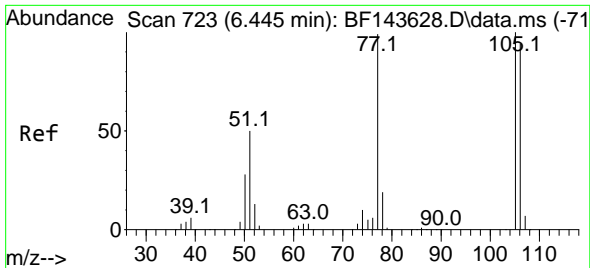
Tgt Ion: 99 Resp: 310623
 Ion Ratio Lower Upper
 99 100
 42 17.3 14.6 22.0
 71 34.6 28.0 42.0



#8
 2-Chlorophenol
 Concen: 40.058 ng
 RT: 6.669 min Scan# 761
 Delta R.T. -0.006 min
 Lab File: BF143650.D
 Acq: 05 Sep 2025 09:54

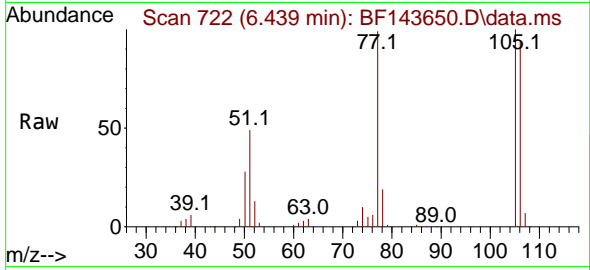
Tgt Ion:128 Resp: 138571
 Ion Ratio Lower Upper
 128 100
 130 31.7 12.3 52.3
 64 52.2 32.9 72.9





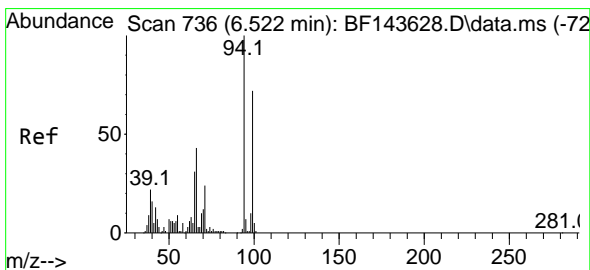
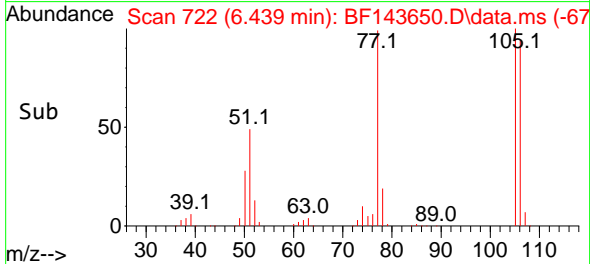
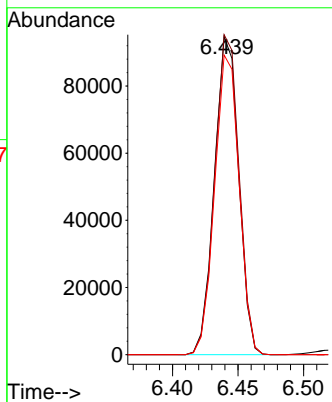
#9
Benzaldehyde
Concen: 39.484 ng
RT: 6.439 min Scan# 711
Delta R.T. -0.006 min
Lab File: BF143650.D
Acq: 05 Sep 2025 09:54

Instrument :
BNA_F
ClientSampleId :



Tgt Ion: 77 Resp: 121623

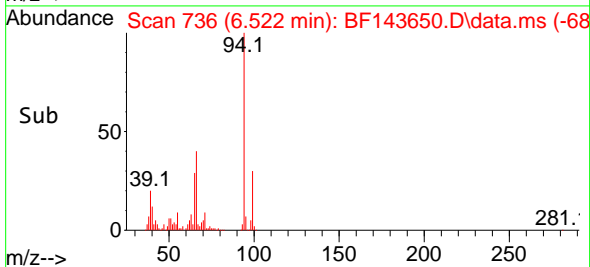
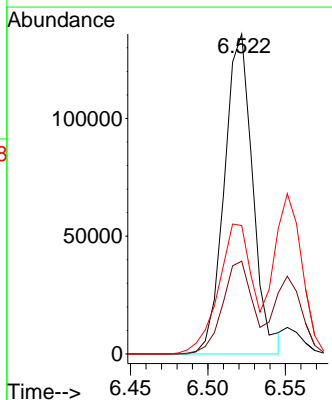
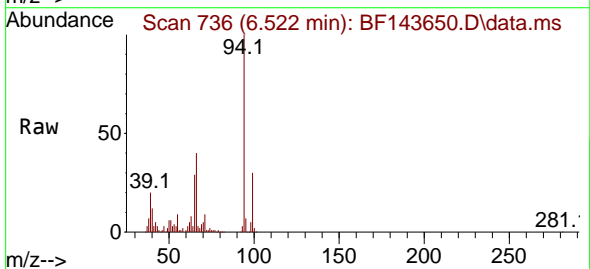
Ion	Ratio	Lower	Upper
77	100		
105	100.6	80.9	120.9
106	94.2	75.1	115.1

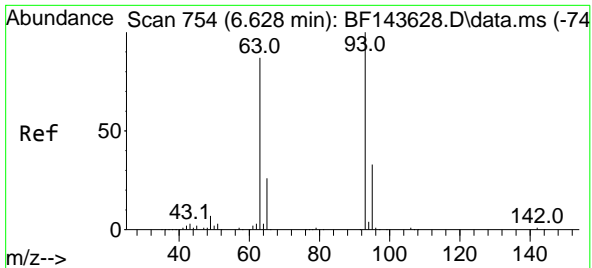


#10
Phenol
Concen: 37.969 ng
RT: 6.522 min Scan# 736
Delta R.T. -0.000 min
Lab File: BF143650.D
Acq: 05 Sep 2025 09:54

Tgt Ion: 94 Resp: 172583

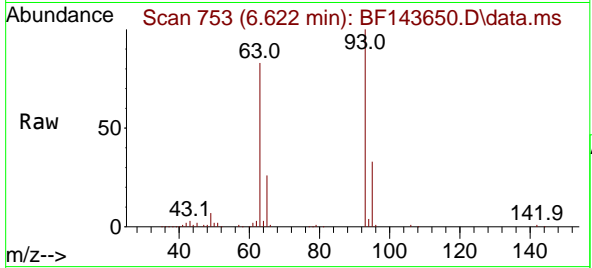
Ion	Ratio	Lower	Upper
94	100		
65	29.0	11.4	51.4
66	40.2	23.7	63.7





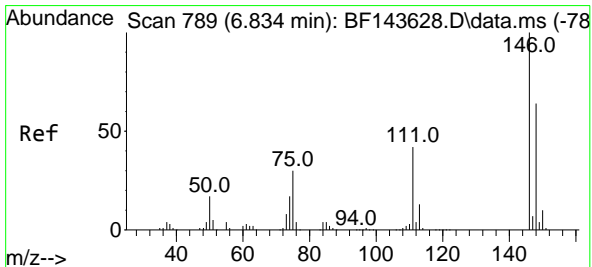
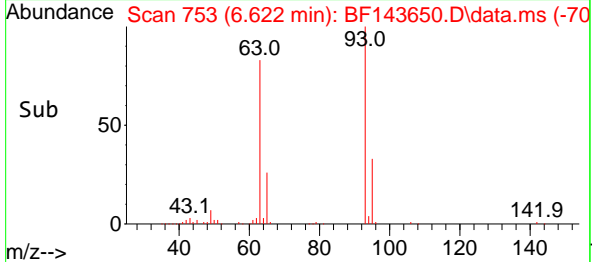
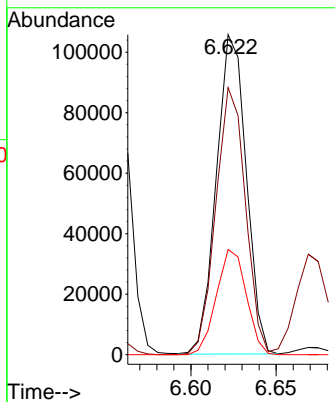
#11
 bis(2-Chloroethyl)ether
 Concen: 36.217 ng
 RT: 6.622 min Scan# 753
 Delta R.T. -0.006 min
 Lab File: BF143650.D
 Acq: 05 Sep 2025 09:54

Instrument : BNA_F
 ClientSampleId :



Tgt Ion: 93 Resp: 128925

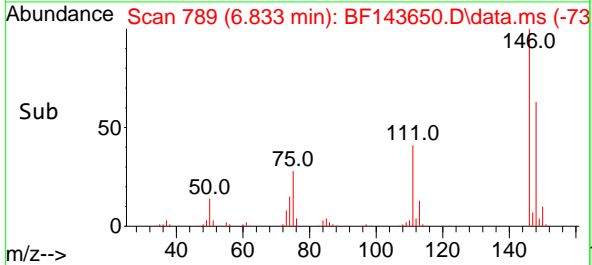
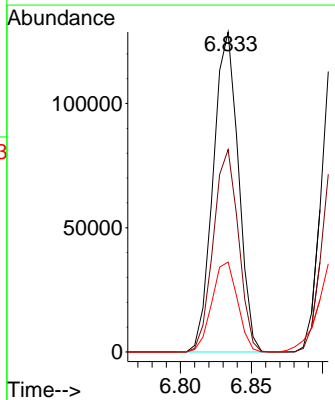
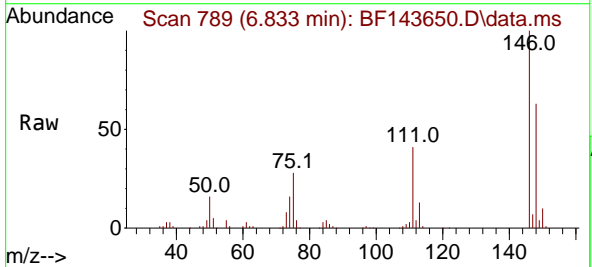
Ion	Ratio	Lower	Upper
93	100		
63	83.4	66.5	106.5
95	32.9	12.7	52.7

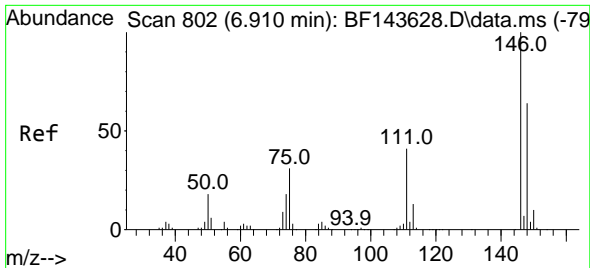


#12
 1,3-Dichlorobenzene
 Concen: 37.179 ng
 RT: 6.833 min Scan# 789
 Delta R.T. -0.000 min
 Lab File: BF143650.D
 Acq: 05 Sep 2025 09:54

Tgt Ion: 146 Resp: 158724

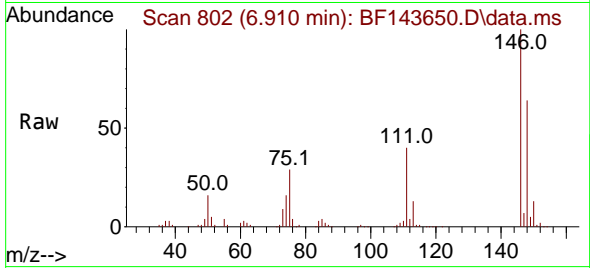
Ion	Ratio	Lower	Upper
146	100		
148	63.3	50.9	76.3
75	28.1	24.2	36.2



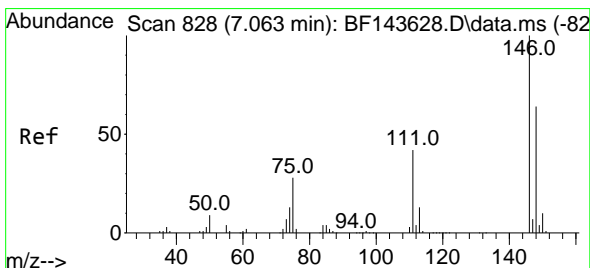
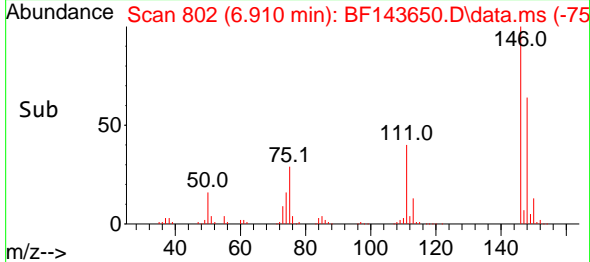
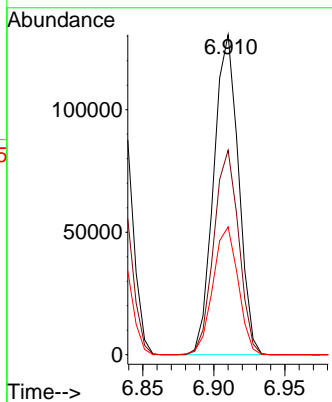


#13
 1,4-Dichlorobenzene
 Concen: 37.045 ng
 RT: 6.910 min Scan# 801
 Delta R.T. -0.000 min
 Lab File: BF143650.D
 Acq: 05 Sep 2025 09:54

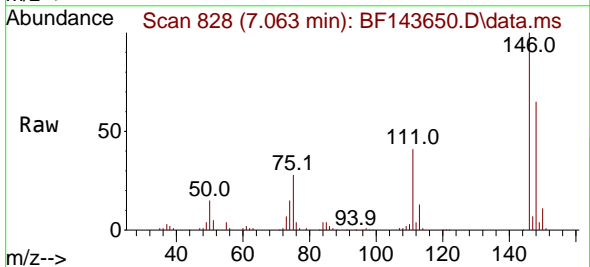
Instrument :
 BNA_F
 ClientSampleId :



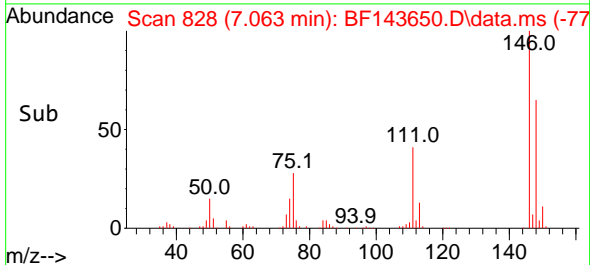
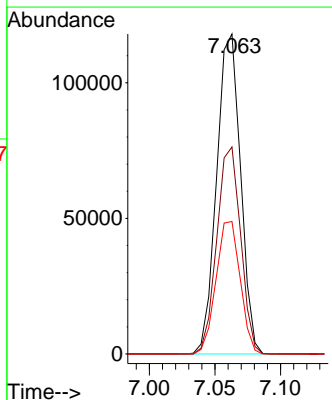
Tgt Ion:146 Resp: 158624
 Ion Ratio Lower Upper
 146 100
 148 63.9 51.4 77.2
 111 39.9 33.1 49.7

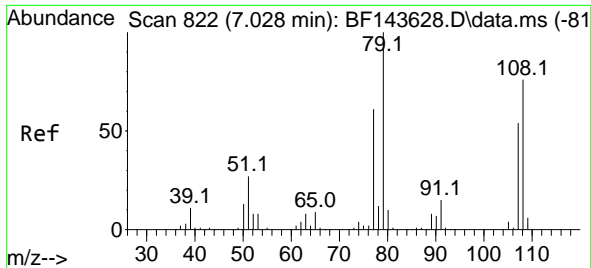


#14
 1,2-Dichlorobenzene
 Concen: 36.899 ng
 RT: 7.063 min Scan# 828
 Delta R.T. -0.000 min
 Lab File: BF143650.D
 Acq: 05 Sep 2025 09:54



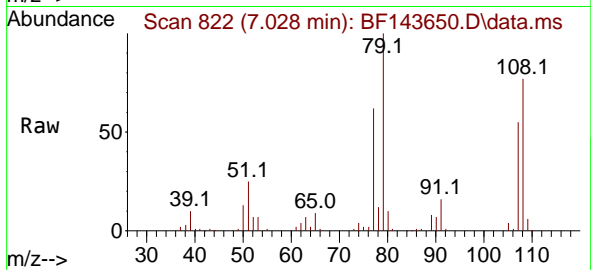
Tgt Ion:146 Resp: 149532
 Ion Ratio Lower Upper
 146 100
 148 64.7 51.2 76.8
 111 41.4 33.9 50.9



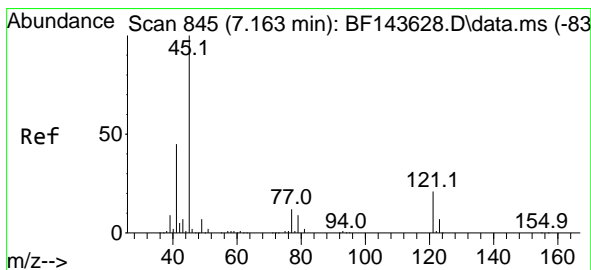
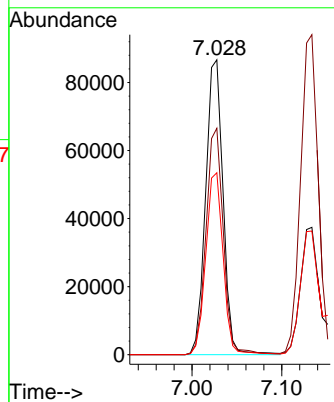
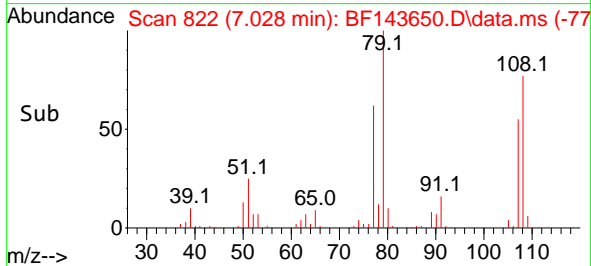


#15
 Benzyl Alcohol
 Concen: 37.057 ng
 RT: 7.028 min Scan# 81
 Delta R.T. -0.000 min
 Lab File: BF143650.D
 Acq: 05 Sep 2025 09:54

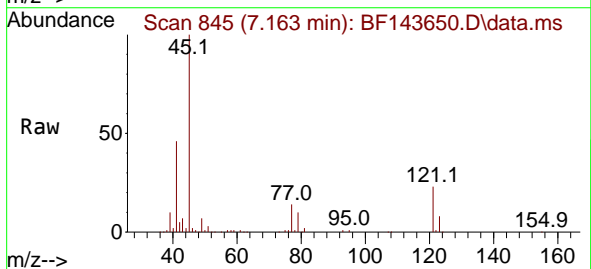
Instrument :
 BNA_F
 ClientSampleId :



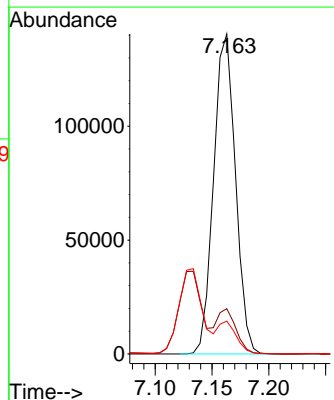
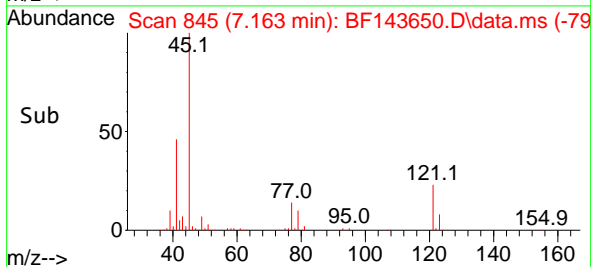
Tgt Ion: 79 Resp: 116740
 Ion Ratio Lower Upper
 79 100
 108 76.7 60.9 91.3
 77 61.7 48.4 72.6

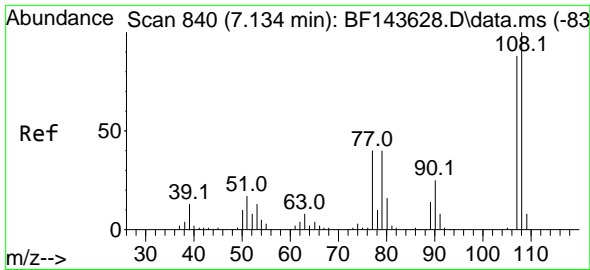


#16
 2,2'-oxybis(1-Chloropropane)
 Concen: 33.520 ng
 RT: 7.163 min Scan# 845
 Delta R.T. -0.000 min
 Lab File: BF143650.D
 Acq: 05 Sep 2025 09:54



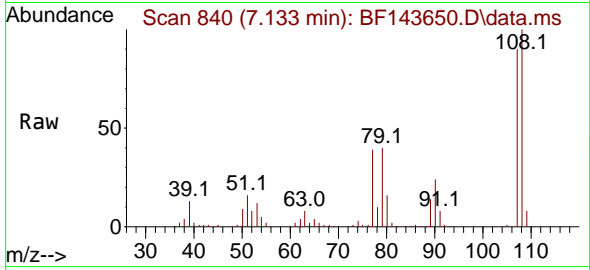
Tgt Ion: 45 Resp: 187802
 Ion Ratio Lower Upper
 45 100
 77 14.1 0.0 33.5
 79 10.2 0.0 29.8





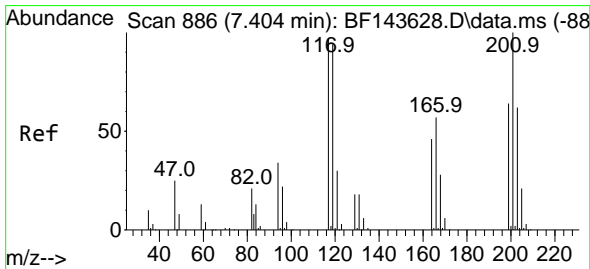
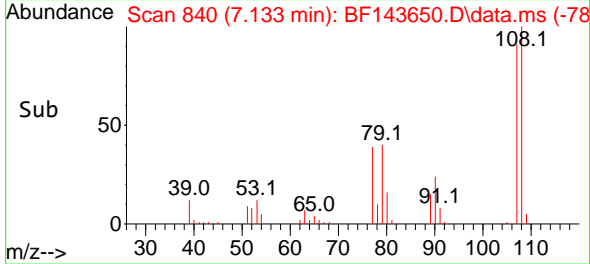
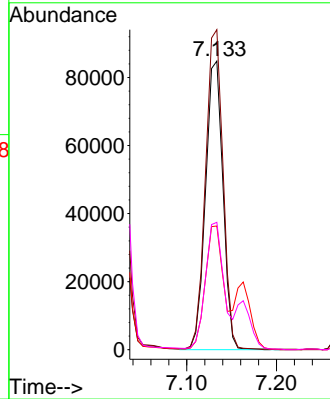
#17
 2-Methylphenol
 Concen: 37.824 ng
 RT: 7.133 min Scan# 84
 Delta R.T. -0.000 min
 Lab File: BF143650.D
 Acq: 05 Sep 2025 09:54

Instrument :
 BNA_F
 ClientSampleId :



Tgt Ion:107 Resp: 114403

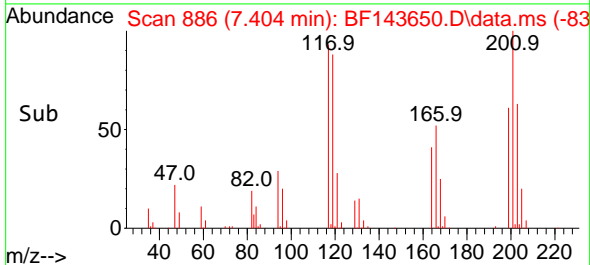
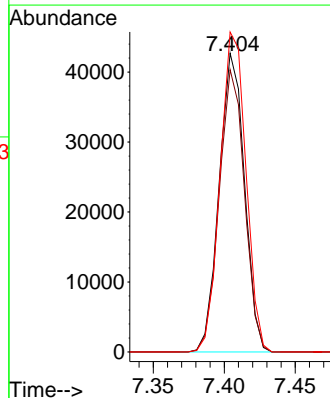
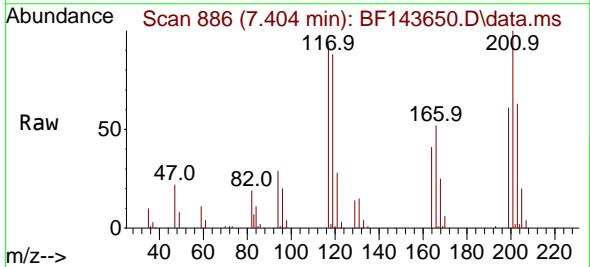
Ion	Ratio	Lower	Upper
107	100		
108	110.8	90.5	135.7
77	42.9	35.9	53.9
79	44.1	36.4	54.6

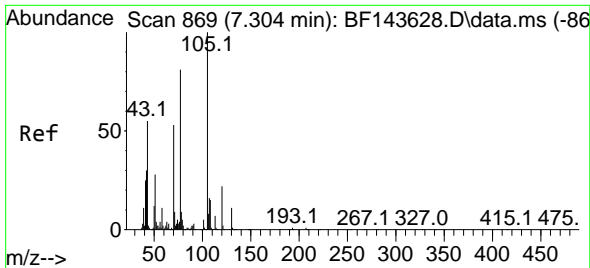


#18
 Hexachloroethane
 Concen: 39.601 ng
 RT: 7.404 min Scan# 886
 Delta R.T. -0.000 min
 Lab File: BF143650.D
 Acq: 05 Sep 2025 09:54

Tgt Ion:117 Resp: 52901

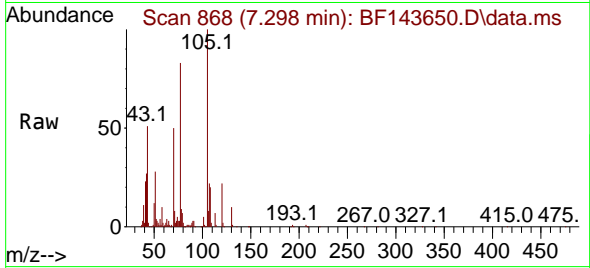
Ion	Ratio	Lower	Upper
117	100		
119	94.5	77.7	116.5
201	107.1	82.7	124.1



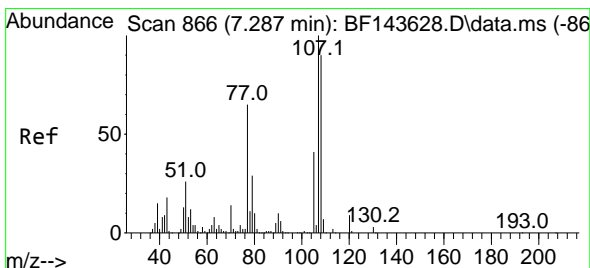
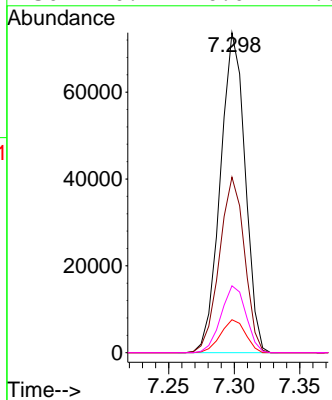
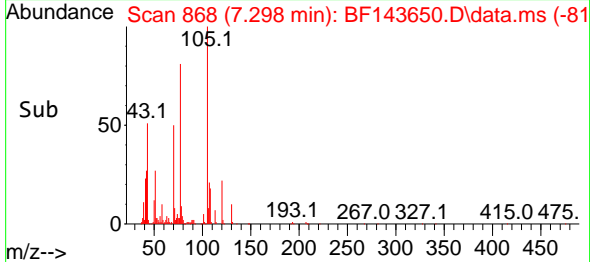


#19
 n-Nitroso-di-n-propylamine
 Concen: 36.705 ng
 RT: 7.298 min Scan# 868
 Delta R.T. -0.006 min
 Lab File: BF143650.D
 Acq: 05 Sep 2025 09:54

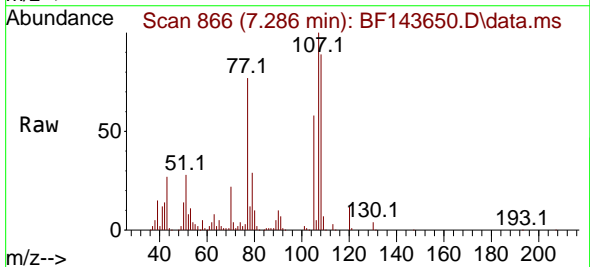
Instrument :
 BNA_F
 ClientSampleId :



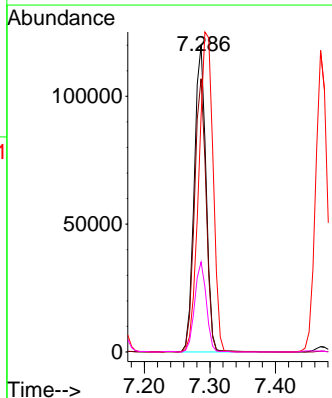
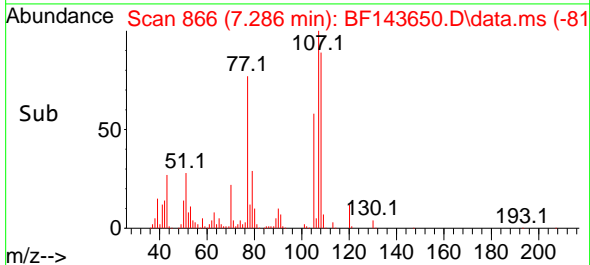
Tgt Ion: 70 Resp: 96905
 Ion Ratio Lower Upper
 70 100
 42 54.9 45.2 67.8
 101 10.3 7.6 11.4
 130 20.9 16.0 24.0

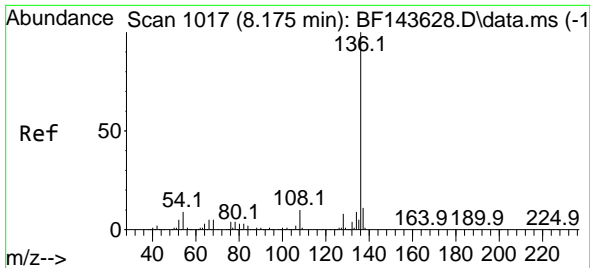


#20
 3+4-Methylphenols
 Concen: 39.481 ng
 RT: 7.286 min Scan# 866
 Delta R.T. -0.000 min
 Lab File: BF143650.D
 Acq: 05 Sep 2025 09:54



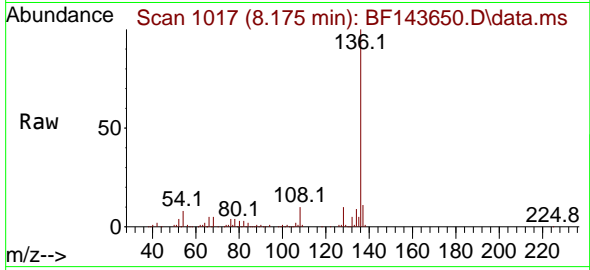
Tgt Ion: 107 Resp: 150318
 Ion Ratio Lower Upper
 107 100
 108 89.1 69.6 109.6
 77 77.0 45.5 85.5
 79 29.3 9.0 49.0



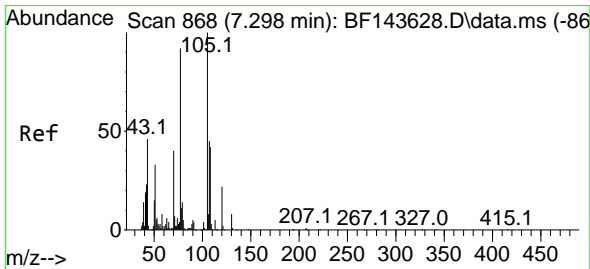
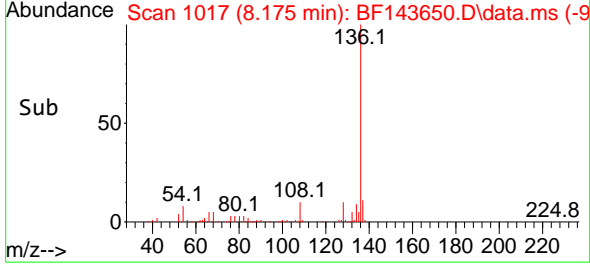
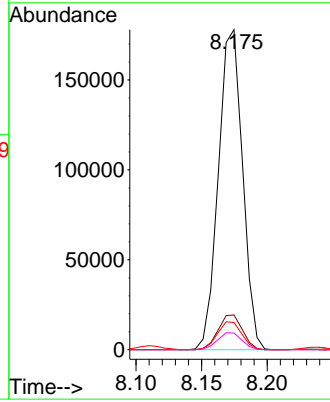


#21
 Naphthalene-d8
 Concen: 20.000 ng
 RT: 8.175 min Scan# 1017
 Delta R.T. -0.000 min
 Lab File: BF143650.D
 Acq: 05 Sep 2025 09:54

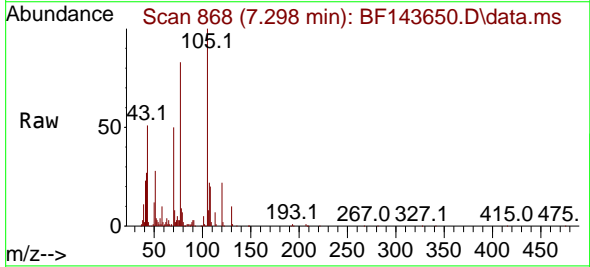
Instrument : BNA_F
 ClientSampleId :



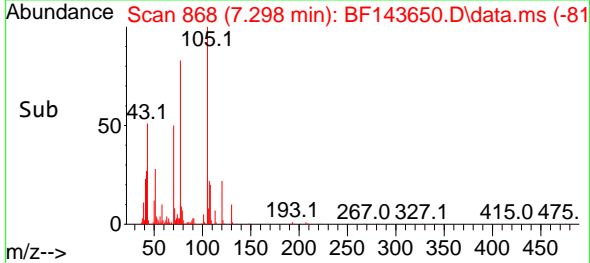
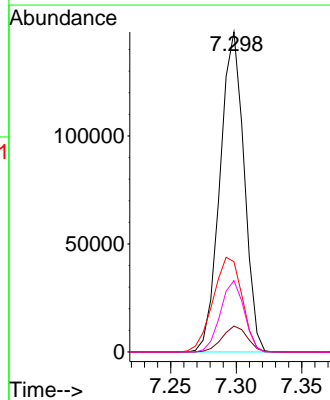
Tgt Ion:136 Resp: 227983
 Ion Ratio Lower Upper
 136 100
 137 10.9 8.6 12.8
 54 8.5 7.3 10.9
 68 5.2 4.4 6.6

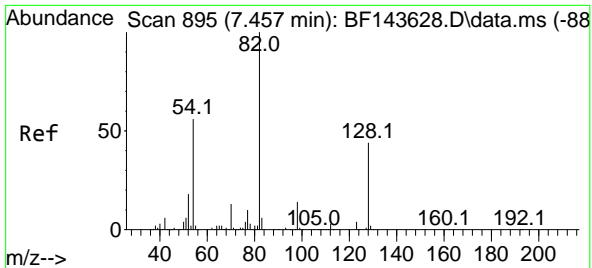


#22
 Acetophenone
 Concen: 36.593 ng
 RT: 7.298 min Scan# 868
 Delta R.T. -0.000 min
 Lab File: BF143650.D
 Acq: 05 Sep 2025 09:54



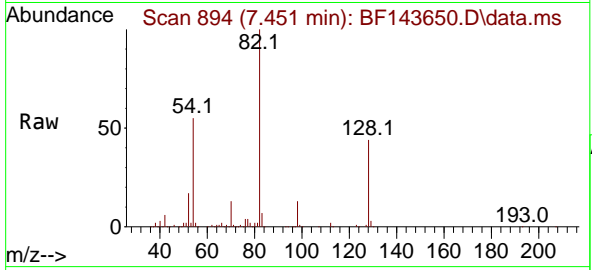
Tgt Ion:105 Resp: 188664
 Ion Ratio Lower Upper
 105 100
 71 8.1 5.3 7.9#
 51 28.2 26.7 40.1
 120 22.3 17.5 26.3





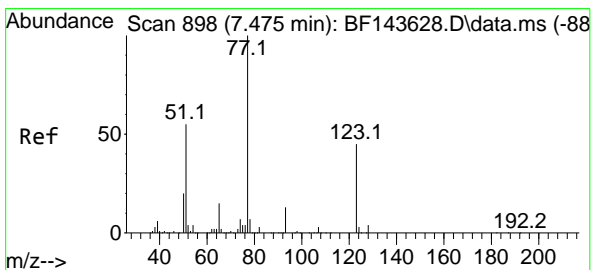
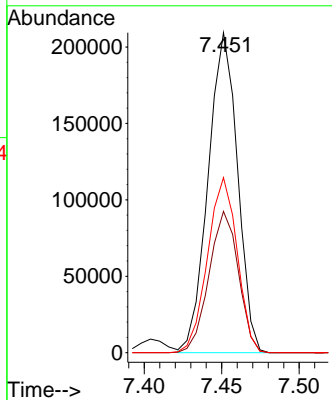
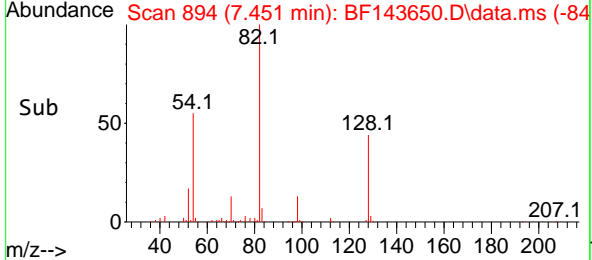
#23
 Nitrobenzene-d5
 Concen: 85.134 ng
 RT: 7.451 min Scan# 894
 Delta R.T. -0.006 min
 Lab File: BF143650.D
 Acq: 05 Sep 2025 09:54

Instrument :
 BNA_F
 ClientSampleId :

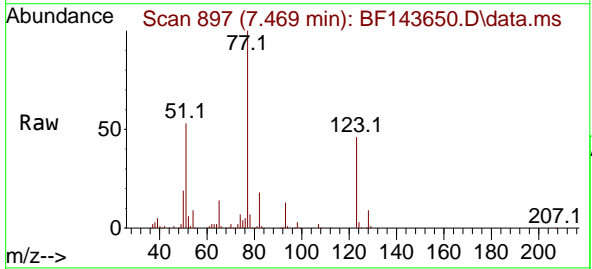


Tgt Ion: 82 Resp: 276153

Ion	Ratio	Lower	Upper
82	100		
128	44.2	34.7	52.1
54	54.7	44.8	67.2

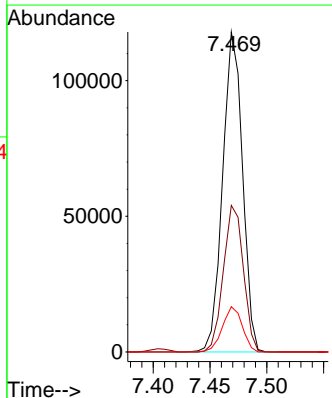
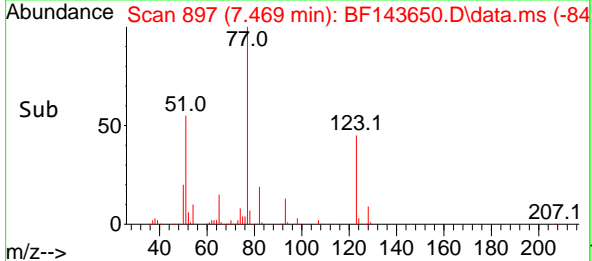


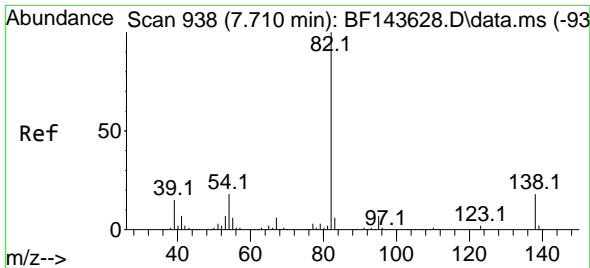
#24
 Nitrobenzene
 Concen: 41.385 ng
 RT: 7.469 min Scan# 897
 Delta R.T. -0.006 min
 Lab File: BF143650.D
 Acq: 05 Sep 2025 09:54



Tgt Ion: 77 Resp: 143536

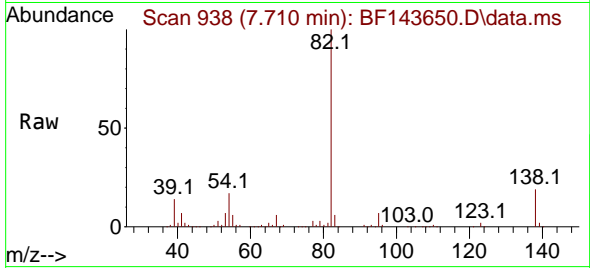
Ion	Ratio	Lower	Upper
77	100		
123	45.8	36.2	54.4
65	14.2	11.8	17.8



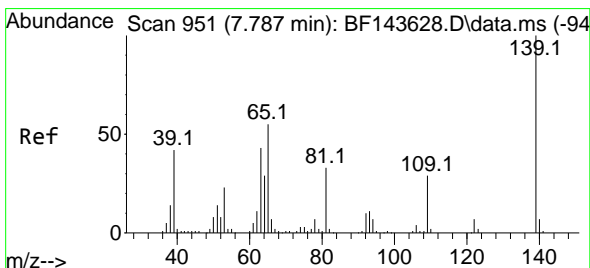
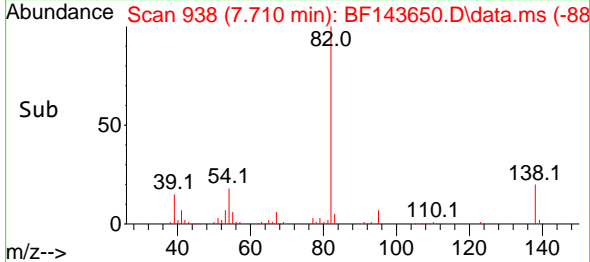
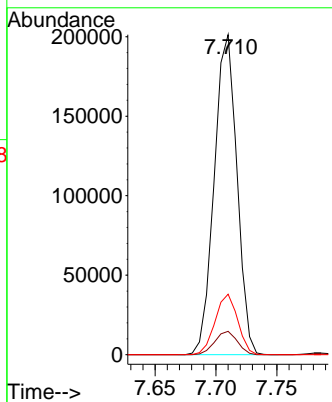


#25
 Isophorone
 Concen: 35.802 ng
 RT: 7.710 min Scan# 910
 Delta R.T. -0.000 min
 Lab File: BF143650.D
 Acq: 05 Sep 2025 09:54

Instrument :
 BNA_F
 ClientSampleId :

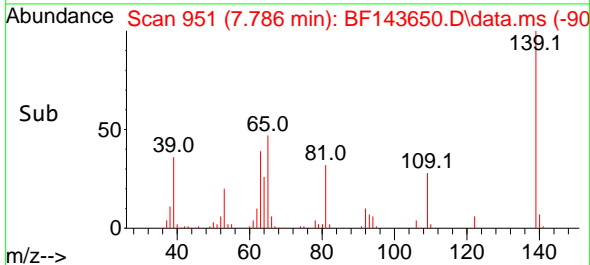
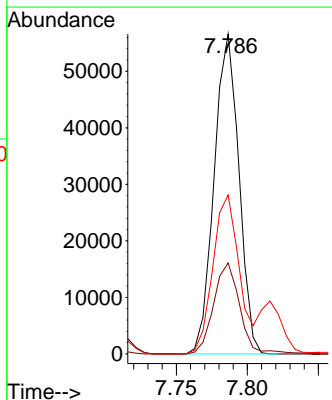
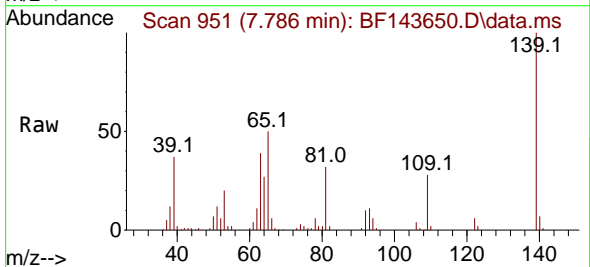


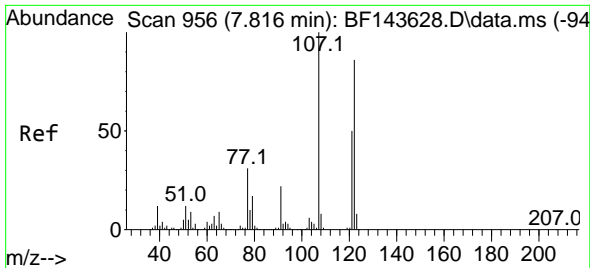
Tgt Ion: 82 Resp: 261700
 Ion Ratio Lower Upper
 82 100
 95 7.3 5.8 8.8
 138 18.9 14.2 21.2



#26
 2-Nitrophenol
 Concen: 46.209 ng
 RT: 7.786 min Scan# 951
 Delta R.T. -0.001 min
 Lab File: BF143650.D
 Acq: 05 Sep 2025 09:54

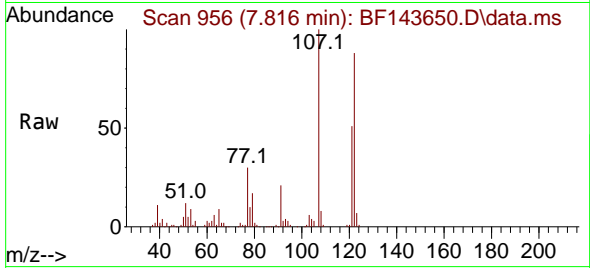
Tgt Ion: 139 Resp: 68498
 Ion Ratio Lower Upper
 139 100
 109 28.5 23.5 35.3
 65 49.7 44.1 66.1



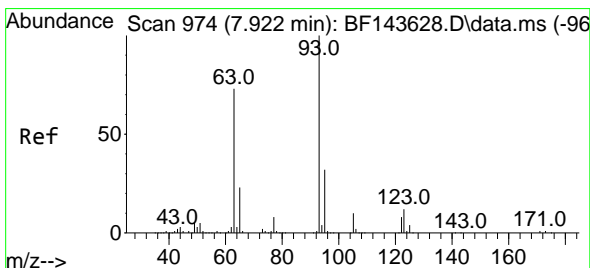
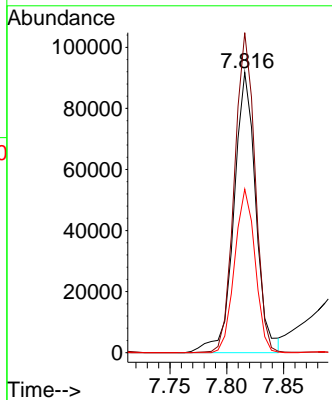
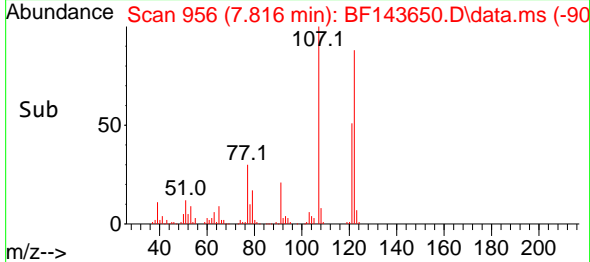


#27
 2,4-Dimethylphenol
 Concen: 38.692 ng
 RT: 7.816 min Scan# 91
 Delta R.T. -0.000 min
 Lab File: BF143650.D
 Acq: 05 Sep 2025 09:54

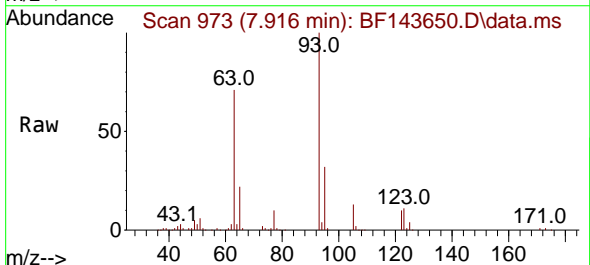
Instrument :
 BNA_F
 ClientSampleId :



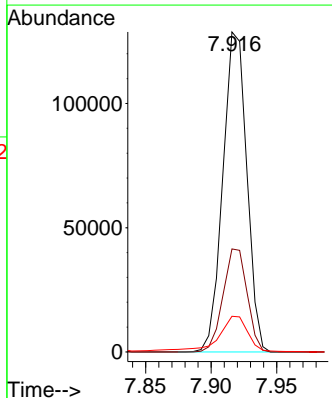
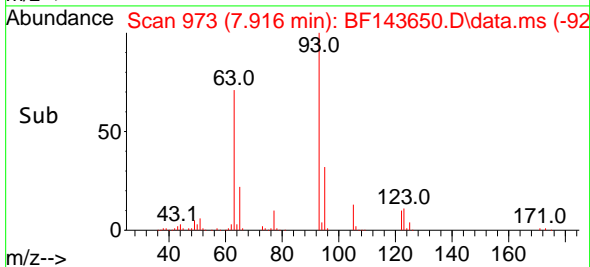
Tgt Ion:122 Resp: 123135
 Ion Ratio Lower Upper
 122 100
 107 114.2 93.4 140.0
 121 58.4 46.9 70.3

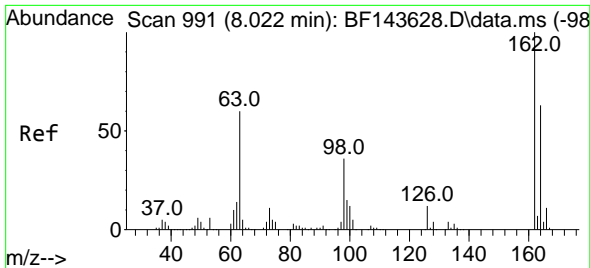


#28
 bis(2-Chloroethoxy)methane
 Concen: 36.582 ng
 RT: 7.916 min Scan# 973
 Delta R.T. -0.006 min
 Lab File: BF143650.D
 Acq: 05 Sep 2025 09:54



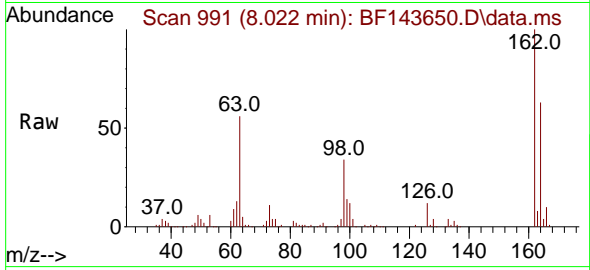
Tgt Ion: 93 Resp: 163473
 Ion Ratio Lower Upper
 93 100
 95 32.2 25.8 38.8
 123 11.2 9.6 14.4





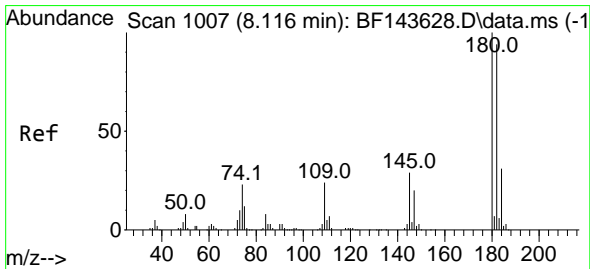
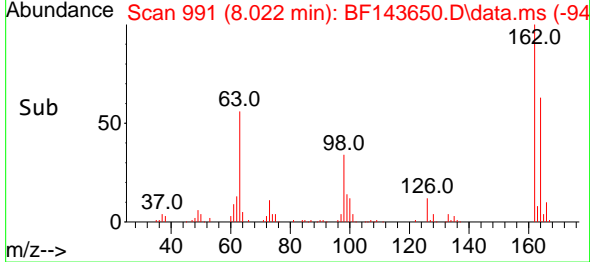
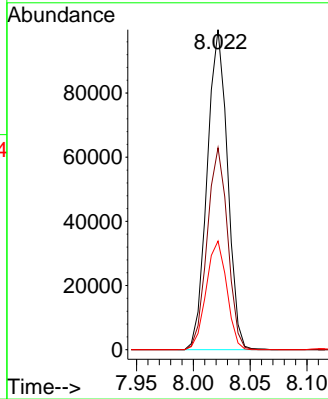
#29
 2,4-Dichlorophenol
 Concen: 39.893 ng
 RT: 8.022 min Scan# 991
 Delta R.T. -0.000 min
 Lab File: BF143650.D
 Acq: 05 Sep 2025 09:54

Instrument : BNA_F
 ClientSampleId :



Tgt Ion:162 Resp: 124581

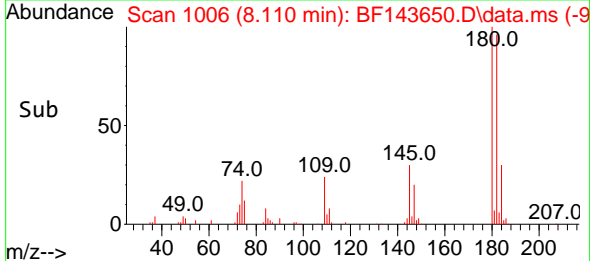
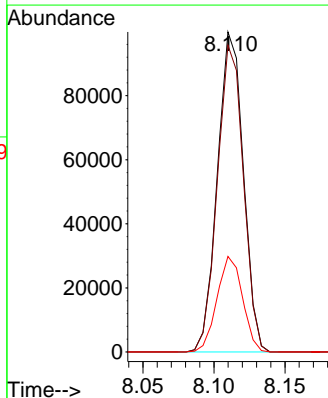
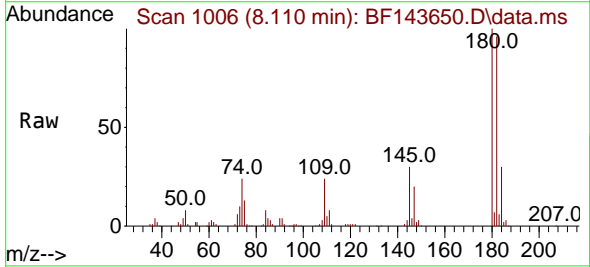
Ion	Ratio	Lower	Upper
162	100		
164	63.1	42.9	82.9
98	33.9	15.9	55.9

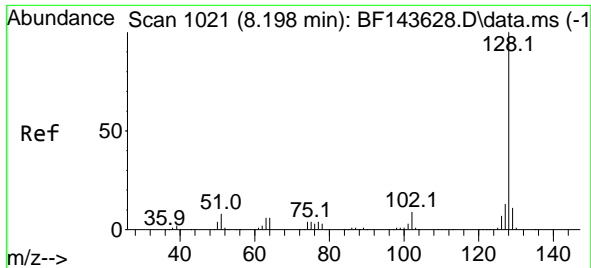


#30
 1,2,4-Trichlorobenzene
 Concen: 37.259 ng
 RT: 8.110 min Scan# 1006
 Delta R.T. -0.006 min
 Lab File: BF143650.D
 Acq: 05 Sep 2025 09:54

Tgt Ion:180 Resp: 126806

Ion	Ratio	Lower	Upper
180	100		
182	95.9	75.2	112.8
145	29.9	23.6	35.4

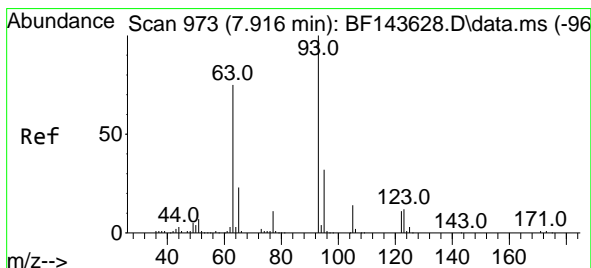
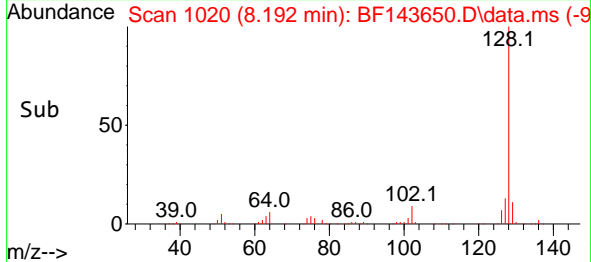
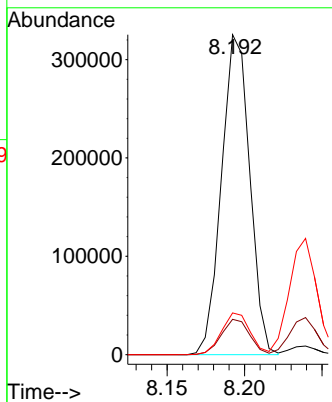
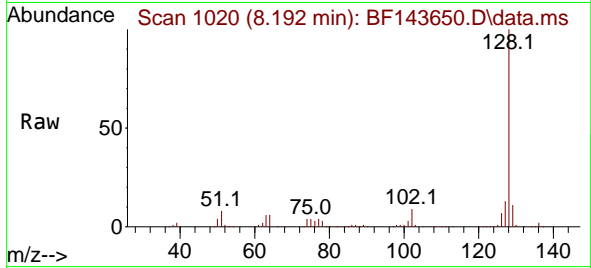




#31
 Naphthalene
 Concen: 37.023 ng
 RT: 8.192 min Scan# 10
 Delta R.T. -0.006 min
 Lab File: BF143650.D
 Acq: 05 Sep 2025 09:54

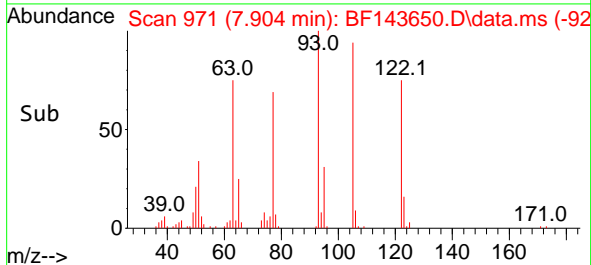
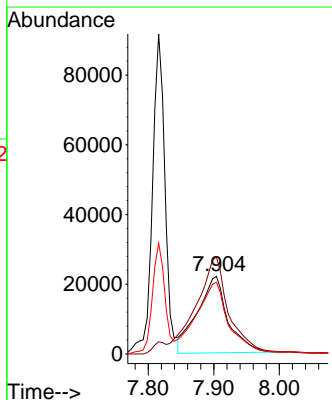
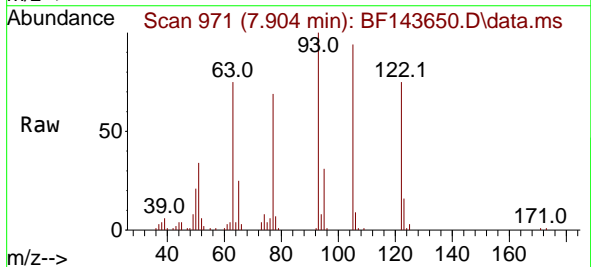
Instrument :
 BNA_F
 ClientSampleId :

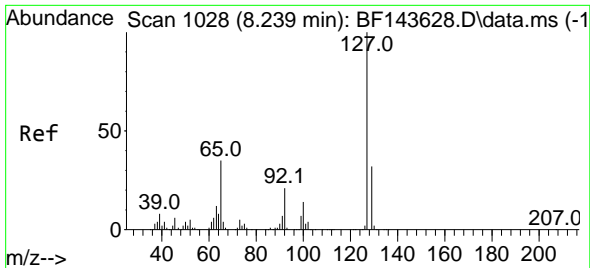
Tgt Ion:128 Resp: 412856
 Ion Ratio Lower Upper
 128 100
 129 11.1 9.0 13.6
 127 13.1 10.6 16.0



#32
 Benzoic acid
 Concen: 38.668 ng
 RT: 7.904 min Scan# 971
 Delta R.T. -0.012 min
 Lab File: BF143650.D
 Acq: 05 Sep 2025 09:54

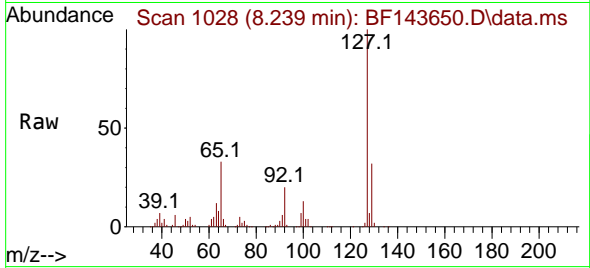
Tgt Ion:122 Resp: 71473
 Ion Ratio Lower Upper
 122 100
 105 125.0 105.9 145.9
 77 92.4 78.6 118.6





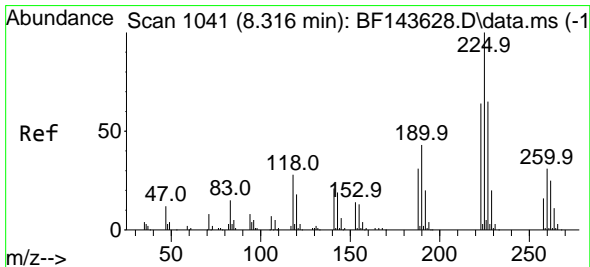
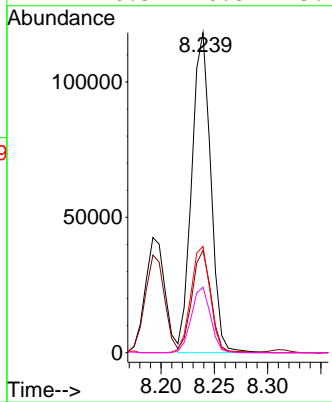
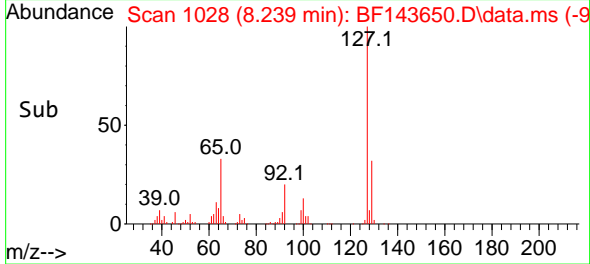
#33
 4-Chloroaniline
 Concen: 37.977 ng
 RT: 8.239 min Scan# 1028
 Delta R.T. -0.000 min
 Lab File: BF143650.D
 Acq: 05 Sep 2025 09:54

Instrument : BNA_F
 ClientSampleId :

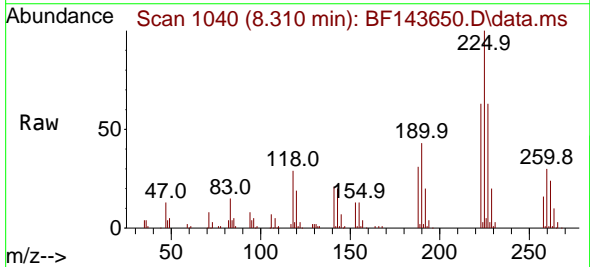


Tgt Ion:127 Resp: 146638

Ion	Ratio	Lower	Upper
127	100		
129	32.0	26.2	39.2
65	33.2	27.6	41.4
92	20.5	16.8	25.2

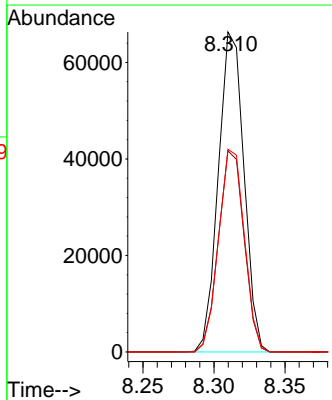
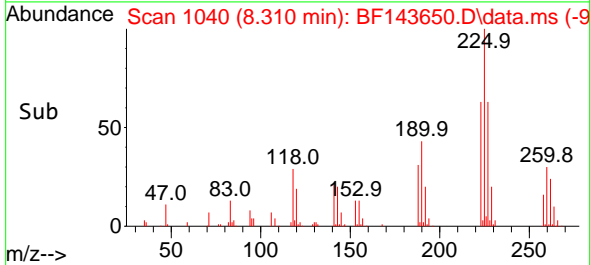


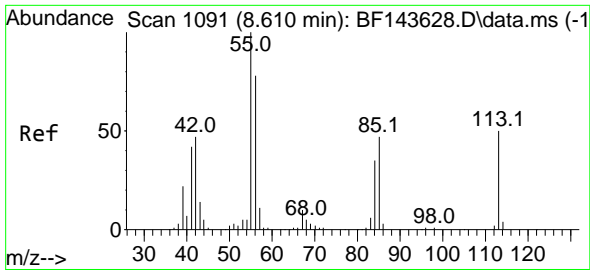
#34
 Hexachlorobutadiene
 Concen: 37.554 ng
 RT: 8.310 min Scan# 1040
 Delta R.T. -0.006 min
 Lab File: BF143650.D
 Acq: 05 Sep 2025 09:54



Tgt Ion:225 Resp: 83137

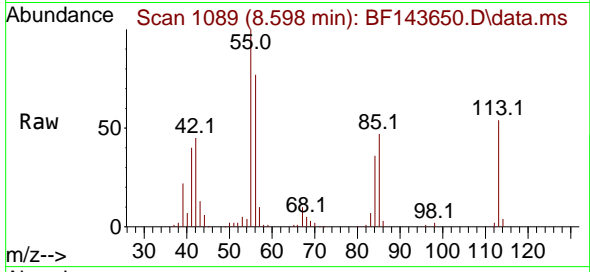
Ion	Ratio	Lower	Upper
225	100		
223	62.9	51.3	76.9
227	63.4	51.7	77.5



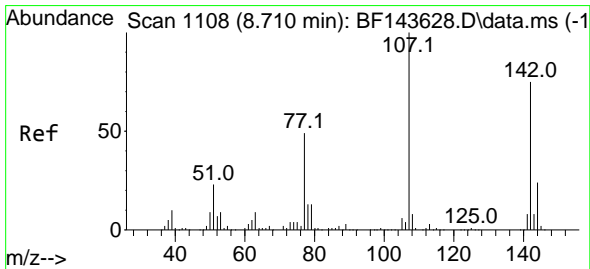
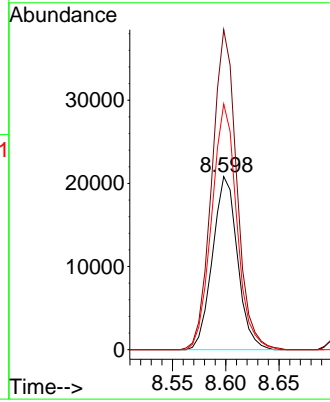
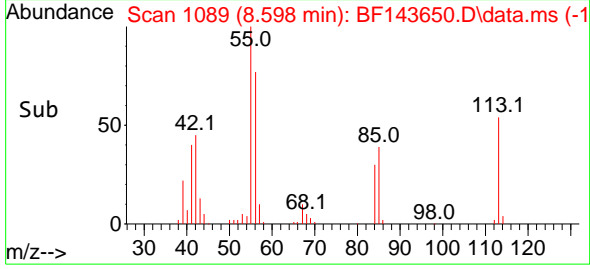


#35
 Caprolactam
 Concen: 40.446 ng
 RT: 8.598 min Scan# 1091
 Delta R.T. -0.012 min
 Lab File: BF143650.D
 Acq: 05 Sep 2025 09:54

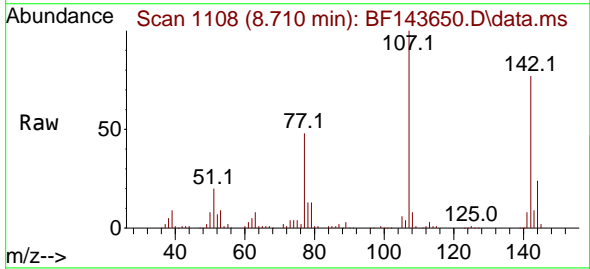
Instrument :
 BNA_F
 ClientSampleId :



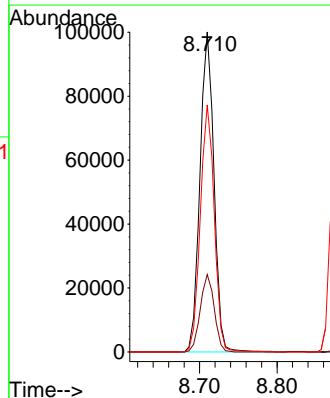
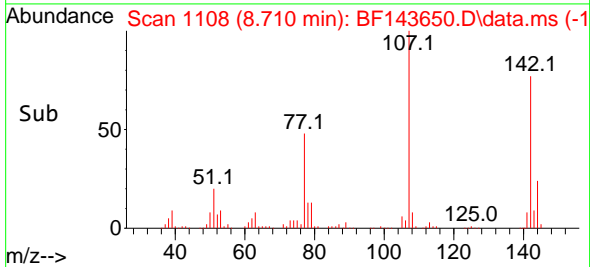
Tgt Ion:113 Resp: 33849
 Ion Ratio Lower Upper
 113 100
 55 184.9 180.5 220.5
 56 142.0 134.8 174.8

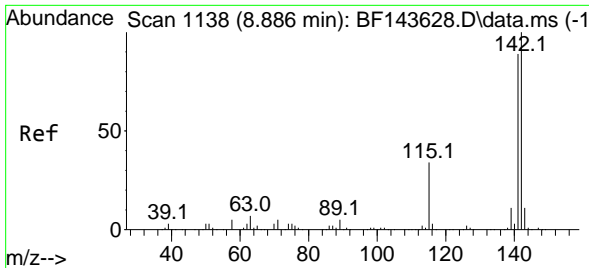


#36
 4-Chloro-3-methylphenol
 Concen: 38.305 ng
 RT: 8.710 min Scan# 1108
 Delta R.T. -0.000 min
 Lab File: BF143650.D
 Acq: 05 Sep 2025 09:54



Tgt Ion:107 Resp: 125263
 Ion Ratio Lower Upper
 107 100
 144 24.2 19.0 28.6
 142 77.2 60.3 90.5

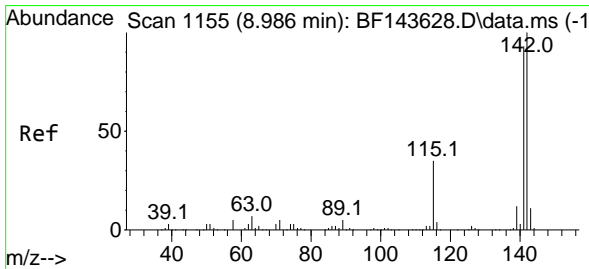
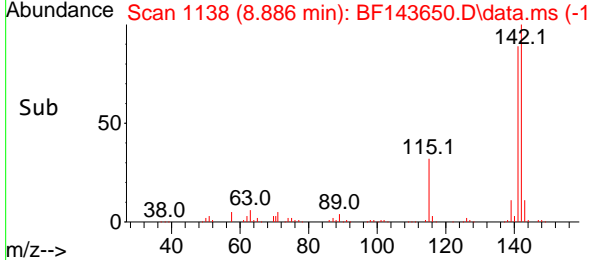
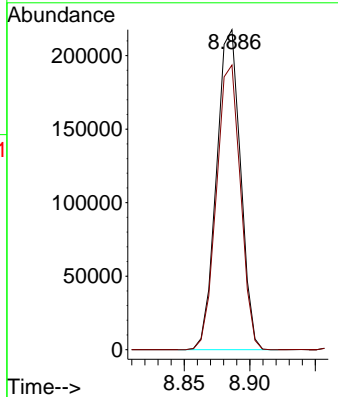
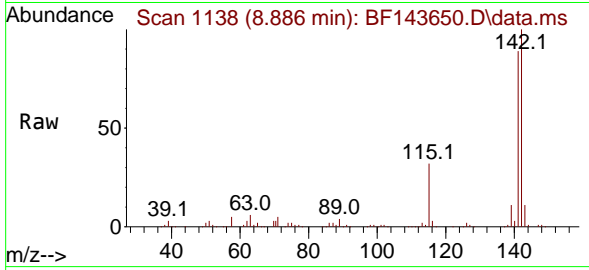




#37
 2-Methylnaphthalene
 Concen: 36.740 ng
 RT: 8.886 min Scan# 1138
 Delta R.T. -0.000 min
 Lab File: BF143650.D
 Acq: 05 Sep 2025 09:54

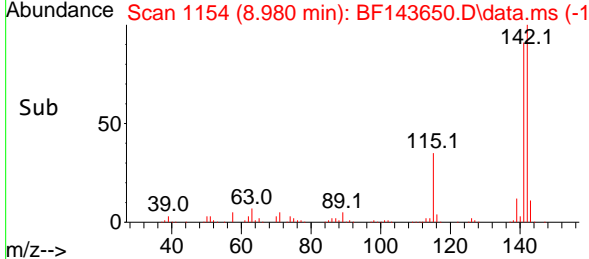
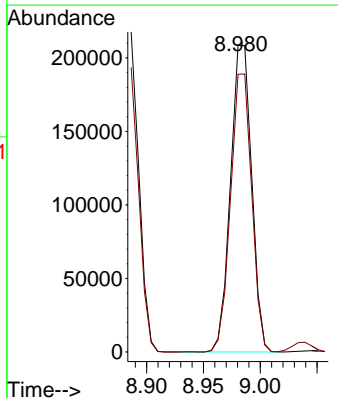
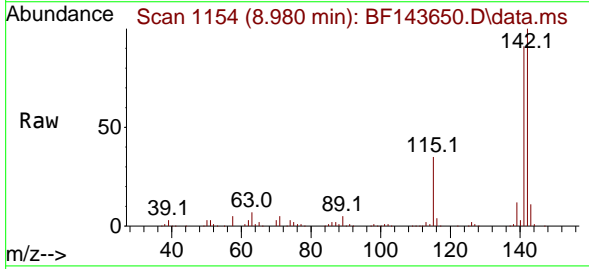
Instrument : BNA_F
 ClientSampleId :

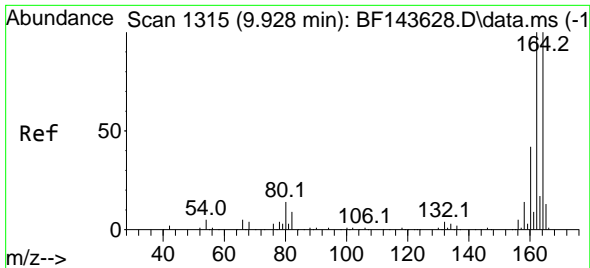
Tgt Ion:142 Resp: 277130
 Ion Ratio Lower Upper
 142 100
 141 89.0 70.8 106.2



#38
 1-Methylnaphthalene
 Concen: 37.535 ng
 RT: 8.980 min Scan# 1154
 Delta R.T. -0.006 min
 Lab File: BF143650.D
 Acq: 05 Sep 2025 09:54

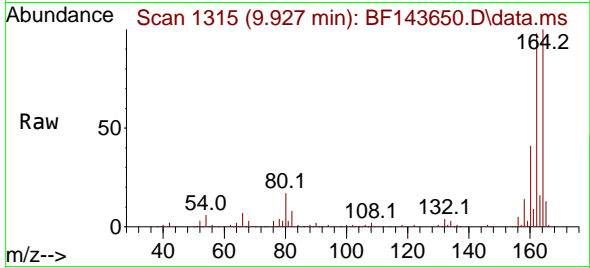
Tgt Ion:142 Resp: 270684
 Ion Ratio Lower Upper
 142 100
 141 90.6 74.5 111.7



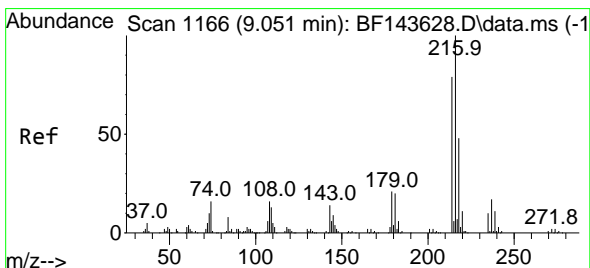
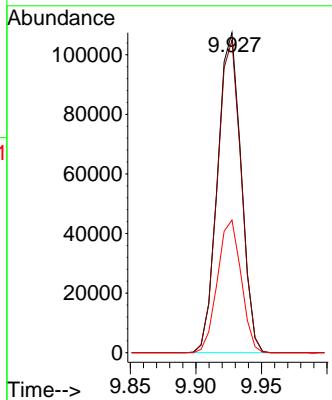
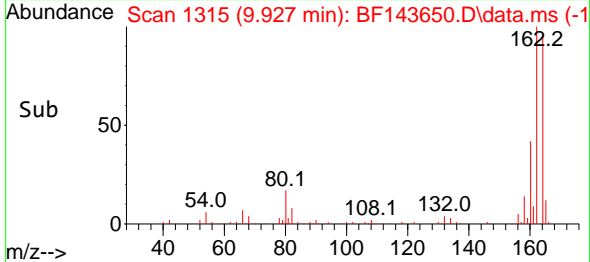


#39
 Acenaphthene-d10
 Concen: 20.000 ng
 RT: 9.927 min Scan# 1115
 Delta R.T. -0.001 min
 Lab File: BF143650.D
 Acq: 05 Sep 2025 09:54

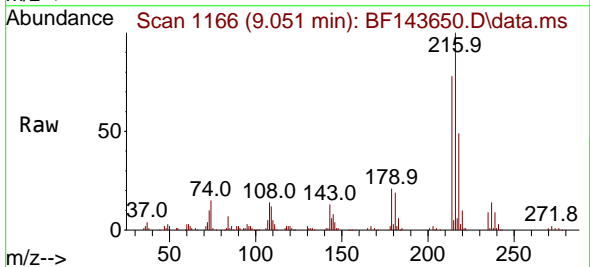
Instrument :
 BNA_F
 ClientSampleId :



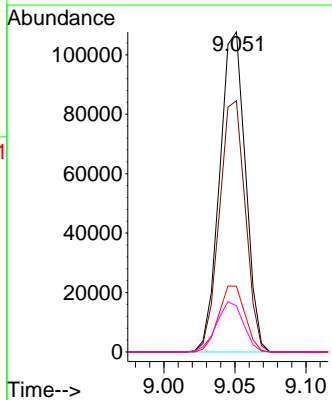
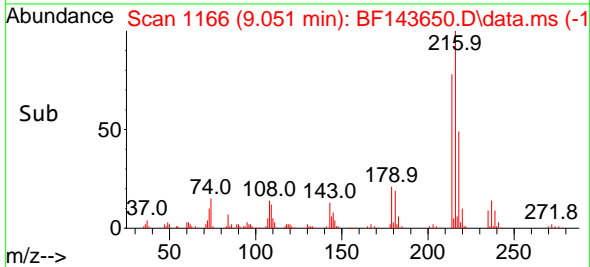
Tgt Ion:164 Resp: 134300
 Ion Ratio Lower Upper
 164 100
 162 97.6 80.3 120.5
 160 41.4 34.0 51.0

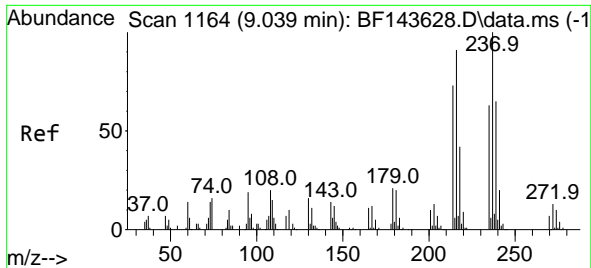


#40
 1,2,4,5-Tetrachlorobenzene
 Concen: 36.610 ng
 RT: 9.051 min Scan# 1166
 Delta R.T. -0.000 min
 Lab File: BF143650.D
 Acq: 05 Sep 2025 09:54



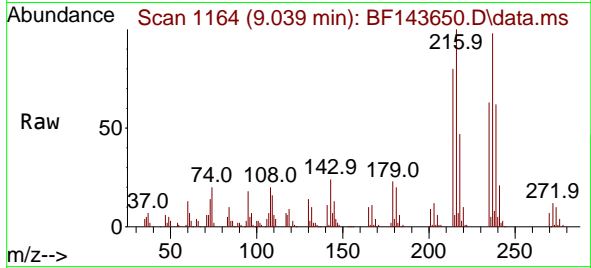
Tgt Ion:216 Resp: 135884
 Ion Ratio Lower Upper
 216 100
 214 78.7 63.3 94.9
 179 21.1 17.2 25.8
 108 16.3 14.0 21.0



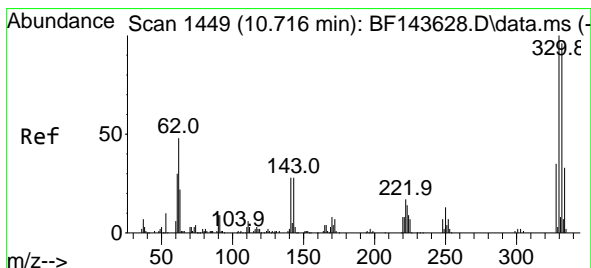
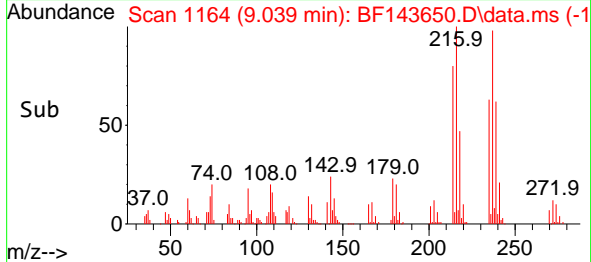
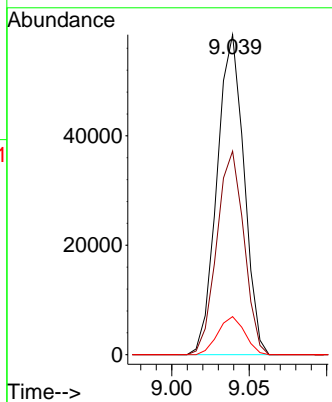


#41
 Hexachlorocyclopentadiene
 Concen: 39.274 ng
 RT: 9.039 min Scan# 1164
 Delta R.T. -0.000 min
 Lab File: BF143650.D
 Acq: 05 Sep 2025 09:54

Instrument :
 BNA_F
 ClientSampleId :

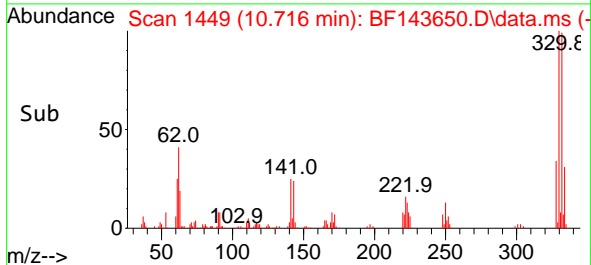
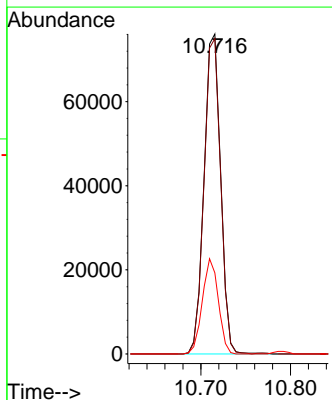
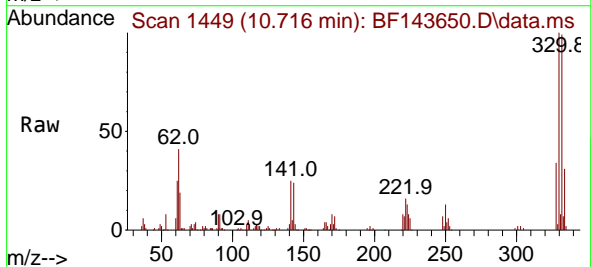


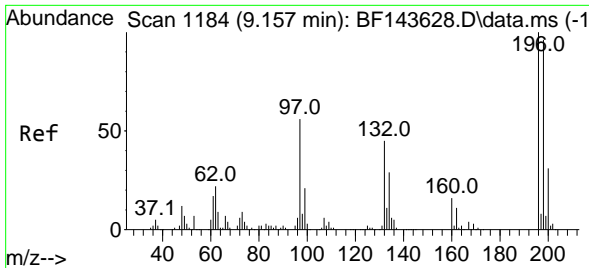
Tgt Ion:237 Resp: 70787
 Ion Ratio Lower Upper
 237 100
 235 63.6 43.0 83.0
 272 11.9 0.0 32.9



#42
 2,4,6-Tribromophenol
 Concen: 87.001 ng
 RT: 10.716 min Scan# 1449
 Delta R.T. -0.000 min
 Lab File: BF143650.D
 Acq: 05 Sep 2025 09:54

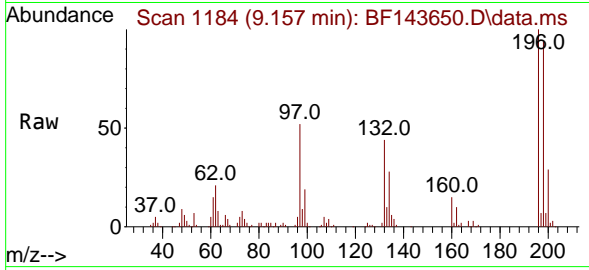
Tgt Ion:330 Resp: 97707
 Ion Ratio Lower Upper
 330 100
 332 98.0 77.0 115.6
 141 28.7 23.5 35.3



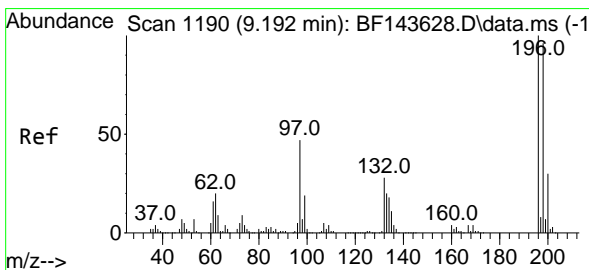
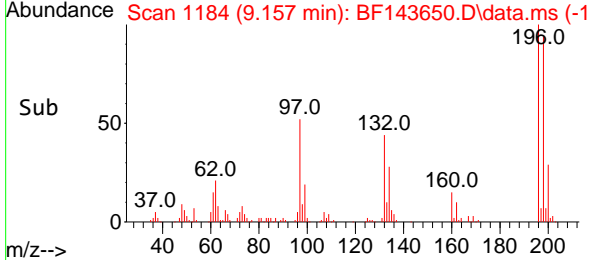
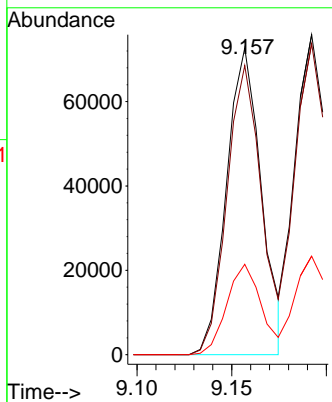


#43
 2,4,6-Trichlorophenol
 Concen: 40.652 ng
 RT: 9.157 min Scan# 1184
 Delta R.T. -0.000 min
 Lab File: BF143650.D
 Acq: 05 Sep 2025 09:54

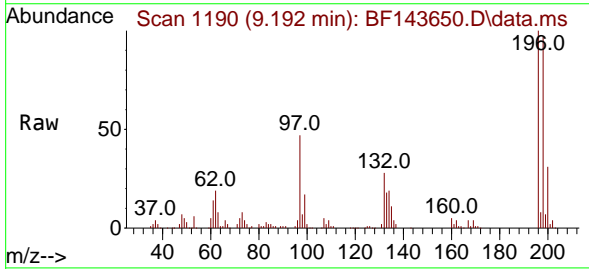
Instrument : BNA_F
 ClientSampleId :



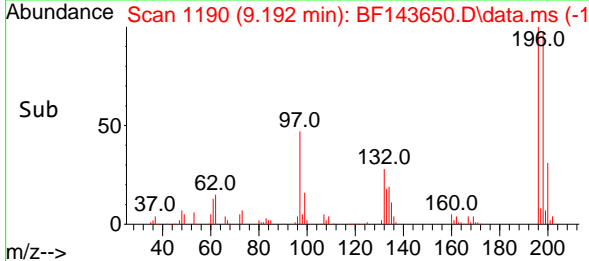
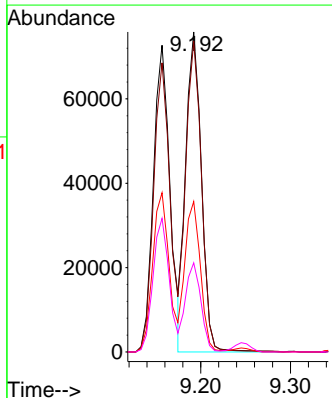
Tgt Ion:196 Resp: 92962
 Ion Ratio Lower Upper
 196 100
 198 94.3 77.1 115.7
 200 29.5 24.7 37.1

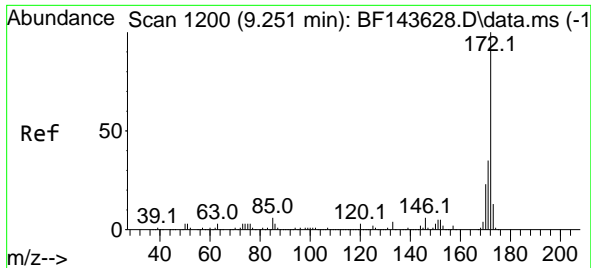


#44
 2,4,5-Trichlorophenol
 Concen: 39.197 ng
 RT: 9.192 min Scan# 1190
 Delta R.T. -0.000 min
 Lab File: BF143650.D
 Acq: 05 Sep 2025 09:54



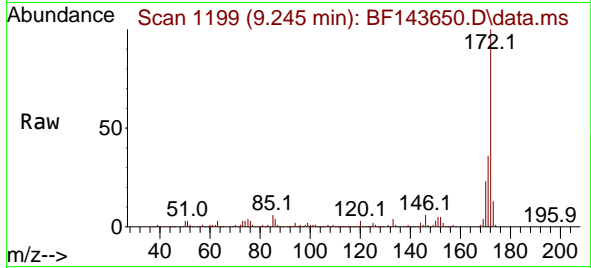
Tgt Ion:196 Resp: 92538
 Ion Ratio Lower Upper
 196 100
 198 97.2 76.6 115.0
 97 47.0 38.2 57.2
 132 27.8 23.3 34.9





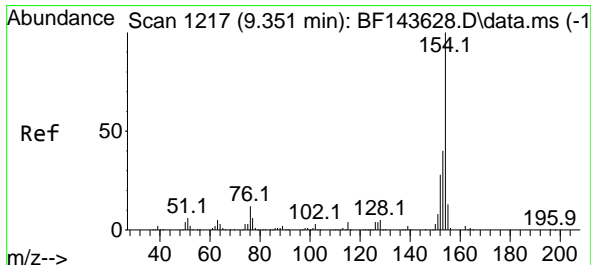
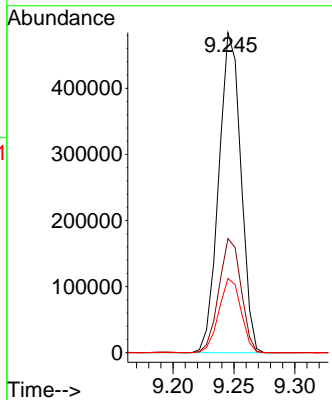
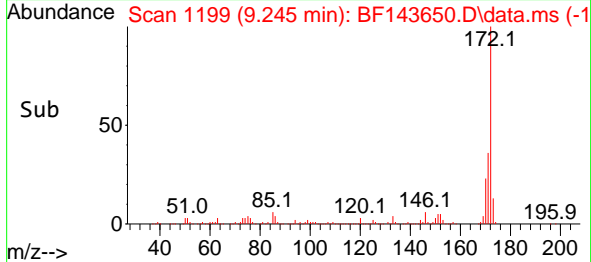
#45
 2-Fluorobiphenyl
 Concen: 72.925 ng
 RT: 9.245 min Scan# 1119
 Delta R.T. -0.006 min
 Lab File: BF143650.D
 Acq: 05 Sep 2025 09:54

Instrument :
 BNA_F
 ClientSampleId :

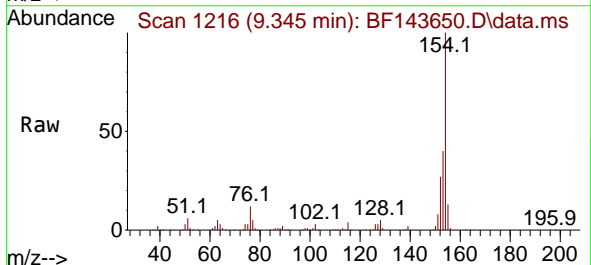


Tgt Ion:172 Resp: 613014

Ion	Ratio	Lower	Upper
172	100		
171	35.6	28.1	42.1
170	23.2	18.6	28.0

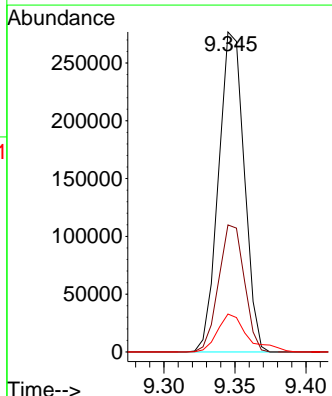
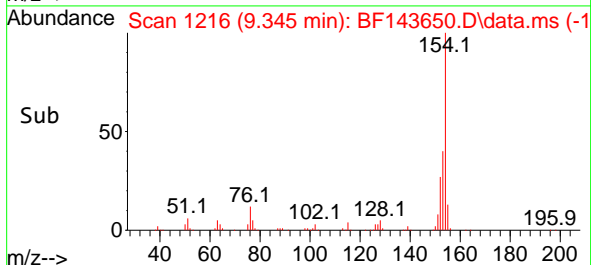


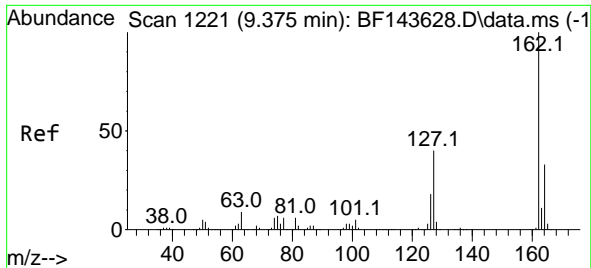
#46
 1,1'-Biphenyl
 Concen: 36.384 ng
 RT: 9.345 min Scan# 1216
 Delta R.T. -0.006 min
 Lab File: BF143650.D
 Acq: 05 Sep 2025 09:54



Tgt Ion:154 Resp: 347518

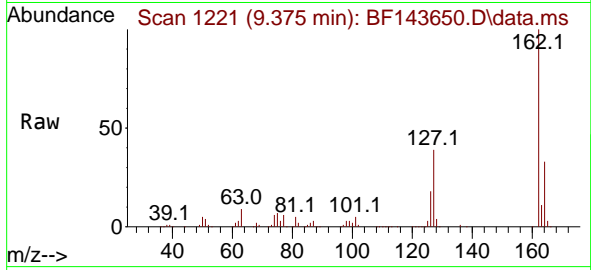
Ion	Ratio	Lower	Upper
154	100		
153	39.7	20.1	60.1
76	11.9	0.0	31.9





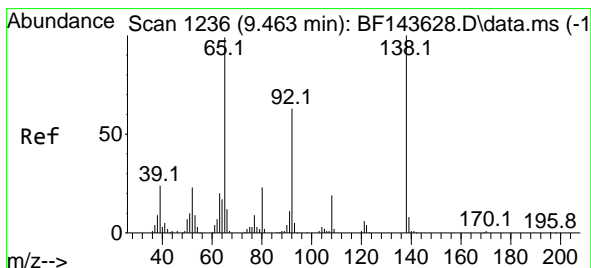
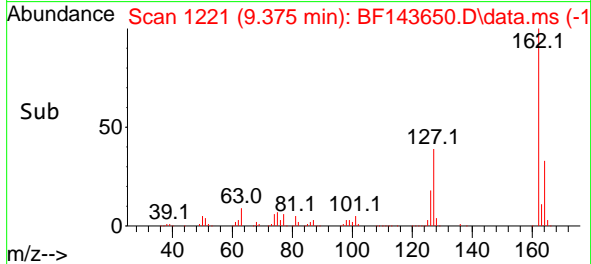
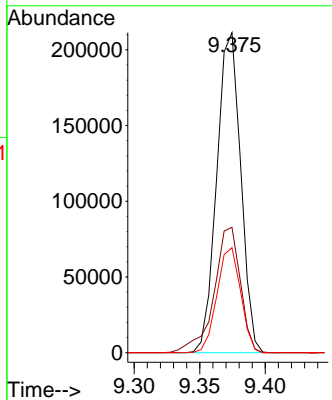
#47
 2-Chloronaphthalene
 Concen: 35.895 ng
 RT: 9.375 min Scan# 1221
 Delta R.T. -0.000 min
 Lab File: BF143650.D
 Acq: 05 Sep 2025 09:54

Instrument : BNA_F
 ClientSampleId :



Tgt Ion:162 Resp: 268309

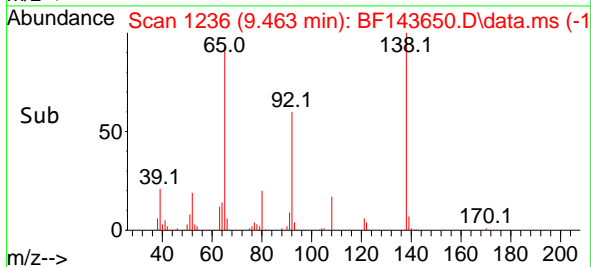
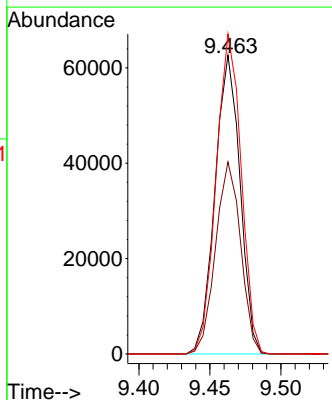
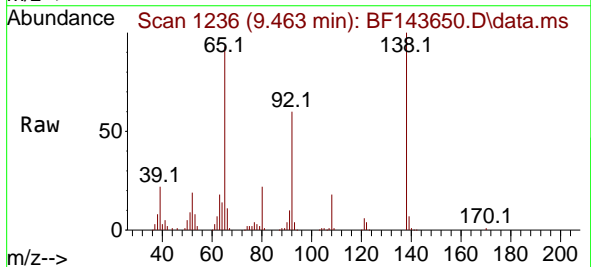
Ion	Ratio	Lower	Upper
162	100		
127	39.2	31.9	47.9
164	32.8	26.0	39.0

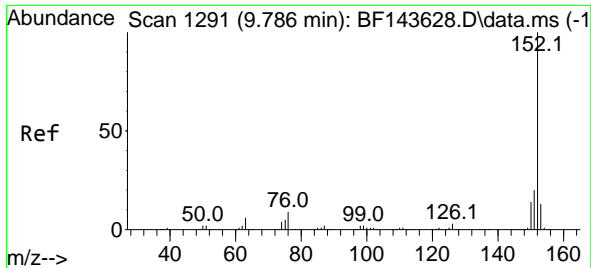


#48
 2-Nitroaniline
 Concen: 38.502 ng
 RT: 9.463 min Scan# 1236
 Delta R.T. -0.000 min
 Lab File: BF143650.D
 Acq: 05 Sep 2025 09:54

Tgt Ion: 65 Resp: 76707

Ion	Ratio	Lower	Upper
65	100		
92	64.3	50.9	76.3
138	107.1	80.6	120.8

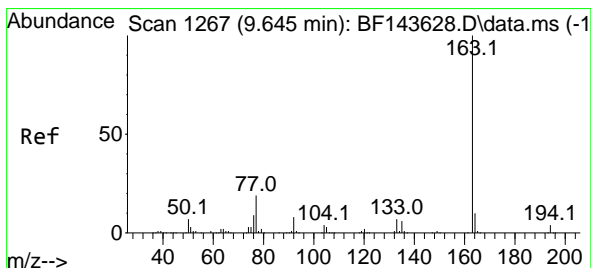
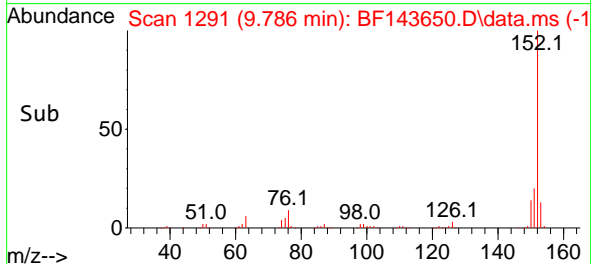
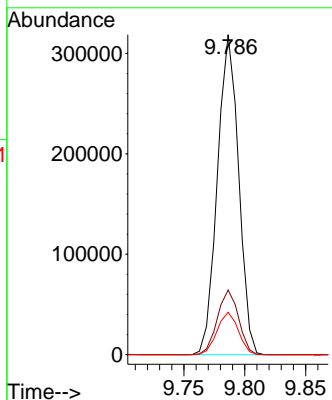
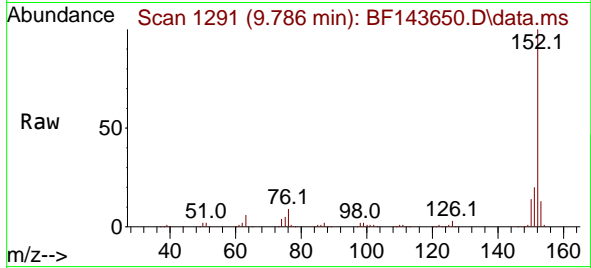




#49
 Acenaphthylene
 Concen: 35.899 ng
 RT: 9.786 min Scan# 11
 Delta R.T. -0.000 min
 Lab File: BF143650.D
 Acq: 05 Sep 2025 09:54

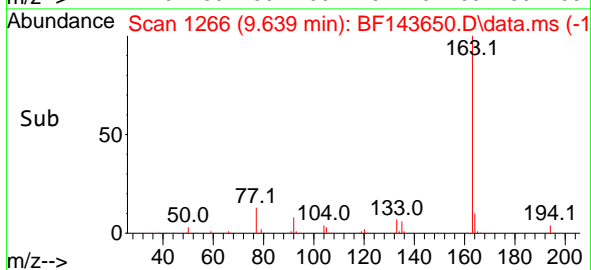
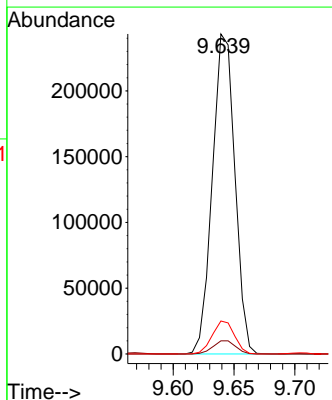
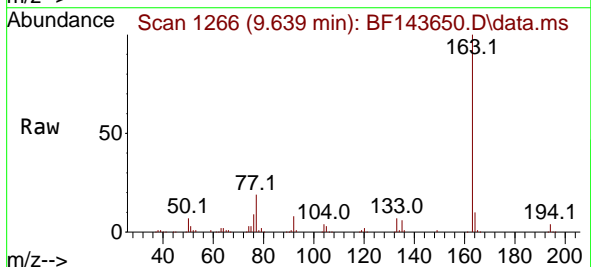
Instrument :
 BNA_F
 ClientSampleId :

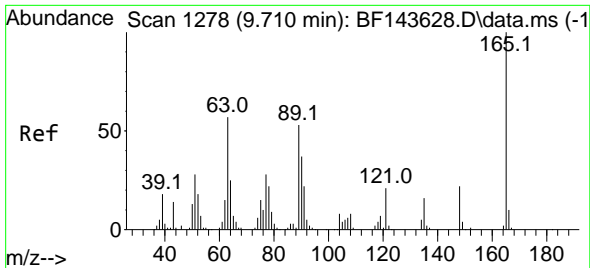
Tgt Ion:152 Resp: 386722
 Ion Ratio Lower Upper
 152 100
 151 20.2 16.1 24.1
 153 13.3 10.6 15.8



#50
 Dimethylphthalate
 Concen: 36.800 ng
 RT: 9.639 min Scan# 1266
 Delta R.T. -0.006 min
 Lab File: BF143650.D
 Acq: 05 Sep 2025 09:54

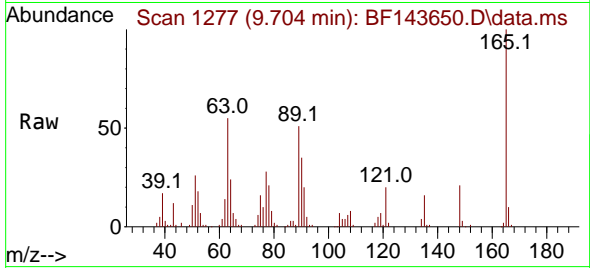
Tgt Ion:163 Resp: 312946
 Ion Ratio Lower Upper
 163 100
 194 4.1 3.1 4.7
 164 10.3 8.1 12.1



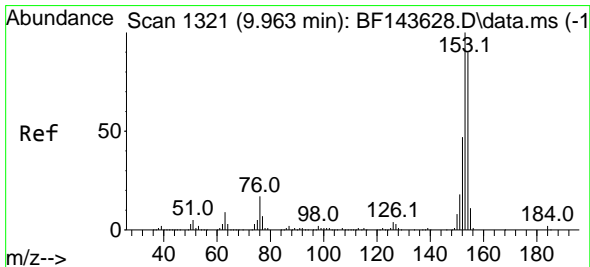
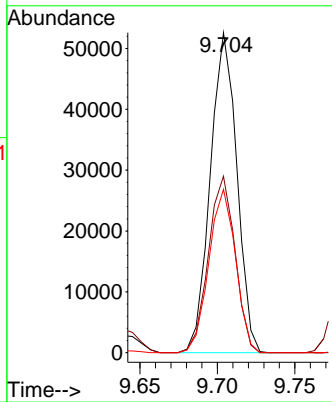
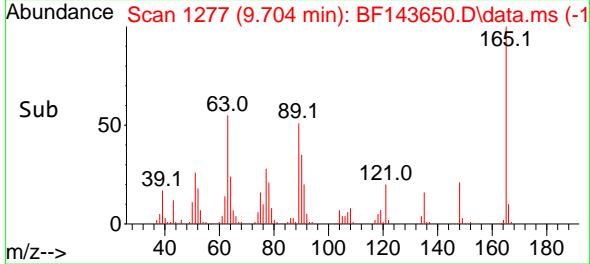


#51
 2,6-Dinitrotoluene
 Concen: 41.123 ng
 RT: 9.704 min Scan# 11
 Delta R.T. -0.006 min
 Lab File: BF143650.D
 Acq: 05 Sep 2025 09:54

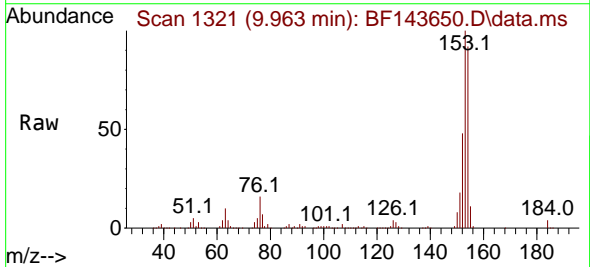
Instrument :
 BNA_F
 ClientSampleId :



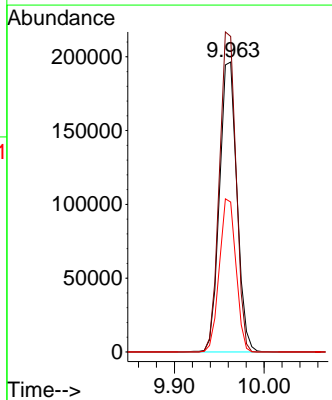
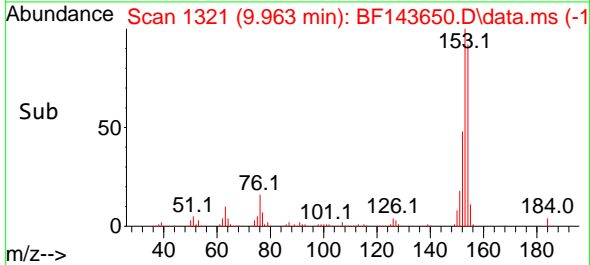
Tgt Ion:165 Resp: 62683
 Ion Ratio Lower Upper
 165 100
 63 55.1 45.4 68.0
 89 51.0 42.1 63.1

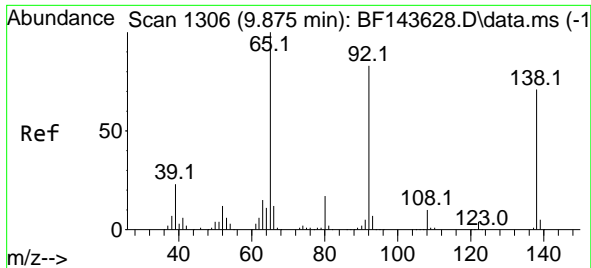


#52
 Acenaphthene
 Concen: 36.815 ng
 RT: 9.963 min Scan# 1321
 Delta R.T. -0.000 min
 Lab File: BF143650.D
 Acq: 05 Sep 2025 09:54



Tgt Ion:154 Resp: 265291
 Ion Ratio Lower Upper
 154 100
 153 108.8 88.6 132.8
 152 51.7 41.8 62.8

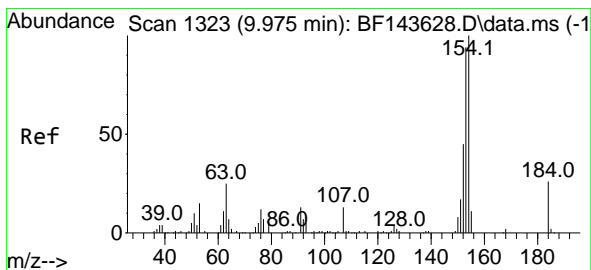
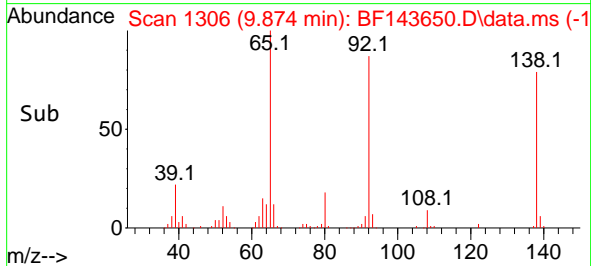
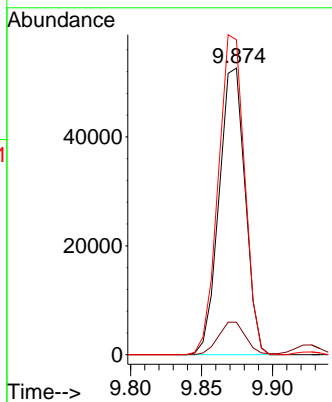
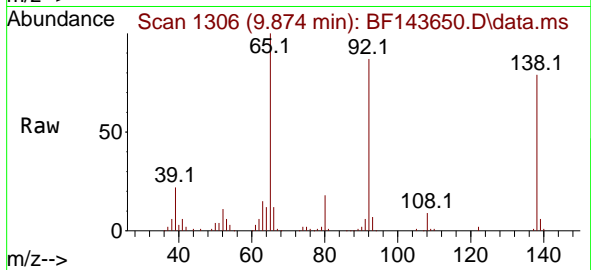




#53
 3-Nitroaniline
 Concen: 39.862 ng
 RT: 9.874 min Scan# 11
 Delta R.T. -0.001 min
 Lab File: BF143650.D
 Acq: 05 Sep 2025 09:54

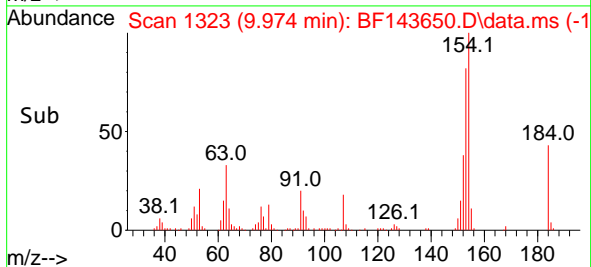
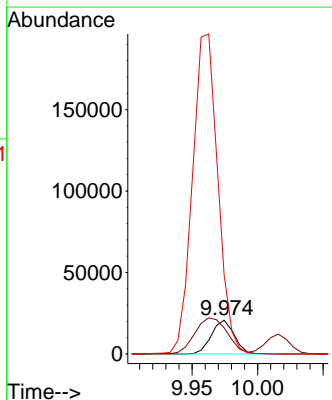
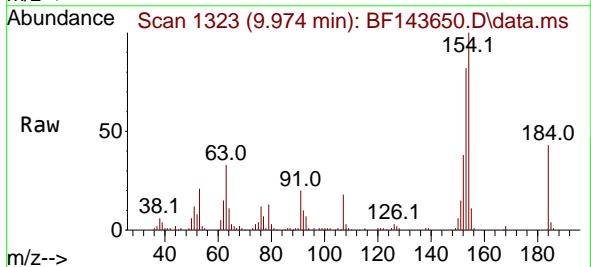
Instrument :
 BNA_F
 ClientSampleId :

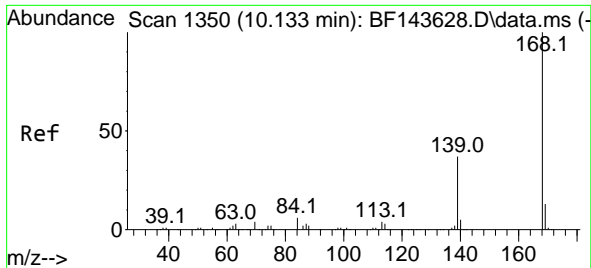
Tgt Ion:138 Resp: 67394
 Ion Ratio Lower Upper
 138 100
 108 11.3 10.7 16.1
 92 109.9 93.4 140.2



#54
 2,4-Dinitrophenol
 Concen: 45.662 ng
 RT: 9.974 min Scan# 1323
 Delta R.T. -0.001 min
 Lab File: BF143650.D
 Acq: 05 Sep 2025 09:54

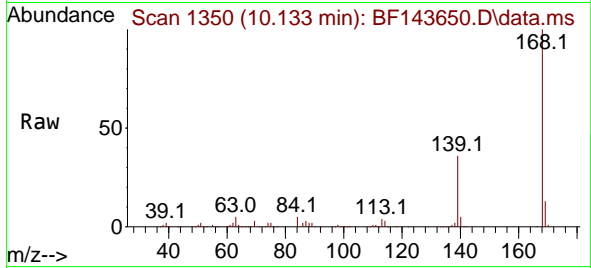
Tgt Ion:184 Resp: 24970
 Ion Ratio Lower Upper
 184 100
 63 77.3 81.8 122.8#
 154 234.1 348.3 522.5#



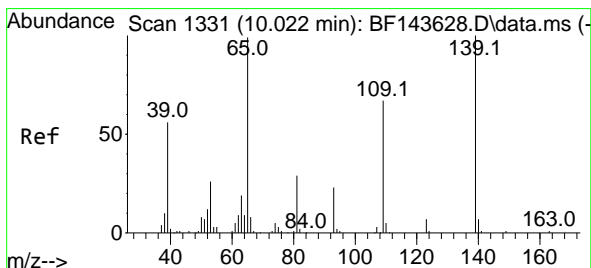
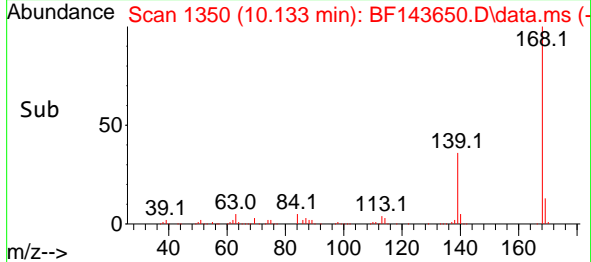
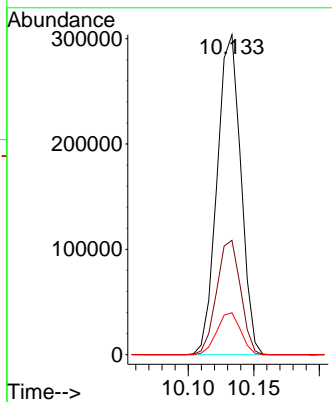


#55
 Dibenzenofuran
 Concen: 36.530 ng
 RT: 10.133 min Scan# 11
 Delta R.T. -0.000 min
 Lab File: BF143650.D
 Acq: 05 Sep 2025 09:54

Instrument :
 BNA_F
 ClientSampleId :

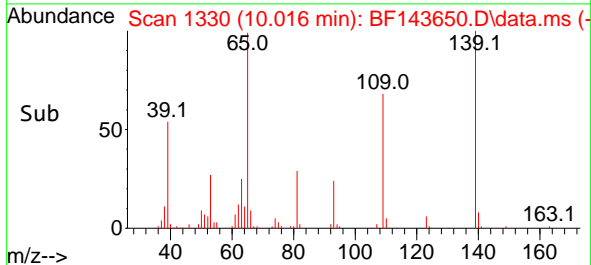
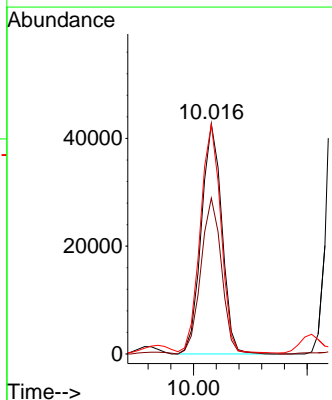
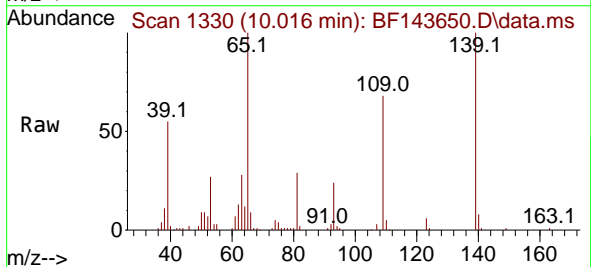


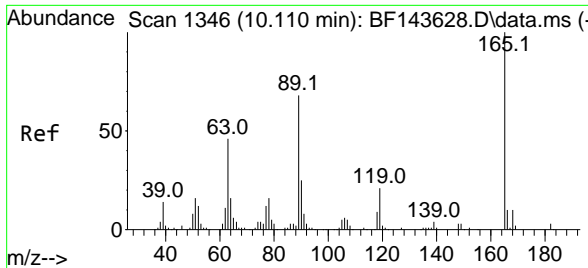
Tgt Ion:168 Resp: 382432
 Ion Ratio Lower Upper
 168 100
 139 35.7 29.8 44.8
 169 13.1 10.6 16.0



#56
 4-Nitrophenol
 Concen: 42.596 ng
 RT: 10.016 min Scan# 1330
 Delta R.T. -0.006 min
 Lab File: BF143650.D
 Acq: 05 Sep 2025 09:54

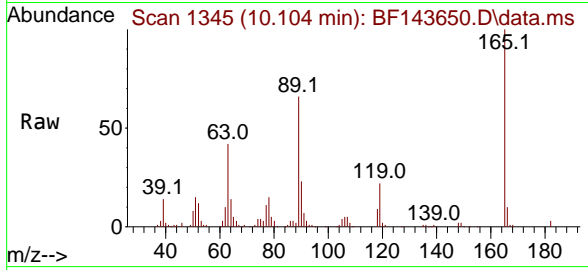
Tgt Ion:139 Resp: 53708
 Ion Ratio Lower Upper
 139 100
 109 67.7 47.6 87.6
 65 99.6 80.5 120.5





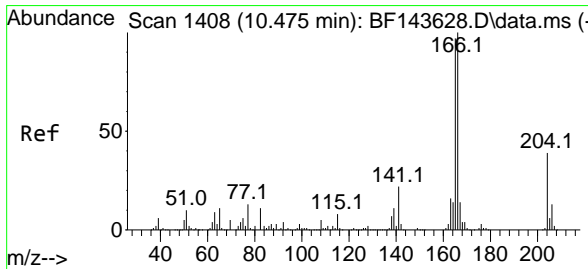
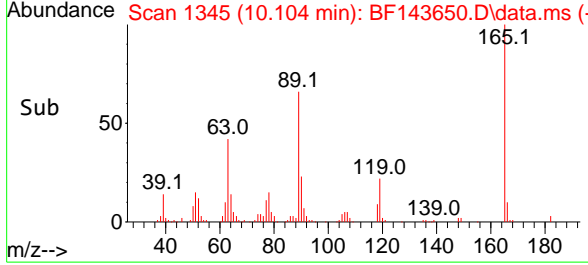
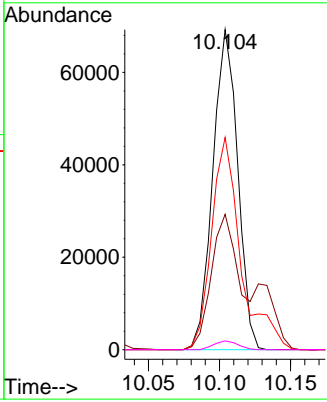
#57
 2,4-Dinitrotoluene
 Concen: 40.861 ng
 RT: 10.104 min Scan# 11
 Delta R.T. -0.006 min
 Lab File: BF143650.D
 Acq: 05 Sep 2025 09:54

Instrument :
 BNA_F
 ClientSampleId :



Tgt Ion:165 Resp: 84230

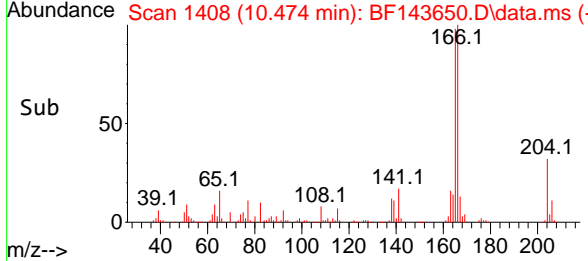
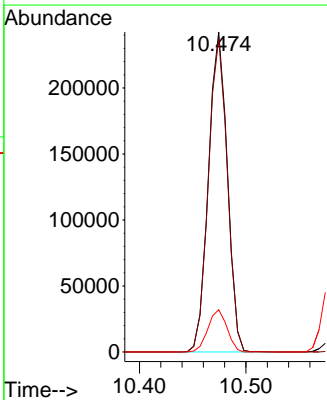
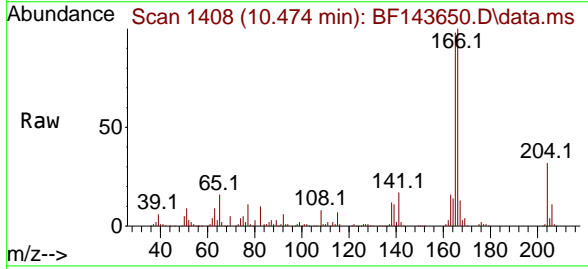
Ion	Ratio	Lower	Upper
165	100		
63	42.3	37.0	55.6
89	66.3	54.1	81.1
182	2.7	2.3	3.5

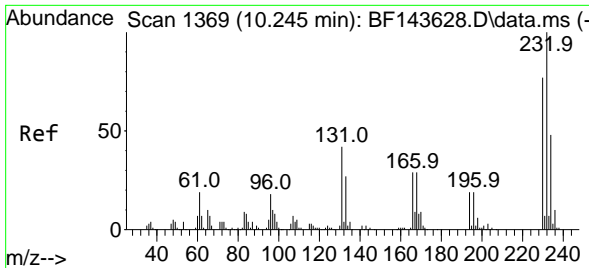


#58
 Fluorene
 Concen: 36.832 ng
 RT: 10.474 min Scan# 1408
 Delta R.T. -0.000 min
 Lab File: BF143650.D
 Acq: 05 Sep 2025 09:54

Tgt Ion:166 Resp: 298253

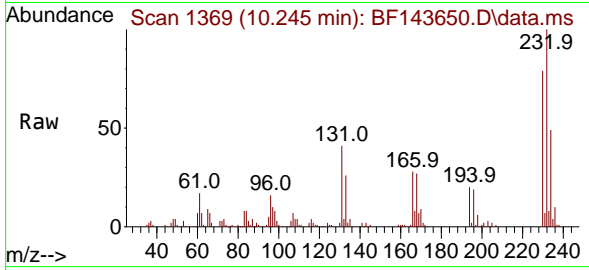
Ion	Ratio	Lower	Upper
166	100		
165	98.0	77.6	116.4
167	13.2	10.9	16.3





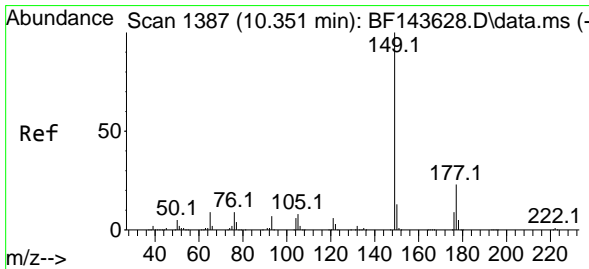
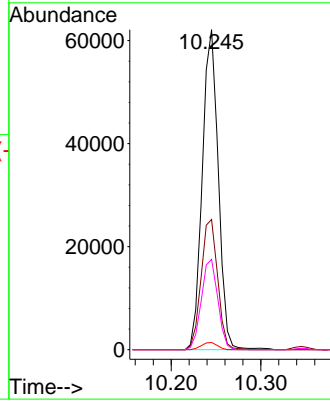
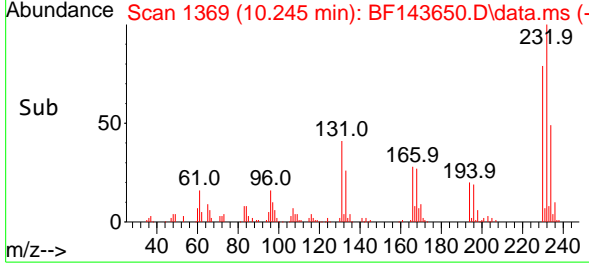
#59
 2,3,4,6-Tetrachlorophenol
 Concen: 42.910 ng
 RT: 10.245 min Scan# 1369
 Delta R.T. -0.000 min
 Lab File: BF143650.D
 Acq: 05 Sep 2025 09:54

Instrument :
 BNA_F
 ClientSampleId :

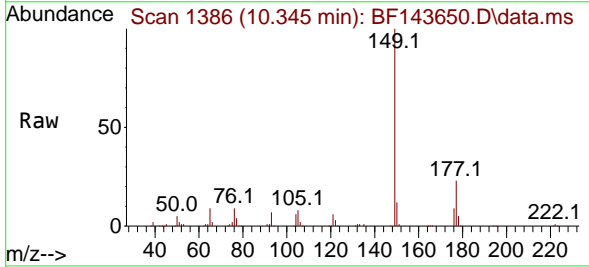


Tgt Ion: 232 Resp: 76935

Ion	Ratio	Lower	Upper
232	100		
131	42.1	33.7	50.5
130	2.2	1.5	2.3
166	28.9	23.2	34.8

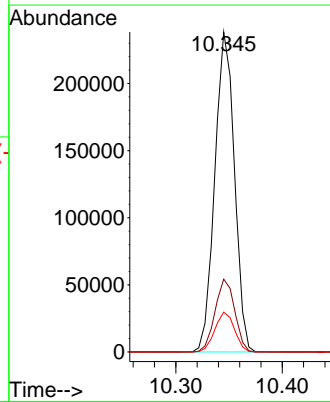
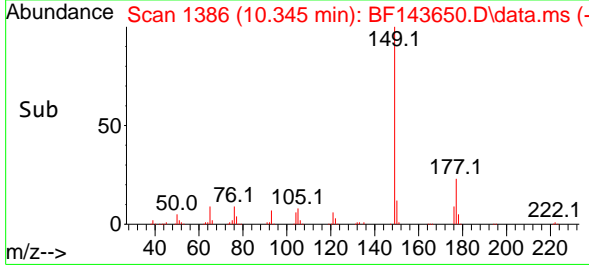


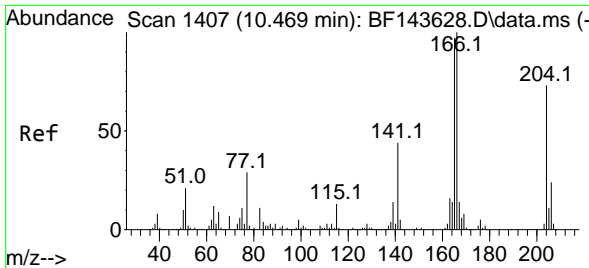
#60
 Diethylphthalate
 Concen: 37.670 ng
 RT: 10.345 min Scan# 1386
 Delta R.T. -0.006 min
 Lab File: BF143650.D
 Acq: 05 Sep 2025 09:54



Tgt Ion: 149 Resp: 304120

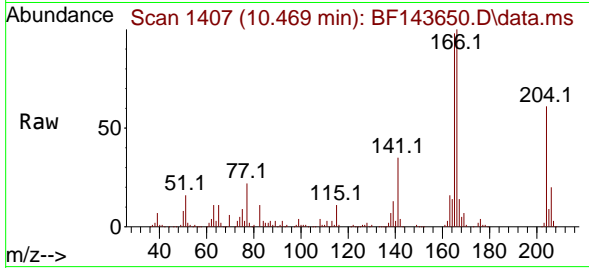
Ion	Ratio	Lower	Upper
149	100		
177	22.7	18.6	28.0
150	12.5	10.3	15.5



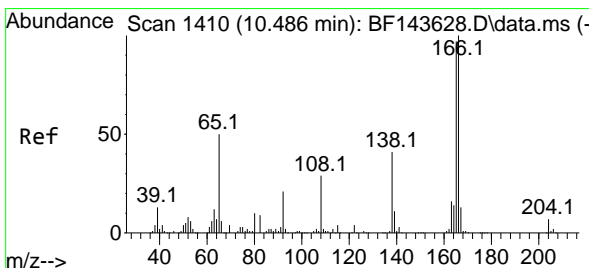
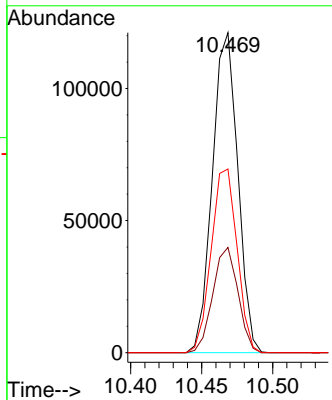
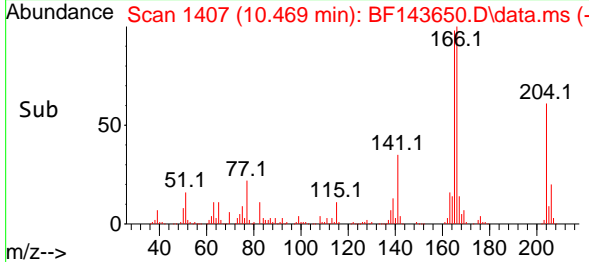


#61
 4-Chlorophenyl-phenylether
 Concen: 37.278 ng
 RT: 10.469 min Scan# 1407
 Delta R.T. -0.000 min
 Lab File: BF143650.D
 Acq: 05 Sep 2025 09:54

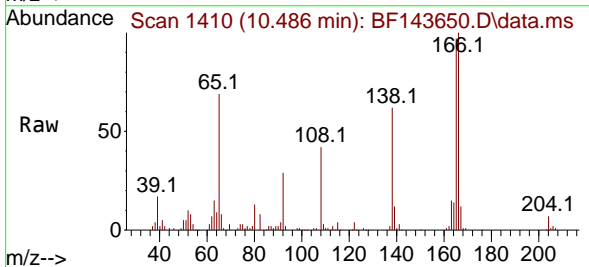
Instrument :
 BNA_F
 ClientSampleId :



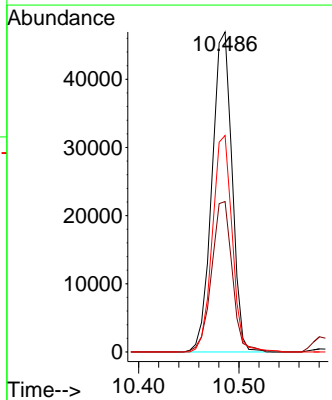
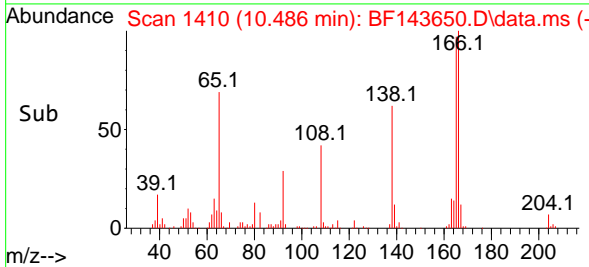
Tgt Ion:204 Resp: 150629
 Ion Ratio Lower Upper
 204 100
 206 32.9 26.6 40.0
 141 57.4 47.8 71.6

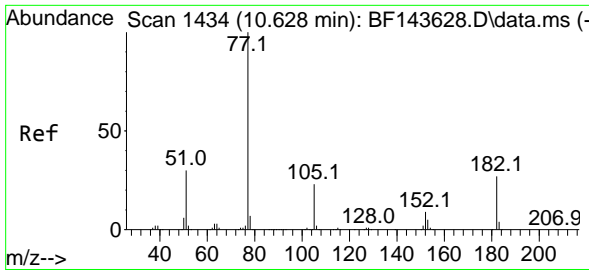


#62
 4-Nitroaniline
 Concen: 39.512 ng
 RT: 10.486 min Scan# 1410
 Delta R.T. 0.000 min
 Lab File: BF143650.D
 Acq: 05 Sep 2025 09:54



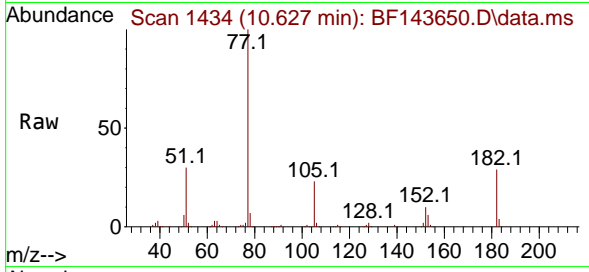
Tgt Ion:138 Resp: 65098
 Ion Ratio Lower Upper
 138 100
 92 47.0 30.5 70.5
 108 67.6 49.1 89.1





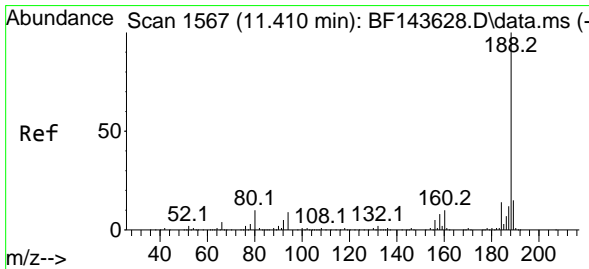
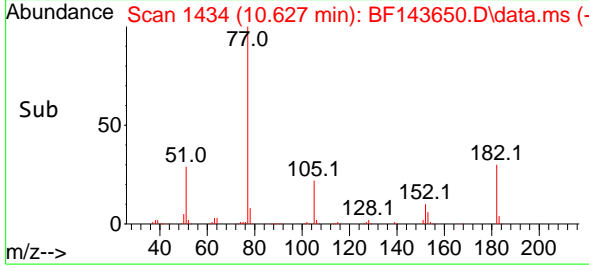
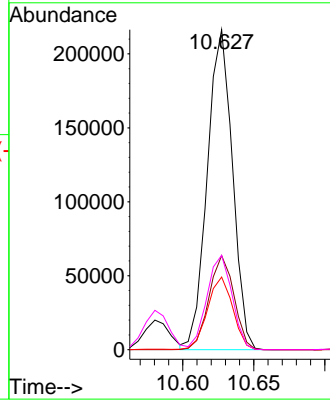
#63
 Azobenzene
 Concen: 35.112 ng
 RT: 10.627 min Scan# 14
 Delta R.T. -0.000 min
 Lab File: BF143650.D
 Acq: 05 Sep 2025 09:54

Instrument :
 BNA_F
 ClientSampleId :



Tgt Ion: 77 Resp: 267205

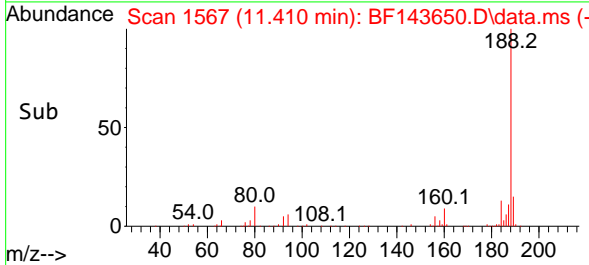
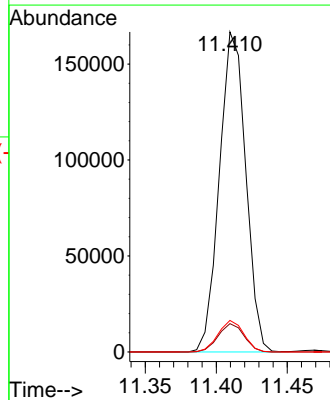
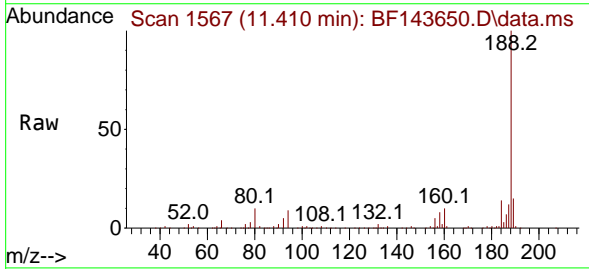
Ion	Ratio	Lower	Upper
77	100		
182	29.4	6.8	46.8
105	22.7	2.8	42.8
51	29.5	10.4	50.4

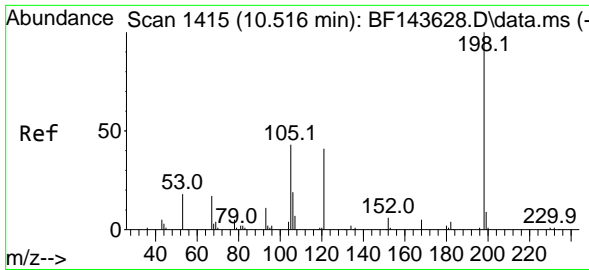


#64
 Phenanthrene-d10
 Concen: 20.000 ng
 RT: 11.410 min Scan# 1567
 Delta R.T. -0.000 min
 Lab File: BF143650.D
 Acq: 05 Sep 2025 09:54

Tgt Ion: 188 Resp: 215097

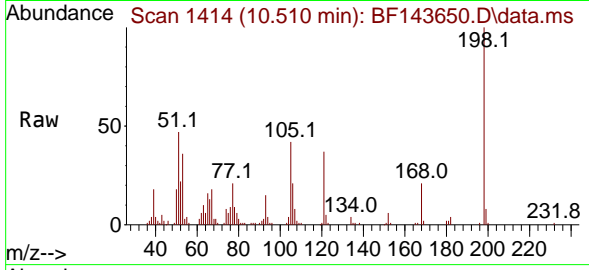
Ion	Ratio	Lower	Upper
188	100		
94	8.9	7.5	11.3
80	9.9	8.4	12.6



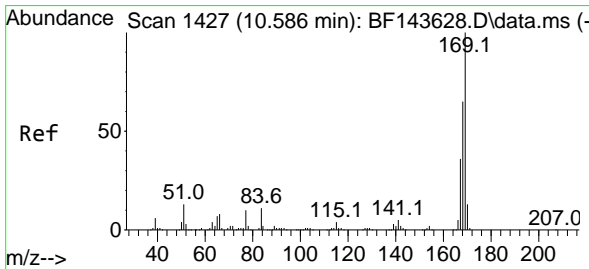
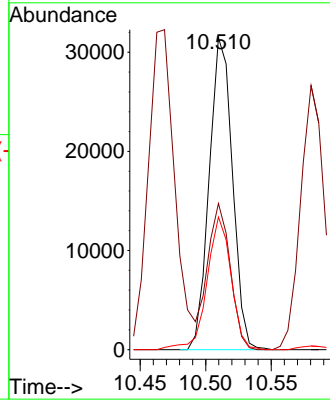
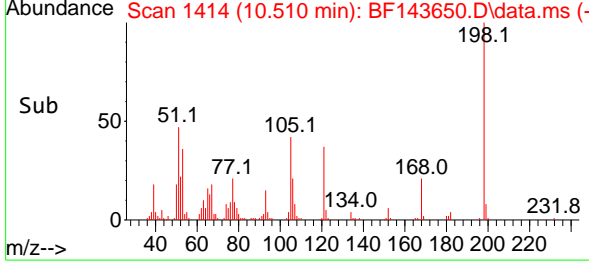


#65
 4,6-Dinitro-2-methylphenol
 Concen: 43.527 ng
 RT: 10.510 min Scan# 1415
 Delta R.T. -0.006 min
 Lab File: BF143650.D
 Acq: 05 Sep 2025 09:54

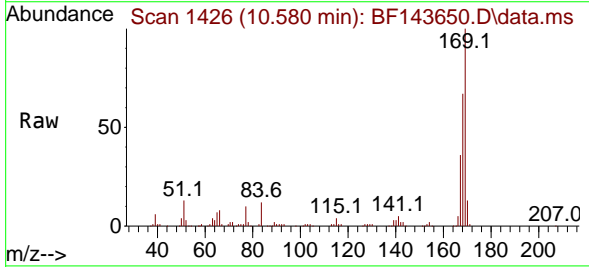
Instrument :
 BNA_F
 ClientSampleId :



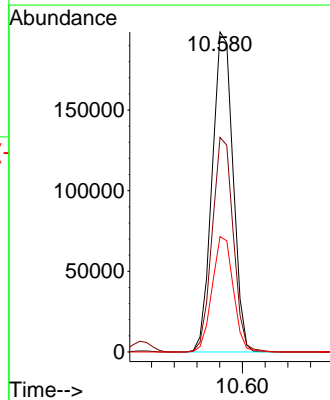
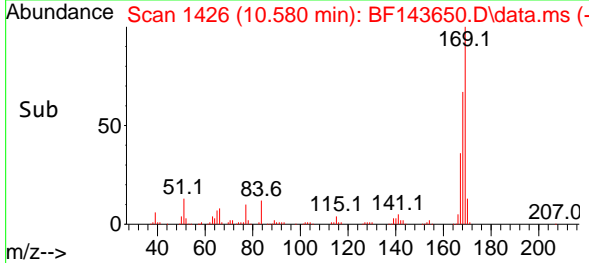
Tgt Ion:198 Resp: 38813
 Ion Ratio Lower Upper
 198 100
 51 46.8 30.7 70.7
 105 42.5 26.0 66.0

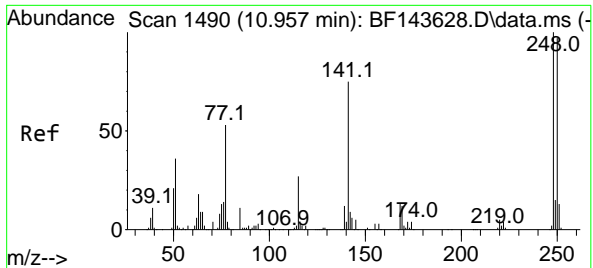


#66
 n-Nitrosodiphenylamine
 Concen: 36.453 ng
 RT: 10.580 min Scan# 1426
 Delta R.T. -0.006 min
 Lab File: BF143650.D
 Acq: 05 Sep 2025 09:54



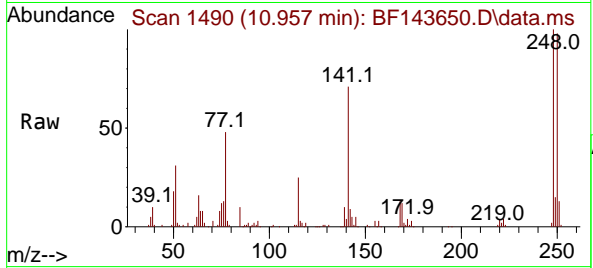
Tgt Ion:169 Resp: 253082
 Ion Ratio Lower Upper
 169 100
 168 67.1 52.2 78.4
 167 36.1 28.5 42.7





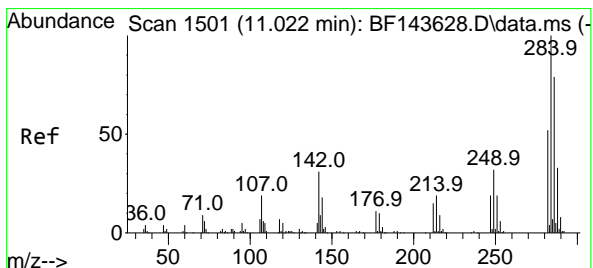
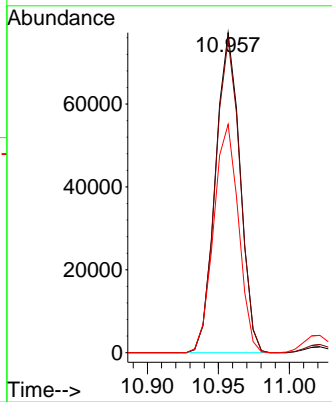
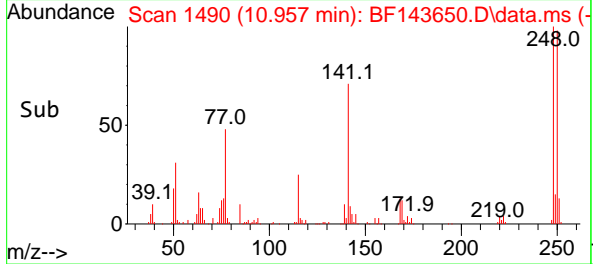
#67
 4-Bromophenyl-phenylether
 Concen: 37.131 ng
 RT: 10.957 min Scan# 1490
 Delta R.T. -0.000 min
 Lab File: BF143650.D
 Acq: 05 Sep 2025 09:54

Instrument :
 BNA_F
 ClientSampleId :

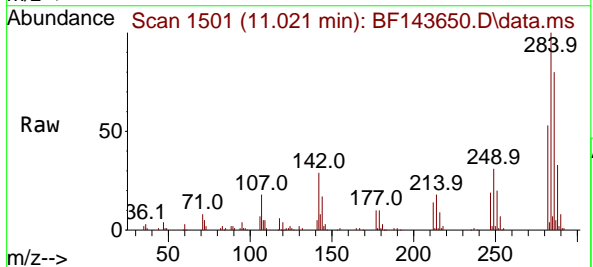


Tgt Ion:248 Resp: 92629

Ion	Ratio	Lower	Upper
248	100		
250	97.9	77.6	116.4
141	71.4	60.1	90.1

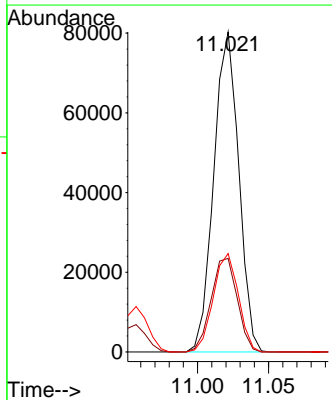
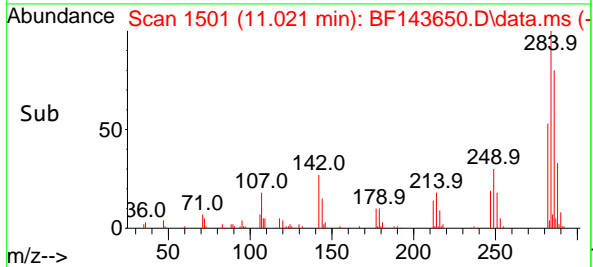


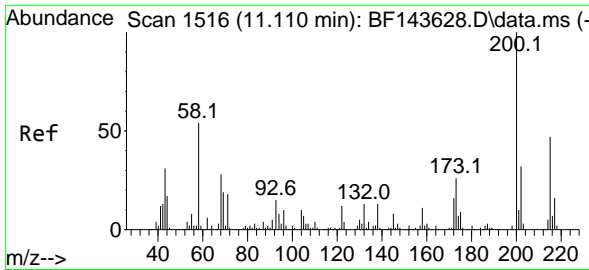
#68
 Hexachlorobenzene
 Concen: 37.424 ng
 RT: 11.021 min Scan# 1501
 Delta R.T. -0.000 min
 Lab File: BF143650.D
 Acq: 05 Sep 2025 09:54



Tgt Ion:284 Resp: 98068

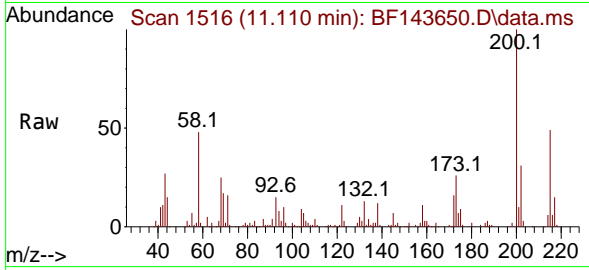
Ion	Ratio	Lower	Upper
284	100		
142	29.3	24.7	37.1
249	30.8	25.4	38.2



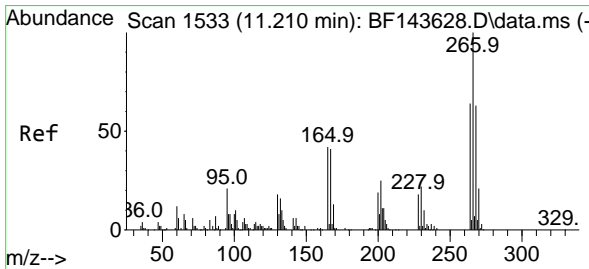
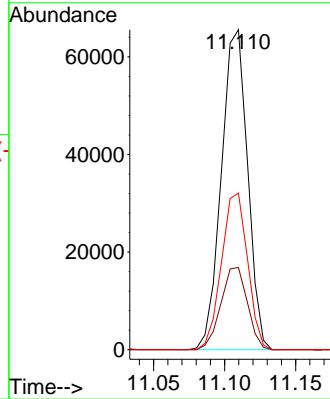
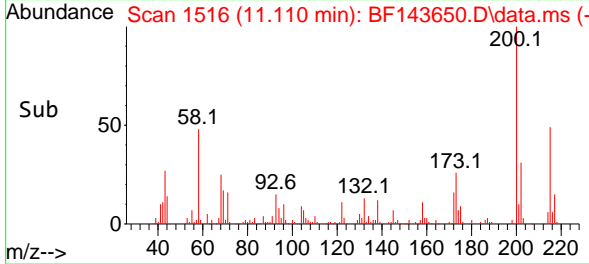


#69
 Atrazine
 Concen: 40.585 ng
 RT: 11.110 min Scan# 1516
 Delta R.T. -0.000 min
 Lab File: BF143650.D
 Acq: 05 Sep 2025 09:54

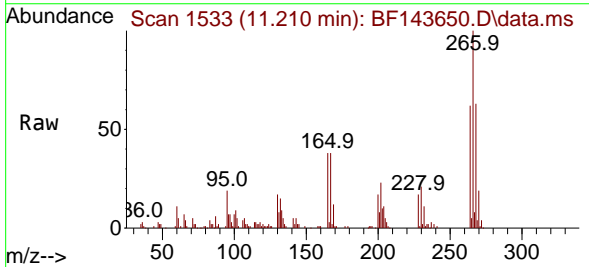
Instrument :
 BNA_F
 ClientSampleId :



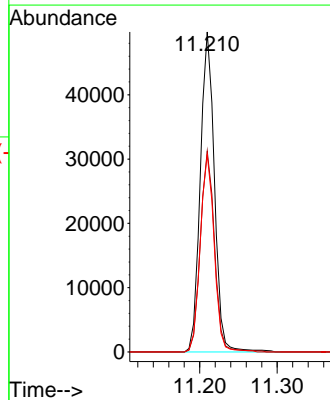
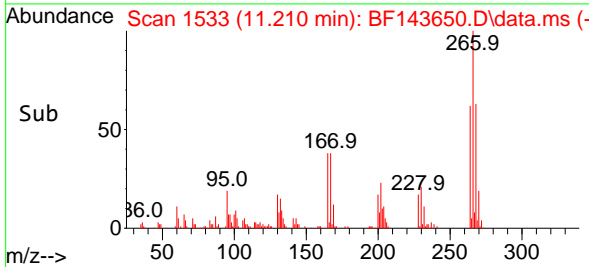
Tgt Ion:200 Resp: 84238
 Ion Ratio Lower Upper
 200 100
 173 25.7 6.4 46.4
 215 48.9 26.9 66.9

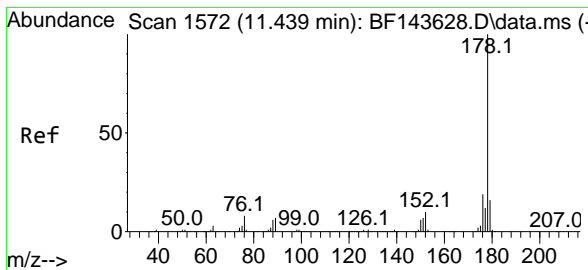


#70
 Pentachlorophenol
 Concen: 42.762 ng
 RT: 11.210 min Scan# 1533
 Delta R.T. -0.000 min
 Lab File: BF143650.D
 Acq: 05 Sep 2025 09:54



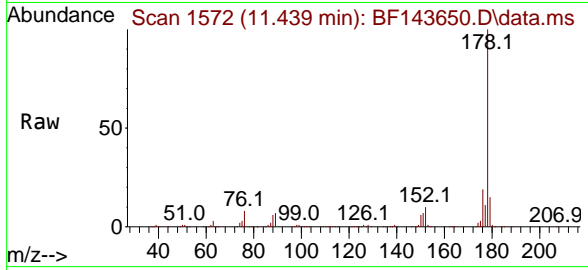
Tgt Ion:266 Resp: 62946
 Ion Ratio Lower Upper
 266 100
 268 62.7 50.6 76.0
 264 61.8 51.2 76.8





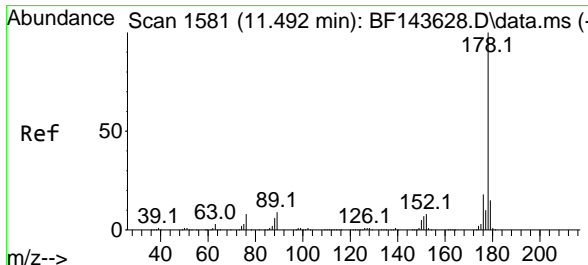
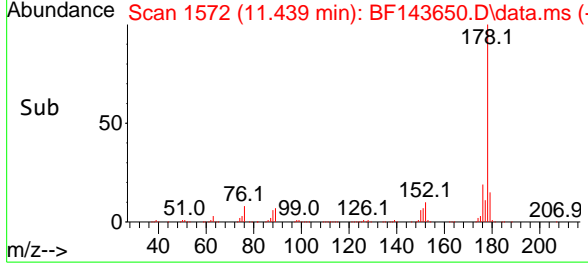
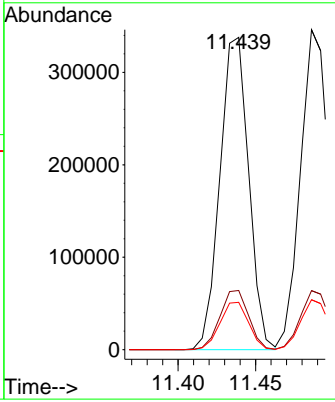
#71
 Phenanthrene
 Concen: 37.539 ng
 RT: 11.439 min Scan# 11
 Delta R.T. -0.000 min
 Lab File: BF143650.D
 Acq: 05 Sep 2025 09:54

Instrument : BNA_F
 ClientSampleId :



Tgt Ion:178 Resp: 436618

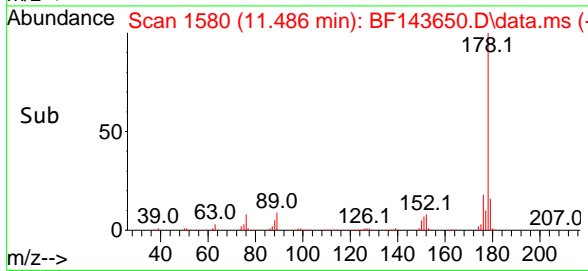
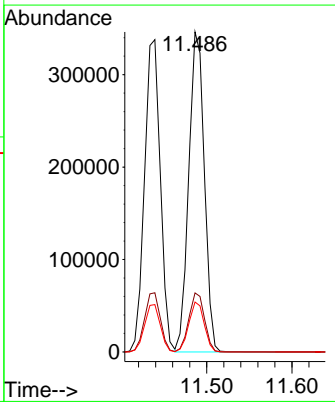
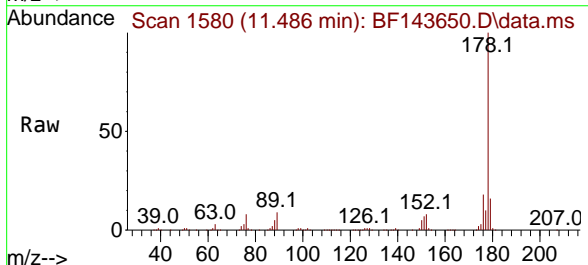
Ion	Ratio	Lower	Upper
178	100		
176	19.0	15.4	23.2
179	15.2	12.4	18.6

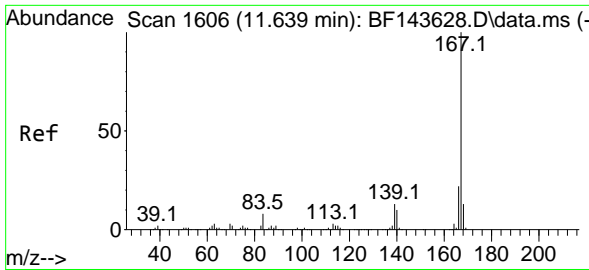


#72
 Anthracene
 Concen: 37.666 ng
 RT: 11.486 min Scan# 1580
 Delta R.T. -0.006 min
 Lab File: BF143650.D
 Acq: 05 Sep 2025 09:54

Tgt Ion:178 Resp: 439388

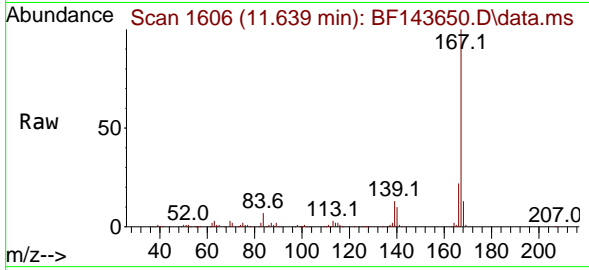
Ion	Ratio	Lower	Upper
178	100		
176	18.4	14.6	22.0
179	15.6	12.3	18.5



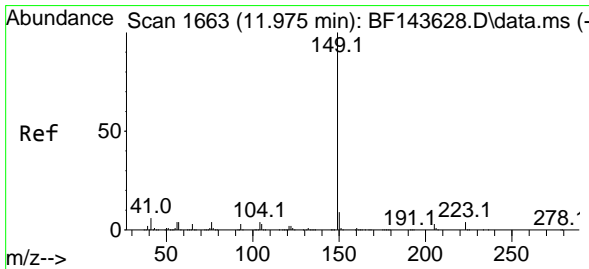
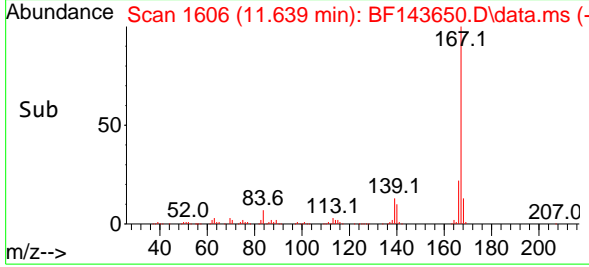
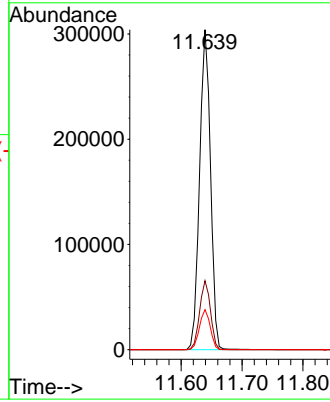


#73
 Carbazole
 Concen: 38.490 ng
 RT: 11.639 min Scan# 1606
 Delta R.T. -0.000 min
 Lab File: BF143650.D
 Acq: 05 Sep 2025 09:54

Instrument : BNA_F
 ClientSampled :

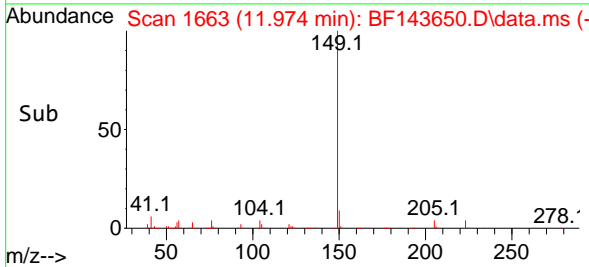
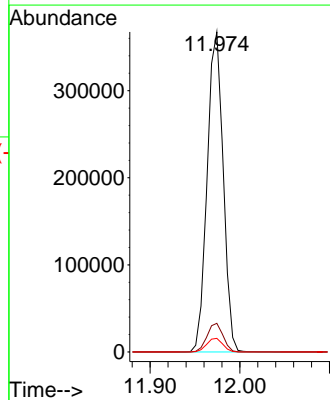
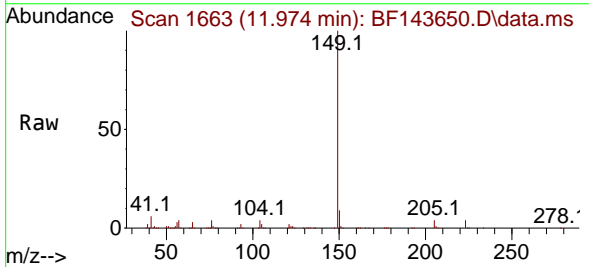


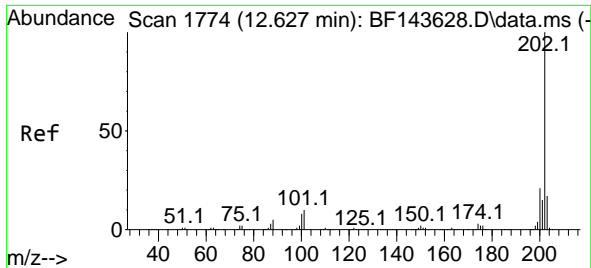
Tgt Ion:167 Resp: 378457
 Ion Ratio Lower Upper
 167 100
 166 21.6 17.3 25.9
 139 12.5 10.3 15.5



#74
 Di-n-butylphthalate
 Concen: 41.240 ng
 RT: 11.974 min Scan# 1663
 Delta R.T. -0.000 min
 Lab File: BF143650.D
 Acq: 05 Sep 2025 09:54

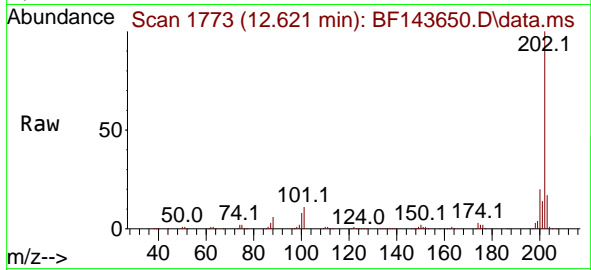
Tgt Ion:149 Resp: 455292
 Ion Ratio Lower Upper
 149 100
 150 8.9 7.4 11.0
 104 4.2 3.5 5.3



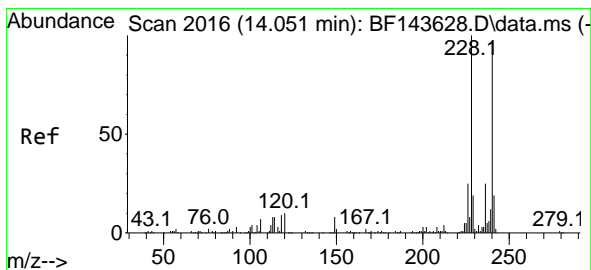
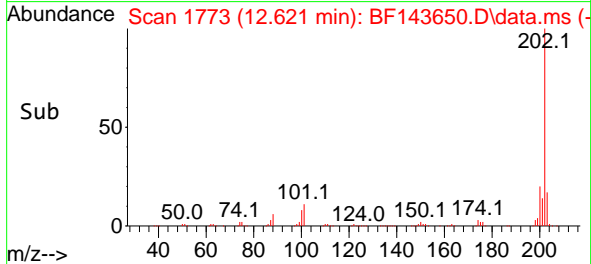
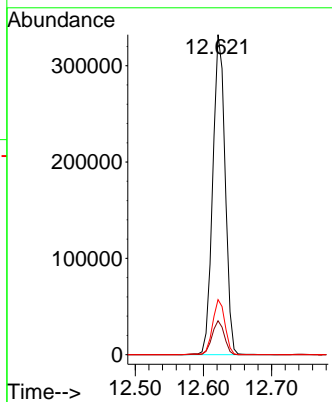


#75
 Fluoranthene
 Concen: 39.277 ng
 RT: 12.621 min Scan# 1773
 Delta R.T. -0.006 min
 Lab File: BF143650.D
 Acq: 05 Sep 2025 09:54

Instrument :
 BNA_F
 ClientSampleId :

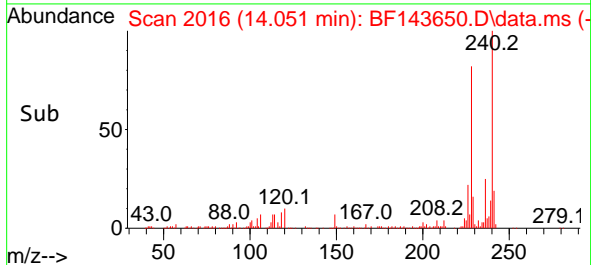
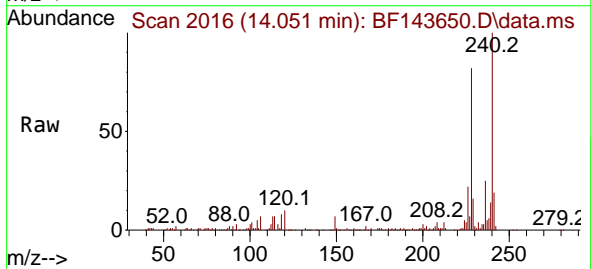
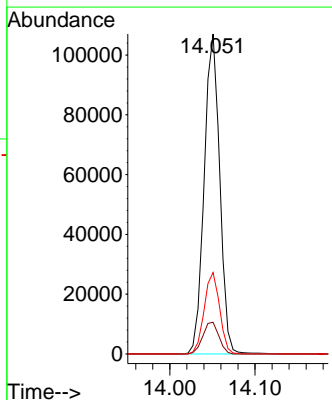


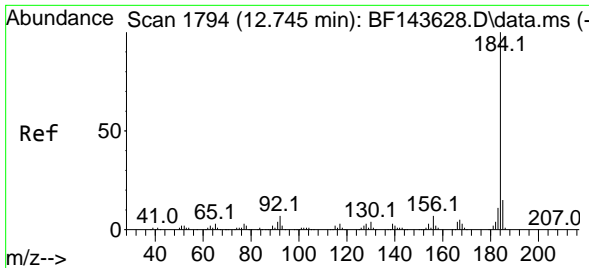
Tgt Ion:202 Resp: 419560
 Ion Ratio Lower Upper
 202 100
 101 10.6 0.0 30.3
 203 17.2 0.0 37.3



#76
 Chrysene-d12
 Concen: 20.000 ng
 RT: 14.051 min Scan# 2016
 Delta R.T. -0.000 min
 Lab File: BF143650.D
 Acq: 05 Sep 2025 09:54

Tgt Ion:240 Resp: 135681
 Ion Ratio Lower Upper
 240 100
 120 9.9 8.0 12.0
 236 25.4 20.5 30.7



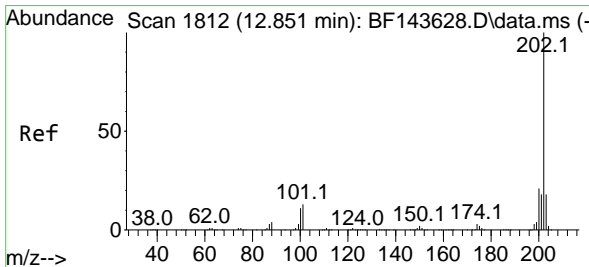
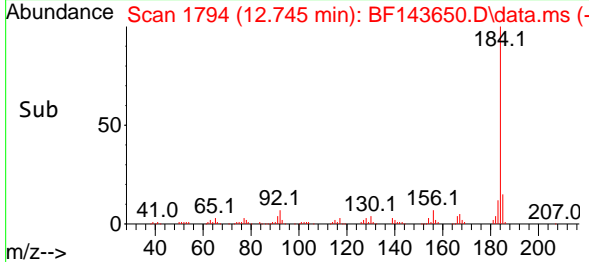
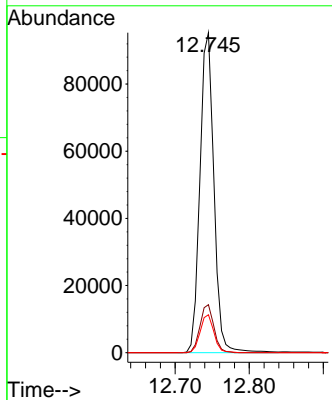
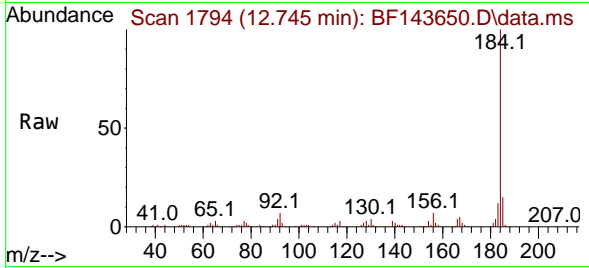


#77
 Benzidine
 Concen: 40.203 ng
 RT: 12.745 min Scan# 11
 Delta R.T. -0.000 min
 Lab File: BF143650.D
 Acq: 05 Sep 2025 09:54

Instrument : BNA_F
 ClientSampleId :

Tgt Ion:184 Resp: 124799

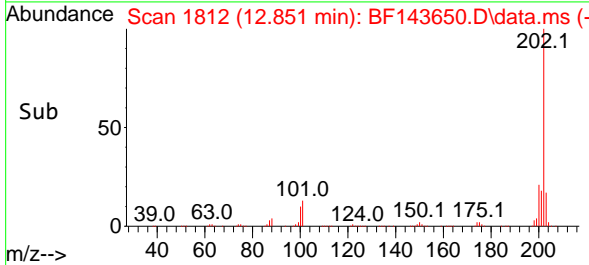
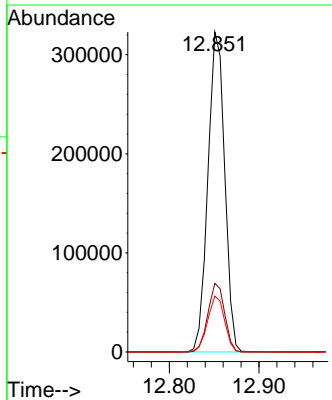
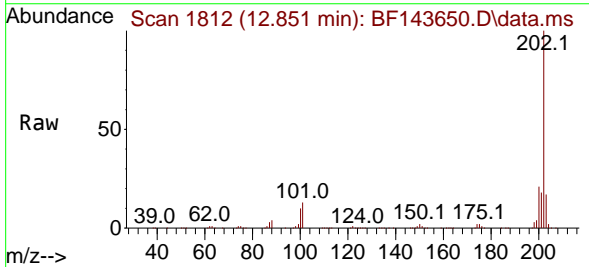
Ion	Ratio	Lower	Upper
184	100		
185	15.0	11.8	17.6
183	11.9	9.0	13.6

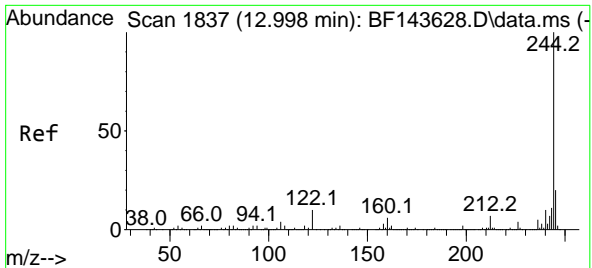


#78
 Pyrene
 Concen: 37.414 ng
 RT: 12.851 min Scan# 1812
 Delta R.T. -0.000 min
 Lab File: BF143650.D
 Acq: 05 Sep 2025 09:54

Tgt Ion:202 Resp: 418885

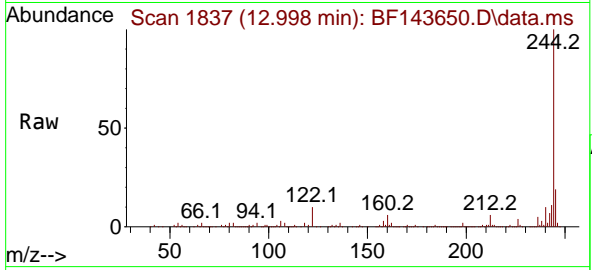
Ion	Ratio	Lower	Upper
202	100		
200	21.5	16.7	25.1
203	17.5	14.0	21.0



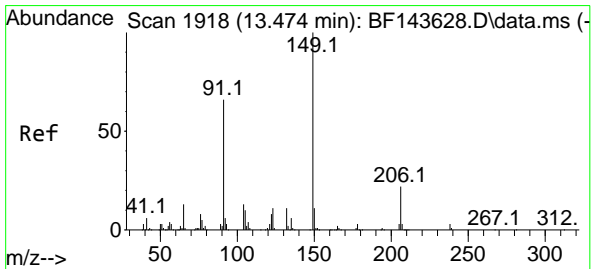
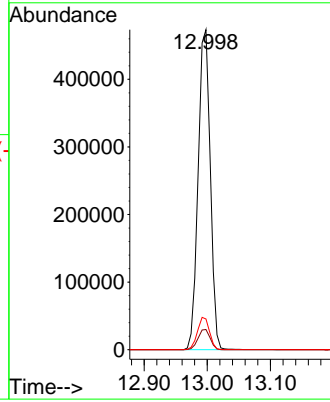
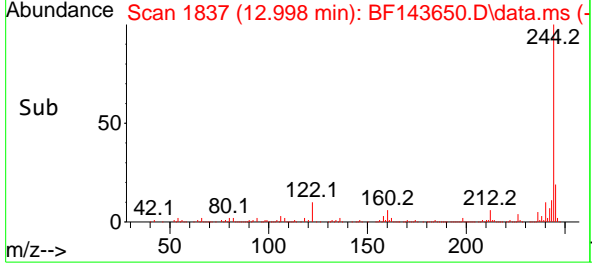


#79
 Terphenyl-d14
 Concen: 77.504 ng
 RT: 12.998 min Scan# 11
 Delta R.T. -0.000 min
 Lab File: BF143650.D
 Acq: 05 Sep 2025 09:54

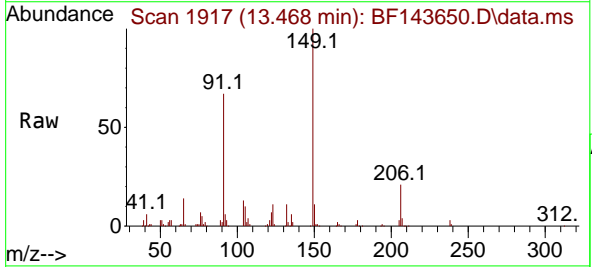
Instrument :
 BNA_F
 ClientSampleId :



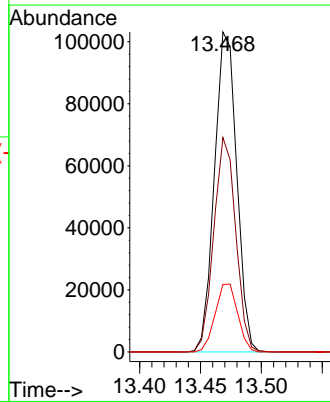
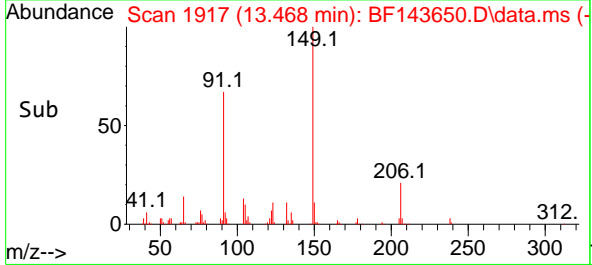
Tgt Ion:244 Resp: 631118
 Ion Ratio Lower Upper
 244 100
 212 6.3 5.3 7.9
 122 9.6 8.3 12.5

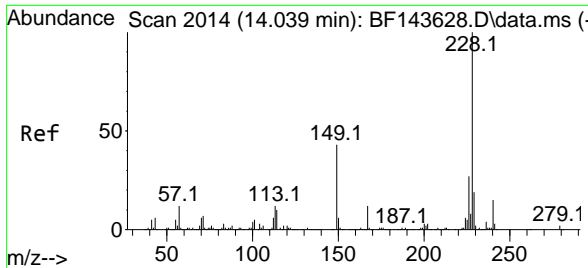


#80
 Butylbenzylphthalate
 Concen: 37.647 ng
 RT: 13.468 min Scan# 1917
 Delta R.T. -0.006 min
 Lab File: BF143650.D
 Acq: 05 Sep 2025 09:54



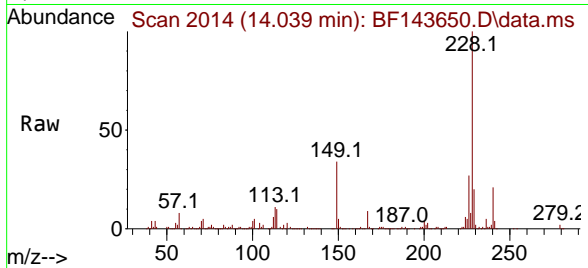
Tgt Ion:149 Resp: 131554
 Ion Ratio Lower Upper
 149 100
 91 67.0 53.0 79.4
 206 21.1 17.4 26.2



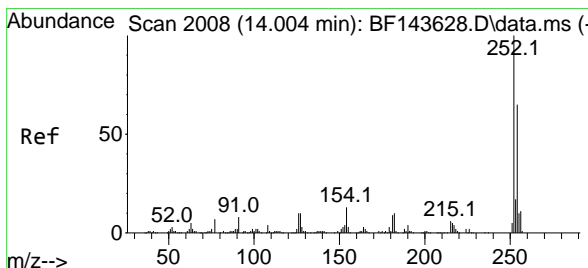
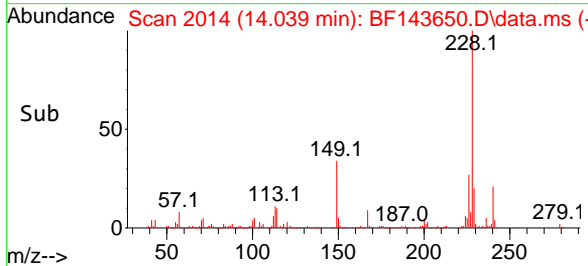
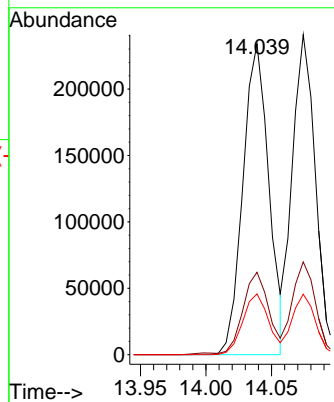


#81
 Benzo(a)anthracene
 Concen: 36.762 ng
 RT: 14.039 min Scan# 2014
 Delta R.T. -0.000 min
 Lab File: BF143650.D
 Acq: 05 Sep 2025 09:54

Instrument : BNA_F
 ClientSampleId :

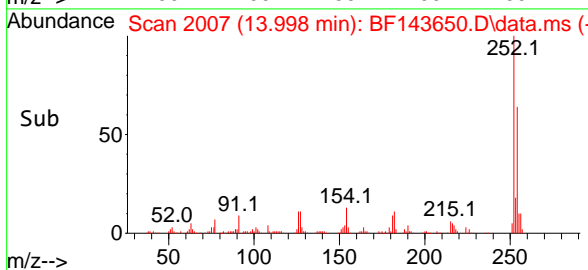
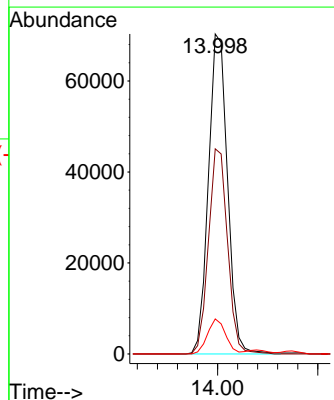
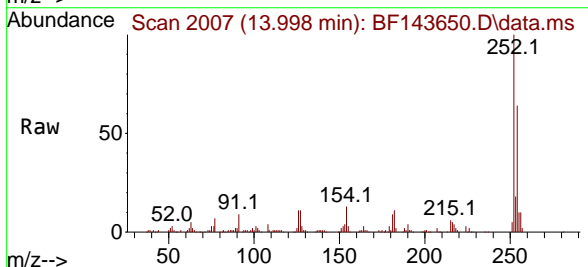


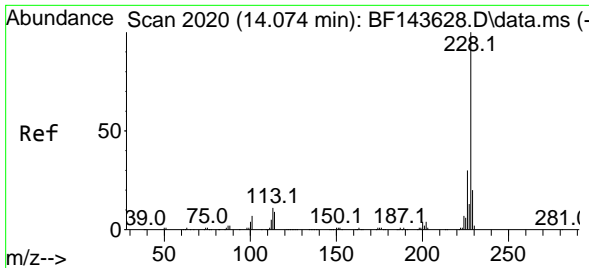
Tgt Ion:228 Resp: 323072
 Ion Ratio Lower Upper
 228 100
 226 26.5 21.4 32.2
 229 19.6 15.5 23.3



#82
 3,3'-Dichlorobenzidine
 Concen: 38.932 ng
 RT: 13.998 min Scan# 2007
 Delta R.T. -0.006 min
 Lab File: BF143650.D
 Acq: 05 Sep 2025 09:54

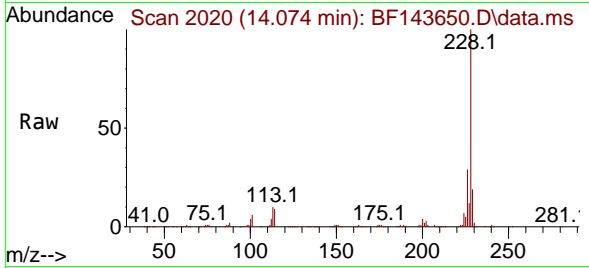
Tgt Ion:252 Resp: 93268
 Ion Ratio Lower Upper
 252 100
 254 64.1 52.2 78.2
 126 10.9 8.1 12.1





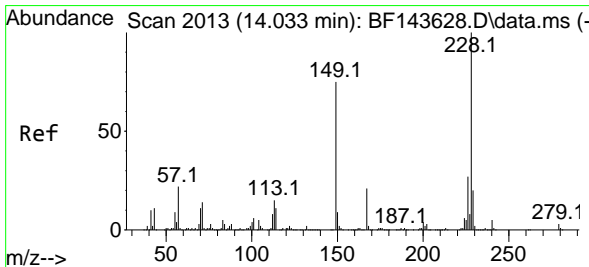
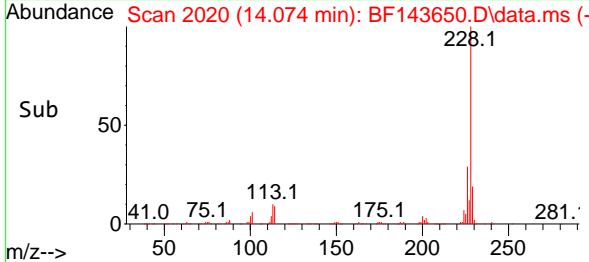
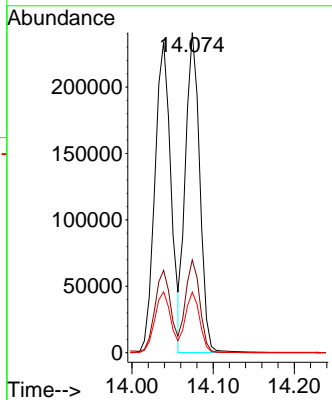
#83
 Chrysene
 Concen: 37.298 ng
 RT: 14.074 min Scan# 2012
 Delta R.T. -0.000 min
 Lab File: BF143650.D
 Acq: 05 Sep 2025 09:54

Instrument : BNA_F
 ClientSampleId :



Tgt Ion: 228 Resp: 294650

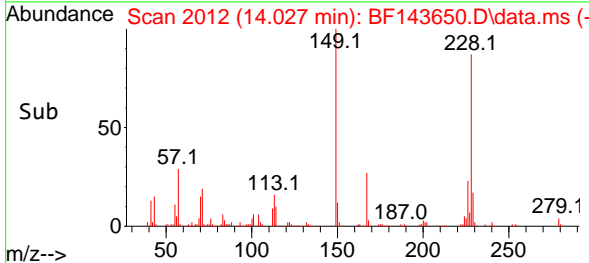
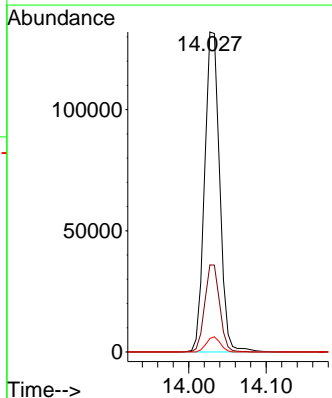
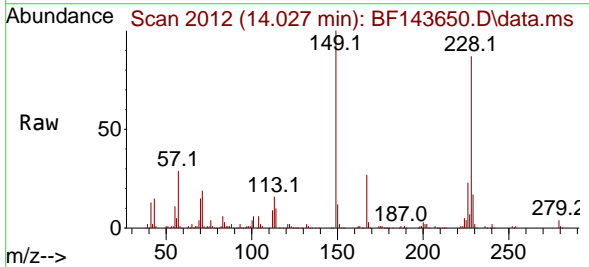
Ion	Ratio	Lower	Upper
228	100		
226	29.0	23.8	35.6
229	18.9	15.8	23.6

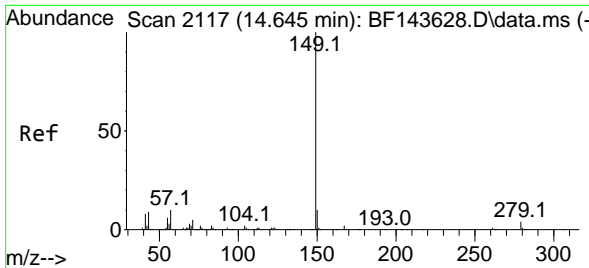


#84
 Bis(2-ethylhexyl)phthalate
 Concen: 36.314 ng
 RT: 14.027 min Scan# 2012
 Delta R.T. -0.006 min
 Lab File: BF143650.D
 Acq: 05 Sep 2025 09:54

Tgt Ion: 149 Resp: 178116

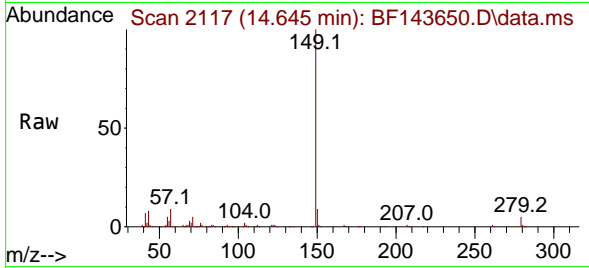
Ion	Ratio	Lower	Upper
149	100		
167	27.2	22.1	33.1
279	4.2	3.4	5.2



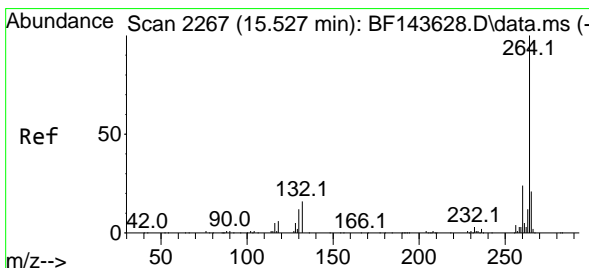
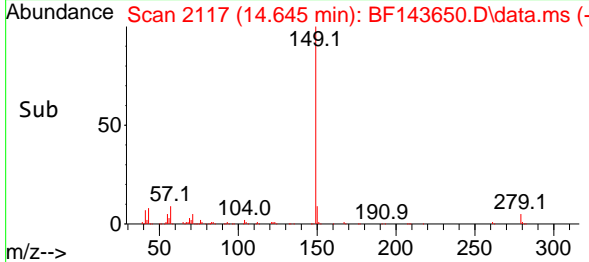
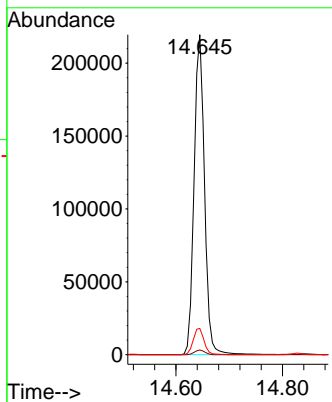


#85
 Di-n-octyl phthalate
 Concen: 37.162 ng
 RT: 14.645 min Scan# 2117
 Delta R.T. -0.000 min
 Lab File: BF143650.D
 Acq: 05 Sep 2025 09:54

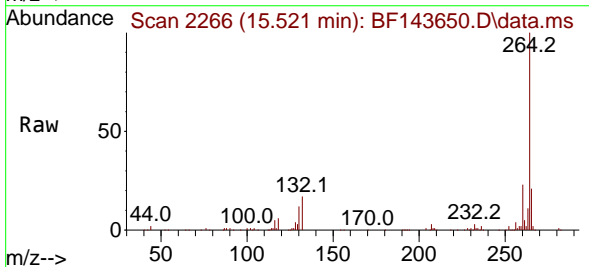
Instrument :
 BNA_F
 ClientSampleId :



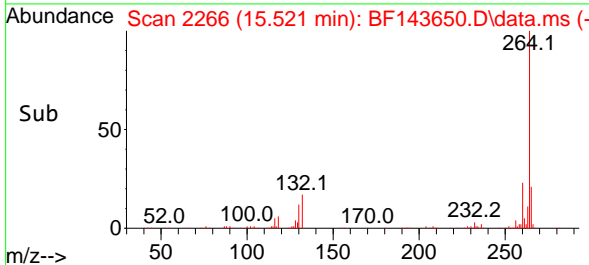
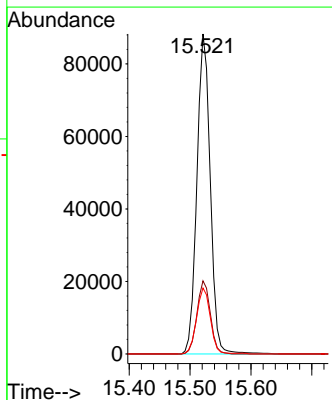
Tgt Ion:149 Resp: 299152
 Ion Ratio Lower Upper
 149 100
 167 1.4 1.2 1.8
 43 8.5 7.8 11.8

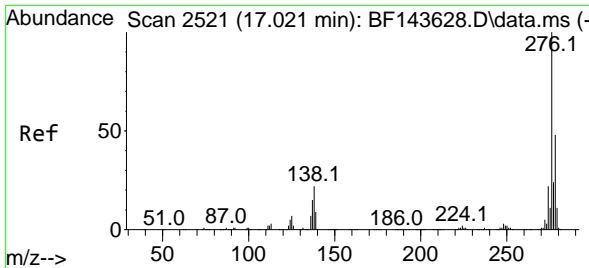


#86
 Perylene-d12
 Concen: 20.000 ng
 RT: 15.521 min Scan# 2266
 Delta R.T. -0.006 min
 Lab File: BF143650.D
 Acq: 05 Sep 2025 09:54



Tgt Ion:264 Resp: 134145
 Ion Ratio Lower Upper
 264 100
 260 22.9 18.9 28.3
 265 20.6 17.1 25.7



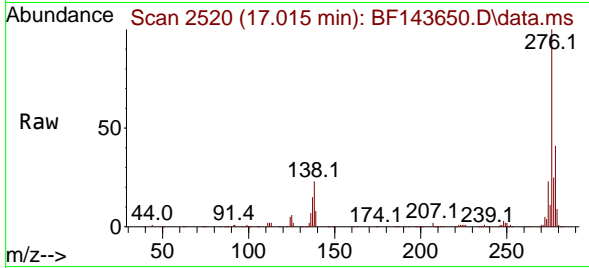


#87
 Indeno(1,2,3-cd)pyrene
 Concen: 37.520 ng
 RT: 17.015 min Scan# 2193
 Delta R.T. -0.006 min
 Lab File: BF143650.D
 Acq: 05 Sep 2025 09:54

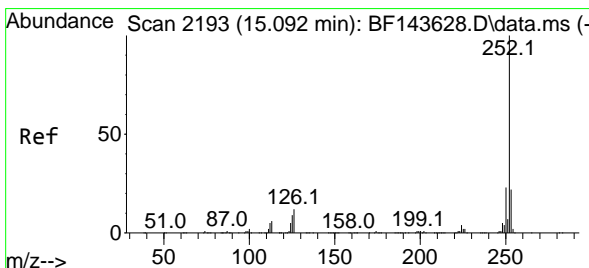
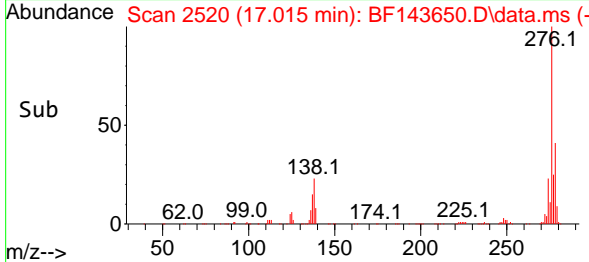
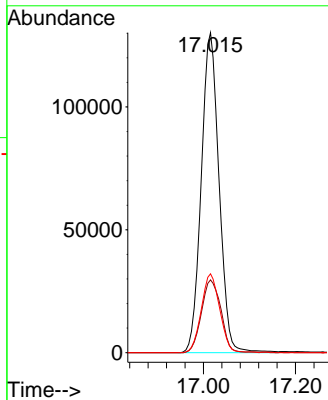
Instrument :

BNA_F

ClientSampleId :

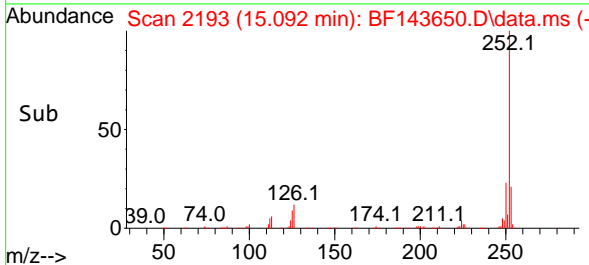
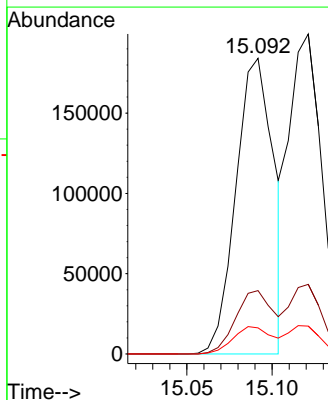
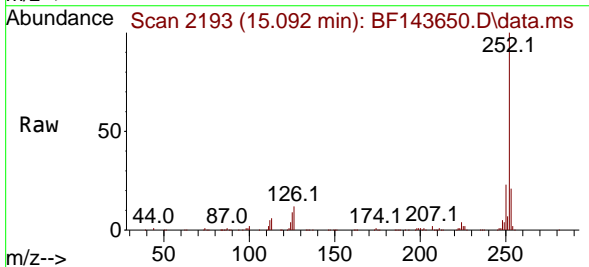


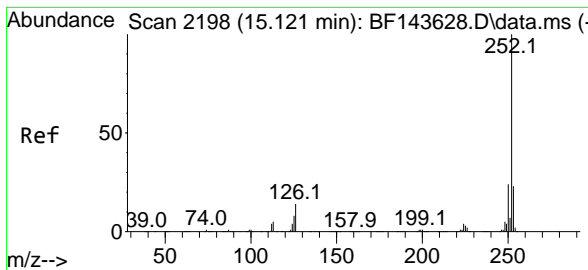
Tgt Ion:276 Resp: 350871
 Ion Ratio Lower Upper
 276 100
 138 24.7 19.8 29.6
 277 25.5 20.1 30.1



#88
 Benzo(b)fluoranthene
 Concen: 35.055 ng
 RT: 15.092 min Scan# 2193
 Delta R.T. -0.000 min
 Lab File: BF143650.D
 Acq: 05 Sep 2025 09:54

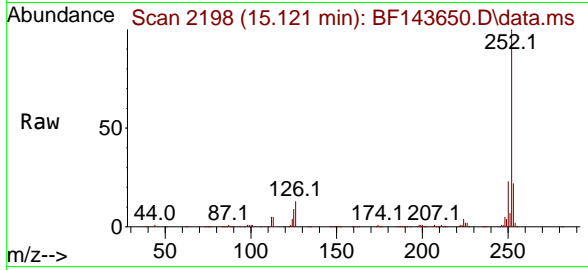
Tgt Ion:252 Resp: 283317
 Ion Ratio Lower Upper
 252 100
 253 21.4 17.2 25.8
 125 8.8 7.4 11.2



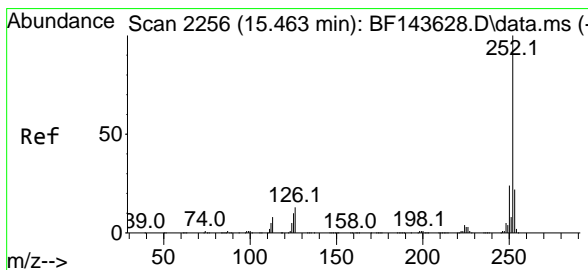
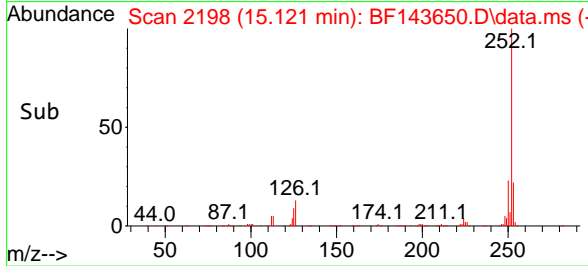
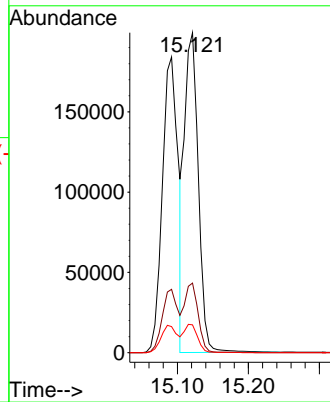


#89
 Benzo(k)fluoranthene
 Concen: 38.599 ng
 RT: 15.121 min Scan# 2198
 Delta R.T. -0.000 min
 Lab File: BF143650.D
 Acq: 05 Sep 2025 09:54

Instrument :
 BNA_F
 ClientSampleId :

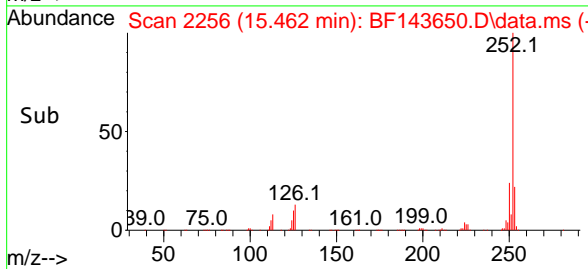
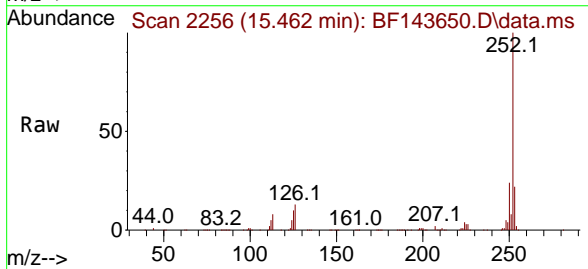
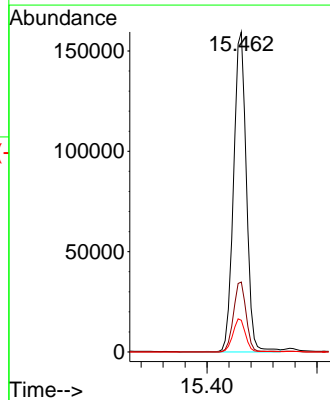


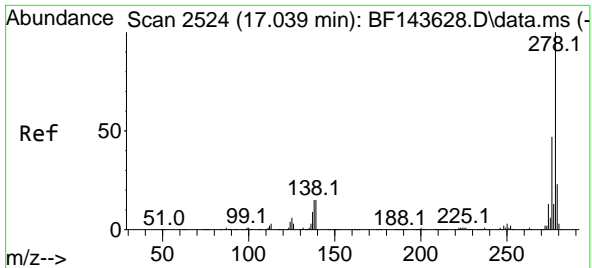
Tgt Ion:252 Resp: 269791
 Ion Ratio Lower Upper
 252 100
 253 21.8 17.8 26.6
 125 8.7 7.3 10.9



#90
 Benzo(a)pyrene
 Concen: 37.027 ng
 RT: 15.462 min Scan# 2256
 Delta R.T. -0.000 min
 Lab File: BF143650.D
 Acq: 05 Sep 2025 09:54

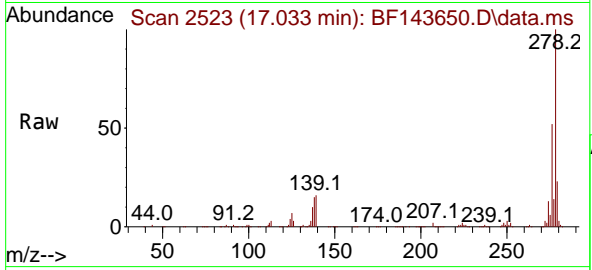
Tgt Ion:252 Resp: 257238
 Ion Ratio Lower Upper
 252 100
 253 21.8 17.4 26.2
 125 9.9 8.3 12.5



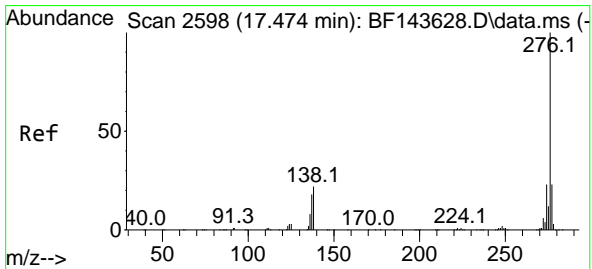
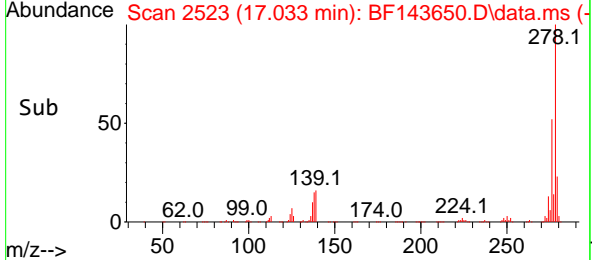
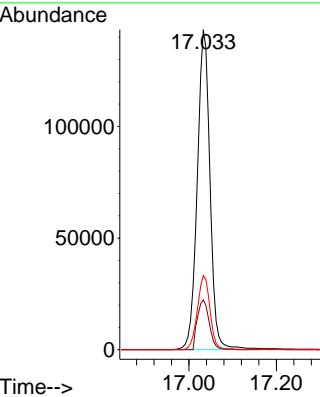


#91
 Dibenzo(a,h)anthracene
 Concen: 38.015 ng
 RT: 17.033 min Scan# 21
 Delta R.T. -0.006 min
 Lab File: BF143650.D
 Acq: 05 Sep 2025 09:54

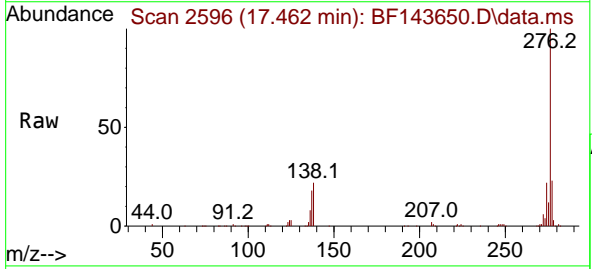
Instrument : BNA_F
 ClientSampleId :



Tgt Ion:278 Resp: 292406
 Ion Ratio Lower Upper
 278 100
 139 15.6 12.4 18.6
 279 23.1 18.7 28.1



#92
 Benzo(g,h,i)perylene
 Concen: 37.664 ng
 RT: 17.462 min Scan# 2596
 Delta R.T. -0.012 min
 Lab File: BF143650.D
 Acq: 05 Sep 2025 09:54



Tgt Ion:276 Resp: 279076
 Ion Ratio Lower Upper
 276 100
 277 23.3 18.7 28.1
 138 21.5 17.2 25.8

