

Data Path : Z:\svoasrv\HPCHEM1\BNA_F\Data\BF090624\
 Data File : BF139268.D
 Acq On : 06 Sep 2024 09:32
 Operator : RC/JU
 Sample : PB163138BL
 Misc :
 ALS Vial : 3 Sample Multiplier: 1

Instrument :
 BNA_F
 ClientSampleId :
 PB163138BL

Quant Time: Sep 06 10:43:16 2024
 Quant Method : Z:\svoasrv\HPCHEM1\BNA_F\Methods\8270-BF090424.M
 Quant Title : ASP BNA STANDARDS FOR 5 POINT CALIBRATION
 QLast Update : Wed Sep 04 16:11:43 2024
 Response via : Initial Calibration

| Compound | R.T. | QIon | Response | Conc | Units | Dev(Min) |
|-----------------------------|--------|------|----------|---------|-------|----------|
| Internal Standards | | | | | | |
| 1) 1,4-Dichlorobenzene-d4 | 6.887 | 152 | 156999 | 20.000 | ng | 0.00 |
| 21) Naphthalene-d8 | 8.169 | 136 | 593248 | 20.000 | ng | 0.00 |
| 39) Acenaphthene-d10 | 9.922 | 164 | 330690 | 20.000 | ng | 0.00 |
| 64) Phenanthrene-d10 | 11.410 | 188 | 607286 | 20.000 | ng | 0.00 |
| 76) Chrysene-d12 | 14.051 | 240 | 304698 | 20.000 | ng | 0.00 |
| 86) Perylene-d12 | 15.527 | 264 | 266856 | 20.000 | ng | 0.00 |
| System Monitoring Compounds | | | | | | |
| 5) 2-Fluorophenol | 5.516 | 112 | 1107235 | 117.979 | ng | 0.01 |
| 7) Phenol-d6 | 6.516 | 99 | 1474582 | 117.695 | ng | 0.00 |
| 23) Nitrobenzene-d5 | 7.451 | 82 | 944345 | 82.811 | ng | 0.00 |
| 42) 2,4,6-Tribromophenol | 10.716 | 330 | 325093 | 113.846 | ng | 0.00 |
| 45) 2-Fluorobiphenyl | 9.245 | 172 | 1674518 | 78.165 | ng | 0.00 |
| 79) Terphenyl-d14 | 12.998 | 244 | 1646138 | 87.228 | ng | 0.00 |

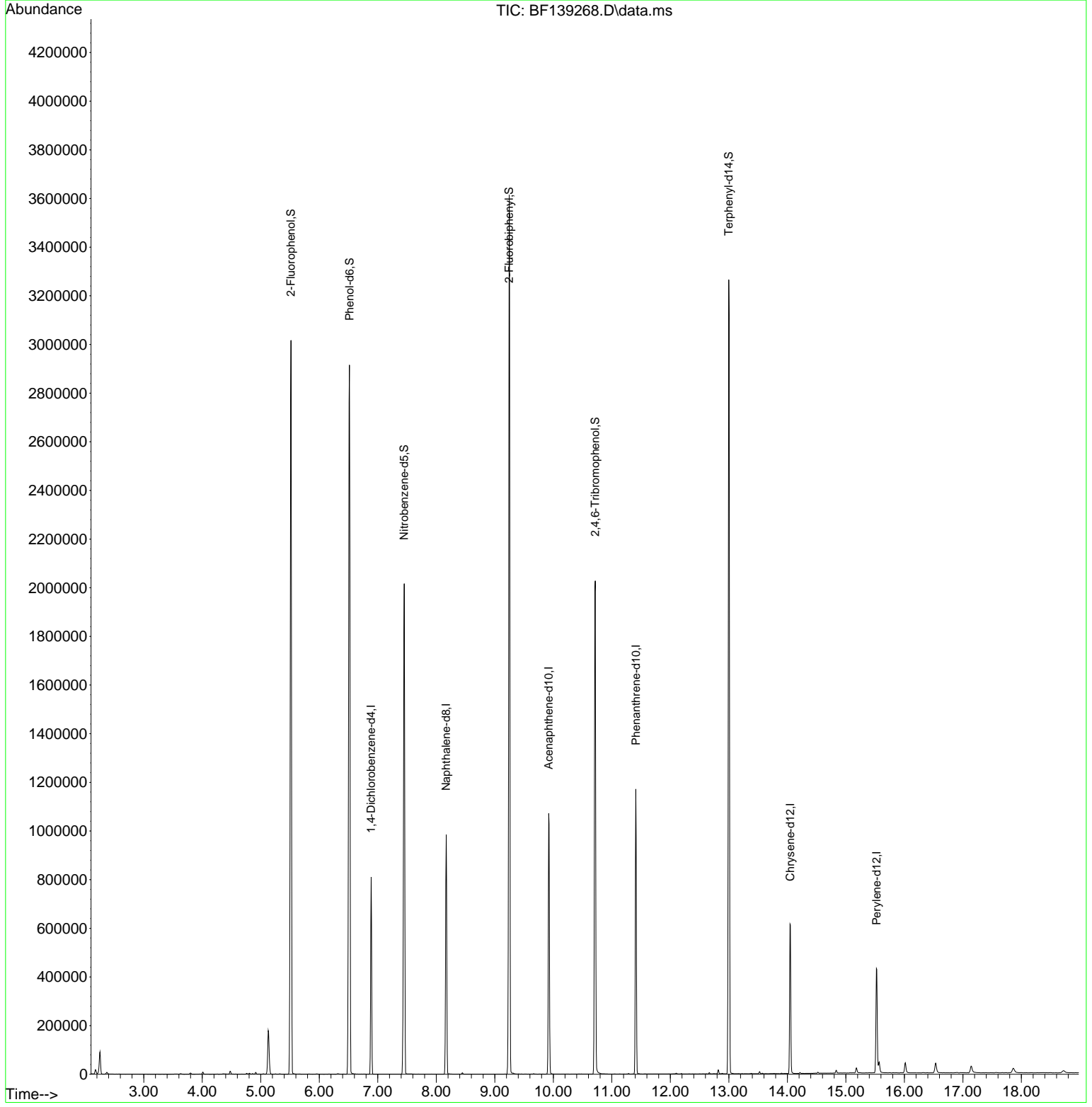
Target Compounds Qvalue

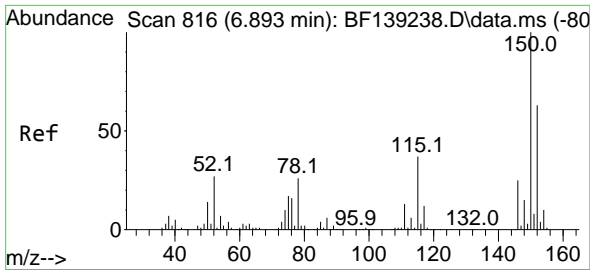
(#) = qualifier out of range (m) = manual integration (+) = signals summed

Data Path : Z:\svoasrv\HPCHEM1\BNA_F\Data\BF090624\
 Data File : BF139268.D
 Acq On : 06 Sep 2024 09:32
 Operator : RC/JU
 Sample : PB163138BL
 Misc :
 ALS Vial : 3 Sample Multiplier: 1

Instrument :
 BNA_F
 ClientSampleId :
 PB163138BL

Quant Time: Sep 06 10:43:16 2024
 Quant Method : Z:\svoasrv\HPCHEM1\BNA_F\Methods\8270-BF090424.M
 Quant Title : ASP BNA STANDARDS FOR 5 POINT CALIBRATION
 QLast Update : Wed Sep 04 16:11:43 2024
 Response via : Initial Calibration

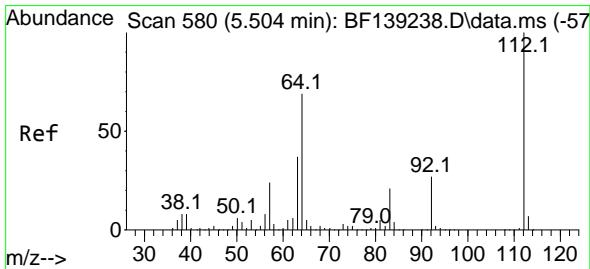
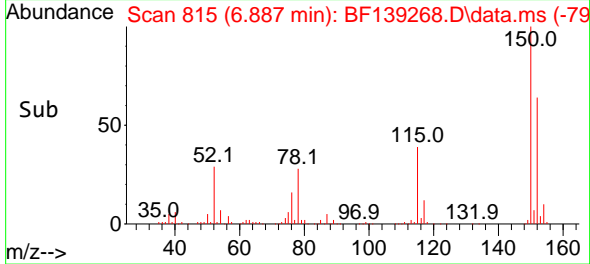
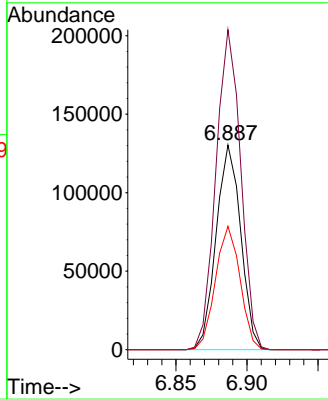
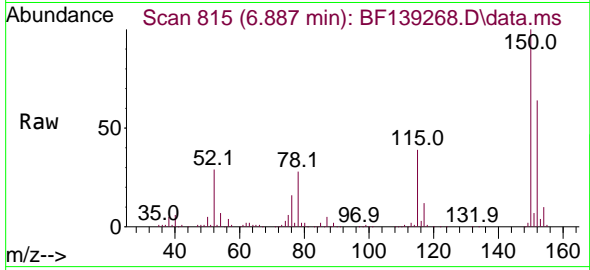




#1
 1,4-Dichlorobenzene-d4
 Concen: 20.000 ng
 RT: 6.887 min Scan# 81
 Delta R.T. -0.006 min
 Lab File: BF139268.D
 Acq: 06 Sep 2024 09:32

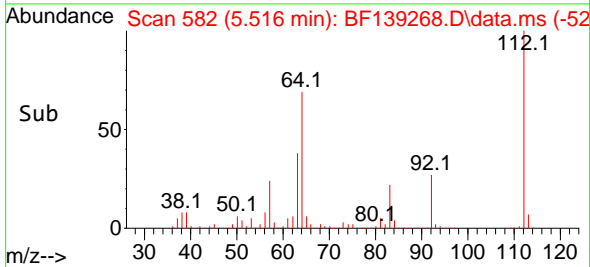
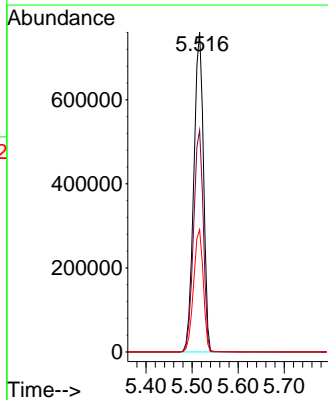
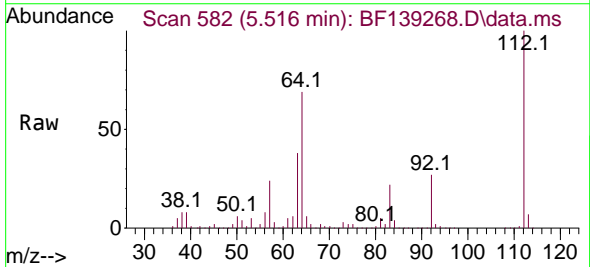
Instrument :
 BNA_F
 ClientSampleId :
 PB163138BL

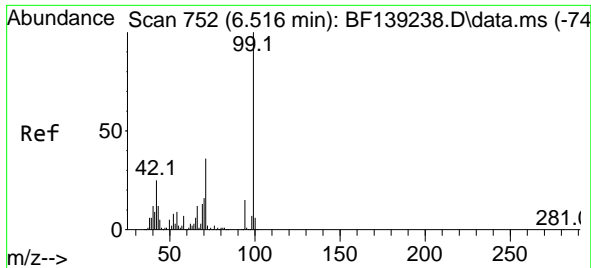
Tgt Ion:152 Resp: 156999
 Ion Ratio Lower Upper
 152 100
 150 156.3 127.0 190.4
 115 60.3 46.9 70.3



#5
 2-Fluorophenol
 Concen: 117.979 ng
 RT: 5.516 min Scan# 582
 Delta R.T. 0.012 min
 Lab File: BF139268.D
 Acq: 06 Sep 2024 09:32

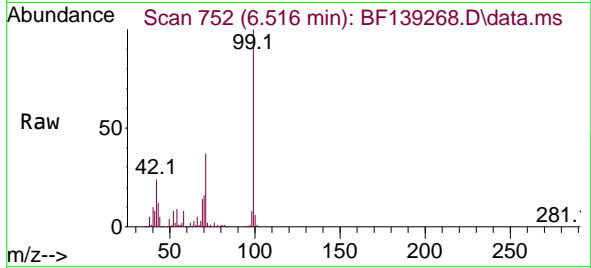
Tgt Ion:112 Resp: 1107235
 Ion Ratio Lower Upper
 112 100
 64 69.2 55.0 82.4
 63 38.2 29.9 44.9



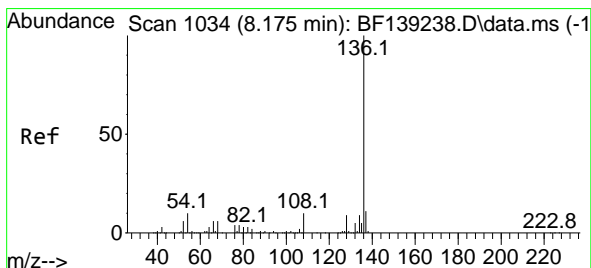
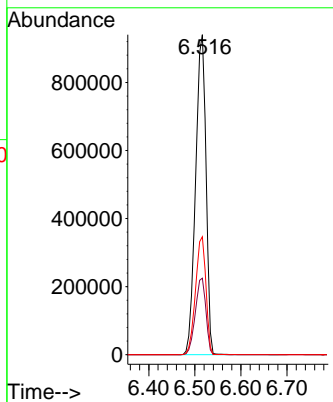
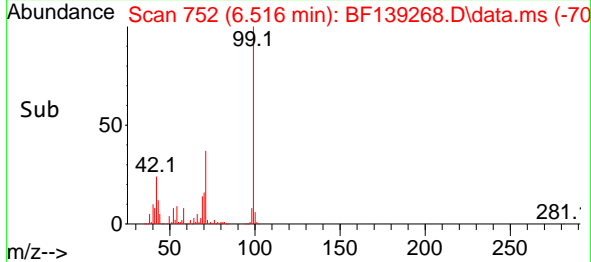


#7
 Phenol-d6
 Concen: 117.695 ng
 RT: 6.516 min Scan# 71
 Delta R.T. -0.000 min
 Lab File: BF139268.D
 Acq: 06 Sep 2024 09:32

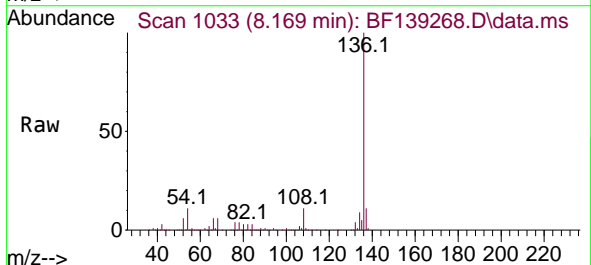
Instrument :
 BNA_F
 ClientSampleId :
 PB163138BL



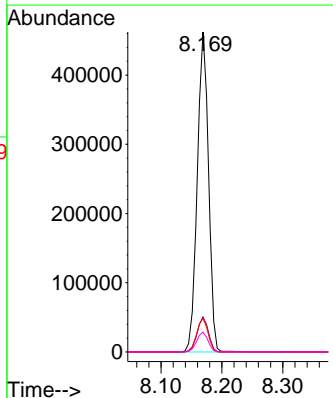
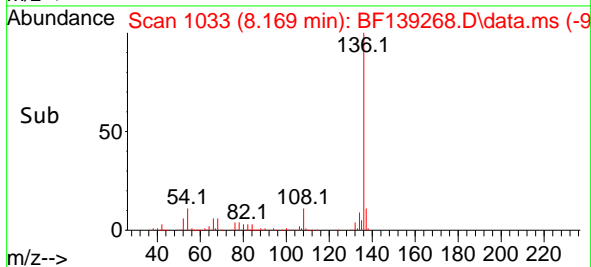
Tgt Ion: 99 Resp: 1474582
 Ion Ratio Lower Upper
 99 100
 42 23.9 19.8 29.6
 71 36.8 28.8 43.2

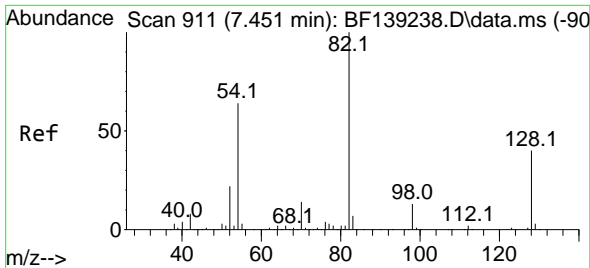


#21
 Naphthalene-d8
 Concen: 20.000 ng
 RT: 8.169 min Scan# 1033
 Delta R.T. -0.006 min
 Lab File: BF139268.D
 Acq: 06 Sep 2024 09:32



Tgt Ion: 136 Resp: 593248
 Ion Ratio Lower Upper
 136 100
 137 10.9 8.6 13.0
 54 10.5 8.4 12.6
 68 6.2 4.8 7.2



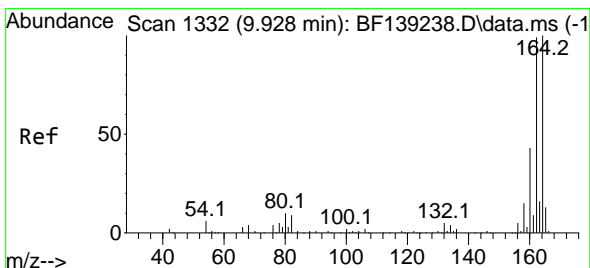
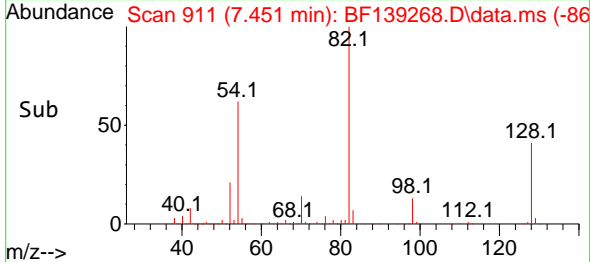
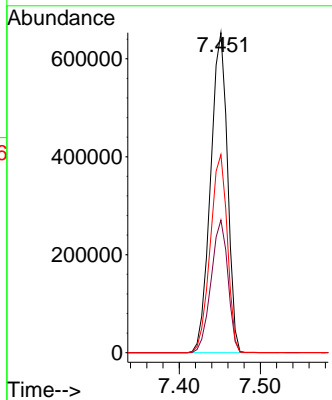
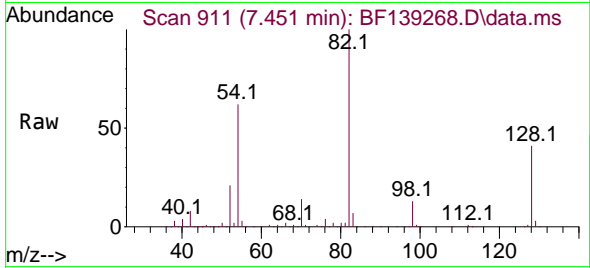


#23
 Nitrobenzene-d5
 Concen: 82.811 ng
 RT: 7.451 min Scan# 911
 Delta R.T. -0.000 min
 Lab File: BF139268.D
 Acq: 06 Sep 2024 09:32

Instrument :
 BNA_F
 ClientSampleId :
 PB163138BL

Tgt Ion: 82 Resp: 944345

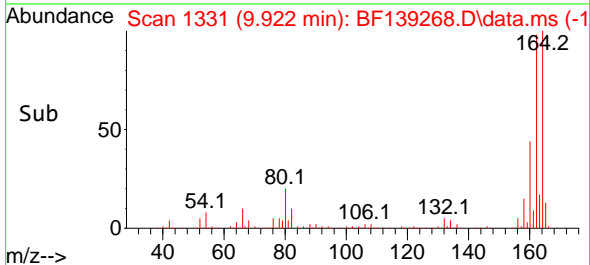
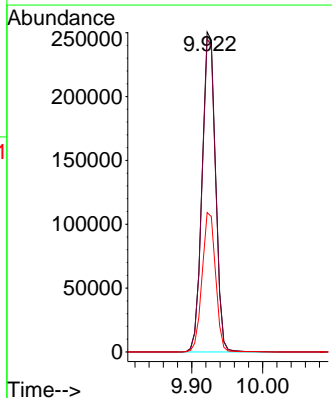
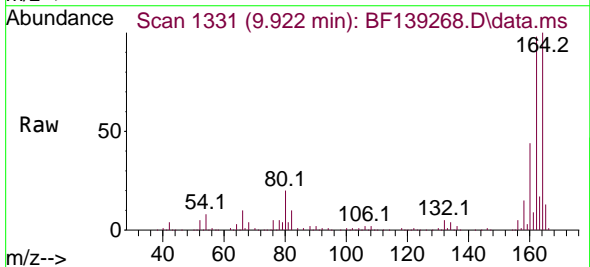
| Ion | Ratio | Lower | Upper |
|-----|-------|-------|-------|
| 82 | 100 | | |
| 128 | 41.5 | 32.3 | 48.5 |
| 54 | 61.9 | 51.2 | 76.8 |

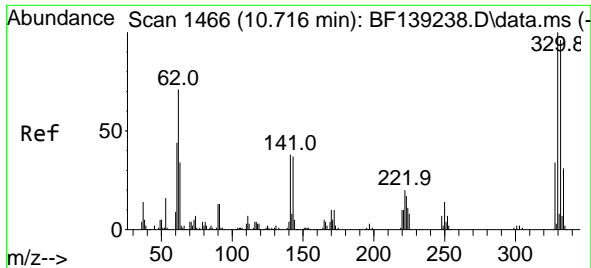


#39
 Acenaphthene-d10
 Concen: 20.000 ng
 RT: 9.922 min Scan# 1331
 Delta R.T. -0.006 min
 Lab File: BF139268.D
 Acq: 06 Sep 2024 09:32

Tgt Ion: 164 Resp: 330690

| Ion | Ratio | Lower | Upper |
|-----|-------|-------|-------|
| 164 | 100 | | |
| 162 | 97.9 | 79.2 | 118.8 |
| 160 | 43.5 | 34.2 | 51.2 |





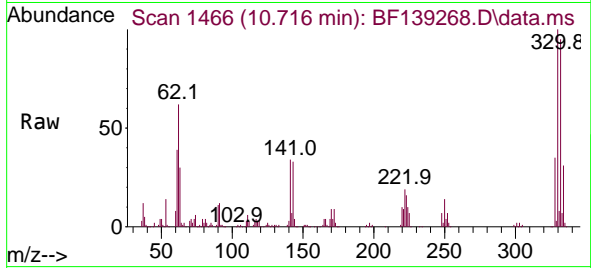
#42
 2,4,6-Tribromophenol
 Concen: 113.846 ng
 RT: 10.716 min Scan# 14
 Delta R.T. -0.000 min
 Lab File: BF139268.D
 Acq: 06 Sep 2024 09:32

Instrument :

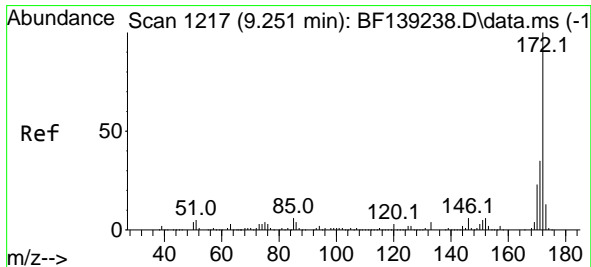
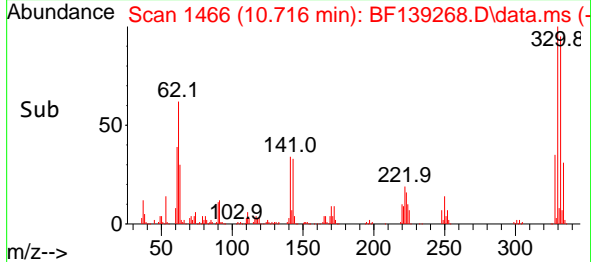
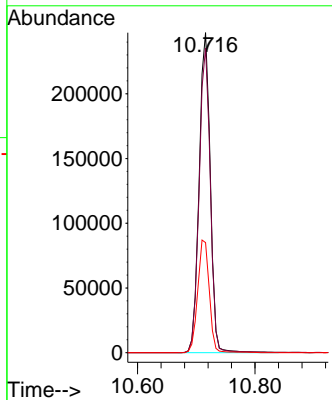
BNA_F

ClientSampleId :

PB163138BL

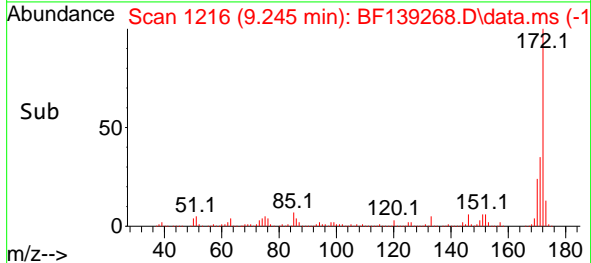
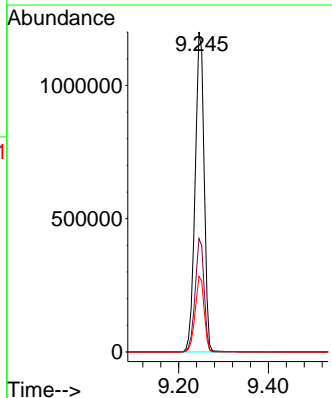
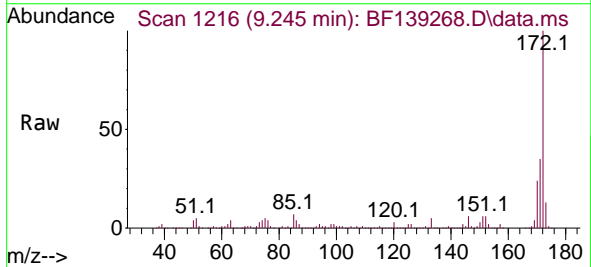


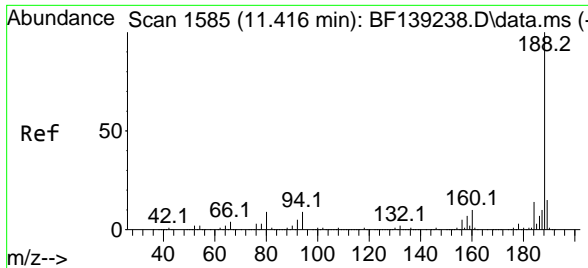
Tgt Ion:330 Resp: 325093
 Ion Ratio Lower Upper
 330 100
 332 95.7 76.6 115.0
 141 36.6 30.1 45.1



#45
 2-Fluorobiphenyl
 Concen: 78.165 ng
 RT: 9.245 min Scan# 1216
 Delta R.T. -0.006 min
 Lab File: BF139268.D
 Acq: 06 Sep 2024 09:32

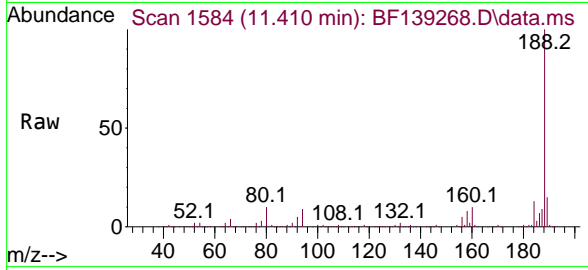
Tgt Ion:172 Resp: 1674518
 Ion Ratio Lower Upper
 172 100
 171 35.5 28.3 42.5
 170 23.6 18.7 28.1



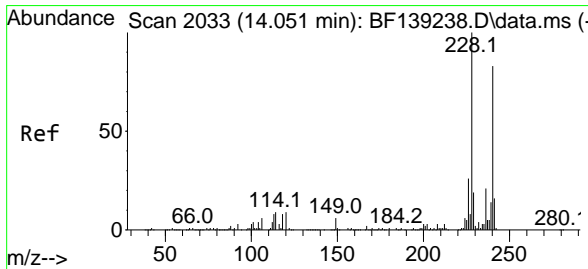
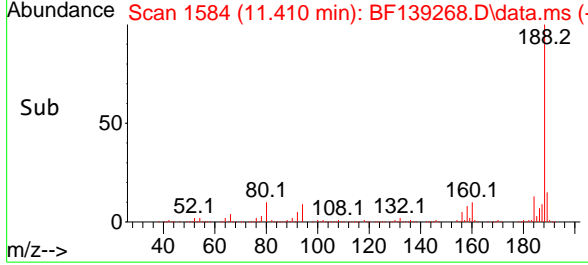
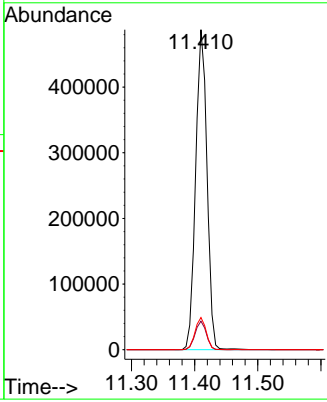


#64
 Phenanthrene-d10
 Concen: 20.000 ng
 RT: 11.410 min Scan# 111
 Delta R.T. -0.006 min
 Lab File: BF139268.D
 Acq: 06 Sep 2024 09:32

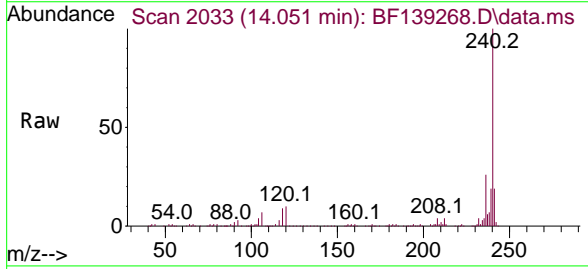
Instrument : BNA_F
 Client Sample Id : PB163138BL



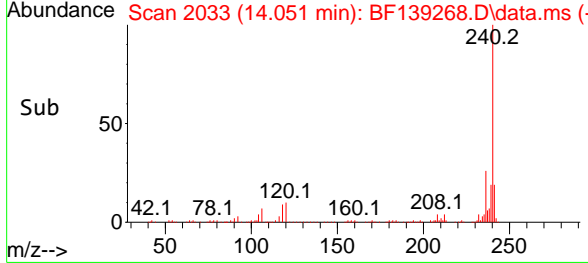
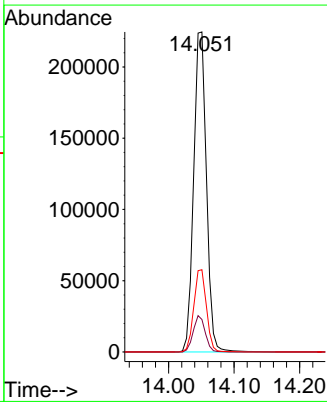
Tgt Ion:188 Resp: 607286
 Ion Ratio Lower Upper
 188 100
 94 8.9 7.0 10.4
 80 10.0 7.3 10.9

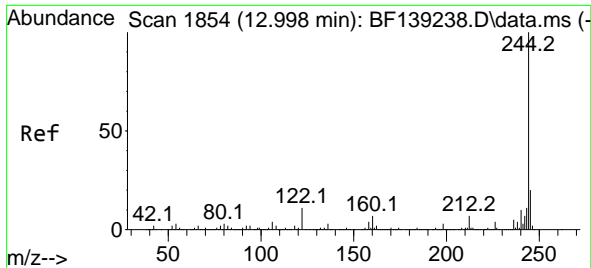


#76
 Chrysene-d12
 Concen: 20.000 ng
 RT: 14.051 min Scan# 2033
 Delta R.T. -0.000 min
 Lab File: BF139268.D
 Acq: 06 Sep 2024 09:32



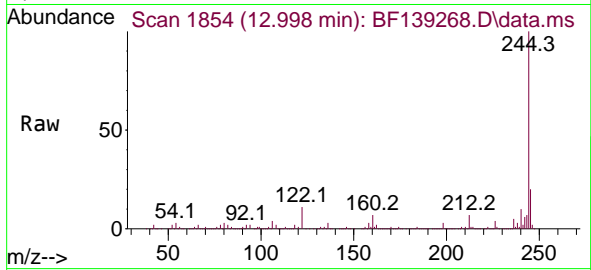
Tgt Ion:240 Resp: 304698
 Ion Ratio Lower Upper
 240 100
 120 10.2 8.6 12.8
 236 25.7 20.7 31.1



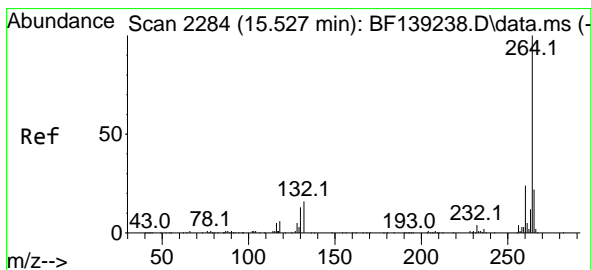
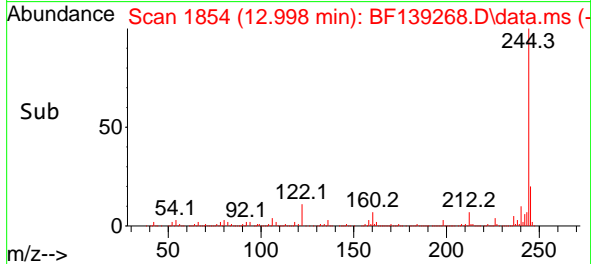
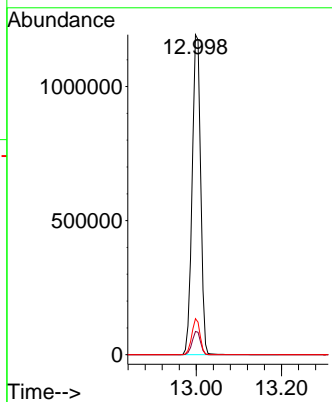


#79
 Terphenyl-d14
 Concen: 87.228 ng
 RT: 12.998 min Scan# 1854
 Delta R.T. -0.000 min
 Lab File: BF139268.D
 Acq: 06 Sep 2024 09:32

Instrument : BNA_F
 ClientSampleId : PB163138BL



Tgt Ion:244 Resp: 1646138
 Ion Ratio Lower Upper
 244 100
 212 7.3 5.9 8.9
 122 11.2 8.7 13.1



#86
 Perylene-d12
 Concen: 20.000 ng
 RT: 15.527 min Scan# 2284
 Delta R.T. -0.000 min
 Lab File: BF139268.D
 Acq: 06 Sep 2024 09:32

Tgt Ion:264 Resp: 266856
 Ion Ratio Lower Upper
 264 100
 260 23.2 18.8 28.2
 265 21.1 17.3 25.9

