

Data Path : Z:\svoasrv\HPCHEM1\BNA_F\Data\BF090925\
 Data File : BF143673.D
 Acq On : 08 Sep 2025 19:48
 Operator : RC/JU
 Sample : SSTDICV040
 Misc :
 ALS Vial : 11 Sample Multiplier: 1

Instrument :
 BNA_F
 ClientSampleId :
 ICVBF090925

Quant Time: Sep 09 05:24:34 2025
 Quant Method : Z:\svoasrv\HPCHEM1\BNA_F\Methods\8270-BF090925.M
 Quant Title : ASP BNA STANDARDS FOR 5 POINT CALIBRATION
 QLast Update : Tue Sep 09 05:18:16 2025
 Response via : Initial Calibration

Compound	R.T.	QIon	Response	Conc Units	Dev(Min)
Internal Standards					
1) 1,4-Dichlorobenzene-d4	6.893	152	61659	20.000 ng	0.00
21) Naphthalene-d8	8.175	136	238420	20.000 ng	0.00
39) Acenaphthene-d10	9.928	164	136783	20.000 ng	0.00
64) Phenanthrene-d10	11.410	188	221570	20.000 ng	0.00
76) Chrysene-d12	14.045	240	138906	20.000 ng	0.00
86) Perylene-d12	15.521	264	134541	20.000 ng	0.00
System Monitoring Compounds					
5) 2-Fluorophenol	5.498	112	288541	80.893 ng	0.00
7) Phenol-d6	6.510	99	353307	81.166 ng	0.00
23) Nitrobenzene-d5	7.451	82	316489	82.648 ng	0.00
42) 2,4,6-Tribromophenol	10.716	330	115814	83.513 ng	0.00
45) 2-Fluorobiphenyl	9.245	172	707534	80.660 ng	0.00
79) Terphenyl-d14	12.992	244	687746	81.160 ng	0.00
Target Compounds					
2) 1,4-Dioxane	2.681	88	64929	40.625 ng	97
3) Pyridine	3.446	79	170307	41.139 ng	100
4) n-Nitrosodimethylamine	3.399	42	63846	39.826 ng	93
6) Aniline	6.551	93	236166	40.357 ng	99
8) 2-Chlorophenol	6.675	128	157585	40.661 ng	98
9) Benzaldehyde	6.440	77	137843	46.032 ng	99
10) Phenol	6.522	94	207272	42.035 ng	99
11) bis(2-Chloroethyl)ether	6.628	93	146873	40.669 ng	99
12) 1,3-Dichlorobenzene	6.834	146	179615	40.230 ng	100
13) 1,4-Dichlorobenzene	6.910	146	181138	40.484 ng	99
14) 1,2-Dichlorobenzene	7.063	146	169647	40.279 ng	98
15) Benzyl Alcohol	7.028	79	131109	40.517 ng	100
16) 2,2'-oxybis(1-Chloropr...	7.163	45	196427	40.497 ng	99
17) 2-Methylphenol	7.134	107	130632	41.010 ng	99
18) Hexachloroethane	7.404	117	60630	41.626 ng	96
19) n-Nitroso-di-n-propyla...	7.304	70	108948	40.070 ng	99
20) 3+4-Methylphenols	7.287	107	167934	41.031 ng	97
22) Acetophenone	7.298	105	213100	39.783 ng	99
24) Nitrobenzene	7.475	77	161534	40.986 ng	98
25) Isophorone	7.710	82	295861	39.863 ng	100
26) 2-Nitrophenol	7.787	139	81748	43.103 ng	99
27) 2,4-Dimethylphenol	7.816	122	140692	40.443 ng	98
28) bis(2-Chloroethoxy)met...	7.922	93	182938	40.347 ng	99
29) 2,4-Dichlorophenol	8.022	162	143287	40.868 ng	97
30) 1,2,4-Trichlorobenzene	8.110	180	145921	40.193 ng	99
31) Naphthalene	8.192	128	472765	40.321 ng	100
32) Benzoic acid	7.916	122	92899	43.939 ng	94
33) 4-Chloroaniline	8.239	127	164624	40.045 ng	98
34) Hexachlorobutadiene	8.310	225	94845	39.782 ng	100
35) Caprolactam	8.610	113	38728	40.228 ng	99
36) 4-Chloro-3-methylphenol	8.710	107	143062	40.674 ng	99
37) 2-Methylnaphthalene	8.887	142	322122	39.903 ng	98
38) 1-Methylnaphthalene	8.981	142	306390	39.635 ng	100
40) 1,2,4,5-Tetrachloroben...	9.051	216	156158	40.288 ng	99
41) Hexachlorocyclopentadiene	9.039	237	83855	41.463 ng	100
43) 2,4,6-Trichlorophenol	9.157	196	107961	41.974 ng	97

Data Path : Z:\svoasrv\HPCHEM1\BNA_F\Data\BF090925\
 Data File : BF143673.D
 Acq On : 08 Sep 2025 19:48
 Operator : RC/JU
 Sample : SSTDICV040
 Misc :
 ALS Vial : 11 Sample Multiplier: 1

Instrument :
 BNA_F
 ClientSampleId :
 ICVBF090925

Quant Time: Sep 09 05:24:34 2025
 Quant Method : Z:\svoasrv\HPCHEM1\BNA_F\Methods\8270-BF090925.M
 Quant Title : ASP BNA STANDARDS FOR 5 POINT CALIBRATION
 QLast Update : Tue Sep 09 05:18:16 2025
 Response via : Initial Calibration

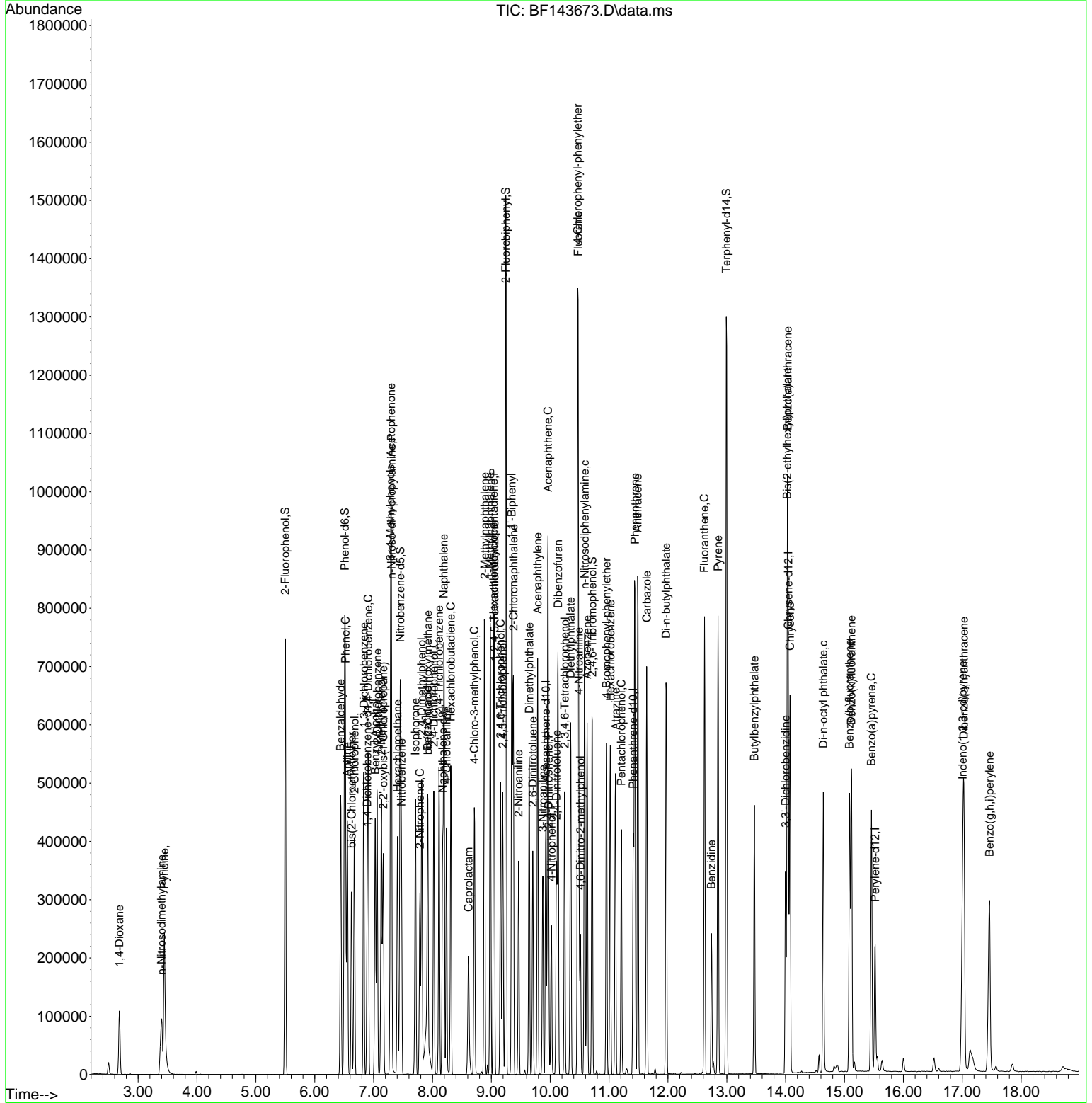
Compound	R.T.	QIon	Response	Conc	Units	Dev(Min)
44) 2,4,5-Trichlorophenol	9.192	196	108367	41.070	ng	99
46) 1,1'-Biphenyl	9.345	154	394776	40.099	ng	99
47) 2-Chloronaphthalene	9.375	162	305307	39.907	ng	100
48) 2-Nitroaniline	9.463	65	88104	42.277	ng	100
49) Acenaphthylene	9.786	152	442581	40.457	ng	99
50) Dimethylphthalate	9.645	163	354932	39.637	ng	99
51) 2,6-Dinitrotoluene	9.704	165	75164	43.943	ng	99
52) Acenaphthene	9.963	154	305976	40.492	ng	100
53) 3-Nitroaniline	9.875	138	77672	42.525	ng	100
54) 2,4-Dinitrophenol	9.975	184	35193	40.425	ng	96
55) Dibenzofuran	10.134	168	435046	40.179	ng	100
56) 4-Nitrophenol	10.022	139	62688	42.054	ng	99
57) 2,4-Dinitrotoluene	10.104	165	101248	44.667	ng	98
58) Fluorene	10.475	166	341219	40.209	ng	99
59) 2,3,4,6-Tetrachlorophenol	10.245	232	89806	41.519	ng	99
60) Diethylphthalate	10.345	149	341881	40.538	ng	99
61) 4-Chlorophenyl-phenyle...	10.469	204	172027	40.148	ng	99
62) 4-Nitroaniline	10.486	138	74588	42.427	ng	99
63) Azobenzene	10.628	77	301083	40.592	ng	99
65) 4,6-Dinitro-2-methylph...	10.516	198	48959	43.281	ng	99
66) n-Nitrosodiphenylamine	10.586	169	291298	40.363	ng	99
67) 4-Bromophenyl-phenylether	10.957	248	106566	40.210	ng	98
68) Hexachlorobenzene	11.022	284	112765	40.733	ng	99
69) Atrazine	11.110	200	94804	40.583	ng	99
70) Pentachlorophenol	11.210	266	71080	41.324	ng	99
71) Phenanthrene	11.439	178	486825	40.156	ng	100
72) Anthracene	11.486	178	493347	40.320	ng	100
73) Carbazole	11.639	167	409970	40.047	ng	99
74) Di-n-butylphthalate	11.969	149	510663	41.454	ng	99
75) Fluoranthene	12.622	202	454608	40.489	ng	100
77) Benzidine	12.739	184	132442	44.048	ng	99
78) Pyrene	12.851	202	459591	41.207	ng	100
80) Butylbenzylphthalate	13.469	149	153622	43.636	ng	99
81) Benzo(a)anthracene	14.033	228	367741	41.411	ng	99
82) 3,3'-Dichlorobenzidine	13.998	252	108436	43.250	ng	99
83) Chrysene	14.074	228	323258	39.928	ng	99
84) Bis(2-ethylhexyl)phtha...	14.027	149	204522	43.153	ng	100
85) Di-n-octyl phthalate	14.639	149	342540	41.480	ng	100
87) Indeno(1,2,3-cd)pyrene	17.010	276	374433	41.264	ng	99
88) Benzo(b)fluoranthene	15.086	252	337280	41.119	ng	100
89) Benzo(k)fluoranthene	15.116	252	289230	40.187	ng	99
90) Benzo(a)pyrene	15.457	252	289729	41.175	ng	100
91) Dibenzo(a,h)anthracene	17.027	278	308390	41.017	ng	98
92) Benzo(g,h,i)perylene	17.462	276	289986	40.776	ng	99

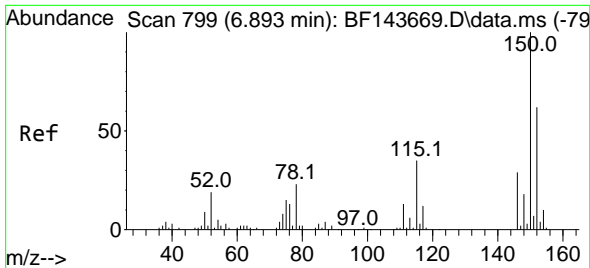
(#) = qualifier out of range (m) = manual integration (+) = signals summed

Data Path : Z:\svoasrv\HPCHEM1\BNA_F\Data\BF090925\
 Data File : BF143673.D
 Acq On : 08 Sep 2025 19:48
 Operator : RC/JU
 Sample : SSTDICV040
 Misc :
 ALS Vial : 11 Sample Multiplier: 1

Instrument :
 BNA_F
 Client Sample Id :
 ICVBF090925

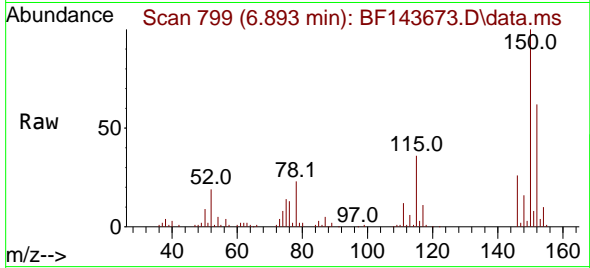
Quant Time: Sep 09 05:24:34 2025
 Quant Method : Z:\svoasrv\HPCHEM1\BNA_F\Methods\8270-BF090925.M
 Quant Title : ASP BNA STANDARDS FOR 5 POINT CALIBRATION
 QLast Update : Tue Sep 09 05:18:16 2025
 Response via : Initial Calibration



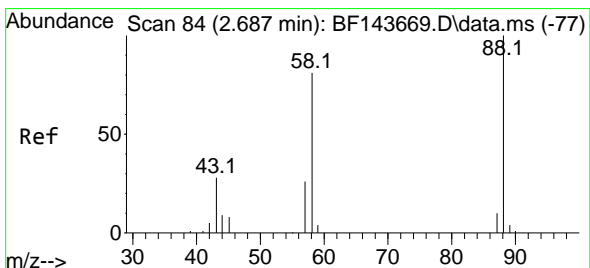
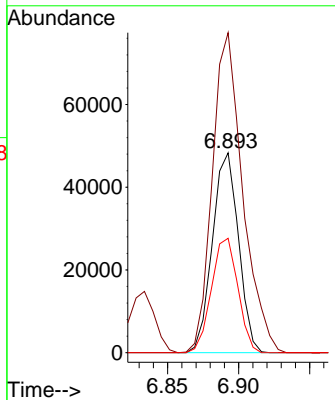
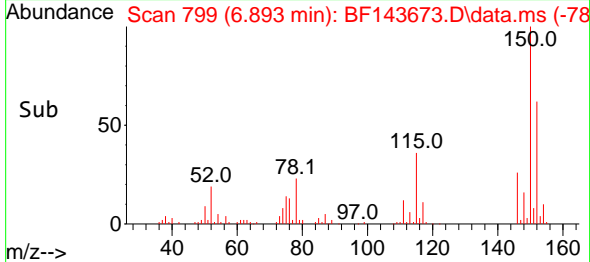


#1
 1,4-Dichlorobenzene-d4
 Concen: 20.000 ng
 RT: 6.893 min Scan# 79
 Delta R.T. -0.000 min
 Lab File: BF143673.D
 Acq: 08 Sep 2025 19:48

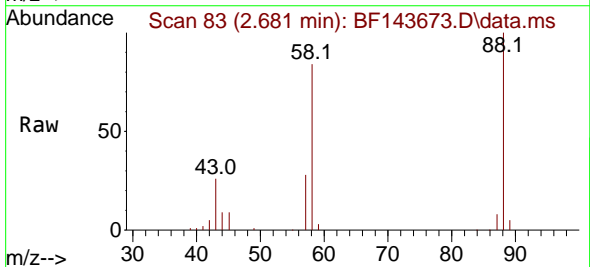
Instrument :
 BNA_F
 ClientSampleId :
 ICVBF090925



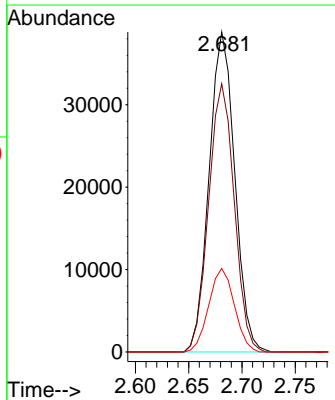
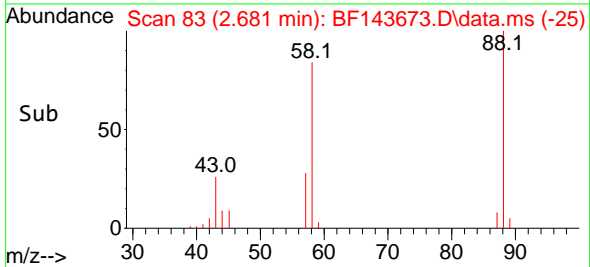
Tgt Ion:152 Resp: 61659
 Ion Ratio Lower Upper
 152 100
 150 160.1 128.2 192.2
 115 57.3 45.0 67.4

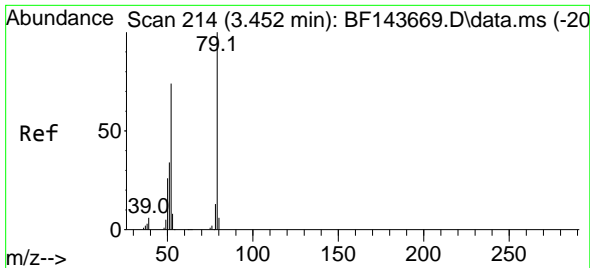


#2
 1,4-Dioxane
 Concen: 40.625 ng
 RT: 2.681 min Scan# 83
 Delta R.T. -0.006 min
 Lab File: BF143673.D
 Acq: 08 Sep 2025 19:48



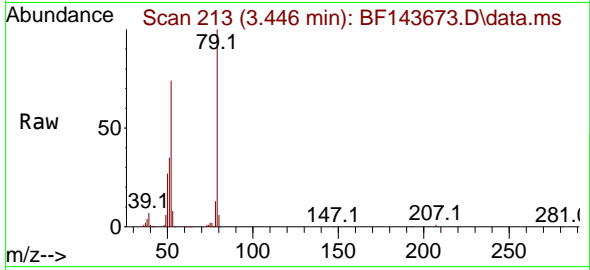
Tgt Ion: 88 Resp: 64929
 Ion Ratio Lower Upper
 88 100
 58 83.5 65.0 97.4
 43 26.0 22.3 33.5



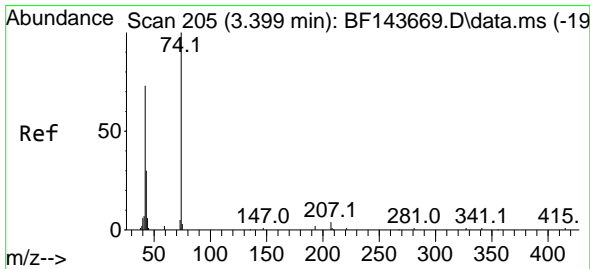
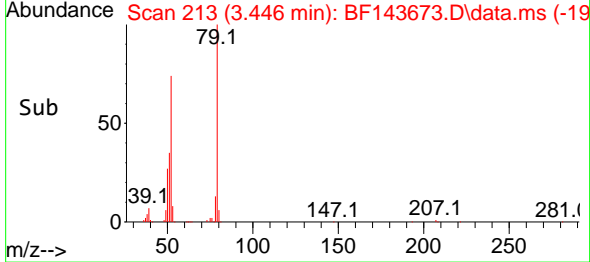
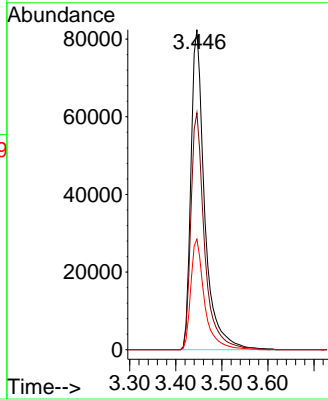


#3
 Pyridine
 Concen: 41.139 ng
 RT: 3.446 min Scan# 214
 Delta R.T. -0.006 min
 Lab File: BF143673.D
 Acq: 08 Sep 2025 19:48

Instrument :
 BNA_F
 ClientSampleId :
 ICVBF090925

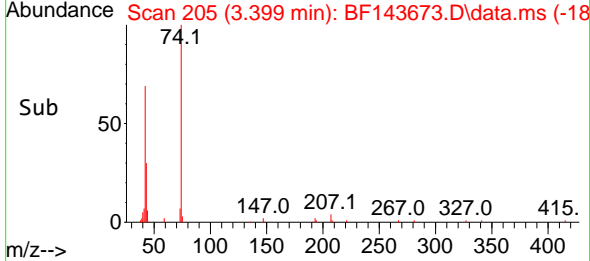
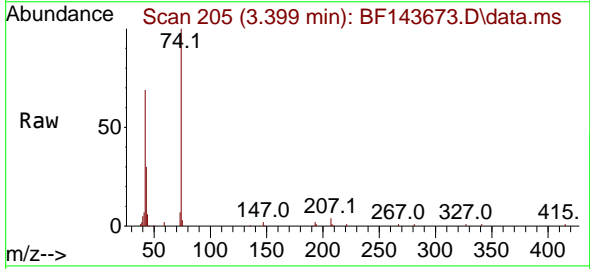
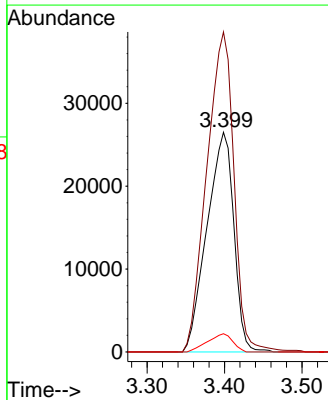


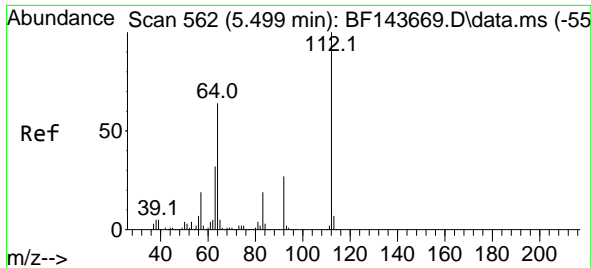
Tgt Ion: 79 Resp: 170307
 Ion Ratio Lower Upper
 79 100
 52 74.0 59.0 88.4
 51 34.5 27.6 41.4



#4
 n-Nitrosodimethylamine
 Concen: 39.826 ng
 RT: 3.399 min Scan# 205
 Delta R.T. -0.000 min
 Lab File: BF143673.D
 Acq: 08 Sep 2025 19:48

Tgt Ion: 42 Resp: 63846
 Ion Ratio Lower Upper
 42 100
 74 145.7 109.3 163.9
 44 8.3 6.5 9.7



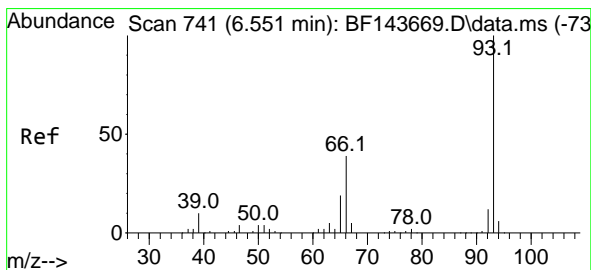
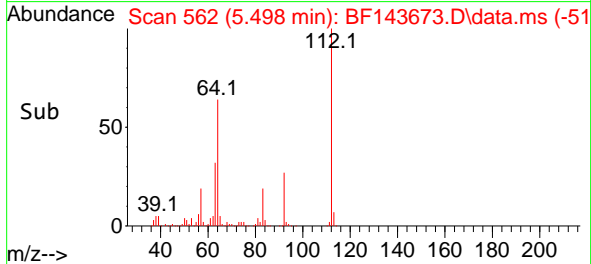
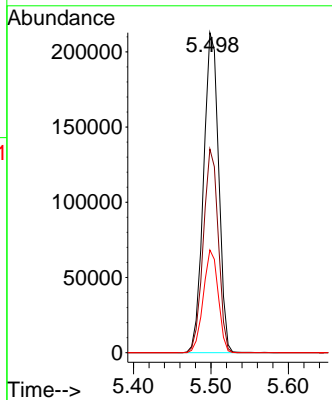
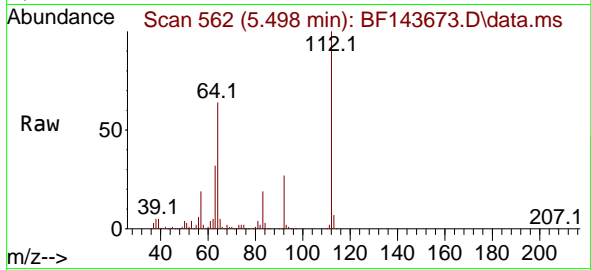


#5
 2-Fluorophenol
 Concen: 80.893 ng
 RT: 5.498 min Scan# 50
 Delta R.T. -0.000 min
 Lab File: BF143673.D
 Acq: 08 Sep 2025 19:48

Instrument : BNA_F
 ClientSampleId : ICVBF090925

Tgt Ion:112 Resp: 288541

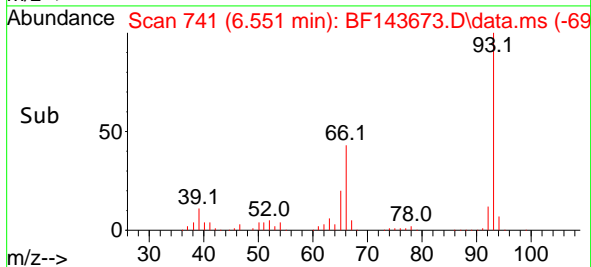
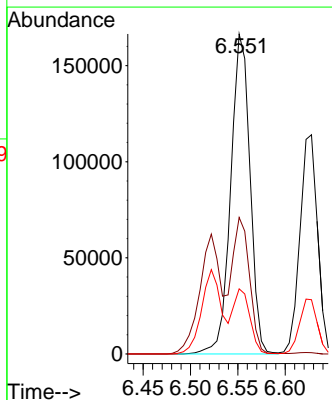
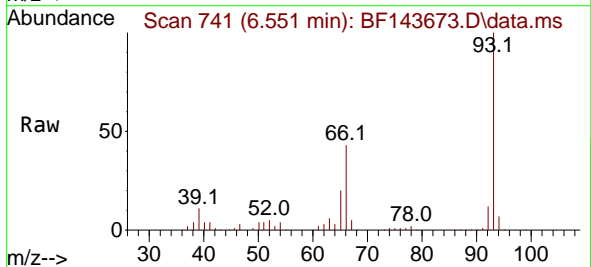
Ion	Ratio	Lower	Upper
112	100		
64	63.7	51.1	76.7
63	32.1	25.4	38.0

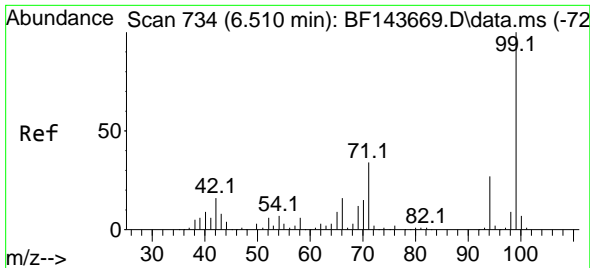


#6
 Aniline
 Concen: 40.357 ng
 RT: 6.551 min Scan# 741
 Delta R.T. -0.000 min
 Lab File: BF143673.D
 Acq: 08 Sep 2025 19:48

Tgt Ion: 93 Resp: 236166

Ion	Ratio	Lower	Upper
93	100		
66	42.6	33.4	50.2
65	20.4	16.1	24.1

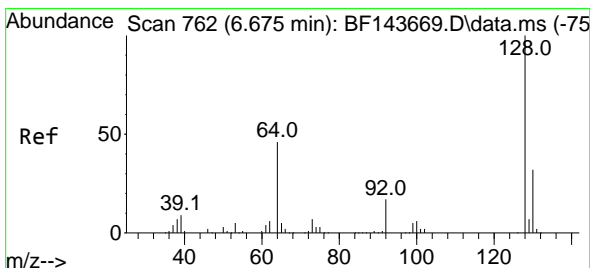
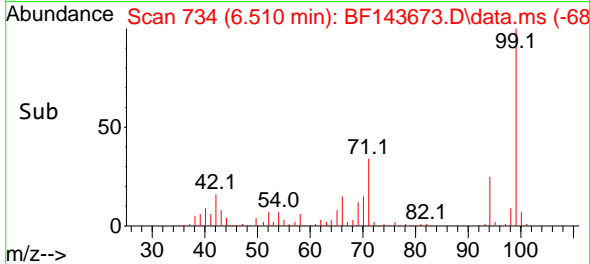
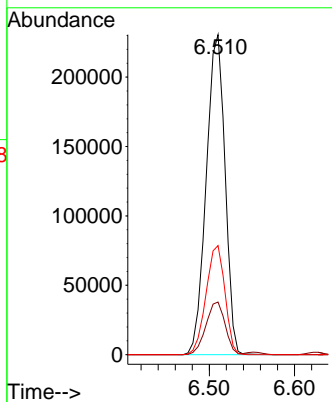
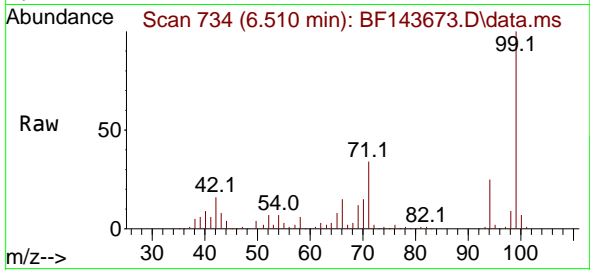




#7
 Phenol-d6
 Concen: 81.166 ng
 RT: 6.510 min Scan# 711
 Delta R.T. -0.000 min
 Lab File: BF143673.D
 Acq: 08 Sep 2025 19:48

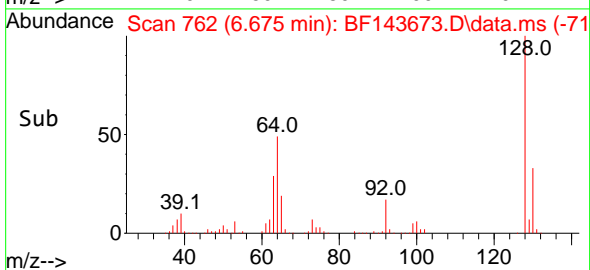
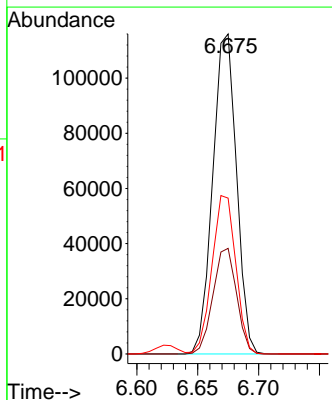
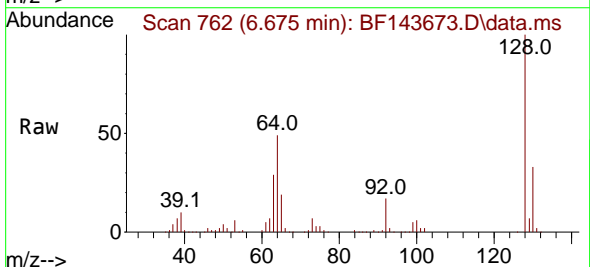
Instrument :
 BNA_F
 ClientSampleId :
 ICVBF090925

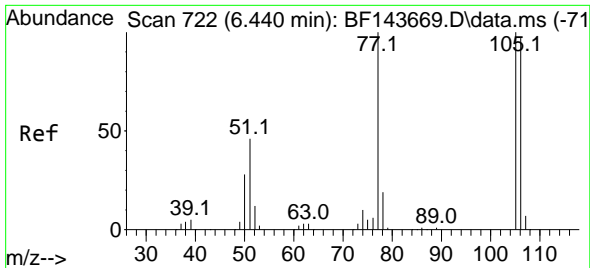
Tgt Ion: 99 Resp: 353307
 Ion Ratio Lower Upper
 99 100
 42 16.5 13.1 19.7
 71 34.1 27.3 40.9



#8
 2-Chlorophenol
 Concen: 40.661 ng
 RT: 6.675 min Scan# 762
 Delta R.T. -0.000 min
 Lab File: BF143673.D
 Acq: 08 Sep 2025 19:48

Tgt Ion: 128 Resp: 157585
 Ion Ratio Lower Upper
 128 100
 130 33.0 11.9 51.9
 64 48.7 27.8 67.8





#9
 Benzaldehyde
 Concen: 46.032 ng
 RT: 6.440 min Scan# 71
 Delta R.T. -0.000 min
 Lab File: BF143673.D
 Acq: 08 Sep 2025 19:48

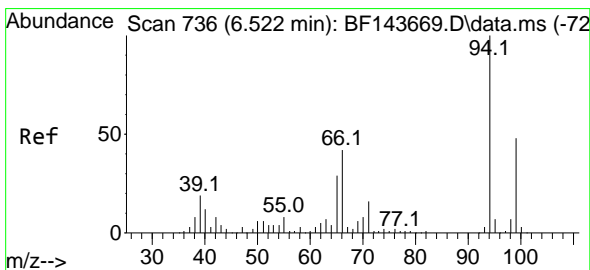
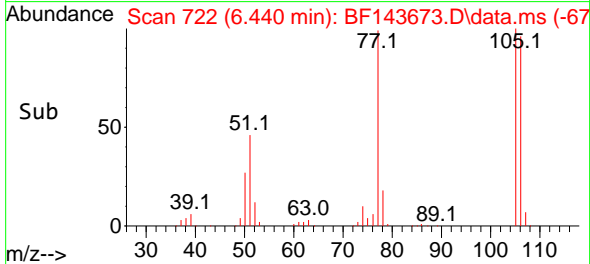
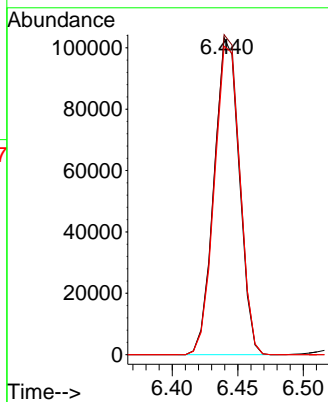
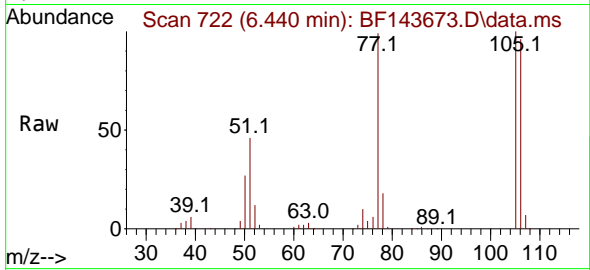
Instrument :

BNA_F

ClientSampleId :

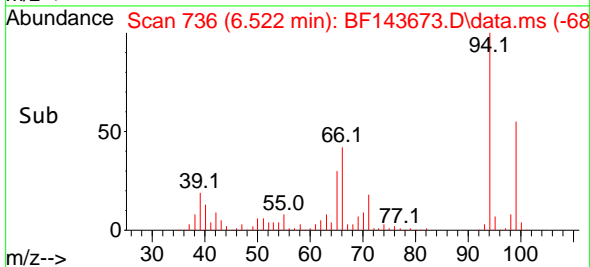
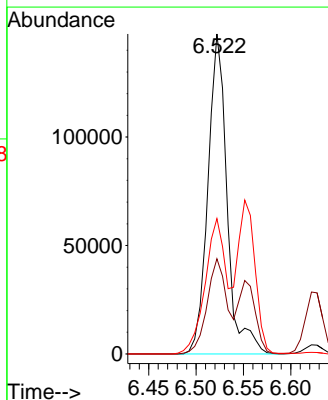
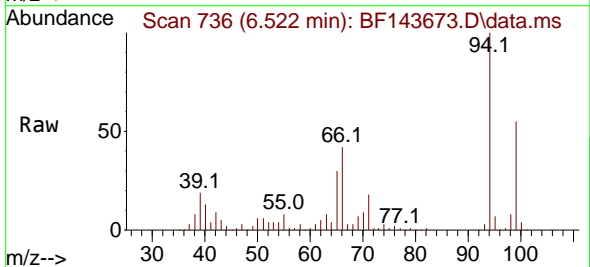
ICVBF090925

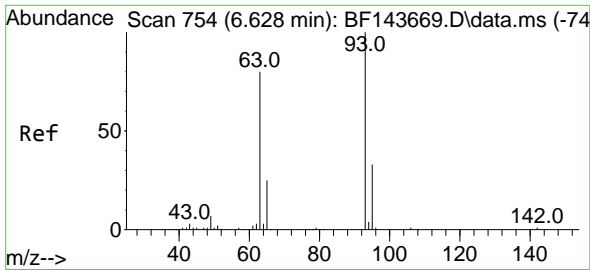
Tgt Ion: 77 Resp: 137843
 Ion Ratio Lower Upper
 77 100
 105 101.0 80.1 120.1
 106 97.4 76.7 116.7



#10
 Phenol
 Concen: 42.035 ng
 RT: 6.522 min Scan# 736
 Delta R.T. -0.000 min
 Lab File: BF143673.D
 Acq: 08 Sep 2025 19:48

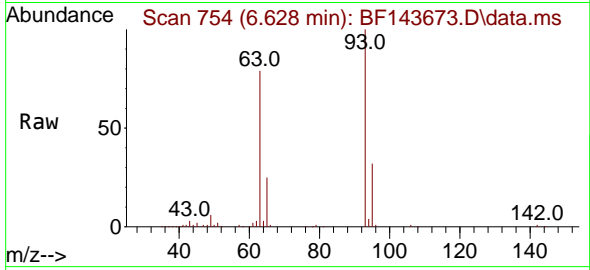
Tgt Ion: 94 Resp: 207272
 Ion Ratio Lower Upper
 94 100
 65 29.8 8.8 48.8
 66 42.3 21.7 61.7





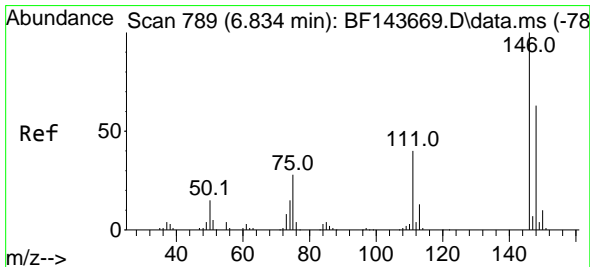
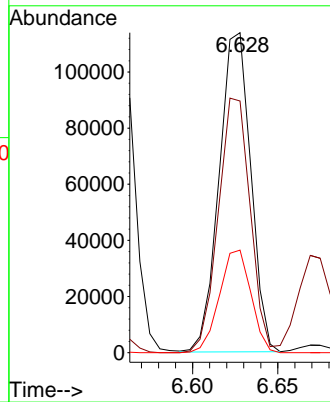
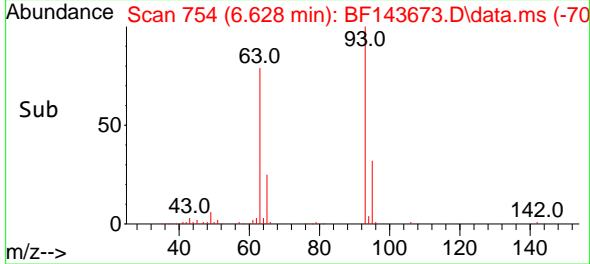
#11
 bis(2-Chloroethyl)ether
 Concen: 40.669 ng
 RT: 6.628 min Scan# 754
 Delta R.T. -0.000 min
 Lab File: BF143673.D
 Acq: 08 Sep 2025 19:48

Instrument : BNA_F
 ClientSampleId : ICVBF090925

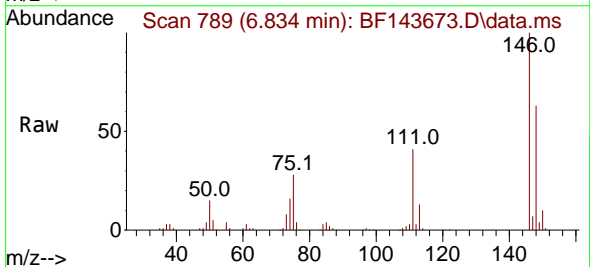


Tgt Ion: 93 Resp: 146873

Ion	Ratio	Lower	Upper
93	100		
63	78.7	59.6	99.6
95	32.1	12.7	52.7

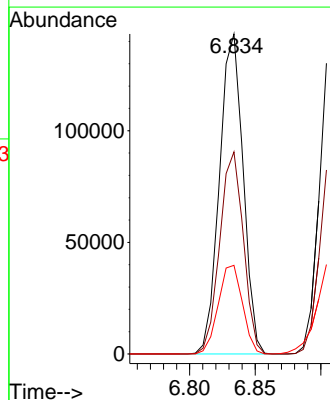
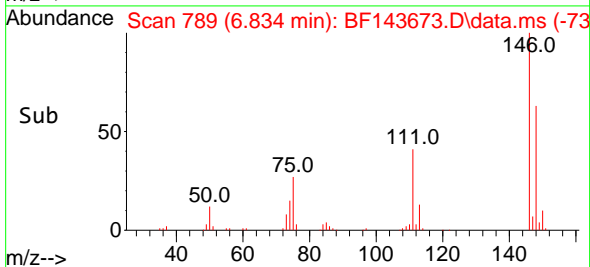


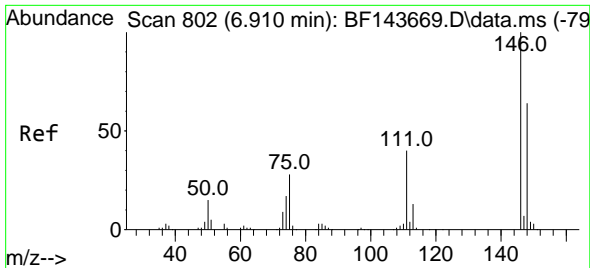
#12
 1,3-Dichlorobenzene
 Concen: 40.230 ng
 RT: 6.834 min Scan# 789
 Delta R.T. -0.000 min
 Lab File: BF143673.D
 Acq: 08 Sep 2025 19:48



Tgt Ion: 146 Resp: 179615

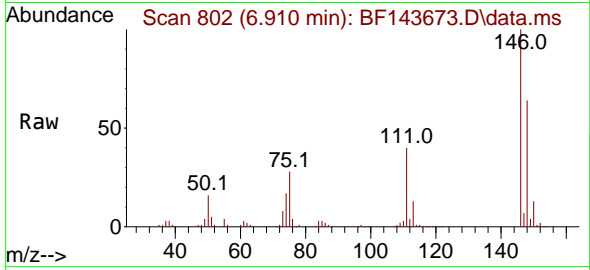
Ion	Ratio	Lower	Upper
146	100		
148	63.1	50.8	76.2
75	27.7	22.1	33.1



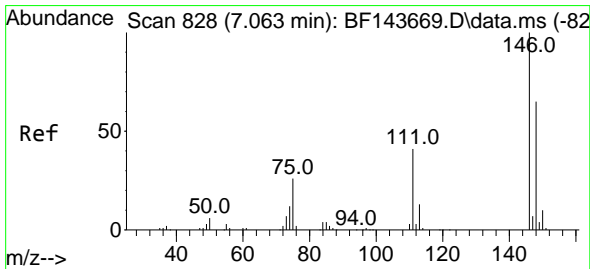
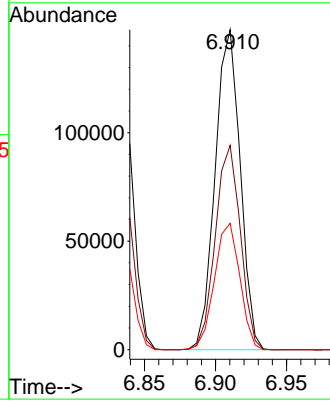
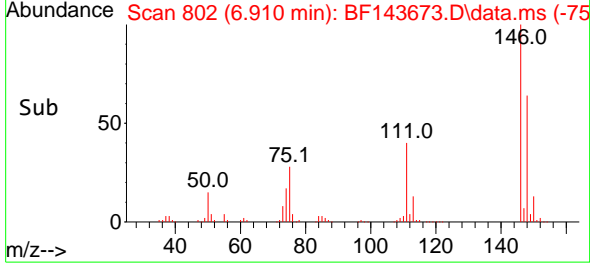


#13
 1,4-Dichlorobenzene
 Concen: 40.484 ng
 RT: 6.910 min Scan# 801
 Delta R.T. -0.000 min
 Lab File: BF143673.D
 Acq: 08 Sep 2025 19:48

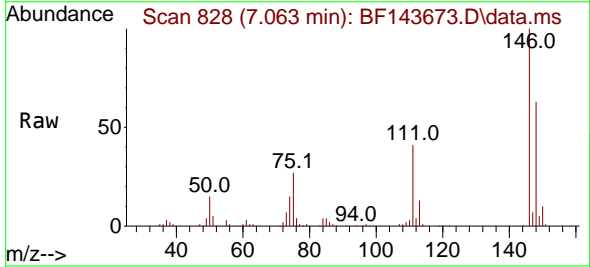
Instrument :
 BNA_F
 ClientSampleId :
 ICVBF090925



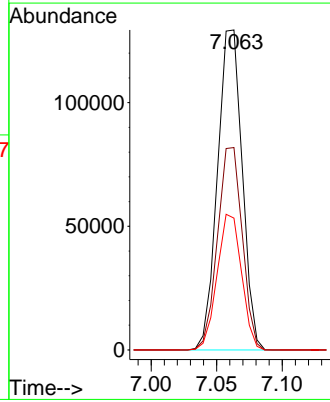
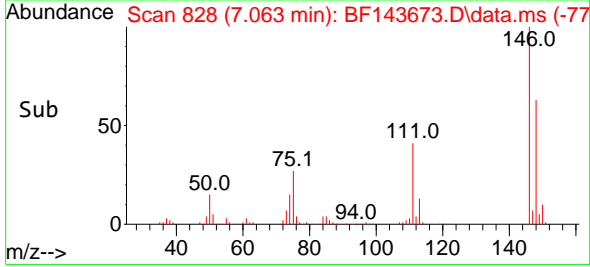
Tgt Ion:146 Resp: 181138
 Ion Ratio Lower Upper
 146 100
 148 63.9 51.4 77.0
 111 39.5 32.2 48.4

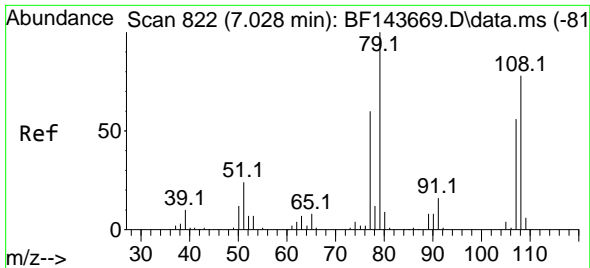


#14
 1,2-Dichlorobenzene
 Concen: 40.279 ng
 RT: 7.063 min Scan# 828
 Delta R.T. -0.000 min
 Lab File: BF143673.D
 Acq: 08 Sep 2025 19:48



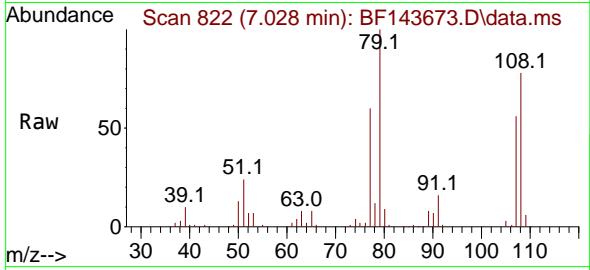
Tgt Ion:146 Resp: 169647
 Ion Ratio Lower Upper
 146 100
 148 63.2 52.0 78.0
 111 41.2 32.4 48.6



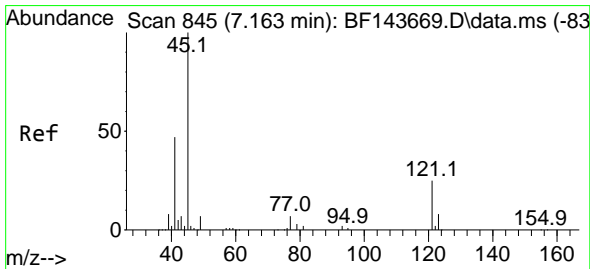
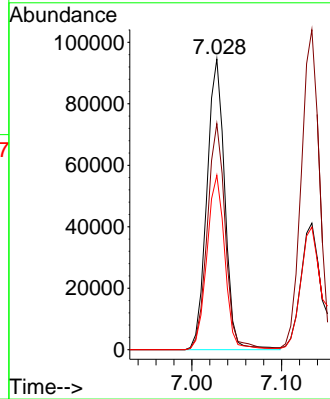
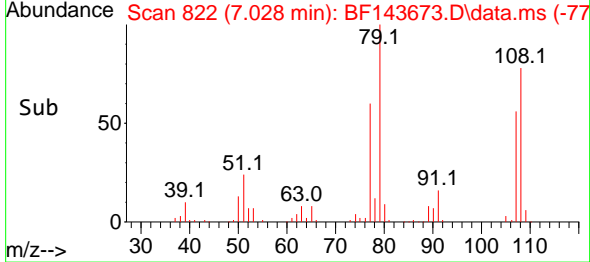


#15
 Benzyl Alcohol
 Concen: 40.517 ng
 RT: 7.028 min Scan# 811
 Delta R.T. -0.000 min
 Lab File: BF143673.D
 Acq: 08 Sep 2025 19:48

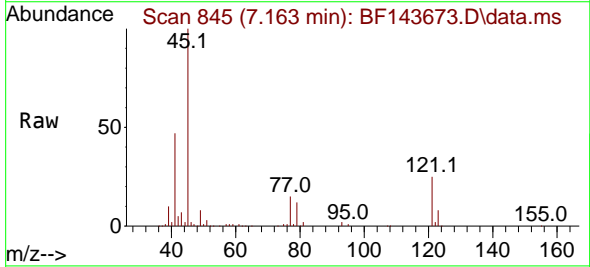
Instrument :
 BNA_F
 ClientSampleId :
 ICVBF090925



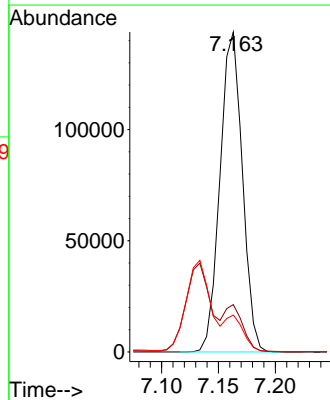
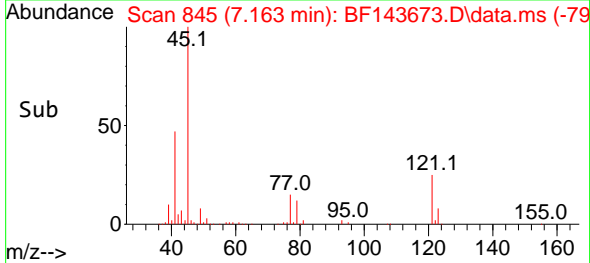
Tgt Ion: 79 Resp: 131109
 Ion Ratio Lower Upper
 79 100
 108 77.8 62.2 93.2
 77 60.0 48.0 72.0

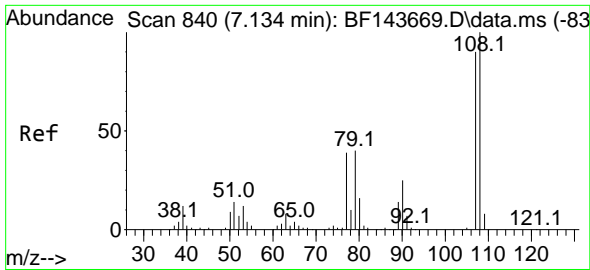


#16
 2,2'-oxybis(1-Chloropropane)
 Concen: 40.497 ng
 RT: 7.163 min Scan# 845
 Delta R.T. -0.000 min
 Lab File: BF143673.D
 Acq: 08 Sep 2025 19:48



Tgt Ion: 45 Resp: 196427
 Ion Ratio Lower Upper
 45 100
 77 14.8 0.0 35.1
 79 11.5 0.0 31.1



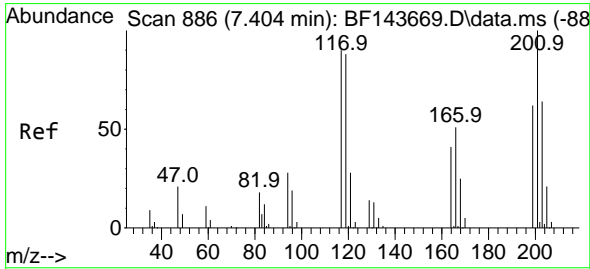
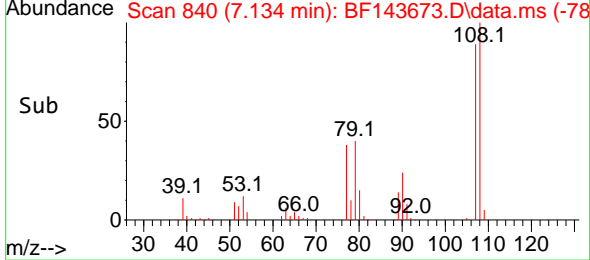
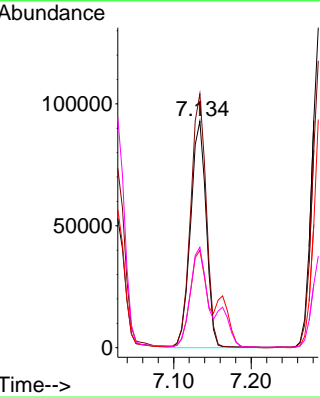
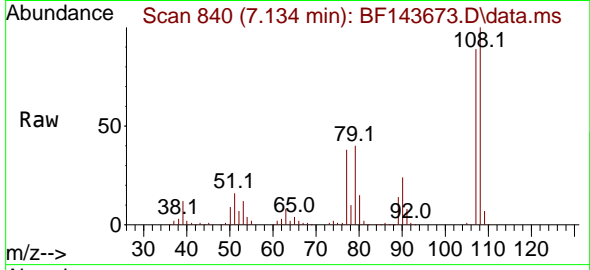


#17
 2-Methylphenol
 Concen: 41.010 ng
 RT: 7.134 min Scan# 840
 Delta R.T. -0.000 min
 Lab File: BF143673.D
 Acq: 08 Sep 2025 19:48

Instrument : BNA_F
 ClientSampleId : ICVBF090925

Tgt Ion:107 Resp: 130632

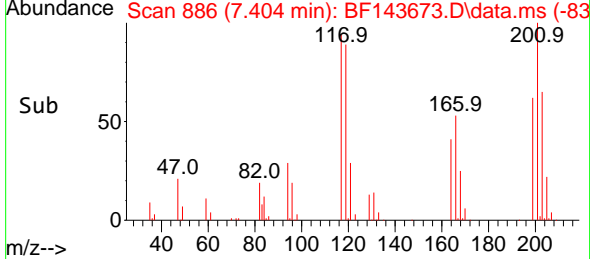
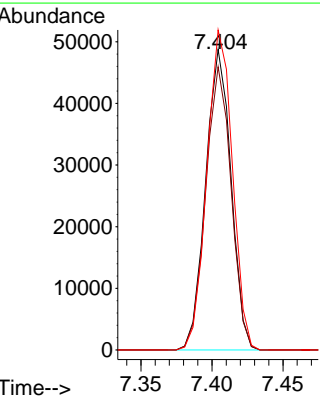
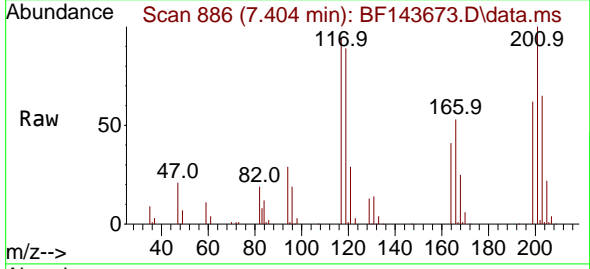
Ion	Ratio	Lower	Upper
107	100		
108	112.1	89.1	133.7
77	42.9	34.8	52.2
79	44.3	35.7	53.5

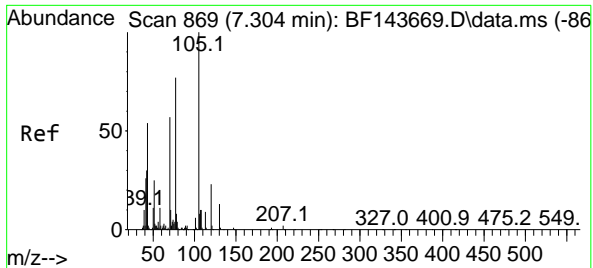


#18
 Hexachloroethane
 Concen: 41.626 ng
 RT: 7.404 min Scan# 886
 Delta R.T. -0.000 min
 Lab File: BF143673.D
 Acq: 08 Sep 2025 19:48

Tgt Ion:117 Resp: 60630

Ion	Ratio	Lower	Upper
117	100		
119	94.2	77.7	116.5
201	106.4	88.8	133.2



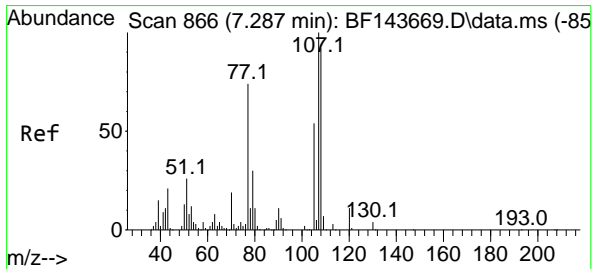
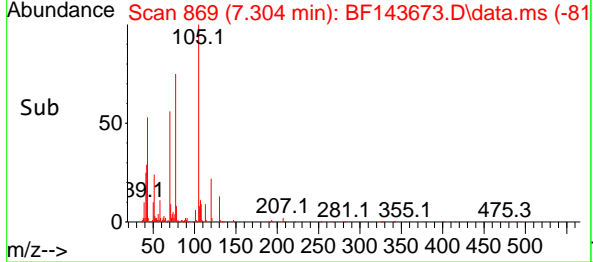
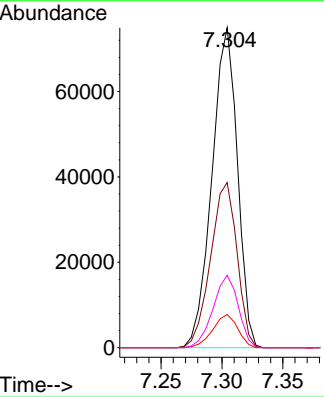
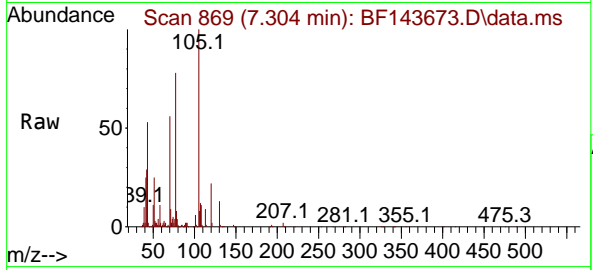


#19
 n-Nitroso-di-n-propylamine
 Concen: 40.070 ng
 RT: 7.304 min Scan# 809
 Delta R.T. -0.000 min
 Lab File: BF143673.D
 Acq: 08 Sep 2025 19:48

Instrument :
 BNA_F
 ClientSampleId :
 ICVBF090925

Tgt Ion: 70 Resp: 108948

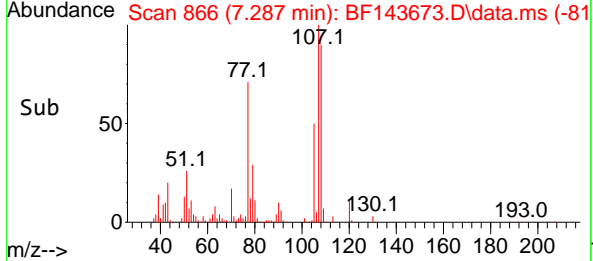
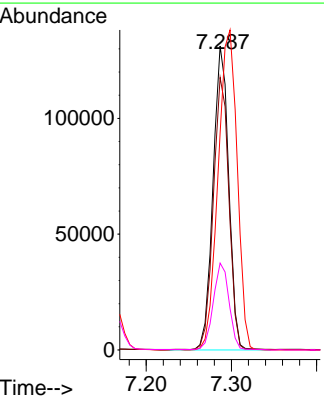
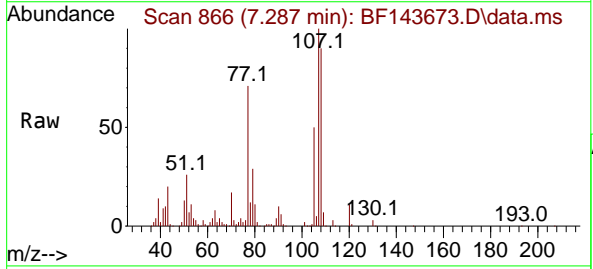
Ion	Ratio	Lower	Upper
70	100		
42	51.6	42.1	63.1
101	10.4	8.2	12.4
130	22.6	18.6	27.8

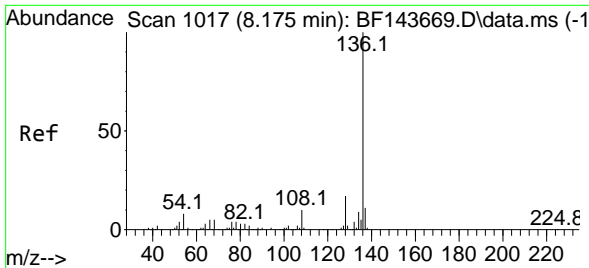


#20
 3+4-Methylphenols
 Concen: 41.031 ng
 RT: 7.287 min Scan# 866
 Delta R.T. -0.000 min
 Lab File: BF143673.D
 Acq: 08 Sep 2025 19:48

Tgt Ion: 107 Resp: 167934

Ion	Ratio	Lower	Upper
107	100		
108	89.6	72.2	112.2
77	71.3	53.7	93.7
79	28.6	9.7	49.7



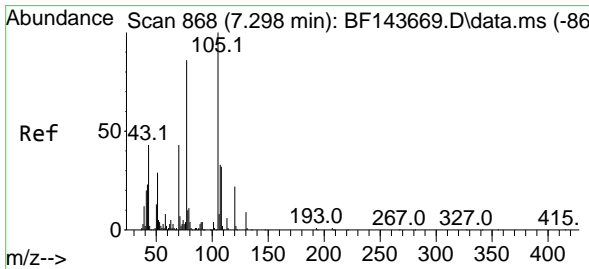
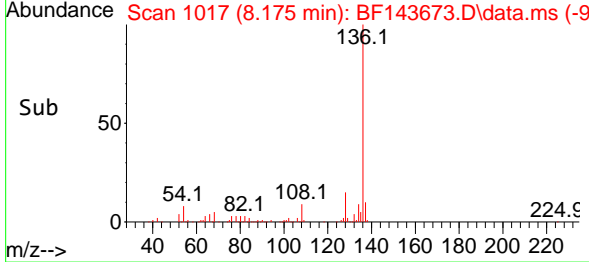
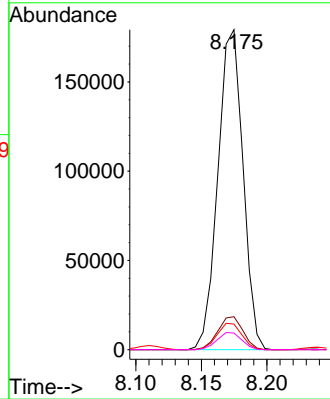
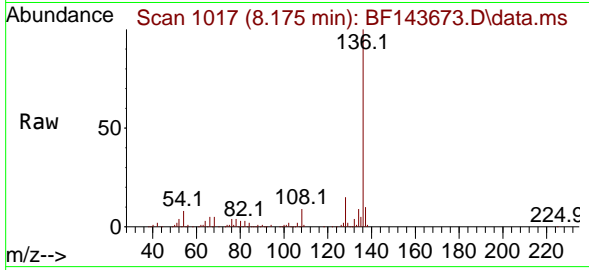


#21
 Naphthalene-d8
 Concen: 20.000 ng
 RT: 8.175 min Scan# 1017
 Delta R.T. -0.000 min
 Lab File: BF143673.D
 Acq: 08 Sep 2025 19:48

Instrument : BNA_F
 ClientSampleId : ICVBF090925

Tgt Ion:136 Resp: 238420

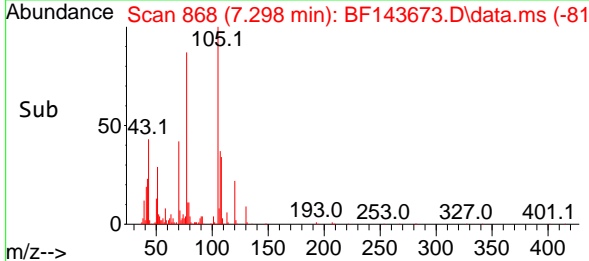
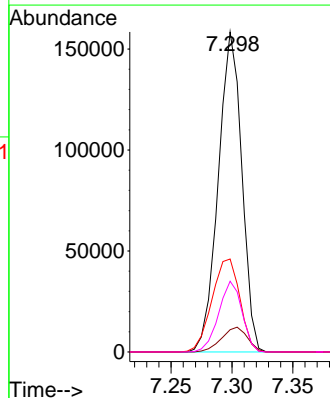
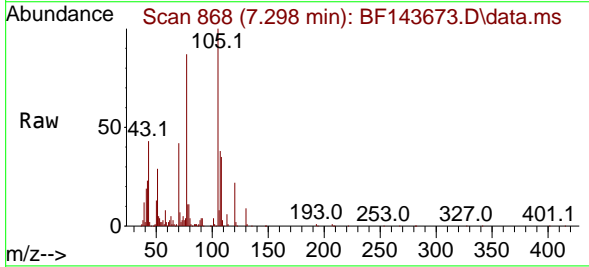
Ion	Ratio	Lower	Upper
136	100		
137	10.3	8.6	13.0
54	8.0	6.4	9.6
68	5.2	4.1	6.1

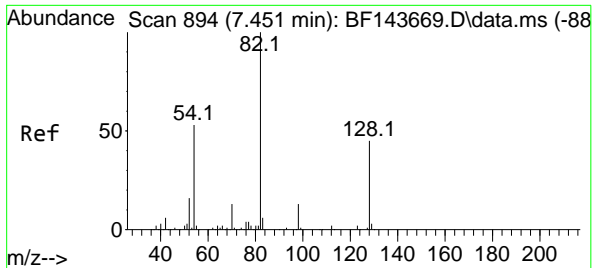


#22
 Acetophenone
 Concen: 39.783 ng
 RT: 7.298 min Scan# 868
 Delta R.T. -0.000 min
 Lab File: BF143673.D
 Acq: 08 Sep 2025 19:48

Tgt Ion:105 Resp: 213100

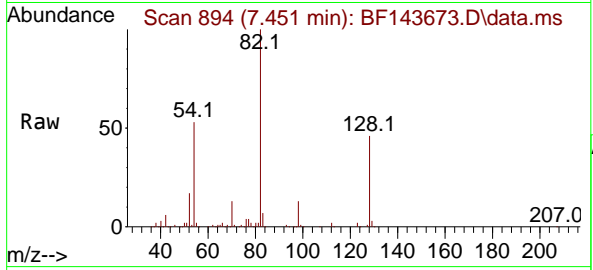
Ion	Ratio	Lower	Upper
105	100		
71	7.0	5.8	8.8
51	29.0	22.9	34.3
120	22.1	17.8	26.6





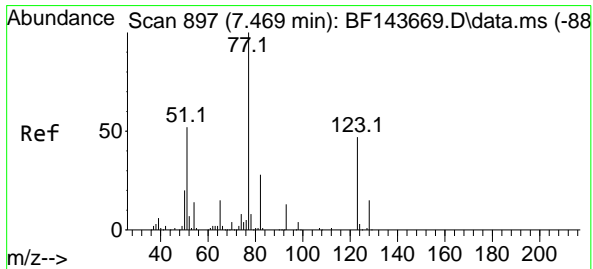
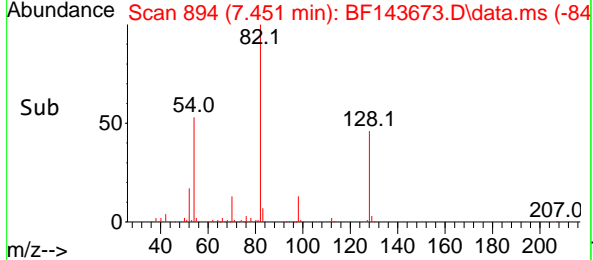
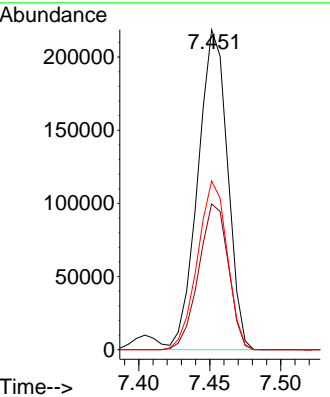
#23
 Nitrobenzene-d5
 Concen: 82.648 ng
 RT: 7.451 min Scan# 894
 Delta R.T. -0.000 min
 Lab File: BF143673.D
 Acq: 08 Sep 2025 19:48

Instrument : BNA_F
 ClientSampleId : ICVBF090925

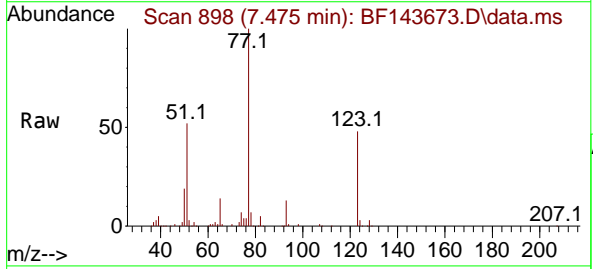


Tgt Ion: 82 Resp: 316489

Ion	Ratio	Lower	Upper
82	100		
128	45.5	36.0	54.0
54	52.8	41.9	62.9

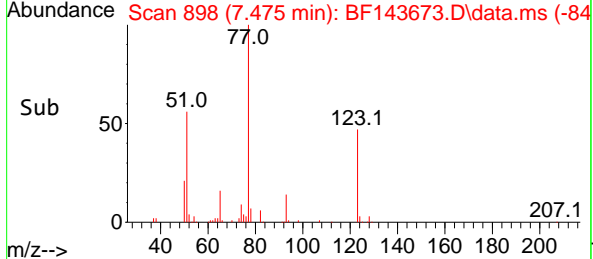
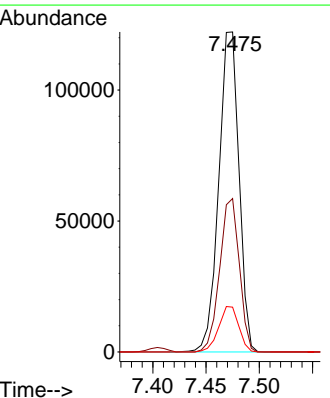


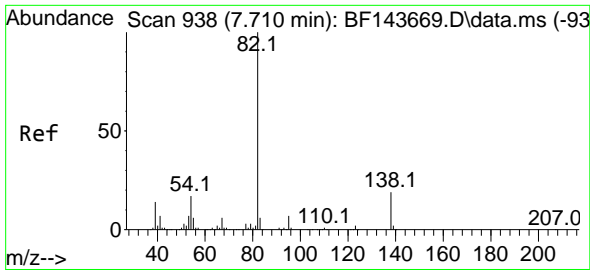
#24
 Nitrobenzene
 Concen: 40.986 ng
 RT: 7.475 min Scan# 898
 Delta R.T. 0.006 min
 Lab File: BF143673.D
 Acq: 08 Sep 2025 19:48



Tgt Ion: 77 Resp: 161534

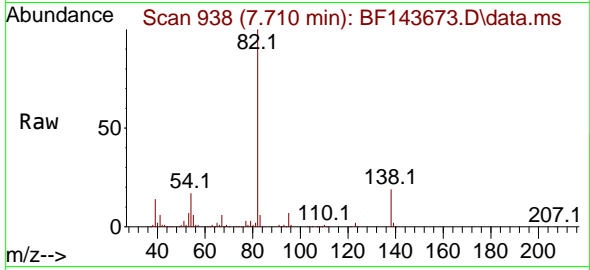
Ion	Ratio	Lower	Upper
77	100		
123	48.0	37.5	56.3
65	14.0	11.7	17.5



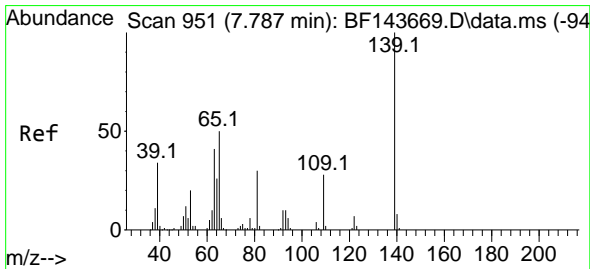
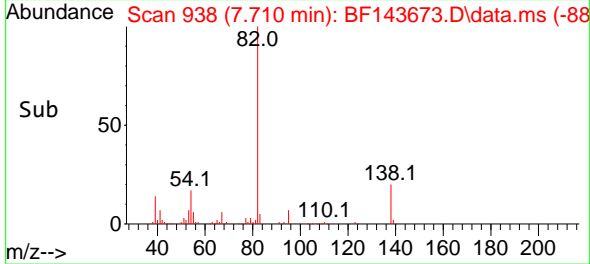
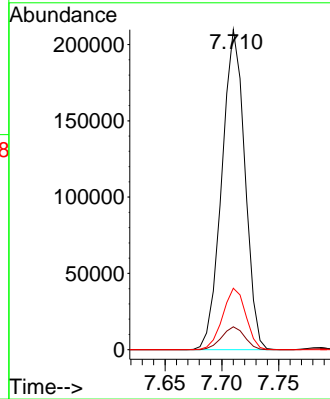


#25
 Isophorone
 Concen: 39.863 ng
 RT: 7.710 min Scan# 911
 Delta R.T. -0.000 min
 Lab File: BF143673.D
 Acq: 08 Sep 2025 19:48

Instrument : BNA_F
 ClientSampleId : ICVBF090925

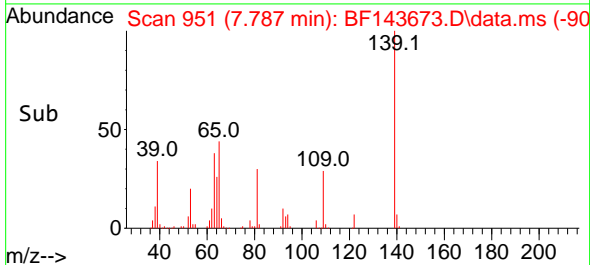
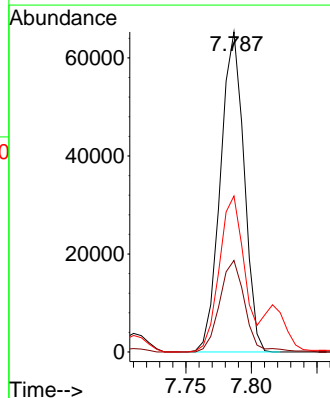
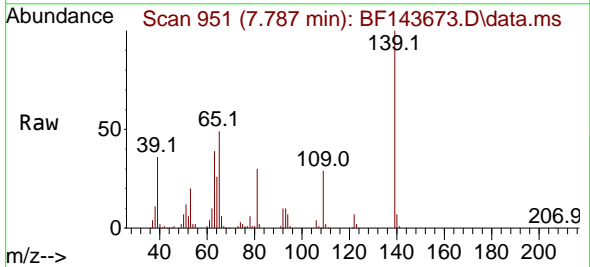


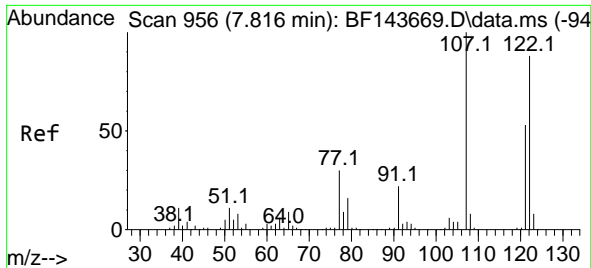
Tgt Ion: 82 Resp: 295861
 Ion Ratio Lower Upper
 82 100
 95 7.2 5.7 8.5
 138 19.2 15.4 23.2



#26
 2-Nitrophenol
 Concen: 43.103 ng
 RT: 7.787 min Scan# 951
 Delta R.T. -0.000 min
 Lab File: BF143673.D
 Acq: 08 Sep 2025 19:48

Tgt Ion: 139 Resp: 81748
 Ion Ratio Lower Upper
 139 100
 109 28.6 22.5 33.7
 65 48.7 39.7 59.5





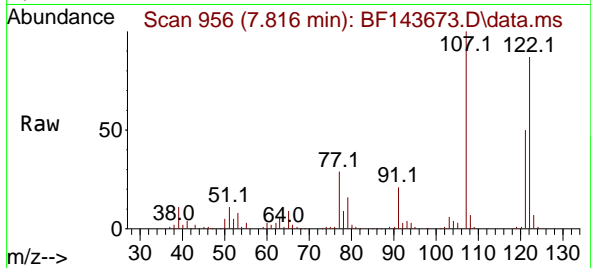
#27
 2,4-Dimethylphenol
 Concen: 40.443 ng
 RT: 7.816 min Scan# 911
 Delta R.T. -0.000 min
 Lab File: BF143673.D
 Acq: 08 Sep 2025 19:48

Instrument :

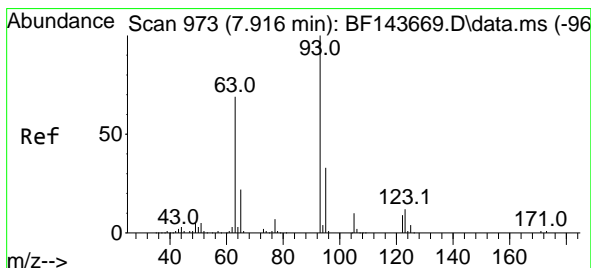
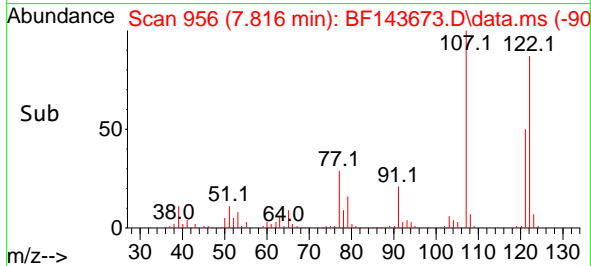
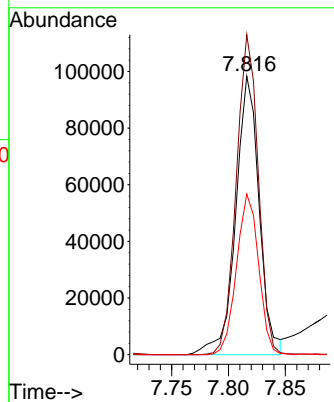
BNA_F

ClientSampleId :

ICVBF090925

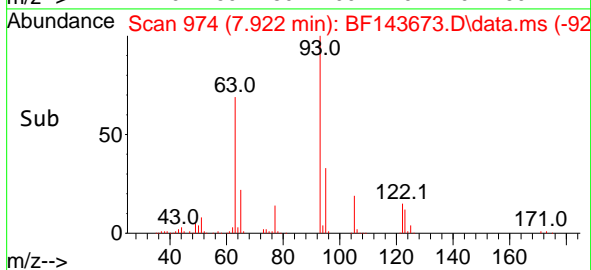
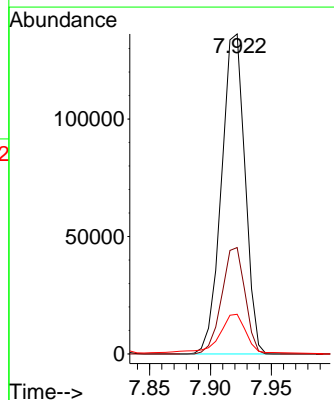
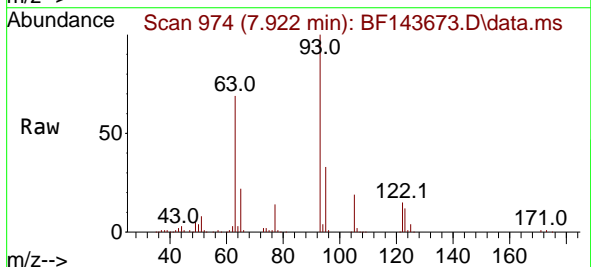


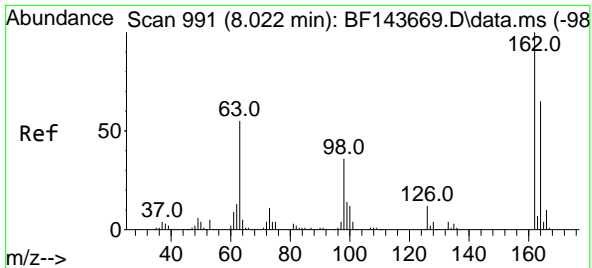
Tgt Ion:122 Resp: 140692
 Ion Ratio Lower Upper
 122 100
 107 114.9 90.8 136.2
 121 57.7 47.9 71.9



#28
 bis(2-Chloroethoxy)methane
 Concen: 40.347 ng
 RT: 7.922 min Scan# 974
 Delta R.T. 0.006 min
 Lab File: BF143673.D
 Acq: 08 Sep 2025 19:48

Tgt Ion: 93 Resp: 182938
 Ion Ratio Lower Upper
 93 100
 95 33.2 26.0 39.0
 123 12.4 9.8 14.8





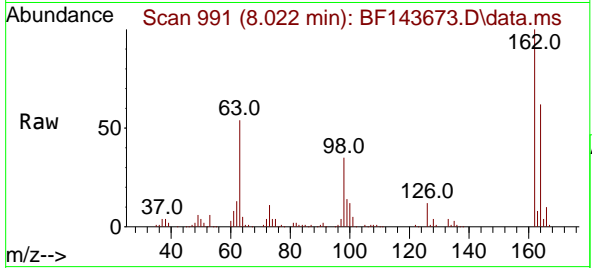
#29
 2,4-Dichlorophenol
 Concen: 40.868 ng
 RT: 8.022 min Scan# 991
 Delta R.T. -0.000 min
 Lab File: BF143673.D
 Acq: 08 Sep 2025 19:48

Instrument :

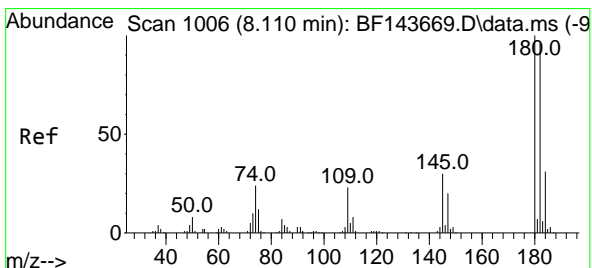
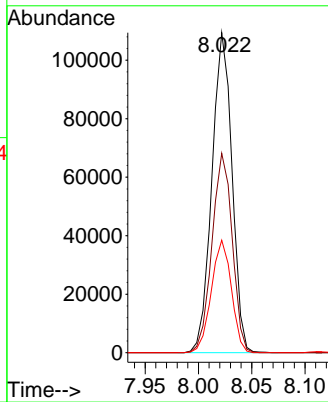
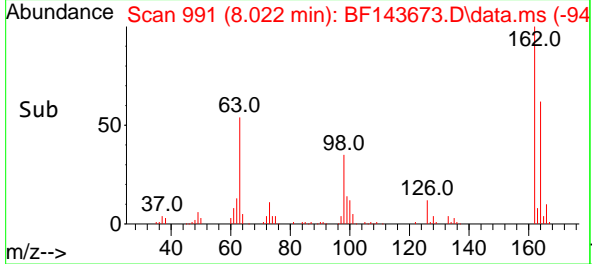
BNA_F

Client Sample Id :

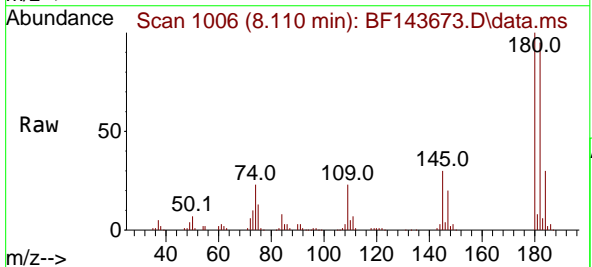
ICVBF090925



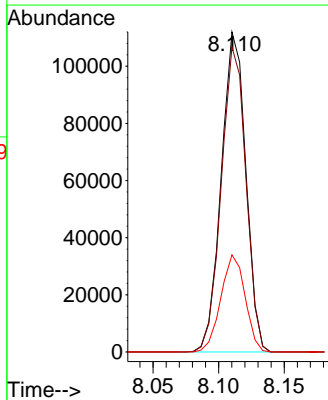
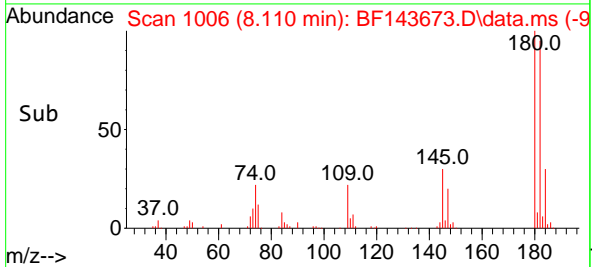
Tgt Ion:162 Resp: 143287
 Ion Ratio Lower Upper
 162 100
 164 62.3 45.0 85.0
 98 35.2 15.8 55.8

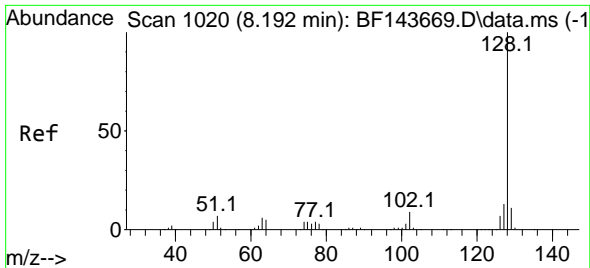


#30
 1,2,4-Trichlorobenzene
 Concen: 40.193 ng
 RT: 8.110 min Scan# 1006
 Delta R.T. -0.000 min
 Lab File: BF143673.D
 Acq: 08 Sep 2025 19:48



Tgt Ion:180 Resp: 145921
 Ion Ratio Lower Upper
 180 100
 182 95.3 77.0 115.4
 145 30.4 23.8 35.6





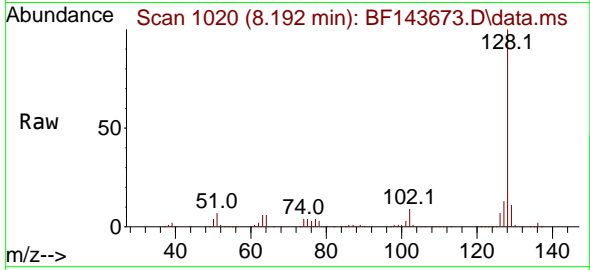
#31
 Naphthalene
 Concen: 40.321 ng
 RT: 8.192 min Scan# 10
 Delta R.T. -0.000 min
 Lab File: BF143673.D
 Acq: 08 Sep 2025 19:48

Instrument :

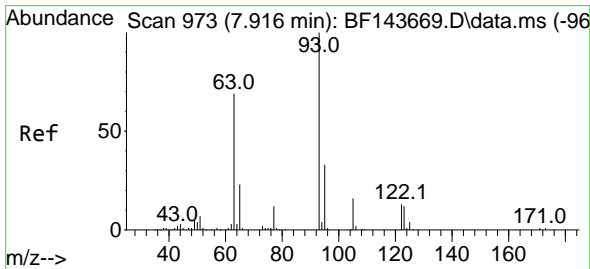
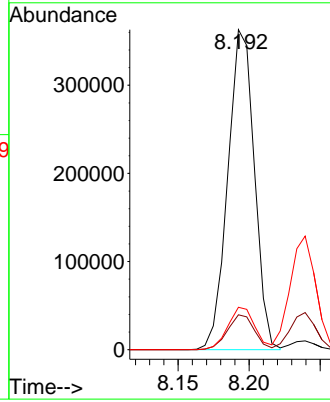
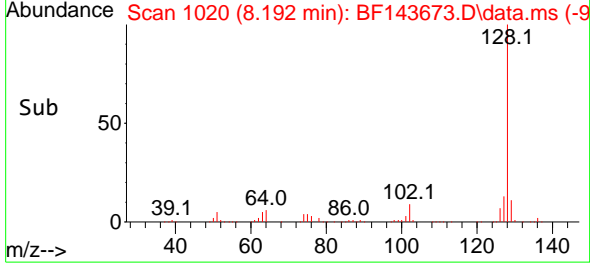
BNA_F

ClientSampleId :

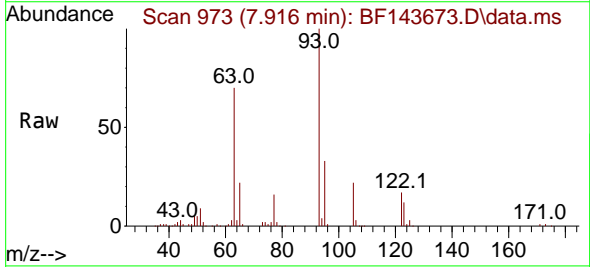
ICVBF090925



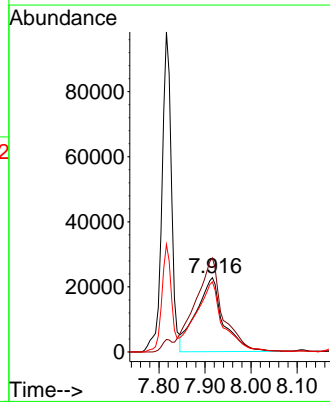
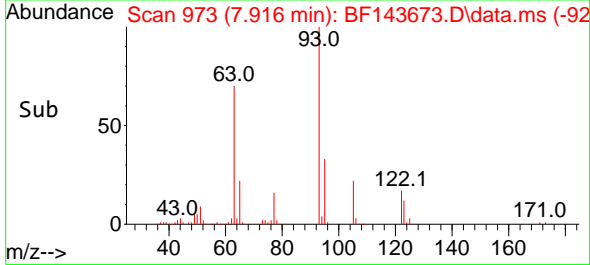
Tgt Ion:128 Resp: 472765
 Ion Ratio Lower Upper
 128 100
 129 10.9 8.9 13.3
 127 13.3 10.6 16.0

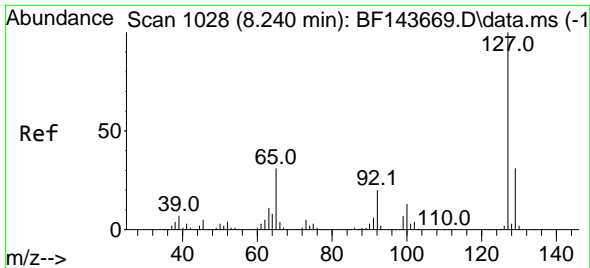


#32
 Benzoic acid
 Concen: 43.939 ng
 RT: 7.916 min Scan# 973
 Delta R.T. -0.000 min
 Lab File: BF143673.D
 Acq: 08 Sep 2025 19:48



Tgt Ion:122 Resp: 92899
 Ion Ratio Lower Upper
 122 100
 105 126.7 100.3 140.3
 77 94.5 67.6 107.6





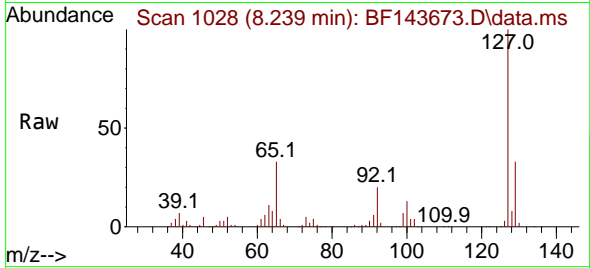
#33
 4-Chloroaniline
 Concen: 40.045 ng
 RT: 8.239 min Scan# 1028
 Delta R.T. -0.000 min
 Lab File: BF143673.D
 Acq: 08 Sep 2025 19:48

Instrument :

BNA_F

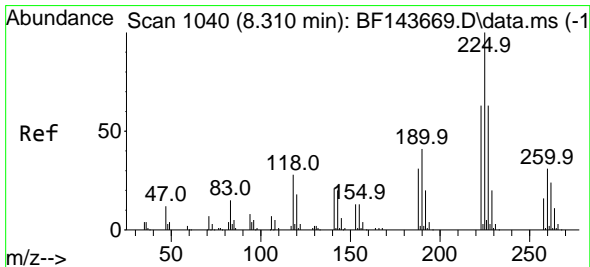
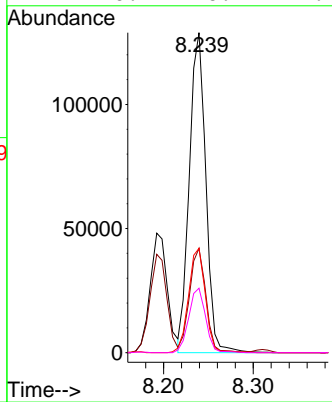
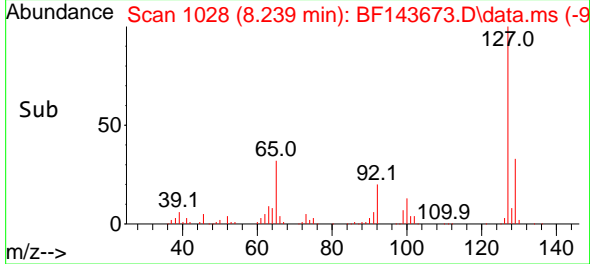
ClientSampleId :

ICVBF090925

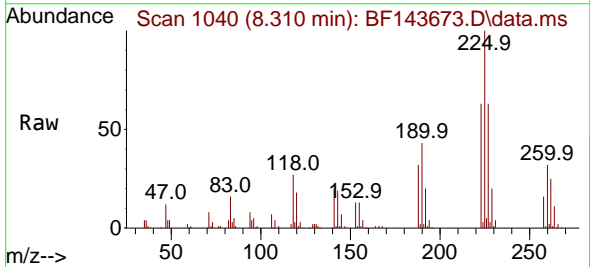


Tgt Ion:127 Resp: 164624

Ion	Ratio	Lower	Upper
127	100		
129	32.6	25.1	37.7
65	32.6	25.0	37.6
92	20.1	16.2	24.2

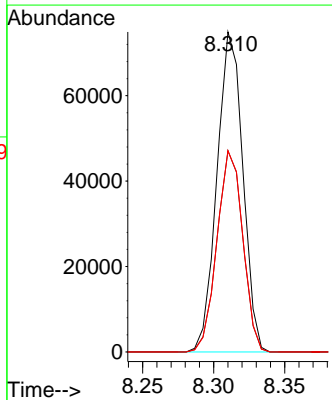
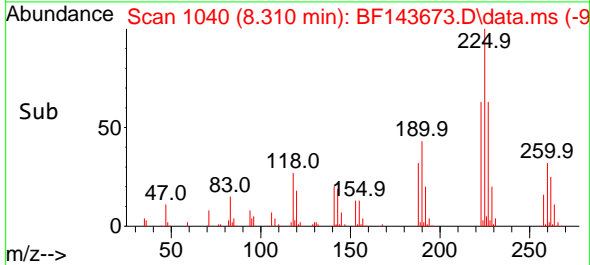


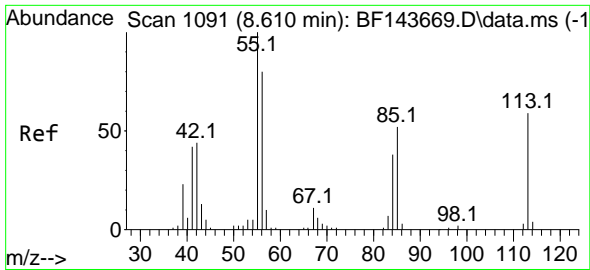
#34
 Hexachlorobutadiene
 Concen: 39.782 ng
 RT: 8.310 min Scan# 1040
 Delta R.T. -0.000 min
 Lab File: BF143673.D
 Acq: 08 Sep 2025 19:48



Tgt Ion:225 Resp: 94845

Ion	Ratio	Lower	Upper
225	100		
223	62.9	50.7	76.1
227	62.9	50.4	75.6

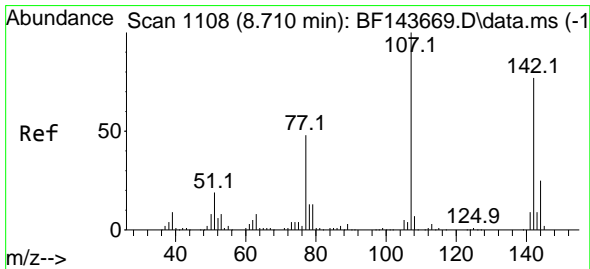
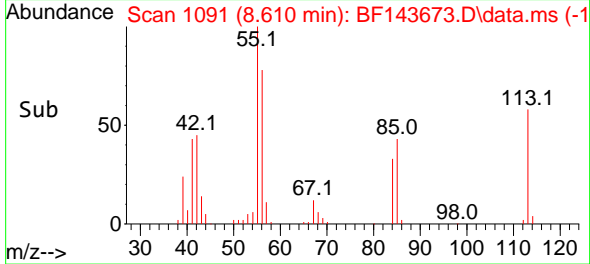
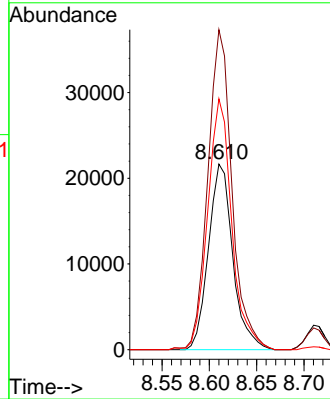
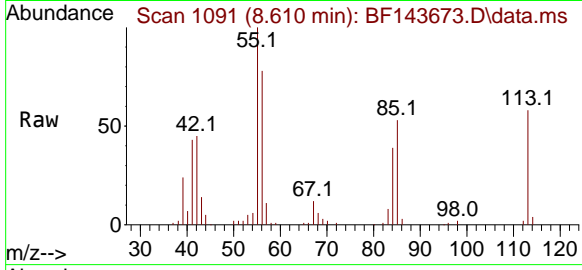




#35
 Caprolactam
 Concen: 40.228 ng
 RT: 8.610 min Scan# 1091
 Delta R.T. -0.000 min
 Lab File: BF143673.D
 Acq: 08 Sep 2025 19:48

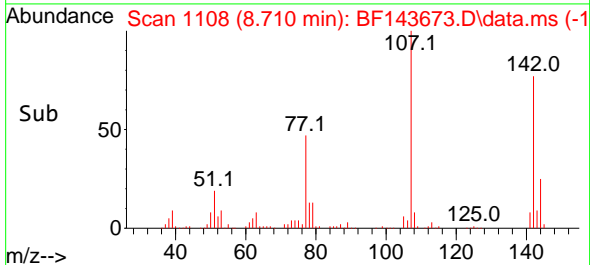
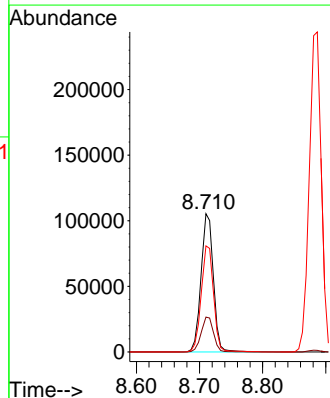
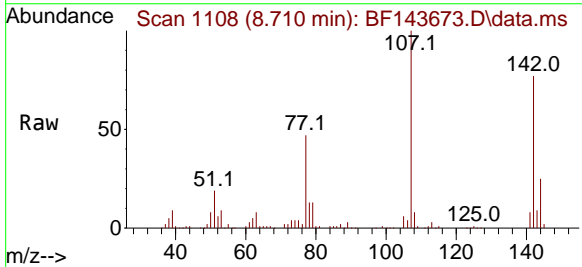
Instrument :
 BNA_F
 ClientSampleId :
 ICVBF090925

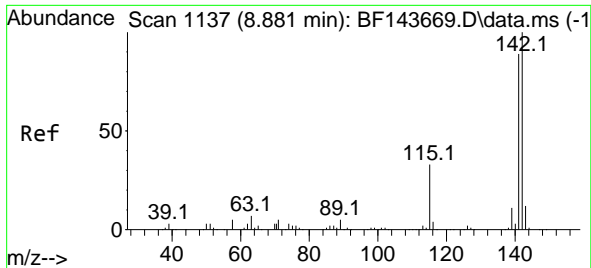
Tgt Ion:113 Resp: 38728
 Ion Ratio Lower Upper
 113 100
 55 172.4 150.6 190.6
 56 135.1 116.0 156.0



#36
 4-Chloro-3-methylphenol
 Concen: 40.674 ng
 RT: 8.710 min Scan# 1108
 Delta R.T. -0.000 min
 Lab File: BF143673.D
 Acq: 08 Sep 2025 19:48

Tgt Ion:107 Resp: 143062
 Ion Ratio Lower Upper
 107 100
 144 25.2 19.6 29.4
 142 76.8 61.8 92.8

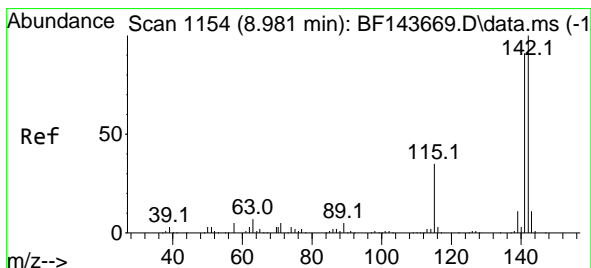
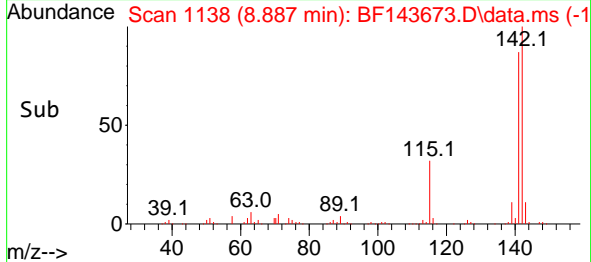
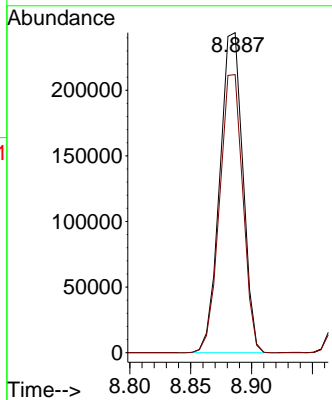
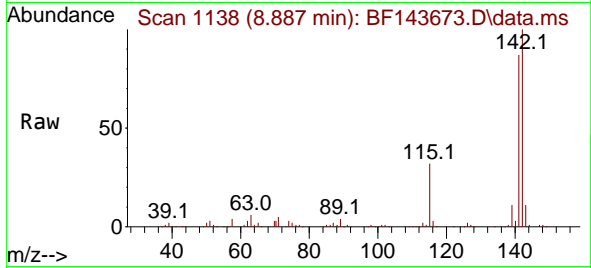




#37
 2-Methylnaphthalene
 Concen: 39.903 ng
 RT: 8.887 min Scan# 1137
 Delta R.T. 0.006 min
 Lab File: BF143673.D
 Acq: 08 Sep 2025 19:48

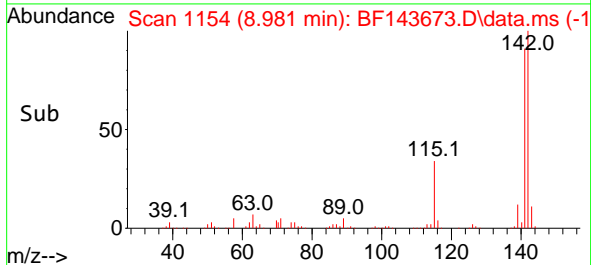
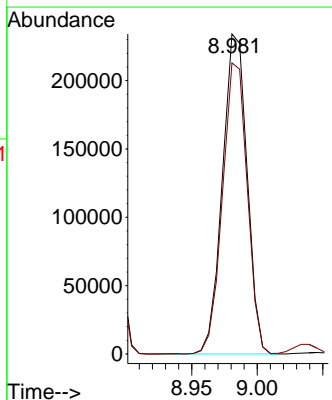
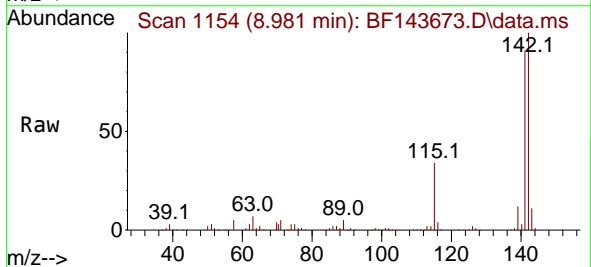
Instrument :
 BNA_F
 ClientSampleId :
 ICVBF090925

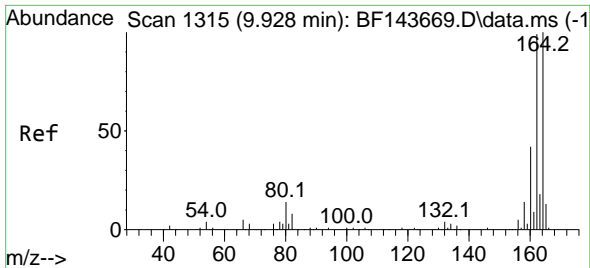
Tgt Ion:142 Resp: 322122
 Ion Ratio Lower Upper
 142 100
 141 86.9 71.0 106.6



#38
 1-Methylnaphthalene
 Concen: 39.635 ng
 RT: 8.981 min Scan# 1154
 Delta R.T. -0.000 min
 Lab File: BF143673.D
 Acq: 08 Sep 2025 19:48

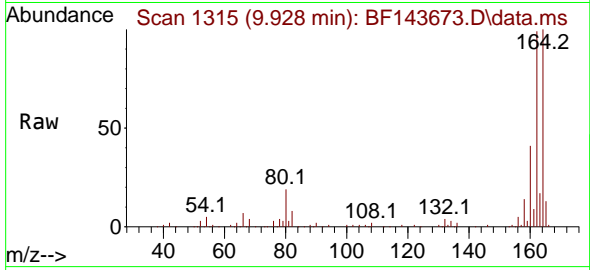
Tgt Ion:142 Resp: 306390
 Ion Ratio Lower Upper
 142 100
 141 91.0 72.5 108.7





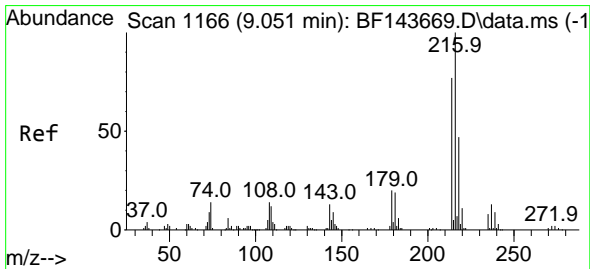
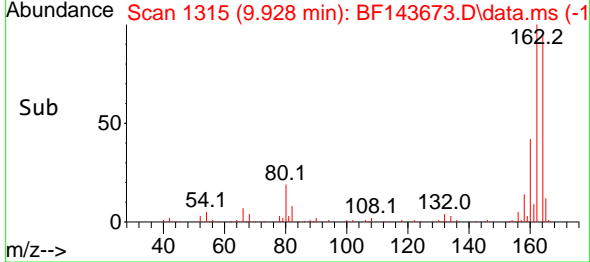
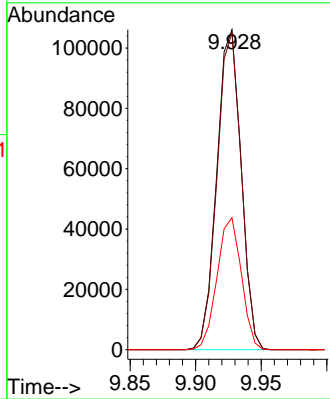
#39
 Acenaphthene-d10
 Concen: 20.000 ng
 RT: 9.928 min Scan# 1116
 Delta R.T. -0.000 min
 Lab File: BF143673.D
 Acq: 08 Sep 2025 19:48

Instrument : BNA_F
 ClientSampleId : ICVBF090925

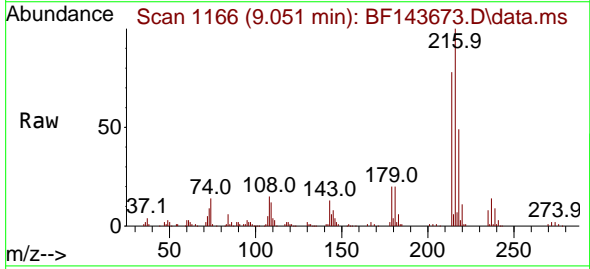


Tgt Ion:164 Resp: 136783

Ion	Ratio	Lower	Upper
164	100		
162	99.0	79.6	119.4
160	41.2	33.9	50.9

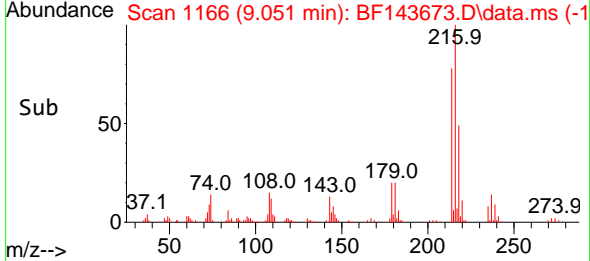
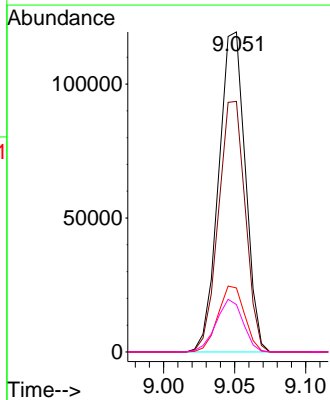


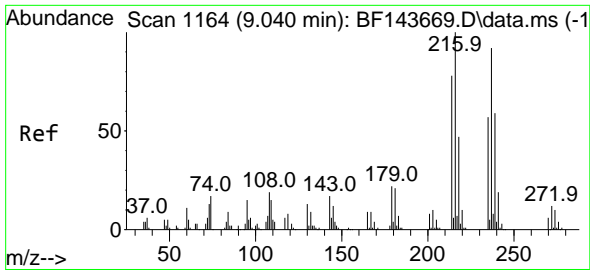
#40
 1,2,4,5-Tetrachlorobenzene
 Concen: 40.288 ng
 RT: 9.051 min Scan# 1166
 Delta R.T. -0.000 min
 Lab File: BF143673.D
 Acq: 08 Sep 2025 19:48



Tgt Ion:216 Resp: 156158

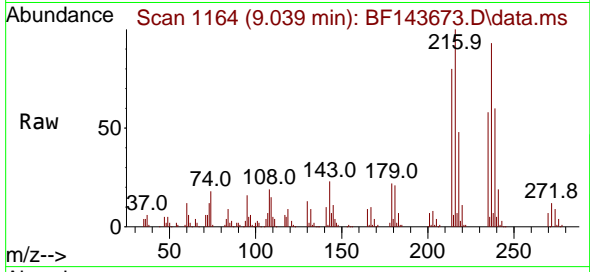
Ion	Ratio	Lower	Upper
216	100		
214	78.6	61.9	92.9
179	20.5	16.5	24.7
108	16.6	13.0	19.4



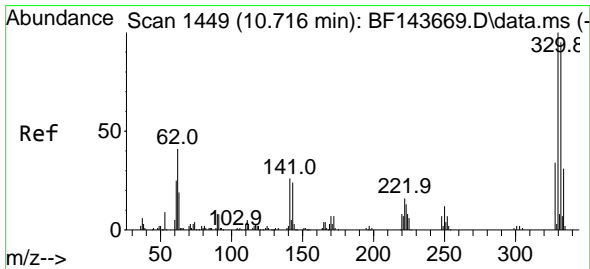
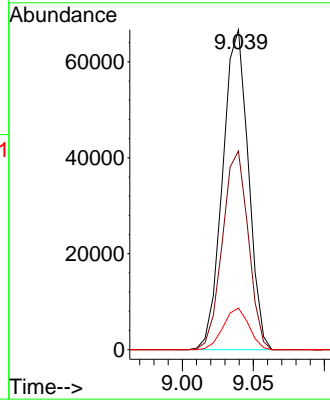
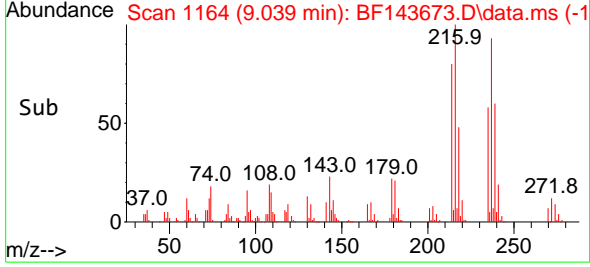


#41
 Hexachlorocyclopentadiene
 Concen: 41.463 ng
 RT: 9.039 min Scan# 1164
 Delta R.T. -0.000 min
 Lab File: BF143673.D
 Acq: 08 Sep 2025 19:48

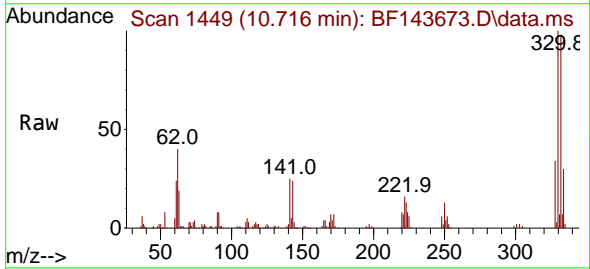
Instrument :
 BNA_F
 ClientSampleId :
 ICVBF090925



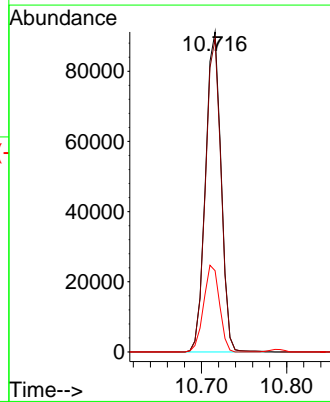
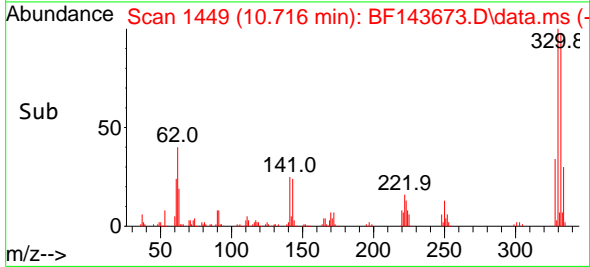
Tgt Ion:237 Resp: 83855
 Ion Ratio Lower Upper
 237 100
 235 62.1 41.9 81.9
 272 13.0 0.0 33.3

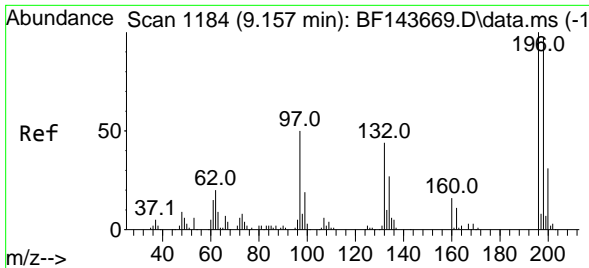


#42
 2,4,6-Tribromophenol
 Concen: 83.513 ng
 RT: 10.716 min Scan# 1449
 Delta R.T. -0.000 min
 Lab File: BF143673.D
 Acq: 08 Sep 2025 19:48



Tgt Ion:330 Resp: 115814
 Ion Ratio Lower Upper
 330 100
 332 97.7 76.2 114.2
 141 27.6 22.0 33.0



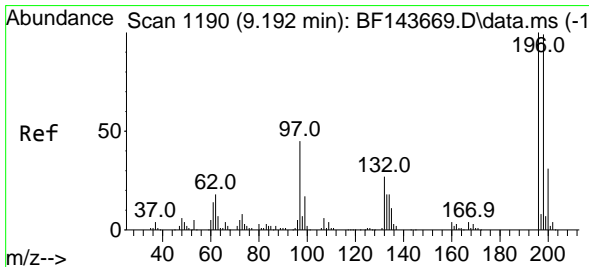
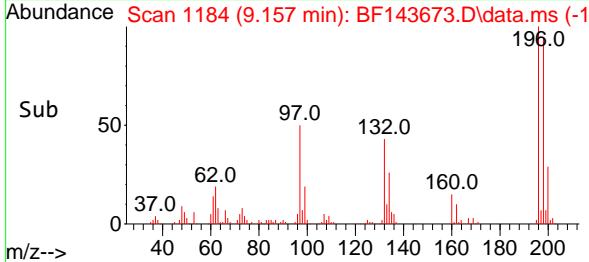
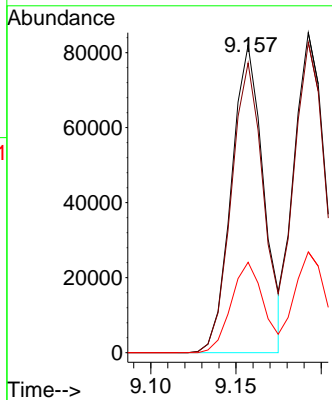
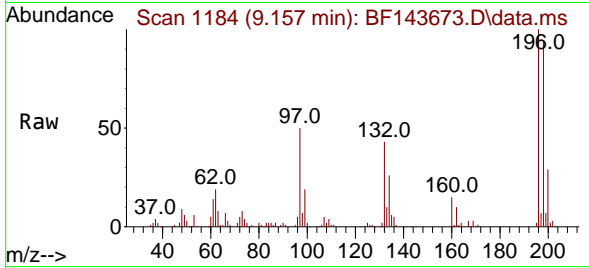


#43
 2,4,6-Trichlorophenol
 Concen: 41.974 ng
 RT: 9.157 min Scan# 1184
 Delta R.T. -0.000 min
 Lab File: BF143673.D
 Acq: 08 Sep 2025 19:48

Instrument : BNA_F
 ClientSampleId : ICVBF090925

Tgt Ion:196 Resp: 107961

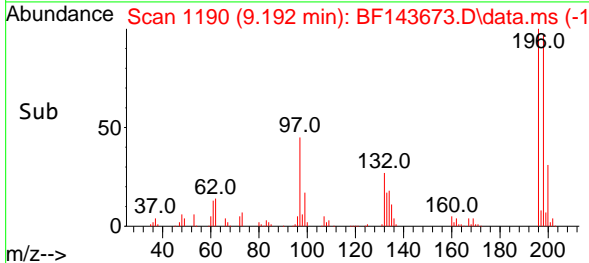
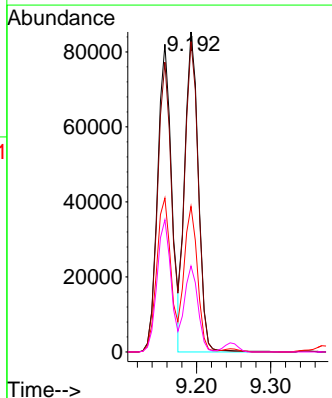
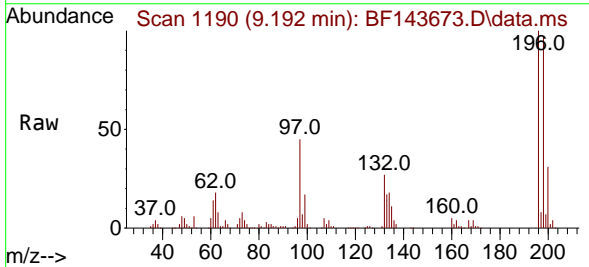
Ion	Ratio	Lower	Upper
196	100		
198	94.2	77.2	115.8
200	29.4	24.8	37.2

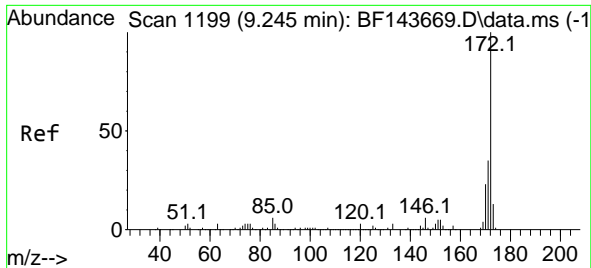


#44
 2,4,5-Trichlorophenol
 Concen: 41.070 ng
 RT: 9.192 min Scan# 1190
 Delta R.T. -0.000 min
 Lab File: BF143673.D
 Acq: 08 Sep 2025 19:48

Tgt Ion:196 Resp: 108367

Ion	Ratio	Lower	Upper
196	100		
198	97.0	78.0	117.0
97	45.5	36.2	54.2
132	26.9	22.2	33.2



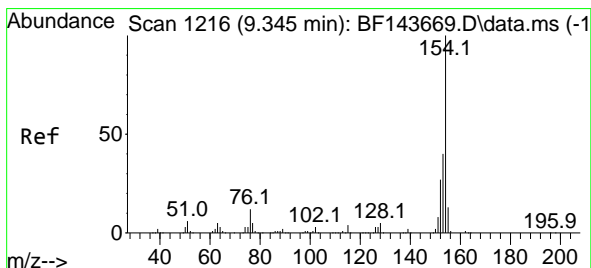
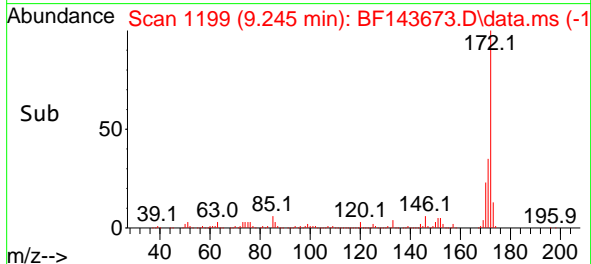
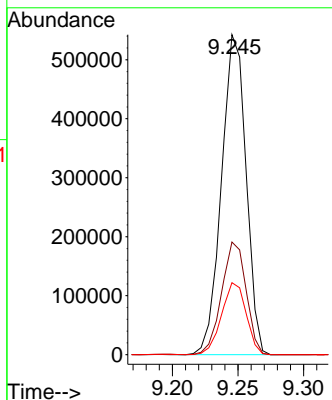
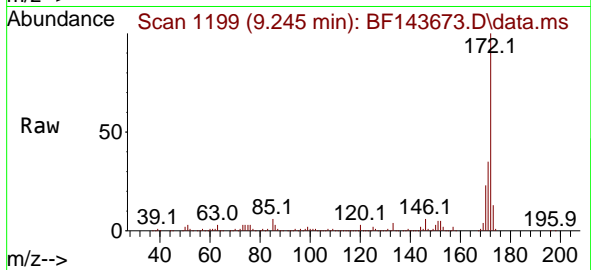


#45
 2-Fluorobiphenyl
 Concen: 80.660 ng
 RT: 9.245 min Scan# 1199
 Delta R.T. -0.000 min
 Lab File: BF143673.D
 Acq: 08 Sep 2025 19:48

Instrument : BNA_F
 ClientSampleId : ICVBF090925

Tgt Ion:172 Resp: 707534

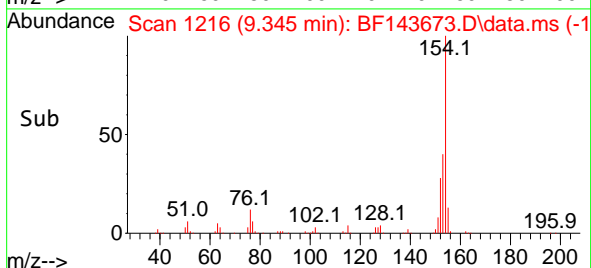
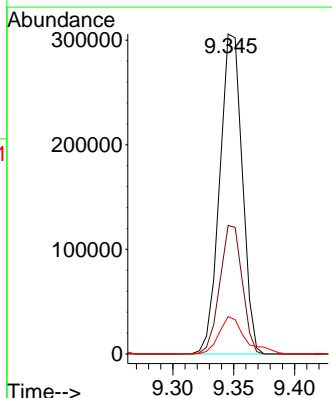
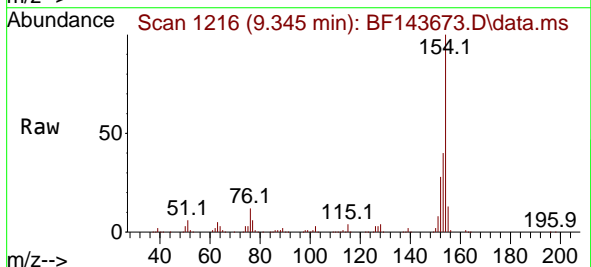
Ion	Ratio	Lower	Upper
172	100		
171	35.2	28.2	42.4
170	22.5	18.7	28.1

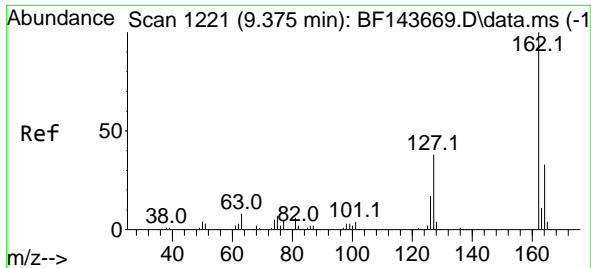


#46
 1,1'-Biphenyl
 Concen: 40.099 ng
 RT: 9.345 min Scan# 1216
 Delta R.T. -0.000 min
 Lab File: BF143673.D
 Acq: 08 Sep 2025 19:48

Tgt Ion:154 Resp: 394776

Ion	Ratio	Lower	Upper
154	100		
153	40.2	20.5	60.5
76	11.6	0.0	32.0



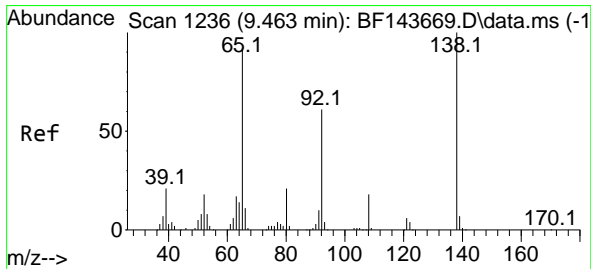
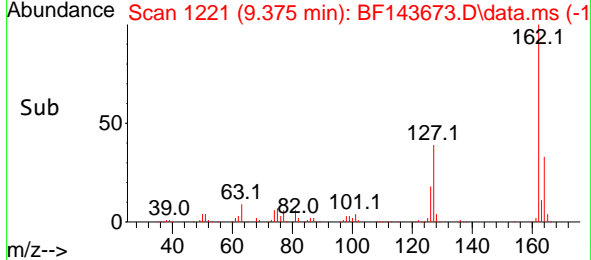
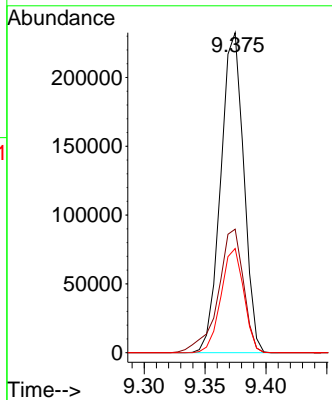
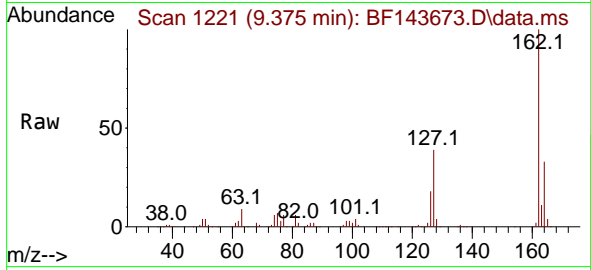


#47
 2-Chloronaphthalene
 Concen: 39.907 ng
 RT: 9.375 min Scan# 1221
 Delta R.T. -0.000 min
 Lab File: BF143673.D
 Acq: 08 Sep 2025 19:48

Instrument : BNA_F
 ClientSampleId : ICVBF090925

Tgt Ion:162 Resp: 305307

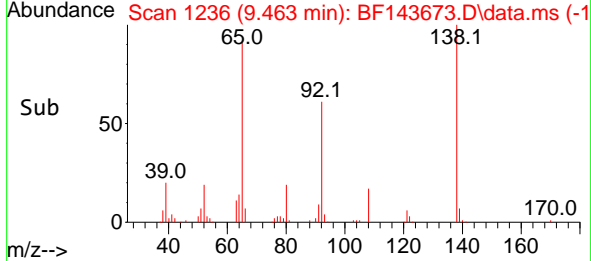
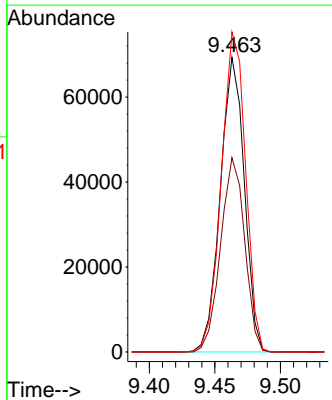
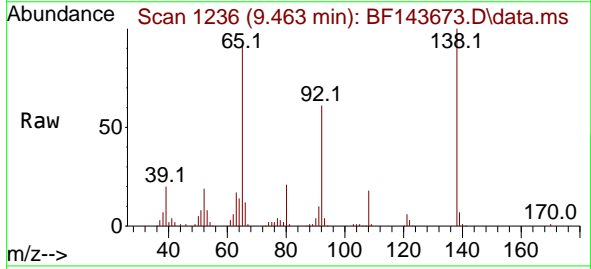
Ion	Ratio	Lower	Upper
162	100		
127	38.6	30.8	46.2
164	32.6	26.2	39.4

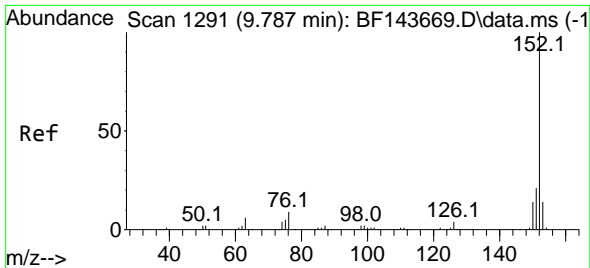


#48
 2-Nitroaniline
 Concen: 42.277 ng
 RT: 9.463 min Scan# 1236
 Delta R.T. -0.000 min
 Lab File: BF143673.D
 Acq: 08 Sep 2025 19:48

Tgt Ion: 65 Resp: 88104

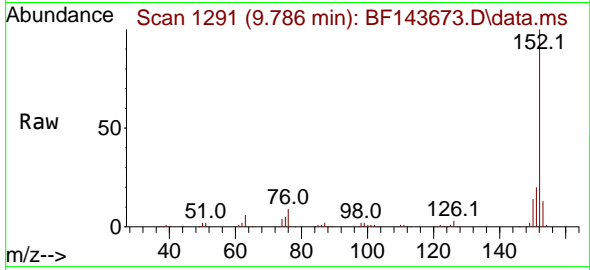
Ion	Ratio	Lower	Upper
65	100		
92	65.9	52.8	79.2
138	108.6	86.9	130.3



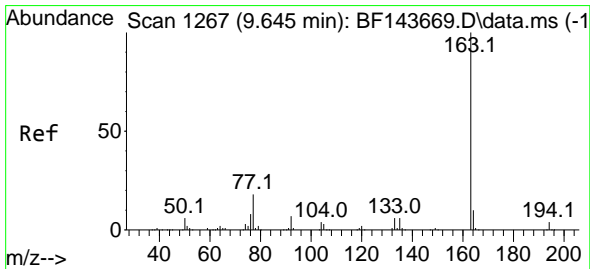
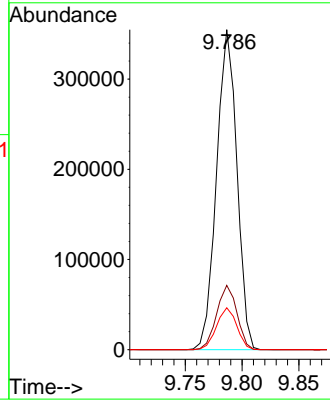
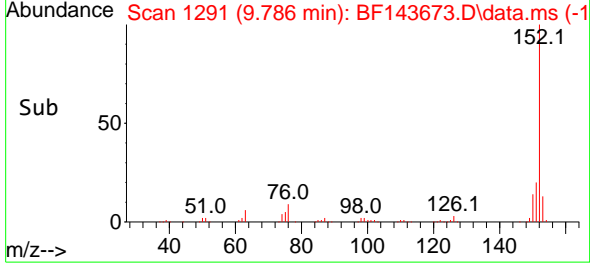


#49
 Acenaphthylene
 Concen: 40.457 ng
 RT: 9.786 min Scan# 1291
 Delta R.T. -0.000 min
 Lab File: BF143673.D
 Acq: 08 Sep 2025 19:48

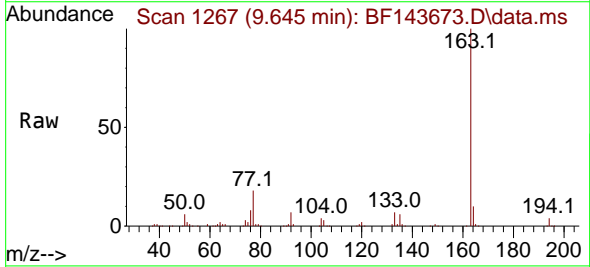
Instrument : BNA_F
 ClientSampleId : ICVBF090925



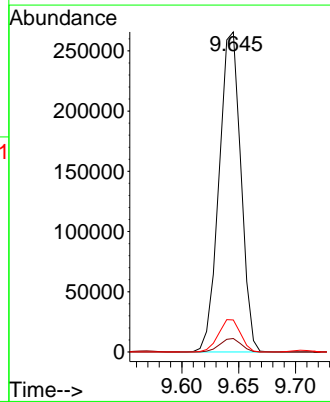
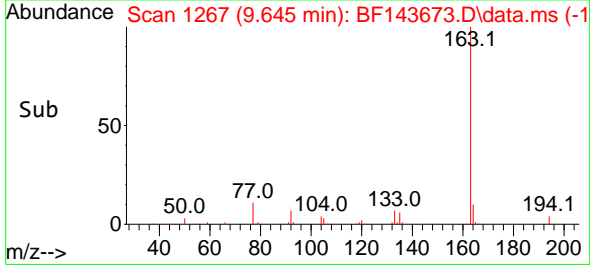
Tgt Ion:152 Resp: 442581
 Ion Ratio Lower Upper
 152 100
 151 20.1 16.6 24.8
 153 13.1 10.8 16.2

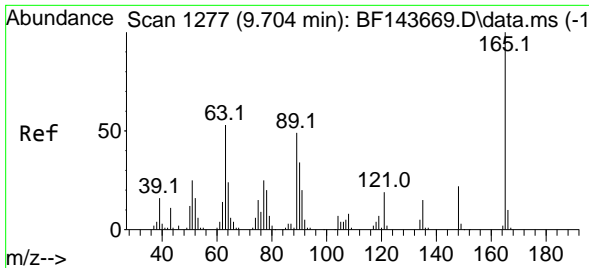


#50
 Dimethylphthalate
 Concen: 39.637 ng
 RT: 9.645 min Scan# 1267
 Delta R.T. -0.000 min
 Lab File: BF143673.D
 Acq: 08 Sep 2025 19:48



Tgt Ion:163 Resp: 354932
 Ion Ratio Lower Upper
 163 100
 194 4.2 3.1 4.7
 164 10.0 7.7 11.5



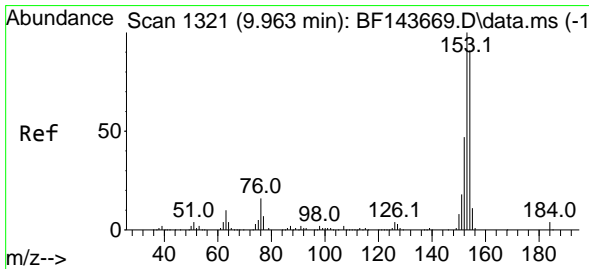
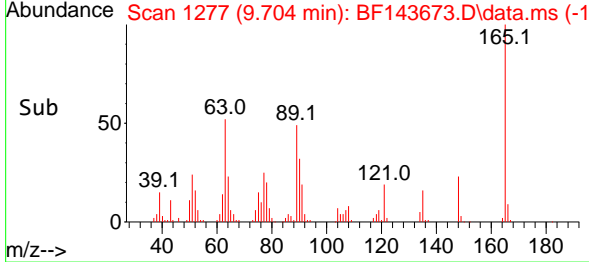
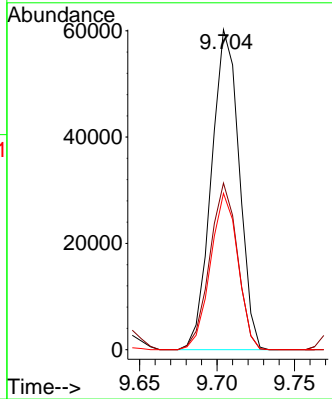
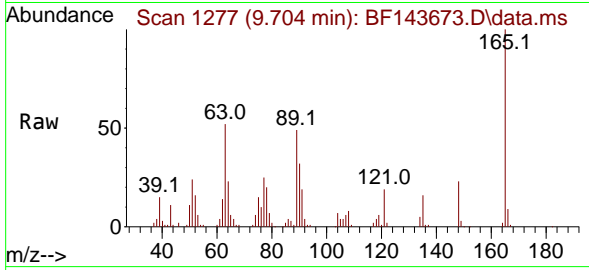


#51
 2,6-Dinitrotoluene
 Concen: 43.943 ng
 RT: 9.704 min Scan# 11
 Delta R.T. -0.000 min
 Lab File: BF143673.D
 Acq: 08 Sep 2025 19:48

Instrument : BNA_F
 ClientSampleId : ICVBF090925

Tgt Ion:165 Resp: 75164

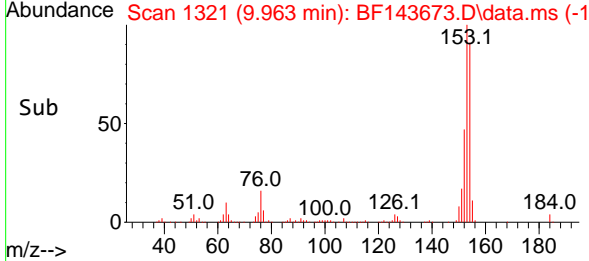
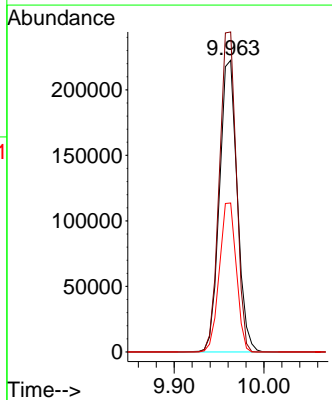
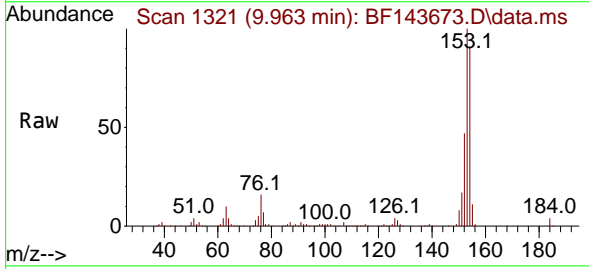
Ion	Ratio	Lower	Upper
165	100		
63	52.0	42.3	63.5
89	48.9	39.4	59.2

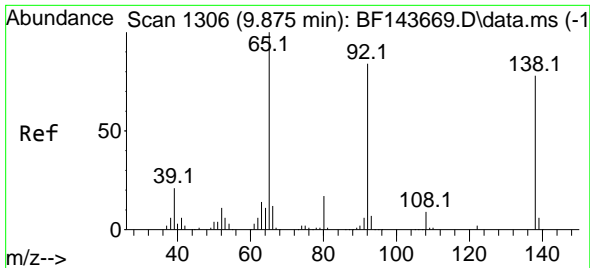


#52
 Acenaphthene
 Concen: 40.492 ng
 RT: 9.963 min Scan# 1321
 Delta R.T. -0.000 min
 Lab File: BF143673.D
 Acq: 08 Sep 2025 19:48

Tgt Ion:154 Resp: 305976

Ion	Ratio	Lower	Upper
154	100		
153	109.7	87.6	131.4
152	51.1	41.0	61.6



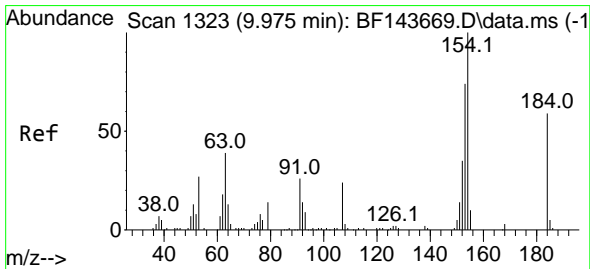
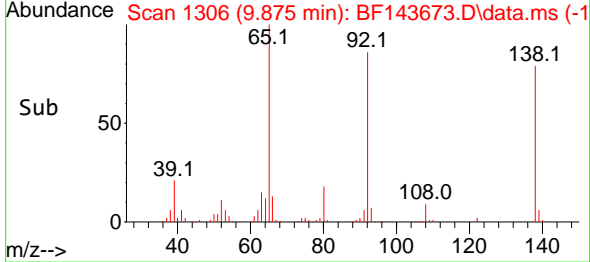
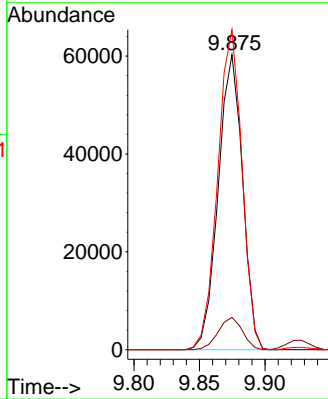
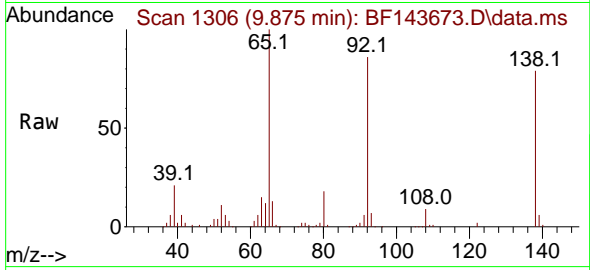


#53
 3-Nitroaniline
 Concen: 42.525 ng
 RT: 9.875 min Scan# 11
 Delta R.T. -0.000 min
 Lab File: BF143673.D
 Acq: 08 Sep 2025 19:48

Instrument : BNA_F
 ClientSampleId : ICVBF090925

Tgt Ion:138 Resp: 77672

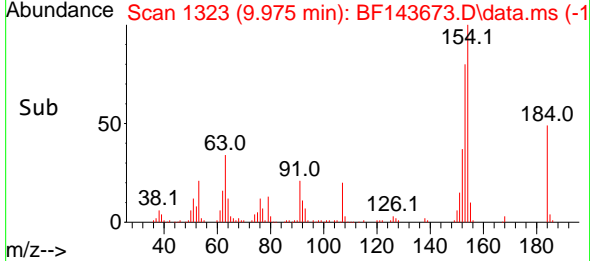
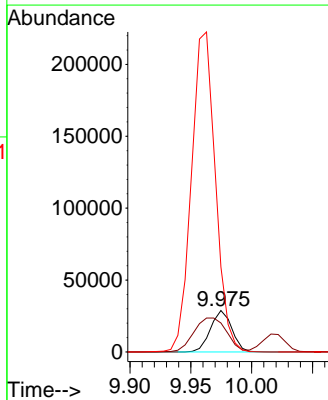
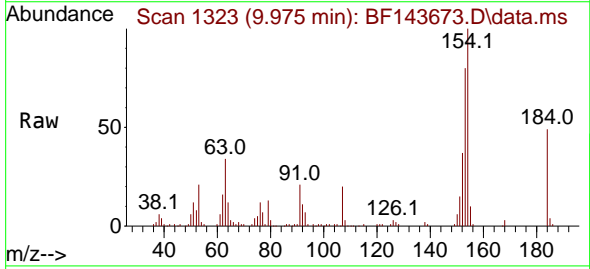
Ion	Ratio	Lower	Upper
138	100		
108	11.0	9.1	13.7
92	108.5	86.7	130.1

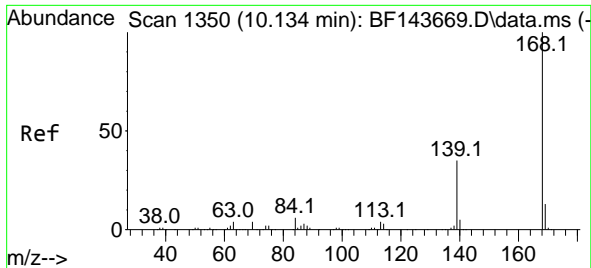


#54
 2,4-Dinitrophenol
 Concen: 40.425 ng
 RT: 9.975 min Scan# 1323
 Delta R.T. -0.000 min
 Lab File: BF143673.D
 Acq: 08 Sep 2025 19:48

Tgt Ion:184 Resp: 35193

Ion	Ratio	Lower	Upper
184	100		
63	70.0	56.6	84.8
154	204.9	170.0	255.0





#55
 Dibenzofuran
 Concen: 40.179 ng
 RT: 10.134 min Scan# 111
 Delta R.T. -0.000 min
 Lab File: BF143673.D
 Acq: 08 Sep 2025 19:48

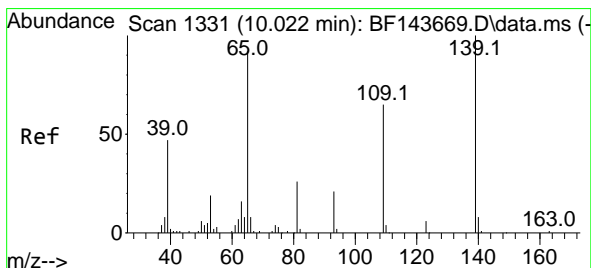
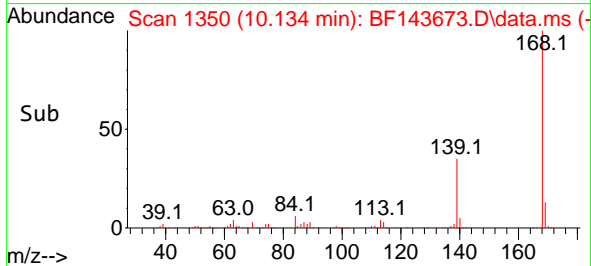
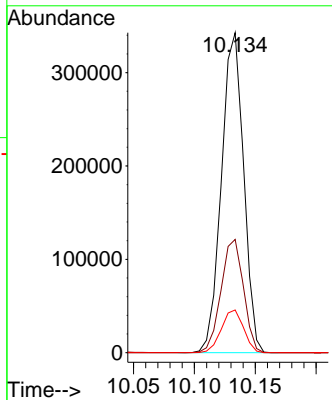
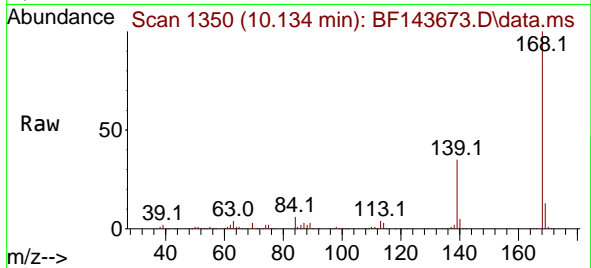
Instrument :

BNA_F

ClientSampleId :

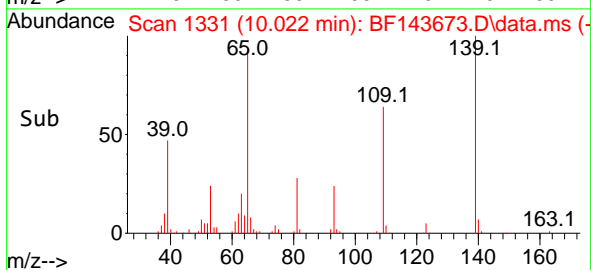
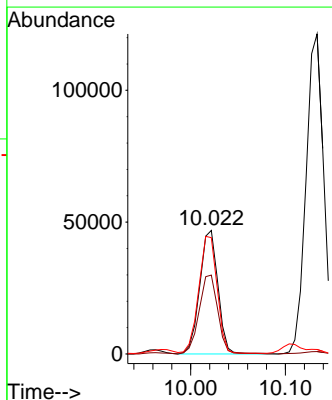
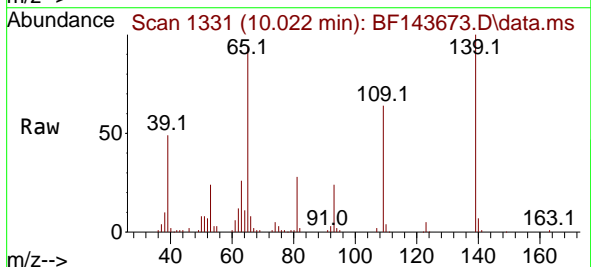
ICVBF090925

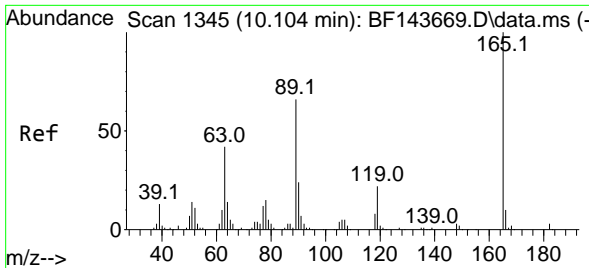
Tgt Ion:168 Resp: 435046
 Ion Ratio Lower Upper
 168 100
 139 35.4 28.2 42.2
 169 13.4 10.6 15.8



#56
 4-Nitrophenol
 Concen: 42.054 ng
 RT: 10.022 min Scan# 1331
 Delta R.T. -0.000 min
 Lab File: BF143673.D
 Acq: 08 Sep 2025 19:48

Tgt Ion:139 Resp: 62688
 Ion Ratio Lower Upper
 139 100
 109 63.9 44.5 84.5
 65 94.1 73.3 113.3





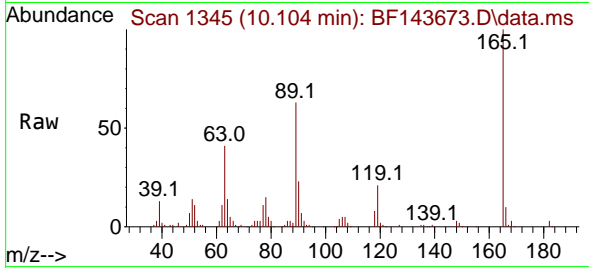
#57
 2,4-Dinitrotoluene
 Concen: 44.667 ng
 RT: 10.104 min Scan# 11
 Delta R.T. -0.000 min
 Lab File: BF143673.D
 Acq: 08 Sep 2025 19:48

Instrument :

BNA_F

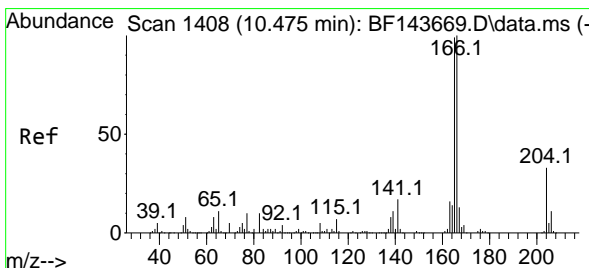
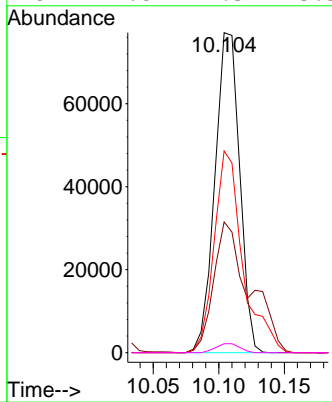
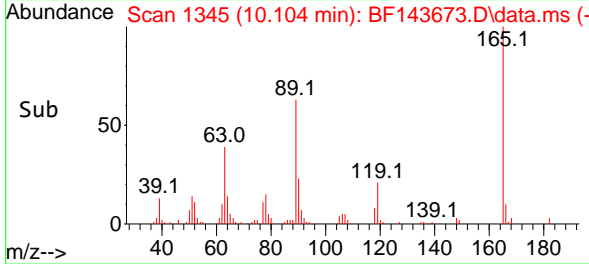
ClientSampleId :

ICVBF090925

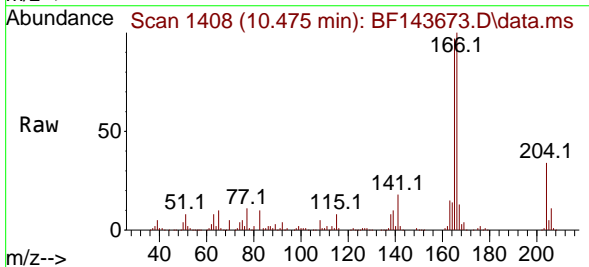


Tgt Ion:165 Resp: 101248

Ion	Ratio	Lower	Upper
165	100		
63	40.9	33.3	49.9
89	63.1	52.4	78.6
182	2.8	2.3	3.5

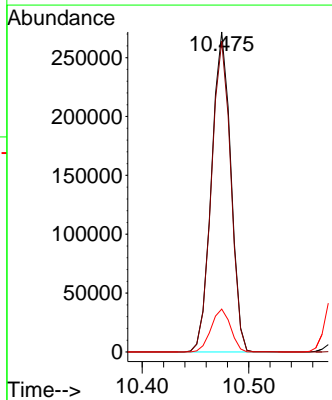
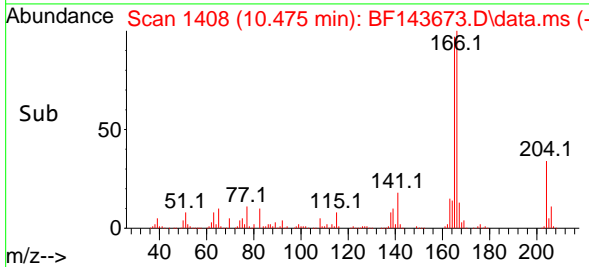


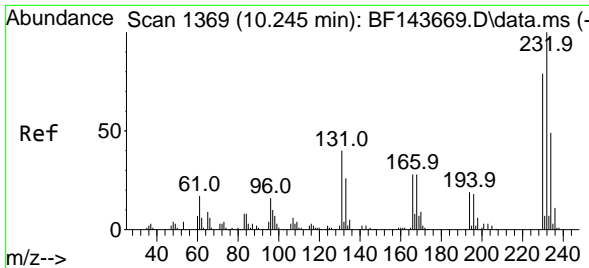
#58
 Fluorene
 Concen: 40.209 ng
 RT: 10.475 min Scan# 1408
 Delta R.T. -0.000 min
 Lab File: BF143673.D
 Acq: 08 Sep 2025 19:48



Tgt Ion:166 Resp: 341219

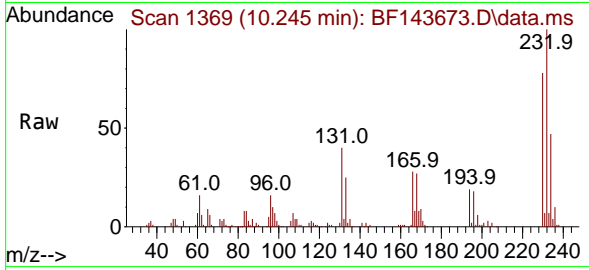
Ion	Ratio	Lower	Upper
166	100		
165	97.0	78.9	118.3
167	13.4	10.8	16.2





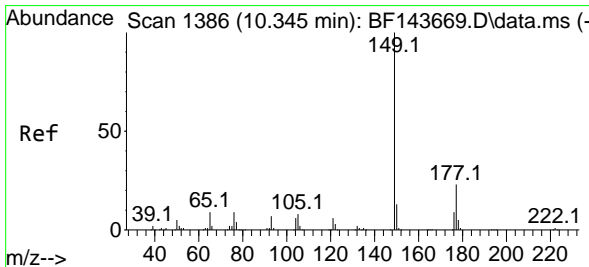
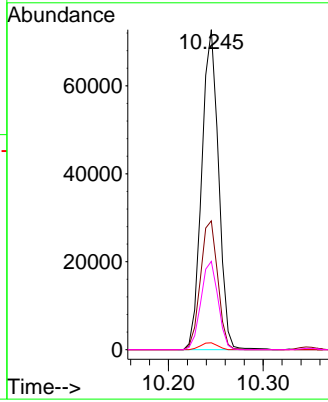
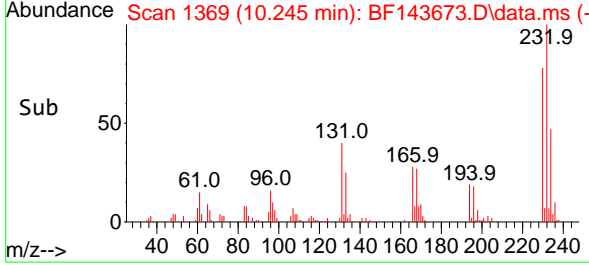
#59
 2,3,4,6-Tetrachlorophenol
 Concen: 41.519 ng
 RT: 10.245 min Scan# 1369
 Delta R.T. -0.000 min
 Lab File: BF143673.D
 Acq: 08 Sep 2025 19:48

Instrument : BNA_F
 ClientSampleId : ICVBF090925

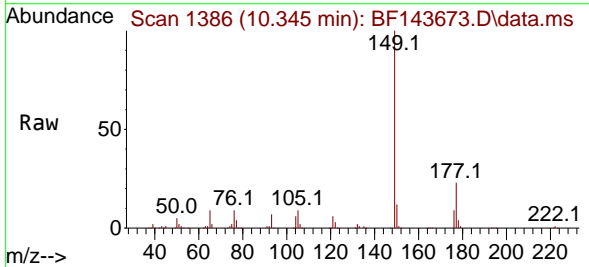


Tgt Ion: 232 Resp: 89806

Ion	Ratio	Lower	Upper
232	100		
131	41.2	32.6	48.8
130	2.2	1.5	2.3
166	28.0	22.8	34.2

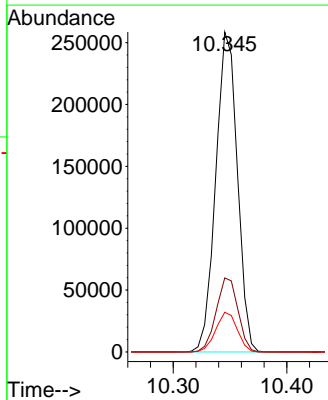
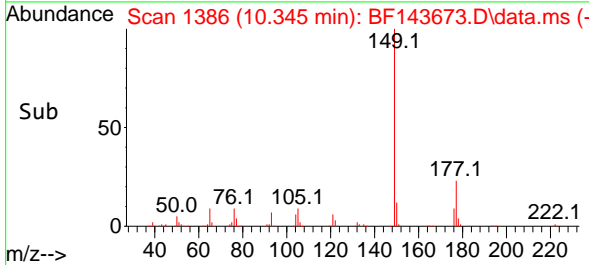


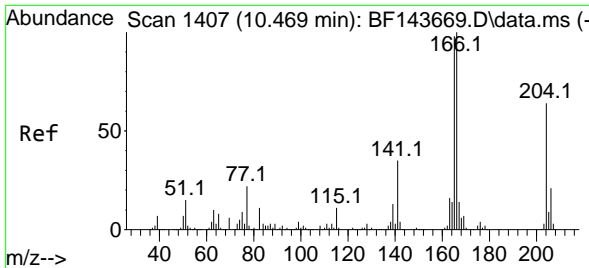
#60
 Diethylphthalate
 Concen: 40.538 ng
 RT: 10.345 min Scan# 1386
 Delta R.T. -0.000 min
 Lab File: BF143673.D
 Acq: 08 Sep 2025 19:48



Tgt Ion: 149 Resp: 341881

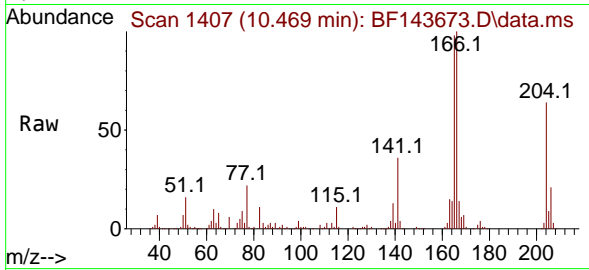
Ion	Ratio	Lower	Upper
149	100		
177	23.2	18.4	27.6
150	12.4	10.2	15.4



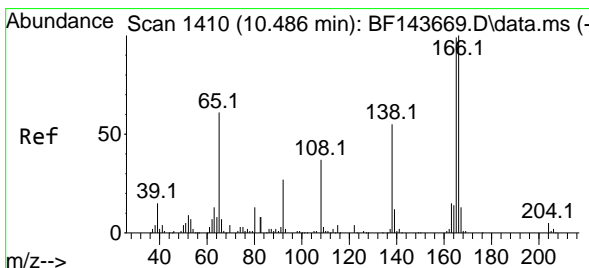
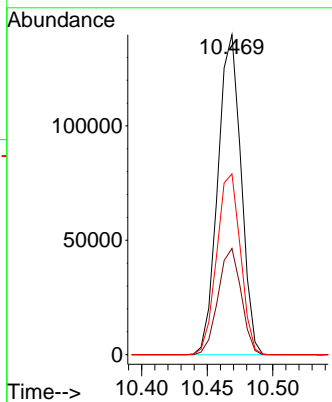
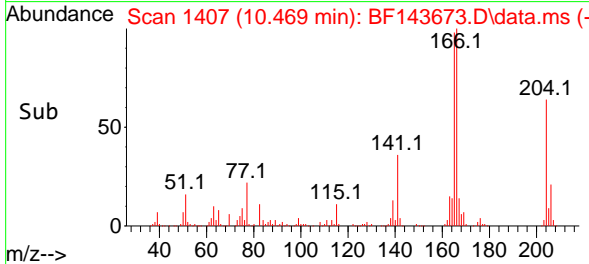


#61
 4-Chlorophenyl-phenylether
 Concen: 40.148 ng
 RT: 10.469 min Scan# 1407
 Delta R.T. -0.000 min
 Lab File: BF143673.D
 Acq: 08 Sep 2025 19:48

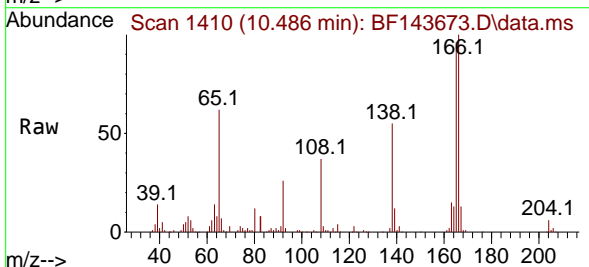
Instrument :
 BNA_F
 ClientSampleId :
 ICVBF090925



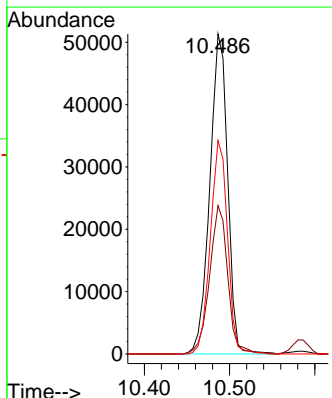
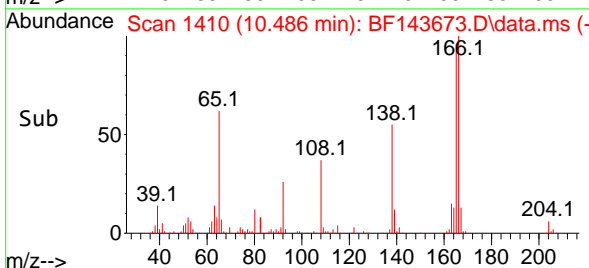
Tgt Ion:204 Resp: 172027
 Ion Ratio Lower Upper
 204 100
 206 33.2 26.8 40.2
 141 56.5 44.6 66.8

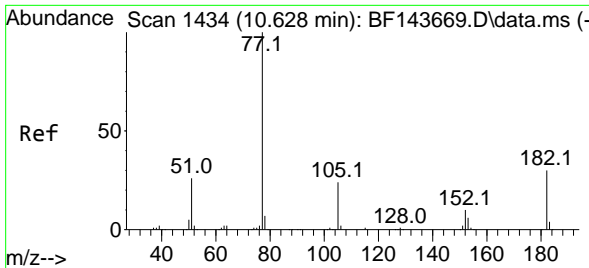


#62
 4-Nitroaniline
 Concen: 42.427 ng
 RT: 10.486 min Scan# 1410
 Delta R.T. -0.000 min
 Lab File: BF143673.D
 Acq: 08 Sep 2025 19:48



Tgt Ion:138 Resp: 74588
 Ion Ratio Lower Upper
 138 100
 92 46.3 28.4 68.4
 108 66.7 47.0 87.0



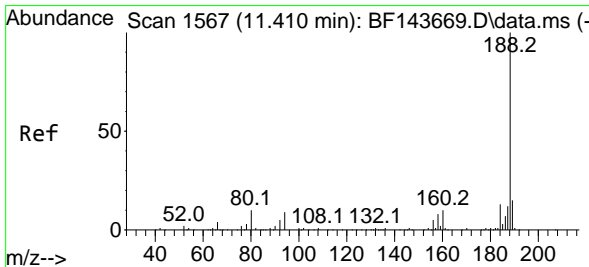
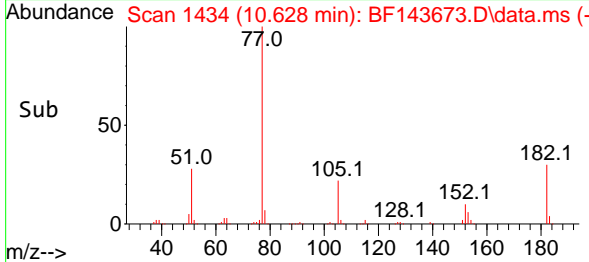
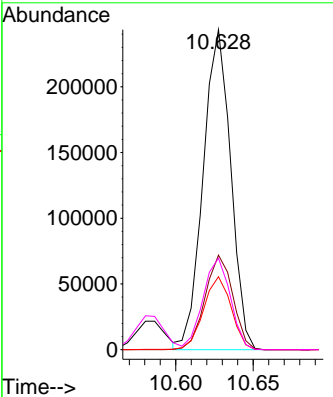
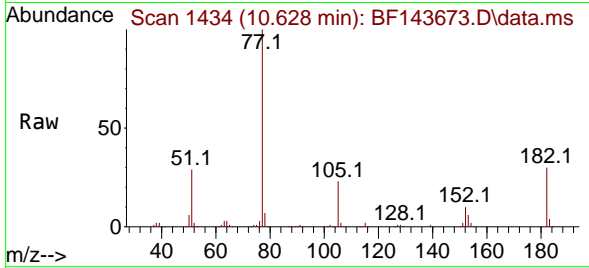


#63
 Azobenzene
 Concen: 40.592 ng
 RT: 10.628 min Scan# 14
 Delta R.T. -0.000 min
 Lab File: BF143673.D
 Acq: 08 Sep 2025 19:48

Instrument : BNA_F
 ClientSampleId : ICVBF090925

Tgt Ion: 77 Resp: 301083

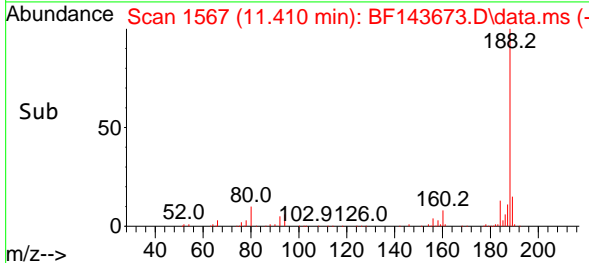
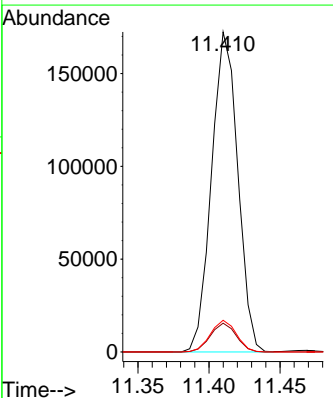
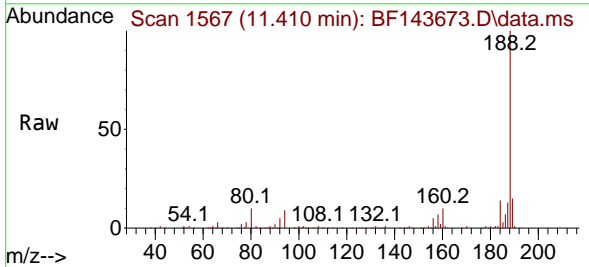
Ion	Ratio	Lower	Upper
77	100		
182	29.6	9.3	49.3
105	22.8	3.2	43.2
51	28.6	8.0	48.0

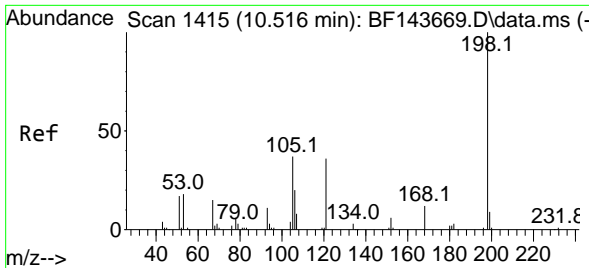


#64
 Phenanthrene-d10
 Concen: 20.000 ng
 RT: 11.410 min Scan# 1567
 Delta R.T. -0.000 min
 Lab File: BF143673.D
 Acq: 08 Sep 2025 19:48

Tgt Ion: 188 Resp: 221570

Ion	Ratio	Lower	Upper
188	100		
94	9.0	7.2	10.8
80	9.9	7.9	11.9

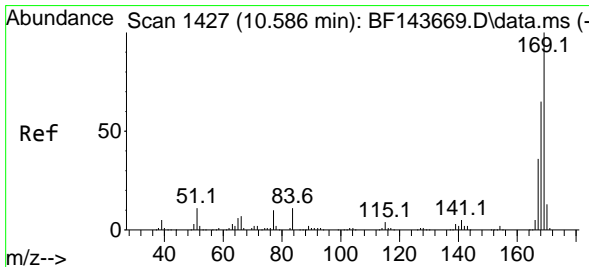
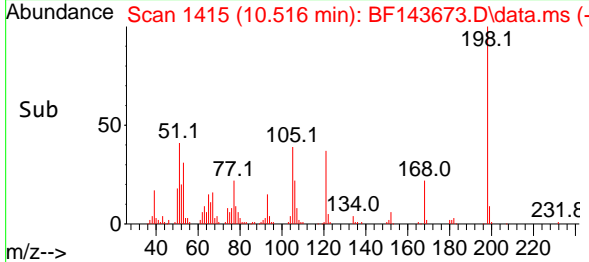
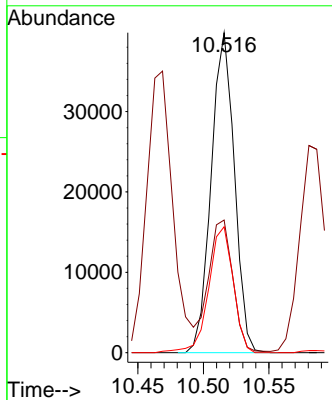
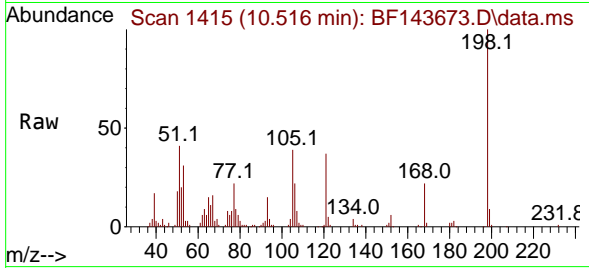




#65
 4,6-Dinitro-2-methylphenol
 Concen: 43.281 ng
 RT: 10.516 min Scan# 1415
 Delta R.T. -0.000 min
 Lab File: BF143673.D
 Acq: 08 Sep 2025 19:48

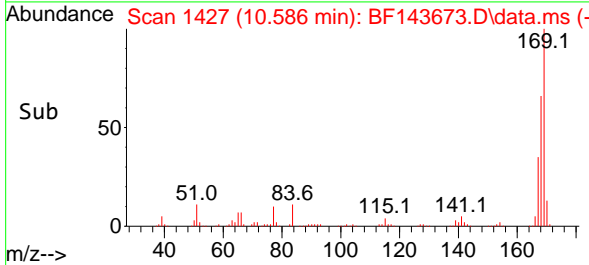
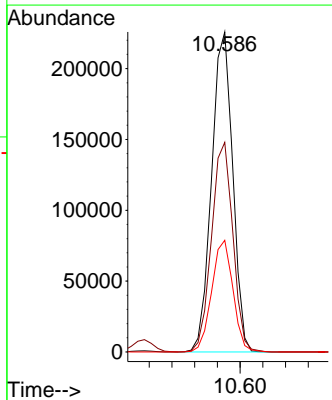
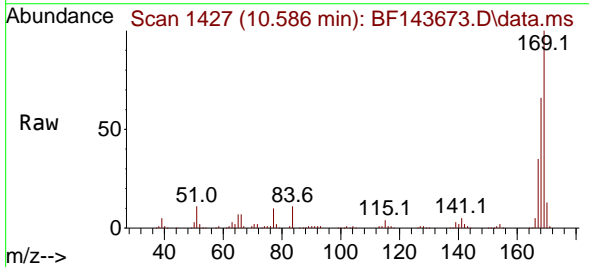
Instrument : BNA_F
 ClientSampleId : ICVBF090925

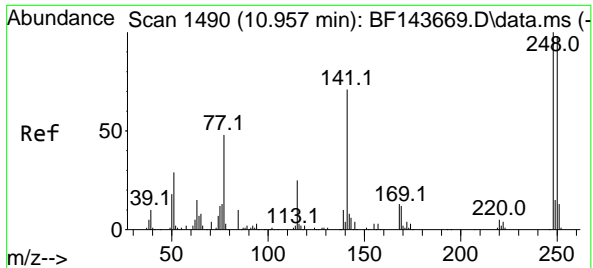
Tgt Ion	Resp	Lower	Upper
198	48959	100	100
51	41.4	21.9	61.9
105	39.3	18.4	58.4



#66
 n-Nitrosodiphenylamine
 Concen: 40.363 ng
 RT: 10.586 min Scan# 1427
 Delta R.T. -0.000 min
 Lab File: BF143673.D
 Acq: 08 Sep 2025 19:48

Tgt Ion	Resp	Lower	Upper
169	291298	100	100
168	65.5	52.3	78.5
167	34.9	28.5	42.7





#67
 4-Bromophenyl-phenylether
 Concen: 40.210 ng
 RT: 10.957 min Scan# 1490
 Delta R.T. -0.000 min
 Lab File: BF143673.D
 Acq: 08 Sep 2025 19:48

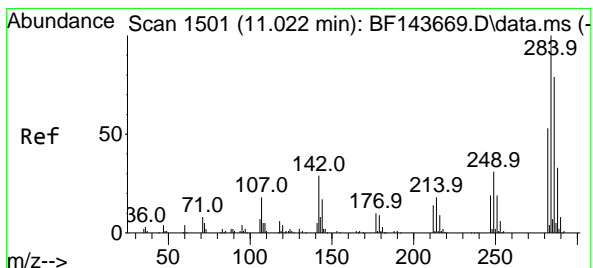
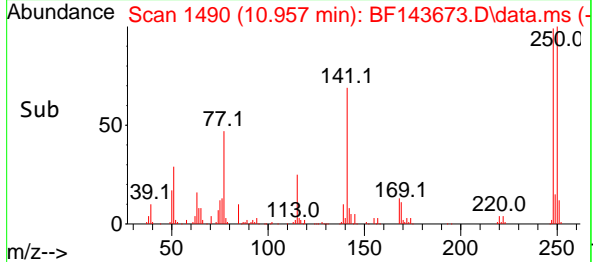
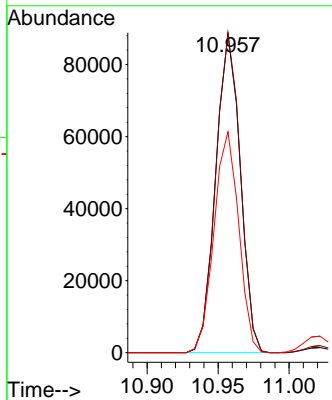
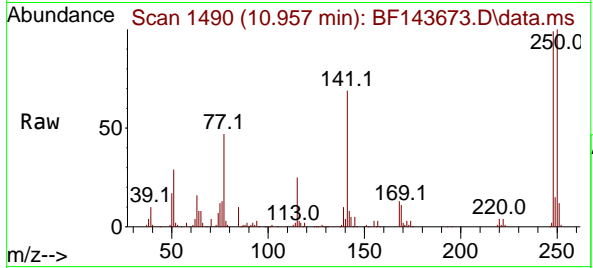
Instrument :

BNA_F

ClientSampleId :

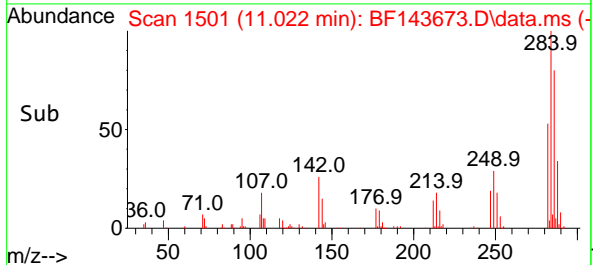
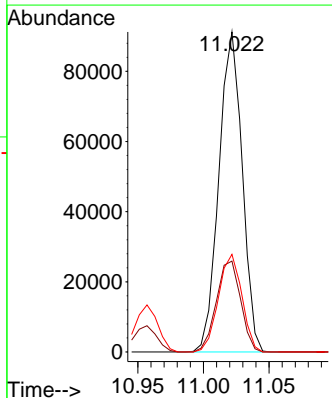
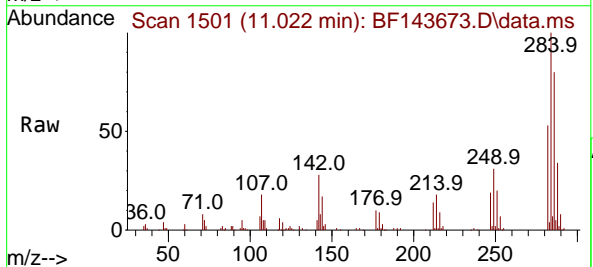
ICVBF090925

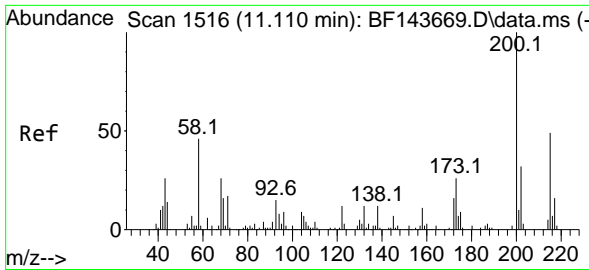
Tgt Ion:248 Resp: 106566
 Ion Ratio Lower Upper
 248 100
 250 100.6 78.6 117.8
 141 69.5 57.1 85.7



#68
 Hexachlorobenzene
 Concen: 40.733 ng
 RT: 11.022 min Scan# 1501
 Delta R.T. -0.000 min
 Lab File: BF143673.D
 Acq: 08 Sep 2025 19:48

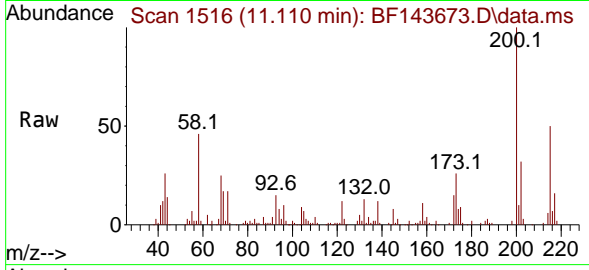
Tgt Ion:284 Resp: 112765
 Ion Ratio Lower Upper
 284 100
 142 28.4 23.2 34.8
 249 30.5 25.0 37.4



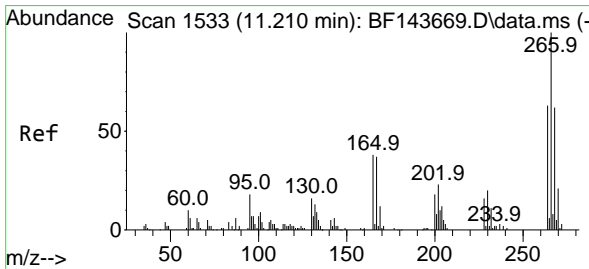
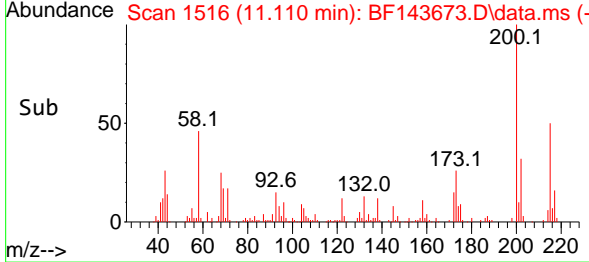
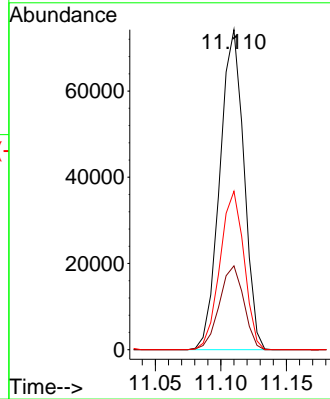


#69
 Atrazine
 Concen: 40.583 ng
 RT: 11.110 min Scan# 11
 Delta R.T. -0.000 min
 Lab File: BF143673.D
 Acq: 08 Sep 2025 19:48

Instrument :
 BNA_F
 ClientSampleId :
 ICVBF090925

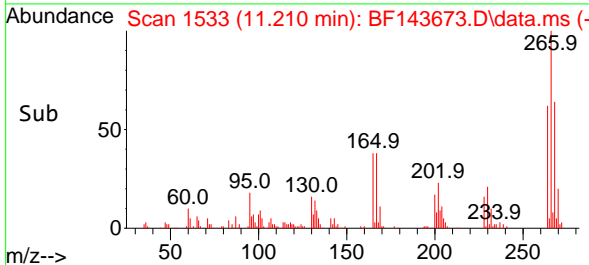
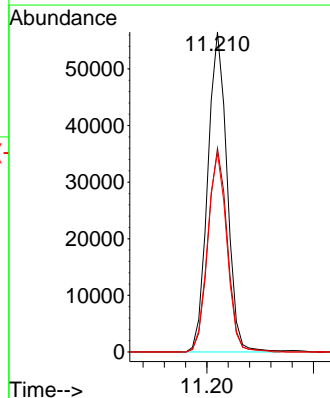
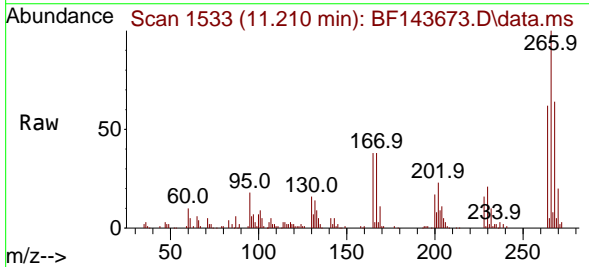


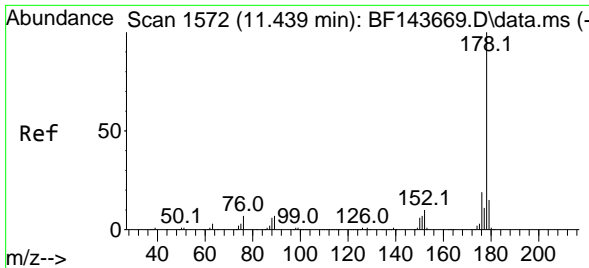
Tgt Ion:200 Resp: 94804
 Ion Ratio Lower Upper
 200 100
 173 26.2 6.1 46.1
 215 49.5 28.5 68.5



#70
 Pentachlorophenol
 Concen: 41.324 ng
 RT: 11.210 min Scan# 1533
 Delta R.T. -0.000 min
 Lab File: BF143673.D
 Acq: 08 Sep 2025 19:48

Tgt Ion:266 Resp: 71080
 Ion Ratio Lower Upper
 266 100
 268 63.6 49.8 74.8
 264 62.3 50.1 75.1





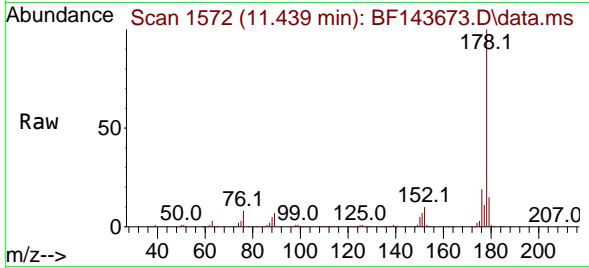
#71
 Phenanthrene
 Concen: 40.156 ng
 RT: 11.439 min Scan# 1572
 Delta R.T. -0.000 min
 Lab File: BF143673.D
 Acq: 08 Sep 2025 19:48

Instrument :

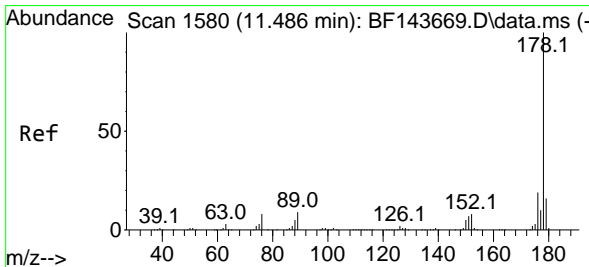
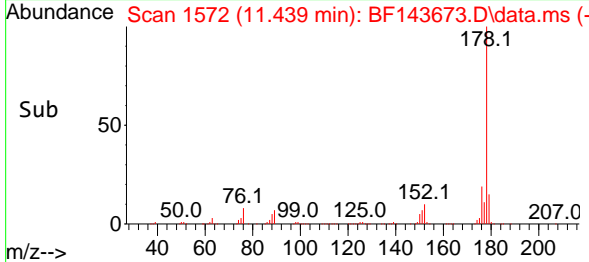
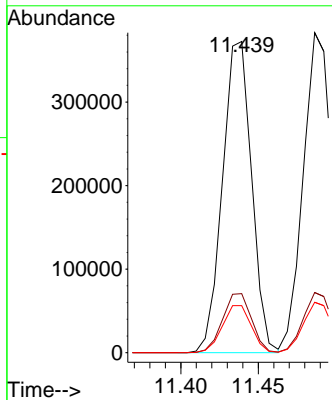
BNA_F

ClientSampleId :

ICVBF090925

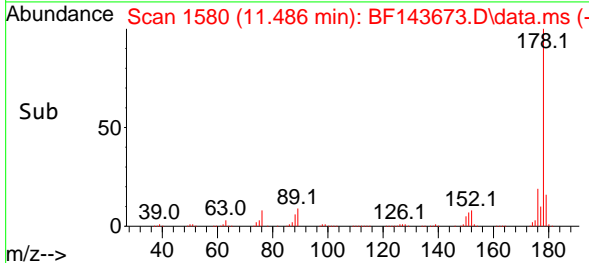
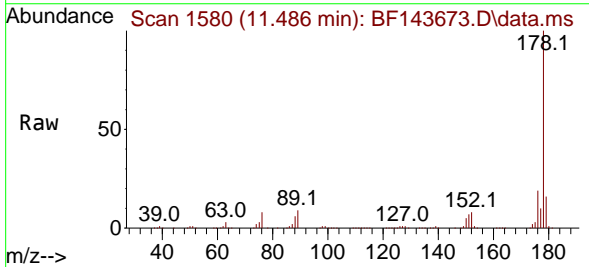
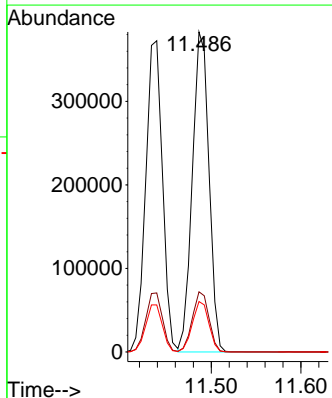


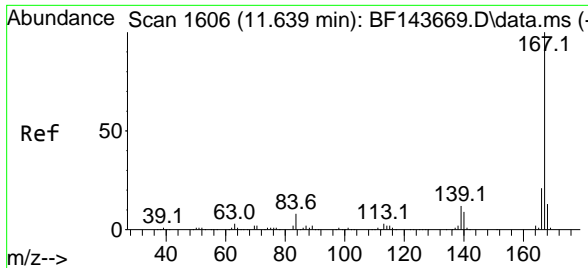
Tgt Ion:178 Resp: 486825
 Ion Ratio Lower Upper
 178 100
 176 19.0 14.9 22.3
 179 15.1 12.1 18.1



#72
 Anthracene
 Concen: 40.320 ng
 RT: 11.486 min Scan# 1580
 Delta R.T. -0.000 min
 Lab File: BF143673.D
 Acq: 08 Sep 2025 19:48

Tgt Ion:178 Resp: 493347
 Ion Ratio Lower Upper
 178 100
 176 18.8 15.0 22.4
 179 15.8 12.9 19.3



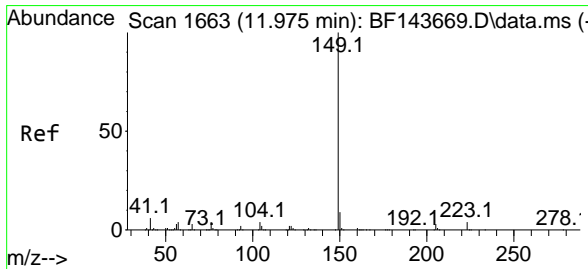
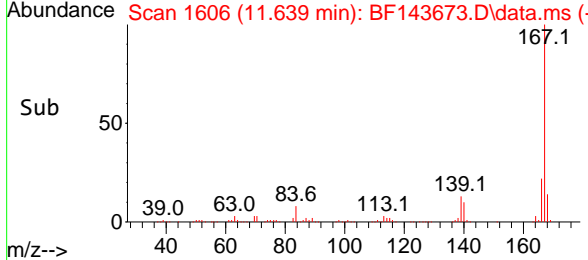
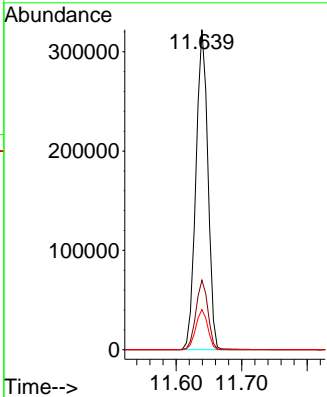
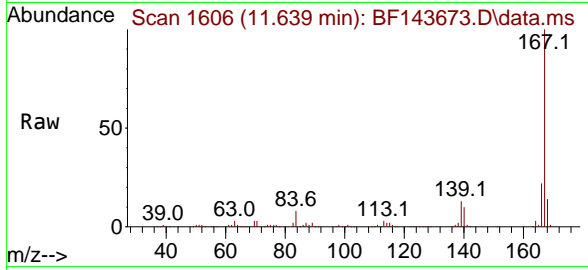


#73
 Carbazole
 Concen: 40.047 ng
 RT: 11.639 min Scan# 1606
 Delta R.T. -0.000 min
 Lab File: BF143673.D
 Acq: 08 Sep 2025 19:48

Instrument : BNA_F
 ClientSampleId : ICVBF090925

Tgt Ion:167 Resp: 409970

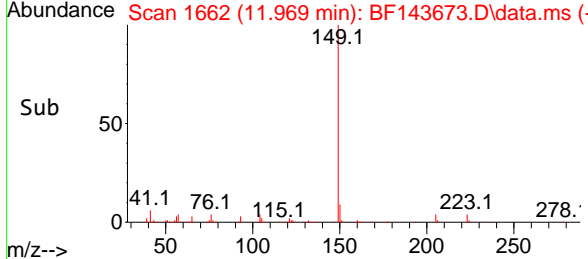
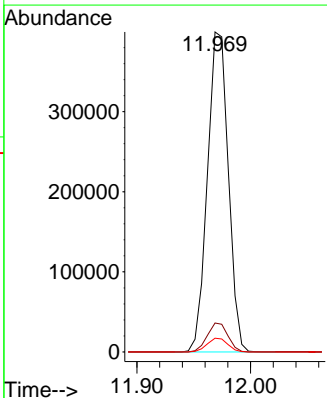
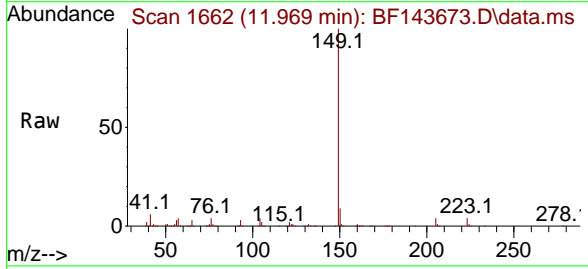
Ion	Ratio	Lower	Upper
167	100		
166	21.7	17.0	25.6
139	12.5	9.9	14.9

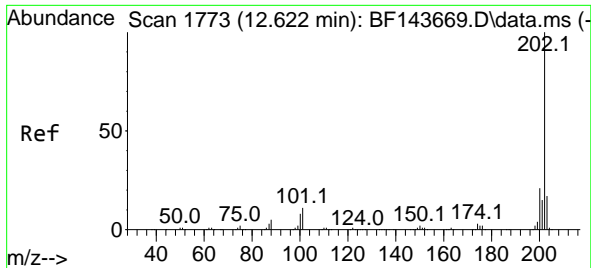


#74
 Di-n-butylphthalate
 Concen: 41.454 ng
 RT: 11.969 min Scan# 1662
 Delta R.T. -0.006 min
 Lab File: BF143673.D
 Acq: 08 Sep 2025 19:48

Tgt Ion:149 Resp: 510663

Ion	Ratio	Lower	Upper
149	100		
150	9.0	7.4	11.2
104	4.3	3.2	4.8





#75
 Fluoranthene
 Concen: 40.489 ng
 RT: 12.622 min Scan# 11
 Delta R.T. -0.000 min
 Lab File: BF143673.D
 Acq: 08 Sep 2025 19:48

Instrument :

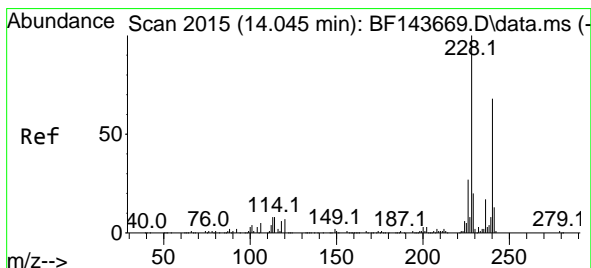
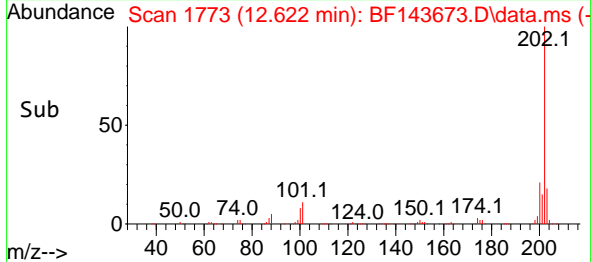
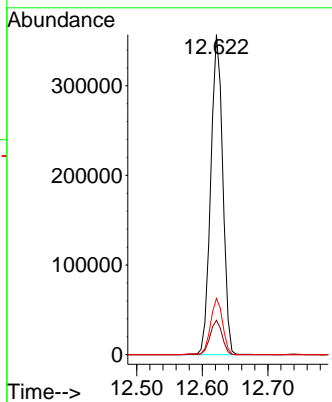
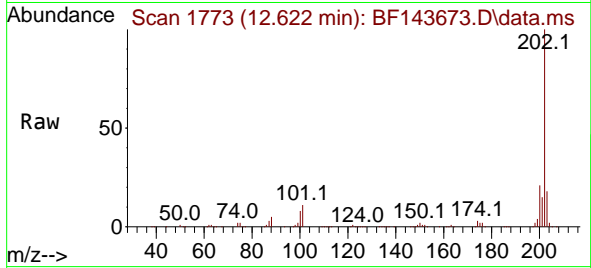
BNA_F

ClientSampleId :

ICVBF090925

Tgt Ion: 202 Resp: 454608

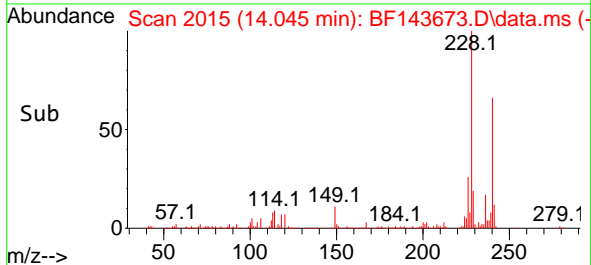
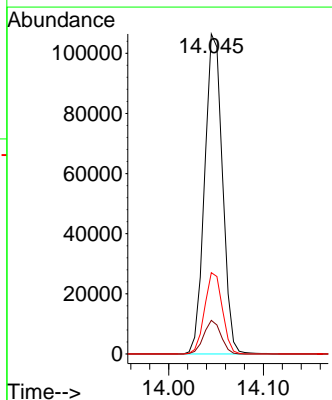
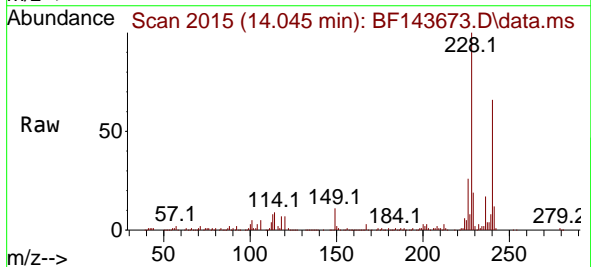
Ion	Ratio	Lower	Upper
202	100		
101	10.8	0.0	30.9
203	17.6	0.0	37.5

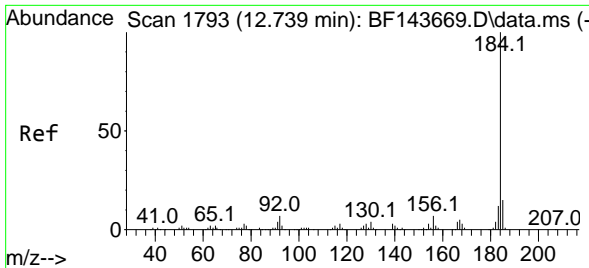


#76
 Chrysene-d12
 Concen: 20.000 ng
 RT: 14.045 min Scan# 2015
 Delta R.T. -0.000 min
 Lab File: BF143673.D
 Acq: 08 Sep 2025 19:48

Tgt Ion: 240 Resp: 138906

Ion	Ratio	Lower	Upper
240	100		
120	10.5	8.7	13.1
236	25.4	19.8	29.8





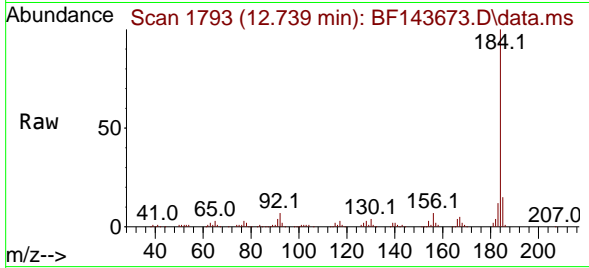
#77
Benzidine
Concen: 44.048 ng
RT: 12.739 min Scan# 11
Delta R.T. -0.000 min
Lab File: BF143673.D
Acq: 08 Sep 2025 19:48

Instrument :

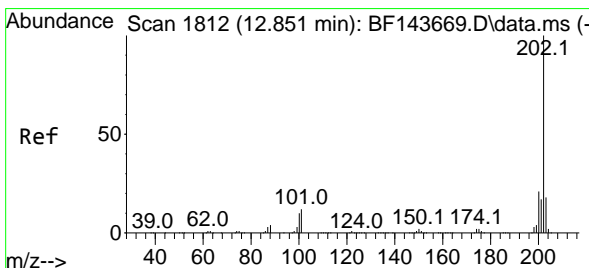
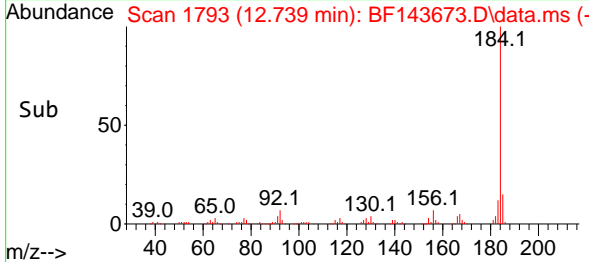
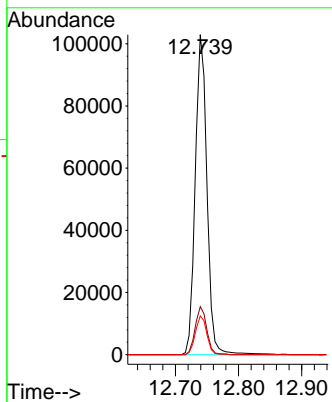
BNA_F

ClientSampleId :

ICVBF090925

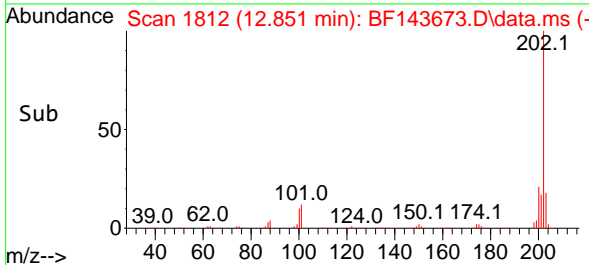
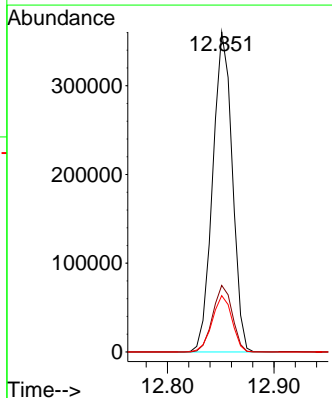
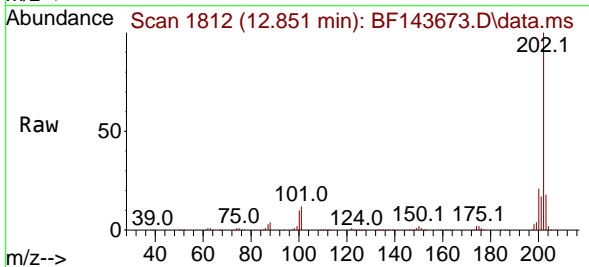


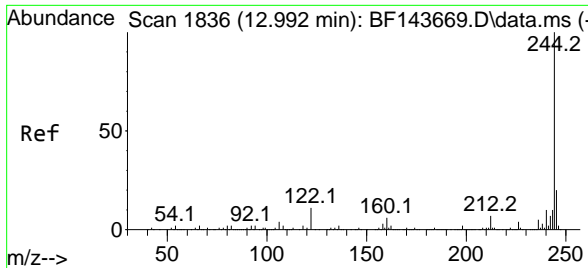
Tgt Ion:184 Resp: 132442
Ion Ratio Lower Upper
184 100
185 15.0 11.7 17.5
183 12.1 9.4 14.0



#78
Pyrene
Concen: 41.207 ng
RT: 12.851 min Scan# 1812
Delta R.T. -0.000 min
Lab File: BF143673.D
Acq: 08 Sep 2025 19:48

Tgt Ion:202 Resp: 459591
Ion Ratio Lower Upper
202 100
200 20.8 16.7 25.1
203 17.6 14.1 21.1

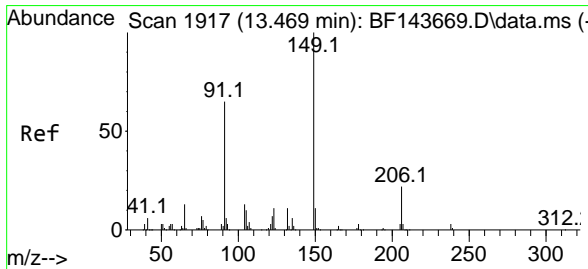
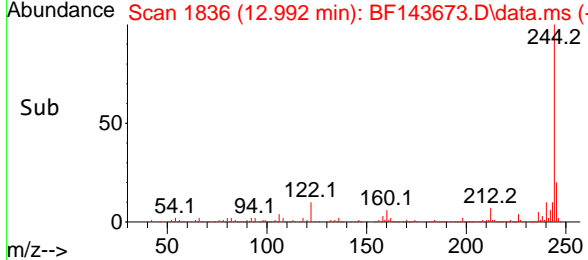
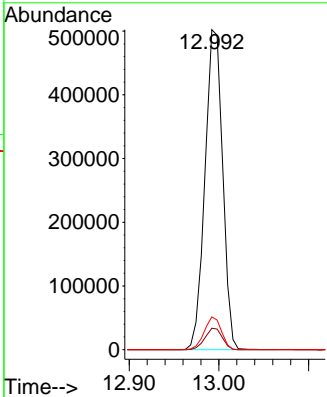
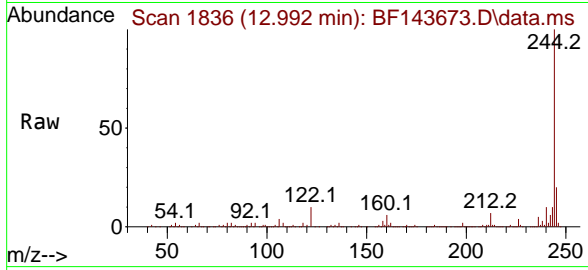




#79
 Terphenyl-d14
 Concen: 81.160 ng
 RT: 12.992 min Scan# 11
 Delta R.T. -0.000 min
 Lab File: BF143673.D
 Acq: 08 Sep 2025 19:48

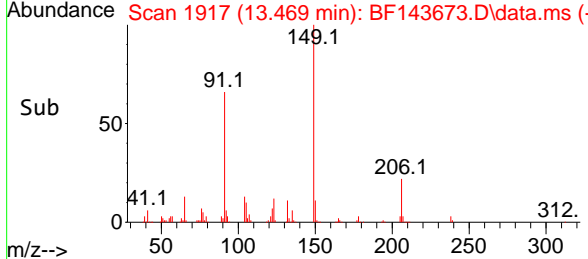
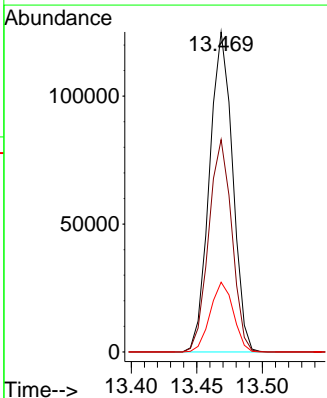
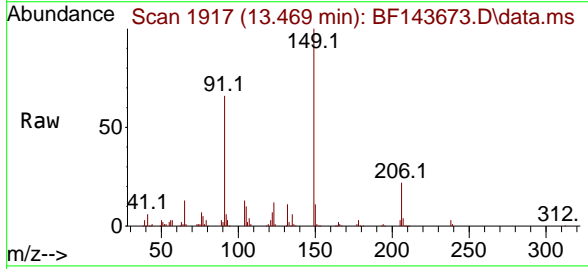
Instrument : BNA_F
 ClientSampleId : ICVBF090925

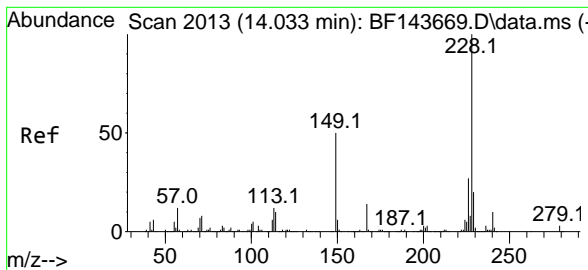
Tgt Ion	Resp	Lower	Upper
244	100		
212	6.7	5.2	7.8
122	10.3	8.4	12.6



#80
 Butylbenzylphthalate
 Concen: 43.636 ng
 RT: 13.469 min Scan# 1917
 Delta R.T. -0.000 min
 Lab File: BF143673.D
 Acq: 08 Sep 2025 19:48

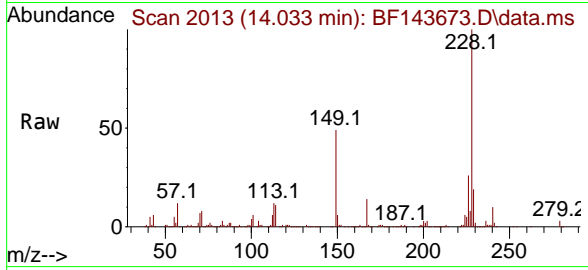
Tgt Ion	Resp	Lower	Upper
149	100		
91	66.4	52.2	78.4
206	21.8	17.6	26.4





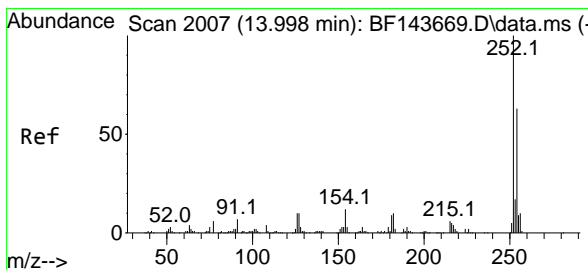
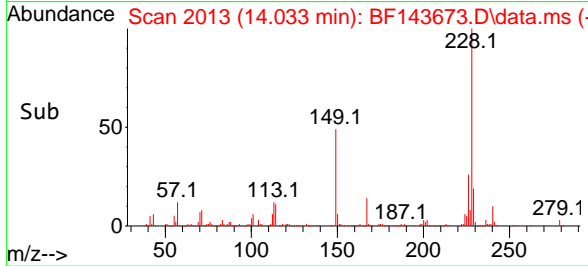
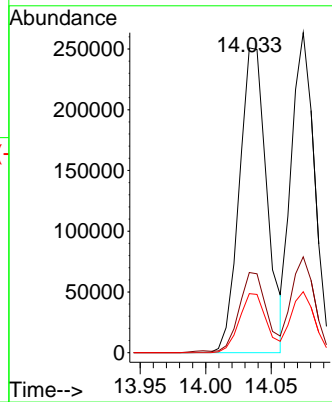
#81
 Benzo(a)anthracene
 Concen: 41.411 ng
 RT: 14.033 min Scan# 2013
 Delta R.T. -0.000 min
 Lab File: BF143673.D
 Acq: 08 Sep 2025 19:48

Instrument : BNA_F
 ClientSampleId : ICVBF090925

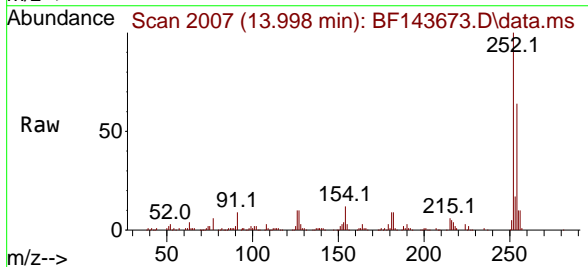


Tgt Ion:228 Resp: 367741

Ion	Ratio	Lower	Upper
228	100		
226	26.3	21.4	32.2
229	19.4	15.8	23.8

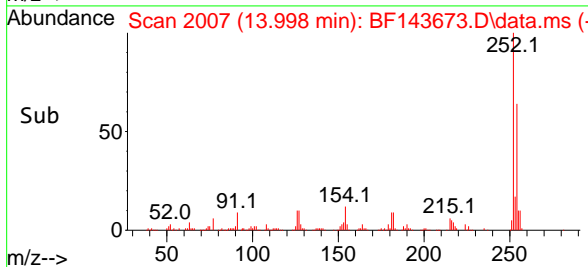
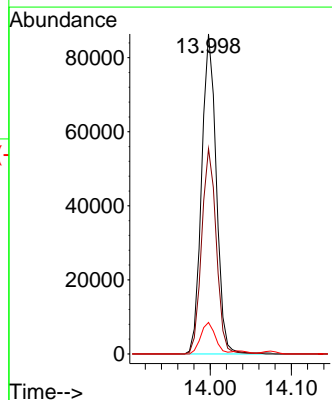


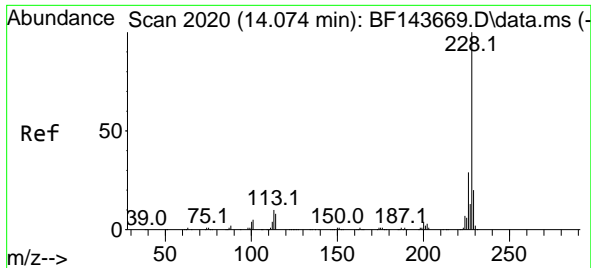
#82
 3,3'-Dichlorobenzidine
 Concen: 43.250 ng
 RT: 13.998 min Scan# 2007
 Delta R.T. -0.000 min
 Lab File: BF143673.D
 Acq: 08 Sep 2025 19:48



Tgt Ion:252 Resp: 108436

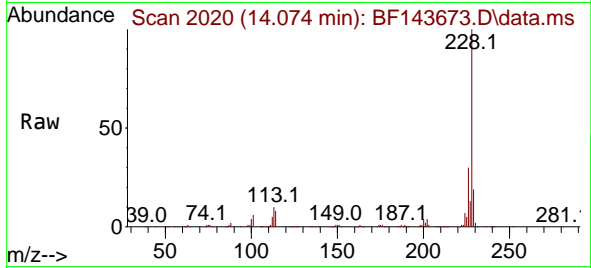
Ion	Ratio	Lower	Upper
252	100		
254	64.2	50.5	75.7
126	9.9	8.1	12.1



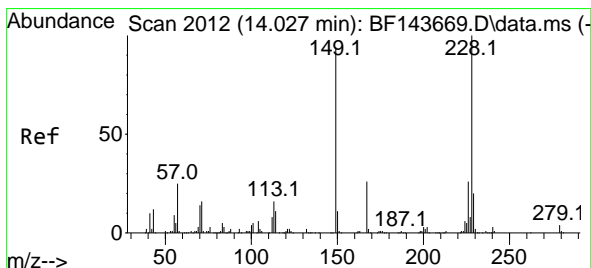
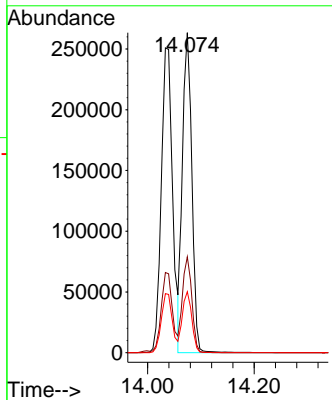
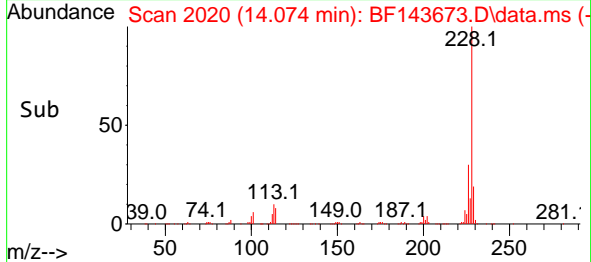


#83
 Chrysene
 Concen: 39.928 ng
 RT: 14.074 min Scan# 2020
 Delta R.T. -0.000 min
 Lab File: BF143673.D
 Acq: 08 Sep 2025 19:48

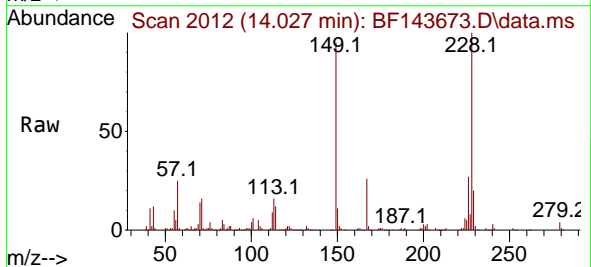
Instrument : BNA_F
 ClientSampleId : ICVBF090925



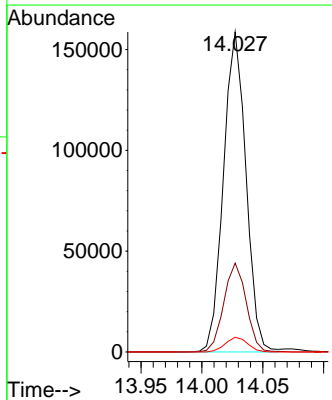
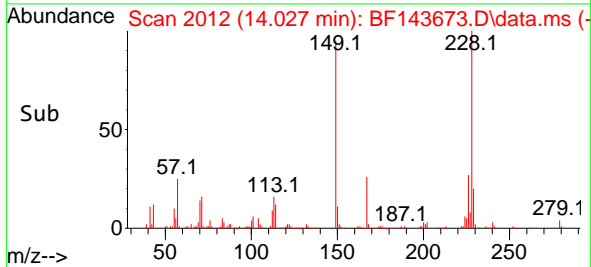
Tgt Ion:228 Resp: 323258
 Ion Ratio Lower Upper
 228 100
 226 30.0 23.4 35.0
 229 19.1 15.7 23.5

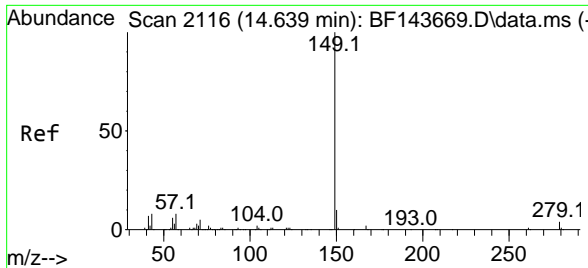


#84
 Bis(2-ethylhexyl)phthalate
 Concen: 43.153 ng
 RT: 14.027 min Scan# 2012
 Delta R.T. -0.000 min
 Lab File: BF143673.D
 Acq: 08 Sep 2025 19:48



Tgt Ion:149 Resp: 204522
 Ion Ratio Lower Upper
 149 100
 167 27.8 22.2 33.2
 279 4.6 3.7 5.5



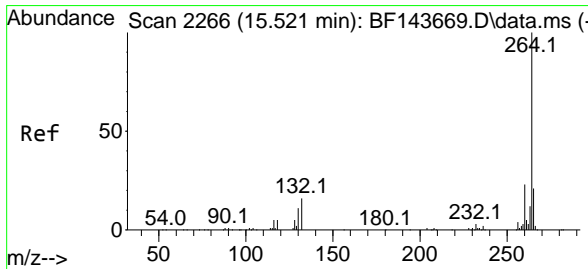
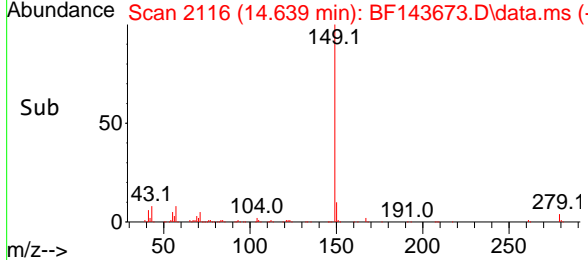
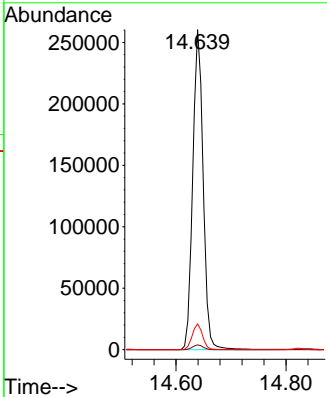
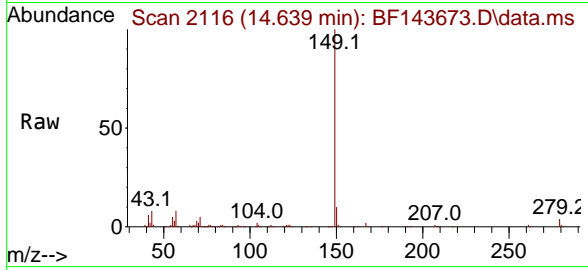


#85
 Di-n-octyl phthalate
 Concen: 41.480 ng
 RT: 14.639 min Scan# 2116
 Delta R.T. -0.000 min
 Lab File: BF143673.D
 Acq: 08 Sep 2025 19:48

Instrument : BNA_F
 Client Sample Id : ICVBF090925

Tgt Ion:149 Resp: 342540

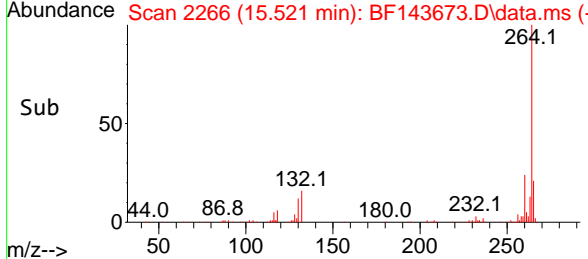
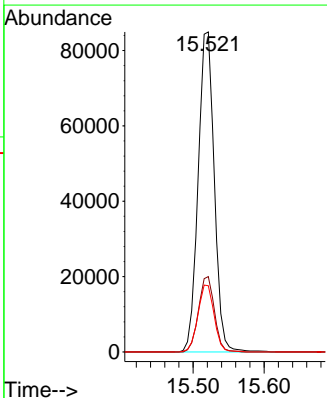
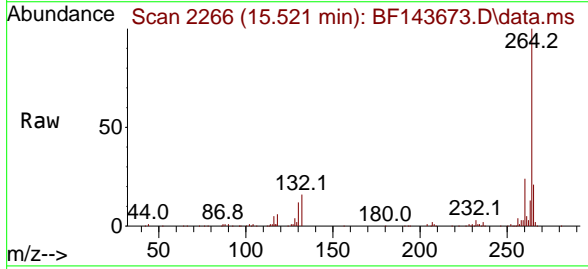
Ion	Ratio	Lower	Upper
149	100		
167	1.5	1.2	1.8
43	8.1	6.4	9.6

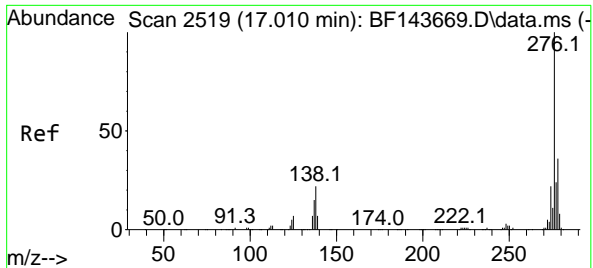


#86
 Perylene-d12
 Concen: 20.000 ng
 RT: 15.521 min Scan# 2266
 Delta R.T. -0.000 min
 Lab File: BF143673.D
 Acq: 08 Sep 2025 19:48

Tgt Ion:264 Resp: 134541

Ion	Ratio	Lower	Upper
264	100		
260	23.5	18.2	27.4
265	20.7	17.2	25.8



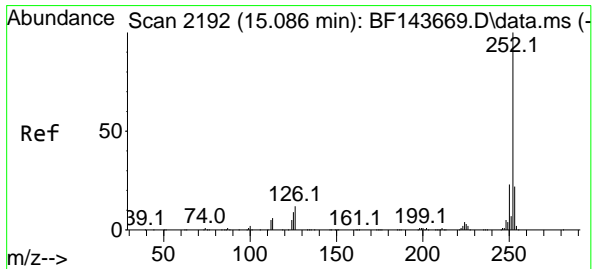
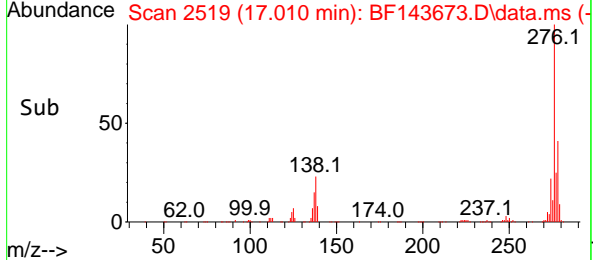
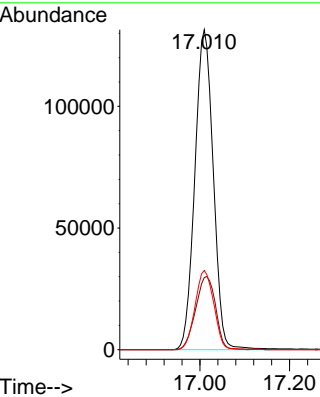
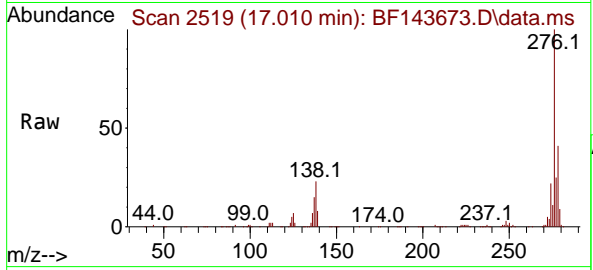


#87
 Indeno(1,2,3-cd)pyrene
 Concen: 41.264 ng
 RT: 17.010 min Scan# 2119
 Delta R.T. -0.000 min
 Lab File: BF143673.D
 Acq: 08 Sep 2025 19:48

Instrument : BNA_F
 ClientSampleId : ICVBF090925

Tgt Ion: 276 Resp: 374433

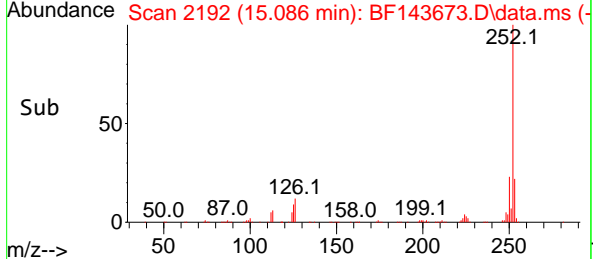
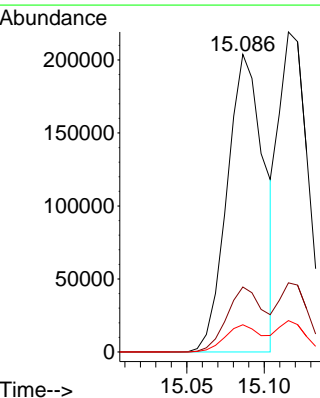
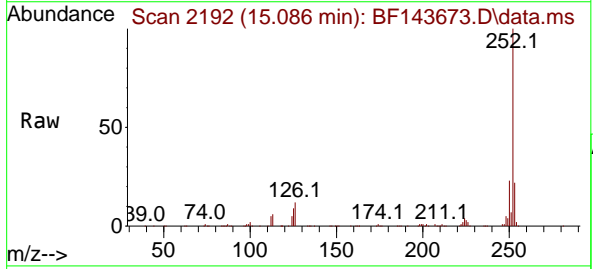
Ion	Ratio	Lower	Upper
276	100		
138	24.9	19.5	29.3
277	25.1	20.2	30.4

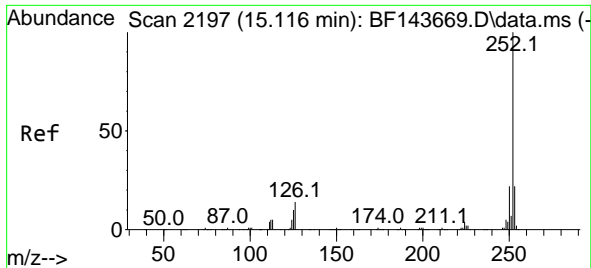


#88
 Benzo(b)fluoranthene
 Concen: 41.119 ng
 RT: 15.086 min Scan# 2192
 Delta R.T. -0.000 min
 Lab File: BF143673.D
 Acq: 08 Sep 2025 19:48

Tgt Ion: 252 Resp: 337280

Ion	Ratio	Lower	Upper
252	100		
253	21.8	17.5	26.3
125	9.2	7.4	11.0



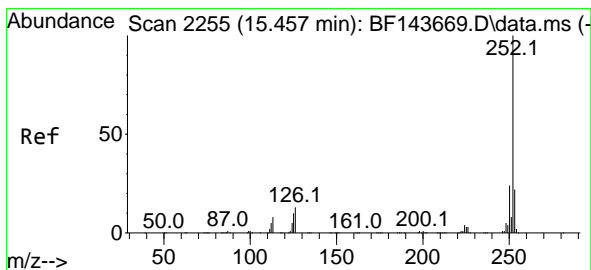
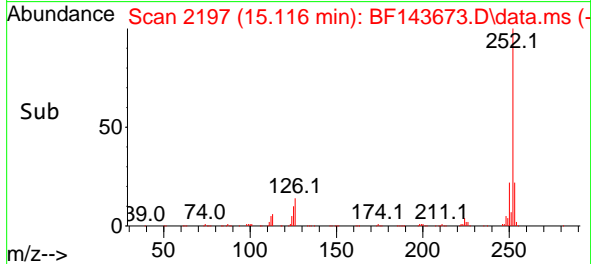
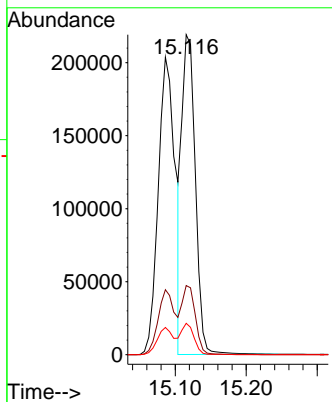
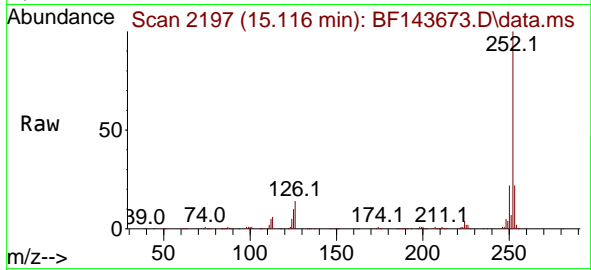


#89
 Benzo(k)fluoranthene
 Concen: 40.187 ng
 RT: 15.116 min Scan# 2197
 Delta R.T. -0.000 min
 Lab File: BF143673.D
 Acq: 08 Sep 2025 19:48

Instrument : BNA_F
 ClientSampleId : ICVBF090925

Tgt Ion:252 Resp: 289230

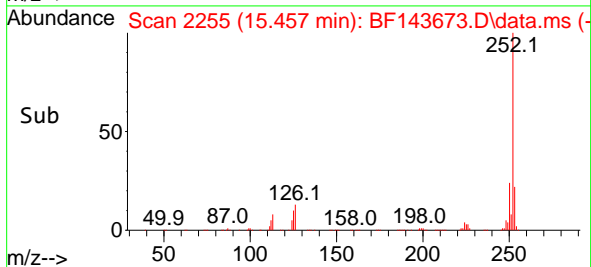
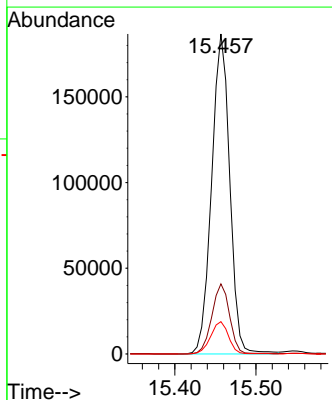
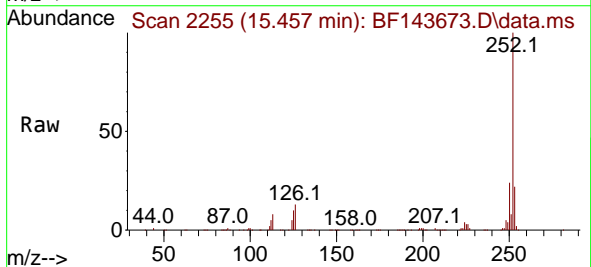
Ion	Ratio	Lower	Upper
252	100		
253	21.6	17.5	26.3
125	9.8	8.1	12.1

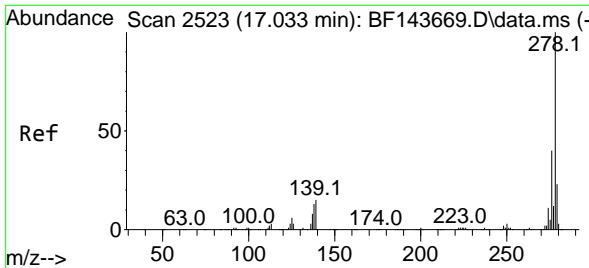


#90
 Benzo(a)pyrene
 Concen: 41.175 ng
 RT: 15.457 min Scan# 2255
 Delta R.T. -0.000 min
 Lab File: BF143673.D
 Acq: 08 Sep 2025 19:48

Tgt Ion:252 Resp: 289729

Ion	Ratio	Lower	Upper
252	100		
253	21.9	17.4	26.2
125	10.1	8.0	12.0





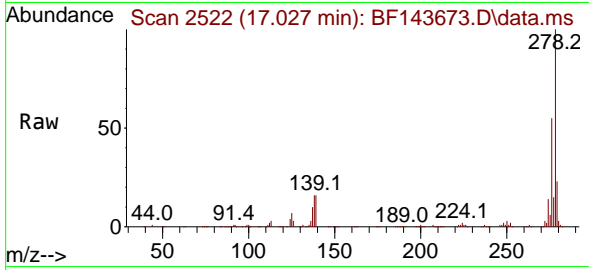
#91
 Dibenzo(a,h)anthracene
 Concen: 41.017 ng
 RT: 17.027 min Scan# 2522
 Delta R.T. -0.006 min
 Lab File: BF143673.D
 Acq: 08 Sep 2025 19:48

Instrument :

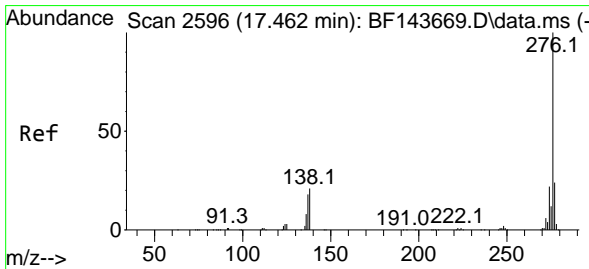
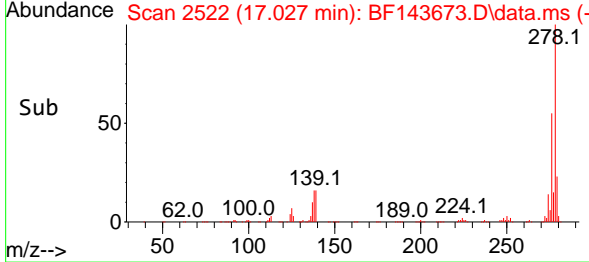
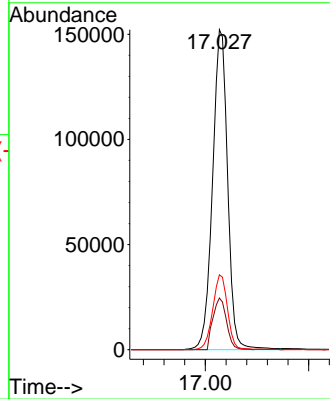
BNA_F

ClientSampleId :

ICVBF090925



Tgt Ion:278 Resp: 308390
 Ion Ratio Lower Upper
 278 100
 139 16.1 11.8 17.8
 279 23.4 18.5 27.7



#92
 Benzo(g,h,i)perylene
 Concen: 40.776 ng
 RT: 17.462 min Scan# 2596
 Delta R.T. -0.000 min
 Lab File: BF143673.D
 Acq: 08 Sep 2025 19:48

Tgt Ion:276 Resp: 289986
 Ion Ratio Lower Upper
 276 100
 277 23.2 18.9 28.3
 138 20.2 16.6 24.8

