

Data Path : Z:\svoasrv\HPCHEM1\BNA_F\Data\BF091025\
 Data File : BF143677.D
 Acq On : 09 Sep 2025 09:41
 Operator : RC/JU
 Sample : SSTDIC005
 Misc :
 ALS Vial : 3 Sample Multiplier: 1

Instrument :
 BNA_F
 ClientSampleId :

Quant Time: Sep 09 15:24:33 2025
 Quant Method : Z:\svoasrv\HPCHEM1\BNA_F\Methods\8270-BF091025.M
 Quant Title : ASP BNA STANDARDS FOR 5 POINT CALIBRATION
 QLast Update : Tue Sep 09 15:20:16 2025
 Response via : Initial Calibration

Compound	R.T.	QIon	Response	Conc	Units	Dev(Min)
Internal Standards						
1) 1,4-Dichlorobenzene-d4	6.892	152	54495	20.000	ng	0.00
21) Naphthalene-d8	8.169	136	205041	20.000	ng	0.00
39) Acenaphthene-d10	9.922	164	120150	20.000	ng	0.00
64) Phenanthrene-d10	11.410	188	207771	20.000	ng	0.00
76) Chrysene-d12	14.045	240	132168	20.000	ng	0.00
86) Perylene-d12	15.521	264	122261	20.000	ng	0.00
System Monitoring Compounds						
5) 2-Fluorophenol	5.492	112	31903	9.988	ng	0.00
7) Phenol-d6	6.492	99	38934	10.011	ng	-0.01
23) Nitrobenzene-d5	7.445	82	33309	10.105	ng	0.00
42) 2,4,6-Tribromophenol	10.704	330	12540	10.356	ng	0.00
45) 2-Fluorobiphenyl	9.239	172	84393	10.611	ng	0.00
79) Terphenyl-d14	12.992	244	92587	11.352	ng	0.00
Target Compounds						
2) 1,4-Dioxane	2.675	88	7644	5.365	ng	97
3) Pyridine	3.446	79	17517	4.759	ng	92
4) n-Nitrosodimethylamine	3.369	42	6621	4.736	ng	100
6) Aniline	6.545	93	25825	5.014	ng	97
8) 2-Chlorophenol	6.669	128	17363	5.033	ng	94
9) Benzaldehyde	6.439	77	13441	4.284	ng	97
10) Phenol	6.510	94	21053	4.897	ng	99
11) bis(2-Chloroethyl)ether	6.616	93	16627	5.179	ng	95
12) 1,3-Dichlorobenzene	6.828	146	19923	5.050	ng	98
13) 1,4-Dichlorobenzene	6.904	146	20557	5.162	ng	97
14) 1,2-Dichlorobenzene	7.057	146	19480	5.180	ng	100
15) Benzyl Alcohol	7.022	79	13846	4.894	ng	98
16) 2,2'-oxybis(1-Chloropr...	7.157	45	21263	5.062	ng	98
17) 2-Methylphenol	7.122	107	13167	4.745	ng	93
18) Hexachloroethane	7.404	117	6510	5.061	ng	97
19) n-Nitroso-di-n-propyla...	7.286	70	11861	4.966	ng	98
20) 3+4-Methylphenols	7.275	107	18791	5.142	ng	# 87
22) Acetophenone	7.292	105	24772	5.349	ng	98
24) Nitrobenzene	7.463	77	16908	4.947	ng	98
25) Isophorone	7.698	82	32204	5.095	ng	99
26) 2-Nitrophenol	7.781	139	7313	4.352	ng	99
27) 2,4-Dimethylphenol	7.810	122	15822	5.244	ng	98
28) bis(2-Chloroethoxy)met...	7.916	93	19972	5.141	ng	98
29) 2,4-Dichlorophenol	8.016	162	14874	4.901	ng	96
30) 1,2,4-Trichlorobenzene	8.110	180	15678	4.986	ng	99
31) Naphthalene	8.192	128	53553	5.276	ng	100
32) Benzoic acid	7.851	122	4640	2.521	ng	94
33) 4-Chloroaniline	8.233	127	17906	5.067	ng	97
34) Hexachlorobutadiene	8.310	225	10229	4.988	ng	98
35) Caprolactam	8.557	113	3746	4.638	ng	# 91
36) 4-Chloro-3-methylphenol	8.704	107	14405	4.814	ng	95
37) 2-Methylnaphthalene	8.880	142	37023	5.328	ng	98
38) 1-Methylnaphthalene	8.980	142	35207	5.280	ng	99
40) 1,2,4,5-Tetrachloroben...	9.045	216	17428	5.067	ng	97
41) Hexachlorocyclopentadiene	9.033	237	8114	4.595	ng	99
43) 2,4,6-Trichlorophenol	9.151	196	11120	4.841	ng	95

Data Path : Z:\svoasrv\HPCHEM1\BNA_F\Data\BF091025\
 Data File : BF143677.D
 Acq On : 09 Sep 2025 09:41
 Operator : RC/JU
 Sample : SSTDICC005
 Misc :
 ALS Vial : 3 Sample Multiplier: 1

Instrument :
 BNA_F
 ClientSampleId :

Quant Time: Sep 09 15:24:33 2025
 Quant Method : Z:\svoasrv\HPCHEM1\BNA_F\Methods\8270-BF091025.M
 Quant Title : ASP BNA STANDARDS FOR 5 POINT CALIBRATION
 QLast Update : Tue Sep 09 15:20:16 2025
 Response via : Initial Calibration

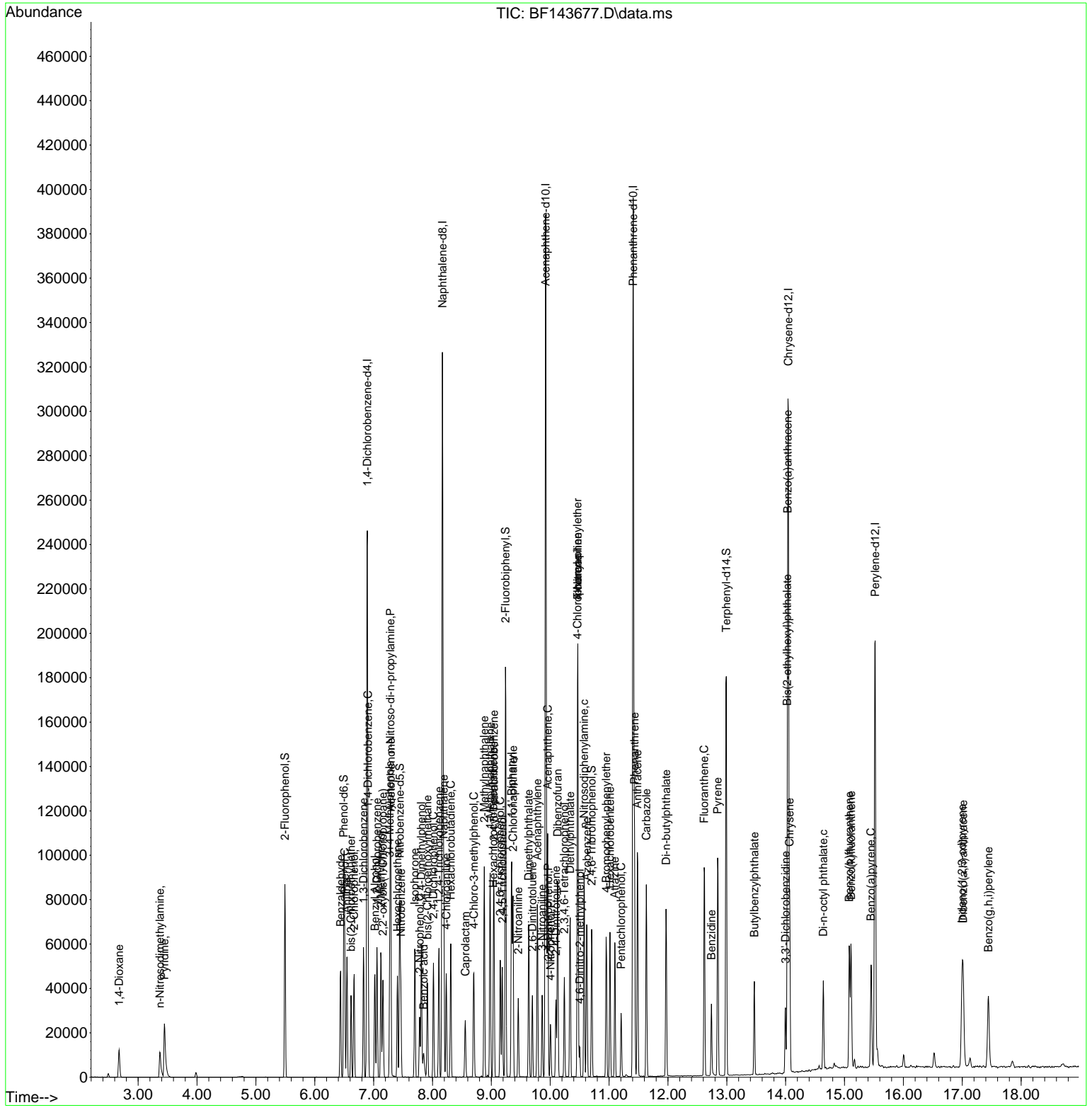
Compound	R.T.	QIon	Response	Conc	Units	Dev(Min)
44) 2,4,5-Trichlorophenol	9.186	196	11336	4.855	ng	95
46) 1,1'-Biphenyl	9.345	154	44485	5.143	ng	100
47) 2-Chloronaphthalene	9.369	162	35613	5.252	ng	99
48) 2-Nitroaniline	9.457	65	8158	4.546	ng	95
49) Acenaphthylene	9.780	152	49733	5.120	ng	99
50) Dimethylphthalate	9.633	163	40112	5.131	ng	99
51) 2,6-Dinitrotoluene	9.698	165	6227	4.166	ng	89
52) Acenaphthene	9.957	154	34323	5.128	ng	99
53) 3-Nitroaniline	9.863	138	7925	4.927	ng	# 98
54) 2,4-Dinitrophenol	9.969	184	1680	7.538	ng	# 1
55) Dibenzofuran	10.127	168	51470	5.348	ng	98
56) 4-Nitrophenol	10.004	139	5265	4.114	ng	97
57) 2,4-Dinitrotoluene	10.098	165	8821	4.336	ng	94
58) Fluorene	10.469	166	40602	5.389	ng	98
59) 2,3,4,6-Tetrachlorophenol	10.239	232	8849	4.674	ng	# 98
60) Diethylphthalate	10.339	149	37807	5.151	ng	98
61) 4-Chlorophenyl-phenyle...	10.463	204	20046	5.246	ng	96
62) 4-Nitroaniline	10.469	138	6936	4.553	ng	94
63) Azobenzene	10.622	77	34418	5.305	ng	99
65) 4,6-Dinitro-2-methylph...	10.504	198	3083	2.914	ng	95
66) n-Nitrosodiphenylamine	10.574	169	33909	4.982	ng	98
67) 4-Bromophenyl-phenylether	10.951	248	11836	4.724	ng	94
68) Hexachlorobenzene	11.016	284	13028	4.924	ng	95
69) Atrazine	11.098	200	10737	5.031	ng	97
70) Pentachlorophenol	11.204	266	5570	3.483	ng	97
71) Phenanthrene	11.433	178	60574	5.291	ng	99
72) Anthracene	11.480	178	59907	5.204	ng	99
73) Carbazole	11.633	167	48759	5.172	ng	99
74) Di-n-butylphthalate	11.969	149	56340	4.964	ng	99
75) Fluoranthene	12.616	202	58331	5.550	ng	99
77) Benzidine	12.739	184	19880	4.613	ng	98
78) Pyrene	12.845	202	58494	5.535	ng	100
80) Butylbenzylphthalate	13.468	149	13634	4.118	ng	98
81) Benzo(a)anthracene	14.033	228	42898	5.045	ng	99
82) 3,3'-Dichlorobenzidine	13.998	252	10899	4.166	ng	94
83) Chrysene	14.068	228	40322	5.178	ng	99
84) Bis(2-ethylhexyl)phtha...	14.027	149	19671	4.164	ng	98
85) Di-n-octyl phthalate	14.639	149	29252	3.455	ng	# 99
87) Indeno(1,2,3-cd)pyrene	16.998	276	37861	4.537	ng	99
88) Benzo(b)fluoranthene	15.080	252	37565	5.161	ng	98
89) Benzo(k)fluoranthene	15.109	252	33327	5.074	ng	99
90) Benzo(a)pyrene	15.451	252	31621	4.945	ng	98
91) Dibenzo(a,h)anthracene	17.015	278	32016	4.625	ng	99
92) Benzo(g,h,i)perylene	17.445	276	30386	4.693	ng	99

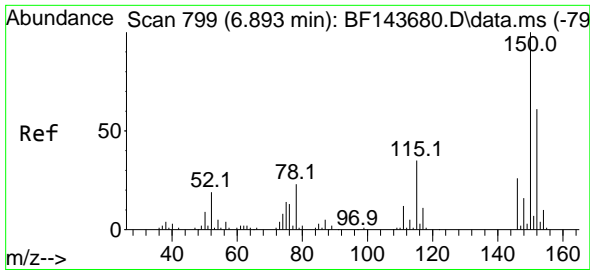
(#) = qualifier out of range (m) = manual integration (+) = signals summed

Data Path : Z:\svoasrv\HPCHEM1\BNA_F\Data\BF091025\
 Data File : BF143677.D
 Acq On : 09 Sep 2025 09:41
 Operator : RC/JU
 Sample : SSTDIC005
 Misc :
 ALS Vial : 3 Sample Multiplier: 1

Instrument :
 BNA_F
 ClientSampleId :

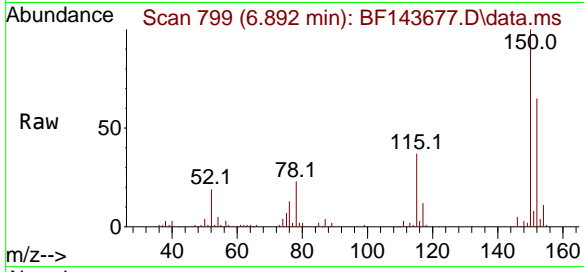
Quant Time: Sep 09 15:24:33 2025
 Quant Method : Z:\svoasrv\HPCHEM1\BNA_F\Methods\8270-BF091025.M
 Quant Title : ASP BNA STANDARDS FOR 5 POINT CALIBRATION
 QLast Update : Tue Sep 09 15:20:16 2025
 Response via : Initial Calibration



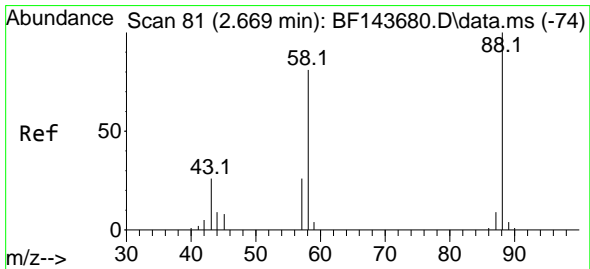
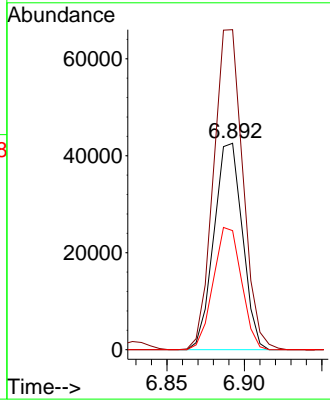
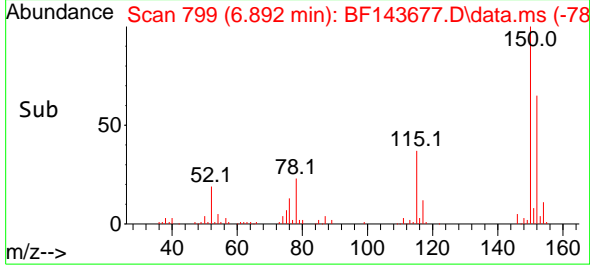


#1
 1,4-Dichlorobenzene-d4
 Concen: 20.000 ng
 RT: 6.892 min Scan# 79
 Delta R.T. -0.001 min
 Lab File: BF143677.D
 Acq: 09 Sep 2025 09:41

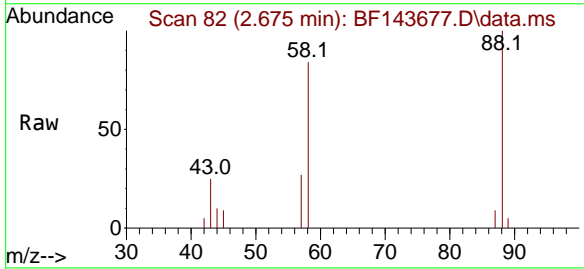
Instrument :
 BNA_F
 ClientSampleId :



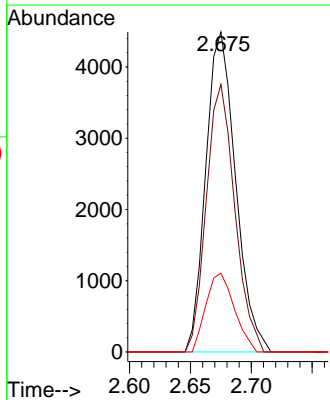
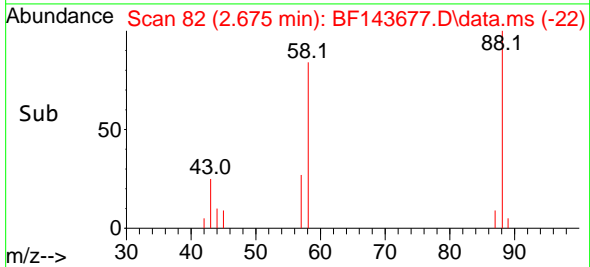
Tgt Ion:152 Resp: 54495
 Ion Ratio Lower Upper
 152 100
 150 155.0 130.7 196.1
 115 57.7 45.9 68.9

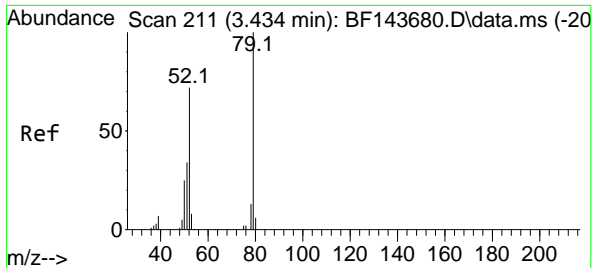


#2
 1,4-Dioxane
 Concen: 5.365 ng
 RT: 2.675 min Scan# 82
 Delta R.T. 0.006 min
 Lab File: BF143677.D
 Acq: 09 Sep 2025 09:41



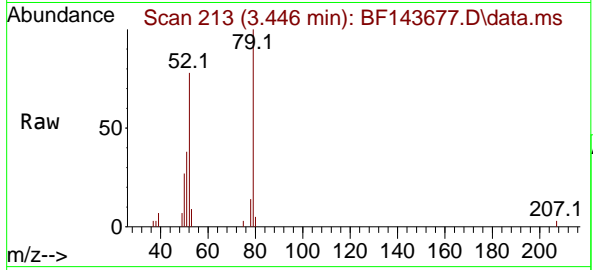
Tgt Ion: 88 Resp: 7644
 Ion Ratio Lower Upper
 88 100
 58 79.9 65.8 98.6
 43 23.4 20.6 31.0





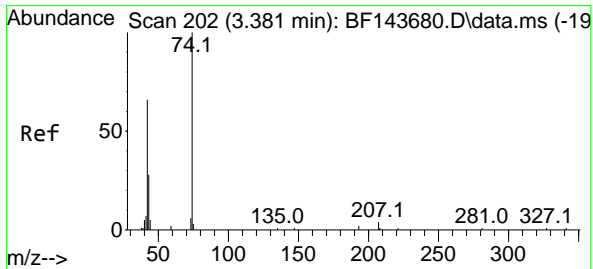
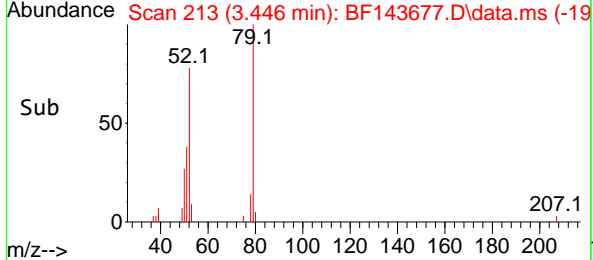
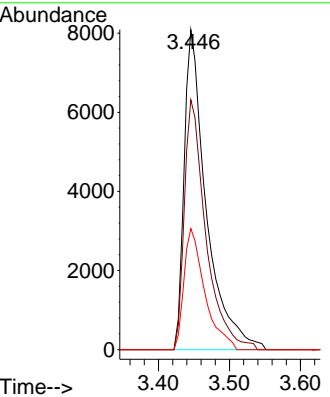
#3
 Pyridine
 Concen: 4.759 ng
 RT: 3.446 min Scan# 211
 Delta R.T. 0.012 min
 Lab File: BF143677.D
 Acq: 09 Sep 2025 09:41

Instrument :
 BNA_F
 ClientSampleId :

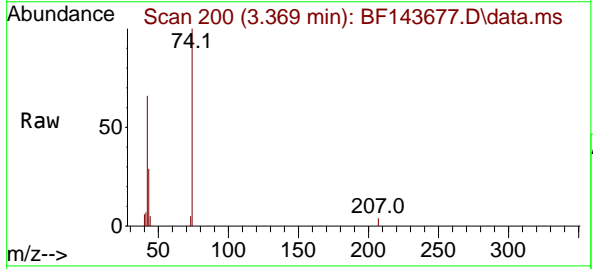


Tgt Ion: 79 Resp: 17517

Ion	Ratio	Lower	Upper
79	100		
52	78.1	57.2	85.8
51	37.9	27.0	40.6

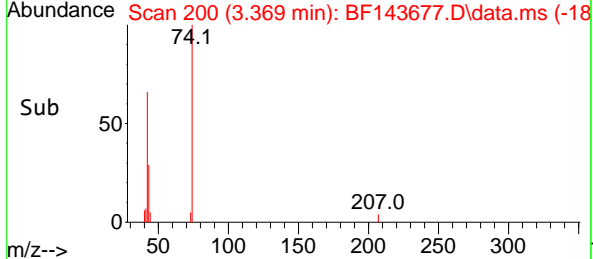
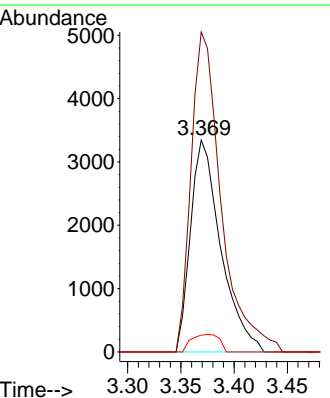


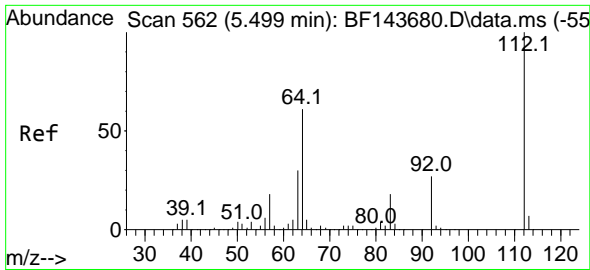
#4
 n-Nitrosodimethylamine
 Concen: 4.736 ng
 RT: 3.369 min Scan# 200
 Delta R.T. -0.012 min
 Lab File: BF143677.D
 Acq: 09 Sep 2025 09:41



Tgt Ion: 42 Resp: 6621

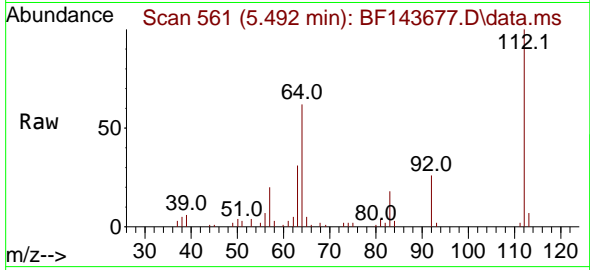
Ion	Ratio	Lower	Upper
42	100		
74	151.1	120.9	181.3
44	7.9	6.5	9.7



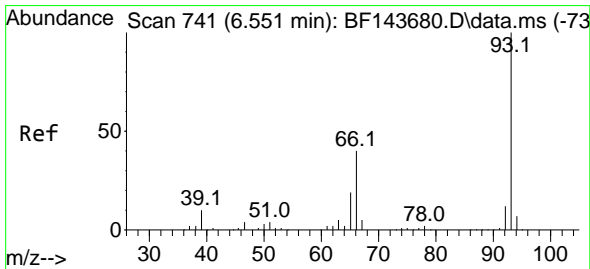
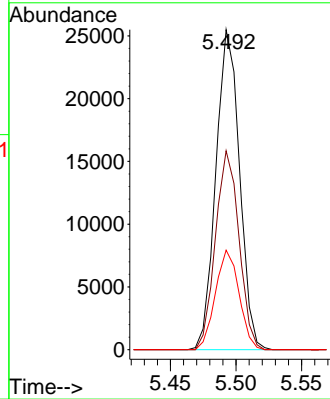
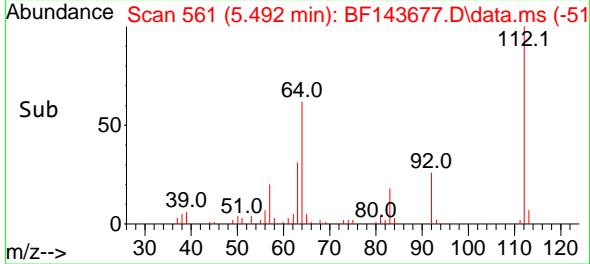


#5
 2-Fluorophenol
 Concen: 9.988 ng
 RT: 5.492 min Scan# 50
 Delta R.T. -0.006 min
 Lab File: BF143677.D
 Acq: 09 Sep 2025 09:41

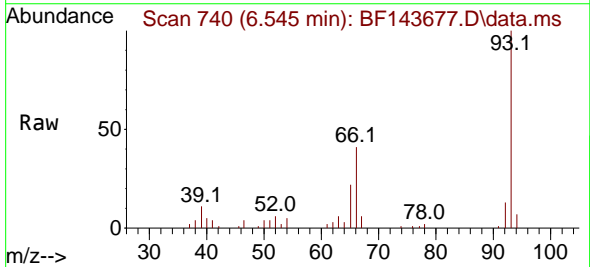
Instrument :
 BNA_F
 ClientSampleId :



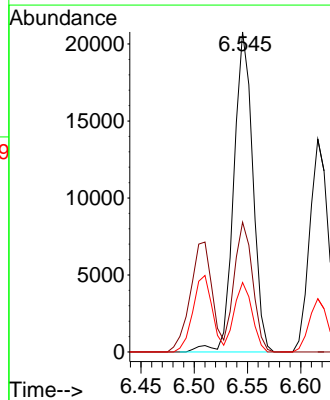
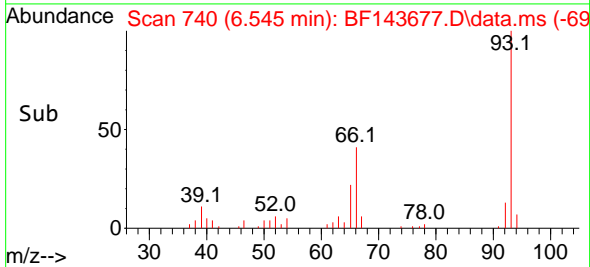
Tgt Ion: 112 Resp: 31903
 Ion Ratio Lower Upper
 112 100
 64 62.2 49.0 73.4
 63 31.1 24.3 36.5

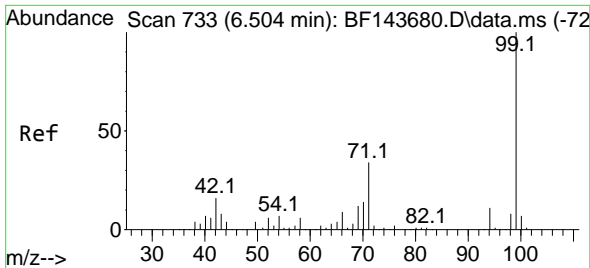


#6
 Aniline
 Concen: 5.014 ng
 RT: 6.545 min Scan# 740
 Delta R.T. -0.006 min
 Lab File: BF143677.D
 Acq: 09 Sep 2025 09:41



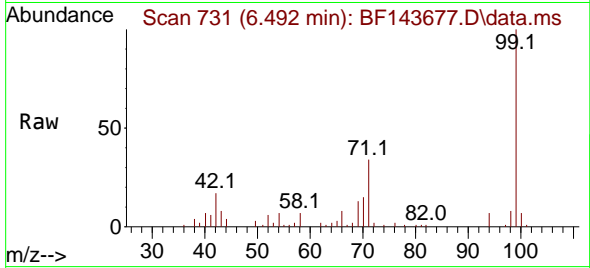
Tgt Ion: 93 Resp: 25825
 Ion Ratio Lower Upper
 93 100
 66 40.5 34.1 51.1
 65 21.7 16.1 24.1





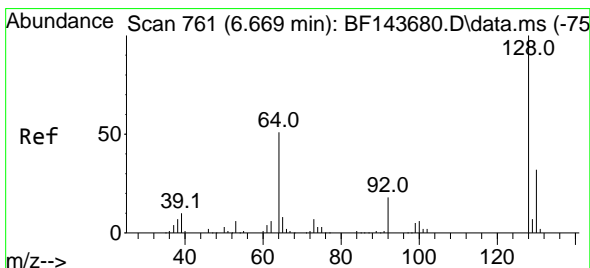
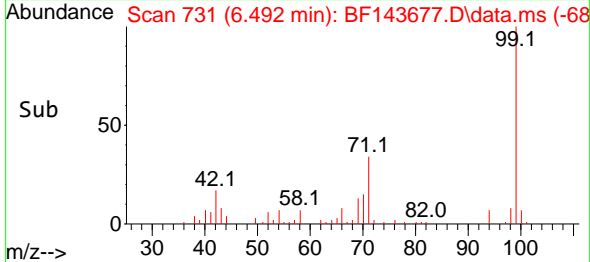
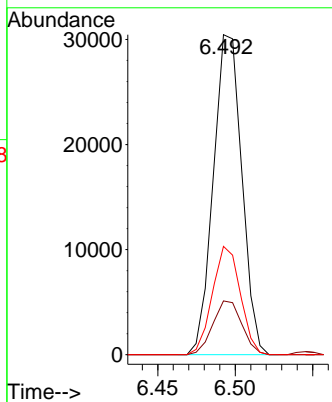
#7
 Phenol-d6
 Concen: 10.011 ng
 RT: 6.492 min Scan# 711
 Delta R.T. -0.012 min
 Lab File: BF143677.D
 Acq: 09 Sep 2025 09:41

Instrument :
 BNA_F
 ClientSampleId :



Tgt Ion: 99 Resp: 38934

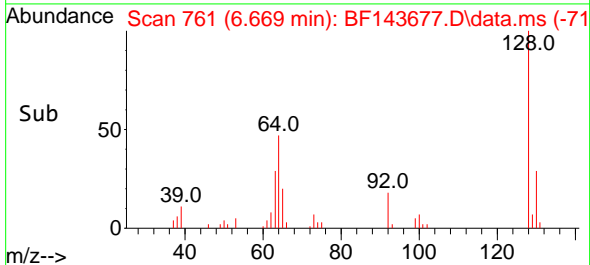
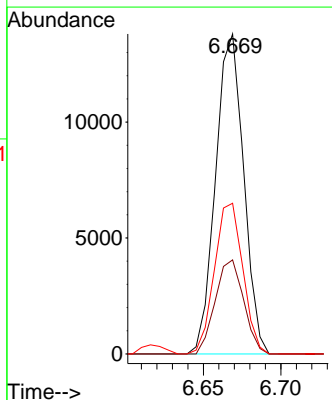
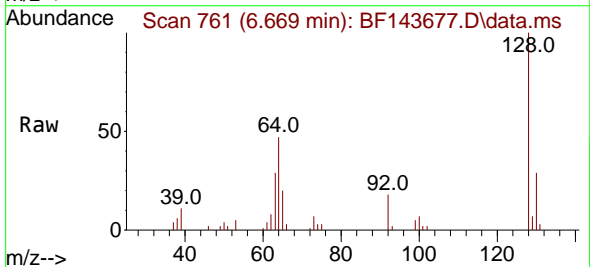
Ion	Ratio	Lower	Upper
99	100		
42	16.8	13.0	19.4
71	33.9	27.4	41.2

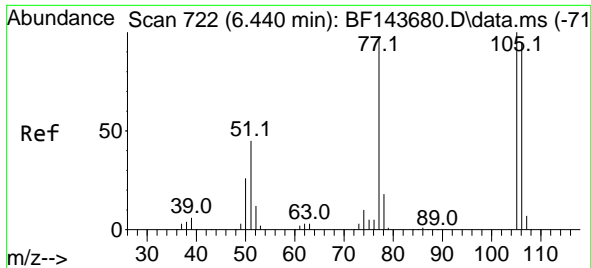


#8
 2-Chlorophenol
 Concen: 5.033 ng
 RT: 6.669 min Scan# 761
 Delta R.T. -0.000 min
 Lab File: BF143677.D
 Acq: 09 Sep 2025 09:41

Tgt Ion: 128 Resp: 17363

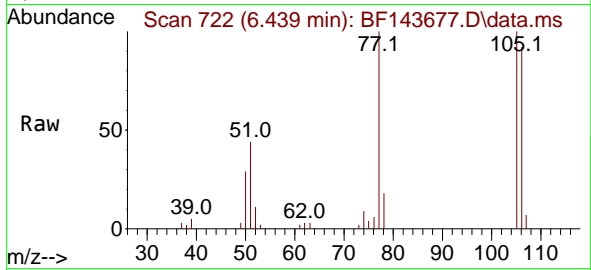
Ion	Ratio	Lower	Upper
128	100		
130	29.4	12.0	52.0
64	47.1	31.9	71.9



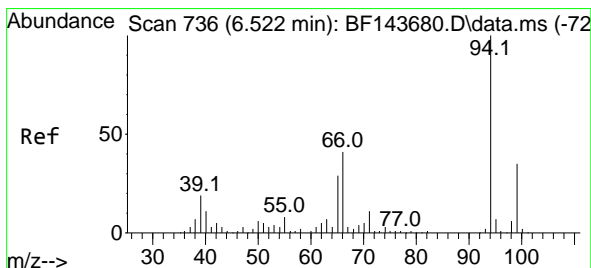
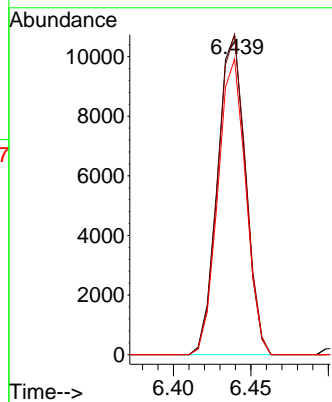
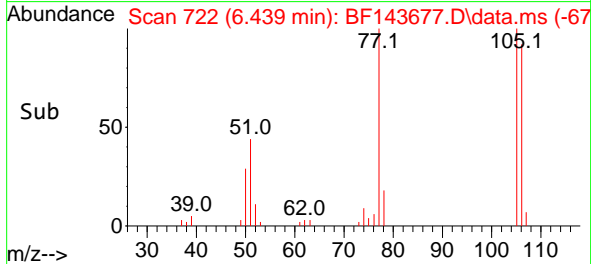


#9
Benzaldehyde
Concen: 4.284 ng
RT: 6.439 min Scan# 71
Delta R.T. -0.000 min
Lab File: BF143677.D
Acq: 09 Sep 2025 09:41

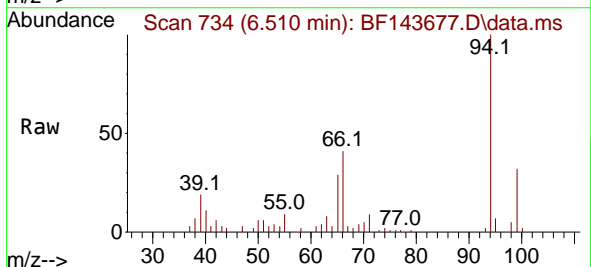
Instrument :
BNA_F
ClientSampleId :



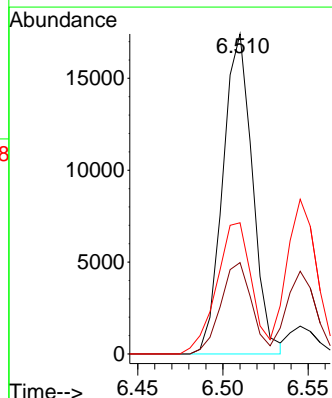
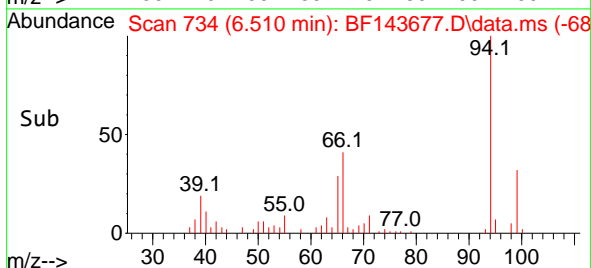
Tgt Ion: 77 Resp: 13441
Ion Ratio Lower Upper
77 100
105 100.0 81.7 121.7
106 92.4 76.9 116.9

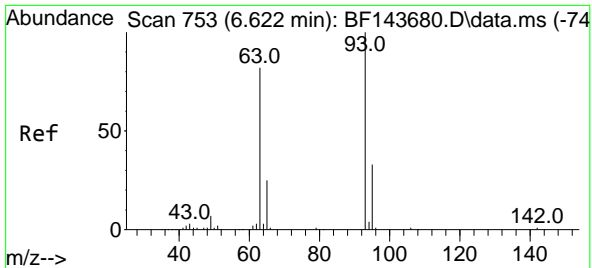


#10
Phenol
Concen: 4.897 ng
RT: 6.510 min Scan# 734
Delta R.T. -0.012 min
Lab File: BF143677.D
Acq: 09 Sep 2025 09:41



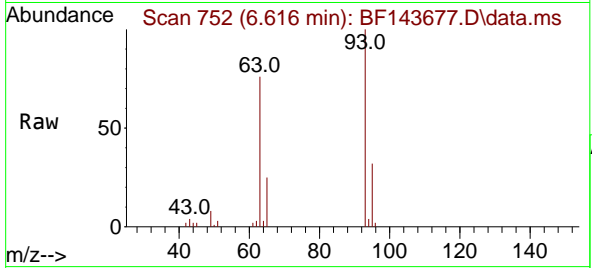
Tgt Ion: 94 Resp: 21053
Ion Ratio Lower Upper
94 100
65 28.5 9.1 49.1
66 41.0 20.8 60.8





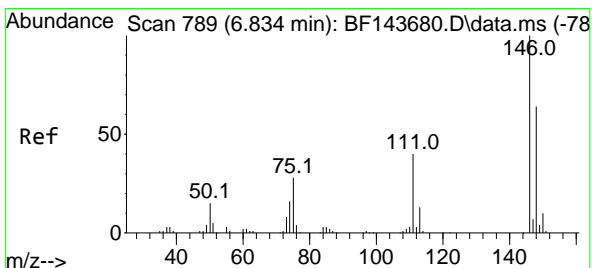
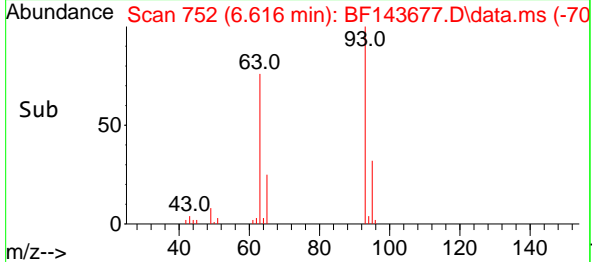
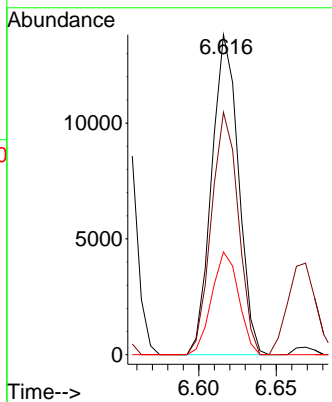
#11
 bis(2-Chloroethyl)ether
 Concen: 5.179 ng
 RT: 6.616 min Scan# 711
 Delta R.T. -0.006 min
 Lab File: BF143677.D
 Acq: 09 Sep 2025 09:41

Instrument :
 BNA_F
 ClientSampleId :



Tgt Ion: 93 Resp: 16627

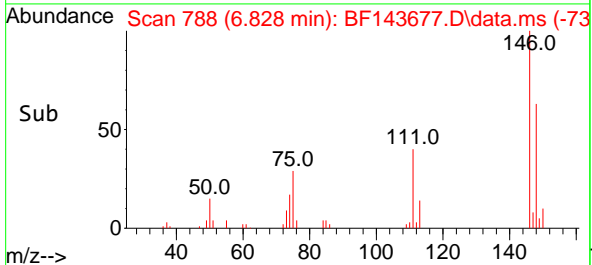
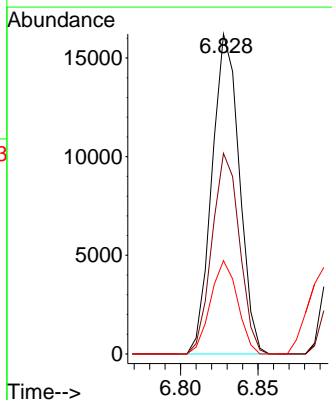
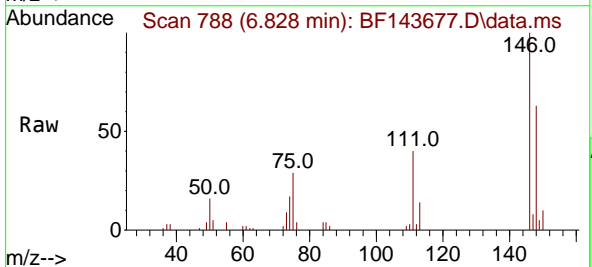
Ion	Ratio	Lower	Upper
93	100		
63	75.7	61.8	101.8
95	32.1	12.6	52.6

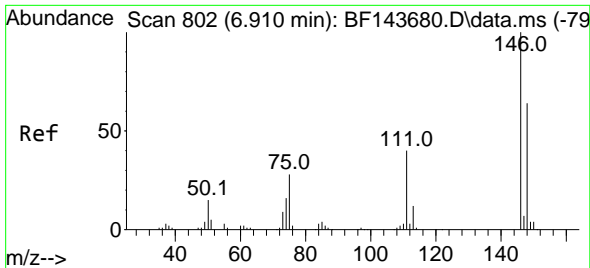


#12
 1,3-Dichlorobenzene
 Concen: 5.050 ng
 RT: 6.828 min Scan# 788
 Delta R.T. -0.006 min
 Lab File: BF143677.D
 Acq: 09 Sep 2025 09:41

Tgt Ion: 146 Resp: 19923

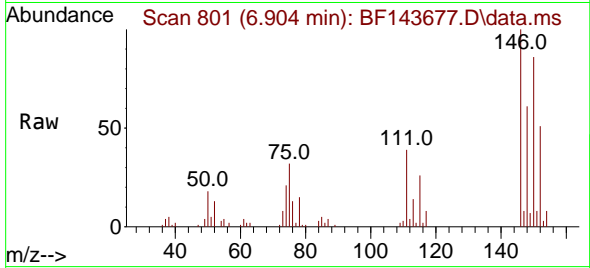
Ion	Ratio	Lower	Upper
146	100		
148	62.7	51.0	76.4
75	29.1	22.0	33.0



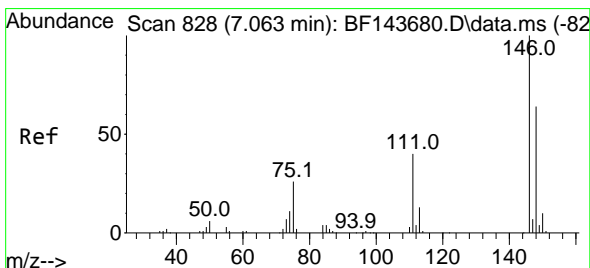
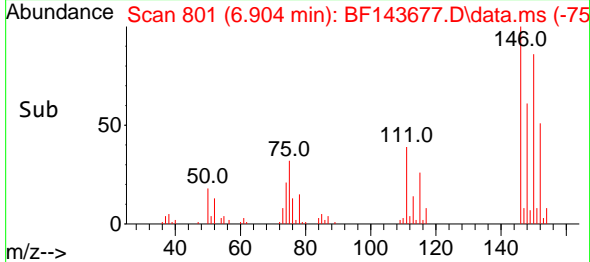
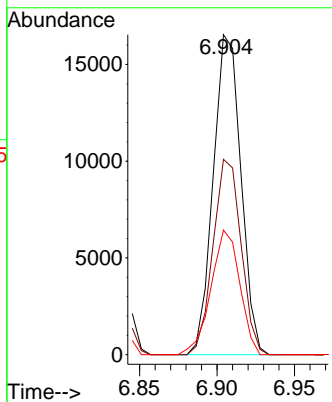


#13
 1,4-Dichlorobenzene
 Concen: 5.162 ng
 RT: 6.904 min Scan# 801
 Delta R.T. -0.006 min
 Lab File: BF143677.D
 Acq: 09 Sep 2025 09:41

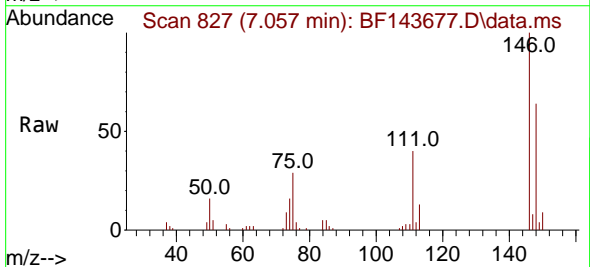
Instrument :
 BNA_F
 ClientSampleId :



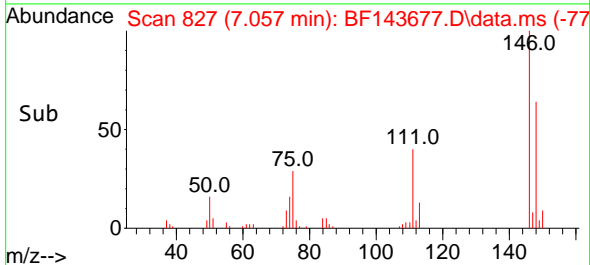
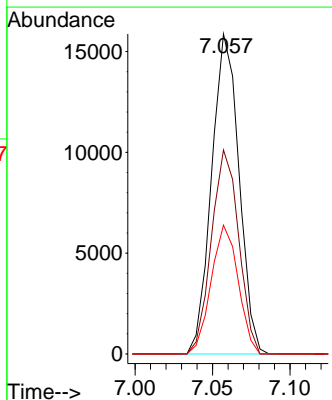
Tgt Ion:146 Resp: 20557
 Ion Ratio Lower Upper
 146 100
 148 61.1 51.2 76.8
 111 39.0 31.8 47.8

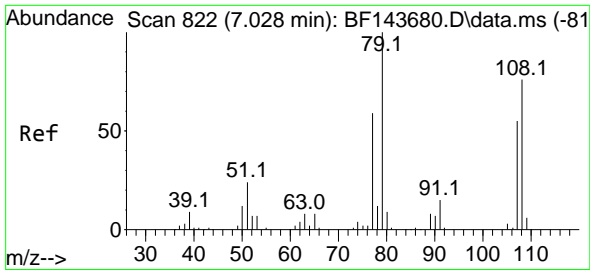


#14
 1,2-Dichlorobenzene
 Concen: 5.180 ng
 RT: 7.057 min Scan# 827
 Delta R.T. -0.006 min
 Lab File: BF143677.D
 Acq: 09 Sep 2025 09:41



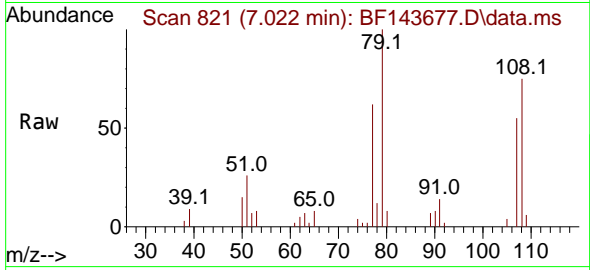
Tgt Ion:146 Resp: 19480
 Ion Ratio Lower Upper
 146 100
 148 63.7 51.0 76.4
 111 40.3 32.3 48.5



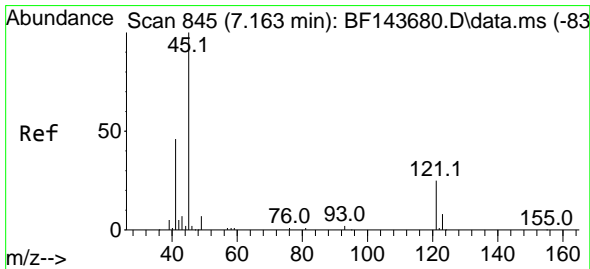
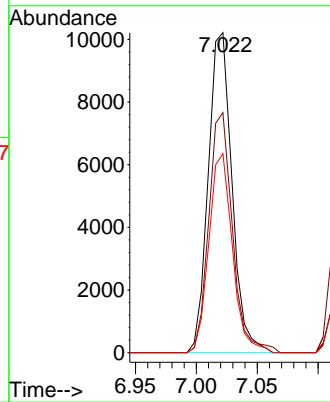
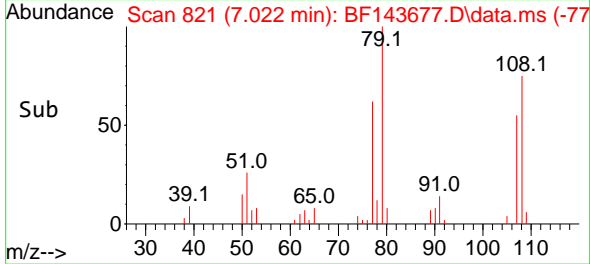


#15
 Benzyl Alcohol
 Concen: 4.894 ng
 RT: 7.022 min Scan# 81
 Delta R.T. -0.006 min
 Lab File: BF143677.D
 Acq: 09 Sep 2025 09:41

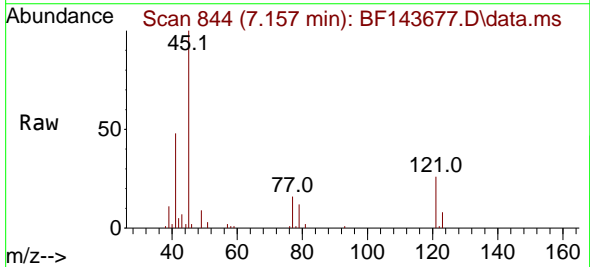
Instrument :
 BNA_F
 ClientSampleId :



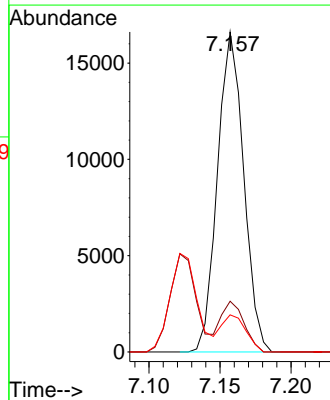
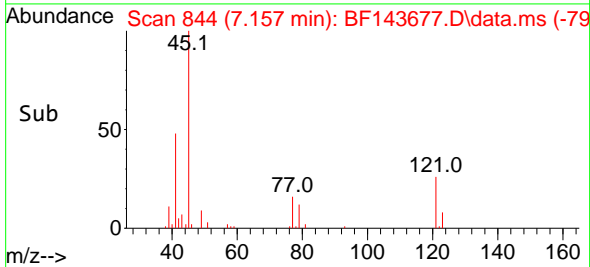
Tgt Ion: 79 Resp: 13846
 Ion Ratio Lower Upper
 79 100
 108 75.0 60.9 91.3
 77 62.2 47.4 71.2

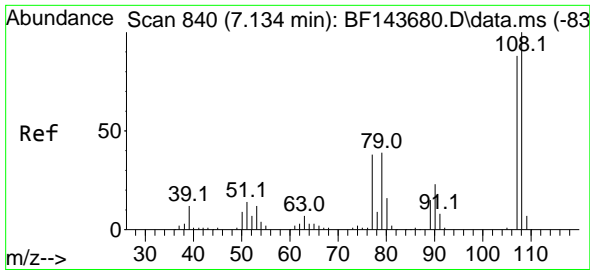


#16
 2,2'-oxybis(1-Chloropropane)
 Concen: 5.062 ng
 RT: 7.157 min Scan# 844
 Delta R.T. -0.006 min
 Lab File: BF143677.D
 Acq: 09 Sep 2025 09:41



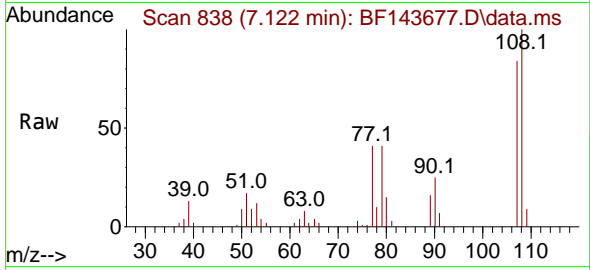
Tgt Ion: 45 Resp: 21263
 Ion Ratio Lower Upper
 45 100
 77 15.9 0.0 34.6
 79 11.6 0.0 31.3





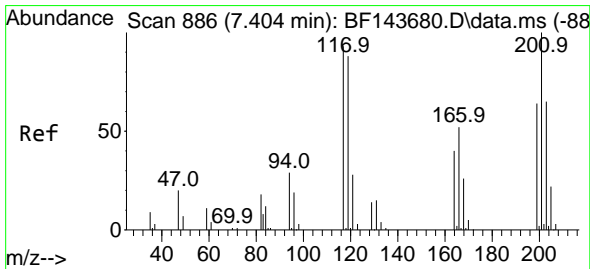
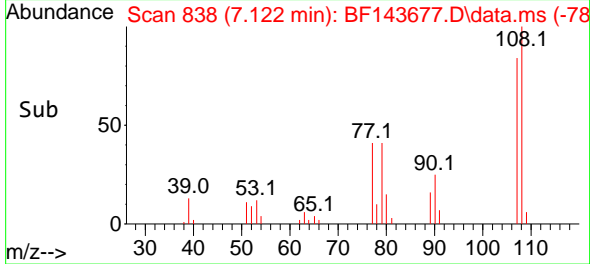
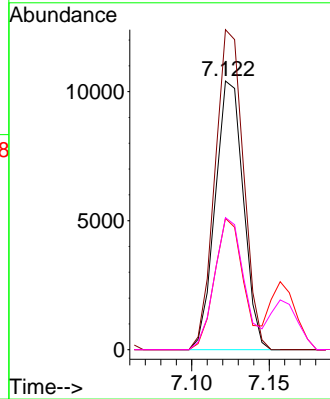
#17
 2-Methylphenol
 Concen: 4.745 ng
 RT: 7.122 min Scan# 811
 Delta R.T. -0.012 min
 Lab File: BF143677.D
 Acq: 09 Sep 2025 09:41

Instrument :
 BNA_F
 ClientSampleId :



Tgt Ion:107 Resp: 13167

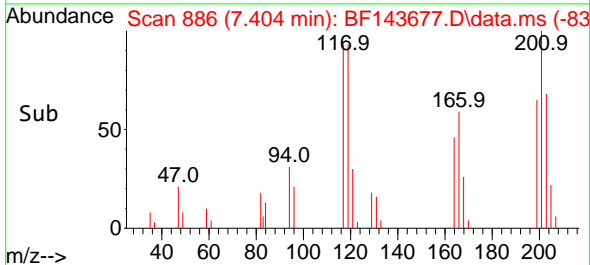
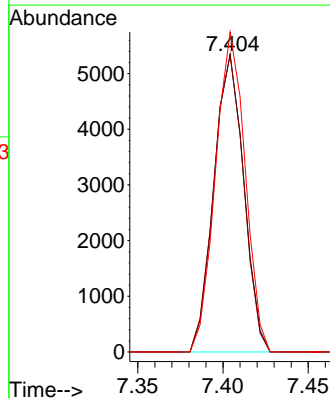
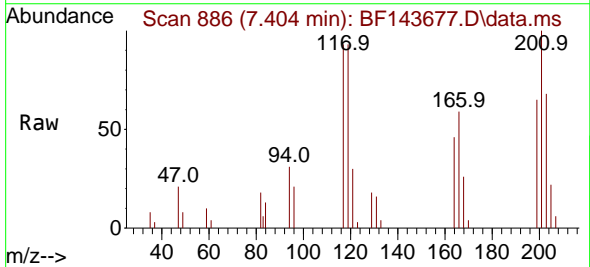
Ion	Ratio	Lower	Upper
107	100		
108	119.1	90.9	136.3
77	48.9	34.4	51.6
79	49.1	35.3	52.9

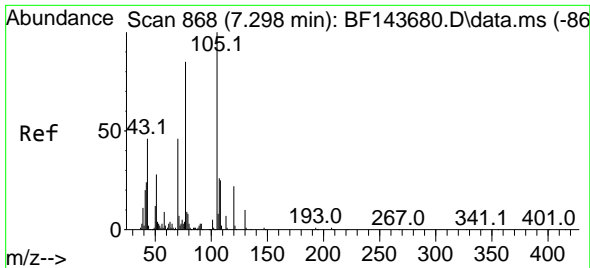


#18
 Hexachloroethane
 Concen: 5.061 ng
 RT: 7.404 min Scan# 886
 Delta R.T. -0.000 min
 Lab File: BF143677.D
 Acq: 09 Sep 2025 09:41

Tgt Ion:117 Resp: 6510

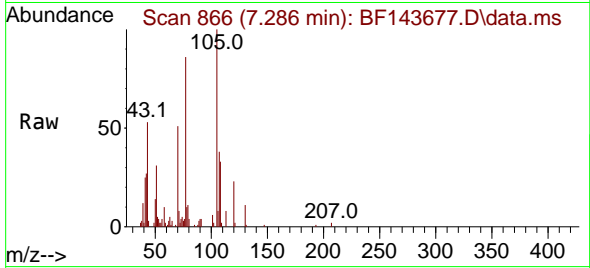
Ion	Ratio	Lower	Upper
117	100		
119	100.1	76.2	114.2
201	107.6	86.4	129.6





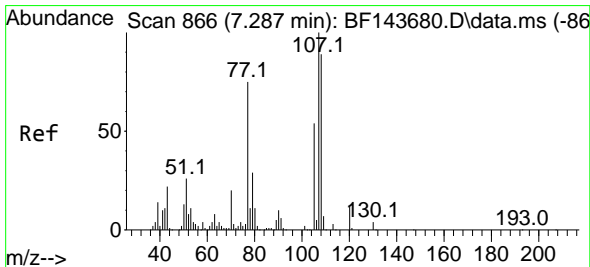
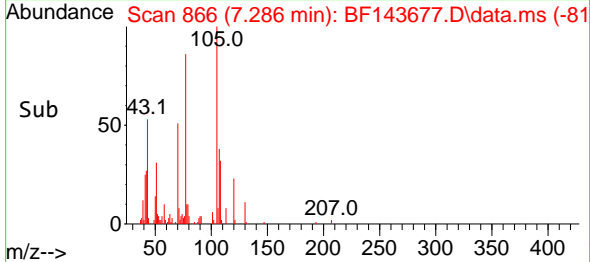
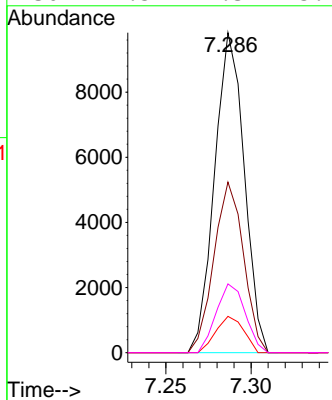
#19
 n-Nitroso-di-n-propylamine
 Concen: 4.966 ng
 RT: 7.286 min Scan# 80
 Delta R.T. -0.012 min
 Lab File: BF143677.D
 Acq: 09 Sep 2025 09:41

Instrument :
 BNA_F
 ClientSampleId :

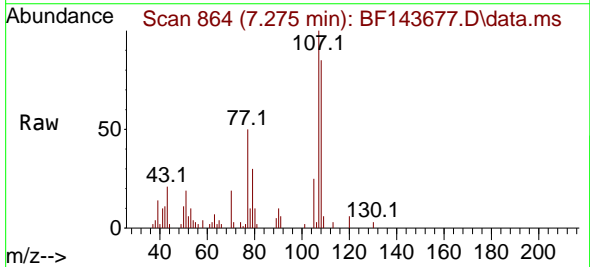


Tgt Ion: 70 Resp: 11861

Ion	Ratio	Lower	Upper
70	100		
42	53.3	41.4	62.2
101	11.4	8.1	12.1
130	21.5	17.3	25.9

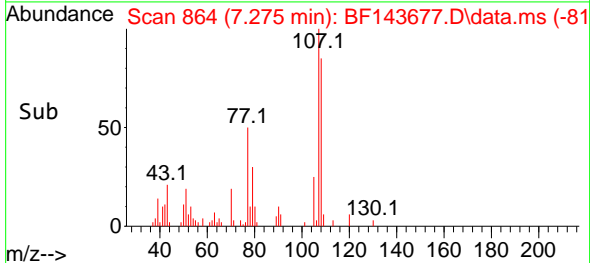
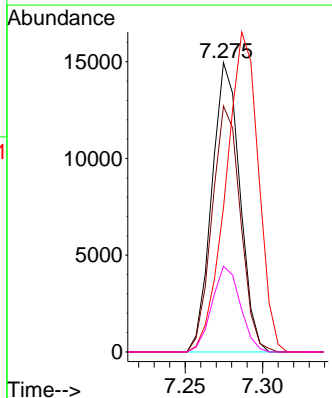


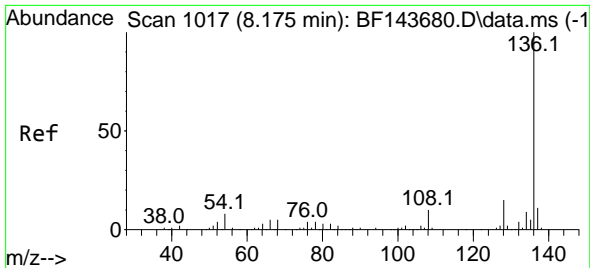
#20
 3+4-Methylphenols
 Concen: 5.142 ng
 RT: 7.275 min Scan# 864
 Delta R.T. -0.012 min
 Lab File: BF143677.D
 Acq: 09 Sep 2025 09:41



Tgt Ion: 107 Resp: 18791

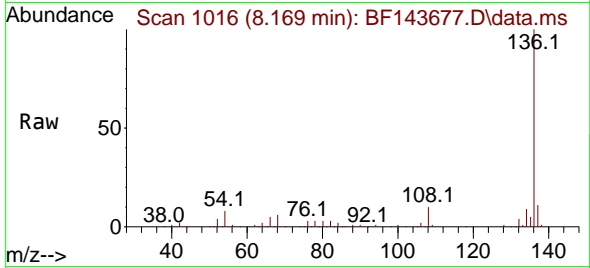
Ion	Ratio	Lower	Upper
107	100		
108	85.0	68.6	108.6
77	49.8	54.6	94.6#
79	29.6	8.9	48.9





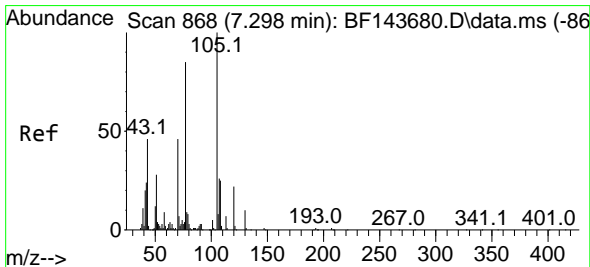
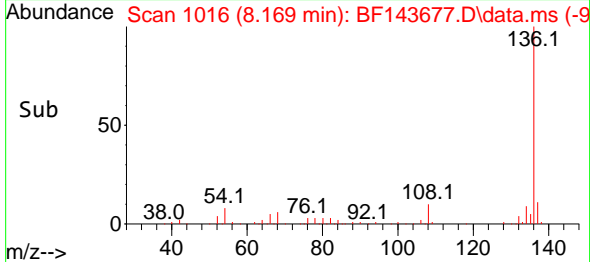
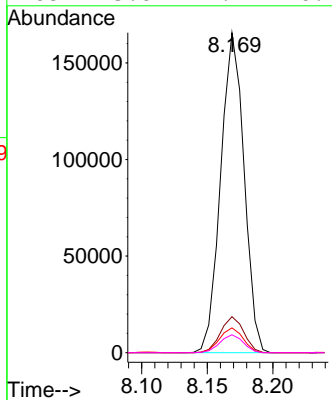
#21
 Naphthalene-d8
 Concen: 20.000 ng
 RT: 8.169 min Scan# 1016
 Delta R.T. -0.006 min
 Lab File: BF143677.D
 Acq: 09 Sep 2025 09:41

Instrument :
 BNA_F
 ClientSampleId :



Tgt Ion:136 Resp: 205041

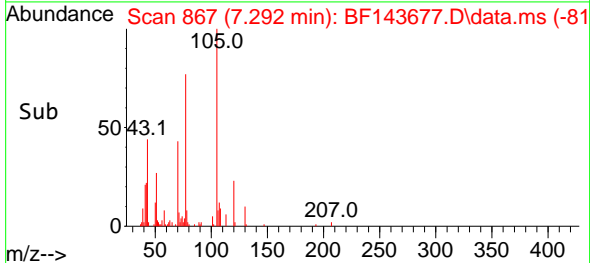
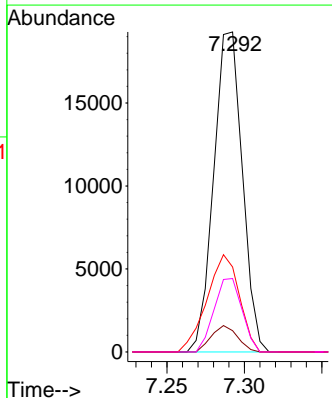
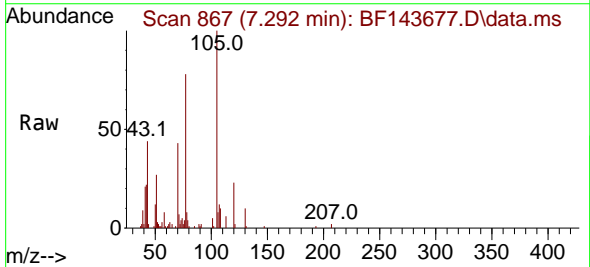
Ion	Ratio	Lower	Upper
136	100		
137	11.2	8.7	13.1
54	7.7	6.2	9.2
68	5.6	4.2	6.4

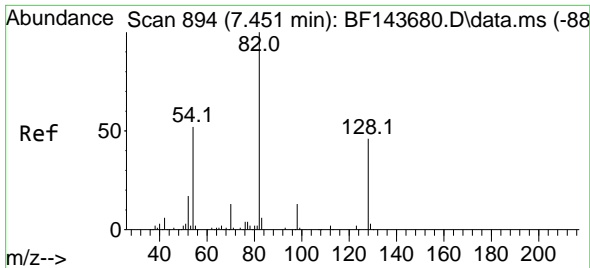


#22
 Acetophenone
 Concen: 5.349 ng
 RT: 7.292 min Scan# 867
 Delta R.T. -0.006 min
 Lab File: BF143677.D
 Acq: 09 Sep 2025 09:41

Tgt Ion:105 Resp: 24772

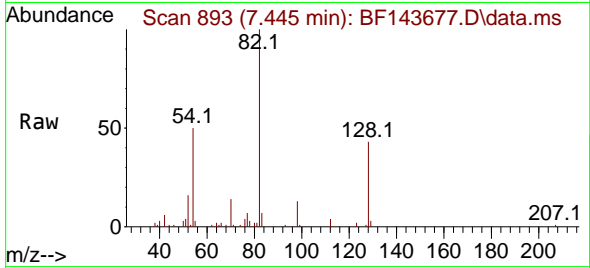
Ion	Ratio	Lower	Upper
105	100		
71	6.7	5.9	8.9
51	26.6	22.4	33.6
120	22.9	17.6	26.4



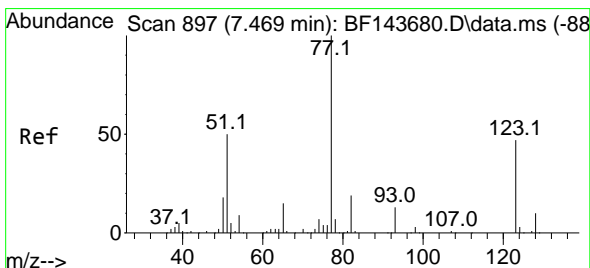
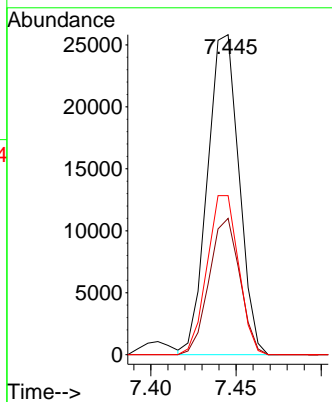
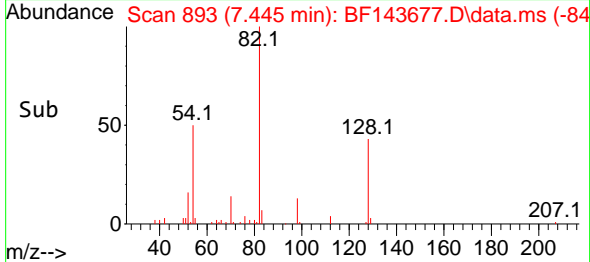


#23
 Nitrobenzene-d5
 Concen: 10.105 ng
 RT: 7.445 min Scan# 891
 Delta R.T. -0.006 min
 Lab File: BF143677.D
 Acq: 09 Sep 2025 09:41

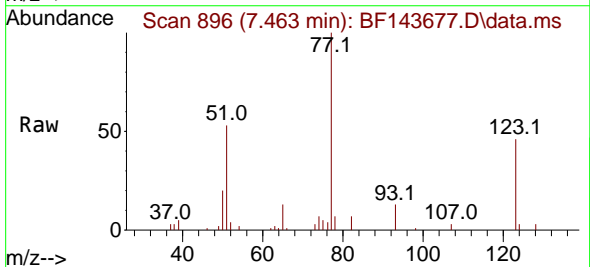
Instrument :
 BNA_F
 ClientSampleId :



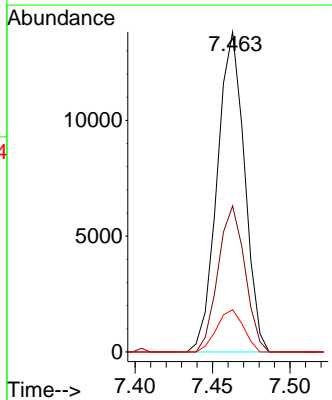
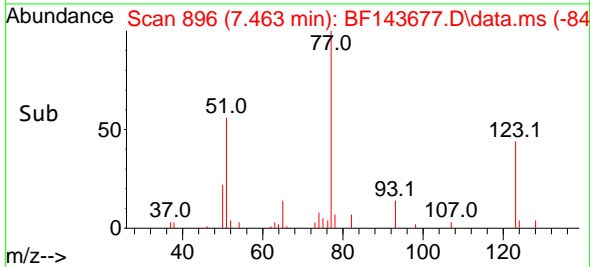
Tgt Ion: 82 Resp: 33309
 Ion Ratio Lower Upper
 82 100
 128 42.6 37.0 55.4
 54 49.7 41.8 62.8

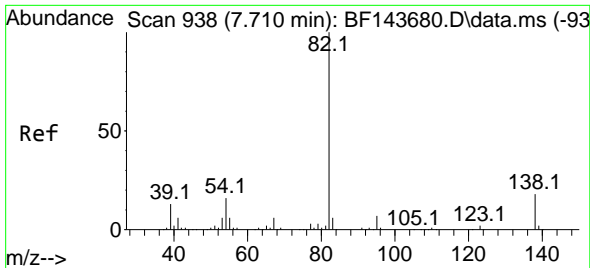


#24
 Nitrobenzene
 Concen: 4.947 ng
 RT: 7.463 min Scan# 896
 Delta R.T. -0.006 min
 Lab File: BF143677.D
 Acq: 09 Sep 2025 09:41



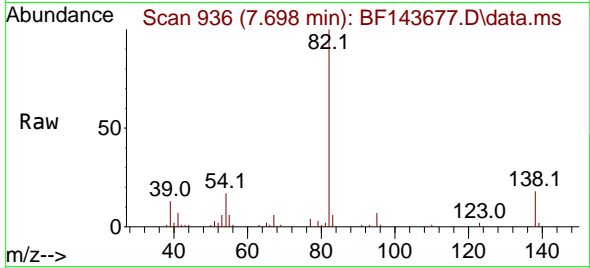
Tgt Ion: 77 Resp: 16908
 Ion Ratio Lower Upper
 77 100
 123 45.7 37.4 56.0
 65 13.2 11.6 17.4



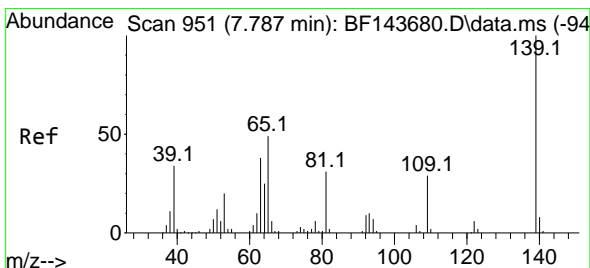
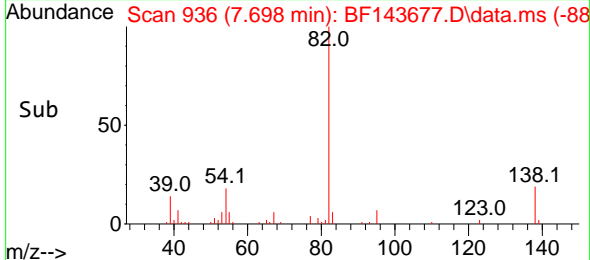
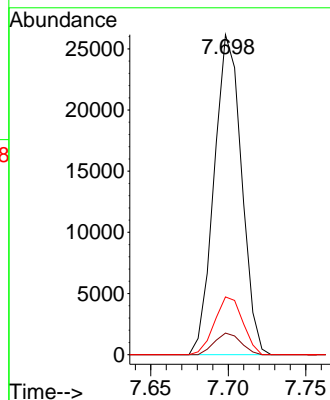


#25
 Isophorone
 Concen: 5.095 ng
 RT: 7.698 min Scan# 91
 Delta R.T. -0.012 min
 Lab File: BF143677.D
 Acq: 09 Sep 2025 09:41

Instrument :
 BNA_F
 ClientSampleId :

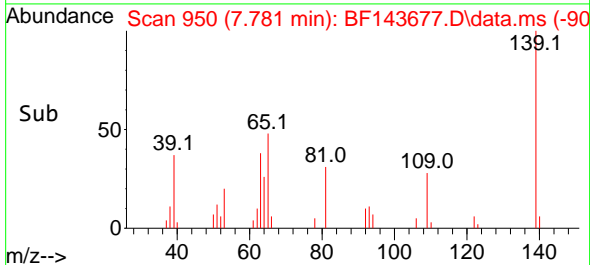
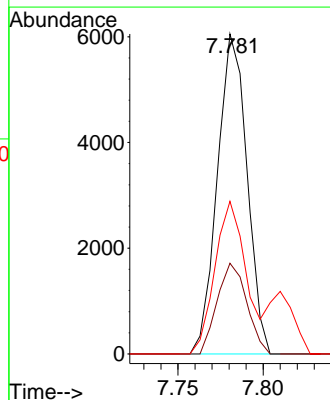
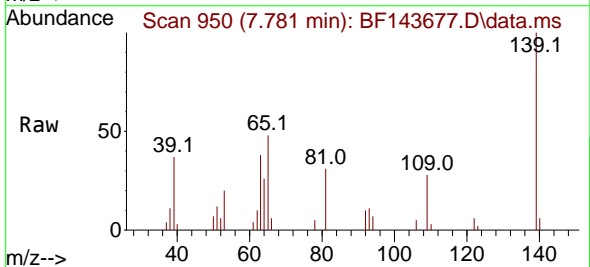


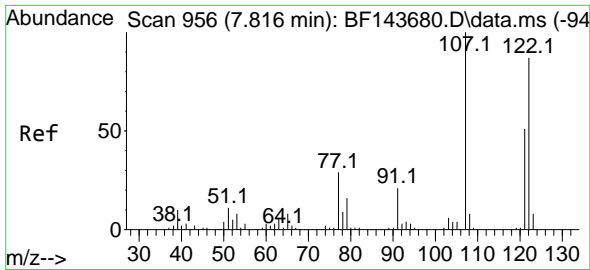
Tgt Ion: 82 Resp: 32204
 Ion Ratio Lower Upper
 82 100
 95 6.8 5.7 8.5
 138 18.0 14.8 22.2



#26
 2-Nitrophenol
 Concen: 4.352 ng
 RT: 7.781 min Scan# 950
 Delta R.T. -0.006 min
 Lab File: BF143677.D
 Acq: 09 Sep 2025 09:41

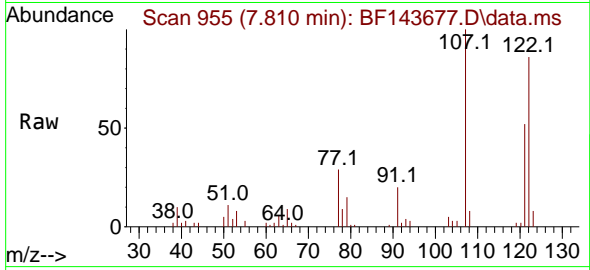
Tgt Ion: 139 Resp: 7313
 Ion Ratio Lower Upper
 139 100
 109 28.4 22.8 34.2
 65 47.7 39.2 58.8



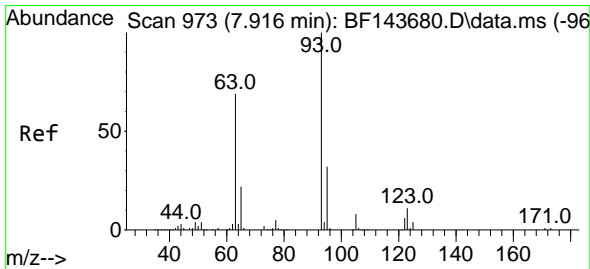
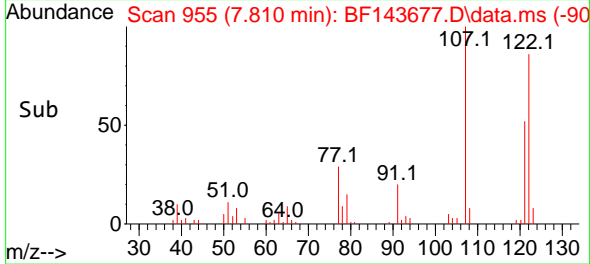
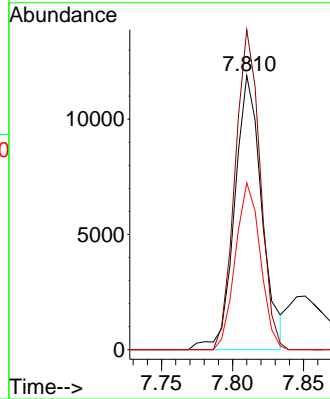


#27
 2,4-Dimethylphenol
 Concen: 5.244 ng
 RT: 7.810 min Scan# 911
 Delta R.T. -0.006 min
 Lab File: BF143677.D
 Acq: 09 Sep 2025 09:41

Instrument :
 BNA_F
 ClientSampleId :

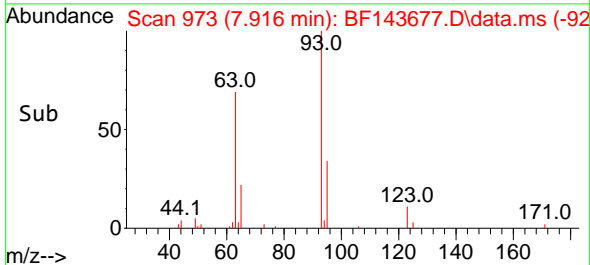
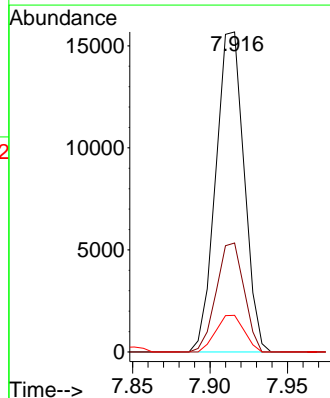
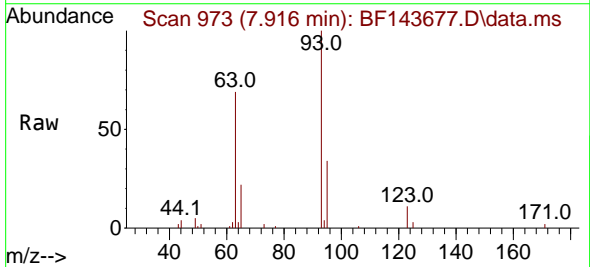


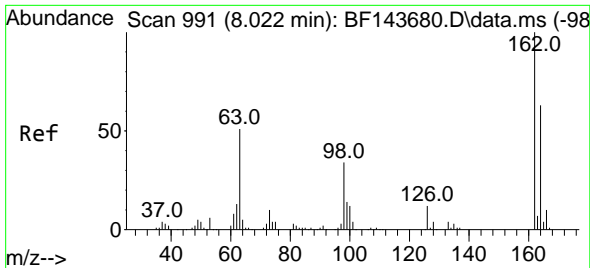
Tgt Ion:122 Resp: 15822
 Ion Ratio Lower Upper
 122 100
 107 116.8 92.1 138.1
 121 60.9 46.9 70.3



#28
 bis(2-Chloroethoxy)methane
 Concen: 5.141 ng
 RT: 7.916 min Scan# 973
 Delta R.T. -0.000 min
 Lab File: BF143677.D
 Acq: 09 Sep 2025 09:41

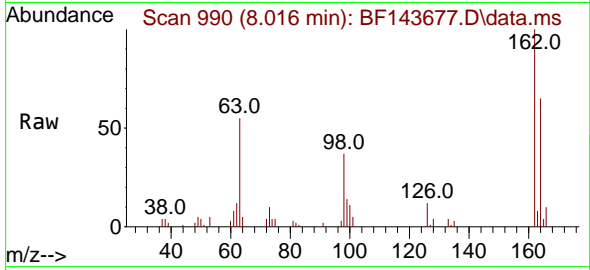
Tgt Ion: 93 Resp: 19972
 Ion Ratio Lower Upper
 93 100
 95 34.0 26.0 39.0
 123 11.4 9.6 14.4



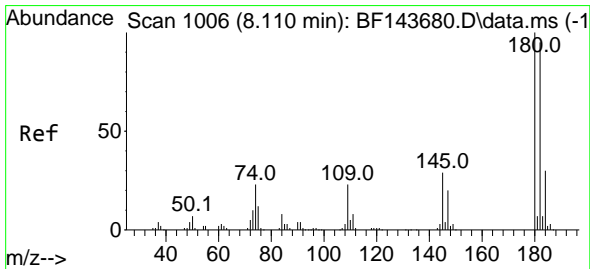
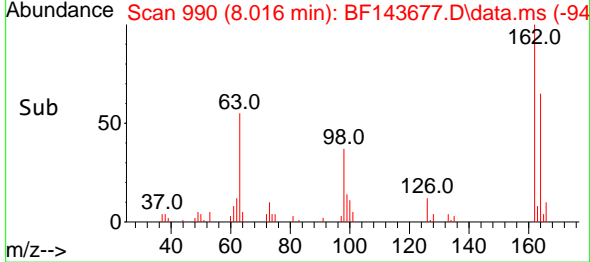
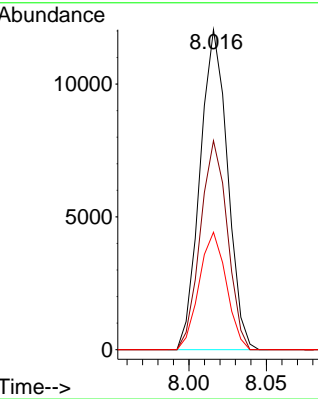


#29
 2,4-Dichlorophenol
 Concen: 4.901 ng
 RT: 8.016 min Scan# 991
 Delta R.T. -0.006 min
 Lab File: BF143677.D
 Acq: 09 Sep 2025 09:41

Instrument :
 BNA_F
 ClientSampleId :

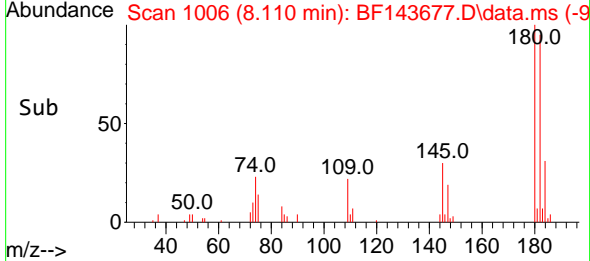
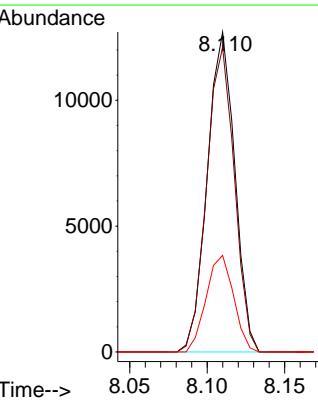
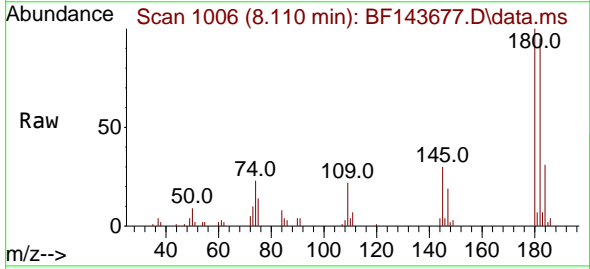


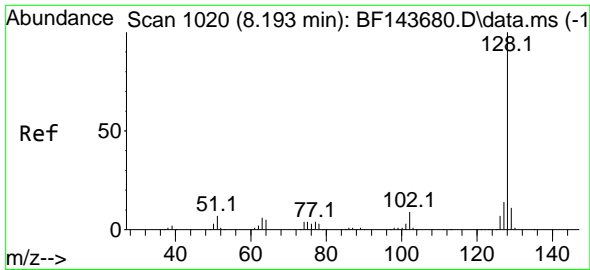
Tgt Ion:162 Resp: 14874
 Ion Ratio Lower Upper
 162 100
 164 65.3 43.0 83.0
 98 36.7 13.8 53.8



#30
 1,2,4-Trichlorobenzene
 Concen: 4.986 ng
 RT: 8.110 min Scan# 1006
 Delta R.T. -0.000 min
 Lab File: BF143677.D
 Acq: 09 Sep 2025 09:41

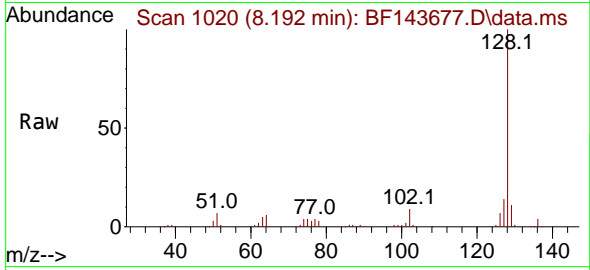
Tgt Ion:180 Resp: 15678
 Ion Ratio Lower Upper
 180 100
 182 95.2 76.2 114.4
 145 30.2 23.2 34.8



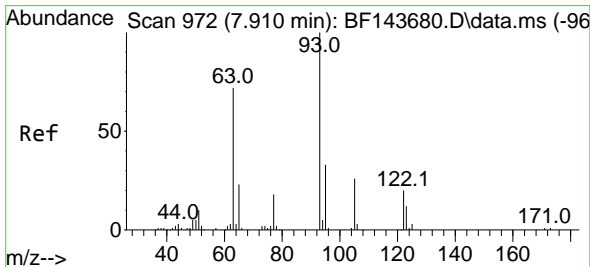
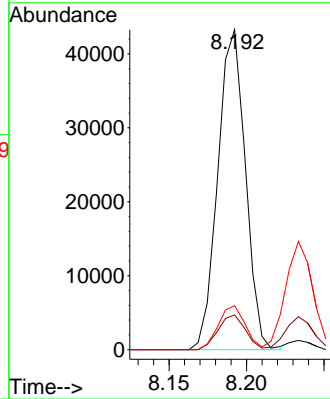
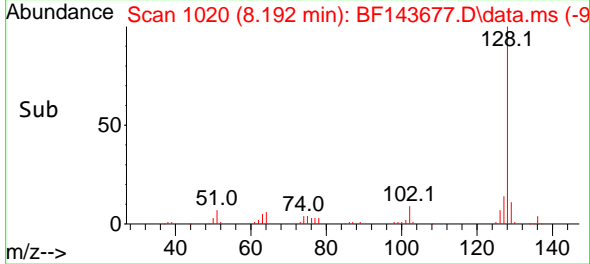


#31
 Naphthalene
 Concen: 5.276 ng
 RT: 8.192 min Scan# 10
 Delta R.T. -0.000 min
 Lab File: BF143677.D
 Acq: 09 Sep 2025 09:41

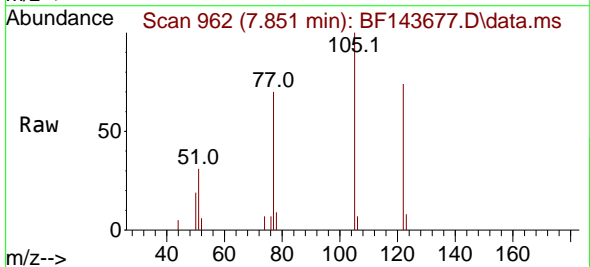
Instrument :
 BNA_F
 ClientSampleId :



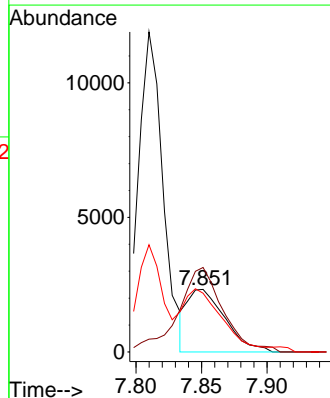
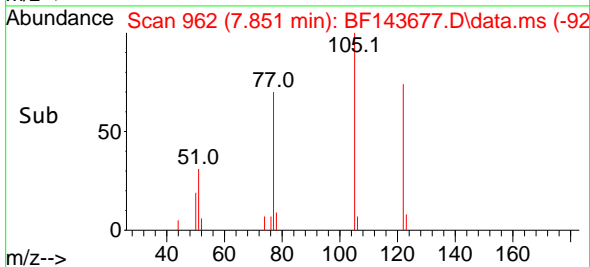
Tgt Ion:128 Resp: 53553
 Ion Ratio Lower Upper
 128 100
 129 10.8 8.8 13.2
 127 13.8 10.9 16.3

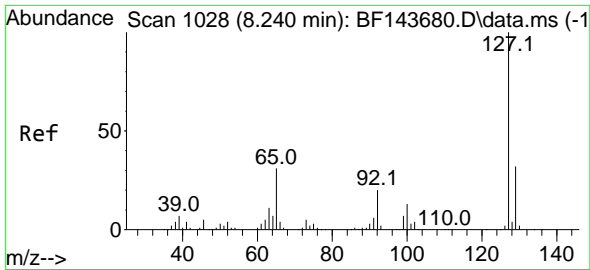


#32
 Benzoic acid
 Concen: 2.521 ng
 RT: 7.851 min Scan# 962
 Delta R.T. -0.059 min
 Lab File: BF143677.D
 Acq: 09 Sep 2025 09:41



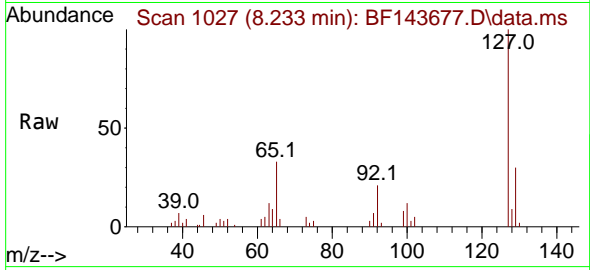
Tgt Ion:122 Resp: 4640
 Ion Ratio Lower Upper
 122 100
 105 135.1 105.2 145.2
 77 94.0 72.0 112.0





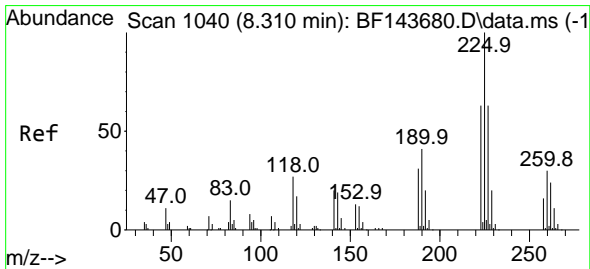
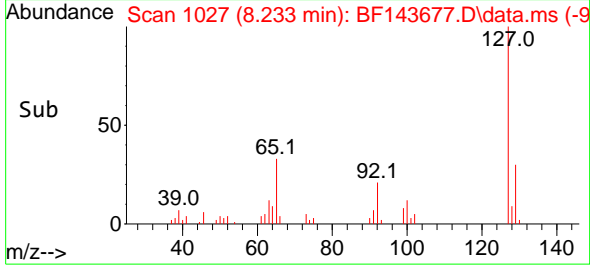
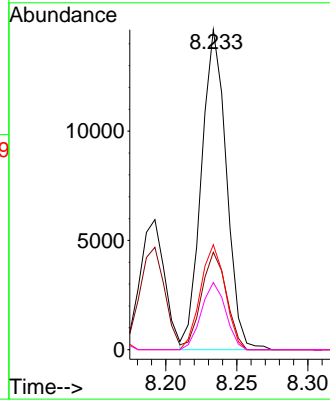
#33
 4-Chloroaniline
 Concen: 5.067 ng
 RT: 8.233 min Scan# 1027
 Delta R.T. -0.006 min
 Lab File: BF143677.D
 Acq: 09 Sep 2025 09:41

Instrument :
 BNA_F
 ClientSampleId :



Tgt Ion:127 Resp: 17906

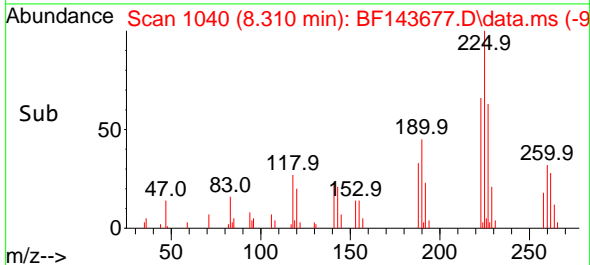
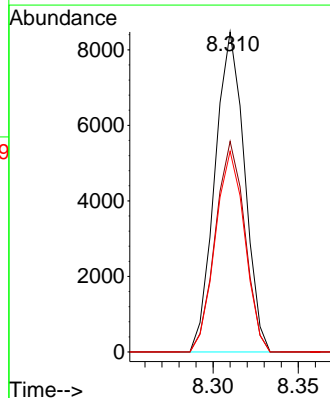
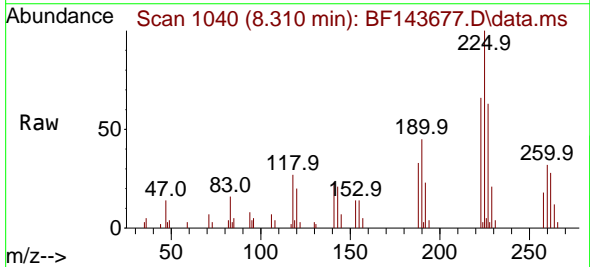
Ion	Ratio	Lower	Upper
127	100		
129	30.4	26.0	39.0
65	32.8	24.6	36.8
92	21.0	16.3	24.5

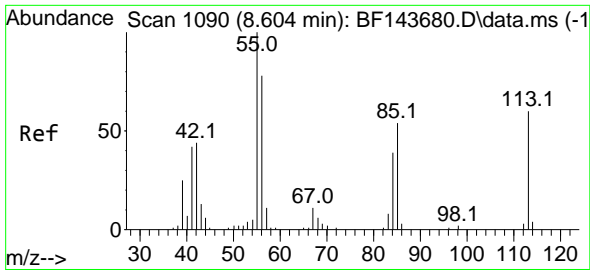


#34
 Hexachlorobutadiene
 Concen: 4.988 ng
 RT: 8.310 min Scan# 1040
 Delta R.T. -0.000 min
 Lab File: BF143677.D
 Acq: 09 Sep 2025 09:41

Tgt Ion:225 Resp: 10229

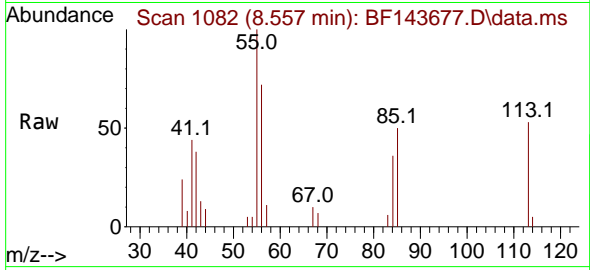
Ion	Ratio	Lower	Upper
225	100		
223	65.8	50.6	76.0
227	62.7	50.8	76.2



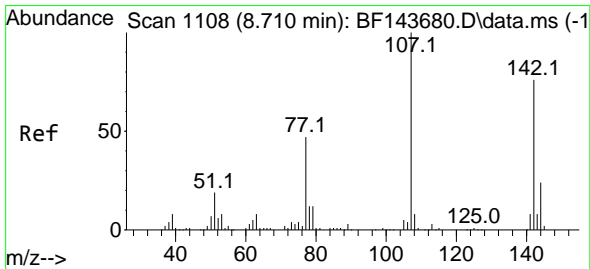
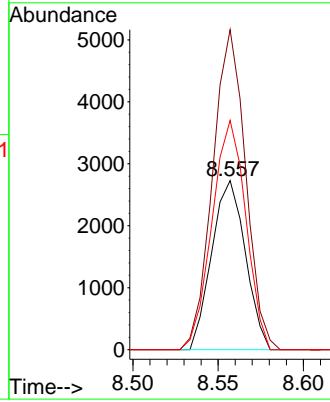
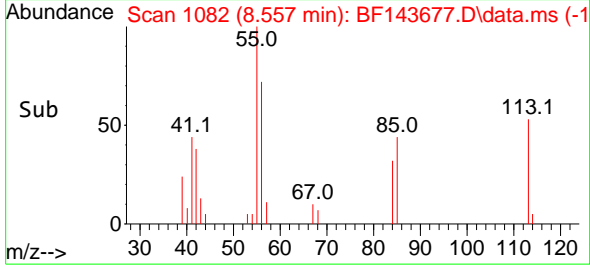


#35
 Caprolactam
 Concen: 4.638 ng
 RT: 8.557 min Scan# 1082
 Delta R.T. -0.047 min
 Lab File: BF143677.D
 Acq: 09 Sep 2025 09:41

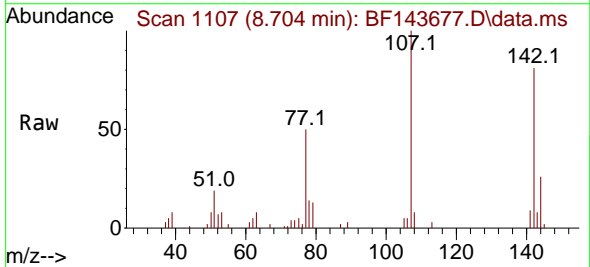
Instrument :
 BNA_F
 ClientSampleId :



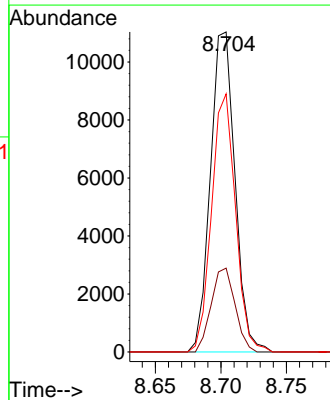
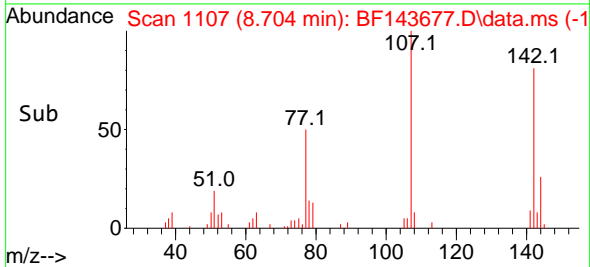
Tgt Ion:113 Resp: 3746
 Ion Ratio Lower Upper
 113 100
 55 189.2 148.9 188.9#
 56 135.6 112.8 152.8

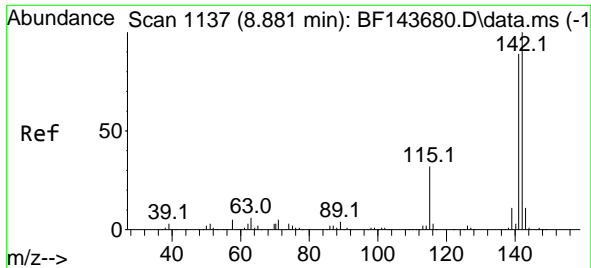


#36
 4-Chloro-3-methylphenol
 Concen: 4.814 ng
 RT: 8.704 min Scan# 1107
 Delta R.T. -0.006 min
 Lab File: BF143677.D
 Acq: 09 Sep 2025 09:41



Tgt Ion:107 Resp: 14405
 Ion Ratio Lower Upper
 107 100
 144 26.2 19.4 29.2
 142 80.6 60.6 91.0

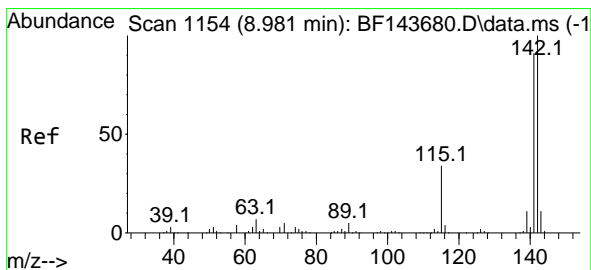
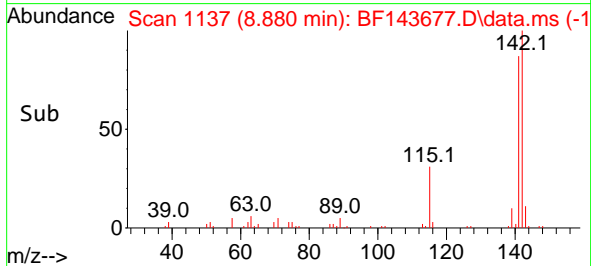
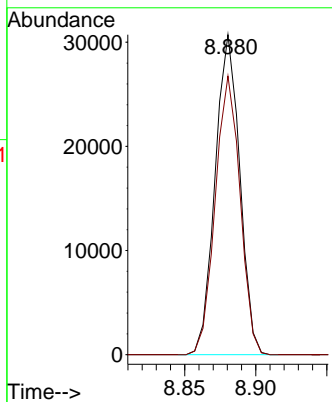
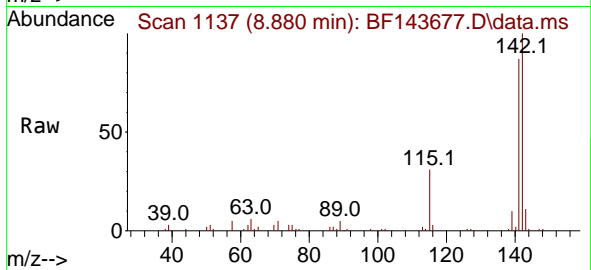




#37
 2-Methylnaphthalene
 Concen: 5.328 ng
 RT: 8.880 min Scan# 1137
 Delta R.T. -0.000 min
 Lab File: BF143677.D
 Acq: 09 Sep 2025 09:41

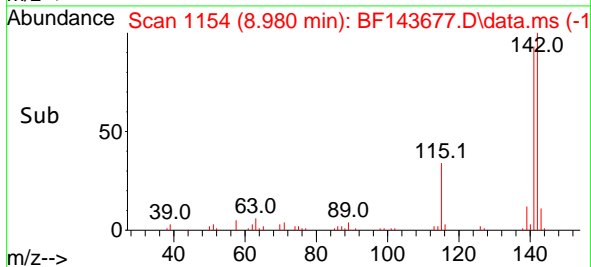
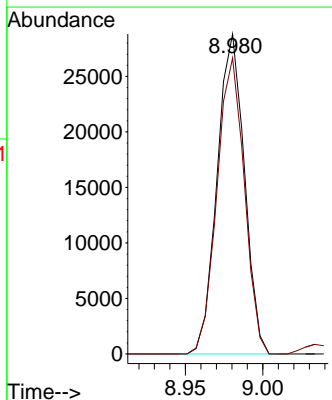
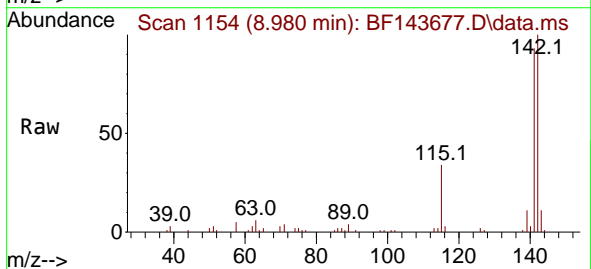
Instrument :
 BNA_F
 ClientSampleId :

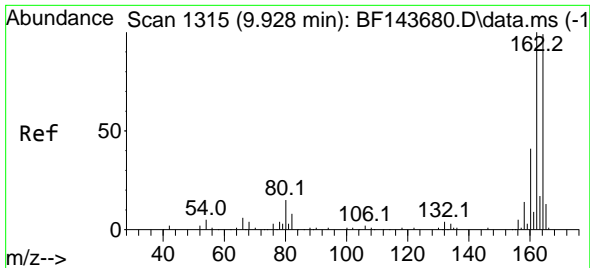
Tgt Ion:142 Resp: 37023
 Ion Ratio Lower Upper
 142 100
 141 87.1 71.1 106.7



#38
 1-Methylnaphthalene
 Concen: 5.280 ng
 RT: 8.980 min Scan# 1154
 Delta R.T. -0.000 min
 Lab File: BF143677.D
 Acq: 09 Sep 2025 09:41

Tgt Ion:142 Resp: 35207
 Ion Ratio Lower Upper
 142 100
 141 92.5 72.9 109.3



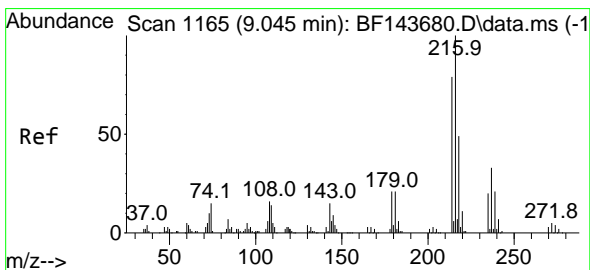
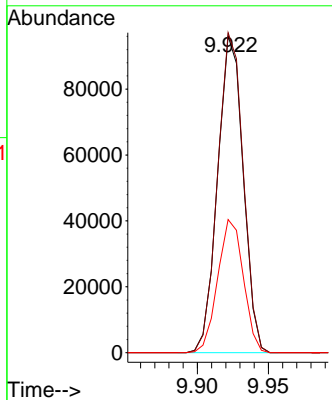
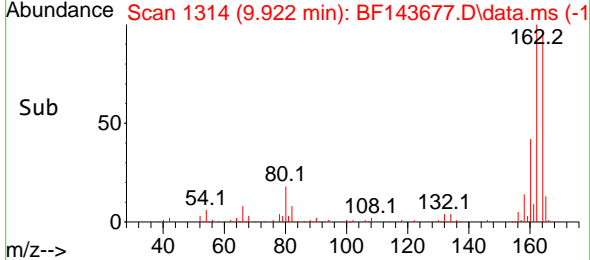
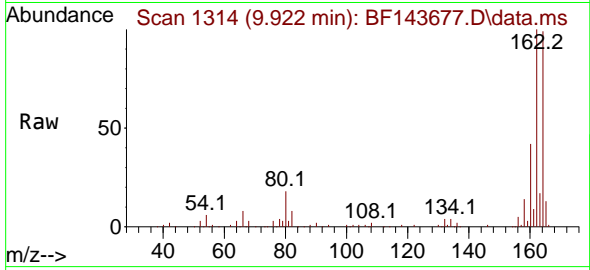


#39
 Acenaphthene-d10
 Concen: 20.000 ng
 RT: 9.922 min Scan# 111
 Delta R.T. -0.006 min
 Lab File: BF143677.D
 Acq: 09 Sep 2025 09:41

Instrument : BNA_F
 ClientSampleId :

Tgt Ion:164 Resp: 120150

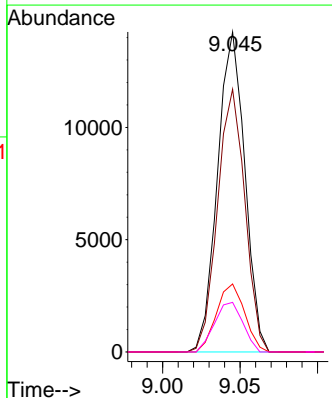
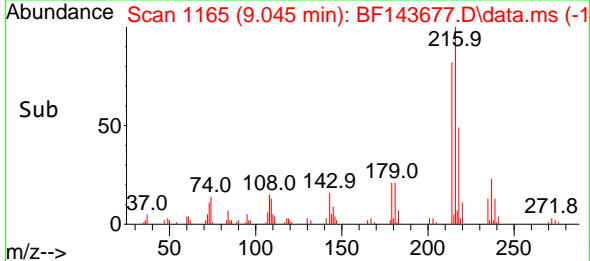
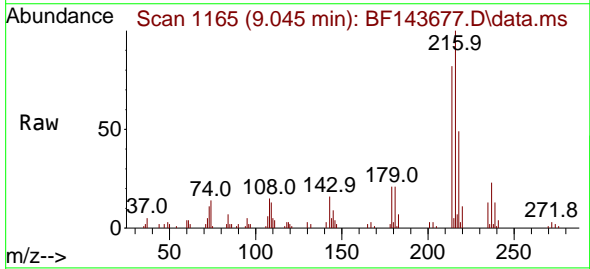
Ion	Ratio	Lower	Upper
164	100		
162	101.1	80.6	121.0
160	42.1	33.0	49.4

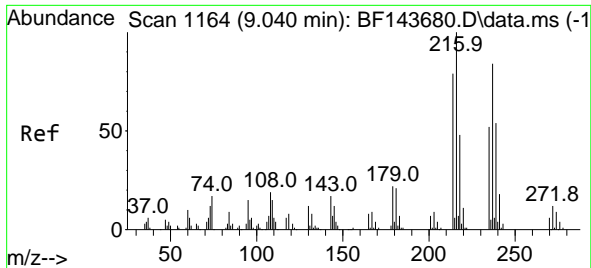


#40
 1,2,4,5-Tetrachlorobenzene
 Concen: 5.067 ng
 RT: 9.045 min Scan# 1165
 Delta R.T. -0.000 min
 Lab File: BF143677.D
 Acq: 09 Sep 2025 09:41

Tgt Ion:216 Resp: 17428

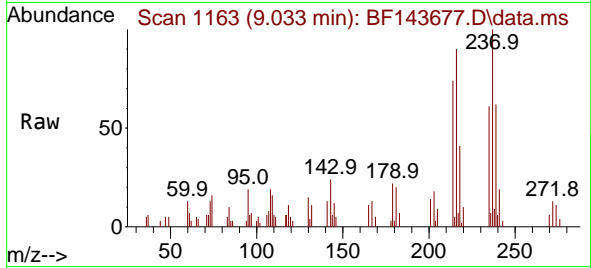
Ion	Ratio	Lower	Upper
216	100		
214	82.1	63.2	94.8
179	22.0	16.8	25.2
108	16.2	13.0	19.6



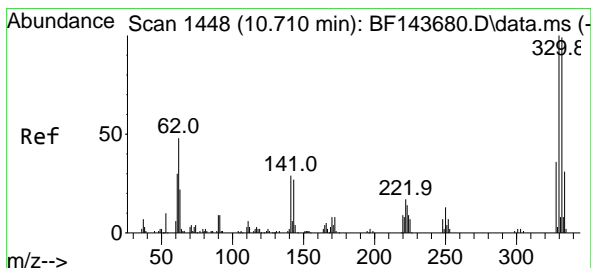
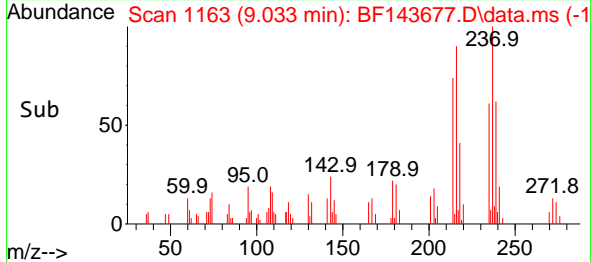
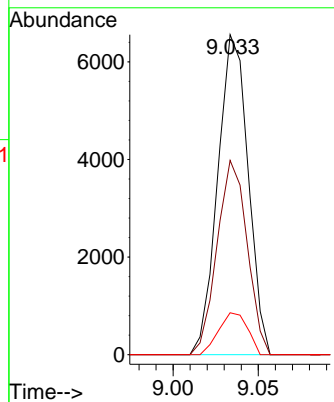


#41
 Hexachlorocyclopentadiene
 Concen: 4.595 ng
 RT: 9.033 min Scan# 1163
 Delta R.T. -0.006 min
 Lab File: BF143677.D
 Acq: 09 Sep 2025 09:41

Instrument :
 BNA_F
 ClientSampleId :

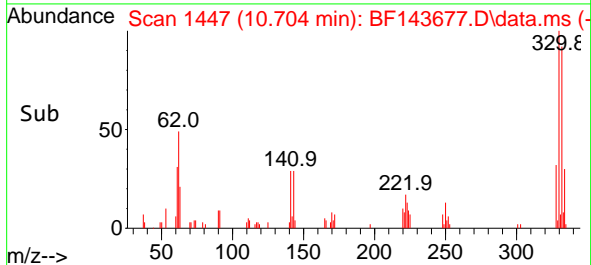
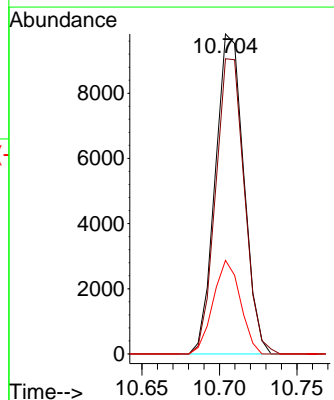
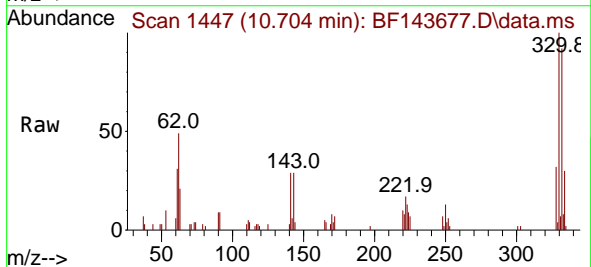


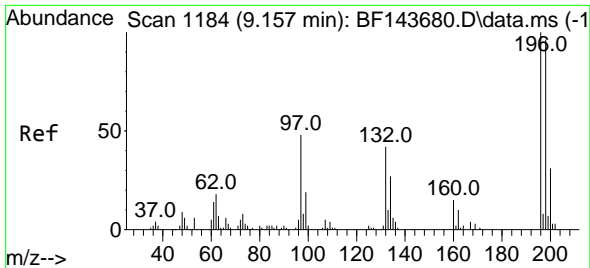
Tgt Ion:237 Resp: 8114
 Ion Ratio Lower Upper
 237 100
 235 60.7 41.6 81.6
 272 13.1 0.0 33.9



#42
 2,4,6-Tribromophenol
 Concen: 10.356 ng
 RT: 10.704 min Scan# 1447
 Delta R.T. -0.006 min
 Lab File: BF143677.D
 Acq: 09 Sep 2025 09:41

Tgt Ion:330 Resp: 12540
 Ion Ratio Lower Upper
 330 100
 332 93.1 79.2 118.8
 141 27.9 22.2 33.4

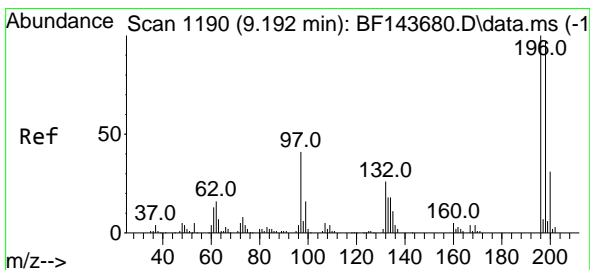
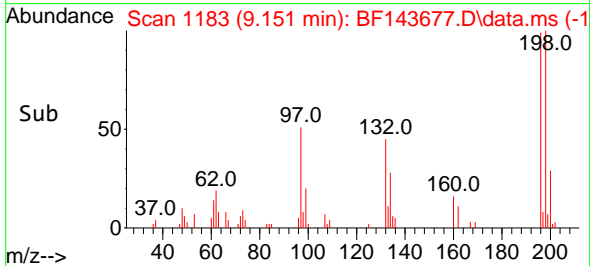
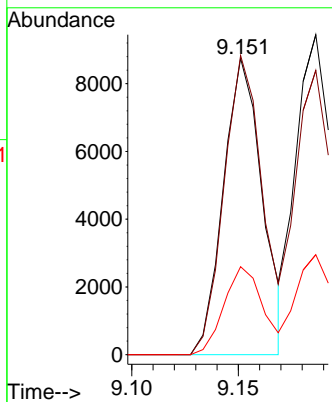
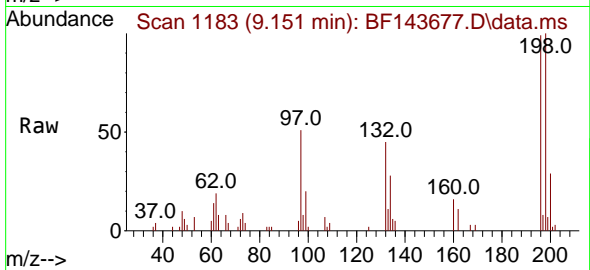




#43
 2,4,6-Trichlorophenol
 Concen: 4.841 ng
 RT: 9.151 min Scan# 1183
 Delta R.T. -0.006 min
 Lab File: BF143677.D
 Acq: 09 Sep 2025 09:41

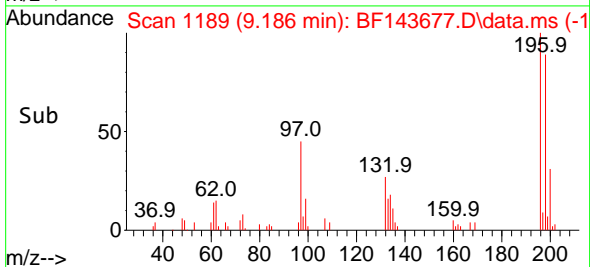
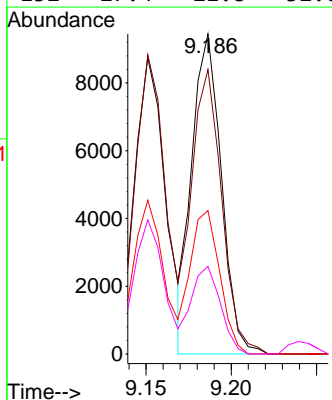
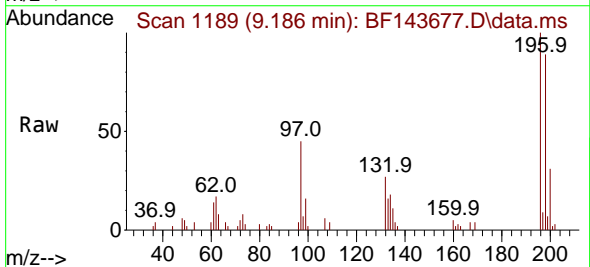
Instrument :
 BNA_F
 ClientSampleId :

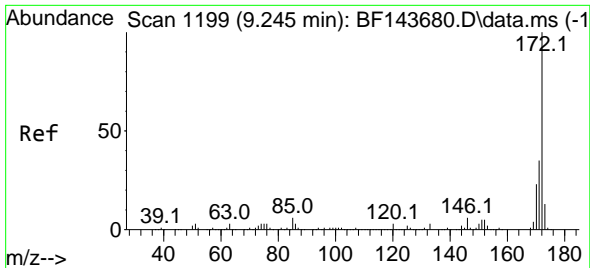
Tgt Ion:196 Resp: 11120
 Ion Ratio Lower Upper
 196 100
 198 101.0 76.5 114.7
 200 29.7 24.5 36.7



#44
 2,4,5-Trichlorophenol
 Concen: 4.855 ng
 RT: 9.186 min Scan# 1189
 Delta R.T. -0.006 min
 Lab File: BF143677.D
 Acq: 09 Sep 2025 09:41

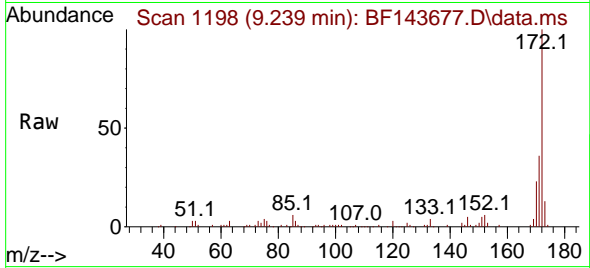
Tgt Ion:196 Resp: 11336
 Ion Ratio Lower Upper
 196 100
 198 88.9 77.0 115.6
 97 44.8 34.2 51.4
 132 27.4 21.8 32.6



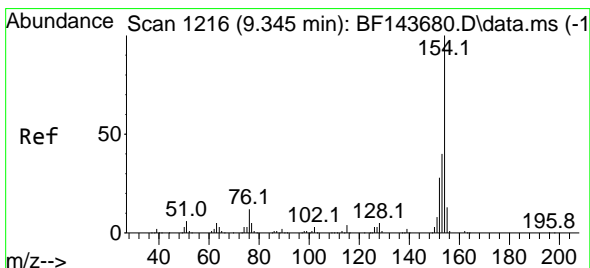
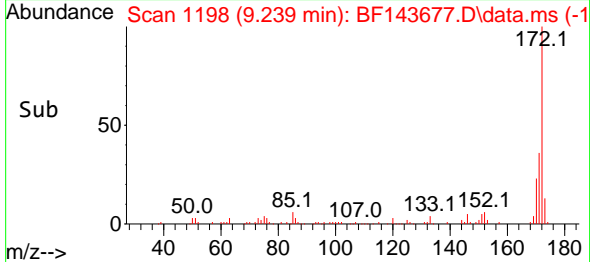
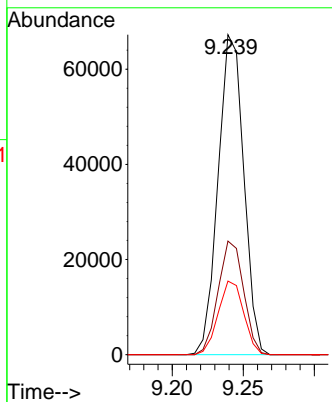


#45
 2-Fluorobiphenyl
 Concen: 10.611 ng
 RT: 9.239 min Scan# 1198
 Delta R.T. -0.006 min
 Lab File: BF143677.D
 Acq: 09 Sep 2025 09:41

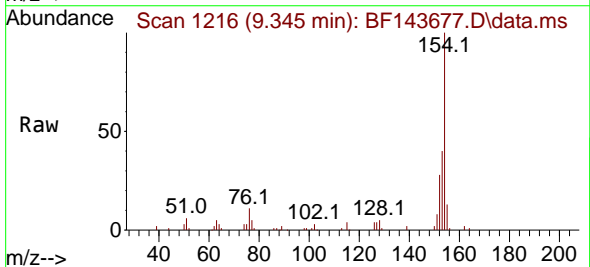
Instrument :
 BNA_F
 ClientSampleId :



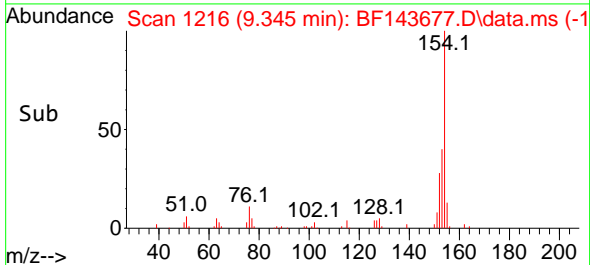
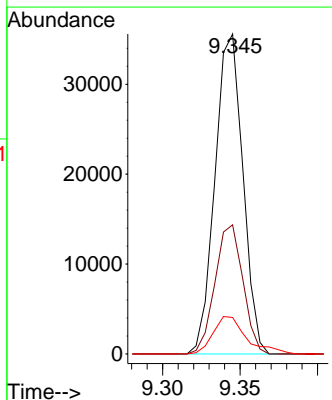
Tgt Ion:172 Resp: 84393
 Ion Ratio Lower Upper
 172 100
 171 35.5 27.9 41.9
 170 23.0 18.6 27.8

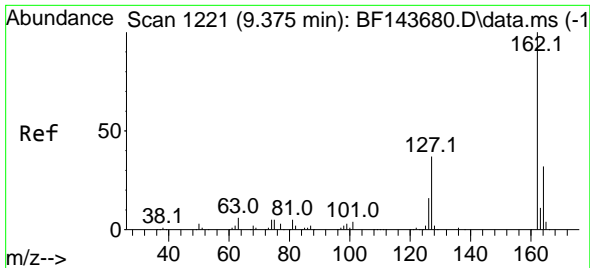


#46
 1,1'-Biphenyl
 Concen: 5.143 ng
 RT: 9.345 min Scan# 1216
 Delta R.T. -0.000 min
 Lab File: BF143677.D
 Acq: 09 Sep 2025 09:41



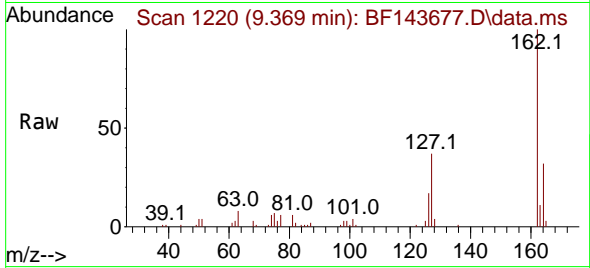
Tgt Ion:154 Resp: 44485
 Ion Ratio Lower Upper
 154 100
 153 40.3 20.2 60.2
 76 11.4 0.0 31.6





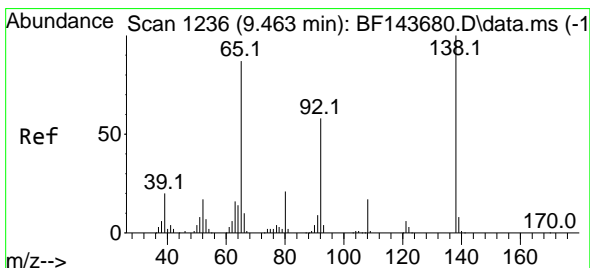
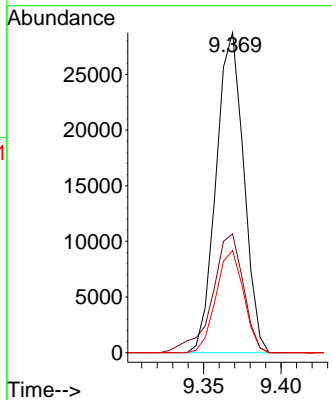
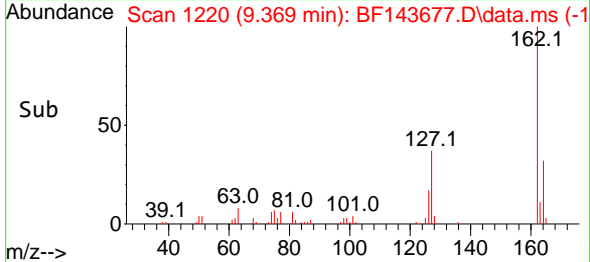
#47
 2-Chloronaphthalene
 Concen: 5.252 ng
 RT: 9.369 min Scan# 11
 Delta R.T. -0.006 min
 Lab File: BF143677.D
 Acq: 09 Sep 2025 09:41

Instrument :
 BNA_F
 ClientSampleId :

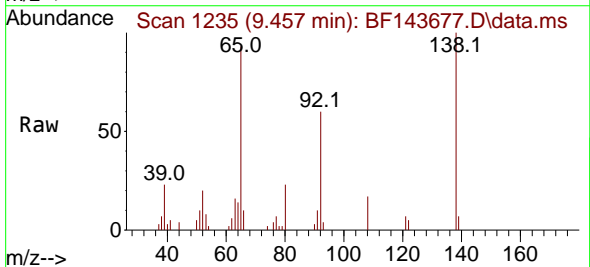


Tgt Ion:162 Resp: 35613

Ion	Ratio	Lower	Upper
162	100		
127	37.1	30.6	45.8
164	31.9	25.8	38.8

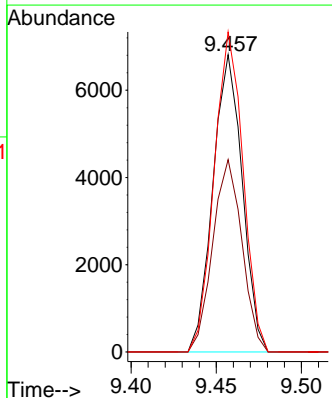
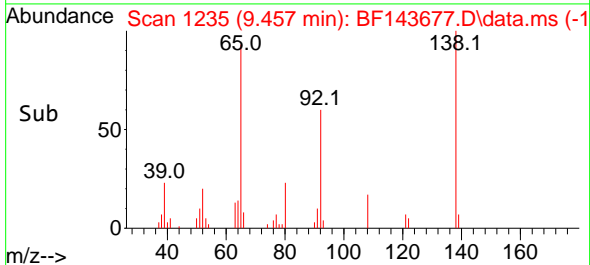


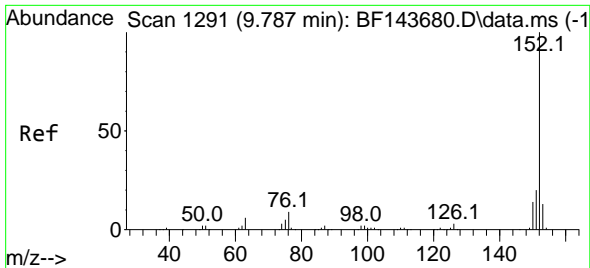
#48
 2-Nitroaniline
 Concen: 4.546 ng
 RT: 9.457 min Scan# 1235
 Delta R.T. -0.006 min
 Lab File: BF143677.D
 Acq: 09 Sep 2025 09:41



Tgt Ion: 65 Resp: 8158

Ion	Ratio	Lower	Upper
65	100		
92	64.7	53.3	79.9
138	107.6	92.1	138.1



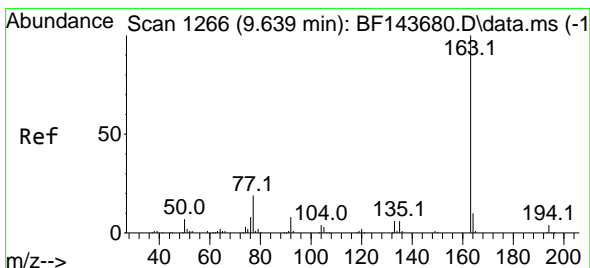
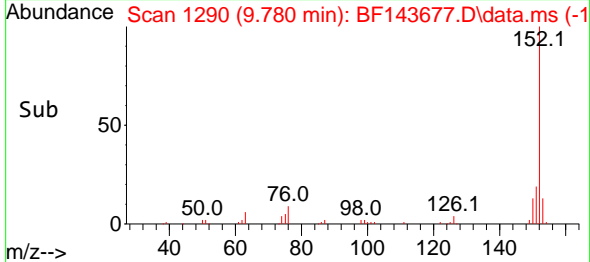
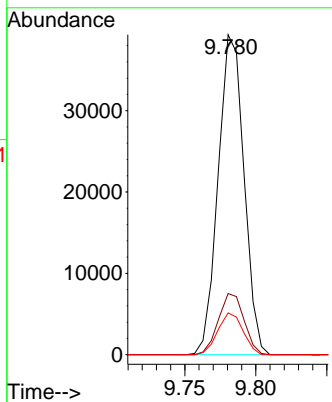
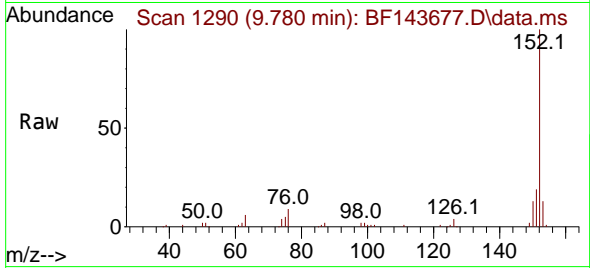


#49
 Acenaphthylene
 Concen: 5.120 ng
 RT: 9.780 min Scan# 11
 Delta R.T. -0.006 min
 Lab File: BF143677.D
 Acq: 09 Sep 2025 09:41

Instrument :
 BNA_F
 ClientSampleId :

Tgt Ion:152 Resp: 49733

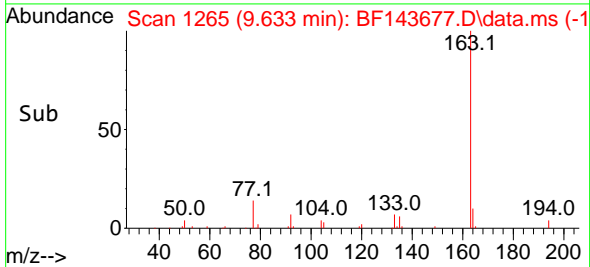
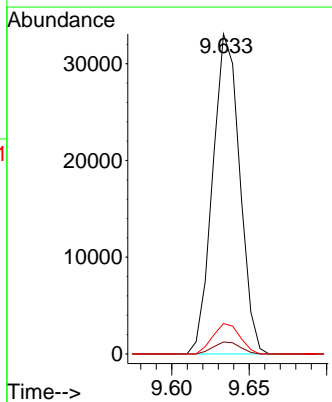
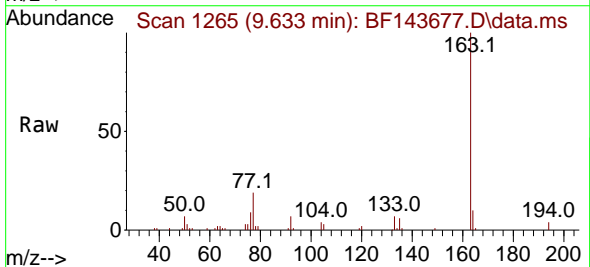
Ion	Ratio	Lower	Upper
152	100		
151	19.1	15.9	23.9
153	13.1	10.4	15.6

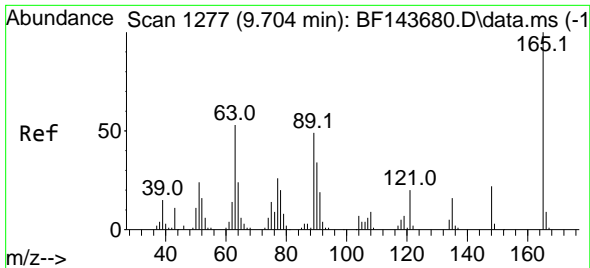


#50
 Dimethylphthalate
 Concen: 5.131 ng
 RT: 9.633 min Scan# 1265
 Delta R.T. -0.006 min
 Lab File: BF143677.D
 Acq: 09 Sep 2025 09:41

Tgt Ion:163 Resp: 40112

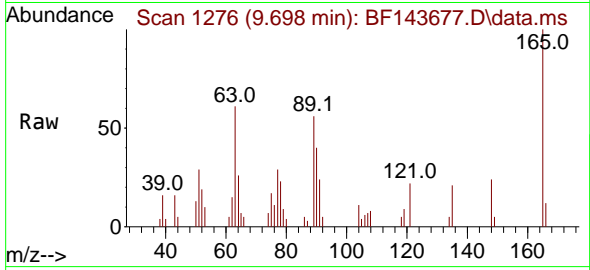
Ion	Ratio	Lower	Upper
163	100		
194	3.8	3.4	5.0
164	9.5	8.0	12.0



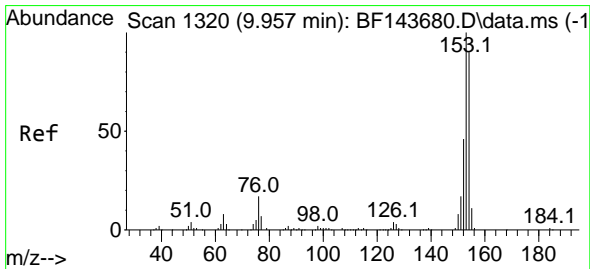
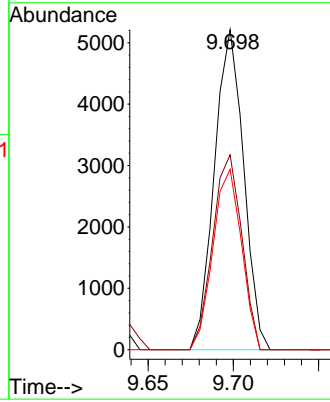
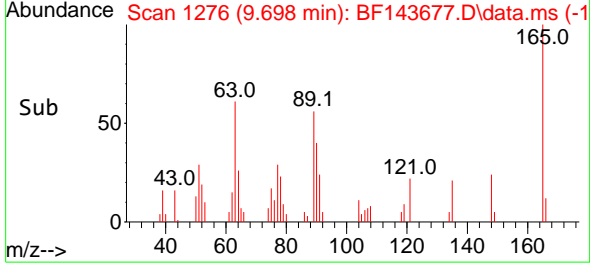


#51
 2,6-Dinitrotoluene
 Concen: 4.166 ng
 RT: 9.698 min Scan# 11
 Delta R.T. -0.006 min
 Lab File: BF143677.D
 Acq: 09 Sep 2025 09:41

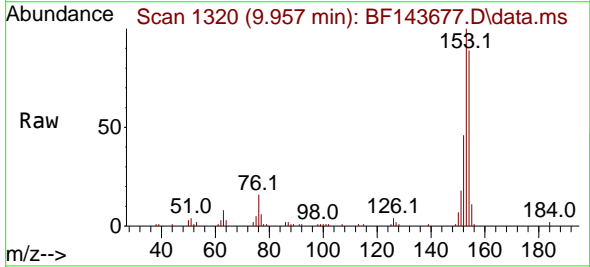
Instrument :
 BNA_F
 ClientSampleId :



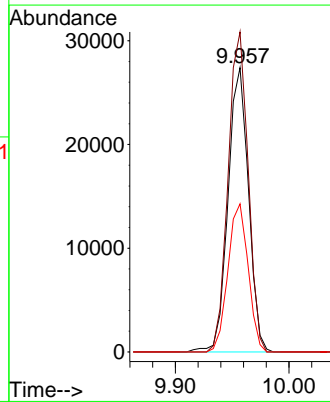
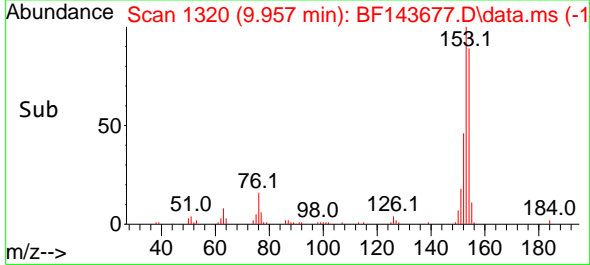
Tgt Ion:165 Resp: 6227
 Ion Ratio Lower Upper
 165 100
 63 60.9 42.2 63.4
 89 56.4 39.3 58.9

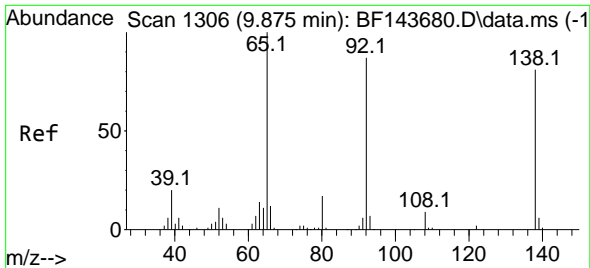


#52
 Acenaphthene
 Concen: 5.128 ng
 RT: 9.957 min Scan# 1320
 Delta R.T. -0.000 min
 Lab File: BF143677.D
 Acq: 09 Sep 2025 09:41



Tgt Ion:154 Resp: 34323
 Ion Ratio Lower Upper
 154 100
 153 112.5 89.4 134.0
 152 52.1 41.2 61.8

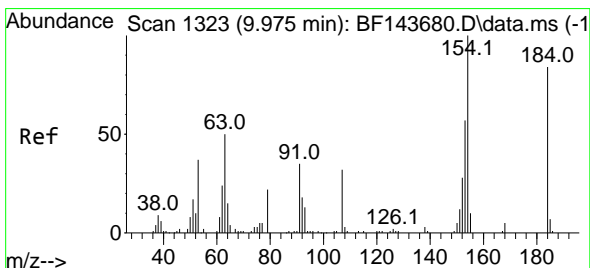
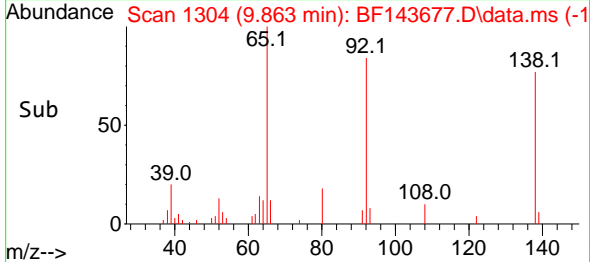
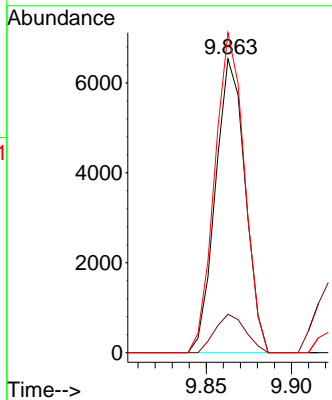
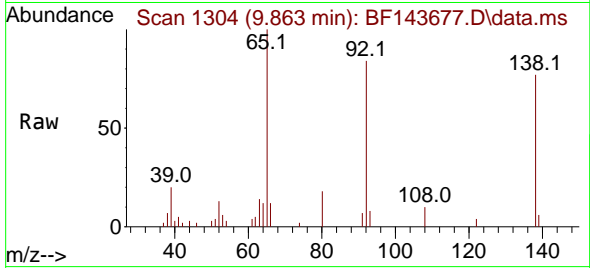




#53
 3-Nitroaniline
 Concen: 4.927 ng
 RT: 9.863 min Scan# 11
 Delta R.T. -0.012 min
 Lab File: BF143677.D
 Acq: 09 Sep 2025 09:41

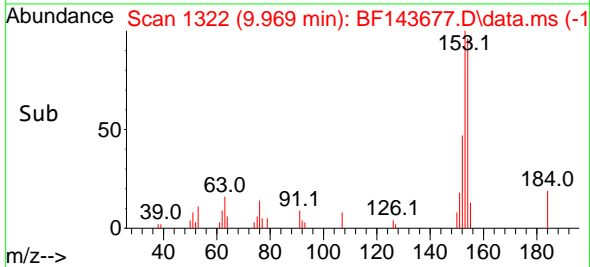
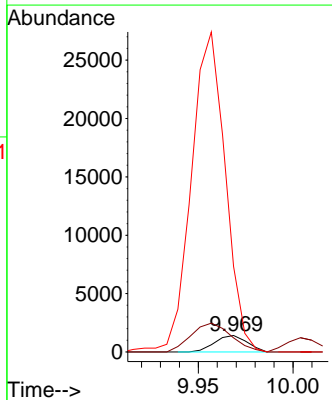
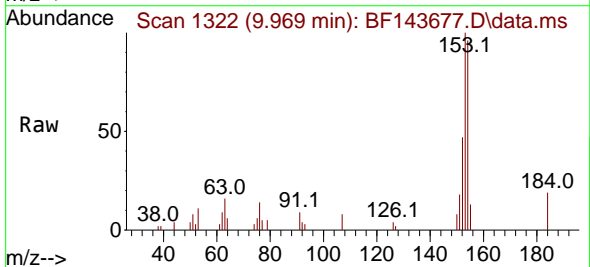
Instrument :
 BNA_F
 ClientSampleId :

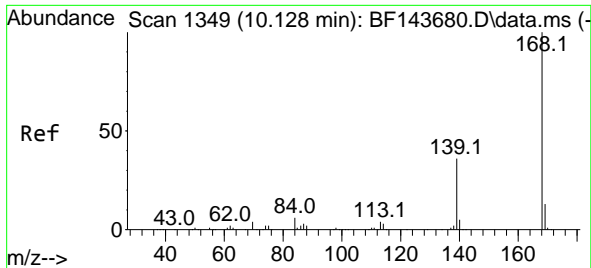
Tgt Ion:138 Resp: 7925
 Ion Ratio Lower Upper
 138 100
 108 13.1 8.6 12.8#
 92 108.9 85.5 128.3



#54
 2,4-Dinitrophenol
 Concen: 7.538 ng
 RT: 9.969 min Scan# 1322
 Delta R.T. -0.006 min
 Lab File: BF143677.D
 Acq: 09 Sep 2025 09:41

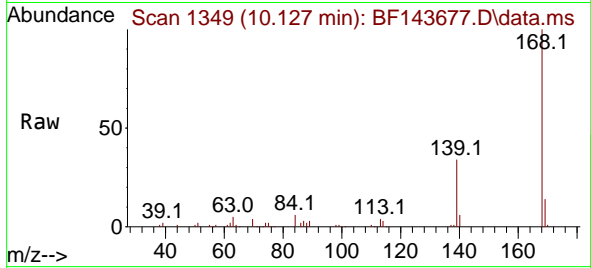
Tgt Ion:184 Resp: 1680
 Ion Ratio Lower Upper
 184 100
 63 85.5 52.7 79.1#
 154 517.8 136.6 204.8#



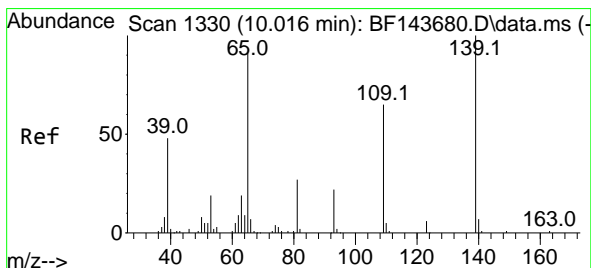
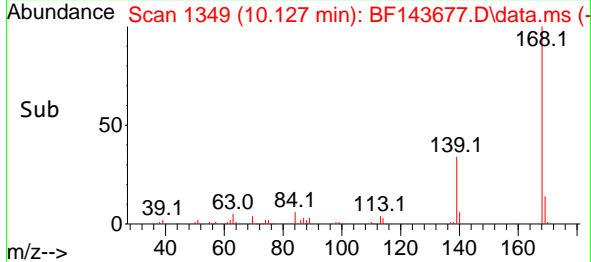
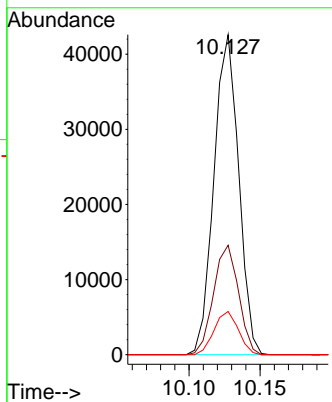


#55
 Dibenzenofuran
 Concen: 5.348 ng
 RT: 10.127 min Scan# 11
 Delta R.T. -0.000 min
 Lab File: BF143677.D
 Acq: 09 Sep 2025 09:41

Instrument :
 BNA_F
 ClientSampleId :

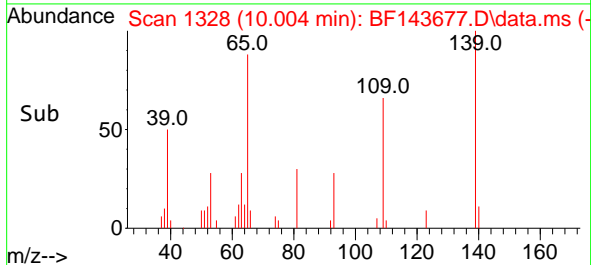
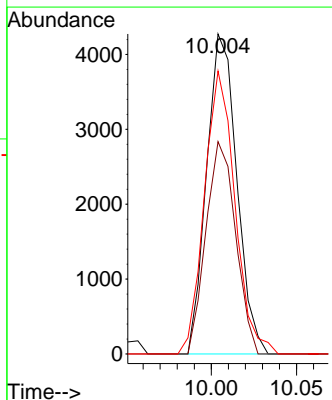
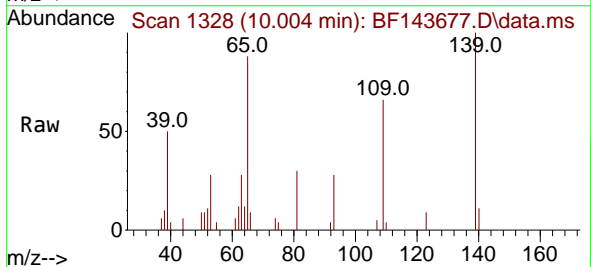


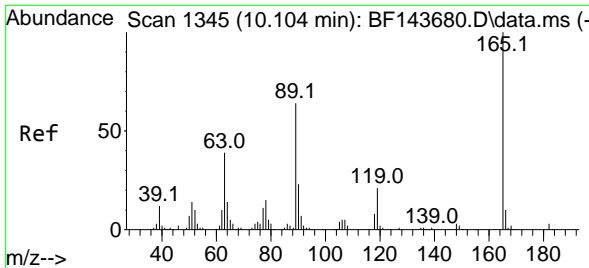
Tgt Ion:168 Resp: 51470
 Ion Ratio Lower Upper
 168 100
 139 34.2 29.0 43.4
 169 13.5 10.8 16.2



#56
 4-Nitrophenol
 Concen: 4.114 ng
 RT: 10.004 min Scan# 1328
 Delta R.T. -0.012 min
 Lab File: BF143677.D
 Acq: 09 Sep 2025 09:41

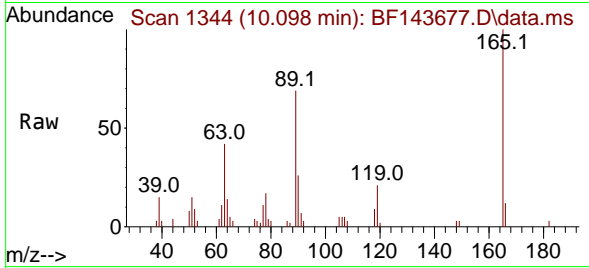
Tgt Ion:139 Resp: 5265
 Ion Ratio Lower Upper
 139 100
 109 66.4 45.2 85.2
 65 88.4 72.1 112.1





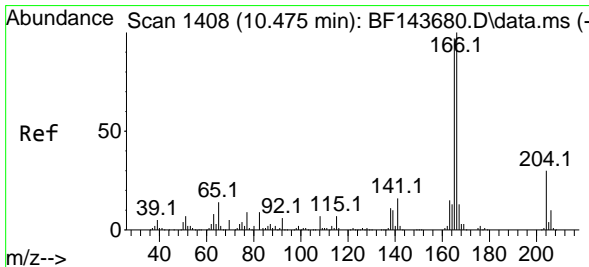
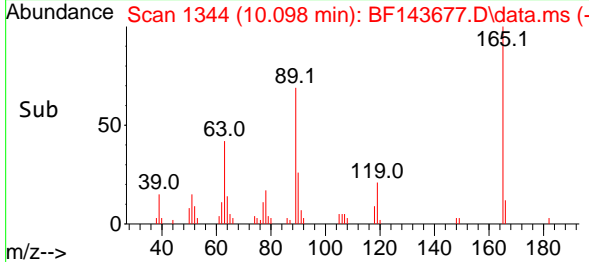
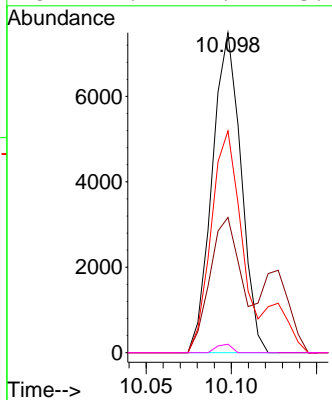
#57
 2,4-Dinitrotoluene
 Concen: 4.336 ng
 RT: 10.098 min Scan# 11
 Delta R.T. -0.006 min
 Lab File: BF143677.D
 Acq: 09 Sep 2025 09:41

Instrument :
 BNA_F
 ClientSampleId :



Tgt Ion:165 Resp: 8821

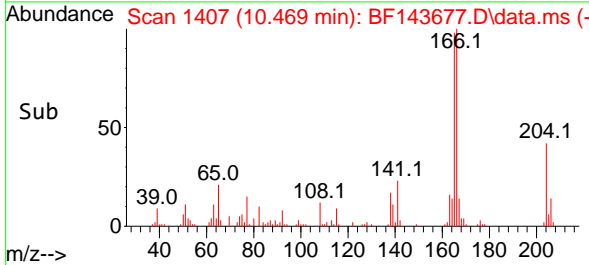
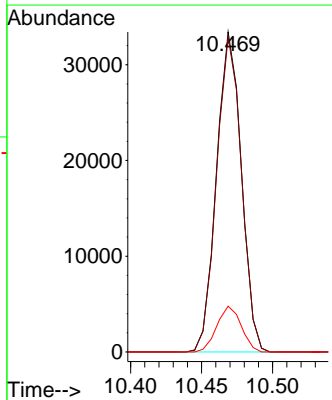
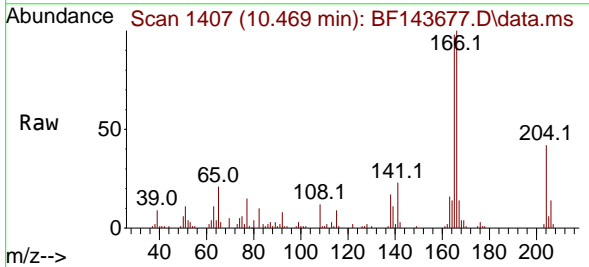
Ion	Ratio	Lower	Upper
165	100		
63	42.2	31.5	47.3
89	69.3	51.3	76.9
182	2.7	2.2	3.4

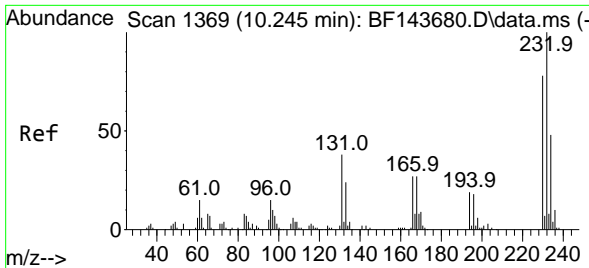


#58
 Fluorene
 Concen: 5.389 ng
 RT: 10.469 min Scan# 1407
 Delta R.T. -0.006 min
 Lab File: BF143677.D
 Acq: 09 Sep 2025 09:41

Tgt Ion:166 Resp: 40602

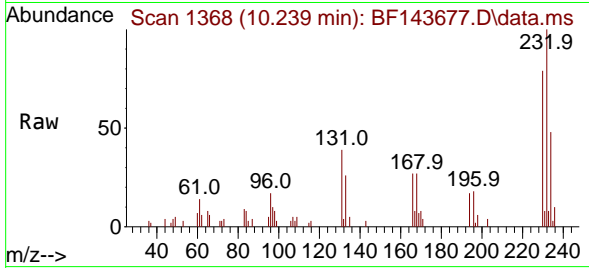
Ion	Ratio	Lower	Upper
166	100		
165	98.5	77.5	116.3
167	14.3	10.2	15.2





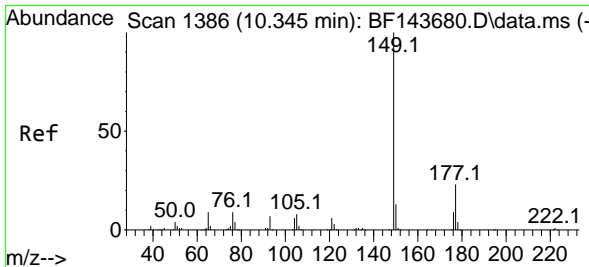
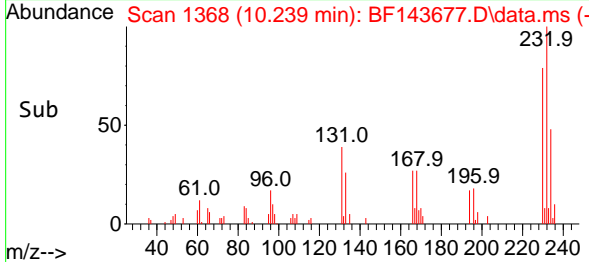
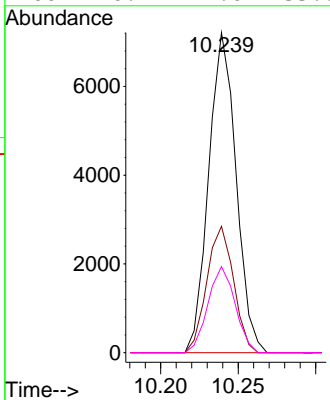
#59
 2,3,4,6-Tetrachlorophenol
 Concen: 4.674 ng
 RT: 10.239 min Scan# 1368
 Delta R.T. -0.006 min
 Lab File: BF143677.D
 Acq: 09 Sep 2025 09:41

Instrument : BNA_F
 ClientSampleId :

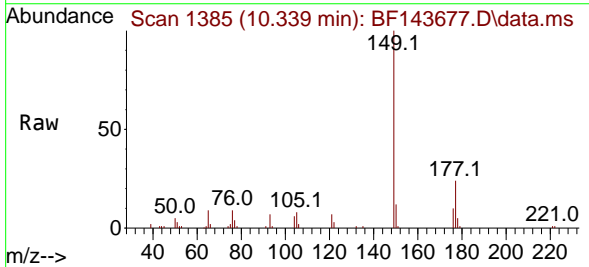


Tgt Ion: 232 Resp: 8849

Ion	Ratio	Lower	Upper
232	100		
131	38.6	31.9	47.9
130	0.0	1.4	2.0
166	26.7	22.0	33.0

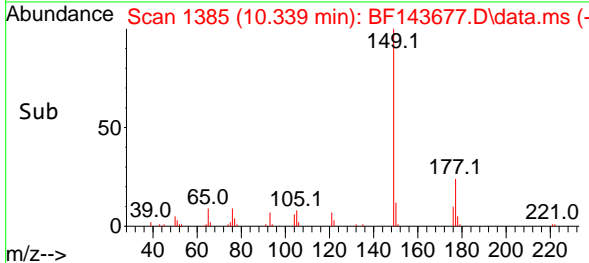
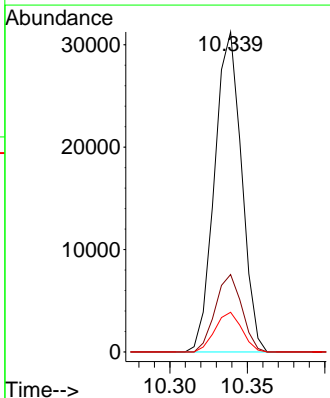


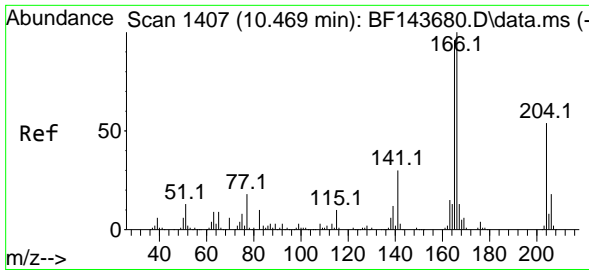
#60
 Diethylphthalate
 Concen: 5.151 ng
 RT: 10.339 min Scan# 1385
 Delta R.T. -0.006 min
 Lab File: BF143677.D
 Acq: 09 Sep 2025 09:41



Tgt Ion: 149 Resp: 37807

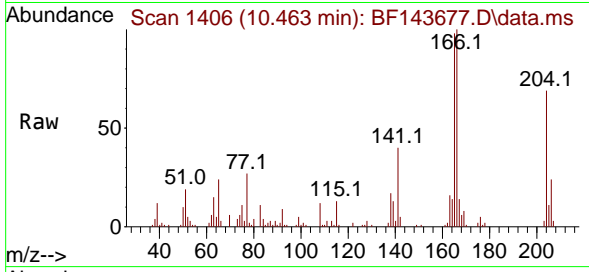
Ion	Ratio	Lower	Upper
149	100		
177	24.2	18.2	27.2
150	12.4	10.0	15.0





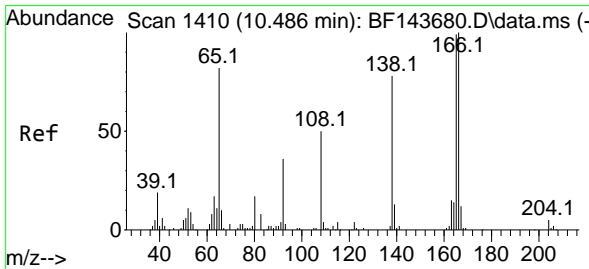
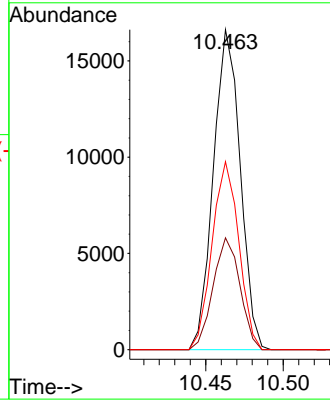
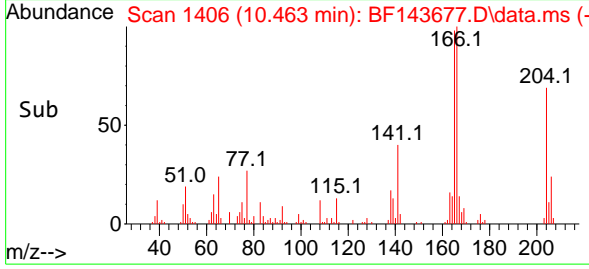
#61
 4-Chlorophenyl-phenylether
 Concen: 5.246 ng
 RT: 10.463 min Scan# 1406
 Delta R.T. -0.006 min
 Lab File: BF143677.D
 Acq: 09 Sep 2025 09:41

Instrument : BNA_F
 ClientSampleId :

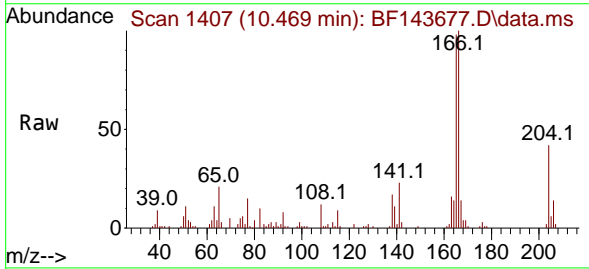


Tgt Ion: 204 Resp: 20046

Ion	Ratio	Lower	Upper
204	100		
206	34.9	26.0	39.0
141	58.8	44.8	67.2

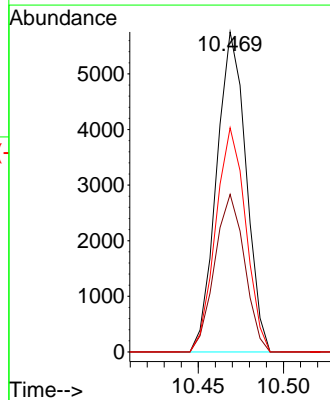
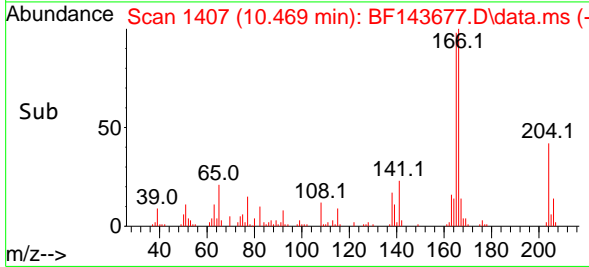


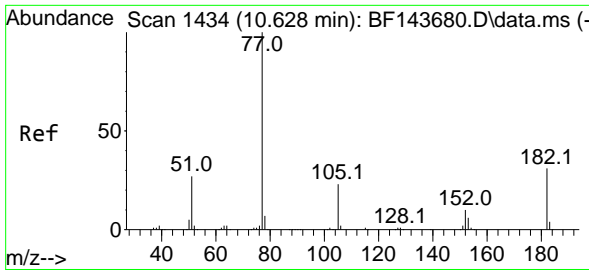
#62
 4-Nitroaniline
 Concen: 4.553 ng
 RT: 10.469 min Scan# 1407
 Delta R.T. -0.018 min
 Lab File: BF143677.D
 Acq: 09 Sep 2025 09:41



Tgt Ion: 138 Resp: 6936

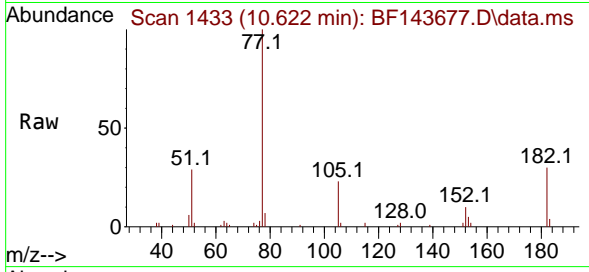
Ion	Ratio	Lower	Upper
138	100		
92	49.3	26.4	66.4
108	70.0	44.3	84.3





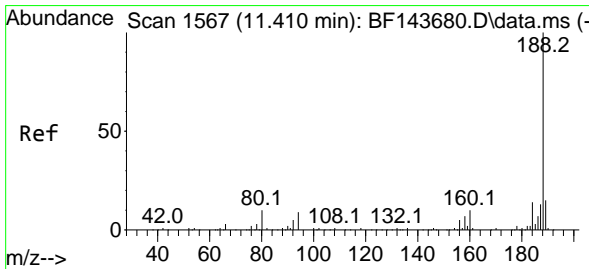
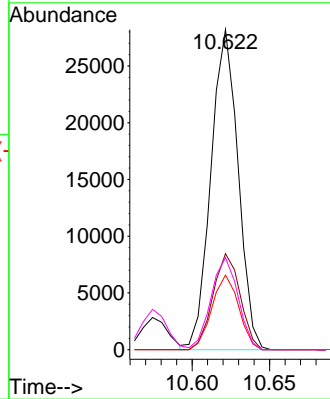
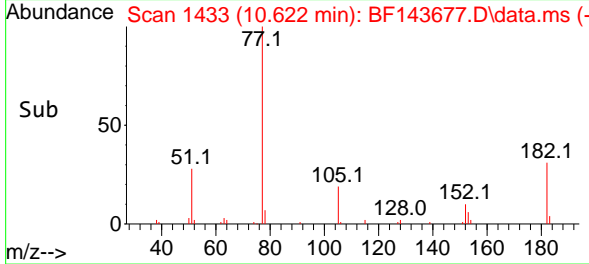
#63
 Azobenzene
 Concen: 5.305 ng
 RT: 10.622 min Scan# 14
 Delta R.T. -0.006 min
 Lab File: BF143677.D
 Acq: 09 Sep 2025 09:41

Instrument :
 BNA_F
 ClientSampleId :

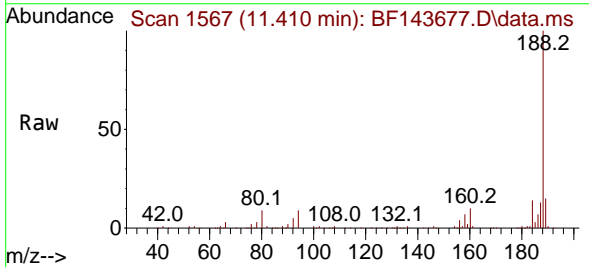


Tgt Ion: 77 Resp: 34418

Ion	Ratio	Lower	Upper
77	100		
182	30.0	10.8	50.8
105	23.3	3.2	43.2
51	28.7	7.7	47.7

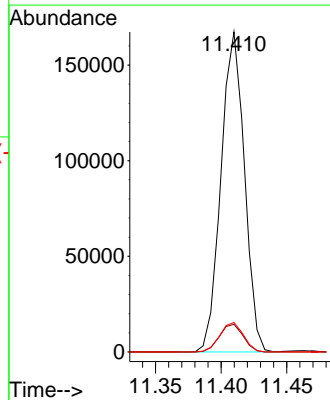
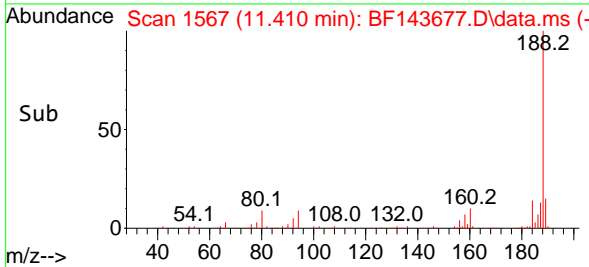


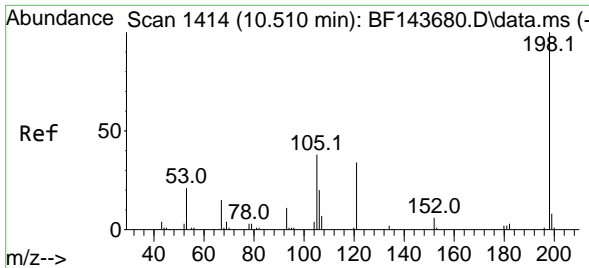
#64
 Phenanthrene-d10
 Concen: 20.000 ng
 RT: 11.410 min Scan# 1567
 Delta R.T. -0.000 min
 Lab File: BF143677.D
 Acq: 09 Sep 2025 09:41



Tgt Ion: 188 Resp: 207771

Ion	Ratio	Lower	Upper
188	100		
94	8.7	7.4	11.0
80	9.2	7.7	11.5

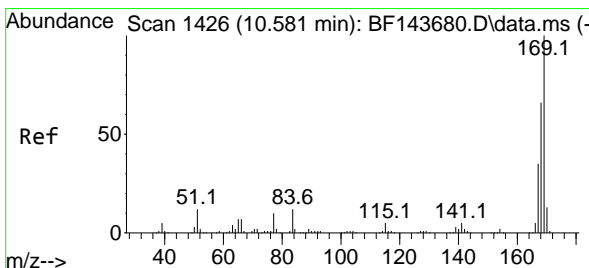
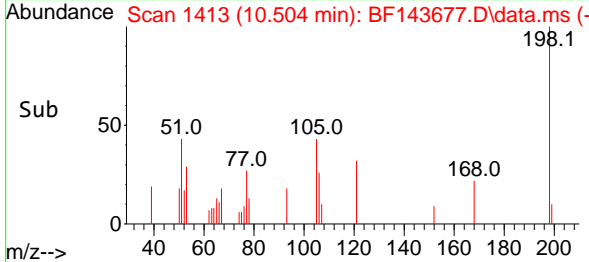
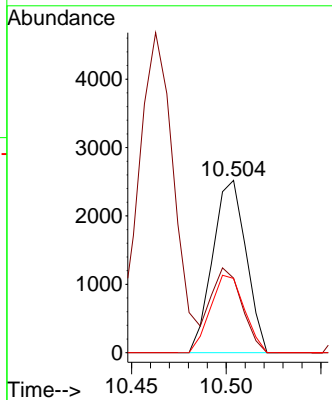
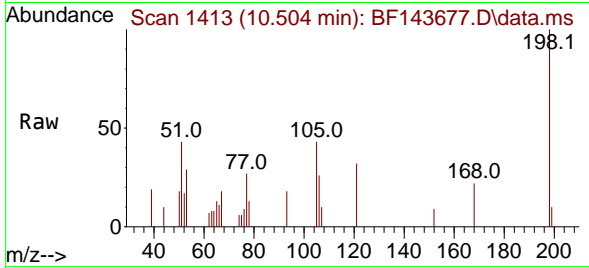




#65
 4,6-Dinitro-2-methylphenol
 Concen: 2.914 ng
 RT: 10.504 min Scan# 1413
 Delta R.T. -0.006 min
 Lab File: BF143677.D
 Acq: 09 Sep 2025 09:41

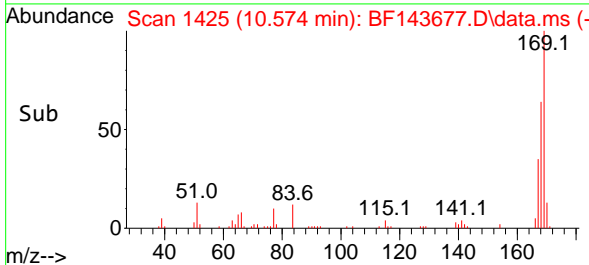
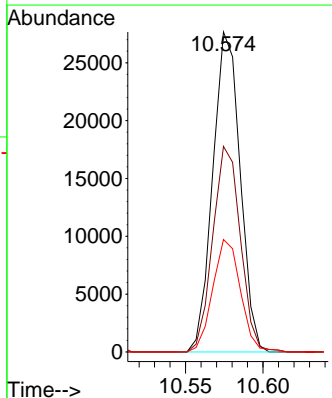
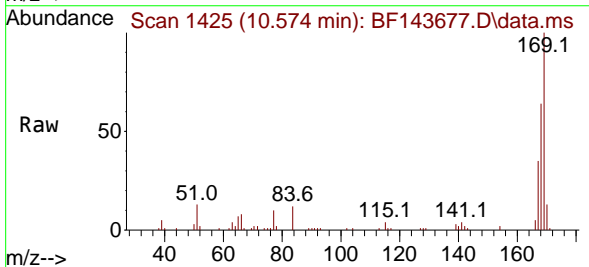
Instrument :
 BNA_F
 ClientSampleId :

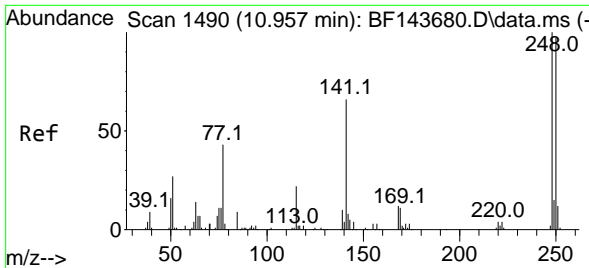
Tgt Ion:198 Resp: 3083
 Ion Ratio Lower Upper
 198 100
 51 43.3 21.2 61.2
 105 43.1 19.0 59.0



#66
 n-Nitrosodiphenylamine
 Concen: 4.982 ng
 RT: 10.574 min Scan# 1425
 Delta R.T. -0.006 min
 Lab File: BF143677.D
 Acq: 09 Sep 2025 09:41

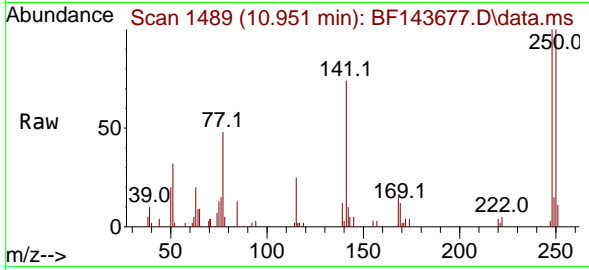
Tgt Ion:169 Resp: 33909
 Ion Ratio Lower Upper
 169 100
 168 64.2 53.0 79.6
 167 35.2 28.1 42.1



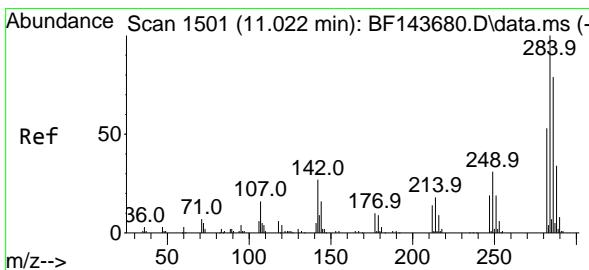
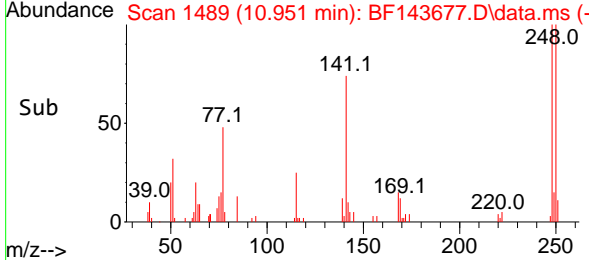
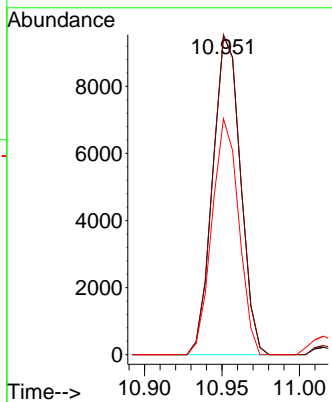


#67
 4-Bromophenyl-phenylether
 Concen: 4.724 ng
 RT: 10.951 min Scan# 14
 Delta R.T. -0.006 min
 Lab File: BF143677.D
 Acq: 09 Sep 2025 09:41

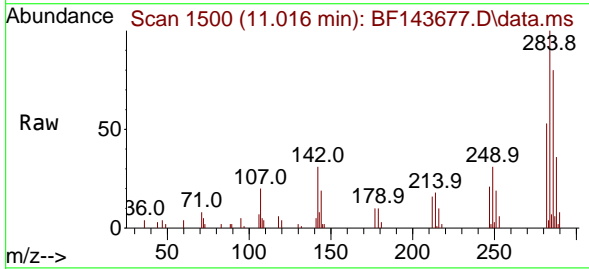
Instrument :
 BNA_F
 ClientSampleId :



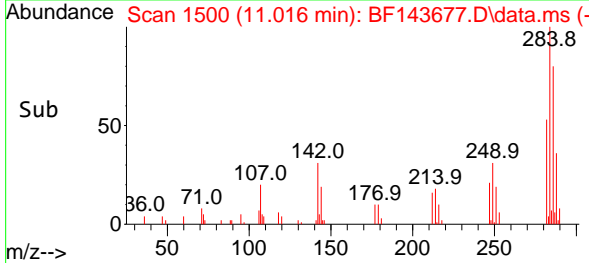
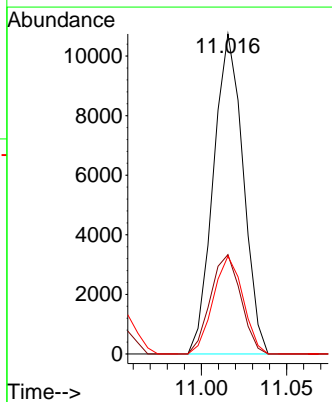
Tgt Ion:248 Resp: 11836
 Ion Ratio Lower Upper
 248 100
 250 100.3 77.5 116.3
 141 74.0 52.6 79.0

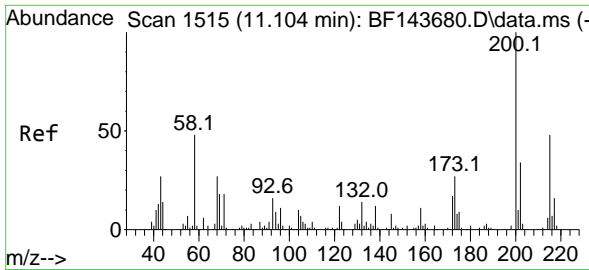


#68
 Hexachlorobenzene
 Concen: 4.924 ng
 RT: 11.016 min Scan# 1500
 Delta R.T. -0.006 min
 Lab File: BF143677.D
 Acq: 09 Sep 2025 09:41



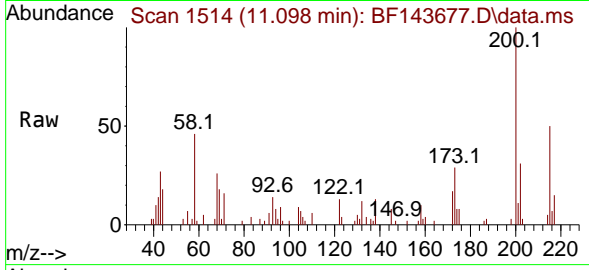
Tgt Ion:284 Resp: 13028
 Ion Ratio Lower Upper
 284 100
 142 31.1 21.3 31.9
 249 30.6 25.0 37.4



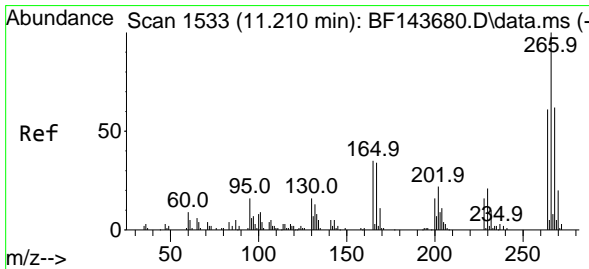
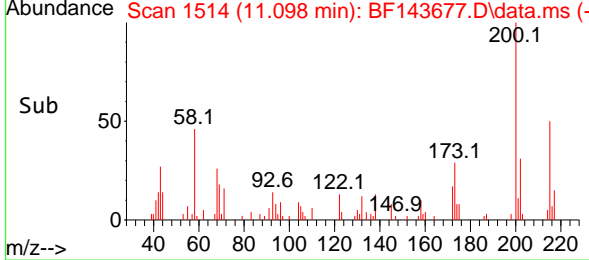
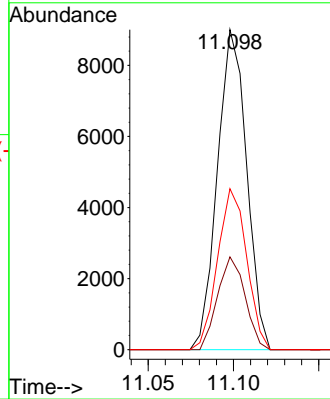


#69
 Atrazine
 Concen: 5.031 ng
 RT: 11.098 min Scan# 11
 Delta R.T. -0.006 min
 Lab File: BF143677.D
 Acq: 09 Sep 2025 09:41

Instrument :
 BNA_F
 ClientSampleId :

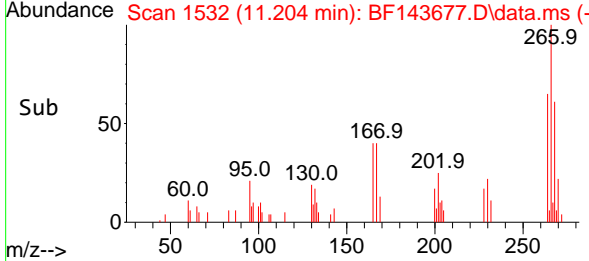
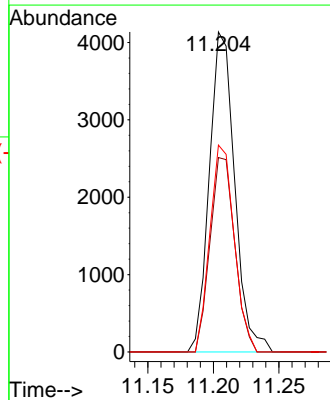
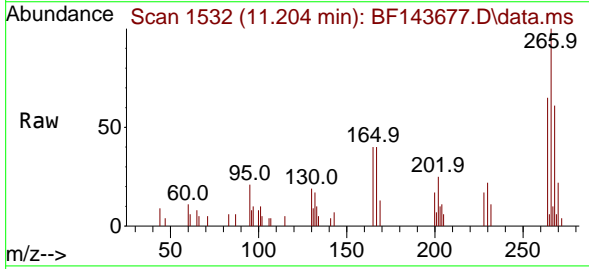


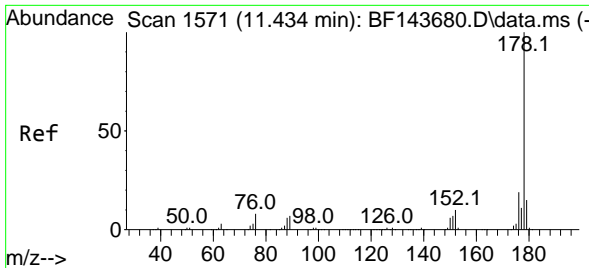
Tgt Ion:200 Resp: 10737
 Ion Ratio Lower Upper
 200 100
 173 29.0 7.3 47.3
 215 50.3 28.5 68.5



#70
 Pentachlorophenol
 Concen: 3.483 ng
 RT: 11.204 min Scan# 1532
 Delta R.T. -0.006 min
 Lab File: BF143677.D
 Acq: 09 Sep 2025 09:41

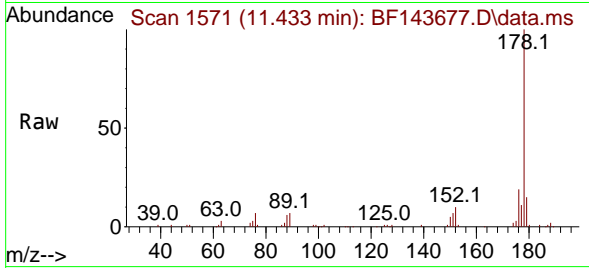
Tgt Ion:266 Resp: 5570
 Ion Ratio Lower Upper
 266 100
 268 60.8 49.2 73.8
 264 64.7 48.6 73.0



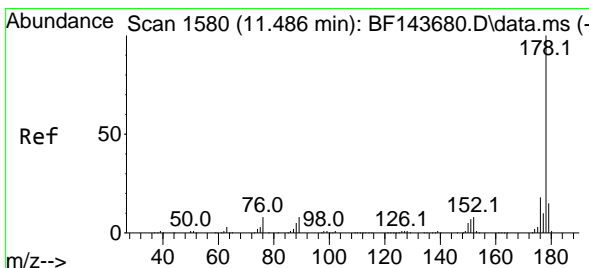
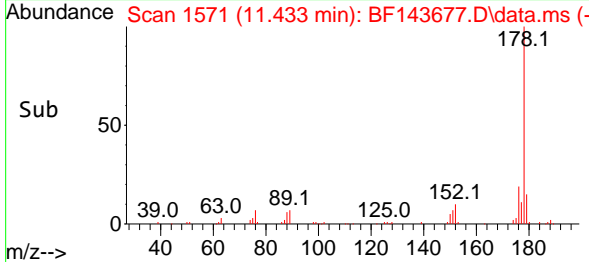
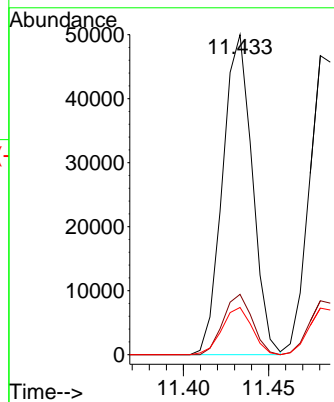


#71
 Phenanthrene
 Concen: 5.291 ng
 RT: 11.433 min Scan# 11
 Delta R.T. -0.000 min
 Lab File: BF143677.D
 Acq: 09 Sep 2025 09:41

Instrument :
 BNA_F
 ClientSampleId :

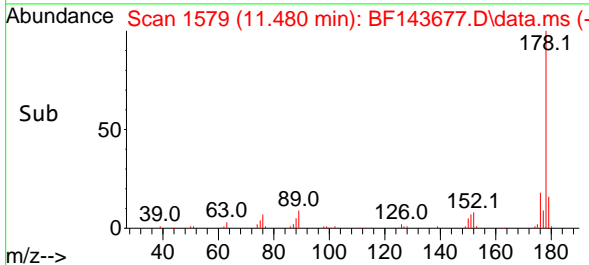
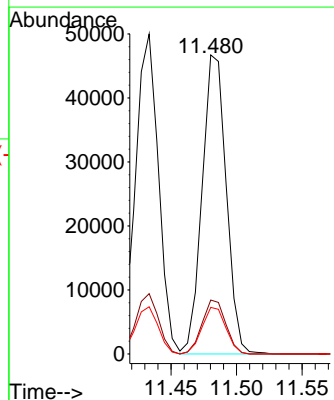
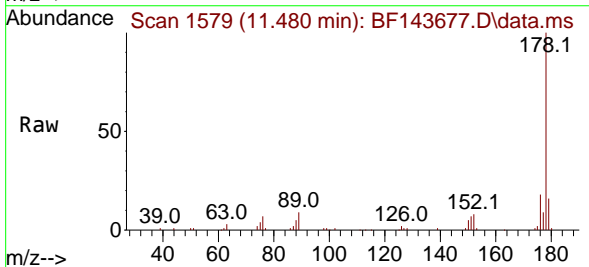


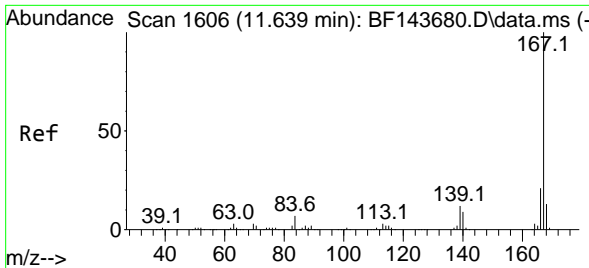
Tgt Ion:178 Resp: 60574
 Ion Ratio Lower Upper
 178 100
 176 18.9 14.8 22.2
 179 14.7 12.2 18.2



#72
 Anthracene
 Concen: 5.204 ng
 RT: 11.480 min Scan# 1579
 Delta R.T. -0.006 min
 Lab File: BF143677.D
 Acq: 09 Sep 2025 09:41

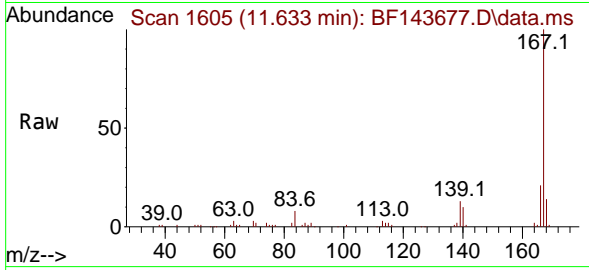
Tgt Ion:178 Resp: 59907
 Ion Ratio Lower Upper
 178 100
 176 18.0 14.5 21.7
 179 15.6 12.2 18.2



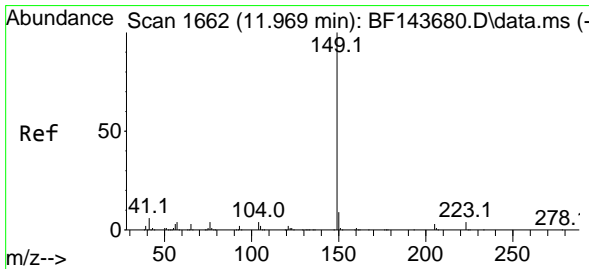
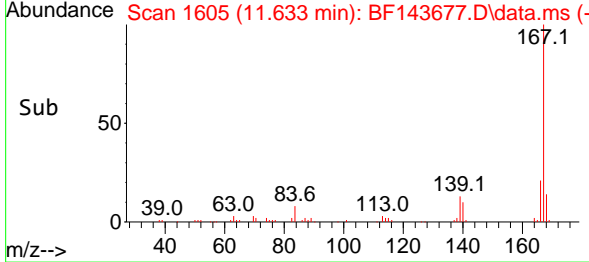
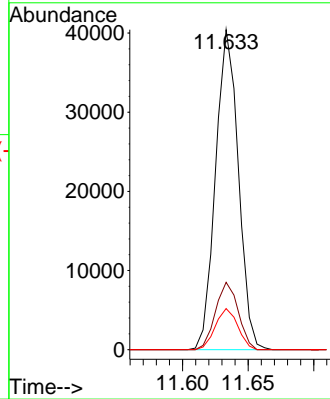


#73
 Carbazole
 Concen: 5.172 ng
 RT: 11.633 min Scan# 1605
 Delta R.T. -0.006 min
 Lab File: BF143677.D
 Acq: 09 Sep 2025 09:41

Instrument : BNA_F
 ClientSampleId :

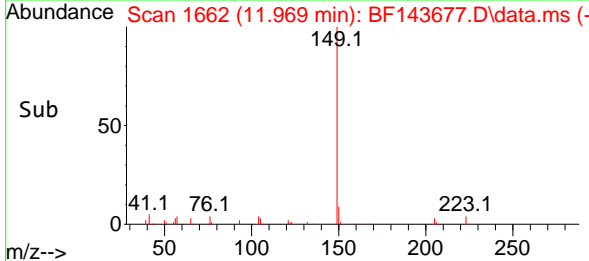
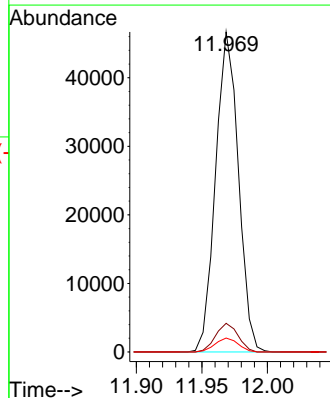
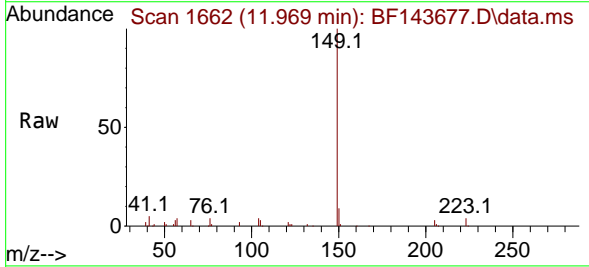


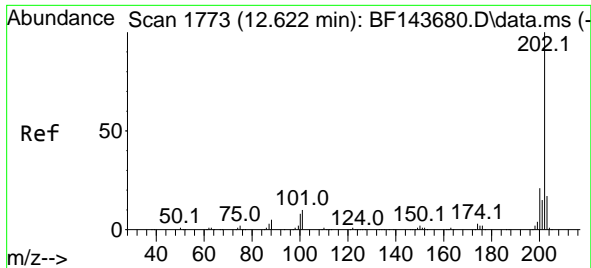
Tgt Ion:167 Resp: 48759
 Ion Ratio Lower Upper
 167 100
 166 21.1 17.0 25.4
 139 12.8 9.7 14.5



#74
 Di-n-butylphthalate
 Concen: 4.964 ng
 RT: 11.969 min Scan# 1662
 Delta R.T. -0.000 min
 Lab File: BF143677.D
 Acq: 09 Sep 2025 09:41

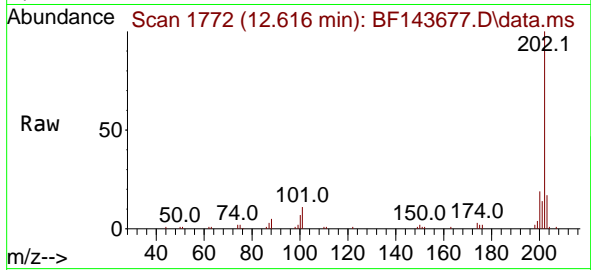
Tgt Ion:149 Resp: 56340
 Ion Ratio Lower Upper
 149 100
 150 9.0 7.3 10.9
 104 4.3 3.3 4.9



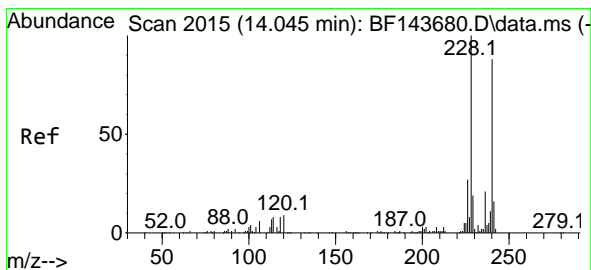
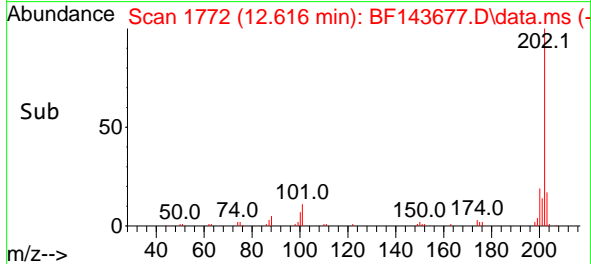
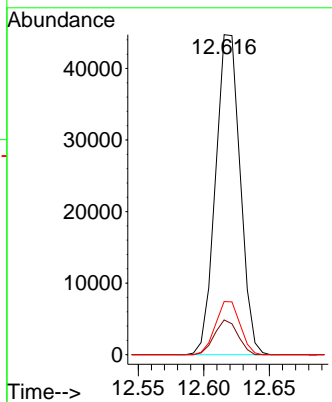


#75
 Fluoranthene
 Concen: 5.550 ng
 RT: 12.616 min Scan# 11
 Delta R.T. -0.006 min
 Lab File: BF143677.D
 Acq: 09 Sep 2025 09:41

Instrument :
 BNA_F
 ClientSampleId :

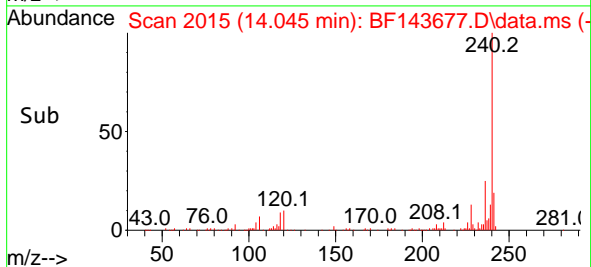
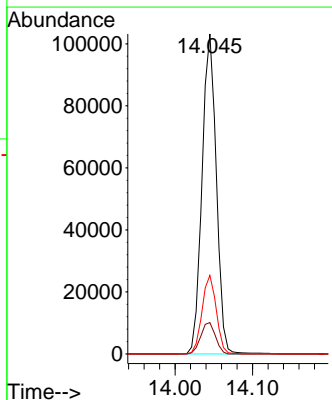
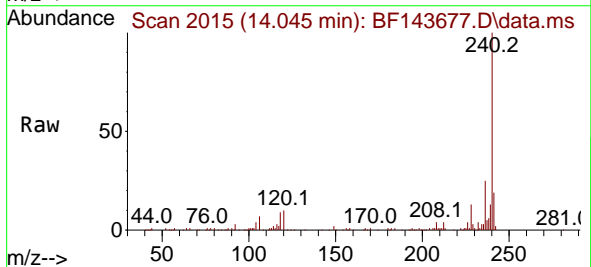


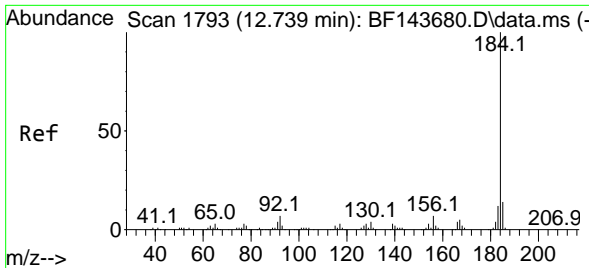
Tgt Ion: 202 Resp: 58331
 Ion Ratio Lower Upper
 202 100
 101 10.9 0.0 30.5
 203 16.6 0.0 37.1



#76
 Chrysene-d12
 Concen: 20.000 ng
 RT: 14.045 min Scan# 2015
 Delta R.T. -0.000 min
 Lab File: BF143677.D
 Acq: 09 Sep 2025 09:41

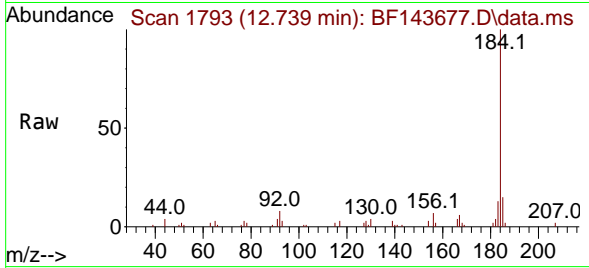
Tgt Ion: 240 Resp: 132168
 Ion Ratio Lower Upper
 240 100
 120 9.8 8.4 12.6
 236 24.6 18.6 28.0



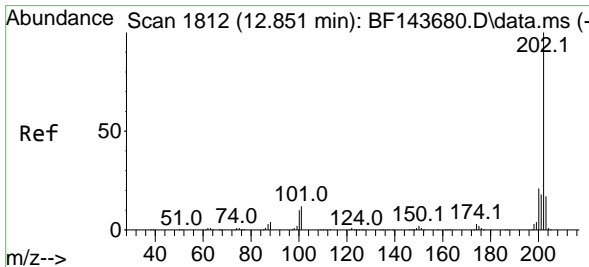
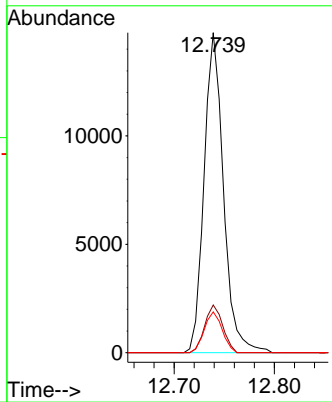
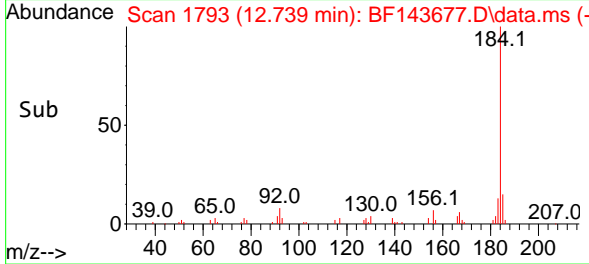


#77
 Benzidine
 Concen: 4.613 ng
 RT: 12.739 min Scan# 11
 Delta R.T. -0.000 min
 Lab File: BF143677.D
 Acq: 09 Sep 2025 09:41

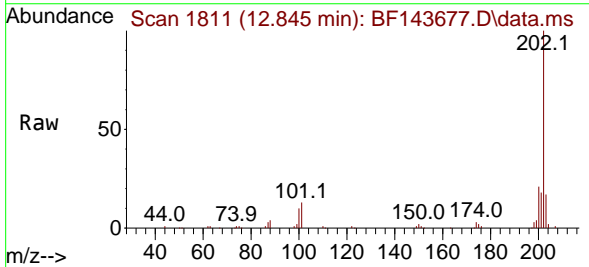
Instrument :
 BNA_F
 ClientSampleId :



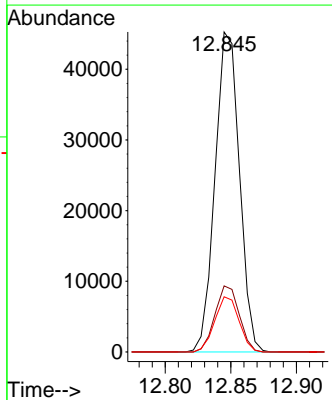
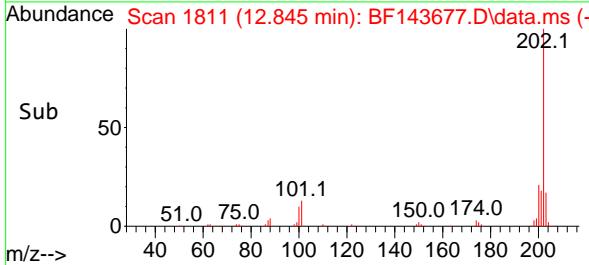
Tgt Ion:184 Resp: 19880
 Ion Ratio Lower Upper
 184 100
 185 14.9 11.5 17.3
 183 12.8 9.4 14.2

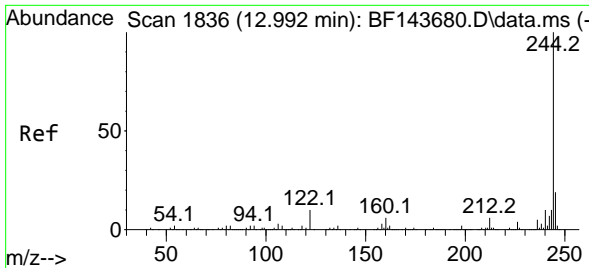


#78
 Pyrene
 Concen: 5.535 ng
 RT: 12.845 min Scan# 1811
 Delta R.T. -0.006 min
 Lab File: BF143677.D
 Acq: 09 Sep 2025 09:41



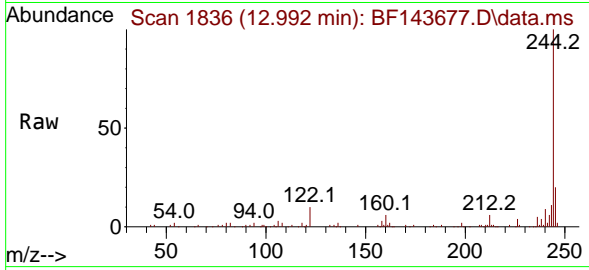
Tgt Ion:202 Resp: 58494
 Ion Ratio Lower Upper
 202 100
 200 20.7 16.6 24.8
 203 17.3 13.5 20.3





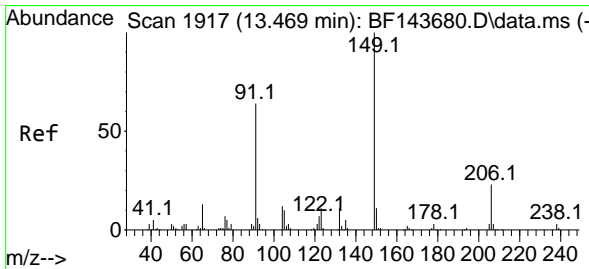
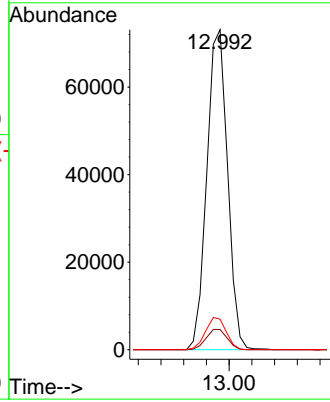
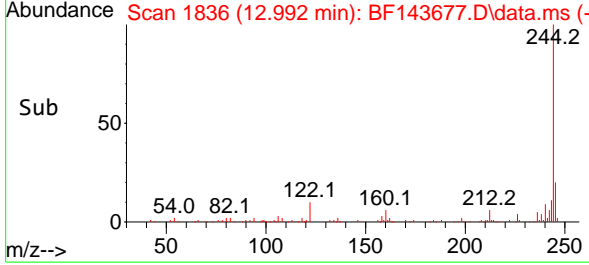
#79
 Terphenyl-d14
 Concen: 11.352 ng
 RT: 12.992 min Scan# 1836
 Delta R.T. -0.000 min
 Lab File: BF143677.D
 Acq: 09 Sep 2025 09:41

Instrument : BNA_F
 ClientSampleId :

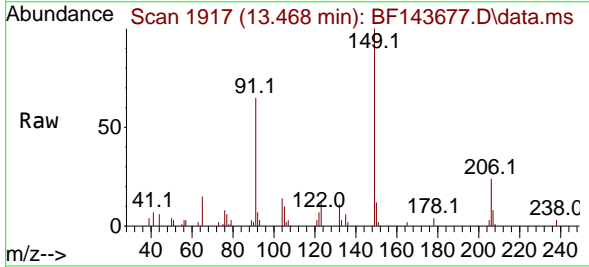


Tgt Ion: 244 Resp: 92587

Ion	Ratio	Lower	Upper
244	100		
212	6.3	5.0	7.6
122	9.5	7.9	11.9

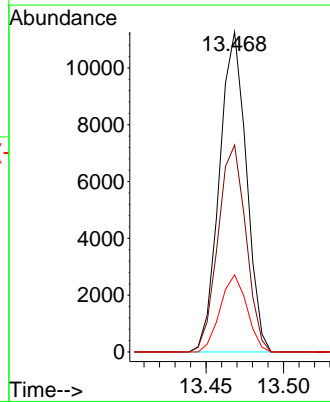
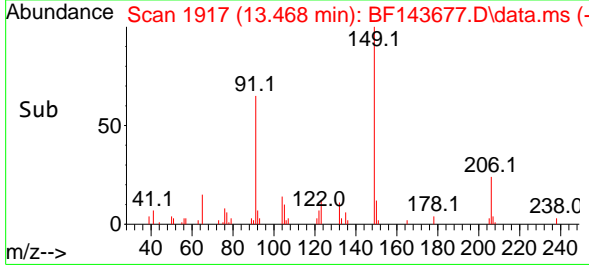


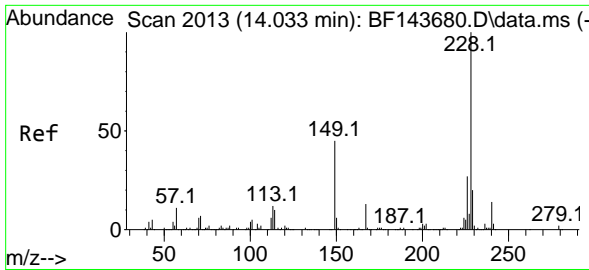
#80
 Butylbenzylphthalate
 Concen: 4.118 ng
 RT: 13.468 min Scan# 1917
 Delta R.T. -0.000 min
 Lab File: BF143677.D
 Acq: 09 Sep 2025 09:41



Tgt Ion: 149 Resp: 13634

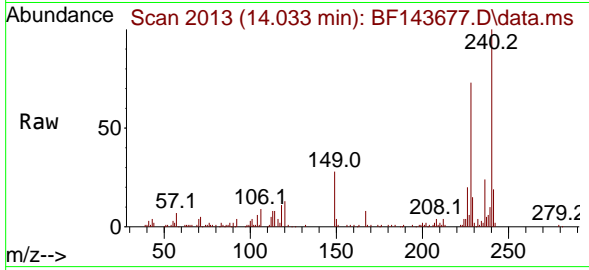
Ion	Ratio	Lower	Upper
149	100		
91	64.6	50.9	76.3
206	24.1	18.2	27.2





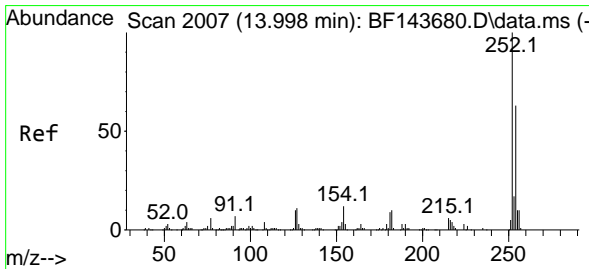
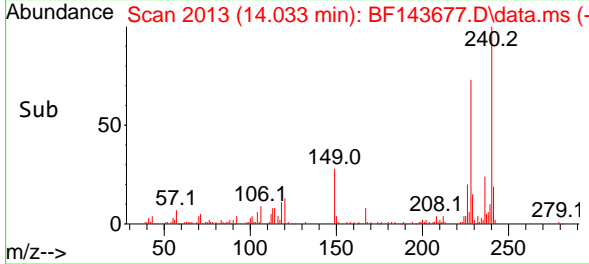
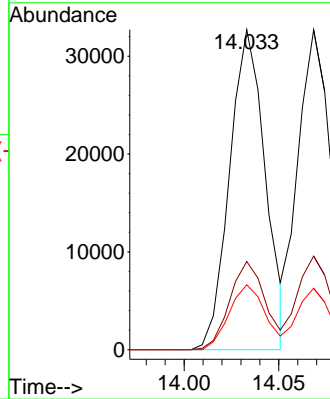
#81
 Benzo(a)anthracene
 Concen: 5.045 ng
 RT: 14.033 min Scan# 2013
 Delta R.T. -0.000 min
 Lab File: BF143677.D
 Acq: 09 Sep 2025 09:41

Instrument : BNA_F
 ClientSampleId :



Tgt Ion:228 Resp: 42898

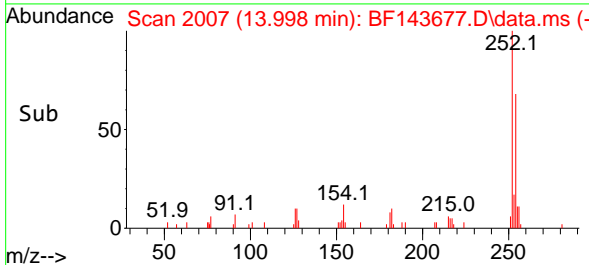
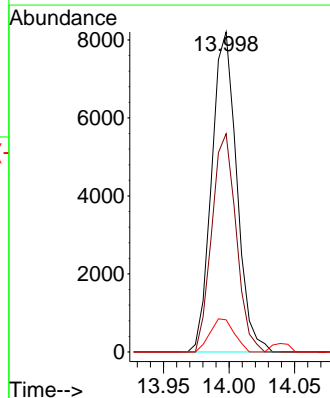
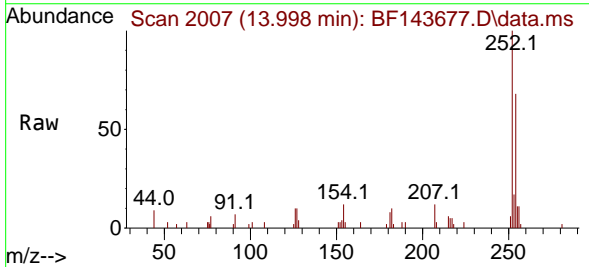
Ion	Ratio	Lower	Upper
228	100		
226	27.5	21.6	32.4
229	20.3	15.7	23.5

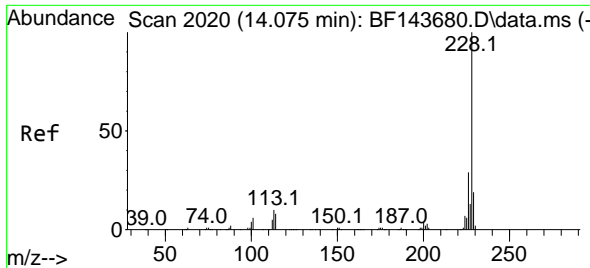


#82
 3,3'-Dichlorobenzidine
 Concen: 4.166 ng
 RT: 13.998 min Scan# 2007
 Delta R.T. -0.000 min
 Lab File: BF143677.D
 Acq: 09 Sep 2025 09:41

Tgt Ion:252 Resp: 10899

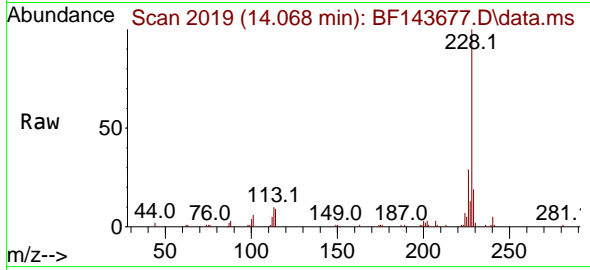
Ion	Ratio	Lower	Upper
252	100		
254	68.2	50.5	75.7
126	10.0	8.2	12.4





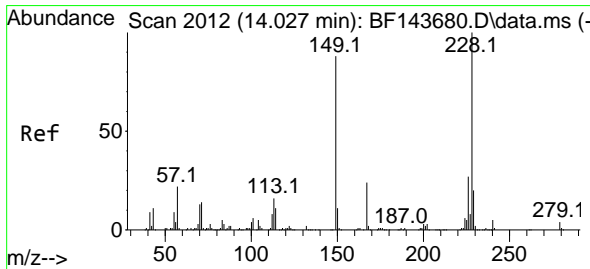
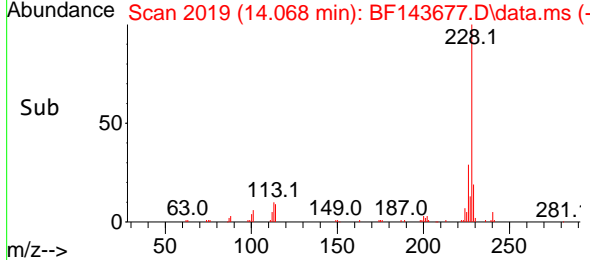
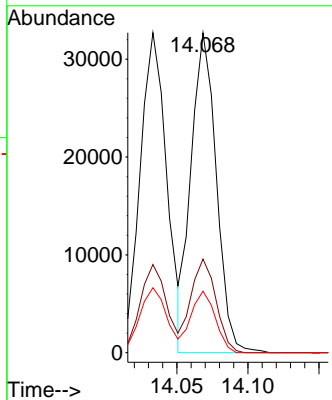
#83
 Chrysene
 Concen: 5.178 ng
 RT: 14.068 min Scan# 2019
 Delta R.T. -0.006 min
 Lab File: BF143677.D
 Acq: 09 Sep 2025 09:41

Instrument : BNA_F
 ClientSampleId :



Tgt Ion:228 Resp: 40322

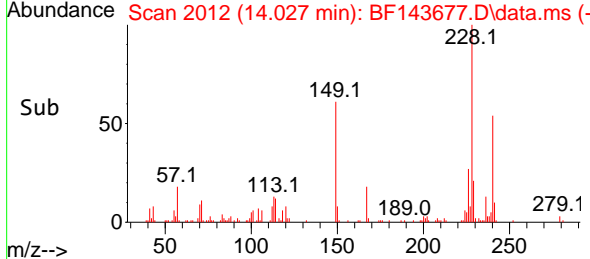
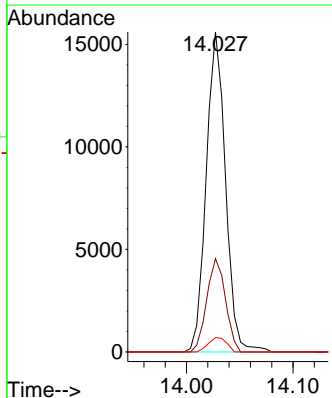
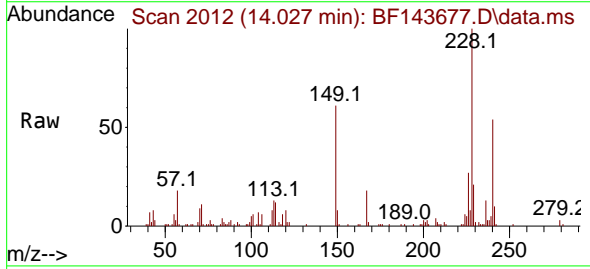
Ion	Ratio	Lower	Upper
228	100		
226	29.3	22.7	34.1
229	19.2	15.1	22.7

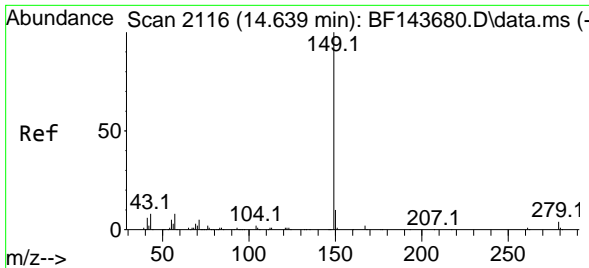


#84
 Bis(2-ethylhexyl)phthalate
 Concen: 4.164 ng
 RT: 14.027 min Scan# 2012
 Delta R.T. -0.000 min
 Lab File: BF143677.D
 Acq: 09 Sep 2025 09:41

Tgt Ion:149 Resp: 19671

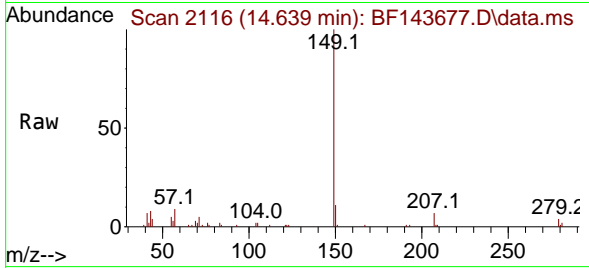
Ion	Ratio	Lower	Upper
149	100		
167	29.2	22.2	33.2
279	4.5	3.5	5.3



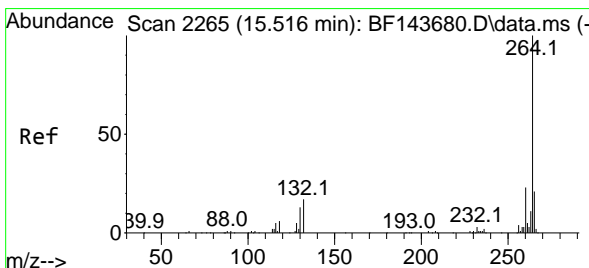
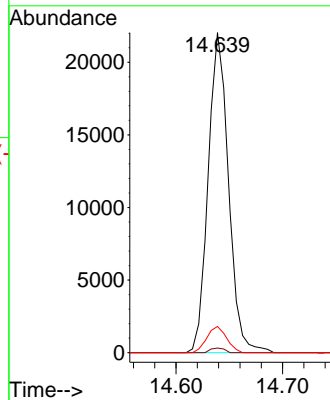
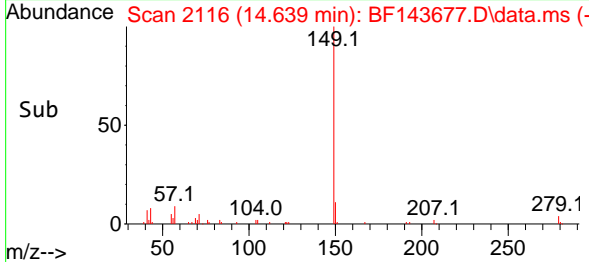


#85
 Di-n-octyl phthalate
 Concen: 3.455 ng
 RT: 14.639 min Scan# 2116
 Delta R.T. -0.000 min
 Lab File: BF143677.D
 Acq: 09 Sep 2025 09:41

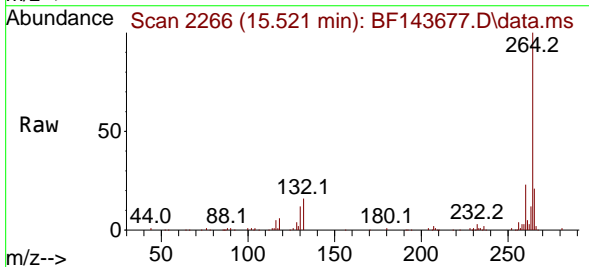
Instrument : BNA_F
 ClientSampleId :



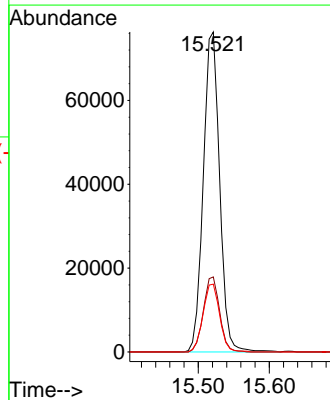
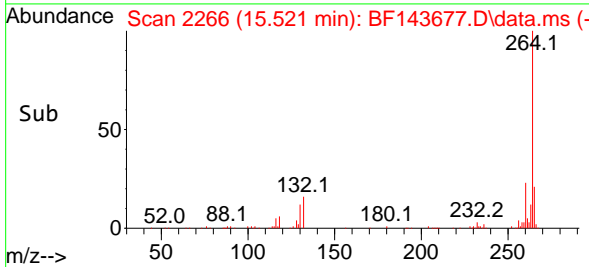
Tgt Ion:149 Resp: 29252
 Ion Ratio Lower Upper
 149 100
 167 1.0 1.2 1.8#
 43 7.9 6.2 9.2

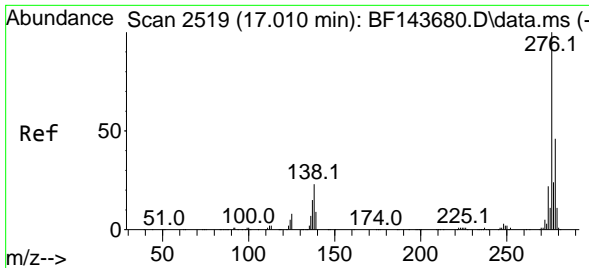


#86
 Perylene-d12
 Concen: 20.000 ng
 RT: 15.521 min Scan# 2266
 Delta R.T. 0.006 min
 Lab File: BF143677.D
 Acq: 09 Sep 2025 09:41



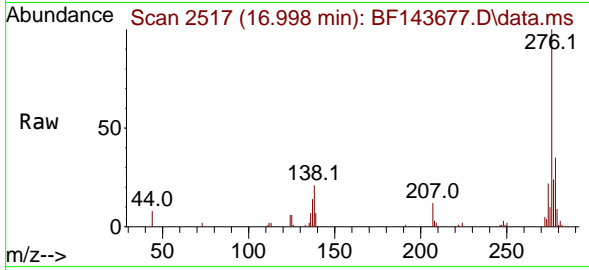
Tgt Ion:264 Resp: 122261
 Ion Ratio Lower Upper
 264 100
 260 23.5 18.4 27.6
 265 21.2 17.1 25.7



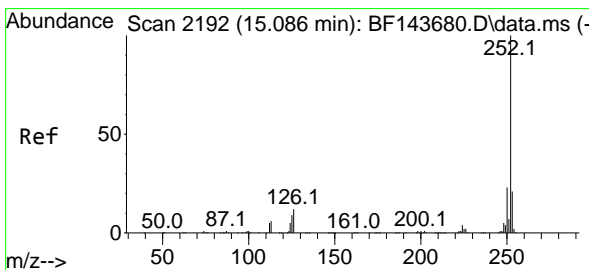
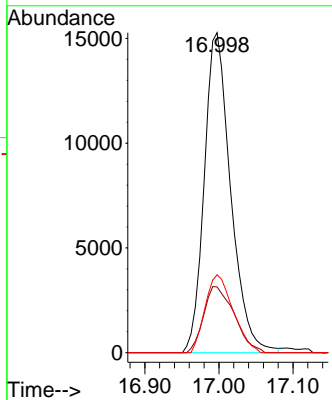
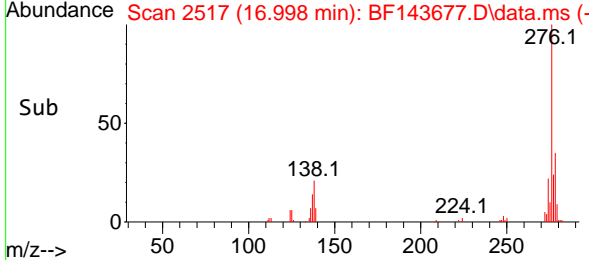


#87
 Indeno(1,2,3-cd)pyrene
 Concen: 4.537 ng
 RT: 16.998 min Scan# 2119
 Delta R.T. -0.012 min
 Lab File: BF143677.D
 Acq: 09 Sep 2025 09:41

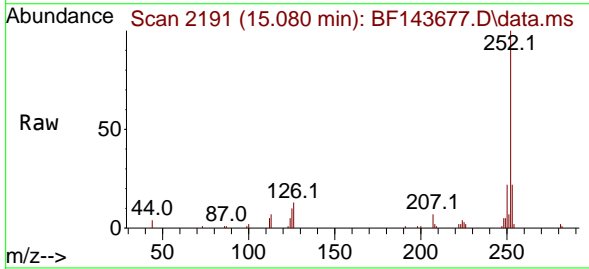
Instrument :
 BNA_F
 ClientSampleId :



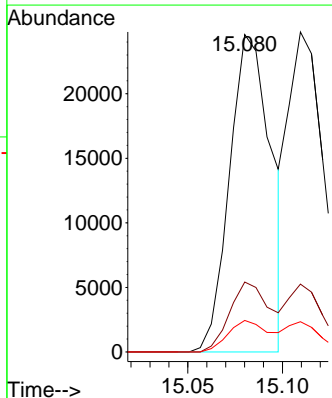
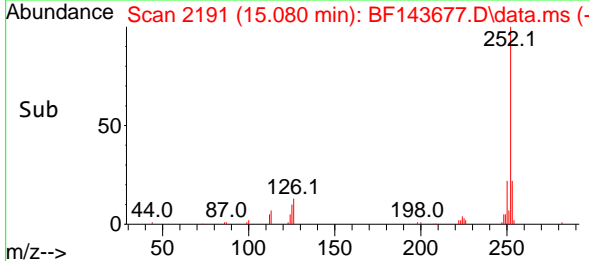
Tgt Ion:276 Resp: 37861
 Ion Ratio Lower Upper
 276 100
 138 23.9 19.7 29.5
 277 25.7 20.2 30.2

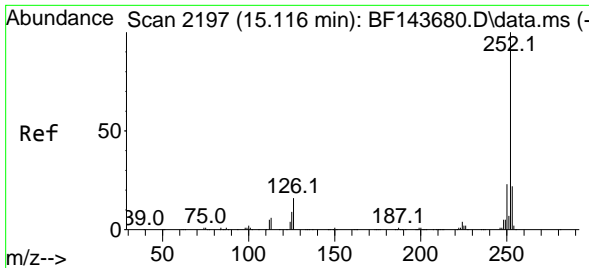


#88
 Benzo(b)fluoranthene
 Concen: 5.161 ng
 RT: 15.080 min Scan# 2191
 Delta R.T. -0.006 min
 Lab File: BF143677.D
 Acq: 09 Sep 2025 09:41



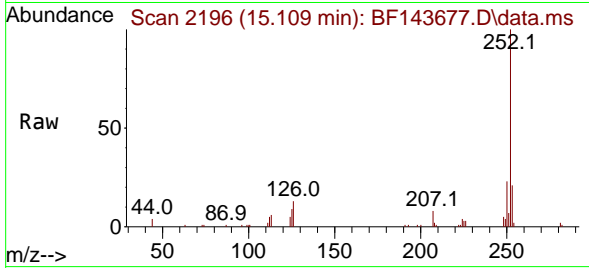
Tgt Ion:252 Resp: 37565
 Ion Ratio Lower Upper
 252 100
 253 22.0 17.0 25.4
 125 9.9 7.4 11.0



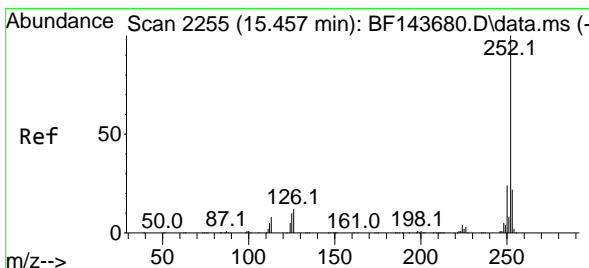
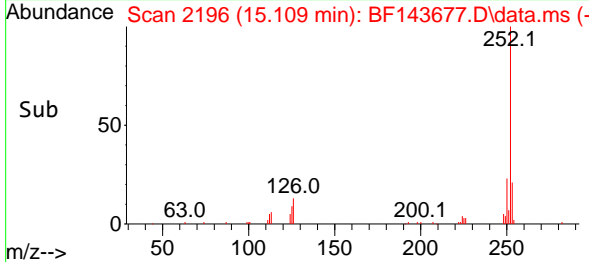
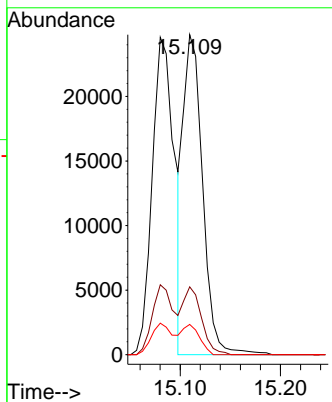


#89
 Benzo(k)fluoranthene
 Concen: 5.074 ng
 RT: 15.109 min Scan# 2196
 Delta R.T. -0.006 min
 Lab File: BF143677.D
 Acq: 09 Sep 2025 09:41

Instrument :
 BNA_F
 ClientSampleId :

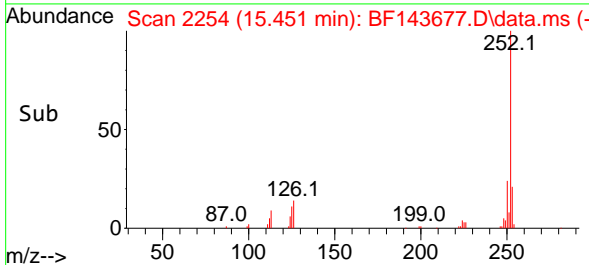
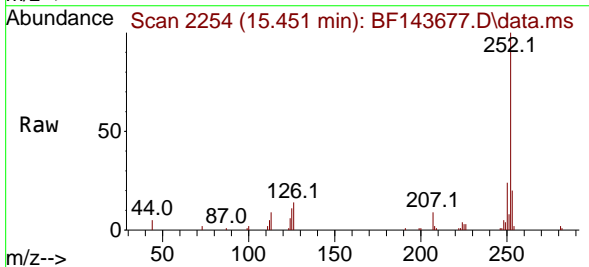
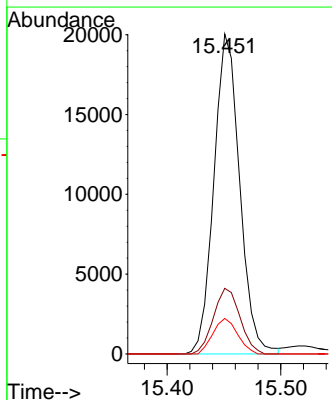


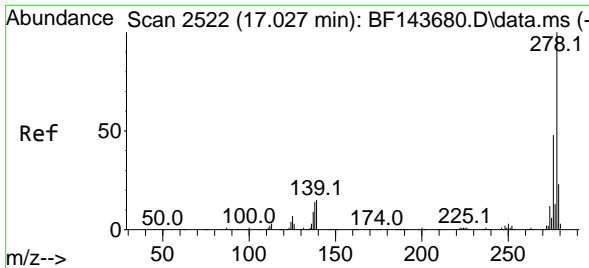
Tgt Ion:252 Resp: 33327
 Ion Ratio Lower Upper
 252 100
 253 21.2 17.3 25.9
 125 9.5 7.3 10.9



#90
 Benzo(a)pyrene
 Concen: 4.945 ng
 RT: 15.451 min Scan# 2254
 Delta R.T. -0.006 min
 Lab File: BF143677.D
 Acq: 09 Sep 2025 09:41

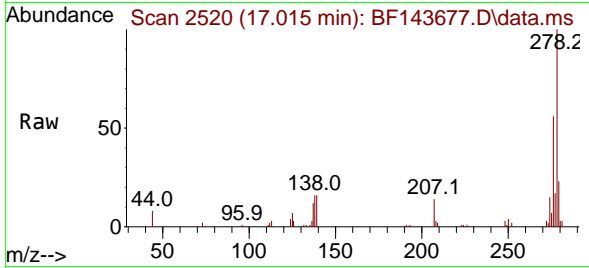
Tgt Ion:252 Resp: 31621
 Ion Ratio Lower Upper
 252 100
 253 20.5 17.4 26.0
 125 11.1 8.2 12.4



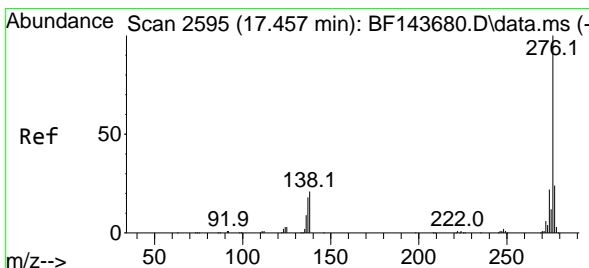
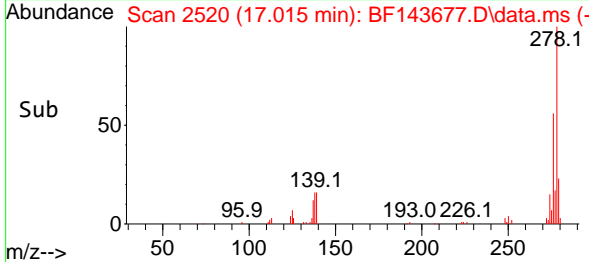
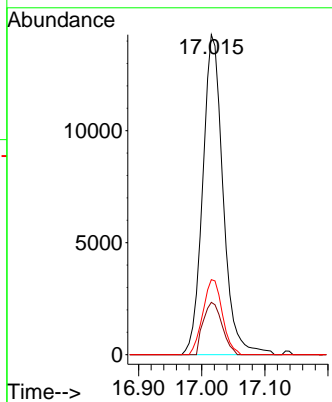


#91
 Dibenzo(a,h)anthracene
 Concen: 4.625 ng
 RT: 17.015 min Scan# 21
 Delta R.T. -0.012 min
 Lab File: BF143677.D
 Acq: 09 Sep 2025 09:41

Instrument :
 BNA_F
 ClientSampleId :



Tgt Ion:278 Resp: 32016
 Ion Ratio Lower Upper
 278 100
 139 16.3 12.2 18.4
 279 23.5 18.7 28.1



#92
 Benzo(g,h,i)perylene
 Concen: 4.693 ng
 RT: 17.445 min Scan# 2593
 Delta R.T. -0.012 min
 Lab File: BF143677.D
 Acq: 09 Sep 2025 09:41

Tgt Ion:276 Resp: 30386
 Ion Ratio Lower Upper
 276 100
 277 24.2 19.2 28.8
 138 20.2 17.0 25.4

