

Data Path : Z:\svoasrv\HPCHEM1\BNA_F\Data\BF091025\
 Data File : BF143679.D
 Acq On : 09 Sep 2025 10:39
 Operator : RC/JU
 Sample : SSTDIC020
 Misc :
 ALS Vial : 5 Sample Multiplier: 1

Instrument :
 BNA_F
 ClientSampleId :

Quant Time: Sep 09 15:25:33 2025
 Quant Method : Z:\svoasrv\HPCHEM1\BNA_F\Methods\8270-BF091025.M
 Quant Title : ASP BNA STANDARDS FOR 5 POINT CALIBRATION
 QLast Update : Tue Sep 09 15:20:16 2025
 Response via : Initial Calibration

Compound	R.T.	QIon	Response	Conc	Units	Dev(Min)	
Internal Standards							
1) 1,4-Dichlorobenzene-d4	6.892	152	51759	20.000	ng	0.00	
21) Naphthalene-d8	8.169	136	200551	20.000	ng	0.00	
39) Acenaphthene-d10	9.927	164	112988	20.000	ng	0.00	
64) Phenanthrene-d10	11.410	188	185175	20.000	ng	0.00	
76) Chrysene-d12	14.045	240	115456	20.000	ng	0.00	
86) Perylene-d12	15.521	264	117544	20.000	ng	0.00	
System Monitoring Compounds							
5) 2-Fluorophenol	5.498	112	124977	41.196	ng	0.00	
7) Phenol-d6	6.504	99	153629	41.591	ng	0.00	
23) Nitrobenzene-d5	7.445	82	131653	40.832	ng	0.00	
42) 2,4,6-Tribromophenol	10.710	330	48468	42.566	ng	0.00	
45) 2-Fluorobiphenyl	9.245	172	308716	41.274	ng	0.00	
79) Terphenyl-d14	12.992	244	296135	41.565	ng	0.00	
Target Compounds							
2) 1,4-Dioxane	2.669	88	27755	20.510	ng		Qvalue 99
3) Pyridine	3.434	79	70975	20.304	ng		95
4) n-Nitrosodimethylamine	3.369	42	26857	20.226	ng		95
6) Aniline	6.551	93	99293	20.296	ng		100
8) 2-Chlorophenol	6.669	128	67137	20.491	ng		98
9) Benzaldehyde	6.439	77	44806	15.034	ng		99
10) Phenol	6.516	94	83341	20.411	ng		99
11) bis(2-Chloroethyl)ether	6.622	93	62534	20.506	ng		99
12) 1,3-Dichlorobenzene	6.834	146	76843	20.507	ng		97
13) 1,4-Dichlorobenzene	6.910	146	78263	20.692	ng		99
14) 1,2-Dichlorobenzene	7.057	146	72296	20.242	ng		98
15) Benzyl Alcohol	7.022	79	55349	20.599	ng		100
16) 2,2'-oxybis(1-Chloropr...	7.157	45	82156	20.592	ng		99
17) 2-Methylphenol	7.128	107	54318	20.609	ng		99
18) Hexachloroethane	7.404	117	24927	20.402	ng		98
19) n-Nitroso-di-n-propyla...	7.292	70	47677	21.016	ng		99
20) 3+4-Methylphenols	7.281	107	71152	20.500	ng		92
22) Acetophenone	7.292	105	92408	20.402	ng		99
24) Nitrobenzene	7.469	77	69021	20.645	ng		98
25) Isophorone	7.704	82	125784	20.345	ng		100
26) 2-Nitrophenol	7.786	139	32862	19.992	ng		98
27) 2,4-Dimethylphenol	7.816	122	58327	19.766	ng		99
28) bis(2-Chloroethoxy)met...	7.916	93	76956	20.254	ng		99
29) 2,4-Dichlorophenol	8.022	162	61224	20.625	ng		98
30) 1,2,4-Trichlorobenzene	8.110	180	62242	20.240	ng		98
31) Naphthalene	8.192	128	200925	20.238	ng		99
32) Benzoic acid	7.886	122	30641	17.020	ng		98
33) 4-Chloroaniline	8.233	127	70979	20.537	ng		98
34) Hexachlorobutadiene	8.310	225	41282	20.581	ng		98
35) Caprolactam	8.580	113	15671	19.836	ng		98
36) 4-Chloro-3-methylphenol	8.704	107	59249	20.243	ng		98
37) 2-Methylnaphthalene	8.880	142	138476	20.376	ng		99
38) 1-Methylnaphthalene	8.980	142	132313	20.287	ng		98
40) 1,2,4,5-Tetrachloroben...	9.045	216	67509	20.870	ng		99
41) Hexachlorocyclopentadiene	9.039	237	32658	19.666	ng		98
43) 2,4,6-Trichlorophenol	9.157	196	45798	21.203	ng		99

Data Path : Z:\svoasrv\HPCHEM1\BNA_F\Data\BF091025\
 Data File : BF143679.D
 Acq On : 09 Sep 2025 10:39
 Operator : RC/JU
 Sample : SSTDICC020
 Misc :
 ALS Vial : 5 Sample Multiplier: 1

Instrument :
 BNA_F
 ClientSampleId :

Quant Time: Sep 09 15:25:33 2025
 Quant Method : Z:\svoasrv\HPCHEM1\BNA_F\Methods\8270-BF091025.M
 Quant Title : ASP BNA STANDARDS FOR 5 POINT CALIBRATION
 QLast Update : Tue Sep 09 15:20:16 2025
 Response via : Initial Calibration

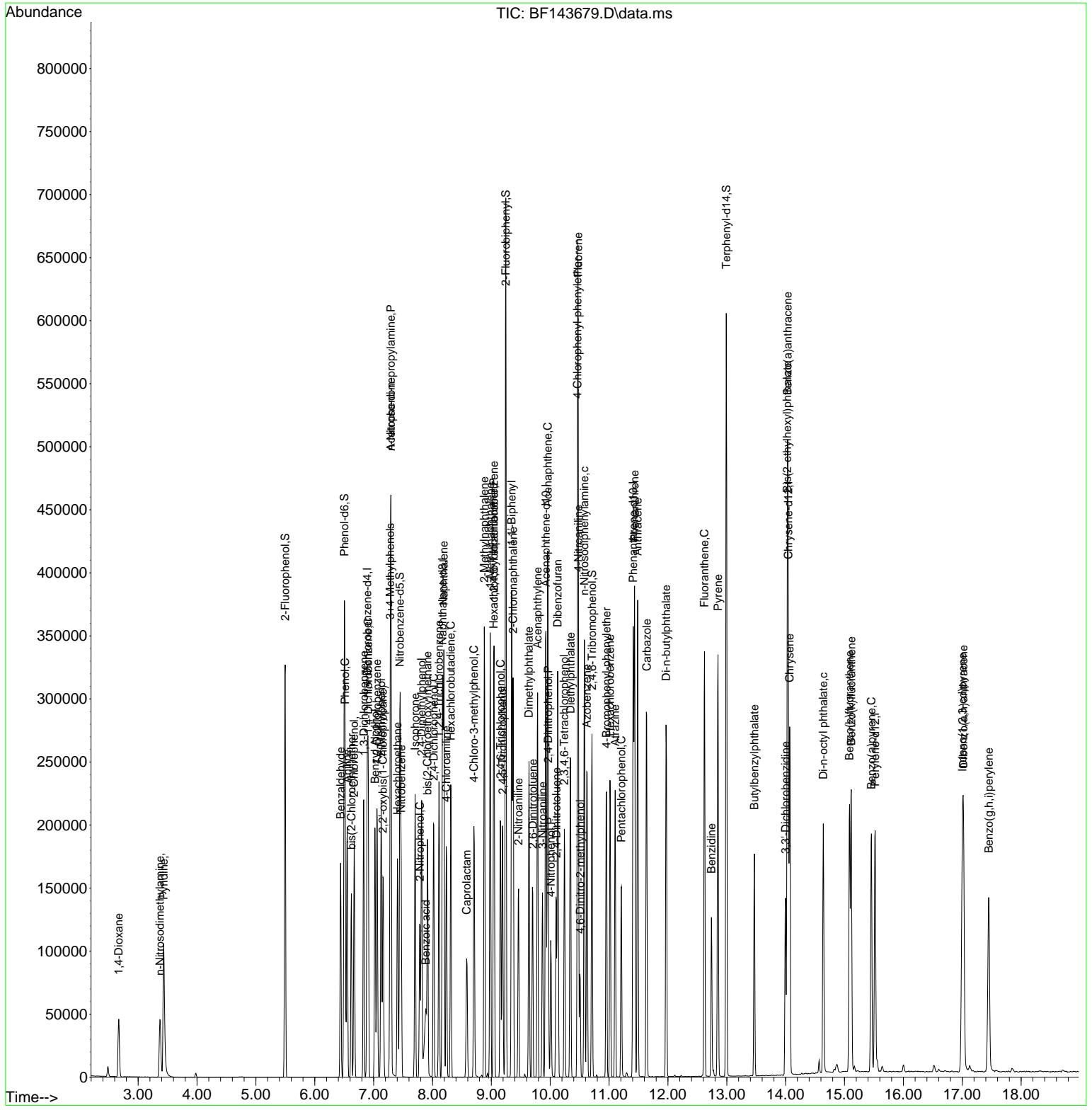
Compound	R.T.	QIon	Response	Conc	Units	Dev(Min)
44) 2,4,5-Trichlorophenol	9.192	196	42661	19.428	ng	97
46) 1,1'-Biphenyl	9.345	154	170247	20.930	ng	99
47) 2-Chloronaphthalene	9.369	162	132606	20.795	ng	100
48) 2-Nitroaniline	9.463	65	34775	20.607	ng	99
49) Acenaphthylene	9.786	152	189590	20.755	ng	100
50) Dimethylphthalate	9.639	163	150319	20.448	ng	100
51) 2,6-Dinitrotoluene	9.704	165	29023	20.649	ng	97
52) Acenaphthene	9.957	154	129597	20.589	ng	99
53) 3-Nitroaniline	9.869	138	30714	20.305	ng	97
54) 2,4-Dinitrophenol	9.969	184	10941	19.052	ng #	1
55) Dibenzofuran	10.127	168	186539	20.609	ng	100
56) 4-Nitrophenol	10.010	139	24583	20.428	ng	99
57) 2,4-Dinitrotoluene	10.104	165	39667	20.736	ng	95
58) Fluorene	10.474	166	147019	20.750	ng	99
59) 2,3,4,6-Tetrachlorophenol	10.239	232	36636	20.577	ng	98
60) Diethylphthalate	10.345	149	142360	20.627	ng	99
61) 4-Chlorophenyl-phenyle...	10.463	204	74802	20.817	ng	97
62) 4-Nitroaniline	10.480	138	30144	21.041	ng	97
63) Azobenzene	10.622	77	125055	20.496	ng	98
65) 4,6-Dinitro-2-methylph...	10.510	198	17425	18.482	ng	97
66) n-Nitrosodiphenylamine	10.580	169	124787	20.570	ng	100
67) 4-Bromophenyl-phenylether	10.957	248	45665	20.450	ng	99
68) Hexachlorobenzene	11.016	284	47505	20.147	ng	95
69) Atrazine	11.104	200	40086	21.075	ng	96
70) Pentachlorophenol	11.210	266	27910	19.581	ng	97
71) Phenanthrene	11.433	178	209980	20.581	ng	99
72) Anthracene	11.486	178	212686	20.732	ng	99
73) Carbazole	11.639	167	174552	20.775	ng	100
74) Di-n-butylphthalate	11.968	149	207739	20.537	ng	99
75) Fluoranthene	12.621	202	197089	21.042	ng	100
77) Benzidine	12.739	184	69388	18.430	ng	98
78) Pyrene	12.851	202	196937	21.334	ng	100
80) Butylbenzylphthalate	13.468	149	59872	20.700	ng	99
81) Benzo(a)anthracene	14.033	228	151517	20.399	ng	99
82) 3,3'-Dichlorobenzidine	13.998	252	45683	19.992	ng	98
83) Chrysene	14.068	228	142412	20.934	ng	99
84) Bis(2-ethylhexyl)phtha...	14.027	149	82925	20.094	ng	99
85) Di-n-octyl phthalate	14.639	149	142412	19.257	ng	99
87) Indeno(1,2,3-cd)pyrene	17.003	276	165403	20.618	ng	99
88) Benzo(b)fluoranthene	15.086	252	137629	19.669	ng	99
89) Benzo(k)fluoranthene	15.115	252	133771	21.183	ng	99
90) Benzo(a)pyrene	15.456	252	124377	20.233	ng	99
91) Dibenzo(a,h)anthracene	17.021	278	137209	20.615	ng	98
92) Benzo(g,h,i)perylene	17.450	276	127434	20.470	ng	99

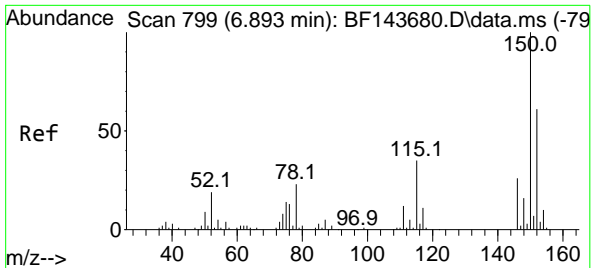
(#) = qualifier out of range (m) = manual integration (+) = signals summed

Data Path : Z:\svoasrv\HPCHEM1\BNA_F\Data\BF091025\
 Data File : BF143679.D
 Acq On : 09 Sep 2025 10:39
 Operator : RC/JU
 Sample : SSTDICC020
 Misc :
 ALS Vial : 5 Sample Multiplier: 1

Instrument :
 BNA_F
 ClientSampleId :

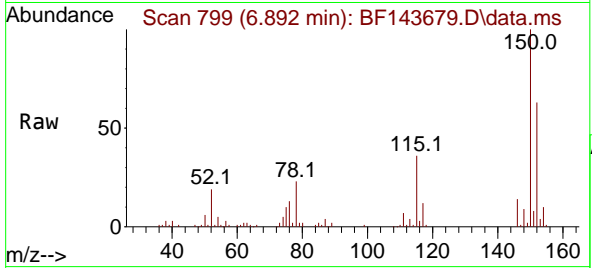
Quant Time: Sep 09 15:25:33 2025
 Quant Method : Z:\svoasrv\HPCHEM1\BNA_F\Methods\8270-BF091025.M
 Quant Title : ASP BNA STANDARDS FOR 5 POINT CALIBRATION
 QLast Update : Tue Sep 09 15:20:16 2025
 Response via : Initial Calibration



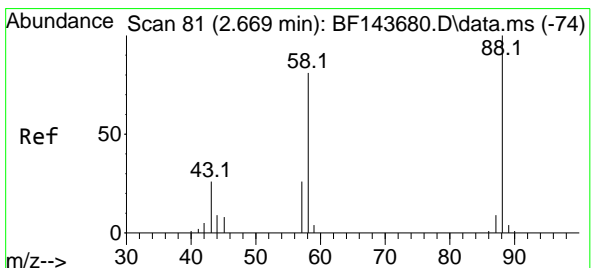
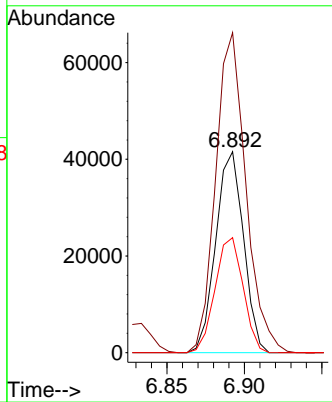
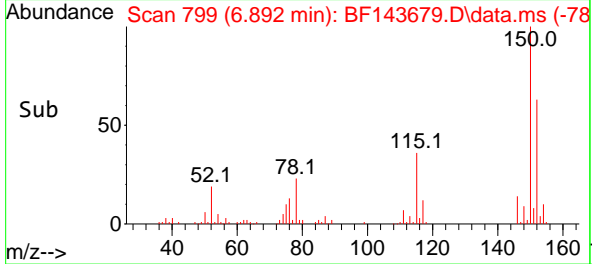


#1
 1,4-Dichlorobenzene-d4
 Concen: 20.000 ng
 RT: 6.892 min Scan# 799
 Delta R.T. -0.001 min
 Lab File: BF143679.D
 Acq: 09 Sep 2025 10:39

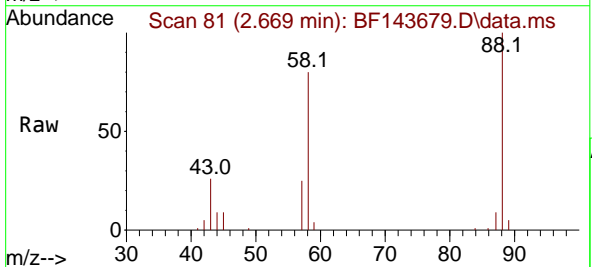
Instrument :
 BNA_F
 ClientSampleId :



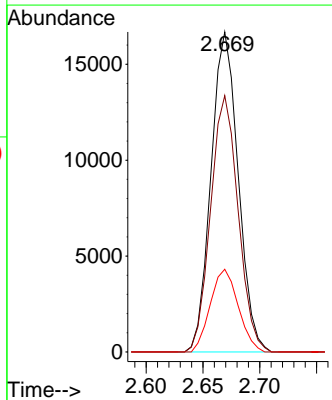
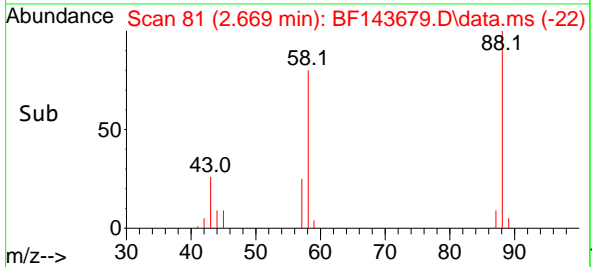
Tgt Ion:152 Resp: 51759
 Ion Ratio Lower Upper
 152 100
 150 159.2 130.7 196.1
 115 57.2 45.9 68.9

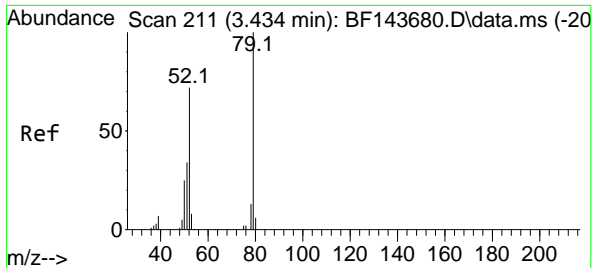


#2
 1,4-Dioxane
 Concen: 20.510 ng
 RT: 2.669 min Scan# 81
 Delta R.T. -0.000 min
 Lab File: BF143679.D
 Acq: 09 Sep 2025 10:39



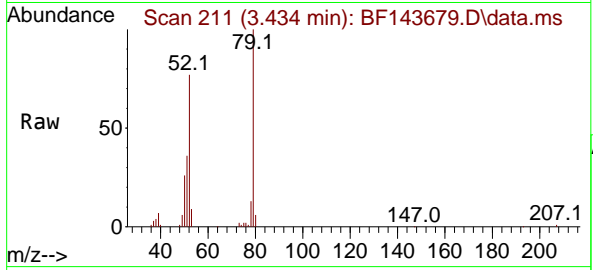
Tgt Ion: 88 Resp: 27755
 Ion Ratio Lower Upper
 88 100
 58 81.1 65.8 98.6
 43 26.6 20.6 31.0



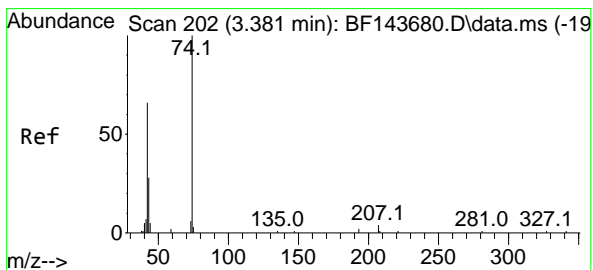
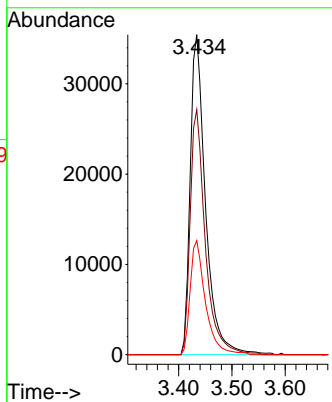
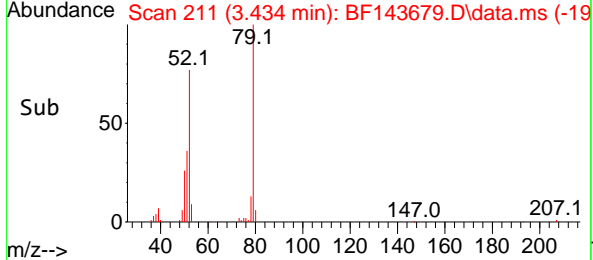


#3
 Pyridine
 Concen: 20.304 ng
 RT: 3.434 min Scan# 211
 Delta R.T. -0.000 min
 Lab File: BF143679.D
 Acq: 09 Sep 2025 10:39

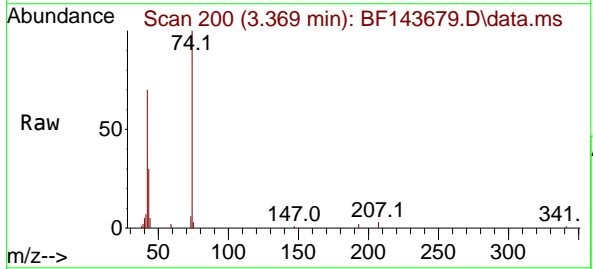
Instrument :
 BNA_F
 ClientSampleId :



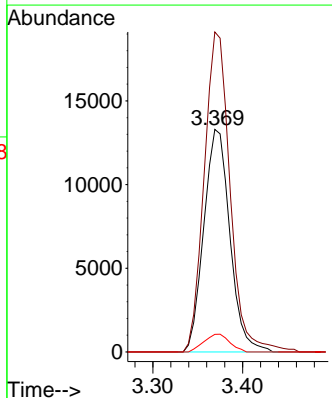
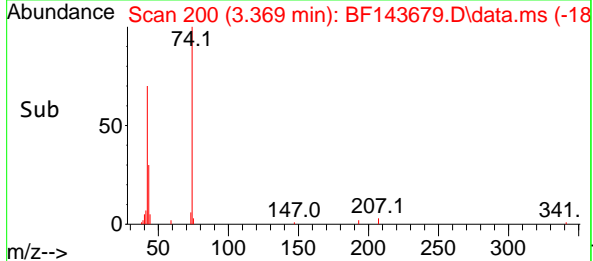
Tgt Ion: 79 Resp: 70975
 Ion Ratio Lower Upper
 79 100
 52 76.6 57.2 85.8
 51 35.7 27.0 40.6

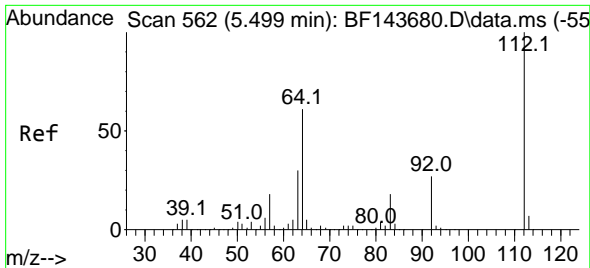


#4
 n-Nitrosodimethylamine
 Concen: 20.226 ng
 RT: 3.369 min Scan# 200
 Delta R.T. -0.012 min
 Lab File: BF143679.D
 Acq: 09 Sep 2025 10:39



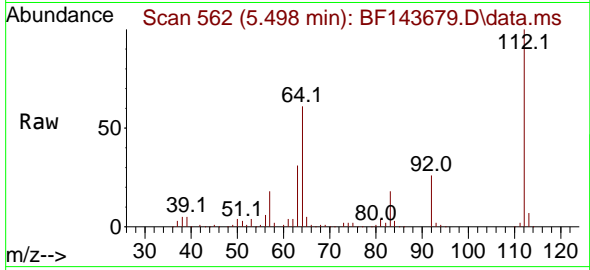
Tgt Ion: 42 Resp: 26857
 Ion Ratio Lower Upper
 42 100
 74 143.8 120.9 181.3
 44 7.9 6.5 9.7



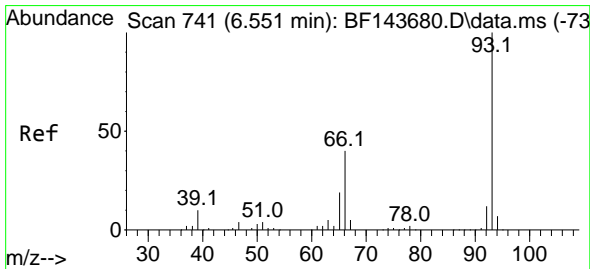
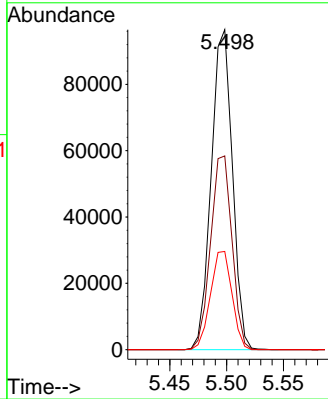
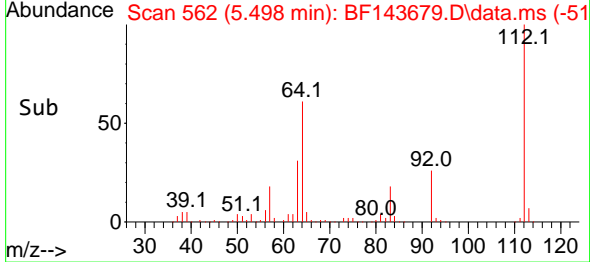


#5
 2-Fluorophenol
 Concen: 41.196 ng
 RT: 5.498 min Scan# 50
 Delta R.T. -0.000 min
 Lab File: BF143679.D
 Acq: 09 Sep 2025 10:39

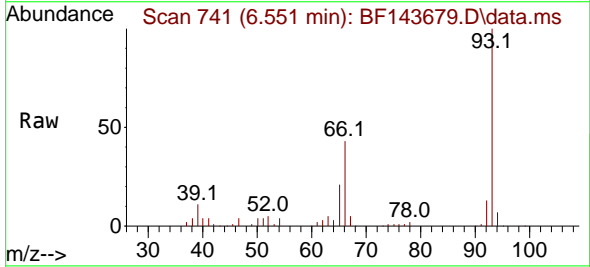
Instrument :
 BNA_F
 ClientSampleId :



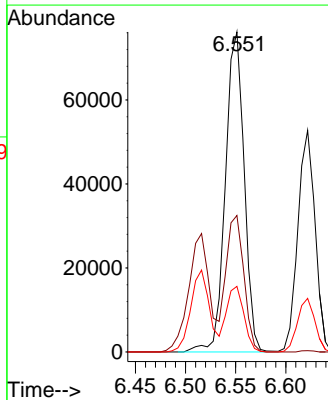
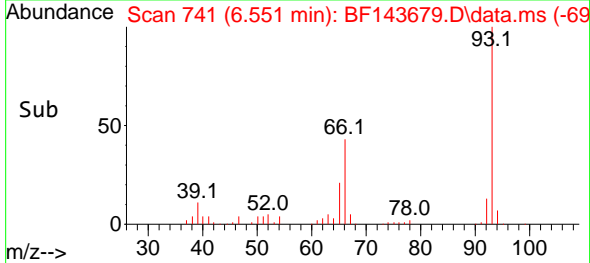
Tgt Ion: 112 Resp: 124977
 Ion Ratio Lower Upper
 112 100
 64 60.6 49.0 73.4
 63 30.7 24.3 36.5

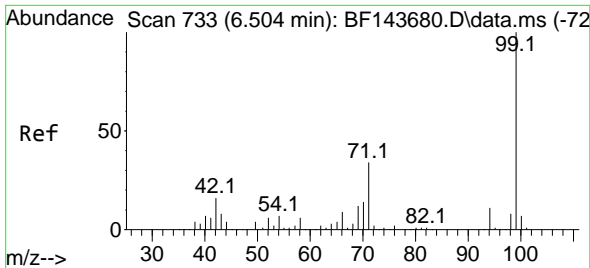


#6
 Aniline
 Concen: 20.296 ng
 RT: 6.551 min Scan# 741
 Delta R.T. -0.000 min
 Lab File: BF143679.D
 Acq: 09 Sep 2025 10:39



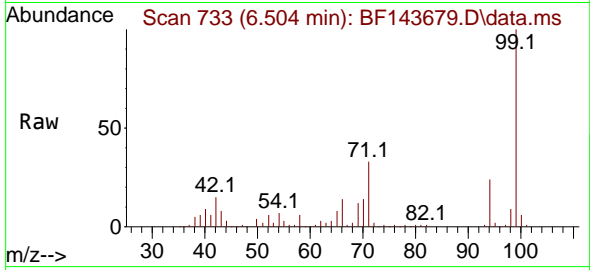
Tgt Ion: 93 Resp: 99293
 Ion Ratio Lower Upper
 93 100
 66 42.7 34.1 51.1
 65 20.5 16.1 24.1





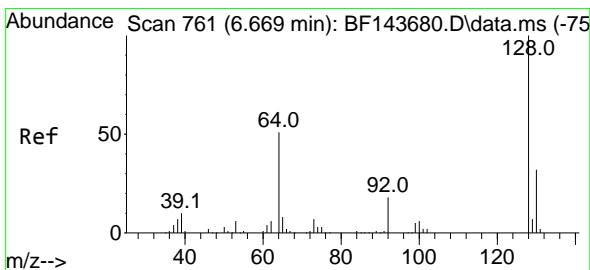
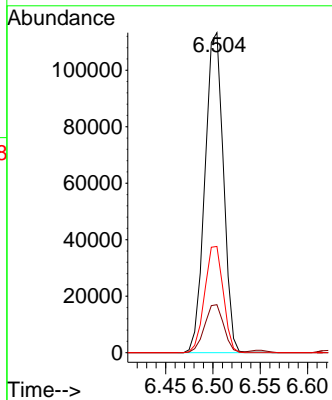
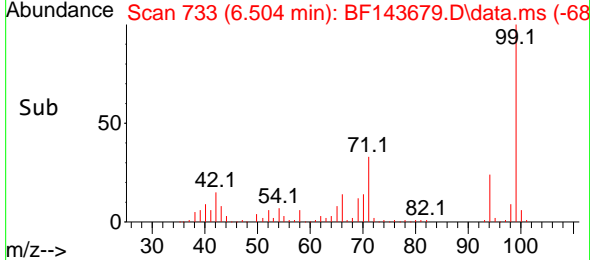
#7
 Phenol-d6
 Concen: 41.591 ng
 RT: 6.504 min Scan# 711
 Delta R.T. -0.000 min
 Lab File: BF143679.D
 Acq: 09 Sep 2025 10:39

Instrument : BNA_F
 ClientSampleId :

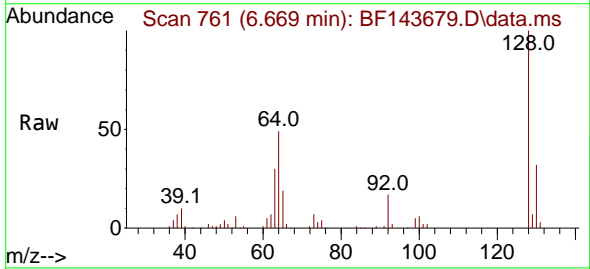


Tgt Ion: 99 Resp: 153629

Ion	Ratio	Lower	Upper
99	100		
42	15.0	13.0	19.4
71	33.2	27.4	41.2

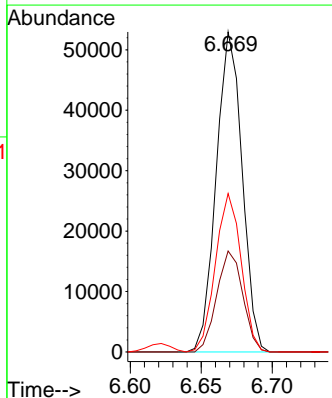
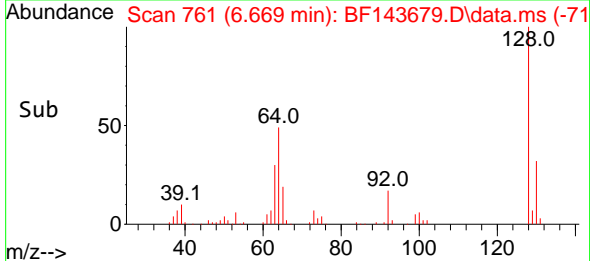


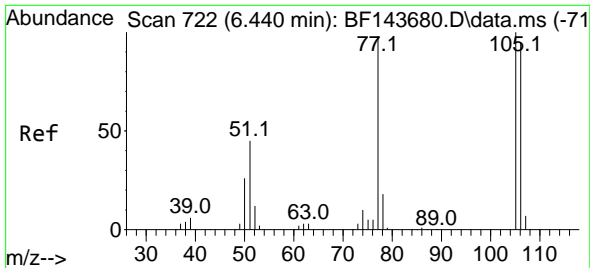
#8
 2-Chlorophenol
 Concen: 20.491 ng
 RT: 6.669 min Scan# 761
 Delta R.T. -0.000 min
 Lab File: BF143679.D
 Acq: 09 Sep 2025 10:39



Tgt Ion: 128 Resp: 67137

Ion	Ratio	Lower	Upper
128	100		
130	31.6	12.0	52.0
64	49.5	31.9	71.9



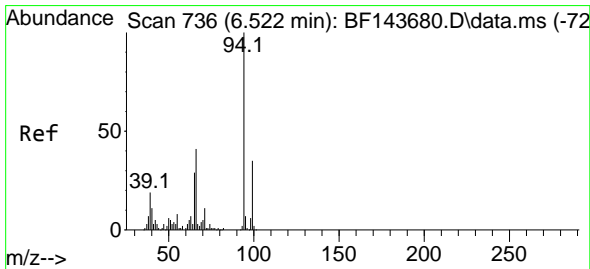
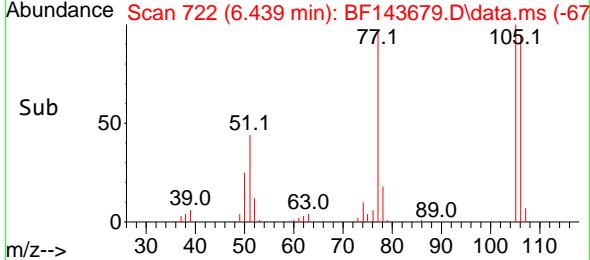
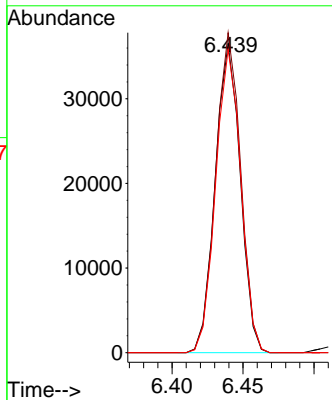
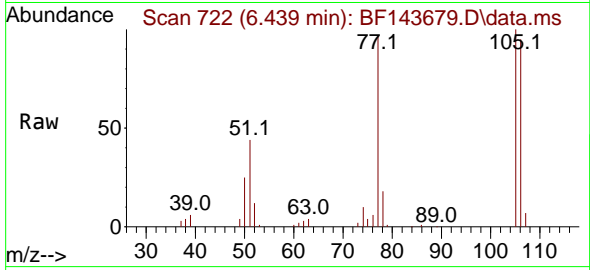


#9
Benzaldehyde
Concen: 15.034 ng
RT: 6.439 min Scan# 71
Delta R.T. -0.000 min
Lab File: BF143679.D
Acq: 09 Sep 2025 10:39

Instrument : BNA_F
ClientSampleId :

Tgt Ion: 77 Resp: 44806

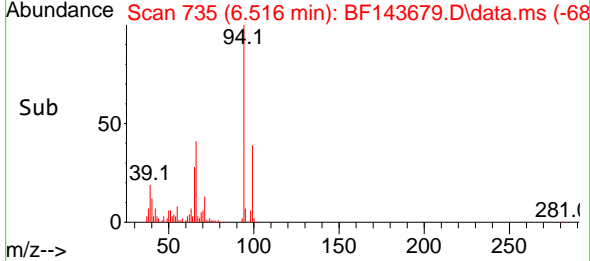
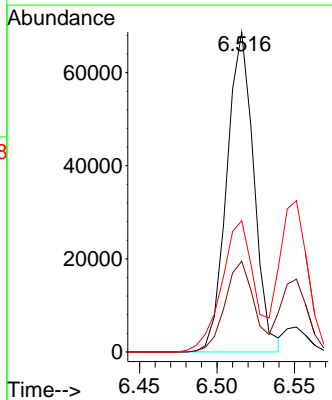
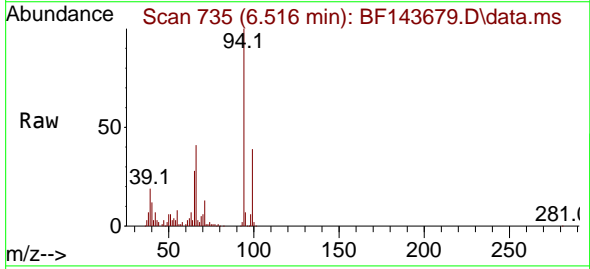
Ion	Ratio	Lower	Upper
77	100		
105	103.5	81.7	121.7
106	98.0	76.9	116.9

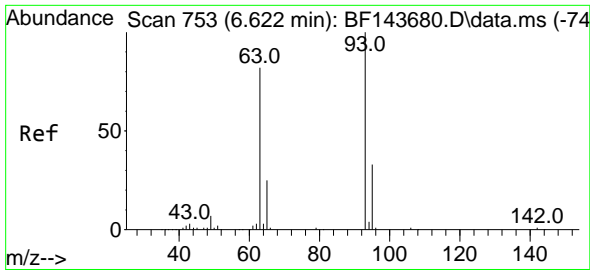


#10
Phenol
Concen: 20.411 ng
RT: 6.516 min Scan# 735
Delta R.T. -0.006 min
Lab File: BF143679.D
Acq: 09 Sep 2025 10:39

Tgt Ion: 94 Resp: 83341

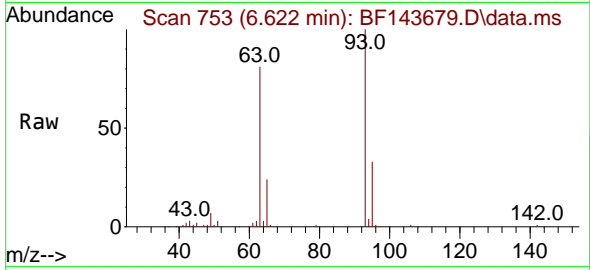
Ion	Ratio	Lower	Upper
94	100		
65	28.4	9.1	49.1
66	41.0	20.8	60.8



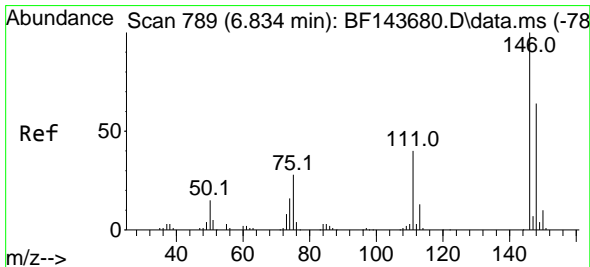
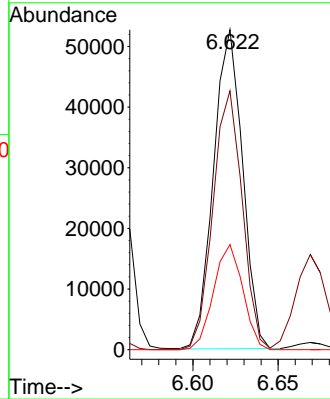
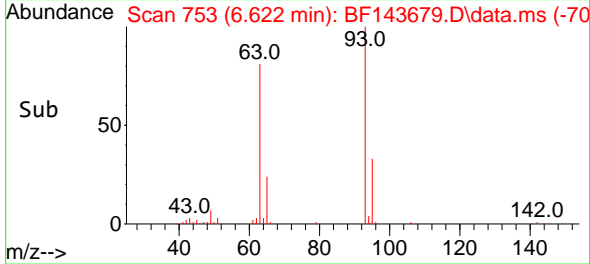


#11
 bis(2-Chloroethyl)ether
 Concen: 20.506 ng
 RT: 6.622 min Scan# 753
 Delta R.T. -0.000 min
 Lab File: BF143679.D
 Acq: 09 Sep 2025 10:39

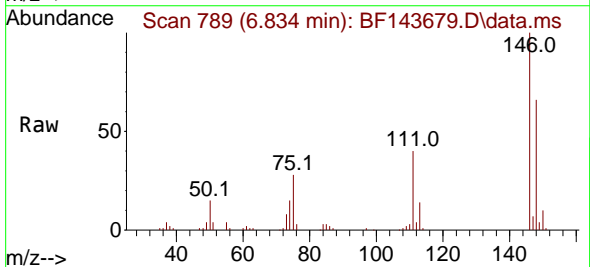
Instrument :
 BNA_F
 ClientSampleId :



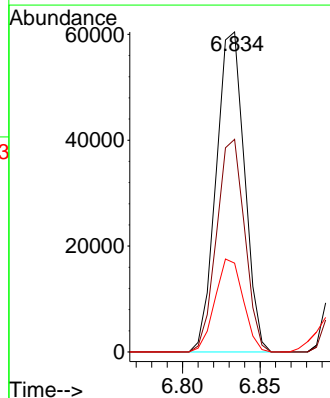
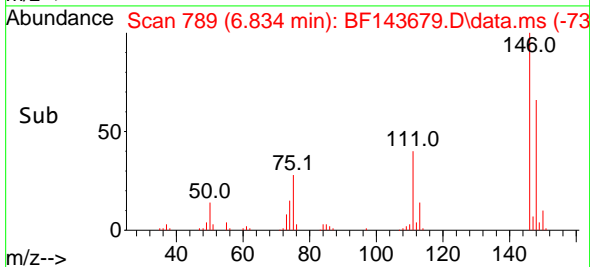
Tgt Ion: 93 Resp: 62534
 Ion Ratio Lower Upper
 93 100
 63 80.9 61.8 101.8
 95 32.9 12.6 52.6

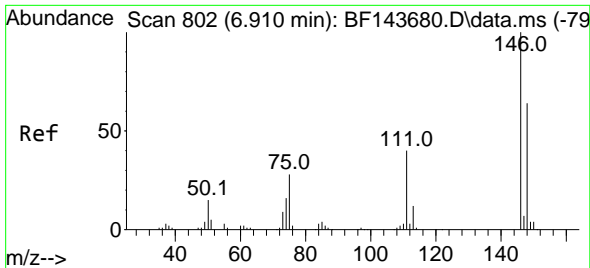


#12
 1,3-Dichlorobenzene
 Concen: 20.507 ng
 RT: 6.834 min Scan# 789
 Delta R.T. -0.000 min
 Lab File: BF143679.D
 Acq: 09 Sep 2025 10:39



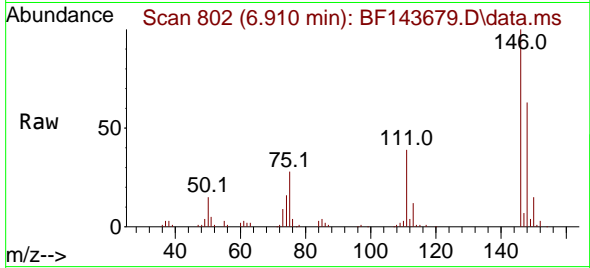
Tgt Ion: 146 Resp: 76843
 Ion Ratio Lower Upper
 146 100
 148 66.5 51.0 76.4
 75 27.7 22.0 33.0



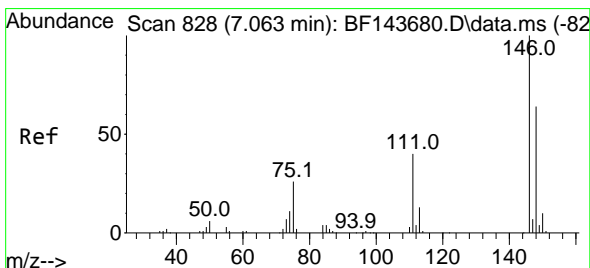
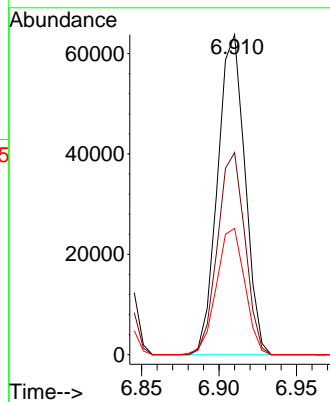
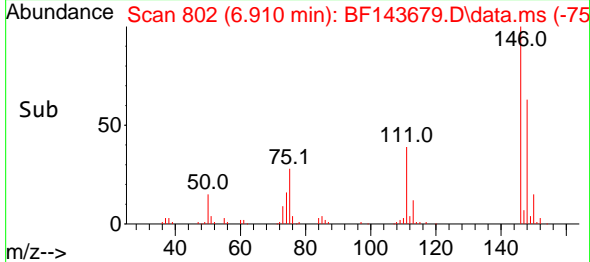


#13
 1,4-Dichlorobenzene
 Concen: 20.692 ng
 RT: 6.910 min Scan# 801
 Delta R.T. -0.000 min
 Lab File: BF143679.D
 Acq: 09 Sep 2025 10:39

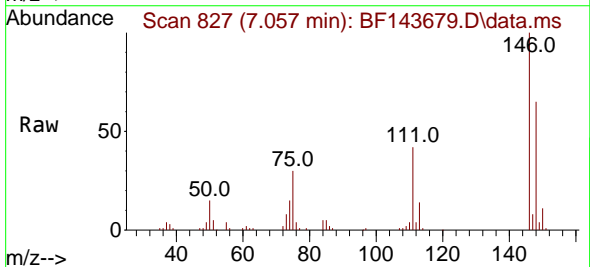
Instrument :
 BNA_F
 ClientSampleId :



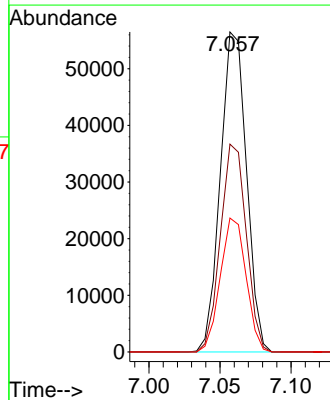
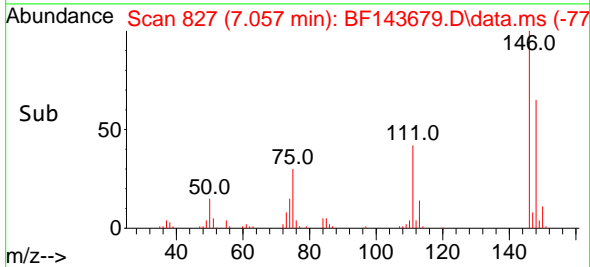
Tgt Ion:146 Resp: 78263
 Ion Ratio Lower Upper
 146 100
 148 63.2 51.2 76.8
 111 39.4 31.8 47.8

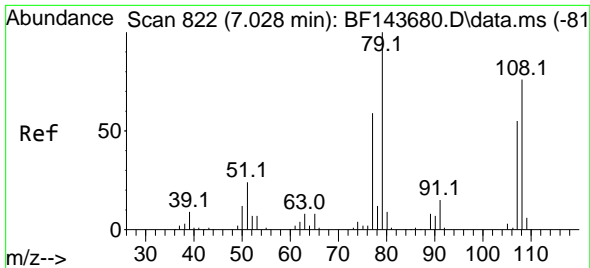


#14
 1,2-Dichlorobenzene
 Concen: 20.242 ng
 RT: 7.057 min Scan# 827
 Delta R.T. -0.006 min
 Lab File: BF143679.D
 Acq: 09 Sep 2025 10:39



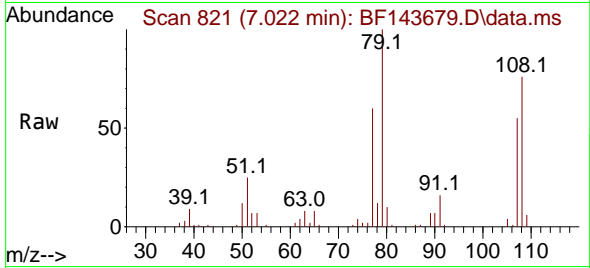
Tgt Ion:146 Resp: 72296
 Ion Ratio Lower Upper
 146 100
 148 64.9 51.0 76.4
 111 41.9 32.3 48.5



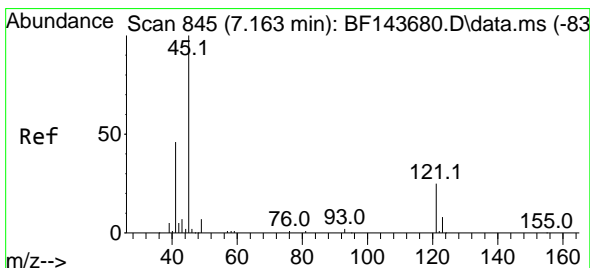
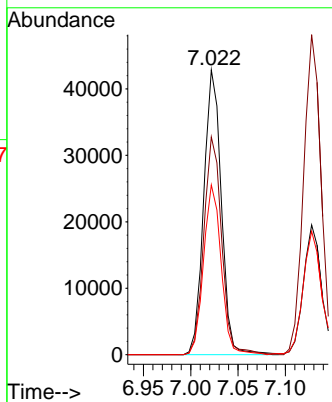
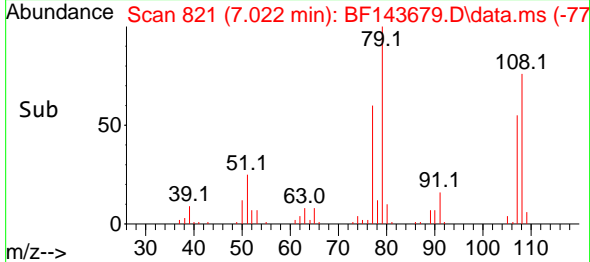


#15
 Benzyl Alcohol
 Concen: 20.599 ng
 RT: 7.022 min Scan# 81
 Delta R.T. -0.006 min
 Lab File: BF143679.D
 Acq: 09 Sep 2025 10:39

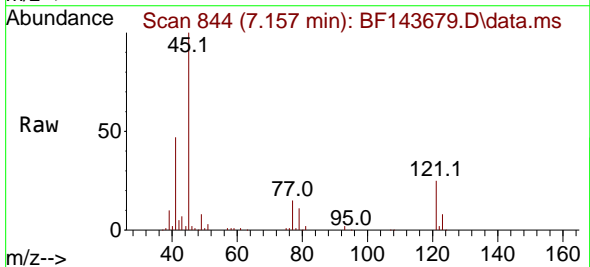
Instrument :
 BNA_F
 ClientSampleId :



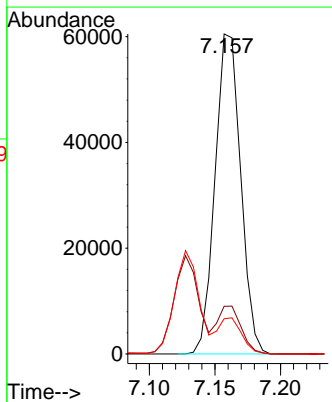
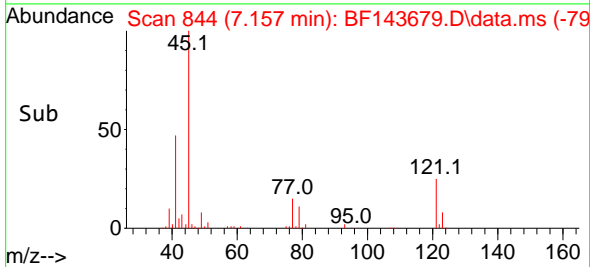
Tgt Ion: 79 Resp: 55349
 Ion Ratio Lower Upper
 79 100
 108 76.5 60.9 91.3
 77 59.6 47.4 71.2

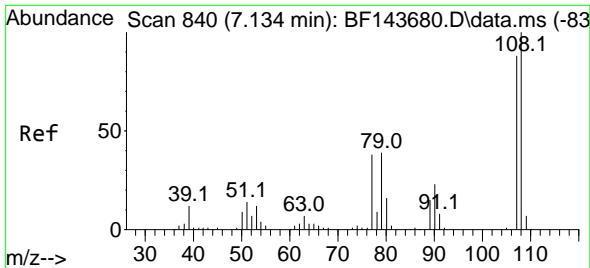


#16
 2,2'-oxybis(1-Chloropropane)
 Concen: 20.592 ng
 RT: 7.157 min Scan# 844
 Delta R.T. -0.006 min
 Lab File: BF143679.D
 Acq: 09 Sep 2025 10:39



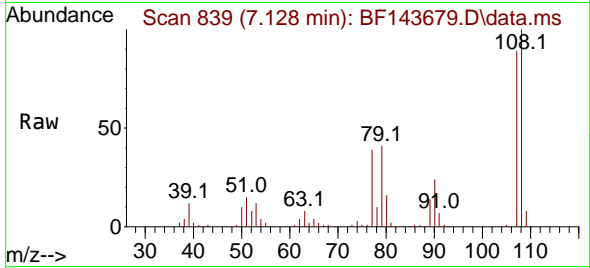
Tgt Ion: 45 Resp: 82156
 Ion Ratio Lower Upper
 45 100
 77 14.9 0.0 34.6
 79 11.0 0.0 31.3





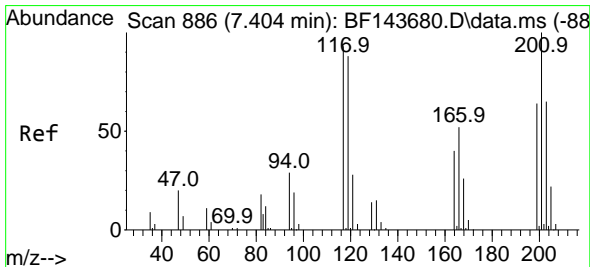
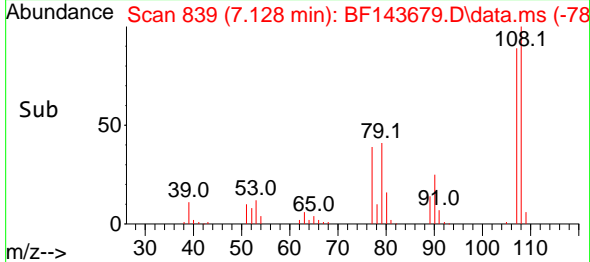
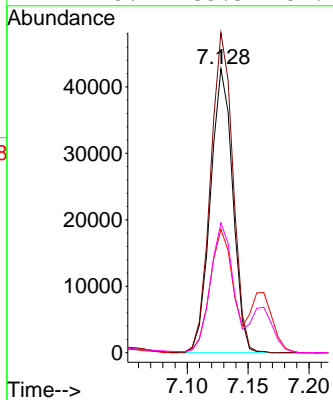
#17
 2-Methylphenol
 Concen: 20.609 ng
 RT: 7.128 min Scan# 811
 Delta R.T. -0.006 min
 Lab File: BF143679.D
 Acq: 09 Sep 2025 10:39

Instrument :
 BNA_F
 ClientSampleId :



Tgt Ion:107 Resp: 54318

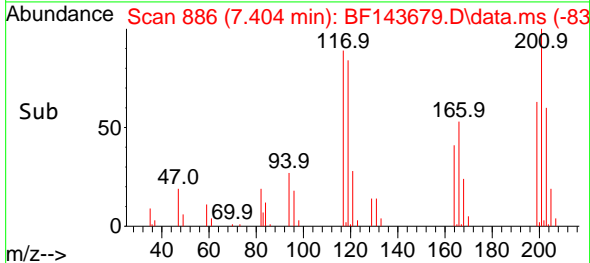
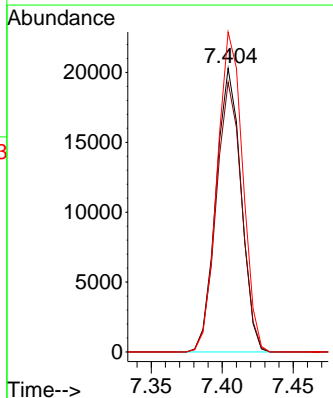
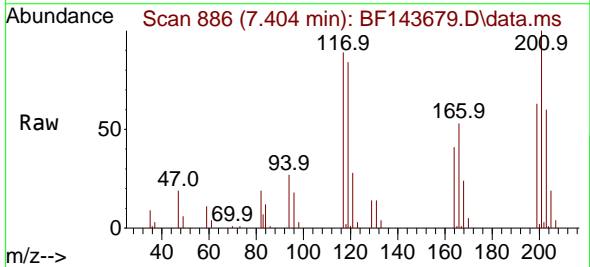
Ion	Ratio	Lower	Upper
107	100		
108	112.6	90.9	136.3
77	43.4	34.4	51.6
79	45.7	35.3	52.9

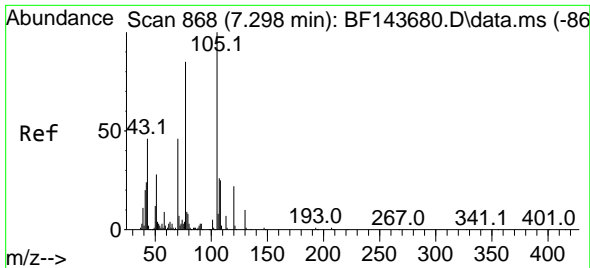


#18
 Hexachloroethane
 Concen: 20.402 ng
 RT: 7.404 min Scan# 886
 Delta R.T. -0.000 min
 Lab File: BF143679.D
 Acq: 09 Sep 2025 10:39

Tgt Ion:117 Resp: 24927

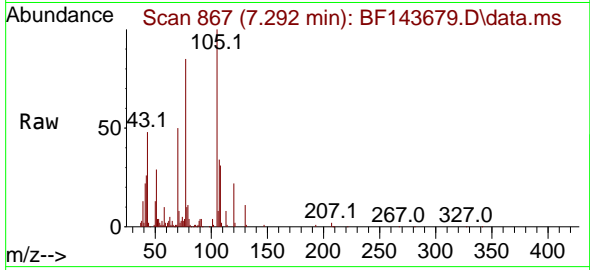
Ion	Ratio	Lower	Upper
117	100		
119	95.1	76.2	114.2
201	112.8	86.4	129.6





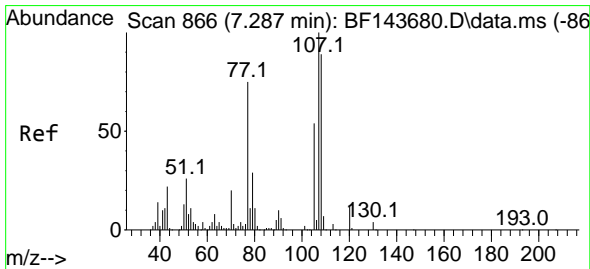
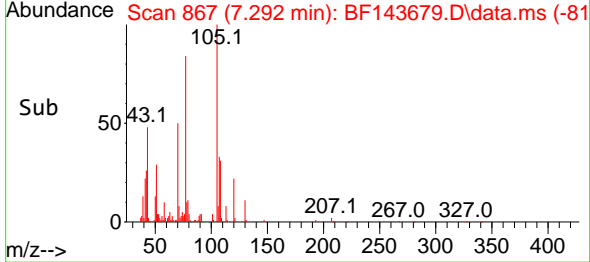
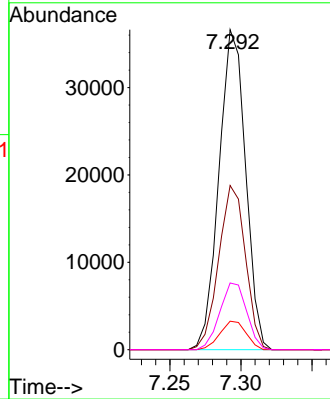
#19
 n-Nitroso-di-n-propylamine
 Concen: 21.016 ng
 RT: 7.292 min Scan# 80
 Delta R.T. -0.006 min
 Lab File: BF143679.D
 Acq: 09 Sep 2025 10:39

Instrument :
 BNA_F
 ClientSampleId :

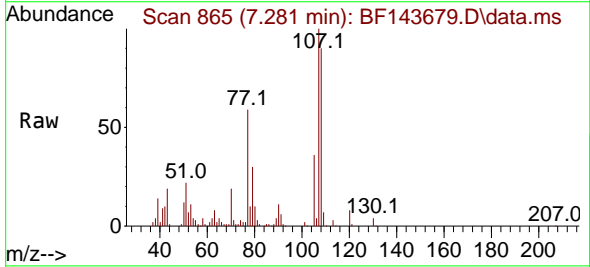


Tgt Ion: 70 Resp: 47677

Ion	Ratio	Lower	Upper
70	100		
42	51.3	41.4	62.2
101	8.9	8.1	12.1
130	20.8	17.3	25.9

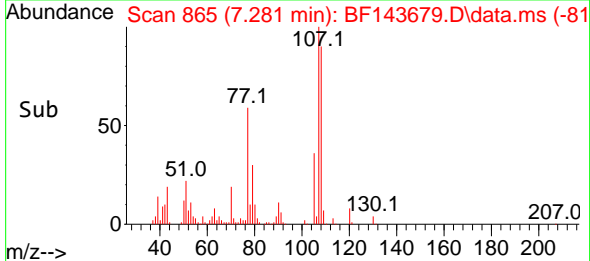
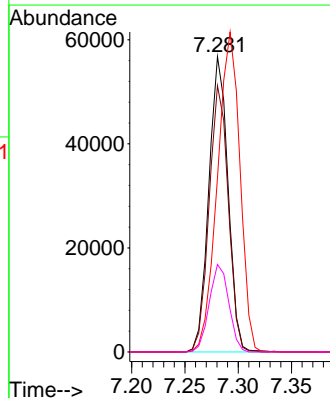


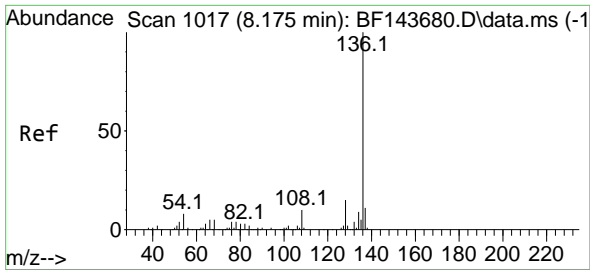
#20
 3+4-Methylphenols
 Concen: 20.500 ng
 RT: 7.281 min Scan# 865
 Delta R.T. -0.006 min
 Lab File: BF143679.D
 Acq: 09 Sep 2025 10:39



Tgt Ion: 107 Resp: 71152

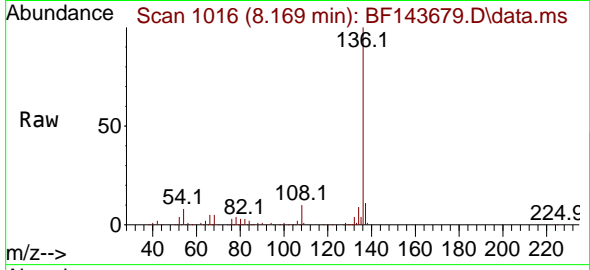
Ion	Ratio	Lower	Upper
107	100		
108	90.1	68.6	108.6
77	59.0	54.6	94.6
79	29.6	8.9	48.9





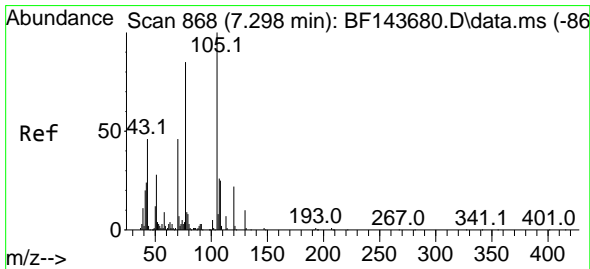
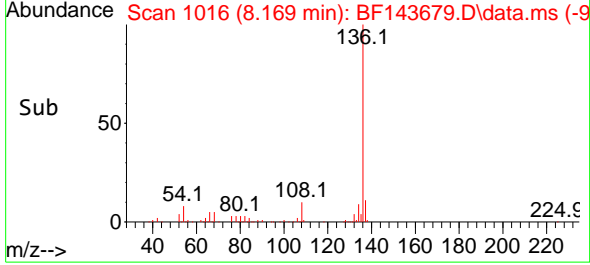
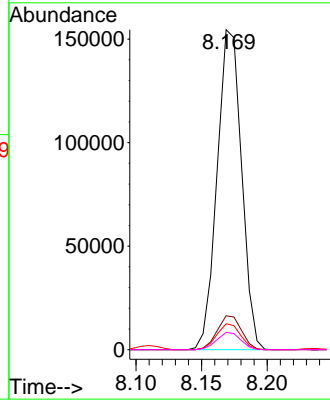
#21
 Naphthalene-d8
 Concen: 20.000 ng
 RT: 8.169 min Scan# 1016
 Delta R.T. -0.006 min
 Lab File: BF143679.D
 Acq: 09 Sep 2025 10:39

Instrument :
 BNA_F
 ClientSampleId :



Tgt Ion:136 Resp: 200551

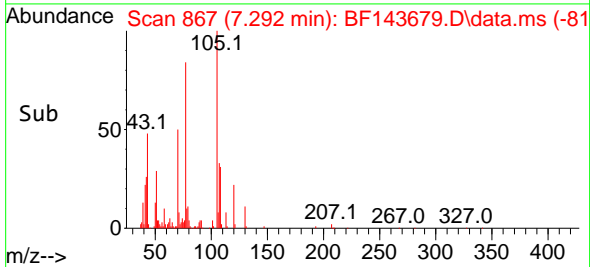
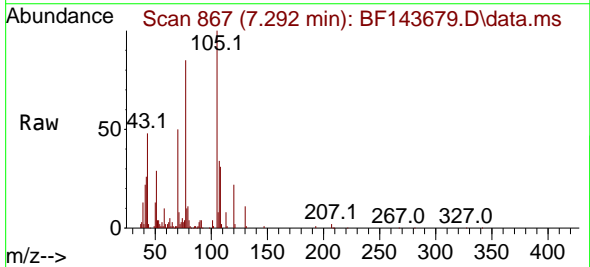
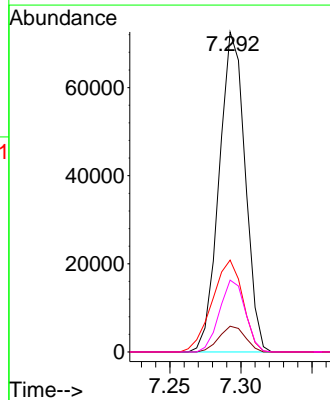
Ion	Ratio	Lower	Upper
136	100		
137	10.6	8.7	13.1
54	8.1	6.2	9.2
68	5.4	4.2	6.4

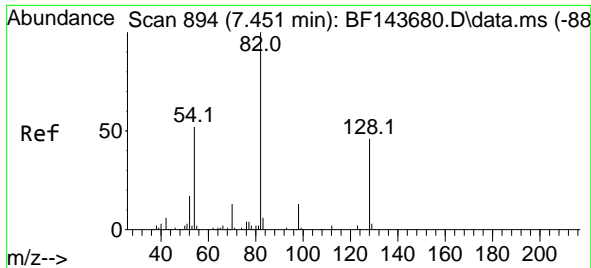


#22
 Acetophenone
 Concen: 20.402 ng
 RT: 7.292 min Scan# 867
 Delta R.T. -0.006 min
 Lab File: BF143679.D
 Acq: 09 Sep 2025 10:39

Tgt Ion:105 Resp: 92408

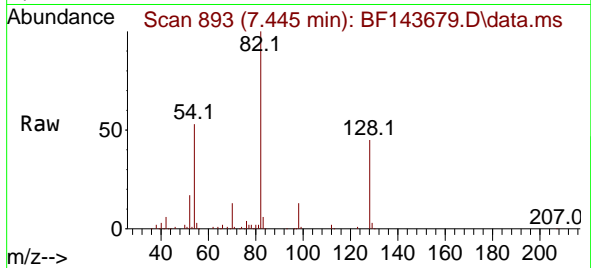
Ion	Ratio	Lower	Upper
105	100		
71	8.1	5.9	8.9
51	28.7	22.4	33.6
120	22.5	17.6	26.4



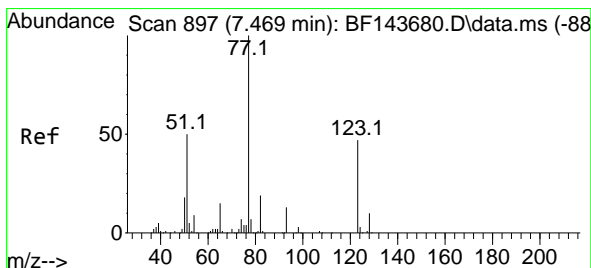
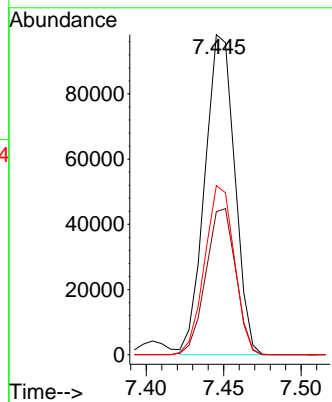
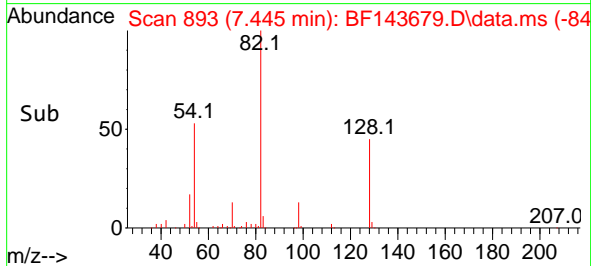


#23
 Nitrobenzene-d5
 Concen: 40.832 ng
 RT: 7.445 min Scan# 894
 Delta R.T. -0.006 min
 Lab File: BF143679.D
 Acq: 09 Sep 2025 10:39

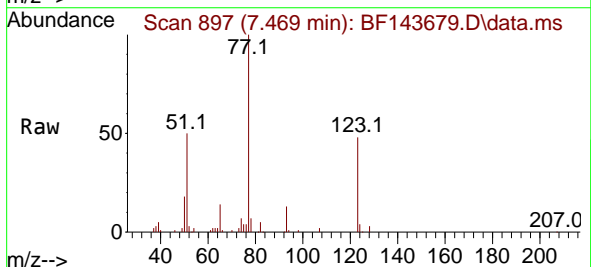
Instrument :
 BNA_F
 ClientSampleId :



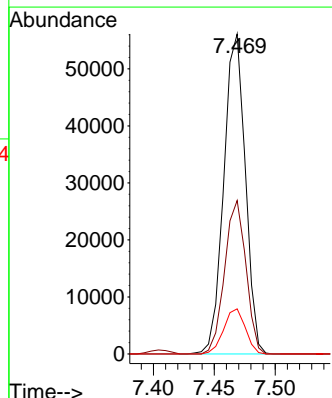
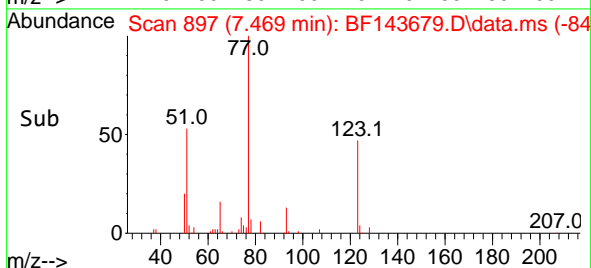
Tgt Ion: 82 Resp: 131653
 Ion Ratio Lower Upper
 82 100
 128 44.7 37.0 55.4
 54 52.8 41.8 62.8

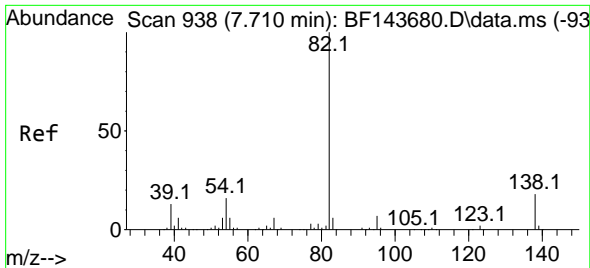


#24
 Nitrobenzene
 Concen: 20.645 ng
 RT: 7.469 min Scan# 897
 Delta R.T. -0.000 min
 Lab File: BF143679.D
 Acq: 09 Sep 2025 10:39



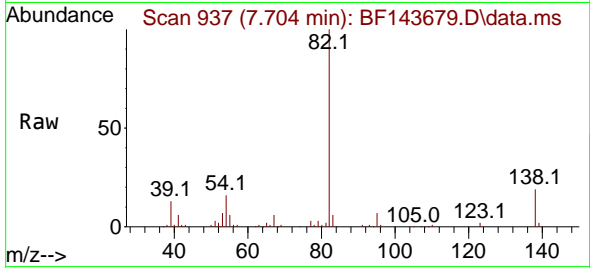
Tgt Ion: 77 Resp: 69021
 Ion Ratio Lower Upper
 77 100
 123 48.0 37.4 56.0
 65 14.1 11.6 17.4



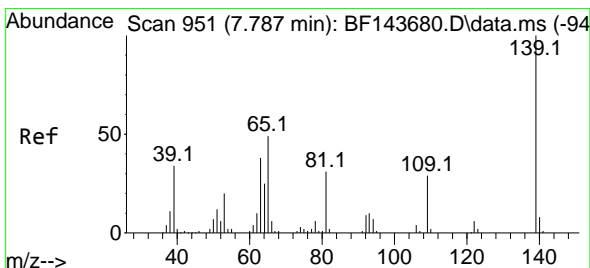
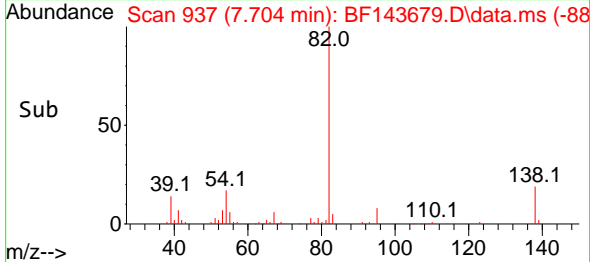
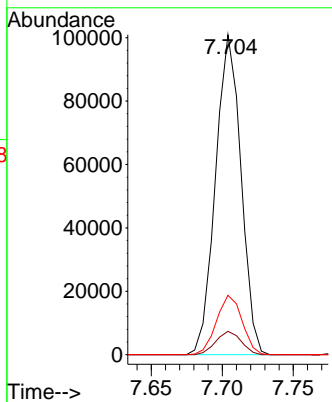


#25
 Isophorone
 Concen: 20.345 ng
 RT: 7.704 min Scan# 91
 Delta R.T. -0.006 min
 Lab File: BF143679.D
 Acq: 09 Sep 2025 10:39

Instrument :
 BNA_F
 ClientSampleId :

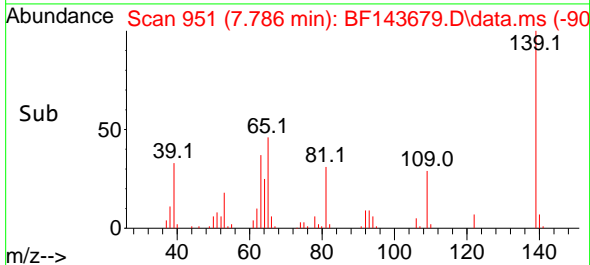
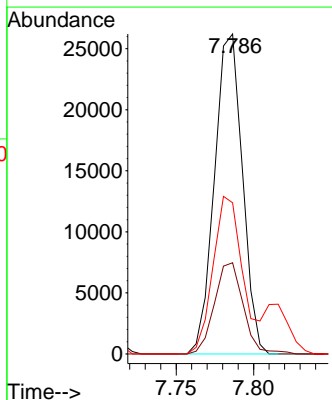
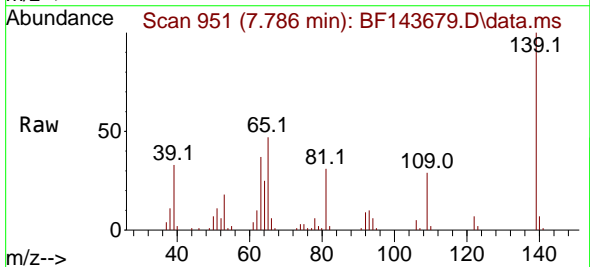


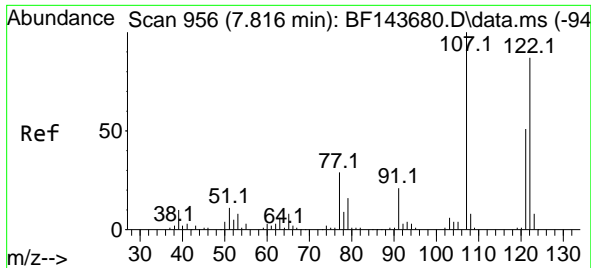
Tgt Ion: 82 Resp: 125784
 Ion Ratio Lower Upper
 82 100
 95 7.3 5.7 8.5
 138 18.6 14.8 22.2



#26
 2-Nitrophenol
 Concen: 19.992 ng
 RT: 7.786 min Scan# 951
 Delta R.T. -0.000 min
 Lab File: BF143679.D
 Acq: 09 Sep 2025 10:39

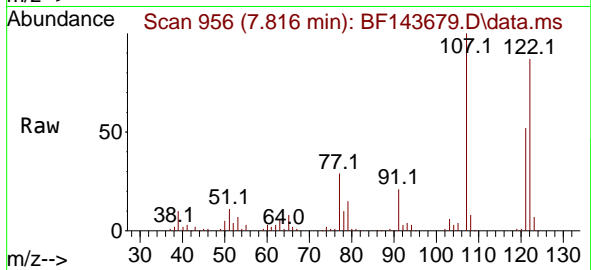
Tgt Ion: 139 Resp: 32862
 Ion Ratio Lower Upper
 139 100
 109 28.5 22.8 34.2
 65 47.3 39.2 58.8



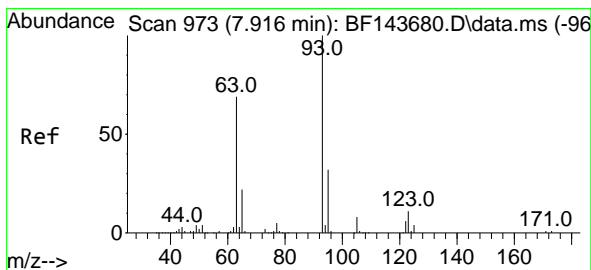
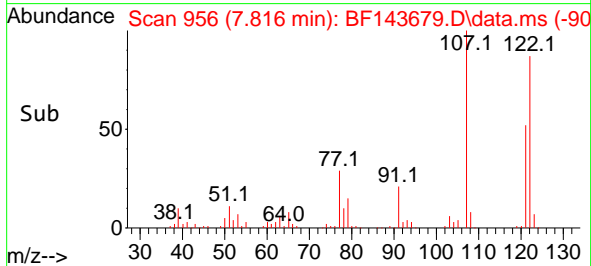
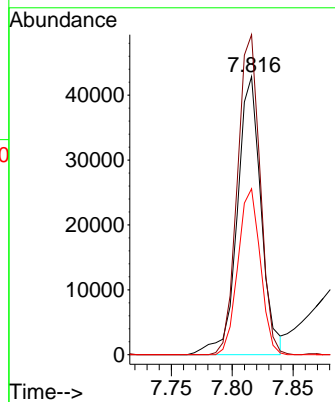


#27
 2,4-Dimethylphenol
 Concen: 19.766 ng
 RT: 7.816 min Scan# 911
 Delta R.T. -0.000 min
 Lab File: BF143679.D
 Acq: 09 Sep 2025 10:39

Instrument :
 BNA_F
 ClientSampleId :

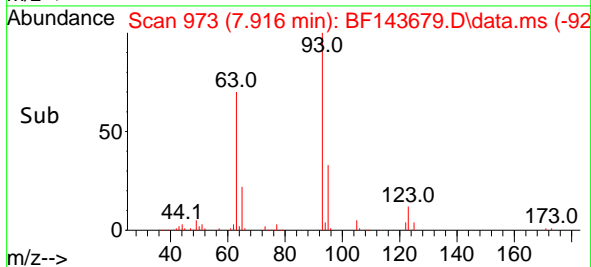
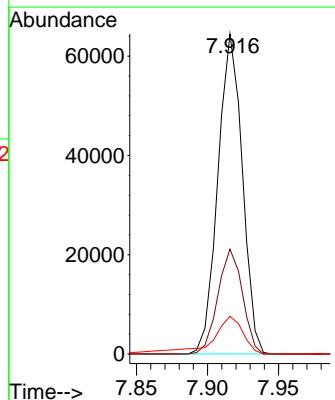
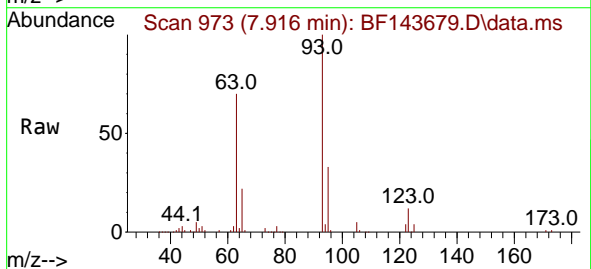


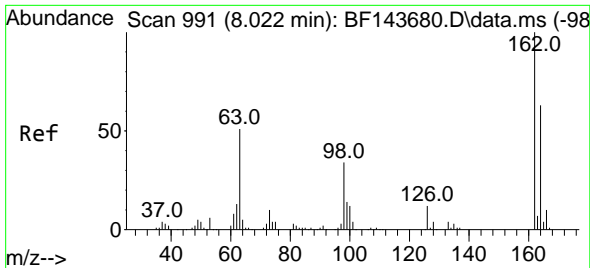
Tgt Ion:122 Resp: 58327
 Ion Ratio Lower Upper
 122 100
 107 115.1 92.1 138.1
 121 59.7 46.9 70.3



#28
 bis(2-Chloroethoxy)methane
 Concen: 20.254 ng
 RT: 7.916 min Scan# 973
 Delta R.T. -0.000 min
 Lab File: BF143679.D
 Acq: 09 Sep 2025 10:39

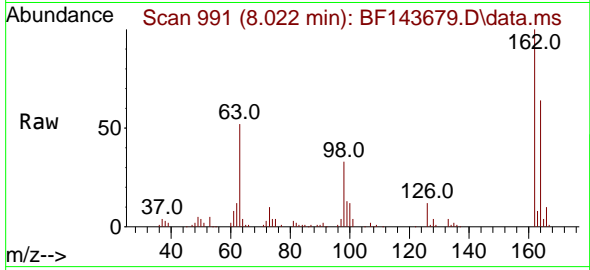
Tgt Ion: 93 Resp: 76956
 Ion Ratio Lower Upper
 93 100
 95 32.8 26.0 39.0
 123 11.7 9.6 14.4



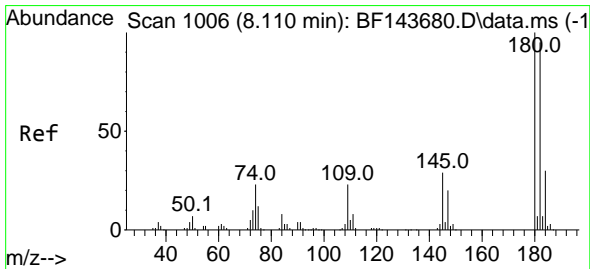
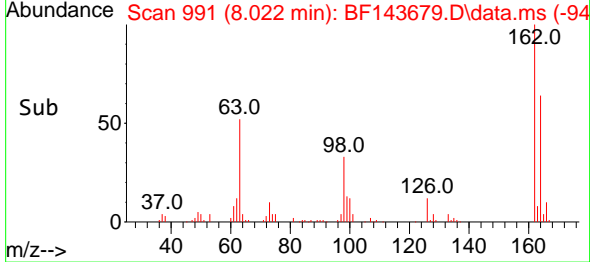
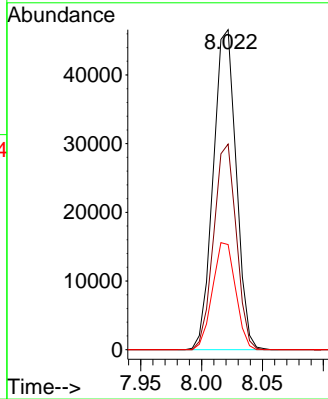


#29
 2,4-Dichlorophenol
 Concen: 20.625 ng
 RT: 8.022 min Scan# 991
 Delta R.T. -0.000 min
 Lab File: BF143679.D
 Acq: 09 Sep 2025 10:39

Instrument : BNA_F
 ClientSampleId :

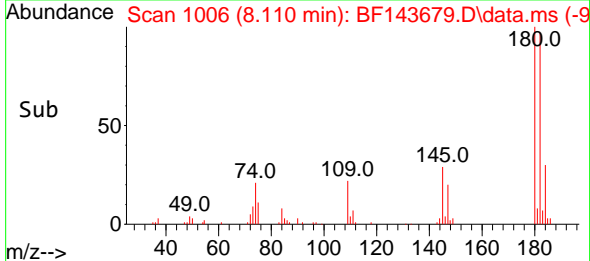
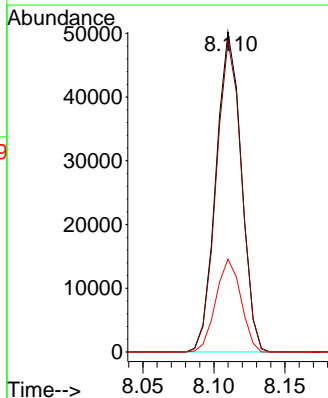
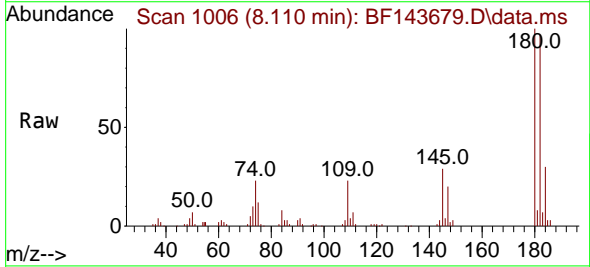


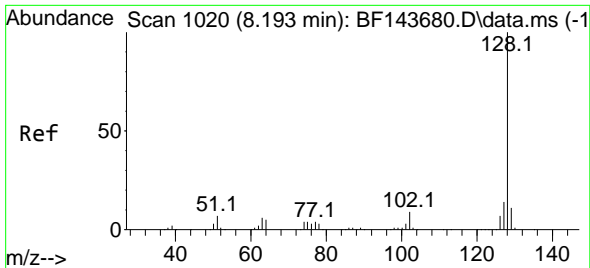
Tgt Ion:162 Resp: 61224
 Ion Ratio Lower Upper
 162 100
 164 64.3 43.0 83.0
 98 32.9 13.8 53.8



#30
 1,2,4-Trichlorobenzene
 Concen: 20.240 ng
 RT: 8.110 min Scan# 1006
 Delta R.T. -0.000 min
 Lab File: BF143679.D
 Acq: 09 Sep 2025 10:39

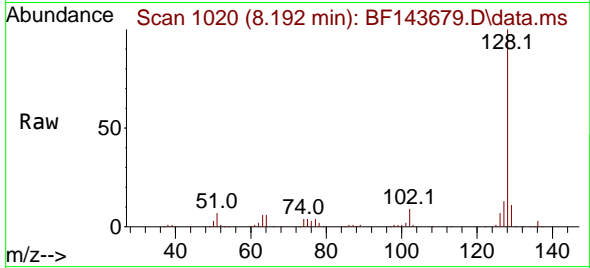
Tgt Ion:180 Resp: 62242
 Ion Ratio Lower Upper
 180 100
 182 97.3 76.2 114.4
 145 29.0 23.2 34.8



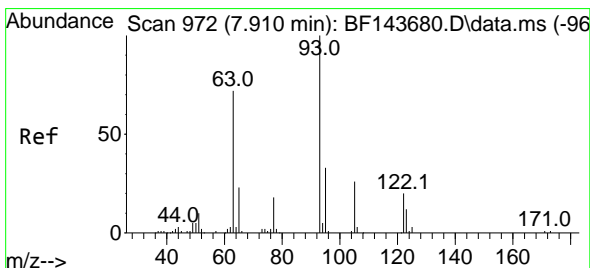
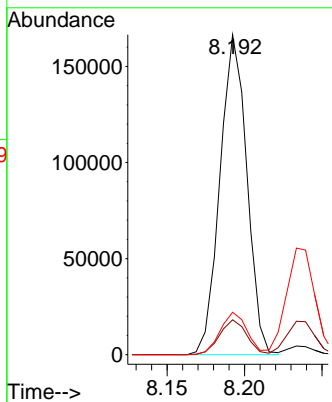
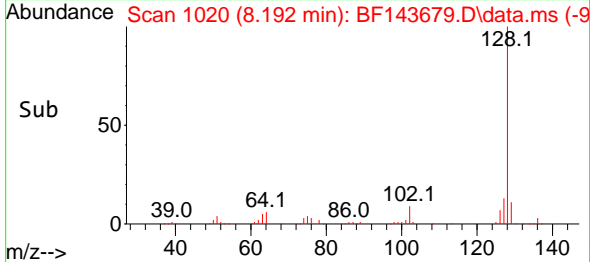


#31
 Naphthalene
 Concen: 20.238 ng
 RT: 8.192 min Scan# 10
 Delta R.T. -0.000 min
 Lab File: BF143679.D
 Acq: 09 Sep 2025 10:39

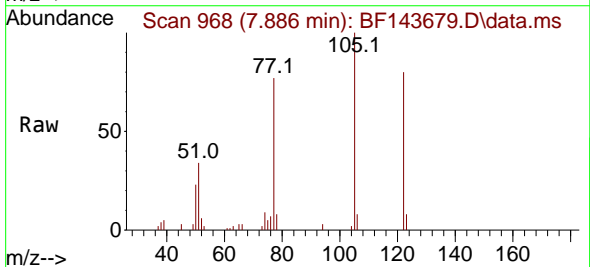
Instrument :
 BNA_F
 ClientSampleId :



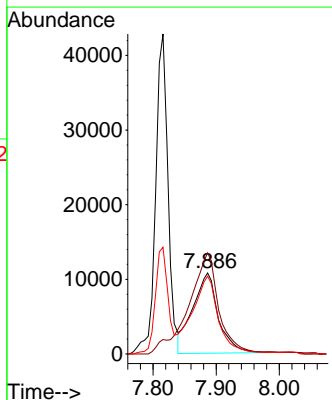
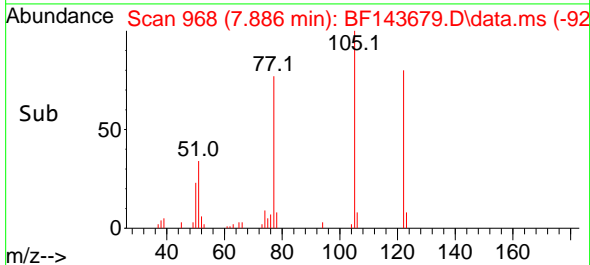
Tgt Ion:128 Resp: 200925
 Ion Ratio Lower Upper
 128 100
 129 10.9 8.8 13.2
 127 13.3 10.9 16.3

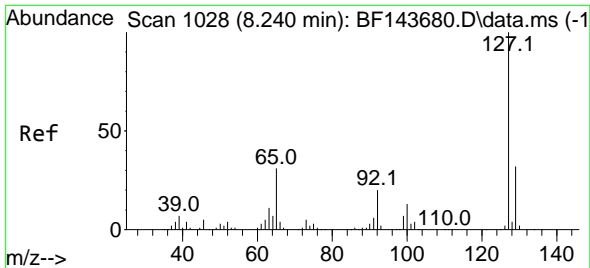


#32
 Benzoic acid
 Concen: 17.020 ng
 RT: 7.886 min Scan# 968
 Delta R.T. -0.024 min
 Lab File: BF143679.D
 Acq: 09 Sep 2025 10:39



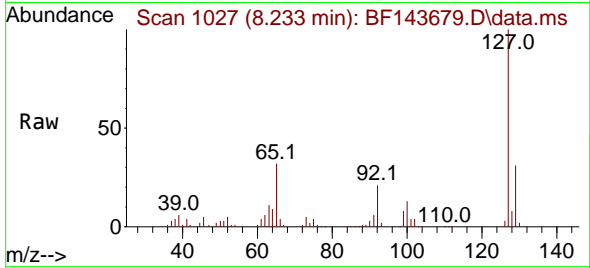
Tgt Ion:122 Resp: 30641
 Ion Ratio Lower Upper
 122 100
 105 124.8 105.2 145.2
 77 96.0 72.0 112.0





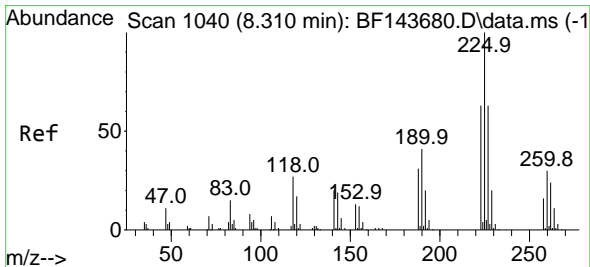
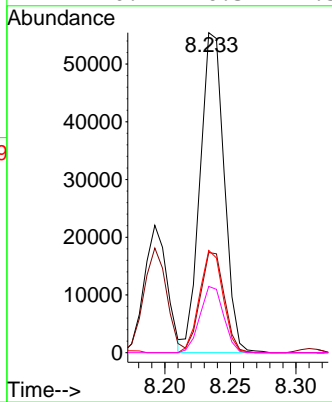
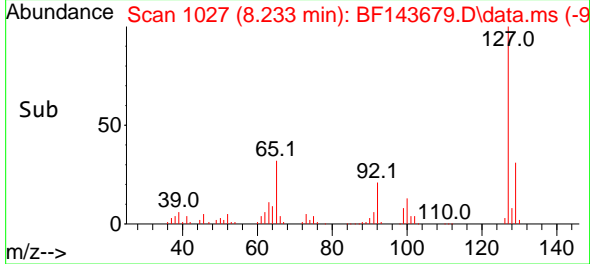
#33
 4-Chloroaniline
 Concen: 20.537 ng
 RT: 8.233 min Scan# 1027
 Delta R.T. -0.006 min
 Lab File: BF143679.D
 Acq: 09 Sep 2025 10:39

Instrument :
 BNA_F
 ClientSampleId :

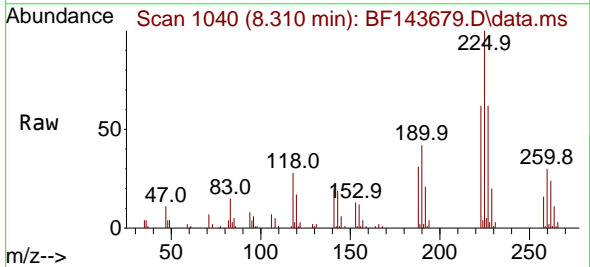


Tgt Ion:127 Resp: 70979

Ion	Ratio	Lower	Upper
127	100		
129	31.3	26.0	39.0
65	32.0	24.6	36.8
92	20.7	16.3	24.5

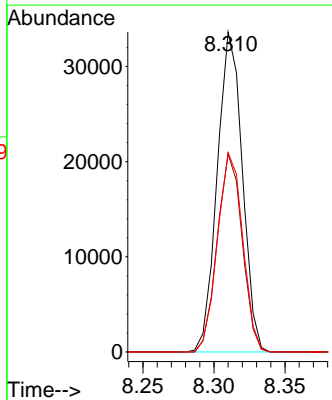
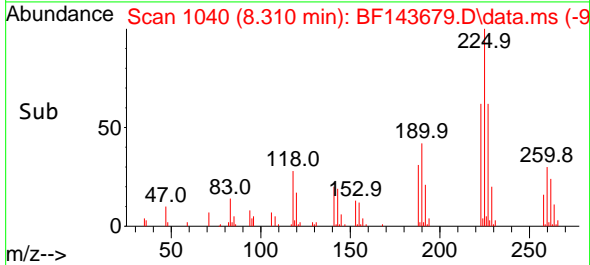


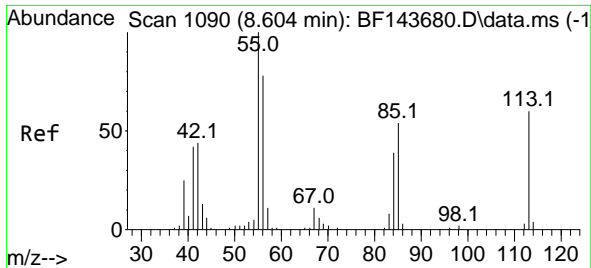
#34
 Hexachlorobutadiene
 Concen: 20.581 ng
 RT: 8.310 min Scan# 1040
 Delta R.T. -0.000 min
 Lab File: BF143679.D
 Acq: 09 Sep 2025 10:39



Tgt Ion:225 Resp: 41282

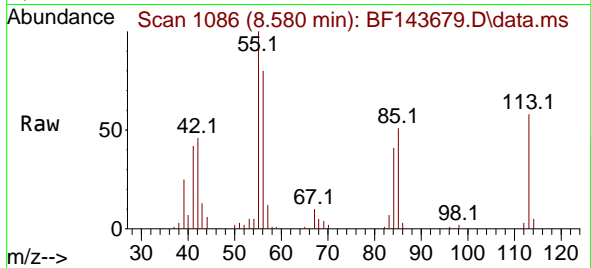
Ion	Ratio	Lower	Upper
225	100		
223	61.9	50.6	76.0
227	62.3	50.8	76.2



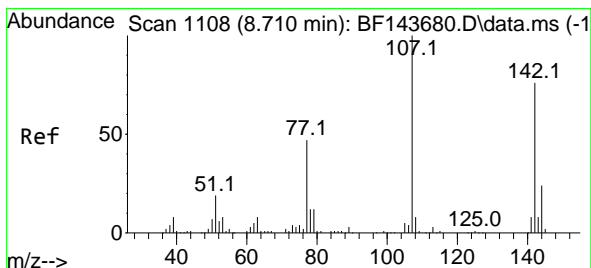
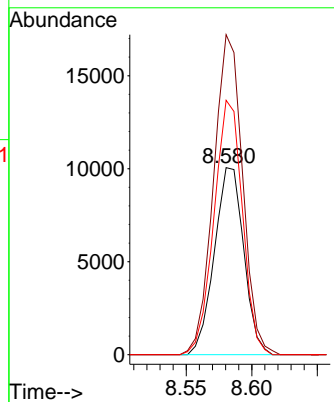
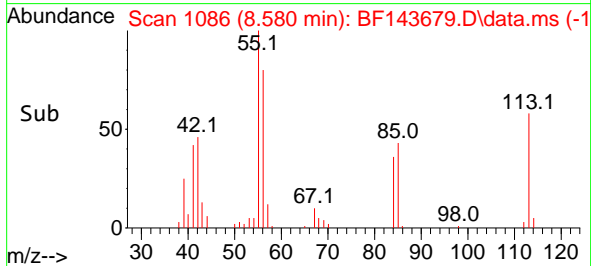


#35
 Caprolactam
 Concen: 19.836 ng
 RT: 8.580 min Scan# 1090
 Delta R.T. -0.024 min
 Lab File: BF143679.D
 Acq: 09 Sep 2025 10:39

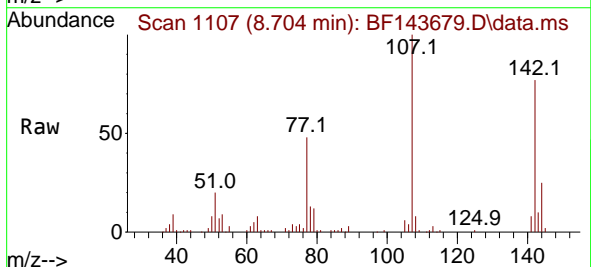
Instrument :
 BNA_F
 ClientSampleId :



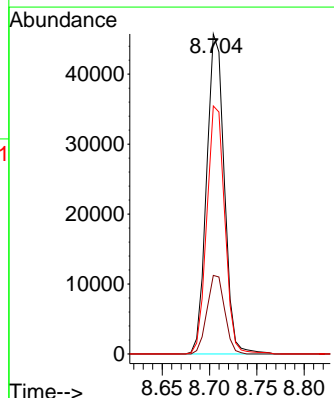
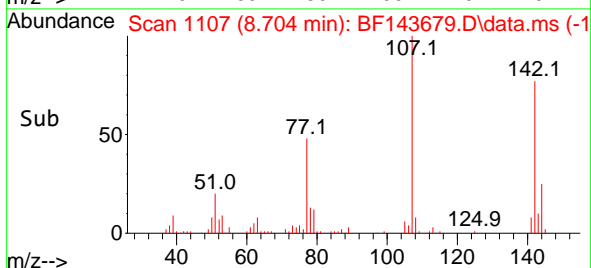
Tgt Ion:113 Resp: 15671
 Ion Ratio Lower Upper
 113 100
 55 171.1 148.9 188.9
 56 136.1 112.8 152.8

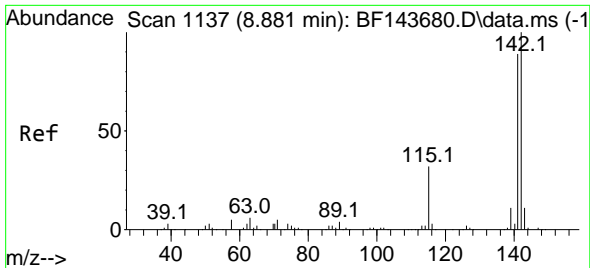


#36
 4-Chloro-3-methylphenol
 Concen: 20.243 ng
 RT: 8.704 min Scan# 1107
 Delta R.T. -0.006 min
 Lab File: BF143679.D
 Acq: 09 Sep 2025 10:39



Tgt Ion:107 Resp: 59249
 Ion Ratio Lower Upper
 107 100
 144 24.6 19.4 29.2
 142 77.5 60.6 91.0

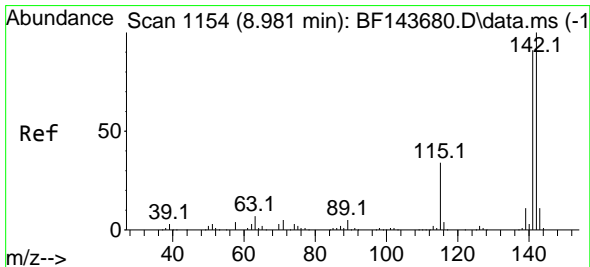
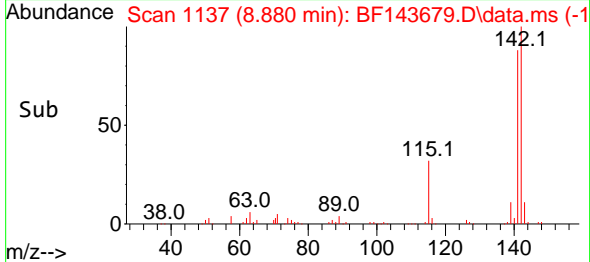
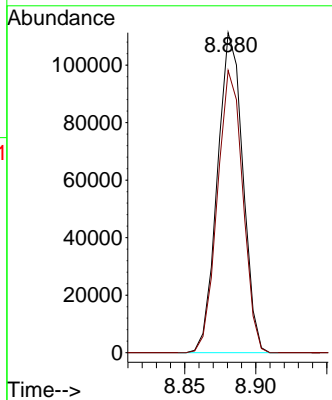
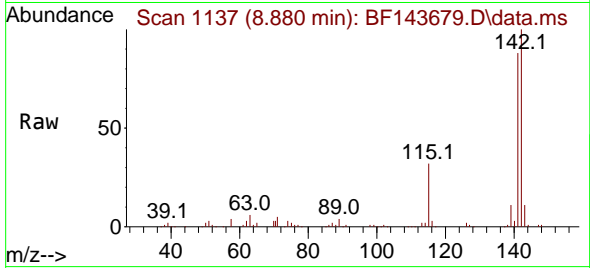




#37
 2-Methylnaphthalene
 Concen: 20.376 ng
 RT: 8.880 min Scan# 1137
 Delta R.T. -0.000 min
 Lab File: BF143679.D
 Acq: 09 Sep 2025 10:39

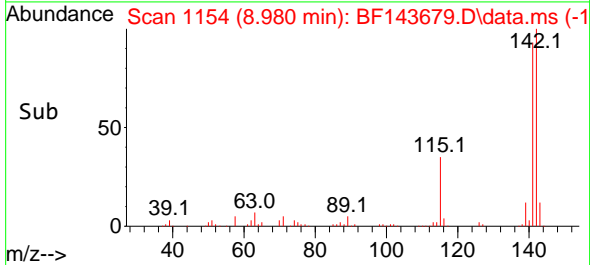
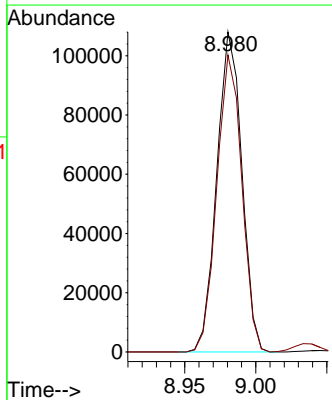
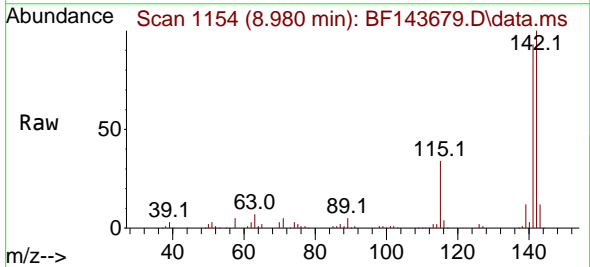
Instrument :
 BNA_F
 ClientSampleId :

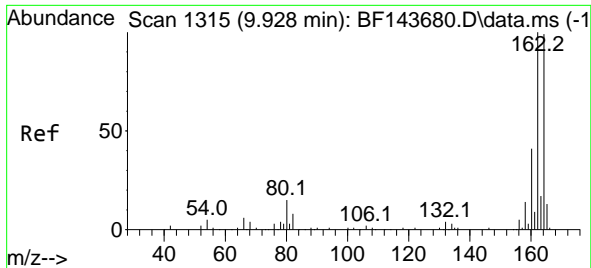
Tgt Ion:142 Resp: 138476
 Ion Ratio Lower Upper
 142 100
 141 88.2 71.1 106.7



#38
 1-Methylnaphthalene
 Concen: 20.287 ng
 RT: 8.980 min Scan# 1154
 Delta R.T. -0.000 min
 Lab File: BF143679.D
 Acq: 09 Sep 2025 10:39

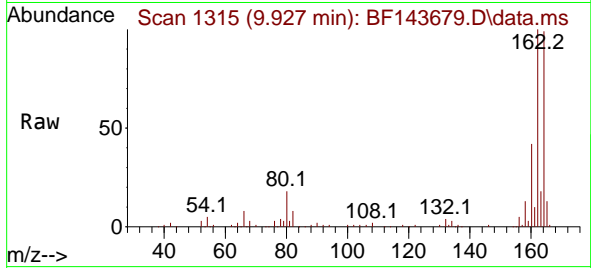
Tgt Ion:142 Resp: 132313
 Ion Ratio Lower Upper
 142 100
 141 92.8 72.9 109.3



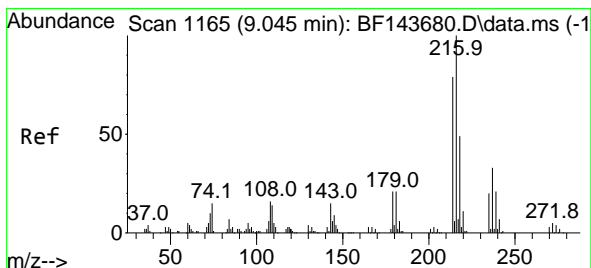
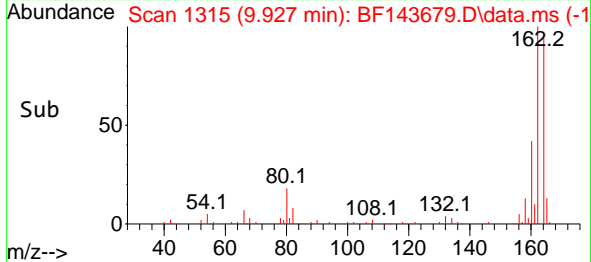
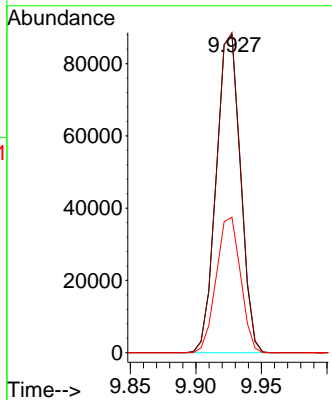


#39
 Acenaphthene-d10
 Concen: 20.000 ng
 RT: 9.927 min Scan# 1115
 Delta R.T. -0.000 min
 Lab File: BF143679.D
 Acq: 09 Sep 2025 10:39

Instrument :
 BNA_F
 ClientSampleId :

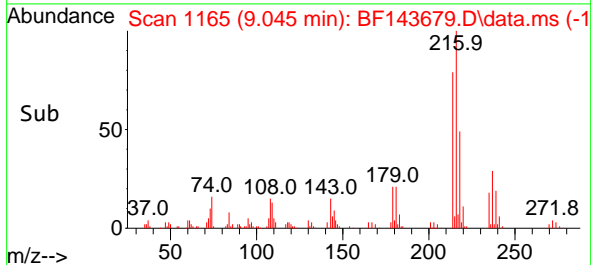
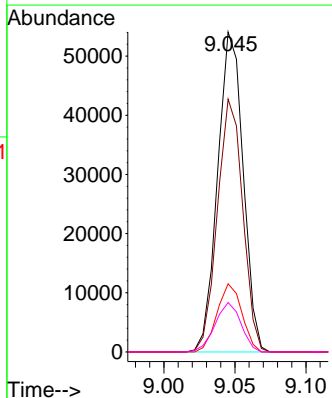
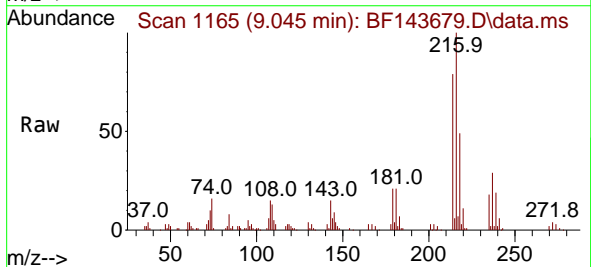


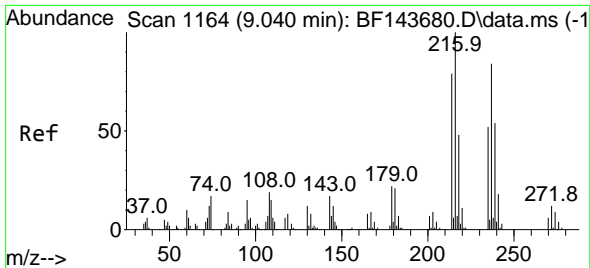
Tgt Ion:164 Resp: 112988
 Ion Ratio Lower Upper
 164 100
 162 100.7 80.6 121.0
 160 42.6 33.0 49.4



#40
 1,2,4,5-Tetrachlorobenzene
 Concen: 20.870 ng
 RT: 9.045 min Scan# 1165
 Delta R.T. -0.000 min
 Lab File: BF143679.D
 Acq: 09 Sep 2025 10:39

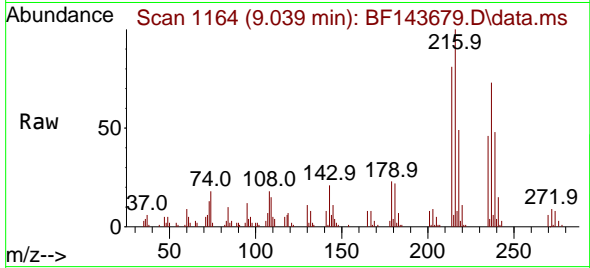
Tgt Ion:216 Resp: 67509
 Ion Ratio Lower Upper
 216 100
 214 78.3 63.2 94.8
 179 20.8 16.8 25.2
 108 15.7 13.0 19.6



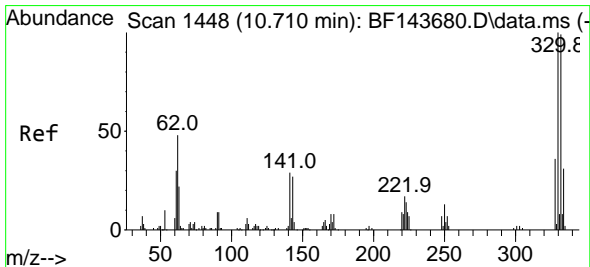
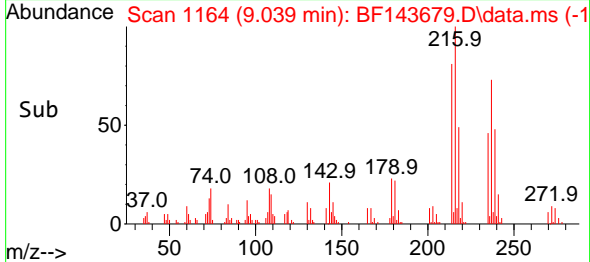
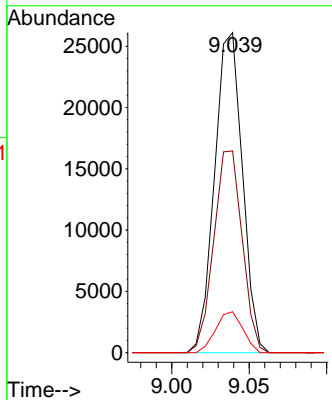


#41
 Hexachlorocyclopentadiene
 Concen: 19.666 ng
 RT: 9.039 min Scan# 1164
 Delta R.T. -0.000 min
 Lab File: BF143679.D
 Acq: 09 Sep 2025 10:39

Instrument :
 BNA_F
 ClientSampleId :

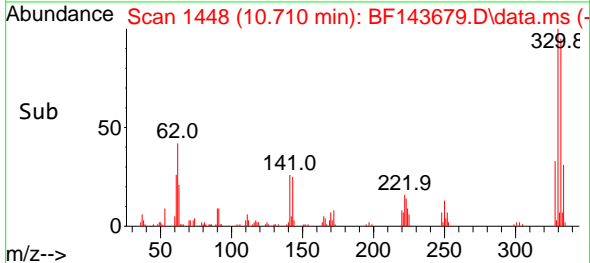
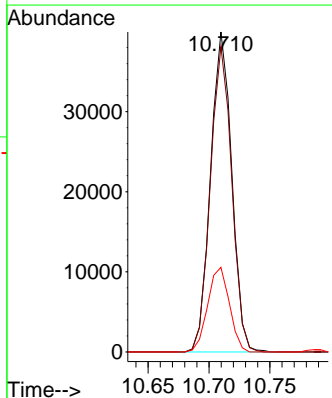
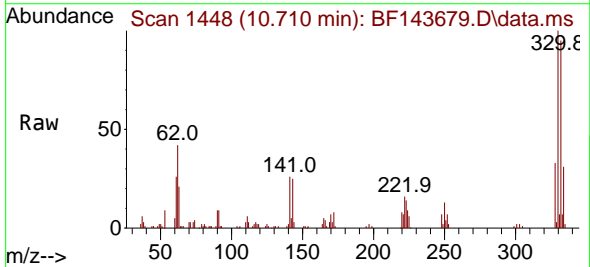


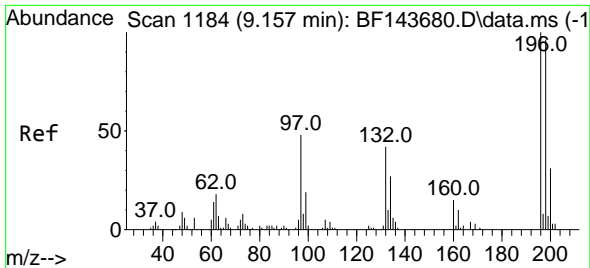
Tgt Ion:237 Resp: 32658
 Ion Ratio Lower Upper
 237 100
 235 63.1 41.6 81.6
 272 12.8 0.0 33.9



#42
 2,4,6-Tribromophenol
 Concen: 42.566 ng
 RT: 10.710 min Scan# 1448
 Delta R.T. -0.000 min
 Lab File: BF143679.D
 Acq: 09 Sep 2025 10:39

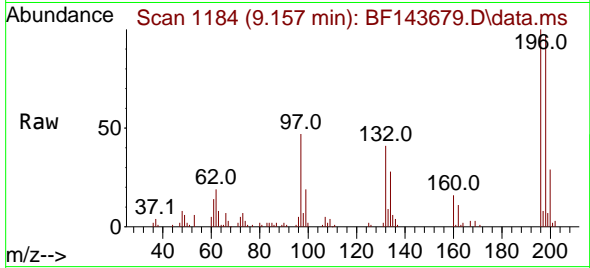
Tgt Ion:330 Resp: 48468
 Ion Ratio Lower Upper
 330 100
 332 95.7 79.2 118.8
 141 27.1 22.2 33.4



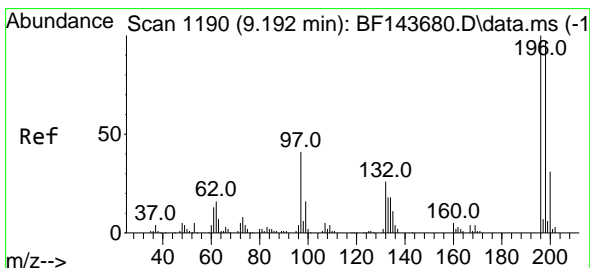
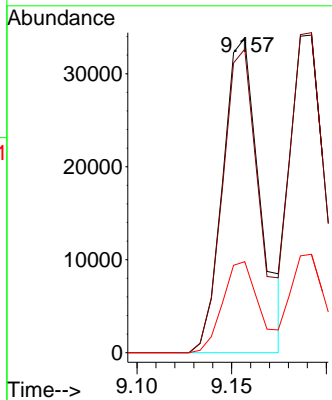
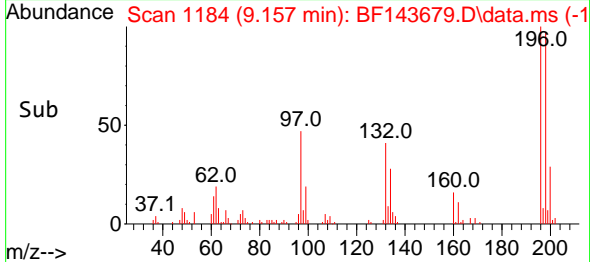


#43
 2,4,6-Trichlorophenol
 Concen: 21.203 ng
 RT: 9.157 min Scan# 1184
 Delta R.T. -0.000 min
 Lab File: BF143679.D
 Acq: 09 Sep 2025 10:39

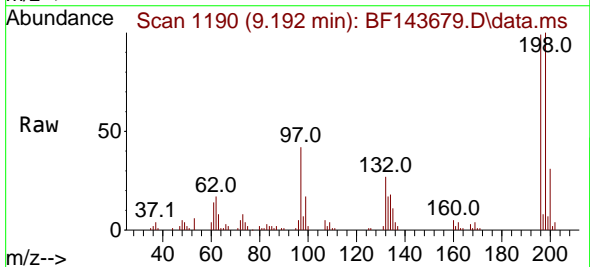
Instrument : BNA_F
 ClientSampleId :



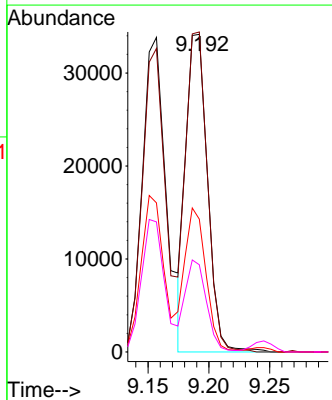
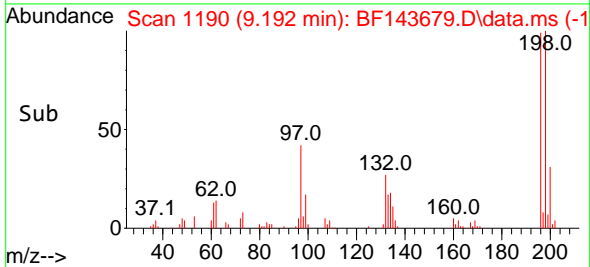
Tgt Ion:196 Resp: 45798
 Ion Ratio Lower Upper
 196 100
 198 96.5 76.5 114.7
 200 28.9 24.5 36.7

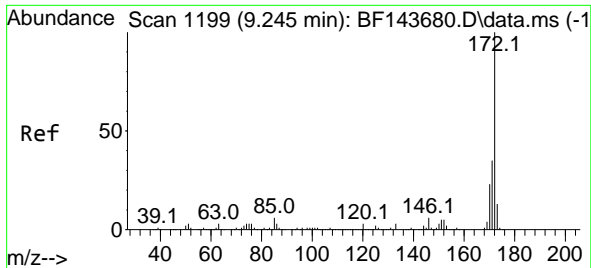


#44
 2,4,5-Trichlorophenol
 Concen: 19.428 ng
 RT: 9.192 min Scan# 1190
 Delta R.T. -0.000 min
 Lab File: BF143679.D
 Acq: 09 Sep 2025 10:39



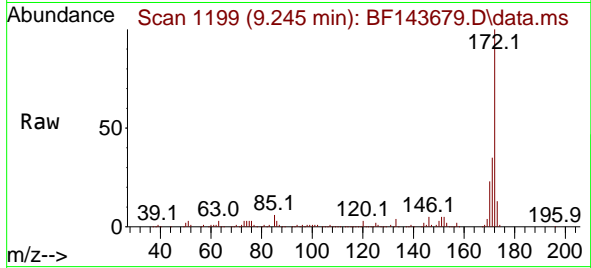
Tgt Ion:196 Resp: 42661
 Ion Ratio Lower Upper
 196 100
 198 100.7 77.0 115.6
 97 41.8 34.2 51.4
 132 27.4 21.8 32.6



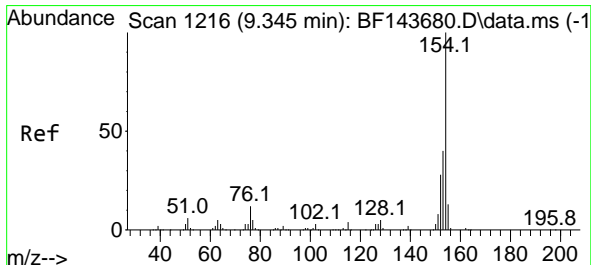
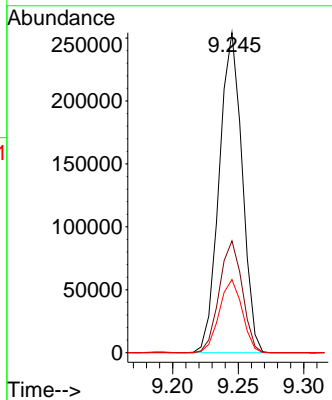
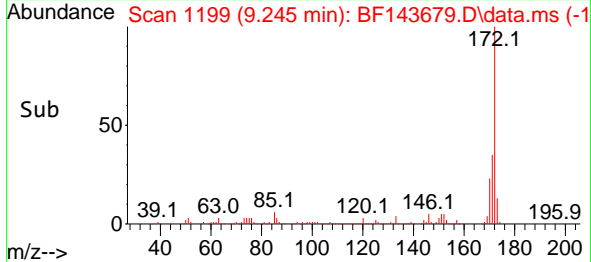


#45
 2-Fluorobiphenyl
 Concen: 41.274 ng
 RT: 9.245 min Scan# 1199
 Delta R.T. -0.000 min
 Lab File: BF143679.D
 Acq: 09 Sep 2025 10:39

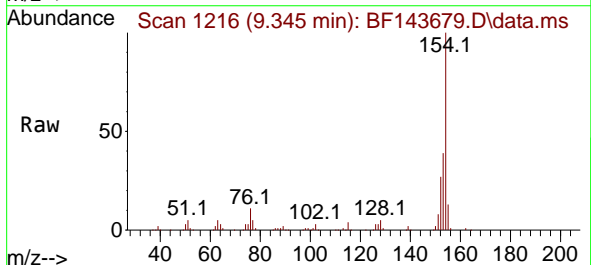
Instrument :
 BNA_F
 ClientSampled :



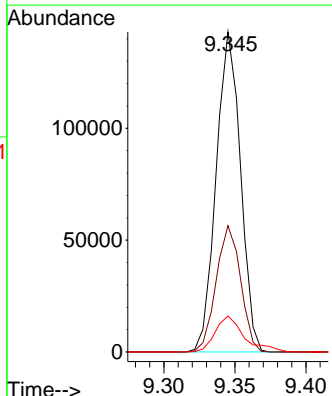
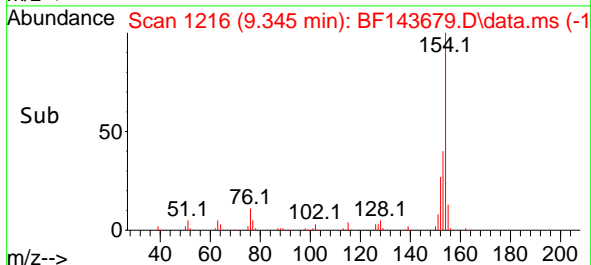
Tgt Ion:172 Resp: 308716
 Ion Ratio Lower Upper
 172 100
 171 35.0 27.9 41.9
 170 22.9 18.6 27.8

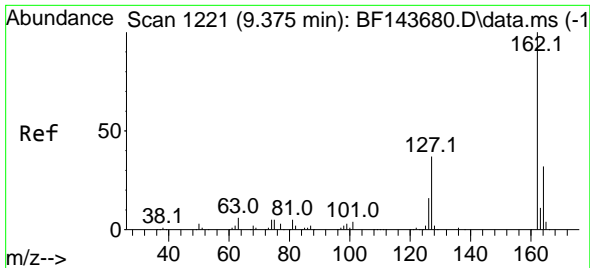


#46
 1,1'-Biphenyl
 Concen: 20.930 ng
 RT: 9.345 min Scan# 1216
 Delta R.T. -0.000 min
 Lab File: BF143679.D
 Acq: 09 Sep 2025 10:39



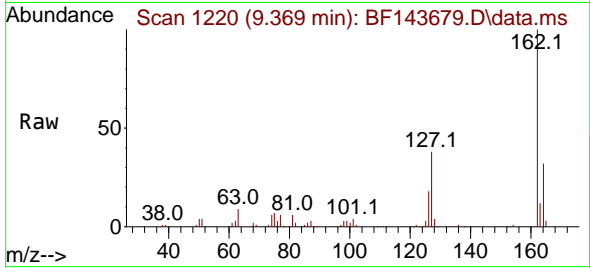
Tgt Ion:154 Resp: 170247
 Ion Ratio Lower Upper
 154 100
 153 39.5 20.2 60.2
 76 11.3 0.0 31.6



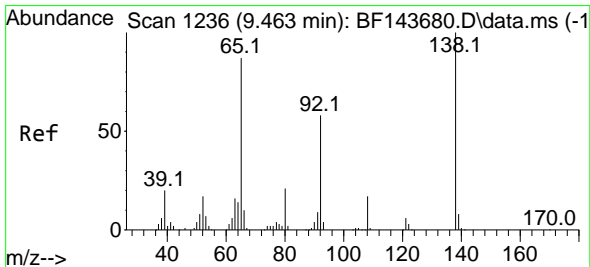
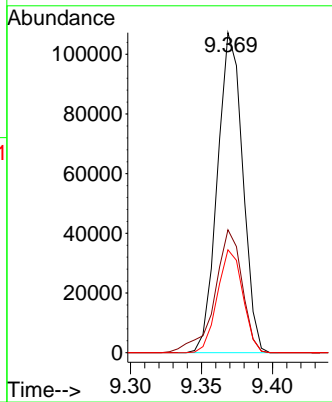
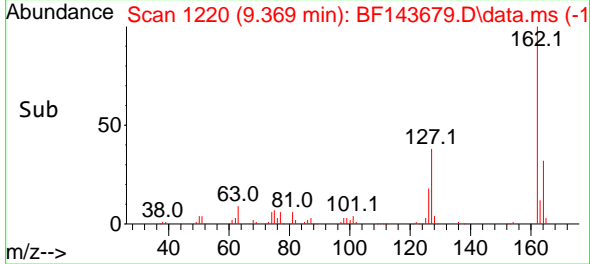


#47
 2-Chloronaphthalene
 Concen: 20.795 ng
 RT: 9.369 min Scan# 11
 Delta R.T. -0.006 min
 Lab File: BF143679.D
 Acq: 09 Sep 2025 10:39

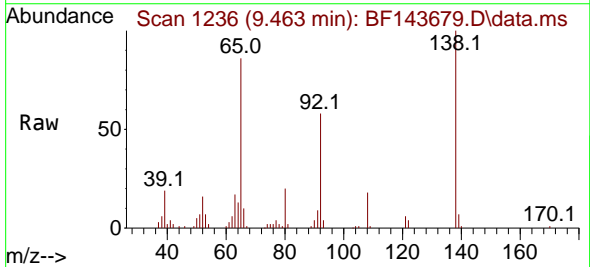
Instrument :
 BNA_F
 ClientSampleId :



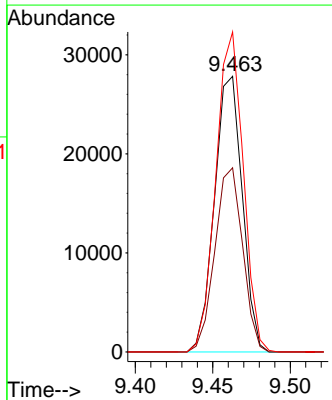
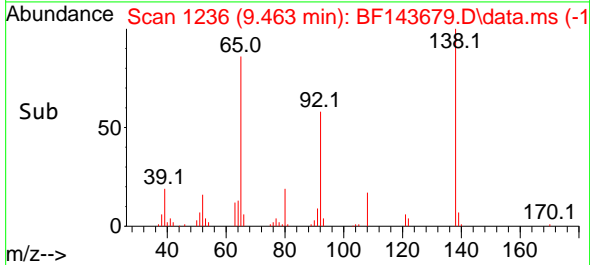
Tgt Ion:162 Resp: 132606
 Ion Ratio Lower Upper
 162 100
 127 38.4 30.6 45.8
 164 32.2 25.8 38.8

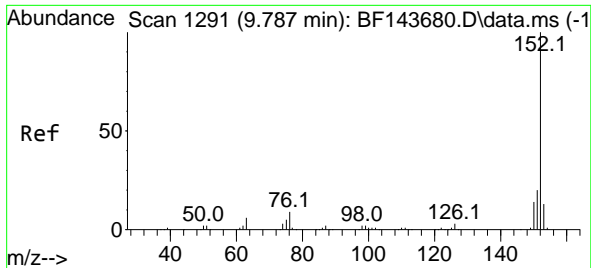


#48
 2-Nitroaniline
 Concen: 20.607 ng
 RT: 9.463 min Scan# 1236
 Delta R.T. -0.000 min
 Lab File: BF143679.D
 Acq: 09 Sep 2025 10:39



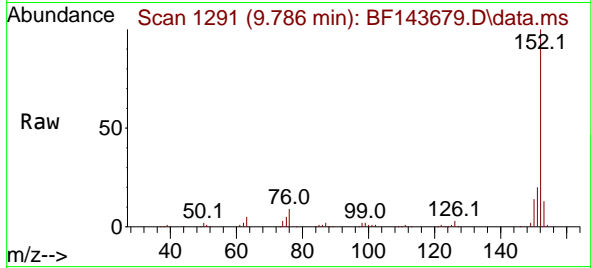
Tgt Ion: 65 Resp: 34775
 Ion Ratio Lower Upper
 65 100
 92 66.8 53.3 79.9
 138 116.1 92.1 138.1



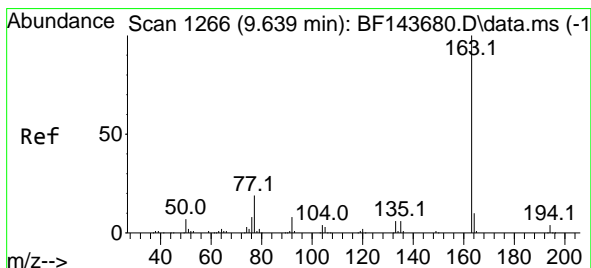
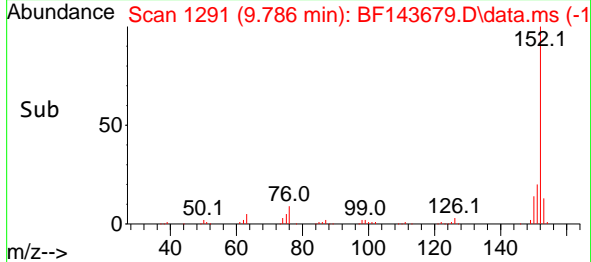
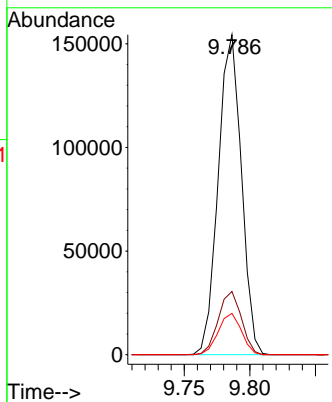


#49
 Acenaphthylene
 Concen: 20.755 ng
 RT: 9.786 min Scan# 1291
 Delta R.T. -0.000 min
 Lab File: BF143679.D
 Acq: 09 Sep 2025 10:39

Instrument :
 BNA_F
 ClientSampleId :

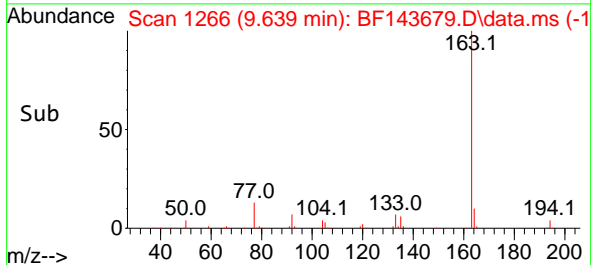
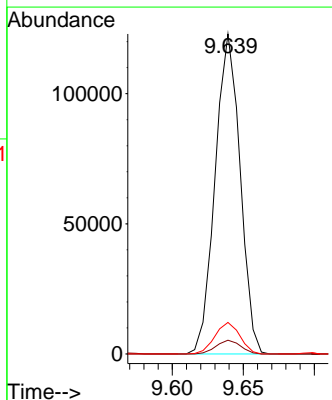
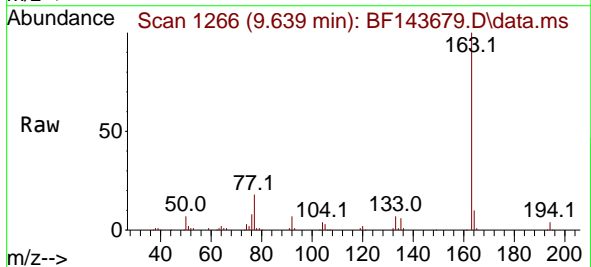


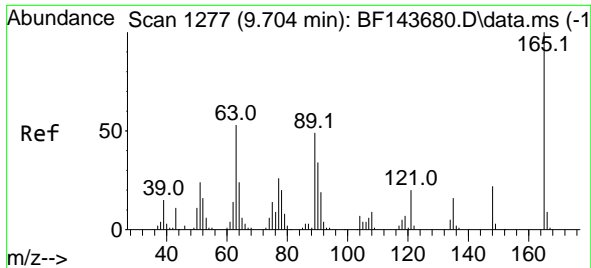
Tgt Ion:152 Resp: 189590
 Ion Ratio Lower Upper
 152 100
 151 19.7 15.9 23.9
 153 12.9 10.4 15.6



#50
 Dimethylphthalate
 Concen: 20.448 ng
 RT: 9.639 min Scan# 1266
 Delta R.T. -0.000 min
 Lab File: BF143679.D
 Acq: 09 Sep 2025 10:39

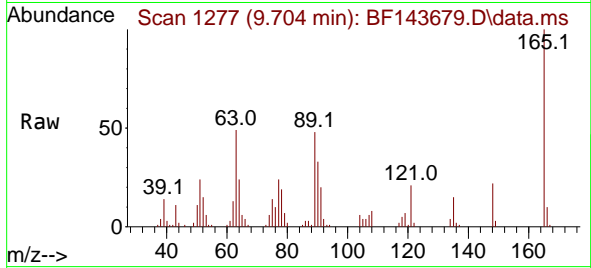
Tgt Ion:163 Resp: 150319
 Ion Ratio Lower Upper
 163 100
 194 4.3 3.4 5.0
 164 9.8 8.0 12.0





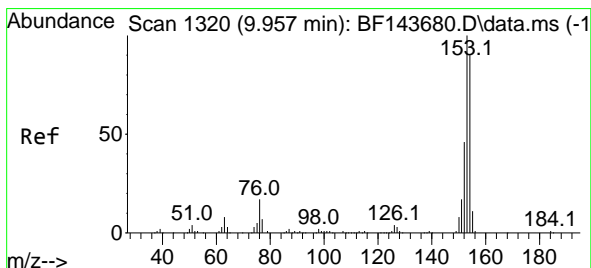
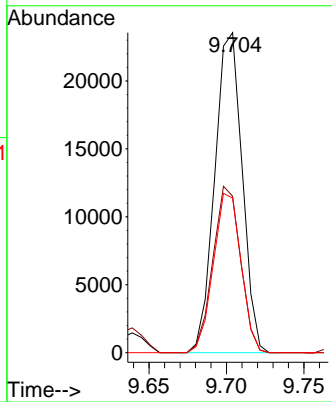
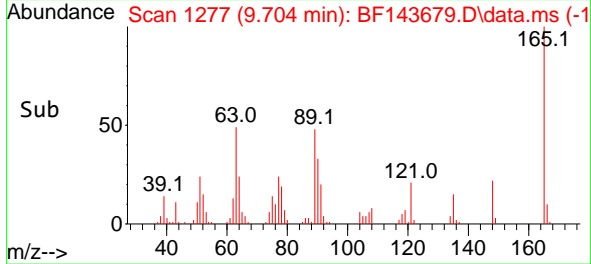
#51
 2,6-Dinitrotoluene
 Concen: 20.649 ng
 RT: 9.704 min Scan# 11
 Delta R.T. -0.000 min
 Lab File: BF143679.D
 Acq: 09 Sep 2025 10:39

Instrument :
 BNA_F
 ClientSampleId :

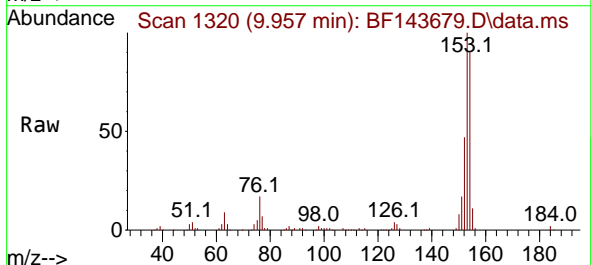


Tgt Ion:165 Resp: 29023

Ion	Ratio	Lower	Upper
165	100		
63	48.9	42.2	63.4
89	48.3	39.3	58.9

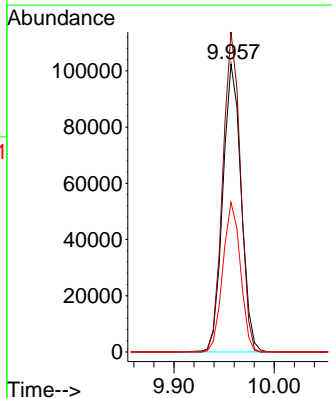
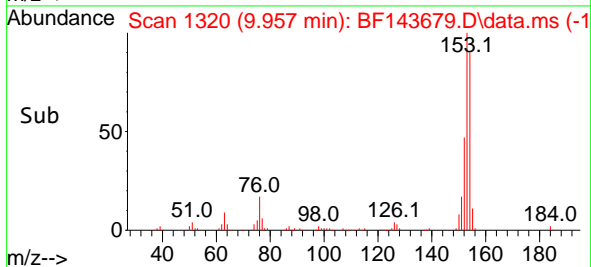


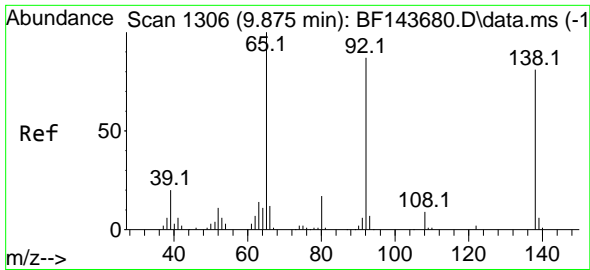
#52
 Acenaphthene
 Concen: 20.589 ng
 RT: 9.957 min Scan# 1320
 Delta R.T. -0.000 min
 Lab File: BF143679.D
 Acq: 09 Sep 2025 10:39



Tgt Ion:154 Resp: 129597

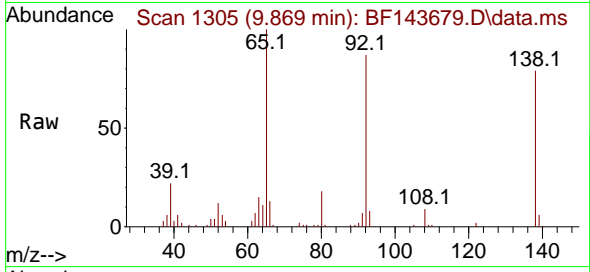
Ion	Ratio	Lower	Upper
154	100		
153	111.1	89.4	134.0
152	52.0	41.2	61.8



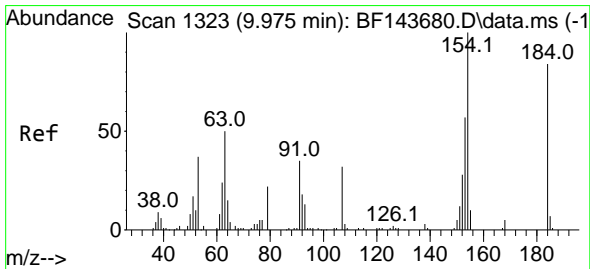
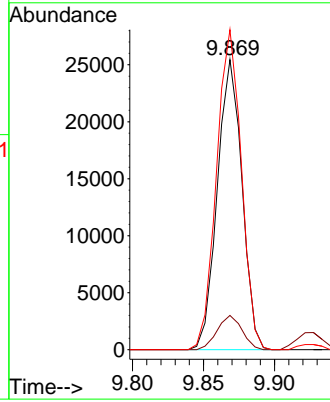
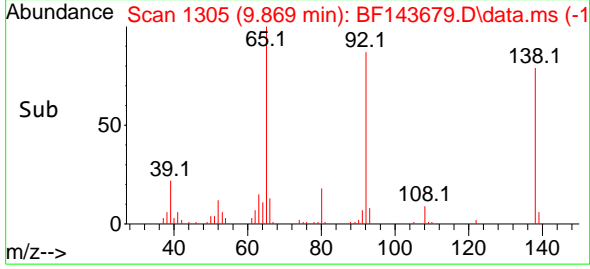


#53
 3-Nitroaniline
 Concen: 20.305 ng
 RT: 9.869 min Scan# 11
 Delta R.T. -0.006 min
 Lab File: BF143679.D
 Acq: 09 Sep 2025 10:39

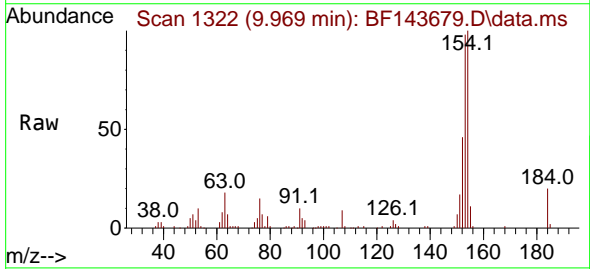
Instrument :
 BNA_F
 ClientSampleId :



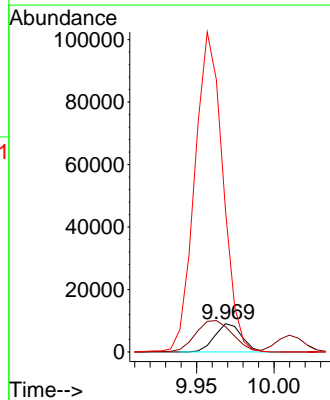
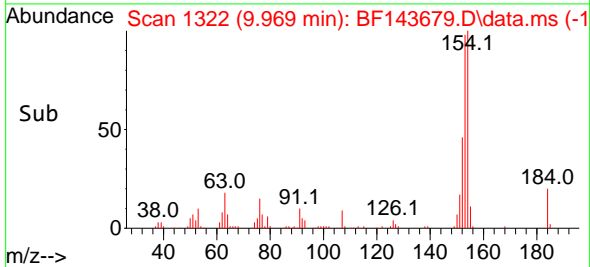
Tgt Ion:138 Resp: 30714
 Ion Ratio Lower Upper
 138 100
 108 11.8 8.6 12.8
 92 110.3 85.5 128.3

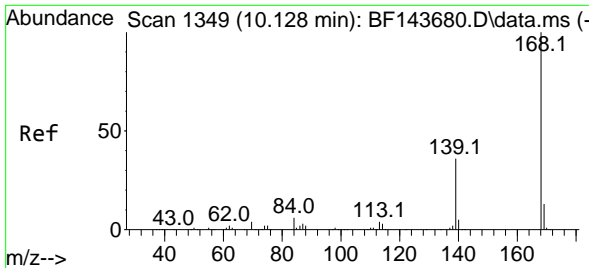


#54
 2,4-Dinitrophenol
 Concen: 19.052 ng
 RT: 9.969 min Scan# 1322
 Delta R.T. -0.006 min
 Lab File: BF143679.D
 Acq: 09 Sep 2025 10:39



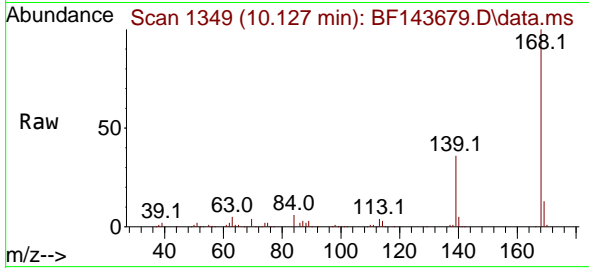
Tgt Ion:184 Resp: 10941
 Ion Ratio Lower Upper
 184 100
 63 89.7 52.7 79.1#
 154 501.6 136.6 204.8#



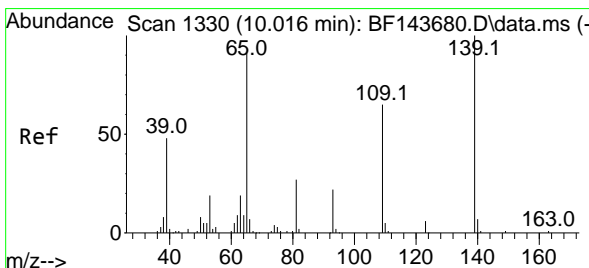
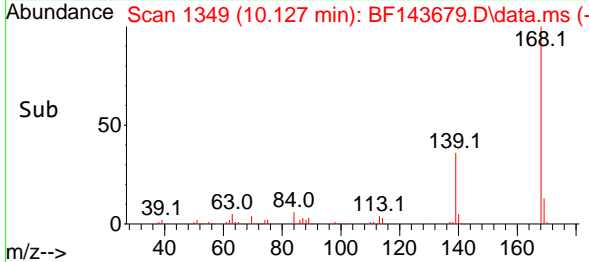
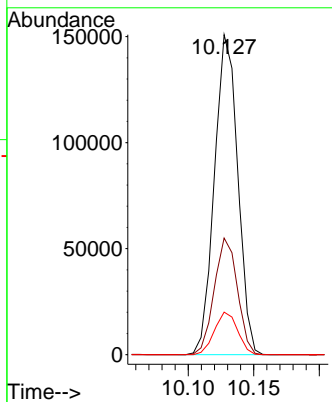


#55
 Dibenzenofuran
 Concen: 20.609 ng
 RT: 10.127 min Scan# 11
 Delta R.T. -0.000 min
 Lab File: BF143679.D
 Acq: 09 Sep 2025 10:39

Instrument :
 BNA_F
 ClientSampleId :

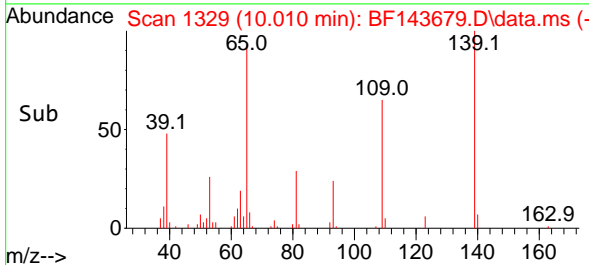
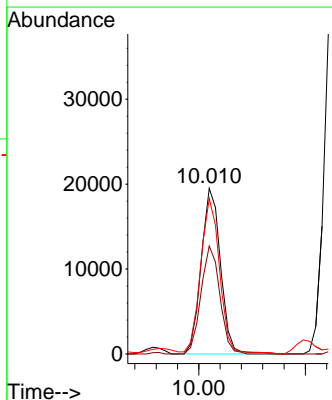
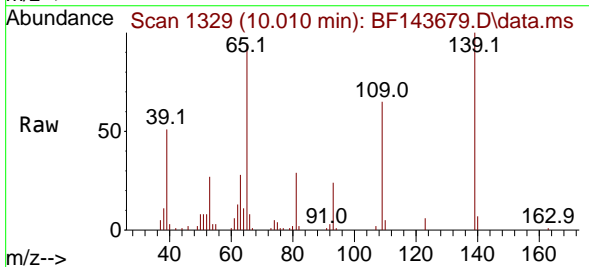


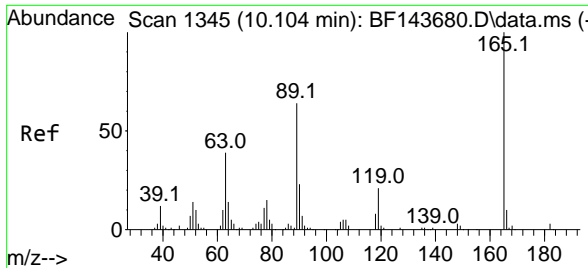
Tgt Ion:168 Resp: 186539
 Ion Ratio Lower Upper
 168 100
 139 36.4 29.0 43.4
 169 13.3 10.8 16.2



#56
 4-Nitrophenol
 Concen: 20.428 ng
 RT: 10.010 min Scan# 1329
 Delta R.T. -0.006 min
 Lab File: BF143679.D
 Acq: 09 Sep 2025 10:39

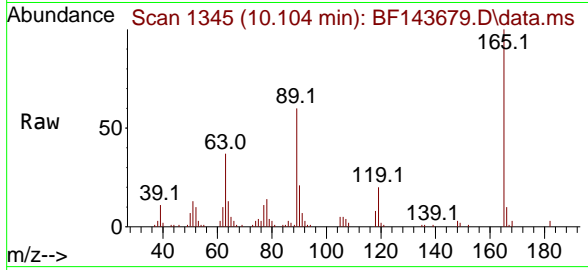
Tgt Ion:139 Resp: 24583
 Ion Ratio Lower Upper
 139 100
 109 65.2 45.2 85.2
 65 93.8 72.1 112.1





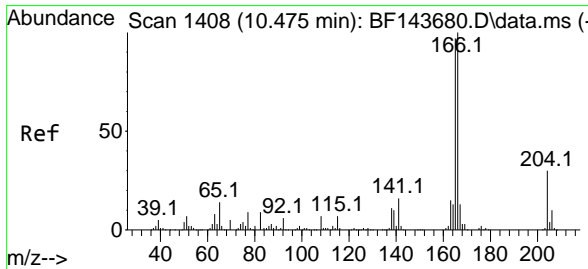
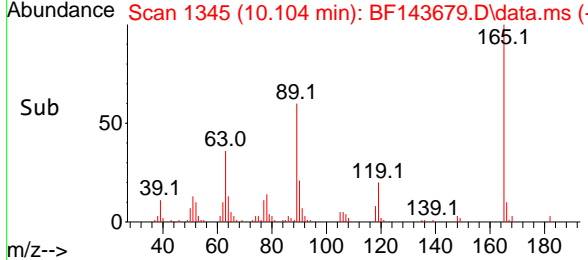
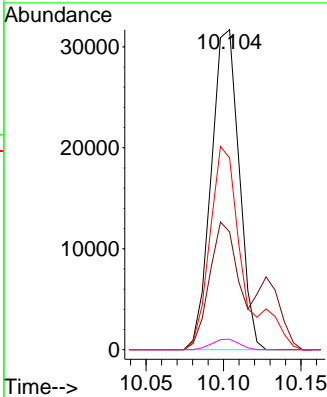
#57
 2,4-Dinitrotoluene
 Concen: 20.736 ng
 RT: 10.104 min Scan# 11
 Delta R.T. -0.000 min
 Lab File: BF143679.D
 Acq: 09 Sep 2025 10:39

Instrument : BNA_F
 ClientSampleId :

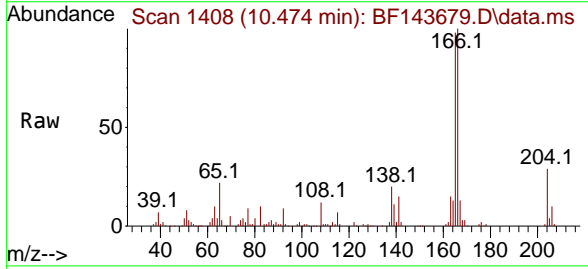


Tgt Ion:165 Resp: 39667

Ion	Ratio	Lower	Upper
165	100		
63	36.8	31.5	47.3
89	59.9	51.3	76.9
182	3.3	2.2	3.4

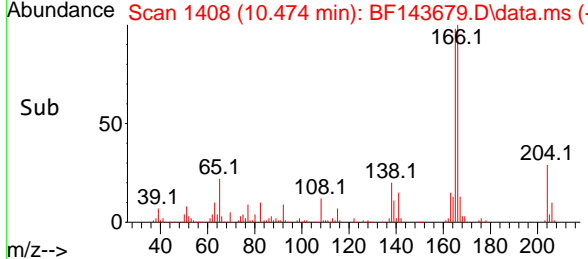
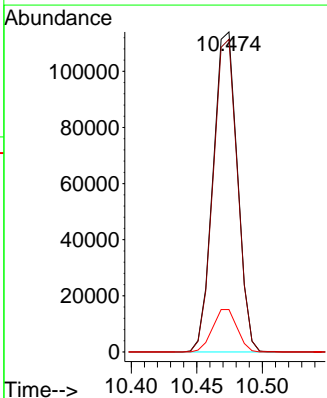


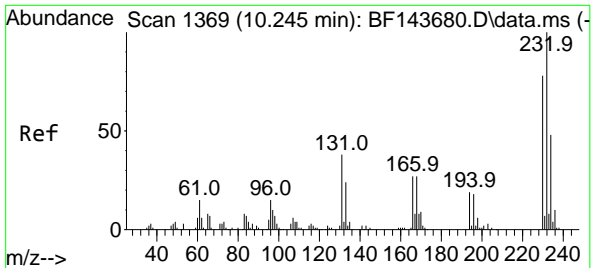
#58
 Fluorene
 Concen: 20.750 ng
 RT: 10.474 min Scan# 1408
 Delta R.T. -0.000 min
 Lab File: BF143679.D
 Acq: 09 Sep 2025 10:39



Tgt Ion:166 Resp: 147019

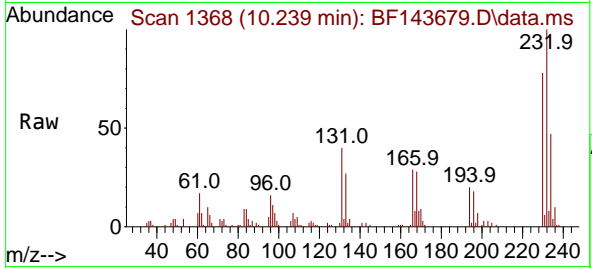
Ion	Ratio	Lower	Upper
166	100		
165	97.7	77.5	116.3
167	13.2	10.2	15.2



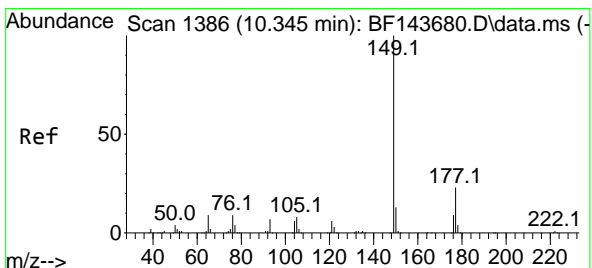
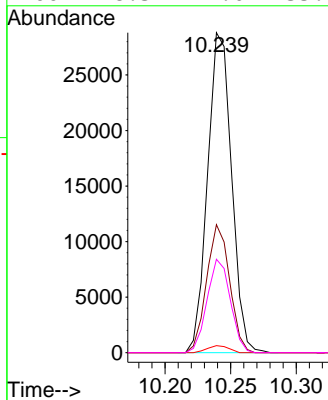
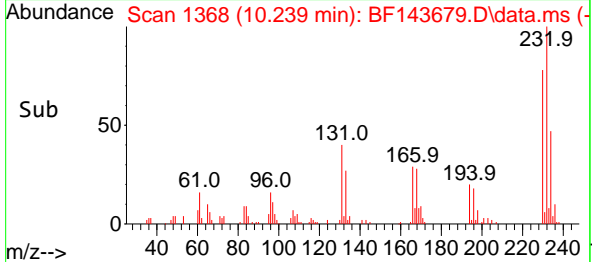


#59
 2,3,4,6-Tetrachlorophenol
 Concen: 20.577 ng
 RT: 10.239 min Scan# 1368
 Delta R.T. -0.006 min
 Lab File: BF143679.D
 Acq: 09 Sep 2025 10:39

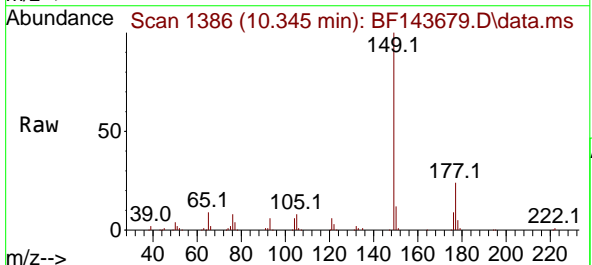
Instrument :
 BNA_F
 ClientSampleId :



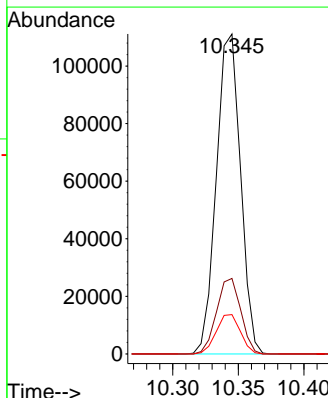
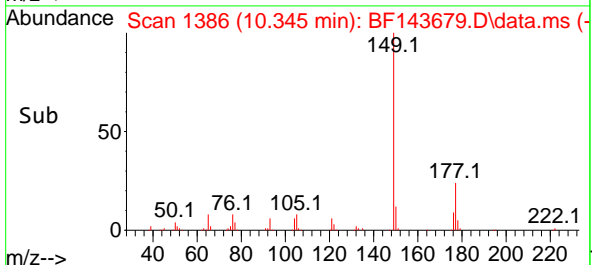
Tgt Ion:232 Resp: 36636
 Ion Ratio Lower Upper
 232 100
 131 38.4 31.9 47.9
 130 2.0 1.4 2.0
 166 28.3 22.0 33.0

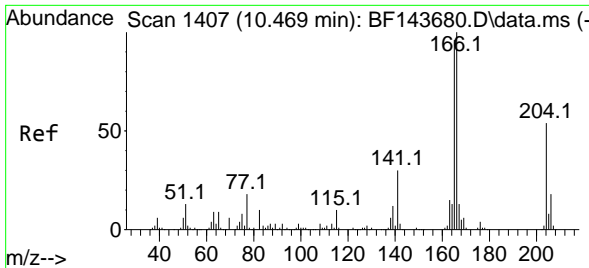


#60
 Diethylphthalate
 Concen: 20.627 ng
 RT: 10.345 min Scan# 1386
 Delta R.T. -0.000 min
 Lab File: BF143679.D
 Acq: 09 Sep 2025 10:39



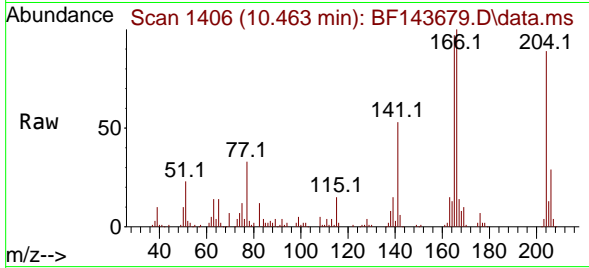
Tgt Ion:149 Resp: 142360
 Ion Ratio Lower Upper
 149 100
 177 23.6 18.2 27.2
 150 12.3 10.0 15.0





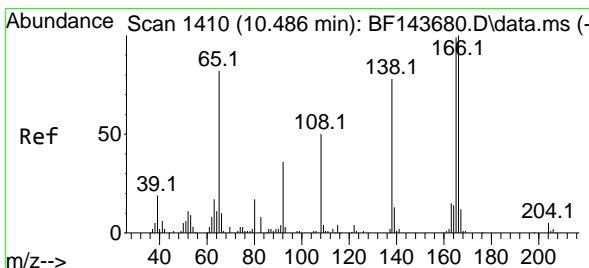
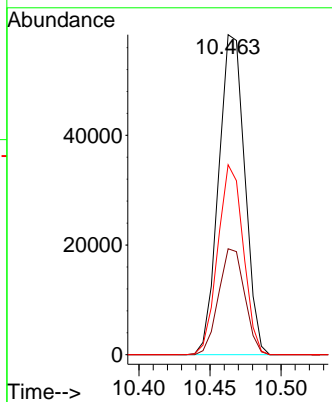
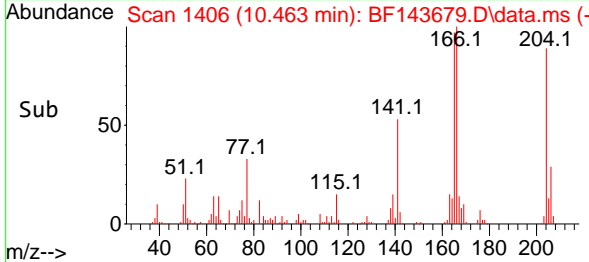
#61
 4-Chlorophenyl-phenylether
 Concen: 20.817 ng
 RT: 10.463 min Scan# 1406
 Delta R.T. -0.006 min
 Lab File: BF143679.D
 Acq: 09 Sep 2025 10:39

Instrument :
 BNA_F
 ClientSampleId :

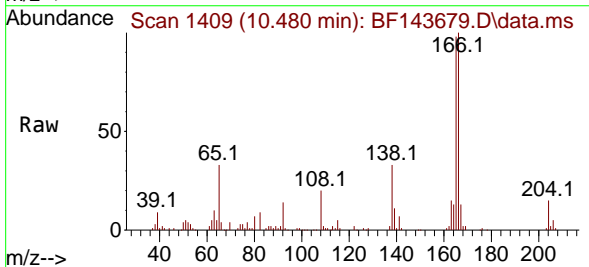


Tgt Ion: 204 Resp: 74802

Ion	Ratio	Lower	Upper
204	100		
206	33.1	26.0	39.0
141	59.3	44.8	67.2

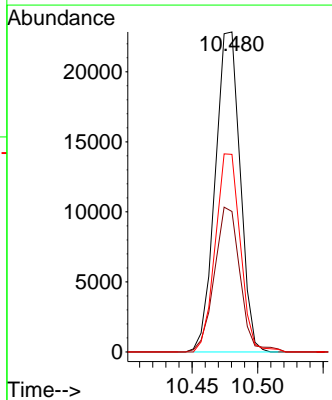
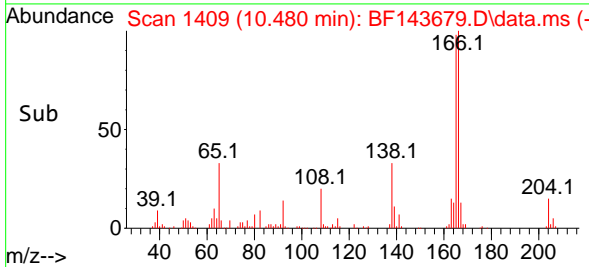


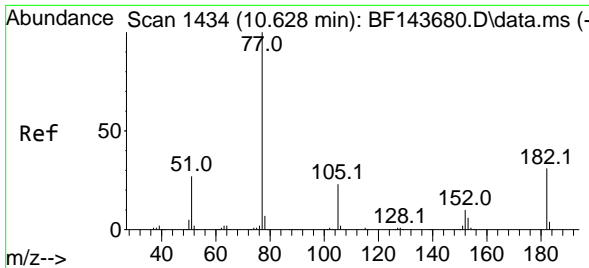
#62
 4-Nitroaniline
 Concen: 21.041 ng
 RT: 10.480 min Scan# 1409
 Delta R.T. -0.006 min
 Lab File: BF143679.D
 Acq: 09 Sep 2025 10:39



Tgt Ion: 138 Resp: 30144

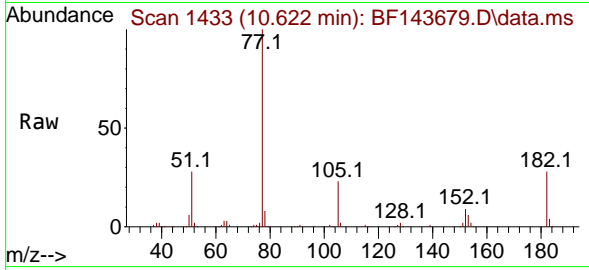
Ion	Ratio	Lower	Upper
138	100		
92	43.9	26.4	66.4
108	61.7	44.3	84.3



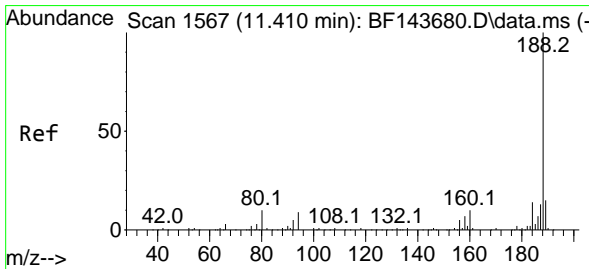
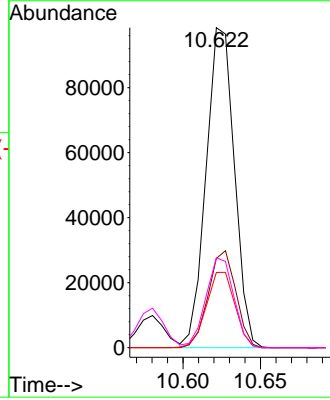
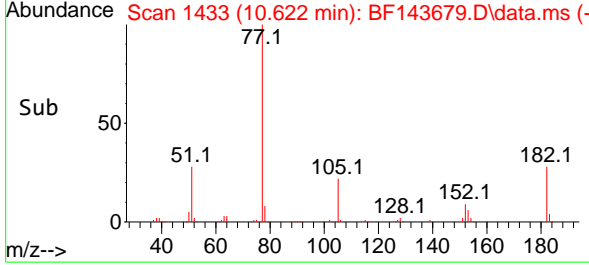


#63
 Azobenzene
 Concen: 20.496 ng
 RT: 10.622 min Scan# 14
 Delta R.T. -0.006 min
 Lab File: BF143679.D
 Acq: 09 Sep 2025 10:39

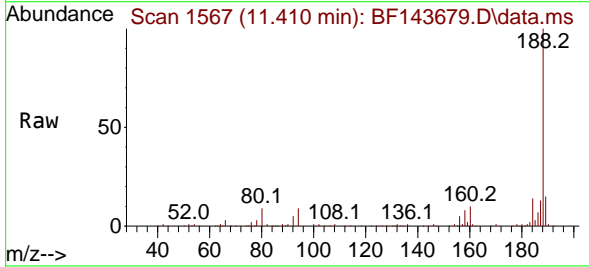
Instrument :
 BNA_F
 ClientSampleId :



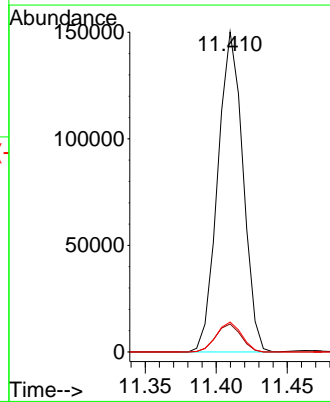
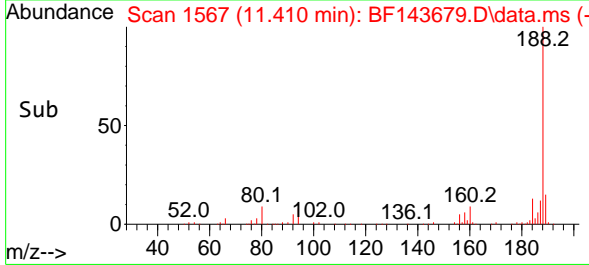
Tgt Ion: 77 Resp: 125055
 Ion Ratio Lower Upper
 77 100
 182 27.9 10.8 50.8
 105 23.5 3.2 43.2
 51 28.1 7.7 47.7

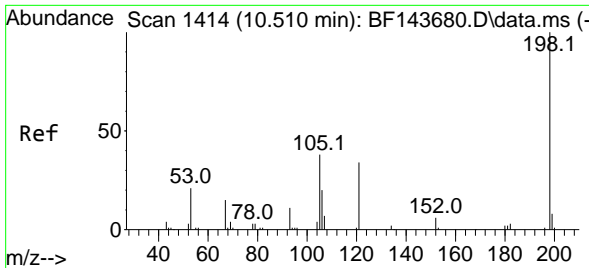


#64
 Phenanthrene-d10
 Concen: 20.000 ng
 RT: 11.410 min Scan# 1567
 Delta R.T. -0.000 min
 Lab File: BF143679.D
 Acq: 09 Sep 2025 10:39



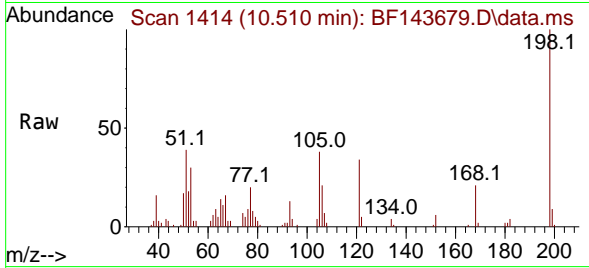
Tgt Ion: 188 Resp: 185175
 Ion Ratio Lower Upper
 188 100
 94 8.7 7.4 11.0
 80 9.4 7.7 11.5



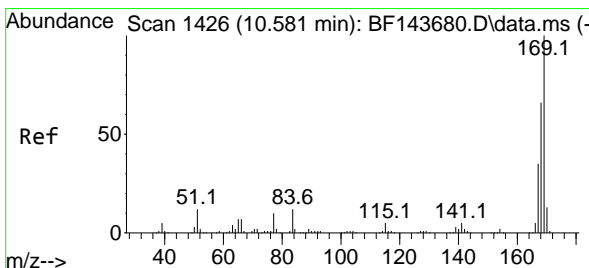
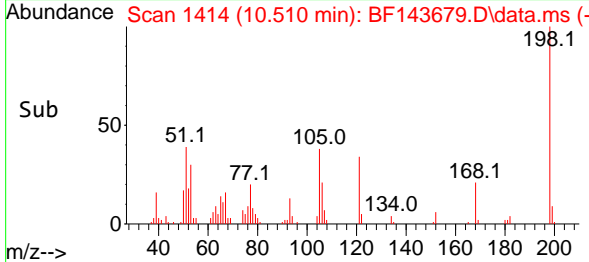
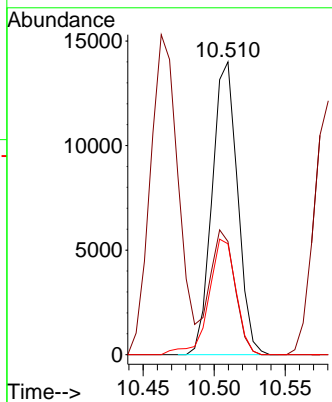


#65
 4,6-Dinitro-2-methylphenol
 Concen: 18.482 ng
 RT: 10.510 min Scan# 1414
 Delta R.T. -0.000 min
 Lab File: BF143679.D
 Acq: 09 Sep 2025 10:39

Instrument :
 BNA_F
 ClientSampleId :

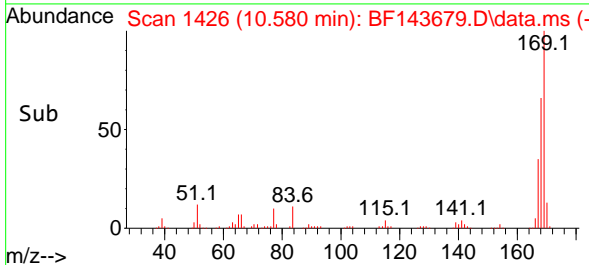
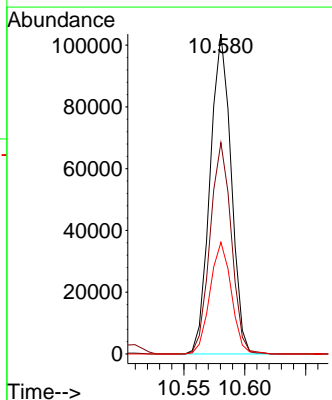
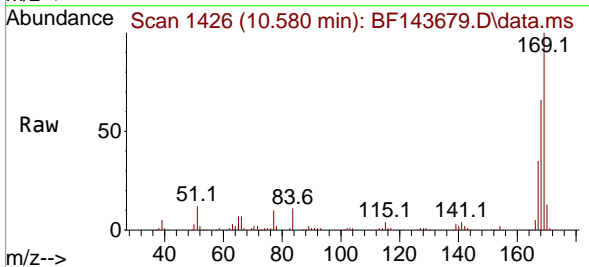


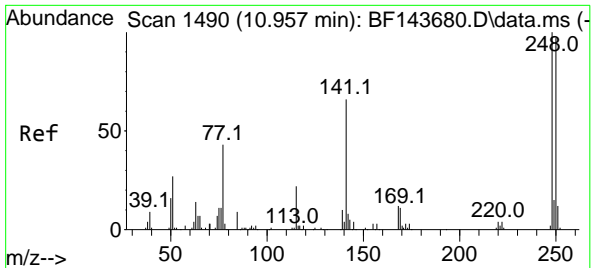
Tgt Ion:198 Resp: 17425
 Ion Ratio Lower Upper
 198 100
 51 38.6 21.2 61.2
 105 37.8 19.0 59.0



#66
 n-Nitrosodiphenylamine
 Concen: 20.570 ng
 RT: 10.580 min Scan# 1426
 Delta R.T. -0.000 min
 Lab File: BF143679.D
 Acq: 09 Sep 2025 10:39

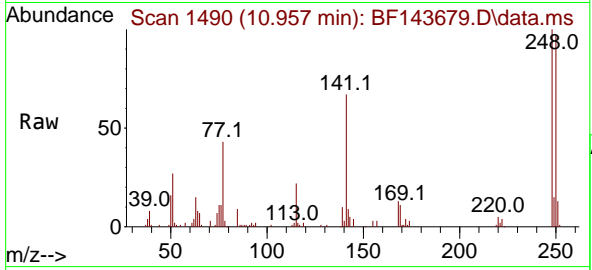
Tgt Ion:169 Resp: 124787
 Ion Ratio Lower Upper
 169 100
 168 66.0 53.0 79.6
 167 34.9 28.1 42.1



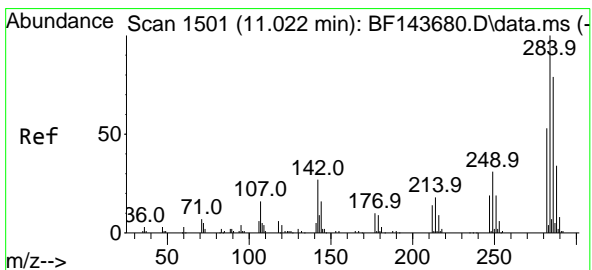
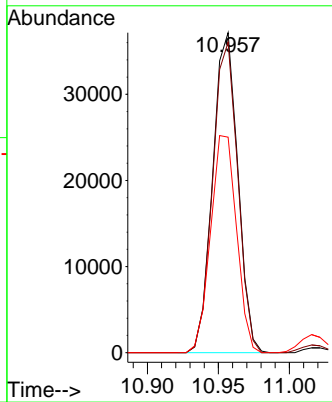
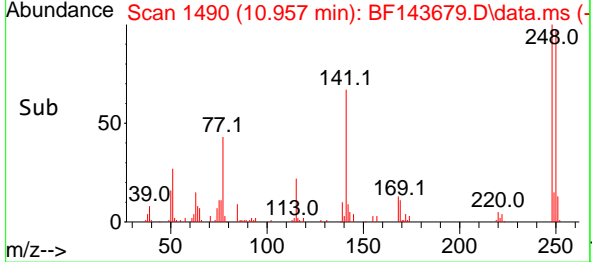


#67
 4-Bromophenyl-phenylether
 Concen: 20.450 ng
 RT: 10.957 min Scan# 14
 Delta R.T. -0.000 min
 Lab File: BF143679.D
 Acq: 09 Sep 2025 10:39

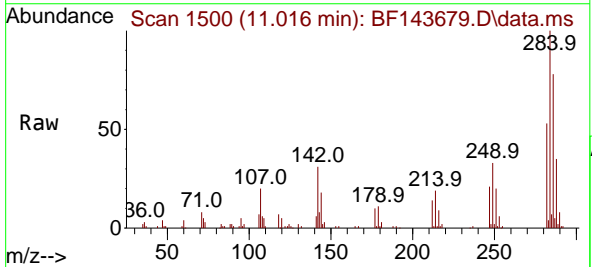
Instrument :
 BNA_F
 ClientSampleId :



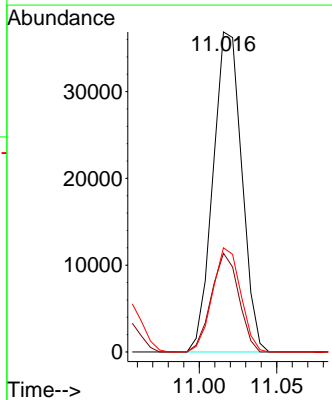
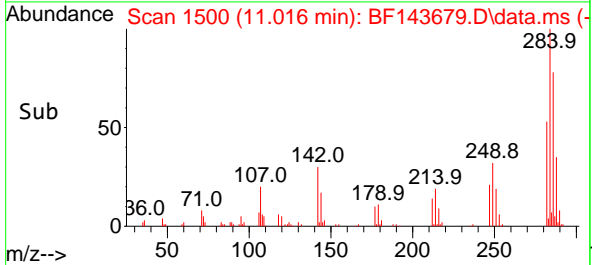
Tgt Ion:248 Resp: 45665
 Ion Ratio Lower Upper
 248 100
 250 97.0 77.5 116.3
 141 67.3 52.6 79.0

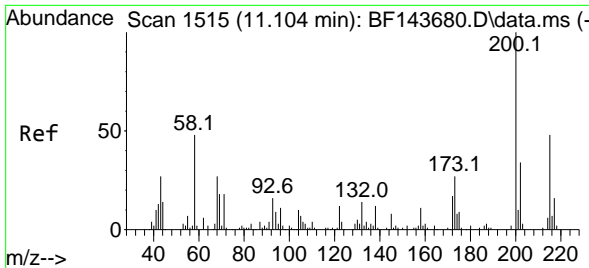


#68
 Hexachlorobenzene
 Concen: 20.147 ng
 RT: 11.016 min Scan# 1500
 Delta R.T. -0.006 min
 Lab File: BF143679.D
 Acq: 09 Sep 2025 10:39



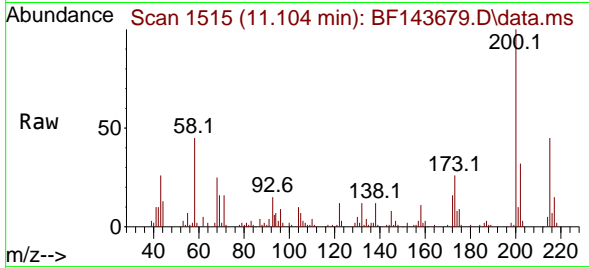
Tgt Ion:284 Resp: 47505
 Ion Ratio Lower Upper
 284 100
 142 30.9 21.3 31.9
 249 32.6 25.0 37.4



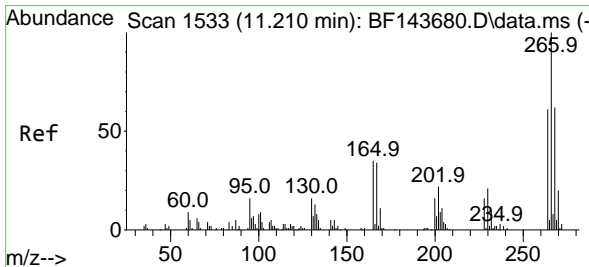
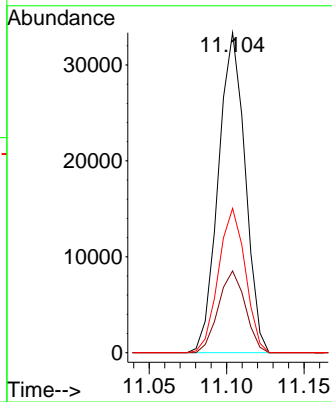
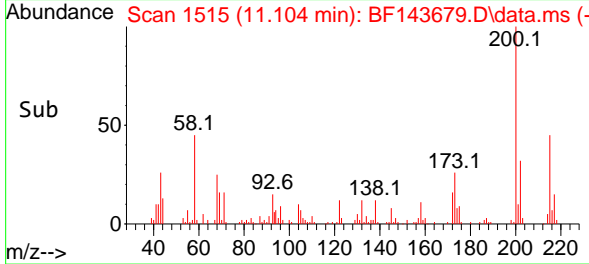


#69
 Atrazine
 Concen: 21.075 ng
 RT: 11.104 min Scan# 1515
 Delta R.T. -0.000 min
 Lab File: BF143679.D
 Acq: 09 Sep 2025 10:39

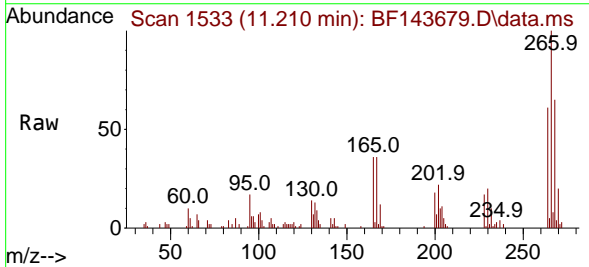
Instrument :
 BNA_F
 ClientSampleId :



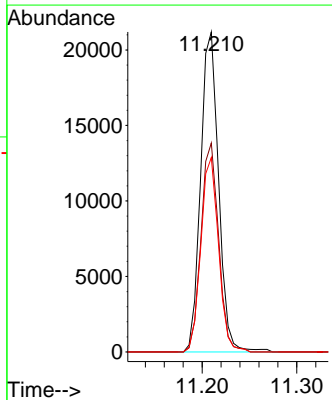
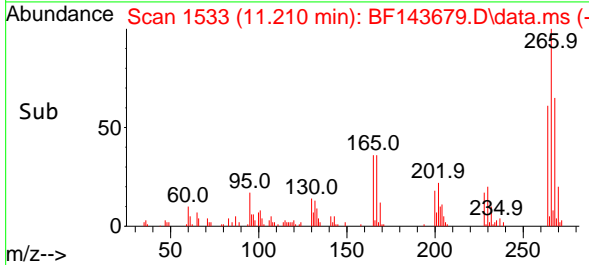
Tgt Ion:200 Resp: 40086
 Ion Ratio Lower Upper
 200 100
 173 25.5 7.3 47.3
 215 45.1 28.5 68.5

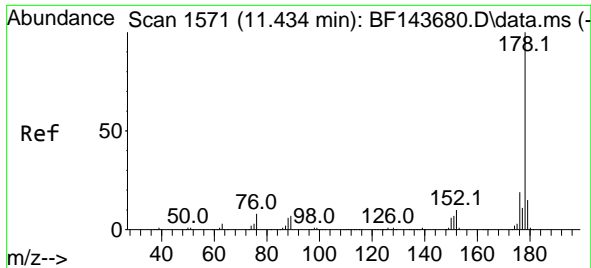


#70
 Pentachlorophenol
 Concen: 19.581 ng
 RT: 11.210 min Scan# 1533
 Delta R.T. -0.000 min
 Lab File: BF143679.D
 Acq: 09 Sep 2025 10:39



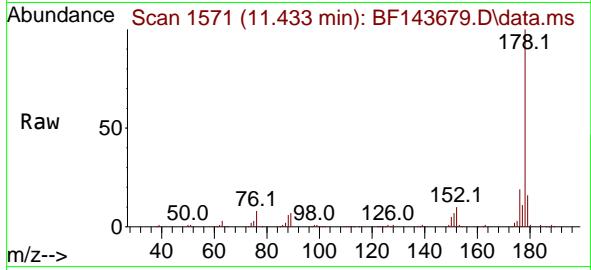
Tgt Ion:266 Resp: 27910
 Ion Ratio Lower Upper
 266 100
 268 65.3 49.2 73.8
 264 60.7 48.6 73.0



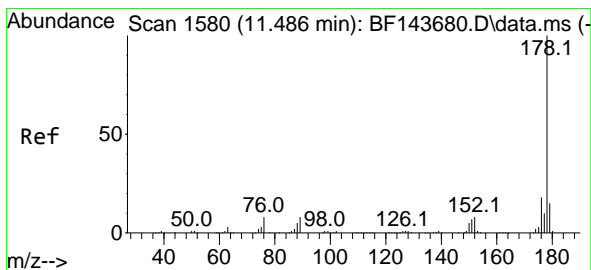
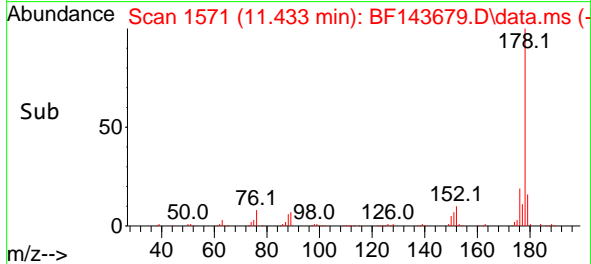
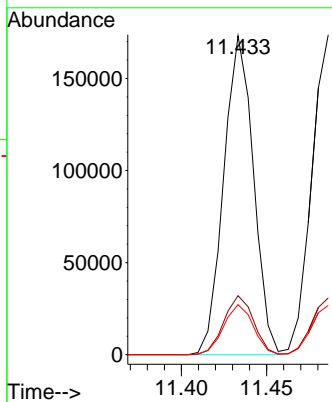


#71
 Phenanthrene
 Concen: 20.581 ng
 RT: 11.433 min Scan# 1571
 Delta R.T. -0.000 min
 Lab File: BF143679.D
 Acq: 09 Sep 2025 10:39

Instrument : BNA_F
 ClientSampleId :

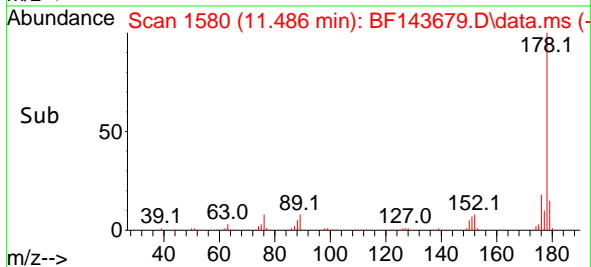
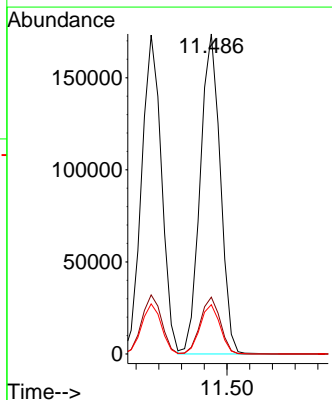
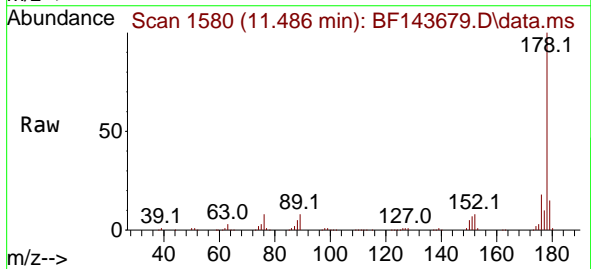


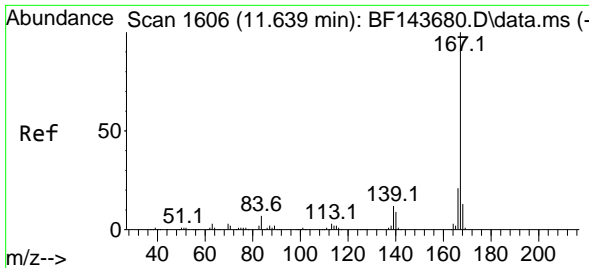
Tgt Ion:178 Resp: 209980
 Ion Ratio Lower Upper
 178 100
 176 18.5 14.8 22.2
 179 15.7 12.2 18.2



#72
 Anthracene
 Concen: 20.732 ng
 RT: 11.486 min Scan# 1580
 Delta R.T. -0.000 min
 Lab File: BF143679.D
 Acq: 09 Sep 2025 10:39

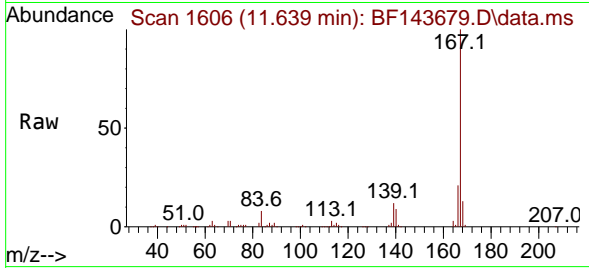
Tgt Ion:178 Resp: 212686
 Ion Ratio Lower Upper
 178 100
 176 17.7 14.5 21.7
 179 15.4 12.2 18.2



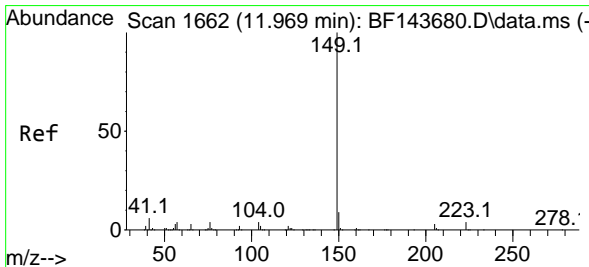
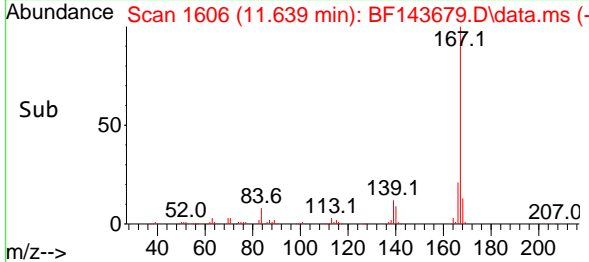
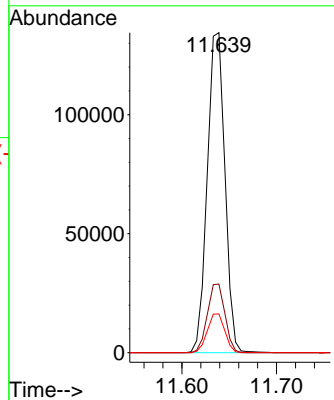


#73
 Carbazole
 Concen: 20.775 ng
 RT: 11.639 min Scan# 1606
 Delta R.T. -0.000 min
 Lab File: BF143679.D
 Acq: 09 Sep 2025 10:39

Instrument : BNA_F
 ClientSampleId :

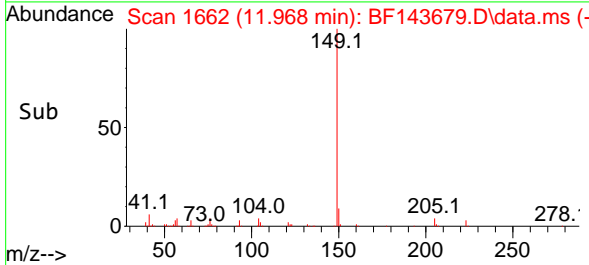
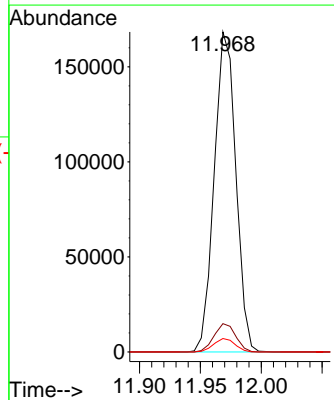
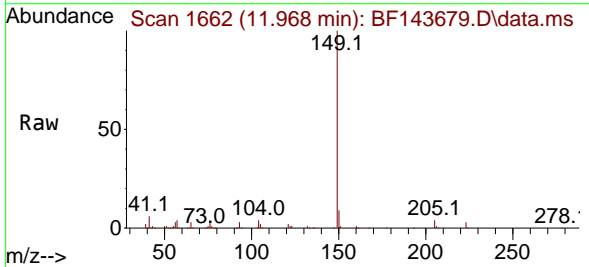


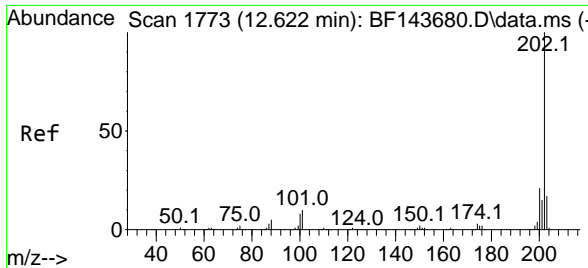
Tgt Ion:167 Resp: 174552
 Ion Ratio Lower Upper
 167 100
 166 21.4 17.0 25.4
 139 12.1 9.7 14.5



#74
 Di-n-butylphthalate
 Concen: 20.537 ng
 RT: 11.968 min Scan# 1662
 Delta R.T. -0.000 min
 Lab File: BF143679.D
 Acq: 09 Sep 2025 10:39

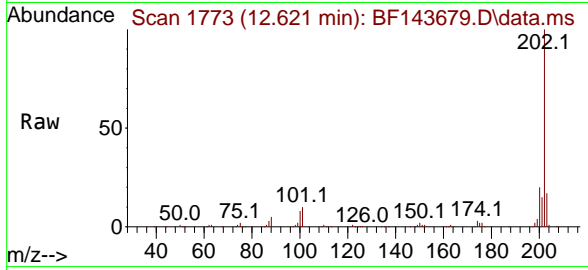
Tgt Ion:149 Resp: 207739
 Ion Ratio Lower Upper
 149 100
 150 8.9 7.3 10.9
 104 4.2 3.3 4.9





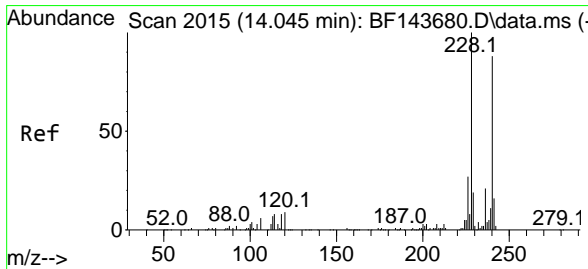
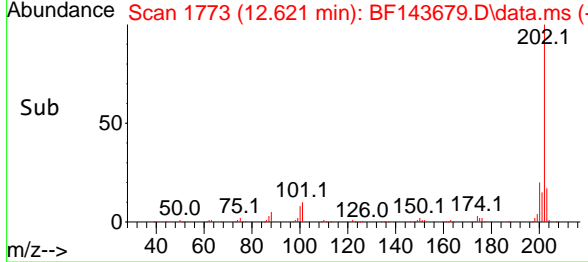
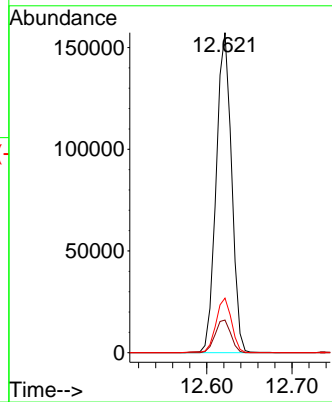
#75
 Fluoranthene
 Concen: 21.042 ng
 RT: 12.621 min Scan# 11
 Delta R.T. -0.000 min
 Lab File: BF143679.D
 Acq: 09 Sep 2025 10:39

Instrument : BNA_F
 ClientSampleId :

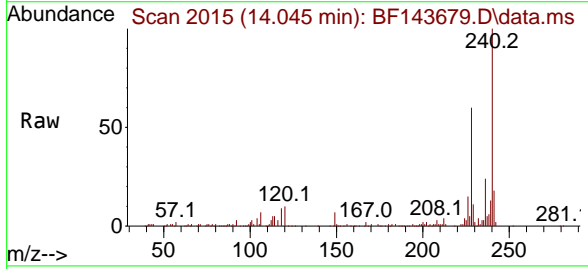


Tgt Ion: 202 Resp: 197089

Ion	Ratio	Lower	Upper
202	100		
101	10.2	0.0	30.5
203	17.1	0.0	37.1

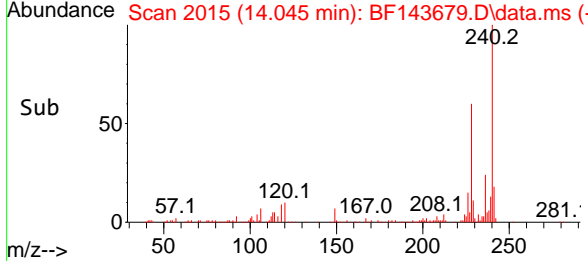
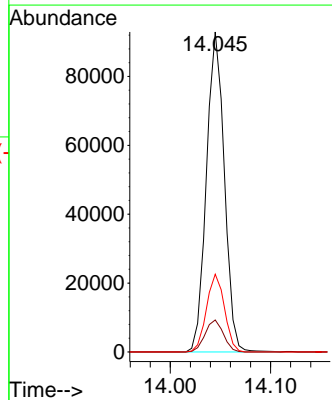


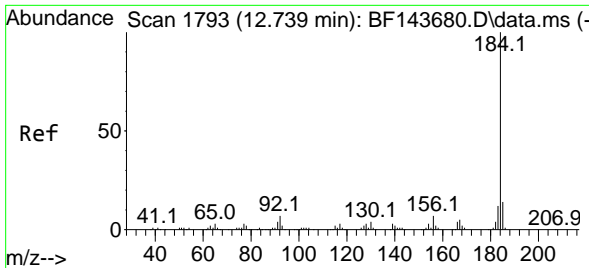
#76
 Chrysene-d12
 Concen: 20.000 ng
 RT: 14.045 min Scan# 2015
 Delta R.T. -0.000 min
 Lab File: BF143679.D
 Acq: 09 Sep 2025 10:39



Tgt Ion: 240 Resp: 115456

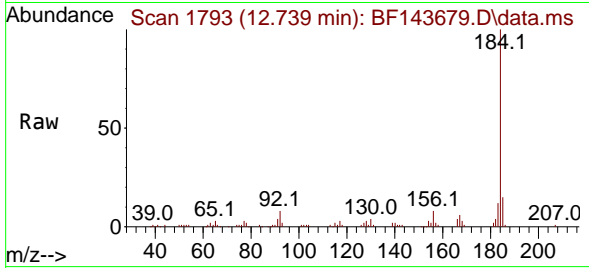
Ion	Ratio	Lower	Upper
240	100		
120	10.0	8.4	12.6
236	24.3	18.6	28.0



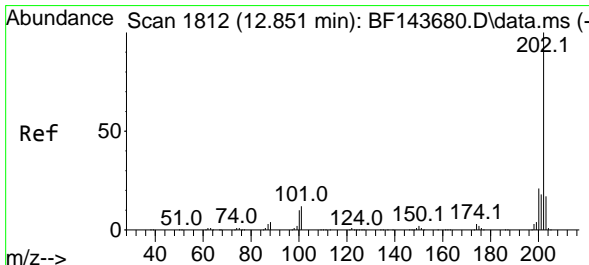
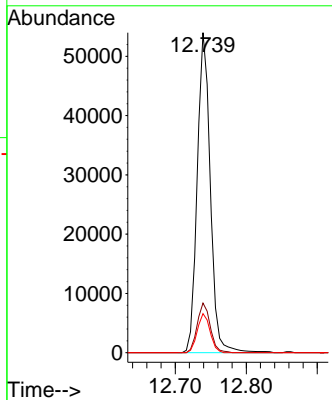
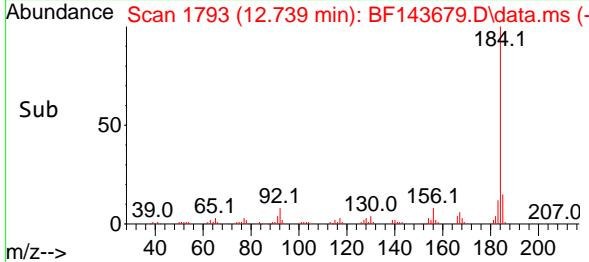


#77
 Benzidine
 Concen: 18.430 ng
 RT: 12.739 min Scan# 11
 Delta R.T. -0.000 min
 Lab File: BF143679.D
 Acq: 09 Sep 2025 10:39

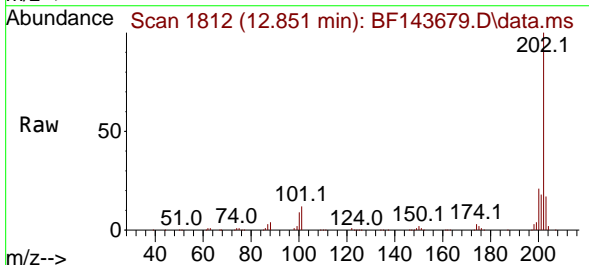
Instrument :
 BNA_F
 ClientSampleId :



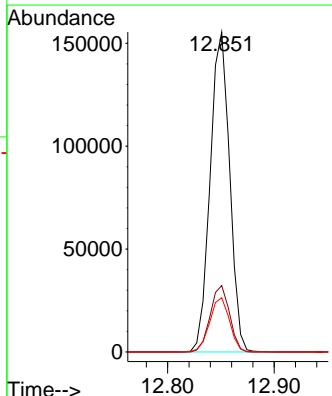
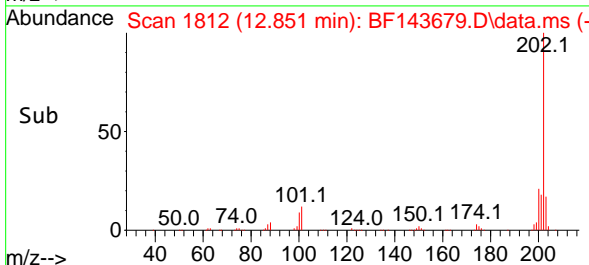
Tgt Ion:184 Resp: 69388
 Ion Ratio Lower Upper
 184 100
 185 15.5 11.5 17.3
 183 12.2 9.4 14.2

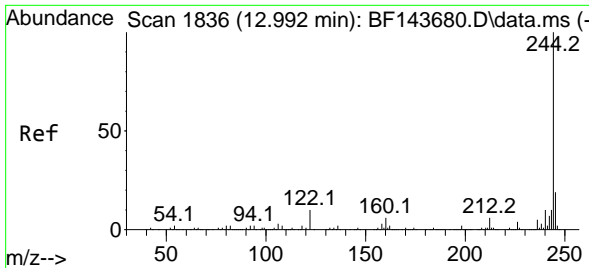


#78
 Pyrene
 Concen: 21.334 ng
 RT: 12.851 min Scan# 1812
 Delta R.T. -0.000 min
 Lab File: BF143679.D
 Acq: 09 Sep 2025 10:39



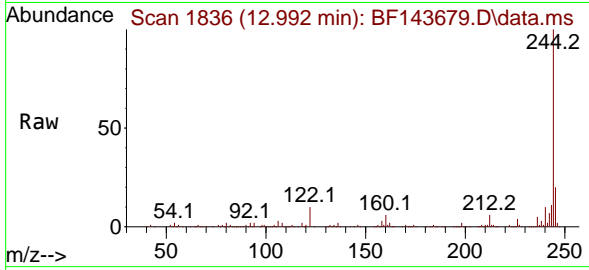
Tgt Ion:202 Resp: 196937
 Ion Ratio Lower Upper
 202 100
 200 20.7 16.6 24.8
 203 16.9 13.5 20.3



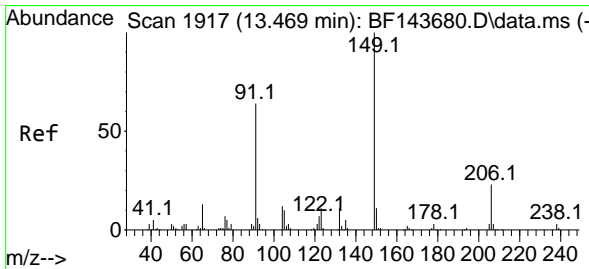
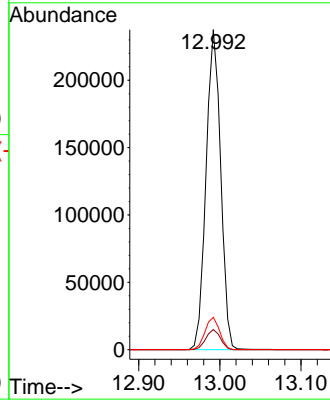
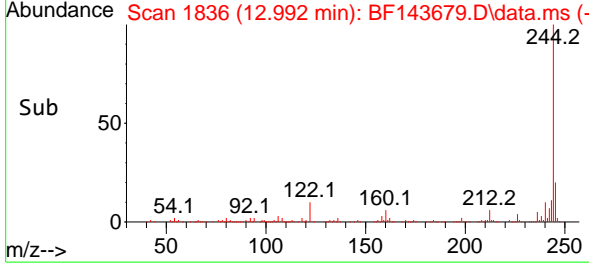


#79
 Terphenyl-d14
 Concen: 41.565 ng
 RT: 12.992 min Scan# 1836
 Delta R.T. -0.000 min
 Lab File: BF143679.D
 Acq: 09 Sep 2025 10:39

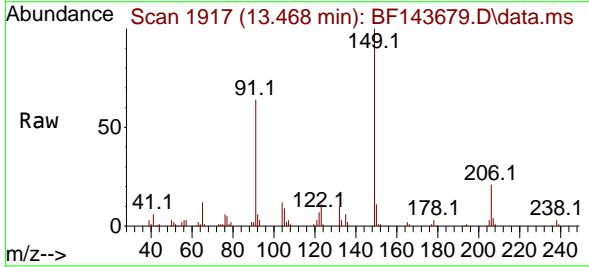
Instrument : BNA_F
 ClientSampleId :



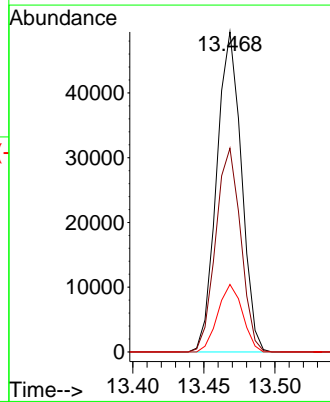
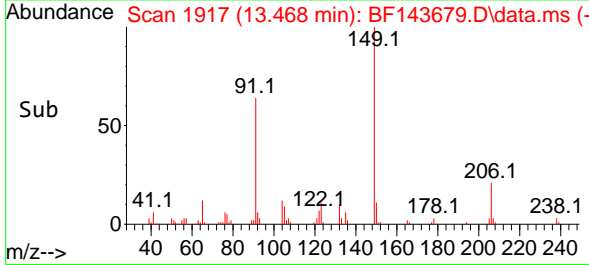
Tgt Ion:244 Resp: 296135
 Ion Ratio Lower Upper
 244 100
 212 6.3 5.0 7.6
 122 10.1 7.9 11.9

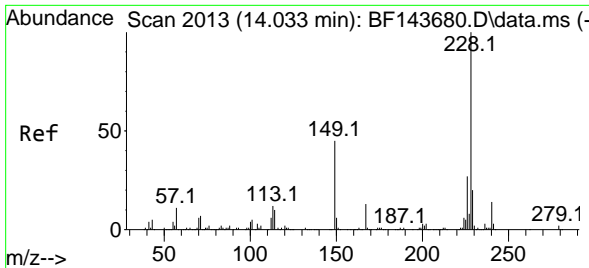


#80
 Butylbenzylphthalate
 Concen: 20.700 ng
 RT: 13.468 min Scan# 1917
 Delta R.T. -0.000 min
 Lab File: BF143679.D
 Acq: 09 Sep 2025 10:39



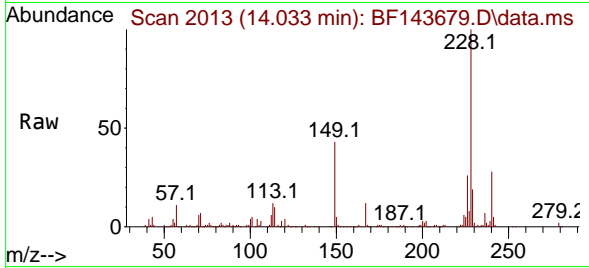
Tgt Ion:149 Resp: 59872
 Ion Ratio Lower Upper
 149 100
 91 63.7 50.9 76.3
 206 21.1 18.2 27.2



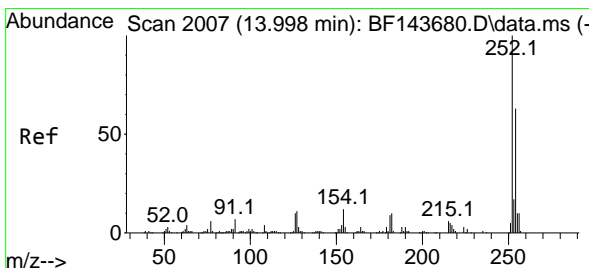
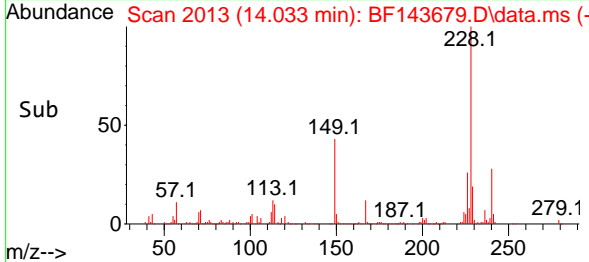
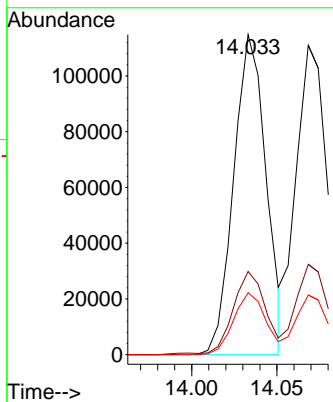


#81
 Benzo(a)anthracene
 Concen: 20.399 ng
 RT: 14.033 min Scan# 2013
 Delta R.T. -0.000 min
 Lab File: BF143679.D
 Acq: 09 Sep 2025 10:39

Instrument : BNA_F
 ClientSampleId :

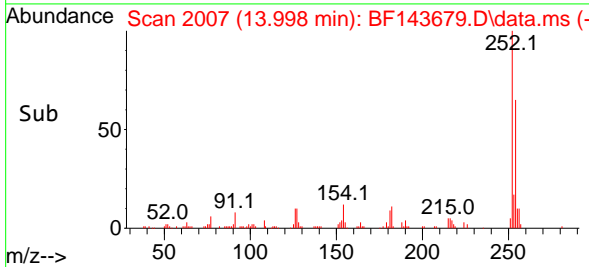
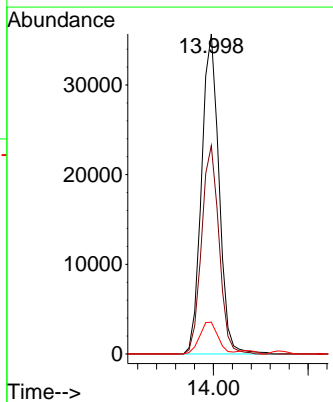
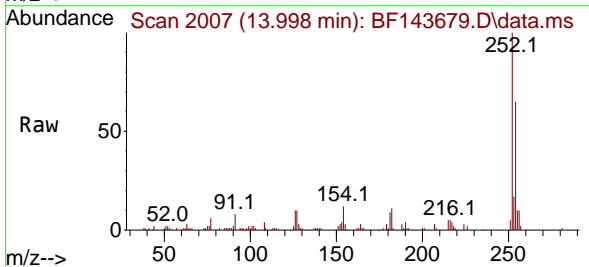


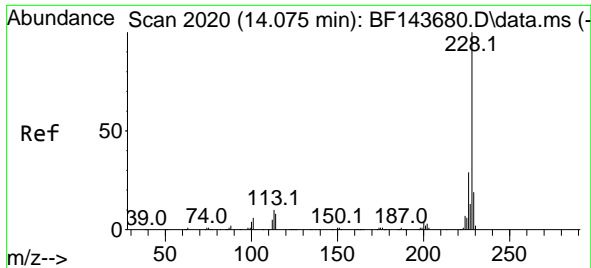
Tgt Ion:228 Resp: 151517
 Ion Ratio Lower Upper
 228 100
 226 26.0 21.6 32.4
 229 19.4 15.7 23.5



#82
 3,3'-Dichlorobenzidine
 Concen: 19.992 ng
 RT: 13.998 min Scan# 2007
 Delta R.T. -0.000 min
 Lab File: BF143679.D
 Acq: 09 Sep 2025 10:39

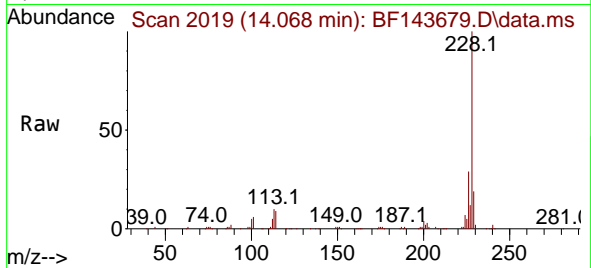
Tgt Ion:252 Resp: 45683
 Ion Ratio Lower Upper
 252 100
 254 65.1 50.5 75.7
 126 9.9 8.2 12.4



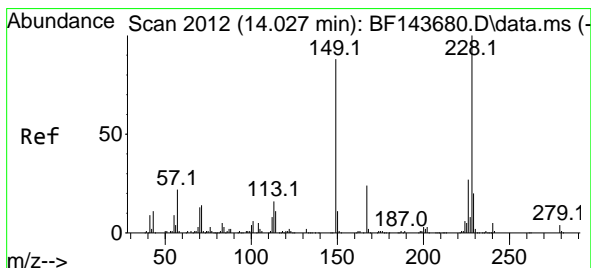
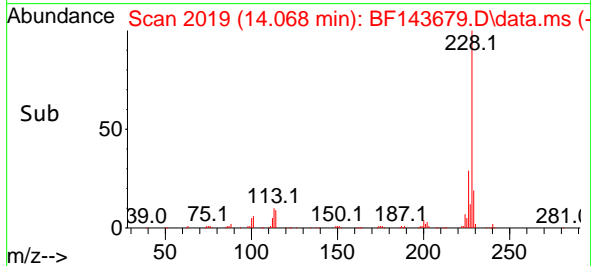
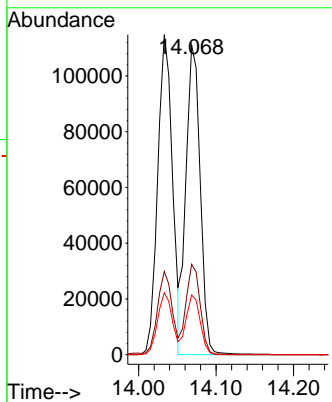


#83
 Chrysene
 Concen: 20.934 ng
 RT: 14.068 min Scan# 2019
 Delta R.T. -0.006 min
 Lab File: BF143679.D
 Acq: 09 Sep 2025 10:39

Instrument : BNA_F
 ClientSampleId :

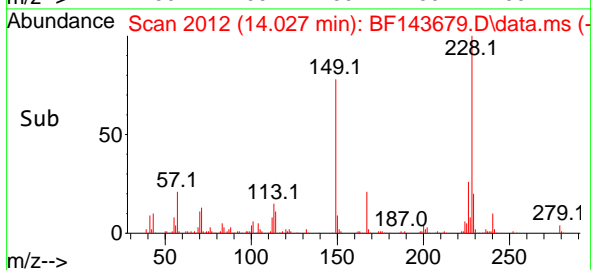
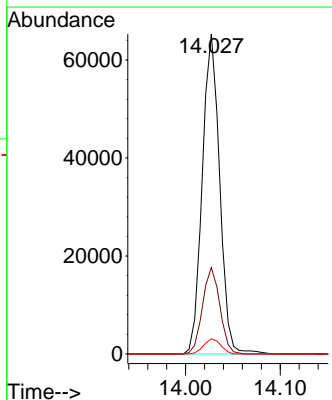
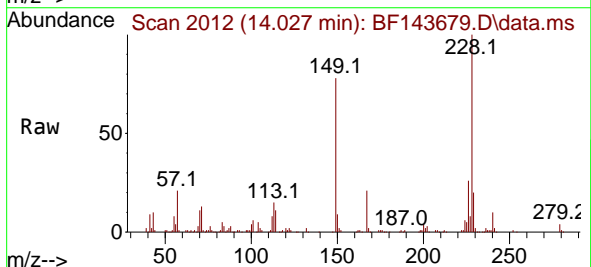


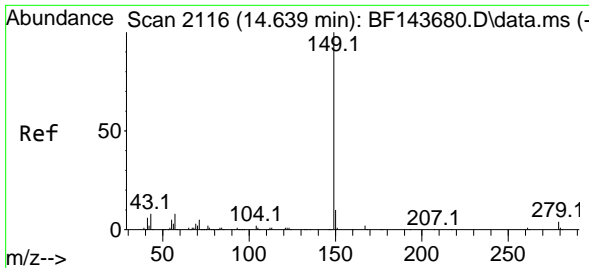
Tgt Ion:228 Resp: 142412
 Ion Ratio Lower Upper
 228 100
 226 29.2 22.7 34.1
 229 19.3 15.1 22.7



#84
 Bis(2-ethylhexyl)phthalate
 Concen: 20.094 ng
 RT: 14.027 min Scan# 2012
 Delta R.T. -0.000 min
 Lab File: BF143679.D
 Acq: 09 Sep 2025 10:39

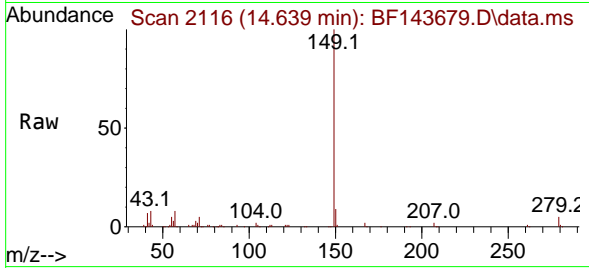
Tgt Ion:149 Resp: 82925
 Ion Ratio Lower Upper
 149 100
 167 27.0 22.2 33.2
 279 4.8 3.5 5.3





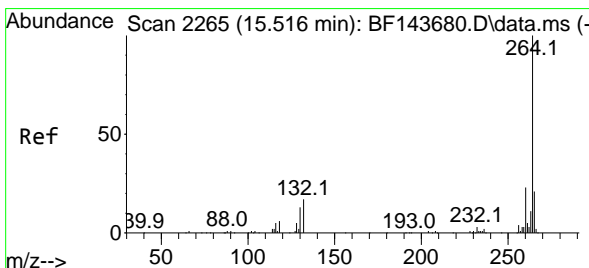
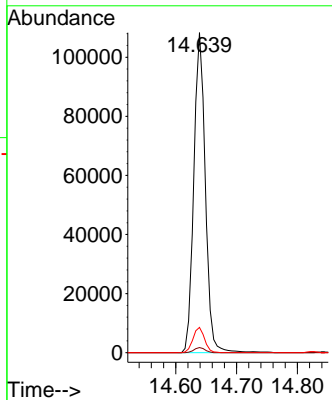
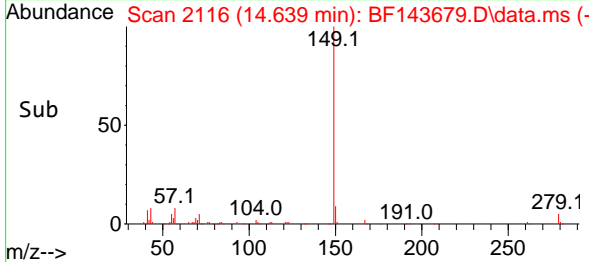
#85
 Di-n-octyl phthalate
 Concen: 19.257 ng
 RT: 14.639 min Scan# 2116
 Delta R.T. -0.000 min
 Lab File: BF143679.D
 Acq: 09 Sep 2025 10:39

Instrument : BNA_F
 ClientSampleId :

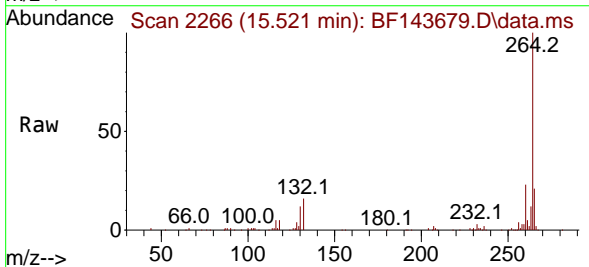


Tgt Ion:149 Resp: 142412

Ion	Ratio	Lower	Upper
149	100		
167	1.5	1.2	1.8
43	7.9	6.2	9.2

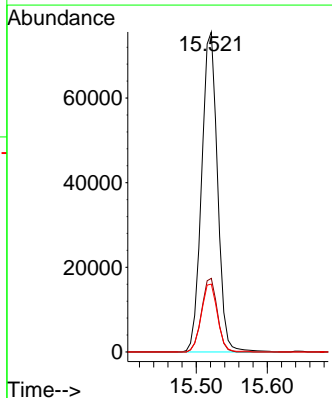
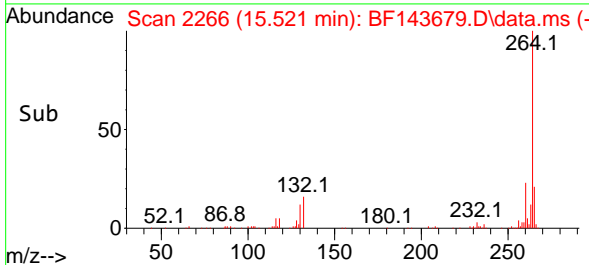


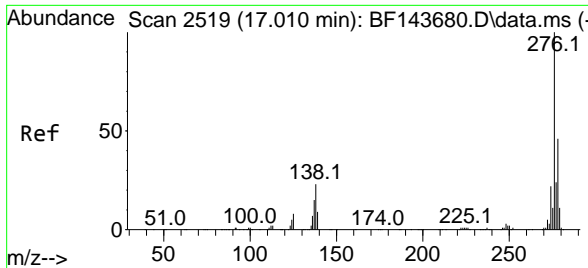
#86
 Perylene-d12
 Concen: 20.000 ng
 RT: 15.521 min Scan# 2266
 Delta R.T. 0.006 min
 Lab File: BF143679.D
 Acq: 09 Sep 2025 10:39



Tgt Ion:264 Resp: 117544

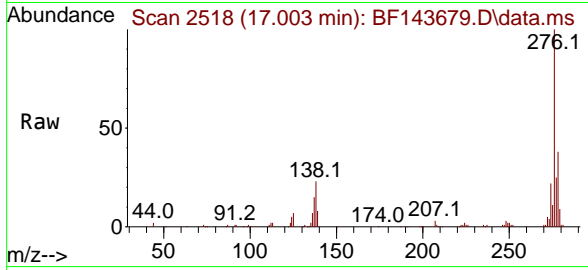
Ion	Ratio	Lower	Upper
264	100		
260	23.0	18.4	27.6
265	21.2	17.1	25.7



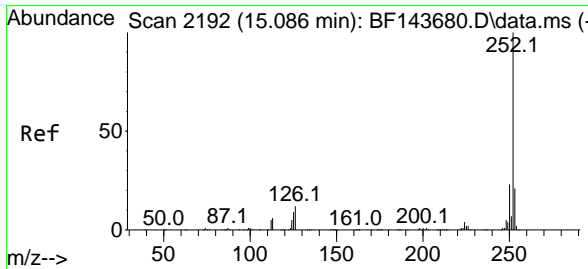
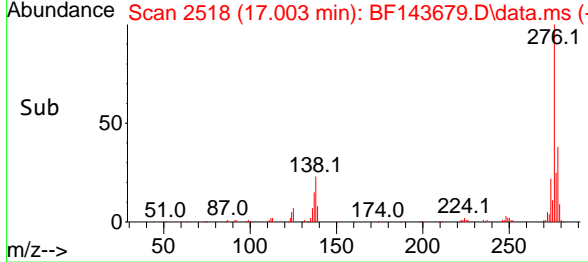
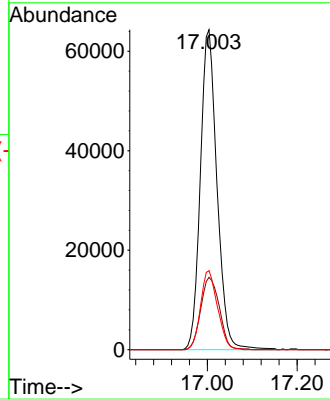


#87
 Indeno(1,2,3-cd)pyrene
 Concen: 20.618 ng
 RT: 17.003 min Scan# 2118
 Delta R.T. -0.006 min
 Lab File: BF143679.D
 Acq: 09 Sep 2025 10:39

Instrument :
 BNA_F
 ClientSampleId :

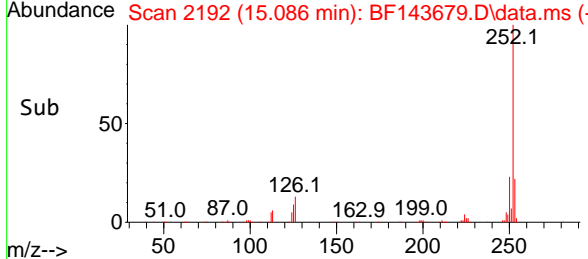
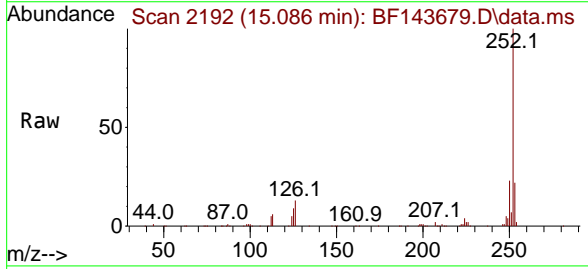
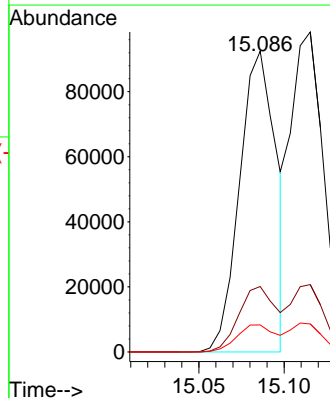


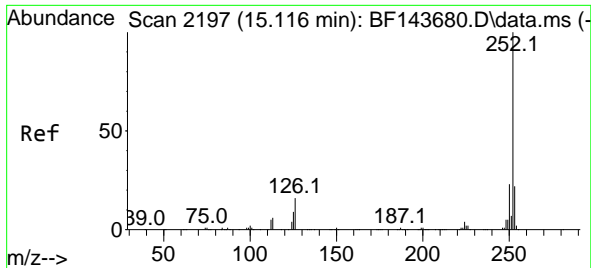
Tgt Ion:276 Resp: 165403
 Ion Ratio Lower Upper
 276 100
 138 25.3 19.7 29.5
 277 25.2 20.2 30.2



#88
 Benzo(b)fluoranthene
 Concen: 19.669 ng
 RT: 15.086 min Scan# 2192
 Delta R.T. -0.000 min
 Lab File: BF143679.D
 Acq: 09 Sep 2025 10:39

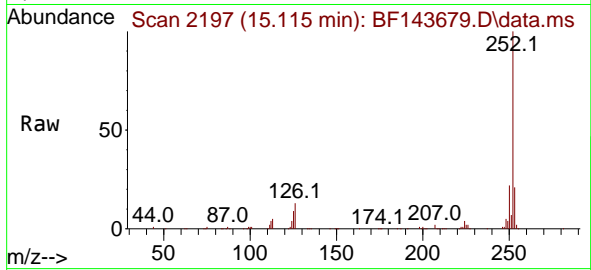
Tgt Ion:252 Resp: 137629
 Ion Ratio Lower Upper
 252 100
 253 21.7 17.0 25.4
 125 9.0 7.4 11.0



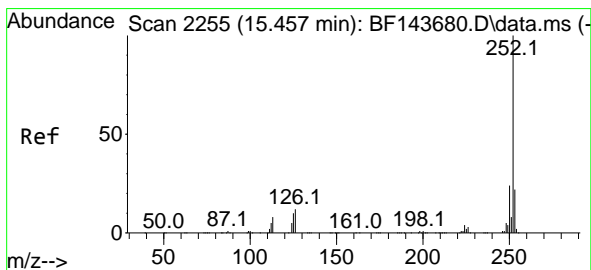
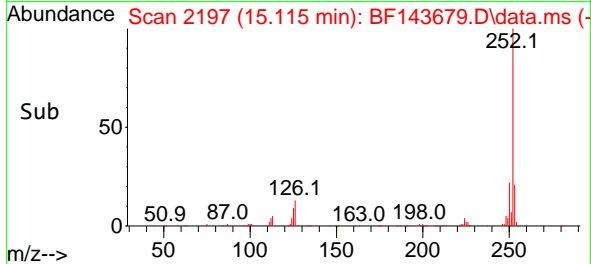
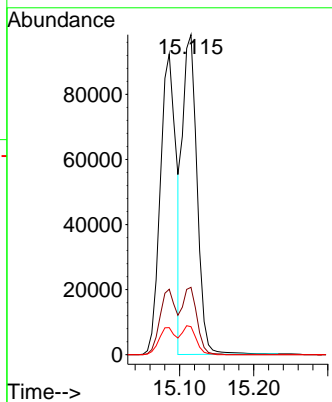


#89
 Benzo(k)fluoranthene
 Concen: 21.183 ng
 RT: 15.115 min Scan# 2115
 Delta R.T. -0.000 min
 Lab File: BF143679.D
 Acq: 09 Sep 2025 10:39

Instrument :
 BNA_F
 ClientSampleId :

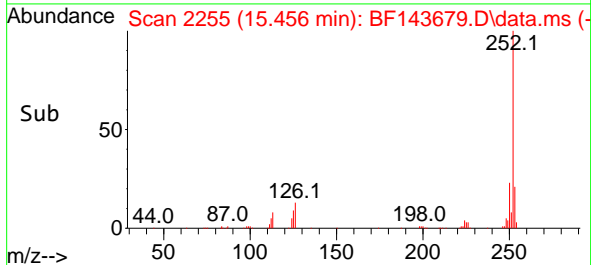
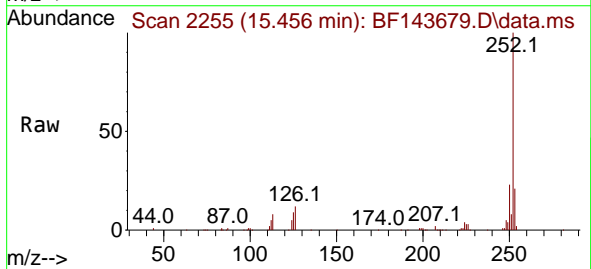
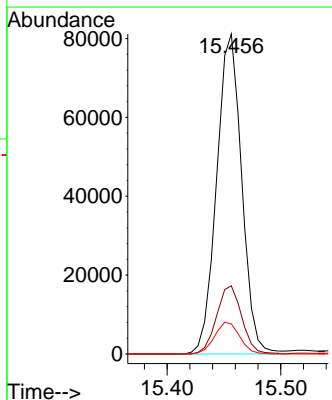


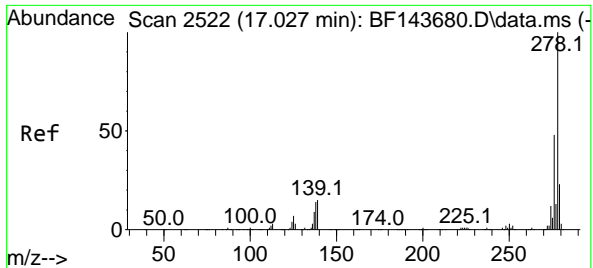
Tgt Ion:252 Resp: 133771
 Ion Ratio Lower Upper
 252 100
 253 21.1 17.3 25.9
 125 8.7 7.3 10.9



#90
 Benzo(a)pyrene
 Concen: 20.233 ng
 RT: 15.456 min Scan# 2255
 Delta R.T. -0.000 min
 Lab File: BF143679.D
 Acq: 09 Sep 2025 10:39

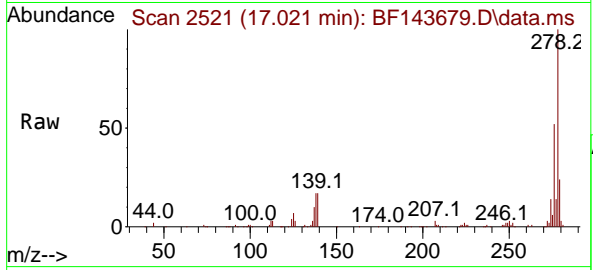
Tgt Ion:252 Resp: 124377
 Ion Ratio Lower Upper
 252 100
 253 21.3 17.4 26.0
 125 9.4 8.2 12.4



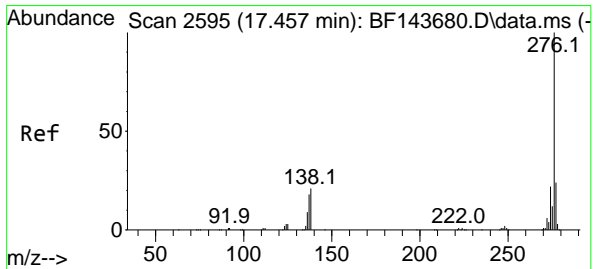
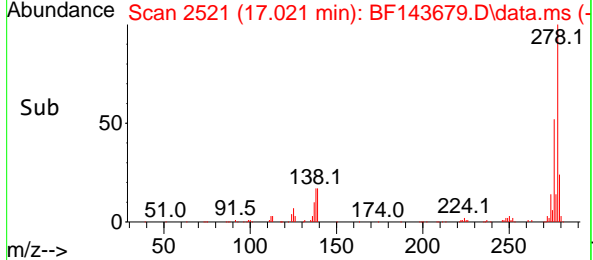
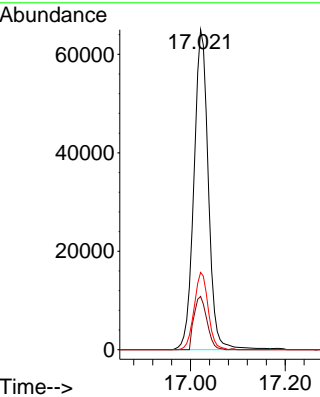


#91
 Dibenzo(a,h)anthracene
 Concen: 20.615 ng
 RT: 17.021 min Scan# 21
 Delta R.T. -0.006 min
 Lab File: BF143679.D
 Acq: 09 Sep 2025 10:39

Instrument :
 BNA_F
 ClientSampleId :



Tgt Ion:278 Resp: 137209
 Ion Ratio Lower Upper
 278 100
 139 16.6 12.2 18.4
 279 24.2 18.7 28.1



#92
 Benzo(g,h,i)perylene
 Concen: 20.470 ng
 RT: 17.450 min Scan# 2594
 Delta R.T. -0.006 min
 Lab File: BF143679.D
 Acq: 09 Sep 2025 10:39

Tgt Ion:276 Resp: 127434
 Ion Ratio Lower Upper
 276 100
 277 24.2 19.2 28.8
 138 20.4 17.0 25.4

