

Data Path : Z:\svoasrv\HPCHEM1\BNA_F\Data\BF091025\
 Data File : BF143685.D
 Acq On : 09 Sep 2025 15:32
 Operator : RC/JU
 Sample : PB169490BL
 Misc :
 ALS Vial : 12 Sample Multiplier: 1

Instrument :
 BNA_F
 ClientSampleId :

Quant Time: Sep 09 16:08:15 2025
 Quant Method : Z:\svoasrv\HPCHEM1\BNA_F\Methods\8270-BF091025.M
 Quant Title : ASP BNA STANDARDS FOR 5 POINT CALIBRATION
 QLast Update : Tue Sep 09 15:20:16 2025
 Response via : Initial Calibration

Compound	R.T.	QIon	Response	Conc	Units	Dev(Min)

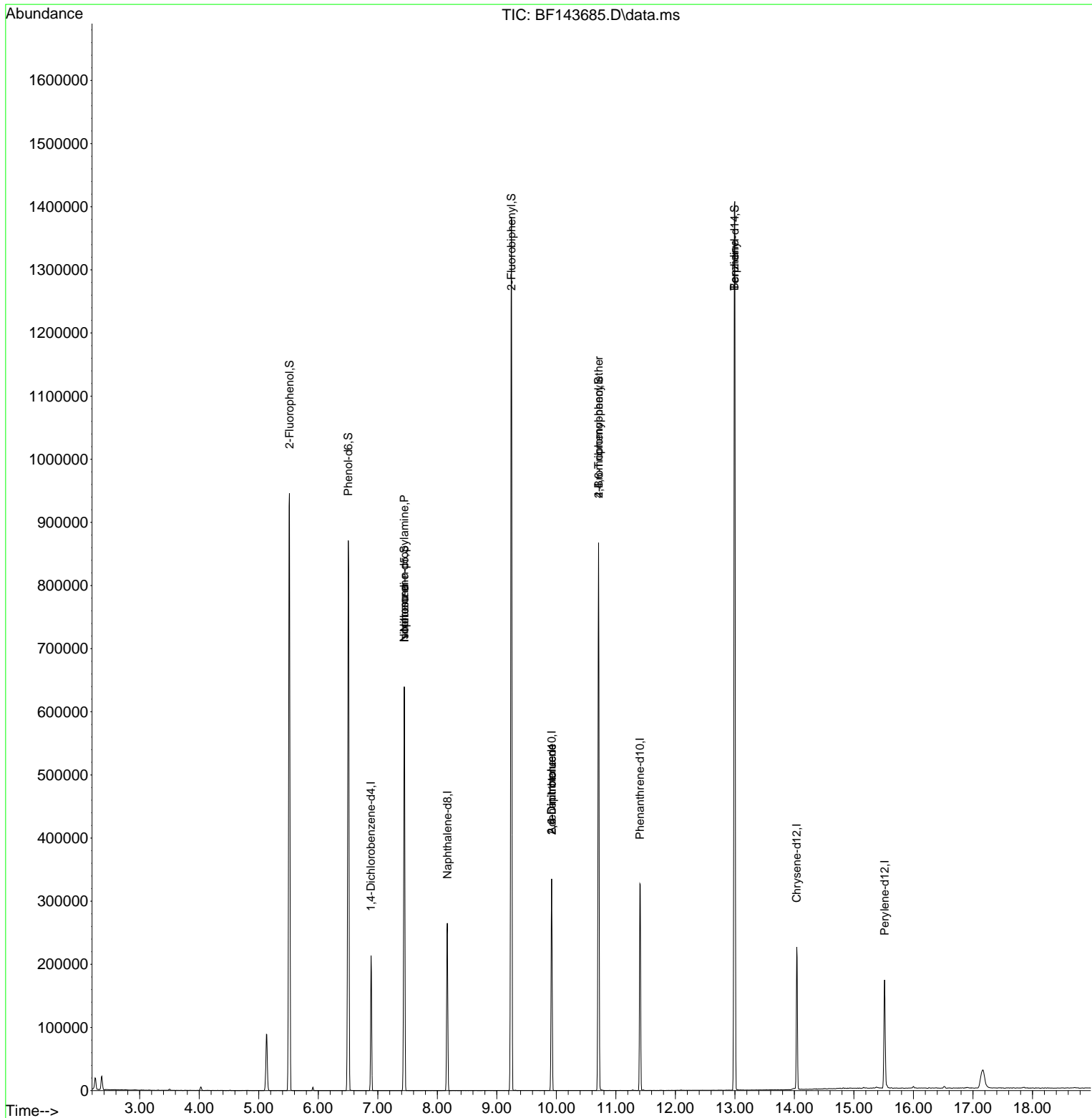
Internal Standards						
1) 1,4-Dichlorobenzene-d4	6.887	152	46527	20.000	ng	0.00
21) Naphthalene-d8	8.169	136	176967	20.000	ng	0.00
39) Acenaphthene-d10	9.922	164	103805	20.000	ng	0.00
64) Phenanthrene-d10	11.404	188	183105	20.000	ng	0.00
76) Chrysene-d12	14.039	240	114611	20.000	ng	0.00
86) Perylene-d12	15.515	264	106751	20.000	ng	0.00
System Monitoring Compounds						
5) 2-Fluorophenol	5.516	112	402008	147.416	ng	0.02
7) Phenol-d6	6.504	99	480976	144.853	ng	0.00
23) Nitrobenzene-d5	7.445	82	301169	105.855	ng	0.00
42) 2,4,6-Tribromophenol	10.710	330	161004	153.906	ng	0.00
45) 2-Fluorobiphenyl	9.245	172	686304	99.874	ng	0.00
79) Terphenyl-d14	12.998	244	770543	108.950	ng	0.00
Target Compounds						
19) n-Nitroso-di-n-propyla...	7.445	70	40203	19.714	ng	# 78
25) Isophorone	7.445	82	300550	55.090	ng	# 64
51) 2,6-Dinitrotoluene	9.922	165	13101	10.145	ng	# 27
57) 2,4-Dinitrotoluene	9.922	165	13101	7.454	ng	# 27
67) 4-Bromophenyl-phenylether	10.710	248	10245	4.640	ng	# 1
77) Benzidine	12.992	184	8092	2.165	ng	# 93

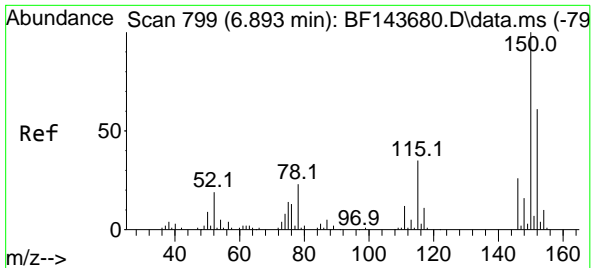
(#) = qualifier out of range (m) = manual integration (+) = signals summed

Data Path : Z:\svoasrv\HPCHEM1\BNA_F\Data\BF091025\
 Data File : BF143685.D
 Acq On : 09 Sep 2025 15:32
 Operator : RC/JU
 Sample : PB169490BL
 Misc :
 ALS Vial : 12 Sample Multiplier: 1

Instrument :
 BNA_F
 ClientSampleId :

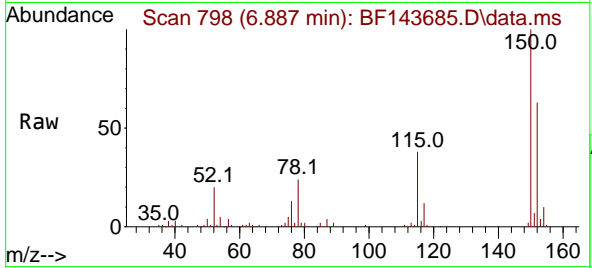
Quant Time: Sep 09 16:08:15 2025
 Quant Method : Z:\svoasrv\HPCHEM1\BNA_F\Methods\8270-BF091025.M
 Quant Title : ASP BNA STANDARDS FOR 5 POINT CALIBRATION
 QLast Update : Tue Sep 09 15:20:16 2025
 Response via : Initial Calibration



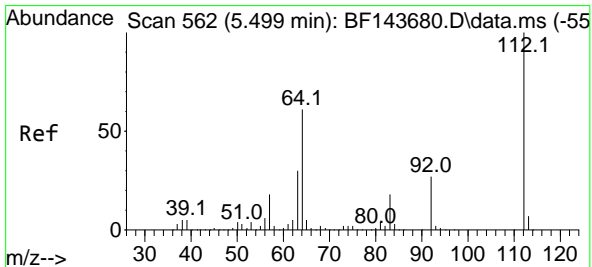
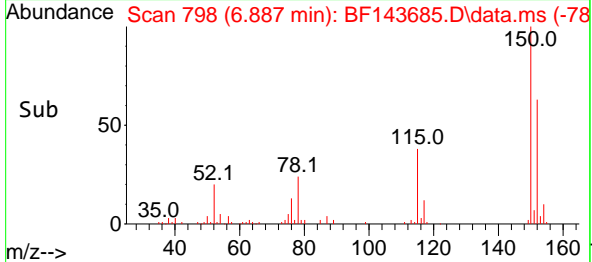
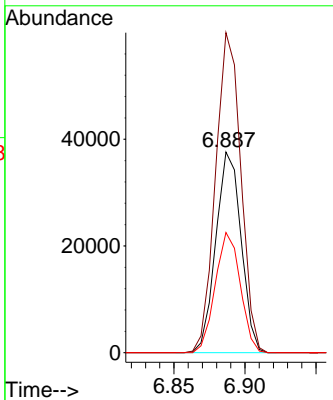


#1
 1,4-Dichlorobenzene-d4
 Concen: 20.000 ng
 RT: 6.887 min Scan# 79
 Delta R.T. -0.006 min
 Lab File: BF143685.D
 Acq: 09 Sep 2025 15:32

Instrument :
 BNA_F
 ClientSampleId :

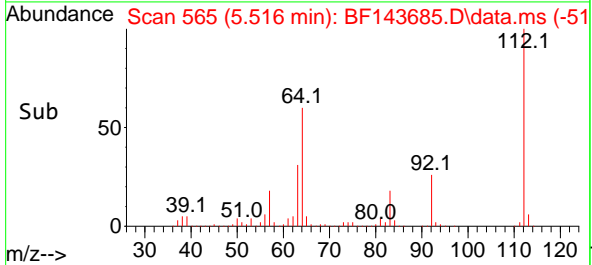
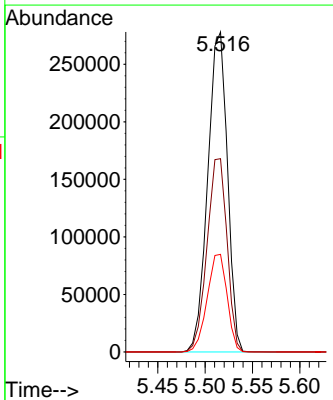
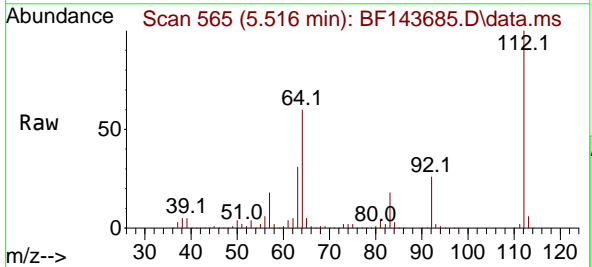


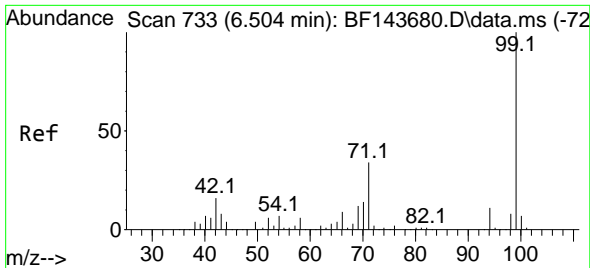
Tgt Ion:152 Resp: 46527
 Ion Ratio Lower Upper
 152 100
 150 159.4 130.7 196.1
 115 59.9 45.9 68.9



#5
 2-Fluorophenol
 Concen: 147.416 ng
 RT: 5.516 min Scan# 565
 Delta R.T. 0.018 min
 Lab File: BF143685.D
 Acq: 09 Sep 2025 15:32

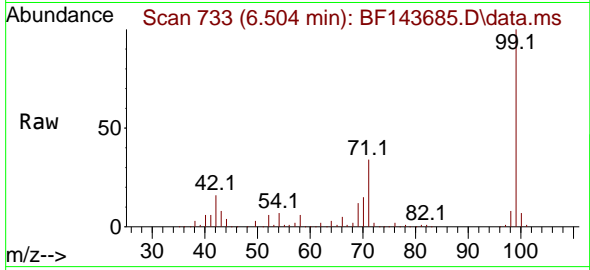
Tgt Ion:112 Resp: 402008
 Ion Ratio Lower Upper
 112 100
 64 60.4 49.0 73.4
 63 30.5 24.3 36.5





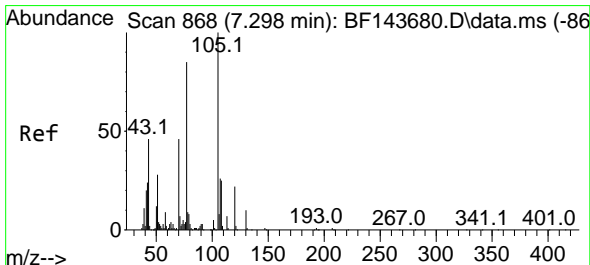
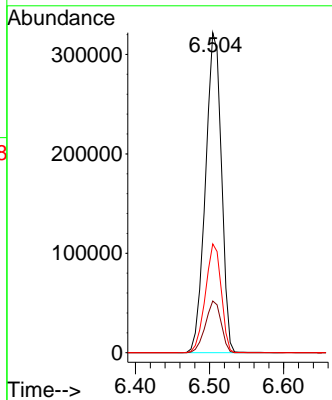
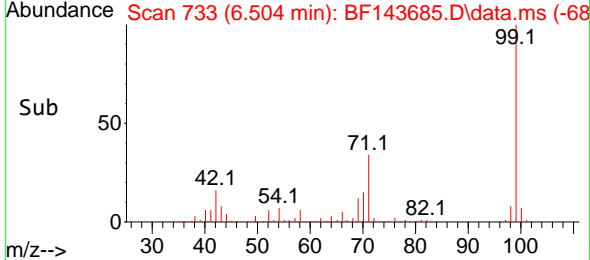
#7
 Phenol-d6
 Concen: 144.853 ng
 RT: 6.504 min Scan# 71
 Delta R.T. -0.000 min
 Lab File: BF143685.D
 Acq: 09 Sep 2025 15:32

Instrument :
 BNA_F
 ClientSampleId :

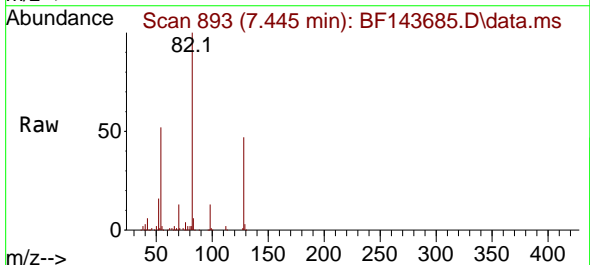


Tgt Ion: 99 Resp: 480976

Ion	Ratio	Lower	Upper
99	100		
42	16.2	13.0	19.4
71	34.0	27.4	41.2

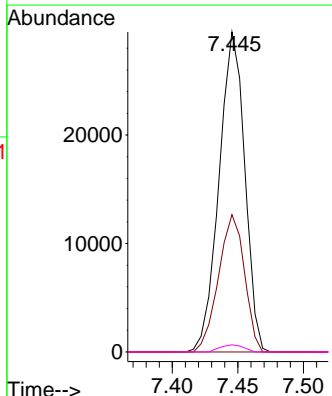
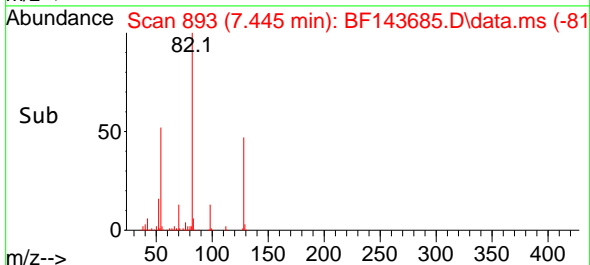


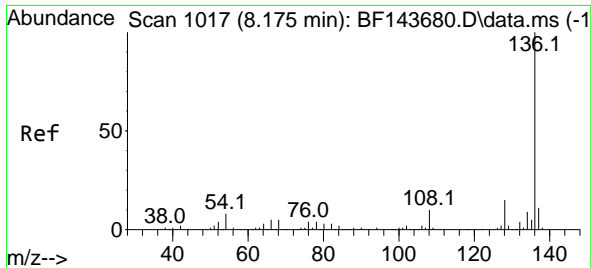
#19
 n-Nitroso-di-n-propylamine
 Concen: 19.714 ng
 RT: 7.445 min Scan# 893
 Delta R.T. 0.147 min
 Lab File: BF143685.D
 Acq: 09 Sep 2025 15:32



Tgt Ion: 70 Resp: 40203

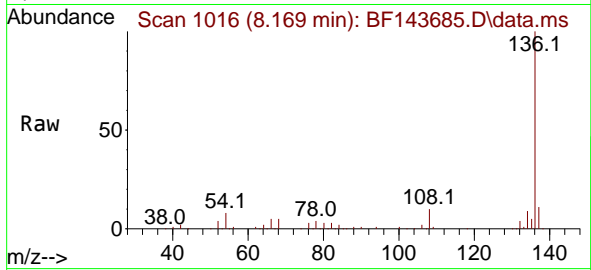
Ion	Ratio	Lower	Upper
70	100		
42	42.9	41.4	62.2
101	0.0	8.1	12.1#
130	2.2	17.3	25.9#



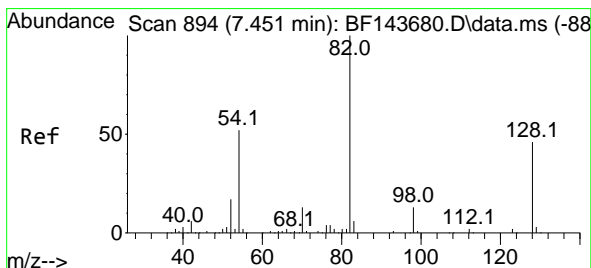
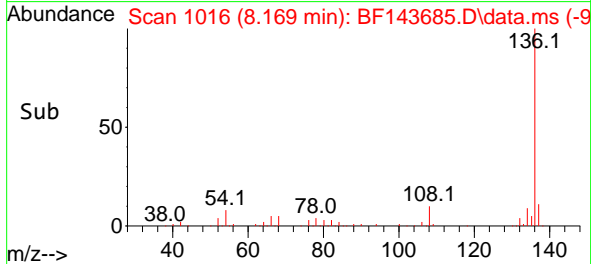
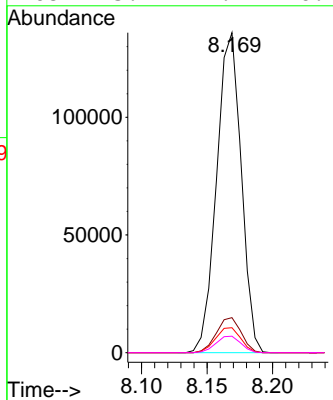


#21
 Naphthalene-d8
 Concen: 20.000 ng
 RT: 8.169 min Scan# 1016
 Delta R.T. -0.006 min
 Lab File: BF143685.D
 Acq: 09 Sep 2025 15:32

Instrument :
 BNA_F
 ClientSampleId :

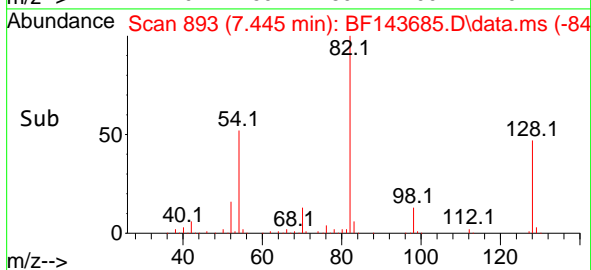
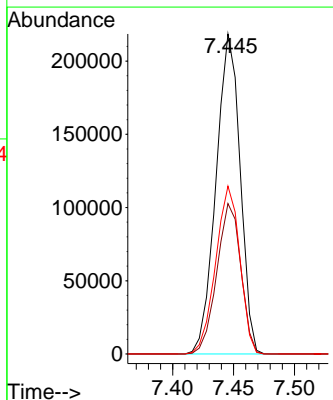
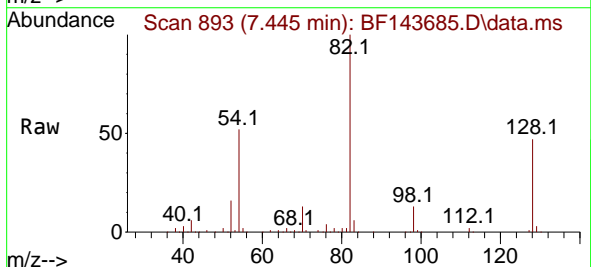


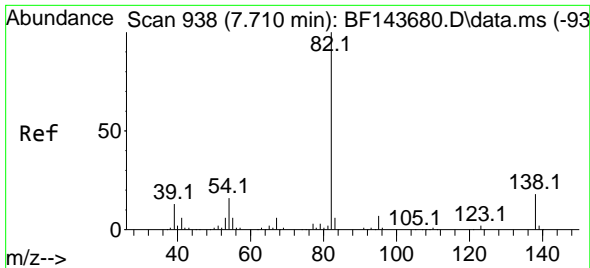
Tgt Ion:136 Resp: 176967
 Ion Ratio Lower Upper
 136 100
 137 11.0 8.7 13.1
 54 7.8 6.2 9.2
 68 5.2 4.2 6.4



#23
 Nitrobenzene-d5
 Concen: 105.855 ng
 RT: 7.445 min Scan# 893
 Delta R.T. -0.006 min
 Lab File: BF143685.D
 Acq: 09 Sep 2025 15:32

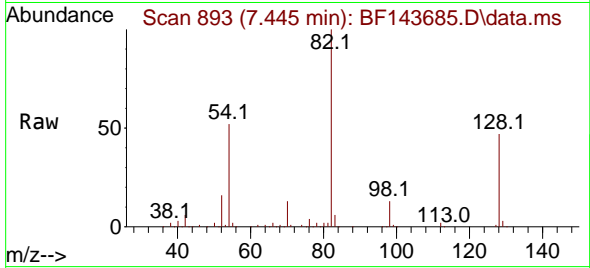
Tgt Ion: 82 Resp: 301169
 Ion Ratio Lower Upper
 82 100
 128 47.0 37.0 55.4
 54 52.5 41.8 62.8



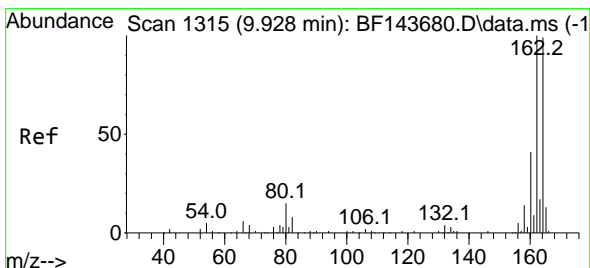
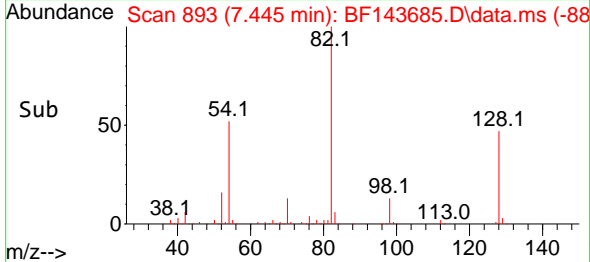
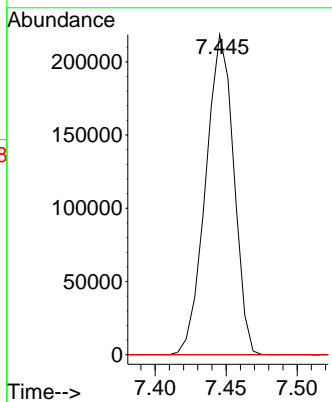


#25
 Isophorone
 Concen: 55.090 ng
 RT: 7.445 min Scan# 893
 Delta R.T. -0.265 min
 Lab File: BF143685.D
 Acq: 09 Sep 2025 15:32

Instrument : BNA_F
 ClientSampleId :

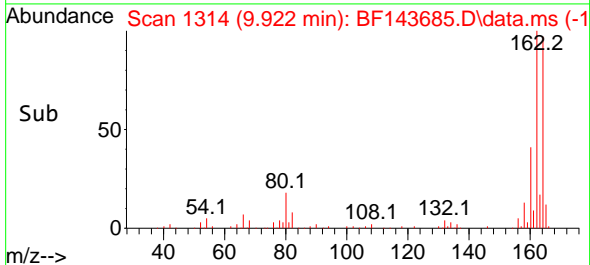
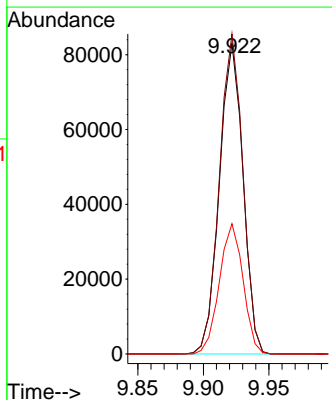
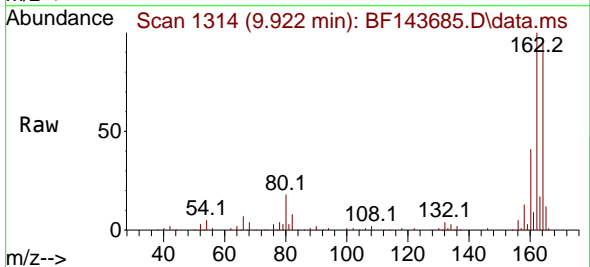


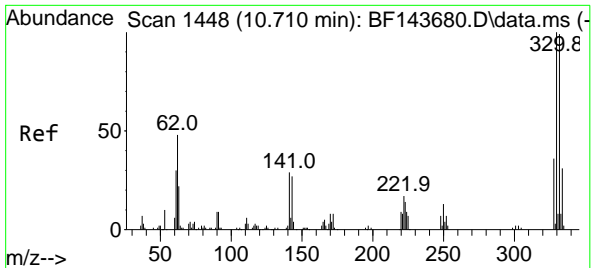
Tgt Ion: 82 Resp: 300550
 Ion Ratio Lower Upper
 82 100
 95 0.0 5.7 8.5#
 138 0.0 14.8 22.2#



#39
 Acenaphthene-d10
 Concen: 20.000 ng
 RT: 9.922 min Scan# 1314
 Delta R.T. -0.006 min
 Lab File: BF143685.D
 Acq: 09 Sep 2025 15:32

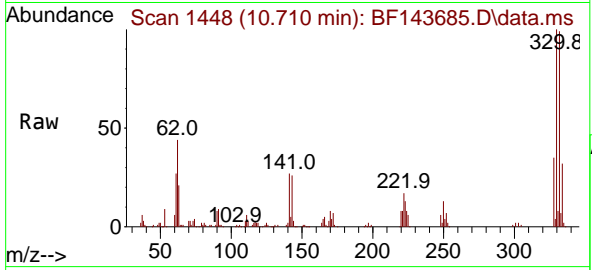
Tgt Ion: 164 Resp: 103805
 Ion Ratio Lower Upper
 164 100
 162 103.0 80.6 121.0
 160 41.9 33.0 49.4



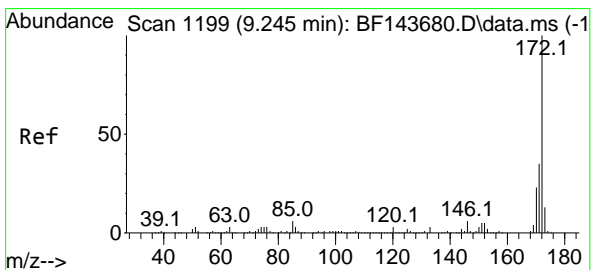
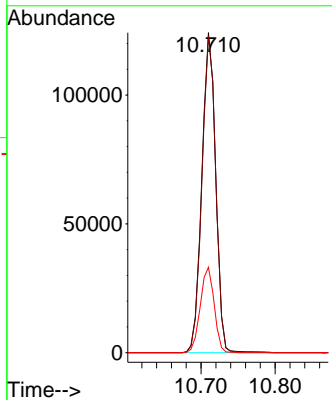
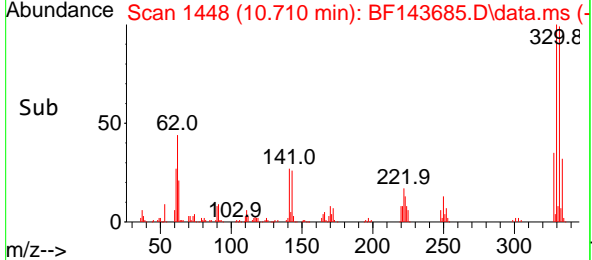


#42
 2,4,6-Tribromophenol
 Concen: 153.906 ng
 RT: 10.710 min Scan# 1448
 Delta R.T. -0.000 min
 Lab File: BF143685.D
 Acq: 09 Sep 2025 15:32

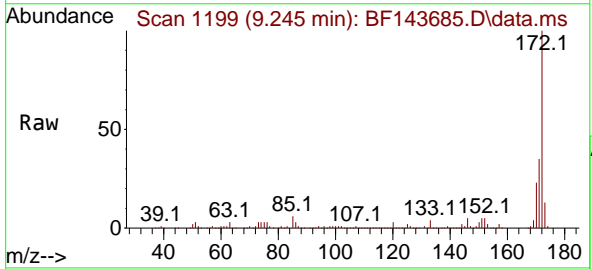
Instrument :
 BNA_F
 ClientSampleId :



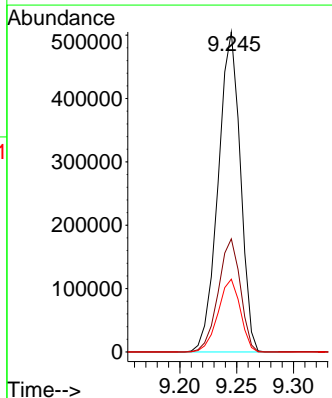
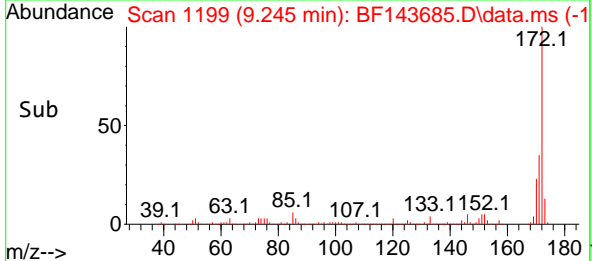
Tgt Ion:330 Resp: 161004
 Ion Ratio Lower Upper
 330 100
 332 98.7 79.2 118.8
 141 26.7 22.2 33.4

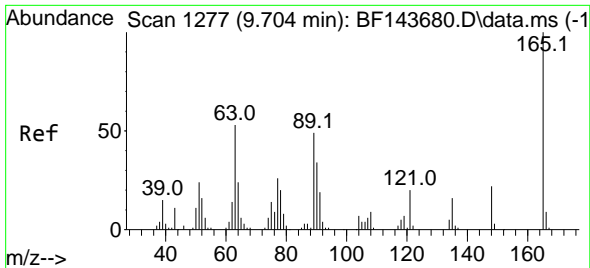


#45
 2-Fluorobiphenyl
 Concen: 99.874 ng
 RT: 9.245 min Scan# 1199
 Delta R.T. -0.000 min
 Lab File: BF143685.D
 Acq: 09 Sep 2025 15:32



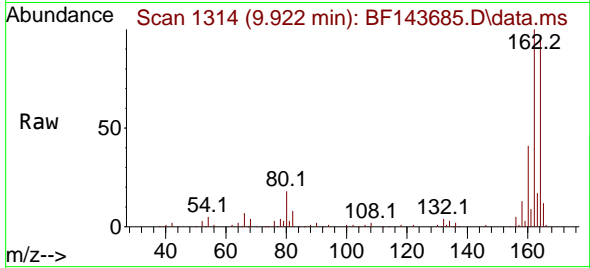
Tgt Ion:172 Resp: 686304
 Ion Ratio Lower Upper
 172 100
 171 35.3 27.9 41.9
 170 22.8 18.6 27.8



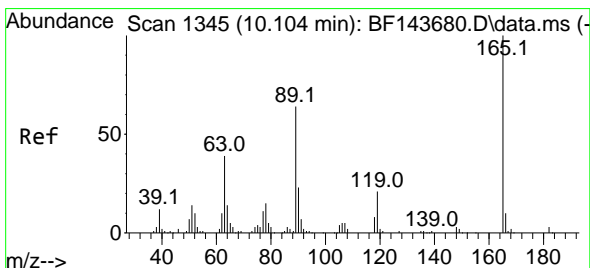
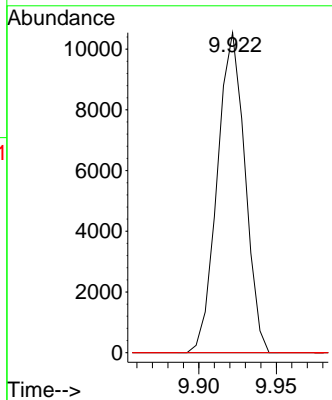
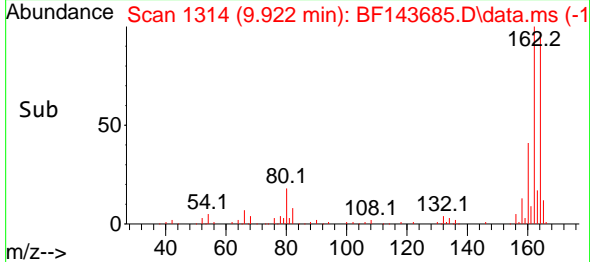


#51
 2,6-Dinitrotoluene
 Concen: 10.145 ng
 RT: 9.922 min Scan# 11
 Delta R.T. 0.218 min
 Lab File: BF143685.D
 Acq: 09 Sep 2025 15:32

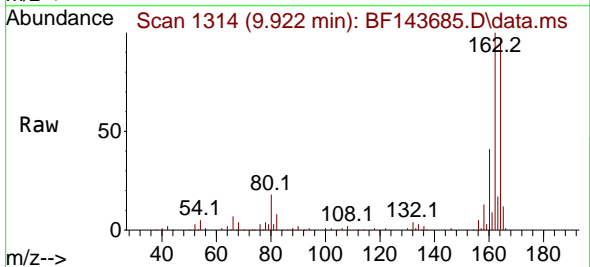
Instrument :
 BNA_F
 ClientSampleId :



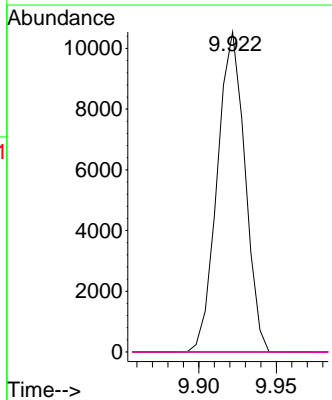
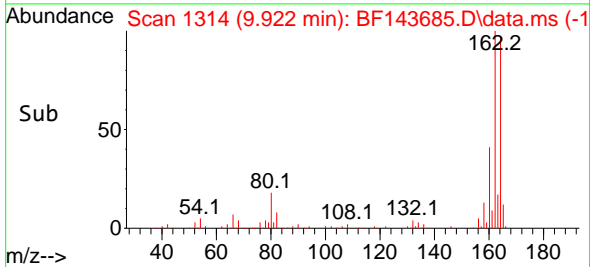
Tgt Ion:165 Resp: 13101
 Ion Ratio Lower Upper
 165 100
 63 0.0 42.2 63.4#
 89 0.0 39.3 58.9#

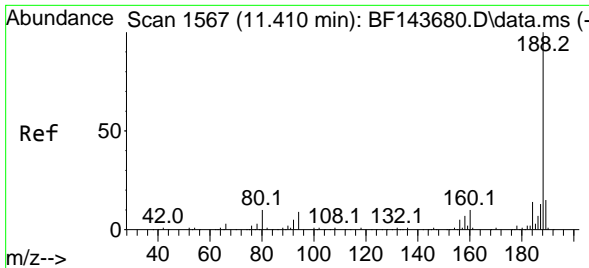


#57
 2,4-Dinitrotoluene
 Concen: 7.454 ng
 RT: 9.922 min Scan# 1314
 Delta R.T. -0.182 min
 Lab File: BF143685.D
 Acq: 09 Sep 2025 15:32



Tgt Ion:165 Resp: 13101
 Ion Ratio Lower Upper
 165 100
 63 0.0 31.5 47.3#
 89 0.0 51.3 76.9#
 182 0.0 2.2 3.4#

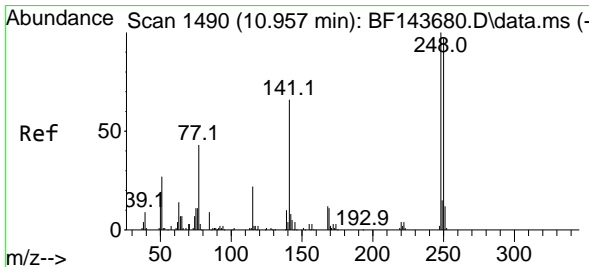
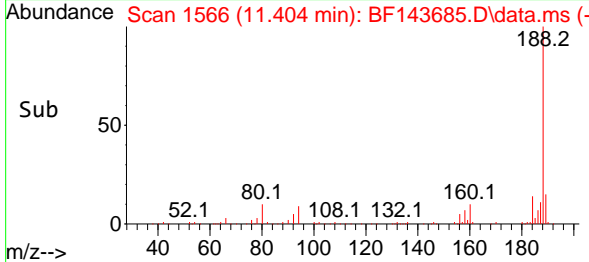
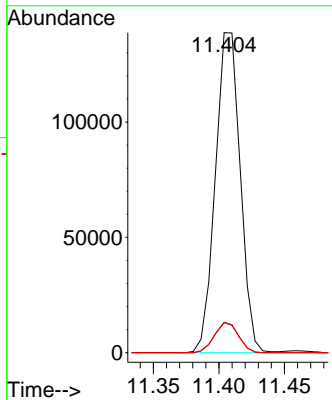
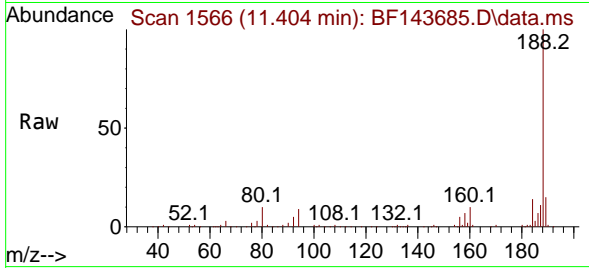




#64
 Phenanthrene-d10
 Concen: 20.000 ng
 RT: 11.404 min Scan# 11
 Delta R.T. -0.006 min
 Lab File: BF143685.D
 Acq: 09 Sep 2025 15:32

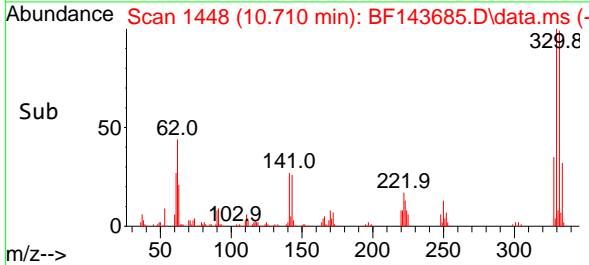
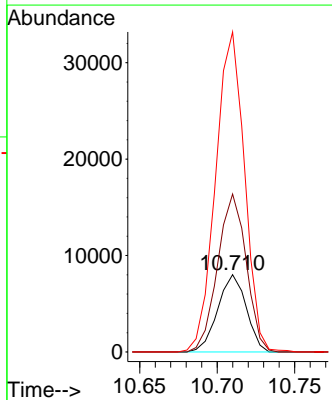
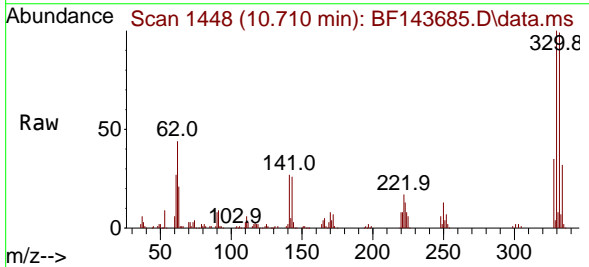
Instrument : BNA_F
 ClientSampleId :

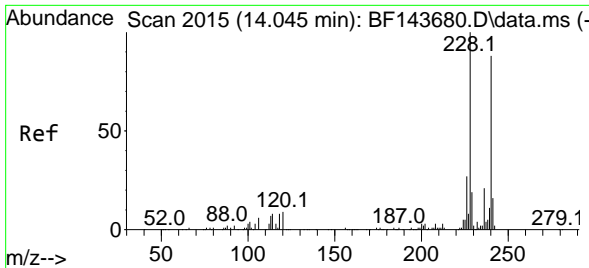
Tgt Ion	Resp	Lower	Upper
188	183105		
188	100		
94	9.4	7.4	11.0
80	9.6	7.7	11.5



#67
 4-Bromophenyl-phenylether
 Concen: 4.640 ng
 RT: 10.710 min Scan# 1448
 Delta R.T. -0.247 min
 Lab File: BF143685.D
 Acq: 09 Sep 2025 15:32

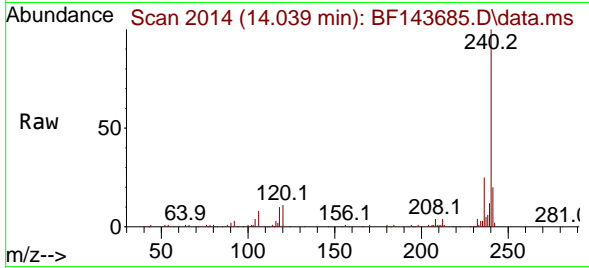
Tgt Ion	Resp	Lower	Upper
248	10245		
248	100		
250	204.2	77.5	116.3#
141	413.8	52.6	79.0#



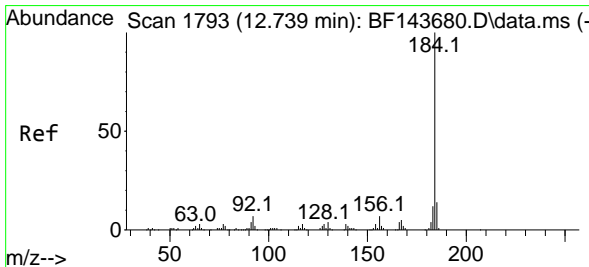
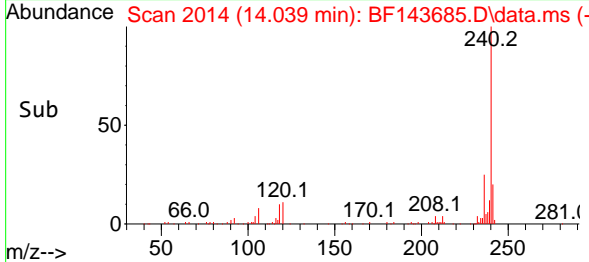
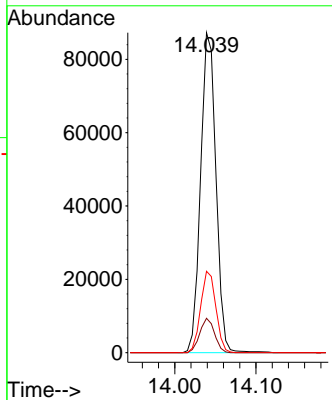


#76
 Chrysene-d12
 Concen: 20.000 ng
 RT: 14.039 min Scan# 2015
 Delta R.T. -0.006 min
 Lab File: BF143685.D
 Acq: 09 Sep 2025 15:32

Instrument : BNA_F
 Client Sampled :

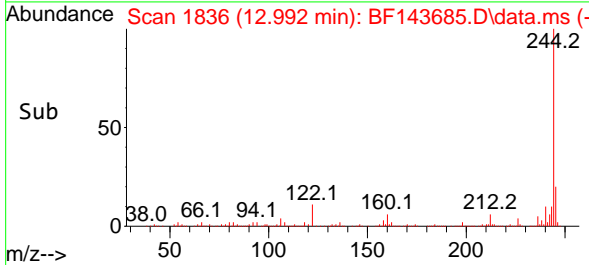
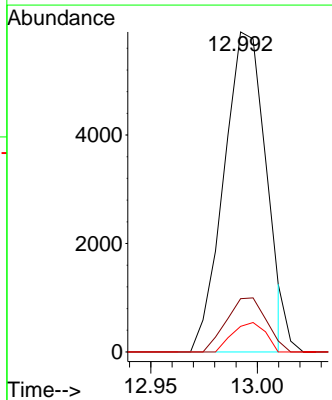
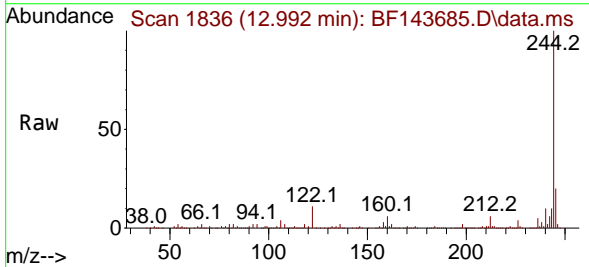


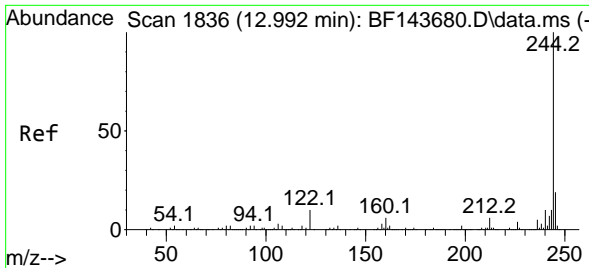
Tgt Ion:240 Resp: 114611
 Ion Ratio Lower Upper
 240 100
 120 10.8 8.4 12.6
 236 25.4 18.6 28.0



#77
 Benzdine
 Concen: 2.165 ng
 RT: 12.992 min Scan# 1836
 Delta R.T. 0.253 min
 Lab File: BF143685.D
 Acq: 09 Sep 2025 15:32

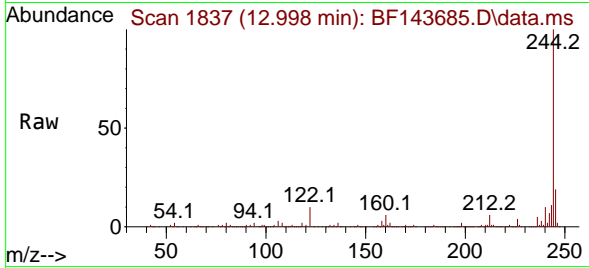
Tgt Ion:184 Resp: 8092
 Ion Ratio Lower Upper
 184 100
 185 16.7 11.5 17.3
 183 8.0 9.4 14.2#



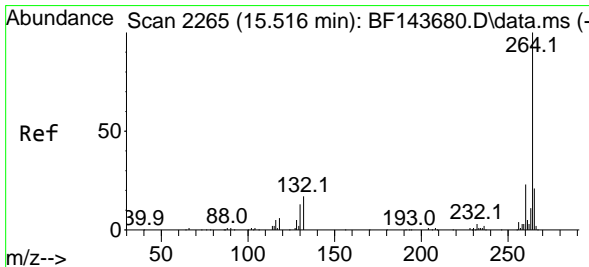
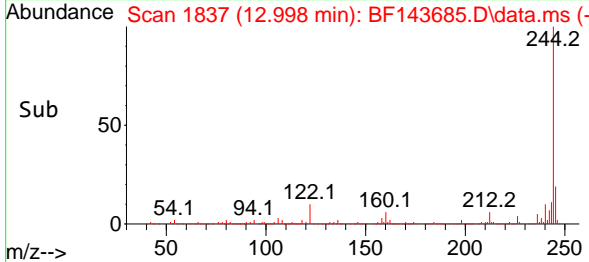
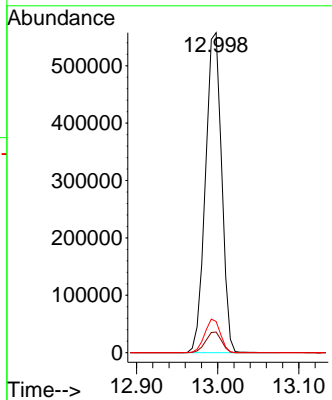


#79
 Terphenyl-d14
 Concen: 108.950 ng
 RT: 12.998 min Scan# 1837
 Delta R.T. 0.006 min
 Lab File: BF143685.D
 Acq: 09 Sep 2025 15:32

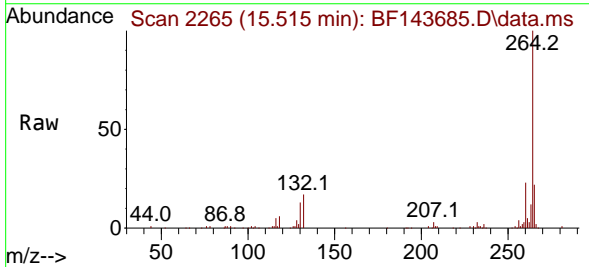
Instrument :
 BNA_F
 ClientSampleId :



Tgt Ion:244 Resp: 770543
 Ion Ratio Lower Upper
 244 100
 212 6.4 5.0 7.6
 122 9.7 7.9 11.9



#86
 Perylene-d12
 Concen: 20.000 ng
 RT: 15.515 min Scan# 2265
 Delta R.T. -0.000 min
 Lab File: BF143685.D
 Acq: 09 Sep 2025 15:32



Tgt Ion:264 Resp: 106751
 Ion Ratio Lower Upper
 264 100
 260 23.0 18.4 27.6
 265 21.6 17.1 25.7

