

Data Path : Z:\svoasrv\HPCHEM1\BNA_F\Data\BF091225\
 Data File : BF143728.D
 Acq On : 12 Sep 2025 12:46
 Operator : RC/JU
 Sample : Q3077-03DL 10X
 Misc :
 ALS Vial : 6 Sample Multiplier: 1

Instrument :
 BNA_F
 ClientSampleId :
 LAW-25-0139DL

Quant Time: Sep 12 13:10:29 2025
 Quant Method : Z:\svoasrv\HPCHEM1\BNA_F\Methods\8270-BF091025.M
 Quant Title : ASP BNA STANDARDS FOR 5 POINT CALIBRATION
 QLast Update : Tue Sep 09 15:20:16 2025
 Response via : Initial Calibration

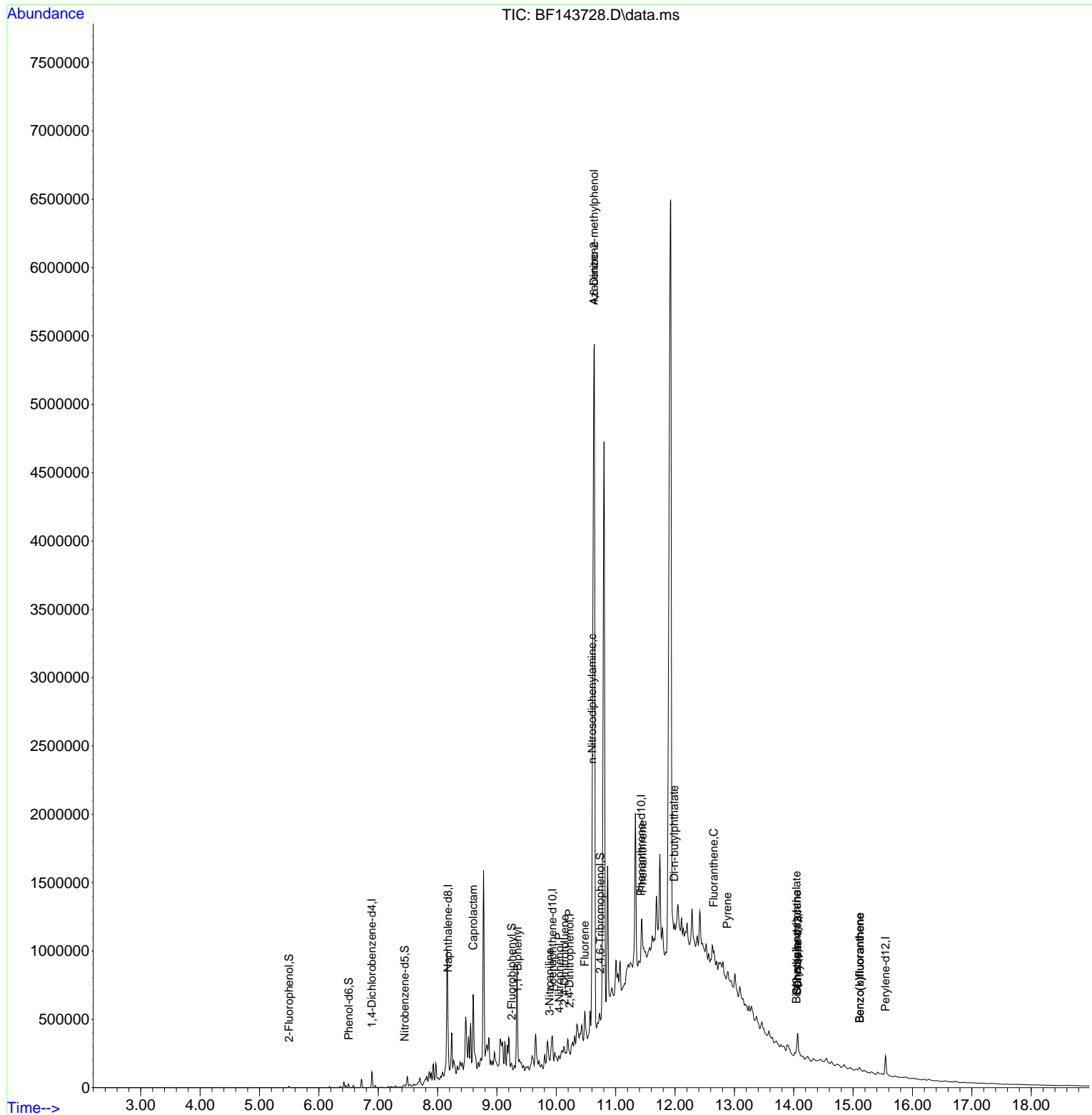
Compound	R.T.	QIon	Response	Conc	Units	Dev(Min)
Internal Standards						
1) 1,4-Dichlorobenzene-d4	6.892	152	24712	20.000	ng	0.00
21) Naphthalene-d8	8.175	136	88490	20.000	ng	# 0.00
39) Acenaphthene-d10	9.933	164	43067	20.000	ng	0.00
64) Phenanthrene-d10	11.427	188	65876	20.000	ng	# 0.02
76) Chrysene-d12	14.068	240	74367	20.000	ng	0.02
86) Perylene-d12	15.545	264	83366	20.000	ng	0.03
System Monitoring Compounds						
5) 2-Fluorophenol	5.498	112	3864	2.668	ng	0.00
7) Phenol-d6	6.504	99	4454	2.526	ng	0.00
23) Nitrobenzene-d5	7.445	82	3849	2.706	ng	0.00
42) 2,4,6-Tribromophenol	10.739	330	1148	2.645	ng	0.03
45) 2-Fluorobiphenyl	9.251	172	5837	2.047	ng	0.00
79) Terphenyl-d14	13.016	244	6928	1.510	ng	0.02
Target Compounds						
35) Caprolactam	8.598	113	14285	40.979	ng	# 1
46) 1,1'-Biphenyl	9.351	154	17295	5.578	ng	99
53) 3-Nitroaniline	9.886	138	1409	2.444	ng	# 25
54) 2,4-Dinitrophenol	10.222	184	600	7.531	ng	# 58
56) 4-Nitrophenol	10.051	139	1017	2.217	ng	# 1
57) 2,4-Dinitrotoluene	10.139	165	1872	2.567	ng	# 66
58) Fluorene	10.480	166	34400	12.738	ng	# 40
63) Azobenzene	10.633	77	189489	81.477	ng	# 1
65) 4,6-Dinitro-2-methylph...	10.633	198	20074	59.851	ng	# 1
66) n-Nitrosodiphenylamine	10.604	169	9662	4.477	ng	# 1
71) Phenanthrene	11.451	178	18860	5.196	ng	# 40
74) Di-n-butylphthalate	11.986	149	23306	6.477	ng	# 35
75) Fluoranthene	12.651	202	17369	5.213	ng	79
78) Pyrene	12.880	202	22944	3.859	ng	# 88
81) Benzo(a)anthracene	14.057	228	16655	3.481	ng	95
83) Chrysene	14.057	228	16655	3.801	ng	96
84) Bis(2-ethylhexyl)phtha...	14.045	149	14313	5.385	ng	# 90
88) Benzo(b)fluoranthene	15.110	252	18574	3.743	ng	# 73
89) Benzo(k)fluoranthene	15.110	252	18574	4.147	ng	# 74

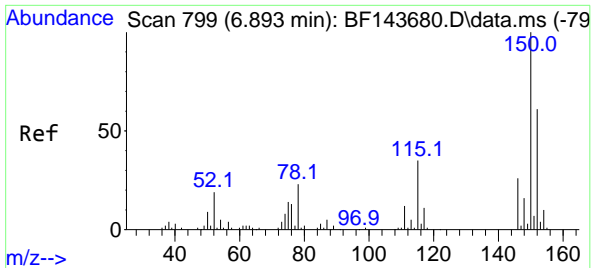
(#) = qualifier out of range (m) = manual integration (+) = signals summed

Data Path : Z:\svoasrv\HPCHEM1\BNA_F\Data\BF091225\
 Data File : BF143728.D
 Acq On : 12 Sep 2025 12:46
 Operator : RC/JU
 Sample : Q3077-03DL 10X
 Misc :
 ALS Vial : 6 Sample Multiplier: 1

Instrument :
 BNA_F
 ClientSampleId :
 LAW-25-0139DL

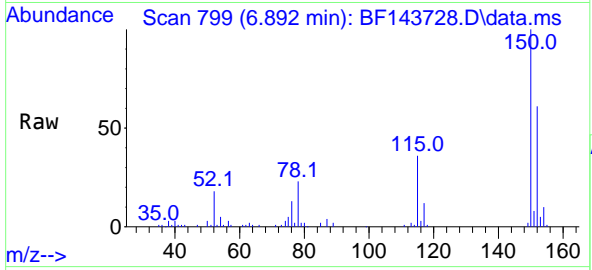
Quant Time: Sep 12 13:10:29 2025
 Quant Method : Z:\svoasrv\HPCHEM1\BNA_F\Methods\8270-BF091025.M
 Quant Title : ASP BNA STANDARDS FOR 5 POINT CALIBRATION
 QLast Update : Tue Sep 09 15:20:16 2025
 Response via : Initial Calibration



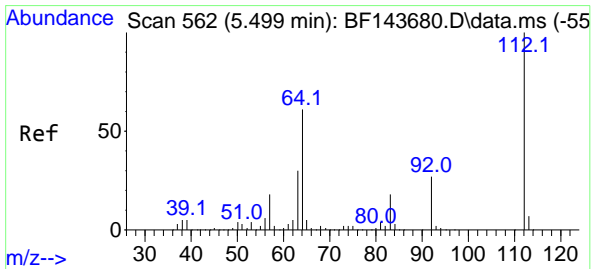
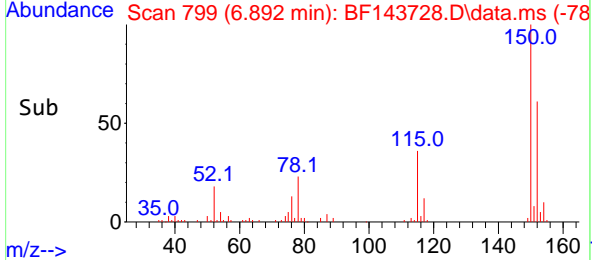
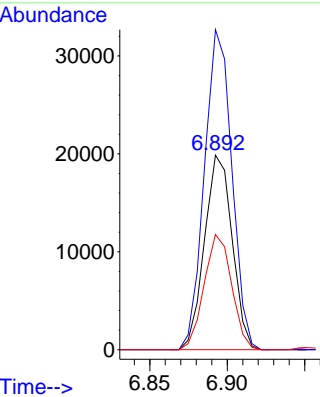


#1
 1,4-Dichlorobenzene-d4
 Concen: 20.000 ng
 RT: 6.892 min Scan# 799
 Delta R.T. -0.001 min
 Lab File: BF143728.D
 Acq: 12 Sep 2025 12:46

Instrument : BNA_F
 ClientSampleId : LAW-25-0139DL

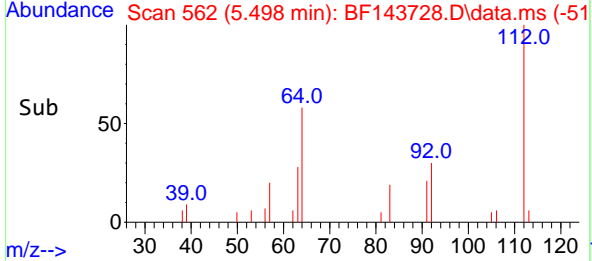
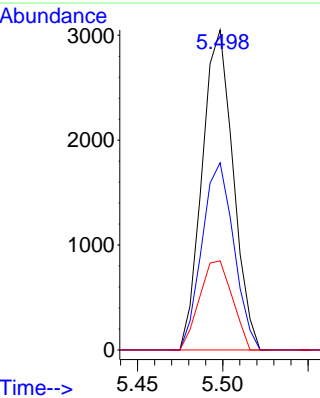
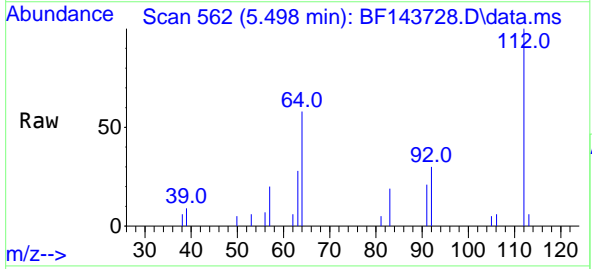


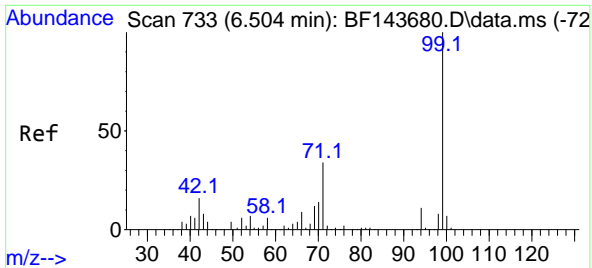
Tgt Ion:152 Resp: 24712
 Ion Ratio Lower Upper
 152 100
 150 164.5 130.7 196.1
 115 59.2 45.9 68.9



#5
 2-Fluorophenol
 Concen: 2.668 ng
 RT: 5.498 min Scan# 562
 Delta R.T. -0.000 min
 Lab File: BF143728.D
 Acq: 12 Sep 2025 12:46

Tgt Ion:112 Resp: 3864
 Ion Ratio Lower Upper
 112 100
 64 58.5 49.0 73.4
 63 27.9 24.3 36.5

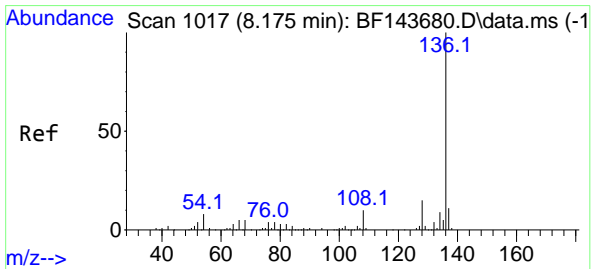
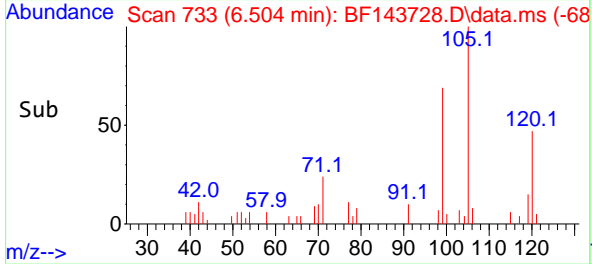
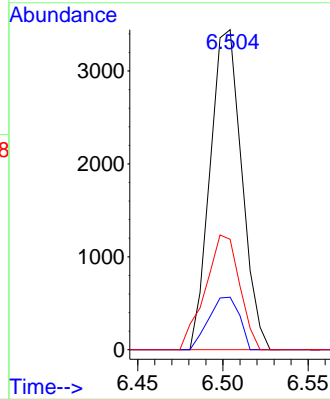
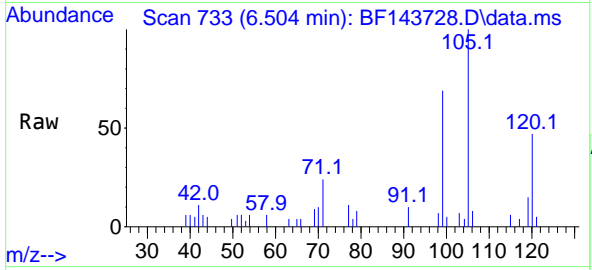




#7
Phenol-d6
Concen: 2.526 ng
RT: 6.504 min Scan# 71
Delta R.T. -0.000 min
Lab File: BF143728.D
Acq: 12 Sep 2025 12:46

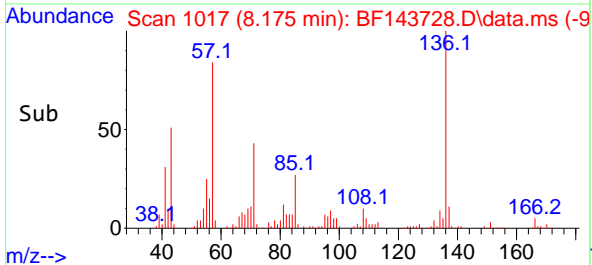
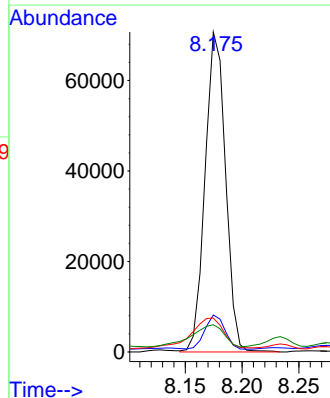
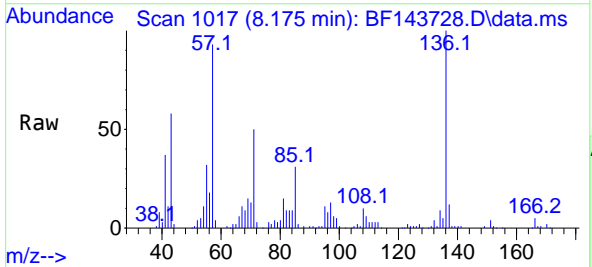
Instrument :
BNA_F
ClientSampleId :
LAW-25-0139DL

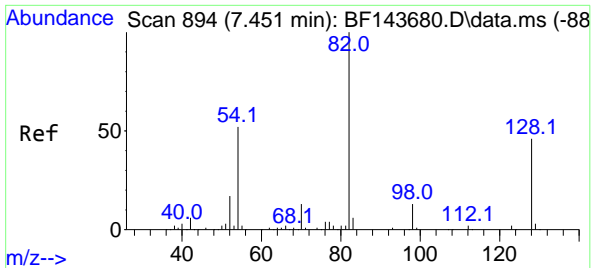
Tgt Ion: 99 Resp: 4454
Ion Ratio Lower Upper
99 100
42 16.4 13.0 19.4
71 34.5 27.4 41.2



#21
Naphthalene-d8
Concen: 20.000 ng
RT: 8.175 min Scan# 1017
Delta R.T. -0.000 min
Lab File: BF143728.D
Acq: 12 Sep 2025 12:46

Tgt Ion:136 Resp: 88490
Ion Ratio Lower Upper
136 100
137 11.5 8.7 13.1
54 10.6 6.2 9.2#
68 8.5 4.2 6.4#



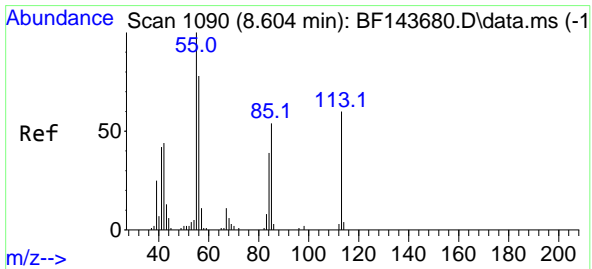
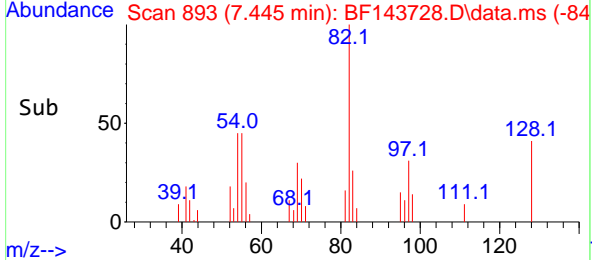
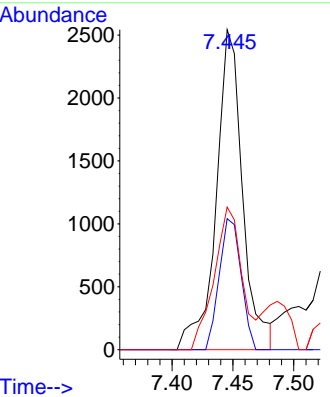
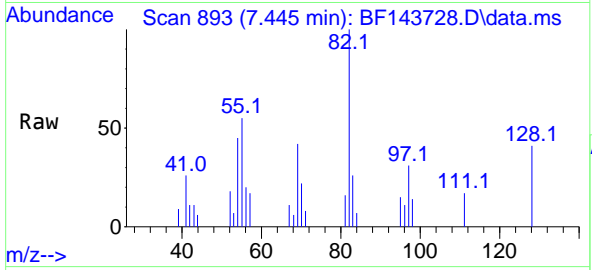


#23
 Nitrobenzene-d5
 Concen: 2.706 ng
 RT: 7.445 min Scan# 894
 Delta R.T. -0.006 min
 Lab File: BF143728.D
 Acq: 12 Sep 2025 12:46

Instrument : BNA_F
 Client Sample Id : LAW-25-0139DL

Tgt Ion: 82 Resp: 3849

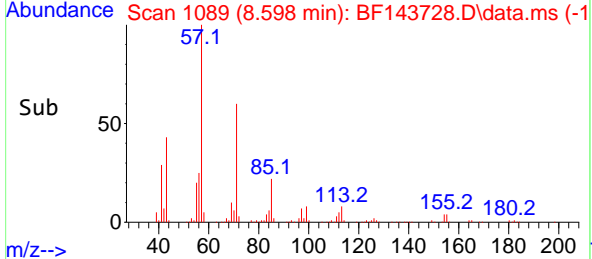
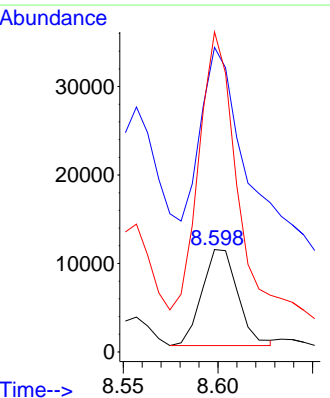
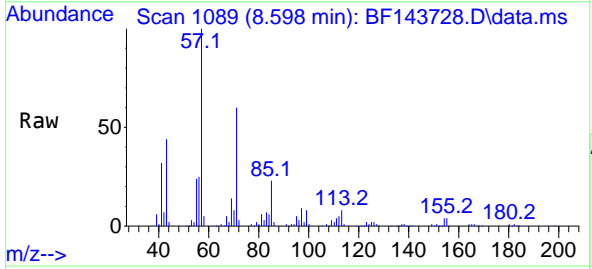
Ion	Ratio	Lower	Upper
82	100		
128	40.9	37.0	55.4
54	44.6	41.8	62.8

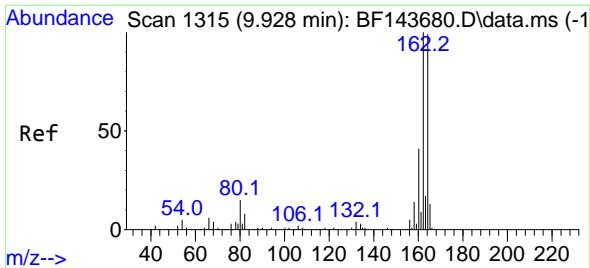


#35
 Caprolactam
 Concen: 40.979 ng
 RT: 8.598 min Scan# 1089
 Delta R.T. -0.006 min
 Lab File: BF143728.D
 Acq: 12 Sep 2025 12:46

Tgt Ion: 113 Resp: 14285

Ion	Ratio	Lower	Upper
113	100		
55	297.7	148.9	188.9#
56	312.6	112.8	152.8#

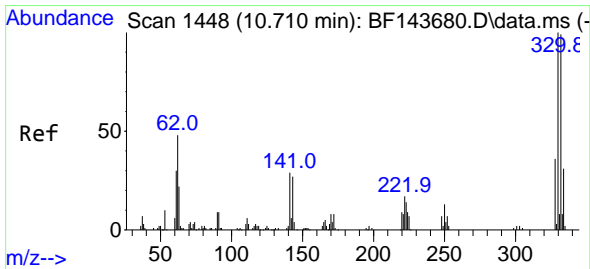
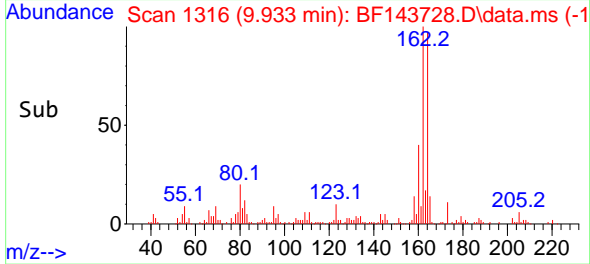
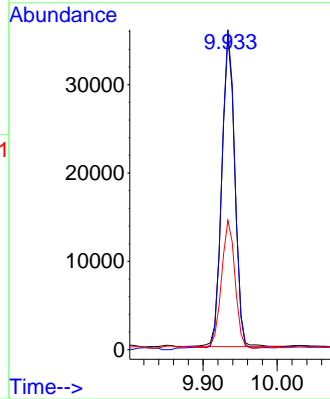
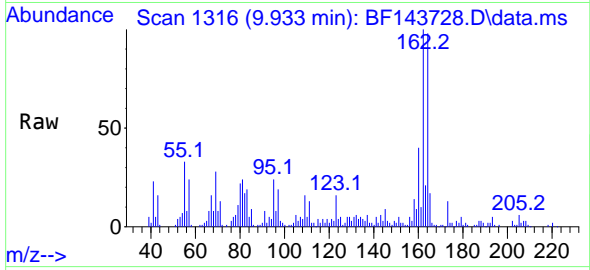




#39
 Acenaphthene-d10
 Concen: 20.000 ng
 RT: 9.933 min Scan# 11
 Delta R.T. 0.006 min
 Lab File: BF143728.D
 Acq: 12 Sep 2025 12:46

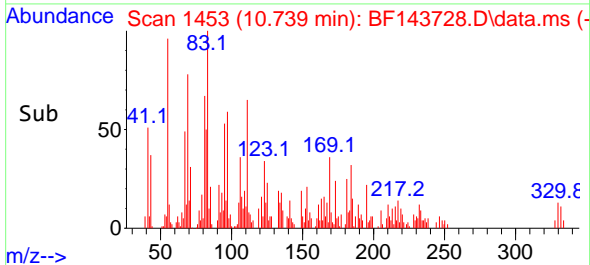
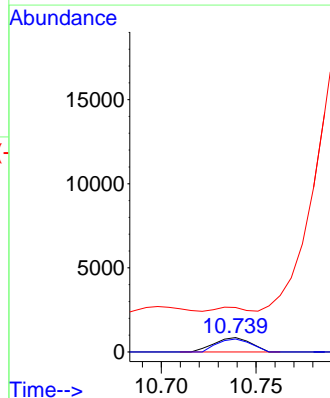
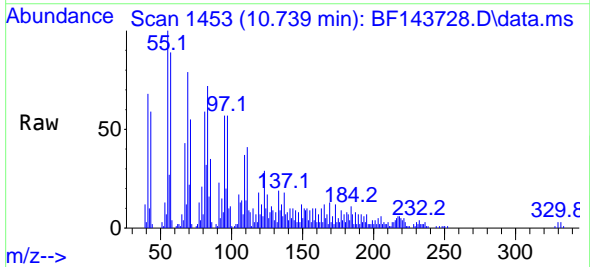
Instrument :
 BNA_F
 ClientSampleId :
 LAW-25-0139DL

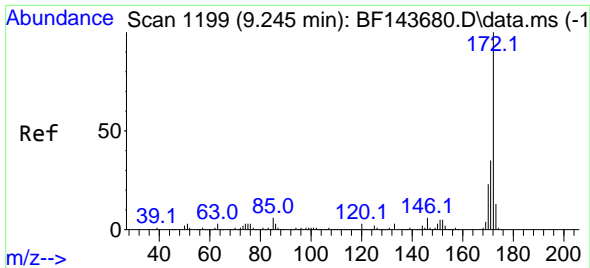
Tgt Ion:164 Resp: 43067
 Ion Ratio Lower Upper
 164 100
 162 102.1 80.6 121.0
 160 41.3 33.0 49.4



#42
 2,4,6-Tribromophenol
 Concen: 2.645 ng
 RT: 10.739 min Scan# 1453
 Delta R.T. 0.029 min
 Lab File: BF143728.D
 Acq: 12 Sep 2025 12:46

Tgt Ion:330 Resp: 1148
 Ion Ratio Lower Upper
 330 100
 332 83.7 79.2 118.8
 141 0.0 22.2 33.4#

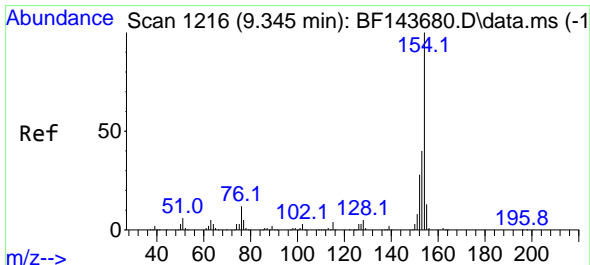
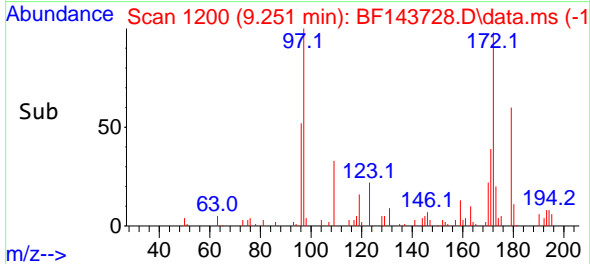
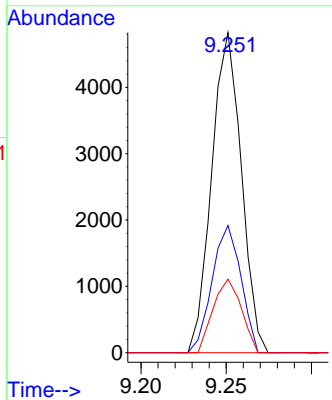
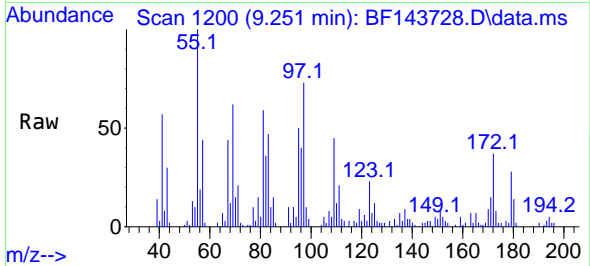




#45
 2-Fluorobiphenyl
 Concen: 2.047 ng
 RT: 9.251 min Scan# 1199
 Delta R.T. 0.006 min
 Lab File: BF143728.D
 Acq: 12 Sep 2025 12:46

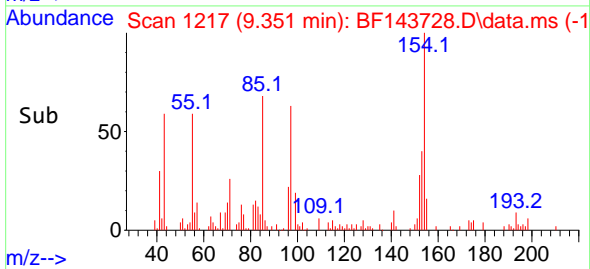
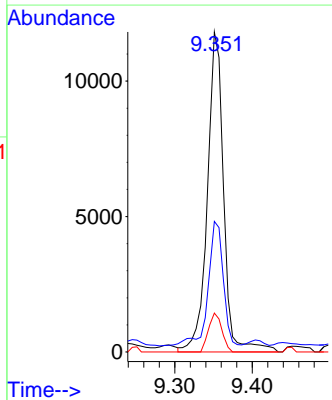
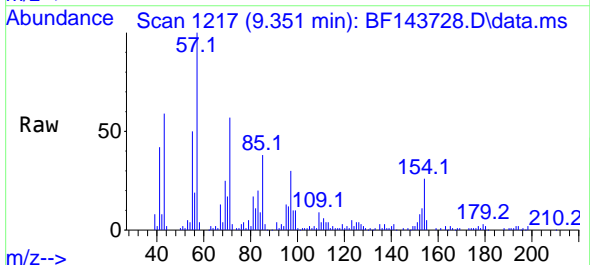
Instrument :
 BNA_F
 ClientSampleId :
 LAW-25-0139DL

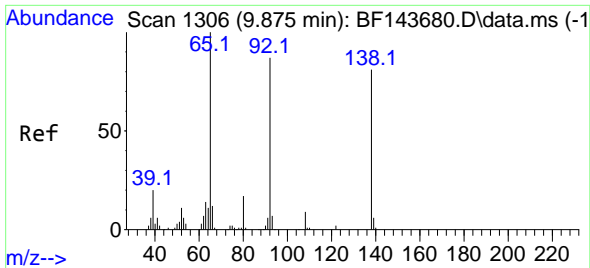
Tgt Ion:172 Resp: 5837
 Ion Ratio Lower Upper
 172 100
 171 39.8 27.9 41.9
 170 23.0 18.6 27.8



#46
 1,1'-Biphenyl
 Concen: 5.578 ng
 RT: 9.351 min Scan# 1217
 Delta R.T. 0.006 min
 Lab File: BF143728.D
 Acq: 12 Sep 2025 12:46

Tgt Ion:154 Resp: 17295
 Ion Ratio Lower Upper
 154 100
 153 40.8 20.2 60.2
 76 12.2 0.0 31.6

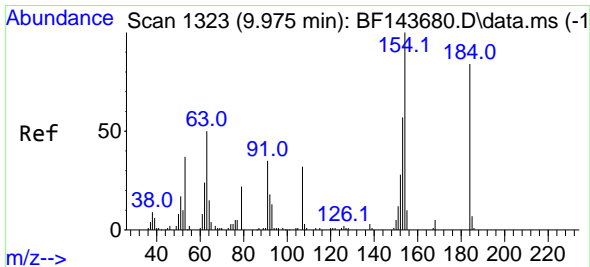
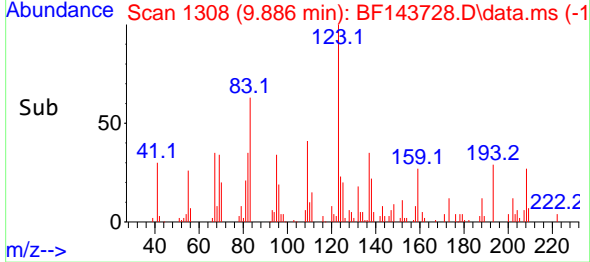
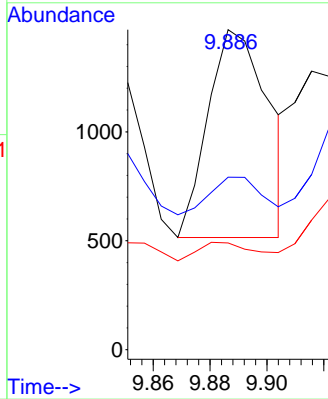
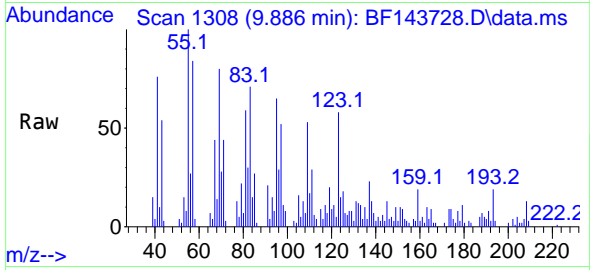




#53
 3-Nitroaniline
 Concen: 2.444 ng
 RT: 9.886 min Scan# 11
 Delta R.T. 0.012 min
 Lab File: BF143728.D
 Acq: 12 Sep 2025 12:46

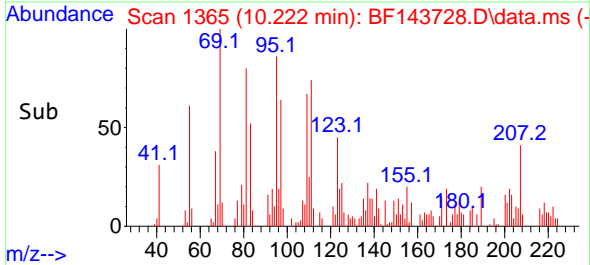
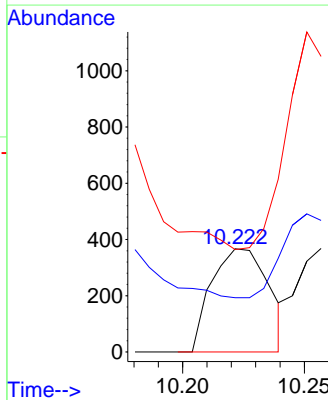
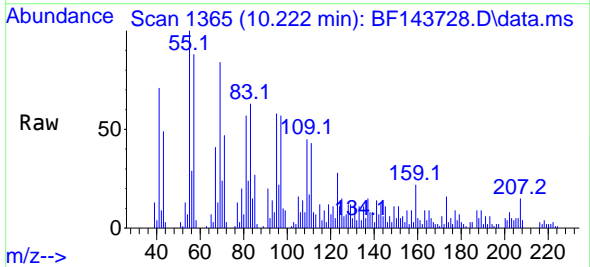
Instrument :
 BNA_F
 ClientSampleId :
 LAW-25-0139DL

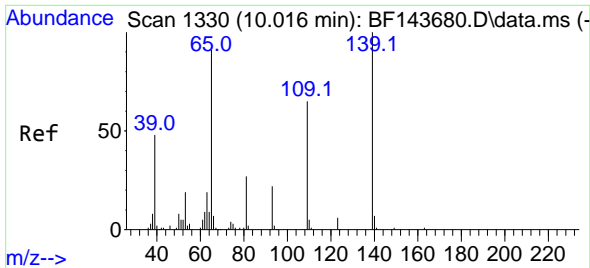
Tgt Ion:138 Resp: 1409
 Ion Ratio Lower Upper
 138 100
 108 53.9 8.6 12.8#
 92 33.4 85.5 128.3#



#54
 2,4-Dinitrophenol
 Concen: 7.531 ng
 RT: 10.222 min Scan# 1365
 Delta R.T. 0.247 min
 Lab File: BF143728.D
 Acq: 12 Sep 2025 12:46

Tgt Ion:184 Resp: 600
 Ion Ratio Lower Upper
 184 100
 63 52.6 52.7 79.1#
 154 99.2 136.6 204.8#

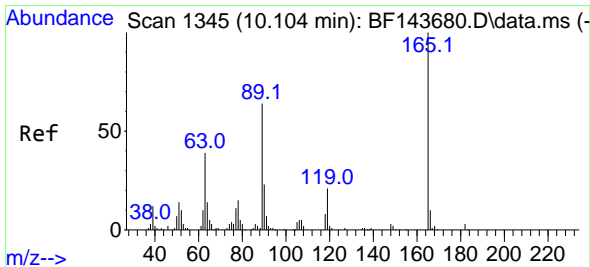
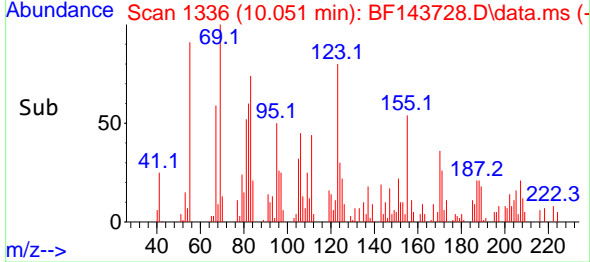
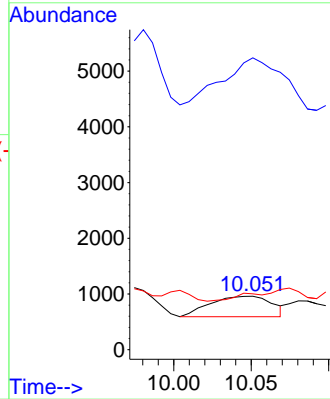
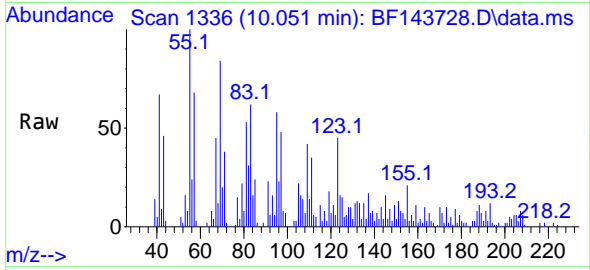




#56
 4-Nitrophenol
 Concen: 2.217 ng
 RT: 10.051 min Scan# 11
 Delta R.T. 0.035 min
 Lab File: BF143728.D
 Acq: 12 Sep 2025 12:46

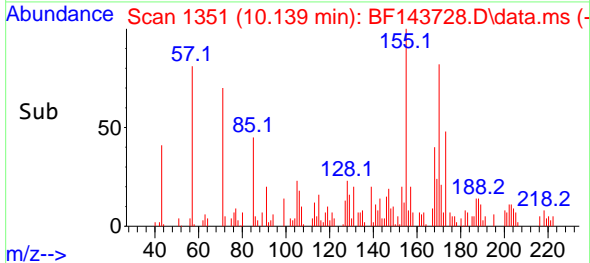
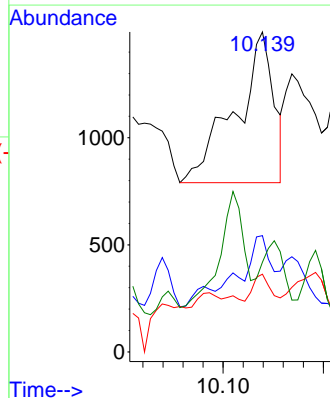
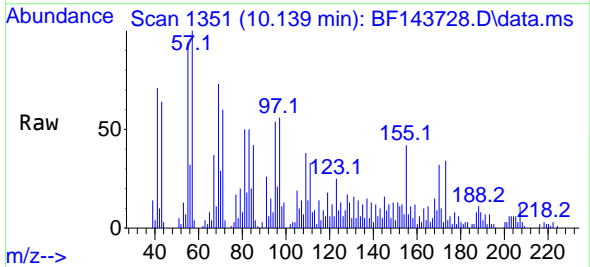
Instrument :
 BNA_F
 ClientSampleId :
 LAW-25-0139DL

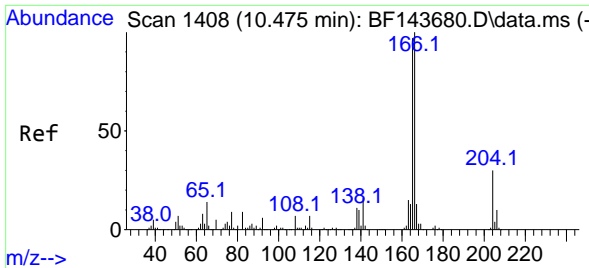
Tgt Ion:139 Resp: 1017
 Ion Ratio Lower Upper
 139 100
 109 545.2 45.2 85.2#
 65 104.3 72.1 112.1



#57
 2,4-Dinitrotoluene
 Concen: 2.567 ng
 RT: 10.139 min Scan# 1351
 Delta R.T. 0.035 min
 Lab File: BF143728.D
 Acq: 12 Sep 2025 12:46

Tgt Ion:165 Resp: 1872
 Ion Ratio Lower Upper
 165 100
 63 36.3 31.5 47.3
 89 24.3 51.3 76.9#
 182 28.0 2.2 3.4#

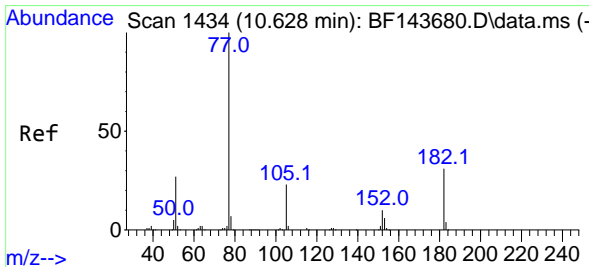
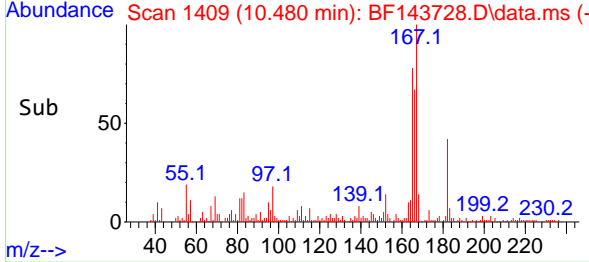
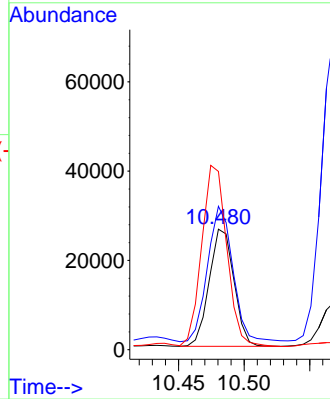
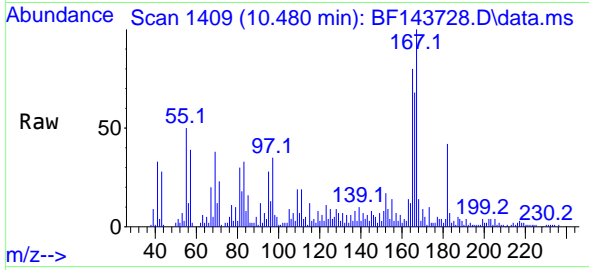




#58
 Fluorene
 Concen: 12.738 ng
 RT: 10.480 min Scan# 1408
 Delta R.T. 0.006 min
 Lab File: BF143728.D
 Acq: 12 Sep 2025 12:46

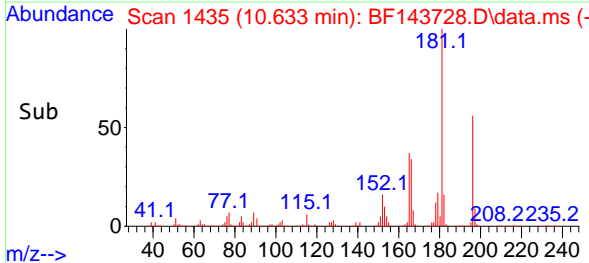
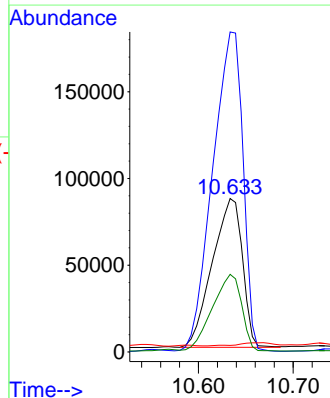
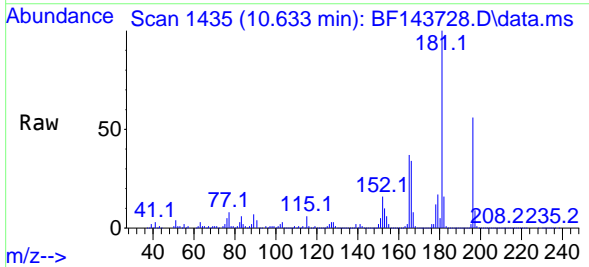
Instrument :
 BNA_F
 ClientSampleId :
 LAW-25-0139DL

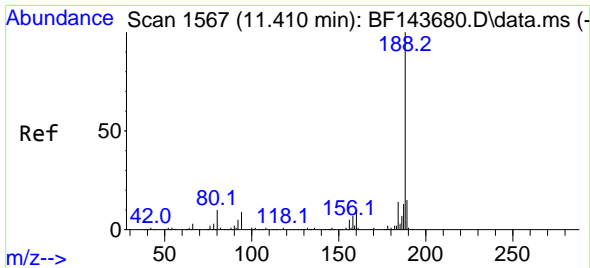
Tgt Ion:166 Resp: 34400
 Ion Ratio Lower Upper
 166 100
 165 119.1 77.5 116.3#
 167 148.0 10.2 15.2#



#63
 Azobenzene
 Concen: 81.477 ng
 RT: 10.633 min Scan# 1435
 Delta R.T. 0.006 min
 Lab File: BF143728.D
 Acq: 12 Sep 2025 12:46

Tgt Ion: 77 Resp: 189489
 Ion Ratio Lower Upper
 77 100
 182 208.5 10.8 50.8#
 105 4.3 3.2 43.2
 51 50.6 7.7 47.7#

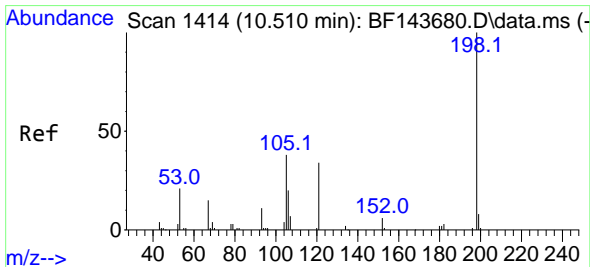
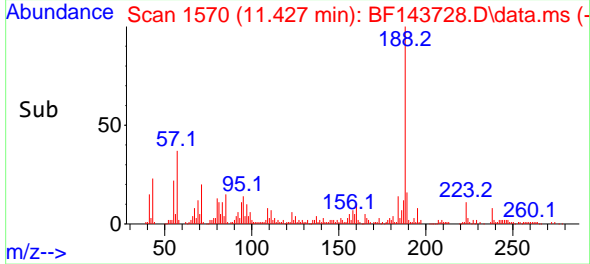
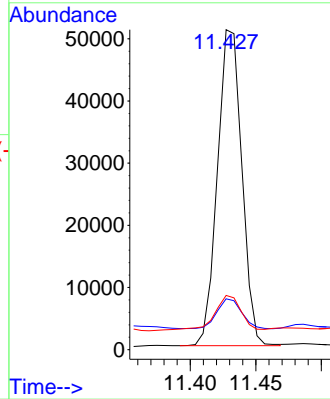
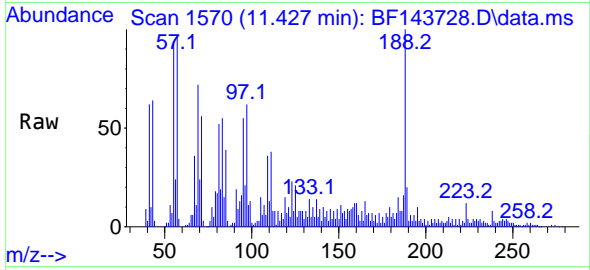




#64
 Phenanthrene-d10
 Concen: 20.000 ng
 RT: 11.427 min Scan# 11
 Delta R.T. 0.017 min
 Lab File: BF143728.D
 Acq: 12 Sep 2025 12:46

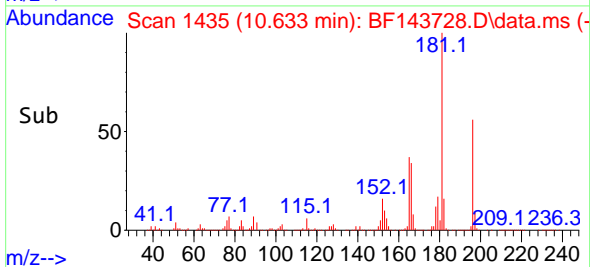
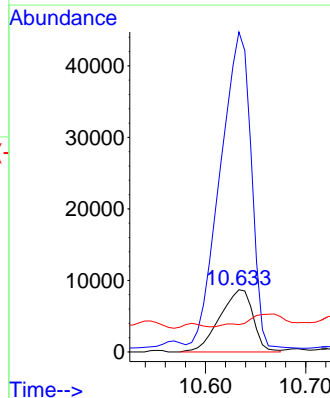
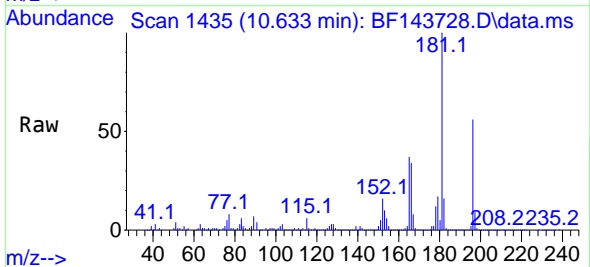
Instrument :
 BNA_F
 ClientSampleId :
 LAW-25-0139DL

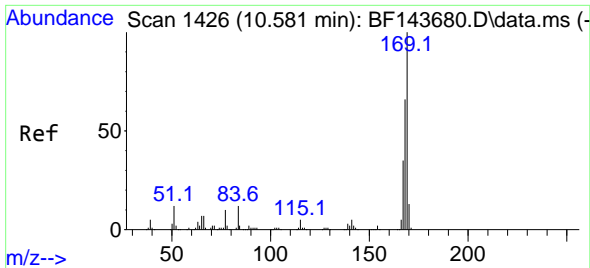
Tgt Ion:188 Resp: 65876
 Ion Ratio Lower Upper
 188 100
 94 15.9 7.4 11.0#
 80 17.0 7.7 11.5#



#65
 4,6-Dinitro-2-methylphenol
 Concen: 59.851 ng
 RT: 10.633 min Scan# 1435
 Delta R.T. 0.123 min
 Lab File: BF143728.D
 Acq: 12 Sep 2025 12:46

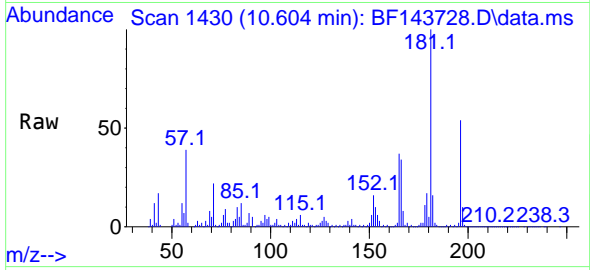
Tgt Ion:198 Resp: 20074
 Ion Ratio Lower Upper
 198 100
 51 514.6 21.2 61.2#
 105 44.0 19.0 59.0



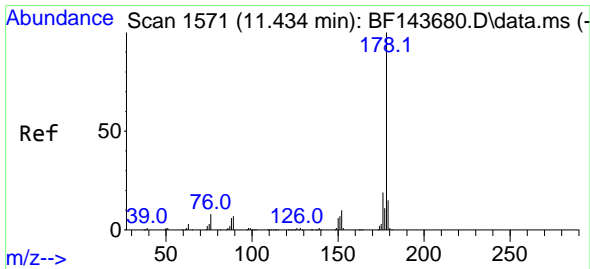
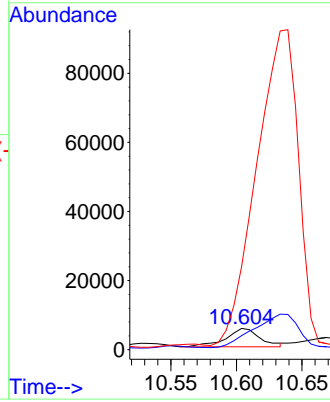
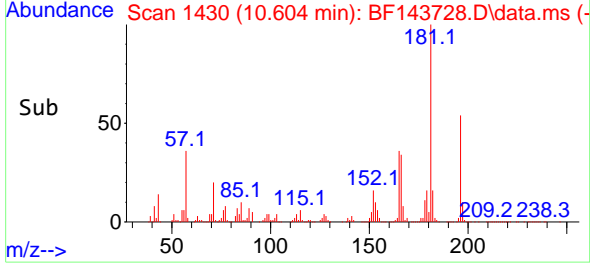


#66
 n-Nitrosodiphenylamine
 Concen: 4.477 ng
 RT: 10.604 min Scan# 14
 Delta R.T. 0.023 min
 Lab File: BF143728.D
 Acq: 12 Sep 2025 12:46

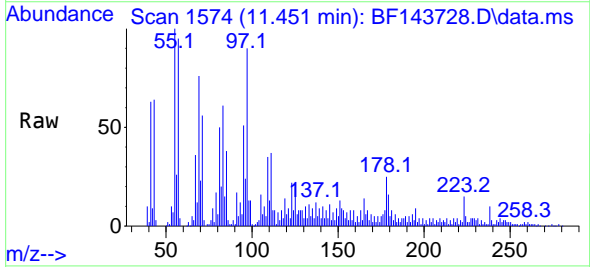
Instrument :
 BNA_F
 ClientSampleId :
 LAW-25-0139DL



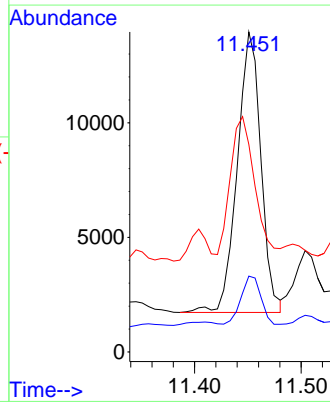
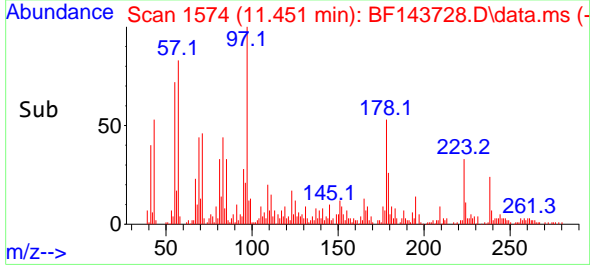
Tgt Ion:169 Resp: 9662
 Ion Ratio Lower Upper
 169 100
 168 66.4 53.0 79.6
 167 392.0 28.1 42.1#

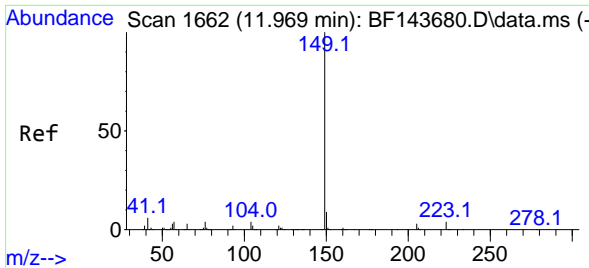


#71
 Phenanthrene
 Concen: 5.196 ng
 RT: 11.451 min Scan# 1574
 Delta R.T. 0.017 min
 Lab File: BF143728.D
 Acq: 12 Sep 2025 12:46



Tgt Ion:178 Resp: 18860
 Ion Ratio Lower Upper
 178 100
 176 23.7 14.8 22.2#
 179 64.9 12.2 18.2#



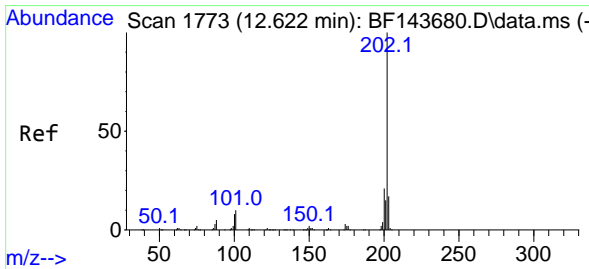
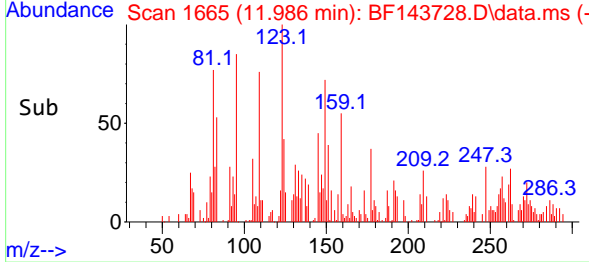
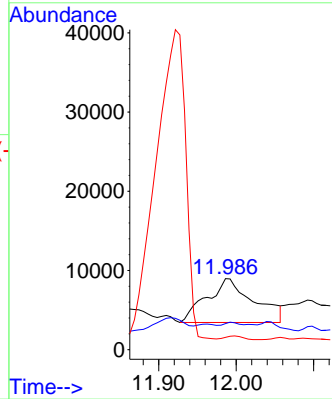
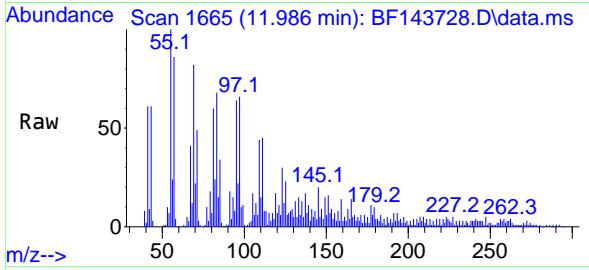


#74
 Di-n-butylphthalate
 Concen: 6.477 ng
 RT: 11.986 min Scan# 11
 Delta R.T. 0.017 min
 Lab File: BF143728.D
 Acq: 12 Sep 2025 12:46

Instrument : BNA_F
 ClientSampleId : LAW-25-0139DL

Tgt Ion:149 Resp: 23306

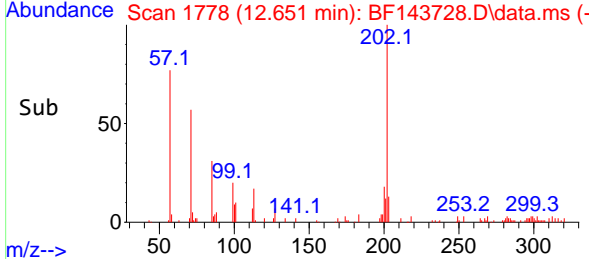
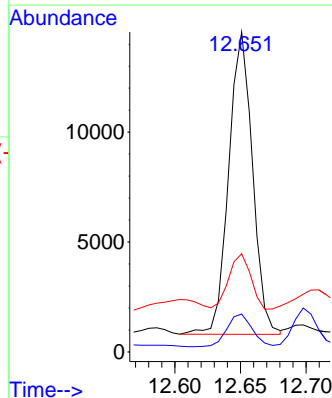
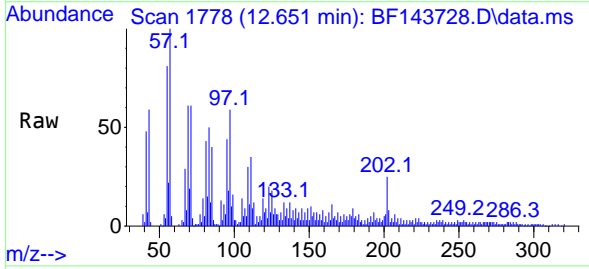
Ion	Ratio	Lower	Upper
149	100		
150	36.7	7.3	10.9#
104	17.4	3.3	4.9#

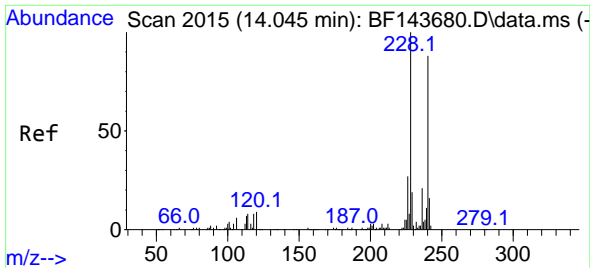


#75
 Fluoranthene
 Concen: 5.213 ng
 RT: 12.651 min Scan# 1778
 Delta R.T. 0.029 min
 Lab File: BF143728.D
 Acq: 12 Sep 2025 12:46

Tgt Ion:202 Resp: 17369

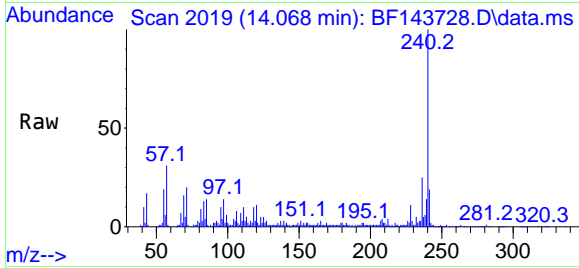
Ion	Ratio	Lower	Upper
202	100		
101	11.9	0.0	30.5
203	30.7	0.0	37.1



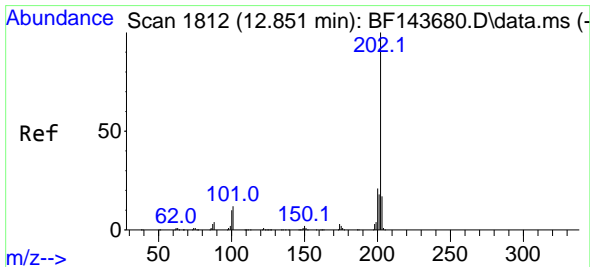
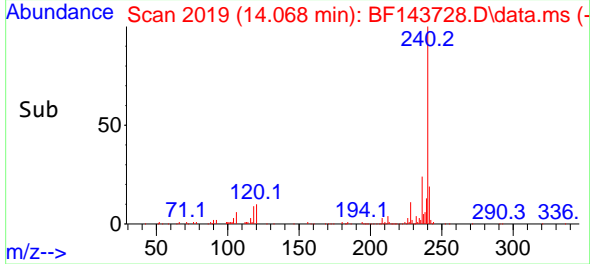
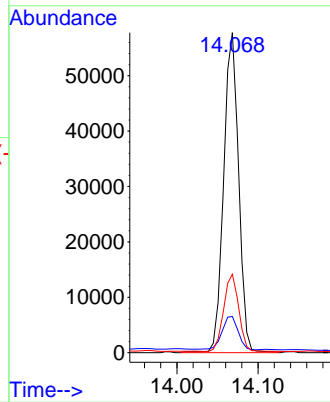


#76
 Chrysene-d12
 Concen: 20.000 ng
 RT: 14.068 min Scan# 2015
 Delta R.T. 0.023 min
 Lab File: BF143728.D
 Acq: 12 Sep 2025 12:46

Instrument :
 BNA_F
 ClientSampleId :
 LAW-25-0139DL

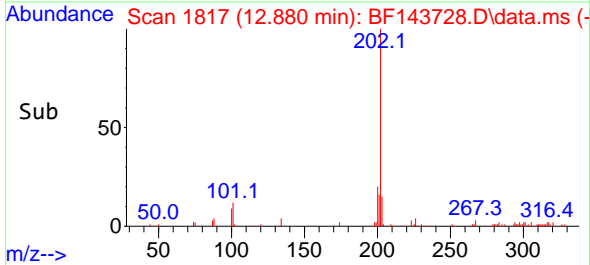
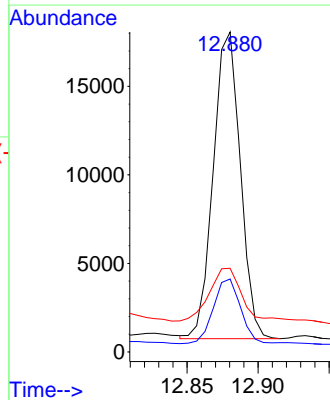
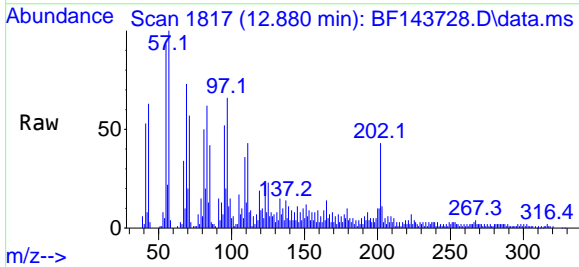


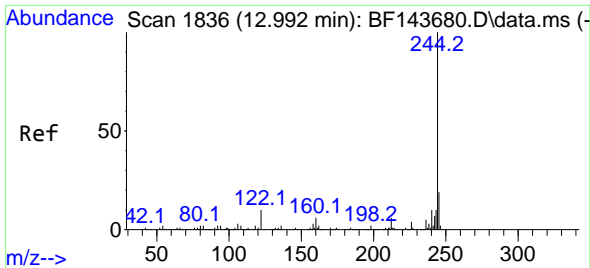
Tgt Ion:240 Resp: 74367
 Ion Ratio Lower Upper
 240 100
 120 11.3 8.4 12.6
 236 24.6 18.6 28.0



#78
 Pyrene
 Concen: 3.859 ng
 RT: 12.880 min Scan# 1817
 Delta R.T. 0.029 min
 Lab File: BF143728.D
 Acq: 12 Sep 2025 12:46

Tgt Ion:202 Resp: 22944
 Ion Ratio Lower Upper
 202 100
 200 22.8 16.6 24.8
 203 26.2 13.5 20.3#

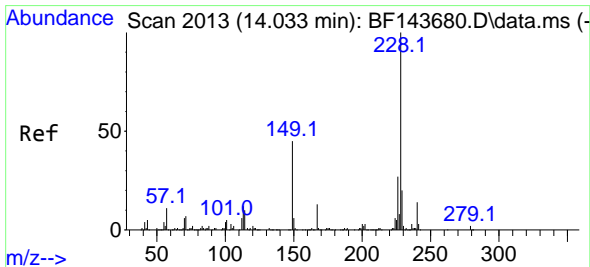
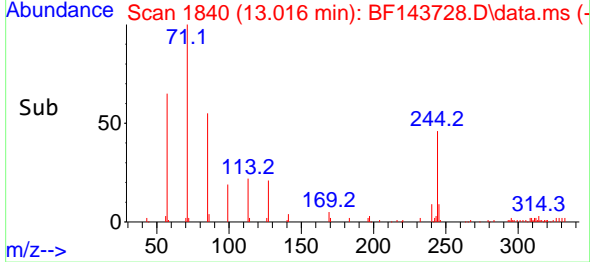
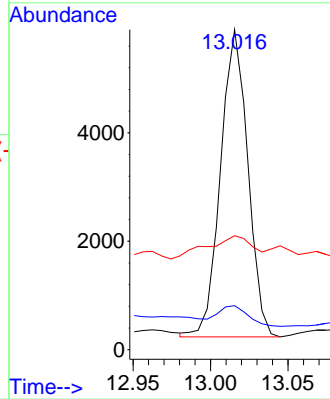
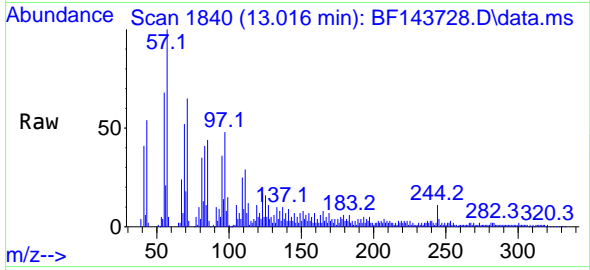




#79
 Terphenyl-d14
 Concen: 1.510 ng
 RT: 13.016 min Scan# 11
 Delta R.T. 0.023 min
 Lab File: BF143728.D
 Acq: 12 Sep 2025 12:46

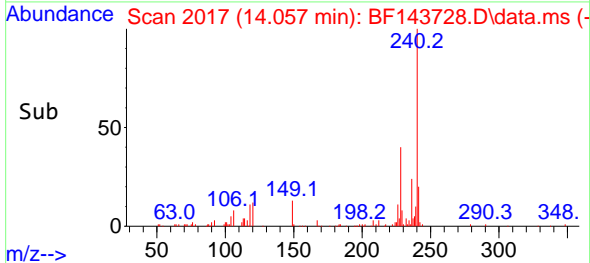
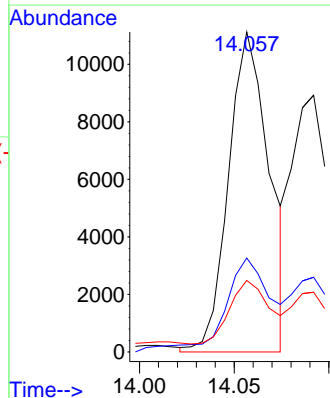
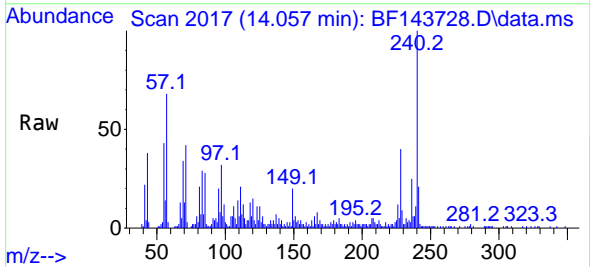
Instrument :
 BNA_F
 ClientSampleId :
 LAW-25-0139DL

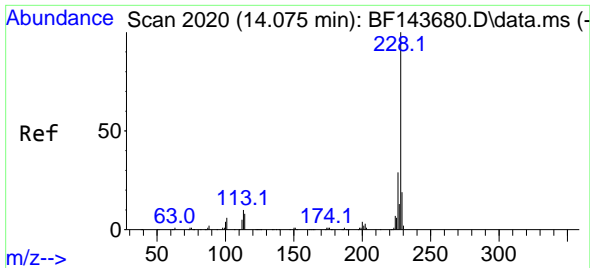
Tgt Ion:244 Resp: 6928
 Ion Ratio Lower Upper
 244 100
 212 13.7 5.0 7.6#
 122 35.6 7.9 11.9#



#81
 Benzo(a)anthracene
 Concen: 3.481 ng
 RT: 14.057 min Scan# 2017
 Delta R.T. 0.023 min
 Lab File: BF143728.D
 Acq: 12 Sep 2025 12:46

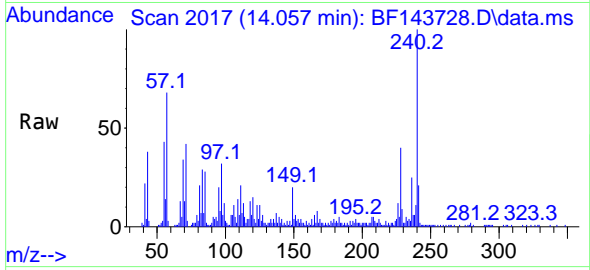
Tgt Ion:228 Resp: 16655
 Ion Ratio Lower Upper
 228 100
 226 29.3 21.6 32.4
 229 22.4 15.7 23.5



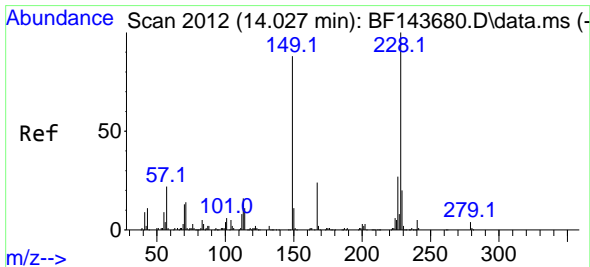
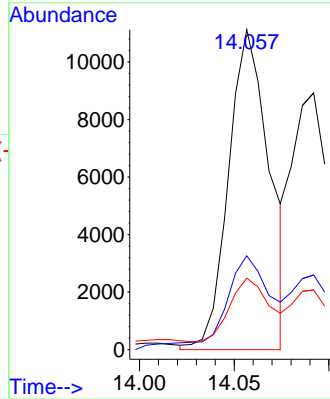
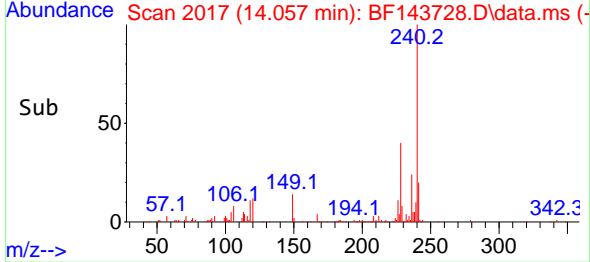


#83
 Chrysene
 Concen: 3.801 ng
 RT: 14.057 min Scan# 2015
 Delta R.T. -0.018 min
 Lab File: BF143728.D
 Acq: 12 Sep 2025 12:46

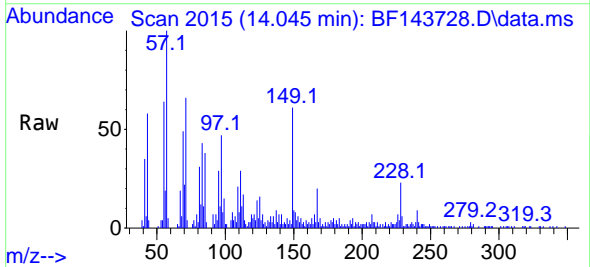
Instrument : BNA_F
 ClientSampleId : LAW-25-0139DL



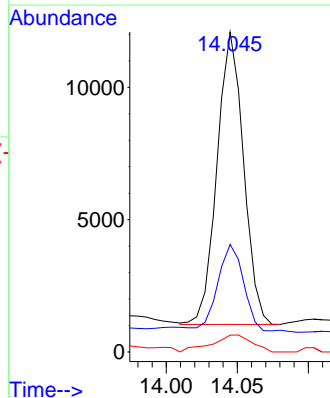
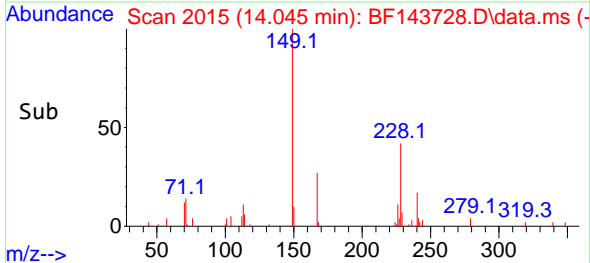
Tgt Ion:228 Resp: 16655
 Ion Ratio Lower Upper
 228 100
 226 29.3 22.7 34.1
 229 22.4 15.1 22.7

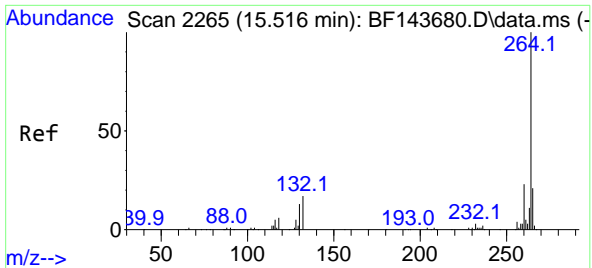


#84
 Bis(2-ethylhexyl)phthalate
 Concen: 5.385 ng
 RT: 14.045 min Scan# 2015
 Delta R.T. 0.017 min
 Lab File: BF143728.D
 Acq: 12 Sep 2025 12:46



Tgt Ion:149 Resp: 14313
 Ion Ratio Lower Upper
 149 100
 167 33.6 22.2 33.2#
 279 5.2 3.5 5.3



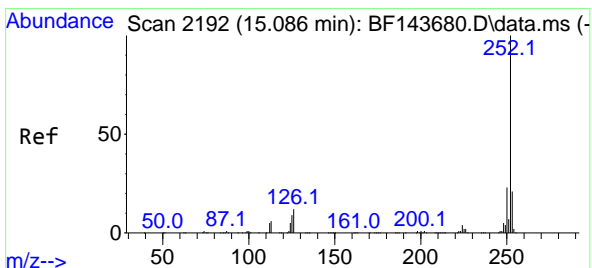
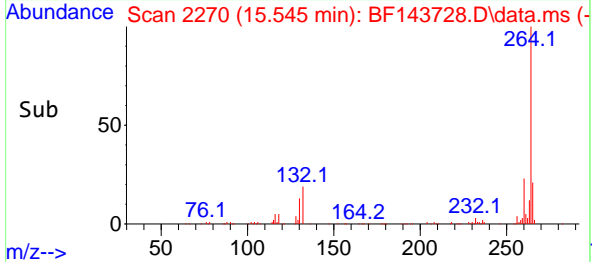
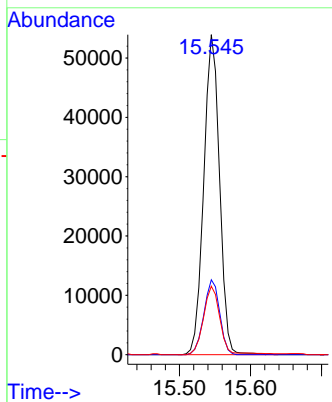
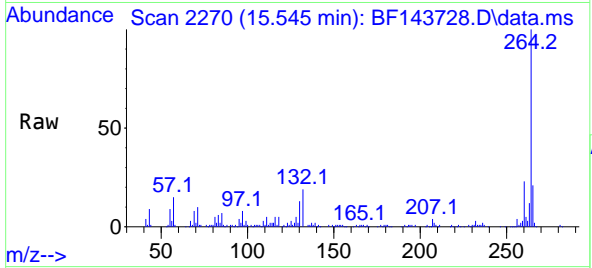


#86
 Perylene-d12
 Concen: 20.000 ng
 RT: 15.545 min Scan# 2196
 Delta R.T. 0.029 min
 Lab File: BF143728.D
 Acq: 12 Sep 2025 12:46

Instrument :
 BNA_F
 ClientSampleId :
 LAW-25-0139DL

Tgt Ion: 264 Resp: 83366

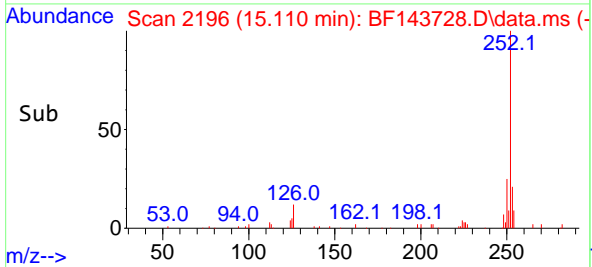
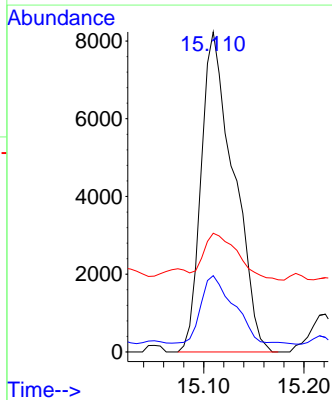
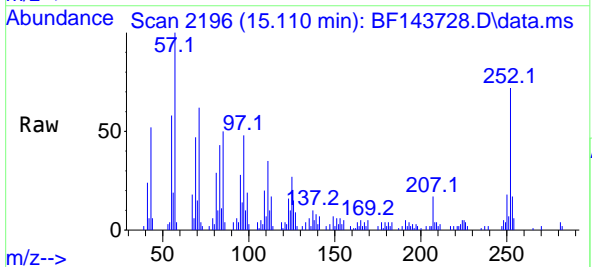
Ion	Ratio	Lower	Upper
264	100		
260	23.4	18.4	27.6
265	21.4	17.1	25.7

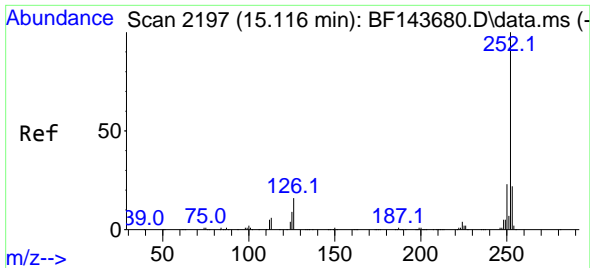


#88
 Benzo(b)fluoranthene
 Concen: 3.743 ng
 RT: 15.110 min Scan# 2196
 Delta R.T. 0.023 min
 Lab File: BF143728.D
 Acq: 12 Sep 2025 12:46

Tgt Ion: 252 Resp: 18574

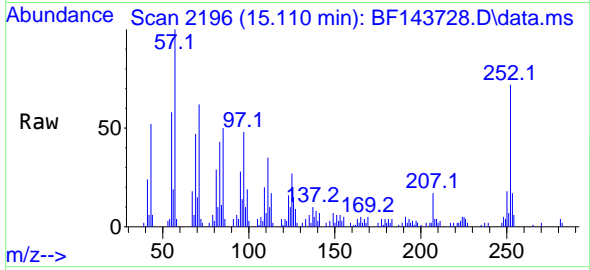
Ion	Ratio	Lower	Upper
252	100		
253	23.9	17.0	25.4
125	37.1	7.4	11.0#





#89
 Benzo(k)fluoranthene
 Concen: 4.147 ng
 RT: 15.110 min Scan# 2196
 Delta R.T. -0.006 min
 Lab File: BF143728.D
 Acq: 12 Sep 2025 12:46

Instrument :
 BNA_F
 ClientSampleId :
 LAW-25-0139DL



Tgt Ion:252 Resp: 18574

Ion	Ratio	Lower	Upper
252	100		
253	23.9	17.3	25.9
125	37.1	7.3	10.9#

