

Data Path : \\74.0.250.170\SVOASRV\HPCHEM1\BNA F\DATA\BF091317\
 Data File : BF098515.D
 Acq On : 14 Sep 2017 3:20
 Operator : SJ/JU
 Sample : I5159-08 10X
 Misc :
 ALS Vial : 33 Sample Multiplier: 1

Instrument :
 BNA_F
 ClientSampleId :

Quant Time: Sep 14 05:25:32 2017
 Quant Method : Z:\HPCHEM1\BNA F\METHODS\8270-BF091117.M
 Quant Title : ASP BNA STANDARDS FOR 5 POINT CALIBRATION
 QLast Update : Tue Sep 12 02:14:50 2017
 Response via : Initial Calibration

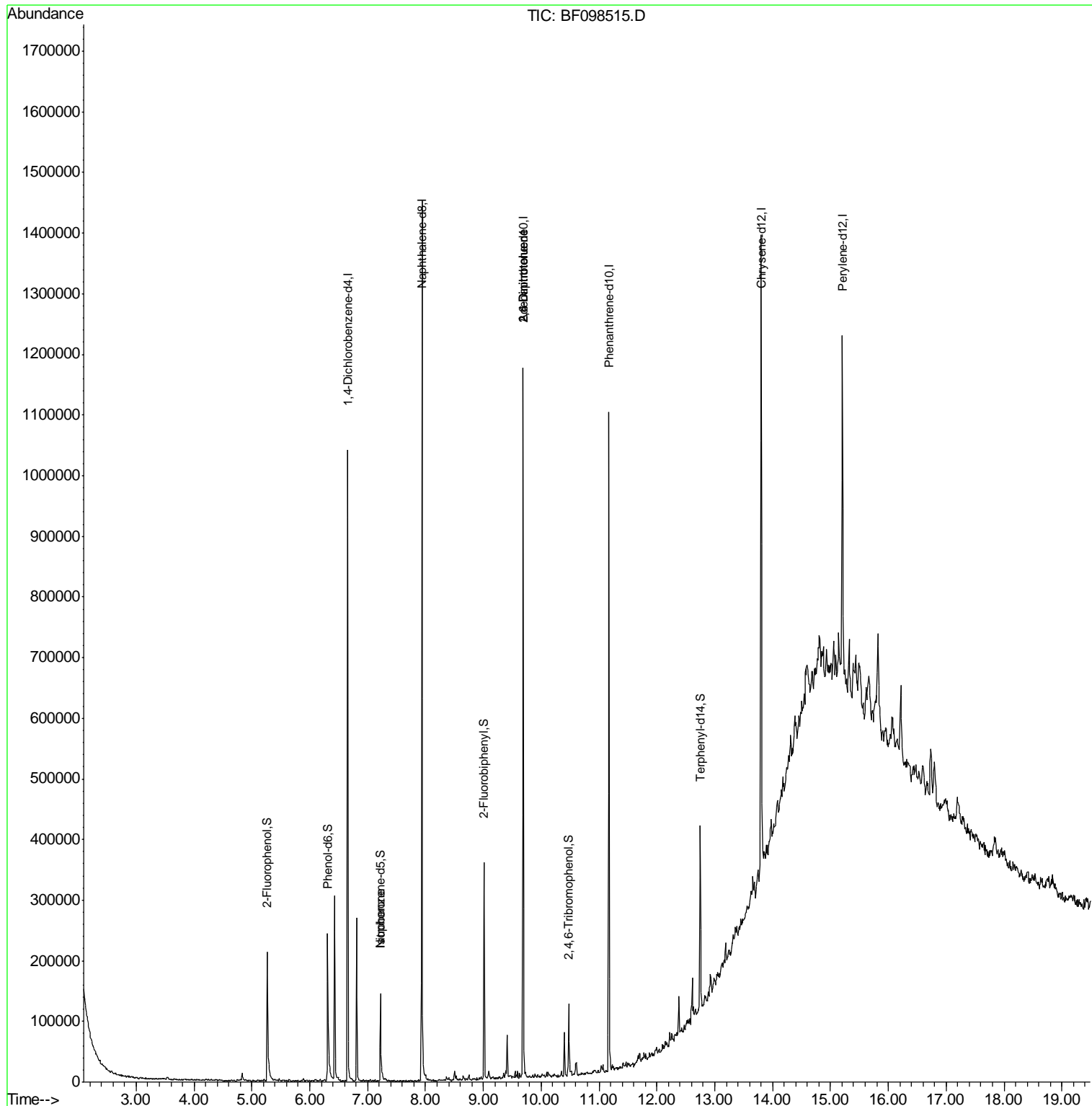
Internal Standards	R.T.	QIon	Response	Conc	Units	Dev(Min)
1) 1,4-Dichlorobenzene-d4	6.66	152	152403	20.00	ng	-0.01
21) Naphthalene-d8	7.94	136	585547	20.00	ng	-0.01
38) Acenaphthene-d10	9.69	164	221574	20.00	ng	-0.02
63) Phenanthrene-d10	11.17	188	344325	20.00	ng	-0.02
75) Chrysene-d12	13.80	240	316958	20.00	ng	-0.01
86) Perylene-d12	15.20	264	228020	20.00	ng	-0.01
System Monitoring Compounds						
5) 2-Fluorophenol	5.26	112	80732	7.83	ng	-0.01
7) Phenol-d6	6.31	99	103172	7.88	ng	-0.01
23) Nitrobenzene-d5	7.22	82	50709	4.83	ng	-0.02
41) 2,4,6-Tribromophenol	10.48	330	11485	7.77	ng	-0.01
44) 2-Fluorobiphenyl	9.01	172	108578	8.31	ng	-0.02
78) Terphenyl-d14	12.75	244	77997	5.31	ng	-0.02
Target Compounds						
25) Isophorone	7.22	82	50708	2.386	ng	# 67
50) 2,6-Dinitrotoluene	9.69	165	28420	8.067	ng	# 34
56) 2,4-Dinitrotoluene	9.69	165	28420	6.635	ng	# 33

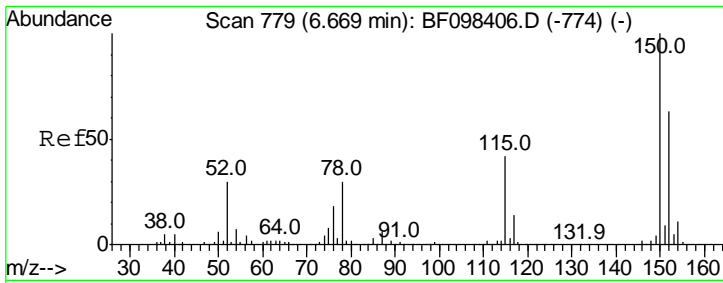
(#) = qualifier out of range (m) = manual integration (+) = signals summed

Data Path : \\74.0.250.170\SVOASRV\HPCHEM1\BNA F\DATA\BF091317\
 Data File : BF098515.D
 Acq On : 14 Sep 2017 3:20
 Operator : SJ/JU
 Sample : I5159-08 10X
 Misc :
 ALS Vial : 33 Sample Multiplier: 1

Instrument :
 BNA_F
 ClientSampled :

Quant Time: Sep 14 05:25:32 2017
 Quant Method : Z:\HPCHEM1\BNA F\METHODS\8270-BF091117.M
 Quant Title : ASP BNA STANDARDS FOR 5 POINT CALIBRATION
 QLast Update : Tue Sep 12 02:14:50 2017
 Response via : Initial Calibration



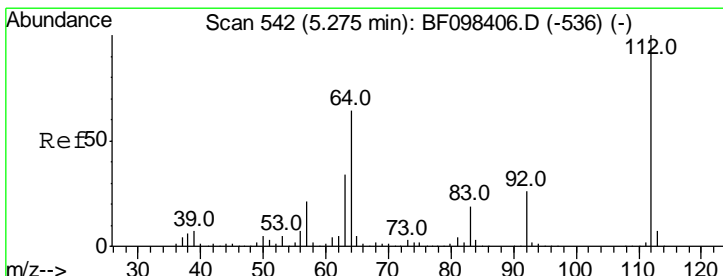
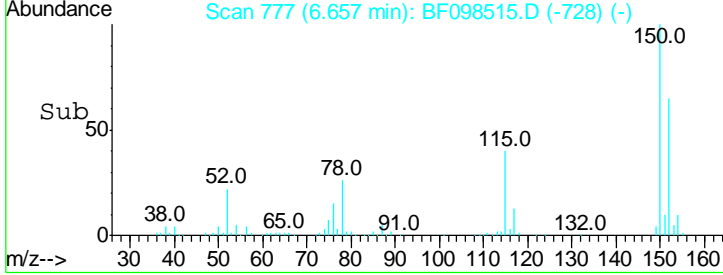
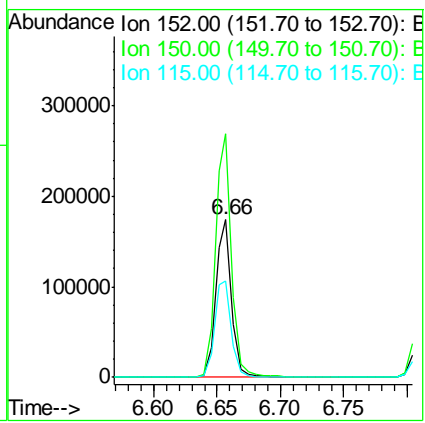
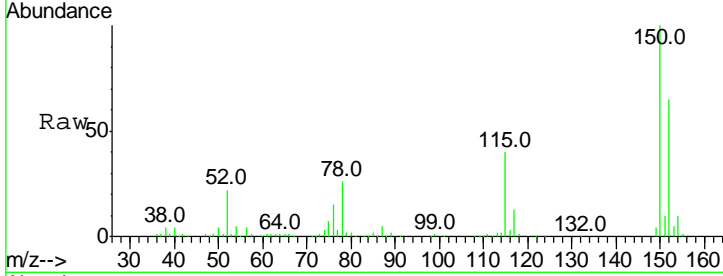


#1
 1,4-Dichlorobenzene-d4
 Concen: 20.000 ng
 RT: 6.66 min Scan# 777
 Delta R.T. -0.01 min
 Lab File: BF098515.D
 Acq: 14 Sep 2017 3:20

Instrument :
 BNA_F
 ClientSampled :

Tgt Ion:152 Resp: 152403

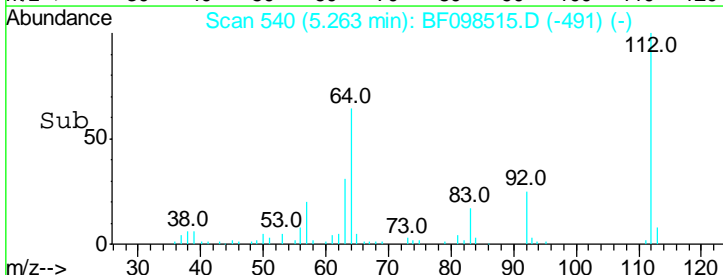
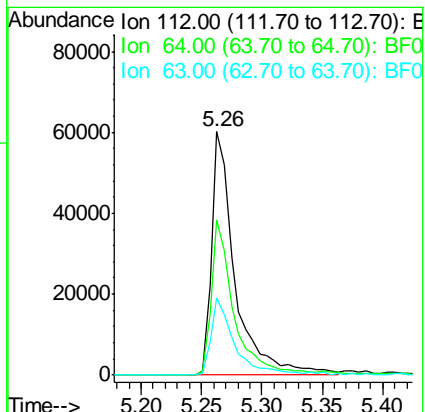
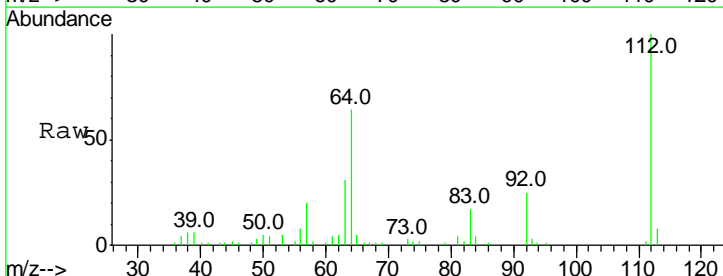
Ion	Ratio	Lower	Upper
152	100		
150	154.7	126.2	189.2
115	61.4	52.2	78.2

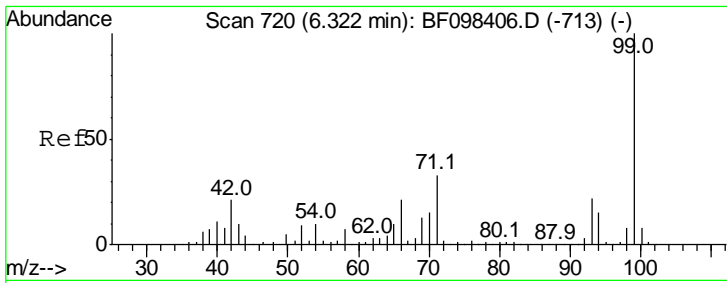


#5
 2-Fluorophenol
 Concen: 7.832 ng
 RT: 5.26 min Scan# 540
 Delta R.T. -0.01 min
 Lab File: BF098515.D
 Acq: 14 Sep 2017 3:20

Tgt Ion:112 Resp: 80732

Ion	Ratio	Lower	Upper
112	100		
64	63.6	46.0	69.0
63	31.5	23.4	35.0

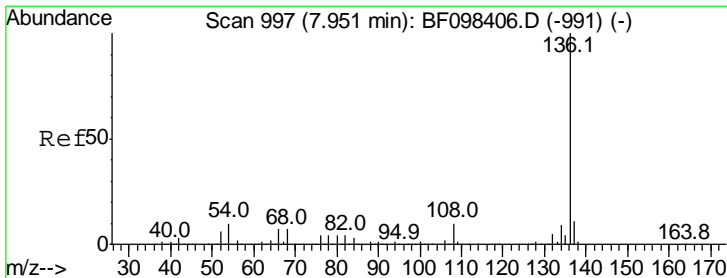
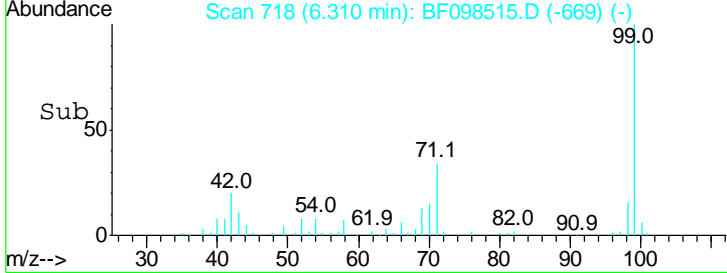
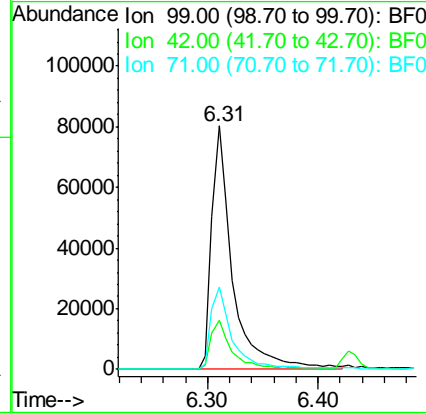
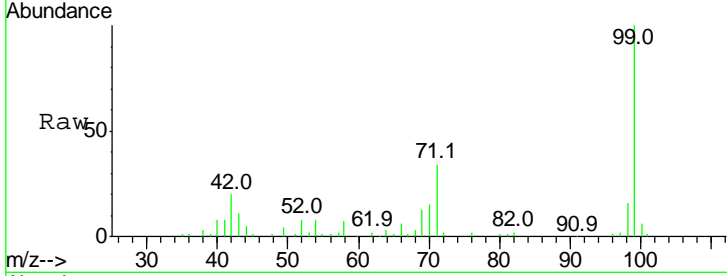




#7
 Phenol-d6
 Concen: 7.883 ng
 RT: 6.31 min Scan# 718
 Delta R.T. -0.01 min
 Lab File: BF098515.D
 Acq: 14 Sep 2017 3:20

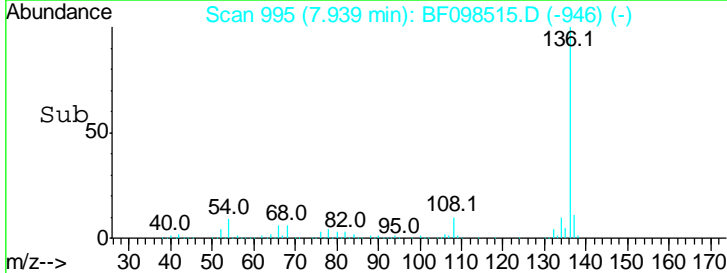
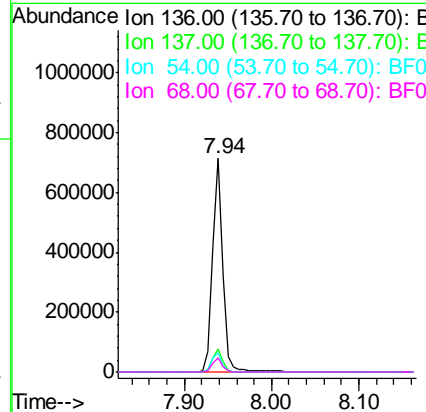
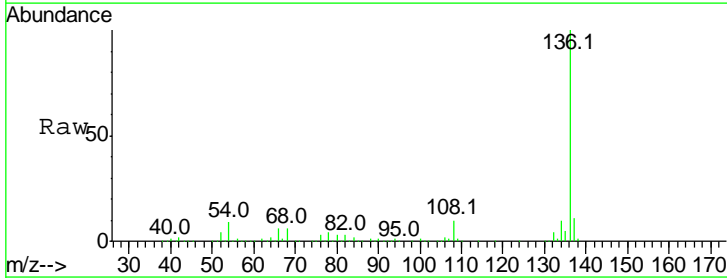
Instrument :
 BNA_F
 ClientSampled :

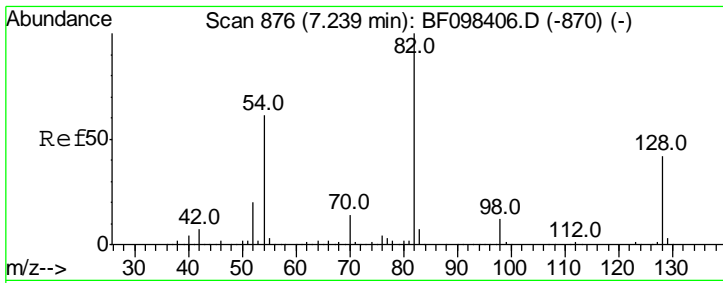
Tgt Ion	Resp	Lower	Upper
99	103172		
99	100		
42	20.0	13.5	20.3
71	34.0	24.5	36.7



#21
 Naphthalene-d8
 Concen: 20.000 ng
 RT: 7.94 min Scan# 995
 Delta R.T. -0.01 min
 Lab File: BF098515.D
 Acq: 14 Sep 2017 3:20

Tgt Ion	Resp	Lower	Upper
136	585547		
136	100		
137	10.9	8.5	12.7
54	9.0	4.9	7.3#
68	6.4	4.1	6.1#

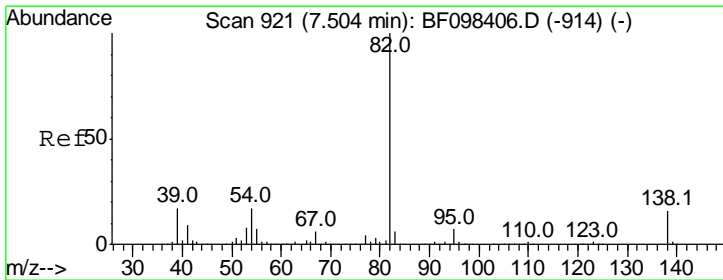
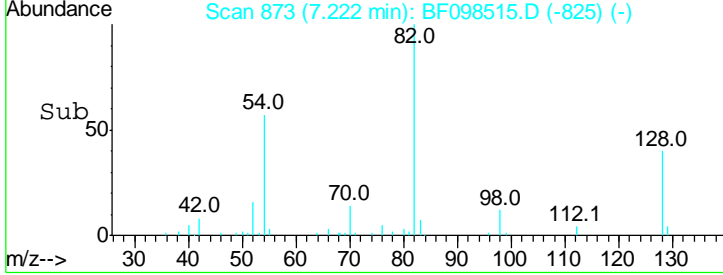
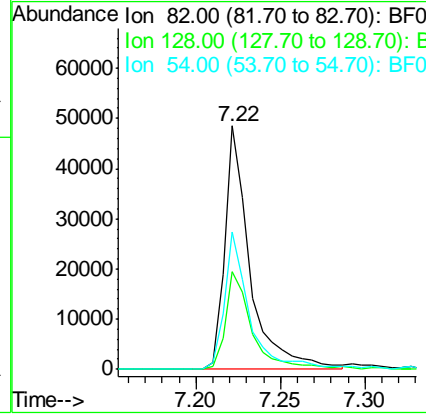
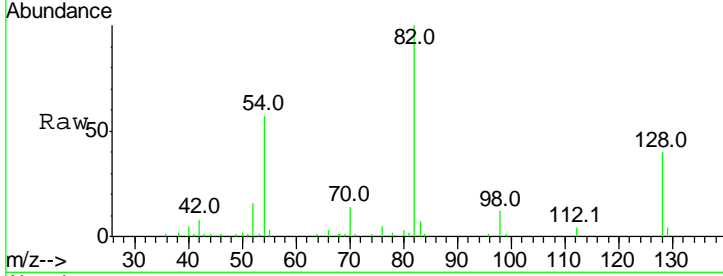




#23
 Nitrobenzene-d5
 Concen: 4.828 ng
 RT: 7.22 min Scan# 873
 Delta R.T. -0.02 min
 Lab File: BF098515.D
 Acq: 14 Sep 2017 3:20

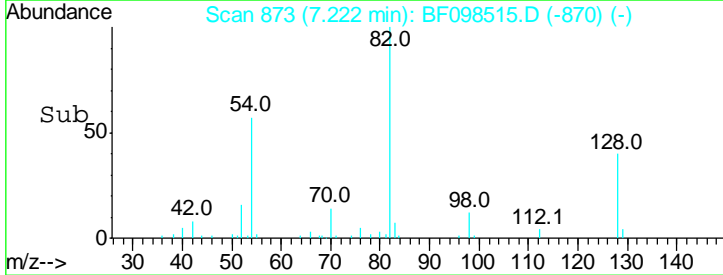
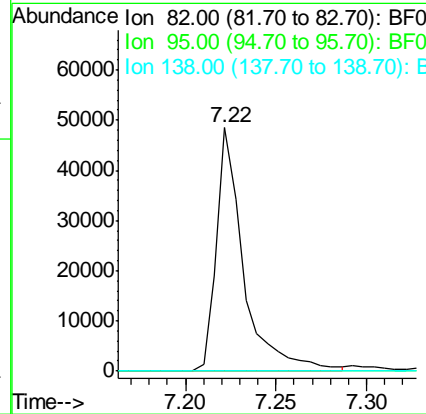
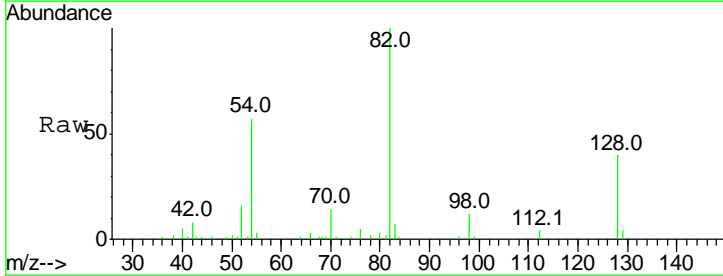
Instrument :
 BNA_F
 ClientSampleId :

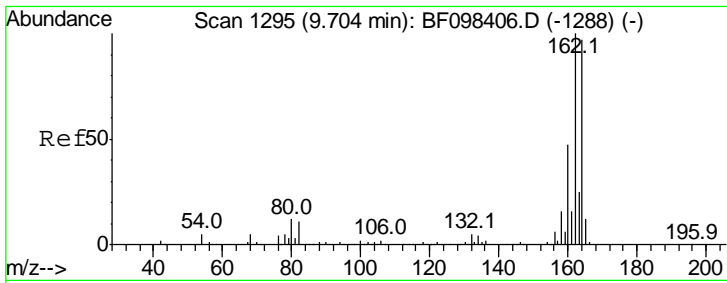
Tgt Ion	Resp	Lower	Upper
82	100		
128	40.3	34.0	51.0
54	56.6	42.2	63.2



#25
 Isophorone
 Concen: 2.386 ng
 RT: 7.22 min Scan# 873
 Delta R.T. -0.28 min
 Lab File: BF098515.D
 Acq: 14 Sep 2017 3:20

Tgt Ion	Resp	Lower	Upper
82	100		
95	0.0	5.3	7.9#
138	0.0	13.1	19.7#

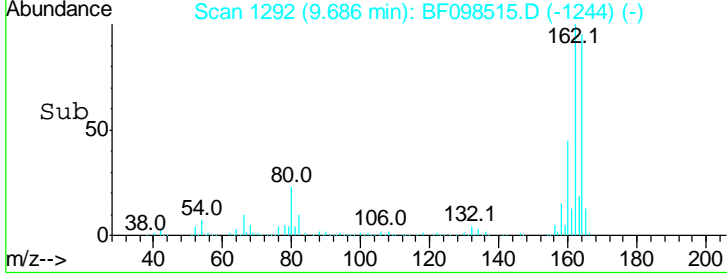
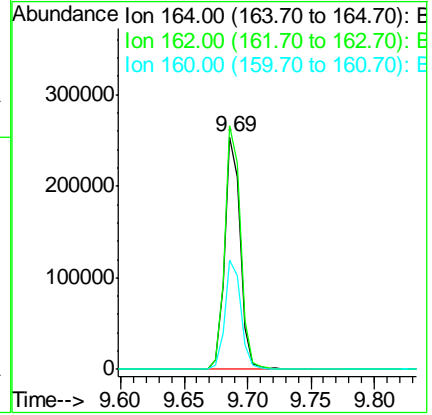
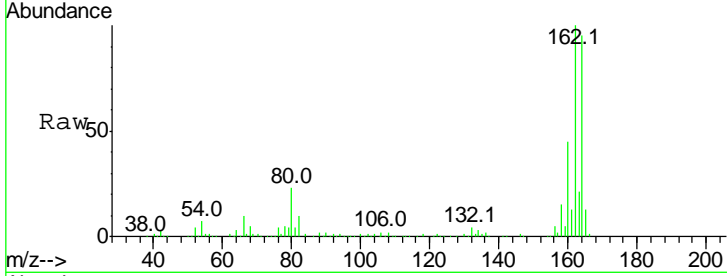




#38
 Acenaphthene-d10
 Concen: 20.000 ng
 RT: 9.69 min Scan# 1292
 Delta R.T. -0.02 min
 Lab File: BF098515.D
 Acq: 14 Sep 2017 3:20

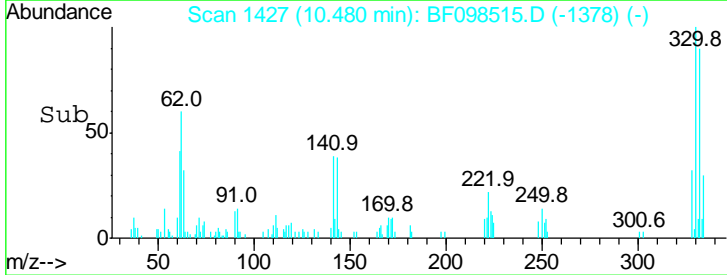
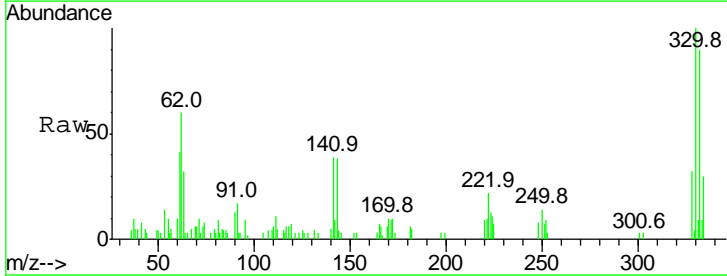
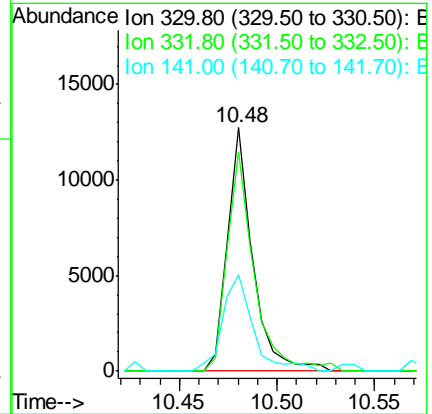
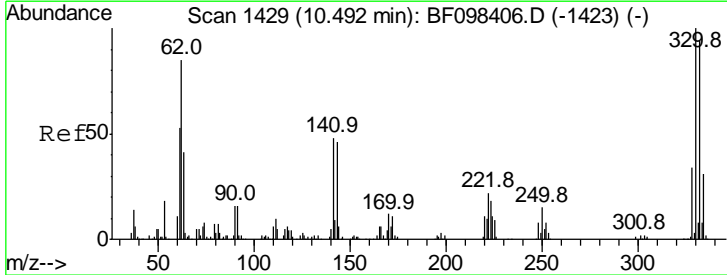
Instrument :
 BNA_F
 ClientSampled :

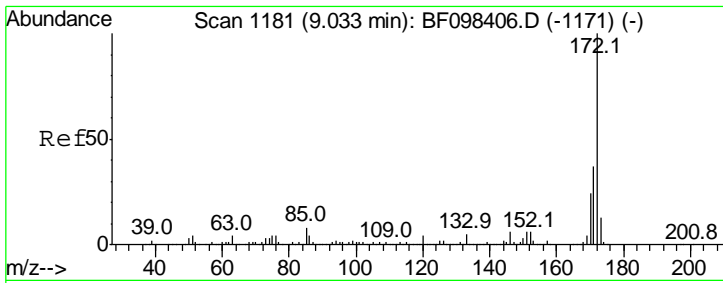
Tgt Ion	Resp	Lower	Upper
164	100		
162	104.7	82.6	123.8
160	47.1	36.2	54.2



#41
 2,4,6-Tribromophenol
 Concen: 7.766 ng
 RT: 10.48 min Scan# 1427
 Delta R.T. -0.01 min
 Lab File: BF098515.D
 Acq: 14 Sep 2017 3:20

Tgt Ion	Resp	Lower	Upper
330	100		
332	95.7	76.6	115.0
141	47.8	31.4	47.2#



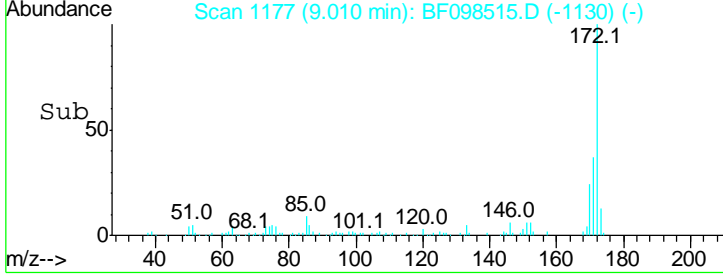
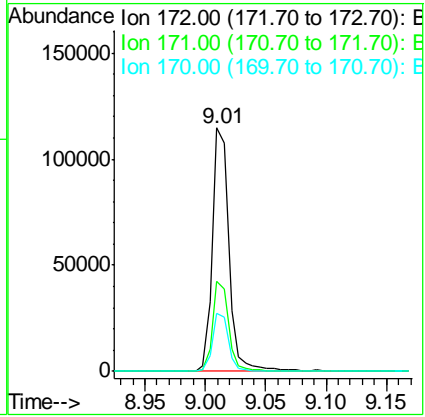
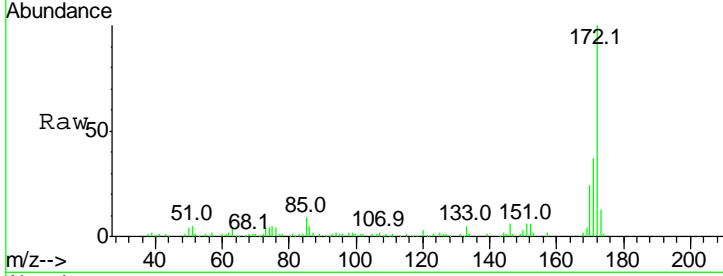


#44
 2-Fluorobiphenyl
 Concen: 8.306 ng
 RT: 9.01 min Scan# 1177
 Delta R.T. -0.02 min
 Lab File: BF098515.D
 Acq: 14 Sep 2017 3:20

Instrument :
 BNA_F
 ClientSampled :

Tgt Ion:172 Resp: 108578

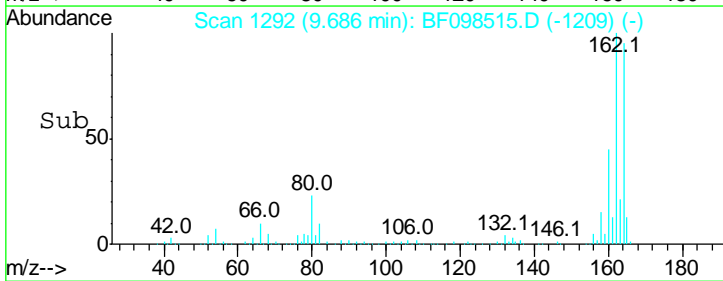
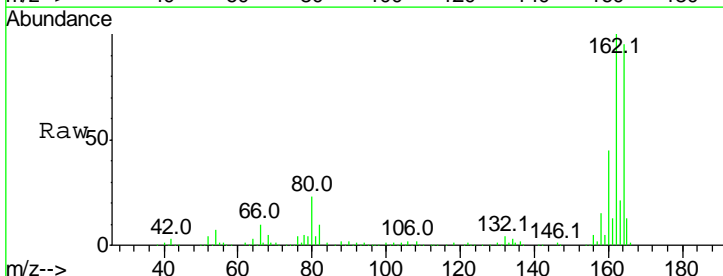
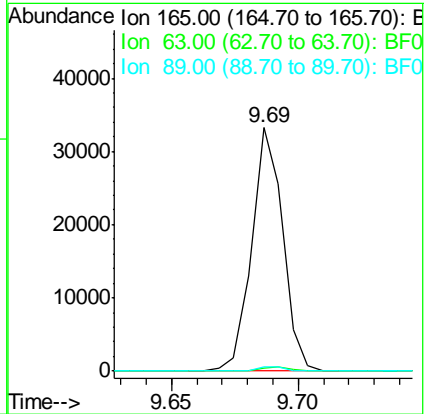
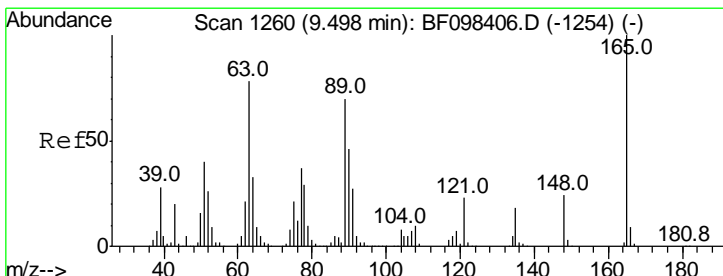
Ion	Ratio	Lower	Upper
172	100		
171	37.0	29.6	44.4
170	23.9	19.8	29.8

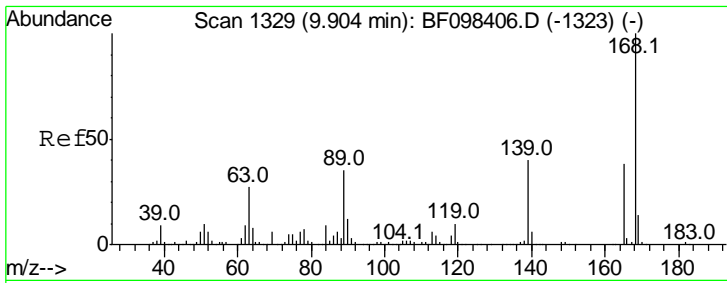


#50
 2,6-Dinitrotoluene
 Concen: 8.067 ng
 RT: 9.69 min Scan# 1292
 Delta R.T. 0.19 min
 Lab File: BF098515.D
 Acq: 14 Sep 2017 3:20

Tgt Ion:165 Resp: 28420

Ion	Ratio	Lower	Upper
165	100		
63	1.3	34.3	51.5#
89	1.8	37.1	55.7#

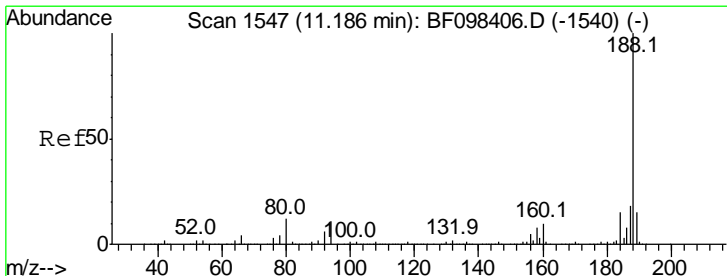
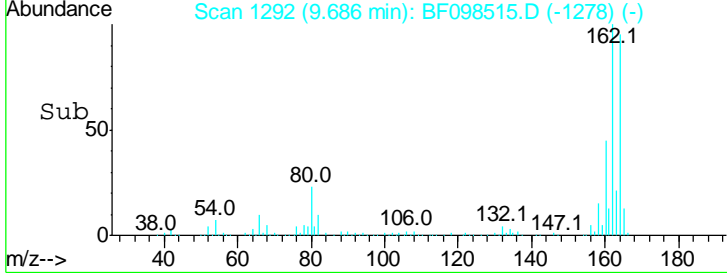
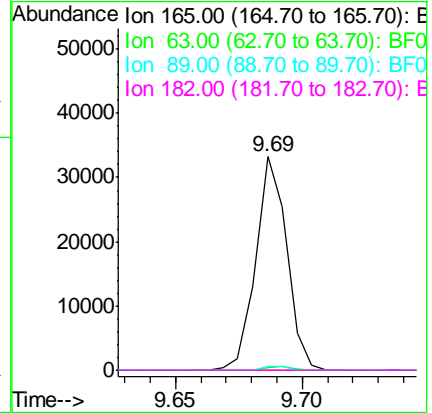
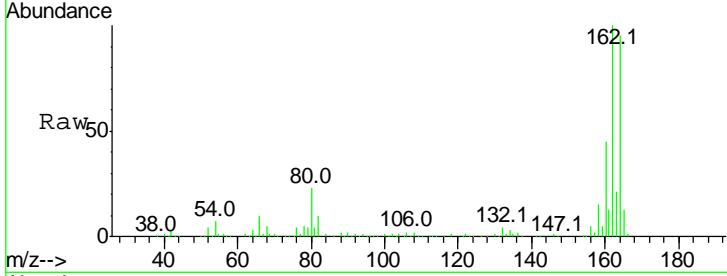




#56
 2,4-Dinitrotoluene
 Concen: 6.635 ng
 RT: 9.69 min Scan# 1292
 Delta R.T. -0.22 min
 Lab File: BF098515.D
 Acq: 14 Sep 2017 3:20

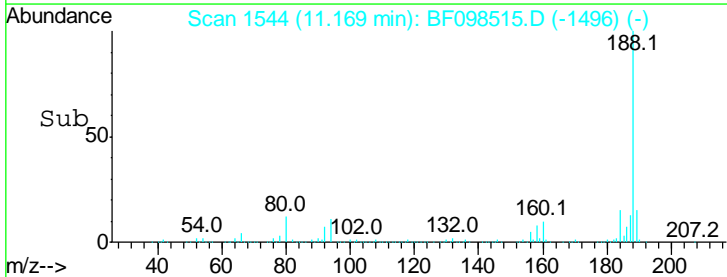
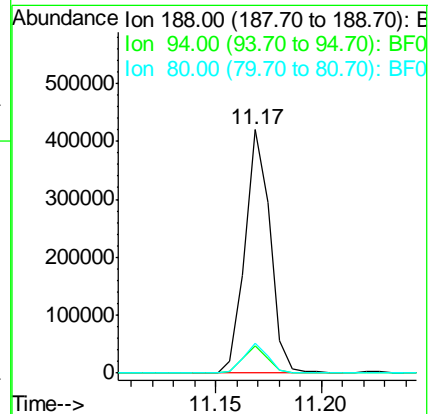
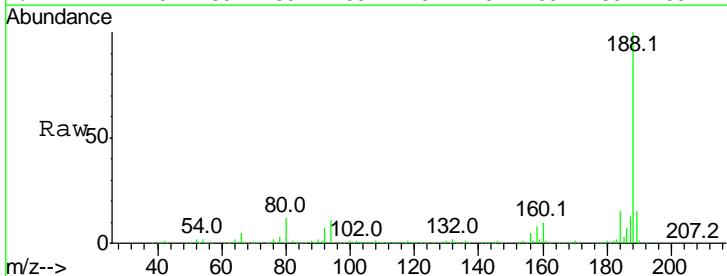
Instrument :
 BNA_F
 ClientSampled :

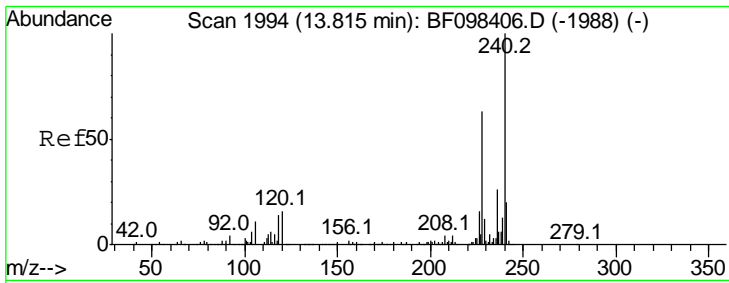
Tgt Ion	Resp	Lower	Upper
165	100		
63	1.3	25.4	38.0#
89	1.8	46.4	69.6#
182	0.0	1.8	2.6#



#63
 Phenanthrene-d10
 Concen: 20.000 ng
 RT: 11.17 min Scan# 1544
 Delta R.T. -0.02 min
 Lab File: BF098515.D
 Acq: 14 Sep 2017 3:20

Tgt Ion	Resp	Lower	Upper
188	100		
94	11.1	9.4	14.2
80	12.1	10.2	15.2

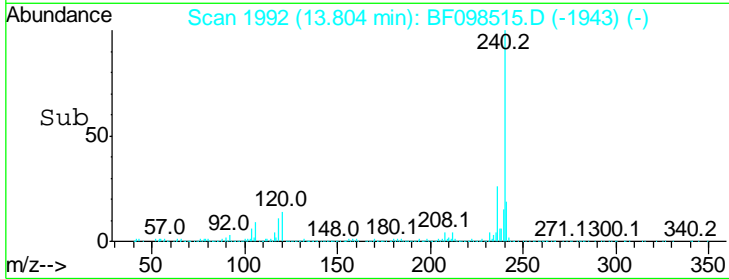
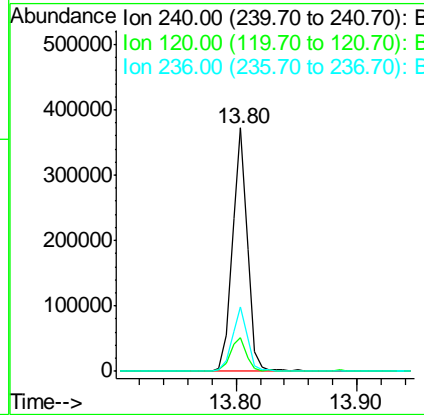
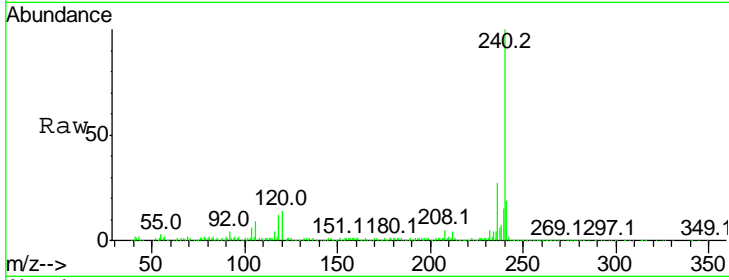




#75
 Chrysene-d12
 Concen: 20.000 ng
 RT: 13.80 min Scan# 1992
 Delta R.T. -0.01 min
 Lab File: BF098515.D
 Acq: 14 Sep 2017 3:20

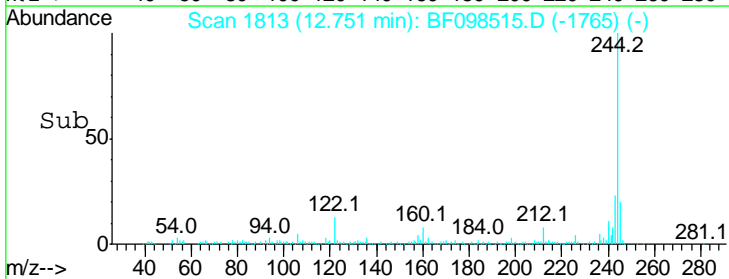
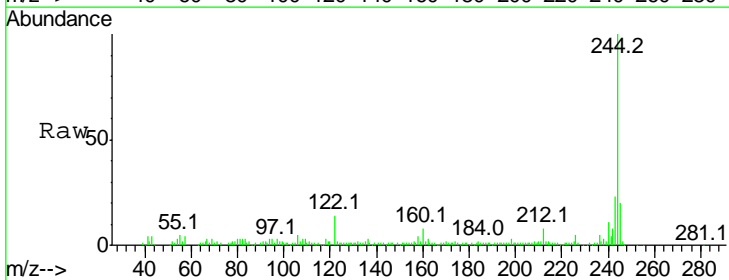
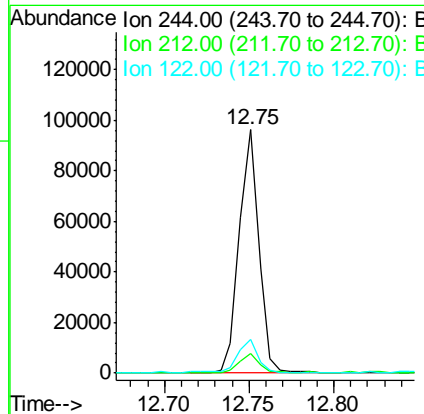
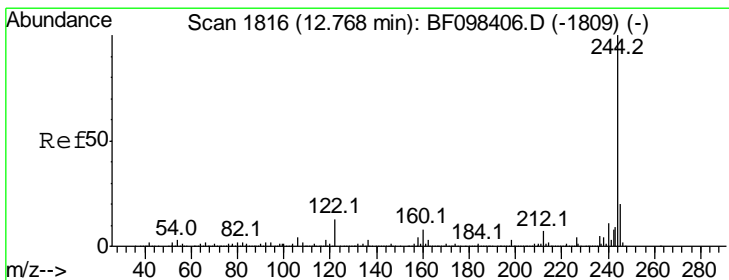
Instrument :
 BNA_F
 ClientSampled :

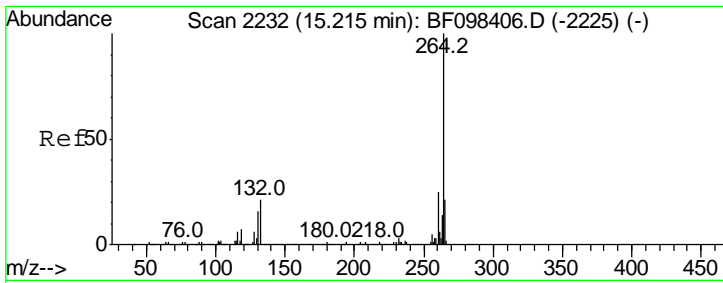
Tgt Ion	Resp	Lower	Upper
240	100		
120	13.8	5.8	8.8#
236	26.6	20.5	30.7



#78
 Terphenyl-d14
 Concen: 5.312 ng
 RT: 12.75 min Scan# 1813
 Delta R.T. -0.02 min
 Lab File: BF098515.D
 Acq: 14 Sep 2017 3:20

Tgt Ion	Resp	Lower	Upper
244	100		
212	7.8	6.0	9.0
122	13.7	10.3	15.5





#86
 Perylene-d12
 Concen: 20.000 ng
 RT: 15.20 min Scan# 2230
 Delta R.T. -0.01 min
 Lab File: BF098515.D
 Acq: 14 Sep 2017 3:20

Instrument :
 BNA_F
 ClientSampled :

Tot Ion	Ion	Ratio	Lower	Upper
228020	264	100		
	260	24.3	19.5	29.3
	265	22.0	17.2	25.8

