

Data Path : Z:\svoasrv\HPCHEM1\BNA_F\Data\BF091321\
 Data File : BF125442.D
 Acq On : 13 Sep 2021 13:58
 Operator : JU/CG
 Sample : M3689-02RE
 Misc :
 ALS Vial : 6 Sample Multiplier: 1

Instrument :
 BNA_F
 ClientSampleId :
 253RE

Quant Time: Sep 13 15:31:23 2021
 Quant Method : Z:\SVOASRV\HPCHEM1\BNA_F\METHODS\8270-BF081821.M
 Quant Title : ASP BNA STANDARDS FOR 5 POINT CALIBRATION
 QLast Update : Mon Sep 13 12:03:46 2021
 Response via : Initial Calibration

| Compound | R.T. | QIon | Response | Conc | Units | Dev(Min) |
|-----------------------------|--------|------|----------|--------|-------|----------|
| Internal Standards | | | | | | |
| 1) 1,4-Dichlorobenzene-d4 | 6.886 | 152 | 191778 | 20.000 | ng | 0.00 |
| 21) Naphthalene-d8 | 8.169 | 136 | 723586 | 20.000 | ng | # 0.00 |
| 39) Acenaphthene-d10 | 9.927 | 164 | 378962 | 20.000 | ng | 0.00 |
| 64) Phenanthrene-d10 | 11.421 | 188 | 646134 | 20.000 | ng | 0.00 |
| 76) Chrysene-d12 | 14.068 | 240 | 404986 | 20.000 | ng | # 0.00 |
| 86) Perylene-d12 | 15.562 | 264 | 334793 | 20.000 | ng | 0.00 |
| System Monitoring Compounds | | | | | | |
| 5) 2-Fluorophenol | 5.510 | 112 | 224541 | 17.722 | ng | 0.00 |
| 7) Phenol-d6 | 6.522 | 99 | 187846 | 11.463 | ng | -0.01 |
| 23) Nitrobenzene-d5 | 7.451 | 82 | 663335 | 46.152 | ng | 0.00 |
| 42) 2,4,6-Tribromophenol | 10.721 | 330 | 167627 | 44.312 | ng | 0.00 |
| 45) 2-Fluorobiphenyl | 9.245 | 172 | 1213248 | 44.620 | ng | 0.00 |
| 79) Terphenyl-d14 | 13.010 | 244 | 1085841 | 42.714 | ng | 0.00 |

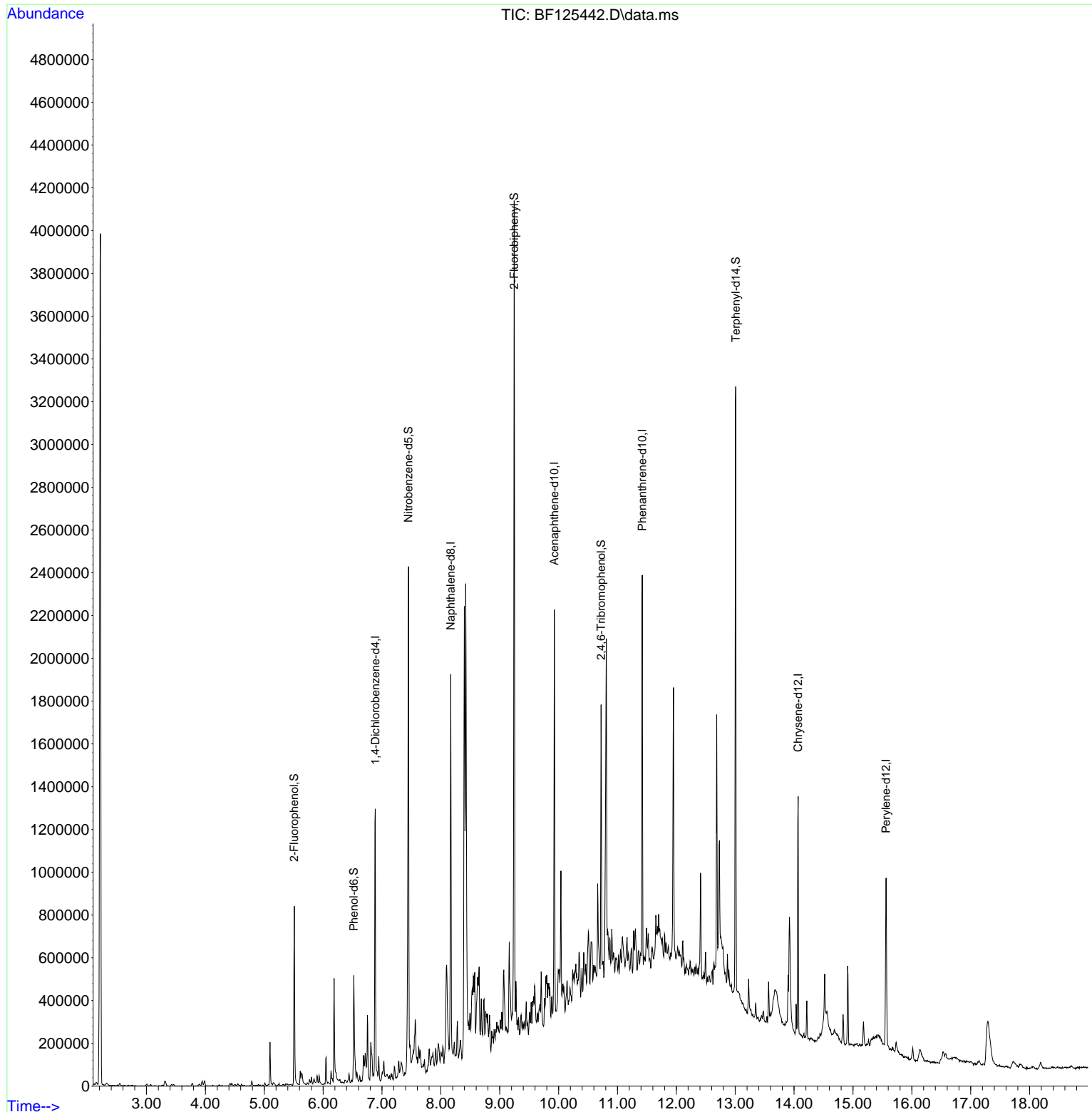
Target Compounds Qvalue

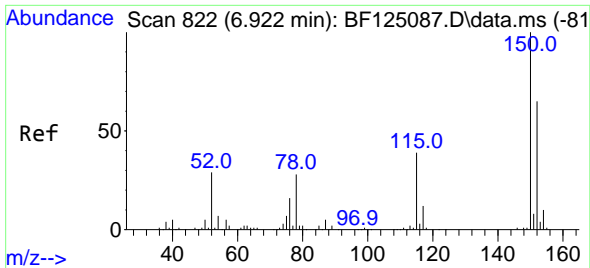
(#) = qualifier out of range (m) = manual integration (+) = signals summed

Data Path : Z:\svoasrv\HPCHEM1\BNA_F\Data\BF091321\
 Data File : BF125442.D
 Acq On : 13 Sep 2021 13:58
 Operator : JU/CG
 Sample : M3689-02RE
 Misc :
 ALS Vial : 6 Sample Multiplier: 1

Instrument :
 BNA_F
 ClientSampleId :
 253RE

Quant Time: Sep 13 15:31:23 2021
 Quant Method : Z:\SVOASRV\HPCHEM1\BNA_F\METHODS\8270-BF081821.M
 Quant Title : ASP BNA STANDARDS FOR 5 POINT CALIBRATION
 QLast Update : Mon Sep 13 12:03:46 2021
 Response via : Initial Calibration

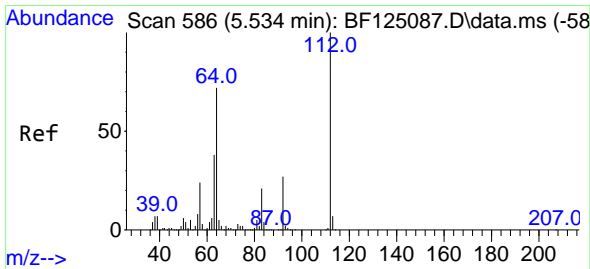
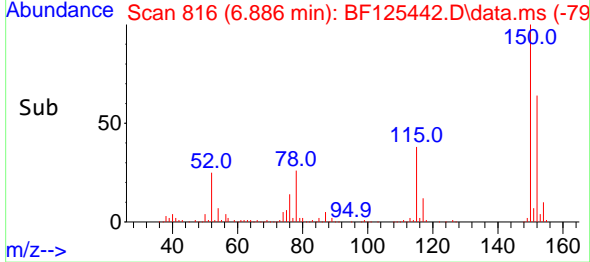
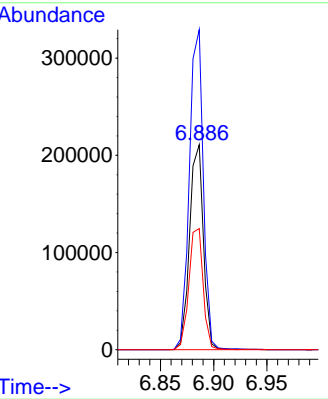
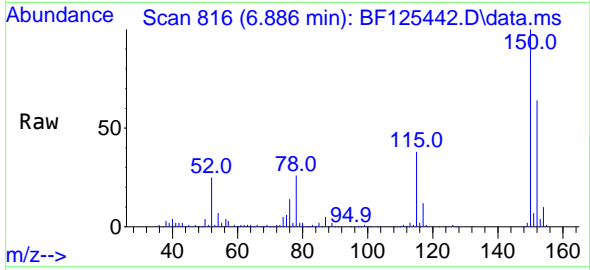




#1
 1,4-Dichlorobenzene-d4
 Concen: 20.000 ng
 RT: 6.886 min Scan# 816
 Delta R.T. 0.000 min
 Lab File: BF125442.D
 Acq: 13 Sep 2021 13:58

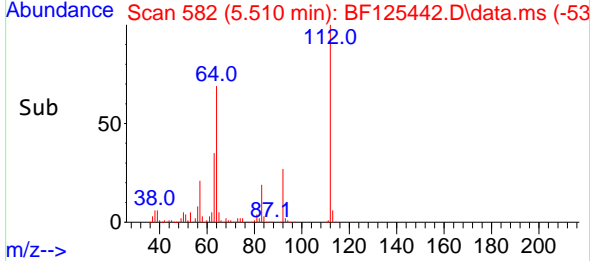
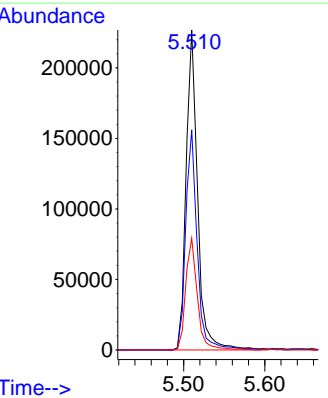
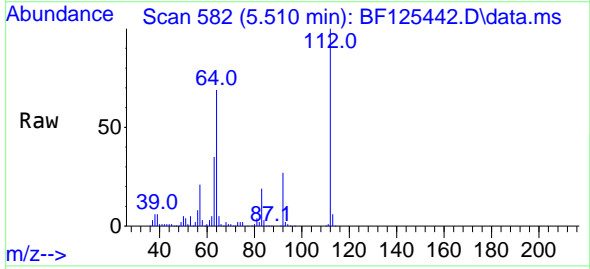
Instrument :
 BNA_F
 ClientSampled :
 253RE

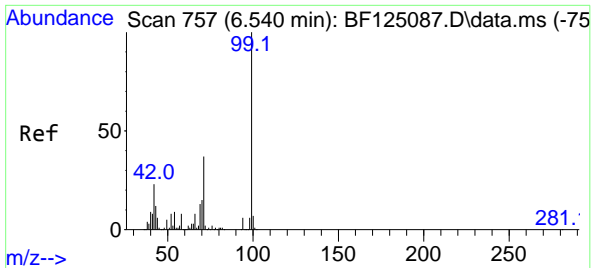
Tgt Ion:152 Resp: 191778
 Ion Ratio Lower Upper
 152 100
 150 156.1 117.6 176.4
 115 59.1 47.1 70.7



#5
 2-Fluorophenol
 Concen: 17.722 ng
 RT: 5.510 min Scan# 582
 Delta R.T. -0.006 min
 Lab File: BF125442.D
 Acq: 13 Sep 2021 13:58

Tgt Ion:112 Resp: 224541
 Ion Ratio Lower Upper
 112 100
 64 68.8 44.2 66.2#
 63 34.9 26.2 39.2

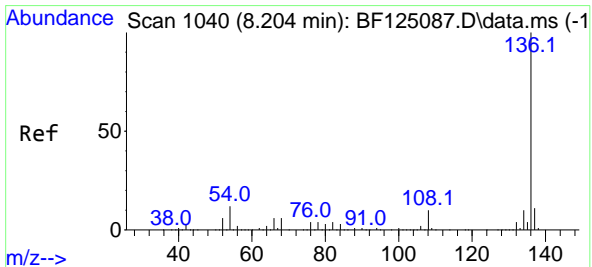
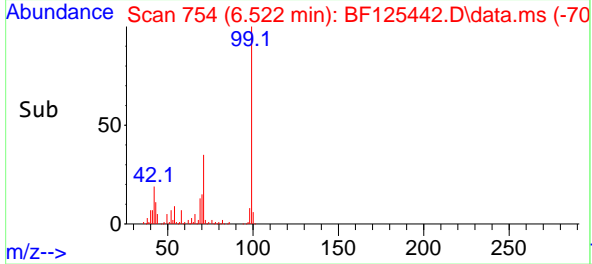
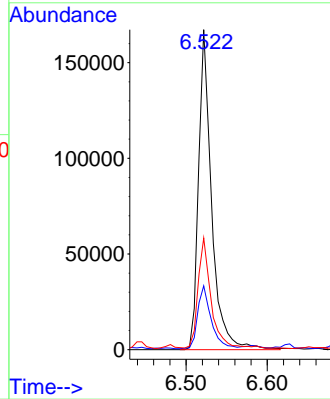
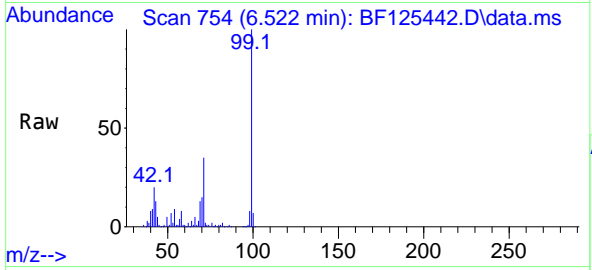




#7
Phenol-d6
Concen: 11.463 ng
RT: 6.522 min Scan# 754
Delta R.T. -0.012 min
Lab File: BF125442.D
Acq: 13 Sep 2021 13:58

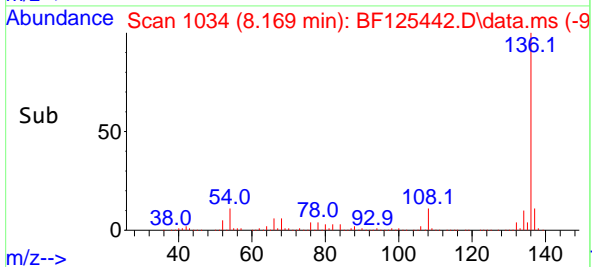
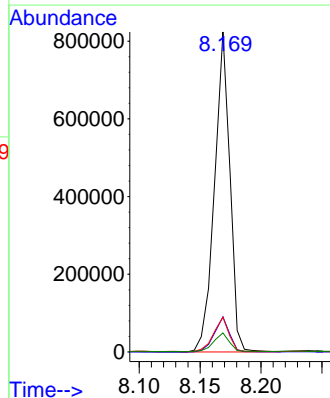
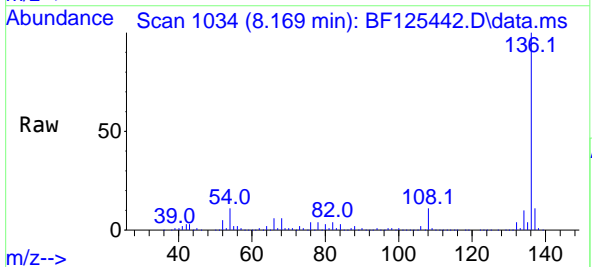
Instrument :
BNA_F
ClientSampled :
253RE

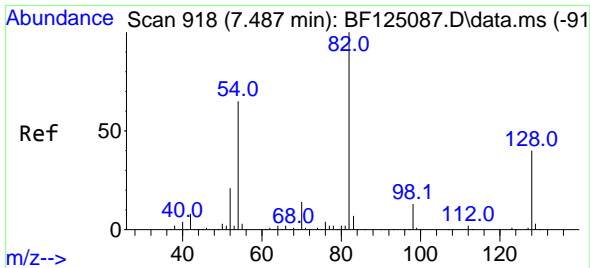
Tgt Ion: 99 Resp: 187846
Ion Ratio Lower Upper
99 100
42 20.0 23.5 35.3#
71 34.9 25.6 38.4



#21
Naphthalene-d8
Concen: 20.000 ng
RT: 8.169 min Scan# 1034
Delta R.T. -0.006 min
Lab File: BF125442.D
Acq: 13 Sep 2021 13:58

Tgt Ion:136 Resp: 723586
Ion Ratio Lower Upper
136 100
137 11.0 9.8 14.6
54 10.9 6.4 9.6#
68 5.9 3.3 4.9#



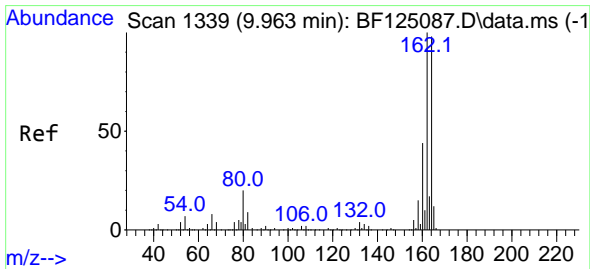
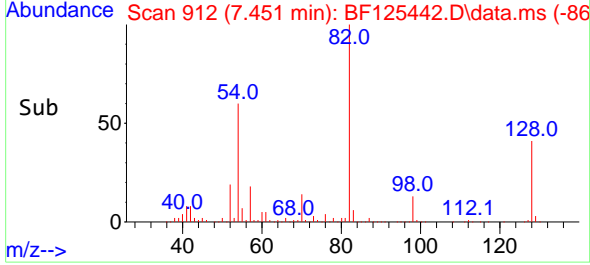
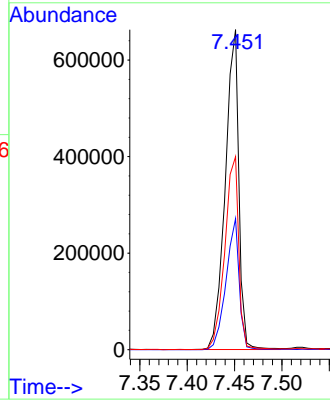
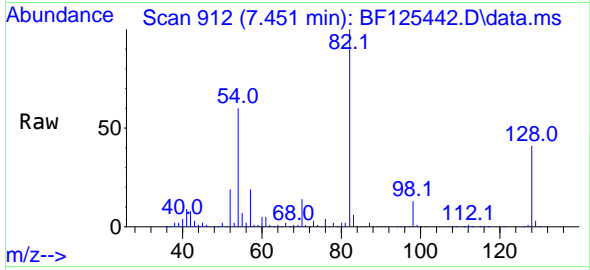


#23
 Nitrobenzene-d5
 Concen: 46.152 ng
 RT: 7.451 min Scan# 912
 Delta R.T. -0.006 min
 Lab File: BF125442.D
 Acq: 13 Sep 2021 13:58

Instrument :
 BNA_F
 ClientSampled :
 253RE

Tgt Ion: 82 Resp: 663335

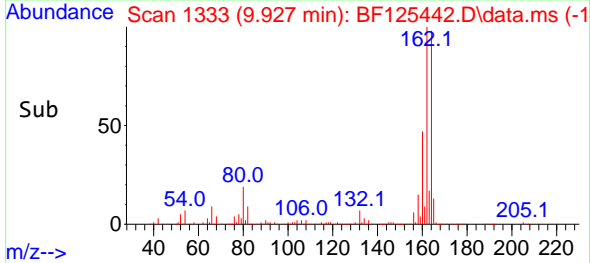
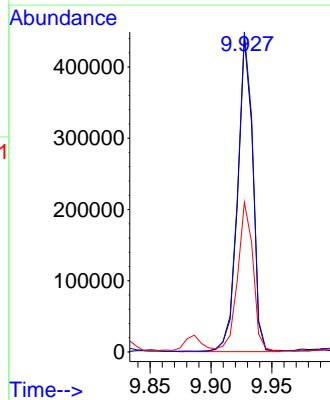
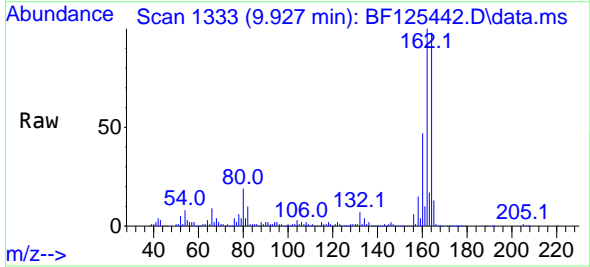
| Ion | Ratio | Lower | Upper |
|-----|-------|-------|-------|
| 82 | 100 | | |
| 128 | 41.0 | 40.6 | 60.8 |
| 54 | 60.3 | 49.6 | 74.4 |

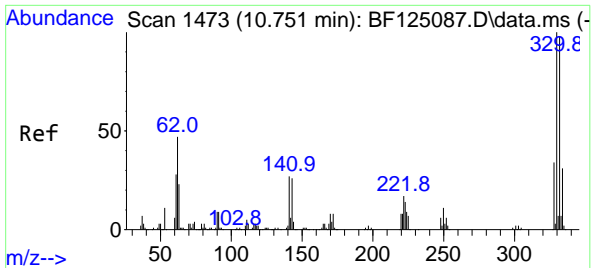


#39
 Acenaphthene-d10
 Concen: 20.000 ng
 RT: 9.927 min Scan# 1333
 Delta R.T. -0.006 min
 Lab File: BF125442.D
 Acq: 13 Sep 2021 13:58

Tgt Ion: 164 Resp: 378962

| Ion | Ratio | Lower | Upper |
|-----|-------|-------|-------|
| 164 | 100 | | |
| 162 | 102.0 | 81.3 | 121.9 |
| 160 | 47.7 | 38.0 | 57.0 |



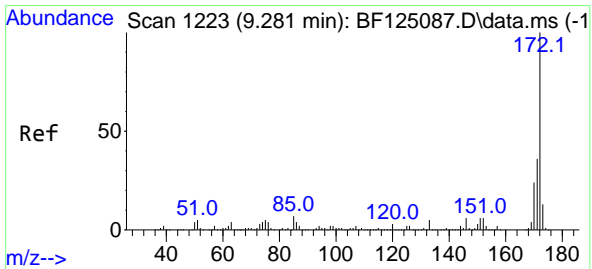
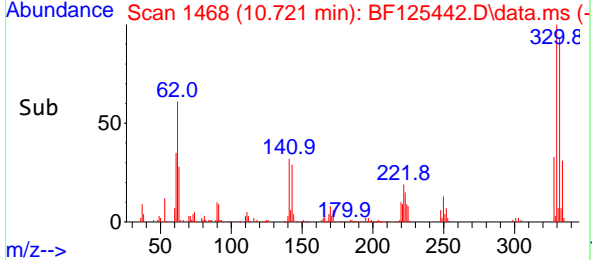
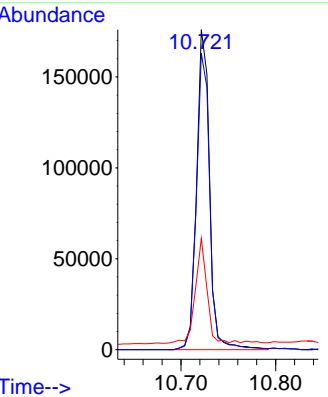
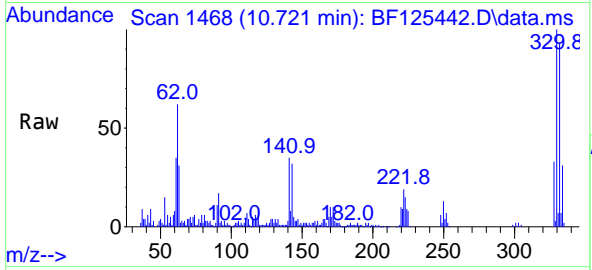


#42
 2,4,6-Tribromophenol
 Concen: 44.312 ng
 RT: 10.721 min Scan# 1468
 Delta R.T. -0.006 min
 Lab File: BF125442.D
 Acq: 13 Sep 2021 13:58

Instrument :
 BNA_F
 ClientSampled :
 253RE

Tgt Ion:330 Resp: 167627

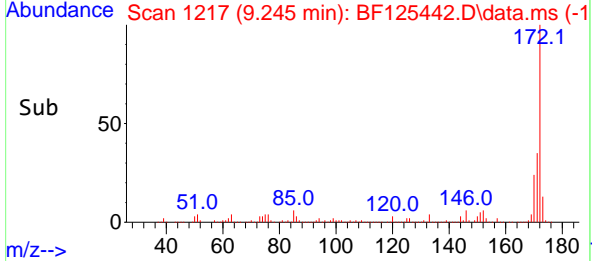
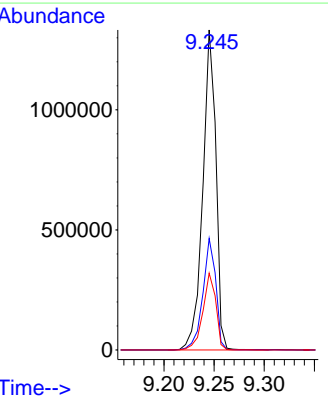
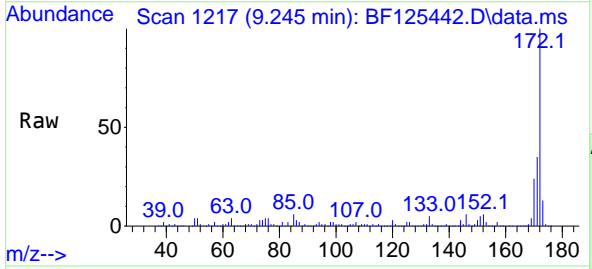
| Ion | Ratio | Lower | Upper |
|-----|-------|-------|-------|
| 330 | 100 | | |
| 332 | 94.8 | 76.2 | 114.4 |
| 141 | 31.2 | 44.6 | 66.8# |

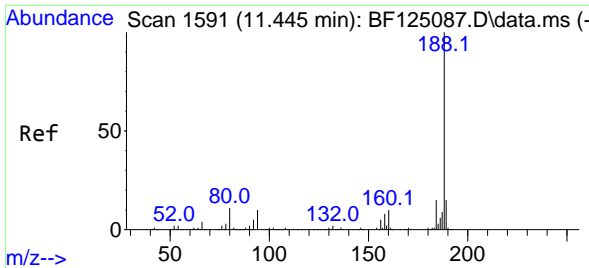


#45
 2-Fluorobiphenyl
 Concen: 44.620 ng
 RT: 9.245 min Scan# 1217
 Delta R.T. -0.006 min
 Lab File: BF125442.D
 Acq: 13 Sep 2021 13:58

Tgt Ion:172 Resp: 1213248

| Ion | Ratio | Lower | Upper |
|-----|-------|-------|-------|
| 172 | 100 | | |
| 171 | 34.8 | 26.5 | 39.7 |
| 170 | 24.0 | 18.8 | 28.2 |

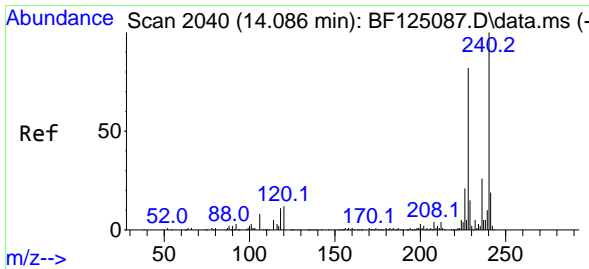
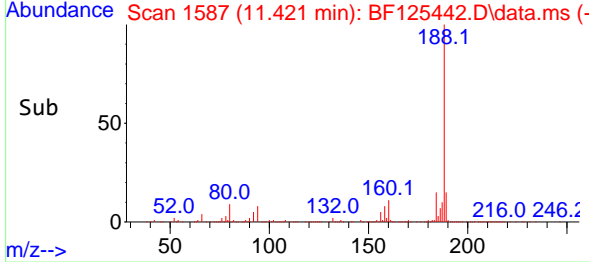
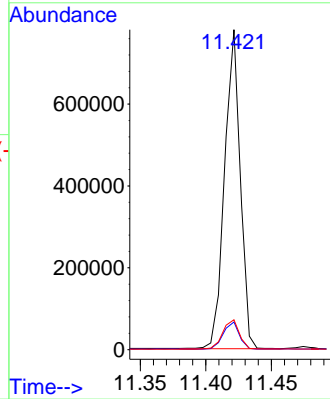
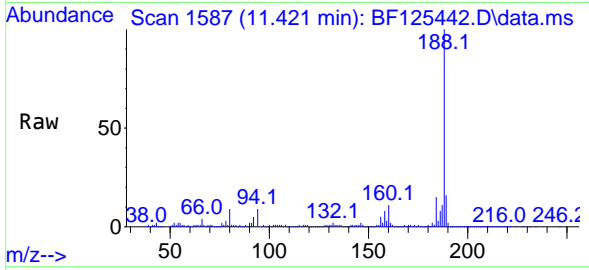




#64
 Phenanthrene-d10
 Concen: 20.000 ng
 RT: 11.421 min Scan# 1587
 Delta R.T. 0.000 min
 Lab File: BF125442.D
 Acq: 13 Sep 2021 13:58

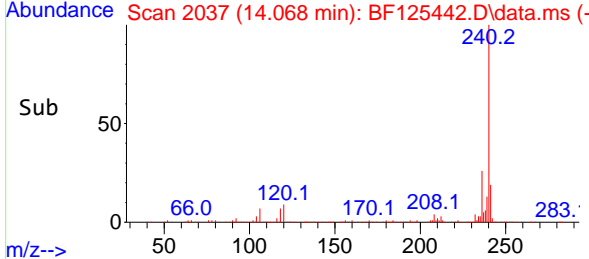
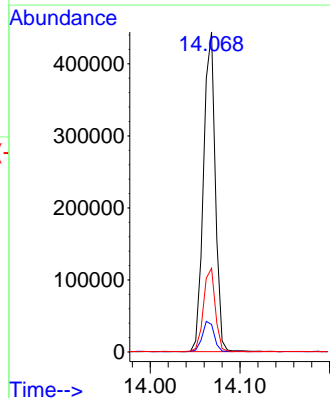
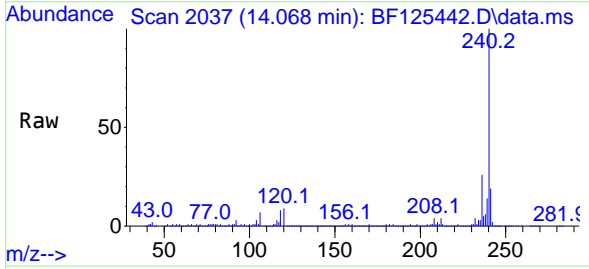
Instrument :
 BNA_F
 ClientSampled :
 253RE

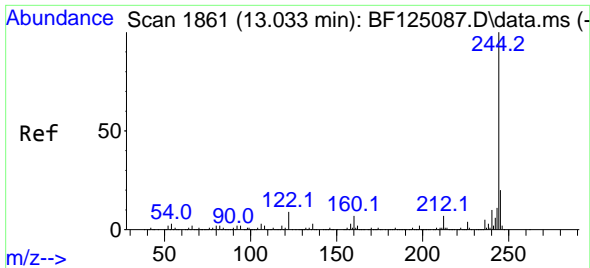
| Tgt Ion | Resp | Lower | Upper |
|---------|------|-------|-------|
| 188 | 100 | | |
| 94 | 8.6 | 6.7 | 10.1 |
| 80 | 9.3 | 7.5 | 11.3 |



#76
 Chrysene-d12
 Concen: 20.000 ng
 RT: 14.068 min Scan# 2037
 Delta R.T. -0.006 min
 Lab File: BF125442.D
 Acq: 13 Sep 2021 13:58

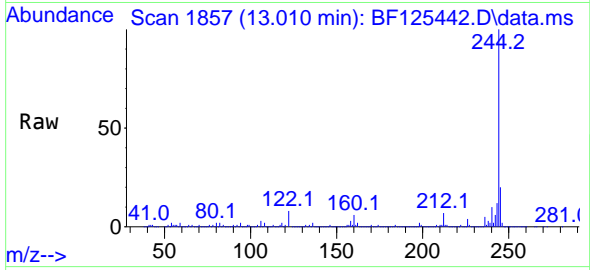
| Tgt Ion | Resp | Lower | Upper |
|---------|------|-------|-------|
| 240 | 100 | | |
| 120 | 8.6 | 10.8 | 16.2# |
| 236 | 26.2 | 21.6 | 32.4 |



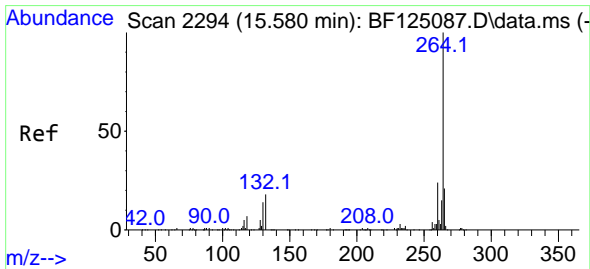
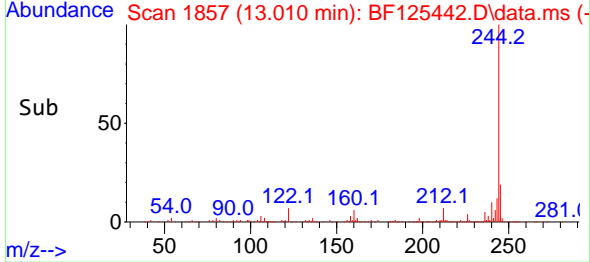
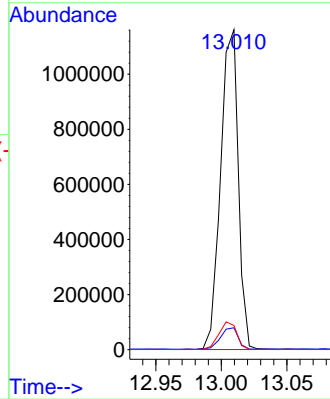


#79
 Terphenyl-d14
 Concen: 42.714 ng
 RT: 13.010 min Scan# 1857
 Delta R.T. 0.000 min
 Lab File: BF125442.D
 Acq: 13 Sep 2021 13:58

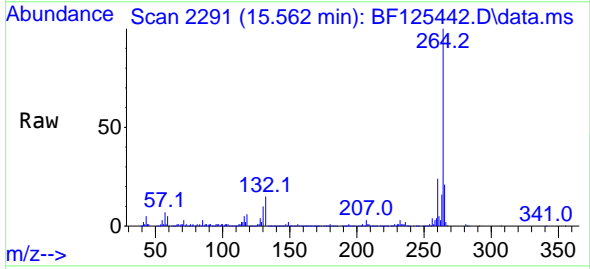
Instrument :
 BNA_F
 ClientSampled :
 253RE



Tgt Ion:244 Resp: 1085841
 Ion Ratio Lower Upper
 244 100
 212 6.9 5.9 8.9
 122 7.6 9.0 13.4#



#86
 Perylene-d12
 Concen: 20.000 ng
 RT: 15.562 min Scan# 2291
 Delta R.T. -0.006 min
 Lab File: BF125442.D
 Acq: 13 Sep 2021 13:58



Tgt Ion:264 Resp: 334793
 Ion Ratio Lower Upper
 264 100
 260 23.7 19.6 29.4
 265 21.4 17.2 25.8

