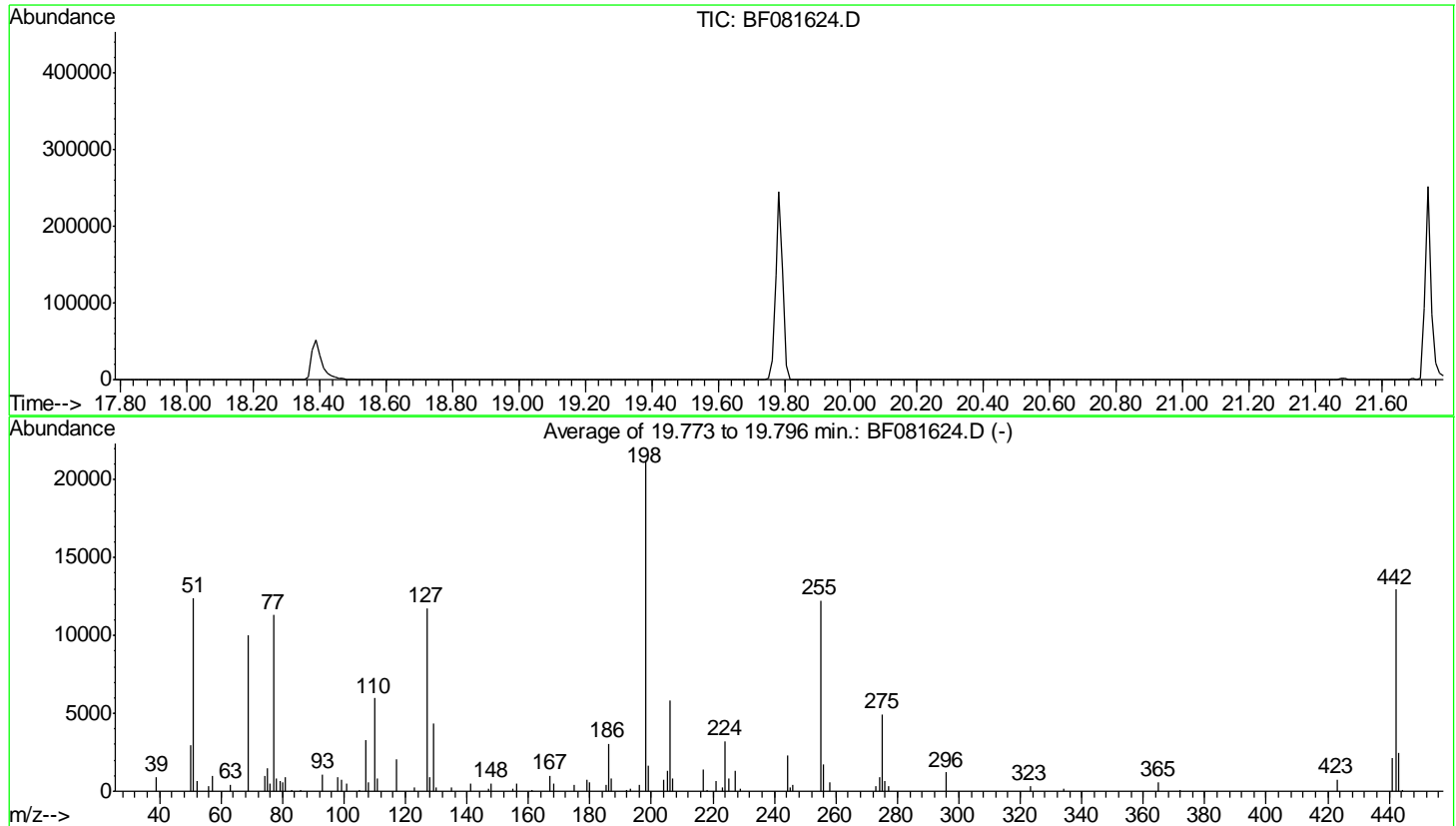


Data Path : Z:\HPCHEM1\BNA_F\DATA\BF091515\
 Data File : BF081624.D
 Acq On : 15 Sep 2015 11:06
 Operator : UM/IZ
 Sample : DFTPP
 Misc :
 ALS Vial : 1 Sample Multiplier: 1

Instrument :
 BNA_F
 ClientSampleId :
 DFTPP

Integration File: rteint.p

Method : Z:\HPCHEM1\BNA_F\METHODS\8270-BF090115.M
 Title : ASP BNA STANDARDS FOR 5 POINT CALIBRATION
 Last Update : Tue Sep 15 14:03:59 2015



AutoFind: Scans 1613, 1614, 1615; Background Corrected with Scan 1608

| Target Mass | Rel. to Mass | Lower Limit% | Upper Limit% | Rel. Abn% | Raw Abn | Result Pass/Fail |
|-------------|--------------|--------------|--------------|-----------|---------|------------------|
| 51 | 198 | 10 | 80 | 58.4 | 12412 | PASS |
| 68 | 69 | 0.00 | 2 | 0.0 | 0 | PASS |
| 69 | 198 | 0.00 | 100 | 46.9 | 9975 | PASS |
| 70 | 69 | 0.00 | 2 | 0.0 | 0 | PASS |
| 127 | 198 | 10 | 80 | 55.3 | 11741 | PASS |
| 197 | 198 | 0.00 | 2 | 0.0 | 0 | PASS |
| 198 | 198 | 100 | 100 | 100.0 | 21249 | PASS |
| 199 | 198 | 5 | 9 | 7.8 | 1649 | PASS |
| 275 | 198 | 10 | 60 | 23.3 | 4956 | PASS |
| 365 | 198 | 1 | 100 | 2.7 | 578 | PASS |
| 441 | 442 | 0.01 | 24 | 16.3 | 2113 | PASS |
| 442 | 198 | 50 | 100 | 60.9 | 12947 | PASS |
| 443 | 442 | 15 | 24 | 18.9 | 2452 | PASS |