

Data Path : Z:\svoasrv\HPCHEM1\BNA_F\Data\BF091625\
 Data File : BF143767.D
 Acq On : 16 Sep 2025 11:23
 Operator : RC/JU
 Sample : SSTDICC2.5
 Misc :
 ALS Vial : 3 Sample Multiplier: 1

Instrument :
 BNA_F
 ClientSampleId :
 SSTDICC2.5

Quant Time: Sep 16 16:05:45 2025
 Quant Method : Z:\svoasrv\HPCHEM1\BNA_F\Methods\8270-BF091625.M
 Quant Title : ASP BNA STANDARDS FOR 5 POINT CALIBRATION
 QLast Update : Tue Sep 16 15:40:08 2025
 Response via : Initial Calibration

Compound	R.T.	QIon	Response	Conc	Units	Dev(Min)
Internal Standards						
1) 1,4-Dichlorobenzene-d4	6.892	152	9211	20.000	ng	0.00
21) Naphthalene-d8	8.175	136	37291	20.000	ng	0.00
39) Acenaphthene-d10	9.928	164	19751	20.000	ng	0.00
64) Phenanthrene-d10	11.422	188	32987	20.000	ng	0.00
76) Chrysenes-d12	14.063	240	18916	20.000	ng	-0.01
86) Perylene-d12	15.545	264	15882	20.000	ng	-0.01
System Monitoring Compounds						
5) 2-Fluorophenol	5.498	112	2535	4.394	ng	-0.01
7) Phenol-d6	6.498	99	3369	5.000	ng	-0.03
23) Nitrobenzene-d5	7.445	82	3111	4.936	ng	-0.02
42) 2,4,6-Tribromophenol	10.716	330	877	4.402	ng	-0.02
45) 2-Fluorobiphenyl	9.245	172	7359	5.129	ng	-0.01
79) Terphenyl-d14	13.004	244	7156	5.892	ng	-0.01
Target Compounds						
2) 1,4-Dioxane	2.687	88	746	2.485	ng	# 86
3) Pyridine	3.463	79	1556	2.097	ng	# 91
6) Aniline	6.545	93	2348	2.666	ng	# 95
8) 2-Chlorophenol	6.669	128	1596	2.568	ng	95
9) Benzaldehyde	6.439	77	1326	3.187	ng	84
10) Phenol	6.516	94	2186	2.916	ng	94
11) bis(2-Chloroethyl)ether	6.616	93	1467	2.629	ng	89
12) 1,3-Dichlorobenzene	6.834	146	2039	2.947	ng	88
13) 1,4-Dichlorobenzene	6.910	146	1959	2.858	ng	96
14) 1,2-Dichlorobenzene	7.063	146	1870	2.900	ng	95
15) Benzyl Alcohol	7.022	79	940	2.088	ng	91
16) 2,2'-oxybis(1-Chloropr...	7.157	45	1593	2.563	ng	98
17) 2-Methylphenol	7.128	107	1251	2.686	ng	87
18) Hexachloroethane	7.404	117	545	2.541	ng	92
19) n-Nitroso-di-n-propyla...	7.287	70	1054	2.692	ng	# 94
20) 3+4-Methylphenols	7.281	107	1601	2.612	ng	93
22) Acetophenone	7.292	105	2025	2.300	ng	# 92
24) Nitrobenzene	7.463	77	1585	2.480	ng	# 86
25) Isophorone	7.704	82	2844	2.492	ng	# 92
26) 2-Nitrophenol	7.786	139	707	2.049	ng	# 77
27) 2,4-Dimethylphenol	7.816	122	1233	2.254	ng	87
28) bis(2-Chloroethoxy)met...	7.916	93	1566	2.201	ng	98
29) 2,4-Dichlorophenol	8.022	162	1445	2.690	ng	89
30) 1,2,4-Trichlorobenzene	8.110	180	1412	2.439	ng	91
31) Naphthalene	8.192	128	4887	2.566	ng	98
32) Benzoic acid	7.816	122	1233	10.821	ng	# 17
33) 4-Chloroaniline	8.239	127	1552	2.443	ng	96
34) Hexachlorobutadiene	8.310	225	790	2.128	ng	90
36) 4-Chloro-3-methylphenol	8.710	107	1343	2.529	ng	98
37) 2-Methylnaphthalene	8.886	142	3259	2.647	ng	96
38) 1-Methylnaphthalene	8.986	142	3008	2.503	ng	95
40) 1,2,4,5-Tetrachloroben...	9.051	216	1377	2.311	ng	# 94
43) 2,4,6-Trichlorophenol	9.192	196	1115	2.773	ng	90
44) 2,4,5-Trichlorophenol	9.192	196	1115	2.775	ng	87
46) 1,1'-Biphenyl	9.351	154	3596	2.370	ng	97
47) 2-Chloronaphthalene	9.375	162	2761	2.338	ng	94

Data Path : Z:\svoasrv\HPCHEM1\BNA_F\Data\BF091625\
 Data File : BF143767.D
 Acq On : 16 Sep 2025 11:23
 Operator : RC/JU
 Sample : SSTDICC2.5
 Misc :
 ALS Vial : 3 Sample Multiplier: 1

Instrument :
 BNA_F
 ClientSampleId :
 SSTDICC2.5

Quant Time: Sep 16 16:05:45 2025
 Quant Method : Z:\svoasrv\HPCHEM1\BNA_F\Methods\8270-BF091625.M
 Quant Title : ASP BNA STANDARDS FOR 5 POINT CALIBRATION
 QLast Update : Tue Sep 16 15:40:08 2025
 Response via : Initial Calibration

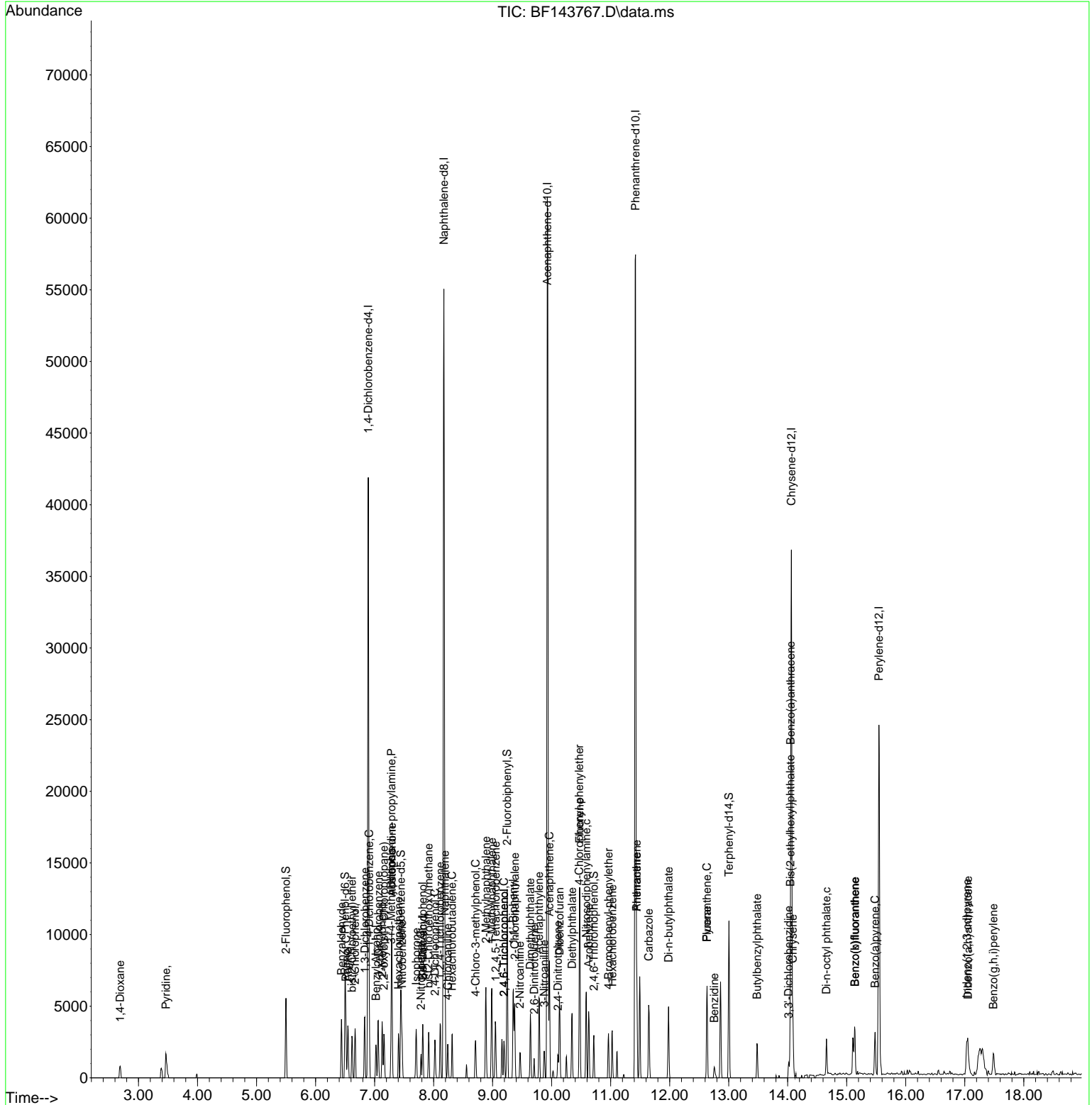
Compound	R.T.	QIon	Response	Conc	Units	Dev(Min)
48) 2-Nitroaniline	9.463	65	796	2.572	ng	86
49) Acenaphthylene	9.786	152	4099	2.469	ng	94
50) Dimethylphthalate	9.639	163	3389	2.611	ng #	95
51) 2,6-Dinitrotoluene	9.704	165	602	2.250	ng #	91
52) Acenaphthene	9.963	154	2658	2.389	ng	89
53) 3-Nitroaniline	9.875	138	723	2.562	ng #	80
55) Dibenzofuran	10.133	168	4212	2.607	ng	95
57) 2,4-Dinitrotoluene	10.104	165	859	2.307	ng #	86
58) Fluorene	10.475	166	3347	2.650	ng	96
60) Diethylphthalate	10.345	149	2991	2.510	ng	97
61) 4-Chlorophenyl-phenyle...	10.469	204	1789	2.823	ng	95
63) Azobenzene	10.627	77	2753	2.617	ng	96
66) n-Nitrosodiphenylamine	10.586	169	2974	2.583	ng	99
67) 4-Bromophenyl-phenylether	10.963	248	1032	2.532	ng	85
68) Hexachlorobenzene	11.027	284	1042	2.403	ng #	89
71) Phenanthrene	11.439	178	4546	2.391	ng	98
72) Anthracene	11.439	178	4546	2.345	ng	96
73) Carbazole	11.645	167	4104	2.597	ng	99
74) Di-n-butylphthalate	11.980	149	4745	2.472	ng	99
75) Fluoranthene	12.633	202	4463	2.544	ng	96
77) Benzidine	12.757	184	1214	2.075	ng #	66
78) Pyrene	12.633	202	4463	2.900	ng	97
80) Butylbenzylphthalate	13.480	149	1341	2.521	ng	94
81) Benzo(a)anthracene	14.051	228	3487	2.801	ng	96
82) 3,3'-Dichlorobenzidine	14.015	252	850	2.387	ng #	91
83) Chrysene	14.086	228	3017	2.657	ng	96
84) Bis(2-ethylhexyl)phtha...	14.045	149	1500	2.078	ng #	91
85) Di-n-octyl phthalate	14.657	149	2439	2.002	ng #	81
87) Indeno(1,2,3-cd)pyrene	17.033	276	2351	2.313	ng	95
88) Benzo(b)fluoranthene	15.139	252	2427	2.468	ng	96
89) Benzo(k)fluoranthene	15.139	252	2427	2.814	ng #	95
90) Benzo(a)pyrene	15.480	252	2248	2.653	ng #	93
91) Dibenzo(a,h)anthracene	17.056	278	1940	2.375	ng	94
92) Benzo(g,h,i)perylene	17.486	276	1846	2.358	ng #	91

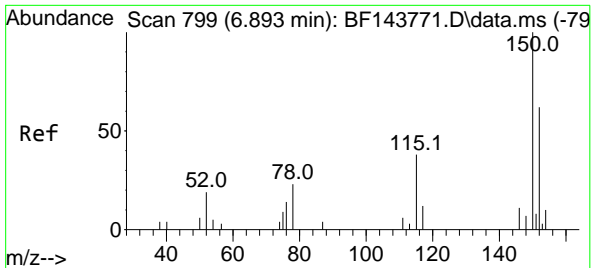
(#) = qualifier out of range (m) = manual integration (+) = signals summed

Data Path : Z:\svoasrv\HPCHEM1\BNA_F\Data\BF091625\
 Data File : BF143767.D
 Acq On : 16 Sep 2025 11:23
 Operator : RC/JU
 Sample : SSTDICC2.5
 Misc :
 ALS Vial : 3 Sample Multiplier: 1

Instrument :
 BNA_F
 ClientSampleId :
 SSTDICC2.5

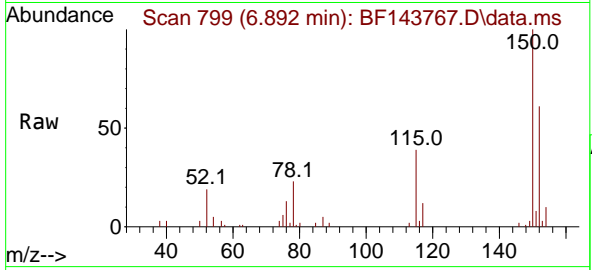
Quant Time: Sep 16 16:05:45 2025
 Quant Method : Z:\svoasrv\HPCHEM1\BNA_F\Methods\8270-BF091625.M
 Quant Title : ASP BNA STANDARDS FOR 5 POINT CALIBRATION
 QLast Update : Tue Sep 16 15:40:08 2025
 Response via : Initial Calibration



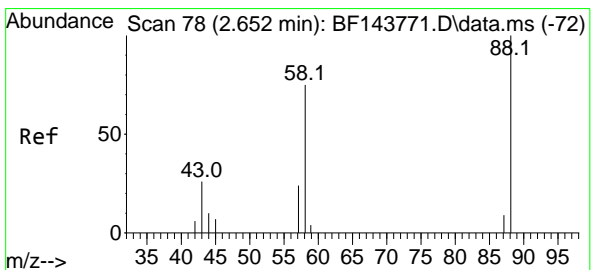
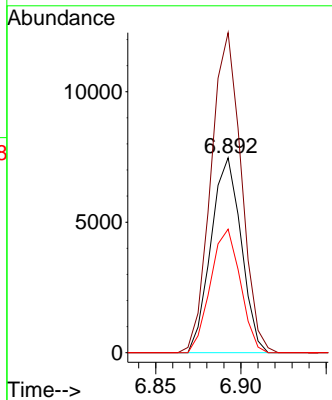
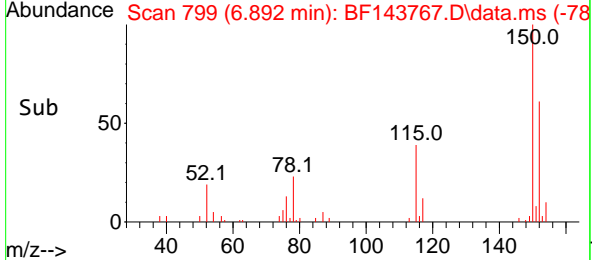


#1
 1,4-Dichlorobenzene-d4
 Concen: 20.000 ng
 RT: 6.892 min Scan# 79
 Delta R.T. -0.006 min
 Lab File: BF143767.D
 Acq: 16 Sep 2025 11:23

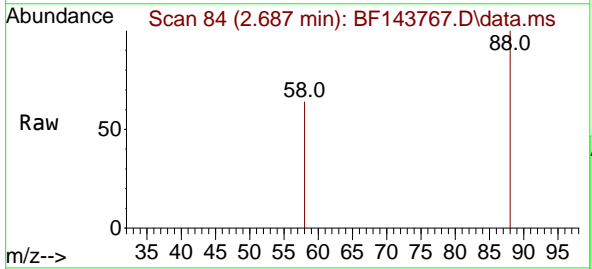
Instrument :
 BNA_F
 ClientSampleId :
 SSTDICC2.5



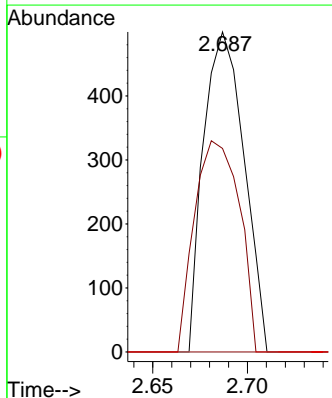
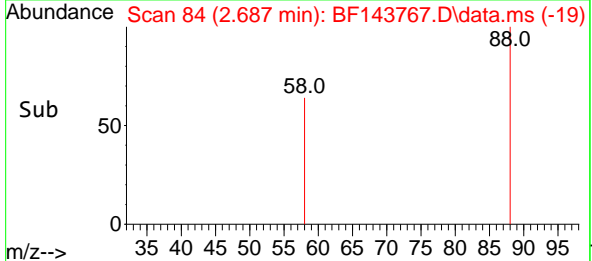
Tgt Ion:152 Resp: 9211
 Ion Ratio Lower Upper
 152 100
 150 164.2 128.8 193.2
 115 63.3 49.1 73.7

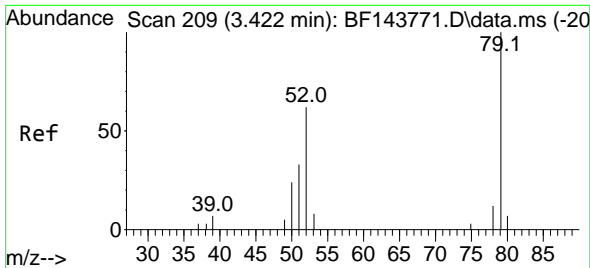


#2
 1,4-Dioxane
 Concen: 2.485 ng
 RT: 2.687 min Scan# 84
 Delta R.T. 0.029 min
 Lab File: BF143767.D
 Acq: 16 Sep 2025 11:23



Tgt Ion: 88 Resp: 746
 Ion Ratio Lower Upper
 88 100
 58 73.1 60.3 90.5
 43 0.0 19.9 29.9#

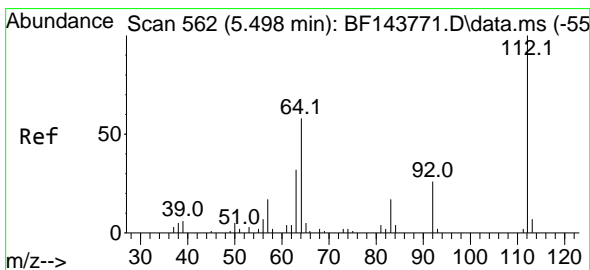
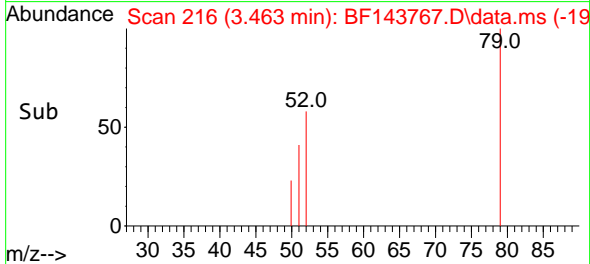
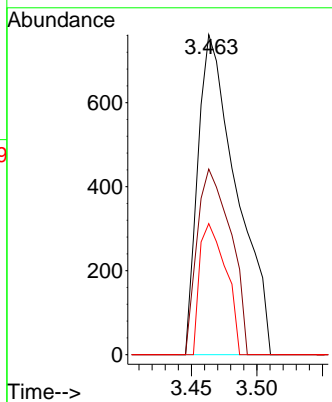
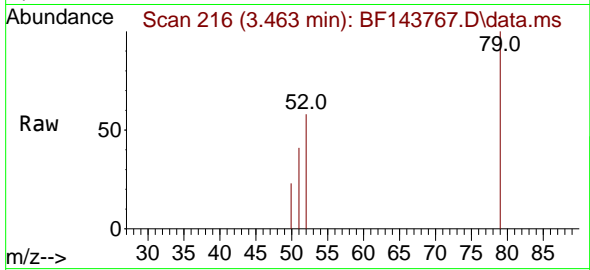




#3
 Pyridine
 Concen: 2.097 ng
 RT: 3.463 min Scan# 216
 Delta R.T. 0.029 min
 Lab File: BF143767.D
 Acq: 16 Sep 2025 11:23

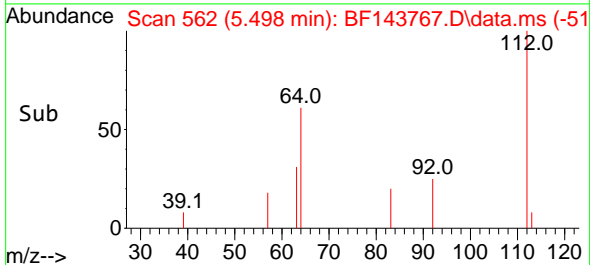
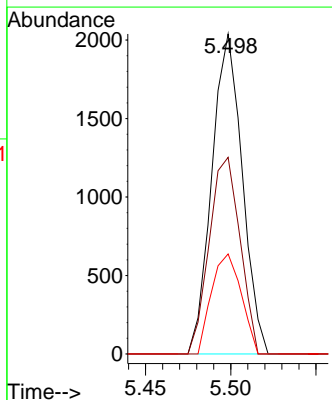
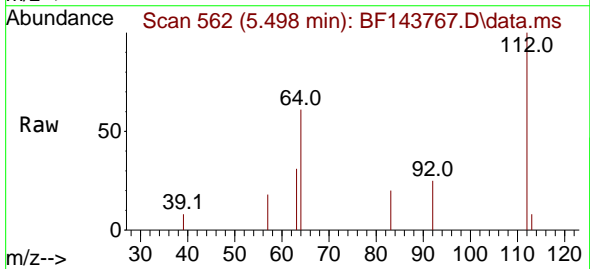
Instrument : BNA_F
 ClientSampleId : SSTDICC2.5

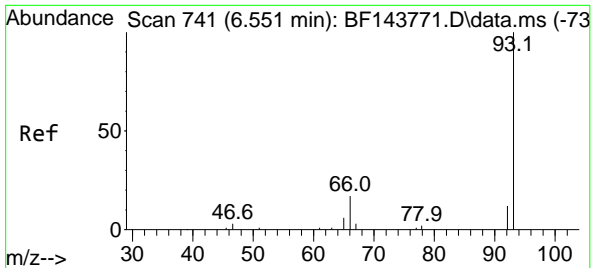
Tgt Ion	Resp	Ion Ratio	Lower	Upper
79	1556	100		
52		58.0	49.8	74.8
51		40.9	26.4	39.6



#5
 2-Fluorophenol
 Concen: 4.394 ng
 RT: 5.498 min Scan# 562
 Delta R.T. -0.012 min
 Lab File: BF143767.D
 Acq: 16 Sep 2025 11:23

Tgt Ion	Resp	Ion Ratio	Lower	Upper
112	2535	100		
64		61.5	46.3	69.5
63		31.2	25.4	38.2



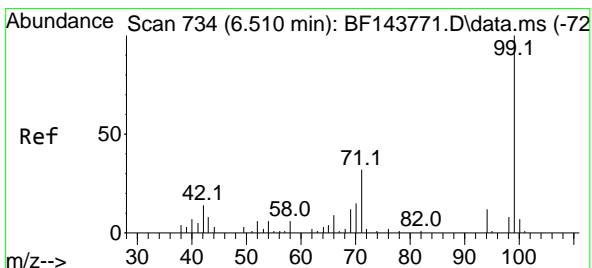
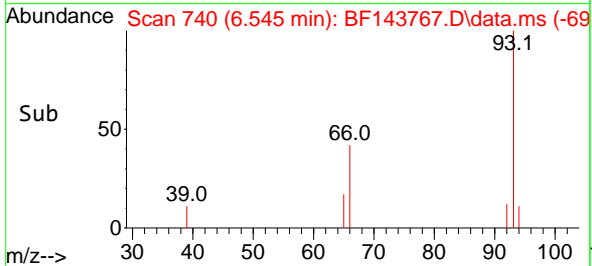
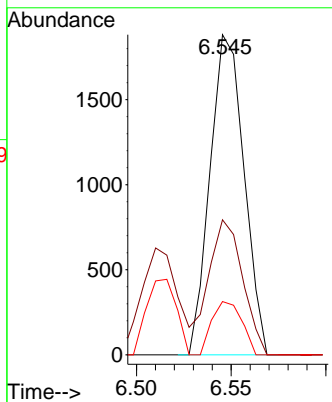
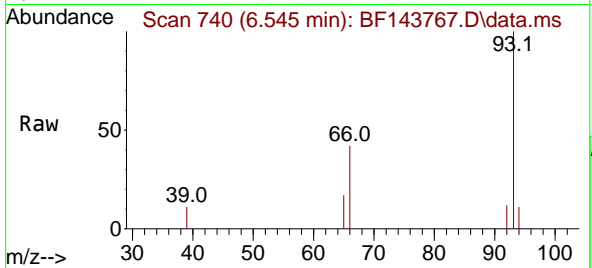


#6
 Aniline
 Concen: 2.666 ng
 RT: 6.545 min Scan# 741
 Delta R.T. -0.018 min
 Lab File: BF143767.D
 Acq: 16 Sep 2025 11:23

Instrument : BNA_F
 ClientSampleId : SSTDICC2.5

Tgt Ion: 93 Resp: 2348

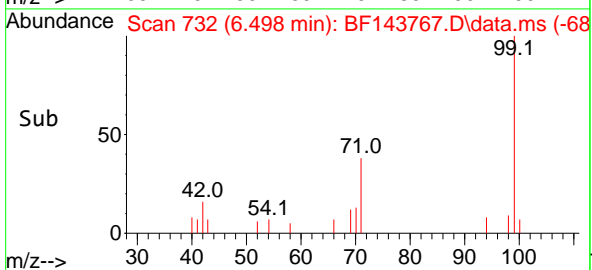
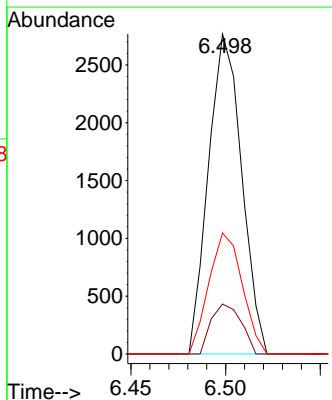
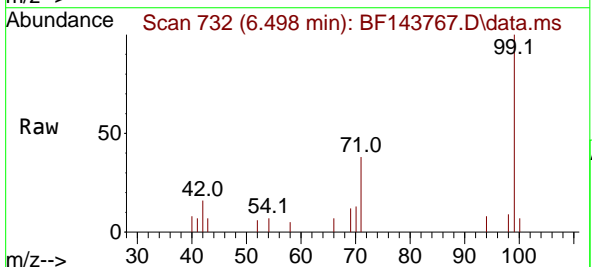
Ion	Ratio	Lower	Upper
93	100		
66	42.2	32.6	48.8
65	16.6	17.2	25.8

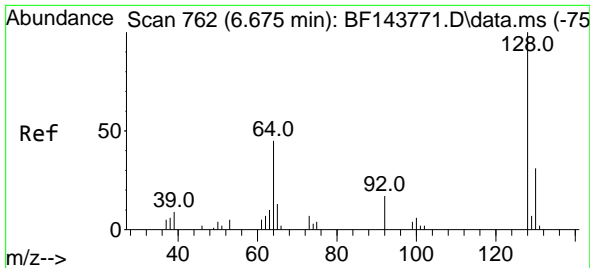


#7
 Phenol-d6
 Concen: 5.000 ng
 RT: 6.498 min Scan# 732
 Delta R.T. -0.029 min
 Lab File: BF143767.D
 Acq: 16 Sep 2025 11:23

Tgt Ion: 99 Resp: 3369

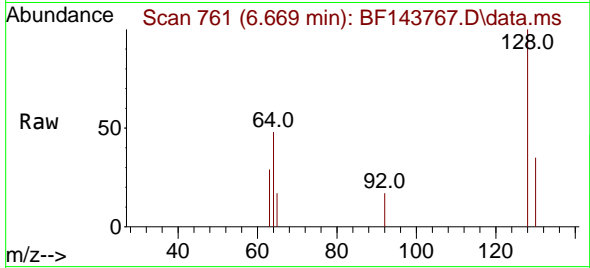
Ion	Ratio	Lower	Upper
99	100		
42	15.6	11.5	17.3
71	37.8	25.4	38.0



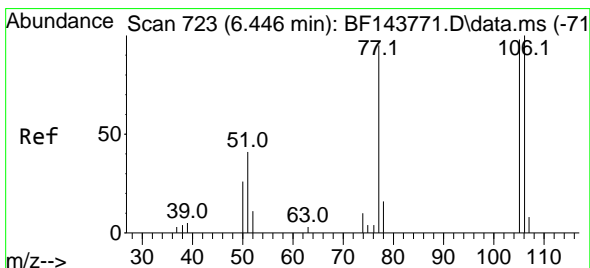
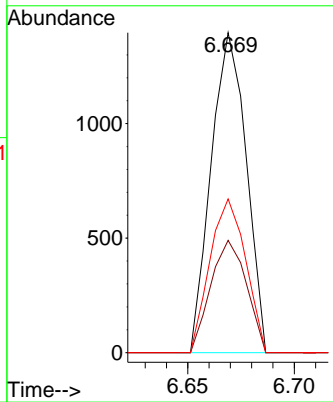
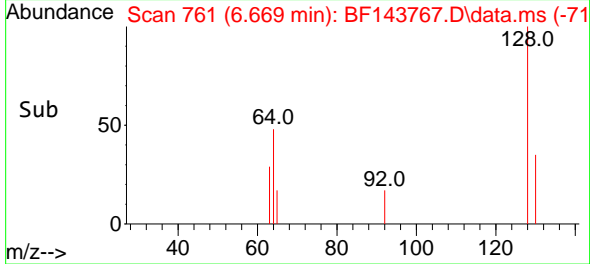


#8
 2-Chlorophenol
 Concen: 2.568 ng
 RT: 6.669 min Scan# 761
 Delta R.T. -0.012 min
 Lab File: BF143767.D
 Acq: 16 Sep 2025 11:23

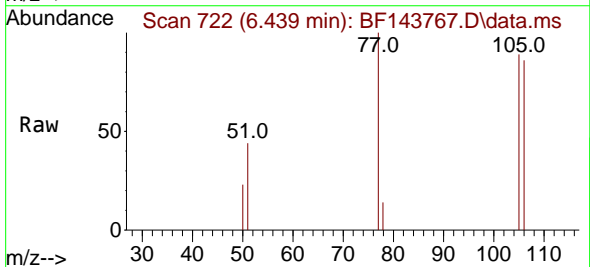
Instrument : BNA_F
 ClientSampleId : SSTDICC2.5



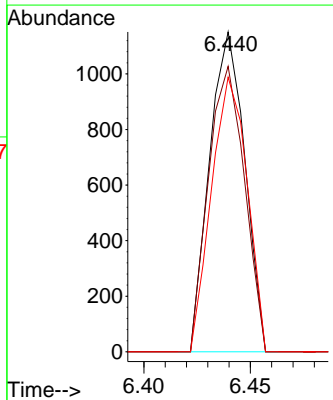
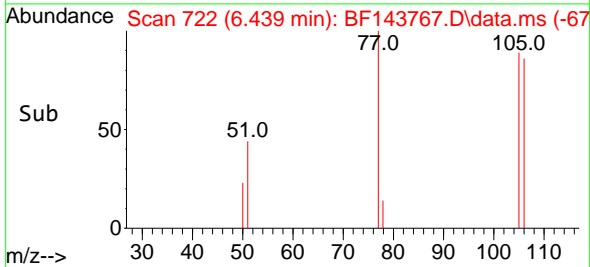
Tgt Ion:128 Resp: 1596
 Ion Ratio Lower Upper
 128 100
 130 35.1 11.4 51.4
 64 48.0 25.2 65.2

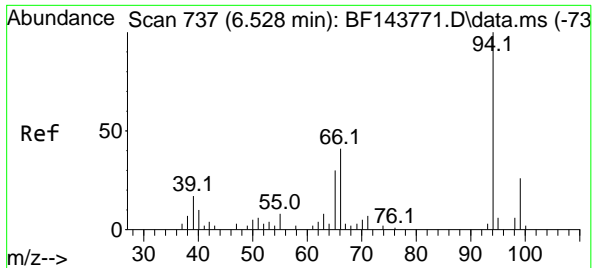


#9
 Benzaldehyde
 Concen: 3.187 ng
 RT: 6.439 min Scan# 722
 Delta R.T. -0.012 min
 Lab File: BF143767.D
 Acq: 16 Sep 2025 11:23



Tgt Ion: 77 Resp: 1326
 Ion Ratio Lower Upper
 77 100
 105 89.2 83.0 123.0
 106 85.8 85.5 125.5

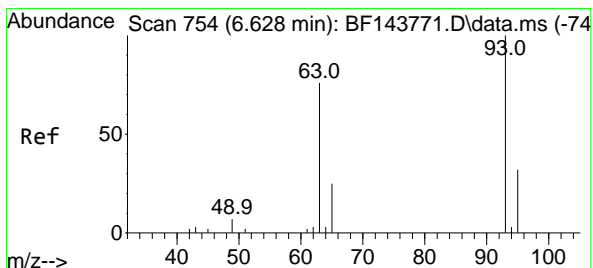
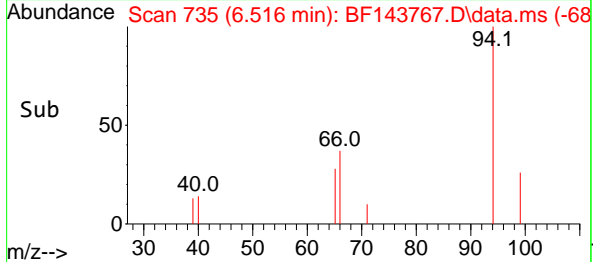
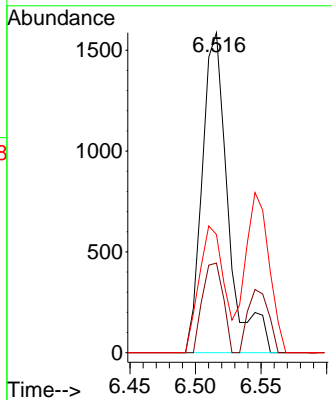
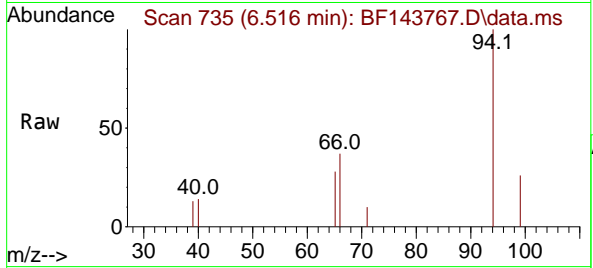




#10
 Phenol
 Concen: 2.916 ng
 RT: 6.516 min Scan# 711
 Delta R.T. -0.023 min
 Lab File: BF143767.D
 Acq: 16 Sep 2025 11:23

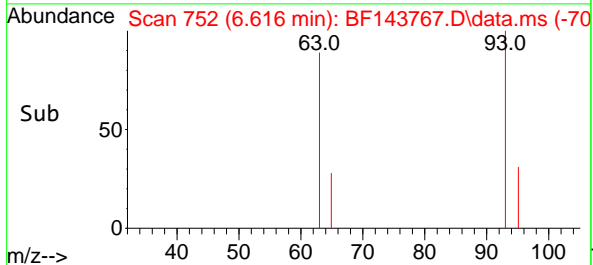
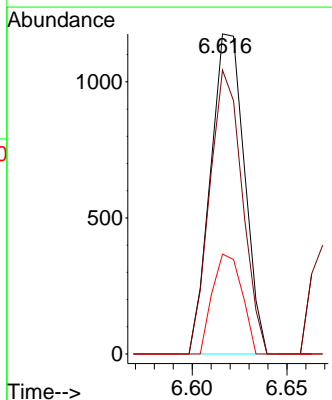
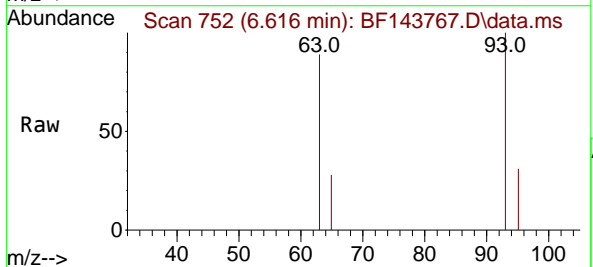
Instrument :
 BNA_F
 ClientSampleId :
 SSTDICC2.5

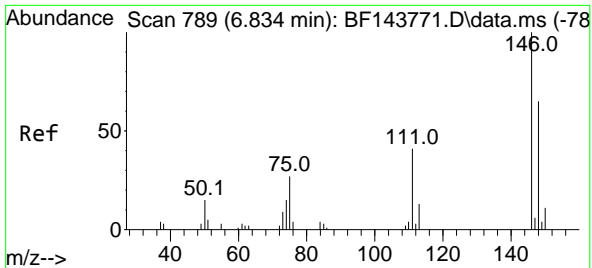
Tgt Ion	Resp	Ion Ratio	Lower	Upper
94	2186	100		
65		28.0	9.8	49.8
66		36.9	21.5	61.5



#11
 bis(2-Chloroethyl)ether
 Concen: 2.629 ng
 RT: 6.616 min Scan# 752
 Delta R.T. -0.018 min
 Lab File: BF143767.D
 Acq: 16 Sep 2025 11:23

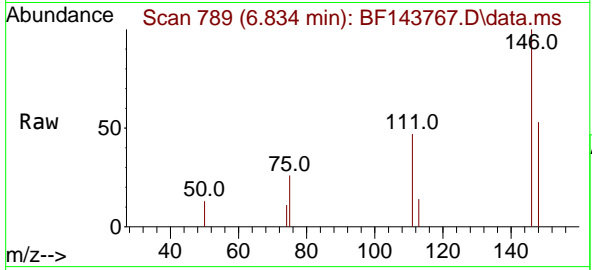
Tgt Ion	Resp	Ion Ratio	Lower	Upper
93	1467	100		
63		88.7	55.7	95.7
95		31.2	11.5	51.5





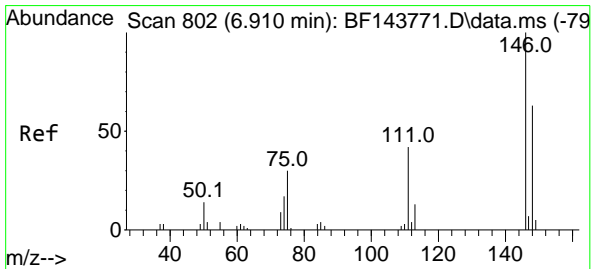
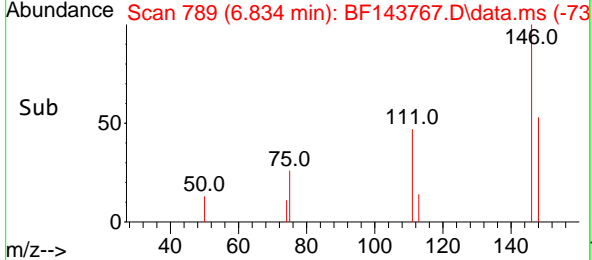
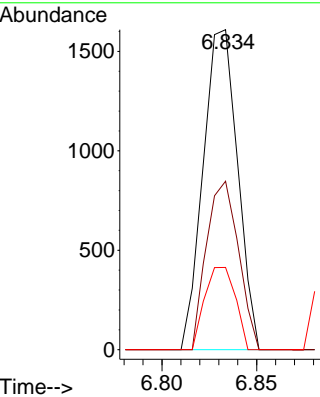
#12
 1,3-Dichlorobenzene
 Concen: 2.947 ng
 RT: 6.834 min Scan# 711
 Delta R.T. -0.006 min
 Lab File: BF143767.D
 Acq: 16 Sep 2025 11:23

Instrument : BNA_F
 ClientSampleId : SSTDICC2.5

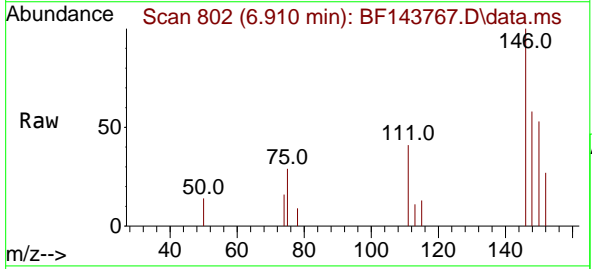


Tgt Ion:146 Resp: 2039

Ion	Ratio	Lower	Upper
146	100		
148	52.6	52.0	78.0
75	25.7	21.4	32.2

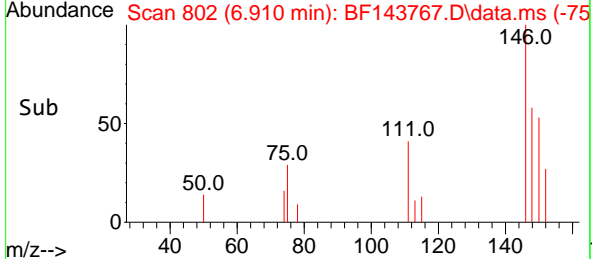
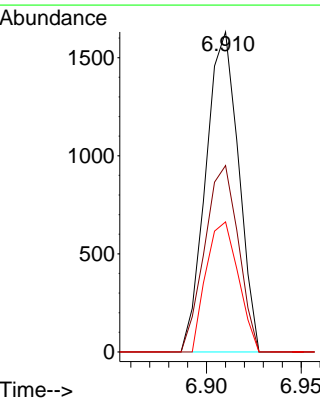


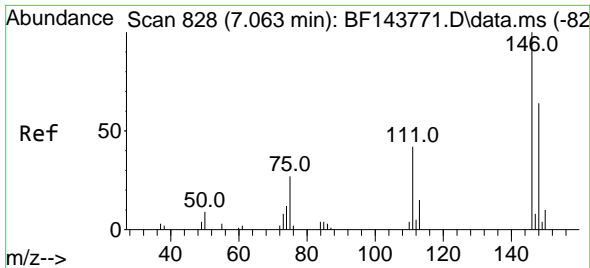
#13
 1,4-Dichlorobenzene
 Concen: 2.858 ng
 RT: 6.910 min Scan# 802
 Delta R.T. -0.006 min
 Lab File: BF143767.D
 Acq: 16 Sep 2025 11:23



Tgt Ion:146 Resp: 1959

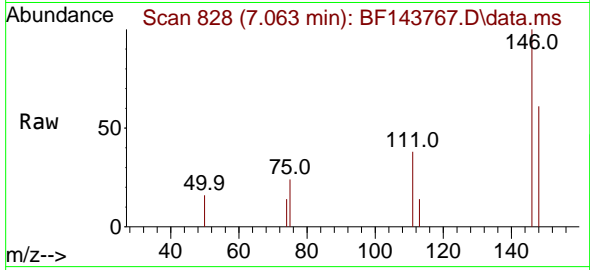
Ion	Ratio	Lower	Upper
146	100		
148	58.2	50.2	75.2
111	40.6	33.3	49.9



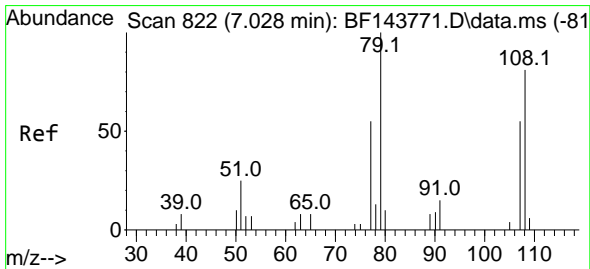
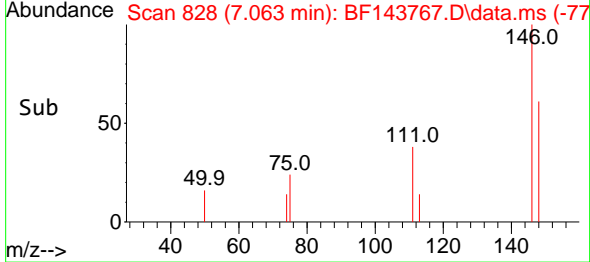
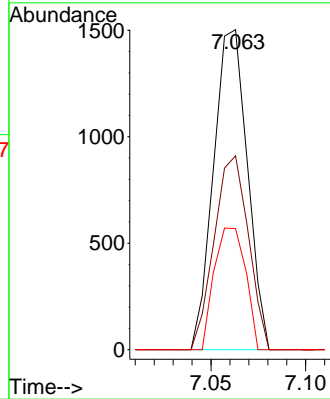


#14
 1,2-Dichlorobenzene
 Concen: 2.900 ng
 RT: 7.063 min Scan# 81
 Delta R.T. -0.006 min
 Lab File: BF143767.D
 Acq: 16 Sep 2025 11:23

Instrument :
 BNA_F
 ClientSampleId :
 SSTDICC2.5

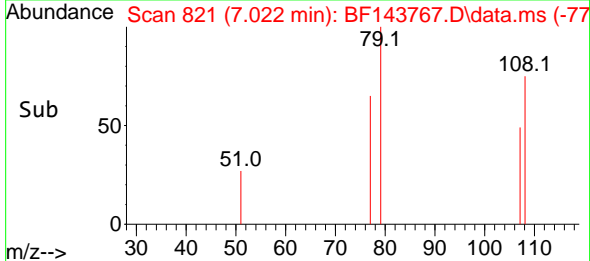
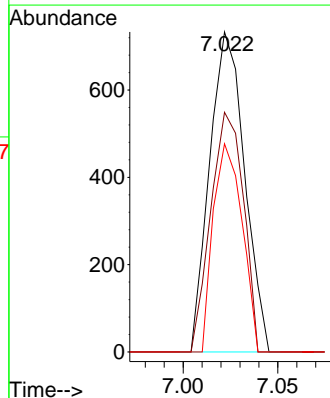
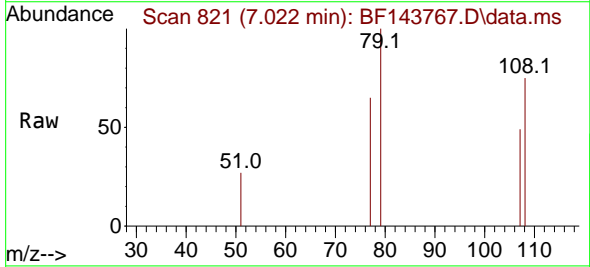


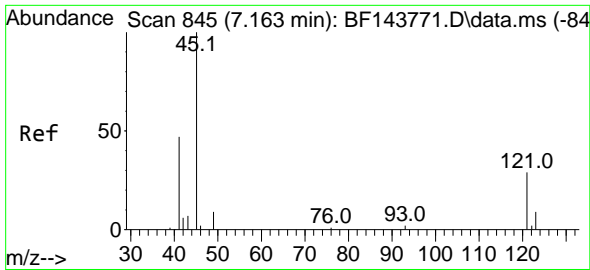
Tgt Ion:146 Resp: 1870
 Ion Ratio Lower Upper
 146 100
 148 60.6 50.9 76.3
 111 37.9 33.3 49.9



#15
 Benzyl Alcohol
 Concen: 2.088 ng
 RT: 7.022 min Scan# 821
 Delta R.T. -0.018 min
 Lab File: BF143767.D
 Acq: 16 Sep 2025 11:23

Tgt Ion: 79 Resp: 940
 Ion Ratio Lower Upper
 79 100
 108 74.9 64.4 96.6
 77 65.1 44.2 66.4

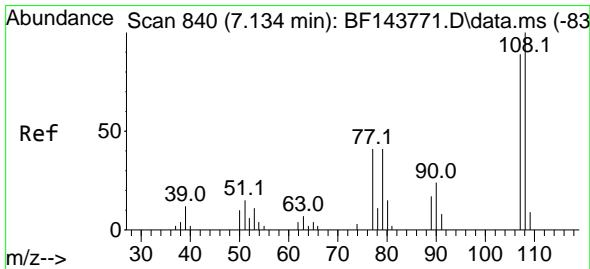
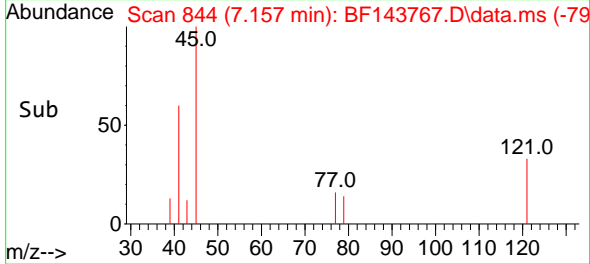
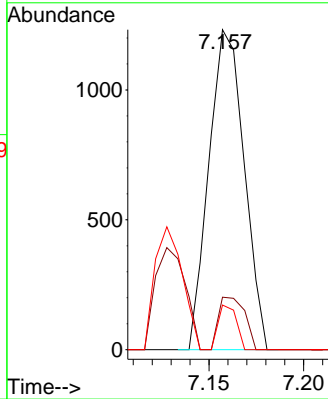
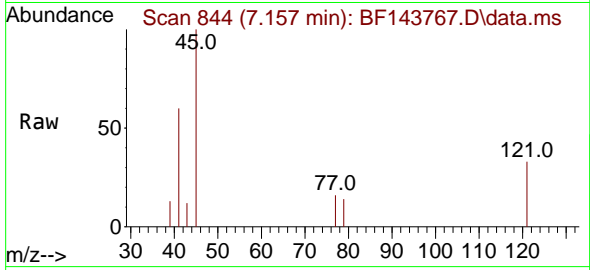




#16
 2,2'-oxybis(1-Chloropropane)
 Concen: 2.563 ng
 RT: 7.157 min Scan# 84
 Delta R.T. -0.012 min
 Lab File: BF143767.D
 Acq: 16 Sep 2025 11:23

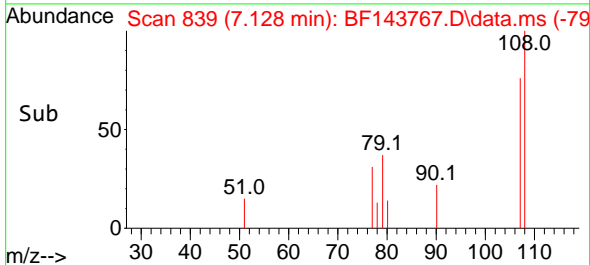
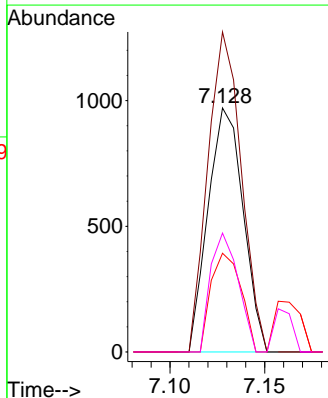
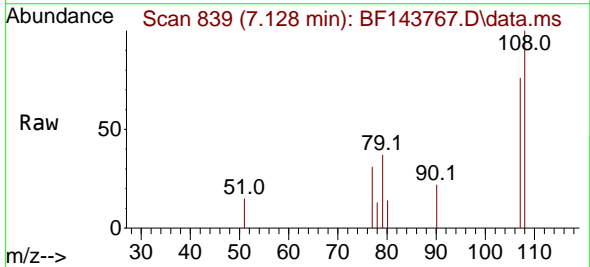
Instrument :
 BNA_F
 ClientSampleId :
 SSTDICC2.5

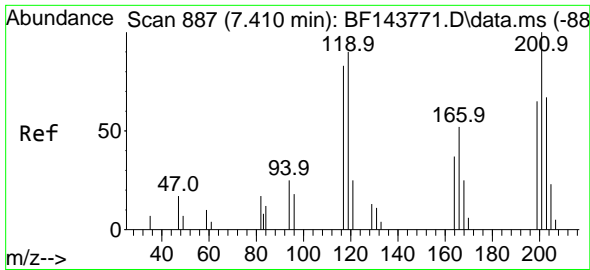
Tgt Ion	Resp	Ion Ratio	Lower	Upper
45	1593	100		
77	16.4	0.0	0.0	37.0
79	14.0	0.0	0.0	32.4



#17
 2-Methylphenol
 Concen: 2.686 ng
 RT: 7.128 min Scan# 839
 Delta R.T. -0.018 min
 Lab File: BF143767.D
 Acq: 16 Sep 2025 11:23

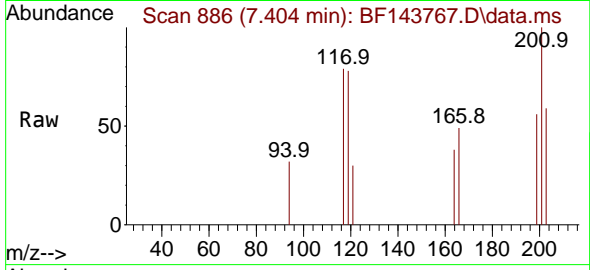
Tgt Ion	Resp	Ion Ratio	Lower	Upper
107	1251	100		
108	131.1	89.7	134.5	
77	40.5	37.1	55.7	
79	48.7	36.4	54.6	



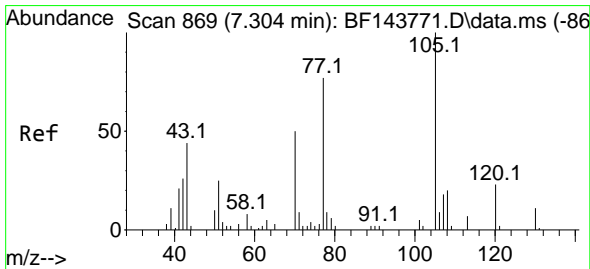
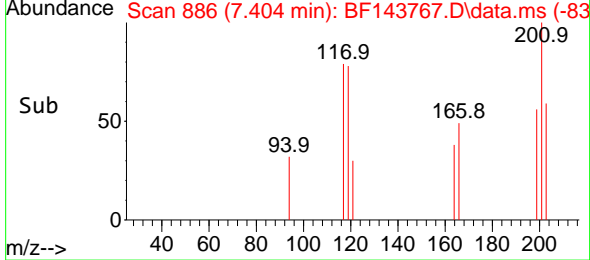
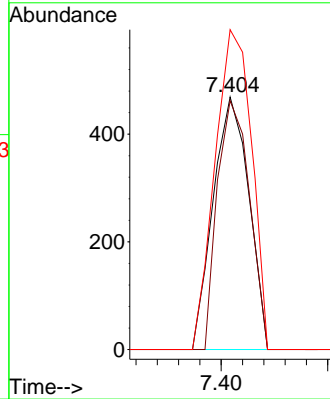


#18
 Hexachloroethane
 Concen: 2.541 ng
 RT: 7.404 min Scan# 81
 Delta R.T. -0.006 min
 Lab File: BF143767.D
 Acq: 16 Sep 2025 11:23

Instrument : BNA_F
 Client Sample Id : SSTDICC2.5

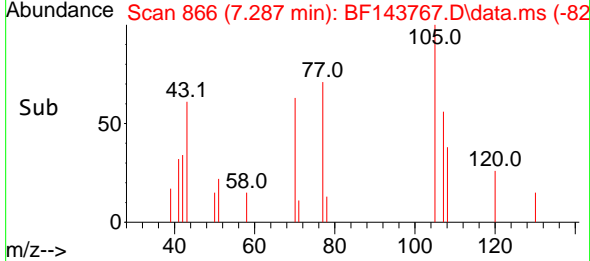
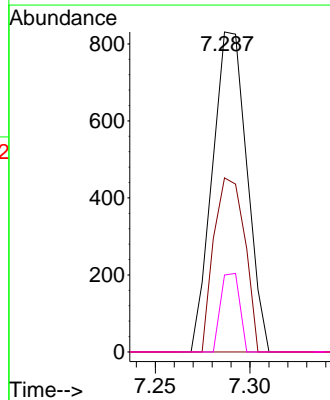
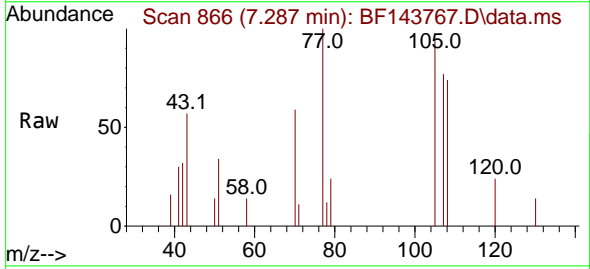


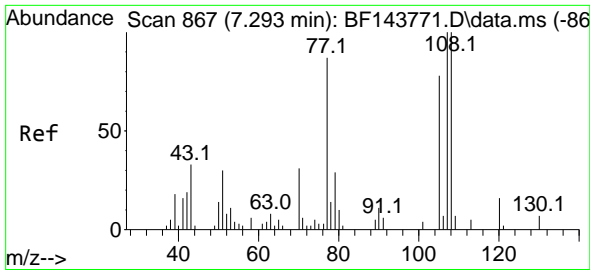
Tgt Ion: 117 Resp: 545
 Ion Ratio Lower Upper
 117 100
 119 98.5 86.6 130.0
 201 126.7 95.8 143.8



#19
 n-Nitroso-di-n-propylamine
 Concen: 2.692 ng
 RT: 7.287 min Scan# 866
 Delta R.T. -0.035 min
 Lab File: BF143767.D
 Acq: 16 Sep 2025 11:23

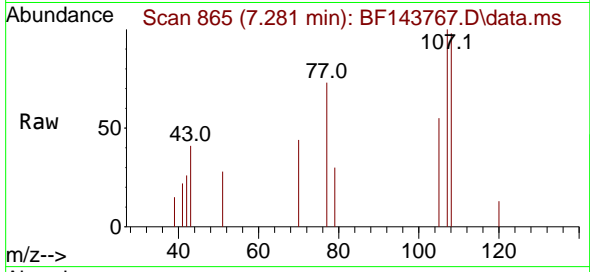
Tgt Ion: 70 Resp: 1054
 Ion Ratio Lower Upper
 70 100
 42 54.4 41.0 61.6
 101 0.0 7.4 11.0#
 130 24.1 18.2 27.2





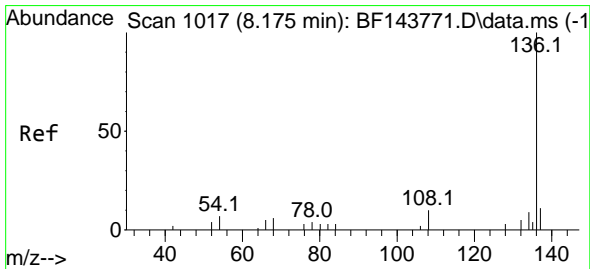
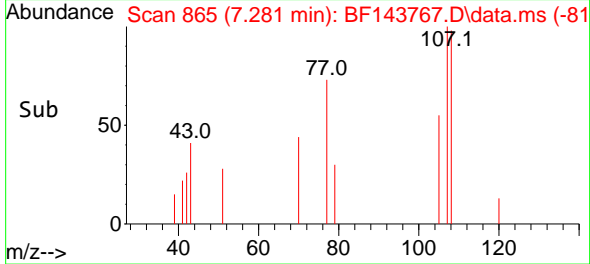
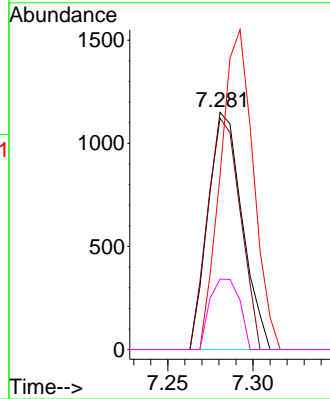
#20
 3+4-Methylphenols
 Concen: 2.612 ng
 RT: 7.281 min Scan# 80
 Delta R.T. -0.023 min
 Lab File: BF143767.D
 Acq: 16 Sep 2025 11:23

Instrument :
 BNA_F
 ClientSampleId :
 SSTDICC2.5



Tgt Ion:107 Resp: 1601

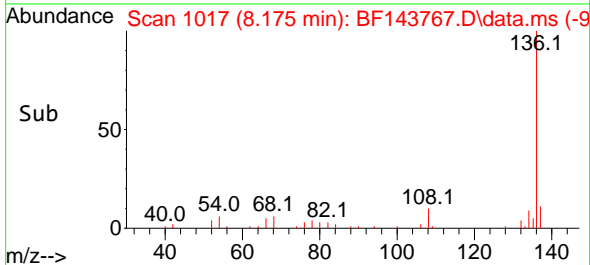
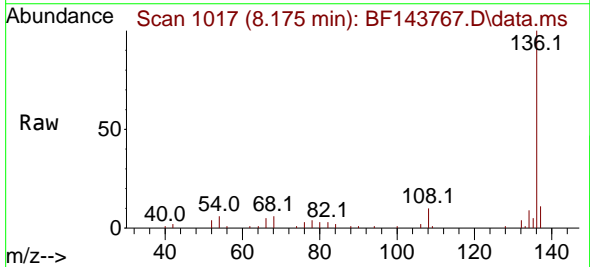
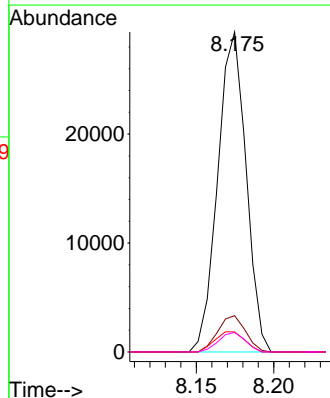
Ion	Ratio	Lower	Upper
107	100		
108	97.6	79.7	119.7
77	73.4	67.1	107.1
79	29.7	9.3	49.3

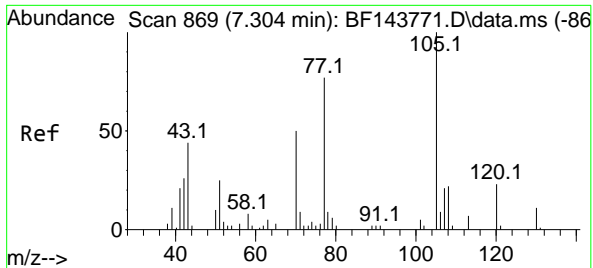


#21
 Naphthalene-d8
 Concen: 20.000 ng
 RT: 8.175 min Scan# 1017
 Delta R.T. -0.006 min
 Lab File: BF143767.D
 Acq: 16 Sep 2025 11:23

Tgt Ion:136 Resp: 37291

Ion	Ratio	Lower	Upper
136	100		
137	11.3	8.9	13.3
54	6.2	5.9	8.9
68	6.1	4.6	6.8

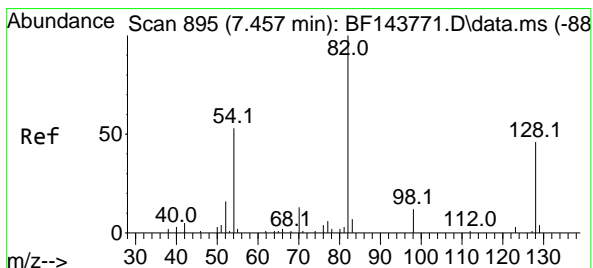
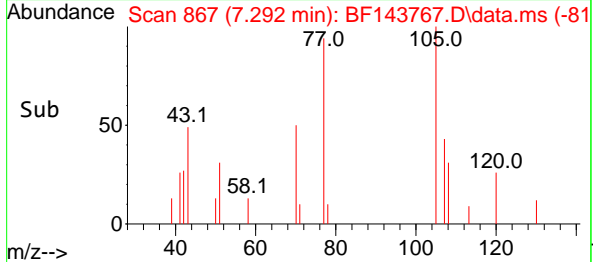
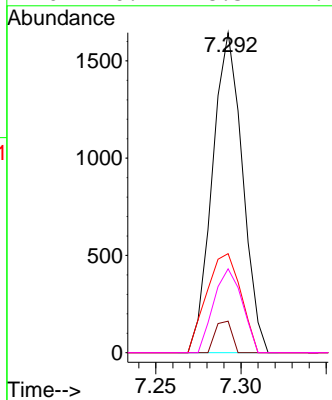
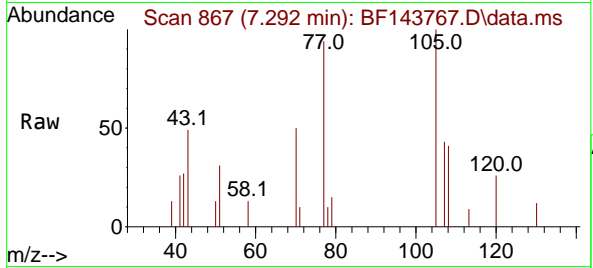




#22
 Acetophenone
 Concen: 2.300 ng
 RT: 7.292 min Scan# 80
 Delta R.T. -0.018 min
 Lab File: BF143767.D
 Acq: 16 Sep 2025 11:23

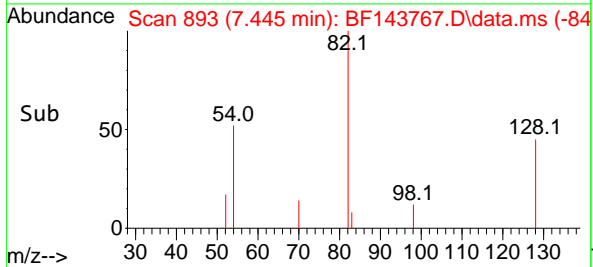
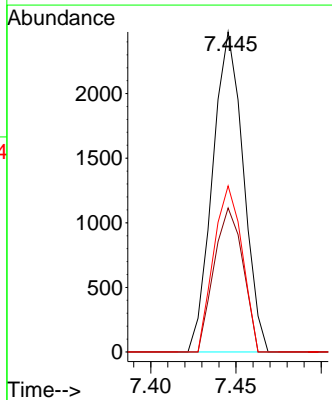
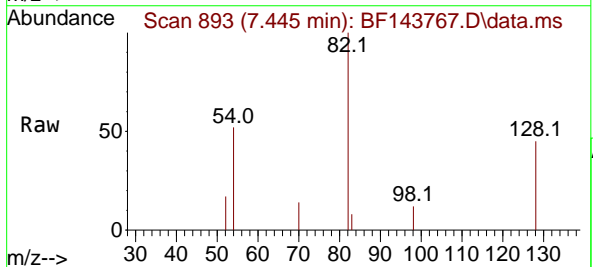
Instrument : BNA_F
 ClientSampleId : SSTDICC2.5

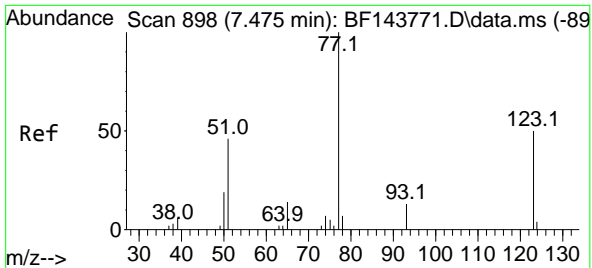
Tgt Ion	Resp	Lower	Upper
105	100		
71	9.8	7.2	10.8
51	30.9	20.0	30.0
120	26.2	18.5	27.7



#23
 Nitrobenzene-d5
 Concen: 4.936 ng
 RT: 7.445 min Scan# 893
 Delta R.T. -0.023 min
 Lab File: BF143767.D
 Acq: 16 Sep 2025 11:23

Tgt Ion	Resp	Lower	Upper
82	100		
128	45.0	36.6	55.0
54	51.9	41.9	62.9

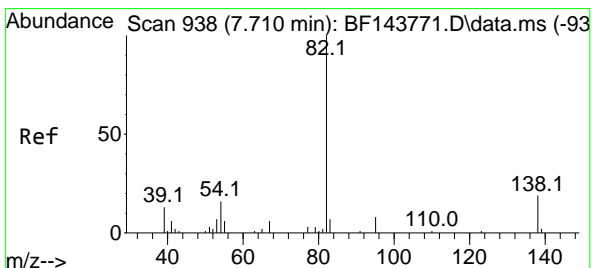
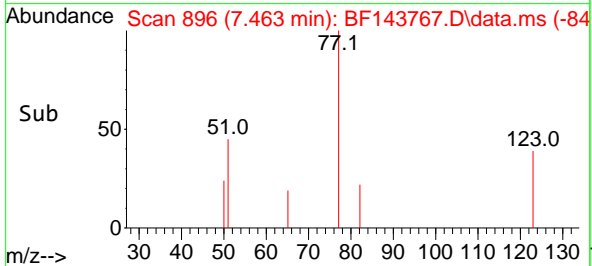
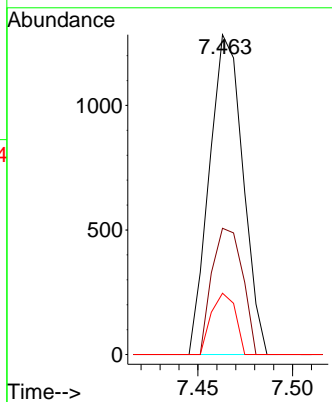
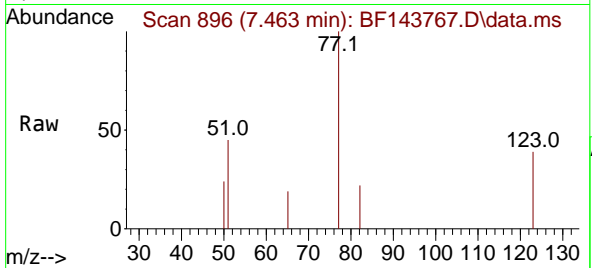




#24
 Nitrobenzene
 Concen: 2.480 ng
 RT: 7.463 min Scan# 89
 Delta R.T. -0.023 min
 Lab File: BF143767.D
 Acq: 16 Sep 2025 11:23

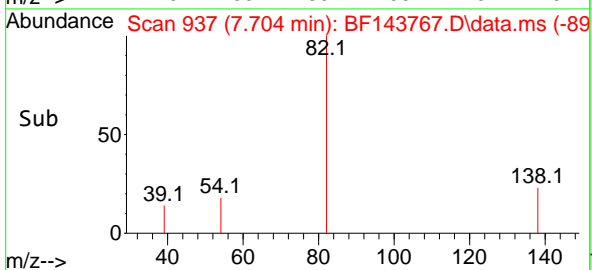
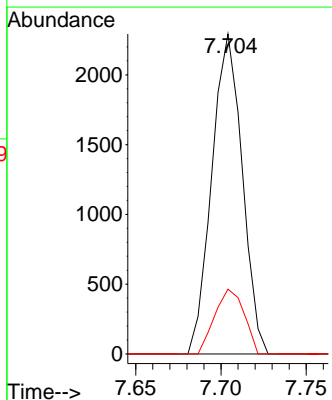
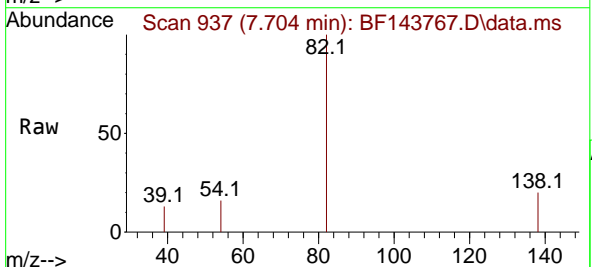
Instrument :
 BNA_F
 ClientSampleId :
 SSTDICC2.5

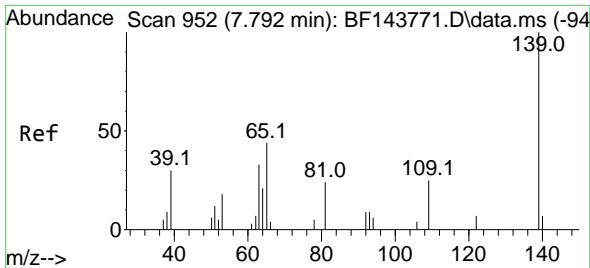
Tgt Ion	Resp	Lower	Upper
77	1585		
123	39.5	40.0	60.0#
65	19.2	11.6	17.4#



#25
 Isophorone
 Concen: 2.492 ng
 RT: 7.704 min Scan# 937
 Delta R.T. -0.023 min
 Lab File: BF143767.D
 Acq: 16 Sep 2025 11:23

Tgt Ion	Resp	Lower	Upper
82	2844		
95	0.0	6.1	9.1#
138	20.2	15.4	23.2



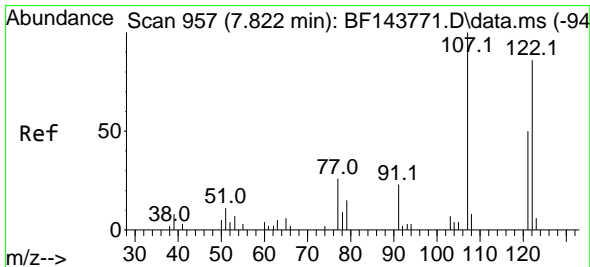
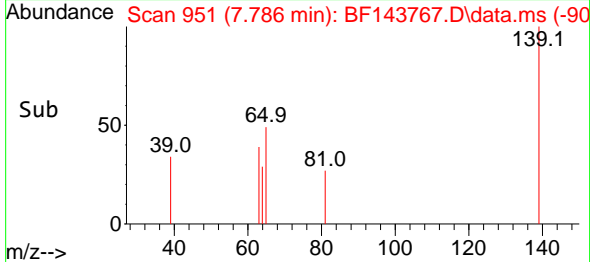
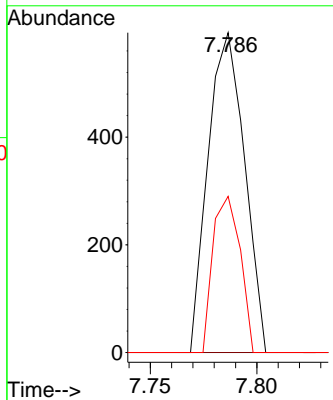
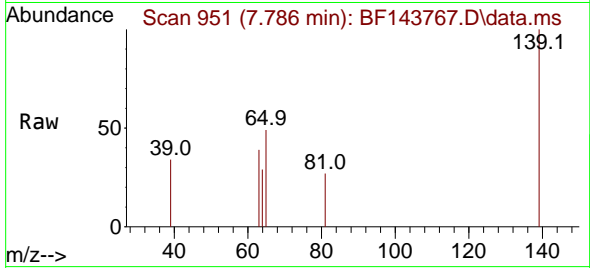


#26
 2-Nitrophenol
 Concen: 2.049 ng
 RT: 7.786 min Scan# 91
 Delta R.T. -0.012 min
 Lab File: BF143767.D
 Acq: 16 Sep 2025 11:23

Instrument :
 BNA_F
 ClientSampleId :
 SSTDICC2.5

Tgt Ion:139 Resp: 707

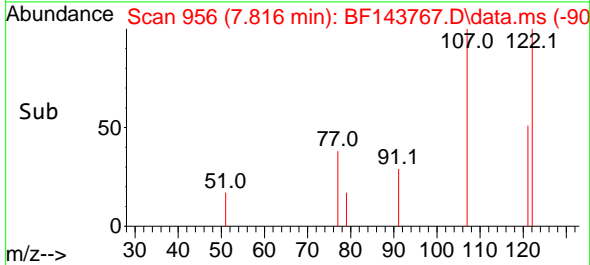
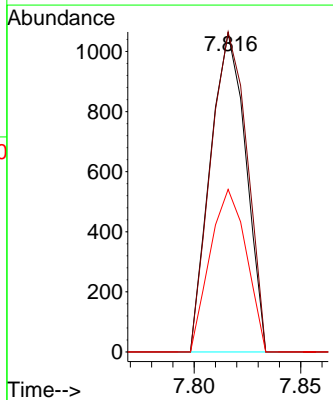
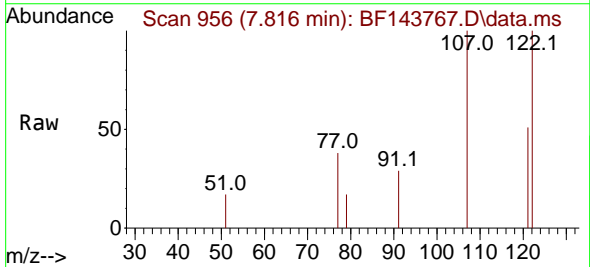
Ion	Ratio	Lower	Upper
139	100		
109	0.0	20.1	30.1#
65	48.8	35.1	52.7

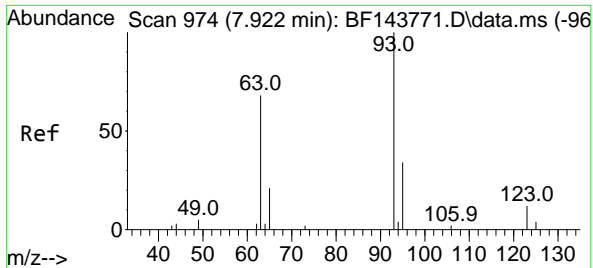


#27
 2,4-Dimethylphenol
 Concen: 2.254 ng
 RT: 7.816 min Scan# 956
 Delta R.T. -0.012 min
 Lab File: BF143767.D
 Acq: 16 Sep 2025 11:23

Tgt Ion:122 Resp: 1233

Ion	Ratio	Lower	Upper
122	100		
107	100.4	92.8	139.2
121	51.0	46.5	69.7





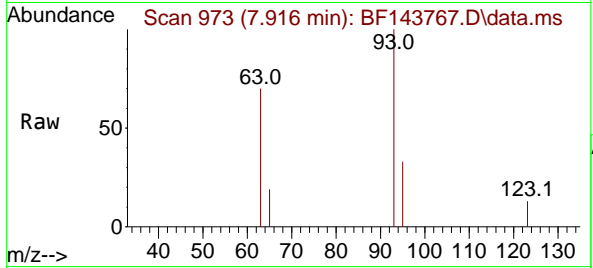
#28
 bis(2-Chloroethoxy)methane
 Concen: 2.201 ng
 RT: 7.916 min Scan# 911
 Delta R.T. -0.012 min
 Lab File: BF143767.D
 Acq: 16 Sep 2025 11:23

Instrument :

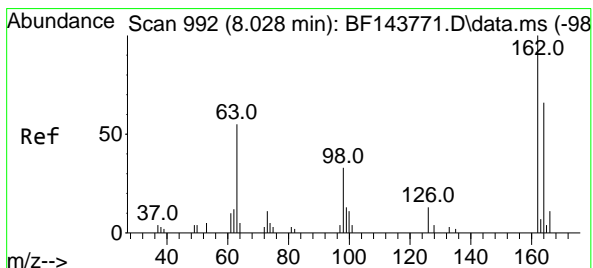
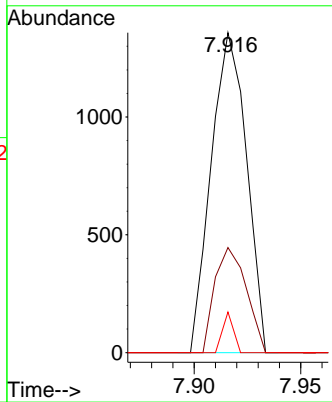
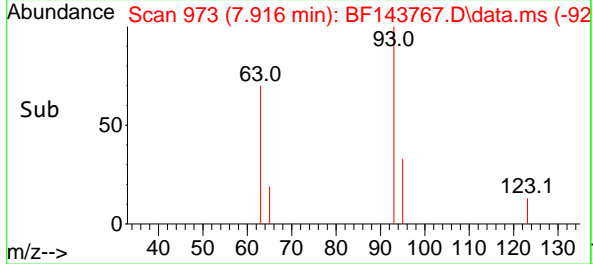
BNA_F

ClientSampleId :

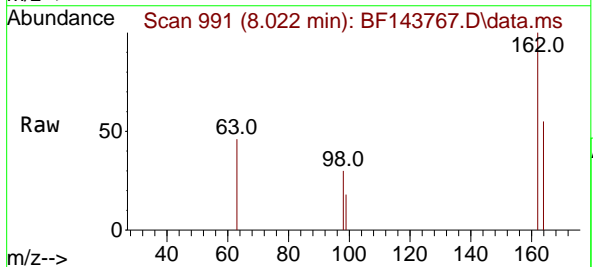
SSTDICC2.5



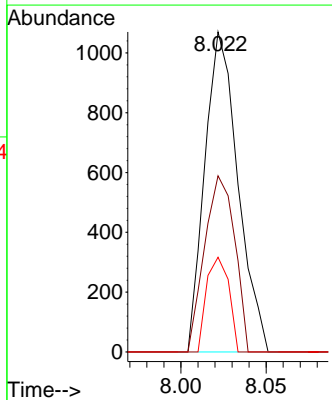
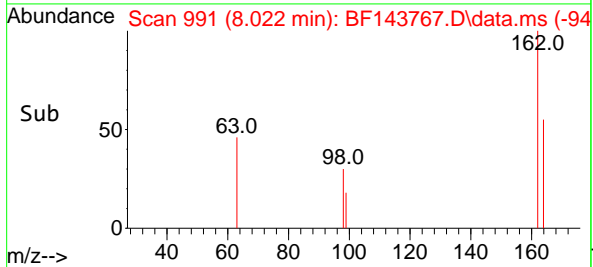
Tgt Ion: 93 Resp: 1566
 Ion Ratio Lower Upper
 93 100
 95 32.8 27.4 41.0
 123 12.7 9.4 14.0

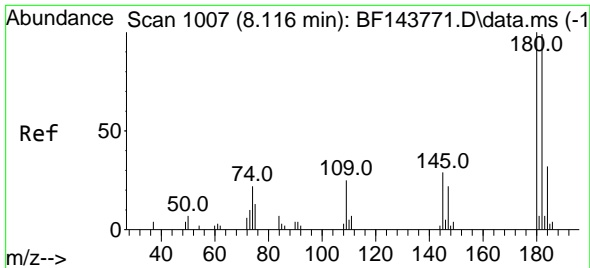


#29
 2,4-Dichlorophenol
 Concen: 2.690 ng
 RT: 8.022 min Scan# 991
 Delta R.T. -0.018 min
 Lab File: BF143767.D
 Acq: 16 Sep 2025 11:23



Tgt Ion: 162 Resp: 1445
 Ion Ratio Lower Upper
 162 100
 164 55.0 45.6 85.6
 98 29.6 13.3 53.3





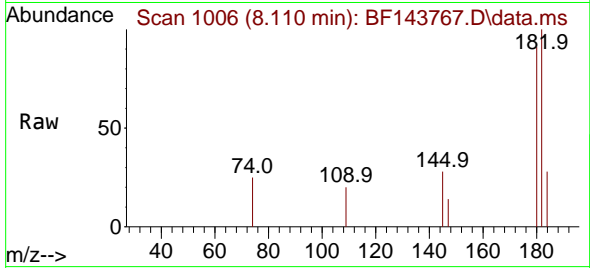
#30
 1,2,4-Trichlorobenzene
 Concen: 2.439 ng
 RT: 8.110 min Scan# 1006
 Delta R.T. -0.012 min
 Lab File: BF143767.D
 Acq: 16 Sep 2025 11:23

Instrument :

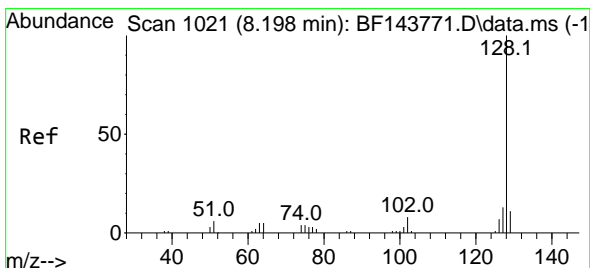
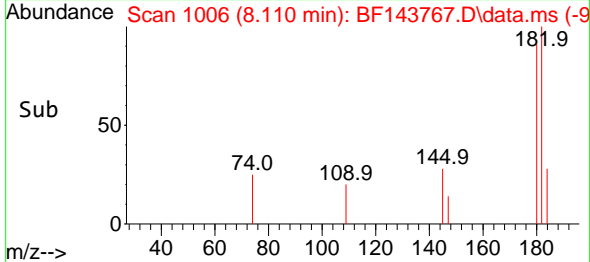
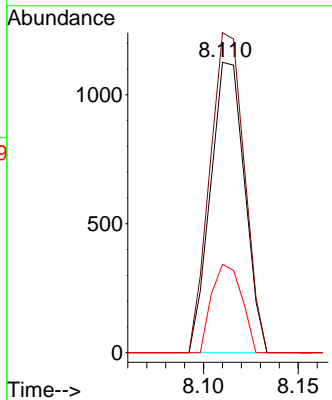
BNA_F

Client Sample Id :

SSTDICC2.5

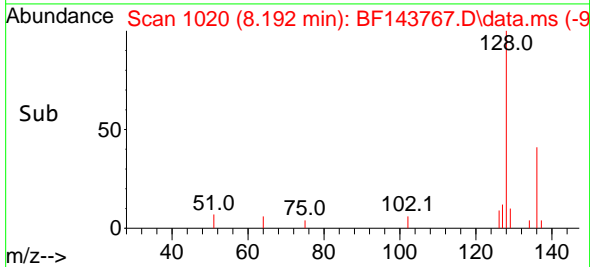
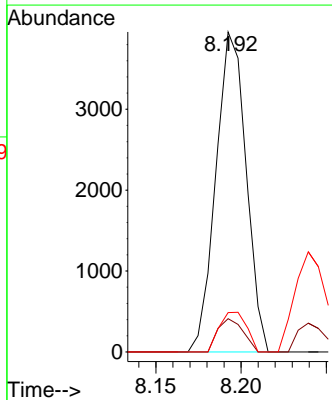
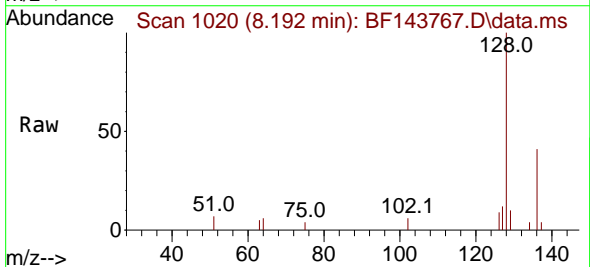


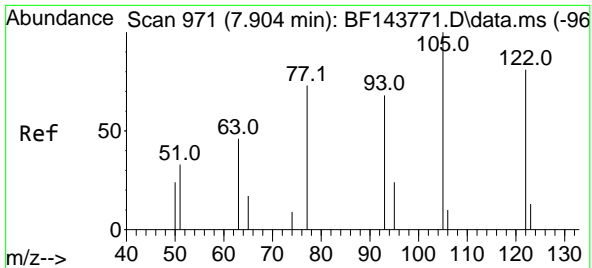
Tgt Ion:180 Resp: 1412
 Ion Ratio Lower Upper
 180 100
 182 110.2 79.5 119.3
 145 30.5 23.0 34.4



#31
 Naphthalene
 Concen: 2.566 ng
 RT: 8.192 min Scan# 1020
 Delta R.T. -0.012 min
 Lab File: BF143767.D
 Acq: 16 Sep 2025 11:23

Tgt Ion:128 Resp: 4887
 Ion Ratio Lower Upper
 128 100
 129 10.4 8.6 12.8
 127 12.3 10.7 16.1

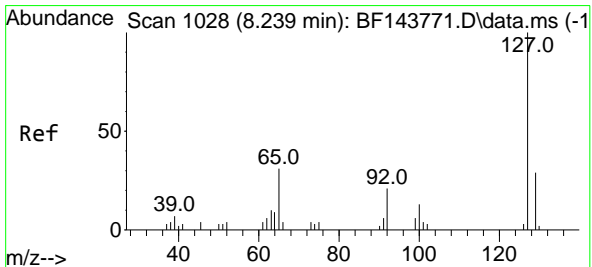
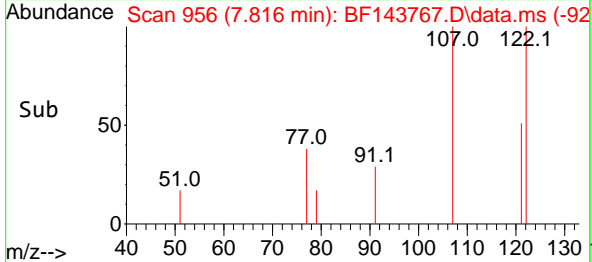
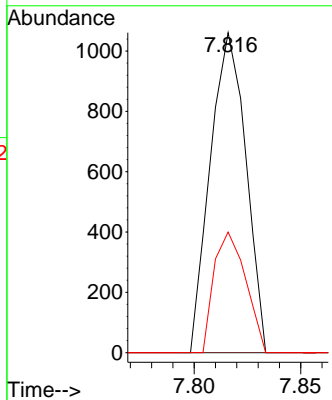
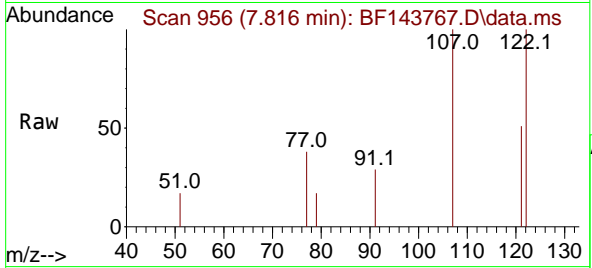




#32
 Benzoic acid
 Concen: 10.821 ng
 RT: 7.816 min Scan# 91
 Delta R.T. -0.141 min
 Lab File: BF143767.D
 Acq: 16 Sep 2025 11:23

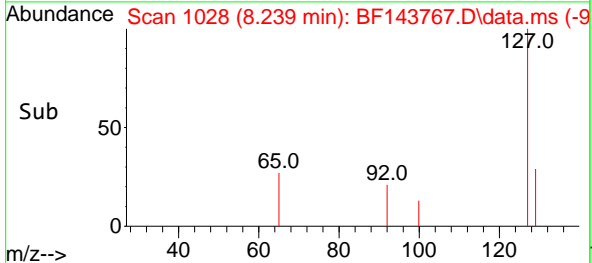
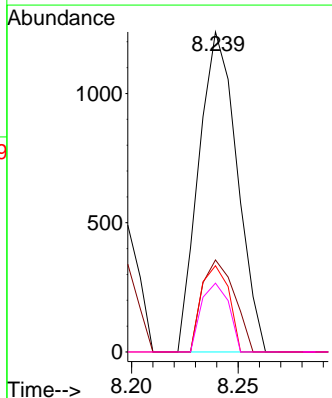
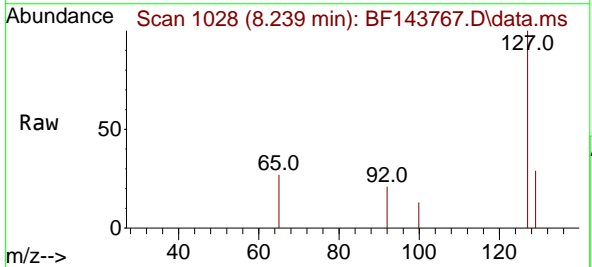
Instrument :
 BNA_F
 ClientSampleId :
 SSTDICC2.5

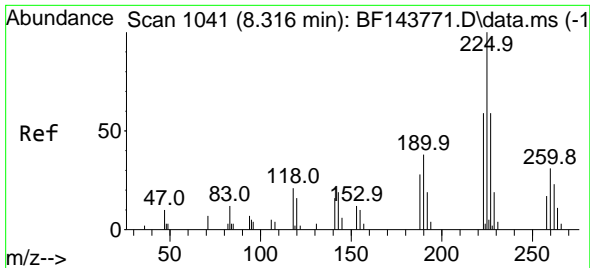
Tgt Ion	Resp	Lower	Upper
122	1233		
105	0.0	96.8	136.8#
77	37.7	59.1	99.1#



#33
 4-Chloroaniline
 Concen: 2.443 ng
 RT: 8.239 min Scan# 1028
 Delta R.T. -0.012 min
 Lab File: BF143767.D
 Acq: 16 Sep 2025 11:23

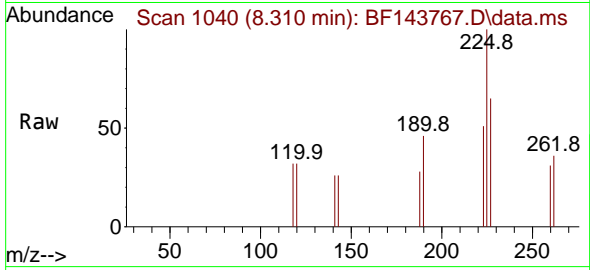
Tgt Ion	Resp	Lower	Upper
127	1552		
129	28.8	24.3	36.5
65	27.0	24.0	36.0
92	21.5	16.0	24.0





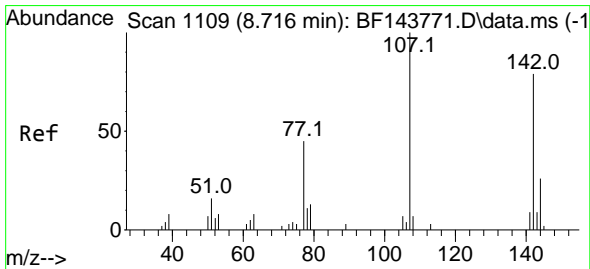
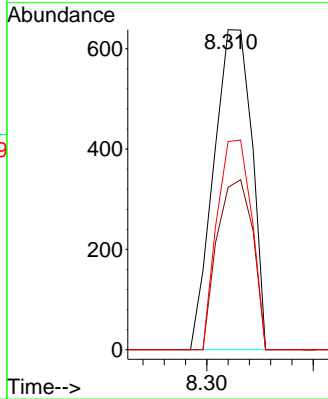
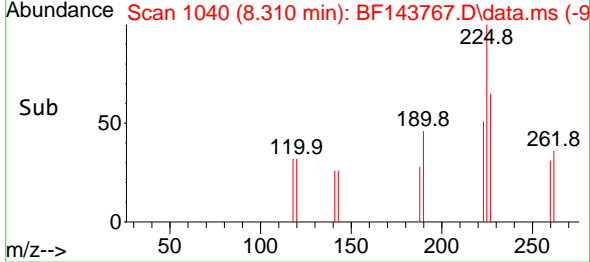
#34
 Hexachlorobutadiene
 Concen: 2.128 ng
 RT: 8.310 min Scan# 1108
 Delta R.T. -0.006 min
 Lab File: BF143767.D
 Acq: 16 Sep 2025 11:23

Instrument : BNA_F
 ClientSampleId : SSTDICC2.5

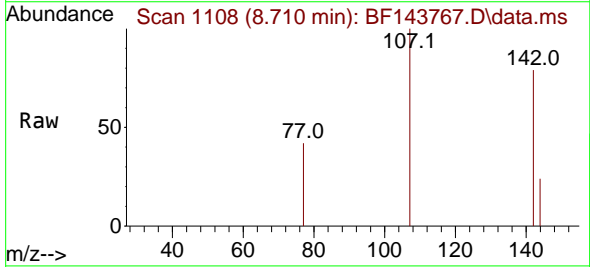


Tgt Ion: 225 Resp: 790

Ion	Ratio	Lower	Upper
225	100		
223	50.8	47.1	70.7
227	65.0	47.0	70.6

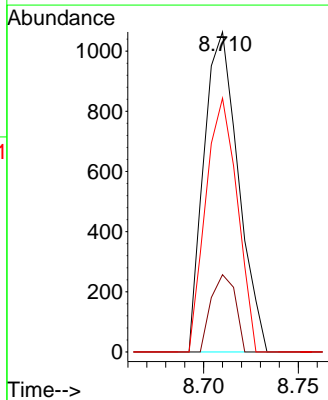
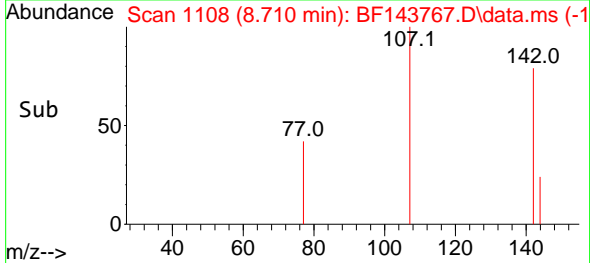


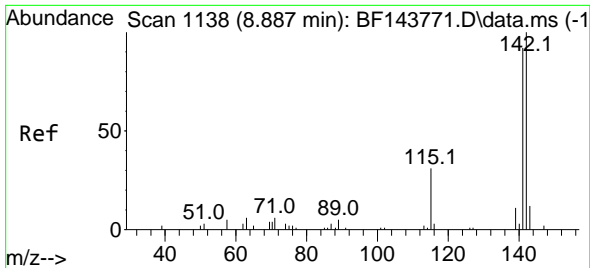
#36
 4-Chloro-3-methylphenol
 Concen: 2.529 ng
 RT: 8.710 min Scan# 1108
 Delta R.T. -0.018 min
 Lab File: BF143767.D
 Acq: 16 Sep 2025 11:23



Tgt Ion: 107 Resp: 1343

Ion	Ratio	Lower	Upper
107	100		
144	24.2	21.2	31.8
142	79.3	63.0	94.6

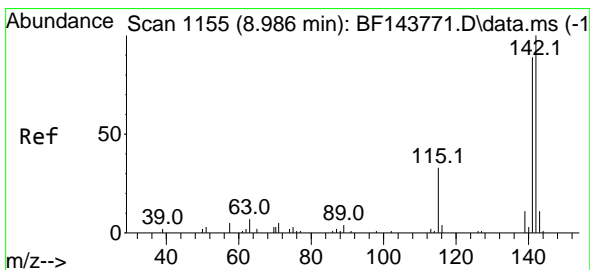
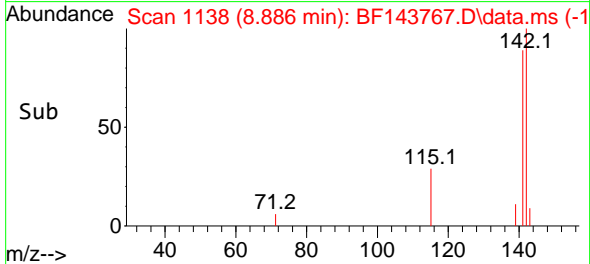
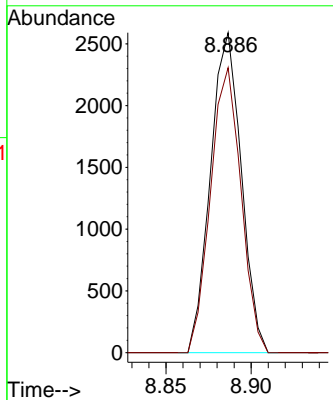
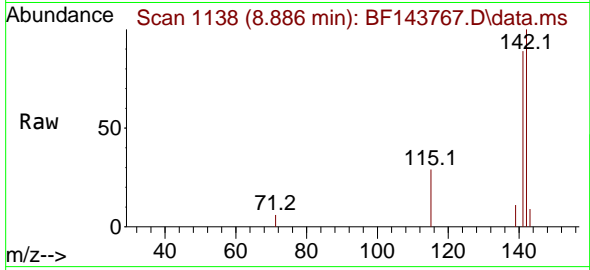




#37
 2-Methylnaphthalene
 Concen: 2.647 ng
 RT: 8.886 min Scan# 1138
 Delta R.T. -0.006 min
 Lab File: BF143767.D
 Acq: 16 Sep 2025 11:23

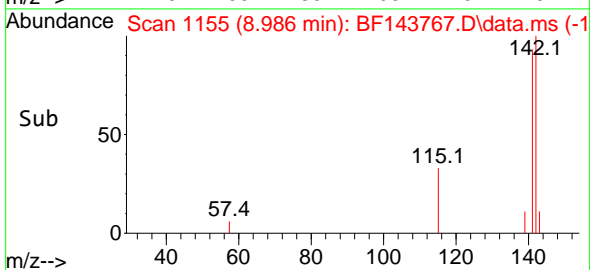
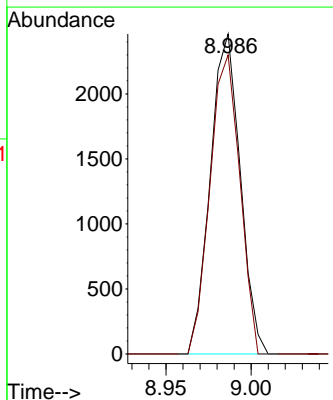
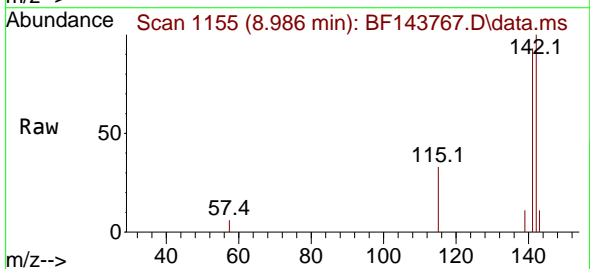
Instrument : BNA_F
 ClientSampleId : SSTDICC2.5

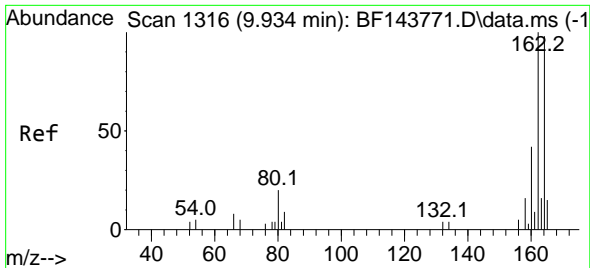
Tgt Ion:142 Resp: 3259
 Ion Ratio Lower Upper
 142 100
 141 89.1 74.0 111.0



#38
 1-Methylnaphthalene
 Concen: 2.503 ng
 RT: 8.986 min Scan# 1155
 Delta R.T. -0.006 min
 Lab File: BF143767.D
 Acq: 16 Sep 2025 11:23

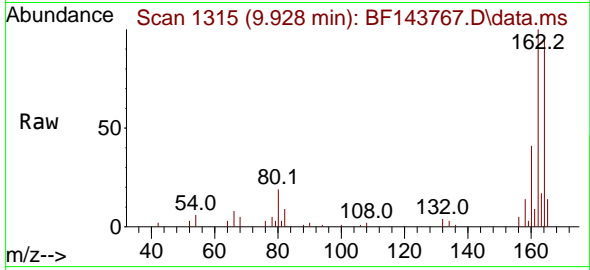
Tgt Ion:142 Resp: 3008
 Ion Ratio Lower Upper
 142 100
 141 93.5 71.4 107.0





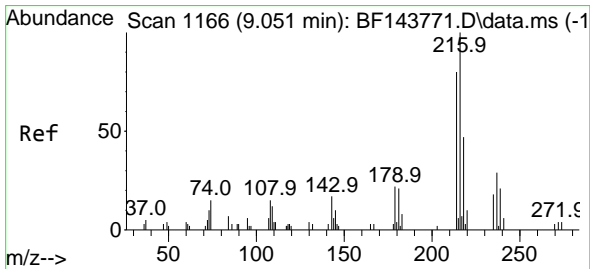
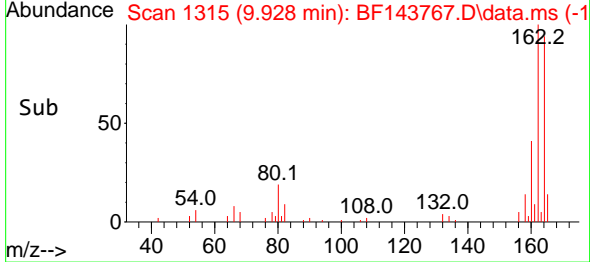
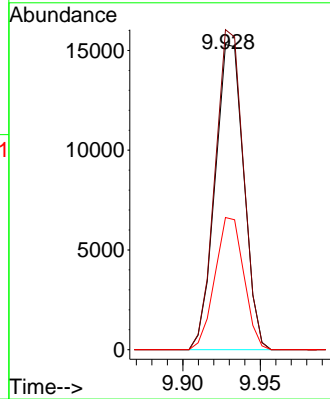
#39
 Acenaphthene-d10
 Concen: 20.000 ng
 RT: 9.928 min Scan# 1116
 Delta R.T. -0.006 min
 Lab File: BF143767.D
 Acq: 16 Sep 2025 11:23

Instrument :
 BNA_F
 ClientSampleId :
 SSTDICC2.5



Tgt Ion:164 Resp: 19751

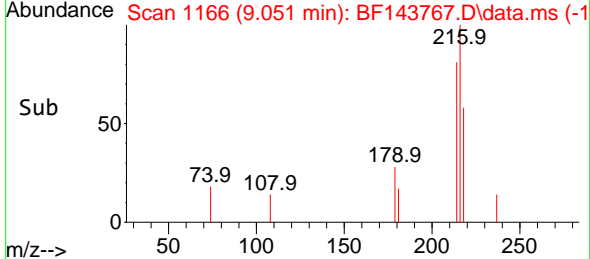
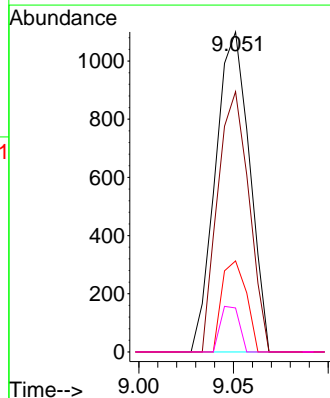
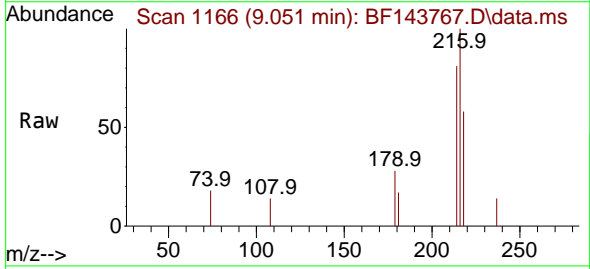
Ion	Ratio	Lower	Upper
164	100		
162	104.9	81.5	122.3
160	43.3	33.9	50.9

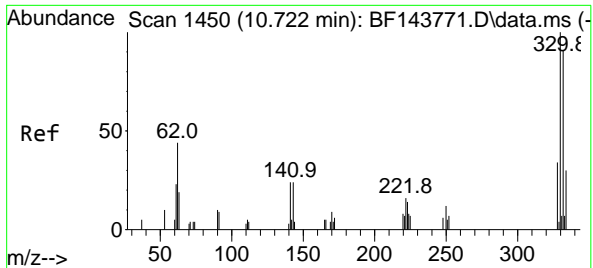


#40
 1,2,4,5-Tetrachlorobenzene
 Concen: 2.311 ng
 RT: 9.051 min Scan# 1166
 Delta R.T. -0.006 min
 Lab File: BF143767.D
 Acq: 16 Sep 2025 11:23

Tgt Ion:216 Resp: 1377

Ion	Ratio	Lower	Upper
216	100		
214	74.7	62.9	94.3
179	20.4	17.3	25.9
108	7.9	11.6	17.4



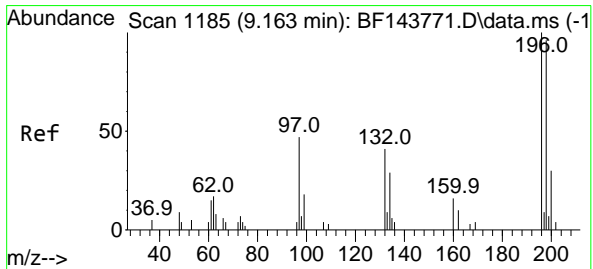
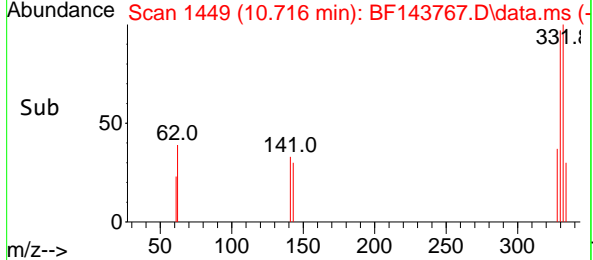
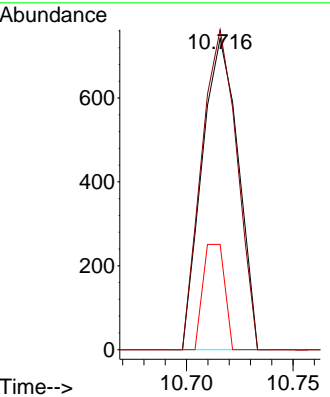
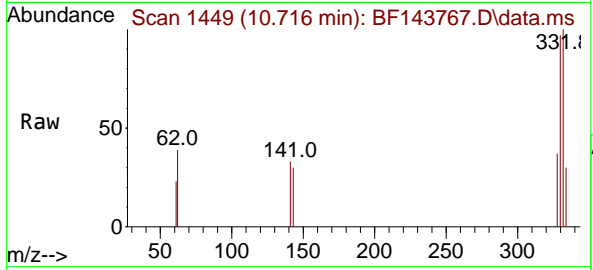


#42
 2,4,6-Tribromophenol
 Concen: 4.402 ng
 RT: 10.716 min Scan# 1449
 Delta R.T. -0.018 min
 Lab File: BF143767.D
 Acq: 16 Sep 2025 11:23

Instrument : BNA_F
 ClientSampleId : SSTDICC2.5

Tgt Ion:330 Resp: 877

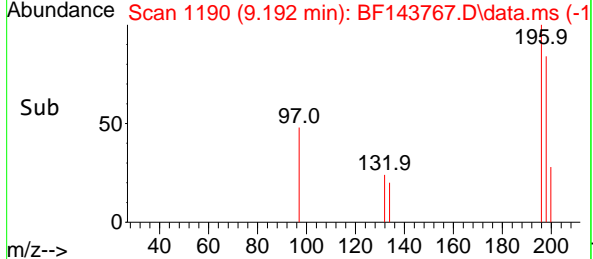
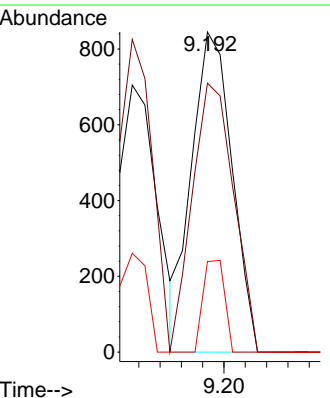
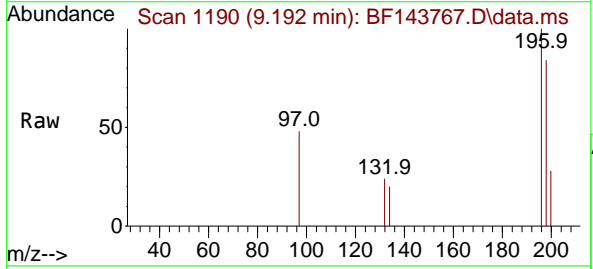
Ion	Ratio	Lower	Upper
330	100		
332	100.7	72.0	108.0
141	20.2	20.3	30.5

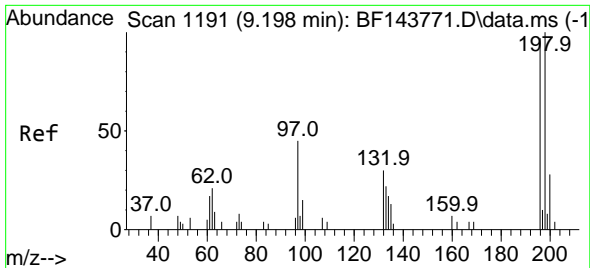


#43
 2,4,6-Trichlorophenol
 Concen: 2.773 ng
 RT: 9.192 min Scan# 1190
 Delta R.T. 0.024 min
 Lab File: BF143767.D
 Acq: 16 Sep 2025 11:23

Tgt Ion:196 Resp: 1115

Ion	Ratio	Lower	Upper
196	100		
198	84.0	76.9	115.3
200	28.3	24.3	36.5



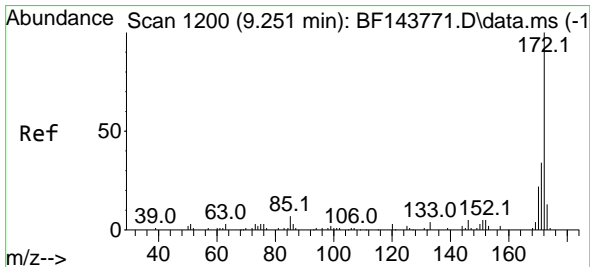
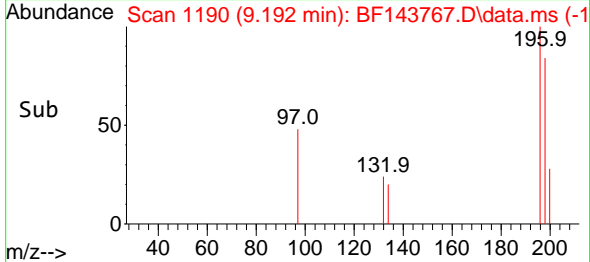
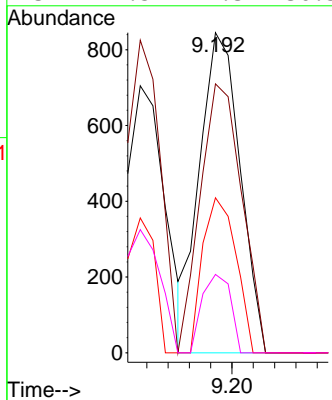
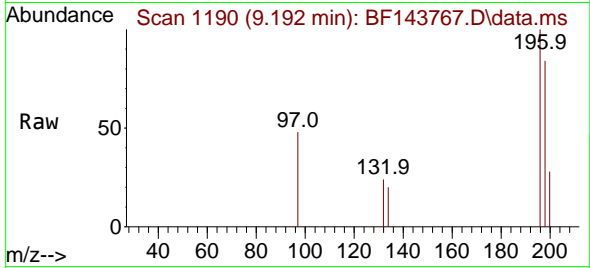


#44
 2,4,5-Trichlorophenol
 Concen: 2.775 ng
 RT: 9.192 min Scan# 1115
 Delta R.T. -0.018 min
 Lab File: BF143767.D
 Acq: 16 Sep 2025 11:23

Instrument :
 BNA_F
 ClientSampleId :
 SSTDICC2.5

Tgt Ion:196 Resp: 1115

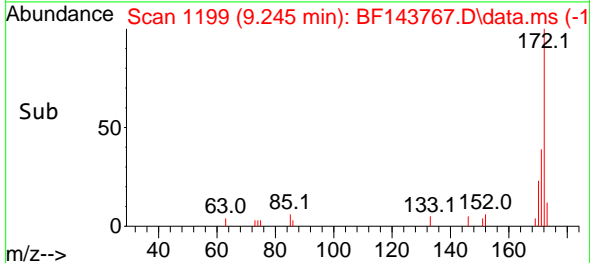
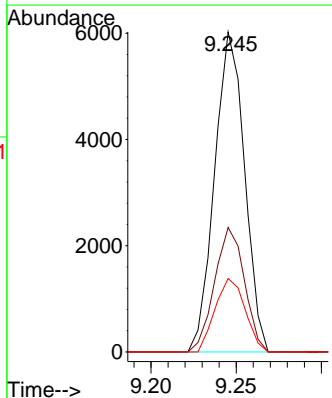
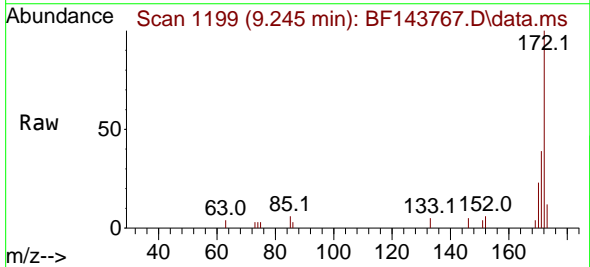
Ion	Ratio	Lower	Upper
196	100		
198	84.0	80.8	121.2
97	48.4	36.6	54.8
132	24.5	24.3	36.5

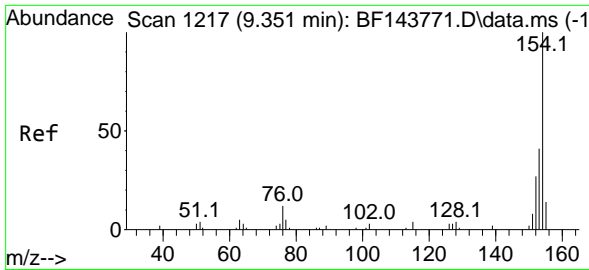


#45
 2-Fluorobiphenyl
 Concen: 5.129 ng
 RT: 9.245 min Scan# 1199
 Delta R.T. -0.012 min
 Lab File: BF143767.D
 Acq: 16 Sep 2025 11:23

Tgt Ion:172 Resp: 7359

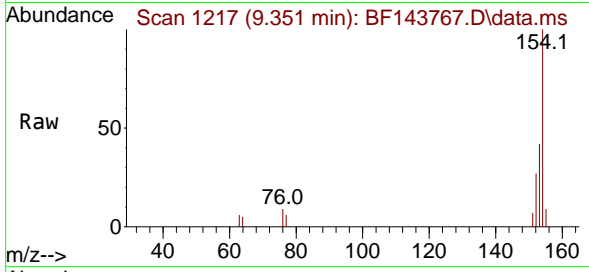
Ion	Ratio	Lower	Upper
172	100		
171	38.9	27.5	41.3
170	22.9	17.7	26.5



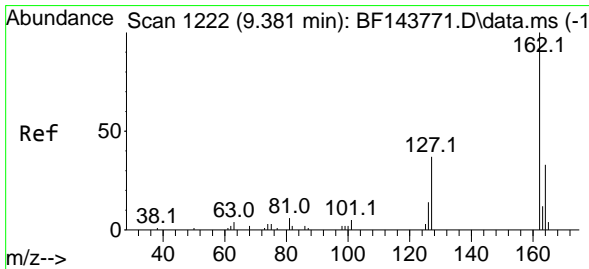
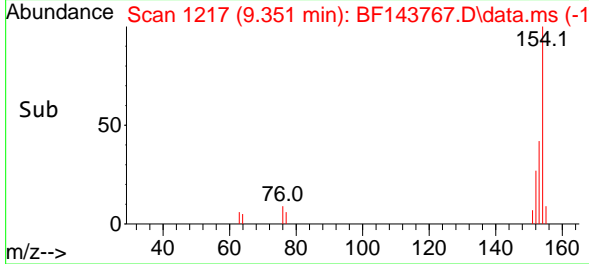
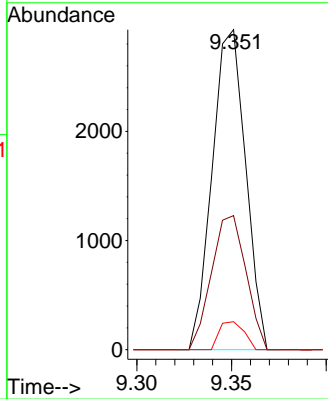


#46
 1,1'-Biphenyl
 Concen: 2.370 ng
 RT: 9.351 min Scan# 1217
 Delta R.T. -0.012 min
 Lab File: BF143767.D
 Acq: 16 Sep 2025 11:23

Instrument : BNA_F
 ClientSampleId : BF143767.D
 SSTDICC2.5

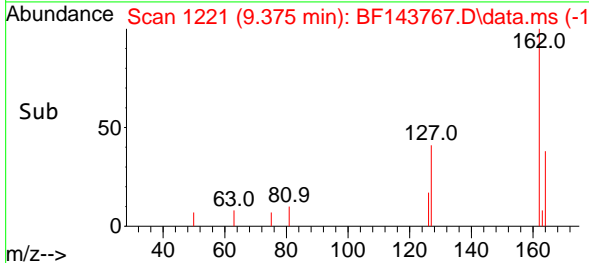
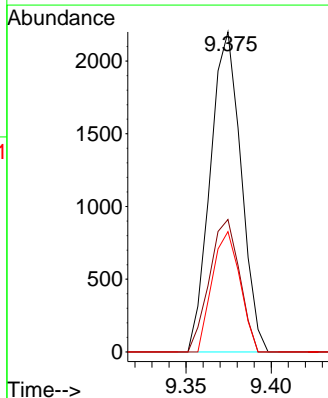
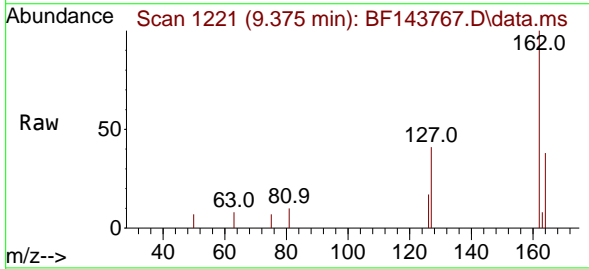


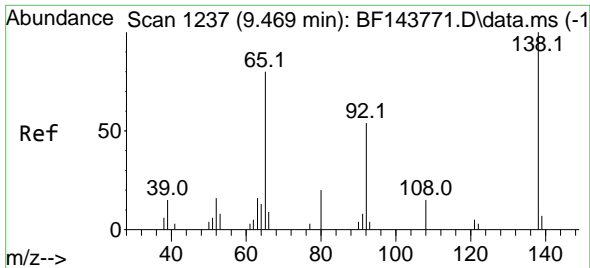
Tgt Ion:154 Resp: 3596
 Ion Ratio Lower Upper
 154 100
 153 41.9 21.3 61.3
 76 8.8 0.0 32.1



#47
 2-Chloronaphthalene
 Concen: 2.338 ng
 RT: 9.375 min Scan# 1221
 Delta R.T. -0.012 min
 Lab File: BF143767.D
 Acq: 16 Sep 2025 11:23

Tgt Ion:162 Resp: 2761
 Ion Ratio Lower Upper
 162 100
 127 41.4 31.5 47.3
 164 37.6 26.0 39.0

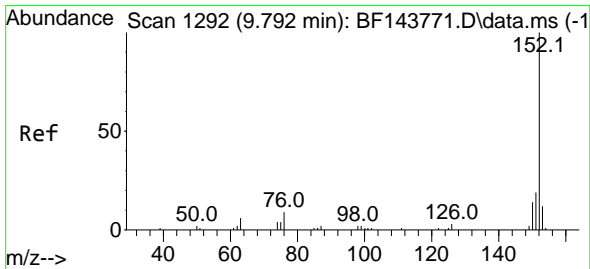
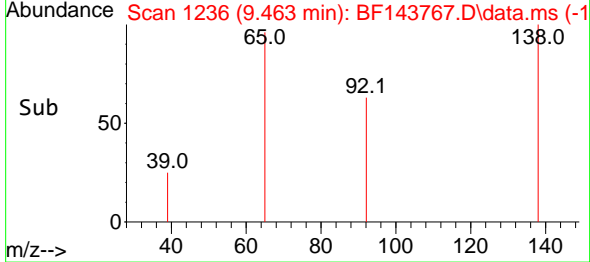
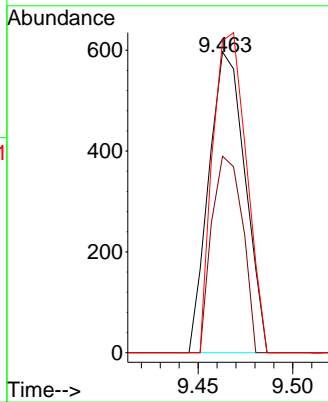
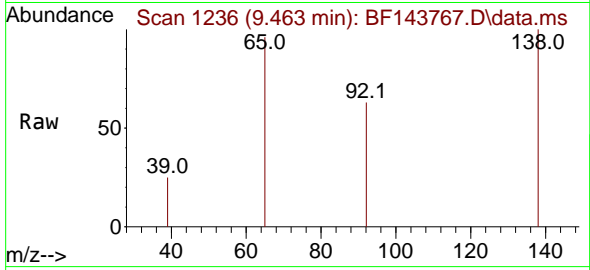




#48
 2-Nitroaniline
 Concen: 2.572 ng
 RT: 9.463 min Scan# 11
 Delta R.T. -0.018 min
 Lab File: BF143767.D
 Acq: 16 Sep 2025 11:23

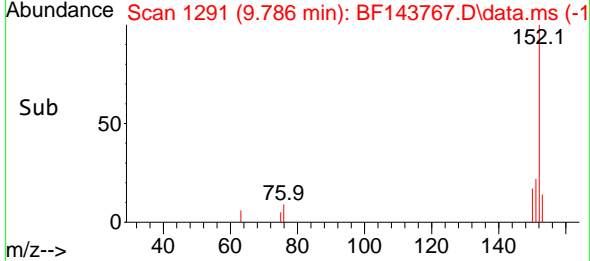
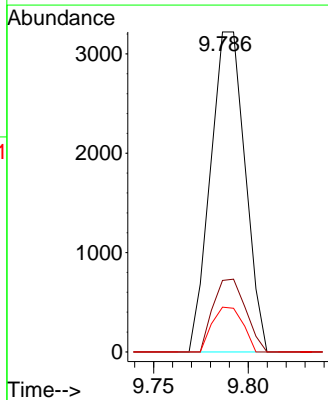
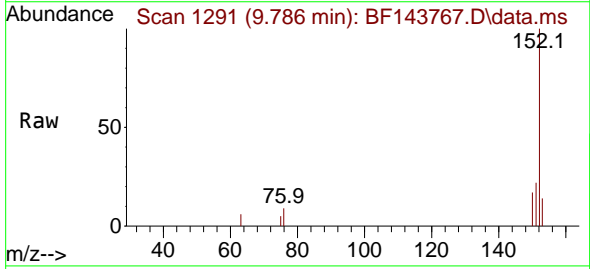
Instrument : BNA_F
 ClientSampleId : SSTDICC2.5

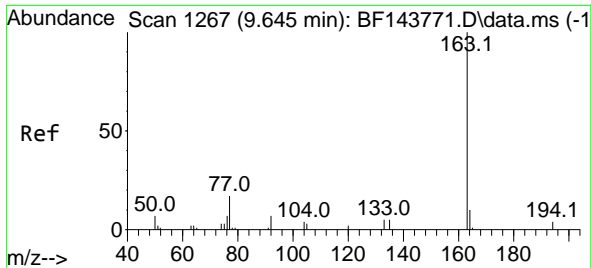
Tgt Ion	Resp	Lower	Upper
65	100		
92	65.3	54.6	81.8
138	103.7	100.4	150.6



#49
 Acenaphthylene
 Concen: 2.469 ng
 RT: 9.786 min Scan# 1291
 Delta R.T. -0.012 min
 Lab File: BF143767.D
 Acq: 16 Sep 2025 11:23

Tgt Ion	Resp	Lower	Upper
152	100		
151	22.3	15.1	22.7
153	14.0	9.8	14.8

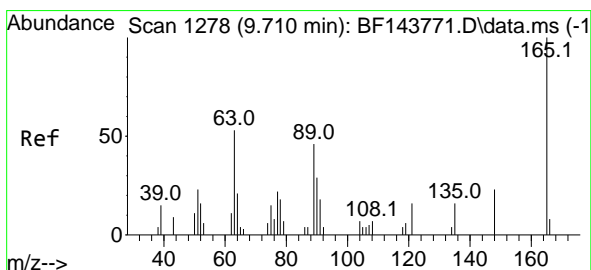
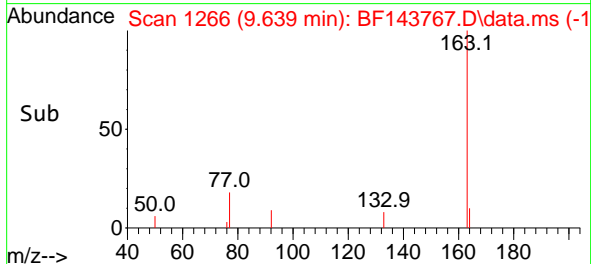
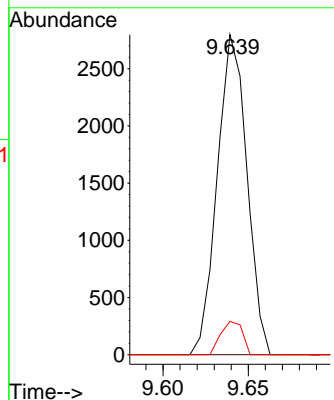
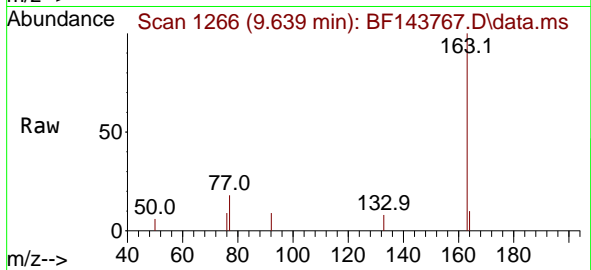




#50
 Dimethylphthalate
 Concen: 2.611 ng
 RT: 9.639 min Scan# 11
 Delta R.T. -0.018 min
 Lab File: BF143767.D
 Acq: 16 Sep 2025 11:23

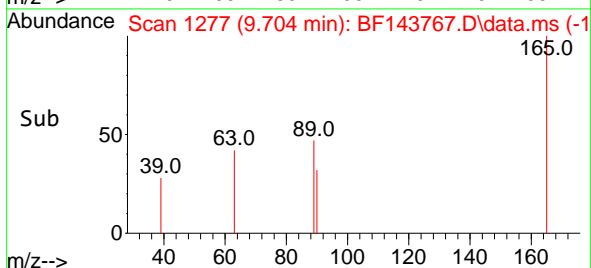
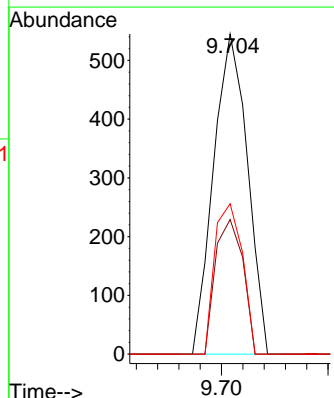
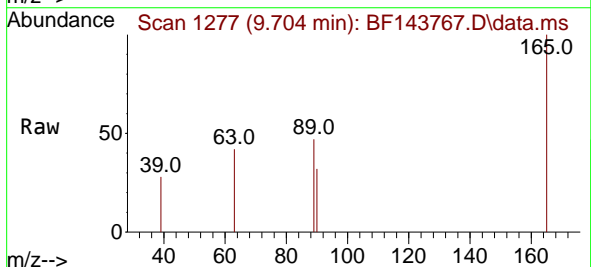
Instrument :
 BNA_F
 ClientSampleId :
 SSTDICC2.5

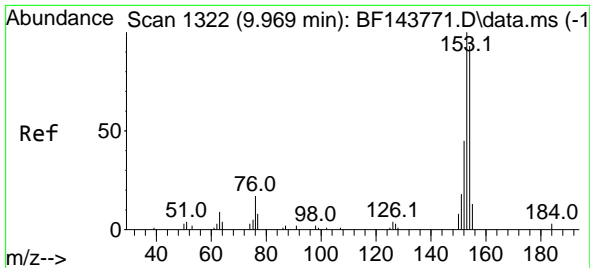
Tgt Ion:163 Resp: 3389
 Ion Ratio Lower Upper
 163 100
 194 0.0 3.0 4.6#
 164 10.4 7.8 11.6



#51
 2,6-Dinitrotoluene
 Concen: 2.250 ng
 RT: 9.704 min Scan# 1277
 Delta R.T. -0.018 min
 Lab File: BF143767.D
 Acq: 16 Sep 2025 11:23

Tgt Ion:165 Resp: 602
 Ion Ratio Lower Upper
 165 100
 63 42.0 42.5 63.7#
 89 47.0 36.9 55.3



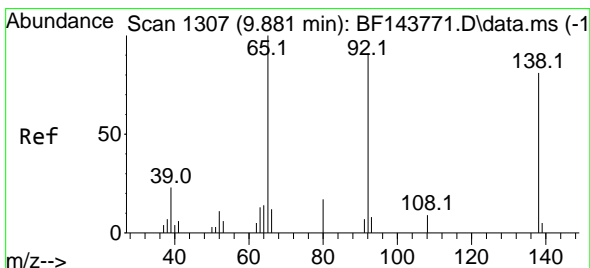
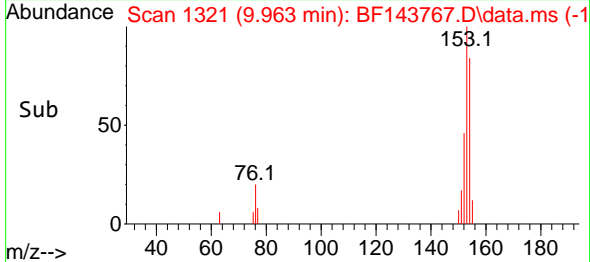
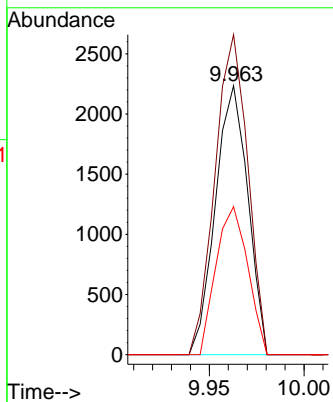
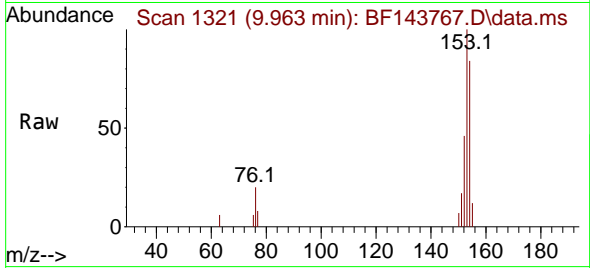


#52
 Acenaphthene
 Concen: 2.389 ng
 RT: 9.963 min Scan# 11
 Delta R.T. -0.012 min
 Lab File: BF143767.D
 Acq: 16 Sep 2025 11:23

Instrument :
 BNA_F
 ClientSampleId :
 SSTDICC2.5

Tgt Ion:154 Resp: 2658

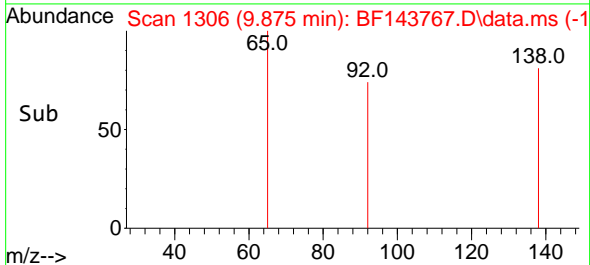
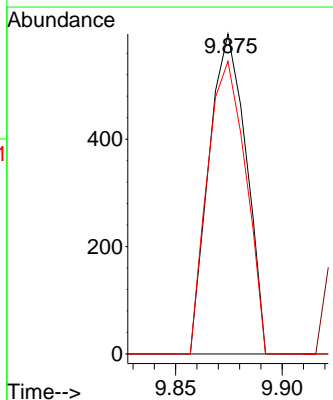
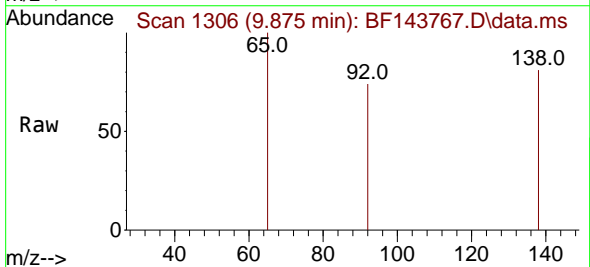
Ion	Ratio	Lower	Upper
154	100		
153	119.0	85.7	128.5
152	55.0	38.7	58.1

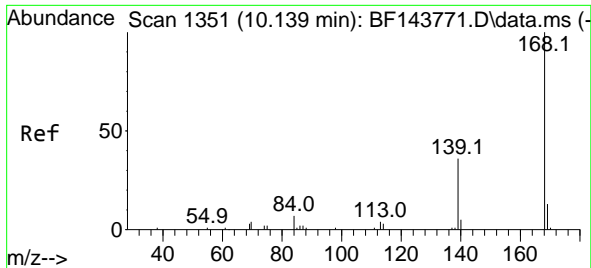


#53
 3-Nitroaniline
 Concen: 2.562 ng
 RT: 9.875 min Scan# 1306
 Delta R.T. -0.018 min
 Lab File: BF143767.D
 Acq: 16 Sep 2025 11:23

Tgt Ion:138 Resp: 723

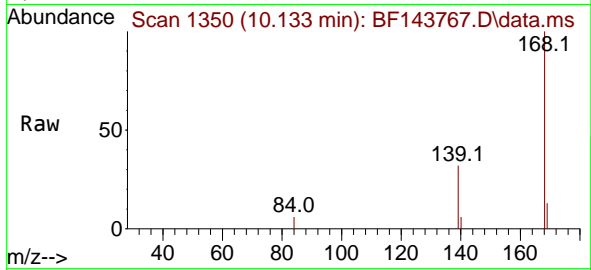
Ion	Ratio	Lower	Upper
138	100		
108	0.0	9.3	13.9#
92	91.4	89.8	134.6



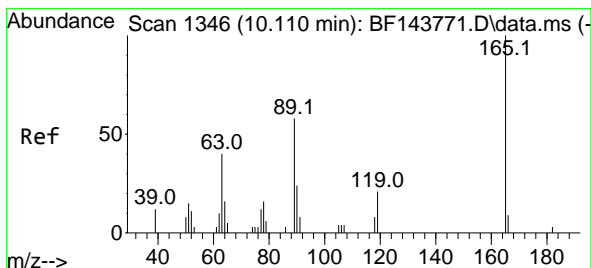
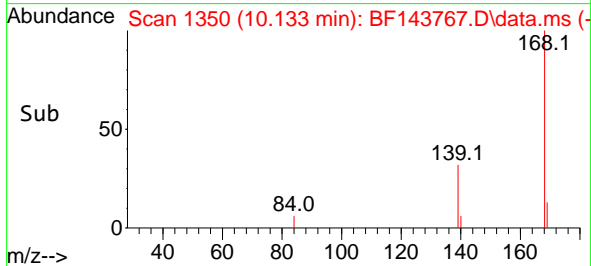
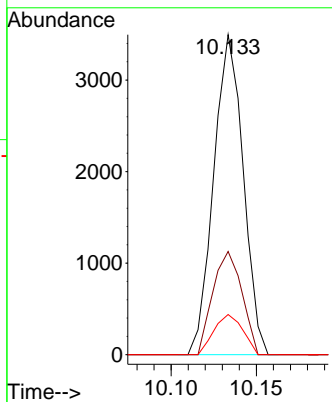


#55
 Dibenzofuran
 Concen: 2.607 ng
 RT: 10.133 min Scan# 11
 Delta R.T. -0.012 min
 Lab File: BF143767.D
 Acq: 16 Sep 2025 11:23

Instrument :
 BNA_F
 ClientSampleId :
 SSTDICC2.5

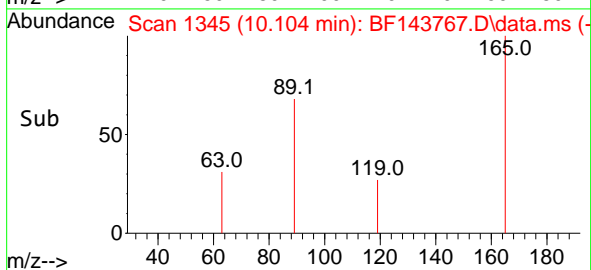
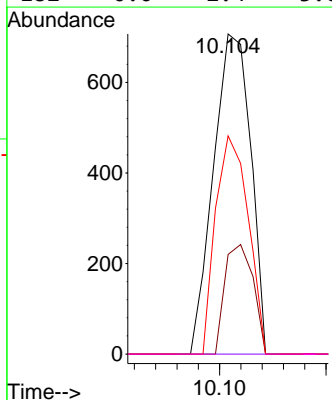
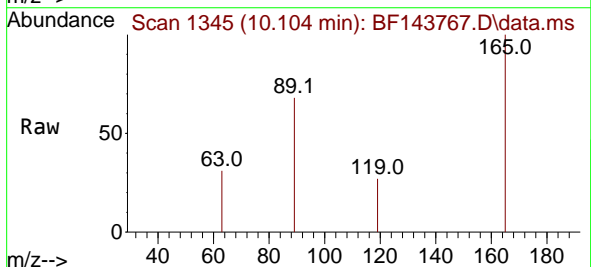


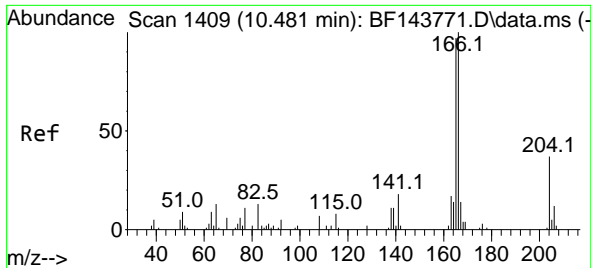
Tgt Ion:168 Resp: 4212
 Ion Ratio Lower Upper
 168 100
 139 32.2 28.6 42.8
 169 12.6 10.6 16.0



#57
 2,4-Dinitrotoluene
 Concen: 2.307 ng
 RT: 10.104 min Scan# 1345
 Delta R.T. -0.018 min
 Lab File: BF143767.D
 Acq: 16 Sep 2025 11:23

Tgt Ion:165 Resp: 859
 Ion Ratio Lower Upper
 165 100
 63 31.1 32.1 48.1#
 89 68.2 46.4 69.6
 182 0.0 2.4 3.6#



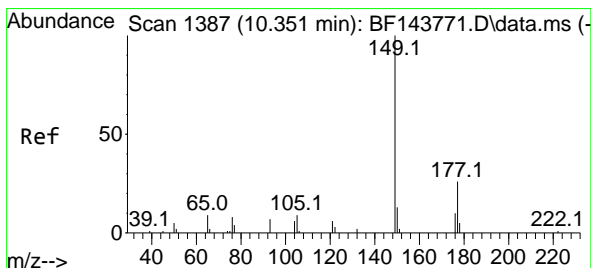
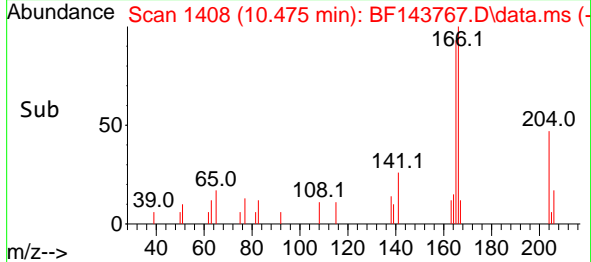
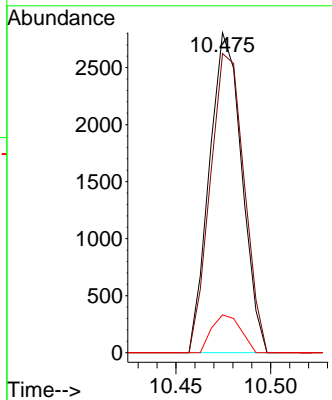
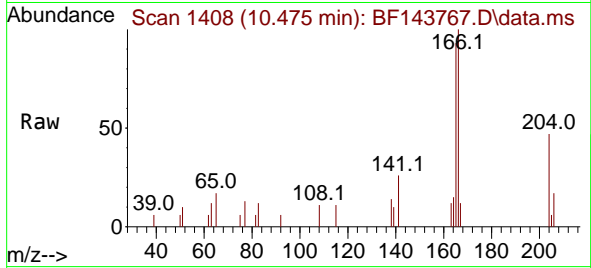


#58
 Fluorene
 Concen: 2.650 ng
 RT: 10.475 min Scan# 1408
 Delta R.T. -0.012 min
 Lab File: BF143767.D
 Acq: 16 Sep 2025 11:23

Instrument : BNA_F
 ClientSampleId : SSTDICC2.5

Tgt Ion:166 Resp: 3347

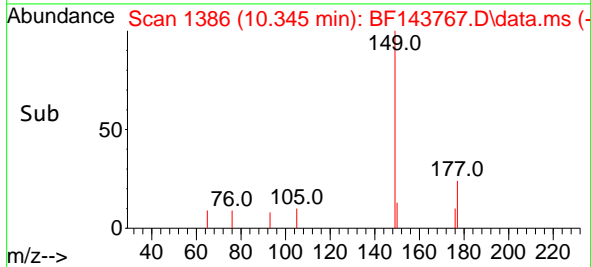
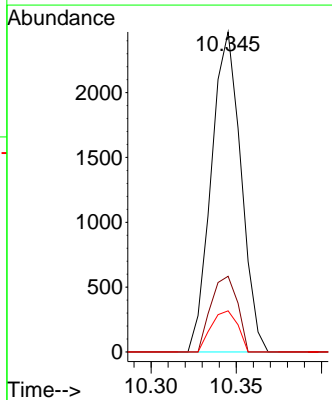
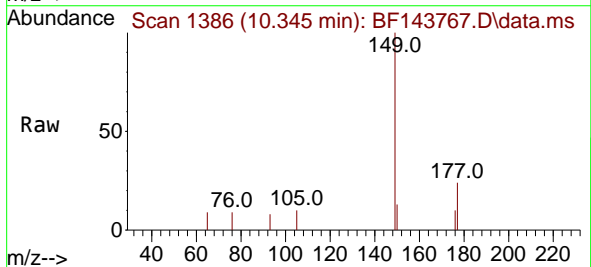
Ion	Ratio	Lower	Upper
166	100		
165	93.4	77.8	116.8
167	11.8	11.6	17.4

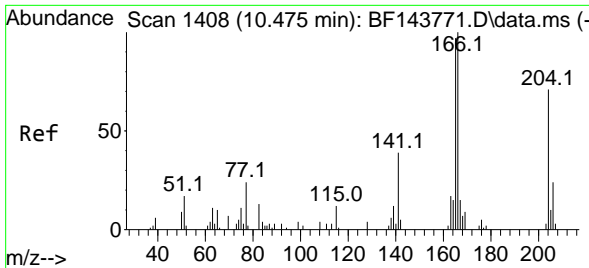


#60
 Diethylphthalate
 Concen: 2.510 ng
 RT: 10.345 min Scan# 1386
 Delta R.T. -0.018 min
 Lab File: BF143767.D
 Acq: 16 Sep 2025 11:23

Tgt Ion:149 Resp: 2991

Ion	Ratio	Lower	Upper
149	100		
177	23.7	20.4	30.6
150	12.8	10.1	15.1



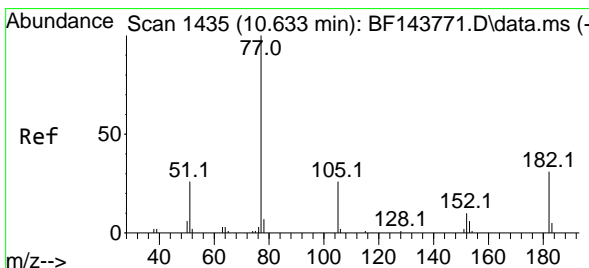
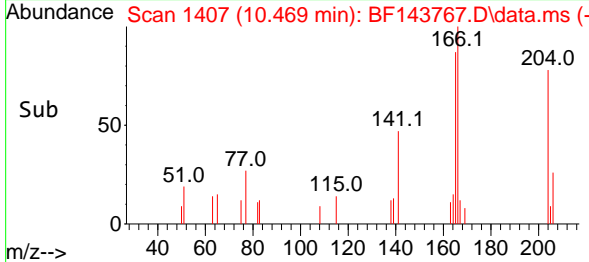
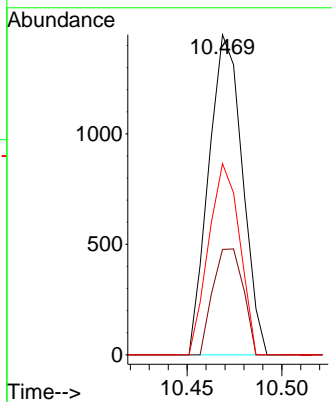
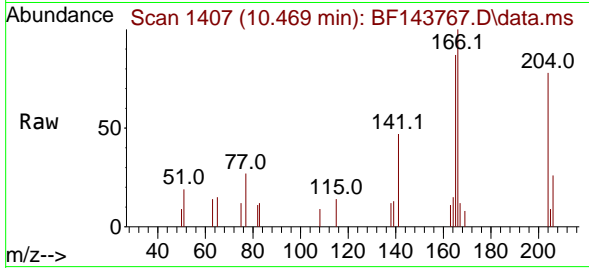


#61
 4-Chlorophenyl-phenylether
 Concen: 2.823 ng
 RT: 10.469 min Scan# 1407
 Delta R.T. -0.012 min
 Lab File: BF143767.D
 Acq: 16 Sep 2025 11:23

Instrument :
 BNA_F
 ClientSampleId :
 SSTDICC2.5

Tgt Ion: 204 Resp: 1789

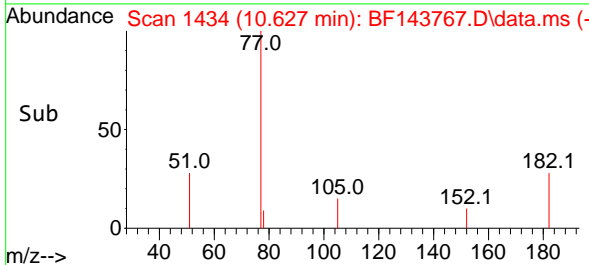
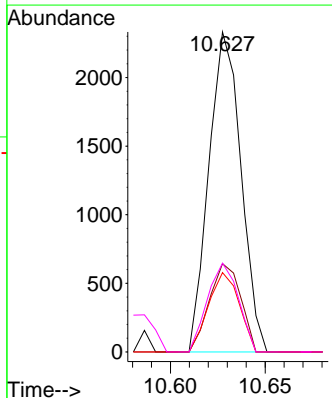
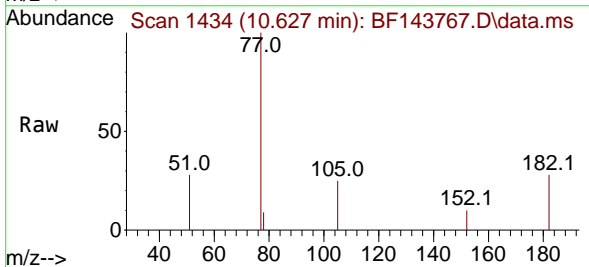
Ion	Ratio	Lower	Upper
204	100		
206	32.9	27.7	41.5
141	59.7	44.2	66.4

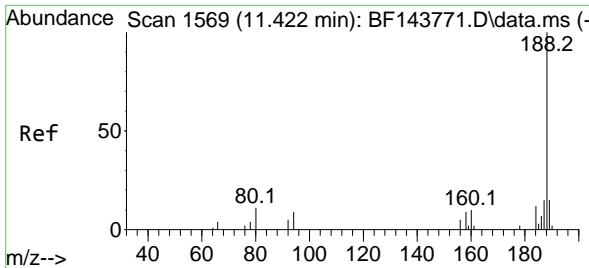


#63
 Azobenzene
 Concen: 2.617 ng
 RT: 10.627 min Scan# 1434
 Delta R.T. -0.012 min
 Lab File: BF143767.D
 Acq: 16 Sep 2025 11:23

Tgt Ion: 77 Resp: 2753

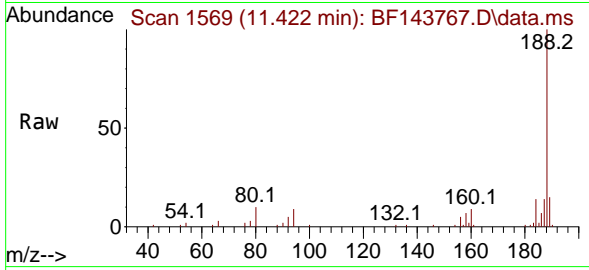
Ion	Ratio	Lower	Upper
77	100		
182	27.6	10.7	50.7
105	24.8	6.0	46.0
51	27.7	6.0	46.0



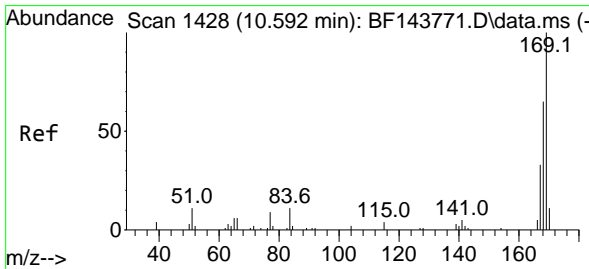
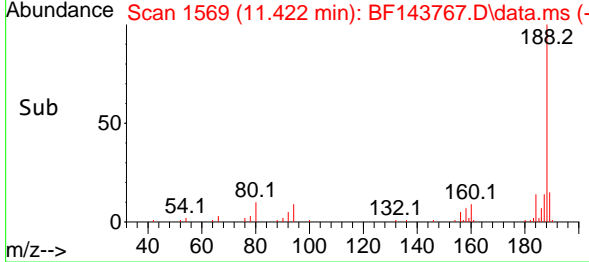
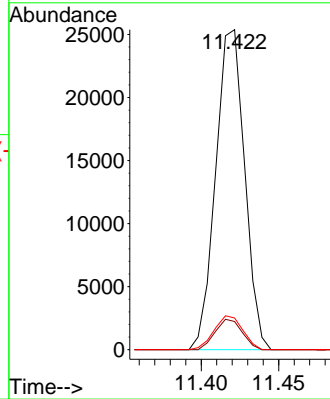


#64
 Phenanthrene-d10
 Concen: 20.000 ng
 RT: 11.422 min Scan# 11
 Delta R.T. -0.006 min
 Lab File: BF143767.D
 Acq: 16 Sep 2025 11:23

Instrument :
 BNA_F
 ClientSampleId :
 SSTDICC2.5

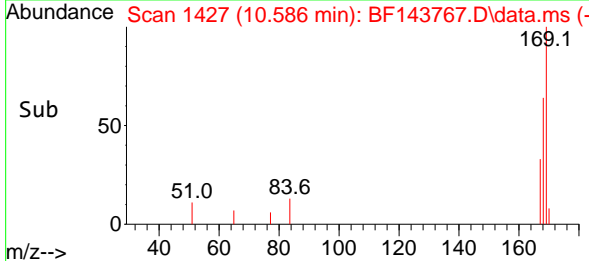
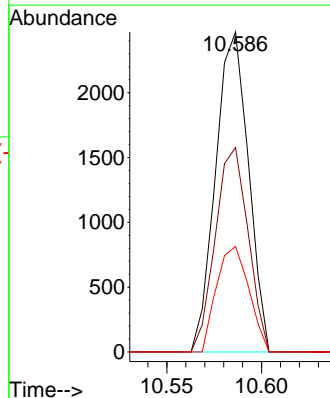
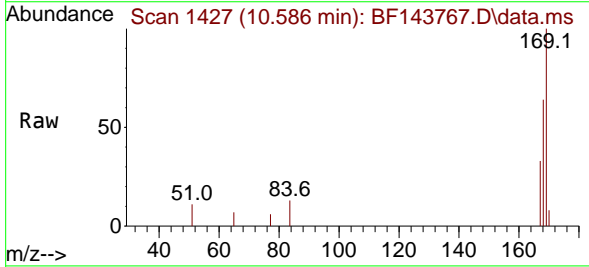


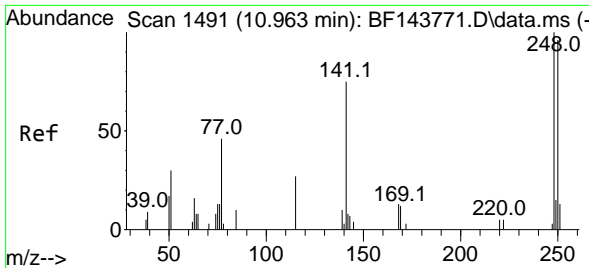
Tgt Ion:188 Resp: 32987
 Ion Ratio Lower Upper
 188 100
 94 8.8 7.5 11.3
 80 9.9 8.6 13.0



#66
 n-Nitrosodiphenylamine
 Concen: 2.583 ng
 RT: 10.586 min Scan# 1427
 Delta R.T. -0.012 min
 Lab File: BF143767.D
 Acq: 16 Sep 2025 11:23

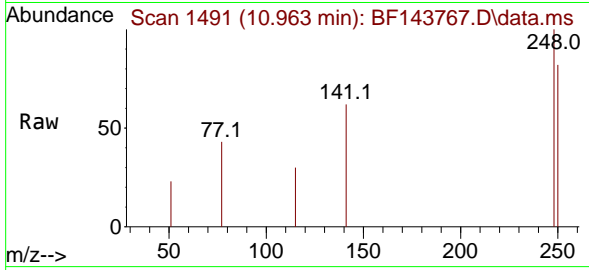
Tgt Ion:169 Resp: 2974
 Ion Ratio Lower Upper
 169 100
 168 63.8 52.2 78.2
 167 33.0 26.6 40.0





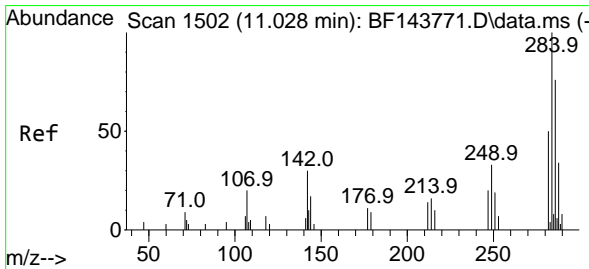
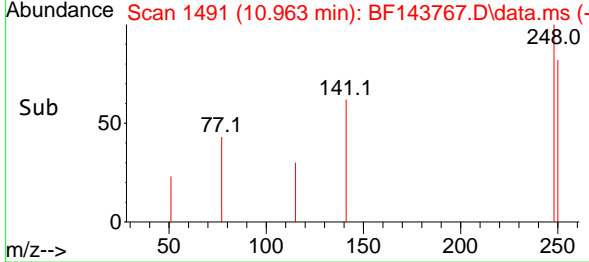
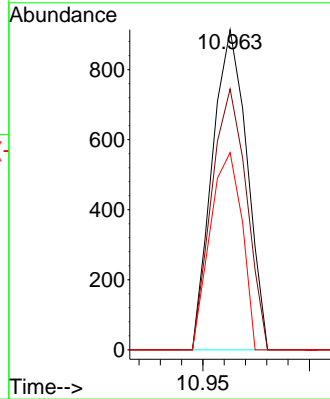
#67
 4-Bromophenyl-phenylether
 Concen: 2.532 ng
 RT: 10.963 min Scan# 1491
 Delta R.T. -0.006 min
 Lab File: BF143767.D
 Acq: 16 Sep 2025 11:23

Instrument : BNA_F
 ClientSampleId : SSTDICC2.5



Tgt Ion: 248 Resp: 1032

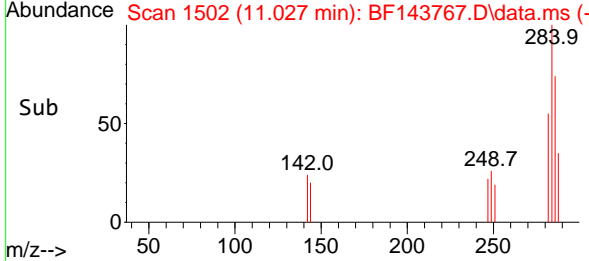
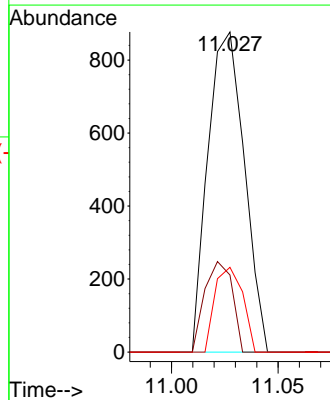
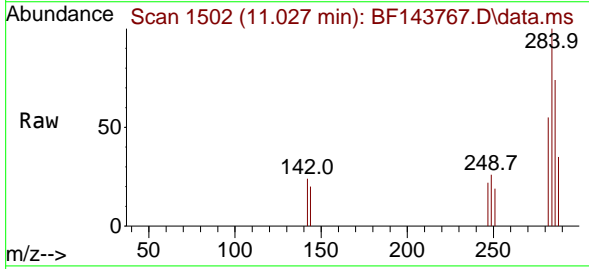
Ion	Ratio	Lower	Upper
248	100		
250	81.5	76.9	115.3
141	61.6	60.3	90.5

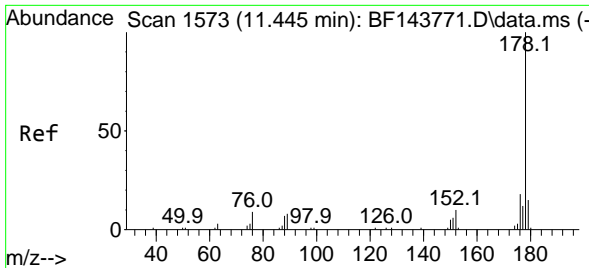


#68
 Hexachlorobenzene
 Concen: 2.403 ng
 RT: 11.027 min Scan# 1502
 Delta R.T. -0.012 min
 Lab File: BF143767.D
 Acq: 16 Sep 2025 11:23

Tgt Ion: 284 Resp: 1042

Ion	Ratio	Lower	Upper
284	100		
142	24.1	24.2	36.2#
249	26.5	26.2	39.4



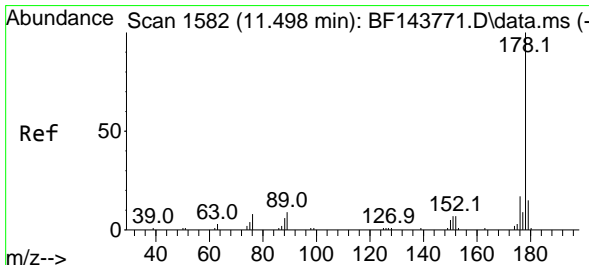
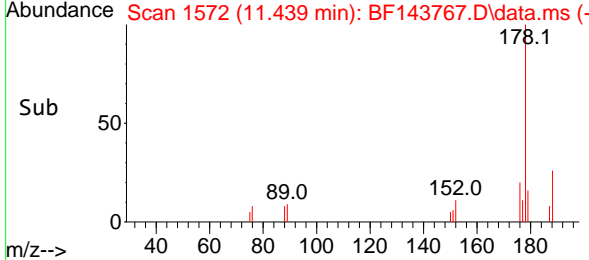
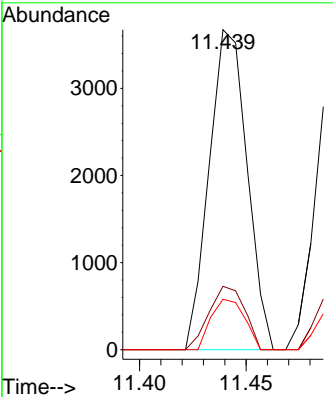
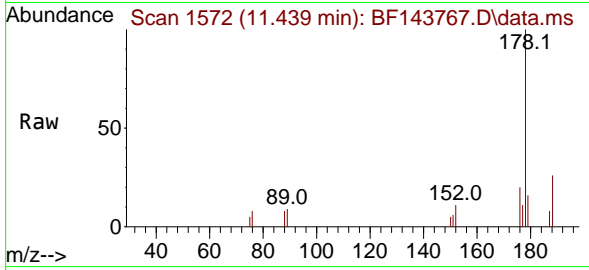


#71
 Phenanthrene
 Concen: 2.391 ng
 RT: 11.439 min Scan# 1572
 Delta R.T. -0.012 min
 Lab File: BF143767.D
 Acq: 16 Sep 2025 11:23

Instrument : BNA_F
 ClientSampleId : SSTDICC2.5

Tgt Ion:178 Resp: 4546

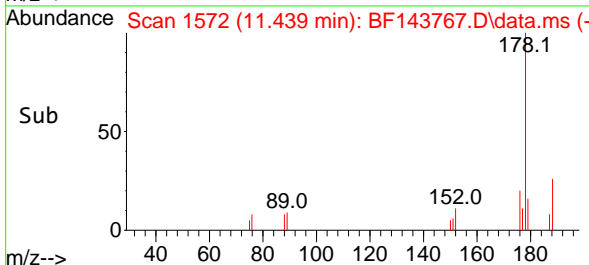
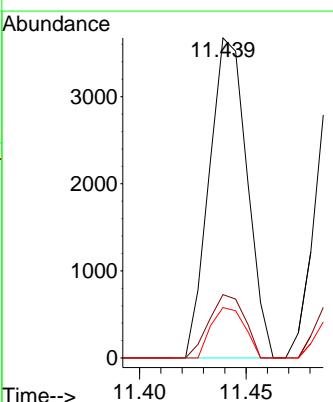
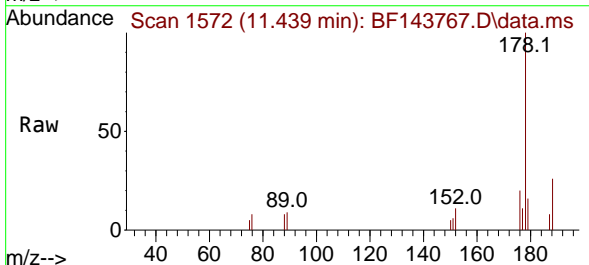
Ion	Ratio	Lower	Upper
178	100		
176	19.8	14.6	22.0
179	15.8	12.3	18.5

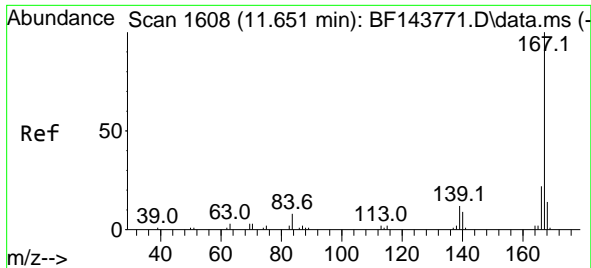


#72
 Anthracene
 Concen: 2.345 ng
 RT: 11.439 min Scan# 1572
 Delta R.T. -0.065 min
 Lab File: BF143767.D
 Acq: 16 Sep 2025 11:23

Tgt Ion:178 Resp: 4546

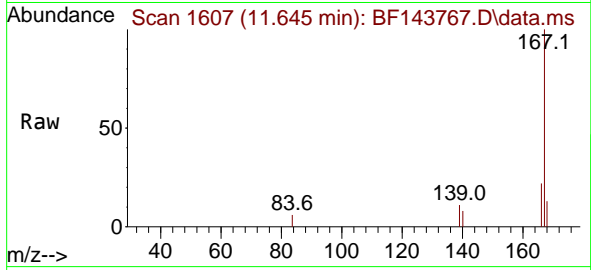
Ion	Ratio	Lower	Upper
178	100		
176	19.8	13.7	20.5
179	15.8	11.8	17.8



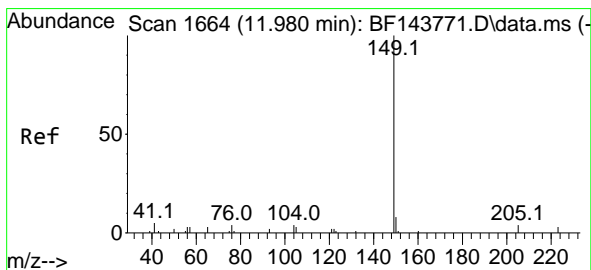
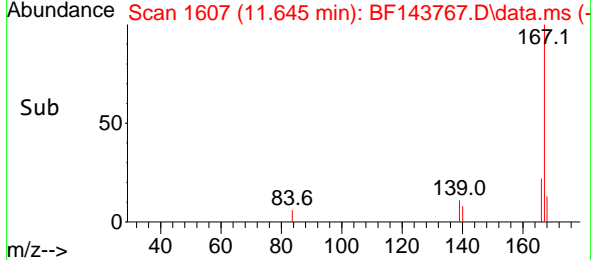
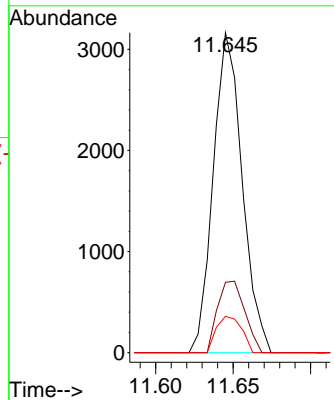


#73
 Carbazole
 Concen: 2.597 ng
 RT: 11.645 min Scan# 1607
 Delta R.T. -0.012 min
 Lab File: BF143767.D
 Acq: 16 Sep 2025 11:23

Instrument : BNA_F
 ClientSampleId : SSTDICC2.5

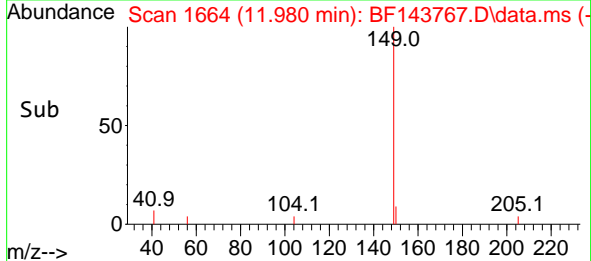
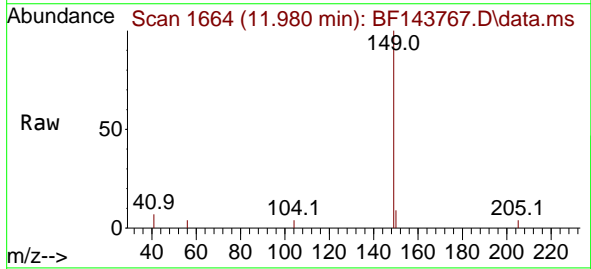
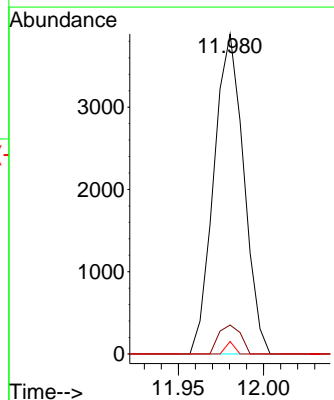


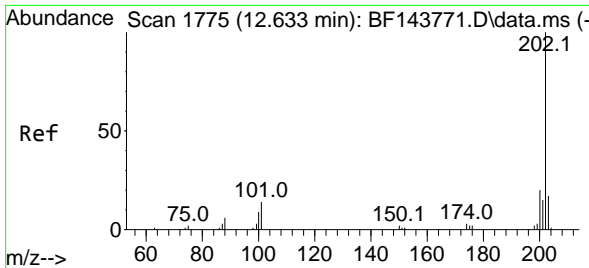
Tgt Ion:167 Resp: 4104
 Ion Ratio Lower Upper
 167 100
 166 22.0 17.4 26.0
 139 11.3 9.2 13.8



#74
 Di-n-butylphthalate
 Concen: 2.472 ng
 RT: 11.980 min Scan# 1664
 Delta R.T. -0.006 min
 Lab File: BF143767.D
 Acq: 16 Sep 2025 11:23

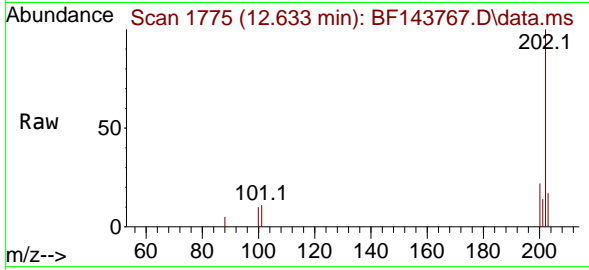
Tgt Ion:149 Resp: 4745
 Ion Ratio Lower Upper
 149 100
 150 9.0 6.6 10.0
 104 3.9 3.1 4.7





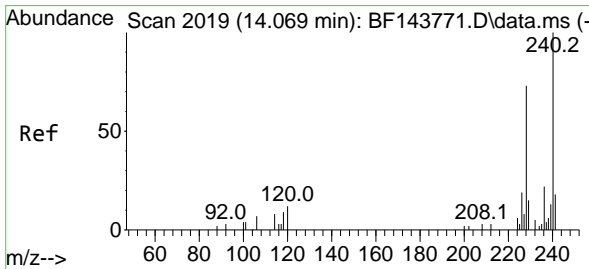
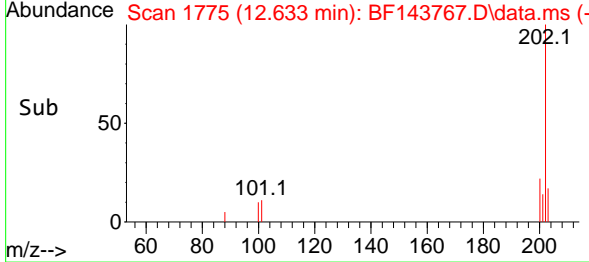
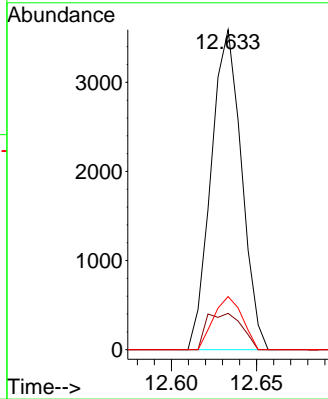
#75
 Fluoranthene
 Concen: 2.544 ng
 RT: 12.633 min Scan# 11
 Delta R.T. -0.012 min
 Lab File: BF143767.D
 Acq: 16 Sep 2025 11:23

Instrument :
 BNA_F
 ClientSampleId :
 SSTDICC2.5



Tgt Ion: 202 Resp: 4463

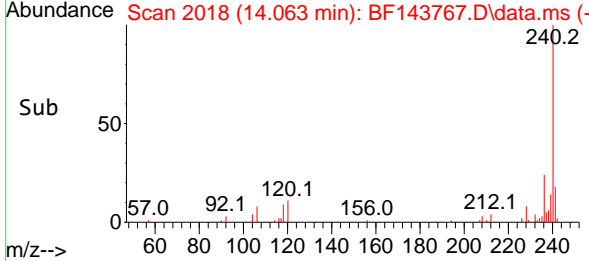
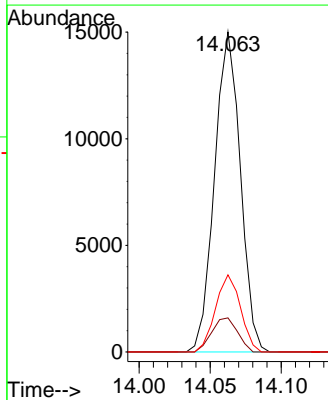
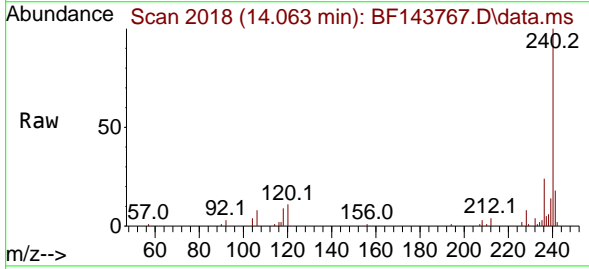
Ion	Ratio	Lower	Upper
202	100		
101	11.4	0.0	33.7
203	16.6	0.0	37.5

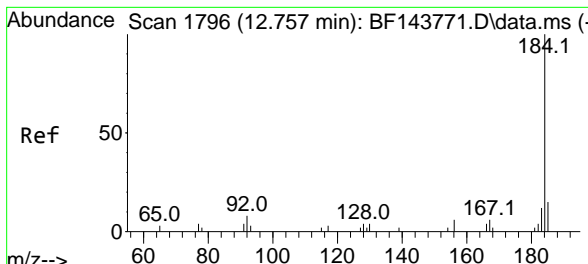


#76
 Chrysene-d12
 Concen: 20.000 ng
 RT: 14.063 min Scan# 2018
 Delta R.T. -0.012 min
 Lab File: BF143767.D
 Acq: 16 Sep 2025 11:23

Tgt Ion: 240 Resp: 18916

Ion	Ratio	Lower	Upper
240	100		
120	10.6	9.3	13.9
236	24.1	17.7	26.5



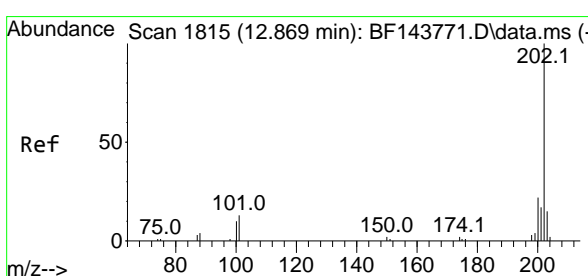
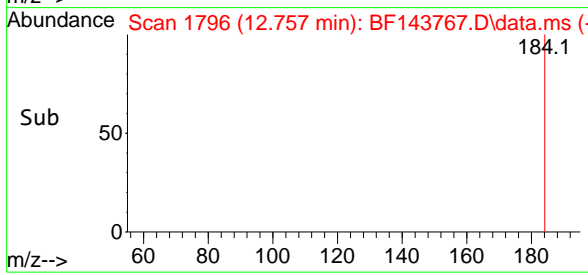
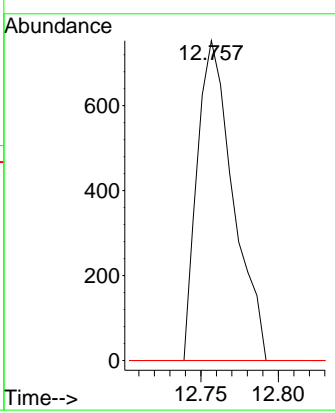
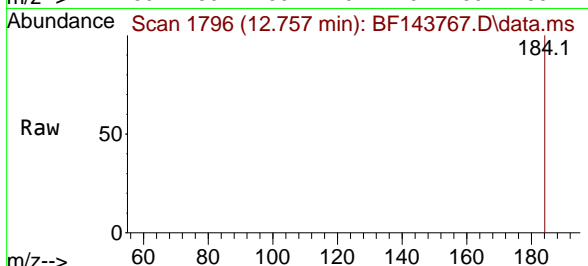


#77
 Benzidine
 Concen: 2.075 ng
 RT: 12.757 min Scan# 11
 Delta R.T. -0.000 min
 Lab File: BF143767.D
 Acq: 16 Sep 2025 11:23

Instrument : BNA_F
 ClientSampleId : SSTDICC2.5

Tgt Ion:184 Resp: 1214

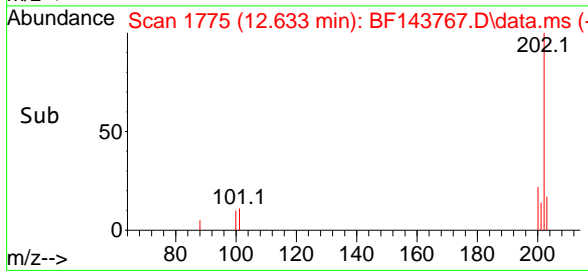
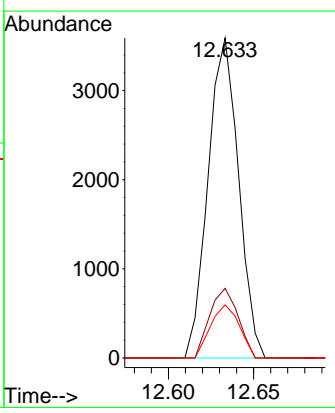
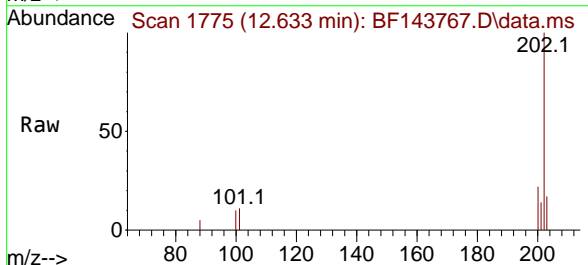
Ion	Ratio	Lower	Upper
184	100		
185	0.0	11.8	17.8#
183	0.0	9.7	14.5#

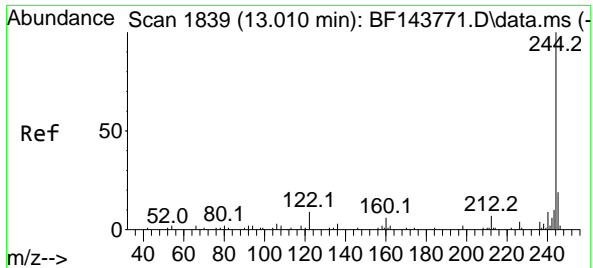


#78
 Pyrene
 Concen: 2.900 ng
 RT: 12.633 min Scan# 1775
 Delta R.T. -0.241 min
 Lab File: BF143767.D
 Acq: 16 Sep 2025 11:23

Tgt Ion:202 Resp: 4463

Ion	Ratio	Lower	Upper
202	100		
200	21.7	17.8	26.8
203	16.6	11.6	17.4



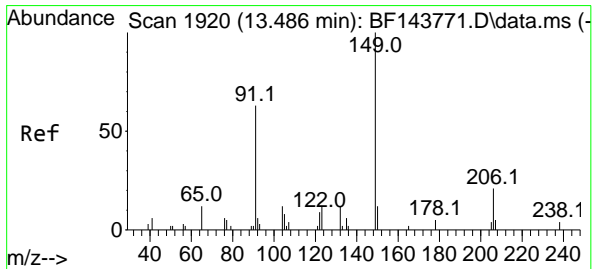
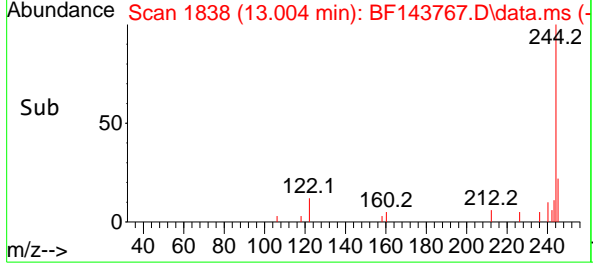
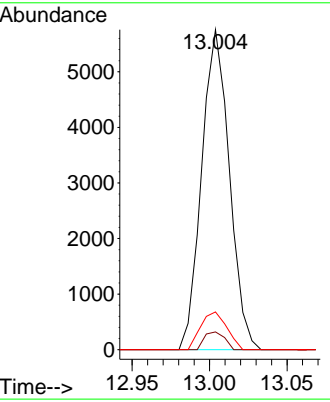
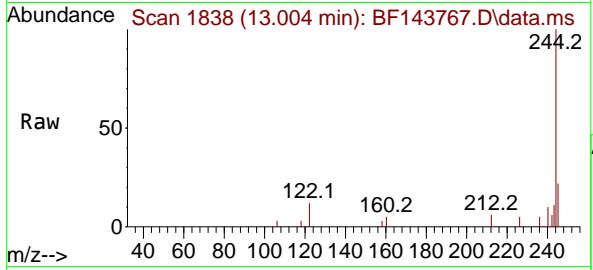


#79
 Terphenyl-d14
 Concen: 5.892 ng
 RT: 13.004 min Scan# 1838
 Delta R.T. -0.012 min
 Lab File: BF143767.D
 Acq: 16 Sep 2025 11:23

Instrument : BNA_F
 Client Sample Id : BF143767.D
 SSTDICC2.5

Tgt Ion: 244 Resp: 7156

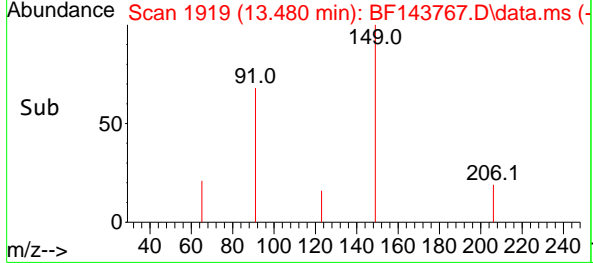
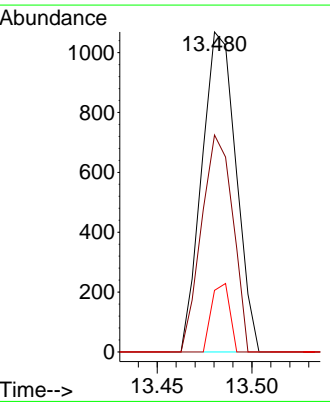
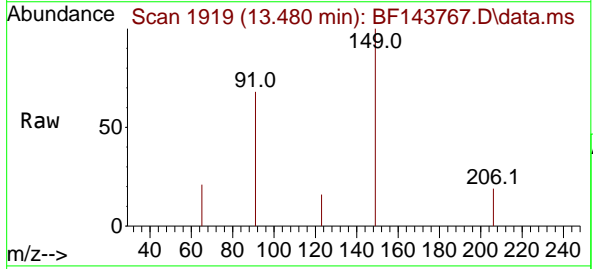
Ion	Ratio	Lower	Upper
244	100		
212	5.5	5.2	7.8
122	11.8	7.6	11.4

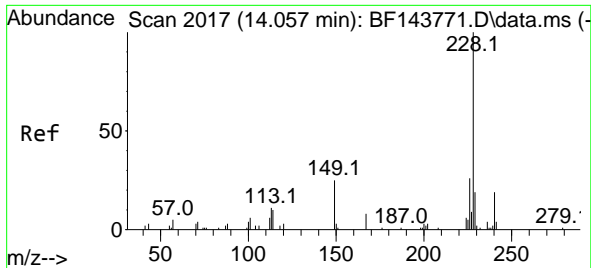


#80
 Butylbenzylphthalate
 Concen: 2.521 ng
 RT: 13.480 min Scan# 1919
 Delta R.T. -0.006 min
 Lab File: BF143767.D
 Acq: 16 Sep 2025 11:23

Tgt Ion: 149 Resp: 1341

Ion	Ratio	Lower	Upper
149	100		
91	67.8	50.3	75.5
206	19.3	16.8	25.2





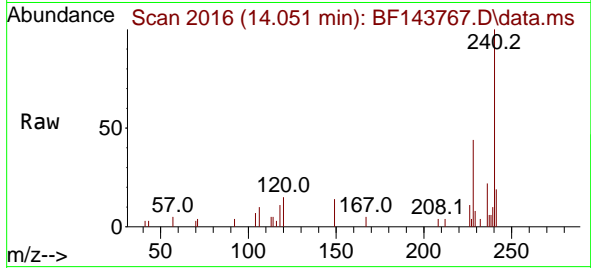
#81
 Benzo(a)anthracene
 Concen: 2.801 ng
 RT: 14.051 min Scan# 2016
 Delta R.T. -0.012 min
 Lab File: BF143767.D
 Acq: 16 Sep 2025 11:23

Instrument :

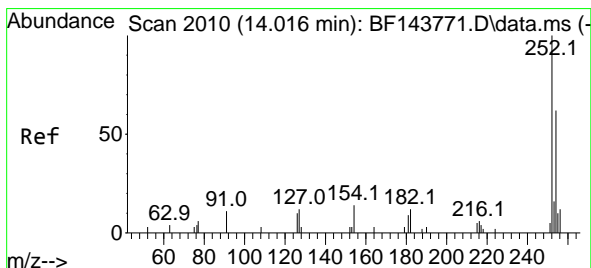
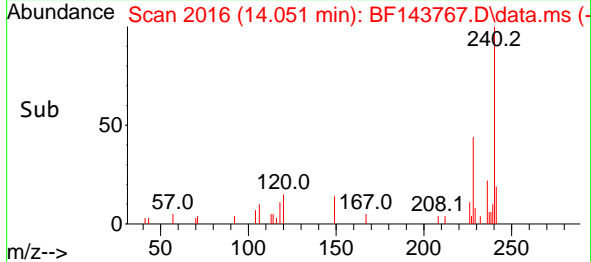
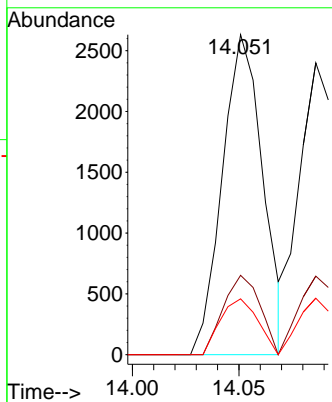
BNA_F

ClientSampleId :

SSTDICC2.5

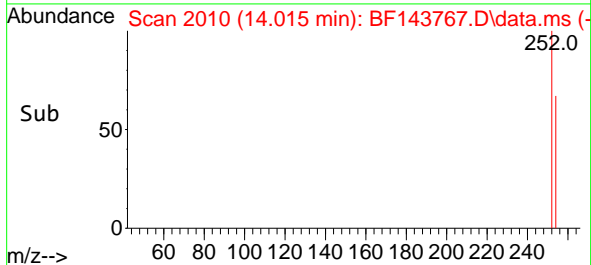
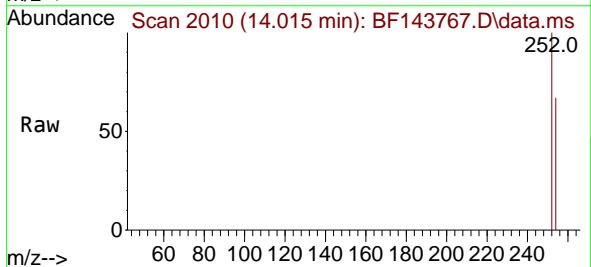
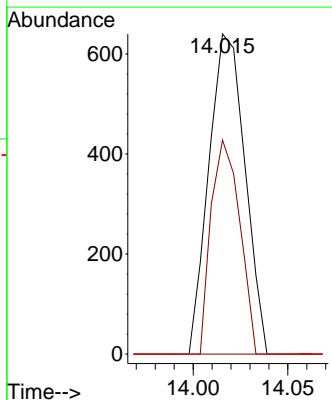


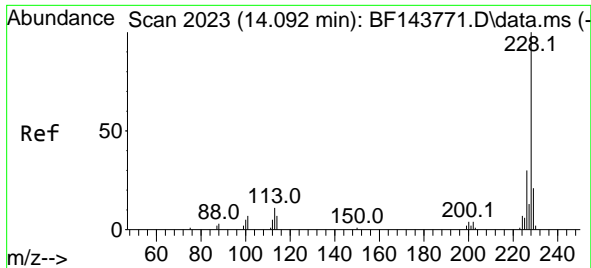
Tgt Ion:228 Resp: 3487
 Ion Ratio Lower Upper
 228 100
 226 24.8 21.1 31.7
 229 17.4 15.5 23.3



#82
 3,3'-Dichlorobenzidine
 Concen: 2.387 ng
 RT: 14.015 min Scan# 2010
 Delta R.T. -0.012 min
 Lab File: BF143767.D
 Acq: 16 Sep 2025 11:23

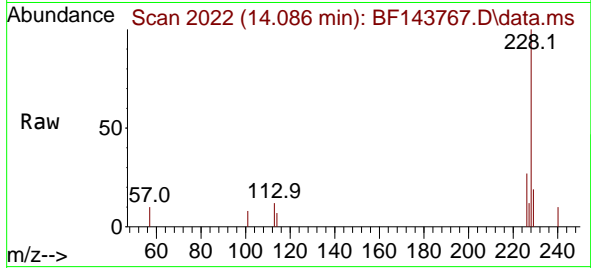
Tgt Ion:252 Resp: 850
 Ion Ratio Lower Upper
 252 100
 254 66.9 49.4 74.0
 126 0.0 7.8 11.6#



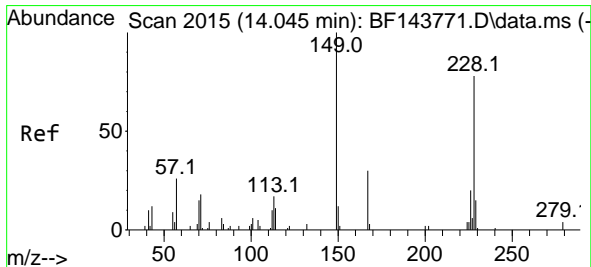
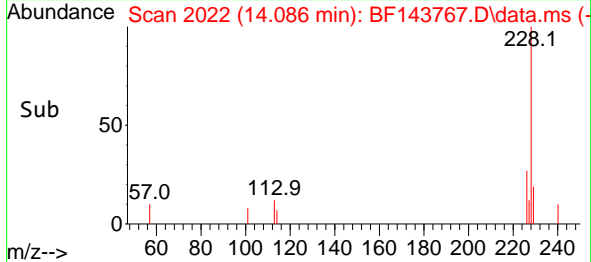
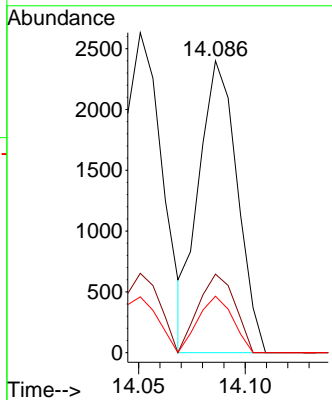


#83
 Chrysene
 Concen: 2.657 ng
 RT: 14.086 min Scan# 2022
 Delta R.T. -0.018 min
 Lab File: BF143767.D
 Acq: 16 Sep 2025 11:23

Instrument : BNA_F
 Client Sample Id : SSTDICC2.5

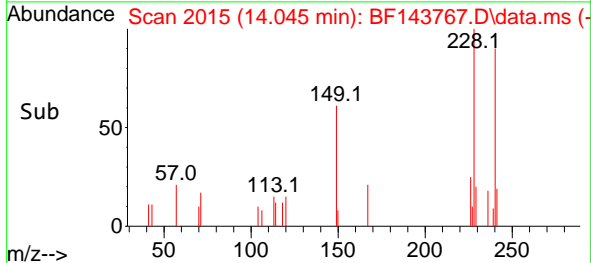
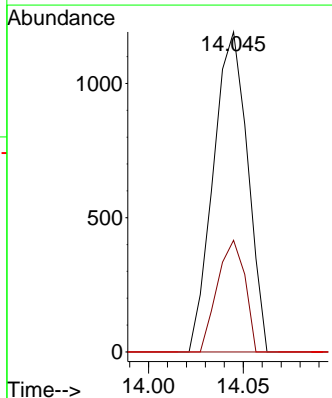
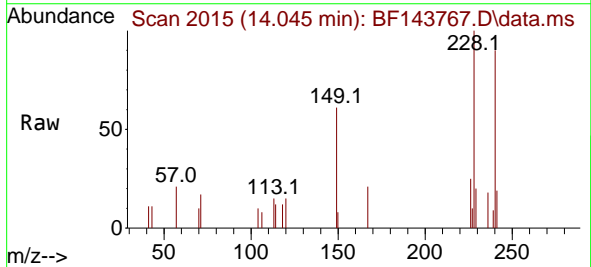


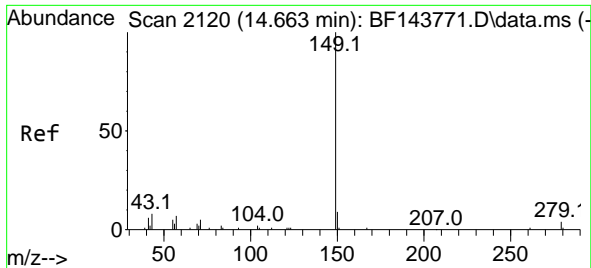
Tgt Ion: 228 Resp: 3017
 Ion Ratio Lower Upper
 228 100
 226 26.9 23.4 35.2
 229 19.3 16.5 24.7



#84
 Bis(2-ethylhexyl)phthalate
 Concen: 2.078 ng
 RT: 14.045 min Scan# 2015
 Delta R.T. 0.000 min
 Lab File: BF143767.D
 Acq: 16 Sep 2025 11:23

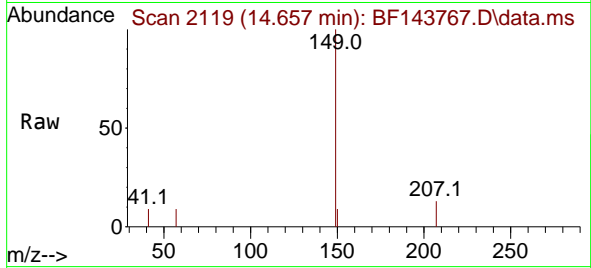
Tgt Ion: 149 Resp: 1500
 Ion Ratio Lower Upper
 149 100
 167 34.9 24.1 36.1
 279 0.0 3.4 5.0





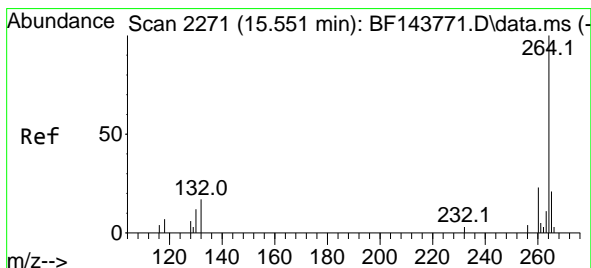
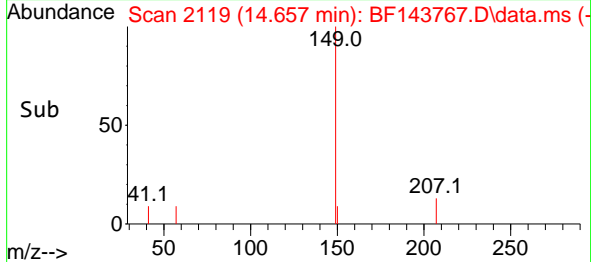
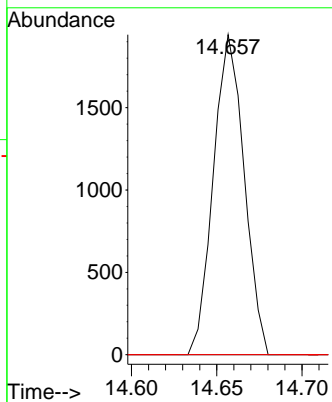
#85
 Di-n-octyl phthalate
 Concen: 2.002 ng
 RT: 14.657 min Scan# 2119
 Delta R.T. -0.006 min
 Lab File: BF143767.D
 Acq: 16 Sep 2025 11:23

Instrument : BNA_F
 ClientSampleId : SSTDICC2.5



Tgt Ion:149 Resp: 2439

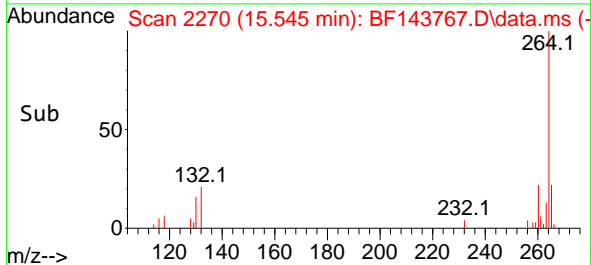
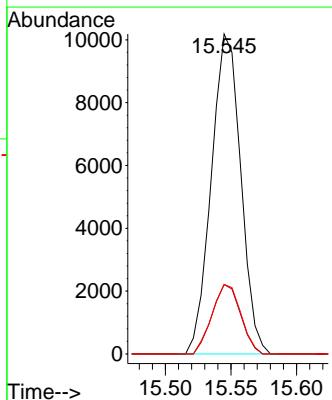
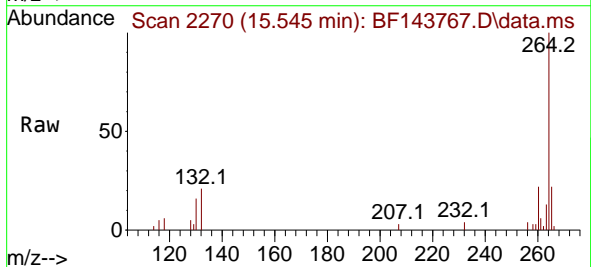
Ion	Ratio	Lower	Upper
149	100		
167	0.0	0.8	1.2#
43	0.0	6.1	9.1#

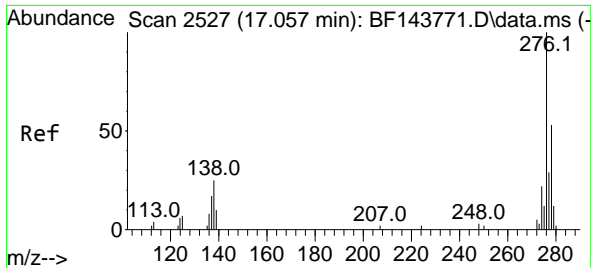


#86
 Perylene-d12
 Concen: 20.000 ng
 RT: 15.545 min Scan# 2270
 Delta R.T. -0.012 min
 Lab File: BF143767.D
 Acq: 16 Sep 2025 11:23

Tgt Ion:264 Resp: 15882

Ion	Ratio	Lower	Upper
264	100		
260	21.7	18.6	27.8
265	21.7	16.9	25.3





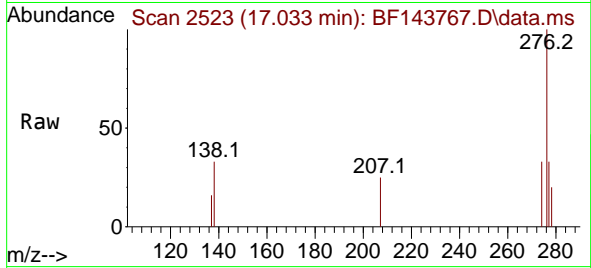
#87
 Indeno(1,2,3-cd)pyrene
 Concen: 2.313 ng
 RT: 17.033 min Scan# 21
 Delta R.T. -0.041 min
 Lab File: BF143767.D
 Acq: 16 Sep 2025 11:23

Instrument :

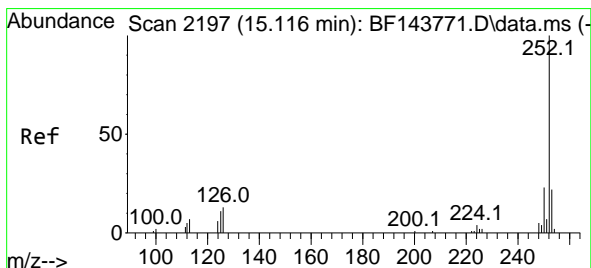
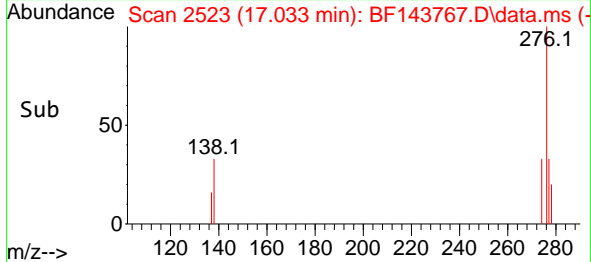
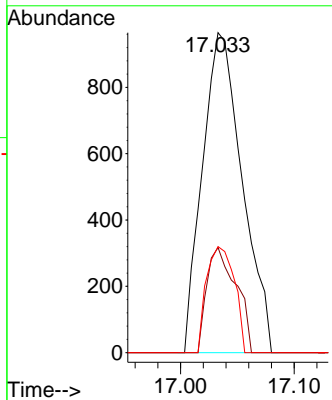
BNA_F

ClientSampleId :

SSTDICC2.5

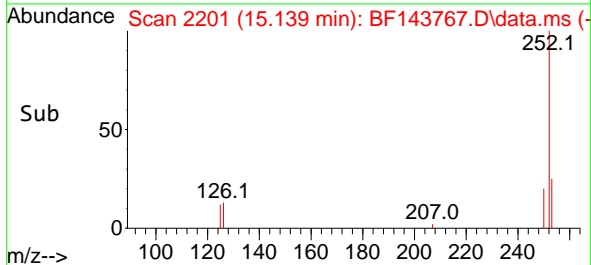
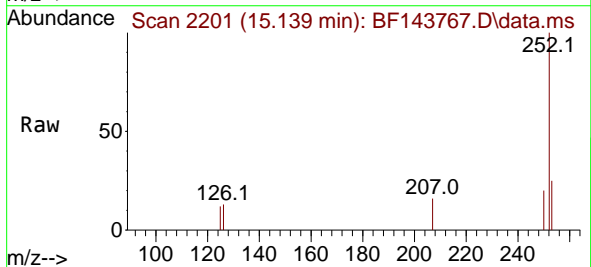
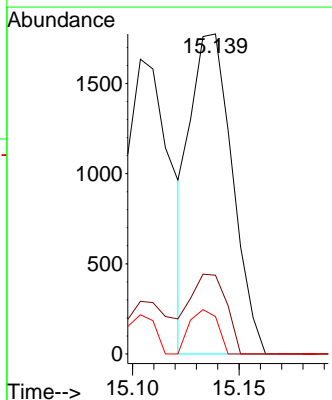


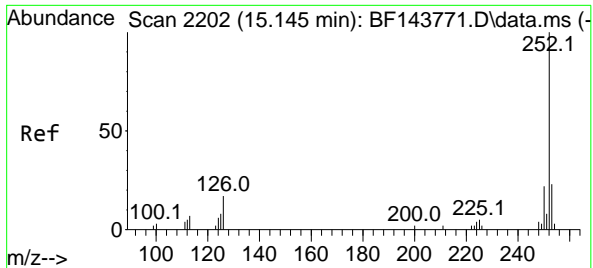
Tgt Ion:276 Resp: 2351
 Ion Ratio Lower Upper
 276 100
 138 24.2 21.3 31.9
 277 23.1 21.0 31.6



#88
 Benzo(b)fluoranthene
 Concen: 2.468 ng
 RT: 15.139 min Scan# 2201
 Delta R.T. 0.018 min
 Lab File: BF143767.D
 Acq: 16 Sep 2025 11:23

Tgt Ion:252 Resp: 2427
 Ion Ratio Lower Upper
 252 100
 253 24.6 17.9 26.9
 125 11.7 8.6 12.8



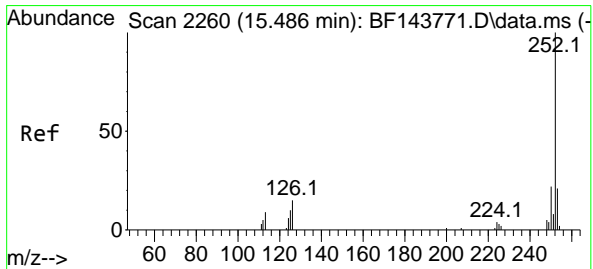
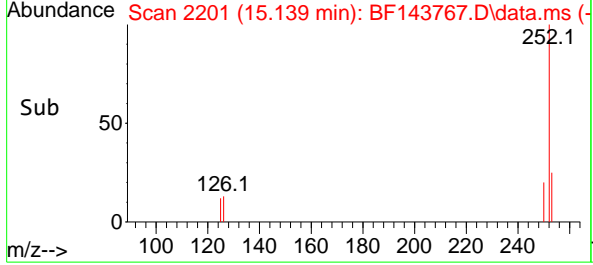
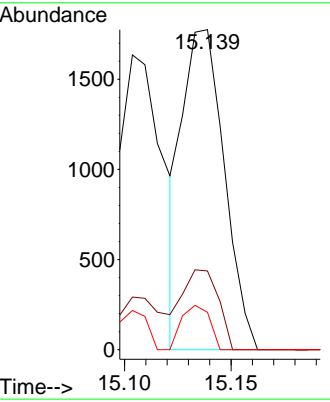
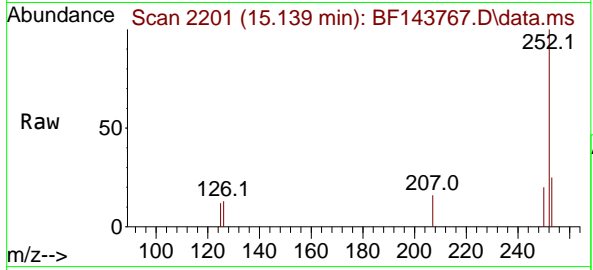


#89
 Benzo(k)fluoranthene
 Concen: 2.814 ng
 RT: 15.139 min Scan# 21
 Delta R.T. -0.018 min
 Lab File: BF143767.D
 Acq: 16 Sep 2025 11:23

Instrument : BNA_F
 ClientSampleId : SSTDICC2.5

Tgt Ion:252 Resp: 2427

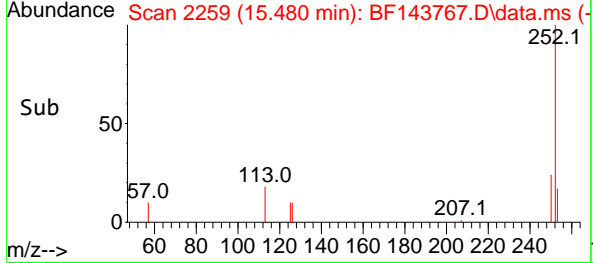
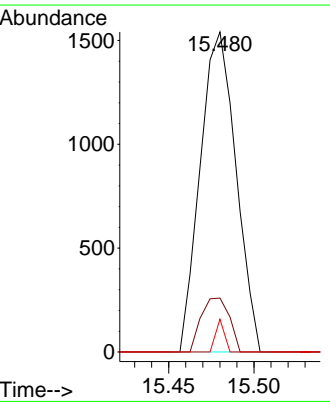
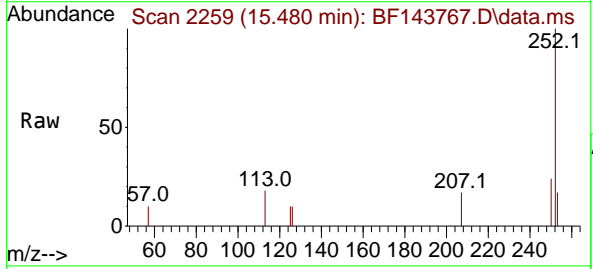
Ion	Ratio	Lower	Upper
252	100		
253	24.6	18.0	27.0
125	11.7	7.7	11.5#

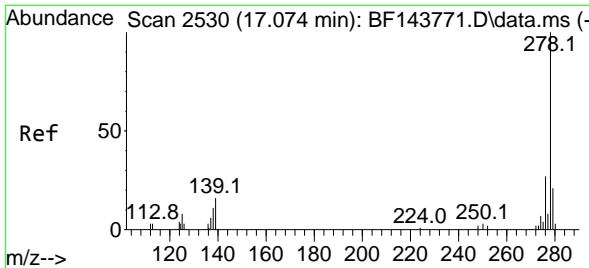


#90
 Benzo(a)pyrene
 Concen: 2.653 ng
 RT: 15.480 min Scan# 2259
 Delta R.T. -0.018 min
 Lab File: BF143767.D
 Acq: 16 Sep 2025 11:23

Tgt Ion:252 Resp: 2248

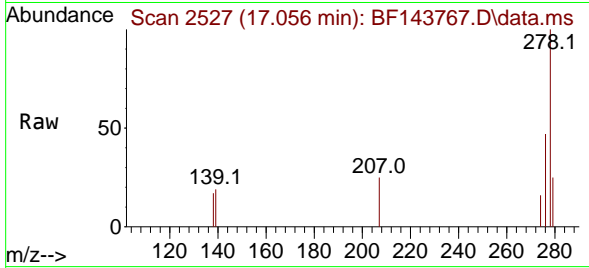
Ion	Ratio	Lower	Upper
252	100		
253	16.9	17.2	25.8#
125	10.3	8.2	12.2



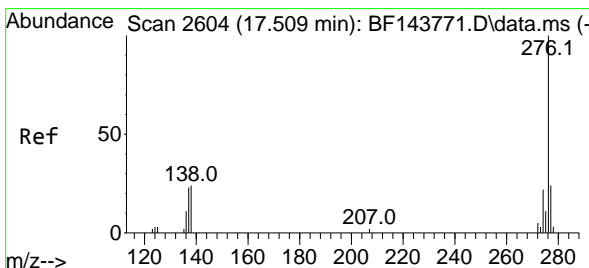
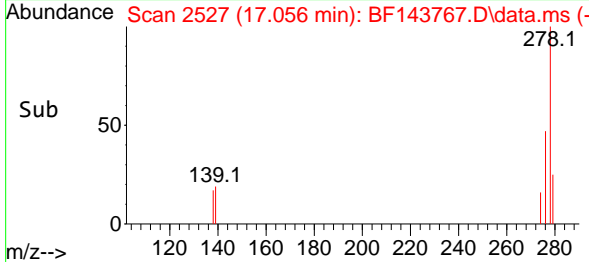
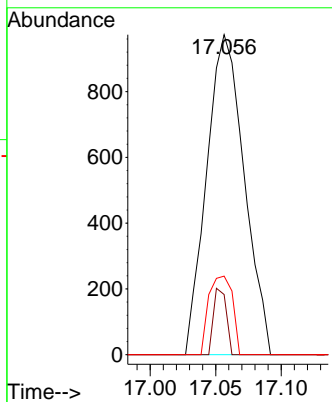


#91
 Dibenzo(a,h)anthracene
 Concen: 2.375 ng
 RT: 17.056 min Scan# 21
 Delta R.T. -0.041 min
 Lab File: BF143767.D
 Acq: 16 Sep 2025 11:23

Instrument : BNA_F
 ClientSampleId : SSTDICC2.5



Tgt Ion:278 Resp: 1940
 Ion Ratio Lower Upper
 278 100
 139 18.8 13.0 19.6
 279 24.6 17.2 25.8



#92
 Benzo(g,h,i)perylene
 Concen: 2.358 ng
 RT: 17.486 min Scan# 2600
 Delta R.T. -0.047 min
 Lab File: BF143767.D
 Acq: 16 Sep 2025 11:23

Tgt Ion:276 Resp: 1846
 Ion Ratio Lower Upper
 276 100
 277 24.9 19.0 28.4
 138 32.3 19.4 29.2#

