

Data Path : Z:\HPCHEM1\BNA\_F\DATA\BF091715\  
 Data File : BF081676.D  
 Acq On : 17 Sep 2015 13:17  
 Operator : UM/IZ  
 Sample : G3669-01  
 Misc :  
 ALS Vial : 3 Sample Multiplier: 1

Instrument :  
 BNA\_F  
 ClientSampleId :  
 WC-91415-WATER

Quant Time: Sep 18 00:49:01 2015  
 Quant Method : Z:\HPCHEM1\BNA\_F\METHODS\8270-BF090115.M  
 Quant Title : ASP BNA STANDARDS FOR 5 POINT CALIBRATION  
 QLast Update : Tue Sep 15 14:03:59 2015  
 Response via : Initial Calibration

Internal Standards	R.T.	QIon	Response	Conc	Units	Dev(Min)
1) 1,4-Dichlorobenzene-d4	8.17	152	43659	20.00	ng	-0.04
21) Naphthalene-d8	11.11	136	171380	20.00	ng	-0.01
38) Acenaphthene-d10	15.20	164	80385	20.00	ng	-0.06
63) Phenanthrene-d10	18.70	188	161969	20.00	ng	-0.06
75) Chrysene-d12	23.35	240	133849	20.00	ng	-0.03
86) Perylene-d12	24.78	264	90801	20.00	ng	-0.03

## System Monitoring Compounds

5) 2-Fluorophenol	5.33	112	54172	19.25	ng	-0.02
7) Phenol-d6	7.60	99	45957	12.34	ng	-0.04
23) Nitrobenzene-d5	9.48	82	213829	60.20	ng	-0.06
41) 2,4,6-Tribromophenol	17.10	330	27641	38.62	ng	-0.07
44) 2-Fluorobiphenyl	13.72	172	363666	57.98	ng	-0.06
78) Terphenyl-d14	22.07	244	280045	48.70	ng	-0.04

## Target Compounds

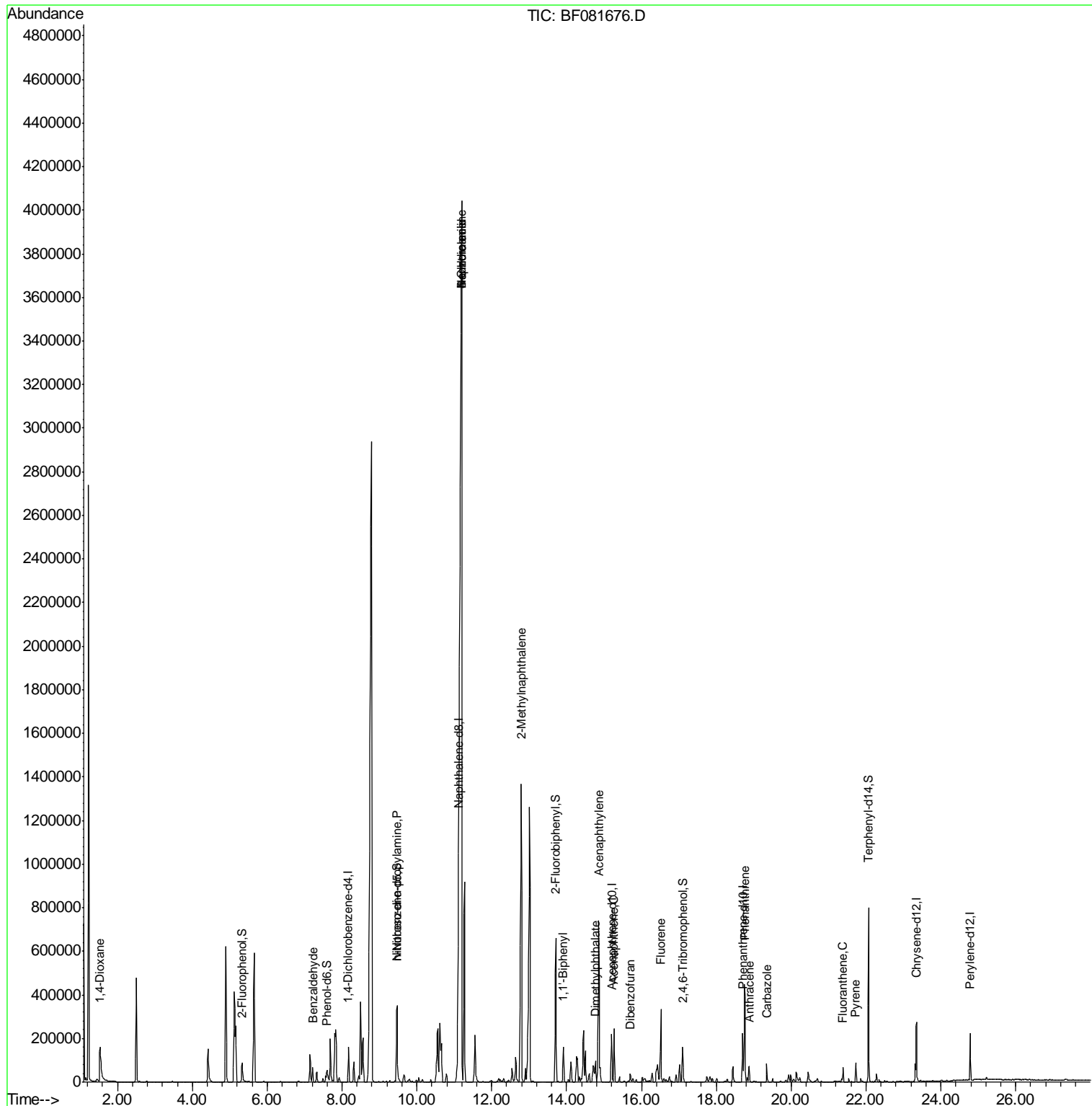
Target Compounds	R.T.	QIon	Response	Conc	Units	Qvalue
2) 1,4-Dioxane	1.53	88	8917	7.06	ng	# 11
9) Benzaldehyde	7.21	77	6191	2.65	ng	# 1
19) n-Nitroso-di-n-propylamine	9.48	70	28578	11.27	ng	# 69
31) Naphthalene	11.20	128	7585218	829.90	ng	96
32) Benzoic acid	11.20	122	19459	11.84	ng	# 1
33) 4-Chloroaniline	11.20	127	925183	248.17	ng	# 34
37) 2-Methylnaphthalene	12.79	142	827598	139.14	ng	# 88
45) 1,1'-Biphenyl	13.91	154	94614	12.79	ng	95
48) Acenaphthylene	14.86	152	611131	64.50	ng	97
49) Dimethylphthalate	14.77	163	57748	9.25	ng	# 96
51) Acenaphthene	15.27	154	74790	13.88	ng	# 84
54) Dibenzofuran	15.69	168	27185	3.45	ng	# 80
57) Fluorene	16.52	166	192514	32.23	ng	95
70) Phenanthrene	18.76	178	326286	36.24	ng	98
71) Anthracene	18.88	178	56063	6.06	ng	98
72) Carbazole	19.35	167	64557	7.44	ng	# 95
74) Fluoranthene	21.39	202	42993	4.41	ng	86
77) Pyrene	21.73	202	57949	5.84	ng	99

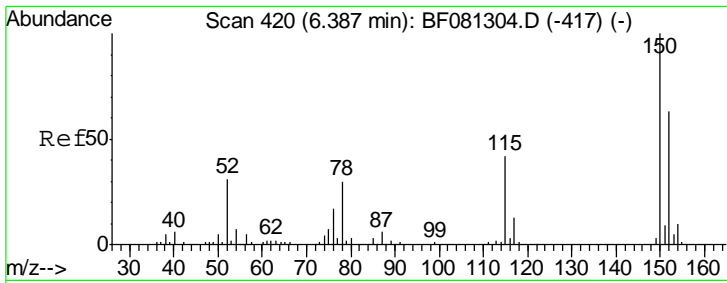
(#) = qualifier out of range (m) = manual integration (+) = signals summed

Data Path : Z:\HPCHEM1\BNA\_F\DATA\BF091715\  
 Data File : BF081676.D  
 Acq On : 17 Sep 2015 13:17  
 Operator : UM/IZ  
 Sample : G3669-01  
 Misc :  
 ALS Vial : 3 Sample Multiplier: 1

Instrument :  
 BNA\_F  
 ClientSampleId :  
 WC-91415-WATER

Quant Time: Sep 18 00:49:01 2015  
 Quant Method : Z:\HPCHEM1\BNA\_F\METHODS\8270-BF090115.M  
 Quant Title : ASP BNA STANDARDS FOR 5 POINT CALIBRATION  
 QLast Update : Tue Sep 15 14:03:59 2015  
 Response via : Initial Calibration

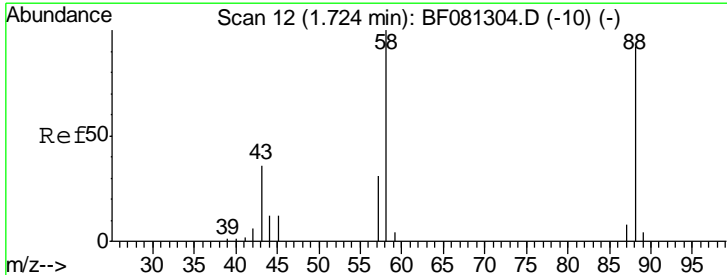
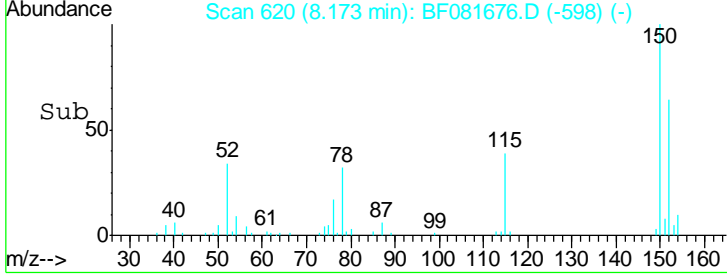
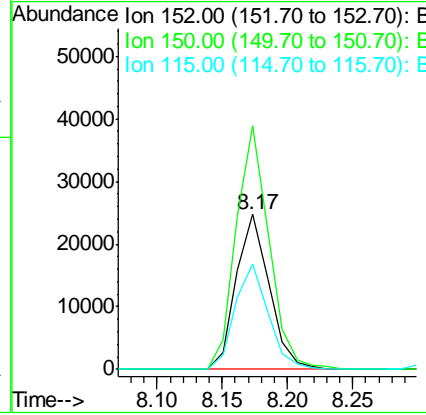
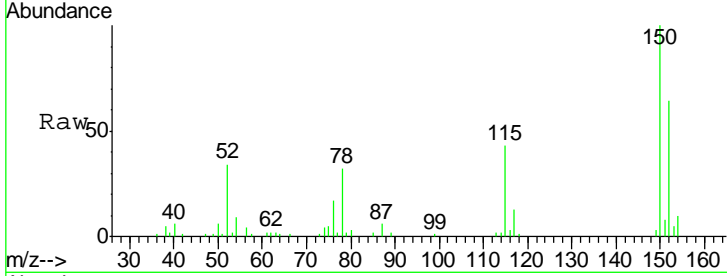




#1  
 1,4-Dichlorobenzene-d4  
 Concen: 20.00 ng  
 RT: 8.17 min Scan# 620  
 Delta R.T. -0.04 min  
 Lab File: BF081676.D  
 Acq: 17 Sep 2015 13:17

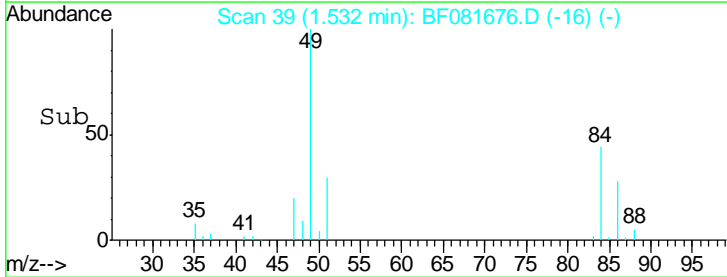
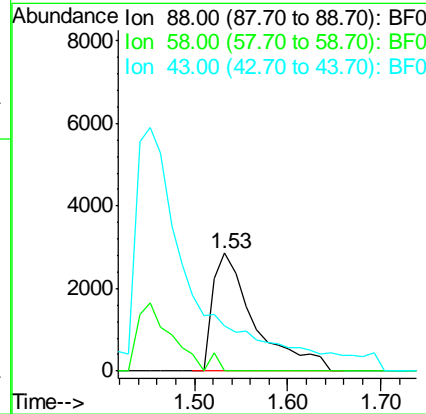
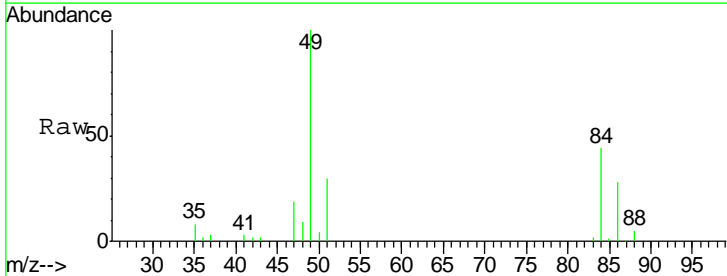
**Instrument :**  
 BNA\_F  
**ClientSampled :**  
 WC-91415-WATER

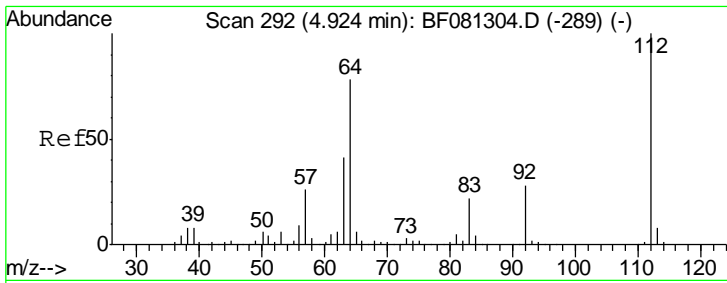
Tgt Ion	Resp	Lower	Upper
152	43659		
152	100		
150	157.1	124.7	187.1
115	68.2	39.0	58.4#



#2  
 1,4-Dioxane  
 Concen: 7.06 ng  
 RT: 1.53 min Scan# 39  
 Delta R.T. -0.03 min  
 Lab File: BF081676.D  
 Acq: 17 Sep 2015 13:17

Tgt Ion	Resp	Lower	Upper
88	8917		
88	100		
58	0.0	77.7	116.5#
43	0.0	26.6	40.0#

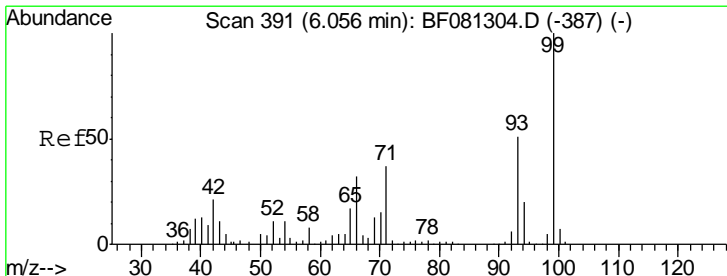
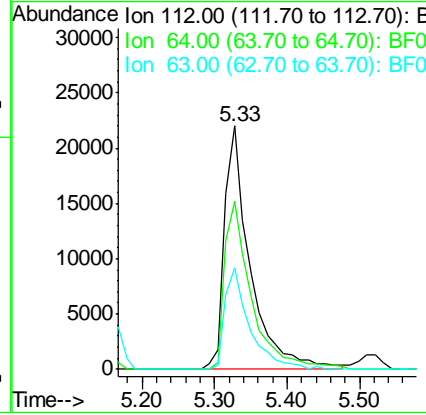
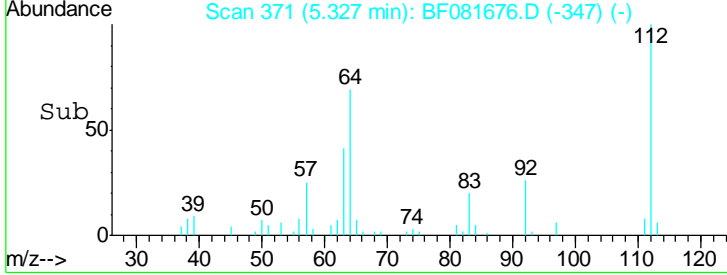
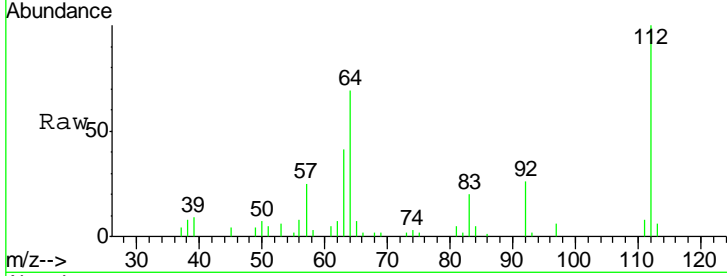




#5  
 2-Fluorophenol  
 Concen: 19.25 ng  
 RT: 5.33 min Scan# 371  
 Delta R.T. -0.02 min  
 Lab File: BF081676.D  
 Acq: 17 Sep 2015 13:17

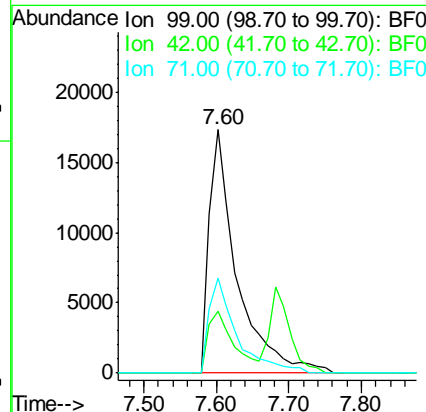
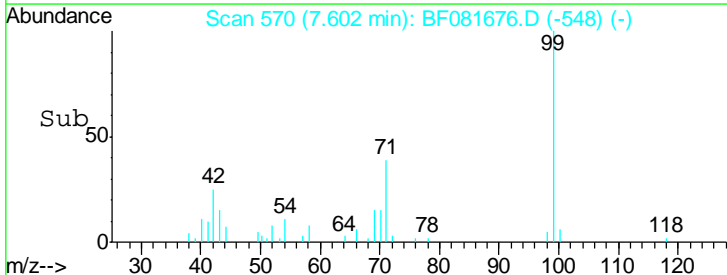
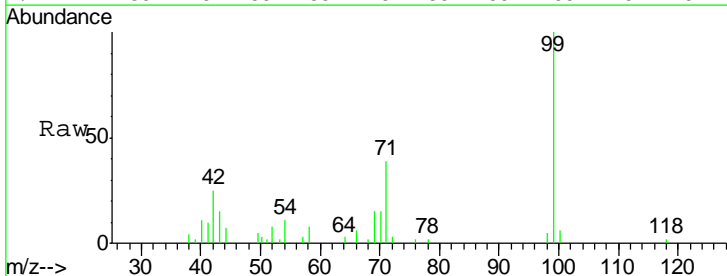
Instrument :  
 BNA\_F  
 ClientSampleId :  
 WC-91415-WATER

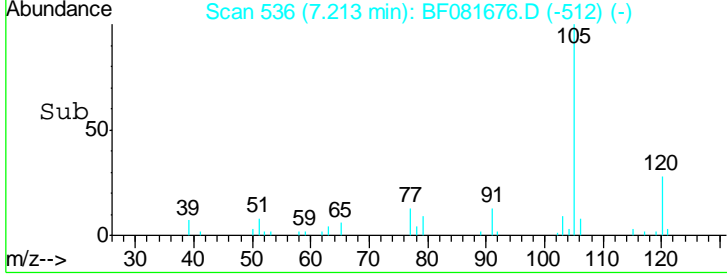
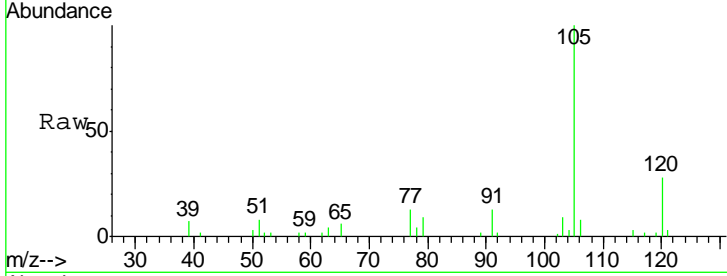
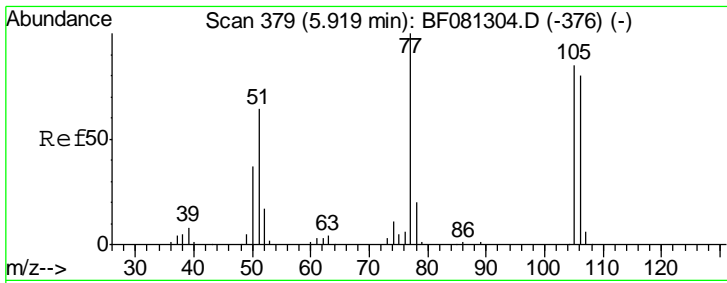
Tgt Ion	Resp	Lower	Upper
112	54172		
64	68.9	39.7	59.5#
63	41.4	17.4	26.0#



#7  
 Phenol-d6  
 Concen: 12.34 ng  
 RT: 7.60 min Scan# 570  
 Delta R.T. -0.04 min  
 Lab File: BF081676.D  
 Acq: 17 Sep 2015 13:17

Tgt Ion	Resp	Lower	Upper
99	45957		
42	25.3	13.7	20.5#
71	38.8	14.2	21.2#

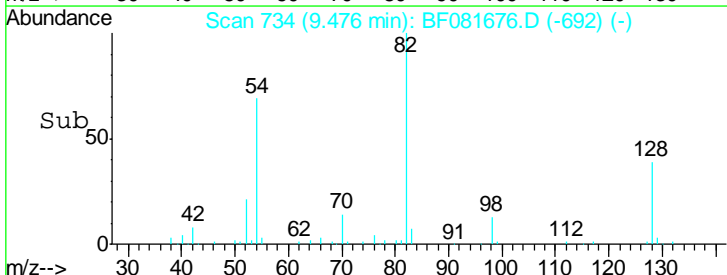
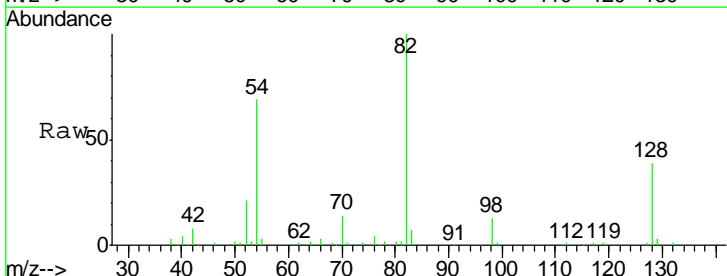
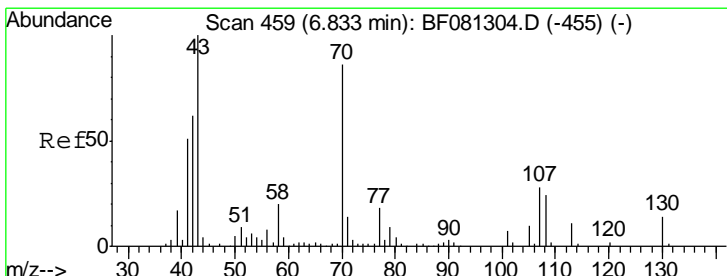
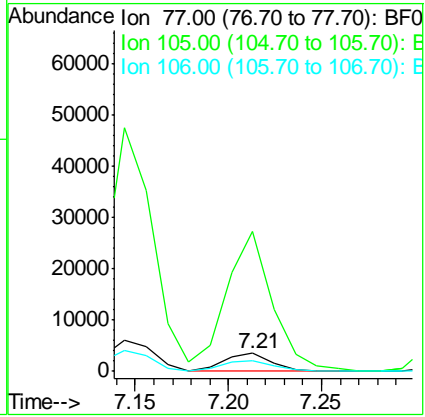




#9  
Benzaldehyde  
Concen: 2.65 ng  
RT: 7.21 min Scan# 536  
Delta R.T. -0.02 min  
Lab File: BF081676.D  
Acq: 17 Sep 2015 13:17

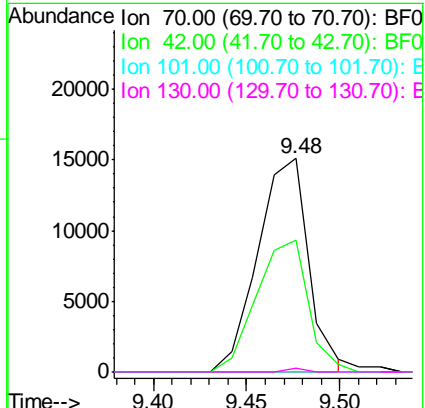
Instrument :  
BNA\_F  
ClientSampleId :  
WC-91415-WATER

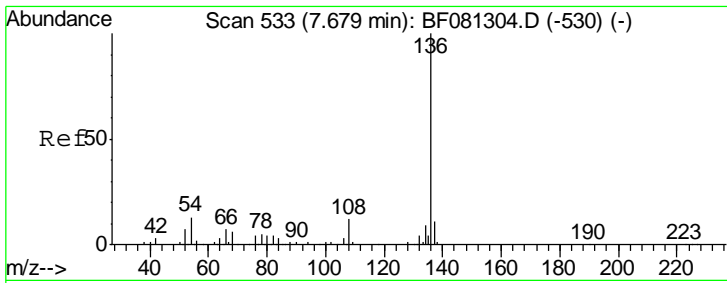
Tgt Ion	Resp	Lower	Upper
77	100		
105	780.6	91.6	131.6#
106	61.3	102.6	142.6#



#19  
n-Nitroso-di-n-propylamine  
Concen: 11.27 ng  
RT: 9.48 min Scan# 734  
Delta R.T. 0.18 min  
Lab File: BF081676.D  
Acq: 17 Sep 2015 13:17

Tgt Ion	Resp	Lower	Upper
70	100		
42	61.8	63.8	95.6#
101	0.0	9.2	13.8#
130	2.0	27.3	40.9#

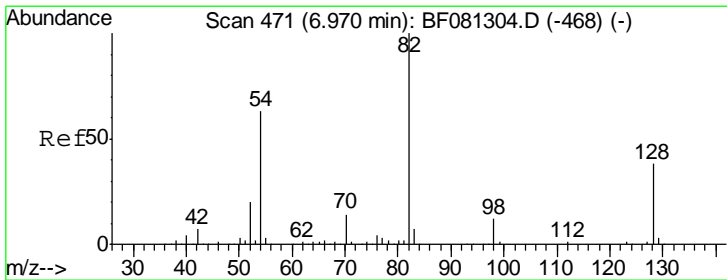
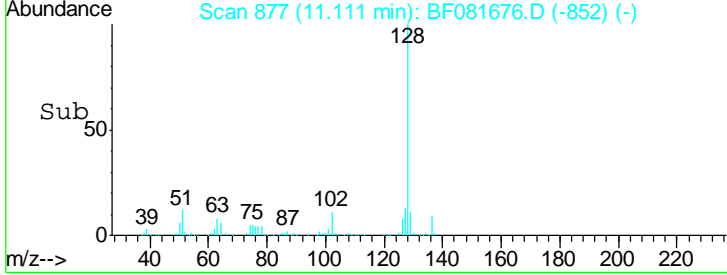
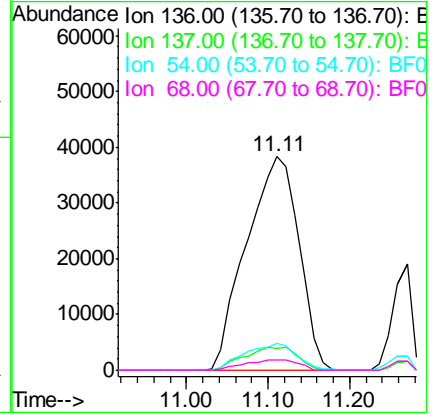
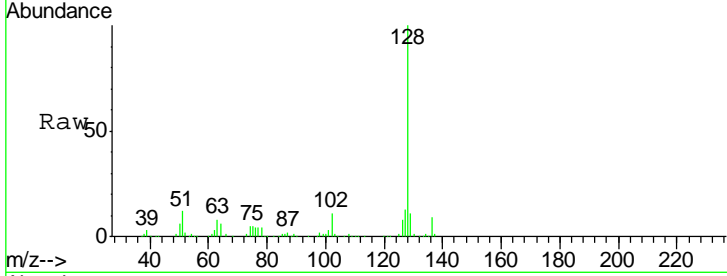




#21  
 Naphthalene-d8  
 Concen: 20.00 ng  
 RT: 11.11 min Scan# 877  
 Delta R.T. -0.01 min  
 Lab File: BF081676.D  
 Acq: 17 Sep 2015 13:17

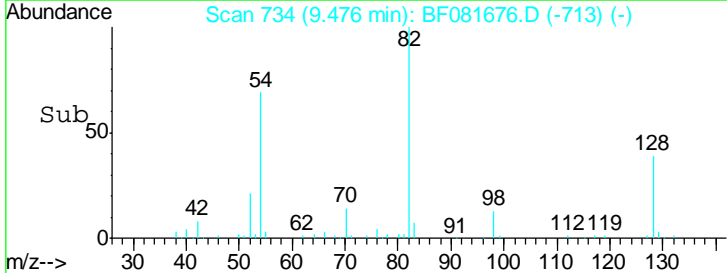
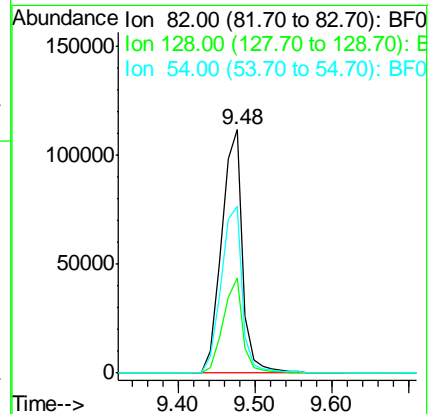
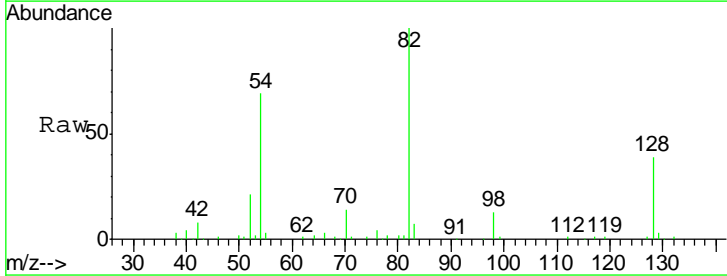
**Instrument :**  
 BNA\_F  
**ClientSampleId :**  
 WC-91415-WATER

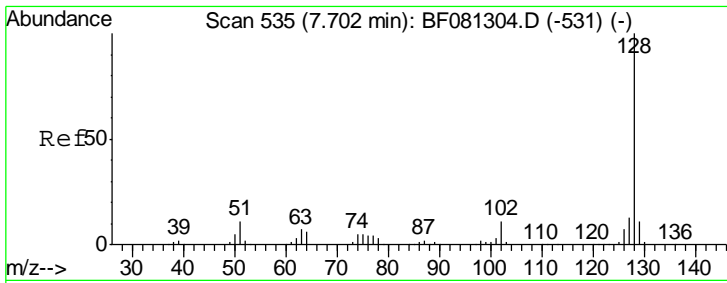
Tgt Ion	Resp	Lower	Upper
136	171380		
137	10.4	9.0	13.6
54	12.3	8.2	12.2#
68	5.0	5.8	8.6#



#23  
 Nitrobenzene-d5  
 Concen: 60.20 ng  
 RT: 9.48 min Scan# 734  
 Delta R.T. -0.06 min  
 Lab File: BF081676.D  
 Acq: 17 Sep 2015 13:17

Tgt Ion	Resp	Lower	Upper
82	213829		
128	38.9	51.0	76.6#
54	68.5	47.5	71.3



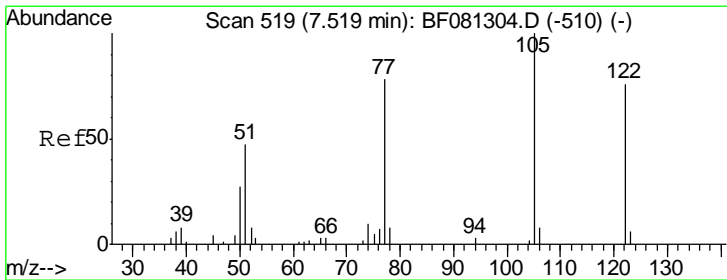
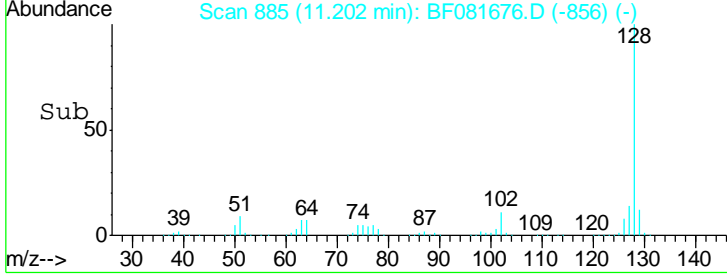
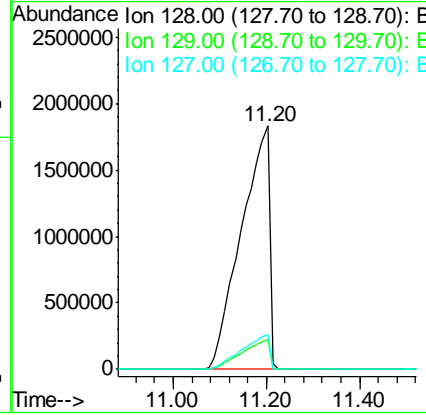
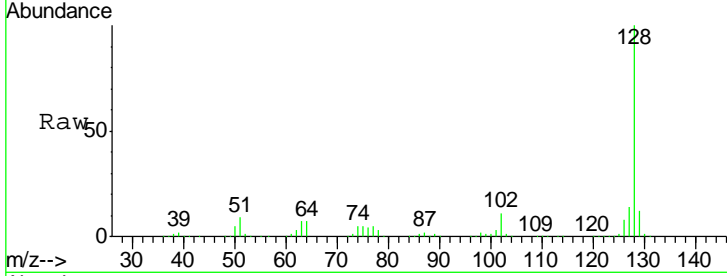


#31  
 Naphthalene  
 Concen: 829.90 ng  
 RT: 11.20 min Scan# 885  
 Delta R.T. 0.04 min  
 Lab File: BF081676.D  
 Acq: 17 Sep 2015 13:17

Instrument :  
 BNA\_F  
 ClientSampled :  
 WC-91415-WATER

Tgt Ion:128 Resp: 7585218

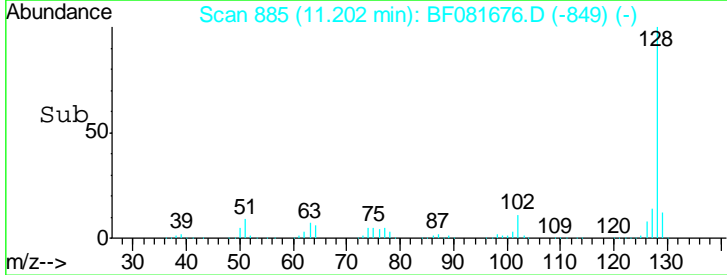
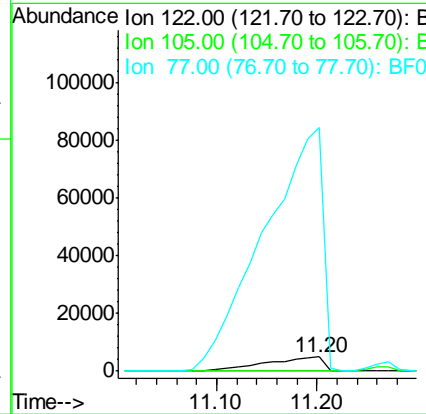
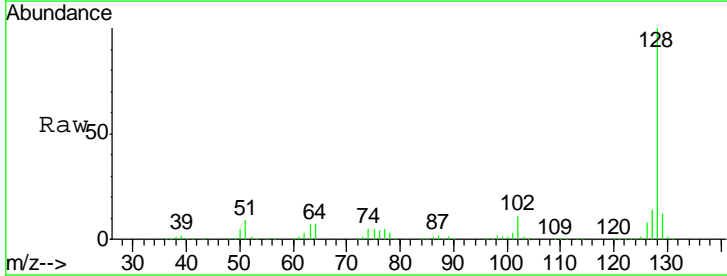
Ion	Ratio	Lower	Upper
128	100		
129	12.0	8.4	12.6
127	14.3	9.9	14.9

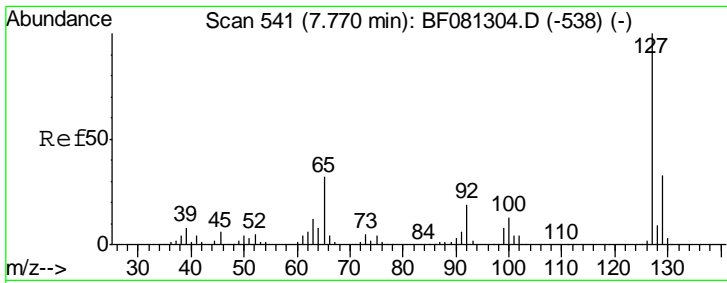


#32  
 Benzoic acid  
 Concen: 11.84 ng  
 RT: 11.20 min Scan# 885  
 Delta R.T. 0.12 min  
 Lab File: BF081676.D  
 Acq: 17 Sep 2015 13:17

Tgt Ion:122 Resp: 19459

Ion	Ratio	Lower	Upper
122	100		
105	0.0	76.1	116.1#
77	1744.3	40.5	80.5#

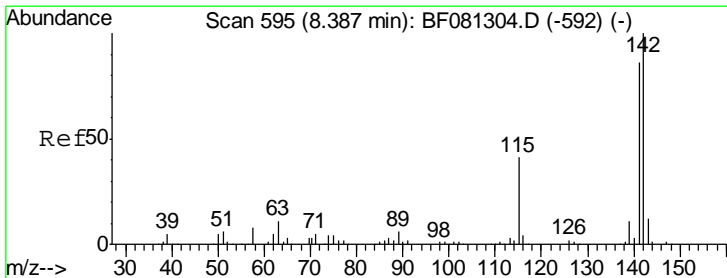
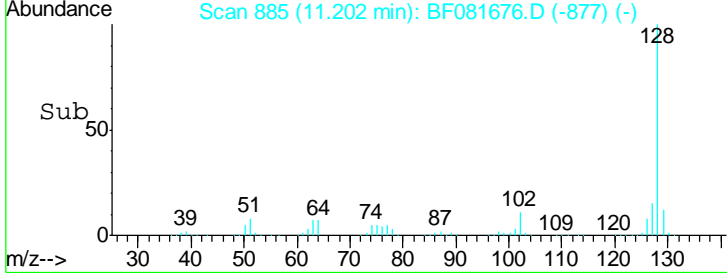
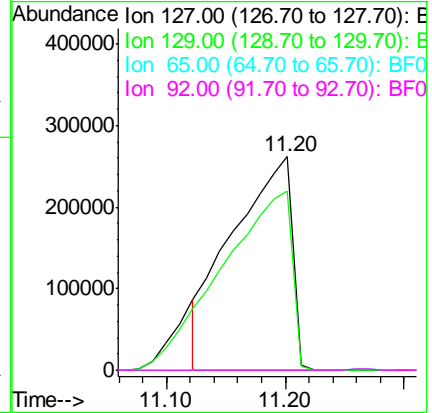
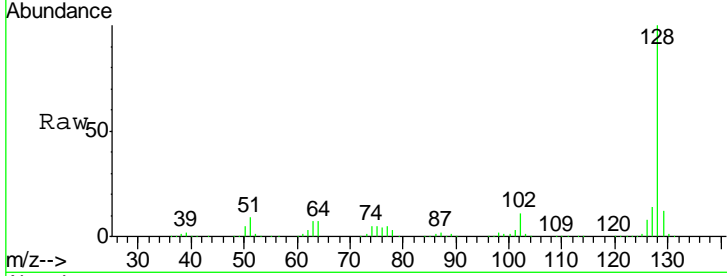




#33  
 4-Chloroaniline  
 Concen: 248.17 ng  
 RT: 11.20 min Scan# 885  
 Delta R.T. -0.20 min  
 Lab File: BF081676.D  
 Acq: 17 Sep 2015 13:17

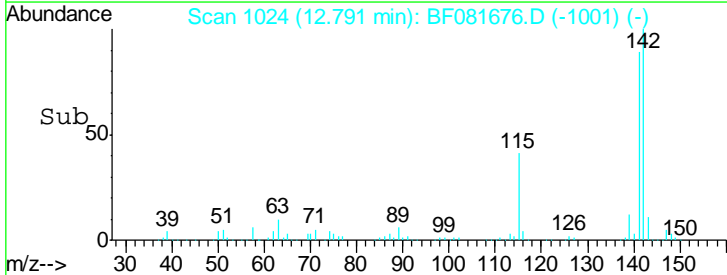
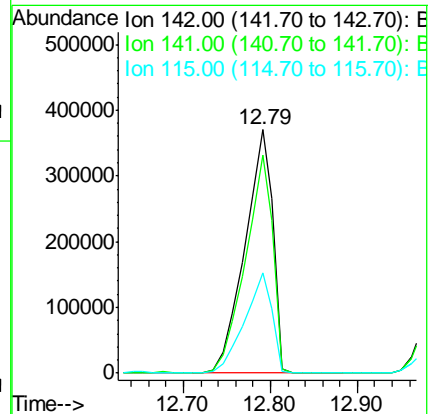
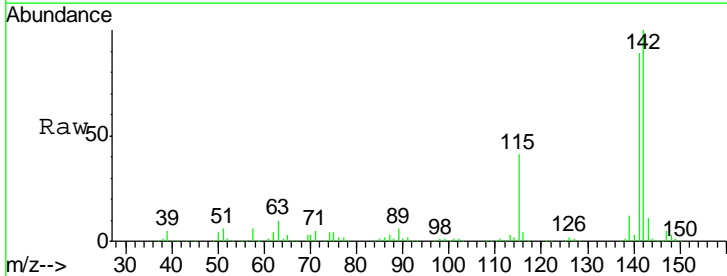
Instrument :  
 BNA\_F  
 ClientSampleId :  
 WC-91415-WATER

Tgt Ion	Resp	Lower	Upper
127	100		
129	84.0	25.8	38.6#
65	0.0	17.9	26.9#
92	0.0	10.5	15.7#

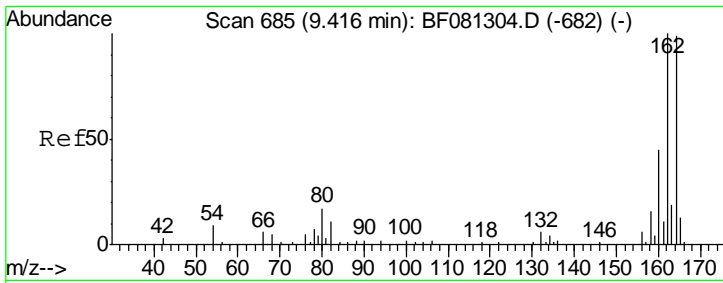


#37  
 2-Methylnaphthalene  
 Concen: 139.14 ng  
 RT: 12.79 min Scan# 1024  
 Delta R.T. -0.03 min  
 Lab File: BF081676.D  
 Acq: 17 Sep 2015 13:17

Tgt Ion	Resp	Lower	Upper
142	100		
141	89.4	67.5	101.3
115	41.3	18.2	27.2#



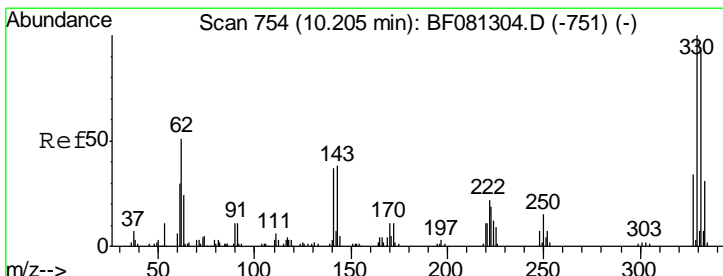
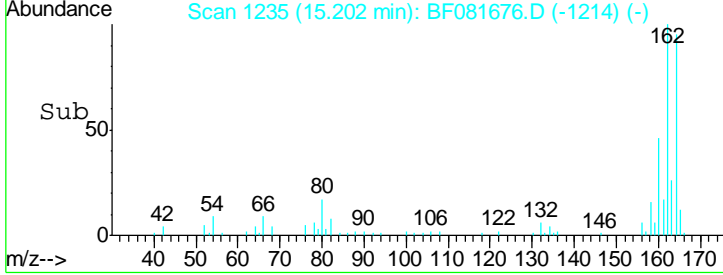
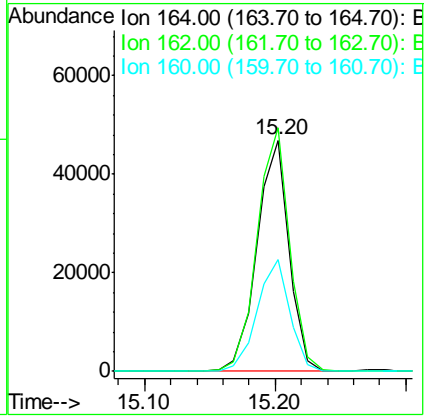
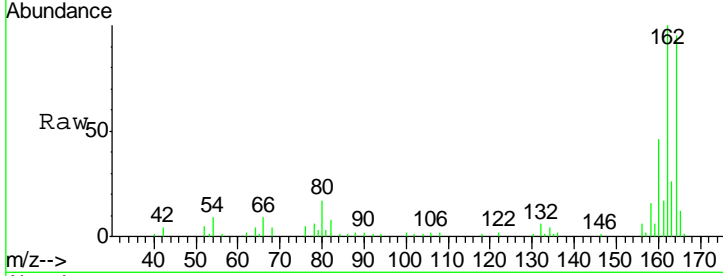




#38  
 Acenaphthene-d10  
 Concen: 20.00 ng  
 RT: 15.20 min Scan# 1235  
 Delta R.T. -0.06 min  
 Lab File: BF081676.D  
 Acq: 17 Sep 2015 13:17

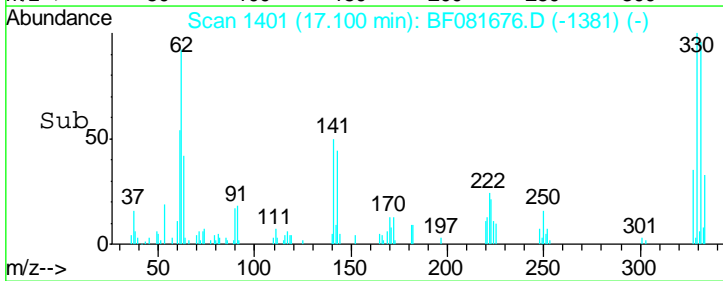
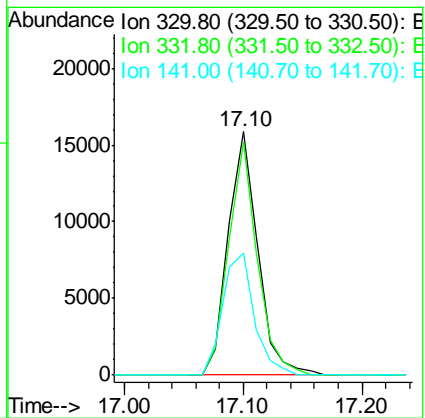
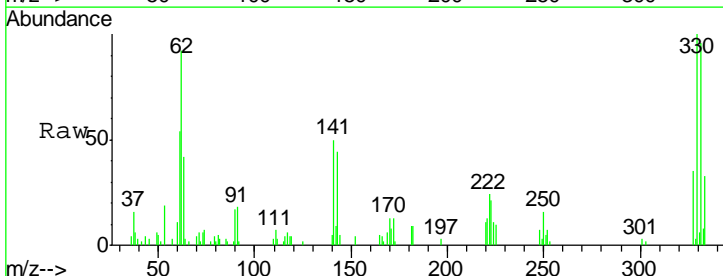
Instrument :  
 BNA\_F  
 ClientSampled :  
 WC-91415-WATER

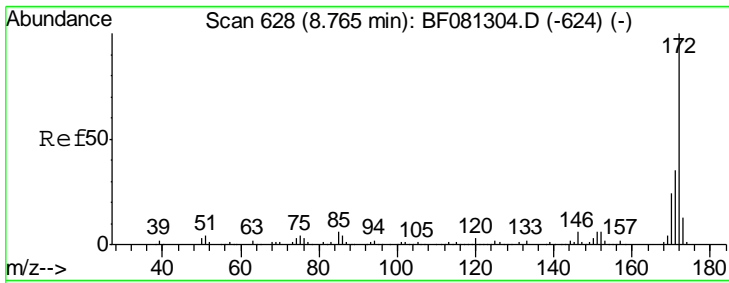
Tgt Ion	Resp	Lower	Upper
164	100		
162	105.3	75.2	112.8
160	48.1	31.5	47.3#



#41  
 2,4,6-Tribromophenol  
 Concen: 38.62 ng  
 RT: 17.10 min Scan# 1401  
 Delta R.T. -0.07 min  
 Lab File: BF081676.D  
 Acq: 17 Sep 2015 13:17

Tgt Ion	Resp	Lower	Upper
330	100		
332	92.8	76.6	114.8
141	52.9	29.7	44.5#

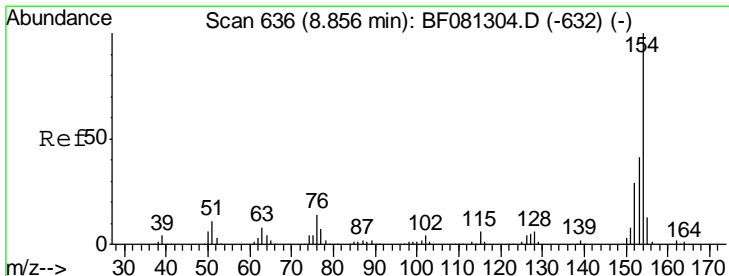
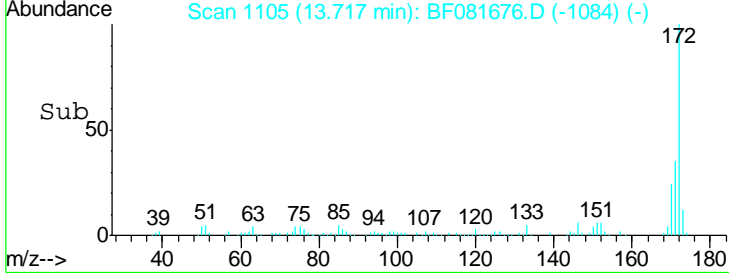
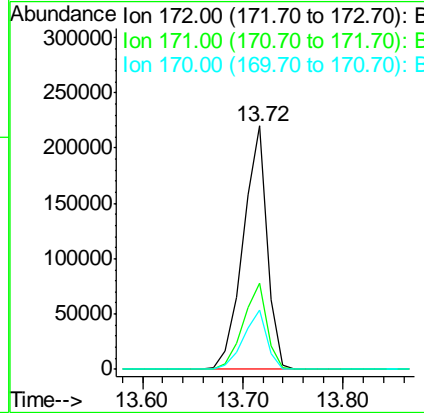
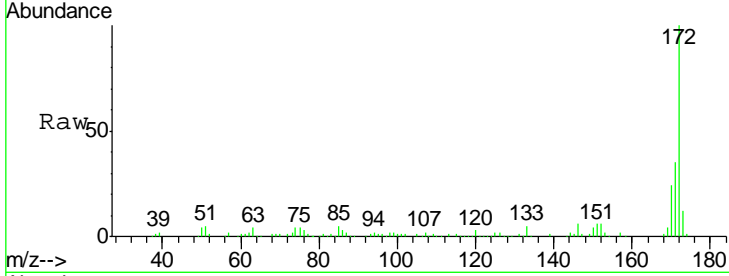




#44  
 2-Fluorobiphenyl  
 Concen: 57.98 ng  
 RT: 13.72 min Scan# 1105  
 Delta R.T. -0.06 min  
 Lab File: BF081676.D  
 Acq: 17 Sep 2015 13:17

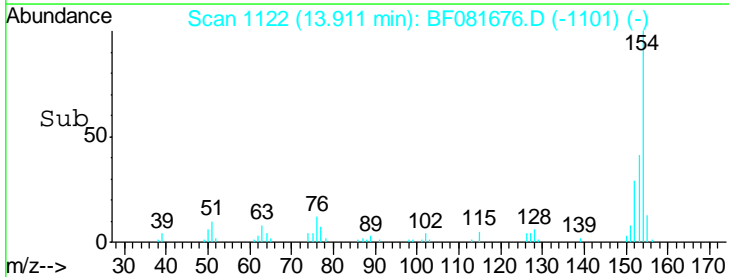
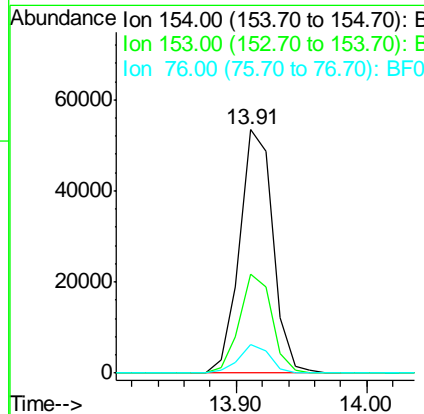
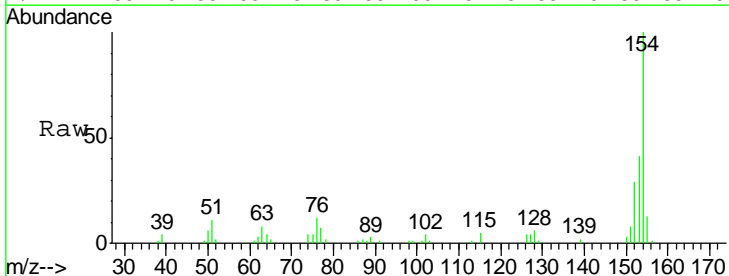
Instrument :  
 BNA\_F  
 ClientSampleId :  
 WC-91415-WATER

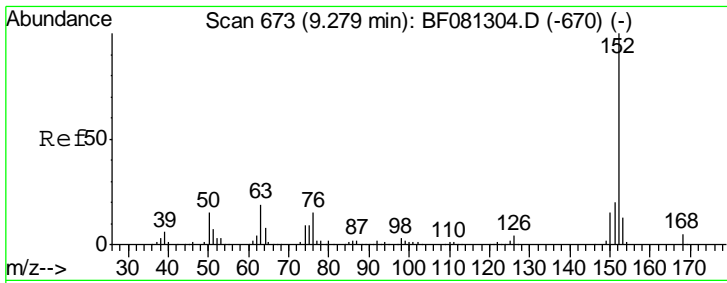
Tgt Ion	Resp	Lower	Upper
172	363666		
171	100	26.1	39.1
170	35.4	17.4	26.2



#45  
 1,1'-Biphenyl  
 Concen: 12.79 ng  
 RT: 13.91 min Scan# 1122  
 Delta R.T. -0.06 min  
 Lab File: BF081676.D  
 Acq: 17 Sep 2015 13:17

Tgt Ion	Resp	Lower	Upper
154	94614		
153	100	17.1	57.1
76	40.9	0.0	31.6



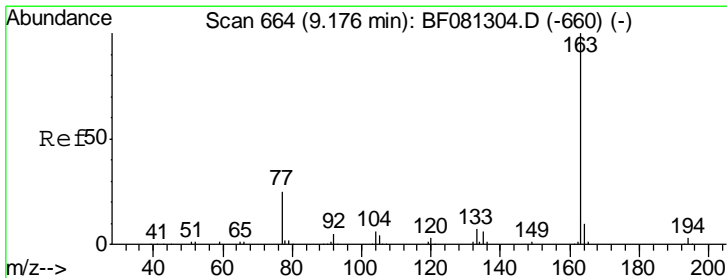
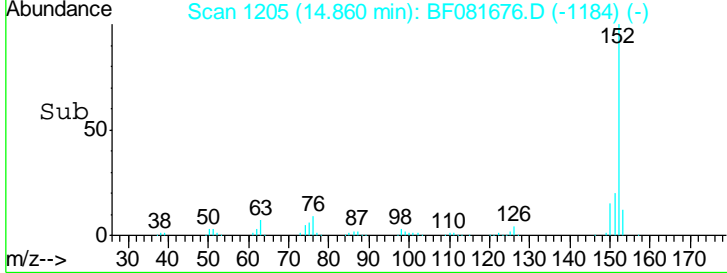
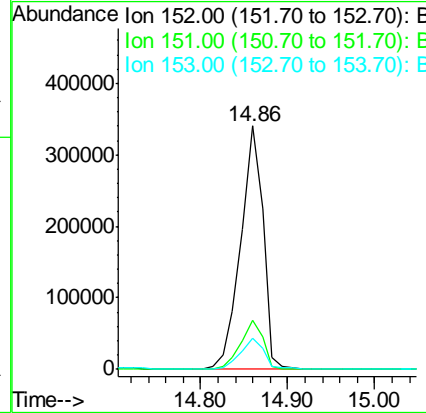
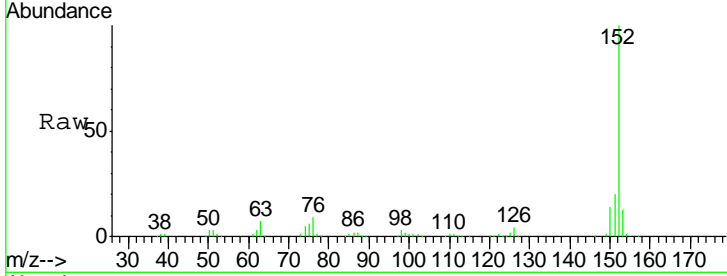


#48  
 Acenaphthylene  
 Concen: 64.50 ng  
 RT: 14.86 min Scan# 1205  
 Delta R.T. -0.06 min  
 Lab File: BF081676.D  
 Acq: 17 Sep 2015 13:17

Instrument :  
 BNA\_F  
 ClientSampled :  
 WC-91415-WATER

Tgt Ion:152 Resp: 611131

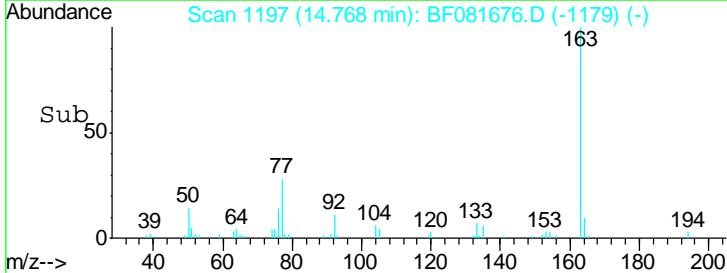
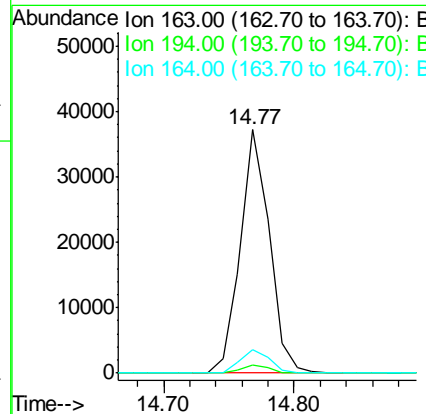
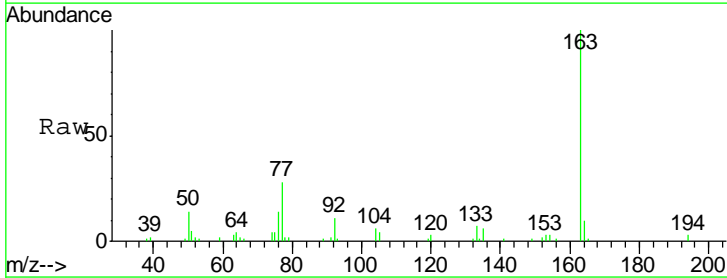
Ion	Ratio	Lower	Upper
152	100		
151	20.2	14.6	22.0
153	12.8	10.3	15.5

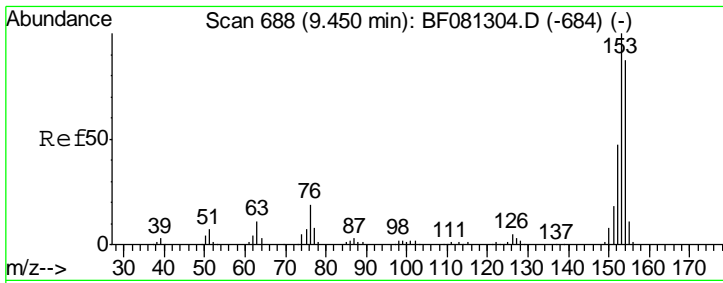


#49  
 Dimethylphthalate  
 Concen: 9.25 ng  
 RT: 14.77 min Scan# 1197  
 Delta R.T. -0.09 min  
 Lab File: BF081676.D  
 Acq: 17 Sep 2015 13:17

Tgt Ion:163 Resp: 57748

Ion	Ratio	Lower	Upper
163	100		
194	3.1	4.4	6.6#
164	9.8	8.3	12.5

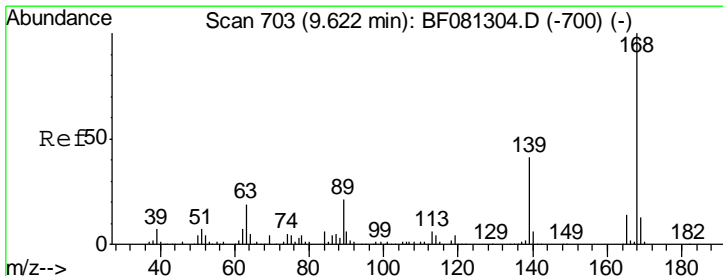
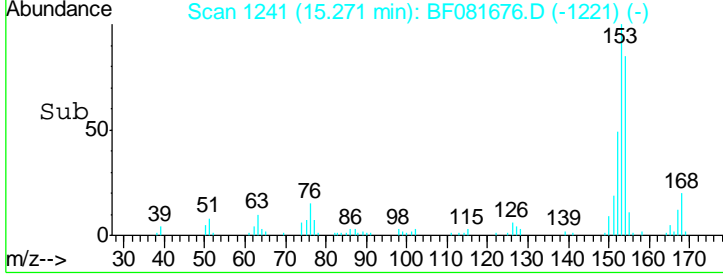
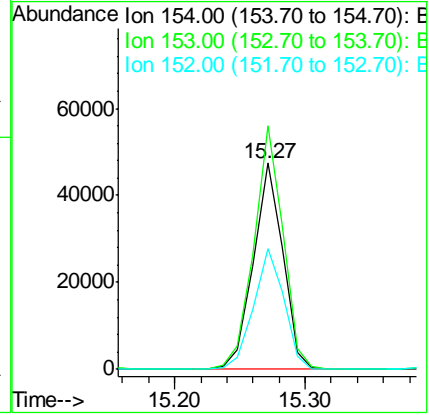
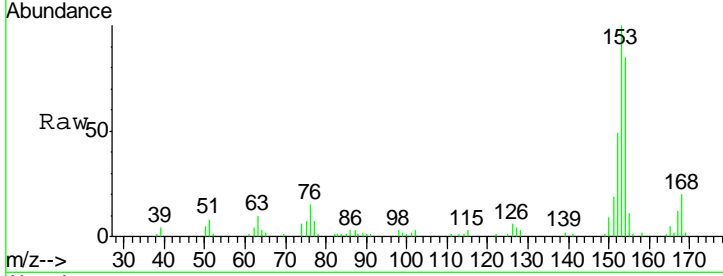




#51  
 Acenaphthene  
 Concen: 13.88 ng  
 RT: 15.27 min Scan# 1241  
 Delta R.T. -0.07 min  
 Lab File: BF081676.D  
 Acq: 17 Sep 2015 13:17

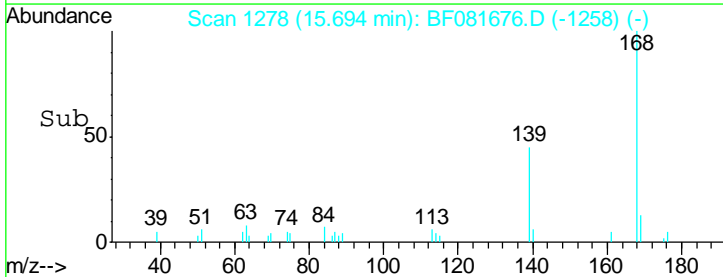
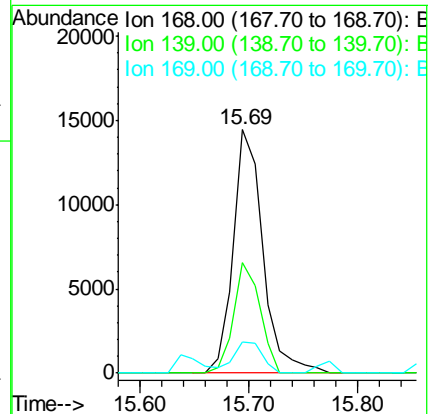
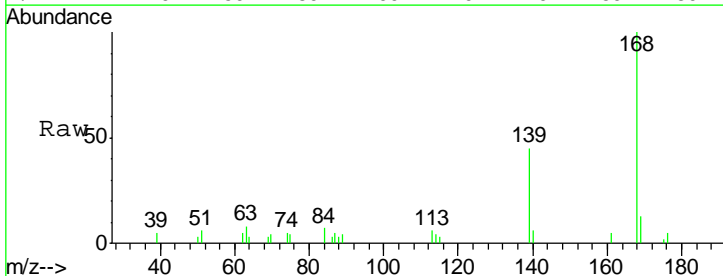
Instrument :  
 BNA\_F  
 ClientSampled :  
 WC-91415-WATER

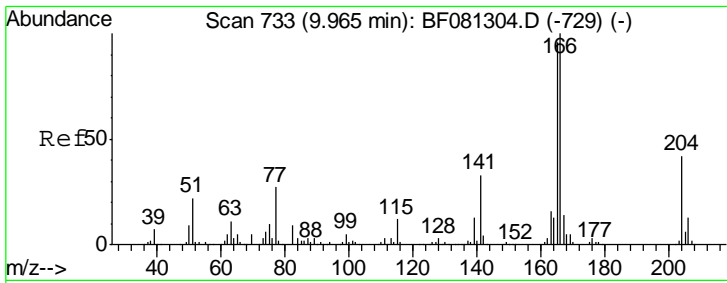
Tgt Ion	Resp	Lower	Upper
154	100		
153	118.0	82.1	123.1
152	58.4	37.9	56.9#



#54  
 Dibenzofuran  
 Concen: 3.45 ng  
 RT: 15.69 min Scan# 1278  
 Delta R.T. -0.07 min  
 Lab File: BF081676.D  
 Acq: 17 Sep 2015 13:17

Tgt Ion	Resp	Lower	Upper
168	100		
139	45.3	24.2	36.2#
169	13.0	10.6	15.8

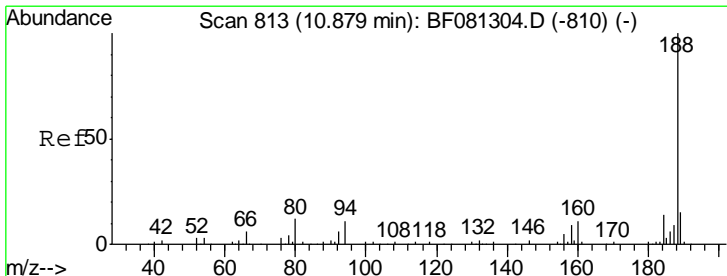
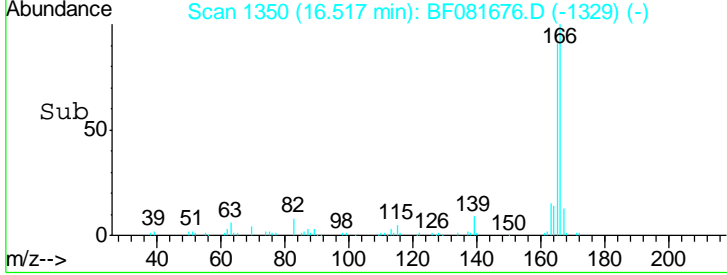
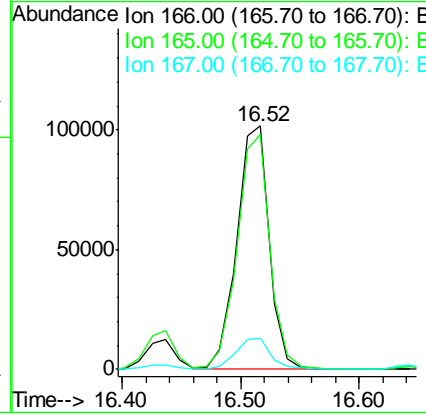
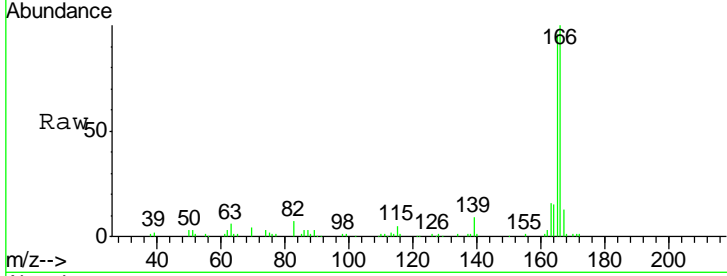




#57  
 Fluorene  
 Concen: 32.23 ng  
 RT: 16.52 min Scan# 1350  
 Delta R.T. -0.06 min  
 Lab File: BF081676.D  
 Acq: 17 Sep 2015 13:17

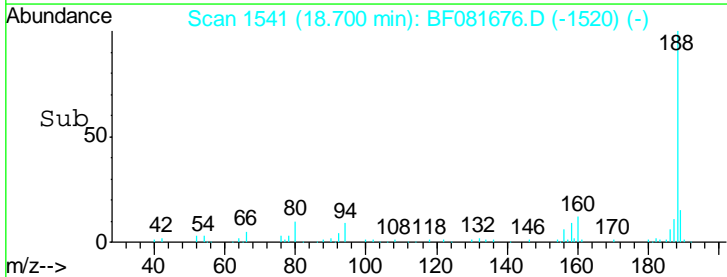
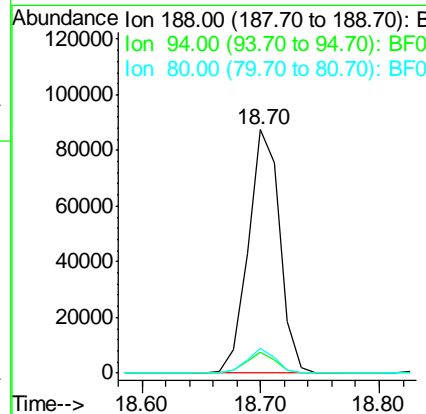
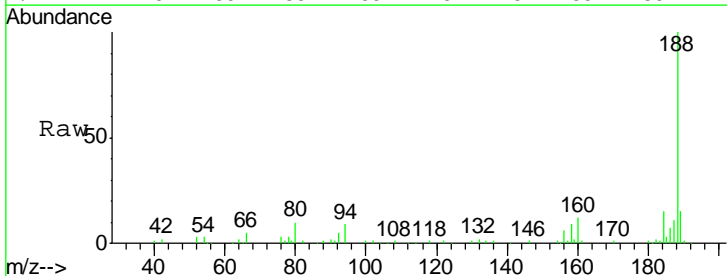
Instrument :  
 BNA\_F  
 ClientSampled :  
 WC-91415-WATER

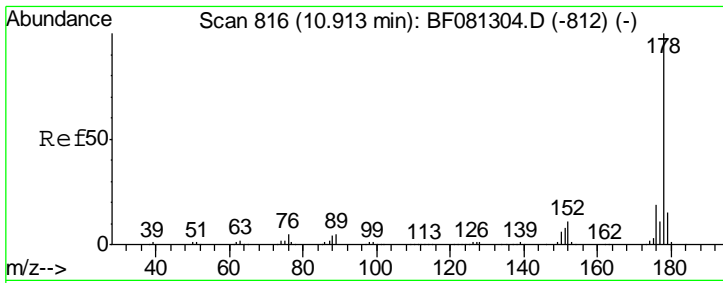
Tgt Ion	Resp	Lower	Upper
166	192514		
165	96.2	72.6	109.0
167	12.8	10.6	16.0



#63  
 Phenanthrene-d10  
 Concen: 20.00 ng  
 RT: 18.70 min Scan# 1541  
 Delta R.T. -0.06 min  
 Lab File: BF081676.D  
 Acq: 17 Sep 2015 13:17

Tgt Ion	Resp	Lower	Upper
188	161969		
94	8.7	11.1	16.7#
80	9.9	11.0	16.4#

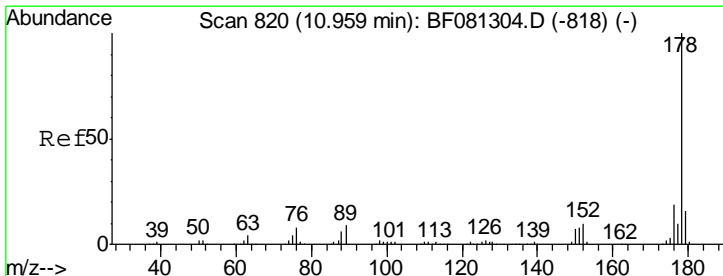
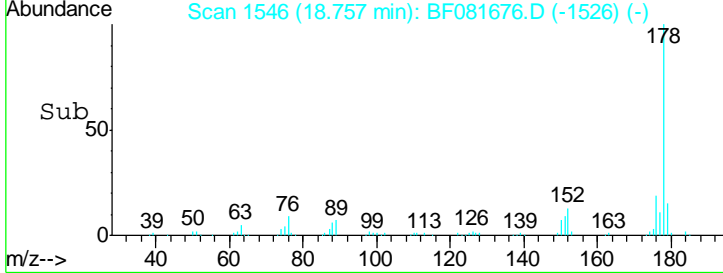
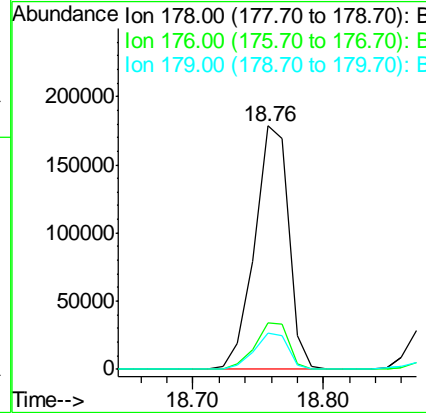
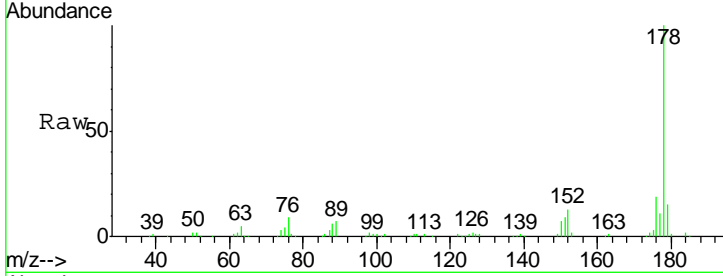




#70  
 Phenanthrene  
 Concen: 36.24 ng  
 RT: 18.76 min Scan# 1546  
 Delta R.T. -0.07 min  
 Lab File: BF081676.D  
 Acq: 17 Sep 2015 13:17

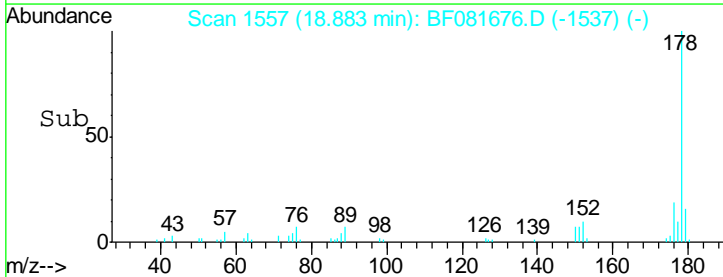
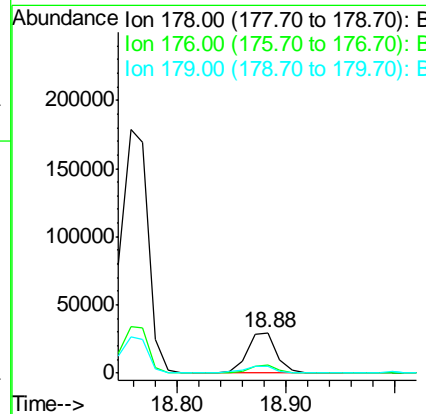
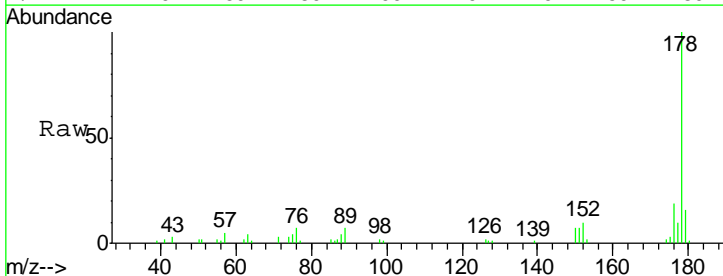
Instrument :  
 BNA\_F  
 ClientSampleId :  
 WC-91415-WATER

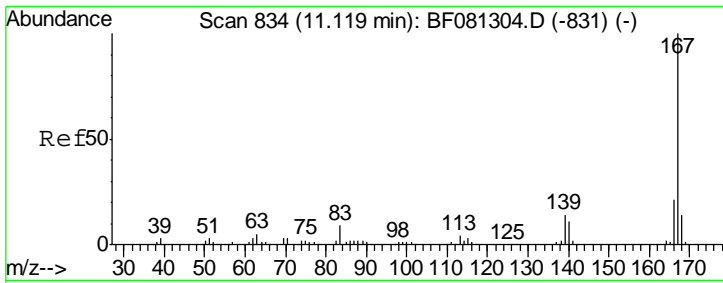
Tgt Ion	Resp	Lower	Upper
178	100		
176	18.8	13.8	20.8
179	14.9	12.2	18.2



#71  
 Anthracene  
 Concen: 6.06 ng  
 RT: 18.88 min Scan# 1557  
 Delta R.T. -0.07 min  
 Lab File: BF081676.D  
 Acq: 17 Sep 2015 13:17

Tgt Ion	Resp	Lower	Upper
178	100		
176	19.2	14.1	21.1
179	15.7	12.2	18.2

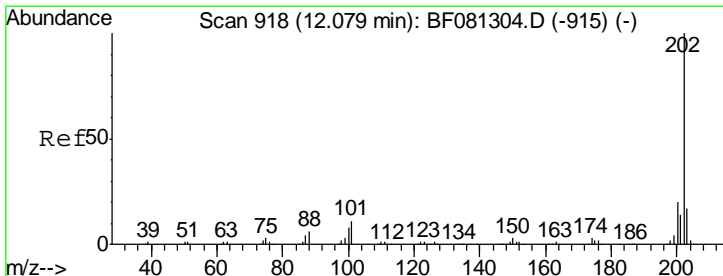
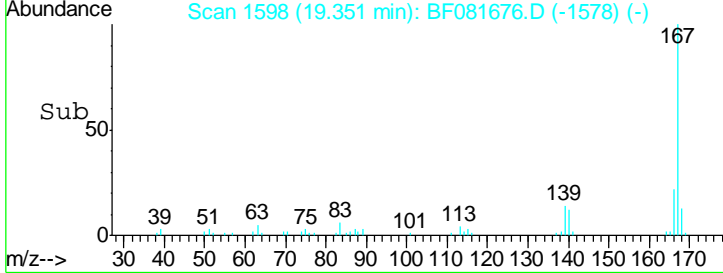
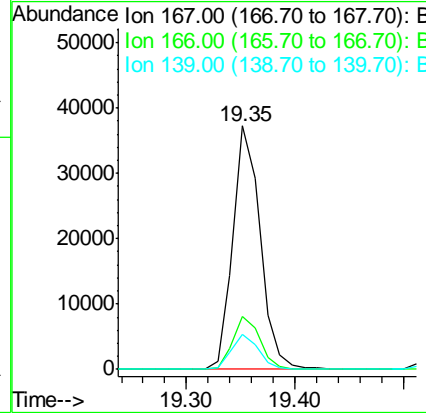
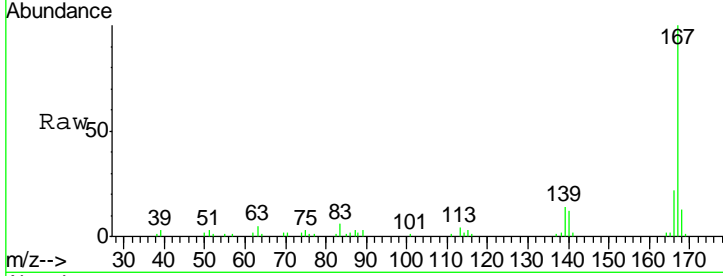




#72  
 Carbazole  
 Concen: 7.44 ng  
 RT: 19.35 min Scan# 1598  
 Delta R.T. -0.07 min  
 Lab File: BF081676.D  
 Acq: 17 Sep 2015 13:17

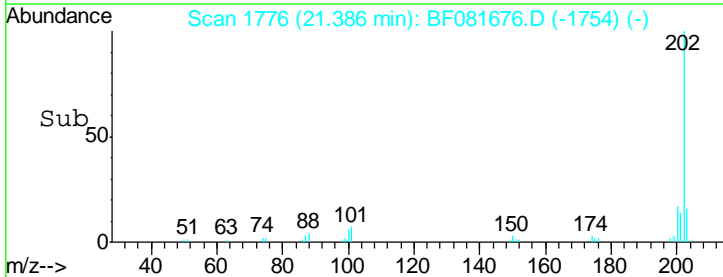
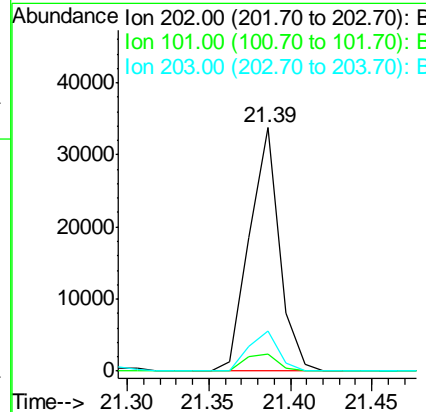
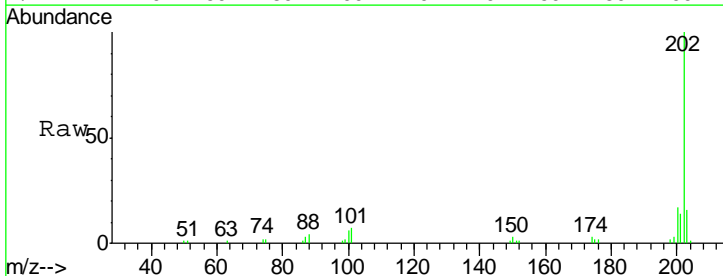
Instrument :  
 BNA\_F  
 ClientSampleId :  
 WC-91415-WATER

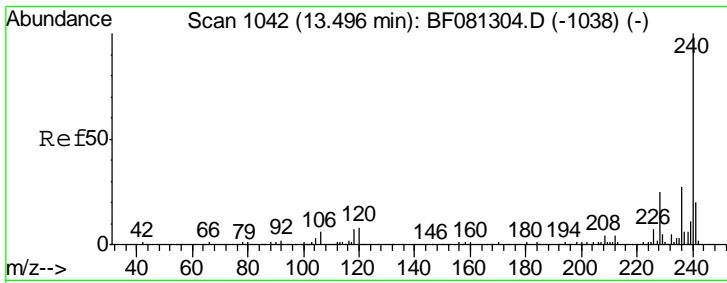
Tgt Ion	Resp	Lower	Upper
167	100		
166	21.6	15.7	23.5
139	14.3	9.5	14.3#



#74  
 Fluoranthene  
 Concen: 4.41 ng  
 RT: 21.39 min Scan# 1776  
 Delta R.T. -0.04 min  
 Lab File: BF081676.D  
 Acq: 17 Sep 2015 13:17

Tgt Ion	Resp	Lower	Upper
202	100		
101	7.0	0.0	38.3
203	16.5	0.0	37.3

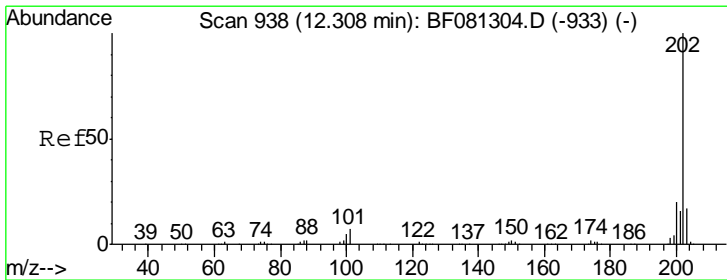
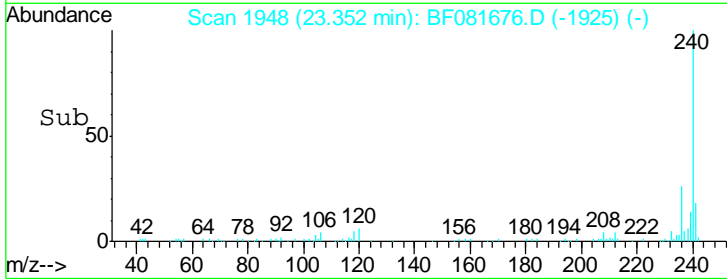
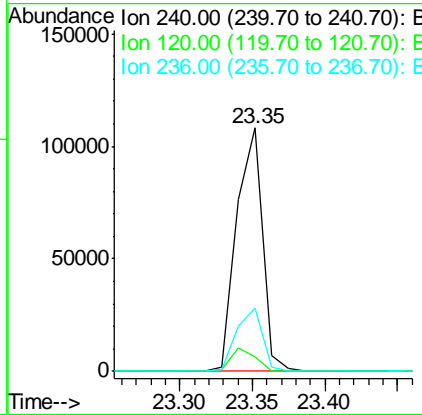
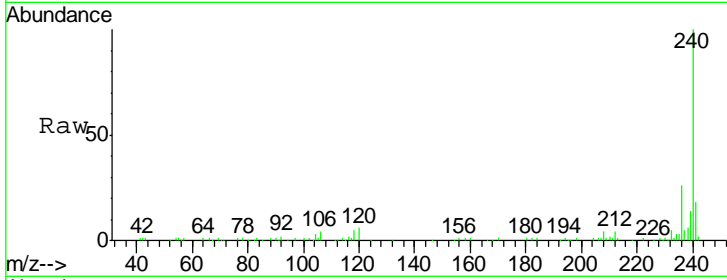




#75  
 Chrysene-d12  
 Concen: 20.00 ng  
 RT: 23.35 min Scan# 1948  
 Delta R.T. -0.03 min  
 Lab File: BF081676.D  
 Acq: 17 Sep 2015 13:17

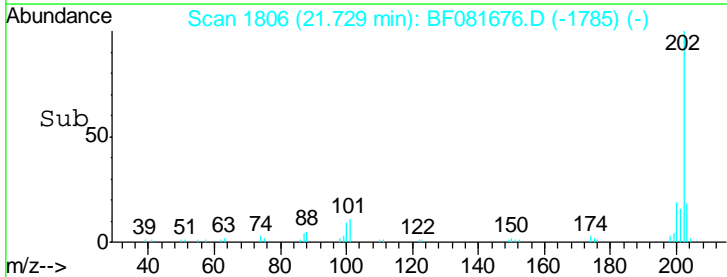
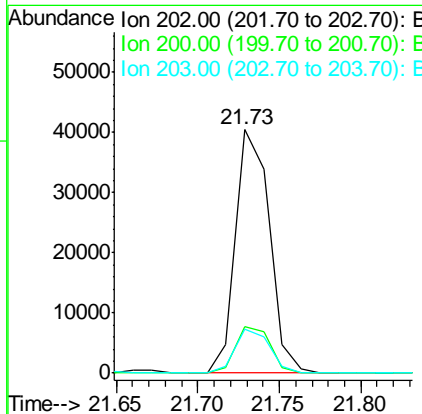
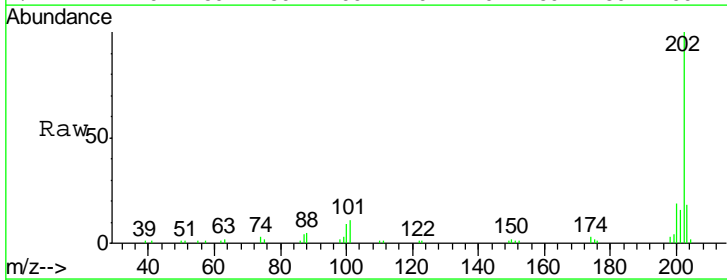
**Instrument :**  
 BNA\_F  
**ClientSampleId :**  
 WC-91415-WATER

Tgt Ion	Resp	Lower	Upper
240	133849		
120	6.1	16.2	24.2#
236	26.0	18.4	27.6

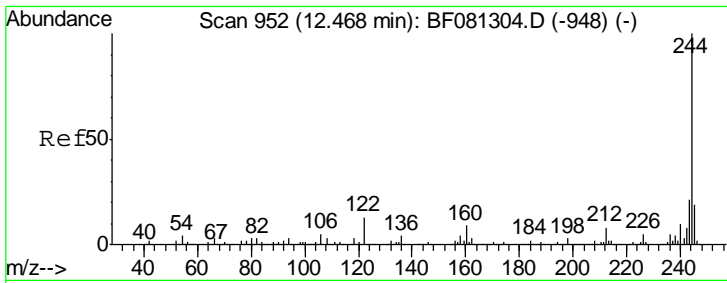


#77  
 Pyrene  
 Concen: 5.84 ng  
 RT: 21.73 min Scan# 1806  
 Delta R.T. -0.06 min  
 Lab File: BF081676.D  
 Acq: 17 Sep 2015 13:17

Tgt Ion	Resp	Lower	Upper
202	57949		
200	19.3	15.0	22.4
203	18.2	14.1	21.1



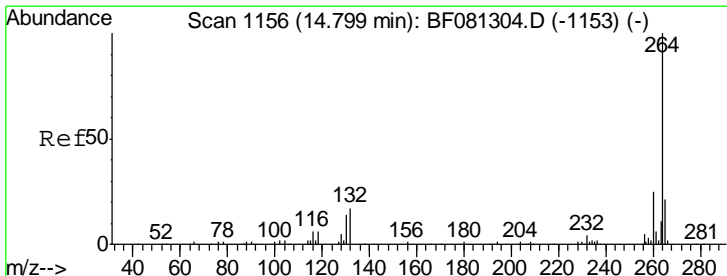
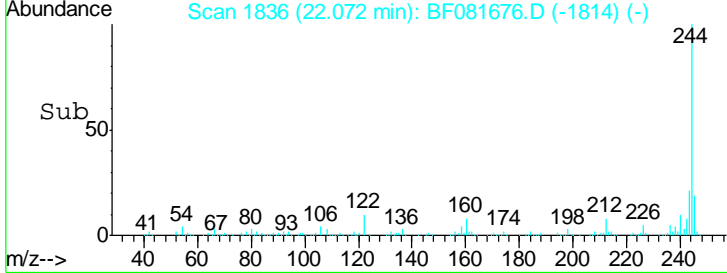
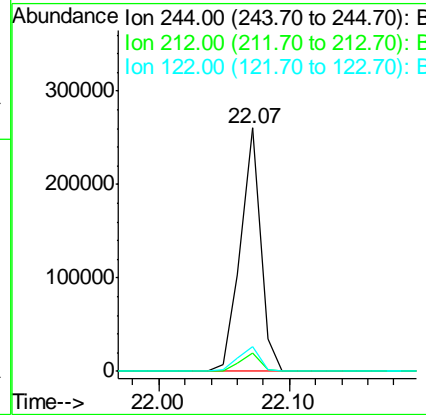
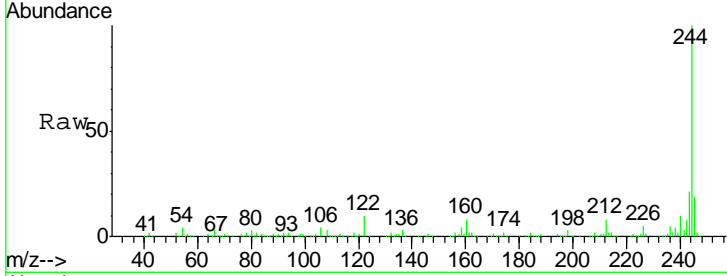




#78  
 Terphenyl-d14  
 Concen: 48.70 ng  
 RT: 22.07 min Scan# 1836  
 Delta R.T. -0.04 min  
 Lab File: BF081676.D  
 Acq: 17 Sep 2015 13:17

Instrument :  
 BNA\_F  
 ClientSampled :  
 WC-91415-WATER

Tgt Ion	Resp	Lower	Upper
244	100		
212	7.6	4.3	6.5#
122	10.2	17.4	26.2#



#86  
 Perylene-d12  
 Concen: 20.00 ng  
 RT: 24.78 min Scan# 2073  
 Delta R.T. -0.03 min  
 Lab File: BF081676.D  
 Acq: 17 Sep 2015 13:17

Tgt Ion	Resp	Lower	Upper
264	100		
260	24.6	16.7	25.1
265	21.8	17.2	25.8

