

Data Path : Z:\svoasrv\HPCHEM1\BNA_F\Data\BF091924\
 Data File : BF139491.D
 Acq On : 20 Sep 2024 04:25
 Operator : RC/JU
 Sample : P4103-07
 Misc :
 ALS Vial : 25 Sample Multiplier: 1

Instrument :
 BNA_F
 ClientSampleId :
 WC-14-5-7.5B

Quant Time: Sep 20 05:11:09 2024
 Quant Method : Z:\svoasrv\HPCHEM1\BNA_F\Methods\8270-BF091324.M
 Quant Title : ASP BNA STANDARDS FOR 5 POINT CALIBRATION
 QLast Update : Sat Sep 14 02:58:23 2024
 Response via : Initial Calibration

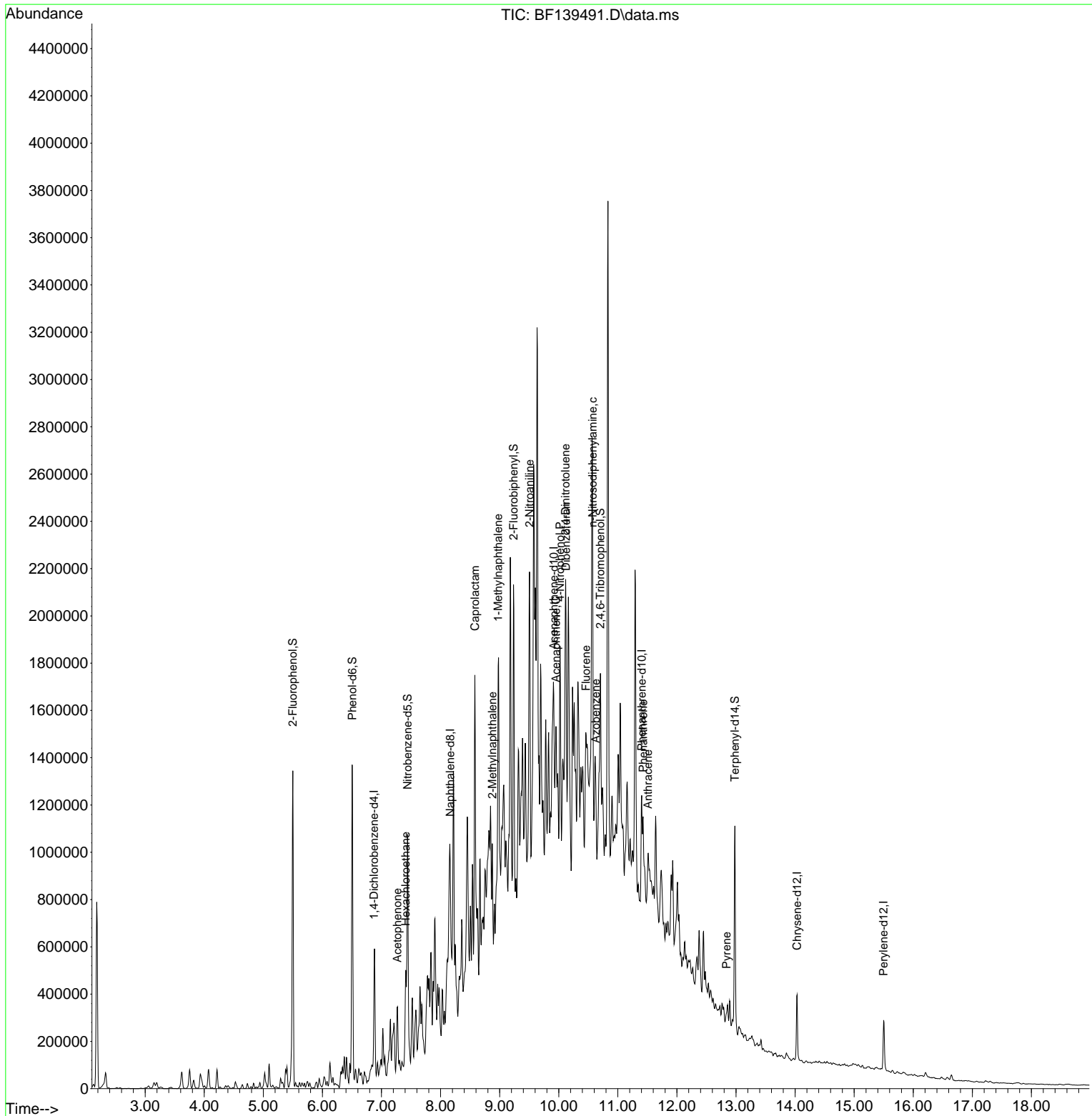
Compound	R.T.	QIon	Response	Conc	Units	Dev(Min)
Internal Standards						
1) 1,4-Dichlorobenzene-d4	6.875	152	79640	20.000	ng	0.00
21) Naphthalene-d8	8.163	136	270358	20.000	ng	# 0.00
39) Acenaphthene-d10	9.916	164	125318	20.000	ng	0.00
64) Phenanthrene-d10	11.404	188	175001	20.000	ng	# 0.00
76) Chrysene-d12	14.033	240	126707	20.000	ng	0.00
86) Perylene-d12	15.498	264	125544	20.000	ng	0.00
System Monitoring Compounds						
5) 2-Fluorophenol	5.499	112	431636	88.416	ng	0.00
7) Phenol-d6	6.504	99	572426	89.333	ng	0.00
23) Nitrobenzene-d5	7.440	82	365231	63.509	ng	0.00
42) 2,4,6-Tribromophenol	10.704	330	98009	73.461	ng	0.00
45) 2-Fluorobiphenyl	9.234	172	575753	64.436	ng	0.00
79) Terphenyl-d14	12.980	244	398574	51.632	ng	0.00
Target Compounds						
18) Hexachloroethane	7.410	117	21613	9.825	ng	# 1
22) Acetophenone	7.269	105	38575	5.458	ng	# 40
35) Caprolactam	8.581	113	32101	27.005	ng	# 1
37) 2-Methylnaphthalene	8.875	142	162609	18.151	ng	98
38) 1-Methylnaphthalene	8.975	142	285907	32.506	ng	100
48) 2-Nitroaniline	9.504	65	8088	3.017	ng	# 42
52) Acenaphthene	9.951	154	30997	4.093	ng	# 47
55) Dibenzofuran	10.122	168	42134	3.992	ng	# 1
56) 4-Nitrophenol	10.022	139	25474	16.906	ng	# 42
57) 2,4-Dinitrotoluene	10.116	165	16800	6.829	ng	# 51
58) Fluorene	10.463	166	71026	8.247	ng	# 83
63) Azobenzene	10.628	77	30817	3.691	ng	# 1
66) n-Nitrosodiphenylamine	10.575	169	143100	27.969	ng	# 51
71) Phenanthrene	11.428	178	170338	20.175	ng	# 93
72) Anthracene	11.510	178	18472	2.238	ng	# 1
78) Pyrene	12.839	202	26565	2.442	ng	# 89

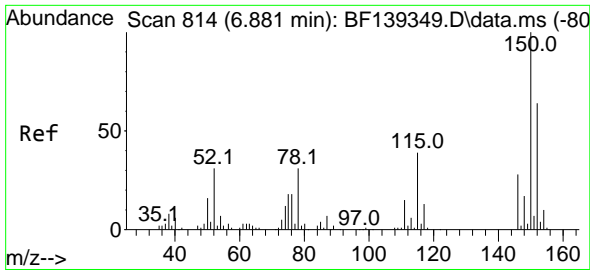
(#) = qualifier out of range (m) = manual integration (+) = signals summed

Data Path : Z:\svoasrv\HPCHEM1\BNA_F\Data\BF091924\
 Data File : BF139491.D
 Acq On : 20 Sep 2024 04:25
 Operator : RC/JU
 Sample : P4103-07
 Misc :
 ALS Vial : 25 Sample Multiplier: 1

Instrument :
 BNA_F
 ClientSampleId :
 WC-14-5-7.5B

Quant Time: Sep 20 05:11:09 2024
 Quant Method : Z:\svoasrv\HPCHEM1\BNA_F\Methods\8270-BF091324.M
 Quant Title : ASP BNA STANDARDS FOR 5 POINT CALIBRATION
 QLast Update : Sat Sep 14 02:58:23 2024
 Response via : Initial Calibration

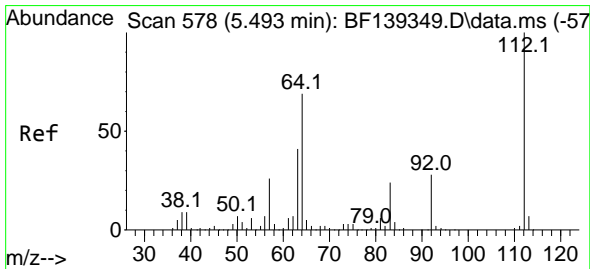
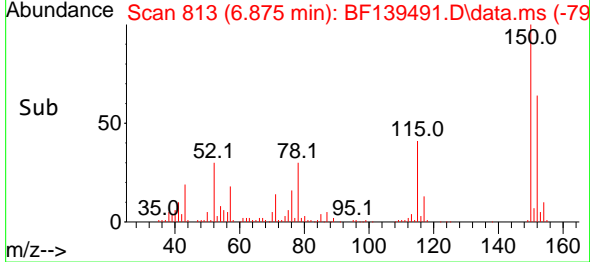
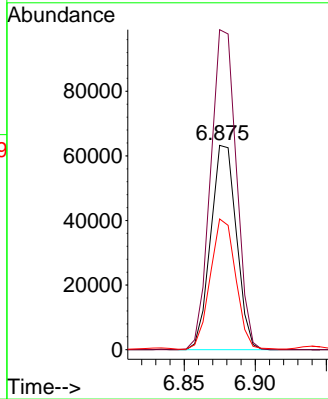
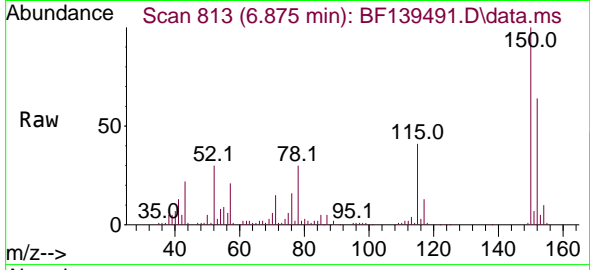




#1
 1,4-Dichlorobenzene-d4
 Concen: 20.000 ng
 RT: 6.875 min Scan# 813
 Delta R.T. -0.006 min
 Lab File: BF139491.D
 Acq: 20 Sep 2024 04:25

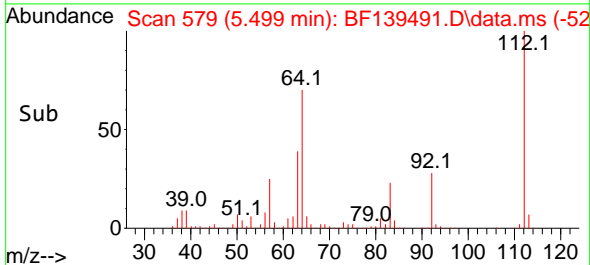
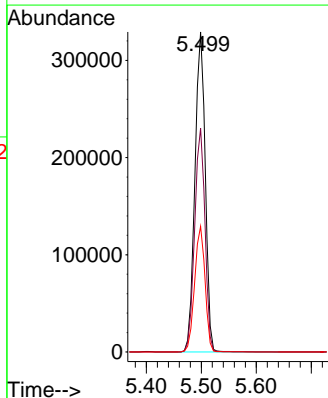
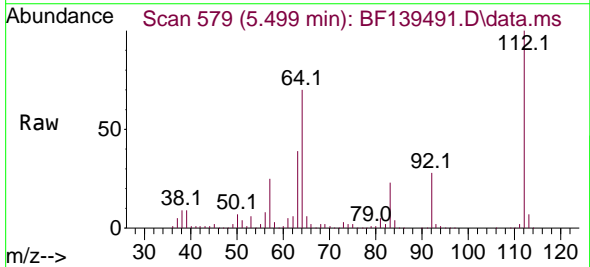
Instrument :
 BNA_F
 ClientSampleId :
 WC-14-5-7.5B

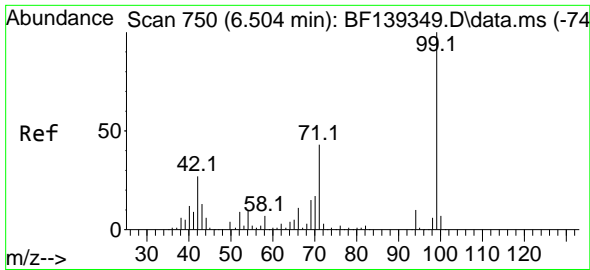
Tgt Ion:152 Resp: 79640
 Ion Ratio Lower Upper
 152 100
 150 156.6 124.1 186.1
 115 63.9 48.1 72.1



#5
 2-Fluorophenol
 Concen: 88.416 ng
 RT: 5.499 min Scan# 579
 Delta R.T. 0.006 min
 Lab File: BF139491.D
 Acq: 20 Sep 2024 04:25

Tgt Ion:112 Resp: 431636
 Ion Ratio Lower Upper
 112 100
 64 69.9 54.8 82.2
 63 39.3 33.0 49.4



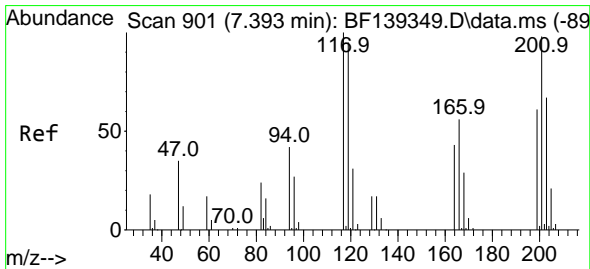
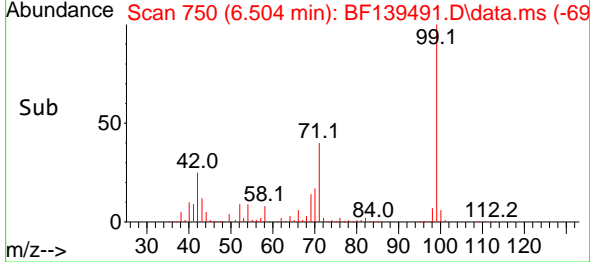
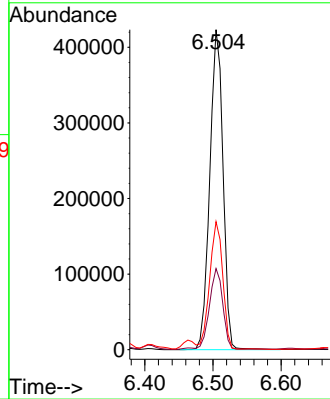
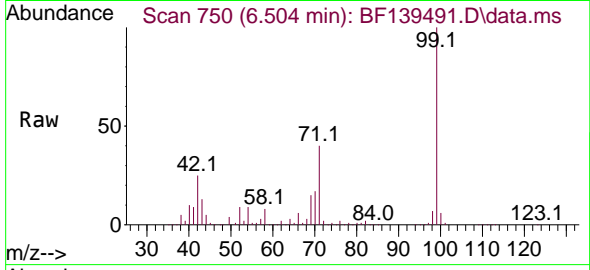


#7
 Phenol-d6
 Concen: 89.333 ng
 RT: 6.504 min Scan# 71
 Delta R.T. 0.000 min
 Lab File: BF139491.D
 Acq: 20 Sep 2024 04:25

Instrument :
 BNA_F
 ClientSampleId :
 WC-14-5-7.5B

Tgt Ion: 99 Resp: 572426

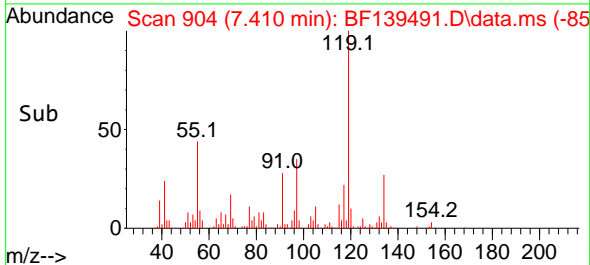
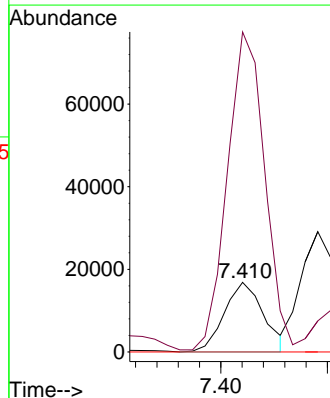
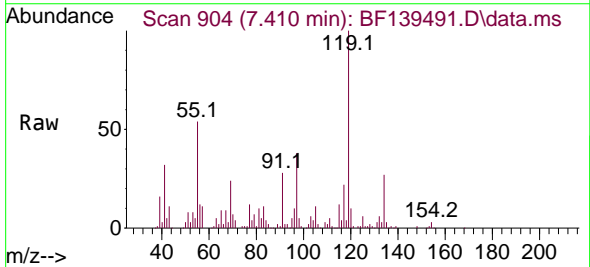
Ion	Ratio	Lower	Upper
99	100		
42	25.4	21.9	32.9
71	40.0	34.6	52.0

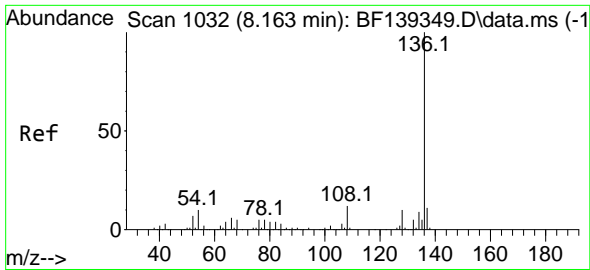


#18
 Hexachloroethane
 Concen: 9.825 ng
 RT: 7.410 min Scan# 904
 Delta R.T. 0.018 min
 Lab File: BF139491.D
 Acq: 20 Sep 2024 04:25

Tgt Ion: 117 Resp: 21613

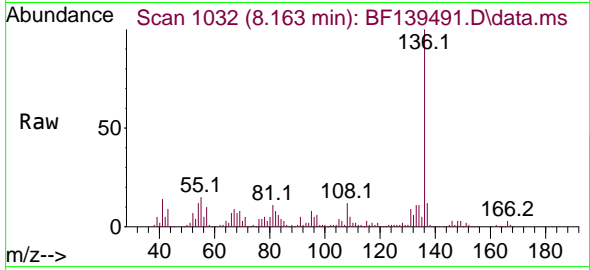
Ion	Ratio	Lower	Upper
117	100		
119	460.0	75.8	113.8#
201	0.0	78.6	118.0#



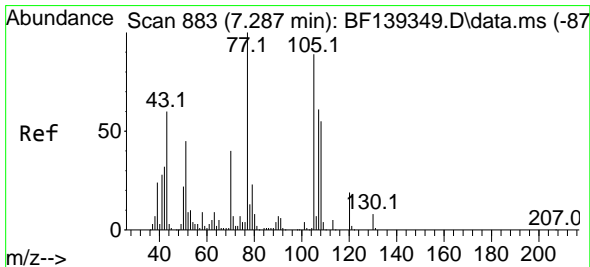
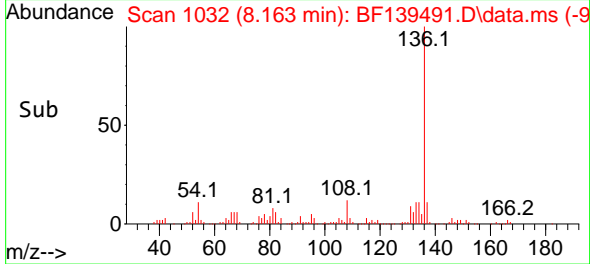
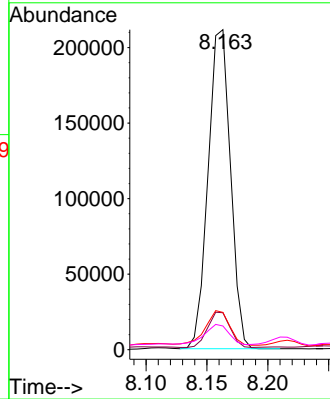


#21
 Naphthalene-d8
 Concen: 20.000 ng
 RT: 8.163 min Scan# 1032
 Delta R.T. 0.000 min
 Lab File: BF139491.D
 Acq: 20 Sep 2024 04:25

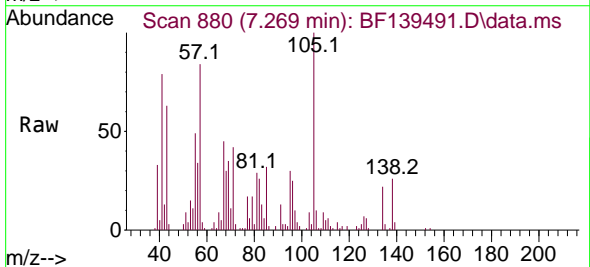
Instrument :
 BNA_F
 ClientSampleId :
 WC-14-5-7.5B



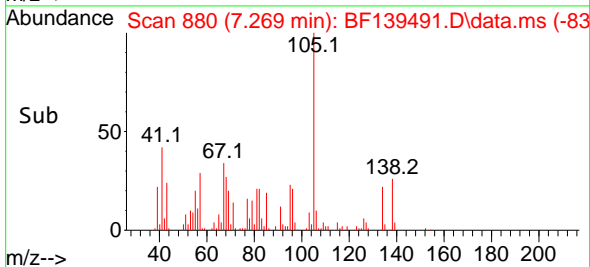
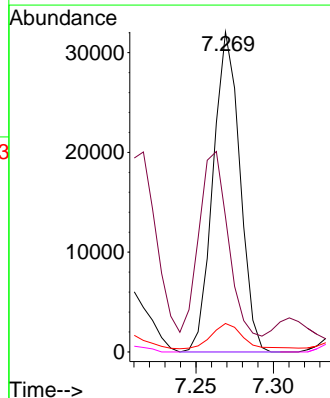
Tgt Ion:136 Resp: 270358
 Ion Ratio Lower Upper
 136 100
 137 11.6 8.6 12.8
 54 11.7 7.8 11.8
 68 7.4 3.6 5.4#

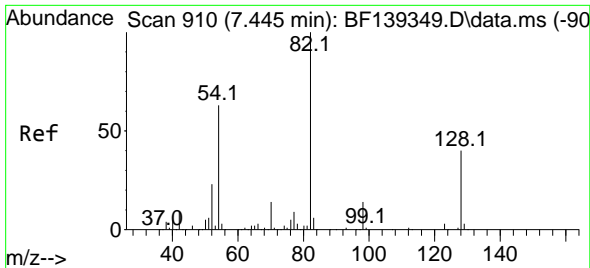


#22
 Acetophenone
 Concen: 5.458 ng
 RT: 7.269 min Scan# 880
 Delta R.T. -0.018 min
 Lab File: BF139491.D
 Acq: 20 Sep 2024 04:25



Tgt Ion:105 Resp: 38575
 Ion Ratio Lower Upper
 105 100
 71 42.2 5.9 8.9#
 51 8.9 40.0 60.0#
 120 0.0 17.1 25.7#



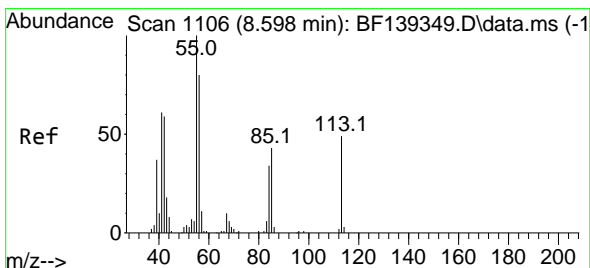
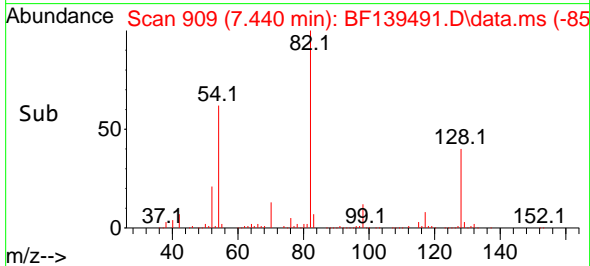
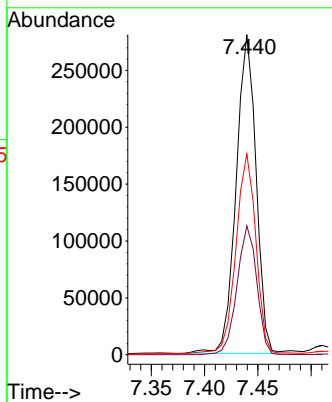
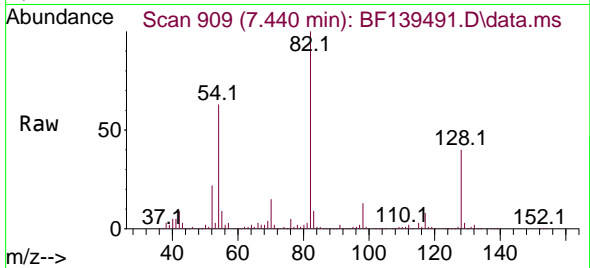


#23
 Nitrobenzene-d5
 Concen: 63.509 ng
 RT: 7.440 min Scan# 90
 Delta R.T. -0.006 min
 Lab File: BF139491.D
 Acq: 20 Sep 2024 04:25

Instrument :
 BNA_F
 ClientSampleId :
 WC-14-5-7.5B

Tgt Ion: 82 Resp: 365231

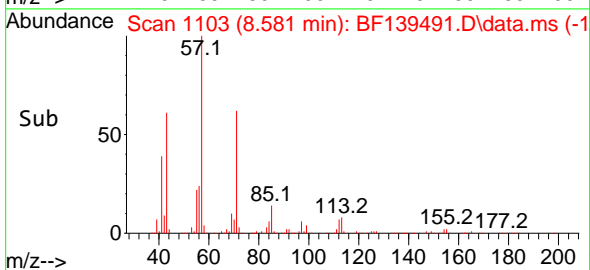
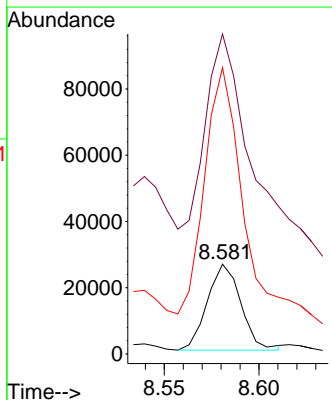
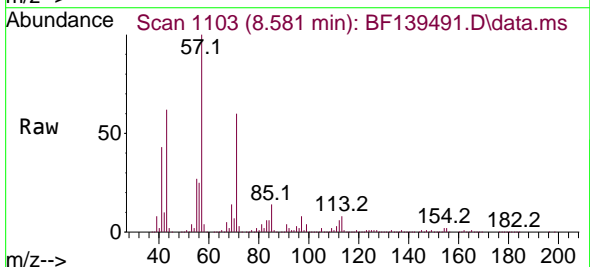
Ion	Ratio	Lower	Upper
82	100		
128	40.3	31.8	47.6
54	62.7	50.6	75.8

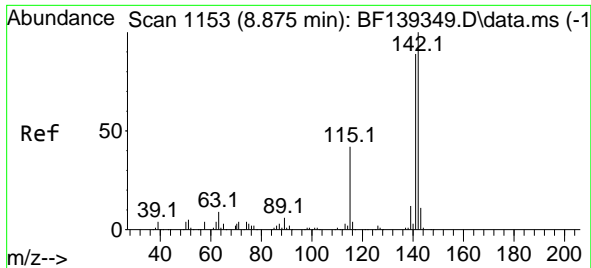


#35
 Caprolactam
 Concen: 27.005 ng
 RT: 8.581 min Scan# 1103
 Delta R.T. -0.018 min
 Lab File: BF139491.D
 Acq: 20 Sep 2024 04:25

Tgt Ion: 113 Resp: 32101

Ion	Ratio	Lower	Upper
113	100		
55	356.3	186.1	226.1#
56	318.7	144.9	184.9#





#37
 2-Methylnaphthalene
 Concen: 18.151 ng
 RT: 8.875 min Scan# 1153
 Delta R.T. 0.000 min
 Lab File: BF139491.D
 Acq: 20 Sep 2024 04:25

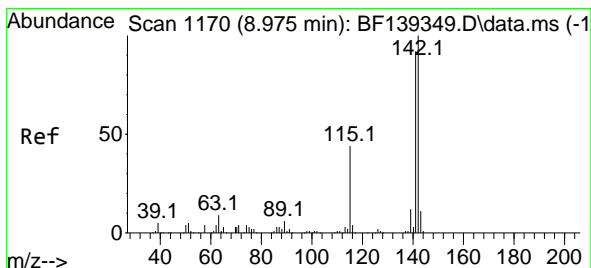
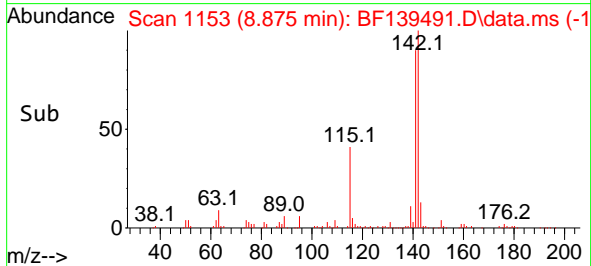
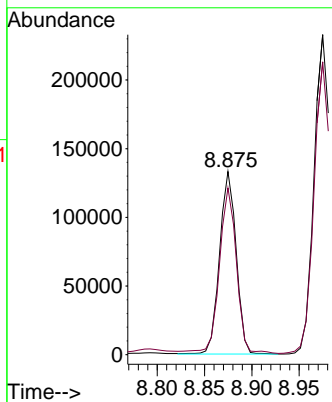
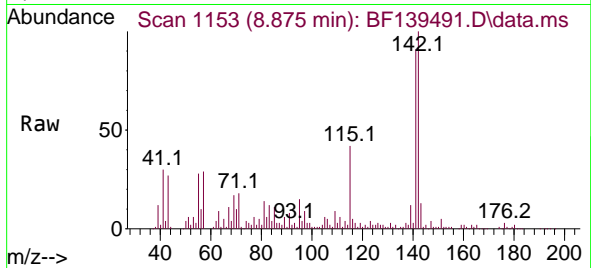
Instrument :

BNA_F

ClientSampleId :

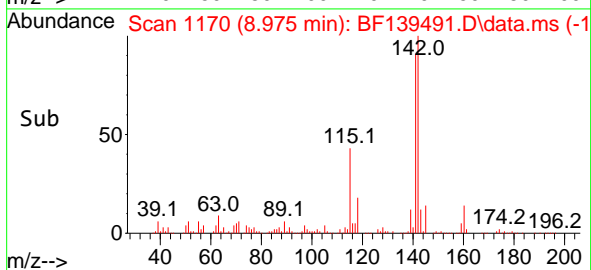
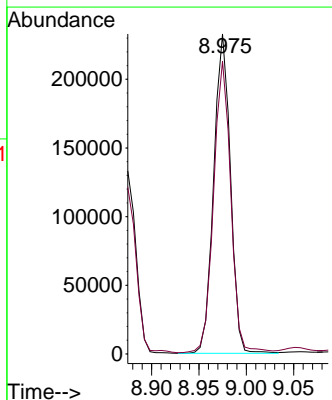
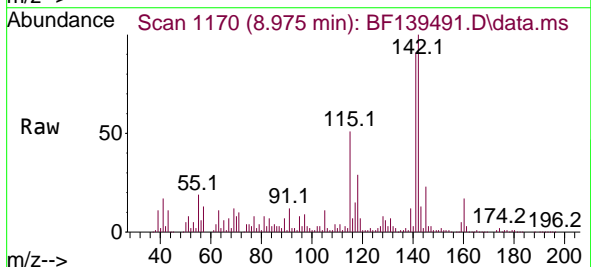
WC-14-5-7.5B

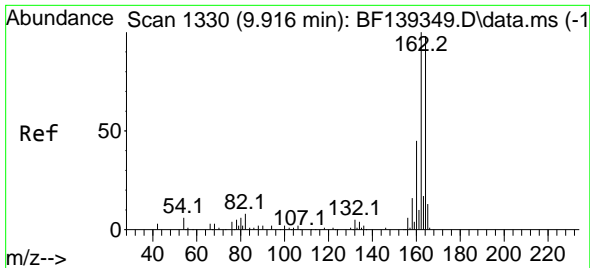
Tgt Ion:142 Resp: 162609
 Ion Ratio Lower Upper
 142 100
 141 91.0 71.6 107.4



#38
 1-Methylnaphthalene
 Concen: 32.506 ng
 RT: 8.975 min Scan# 1170
 Delta R.T. 0.000 min
 Lab File: BF139491.D
 Acq: 20 Sep 2024 04:25

Tgt Ion:142 Resp: 285907
 Ion Ratio Lower Upper
 142 100
 141 91.5 73.2 109.8



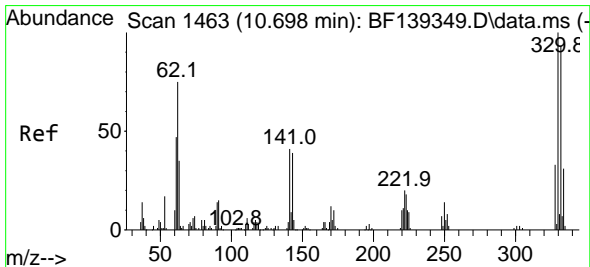
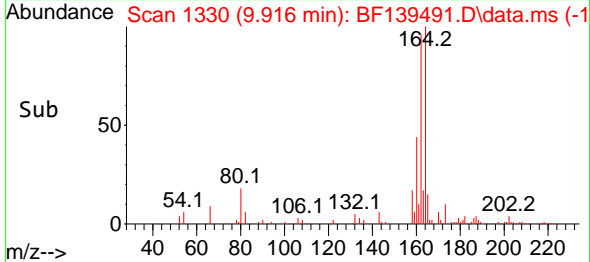
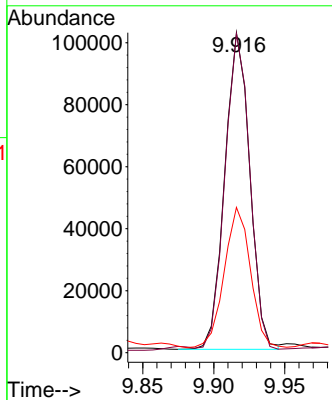
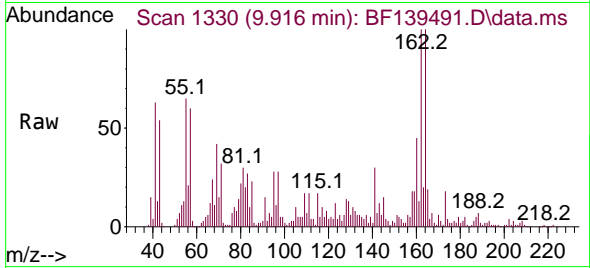


#39
 Acenaphthene-d10
 Concen: 20.000 ng
 RT: 9.916 min Scan# 11
 Delta R.T. 0.000 min
 Lab File: BF139491.D
 Acq: 20 Sep 2024 04:25

Instrument :
 BNA_F
 ClientSampleId :
 WC-14-5-7.5B

Tgt Ion:164 Resp: 125318

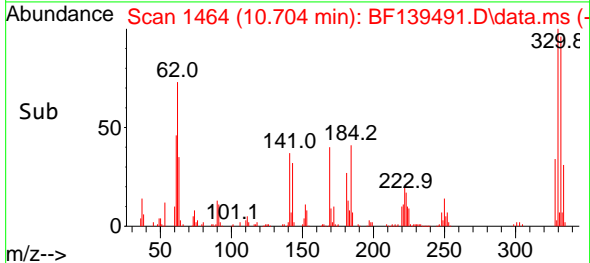
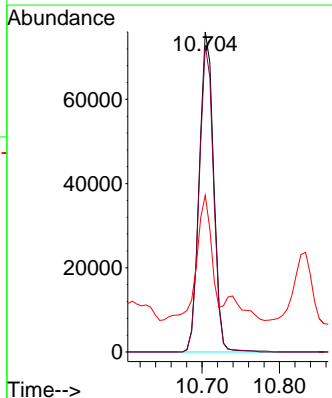
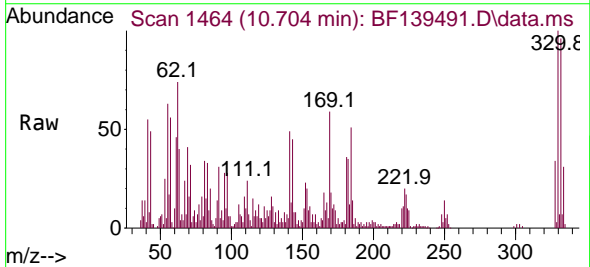
Ion	Ratio	Lower	Upper
164	100		
162	99.7	81.3	121.9
160	45.4	36.4	54.6

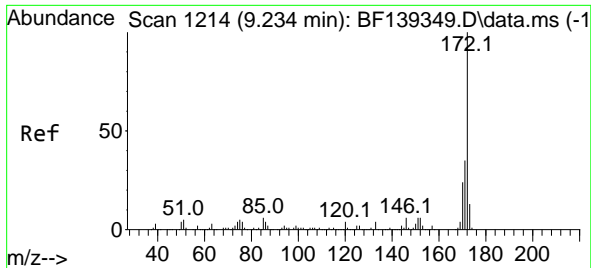


#42
 2,4,6-Tribromophenol
 Concen: 73.461 ng
 RT: 10.704 min Scan# 1464
 Delta R.T. 0.006 min
 Lab File: BF139491.D
 Acq: 20 Sep 2024 04:25

Tgt Ion:330 Resp: 98009

Ion	Ratio	Lower	Upper
330	100		
332	95.5	75.2	112.8
141	41.2	31.2	46.8



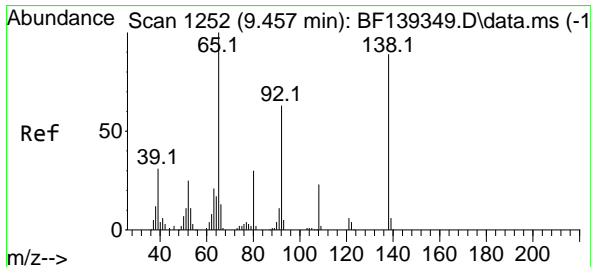
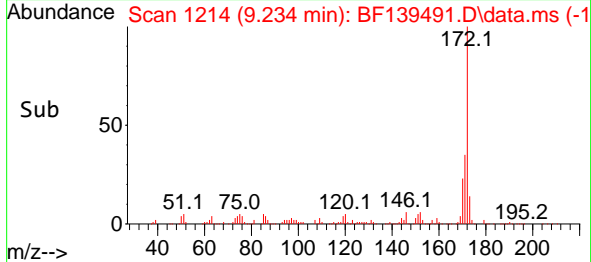
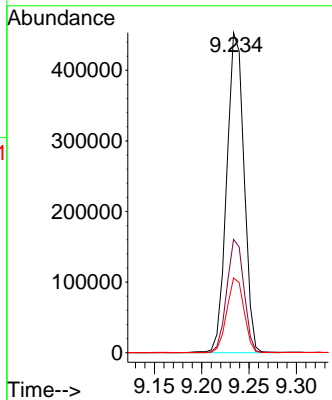
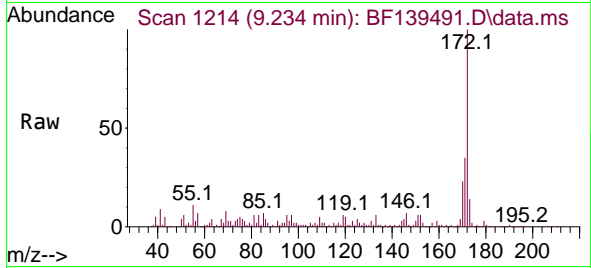


#45
 2-Fluorobiphenyl
 Concen: 64.436 ng
 RT: 9.234 min Scan# 11
 Delta R.T. 0.000 min
 Lab File: BF139491.D
 Acq: 20 Sep 2024 04:25

Instrument : BNA_F
 ClientSampleId : WC-14-5-7.5B

Tgt Ion:172 Resp: 575753

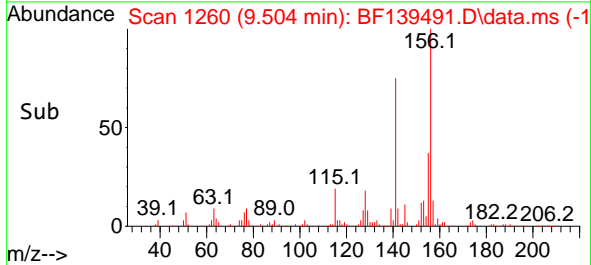
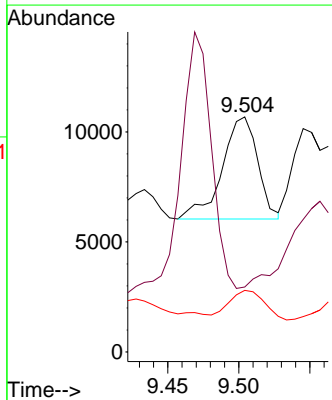
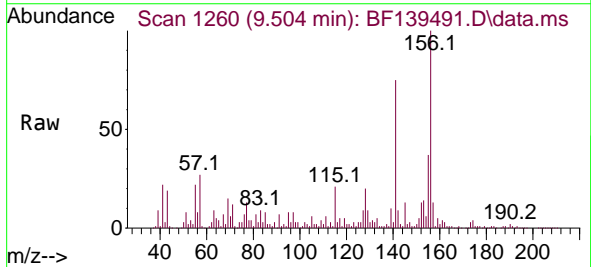
Ion	Ratio	Lower	Upper
172	100		
171	35.4	28.3	42.5
170	23.4	19.0	28.6

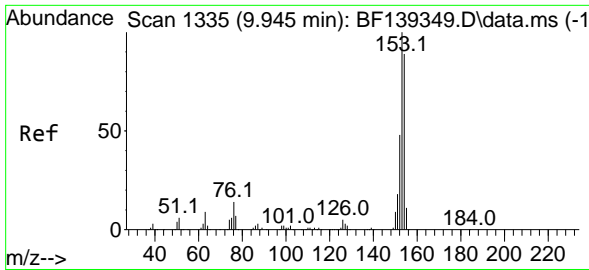


#48
 2-Nitroaniline
 Concen: 3.017 ng
 RT: 9.504 min Scan# 1260
 Delta R.T. 0.047 min
 Lab File: BF139491.D
 Acq: 20 Sep 2024 04:25

Tgt Ion: 65 Resp: 8088

Ion	Ratio	Lower	Upper
65	100		
92	27.6	50.3	75.5#
138	26.2	71.3	106.9#

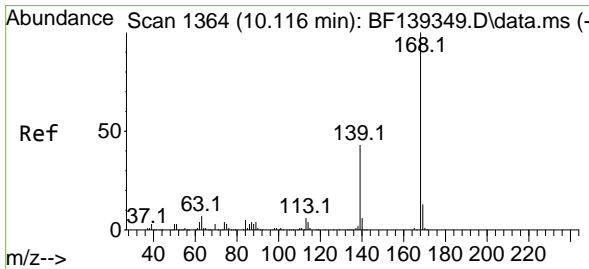
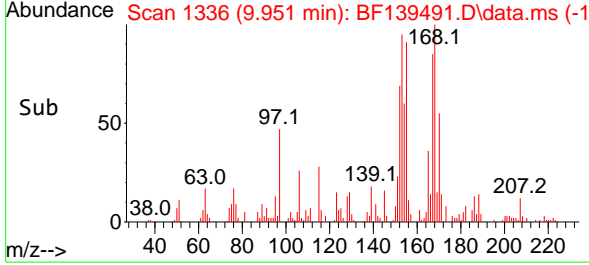
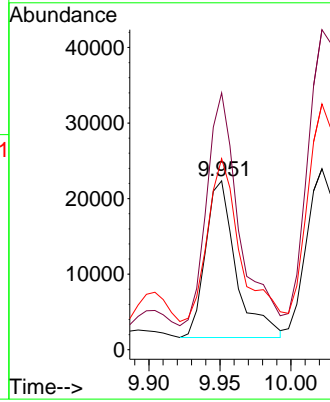
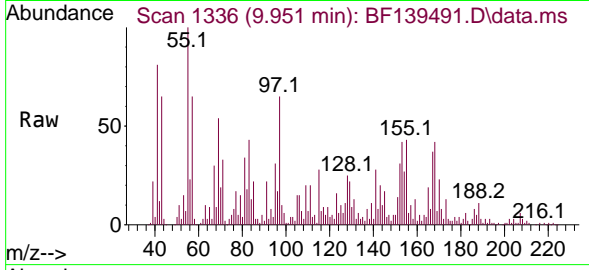




#52
 Acenaphthene
 Concen: 4.093 ng
 RT: 9.951 min Scan# 1336
 Delta R.T. 0.006 min
 Lab File: BF139491.D
 Acq: 20 Sep 2024 04:25

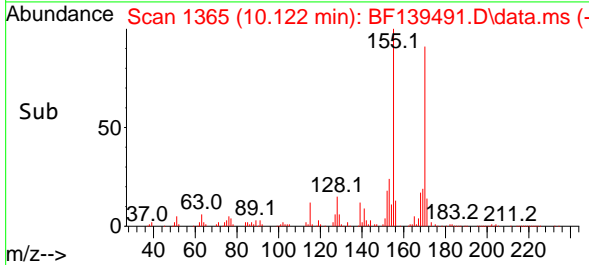
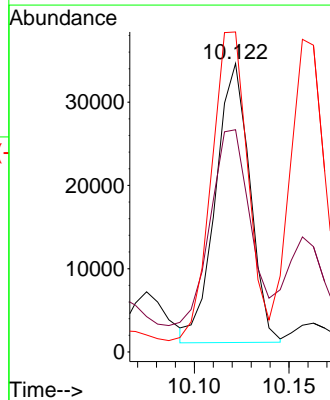
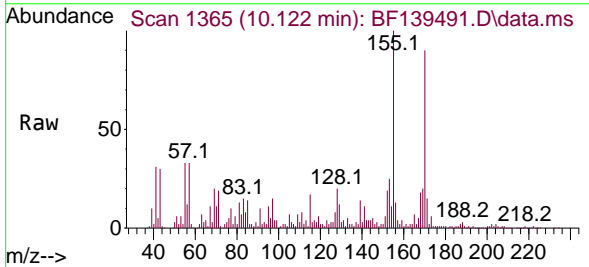
Instrument :
 BNA_F
 ClientSampleId :
 WC-14-5-7.5B

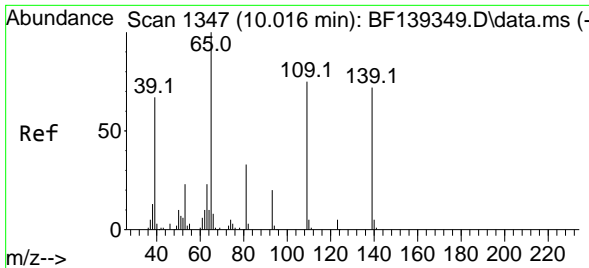
Tgt Ion:154 Resp: 30997
 Ion Ratio Lower Upper
 154 100
 153 152.1 89.5 134.3#
 152 113.1 42.6 64.0#



#55
 Dibenzofuran
 Concen: 3.992 ng
 RT: 10.122 min Scan# 1365
 Delta R.T. 0.006 min
 Lab File: BF139491.D
 Acq: 20 Sep 2024 04:25

Tgt Ion:168 Resp: 42134
 Ion Ratio Lower Upper
 168 100
 139 77.0 34.1 51.1#
 169 110.9 10.5 15.7#

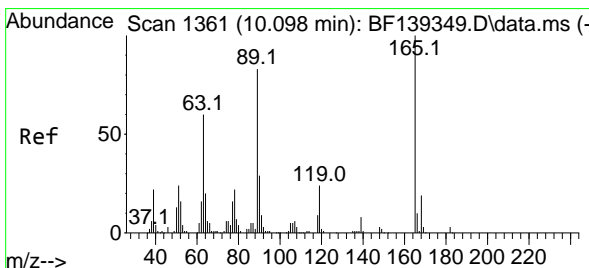
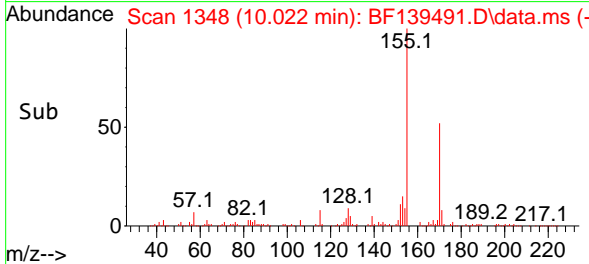
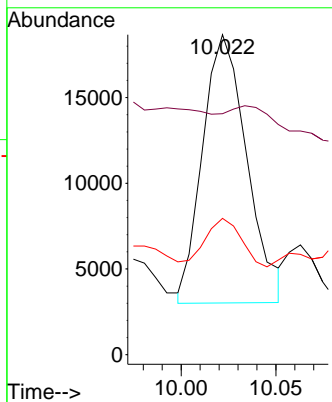
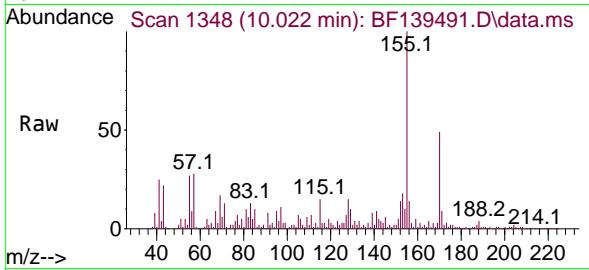




#56
 4-Nitrophenol
 Concen: 16.906 ng
 RT: 10.022 min Scan# 1347
 Delta R.T. 0.006 min
 Lab File: BF139491.D
 Acq: 20 Sep 2024 04:25

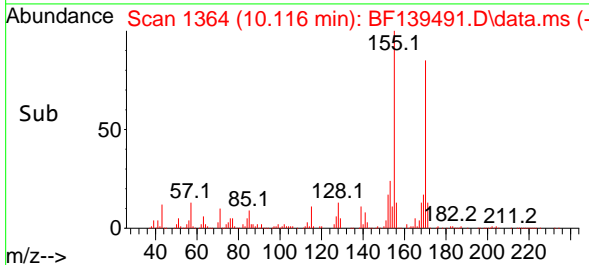
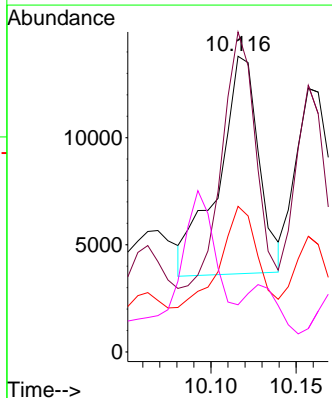
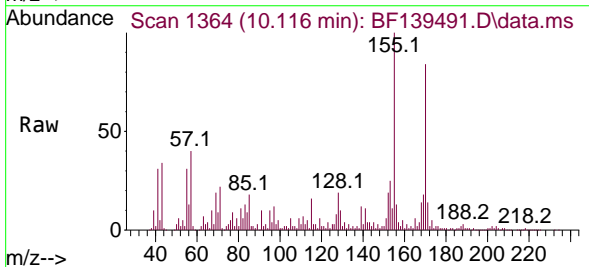
Instrument :
 BNA_F
 ClientSampleId :
 WC-14-5-7.5B

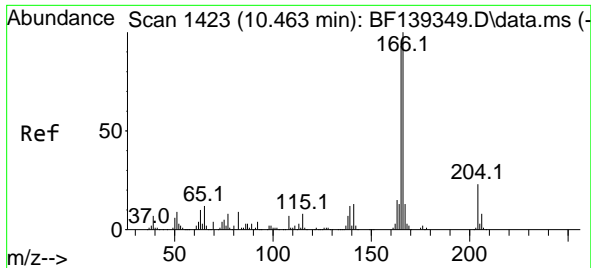
Tgt Ion:139 Resp: 25474
 Ion Ratio Lower Upper
 139 100
 109 75.3 84.1 124.1#
 65 42.6 120.0 160.0#



#57
 2,4-Dinitrotoluene
 Concen: 6.829 ng
 RT: 10.116 min Scan# 1364
 Delta R.T. 0.018 min
 Lab File: BF139491.D
 Acq: 20 Sep 2024 04:25

Tgt Ion:165 Resp: 16800
 Ion Ratio Lower Upper
 165 100
 63 108.3 47.8 71.6#
 89 49.3 66.7 100.1#
 182 16.0 2.2 3.4#

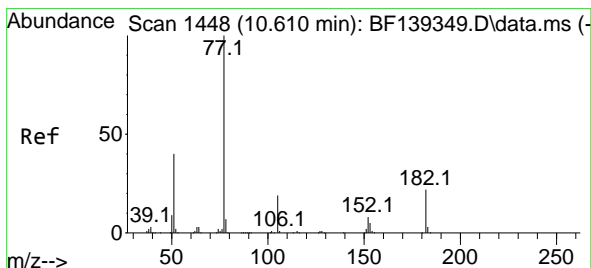
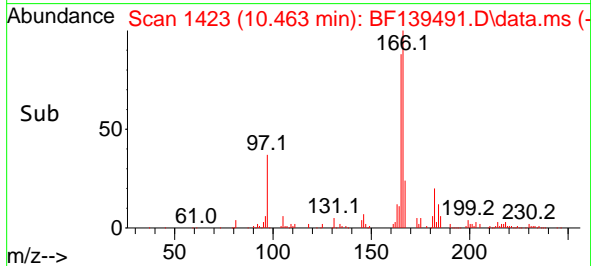
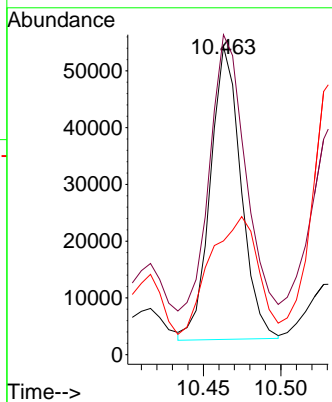
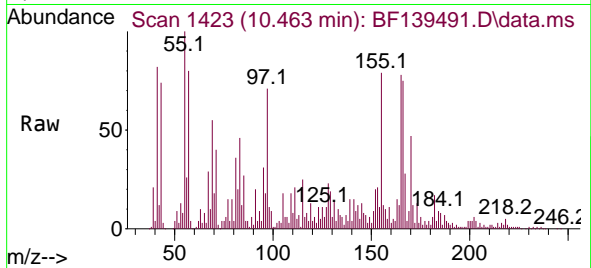




#58
 Fluorene
 Concen: 8.247 ng
 RT: 10.463 min Scan# 1423
 Delta R.T. 0.000 min
 Lab File: BF139491.D
 Acq: 20 Sep 2024 04:25

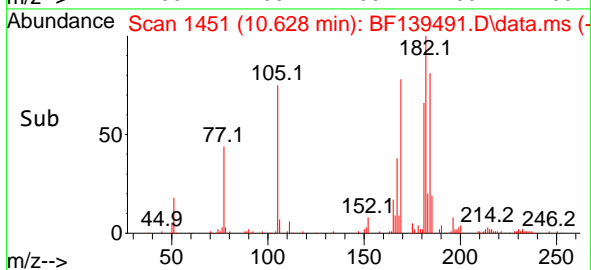
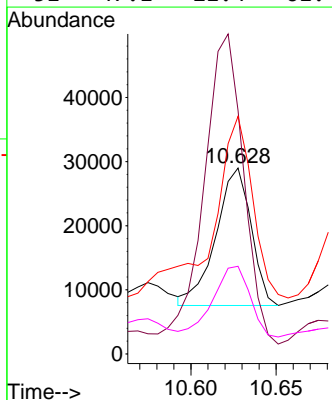
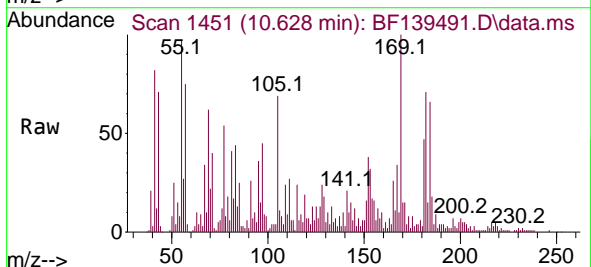
Instrument :
 BNA_F
 ClientSampleId :
 WC-14-5-7.5B

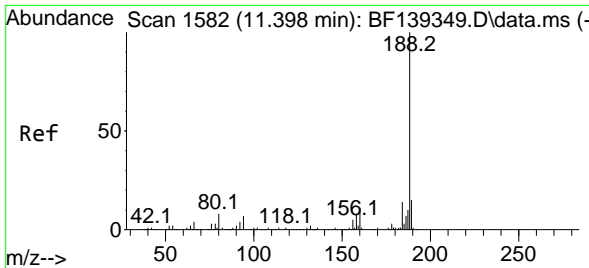
Tgt Ion	Resp	Lower	Upper
166	100		
165	103.9	74.5	111.7
167	36.9	10.6	16.0



#63
 Azobenzene
 Concen: 3.691 ng
 RT: 10.628 min Scan# 1451
 Delta R.T. 0.018 min
 Lab File: BF139491.D
 Acq: 20 Sep 2024 04:25

Tgt Ion	Resp	Lower	Upper
77	100		
182	131.0	1.8	41.8
105	127.8	0.0	38.6
51	47.1	21.4	61.4



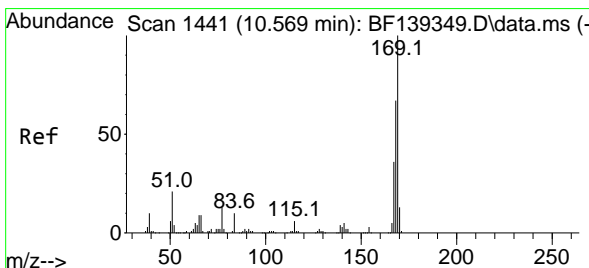
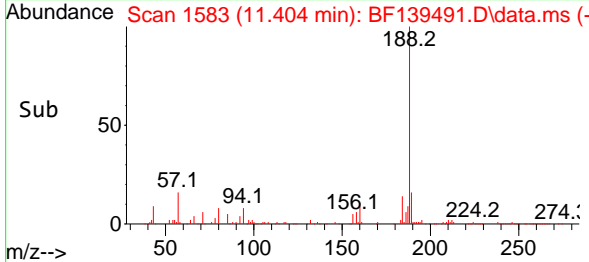
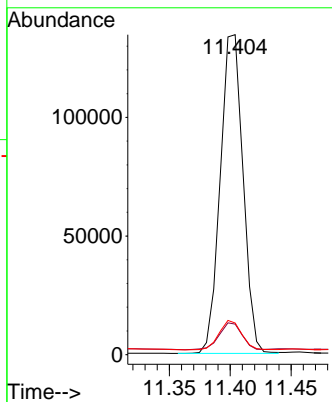
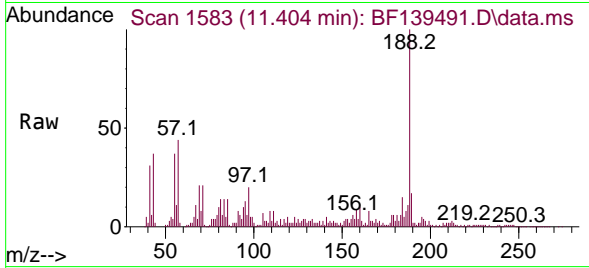


#64
 Phenanthrene-d10
 Concen: 20.000 ng
 RT: 11.404 min Scan# 11
 Delta R.T. 0.006 min
 Lab File: BF139491.D
 Acq: 20 Sep 2024 04:25

Instrument :
 BNA_F
 ClientSampleId :
 WC-14-5-7.5B

Tgt Ion:188 Resp: 175001
 Ion Ratio Lower Upper

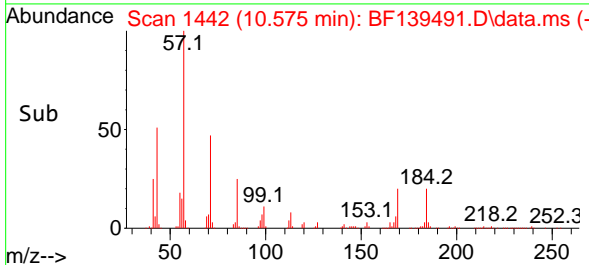
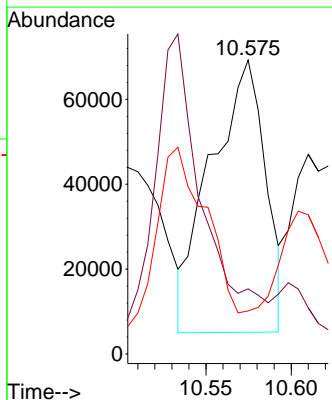
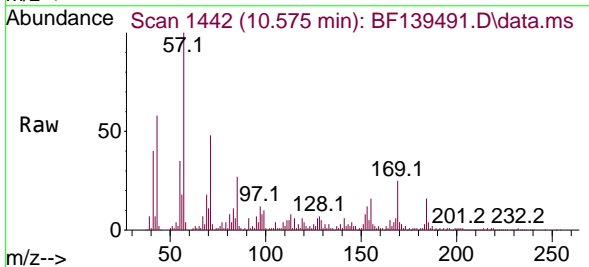
Ion	Ratio	Lower	Upper
188	100		
94	9.6	5.5	8.3#
80	9.9	6.6	9.8#

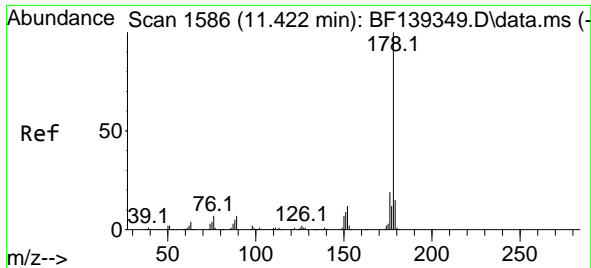


#66
 n-Nitrosodiphenylamine
 Concen: 27.969 ng
 RT: 10.575 min Scan# 1442
 Delta R.T. 0.006 min
 Lab File: BF139491.D
 Acq: 20 Sep 2024 04:25

Tgt Ion:169 Resp: 143100
 Ion Ratio Lower Upper

Ion	Ratio	Lower	Upper
169	100		
168	22.2	53.6	80.4#
167	14.7	28.7	43.1#



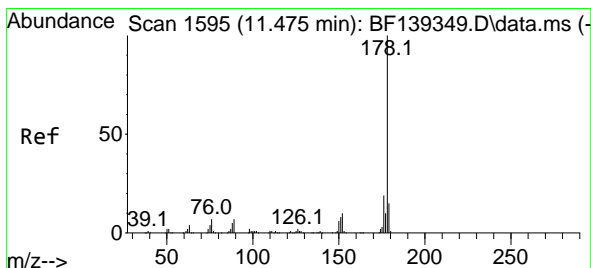
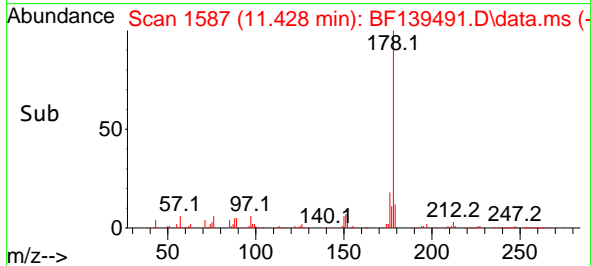
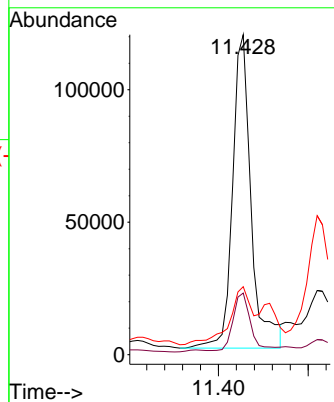
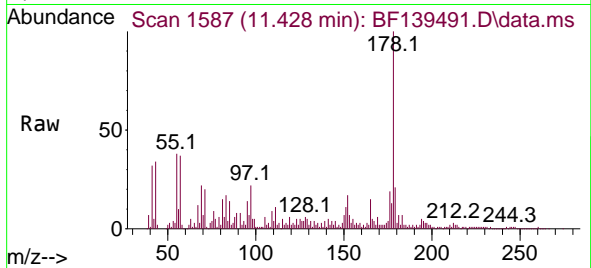


#71
 Phenanthrene
 Concen: 20.175 ng
 RT: 11.428 min Scan# 11
 Delta R.T. 0.006 min
 Lab File: BF139491.D
 Acq: 20 Sep 2024 04:25

Instrument :
 BNA_F
 ClientSampleId :
 WC-14-5-7.5B

Tgt Ion:178 Resp: 170338

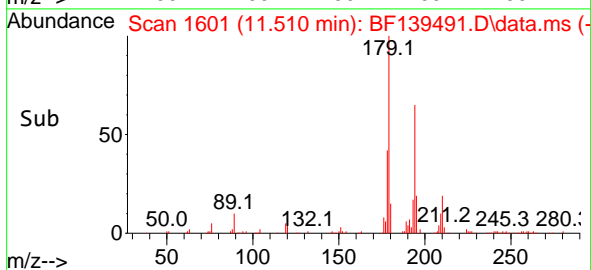
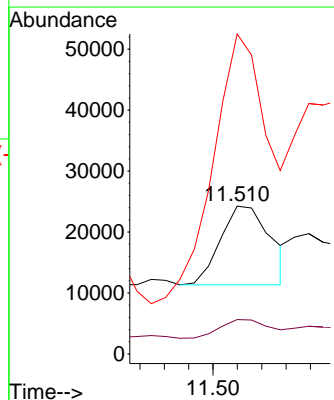
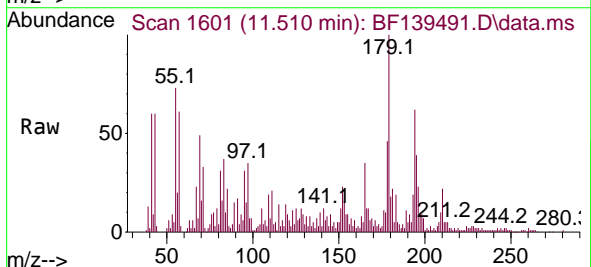
Ion	Ratio	Lower	Upper
178	100		
176	19.3	15.2	22.8
179	21.3	12.2	18.4#

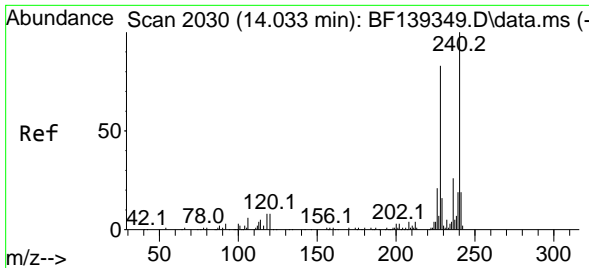


#72
 Anthracene
 Concen: 2.238 ng
 RT: 11.510 min Scan# 1601
 Delta R.T. 0.035 min
 Lab File: BF139491.D
 Acq: 20 Sep 2024 04:25

Tgt Ion:178 Resp: 18472

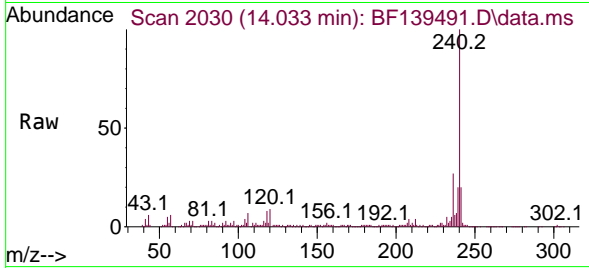
Ion	Ratio	Lower	Upper
178	100		
176	23.3	15.0	22.6#
179	216.5	12.0	18.0#



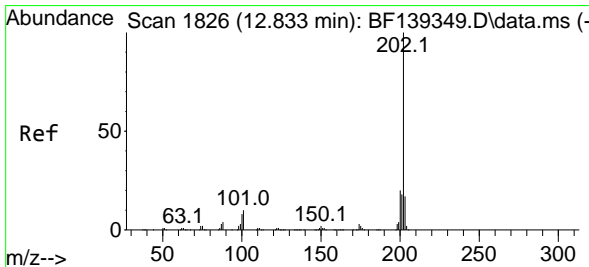
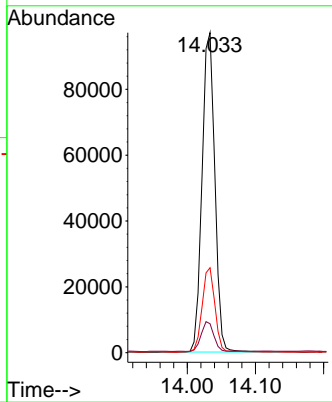
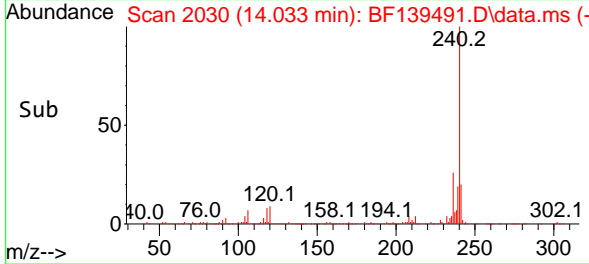


#76
 Chrysene-d12
 Concen: 20.000 ng
 RT: 14.033 min Scan# 20
 Delta R.T. 0.000 min
 Lab File: BF139491.D
 Acq: 20 Sep 2024 04:25

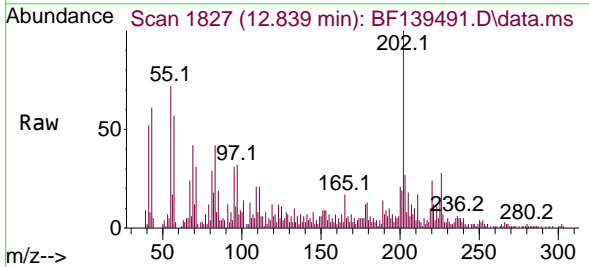
Instrument :
 BNA_F
 ClientSampleId :
 WC-14-5-7.5B



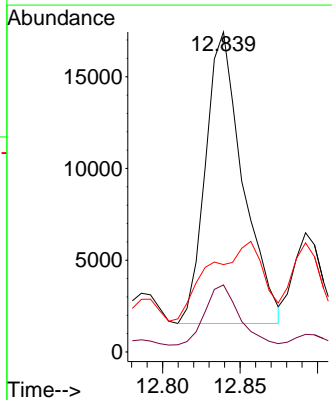
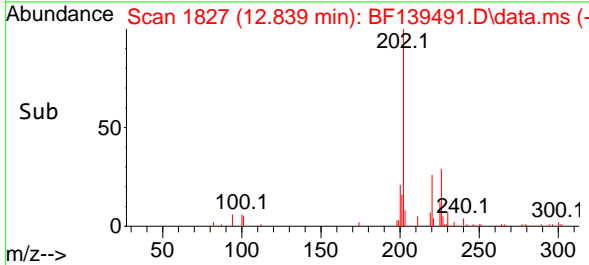
Tgt Ion:240 Resp: 126707
 Ion Ratio Lower Upper
 240 100
 120 9.0 6.2 9.2
 236 26.5 20.9 31.3

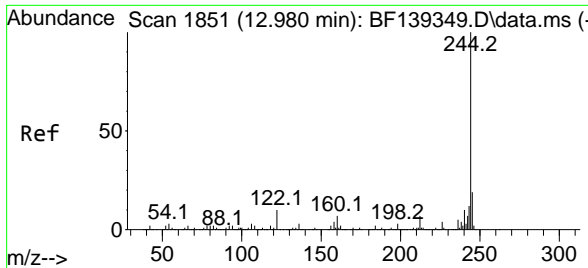


#78
 Pyrene
 Concen: 2.442 ng
 RT: 12.839 min Scan# 1827
 Delta R.T. 0.006 min
 Lab File: BF139491.D
 Acq: 20 Sep 2024 04:25



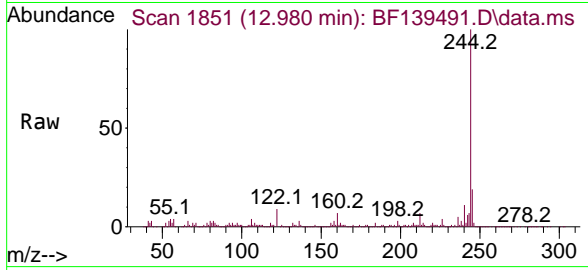
Tgt Ion:202 Resp: 26565
 Ion Ratio Lower Upper
 202 100
 200 20.9 16.2 24.2
 203 27.3 13.9 20.9#





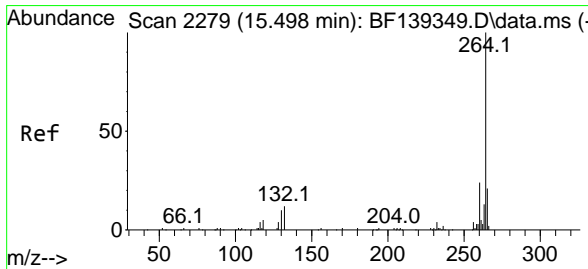
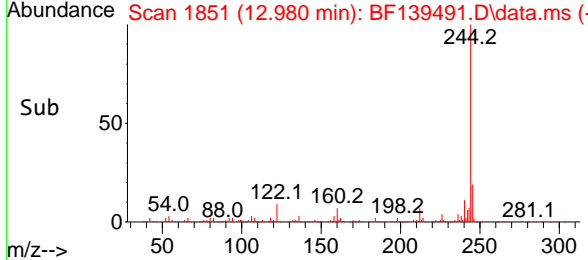
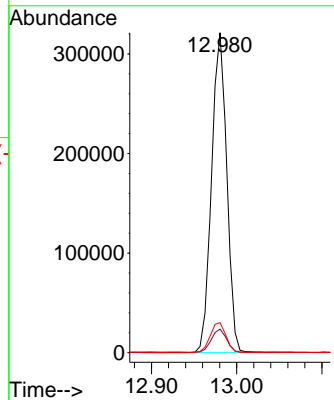
#79
 Terphenyl-d14
 Concen: 51.632 ng
 RT: 12.980 min Scan# 11
 Delta R.T. 0.000 min
 Lab File: BF139491.D
 Acq: 20 Sep 2024 04:25

Instrument : BNA_F
 ClientSampleId : WC-14-5-7.5B

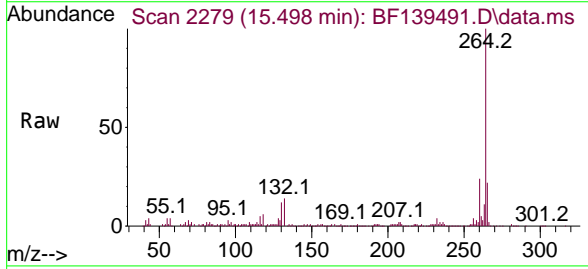


Tgt Ion:244 Resp: 398574

Ion	Ratio	Lower	Upper
244	100		
212	7.3	6.0	9.0
122	9.4	7.6	11.4



#86
 Perylene-d12
 Concen: 20.000 ng
 RT: 15.498 min Scan# 2279
 Delta R.T. 0.000 min
 Lab File: BF139491.D
 Acq: 20 Sep 2024 04:25



Tgt Ion:264 Resp: 125544

Ion	Ratio	Lower	Upper
264	100		
260	24.4	19.5	29.3
265	21.6	16.6	25.0

