

Data Path : Z:\svoasrv\HPCHEM1\BNA_F\Data\BF092321\
 Data File : BF125611.D
 Acq On : 24 Sep 2021 1:33
 Operator : JU/CG
 Sample : M3730-01
 Misc :
 ALS Vial : 20 Sample Multiplier: 1

Instrument :
 BNA_F
 ClientSampleId :
 FLOOR

Manual Integrations
 APPROVED

mohammad
 9/24/2021 5:30:21 PM

Quant Time: Sep 24 04:20:52 2021
 Quant Method : Z:\SVOASRV\HPCHEM1\BNA_F\METHODS\8270-BF092121.M
 Quant Title : ASP BNA STANDARDS FOR 5 POINT CALIBRATION
 QLast Update : Tue Sep 21 19:21:36 2021
 Response via : Initial Calibration

Compound	R.T.	QIon	Response	Conc	Units	Dev(Min)	
Internal Standards							
1) 1,4-Dichlorobenzene-d4	6.892	152	213745	20.000	ng	0.00	
21) Naphthalene-d8	8.180	136	860664	20.000	ng	# 0.00	
39) Acenaphthene-d10	9.933	164	386646	20.000	ng	0.00	
64) Phenanthrene-d10	11.439	188	361898	20.000	ng	# 0.02	
76) Chrysene-d12	14.109	240	294081	20.000	ng	# 0.05	
86) Perylene-d12	15.580	264	448760	20.000	ng	0.04	
System Monitoring Compounds							
5) 2-Fluorophenol	5.510	112	1256593	92.967	ng	0.00	
7) Phenol-d6	6.516	99	1658223	95.151	ng	0.00	
23) Nitrobenzene-d5	7.451	82	1009599	74.819	ng	-0.01	
42) 2,4,6-Tribromophenol	10.733	330	289592	76.469	ng	0.00	
45) 2-Fluorobiphenyl	9.257	172	1906569	89.925	ng	0.00	
79) Terphenyl-d14	13.051	244	976655	53.629	ng	0.04	
Target Compounds							
10) Phenol	6.528	94	396172	22.334	ng		Qvalue 87
20) 3+4-Methylphenols	7.286	107	106298	6.939	ng	#	80
31) Naphthalene	8.210	128	5158643	116.707	ng	#	88
32) Benzoic acid	7.886	122	75965m	9.695	ng		
37) 2-Methylnaphthalene	8.892	142	1762175	58.859	ng		97
38) 1-Methylnaphthalene	8.992	142	1052544	37.469	ng		99
46) 1,1'-Biphenyl	9.351	154	549175	18.851	ng		99
52) Acenaphthene	9.969	154	578099	25.753	ng		93
55) Dibenzofuran	10.145	168	2444322	73.378	ng		98
58) Fluorene	10.486	166	334844	13.070	ng	#	92
71) Phenanthrene	11.486	178	6509144	320.199	ng	#	88
72) Anthracene	11.521	178	181034m	8.934	ng		
73) Carbazole	11.668	167	803632	41.932	ng	#	94
75) Fluoranthene	12.698	202	4268955	214.052	ng		94
78) Pyrene	12.927	202	2907089	105.486	ng		94
81) Benzo(a)anthracene	14.104	228	1001641	50.035	ng		95
83) Chrysene	14.139	228	1165202	57.620	ng		95
87) Indeno(1,2,3-cd)pyrene	17.056	276	162280	5.037	ng		93
88) Benzo(b)fluoranthene	15.151	252	1141704m	34.787	ng		
89) Benzo(k)fluoranthene	15.174	252	262710m	8.752	ng		
90) Benzo(a)pyrene	15.515	252	109457	3.832	ng	#	60
92) Benzo(g,h,i)perylene	17.497	276	116732	4.332	ng		97

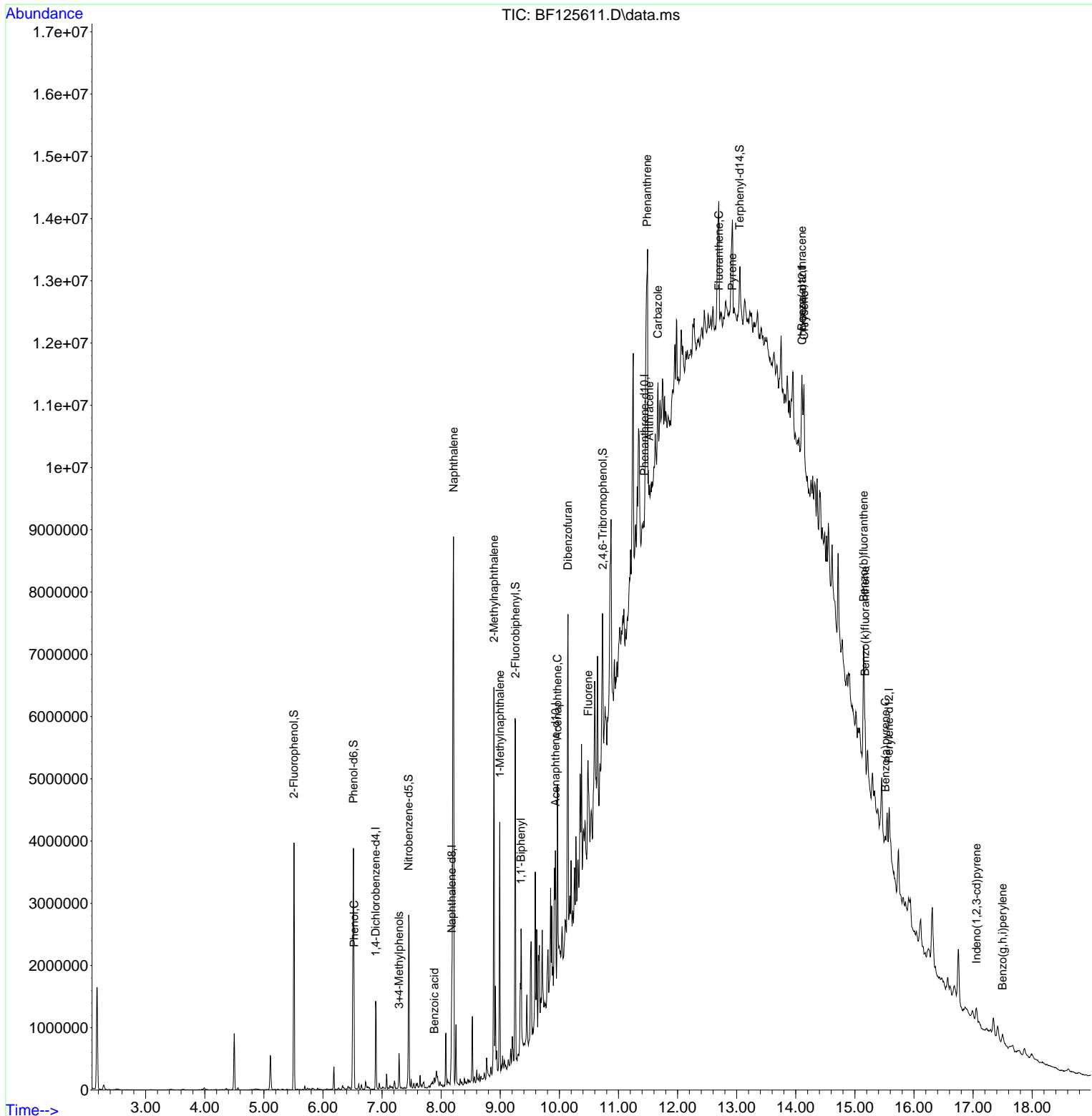
(#) = qualifier out of range (m) = manual integration (+) = signals summed

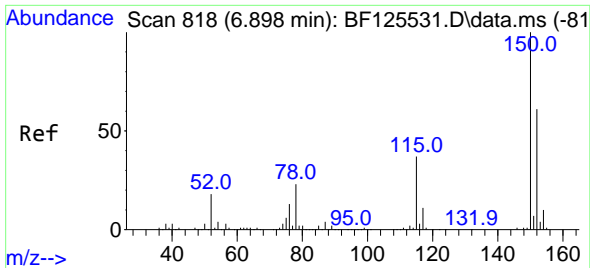
Data Path : Z:\svoasrv\HPCHEM1\BNA_F\Data\BF092321\
 Data File : BF125611.D
 Acq On : 24 Sep 2021 1:33
 Operator : JU/CG
 Sample : M3730-01
 Misc :
 ALS Vial : 20 Sample Multiplier: 1

Instrument :
 BNA_F
 ClientSampled :
 FLOOR

Manual Integrations
APPROVED
 mohammad
 9/24/2021 5:30:21 PM

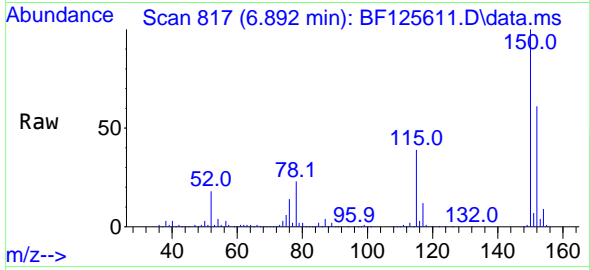
Quant Time: Sep 24 04:20:52 2021
 Quant Method : Z:\SVOASRV\HPCHEM1\BNA_F\METHODS\8270-BF092121.M
 Quant Title : ASP BNA STANDARDS FOR 5 POINT CALIBRATION
 QLast Update : Tue Sep 21 19:21:36 2021
 Response via : Initial Calibration





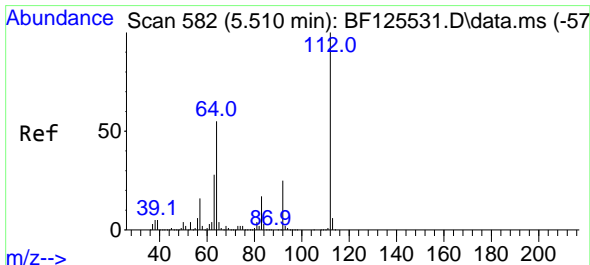
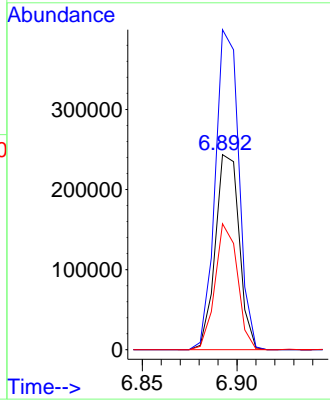
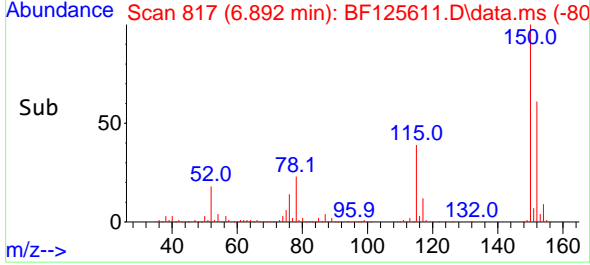
#1
 1,4-Dichlorobenzene-d4
 Concen: 20.000 ng
 RT: 6.892 min Scan# 817
 Delta R.T. -0.006 min
 Lab File: BF125611.D
 Acq: 24 Sep 2021 1:33

Instrument :
 BNA_F
ClientSampled :
 FLOOR

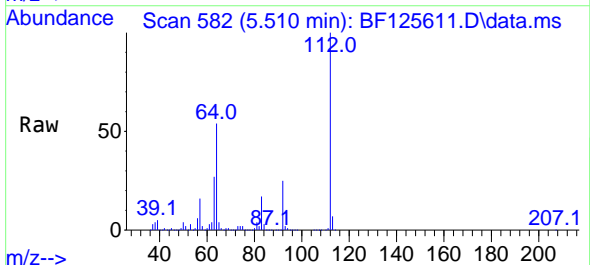


Tgt Ion:152 Resp: 213745
 Ion Ratio Lower Upper
 152 100
 150 164.1 117.6 176.4
 115 64.5 47.1 70.7

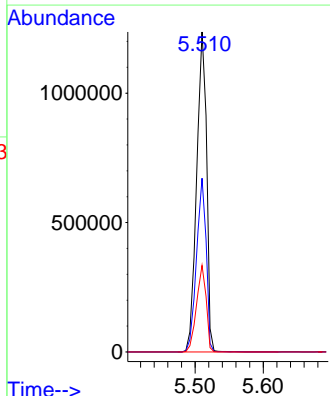
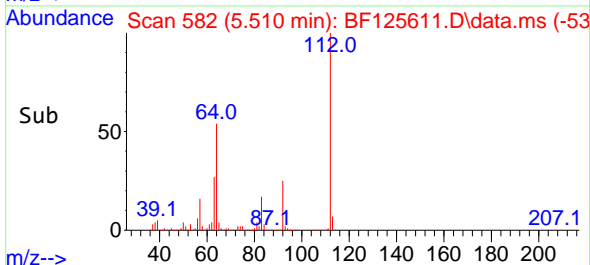
Manual Integrations
APPROVED
 mohammad
 9/24/2021 5:30:21 PM

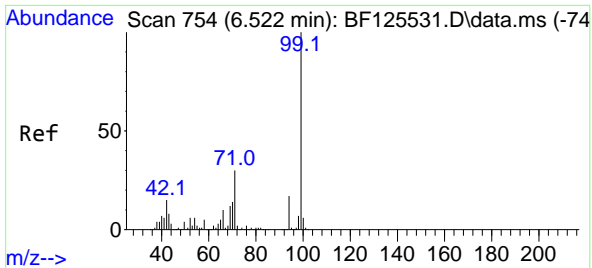


#5
 2-Fluorophenol
 Concen: 92.967 ng
 RT: 5.510 min Scan# 582
 Delta R.T. 0.000 min
 Lab File: BF125611.D
 Acq: 24 Sep 2021 1:33



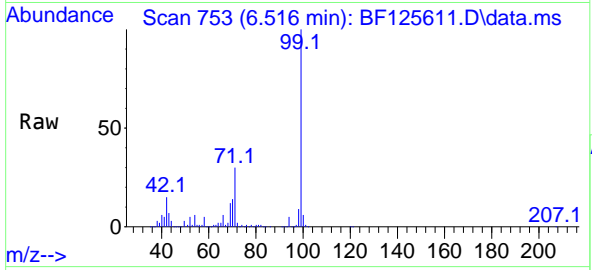
Tgt Ion:112 Resp: 1256593
 Ion Ratio Lower Upper
 112 100
 64 54.3 44.2 66.2
 63 27.0 26.2 39.2





#7
Phenol-d6
Concen: 95.151 ng
RT: 6.516 min Scan# 753
Delta R.T. -0.006 min
Lab File: BF125611.D
Acq: 24 Sep 2021 1:33

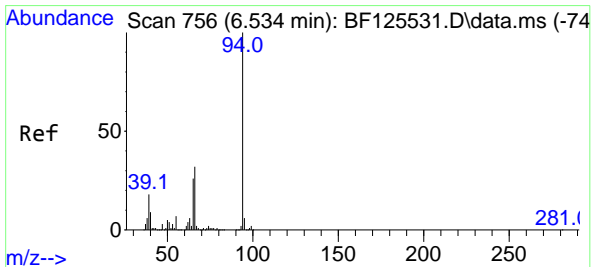
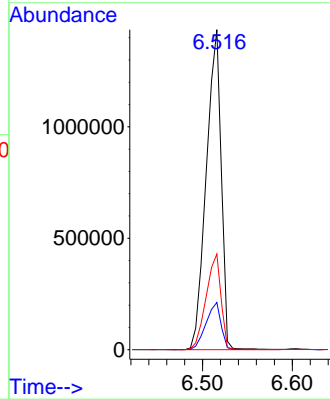
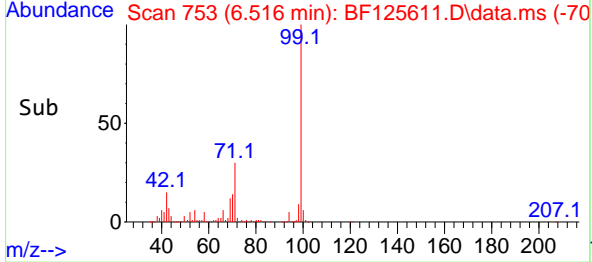
Instrument :
BNA_F
ClientSampled :
FLOOR



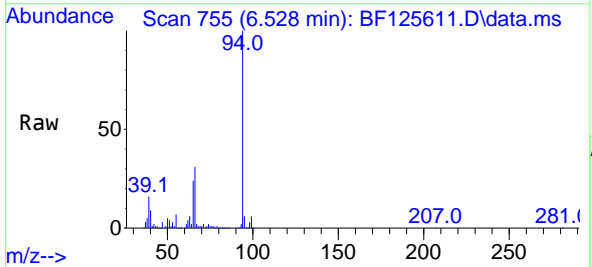
Tgt Ion: 99 Resp: 1658223
Ion Ratio Lower Upper
99 100
42 14.8 23.5 35.3#
71 29.9 25.6 38.4

Manual Integrations
APPROVED

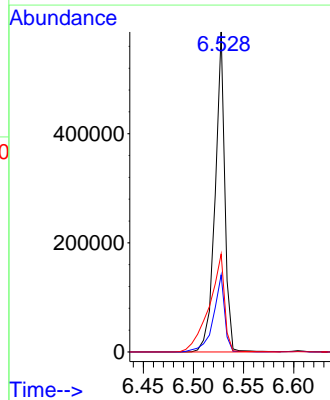
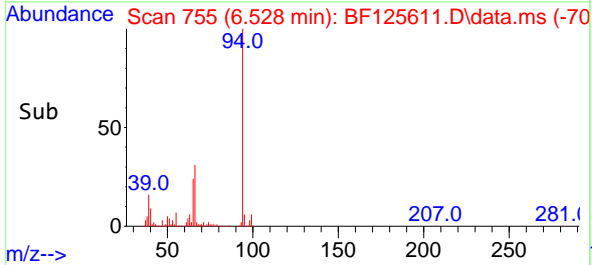
mohammad
9/24/2021 5:30:21 PM

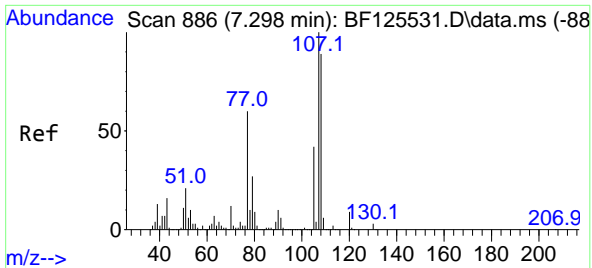


#10
Phenol
Concen: 22.334 ng
RT: 6.528 min Scan# 755
Delta R.T. -0.006 min
Lab File: BF125611.D
Acq: 24 Sep 2021 1:33



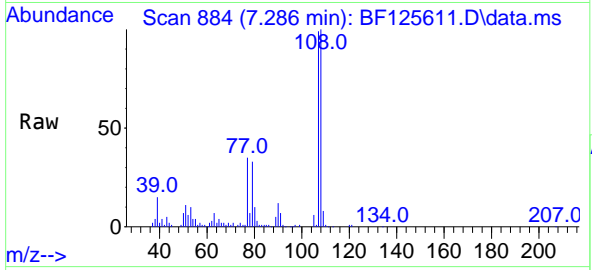
Tgt Ion: 94 Resp: 396172
Ion Ratio Lower Upper
94 100
65 24.1 9.3 49.3
66 30.6 20.3 60.3





#20
 3+4-Methylphenols
 Concen: 6.939 ng
 RT: 7.286 min Scan# 884
 Delta R.T. -0.012 min
 Lab File: BF125611.D
 Acq: 24 Sep 2021 1:33

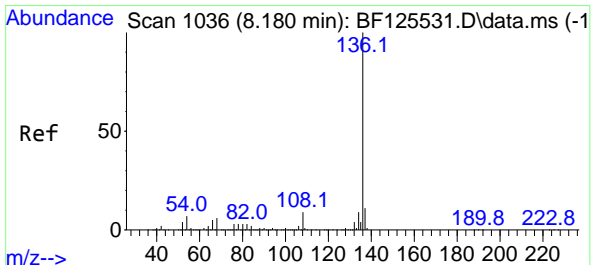
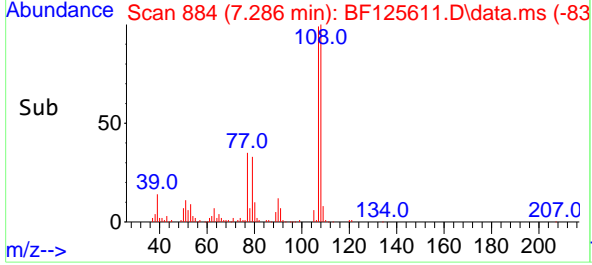
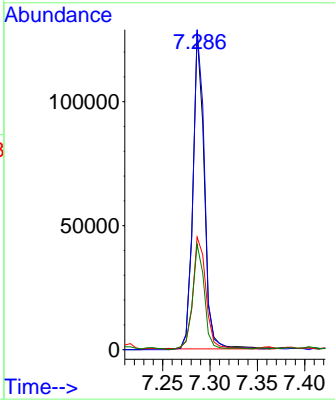
Instrument :
 BNA_F
 ClientSampled :
 FLOOR



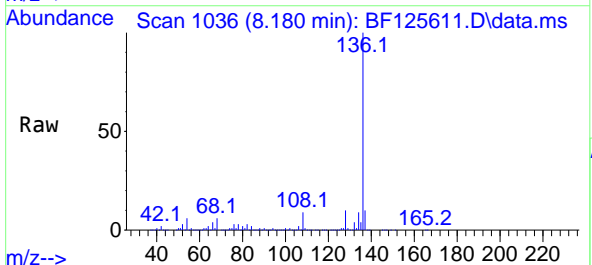
Tgt Ion:107 Resp: 106298

Ion	Ratio	Lower	Upper
107	100		
108	101.0	76.6	116.6
77	35.6	53.3	93.3#
79	33.2	8.7	48.7

Manual Integrations
APPROVED
 mohammad
 9/24/2021 5:30:21 PM

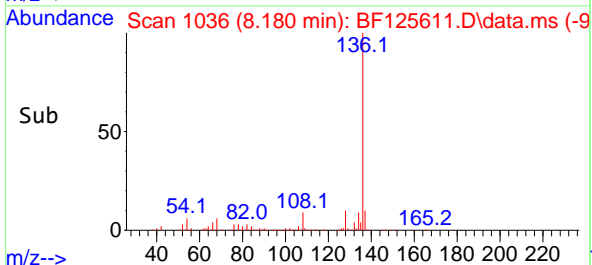
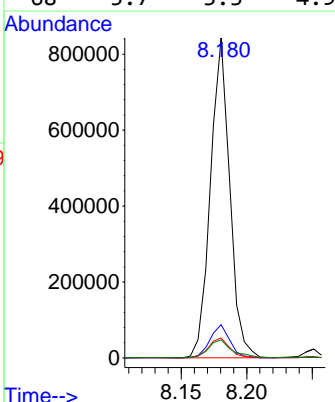


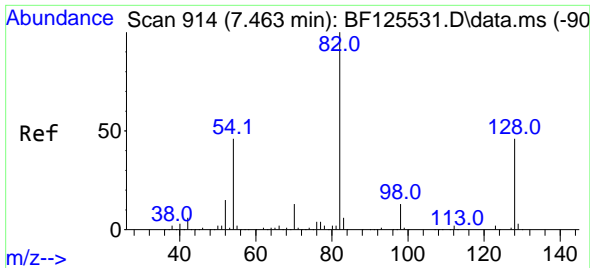
#21
 Naphthalene-d8
 Concen: 20.000 ng
 RT: 8.180 min Scan# 1036
 Delta R.T. 0.000 min
 Lab File: BF125611.D
 Acq: 24 Sep 2021 1:33



Tgt Ion:136 Resp: 860664

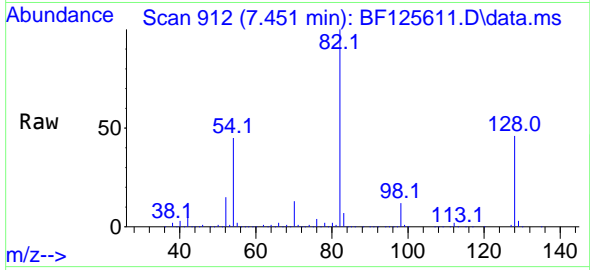
Ion	Ratio	Lower	Upper
136	100		
137	10.4	9.8	14.6
54	6.2	6.4	9.6#
68	5.7	3.3	4.9#





#23
 Nitrobenzene-d5
 Concen: 74.819 ng
 RT: 7.451 min Scan# 912
 Delta R.T. -0.012 min
 Lab File: BF125611.D
 Acq: 24 Sep 2021 1:33

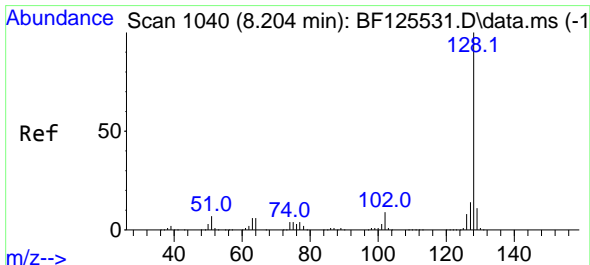
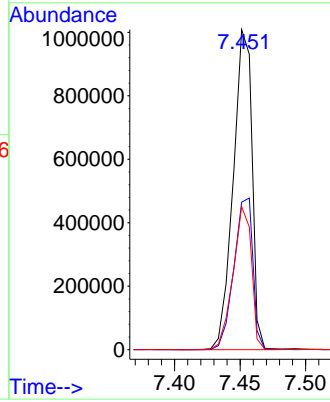
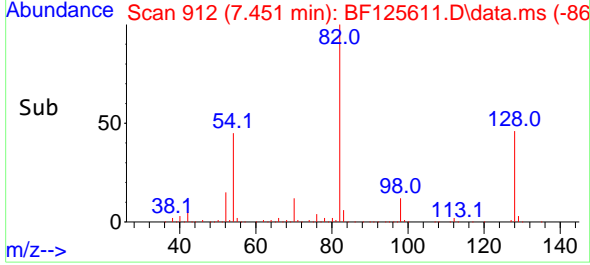
Instrument :
 BNA_F
ClientSampled :
 FLOOR



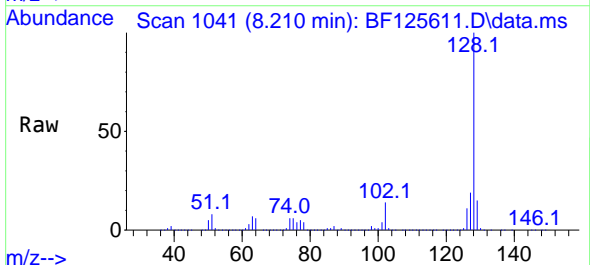
Tgt Ion: 82 Resp: 1009599

Ion	Ratio	Lower	Upper
82	100		
128	46.1	40.6	60.8
54	44.7	49.6	74.4#

Manual Integrations
APPROVED
 mohammad
 9/24/2021 5:30:21 PM

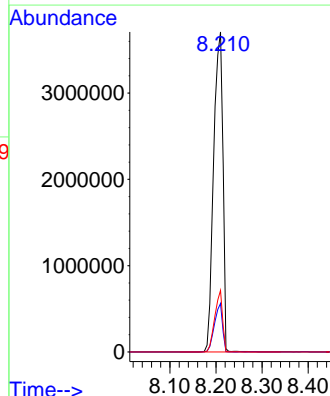
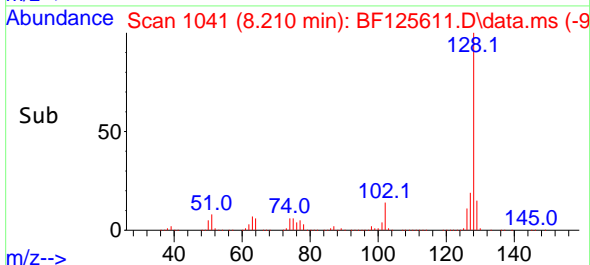


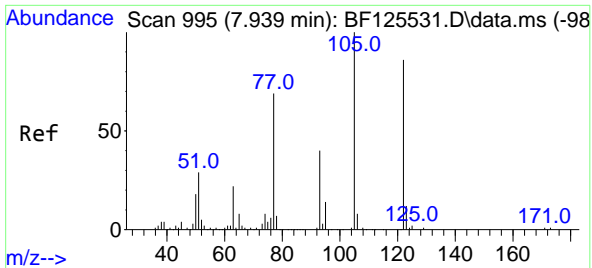
#31
 Naphthalene
 Concen: 116.707 ng
 RT: 8.210 min Scan# 1041
 Delta R.T. 0.006 min
 Lab File: BF125611.D
 Acq: 24 Sep 2021 1:33



Tgt Ion: 128 Resp: 5158643

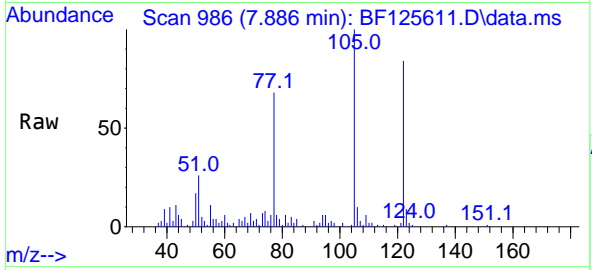
Ion	Ratio	Lower	Upper
128	100		
129	15.1	9.4	14.0#
127	19.3	10.9	16.3#





#32
 Benzoic acid
 Concen: 9.695 ng m
 RT: 7.886 min Scan# 986
 Delta R.T. -0.053 min
 Lab File: BF125611.D
 Acq: 24 Sep 2021 1:33

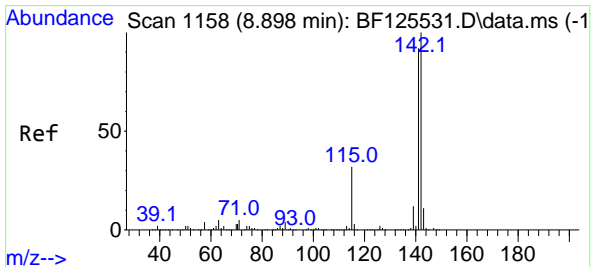
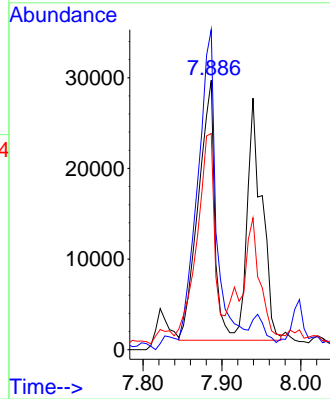
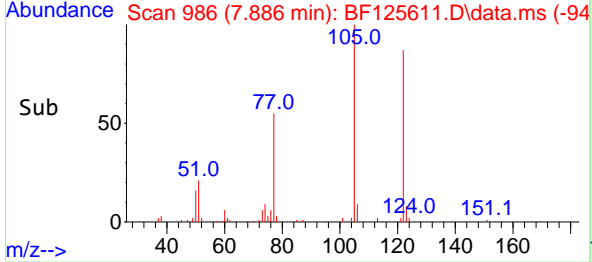
Instrument :
 BNA_F
 ClientSampled :
 FLOOR



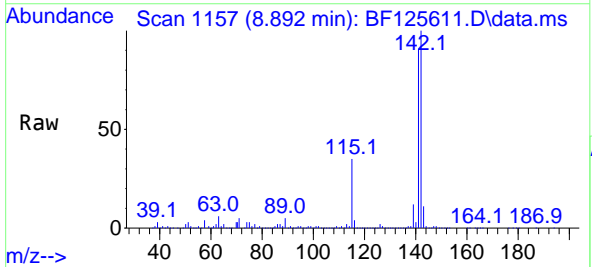
Tgt Ion:122 Resp: 75965
 Ion Ratio Lower Upper
 122 100
 105 118.8 97.6 137.6
 77 80.2 59.6 99.6

Manual Integrations
 APPROVED

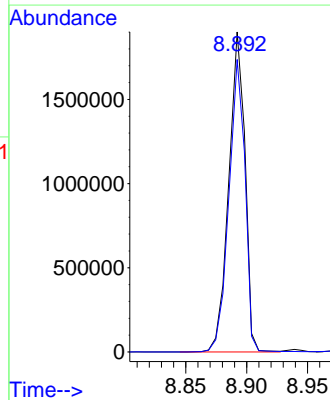
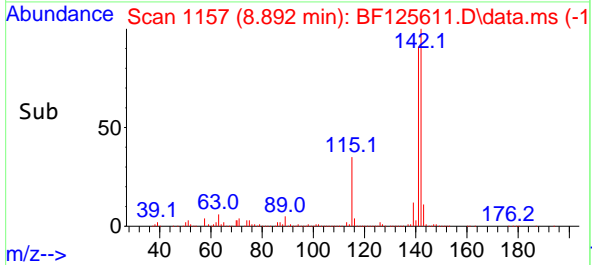
mohammad
 9/24/2021 5:30:21 PM

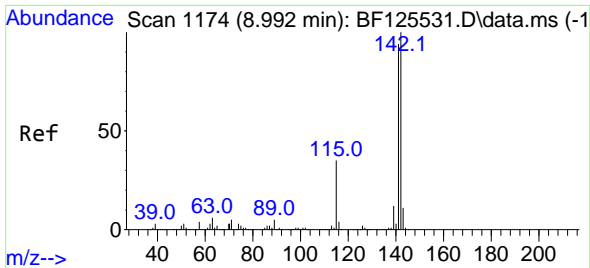


#37
 2-Methylnaphthalene
 Concen: 58.859 ng
 RT: 8.892 min Scan# 1157
 Delta R.T. -0.006 min
 Lab File: BF125611.D
 Acq: 24 Sep 2021 1:33



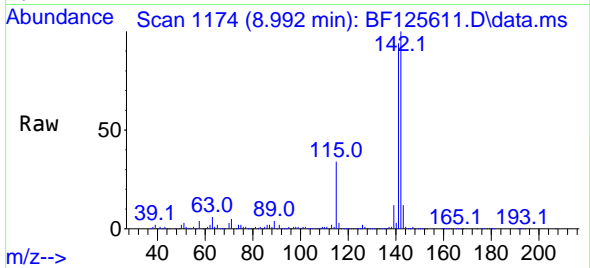
Tgt Ion:142 Resp: 1762175
 Ion Ratio Lower Upper
 142 100
 141 91.4 71.2 106.8





#38
 1-Methylnaphthalene
 Concen: 37.469 ng
 RT: 8.992 min Scan# 1174
 Delta R.T. 0.000 min
 Lab File: BF125611.D
 Acq: 24 Sep 2021 1:33

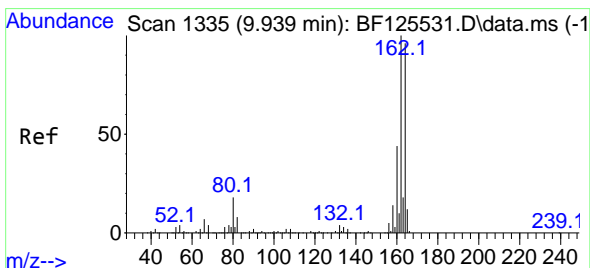
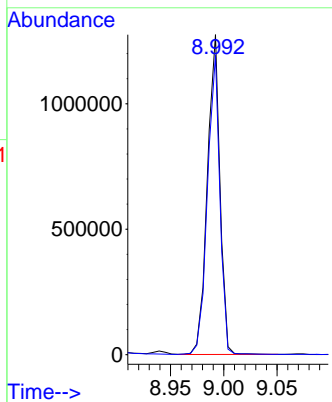
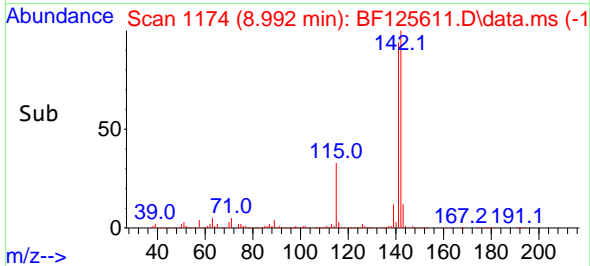
Instrument :
 BNA_F
 ClientSampled :
 FLOOR



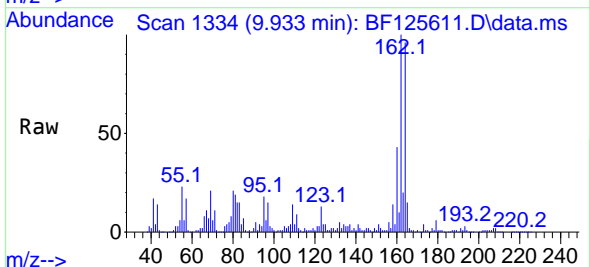
Tgt Ion:142 Resp: 1052544
 Ion Ratio Lower Upper
 142 100
 141 93.6 76.0 114.0

Manual Integrations
 APPROVED

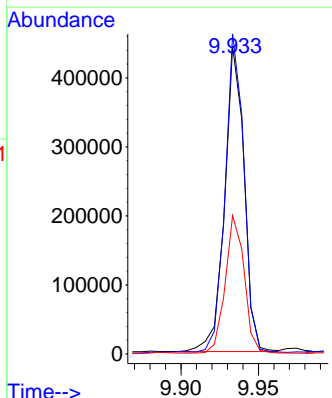
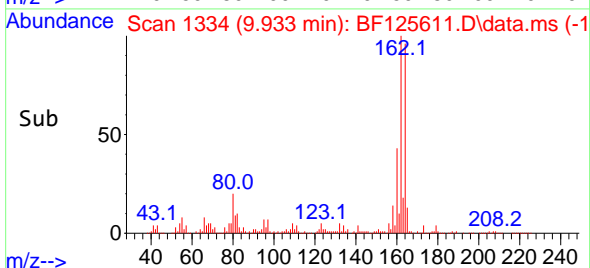
mohammad
 9/24/2021 5:30:21 PM

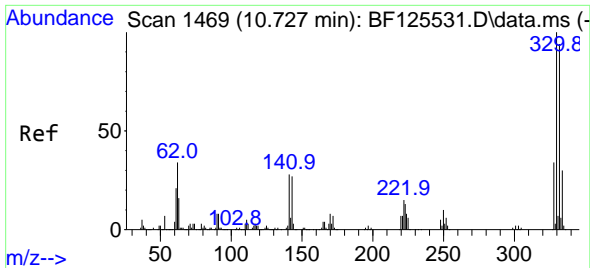


#39
 Acenaphthene-d10
 Concen: 20.000 ng
 RT: 9.933 min Scan# 1334
 Delta R.T. -0.006 min
 Lab File: BF125611.D
 Acq: 24 Sep 2021 1:33



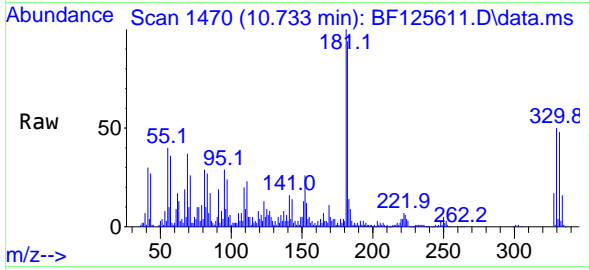
Tgt Ion:164 Resp: 386646
 Ion Ratio Lower Upper
 164 100
 162 103.9 81.3 121.9
 160 44.9 38.0 57.0





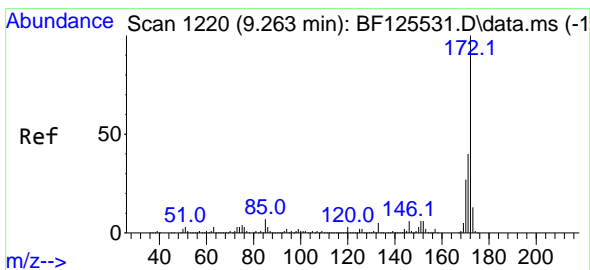
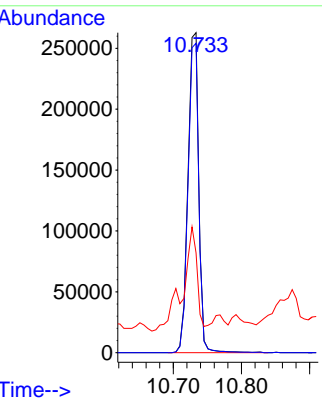
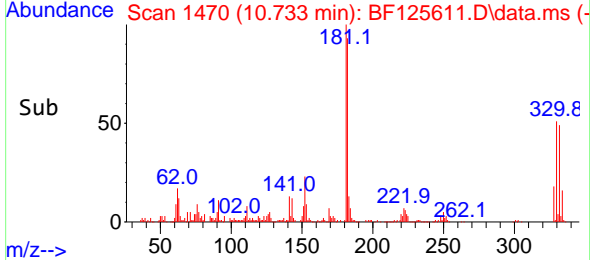
#42
 2,4,6-Tribromophenol
 Concen: 76.469 ng
 RT: 10.733 min Scan# 1470
 Delta R.T. 0.006 min
 Lab File: BF125611.D
 Acq: 24 Sep 2021 1:33

Instrument :
 BNA_F
ClientSampled :
 FLOOR

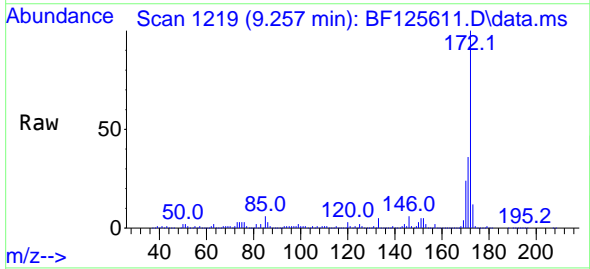


Tgt Ion: 330 Resp: 289592
 Ion Ratio Lower Upper
 330 100
 332 96.4 76.2 114.4
 141 44.1 44.6 66.8#

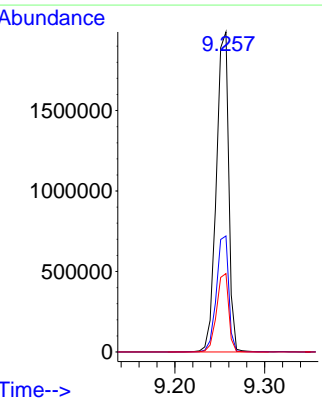
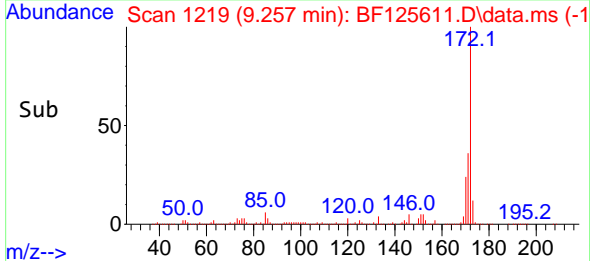
Manual Integrations
APPROVED
 mohammad
 9/24/2021 5:30:21 PM

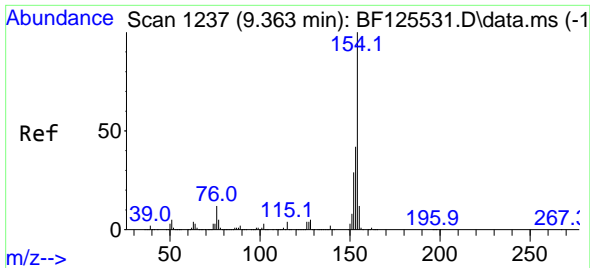


#45
 2-Fluorobiphenyl
 Concen: 89.925 ng
 RT: 9.257 min Scan# 1219
 Delta R.T. -0.006 min
 Lab File: BF125611.D
 Acq: 24 Sep 2021 1:33



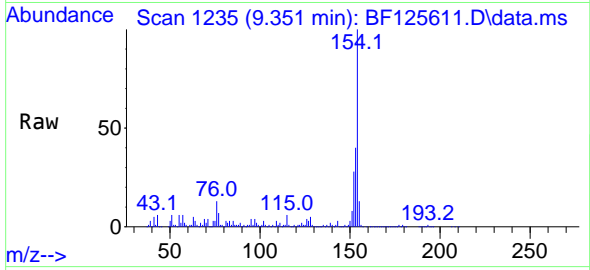
Tgt Ion: 172 Resp: 1906569
 Ion Ratio Lower Upper
 172 100
 171 36.3 26.5 39.7
 170 24.5 18.8 28.2





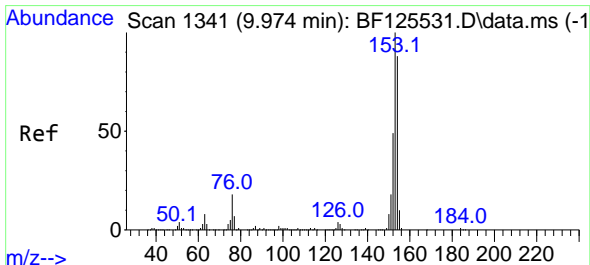
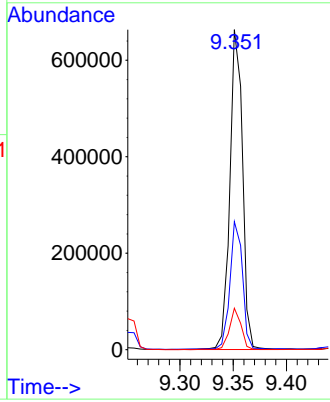
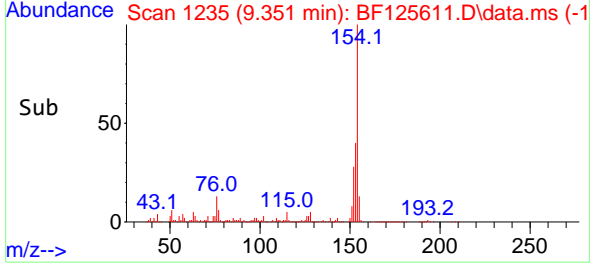
#46
 1,1'-Biphenyl
 Concen: 18.851 ng
 RT: 9.351 min Scan# 1235
 Delta R.T. -0.012 min
 Lab File: BF125611.D
 Acq: 24 Sep 2021 1:33

Instrument :
 BNA_F
ClientSampled :
 FLOOR

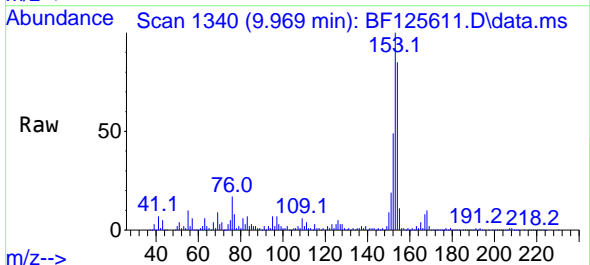


Tgt Ion:154 Resp: 549175
 Ion Ratio Lower Upper
 154 100
 153 40.0 20.0 60.0
 76 13.0 0.0 30.3

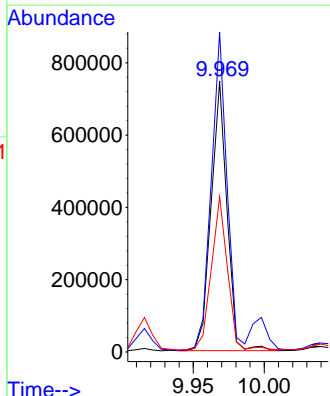
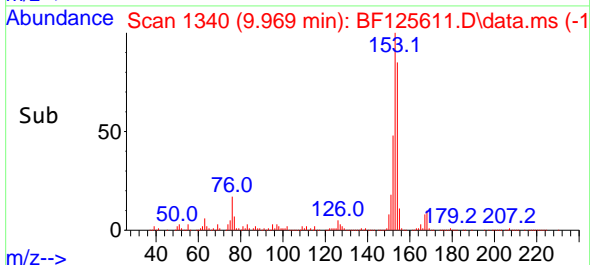
Manual Integrations
APPROVED
 mohammad
 9/24/2021 5:30:21 PM

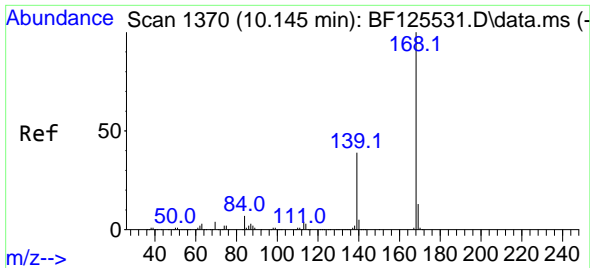


#52
 Acenaphthene
 Concen: 25.753 ng
 RT: 9.969 min Scan# 1340
 Delta R.T. -0.006 min
 Lab File: BF125611.D
 Acq: 24 Sep 2021 1:33



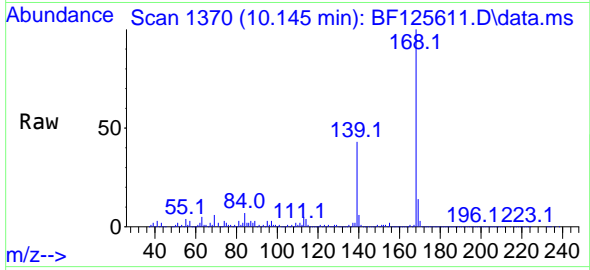
Tgt Ion:154 Resp: 578099
 Ion Ratio Lower Upper
 154 100
 153 118.1 89.4 134.2
 152 57.3 40.5 60.7





#55
 Dibenzofuran
 Concen: 73.378 ng
 RT: 10.145 min Scan# 1370
 Delta R.T. 0.000 min
 Lab File: BF125611.D
 Acq: 24 Sep 2021 1:33

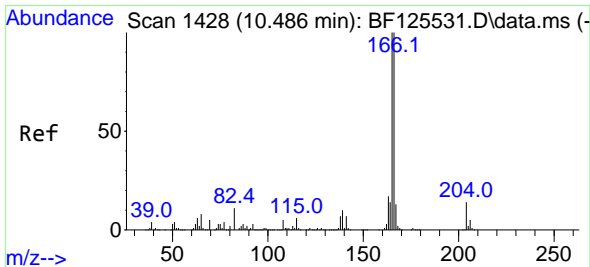
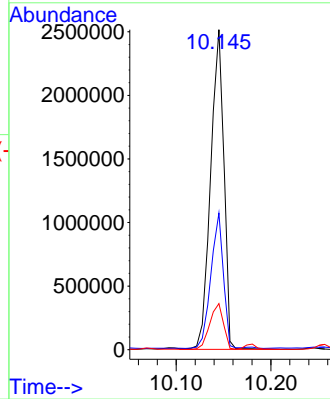
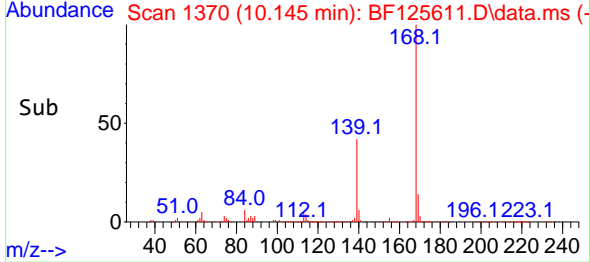
Instrument :
 BNA_F
 ClientSampled :
 FLOOR



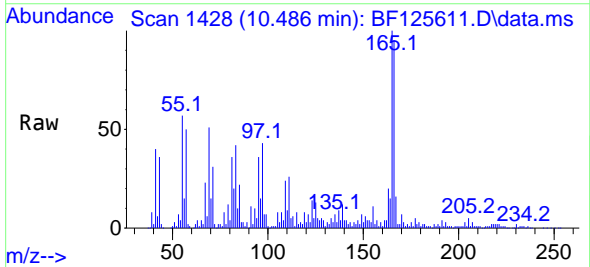
Tgt Ion:168 Resp: 2444322
 Ion Ratio Lower Upper
 168 100
 139 42.7 32.7 49.1
 169 14.4 11.2 16.8

Manual Integrations
 APPROVED

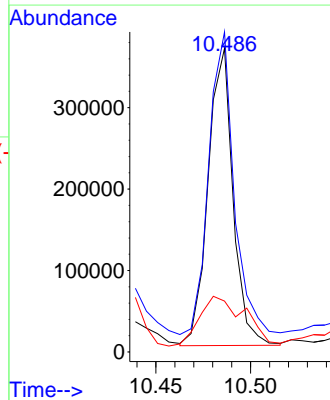
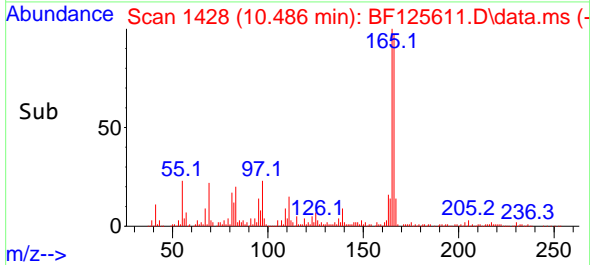
mohammad
 9/24/2021 5:30:21 PM

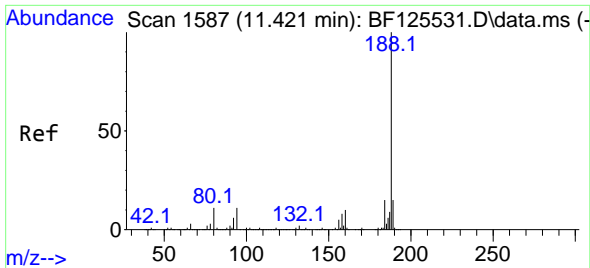


#58
 Fluorene
 Concen: 13.070 ng
 RT: 10.486 min Scan# 1428
 Delta R.T. 0.000 min
 Lab File: BF125611.D
 Acq: 24 Sep 2021 1:33



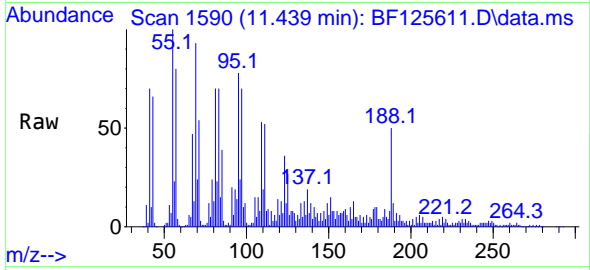
Tgt Ion:166 Resp: 334844
 Ion Ratio Lower Upper
 166 100
 165 105.4 78.1 117.1
 167 16.8 11.1 16.7#





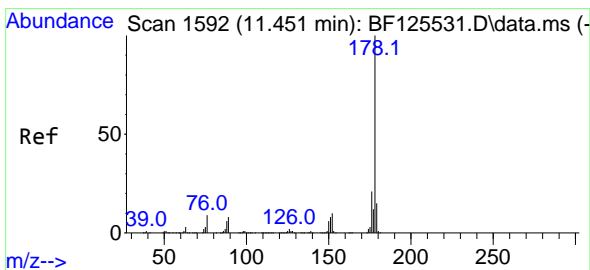
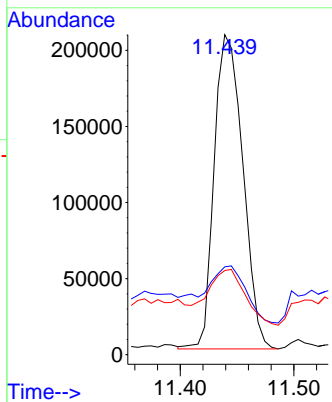
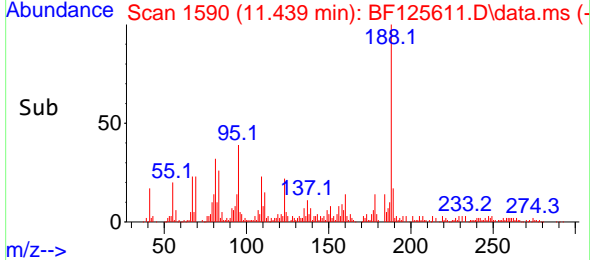
#64
 Phenanthrene-d10
 Concen: 20.000 ng
 RT: 11.439 min Scan# 1590
 Delta R.T. 0.018 min
 Lab File: BF125611.D
 Acq: 24 Sep 2021 1:33

Instrument :
 BNA_F
 ClientSampled :
 FLOOR

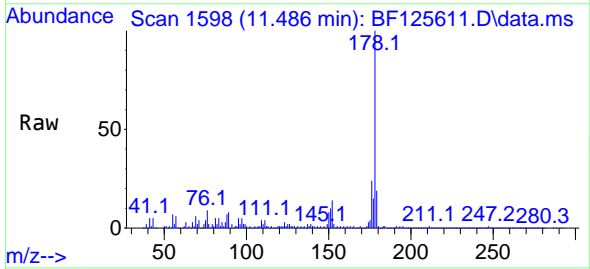


Tgt Ion:188 Resp: 361898
 Ion Ratio Lower Upper
 188 100
 94 27.4 6.7 10.1#
 80 26.3 7.5 11.3#

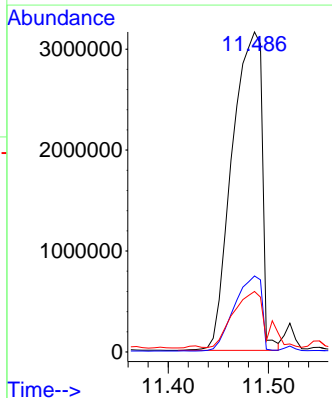
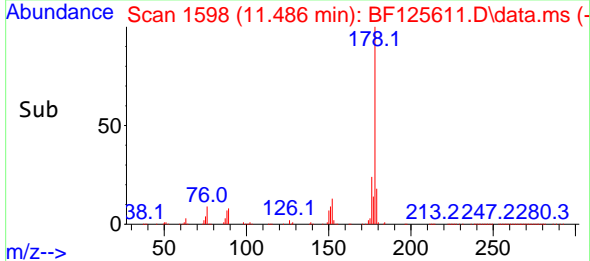
Manual Integrations
 APPROVED
 mohammad
 9/24/2021 5:30:21 PM

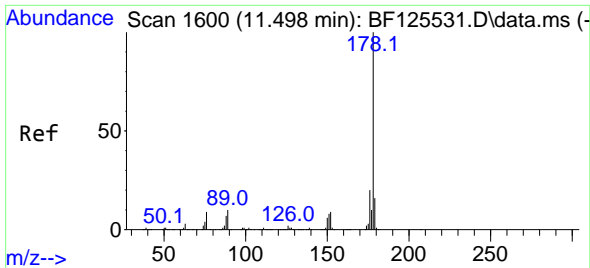


#71
 Phenanthrene
 Concen: 320.199 ng
 RT: 11.486 min Scan# 1598
 Delta R.T. 0.035 min
 Lab File: BF125611.D
 Acq: 24 Sep 2021 1:33



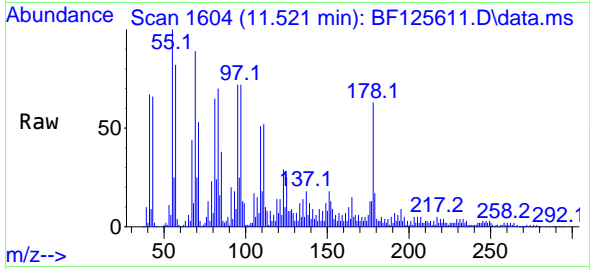
Tgt Ion:178 Resp: 6509144
 Ion Ratio Lower Upper
 178 100
 176 23.7 14.7 22.1#
 179 18.9 11.5 17.3#





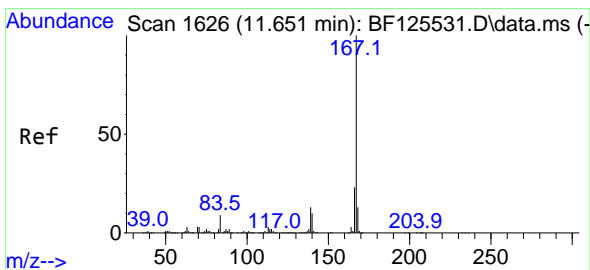
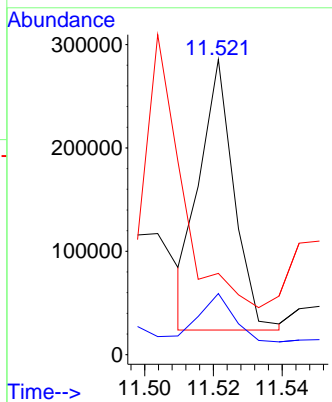
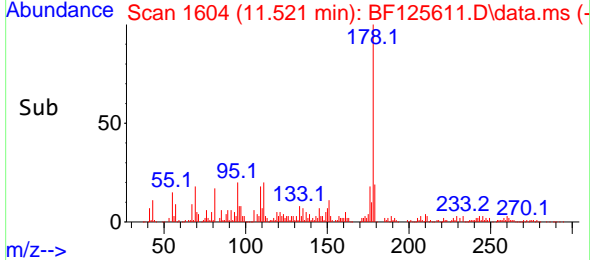
#72
 Anthracene
 Concen: 8.934 ng m
 RT: 11.521 min Scan# 1604
 Delta R.T. 0.024 min
 Lab File: BF125611.D
 Acq: 24 Sep 2021 1:33

Instrument :
 BNA_F
ClientSampled :
 FLOOR

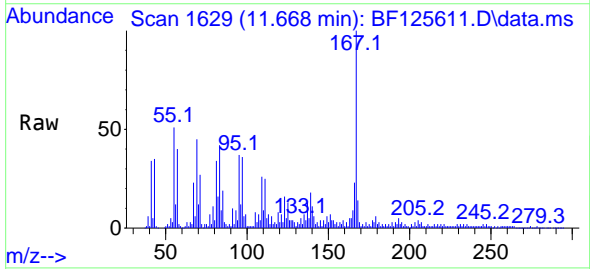


Tgt Ion:178 Resp: 181034
 Ion Ratio Lower Upper
 178 100
 176 20.7 14.3 21.5
 179 27.5 12.2 18.4#

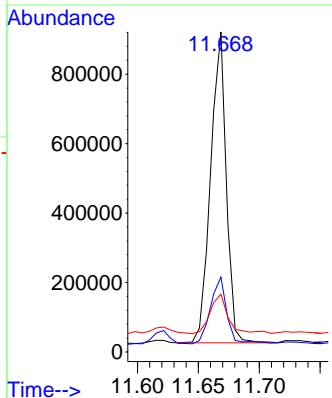
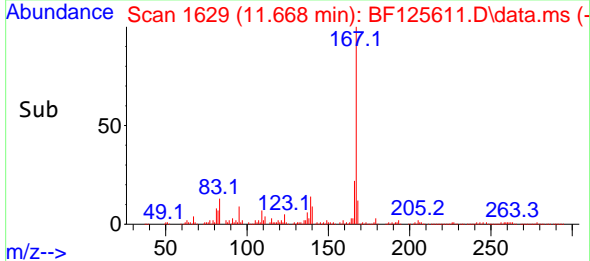
Manual Integrations
APPROVED
 mohammad
 9/24/2021 5:30:21 PM

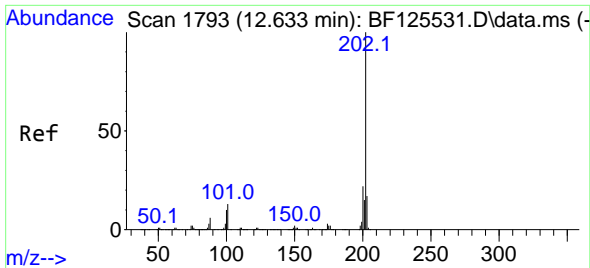


#73
 Carbazole
 Concen: 41.932 ng
 RT: 11.668 min Scan# 1629
 Delta R.T. 0.018 min
 Lab File: BF125611.D
 Acq: 24 Sep 2021 1:33



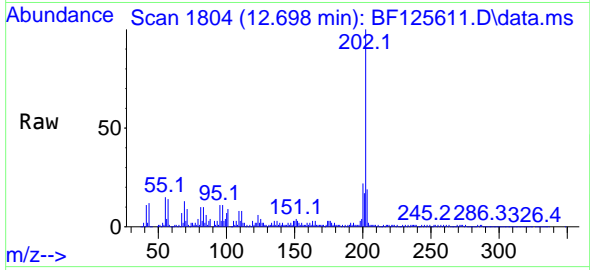
Tgt Ion:167 Resp: 803632
 Ion Ratio Lower Upper
 167 100
 166 23.4 17.4 26.0
 139 18.1 11.0 16.4#





#75
 Fluoranthene
 Concen: 214.052 ng
 RT: 12.698 min Scan# 1804
 Delta R.T. 0.065 min
 Lab File: BF125611.D
 Acq: 24 Sep 2021 1:33

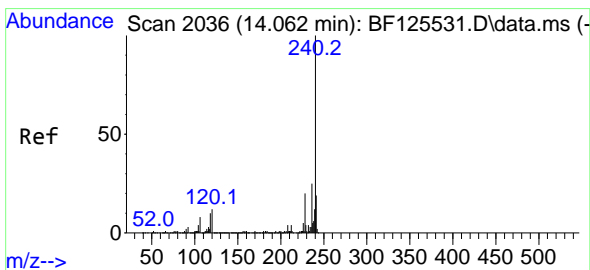
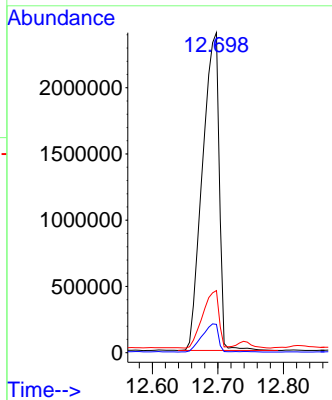
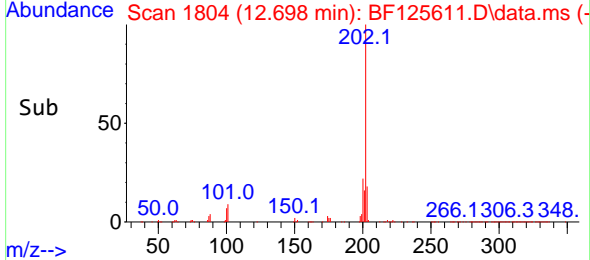
Instrument :
 BNA_F
ClientSampled :
 FLOOR



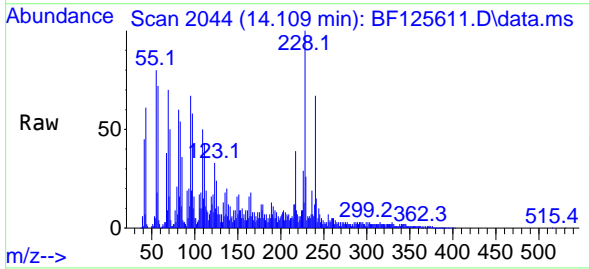
Tgt Ion: 202 Resp: 4268955

Ion	Ratio	Lower	Upper
202	100		
101	8.9	0.0	30.7
203	19.4	0.0	36.3

Manual Integrations
APPROVED
 mohammad
 9/24/2021 5:30:21 PM

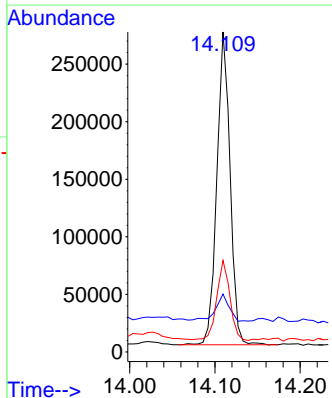
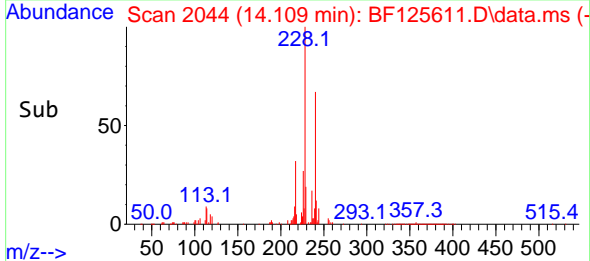


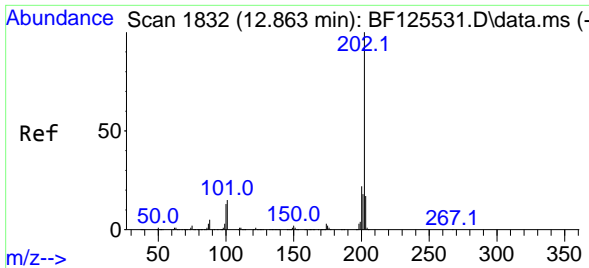
#76
 Chrysene-d12
 Concen: 20.000 ng
 RT: 14.109 min Scan# 2044
 Delta R.T. 0.047 min
 Lab File: BF125611.D
 Acq: 24 Sep 2021 1:33



Tgt Ion: 240 Resp: 294081

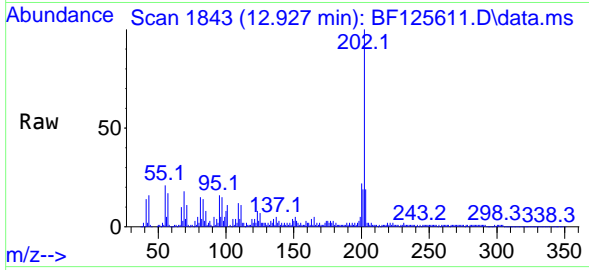
Ion	Ratio	Lower	Upper
240	100		
120	18.1	10.8	16.2#
236	28.6	21.6	32.4





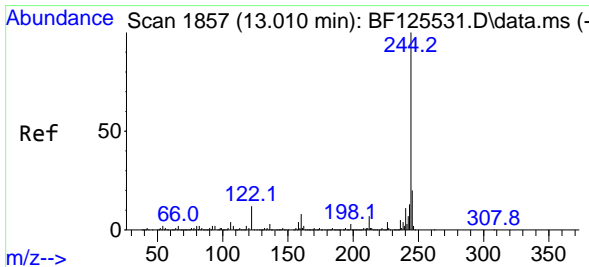
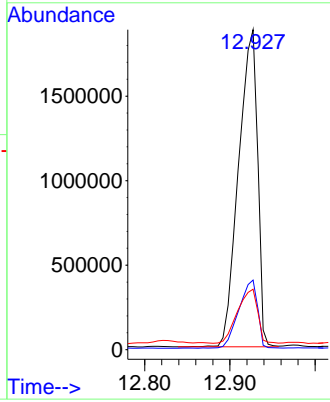
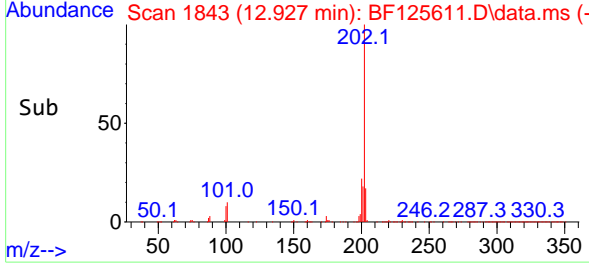
#78
 Pyrene
 Concen: 105.486 ng
 RT: 12.927 min Scan# 1843
 Delta R.T. 0.065 min
 Lab File: BF125611.D
 Acq: 24 Sep 2021 1:33

Instrument :
 BNA_F
ClientSampled :
 FLOOR

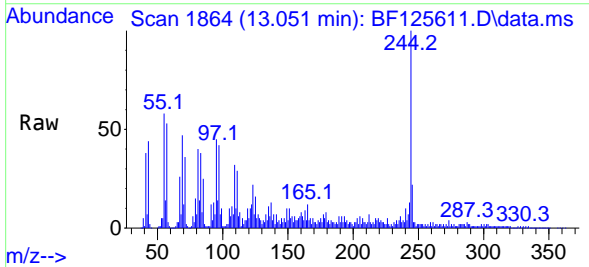


Tgt Ion:202 Resp: 2907089
 Ion Ratio Lower Upper
 202 100
 200 21.8 15.3 22.9
 203 18.9 13.4 20.0

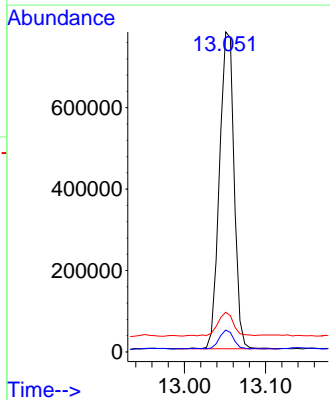
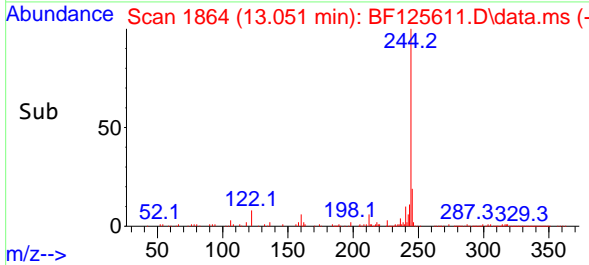
Manual Integrations
APPROVED
 mohammad
 9/24/2021 5:30:21 PM

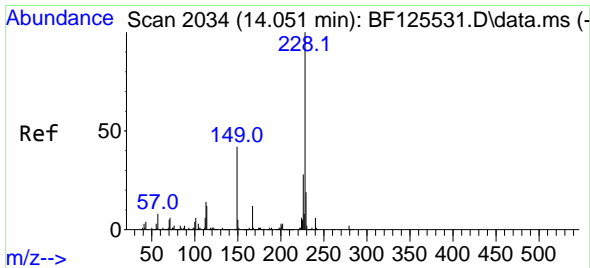


#79
 Terphenyl-d14
 Concen: 53.629 ng
 RT: 13.051 min Scan# 1864
 Delta R.T. 0.041 min
 Lab File: BF125611.D
 Acq: 24 Sep 2021 1:33



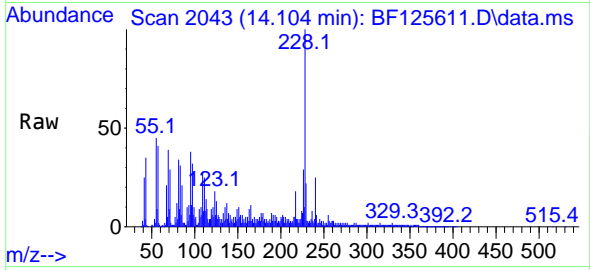
Tgt Ion:244 Resp: 976655
 Ion Ratio Lower Upper
 244 100
 212 6.9 5.9 8.9
 122 12.4 9.0 13.4





#81
 Benzo(a)anthracene
 Concen: 50.035 ng
 RT: 14.104 min Scan# 2043
 Delta R.T. 0.053 min
 Lab File: BF125611.D
 Acq: 24 Sep 2021 1:33

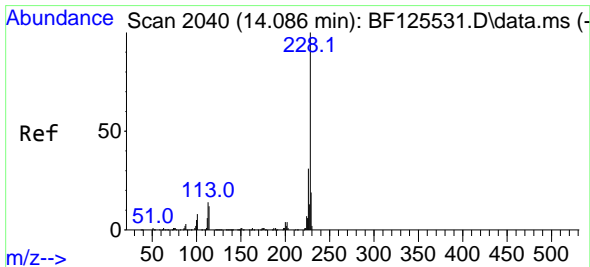
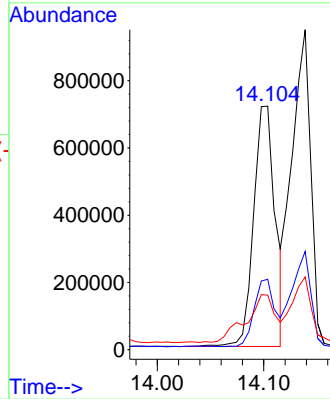
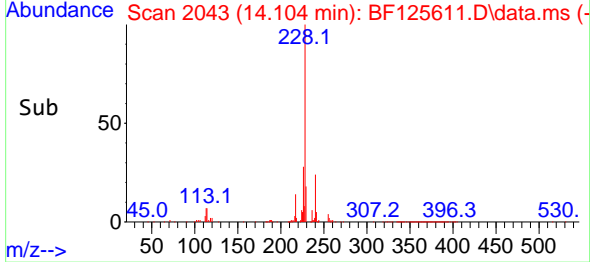
Instrument :
 BNA_F
 ClientSampled :
 FLOOR



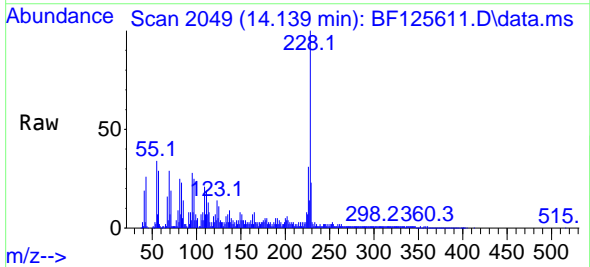
Tgt Ion:228 Resp: 1001641
 Ion Ratio Lower Upper
 228 100
 226 28.9 21.6 32.4
 229 22.4 15.6 23.4

Manual Integrations
 APPROVED

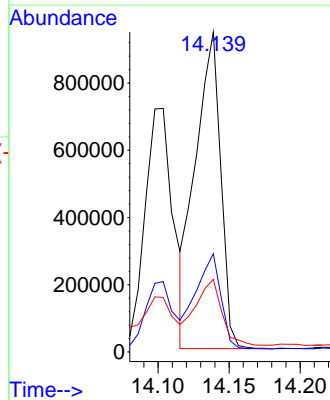
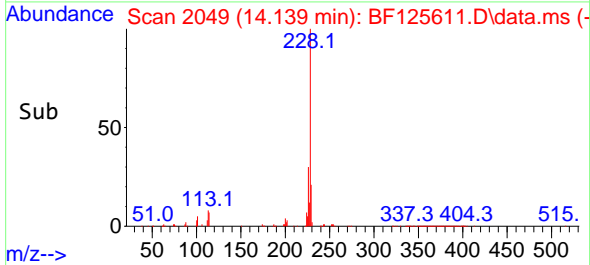
mohammad
 9/24/2021 5:30:21 PM

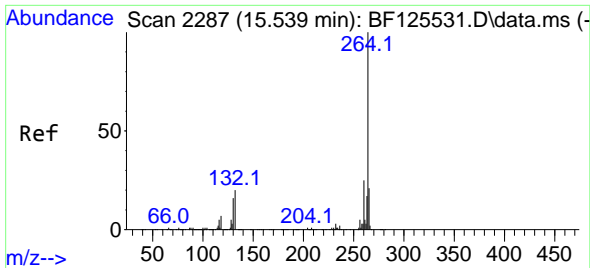


#83
 Chrysene
 Concen: 57.620 ng
 RT: 14.139 min Scan# 2049
 Delta R.T. 0.053 min
 Lab File: BF125611.D
 Acq: 24 Sep 2021 1:33



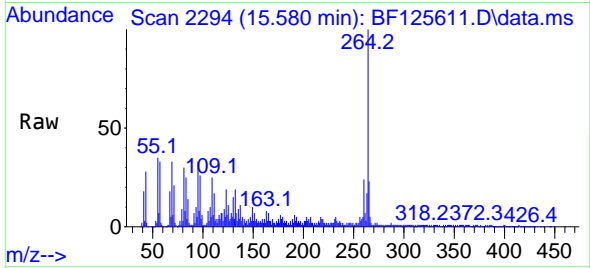
Tgt Ion:228 Resp: 1165202
 Ion Ratio Lower Upper
 228 100
 226 30.7 22.6 34.0
 229 22.7 15.9 23.9





#86
 Perylene-d12
 Concen: 20.000 ng
 RT: 15.580 min Scan# 2294
 Delta R.T. 0.041 min
 Lab File: BF125611.D
 Acq: 24 Sep 2021 1:33

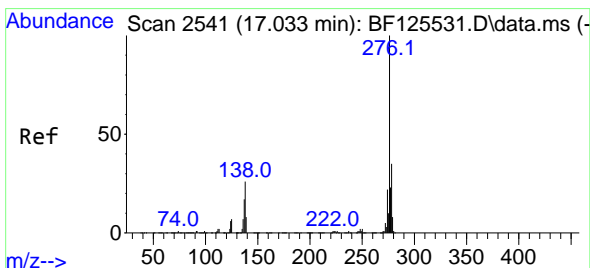
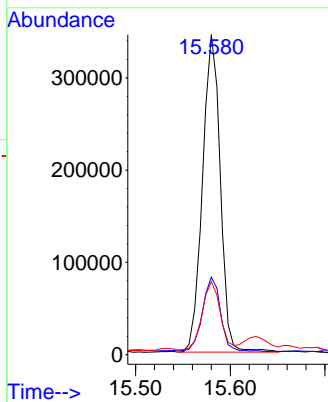
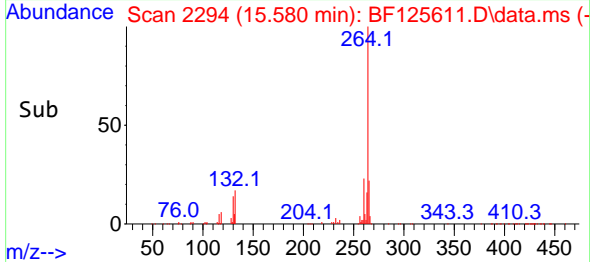
Instrument :
 BNA_F
 ClientSampled :
 FLOOR



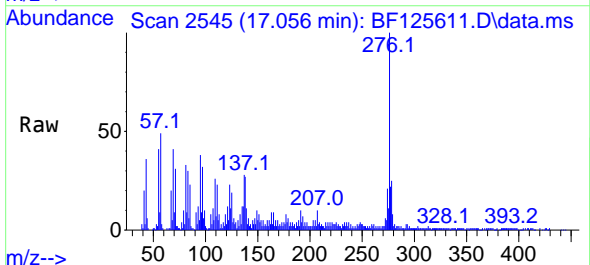
Tgt Ion:264 Resp: 448760
 Ion Ratio Lower Upper
 264 100
 260 24.3 19.6 29.4
 265 22.8 17.2 25.8

Manual Integrations
 APPROVED

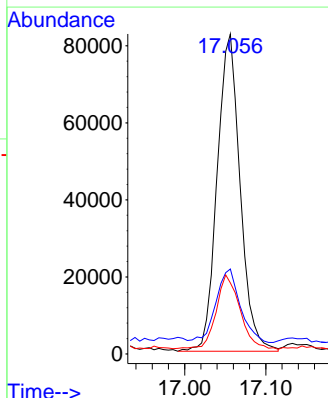
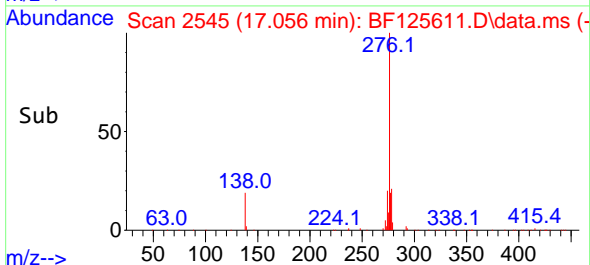
mohammad
 9/24/2021 5:30:21 PM

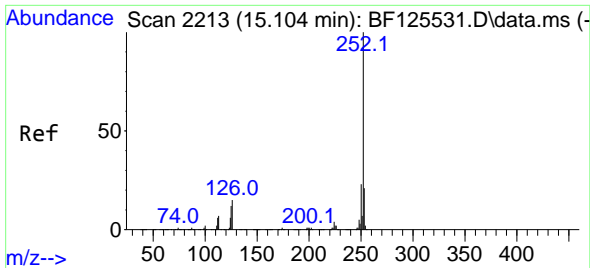


#87
 Indeno(1,2,3-cd)pyrene
 Concen: 5.037 ng
 RT: 17.056 min Scan# 2545
 Delta R.T. 0.024 min
 Lab File: BF125611.D
 Acq: 24 Sep 2021 1:33



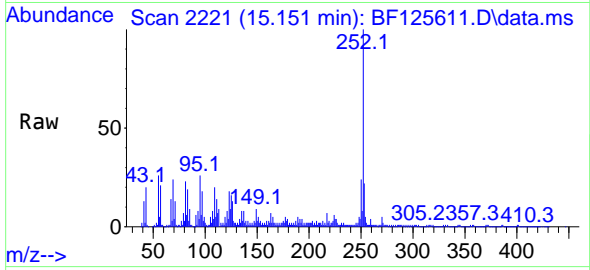
Tgt Ion:276 Resp: 162280
 Ion Ratio Lower Upper
 276 100
 138 24.6 24.1 36.1
 277 24.4 18.8 28.2





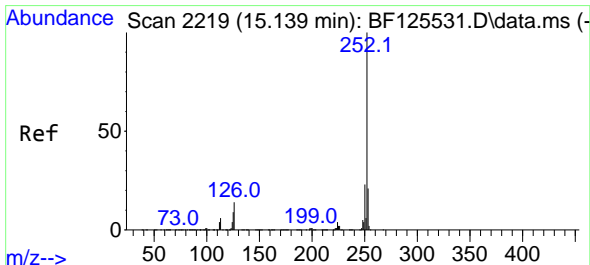
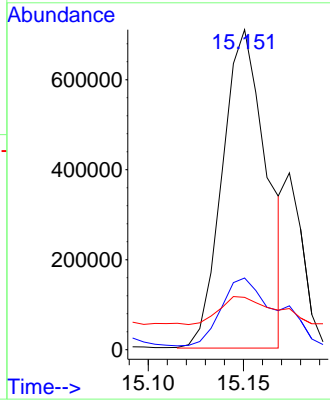
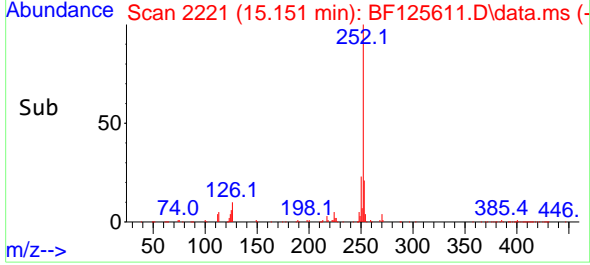
#88
 Benzo(b)fluoranthene
 Concen: 34.787 ng m
 RT: 15.151 min Scan# 2221
 Delta R.T. 0.047 min
 Lab File: BF125611.D
 Acq: 24 Sep 2021 1:33

Instrument :
 BNA_F
ClientSampled :
 FLOOR

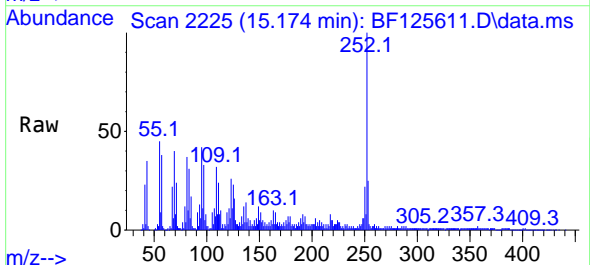


Tgt Ion:252 Resp: 1141704
 Ion Ratio Lower Upper
 252 100
 253 22.4 16.8 25.2
 125 16.3 9.8 14.8#

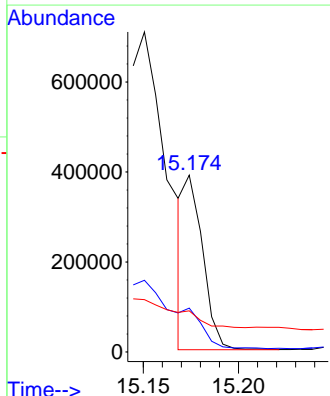
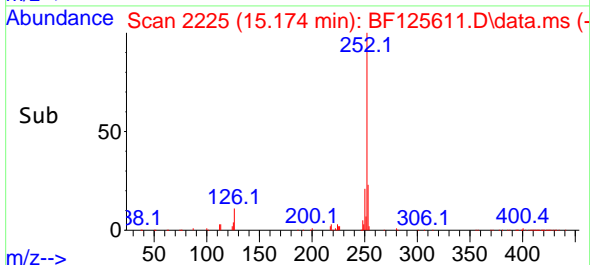
Manual Integrations
APPROVED
 mohammad
 9/24/2021 5:30:21 PM

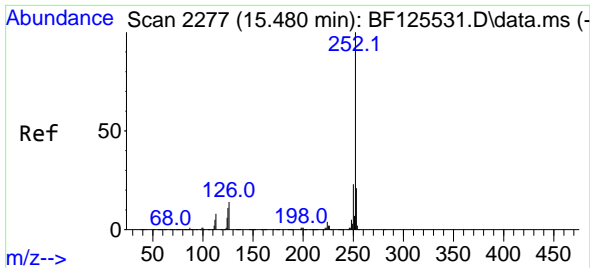


#89
 Benzo(k)fluoranthene
 Concen: 8.752 ng m
 RT: 15.174 min Scan# 2225
 Delta R.T. 0.035 min
 Lab File: BF125611.D
 Acq: 24 Sep 2021 1:33



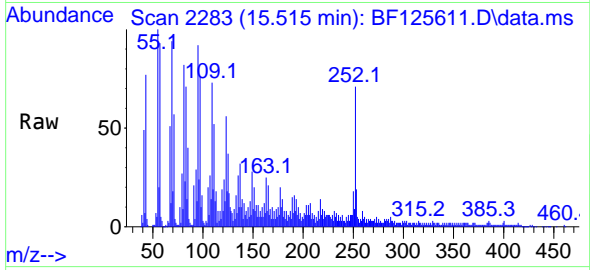
Tgt Ion:252 Resp: 262710
 Ion Ratio Lower Upper
 252 100
 253 24.8 17.8 26.8
 125 23.3 7.2 10.8#





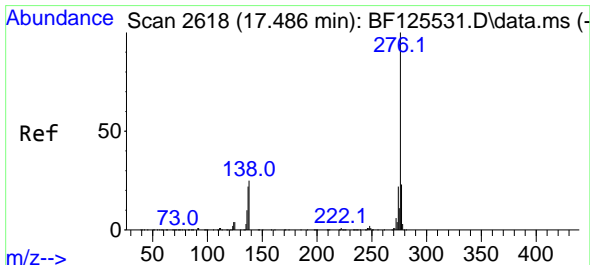
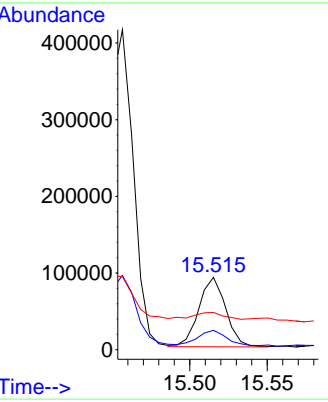
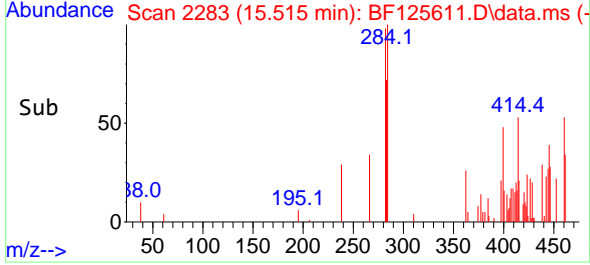
#90
 Benzo(a)pyrene
 Concen: 3.832 ng
 RT: 15.515 min Scan# 2283
 Delta R.T. 0.035 min
 Lab File: BF125611.D
 Acq: 24 Sep 2021 1:33

Instrument :
 BNA_F
ClientSampled :
 FLOOR

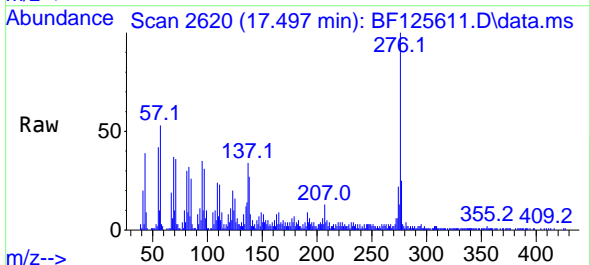


Tgt Ion: 252 Resp: 109457
 Ion Ratio Lower Upper
 252 100
 253 26.8 18.4 27.6
 125 51.5 9.9 14.9#

Manual Integrations
APPROVED
 mohammad
 9/24/2021 5:30:21 PM



#92
 Benzo(g,h,i)perylene
 Concen: 4.332 ng
 RT: 17.497 min Scan# 2620
 Delta R.T. 0.012 min
 Lab File: BF125611.D
 Acq: 24 Sep 2021 1:33



Tgt Ion: 276 Resp: 116732
 Ion Ratio Lower Upper
 276 100
 277 24.7 22.0 33.0
 138 27.3 22.2 33.4

