

Data Path : Z:\svoasrv\HPCHEM1\BNA_F\Data\BF092325\
 Data File : BF143793.D
 Acq On : 23 Sep 2025 11:57
 Operator : RC/JU
 Sample : SSTDICC010
 Misc :
 ALS Vial : 4 Sample Multiplier: 1

Instrument :
 BNA_F
 ClientSampleId :
 SSTDICC010

Quant Time: Sep 23 17:06:19 2025
 Quant Method : Z:\svoasrv\HPCHEM1\BNA_F\Methods\8270-BF092325.M
 Quant Title : ASP BNA STANDARDS FOR 5 POINT CALIBRATION
 QLast Update : Tue Sep 23 16:31:21 2025
 Response via : Initial Calibration

Compound	R.T.	QIon	Response	Conc	Units	Dev(Min)	
Internal Standards							
1) 1,4-Dichlorobenzene-d4	6.887	152	132313	20.000	ng	0.00	
21) Naphthalene-d8	8.169	136	488285	20.000	ng	0.00	
39) Acenaphthene-d10	9.922	164	239396	20.000	ng	0.00	
64) Phenanthrene-d10	11.410	188	375125	20.000	ng	0.00	
76) Chrysene-d12	14.051	240	430577	20.000	ng	-0.01	
86) Perylene-d12	15.533	264	582350	20.000	ng	0.00	
System Monitoring Compounds							
5) 2-Fluorophenol	5.487	112	166482	20.250	ng	-0.01	
7) Phenol-d6	6.493	99	199435	20.556	ng	-0.02	
23) Nitrobenzene-d5	7.440	82	150816	19.438	ng	-0.01	
42) 2,4,6-Tribromophenol	10.710	330	72517	21.225	ng	0.00	
45) 2-Fluorobiphenyl	9.239	172	353299	21.809	ng	0.00	
79) Terphenyl-d14	12.998	244	449442	20.493	ng	0.00	
Target Compounds							
2) 1,4-Dioxane	2.640	88	38037	9.758	ng		Qvalue 97
3) Pyridine	3.410	79	100675	9.568	ng		99
4) n-Nitrosodimethylamine	3.334	42	49199	9.325	ng		97
6) Aniline	6.545	93	140265	10.271	ng		98
8) 2-Chlorophenol	6.663	128	82971	9.952	ng		99
9) Benzaldehyde	6.434	77	70550	8.562	ng		99
10) Phenol	6.510	94	113001	10.332	ng		96
11) bis(2-Chloroethyl)ether	6.616	93	87384	10.192	ng		97
12) 1,3-Dichlorobenzene	6.828	146	98776	10.204	ng		99
13) 1,4-Dichlorobenzene	6.904	146	99003	10.249	ng		99
14) 1,2-Dichlorobenzene	7.057	146	93067	10.172	ng		99
15) Benzyl Alcohol	7.016	79	67639	9.948	ng		98
16) 2,2'-oxybis(1-Chloropr...	7.157	45	207456	10.204	ng		99
17) 2-Methylphenol	7.122	107	65621	10.167	ng		99
18) Hexachloroethane	7.398	117	33843	9.962	ng		98
19) n-Nitroso-di-n-propyla...	7.287	70	61660	10.190	ng		99
20) 3+4-Methylphenols	7.275	107	84574	10.760	ng		96
22) Acetophenone	7.287	105	113726	10.604	ng		99
24) Nitrobenzene	7.463	77	86488	9.782	ng		98
25) Isophorone	7.698	82	155268	9.989	ng		99
26) 2-Nitrophenol	7.781	139	25281	9.284	ng		99
27) 2,4-Dimethylphenol	7.810	122	68320	9.833	ng		99
28) bis(2-Chloroethoxy)met...	7.910	93	104902	10.387	ng		99
29) 2,4-Dichlorophenol	8.016	162	69731	10.200	ng		97
30) 1,2,4-Trichlorobenzene	8.110	180	70340	9.914	ng		97
31) Naphthalene	8.187	128	249230	10.662	ng		99
32) Benzoic acid	7.875	122	30248	9.023	ng		97
33) 4-Chloroaniline	8.234	127	84740	10.316	ng		99
34) Hexachlorobutadiene	8.310	225	53434	10.103	ng		98
35) Caprolactam	8.563	113	16062	9.192	ng		96
36) 4-Chloro-3-methylphenol	8.704	107	63361	9.882	ng		97
37) 2-Methylnaphthalene	8.881	142	158654	10.644	ng		99
38) 1-Methylnaphthalene	8.981	142	150831	10.572	ng		98
40) 1,2,4,5-Tetrachloroben...	9.045	216	75923	10.509	ng		100
41) Hexachlorocyclopentadiene	9.034	237	40258	8.792	ng		99
43) 2,4,6-Trichlorophenol	9.151	196	42859	9.474	ng		99

Data Path : Z:\svoasrv\HPCHEM1\BNA_F\Data\BF092325\
 Data File : BF143793.D
 Acq On : 23 Sep 2025 11:57
 Operator : RC/JU
 Sample : SSTDICC010
 Misc :
 ALS Vial : 4 Sample Multiplier: 1

Instrument :
 BNA_F
 ClientSampleId :
 SSTDICC010

Quant Time: Sep 23 17:06:19 2025
 Quant Method : Z:\svoasrv\HPCHEM1\BNA_F\Methods\8270-BF092325.M
 Quant Title : ASP BNA STANDARDS FOR 5 POINT CALIBRATION
 QLast Update : Tue Sep 23 16:31:21 2025
 Response via : Initial Calibration

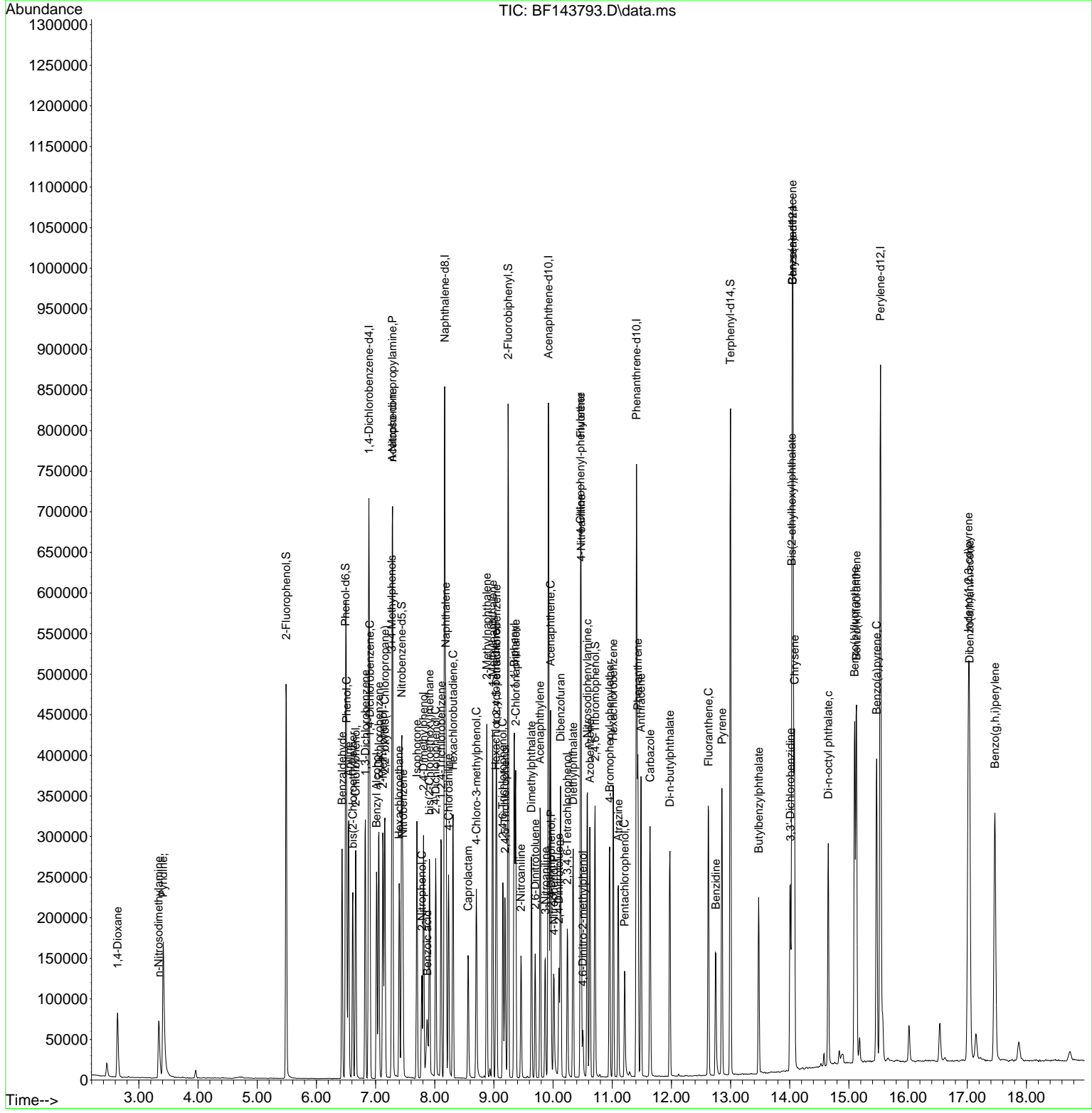
Compound	R.T.	QIon	Response	Conc	Units	Dev(Min)
44) 2,4,5-Trichlorophenol	9.186	196	46791	9.889	ng	98
46) 1,1'-Biphenyl	9.345	154	184443	10.644	ng	98
47) 2-Chloronaphthalene	9.369	162	146409	10.496	ng	100
48) 2-Nitroaniline	9.457	65	36451	8.646	ng	93
49) Acenaphthylene	9.781	152	198522	10.338	ng	100
50) Dimethylphthalate	9.633	163	147631	10.118	ng	100
51) 2,6-Dinitrotoluene	9.698	165	19239	8.025	ng	90
52) Acenaphthene	9.957	154	134197	10.619	ng	99
53) 3-Nitroaniline	9.869	138	25136	8.650	ng #	96
54) 2,4-Dinitrophenol	9.969	184	6231	11.233	ng #	1
55) Dibenzofuran	10.128	168	185710	10.393	ng	100
56) 4-Nitrophenol	10.016	139	23569	10.065	ng	98
57) 2,4-Dinitrotoluene	10.098	165	25096	9.543	ng	94
58) Fluorene	10.469	166	144778	10.898	ng	100
59) 2,3,4,6-Tetrachlorophenol	10.239	232	36970	9.120	ng	100
60) Diethylphthalate	10.339	149	140054	10.254	ng	98
61) 4-Chlorophenyl-phenyle...	10.463	204	70883	10.472	ng	99
62) 4-Nitroaniline	10.475	138	24435	8.943	ng	98
63) Azobenzene	10.622	77	146130	10.152	ng	99
65) 4,6-Dinitro-2-methylph...	10.504	198	8417	10.867	ng	98
66) n-Nitrosodiphenylamine	10.580	169	126584	10.261	ng	98
67) 4-Bromophenyl-phenylether	10.957	248	62547	9.784	ng	99
68) Hexachlorobenzene	11.016	284	88177	10.009	ng	98
69) Atrazine	11.104	200	35762	10.010	ng	97
70) Pentachlorophenol	11.210	266	33783	7.704	ng	98
71) Phenanthrene	11.433	178	200025	10.386	ng	99
72) Anthracene	11.486	178	200505	10.379	ng	97
73) Carbazole	11.639	167	174601	10.337	ng	98
74) Di-n-butylphthalate	11.975	149	189120	9.736	ng	99
75) Fluoranthene	12.627	202	196207	10.129	ng	100
77) Benzidine	12.751	184	94401	8.997	ng	99
78) Pyrene	12.857	202	211336	9.983	ng	99
80) Butylbenzylphthalate	13.474	149	64090	8.751	ng	99
81) Benzo(a)anthracene	14.045	228	232722	10.061	ng	99
82) 3,3'-Dichlorobenzidine	14.010	252	91789	9.160	ng	99
83) Chrysene	14.080	228	212098	10.133	ng	99
84) Bis(2-ethylhexyl)phtha...	14.033	149	102600	9.557	ng	98
85) Di-n-octyl phthalate	14.651	149	165178	8.482	ng	99
87) Indeno(1,2,3-cd)pyrene	17.021	276	415337	9.400	ng	99
88) Benzo(b)fluoranthene	15.098	252	292308	9.857	ng	99
89) Benzo(k)fluoranthene	15.127	252	292238	9.808	ng	99
90) Benzo(a)pyrene	15.468	252	267775	9.606	ng	99
91) Dibenzo(a,h)anthracene	17.039	278	345636	9.564	ng	98
92) Benzo(g,h,i)perylene	17.468	276	324982	9.329	ng	99

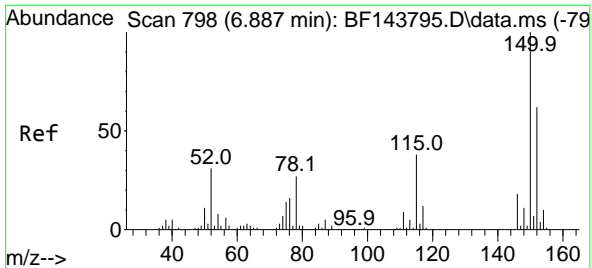
(#) = qualifier out of range (m) = manual integration (+) = signals summed

Data Path : Z:\svoasrv\HPCHEM1\BNA_F\Data\BF092325\
 Data File : BF143793.D
 Acq On : 23 Sep 2025 11:57
 Operator : RC/JU
 Sample : SSTDICC010
 Misc :
 ALS Vial : 4 Sample Multiplier: 1

Instrument :
 BNA_F
 ClientSampleId :
 SSTDICC010

Quant Time: Sep 23 17:06:19 2025
 Quant Method : Z:\svoasrv\HPCHEM1\BNA_F\Methods\8270-BF092325.M
 Quant Title : ASP BNA STANDARDS FOR 5 POINT CALIBRATION
 QLast Update : Tue Sep 23 16:31:21 2025
 Response via : Initial Calibration

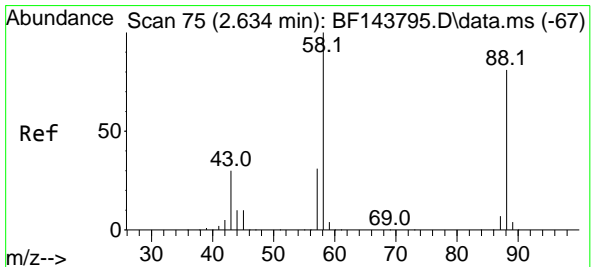
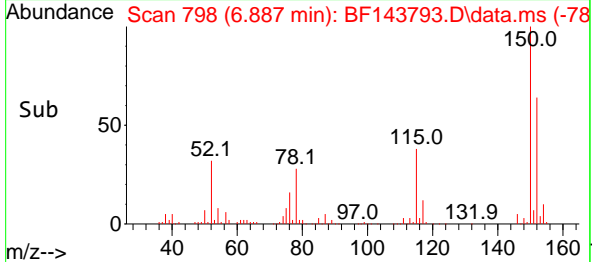
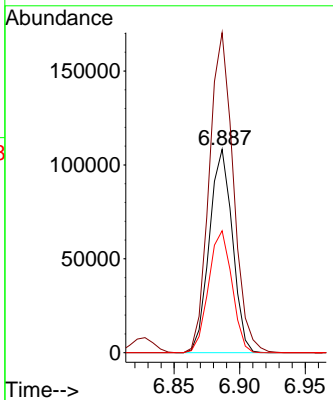
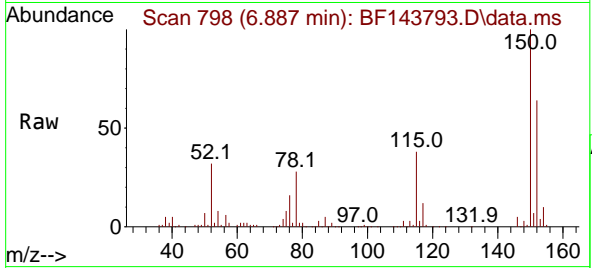




#1
 1,4-Dichlorobenzene-d4
 Concen: 20.000 ng
 RT: 6.887 min Scan# 79
 Delta R.T. -0.000 min
 Lab File: BF143793.D
 Acq: 23 Sep 2025 11:57

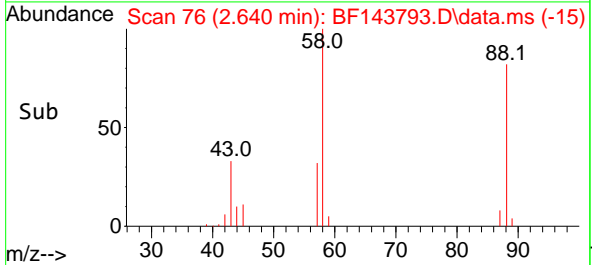
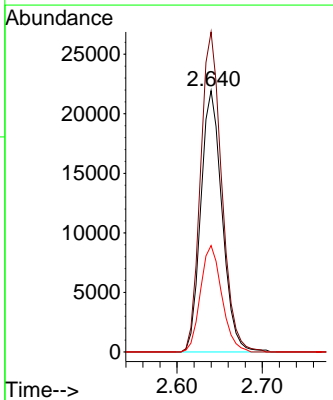
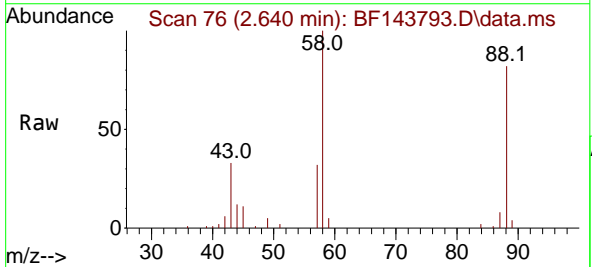
Instrument :
 BNA_F
 ClientSampleId :
 SSTDICC010

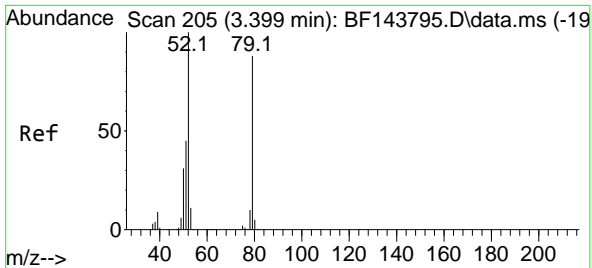
Tgt Ion:152 Resp: 132313
 Ion Ratio Lower Upper
 152 100
 150 157.4 129.6 194.4
 115 60.0 49.0 73.4



#2
 1,4-Dioxane
 Concen: 9.758 ng
 RT: 2.640 min Scan# 76
 Delta R.T. 0.006 min
 Lab File: BF143793.D
 Acq: 23 Sep 2025 11:57

Tgt Ion: 88 Resp: 38037
 Ion Ratio Lower Upper
 88 100
 58 121.6 99.4 149.2
 43 40.9 30.6 45.8



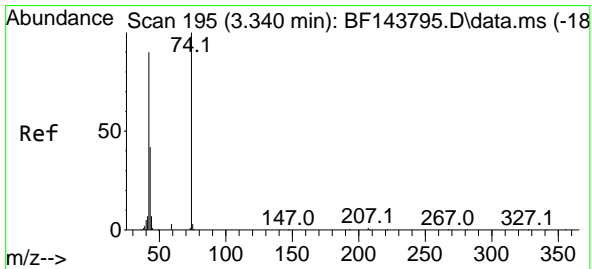
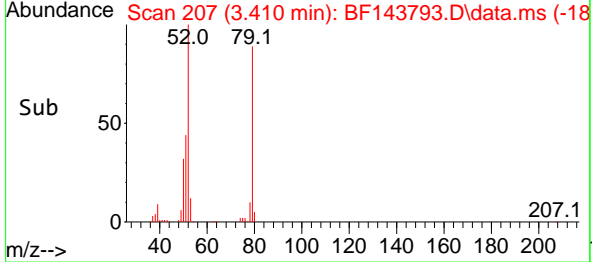
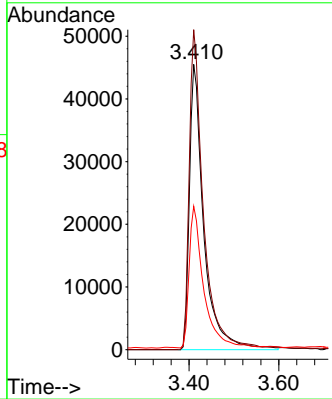
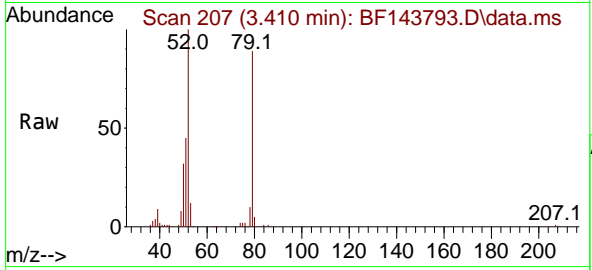


#3
 Pyridine
 Concen: 9.568 ng
 RT: 3.410 min Scan# 205
 Delta R.T. 0.012 min
 Lab File: BF143793.D
 Acq: 23 Sep 2025 11:57

Instrument : BNA_F
 ClientSampleId : SSTDICC010

Tgt Ion: 79 Resp: 100675

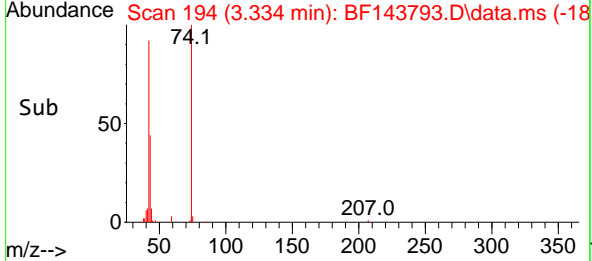
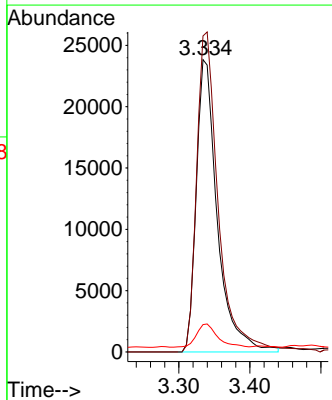
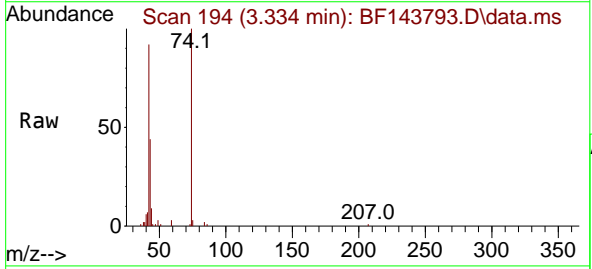
Ion	Ratio	Lower	Upper
79	100		
52	112.2	90.5	135.7
51	50.3	40.6	61.0

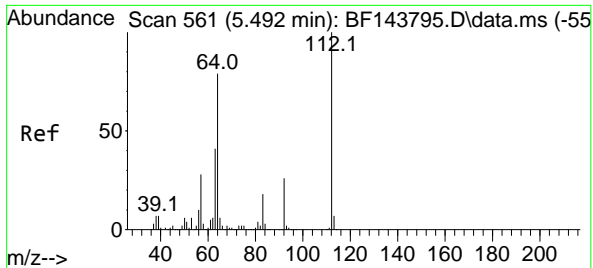


#4
 n-Nitrosodimethylamine
 Concen: 9.325 ng
 RT: 3.334 min Scan# 194
 Delta R.T. -0.023 min
 Lab File: BF143793.D
 Acq: 23 Sep 2025 11:57

Tgt Ion: 42 Resp: 49199

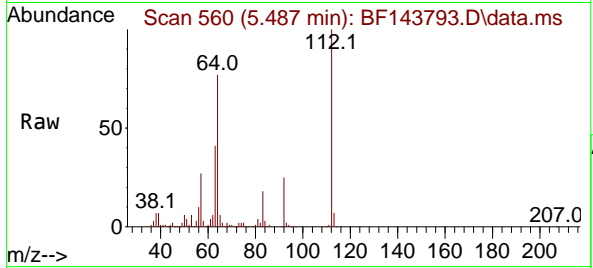
Ion	Ratio	Lower	Upper
42	100		
74	108.1	89.1	133.7
44	9.3	6.4	9.6





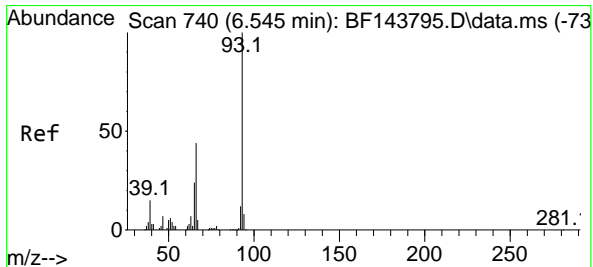
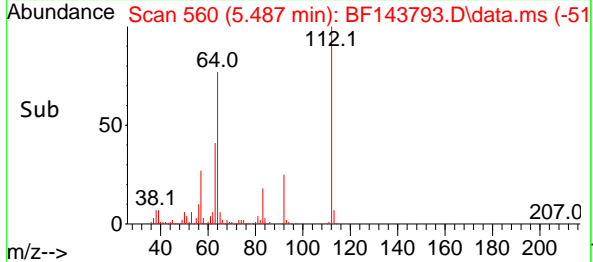
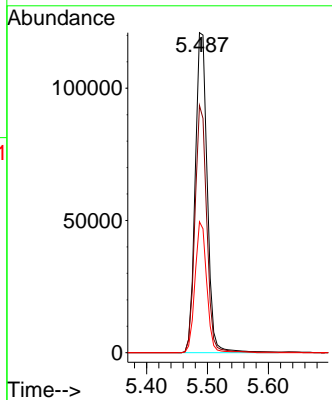
#5
 2-Fluorophenol
 Concen: 20.250 ng
 RT: 5.487 min Scan# 50
 Delta R.T. -0.012 min
 Lab File: BF143793.D
 Acq: 23 Sep 2025 11:57

Instrument :
 BNA_F
 ClientSampleId :
 SSTDICC010



Tgt Ion: 112 Resp: 166482

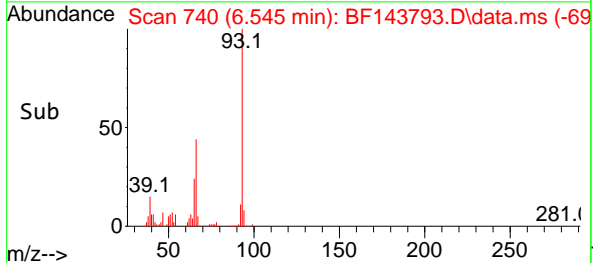
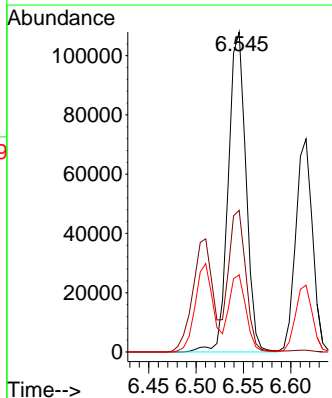
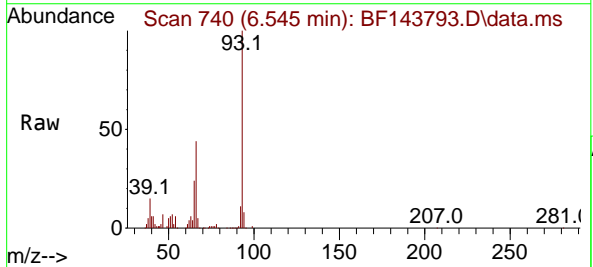
Ion	Ratio	Lower	Upper
112	100		
64	77.2	63.0	94.4
63	40.9	32.6	49.0

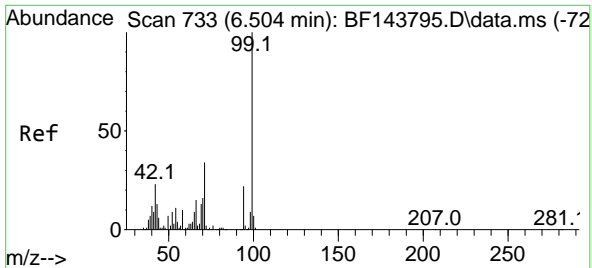


#6
 Aniline
 Concen: 10.271 ng
 RT: 6.545 min Scan# 740
 Delta R.T. -0.006 min
 Lab File: BF143793.D
 Acq: 23 Sep 2025 11:57

Tgt Ion: 93 Resp: 140265

Ion	Ratio	Lower	Upper
93	100		
66	44.3	37.1	55.7
65	24.1	19.4	29.0



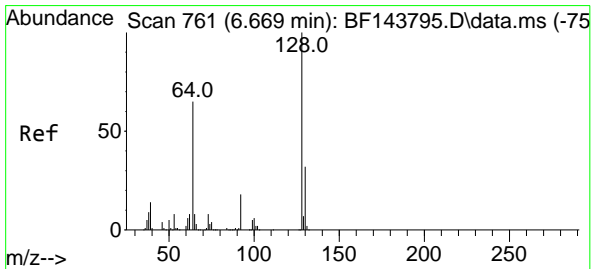
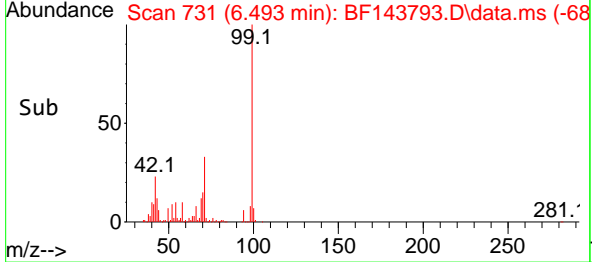
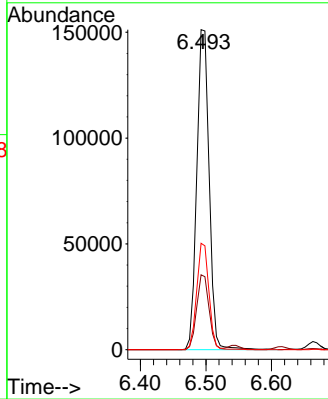
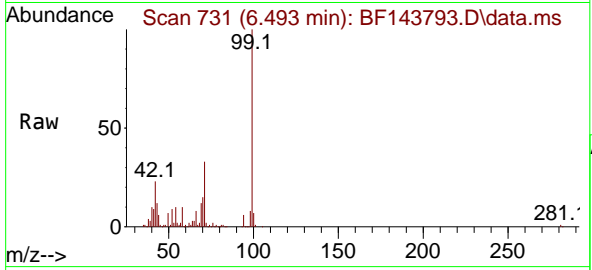


#7
 Phenol-d6
 Concen: 20.556 ng
 RT: 6.493 min Scan# 71
 Delta R.T. -0.018 min
 Lab File: BF143793.D
 Acq: 23 Sep 2025 11:57

Instrument :
 BNA_F
 ClientSampleId :
 SSTDICC010

Tgt Ion: 99 Resp: 199435

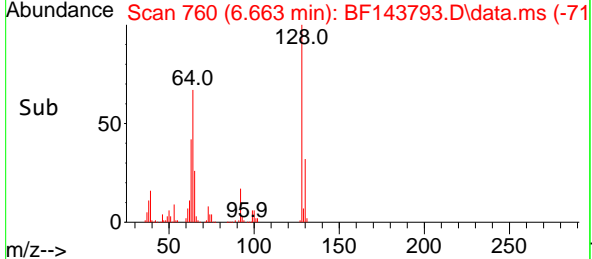
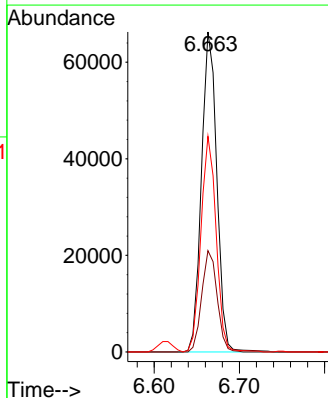
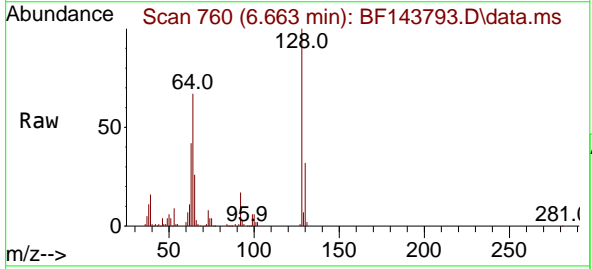
Ion	Ratio	Lower	Upper
99	100		
42	23.4	18.6	28.0
71	33.2	27.0	40.4

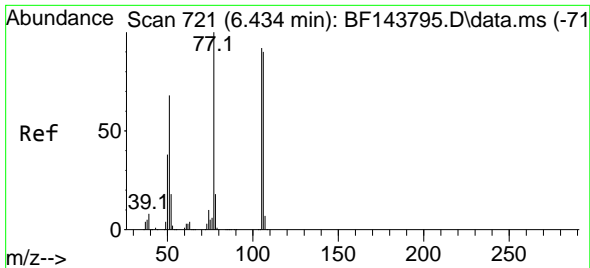


#8
 2-Chlorophenol
 Concen: 9.952 ng
 RT: 6.663 min Scan# 760
 Delta R.T. -0.006 min
 Lab File: BF143793.D
 Acq: 23 Sep 2025 11:57

Tgt Ion: 128 Resp: 82971

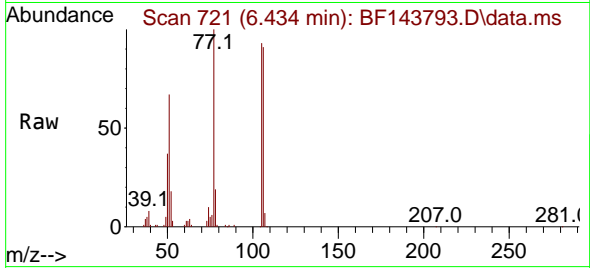
Ion	Ratio	Lower	Upper
128	100		
130	31.7	12.2	52.2
64	67.4	46.5	86.5



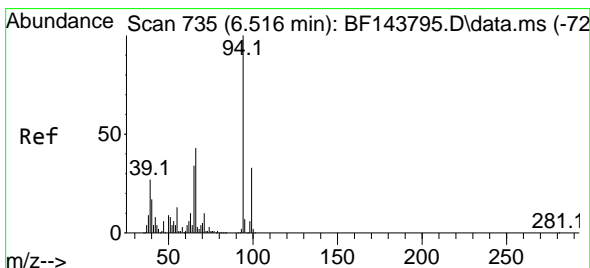
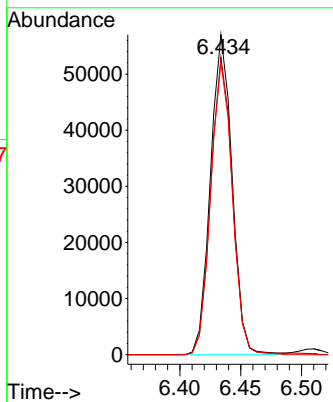
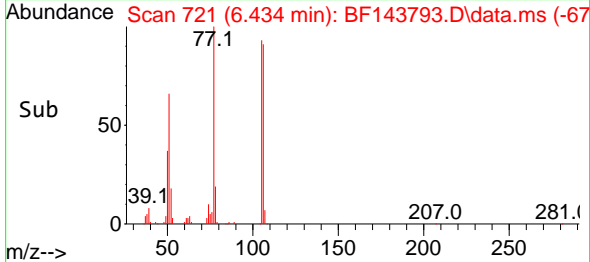


#9
Benzaldehyde
Concen: 8.562 ng
RT: 6.434 min Scan# 71
Delta R.T. -0.006 min
Lab File: BF143793.D
Acq: 23 Sep 2025 11:57

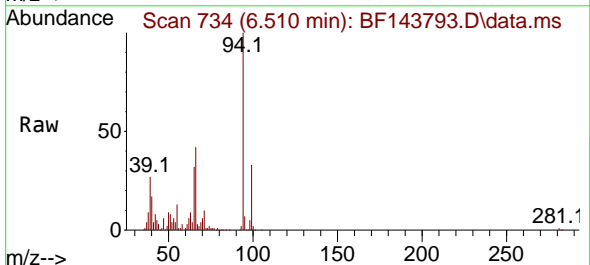
Instrument :
BNA_F
ClientSampleId :
SSTDICC010



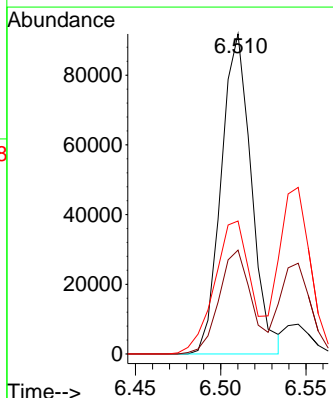
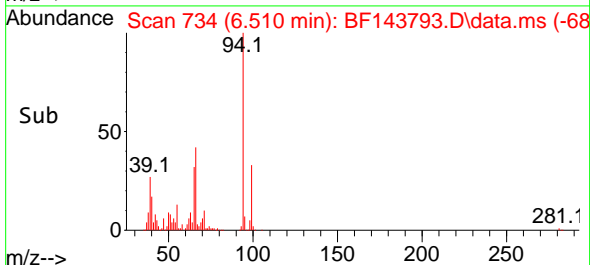
Tgt Ion: 77 Resp: 70550
Ion Ratio Lower Upper
77 100
105 92.9 71.8 111.8
106 91.3 69.8 109.8

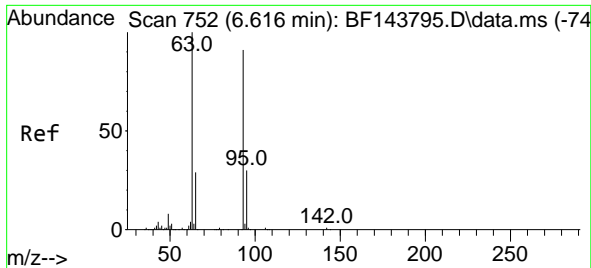


#10
Phenol
Concen: 10.332 ng
RT: 6.510 min Scan# 734
Delta R.T. -0.018 min
Lab File: BF143793.D
Acq: 23 Sep 2025 11:57



Tgt Ion: 94 Resp: 113001
Ion Ratio Lower Upper
94 100
65 32.5 14.2 54.2
66 41.6 24.1 64.1





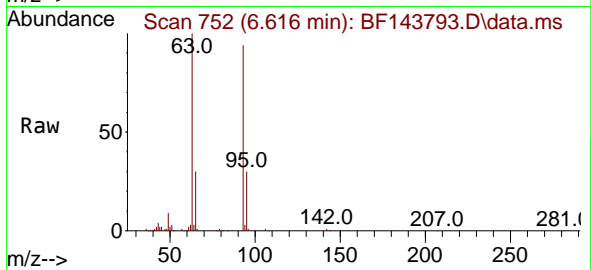
#11
 bis(2-Chloroethyl)ether
 Concen: 10.192 ng
 RT: 6.616 min Scan# 752
 Delta R.T. -0.006 min
 Lab File: BF143793.D
 Acq: 23 Sep 2025 11:57

Instrument :

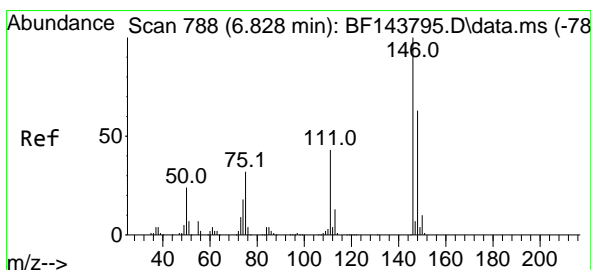
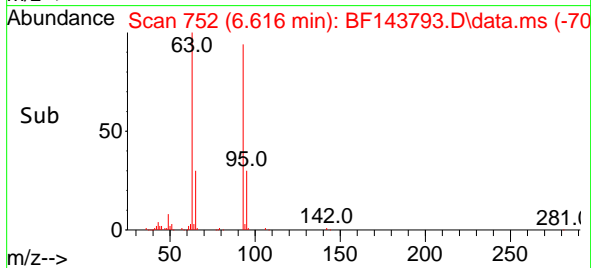
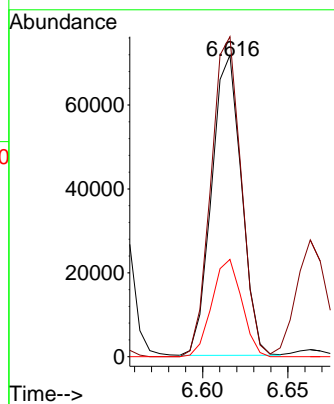
BNA_F

ClientSampleId :

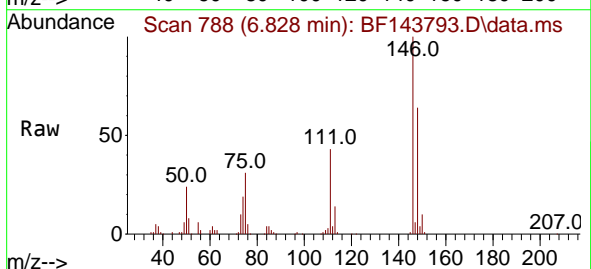
SSTDICC010



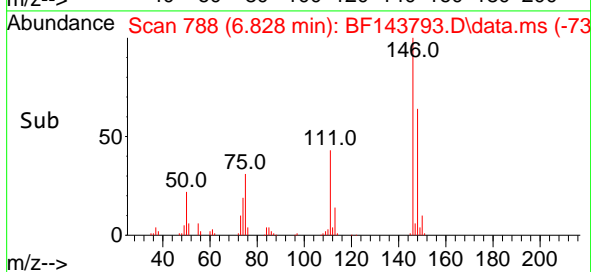
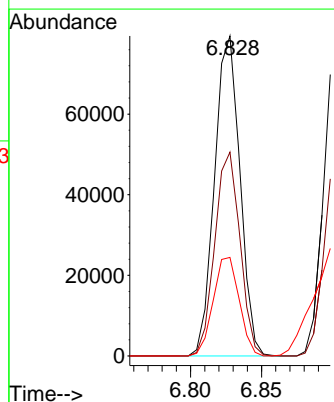
Tgt Ion: 93 Resp: 87384
 Ion Ratio Lower Upper
 93 100
 63 106.1 89.2 129.2
 95 32.3 12.9 52.9

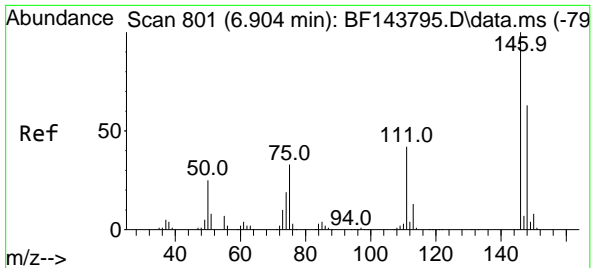


#12
 1,3-Dichlorobenzene
 Concen: 10.204 ng
 RT: 6.828 min Scan# 788
 Delta R.T. 0.000 min
 Lab File: BF143793.D
 Acq: 23 Sep 2025 11:57



Tgt Ion:146 Resp: 98776
 Ion Ratio Lower Upper
 146 100
 148 63.7 50.4 75.6
 75 30.8 25.6 38.4

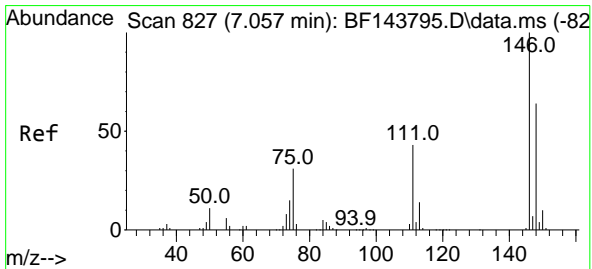
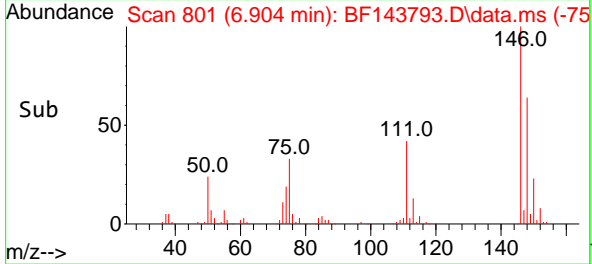
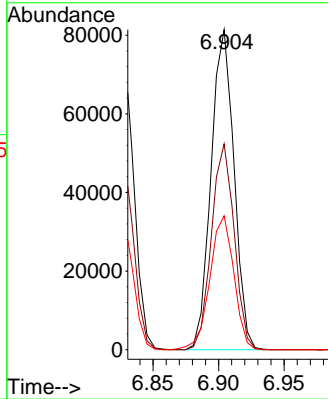
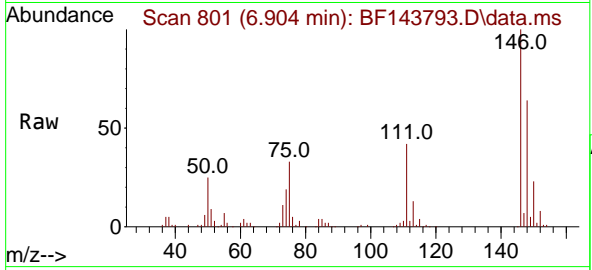




#13
 1,4-Dichlorobenzene
 Concen: 10.249 ng
 RT: 6.904 min Scan# 801
 Delta R.T. 0.000 min
 Lab File: BF143793.D
 Acq: 23 Sep 2025 11:57

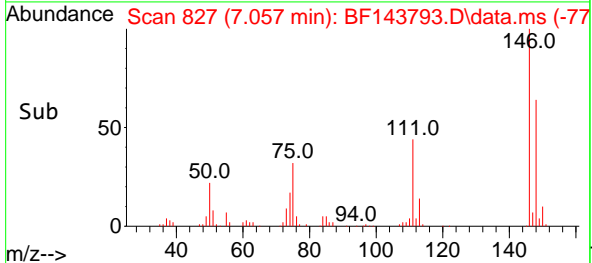
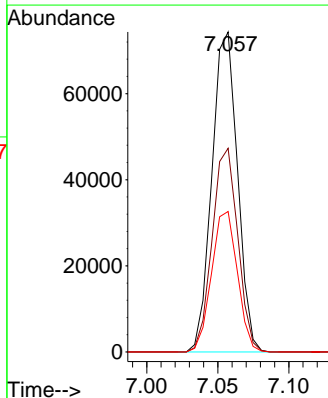
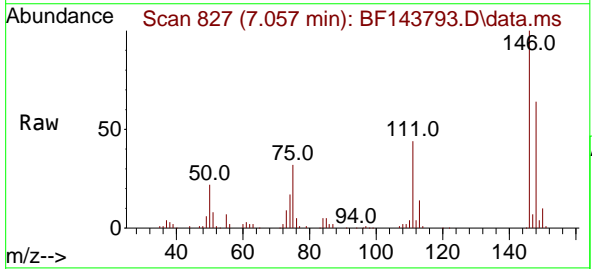
Instrument :
 BNA_F
 ClientSampleId :
 SSTDICC010

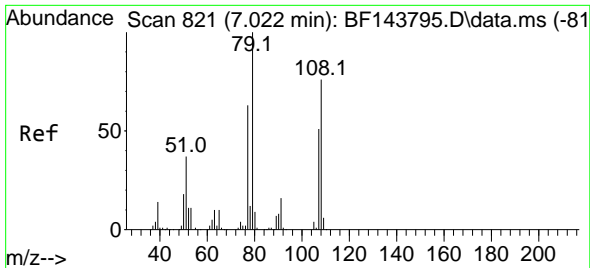
Tgt Ion:146 Resp: 99003
 Ion Ratio Lower Upper
 146 100
 148 64.3 50.7 76.1
 111 41.8 33.4 50.2



#14
 1,2-Dichlorobenzene
 Concen: 10.172 ng
 RT: 7.057 min Scan# 827
 Delta R.T. 0.000 min
 Lab File: BF143793.D
 Acq: 23 Sep 2025 11:57

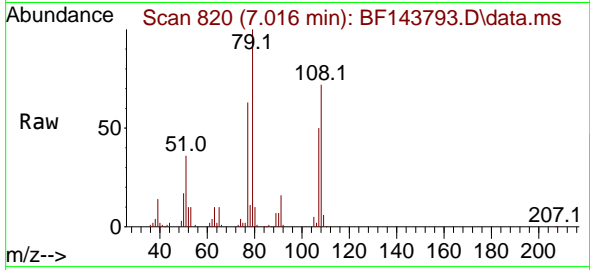
Tgt Ion:146 Resp: 93067
 Ion Ratio Lower Upper
 146 100
 148 63.7 51.1 76.7
 111 43.9 34.3 51.5



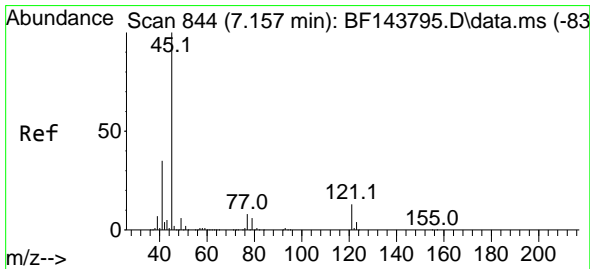
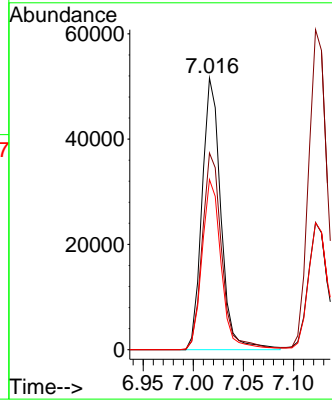
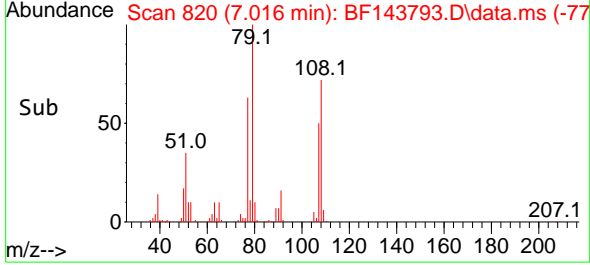


#15
 Benzyl Alcohol
 Concen: 9.948 ng
 RT: 7.016 min Scan# 81
 Delta R.T. -0.012 min
 Lab File: BF143793.D
 Acq: 23 Sep 2025 11:57

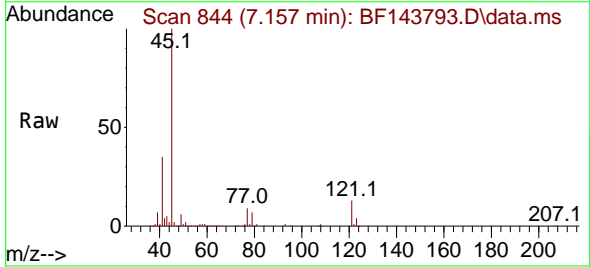
Instrument :
 BNA_F
 ClientSampleId :
 SSTDICC010



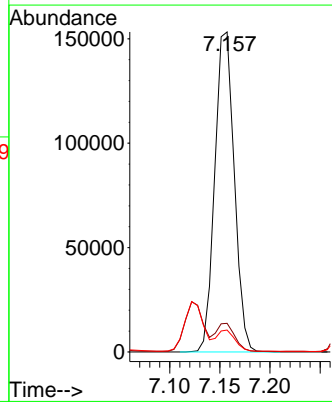
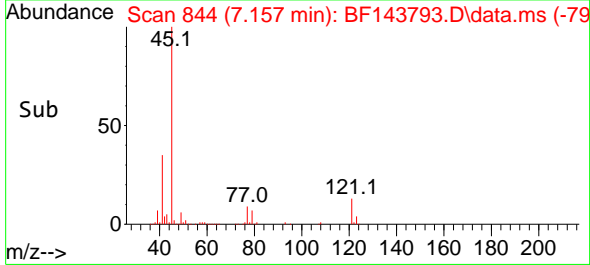
Tgt Ion: 79 Resp: 67639
 Ion Ratio Lower Upper
 79 100
 108 72.4 60.5 90.7
 77 62.6 50.3 75.5

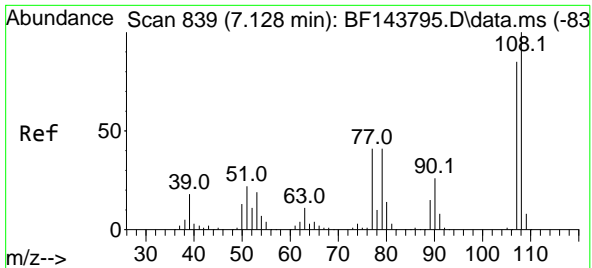


#16
 2,2'-oxybis(1-Chloropropane)
 Concen: 10.204 ng
 RT: 7.157 min Scan# 844
 Delta R.T. 0.000 min
 Lab File: BF143793.D
 Acq: 23 Sep 2025 11:57



Tgt Ion: 45 Resp: 207456
 Ion Ratio Lower Upper
 45 100
 77 9.0 0.0 28.5
 79 6.9 0.0 26.3





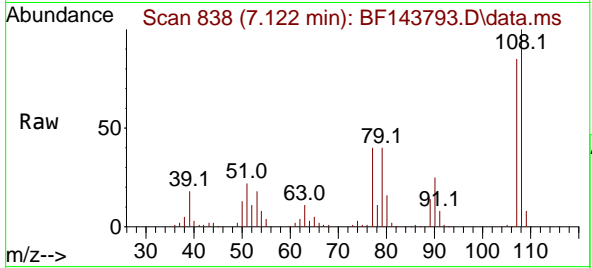
#17
 2-Methylphenol
 Concen: 10.167 ng
 RT: 7.122 min Scan# 811
 Delta R.T. -0.012 min
 Lab File: BF143793.D
 Acq: 23 Sep 2025 11:57

Instrument :

BNA_F

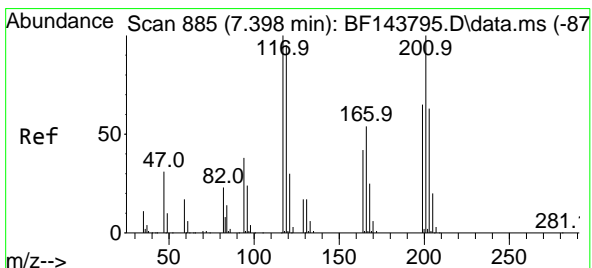
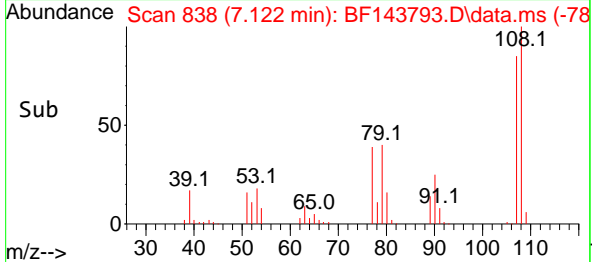
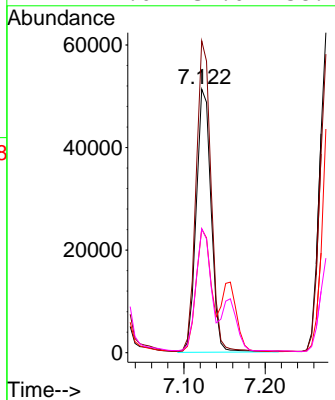
ClientSampleId :

SSTDICC010



Tgt Ion:107 Resp: 65621

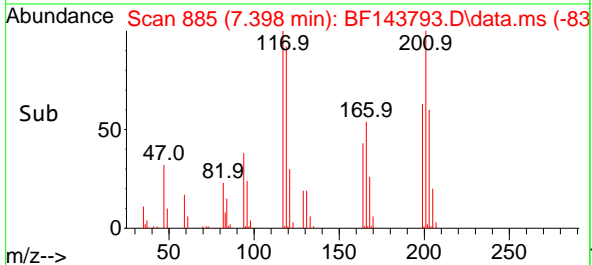
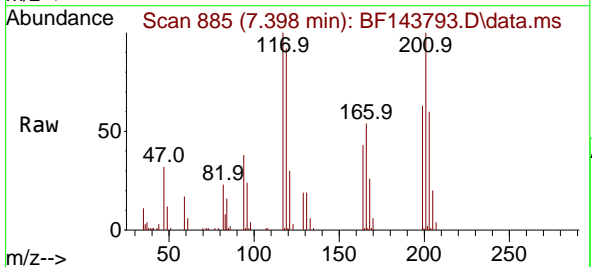
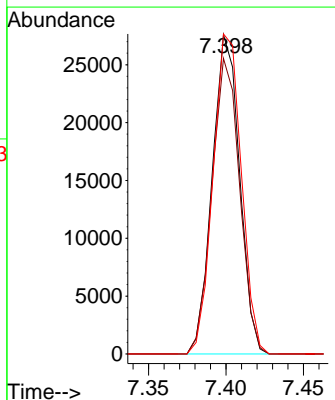
Ion	Ratio	Lower	Upper
107	100		
108	118.3	94.2	141.4
77	46.9	38.6	58.0
79	47.0	39.0	58.4

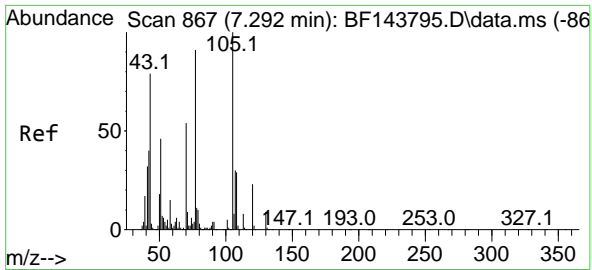


#18
 Hexachloroethane
 Concen: 9.962 ng
 RT: 7.398 min Scan# 885
 Delta R.T. -0.006 min
 Lab File: BF143793.D
 Acq: 23 Sep 2025 11:57

Tgt Ion:117 Resp: 33843

Ion	Ratio	Lower	Upper
117	100		
119	92.5	76.2	114.2
201	100.2	79.7	119.5



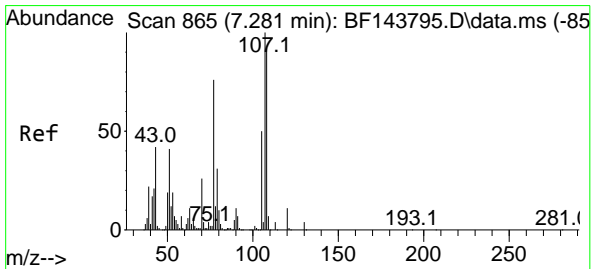
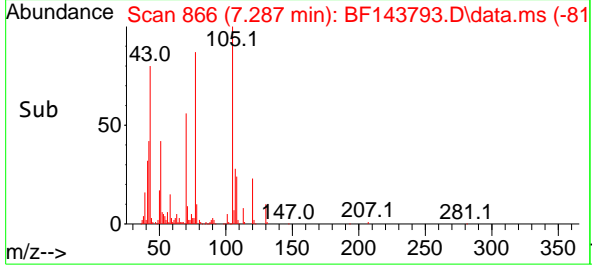
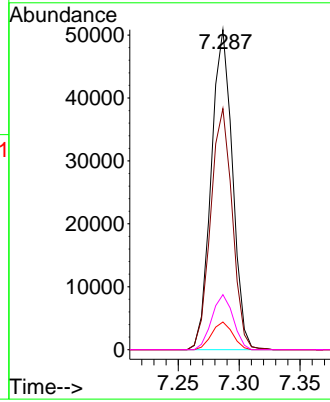
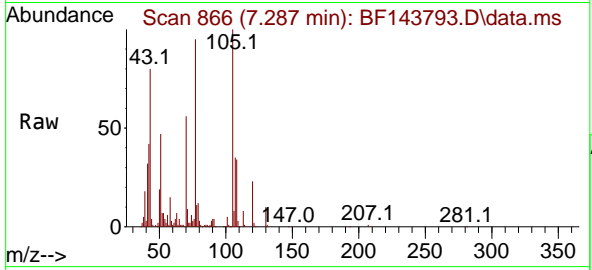


#19
 n-Nitroso-di-n-propylamine
 Concen: 10.190 ng
 RT: 7.287 min Scan# 80
 Delta R.T. -0.018 min
 Lab File: BF143793.D
 Acq: 23 Sep 2025 11:57

Instrument :
 BNA_F
 ClientSampleId :
 SSTDICC010

Tgt Ion: 70 Resp: 61660

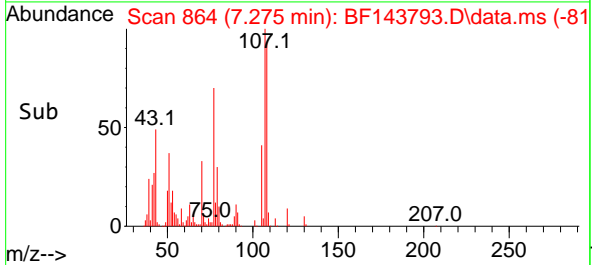
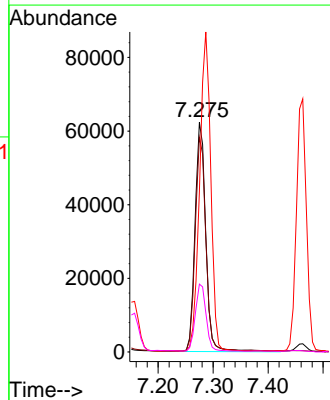
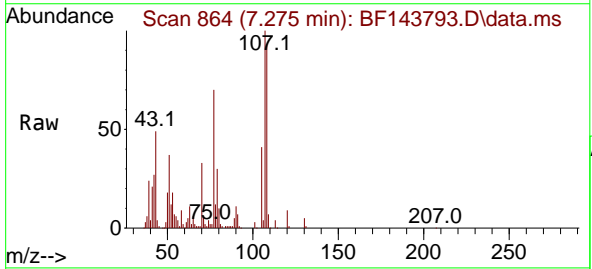
Ion	Ratio	Lower	Upper
70	100		
42	75.4	59.4	89.0
101	8.7	7.1	10.7
130	17.2	13.8	20.8

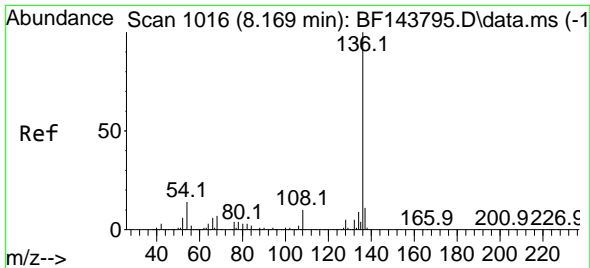


#20
 3+4-Methylphenols
 Concen: 10.760 ng
 RT: 7.275 min Scan# 864
 Delta R.T. -0.012 min
 Lab File: BF143793.D
 Acq: 23 Sep 2025 11:57

Tgt Ion: 107 Resp: 84574

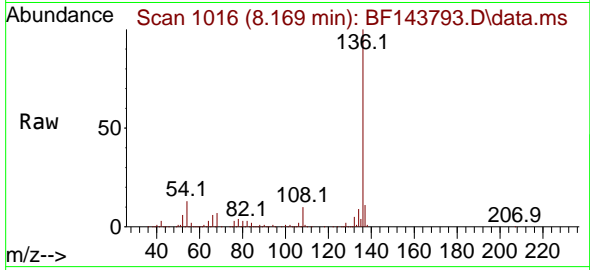
Ion	Ratio	Lower	Upper
107	100		
108	93.3	72.5	112.5
77	69.9	56.2	96.2
79	29.5	10.8	50.8





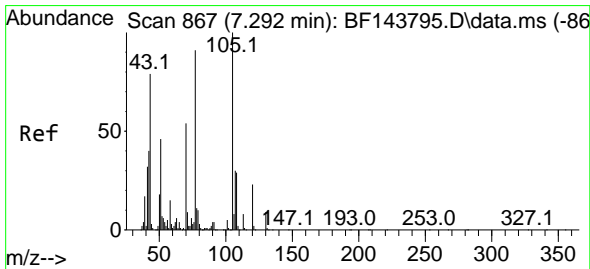
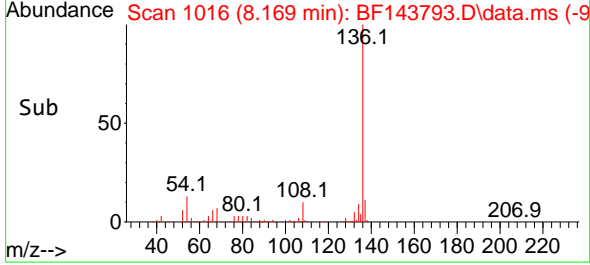
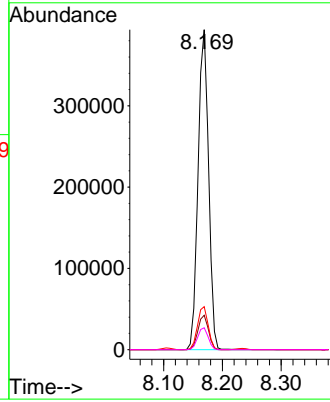
#21
 Naphthalene-d8
 Concen: 20.000 ng
 RT: 8.169 min Scan# 1016
 Delta R.T. -0.000 min
 Lab File: BF143793.D
 Acq: 23 Sep 2025 11:57

Instrument : BNA_F
 ClientSampleId : SSTDICC010

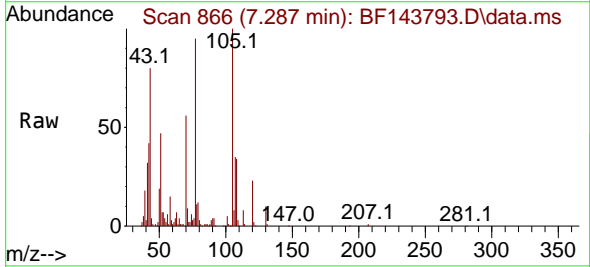


Tgt Ion:136 Resp: 488285

Ion	Ratio	Lower	Upper
136	100		
137	10.8	9.0	13.4
54	13.4	11.2	16.8
68	6.8	5.6	8.4

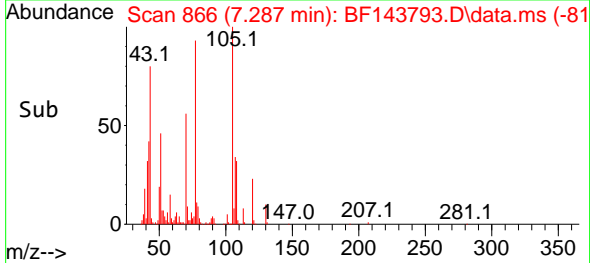
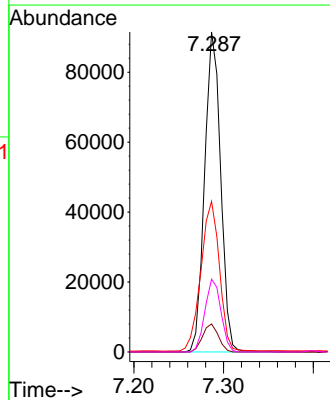


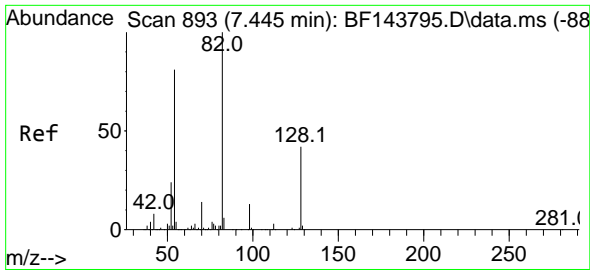
#22
 Acetophenone
 Concen: 10.604 ng
 RT: 7.287 min Scan# 866
 Delta R.T. -0.012 min
 Lab File: BF143793.D
 Acq: 23 Sep 2025 11:57



Tgt Ion:105 Resp: 113726

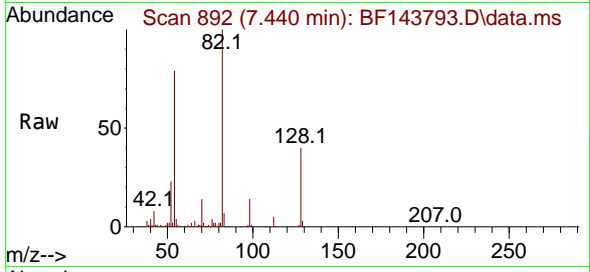
Ion	Ratio	Lower	Upper
105	100		
71	8.8	7.0	10.4
51	47.0	36.6	55.0
120	22.8	18.1	27.1



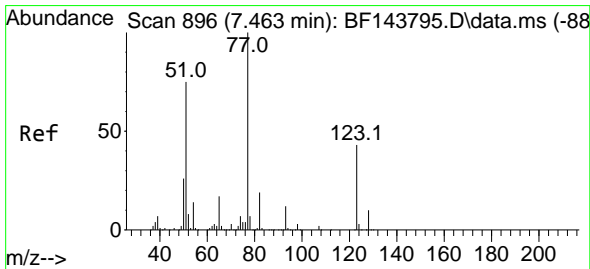
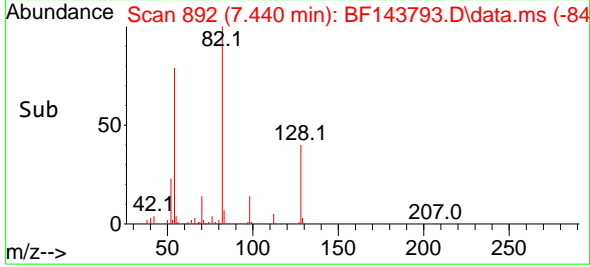
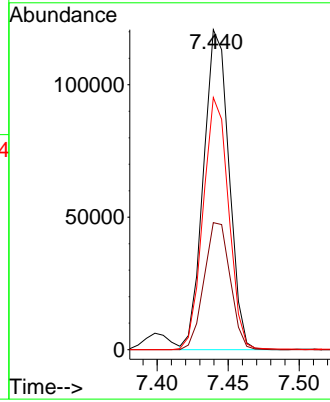


#23
 Nitrobenzene-d5
 Concen: 19.438 ng
 RT: 7.440 min Scan# 893
 Delta R.T. -0.012 min
 Lab File: BF143793.D
 Acq: 23 Sep 2025 11:57

Instrument : BNA_F
 ClientSampleId : SSTDICC010

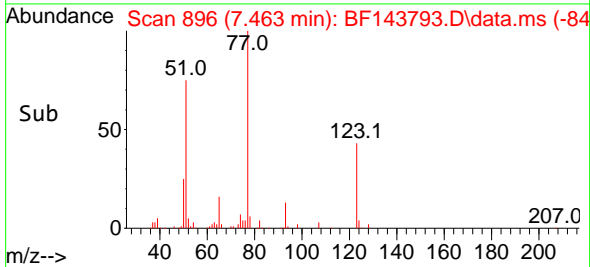
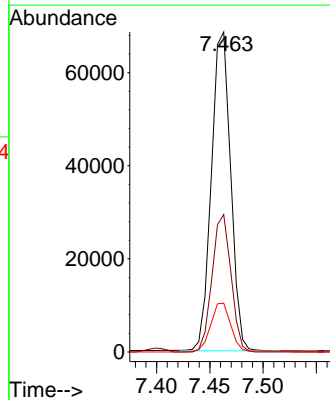
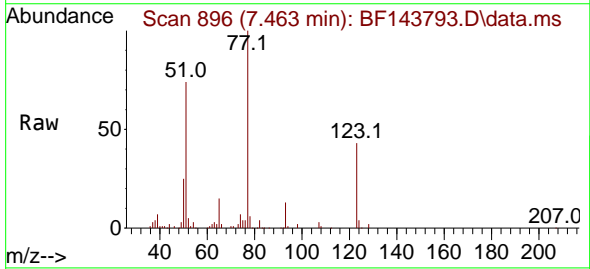


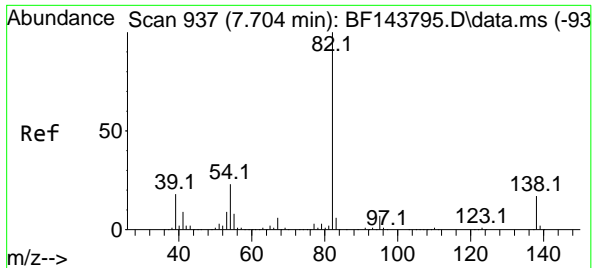
Tgt Ion: 82 Resp: 150816
 Ion Ratio Lower Upper
 82 100
 128 39.7 33.3 49.9
 54 78.8 64.2 96.4



#24
 Nitrobenzene
 Concen: 9.782 ng
 RT: 7.463 min Scan# 896
 Delta R.T. -0.012 min
 Lab File: BF143793.D
 Acq: 23 Sep 2025 11:57

Tgt Ion: 77 Resp: 86488
 Ion Ratio Lower Upper
 77 100
 123 43.0 34.0 51.0
 65 15.2 13.5 20.3

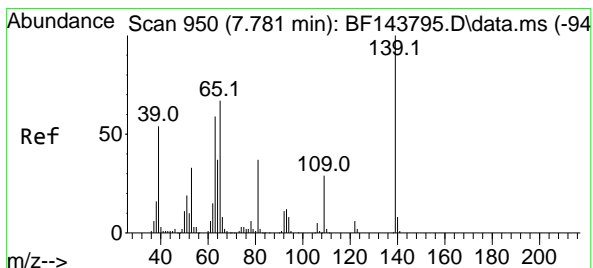
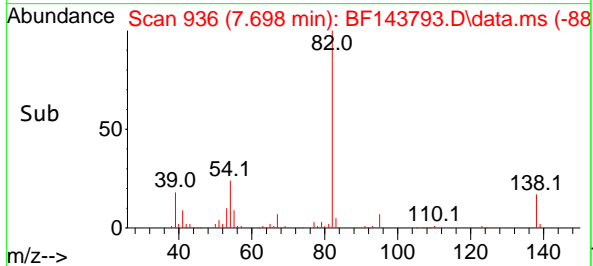
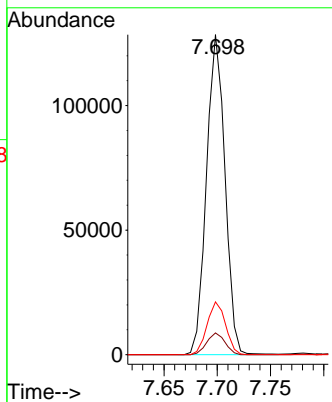
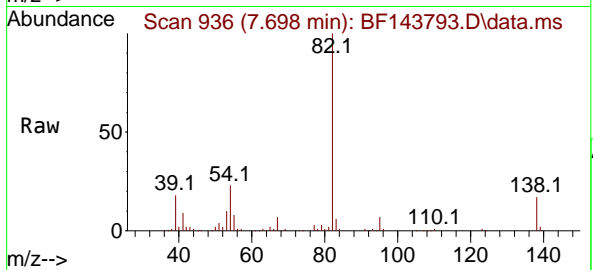




#25
 Isophorone
 Concen: 9.989 ng
 RT: 7.698 min Scan# 91
 Delta R.T. -0.012 min
 Lab File: BF143793.D
 Acq: 23 Sep 2025 11:57

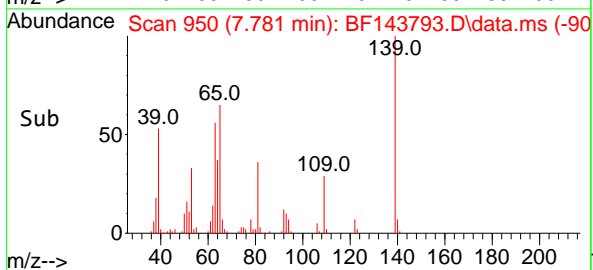
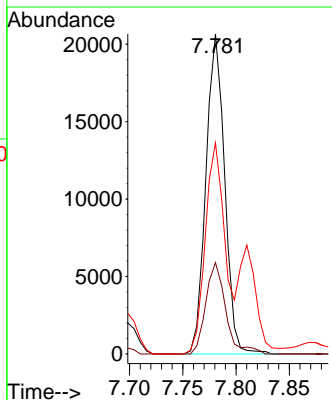
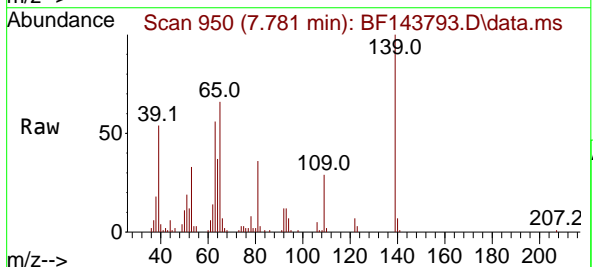
Instrument :
 BNA_F
 ClientSampleId :
 SSTDICC010

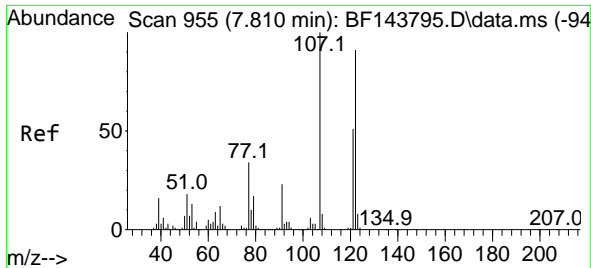
Tgt Ion: 82 Resp: 155268
 Ion Ratio Lower Upper
 82 100
 95 6.8 5.4 8.2
 138 16.5 13.7 20.5



#26
 2-Nitrophenol
 Concen: 9.284 ng
 RT: 7.781 min Scan# 950
 Delta R.T. -0.005 min
 Lab File: BF143793.D
 Acq: 23 Sep 2025 11:57

Tgt Ion: 139 Resp: 25281
 Ion Ratio Lower Upper
 139 100
 109 28.5 23.3 34.9
 65 66.0 53.8 80.6





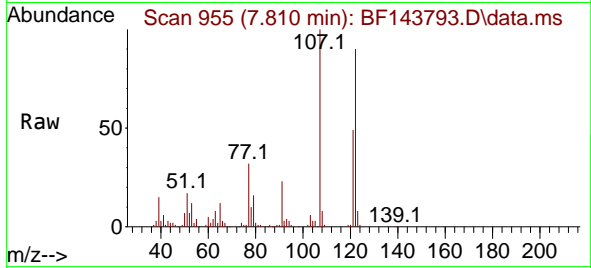
#27
 2,4-Dimethylphenol
 Concen: 9.833 ng
 RT: 7.810 min Scan# 91
 Delta R.T. -0.006 min
 Lab File: BF143793.D
 Acq: 23 Sep 2025 11:57

Instrument :

BNA_F

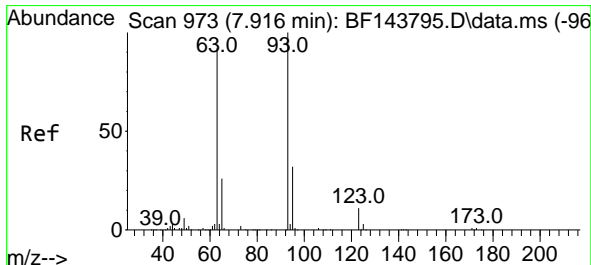
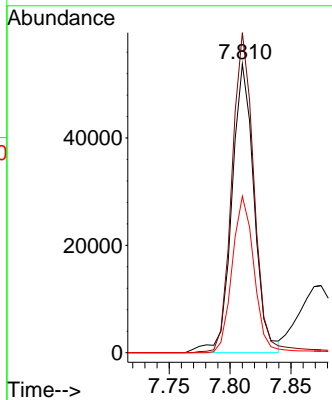
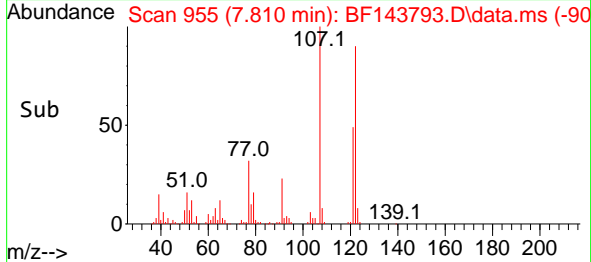
ClientSampleId :

SSTDICC010

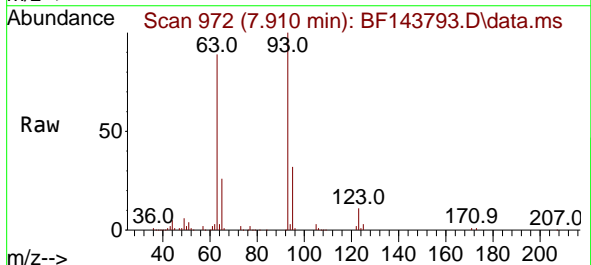


Tgt Ion:122 Resp: 68320

Ion	Ratio	Lower	Upper
122	100		
107	110.8	87.5	131.3
121	54.2	44.2	66.4

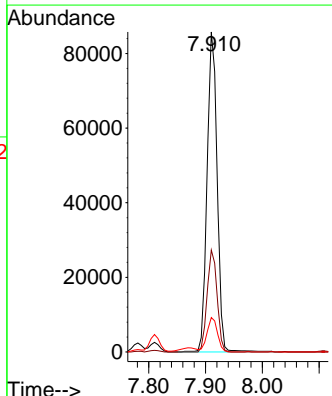
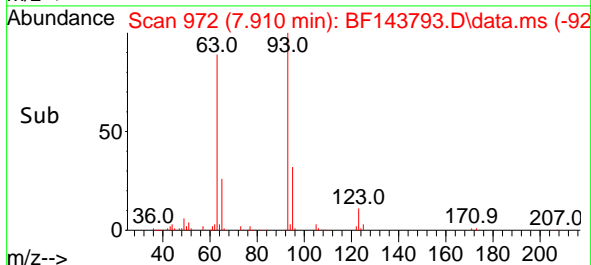


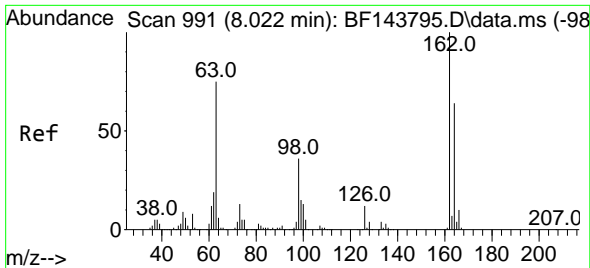
#28
 bis(2-Chloroethoxy)methane
 Concen: 10.387 ng
 RT: 7.910 min Scan# 972
 Delta R.T. -0.006 min
 Lab File: BF143793.D
 Acq: 23 Sep 2025 11:57



Tgt Ion: 93 Resp: 104902

Ion	Ratio	Lower	Upper
93	100		
95	31.8	25.8	38.8
123	10.8	8.8	13.2

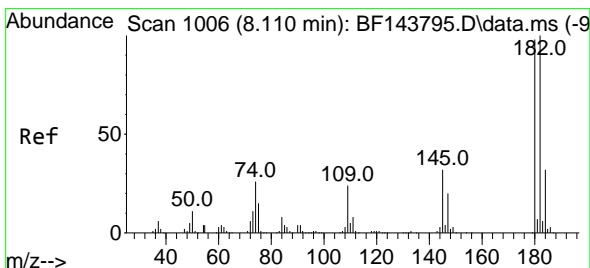
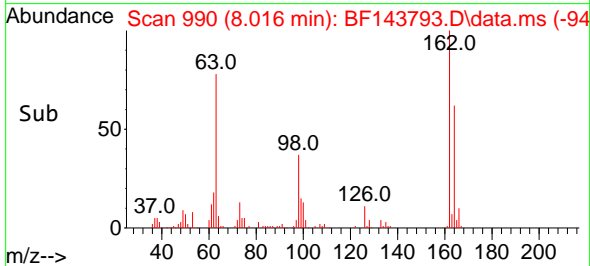
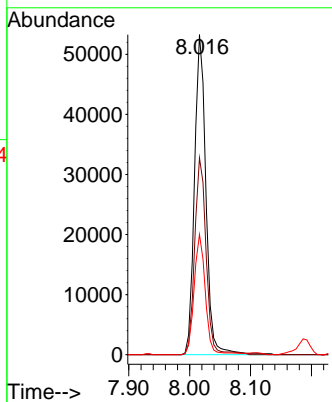
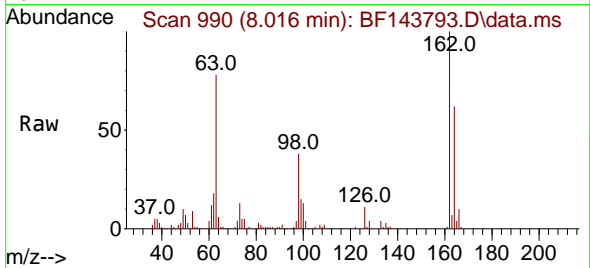




#29
 2,4-Dichlorophenol
 Concen: 10.200 ng
 RT: 8.016 min Scan# 991
 Delta R.T. -0.006 min
 Lab File: BF143793.D
 Acq: 23 Sep 2025 11:57

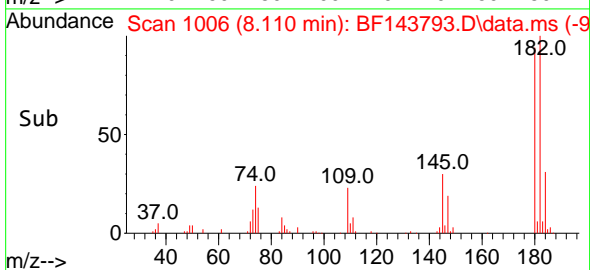
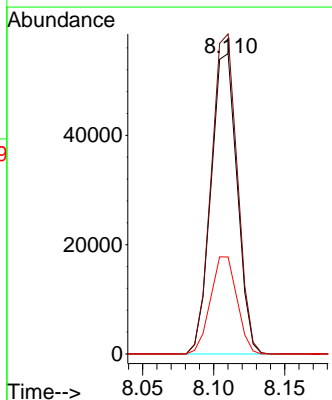
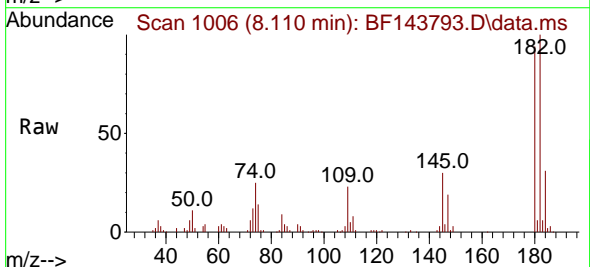
Instrument :
 BNA_F
 ClientSampleId :
 SSTDICC010

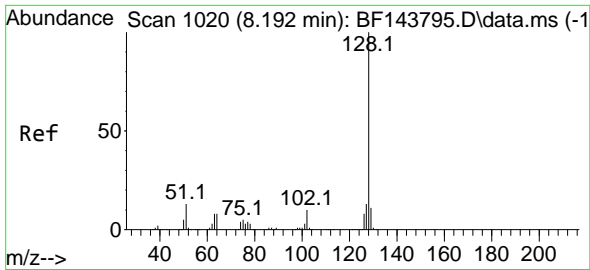
Tgt Ion	Resp	Lower	Upper
162	69731		
162	100		
164	61.5	44.1	84.1
98	37.5	15.8	55.8



#30
 1,2,4-Trichlorobenzene
 Concen: 9.914 ng
 RT: 8.110 min Scan# 1006
 Delta R.T. 0.000 min
 Lab File: BF143793.D
 Acq: 23 Sep 2025 11:57

Tgt Ion	Resp	Lower	Upper
180	70340		
180	100		
182	106.5	82.0	123.0
145	32.3	25.9	38.9



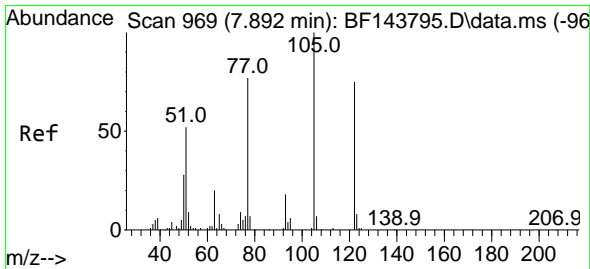
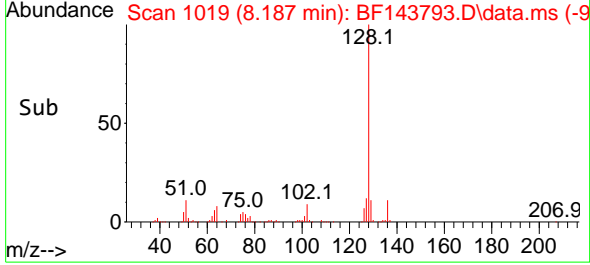
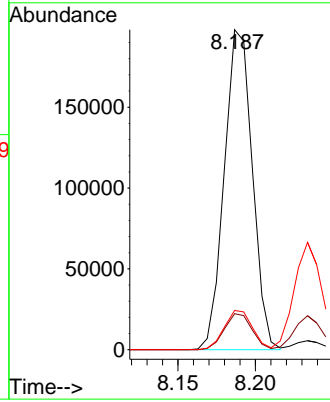
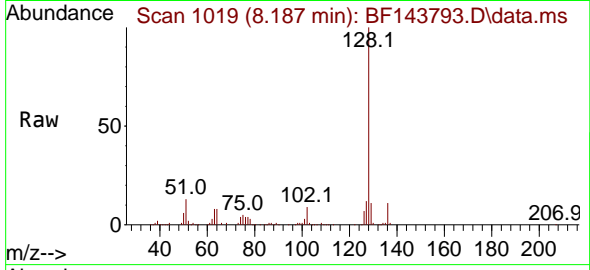


#31
 Naphthalene
 Concen: 10.662 ng
 RT: 8.187 min Scan# 10
 Delta R.T. -0.006 min
 Lab File: BF143793.D
 Acq: 23 Sep 2025 11:57

Instrument :
 BNA_F
 ClientSampleId :
 SSTDICC010

Tgt Ion:128 Resp: 249230

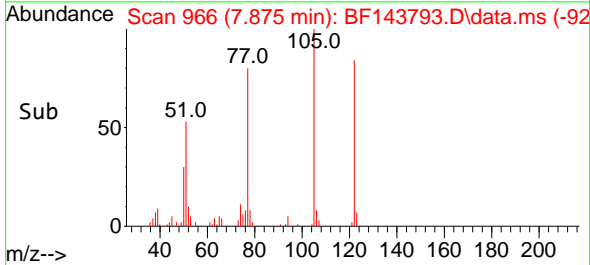
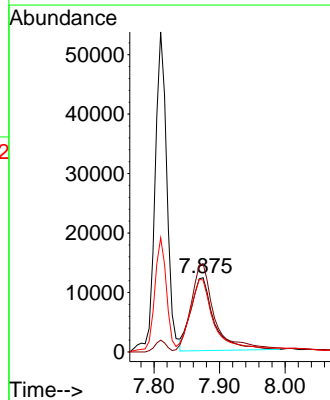
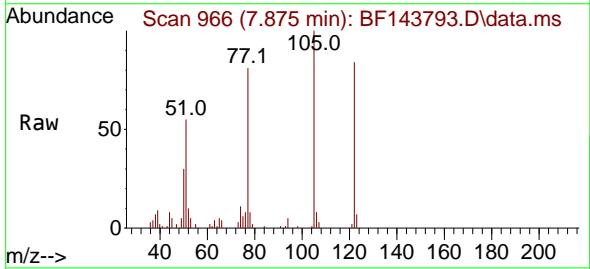
Ion	Ratio	Lower	Upper
128	100		
129	11.3	8.8	13.2
127	12.3	10.2	15.4

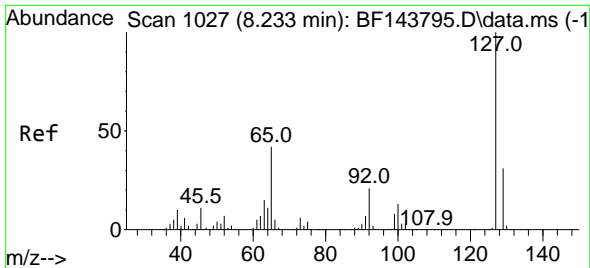


#32
 Benzoic acid
 Concen: 9.023 ng
 RT: 7.875 min Scan# 966
 Delta R.T. -0.047 min
 Lab File: BF143793.D
 Acq: 23 Sep 2025 11:57

Tgt Ion:122 Resp: 30248

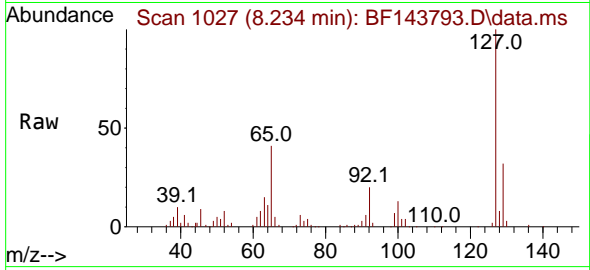
Ion	Ratio	Lower	Upper
122	100		
105	118.9	103.7	143.7
77	96.9	78.8	118.8





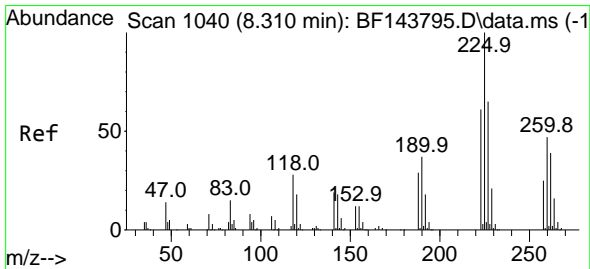
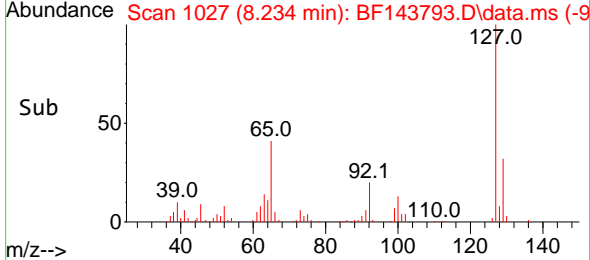
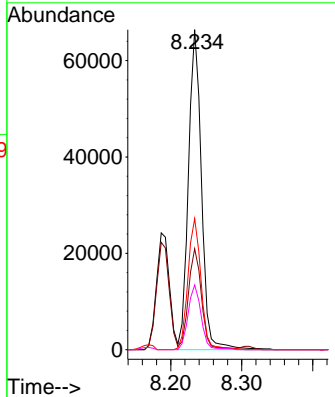
#33
 4-Chloroaniline
 Concen: 10.316 ng
 RT: 8.234 min Scan# 1027
 Delta R.T. -0.006 min
 Lab File: BF143793.D
 Acq: 23 Sep 2025 11:57

Instrument : BNA_F
 Client Sample Id : SSTDICC010



Tgt Ion:127 Resp: 84740

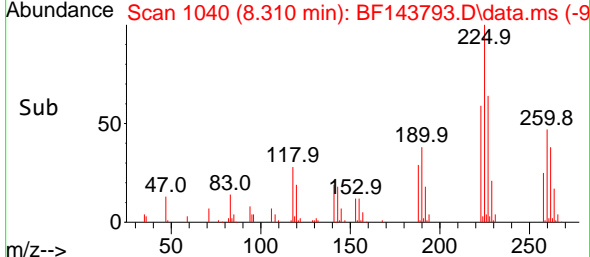
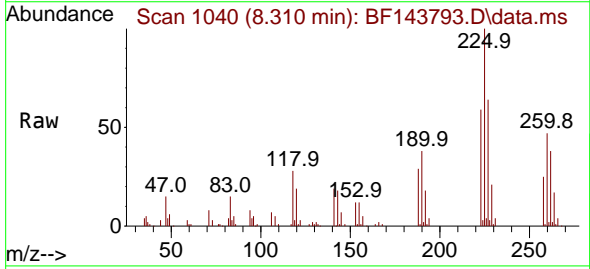
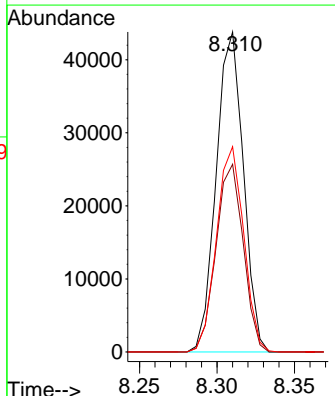
Ion	Ratio	Lower	Upper
127	100		
129	31.6	25.4	38.2
65	40.9	33.4	50.2
92	20.2	16.6	25.0

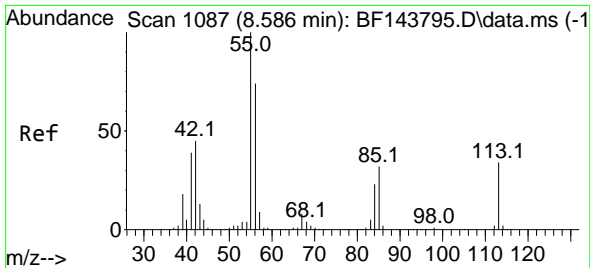


#34
 Hexachlorobutadiene
 Concen: 10.103 ng
 RT: 8.310 min Scan# 1040
 Delta R.T. 0.000 min
 Lab File: BF143793.D
 Acq: 23 Sep 2025 11:57

Tgt Ion:225 Resp: 53434

Ion	Ratio	Lower	Upper
225	100		
223	58.6	48.6	72.8
227	64.2	51.9	77.9

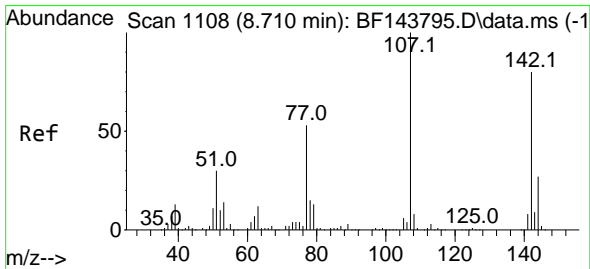
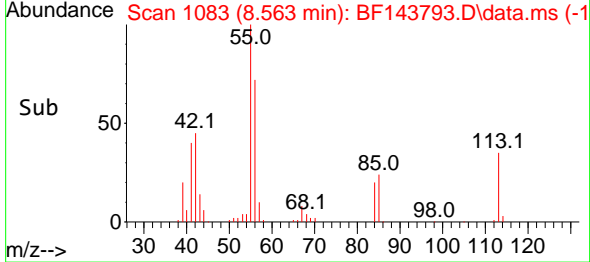
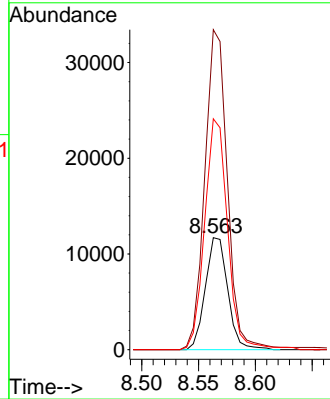
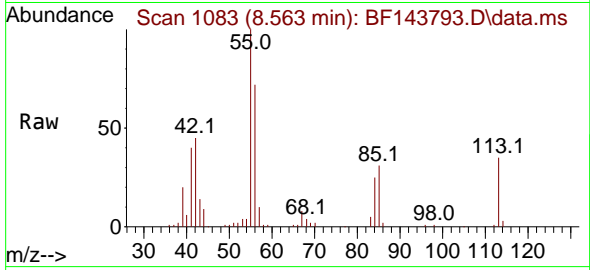




#35
 Caprolactam
 Concen: 9.192 ng
 RT: 8.563 min Scan# 1107
 Delta R.T. -0.047 min
 Lab File: BF143793.D
 Acq: 23 Sep 2025 11:57

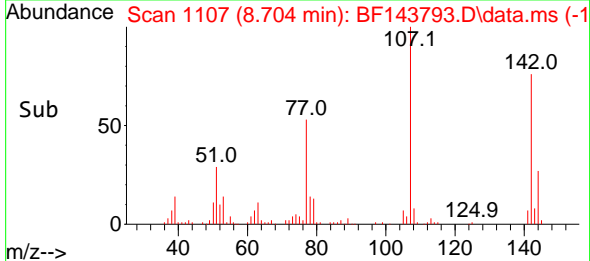
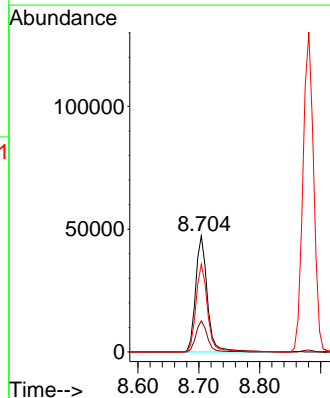
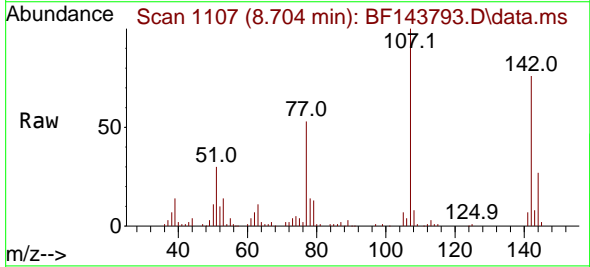
Instrument :
 BNA_F
 ClientSampleId :
 SSTDICC010

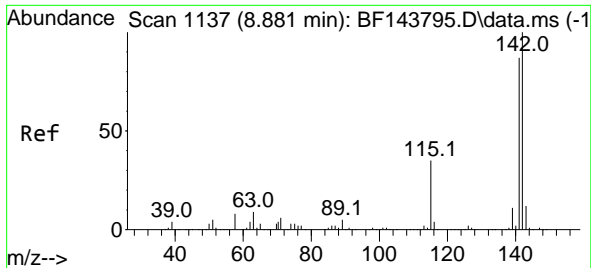
Tgt Ion:113 Resp: 16062
 Ion Ratio Lower Upper
 113 100
 55 285.6 271.7 311.7
 56 206.2 194.5 234.5



#36
 4-Chloro-3-methylphenol
 Concen: 9.882 ng
 RT: 8.704 min Scan# 1107
 Delta R.T. -0.006 min
 Lab File: BF143793.D
 Acq: 23 Sep 2025 11:57

Tgt Ion:107 Resp: 63361
 Ion Ratio Lower Upper
 107 100
 144 26.7 21.8 32.8
 142 75.7 63.6 95.4





#37
 2-Methylnaphthalene
 Concen: 10.644 ng
 RT: 8.881 min Scan# 1113
 Delta R.T. 0.000 min
 Lab File: BF143793.D
 Acq: 23 Sep 2025 11:57

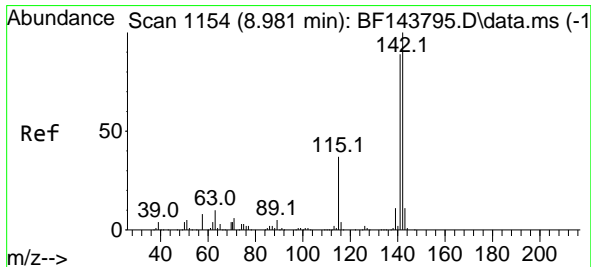
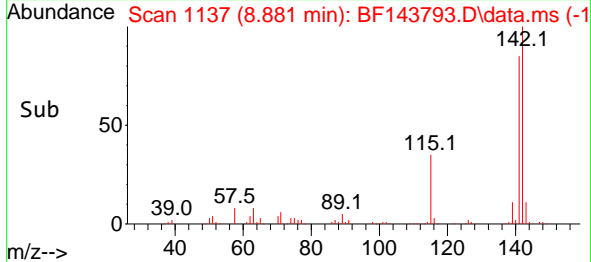
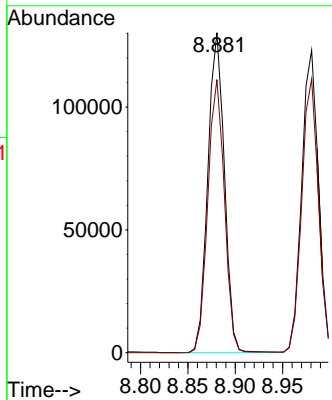
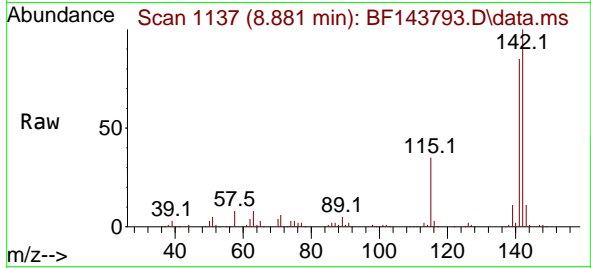
Instrument :

BNA_F

ClientSampleId :

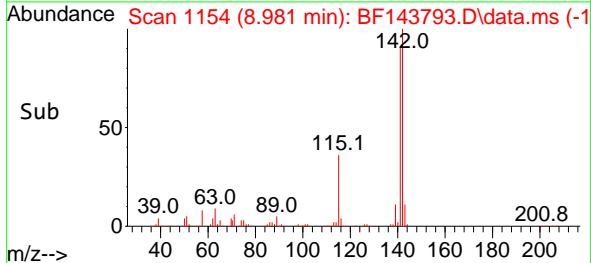
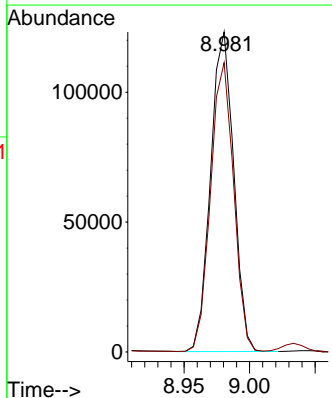
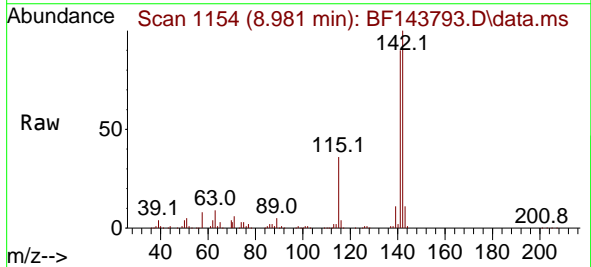
SSTDICC010

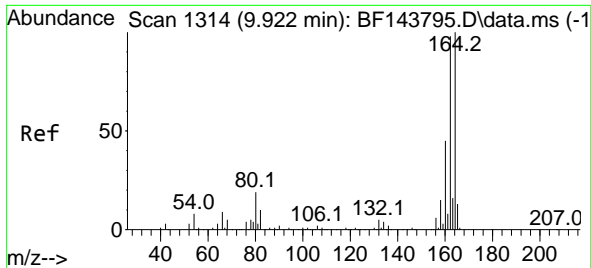
Tgt Ion:142 Resp: 158654
 Ion Ratio Lower Upper
 142 100
 141 85.3 69.4 104.0



#38
 1-Methylnaphthalene
 Concen: 10.572 ng
 RT: 8.981 min Scan# 1154
 Delta R.T. 0.000 min
 Lab File: BF143793.D
 Acq: 23 Sep 2025 11:57

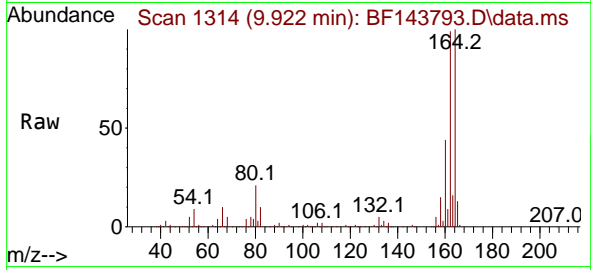
Tgt Ion:142 Resp: 150831
 Ion Ratio Lower Upper
 142 100
 141 90.4 71.1 106.7



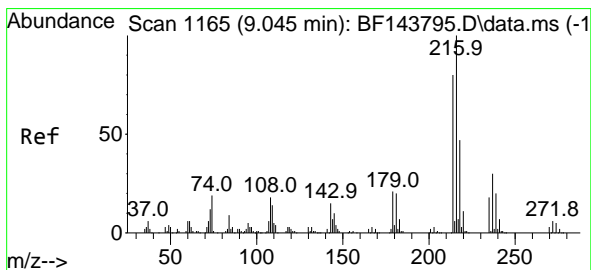
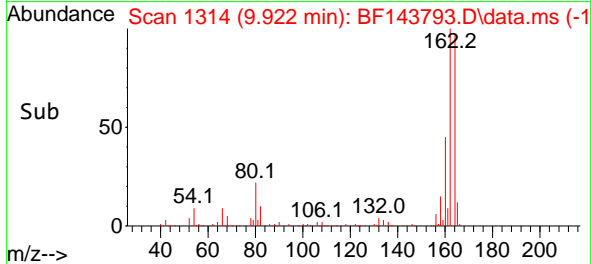
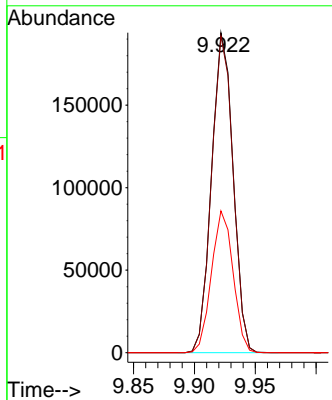


#39
 Acenaphthene-d10
 Concen: 20.000 ng
 RT: 9.922 min Scan# 111
 Delta R.T. -0.006 min
 Lab File: BF143793.D
 Acq: 23 Sep 2025 11:57

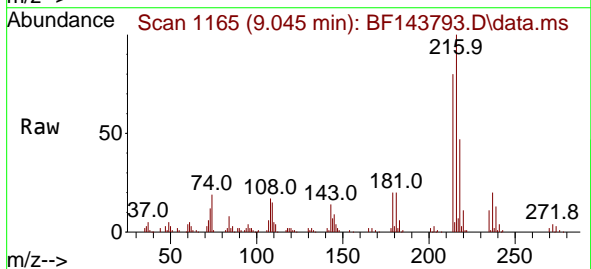
Instrument :
 BNA_F
 ClientSampleId :
 SSTDICC010



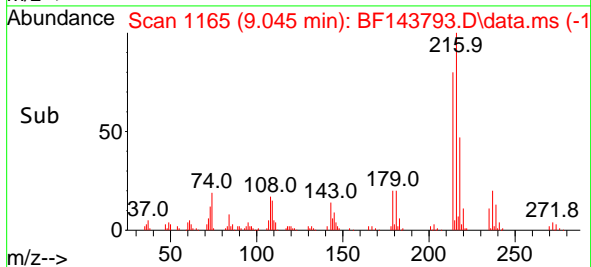
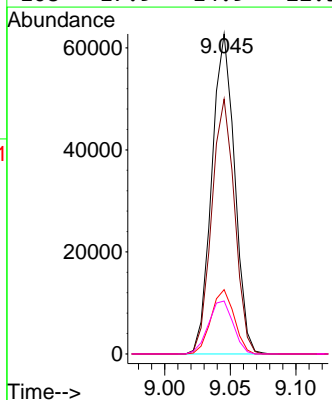
Tgt Ion:164 Resp: 239396
 Ion Ratio Lower Upper
 164 100
 162 99.0 78.8 118.2
 160 44.3 35.8 53.6

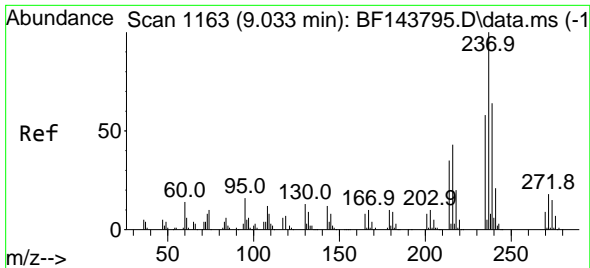


#40
 1,2,4,5-Tetrachlorobenzene
 Concen: 10.509 ng
 RT: 9.045 min Scan# 1165
 Delta R.T. -0.006 min
 Lab File: BF143793.D
 Acq: 23 Sep 2025 11:57



Tgt Ion:216 Resp: 75923
 Ion Ratio Lower Upper
 216 100
 214 79.8 63.7 95.5
 179 20.4 16.5 24.7
 108 17.9 14.9 22.3





#41
 Hexachlorocyclopentadiene
 Concen: 8.792 ng
 RT: 9.034 min Scan# 11163
 Delta R.T. -0.006 min
 Lab File: BF143793.D
 Acq: 23 Sep 2025 11:57

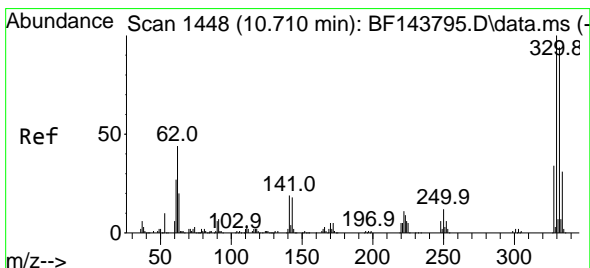
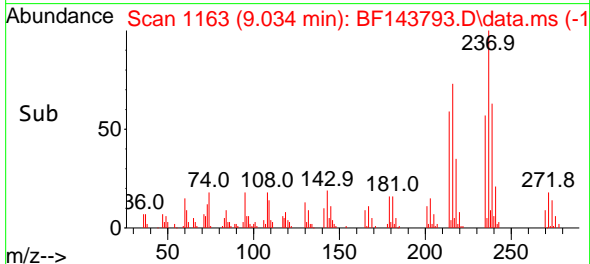
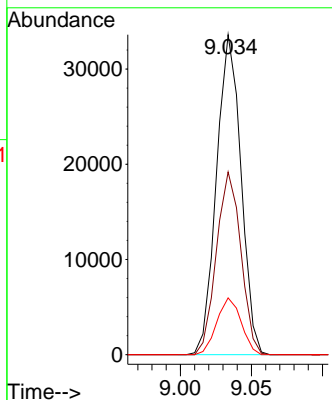
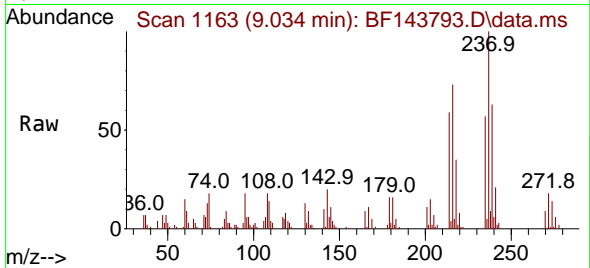
Instrument :

BNA_F

ClientSampleId :

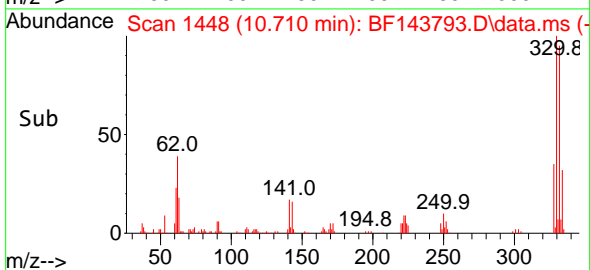
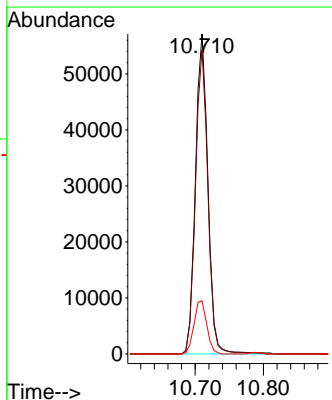
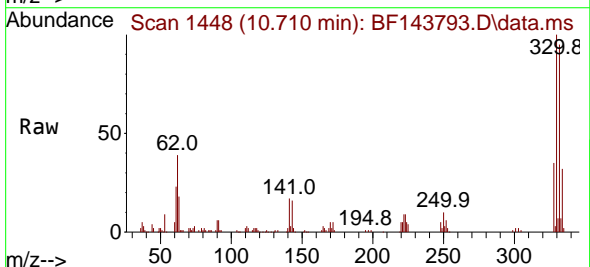
SSTDICC010

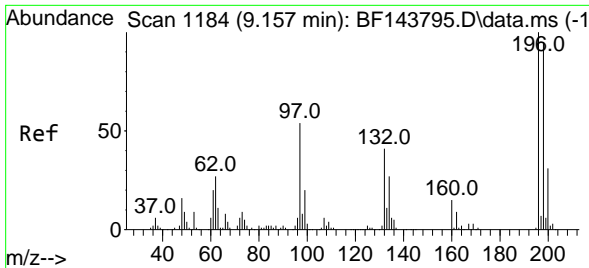
Tgt Ion:237 Resp: 40258
 Ion Ratio Lower Upper
 237 100
 235 57.1 38.1 78.1
 272 17.7 0.0 37.9



#42
 2,4,6-Tribromophenol
 Concen: 21.225 ng
 RT: 10.710 min Scan# 1448
 Delta R.T. -0.006 min
 Lab File: BF143793.D
 Acq: 23 Sep 2025 11:57

Tgt Ion:330 Resp: 72517
 Ion Ratio Lower Upper
 330 100
 332 94.6 74.7 112.1
 141 17.0 14.3 21.5



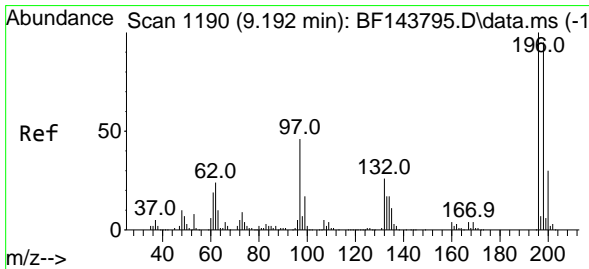
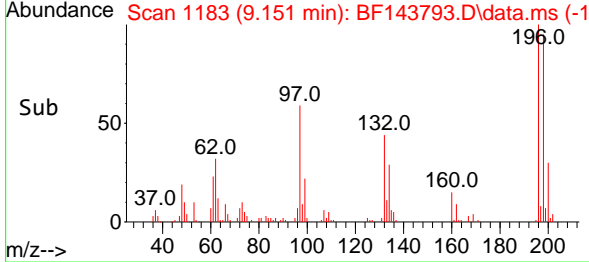
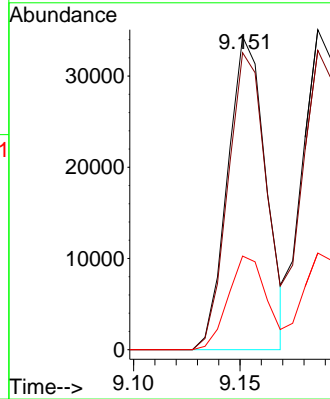
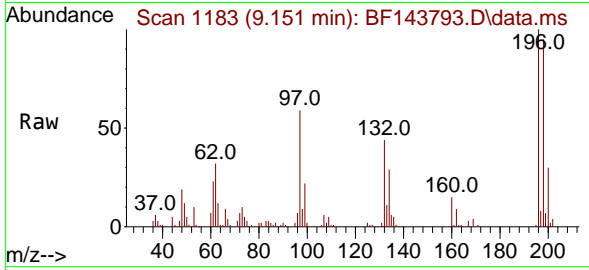


#43
 2,4,6-Trichlorophenol
 Concen: 9.474 ng
 RT: 9.151 min Scan# 1183
 Delta R.T. -0.006 min
 Lab File: BF143793.D
 Acq: 23 Sep 2025 11:57

Instrument : BNA_F
 ClientSampleId : SSTDICC010

Tgt Ion:196 Resp: 42859

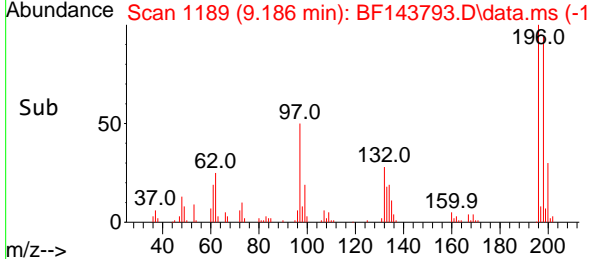
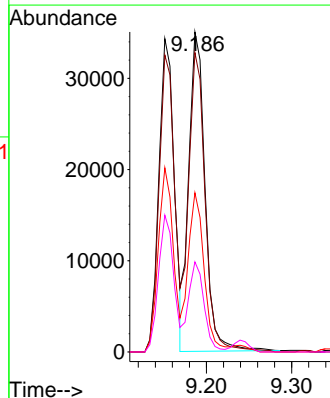
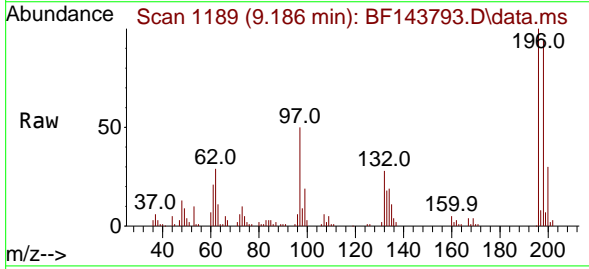
Ion	Ratio	Lower	Upper
196	100		
198	94.8	76.2	114.2
200	29.9	24.7	37.1

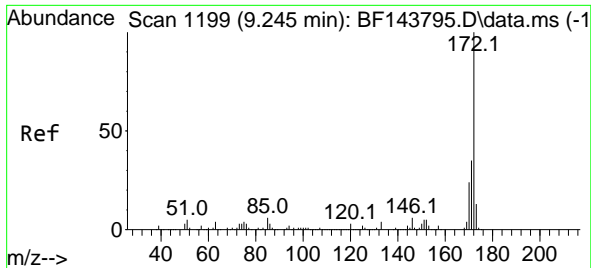


#44
 2,4,5-Trichlorophenol
 Concen: 9.889 ng
 RT: 9.186 min Scan# 1189
 Delta R.T. -0.006 min
 Lab File: BF143793.D
 Acq: 23 Sep 2025 11:57

Tgt Ion:196 Resp: 46791

Ion	Ratio	Lower	Upper
196	100		
198	93.6	75.9	113.9
97	49.8	38.3	57.5
132	28.1	21.9	32.9





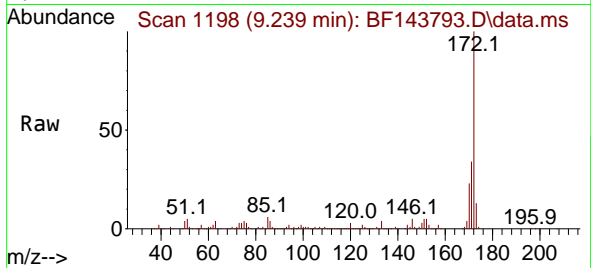
#45
 2-Fluorobiphenyl
 Concen: 21.809 ng
 RT: 9.239 min Scan# 1198
 Delta R.T. -0.006 min
 Lab File: BF143793.D
 Acq: 23 Sep 2025 11:57

Instrument :

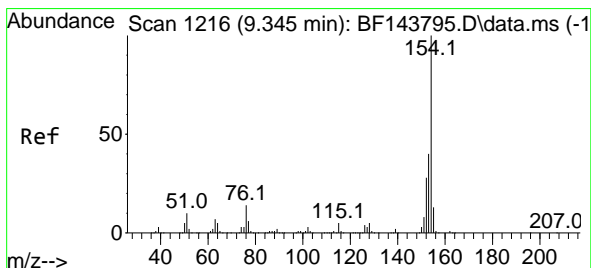
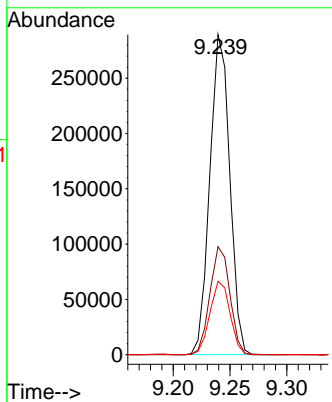
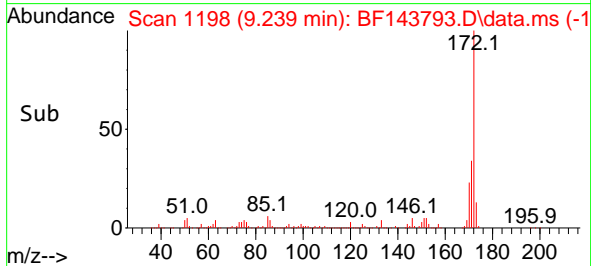
BNA_F

ClientSampleId :

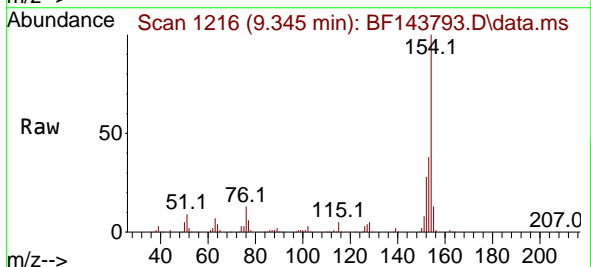
SSTDICC010



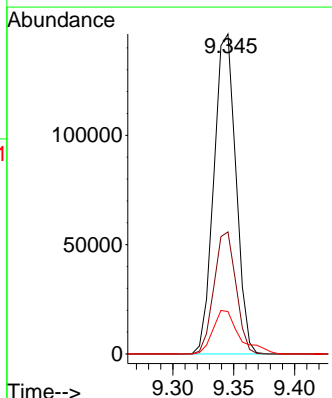
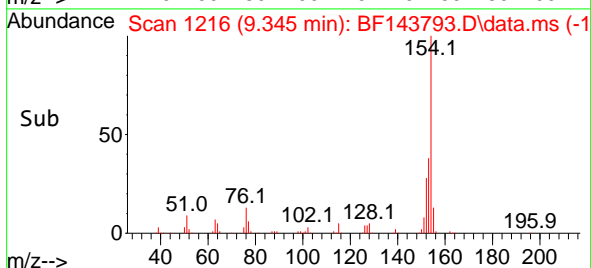
Tgt Ion:172 Resp: 353299
 Ion Ratio Lower Upper
 172 100
 171 33.7 27.9 41.9
 170 22.9 19.1 28.7

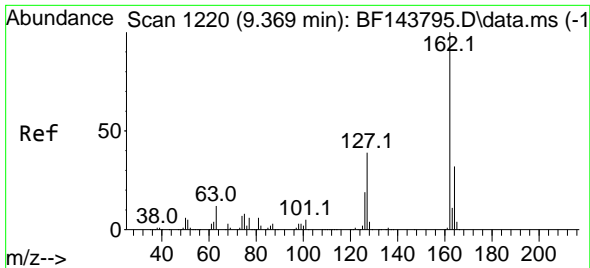


#46
 1,1'-Biphenyl
 Concen: 10.644 ng
 RT: 9.345 min Scan# 1216
 Delta R.T. 0.000 min
 Lab File: BF143793.D
 Acq: 23 Sep 2025 11:57



Tgt Ion:154 Resp: 184443
 Ion Ratio Lower Upper
 154 100
 153 38.1 19.7 59.7
 76 13.3 0.0 33.8





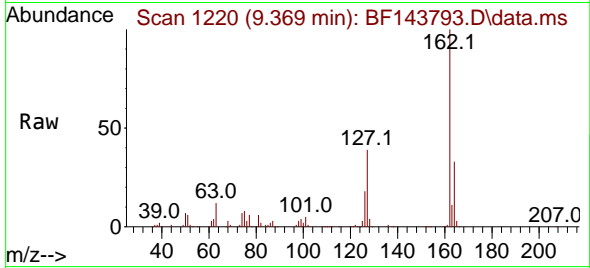
#47
 2-Chloronaphthalene
 Concen: 10.496 ng
 RT: 9.369 min Scan# 11
 Delta R.T. -0.006 min
 Lab File: BF143793.D
 Acq: 23 Sep 2025 11:57

Instrument :

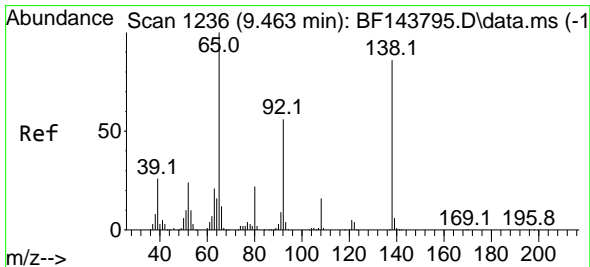
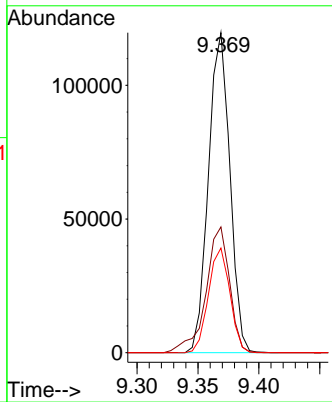
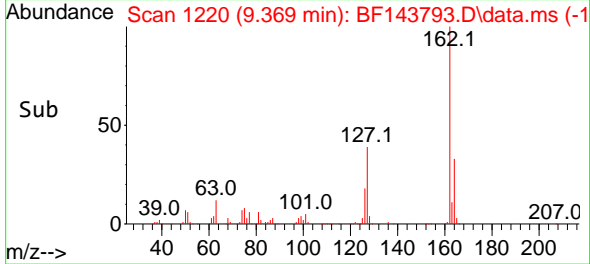
BNA_F

ClientSampleId :

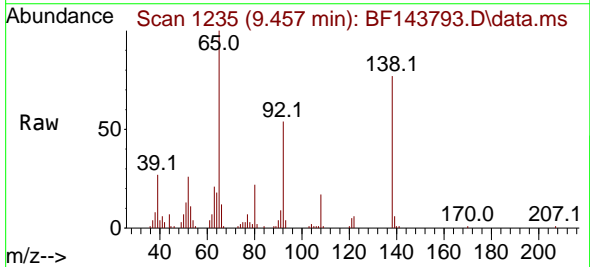
SSTDICC010



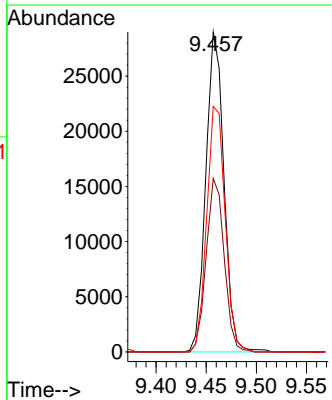
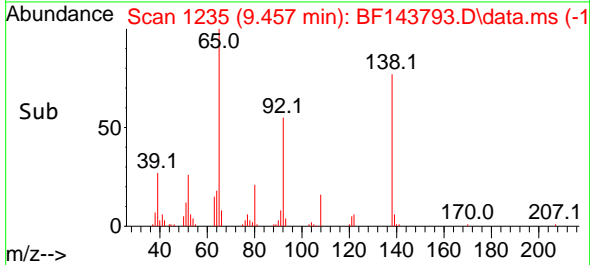
Tgt Ion:162 Resp: 146409
 Ion Ratio Lower Upper
 162 100
 127 39.3 31.5 47.3
 164 32.7 25.9 38.9

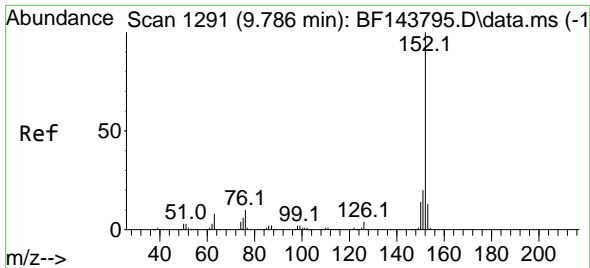


#48
 2-Nitroaniline
 Concen: 8.646 ng
 RT: 9.457 min Scan# 1235
 Delta R.T. -0.006 min
 Lab File: BF143793.D
 Acq: 23 Sep 2025 11:57



Tgt Ion: 65 Resp: 36451
 Ion Ratio Lower Upper
 65 100
 92 54.2 44.9 67.3
 138 76.8 69.0 103.4



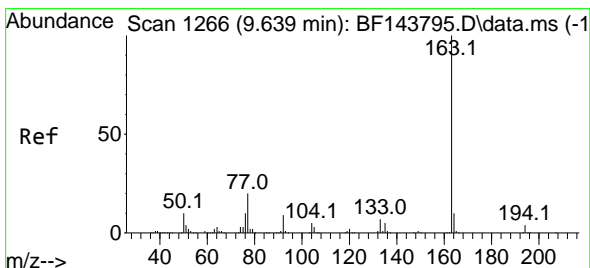
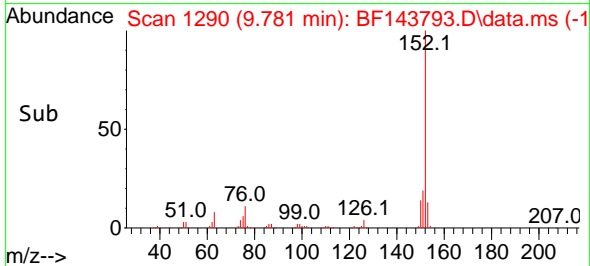
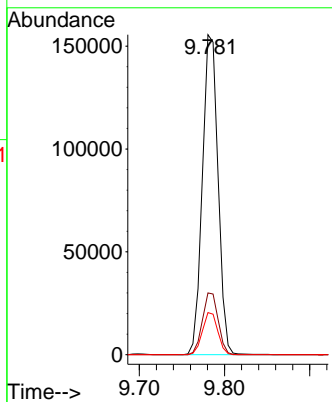
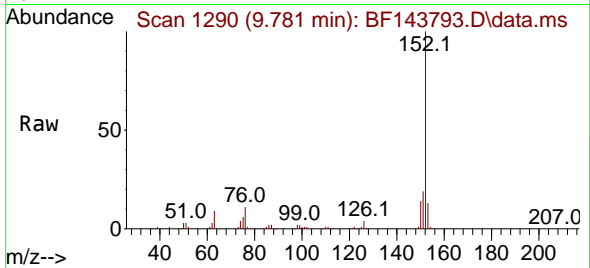


#49
 Acenaphthylene
 Concen: 10.338 ng
 RT: 9.781 min Scan# 11
 Delta R.T. -0.006 min
 Lab File: BF143793.D
 Acq: 23 Sep 2025 11:57

Instrument :
 BNA_F
 ClientSampleId :
 SSTDICC010

Tgt Ion:152 Resp: 198522

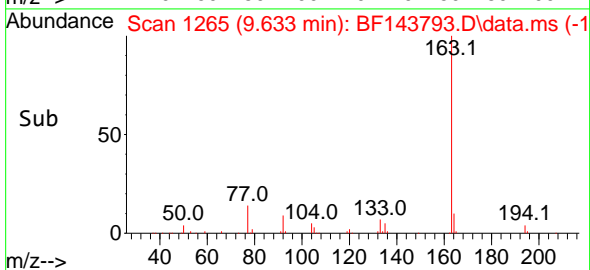
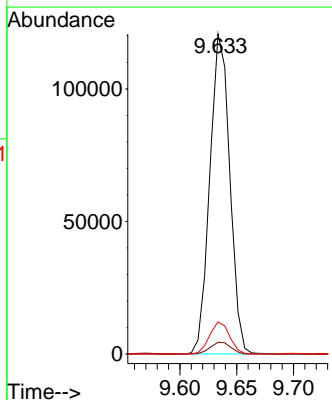
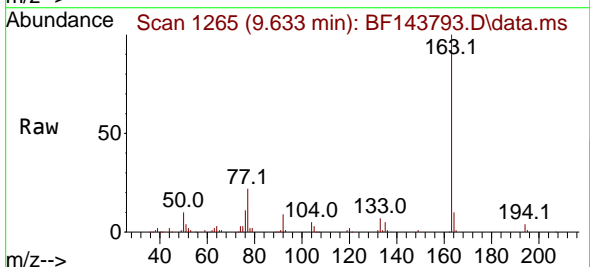
Ion	Ratio	Lower	Upper
152	100		
151	19.3	15.7	23.5
153	13.2	10.6	15.8

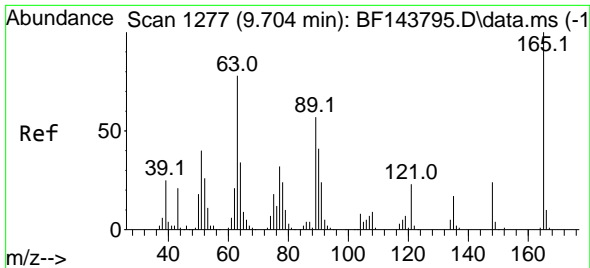


#50
 Dimethylphthalate
 Concen: 10.118 ng
 RT: 9.633 min Scan# 1265
 Delta R.T. -0.006 min
 Lab File: BF143793.D
 Acq: 23 Sep 2025 11:57

Tgt Ion:163 Resp: 147631

Ion	Ratio	Lower	Upper
163	100		
194	3.7	3.0	4.6
164	10.0	8.2	12.2





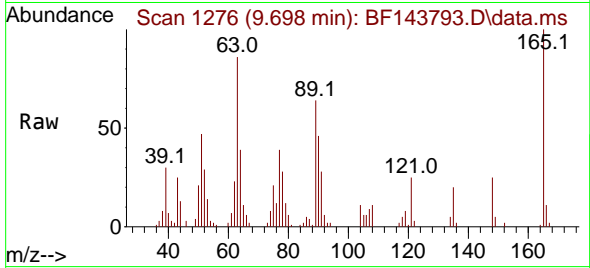
#51
 2,6-Dinitrotoluene
 Concen: 8.025 ng
 RT: 9.698 min Scan# 11
 Delta R.T. -0.006 min
 Lab File: BF143793.D
 Acq: 23 Sep 2025 11:57

Instrument :

BNA_F

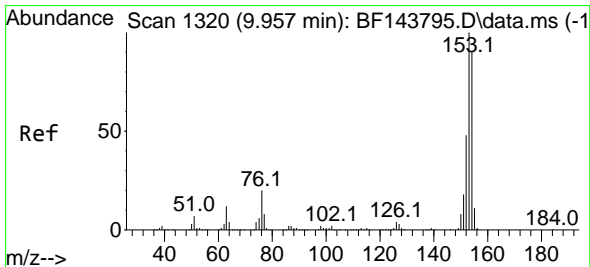
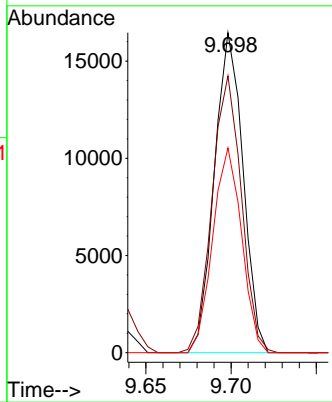
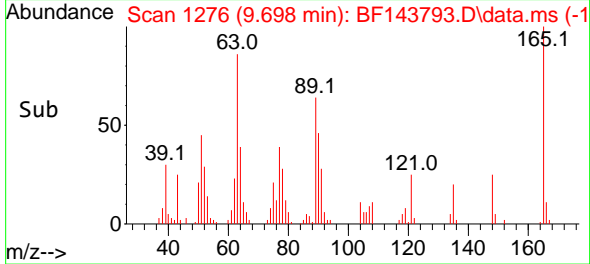
ClientSampleId :

SSTDICC010

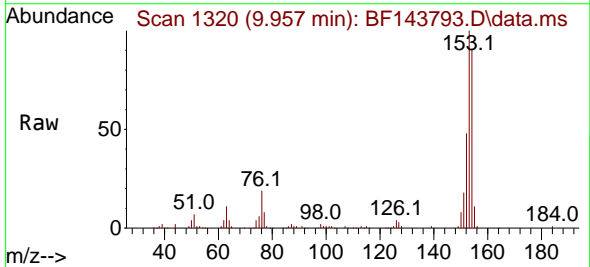


Tgt Ion:165 Resp: 19239

Ion	Ratio	Lower	Upper
165	100		
63	86.5	62.6	94.0
89	64.0	45.2	67.8

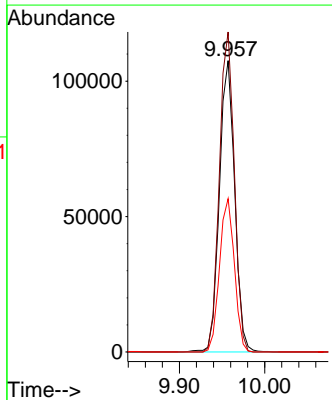
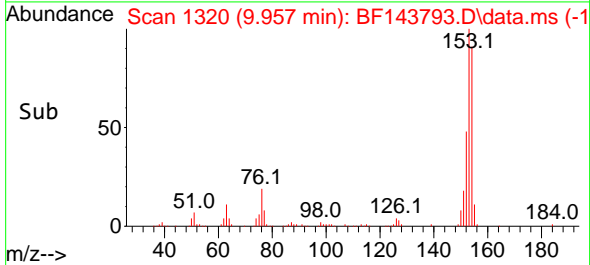


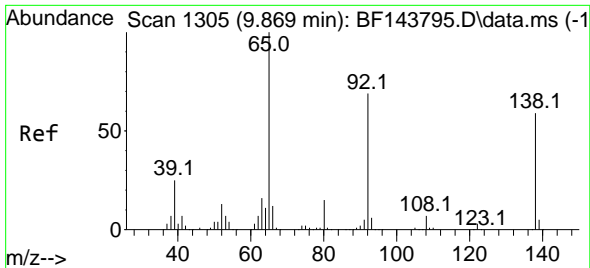
#52
 Acenaphthene
 Concen: 10.619 ng
 RT: 9.957 min Scan# 1320
 Delta R.T. -0.006 min
 Lab File: BF143793.D
 Acq: 23 Sep 2025 11:57



Tgt Ion:154 Resp: 134197

Ion	Ratio	Lower	Upper
154	100		
153	109.8	88.7	133.1
152	52.6	42.7	64.1

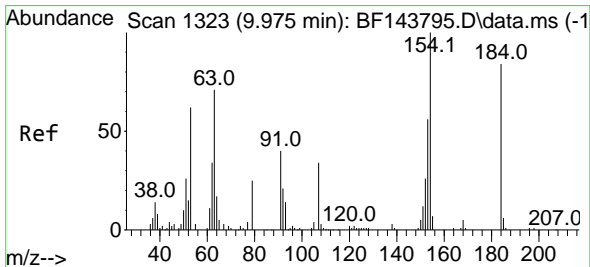
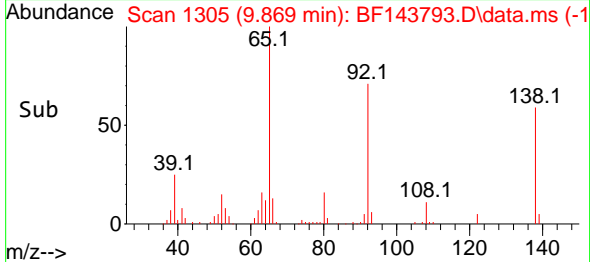
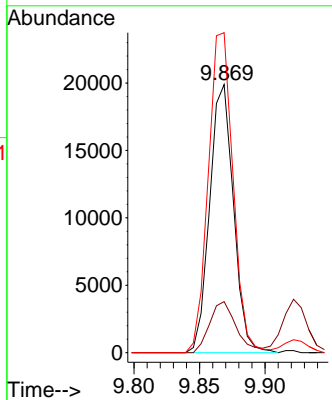
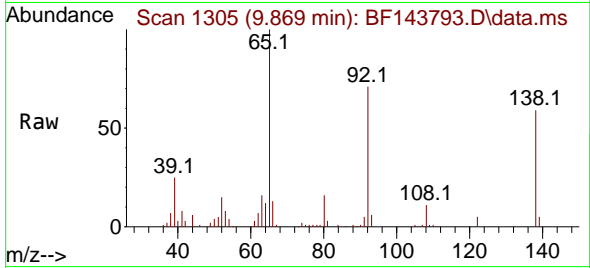




#53
 3-Nitroaniline
 Concen: 8.650 ng
 RT: 9.869 min Scan# 11
 Delta R.T. -0.006 min
 Lab File: BF143793.D
 Acq: 23 Sep 2025 11:57

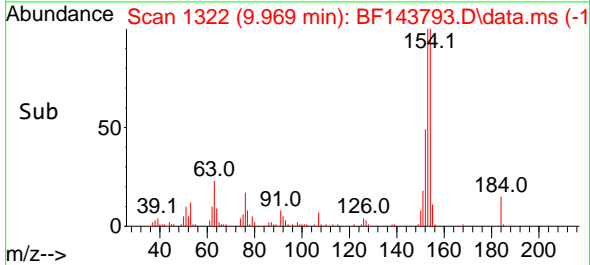
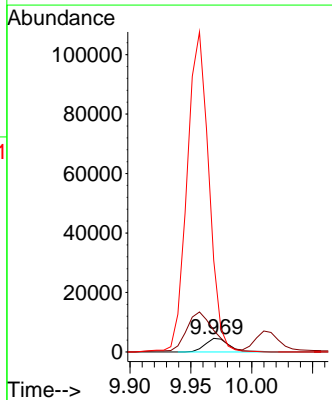
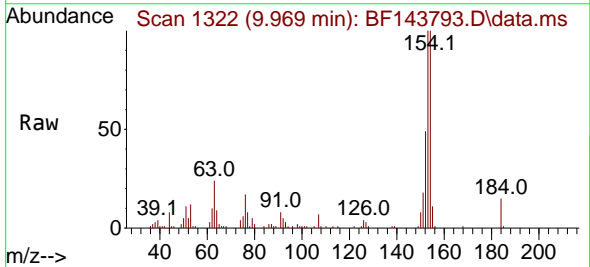
Instrument : BNA_F
 ClientSampleId : SSTDICC010

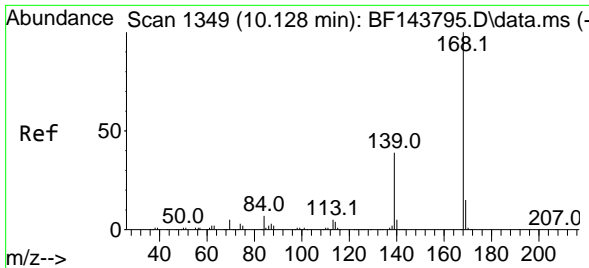
Tgt Ion:138 Resp: 25136
 Ion Ratio Lower Upper
 138 100
 108 19.0 9.9 14.9#
 92 119.3 93.5 140.3



#54
 2,4-Dinitrophenol
 Concen: 11.233 ng
 RT: 9.969 min Scan# 1322
 Delta R.T. -0.006 min
 Lab File: BF143793.D
 Acq: 23 Sep 2025 11:57

Tgt Ion:184 Resp: 6231
 Ion Ratio Lower Upper
 184 100
 63 160.0 84.6 127.0#
 154 677.6 199.3 298.9#



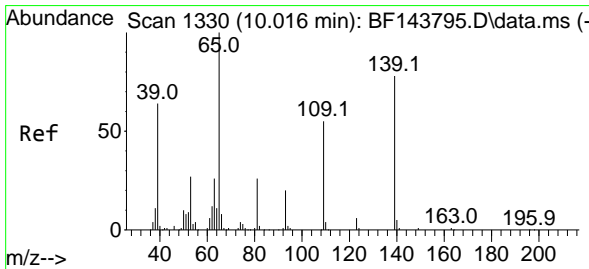
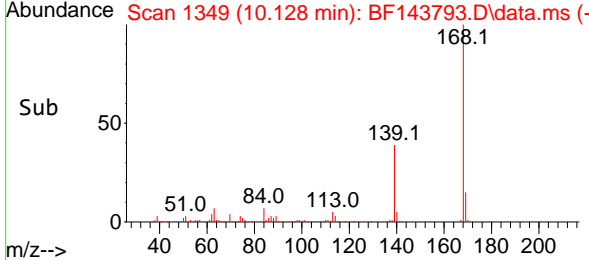
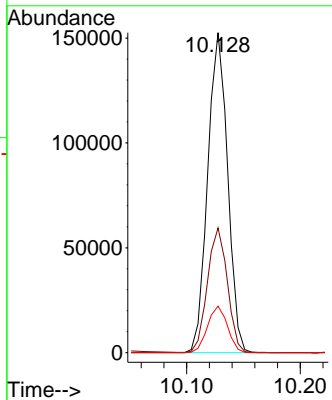
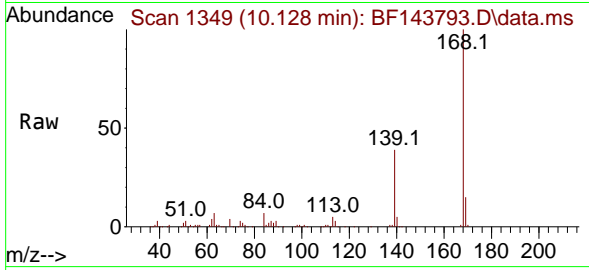


#55
 Dibenzofuran
 Concen: 10.393 ng
 RT: 10.128 min Scan# 11
 Delta R.T. -0.006 min
 Lab File: BF143793.D
 Acq: 23 Sep 2025 11:57

Instrument : BNA_F
 ClientSampleId : SSTDICC010

Tgt Ion:168 Resp: 185710

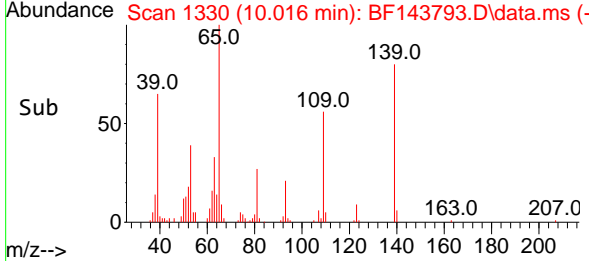
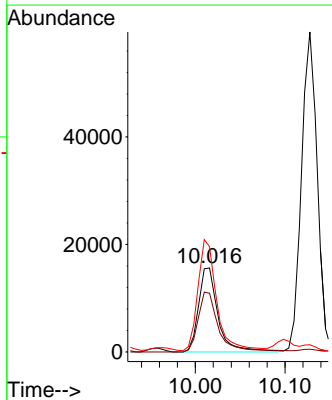
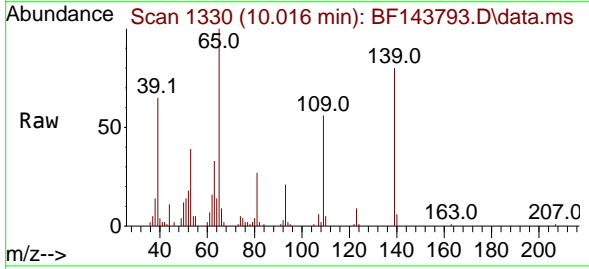
Ion	Ratio	Lower	Upper
168	100		
139	39.0	31.0	46.6
169	14.6	11.9	17.9

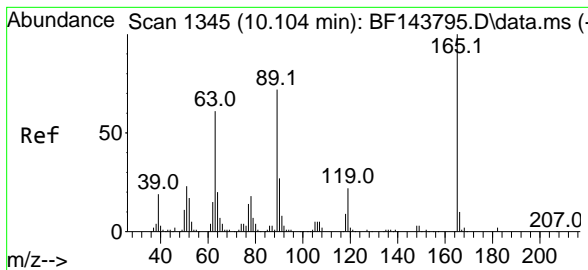


#56
 4-Nitrophenol
 Concen: 10.065 ng
 RT: 10.016 min Scan# 1330
 Delta R.T. -0.006 min
 Lab File: BF143793.D
 Acq: 23 Sep 2025 11:57

Tgt Ion:139 Resp: 23569

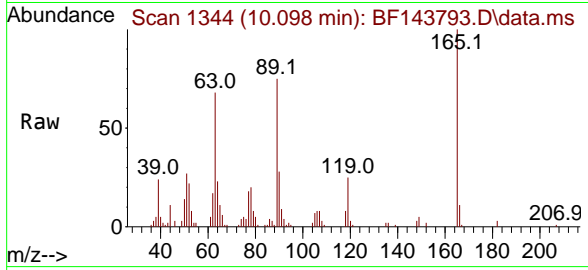
Ion	Ratio	Lower	Upper
139	100		
109	69.9	50.2	90.2
65	125.3	109.2	149.2





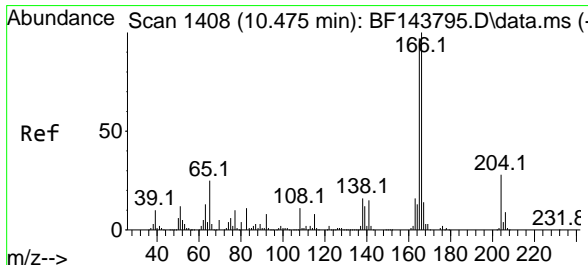
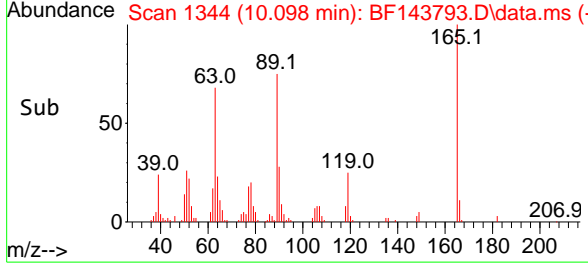
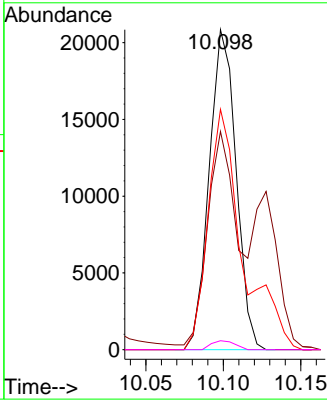
#57
 2,4-Dinitrotoluene
 Concen: 9.543 ng
 RT: 10.098 min Scan# 11
 Delta R.T. -0.012 min
 Lab File: BF143793.D
 Acq: 23 Sep 2025 11:57

Instrument : BNA_F
 ClientSampleId : SSTDICC010



Tgt Ion:165 Resp: 25096

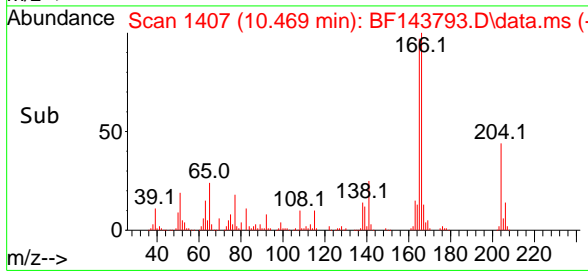
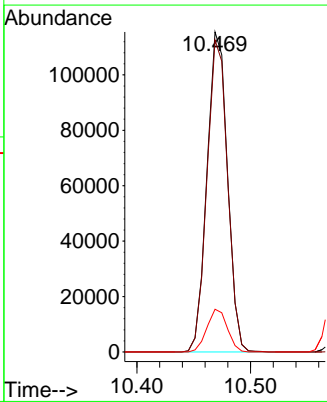
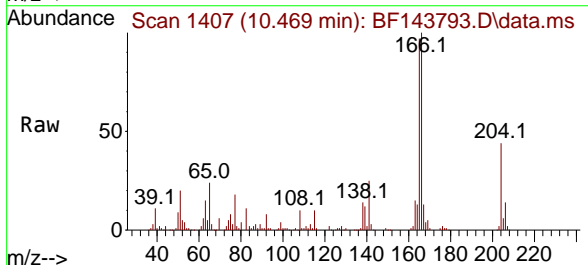
Ion	Ratio	Lower	Upper
165	100		
63	68.2	48.9	73.3
89	75.1	57.5	86.3
182	2.8	2.0	3.0

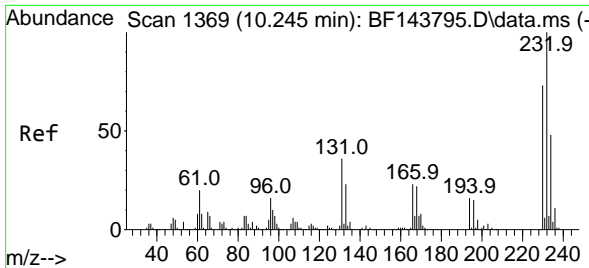


#58
 Fluorene
 Concen: 10.898 ng
 RT: 10.469 min Scan# 1407
 Delta R.T. -0.006 min
 Lab File: BF143793.D
 Acq: 23 Sep 2025 11:57

Tgt Ion:166 Resp: 144778

Ion	Ratio	Lower	Upper
166	100		
165	97.5	78.0	117.0
167	13.3	10.9	16.3





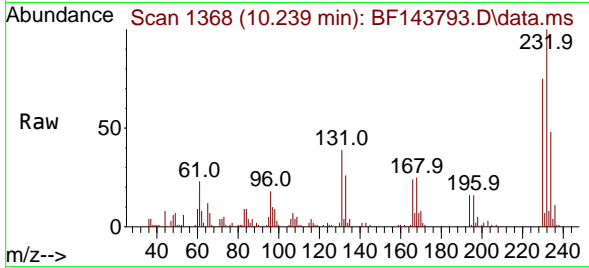
#59
 2,3,4,6-Tetrachlorophenol
 Concen: 9.120 ng
 RT: 10.239 min Scan# 1385
 Delta R.T. -0.006 min
 Lab File: BF143793.D
 Acq: 23 Sep 2025 11:57

Instrument :

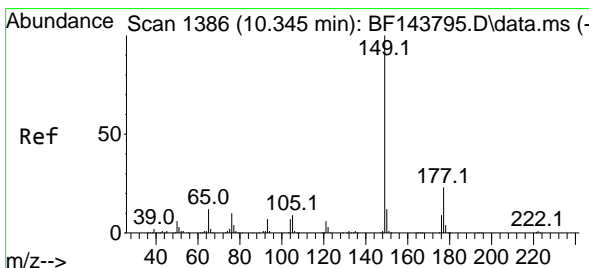
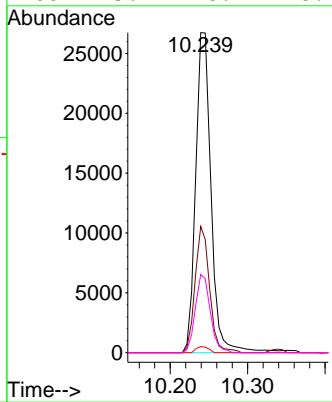
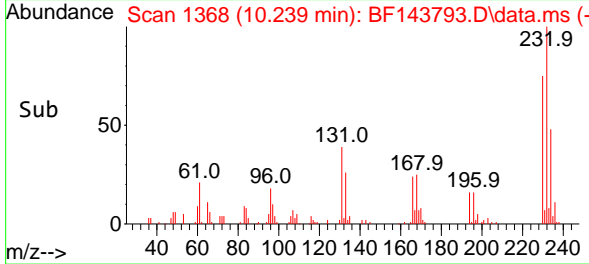
BNA_F

ClientSampleId :

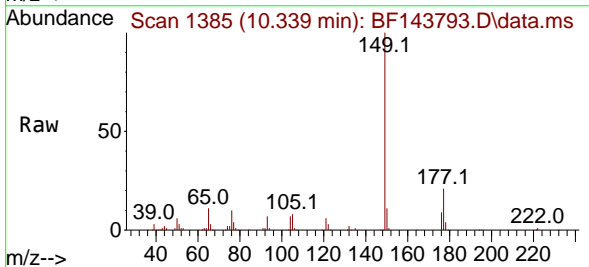
SSTDICC010



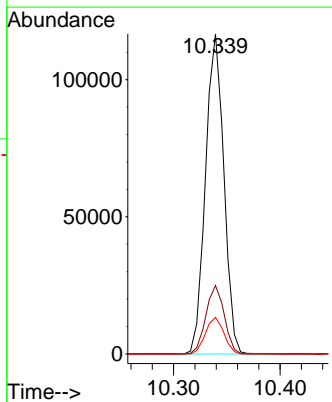
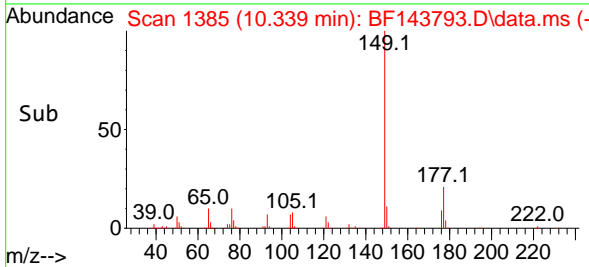
Tgt Ion:232 Resp: 36970
 Ion Ratio Lower Upper
 232 100
 131 37.0 29.4 44.2
 130 1.5 1.3 1.9
 166 23.7 18.7 28.1

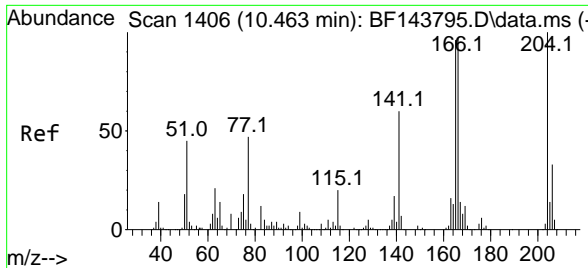


#60
 Diethylphthalate
 Concen: 10.254 ng
 RT: 10.339 min Scan# 1385
 Delta R.T. -0.006 min
 Lab File: BF143793.D
 Acq: 23 Sep 2025 11:57



Tgt Ion:149 Resp: 140054
 Ion Ratio Lower Upper
 149 100
 177 21.4 18.1 27.1
 150 11.4 9.7 14.5





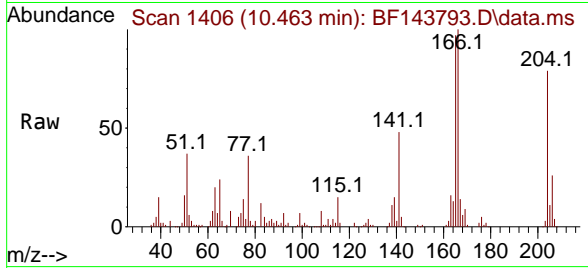
#61
 4-Chlorophenyl-phenylether
 Concen: 10.472 ng
 RT: 10.463 min Scan# 1406
 Delta R.T. -0.006 min
 Lab File: BF143793.D
 Acq: 23 Sep 2025 11:57

Instrument :

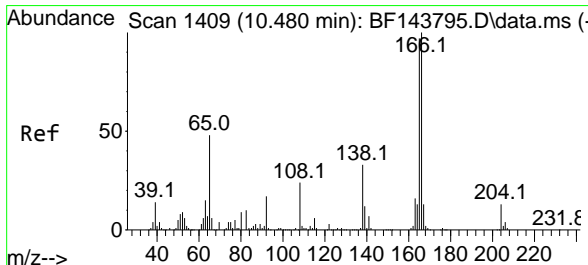
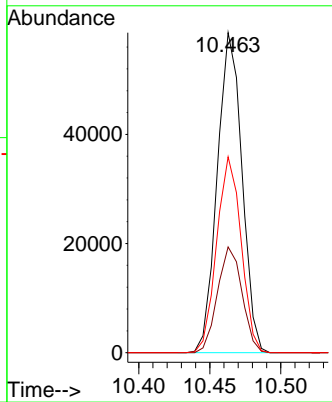
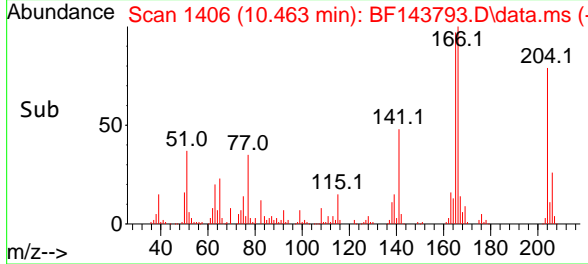
BNA_F

ClientSampleId :

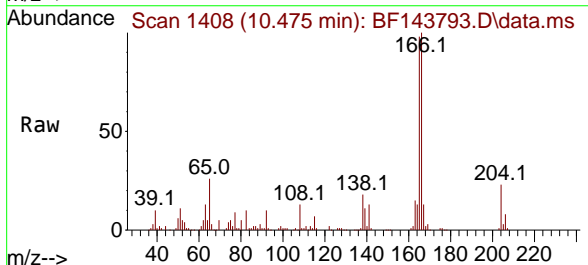
SSTDICC010



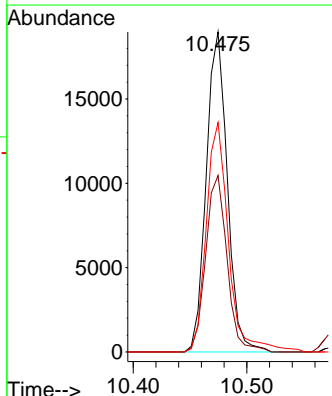
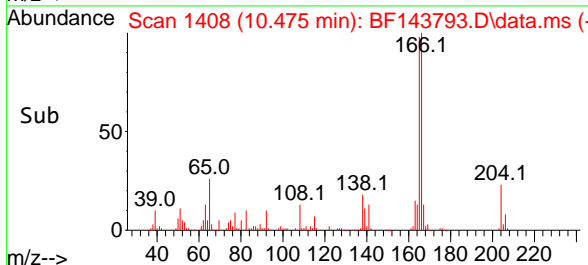
Tgt Ion:204 Resp: 70883
 Ion Ratio Lower Upper
 204 100
 206 33.1 26.7 40.1
 141 61.2 48.2 72.2

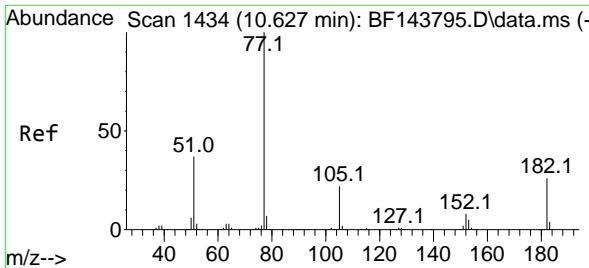


#62
 4-Nitroaniline
 Concen: 8.943 ng
 RT: 10.475 min Scan# 1408
 Delta R.T. -0.018 min
 Lab File: BF143793.D
 Acq: 23 Sep 2025 11:57



Tgt Ion:138 Resp: 24435
 Ion Ratio Lower Upper
 138 100
 92 55.1 31.5 71.5
 108 71.7 51.9 91.9

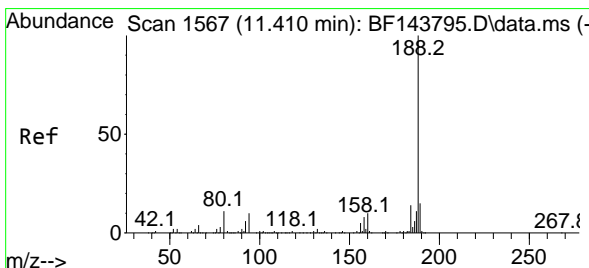
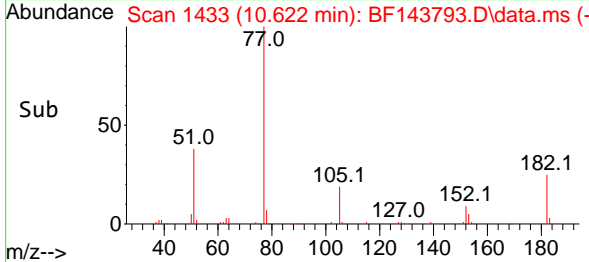
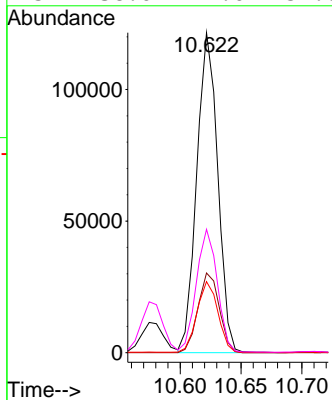
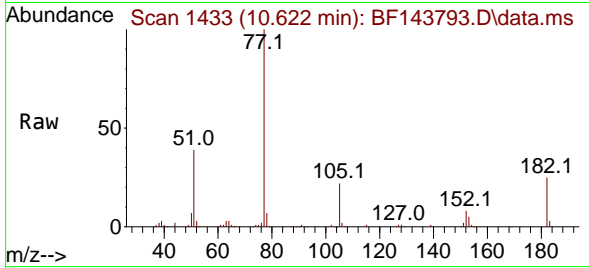




#63
 Azobenzene
 Concen: 10.152 ng
 RT: 10.622 min Scan# 1433
 Delta R.T. -0.006 min
 Lab File: BF143793.D
 Acq: 23 Sep 2025 11:57

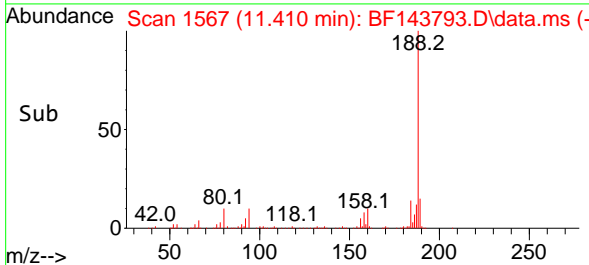
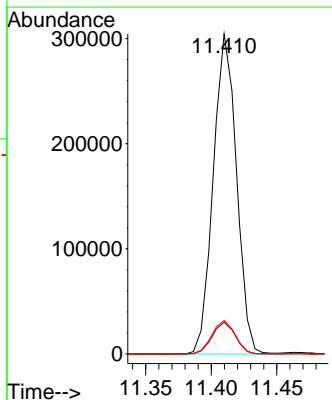
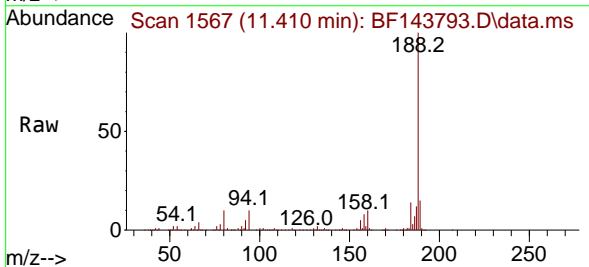
Instrument : BNA_F
 ClientSampleId : SSTDICC010

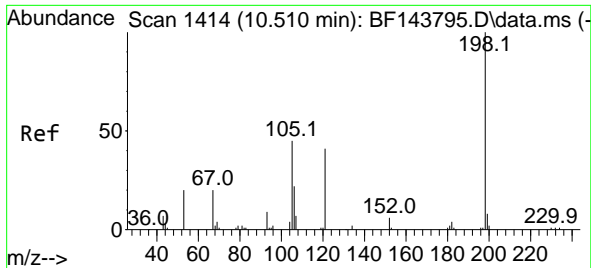
Tgt Ion	Resp	Lower	Upper
77	146130		
182	24.9	5.9	45.9
105	22.2	2.3	42.3
51	38.6	17.6	57.6



#64
 Phenanthrene-d10
 Concen: 20.000 ng
 RT: 11.410 min Scan# 1567
 Delta R.T. -0.006 min
 Lab File: BF143793.D
 Acq: 23 Sep 2025 11:57

Tgt Ion	Resp	Lower	Upper
188	375125		
94	9.9	8.2	12.2
80	10.5	8.6	12.8



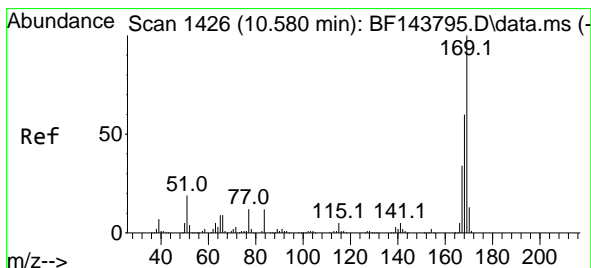
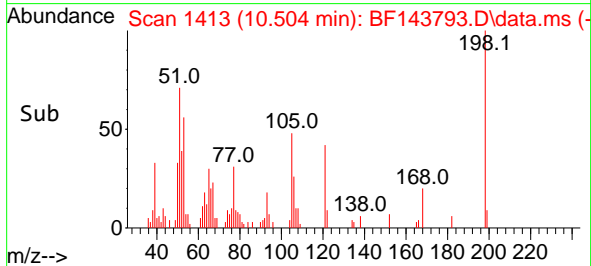
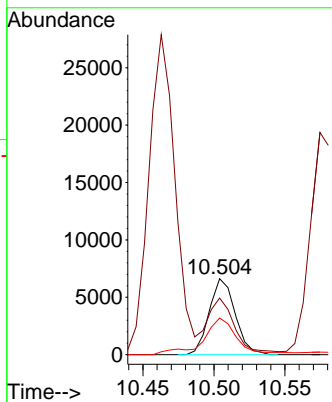
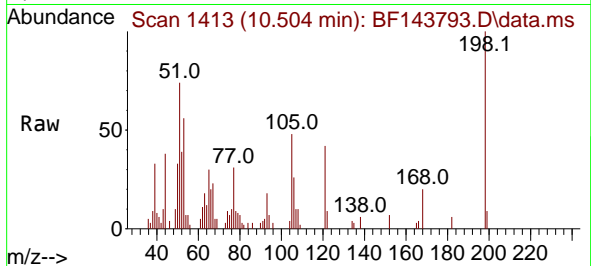


#65
 4,6-Dinitro-2-methylphenol
 Concen: 10.867 ng
 RT: 10.504 min Scan# 1413
 Delta R.T. -0.012 min
 Lab File: BF143793.D
 Acq: 23 Sep 2025 11:57

Instrument :
 BNA_F
 ClientSampleId :
 SSTDICC010

Tgt Ion:198 Resp: 8417

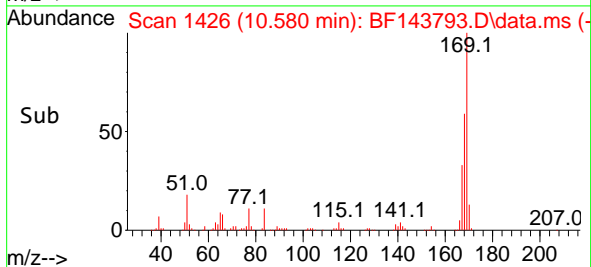
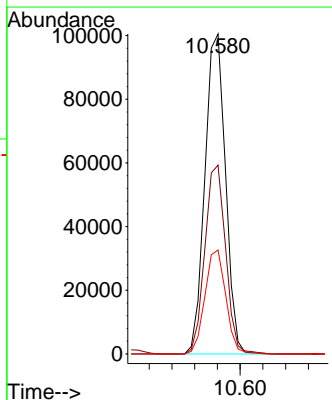
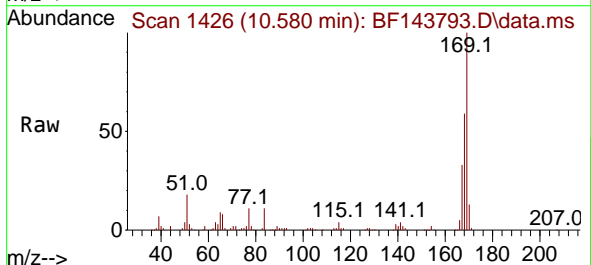
Ion	Ratio	Lower	Upper
198	100		
51	74.4	52.0	92.0
105	48.2	27.5	67.5

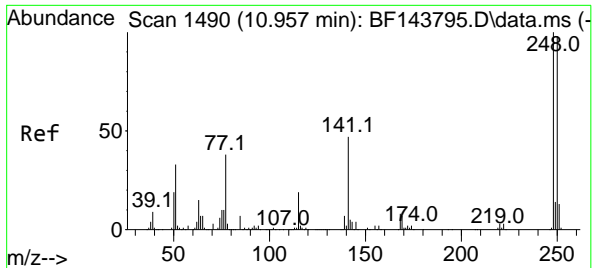


#66
 n-Nitrosodiphenylamine
 Concen: 10.261 ng
 RT: 10.580 min Scan# 1426
 Delta R.T. -0.006 min
 Lab File: BF143793.D
 Acq: 23 Sep 2025 11:57

Tgt Ion:169 Resp: 126584

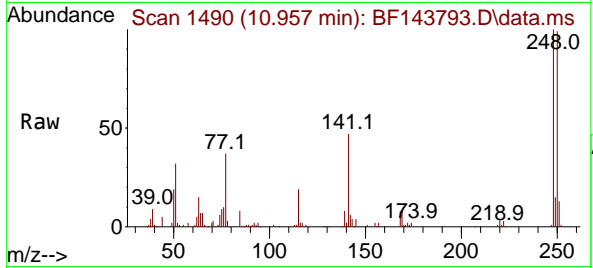
Ion	Ratio	Lower	Upper
169	100		
168	59.0	47.9	71.9
167	32.5	27.0	40.6





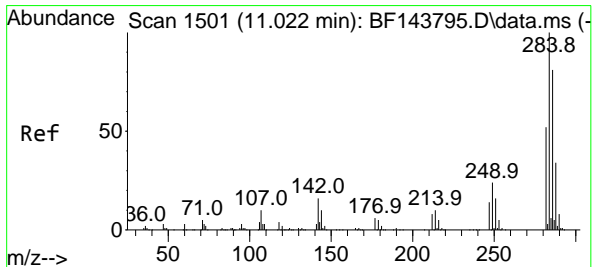
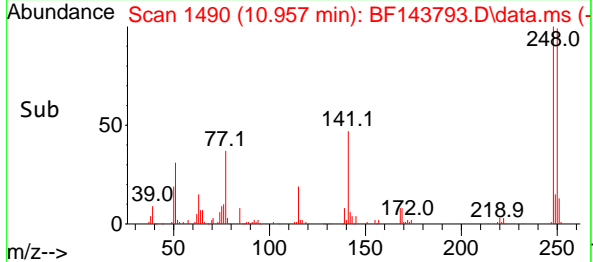
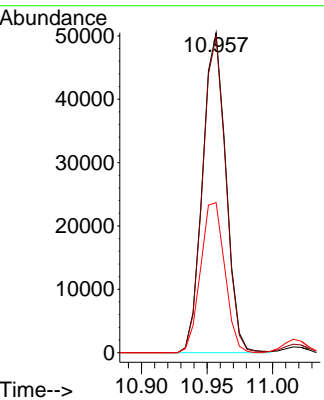
#67
 4-Bromophenyl-phenylether
 Concen: 9.784 ng
 RT: 10.957 min Scan# 14
 Delta R.T. 0.000 min
 Lab File: BF143793.D
 Acq: 23 Sep 2025 11:57

Instrument :
 BNA_F
 ClientSampleId :
 SSTDICC010



Tgt Ion:248 Resp: 62547

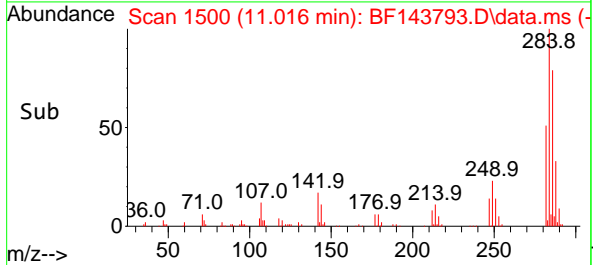
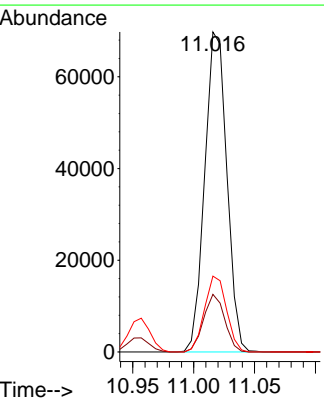
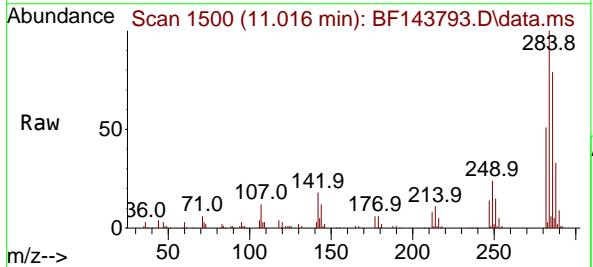
Ion	Ratio	Lower	Upper
248	100		
250	98.9	78.7	118.1
141	46.9	37.9	56.9

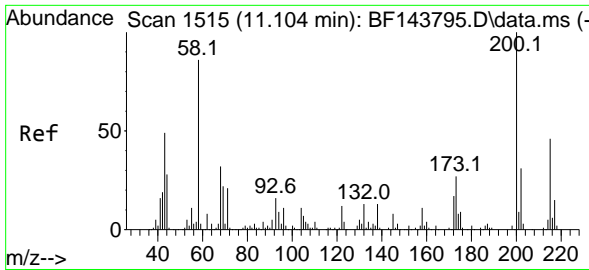


#68
 Hexachlorobenzene
 Concen: 10.009 ng
 RT: 11.016 min Scan# 1500
 Delta R.T. -0.006 min
 Lab File: BF143793.D
 Acq: 23 Sep 2025 11:57

Tgt Ion:284 Resp: 88177

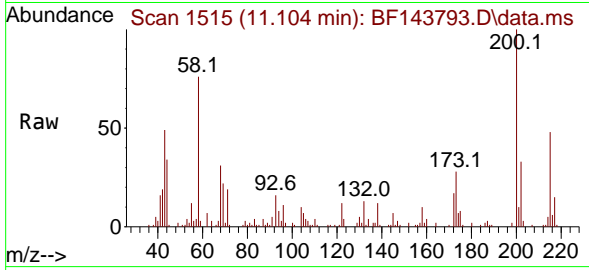
Ion	Ratio	Lower	Upper
284	100		
142	18.0	13.1	19.7
249	23.7	19.5	29.3



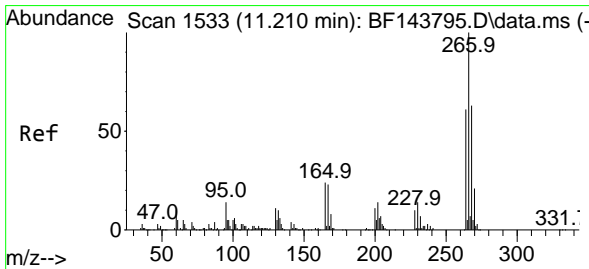
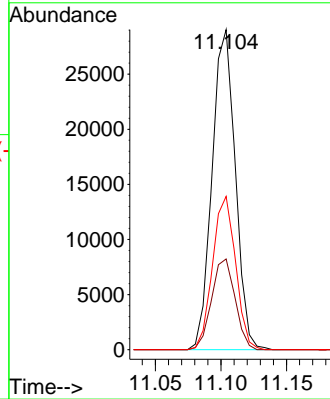
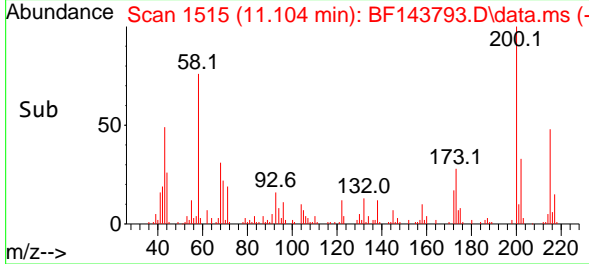


#69
 Atrazine
 Concen: 10.010 ng
 RT: 11.104 min Scan# 1111
 Delta R.T. -0.006 min
 Lab File: BF143793.D
 Acq: 23 Sep 2025 11:57

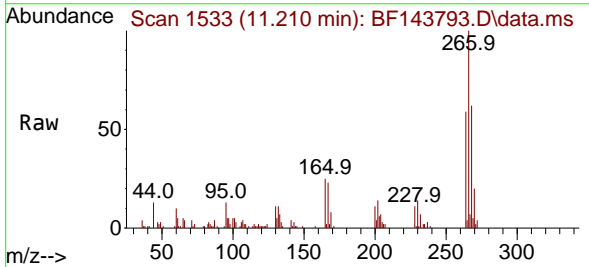
Instrument :
 BNA_F
 ClientSampleId :
 SSTDICC010



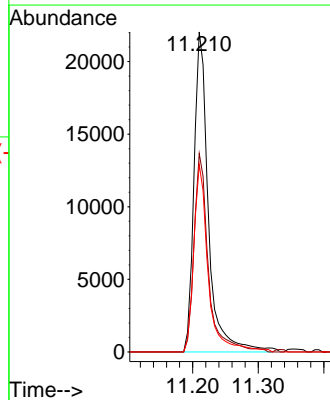
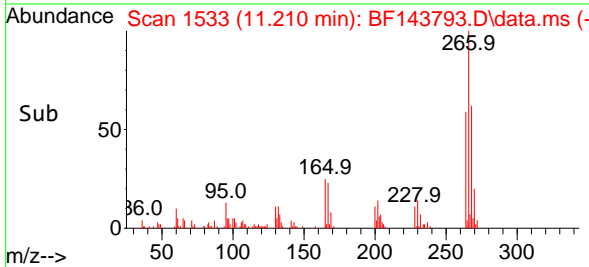
Tgt Ion:200 Resp: 35762
 Ion Ratio Lower Upper
 200 100
 173 28.3 7.2 47.2
 215 47.9 26.0 66.0

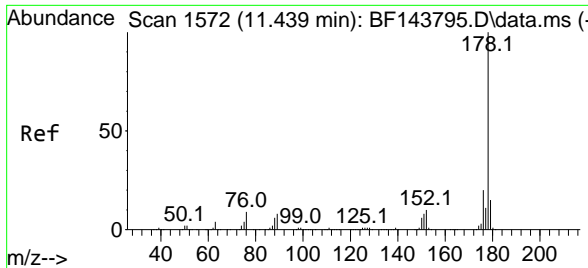


#70
 Pentachlorophenol
 Concen: 7.704 ng
 RT: 11.210 min Scan# 1533
 Delta R.T. -0.006 min
 Lab File: BF143793.D
 Acq: 23 Sep 2025 11:57



Tgt Ion:266 Resp: 33783
 Ion Ratio Lower Upper
 266 100
 268 62.0 50.5 75.7
 264 58.6 48.8 73.2



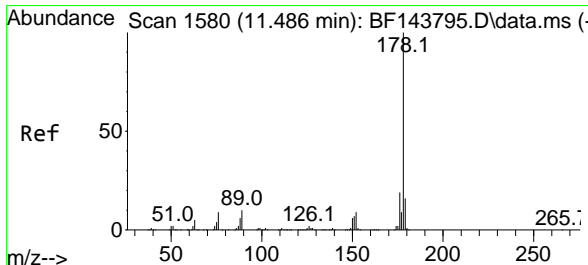
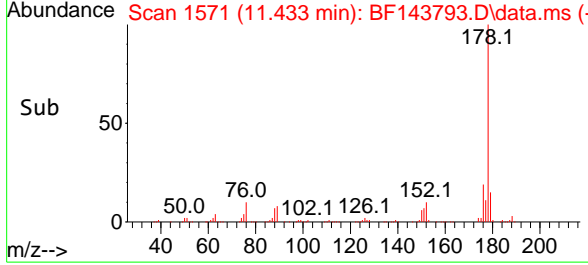
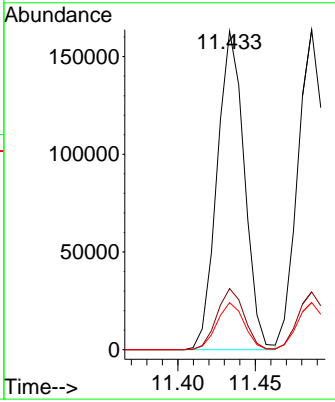
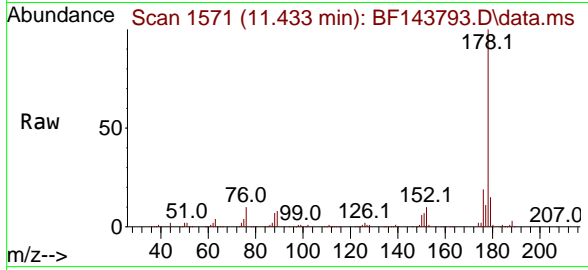


#71
 Phenanthrene
 Concen: 10.386 ng
 RT: 11.433 min Scan# 1571
 Delta R.T. -0.006 min
 Lab File: BF143793.D
 Acq: 23 Sep 2025 11:57

Instrument : BNA_F
 ClientSampleId : SSTDICC010

Tgt Ion:178 Resp: 200025

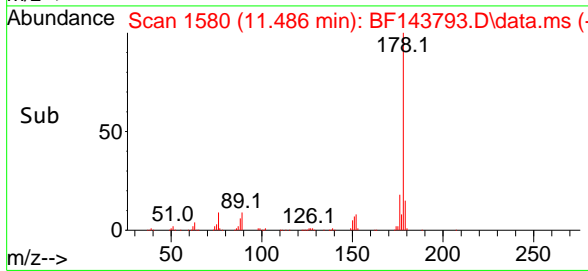
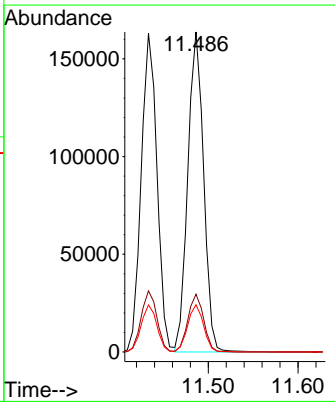
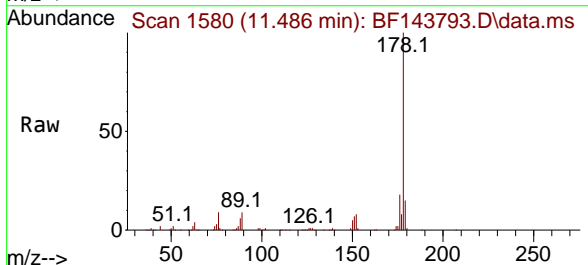
Ion	Ratio	Lower	Upper
178	100		
176	19.2	15.6	23.4
179	14.8	12.2	18.4

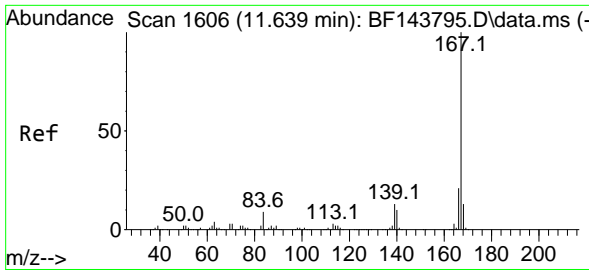


#72
 Anthracene
 Concen: 10.379 ng
 RT: 11.486 min Scan# 1580
 Delta R.T. -0.006 min
 Lab File: BF143793.D
 Acq: 23 Sep 2025 11:57

Tgt Ion:178 Resp: 200505

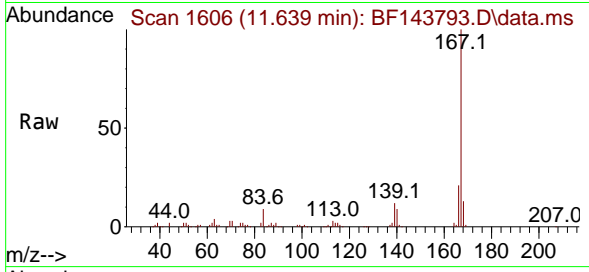
Ion	Ratio	Lower	Upper
178	100		
176	18.0	15.3	22.9
179	14.7	12.8	19.2



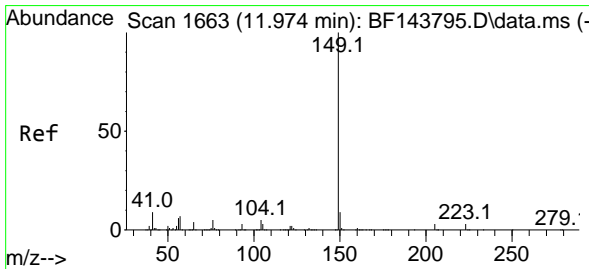
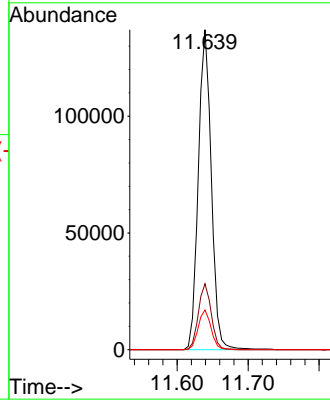
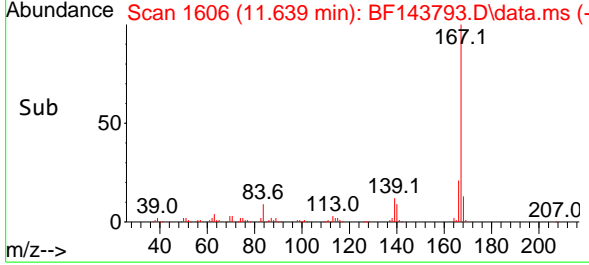


#73
 Carbazole
 Concen: 10.337 ng
 RT: 11.639 min Scan# 1606
 Delta R.T. -0.006 min
 Lab File: BF143793.D
 Acq: 23 Sep 2025 11:57

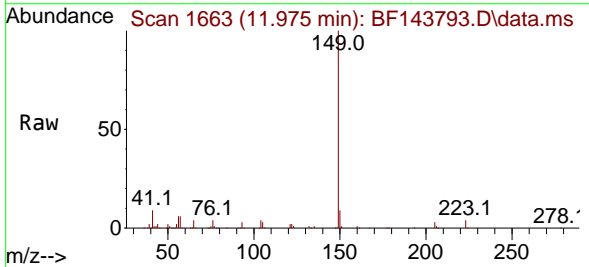
Instrument : BNA_F
 ClientSampleId : SSTDICC010



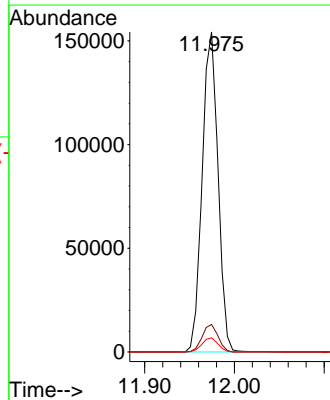
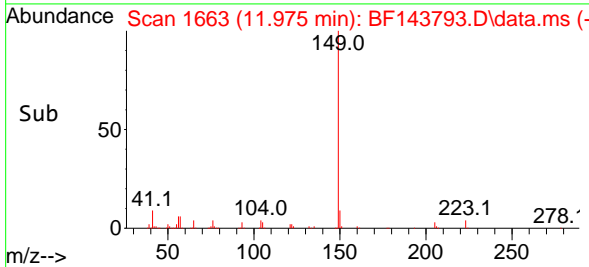
Tgt Ion:167 Resp: 174601
 Ion Ratio Lower Upper
 167 100
 166 20.6 17.0 25.4
 139 12.4 10.6 15.8

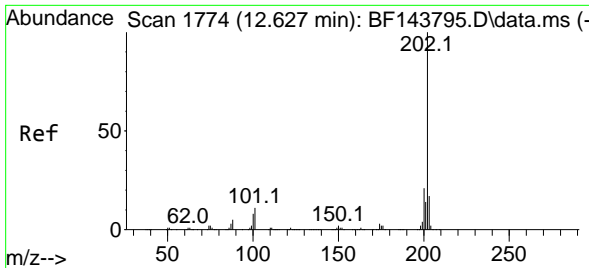


#74
 Di-n-butylphthalate
 Concen: 9.736 ng
 RT: 11.975 min Scan# 1663
 Delta R.T. 0.000 min
 Lab File: BF143793.D
 Acq: 23 Sep 2025 11:57



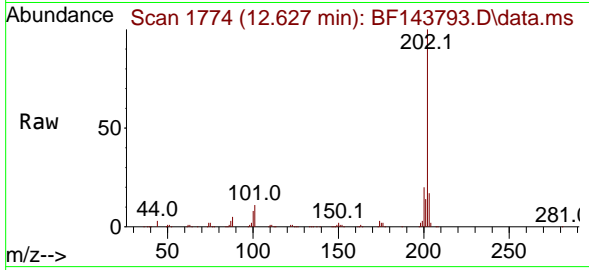
Tgt Ion:149 Resp: 189120
 Ion Ratio Lower Upper
 149 100
 150 8.6 7.3 10.9
 104 4.4 3.6 5.4





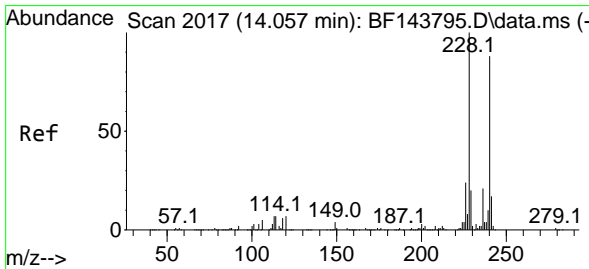
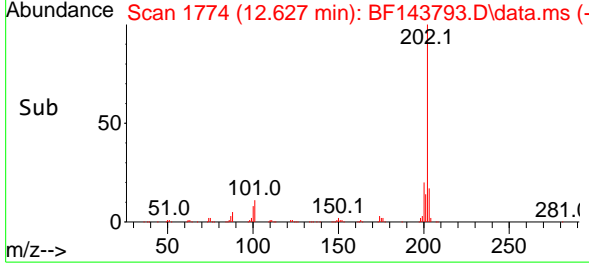
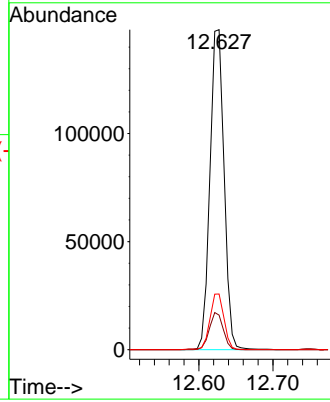
#75
 Fluoranthene
 Concen: 10.129 ng
 RT: 12.627 min Scan# 1774
 Delta R.T. 0.000 min
 Lab File: BF143793.D
 Acq: 23 Sep 2025 11:57

Instrument : BNA_F
 ClientSampleId : SSTDICC010

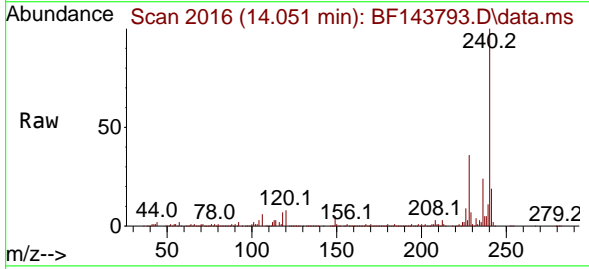


Tgt Ion:202 Resp: 196207

Ion	Ratio	Lower	Upper
202	100		
101	10.8	0.0	31.1
203	17.4	0.0	37.4

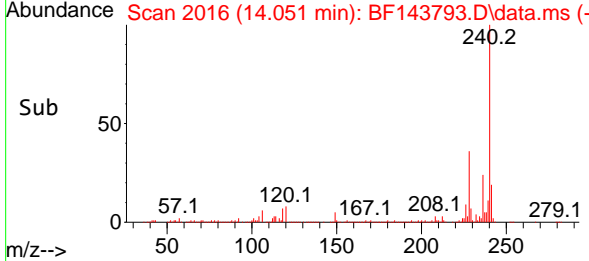
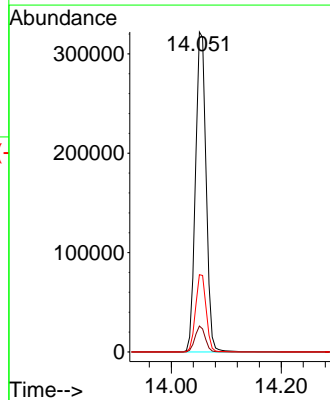


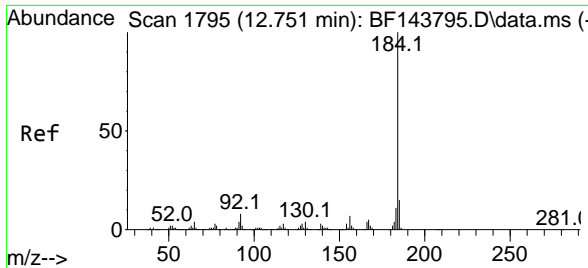
#76
 Chrysene-d12
 Concen: 20.000 ng
 RT: 14.051 min Scan# 2016
 Delta R.T. -0.012 min
 Lab File: BF143793.D
 Acq: 23 Sep 2025 11:57



Tgt Ion:240 Resp: 430577

Ion	Ratio	Lower	Upper
240	100		
120	8.1	6.2	9.4
236	24.2	19.4	29.2



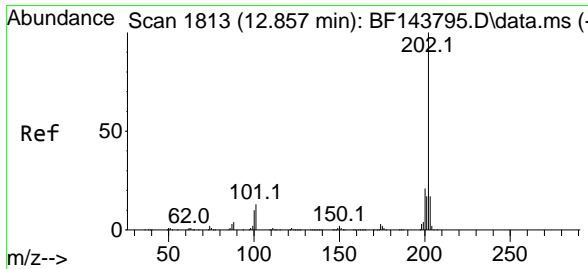
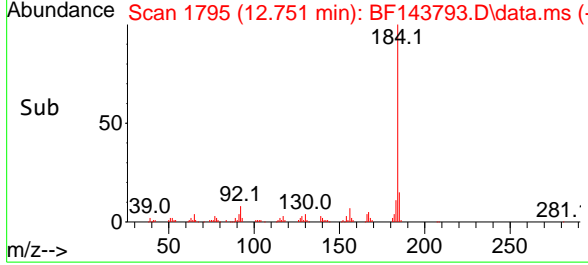
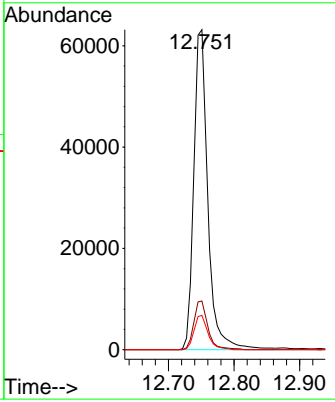
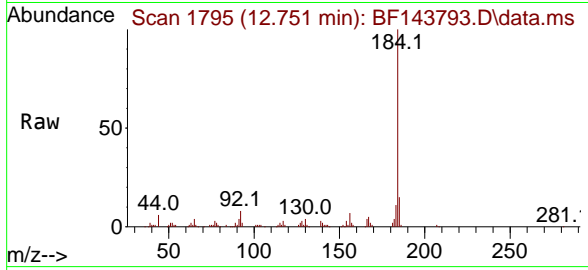


#77
 Benzidine
 Concen: 8.997 ng
 RT: 12.751 min Scan# 11
 Delta R.T. 0.000 min
 Lab File: BF143793.D
 Acq: 23 Sep 2025 11:57

Instrument : BNA_F
 ClientSampleId : SSTDICC010

Tgt Ion:184 Resp: 94401

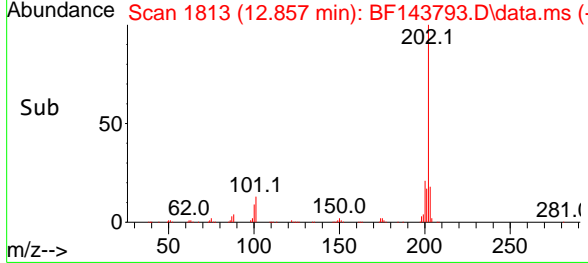
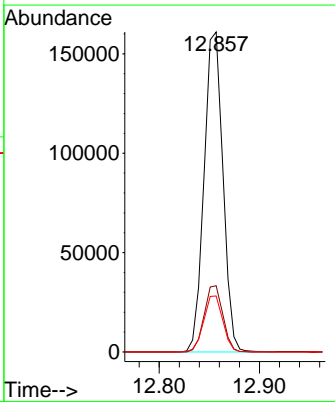
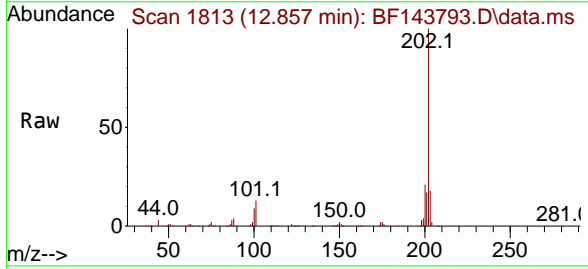
Ion	Ratio	Lower	Upper
184	100		
185	15.2	11.6	17.4
183	10.7	8.6	13.0

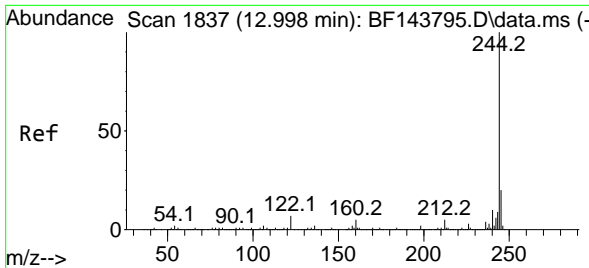


#78
 Pyrene
 Concen: 9.983 ng
 RT: 12.857 min Scan# 1813
 Delta R.T. 0.000 min
 Lab File: BF143793.D
 Acq: 23 Sep 2025 11:57

Tgt Ion:202 Resp: 211336

Ion	Ratio	Lower	Upper
202	100		
200	20.7	17.0	25.4
203	17.5	13.9	20.9





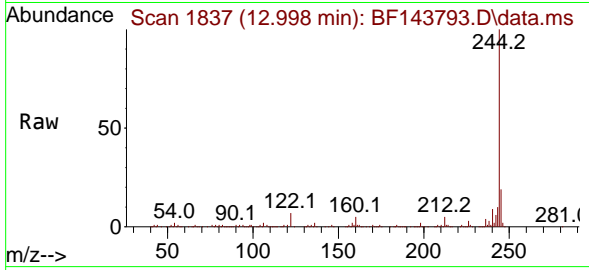
#79
 Terphenyl-d14
 Concen: 20.493 ng
 RT: 12.998 min Scan# 11
 Delta R.T. -0.006 min
 Lab File: BF143793.D
 Acq: 23 Sep 2025 11:57

Instrument :

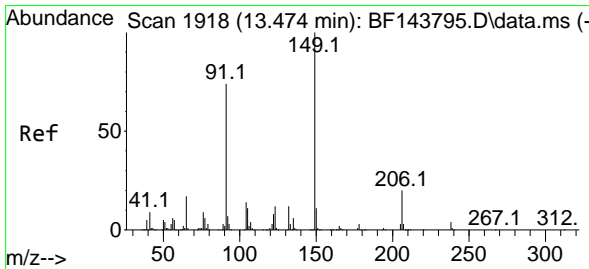
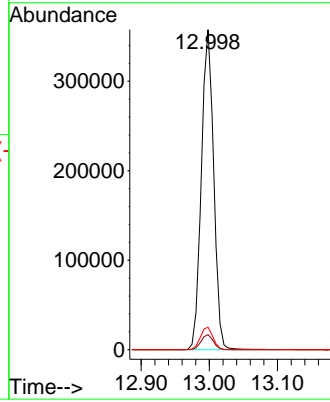
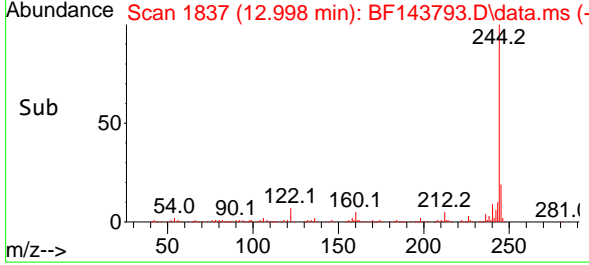
BNA_F

ClientSampleId :

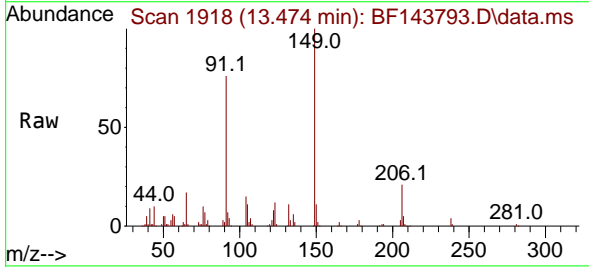
SSTDICC010



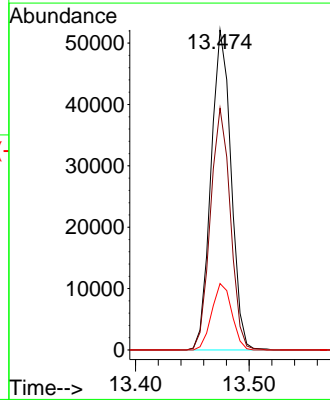
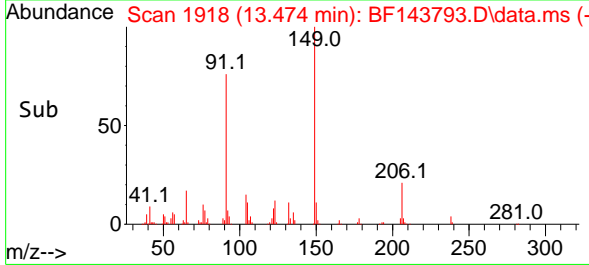
Tgt Ion:244 Resp: 449442
 Ion Ratio Lower Upper
 244 100
 212 4.7 3.9 5.9
 122 7.0 5.6 8.4

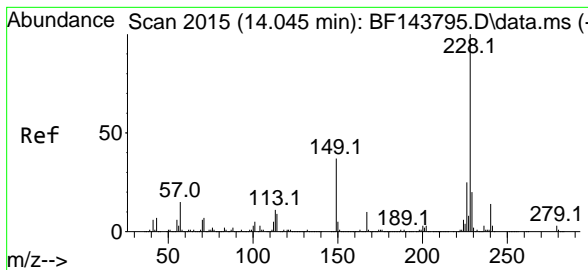


#80
 Butylbenzylphthalate
 Concen: 8.751 ng
 RT: 13.474 min Scan# 1918
 Delta R.T. -0.006 min
 Lab File: BF143793.D
 Acq: 23 Sep 2025 11:57



Tgt Ion:149 Resp: 64090
 Ion Ratio Lower Upper
 149 100
 91 75.5 59.5 89.3
 206 20.8 16.1 24.1





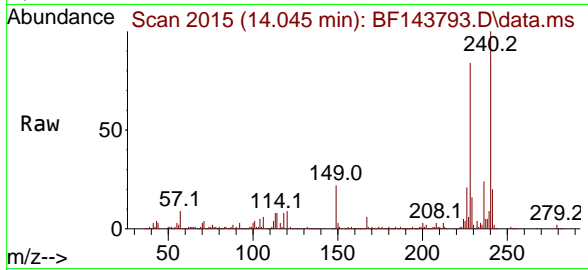
#81
 Benzo(a)anthracene
 Concen: 10.061 ng
 RT: 14.045 min Scan# 2015
 Delta R.T. -0.006 min
 Lab File: BF143793.D
 Acq: 23 Sep 2025 11:57

Instrument :

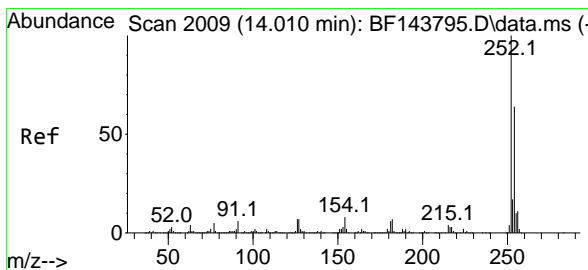
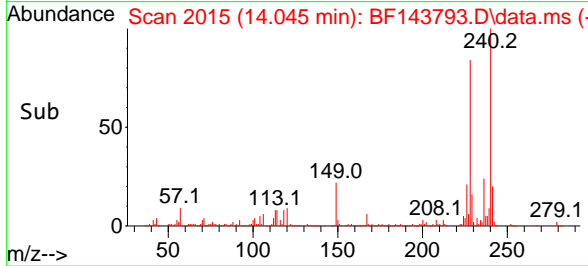
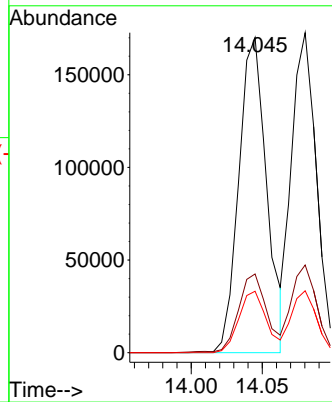
BNA_F

ClientSampleId :

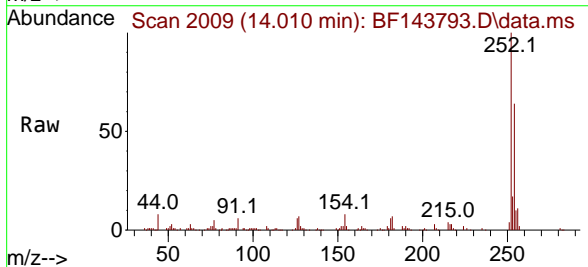
SSTDICC010



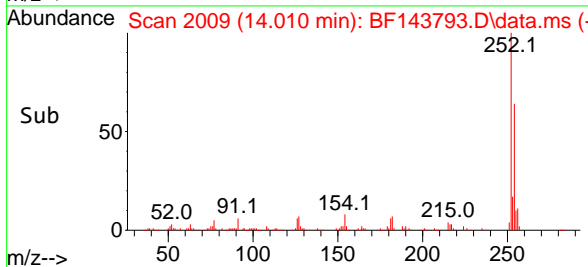
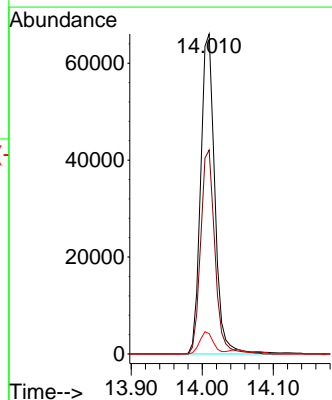
Tgt Ion:228 Resp: 232722
 Ion Ratio Lower Upper
 228 100
 226 25.0 20.2 30.2
 229 19.5 16.1 24.1

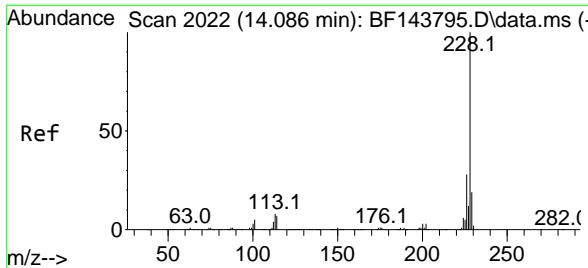


#82
 3,3'-Dichlorobenzidine
 Concen: 9.160 ng
 RT: 14.010 min Scan# 2009
 Delta R.T. 0.000 min
 Lab File: BF143793.D
 Acq: 23 Sep 2025 11:57



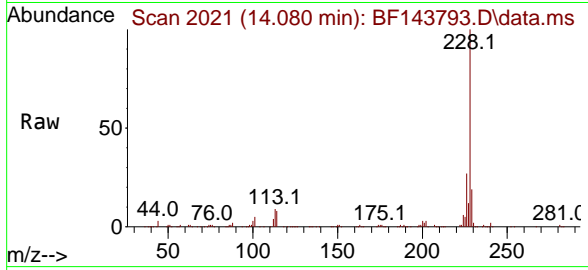
Tgt Ion:252 Resp: 91789
 Ion Ratio Lower Upper
 252 100
 254 63.8 51.5 77.3
 126 6.4 5.4 8.2





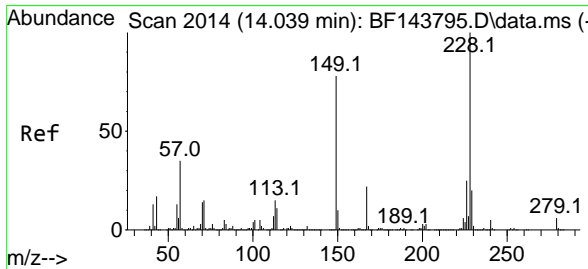
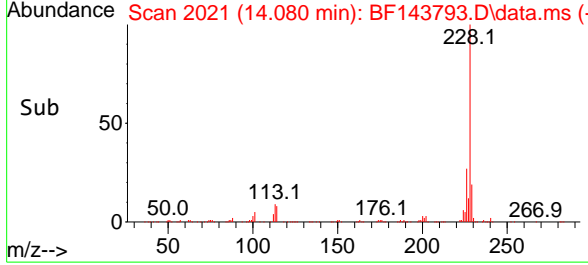
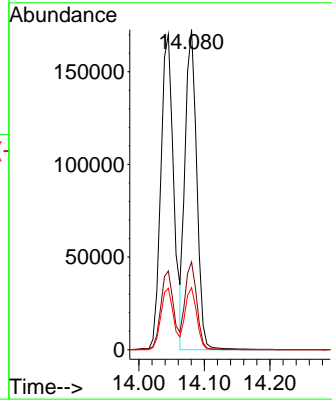
#83
 Chrysene
 Concen: 10.133 ng
 RT: 14.080 min Scan# 2013
 Delta R.T. -0.006 min
 Lab File: BF143793.D
 Acq: 23 Sep 2025 11:57

Instrument : BNA_F
 ClientSampleId : SSTDICC010



Tgt Ion:228 Resp: 212098

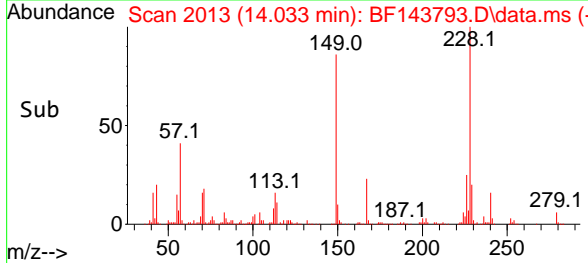
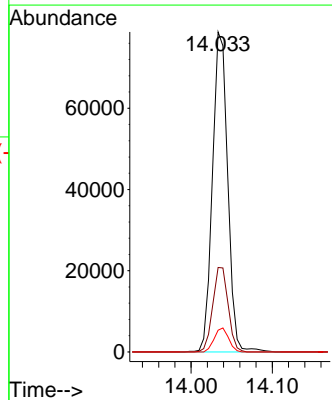
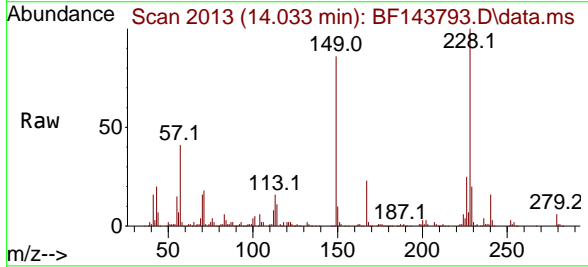
Ion	Ratio	Lower	Upper
228	100		
226	27.4	22.6	33.8
229	19.4	15.6	23.4

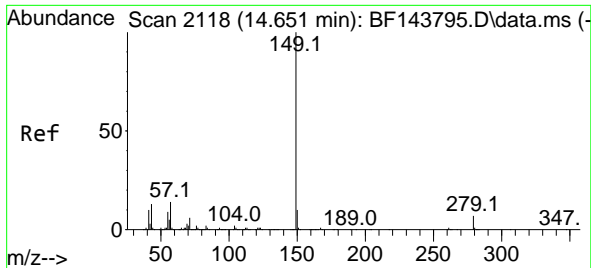


#84
 Bis(2-ethylhexyl)phthalate
 Concen: 9.557 ng
 RT: 14.033 min Scan# 2013
 Delta R.T. -0.006 min
 Lab File: BF143793.D
 Acq: 23 Sep 2025 11:57

Tgt Ion:149 Resp: 102600

Ion	Ratio	Lower	Upper
149	100		
167	26.4	22.2	33.2
279	6.8	6.0	9.0

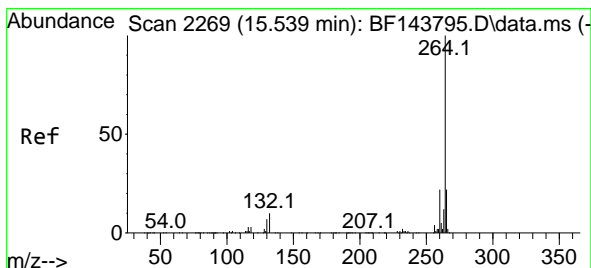
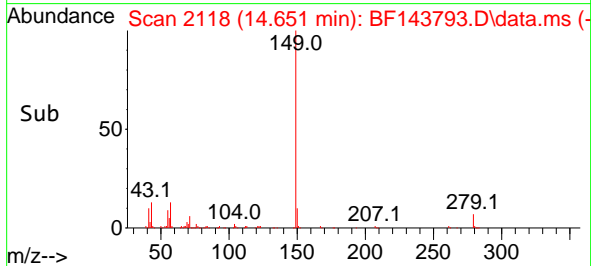
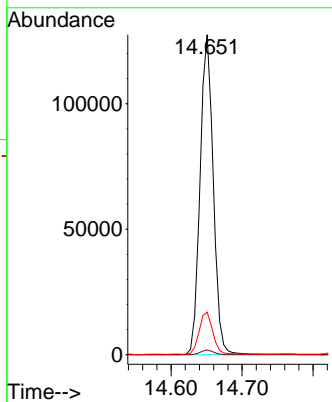
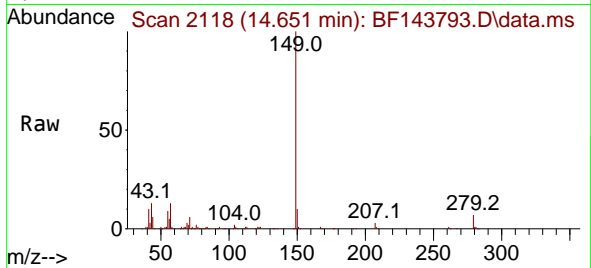




#85
 Di-n-octyl phthalate
 Concen: 8.482 ng
 RT: 14.651 min Scan# 2118
 Delta R.T. -0.006 min
 Lab File: BF143793.D
 Acq: 23 Sep 2025 11:57

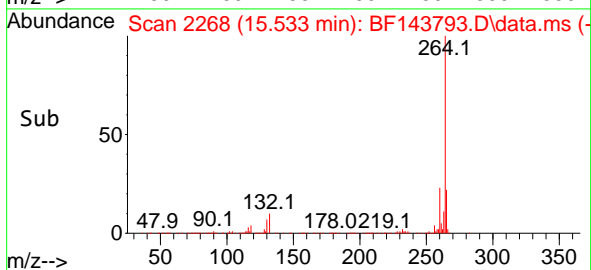
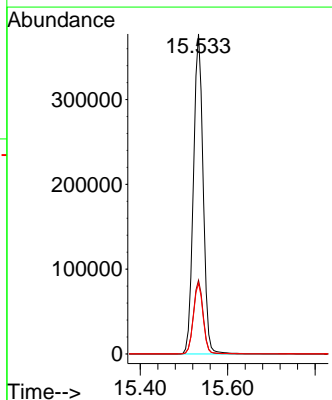
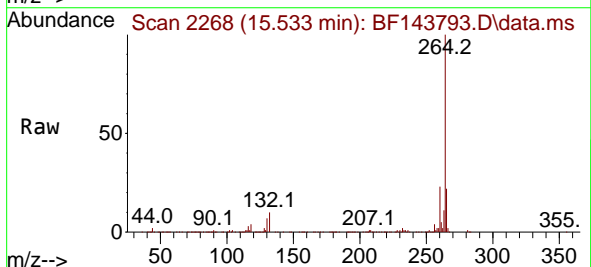
Instrument : BNA_F
 Client Sample Id : BF143793.D
 SSTDICC010

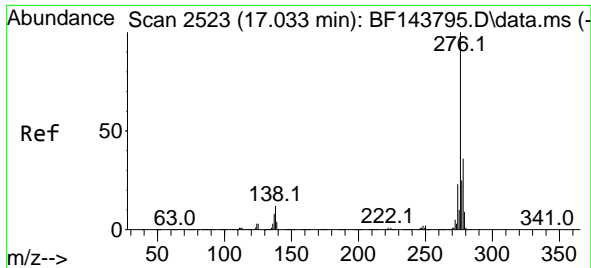
Tgt Ion: 149 Resp: 165178
 Ion Ratio Lower Upper
 149 100
 167 1.4 1.1 1.7
 43 13.7 10.7 16.1



#86
 Perylene-d12
 Concen: 20.000 ng
 RT: 15.533 min Scan# 2268
 Delta R.T. -0.006 min
 Lab File: BF143793.D
 Acq: 23 Sep 2025 11:57

Tgt Ion: 264 Resp: 582350
 Ion Ratio Lower Upper
 264 100
 260 23.0 17.9 26.9
 265 22.1 17.7 26.5





#87
 Indeno(1,2,3-cd)pyrene
 Concen: 9.400 ng
 RT: 17.021 min Scan# 2194
 Delta R.T. -0.023 min
 Lab File: BF143793.D
 Acq: 23 Sep 2025 11:57

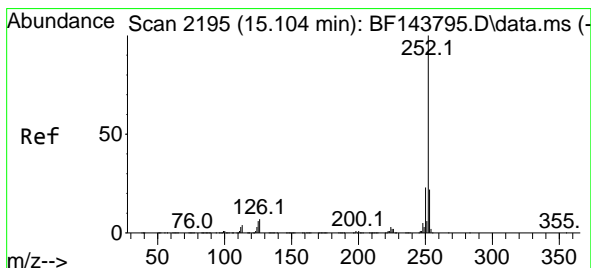
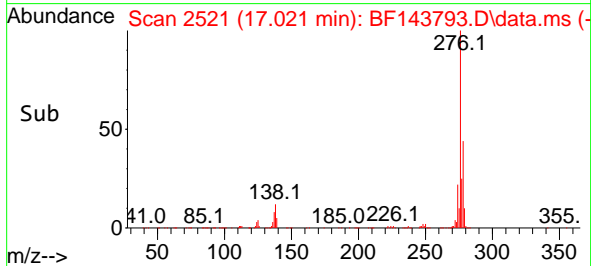
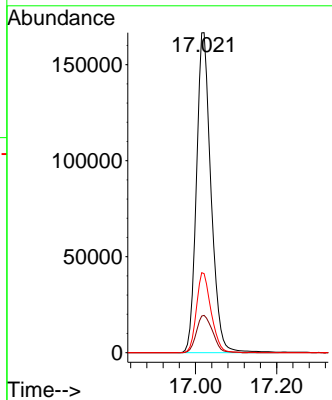
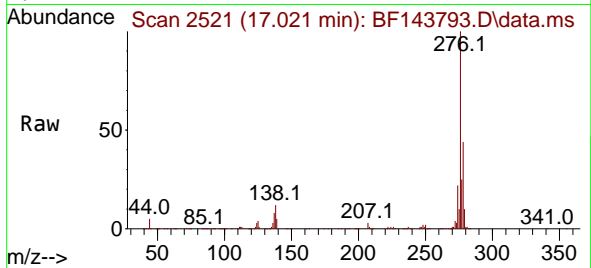
Instrument :

BNA_F

ClientSampleId :

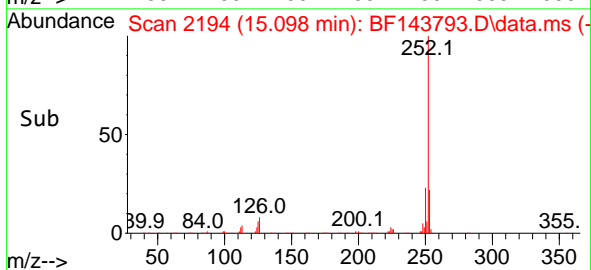
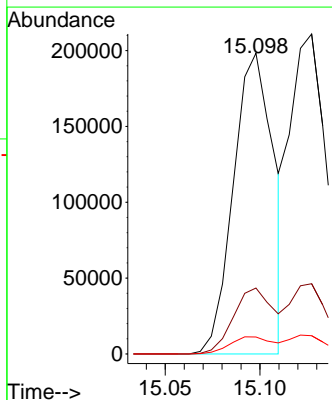
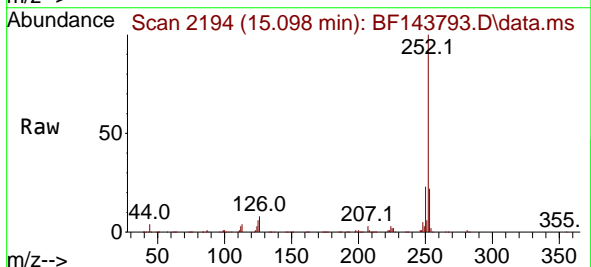
SSTDICC010

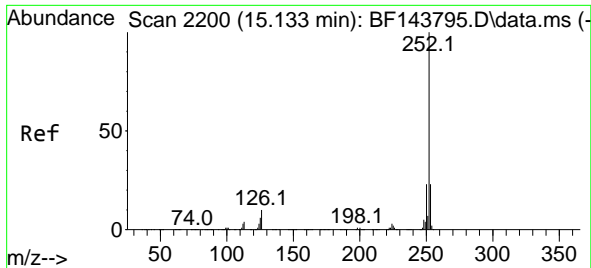
Tgt Ion:276 Resp: 415337
 Ion Ratio Lower Upper
 276 100
 138 13.0 10.6 15.8
 277 25.1 20.7 31.1



#88
 Benzo(b)fluoranthene
 Concen: 9.857 ng
 RT: 15.098 min Scan# 2194
 Delta R.T. -0.006 min
 Lab File: BF143793.D
 Acq: 23 Sep 2025 11:57

Tgt Ion:252 Resp: 292308
 Ion Ratio Lower Upper
 252 100
 253 21.9 17.8 26.8
 125 5.7 4.4 6.6

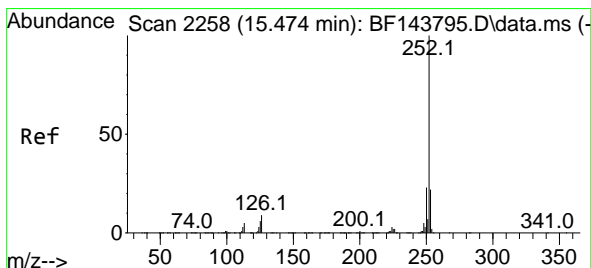
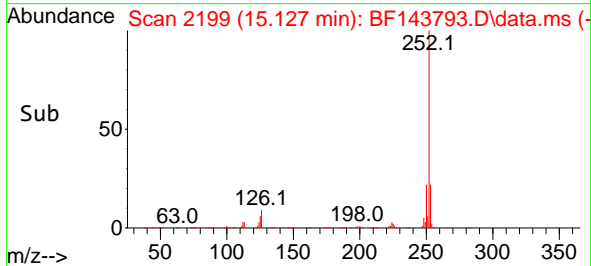
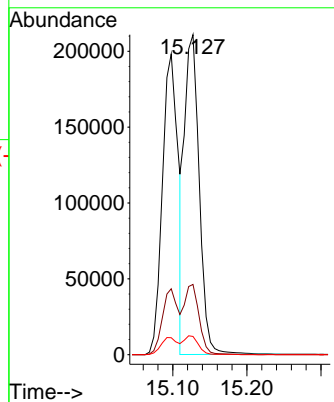
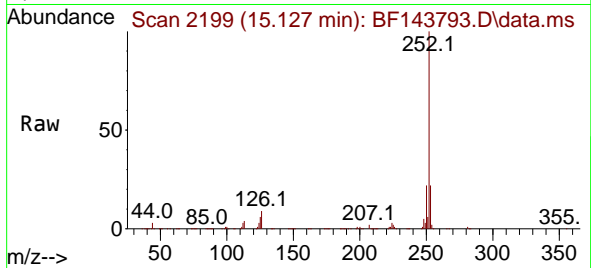




#89
 Benzo(k)fluoranthene
 Concen: 9.808 ng
 RT: 15.127 min Scan# 2119
 Delta R.T. -0.012 min
 Lab File: BF143793.D
 Acq: 23 Sep 2025 11:57

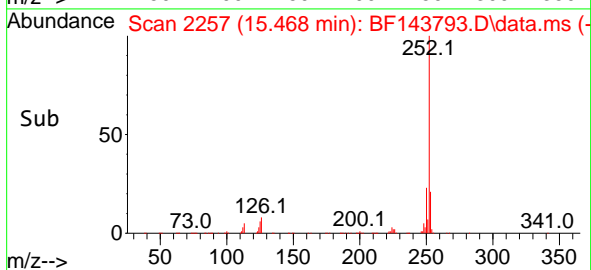
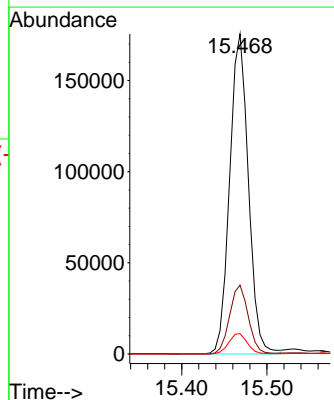
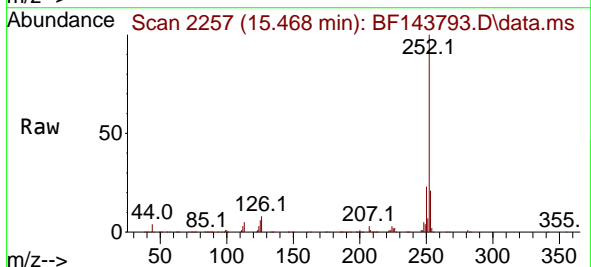
Instrument :
 BNA_F
 ClientSampleId :
 SSTDICC010

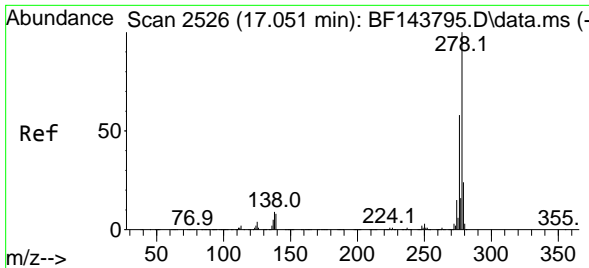
Tgt Ion:252 Resp: 292238
 Ion Ratio Lower Upper
 252 100
 253 21.9 17.9 26.9
 125 5.7 4.6 6.8



#90
 Benzo(a)pyrene
 Concen: 9.606 ng
 RT: 15.468 min Scan# 2257
 Delta R.T. -0.012 min
 Lab File: BF143793.D
 Acq: 23 Sep 2025 11:57

Tgt Ion:252 Resp: 267775
 Ion Ratio Lower Upper
 252 100
 253 21.5 17.6 26.4
 125 6.3 5.0 7.4





#91
 Dibenzo(a,h)anthracene
 Concen: 9.564 ng
 RT: 17.039 min Scan# 21
 Delta R.T. -0.029 min
 Lab File: BF143793.D
 Acq: 23 Sep 2025 11:57

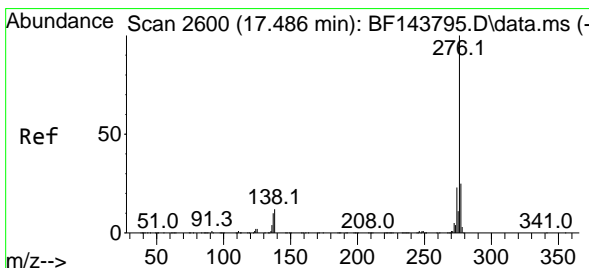
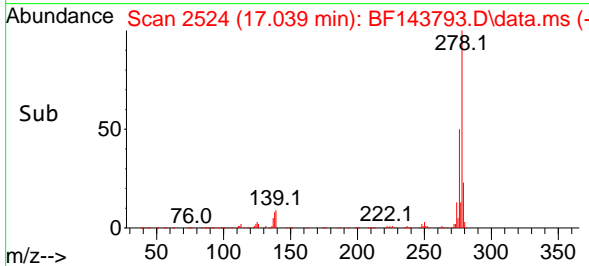
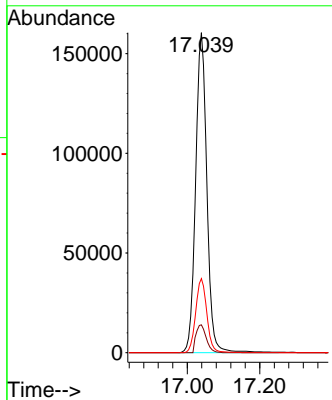
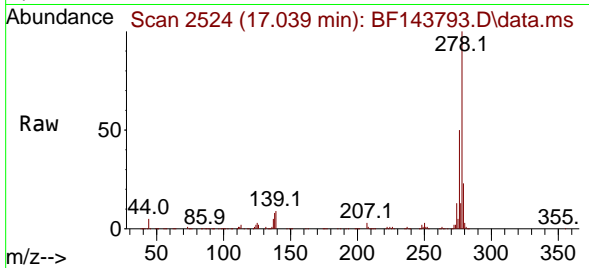
Instrument :

BNA_F

ClientSampleId :

SSTDICC010

Tgt Ion:278 Resp: 345636
 Ion Ratio Lower Upper
 278 100
 139 8.7 6.7 10.1
 279 23.2 19.3 28.9



#92
 Benzo(g,h,i)perylene
 Concen: 9.329 ng
 RT: 17.468 min Scan# 2597
 Delta R.T. -0.035 min
 Lab File: BF143793.D
 Acq: 23 Sep 2025 11:57

Tgt Ion:276 Resp: 324982
 Ion Ratio Lower Upper
 276 100
 277 24.2 19.6 29.4
 138 11.1 9.2 13.8

