

Data Path : Z:\svoasrv\HPCHEM1\BNA_F\Data\BF092325\
 Data File : BF143794.D
 Acq On : 23 Sep 2025 12:27
 Operator : RC/JU
 Sample : SSTDICC020
 Misc :
 ALS Vial : 5 Sample Multiplier: 1

Instrument :
 BNA_F
 ClientSampleId :
 SSTDICC020

Quant Time: Sep 23 17:06:28 2025
 Quant Method : Z:\svoasrv\HPCHEM1\BNA_F\Methods\8270-BF092325.M
 Quant Title : ASP BNA STANDARDS FOR 5 POINT CALIBRATION
 QLast Update : Tue Sep 23 16:31:21 2025
 Response via : Initial Calibration

Compound	R.T.	QIon	Response	Conc	Units	Dev(Min)
Internal Standards						
1) 1,4-Dichlorobenzene-d4	6.887	152	123560	20.000	ng	0.00
21) Naphthalene-d8	8.169	136	446120	20.000	ng	0.00
39) Acenaphthene-d10	9.922	164	213356	20.000	ng	0.00
64) Phenanthrene-d10	11.410	188	331910	20.000	ng	0.00
76) Chrysene-d12	14.057	240	394143	20.000	ng	0.00
86) Perylene-d12	15.533	264	545751	20.000	ng	0.00
System Monitoring Compounds						
5) 2-Fluorophenol	5.487	112	327687	42.681	ng	-0.01
7) Phenol-d6	6.498	99	377986	41.720	ng	-0.01
23) Nitrobenzene-d5	7.445	82	302138	42.621	ng	0.00
42) 2,4,6-Tribromophenol	10.710	330	138317	45.426	ng	0.00
45) 2-Fluorobiphenyl	9.239	172	622849	43.140	ng	0.00
79) Terphenyl-d14	12.998	244	798420	39.771	ng	0.00
Target Compounds						
2) 1,4-Dioxane	2.628	88	73941	20.313	ng	99
3) Pyridine	3.399	79	200605	20.416	ng	98
4) n-Nitrosodimethylamine	3.328	42	100296	20.357	ng	98
6) Aniline	6.545	93	266602	20.904	ng	99
8) 2-Chlorophenol	6.663	128	164198	21.090	ng	98
9) Benzaldehyde	6.434	77	117654	15.290	ng	99
10) Phenol	6.510	94	231989	22.713	ng	99
11) bis(2-Chloroethyl)ether	6.616	93	166393	20.783	ng	99
12) 1,3-Dichlorobenzene	6.828	146	192258	21.268	ng	99
13) 1,4-Dichlorobenzene	6.904	146	191454	21.223	ng	100
14) 1,2-Dichlorobenzene	7.057	146	181008	21.185	ng	99
15) Benzyl Alcohol	7.016	79	132713	20.902	ng	99
16) 2,2'-oxybis(1-Chloropr...	7.157	45	398403	20.985	ng	100
17) 2-Methylphenol	7.128	107	124617	20.674	ng	99
18) Hexachloroethane	7.398	117	67048	21.134	ng	98
19) n-Nitroso-di-n-propyla...	7.287	70	114449	20.254	ng	100
20) 3+4-Methylphenols	7.281	107	155211	21.145	ng	# 86
22) Acetophenone	7.293	105	208896	21.319	ng	97
24) Nitrobenzene	7.463	77	164815	20.402	ng	97
25) Isophorone	7.698	82	289674	20.396	ng	99
26) 2-Nitrophenol	7.781	139	55948	18.629	ng	97
27) 2,4-Dimethylphenol	7.810	122	129731	20.437	ng	99
28) bis(2-Chloroethoxy)met...	7.910	93	191947	20.802	ng	100
29) 2,4-Dichlorophenol	8.016	162	128651	20.597	ng	98
30) 1,2,4-Trichlorobenzene	8.110	180	135810	20.952	ng	99
31) Naphthalene	8.187	128	455060	21.308	ng	100
32) Benzoic acid	7.875	122	40592	13.254	ng	97
33) 4-Chloroaniline	8.234	127	157439	20.978	ng	99
34) Hexachlorobutadiene	8.310	225	99520	20.595	ng	99
35) Caprolactam	8.575	113	30948	19.385	ng	95
36) 4-Chloro-3-methylphenol	8.704	107	121067	20.667	ng	97
37) 2-Methylnaphthalene	8.881	142	286790	21.060	ng	98
38) 1-Methylnaphthalene	8.981	142	272276	20.889	ng	99
40) 1,2,4,5-Tetrachloroben...	9.045	216	135689	21.074	ng	99
41) Hexachlorocyclopentadiene	9.034	237	79092	19.382	ng	99
43) 2,4,6-Trichlorophenol	9.151	196	82341	20.423	ng	98

Data Path : Z:\svoasrv\HPCHEM1\BNA_F\Data\BF092325\
 Data File : BF143794.D
 Acq On : 23 Sep 2025 12:27
 Operator : RC/JU
 Sample : SSTDICC020
 Misc :
 ALS Vial : 5 Sample Multiplier: 1

Instrument :
 BNA_F
 ClientSampleId :
 SSTDICC020

Quant Time: Sep 23 17:06:28 2025
 Quant Method : Z:\svoasrv\HPCHEM1\BNA_F\Methods\8270-BF092325.M
 Quant Title : ASP BNA STANDARDS FOR 5 POINT CALIBRATION
 QLast Update : Tue Sep 23 16:31:21 2025
 Response via : Initial Calibration

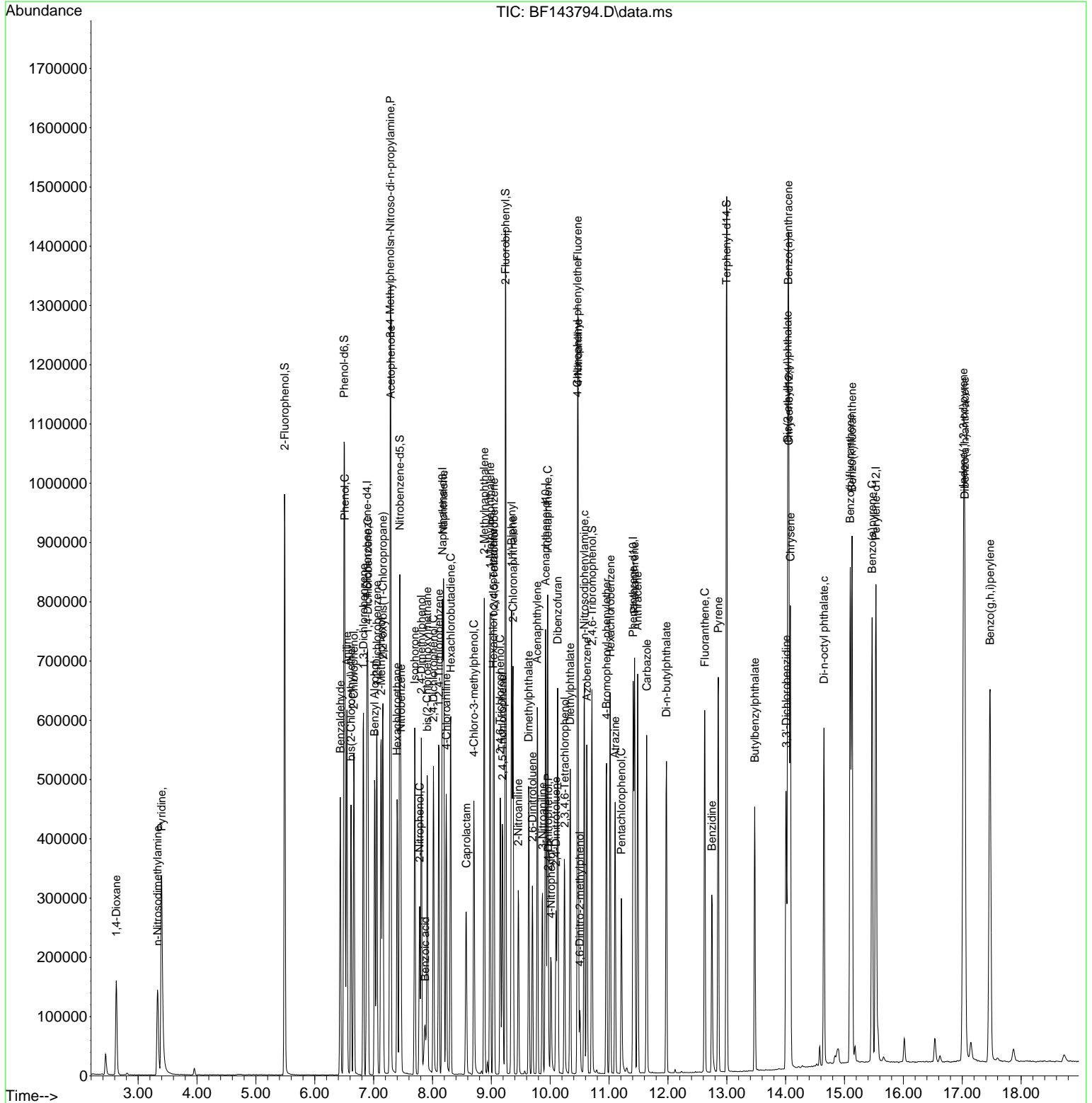
Compound	R.T.	QIon	Response	Conc	Units	Dev(Min)
44) 2,4,5-Trichlorophenol	9.187	196	89458	21.213	ng	97
46) 1,1'-Biphenyl	9.345	154	333743	21.610	ng	98
47) 2-Chloronaphthalene	9.369	162	265169	21.330	ng	99
48) 2-Nitroaniline	9.457	65	75737	20.157	ng	95
49) Acenaphthylene	9.781	152	362739	21.195	ng	99
50) Dimethylphthalate	9.634	163	267211	20.548	ng	99
51) 2,6-Dinitrotoluene	9.698	165	42291	19.794	ng	93
52) Acenaphthene	9.957	154	239533	21.268	ng	99
53) 3-Nitroaniline	9.869	138	52183	20.150	ng	96
54) 2,4-Dinitrophenol	9.969	184	8519	16.759	ng #	1
55) Dibenzofuran	10.128	168	339308	21.305	ng	99
56) 4-Nitrophenol	10.016	139	36150	17.322	ng	98
57) 2,4-Dinitrotoluene	10.098	165	54137	18.952	ng	93
58) Fluorene	10.469	166	253897	21.445	ng	99
59) 2,3,4,6-Tetrachlorophenol	10.245	232	74485	20.618	ng #	98
60) Diethylphthalate	10.339	149	250459	20.575	ng	99
61) 4-Chlorophenyl-phenyle...	10.463	204	128143	21.242	ng	99
62) 4-Nitroaniline	10.475	138	48558	19.941	ng	98
63) Azobenzene	10.622	77	265823	20.720	ng	98
65) 4,6-Dinitro-2-methylph...	10.504	198	15499	17.632	ng	94
66) n-Nitrosodiphenylamine	10.581	169	228456	20.930	ng	99
67) 4-Bromophenyl-phenylether	10.957	248	115749	20.464	ng	99
68) Hexachlorobenzene	11.022	284	162113	20.797	ng	98
69) Atrazine	11.104	200	65580	20.747	ng	98
70) Pentachlorophenol	11.210	266	71585	18.449	ng	99
71) Phenanthrene	11.433	178	355364	20.854	ng	100
72) Anthracene	11.486	178	361245	21.135	ng	99
73) Carbazole	11.639	167	314908	21.072	ng	99
74) Di-n-butylphthalate	11.975	149	356883	20.764	ng	99
75) Fluoranthene	12.627	202	364772	21.284	ng	99
77) Benzidine	12.745	184	174994	18.220	ng	100
78) Pyrene	12.857	202	390517	20.153	ng	99
80) Butylbenzylphthalate	13.474	149	131846	19.666	ng	99
81) Benzo(a)anthracene	14.045	228	426715	20.153	ng	99
82) 3,3'-Dichlorobenzidine	14.010	252	183227	19.974	ng	100
83) Chrysene	14.080	228	392431	20.482	ng	99
84) Bis(2-ethylhexyl)phtha...	14.033	149	202632	20.620	ng	99
85) Di-n-octyl phthalate	14.651	149	345757	19.397	ng	100
87) Indeno(1,2,3-cd)pyrene	17.021	276	862284	20.824	ng	100
88) Benzo(b)fluoranthene	15.098	252	561825	20.215	ng	99
89) Benzo(k)fluoranthene	15.127	252	589201	21.102	ng	99
90) Benzo(a)pyrene	15.468	252	539579	20.654	ng	100
91) Dibenzo(a,h)anthracene	17.045	278	710542	20.980	ng	99
92) Benzo(g,h,i)perylene	17.474	276	673228	20.621	ng	99

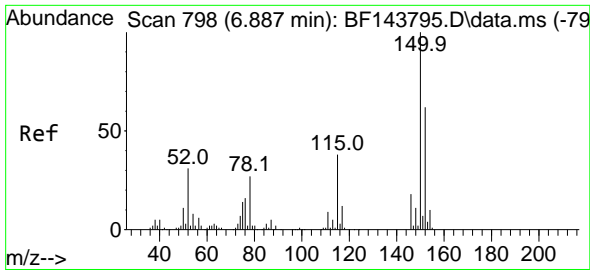
(#) = qualifier out of range (m) = manual integration (+) = signals summed

Data Path : Z:\svoasrv\HPCHEM1\BNA_F\Data\BF092325\
 Data File : BF143794.D
 Acq On : 23 Sep 2025 12:27
 Operator : RC/JU
 Sample : SSTDICC020
 Misc :
 ALS Vial : 5 Sample Multiplier: 1

Instrument :
 BNA_F
 ClientSampleId :
 SSTDICC020

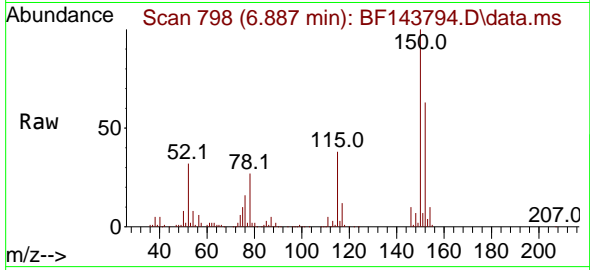
Quant Time: Sep 23 17:06:28 2025
 Quant Method : Z:\svoasrv\HPCHEM1\BNA_F\Methods\8270-BF092325.M
 Quant Title : ASP BNA STANDARDS FOR 5 POINT CALIBRATION
 QLast Update : Tue Sep 23 16:31:21 2025
 Response via : Initial Calibration



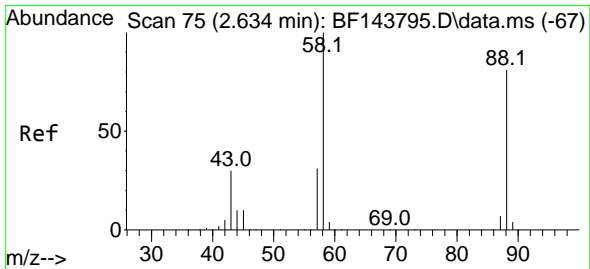
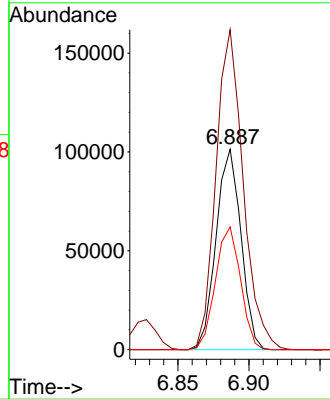
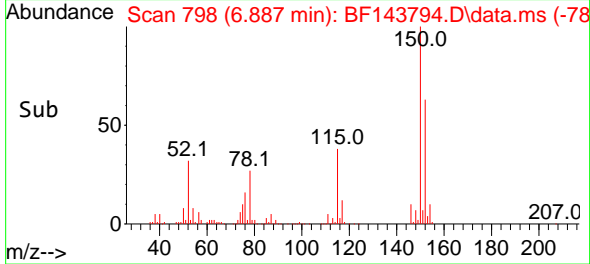


#1
 1,4-Dichlorobenzene-d4
 Concen: 20.000 ng
 RT: 6.887 min Scan# 79
 Delta R.T. -0.000 min
 Lab File: BF143794.D
 Acq: 23 Sep 2025 12:27

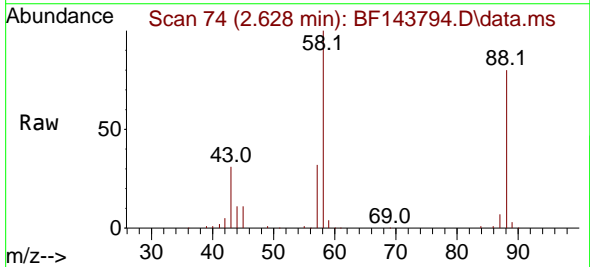
Instrument :
 BNA_F
 ClientSampleId :
 SSTDICC020



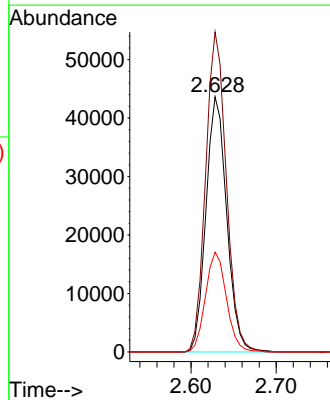
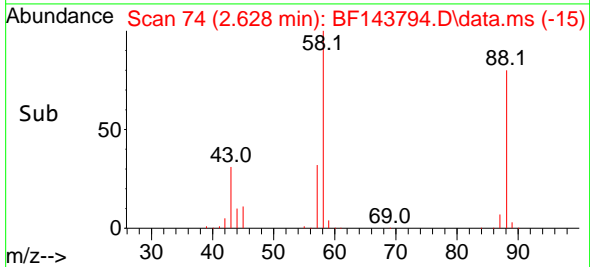
Tgt Ion:152 Resp: 123560
 Ion Ratio Lower Upper
 152 100
 150 159.6 129.6 194.4
 115 61.2 49.0 73.4

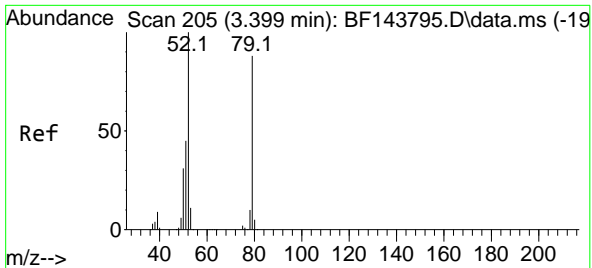


#2
 1,4-Dioxane
 Concen: 20.313 ng
 RT: 2.628 min Scan# 74
 Delta R.T. -0.006 min
 Lab File: BF143794.D
 Acq: 23 Sep 2025 12:27



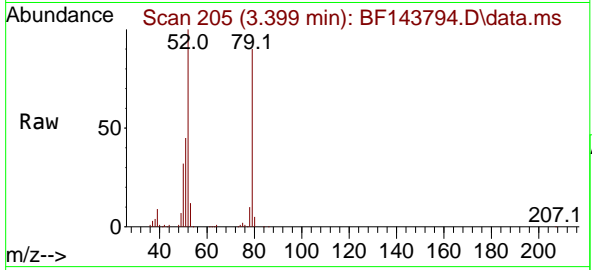
Tgt Ion: 88 Resp: 73941
 Ion Ratio Lower Upper
 88 100
 58 124.8 99.4 149.2
 43 39.5 30.6 45.8



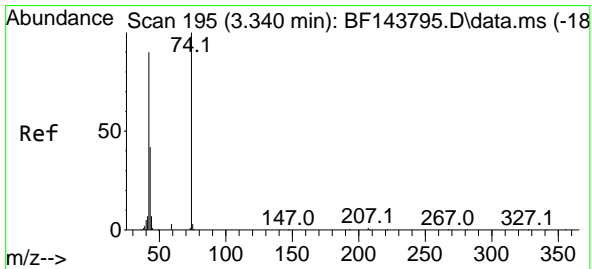
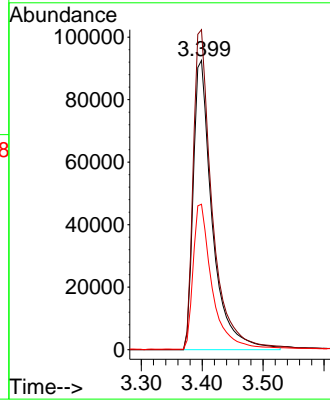
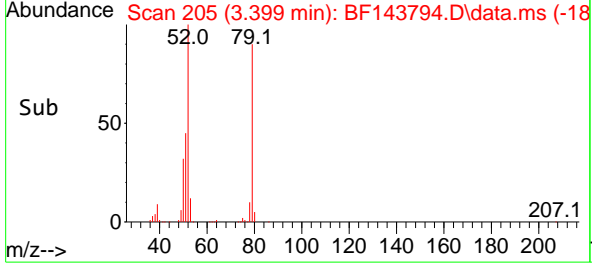


#3
 Pyridine
 Concen: 20.416 ng
 RT: 3.399 min Scan# 205
 Delta R.T. 0.000 min
 Lab File: BF143794.D
 Acq: 23 Sep 2025 12:27

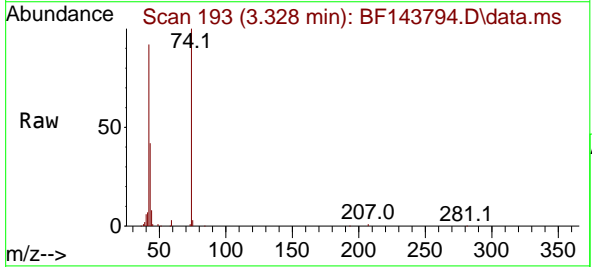
Instrument : BNA_F
 ClientSampleId : SSTDICC020



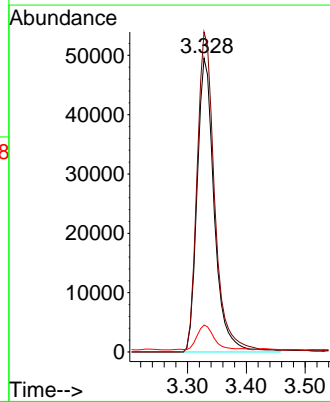
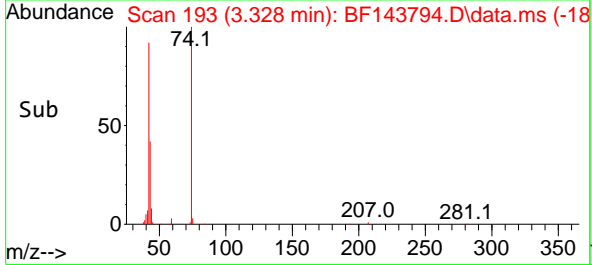
Tgt Ion: 79 Resp: 200605
 Ion Ratio Lower Upper
 79 100
 52 110.6 90.5 135.7
 51 50.3 40.6 61.0

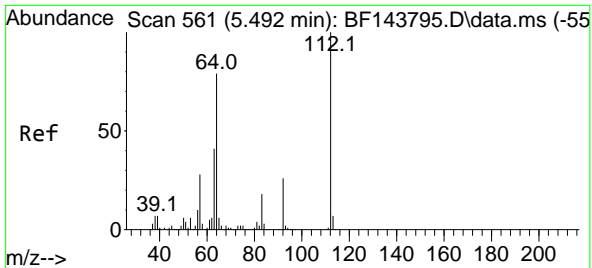


#4
 n-Nitrosodimethylamine
 Concen: 20.357 ng
 RT: 3.328 min Scan# 193
 Delta R.T. -0.029 min
 Lab File: BF143794.D
 Acq: 23 Sep 2025 12:27



Tgt Ion: 42 Resp: 100296
 Ion Ratio Lower Upper
 42 100
 74 108.9 89.1 133.7
 44 9.1 6.4 9.6





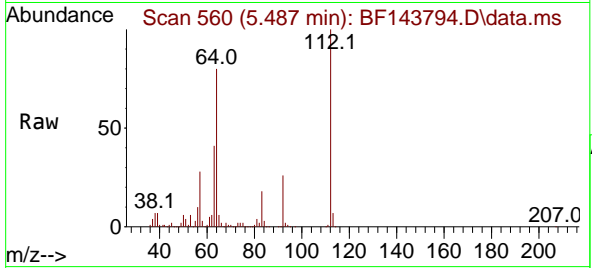
#5
 2-Fluorophenol
 Concen: 42.681 ng
 RT: 5.487 min Scan# 50
 Delta R.T. -0.012 min
 Lab File: BF143794.D
 Acq: 23 Sep 2025 12:27

Instrument :

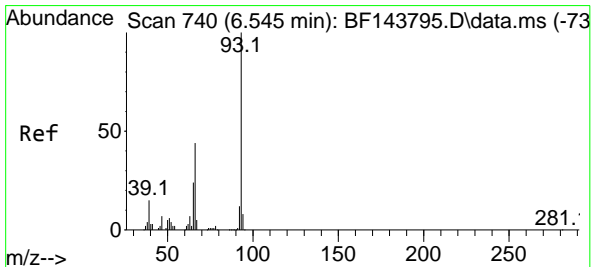
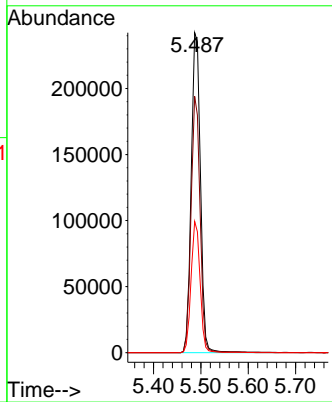
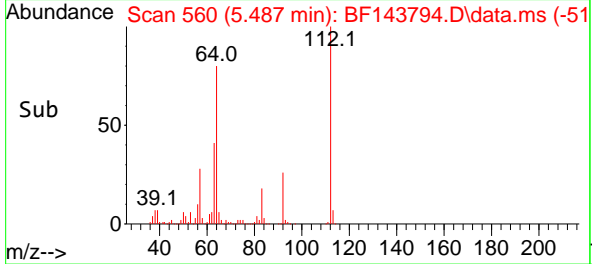
BNA_F

ClientSampleId :

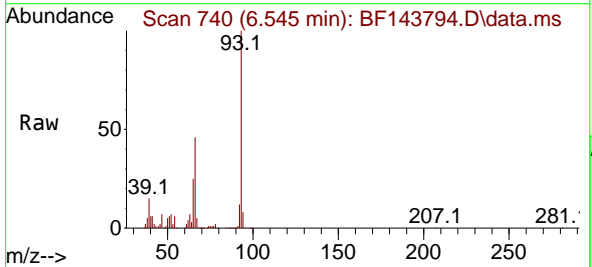
SSTDICC020



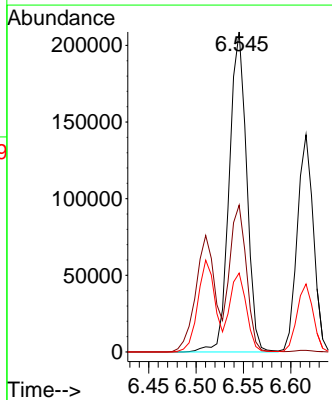
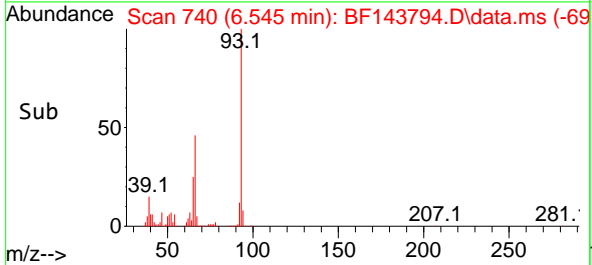
Tgt Ion:112 Resp: 327687
 Ion Ratio Lower Upper
 112 100
 64 80.1 63.0 94.4
 63 41.0 32.6 49.0

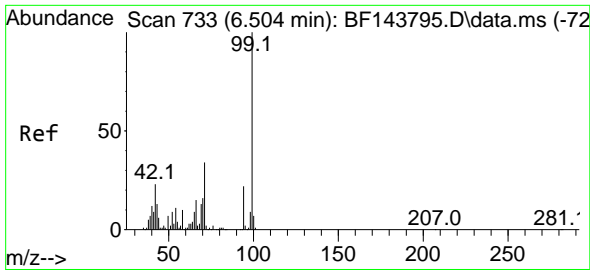


#6
 Aniline
 Concen: 20.904 ng
 RT: 6.545 min Scan# 740
 Delta R.T. -0.006 min
 Lab File: BF143794.D
 Acq: 23 Sep 2025 12:27



Tgt Ion: 93 Resp: 266602
 Ion Ratio Lower Upper
 93 100
 66 45.9 37.1 55.7
 65 24.6 19.4 29.0

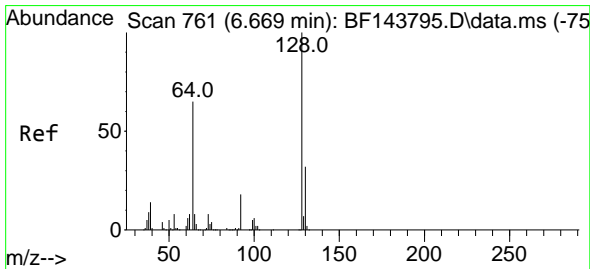
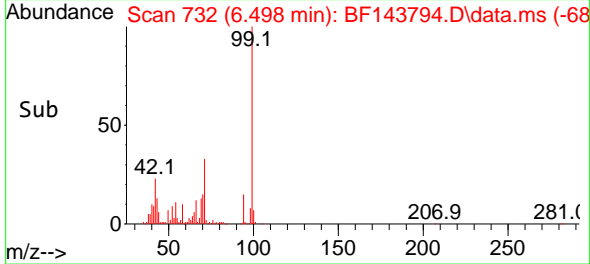
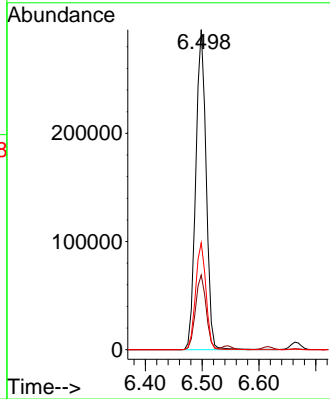
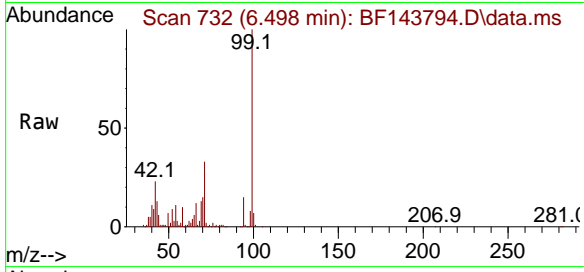




#7
Phenol-d6
Concen: 41.720 ng
RT: 6.498 min Scan# 71
Delta R.T. -0.012 min
Lab File: BF143794.D
Acq: 23 Sep 2025 12:27

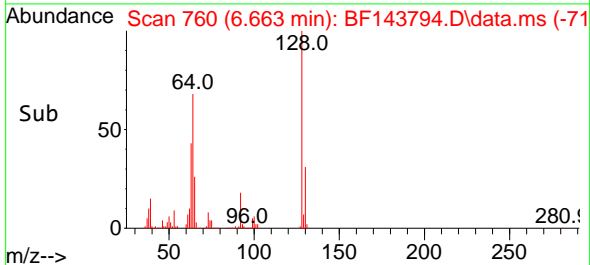
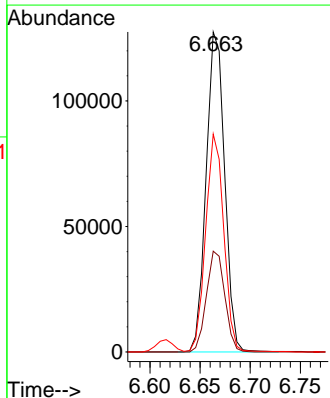
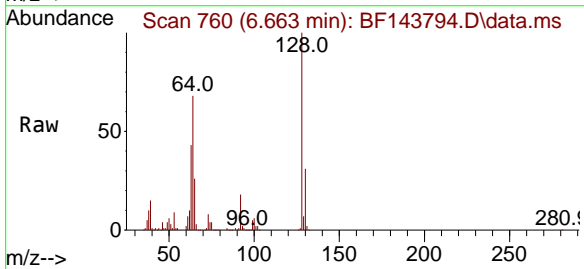
Instrument :
BNA_F
ClientSampleId :
SSTDICC020

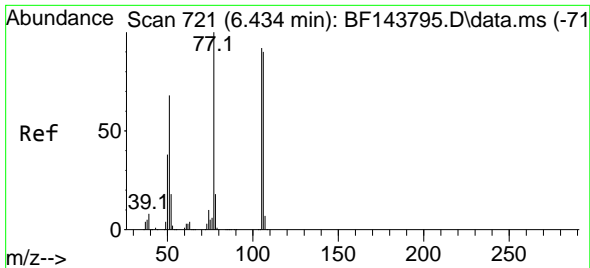
Tgt Ion: 99 Resp: 377986
Ion Ratio Lower Upper
99 100
42 23.4 18.6 28.0
71 33.4 27.0 40.4



#8
2-Chlorophenol
Concen: 21.090 ng
RT: 6.663 min Scan# 760
Delta R.T. -0.006 min
Lab File: BF143794.D
Acq: 23 Sep 2025 12:27

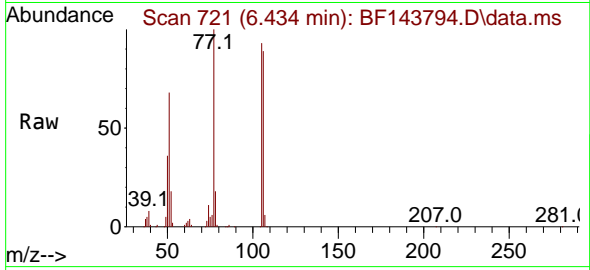
Tgt Ion: 128 Resp: 164198
Ion Ratio Lower Upper
128 100
130 31.5 12.2 52.2
64 68.1 46.5 86.5





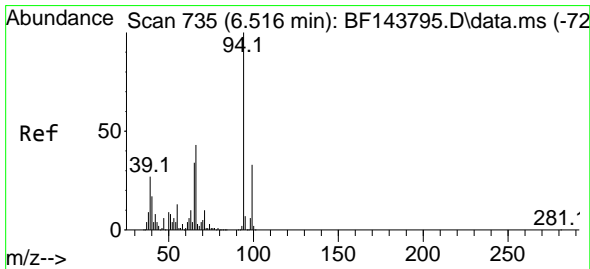
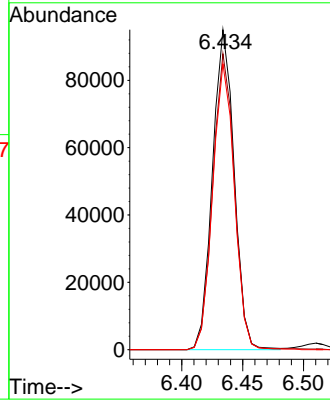
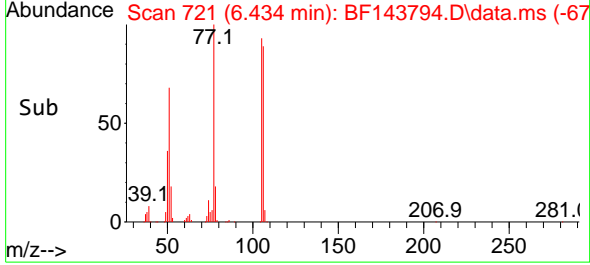
#9
 Benzaldehyde
 Concen: 15.290 ng
 RT: 6.434 min Scan# 714
 Delta R.T. -0.006 min
 Lab File: BF143794.D
 Acq: 23 Sep 2025 12:27

Instrument : BNA_F
 ClientSampleId : SSTDICC020

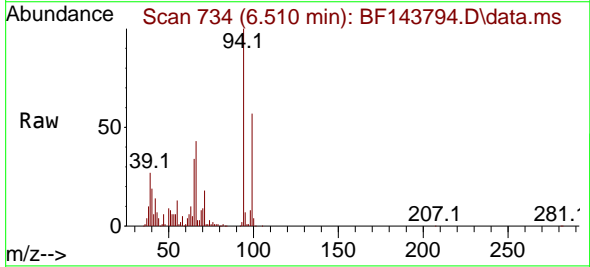


Tgt Ion: 77 Resp: 117654

Ion	Ratio	Lower	Upper
77	100		
105	92.5	71.8	111.8
106	89.3	69.8	109.8

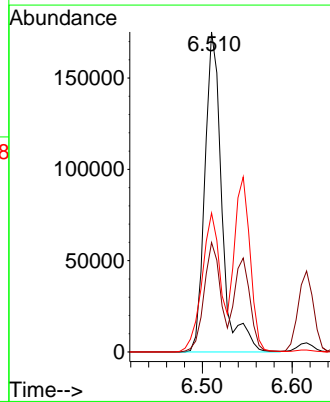
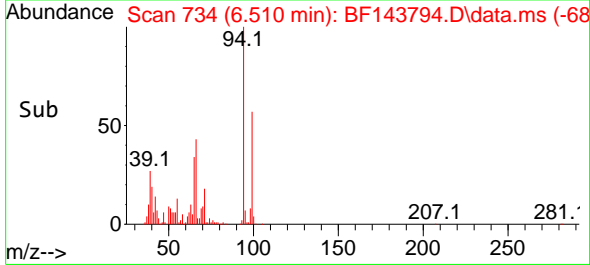


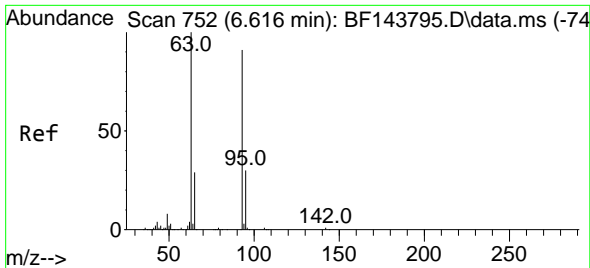
#10
 Phenol
 Concen: 22.713 ng
 RT: 6.510 min Scan# 734
 Delta R.T. -0.018 min
 Lab File: BF143794.D
 Acq: 23 Sep 2025 12:27



Tgt Ion: 94 Resp: 231989

Ion	Ratio	Lower	Upper
94	100		
65	34.2	14.2	54.2
66	43.4	24.1	64.1





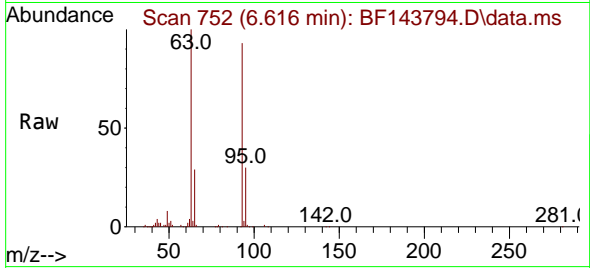
#11
 bis(2-Chloroethyl)ether
 Concen: 20.783 ng
 RT: 6.616 min Scan# 711
 Delta R.T. -0.006 min
 Lab File: BF143794.D
 Acq: 23 Sep 2025 12:27

Instrument :

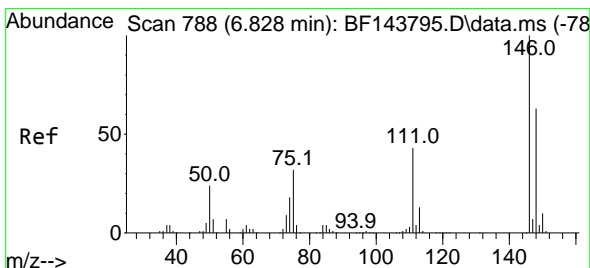
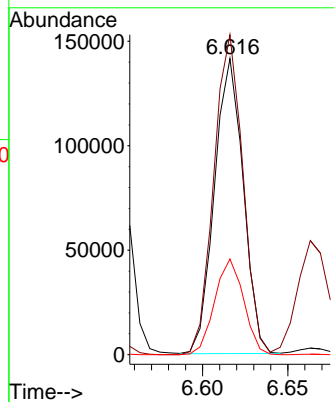
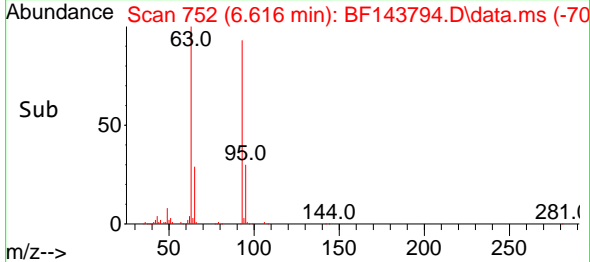
BNA_F

ClientSampleId :

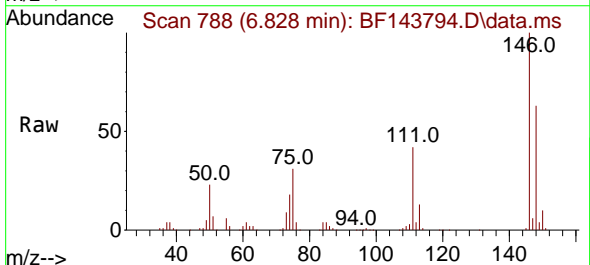
SSTDICC020



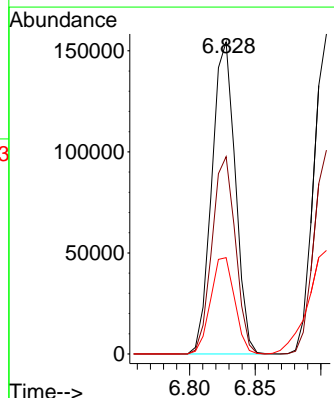
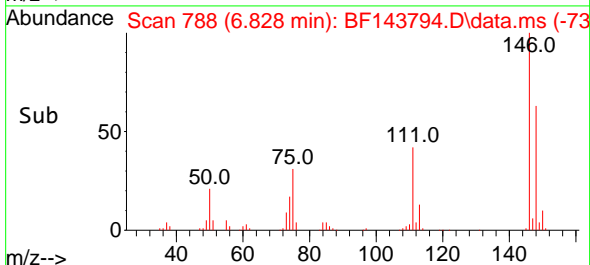
Tgt Ion: 93 Resp: 166393
 Ion Ratio Lower Upper
 93 100
 63 108.0 89.2 129.2
 95 32.3 12.9 52.9

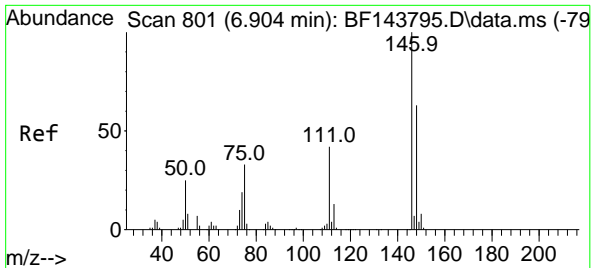


#12
 1,3-Dichlorobenzene
 Concen: 21.268 ng
 RT: 6.828 min Scan# 788
 Delta R.T. 0.000 min
 Lab File: BF143794.D
 Acq: 23 Sep 2025 12:27



Tgt Ion: 146 Resp: 192258
 Ion Ratio Lower Upper
 146 100
 148 63.2 50.4 75.6
 75 30.9 25.6 38.4



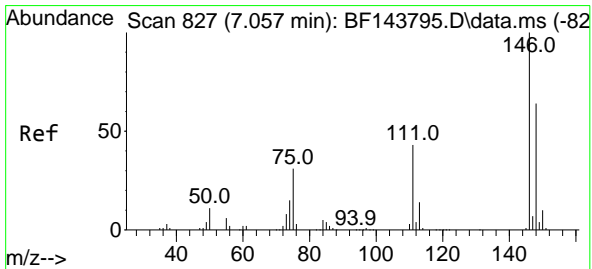
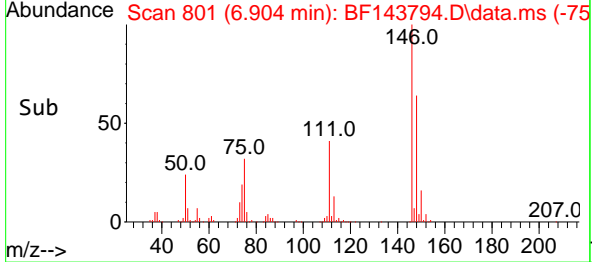
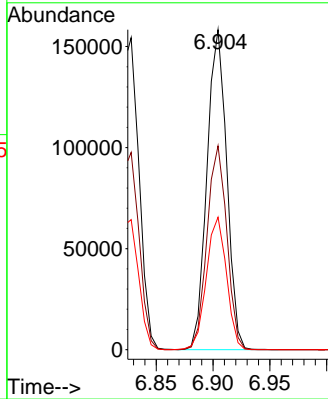
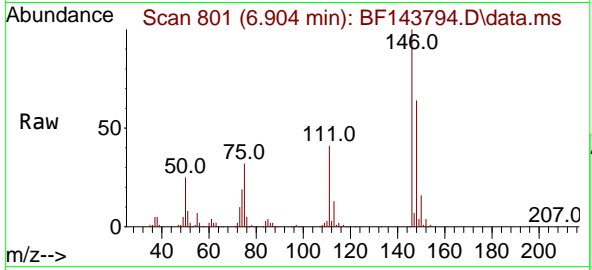


#13
 1,4-Dichlorobenzene
 Concen: 21.223 ng
 RT: 6.904 min Scan# 801
 Delta R.T. 0.000 min
 Lab File: BF143794.D
 Acq: 23 Sep 2025 12:27

Instrument : BNA_F
 ClientSampleId : SSTDICC020

Tgt Ion:146 Resp: 191454

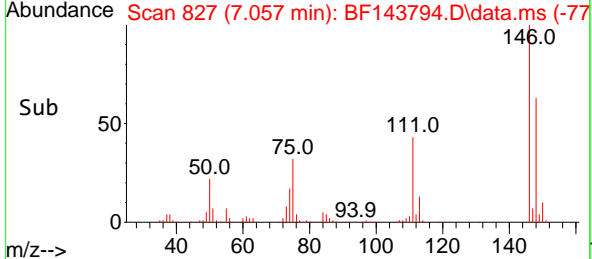
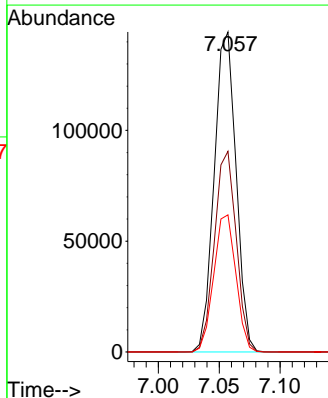
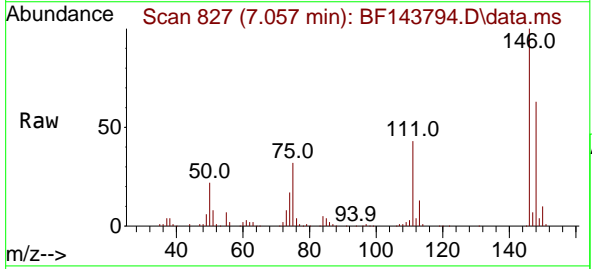
Ion	Ratio	Lower	Upper
146	100		
148	63.7	50.7	76.1
111	41.4	33.4	50.2

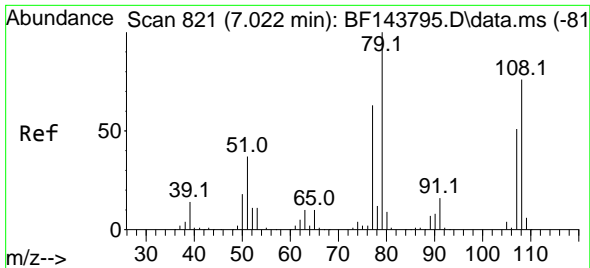


#14
 1,2-Dichlorobenzene
 Concen: 21.185 ng
 RT: 7.057 min Scan# 827
 Delta R.T. 0.000 min
 Lab File: BF143794.D
 Acq: 23 Sep 2025 12:27

Tgt Ion:146 Resp: 181008

Ion	Ratio	Lower	Upper
146	100		
148	62.7	51.1	76.7
111	42.9	34.3	51.5



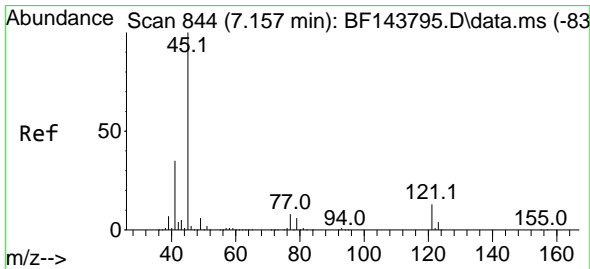
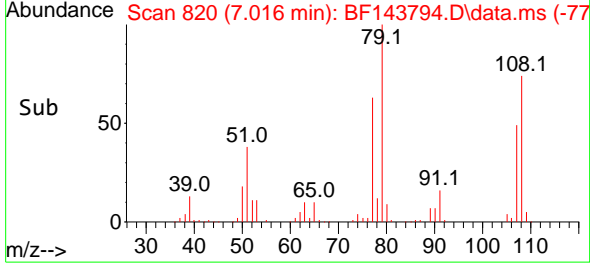
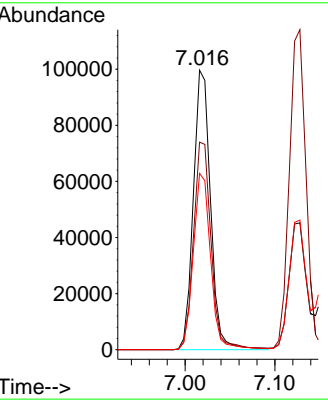
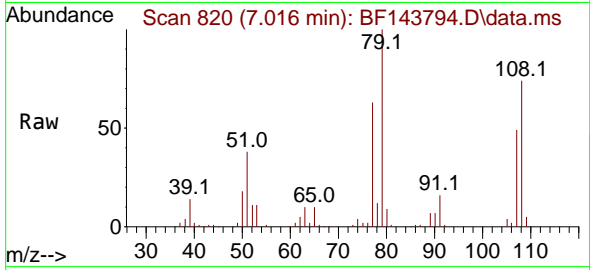


#15
 Benzyl Alcohol
 Concen: 20.902 ng
 RT: 7.016 min Scan# 81
 Delta R.T. -0.012 min
 Lab File: BF143794.D
 Acq: 23 Sep 2025 12:27

Instrument :
 BNA_F
 ClientSampleId :
 SSTDICC020

Tgt Ion: 79 Resp: 132713

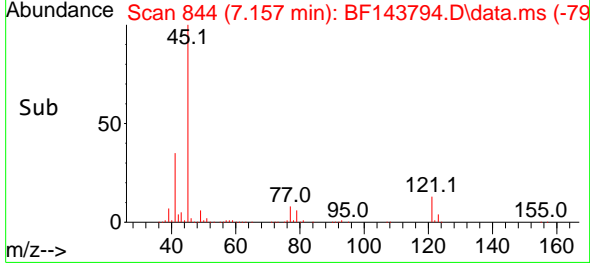
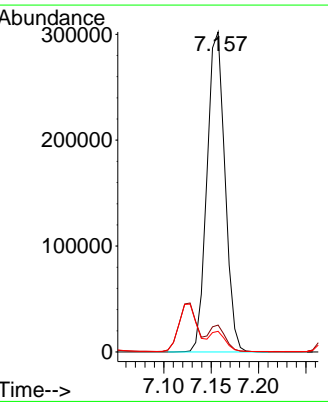
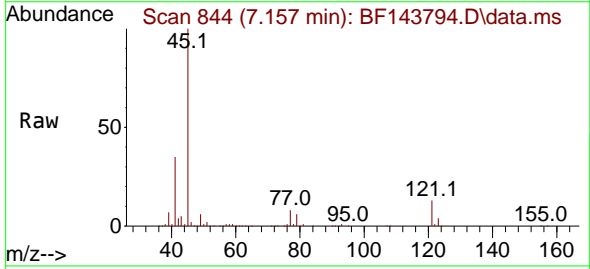
Ion	Ratio	Lower	Upper
79	100		
108	74.3	60.5	90.7
77	63.1	50.3	75.5

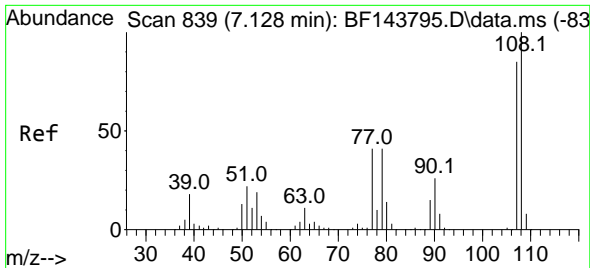


#16
 2,2'-oxybis(1-Chloropropane)
 Concen: 20.985 ng
 RT: 7.157 min Scan# 844
 Delta R.T. 0.000 min
 Lab File: BF143794.D
 Acq: 23 Sep 2025 12:27

Tgt Ion: 45 Resp: 398403

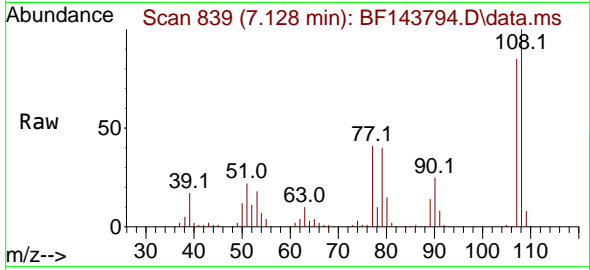
Ion	Ratio	Lower	Upper
45	100		
77	8.4	0.0	28.5
79	6.5	0.0	26.3





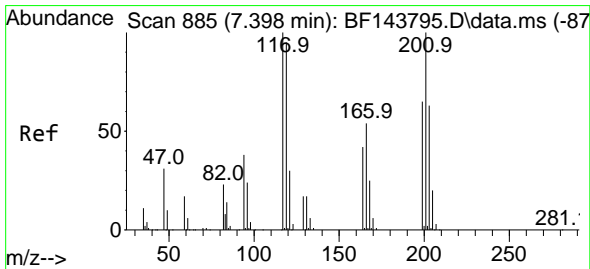
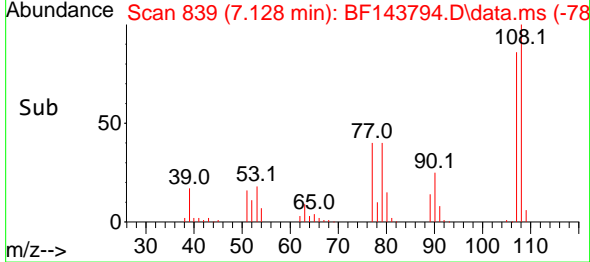
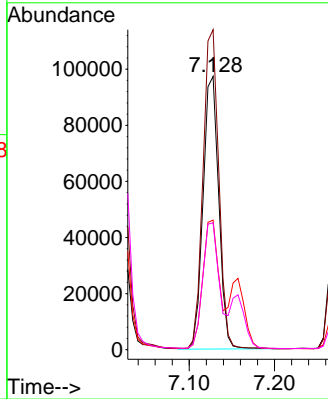
#17
 2-Methylphenol
 Concen: 20.674 ng
 RT: 7.128 min Scan# 811
 Delta R.T. -0.006 min
 Lab File: BF143794.D
 Acq: 23 Sep 2025 12:27

Instrument : BNA_F
 ClientSampleId : SSTDICC020



Tgt Ion:107 Resp: 124617

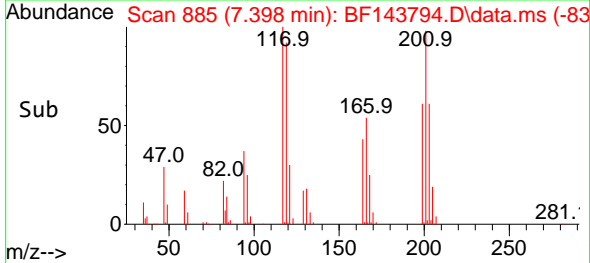
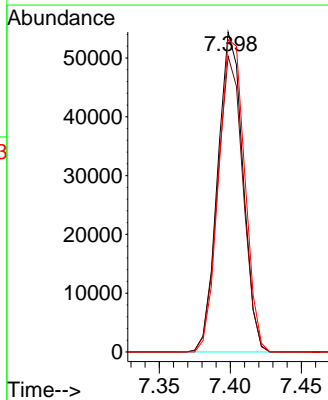
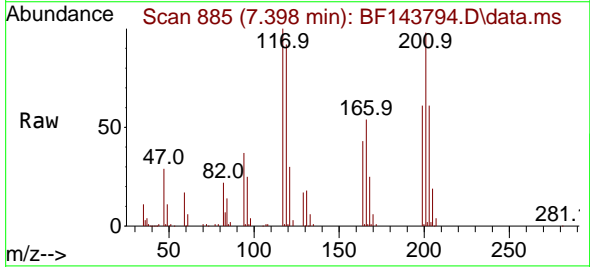
Ion	Ratio	Lower	Upper
107	100		
108	117.1	94.2	141.4
77	47.4	38.6	58.0
79	46.4	39.0	58.4

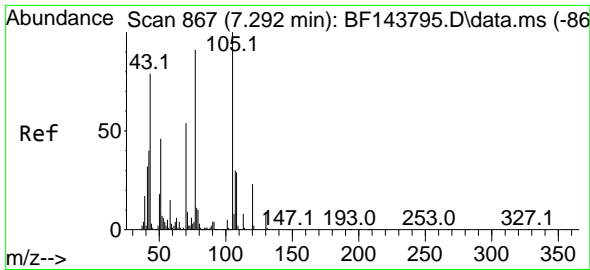


#18
 Hexachloroethane
 Concen: 21.134 ng
 RT: 7.398 min Scan# 885
 Delta R.T. -0.006 min
 Lab File: BF143794.D
 Acq: 23 Sep 2025 12:27

Tgt Ion:117 Resp: 67048

Ion	Ratio	Lower	Upper
117	100		
119	92.4	76.2	114.2
201	97.6	79.7	119.5



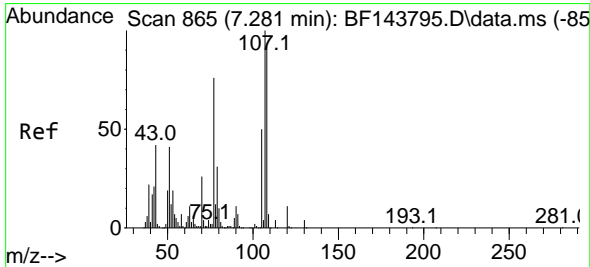
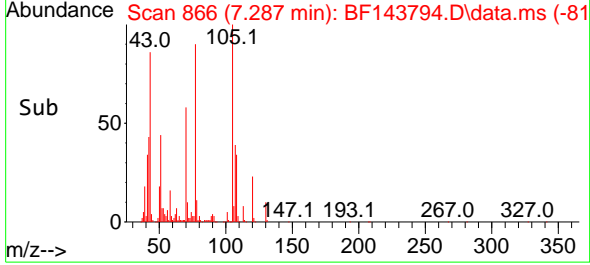
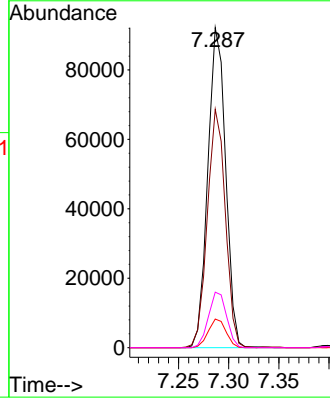
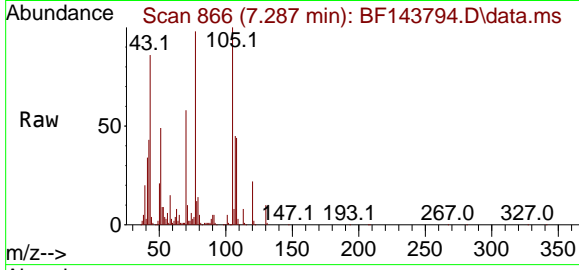


#19
 n-Nitroso-di-n-propylamine
 Concen: 20.254 ng
 RT: 7.287 min Scan# 80
 Delta R.T. -0.018 min
 Lab File: BF143794.D
 Acq: 23 Sep 2025 12:27

Instrument :
 BNA_F
 ClientSampleId :
 SSTDICC020

Tgt Ion: 70 Resp: 114449

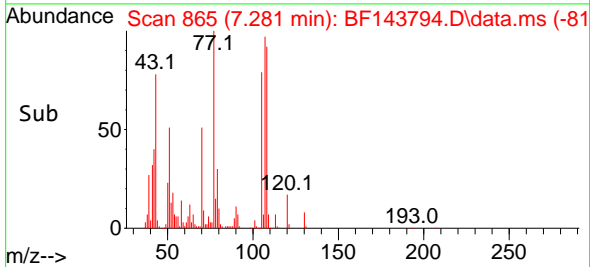
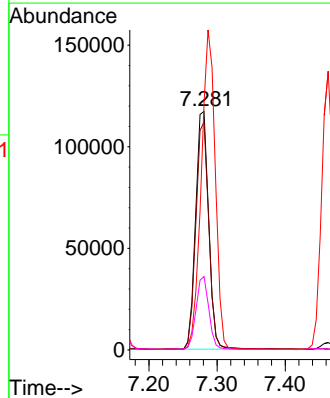
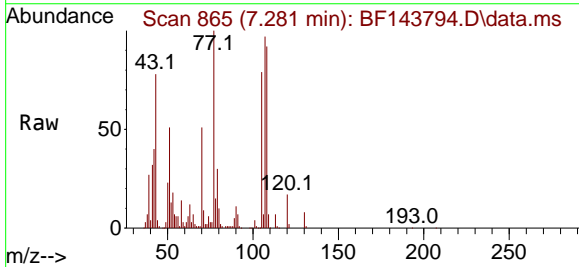
Ion	Ratio	Lower	Upper
70	100		
42	74.5	59.4	89.0
101	9.0	7.1	10.7
130	17.4	13.8	20.8

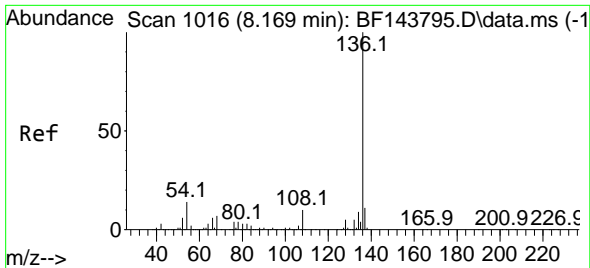


#20
 3+4-Methylphenols
 Concen: 21.145 ng
 RT: 7.281 min Scan# 865
 Delta R.T. -0.006 min
 Lab File: BF143794.D
 Acq: 23 Sep 2025 12:27

Tgt Ion: 107 Resp: 155211

Ion	Ratio	Lower	Upper
107	100		
108	95.5	72.5	112.5
77	103.4	56.2	96.2#
79	30.8	10.8	50.8





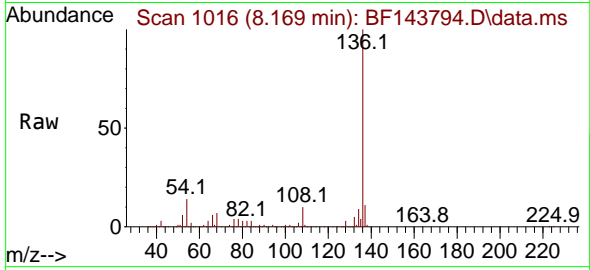
#21
 Naphthalene-d8
 Concen: 20.000 ng
 RT: 8.169 min Scan# 10
 Delta R.T. -0.000 min
 Lab File: BF143794.D
 Acq: 23 Sep 2025 12:27

Instrument :

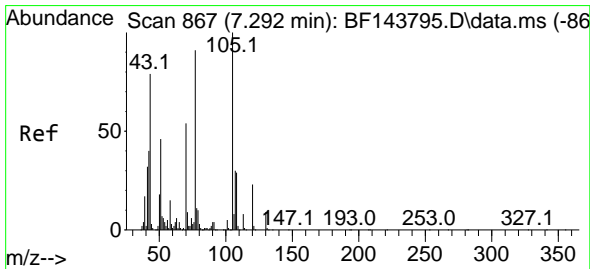
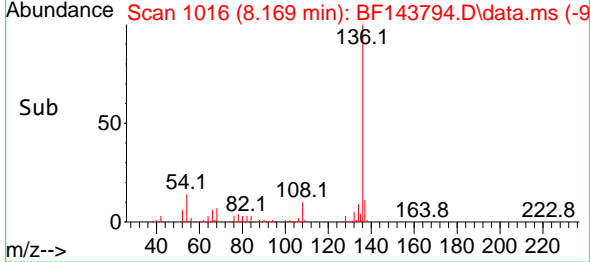
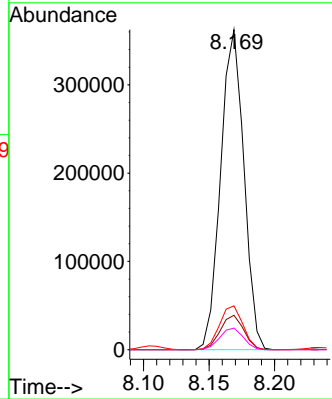
BNA_F

ClientSampleId :

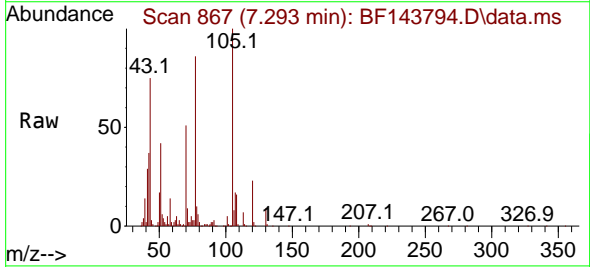
SSTDICC020



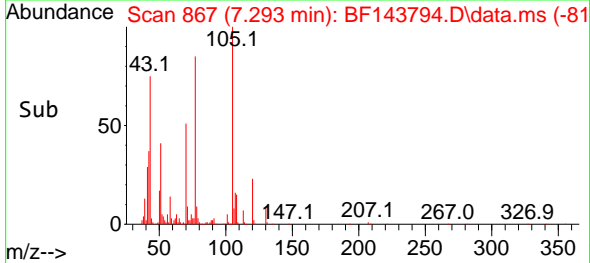
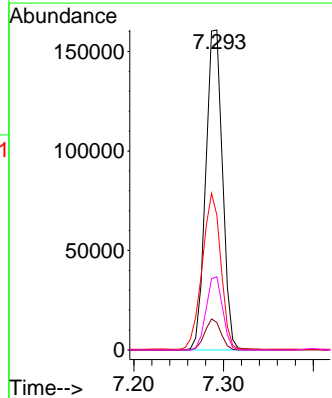
Tgt Ion:136 Resp: 446120
 Ion Ratio Lower Upper
 136 100
 137 10.8 9.0 13.4
 54 13.7 11.2 16.8
 68 6.8 5.6 8.4

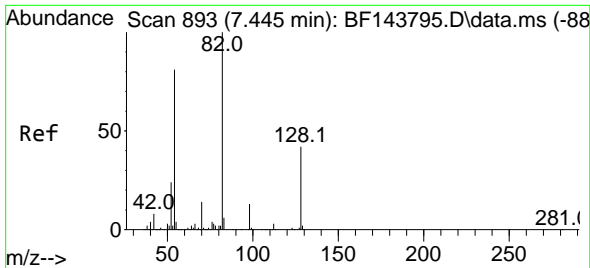


#22
 Acetophenone
 Concen: 21.319 ng
 RT: 7.293 min Scan# 867
 Delta R.T. -0.006 min
 Lab File: BF143794.D
 Acq: 23 Sep 2025 12:27



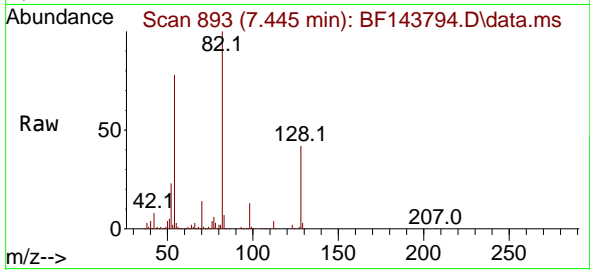
Tgt Ion:105 Resp: 208896
 Ion Ratio Lower Upper
 105 100
 71 8.6 7.0 10.4
 51 42.2 36.6 55.0
 120 22.8 18.1 27.1



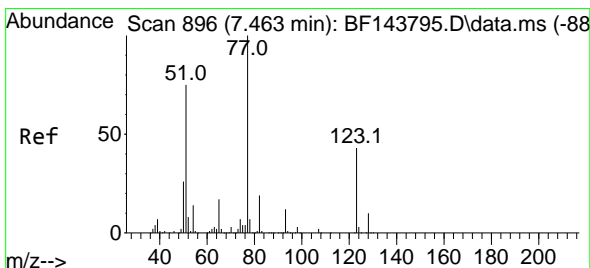
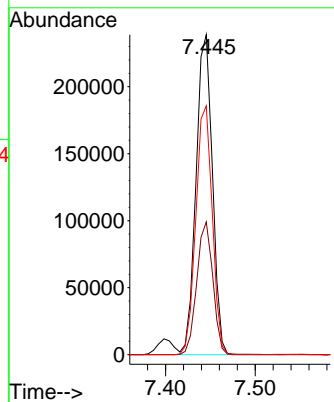
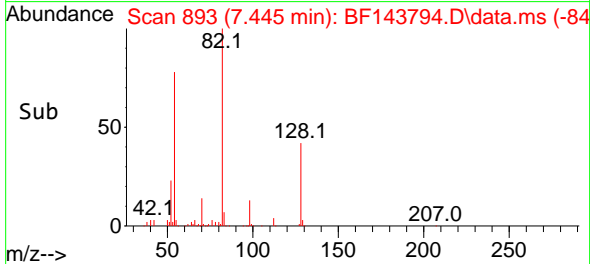


#23
 Nitrobenzene-d5
 Concen: 42.621 ng
 RT: 7.445 min Scan# 893
 Delta R.T. -0.006 min
 Lab File: BF143794.D
 Acq: 23 Sep 2025 12:27

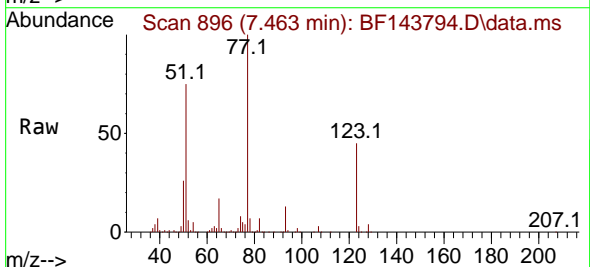
Instrument : BNA_F
 ClientSampleId : SSTDICC020



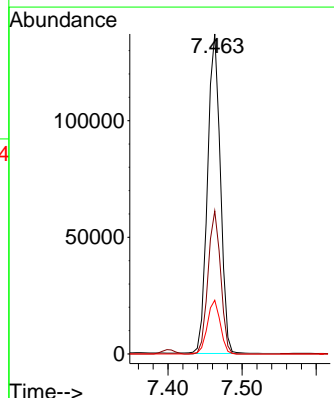
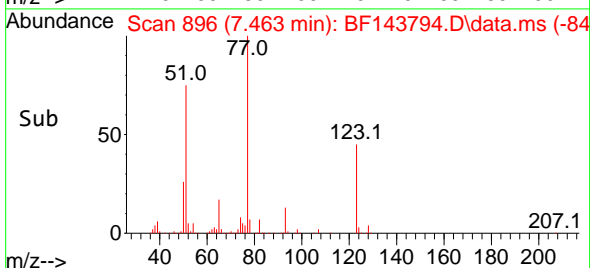
Tgt Ion: 82 Resp: 302138
 Ion Ratio Lower Upper
 82 100
 128 41.5 33.3 49.9
 54 77.7 64.2 96.4

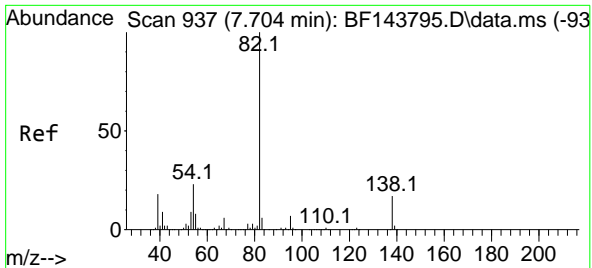


#24
 Nitrobenzene
 Concen: 20.402 ng
 RT: 7.463 min Scan# 896
 Delta R.T. -0.012 min
 Lab File: BF143794.D
 Acq: 23 Sep 2025 12:27



Tgt Ion: 77 Resp: 164815
 Ion Ratio Lower Upper
 77 100
 123 44.7 34.0 51.0
 65 16.8 13.5 20.3



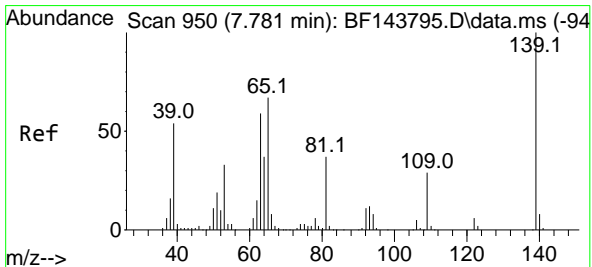
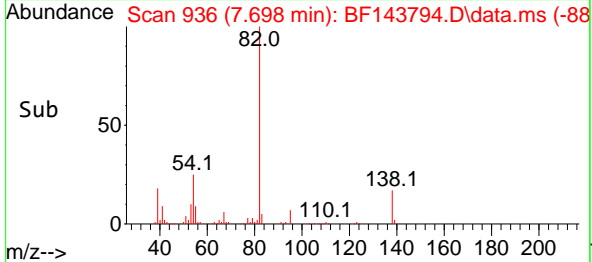
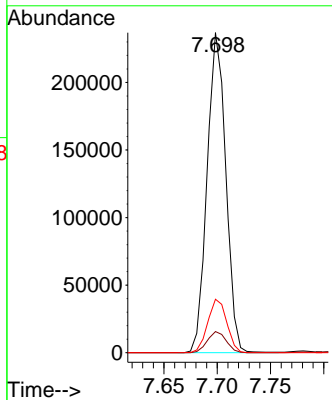
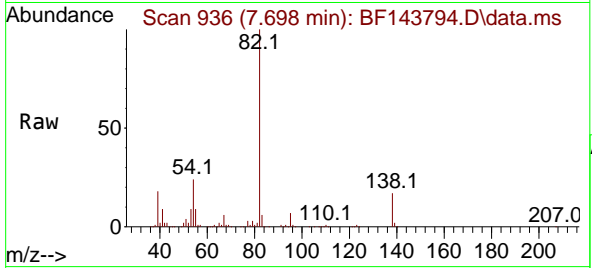


#25
 Isophorone
 Concen: 20.396 ng
 RT: 7.698 min Scan# 91
 Delta R.T. -0.012 min
 Lab File: BF143794.D
 Acq: 23 Sep 2025 12:27

Instrument : BNA_F
 ClientSampleId : SSTDICC020

Tgt Ion: 82 Resp: 289674

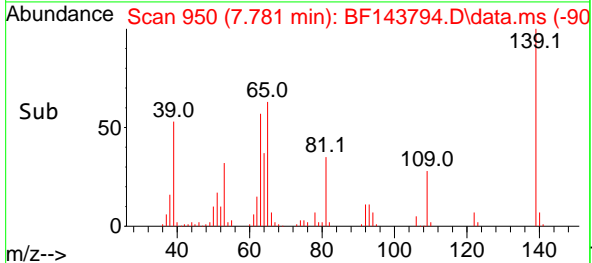
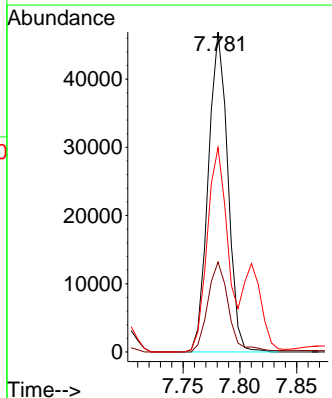
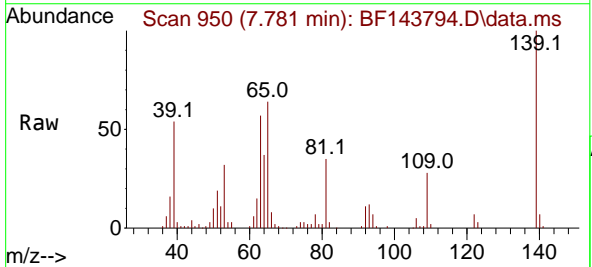
Ion	Ratio	Lower	Upper
82	100		
95	6.6	5.4	8.2
138	16.7	13.7	20.5

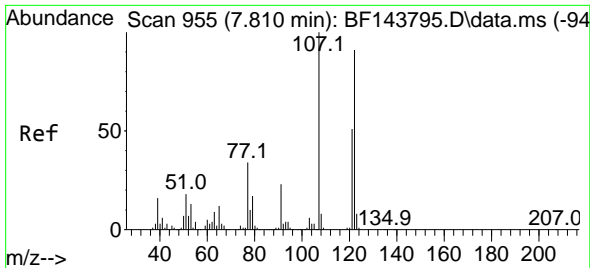


#26
 2-Nitrophenol
 Concen: 18.629 ng
 RT: 7.781 min Scan# 950
 Delta R.T. -0.005 min
 Lab File: BF143794.D
 Acq: 23 Sep 2025 12:27

Tgt Ion: 139 Resp: 55948

Ion	Ratio	Lower	Upper
139	100		
109	28.1	23.3	34.9
65	63.8	53.8	80.6





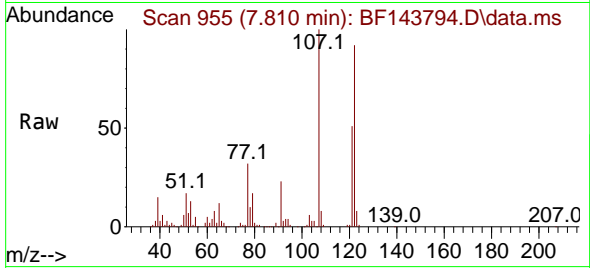
#27
 2,4-Dimethylphenol
 Concen: 20.437 ng
 RT: 7.810 min Scan# 91
 Delta R.T. -0.006 min
 Lab File: BF143794.D
 Acq: 23 Sep 2025 12:27

Instrument :

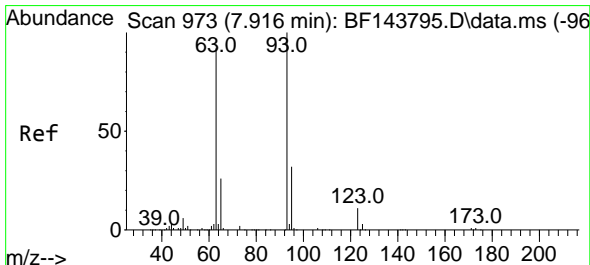
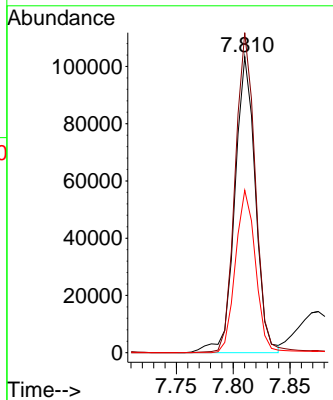
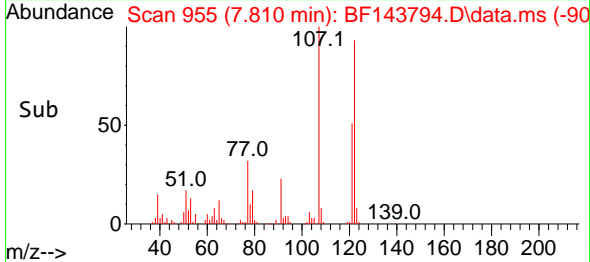
BNA_F

ClientSampleId :

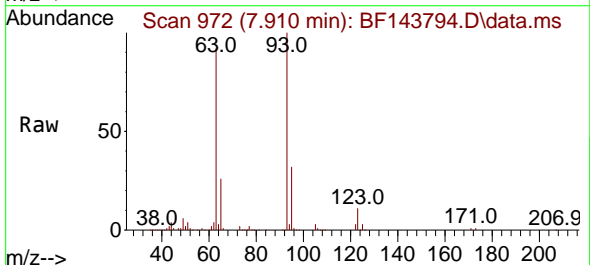
SSTDICC020



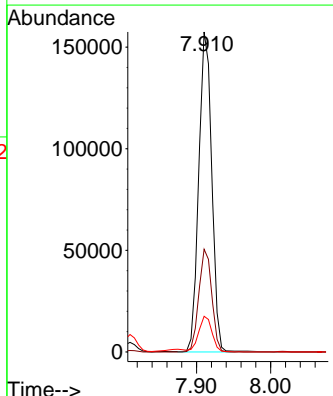
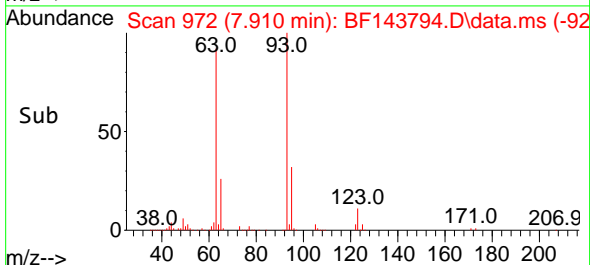
Tgt Ion:122 Resp: 129731
 Ion Ratio Lower Upper
 122 100
 107 108.1 87.5 131.3
 121 54.9 44.2 66.4

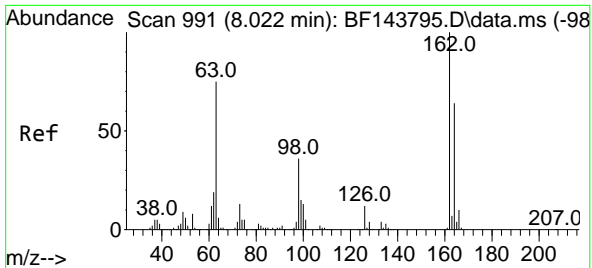


#28
 bis(2-Chloroethoxy)methane
 Concen: 20.802 ng
 RT: 7.910 min Scan# 972
 Delta R.T. -0.006 min
 Lab File: BF143794.D
 Acq: 23 Sep 2025 12:27



Tgt Ion: 93 Resp: 191947
 Ion Ratio Lower Upper
 93 100
 95 32.1 25.8 38.8
 123 11.2 8.8 13.2



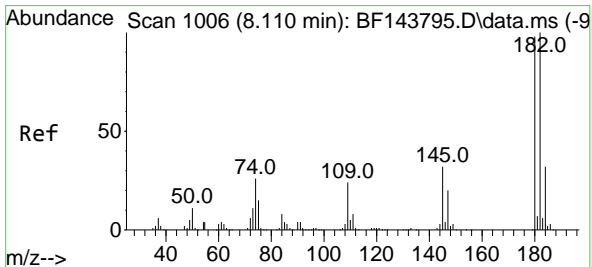
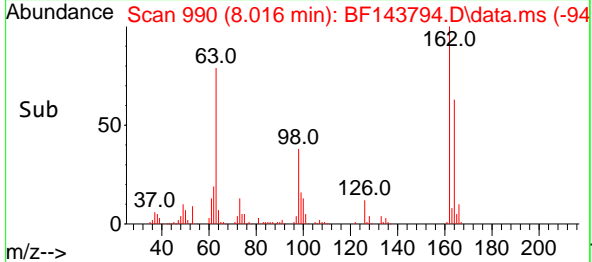
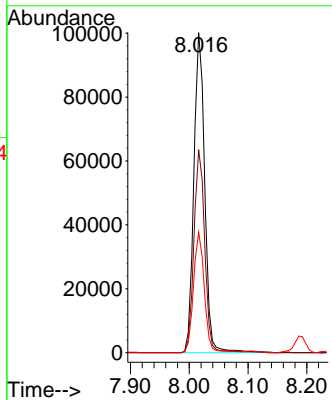
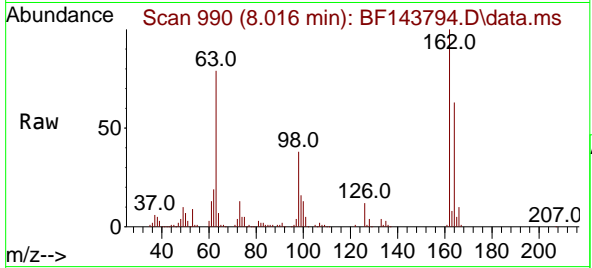


#29
 2,4-Dichlorophenol
 Concen: 20.597 ng
 RT: 8.016 min Scan# 991
 Delta R.T. -0.006 min
 Lab File: BF143794.D
 Acq: 23 Sep 2025 12:27

Instrument : BNA_F
 ClientSampleId : SSTDICC020

Tgt Ion:162 Resp: 128651

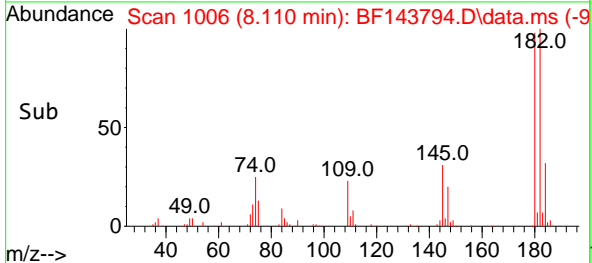
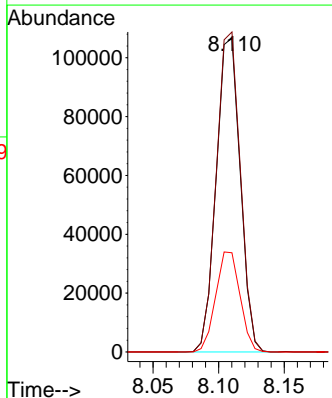
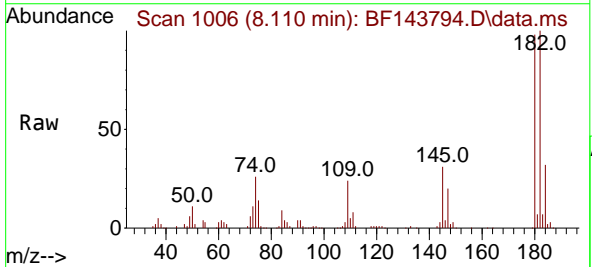
Ion	Ratio	Lower	Upper
162	100		
164	63.5	44.1	84.1
98	37.7	15.8	55.8

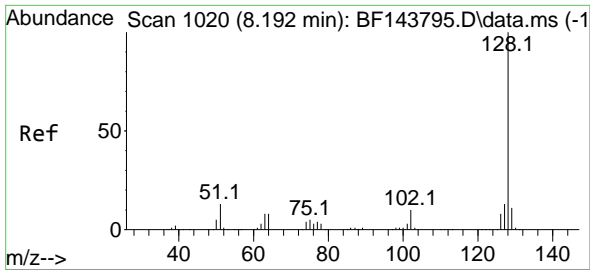


#30
 1,2,4-Trichlorobenzene
 Concen: 20.952 ng
 RT: 8.110 min Scan# 1006
 Delta R.T. 0.000 min
 Lab File: BF143794.D
 Acq: 23 Sep 2025 12:27

Tgt Ion:180 Resp: 135810

Ion	Ratio	Lower	Upper
180	100		
182	101.9	82.0	123.0
145	31.6	25.9	38.9



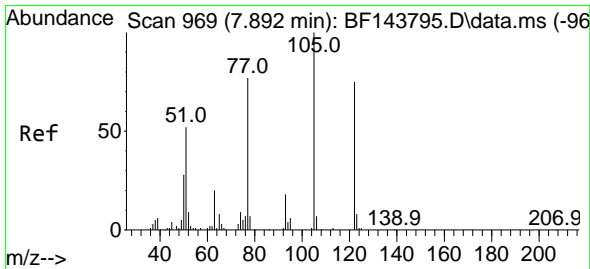
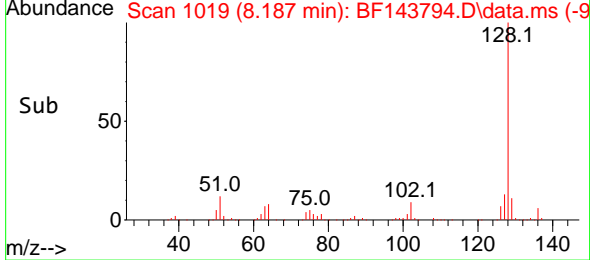
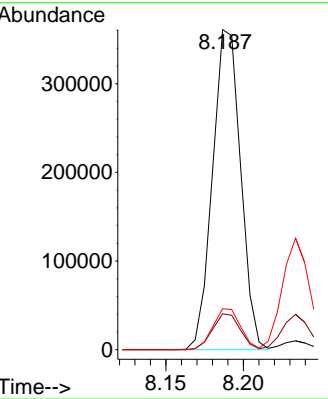
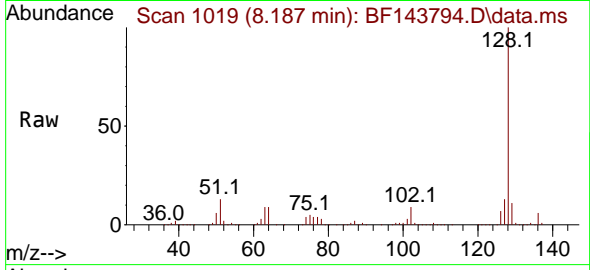


#31
 Naphthalene
 Concen: 21.308 ng
 RT: 8.187 min Scan# 1019
 Delta R.T. -0.006 min
 Lab File: BF143794.D
 Acq: 23 Sep 2025 12:27

Instrument : BNA_F
 ClientSampleId : SSTDICC020

Tgt Ion:128 Resp: 455060

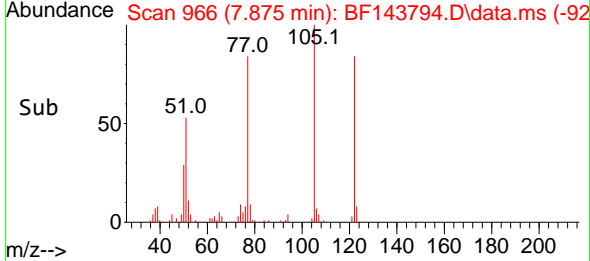
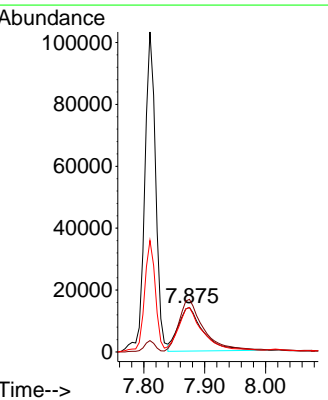
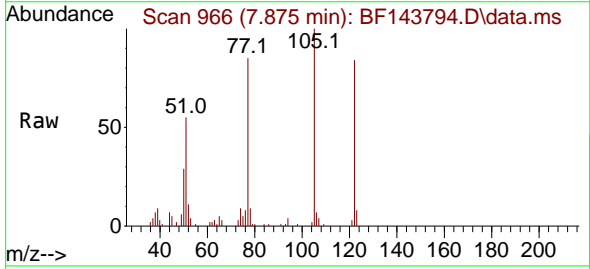
Ion	Ratio	Lower	Upper
128	100		
129	11.2	8.8	13.2
127	12.8	10.2	15.4

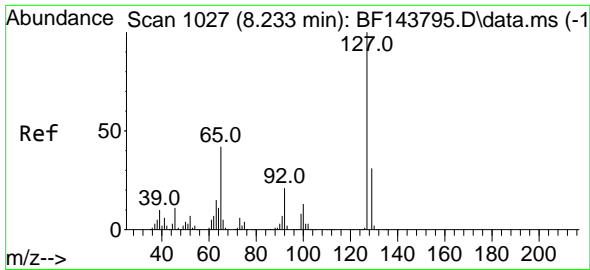


#32
 Benzoic acid
 Concen: 13.254 ng
 RT: 7.875 min Scan# 966
 Delta R.T. -0.047 min
 Lab File: BF143794.D
 Acq: 23 Sep 2025 12:27

Tgt Ion:122 Resp: 40592

Ion	Ratio	Lower	Upper
122	100		
105	118.4	103.7	143.7
77	100.2	78.8	118.8





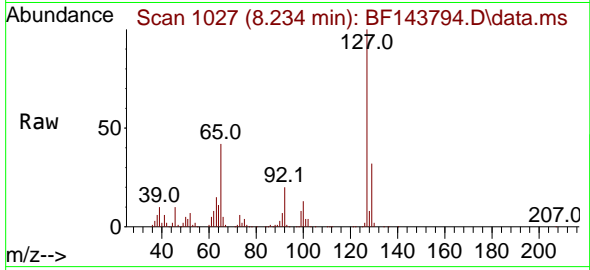
#33
 4-Chloroaniline
 Concen: 20.978 ng
 RT: 8.234 min Scan# 1027
 Delta R.T. -0.006 min
 Lab File: BF143794.D
 Acq: 23 Sep 2025 12:27

Instrument :

BNA_F

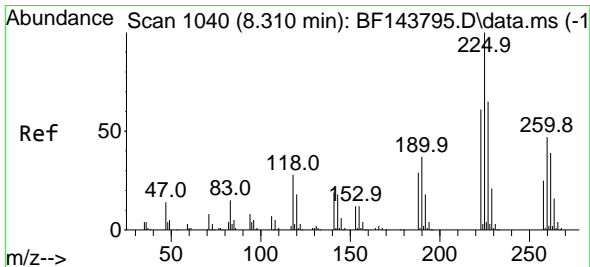
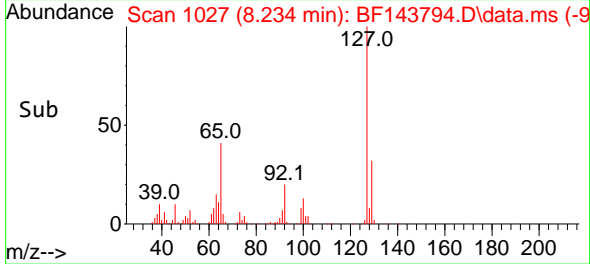
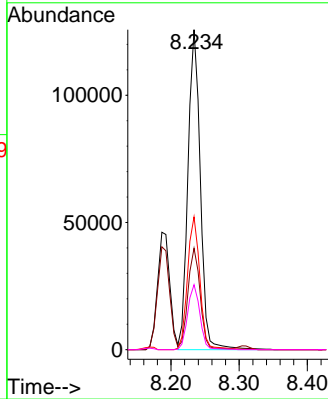
Client SampleId :

SSTDICC020



Tgt Ion:127 Resp: 157439

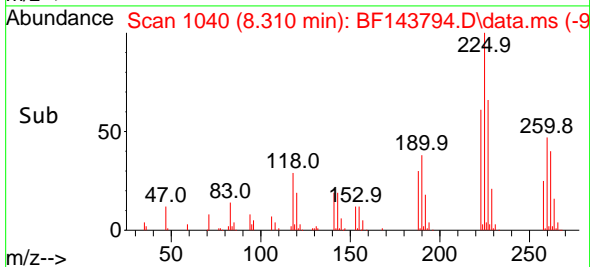
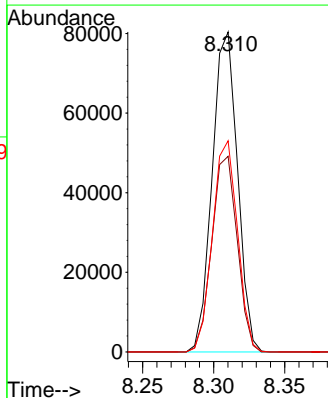
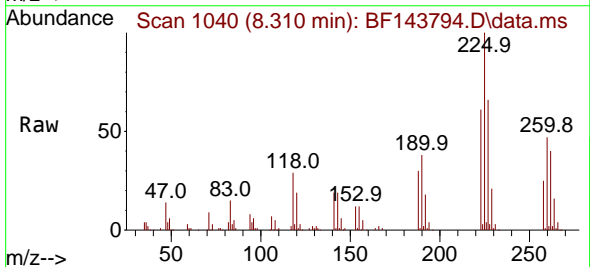
Ion	Ratio	Lower	Upper
127	100		
129	31.7	25.4	38.2
65	41.5	33.4	50.2
92	20.3	16.6	25.0

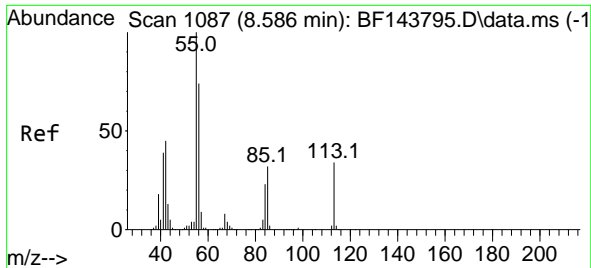


#34
 Hexachlorobutadiene
 Concen: 20.595 ng
 RT: 8.310 min Scan# 1040
 Delta R.T. 0.000 min
 Lab File: BF143794.D
 Acq: 23 Sep 2025 12:27

Tgt Ion:225 Resp: 99520

Ion	Ratio	Lower	Upper
225	100		
223	61.1	48.6	72.8
227	66.0	51.9	77.9



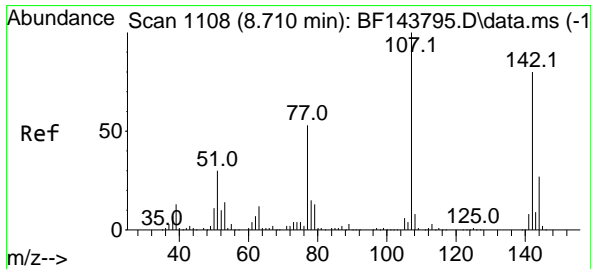
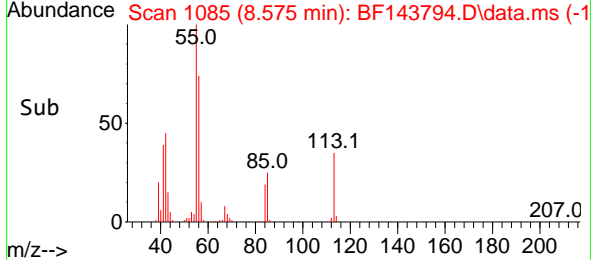
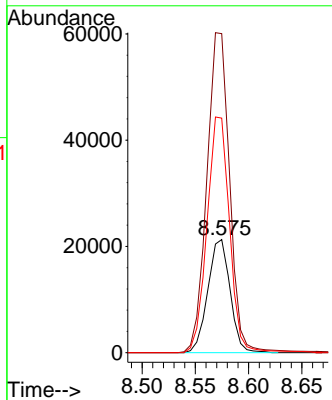
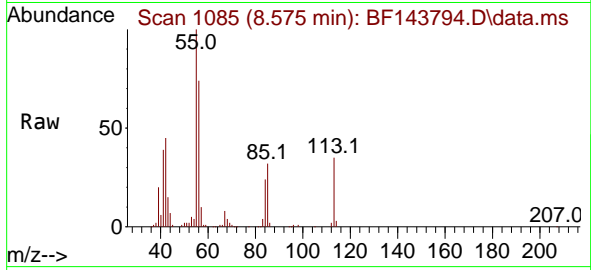


#35
 Caprolactam
 Concen: 19.385 ng
 RT: 8.575 min Scan# 1107
 Delta R.T. -0.035 min
 Lab File: BF143794.D
 Acq: 23 Sep 2025 12:27

Instrument : BNA_F
 ClientSampleId : SSTDICC020

Tgt Ion:113 Resp: 30948

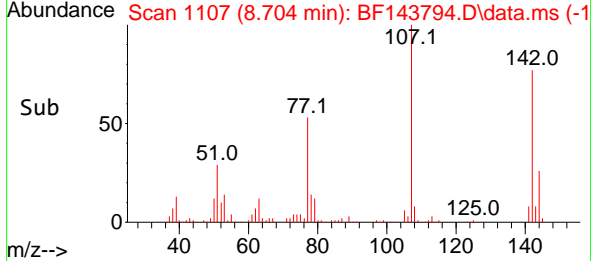
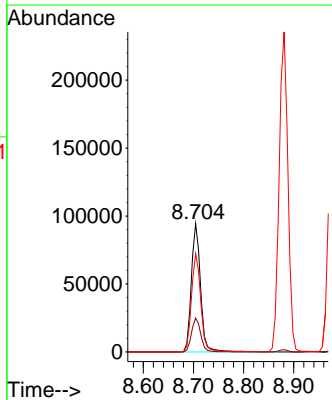
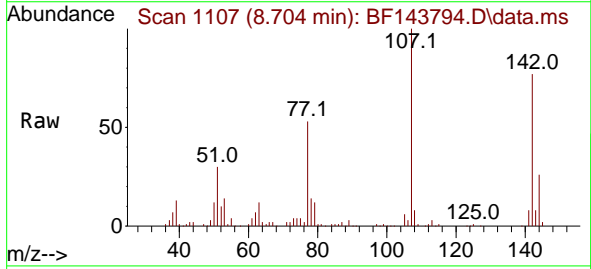
Ion	Ratio	Lower	Upper
113	100		
55	282.0	271.7	311.7
56	207.4	194.5	234.5

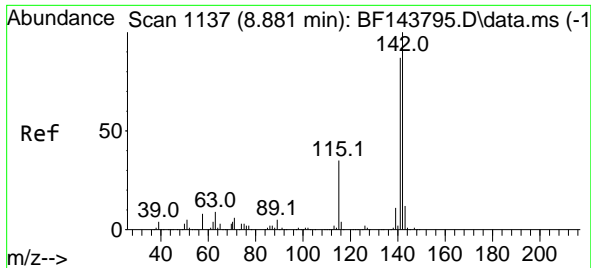


#36
 4-Chloro-3-methylphenol
 Concen: 20.667 ng
 RT: 8.704 min Scan# 1107
 Delta R.T. -0.006 min
 Lab File: BF143794.D
 Acq: 23 Sep 2025 12:27

Tgt Ion:107 Resp: 121067

Ion	Ratio	Lower	Upper
107	100		
144	26.5	21.8	32.8
142	76.6	63.6	95.4

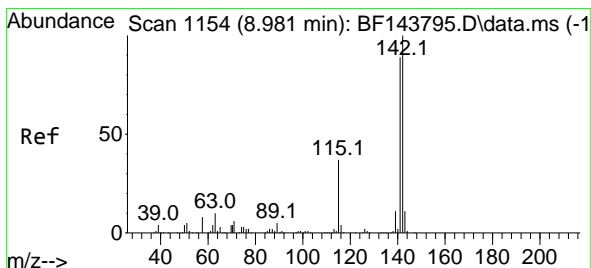
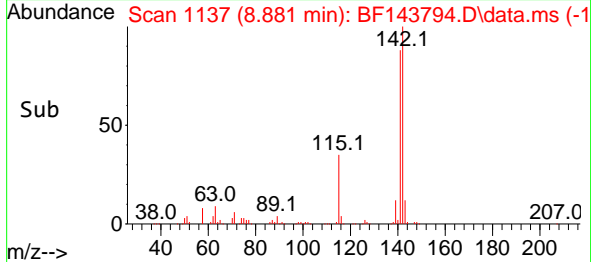
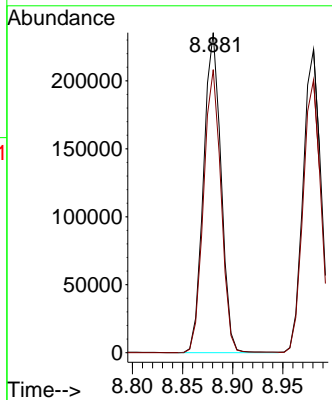
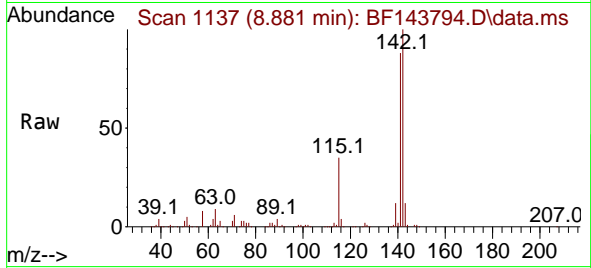




#37
 2-Methylnaphthalene
 Concen: 21.060 ng
 RT: 8.881 min Scan# 1137
 Delta R.T. 0.000 min
 Lab File: BF143794.D
 Acq: 23 Sep 2025 12:27

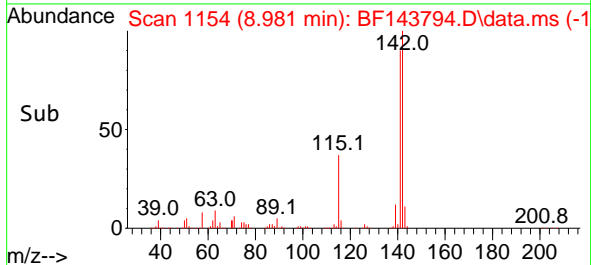
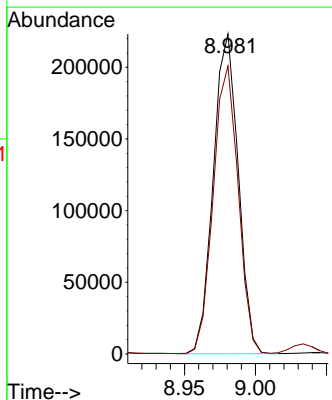
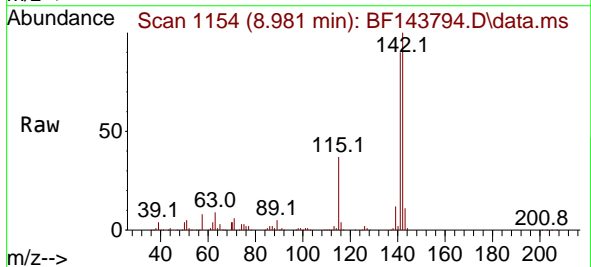
Instrument : BNA_F
 ClientSampleId : SSTDICC020

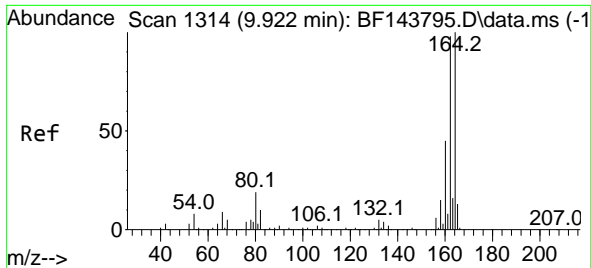
Tgt Ion:142 Resp: 286790
 Ion Ratio Lower Upper
 142 100
 141 88.4 69.4 104.0



#38
 1-Methylnaphthalene
 Concen: 20.889 ng
 RT: 8.981 min Scan# 1154
 Delta R.T. 0.000 min
 Lab File: BF143794.D
 Acq: 23 Sep 2025 12:27

Tgt Ion:142 Resp: 272276
 Ion Ratio Lower Upper
 142 100
 141 89.9 71.1 106.7





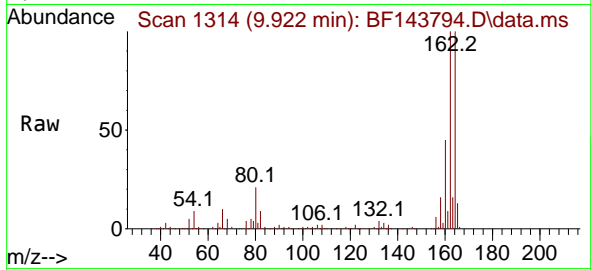
#39
 Acenaphthene-d10
 Concen: 20.000 ng
 RT: 9.922 min Scan# 111
 Delta R.T. -0.006 min
 Lab File: BF143794.D
 Acq: 23 Sep 2025 12:27

Instrument :

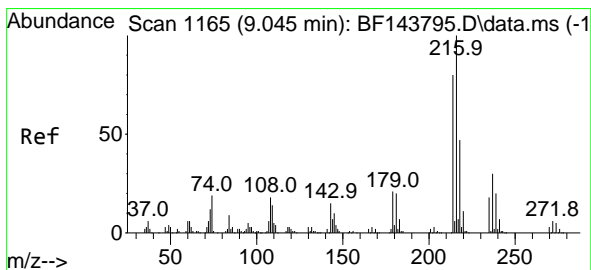
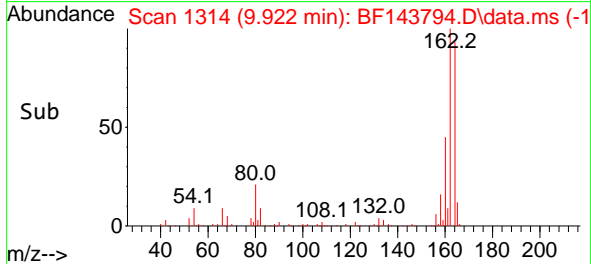
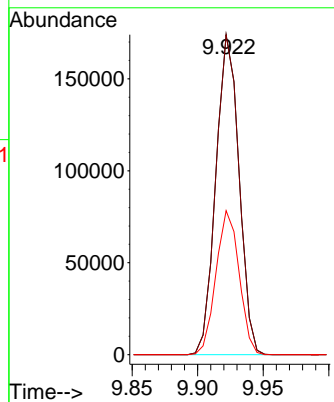
BNA_F

ClientSampleId :

SSTDICC020

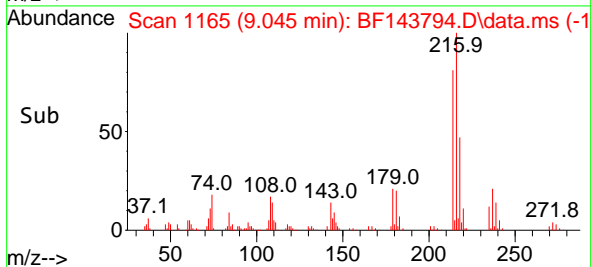
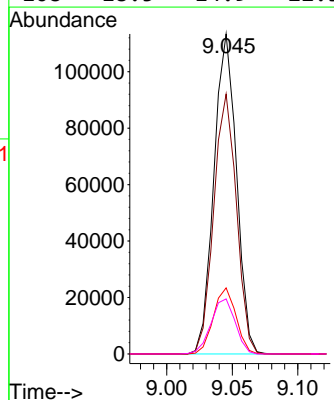
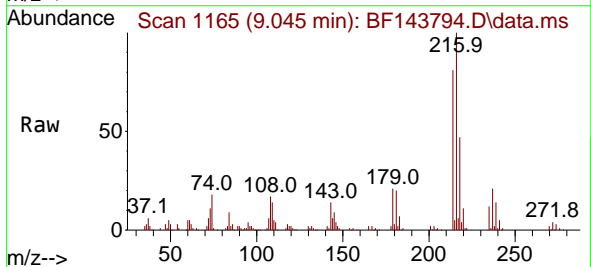


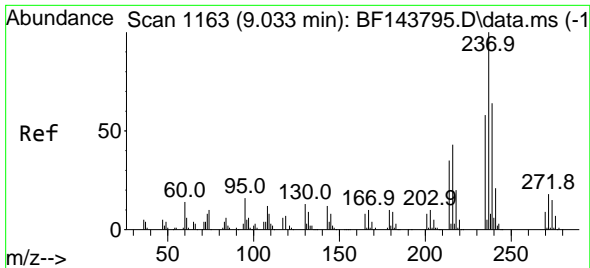
Tgt Ion:164 Resp: 213356
 Ion Ratio Lower Upper
 164 100
 162 99.9 78.8 118.2
 160 45.0 35.8 53.6



#40
 1,2,4,5-Tetrachlorobenzene
 Concen: 21.074 ng
 RT: 9.045 min Scan# 1165
 Delta R.T. -0.006 min
 Lab File: BF143794.D
 Acq: 23 Sep 2025 12:27

Tgt Ion:216 Resp: 135689
 Ion Ratio Lower Upper
 216 100
 214 81.5 63.7 95.5
 179 20.7 16.5 24.7
 108 18.5 14.9 22.3





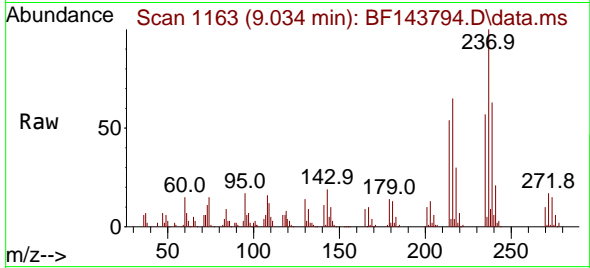
#41
 Hexachlorocyclopentadiene
 Concen: 19.382 ng
 RT: 9.034 min Scan# 1113
 Delta R.T. -0.006 min
 Lab File: BF143794.D
 Acq: 23 Sep 2025 12:27

Instrument :

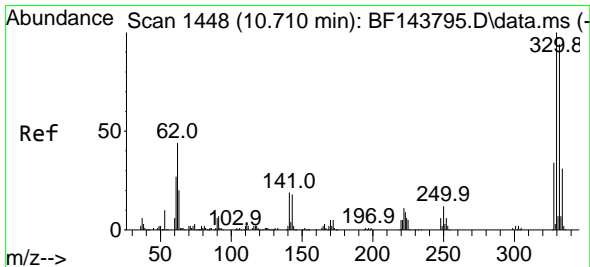
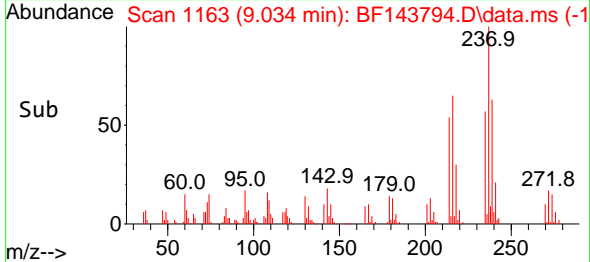
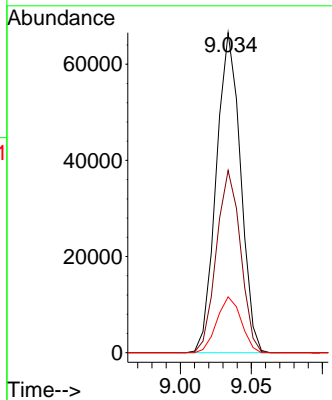
BNA_F

ClientSampleId :

SSTDICC020

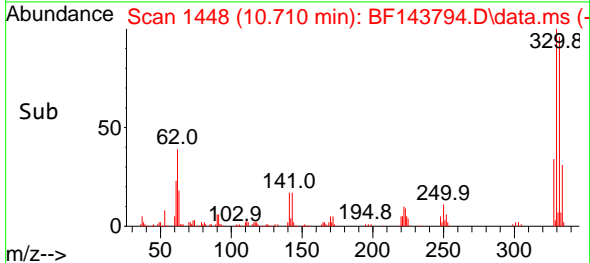
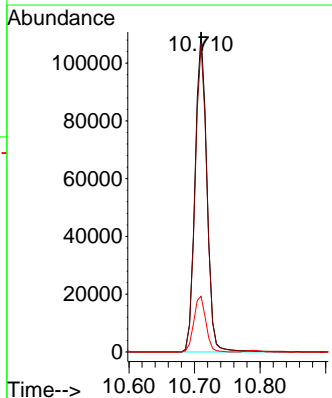
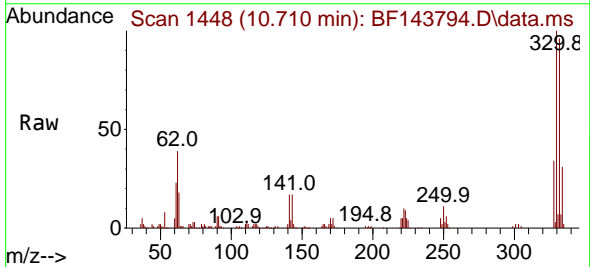


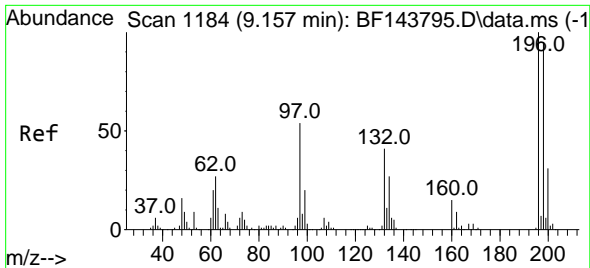
Tgt Ion:237 Resp: 79092
 Ion Ratio Lower Upper
 237 100
 235 57.0 38.1 78.1
 272 17.4 0.0 37.9



#42
 2,4,6-Tribromophenol
 Concen: 45.426 ng
 RT: 10.710 min Scan# 1448
 Delta R.T. -0.006 min
 Lab File: BF143794.D
 Acq: 23 Sep 2025 12:27

Tgt Ion:330 Resp: 138317
 Ion Ratio Lower Upper
 330 100
 332 96.5 74.7 112.1
 141 17.7 14.3 21.5





#43
 2,4,6-Trichlorophenol
 Concen: 20.423 ng
 RT: 9.151 min Scan# 1183
 Delta R.T. -0.006 min
 Lab File: BF143794.D
 Acq: 23 Sep 2025 12:27

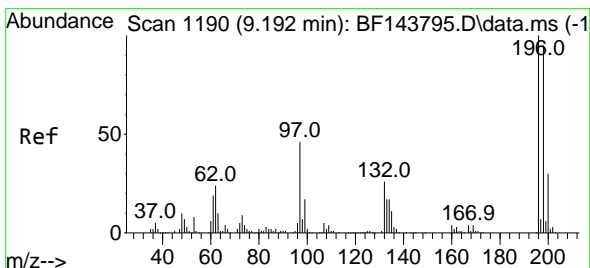
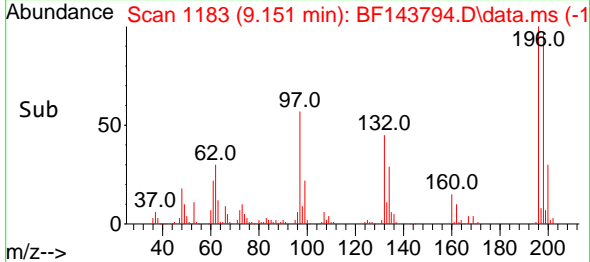
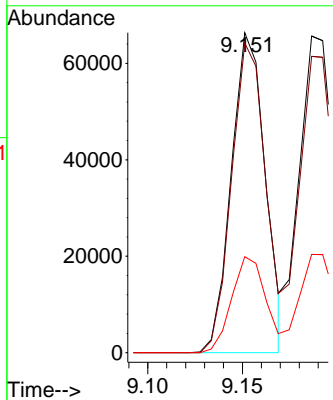
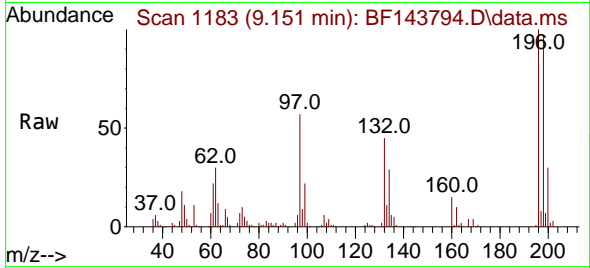
Instrument :

BNA_F

ClientSampleId :

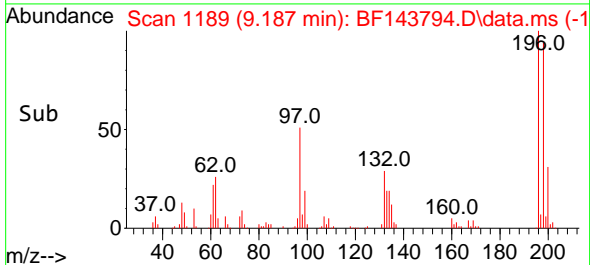
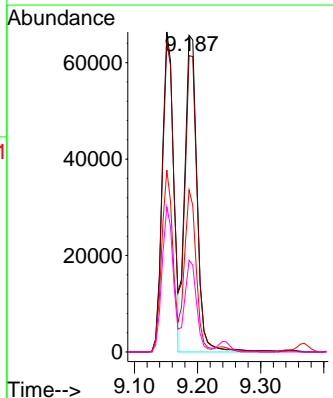
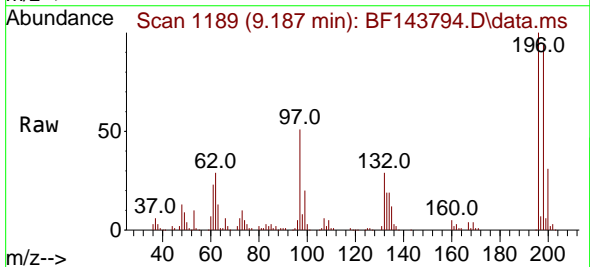
SSTDICC020

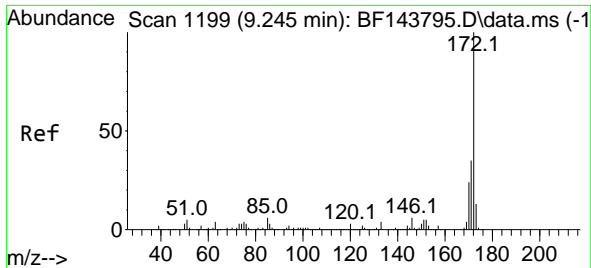
Tgt Ion:196 Resp: 82341
 Ion Ratio Lower Upper
 196 100
 198 96.8 76.2 114.2
 200 30.0 24.7 37.1



#44
 2,4,5-Trichlorophenol
 Concen: 21.213 ng
 RT: 9.187 min Scan# 1189
 Delta R.T. -0.006 min
 Lab File: BF143794.D
 Acq: 23 Sep 2025 12:27

Tgt Ion:196 Resp: 89458
 Ion Ratio Lower Upper
 196 100
 198 93.5 75.9 113.9
 97 51.2 38.3 57.5
 132 29.0 21.9 32.9





#45
 2-Fluorobiphenyl
 Concen: 43.140 ng
 RT: 9.239 min Scan# 1198
 Delta R.T. -0.006 min
 Lab File: BF143794.D
 Acq: 23 Sep 2025 12:27

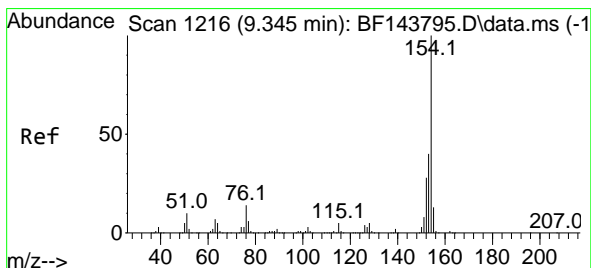
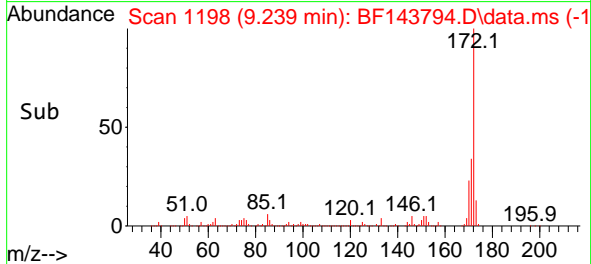
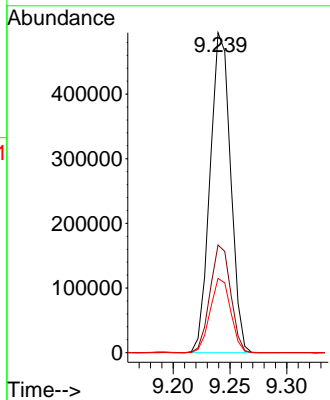
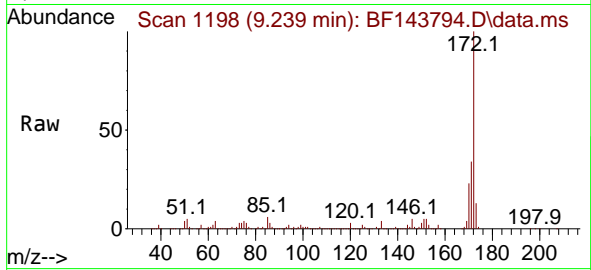
Instrument :

BNA_F

ClientSampleId :

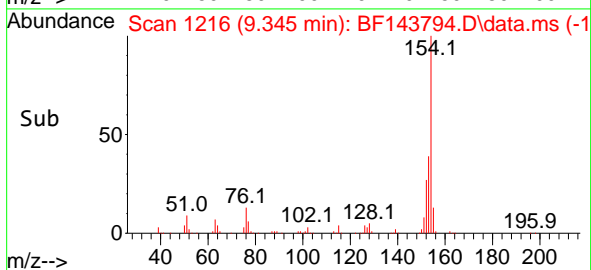
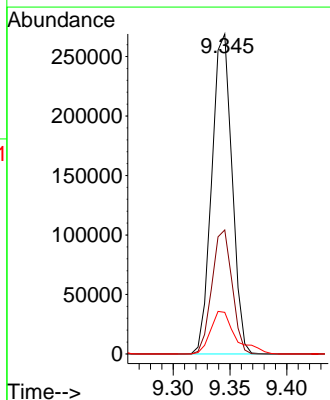
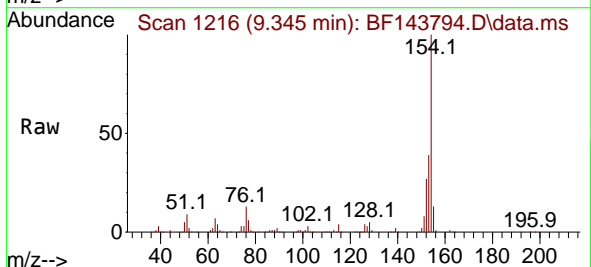
SSTDICC020

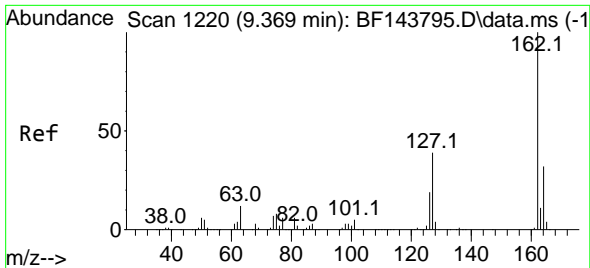
Tgt Ion:172 Resp: 622849
 Ion Ratio Lower Upper
 172 100
 171 33.7 27.9 41.9
 170 23.2 19.1 28.7



#46
 1,1'-Biphenyl
 Concen: 21.610 ng
 RT: 9.345 min Scan# 1216
 Delta R.T. 0.000 min
 Lab File: BF143794.D
 Acq: 23 Sep 2025 12:27

Tgt Ion:154 Resp: 333743
 Ion Ratio Lower Upper
 154 100
 153 38.8 19.7 59.7
 76 13.0 0.0 33.8



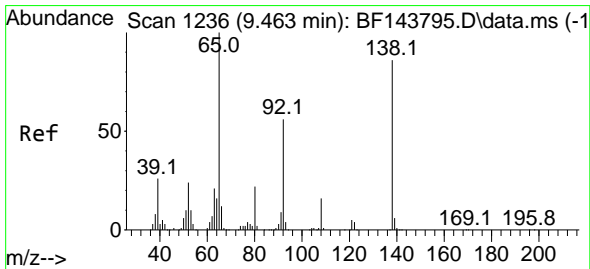
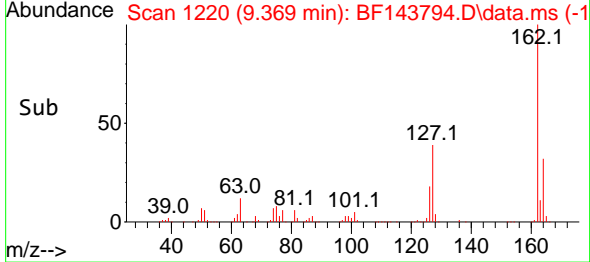
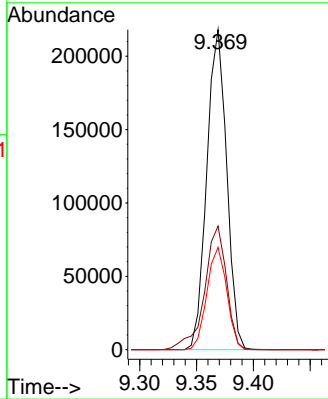
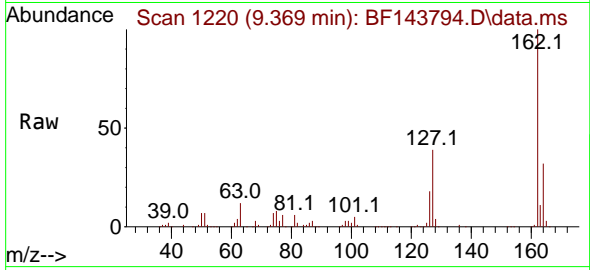


#47
 2-Chloronaphthalene
 Concen: 21.330 ng
 RT: 9.369 min Scan# 11
 Delta R.T. -0.006 min
 Lab File: BF143794.D
 Acq: 23 Sep 2025 12:27

Instrument :
 BNA_F
 ClientSampleId :
 SSTDICC020

Tgt Ion:162 Resp: 265169

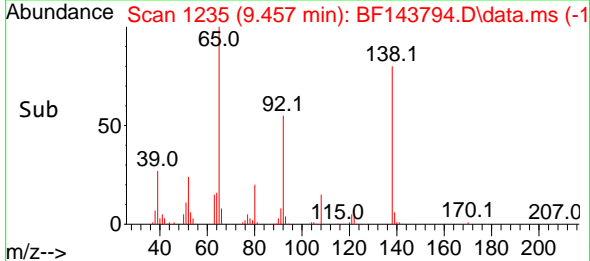
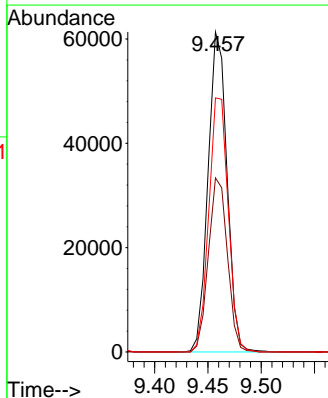
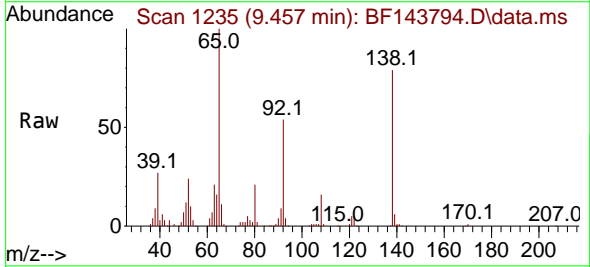
Ion	Ratio	Lower	Upper
162	100		
127	38.6	31.5	47.3
164	32.0	25.9	38.9

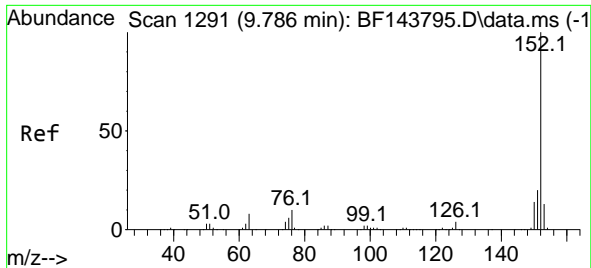


#48
 2-Nitroaniline
 Concen: 20.157 ng
 RT: 9.457 min Scan# 1235
 Delta R.T. -0.006 min
 Lab File: BF143794.D
 Acq: 23 Sep 2025 12:27

Tgt Ion: 65 Resp: 75737

Ion	Ratio	Lower	Upper
65	100		
92	54.4	44.9	67.3
138	79.4	69.0	103.4





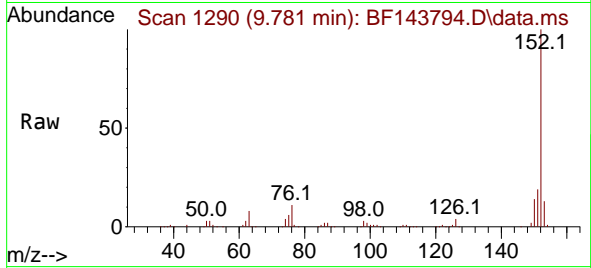
#49
 Acenaphthylene
 Concen: 21.195 ng
 RT: 9.781 min Scan# 11
 Delta R.T. -0.006 min
 Lab File: BF143794.D
 Acq: 23 Sep 2025 12:27

Instrument :

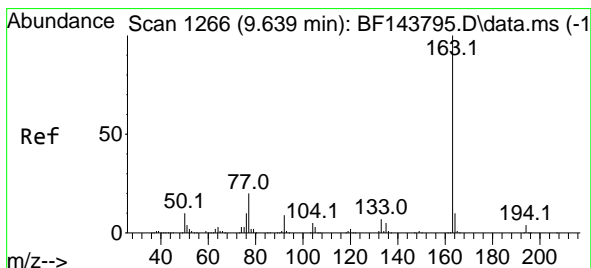
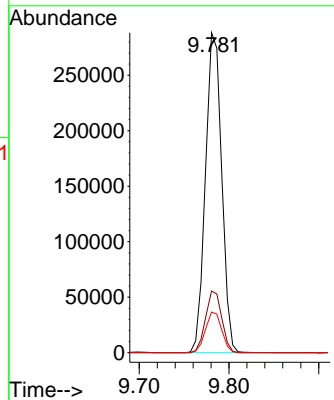
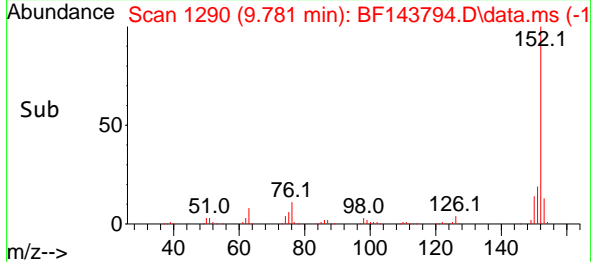
BNA_F

ClientSampleId :

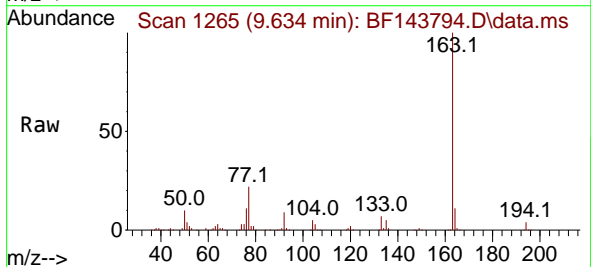
SSTDICC020



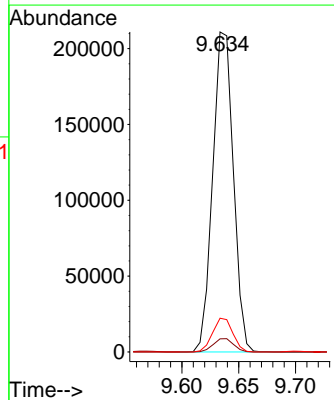
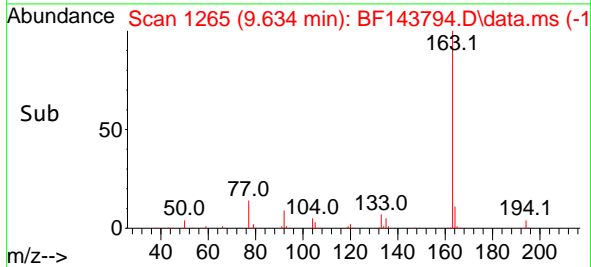
Tgt Ion:152 Resp: 362739
 Ion Ratio Lower Upper
 152 100
 151 19.3 15.7 23.5
 153 12.7 10.6 15.8

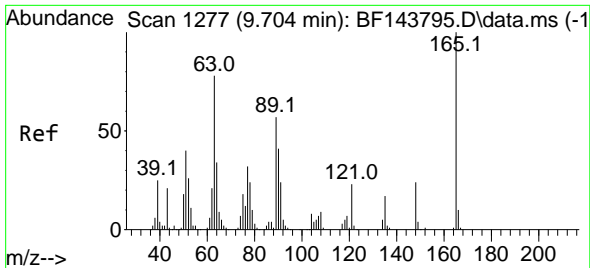


#50
 Dimethylphthalate
 Concen: 20.548 ng
 RT: 9.634 min Scan# 1265
 Delta R.T. -0.006 min
 Lab File: BF143794.D
 Acq: 23 Sep 2025 12:27



Tgt Ion:163 Resp: 267211
 Ion Ratio Lower Upper
 163 100
 194 4.1 3.0 4.6
 164 10.6 8.2 12.2

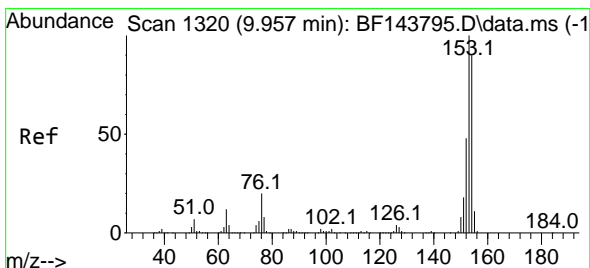
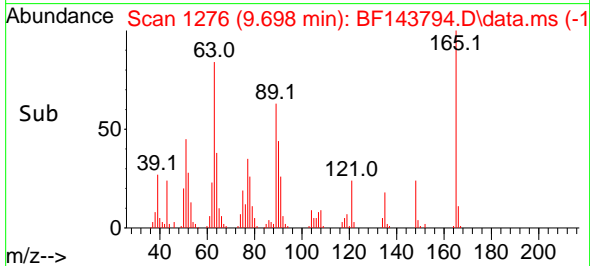
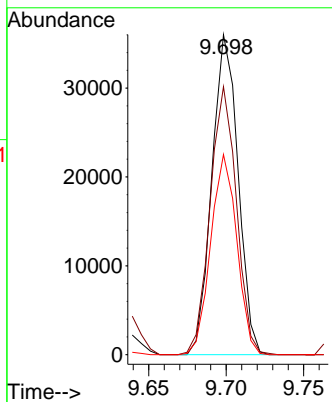
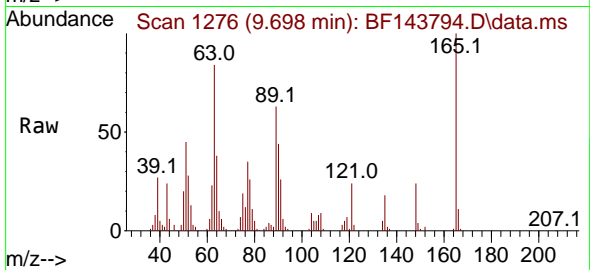




#51
 2,6-Dinitrotoluene
 Concen: 19.794 ng
 RT: 9.698 min Scan# 11
 Delta R.T. -0.006 min
 Lab File: BF143794.D
 Acq: 23 Sep 2025 12:27

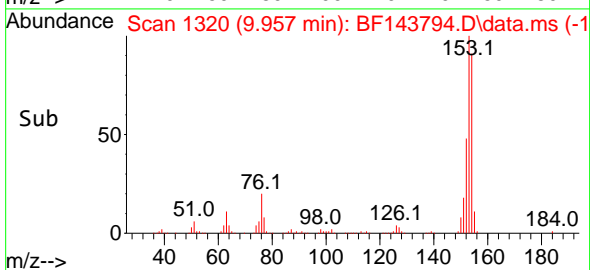
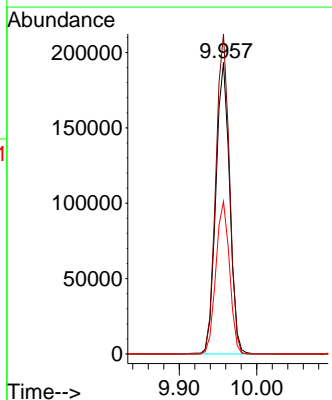
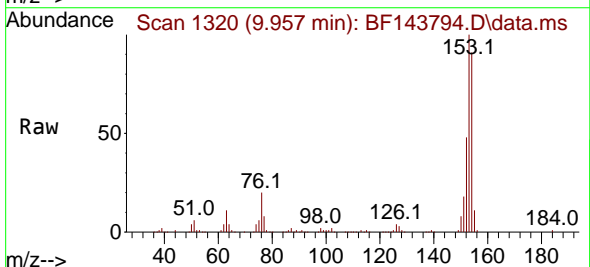
Instrument :
 BNA_F
 ClientSampleId :
 SSTDICC020

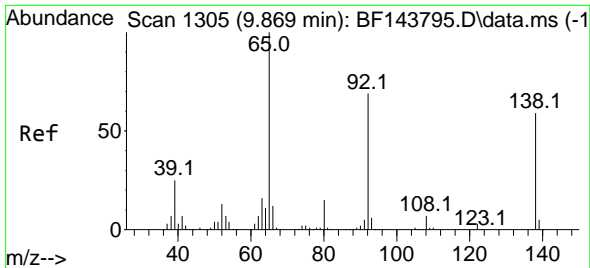
Tgt Ion	Resp	Lower	Upper
165	42291		
165	100		
63	83.8	62.6	94.0
89	62.6	45.2	67.8



#52
 Acenaphthene
 Concen: 21.268 ng
 RT: 9.957 min Scan# 1320
 Delta R.T. -0.006 min
 Lab File: BF143794.D
 Acq: 23 Sep 2025 12:27

Tgt Ion	Resp	Lower	Upper
154	239533		
154	100		
153	109.8	88.7	133.1
152	52.3	42.7	64.1



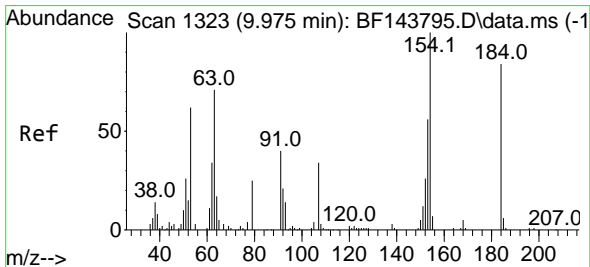
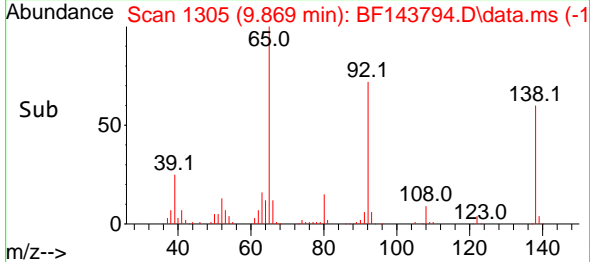
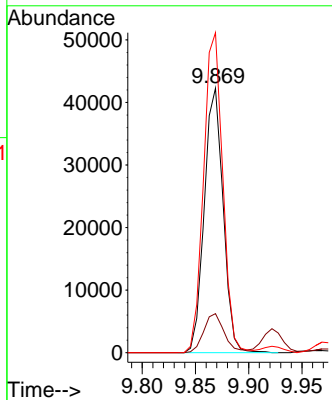
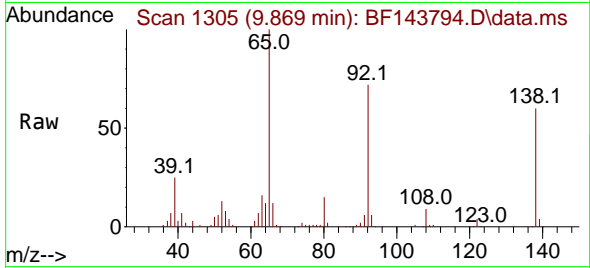


#53
 3-Nitroaniline
 Concen: 20.150 ng
 RT: 9.869 min Scan# 11
 Delta R.T. -0.006 min
 Lab File: BF143794.D
 Acq: 23 Sep 2025 12:27

Instrument : BNA_F
 ClientSampleId : SSTDICC020

Tgt Ion:138 Resp: 52183

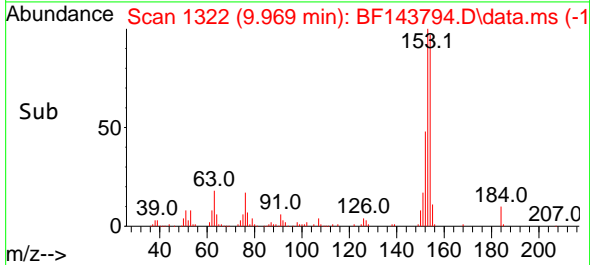
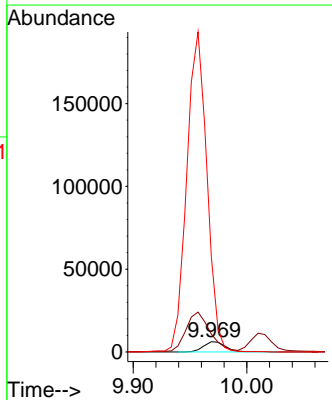
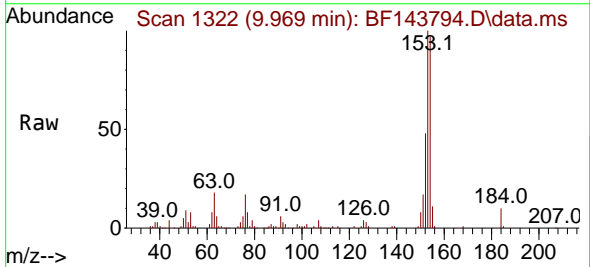
Ion	Ratio	Lower	Upper
138	100		
108	14.8	9.9	14.9
92	121.0	93.5	140.3

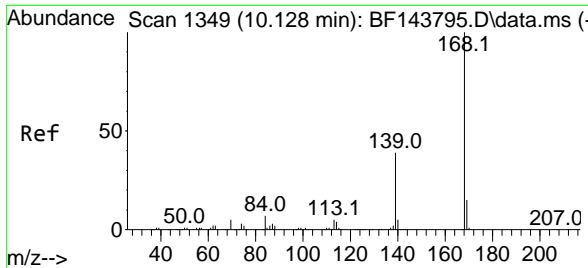


#54
 2,4-Dinitrophenol
 Concen: 16.759 ng
 RT: 9.969 min Scan# 1322
 Delta R.T. -0.006 min
 Lab File: BF143794.D
 Acq: 23 Sep 2025 12:27

Tgt Ion:184 Resp: 8519

Ion	Ratio	Lower	Upper
184	100		
63	174.8	84.6	127.0#
154	930.3	199.3	298.9#



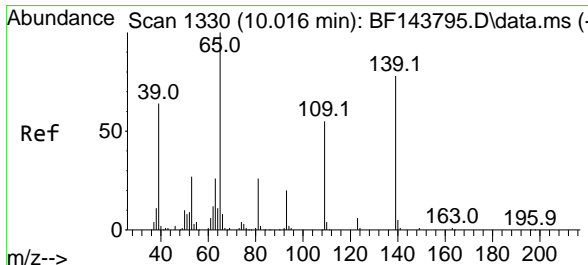
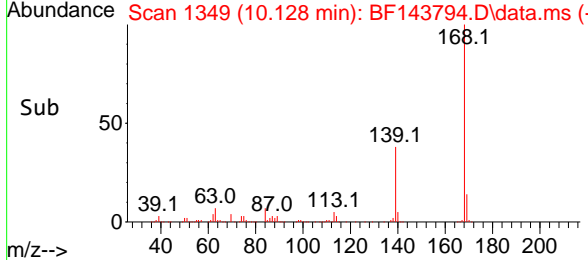
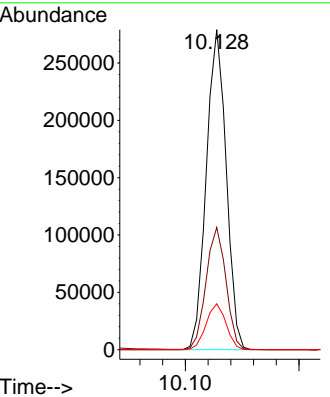
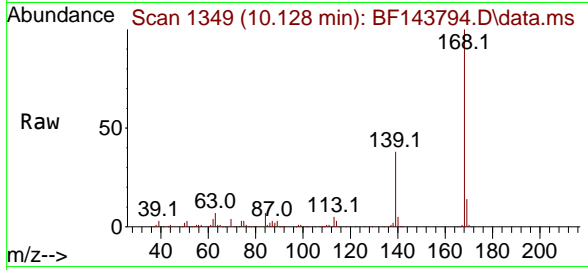


#55
 Dibenzofuran
 Concen: 21.305 ng
 RT: 10.128 min Scan# 1349
 Delta R.T. -0.006 min
 Lab File: BF143794.D
 Acq: 23 Sep 2025 12:27

Instrument : BNA_F
 ClientSampleId : SSTDICC020

Tgt Ion:168 Resp: 339308

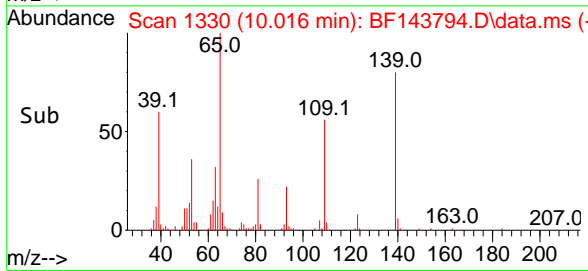
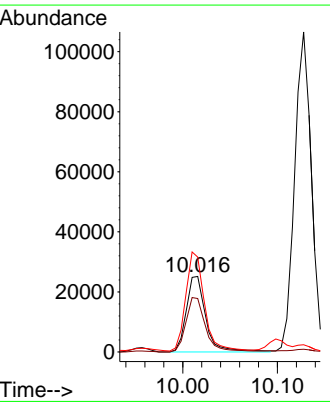
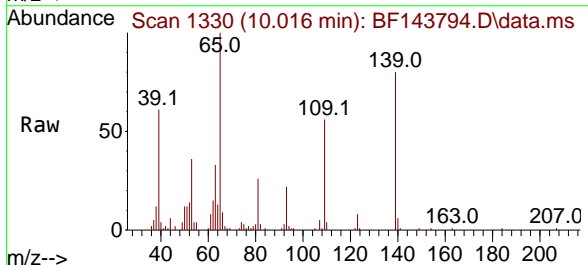
Ion	Ratio	Lower	Upper
168	100		
139	38.2	31.0	46.6
169	14.4	11.9	17.9

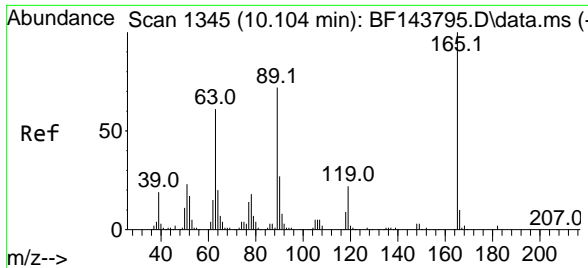


#56
 4-Nitrophenol
 Concen: 17.322 ng
 RT: 10.016 min Scan# 1330
 Delta R.T. -0.006 min
 Lab File: BF143794.D
 Acq: 23 Sep 2025 12:27

Tgt Ion:139 Resp: 36150

Ion	Ratio	Lower	Upper
139	100		
109	70.9	50.2	90.2
65	125.7	109.2	149.2





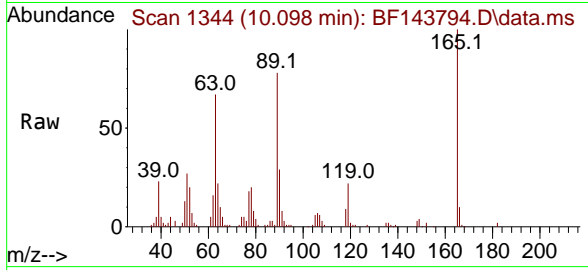
#57
 2,4-Dinitrotoluene
 Concen: 18.952 ng
 RT: 10.098 min Scan# 11
 Delta R.T. -0.012 min
 Lab File: BF143794.D
 Acq: 23 Sep 2025 12:27

Instrument :

BNA_F

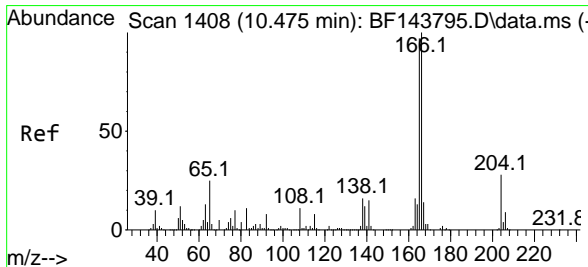
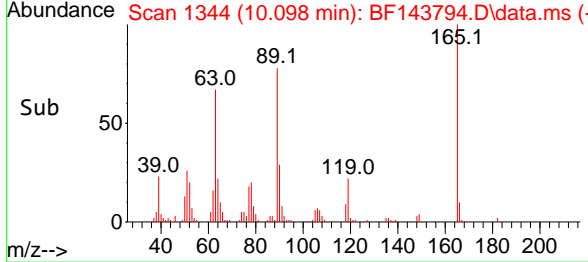
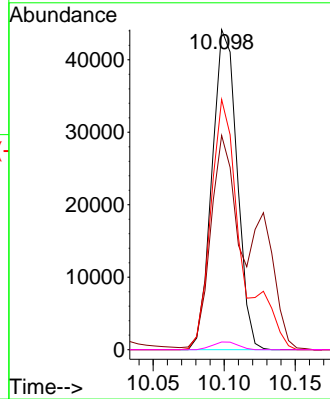
ClientSampleId :

SSTDICC020



Tgt Ion:165 Resp: 54137

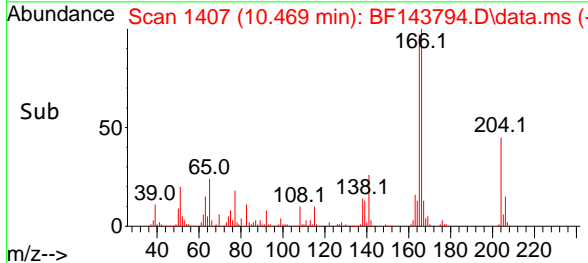
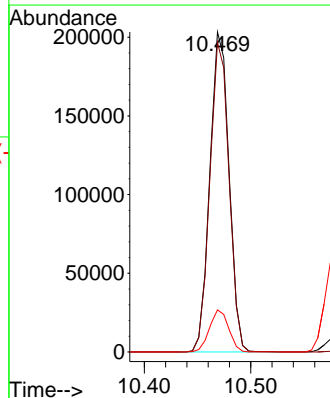
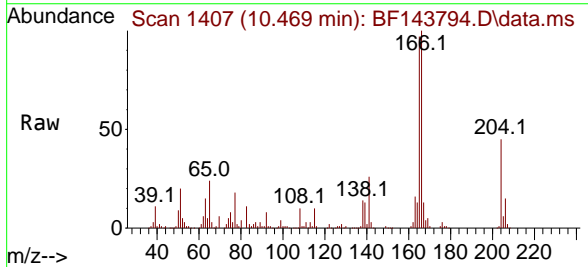
Ion	Ratio	Lower	Upper
165	100		
63	67.0	48.9	73.3
89	78.2	57.5	86.3
182	2.4	2.0	3.0

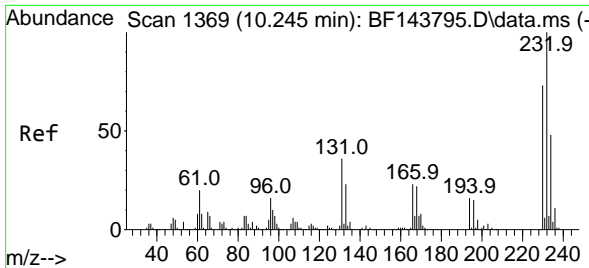


#58
 Fluorene
 Concen: 21.445 ng
 RT: 10.469 min Scan# 1407
 Delta R.T. -0.006 min
 Lab File: BF143794.D
 Acq: 23 Sep 2025 12:27

Tgt Ion:166 Resp: 253897

Ion	Ratio	Lower	Upper
166	100		
165	96.8	78.0	117.0
167	13.2	10.9	16.3





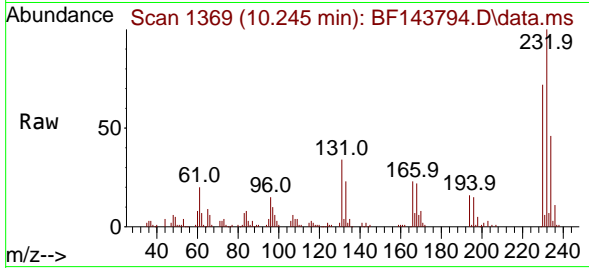
#59
 2,3,4,6-Tetrachlorophenol
 Concen: 20.618 ng
 RT: 10.245 min Scan# 1369
 Delta R.T. 0.000 min
 Lab File: BF143794.D
 Acq: 23 Sep 2025 12:27

Instrument :

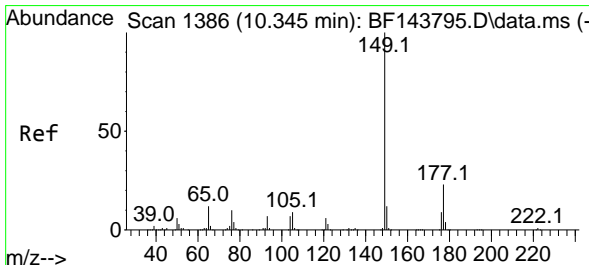
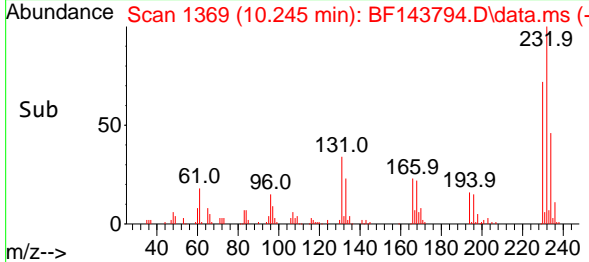
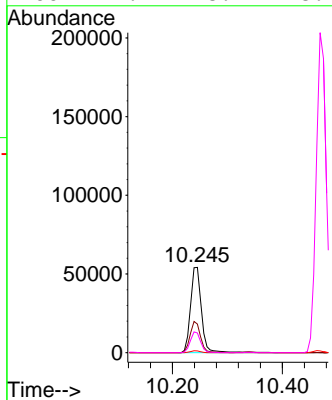
BNA_F

ClientSampleId :

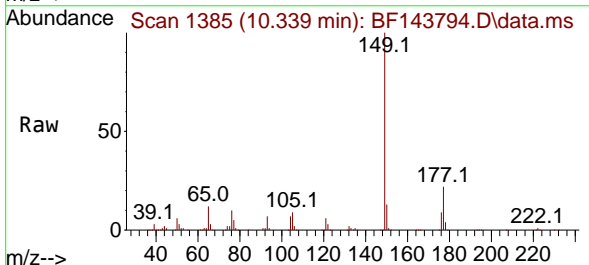
SSTDICC020



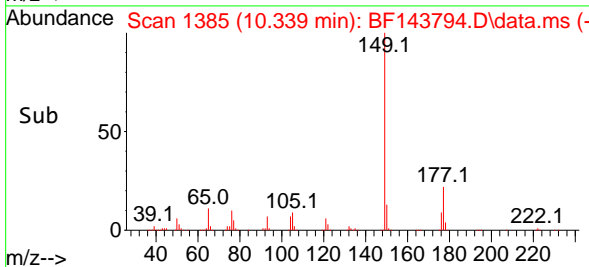
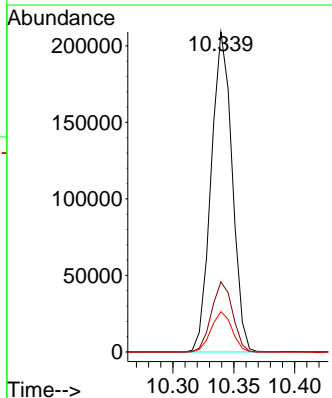
Tgt Ion: 232 Resp: 74485
 Ion Ratio Lower Upper
 232 100
 131 34.9 29.4 44.2
 130 1.9 1.3 1.9#
 166 22.9 18.7 28.1

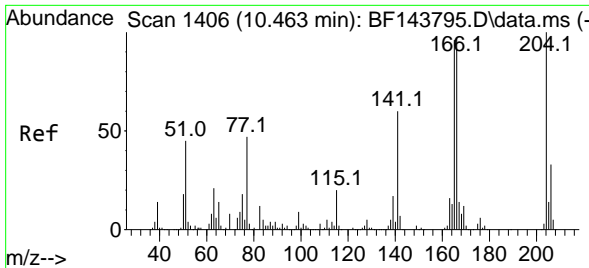


#60
 Diethylphthalate
 Concen: 20.575 ng
 RT: 10.339 min Scan# 1385
 Delta R.T. -0.006 min
 Lab File: BF143794.D
 Acq: 23 Sep 2025 12:27



Tgt Ion: 149 Resp: 250459
 Ion Ratio Lower Upper
 149 100
 177 21.9 18.1 27.1
 150 12.6 9.7 14.5





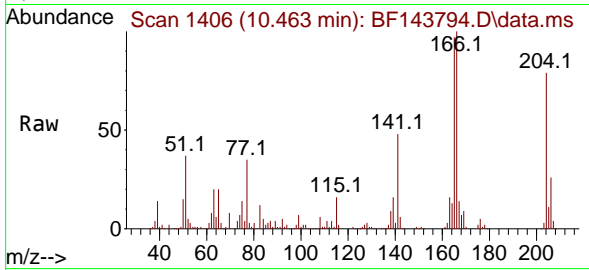
#61
 4-Chlorophenyl-phenylether
 Concen: 21.242 ng
 RT: 10.463 min Scan# 1406
 Delta R.T. -0.006 min
 Lab File: BF143794.D
 Acq: 23 Sep 2025 12:27

Instrument :

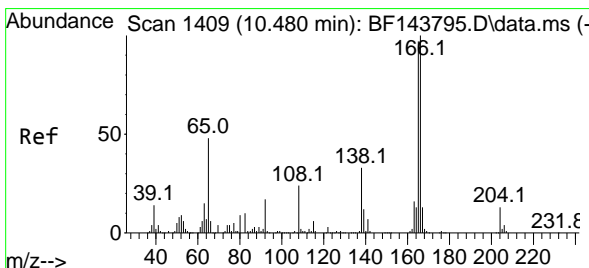
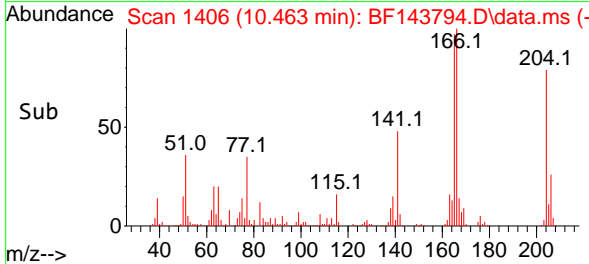
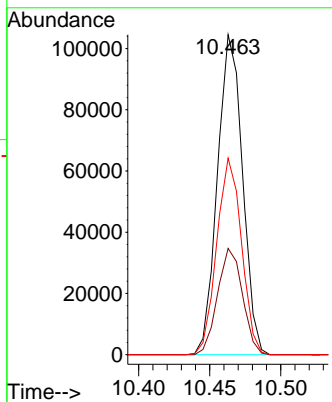
BNA_F

ClientSampleId :

SSTDICC020

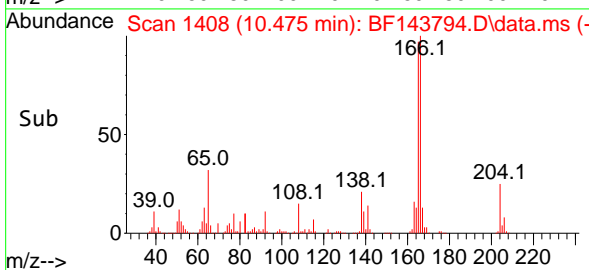
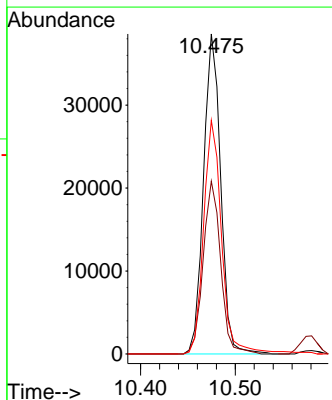
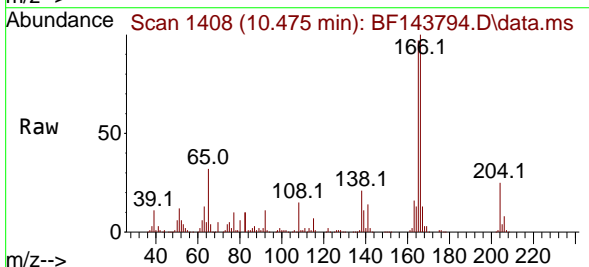


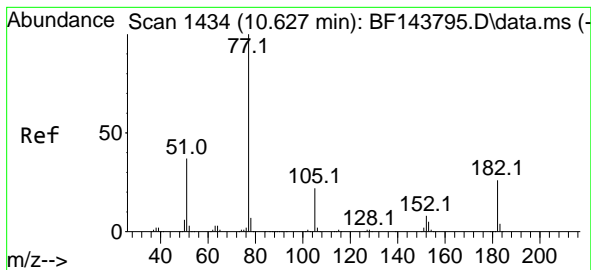
Tgt Ion:204 Resp: 128143
 Ion Ratio Lower Upper
 204 100
 206 33.2 26.7 40.1
 141 61.4 48.2 72.2



#62
 4-Nitroaniline
 Concen: 19.941 ng
 RT: 10.475 min Scan# 1408
 Delta R.T. -0.018 min
 Lab File: BF143794.D
 Acq: 23 Sep 2025 12:27

Tgt Ion:138 Resp: 48558
 Ion Ratio Lower Upper
 138 100
 92 54.0 31.5 71.5
 108 73.0 51.9 91.9





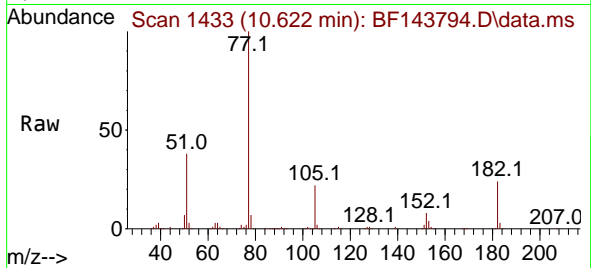
#63
 Azobenzene
 Concen: 20.720 ng
 RT: 10.622 min Scan# 1433
 Delta R.T. -0.006 min
 Lab File: BF143794.D
 Acq: 23 Sep 2025 12:27

Instrument :

BNA_F

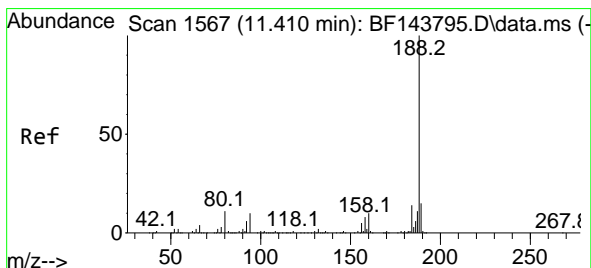
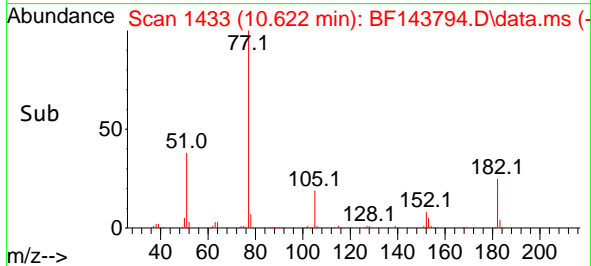
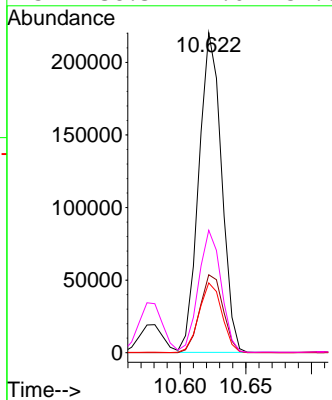
ClientSampleId :

SSTDICC020



Tgt Ion: 77 Resp: 265823

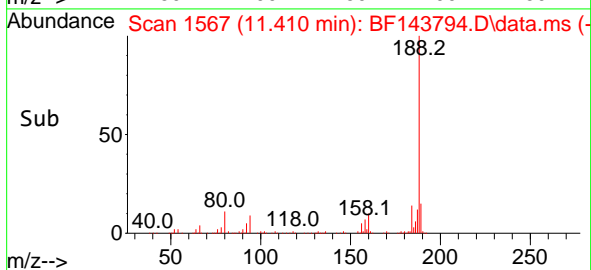
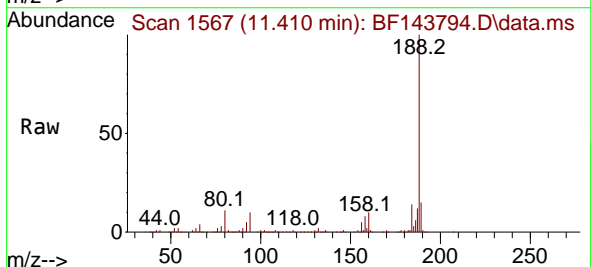
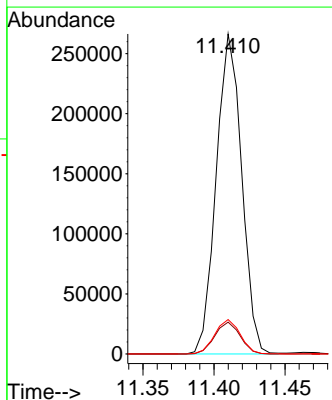
Ion	Ratio	Lower	Upper
77	100		
182	24.3	5.9	45.9
105	21.8	2.3	42.3
51	38.3	17.6	57.6

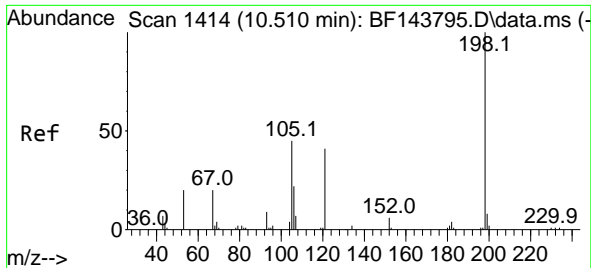


#64
 Phenanthrene-d10
 Concen: 20.000 ng
 RT: 11.410 min Scan# 1567
 Delta R.T. -0.006 min
 Lab File: BF143794.D
 Acq: 23 Sep 2025 12:27

Tgt Ion: 188 Resp: 331910

Ion	Ratio	Lower	Upper
188	100		
94	9.9	8.2	12.2
80	10.8	8.6	12.8



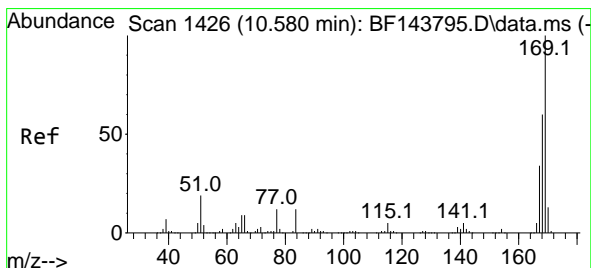
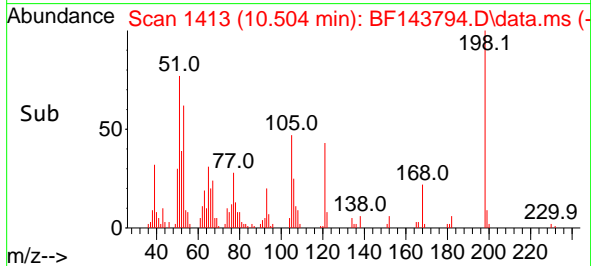
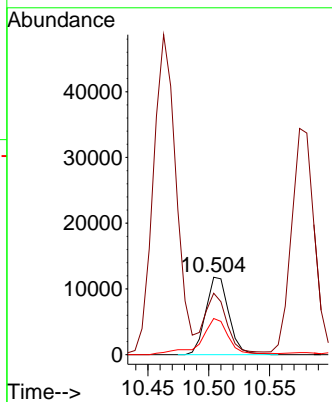
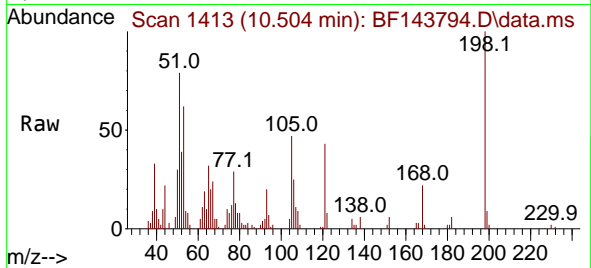


#65
 4,6-Dinitro-2-methylphenol
 Concen: 17.632 ng
 RT: 10.504 min Scan# 1413
 Delta R.T. -0.012 min
 Lab File: BF143794.D
 Acq: 23 Sep 2025 12:27

Instrument :
 BNA_F
 ClientSampleId :
 SSTDICC020

Tgt Ion:198 Resp: 15499

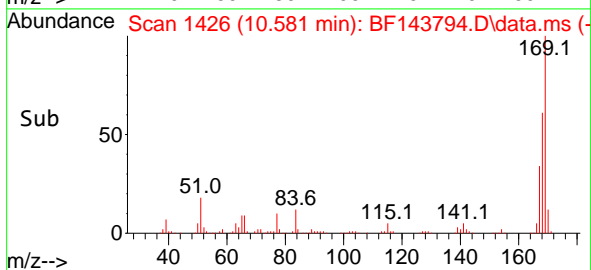
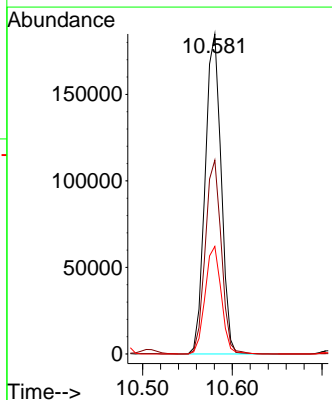
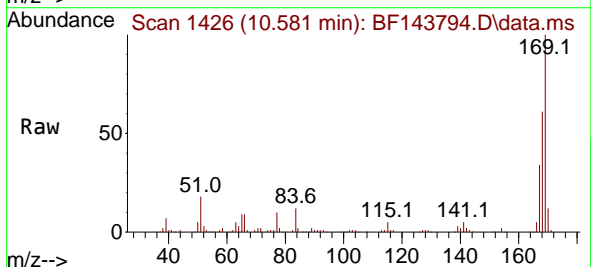
Ion	Ratio	Lower	Upper
198	100		
51	79.4	52.0	92.0
105	46.7	27.5	67.5

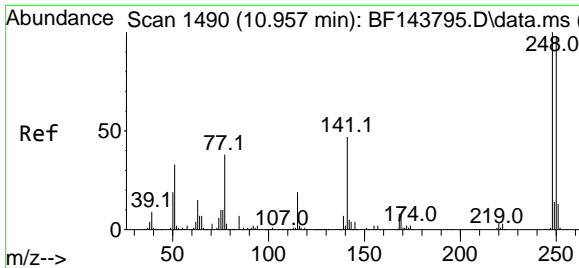


#66
 n-Nitrosodiphenylamine
 Concen: 20.930 ng
 RT: 10.581 min Scan# 1426
 Delta R.T. -0.006 min
 Lab File: BF143794.D
 Acq: 23 Sep 2025 12:27

Tgt Ion:169 Resp: 228456

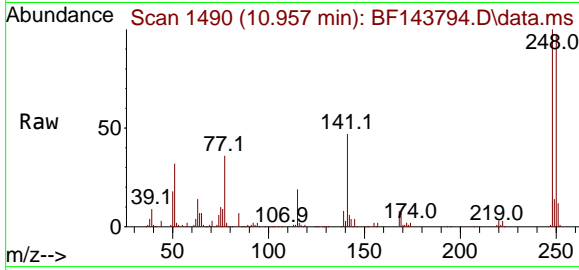
Ion	Ratio	Lower	Upper
169	100		
168	60.6	47.9	71.9
167	33.6	27.0	40.6



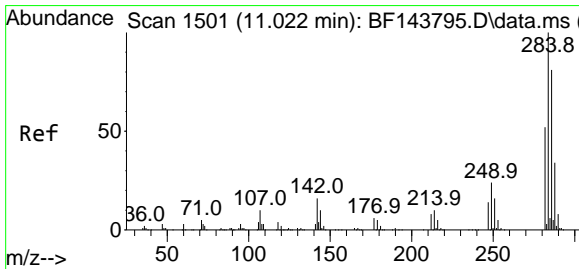
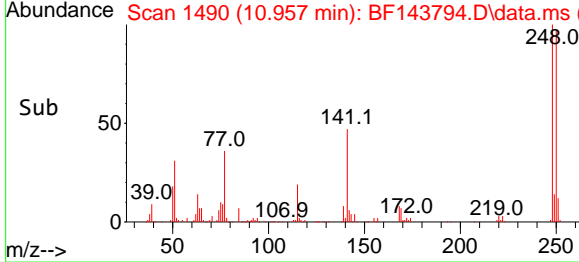
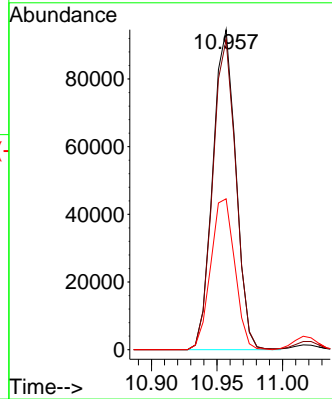


#67
 4-Bromophenyl-phenylether
 Concen: 20.464 ng
 RT: 10.957 min Scan# 1490
 Delta R.T. 0.000 min
 Lab File: BF143794.D
 Acq: 23 Sep 2025 12:27

Instrument :
 BNA_F
 ClientSampleId :
 SSTDICC020

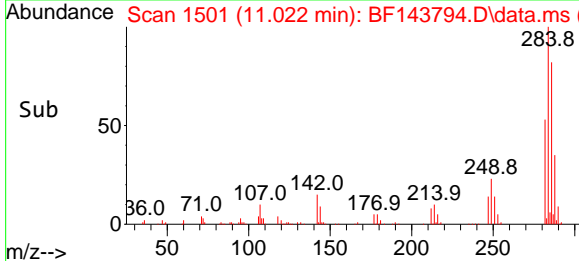
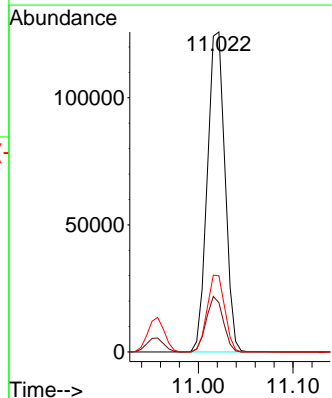
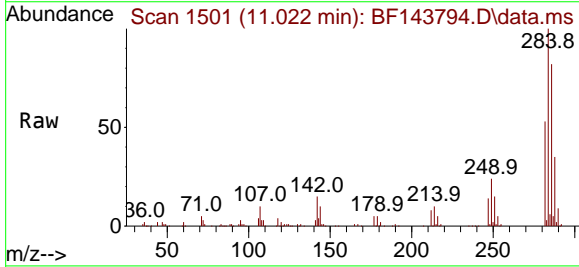


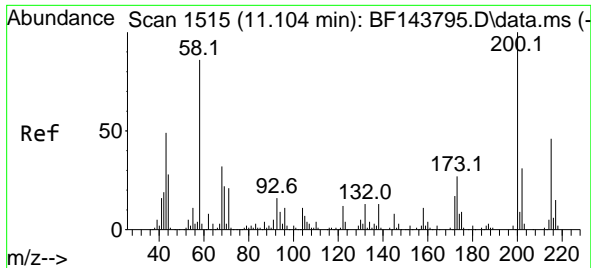
Tgt Ion:248 Resp: 115749
 Ion Ratio Lower Upper
 248 100
 250 96.9 78.7 118.1
 141 47.1 37.9 56.9



#68
 Hexachlorobenzene
 Concen: 20.797 ng
 RT: 11.022 min Scan# 1501
 Delta R.T. 0.000 min
 Lab File: BF143794.D
 Acq: 23 Sep 2025 12:27

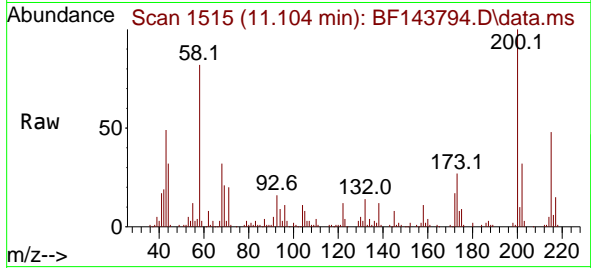
Tgt Ion:284 Resp: 162113
 Ion Ratio Lower Upper
 284 100
 142 15.4 13.1 19.7
 249 23.8 19.5 29.3



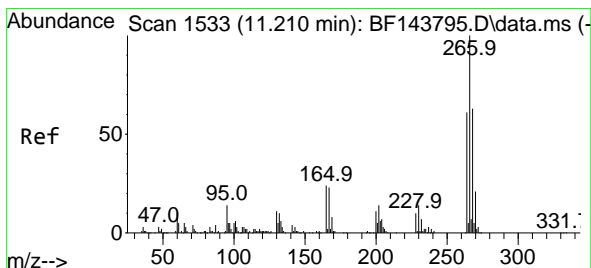
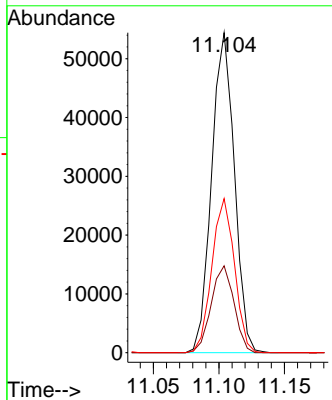
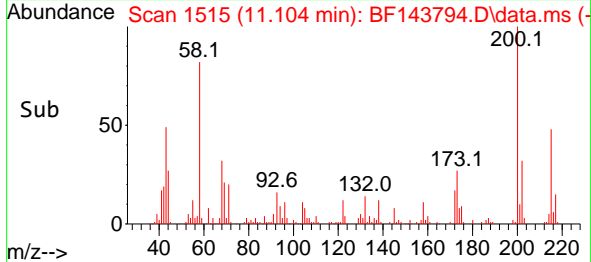


#69
 Atrazine
 Concen: 20.747 ng
 RT: 11.104 min Scan# 1515
 Delta R.T. -0.006 min
 Lab File: BF143794.D
 Acq: 23 Sep 2025 12:27

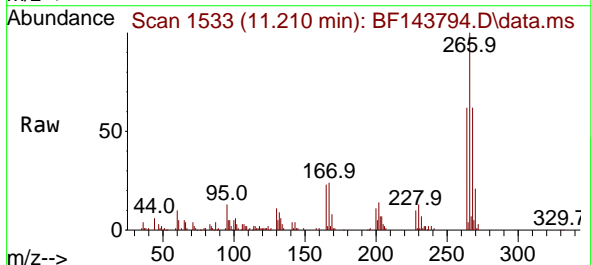
Instrument : BNA_F
 Client Sample Id : SSTDICC020



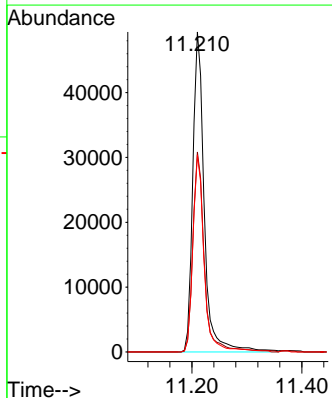
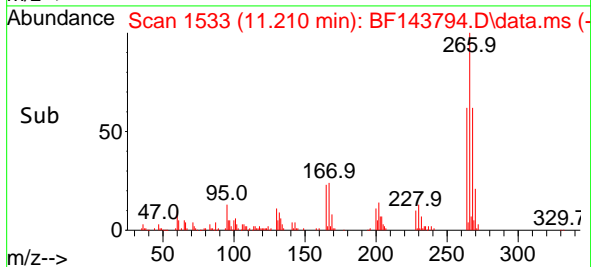
Tgt Ion:200 Resp: 65580
 Ion Ratio Lower Upper
 200 100
 173 27.1 7.2 47.2
 215 48.1 26.0 66.0

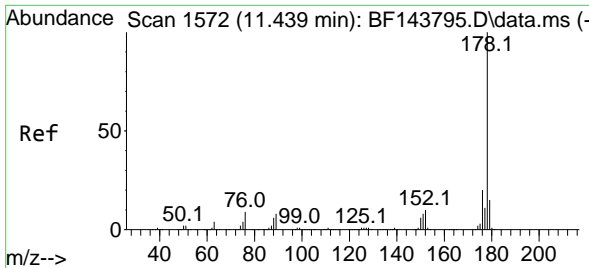


#70
 Pentachlorophenol
 Concen: 18.449 ng
 RT: 11.210 min Scan# 1533
 Delta R.T. -0.006 min
 Lab File: BF143794.D
 Acq: 23 Sep 2025 12:27



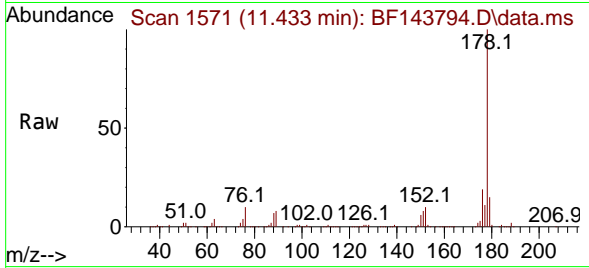
Tgt Ion:266 Resp: 71585
 Ion Ratio Lower Upper
 266 100
 268 62.5 50.5 75.7
 264 61.6 48.8 73.2



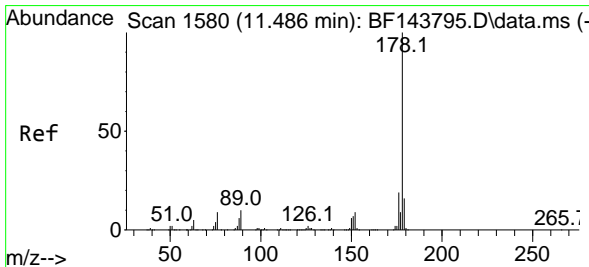
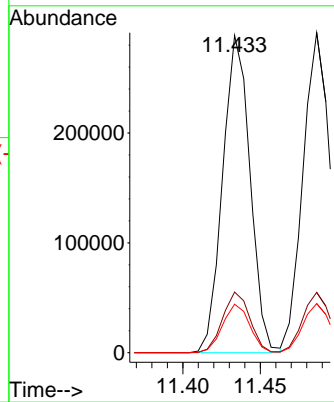
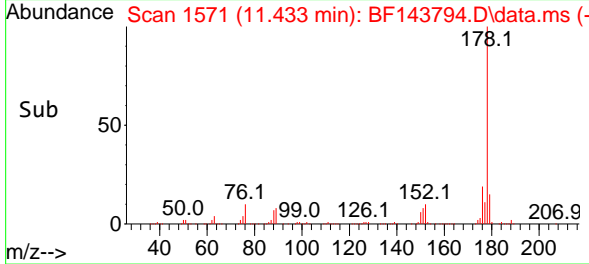


#71
 Phenanthrene
 Concen: 20.854 ng
 RT: 11.433 min Scan# 11
 Delta R.T. -0.006 min
 Lab File: BF143794.D
 Acq: 23 Sep 2025 12:27

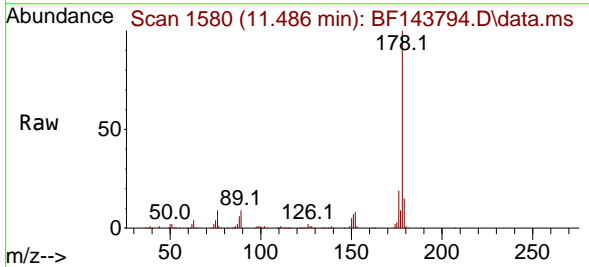
Instrument :
 BNA_F
 ClientSampleId :
 SSTDICC020



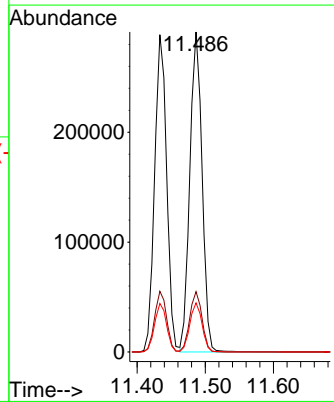
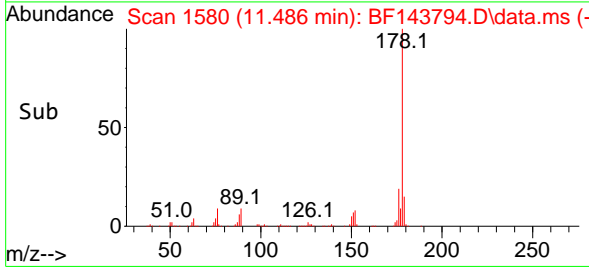
Tgt Ion:178 Resp: 355364
 Ion Ratio Lower Upper
 178 100
 176 19.1 15.6 23.4
 179 15.3 12.2 18.4

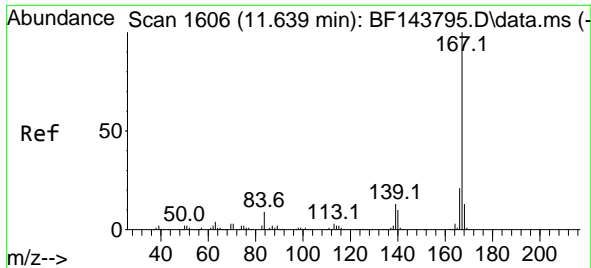


#72
 Anthracene
 Concen: 21.135 ng
 RT: 11.486 min Scan# 1580
 Delta R.T. -0.006 min
 Lab File: BF143794.D
 Acq: 23 Sep 2025 12:27



Tgt Ion:178 Resp: 361245
 Ion Ratio Lower Upper
 178 100
 176 18.9 15.3 22.9
 179 15.4 12.8 19.2





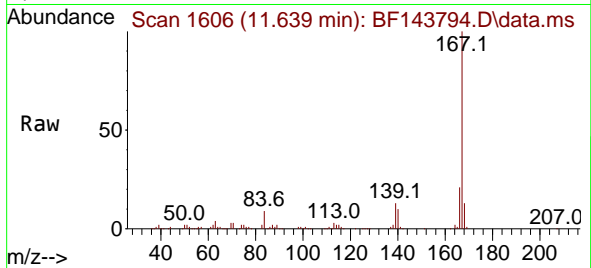
#73
 Carbazole
 Concen: 21.072 ng
 RT: 11.639 min Scan# 1606
 Delta R.T. -0.006 min
 Lab File: BF143794.D
 Acq: 23 Sep 2025 12:27

Instrument :

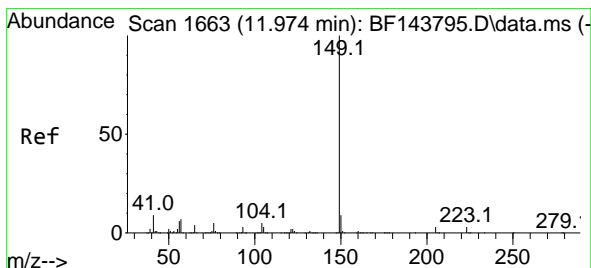
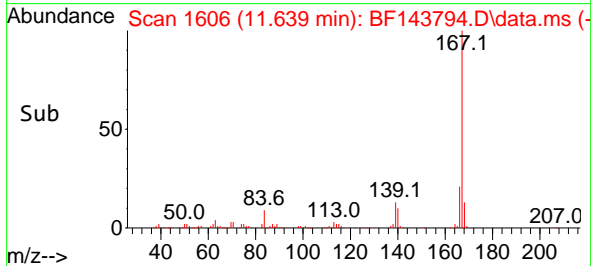
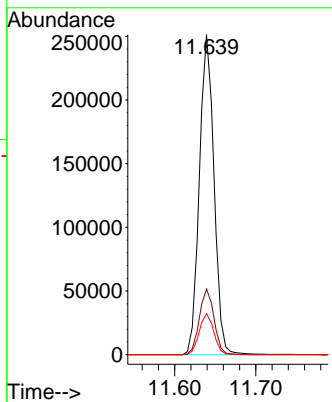
BNA_F

Client Sample Id :

SSTDICC020

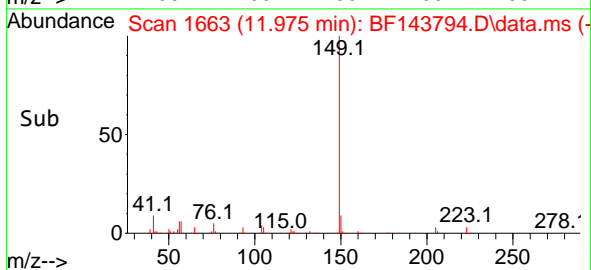
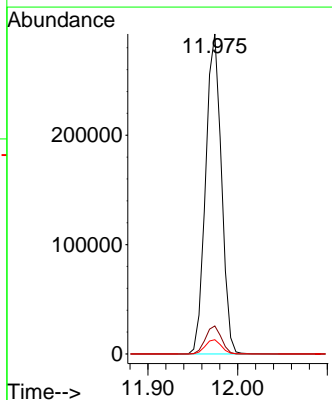
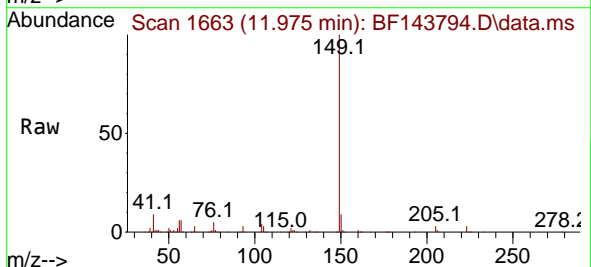


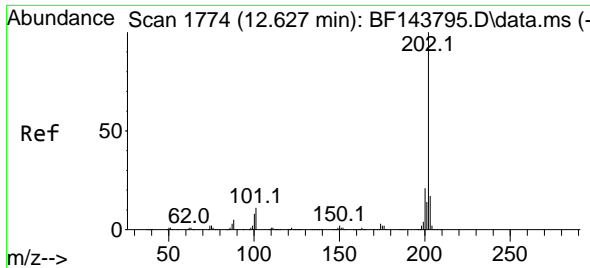
Tgt Ion:167 Resp: 314908
 Ion Ratio Lower Upper
 167 100
 166 20.5 17.0 25.4
 139 12.8 10.6 15.8



#74
 Di-n-butylphthalate
 Concen: 20.764 ng
 RT: 11.975 min Scan# 1663
 Delta R.T. 0.000 min
 Lab File: BF143794.D
 Acq: 23 Sep 2025 12:27

Tgt Ion:149 Resp: 356883
 Ion Ratio Lower Upper
 149 100
 150 8.8 7.3 10.9
 104 4.4 3.6 5.4





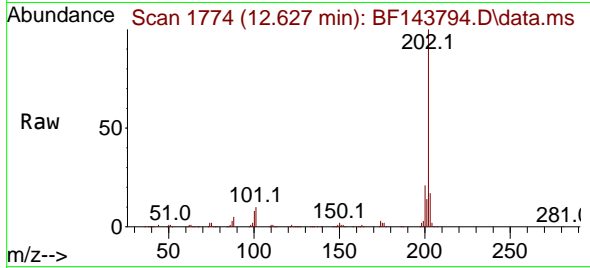
#75
 Fluoranthene
 Concen: 21.284 ng
 RT: 12.627 min Scan# 11
 Delta R.T. 0.000 min
 Lab File: BF143794.D
 Acq: 23 Sep 2025 12:27

Instrument :

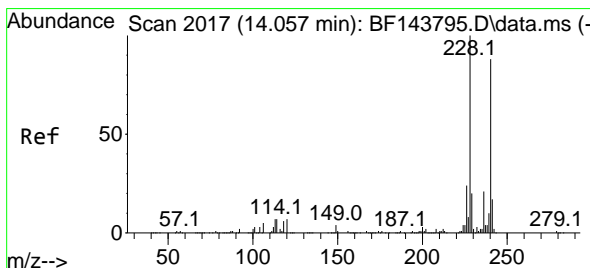
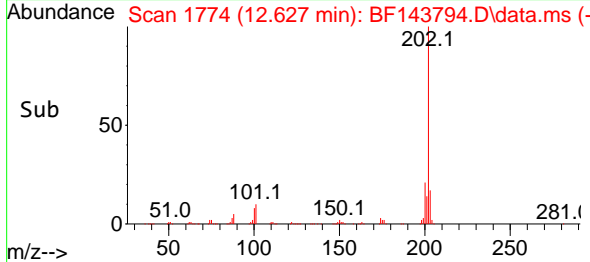
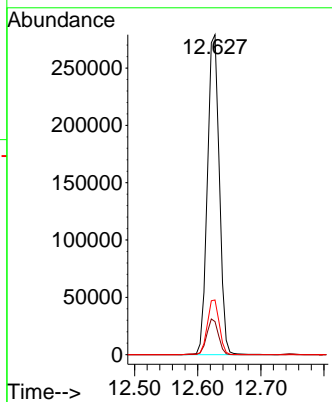
BNA_F

ClientSampleId :

SSTDICC020

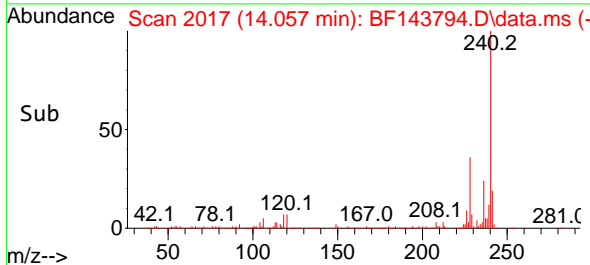
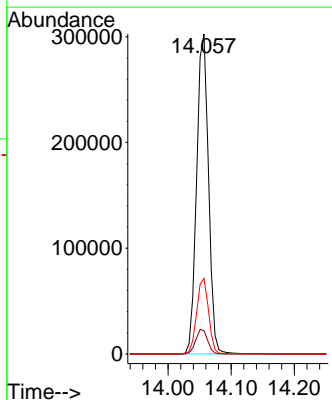
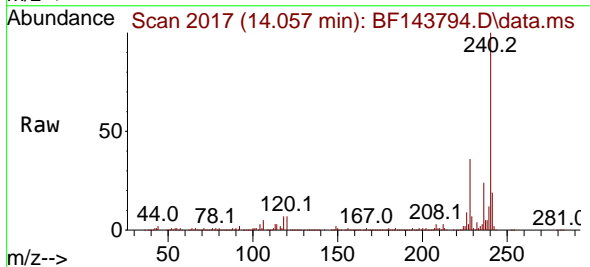


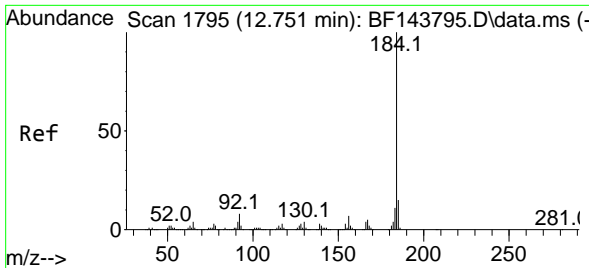
Tgt Ion:202 Resp: 364772
 Ion Ratio Lower Upper
 202 100
 101 10.3 0.0 31.1
 203 17.1 0.0 37.4



#76
 Chrysene-d12
 Concen: 20.000 ng
 RT: 14.057 min Scan# 2017
 Delta R.T. -0.006 min
 Lab File: BF143794.D
 Acq: 23 Sep 2025 12:27

Tgt Ion:240 Resp: 394143
 Ion Ratio Lower Upper
 240 100
 120 7.3 6.2 9.4
 236 23.6 19.4 29.2



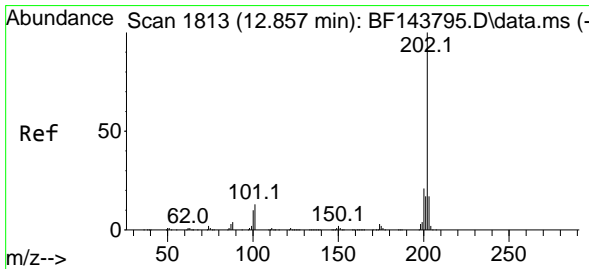
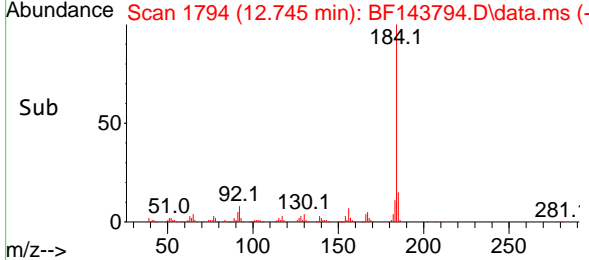
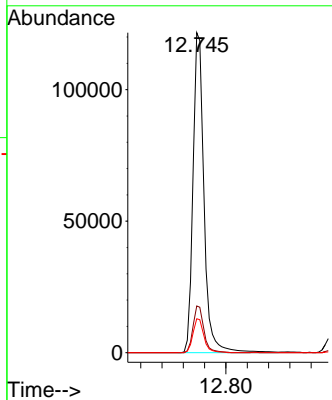
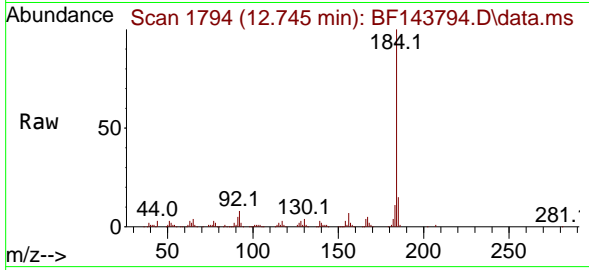


#77
 Benzidine
 Concen: 18.220 ng
 RT: 12.745 min Scan# 11
 Delta R.T. -0.006 min
 Lab File: BF143794.D
 Acq: 23 Sep 2025 12:27

Instrument : BNA_F
 ClientSampleId : SSTDICC020

Tgt Ion:184 Resp: 174994

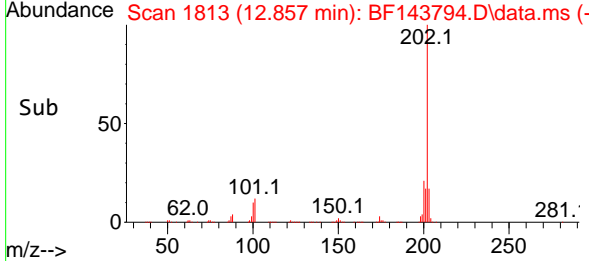
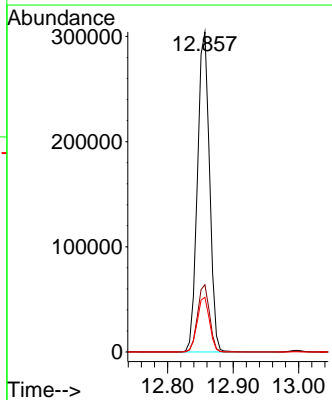
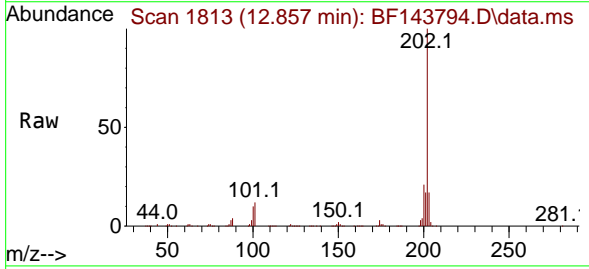
Ion	Ratio	Lower	Upper
184	100		
185	14.6	11.6	17.4
183	10.6	8.6	13.0

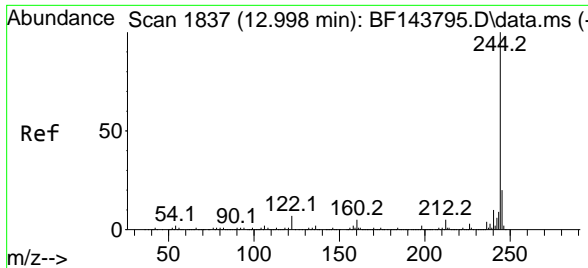


#78
 Pyrene
 Concen: 20.153 ng
 RT: 12.857 min Scan# 1813
 Delta R.T. 0.000 min
 Lab File: BF143794.D
 Acq: 23 Sep 2025 12:27

Tgt Ion:202 Resp: 390517

Ion	Ratio	Lower	Upper
202	100		
200	21.0	17.0	25.4
203	17.1	13.9	20.9



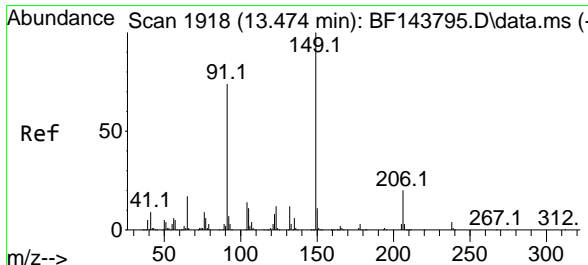
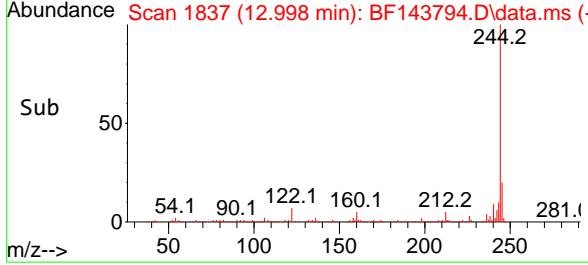
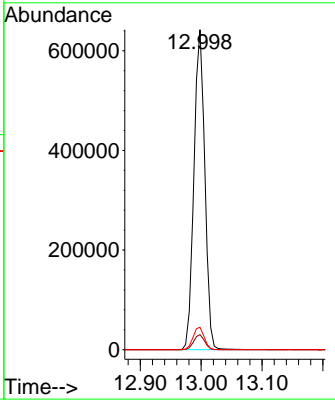
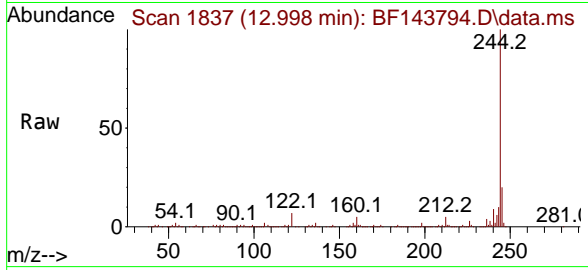


#79
 Terphenyl-d14
 Concen: 39.771 ng
 RT: 12.998 min Scan# 11
 Delta R.T. -0.006 min
 Lab File: BF143794.D
 Acq: 23 Sep 2025 12:27

Instrument : BNA_F
 ClientSampleId : SSTDICC020

Tgt Ion:244 Resp: 798420

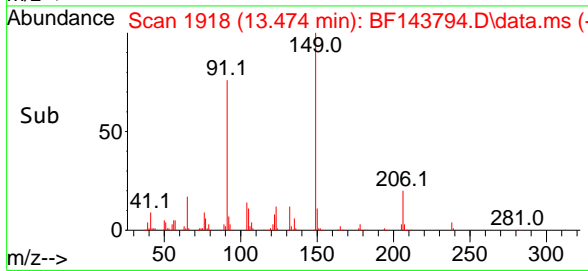
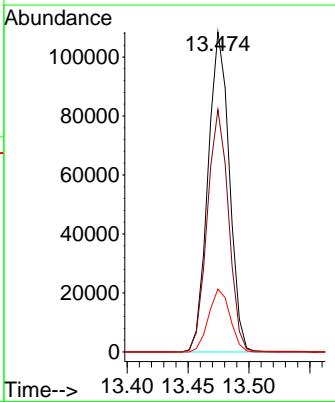
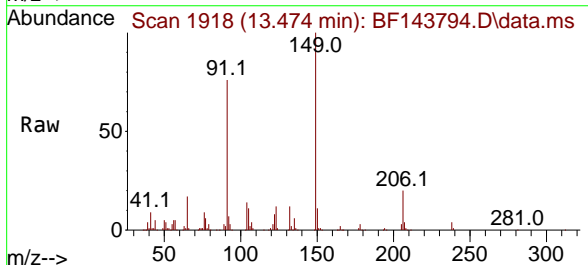
Ion	Ratio	Lower	Upper
244	100		
212	4.7	3.9	5.9
122	7.0	5.6	8.4

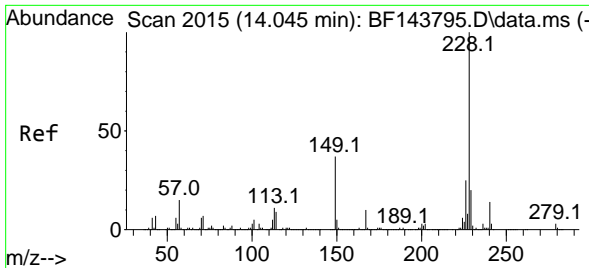


#80
 Butylbenzylphthalate
 Concen: 19.666 ng
 RT: 13.474 min Scan# 1918
 Delta R.T. -0.006 min
 Lab File: BF143794.D
 Acq: 23 Sep 2025 12:27

Tgt Ion:149 Resp: 131846

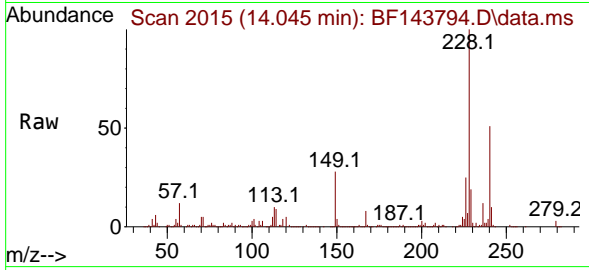
Ion	Ratio	Lower	Upper
149	100		
91	75.7	59.5	89.3
206	19.6	16.1	24.1



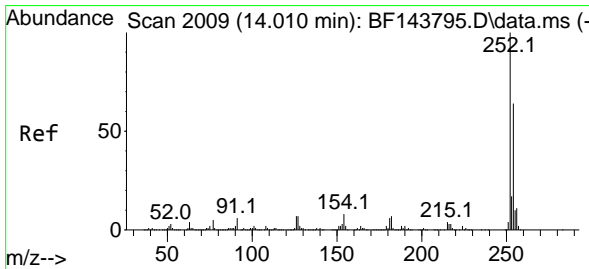
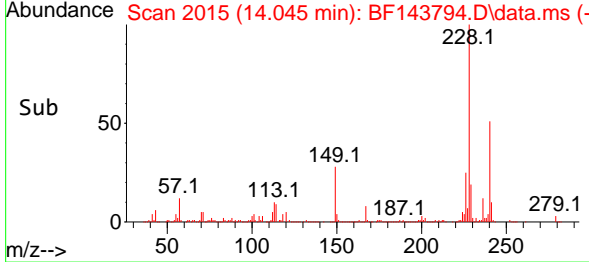
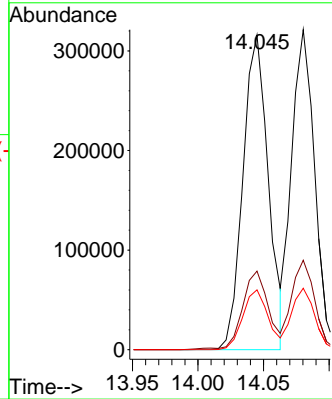


#81
 Benzo(a)anthracene
 Concen: 20.153 ng
 RT: 14.045 min Scan# 2015
 Delta R.T. -0.006 min
 Lab File: BF143794.D
 Acq: 23 Sep 2025 12:27

Instrument : BNA_F
 ClientSampleId : SSTDIC020

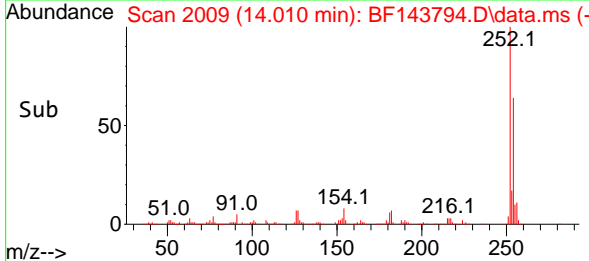
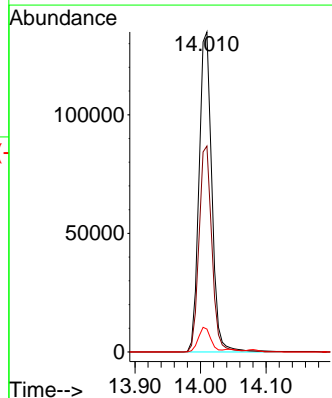
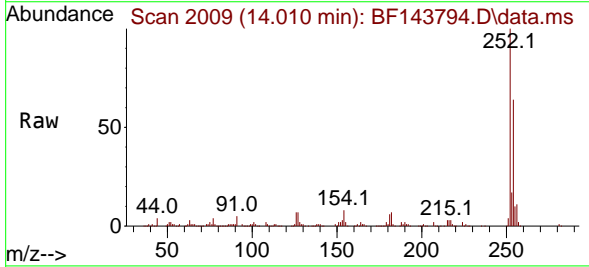


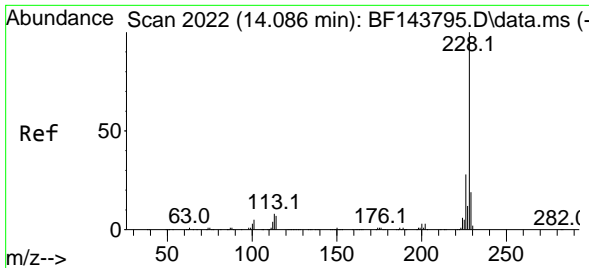
Tgt Ion:228 Resp: 426715
 Ion Ratio Lower Upper
 228 100
 226 25.0 20.2 30.2
 229 19.0 16.1 24.1



#82
 3,3'-Dichlorobenzidine
 Concen: 19.974 ng
 RT: 14.010 min Scan# 2009
 Delta R.T. 0.000 min
 Lab File: BF143794.D
 Acq: 23 Sep 2025 12:27

Tgt Ion:252 Resp: 183227
 Ion Ratio Lower Upper
 252 100
 254 64.3 51.5 77.3
 126 7.2 5.4 8.2

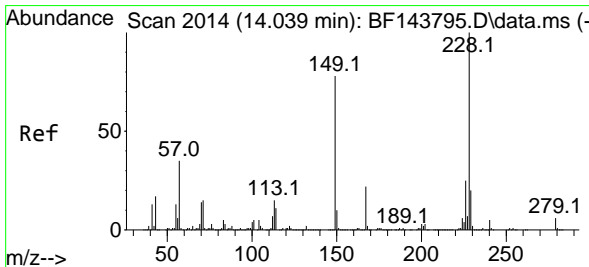
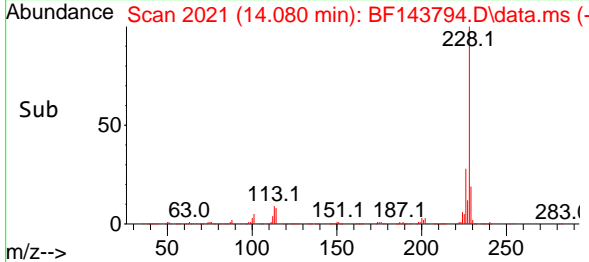
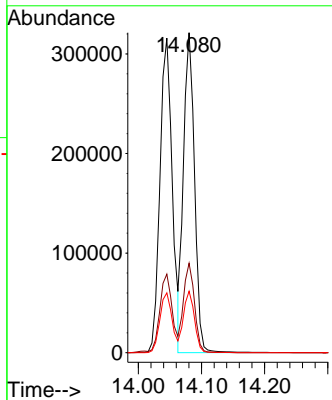
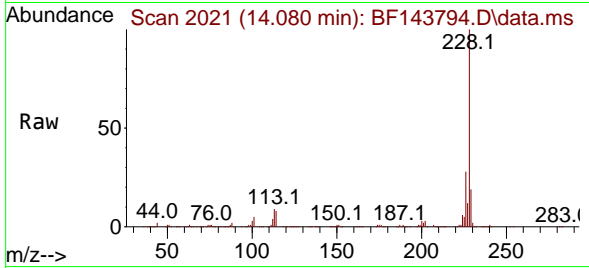




#83
 Chrysene
 Concen: 20.482 ng
 RT: 14.080 min Scan# 2013
 Delta R.T. -0.006 min
 Lab File: BF143794.D
 Acq: 23 Sep 2025 12:27

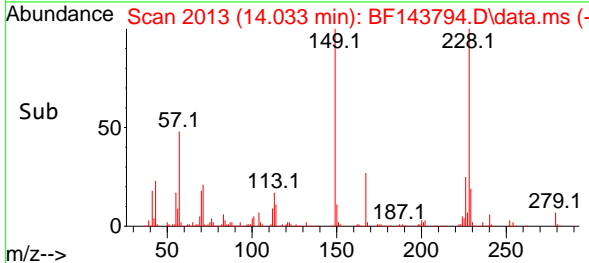
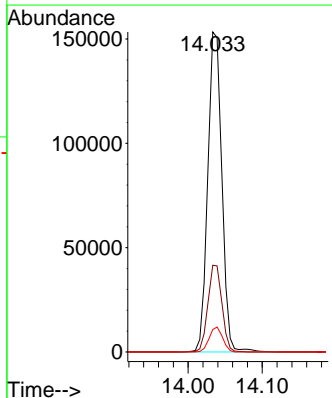
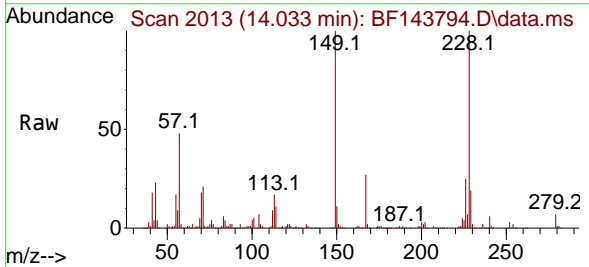
Instrument : BNA_F
 ClientSampleId : SSTDICC020

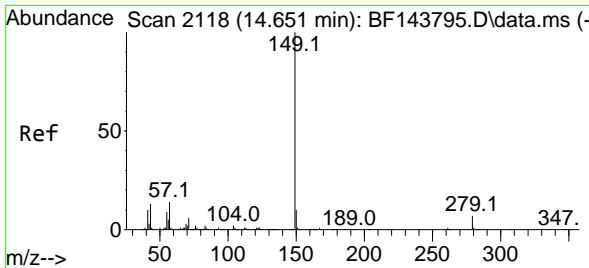
Tgt Ion:228 Resp: 392431
 Ion Ratio Lower Upper
 228 100
 226 27.9 22.6 33.8
 229 19.2 15.6 23.4



#84
 Bis(2-ethylhexyl)phthalate
 Concen: 20.620 ng
 RT: 14.033 min Scan# 2013
 Delta R.T. -0.006 min
 Lab File: BF143794.D
 Acq: 23 Sep 2025 12:27

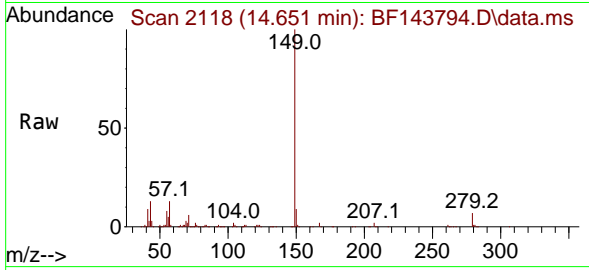
Tgt Ion:149 Resp: 202632
 Ion Ratio Lower Upper
 149 100
 167 27.1 22.2 33.2
 279 7.0 6.0 9.0



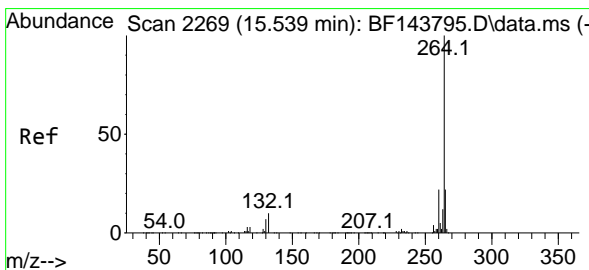
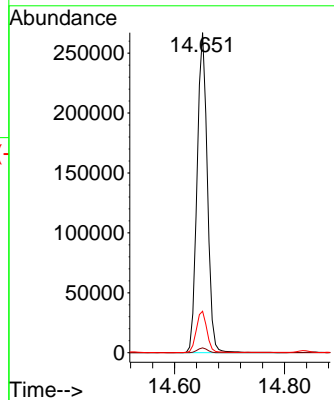
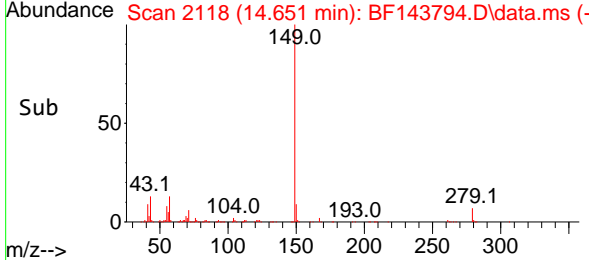


#85
 Di-n-octyl phthalate
 Concen: 19.397 ng
 RT: 14.651 min Scan# 2118
 Delta R.T. -0.006 min
 Lab File: BF143794.D
 Acq: 23 Sep 2025 12:27

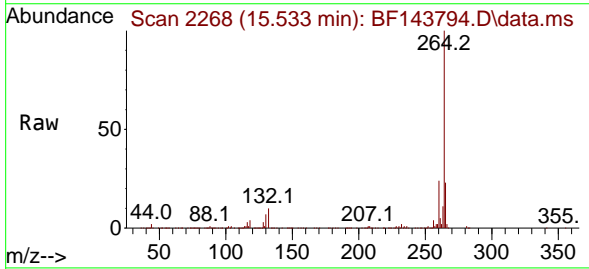
Instrument :
 BNA_F
 ClientSampleId :
 SSTDICC020



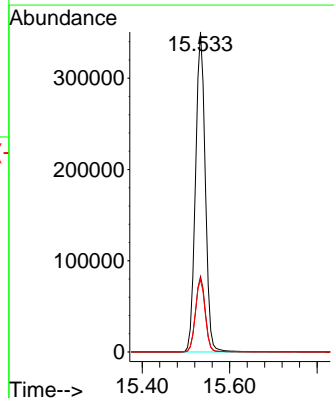
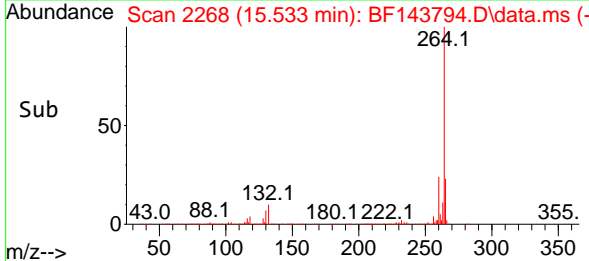
Tgt Ion:149 Resp: 345757
 Ion Ratio Lower Upper
 149 100
 167 1.5 1.1 1.7
 43 13.6 10.7 16.1

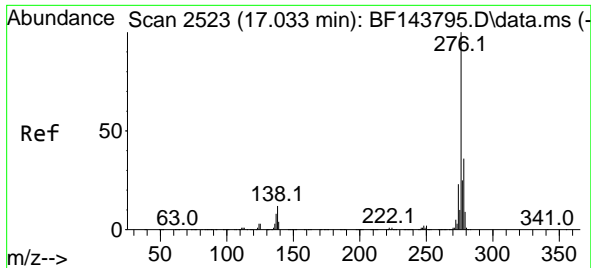


#86
 Perylene-d12
 Concen: 20.000 ng
 RT: 15.533 min Scan# 2268
 Delta R.T. -0.006 min
 Lab File: BF143794.D
 Acq: 23 Sep 2025 12:27



Tgt Ion:264 Resp: 545751
 Ion Ratio Lower Upper
 264 100
 260 23.6 17.9 26.9
 265 22.7 17.7 26.5





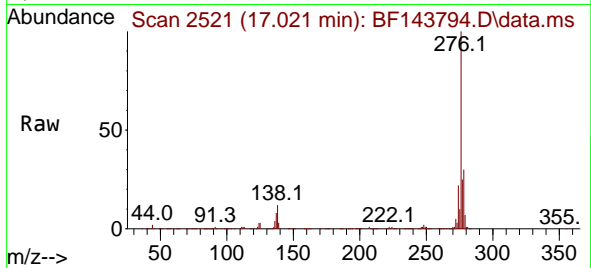
#87
 Indeno(1,2,3-cd)pyrene
 Concen: 20.824 ng
 RT: 17.021 min Scan# 21
 Delta R.T. -0.023 min
 Lab File: BF143794.D
 Acq: 23 Sep 2025 12:27

Instrument :

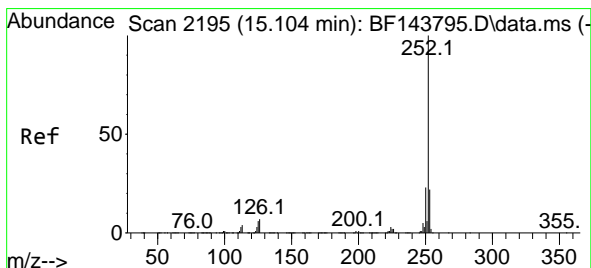
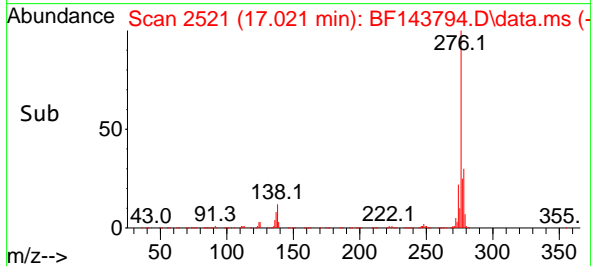
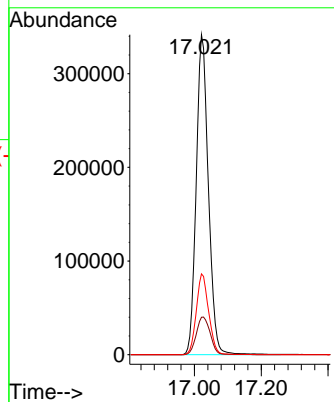
BNA_F

ClientSampleId :

SSTDICC020

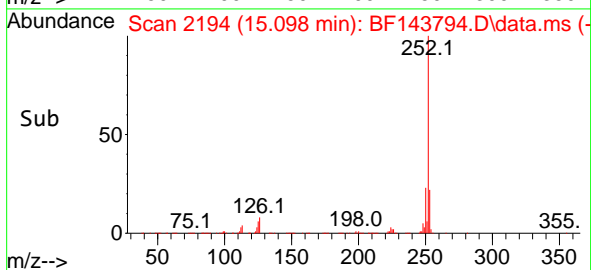
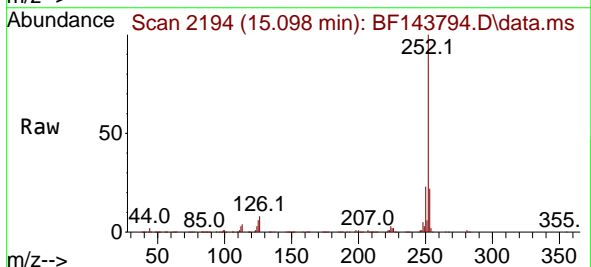
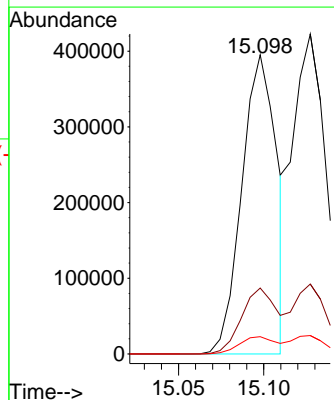


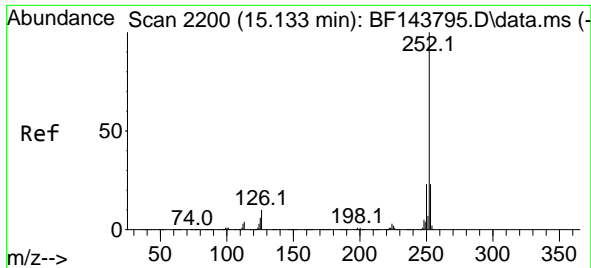
Tgt Ion:276 Resp: 862284
 Ion Ratio Lower Upper
 276 100
 138 13.4 10.6 15.8
 277 25.7 20.7 31.1



#88
 Benzo(b)fluoranthene
 Concen: 20.215 ng
 RT: 15.098 min Scan# 2194
 Delta R.T. -0.006 min
 Lab File: BF143794.D
 Acq: 23 Sep 2025 12:27

Tgt Ion:252 Resp: 561825
 Ion Ratio Lower Upper
 252 100
 253 22.0 17.8 26.8
 125 5.8 4.4 6.6

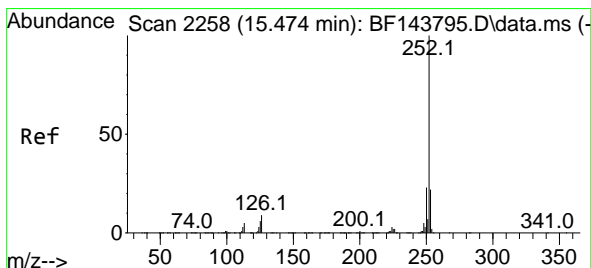
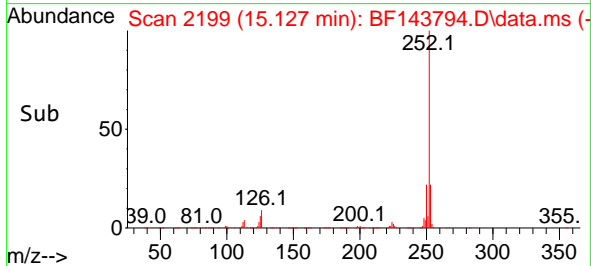
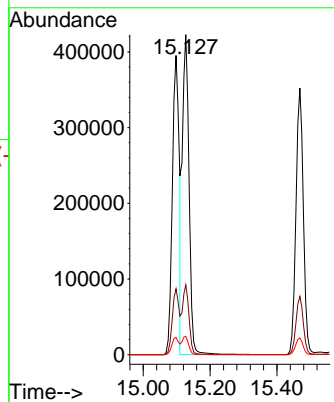
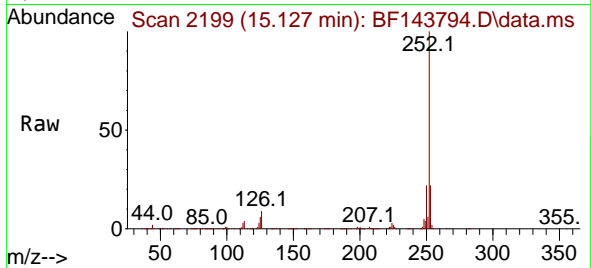




#89
 Benzo(k)fluoranthene
 Concen: 21.102 ng
 RT: 15.127 min Scan# 21
 Delta R.T. -0.012 min
 Lab File: BF143794.D
 Acq: 23 Sep 2025 12:27

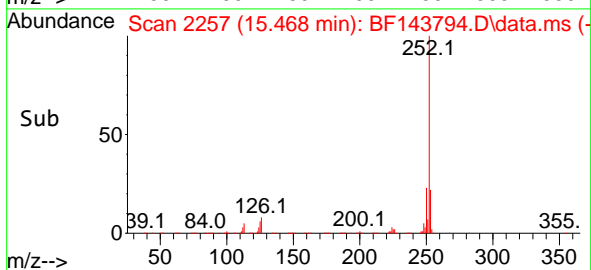
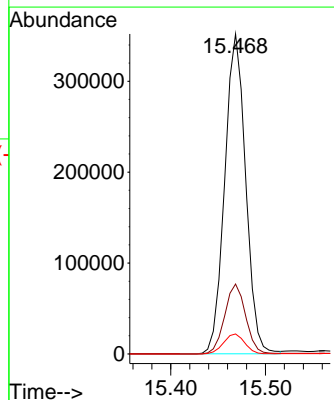
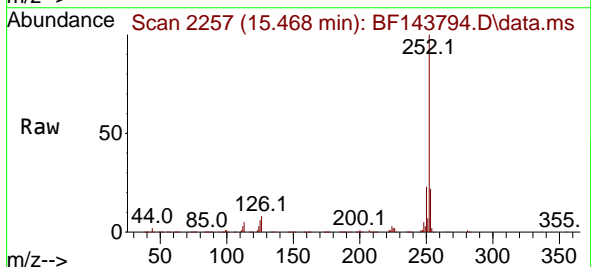
Instrument :
 BNA_F
 ClientSampleId :
 SSTDICC020

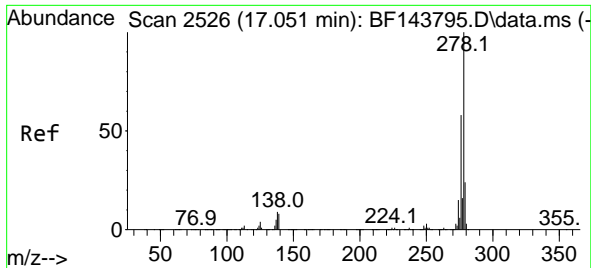
Tgt Ion:252 Resp: 589201
 Ion Ratio Lower Upper
 252 100
 253 21.9 17.9 26.9
 125 5.8 4.6 6.8



#90
 Benzo(a)pyrene
 Concen: 20.654 ng
 RT: 15.468 min Scan# 2257
 Delta R.T. -0.012 min
 Lab File: BF143794.D
 Acq: 23 Sep 2025 12:27

Tgt Ion:252 Resp: 539579
 Ion Ratio Lower Upper
 252 100
 253 21.8 17.6 26.4
 125 6.2 5.0 7.4





#91
 Dibenzo(a,h)anthracene
 Concen: 20.980 ng
 RT: 17.045 min Scan# 21
 Delta R.T. -0.023 min
 Lab File: BF143794.D
 Acq: 23 Sep 2025 12:27

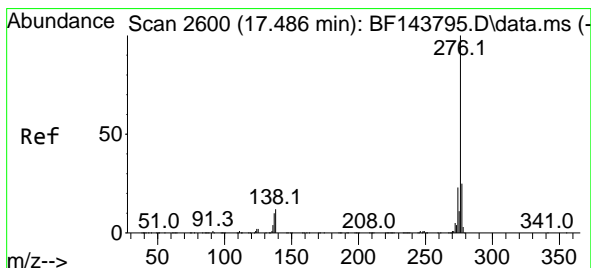
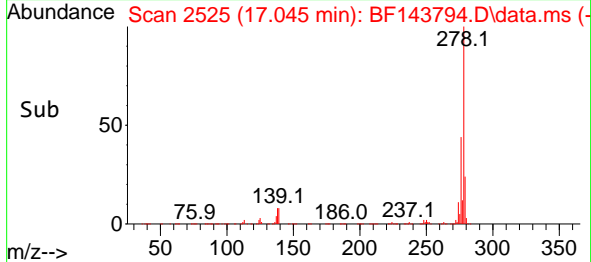
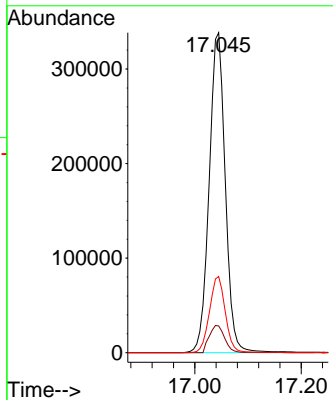
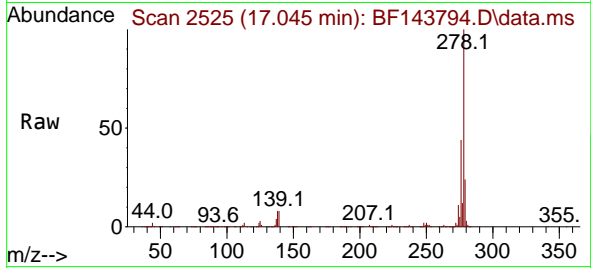
Instrument :

BNA_F

ClientSampleId :

SSTDICC020

Tgt Ion:278 Resp: 710542
 Ion Ratio Lower Upper
 278 100
 139 8.4 6.7 10.1
 279 23.8 19.3 28.9



#92
 Benzo(g,h,i)perylene
 Concen: 20.621 ng
 RT: 17.474 min Scan# 2598
 Delta R.T. -0.029 min
 Lab File: BF143794.D
 Acq: 23 Sep 2025 12:27

Tgt Ion:276 Resp: 673228
 Ion Ratio Lower Upper
 276 100
 277 24.1 19.6 29.4
 138 11.2 9.2 13.8

