

Data Path : Z:\HPCHEM1\BNA F\DATA\BF092415\  
 Data File : BF081776.D  
 Acq On : 24 Sep 2015 21:28  
 Operator : UM/IZ  
 Sample : SSTDICV040  
 Misc :  
 ALS Vial : 9 Sample Multiplier: 1

Instrument :  
 BNA\_F  
 ClientSampleId :  
 ICVBF092415

Quant Time: Sep 25 06:01:20 2015  
 Quant Method : Z:\HPCHEM1\BNA F\METHODS\8270-BF092415.M  
 Quant Title : ASP BNA STANDARDS FOR 5 POINT CALIBRATION  
 QLast Update : Fri Sep 25 05:09:04 2015  
 Response via : Initial Calibration

Internal Standards	R.T.	QIon	Response	Conc	Units	Dev(Min)
1) 1,4-Dichlorobenzene-d4	0.00	152	0	0.00	ng	-8.14
21) Naphthalene-d8	11.18	136	5558	20.00	ng	0.14
38) Acenaphthene-d10	15.18	164	274	20.00	ng	0.01
63) Phenanthrene-d10	0.00	188	0	0.00	ng	-18.68
75) Chrysene-d12	0.00	240	0	0.00	ng	-23.33
86) Perylene-d12	0.00	264	0	0.00	ng	-24.77

## System Monitoring Compounds

5) 2-Fluorophenol	0.00	112	0	0.00	ng	
7) Phenol-d6	7.52	99	6036	0.00	ng	-0.06
23) Nitrobenzene-d5	9.68	82	867	10.29	ng	0.23
41) 2,4,6-Tribromophenol	0.00	330	0	0.00	ng	
44) 2-Fluorobiphenyl	13.60	172	453	27.14	ng	-0.09
78) Terphenyl-d14	0.00	244	0	0.00	ng	

## Target Compounds

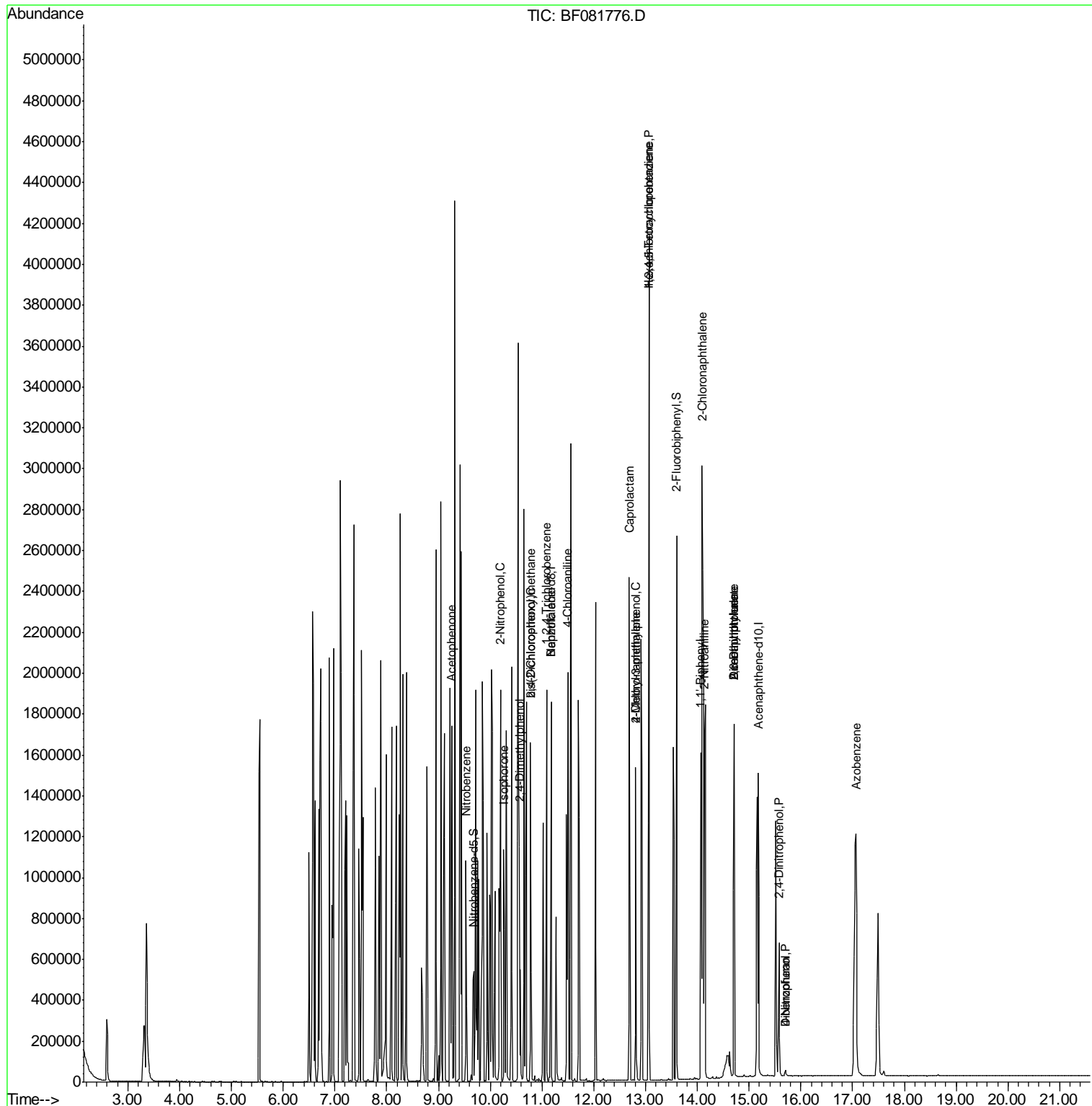
Target Compounds	R.T.	QIon	Response	Conc	Units	Qvalue
22) Acetophenone	9.26	105	1101	9.03	ng	# 1
24) Nitrobenzene	9.53	77	11502	122.39	ng	# 1
25) Isophorone	10.26	82	1204	6.45	ng	# 1
26) 2-Nitrophenol	10.19	139	340221	9966.36	ng	# 54
27) 2,4-Dimethylphenol	10.56	122	21410	252.97	ng	# 20
28) bis(2-Chloroethoxy)methane	10.78	93	2837	26.02	ng	# 60
29) 2,4-Dichlorophenol	10.78	162	211	2.68	ng	# 1
30) 1,2,4-Trichlorobenzene	11.09	180	2127	24.05	ng	# 1
32) Benzoic acid	11.18	122	27250	1653.65	ng	# 47
33) 4-Chloroaniline	11.50	127	6005	53.36	ng	# 73
35) Caprolactam	12.69	113	1611	76.53	ng	# 1
36) 4-Chloro-3-methylphenol	12.81	107	385	4.88	ng	# 1
37) 2-Methylnaphthalene	12.81	142	2883	15.78	ng	# 1
39) 1,2,4,5-Tetrachlorobenzene	13.06	216	2737	312.97	ng	# 1
40) Hexachlorocyclopentadiene	13.06	237	19730	5264.28	ng	79
45) 1,1'-Biphenyl	14.07	154	45913	2143.07	ng	83
46) 2-Chloronaphthalene	14.09	162	9363	543.29	ng	# 65
47) 2-Nitroaniline	14.14	65	586	127.85	ng	# 48
48) Acenaphthylene	14.71	152	2530	86.74	ng	# 1
49) Dimethylphthalate	14.71	163	206	9.88	ng	# 1
50) 2,6-Dinitrotoluene	14.71	165	317	78.77	ng	# 37
53) 2,4-Dinitrophenol	15.58	184	247	157.93	ng	# 8
54) Dibenzofuran	15.69	168	2108	85.50	ng	# 69
55) 4-Nitrophenol	15.70	139	813	270.09	ng	# 25
62) Azobenzene	17.06	77	800	38.75	ng	# 1

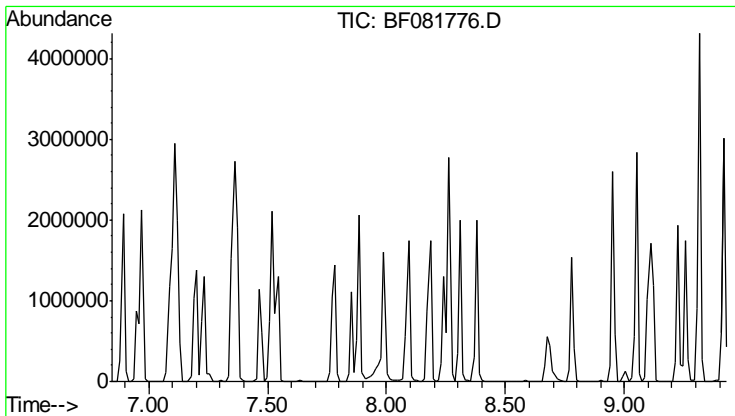
(#) = qualifier out of range (m) = manual integration (+) = signals summed

Data Path : Z:\HPCHEM1\BNA F\DATA\BF092415\  
 Data File : BF081776.D  
 Acq On : 24 Sep 2015 21:28  
 Operator : UM/IZ  
 Sample : SSTDICV040  
 Misc :  
 ALS Vial : 9 Sample Multiplier: 1

Instrument :  
 BNA\_F  
 Client Sampled :  
 ICVBF092415

Quant Time: Sep 25 06:01:20 2015  
 Quant Method : Z:\HPCHEM1\BNA F\METHODS\8270-BF092415.M  
 Quant Title : ASP BNA STANDARDS FOR 5 POINT CALIBRATION  
 QLast Update : Fri Sep 25 05:09:04 2015  
 Response via : Initial Calibration

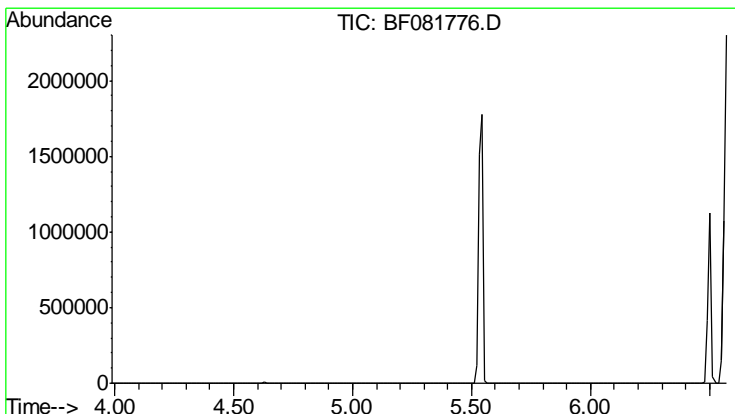
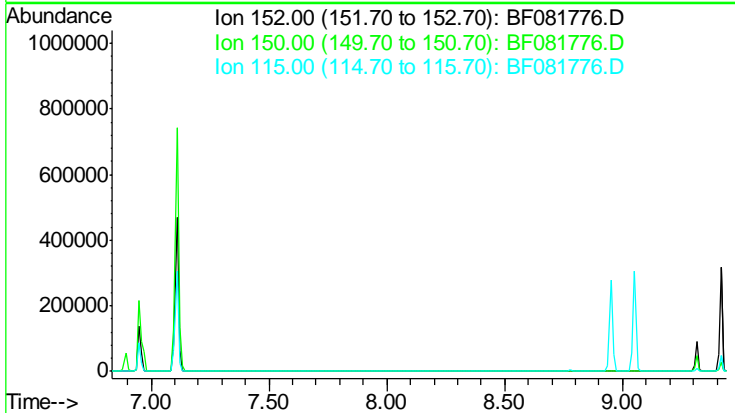




#1  
 1,4-Dichlorobenzene-d4  
 Concen: 0.00 ng  
 Expected RT: 8.14 min  
 Lab File: BF081776.D  
 Acq: 24 Sep 2015 21:28

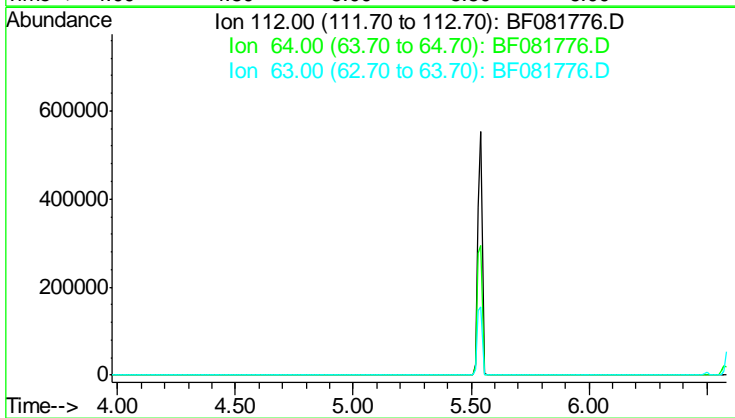
**Instrument :**  
 BNA\_F  
**ClientSampled :**  
 ICVBF092415

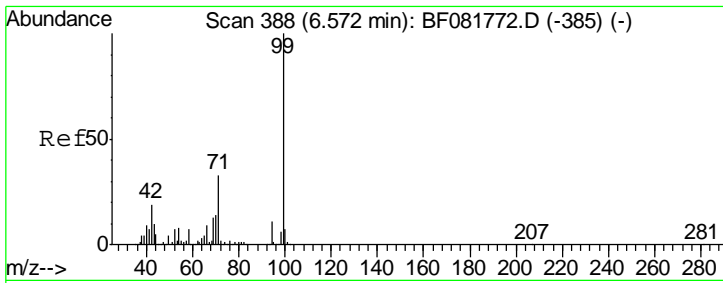
Tgt Ion	Exp Ratio
152	100
150	155.9
115	48.7



#5  
 2-Fluorophenol  
 Concen: 0.00 ng  
 Expected RT: 5.28 min  
 Lab File: BF081776.D  
 Acq: 24 Sep 2015 21:28

Tgt Ion	Exp Ratio
112	100
64	49.6
63	21.7

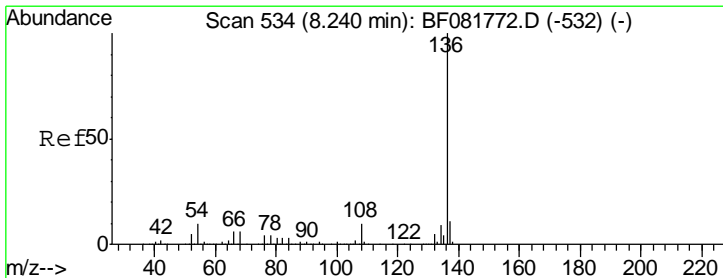
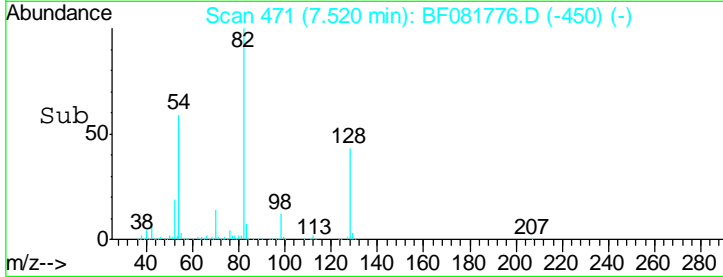
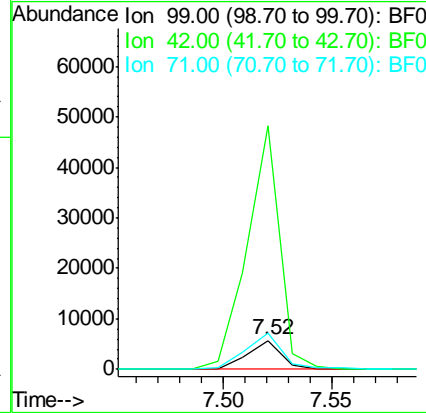
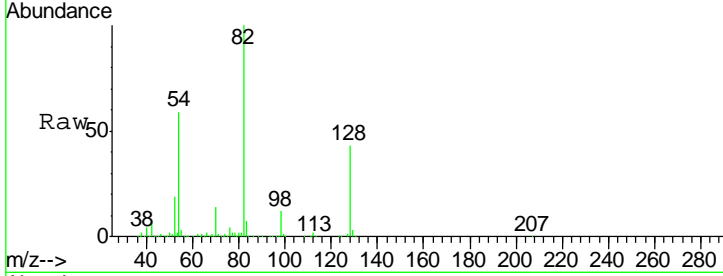




#7  
 Phenol-d6  
 Concen: 0.00 ng  
 RT: 7.52 min Scan# 471  
 Delta R.T. -0.06 min  
 Lab File: BF081776.D  
 Acq: 24 Sep 2015 21:28

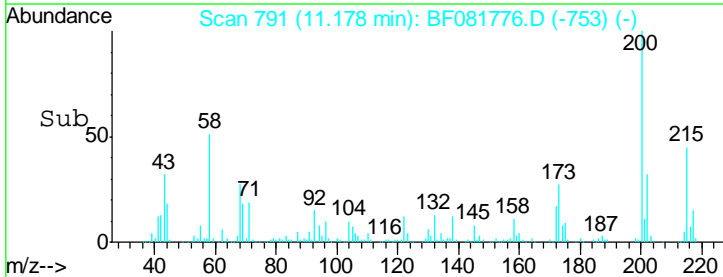
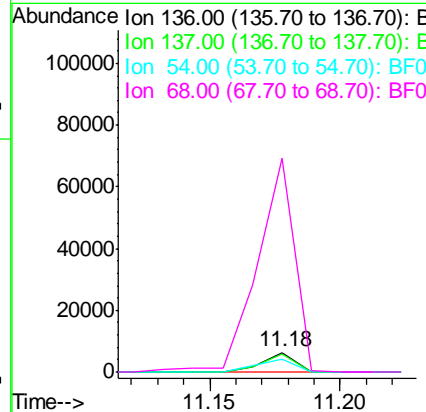
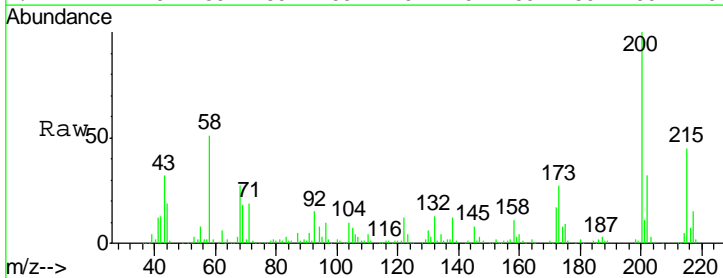
Instrument :  
 BNA\_F  
 ClientSampled :  
 ICVBF092415

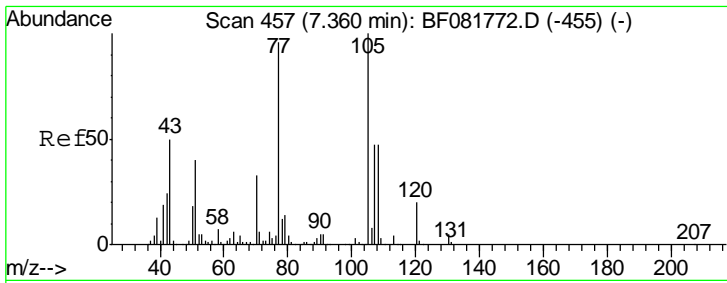
Tgt Ion	Resp	Lower	Upper
99	6036		
42	851.9	13.7	20.5#
71	125.1	14.2	21.2#



#21  
 Naphthalene-d8  
 Concen: 20.00 ng  
 RT: 11.18 min Scan# 791  
 Delta R.T. 0.14 min  
 Lab File: BF081776.D  
 Acq: 24 Sep 2015 21:28

Tgt Ion	Resp	Lower	Upper
136	5558		
137	90.5	9.0	13.6#
54	68.7	8.2	12.2#
68	1105.4	5.8	8.6#

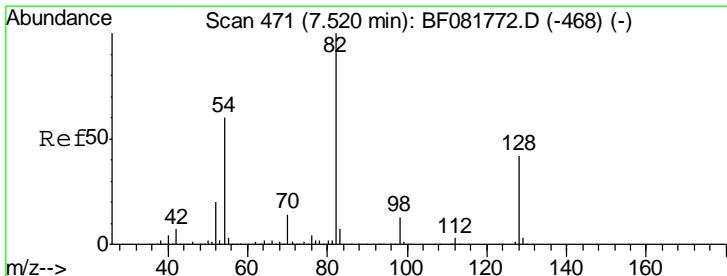
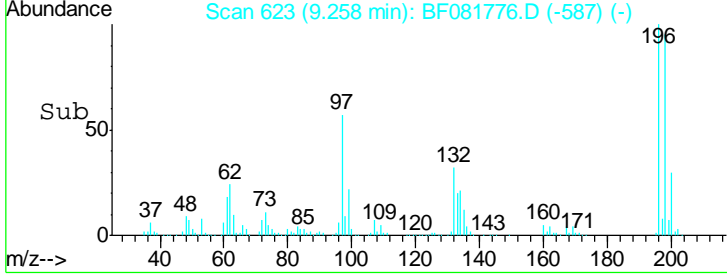
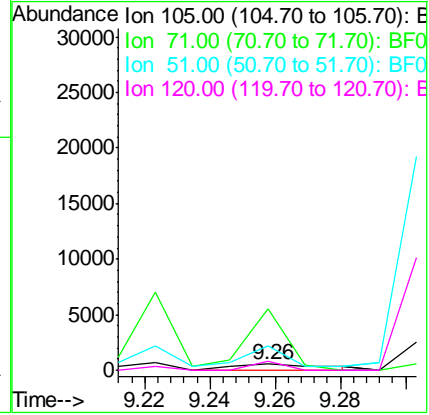
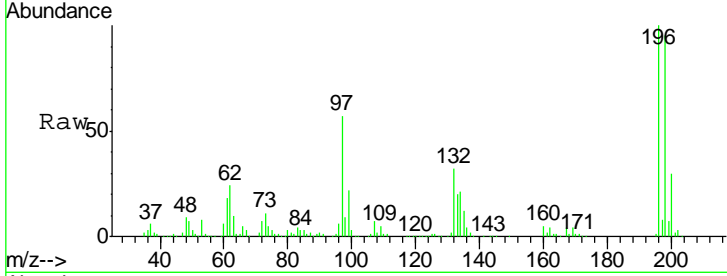




#22  
 Acetophenone  
 Concen: 9.03 ng  
 RT: 9.26 min Scan# 623  
 Delta R.T. 0.11 min  
 Lab File: BF081776.D  
 Acq: 24 Sep 2015 21:28

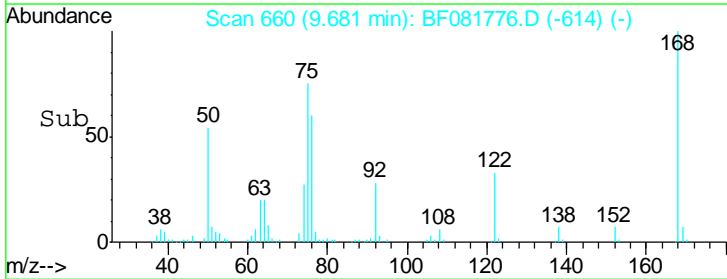
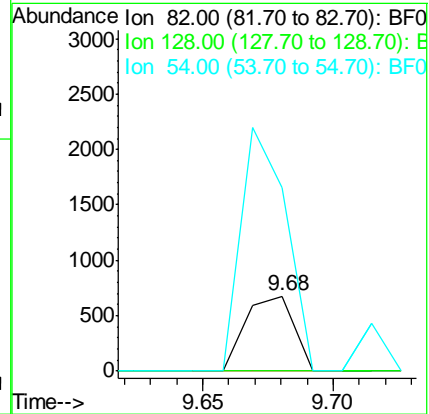
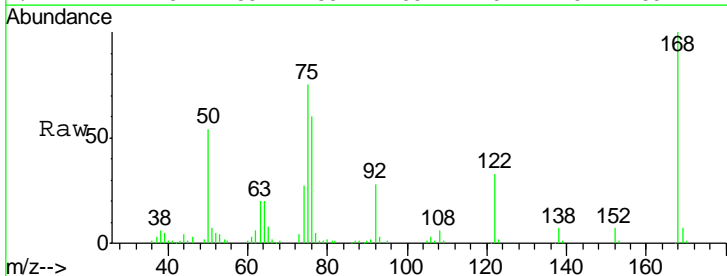
Instrument :  
 BNA\_F  
 ClientSampled :  
 ICVBF092415

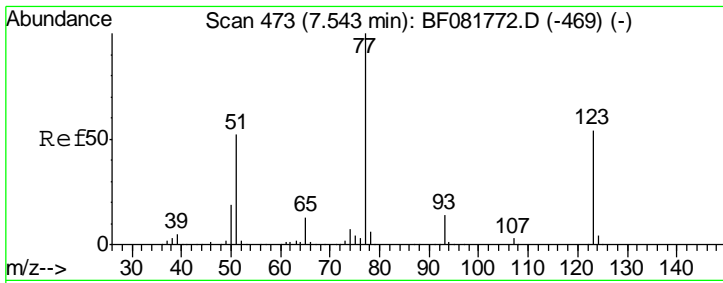
Tgt Ion	Resp	Lower	Upper
105	1101		
71	994.8	4.7	7.1#
51	403.1	22.0	33.0#
120	155.9	30.1	45.1#



#23  
 Nitrobenzene-d5  
 Concen: 10.29 ng  
 RT: 9.68 min Scan# 660  
 Delta R.T. 0.23 min  
 Lab File: BF081776.D  
 Acq: 24 Sep 2015 21:28

Tgt Ion	Resp	Lower	Upper
82	867		
128	0.0	51.0	76.6#
54	244.7	47.5	71.3#

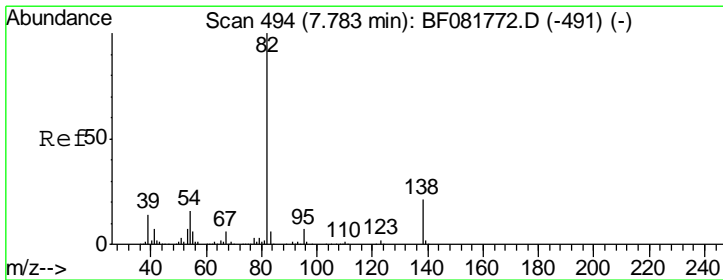
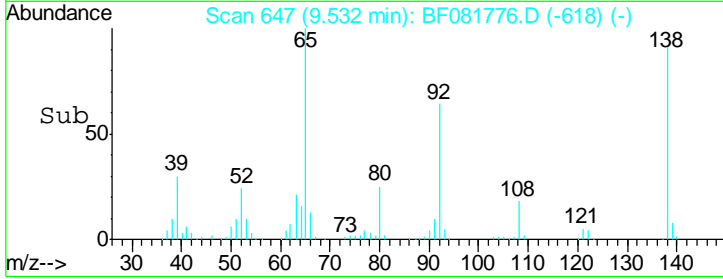
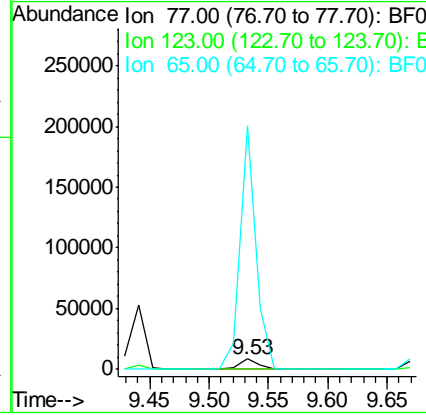
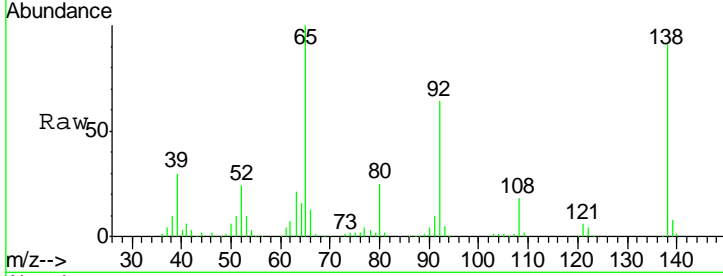




#24  
 Nitrobenzene  
 Concen: 122.39 ng  
 RT: 9.53 min Scan# 647  
 Delta R.T. 0.03 min  
 Lab File: BF081776.D  
 Acq: 24 Sep 2015 21:28

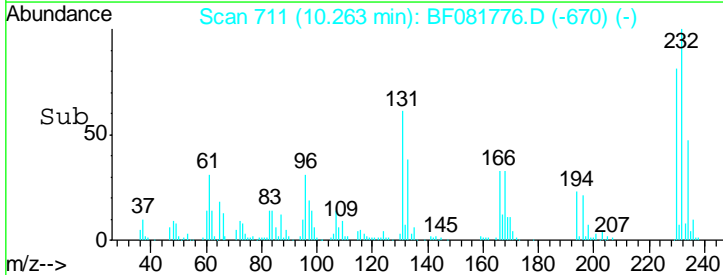
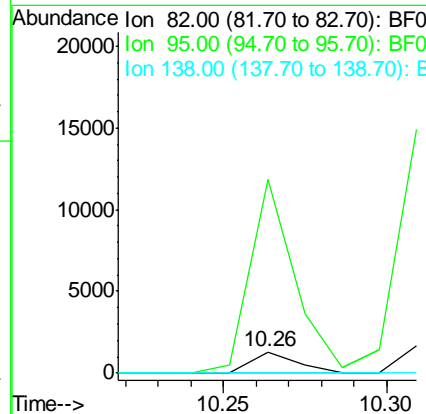
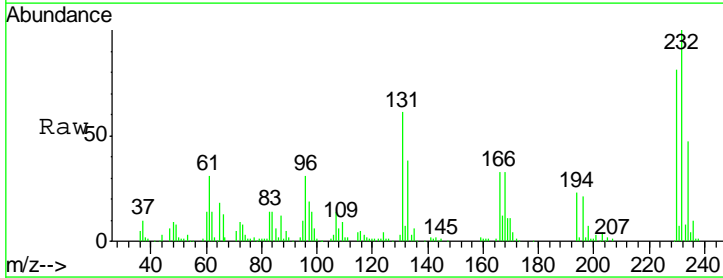
Instrument :  
 BNA\_F  
 ClientSampleID :  
 ICVBF092415

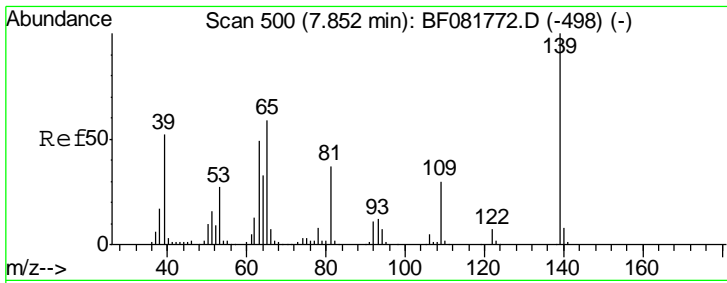
Tgt Ion	Resp	Lower	Upper
77	11502		
123	8.2	59.8	89.8#
65	2314.9	10.2	15.4#



#25  
 Isophorone  
 Concen: 6.45 ng  
 RT: 10.26 min Scan# 711  
 Delta R.T. 0.17 min  
 Lab File: BF081776.D  
 Acq: 24 Sep 2015 21:28

Tgt Ion	Resp	Lower	Upper
82	1204		
95	922.3	4.0	6.0#
138	0.0	18.3	27.5#

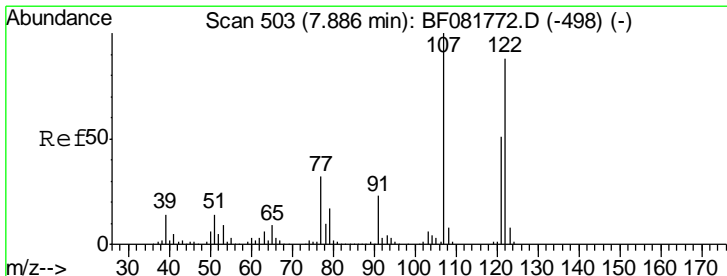
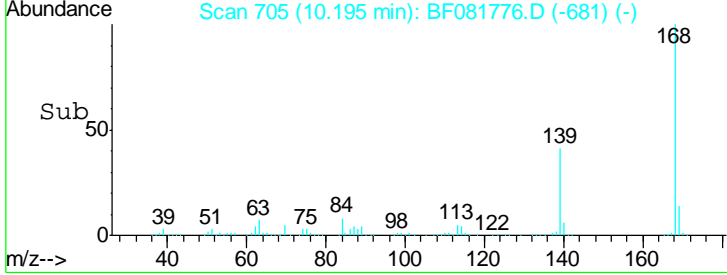
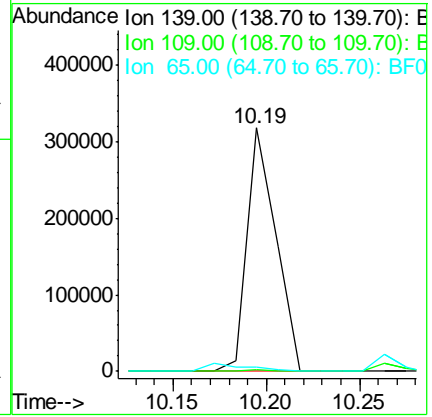
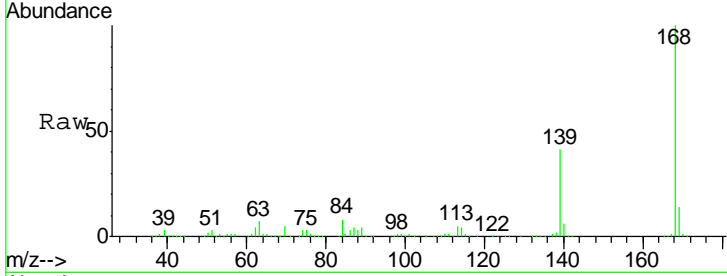




#26  
 2-Nitrophenol  
 Concen: 9966.36 ng  
 RT: 10.19 min Scan# 705  
 Delta R.T. -0.02 min  
 Lab File: BF081776.D  
 Acq: 24 Sep 2015 21:28

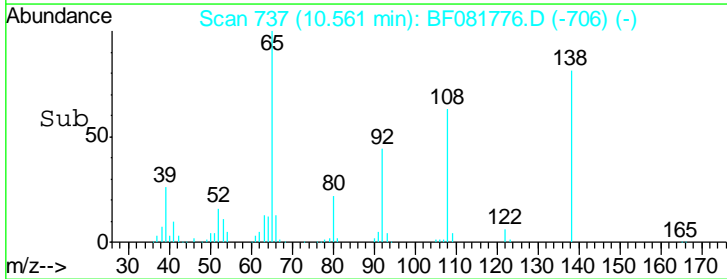
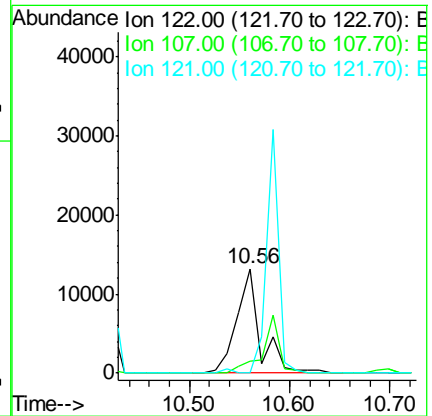
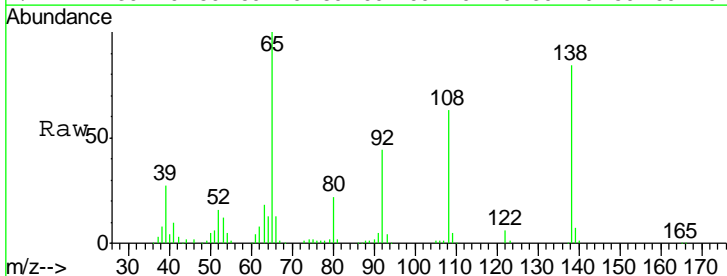
Instrument :  
 BNA\_F  
 ClientSampleId :  
 ICVBF092415

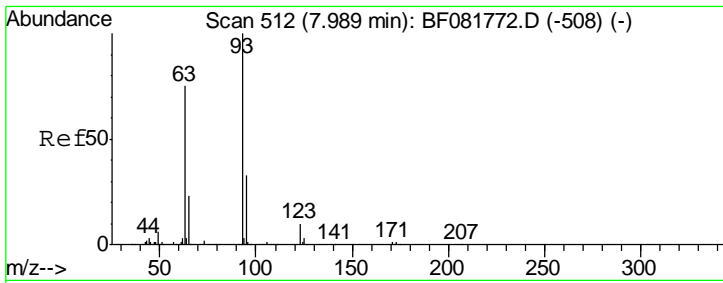
Tgt Ion	Resp	Lower	Upper
139	340221		
109	0.9	11.0	16.4#
65	1.8	24.7	37.1#



#27  
 2,4-Dimethylphenol  
 Concen: 252.97 ng  
 RT: 10.56 min Scan# 737  
 Delta R.T. 0.06 min  
 Lab File: BF081776.D  
 Acq: 24 Sep 2015 21:28

Tgt Ion	Resp	Lower	Upper
122	21410		
107	11.8	71.8	107.6#
121	0.0	42.3	63.5#

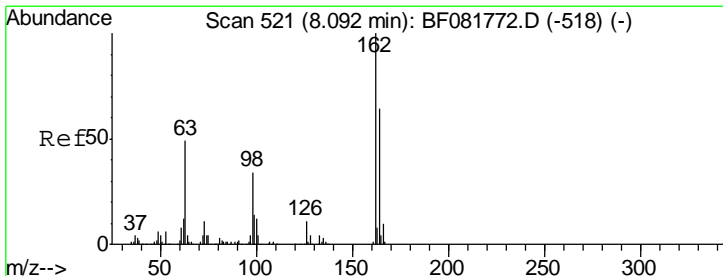
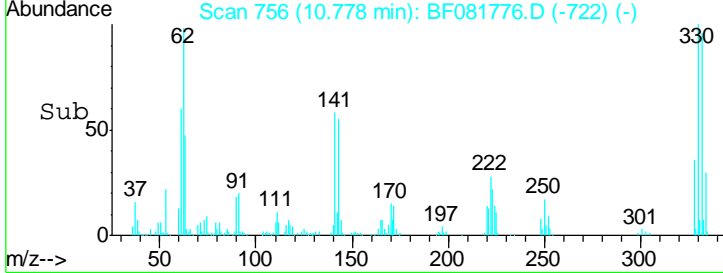
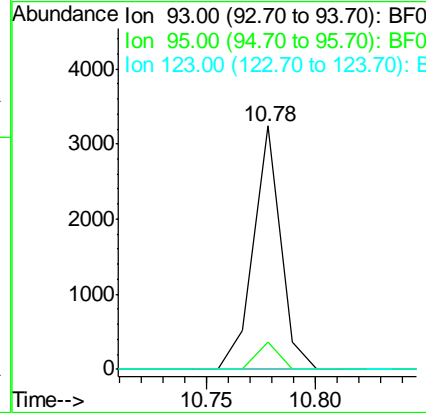
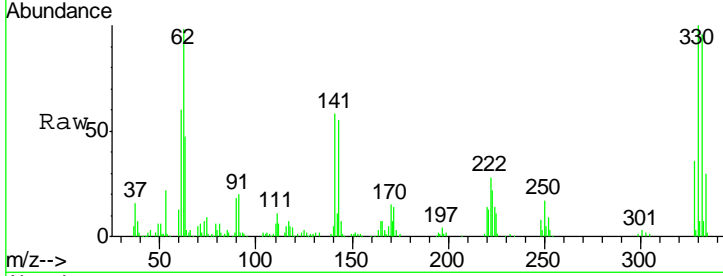




#28  
 bis(2-Chloroethoxy)methane  
 Concen: 26.02 ng  
 RT: 10.78 min Scan# 756  
 Delta R.T. 0.09 min  
 Lab File: BF081776.D  
 Acq: 24 Sep 2015 21:28

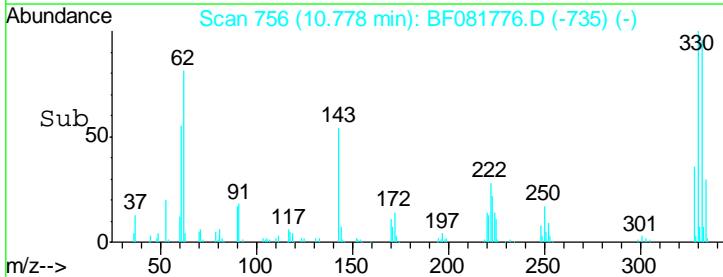
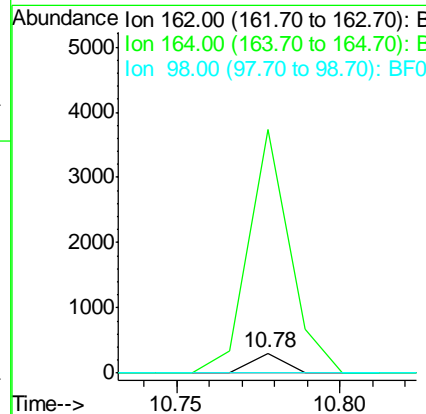
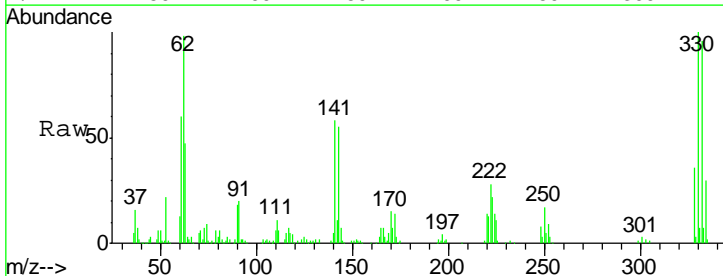
**Instrument :**  
 BNA\_F  
**ClientSampled :**  
 ICVBF092415

Tgt Ion	Resp	Lower	Upper
93	100		
95	11.0	27.5	41.3#
123	0.0	13.7	20.5#

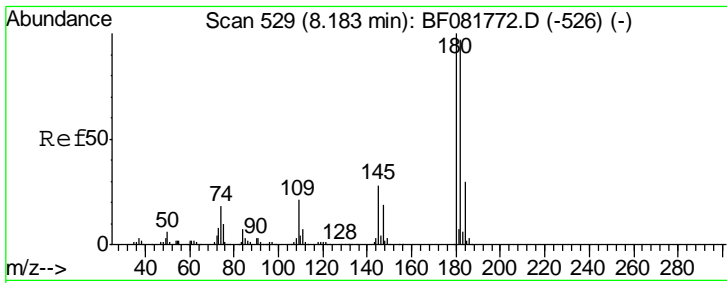


#29  
 2,4-Dichlorophenol  
 Concen: 2.68 ng  
 RT: 10.78 min Scan# 756  
 Delta R.T. -0.06 min  
 Lab File: BF081776.D  
 Acq: 24 Sep 2015 21:28

Tgt Ion	Resp	Lower	Upper
162	100		
164	1216.0	44.9	84.9#
98	0.0	13.0	53.0#



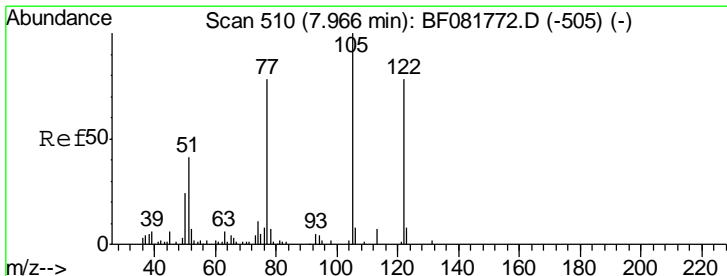
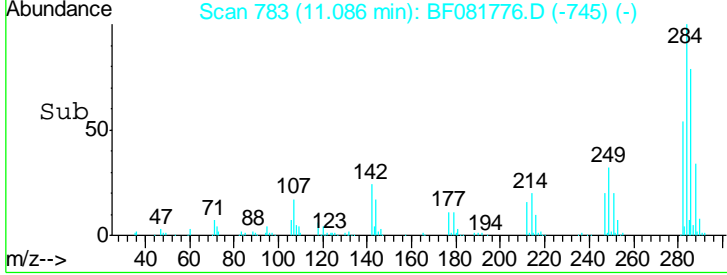
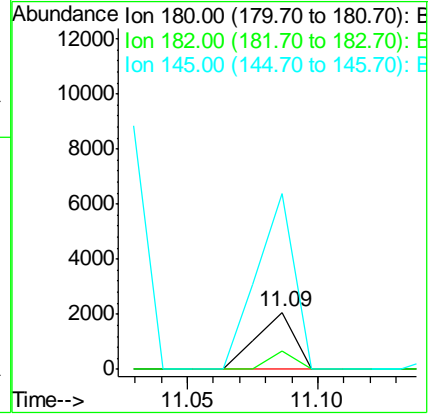
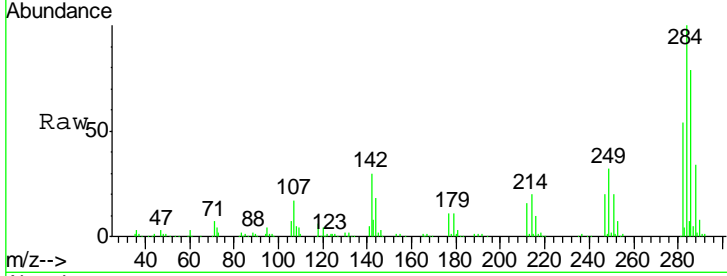




#30  
 1,2,4-Trichlorobenzene  
 Concen: 24.05 ng  
 RT: 11.09 min Scan# 783  
 Delta R.T. 0.14 min  
 Lab File: BF081776.D  
 Acq: 24 Sep 2015 21:28

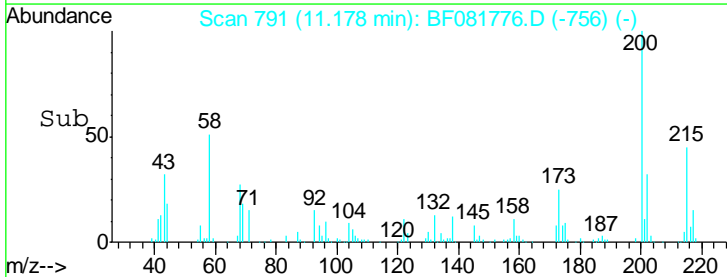
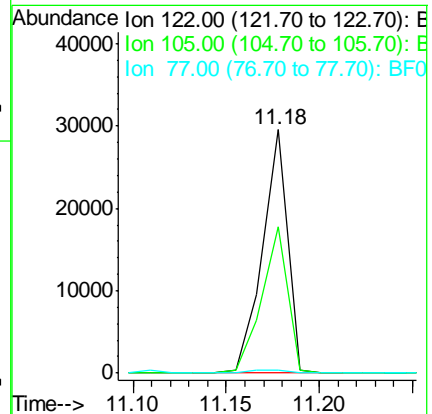
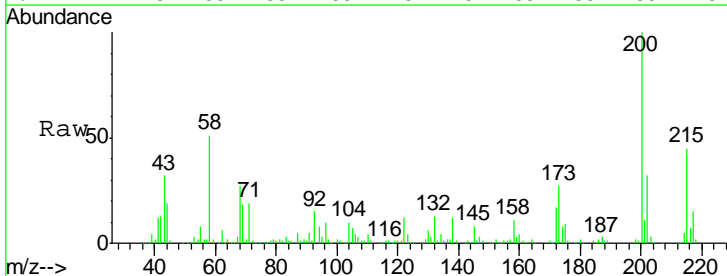
Instrument :  
 BNA\_F  
 ClientSampleId :  
 ICVBF092415

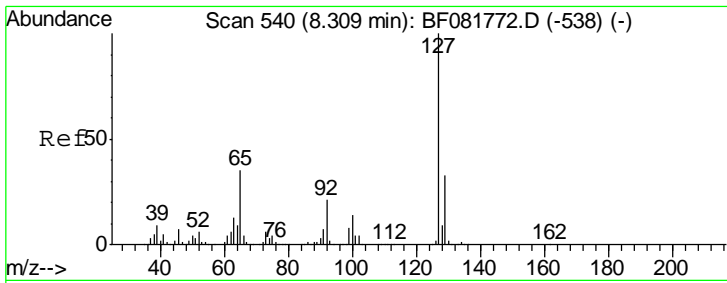
Tgt Ion	Resp	Lower	Upper
180	100		
182	31.3	77.1	115.7#
145	307.6	23.3	34.9#



#32  
 Benzoic acid  
 Concen: 1653.65 ng  
 RT: 11.18 min Scan# 791  
 Delta R.T. 0.10 min  
 Lab File: BF081776.D  
 Acq: 24 Sep 2015 21:28

Tgt Ion	Resp	Lower	Upper
122	100		
105	60.2	76.1	116.1#
77	1.5	40.5	80.5#

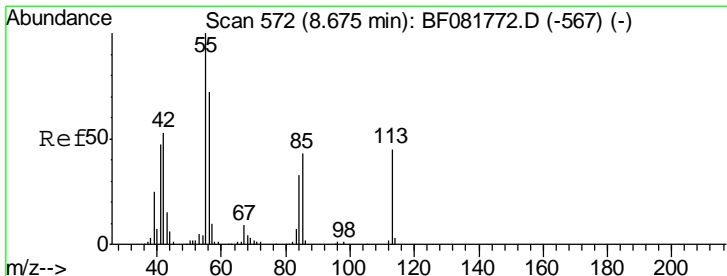
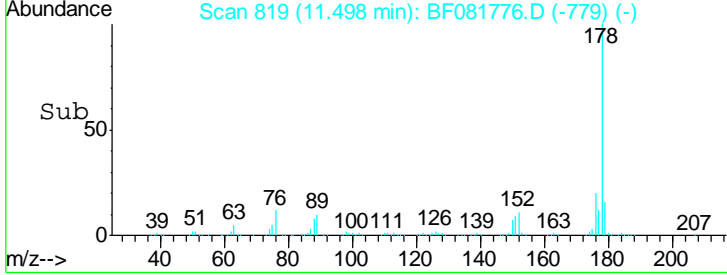
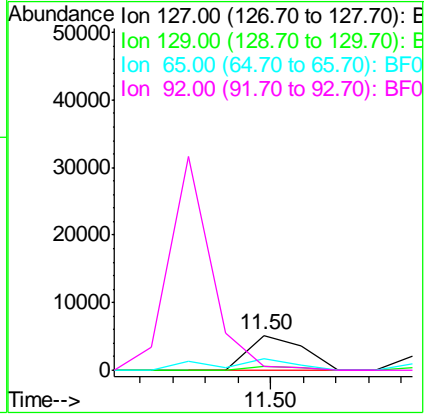
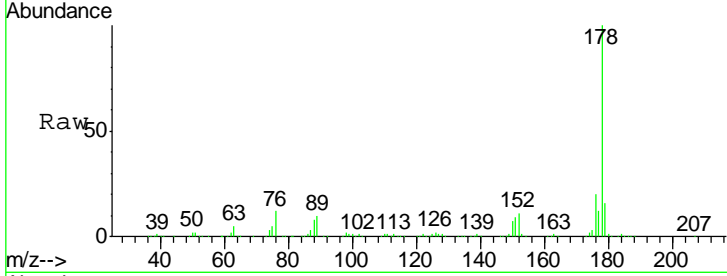




#33  
 4-Chloroaniline  
 Concen: 53.36 ng  
 RT: 11.50 min Scan# 819  
 Delta R.T. 0.16 min  
 Lab File: BF081776.D  
 Acq: 24 Sep 2015 21:28

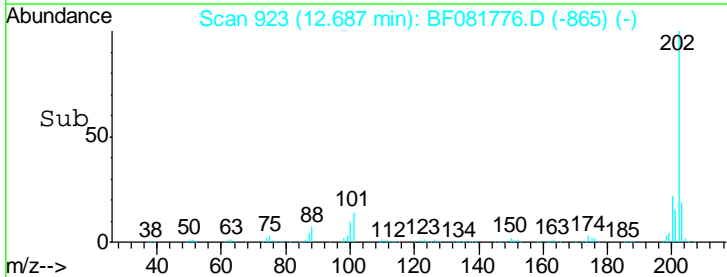
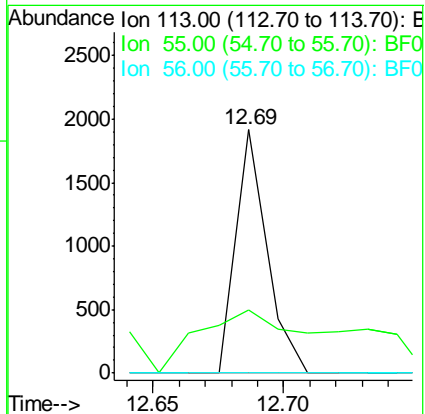
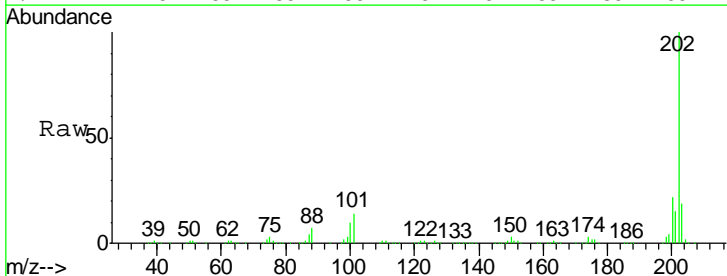
Instrument :  
 BNA\_F  
 ClientSampleID :  
 ICVBF092415

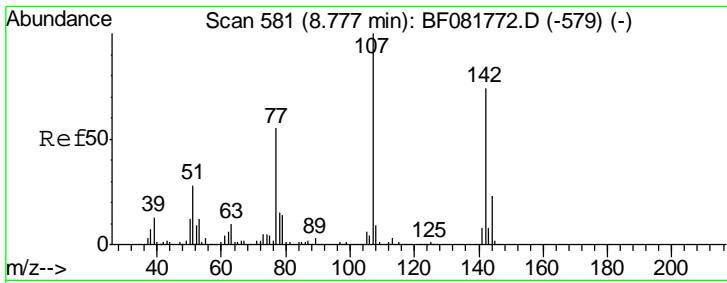
Tgt Ion	Resp	Lower	Upper
127	100		
129	11.9	25.8	38.6#
65	33.3	17.9	26.9#
92	9.5	10.5	15.7#



#35  
 Caprolactam  
 Concen: 76.53 ng  
 RT: 12.69 min Scan# 923  
 Delta R.T. 0.36 min  
 Lab File: BF081776.D  
 Acq: 24 Sep 2015 21:28

Tgt Ion	Resp	Lower	Upper
113	100		
55	25.7	152.4	192.4#
56	0.0	104.6	144.6#

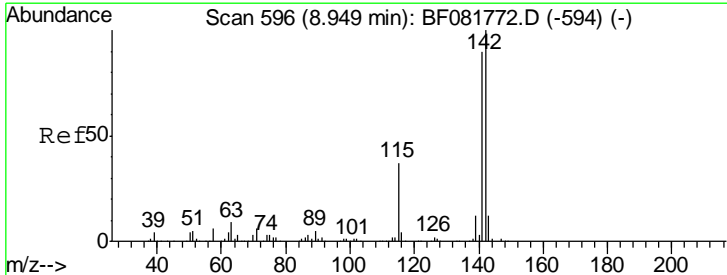
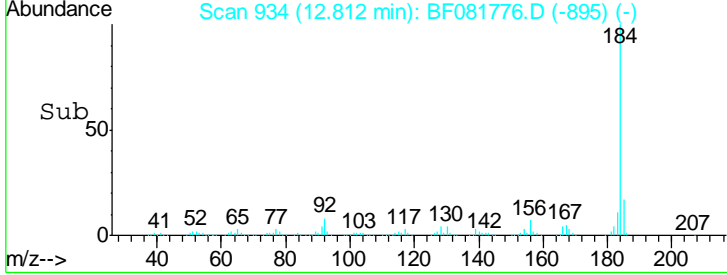
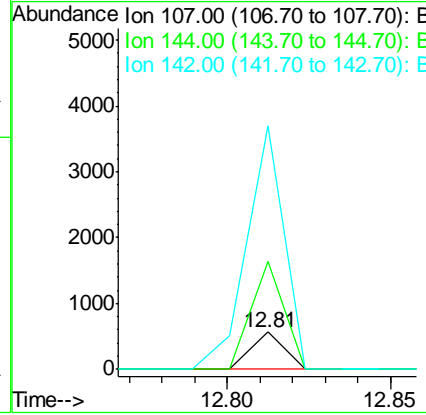
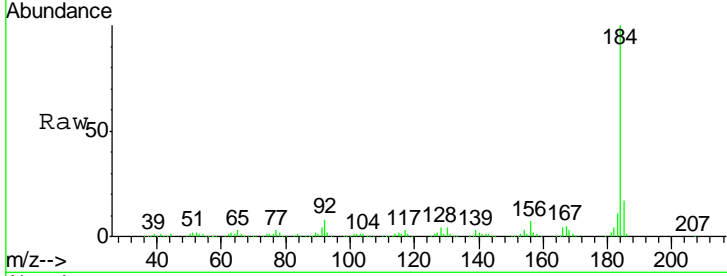




#36  
 4-Chloro-3-methylphenol  
 Concen: 4.88 ng  
 RT: 12.81 min Scan# 934  
 Delta R.T. 0.15 min  
 Lab File: BF081776.D  
 Acq: 24 Sep 2015 21:28

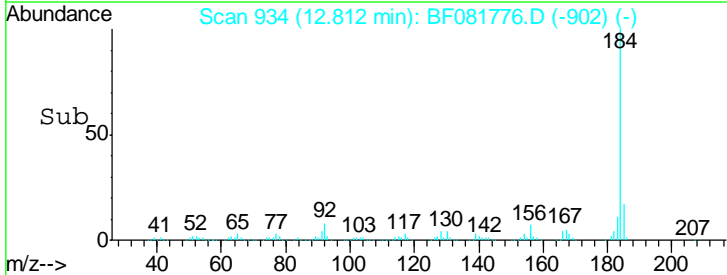
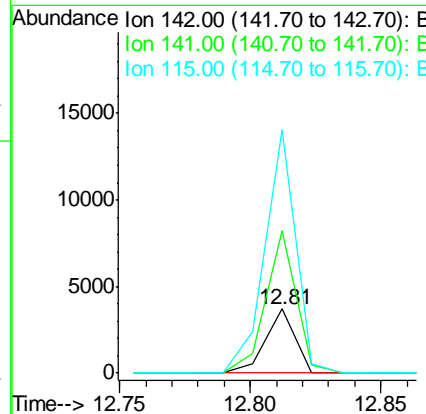
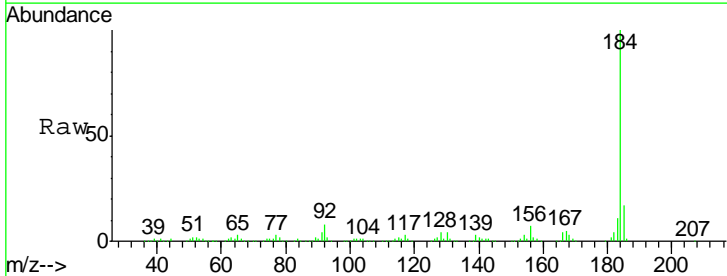
Instrument :  
 BNA\_F  
 ClientSampleId :  
 ICVBF092415

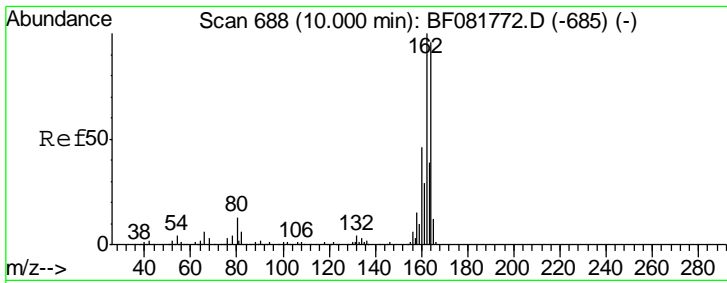
Tgt Ion	Resp	Lower	Upper
107	385		
144	293.6	25.4	38.0#
142	659.0	77.3	115.9#



#37  
 2-Methylnaphthalene  
 Concen: 15.78 ng  
 RT: 12.81 min Scan# 934  
 Delta R.T. 0.07 min  
 Lab File: BF081776.D  
 Acq: 24 Sep 2015 21:28

Tgt Ion	Resp	Lower	Upper
142	2883		
141	221.9	67.5	101.3#
115	380.3	18.2	27.2#

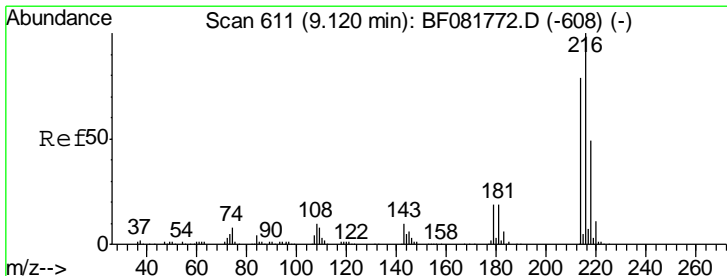
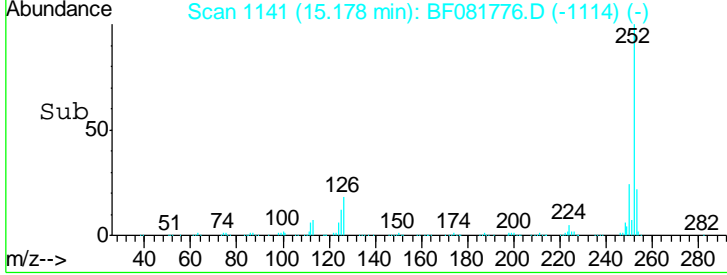
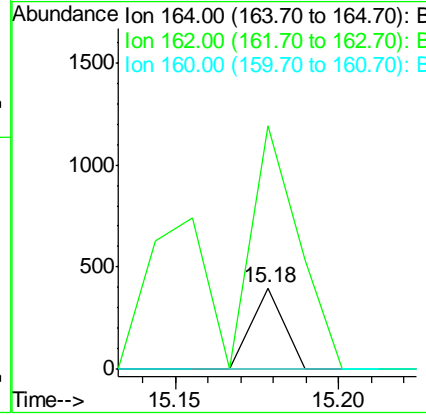
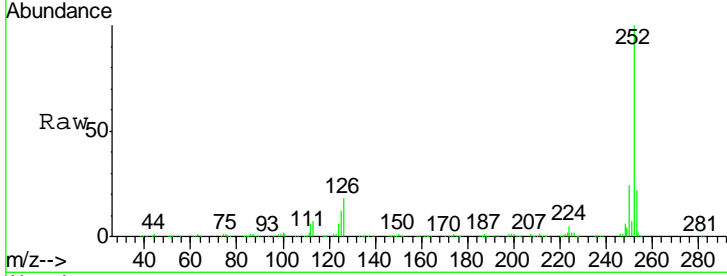




#38  
 Acenaphthene-d10  
 Concen: 20.00 ng  
 RT: 15.18 min Scan# 1141  
 Delta R.T. 0.01 min  
 Lab File: BF081776.D  
 Acq: 24 Sep 2015 21:28

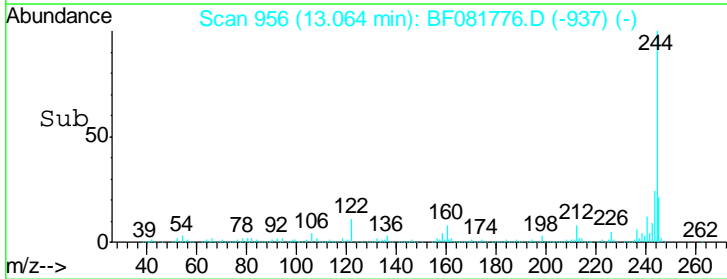
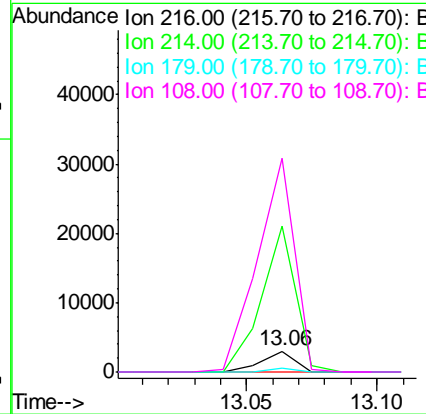
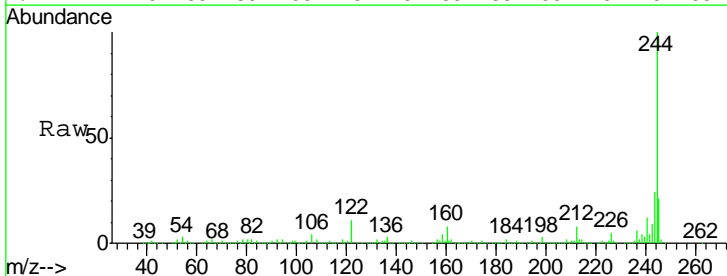
Instrument :  
 BNA\_F  
 ClientSampleId :  
 ICVBF092415

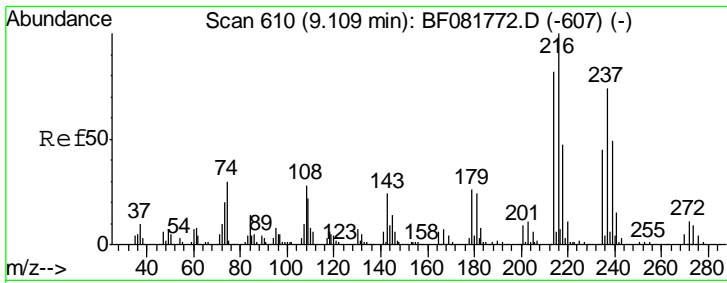
Tgt Ion	Resp	Lower	Upper
164	100		
162	298.5	75.2	112.8#
160	0.0	31.5	47.3#



#39  
 1,2,4,5-Tetrachlorobenzene  
 Concen: 312.97 ng  
 RT: 13.06 min Scan# 956  
 Delta R.T. -0.08 min  
 Lab File: BF081776.D  
 Acq: 24 Sep 2015 21:28

Tgt Ion	Resp	Lower	Upper
216	100		
214	707.0	63.5	95.3#
179	11.8	16.6	24.8#
108	1127.7	16.3	24.5#

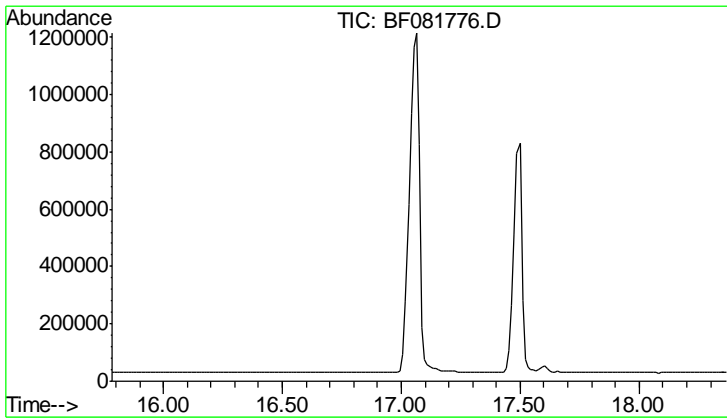
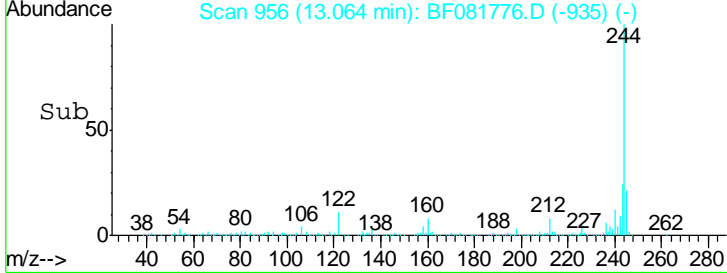
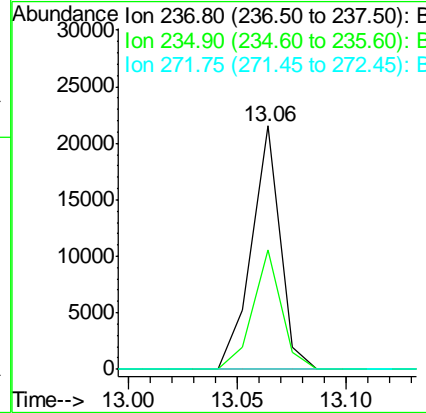
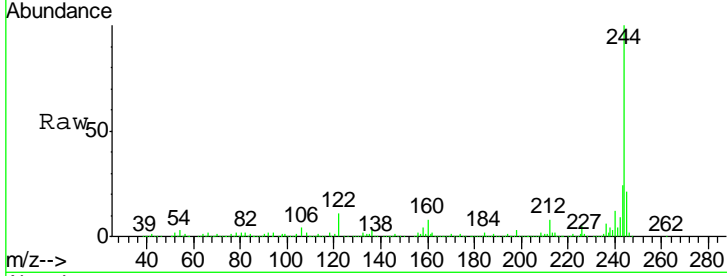




#40  
 Hexachlorocyclopentadiene  
 Concen: 5264.28 ng  
 RT: 13.06 min Scan# 956  
 Delta R.T. -0.06 min  
 Lab File: BF081776.D  
 Acq: 24 Sep 2015 21:28

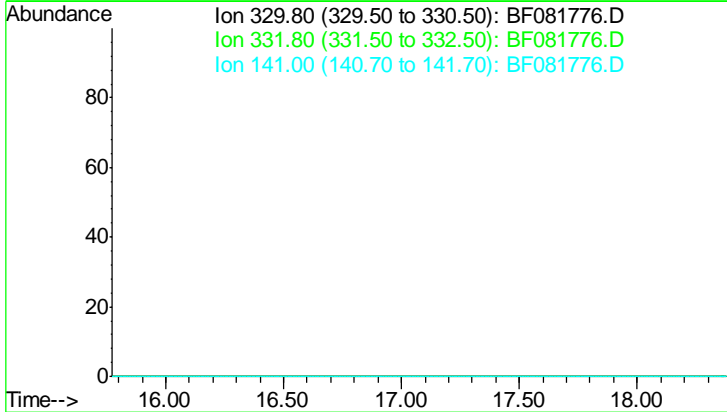
Instrument :  
 BNA\_F  
 ClientSampleId :  
 ICVBF092415

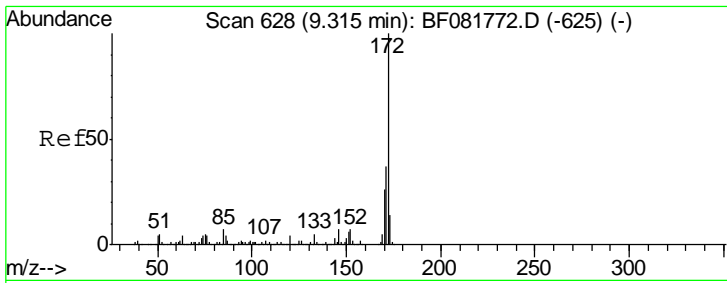
Tgt Ion	Resp	Lower	Upper
237	100		
235	49.2	42.0	82.0
272	0.0	0.0	36.1



#41  
 2,4,6-Tribromophenol  
 Concen: 0.00 ng  
 Expected RT: 17.08 min  
 Lab File: BF081776.D  
 Acq: 24 Sep 2015 21:28

Tgt Ion	Exp Ratio
330	100
332	95.7
141	37.1

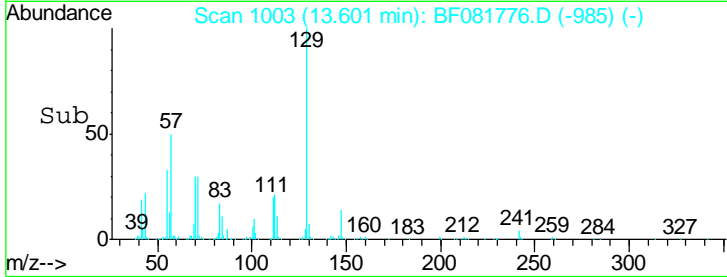
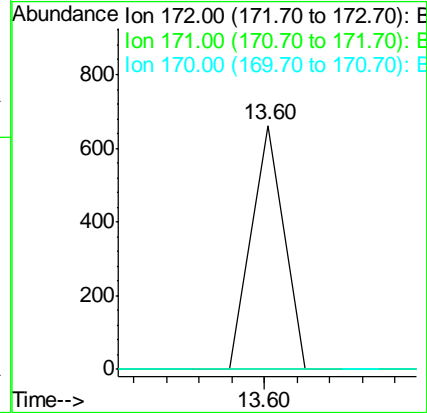
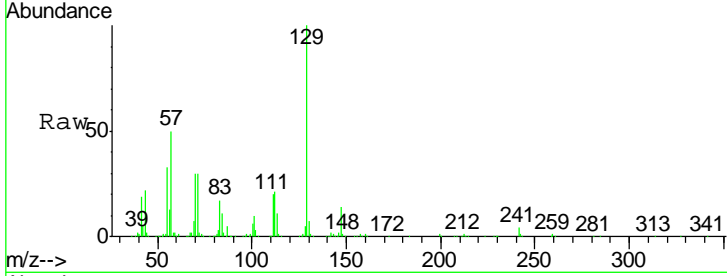




#44  
 2-Fluorobiphenyl  
 Concen: 27.14 ng  
 RT: 13.60 min Scan# 1003  
 Delta R.T. -0.09 min  
 Lab File: BF081776.D  
 Acq: 24 Sep 2015 21:28

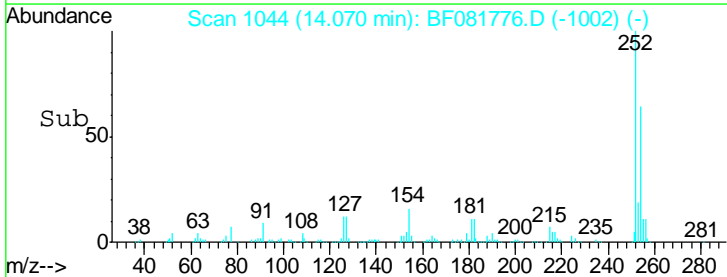
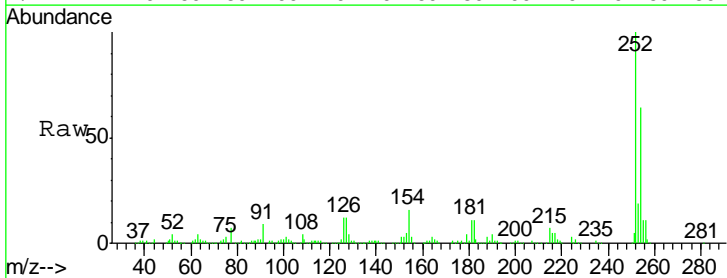
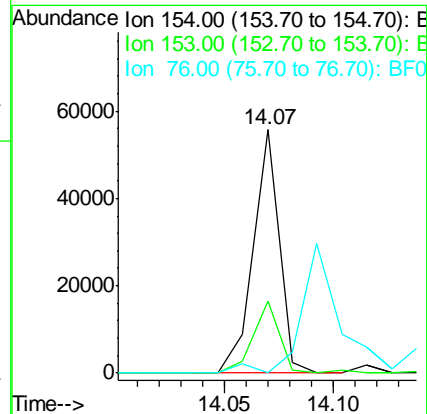
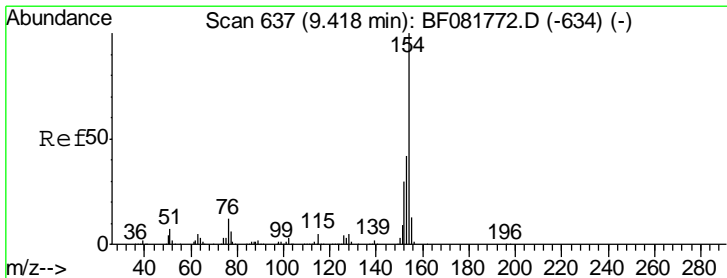
Instrument :  
 BNA\_F  
 ClientSampleId :  
 ICVBF092415

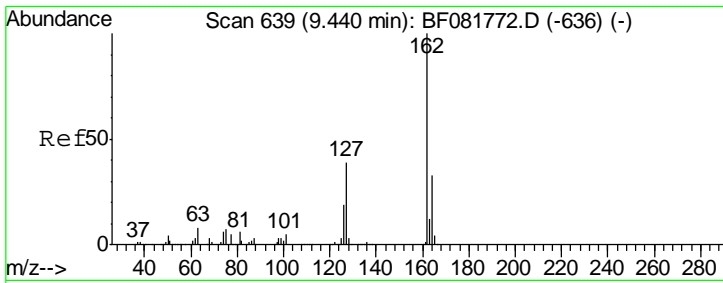
Tgt Ion	Resp	Lower	Upper
172	100		
171	0.0	26.1	39.1#
170	0.0	17.4	26.2#



#45  
 1,1'-Biphenyl  
 Concen: 2143.07 ng  
 RT: 14.07 min Scan# 1044  
 Delta R.T. 0.18 min  
 Lab File: BF081776.D  
 Acq: 24 Sep 2015 21:28

Tgt Ion	Resp	Lower	Upper
154	100		
153	29.6	17.1	57.1
76	0.0	0.0	31.6

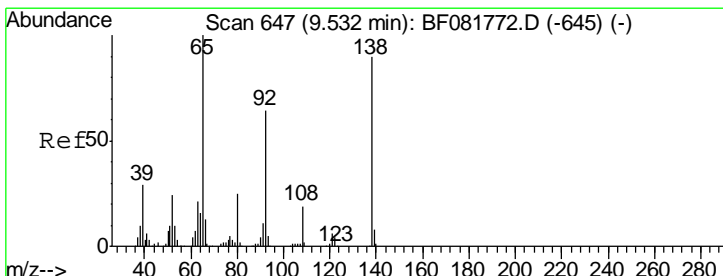
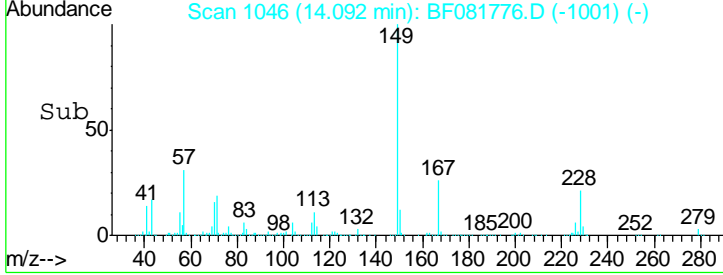
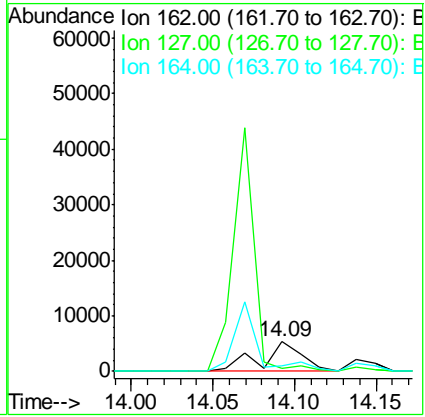
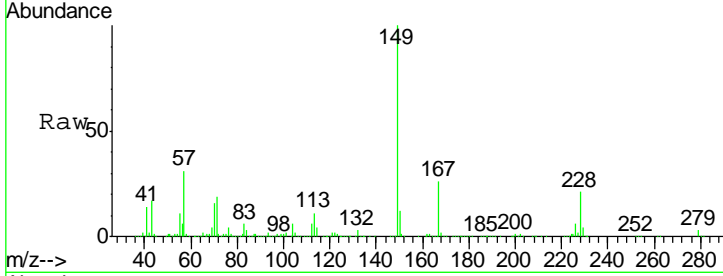




#46  
 2-Chloronaphthalene  
 Concen: 543.29 ng  
 RT: 14.09 min Scan# 1046  
 Delta R.T. 0.22 min  
 Lab File: BF081776.D  
 Acq: 24 Sep 2015 21:28

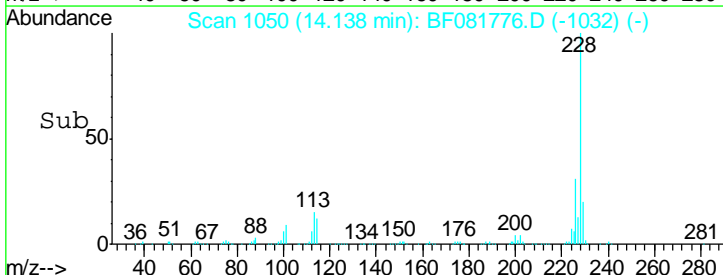
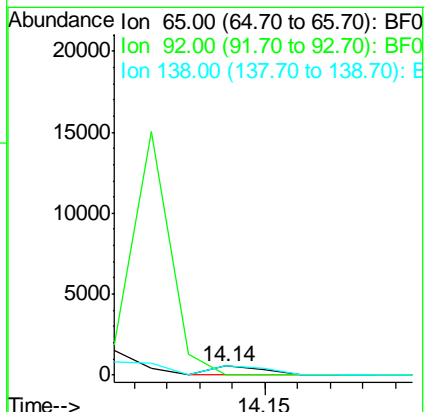
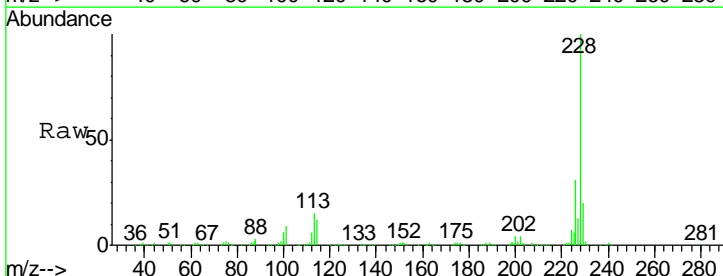
Instrument :  
 BNA\_F  
 ClientSampleId :  
 ICVBF092415

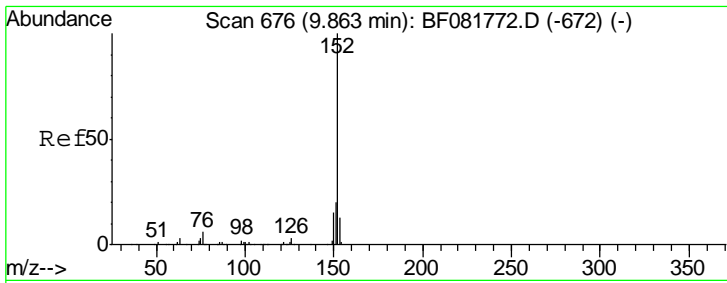
Tgt Ion	Resp	Lower	Upper
162	9363		
127	100	27.6	41.4#
164	16.5	25.4	38.2#



#47  
 2-Nitroaniline  
 Concen: 127.85 ng  
 RT: 14.14 min Scan# 1050  
 Delta R.T. -0.09 min  
 Lab File: BF081776.D  
 Acq: 24 Sep 2015 21:28

Tgt Ion	Resp	Lower	Upper
65	586		
92	100	55.4	83.0#
138	98.9	115.5	173.3#

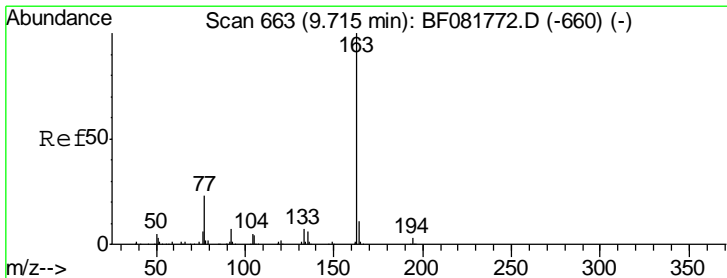
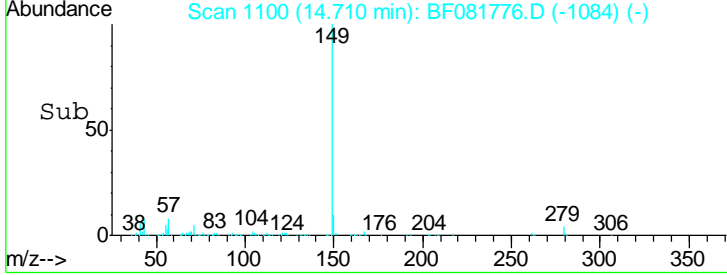
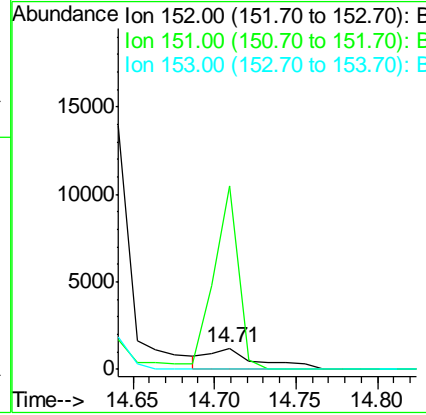
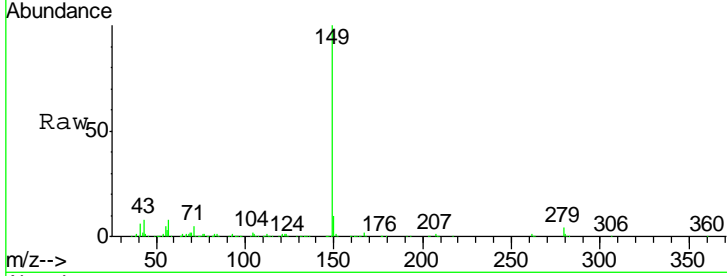




#48  
 Acenaphthylene  
 Concen: 86.74 ng  
 RT: 14.71 min Scan# 1100  
 Delta R.T. -0.12 min  
 Lab File: BF081776.D  
 Acq: 24 Sep 2015 21:28

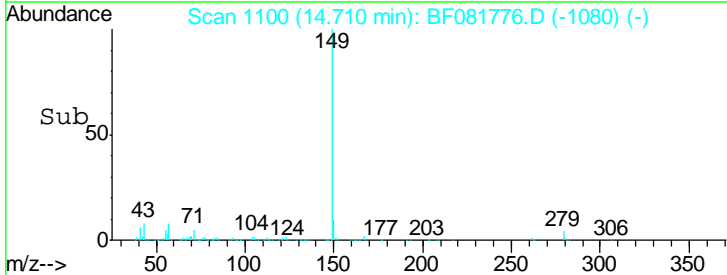
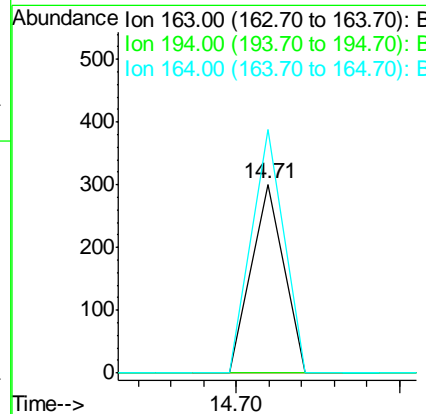
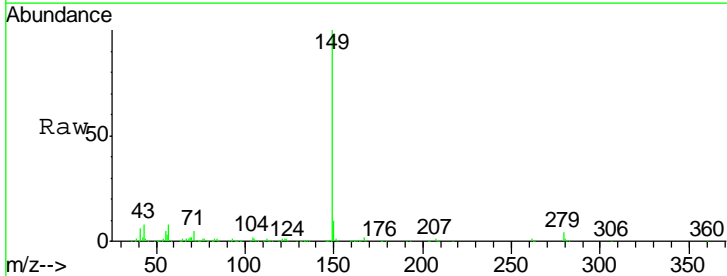
Instrument :  
 BNA\_F  
 ClientSampleId :  
 ICVBF092415

Tgt Ion	Resp	Lower	Upper
152	100		
151	857.1	14.6	22.0#
153	0.0	10.3	15.5#

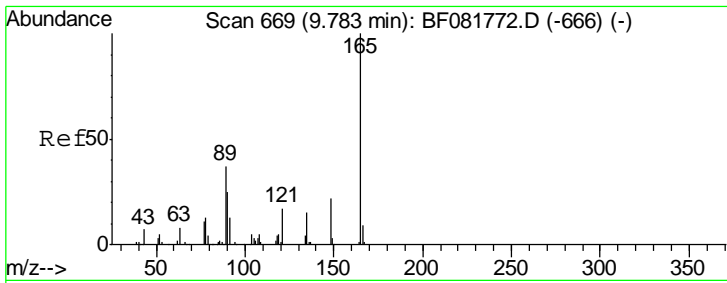


#49  
 Dimethylphthalate  
 Concen: 9.88 ng  
 RT: 14.71 min Scan# 1100  
 Delta R.T. -0.07 min  
 Lab File: BF081776.D  
 Acq: 24 Sep 2015 21:28

Tgt Ion	Resp	Lower	Upper
163	100		
194	0.0	4.4	6.6#
164	128.9	8.3	12.5#



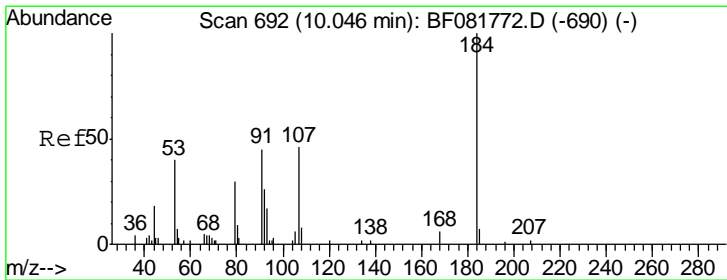
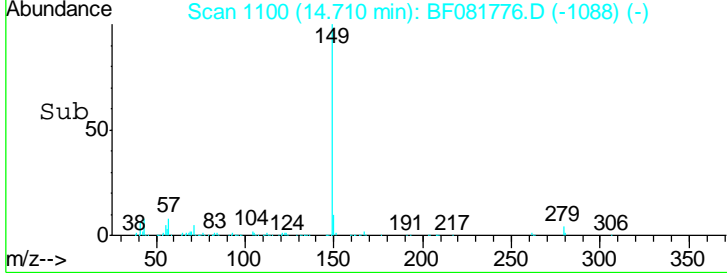
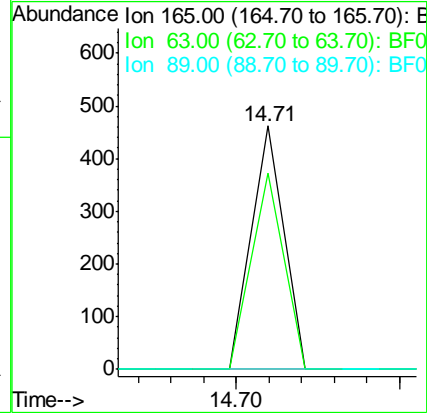
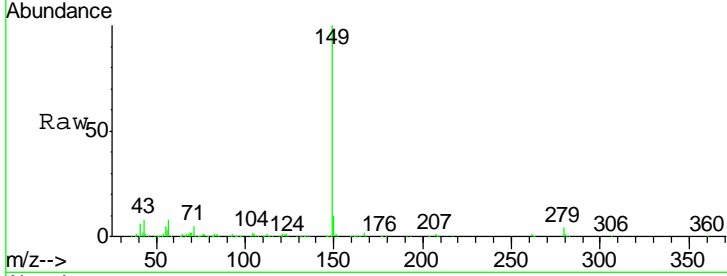




#50  
 2,6-Dinitrotoluene  
 Concen: 78.77 ng  
 RT: 14.71 min Scan# 1100  
 Delta R.T. -0.16 min  
 Lab File: BF081776.D  
 Acq: 24 Sep 2015 21:28

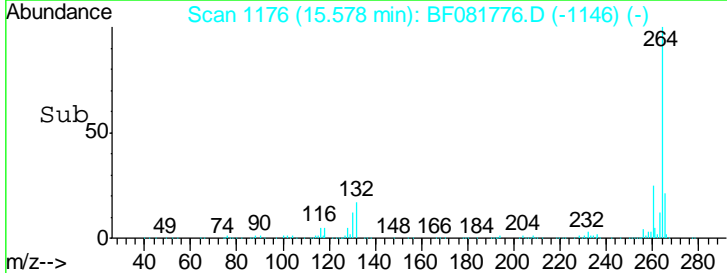
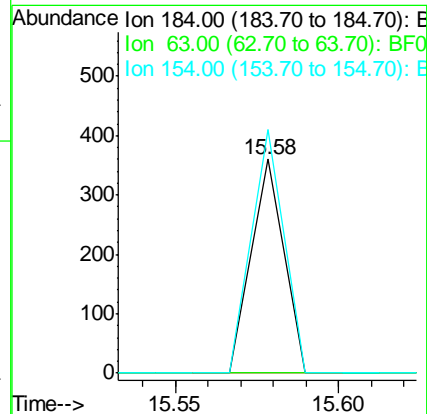
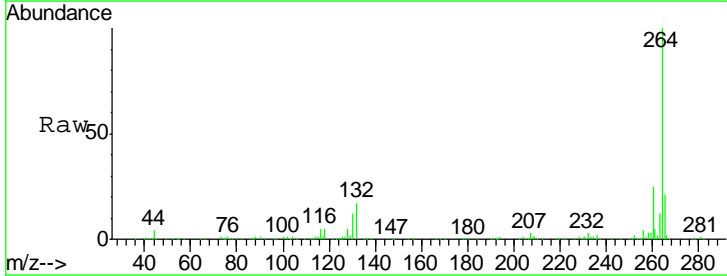
Instrument :  
 BNA\_F  
 ClientSampleId :  
 ICVBF092415

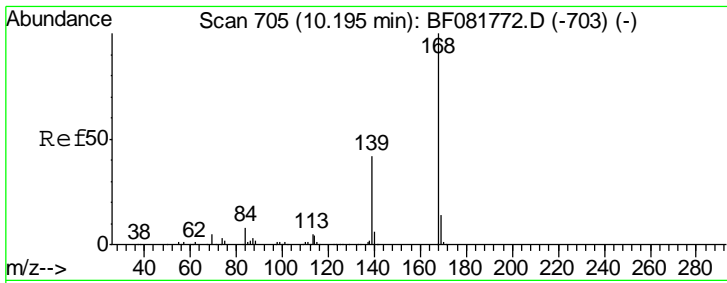
Tgt Ion	Resp	Lower	Upper
165	100		
63	80.5	32.3	48.5#
89	0.0	28.6	43.0#



#53  
 2,4-Dinitrophenol  
 Concen: 157.93 ng  
 RT: 15.58 min Scan# 1176  
 Delta R.T. 0.05 min  
 Lab File: BF081776.D  
 Acq: 24 Sep 2015 21:28

Tgt Ion	Resp	Lower	Upper
184	100		
63	0.0	35.4	53.2#
154	113.9	32.2	48.4#

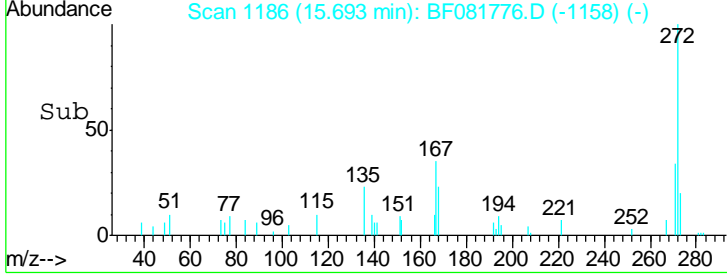
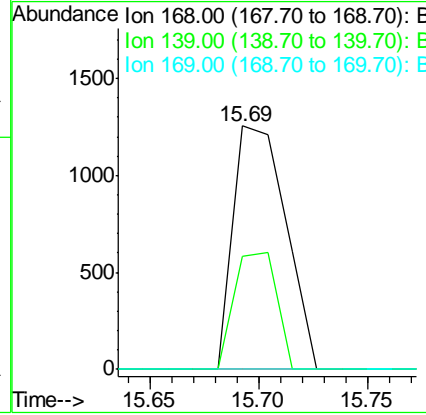
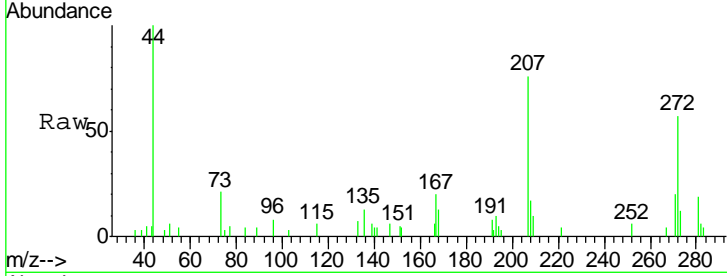




#54  
 Dibenzofuran  
 Concen: 85.50 ng  
 RT: 15.69 min Scan# 1186  
 Delta R.T. 0.02 min  
 Lab File: BF081776.D  
 Acq: 24 Sep 2015 21:28

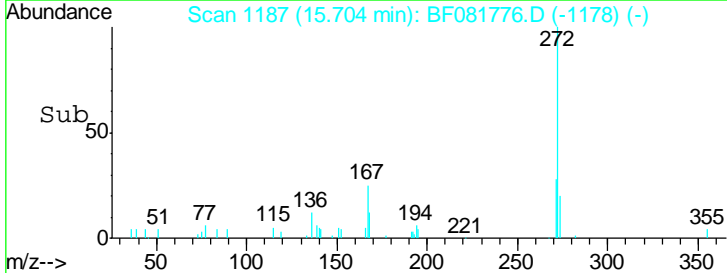
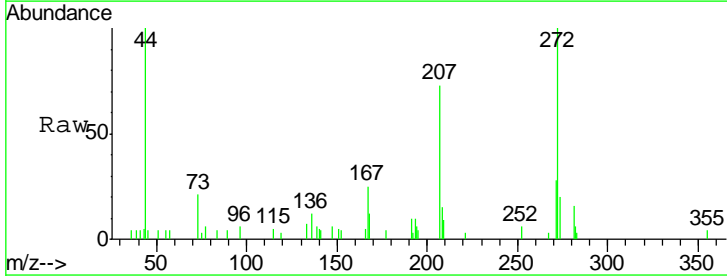
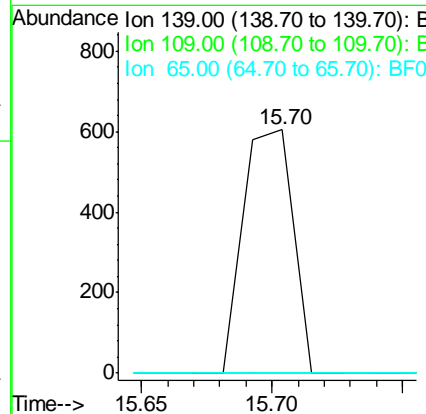
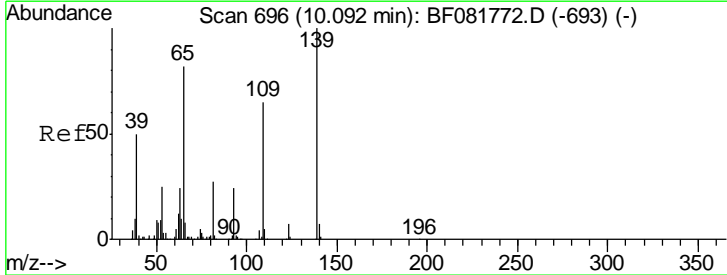
Instrument :  
 BNA\_F  
 ClientSampleId :  
 ICVBF092415

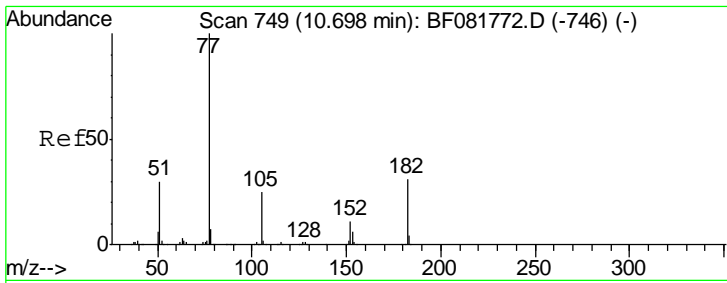
Tgt Ion	Resp	Lower	Upper
168	2108		
139	46.3	24.2	36.2#
169	0.0	10.6	15.8#



#55  
 4-Nitrophenol  
 Concen: 270.09 ng  
 RT: 15.70 min Scan# 1187  
 Delta R.T. -0.20 min  
 Lab File: BF081776.D  
 Acq: 24 Sep 2015 21:28

Tgt Ion	Resp	Lower	Upper
139	813		
109	0.0	12.7	52.7#
65	0.0	45.9	85.9#

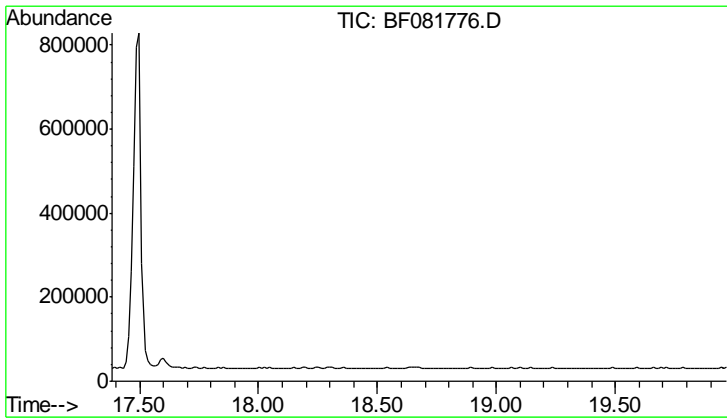
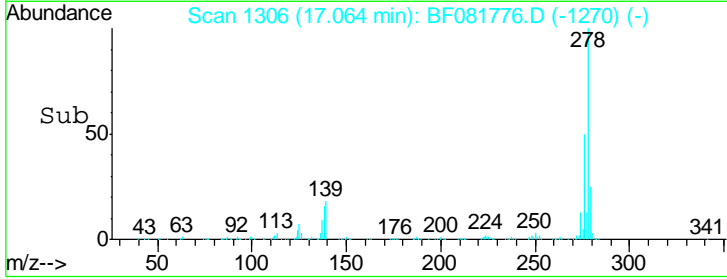
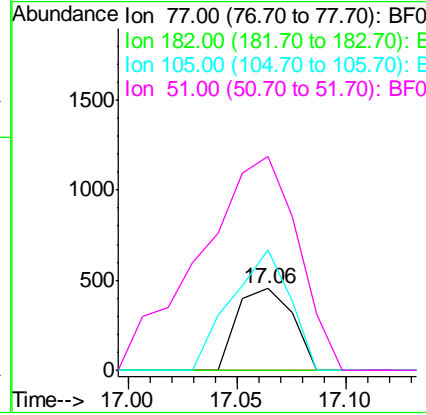
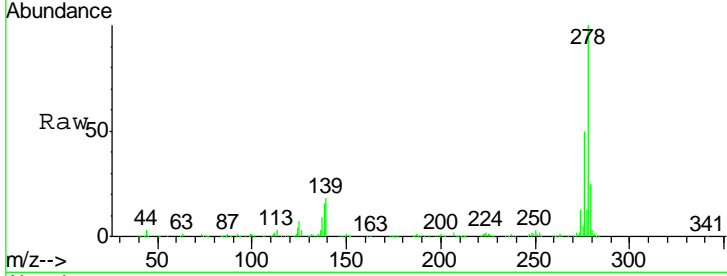




#62  
 Azobenzene  
 Concen: 38.75 ng  
 RT: 17.06 min Scan# 1306  
 Delta R.T. 0.11 min  
 Lab File: BF081776.D  
 Acq: 24 Sep 2015 21:28

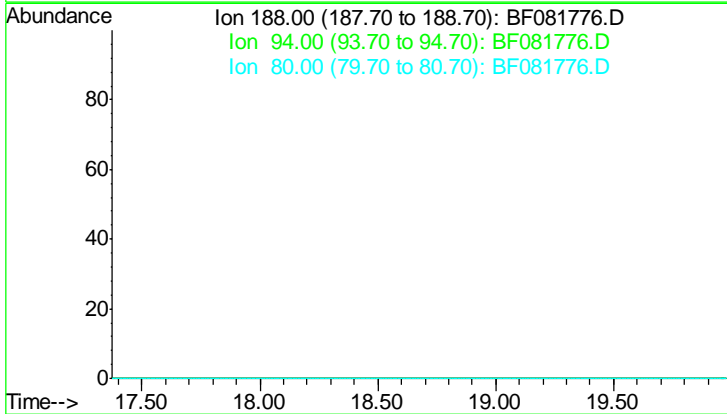
Instrument :  
 BNA\_F  
 ClientSampleId :  
 ICVBF092415

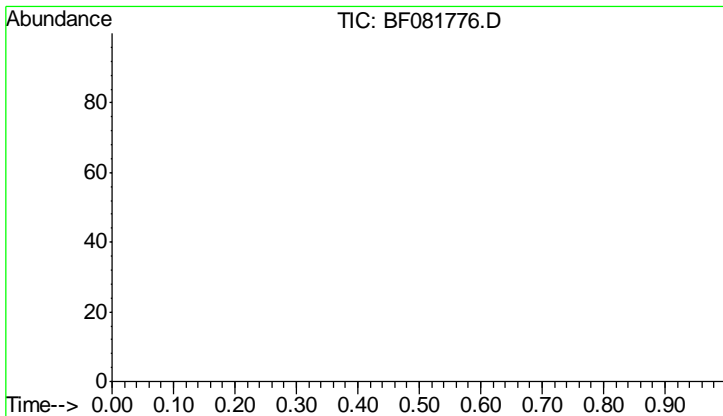
Tgt Ion	Resp	Lower	Upper
77	100		
182	0.0	15.1	55.1#
105	147.6	3.4	43.4#
51	262.4	12.0	52.0#



#63  
 Phenanthrene-d10  
 Concen: 0.00 ng  
 Expected RT: 18.68 min  
 Lab File: BF081776.D  
 Acq: 24 Sep 2015 21:28

Tgt Ion	Exp Ratio
188	100
94	13.9
80	13.7

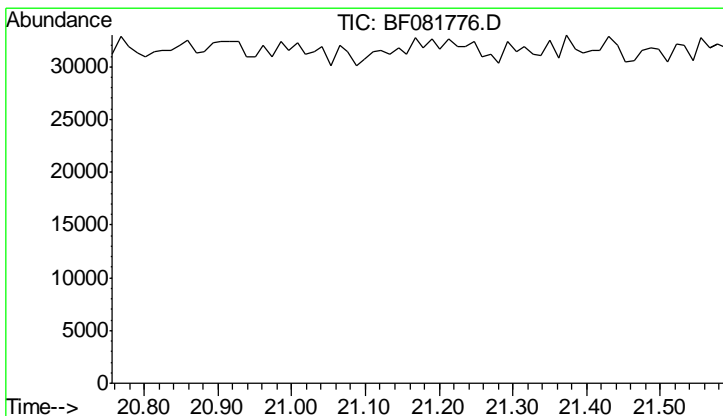
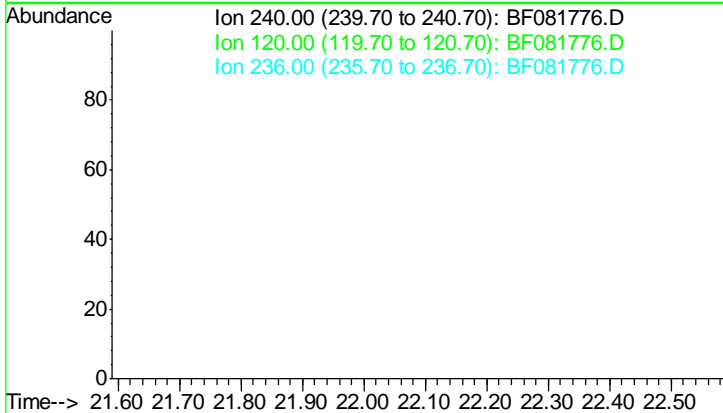




#75  
 Chrysene-d12  
 Concen: 0.00 ng  
 Expected RT: 23.33 min  
 Lab File: BF081776.D  
 Acq: 24 Sep 2015 21:28

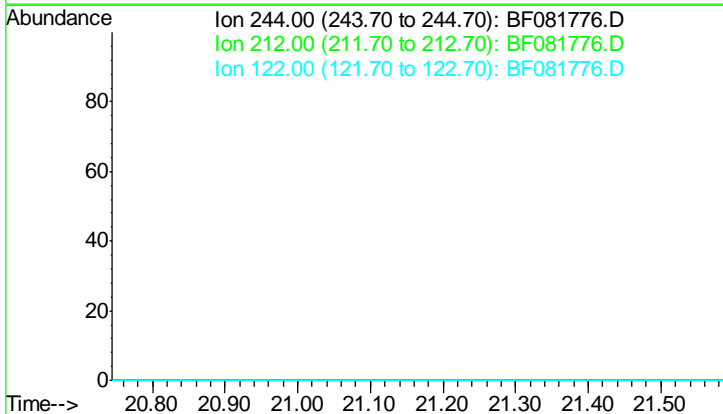
**Instrument :**  
 BNA\_F  
**ClientSampleId :**  
 ICVBF092415

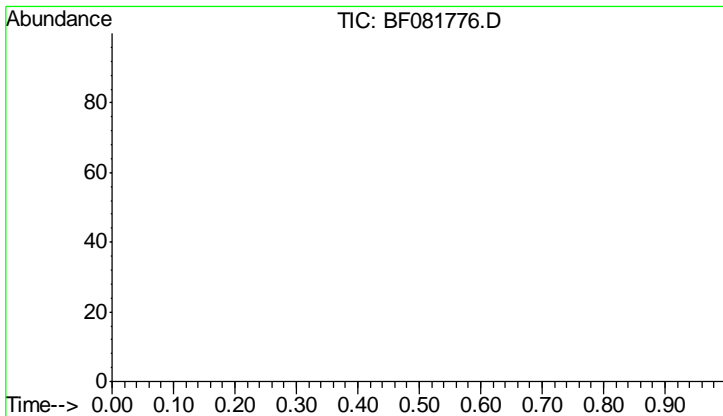
Tgt Ion	Exp Ratio
240	100
120	20.2
236	23.0



#78  
 Terphenyl-d14  
 Concen: 0.00 ng  
 Expected RT: 22.05 min  
 Lab File: BF081776.D  
 Acq: 24 Sep 2015 21:28

Tgt Ion	Exp Ratio
244	100
212	5.4
122	21.8





#86  
 Perylene-d12  
 Concen: 0.00 ng  
 Expected RT: 24.77 min  
 Lab File: BF081776.D  
 Acq: 24 Sep 2015 21:28

**Instrument :**  
 BNA\_F  
**ClientSampleId :**  
 ICVBF092415

Tot Ion	Exp Ratio
264	100
260	20.9
265	21.5

