

Data Path : Z:\HPCHEM1\BNA F\DATA\BF092915\
 Data File : BF081906.D
 Acq On : 30 Sep 2015 9:37
 Operator : UM/IZ
 Sample : G3754-06DL2 25X
 Misc :
 ALS Vial : 31 Sample Multiplier: 1

Instrument :
 BNA_F
 ClientSampleId :
 MW-7BDDL2

Quant Time: Sep 30 11:27:23 2015
 Quant Method : Z:\HPCHEM1\BNA F\METHODS\8270-BF092815.M
 Quant Title : ASP BNA STANDARDS FOR 5 POINT CALIBRATION
 QLast Update : Mon Sep 28 18:10:42 2015
 Response via : Initial Calibration

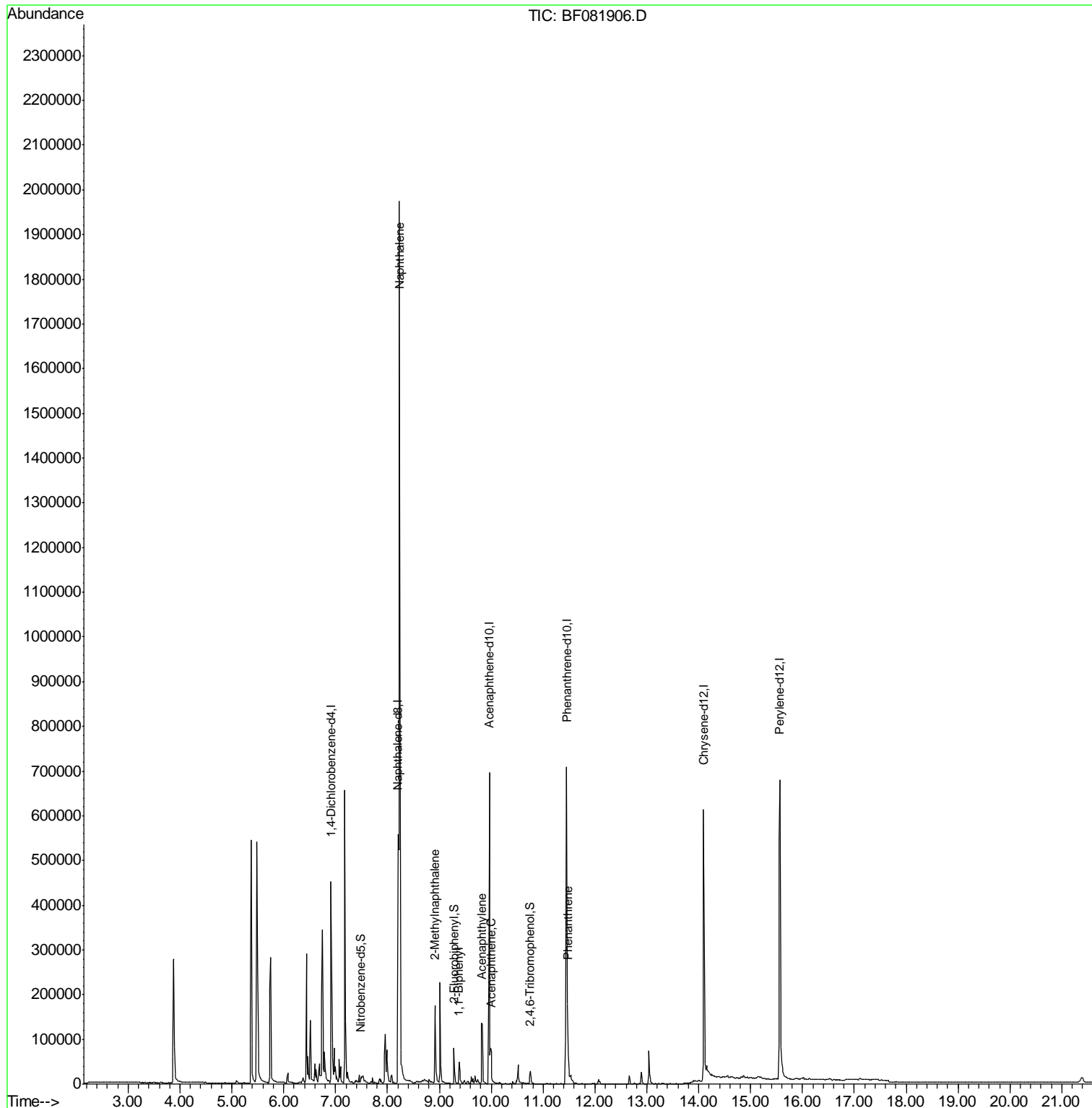
Internal Standards	R.T.	QIon	Response	Conc	Units	Dev(Min)
1) 1,4-Dichlorobenzene-d4	6.91	152	101778	20.00	ng	-0.02
21) Naphthalene-d8	8.21	136	297942	20.00	ng	-0.01
38) Acenaphthene-d10	9.97	164	158543	20.00	ng	-0.01
63) Phenanthrene-d10	11.45	188	324369	20.00	ng	-0.01
75) Chrysene-d12	14.09	240	334964	20.00	ng	-0.02
86) Perylene-d12	15.57	264	455094	20.00	ng	-0.01
System Monitoring Compounds						
5) 2-Fluorophenol	5.51	112	7550	1.35	ng	-0.01
7) Phenol-d6	6.55	99	8652	1.23	ng	-0.01
23) Nitrobenzene-d5	7.49	82	14436	3.23	ng	-0.01
41) 2,4,6-Tribromophenol	10.75	330	6825	4.25	ng	-0.01
44) 2-Fluorobiphenyl	9.28	172	37965	2.41	ng	-0.02
78) Terphenyl-d14	13.04	244	43931	1.52	ng	-0.01
Target Compounds						
31) Naphthalene	8.23	128	1138426	86.23	ng	96
37) 2-Methylnaphthalene	8.91	142	79396	8.81	ng	# 85
45) 1,1'-Biphenyl	9.38	154	28645	2.34	ng	97
48) Acenaphthylene	9.83	152	107603	7.00	ng	98
51) Acenaphthene	10.00	154	24720	2.71	ng	# 85
70) Phenanthrene	11.47	178	63895	2.52	ng	97

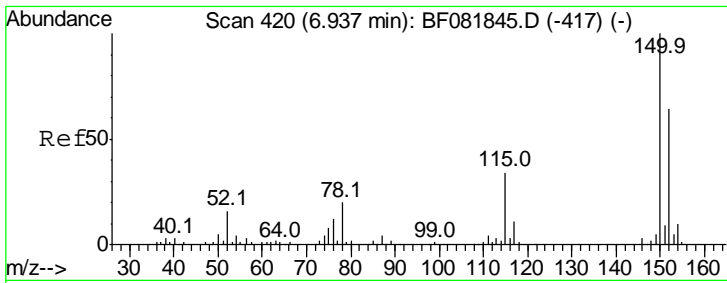
(#) = qualifier out of range (m) = manual integration (+) = signals summed

Data Path : Z:\HPCHEM1\BNA F\DATA\BF092915\
 Data File : BF081906.D
 Acq On : 30 Sep 2015 9:37
 Operator : UM/IZ
 Sample : G3754-06DL2 25X
 Misc :
 ALS Vial : 31 Sample Multiplier: 1

Instrument :
 BNA_F
 ClientSampled :
 MW-7BDDL2

Quant Time: Sep 30 11:27:23 2015
 Quant Method : Z:\HPCHEM1\BNA F\METHODS\8270-BF092815.M
 Quant Title : ASP BNA STANDARDS FOR 5 POINT CALIBRATION
 QLast Update : Mon Sep 28 18:10:42 2015
 Response via : Initial Calibration

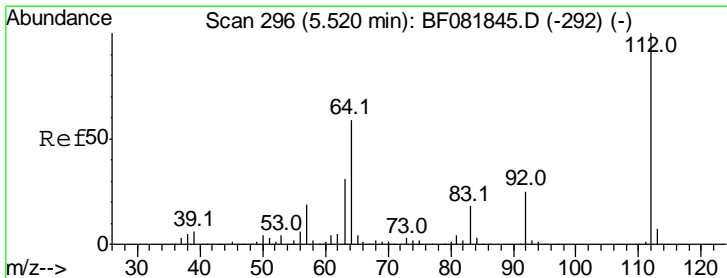
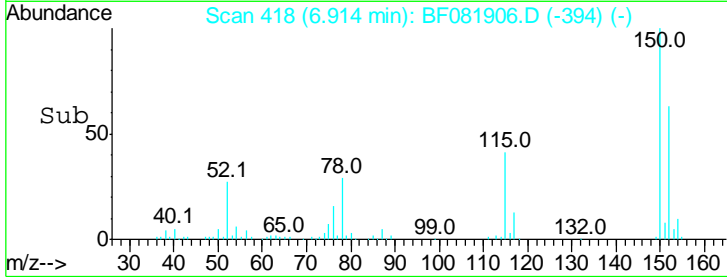
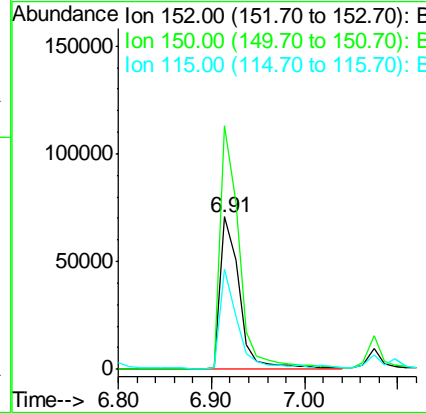
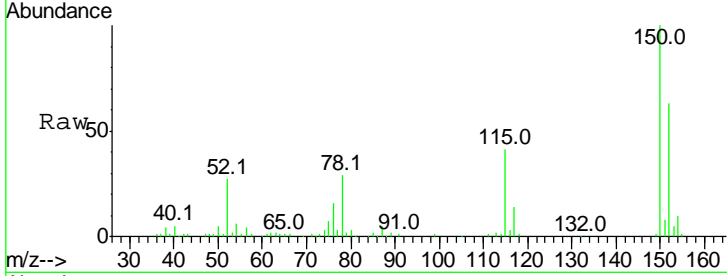




#1
 1,4-Dichlorobenzene-d4
 Concen: 20.00 ng
 RT: 6.91 min Scan# 418
 Delta R.T. -0.02 min
 Lab File: BF081906.D
 Acq: 30 Sep 2015 9:37

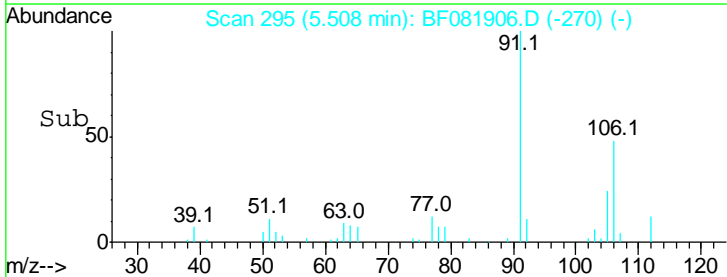
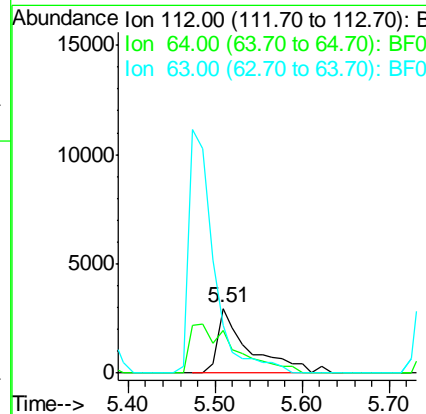
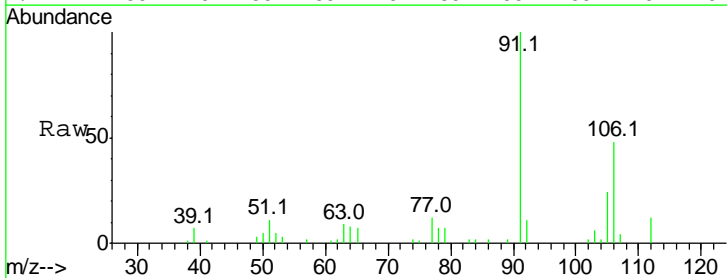
Instrument :
 BNA_F
 ClientSampleID :
 MW-7BDDL2

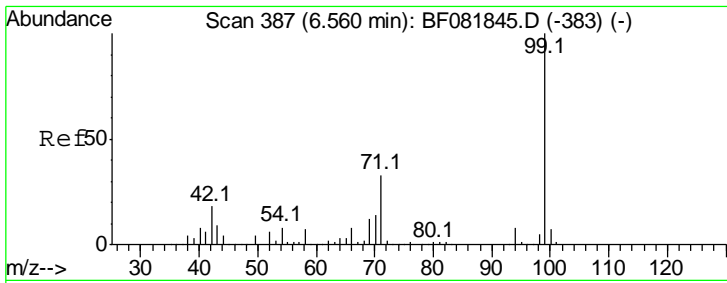
Tgt Ion	Resp	Lower	Upper
152	101778		
152	100		
150	159.7	124.7	187.1
115	66.0	39.0	58.4#



#5
 2-Fluorophenol
 Concen: 1.35 ng
 RT: 5.51 min Scan# 295
 Delta R.T. -0.01 min
 Lab File: BF081906.D
 Acq: 30 Sep 2015 9:37

Tgt Ion	Resp	Lower	Upper
112	7550		
112	100		
64	66.0	39.7	59.5#
63	74.4	17.4	26.0#

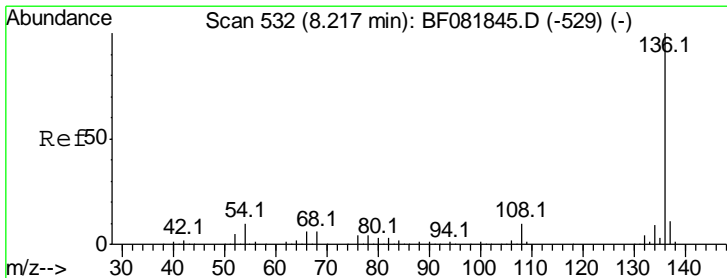
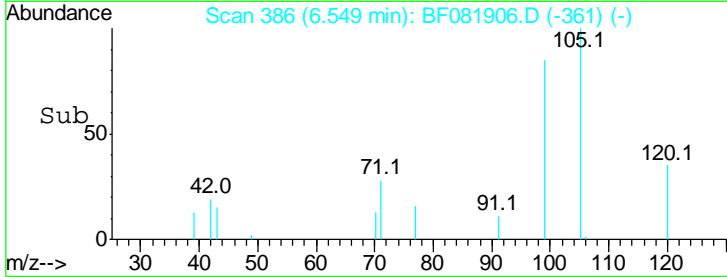
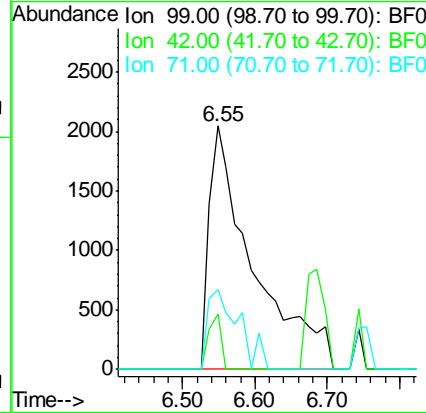
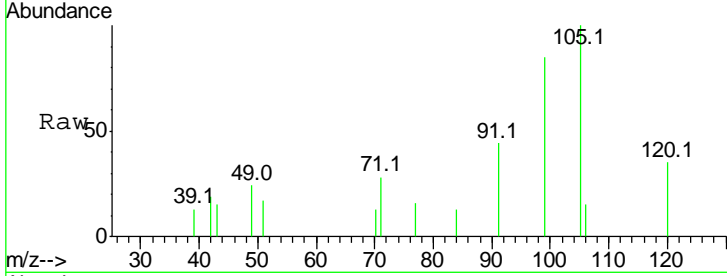




#7
 Phenol-d6
 Concen: 1.23 ng
 RT: 6.55 min Scan# 386
 Delta R.T. -0.01 min
 Lab File: BF081906.D
 Acq: 30 Sep 2015 9:37

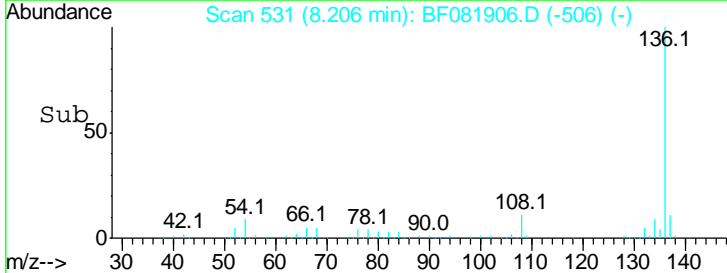
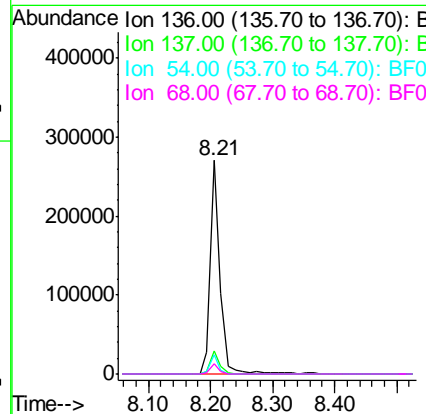
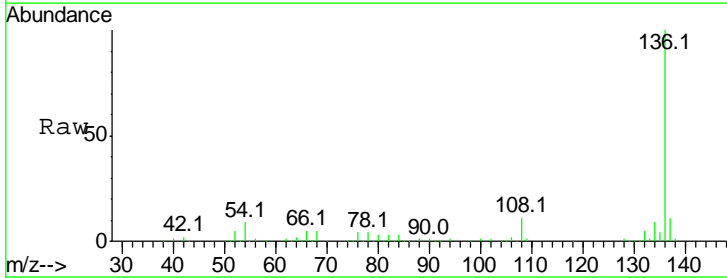
Instrument :
 BNA_F
 ClientSampled :
 MW-7BDDL2

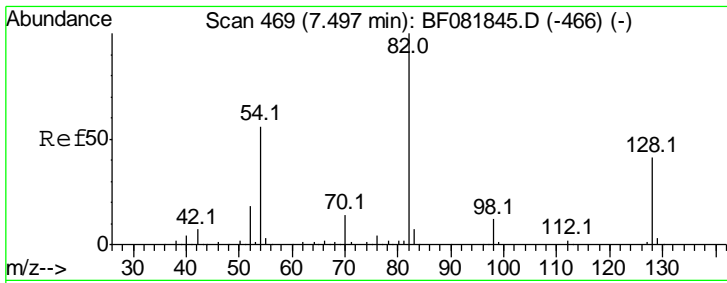
Tgt Ion	Resp	Lower	Upper
99	100		
42	22.7	13.7	20.5#
71	32.6	14.2	21.2#



#21
 Naphthalene-d8
 Concen: 20.00 ng
 RT: 8.21 min Scan# 531
 Delta R.T. -0.01 min
 Lab File: BF081906.D
 Acq: 30 Sep 2015 9:37

Tgt Ion	Resp	Lower	Upper
136	100		
137	10.8	9.0	13.6
54	8.8	8.2	12.2
68	4.8	5.8	8.6#

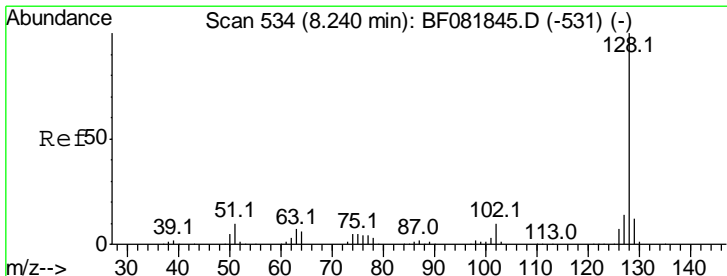
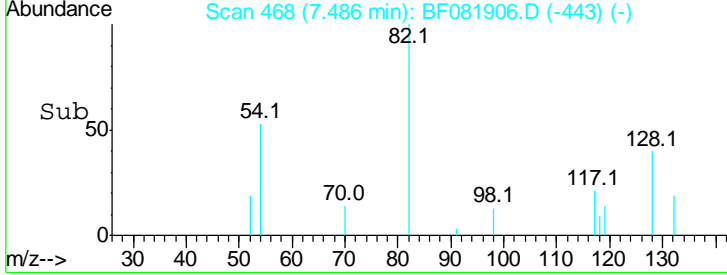
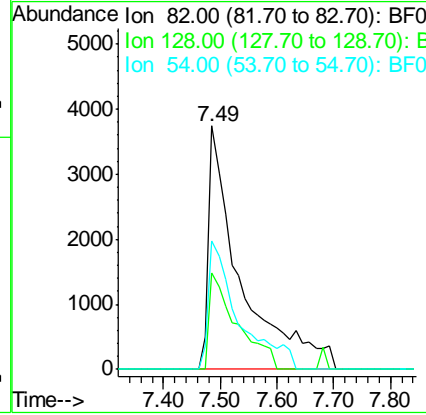
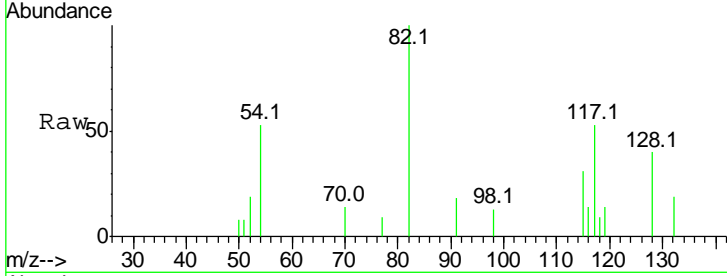




#23
 Nitrobenzene-d5
 Concen: 3.23 ng
 RT: 7.49 min Scan# 468
 Delta R.T. -0.01 min
 Lab File: BF081906.D
 Acq: 30 Sep 2015 9:37

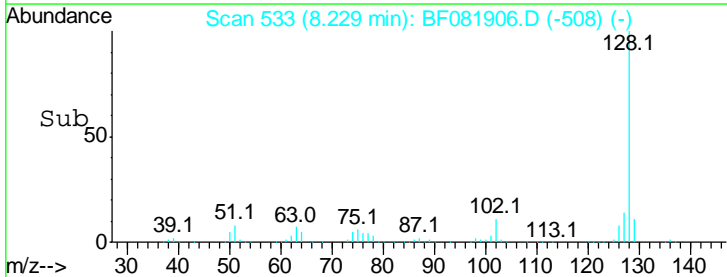
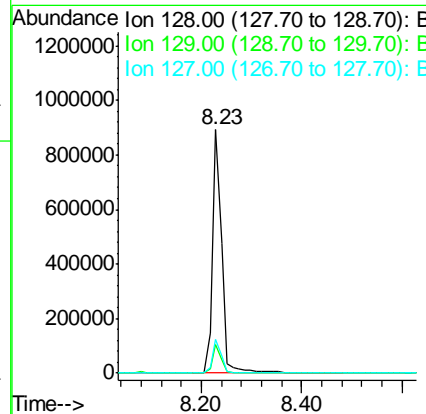
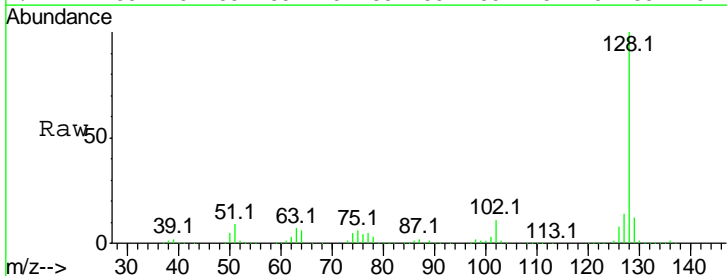
Instrument :
 BNA_F
 ClientSampleID :
 MW-7BDDL2

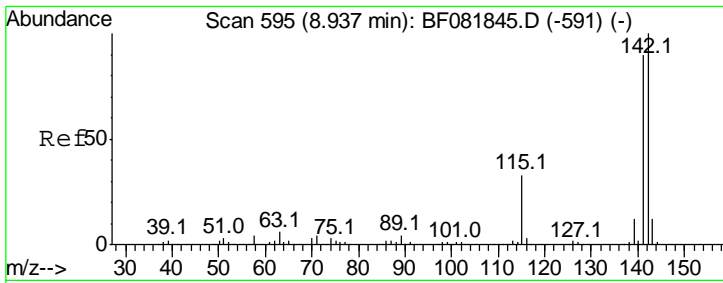
Tgt Ion	Resp	Lower	Upper
82	14436		
128	39.7	51.0	76.6#
54	52.6	47.5	71.3



#31
 Naphthalene
 Concen: 86.23 ng
 RT: 8.23 min Scan# 533
 Delta R.T. -0.01 min
 Lab File: BF081906.D
 Acq: 30 Sep 2015 9:37

Tgt Ion	Resp	Lower	Upper
128	1138426		
129	12.0	8.4	12.6
127	14.0	9.9	14.9

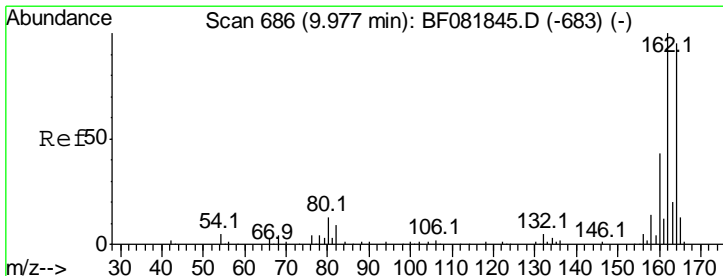
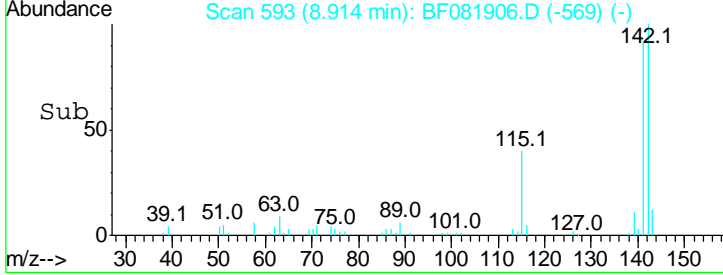
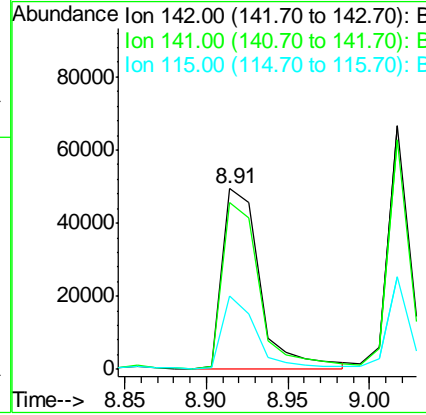
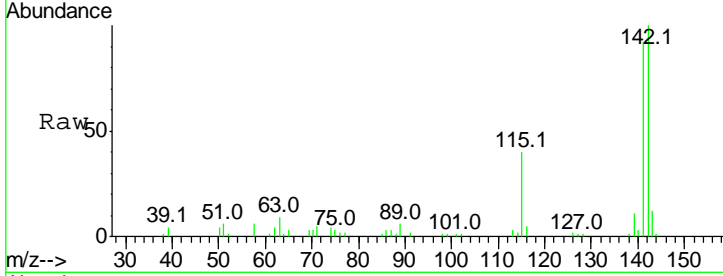




#37
 2-Methylnaphthalene
 Concen: 8.81 ng
 RT: 8.91 min Scan# 593
 Delta R.T. -0.02 min
 Lab File: BF081906.D
 Acq: 30 Sep 2015 9:37

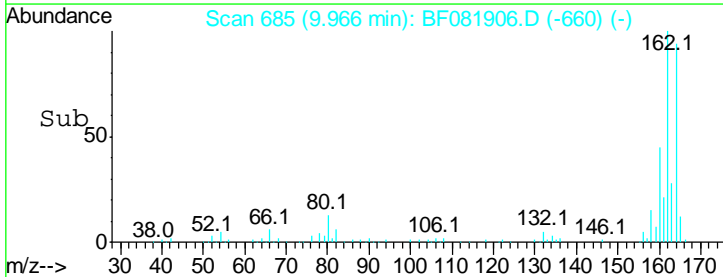
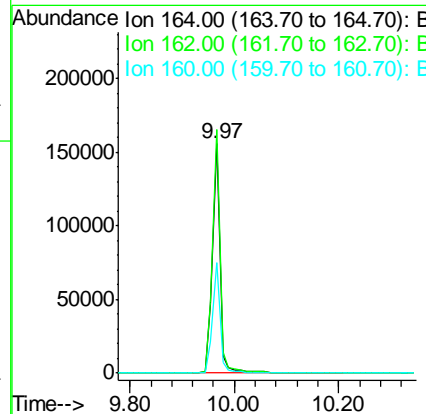
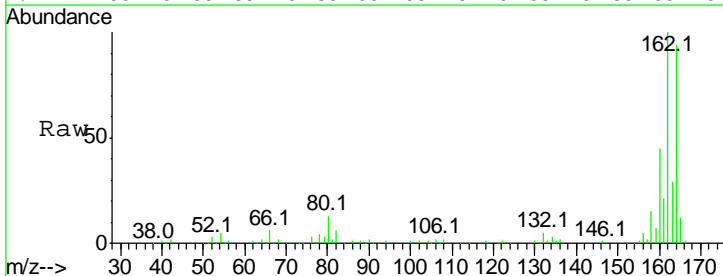
Instrument :
 BNA_F
 ClientSampled :
 MW-7BDDL2

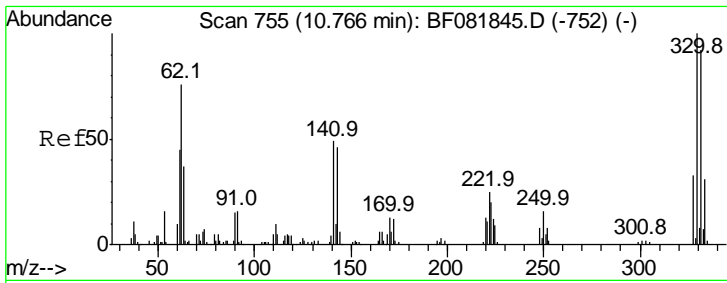
Tgt Ion	Resp	Lower	Upper
142	100		
141	92.3	67.5	101.3
115	40.3	18.2	27.2



#38
 Acenaphthene-d10
 Concen: 20.00 ng
 RT: 9.97 min Scan# 685
 Delta R.T. -0.01 min
 Lab File: BF081906.D
 Acq: 30 Sep 2015 9:37

Tgt Ion	Resp	Lower	Upper
164	100		
162	106.3	75.2	112.8
160	48.0	31.5	47.3

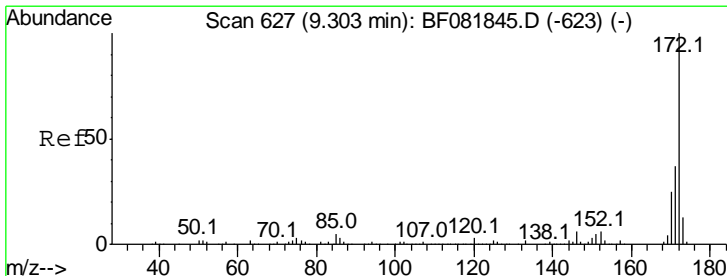
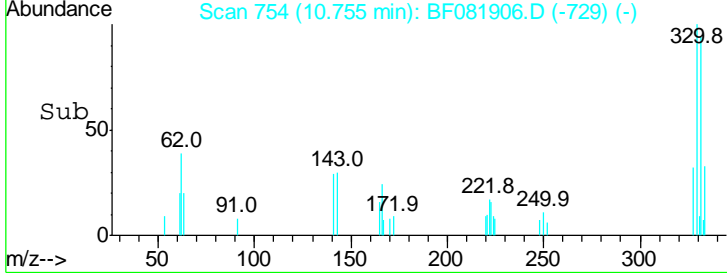
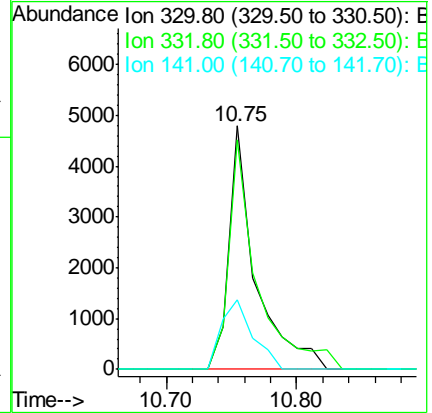
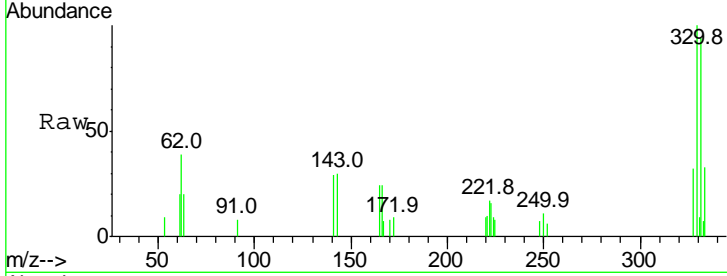




#41
 2,4,6-Tribromophenol
 Concen: 4.25 ng
 RT: 10.75 min Scan# 754
 Delta R.T. -0.01 min
 Lab File: BF081906.D
 Acq: 30 Sep 2015 9:37

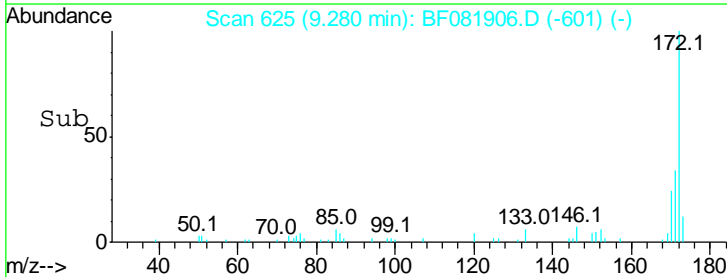
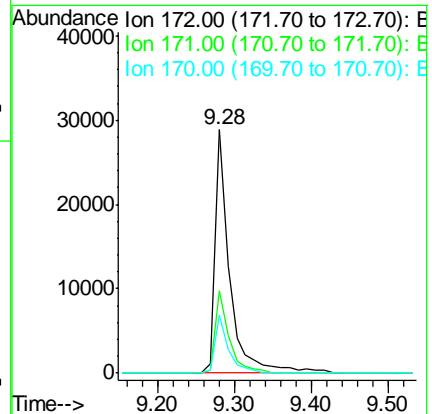
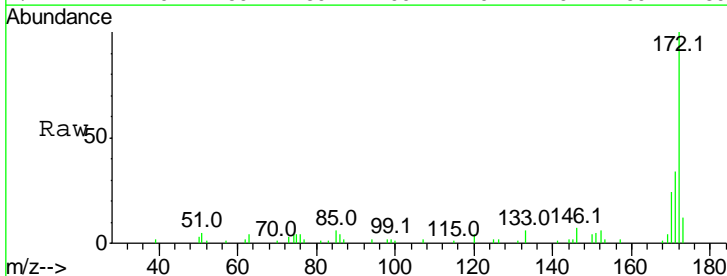
Instrument :
 BNA_F
 ClientSampled :
 MW-7BDDL2

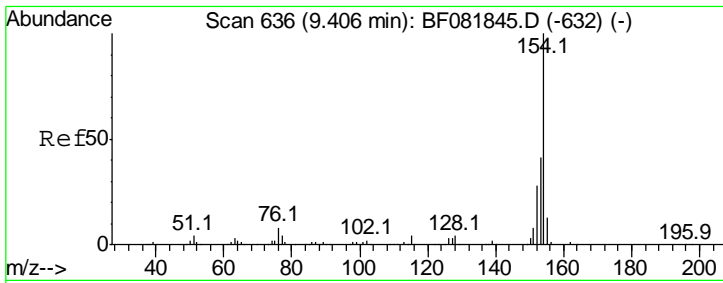
Tgt Ion	Resp	Lower	Upper
330	100		
332	100.9	76.6	114.8
141	33.9	29.7	44.5



#44
 2-Fluorobiphenyl
 Concen: 2.41 ng
 RT: 9.28 min Scan# 625
 Delta R.T. -0.02 min
 Lab File: BF081906.D
 Acq: 30 Sep 2015 9:37

Tgt Ion	Resp	Lower	Upper
172	100		
171	33.7	26.1	39.1
170	23.9	17.4	26.2

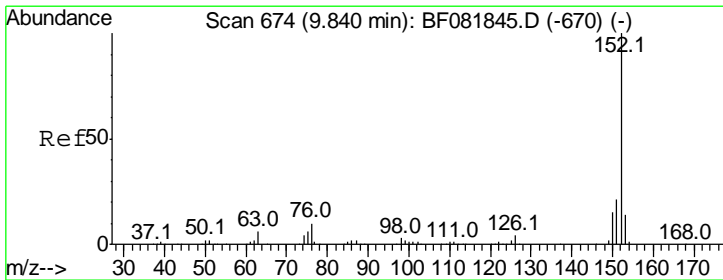
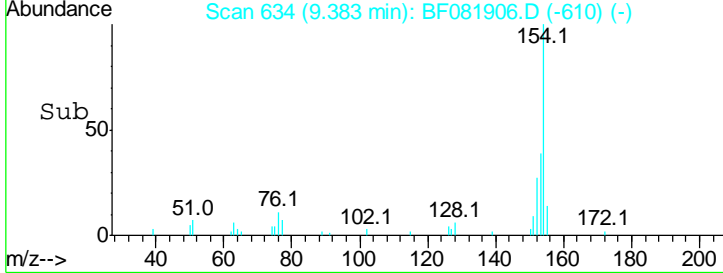
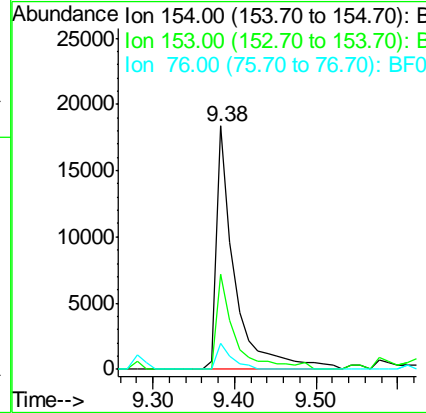
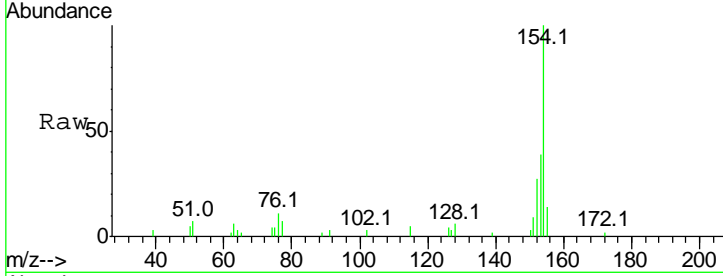




#45
 1,1'-Biphenyl
 Concen: 2.34 ng
 RT: 9.38 min Scan# 634
 Delta R.T. -0.02 min
 Lab File: BF081906.D
 Acq: 30 Sep 2015 9:37

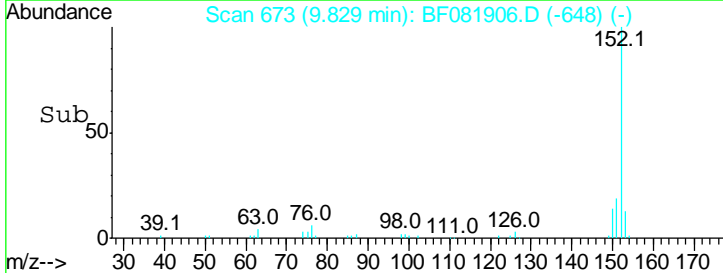
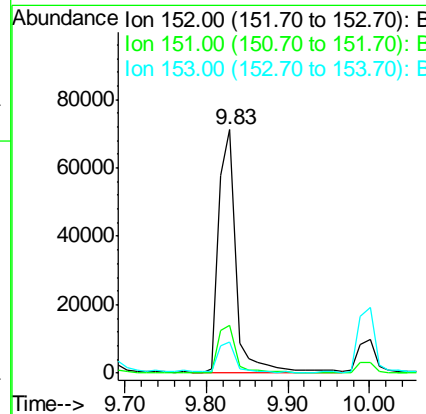
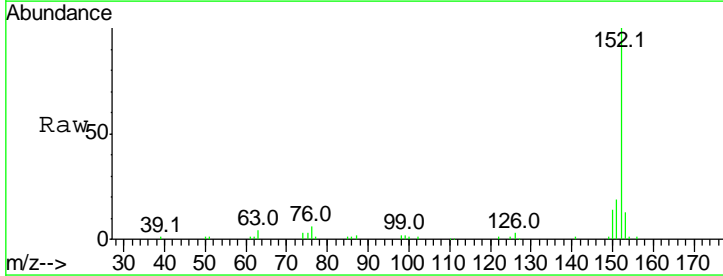
Instrument :
 BNA_F
 ClientSampled :
 MW-7BDDL2

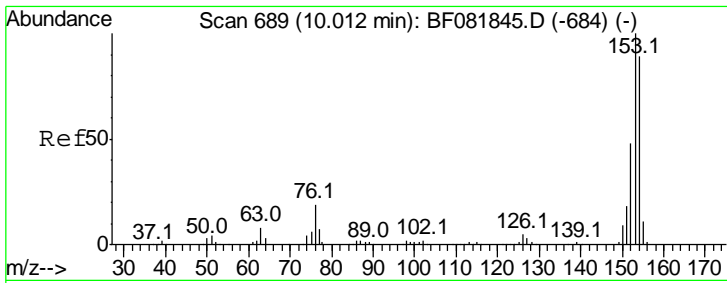
Tgt Ion	Resp	Lower	Upper
154	100		
153	38.9	17.1	57.1
76	10.8	0.0	31.6



#48
 Acenaphthylene
 Concen: 7.00 ng
 RT: 9.83 min Scan# 673
 Delta R.T. -0.01 min
 Lab File: BF081906.D
 Acq: 30 Sep 2015 9:37

Tgt Ion	Resp	Lower	Upper
152	100		
151	19.5	14.6	22.0
153	13.0	10.3	15.5



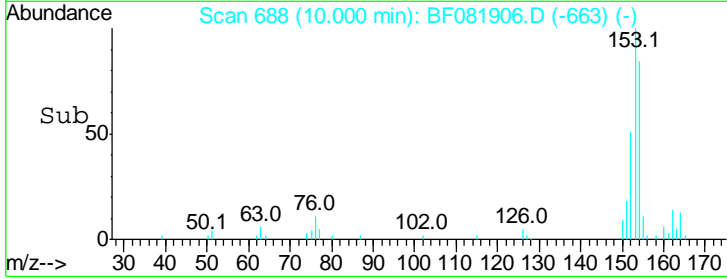
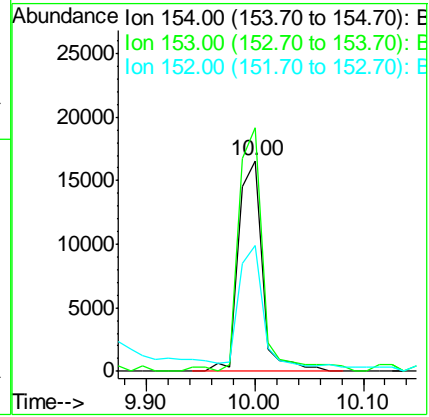
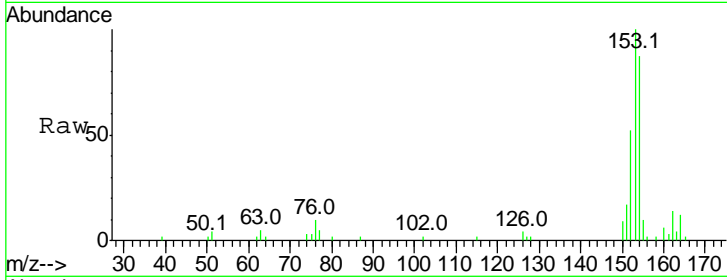


#51
 Acenaphthene
 Concen: 2.71 ng
 RT: 10.00 min Scan# 688
 Delta R.T. -0.01 min
 Lab File: BF081906.D
 Acq: 30 Sep 2015 9:37

Instrument :
 BNA_F
ClientSampled :
 MW-7BDDL2

Tot Ion:154 Resp: 24720

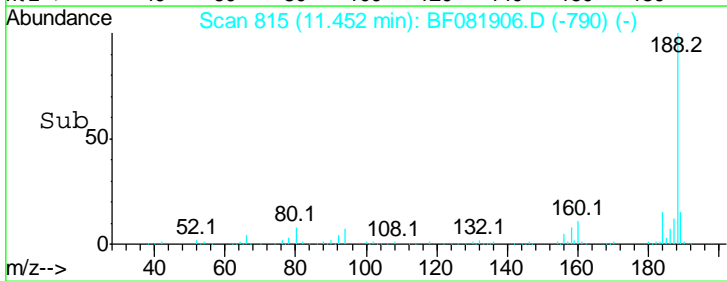
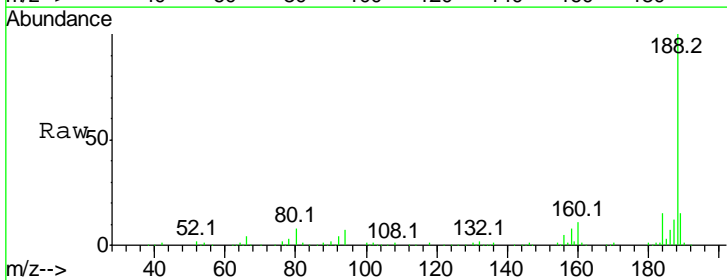
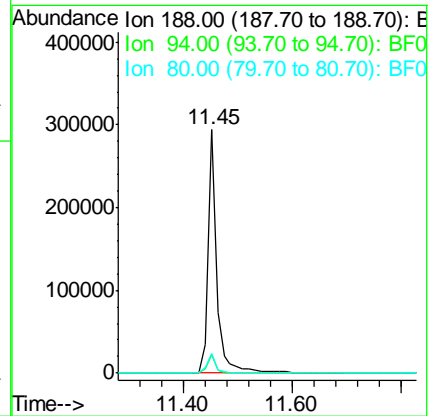
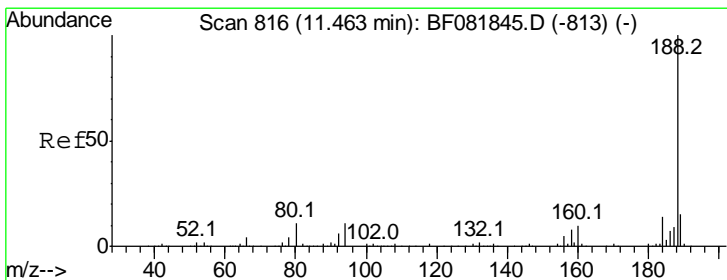
Ion	Ratio	Lower	Upper
154	100		
153	115.6	82.1	123.1
152	59.6	37.9	56.9#

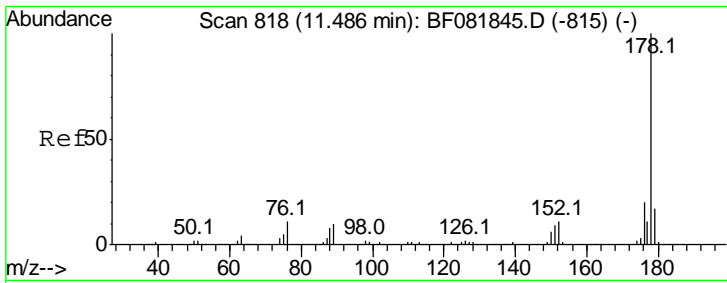


#63
 Phenanthrene-d10
 Concen: 20.00 ng
 RT: 11.45 min Scan# 815
 Delta R.T. -0.01 min
 Lab File: BF081906.D
 Acq: 30 Sep 2015 9:37

Tgt Ion:188 Resp: 324369

Ion	Ratio	Lower	Upper
188	100		
94	7.3	11.1	16.7#
80	8.0	11.0	16.4#

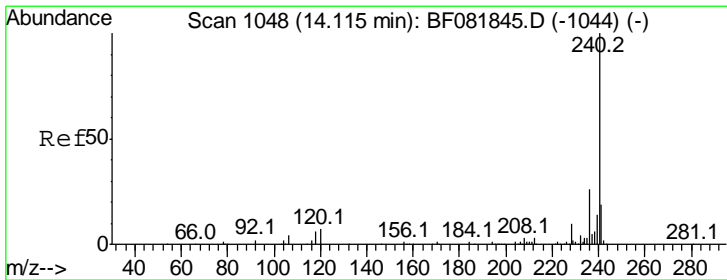
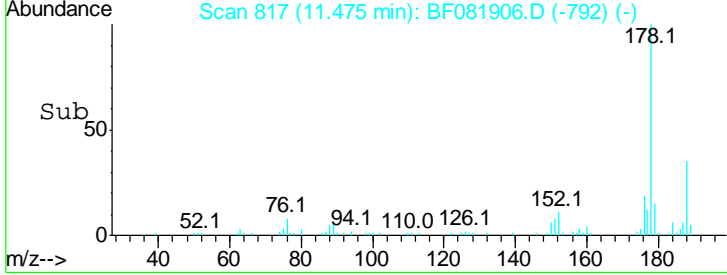
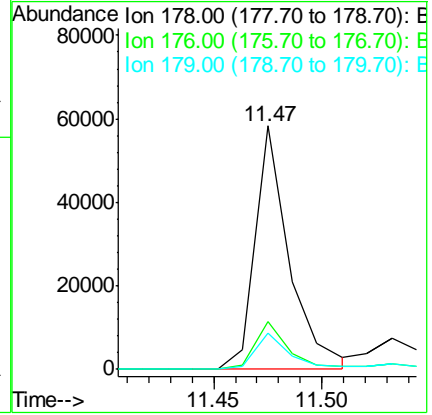
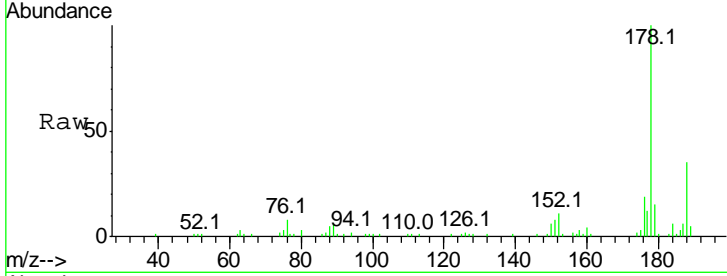




#70
 Phenanthrene
 Concen: 2.52 ng
 RT: 11.47 min Scan# 817
 Delta R.T. -0.01 min
 Lab File: BF081906.D
 Acq: 30 Sep 2015 9:37

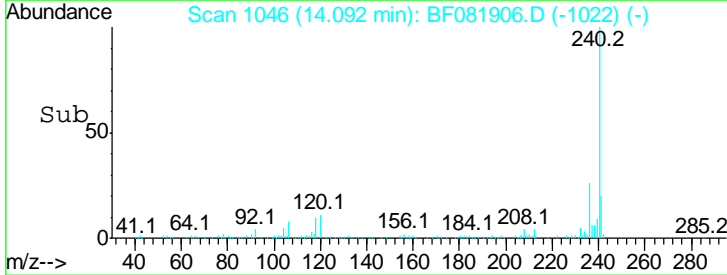
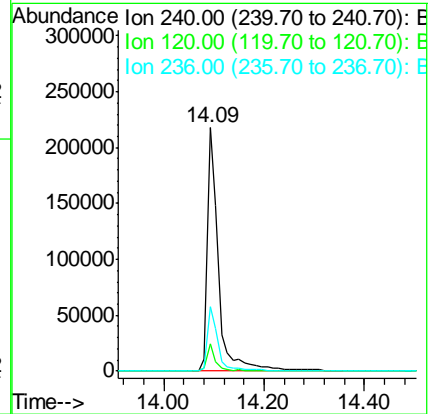
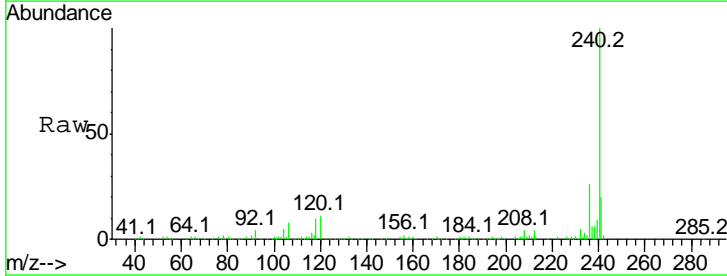
Instrument :
 BNA_F
ClientSampled :
 MW-7BDDL2

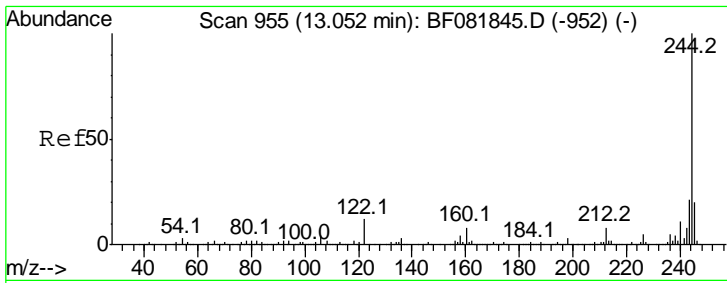
Tgt Ion	Resp	Lower	Upper
178	100		
176	19.4	13.8	20.8
179	14.9	12.2	18.2



#75
 Chrysene-d12
 Concen: 20.00 ng
 RT: 14.09 min Scan# 1046
 Delta R.T. -0.02 min
 Lab File: BF081906.D
 Acq: 30 Sep 2015 9:37

Tgt Ion	Resp	Lower	Upper
240	100		
120	11.0	16.2	24.2#
236	26.4	18.4	27.6

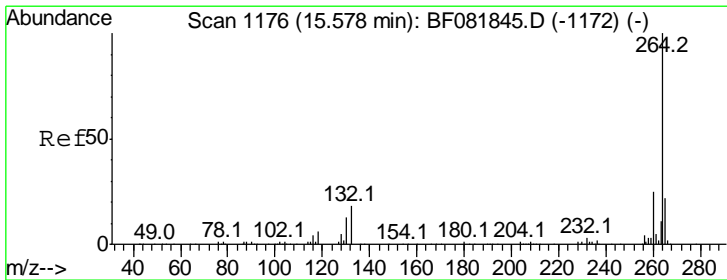
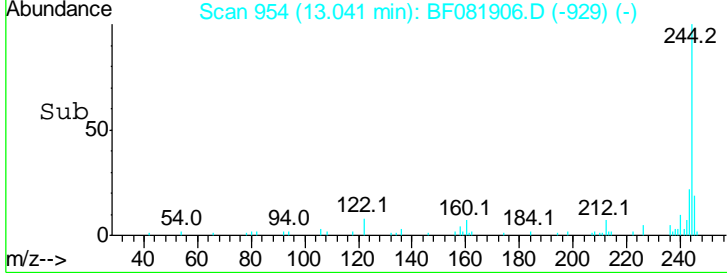
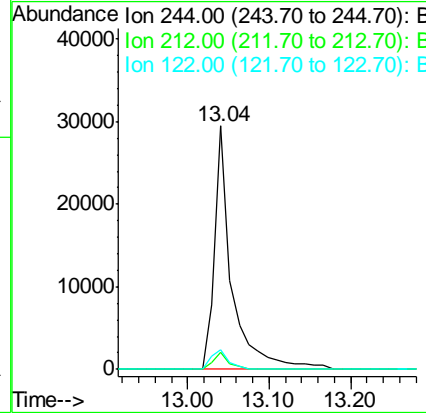
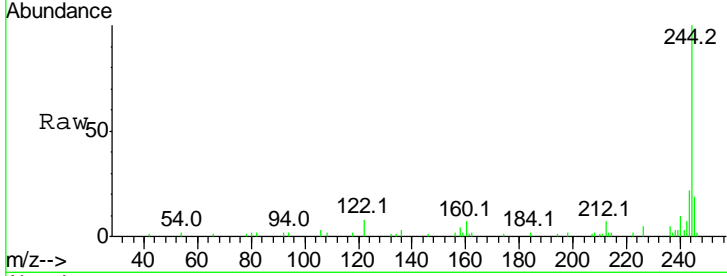




#78
 Terphenyl-d14
 Concen: 1.52 ng
 RT: 13.04 min Scan# 954
 Delta R.T. -0.01 min
 Lab File: BF081906.D
 Acq: 30 Sep 2015 9:37

Instrument :
 BNA_F
 ClientSampled :
 MW-7BDDL2

Tgt Ion	Resp	Lower	Upper
244	100		
212	7.3	4.3	6.5#
122	8.1	17.4	26.2#



#86
 Perylene-d12
 Concen: 20.00 ng
 RT: 15.57 min Scan# 1175
 Delta R.T. -0.01 min
 Lab File: BF081906.D
 Acq: 30 Sep 2015 9:37

Tgt Ion	Resp	Lower	Upper
264	100		
260	24.0	16.7	25.1
265	21.5	17.2	25.8

