

Data Path : Z:\svoasrv\HPCHEM1\BNA\_F\Data\BF092925\  
 Data File : BF143821.D  
 Acq On : 29 Sep 2025 14:42  
 Operator : RC/JU  
 Sample : PB169890BL  
 Misc :  
 ALS Vial : 3 Sample Multiplier: 1

Instrument :  
 BNA\_F  
 ClientSampleId :  
 PB169890BL

Quant Time: Sep 29 15:06:29 2025  
 Quant Method : Z:\svoasrv\HPCHEM1\BNA\_F\Methods\8270-BF092325.M  
 Quant Title : ASP BNA STANDARDS FOR 5 POINT CALIBRATION  
 QLast Update : Wed Sep 24 05:00:00 2025  
 Response via : Initial Calibration

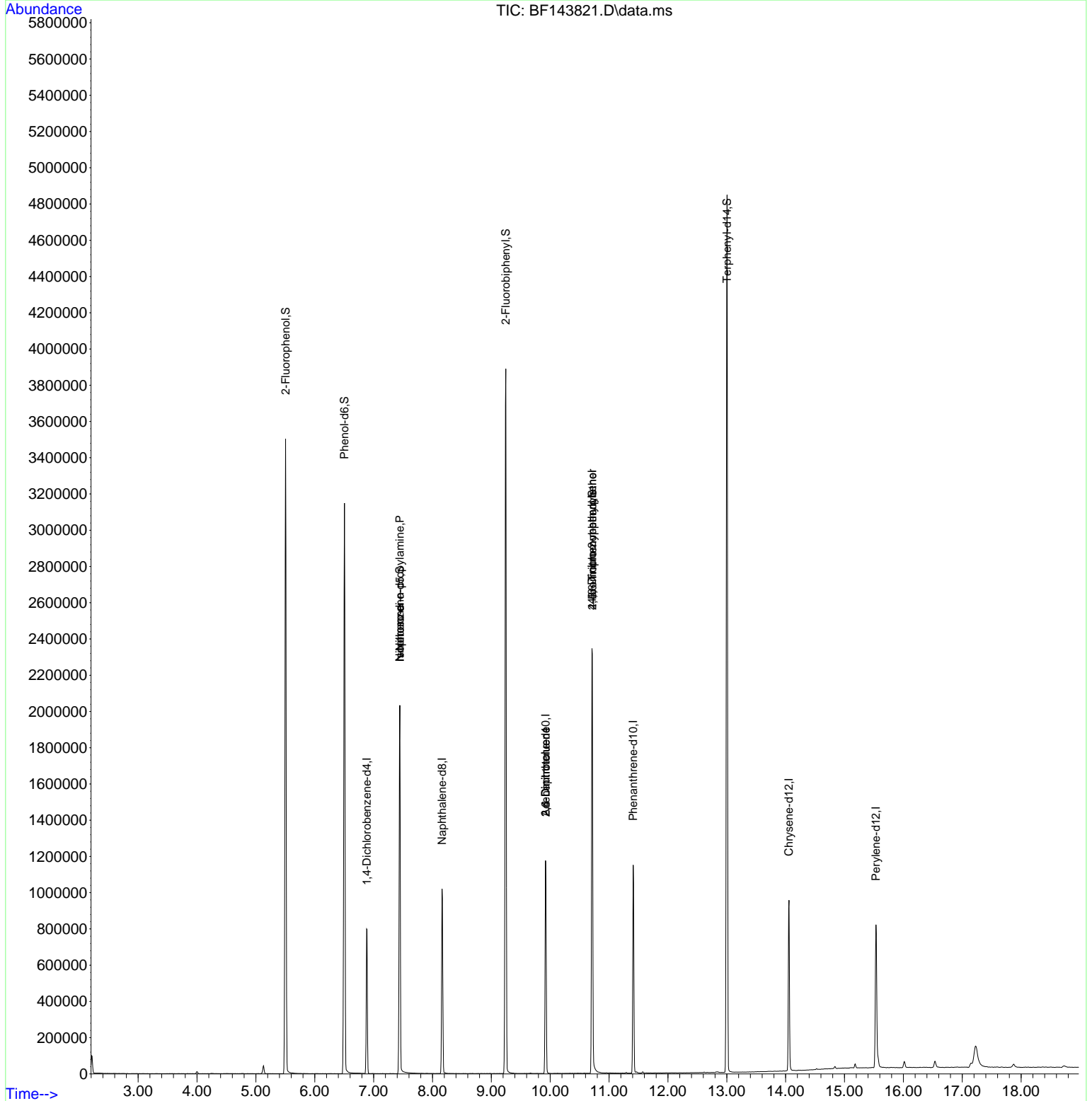
Compound	R.T.	QIon	Response	Conc	Units	Dev(Min)
Internal Standards						
1) 1,4-Dichlorobenzene-d4	6.887	152	168062	20.000	ng	0.00
21) Naphthalene-d8	8.163	136	649975	20.000	ng	0.00
39) Acenaphthene-d10	9.922	164	352419	20.000	ng	0.00
64) Phenanthrene-d10	11.410	188	599933	20.000	ng	0.00
76) Chrysene-d12	14.057	240	534791	20.000	ng	0.00
86) Perylene-d12	15.533	264	568781	20.000	ng	0.00
System Monitoring Compounds						
5) 2-Fluorophenol	5.504	112	1250813	120.919	ng	0.00
7) Phenol-d6	6.504	99	1513616	126.641	ng	0.00
23) Nitrobenzene-d5	7.445	82	849589	80.010	ng	0.00
42) 2,4,6-Tribromophenol	10.716	330	480044	91.995	ng	0.00
45) 2-Fluorobiphenyl	9.245	172	1902938	84.261	ng	0.00
79) Terphenyl-d14	13.004	244	2790617	106.124	ng	0.00
Target Compounds						
19) n-Nitroso-di-n-propyla...	7.445	70	122499	15.938	ng	# 72
25) Isophorone	7.445	82	841418	40.664	ng	# 66
51) 2,6-Dinitrotoluene	9.922	165	45808	12.980	ng	# 17
57) 2,4-Dinitrotoluene	9.922	165	45808	11.133	ng	# 19
65) 4,6-Dinitro-2-methylph...	10.710	198	736	4.542	ng	# 1
67) 4-Bromophenyl-phenylether	10.716	248	39058	3.820	ng	# 1

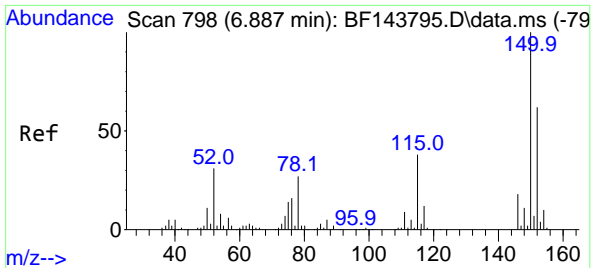
(#) = qualifier out of range (m) = manual integration (+) = signals summed

Data Path : Z:\svoasrv\HPCHEM1\BNA\_F\Data\BF092925\  
 Data File : BF143821.D  
 Acq On : 29 Sep 2025 14:42  
 Operator : RC/JU  
 Sample : PB169890BL  
 Misc :  
 ALS Vial : 3 Sample Multiplier: 1

Instrument :  
 BNA\_F  
 ClientSampleId :  
 PB169890BL

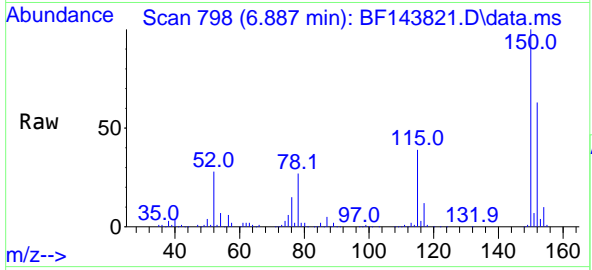
Quant Time: Sep 29 15:06:29 2025  
 Quant Method : Z:\svoasrv\HPCHEM1\BNA\_F\Methods\8270-BF092325.M  
 Quant Title : ASP BNA STANDARDS FOR 5 POINT CALIBRATION  
 QLast Update : Wed Sep 24 05:00:00 2025  
 Response via : Initial Calibration



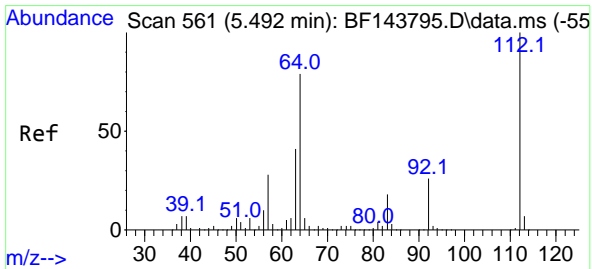
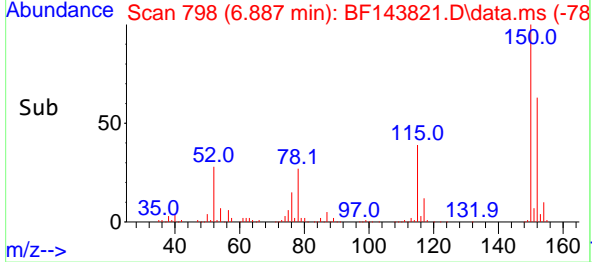
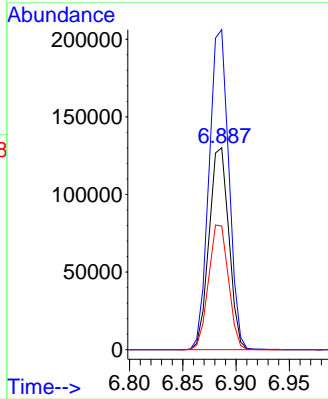


#1  
 1,4-Dichlorobenzene-d4  
 Concen: 20.000 ng  
 RT: 6.887 min Scan# 79  
 Delta R.T. -0.000 min  
 Lab File: BF143821.D  
 Acq: 29 Sep 2025 14:42

Instrument :  
 BNA\_F  
 ClientSampleId :  
 PB169890BL

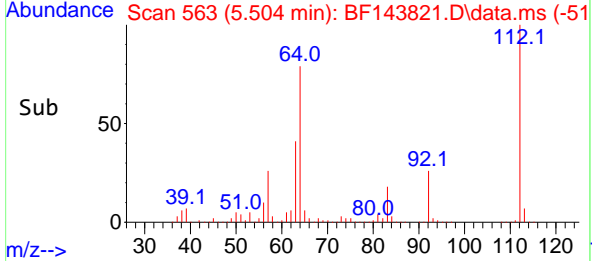
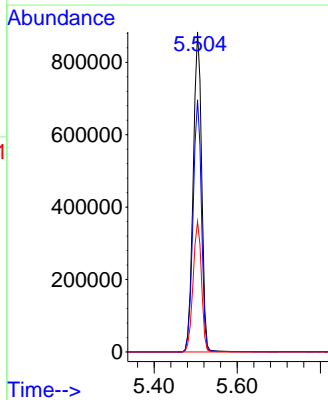
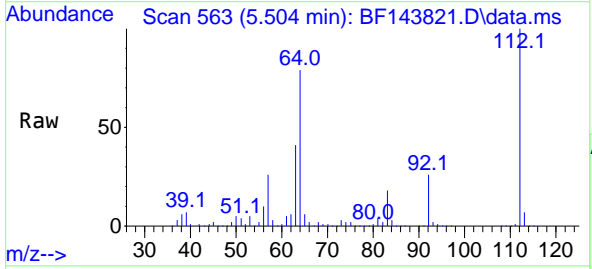


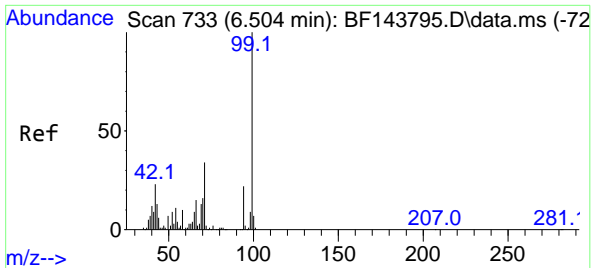
Tgt Ion:152 Resp: 168062  
 Ion Ratio Lower Upper  
 152 100  
 150 158.5 129.6 194.4  
 115 61.3 49.0 73.4



#5  
 2-Fluorophenol  
 Concen: 120.919 ng  
 RT: 5.504 min Scan# 563  
 Delta R.T. 0.006 min  
 Lab File: BF143821.D  
 Acq: 29 Sep 2025 14:42

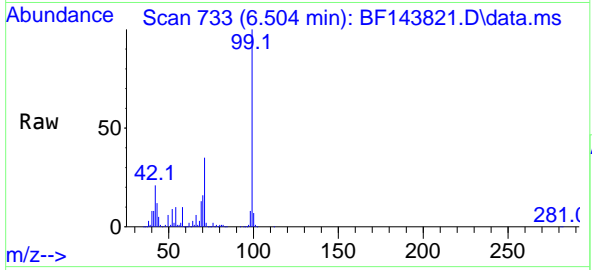
Tgt Ion:112 Resp: 1250813  
 Ion Ratio Lower Upper  
 112 100  
 64 78.8 63.0 94.4  
 63 40.8 32.6 49.0



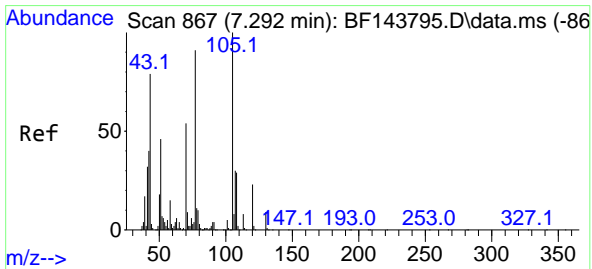
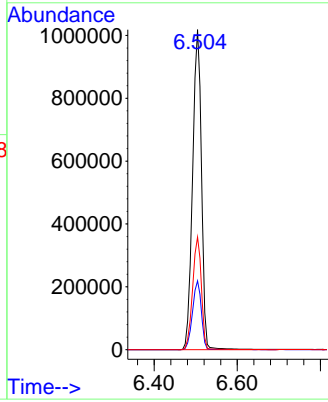
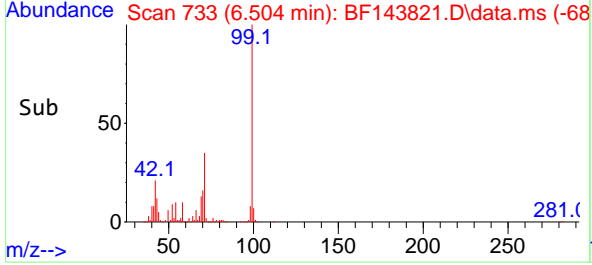


#7  
 Phenol-d6  
 Concen: 126.641 ng  
 RT: 6.504 min Scan# 71  
 Delta R.T. -0.006 min  
 Lab File: BF143821.D  
 Acq: 29 Sep 2025 14:42

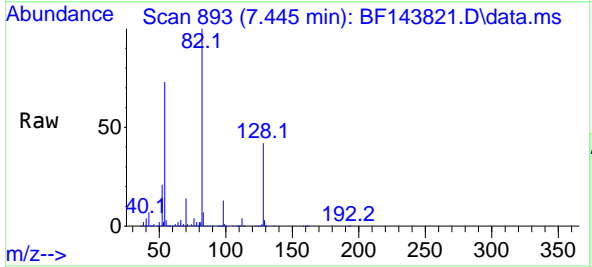
Instrument :  
 BNA\_F  
 ClientSampleId :  
 PB169890BL



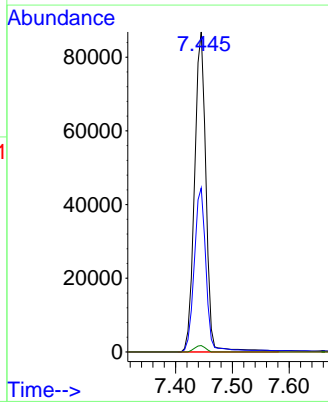
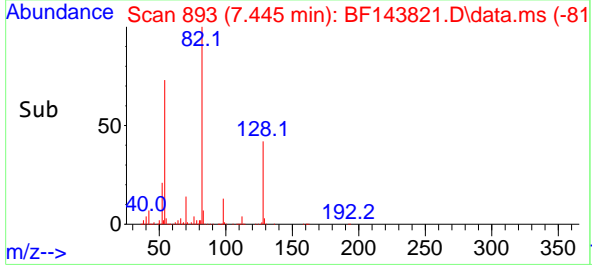
Tgt Ion: 99 Resp: 1513616  
 Ion Ratio Lower Upper  
 99 100  
 42 21.5 18.6 28.0  
 71 35.2 27.0 40.4

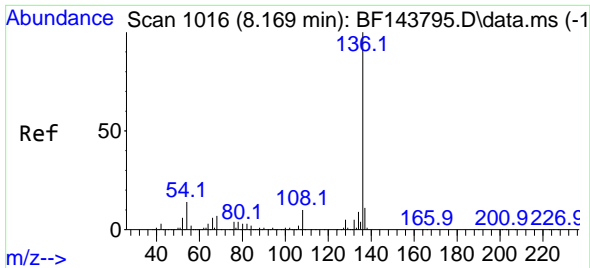


#19  
 n-Nitroso-di-n-propylamine  
 Concen: 15.938 ng  
 RT: 7.445 min Scan# 893  
 Delta R.T. 0.141 min  
 Lab File: BF143821.D  
 Acq: 29 Sep 2025 14:42



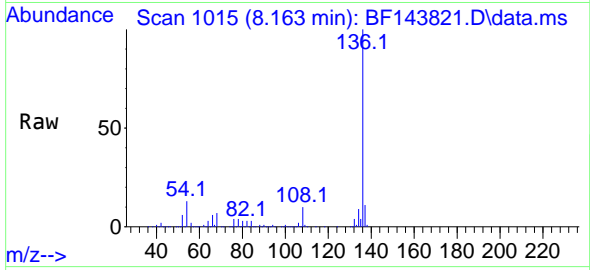
Tgt Ion: 70 Resp: 122499  
 Ion Ratio Lower Upper  
 70 100  
 42 51.2 59.4 89.0#  
 101 0.0 7.1 10.7#  
 130 2.0 13.8 20.8#



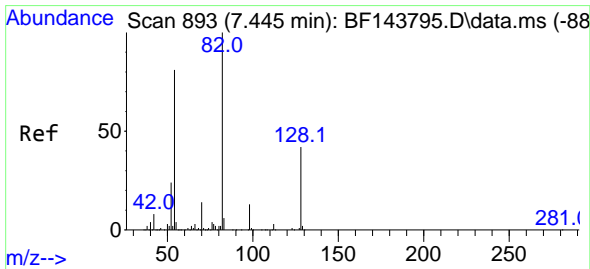
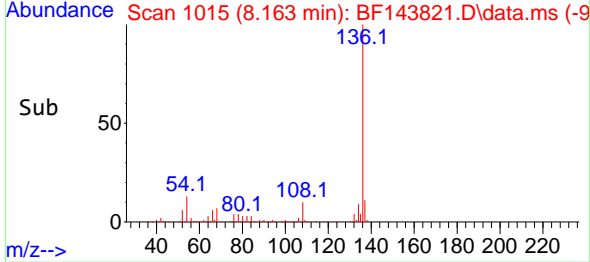
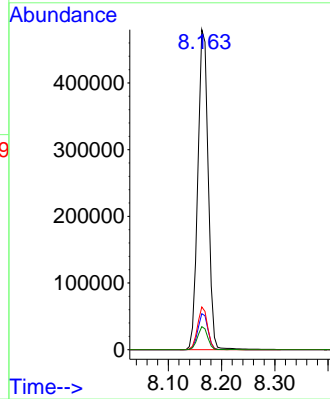


#21  
 Naphthalene-d8  
 Concen: 20.000 ng  
 RT: 8.163 min Scan# 1016  
 Delta R.T. -0.006 min  
 Lab File: BF143821.D  
 Acq: 29 Sep 2025 14:42

Instrument : BNA\_F  
 ClientSampleId : PB169890BL

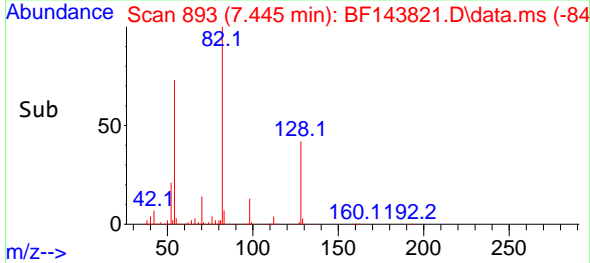
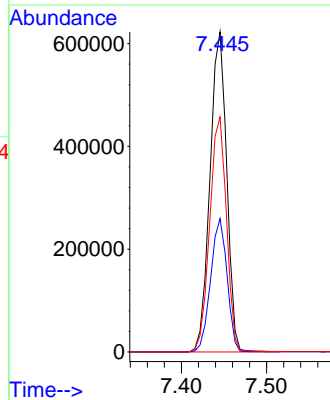
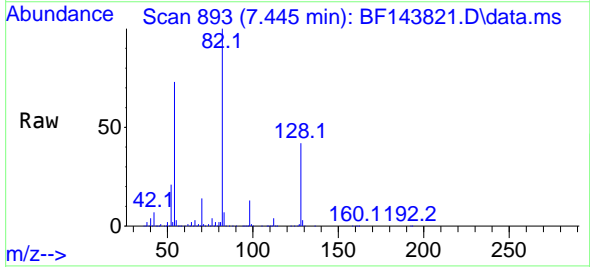


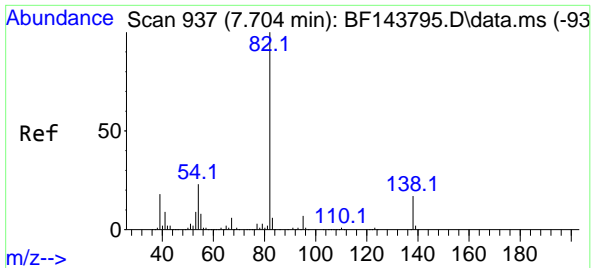
Tgt Ion:136 Resp: 649975  
 Ion Ratio Lower Upper  
 136 100  
 137 11.2 9.0 13.4  
 54 13.4 11.2 16.8  
 68 7.2 5.6 8.4



#23  
 Nitrobenzene-d5  
 Concen: 80.010 ng  
 RT: 7.445 min Scan# 893  
 Delta R.T. -0.006 min  
 Lab File: BF143821.D  
 Acq: 29 Sep 2025 14:42

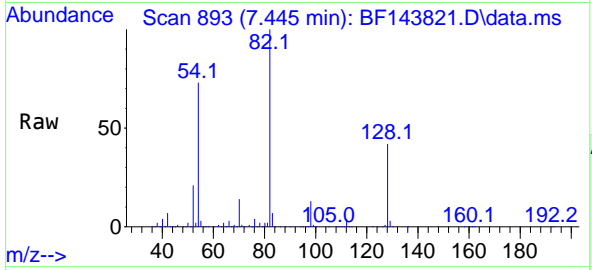
Tgt Ion: 82 Resp: 849589  
 Ion Ratio Lower Upper  
 82 100  
 128 41.7 33.3 49.9  
 54 73.4 64.2 96.4



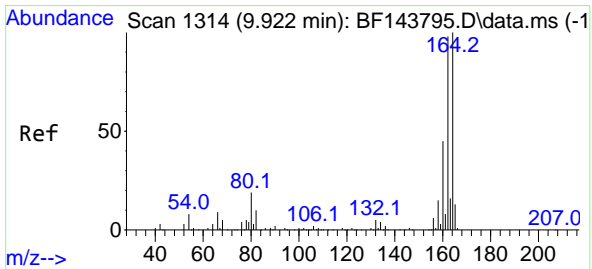
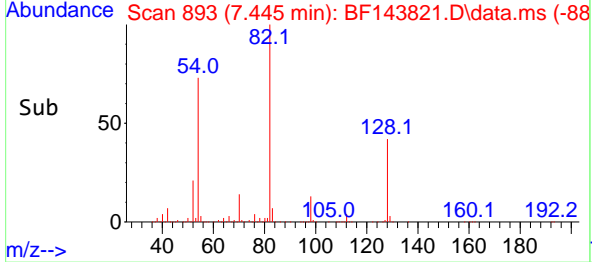
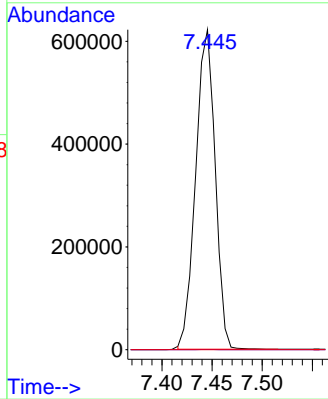


#25  
 Isophorone  
 Concen: 40.664 ng  
 RT: 7.445 min Scan# 893  
 Delta R.T. -0.265 min  
 Lab File: BF143821.D  
 Acq: 29 Sep 2025 14:42

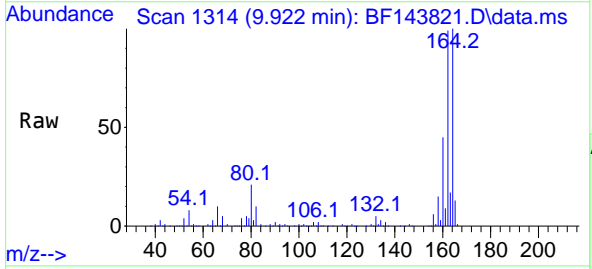
Instrument : BNA\_F  
 ClientSampleId : PB169890BL



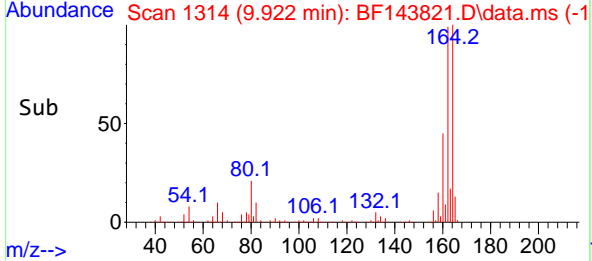
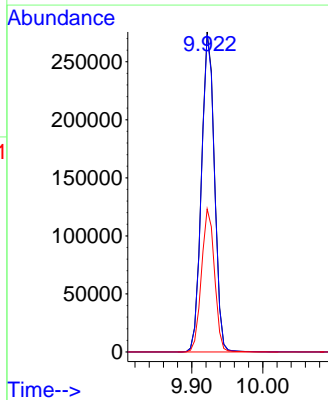
Tgt Ion: 82 Resp: 841418  
 Ion Ratio Lower Upper  
 82 100  
 95 0.0 5.4 8.2#  
 138 0.0 13.7 20.5#

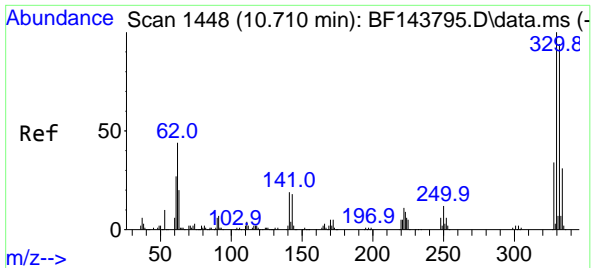


#39  
 Acenaphthene-d10  
 Concen: 20.000 ng  
 RT: 9.922 min Scan# 1314  
 Delta R.T. -0.006 min  
 Lab File: BF143821.D  
 Acq: 29 Sep 2025 14:42



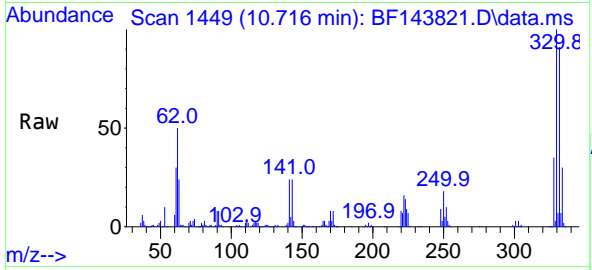
Tgt Ion: 164 Resp: 352419  
 Ion Ratio Lower Upper  
 164 100  
 162 99.1 78.8 118.2  
 160 44.7 35.8 53.6



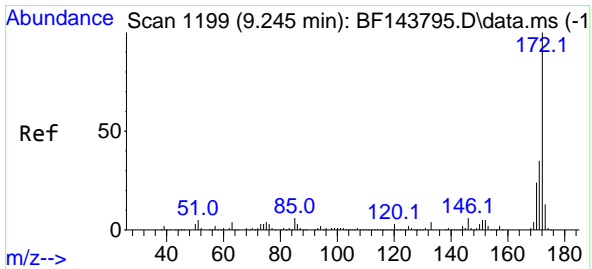
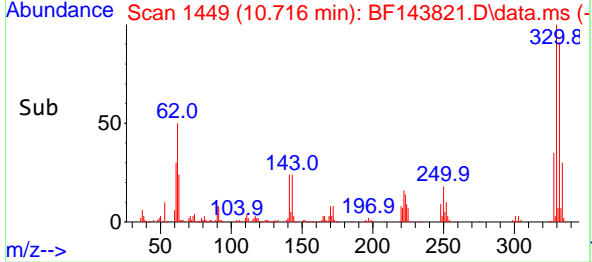
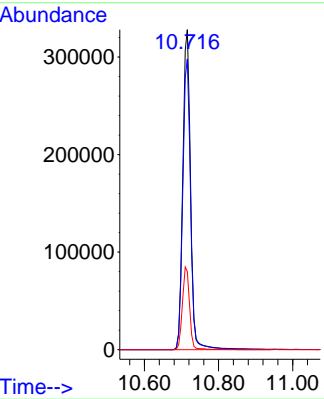


#42  
 2,4,6-Tribromophenol  
 Concen: 91.995 ng  
 RT: 10.716 min Scan# 1448  
 Delta R.T. -0.000 min  
 Lab File: BF143821.D  
 Acq: 29 Sep 2025 14:42

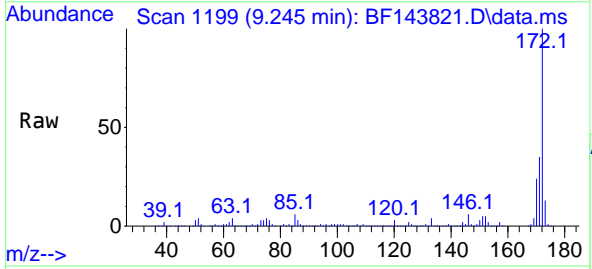
Instrument : BNA\_F  
 ClientSampleId : PB169890BL



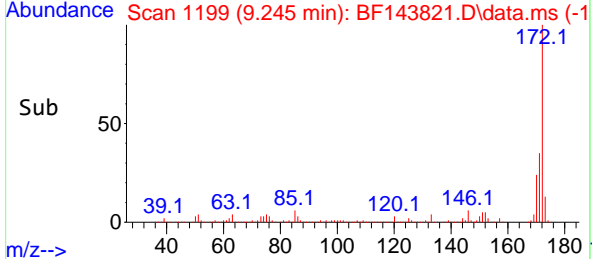
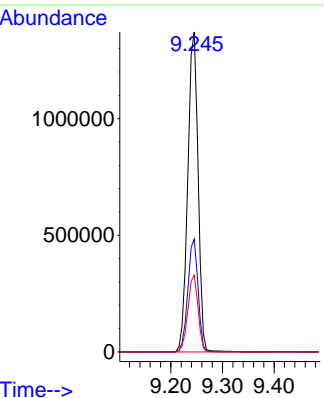
Tgt Ion:330 Resp: 480044  
 Ion Ratio Lower Upper  
 330 100  
 332 91.4 74.7 112.1  
 141 23.8 14.3 21.5#

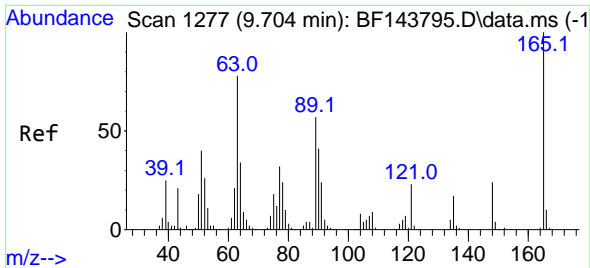


#45  
 2-Fluorobiphenyl  
 Concen: 84.261 ng  
 RT: 9.245 min Scan# 1199  
 Delta R.T. 0.000 min  
 Lab File: BF143821.D  
 Acq: 29 Sep 2025 14:42



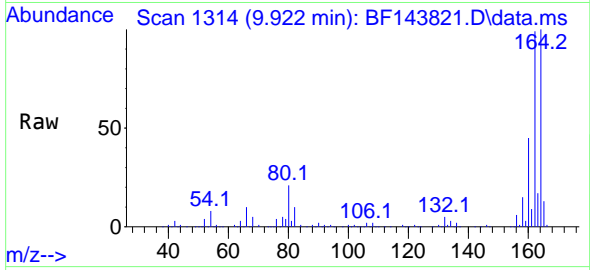
Tgt Ion:172 Resp: 1902938  
 Ion Ratio Lower Upper  
 172 100  
 171 35.3 27.9 41.9  
 170 24.0 19.1 28.7



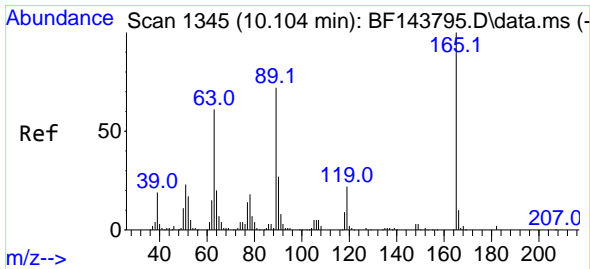
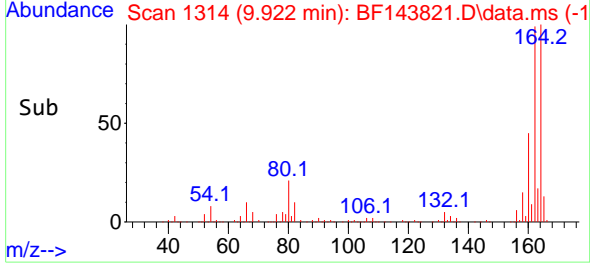
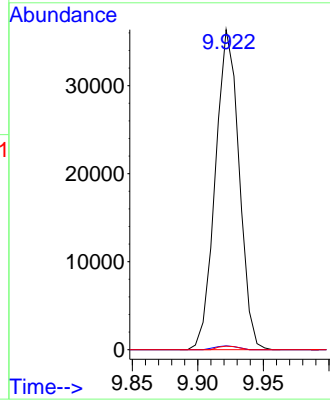


#51  
 2,6-Dinitrotoluene  
 Concen: 12.980 ng  
 RT: 9.922 min Scan# 11  
 Delta R.T. 0.218 min  
 Lab File: BF143821.D  
 Acq: 29 Sep 2025 14:42

Instrument :  
 BNA\_F  
 ClientSampleId :  
 PB169890BL

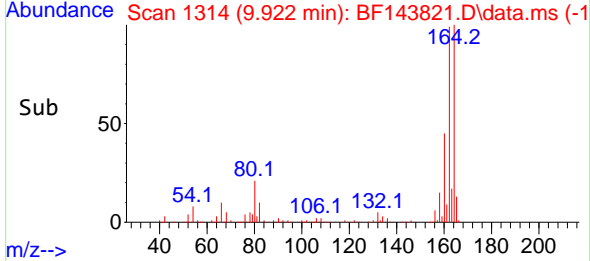
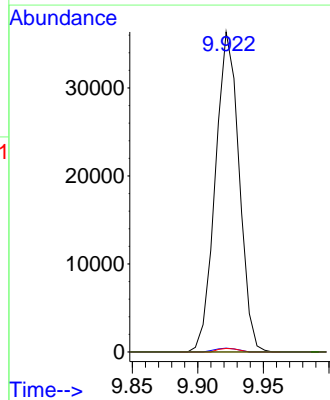
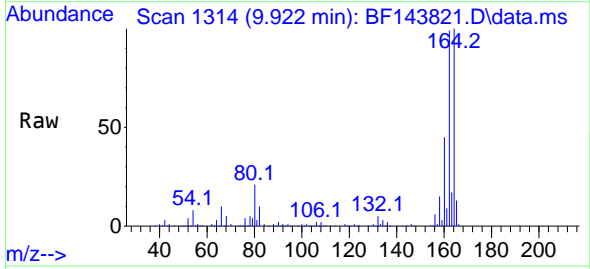


Tgt Ion:165 Resp: 45808  
 Ion Ratio Lower Upper  
 165 100  
 63 1.2 62.6 94.0#  
 89 1.1 45.2 67.8#

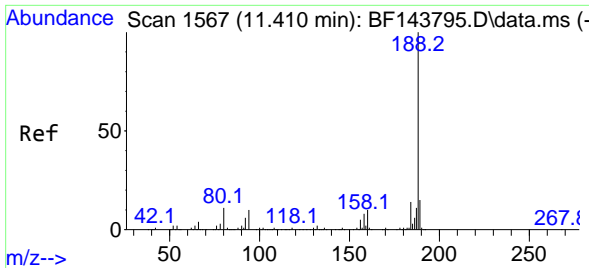


#57  
 2,4-Dinitrotoluene  
 Concen: 11.133 ng  
 RT: 9.922 min Scan# 1314  
 Delta R.T. -0.188 min  
 Lab File: BF143821.D  
 Acq: 29 Sep 2025 14:42

Tgt Ion:165 Resp: 45808  
 Ion Ratio Lower Upper  
 165 100  
 63 1.2 48.9 73.3#  
 89 1.1 57.5 86.3#  
 182 0.0 2.0 3.0#

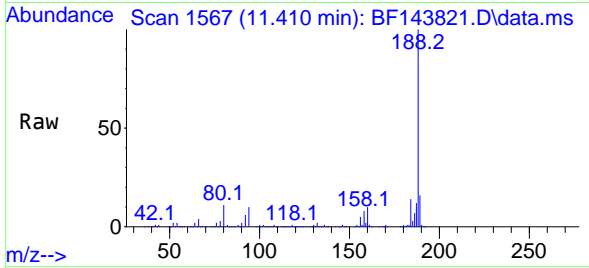




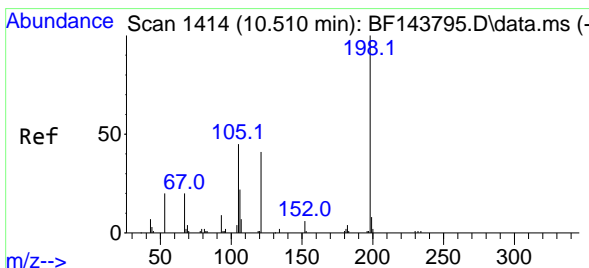
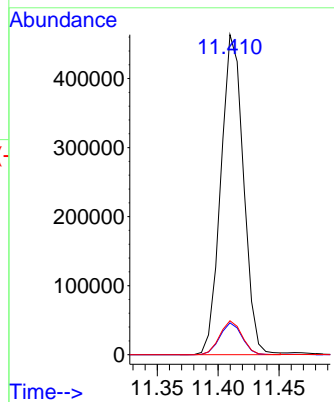
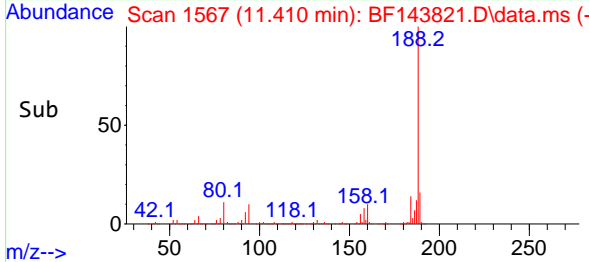


#64  
 Phenanthrene-d10  
 Concen: 20.000 ng  
 RT: 11.410 min Scan# 11  
 Delta R.T. -0.006 min  
 Lab File: BF143821.D  
 Acq: 29 Sep 2025 14:42

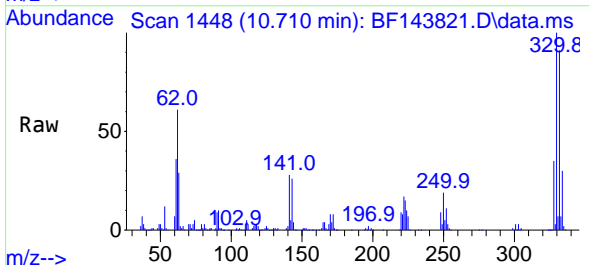
Instrument :  
 BNA\_F  
 ClientSampleId :  
 PB169890BL



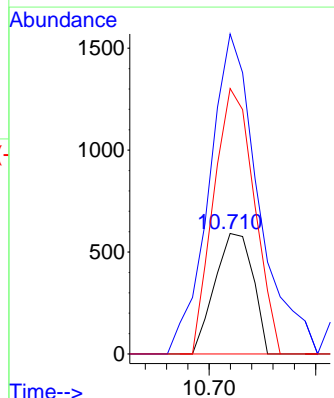
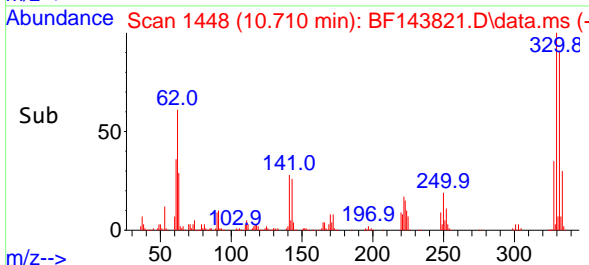
Tgt Ion:188 Resp: 599933  
 Ion Ratio Lower Upper  
 188 100  
 94 9.9 8.2 12.2  
 80 10.6 8.6 12.8

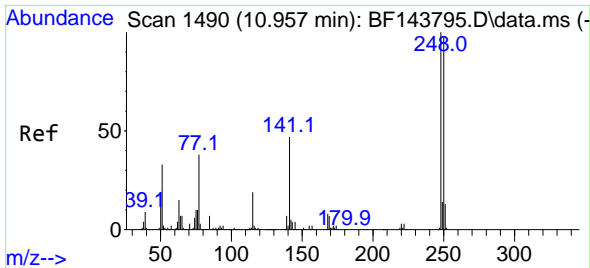


#65  
 4,6-Dinitro-2-methylphenol  
 Concen: 4.542 ng  
 RT: 10.710 min Scan# 1448  
 Delta R.T. 0.194 min  
 Lab File: BF143821.D  
 Acq: 29 Sep 2025 14:42



Tgt Ion:198 Resp: 736  
 Ion Ratio Lower Upper  
 198 100  
 51 265.7 52.0 92.0#  
 105 220.3 27.5 67.5#



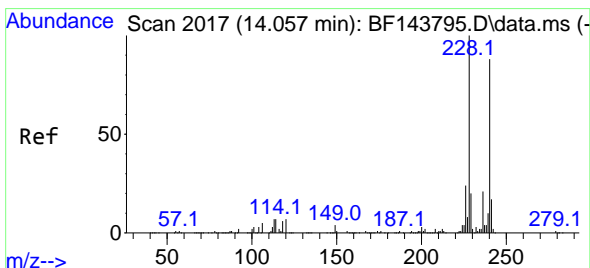
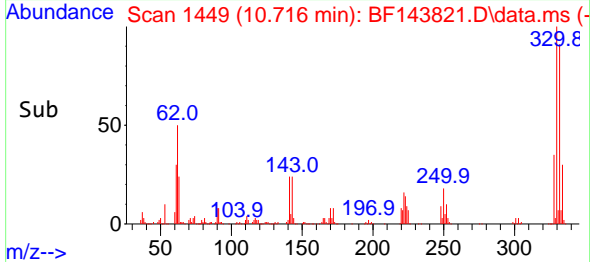
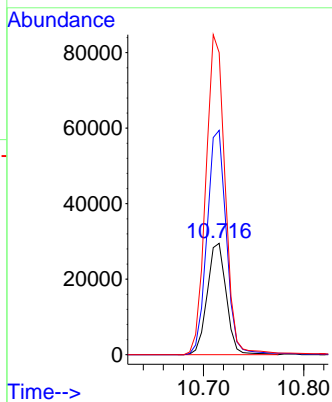
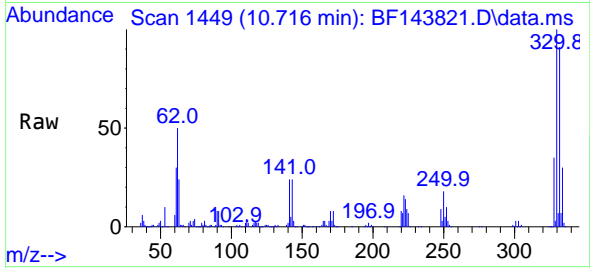


#67  
 4-Bromophenyl-phenylether  
 Concen: 3.820 ng  
 RT: 10.716 min Scan# 14  
 Delta R.T. -0.241 min  
 Lab File: BF143821.D  
 Acq: 29 Sep 2025 14:42

Instrument :  
 BNA\_F  
 ClientSampleId :  
 PB169890BL

Tgt Ion:248 Resp: 39058

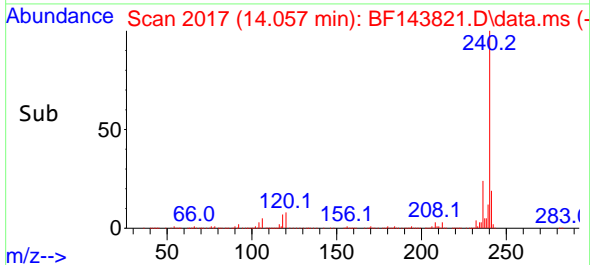
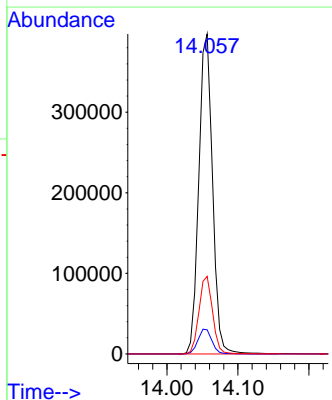
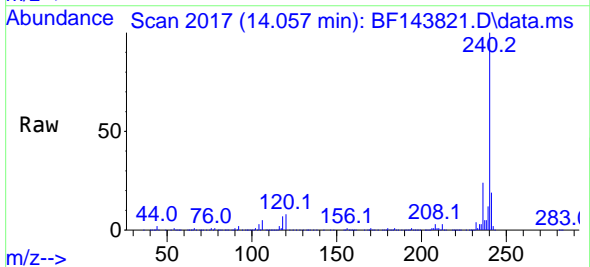
Ion	Ratio	Lower	Upper
248	100		
250	201.3	78.7	118.1#
141	271.1	37.9	56.9#

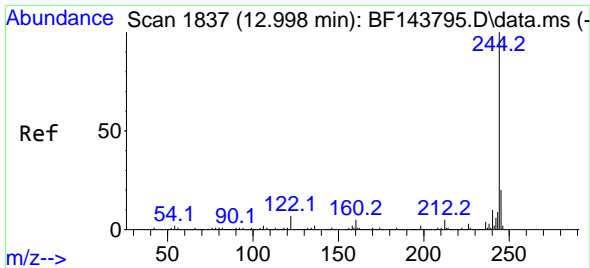


#76  
 Chrysene-d12  
 Concen: 20.000 ng  
 RT: 14.057 min Scan# 2017  
 Delta R.T. -0.006 min  
 Lab File: BF143821.D  
 Acq: 29 Sep 2025 14:42

Tgt Ion:240 Resp: 534791

Ion	Ratio	Lower	Upper
240	100		
120	7.6	6.2	9.4
236	24.3	19.4	29.2



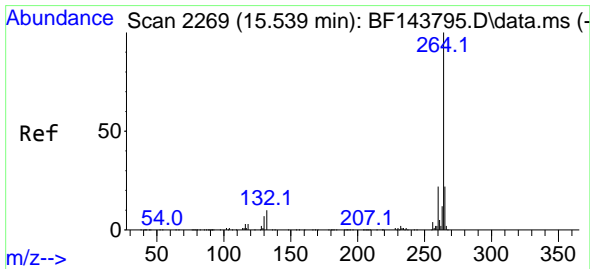
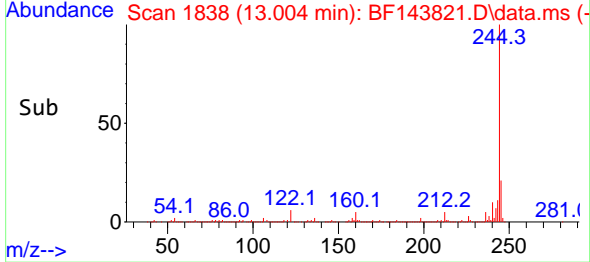
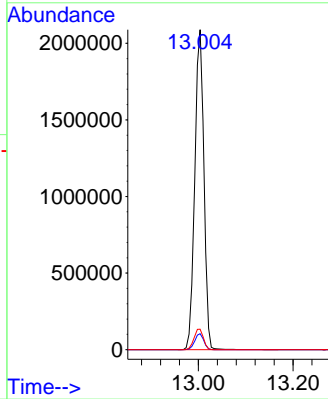
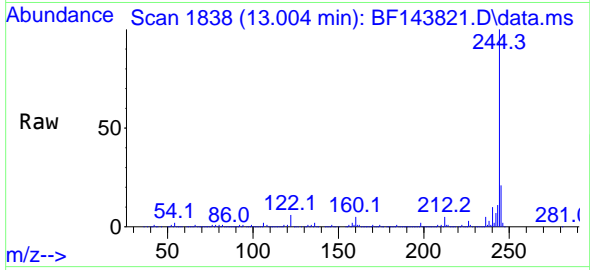


#79  
 Terphenyl-d14  
 Concen: 106.124 ng  
 RT: 13.004 min Scan# 11  
 Delta R.T. -0.000 min  
 Lab File: BF143821.D  
 Acq: 29 Sep 2025 14:42

Instrument :  
 BNA\_F  
 ClientSampleId :  
 PB169890BL

Tgt Ion:244 Resp: 2790617

Ion	Ratio	Lower	Upper
244	100		
212	5.0	3.9	5.9
122	6.4	5.6	8.4



#86  
 Perylene-d12  
 Concen: 20.000 ng  
 RT: 15.533 min Scan# 2268  
 Delta R.T. -0.006 min  
 Lab File: BF143821.D  
 Acq: 29 Sep 2025 14:42

Tgt Ion:264 Resp: 568781

Ion	Ratio	Lower	Upper
264	100		
260	23.8	17.9	26.9
265	22.7	17.7	26.5

