

Data Path : Z:\svoasrv\HPCHEM1\BNA_F\Data\BF092925\
 Data File : BF143827.D
 Acq On : 29 Sep 2025 17:42
 Operator : RC/JU
 Sample : Q3231-13
 Misc :
 ALS Vial : 9 Sample Multiplier: 1

Instrument :
 BNA_F
 ClientSampleId :
 WC-4

Quant Time: Sep 29 18:11:26 2025
 Quant Method : Z:\svoasrv\HPCHEM1\BNA_F\Methods\8270-BF092325.M
 Quant Title : ASP BNA STANDARDS FOR 5 POINT CALIBRATION
 QLast Update : Wed Sep 24 05:00:00 2025
 Response via : Initial Calibration

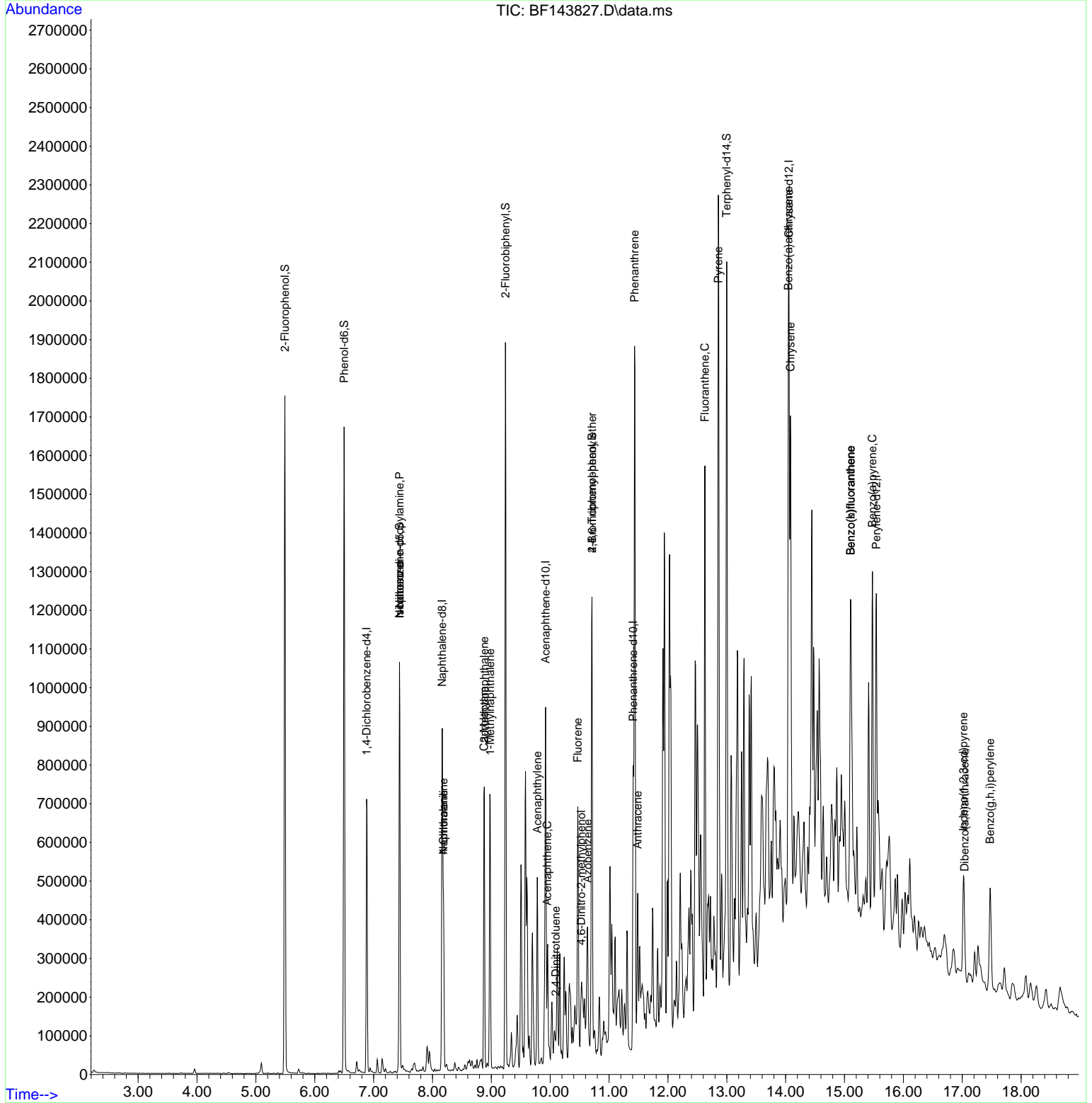
Compound	R.T.	QIon	Response	Conc	Units	Dev(Min)
Internal Standards						
1) 1,4-Dichlorobenzene-d4	6.881	152	145973	20.000	ng	0.00
21) Naphthalene-d8	8.163	136	542293	20.000	ng	0.00
39) Acenaphthene-d10	9.922	164	266162	20.000	ng	0.00
64) Phenanthrene-d10	11.410	188	372415	20.000	ng	0.00
76) Chrysene-d12	14.057	240	479462	20.000	ng	0.00
86) Perylene-d12	15.539	264	604628	20.000	ng	0.00
System Monitoring Compounds						
5) 2-Fluorophenol	5.493	112	594777	66.200	ng	0.00
7) Phenol-d6	6.499	99	723604	69.704	ng	-0.01
23) Nitrobenzene-d5	7.440	82	413320	46.654	ng	-0.01
42) 2,4,6-Tribromophenol	10.710	330	237588	60.287	ng	0.00
45) 2-Fluorobiphenyl	9.240	172	815436	47.809	ng	0.00
79) Terphenyl-d14	12.998	244	978671	41.513	ng	0.00
Target Compounds						
19) n-Nitroso-di-n-propyla...	7.440	70	57867	8.668	ng	# 72
25) Isophorone	7.440	82	408810	23.680	ng	# 66
31) Naphthalene	8.187	128	232697	8.964	ng	100
33) 4-Chloroaniline	8.187	127	29768	3.263	ng	# 27
35) Caprolactam	8.875	113	4802	2.474	ng	# 1
37) 2-Methylnaphthalene	8.881	142	275659	16.653	ng	100
38) 1-Methylnaphthalene	8.981	142	264574	16.698	ng	100
49) Acenaphthylene	9.781	152	175977	8.242	ng	# 95
52) Acenaphthene	9.951	154	75153	5.349	ng	95
54) 2,4-Dinitrophenol	10.216	184	172	Below Cal		# 1
57) 2,4-Dinitrotoluene	10.092	165	5743	4.283	ng	# 55
58) Fluorene	10.469	166	251620	17.036	ng	97
63) Azobenzene	10.634	77	52648	3.290	ng	# 1
65) 4,6-Dinitro-2-methylph...	10.528	198	209	4.336	ng	# 1
67) 4-Bromophenyl-phenylether	10.710	248	13842	2.181	ng	# 1
71) Phenanthrene	11.433	178	998071	52.201	ng	99
72) Anthracene	11.486	178	204755	10.676	ng	99
75) Fluoranthene	12.628	202	666985	34.684	ng	98
78) Pyrene	12.857	202	1236899	52.472	ng	98
81) Benzo(a)anthracene	14.045	228	678591	26.345	ng	# 87
83) Chrysene	14.080	228	719218	30.858	ng	# 93
87) Indeno(1,2,3-cd)pyrene	17.021	276	236079	5.146	ng	99
88) Benzo(b)fluoranthene	15.104	252	829676	26.946	ng	# 97
89) Benzo(k)fluoranthene	15.104	252	829676	26.821	ng	97
90) Benzo(a)pyrene	15.474	252	639966	22.112	ng	97
91) Dibenzo(a,h)anthracene	17.039	278	77889	2.076	ng	# 77
92) Benzo(g,h,i)perylene	17.474	276	280007	7.741	ng	98

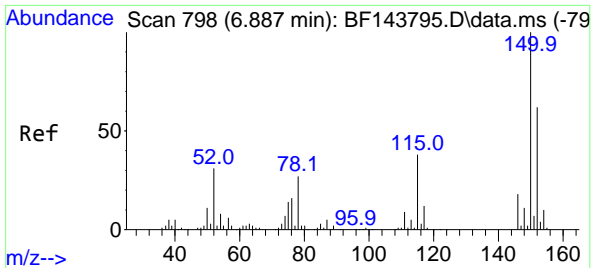
(#) = qualifier out of range (m) = manual integration (+) = signals summed

Data Path : Z:\svoasrv\HPCHEM1\BNA_F\Data\BF092925\
 Data File : BF143827.D
 Acq On : 29 Sep 2025 17:42
 Operator : RC/JU
 Sample : Q3231-13
 Misc :
 ALS Vial : 9 Sample Multiplier: 1

Instrument :
 BNA_F
 ClientSampleId :
 WC-4

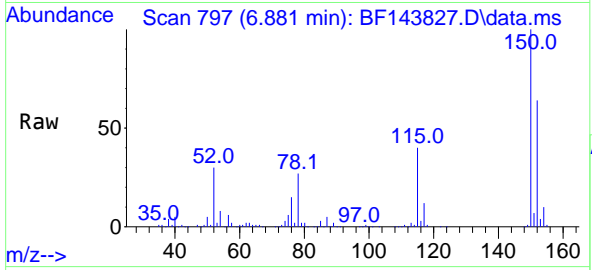
Quant Time: Sep 29 18:11:26 2025
 Quant Method : Z:\svoasrv\HPCHEM1\BNA_F\Methods\8270-BF092325.M
 Quant Title : ASP BNA STANDARDS FOR 5 POINT CALIBRATION
 QLast Update : Wed Sep 24 05:00:00 2025
 Response via : Initial Calibration



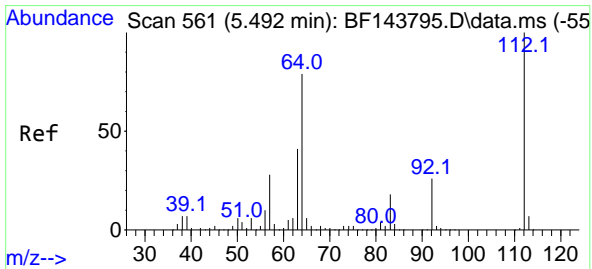
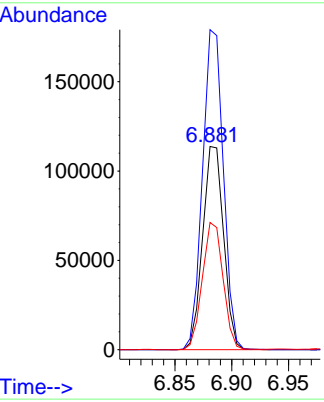
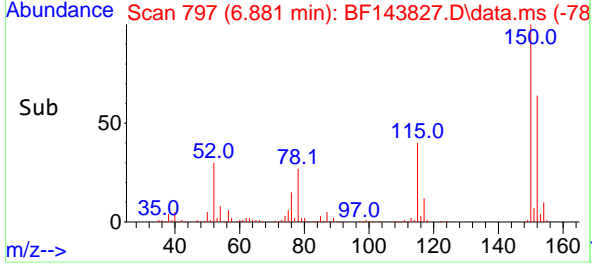


#1
 1,4-Dichlorobenzene-d4
 Concen: 20.000 ng
 RT: 6.881 min Scan# 798
 Delta R.T. -0.006 min
 Lab File: BF143827.D
 Acq: 29 Sep 2025 17:42

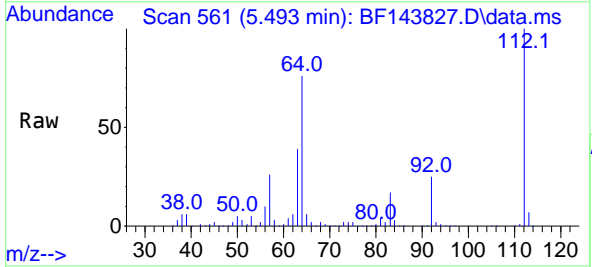
Instrument :
 BNA_F
 ClientSampleId :
 WC-4



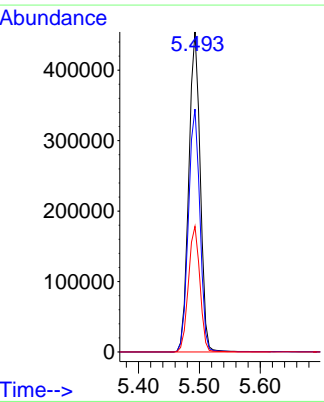
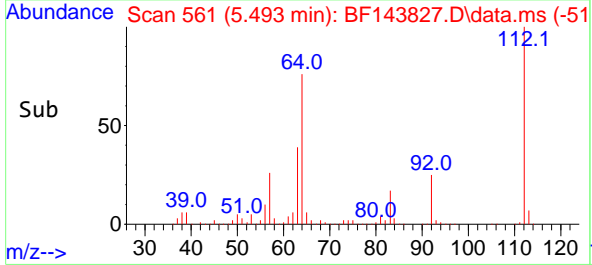
Tgt Ion:152 Resp: 145973
 Ion Ratio Lower Upper
 152 100
 150 157.4 129.6 194.4
 115 62.6 49.0 73.4

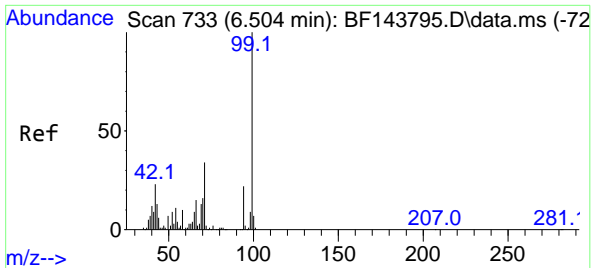


#5
 2-Fluorophenol
 Concen: 66.200 ng
 RT: 5.493 min Scan# 561
 Delta R.T. -0.005 min
 Lab File: BF143827.D
 Acq: 29 Sep 2025 17:42



Tgt Ion:112 Resp: 594777
 Ion Ratio Lower Upper
 112 100
 64 75.9 63.0 94.4
 63 39.3 32.6 49.0



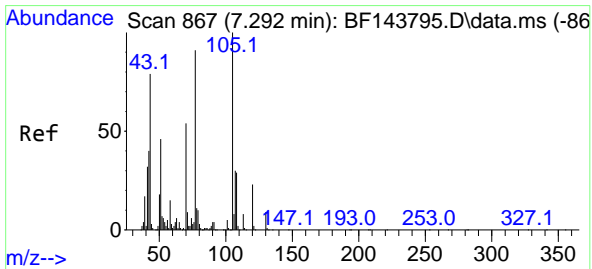
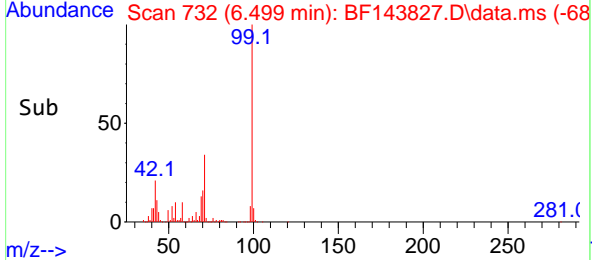
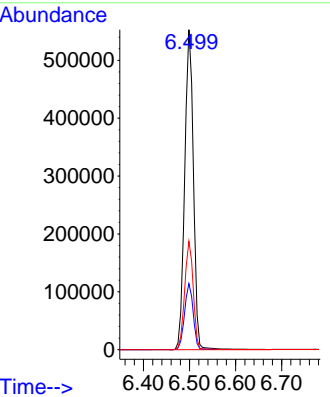
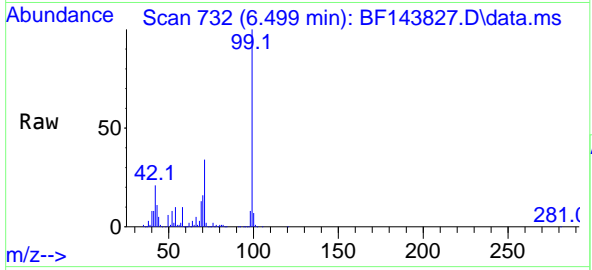


#7
 Phenol-d6
 Concen: 69.704 ng
 RT: 6.499 min Scan# 71
 Delta R.T. -0.011 min
 Lab File: BF143827.D
 Acq: 29 Sep 2025 17:42

Instrument :
 BNA_F
 ClientSampleId :
 WC-4

Tgt Ion: 99 Resp: 723604

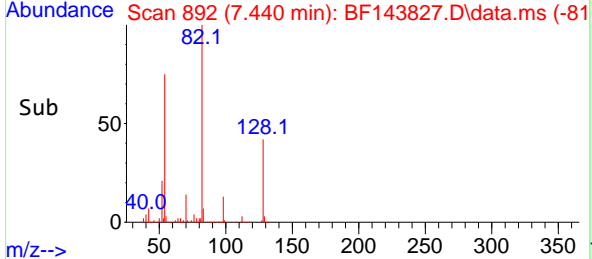
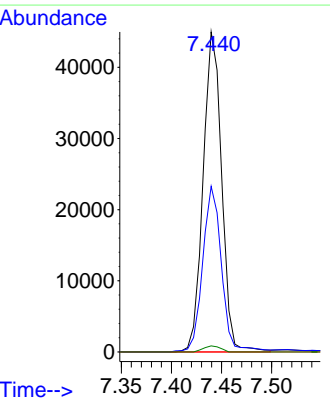
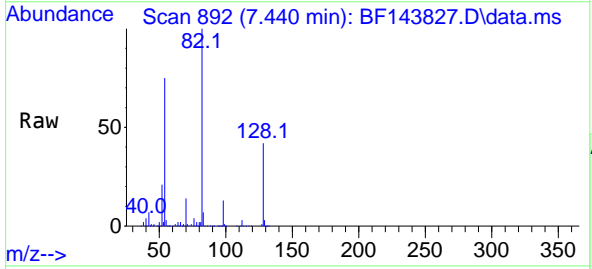
Ion	Ratio	Lower	Upper
99	100		
42	20.7	18.6	28.0
71	33.8	27.0	40.4

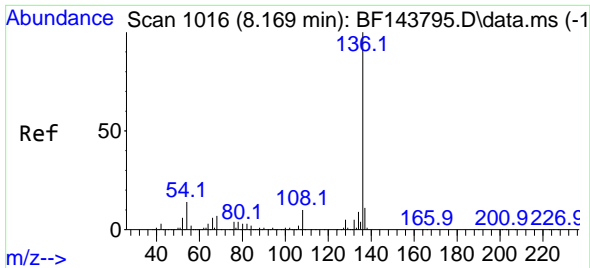


#19
 n-Nitroso-di-n-propylamine
 Concen: 8.668 ng
 RT: 7.440 min Scan# 892
 Delta R.T. 0.135 min
 Lab File: BF143827.D
 Acq: 29 Sep 2025 17:42

Tgt Ion: 70 Resp: 57867

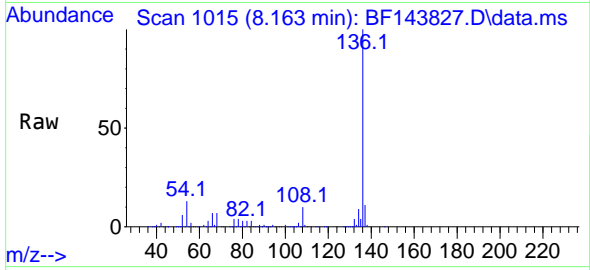
Ion	Ratio	Lower	Upper
70	100		
42	51.7	59.4	89.0#
101	0.0	7.1	10.7#
130	1.9	13.8	20.8#



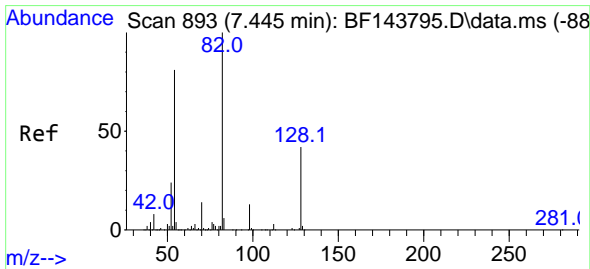
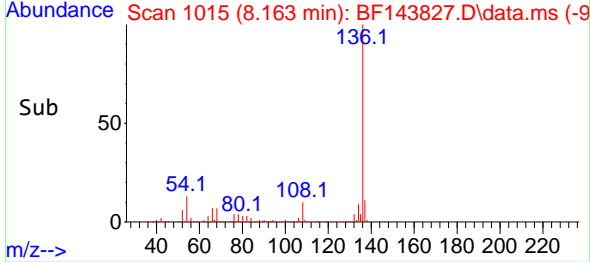
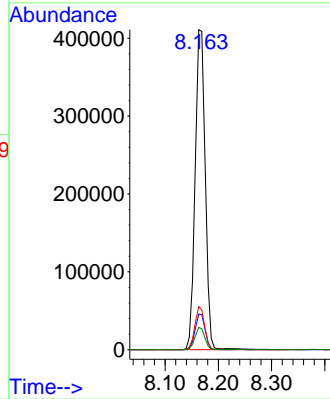


#21
 Naphthalene-d8
 Concen: 20.000 ng
 RT: 8.163 min Scan# 1016
 Delta R.T. -0.006 min
 Lab File: BF143827.D
 Acq: 29 Sep 2025 17:42

Instrument : BNA_F
 ClientSampleId : WC-4

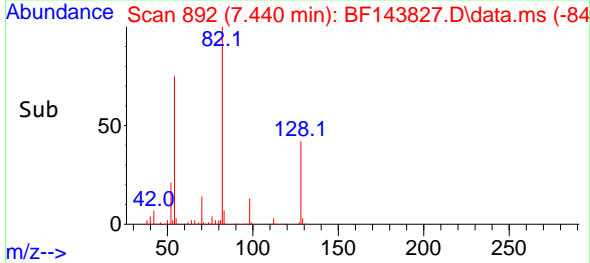
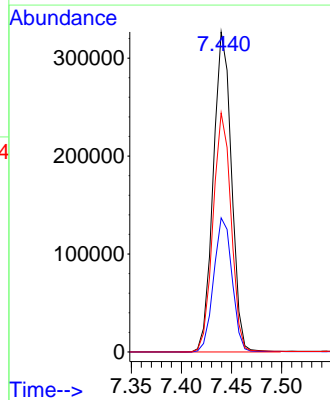
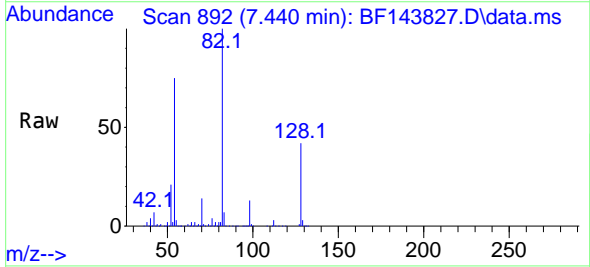


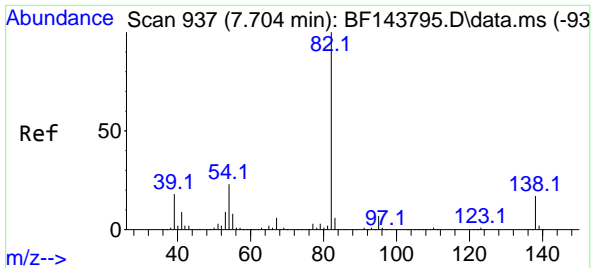
Tgt Ion: 136 Resp: 542293
 Ion Ratio Lower Upper
 136 100
 137 11.1 9.0 13.4
 54 13.4 11.2 16.8
 68 7.0 5.6 8.4



#23
 Nitrobenzene-d5
 Concen: 46.654 ng
 RT: 7.440 min Scan# 892
 Delta R.T. -0.011 min
 Lab File: BF143827.D
 Acq: 29 Sep 2025 17:42

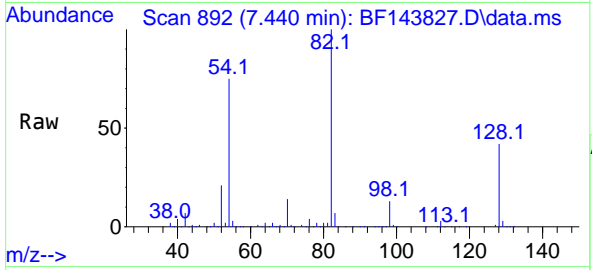
Tgt Ion: 82 Resp: 413320
 Ion Ratio Lower Upper
 82 100
 128 41.9 33.3 49.9
 54 74.7 64.2 96.4



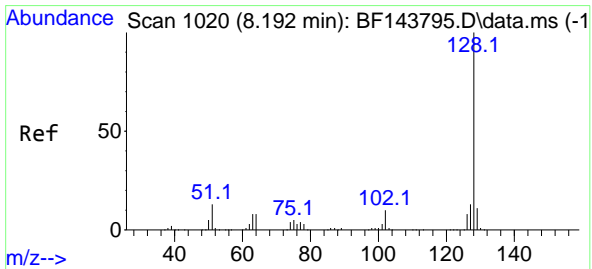
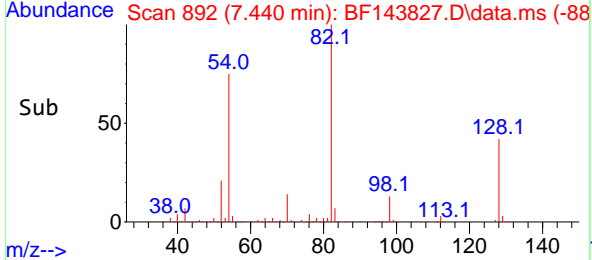
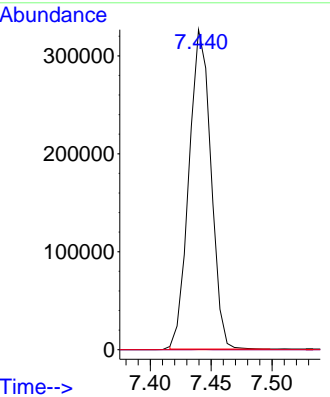


#25
 Isophorone
 Concen: 23.680 ng
 RT: 7.440 min Scan# 892
 Delta R.T. -0.270 min
 Lab File: BF143827.D
 Acq: 29 Sep 2025 17:42

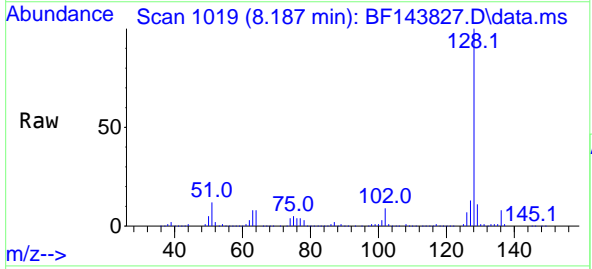
Instrument : BNA_F
 ClientSampleId : WC-4



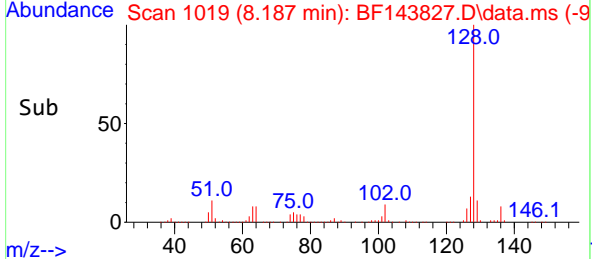
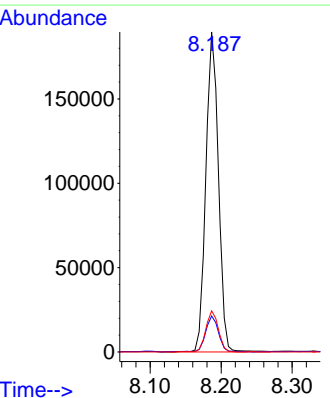
Tgt Ion: 82 Resp: 408810
 Ion Ratio Lower Upper
 82 100
 95 0.0 5.4 8.2#
 138 0.0 13.7 20.5#

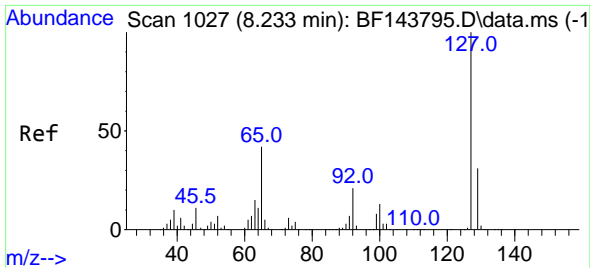


#31
 Naphthalene
 Concen: 8.964 ng
 RT: 8.187 min Scan# 1019
 Delta R.T. -0.006 min
 Lab File: BF143827.D
 Acq: 29 Sep 2025 17:42



Tgt Ion: 128 Resp: 232697
 Ion Ratio Lower Upper
 128 100
 129 11.3 8.8 13.2
 127 12.8 10.2 15.4



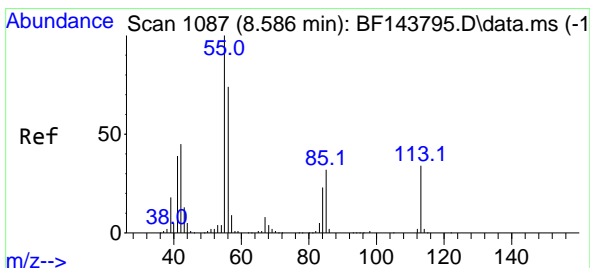
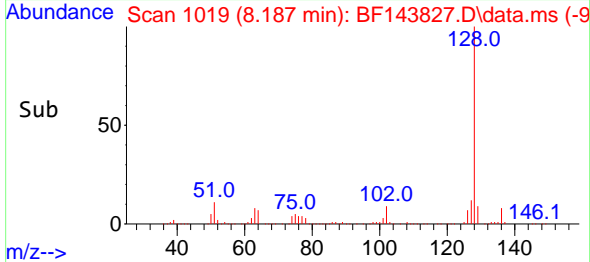
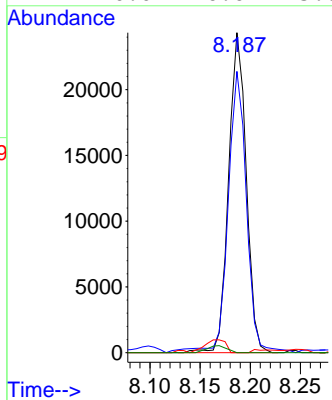
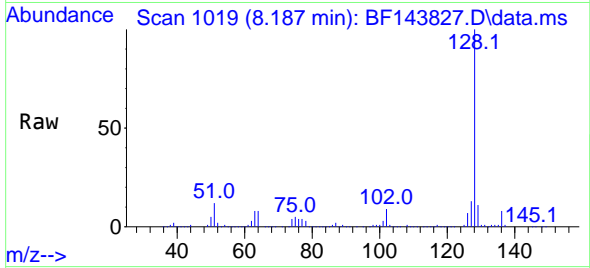


#33
 4-Chloroaniline
 Concen: 3.263 ng
 RT: 8.187 min Scan# 1136
 Delta R.T. -0.053 min
 Lab File: BF143827.D
 Acq: 29 Sep 2025 17:42

Instrument : BNA_F
 ClientSampleId : WC-4

Tgt Ion:127 Resp: 29768

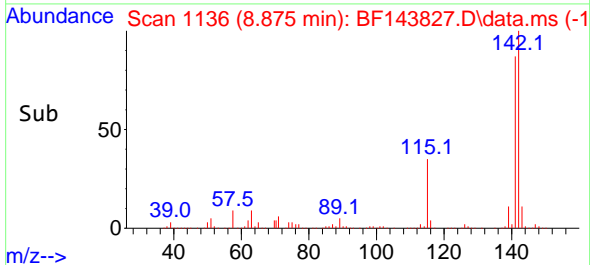
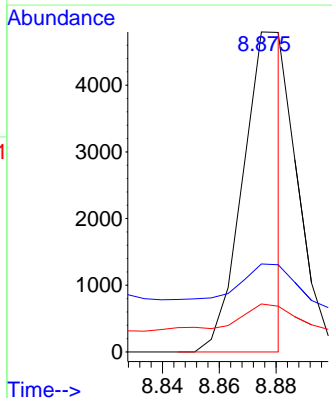
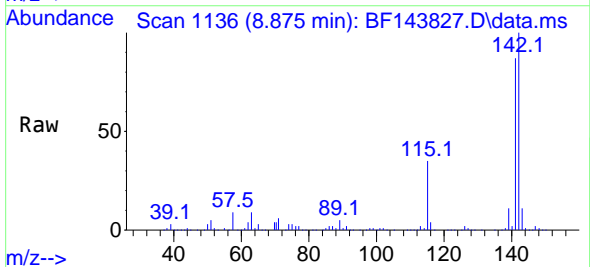
Ion	Ratio	Lower	Upper
127	100		
129	87.9	25.4	38.2#
65	0.0	33.4	50.2#
92	0.0	16.6	25.0#

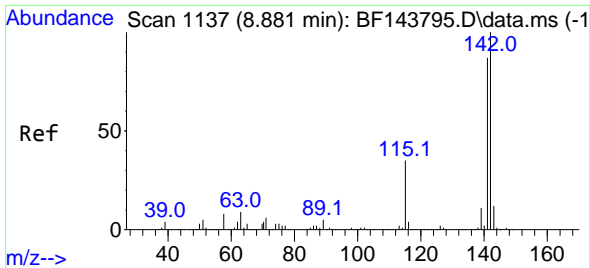


#35
 Caprolactam
 Concen: 2.474 ng
 RT: 8.875 min Scan# 1136
 Delta R.T. 0.265 min
 Lab File: BF143827.D
 Acq: 29 Sep 2025 17:42

Tgt Ion:113 Resp: 4802

Ion	Ratio	Lower	Upper
113	100		
55	27.5	271.7	311.7#
56	15.0	194.5	234.5#

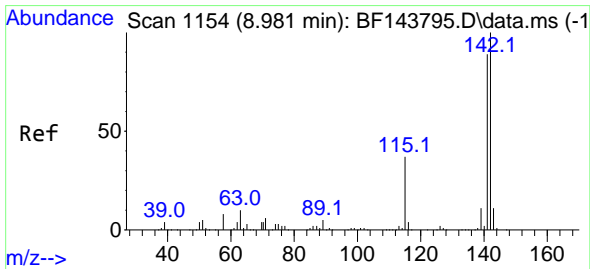
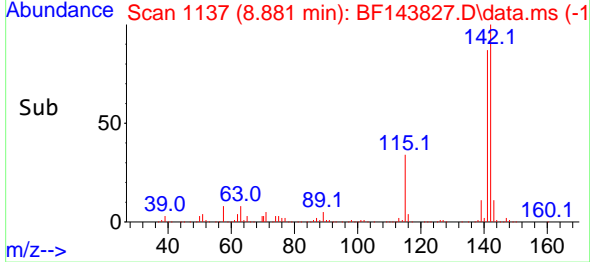
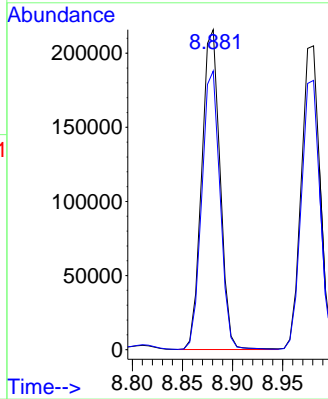
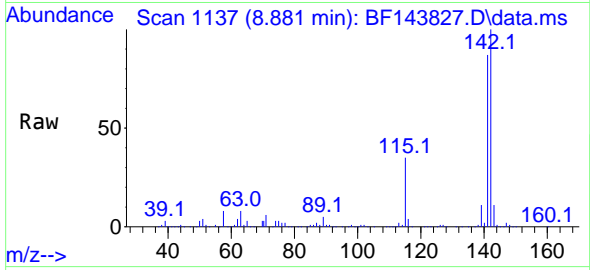




#37
 2-Methylnaphthalene
 Concen: 16.653 ng
 RT: 8.881 min Scan# 1137
 Delta R.T. 0.000 min
 Lab File: BF143827.D
 Acq: 29 Sep 2025 17:42

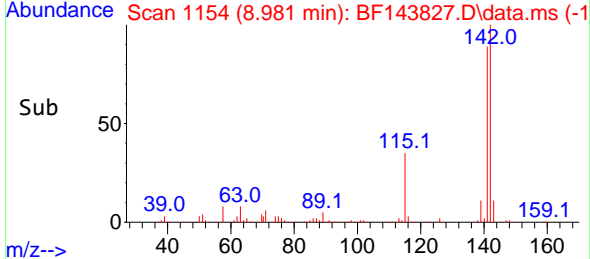
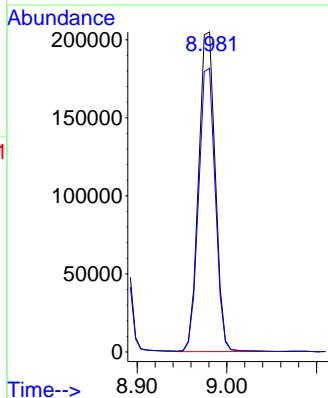
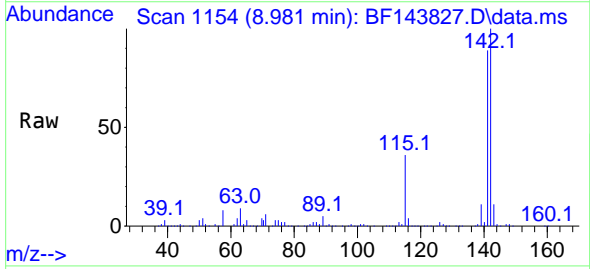
Instrument :
 BNA_F
 ClientSampleId :
 WC-4

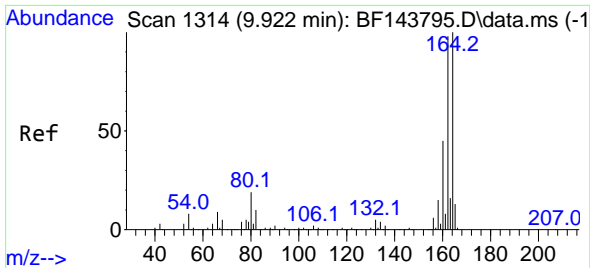
Tgt Ion:142 Resp: 275659
 Ion Ratio Lower Upper
 142 100
 141 87.1 69.4 104.0



#38
 1-Methylnaphthalene
 Concen: 16.698 ng
 RT: 8.981 min Scan# 1154
 Delta R.T. 0.000 min
 Lab File: BF143827.D
 Acq: 29 Sep 2025 17:42

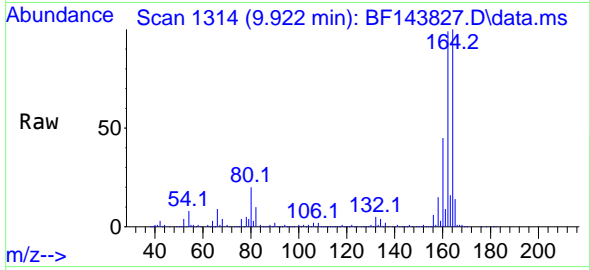
Tgt Ion:142 Resp: 264574
 Ion Ratio Lower Upper
 142 100
 141 88.6 71.1 106.7



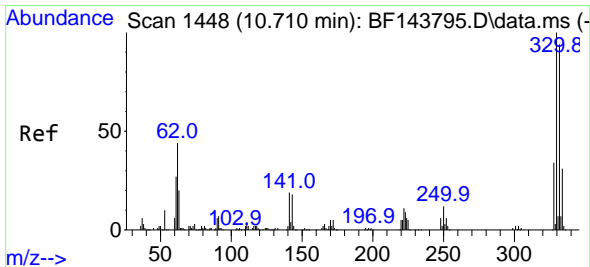
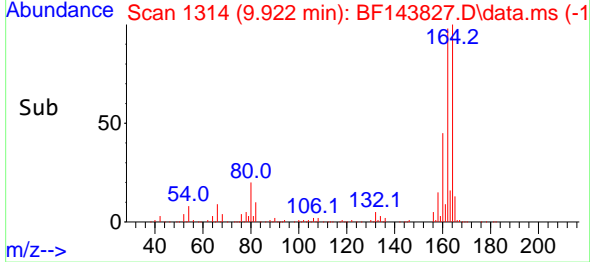
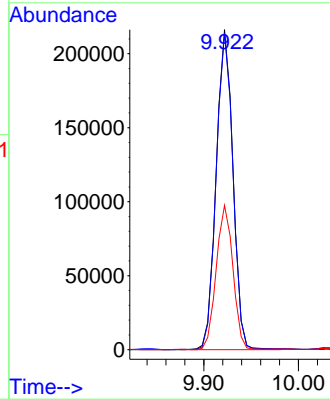


#39
 Acenaphthene-d10
 Concen: 20.000 ng
 RT: 9.922 min Scan# 11
 Delta R.T. -0.006 min
 Lab File: BF143827.D
 Acq: 29 Sep 2025 17:42

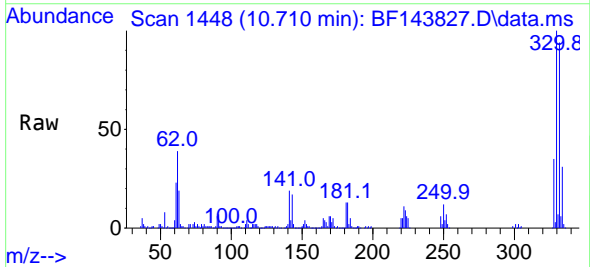
Instrument :
 BNA_F
 ClientSampleId :
 WC-4



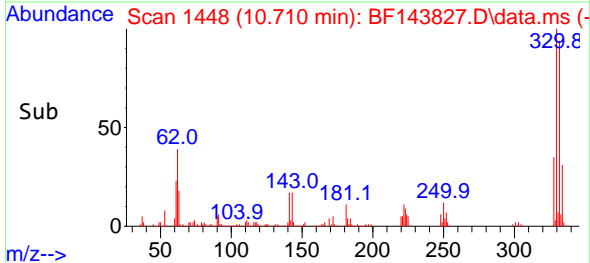
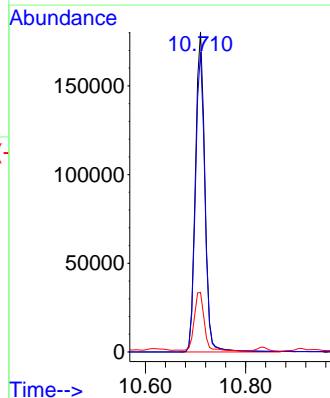
Tgt Ion:164 Resp: 266162
 Ion Ratio Lower Upper
 164 100
 162 99.0 78.8 118.2
 160 45.1 35.8 53.6

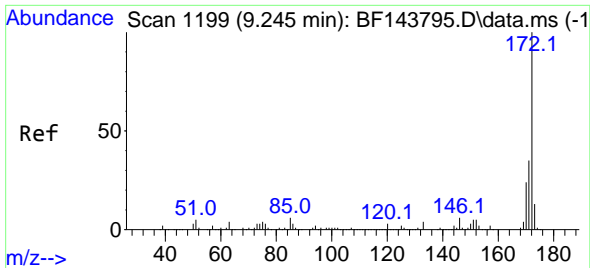


#42
 2,4,6-Tribromophenol
 Concen: 60.287 ng
 RT: 10.710 min Scan# 1448
 Delta R.T. -0.006 min
 Lab File: BF143827.D
 Acq: 29 Sep 2025 17:42



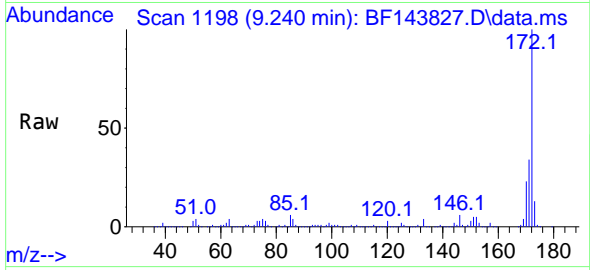
Tgt Ion:330 Resp: 237588
 Ion Ratio Lower Upper
 330 100
 332 93.5 74.7 112.1
 141 19.0 14.3 21.5



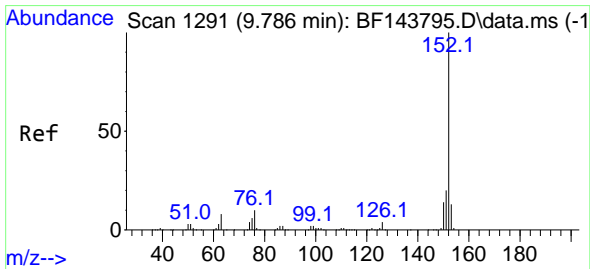
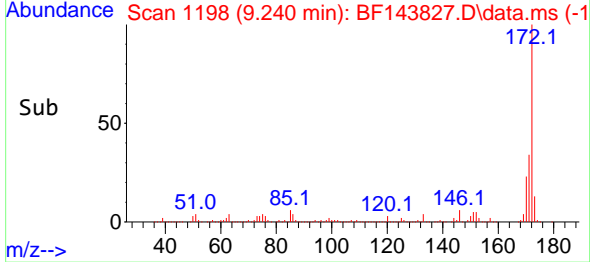
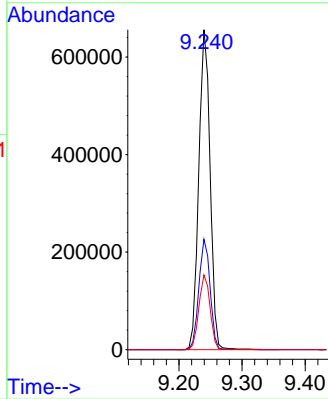


#45
 2-Fluorobiphenyl
 Concen: 47.809 ng
 RT: 9.240 min Scan# 1199
 Delta R.T. -0.005 min
 Lab File: BF143827.D
 Acq: 29 Sep 2025 17:42

Instrument : BNA_F
 ClientSampleId : WC-4

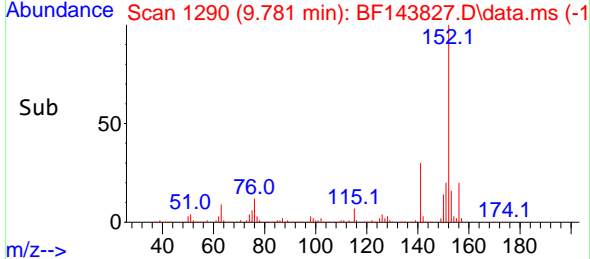
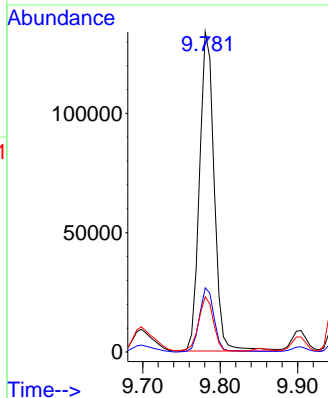
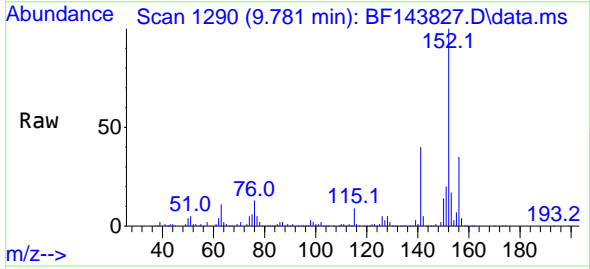


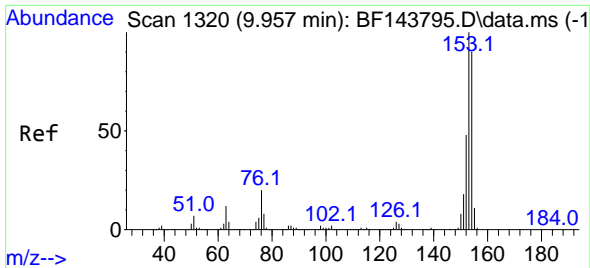
Tgt Ion:172 Resp: 815436
 Ion Ratio Lower Upper
 172 100
 171 34.5 27.9 41.9
 170 23.3 19.1 28.7



#49
 Acenaphthylene
 Concen: 8.242 ng
 RT: 9.781 min Scan# 1290
 Delta R.T. -0.006 min
 Lab File: BF143827.D
 Acq: 29 Sep 2025 17:42

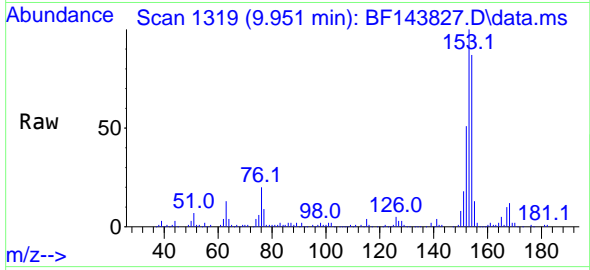
Tgt Ion:152 Resp: 175977
 Ion Ratio Lower Upper
 152 100
 151 20.1 15.7 23.5
 153 17.3 10.6 15.8#



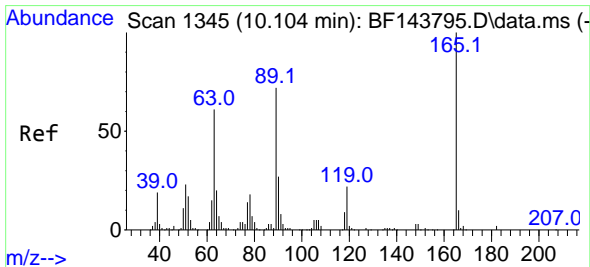
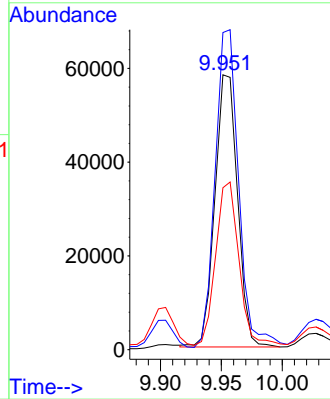
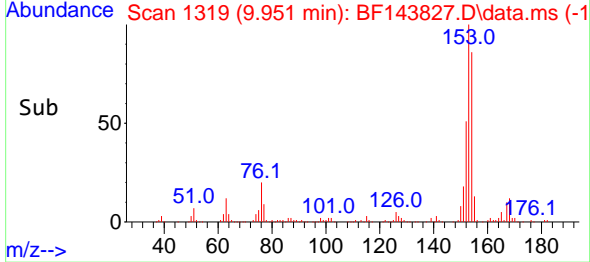


#52
 Acenaphthene
 Concen: 5.349 ng
 RT: 9.951 min Scan# 1319
 Delta R.T. -0.012 min
 Lab File: BF143827.D
 Acq: 29 Sep 2025 17:42

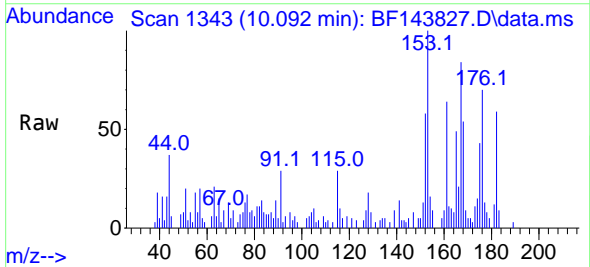
Instrument :
 BNA_F
 ClientSampleId :
 WC-4



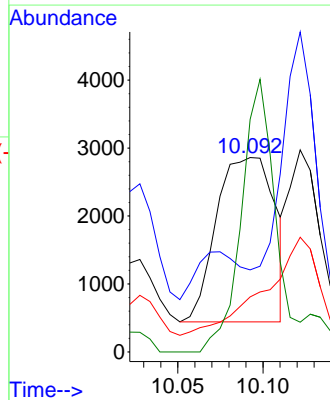
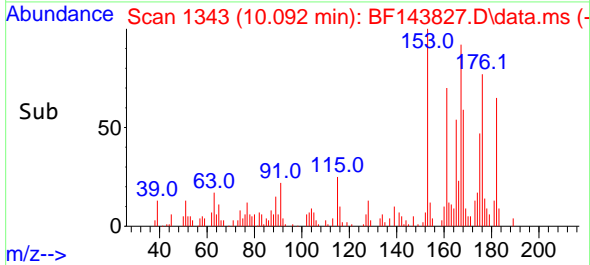
Tgt Ion:154 Resp: 75153
 Ion Ratio Lower Upper
 154 100
 153 115.3 88.7 133.1
 152 58.9 42.7 64.1

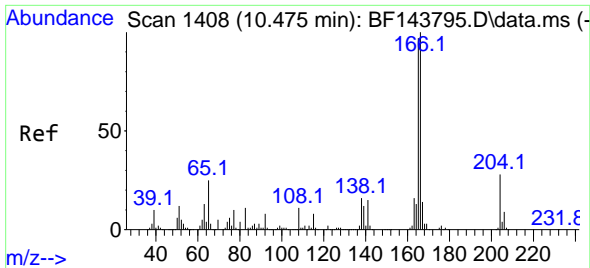


#57
 2,4-Dinitrotoluene
 Concen: 4.283 ng
 RT: 10.092 min Scan# 1343
 Delta R.T. -0.018 min
 Lab File: BF143827.D
 Acq: 29 Sep 2025 17:42



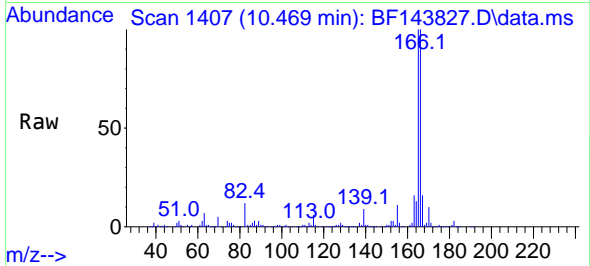
Tgt Ion:165 Resp: 5743
 Ion Ratio Lower Upper
 165 100
 63 42.2 48.9 73.3#
 89 28.3 57.5 86.3#
 182 119.6 2.0 3.0#



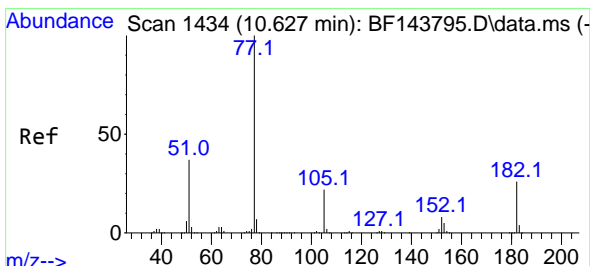
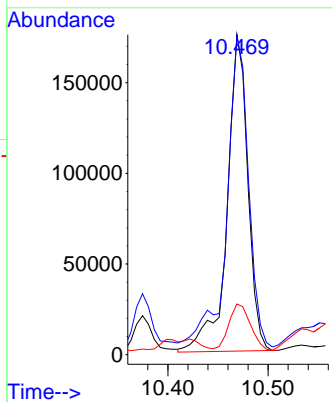
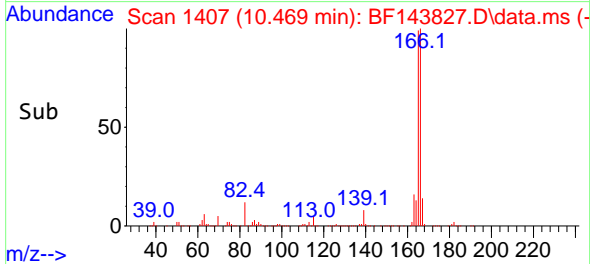


#58
 Fluorene
 Concen: 17.036 ng
 RT: 10.469 min Scan# 1407
 Delta R.T. -0.006 min
 Lab File: BF143827.D
 Acq: 29 Sep 2025 17:42

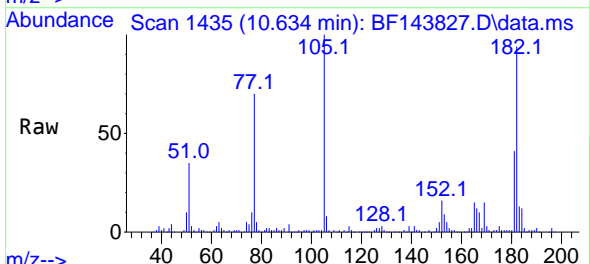
Instrument :
 BNA_F
 ClientSampleId :
 WC-4



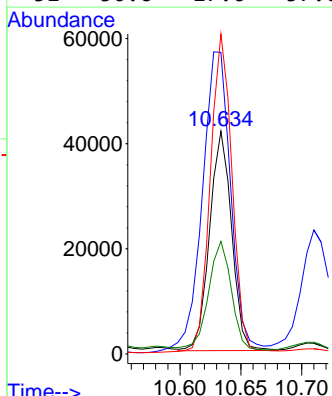
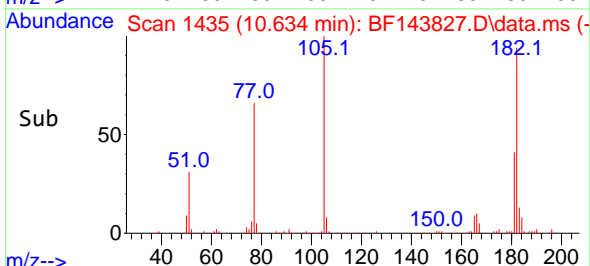
Tgt Ion:166 Resp: 251620
 Ion Ratio Lower Upper
 166 100
 165 99.7 78.0 117.0
 167 15.9 10.9 16.3

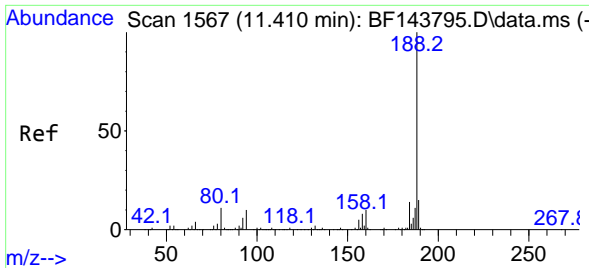


#63
 Azobenzene
 Concen: 3.290 ng
 RT: 10.634 min Scan# 1435
 Delta R.T. 0.006 min
 Lab File: BF143827.D
 Acq: 29 Sep 2025 17:42



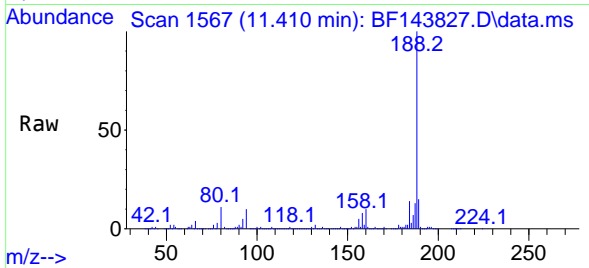
Tgt Ion: 77 Resp: 52648
 Ion Ratio Lower Upper
 77 100
 182 135.5 5.9 45.9#
 105 143.7 2.3 42.3#
 51 50.6 17.6 57.6



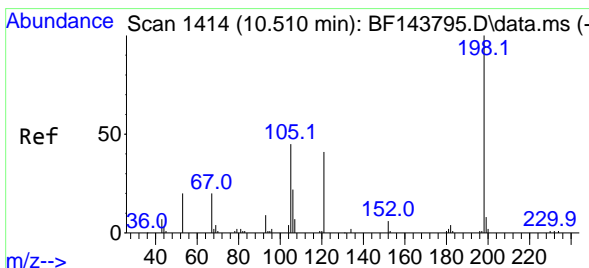
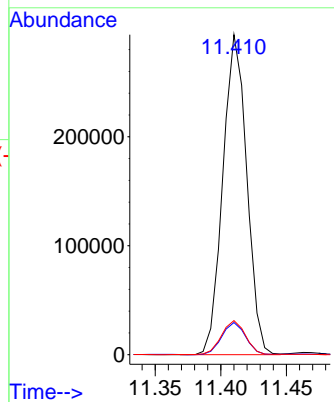
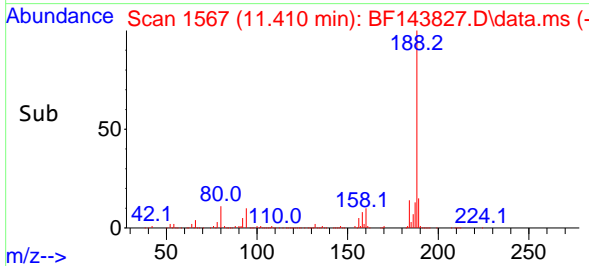


#64
 Phenanthrene-d10
 Concen: 20.000 ng
 RT: 11.410 min Scan# 11
 Delta R.T. -0.006 min
 Lab File: BF143827.D
 Acq: 29 Sep 2025 17:42

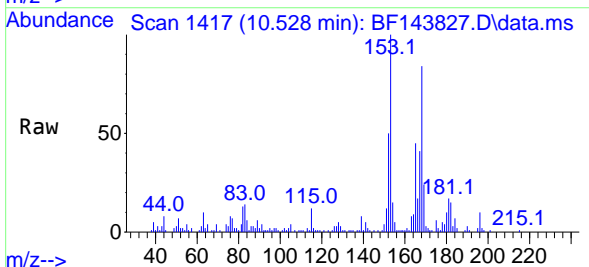
Instrument :
 BNA_F
 ClientSampleId :
 WC-4



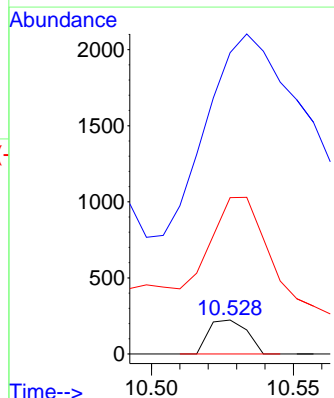
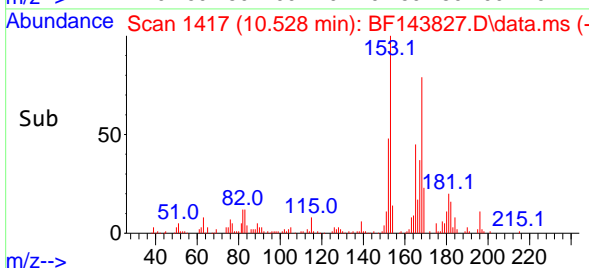
Tgt Ion:188 Resp: 372415
 Ion Ratio Lower Upper
 188 100
 94 10.0 8.2 12.2
 80 10.7 8.6 12.8

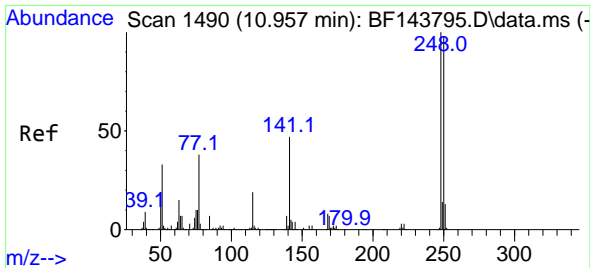


#65
 4,6-Dinitro-2-methylphenol
 Concen: 4.336 ng
 RT: 10.528 min Scan# 1417
 Delta R.T. 0.012 min
 Lab File: BF143827.D
 Acq: 29 Sep 2025 17:42



Tgt Ion:198 Resp: 209
 Ion Ratio Lower Upper
 198 100
 51 887.9 52.0 92.0#
 105 460.5 27.5 67.5#



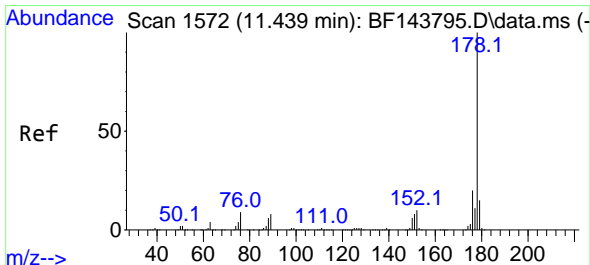
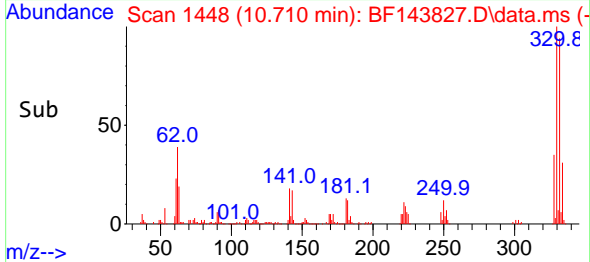
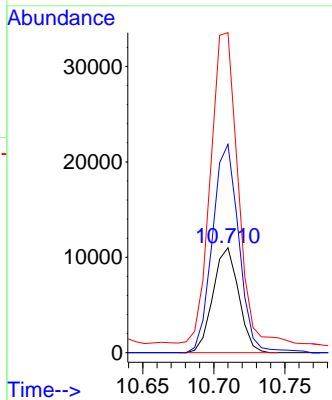
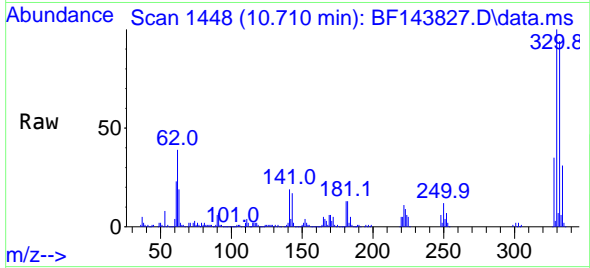


#67
 4-Bromophenyl-phenylether
 Concen: 2.181 ng
 RT: 10.710 min Scan# 14
 Delta R.T. -0.247 min
 Lab File: BF143827.D
 Acq: 29 Sep 2025 17:42

Instrument :
 BNA_F
 ClientSampleId :
 WC-4

Tgt Ion:248 Resp: 13842

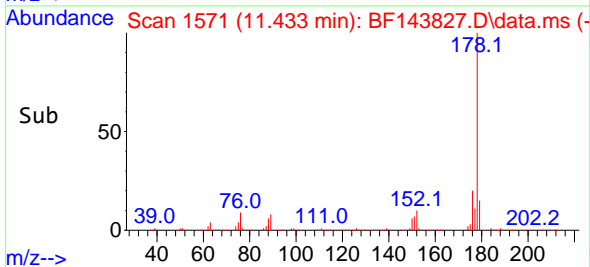
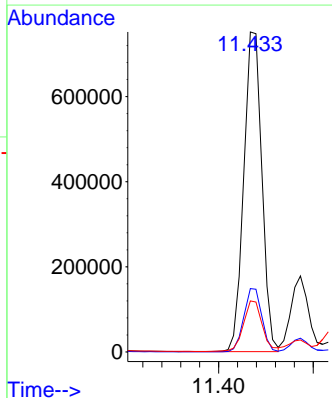
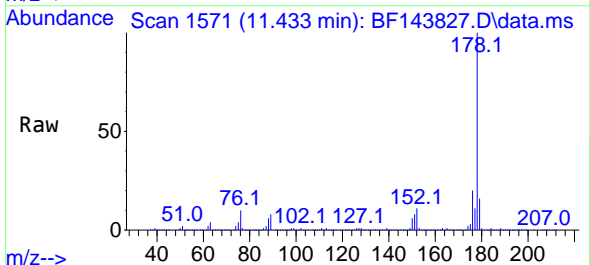
Ion	Ratio	Lower	Upper
248	100		
250	198.5	78.7	118.1#
141	305.0	37.9	56.9#

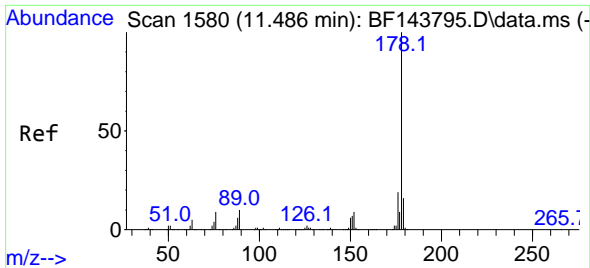


#71
 Phenanthrene
 Concen: 52.201 ng
 RT: 11.433 min Scan# 1571
 Delta R.T. -0.006 min
 Lab File: BF143827.D
 Acq: 29 Sep 2025 17:42

Tgt Ion:178 Resp: 998071

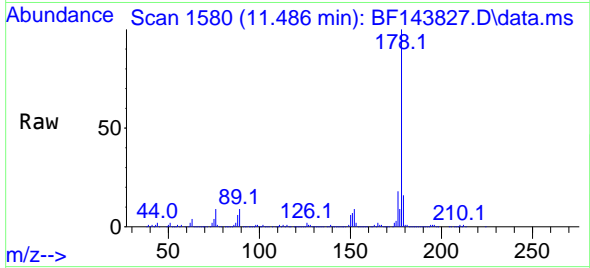
Ion	Ratio	Lower	Upper
178	100		
176	19.8	15.6	23.4
179	15.9	12.2	18.4



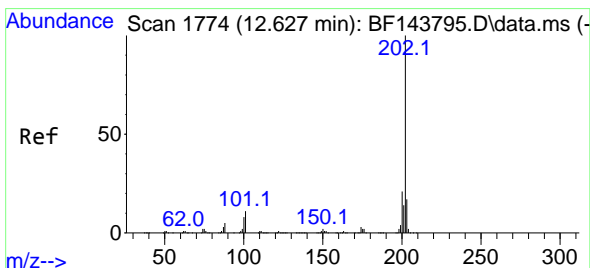
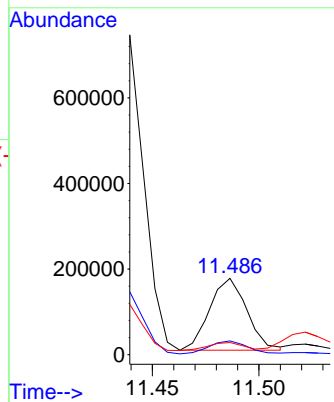
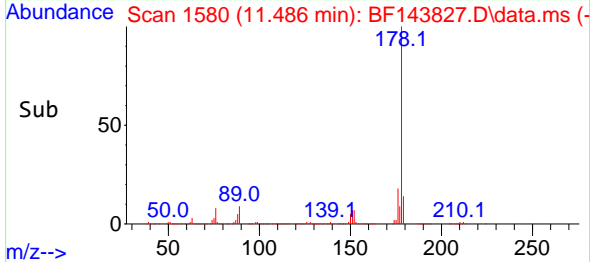


#72
 Anthracene
 Concen: 10.676 ng
 RT: 11.486 min Scan# 11
 Delta R.T. -0.006 min
 Lab File: BF143827.D
 Acq: 29 Sep 2025 17:42

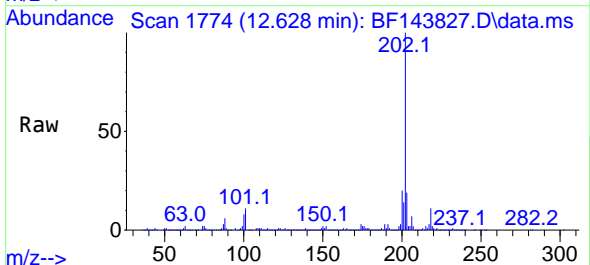
Instrument : BNA_F
 ClientSampleId : WC-4



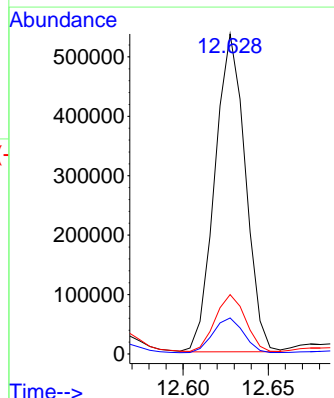
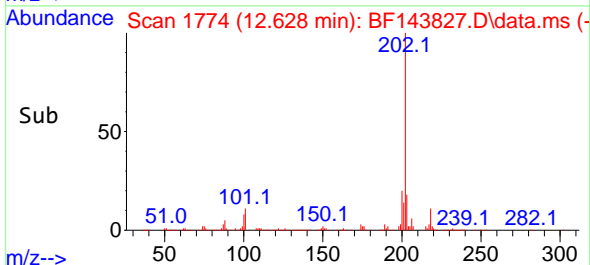
Tgt Ion:178 Resp: 204755
 Ion Ratio Lower Upper
 178 100
 176 18.1 15.3 22.9
 179 15.9 12.8 19.2

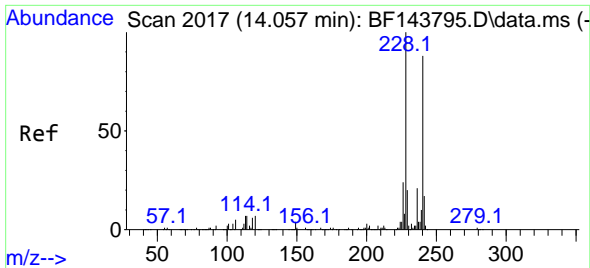


#75
 Fluoranthene
 Concen: 34.684 ng
 RT: 12.628 min Scan# 1774
 Delta R.T. 0.000 min
 Lab File: BF143827.D
 Acq: 29 Sep 2025 17:42



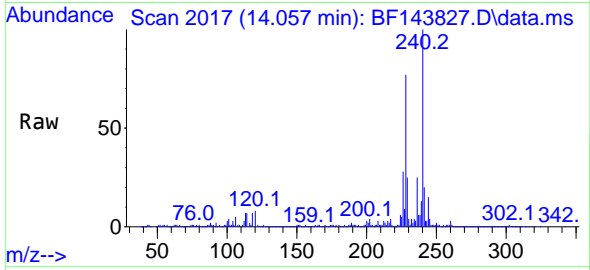
Tgt Ion:202 Resp: 666985
 Ion Ratio Lower Upper
 202 100
 101 11.2 0.0 31.1
 203 18.6 0.0 37.4



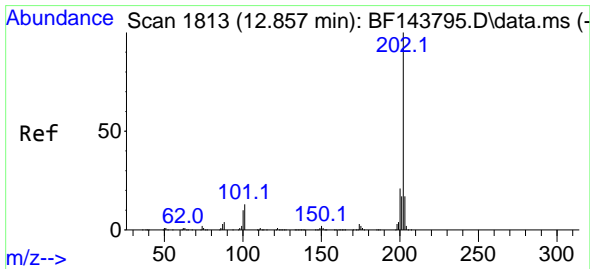
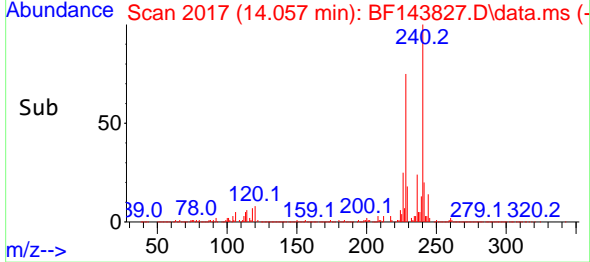
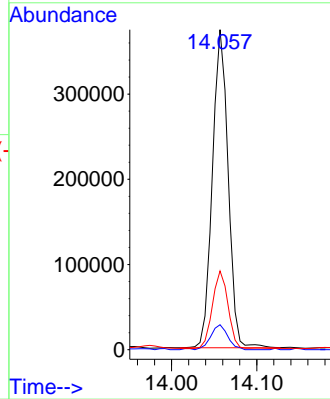


#76
 Chrysene-d12
 Concen: 20.000 ng
 RT: 14.057 min Scan# 20
 Delta R.T. -0.006 min
 Lab File: BF143827.D
 Acq: 29 Sep 2025 17:42

Instrument :
 BNA_F
 ClientSampleId :
 WC-4

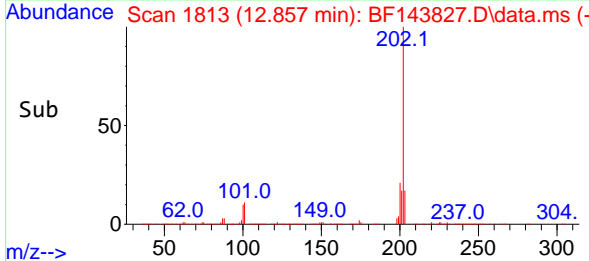
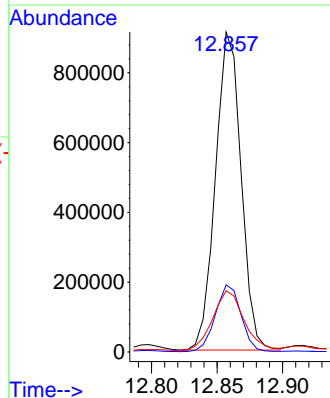
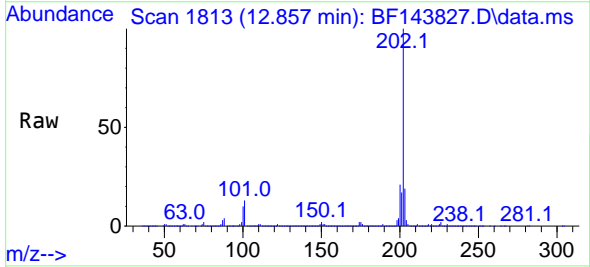


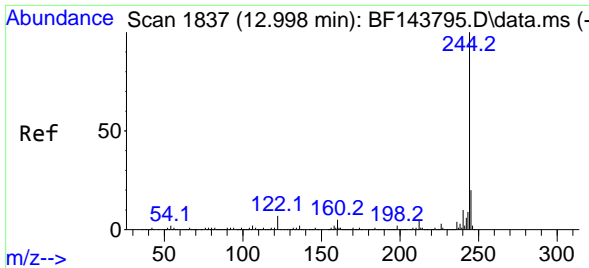
Tgt Ion:240 Resp: 479462
 Ion Ratio Lower Upper
 240 100
 120 7.8 6.2 9.4
 236 24.6 19.4 29.2



#78
 Pyrene
 Concen: 52.472 ng
 RT: 12.857 min Scan# 1813
 Delta R.T. 0.000 min
 Lab File: BF143827.D
 Acq: 29 Sep 2025 17:42

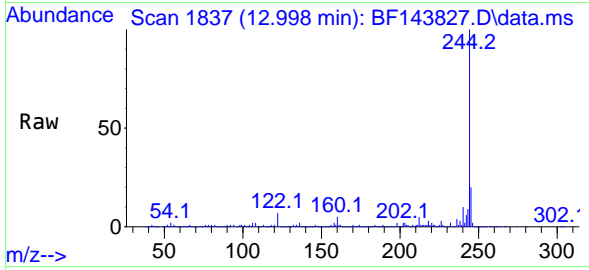
Tgt Ion:202 Resp: 1236899
 Ion Ratio Lower Upper
 202 100
 200 20.9 17.0 25.4
 203 19.1 13.9 20.9



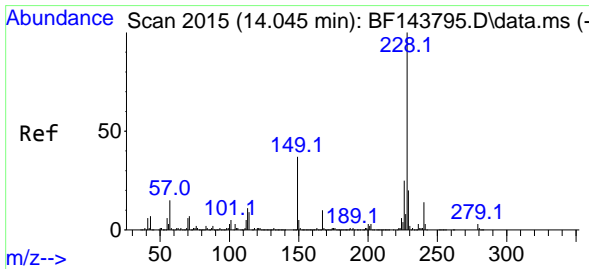
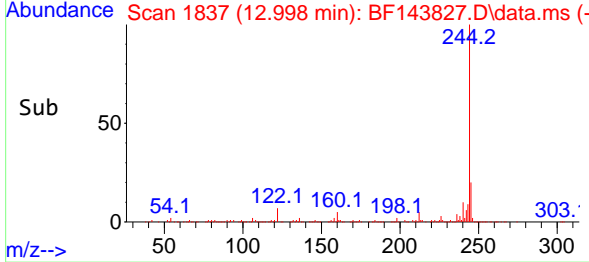
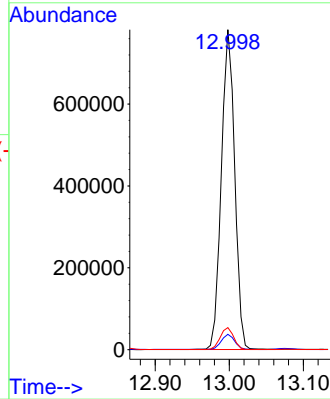


#79
 Terphenyl-d14
 Concen: 41.513 ng
 RT: 12.998 min Scan# 11
 Delta R.T. -0.006 min
 Lab File: BF143827.D
 Acq: 29 Sep 2025 17:42

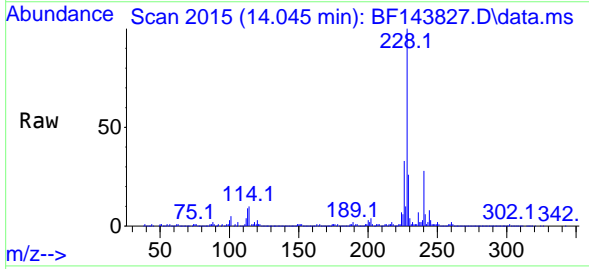
Instrument :
 BNA_F
 ClientSampleId :
 WC-4



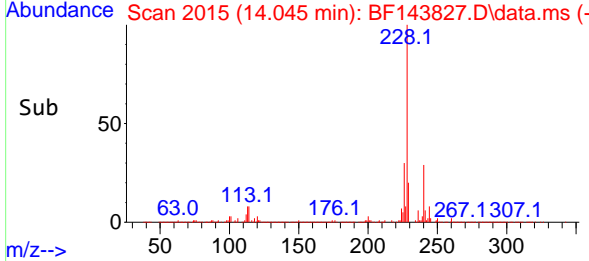
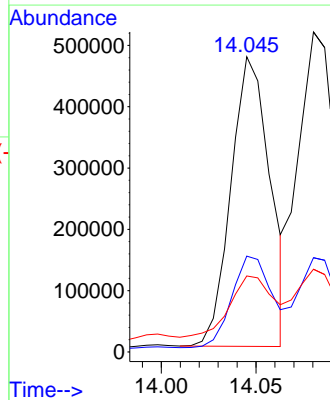
Tgt Ion:244 Resp: 978671
 Ion Ratio Lower Upper
 244 100
 212 4.8 3.9 5.9
 122 6.9 5.6 8.4

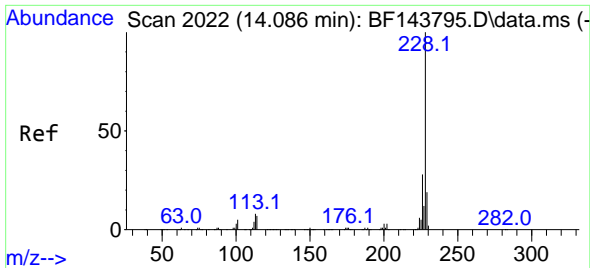


#81
 Benzo(a)anthracene
 Concen: 26.345 ng
 RT: 14.045 min Scan# 2015
 Delta R.T. -0.006 min
 Lab File: BF143827.D
 Acq: 29 Sep 2025 17:42



Tgt Ion:228 Resp: 678591
 Ion Ratio Lower Upper
 228 100
 226 32.5 20.2 30.2#
 229 25.7 16.1 24.1#



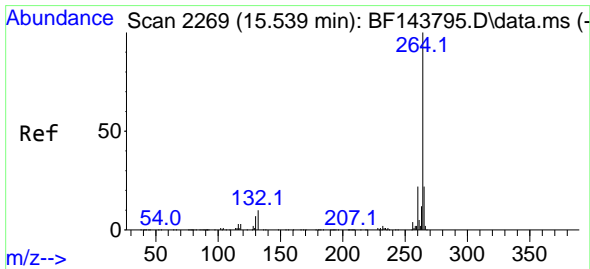
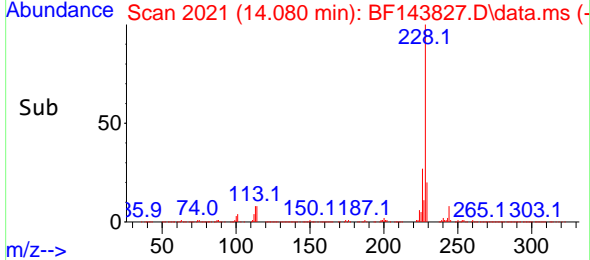
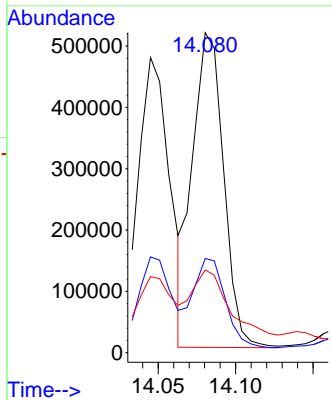
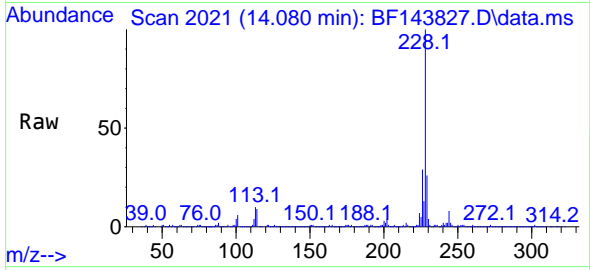


#83
 Chrysene
 Concen: 30.858 ng
 RT: 14.080 min Scan# 20
 Delta R.T. -0.006 min
 Lab File: BF143827.D
 Acq: 29 Sep 2025 17:42

Instrument : BNA_F
 ClientSampleId : WC-4

Tgt Ion:228 Resp: 719218

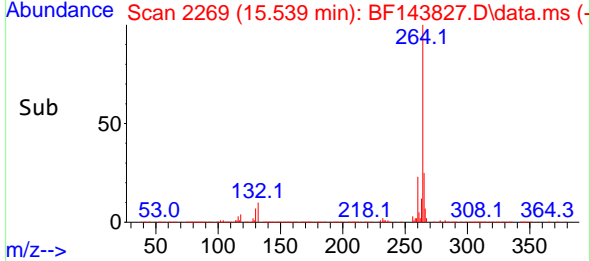
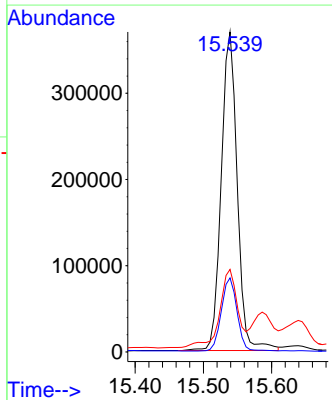
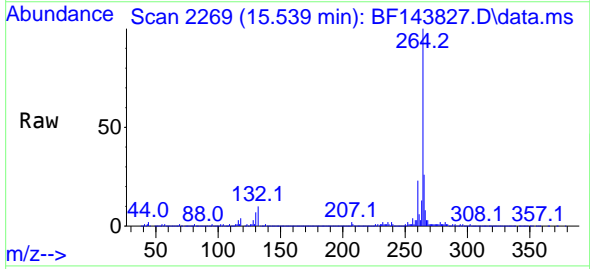
Ion	Ratio	Lower	Upper
228	100		
226	29.5	22.6	33.8
229	25.8	15.6	23.4

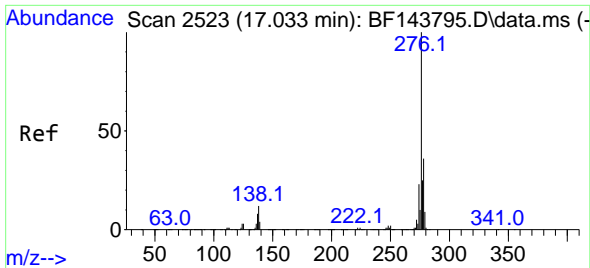


#86
 Perylene-d12
 Concen: 20.000 ng
 RT: 15.539 min Scan# 2269
 Delta R.T. 0.000 min
 Lab File: BF143827.D
 Acq: 29 Sep 2025 17:42

Tgt Ion:264 Resp: 604628

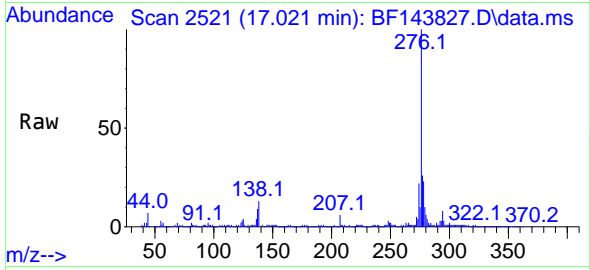
Ion	Ratio	Lower	Upper
264	100		
260	23.2	17.9	26.9
265	25.8	17.7	26.5



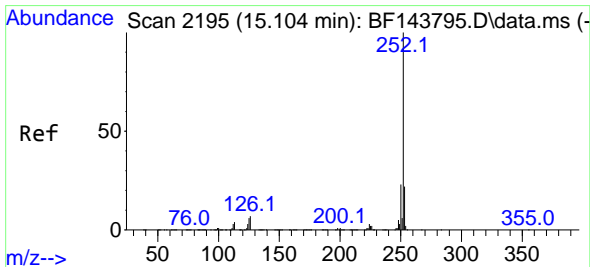
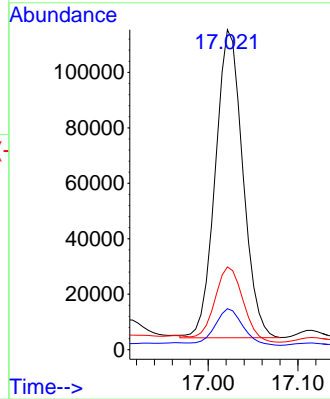
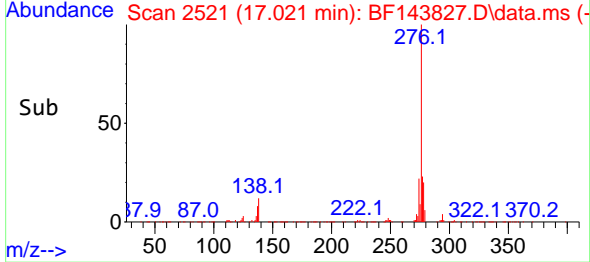


#87
 Indeno(1,2,3-cd)pyrene
 Concen: 5.146 ng
 RT: 17.021 min Scan# 2195
 Delta R.T. -0.023 min
 Lab File: BF143827.D
 Acq: 29 Sep 2025 17:42

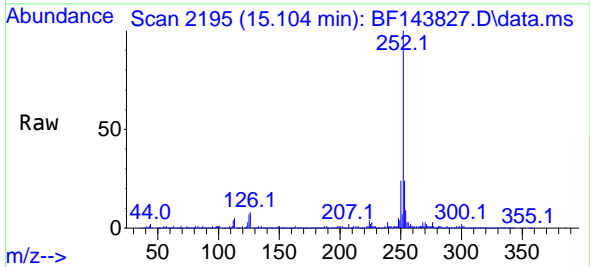
Instrument : BNA_F
 ClientSampleId : WC-4



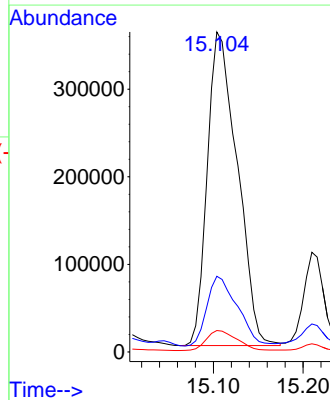
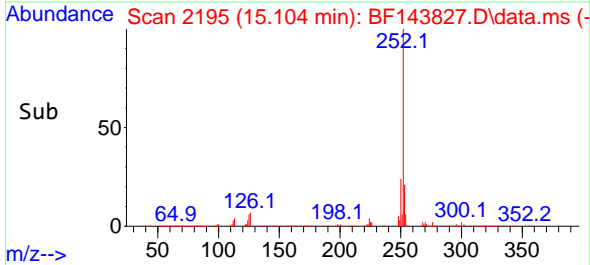
Tgt Ion: 276 Resp: 236079
 Ion Ratio Lower Upper
 276 100
 138 12.2 10.6 15.8
 277 25.5 20.7 31.1

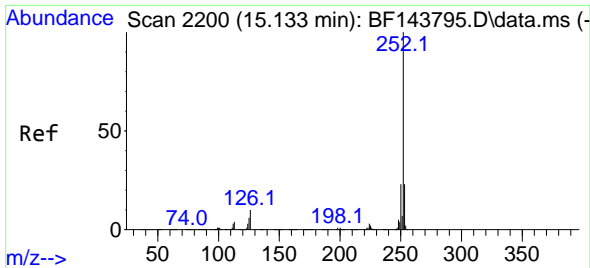


#88
 Benzo(b)fluoranthene
 Concen: 26.946 ng
 RT: 15.104 min Scan# 2195
 Delta R.T. 0.000 min
 Lab File: BF143827.D
 Acq: 29 Sep 2025 17:42



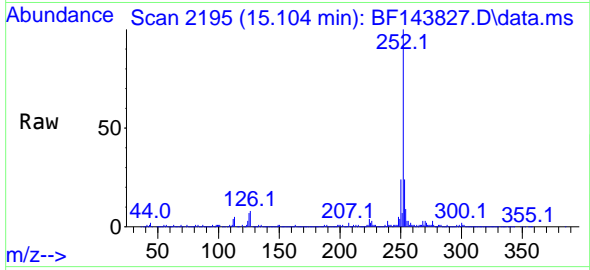
Tgt Ion: 252 Resp: 829676
 Ion Ratio Lower Upper
 252 100
 253 23.7 17.8 26.8
 125 6.7 4.4 6.6#



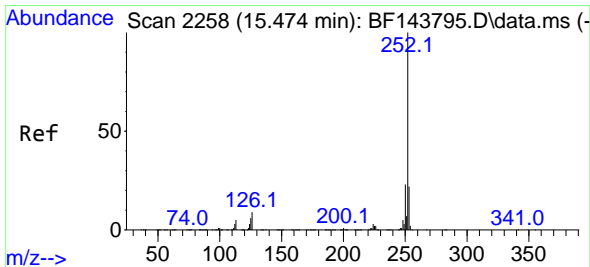
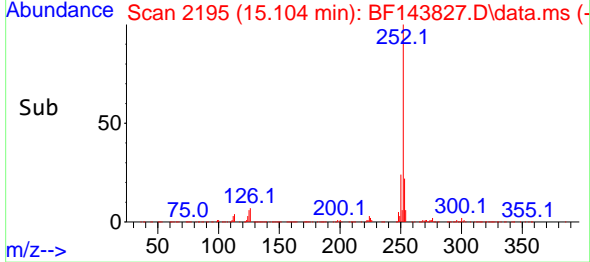
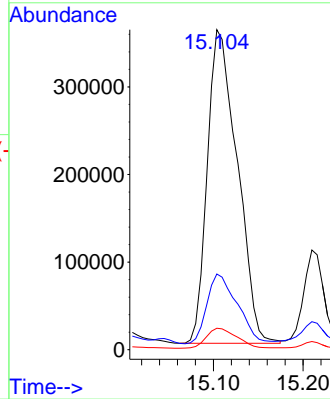


#89
 Benzo(k)fluoranthene
 Concen: 26.821 ng
 RT: 15.104 min Scan# 2195
 Delta R.T. -0.035 min
 Lab File: BF143827.D
 Acq: 29 Sep 2025 17:42

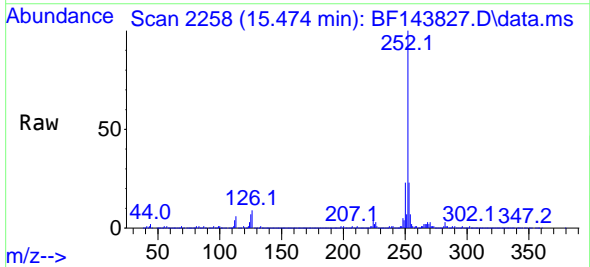
Instrument :
 BNA_F
 ClientSampleId :
 WC-4



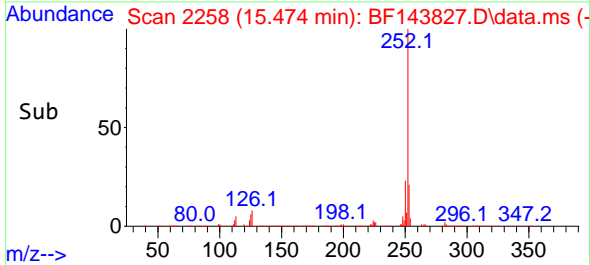
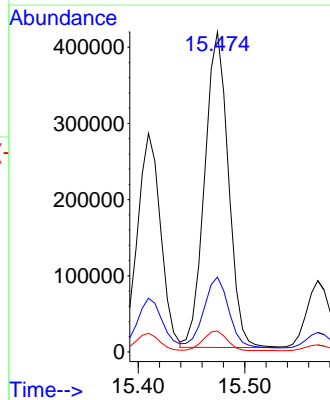
Tgt Ion:252 Resp: 829676
 Ion Ratio Lower Upper
 252 100
 253 23.7 17.9 26.9
 125 6.7 4.6 6.8

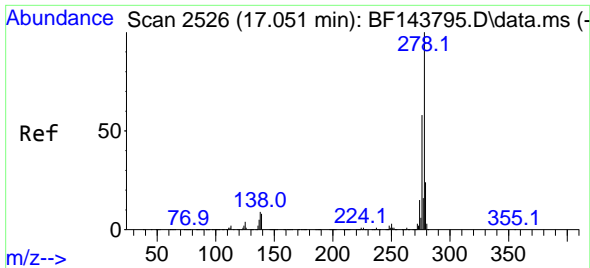


#90
 Benzo(a)pyrene
 Concen: 22.112 ng
 RT: 15.474 min Scan# 2258
 Delta R.T. -0.006 min
 Lab File: BF143827.D
 Acq: 29 Sep 2025 17:42



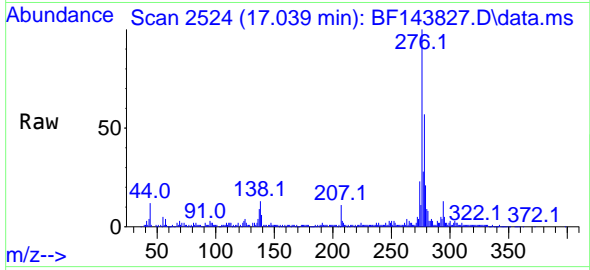
Tgt Ion:252 Resp: 639966
 Ion Ratio Lower Upper
 252 100
 253 23.4 17.6 26.4
 125 6.5 5.0 7.4



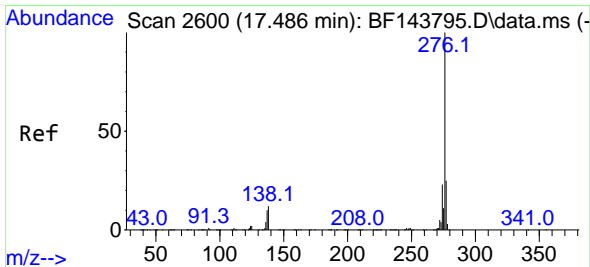
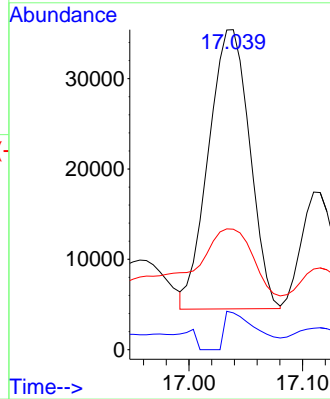
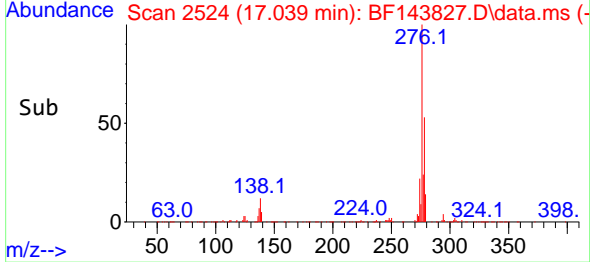


#91
 Dibenzo(a,h)anthracene
 Concen: 2.076 ng
 RT: 17.039 min Scan# 21
 Delta R.T. -0.029 min
 Lab File: BF143827.D
 Acq: 29 Sep 2025 17:42

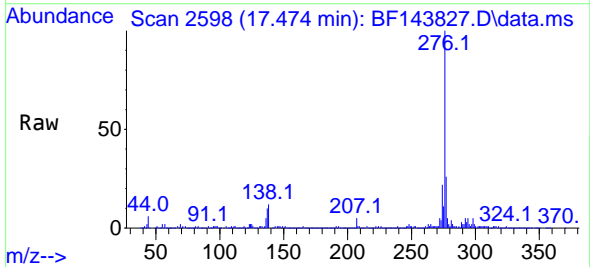
Instrument :
 BNA_F
 ClientSampleId :
 WC-4



Tgt Ion:278 Resp: 77889
 Ion Ratio Lower Upper
 278 100
 139 11.5 6.7 10.1#
 279 37.7 19.3 28.9#



#92
 Benzo(g,h,i)perylene
 Concen: 7.741 ng
 RT: 17.474 min Scan# 2598
 Delta R.T. -0.029 min
 Lab File: BF143827.D
 Acq: 29 Sep 2025 17:42



Tgt Ion:276 Resp: 280007
 Ion Ratio Lower Upper
 276 100
 277 25.6 19.6 29.4
 138 12.2 9.2 13.8

