

Data Path : Z:\HPCHEM1\BNA F\DATA\BF100217\
 Data File : BF099001.D
 Acq On : 2 Oct 2017 15:59
 Operator : SJ/JU
 Sample : I5457-19
 Misc :
 ALS Vial : 5 Sample Multiplier: 1

Instrument :
 BNA_F
 ClientSampleId :

Quant Time: Oct 02 17:16:36 2017
 Quant Method : Z:\HPCHEM1\BNA F\METHODS\8270-BF092317.M
 Quant Title : ASP BNA STANDARDS FOR 5 POINT CALIBRATION
 QLast Update : Sat Sep 23 13:50:58 2017
 Response via : Initial Calibration

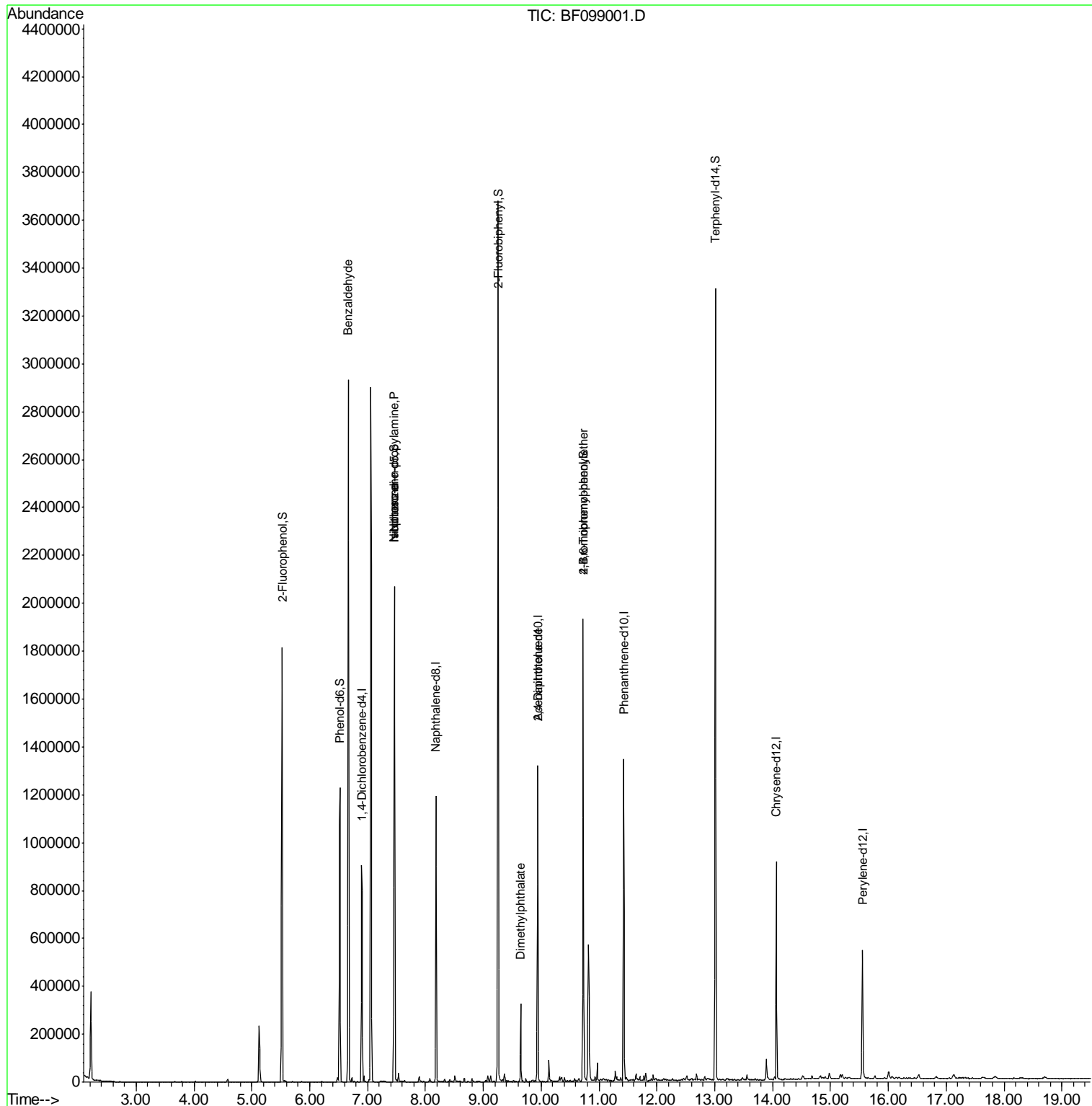
Internal Standards	R.T.	QIon	Response	Conc	Units	Dev(Min)
1) 1,4-Dichlorobenzene-d4	6.90	152	132411	20.00	ng	-0.02
21) Naphthalene-d8	8.18	136	544647	20.00	ng	-0.02
38) Acenaphthene-d10	9.94	164	247184	20.00	ng	-0.02
63) Phenanthrene-d10	11.43	188	428202	20.00	ng	-0.02
75) Chrysene-d12	14.07	240	299211	20.00	ng	-0.02
86) Perylene-d12	15.56	264	239977	20.00	ng	-0.02
System Monitoring Compounds						
5) 2-Fluorophenol	5.52	112	522755	62.85	ng	-0.02
7) Phenol-d6	6.52	99	400938	39.07	ng	-0.02
23) Nitrobenzene-d5	7.46	82	771875	90.89	ng	-0.02
41) 2,4,6-Tribromophenol	10.73	330	244906	121.08	ng	-0.02
44) 2-Fluorobiphenyl	9.26	172	1331447	89.92	ng	-0.02
78) Terphenyl-d14	13.02	244	1102969	83.83	ng	-0.02
Target Compounds						
9) Benzaldehyde	6.67	77	18114	3.043	ng	# 79
19) n-Nitroso-di-n-propylamine	7.46	70	100086	15.278	ng	# 77
25) Isophorone	7.46	82	768954	43.793	ng	# 64
49) Dimethylphthalate	9.65	163	130110	6.974	ng	100
56) 2,4-Dinitrotoluene	9.94	165	30724	5.829	ng	# 23
66) 4-Bromophenyl-phenylether	10.73	248	16048	3.829	ng	# 1

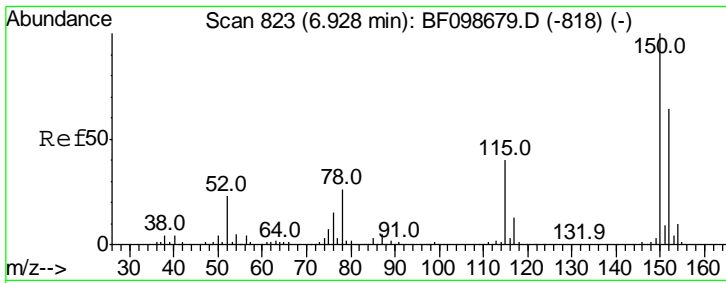
(#) = qualifier out of range (m) = manual integration (+) = signals summed

Data Path : Z:\HPCHEM1\BNA F\DATA\BF100217\
 Data File : BF099001.D
 Acq On : 2 Oct 2017 15:59
 Operator : SJ/JU
 Sample : I5457-19
 Misc :
 ALS Vial : 5 Sample Multiplier: 1

Instrument :
 BNA_F
 ClientSampleId :

Quant Time: Oct 02 17:16:36 2017
 Quant Method : Z:\HPCHEM1\BNA F\METHODS\8270-BF092317.M
 Quant Title : ASP BNA STANDARDS FOR 5 POINT CALIBRATION
 QLast Update : Sat Sep 23 13:50:58 2017
 Response via : Initial Calibration

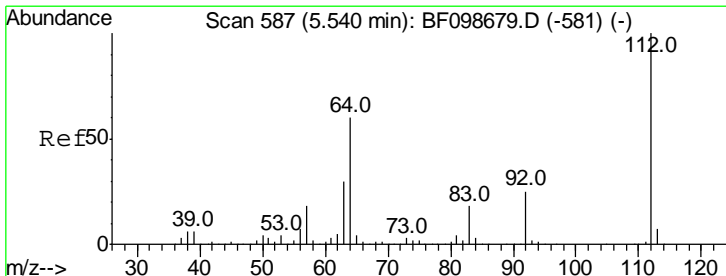
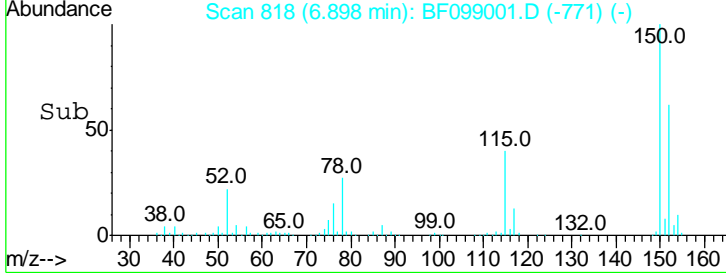
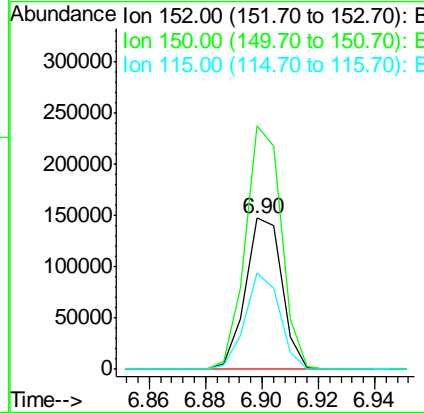
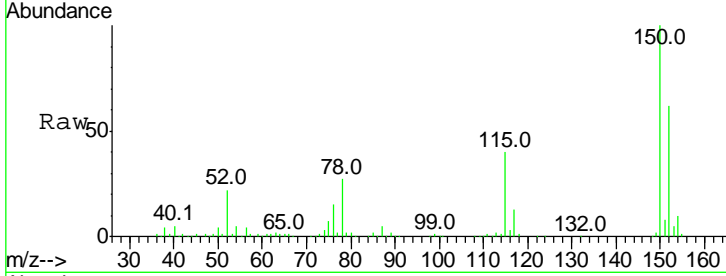




#1
 1,4-Dichlorobenzene-d4
 Concen: 20.000 ng
 RT: 6.90 min Scan# 818
 Delta R.T. -0.02 min
 Lab File: BF099001.D
 Acq: 2 Oct 2017 15:59

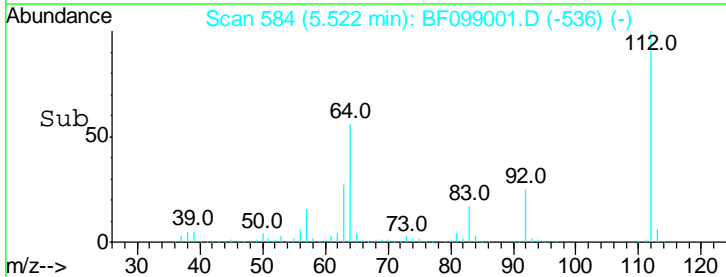
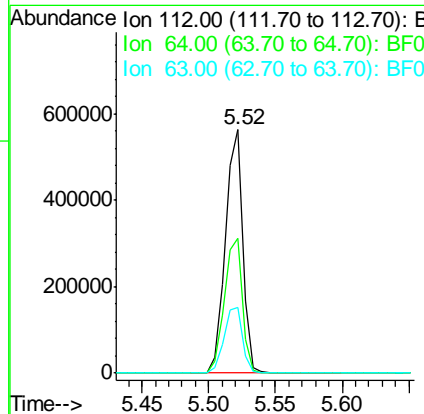
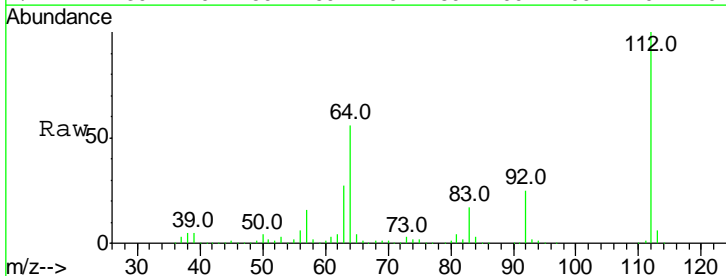
Instrument :
 BNA_F
 ClientSampled :

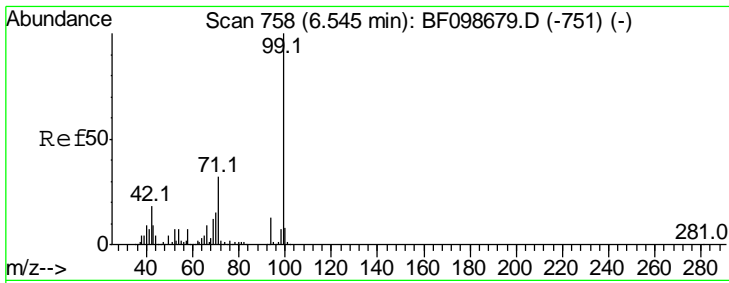
Tgt Ion	Resp	Lower	Upper
152	132411		
150	161.3	124.6	186.8
115	64.1	50.1	75.1



#5
 2-Fluorophenol
 Concen: 62.848 ng
 RT: 5.52 min Scan# 584
 Delta R.T. -0.02 min
 Lab File: BF099001.D
 Acq: 2 Oct 2017 15:59

Tgt Ion	Resp	Lower	Upper
112	522755		
64	55.6	47.9	71.9
63	26.9	23.7	35.5

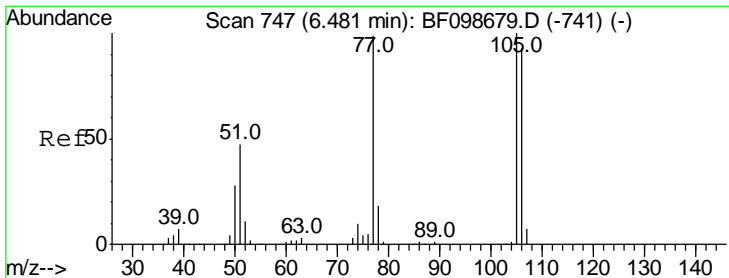
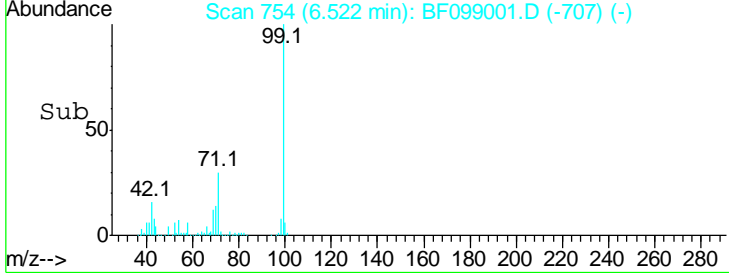
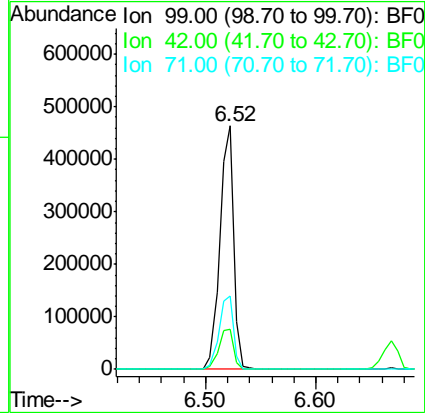
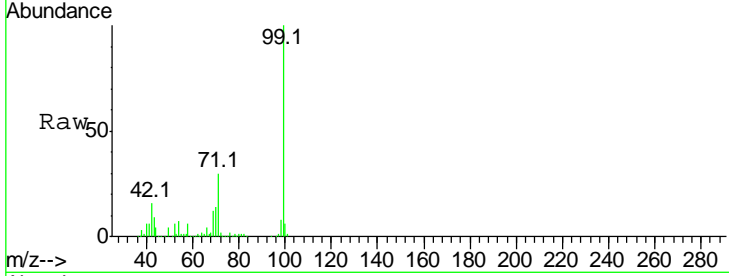




#7
 Phenol-d6
 Concen: 39.074 ng
 RT: 6.52 min Scan# 754
 Delta R.T. -0.02 min
 Lab File: BF099001.D
 Acq: 2 Oct 2017 15:59

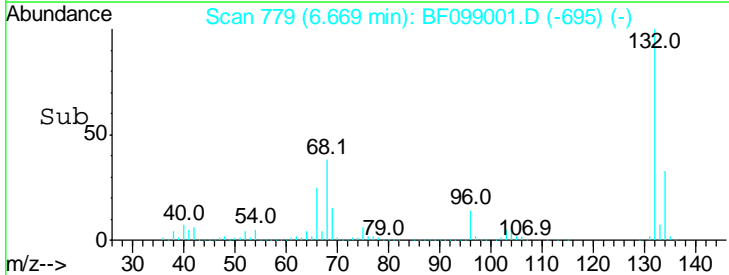
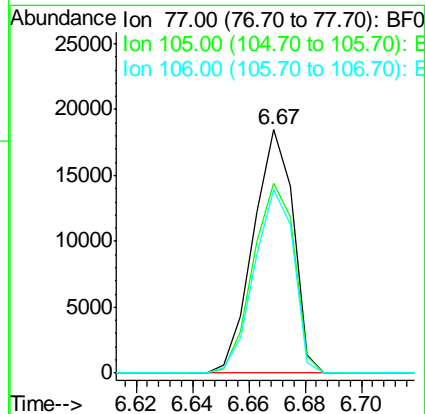
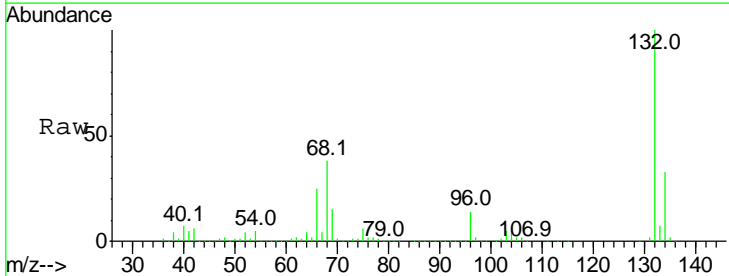
Instrument :
 BNA_F
 ClientSampled :

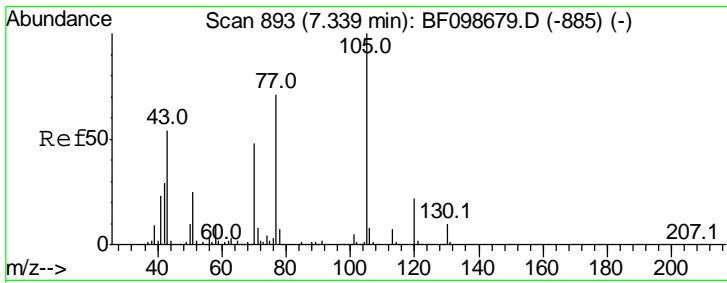
Tgt Ion	Resp	Lower	Upper
99	400938		
42	16.3	14.5	21.7
71	30.1	25.4	38.0



#9
 Benzaldehyde
 Concen: 3.043 ng
 RT: 6.67 min Scan# 779
 Delta R.T. 0.19 min
 Lab File: BF099001.D
 Acq: 2 Oct 2017 15:59

Tgt Ion	Resp	Lower	Upper
77	18114		
105	78.1	81.1	121.1#
106	75.1	74.5	114.5

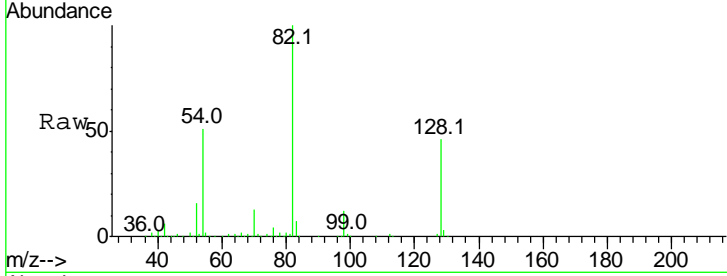




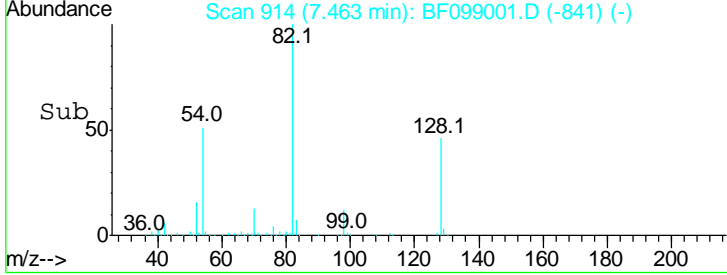
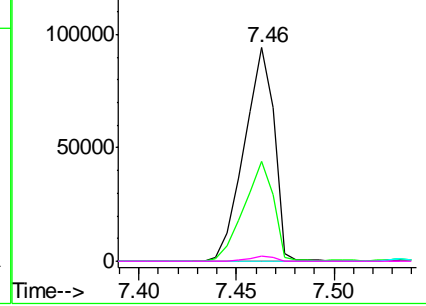
#19
 n-Nitroso-di-n-propylamine
 Concen: 15.278 ng
 RT: 7.46 min Scan# 914
 Delta R.T. 0.13 min
 Lab File: BF099001.D
 Acq: 2 Oct 2017 15:59

Instrument :
 BNA_F
 ClientSampled :

Tgt Ion	Resp	Lower	Upper
70	100		
42	47.0	47.5	71.3#
101	0.0	7.4	11.2#
130	2.5	16.6	25.0#



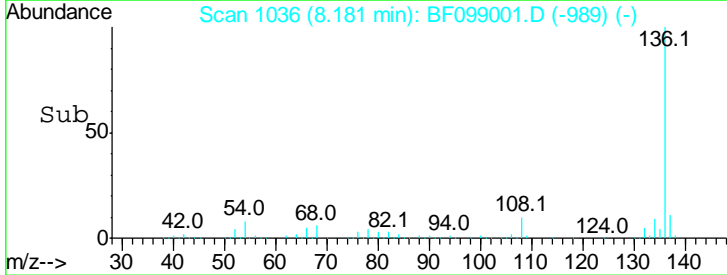
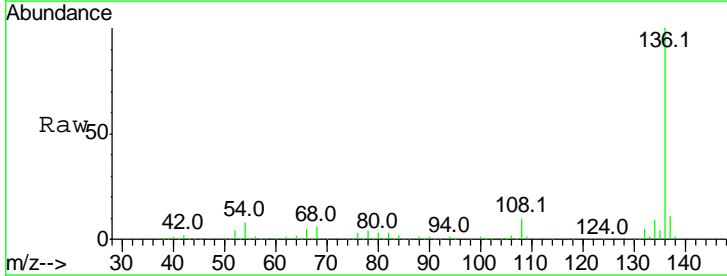
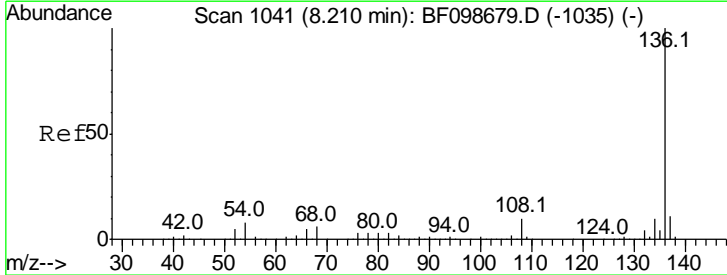
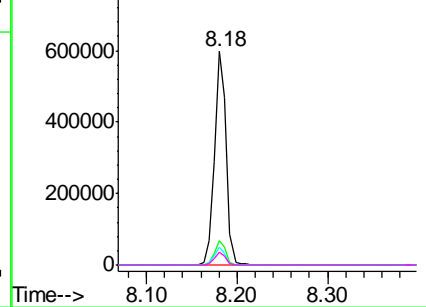
Abundance Ion 70.00 (69.70 to 70.70): BF0
 Ion 42.00 (41.70 to 42.70): BF0
 Ion 101.00 (100.70 to 101.70): E
 Ion 130.00 (129.70 to 130.70): E

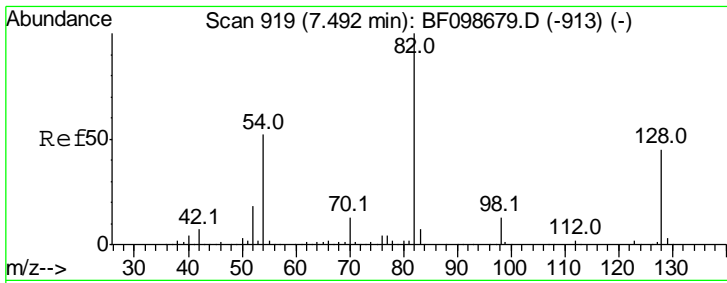


#21
 Naphthalene-d8
 Concen: 20.000 ng
 RT: 8.18 min Scan# 1036
 Delta R.T. -0.02 min
 Lab File: BF099001.D
 Acq: 2 Oct 2017 15:59

Tgt Ion	Resp	Lower	Upper
136	100		
137	11.5	8.9	13.3
54	8.3	6.6	9.8
68	6.3	5.0	7.4

Abundance Ion 136.00 (135.70 to 136.70): E
 Ion 137.00 (136.70 to 137.70): E
 Ion 54.00 (53.70 to 54.70): BF0
 Ion 68.00 (67.70 to 68.70): BF0

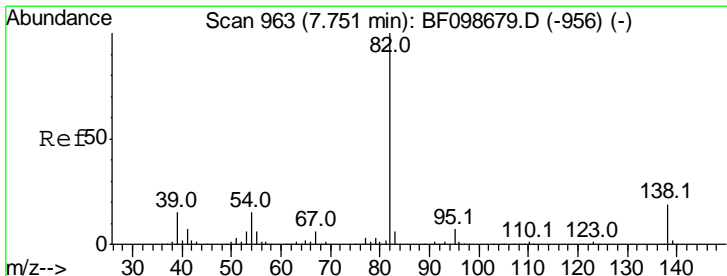
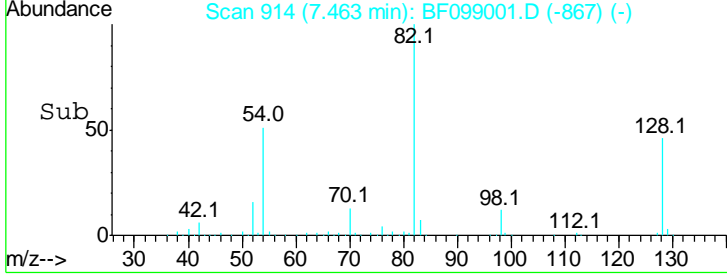
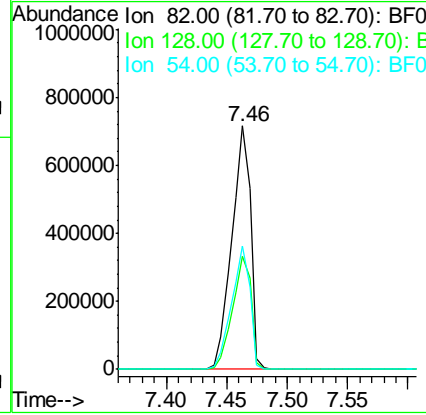
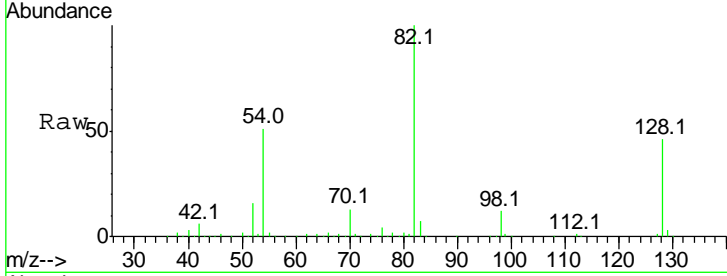




#23
 Nitrobenzene-d5
 Concen: 90.885 ng
 RT: 7.46 min Scan# 914
 Delta R.T. -0.02 min
 Lab File: BF099001.D
 Acq: 2 Oct 2017 15:59

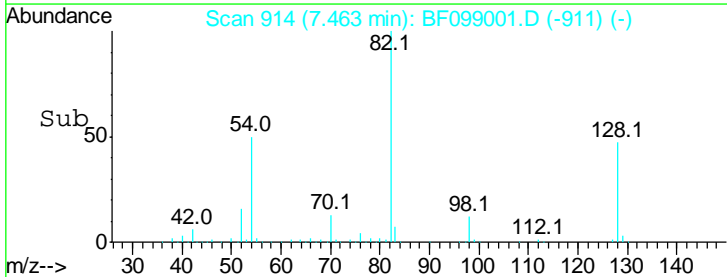
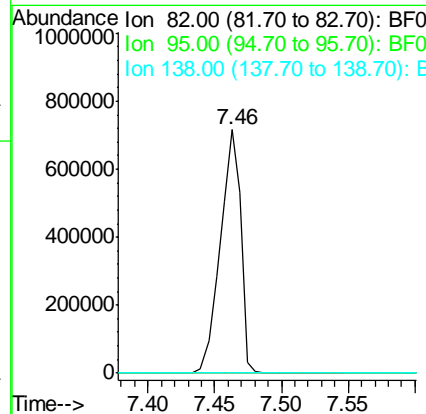
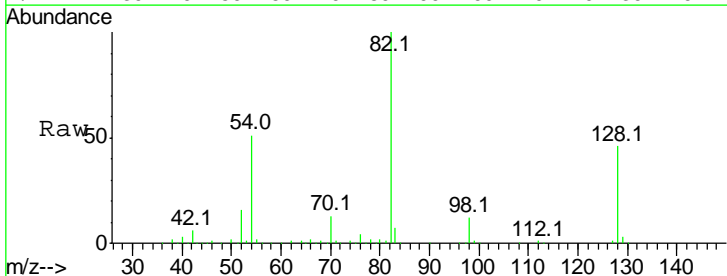
Instrument :
 BNA_F
 ClientSampled :

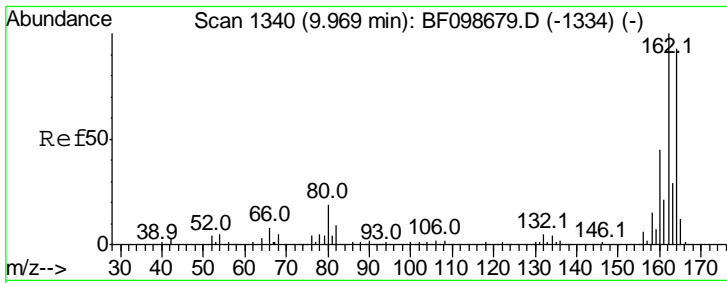
Tgt Ion	Resp	Lower	Upper
82	100		
128	46.3	36.1	54.1
54	50.6	41.4	62.2



#25
 Isophorone
 Concen: 43.793 ng
 RT: 7.46 min Scan# 914
 Delta R.T. -0.28 min
 Lab File: BF099001.D
 Acq: 2 Oct 2017 15:59

Tgt Ion	Resp	Lower	Upper
82	100		
95	0.0	5.2	7.8#
138	0.0	14.9	22.3#

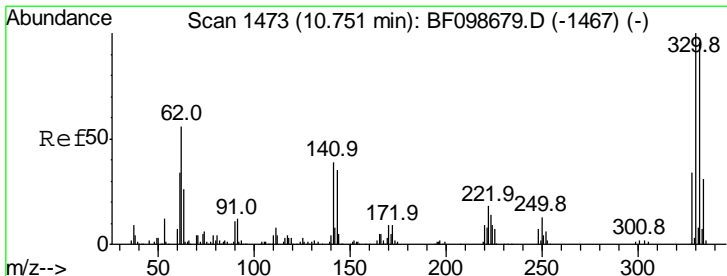
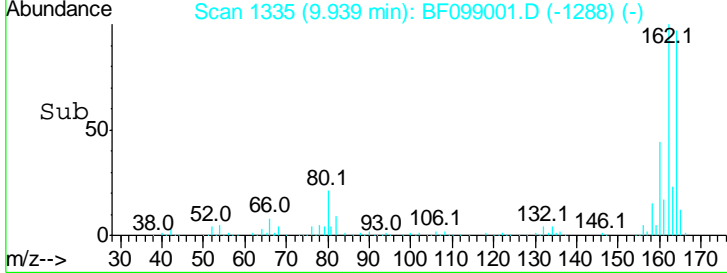
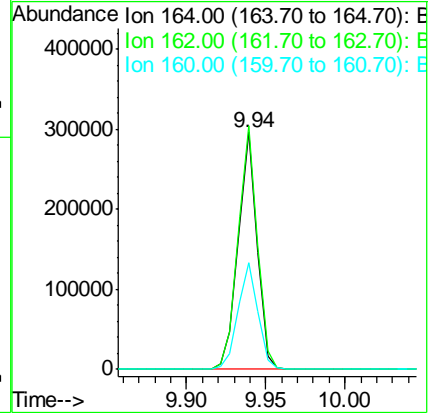
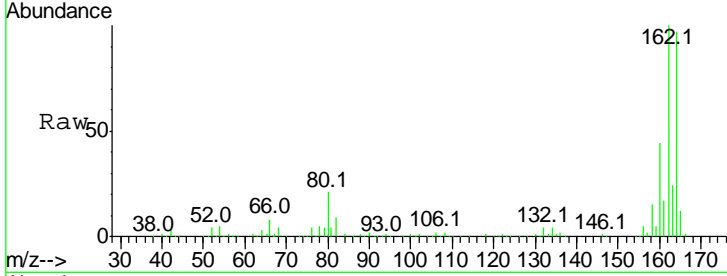




#38
 Acenaphthene-d10
 Concen: 20.000 ng
 RT: 9.94 min Scan# 1335
 Delta R.T. -0.02 min
 Lab File: BF099001.D
 Acq: 2 Oct 2017 15:59

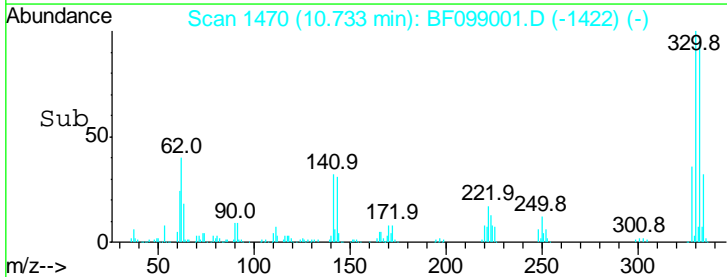
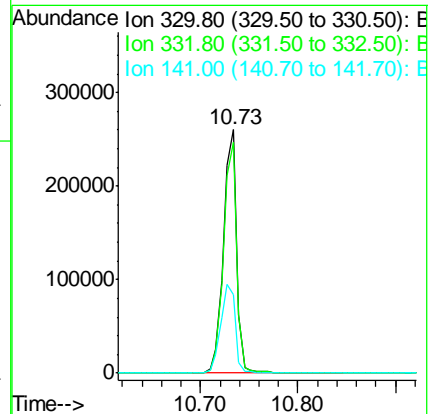
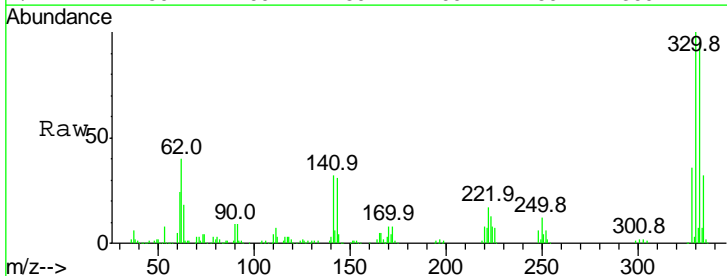
Instrument :
 BNA_F
 ClientSampled :

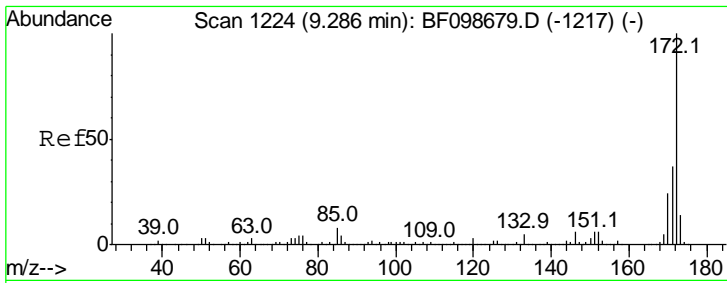
Tgt Ion	Resp	Lower	Upper
164	100		
162	102.8	86.1	129.1
160	44.9	38.3	57.5



#41
 2,4,6-Tribromophenol
 Concen: 121.083 ng
 RT: 10.73 min Scan# 1470
 Delta R.T. -0.02 min
 Lab File: BF099001.D
 Acq: 2 Oct 2017 15:59

Tgt Ion	Resp	Lower	Upper
330	100		
332	95.3	77.0	115.6
141	40.5	29.9	44.9



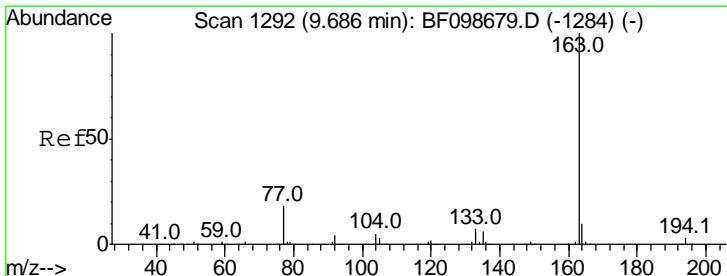
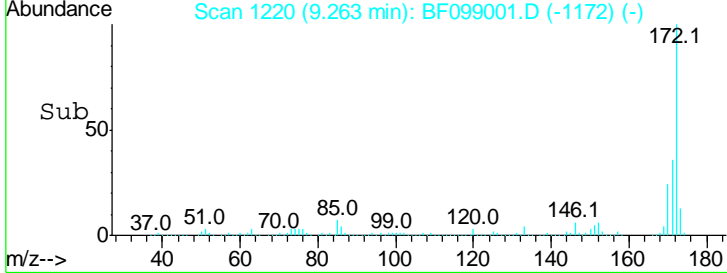
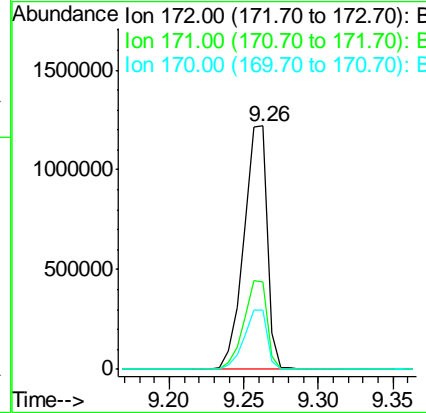
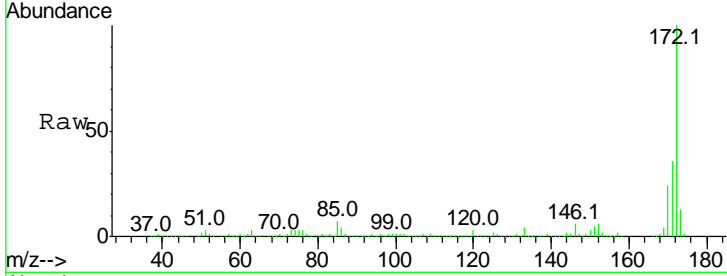


#44
 2-Fluorobiphenyl
 Concen: 89.922 ng
 RT: 9.26 min Scan# 1220
 Delta R.T. -0.02 min
 Lab File: BF099001.D
 Acq: 2 Oct 2017 15:59

Instrument :
 BNA_F
 ClientSampled :

Tot Ion:172 Resp: 1331447

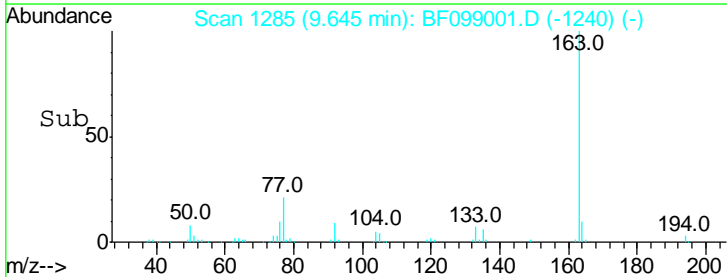
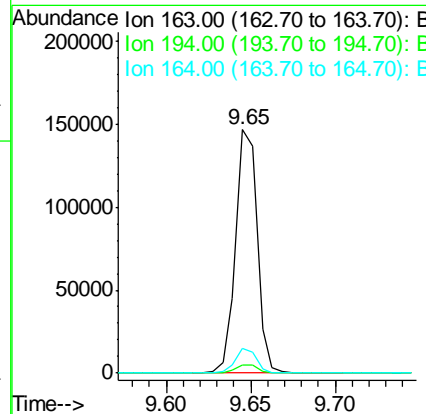
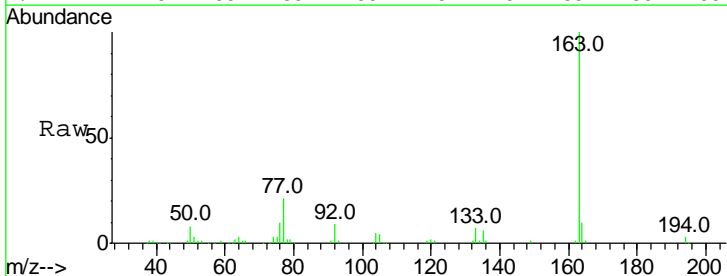
Ion	Ratio	Lower	Upper
172	100		
171	35.8	29.7	44.5
170	24.1	19.6	29.4

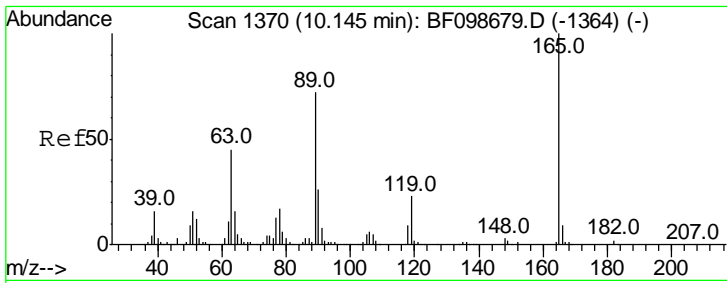


#49
 Dimethylphthalate
 Concen: 6.974 ng
 RT: 9.65 min Scan# 1285
 Delta R.T. -0.04 min
 Lab File: BF099001.D
 Acq: 2 Oct 2017 15:59

Tgt Ion:163 Resp: 130110

Ion	Ratio	Lower	Upper
163	100		
194	3.3	2.7	4.1
164	10.2	8.2	12.2

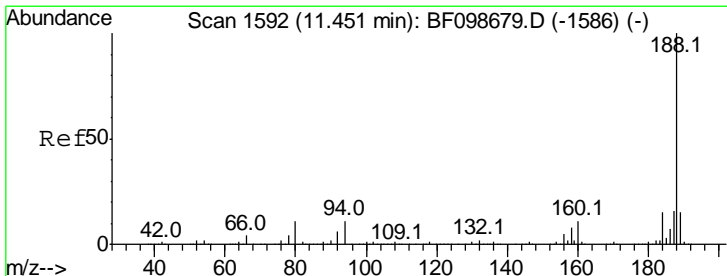
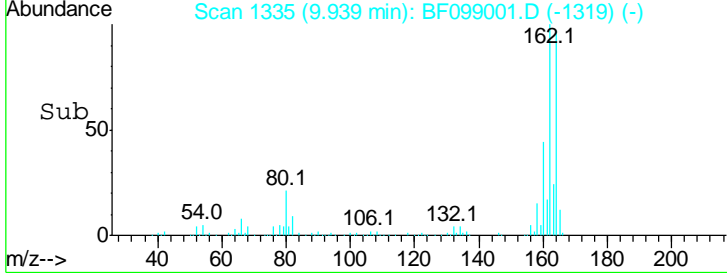
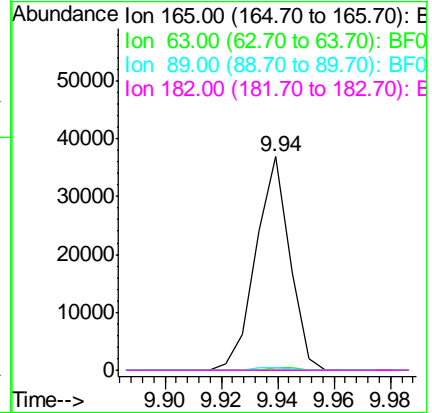
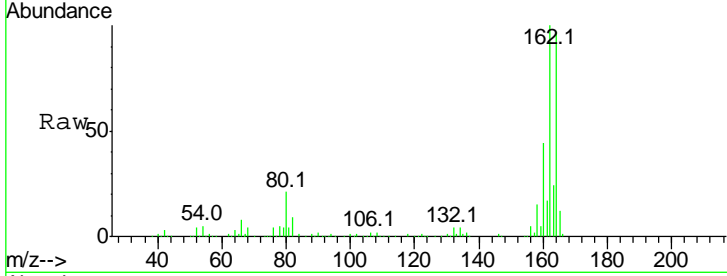




#56
 2,4-Dinitrotoluene
 Concen: 5.829 ng
 RT: 9.94 min Scan# 1335
 Delta R.T. -0.21 min
 Lab File: BF099001.D
 Acq: 2 Oct 2017 15:59

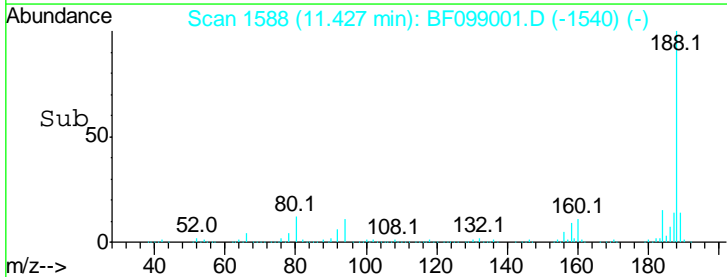
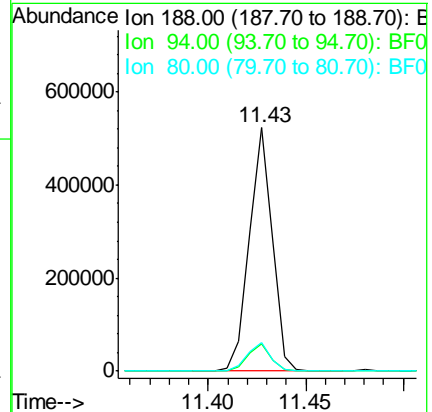
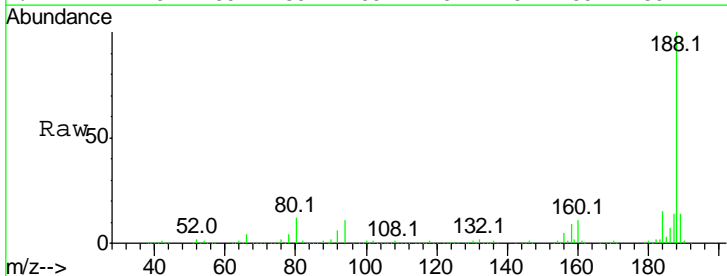
Instrument :
 BNA_F
 ClientSampled :

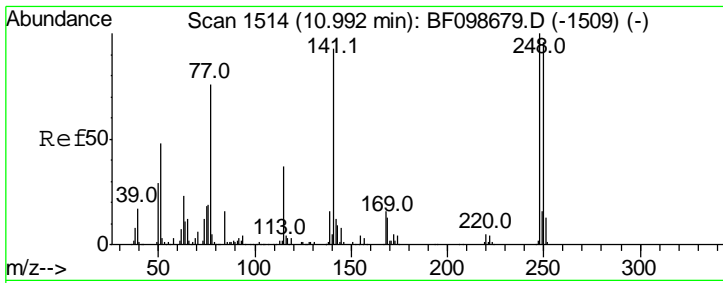
Tgt Ion	Resp	Lower	Upper
165	100		
63	1.4	36.4	54.6#
89	1.4	57.8	86.6#
182	0.0	1.6	2.4#



#63
 Phenanthrene-d10
 Concen: 20.000 ng
 RT: 11.43 min Scan# 1588
 Delta R.T. -0.02 min
 Lab File: BF099001.D
 Acq: 2 Oct 2017 15:59

Tgt Ion	Resp	Lower	Upper
188	100		
94	11.3	8.5	12.7
80	12.0	9.2	13.8

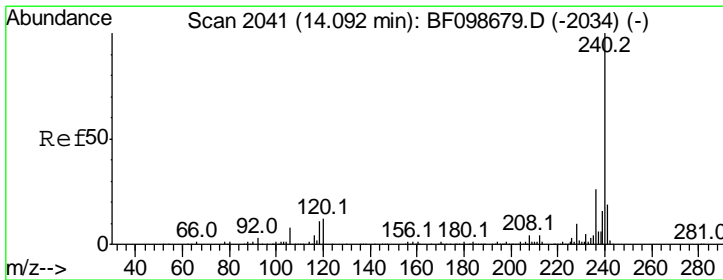
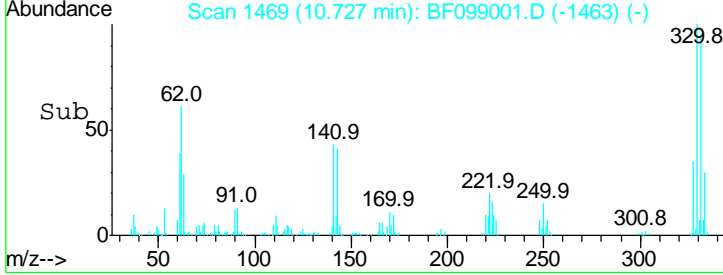
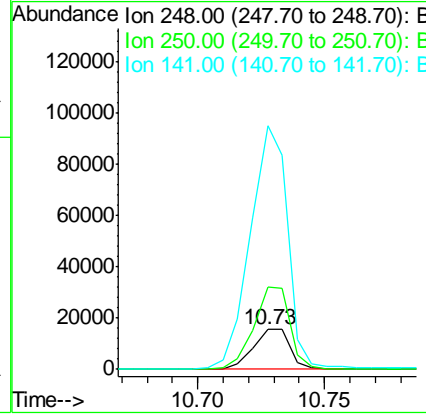
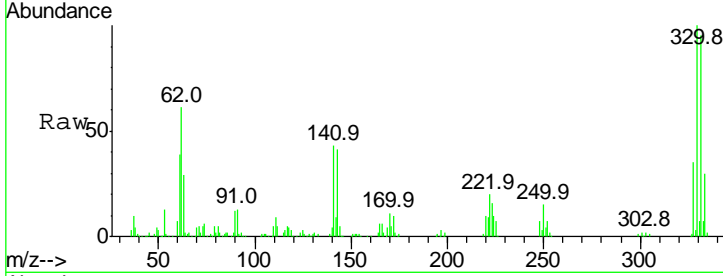




#66
 4-Bromophenyl-phenylether
 Concen: 3.829 ng
 RT: 10.73 min Scan# 1469
 Delta R.T. -0.26 min
 Lab File: BF099001.D
 Acq: 2 Oct 2017 15:59

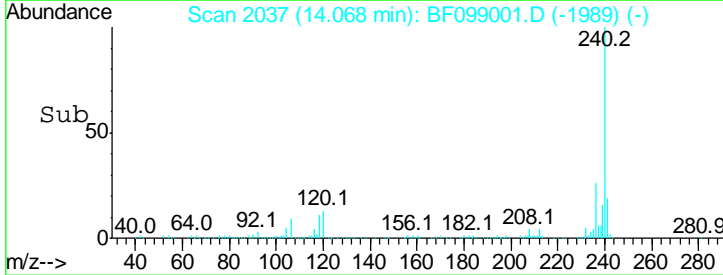
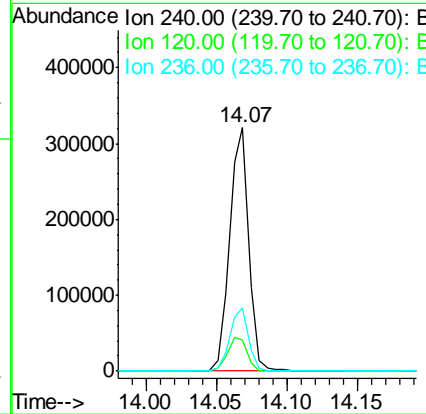
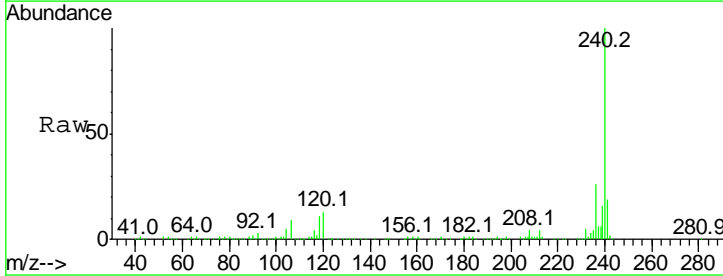
Instrument :
 BNA_F
 ClientSampled :

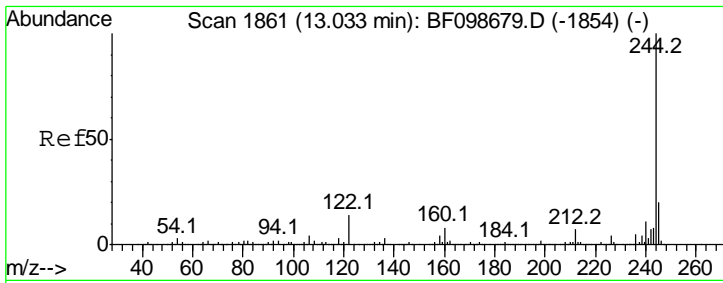
Tgt Ion	Resp	Lower	Upper
248	16048		
248	100		
250	207.0	76.9	115.3#
141	607.8	74.4	111.6#



#75
 Chrysene-d12
 Concen: 20.000 ng
 RT: 14.07 min Scan# 2037
 Delta R.T. -0.02 min
 Lab File: BF099001.D
 Acq: 2 Oct 2017 15:59

Tgt Ion	Resp	Lower	Upper
240	299211		
240	100		
120	13.0	9.5	14.3
236	26.0	20.7	31.1



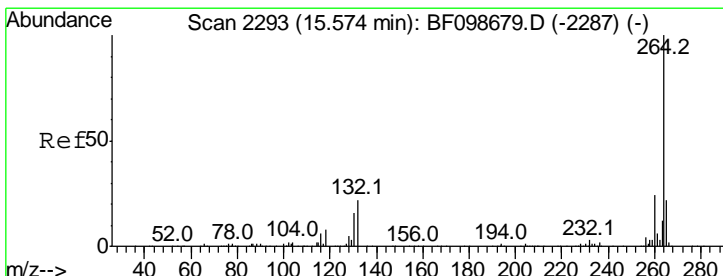
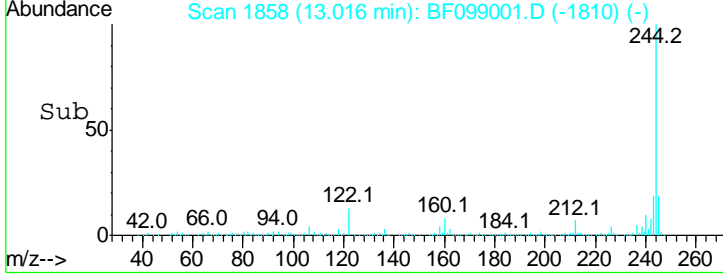
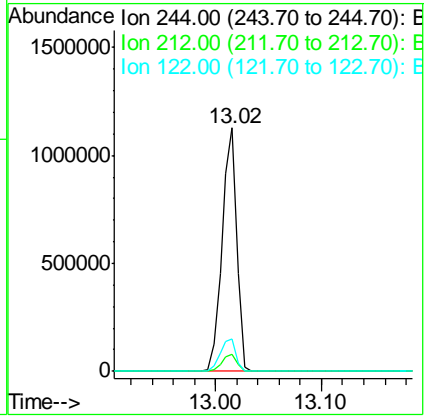
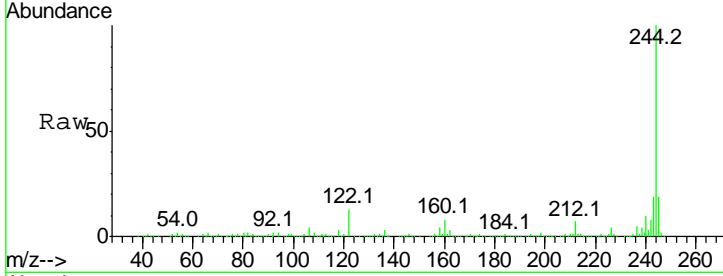


#78
 Terphenyl-d14
 Concen: 83.833 ng
 RT: 13.02 min Scan# 1858
 Delta R.T. -0.02 min
 Lab File: BF099001.D
 Acq: 2 Oct 2017 15:59

Instrument :
 BNA_F
 ClientSampled :

Tgt Ion: 244 Resp: 1102969

Ion	Ratio	Lower	Upper
244	100		
212	7.1	5.4	8.0
122	13.3	11.0	16.4



#86
 Perylene-d12
 Concen: 20.000 ng
 RT: 15.56 min Scan# 2290
 Delta R.T. -0.02 min
 Lab File: BF099001.D
 Acq: 2 Oct 2017 15:59

Tgt Ion: 264 Resp: 239977

Ion	Ratio	Lower	Upper
264	100		
260	23.5	19.2	28.8
265	20.1	17.5	26.3

