

Data Path : Z:\HPCHEM1\BNA F\DATA\BF100517\  
 Data File : BF099100.D  
 Acq On : 5 Oct 2017 13:45  
 Operator : SJ/JU  
 Sample : PB102887BL  
 Misc :  
 ALS Vial : 10 Sample Multiplier: 1

Instrument :  
 BNA\_F  
 ClientSampleId :  
 PB102887BL

Quant Time: Oct 05 17:27:16 2017  
 Quant Method : Z:\HPCHEM1\BNA F\METHODS\8270-BF092317.M  
 Quant Title : ASP BNA STANDARDS FOR 5 POINT CALIBRATION  
 QLast Update : Thu Oct 05 17:20:48 2017  
 Response via : Initial Calibration

Internal Standards	R.T.	QIon	Response	Conc	Units	Dev(Min)
1) 1,4-Dichlorobenzene-d4	6.86	152	123876	20.00	ng	0.00
21) Naphthalene-d8	8.15	136	513742	20.00	ng	0.00
38) Acenaphthene-d10	9.90	164	229853	20.00	ng	0.00
63) Phenanthrene-d10	11.39	188	425302	20.00	ng	0.00
75) Chrysene-d12	14.03	240	345525	20.00	ng	0.00
86) Perylene-d12	15.50	264	344468	20.00	ng	0.00
System Monitoring Compounds						
5) 2-Fluorophenol	5.49	112	917793	117.94	ng	0.01
7) Phenol-d6	6.49	99	1114987	116.15	ng	0.00
23) Nitrobenzene-d5	7.43	82	664493	82.95	ng	0.00
41) 2,4,6-Tribromophenol	10.69	330	225667	119.98	ng	0.00
44) 2-Fluorobiphenyl	9.22	172	1211857	88.02	ng	0.00
78) Terphenyl-d14	12.97	244	1109466	73.02	ng	0.00

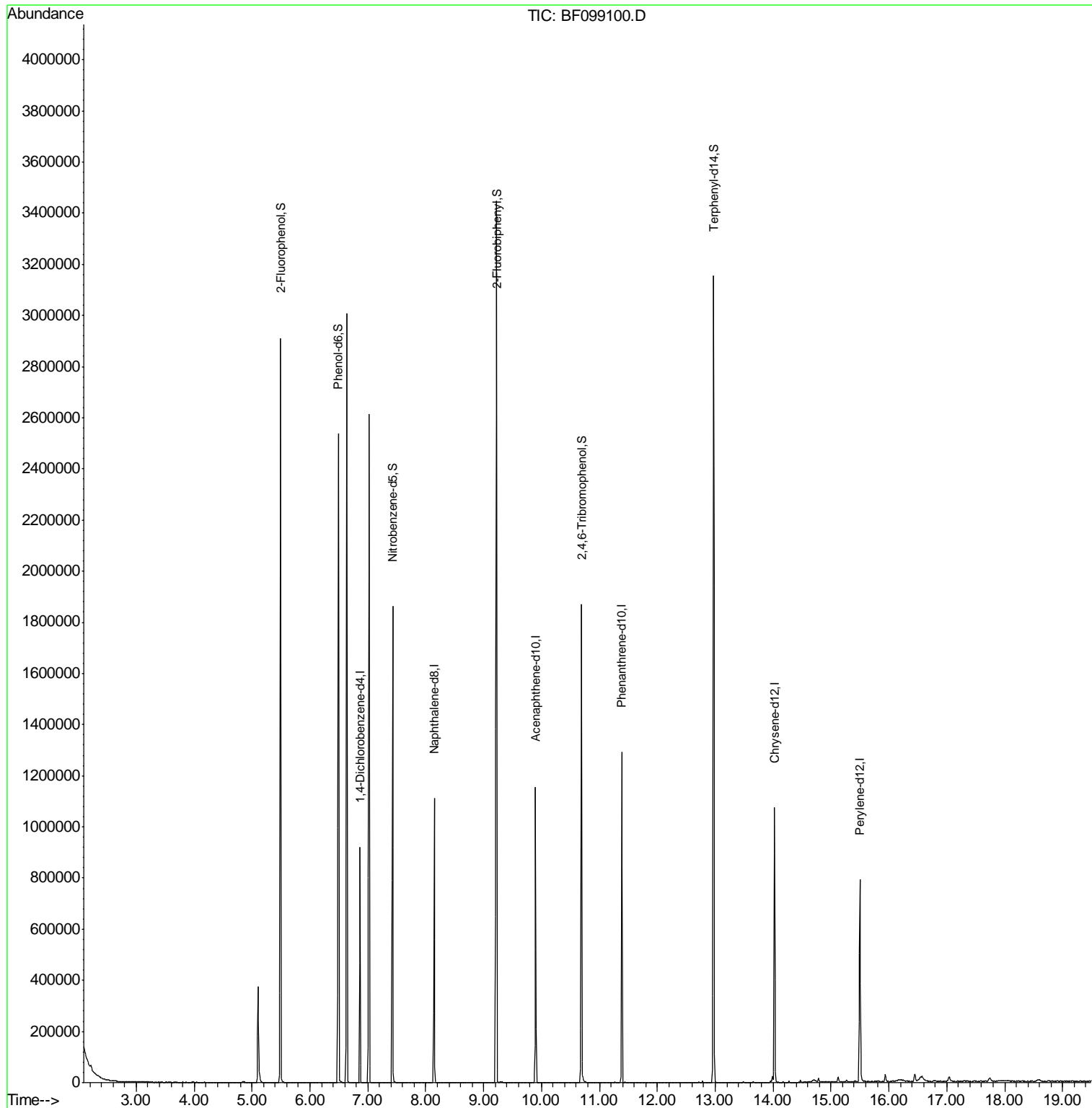
Target Compounds Qvalue

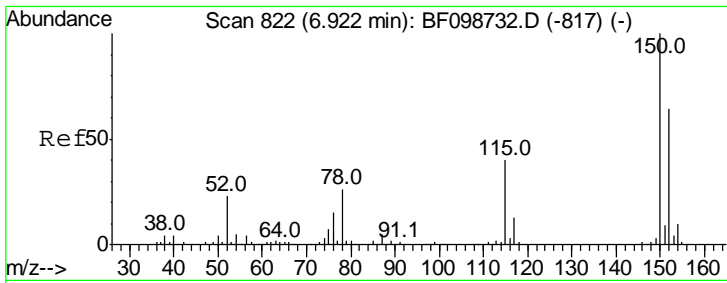
(#) = qualifier out of range (m) = manual integration (+) = signals summed

Data Path : Z:\HPCHEM1\BNA F\DATA\BF100517\  
Data File : BF099100.D  
Acq On : 5 Oct 2017 13:45  
Operator : SJ/JU  
Sample : PB102887BL  
Misc :  
ALS Vial : 10 Sample Multiplier: 1

Instrument :  
BNA\_F  
ClientSampled :  
PB102887BL

Quant Time: Oct 05 17:27:16 2017  
Quant Method : Z:\HPCHEM1\BNA F\METHODS\8270-BF092317.M  
Quant Title : ASP BNA STANDARDS FOR 5 POINT CALIBRATION  
QLast Update : Thu Oct 05 17:20:48 2017  
Response via : Initial Calibration

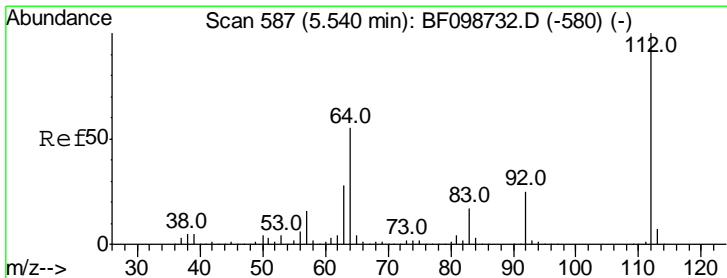
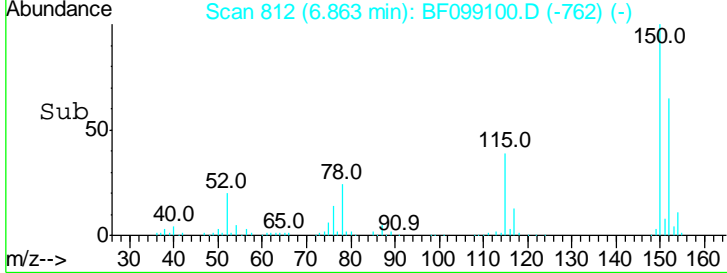
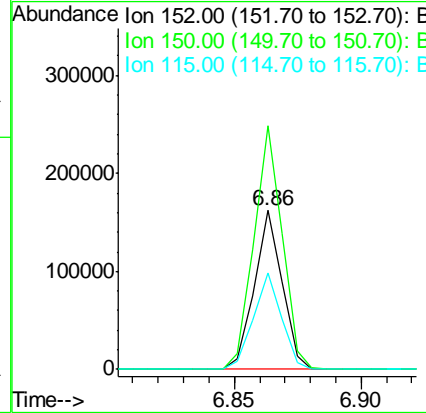
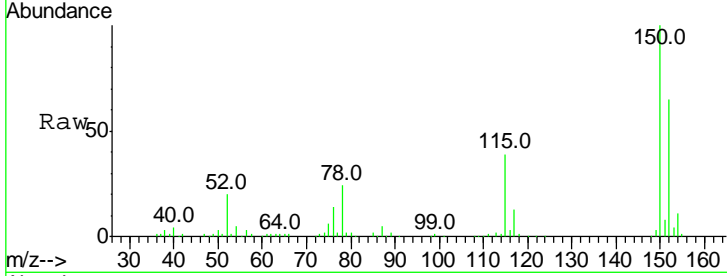




#1  
 1,4-Dichlorobenzene-d4  
 Concen: 20.000 ng  
 RT: 6.86 min Scan# 812  
 Delta R.T. -0.01 min  
 Lab File: BF099100.D  
 Acq: 5 Oct 2017 13:45

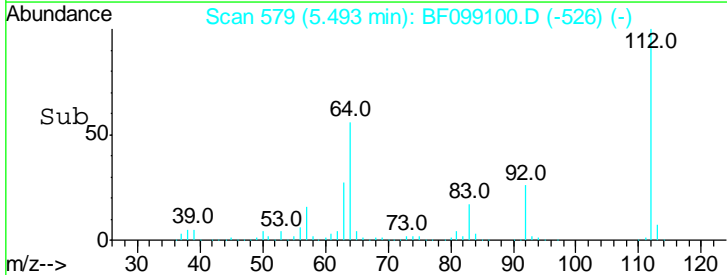
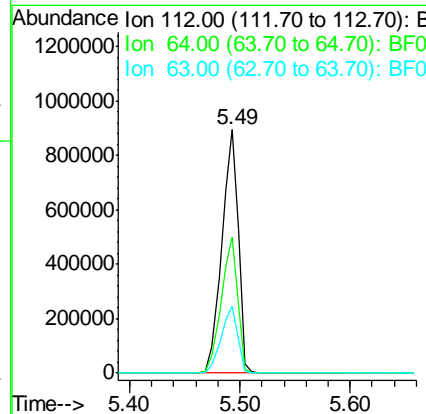
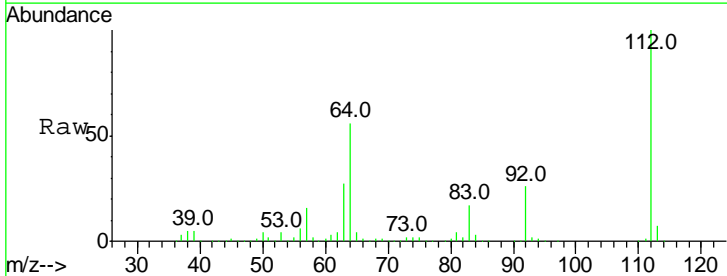
**Instrument :**  
 BNA\_F  
**ClientSampled :**  
 PB102887BL

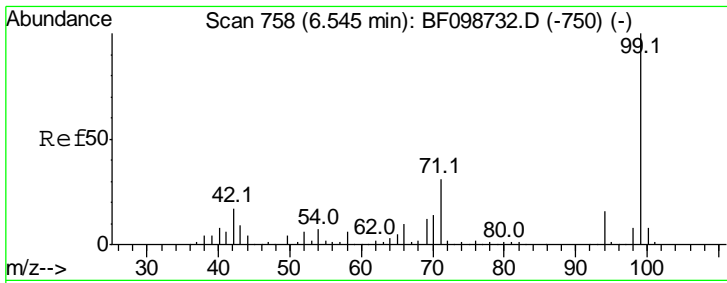
Tgt Ion	Resp	Lower	Upper
152	123876		
152	100		
150	153.5	124.6	186.8
115	60.6	50.1	75.1



#5  
 2-Fluorophenol  
 Concen: 117.943 ng  
 RT: 5.49 min Scan# 579  
 Delta R.T. 0.01 min  
 Lab File: BF099100.D  
 Acq: 5 Oct 2017 13:45

Tgt Ion	Resp	Lower	Upper
112	917793		
112	100		
64	55.9	47.9	71.9
63	27.4	23.7	35.5



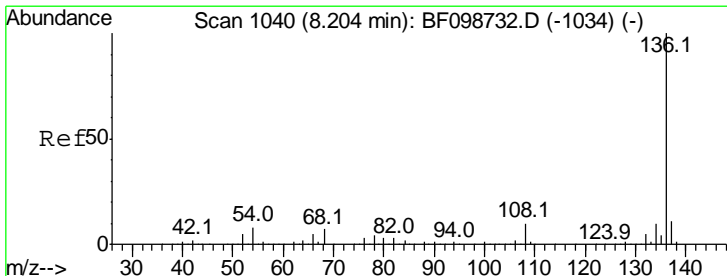
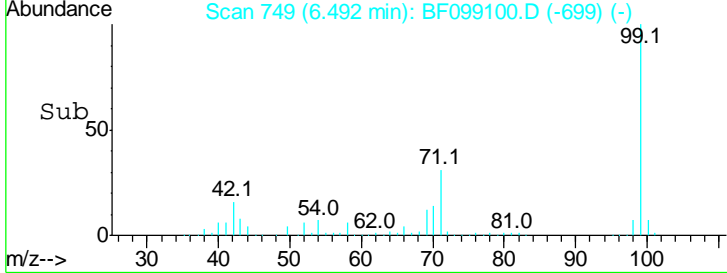
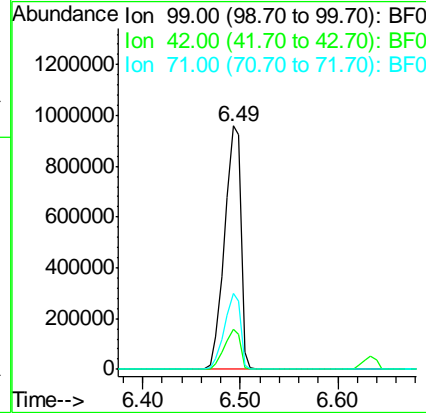
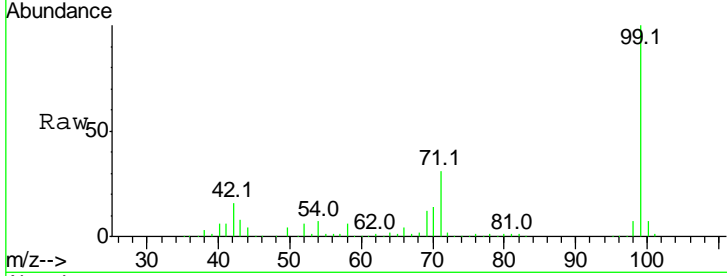


#7  
 Phenol-d6  
 Concen: 116.150 ng  
 RT: 6.49 min Scan# 749  
 Delta R.T. -0.01 min  
 Lab File: BF099100.D  
 Acq: 5 Oct 2017 13:45

**Instrument :**  
 BNA\_F  
**ClientSampled :**  
 PB102887BL

Tot Ion: 99 Resp: 1114987

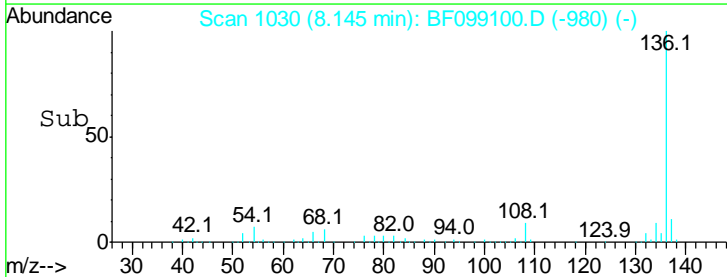
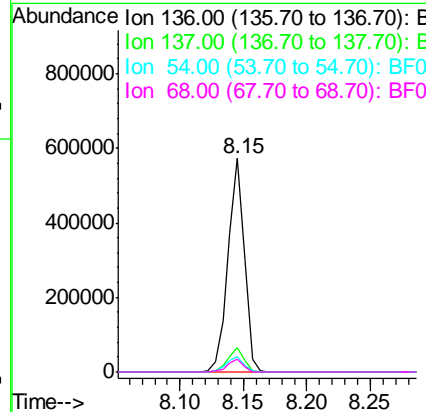
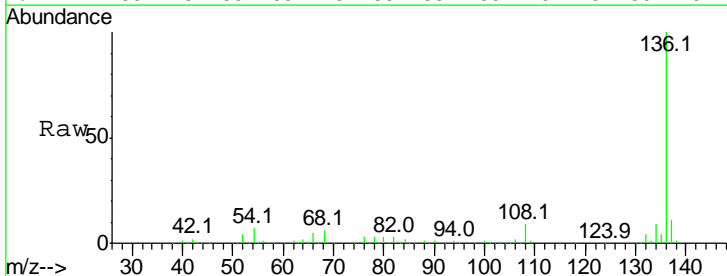
Ion	Ratio	Lower	Upper
99	100		
42	16.5	14.5	21.7
71	31.4	25.4	38.0

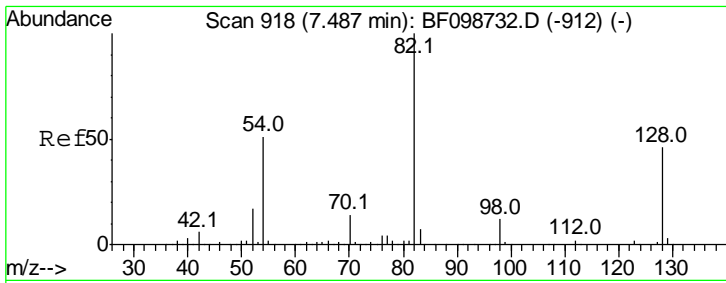


#21  
 Naphthalene-d8  
 Concen: 20.000 ng  
 RT: 8.15 min Scan# 1030  
 Delta R.T. -0.01 min  
 Lab File: BF099100.D  
 Acq: 5 Oct 2017 13:45

Tgt Ion: 136 Resp: 513742

Ion	Ratio	Lower	Upper
136	100		
137	11.4	8.9	13.3
54	7.4	6.6	9.8
68	5.9	5.0	7.4

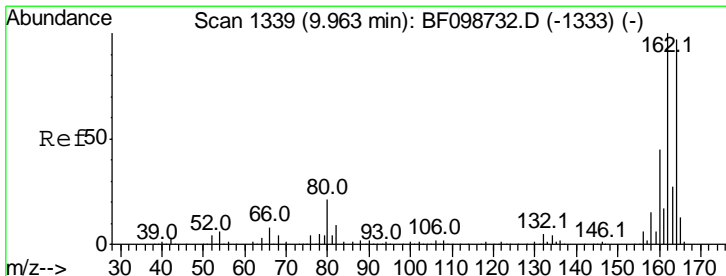
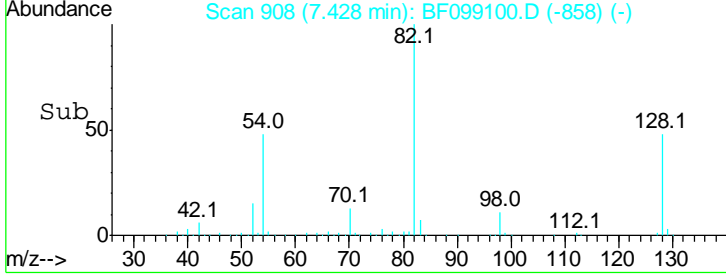
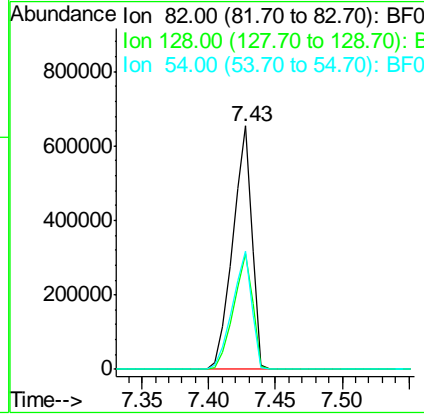
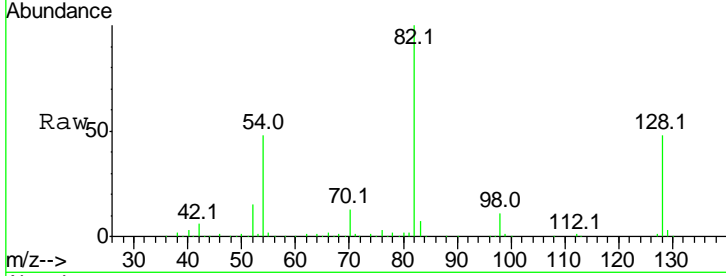




#23  
 Nitrobenzene-d5  
 Concen: 82.948 ng  
 RT: 7.43 min Scan# 908  
 Delta R.T. -0.01 min  
 Lab File: BF099100.D  
 Acq: 5 Oct 2017 13:45

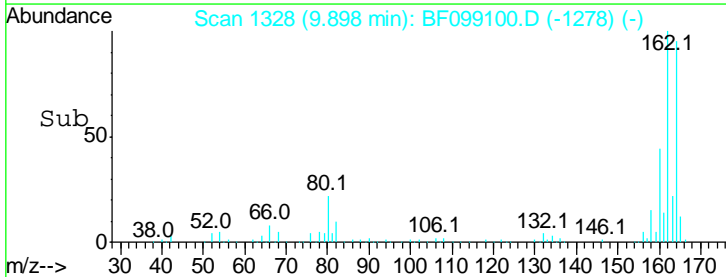
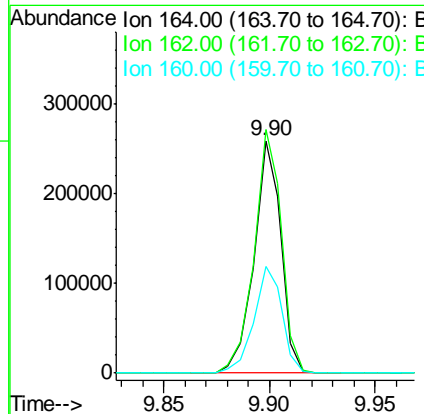
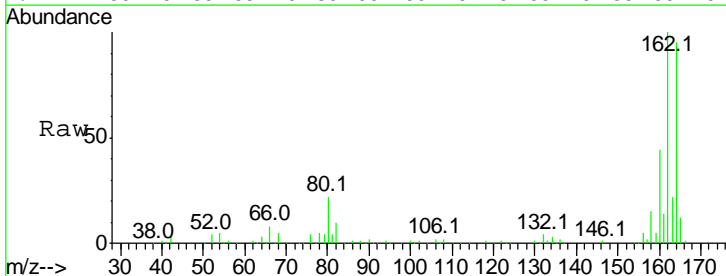
**Instrument :**  
 BNA\_F  
**ClientSampled :**  
 PB102887BL

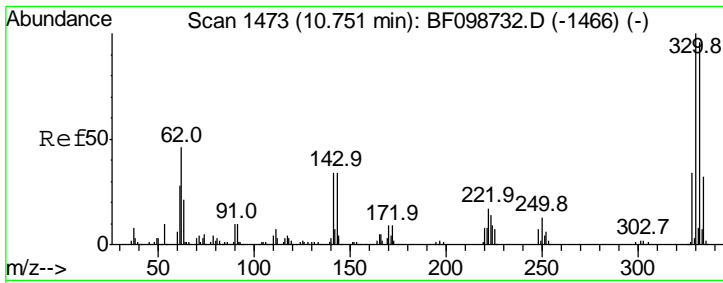
Tgt Ion	Resp	Lower	Upper
82	100		
128	47.7	36.1	54.1
54	48.4	41.4	62.2



#38  
 Acenaphthene-d10  
 Concen: 20.000 ng  
 RT: 9.90 min Scan# 1328  
 Delta R.T. -0.01 min  
 Lab File: BF099100.D  
 Acq: 5 Oct 2017 13:45

Tgt Ion	Resp	Lower	Upper
164	100		
162	104.8	86.1	129.1
160	45.9	38.3	57.5

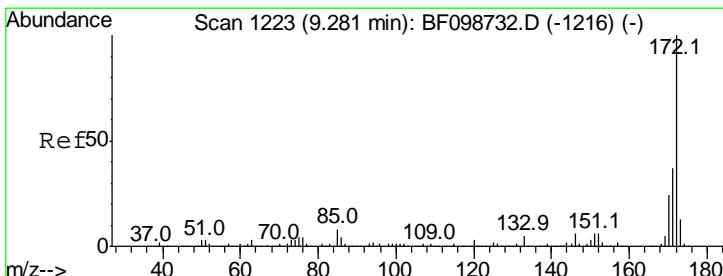
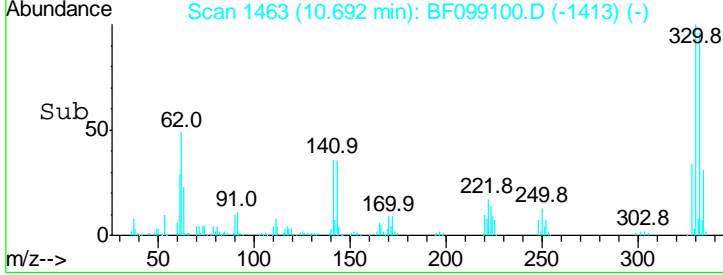
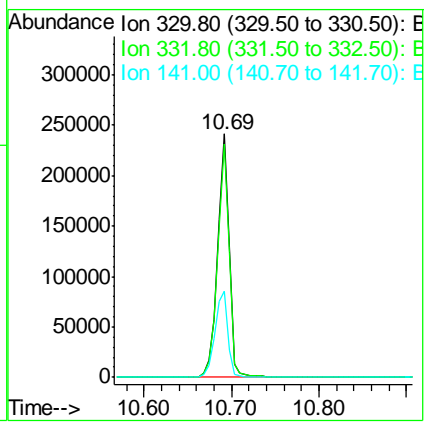
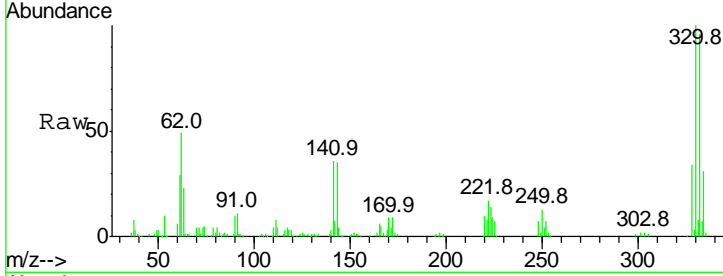




#41  
 2,4,6-Tribromophenol  
 Concen: 119.983 ng  
 RT: 10.69 min Scan# 1463  
 Delta R.T. -0.01 min  
 Lab File: BF099100.D  
 Acq: 5 Oct 2017 13:45

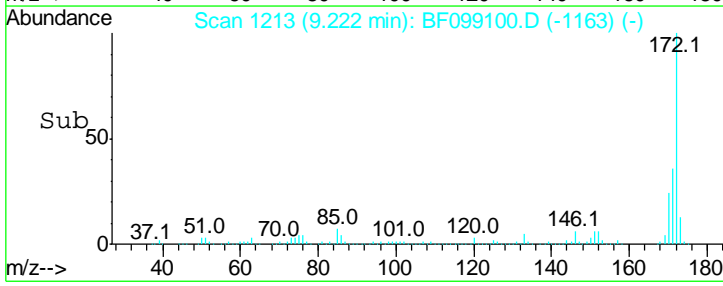
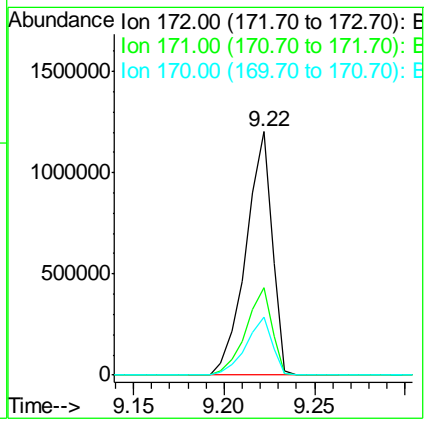
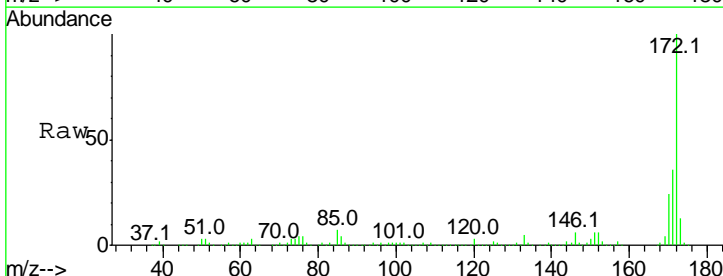
Instrument :  
 BNA\_F  
 ClientSampled :  
 PB102887BL

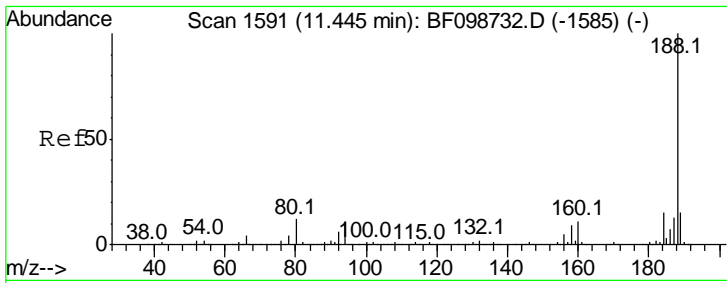
Tgt Ion	Resp	Lower	Upper
330	100		
332	95.3	77.0	115.6
141	39.4	29.9	44.9



#44  
 2-Fluorobiphenyl  
 Concen: 88.017 ng  
 RT: 9.22 min Scan# 1213  
 Delta R.T. -0.01 min  
 Lab File: BF099100.D  
 Acq: 5 Oct 2017 13:45

Tgt Ion	Resp	Lower	Upper
172	100		
171	35.9	29.7	44.5
170	23.8	19.6	29.4

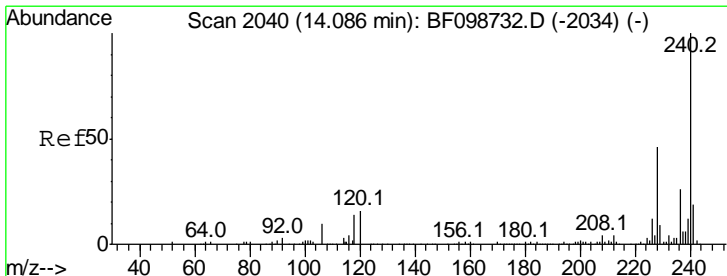
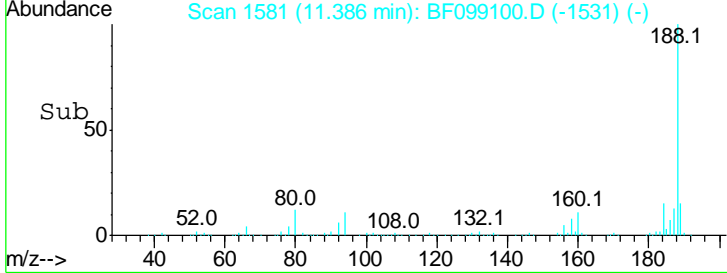
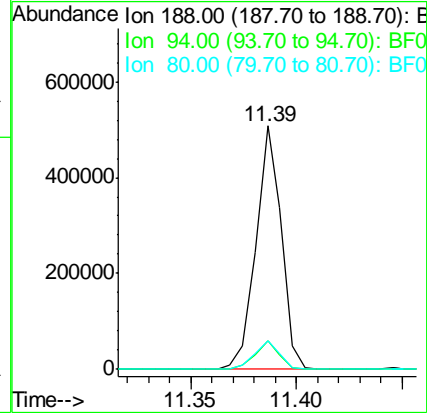
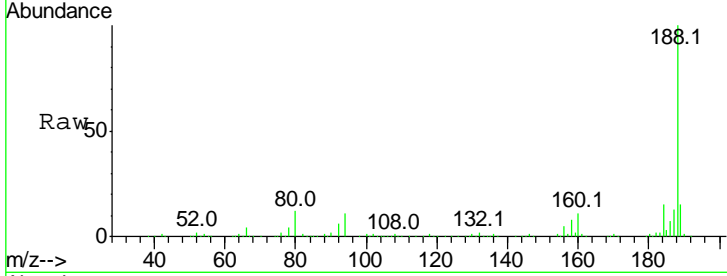




#63  
 Phenanthrene-d10  
 Concen: 20.000 ng  
 RT: 11.39 min Scan# 1581  
 Delta R.T. -0.01 min  
 Lab File: BF099100.D  
 Acq: 5 Oct 2017 13:45

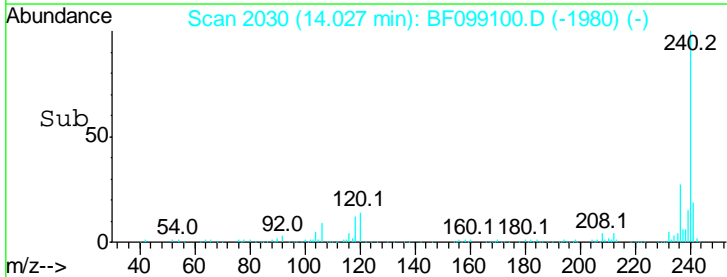
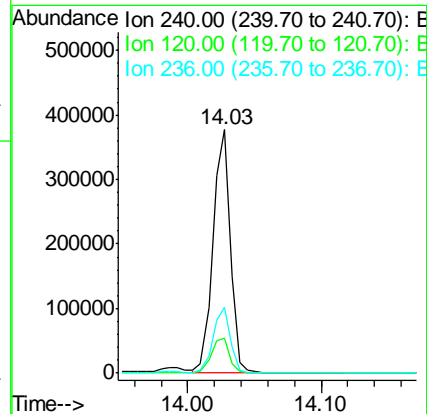
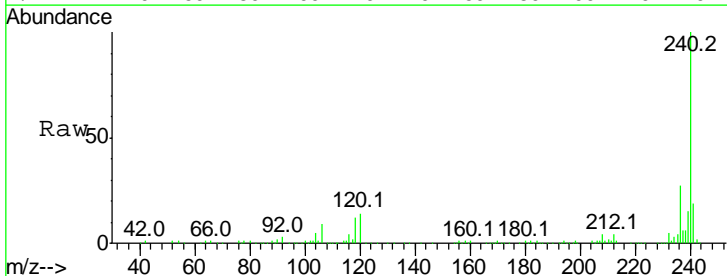
Instrument :  
 BNA\_F  
 ClientSampled :  
 PB102887BL

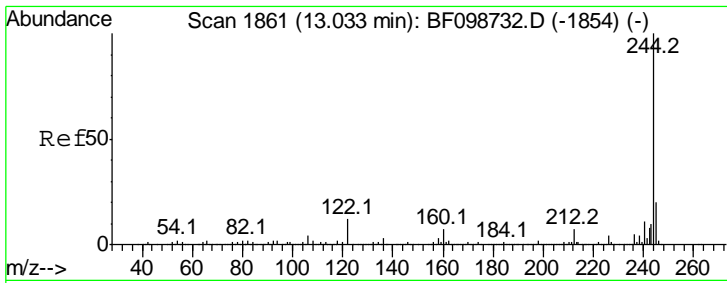
Tgt Ion	Resp	Lower	Upper
188	100		
94	11.5	8.5	12.7
80	11.9	9.2	13.8



#75  
 Chrysene-d12  
 Concen: 20.000 ng  
 RT: 14.03 min Scan# 2030  
 Delta R.T. -0.01 min  
 Lab File: BF099100.D  
 Acq: 5 Oct 2017 13:45

Tgt Ion	Resp	Lower	Upper
240	100		
120	14.4	9.5	14.3#
236	26.7	20.7	31.1



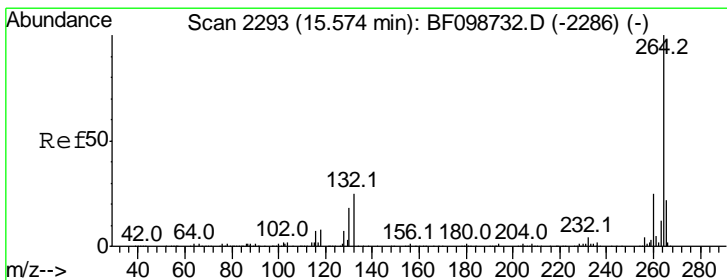
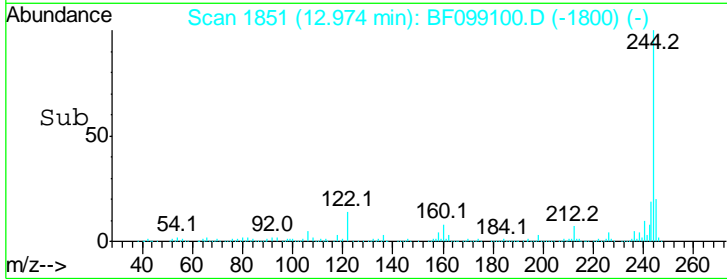
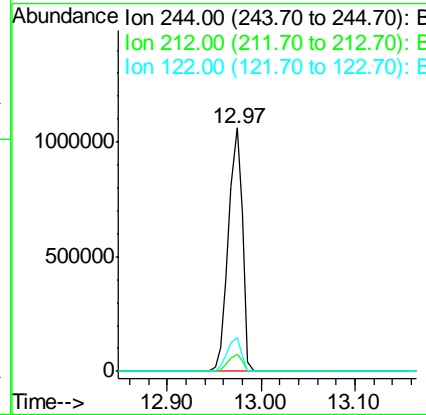
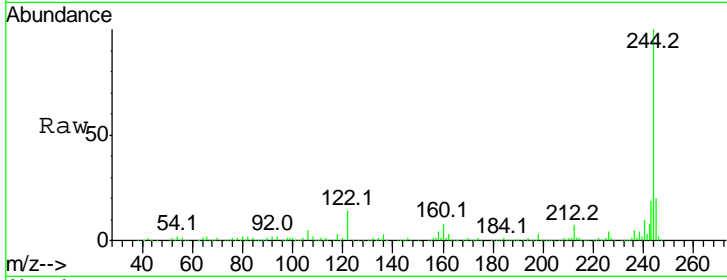


#78  
 Terphenyl-d14  
 Concen: 73.024 ng  
 RT: 12.97 min Scan# 1851  
 Delta R.T. 0.00 min  
 Lab File: BF099100.D  
 Acq: 5 Oct 2017 13:45

Instrument :  
 BNA\_F  
 ClientSampled :  
 PB102887BL

Tgt Ion: 244 Resp: 1109466

Ion	Ratio	Lower	Upper
244	100		
212	7.2	5.4	8.0
122	14.0	11.0	16.4



#86  
 Perylene-d12  
 Concen: 20.000 ng  
 RT: 15.50 min Scan# 2280  
 Delta R.T. -0.01 min  
 Lab File: BF099100.D  
 Acq: 5 Oct 2017 13:45

Tgt Ion: 264 Resp: 344468

Ion	Ratio	Lower	Upper
264	100		
260	23.6	19.2	28.8
265	21.4	17.5	26.3

