

Data Path : Z:\HPCHEM1\BNA_F\DATA\BF100617\
 Data File : BF099181.D
 Acq On : 7 Oct 2017 7:31
 Operator : SJ/JU
 Sample : I5675-01
 Misc :
 ALS Vial : 33 Sample Multiplier: 1

Instrument :
 BNA_F
 ClientSampleId :
 RI-MW-1-GW

Integration Parameters: rteint.p
 Integrator: RTE
 Smoothing : ON
 Sampling : 1
 Start Thrs: 0.2
 Stop Thrs : 0

Filtering: 5
 Min Area: 3 % of largest Peak
 Max Peaks: 100
 Peak Location: TOP

If leading or trailing edge < 100 prefer < Baseline drop else tangent >
 Peak separation: 5

Method : Z:\HPCHEM1\BNA_F\METHODS\8270-BF092317.M
 Title : ASP BNA STANDARDS FOR 5 POINT CALIBRATION

Signal : TIC

peak #	R.T. min	first scan	max scan	last scan	PK TY	peak height	corr. area	corr. % max.	% of total
1	2.163	7	13	21	rVB	562855	705039	17.53%	2.591%
2	3.957	313	318	322	rVB	35396	44609	1.11%	0.164%
3	5.093	507	511	521	rVB	257503	309650	7.70%	1.138%
4	5.487	574	578	582	rBV	2195506	2142477	53.26%	7.873%
5	6.492	745	749	752	rBV	1729178	1444396	35.90%	5.308%
6	6.634	769	773	777	rBV	3029569	3141822	78.10%	11.545%
7	6.863	808	812	815	rBV	951082	767074	19.07%	2.819%
8	7.022	834	839	842	rBV	3036835	2746370	68.27%	10.092%
9	7.428	903	908	911	rBV	2019249	2296870	57.10%	8.440%
10	8.145	1025	1030	1033	rBV	1235751	1050382	26.11%	3.860%
11	9.222	1207	1213	1216	rBV	4065060	4022846	100.00%	14.783%
12	9.898	1324	1328	1332	rBV2	1318249	1107652	27.53%	4.070%
13	10.692	1458	1463	1466	rBV	2055064	2030202	50.47%	7.460%
14	10.792	1477	1480	1489	rVB4	27936	42794	1.06%	0.157%
15	11.386	1577	1581	1584	rBV	1148440	996996	24.78%	3.664%
16	12.968	1845	1850	1854	rBV	2745413	2899024	72.06%	10.653%
17	13.851	1997	2000	2004	rBV4	34401	40255	1.00%	0.148%
18	14.021	2025	2029	2037	rVB	737929	659296	16.39%	2.423%
19	15.498	2274	2280	2290	rVB	561898	710881	17.67%	2.612%
20	16.433	2434	2439	2450	rBV2	27741	54458	1.35%	0.200%

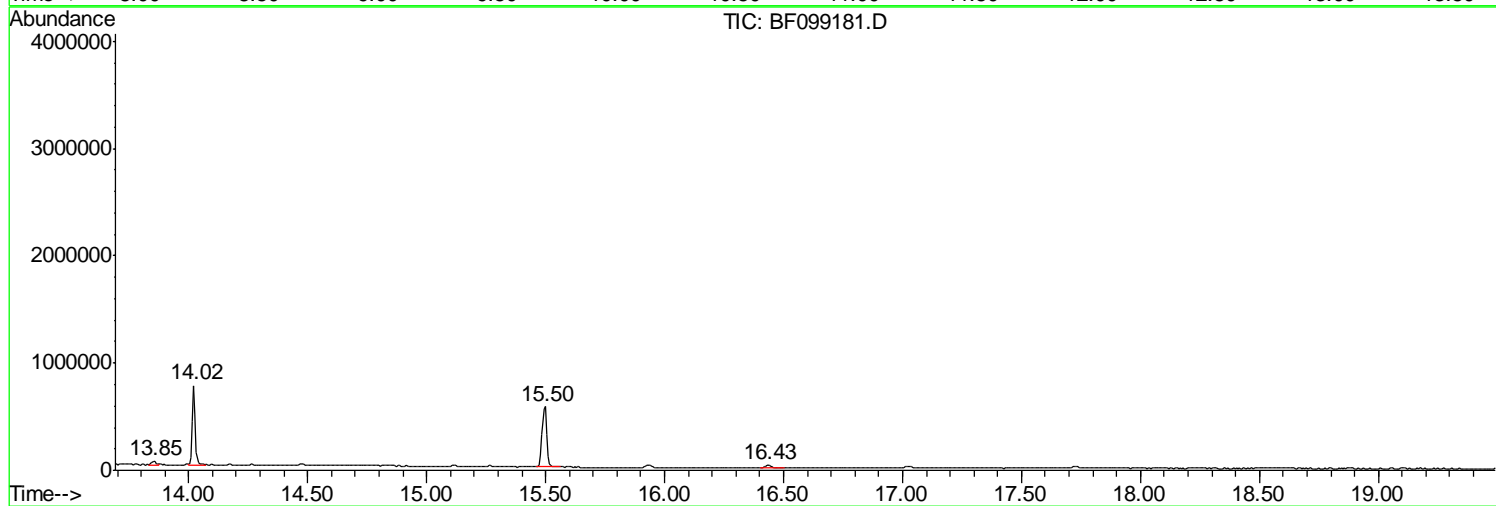
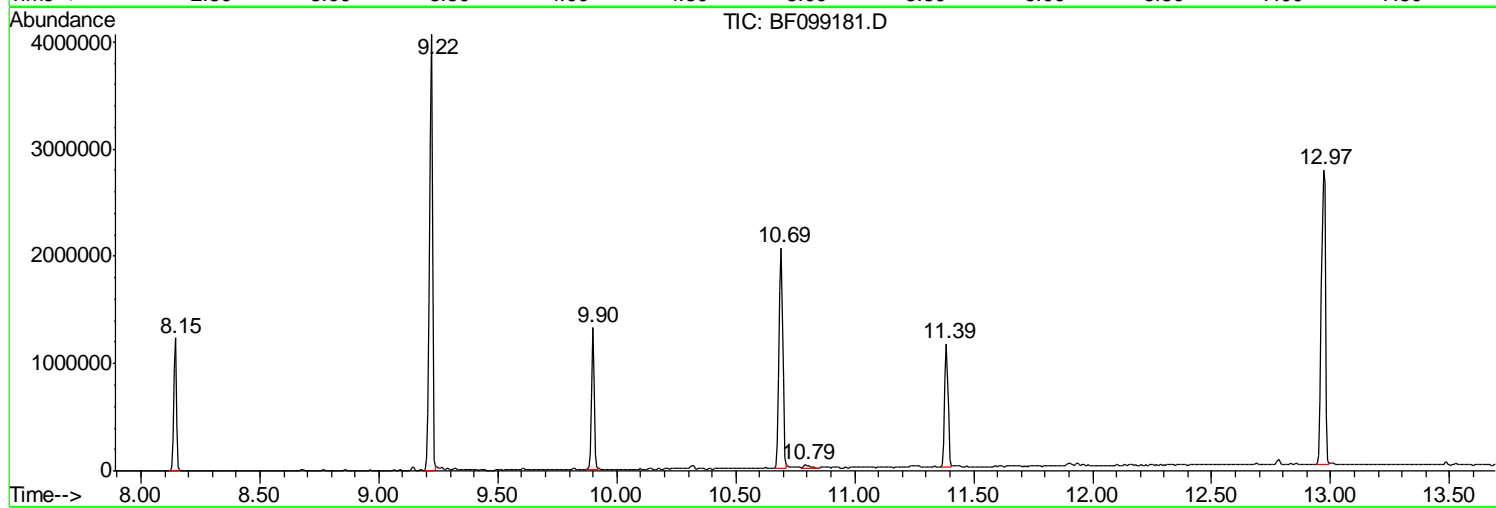
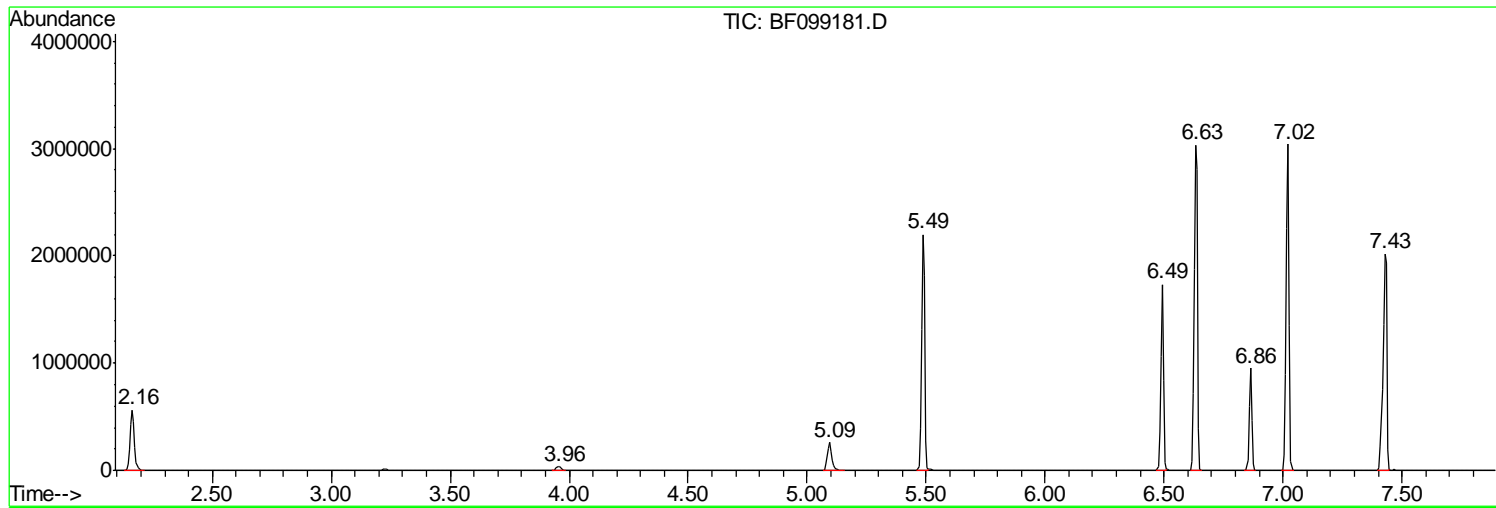
Sum of corrected areas: 27213093

Data Path : Z:\HPCHEM1\BNA_F\DATA\BF100617\
Data File : BF099181.D
Acq On : 7 Oct 2017 7:31
Operator : SJ/JU
Sample : I5675-01
Misc :
ALS Vial : 33 Sample Multiplier: 1

Instrument :
BNA_F
ClientSampled :
RI-MW-1-GW

Quant Method : Z:\HPCHEM1\BNA_F\METHODS\8270-BF092317.M
Quant Title : ASP BNA STANDARDS FOR 5 POINT CALIBRATION

TIC Library : C:\DATABASE\NIST11.L
TIC Integration Parameters: LSCINT.P



Data Path : Z:\HPCHEM1\BNA_F\DATA\BF100617\
 Data File : BF099181.D
 Acq On : 7 Oct 2017 7:31
 Operator : SJ/JU
 Sample : I5675-01
 Misc :
 ALS Vial : 33 Sample Multiplier: 1

Instrument :
 BNA_F
 ClientSampleID :
 RI-MW-1-GW

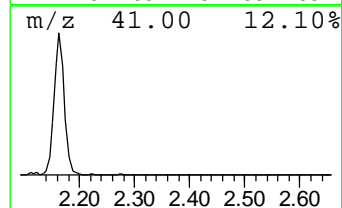
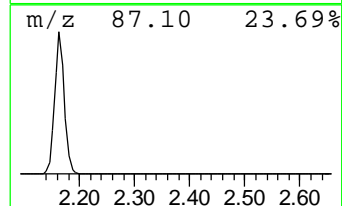
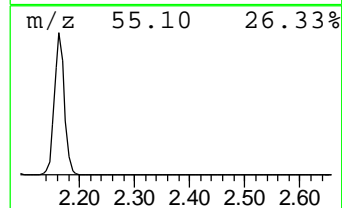
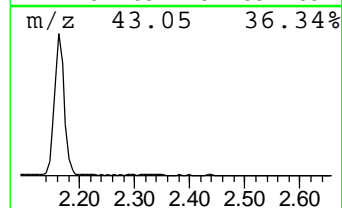
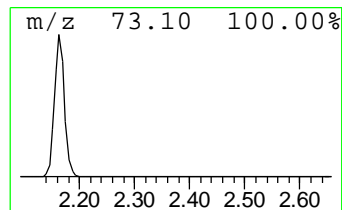
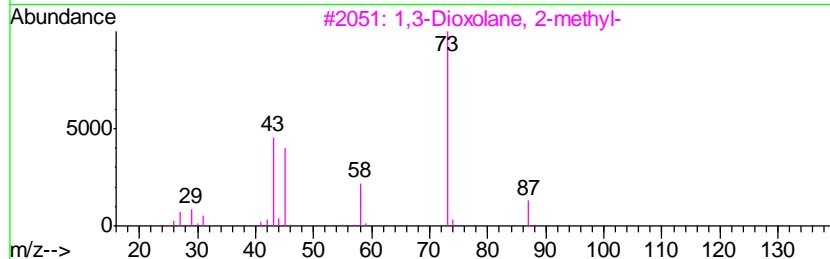
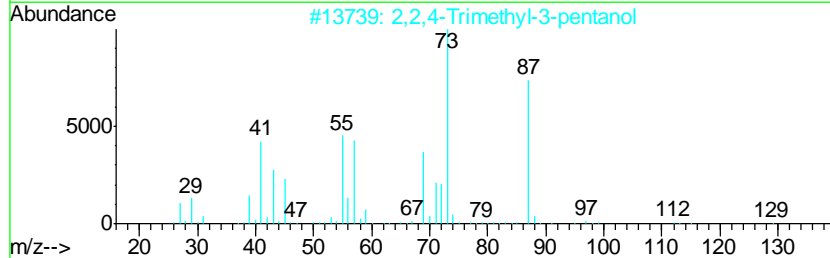
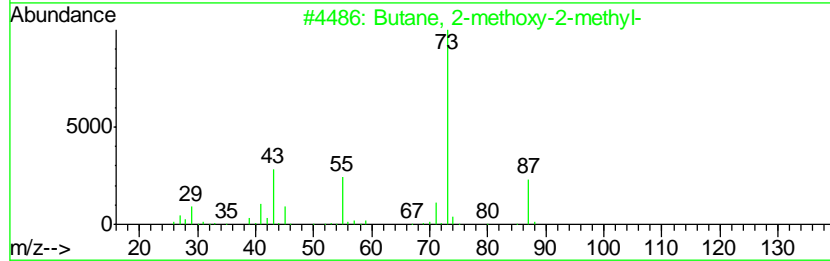
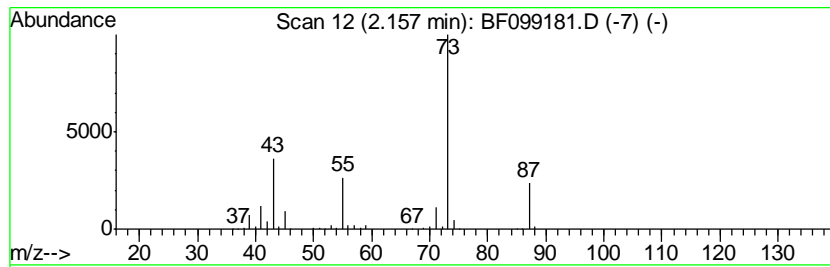
Quant Method : Z:\HPCHEM1\BNA_F\METHODS\8270-BF092317.M
 Quant Title : ASP BNA STANDARDS FOR 5 POINT CALIBRATION

TIC Library : C:\DATABASE\NIST11.L
 TIC Integration Parameters: LSCINT.P

 Peak Number 1 Butane, 2-methoxy-2-methyl- Concentration Rank 3

R.T.	EstConc	Area	Relative to ISTD	R.T.
2.16	18.38 ng	705039	1,4-Dichlorobenzene-d4	6.86

Hit#	of	Tentative ID	MW	MolForm	CAS#	Qual
1	5	Butane, 2-methoxy-2-methyl-	102	C6H14O	000994-05-8	78
2		2,2,4-Trimethyl-3-pentanol	130	C8H18O	005162-48-1	40
3		1,3-Dioxolane, 2-methyl-	88	C4H8O2	000497-26-7	25
4		Acetamide, N-ethyl-	87	C4H9NO	000625-50-3	22
5		Pentane, 3-methoxy-	102	C6H14O	036839-67-5	17



Data Path : Z:\HPCHEM1\BNA_F\DATA\BF100617\
 Data File : BF099181.D
 Acq On : 7 Oct 2017 7:31
 Operator : SJ/JU
 Sample : I5675-01
 Misc :
 ALS Vial : 33 Sample Multiplier: 1

Instrument :
 BNA_F
 ClientSampleID :
 RI-MW-1-GW

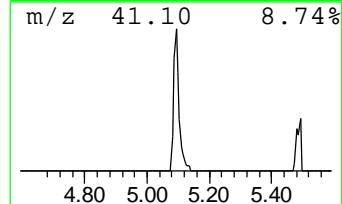
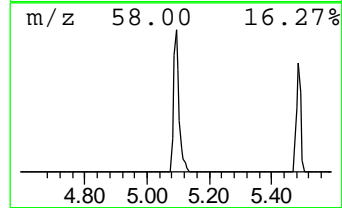
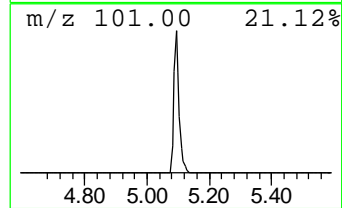
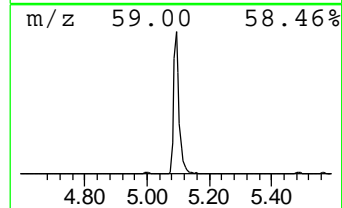
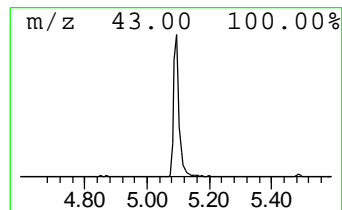
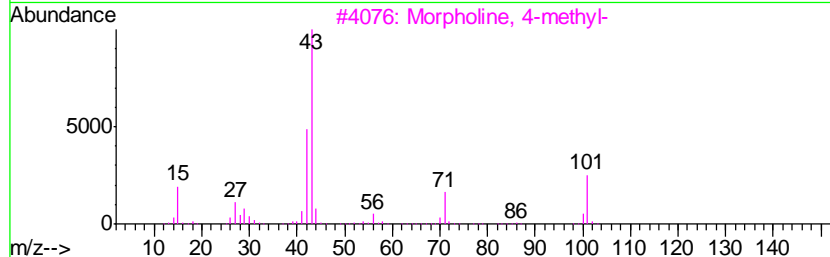
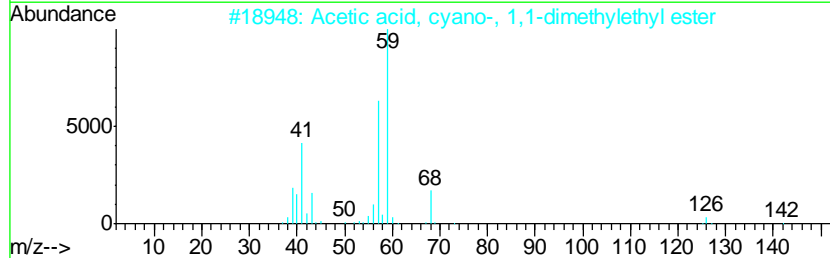
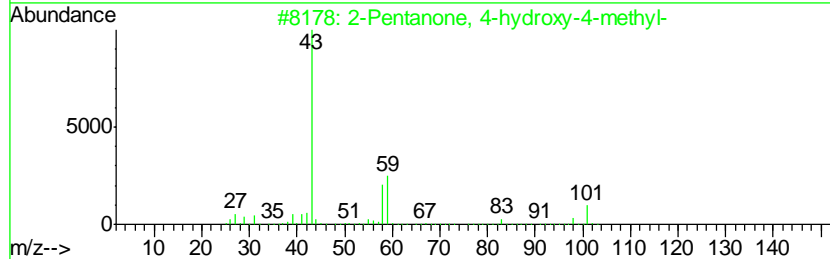
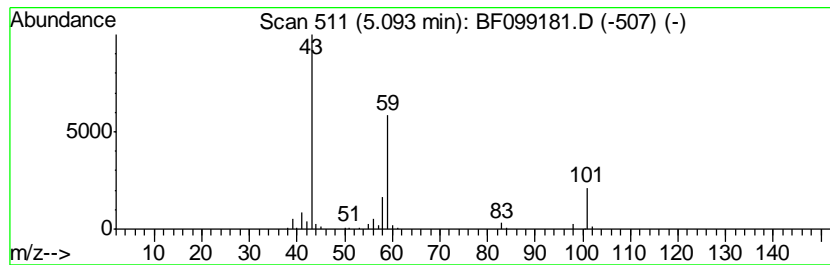
Quant Method : Z:\HPCHEM1\BNA_F\METHODS\8270-BF092317.M
 Quant Title : ASP BNA STANDARDS FOR 5 POINT CALIBRATION

TIC Library : C:\DATABASE\NIST11.L
 TIC Integration Parameters: LSCINT.P

 Peak Number 2 2-Pentanone, 4-hydroxy-4-me... Concentration Rank 4

R.T.	EstConc	Area	Relative to ISTD	R.T.
5.09	8.07 ng	309650	1,4-Dichlorobenzene-d4	6.86

Hit#	of	Tentative ID	MW	MolForm	CAS#	Qual
1	5	2-Pentanone, 4-hydroxy-4-methyl-	116	C6H12O2	000123-42-2	50
2		Acetic acid, cyano-, 1,1-dimethyl...	141	C7H11NO2	001116-98-9	17
3		Morpholine, 4-methyl-	101	C5H11NO	000109-02-4	9
4		5-Hexen-2-one	98	C6H10O	000109-49-9	9
5		(+)-4-Amino-4,5-dihydro-2(3H)-f...	101	C4H7NO2	016504-58-8	9



Data Path : Z:\HPCHEM1\BNA_F\DATA\BF100617\
 Data File : BF099181.D
 Acq On : 7 Oct 2017 7:31
 Operator : SJ/JU
 Sample : I5675-01
 Misc :
 ALS Vial : 33 Sample Multiplier: 1

Instrument :
 BNA_F
 ClientSampleID :
 RI-MW-1-GW

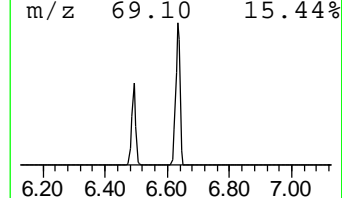
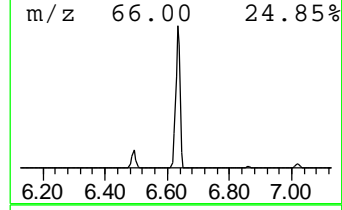
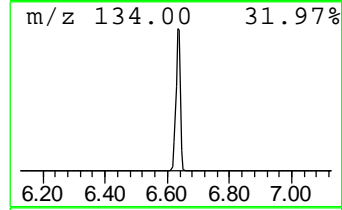
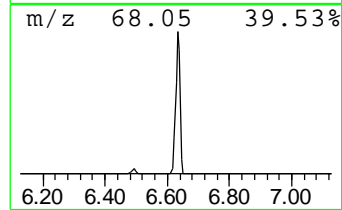
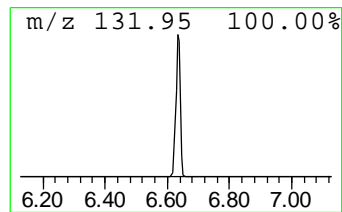
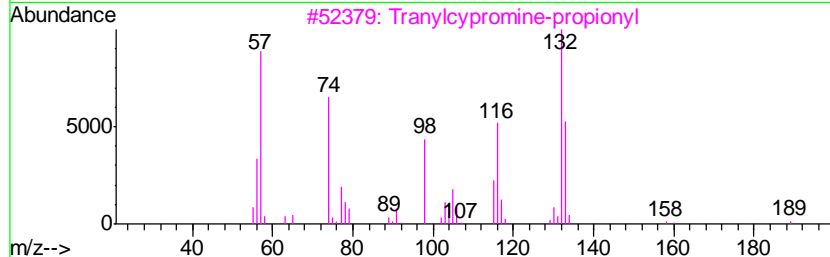
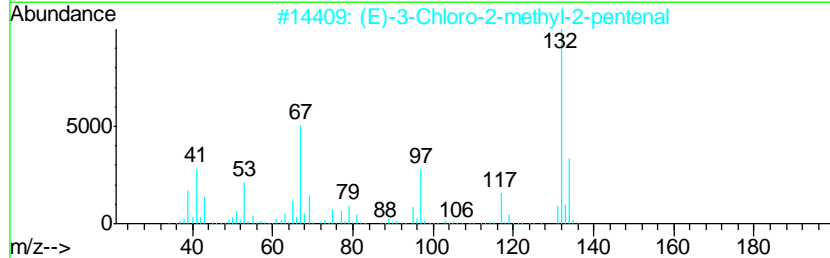
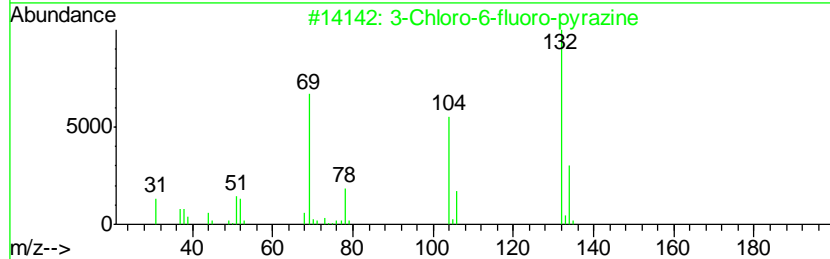
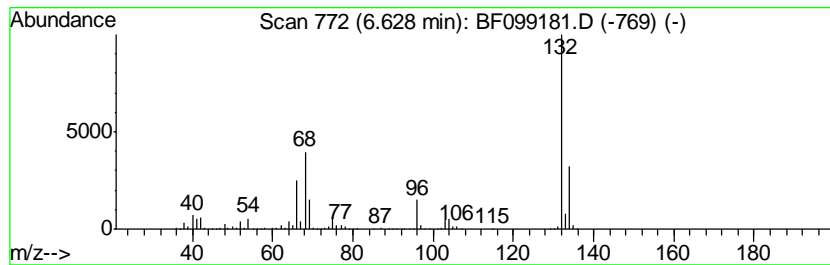
Quant Method : Z:\HPCHEM1\BNA_F\METHODS\8270-BF092317.M
 Quant Title : ASP BNA STANDARDS FOR 5 POINT CALIBRATION

TIC Library : C:\DATABASE\NIST11.L
 TIC Integration Parameters: LSCINT.P

 Peak Number 3 unknown6.63 Concentration Rank 1

R.T.	EstConc	Area	Relative to ISTD	R.T.
6.63	81.92 ng	3141820	1,4-Dichlorobenzene-d4	6.86

Hit#	of	Tentative ID	MW	MolForm	CAS#	Qual
1	5	3-Chloro-6-fluoro-pyrazine	132	C4H2ClFN2	1000146-10-7	35
2		(E)-3-Chloro-2-methyl-2-pentenal	132	C6H9ClO	031357-76-3	17
3		Tranlycypromine-propionyl	189	C12H15NO	1000123-86-3	12
4		5-Aminoindole	132	C8H8N2	005192-03-0	12
5		2H-Cyclopenta[d]pyridazine, 2-me...	132	C8H8N2	022291-85-6	9



Data Path : Z:\HPCHEM1\BNA_F\DATA\BF100617\
Data File : BF099181.D
Acq On : 7 Oct 2017 7:31
Operator : SJ/JU
Sample : I5675-01
Misc :
ALS Vial : 33 Sample Multiplier: 1

Instrument :
BNA_F
ClientSampleId :
RI-MW-1-GW

Quant Method : Z:\HPCHEM1\BNA_F\METHODS\8270-BF092317.M
Quant Title : ASP BNA STANDARDS FOR 5 POINT CALIBRATION

TIC Library : C:\DATABASE\NIST11.L
TIC Integration Parameters: LSCINT.P

TIC Top Hit name	RT	EstConc	Units	Response	--Internal Standard--			
					#	RT	Resp	Conc
Butane, 2-methoxy...	2.16	18.4	ng	705039	1	6.86	767074	20.0
2-Pentanone, 4-hy...	5.09	8.1	ng	309650	1	6.86	767074	20.0
unknown6.63	6.63	81.9	ng	3141820	1	6.86	767074	20.0