

Data Path : Z:\HPCHEM1\BNA_F\DATA\BF100715\
 Data File : BF082106.D
 Acq On : 7 Oct 2015 16:00
 Operator : UM/IZ
 Sample : PB85936BL
 Misc :
 ALS Vial : 10 Sample Multiplier: 1

Instrument :
 BNA_F
 ClientSampleId :
 PB85936BL

Integration Parameters: rteint.p
 Integrator: RTE
 Smoothing : ON Filtering: 5
 Sampling : 1 Min Area: 3 % of largest Peak
 Start Thrs: 0.2 Max Peaks: 100
 Stop Thrs : 0 Peak Location: TOP

If leading or trailing edge < 100 prefer < Baseline drop else tangent >
 Peak separation: 5

Method : Z:\HPCHEM1\BNA_F\METHODS\8270-BF092815.M
 Title : ASP BNA STANDARDS FOR 5 POINT CALIBRATION

Signal : TIC

peak #	R.T. min	first scan	max scan	last scan	PK TY	peak height	corr. area	corr. % max.	% of total
1	5.063	253	256	267	rBV	723573	982420	34.47%	4.727%
2	5.474	289	292	294	rBV	1922034	1946371	68.29%	9.365%
3	6.503	379	382	385	rBV	1690103	1785921	62.66%	8.593%
4	6.640	391	394	396	rBV	2160478	2107411	73.94%	10.140%
5	6.869	412	414	426	rBV	385189	477053	16.74%	2.295%
6	7.029	426	428	430	rBV	1883385	1706350	59.87%	8.210%
7	7.440	462	464	477	rBV	1179730	1284438	45.06%	6.180%
8	8.160	525	527	536	rBV	656446	650086	22.81%	3.128%
9	9.235	619	621	624	rBV	2031274	2409307	84.53%	11.593%
10	9.920	678	681	683	rBV	655453	754205	26.46%	3.629%
11	10.709	747	750	752	rBV	1539897	1563177	54.84%	7.522%
12	11.406	809	811	813	rBV	778817	769523	27.00%	3.703%
13	12.995	947	950	952	rBV	2802314	2850306	100.00%	13.715%
14	14.047	1040	1042	1054	rBV	757050	839368	29.45%	4.039%
15	15.498	1166	1169	1179	rBV	379817	656787	23.04%	3.160%

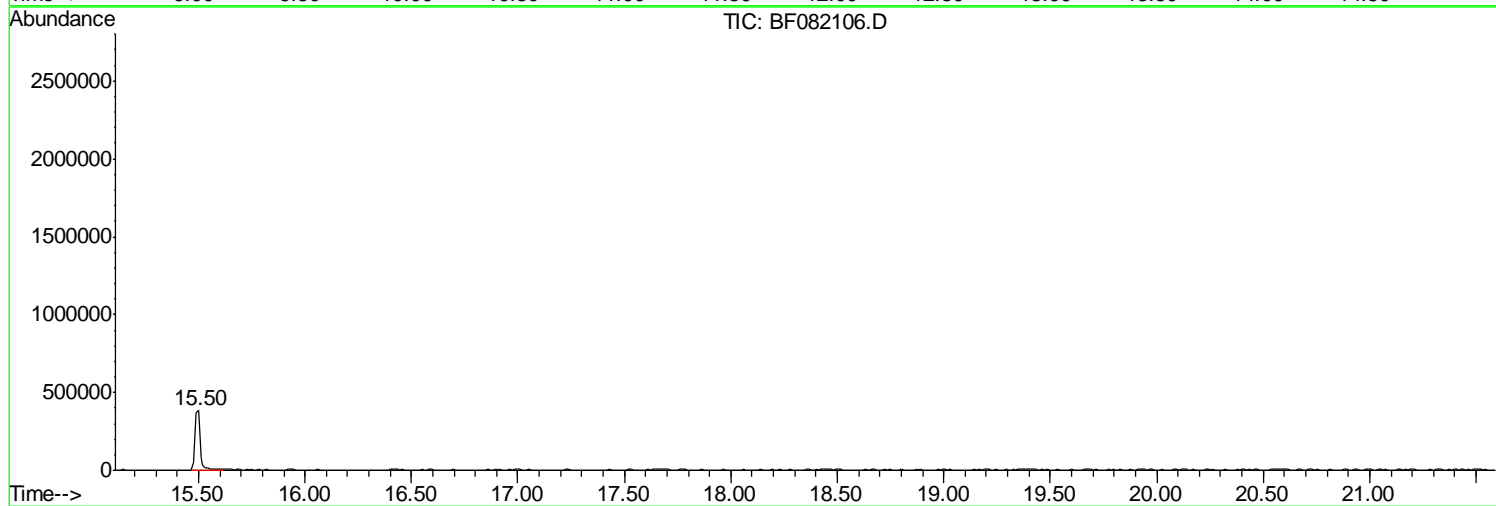
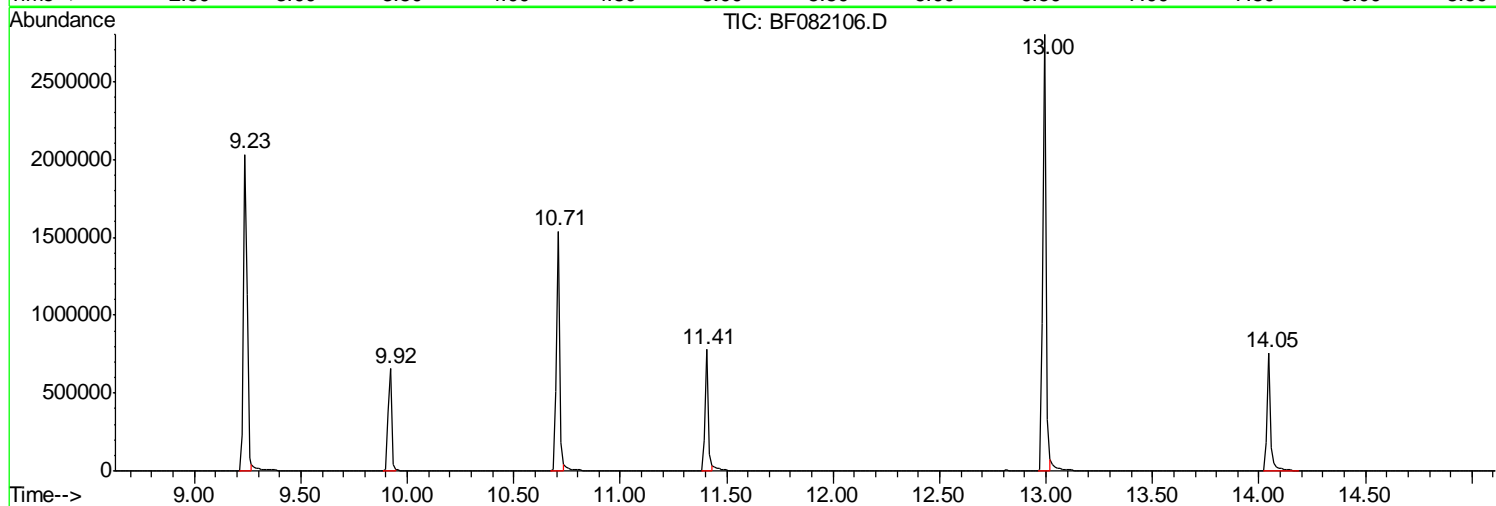
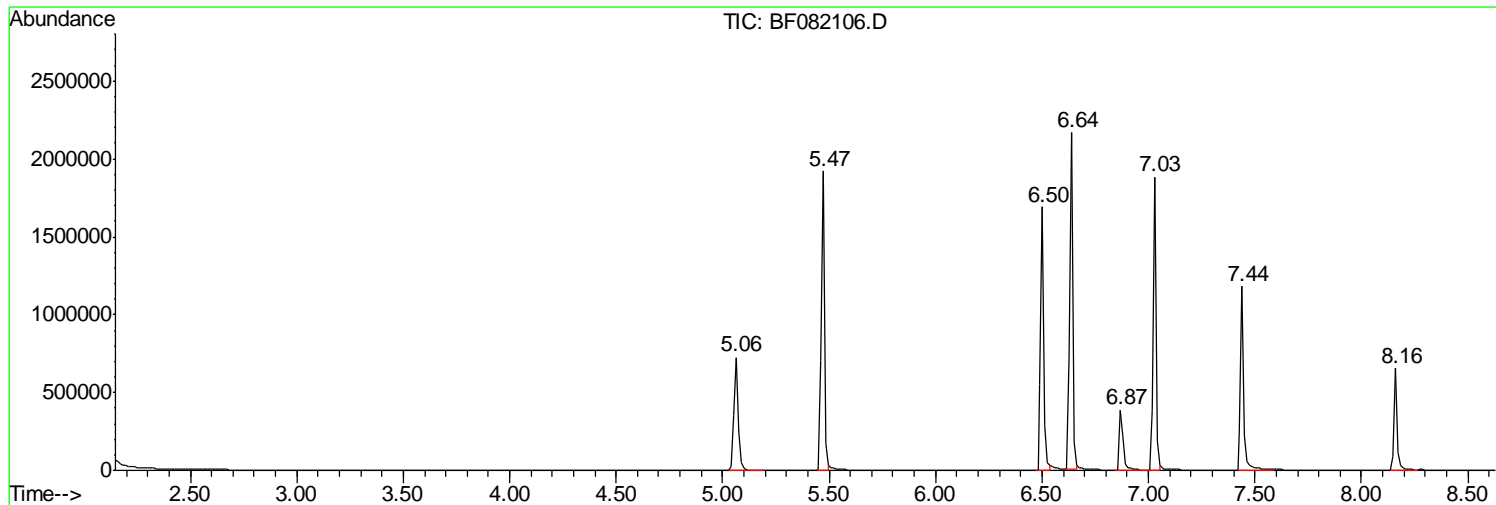
Sum of corrected areas: 20782723

Data Path : Z:\HPCHEM1\BNA_F\DATA\BF100715\
Data File : BF082106.D
Acq On : 7 Oct 2015 16:00
Operator : UM/IZ
Sample : PB85936BL
Misc :
ALS Vial : 10 Sample Multiplier: 1

Instrument :
BNA_F
ClientSampled :
PB85936BL

Quant Method : Z:\HPCHEM1\BNA_F\METHODS\8270-BF092815.M
Quant Title : ASP BNA STANDARDS FOR 5 POINT CALIBRATION

TIC Library : C:\DATABASE\NIST02.L
TIC Integration Parameters: LSCINT.P



Data Path : Z:\HPCHEM1\BNA_F\DATA\BF100715\
 Data File : BF082106.D
 Acq On : 7 Oct 2015 16:00
 Operator : UM/IZ
 Sample : PB85936BL
 Misc :
 ALS Vial : 10 Sample Multiplier: 1

Instrument :
 BNA_F
 ClientSampleID :
 PB85936BL

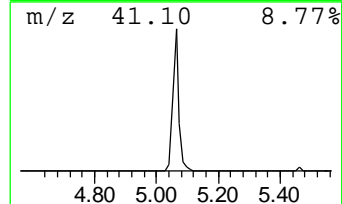
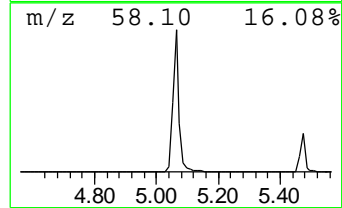
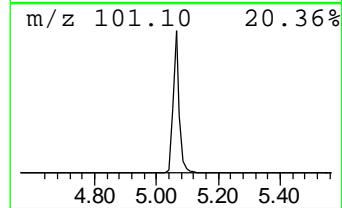
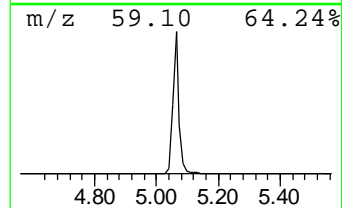
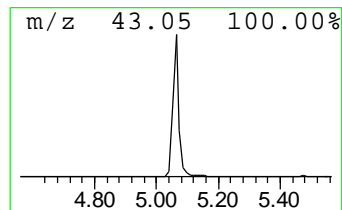
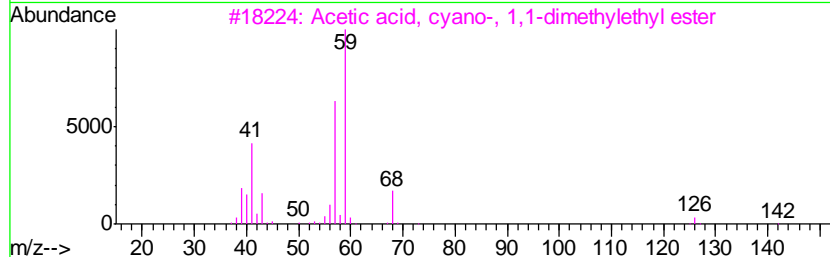
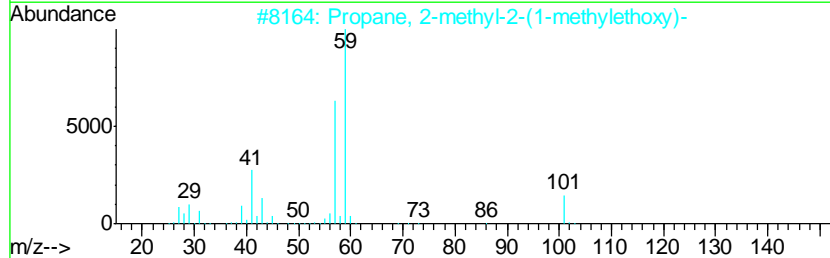
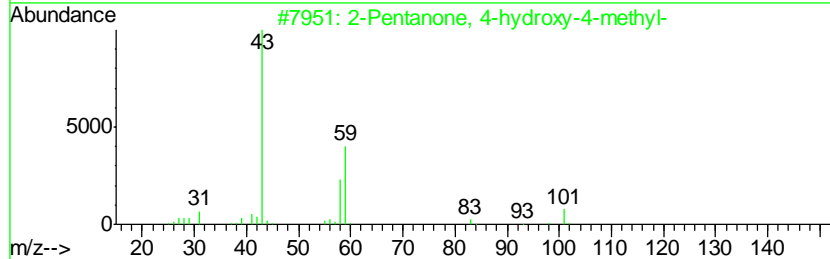
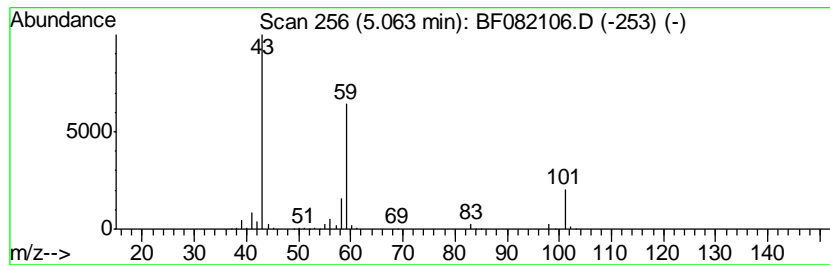
Quant Method : Z:\HPCHEM1\BNA_F\METHODS\8270-BF092815.M
 Quant Title : ASP BNA STANDARDS FOR 5 POINT CALIBRATION

TIC Library : C:\DATABASE\NIST02.L
 TIC Integration Parameters: LSCINT.P

 Peak Number 1 2-Pentanone, 4-hydroxy-4-me... Concentration Rank 3

R.T.	EstConc	Area	Relative to ISTD	R.T.
5.06	41.19 ng	982420	1,4-Dichlorobenzene-d4	6.87

Hit#	of	Tentative ID	MW	MolForm	CAS#	Qual
1	5	2-Pentanone, 4-hydroxy-4-methyl-	116	C6H12O2	000123-42-2	56
2		Propane, 2-methyl-2-(1-methyleth...	116	C7H16O	017348-59-3	28
3		Acetic acid, cyano-, 1,1-dimethy...	141	C7H11NO2	001116-98-9	23
4		Guanidine	59	CH5N3	000113-00-8	9
5		Morpholine, 4-methyl-	101	C5H11NO	000109-02-4	9



Data Path : Z:\HPCHEM1\BNA_F\DATA\BF100715\
 Data File : BF082106.D
 Acq On : 7 Oct 2015 16:00
 Operator : UM/IZ
 Sample : PB85936BL
 Misc :
 ALS Vial : 10 Sample Multiplier: 1

Instrument :
 BNA_F
 ClientSampleID :
 PB85936BL

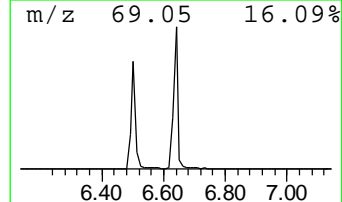
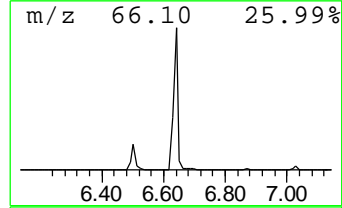
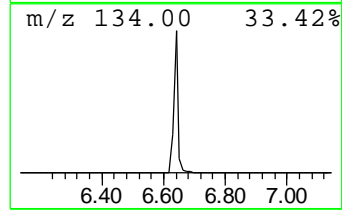
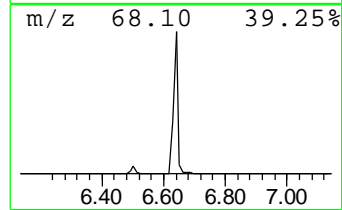
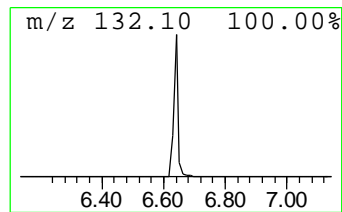
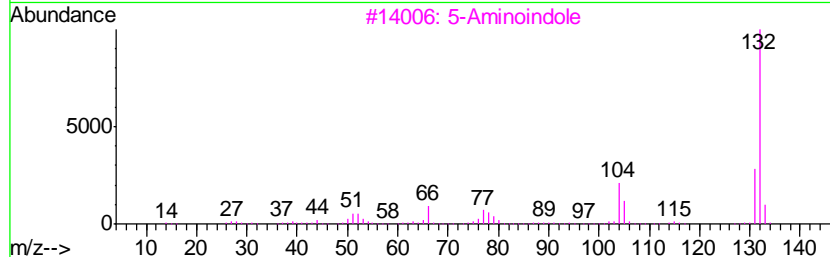
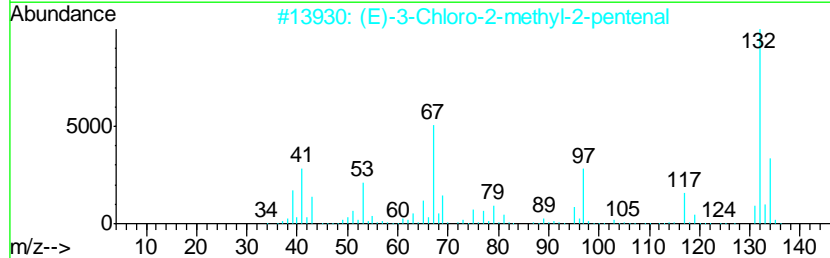
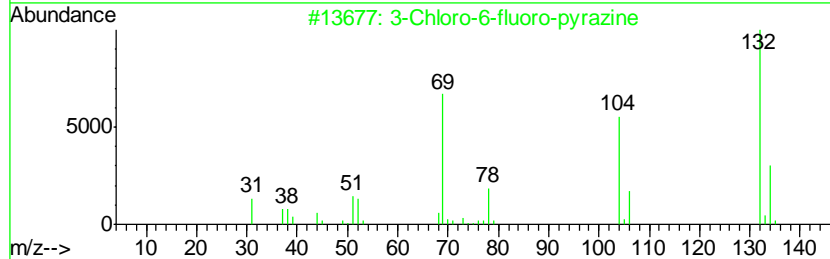
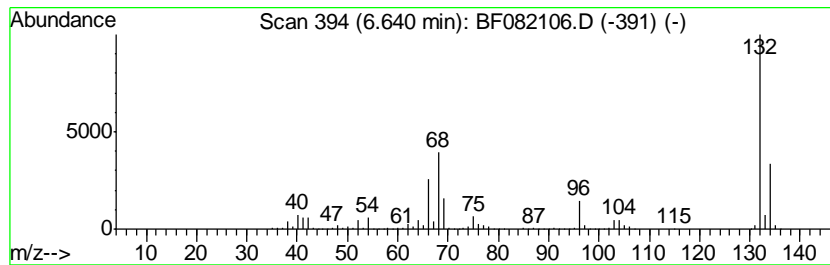
Quant Method : Z:\HPCHEM1\BNA_F\METHODS\8270-BF092815.M
 Quant Title : ASP BNA STANDARDS FOR 5 POINT CALIBRATION

TIC Library : C:\DATABASE\NIST02.L
 TIC Integration Parameters: LSCINT.P

 Peak Number 2 unknown6.64 Concentration Rank 1

R.T.	EstConc	Area	Relative to ISTD	R.T.
6.64	88.35 ng	2107410	1,4-Dichlorobenzene-d4	6.87

Hit#	of	Tentative ID	MW	MolForm	CAS#	Qual
1	5	3-Chloro-6-fluoro-pyrazine	132	C4H2ClFN2	1000146-10-7	27
2		(E)-3-Chloro-2-methyl-2-pentenal	132	C6H9ClO	031357-76-3	16
3		5-Aminoindole	132	C8H8N2	005192-03-0	12
4		Tranylcypromine-propionyl	189	C12H15NO	1000123-86-3	10
5		Benzene, 1,3,5-trifluoro-	132	C6H3F3	000372-38-3	9



Data Path : Z:\HPCHEM1\BNA_F\DATA\BF100715\
Data File : BF082106.D
Acq On : 7 Oct 2015 16:00
Operator : UM/IZ
Sample : PB85936BL
Misc :
ALS Vial : 10 Sample Multiplier: 1

Instrument :
BNA_F
ClientSampleId :
PB85936BL

Quant Method : Z:\HPCHEM1\BNA_F\METHODS\8270-BF092815.M
Quant Title : ASP BNA STANDARDS FOR 5 POINT CALIBRATION

TIC Library : C:\DATABASE\NIST02.L
TIC Integration Parameters: LSCINT.P

TIC Top Hit name	RT	EstConc	Units	Response	--Internal Standard--			
					#	RT	Resp	Conc
2-Pentanone, 4-hy...	5.06	41.2	ng	982420	1	6.87	477053	20.0
unknown6.64	6.64	88.3	ng	2107410	1	6.87	477053	20.0