

Data Path : Z:\svoasrv\HPCHEM1\BNA\_F\Data\BF100825\  
 Data File : BF143904.D  
 Acq On : 08 Oct 2025 19:34  
 Operator : RC/JU  
 Sample : Q3304-03 5X  
 Misc :  
 ALS Vial : 19 Sample Multiplier: 1

Instrument :  
 BNA\_F  
 ClientSampleId :  
 TR-05-100725

Quant Time: Oct 09 01:48:57 2025  
 Quant Method : Z:\svoasrv\HPCHEM1\BNA\_F\Methods\8270-BF100625.M  
 Quant Title : ASP BNA STANDARDS FOR 5 POINT CALIBRATION  
 QLast Update : Mon Oct 06 15:29:47 2025  
 Response via : Initial Calibration

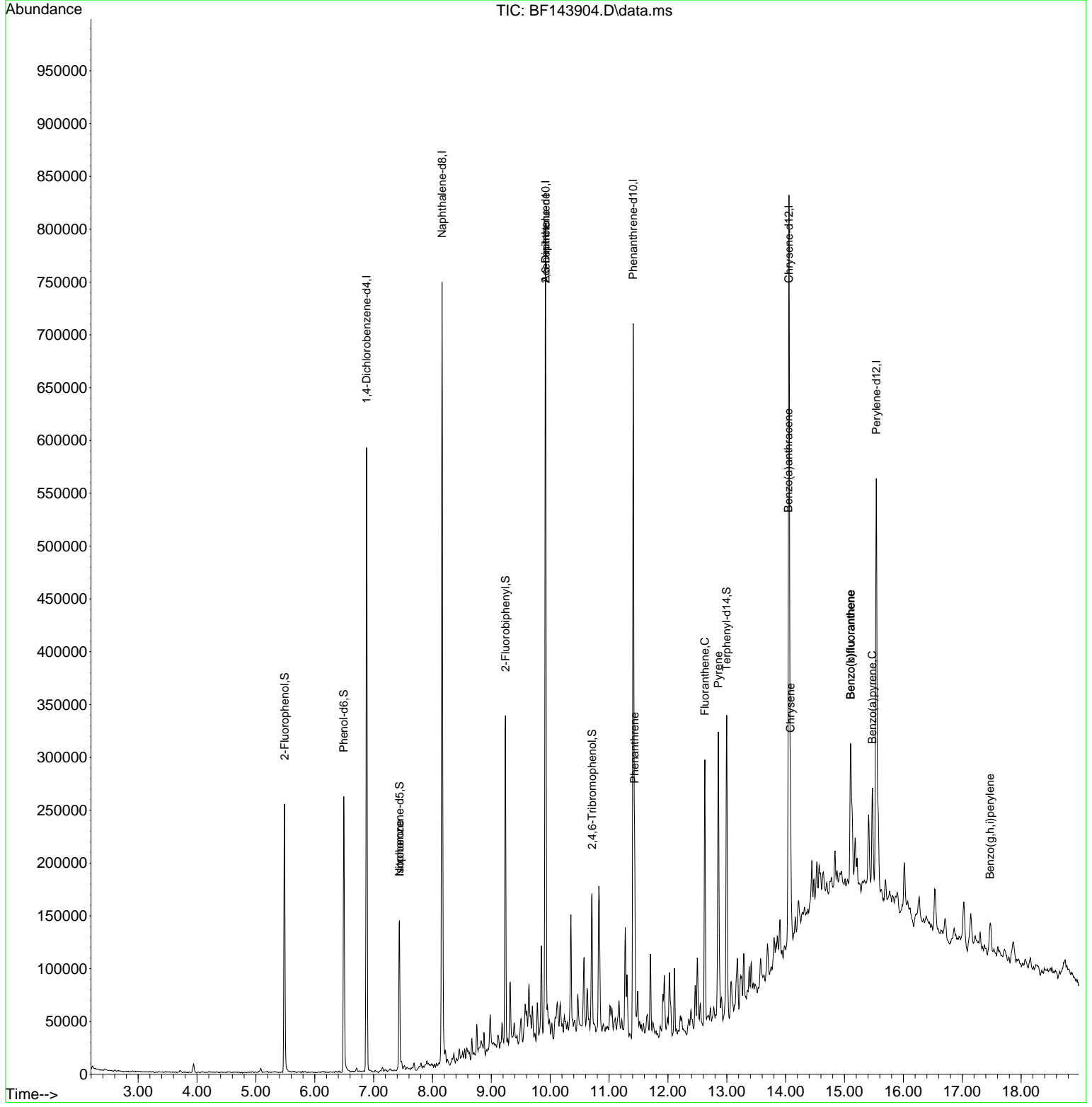
Compound	R.T.	QIon	Response	Conc	Units	Dev(Min)
Internal Standards						
1) 1,4-Dichlorobenzene-d4	6.881	152	119244	20.000	ng	0.00
21) Naphthalene-d8	8.163	136	437893	20.000	ng	0.00
39) Acenaphthene-d10	9.922	164	226915	20.000	ng	0.00
64) Phenanthrene-d10	11.410	188	351847	20.000	ng	0.00
76) Chrysene-d12	14.057	240	293485	20.000	ng	-0.01
86) Perylene-d12	15.539	264	252441	20.000	ng	0.00
System Monitoring Compounds						
5) 2-Fluorophenol	5.487	112	100041	13.323	ng	-0.01
7) Phenol-d6	6.492	99	118367	13.225	ng	-0.02
23) Nitrobenzene-d5	7.439	82	60985	8.461	ng	-0.02
42) 2,4,6-Tribromophenol	10.710	330	22617	10.007	ng	-0.01
45) 2-Fluorobiphenyl	9.239	172	151152	10.570	ng	-0.01
79) Terphenyl-d14	12.998	244	136066	7.924	ng	-0.01
Target Compounds						
25) Isophorone	7.439	82	46886	3.085	ng	# 68
51) 2,6-Dinitrotoluene	9.922	165	30296	11.338	ng	# 26
71) Phenanthrene	11.433	178	94345	5.531	ng	99
75) Fluoranthene	12.627	202	142675	8.098	ng	99
78) Pyrene	12.857	202	152314	6.225	ng	99
81) Benzo(a)anthracene	14.045	228	88176	4.591	ng	93
83) Chrysene	14.080	228	79081	4.449	ng	98
88) Benzo(b)fluoranthene	15.104	252	118981	8.205	ng	# 97
89) Benzo(k)fluoranthene	15.104	252	118981	8.867	ng	# 96
90) Benzo(a)pyrene	15.474	252	59412	4.725	ng	# 91
92) Benzo(g,h,i)perylene	17.474	276	27692	2.226	ng	# 91

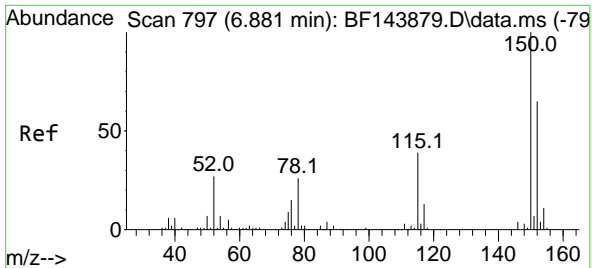
(#) = qualifier out of range (m) = manual integration (+) = signals summed

Data Path : Z:\svoasrv\HPCHEM1\BNA\_F\Data\BF100825\  
 Data File : BF143904.D  
 Acq On : 08 Oct 2025 19:34  
 Operator : RC/JU  
 Sample : Q3304-03 5X  
 Misc :  
 ALS Vial : 19 Sample Multiplier: 1

Instrument :  
 BNA\_F  
 ClientSampleId :  
 TR-05-100725

Quant Time: Oct 09 01:48:57 2025  
 Quant Method : Z:\svoasrv\HPCHEM1\BNA\_F\Methods\8270-BF100625.M  
 Quant Title : ASP BNA STANDARDS FOR 5 POINT CALIBRATION  
 QLast Update : Mon Oct 06 15:29:47 2025  
 Response via : Initial Calibration

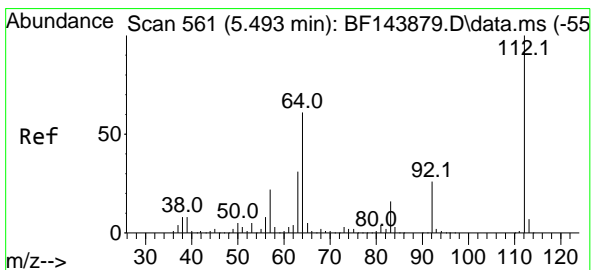
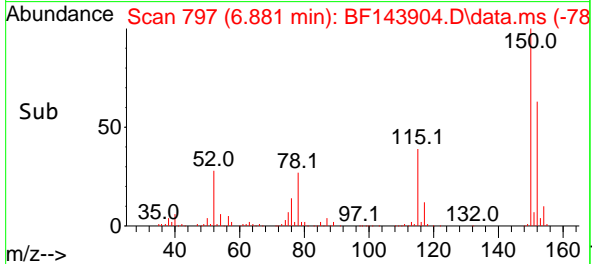
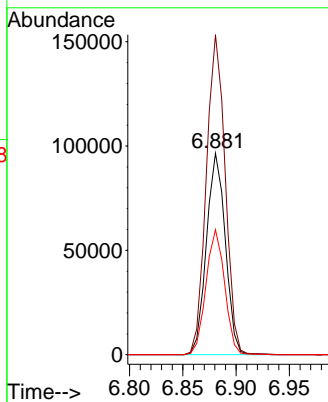
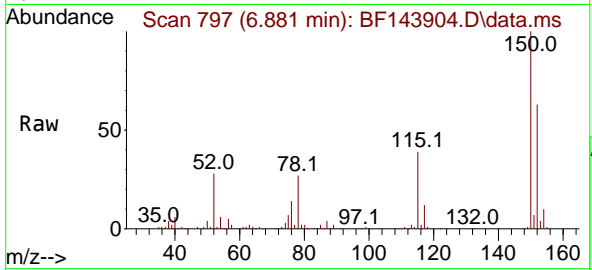




#1  
 1,4-Dichlorobenzene-d4  
 Concen: 20.000 ng  
 RT: 6.881 min Scan# 79  
 Delta R.T. -0.005 min  
 Lab File: BF143904.D  
 Acq: 08 Oct 2025 19:34

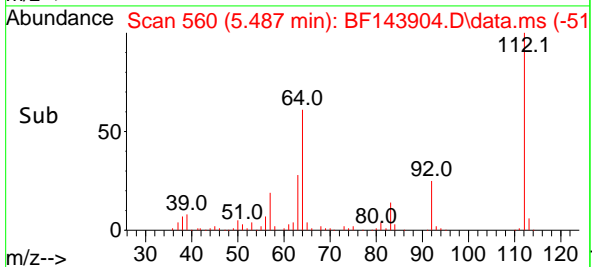
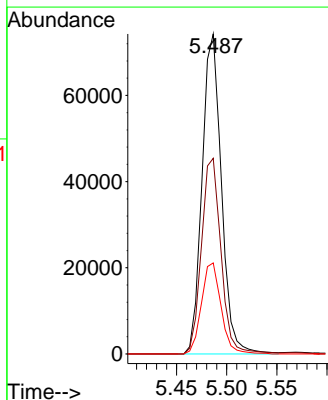
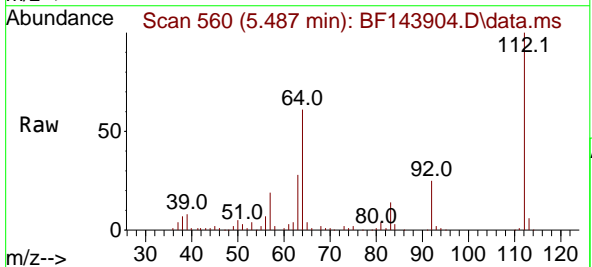
Instrument :  
 BNA\_F  
 ClientSampleId :  
 TR-05-100725

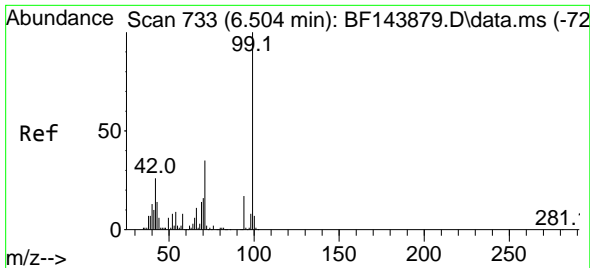
Tgt Ion:152 Resp: 119244  
 Ion Ratio Lower Upper  
 152 100  
 150 158.9 124.4 186.6  
 115 62.1 48.1 72.1



#5  
 2-Fluorophenol  
 Concen: 13.323 ng  
 RT: 5.487 min Scan# 560  
 Delta R.T. -0.012 min  
 Lab File: BF143904.D  
 Acq: 08 Oct 2025 19:34

Tgt Ion:112 Resp: 100041  
 Ion Ratio Lower Upper  
 112 100  
 64 61.2 49.1 73.7  
 63 28.4 24.5 36.7



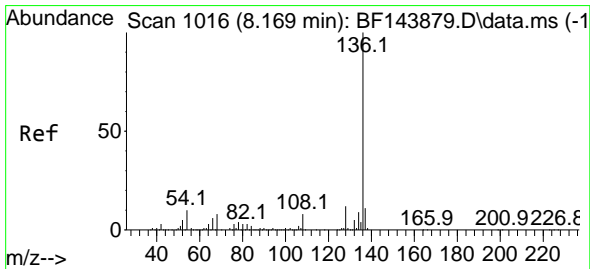
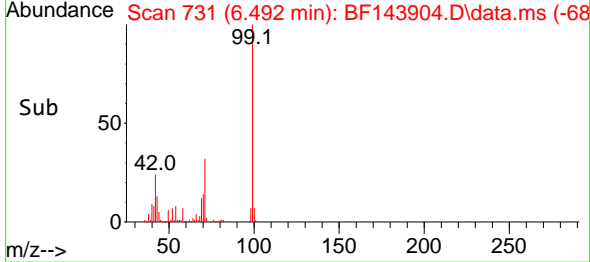
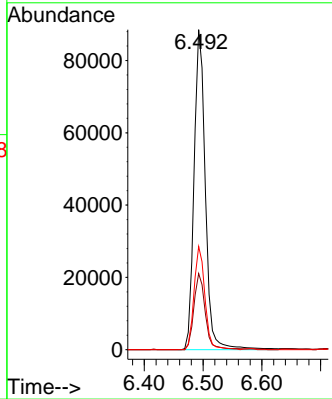
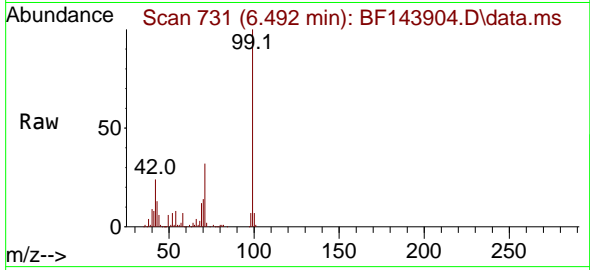


#7  
 Phenol-d6  
 Concen: 13.225 ng  
 RT: 6.492 min Scan# 71  
 Delta R.T. -0.024 min  
 Lab File: BF143904.D  
 Acq: 08 Oct 2025 19:34

Instrument :  
 BNA\_F  
 ClientSampleId :  
 TR-05-100725

Tgt Ion: 99 Resp: 118367

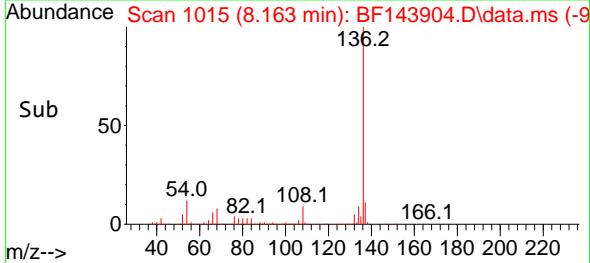
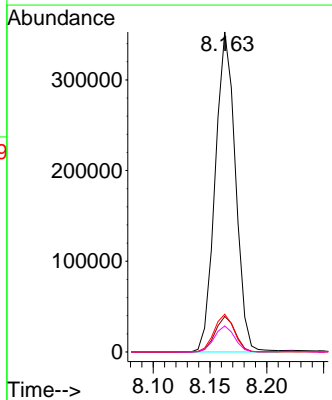
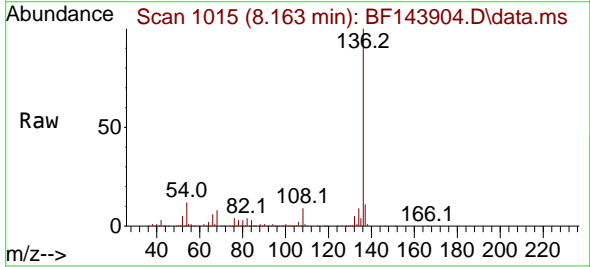
Ion	Ratio	Lower	Upper
99	100		
42	23.8	21.0	31.4
71	32.2	27.8	41.8

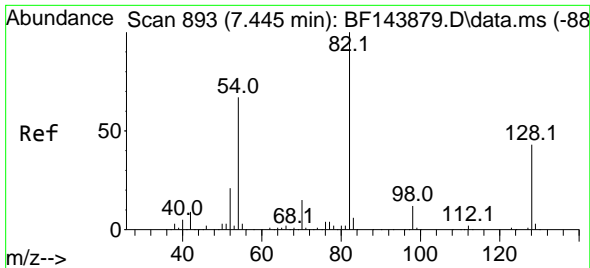


#21  
 Naphthalene-d8  
 Concen: 20.000 ng  
 RT: 8.163 min Scan# 1015  
 Delta R.T. -0.006 min  
 Lab File: BF143904.D  
 Acq: 08 Oct 2025 19:34

Tgt Ion: 136 Resp: 437893

Ion	Ratio	Lower	Upper
136	100		
137	11.1	8.5	12.7
54	11.8	8.2	12.4
68	8.1	6.2	9.4



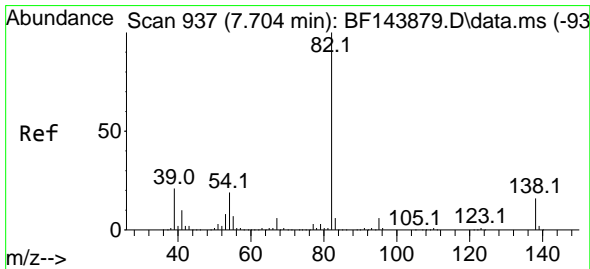
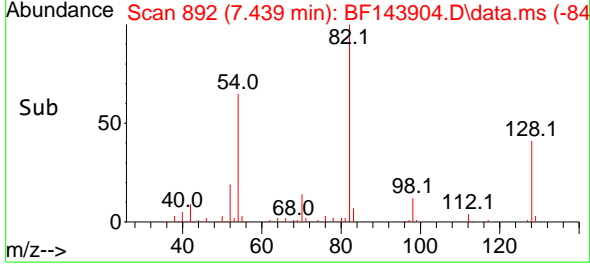
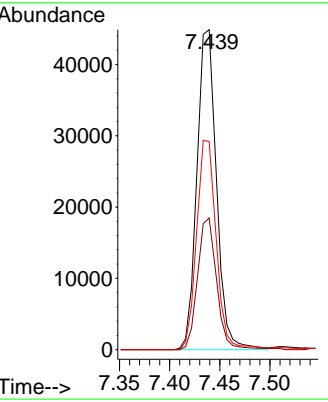
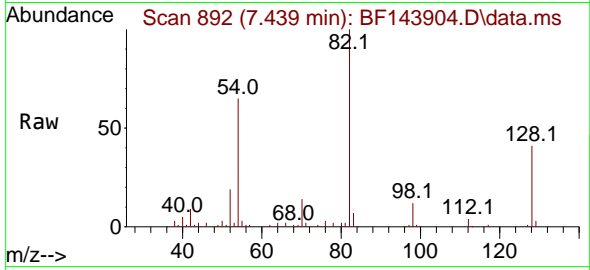


#23  
 Nitrobenzene-d5  
 Concen: 8.461 ng  
 RT: 7.439 min Scan# 892  
 Delta R.T. -0.018 min  
 Lab File: BF143904.D  
 Acq: 08 Oct 2025 19:34

Instrument :  
 BNA\_F  
 ClientSampleId :  
 TR-05-100725

Tgt Ion: 82 Resp: 60985

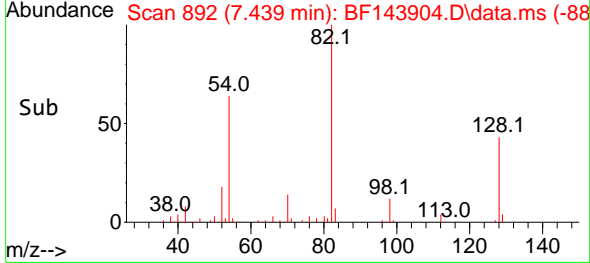
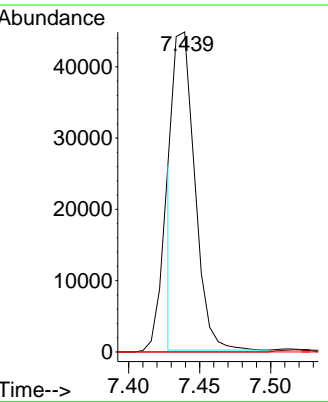
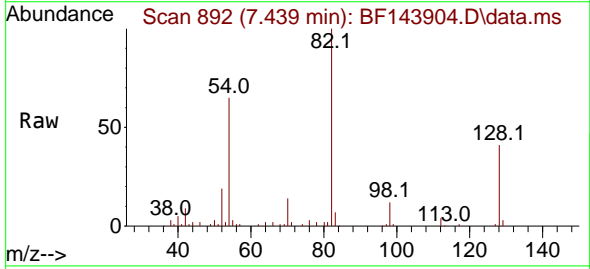
Ion	Ratio	Lower	Upper
82	100		
128	41.1	34.0	51.0
54	65.0	53.2	79.8

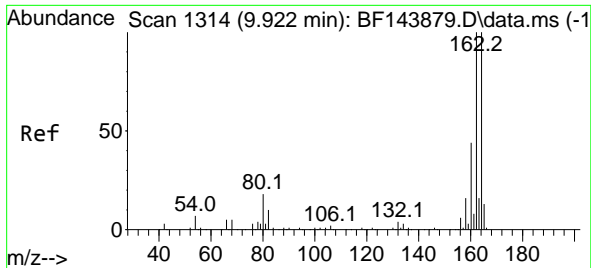


#25  
 Isophorone  
 Concen: 3.085 ng  
 RT: 7.439 min Scan# 892  
 Delta R.T. -0.282 min  
 Lab File: BF143904.D  
 Acq: 08 Oct 2025 19:34

Tgt Ion: 82 Resp: 46886

Ion	Ratio	Lower	Upper
82	100		
95	0.0	5.1	7.7#
138	0.0	12.9	19.3#





#39  
 Acenaphthene-d10  
 Concen: 20.000 ng  
 RT: 9.922 min Scan# 11  
 Delta R.T. -0.005 min  
 Lab File: BF143904.D  
 Acq: 08 Oct 2025 19:34

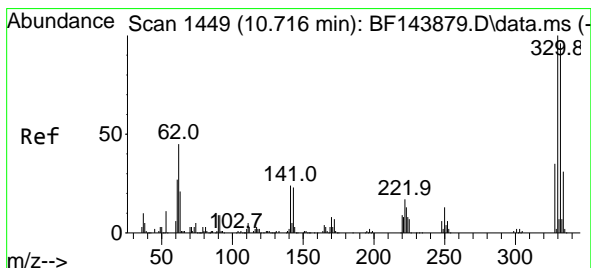
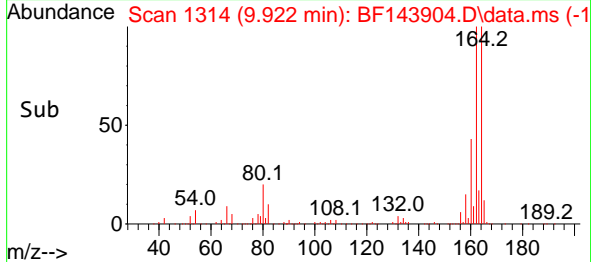
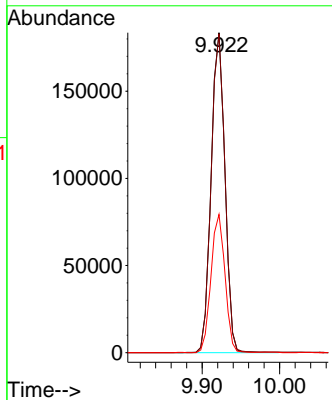
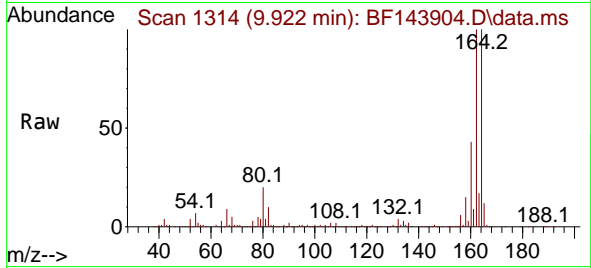
Instrument :

BNA\_F

ClientSampleId :

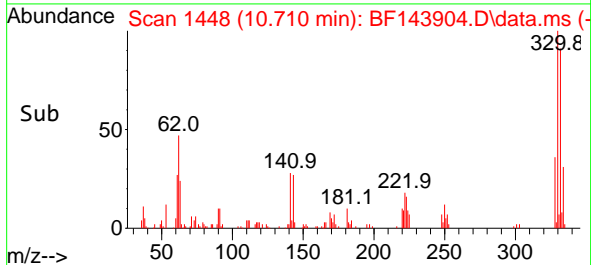
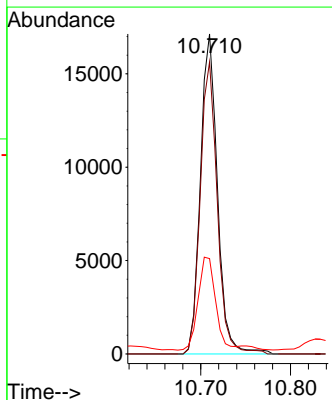
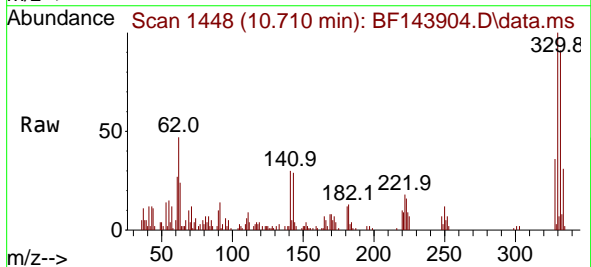
TR-05-100725

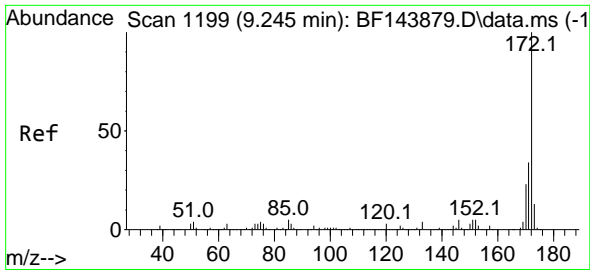
Tgt Ion:164 Resp: 226915  
 Ion Ratio Lower Upper  
 164 100  
 162 99.7 80.2 120.2  
 160 43.2 35.4 53.0



#42  
 2,4,6-Tribromophenol  
 Concen: 10.007 ng  
 RT: 10.710 min Scan# 1448  
 Delta R.T. -0.012 min  
 Lab File: BF143904.D  
 Acq: 08 Oct 2025 19:34

Tgt Ion:330 Resp: 22617  
 Ion Ratio Lower Upper  
 330 100  
 332 91.1 76.9 115.3  
 141 29.7 20.2 30.4



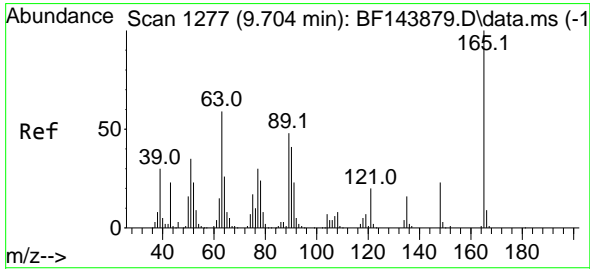
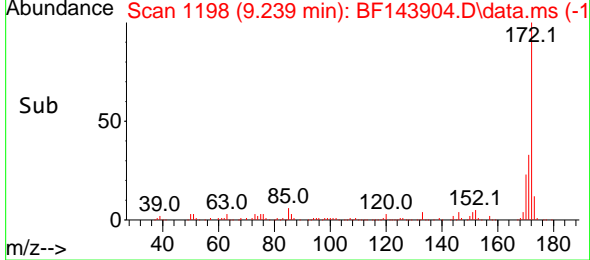
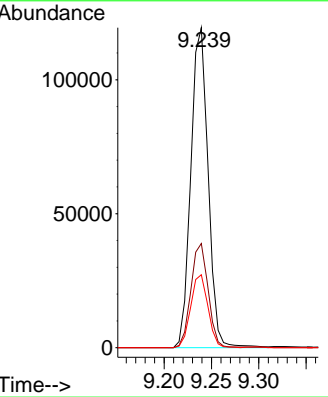
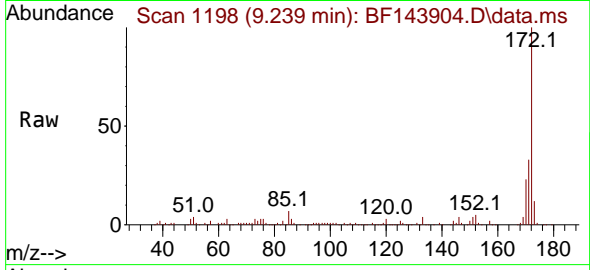


#45  
 2-Fluorobiphenyl  
 Concen: 10.570 ng  
 RT: 9.239 min Scan# 1198  
 Delta R.T. -0.012 min  
 Lab File: BF143904.D  
 Acq: 08 Oct 2025 19:34

Instrument : BNA\_F  
 ClientSampleId : TR-05-100725

Tgt Ion:172 Resp: 151152

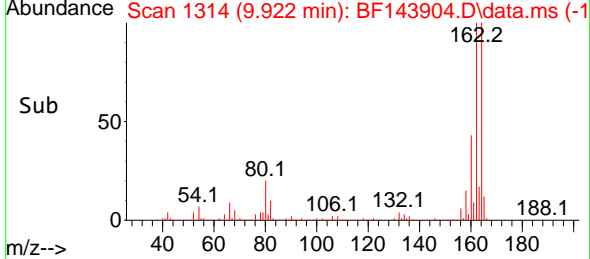
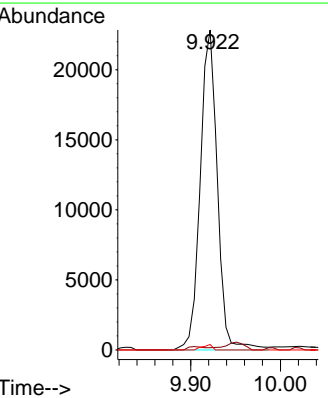
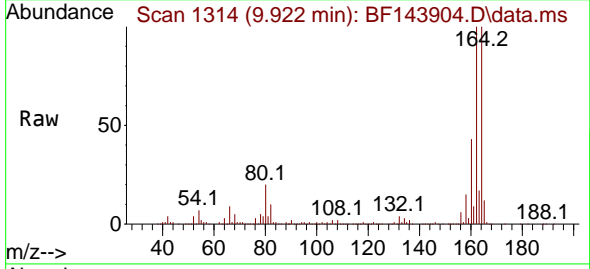
Ion	Ratio	Lower	Upper
172	100		
171	32.5	27.4	41.0
170	22.8	18.6	28.0

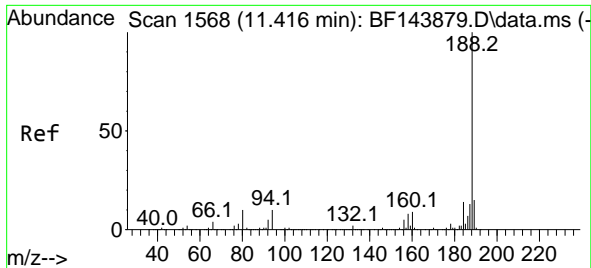


#51  
 2,6-Dinitrotoluene  
 Concen: 11.338 ng  
 RT: 9.922 min Scan# 1314  
 Delta R.T. 0.206 min  
 Lab File: BF143904.D  
 Acq: 08 Oct 2025 19:34

Tgt Ion:165 Resp: 30296

Ion	Ratio	Lower	Upper
165	100		
63	0.7	47.3	70.9#
89	1.7	38.2	57.4#



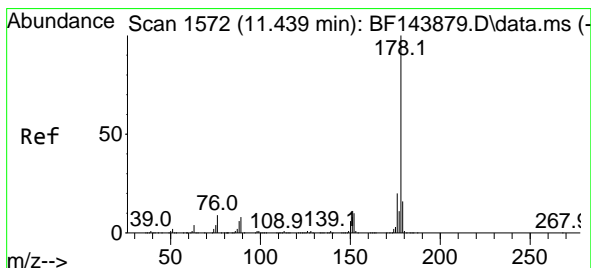
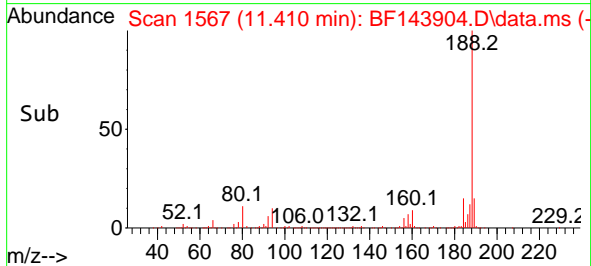
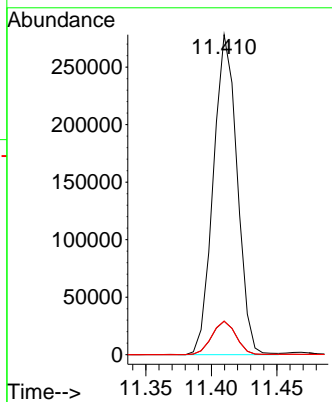
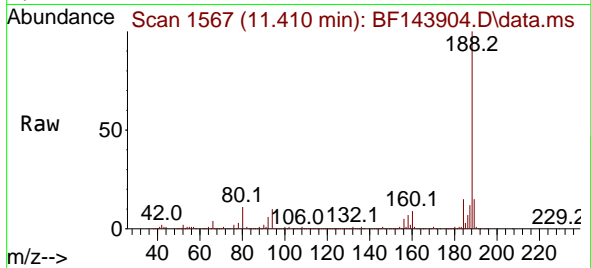


#64  
 Phenanthrene-d10  
 Concen: 20.000 ng  
 RT: 11.410 min Scan# 11  
 Delta R.T. -0.006 min  
 Lab File: BF143904.D  
 Acq: 08 Oct 2025 19:34

Instrument : BNA\_F  
 Client Sample Id : TR-05-100725

Tgt Ion:188 Resp: 351847

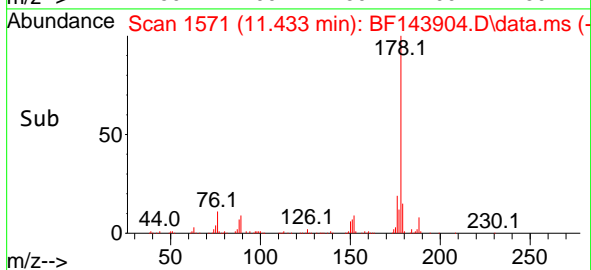
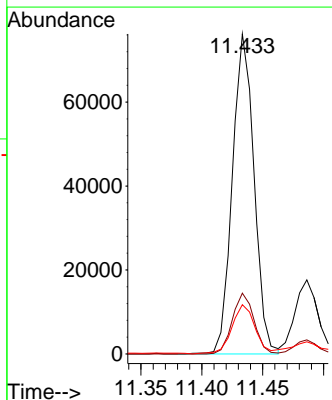
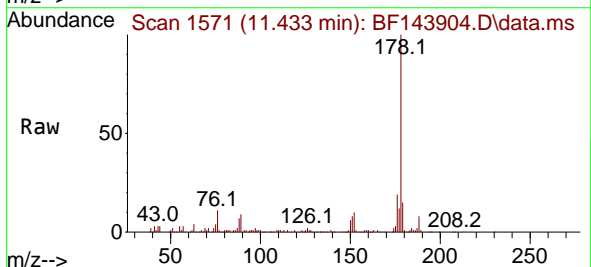
Ion	Ratio	Lower	Upper
188	100		
94	10.4	7.8	11.6
80	10.5	7.9	11.9



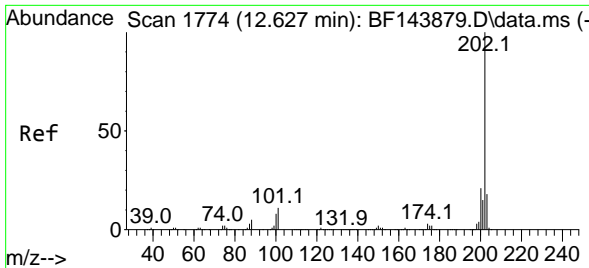
#71  
 Phenanthrene  
 Concen: 5.531 ng  
 RT: 11.433 min Scan# 1571  
 Delta R.T. -0.012 min  
 Lab File: BF143904.D  
 Acq: 08 Oct 2025 19:34

Tgt Ion:178 Resp: 94345

Ion	Ratio	Lower	Upper
178	100		
176	19.0	15.9	23.9
179	15.4	12.4	18.6



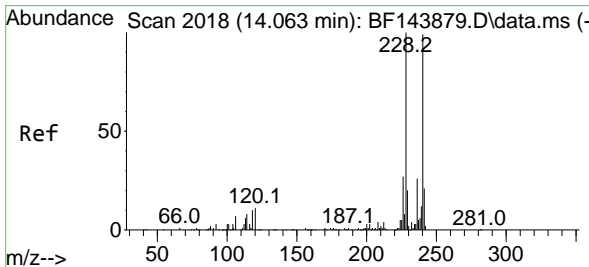
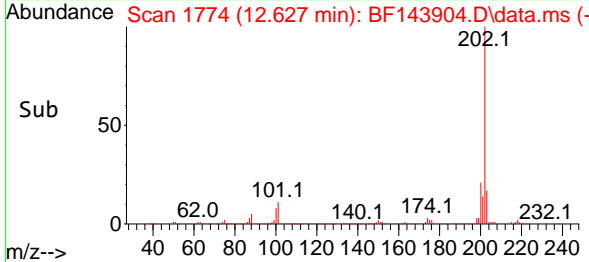
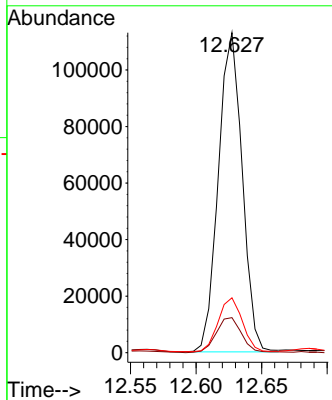
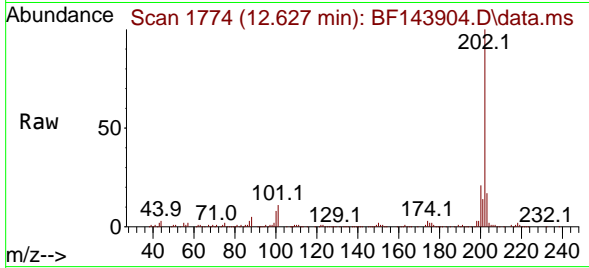




#75  
 Fluoranthene  
 Concen: 8.098 ng  
 RT: 12.627 min Scan# 11  
 Delta R.T. -0.006 min  
 Lab File: BF143904.D  
 Acq: 08 Oct 2025 19:34

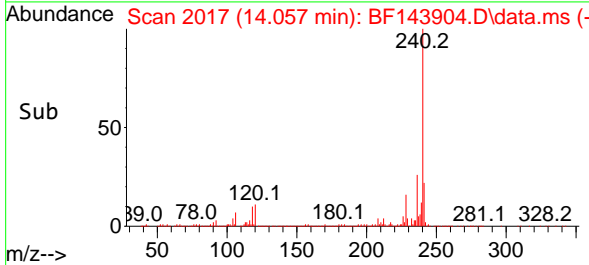
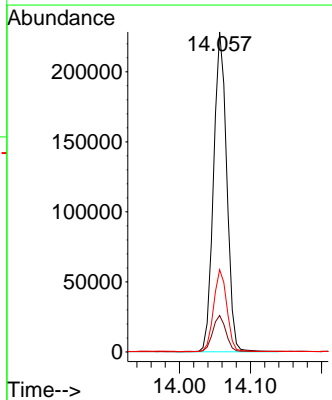
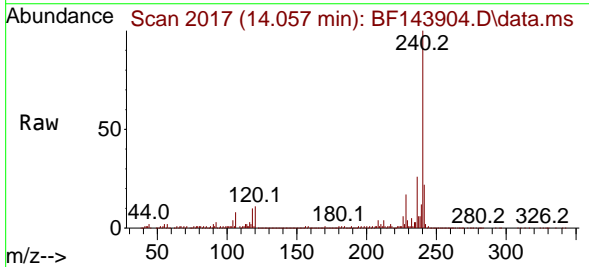
Instrument : BNA\_F  
 ClientSampleId : TR-05-100725

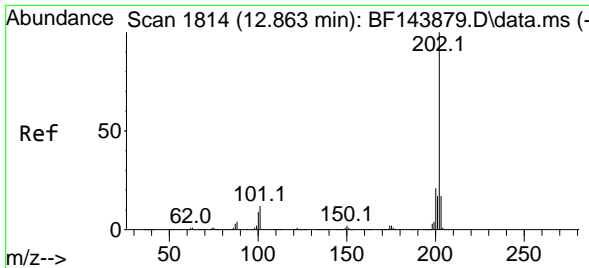
Tgt Ion	Resp	Lower	Upper
202	142675		
101	11.0	0.0	30.7
203	17.2	0.0	37.8



#76  
 Chrysene-d12  
 Concen: 20.000 ng  
 RT: 14.057 min Scan# 2017  
 Delta R.T. -0.011 min  
 Lab File: BF143904.D  
 Acq: 08 Oct 2025 19:34

Tgt Ion	Resp	Lower	Upper
240	293485		
120	11.4	8.6	13.0
236	25.7	21.1	31.7



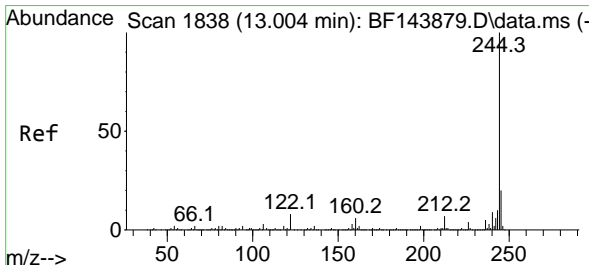
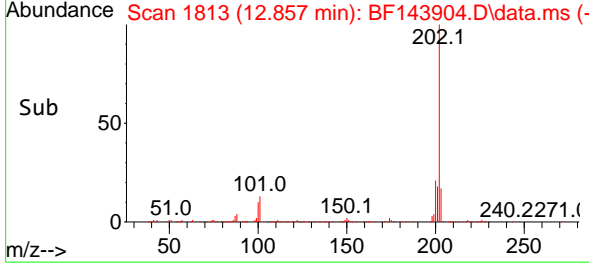
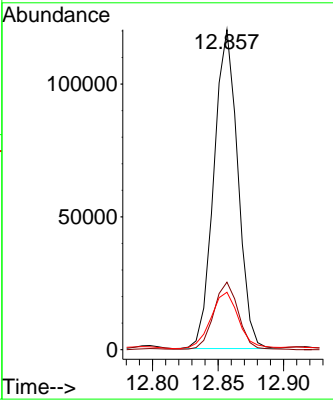
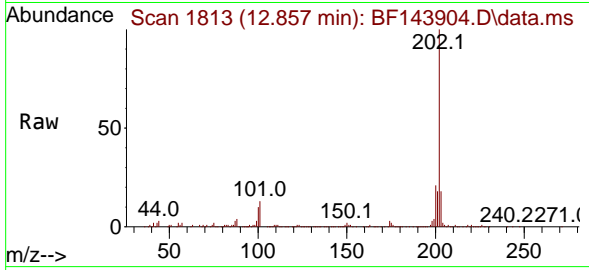


#78  
 Pyrene  
 Concen: 6.225 ng  
 RT: 12.857 min Scan# 1814  
 Delta R.T. -0.006 min  
 Lab File: BF143904.D  
 Acq: 08 Oct 2025 19:34

Instrument : BNA\_F  
 Client Sample Id : TR-05-100725

Tgt Ion: 202 Resp: 152314

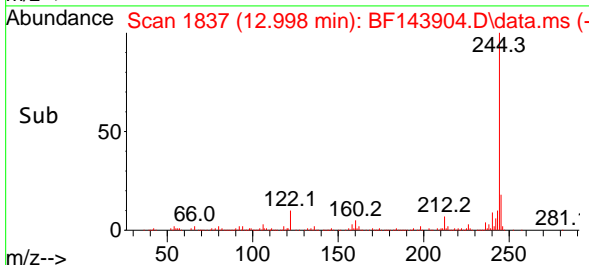
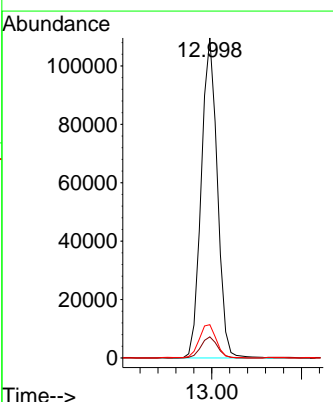
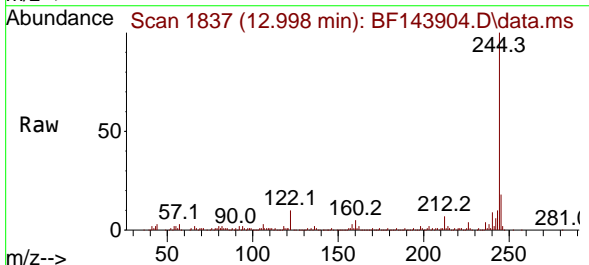
Ion	Ratio	Lower	Upper
202	100		
200	21.1	17.0	25.6
203	18.0	13.8	20.6

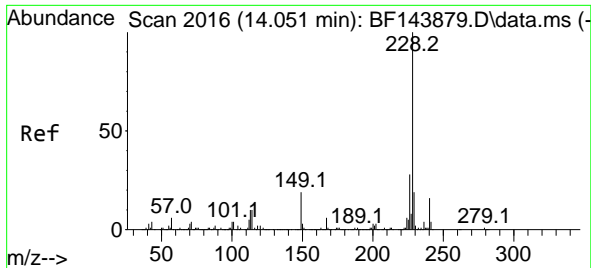


#79  
 Terphenyl-d14  
 Concen: 7.924 ng  
 RT: 12.998 min Scan# 1837  
 Delta R.T. -0.012 min  
 Lab File: BF143904.D  
 Acq: 08 Oct 2025 19:34

Tgt Ion: 244 Resp: 136066

Ion	Ratio	Lower	Upper
244	100		
212	6.6	5.4	8.0
122	10.4	6.4	9.6





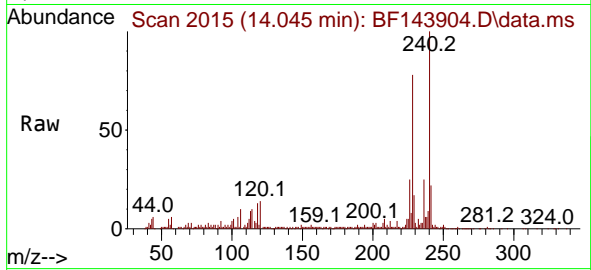
#81  
 Benzo(a)anthracene  
 Concen: 4.591 ng  
 RT: 14.045 min Scan# 2015  
 Delta R.T. -0.012 min  
 Lab File: BF143904.D  
 Acq: 08 Oct 2025 19:34

Instrument :

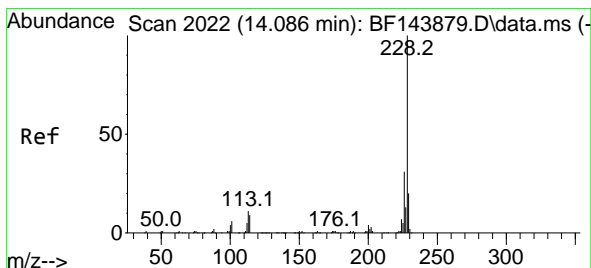
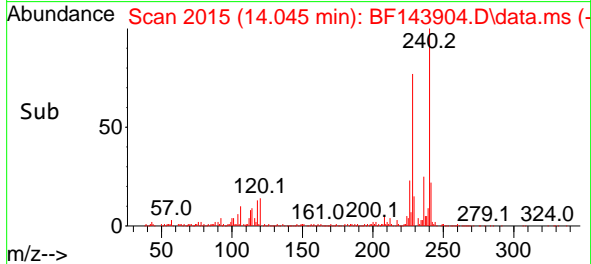
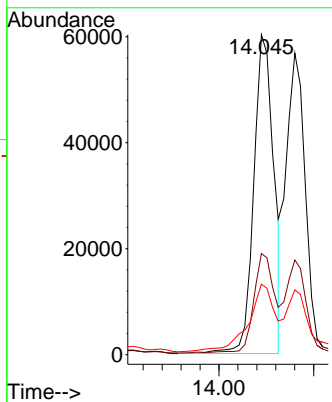
BNA\_F

ClientSampleId :

TR-05-100725

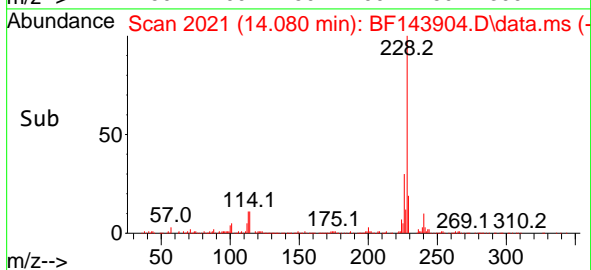
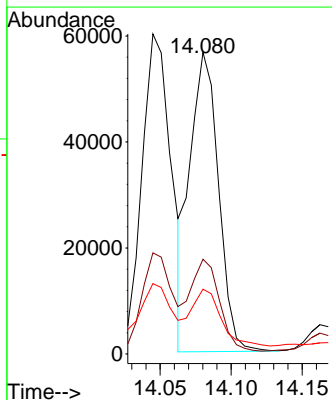
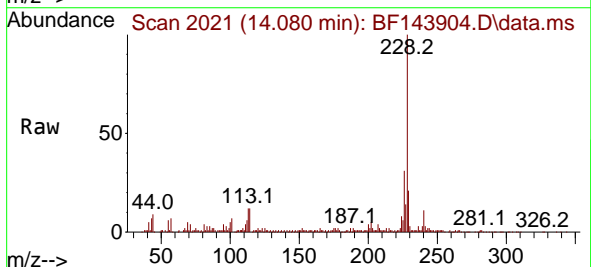


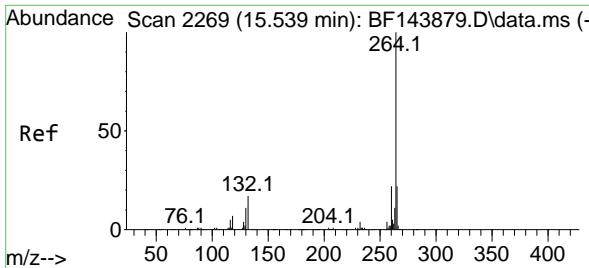
Tgt Ion:228 Resp: 88176  
 Ion Ratio Lower Upper  
 228 100  
 226 31.6 22.2 33.2  
 229 22.0 15.6 23.4



#83  
 Chrysene  
 Concen: 4.449 ng  
 RT: 14.080 min Scan# 2021  
 Delta R.T. -0.012 min  
 Lab File: BF143904.D  
 Acq: 08 Oct 2025 19:34

Tgt Ion:228 Resp: 79081  
 Ion Ratio Lower Upper  
 228 100  
 226 31.4 24.4 36.6  
 229 21.5 15.9 23.9



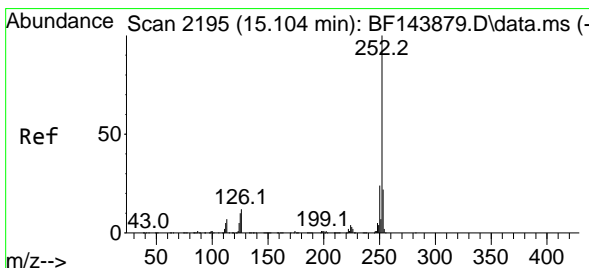
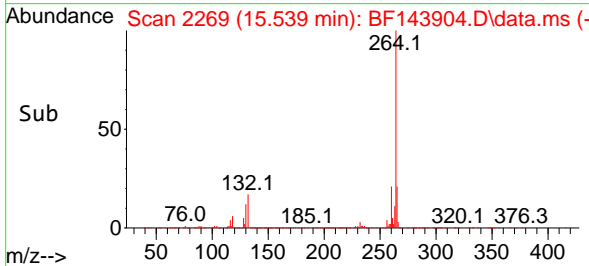
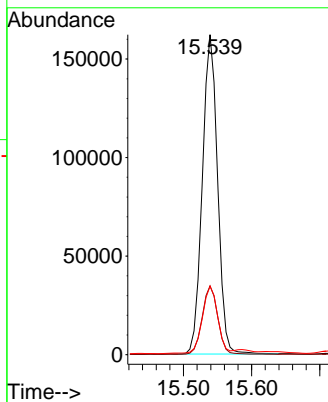
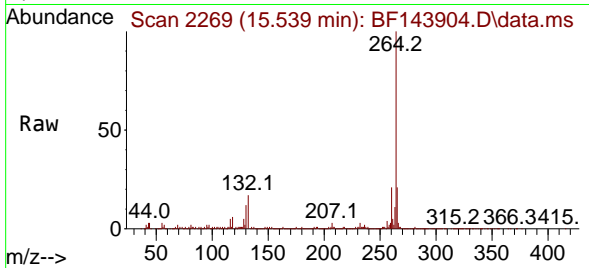


#86  
 Perylene-d12  
 Concen: 20.000 ng  
 RT: 15.539 min Scan# 2195  
 Delta R.T. -0.006 min  
 Lab File: BF143904.D  
 Acq: 08 Oct 2025 19:34

Instrument : BNA\_F  
 Client Sample Id : TR-05-100725

Tgt Ion: 264 Resp: 252441

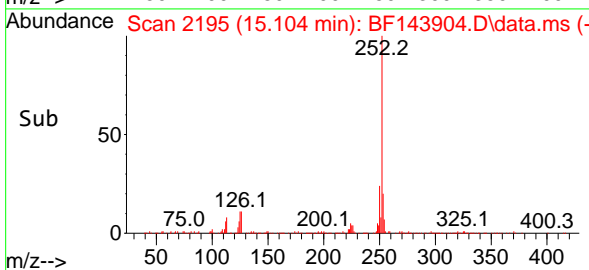
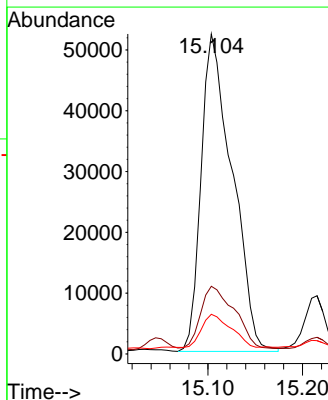
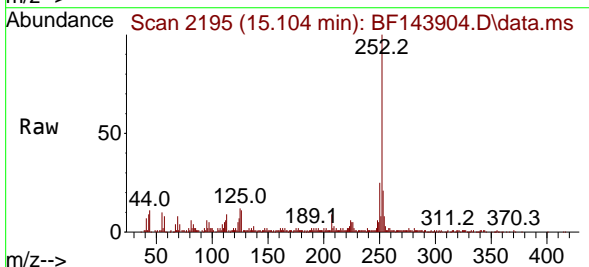
Ion	Ratio	Lower	Upper
264	100		
260	21.5	17.8	26.8
265	21.4	17.5	26.3

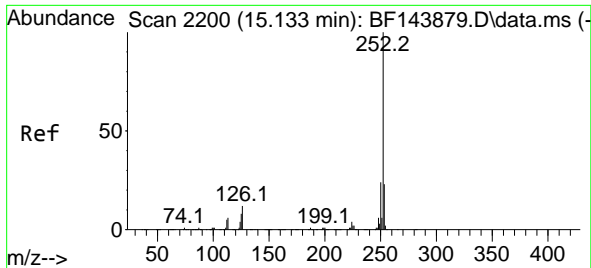


#88  
 Benzo(b)fluoranthene  
 Concen: 8.205 ng  
 RT: 15.104 min Scan# 2195  
 Delta R.T. -0.012 min  
 Lab File: BF143904.D  
 Acq: 08 Oct 2025 19:34

Tgt Ion: 252 Resp: 118981

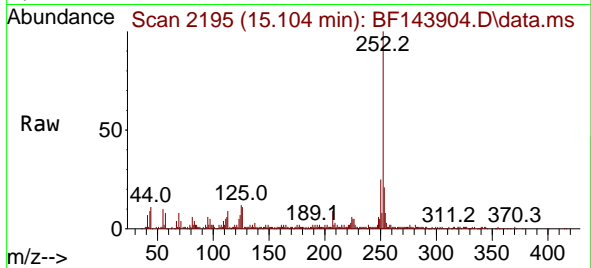
Ion	Ratio	Lower	Upper
252	100		
253	21.2	17.4	26.2
125	12.4	7.8	11.6



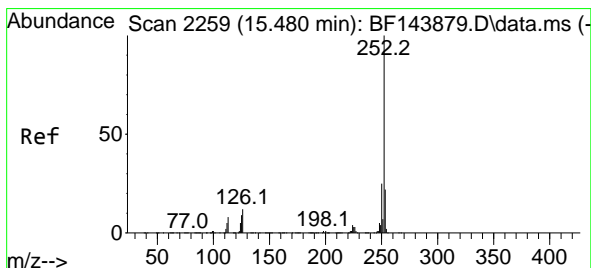
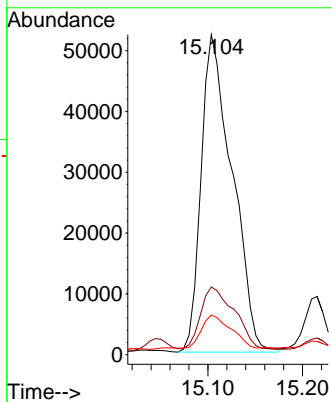
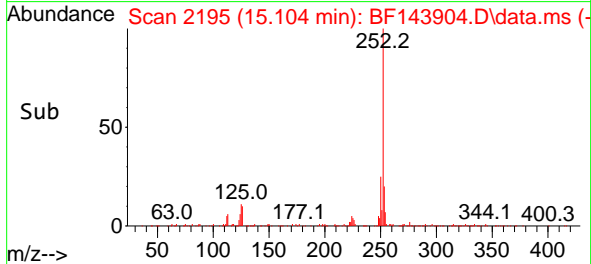


#89  
 Benzo(k)fluoranthene  
 Concen: 8.867 ng  
 RT: 15.104 min Scan# 2119  
 Delta R.T. -0.041 min  
 Lab File: BF143904.D  
 Acq: 08 Oct 2025 19:34

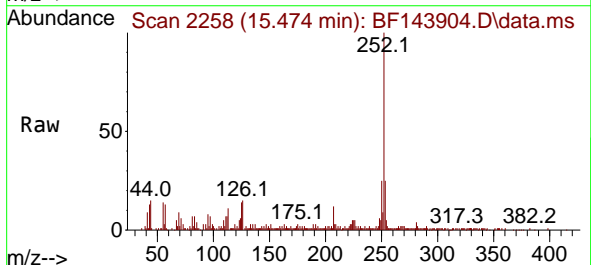
Instrument : BNA\_F  
 ClientSampleId : TR-05-100725



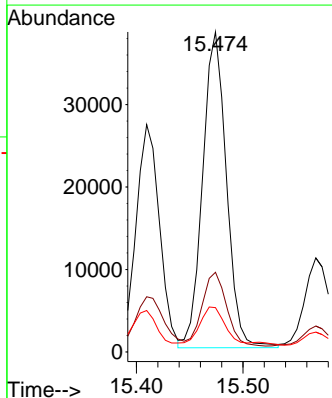
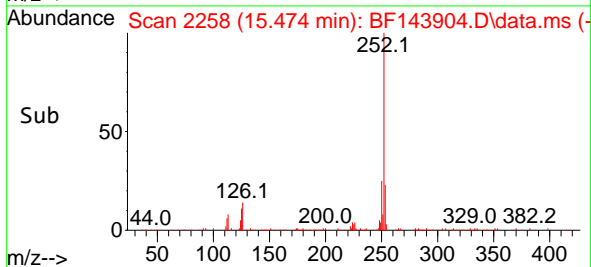
Tgt Ion:252 Resp: 118981  
 Ion Ratio Lower Upper  
 252 100  
 253 21.2 17.8 26.8  
 125 12.4 7.4 11.2#

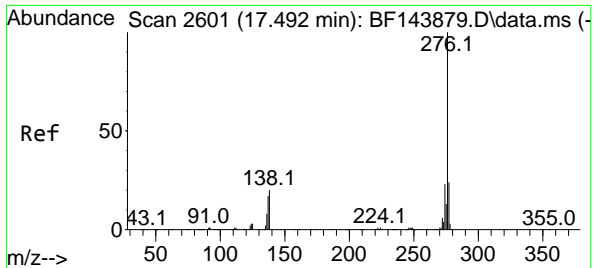


#90  
 Benzo(a)pyrene  
 Concen: 4.725 ng  
 RT: 15.474 min Scan# 2258  
 Delta R.T. -0.012 min  
 Lab File: BF143904.D  
 Acq: 08 Oct 2025 19:34



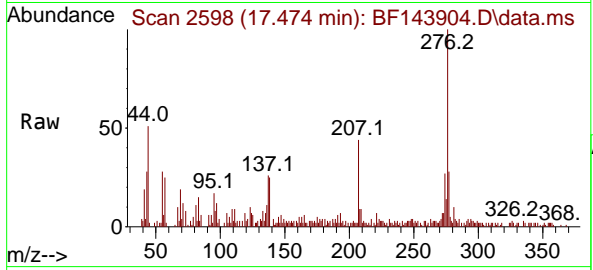
Tgt Ion:252 Resp: 59412  
 Ion Ratio Lower Upper  
 252 100  
 253 24.9 17.3 25.9  
 125 13.9 7.0 10.4#





#92  
 Benzo(g,h,i)perylene  
 Concen: 2.226 ng  
 RT: 17.474 min Scan# 21  
 Delta R.T. -0.041 min  
 Lab File: BF143904.D  
 Acq: 08 Oct 2025 19:34

Instrument : BNA\_F  
 ClientSampleId : TR-05-100725



Tgt Ion: 276 Resp: 27692

Ion	Ratio	Lower	Upper
276	100		
277	27.7	19.0	28.6
138	24.5	16.1	24.1#

