

Data Path : Z:\svoasrv\HPCHEM1\BNA_F\Data\BF100825\
 Data File : BF143888.D
 Acq On : 08 Oct 2025 10:42
 Operator : RC/JU
 Sample : PB170004BL
 Misc :
 ALS Vial : 3 Sample Multiplier: 1

Instrument :
 BNA_F
 ClientSampleId :
 PB170004BL

Quant Time: Oct 08 11:14:27 2025
 Quant Method : Z:\svoasrv\HPCHEM1\BNA_F\Methods\8270-BF100625.M
 Quant Title : ASP BNA STANDARDS FOR 5 POINT CALIBRATION
 QLast Update : Mon Oct 06 15:29:47 2025
 Response via : Initial Calibration

Compound	R.T.	QIon	Response	Conc	Units	Dev(Min)
Internal Standards						
1) 1,4-Dichlorobenzene-d4	6.881	152	155210	20.000	ng	0.00
21) Naphthalene-d8	8.163	136	597434	20.000	ng	0.00
39) Acenaphthene-d10	9.922	164	331058	20.000	ng	0.00
64) Phenanthrene-d10	11.410	188	598123	20.000	ng	0.00
76) Chrysene-d12	14.057	240	430751	20.000	ng	-0.01
86) Perylene-d12	15.539	264	368951	20.000	ng	0.00
System Monitoring Compounds						
5) 2-Fluorophenol	5.504	112	1146966	117.349	ng	0.00
7) Phenol-d6	6.504	99	1364919	117.159	ng	-0.01
23) Nitrobenzene-d5	7.439	82	893802	90.893	ng	-0.02
42) 2,4,6-Tribromophenol	10.716	330	465919	141.299	ng	0.00
45) 2-Fluorobiphenyl	9.239	172	1673103	80.191	ng	-0.01
79) Terphenyl-d14	13.004	244	2087290	82.817	ng	0.00

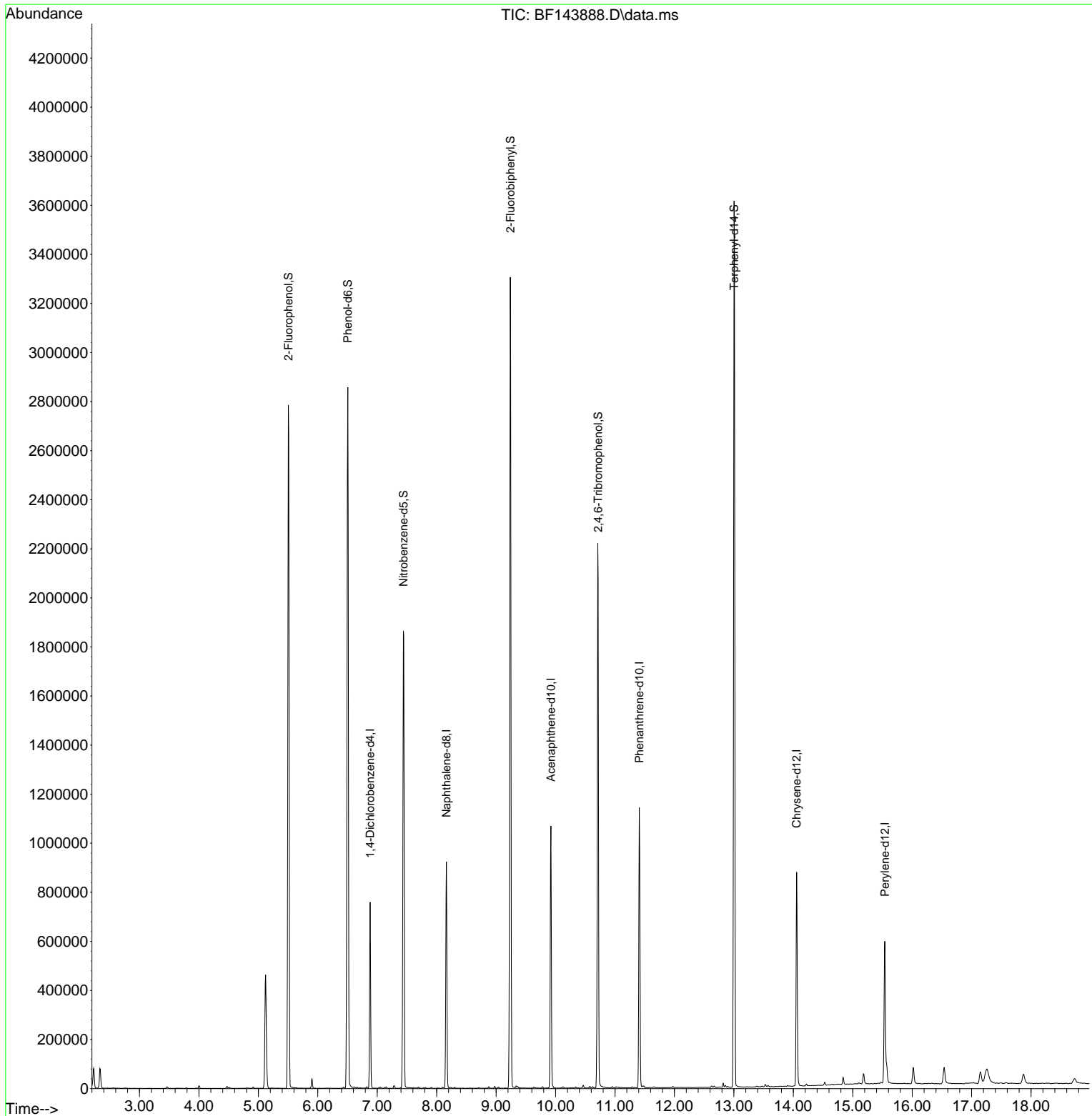
Target Compounds Qvalue

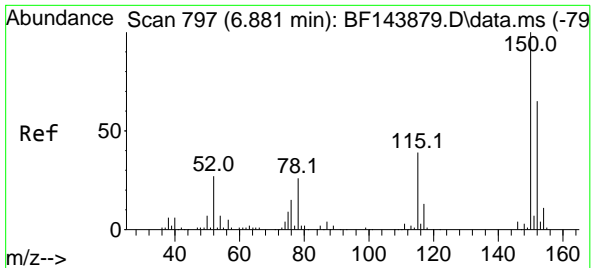
(#) = qualifier out of range (m) = manual integration (+) = signals summed

Data Path : Z:\svoasrv\HPCHEM1\BNA_F\Data\BF100825\
 Data File : BF143888.D
 Acq On : 08 Oct 2025 10:42
 Operator : RC/JU
 Sample : PB170004BL
 Misc :
 ALS Vial : 3 Sample Multiplier: 1

Instrument :
 BNA_F
 ClientSampleId :
 PB170004BL

Quant Time: Oct 08 11:14:27 2025
 Quant Method : Z:\svoasrv\HPCHEM1\BNA_F\Methods\8270-BF100625.M
 Quant Title : ASP BNA STANDARDS FOR 5 POINT CALIBRATION
 QLast Update : Mon Oct 06 15:29:47 2025
 Response via : Initial Calibration

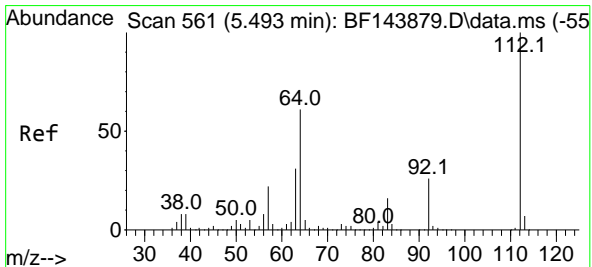
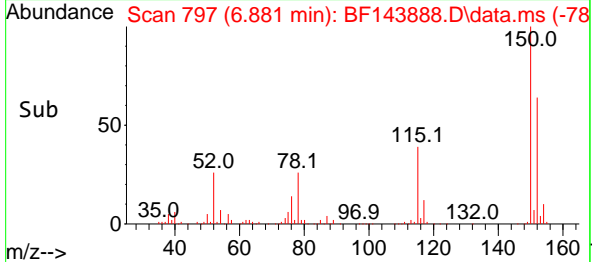
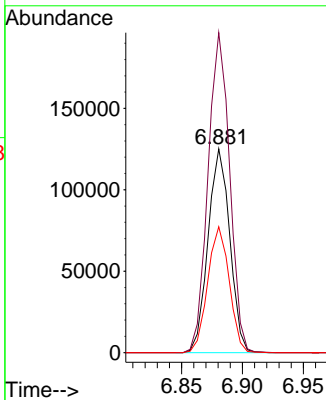
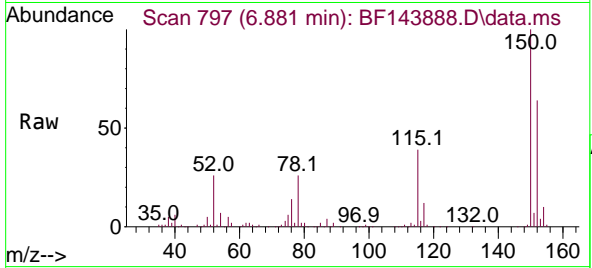




#1
 1,4-Dichlorobenzene-d4
 Concen: 20.000 ng
 RT: 6.881 min Scan# 79
 Delta R.T. -0.005 min
 Lab File: BF143888.D
 Acq: 08 Oct 2025 10:42

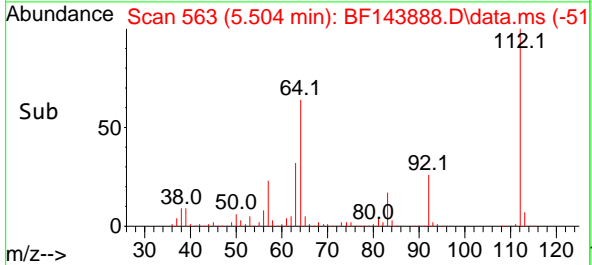
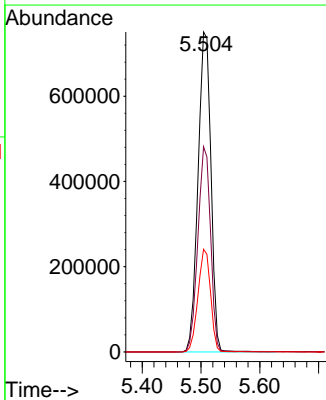
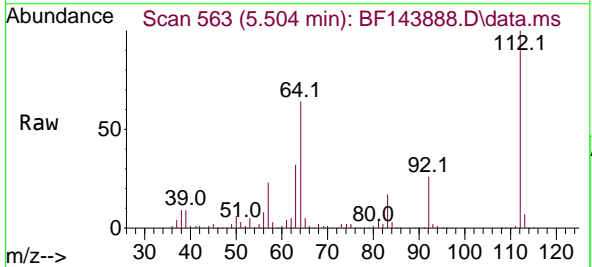
Instrument :
 BNA_F
 ClientSampleId :
 PB170004BL

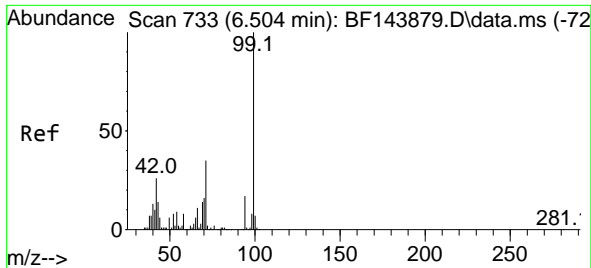
Tgt Ion:152 Resp: 155210
 Ion Ratio Lower Upper
 152 100
 150 157.1 124.4 186.6
 115 61.8 48.1 72.1



#5
 2-Fluorophenol
 Concen: 117.349 ng
 RT: 5.504 min Scan# 563
 Delta R.T. 0.006 min
 Lab File: BF143888.D
 Acq: 08 Oct 2025 10:42

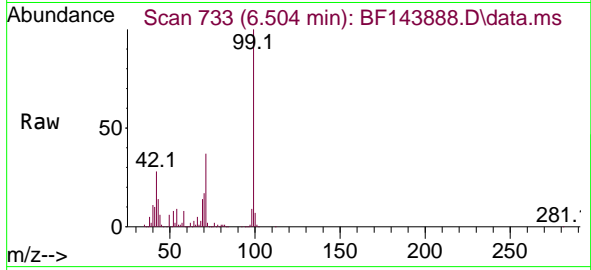
Tgt Ion:112 Resp: 1146966
 Ion Ratio Lower Upper
 112 100
 64 64.1 49.1 73.7
 63 32.1 24.5 36.7





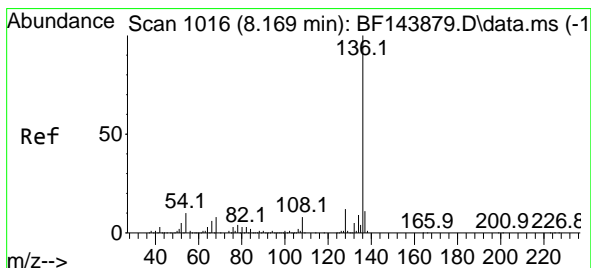
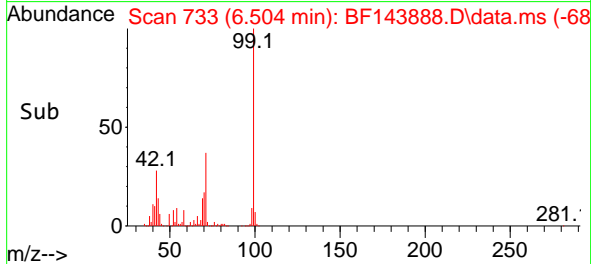
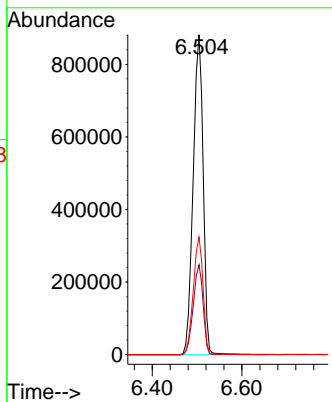
#7
 Phenol-d6
 Concen: 117.159 ng
 RT: 6.504 min Scan# 733
 Delta R.T. -0.012 min
 Lab File: BF143888.D
 Acq: 08 Oct 2025 10:42

Instrument :
 BNA_F
 ClientSampleId :
 PB170004BL



Tgt Ion: 99 Resp: 1364919

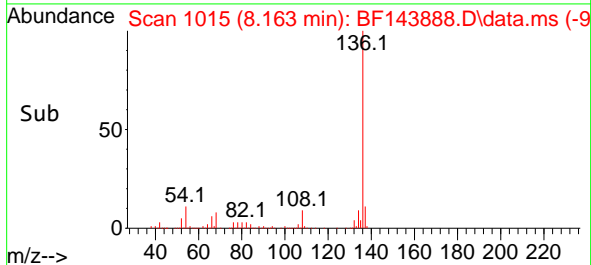
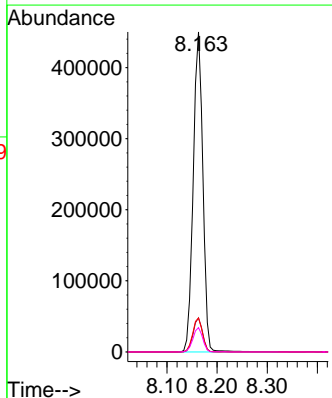
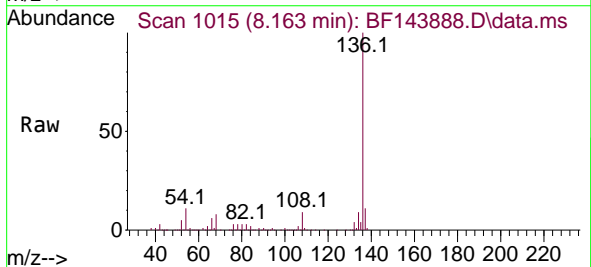
Ion	Ratio	Lower	Upper
99	100		
42	28.1	21.0	31.4
71	36.7	27.8	41.8

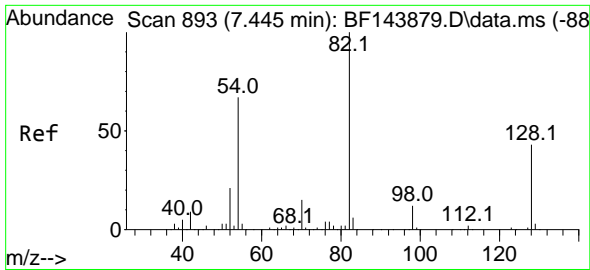


#21
 Naphthalene-d8
 Concen: 20.000 ng
 RT: 8.163 min Scan# 1015
 Delta R.T. -0.006 min
 Lab File: BF143888.D
 Acq: 08 Oct 2025 10:42

Tgt Ion: 136 Resp: 597434

Ion	Ratio	Lower	Upper
136	100		
137	10.6	8.5	12.7
54	10.6	8.2	12.4
68	7.6	6.2	9.4



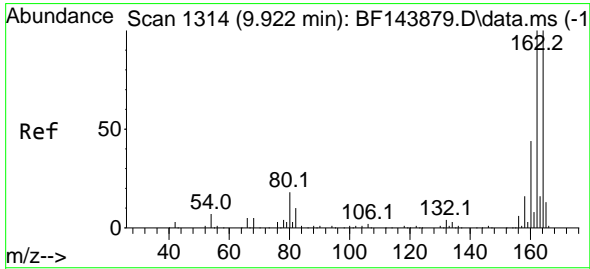
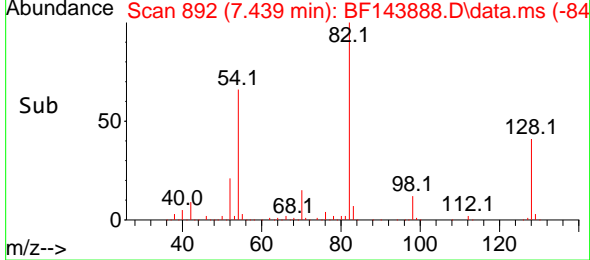
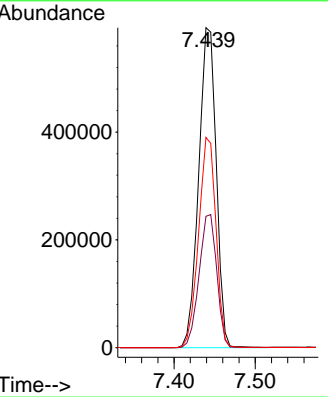
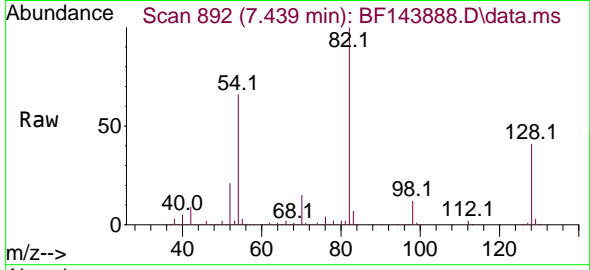


#23
 Nitrobenzene-d5
 Concen: 90.893 ng
 RT: 7.439 min Scan# 89
 Delta R.T. -0.018 min
 Lab File: BF143888.D
 Acq: 08 Oct 2025 10:42

Instrument : BNA_F
 ClientSampleId : PB170004BL

Tgt Ion: 82 Resp: 893802

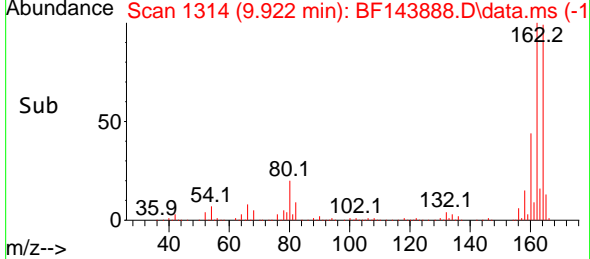
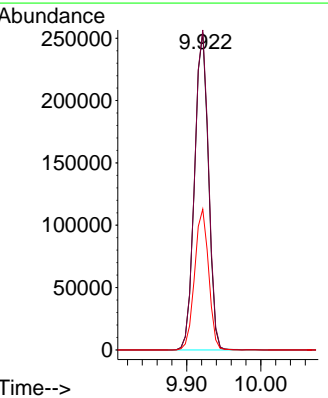
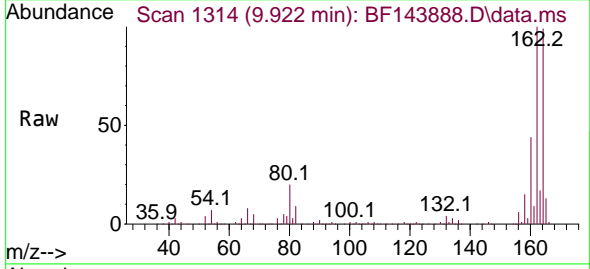
Ion	Ratio	Lower	Upper
82	100		
128	41.1	34.0	51.0
54	65.7	53.2	79.8

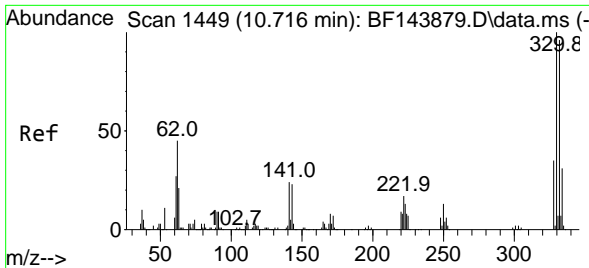


#39
 Acenaphthene-d10
 Concen: 20.000 ng
 RT: 9.922 min Scan# 1314
 Delta R.T. -0.005 min
 Lab File: BF143888.D
 Acq: 08 Oct 2025 10:42

Tgt Ion: 164 Resp: 331058

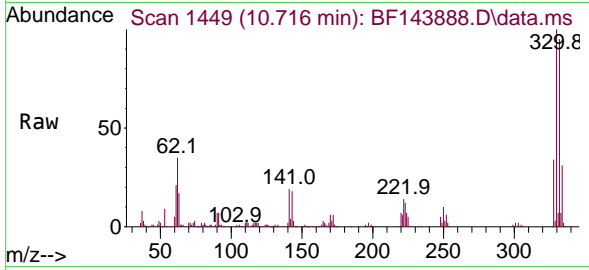
Ion	Ratio	Lower	Upper
164	100		
162	100.9	80.2	120.2
160	44.3	35.4	53.0



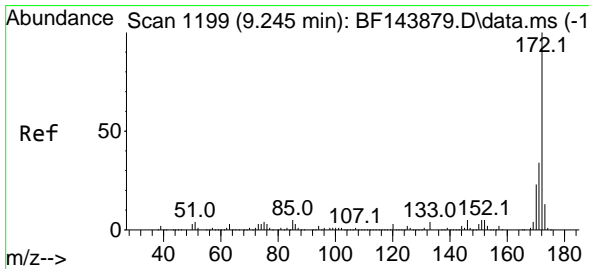
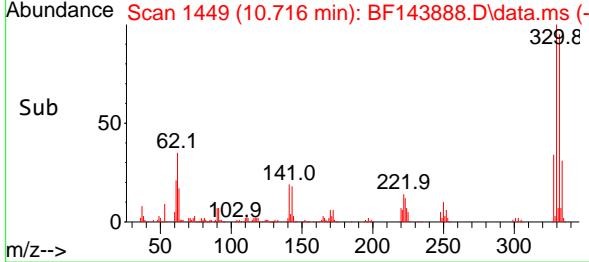
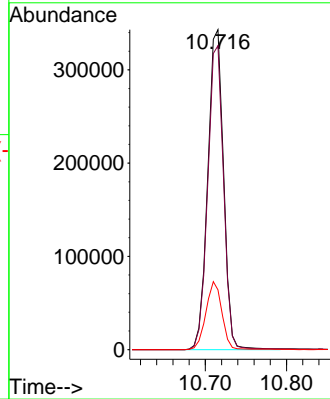


#42
 2,4,6-Tribromophenol
 Concen: 141.299 ng
 RT: 10.716 min Scan# 1449
 Delta R.T. -0.006 min
 Lab File: BF143888.D
 Acq: 08 Oct 2025 10:42

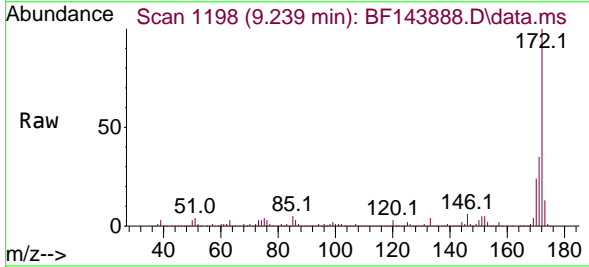
Instrument : BNA_F
 ClientSampleId : PB170004BL



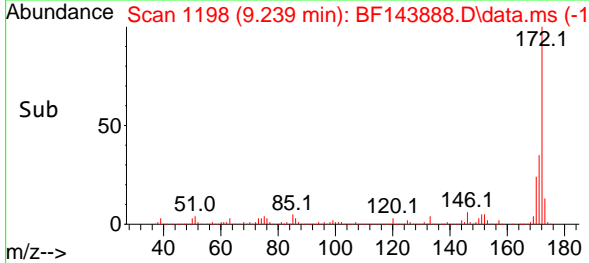
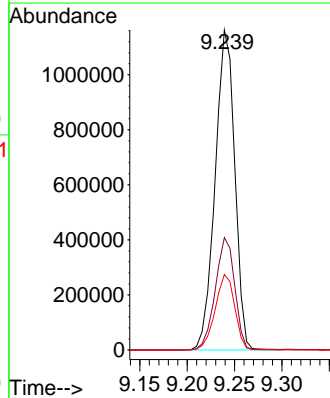
Tgt Ion:330 Resp: 465919
 Ion Ratio Lower Upper
 330 100
 332 95.1 76.9 115.3
 141 21.4 20.2 30.4

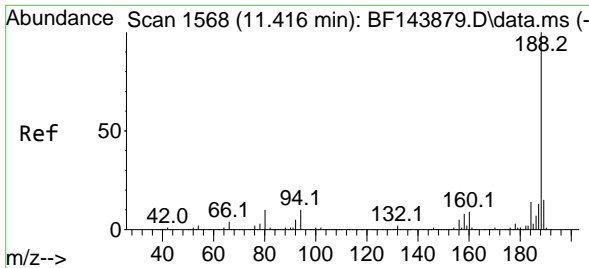


#45
 2-Fluorobiphenyl
 Concen: 80.191 ng
 RT: 9.239 min Scan# 1198
 Delta R.T. -0.012 min
 Lab File: BF143888.D
 Acq: 08 Oct 2025 10:42



Tgt Ion:172 Resp: 1673103
 Ion Ratio Lower Upper
 172 100
 171 35.1 27.4 41.0
 170 23.6 18.6 28.0



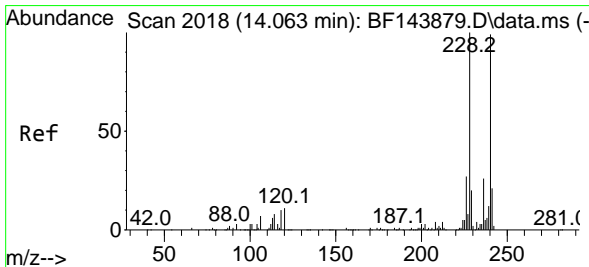
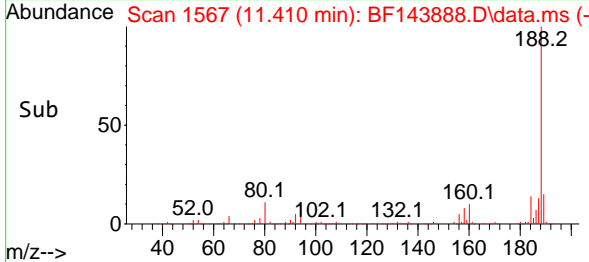
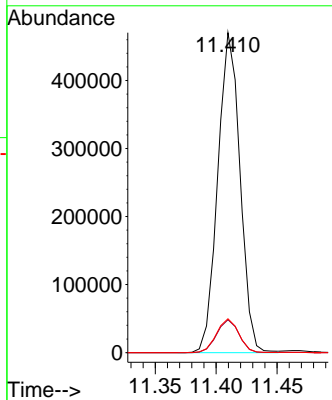
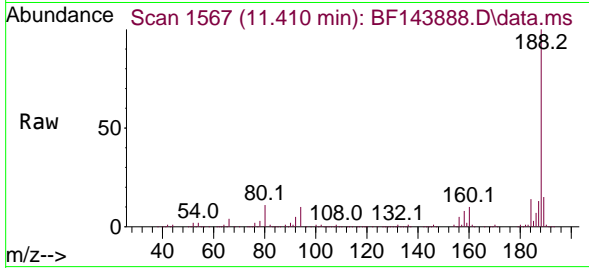


#64
 Phenanthrene-d10
 Concen: 20.000 ng
 RT: 11.410 min Scan# 11
 Delta R.T. -0.006 min
 Lab File: BF143888.D
 Acq: 08 Oct 2025 10:42

Instrument : BNA_F
 Client Sample Id : PB170004BL

Tgt Ion:188 Resp: 598123

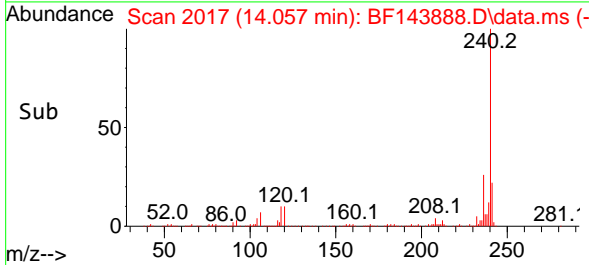
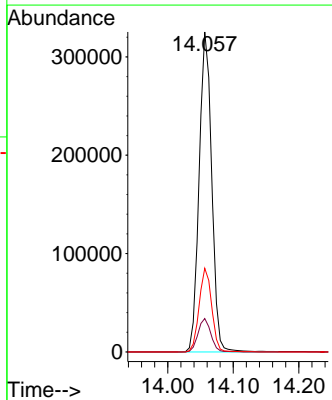
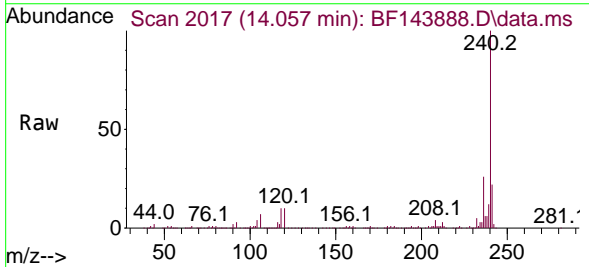
Ion	Ratio	Lower	Upper
188	100		
94	10.3	7.8	11.6
80	10.6	7.9	11.9

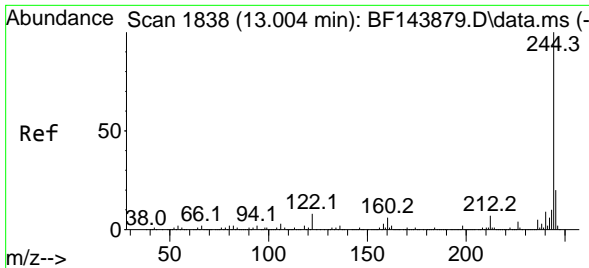


#76
 Chrysene-d12
 Concen: 20.000 ng
 RT: 14.057 min Scan# 2017
 Delta R.T. -0.011 min
 Lab File: BF143888.D
 Acq: 08 Oct 2025 10:42

Tgt Ion:240 Resp: 430751

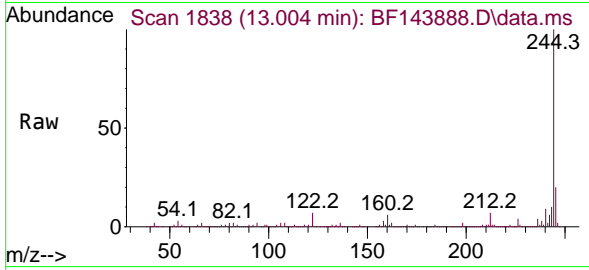
Ion	Ratio	Lower	Upper
240	100		
120	10.4	8.6	13.0
236	26.1	21.1	31.7



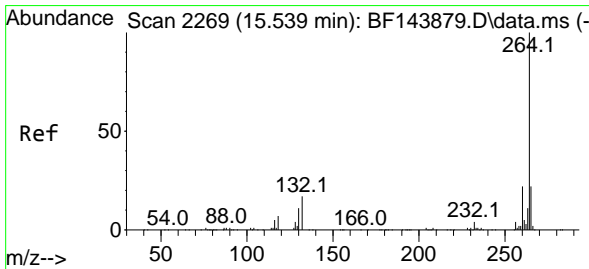
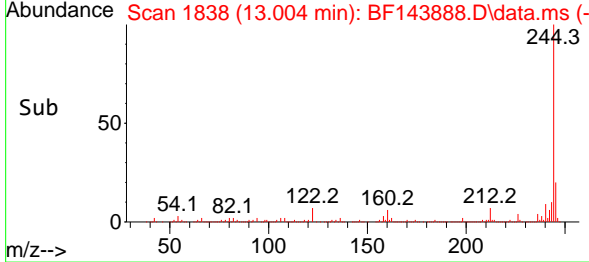
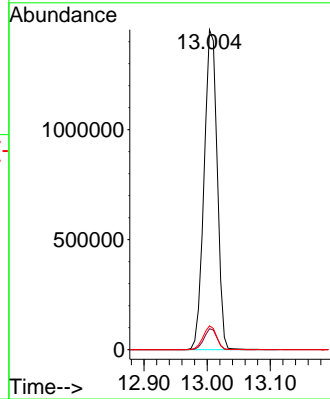


#79
 Terphenyl-d14
 Concen: 82.817 ng
 RT: 13.004 min Scan# 1838
 Delta R.T. -0.006 min
 Lab File: BF143888.D
 Acq: 08 Oct 2025 10:42

Instrument :
 BNA_F
 ClientSampleId :
 PB170004BL



Tgt Ion:244 Resp: 2087290
 Ion Ratio Lower Upper
 244 100
 212 6.5 5.4 8.0
 122 7.4 6.4 9.6



#86
 Perylene-d12
 Concen: 20.000 ng
 RT: 15.539 min Scan# 2269
 Delta R.T. -0.006 min
 Lab File: BF143888.D
 Acq: 08 Oct 2025 10:42

Tgt Ion:264 Resp: 368951
 Ion Ratio Lower Upper
 264 100
 260 21.8 17.8 26.8
 265 21.5 17.5 26.3

