

Data Path : Z:\HPCHEM1\BNA F\Data\BF100915\
 Data File : BF082144.D
 Acq On : 9 Oct 2015 14:31
 Operator : UM/IZ
 Sample : G3917-01
 Misc :
 ALS Vial : 3 Sample Multiplier: 1

Instrument :
 BNA_F
 ClientSampleId :

Quant Time: Oct 09 15:16:18 2015
 Quant Method : Z:\HPCHEM1\BNA F\METHODS\8270-BF092815.M
 Quant Title : ASP BNA STANDARDS FOR 5 POINT CALIBRATION
 QLast Update : Thu Oct 08 02:46:05 2015
 Response via : Initial Calibration

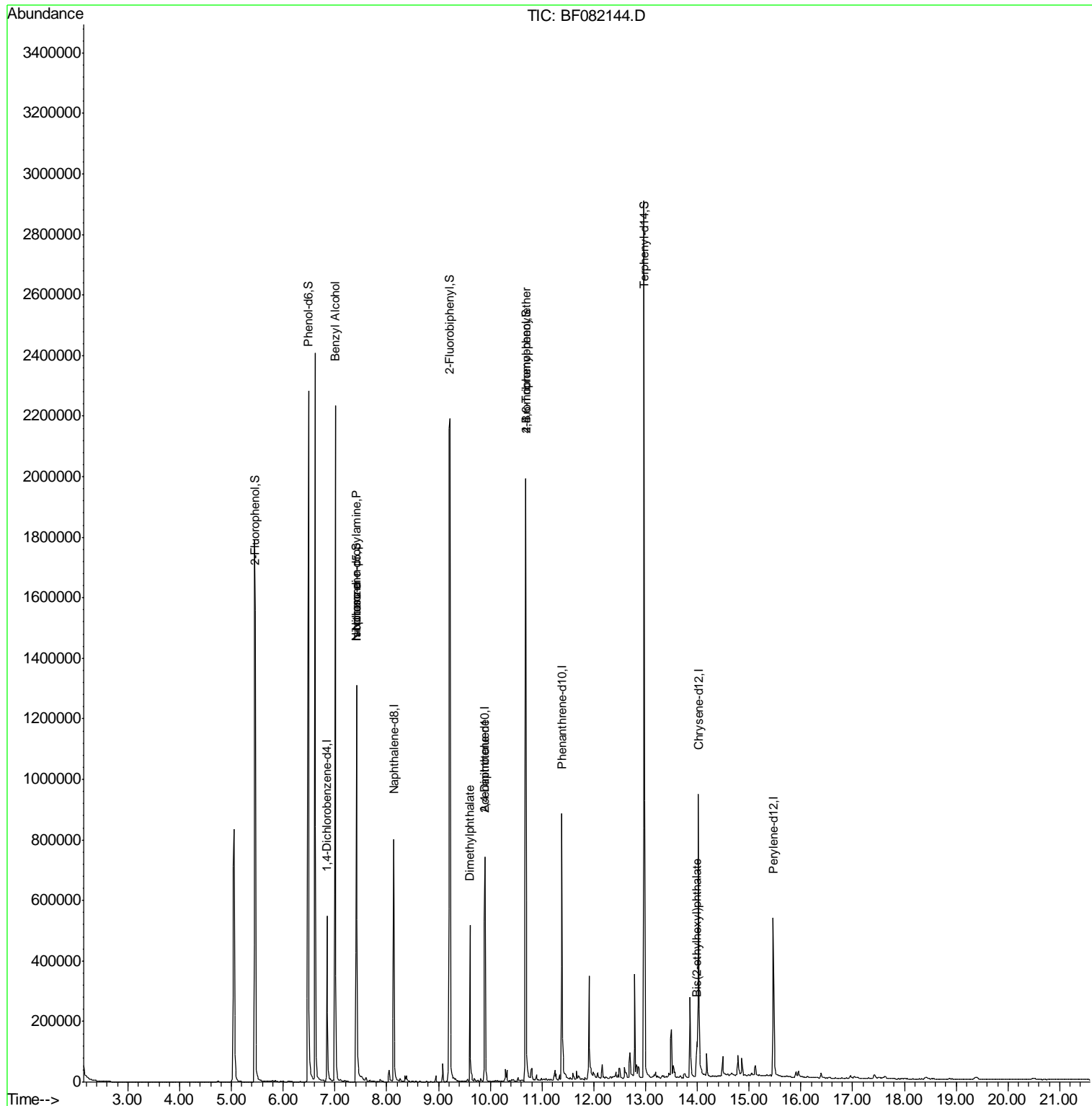
Internal Standards	R.T.	QIon	Response	Conc	Units	Dev(Min)	
1) 1,4-Dichlorobenzene-d4	6.85	152	104538	20.00	ng	-0.03	
21) Naphthalene-d8	8.14	136	429999	20.00	ng	-0.02	
38) Acenaphthene-d10	9.90	164	214526	20.00	ng	-0.02	
63) Phenanthrene-d10	11.38	188	436070	20.00	ng	-0.02	
75) Chrysene-d12	14.02	240	389494	20.00	ng	-0.03	
86) Perylene-d12	15.46	264	296038	20.00	ng	-0.03	
System Monitoring Compounds							
5) 2-Fluorophenol	5.46	112	818863	142.20	ng	0.00	
7) Phenol-d6	6.49	99	1076076	148.50	ng	-0.01	
23) Nitrobenzene-d5	7.42	82	616499	95.57	ng	-0.03	
41) 2,4,6-Tribromophenol	10.69	330	298566	137.42	ng	-0.03	
44) 2-Fluorobiphenyl	9.22	172	1272339	103.60	ng	-0.02	
78) Terphenyl-d14	12.97	244	1143281	99.40	ng	-0.02	
Target Compounds							
15) Benzyl Alcohol	7.01	79	10820	2.07	ng	#	29
19) n-Nitroso-di-n-propylamine	7.42	70	78319	17.78	ng	#	58
25) Isophorone	7.42	82	507488	39.69	ng	#	58
49) Dimethylphthalate	9.61	163	233389	15.76	ng	#	98
56) 2,4-Dinitrotoluene	9.90	165	26800	6.54	ng	#	33
57) Fluorene	10.45	166	3675	Below	Cal		98
66) 4-Bromophenyl-phenylether	10.69	248	19991	4.55	ng	#	1
70) Phenanthrene	11.41	178	21582	Below	Cal		96
73) Di-n-butylphthalate	11.94	149	7476	Below	Cal	#	98
83) Bis(2-ethylhexyl)phthalate	13.99	149	79332	7.22	ng	#	95

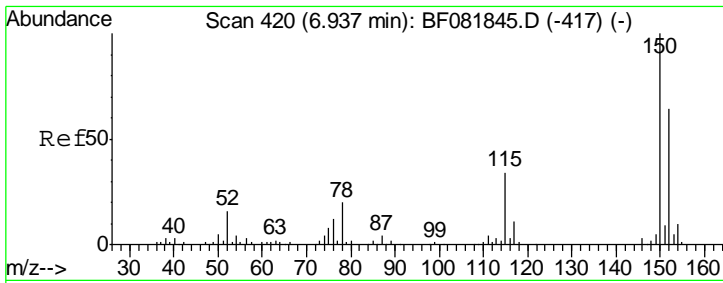
(#) = qualifier out of range (m) = manual integration (+) = signals summed

Data Path : Z:\HPCHEM1\BNA F\Data\BF100915\
 Data File : BF082144.D
 Acq On : 9 Oct 2015 14:31
 Operator : UM/IZ
 Sample : G3917-01
 Misc :
 ALS Vial : 3 Sample Multiplier: 1

Instrument :
 BNA_F
 ClientSampled :

Quant Time: Oct 09 15:16:18 2015
 Quant Method : Z:\HPCHEM1\BNA F\METHODS\8270-BF092815.M
 Quant Title : ASP BNA STANDARDS FOR 5 POINT CALIBRATION
 QLast Update : Thu Oct 08 02:46:05 2015
 Response via : Initial Calibration

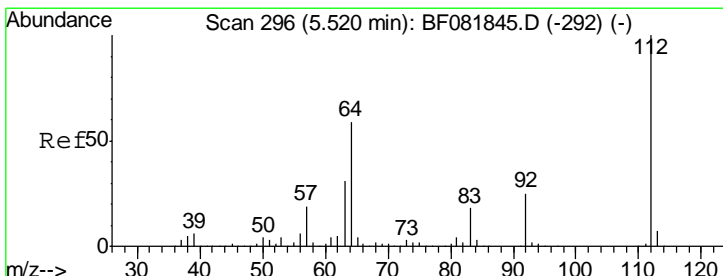
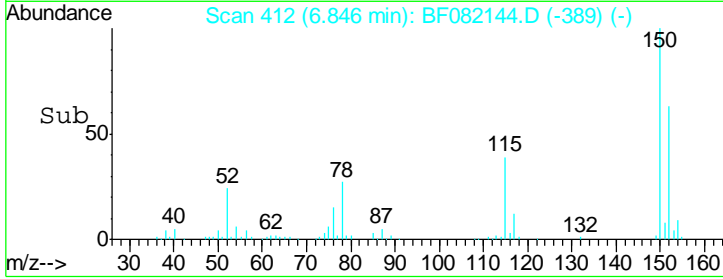
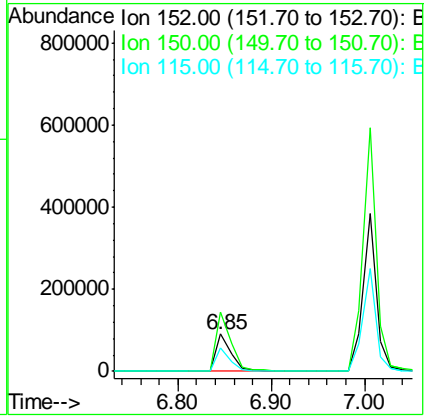
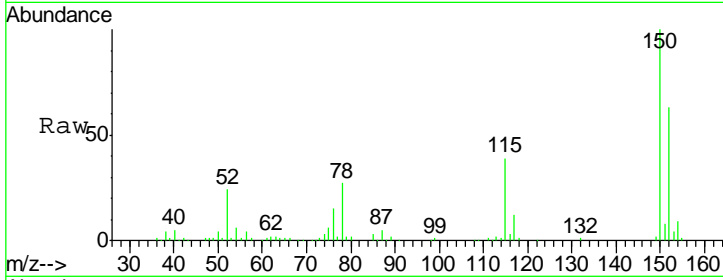




#1
 1,4-Dichlorobenzene-d4
 Concen: 20.00 ng
 RT: 6.85 min Scan# 412
 Delta R.T. -0.03 min
 Lab File: BF082144.D
 Acq: 9 Oct 2015 14:31

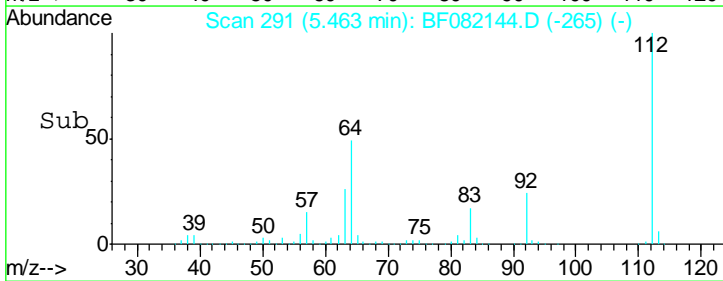
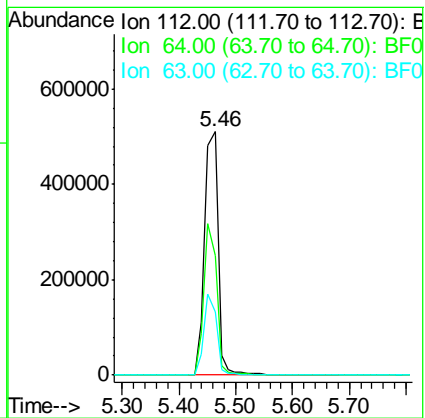
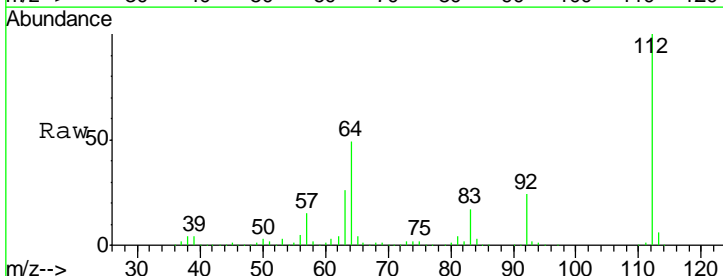
Instrument :
 BNA_F
 ClientSampled :

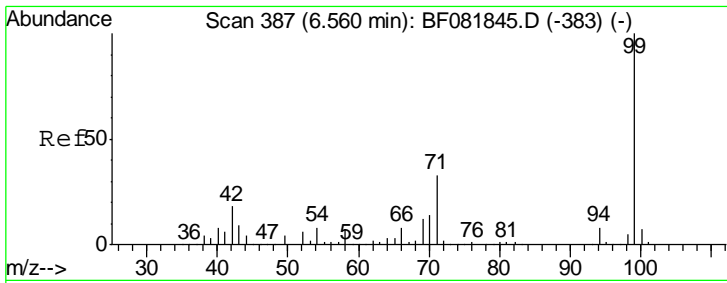
Tgt Ion	Resp	Lower	Upper
152	104538		
150	158.3	124.7	187.1
115	61.7	39.0	58.4



#5
 2-Fluorophenol
 Concen: 142.20 ng
 RT: 5.46 min Scan# 291
 Delta R.T. -0.00 min
 Lab File: BF082144.D
 Acq: 9 Oct 2015 14:31

Tgt Ion	Resp	Lower	Upper
112	818863		
64	49.2	39.7	59.5
63	25.9	17.4	26.0



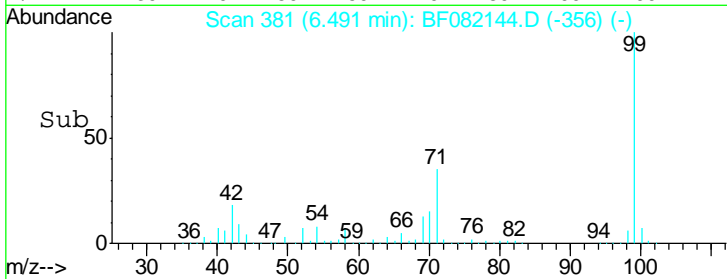
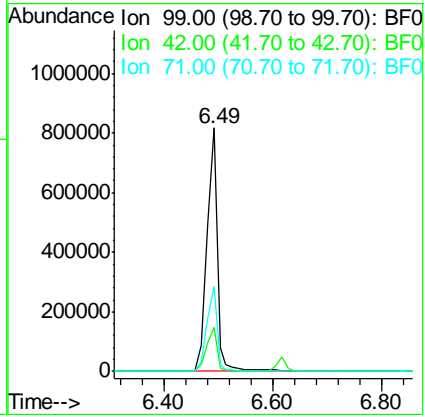
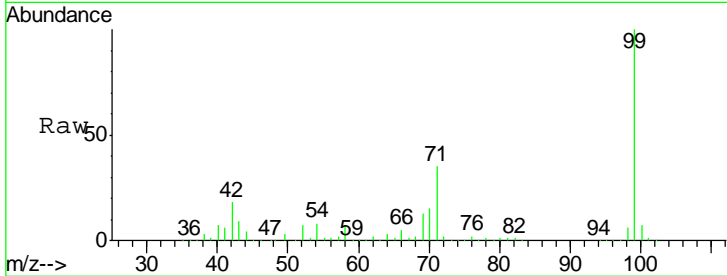


#7
 Phenol-d6
 Concen: 148.50 ng
 RT: 6.49 min Scan# 381
 Delta R.T. -0.01 min
 Lab File: BF082144.D
 Acq: 9 Oct 2015 14:31

Instrument :
 BNA_F
 ClientSampled :

Tgt Ion: 99 Resp: 1076076

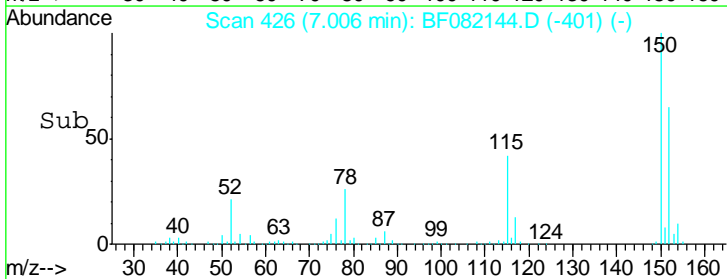
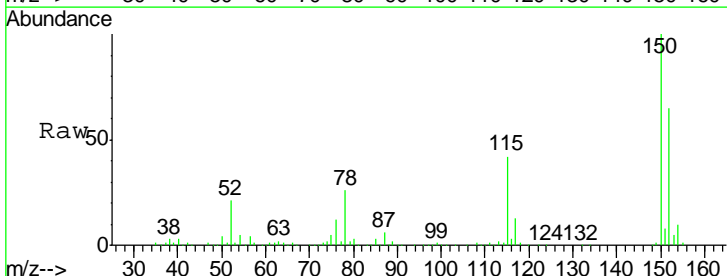
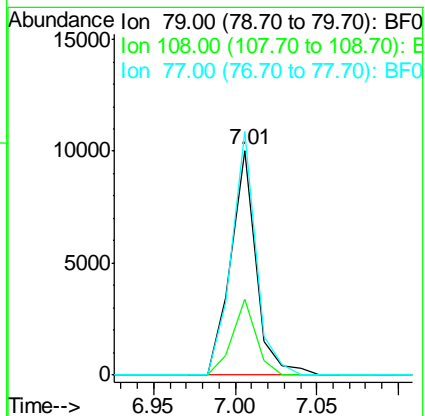
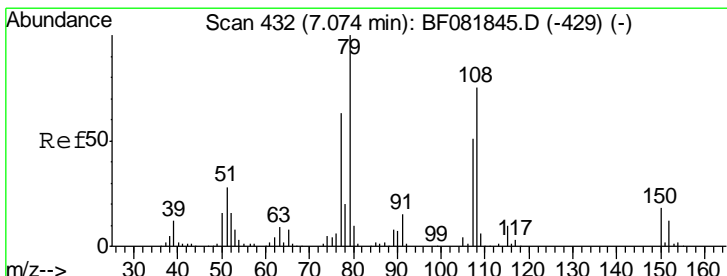
Ion	Ratio	Lower	Upper
99	100		
42	17.8	13.7	20.5
71	34.8	14.2	21.2#

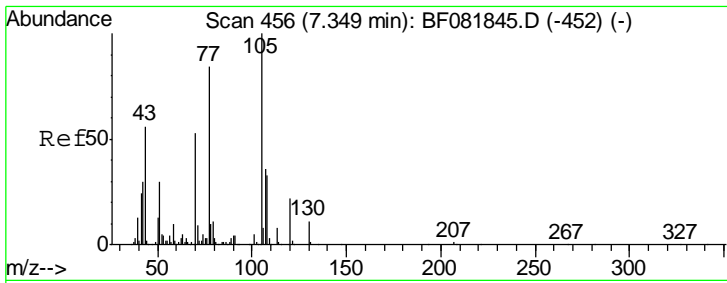


#15
 Benzyl Alcohol
 Concen: 2.07 ng
 RT: 7.01 min Scan# 426
 Delta R.T. -0.01 min
 Lab File: BF082144.D
 Acq: 9 Oct 2015 14:31

Tgt Ion: 79 Resp: 10820

Ion	Ratio	Lower	Upper
79	100		
108	33.6	88.6	132.8#
77	108.4	47.0	70.4#

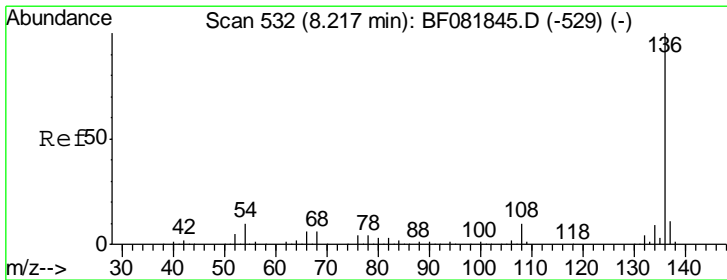
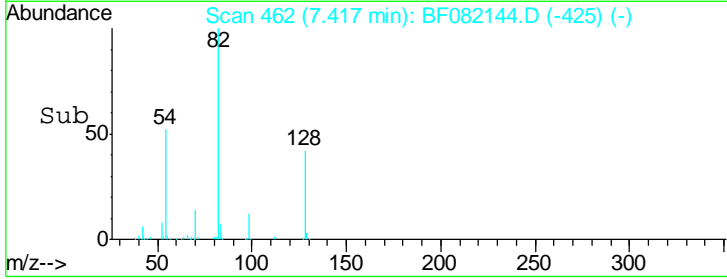
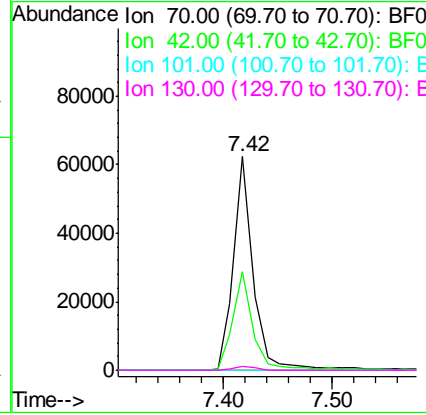
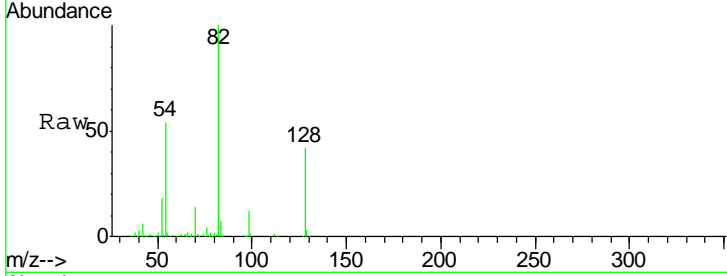




#19
 n-Nitroso-di-n-propylamine
 Concen: 17.78 ng
 RT: 7.42 min Scan# 462
 Delta R.T. 0.13 min
 Lab File: BF082144.D
 Acq: 9 Oct 2015 14:31

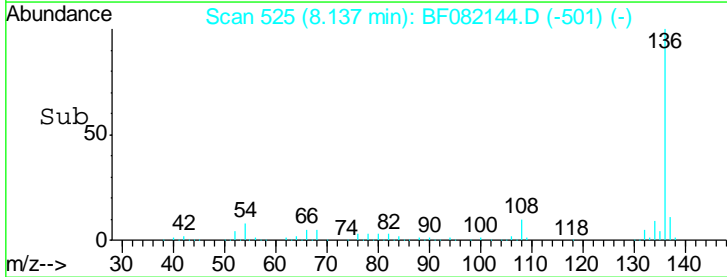
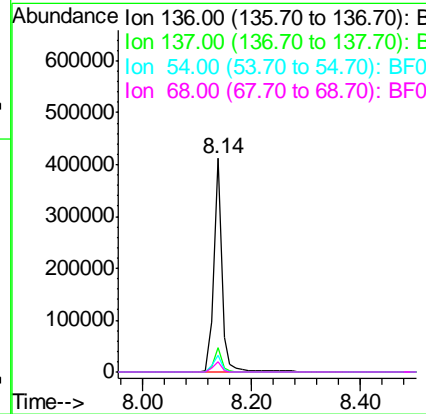
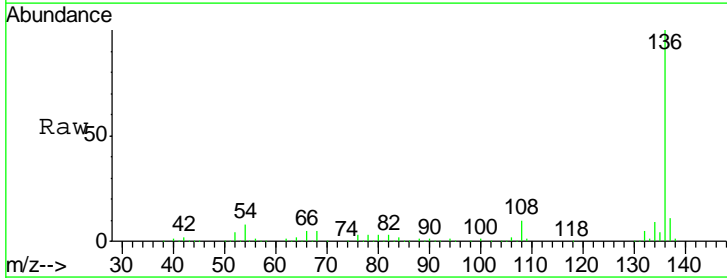
Instrument :
 BNA_F
 ClientSampleId :

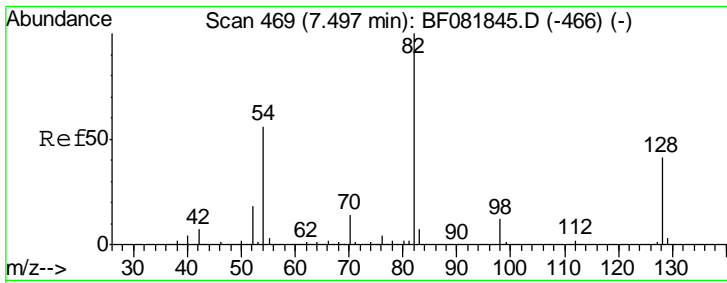
Tgt Ion	Resp	Lower	Upper
70	78319		
70	100		
42	45.9	63.8	95.6#
101	0.0	9.2	13.8#
130	1.9	27.3	40.9#



#21
 Naphthalene-d8
 Concen: 20.00 ng
 RT: 8.14 min Scan# 525
 Delta R.T. -0.02 min
 Lab File: BF082144.D
 Acq: 9 Oct 2015 14:31

Tgt Ion	Resp	Lower	Upper
136	429999		
136	100		
137	11.2	9.0	13.6
54	7.6	8.2	12.2#
68	4.9	5.8	8.6#

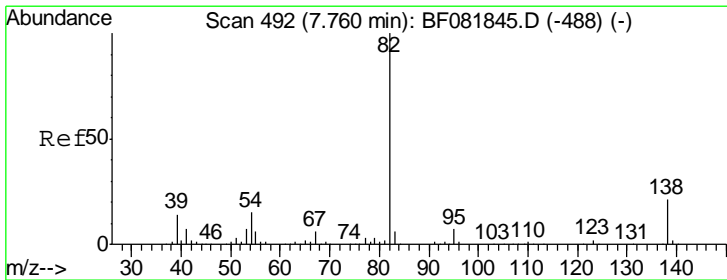
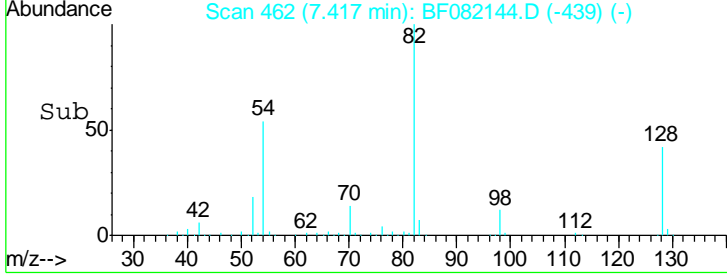
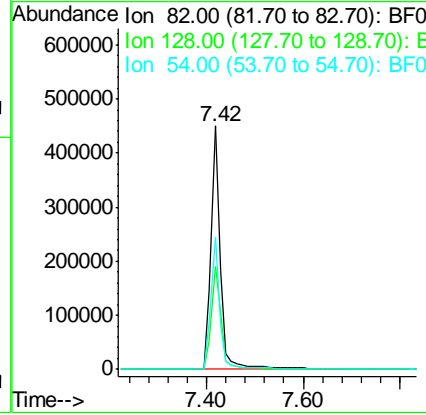
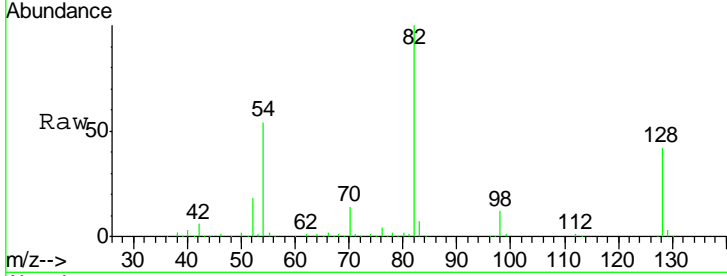




#23
 Nitrobenzene-d5
 Concen: 95.57 ng
 RT: 7.42 min Scan# 462
 Delta R.T. -0.03 min
 Lab File: BF082144.D
 Acq: 9 Oct 2015 14:31

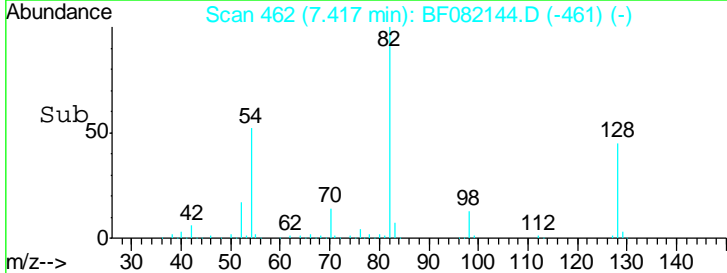
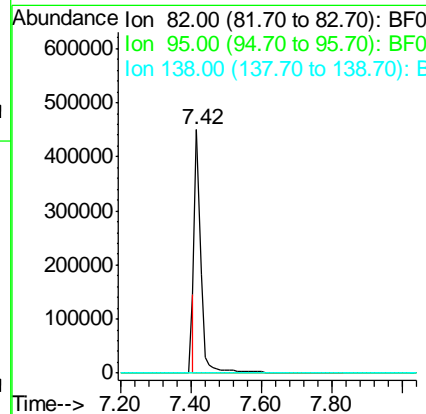
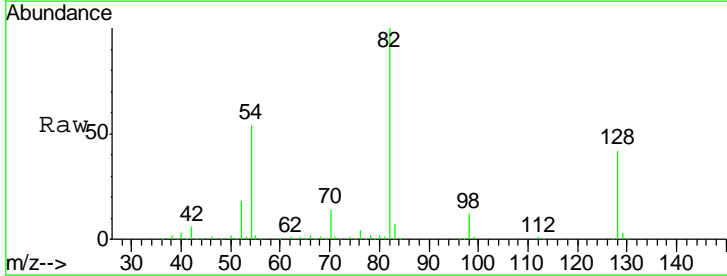
Instrument :
 BNA_F
 ClientSampled :

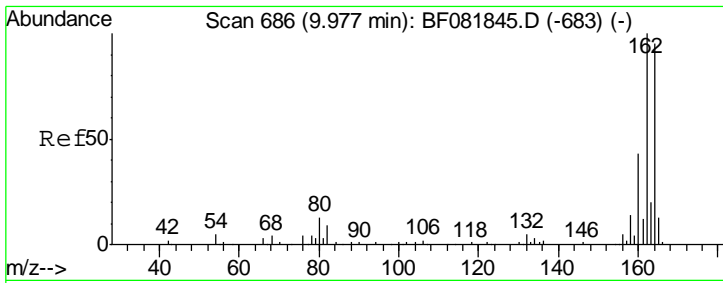
Tgt Ion	Resp	Lower	Upper
82	100		
128	42.1	51.0	76.6#
54	54.5	47.5	71.3



#25
 Isophorone
 Concen: 39.69 ng
 RT: 7.42 min Scan# 462
 Delta R.T. -0.29 min
 Lab File: BF082144.D
 Acq: 9 Oct 2015 14:31

Tgt Ion	Resp	Lower	Upper
82	100		
95	0.0	4.0	6.0#
138	0.0	18.3	27.5#

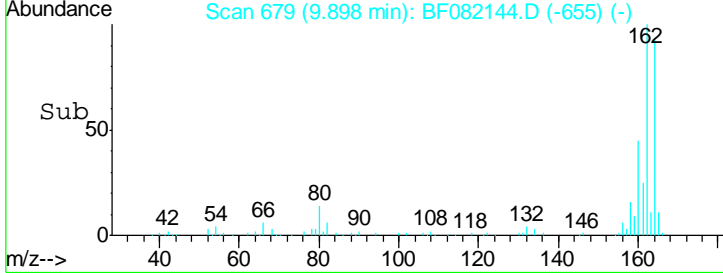
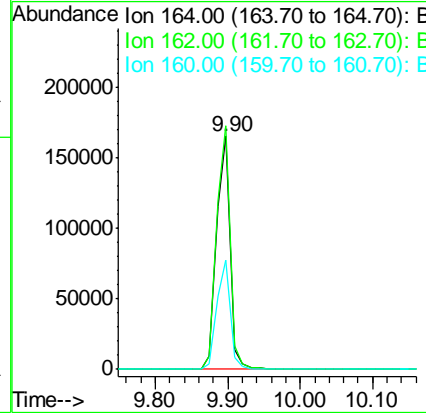
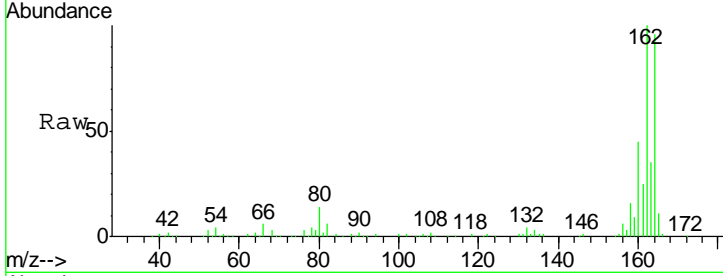




#38
 Acenaphthene-d10
 Concen: 20.00 ng
 RT: 9.90 min Scan# 679
 Delta R.T. -0.02 min
 Lab File: BF082144.D
 Acq: 9 Oct 2015 14:31

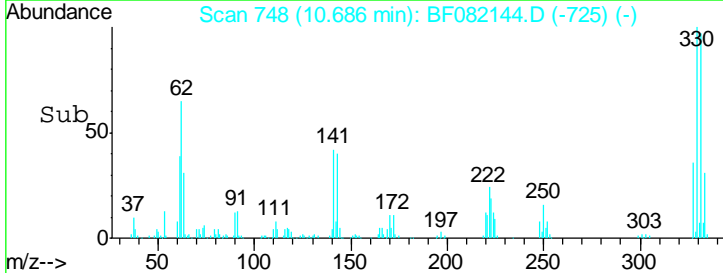
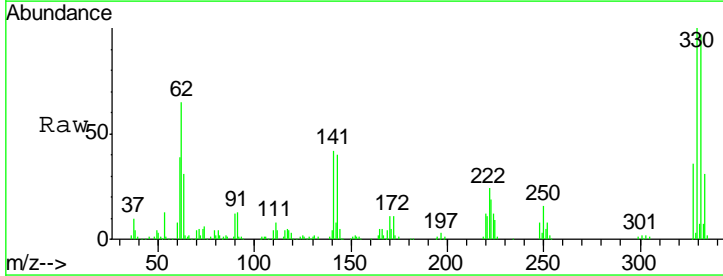
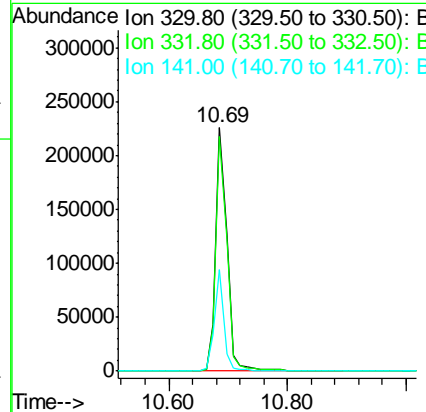
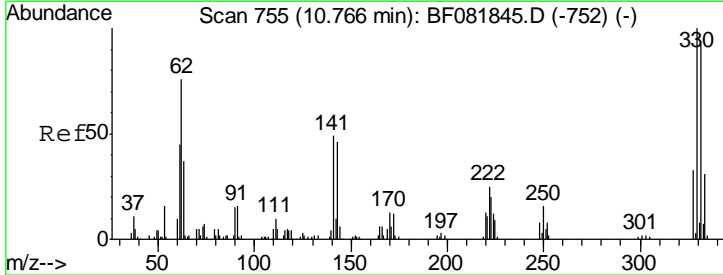
Instrument :
 BNA_F
 ClientSampled :

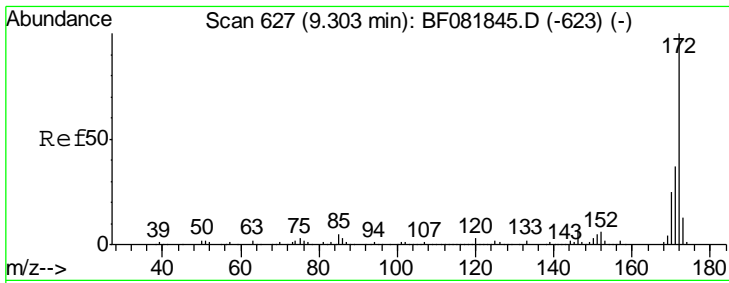
Tgt Ion	Resp	Lower	Upper
164	100		
162	104.5	75.2	112.8
160	46.6	31.5	47.3



#41
 2,4,6-Tribromophenol
 Concen: 137.42 ng
 RT: 10.69 min Scan# 748
 Delta R.T. -0.03 min
 Lab File: BF082144.D
 Acq: 9 Oct 2015 14:31

Tgt Ion	Resp	Lower	Upper
330	100		
332	96.2	76.6	114.8
141	36.2	29.7	44.5



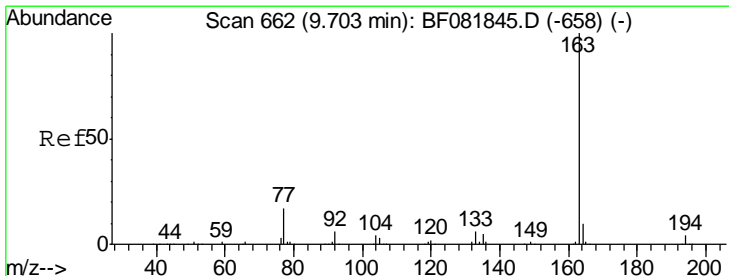
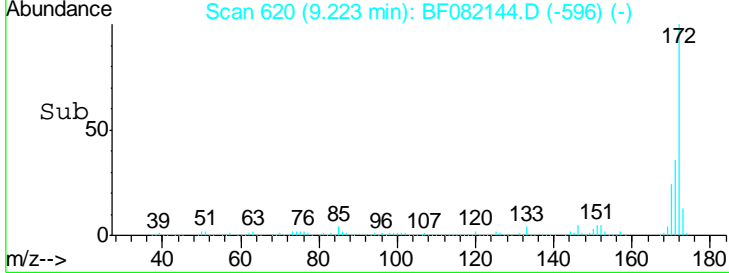
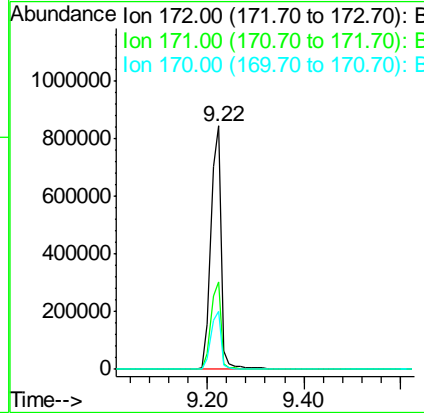
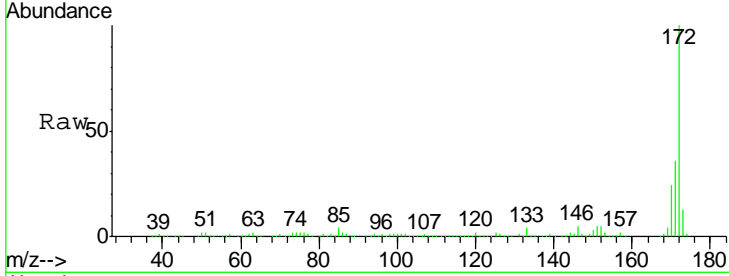


#44
 2-Fluorobiphenyl
 Concen: 103.60 ng
 RT: 9.22 min Scan# 620
 Delta R.T. -0.02 min
 Lab File: BF082144.D
 Acq: 9 Oct 2015 14:31

Instrument :
 BNA_F
 ClientSampled :

Tgt Ion:172 Resp: 1272339

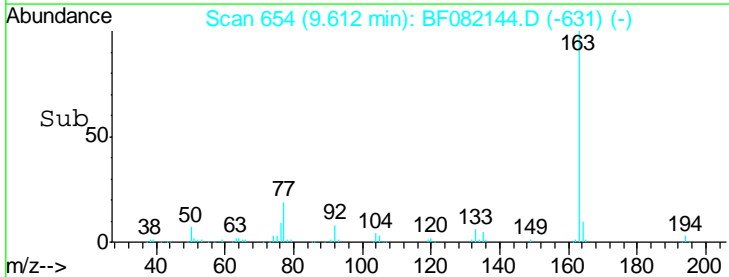
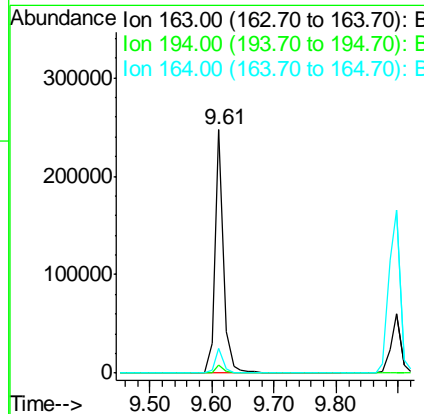
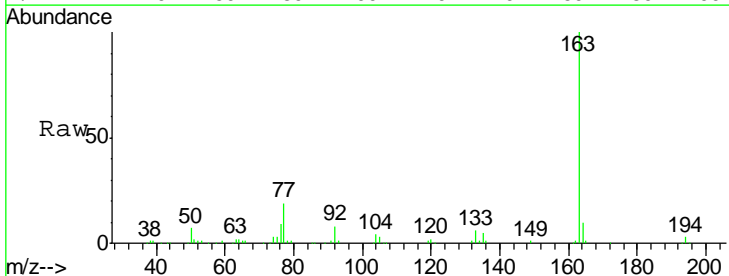
Ion	Ratio	Lower	Upper
172	100		
171	36.0	26.1	39.1
170	23.8	17.4	26.2

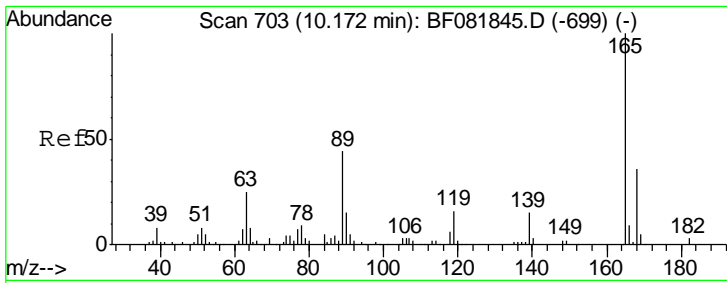


#49
 Dimethylphthalate
 Concen: 15.76 ng
 RT: 9.61 min Scan# 654
 Delta R.T. -0.03 min
 Lab File: BF082144.D
 Acq: 9 Oct 2015 14:31

Tgt Ion:163 Resp: 233389

Ion	Ratio	Lower	Upper
163	100		
194	3.4	4.4	6.6#
164	10.4	8.3	12.5

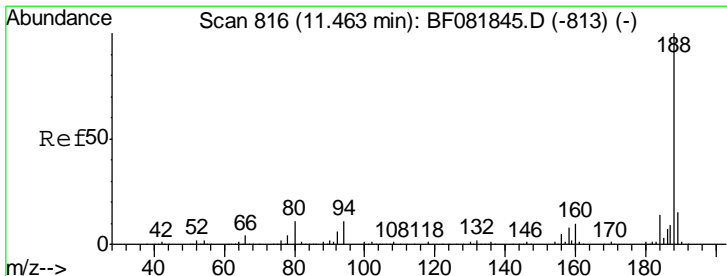
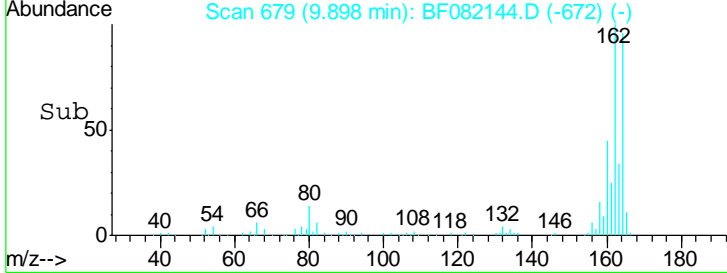
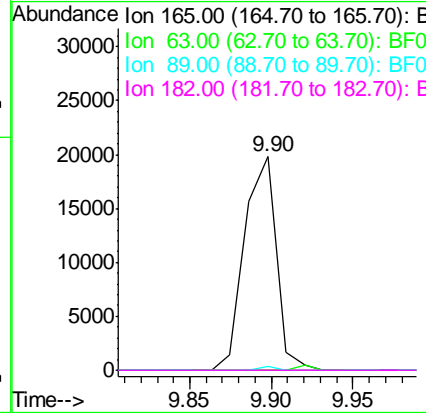
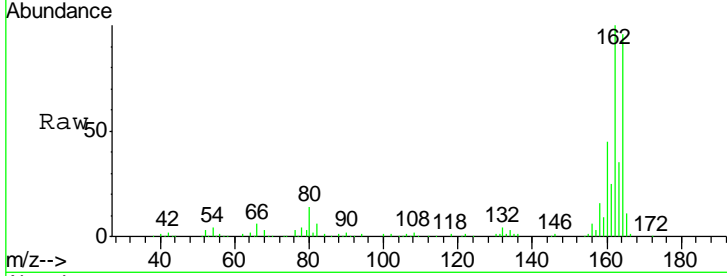




#56
 2,4-Dinitrotoluene
 Concen: 6.54 ng
 RT: 9.90 min Scan# 679
 Delta R.T. -0.22 min
 Lab File: BF082144.D
 Acq: 9 Oct 2015 14:31

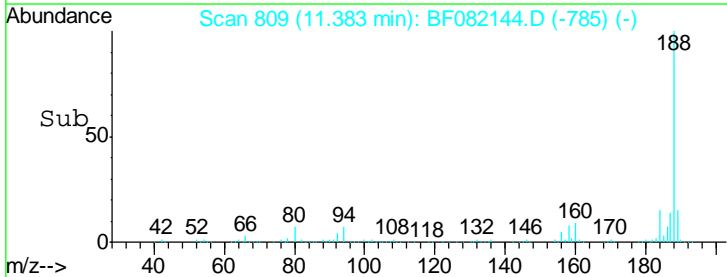
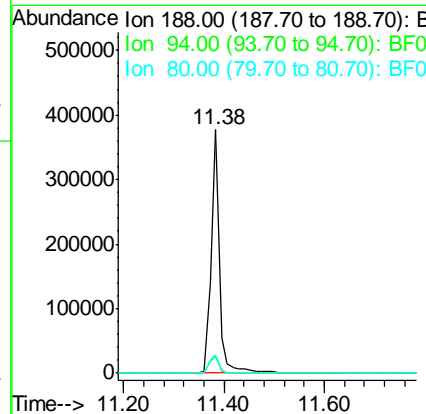
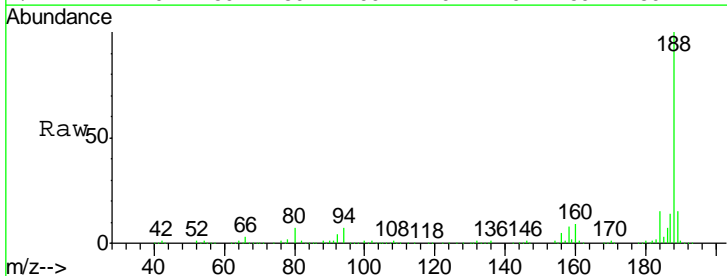
Instrument :
 BNA_F
 ClientSampled :

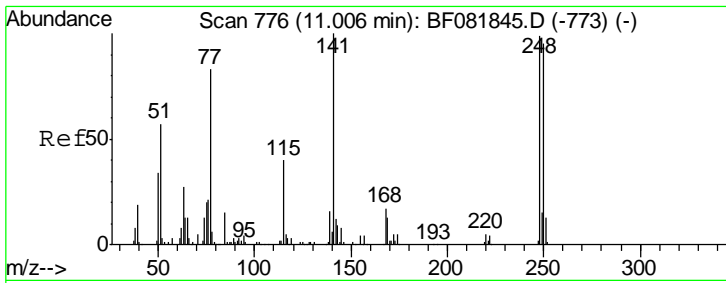
Tgt Ion	Resp	Lower	Upper
165	100		
63	0.0	29.8	44.6#
89	1.8	44.5	66.7#
182	0.0	3.0	4.4#



#63
 Phenanthrene-d10
 Concen: 20.00 ng
 RT: 11.38 min Scan# 809
 Delta R.T. -0.02 min
 Lab File: BF082144.D
 Acq: 9 Oct 2015 14:31

Tgt Ion	Resp	Lower	Upper
188	100		
94	7.0	11.1	16.7#
80	7.4	11.0	16.4#

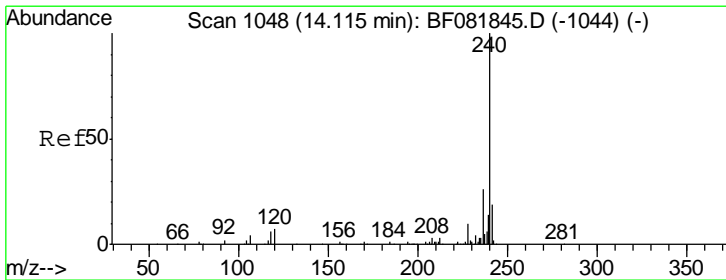
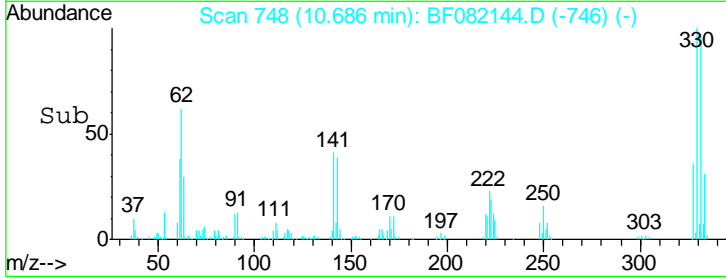
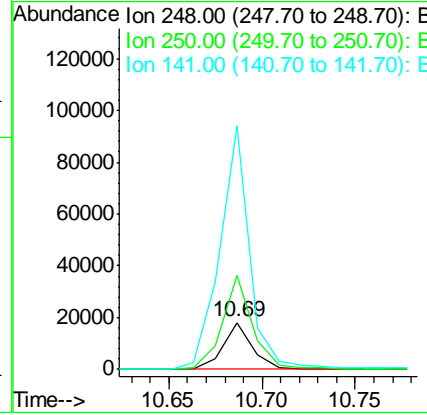
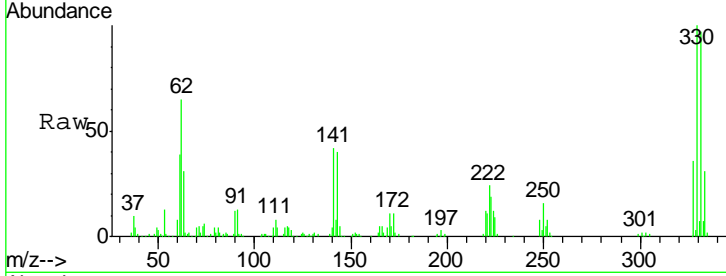




#66
 4-Bromophenyl-phenylether
 Concen: 4.55 ng
 RT: 10.69 min Scan# 748
 Delta R.T. -0.27 min
 Lab File: BF082144.D
 Acq: 9 Oct 2015 14:31

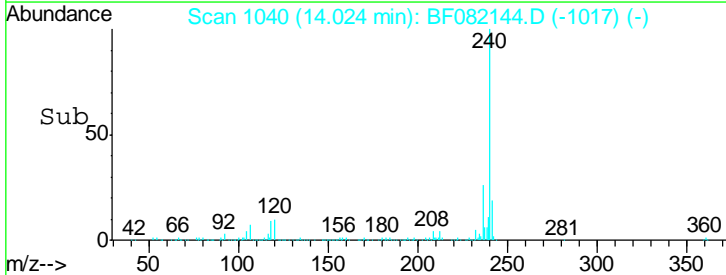
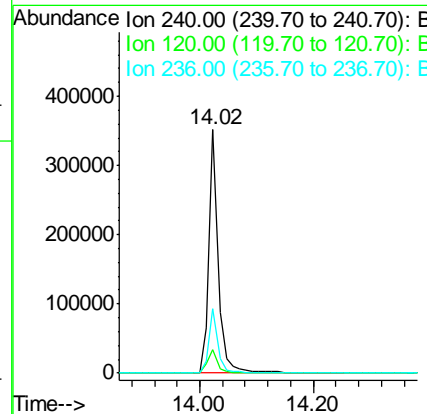
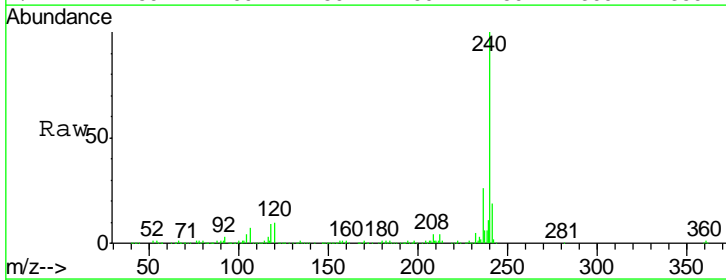
Instrument :
 BNA_F
 ClientSampled :

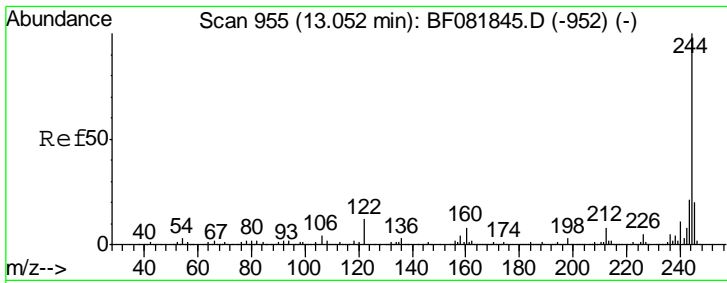
Tgt Ion	Resp	Lower	Upper
248	19991		
248	100		
250	199.4	78.5	117.7#
141	520.7	59.0	88.6#



#75
 Chrysene-d12
 Concen: 20.00 ng
 RT: 14.02 min Scan# 1040
 Delta R.T. -0.03 min
 Lab File: BF082144.D
 Acq: 9 Oct 2015 14:31

Tgt Ion	Resp	Lower	Upper
240	389494		
240	100		
120	9.7	16.2	24.2#
236	26.3	18.4	27.6



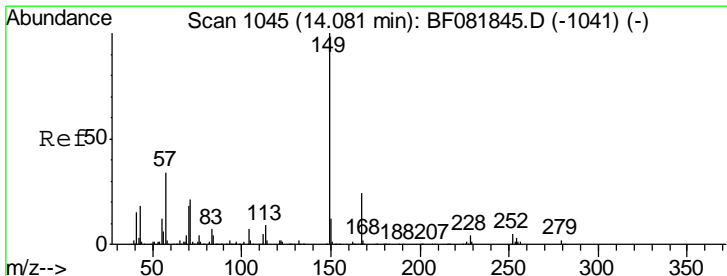
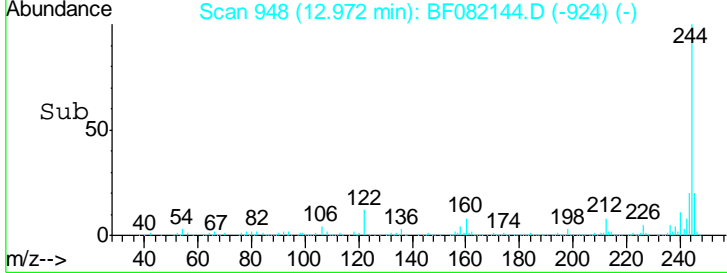
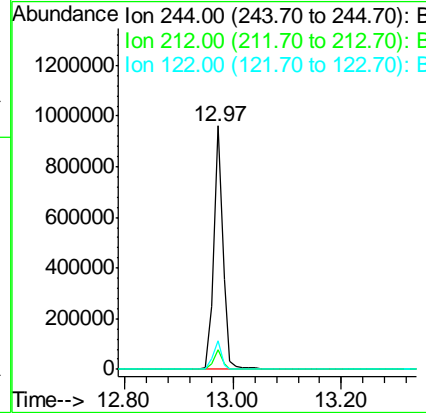
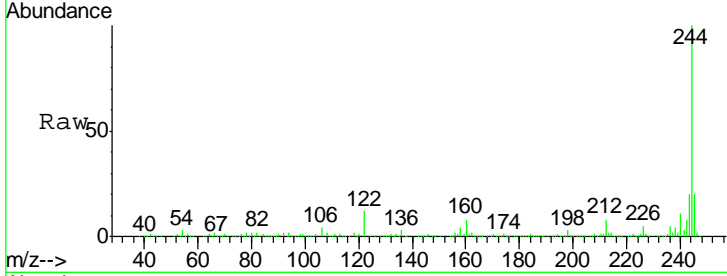


#78
 Terphenyl-d14
 Concen: 99.40 ng
 RT: 12.97 min Scan# 948
 Delta R.T. -0.02 min
 Lab File: BF082144.D
 Acq: 9 Oct 2015 14:31

Instrument :
 BNA_F
 ClientSampled :

Tgt Ion:244 Resp: 1143281

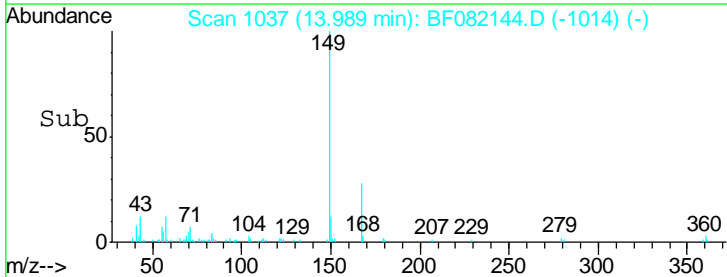
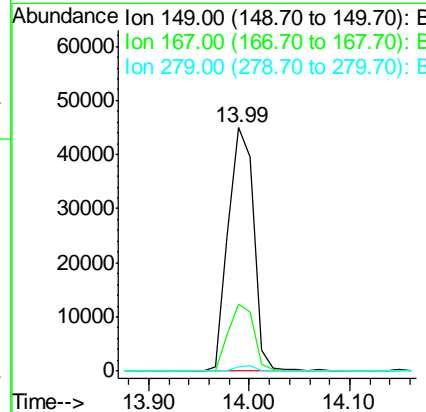
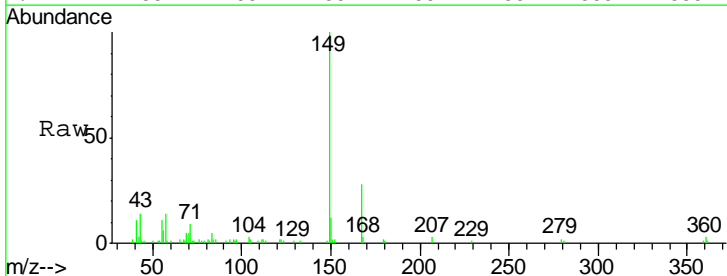
Ion	Ratio	Lower	Upper
244	100		
212	7.8	4.3	6.5#
122	11.7	17.4	26.2#

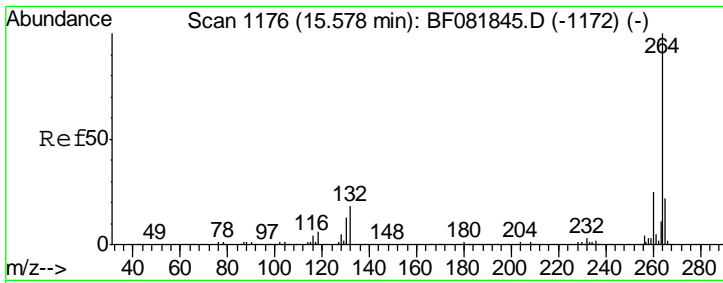


#83
 Bis(2-ethylhexyl)phthalate
 Concen: 7.22 ng
 RT: 13.99 min Scan# 1037
 Delta R.T. -0.03 min
 Lab File: BF082144.D
 Acq: 9 Oct 2015 14:31

Tgt Ion:149 Resp: 79332

Ion	Ratio	Lower	Upper
149	100		
167	27.6	24.2	36.2
279	2.0	3.8	5.6#





#86
 Perylene-d12
 Concen: 20.00 ng
 RT: 15.46 min Scan# 1166
 Delta R.T. -0.03 min
 Lab File: BF082144.D
 Acq: 9 Oct 2015 14:31

Instrument :
 BNA_F
 ClientSampled :

Tot Ion: 264 Resp: 296038

Ion	Ratio	Lower	Upper
264	100		
260	23.8	16.7	25.1
265	22.0	17.2	25.8

