

Data Path : Z:\HPCHEM1\BNA F\DATA\BF100917\  
 Data File : BF099263.D  
 Acq On : 9 Oct 2017 15:38  
 Operator : SJ/JU  
 Sample : I5702-01  
 Misc :  
 ALS Vial : 6 Sample Multiplier: 1

Instrument :  
 BNA\_F  
 ClientSampleId :  
 PHOENIX-RAW

Quant Time: Oct 09 17:29:56 2017  
 Quant Method : Z:\HPCHEM1\BNA F\METHODS\8270-BF092317.M  
 Quant Title : ASP BNA STANDARDS FOR 5 POINT CALIBRATION  
 QLast Update : Thu Oct 05 17:20:48 2017  
 Response via : Initial Calibration

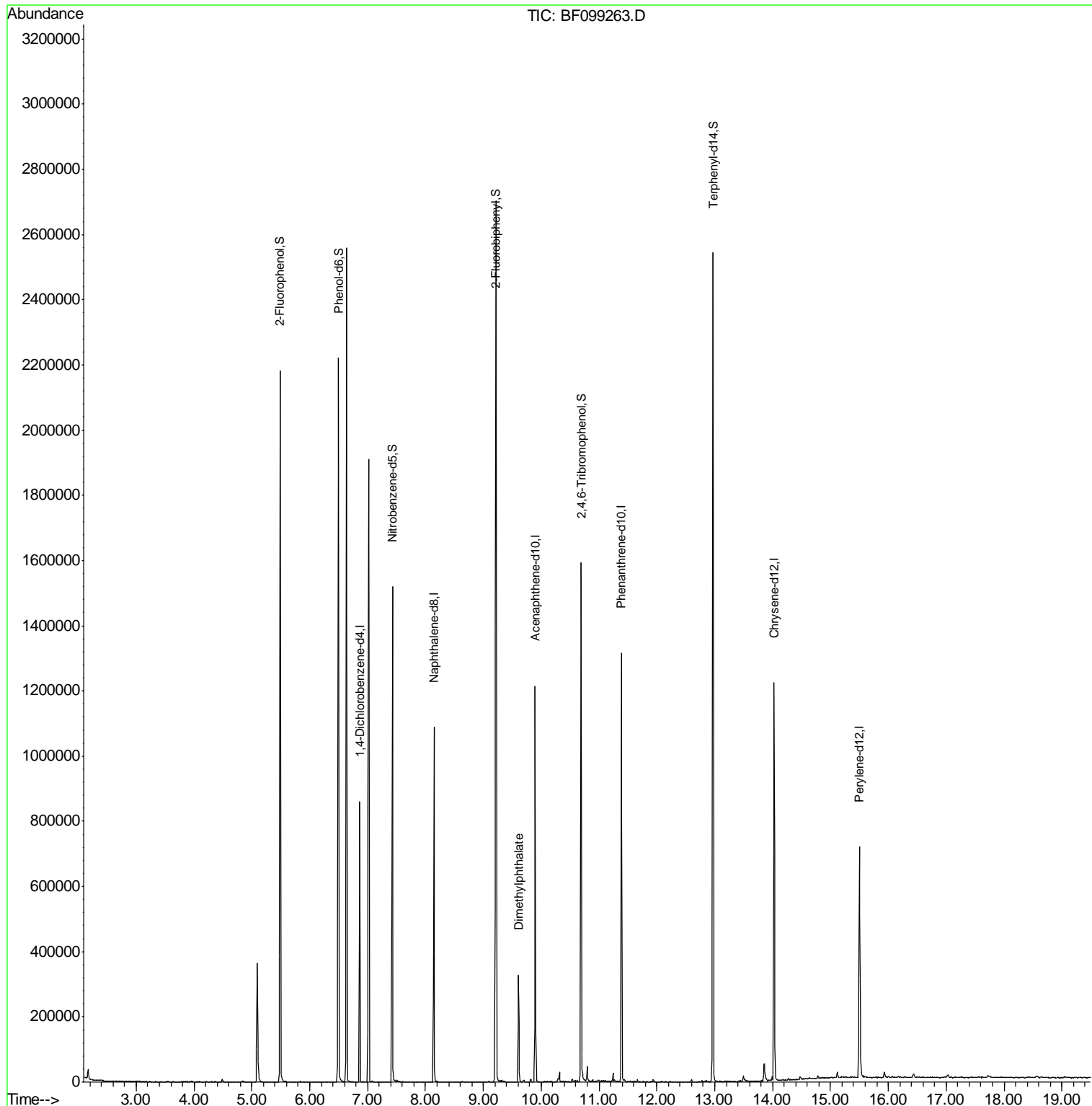
Internal Standards	R.T.	QIon	Response	Conc	Units	Dev(Min)
1) 1,4-Dichlorobenzene-d4	6.86	152	120288	20.00	ng	0.00
21) Naphthalene-d8	8.15	136	498223	20.00	ng	0.00
38) Acenaphthene-d10	9.90	164	233659	20.00	ng	0.00
63) Phenanthrene-d10	11.39	188	444262	20.00	ng	0.00
75) Chrysene-d12	14.03	240	373218	20.00	ng	0.00
86) Perylene-d12	15.50	264	308081	20.00	ng	0.00
System Monitoring Compounds						
5) 2-Fluorophenol	5.49	112	711196	94.12	ng	0.00
7) Phenol-d6	6.50	99	862961	92.58	ng	0.00
23) Nitrobenzene-d5	7.43	82	505624	65.08	ng	0.00
41) 2,4,6-Tribromophenol	10.69	330	199486	104.34	ng	0.00
44) 2-Fluorobiphenyl	9.22	172	943342	67.40	ng	-0.01
78) Terphenyl-d14	12.97	244	913762	55.68	ng	0.00
Target Compounds						Qvalue
49) Dimethylphthalate	9.61	163	131750	7.471	ng	100

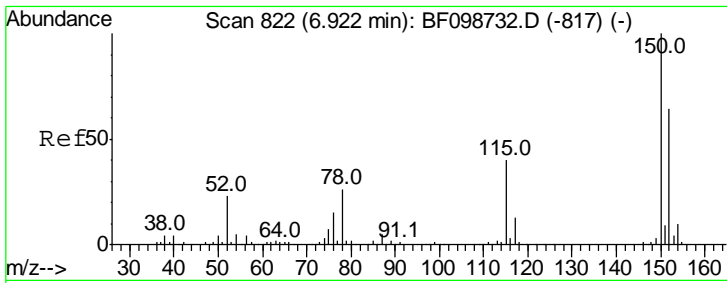
(#) = qualifier out of range (m) = manual integration (+) = signals summed

Data Path : Z:\HPCHEM1\BNA F\DATA\BF100917\  
 Data File : BF099263.D  
 Acq On : 9 Oct 2017 15:38  
 Operator : SJ/JU  
 Sample : I5702-01  
 Misc :  
 ALS Vial : 6 Sample Multiplier: 1

Instrument :  
 BNA\_F  
 ClientSampled :  
 PHOENIX-RAW

Quant Time: Oct 09 17:29:56 2017  
 Quant Method : Z:\HPCHEM1\BNA F\METHODS\8270-BF092317.M  
 Quant Title : ASP BNA STANDARDS FOR 5 POINT CALIBRATION  
 QLast Update : Thu Oct 05 17:20:48 2017  
 Response via : Initial Calibration



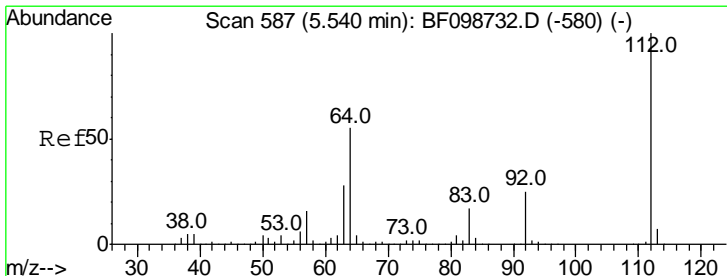
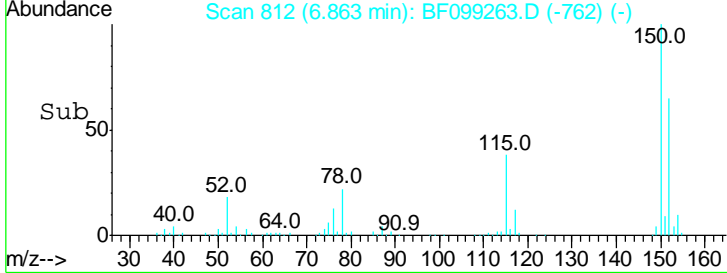
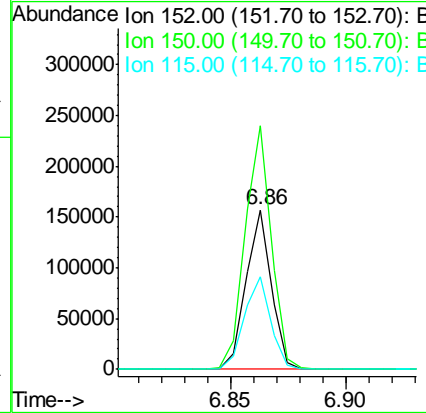
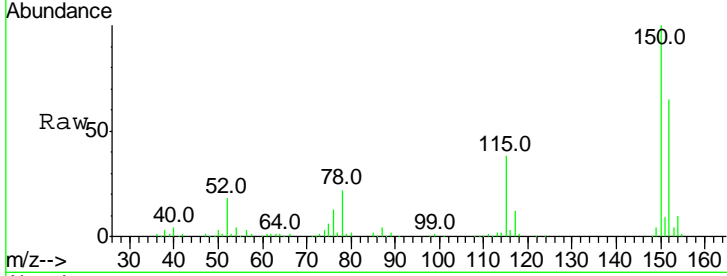


#1  
 1,4-Dichlorobenzene-d4  
 Concen: 20.000 ng  
 RT: 6.86 min Scan# 812  
 Delta R.T. -0.01 min  
 Lab File: BF099263.D  
 Acq: 9 Oct 2017 15:38

**Instrument :**  
 BNA\_F  
**ClientSampled :**  
 PHOENIX-RAW

Tot Ion:152 Resp: 120288

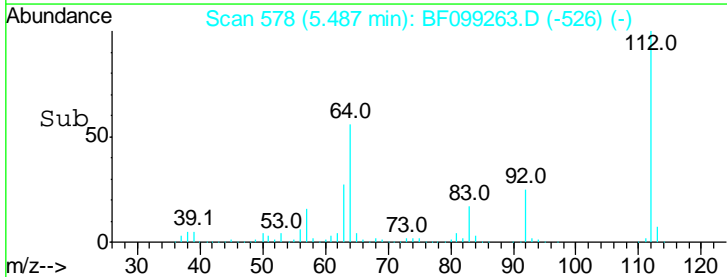
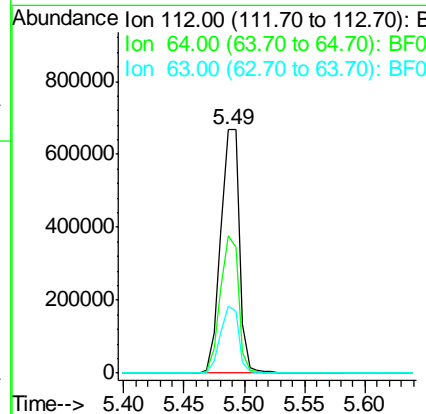
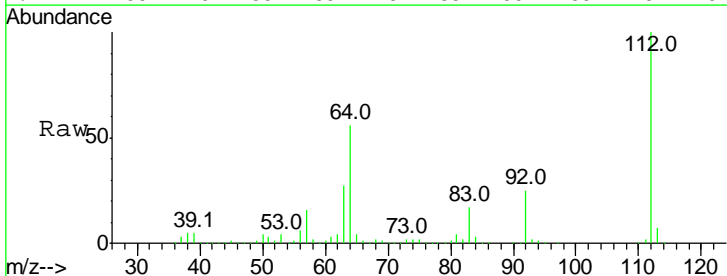
Ion	Ratio	Lower	Upper
152	100		
150	152.7	124.6	186.8
115	58.2	50.1	75.1

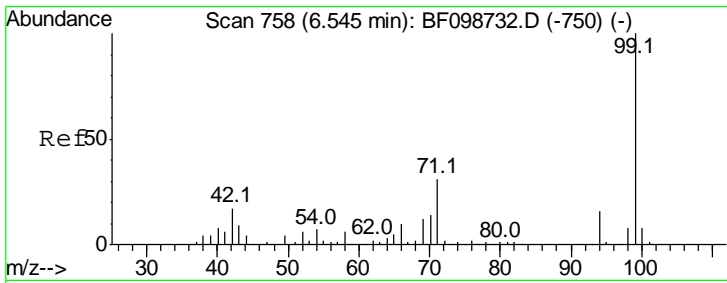


#5  
 2-Fluorophenol  
 Concen: 94.120 ng  
 RT: 5.49 min Scan# 578  
 Delta R.T. 0.01 min  
 Lab File: BF099263.D  
 Acq: 9 Oct 2017 15:38

Tgt Ion:112 Resp: 711196

Ion	Ratio	Lower	Upper
112	100		
64	56.4	47.9	71.9
63	27.4	23.7	35.5



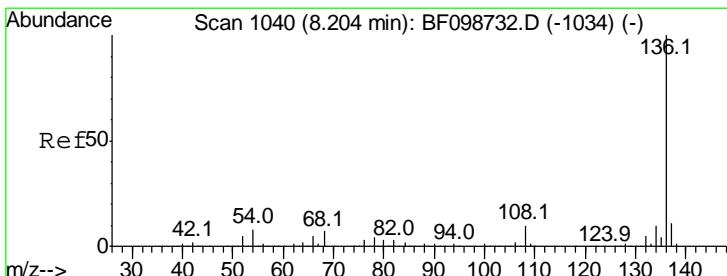
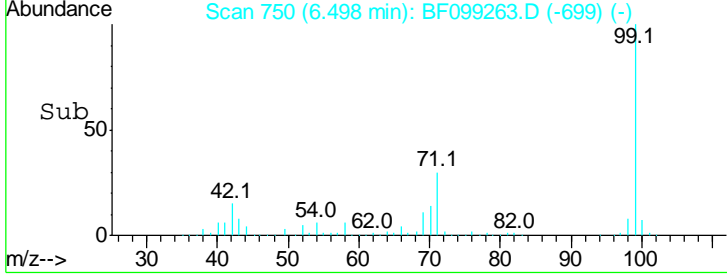
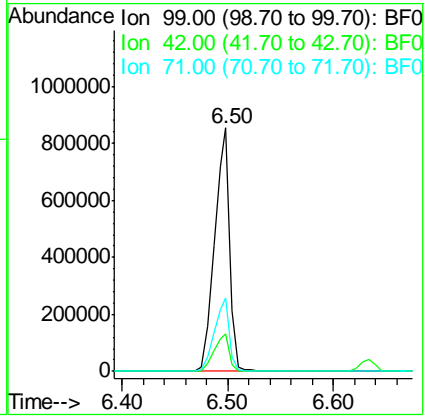
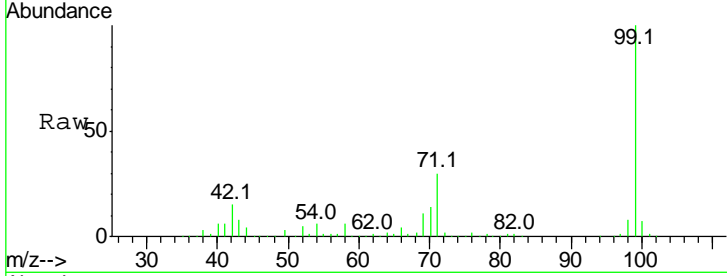


#7  
 Phenol-d6  
 Concen: 92.578 ng  
 RT: 6.50 min Scan# 750  
 Delta R.T. 0.00 min  
 Lab File: BF099263.D  
 Acq: 9 Oct 2017 15:38

**Instrument :**  
 BNA\_F  
**ClientSampled :**  
 PHOENIX-RAW

Tot Ion: 99 Resp: 862961

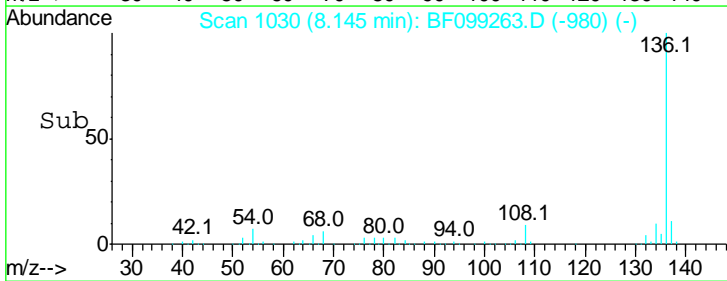
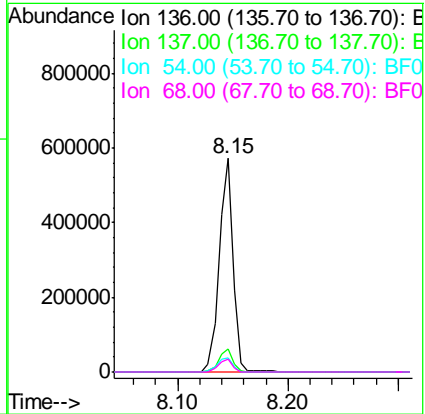
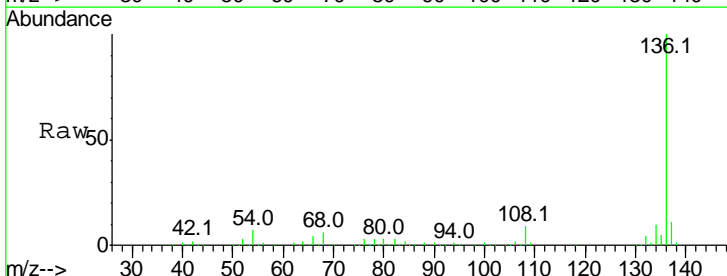
Ion	Ratio	Lower	Upper
99	100		
42	15.4	14.5	21.7
71	30.4	25.4	38.0

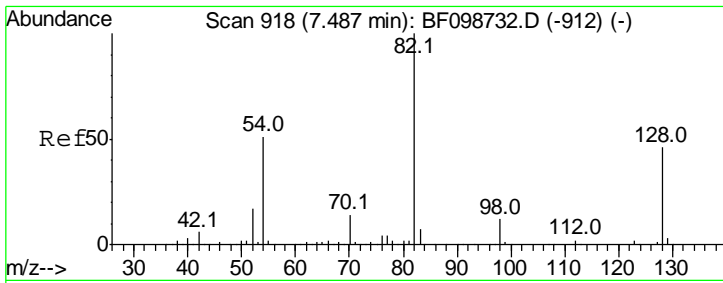


#21  
 Naphthalene-d8  
 Concen: 20.000 ng  
 RT: 8.15 min Scan# 1030  
 Delta R.T. -0.01 min  
 Lab File: BF099263.D  
 Acq: 9 Oct 2017 15:38

Tgt Ion: 136 Resp: 498223

Ion	Ratio	Lower	Upper
136	100		
137	10.9	8.9	13.3
54	6.8	6.6	9.8
68	5.7	5.0	7.4

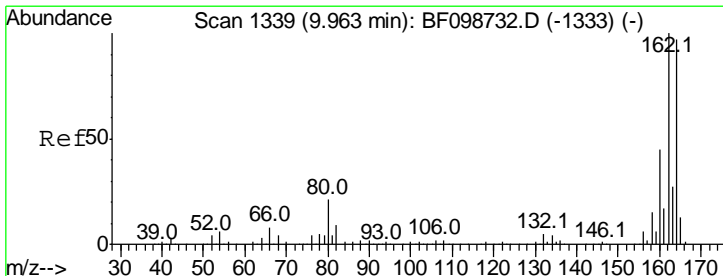
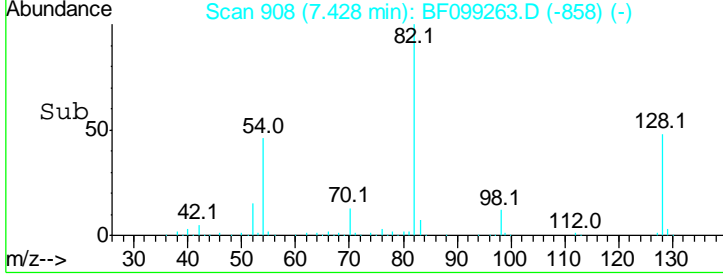
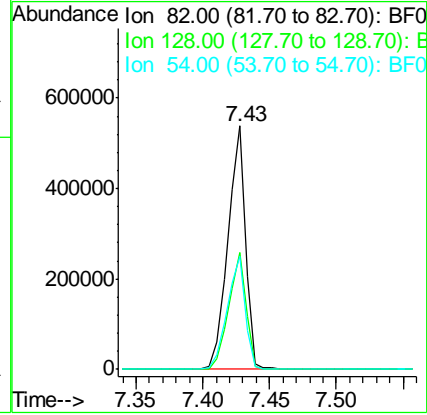
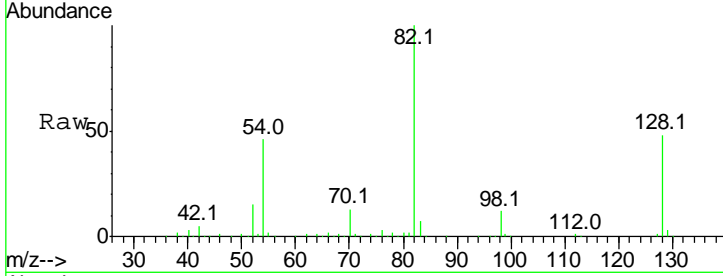




#23  
 Nitrobenzene-d5  
 Concen: 65.083 ng  
 RT: 7.43 min Scan# 908  
 Delta R.T. -0.01 min  
 Lab File: BF099263.D  
 Acq: 9 Oct 2017 15:38

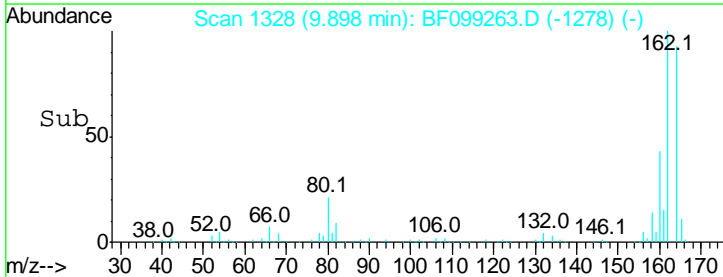
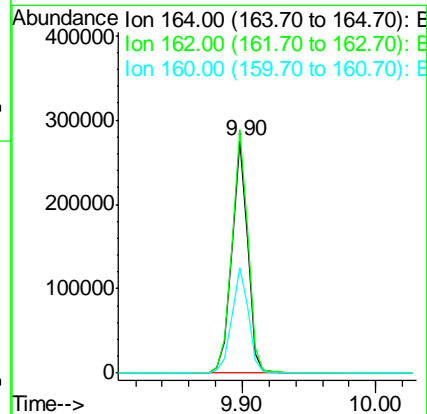
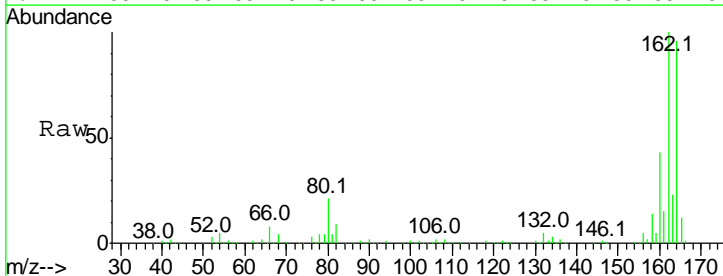
**Instrument :**  
 BNA\_F  
**ClientSampleId :**  
 PHOENIX-RAW

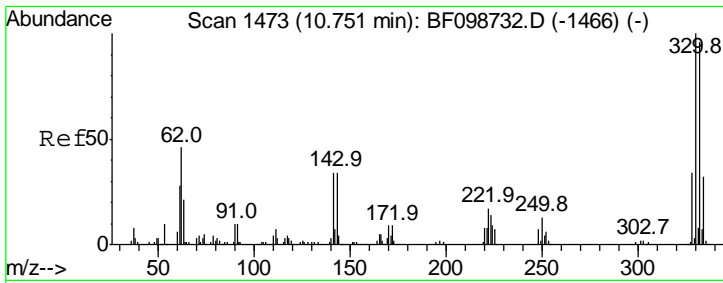
Tgt Ion	Resp	Lower	Upper
82	100		
128	48.1	36.1	54.1
54	46.3	41.4	62.2



#38  
 Acenaphthene-d10  
 Concen: 20.000 ng  
 RT: 9.90 min Scan# 1328  
 Delta R.T. -0.01 min  
 Lab File: BF099263.D  
 Acq: 9 Oct 2017 15:38

Tgt Ion	Resp	Lower	Upper
164	100		
162	104.6	86.1	129.1
160	45.3	38.3	57.5

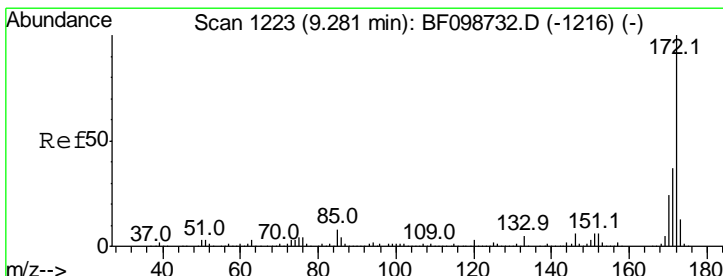
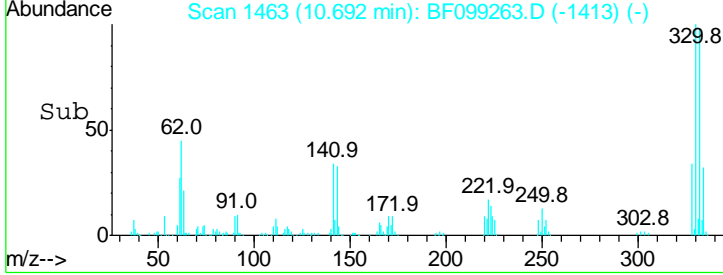
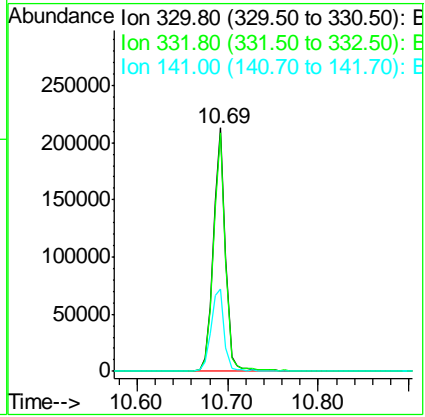
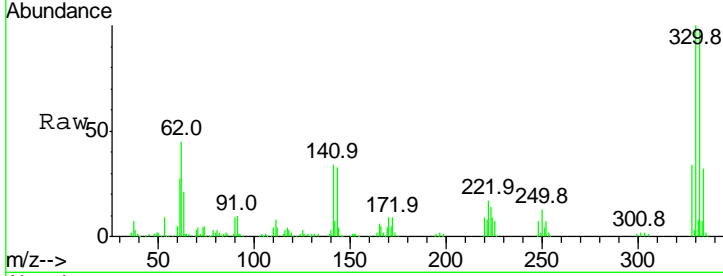




#41  
 2,4,6-Tribromophenol  
 Concen: 104.336 ng  
 RT: 10.69 min Scan# 1463  
 Delta R.T. -0.01 min  
 Lab File: BF099263.D  
 Acq: 9 Oct 2017 15:38

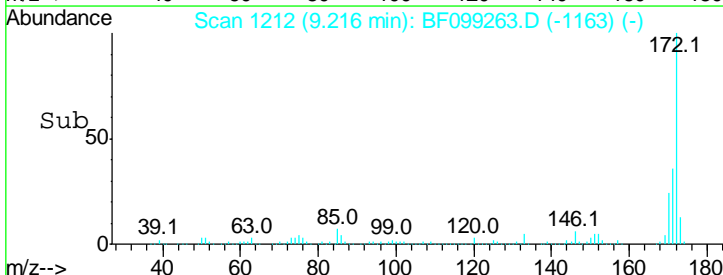
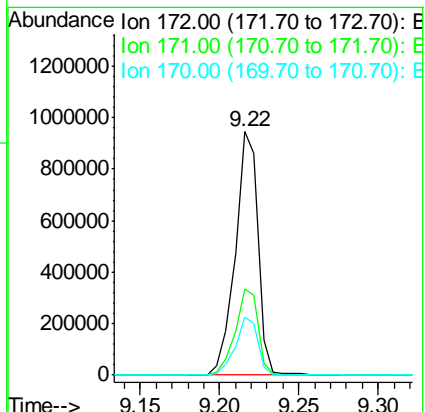
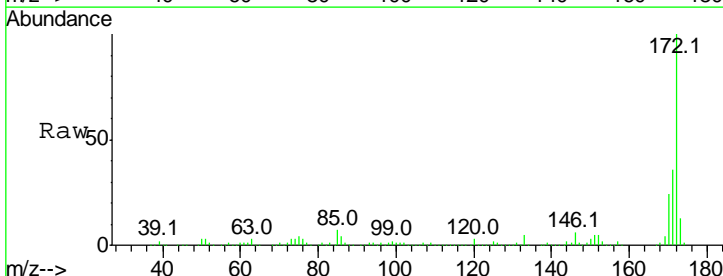
Instrument :  
 BNA\_F  
 ClientSampled :  
 PHOENIX-RAW

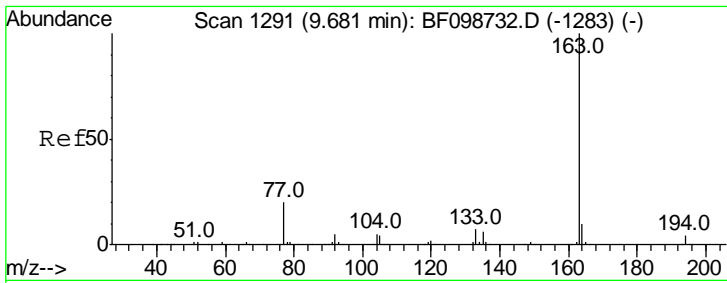
Tgt Ion	Resp	Lower	Upper
330	100		
332	96.7	77.0	115.6
141	37.4	29.9	44.9



#44  
 2-Fluorobiphenyl  
 Concen: 67.399 ng  
 RT: 9.22 min Scan# 1212  
 Delta R.T. -0.01 min  
 Lab File: BF099263.D  
 Acq: 9 Oct 2017 15:38

Tgt Ion	Resp	Lower	Upper
172	100		
171	35.6	29.7	44.5
170	23.8	19.6	29.4

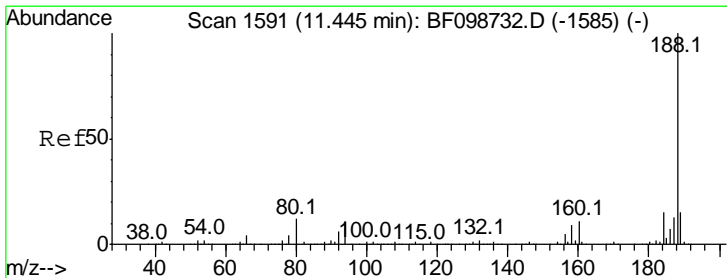
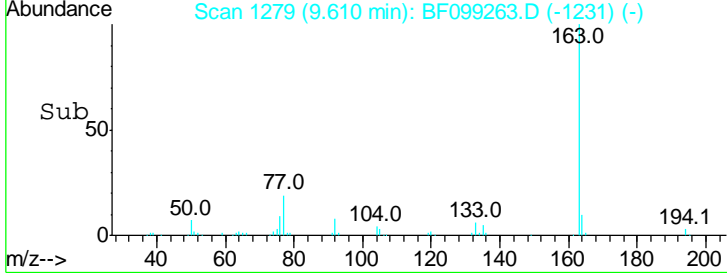
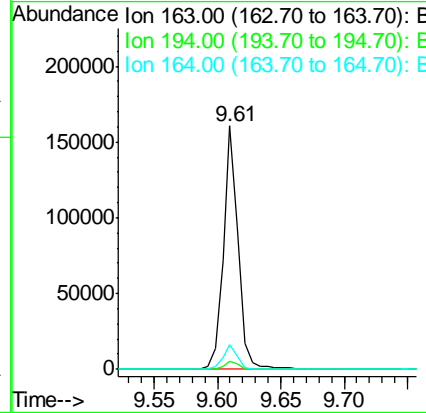
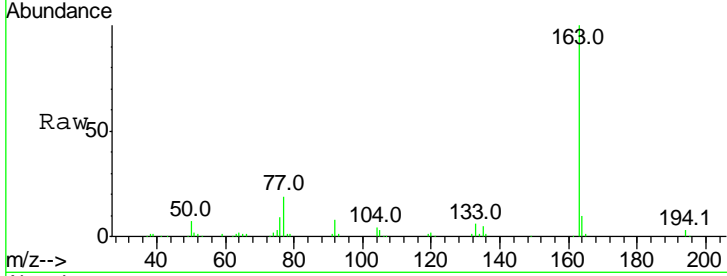




#49  
 Dimethylphthalate  
 Concen: 7.471 ng  
 RT: 9.61 min Scan# 1279  
 Delta R.T. -0.02 min  
 Lab File: BF099263.D  
 Acq: 9 Oct 2017 15:38

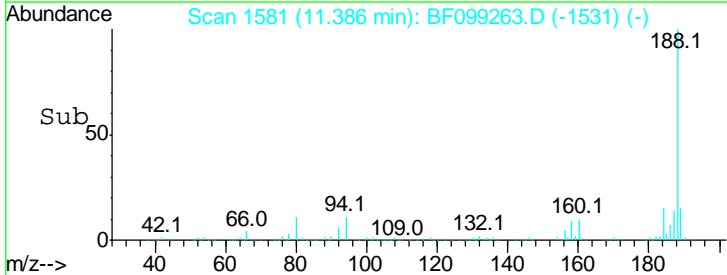
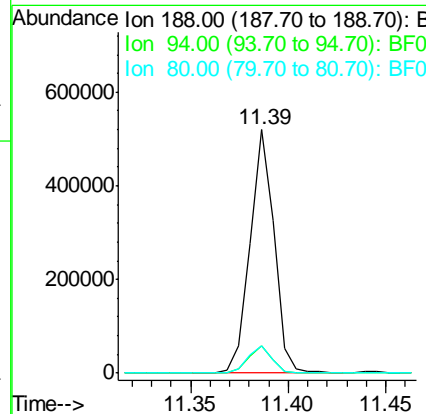
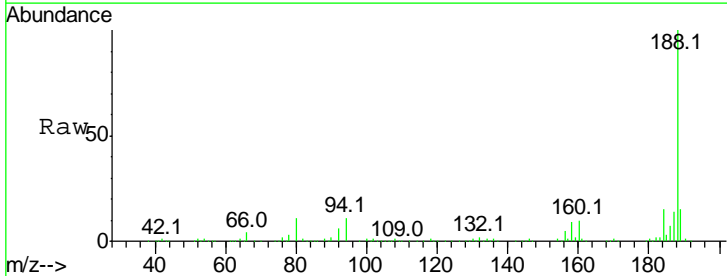
Instrument :  
 BNA\_F  
 ClientSampleId :  
 PHOENIX-RAW

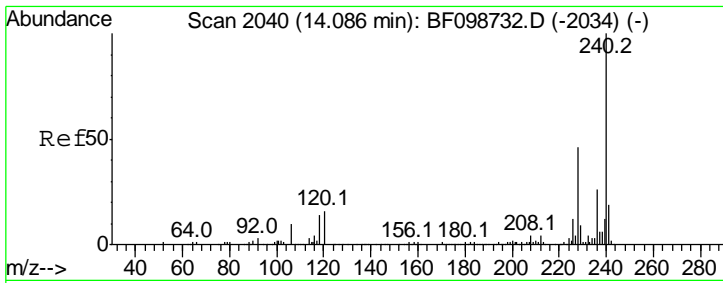
Tgt Ion	Resp	Lower	Upper
163	100		
194	3.3	2.7	4.1
164	10.4	8.2	12.2



#63  
 Phenanthrene-d10  
 Concen: 20.000 ng  
 RT: 11.39 min Scan# 1581  
 Delta R.T. -0.01 min  
 Lab File: BF099263.D  
 Acq: 9 Oct 2017 15:38

Tgt Ion	Resp	Lower	Upper
188	100		
94	11.1	8.5	12.7
80	11.4	9.2	13.8

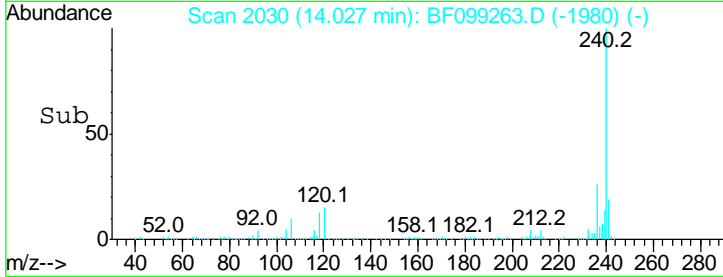
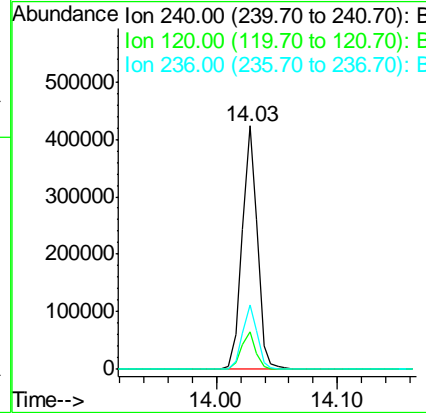
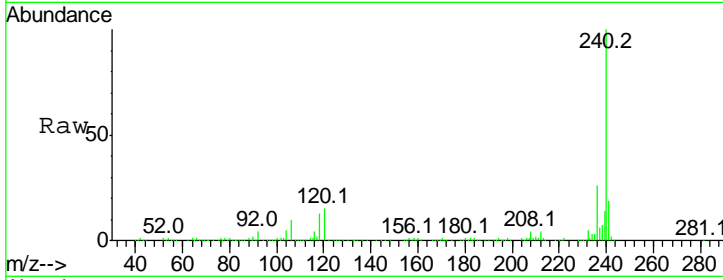




#75  
 Chrysene-d12  
 Concen: 20.000 ng  
 RT: 14.03 min Scan# 2030  
 Delta R.T. -0.01 min  
 Lab File: BF099263.D  
 Acq: 9 Oct 2017 15:38

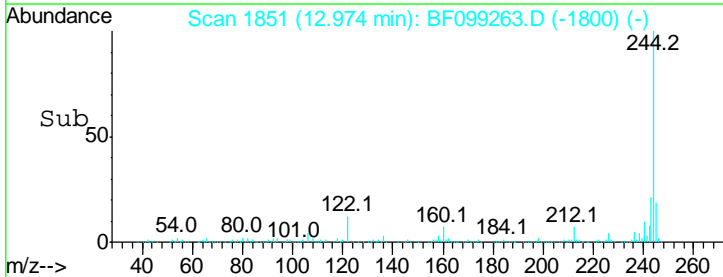
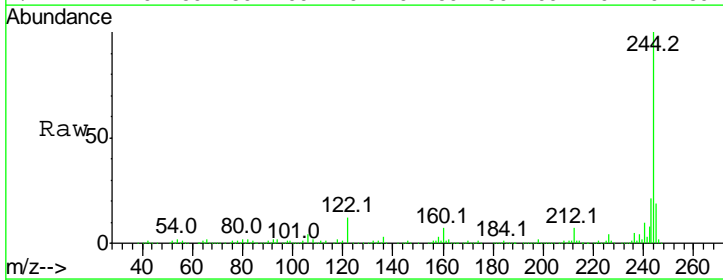
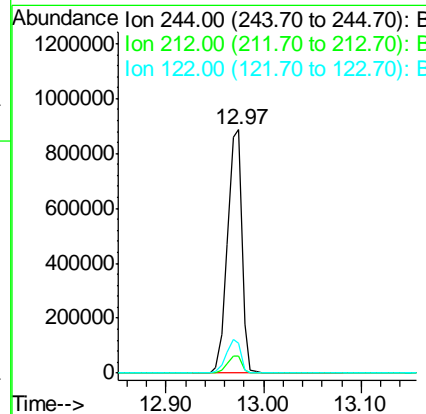
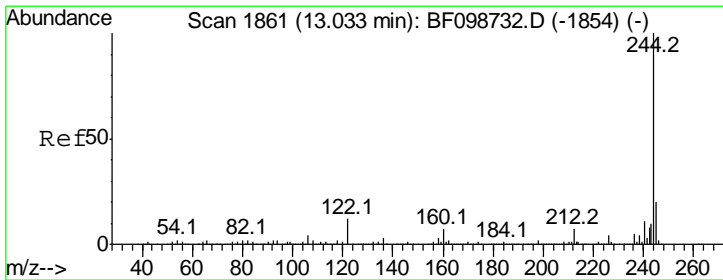
Instrument :  
 BNA\_F  
 ClientSampleId :  
 PHOENIX-RAW

Tgt Ion	Resp	Lower	Upper
240	100		
120	15.5	9.5	14.3#
236	26.4	20.7	31.1

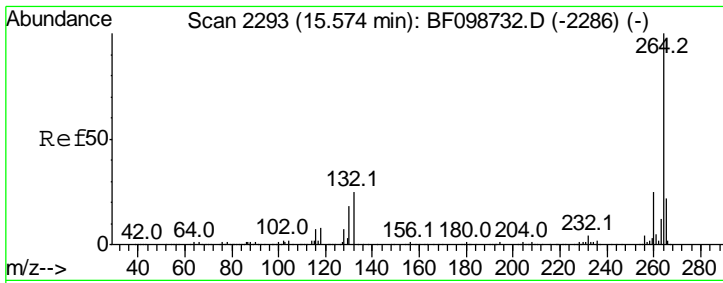


#78  
 Terphenyl-d14  
 Concen: 55.680 ng  
 RT: 12.97 min Scan# 1851  
 Delta R.T. 0.00 min  
 Lab File: BF099263.D  
 Acq: 9 Oct 2017 15:38

Tgt Ion	Resp	Lower	Upper
244	100		
212	6.9	5.4	8.0
122	12.2	11.0	16.4







#86  
 Perylene-d12  
 Concen: 20.000 ng  
 RT: 15.50 min Scan# 2281  
 Delta R.T. 0.00 min  
 Lab File: BF099263.D  
 Acq: 9 Oct 2017 15:38

Instrument :  
 BNA\_F  
 ClientSampleId :  
 PHOENIX-RAW

Tot Ion: 264 Resp: 308081

Ion	Ratio	Lower	Upper
264	100		
260	24.2	19.2	28.8
265	21.4	17.5	26.3

