

Data Path : Z:\HPCHEM1\BNA F\DATA\BF101016\
 Data File : BF090491.D
 Acq On : 10 Oct 2016 20:36
 Operator : UM/SJ
 Sample : H5134-03DL 5X
 Misc :
 ALS Vial : 9 Sample Multiplier: 1

Instrument :
 BNA_F
ClientSampleId :
 MJSB-16(6.5-8.5)DL

Manual Integrations
APPROVED
 sohil
 10/11/2016 7:07:21 PM

Quant Time: Oct 11 13:53:48 2016
 Quant Method : Z:\HPCHEM1\BNA F\METHODS\8270-BF100516.M
 Quant Title : ASP BNA STANDARDS FOR 5 POINT CALIBRATION
 QLast Update : Wed Oct 05 14:57:00 2016
 Response via : Initial Calibration

Internal Standards	R.T.	QIon	Response	Conc	Units	Dev(Min)	
1) 1,4-Dichlorobenzene-d4	6.97	152	245248	20.00	ng	-0.03	
21) Naphthalene-d8	8.26	136	959837	20.00	ng	-0.03	
38) Acenaphthene-d10	10.02	164	467845	20.00	ng	-0.03	
63) Phenanthrene-d10	11.51	188	788387	20.00	ng	-0.03	
75) Chrysene-d12	14.14	240	567852	20.00	ng	-0.06	
86) Perylene-d12	15.63	264	498417	20.00	ng	-0.07	
System Monitoring Compounds							
5) 2-Fluorophenol	5.56	112	285971	17.40	ng	-0.04	
7) Phenol-d6	6.58	99	368184	17.11	ng	-0.05	
23) Nitrobenzene-d5	7.51	82	299159	15.16	ng	-0.06	
41) 2,4,6-Tribromophenol	10.81	330	84957	22.33	ng	-0.05	
44) 2-Fluorobiphenyl	9.33	172	391209	13.93	ng	-0.05	
78) Terphenyl-d14	13.08	244	303452	12.01	ng	-0.06	
Target Compounds							
49) Dimethylphthalate	9.73	163	167276	5.58	ng		# 67
51) Acenaphthene	10.05	154	191500	7.27	ng		# 76
57) Fluorene	10.57	166	359916	12.56	ng		# 86
70) Phenanthrene	11.54	178	1299679	32.19	ng		97
74) Fluoranthene	12.73	202	308227	7.78	ng		90
77) Pyrene	12.94	202	405066	10.70	ng		97
80) Benzo(a)anthracene	14.13	228	173432m	5.44	ng		
82) Chrysene	14.17	228	149264m	5.09	ng		
85) Indeno(1,2,3-cd)pyrene	17.10	276	172073	8.23	ng		94
87) Benzo(b)fluoranthene	15.18	252	271748m	8.56	ng		
88) Benzo(k)fluoranthene	15.22	252	66978m	2.25	ng		
89) Benzo(a)pyrene	15.56	252	229281	8.38	ng		# 95
90) Dibenzo(a,h)anthracene	17.12	278	47364m	2.03	ng		
91) Benzo(g,h,i)perylene	17.55	276	159496	7.14	ng		96

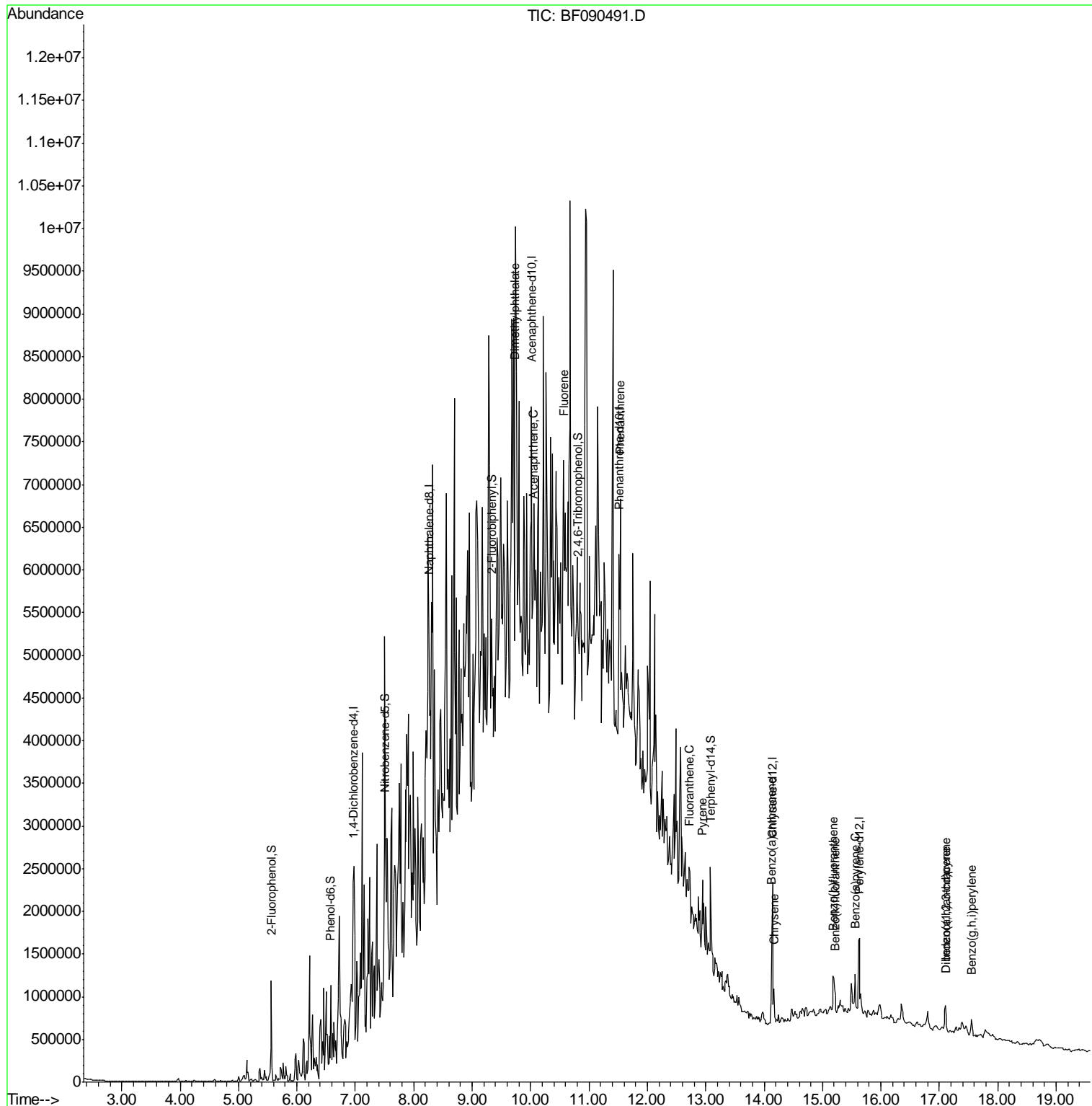
(#) = qualifier out of range (m) = manual integration (+) = signals summed

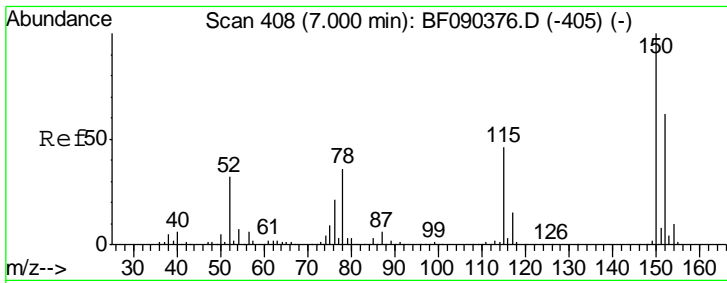
Data Path : Z:\HPCHEM1\BNA F\DATA\BF101016\
 Data File : BF090491.D
 Acq On : 10 Oct 2016 20:36
 Operator : UM/SJ
 Sample : H5134-03DL 5X
 Misc :
 ALS Vial : 9 Sample Multiplier: 1

Instrument :
 BNA_F
 Client Sampled :
 MJSB-16(6.5-8.5)DL

Manual Integrations
APPROVED
 sohil
 10/11/2016 7:07:21 PM

Quant Time: Oct 11 13:53:48 2016
 Quant Method : Z:\HPCHEM1\BNA F\METHODS\8270-BF100516.M
 Quant Title : ASP BNA STANDARDS FOR 5 POINT CALIBRATION
 QLast Update : Wed Oct 05 14:57:00 2016
 Response via : Initial Calibration





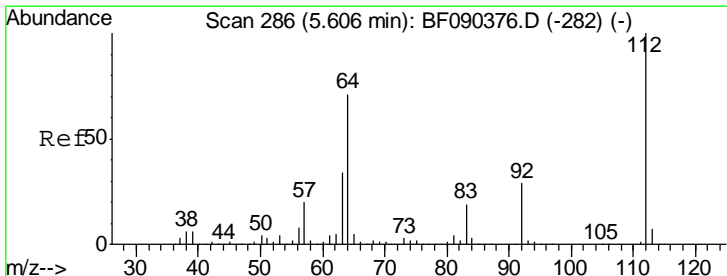
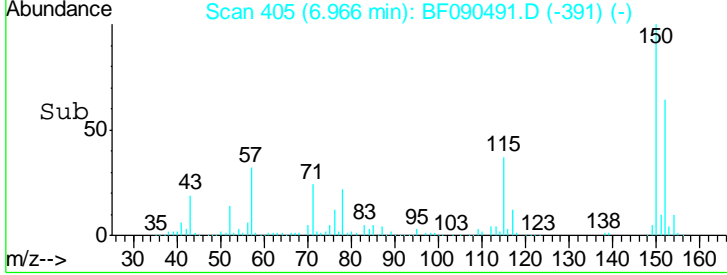
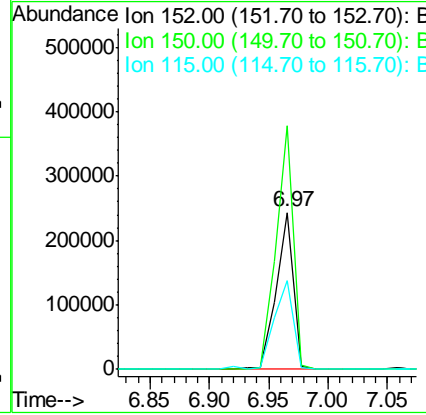
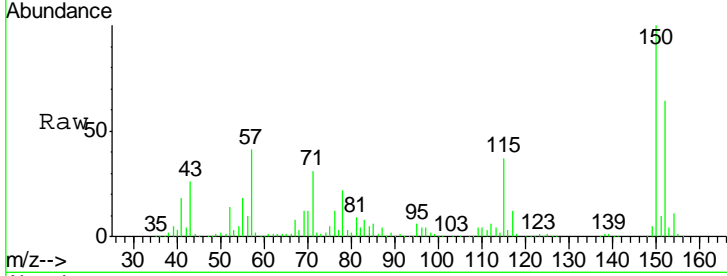
#1
 1,4-Dichlorobenzene-d4
 Concen: 20.00 ng
 RT: 6.97 min Scan# 405
 Delta R.T. -0.03 min
 Lab File: BF090491.D
 Acq: 10 Oct 2016 20:36

Instrument :
 BNA_F
ClientSampleID :
 MJSB-16(6.5-8.5)DL

Tgt Ion	Resp	Lower	Upper
152	100		
150	155.4	124.6	186.8
115	57.0	46.2	69.4

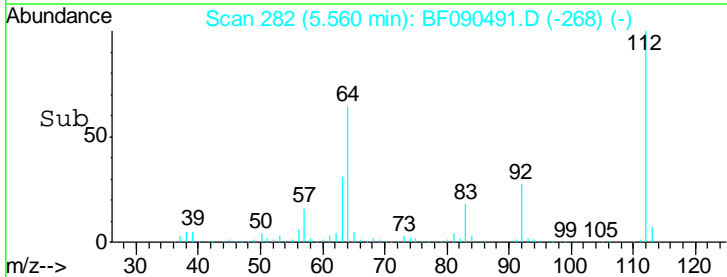
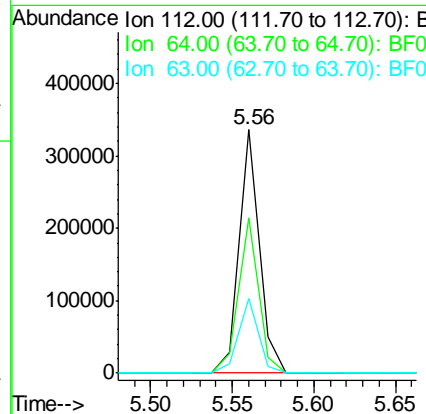
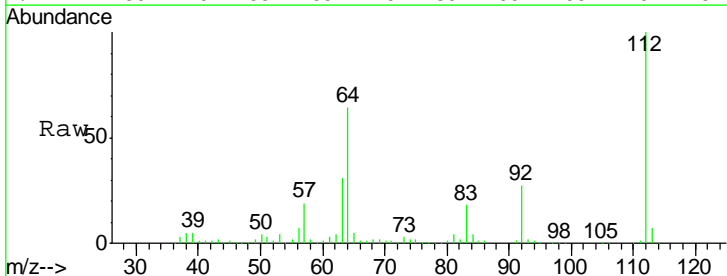
Manual Integrations
APPROVED

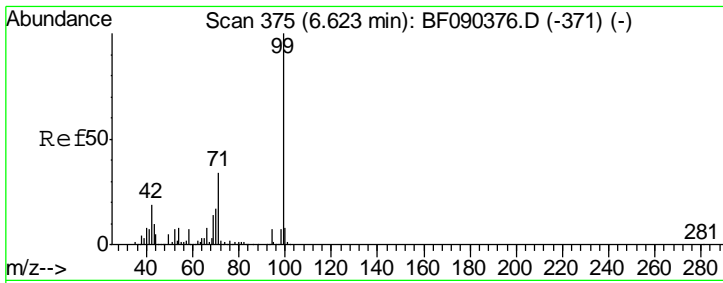
sohil
 10/11/2016 7:07:21 PM



#5
 2-Fluorophenol
 Concen: 17.40 ng
 RT: 5.56 min Scan# 282
 Delta R.T. -0.04 min
 Lab File: BF090491.D
 Acq: 10 Oct 2016 20:36

Tgt Ion	Resp	Lower	Upper
112	100		
64	63.7	57.9	86.9
63	30.7	29.6	44.4





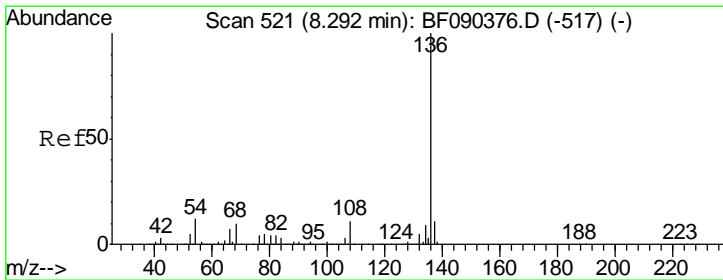
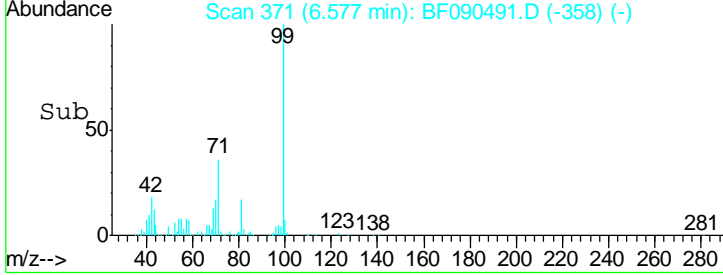
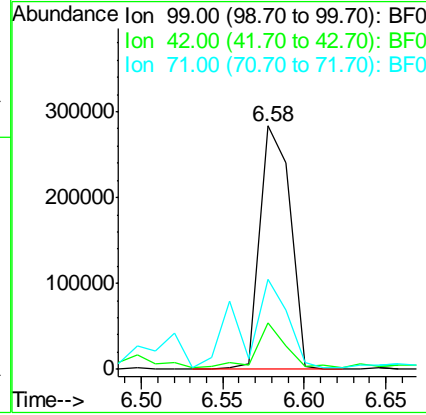
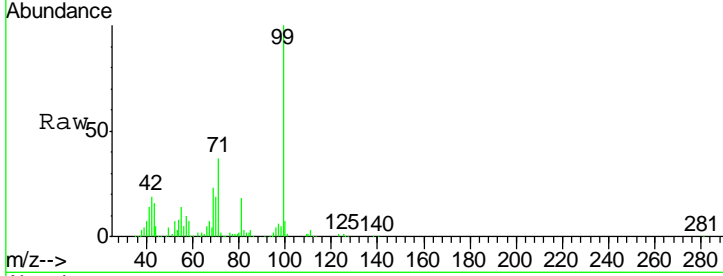
#7
 Phenol-d6
 Concen: 17.11 ng
 RT: 6.58 min Scan# 371
 Delta R.T. -0.05 min
 Lab File: BF090491.D
 Acq: 10 Oct 2016 20:36

Instrument :
 BNA_F
ClientSampled :
 MJSB-16(6.5-8.5)DL

Tgt Ion	Resp	Lower	Upper
99	100		
42	19.2	20.0	30.0#
71	36.7	27.9	41.9

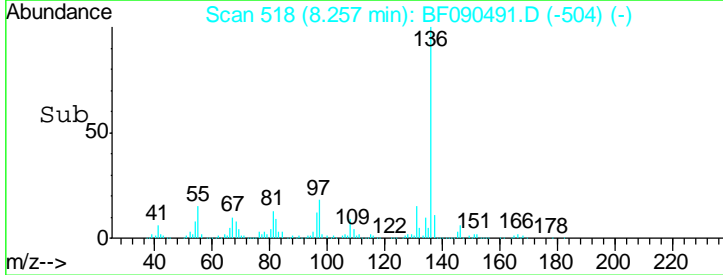
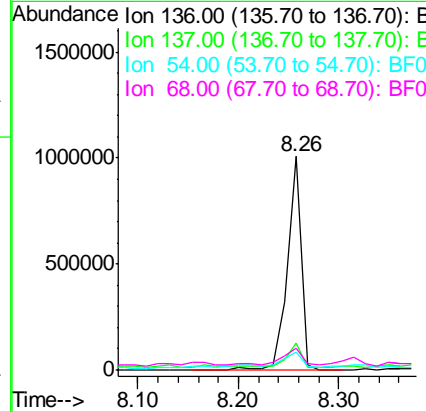
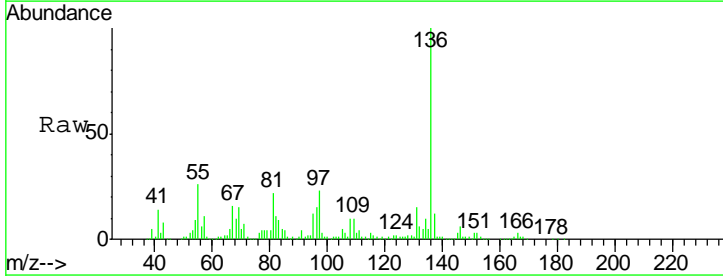
Manual Integrations
APPROVED

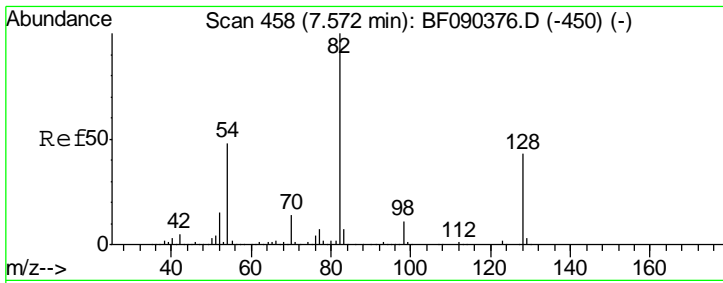
sohil
 10/11/2016 7:07:21 PM



#21
 Naphthalene-d8
 Concen: 20.00 ng
 RT: 8.26 min Scan# 518
 Delta R.T. -0.03 min
 Lab File: BF090491.D
 Acq: 10 Oct 2016 20:36

Tgt Ion	Resp	Lower	Upper
136	100		
137	12.4	9.0	13.6
54	8.5	6.6	10.0
68	10.0	5.0	7.6#





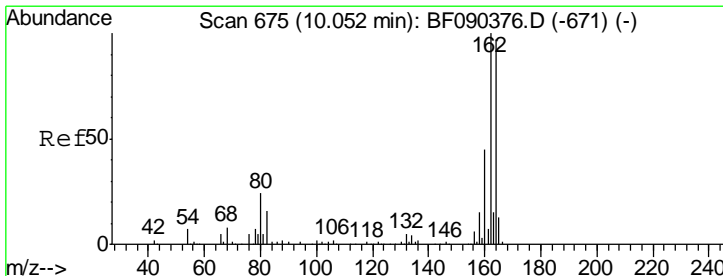
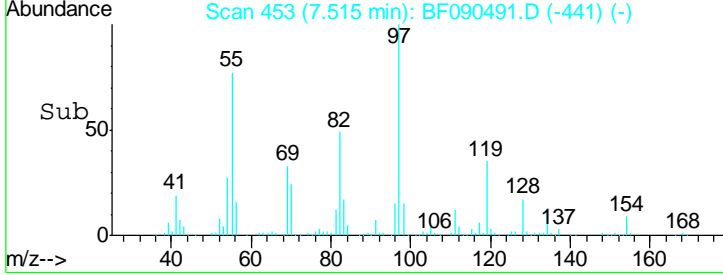
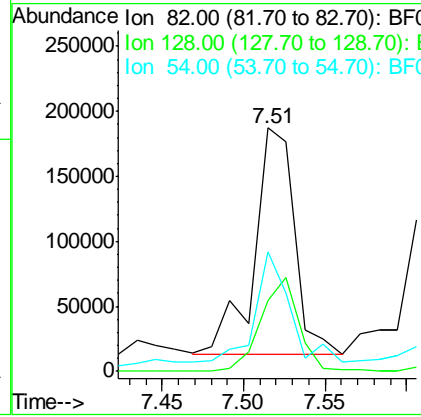
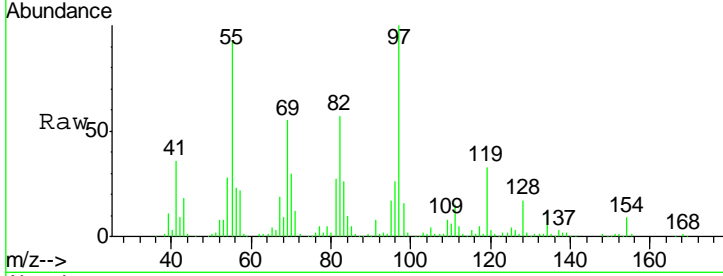
#23
 Nitrobenzene-d5
 Concen: 15.16 ng
 RT: 7.51 min Scan# 453
 Delta R.T. -0.06 min
 Lab File: BF090491.D
 Acq: 10 Oct 2016 20:36

Instrument :
 BNA_F
ClientSampleID :
 MJSB-16(6.5-8.5)DL

Tgt Ion	Resp	Lower	Upper
82	100		
128	28.9	40.0	60.0#
54	49.2	42.6	64.0

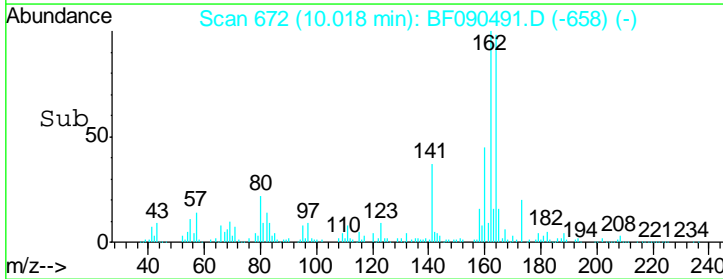
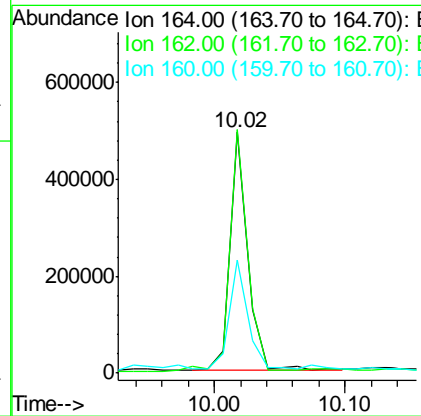
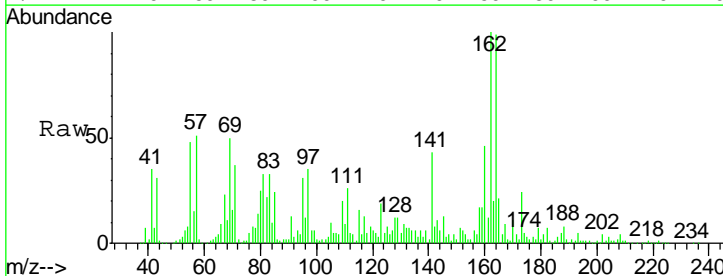
Manual Integrations
APPROVED

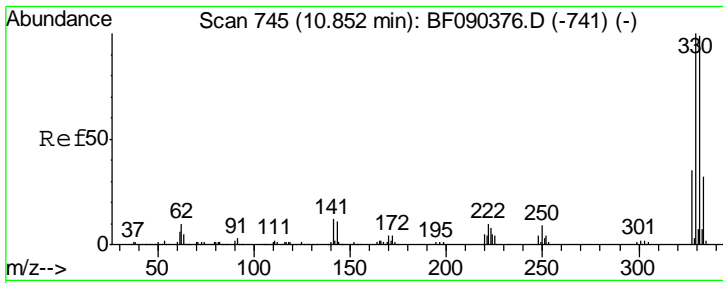
sohil
 10/11/2016 7:07:21 PM



#38
 Acenaphthene-d10
 Concen: 20.00 ng
 RT: 10.02 min Scan# 672
 Delta R.T. -0.03 min
 Lab File: BF090491.D
 Acq: 10 Oct 2016 20:36

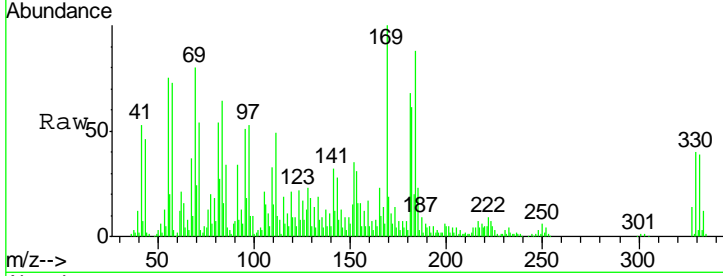
Tgt Ion	Resp	Lower	Upper
164	100		
162	101.2	80.1	120.1
160	46.8	36.3	54.5





#41
 2,4,6-Tribromophenol
 Concen: 22.33 ng
 RT: 10.81 min Scan# 741
 Delta R.T. -0.05 min
 Lab File: BF090491.D
 Acq: 10 Oct 2016 20:36

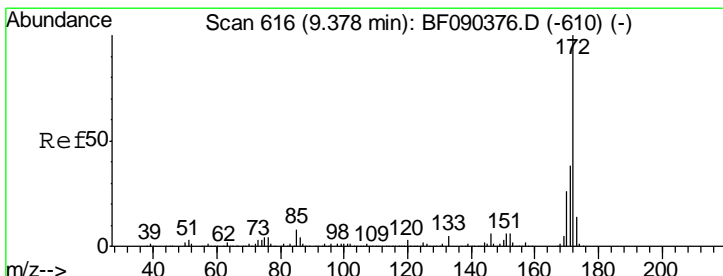
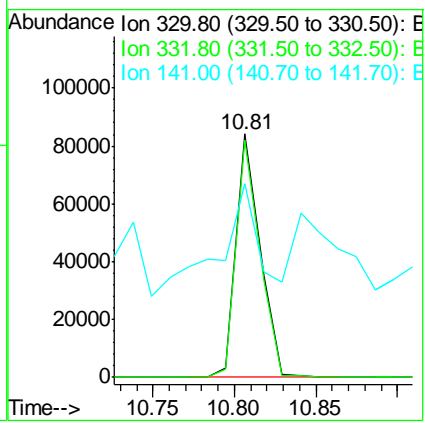
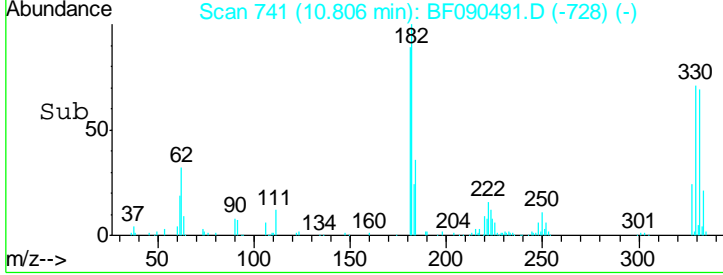
Instrument :
 BNA_F
ClientSampled :
 MJSB-16(6.5-8.5)DL



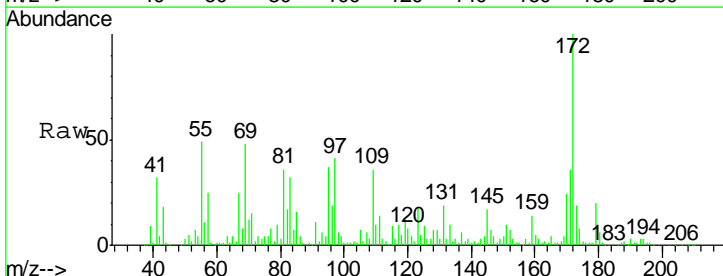
Tgt Ion: 330 Resp: 84957

Ion	Ratio	Lower	Upper
330	100		
332	96.2	75.4	113.0
141	46.9	26.9	40.3#

Manual Integrations
APPROVED
 sohil
 10/11/2016 7:07:21 PM

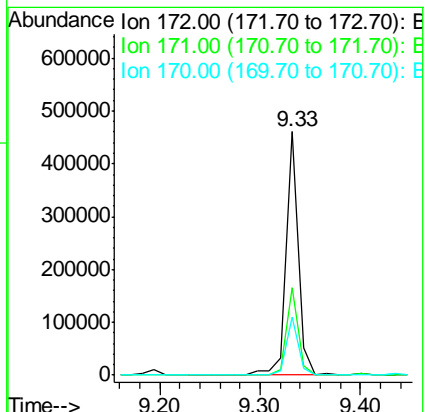
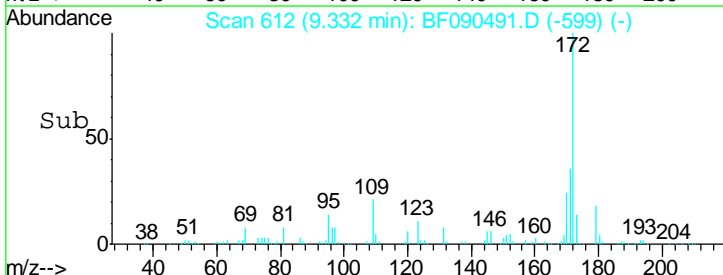


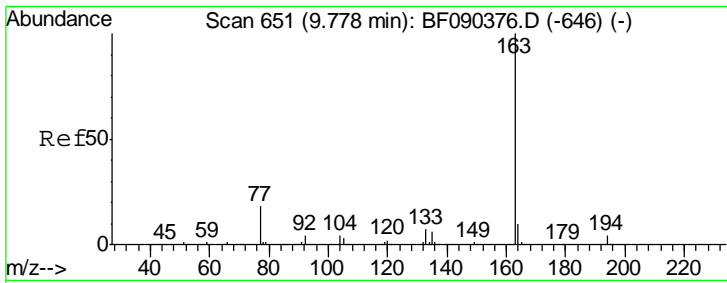
#44
 2-Fluorobiphenyl
 Concen: 13.93 ng
 RT: 9.33 min Scan# 612
 Delta R.T. -0.05 min
 Lab File: BF090491.D
 Acq: 10 Oct 2016 20:36



Tgt Ion: 172 Resp: 391209

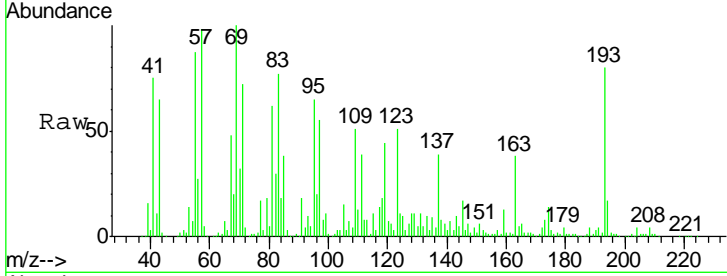
Ion	Ratio	Lower	Upper
172	100		
171	35.7	31.8	47.8
170	23.8	21.7	32.5





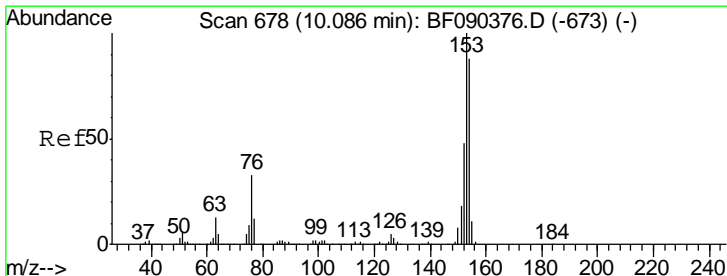
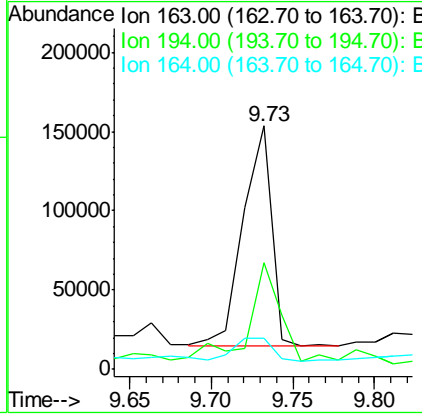
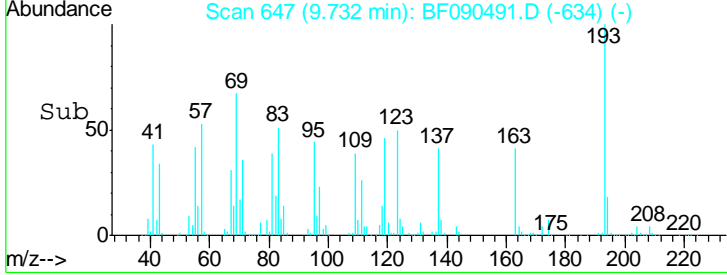
#49
 Dimethylphthalate
 Concen: 5.58 ng
 RT: 9.73 min Scan# 647
 Delta R.T. -0.05 min
 Lab File: BF090491.D
 Acq: 10 Oct 2016 20:36

Instrument :
 BNA_F
 ClientSampled :
 MJSB-16(6.5-8.5)DL

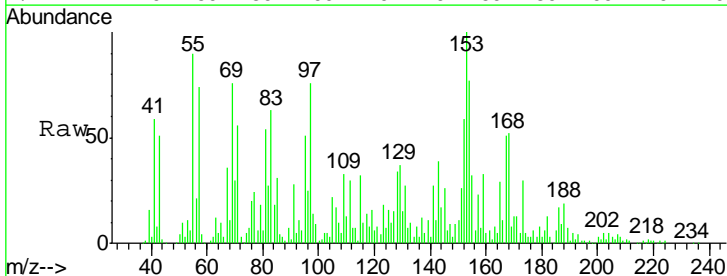


Tgt Ion	Resp	Lower	Upper
163	167276		
194	43.6	2.8	4.2#
164	13.0	9.0	13.4

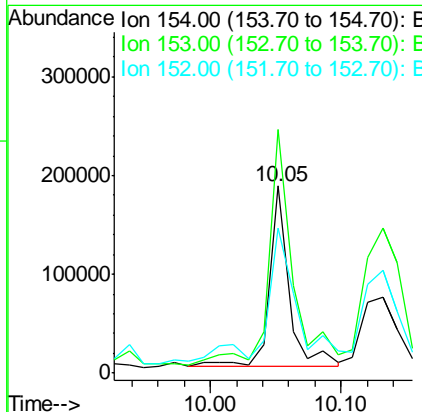
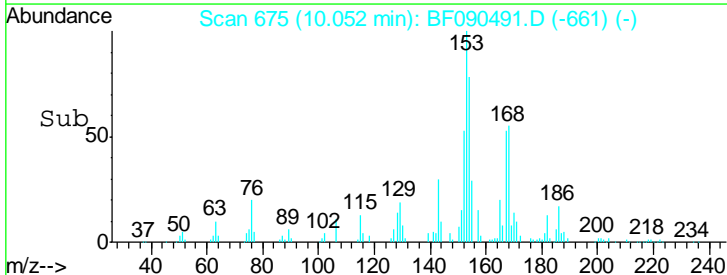
Manual Integrations
 APPROVED
 sohil
 10/11/2016 7:07:21 PM

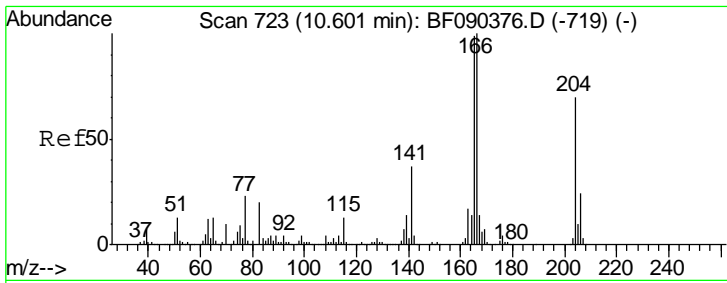


#51
 Acenaphthene
 Concen: 7.27 ng
 RT: 10.05 min Scan# 675
 Delta R.T. -0.03 min
 Lab File: BF090491.D
 Acq: 10 Oct 2016 20:36



Tgt Ion	Resp	Lower	Upper
154	191500		
153	130.4	88.6	133.0
152	77.5	42.6	64.0#



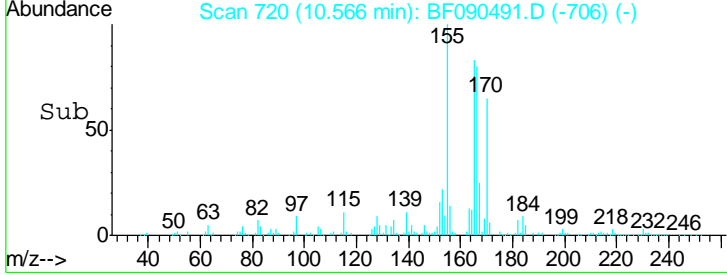
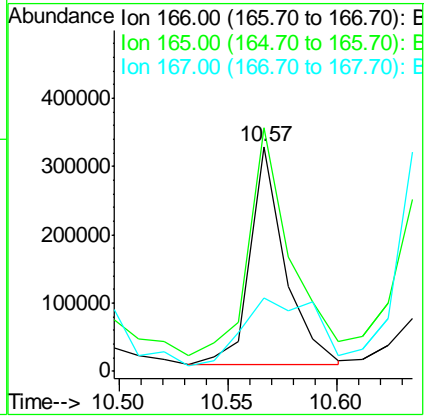
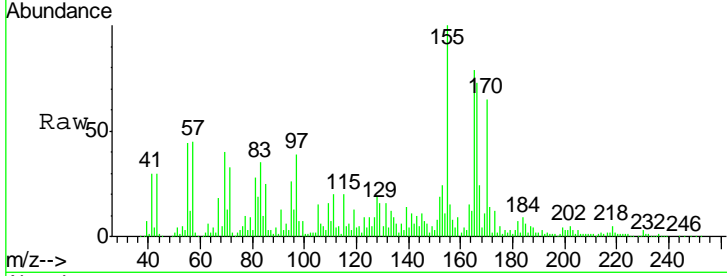


#57
 Fluorene
 Concen: 12.56 ng
 RT: 10.57 min Scan# 720
 Delta R.T. -0.03 min
 Lab File: BF090491.D
 Acq: 10 Oct 2016 20:36

Instrument :
 BNA_F
ClientSampled :
 MJSB-16(6.5-8.5)DL

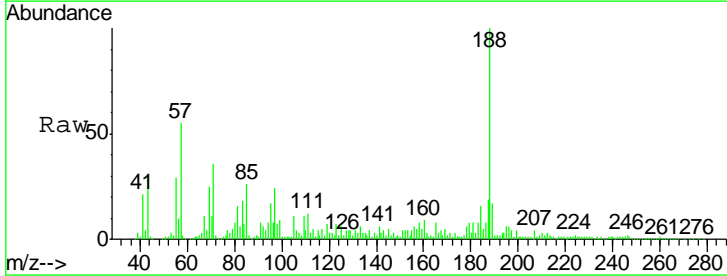
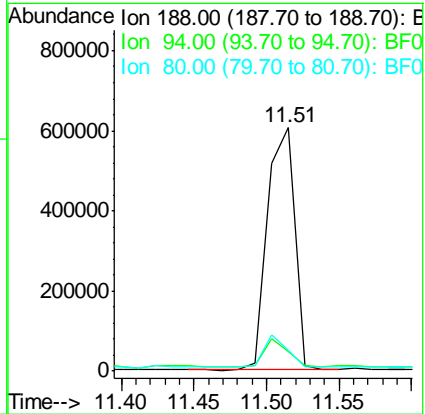
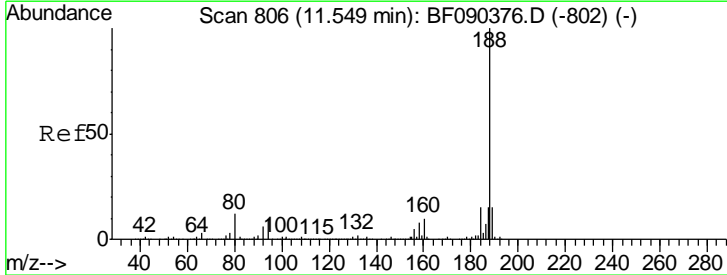
Tgt Ion	Resp	Lower	Upper
166	359916		
165	108.4	79.2	118.8
167	32.5	11.1	16.7#

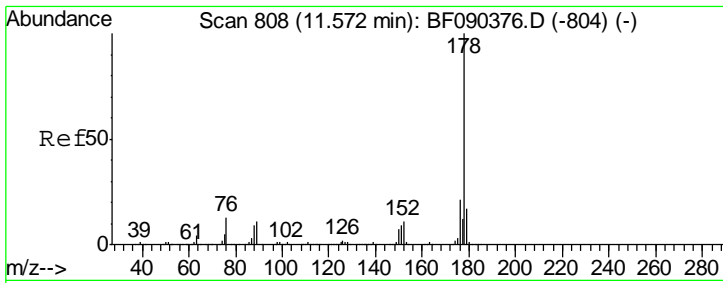
Manual Integrations
APPROVED
 sohil
 10/11/2016 7:07:21 PM



#63
 Phenanthrene-d10
 Concen: 20.00 ng
 RT: 11.51 min Scan# 803
 Delta R.T. -0.03 min
 Lab File: BF090491.D
 Acq: 10 Oct 2016 20:36

Tgt Ion	Resp	Lower	Upper
188	788387		
94	8.3	8.2	12.2
80	8.4	8.8	13.2#





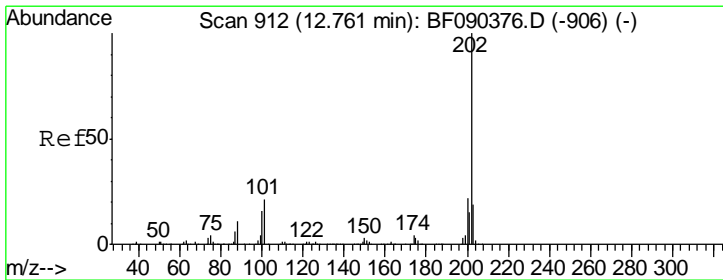
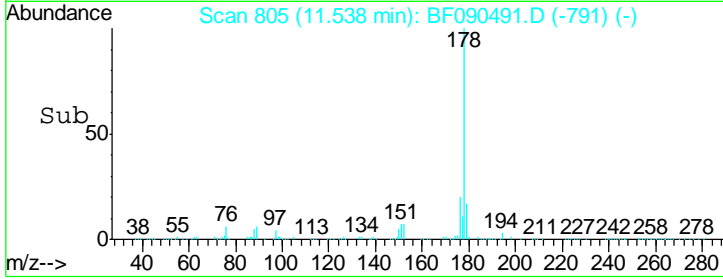
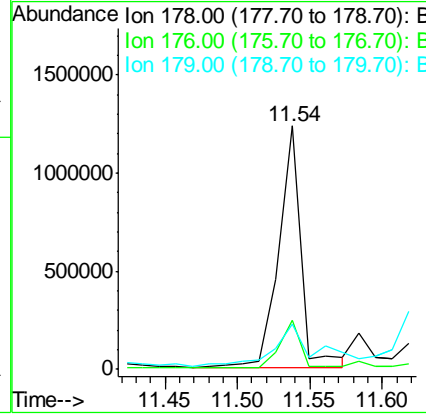
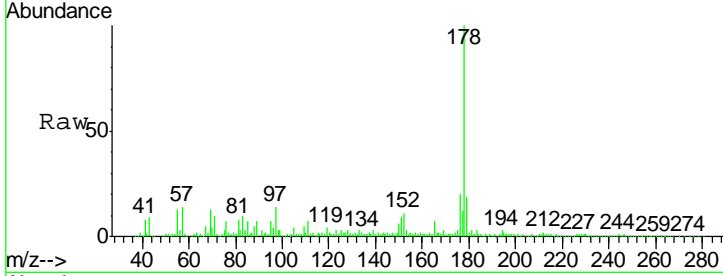
#70
 Phenanthrene
 Concen: 32.19 ng
 RT: 11.54 min Scan# 805
 Delta R.T. -0.03 min
 Lab File: BF090491.D
 Acq: 10 Oct 2016 20:36

Instrument :
 BNA_F
 ClientSampled :
 MJSB-16(6.5-8.5)DL

Tgt Ion	Resp	Lower	Upper
178	100		
176	20.1	17.3	25.9
179	18.6	13.8	20.6

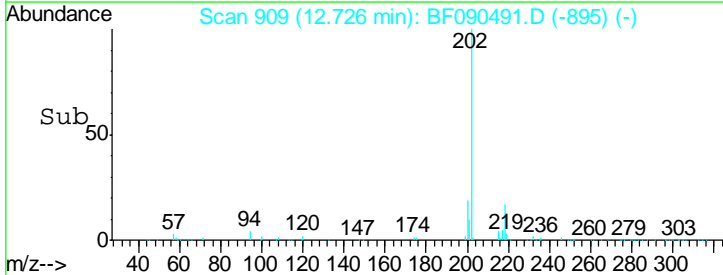
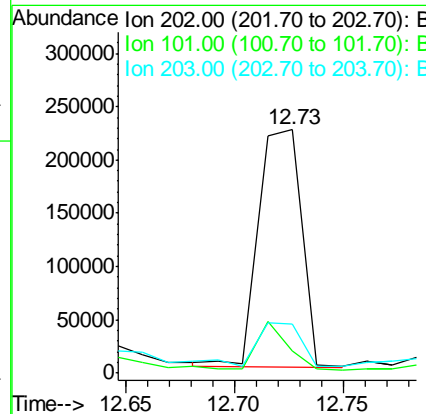
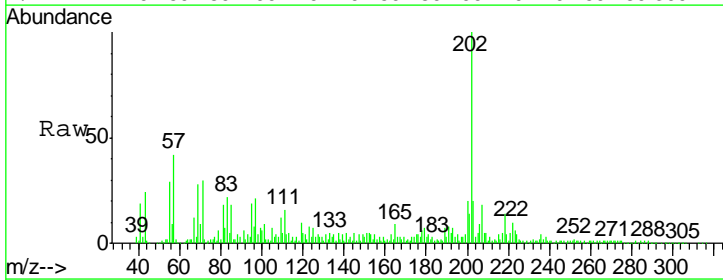
Manual Integrations
 APPROVED

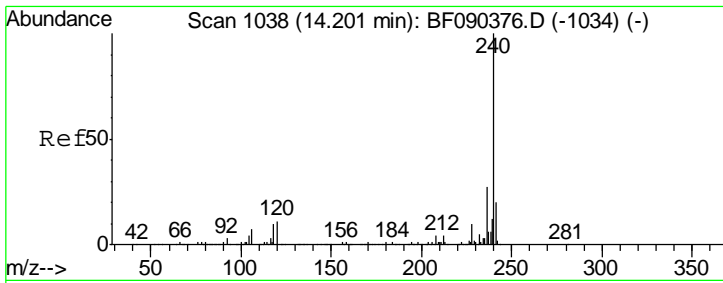
sohil
 10/11/2016 7:07:21 PM



#74
 Fluoranthene
 Concen: 7.78 ng
 RT: 12.73 min Scan# 909
 Delta R.T. -0.03 min
 Lab File: BF090491.D
 Acq: 10 Oct 2016 20:36

Tgt Ion	Resp	Lower	Upper
202	100		
101	9.0	0.0	37.2
203	20.0	0.0	39.3





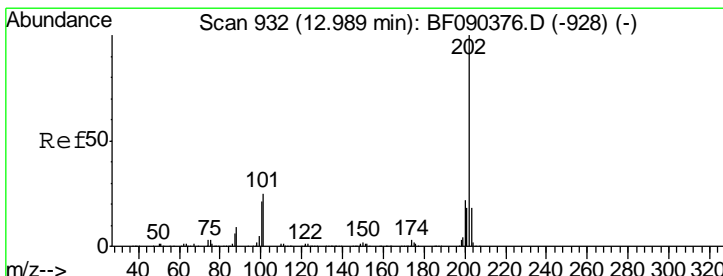
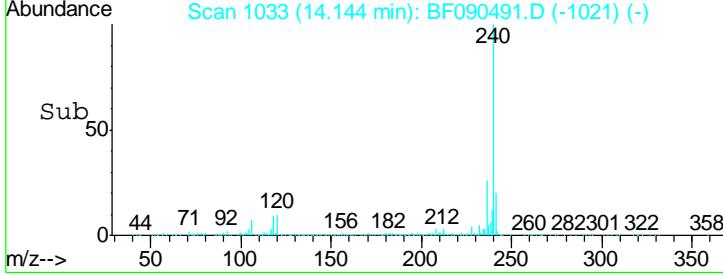
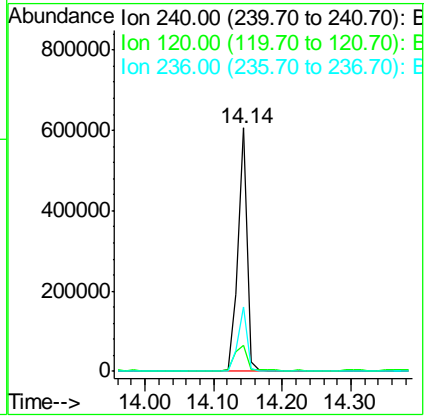
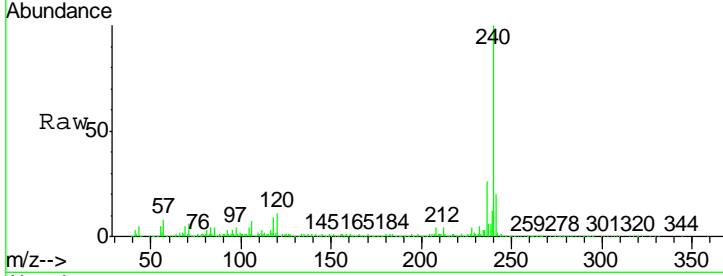
#75
 Chrysene-d12
 Concen: 20.00 ng
 RT: 14.14 min Scan# 1033
 Delta R.T. -0.06 min
 Lab File: BF090491.D
 Acq: 10 Oct 2016 20:36

Instrument :
 BNA_F
Client Sampled :
 MJSB-16(6.5-8.5)DL

Tgt Ion	Resp	Lower	Upper
240	100		
120	10.5	8.6	13.0
236	26.3	21.6	32.4

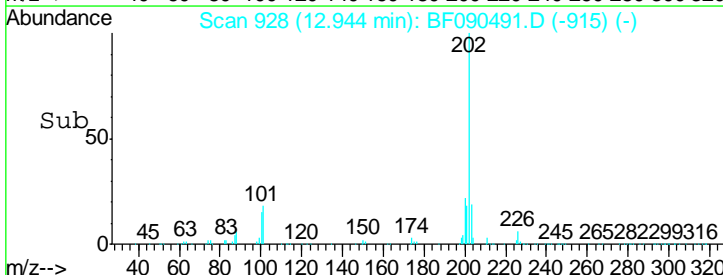
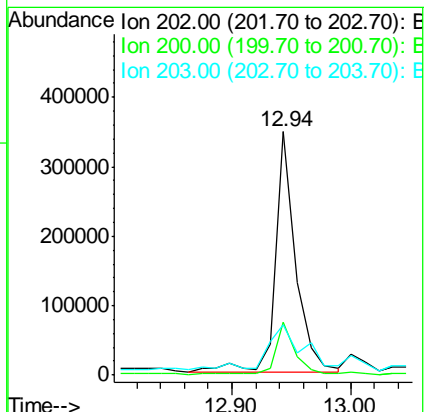
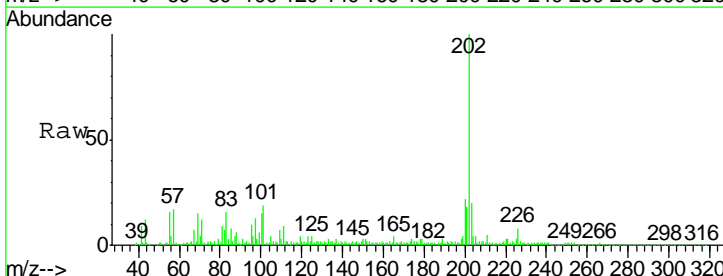
Manual Integrations
APPROVED

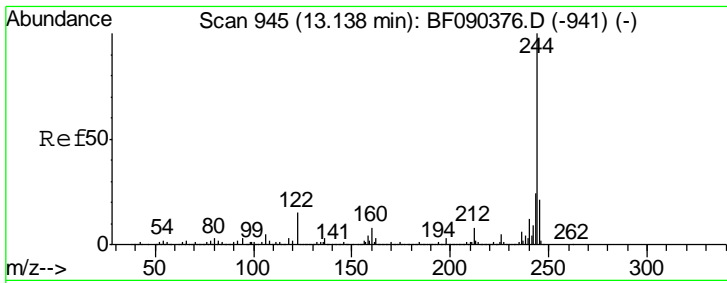
sohil
 10/11/2016 7:07:21 PM



#77
 Pyrene
 Concen: 10.70 ng
 RT: 12.94 min Scan# 928
 Delta R.T. -0.05 min
 Lab File: BF090491.D
 Acq: 10 Oct 2016 20:36

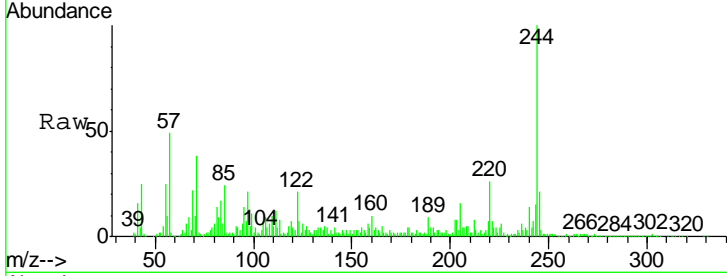
Tgt Ion	Resp	Lower	Upper
202	100		
200	21.7	18.5	27.7
203	20.4	15.0	22.6





#78
 Terphenyl-d14
 Concen: 12.01 ng
 RT: 13.08 min Scan# 940
 Delta R.T. -0.06 min
 Lab File: BF090491.D
 Acq: 10 Oct 2016 20:36

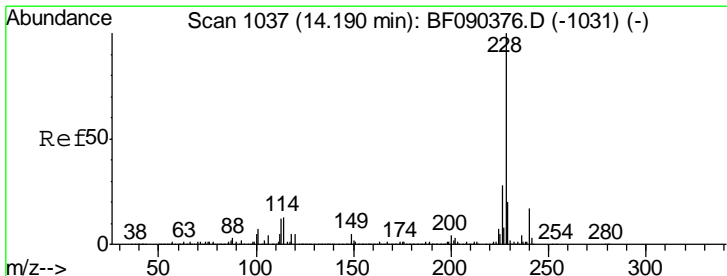
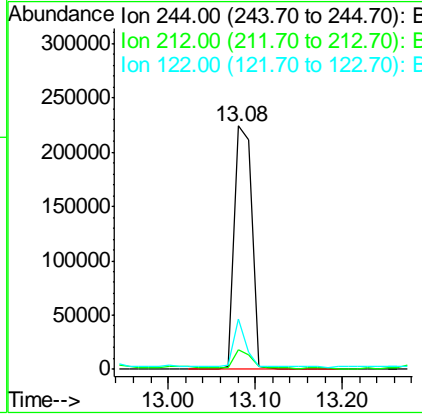
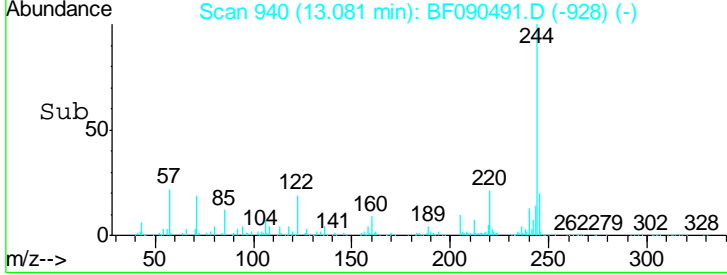
Instrument :
 BNA_F
ClientSampled :
 MJSB-16(6.5-8.5)DL



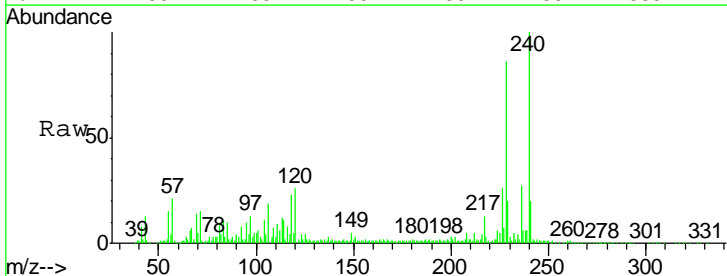
Tgt Ion	Ratio	Lower	Upper
244	100		
212	8.1	6.8	10.2
122	20.9	13.3	19.9

Manual Integrations
APPROVED

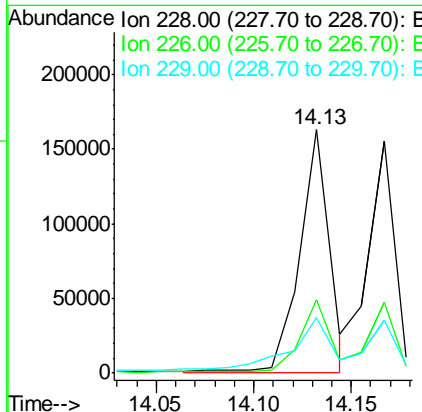
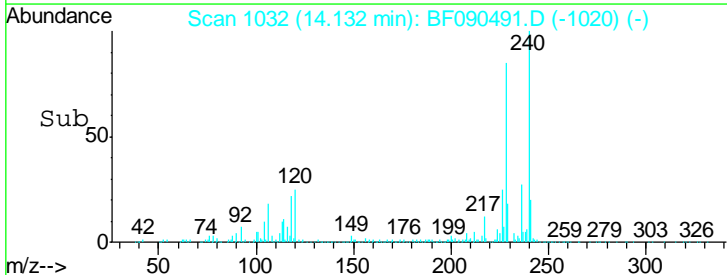
sohil
 10/11/2016 7:07:21 PM

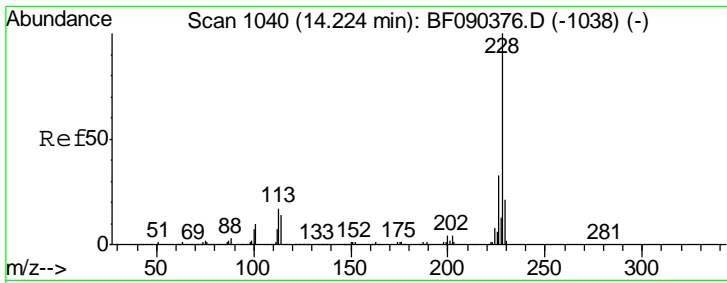


#80
 Benzo(a)anthracene
 Concen: 5.44 ng m
 RT: 14.13 min Scan# 1032
 Delta R.T. -0.06 min
 Lab File: BF090491.D
 Acq: 10 Oct 2016 20:36



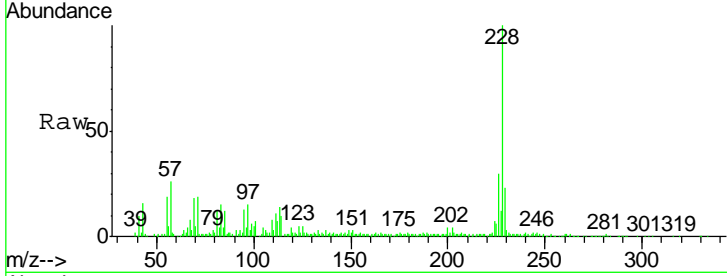
Tgt Ion	Ratio	Lower	Upper
228	100		
226	30.3	23.6	35.4
229	22.9	16.6	25.0





#82
 Chrysene
 Concen: 5.09 ng m
 RT: 14.17 min Scan# 1035
 Delta R.T. -0.06 min
 Lab File: BF090491.D
 Acq: 10 Oct 2016 20:36

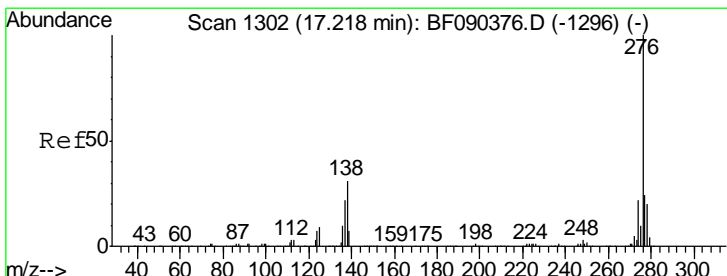
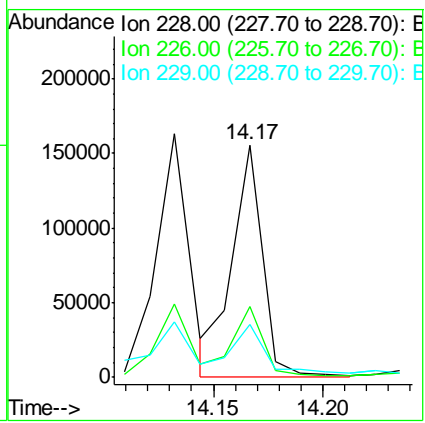
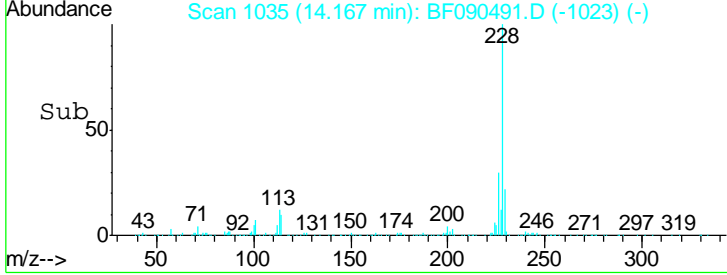
Instrument :
 BNA_F
 ClientSampled :
 MJSB-16(6.5-8.5)DL



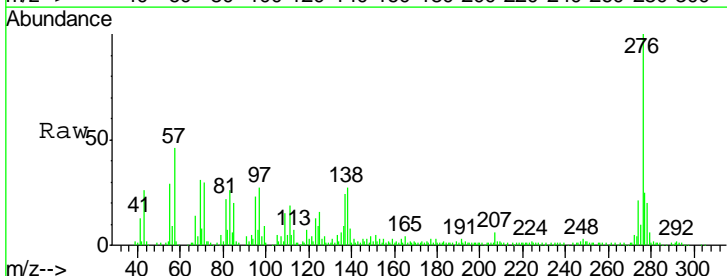
Tgt Ion: 228 Resp: 149264

Ion	Ratio	Lower	Upper
228	100		
226	30.3	25.8	38.6
229	22.9	16.9	25.3

Manual Integrations
APPROVED
 sohil
 10/11/2016 7:07:21 PM

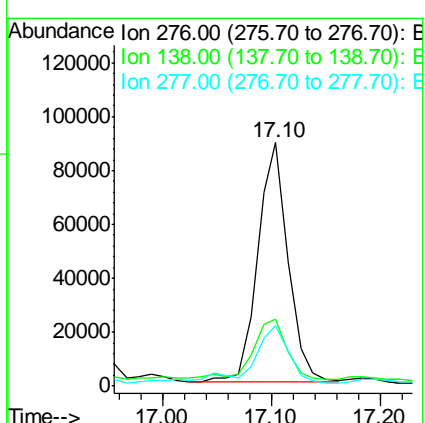
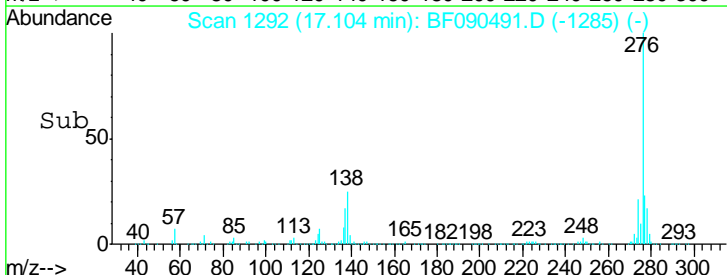


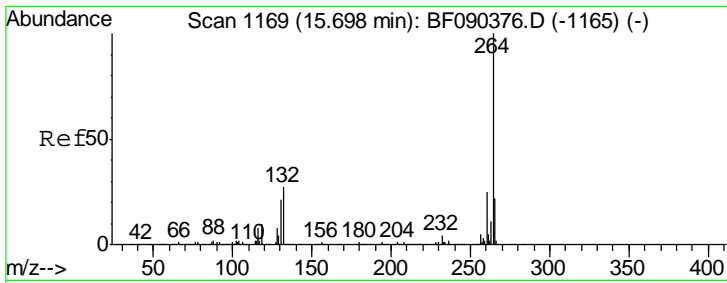
#85
 Indeno(1,2,3-cd)pyrene
 Concen: 8.23 ng
 RT: 17.10 min Scan# 1292
 Delta R.T. -0.11 min
 Lab File: BF090491.D
 Acq: 10 Oct 2016 20:36



Tgt Ion: 276 Resp: 172073

Ion	Ratio	Lower	Upper
276	100		
138	27.5	23.8	35.8
277	29.2	20.4	30.6





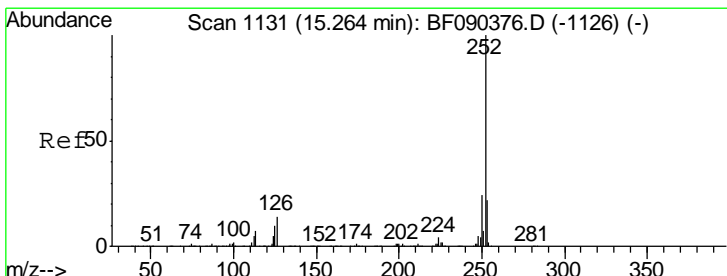
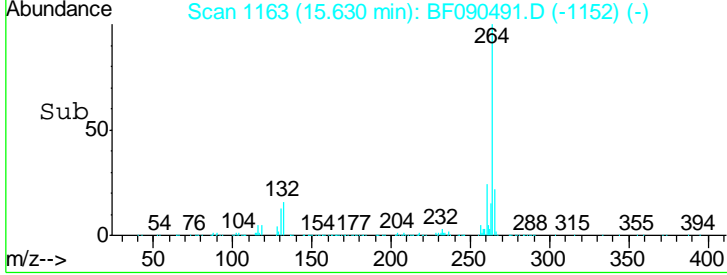
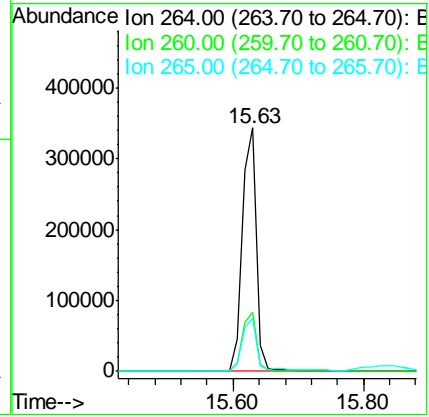
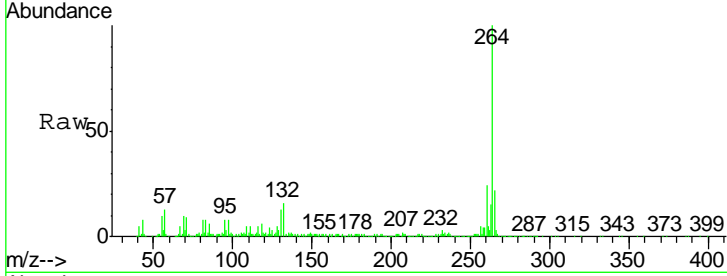
#86
 Perylene-d12
 Concen: 20.00 ng
 RT: 15.63 min Scan# 1163
 Delta R.T. -0.07 min
 Lab File: BF090491.D
 Acq: 10 Oct 2016 20:36

Instrument :
 BNA_F
Client Sampled :
 MJSB-16(6.5-8.5)DL

Tgt Ion	Resp	Lower	Upper
264	498417		
260	24.1	19.3	28.9
265	21.8	17.4	26.0

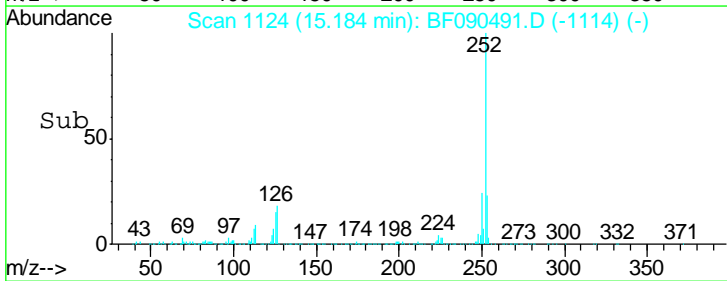
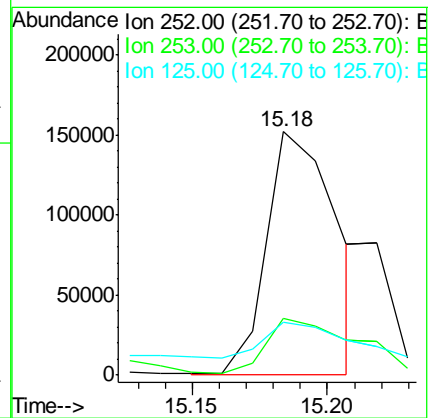
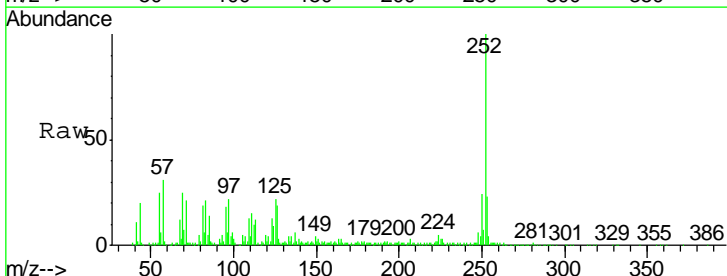
Manual Integrations
APPROVED

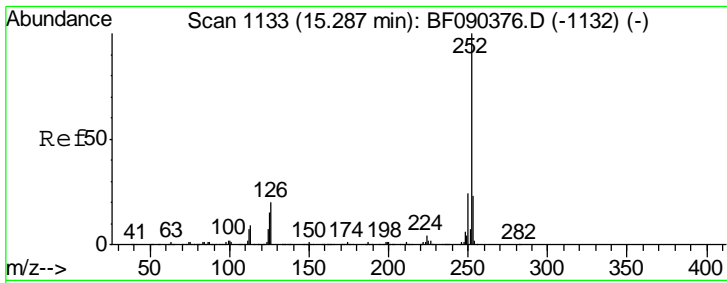
sohil
 10/11/2016 7:07:21 PM



#87
 Benzo(b)fluoranthene
 Concen: 8.56 ng m
 RT: 15.18 min Scan# 1124
 Delta R.T. -0.08 min
 Lab File: BF090491.D
 Acq: 10 Oct 2016 20:36

Tgt Ion	Resp	Lower	Upper
252	271748		
253	23.5	18.2	27.2
125	21.6	7.0	10.4#





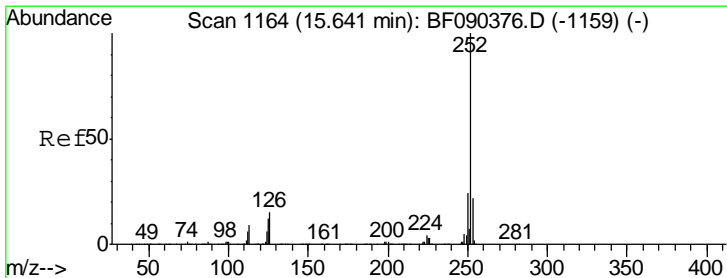
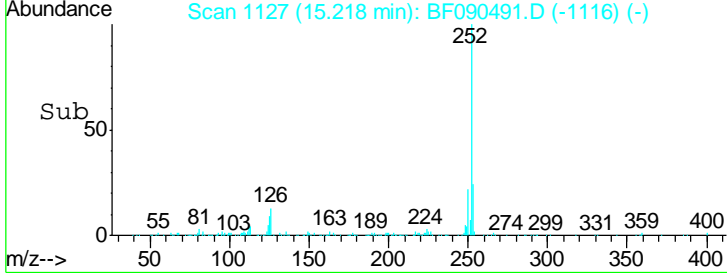
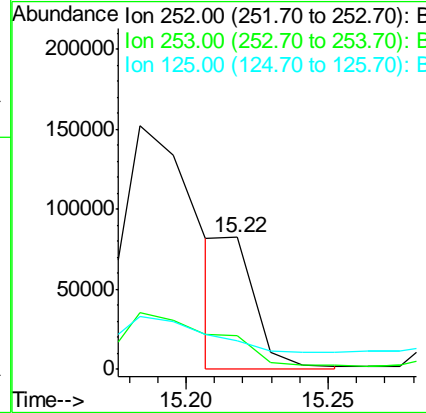
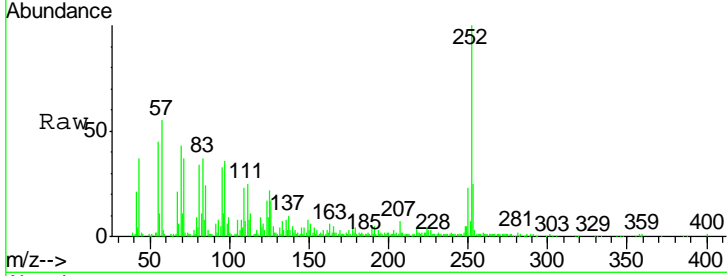
#88
 Benzo(k)fluoranthene
 Concen: 2.25 ng m
 RT: 15.22 min Scan# 1127
 Delta R.T. -0.07 min
 Lab File: BF090491.D
 Acq: 10 Oct 2016 20:36

Instrument :
 BNA_F
Client Sampled :
 MJSB-16(6.5-8.5)DL

Tgt Ion	Resp	Lower	Upper
252	100		
253	25.1	18.6	27.8
125	22.1	11.7	17.5#

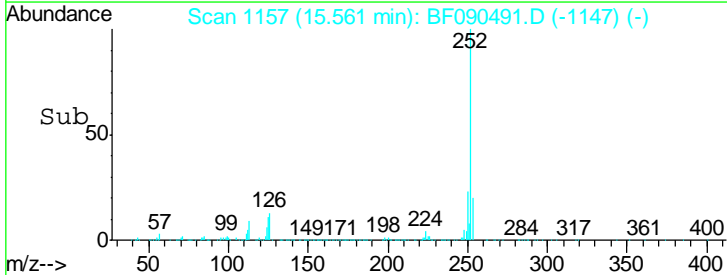
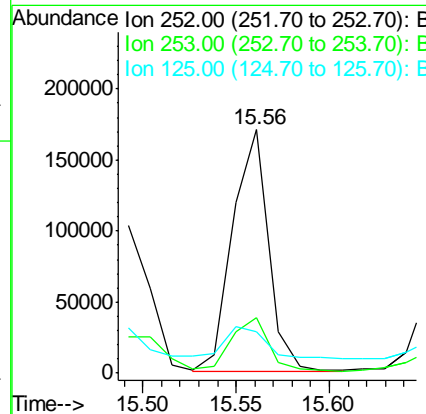
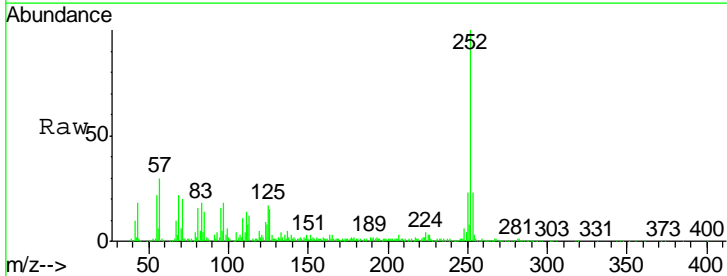
Manual Integrations
APPROVED

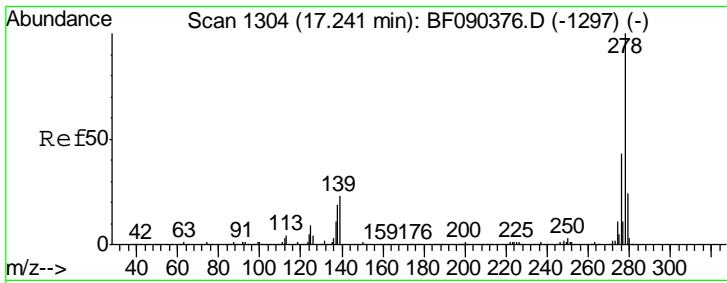
sohil
 10/11/2016 7:07:21 PM



#89
 Benzo(a)pyrene
 Concen: 8.38 ng
 RT: 15.56 min Scan# 1157
 Delta R.T. -0.08 min
 Lab File: BF090491.D
 Acq: 10 Oct 2016 20:36

Tgt Ion	Resp	Lower	Upper
252	100		
253	22.9	18.2	27.4
125	17.2	9.8	14.8#



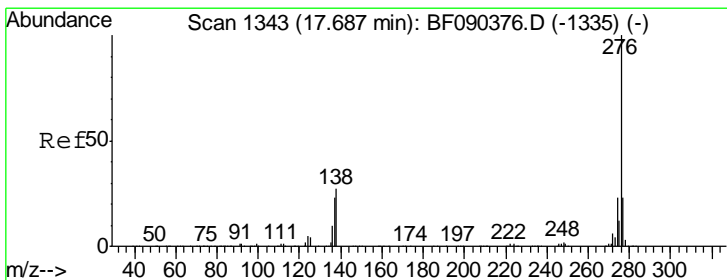
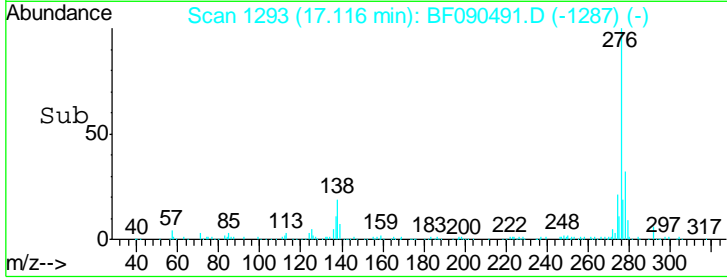
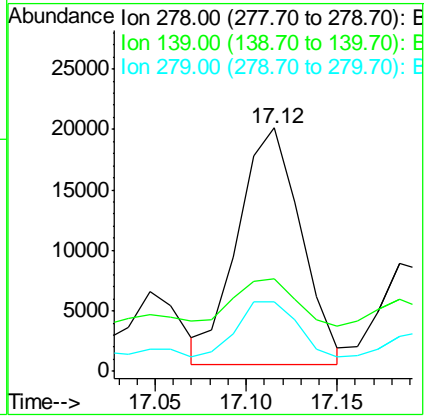
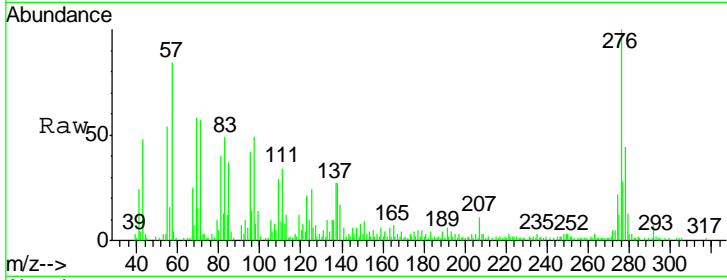


#90
 Dibenzo(a,h)anthracene
 Concen: 2.03 ng m
 RT: 17.12 min Scan# 1293
 Delta R.T. -0.13 min
 Lab File: BF090491.D
 Acq: 10 Oct 2016 20:36

Instrument :
 BNA_F
 ClientSampleID :
 MJSB-16(6.5-8.5)DL

Tgt Ion	Resp	Lower	Upper
278	47364		
139	38.3	12.8	19.2#
279	28.6	19.6	29.4

Manual Integrations
APPROVED
 sohil
 10/11/2016 7:07:21 PM



#91
 Benzo(g,h,i)perylene
 Concen: 7.14 ng
 RT: 17.55 min Scan# 1331
 Delta R.T. -0.14 min
 Lab File: BF090491.D
 Acq: 10 Oct 2016 20:36

Tgt Ion	Resp	Lower	Upper
276	159496		
277	24.4	19.4	29.0
138	30.1	20.8	31.2

