

Data Path : Z:\HPCHEM1\BNA F\DATA\BF101017\
 Data File : BF099326.D
 Acq On : 11 Oct 2017 3:29
 Operator : SJ/JU
 Sample : I5691-03
 Misc :
 ALS Vial : 24 Sample Multiplier: 1

Instrument :
 BNA_F
ClientSampleId :
 ENV-115-8(10-15)

Manual Integrations
APPROVED
 Sohil
 10/11/2017 7:24:16 PM

Quant Time: Oct 11 14:09:15 2017
 Quant Method : Z:\HPCHEM1\BNA F\METHODS\8270-BF092317.M
 Quant Title : ASP BNA STANDARDS FOR 5 POINT CALIBRATION
 QLast Update : Thu Oct 05 17:20:48 2017
 Response via : Initial Calibration

Internal Standards	R.T.	QIon	Response	Conc	Units	Dev(Min)
1) 1,4-Dichlorobenzene-d4	6.86	152	92675	20.00	ng	0.00
21) Naphthalene-d8	8.15	136	274870	20.00	ng	0.00
38) Acenaphthene-d10	9.93	164	78329	20.00	ng	0.02
63) Phenanthrene-d10	11.42	188	129505	20.00	ng	0.03
75) Chrysene-d12	14.04	240	171815	20.00	ng	0.00
86) Perylene-d12	15.51	264	127529	20.00	ng	0.00
System Monitoring Compounds						
5) 2-Fluorophenol	5.49	112	702841	120.73	ng	0.01
7) Phenol-d6	6.50	99	809717	112.75	ng	0.00
23) Nitrobenzene-d5	7.43	82	416158	97.09	ng	0.00
41) 2,4,6-Tribromophenol	10.72	330	88710	138.41	ng	0.02
44) 2-Fluorobiphenyl	9.23	172	505543	107.75	ng	0.00
78) Terphenyl-d14	12.99	244	518317	68.61	ng	0.02
Target Compounds						
77) Pyrene	12.86	202	190866	14.568	ng	Qvalue # 92

(#) = qualifier out of range (m) = manual integration (+) = signals summed

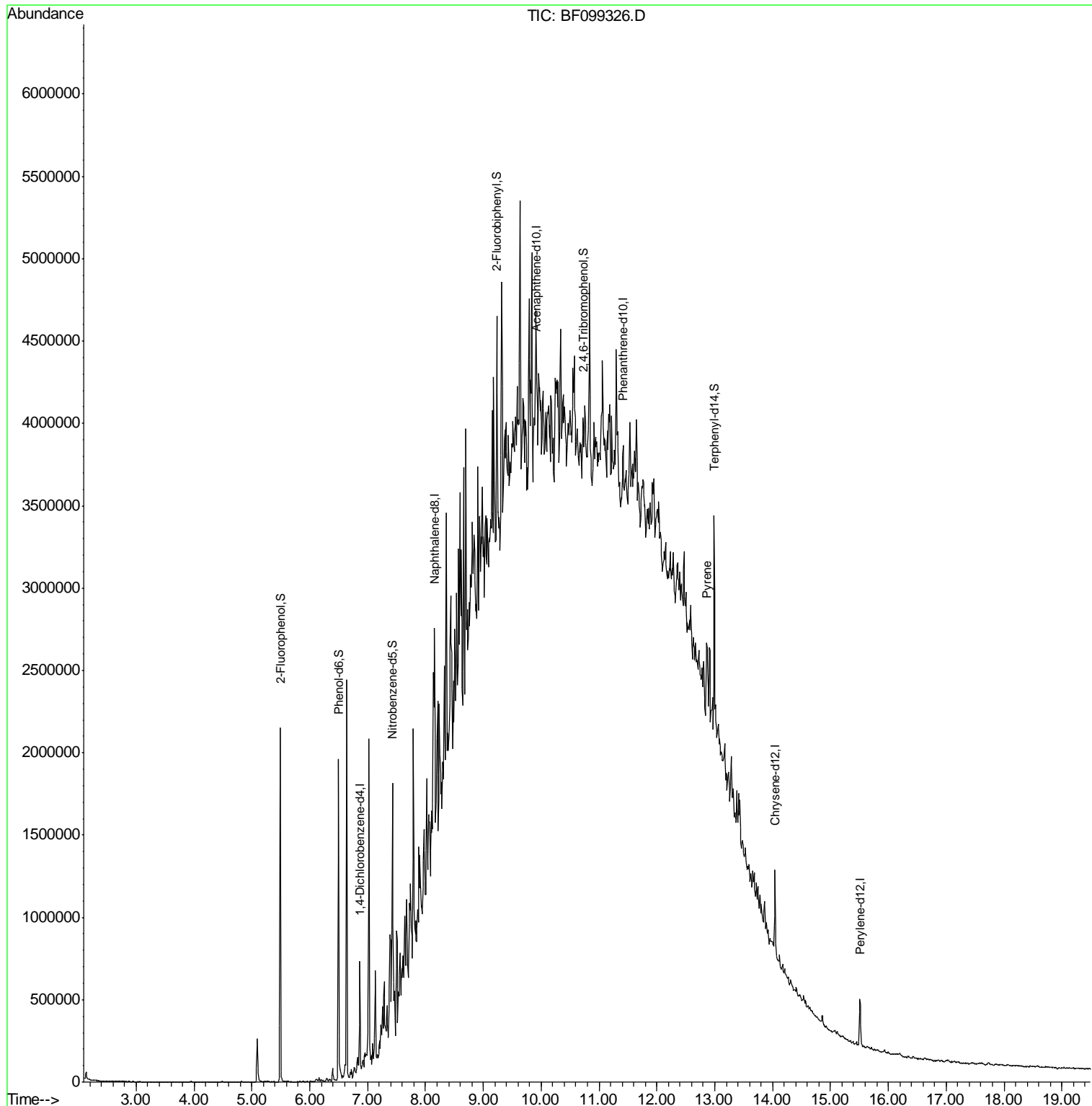
Data Path : Z:\HPCHEM1\BNA F\DATA\BF101017\
 Data File : BF099326.D
 Acq On : 11 Oct 2017 3:29
 Operator : SJ/JU
 Sample : I5691-03
 Misc :
 ALS Vial : 24 Sample Multiplier: 1

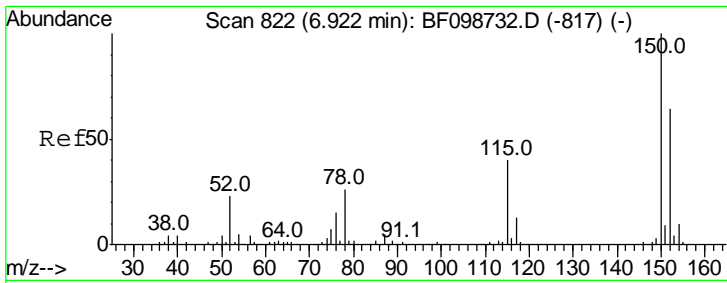
Instrument :
 BNA_F
 ClientSampled :
 ENV-115-8(10-15)

Manual Integrations
 APPROVED

Sohil
 10/11/2017 7:24:16 PM

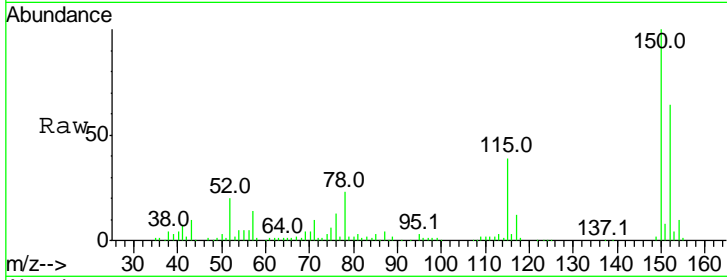
Quant Time: Oct 11 14:09:15 2017
 Quant Method : Z:\HPCHEM1\BNA F\METHODS\8270-BF092317.M
 Quant Title : ASP BNA STANDARDS FOR 5 POINT CALIBRATION
 QLast Update : Thu Oct 05 17:20:48 2017
 Response via : Initial Calibration





#1
 1,4-Dichlorobenzene-d4
 Concen: 20.000 ng
 RT: 6.86 min Scan# 812
 Delta R.T. -0.01 min
 Lab File: BF099326.D
 Acq: 11 Oct 2017 3:29

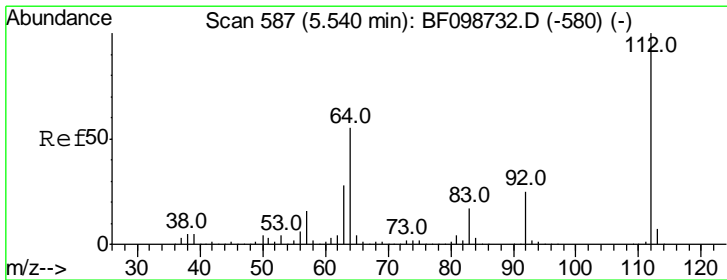
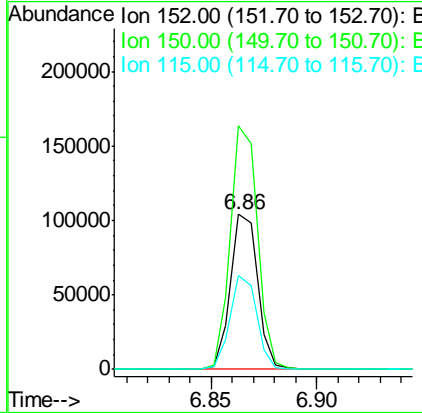
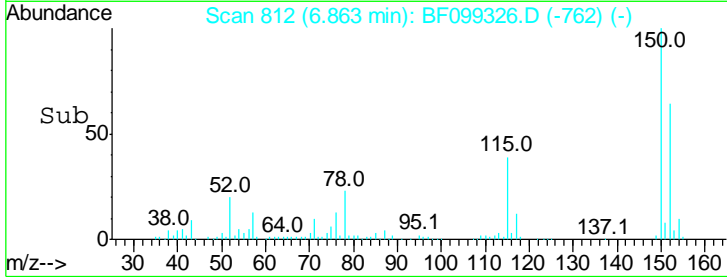
Instrument :
 BNA_F
ClientSampled :
 ENV-115-8(10-15)



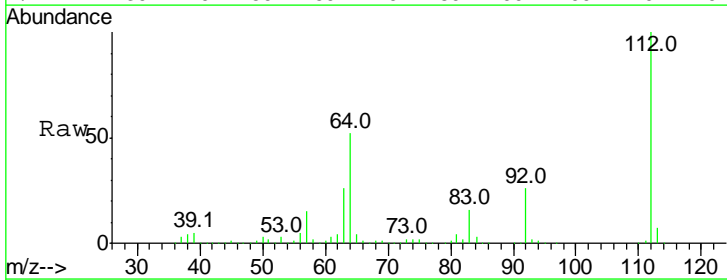
Tgt Ion	Resp	Lower	Upper
152	92675		
152	100		
150	157.1	124.6	186.8
115	60.9	50.1	75.1

Manual Integrations
APPROVED

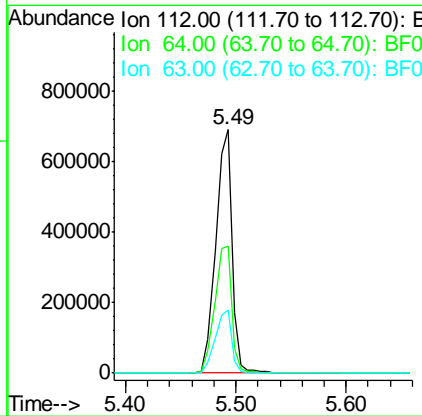
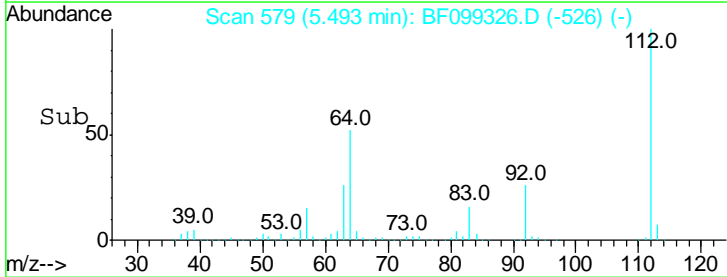
Sohil
 10/11/2017 7:24:16 PM

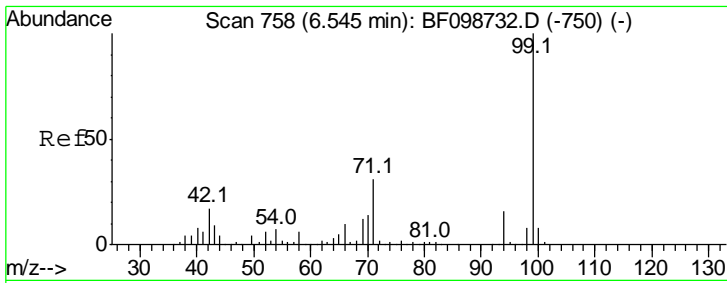


#5
 2-Fluorophenol
 Concen: 120.729 ng
 RT: 5.49 min Scan# 579
 Delta R.T. 0.01 min
 Lab File: BF099326.D
 Acq: 11 Oct 2017 3:29



Tgt Ion	Resp	Lower	Upper
112	702841		
112	100		
64	52.2	47.9	71.9
63	26.0	23.7	35.5





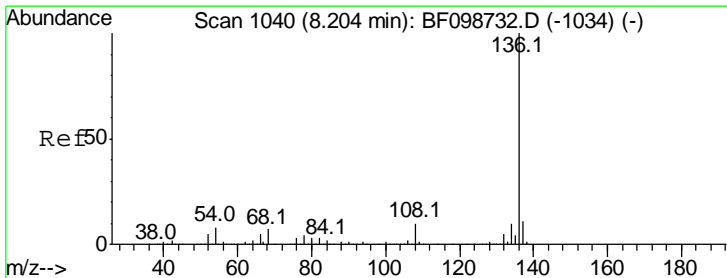
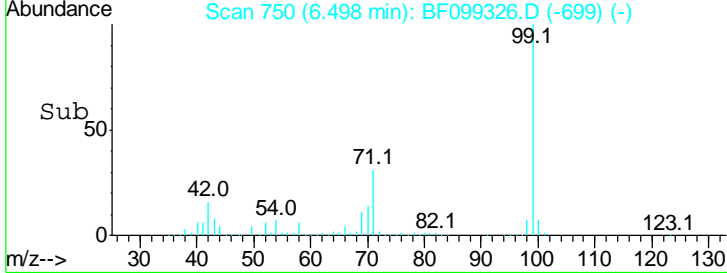
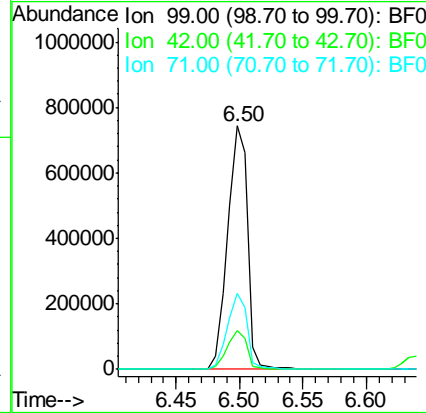
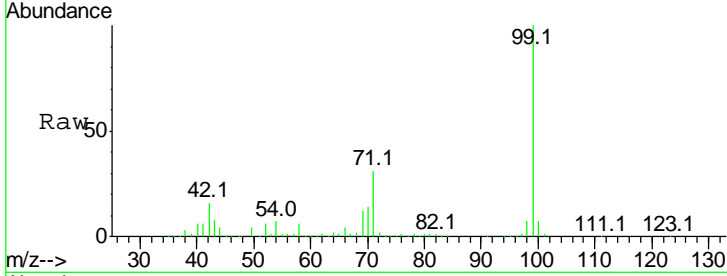
#7
 Phenol-d6
 Concen: 112.748 ng
 RT: 6.50 min Scan# 750
 Delta R.T. 0.00 min
 Lab File: BF099326.D
 Acq: 11 Oct 2017 3:29

Instrument :
 BNA_F
ClientSampled :
 ENV-115-8(10-15)

Tgt Ion	Resp	Lower	Upper
99	100		
42	15.8	14.5	21.7
71	31.2	25.4	38.0

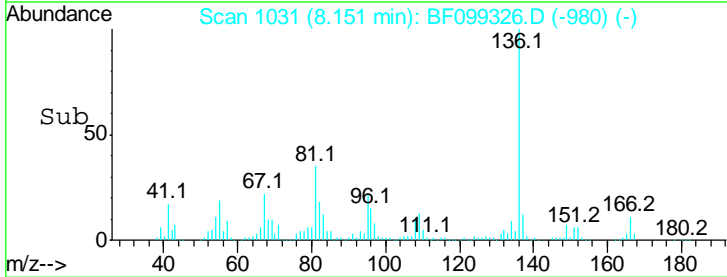
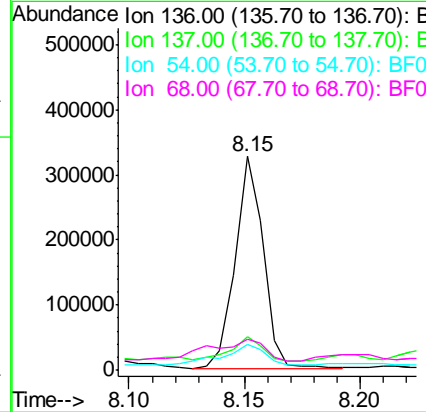
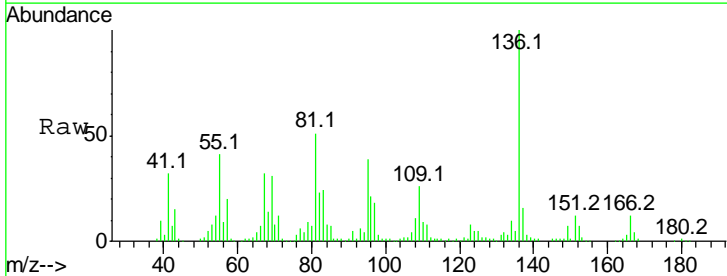
Manual Integrations
APPROVED

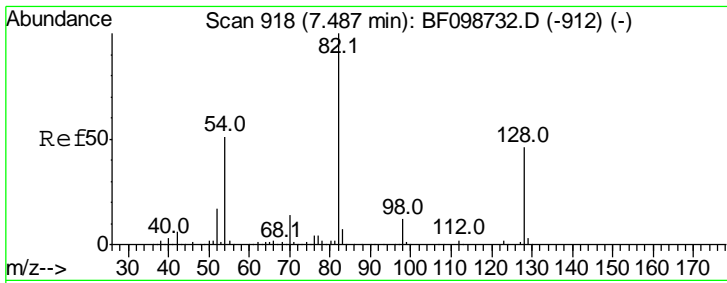
Sohil
 10/11/2017 7:24:16 PM



#21
 Naphthalene-d8
 Concen: 20.000 ng
 RT: 8.15 min Scan# 1031
 Delta R.T. 0.00 min
 Lab File: BF099326.D
 Acq: 11 Oct 2017 3:29

Tgt Ion	Resp	Lower	Upper
136	100		
137	15.8	8.9	13.3#
54	12.3	6.6	9.8#
68	14.3	5.0	7.4#





#23
 Nitrobenzene-d5
 Concen: 97.094 ng
 RT: 7.43 min Scan# 909
 Delta R.T. 0.00 min
 Lab File: BF099326.D
 Acq: 11 Oct 2017 3:29

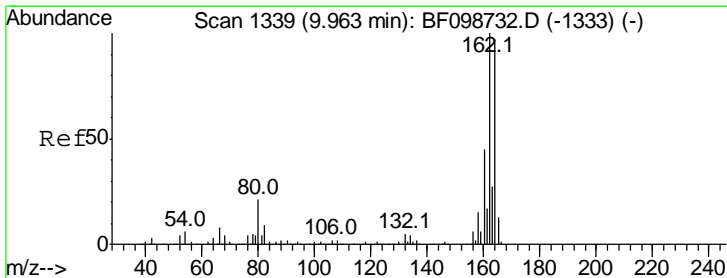
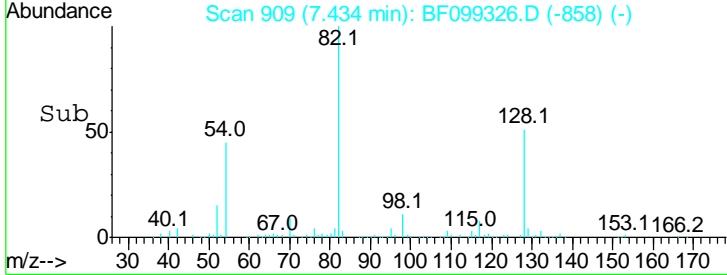
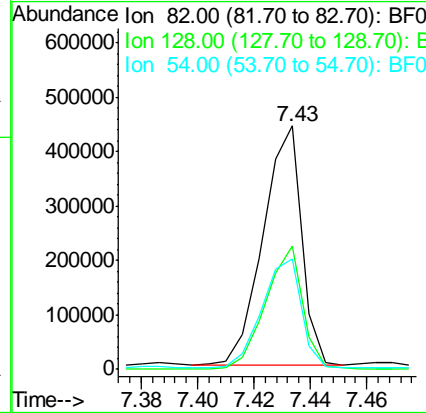
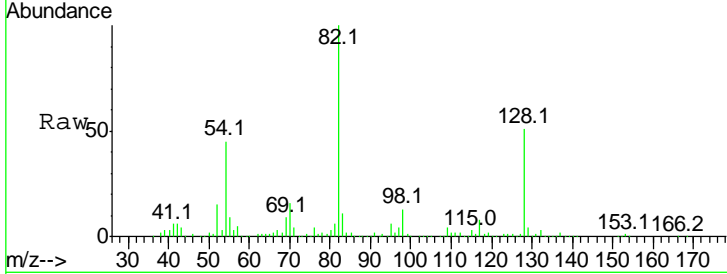
Instrument :
 BNA_F
ClientSampled :
 ENV-115-8(10-15)

Tgt Ion: 82 Resp: 416158

Ion	Ratio	Lower	Upper
82	100		
128	50.8	36.1	54.1
54	45.4	41.4	62.2

Manual Integrations
APPROVED

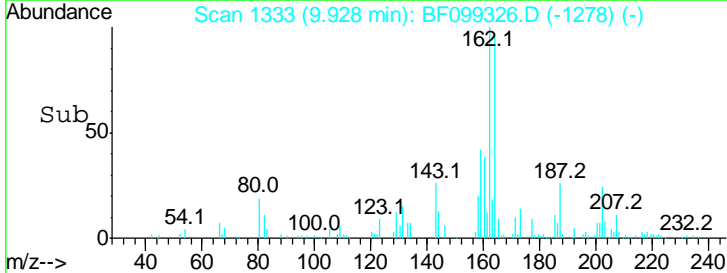
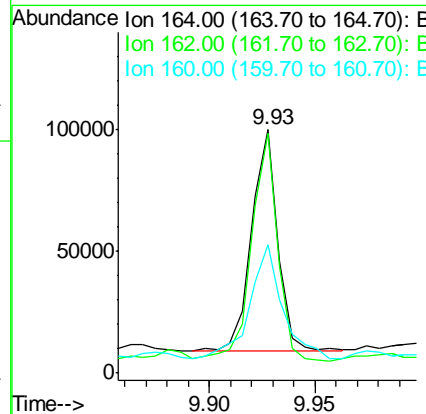
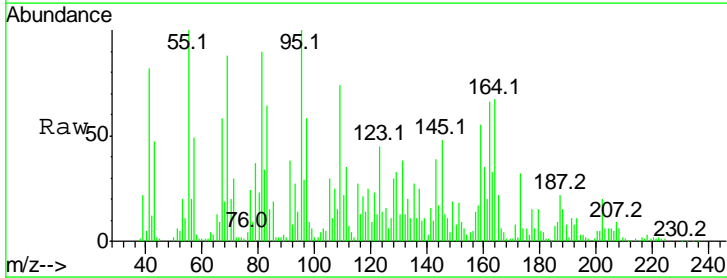
Sohil
 10/11/2017 7:24:16 PM

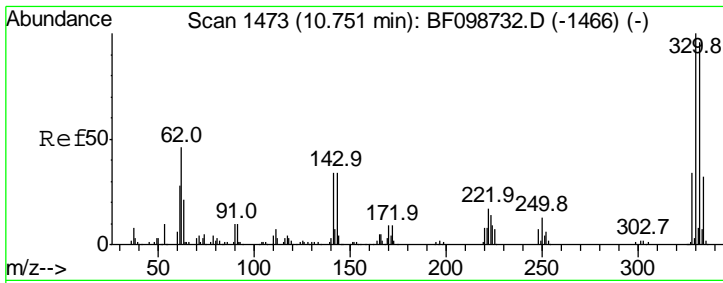


#38
 Acenaphthene-d10
 Concen: 20.000 ng
 RT: 9.93 min Scan# 1333
 Delta R.T. 0.02 min
 Lab File: BF099326.D
 Acq: 11 Oct 2017 3:29

Tgt Ion: 164 Resp: 78329

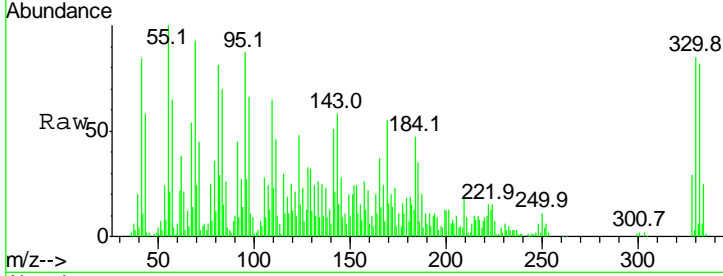
Ion	Ratio	Lower	Upper
164	100		
162	98.3	86.1	129.1
160	52.7	38.3	57.5





#41
 2,4,6-Tribromophenol
 Concen: 138.405 ng
 RT: 10.72 min Scan# 1468
 Delta R.T. 0.02 min
 Lab File: BF099326.D
 Acq: 11 Oct 2017 3:29

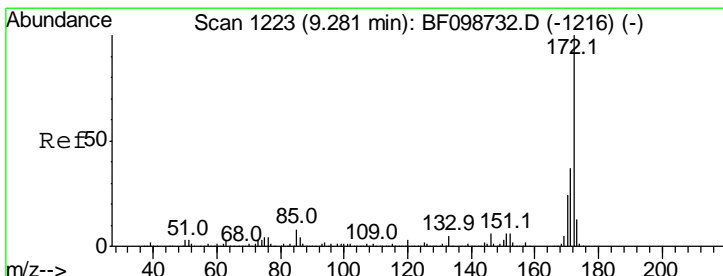
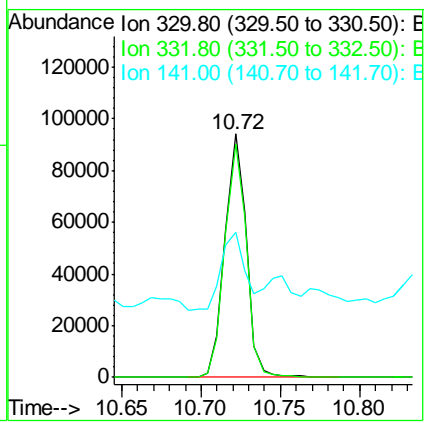
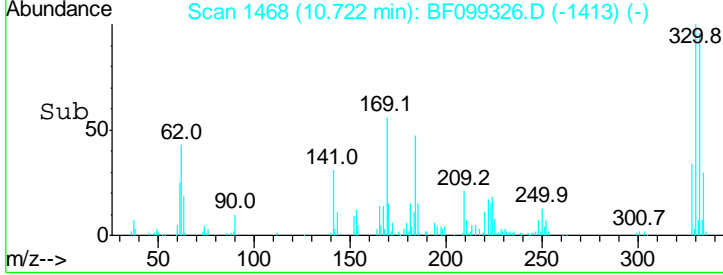
Instrument :
 BNA_F
 ClientSampled :
 ENV-115-8(10-15)



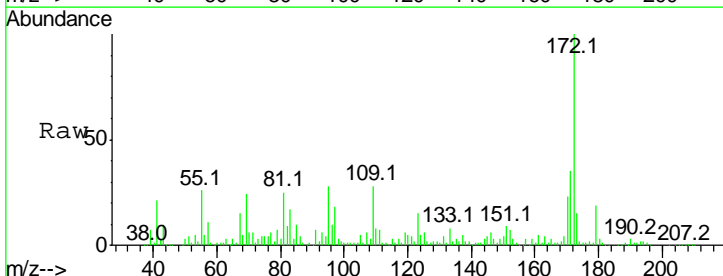
Tgt Ion: 330 Resp: 88710

Ion	Ratio	Lower	Upper
330	100		
332	96.7	77.0	115.6
141	34.7	29.9	44.9

Manual Integrations
APPROVED
 Sohil
 10/11/2017 7:24:16 PM

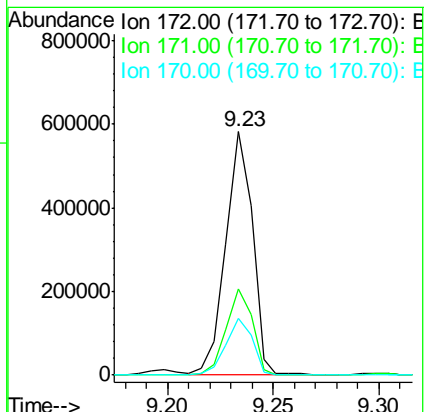
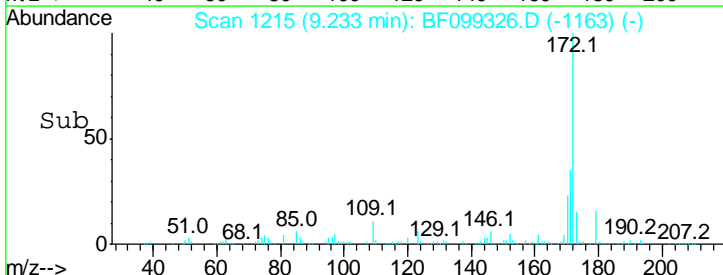


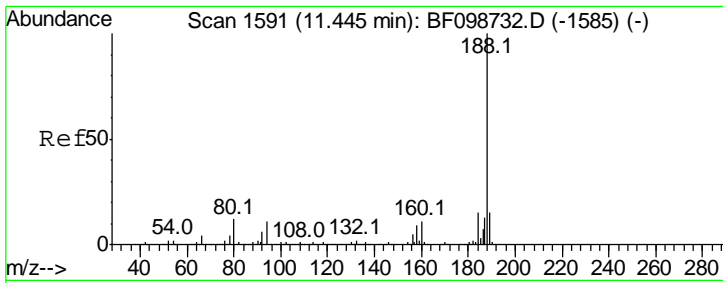
#44
 2-Fluorobiphenyl
 Concen: 107.746 ng
 RT: 9.23 min Scan# 1215
 Delta R.T. 0.01 min
 Lab File: BF099326.D
 Acq: 11 Oct 2017 3:29



Tgt Ion: 172 Resp: 505543

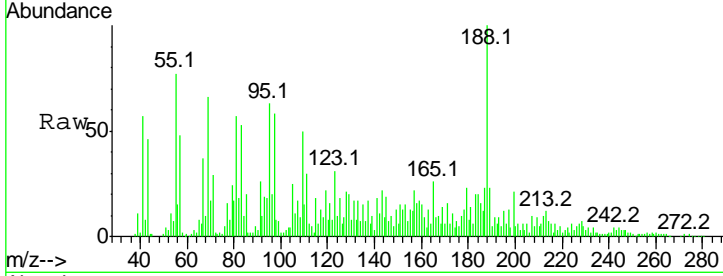
Ion	Ratio	Lower	Upper
172	100		
171	35.4	29.7	44.5
170	23.0	19.6	29.4





#63
 Phenanthrene-d10
 Concen: 20.000 ng
 RT: 11.42 min Scan# 1587
 Delta R.T. 0.03 min
 Lab File: BF099326.D
 Acq: 11 Oct 2017 3:29

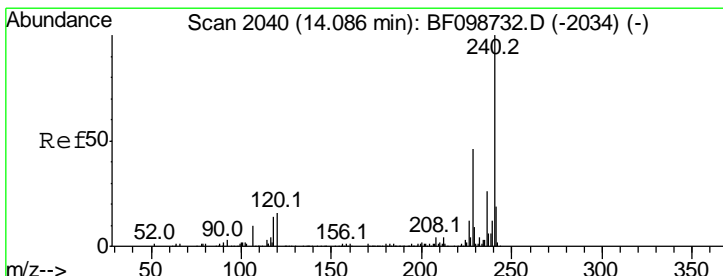
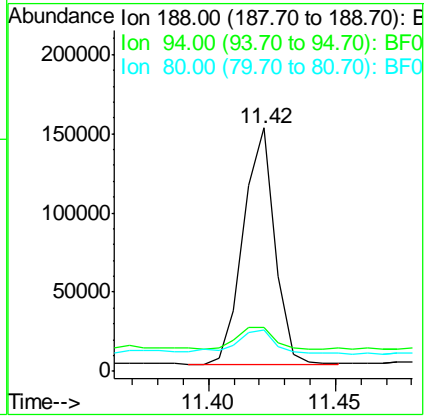
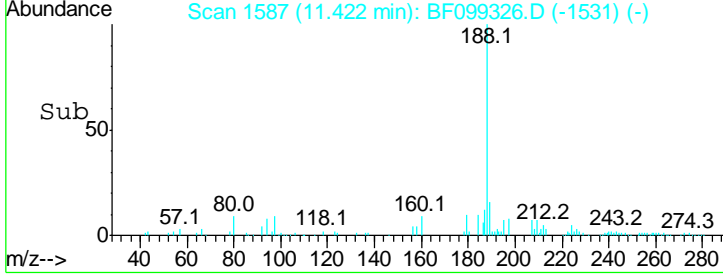
Instrument :
 BNA_F
ClientSampled :
 ENV-115-8(10-15)



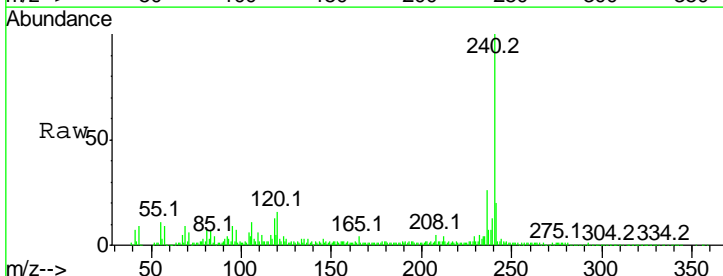
Tgt Ion: 188 Resp: 129505

Ion	Ratio	Lower	Upper
188	100		
94	17.9	8.5	12.7#
80	16.8	9.2	13.8#

Manual Integrations
APPROVED
 Sohil
 10/11/2017 7:24:16 PM

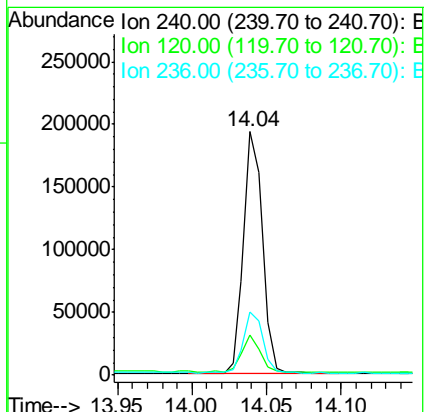
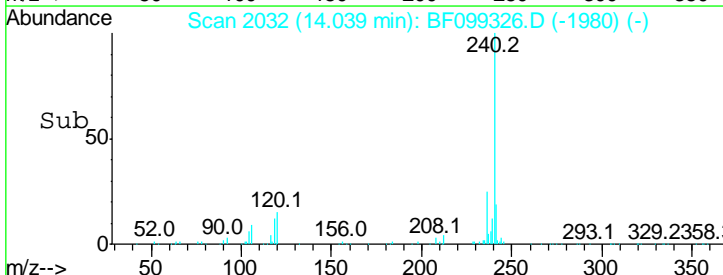


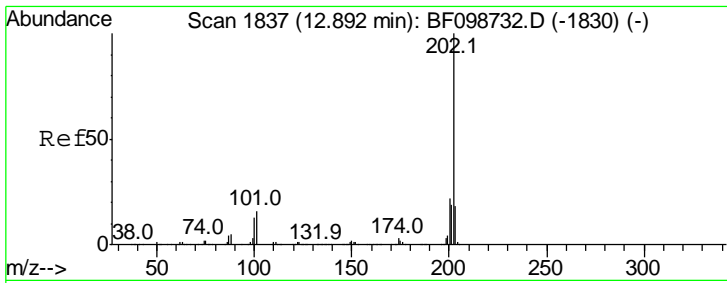
#75
 Chrysene-d12
 Concen: 20.000 ng
 RT: 14.04 min Scan# 2032
 Delta R.T. 0.01 min
 Lab File: BF099326.D
 Acq: 11 Oct 2017 3:29



Tgt Ion: 240 Resp: 171815

Ion	Ratio	Lower	Upper
240	100		
120	16.3	9.5	14.3#
236	26.1	20.7	31.1



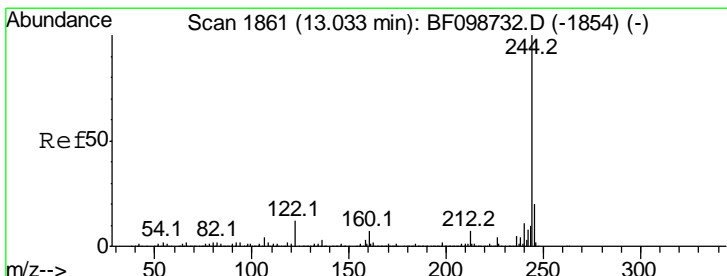
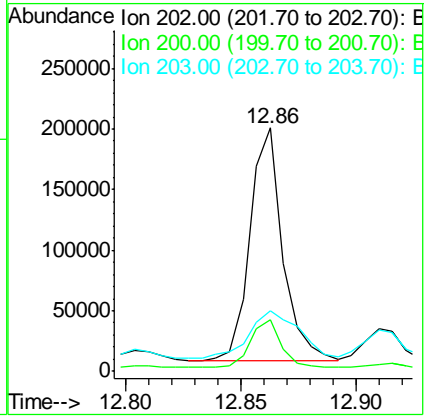
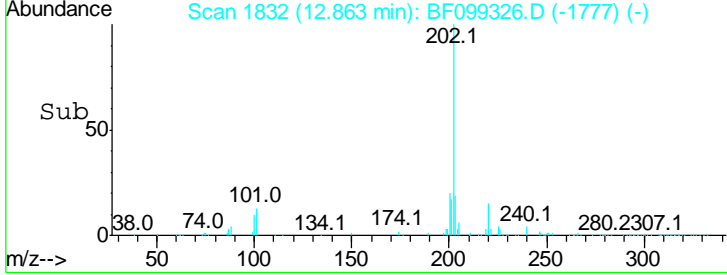
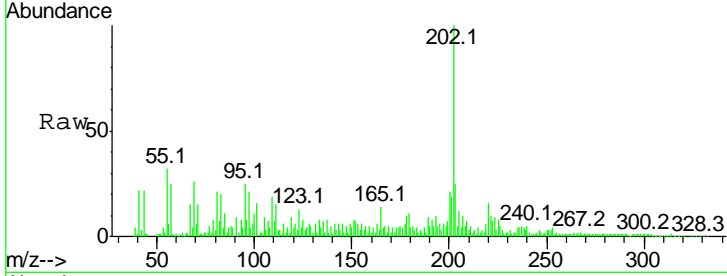


#77
 Pyrene
 Concen: 14.568 ng
 RT: 12.86 min Scan# 1832
 Delta R.T. 0.02 min
 Lab File: BF099326.D
 Acq: 11 Oct 2017 3:29

Instrument :
 BNA_F
 ClientSampled :
 ENV-115-8(10-15)

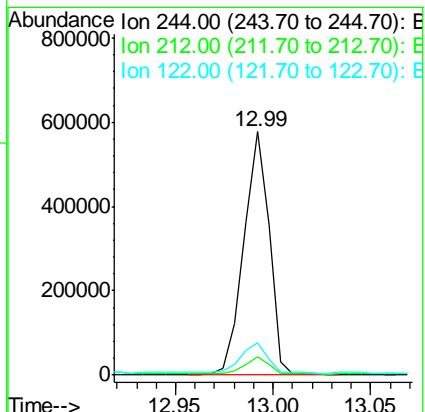
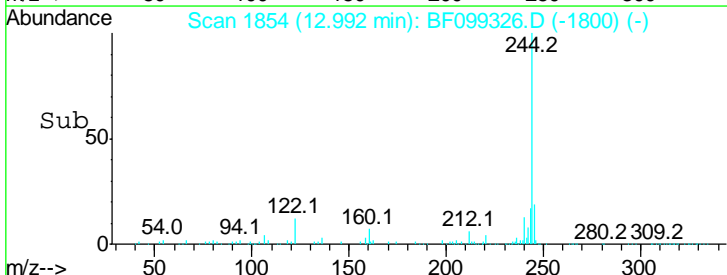
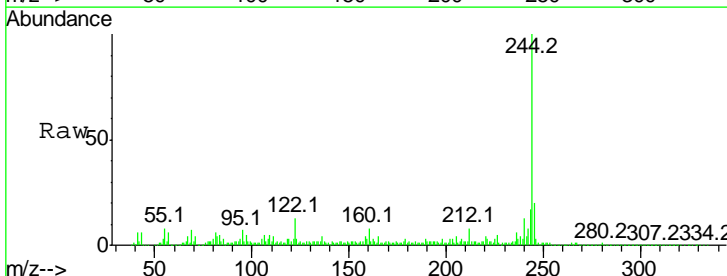
Tgt Ion	Ratio	Lower	Upper
202	100		
200	21.0	17.4	26.2
203	25.0	14.3	21.5#

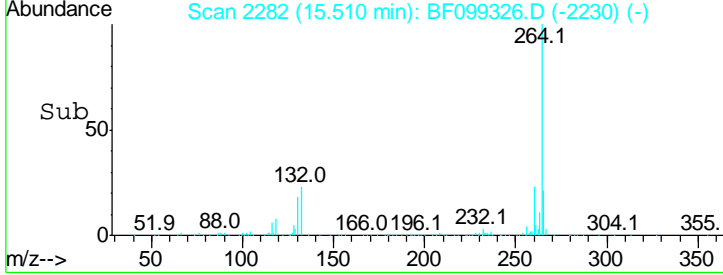
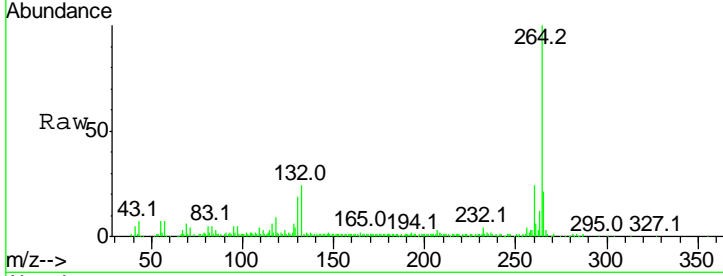
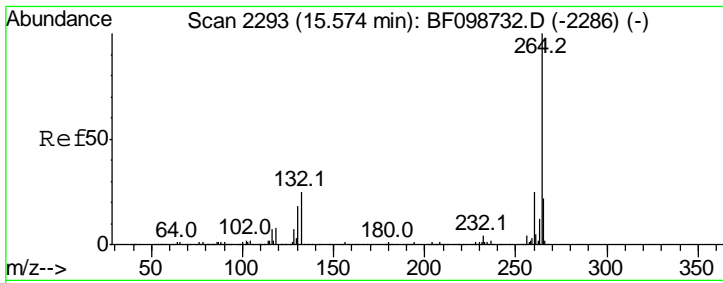
Manual Integrations
APPROVED
 Sohil
 10/11/2017 7:24:16 PM



#78
 Terphenyl-d14
 Concen: 68.606 ng
 RT: 12.99 min Scan# 1854
 Delta R.T. 0.02 min
 Lab File: BF099326.D
 Acq: 11 Oct 2017 3:29

Tgt Ion	Ratio	Lower	Upper
244	100		
212	7.5	5.4	8.0
122	13.2	11.0	16.4





#86
 Perylene-d12
 Concen: 20.000 ng
 RT: 15.51 min Scan# 2282
 Delta R.T. 0.01 min
 Lab File: BF099326.D
 Acq: 11 Oct 2017 3:29

Tot Ion: 264 Resp: 127529

Ion	Ratio	Lower	Upper
264	100		
260	23.7	19.2	28.8
265	21.3	17.5	26.3

Instrument :
 BNA_F
ClientSampled :
 ENV-115-8(10-15)

Manual Integrations
APPROVED
 Sohil
 10/11/2017 7:24:16 PM

