

Data Path : Z:\HPCHEM1\BNA F\DATA\BF101017\
 Data File : BF099296.D
 Acq On : 10 Oct 2017 12:53
 Operator : SJ/JU
 Sample : I5651-07
 Misc :
 ALS Vial : 7 Sample Multiplier: 1

Instrument :
 BNA_F
 ClientSampleId :
 ENV-115-2(40-50)

Integration Parameters: rteint.p
 Integrator: RTE
 Smoothing : ON Filtering: 5
 Sampling : 1 Min Area: 3 % of largest Peak
 Start Thrs: 0.2 Max Peaks: 100
 Stop Thrs : 0 Peak Location: TOP

If leading or trailing edge < 100 prefer < Baseline drop else tangent >
 Peak separation: 5

Method : Z:\HPCHEM1\BNA F\METHODS\8270-BF092317.M
 Title : ASP BNA STANDARDS FOR 5 POINT CALIBRATION

Signal : TIC

peak #	R.T. min	first scan	max scan	last scan	PK TY	peak height	corr. area	corr. % max.	% of total
1	2.181	12	16	24	rVB	35457	52106	2.23%	0.262%
2	5.093	508	511	524	rBV	276412	356510	15.23%	1.791%
3	5.487	574	578	582	rBV	1925585	2011369	85.93%	10.106%
4	6.493	744	749	753	rBV	1798683	2000182	85.45%	10.050%
5	6.634	769	773	776	rBV	2327141	2094582	89.49%	10.524%
6	6.863	808	812	815	rBV	719587	577108	24.66%	2.900%
7	7.016	834	838	842	rBV	1704733	1653784	70.65%	8.310%
8	7.428	903	908	911	rBV	1330928	1253258	53.54%	6.297%
9	8.145	1025	1030	1033	rBV	865093	772240	32.99%	3.880%
10	9.216	1207	1212	1215	rBV	2489688	2340659	100.00%	11.761%
11	9.610	1275	1279	1289	rBV	380364	302284	12.91%	1.519%
12	9.898	1323	1328	1332	rBV	972586	832658	35.57%	4.184%
13	10.316	1396	1399	1402	rVB	32394	24884	1.06%	0.125%
14	10.686	1458	1462	1472	rBV	1287447	1187736	50.74%	5.968%
15	10.786	1476	1479	1488	rVB	39409	42628	1.82%	0.214%
16	11.386	1577	1581	1588	rBV	981196	834410	35.65%	4.193%
17	12.969	1845	1850	1853	rBV	2343891	2152494	91.96%	10.815%
18	13.851	1996	2000	2013	rBV2	67927	120882	5.16%	0.607%
19	14.027	2025	2030	2033	rBV	745153	727503	31.08%	3.655%
20	15.498	2275	2280	2289	rBV	405532	537444	22.96%	2.700%
21	17.727	2650	2659	2667	rBV8	9112	27282	1.17%	0.137%

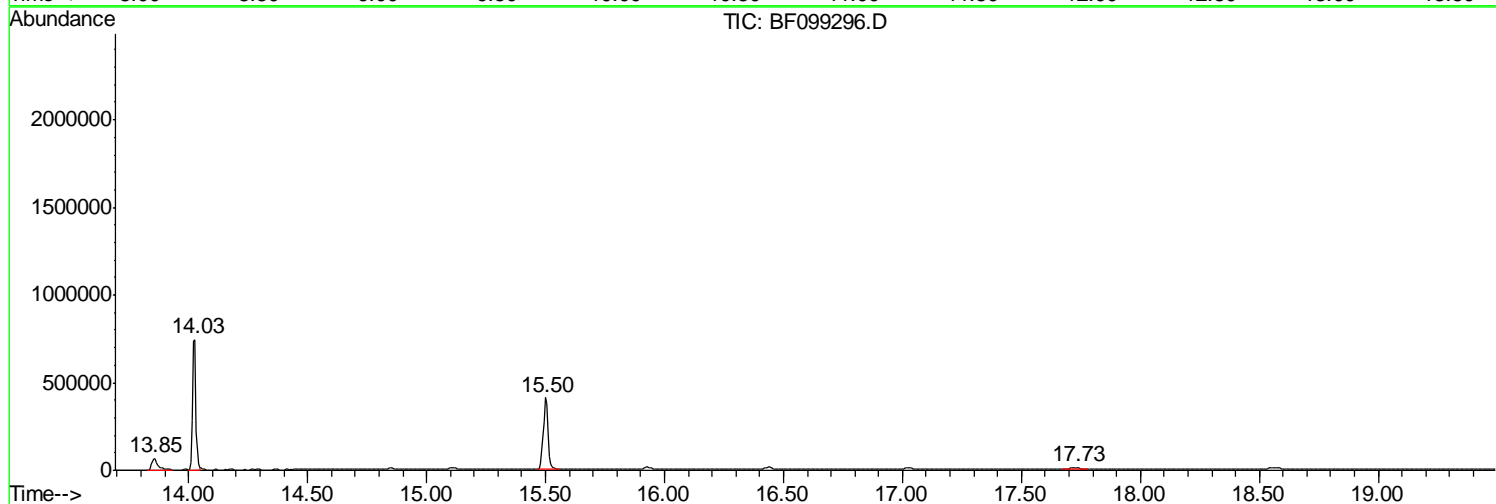
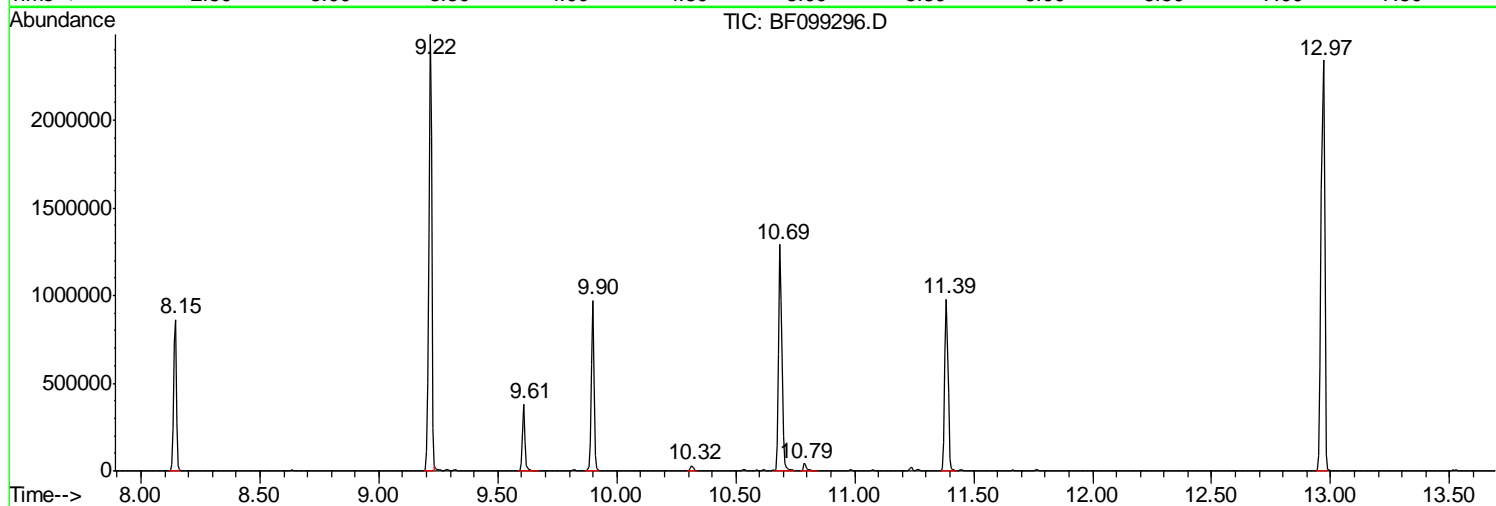
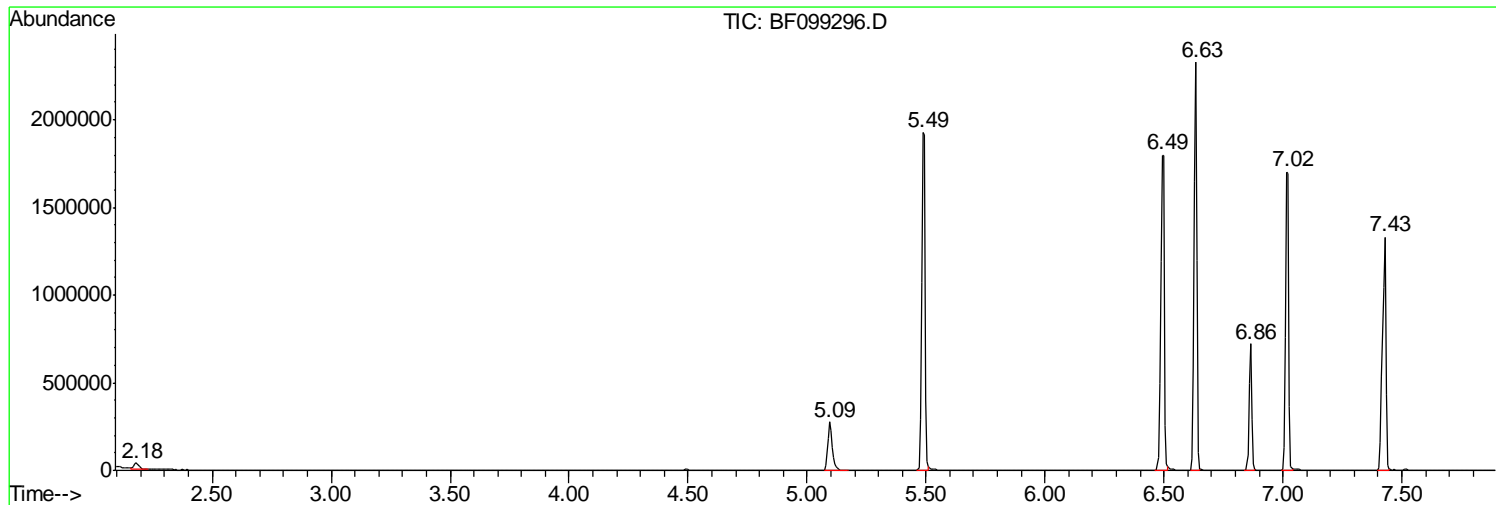
Sum of corrected areas: 19902003

Data Path : Z:\HPCHEM1\BNA F\DATA\BF101017\
Data File : BF099296.D
Acq On : 10 Oct 2017 12:53
Operator : SJ/JU
Sample : I5651-07
Misc :
ALS Vial : 7 Sample Multiplier: 1

Instrument :
BNA_F
ClientSampleId :
ENV-115-2(40-50)

Quant Method : Z:\HPCHEM1\BNA F\METHODS\8270-BF092317.M
Quant Title : ASP BNA STANDARDS FOR 5 POINT CALIBRATION

TIC Library : C:\DATABASE\NIST11.L
TIC Integration Parameters: LSCINT.P



Data Path : Z:\HPCHEM1\BNA F\DATA\BF101017\
 Data File : BF099296.D
 Acq On : 10 Oct 2017 12:53
 Operator : SJ/JU
 Sample : I5651-07
 Misc :
 ALS Vial : 7 Sample Multiplier: 1

Instrument :
 BNA_F
 ClientSampleId :
 ENV-115-2(40-50)

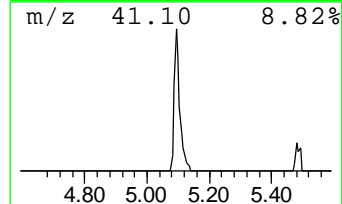
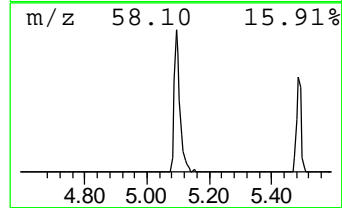
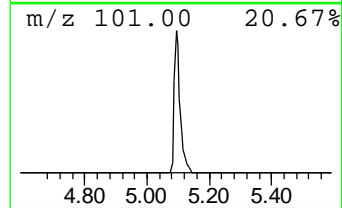
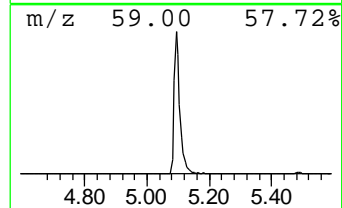
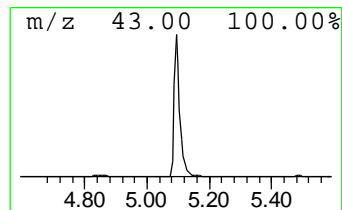
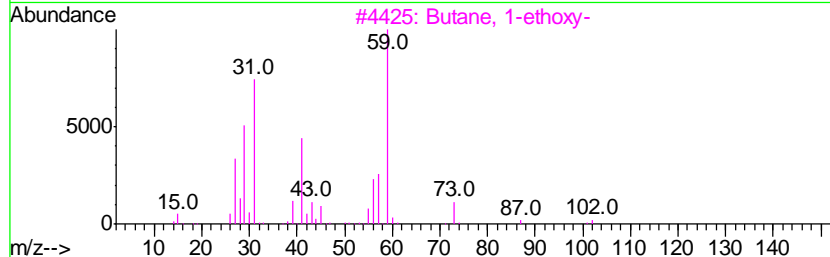
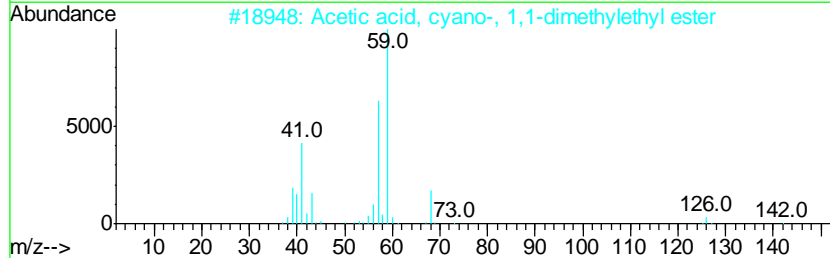
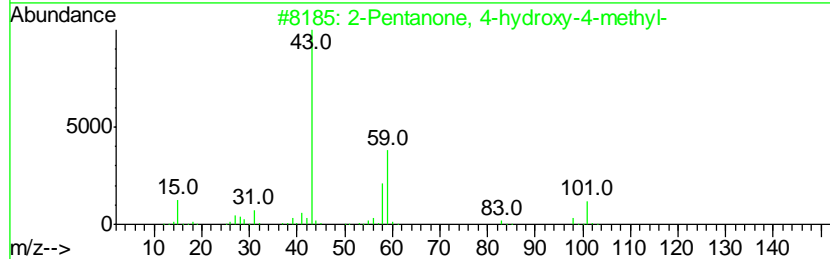
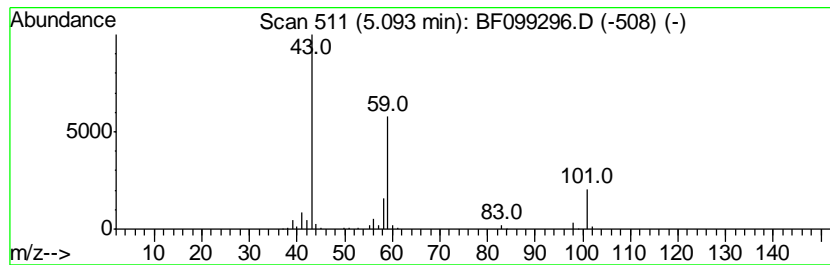
Quant Method : Z:\HPCHEM1\BNA F\METHODS\8270-BF092317.M
 Quant Title : ASP BNA STANDARDS FOR 5 POINT CALIBRATION

TIC Library : C:\DATABASE\NIST11.L
 TIC Integration Parameters: LSCINT.P

 Peak Number 1 unknown5.09 Concentration Rank 3

R.T.	EstConc	Area	Relative to ISTD	R.T.
5.09	12.36 ng	356510	1,4-Dichlorobenzene-d4	6.86

Hit#	of	Tentative ID	MW	MolForm	CAS#	Qual
1	5	2-Pentanone, 4-hydroxy-4-methyl-	116	C6H12O2	000123-42-2	40
2		Acetic acid, cyano-, 1,1-dimethyl...	141	C7H11NO2	001116-98-9	23
3		Butane, 1-ethoxy-	102	C6H14O	000628-81-9	9
4		Morpholine, 4-methyl-	101	C5H11NO	000109-02-4	9
5		(+)-4-Amino-4,5-dihydro-2(3H)-f...	101	C4H7NO2	016504-58-8	9



Data Path : Z:\HPCHEM1\BNA F\DATA\BF101017\
 Data File : BF099296.D
 Acq On : 10 Oct 2017 12:53
 Operator : SJ/JU
 Sample : I5651-07
 Misc :
 ALS Vial : 7 Sample Multiplier: 1

Instrument :
 BNA_F
 ClientSampled :
 ENV-115-2(40-50)

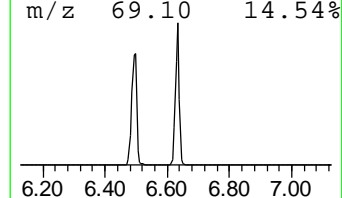
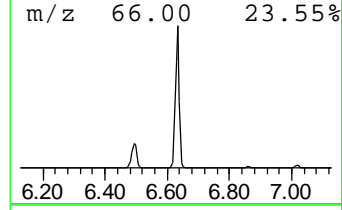
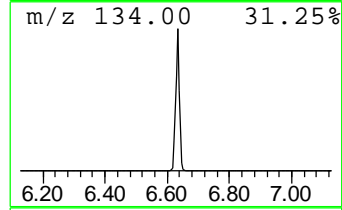
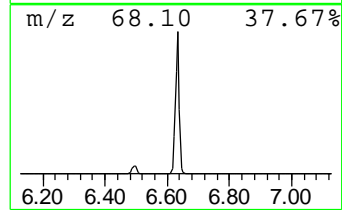
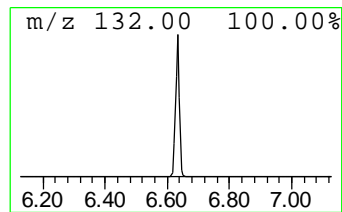
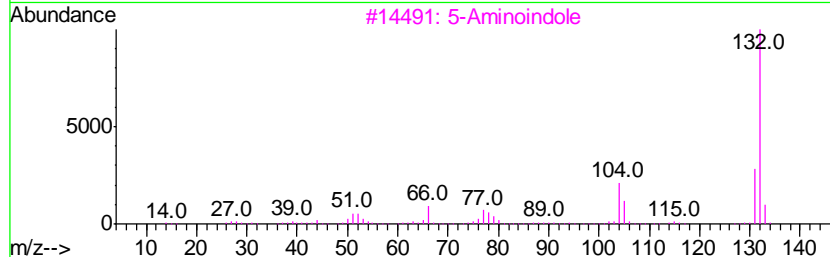
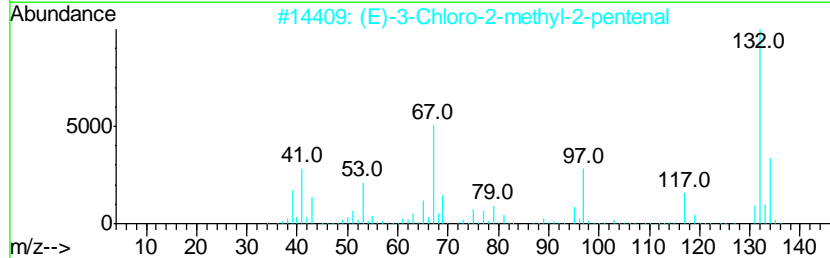
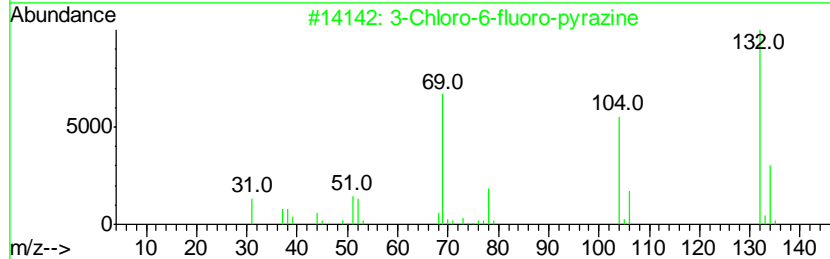
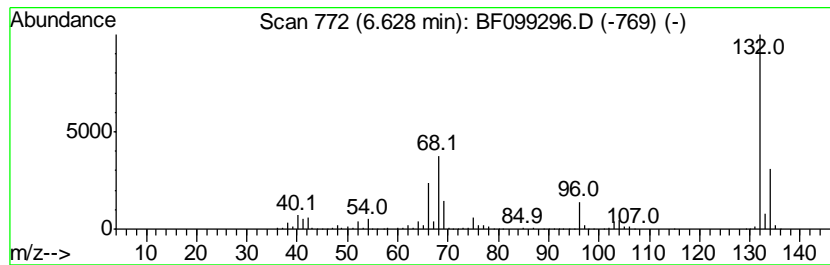
Quant Method : Z:\HPCHEM1\BNA F\METHODS\8270-BF092317.M
 Quant Title : ASP BNA STANDARDS FOR 5 POINT CALIBRATION

TIC Library : C:\DATABASE\NIST11.L
 TIC Integration Parameters: LSCINT.P

 Peak Number 2 unknown6.63 Concentration Rank 1

R.T.	EstConc	Area	Relative to ISTD	R.T.
6.63	72.59 ng	2094580	1,4-Dichlorobenzene-d4	6.86

Hit#	of	Tentative ID	MW	MolForm	CAS#	Qual
1	5	3-Chloro-6-fluoro-pyrazine	132	C4H2ClFN2	1000146-10-7	38
2		(E)-3-Chloro-2-methyl-2-pentenal	132	C6H9ClO	031357-76-3	12
3		5-Aminoindole	132	C8H8N2	005192-03-0	12
4		4-Chloro-6-fluoro-pyrimidine	132	C4H2ClFN2	051422-01-6	9
5		2H-Cyclopenta[d]pyridazine, 2-me...	132	C8H8N2	022291-85-6	9



Data Path : Z:\HPCHEM1\BNA F\DATA\BF101017\
 Data File : BF099296.D
 Acq On : 10 Oct 2017 12:53
 Operator : SJ/JU
 Sample : I5651-07
 Misc :
 ALS Vial : 7 Sample Multiplier: 1

Instrument :
 BNA_F
 ClientSampleId :
 ENV-115-2(40-50)

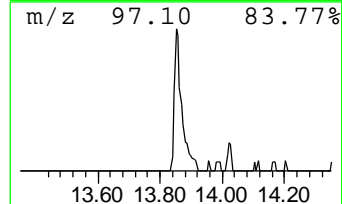
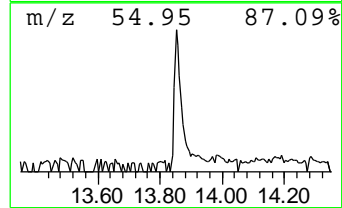
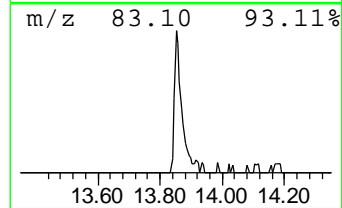
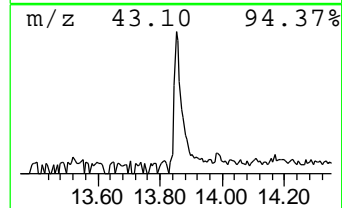
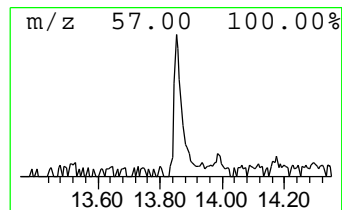
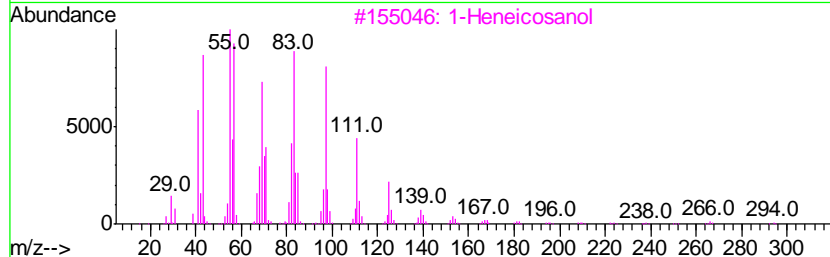
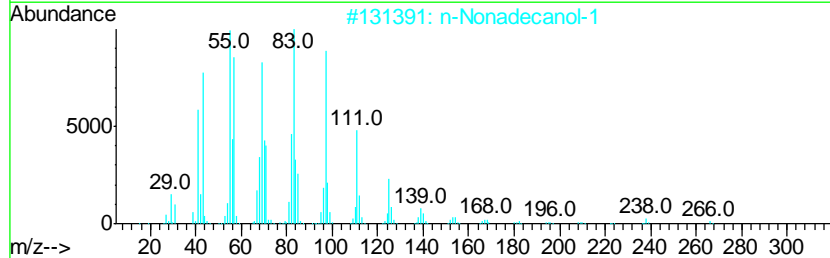
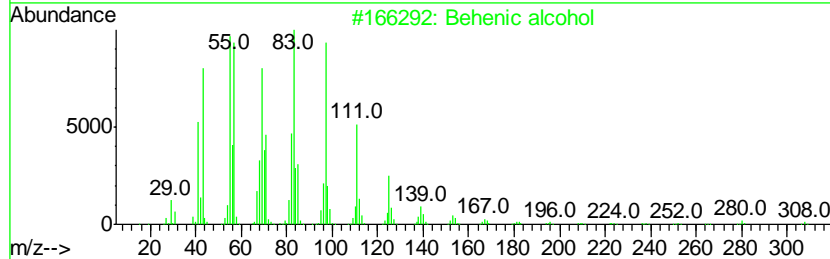
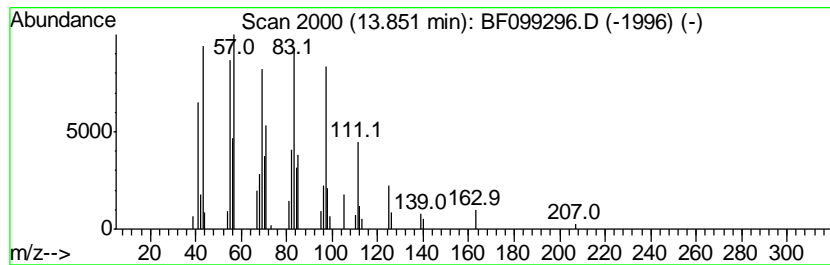
Quant Method : Z:\HPCHEM1\BNA F\METHODS\8270-BF092317.M
 Quant Title : ASP BNA STANDARDS FOR 5 POINT CALIBRATION

TIC Library : C:\DATABASE\NIST11.L
 TIC Integration Parameters: LSCINT.P

 Peak Number 4 Behenic alcohol Concentration Rank 4

R.T.	EstConc	Area	Relative to ISTD	R.T.
13.85	3.32 ng	120882	Chrysene-d12	14.03

Hit#	of	Tentative ID	MW	MolForm	CAS#	Qual
1	5	Behenic alcohol	326	C22H46O	000661-19-8	95
2		n-Nonadecanol-1	284	C19H40O	001454-84-8	94
3		1-Heneicosanol	312	C21H44O	015594-90-8	94
4		Heptafluorobutyric acid, n-tetra...	410	C18H29F7O2	007365-36-8	94
5		Heptadecyl trifluoroacetate	352	C19H35F3O2	1000351-87-0	93



Data Path : Z:\HPCHEM1\BNA_F\DATA\BF101017\
Data File : BF099296.D
Acq On : 10 Oct 2017 12:53
Operator : SJ/JU
Sample : I5651-07
Misc :
ALS Vial : 7 Sample Multiplier: 1

Instrument :
BNA_F
ClientSampleId :
ENV-115-2(40-50)

Quant Method : Z:\HPCHEM1\BNA_F\METHODS\8270-BF092317.M
Quant Title : ASP BNA STANDARDS FOR 5 POINT CALIBRATION

TIC Library : C:\DATABASE\NIST11.L
TIC Integration Parameters: LSCINT.P

TIC Top Hit name	RT	EstConc	Units	Response	--Internal Standard--			
					#	RT	Resp	Conc
unknown5.09	5.09	12.4	ng	356510	1	6.86	577108	20.0
unknown6.63	6.63	72.6	ng	2094580	1	6.86	577108	20.0
Behenic alcohol	13.85	3.3	ng	120882	5	14.03	727503	20.0