

Data Path : Z:\svoasrv\HPCHEM1\BNA\_F\Data\BF101024\  
 Data File : BF139758.D  
 Acq On : 10 Oct 2024 20:49  
 Operator : RC/JU  
 Sample : P4375-21  
 Misc :  
 ALS Vial : 23 Sample Multiplier: 1

Instrument :  
 BNA\_F  
 ClientSampleId :  
 CONCRETE-PADS-11

Quant Time: Oct 10 23:20:35 2024  
 Quant Method : Z:\svoasrv\HPCHEM1\BNA\_F\Methods\8270-BF100124.M  
 Quant Title : ASP BNA STANDARDS FOR 5 POINT CALIBRATION  
 QLast Update : Wed Oct 02 04:58:47 2024  
 Response via : Initial Calibration

Compound	R.T.	QIon	Response	Conc	Units	Dev(Min)
Internal Standards						
1) 1,4-Dichlorobenzene-d4	6.863	152	71943	20.000	ng	0.00
21) Naphthalene-d8	8.145	136	268320	20.000	ng	0.00
39) Acenaphthene-d10	9.898	164	145044	20.000	ng	-0.01
64) Phenanthrene-d10	11.386	188	235737	20.000	ng	0.00
76) Chrysene-d12	14.027	240	156758	20.000	ng	0.00
86) Perylene-d12	15.498	264	165137	20.000	ng	0.00
System Monitoring Compounds						
5) 2-Fluorophenol	5.487	112	321022	77.340	ng	0.00
7) Phenol-d6	6.498	99	489417	87.679	ng	0.00
23) Nitrobenzene-d5	7.428	82	338449	63.863	ng	0.00
42) 2,4,6-Tribromophenol	10.692	330	81147	57.955	ng	0.00
45) 2-Fluorobiphenyl	9.222	172	651961	69.005	ng	0.00
79) Terphenyl-d14	12.974	244	550853	57.659	ng	0.00

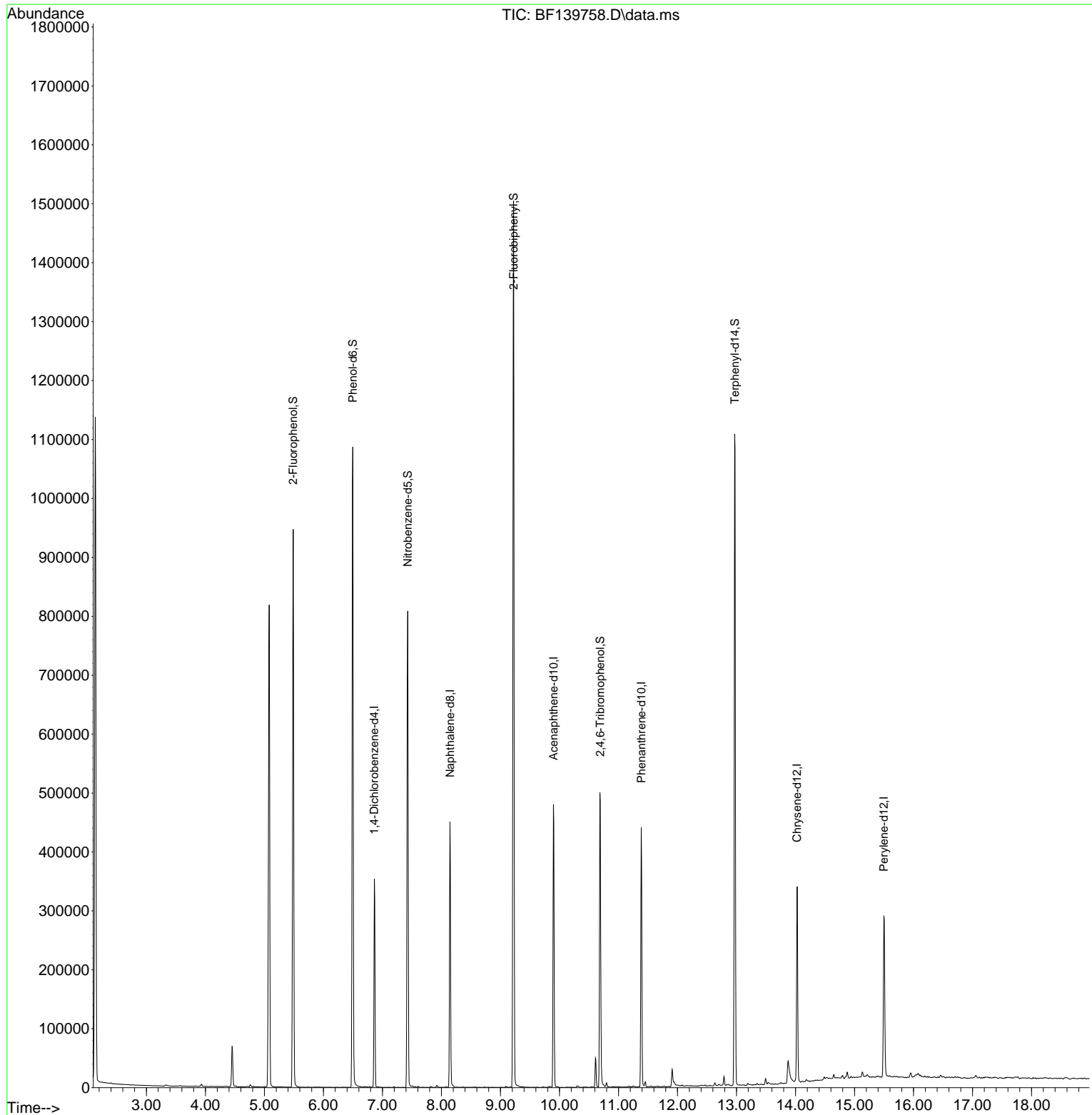
Target Compounds Qvalue

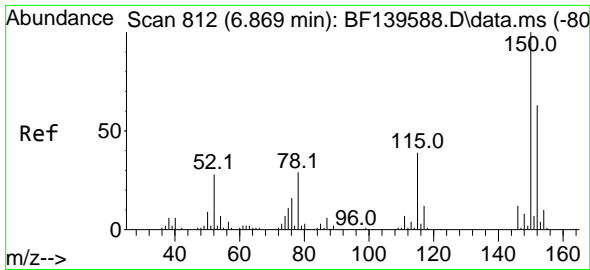
(#) = qualifier out of range (m) = manual integration (+) = signals summed

Data Path : Z:\svoasrv\HPCHEM1\BNA\_F\Data\BF101024\  
 Data File : BF139758.D  
 Acq On : 10 Oct 2024 20:49  
 Operator : RC/JU  
 Sample : P4375-21  
 Misc :  
 ALS Vial : 23 Sample Multiplier: 1

Instrument :  
 BNA\_F  
 ClientSampleId :  
 CONCRETE-PADS-11

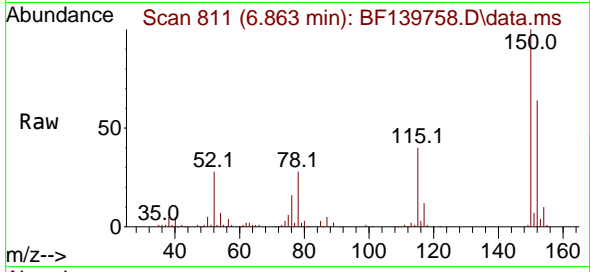
Quant Time: Oct 10 23:20:35 2024  
 Quant Method : Z:\svoasrv\HPCHEM1\BNA\_F\Methods\8270-BF100124.M  
 Quant Title : ASP BNA STANDARDS FOR 5 POINT CALIBRATION  
 QLast Update : Wed Oct 02 04:58:47 2024  
 Response via : Initial Calibration



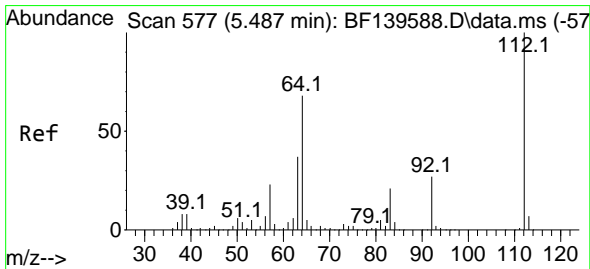
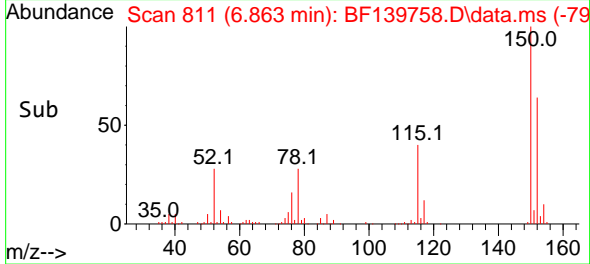
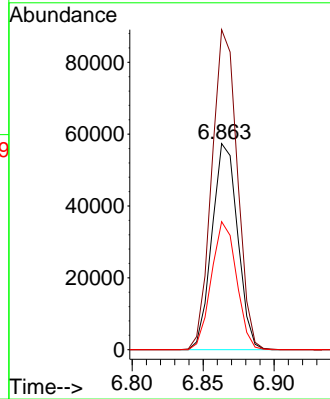


#1  
 1,4-Dichlorobenzene-d4  
 Concen: 20.000 ng  
 RT: 6.863 min Scan# 811  
 Delta R.T. -0.006 min  
 Lab File: BF139758.D  
 Acq: 10 Oct 2024 20:49

Instrument :  
 BNA\_F  
 ClientSampleId :  
 CONCRETE-PADS-11

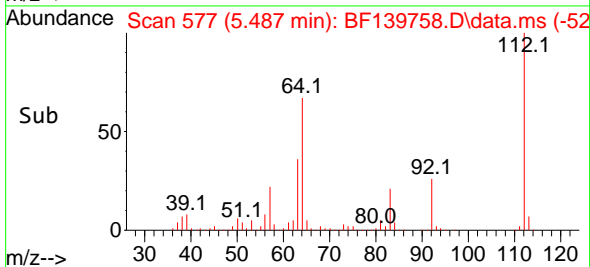
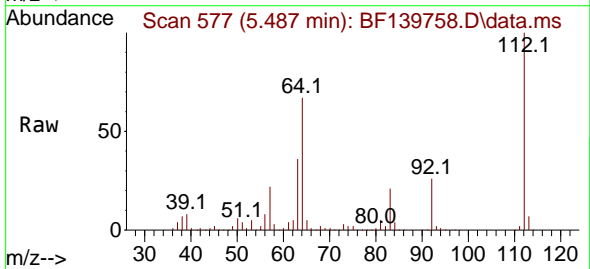
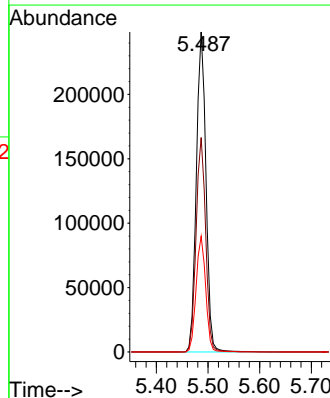


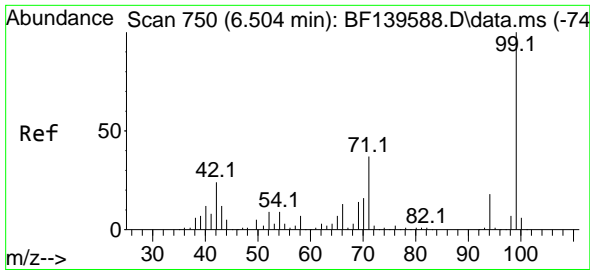
Tgt Ion:152 Resp: 71943  
 Ion Ratio Lower Upper  
 152 100  
 150 155.3 127.2 190.8  
 115 62.2 49.0 73.4



#5  
 2-Fluorophenol  
 Concen: 77.340 ng  
 RT: 5.487 min Scan# 577  
 Delta R.T. -0.000 min  
 Lab File: BF139758.D  
 Acq: 10 Oct 2024 20:49

Tgt Ion:112 Resp: 321022  
 Ion Ratio Lower Upper  
 112 100  
 64 67.0 54.2 81.4  
 63 36.1 29.4 44.2



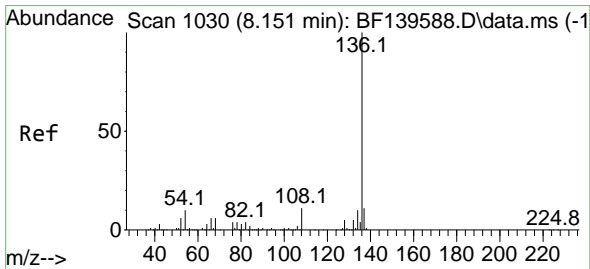
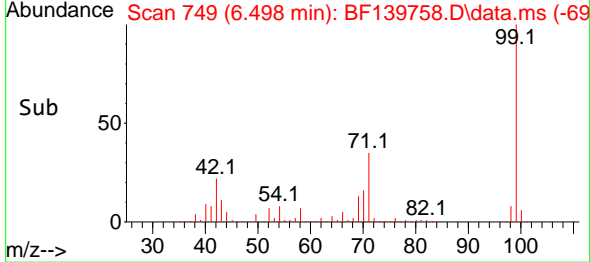
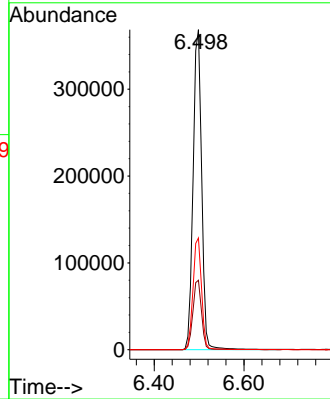
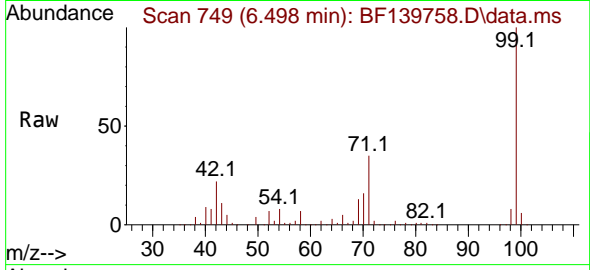


#7  
 Phenol-d6  
 Concen: 87.679 ng  
 RT: 6.498 min Scan# 74  
 Delta R.T. -0.006 min  
 Lab File: BF139758.D  
 Acq: 10 Oct 2024 20:49

Instrument :  
 BNA\_F  
 ClientSampleId :  
 CONCRETE-PADS-11

Tgt Ion: 99 Resp: 489417

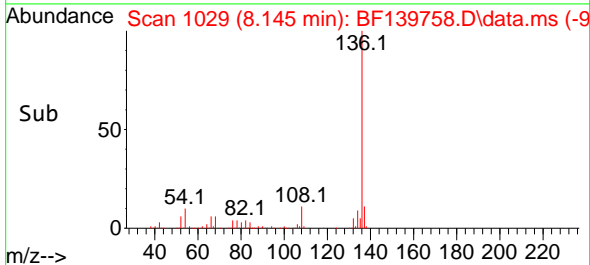
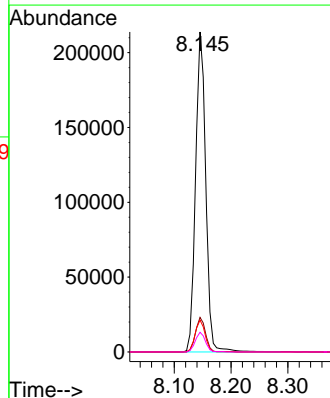
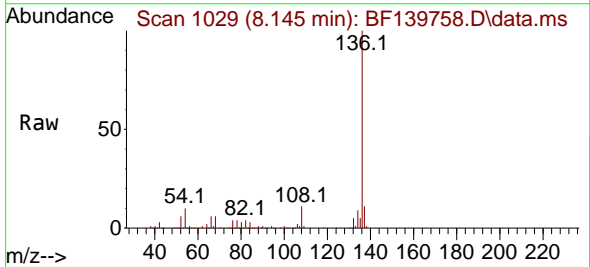
Ion	Ratio	Lower	Upper
99	100		
42	21.7	19.1	28.7
71	34.9	29.7	44.5

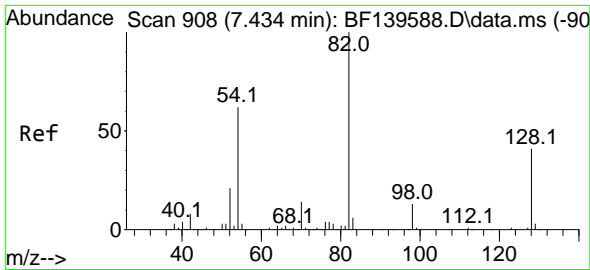


#21  
 Naphthalene-d8  
 Concen: 20.000 ng  
 RT: 8.145 min Scan# 1029  
 Delta R.T. -0.006 min  
 Lab File: BF139758.D  
 Acq: 10 Oct 2024 20:49

Tgt Ion: 136 Resp: 268320

Ion	Ratio	Lower	Upper
136	100		
137	10.8	8.6	13.0
54	10.0	8.3	12.5
68	6.2	4.6	7.0

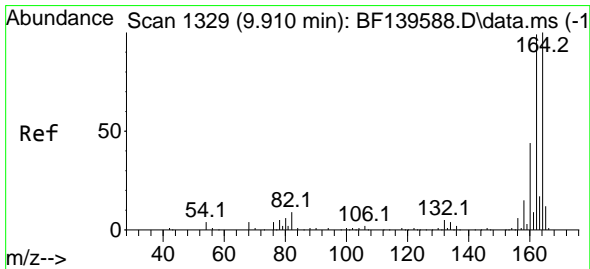
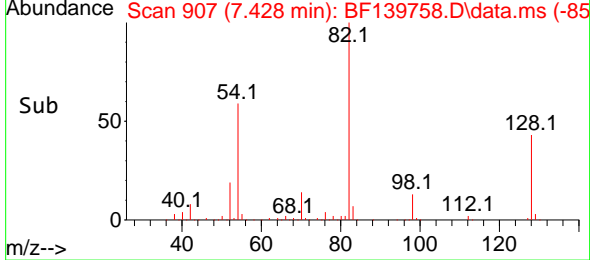
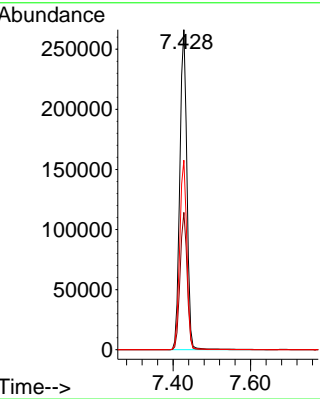
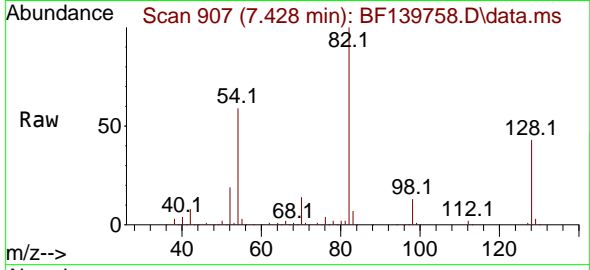




#23  
 Nitrobenzene-d5  
 Concen: 63.863 ng  
 RT: 7.428 min Scan# 907  
 Delta R.T. -0.006 min  
 Lab File: BF139758.D  
 Acq: 10 Oct 2024 20:49

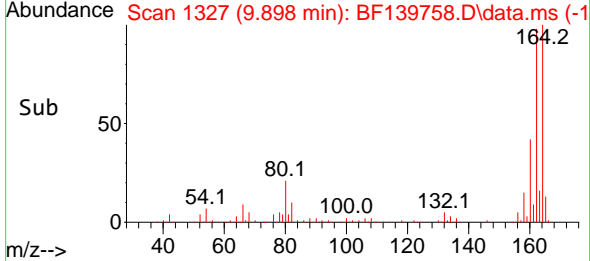
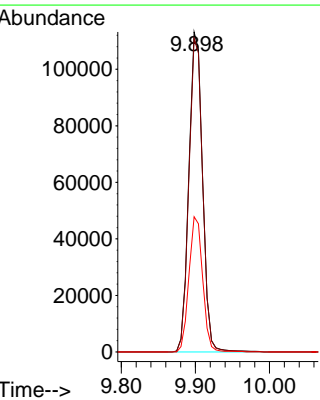
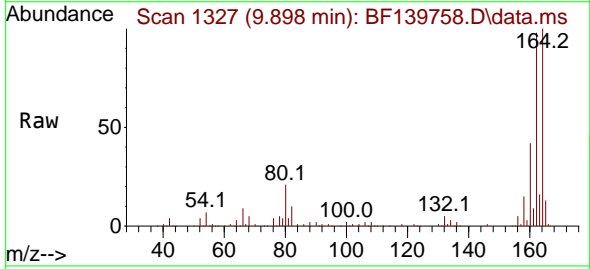
Instrument :  
 BNA\_F  
 ClientSampleId :  
 CONCRETE-PADS-11

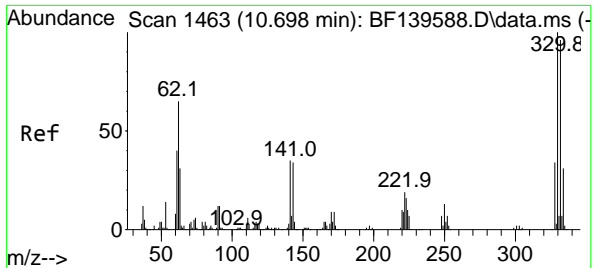
Tgt Ion: 82 Resp: 338449  
 Ion Ratio Lower Upper  
 82 100  
 128 42.9 32.4 48.6  
 54 59.2 49.1 73.7



#39  
 Acenaphthene-d10  
 Concen: 20.000 ng  
 RT: 9.898 min Scan# 1327  
 Delta R.T. -0.012 min  
 Lab File: BF139758.D  
 Acq: 10 Oct 2024 20:49

Tgt Ion: 164 Resp: 145044  
 Ion Ratio Lower Upper  
 164 100  
 162 98.0 79.4 119.0  
 160 42.3 35.1 52.7



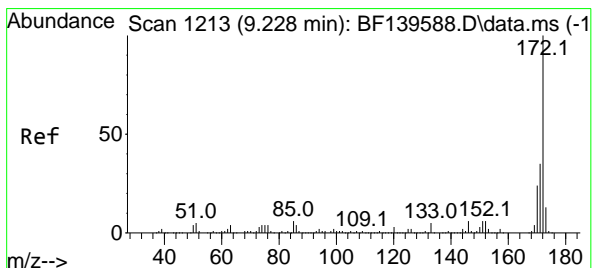
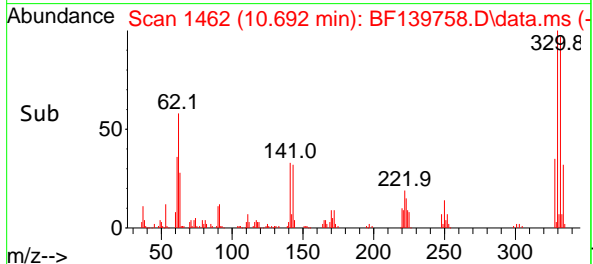
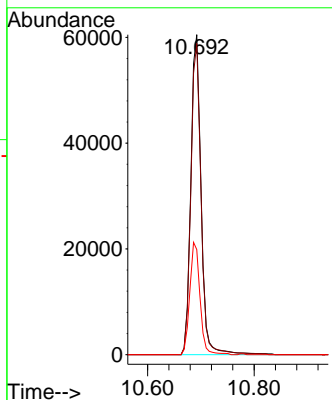
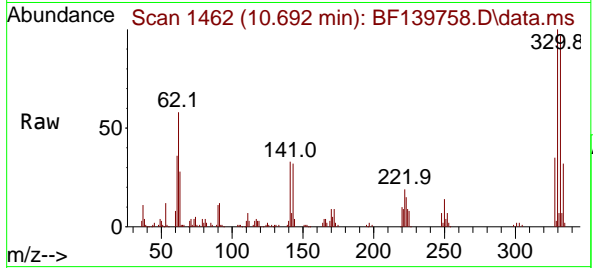


#42  
 2,4,6-Tribromophenol  
 Concen: 57.955 ng  
 RT: 10.692 min Scan# 1462  
 Delta R.T. -0.006 min  
 Lab File: BF139758.D  
 Acq: 10 Oct 2024 20:49

Instrument : BNA\_F  
 ClientSampleId : CONCRETE-PADS-11

Tgt Ion: 330 Resp: 81147

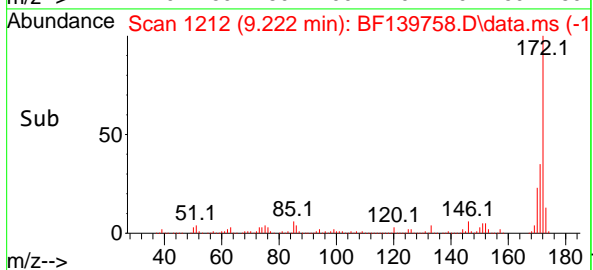
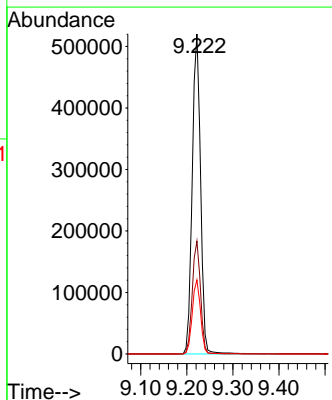
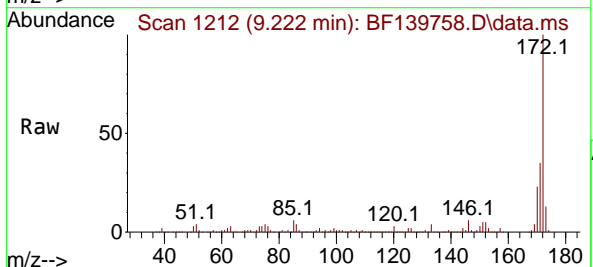
Ion	Ratio	Lower	Upper
330	100		
332	96.8	76.5	114.7
141	34.9	29.3	43.9

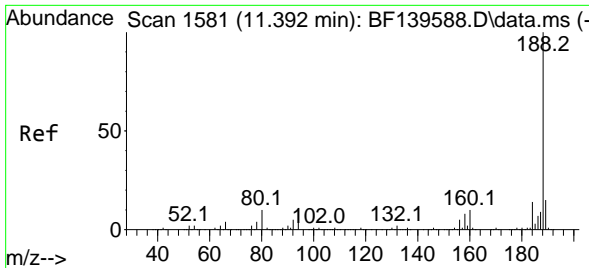


#45  
 2-Fluorobiphenyl  
 Concen: 69.005 ng  
 RT: 9.222 min Scan# 1212  
 Delta R.T. -0.006 min  
 Lab File: BF139758.D  
 Acq: 10 Oct 2024 20:49

Tgt Ion: 172 Resp: 651961

Ion	Ratio	Lower	Upper
172	100		
171	35.2	28.2	42.4
170	23.1	18.8	28.2



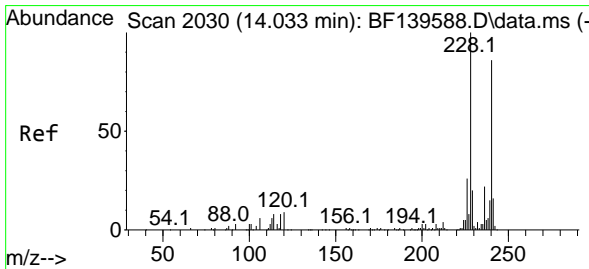
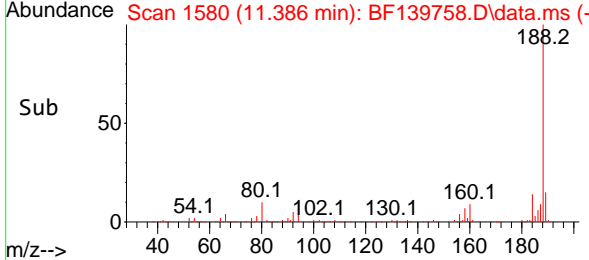
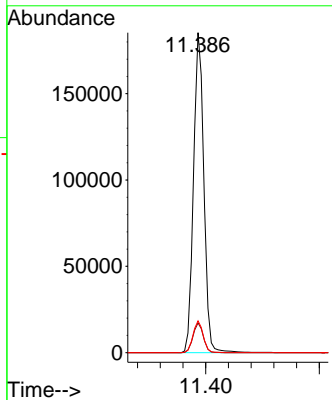
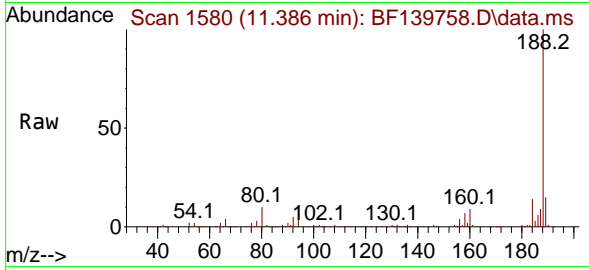


#64  
 Phenanthrene-d10  
 Concen: 20.000 ng  
 RT: 11.386 min Scan# 11  
 Delta R.T. -0.006 min  
 Lab File: BF139758.D  
 Acq: 10 Oct 2024 20:49

Instrument : BNA\_F  
 ClientSampleId : CONCRETE-PADS-11

Tgt Ion:188 Resp: 235737

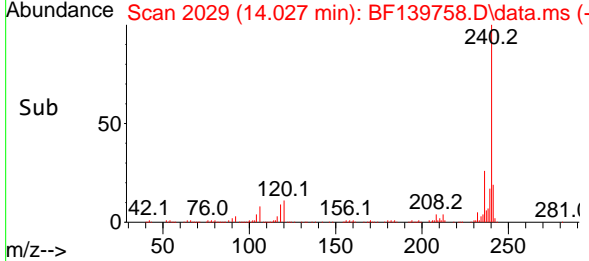
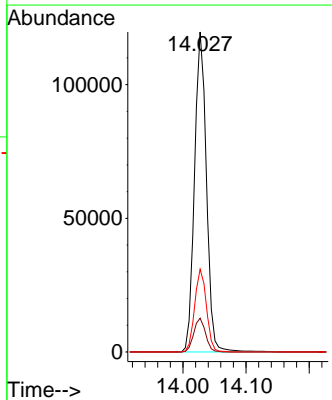
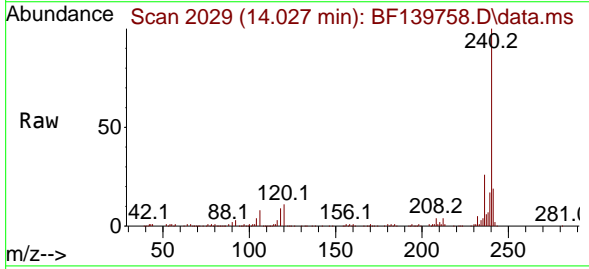
Ion	Ratio	Lower	Upper
188	100		
94	9.3	7.4	11.2
80	10.0	8.2	12.2

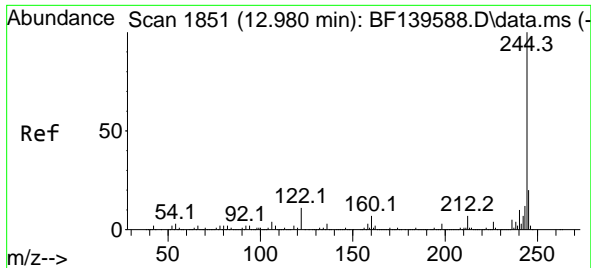


#76  
 Chrysene-d12  
 Concen: 20.000 ng  
 RT: 14.027 min Scan# 2029  
 Delta R.T. -0.006 min  
 Lab File: BF139758.D  
 Acq: 10 Oct 2024 20:49

Tgt Ion:240 Resp: 156758

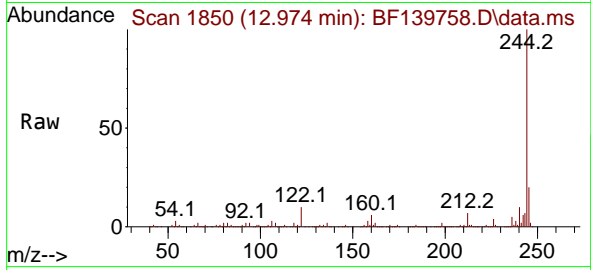
Ion	Ratio	Lower	Upper
240	100		
120	10.6	8.4	12.6
236	25.9	20.3	30.5



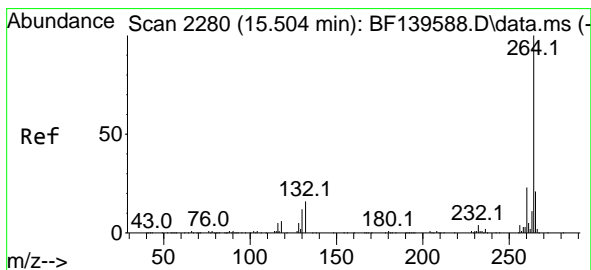
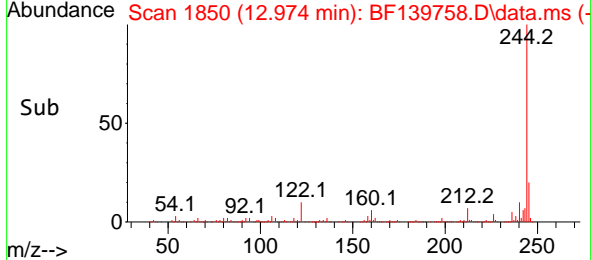
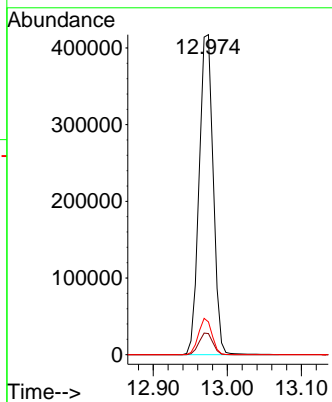


#79  
 Terphenyl-d14  
 Concen: 57.659 ng  
 RT: 12.974 min Scan# 1850  
 Delta R.T. -0.006 min  
 Lab File: BF139758.D  
 Acq: 10 Oct 2024 20:49

Instrument : BNA\_F  
 ClientSampleId : CONCRETE-PADS-11



Tgt Ion:244 Resp: 550853  
 Ion Ratio Lower Upper  
 244 100  
 212 6.6 5.8 8.6  
 122 10.3 8.6 12.8



#86  
 Perylene-d12  
 Concen: 20.000 ng  
 RT: 15.498 min Scan# 2279  
 Delta R.T. -0.006 min  
 Lab File: BF139758.D  
 Acq: 10 Oct 2024 20:49

Tgt Ion:264 Resp: 165137  
 Ion Ratio Lower Upper  
 264 100  
 260 22.9 18.7 28.1  
 265 21.4 16.9 25.3

