

Data Path : Z:\HPCHEM1\BNA F\DATA\BF101117\
 Data File : BF099377.D
 Acq On : 12 Oct 2017 7:15
 Operator : SJ/JU
 Sample : I5710-20
 Misc :
 ALS Vial : 28 Sample Multiplier: 1

Instrument :
 BNA_F
 ClientSampleId :

Quant Time: Oct 12 07:40:58 2017
 Quant Method : Z:\HPCHEM1\BNA F\METHODS\8270-BF092317.M
 Quant Title : ASP BNA STANDARDS FOR 5 POINT CALIBRATION
 QLast Update : Wed Oct 11 16:25:21 2017
 Response via : Initial Calibration

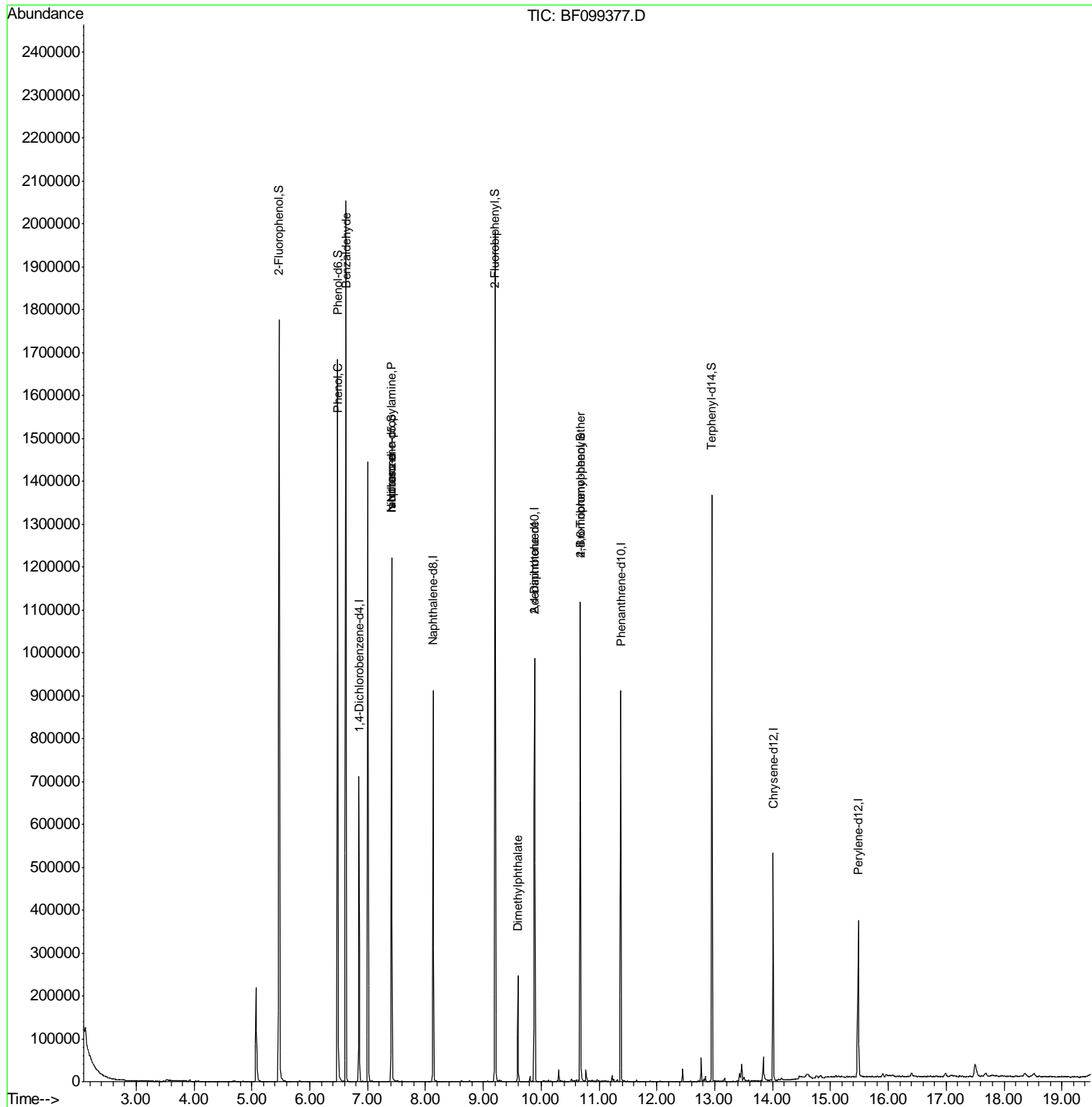
Internal Standards	R.T.	QIon	Response	Conc	Units	Dev(Min)
1) 1,4-Dichlorobenzene-d4	6.85	152	101571	20.00	ng	0.00
21) Naphthalene-d8	8.13	136	414741	20.00	ng	0.00
38) Acenaphthene-d10	9.89	164	185358	20.00	ng	0.00
63) Phenanthrene-d10	11.37	188	309080	20.00	ng	0.00
75) Chrysene-d12	14.01	240	159238	20.00	ng	0.00
86) Perylene-d12	15.48	264	165120	20.00	ng	0.00
System Monitoring Compounds						
5) 2-Fluorophenol	5.47	112	542027	84.95	ng	0.00
7) Phenol-d6	6.48	99	652518	82.90	ng	0.00
23) Nitrobenzene-d5	7.42	82	385051	59.54	ng	0.00
41) 2,4,6-Tribromophenol	10.67	330	124967	82.39	ng	0.00
44) 2-Fluorobiphenyl	9.20	172	592381	53.35	ng	0.00
78) Terphenyl-d14	12.95	244	398382	56.90	ng	0.00
Target Compounds						
9) Benzaldehyde	6.62	77	10937	2.40	ng	88
10) Phenol	6.49	94	19573	2.22	ng	89
19) n-Nitroso-di-n-propylamine	7.42	70	48506	9.65	ng	# 71
25) Isophorone	7.42	82	385046	28.80	ng	# 64
49) Dimethylphthalate	9.60	163	91724	6.56	ng	100
56) 2,4-Dinitrotoluene	9.89	165	23140	5.85	ng	# 22
66) 4-Bromophenyl-phenylether	10.67	248	8328	2.75	ng	# 1

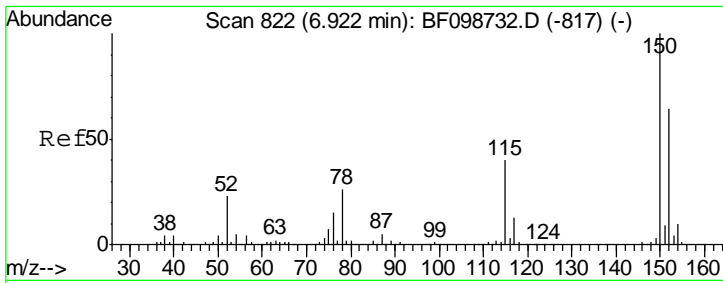
(#) = qualifier out of range (m) = manual integration (+) = signals summed

Data Path : Z:\HPCHEM1\BNA F\DATA\BF101117\
 Data File : BF099377.D
 Acq On : 12 Oct 2017 7:15
 Operator : SJ/JU
 Sample : I5710-20
 Misc :
 ALS Vial : 28 Sample Multiplier: 1

Instrument :
 BNA_F
 ClientSampleId :

Quant Time: Oct 12 07:40:58 2017
 Quant Method : Z:\HPCHEM1\BNA F\METHODS\8270-BF092317.M
 Quant Title : ASP BNA STANDARDS FOR 5 POINT CALIBRATION
 QLast Update : Wed Oct 11 16:25:21 2017
 Response via : Initial Calibration

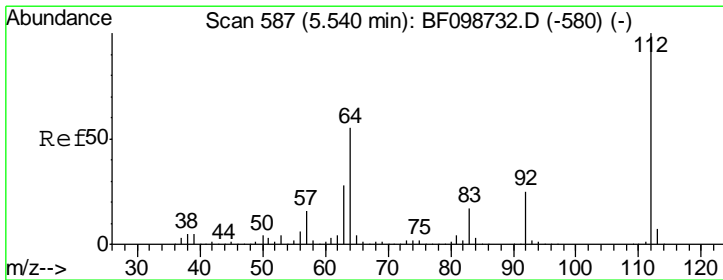
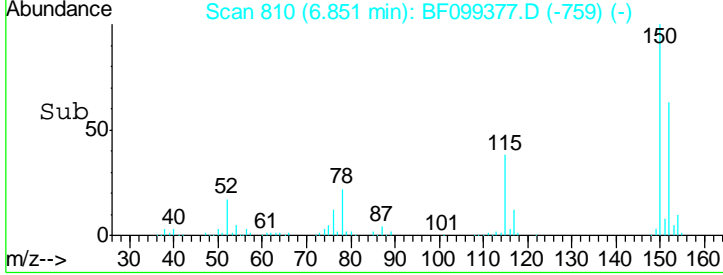
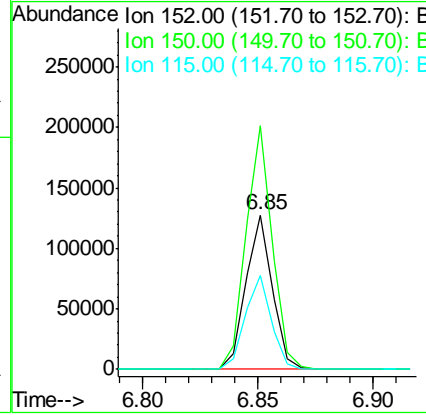
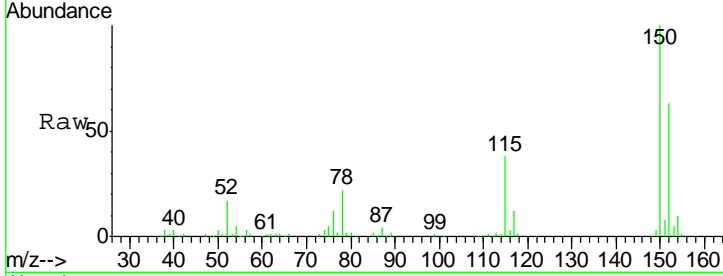




#1
 1,4-Dichlorobenzene-d4
 Concen: 20.00 ng
 RT: 6.85 min Scan# 810
 Delta R.T. -0.00 min
 Lab File: BF099377.D
 Acq: 12 Oct 2017 7:15

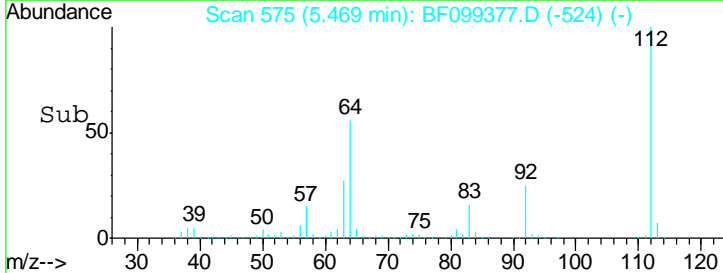
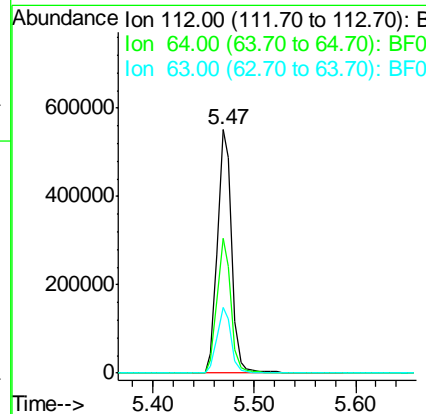
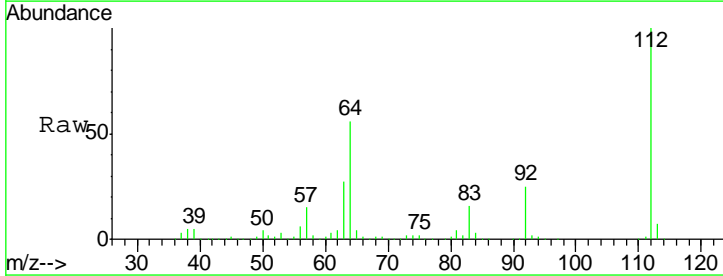
Instrument :
 BNA_F
 ClientSampleId :

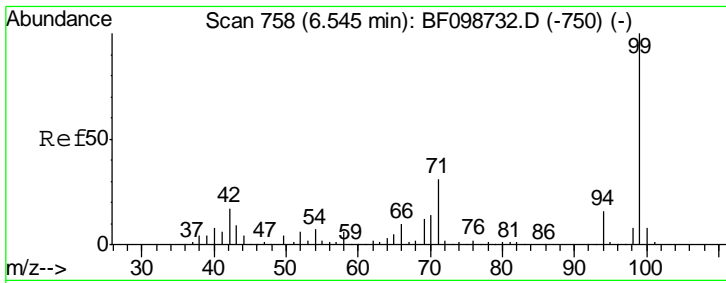
Tgt Ion	Resp	Lower	Upper
152	101571		
150	158.1	124.6	186.8
115	60.6	50.1	75.1



#5
 2-Fluorophenol
 Concen: 84.95 ng
 RT: 5.47 min Scan# 575
 Delta R.T. -0.00 min
 Lab File: BF099377.D
 Acq: 12 Oct 2017 7:15

Tgt Ion	Resp	Lower	Upper
112	542027		
64	55.6	47.9	71.9
63	27.1	23.7	35.5

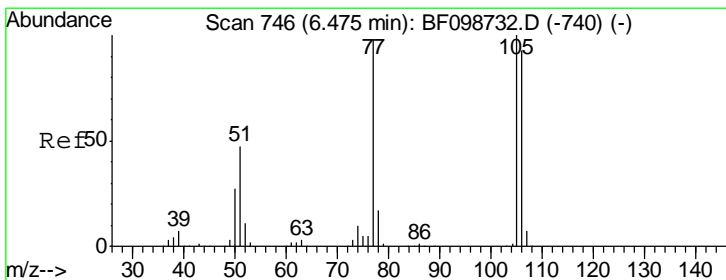
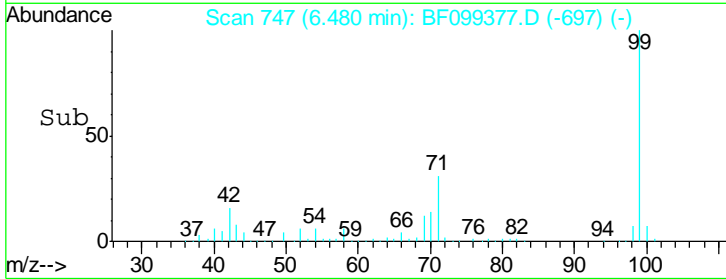
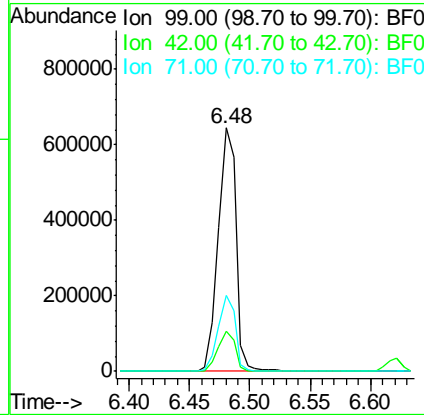
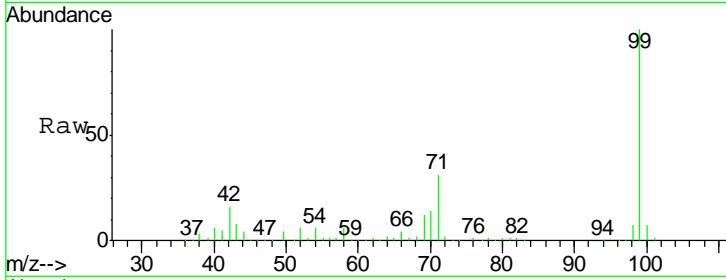




#7
 Phenol-d6
 Concen: 82.90 ng
 RT: 6.48 min Scan# 747
 Delta R.T. -0.01 min
 Lab File: BF099377.D
 Acq: 12 Oct 2017 7:15

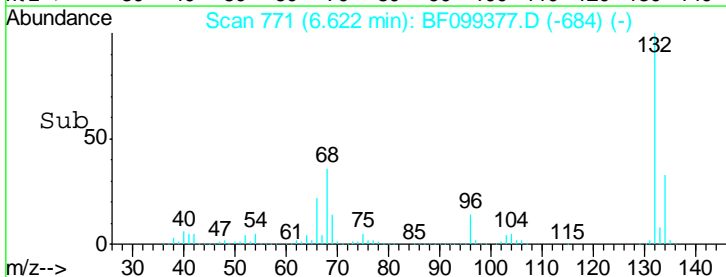
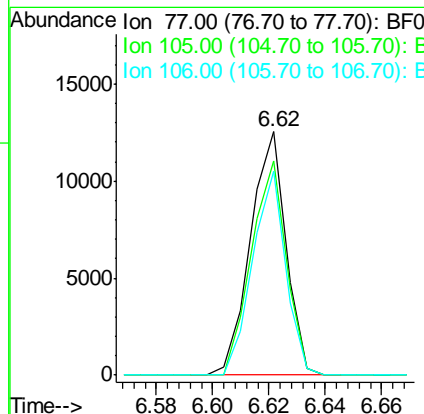
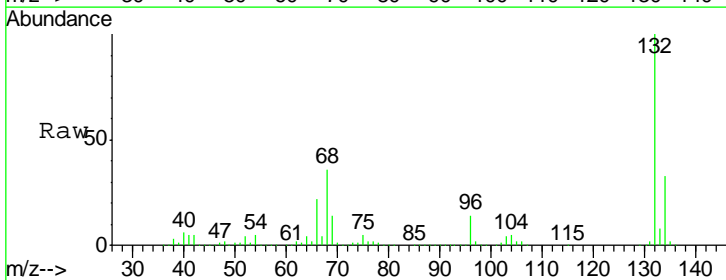
Instrument :
 BNA_F
 ClientSampled :

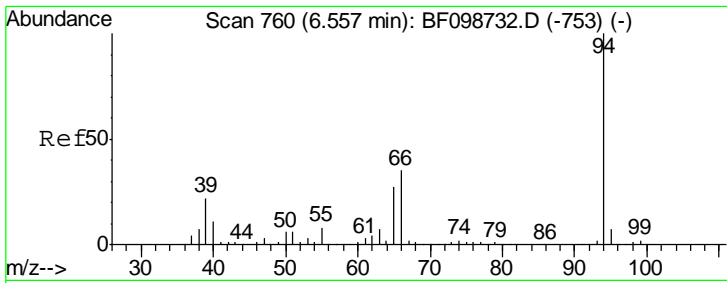
Tgt Ion	Resp	Lower	Upper
99	652518		
42	16.3	14.5	21.7
71	31.0	25.4	38.0



#9
 Benzaldehyde
 Concen: 2.40 ng
 RT: 6.62 min Scan# 771
 Delta R.T. 0.21 min
 Lab File: BF099377.D
 Acq: 12 Oct 2017 7:15

Tgt Ion	Resp	Lower	Upper
77	10937		
105	87.7	81.1	121.1
106	83.6	74.5	114.5

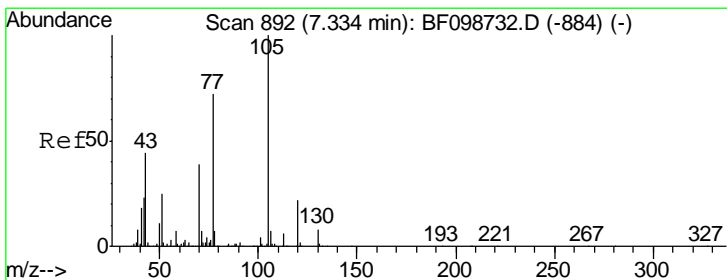
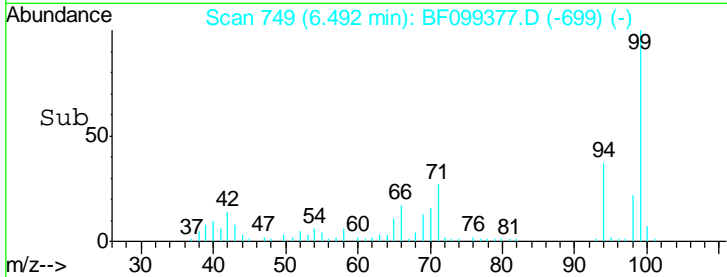
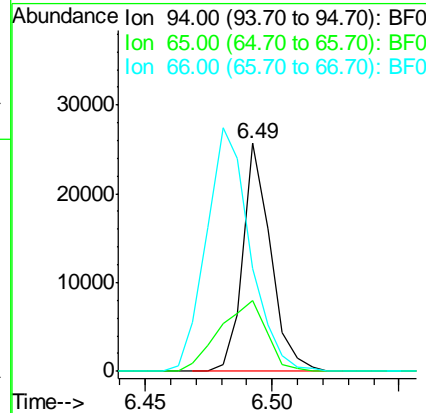
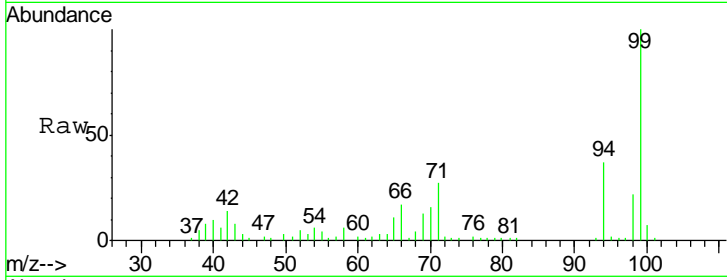




#10
 Phenol
 Concen: 2.22 ng
 RT: 6.49 min Scan# 749
 Delta R.T. -0.01 min
 Lab File: BF099377.D
 Acq: 12 Oct 2017 7:15

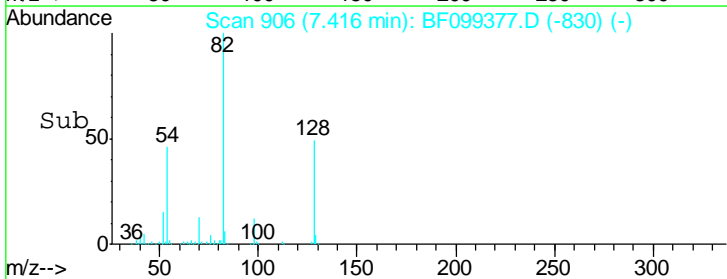
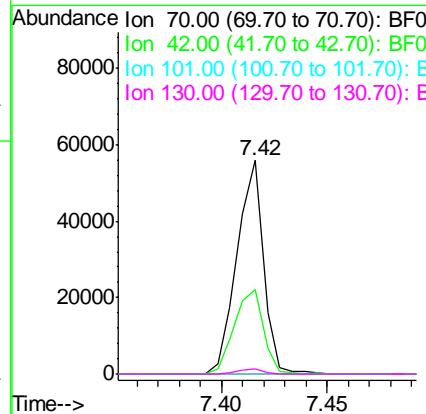
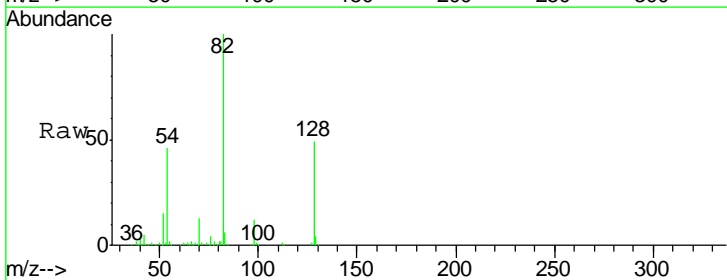
Instrument :
 BNA_F
 ClientSampled :

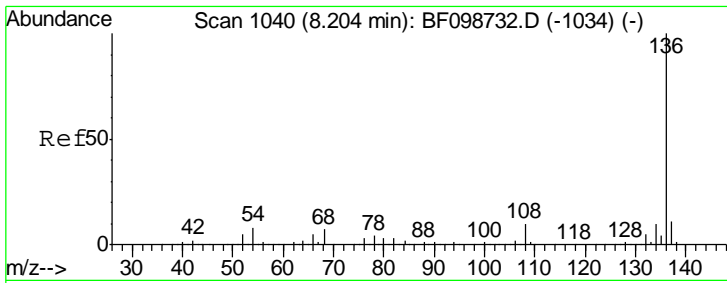
Tgt Ion	Resp	Lower	Upper
94	100		
65	31.2	7.9	47.9
66	44.9	16.2	56.2



#19
 n-Nitroso-di-n-propylamine
 Concen: 9.65 ng
 RT: 7.42 min Scan# 906
 Delta R.T. 0.15 min
 Lab File: BF099377.D
 Acq: 12 Oct 2017 7:15

Tgt Ion	Resp	Lower	Upper
70	100		
42	39.8	47.5	71.3#
101	0.0	7.4	11.2#
130	2.6	16.6	25.0#

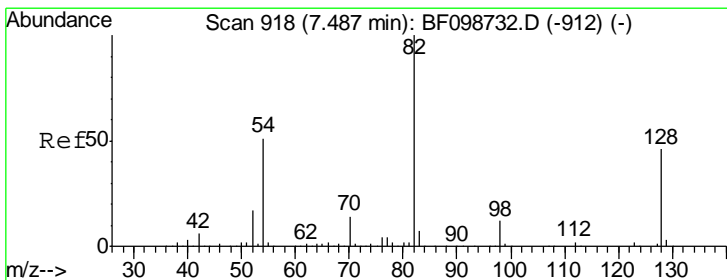
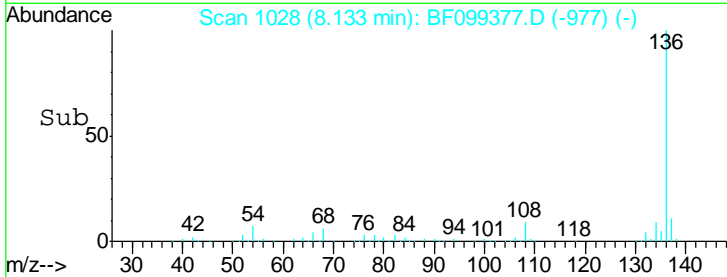
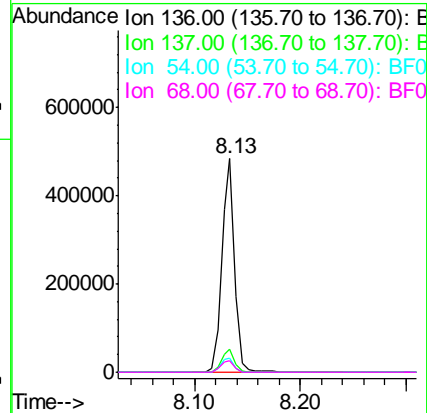
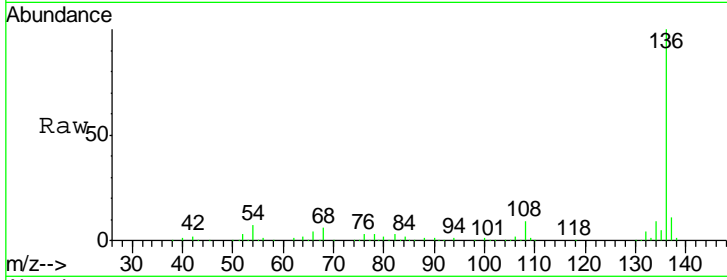




#21
 Naphthalene-d8
 Concen: 20.00 ng
 RT: 8.13 min Scan# 1028
 Delta R.T. -0.00 min
 Lab File: BF099377.D
 Acq: 12 Oct 2017 7:15

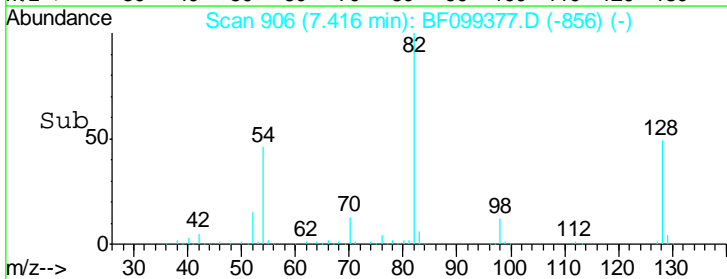
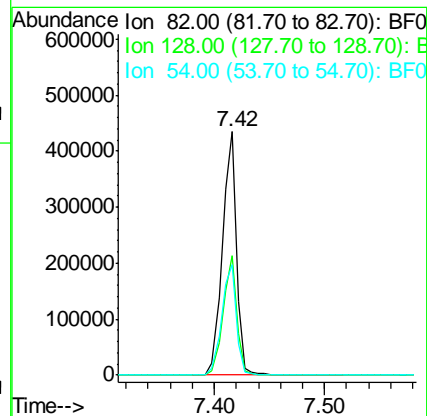
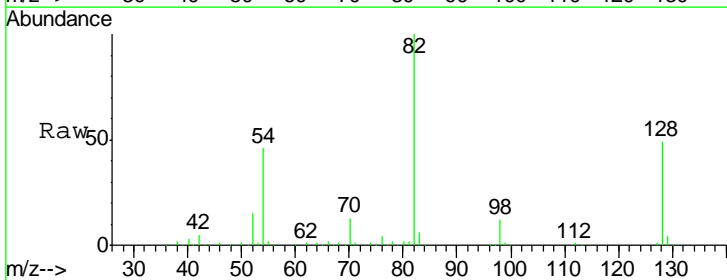
Instrument :
 BNA_F
 ClientSampled :

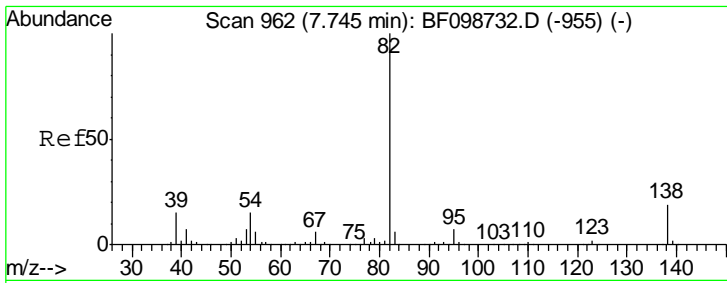
Tgt Ion	Resp	Lower	Upper
136	414741		
137	10.9	8.9	13.3
54	6.7	6.6	9.8
68	5.6	5.0	7.4



#23
 Nitrobenzene-d5
 Concen: 59.54 ng
 RT: 7.42 min Scan# 906
 Delta R.T. -0.01 min
 Lab File: BF099377.D
 Acq: 12 Oct 2017 7:15

Tgt Ion	Resp	Lower	Upper
82	385051		
128	48.8	36.1	54.1
54	45.6	41.4	62.2

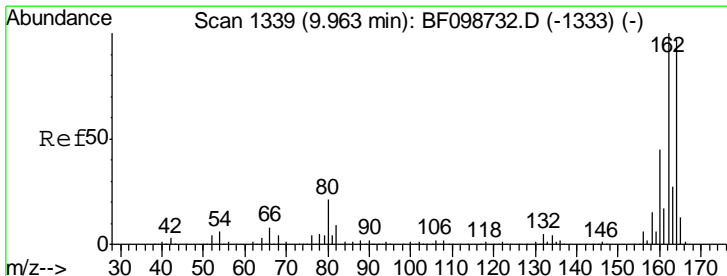
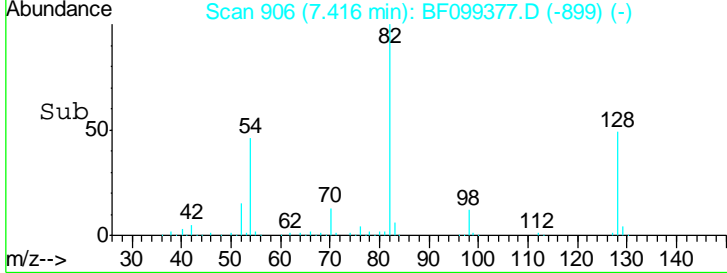
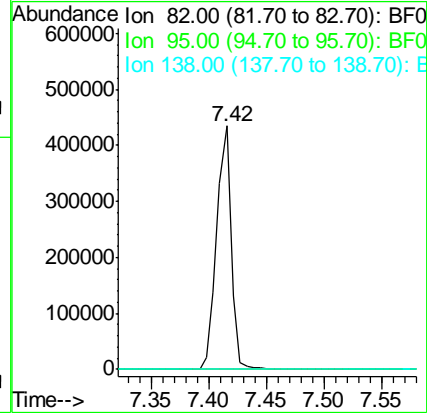
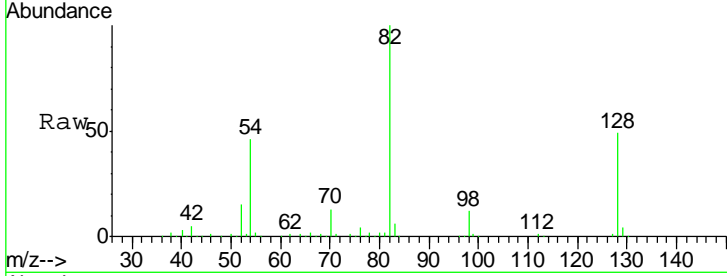




#25
 Isophorone
 Concen: 28.80 ng
 RT: 7.42 min Scan# 906
 Delta R.T. -0.26 min
 Lab File: BF099377.D
 Acq: 12 Oct 2017 7:15

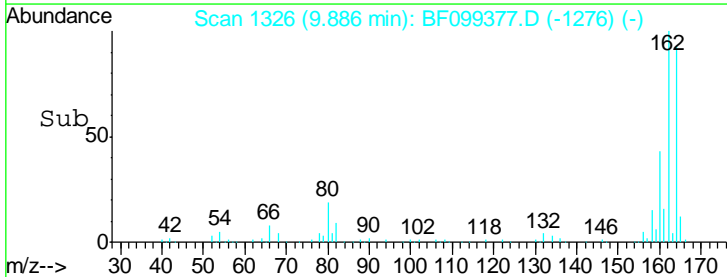
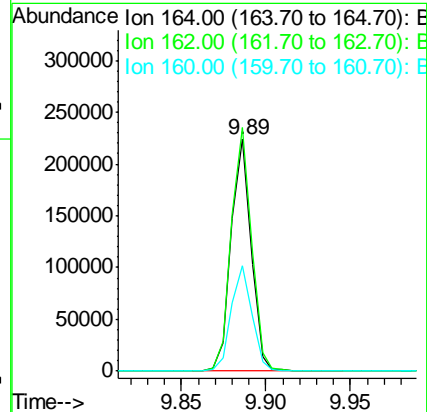
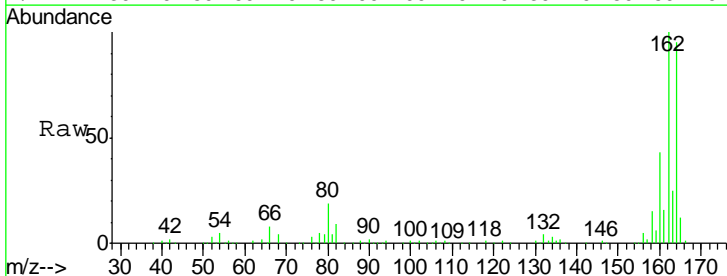
Instrument :
 BNA_F
 ClientSampled :

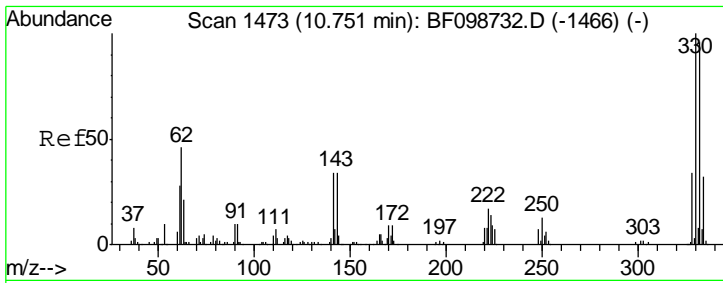
Tgt Ion	Resp	Lower	Upper
82	100		
95	0.0	5.2	7.8#
138	0.0	14.9	22.3#



#38
 Acenaphthene-d10
 Concen: 20.00 ng
 RT: 9.89 min Scan# 1326
 Delta R.T. -0.01 min
 Lab File: BF099377.D
 Acq: 12 Oct 2017 7:15

Tgt Ion	Resp	Lower	Upper
164	100		
162	105.1	86.1	129.1
160	45.3	38.3	57.5

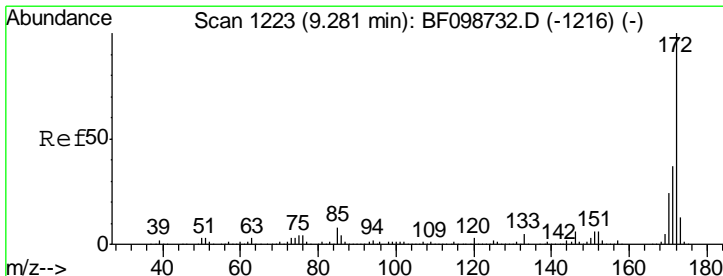
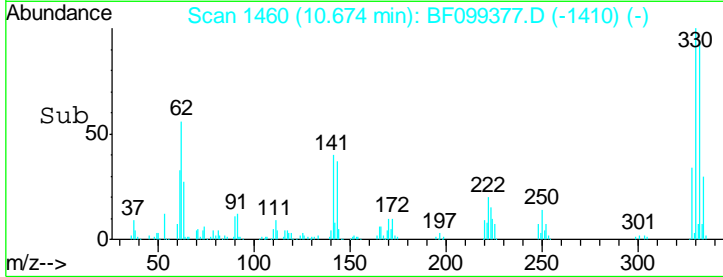
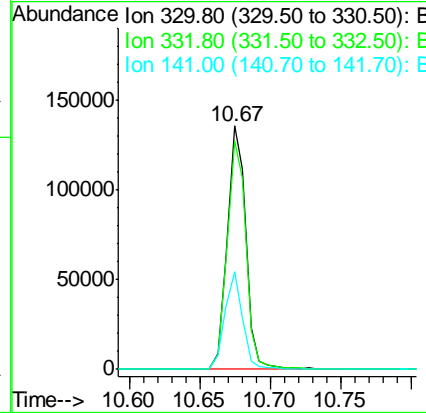
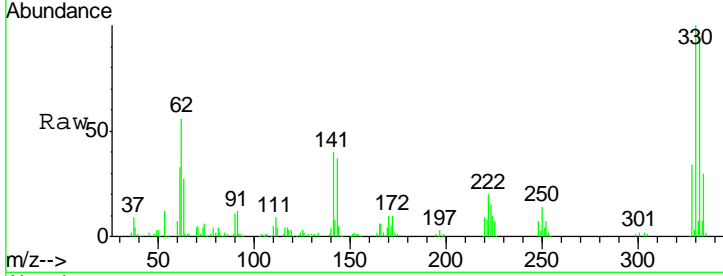




#41
 2,4,6-Tribromophenol
 Concen: 82.39 ng
 RT: 10.67 min Scan# 1460
 Delta R.T. -0.01 min
 Lab File: BF099377.D
 Acq: 12 Oct 2017 7:15

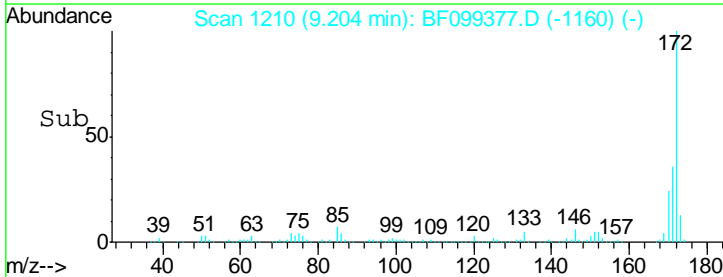
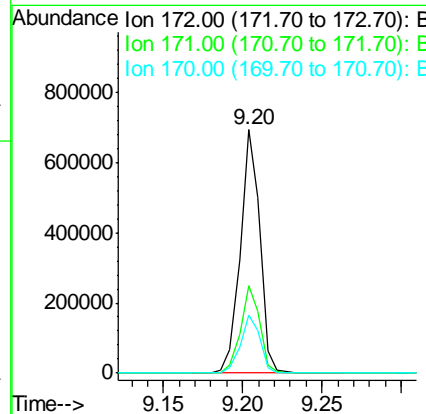
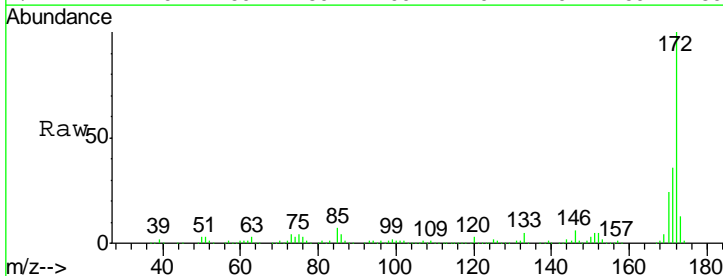
Instrument :
 BNA_F
 ClientSampled :

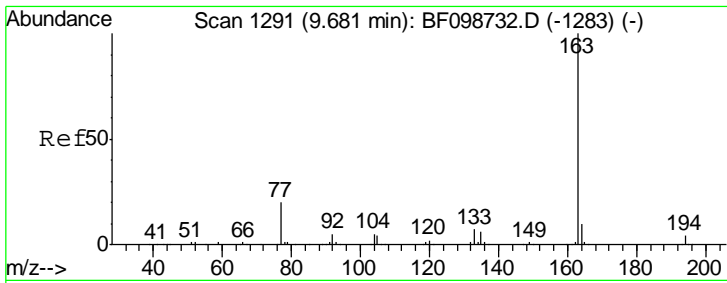
Tgt Ion	Resp	Lower	Upper
330	124967		
332	95.4	77.0	115.6
141	38.1	29.9	44.9



#44
 2-Fluorobiphenyl
 Concen: 53.35 ng
 RT: 9.20 min Scan# 1210
 Delta R.T. -0.01 min
 Lab File: BF099377.D
 Acq: 12 Oct 2017 7:15

Tgt Ion	Resp	Lower	Upper
172	592381		
171	35.8	29.7	44.5
170	24.0	19.6	29.4



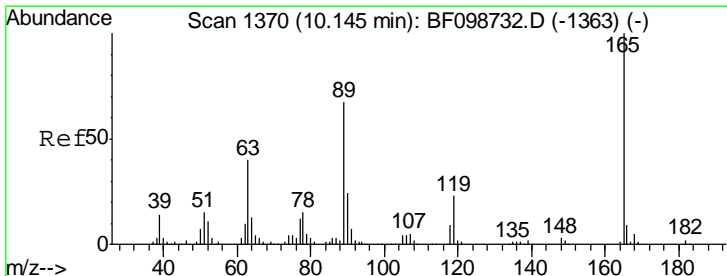
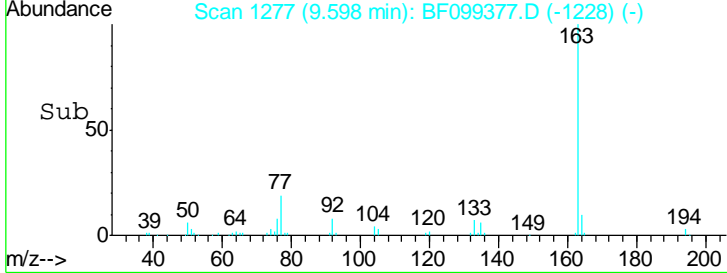
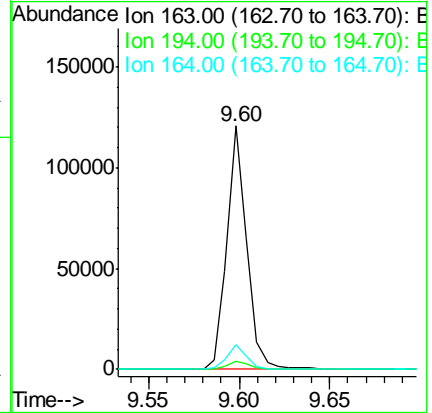
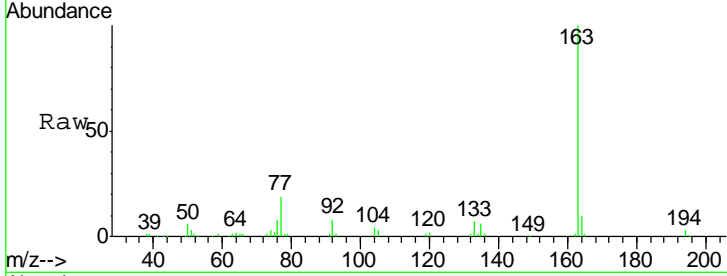


#49
 Dimethylphthalate
 Concen: 6.56 ng
 RT: 9.60 min Scan# 1277
 Delta R.T. -0.01 min
 Lab File: BF099377.D
 Acq: 12 Oct 2017 7:15

Instrument :
 BNA_F
 ClientSampled :

Tgt Ion:163 Resp: 91724

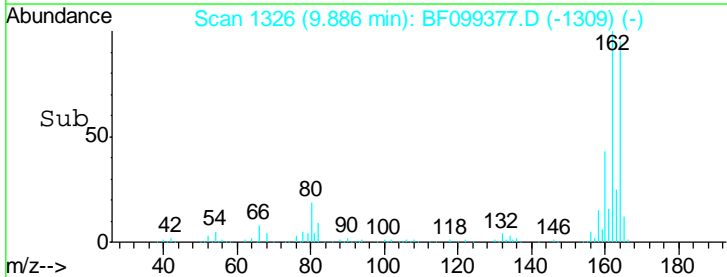
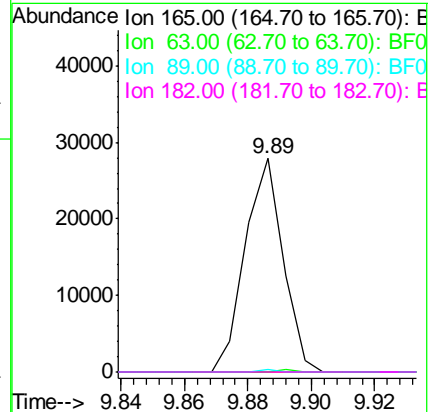
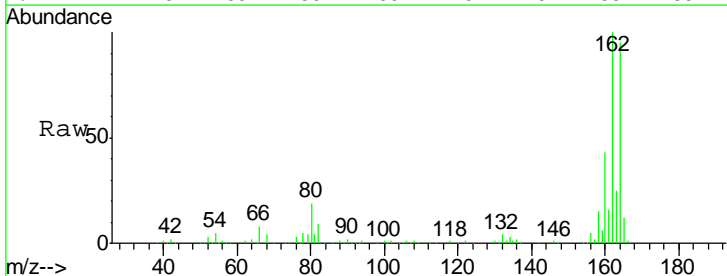
Ion	Ratio	Lower	Upper
163	100		
194	3.2	2.7	4.1
164	10.3	8.2	12.2

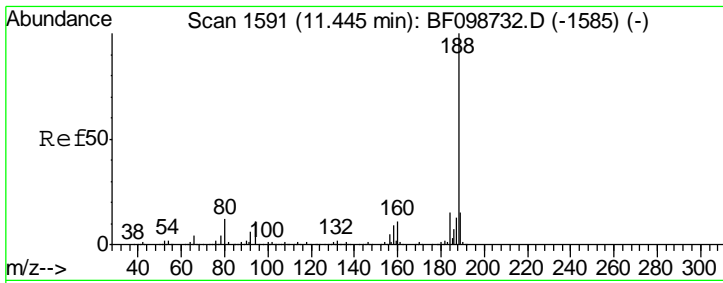


#56
 2,4-Dinitrotoluene
 Concen: 5.85 ng
 RT: 9.89 min Scan# 1326
 Delta R.T. -0.20 min
 Lab File: BF099377.D
 Acq: 12 Oct 2017 7:15

Tgt Ion:165 Resp: 23140

Ion	Ratio	Lower	Upper
165	100		
63	0.0	36.4	54.6#
89	1.2	57.8	86.6#
182	0.0	1.6	2.4#

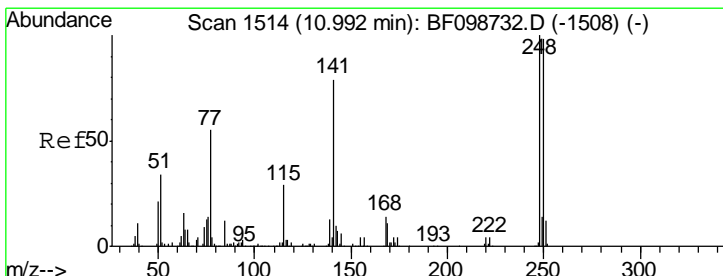
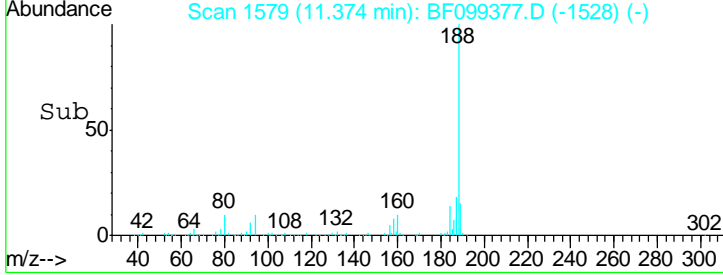
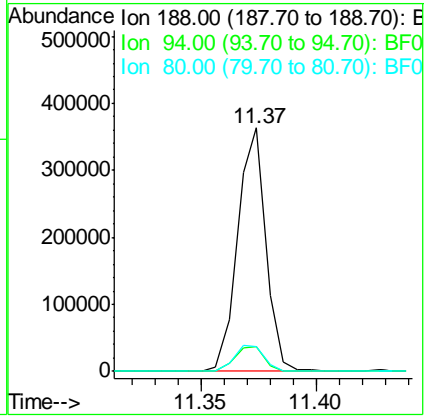
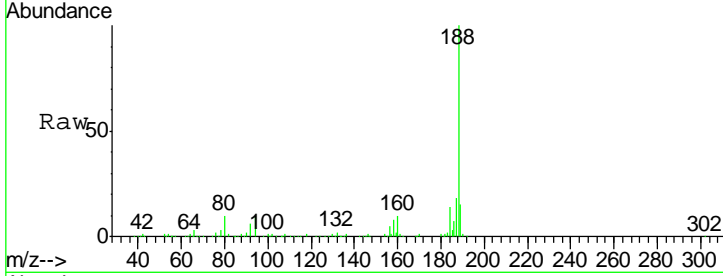




#63
 Phenanthrene-d10
 Concen: 20.00 ng
 RT: 11.37 min Scan# 1579
 Delta R.T. -0.00 min
 Lab File: BF099377.D
 Acq: 12 Oct 2017 7:15

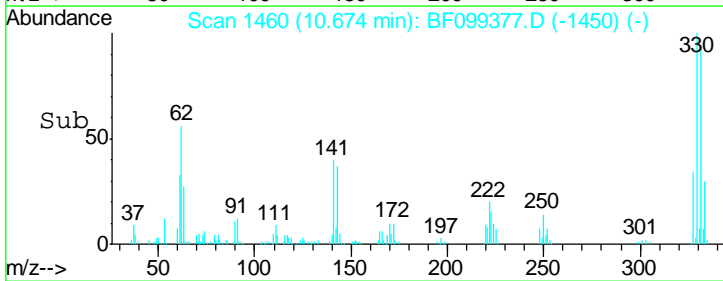
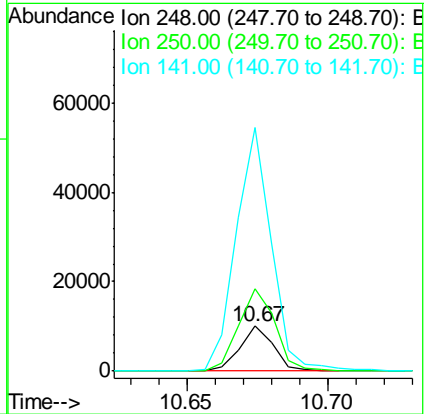
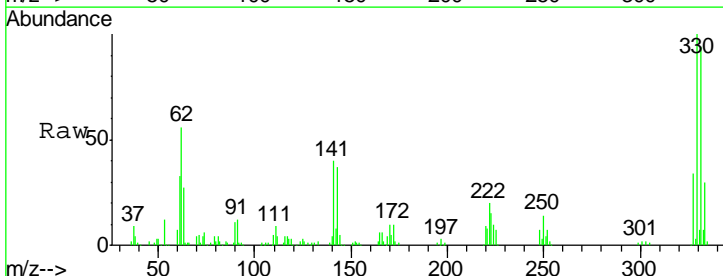
Instrument :
 BNA_F
 ClientSampled :

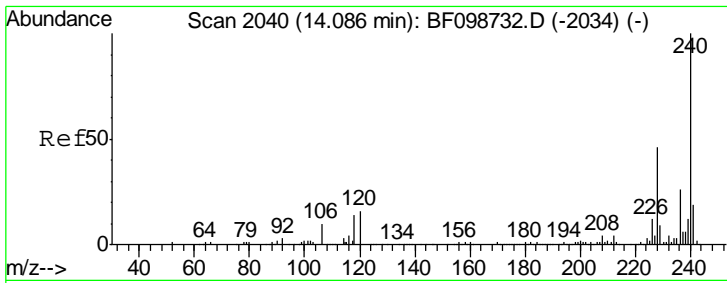
Tgt Ion	Resp	Lower	Upper
188	100		
94	9.9	8.5	12.7
80	10.4	9.2	13.8



#66
 4-Bromophenyl-phenylether
 Concen: 2.75 ng
 RT: 10.67 min Scan# 1460
 Delta R.T. -0.24 min
 Lab File: BF099377.D
 Acq: 12 Oct 2017 7:15

Tgt Ion	Resp	Lower	Upper
248	100		
250	182.3	76.9	115.3#
141	541.1	74.4	111.6#

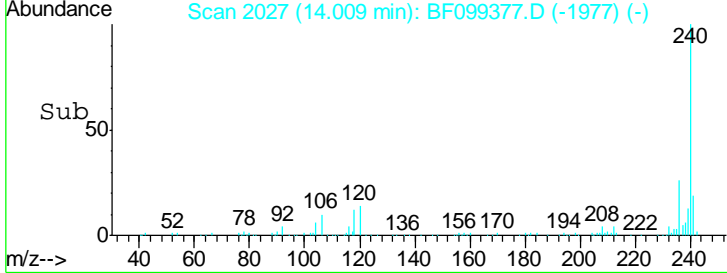
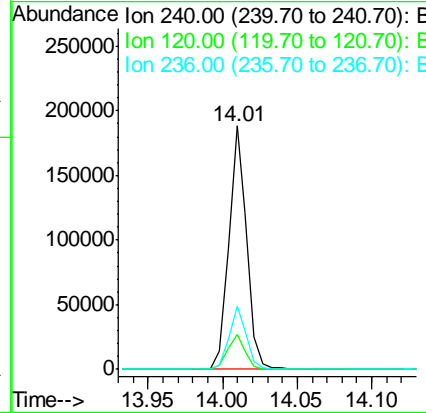
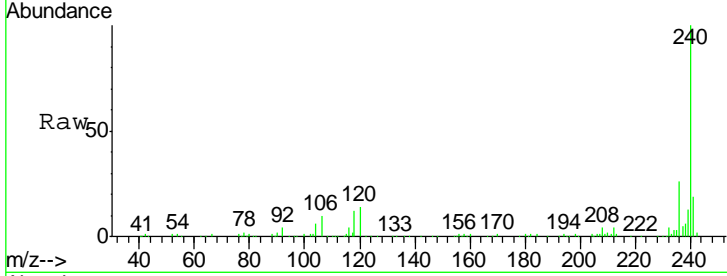




#75
 Chrysene-d12
 Concen: 20.00 ng
 RT: 14.01 min Scan# 2027
 Delta R.T. -0.01 min
 Lab File: BF099377.D
 Acq: 12 Oct 2017 7:15

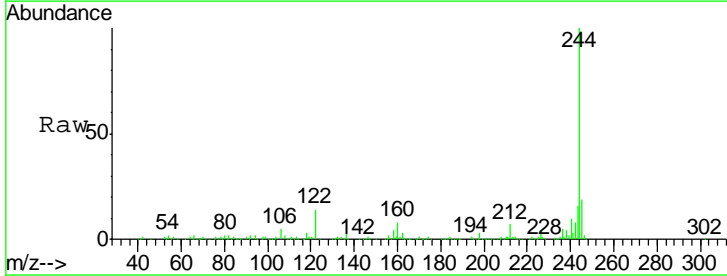
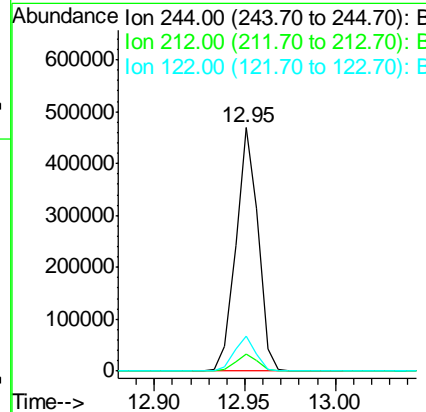
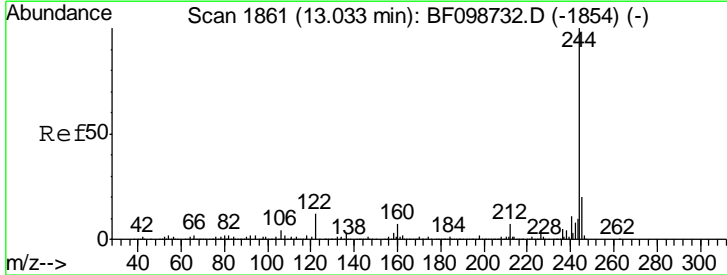
Instrument :
 BNA_F
 ClientSampled :

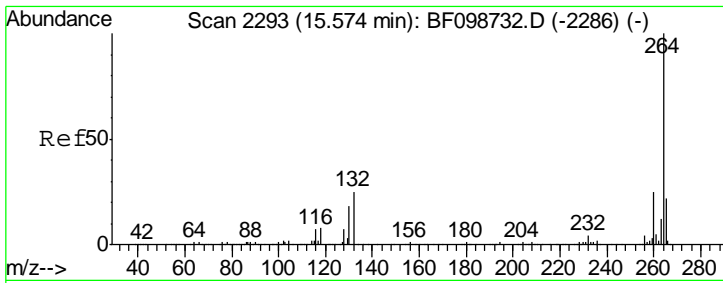
Tgt Ion	Resp	Lower	Upper
240	159238		
120	14.4	9.5	14.3#
236	25.8	20.7	31.1



#78
 Terphenyl-d14
 Concen: 56.90 ng
 RT: 12.95 min Scan# 1847
 Delta R.T. -0.01 min
 Lab File: BF099377.D
 Acq: 12 Oct 2017 7:15

Tgt Ion	Resp	Lower	Upper
244	398382		
212	7.1	5.4	8.0
122	14.3	11.0	16.4





#86
 Perylene-d12
 Concen: 20.00 ng
 RT: 15.48 min Scan# 2277
 Delta R.T. -0.00 min
 Lab File: BF099377.D
 Acq: 12 Oct 2017 7:15

Instrument :
 BNA_F
 ClientSampleId :

Tot Ion	264	260	265
Resp:	165120		
Ion Ratio	100	22.8	20.3
Lower		19.2	17.5
Upper		28.8	26.3

