

Data Path : Z:\HPCHEM1\BNA F\DATA\BF101215\
 Data File : BF082233.D
 Acq On : 12 Oct 2015 21:45
 Operator : UM/IZ
 Sample : G3990-16
 Misc :
 ALS Vial : 21 Sample Multiplier: 1

Instrument :
 BNA_F
 ClientSampleId :
 TE-PMW-11S

Quant Time: Oct 13 02:10:51 2015
 Quant Method : Z:\HPCHEM1\BNA F\METHODS\8270-BF101015.M
 Quant Title : ASP BNA STANDARDS FOR 5 POINT CALIBRATION
 QLast Update : Tue Oct 13 02:05:16 2015
 Response via : Initial Calibration

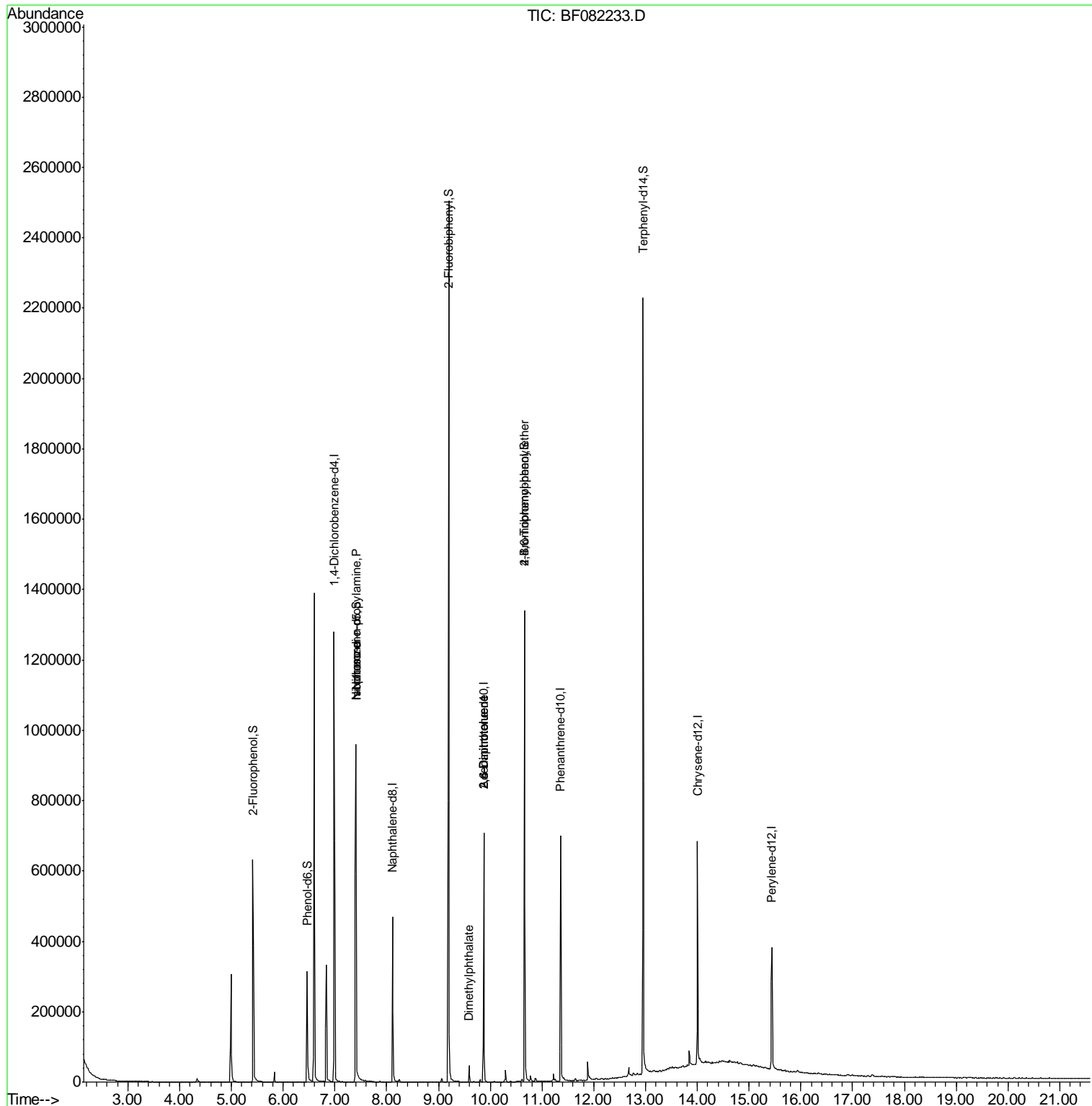
Internal Standards	R.T.	QIon	Response	Conc	Units	Dev(Min)
1) 1,4-Dichlorobenzene-d4	6.98	152	253493	20.00	ng	0.15
21) Naphthalene-d8	8.11	136	263284	20.00	ng	-0.01
38) Acenaphthene-d10	9.87	164	138921	20.00	ng	0.00
63) Phenanthrene-d10	11.36	188	275913	20.00	ng	0.00
75) Chrysene-d12	14.00	240	258236	20.00	ng	-0.01
86) Perylene-d12	15.44	264	196028	20.00	ng	0.00
System Monitoring Compounds						
5) 2-Fluorophenol	5.42	112	232385	18.50	ng	0.00
7) Phenol-d6	6.47	99	179159	10.96	ng	0.00
23) Nitrobenzene-d5	7.41	82	429683	109.60	ng	0.00
41) 2,4,6-Tribromophenol	10.66	330	188589	144.75	ng	-0.01
44) 2-Fluorobiphenyl	9.20	172	853930	101.94	ng	0.00
78) Terphenyl-d14	12.95	244	853470	87.58	ng	0.00
Target Compounds						
19) n-Nitroso-di-n-propylamine	7.41	70	55332	4.82	ng	# 75
25) Isophorone	7.41	82	415938	52.57	ng	# 66
49) Dimethylphthalate	9.59	163	24528	2.51	ng	99
50) 2,6-Dinitrotoluene	9.87	165	17397	8.43	ng	# 32
56) 2,4-Dinitrotoluene	9.87	165	17397	6.74	ng	# 23
66) 4-Bromophenyl-phenylether	10.66	248	11645	4.22	ng	# 1

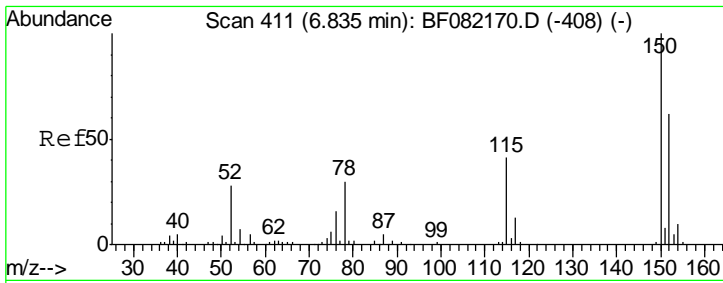
(#) = qualifier out of range (m) = manual integration (+) = signals summed

Data Path : Z:\HPCHEM1\BNA F\DATA\BF101215\
 Data File : BF082233.D
 Acq On : 12 Oct 2015 21:45
 Operator : UM/IZ
 Sample : G3990-16
 Misc :
 ALS Vial : 21 Sample Multiplier: 1

Instrument :
 BNA_F
 ClientSampled :
 TE-PMW-11S

Quant Time: Oct 13 02:10:51 2015
 Quant Method : Z:\HPCHEM1\BNA F\METHODS\8270-BF101015.M
 Quant Title : ASP BNA STANDARDS FOR 5 POINT CALIBRATION
 QLast Update : Tue Oct 13 02:05:16 2015
 Response via : Initial Calibration

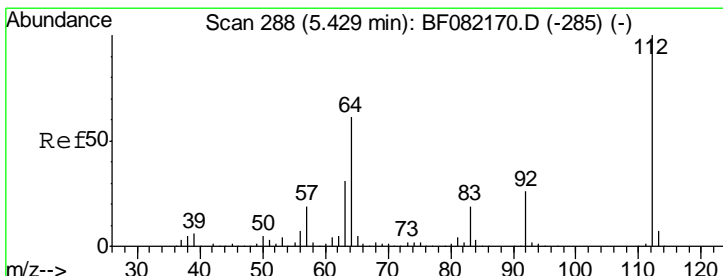
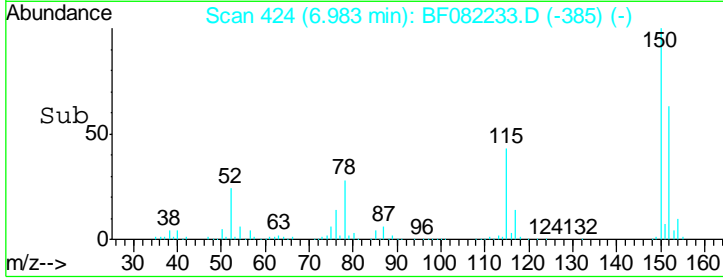
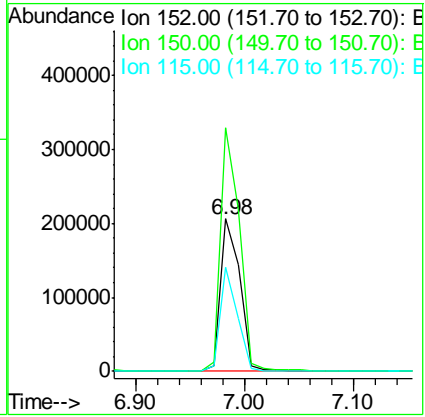
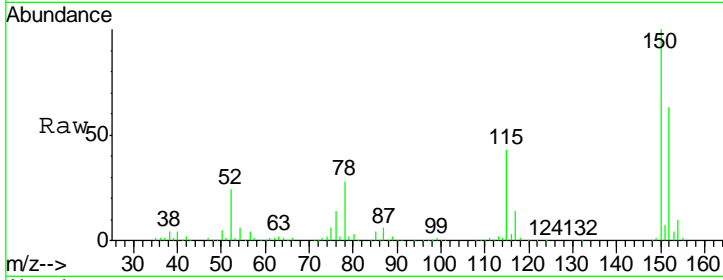




#1
 1,4-Dichlorobenzene-d4
 Concen: 20.00 ng
 RT: 6.98 min Scan# 424
 Delta R.T. 0.15 min
 Lab File: BF082233.D
 Acq: 12 Oct 2015 21:45

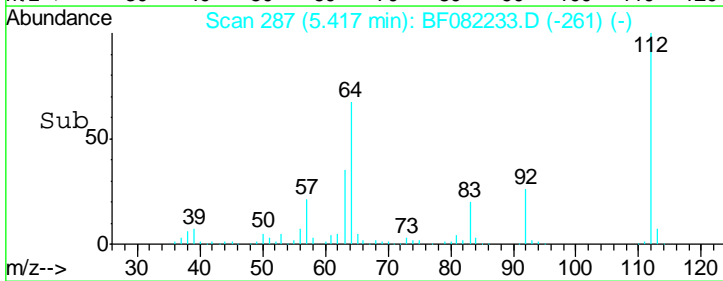
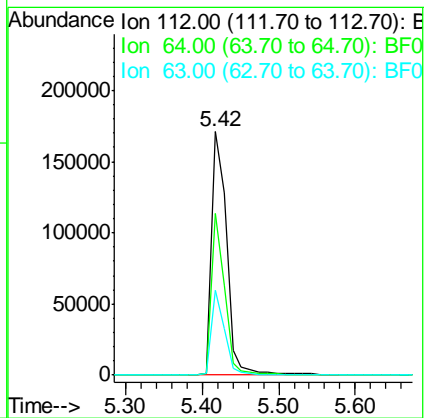
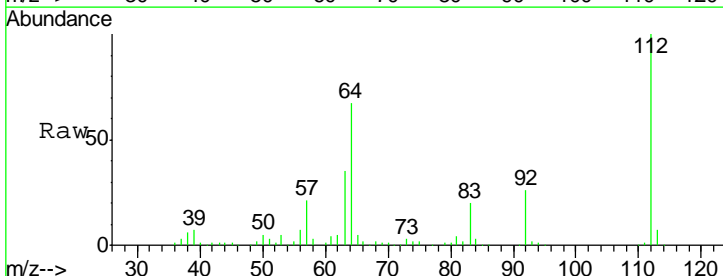
Instrument :
 BNA_F
ClientSampled :
 TE-PMW-11S

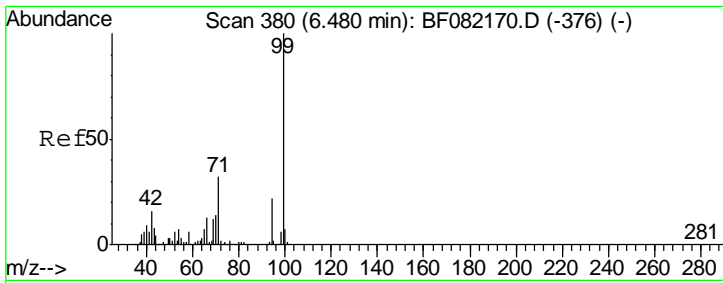
Tgt Ion	Resp	Lower	Upper
152	100		
150	159.7	129.0	193.4
115	68.1	52.1	78.1



#5
 2-Fluorophenol
 Concen: 18.50 ng
 RT: 5.42 min Scan# 287
 Delta R.T. -0.00 min
 Lab File: BF082233.D
 Acq: 12 Oct 2015 21:45

Tgt Ion	Resp	Lower	Upper
112	100		
64	66.7	48.6	73.0
63	35.0	25.1	37.7

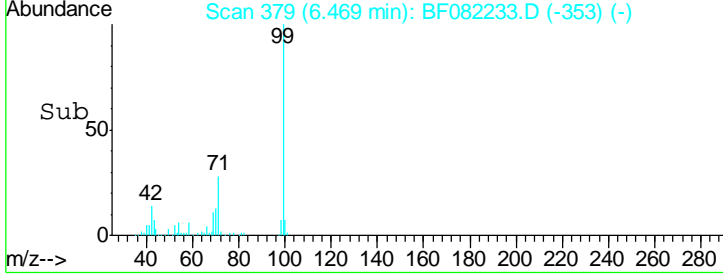
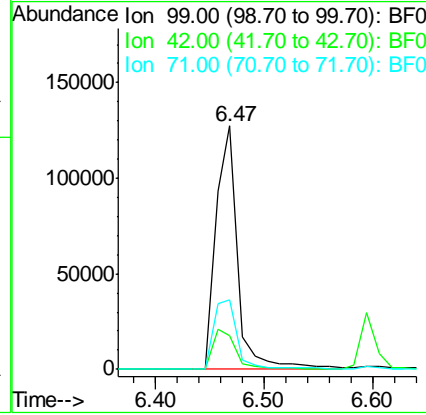
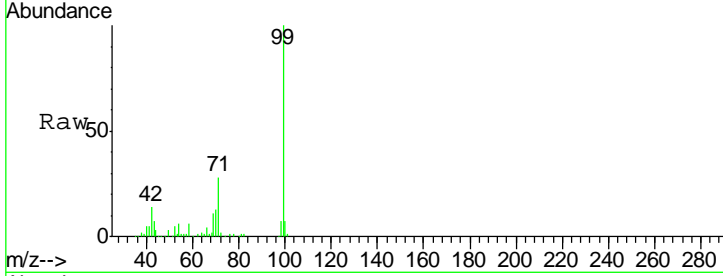




#7
 Phenol-d6
 Concen: 10.96 ng
 RT: 6.47 min Scan# 379
 Delta R.T. -0.00 min
 Lab File: BF082233.D
 Acq: 12 Oct 2015 21:45

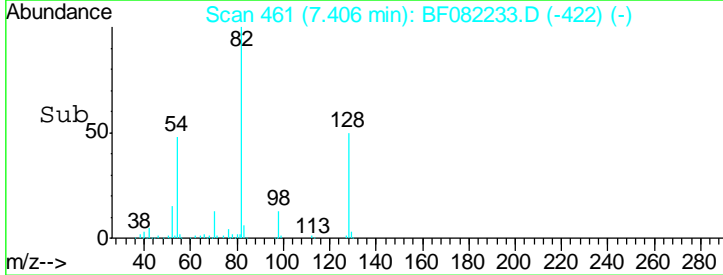
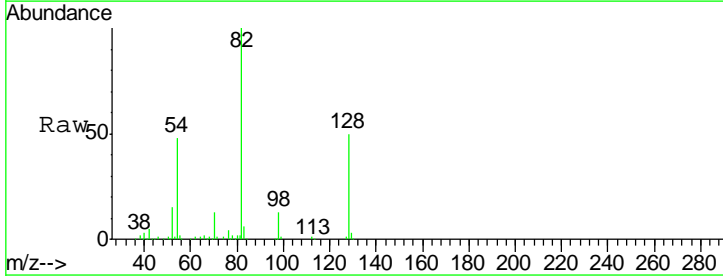
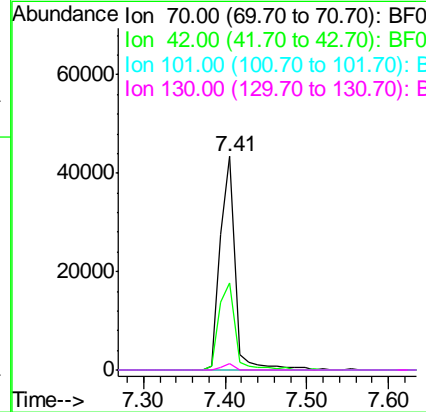
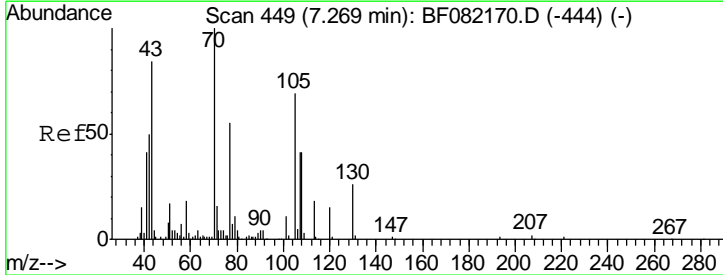
Instrument :
 BNA_F
ClientSampled :
 TE-PMW-11S

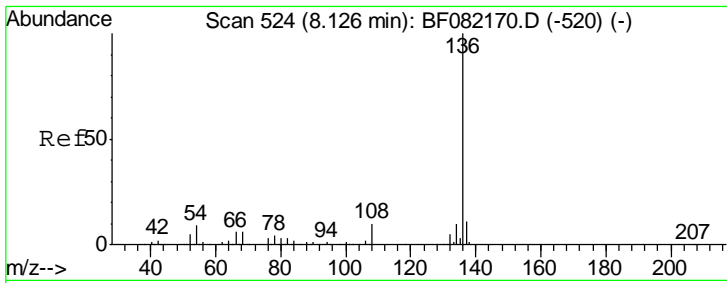
Tgt Ion	Resp	Lower	Upper
99	179159		
42	14.0	13.2	19.8
71	28.3	25.6	38.4



#19
 n-Nitroso-di-n-propylamine
 Concen: 4.82 ng
 RT: 7.41 min Scan# 461
 Delta R.T. 0.15 min
 Lab File: BF082233.D
 Acq: 12 Oct 2015 21:45

Tgt Ion	Resp	Lower	Upper
70	55332		
42	40.6	39.8	59.8
101	0.0	8.6	13.0#
130	2.8	20.5	30.7#

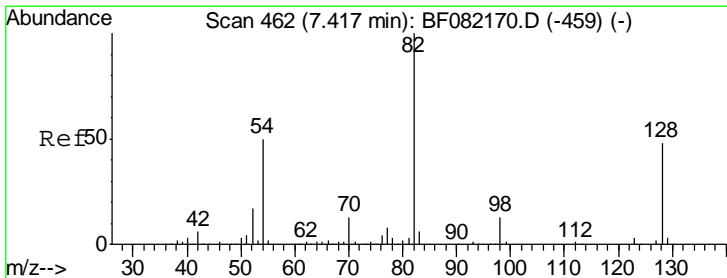
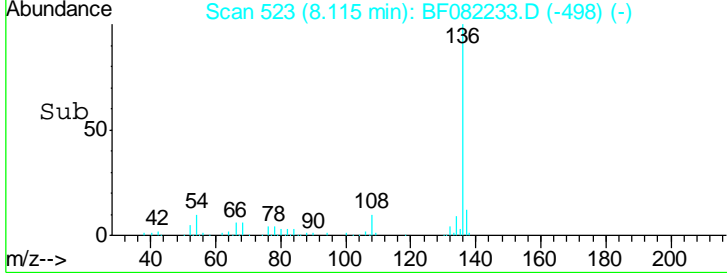
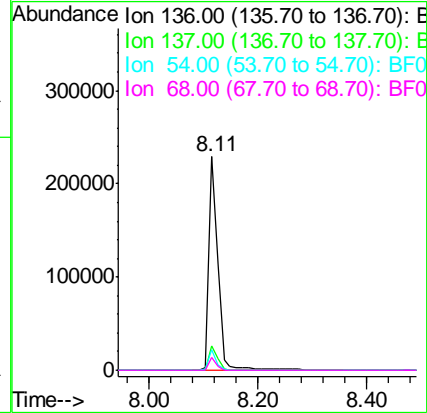
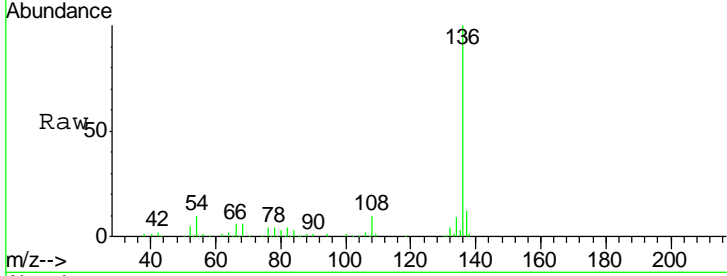




#21
 Naphthalene-d8
 Concen: 20.00 ng
 RT: 8.11 min Scan# 523
 Delta R.T. -0.01 min
 Lab File: BF082233.D
 Acq: 12 Oct 2015 21:45

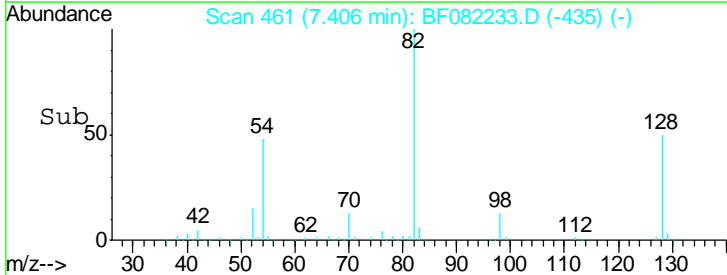
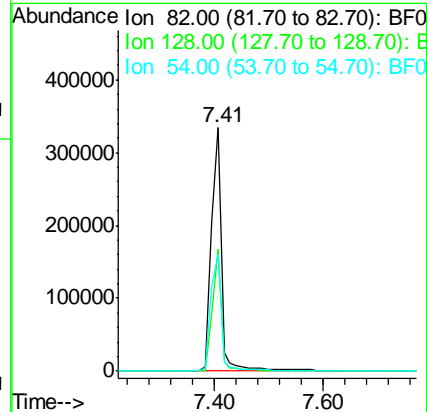
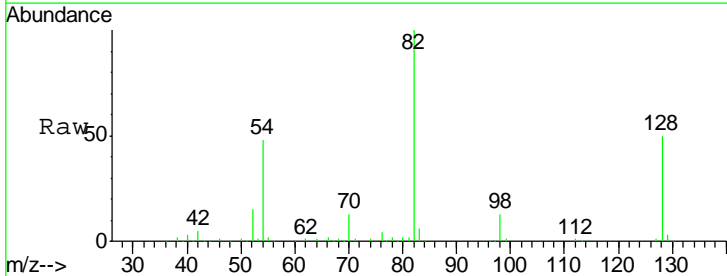
Instrument :
 BNA_F
ClientSampled :
 TE-PMW-11S

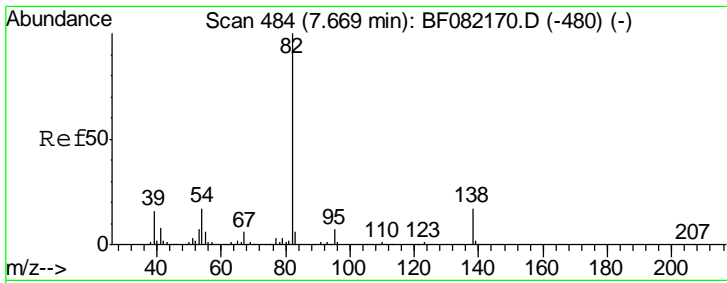
Tgt Ion	Resp	Lower	Upper
136	263284		
137	11.6	9.0	13.6
54	9.9	7.5	11.3
68	6.1	4.6	7.0



#23
 Nitrobenzene-d5
 Concen: 109.60 ng
 RT: 7.41 min Scan# 461
 Delta R.T. -0.00 min
 Lab File: BF082233.D
 Acq: 12 Oct 2015 21:45

Tgt Ion	Resp	Lower	Upper
82	429683		
128	50.1	38.7	58.1
54	48.1	40.1	60.1

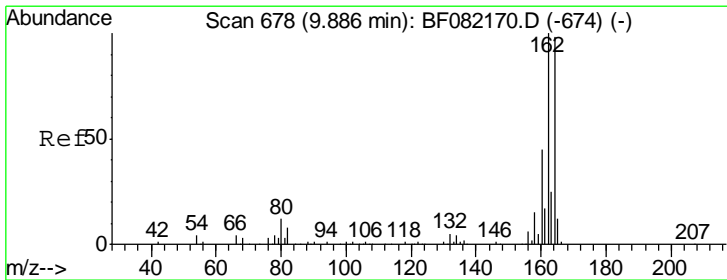
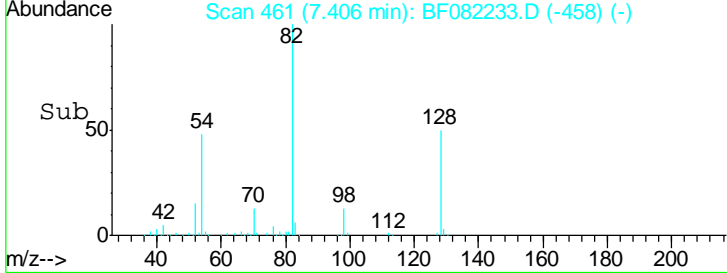
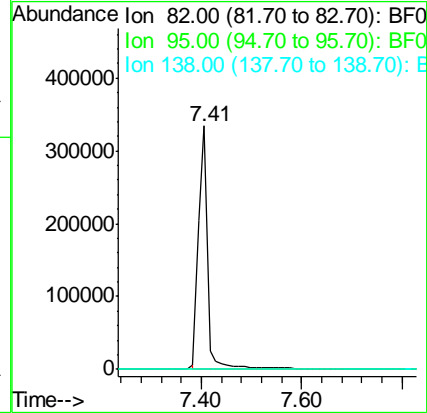
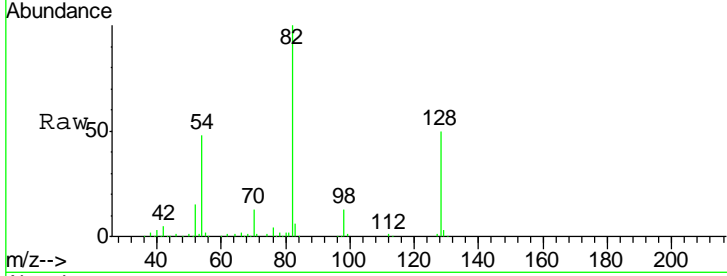




#25
 Isophorone
 Concen: 52.57 ng
 RT: 7.41 min Scan# 461
 Delta R.T. -0.26 min
 Lab File: BF082233.D
 Acq: 12 Oct 2015 21:45

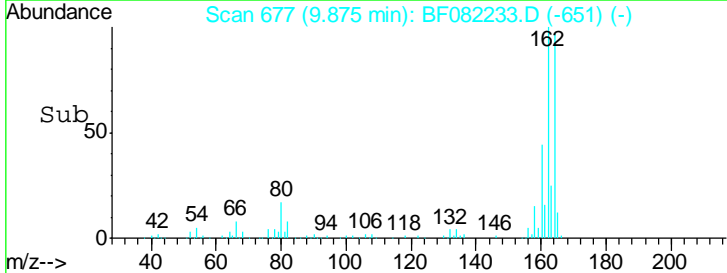
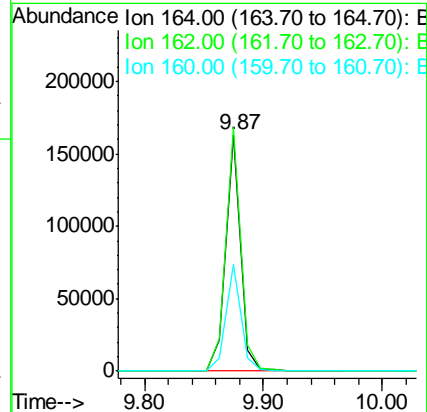
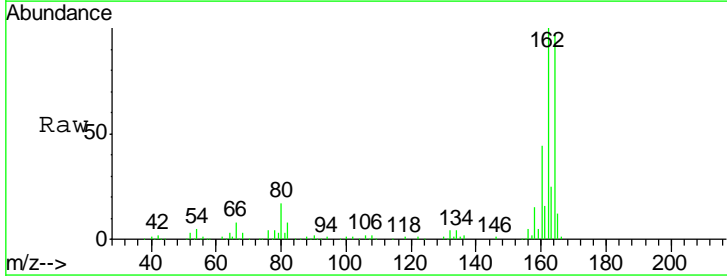
Instrument :
 BNA_F
 ClientSampleId :
 TE-PMW-11S

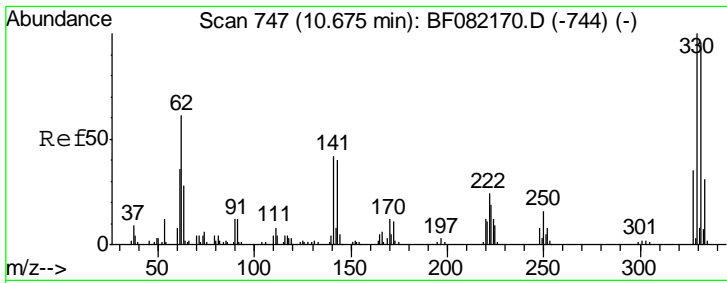
Tgt Ion	Resp	Lower	Upper
82	415938		
95	0.0	5.6	8.4#
138	0.0	13.6	20.4#



#38
 Acenaphthene-d10
 Concen: 20.00 ng
 RT: 9.87 min Scan# 677
 Delta R.T. -0.00 min
 Lab File: BF082233.D
 Acq: 12 Oct 2015 21:45

Tgt Ion	Resp	Lower	Upper
164	138921		
162	103.1	81.6	122.4
160	45.3	36.4	54.6

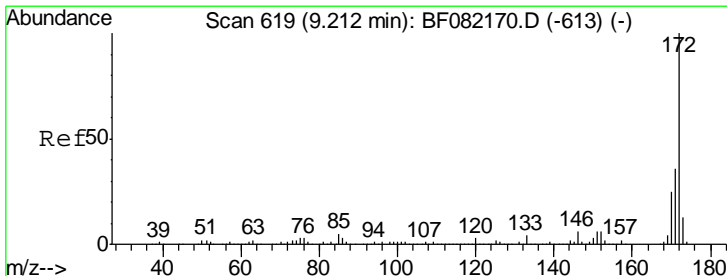
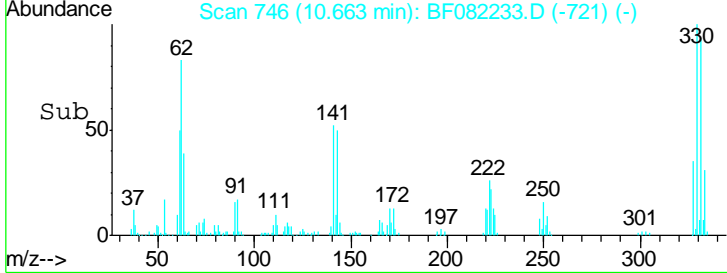
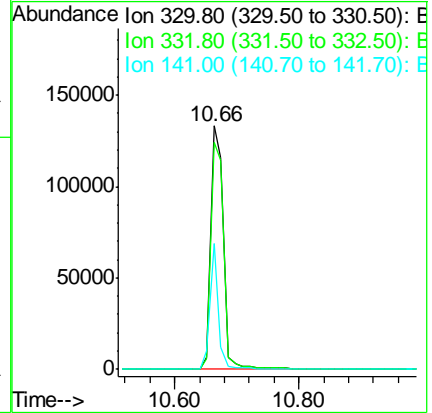
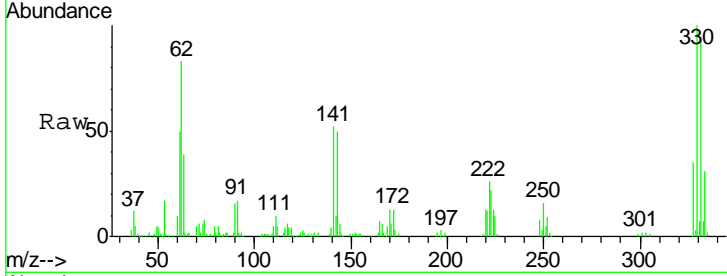




#41
 2,4,6-Tribromophenol
 Concen: 144.75 ng
 RT: 10.66 min Scan# 746
 Delta R.T. -0.01 min
 Lab File: BF082233.D
 Acq: 12 Oct 2015 21:45

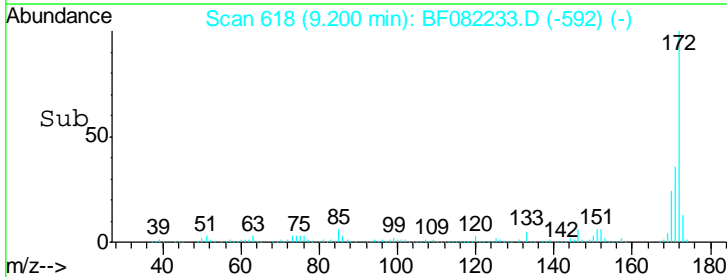
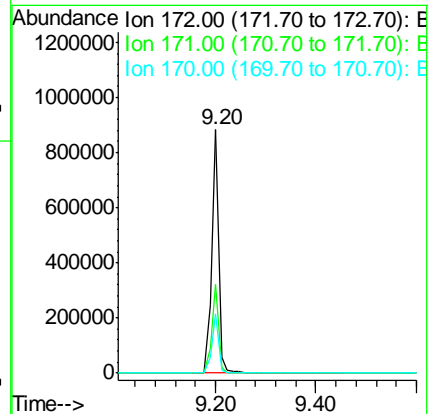
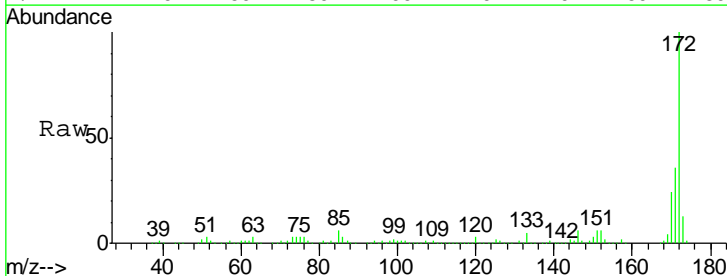
Instrument :
 BNA_F
 ClientSampleId :
 TE-PMW-11S

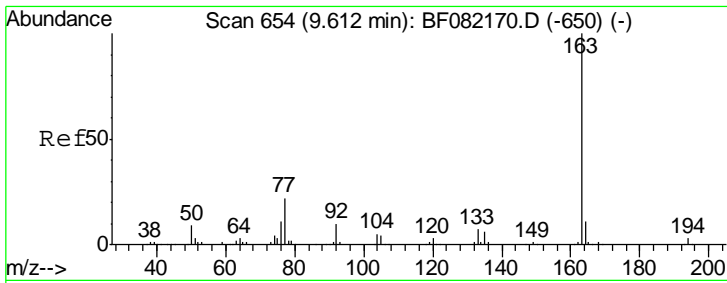
Tgt Ion	Resp	Lower	Upper
330	188589		
332	96.0	77.1	115.7
141	34.5	29.8	44.8



#44
 2-Fluorobiphenyl
 Concen: 101.94 ng
 RT: 9.20 min Scan# 618
 Delta R.T. -0.00 min
 Lab File: BF082233.D
 Acq: 12 Oct 2015 21:45

Tgt Ion	Resp	Lower	Upper
172	853930		
171	36.3	28.6	42.8
170	24.5	19.7	29.5

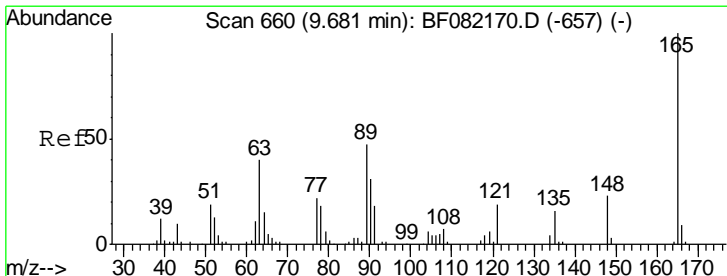
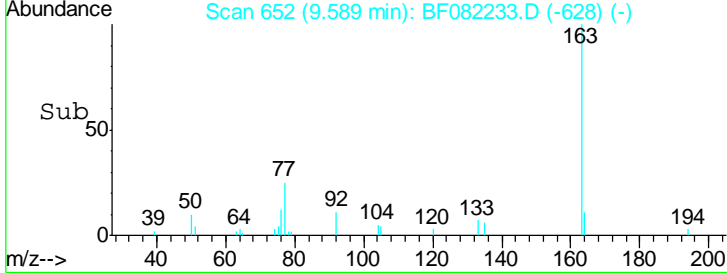
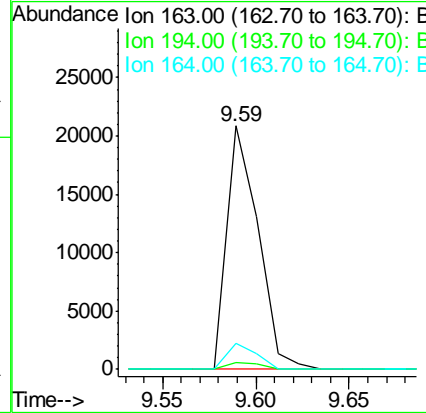
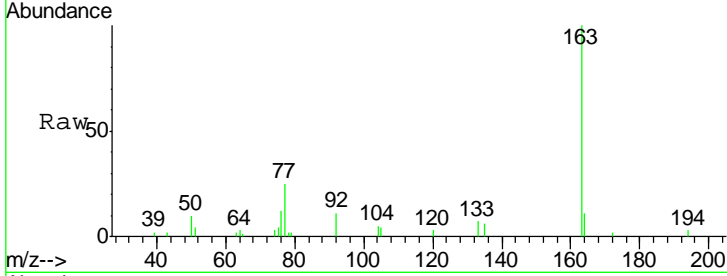




#49
 Dimethylphthalate
 Concen: 2.51 ng
 RT: 9.59 min Scan# 652
 Delta R.T. -0.02 min
 Lab File: BF082233.D
 Acq: 12 Oct 2015 21:45

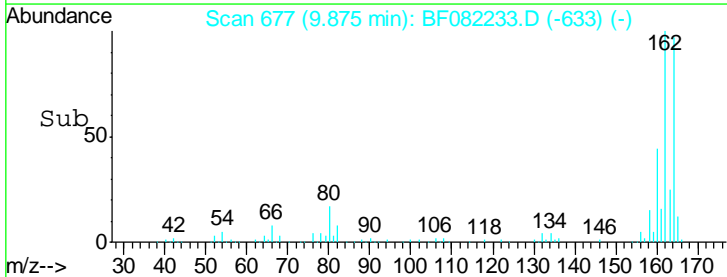
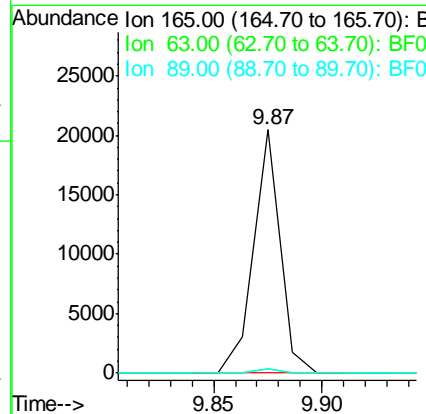
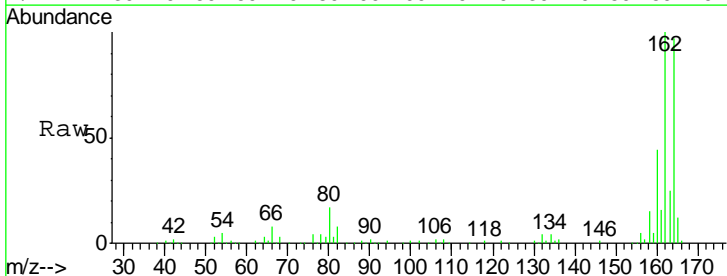
Instrument :
 BNA_F
 ClientSampleId :
 TE-PMW-11S

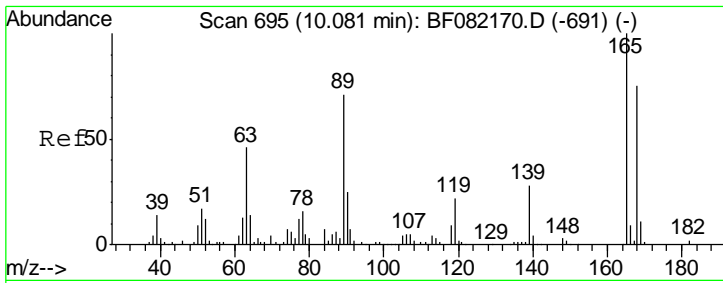
Tgt Ion	Resp	Lower	Upper
163	100		
194	2.7	2.6	4.0
164	10.5	8.5	12.7



#50
 2,6-Dinitrotoluene
 Concen: 8.43 ng
 RT: 9.87 min Scan# 677
 Delta R.T. 0.21 min
 Lab File: BF082233.D
 Acq: 12 Oct 2015 21:45

Tgt Ion	Resp	Lower	Upper
165	100		
63	1.7	36.7	55.1#
89	1.6	37.8	56.6#

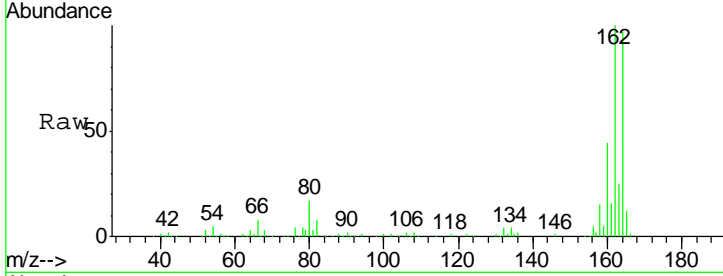




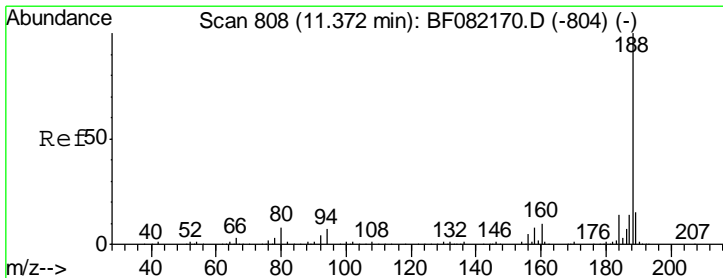
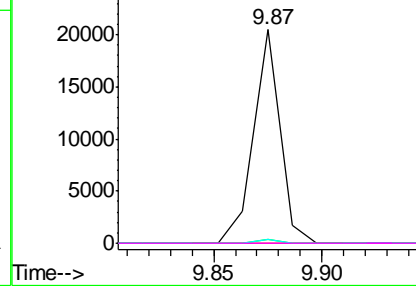
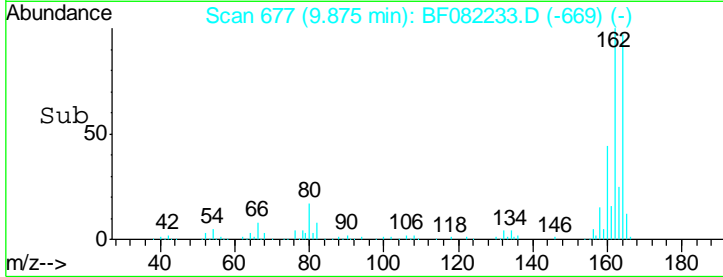
#56
 2,4-Dinitrotoluene
 Concen: 6.74 ng
 RT: 9.87 min Scan# 677
 Delta R.T. -0.21 min
 Lab File: BF082233.D
 Acq: 12 Oct 2015 21:45

Instrument :
 BNA_F
 ClientSampleId :
 TE-PMW-11S

Tgt Ion	Resp	Lower	Upper
165	17397		
63	1.7	38.6	58.0#
89	1.6	57.0	85.6#
182	0.0	1.8	2.6#

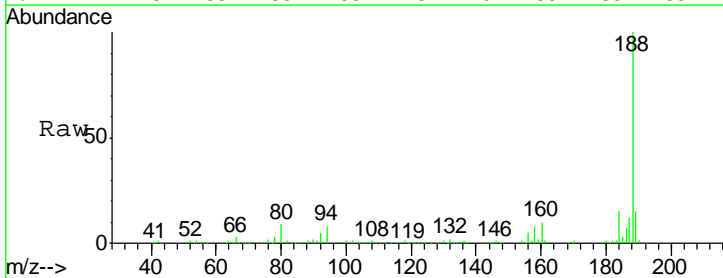


Abundance Ion 165.00 (164.70 to 165.70): E
 Ion 63.00 (62.70 to 63.70): BF0
 Ion 89.00 (88.70 to 89.70): BF0
 Ion 182.00 (181.70 to 182.70): E

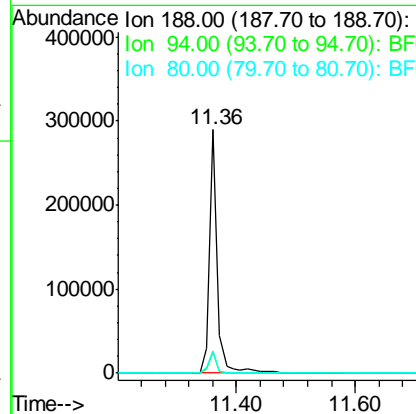
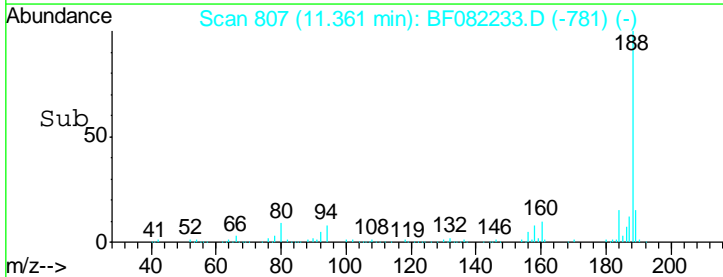


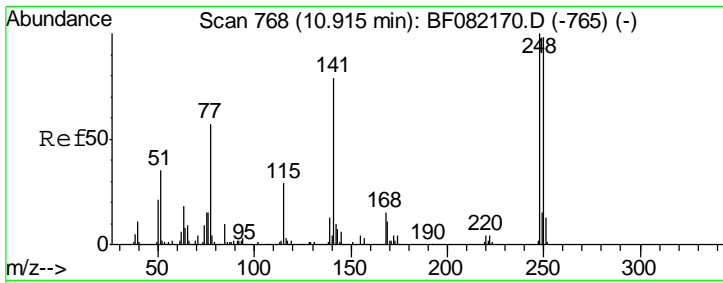
#63
 Phenanthrene-d10
 Concen: 20.00 ng
 RT: 11.36 min Scan# 807
 Delta R.T. -0.00 min
 Lab File: BF082233.D
 Acq: 12 Oct 2015 21:45

Tgt Ion	Resp	Lower	Upper
188	275913		
94	8.4	5.8	8.6
80	9.2	6.4	9.6



Abundance Ion 188.00 (187.70 to 188.70): E
 Ion 94.00 (93.70 to 94.70): BF0
 Ion 80.00 (79.70 to 80.70): BF0

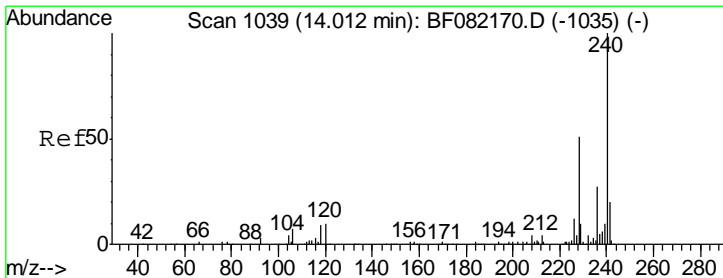
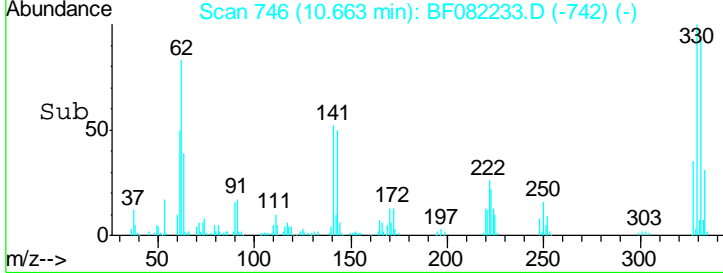
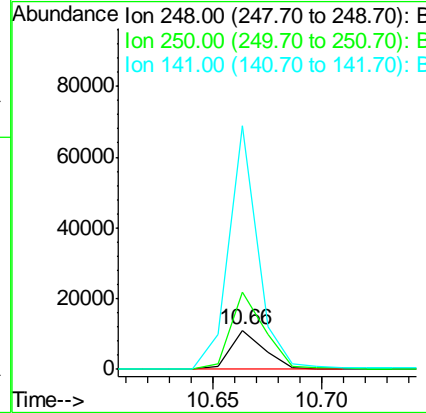
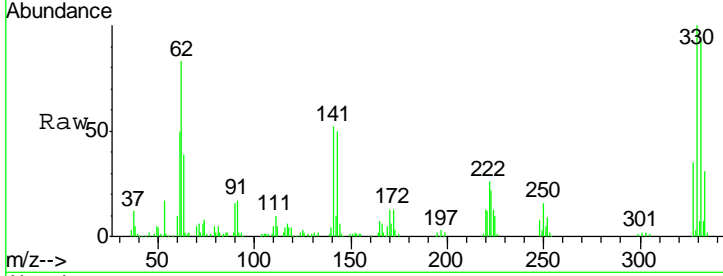




#66
 4-Bromophenyl-phenylether
 Concen: 4.22 ng
 RT: 10.66 min Scan# 746
 Delta R.T. -0.25 min
 Lab File: BF082233.D
 Acq: 12 Oct 2015 21:45

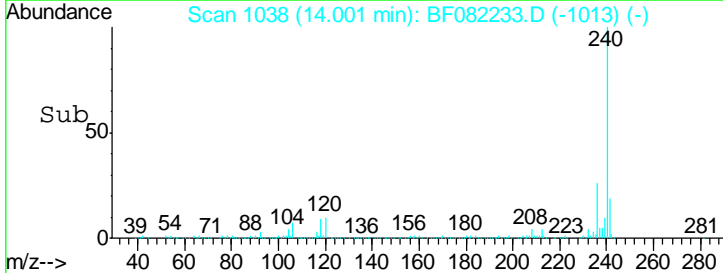
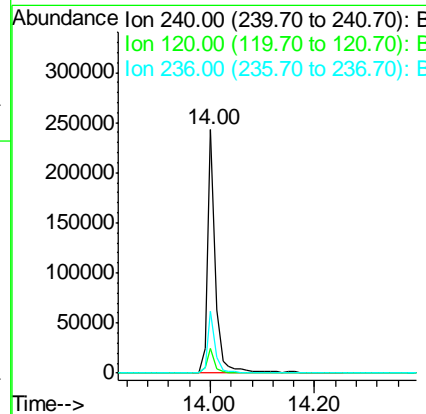
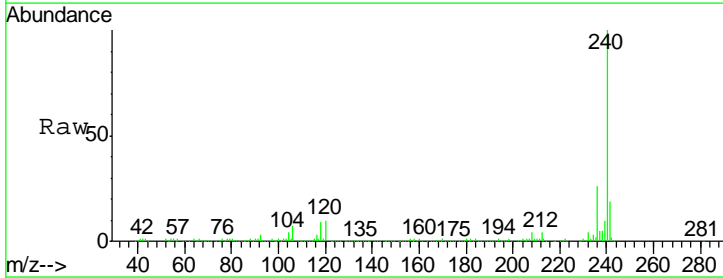
Instrument :
 BNA_F
ClientSampled :
 TE-PMW-11S

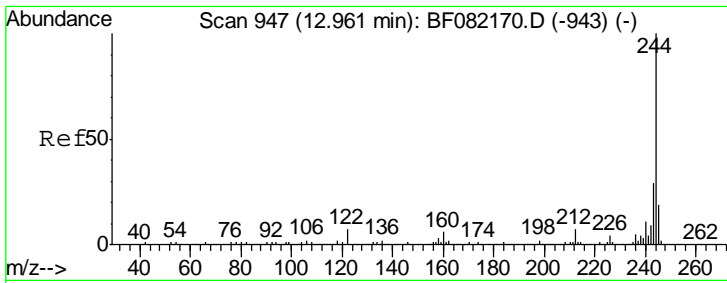
Tgt Ion	Resp	Lower	Upper
248	11645		
250	198.4	78.6	117.8#
141	624.4	63.3	94.9#



#75
 Chrysene-d12
 Concen: 20.00 ng
 RT: 14.00 min Scan# 1038
 Delta R.T. -0.01 min
 Lab File: BF082233.D
 Acq: 12 Oct 2015 21:45

Tgt Ion	Resp	Lower	Upper
240	258236		
120	10.1	8.1	12.1
236	25.5	21.3	31.9

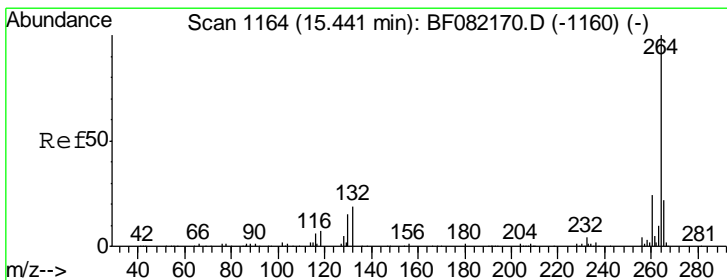
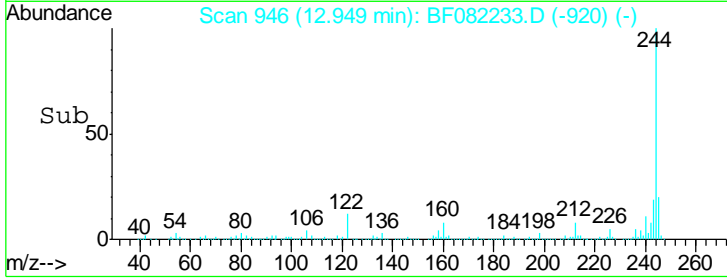
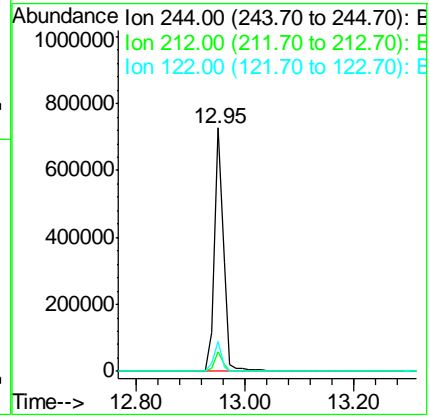
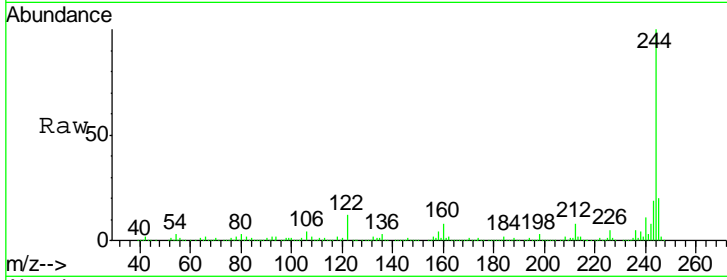




#78
 Terphenyl-d14
 Concen: 87.58 ng
 RT: 12.95 min Scan# 946
 Delta R.T. -0.00 min
 Lab File: BF082233.D
 Acq: 12 Oct 2015 21:45

Instrument :
 BNA_F
ClientSampled :
 TE-PMW-11S

Tgt Ion	Ratio	Lower	Upper
244	100		
212	7.8	5.8	8.6
122	12.4	5.9	8.9#



#86
 Perylene-d12
 Concen: 20.00 ng
 RT: 15.44 min Scan# 1164
 Delta R.T. -0.00 min
 Lab File: BF082233.D
 Acq: 12 Oct 2015 21:45

Tgt Ion	Ratio	Lower	Upper
264	100		
260	24.2	19.0	28.6
265	21.3	17.3	25.9

