

Data Path : \\74.0.250.170\SVOASRV\HPCHEM1\BNA_F\DATA\BF101217\
 Data File : BF099398.D
 Acq On : 12 Oct 2017 16:50
 Operator : SJ/JU
 Sample : I5637-01
 Misc :
 ALS Vial : 3 Sample Multiplier: 1

Instrument :
 BNA_F
 ClientSampleId :
 B-18(0-10)COMP

Integration Parameters: rteint.p
 Integrator: RTE
 Smoothing : ON Filtering: 5
 Sampling : 1 Min Area: 3 % of largest Peak
 Start Thrs: 0.2 Max Peaks: 100
 Stop Thrs : 0 Peak Location: TOP

If leading or trailing edge < 100 prefer < Baseline drop else tangent >
 Peak separation: 5

Method : Z:\HPCHEM1\BNA_F\METHODS\8270-BF092317.M
 Title : ASP BNA STANDARDS FOR 5 POINT CALIBRATION

Signal : TIC

peak #	R.T. min	first scan	max scan	last scan	PK TY	peak height	corr. area	corr. % max.	% of total
1	2.140	7	9	26	rVB2	81514	184410	5.43%	0.295%
2	5.081	505	509	520	rBV	377362	541907	15.95%	0.867%
3	5.481	572	577	588	rBV	2571455	2735595	80.52%	4.378%
4	6.492	739	749	752	rBV	2455191	2800368	82.43%	4.481%
5	6.628	767	772	775	rBV	2880359	2785237	81.98%	4.457%
6	6.851	806	810	814	rBV	837313	673728	19.83%	1.078%
7	7.010	832	837	840	rBV	2066804	1932200	56.87%	3.092%
8	7.416	901	906	909	rBV	1582359	1766207	51.99%	2.826%
9	8.133	1024	1028	1030	rBV	1070282	913745	26.90%	1.462%
10	8.945	1162	1166	1169	rBV	124483	110161	3.24%	0.176%
11	9.210	1205	1211	1214	rBV	2598024	2609154	76.80%	4.175%
12	9.469	1251	1255	1260	rVB2	105963	141988	4.18%	0.227%
13	9.545	1264	1268	1270	rBV	214023	225446	6.64%	0.361%
14	9.598	1274	1277	1284	rVB	614389	517866	15.24%	0.829%
15	9.663	1284	1288	1289	rBV	120703	109303	3.22%	0.175%
16	9.886	1319	1326	1329	rBV2	1169248	1165026	34.29%	1.864%
17	9.922	1329	1332	1334	rVV	263590	249334	7.34%	0.399%
18	9.980	1339	1342	1347	rVB3	92861	175762	5.17%	0.281%
19	10.086	1357	1360	1364	rVB2	233593	258923	7.62%	0.414%
20	10.127	1364	1367	1369	rBV2	125132	115816	3.41%	0.185%
21	10.433	1416	1419	1424	rVB	396367	364386	10.73%	0.583%
22	10.522	1432	1434	1436	rVV2	136792	118936	3.50%	0.190%
23	10.586	1443	1445	1450	rVB2	142869	177755	5.23%	0.284%
24	10.680	1456	1461	1464	rBV	1806497	1737296	51.14%	2.780%
25	10.792	1479	1480	1487	rVB4	94669	113821	3.35%	0.182%
26	10.980	1505	1512	1515	rBV3	201694	300733	8.85%	0.481%
27	11.010	1515	1517	1519	rBV2	146415	113704	3.35%	0.182%
28	11.127	1535	1537	1542	rVV3	108160	121584	3.58%	0.195%
29	11.180	1543	1546	1549	rVB2	202409	176678	5.20%	0.283%
30	11.227	1549	1554	1558	rBV3	219365	270466	7.96%	0.433%
31	11.269	1558	1561	1566	rVB	278501	258123	7.60%	0.413%
32	11.374	1575	1579	1581	rBV	959499	997834	29.37%	1.597%
33	11.404	1581	1584	1587	rVV	2926191	2939123	86.51%	4.703%
34	11.451	1589	1592	1594	rVV	554595	430637	12.68%	0.689%

Data Path : \\74.0.250.170\SVOASRV\HPCHEM1\BNA_F\DATA\BF101217\
 Data File : BF099398.D
 Acq On : 12 Oct 2017 16:50
 Operator : SJ/JU
 Sample : I5637-01
 Misc :
 ALS Vial : 3 Sample Multiplier: 1

Instrument :
 BNA_F
 ClientSampleId :
 B-18(0-10)COMP

Integration Parameters: rteint.p
 Integrator: RTE
 Smoothing : ON
 Sampling : 1
 Start Thrs: 0.2
 Stop Thrs : 0
 Filtering: 5
 Min Area: 3 % of largest Peak
 Max Peaks: 100
 Peak Location: TOP

If leading or trailing edge < 100 prefer < Baseline drop else tangent >
 Peak separation: 5

Method : Z:\HPCHEM1\BNA_F\METHODS\8270-BF092317.M
 Title : ASP BNA STANDARDS FOR 5 POINT CALIBRATION

35	11.486	1594	1598	1600	rVV2	91073	143280	4.22%	0.229%
36	11.604	1614	1618	1624	rBV2	175963	255881	7.53%	0.409%
37	11.669	1624	1629	1631	rVV2	135717	145131	4.27%	0.232%
38	11.704	1631	1635	1640	rVV2	298719	307110	9.04%	0.491%
39	11.786	1646	1649	1652	rVB	148783	164958	4.86%	0.264%
40	11.874	1661	1664	1666	rVV	995865	998423	29.39%	1.598%
41	11.904	1666	1669	1673	rVB	1272773	1301213	38.30%	2.082%
42	11.951	1673	1677	1680	rBV	276146	268830	7.91%	0.430%
43	11.986	1680	1683	1686	rVV2	1149848	1308081	38.50%	2.093%
44	12.010	1686	1687	1691	rVB	861917	610390	17.97%	0.977%
45	12.057	1691	1695	1697	rBV4	123493	132613	3.90%	0.212%
46	12.169	1712	1714	1717	rVV	502920	430185	12.66%	0.688%
47	12.204	1717	1720	1724	rVB	414275	387039	11.39%	0.619%
48	12.245	1724	1727	1729	rBV	161503	140830	4.15%	0.225%
49	12.316	1734	1739	1742	rBV3	363341	462139	13.60%	0.740%
50	12.351	1742	1745	1747	rVB	257633	190706	5.61%	0.305%
51	12.374	1747	1749	1752	rVB	193720	145085	4.27%	0.232%
52	12.427	1754	1758	1760	rBV	715051	739346	21.76%	1.183%
53	12.463	1760	1764	1766	rVV3	337826	427562	12.59%	0.684%
54	12.480	1766	1767	1770	rVB	244788	165764	4.88%	0.265%
55	12.516	1770	1773	1777	rBV3	389032	518648	15.27%	0.830%
56	12.598	1781	1787	1790	rBV	2531190	2645389	77.87%	4.233%
57	12.651	1794	1796	1799	rBV2	139208	118667	3.49%	0.190%
58	12.745	1810	1812	1814	rVB2	137831	112145	3.30%	0.179%
59	12.768	1814	1816	1819	rVB2	136140	116194	3.42%	0.186%
60	12.827	1819	1826	1830	rBV	2784684	3397330	100.00%	5.437%
61	12.868	1830	1833	1837	rVB2	287337	317866	9.36%	0.509%
62	12.957	1837	1848	1851	rBV	2173944	2430918	71.55%	3.890%
63	13.033	1857	1861	1868	rBV5	339890	586214	17.26%	0.938%
64	13.092	1868	1871	1873	rVV	215350	173234	5.10%	0.277%
65	13.121	1873	1876	1878	rVV3	298152	370632	10.91%	0.593%
66	13.145	1878	1880	1883	rVV	461268	405574	11.94%	0.649%
67	13.210	1886	1891	1894	rVV	233340	250034	7.36%	0.400%
68	13.251	1894	1898	1900	rVV	516194	530651	15.62%	0.849%
69	13.268	1900	1901	1905	rVV2	122854	150221	4.42%	0.240%
70	13.345	1910	1914	1916	rBV	396388	361756	10.65%	0.579%
71	13.374	1916	1919	1922	rVB	405095	339672	10.00%	0.544%

Data Path : \\74.0.250.170\SVOASRV\HPCHEM1\BNA_F\DATA\BF101217\
 Data File : BF099398.D
 Acq On : 12 Oct 2017 16:50
 Operator : SJ/JU
 Sample : I5637-01
 Misc :
 ALS Vial : 3 Sample Multiplier: 1

Instrument :
 BNA_F
 ClientSampleId :
 B-18(0-10)COMP

Integration Parameters: rteint.p
 Integrator: RTE
 Smoothing : ON Filtering: 5
 Sampling : 1 Min Area: 3 % of largest Peak
 Start Thrs: 0.2 Max Peaks: 100
 Stop Thrs : 0 Peak Location: TOP

If leading or trailing edge < 100 prefer < Baseline drop else tangent >
 Peak separation: 5

Method : Z:\HPCHEM1\BNA_F\METHODS\8270-BF092317.M
 Title : ASP BNA STANDARDS FOR 5 POINT CALIBRATION

72	13.457	1930	1933	1936	rVB	172701	173347	5.10%	0.277%
73	13.657	1964	1967	1971	rVV	385419	409773	12.06%	0.656%
74	13.763	1980	1985	1988	rBV	331057	418725	12.33%	0.670%
75	13.792	1988	1990	1992	rVV	288829	232344	6.84%	0.372%
76	13.833	1995	1997	2000	rVV3	266533	341476	10.05%	0.546%
77	13.863	2000	2002	2006	rVV	300205	282654	8.32%	0.452%
78	14.010	2020	2027	2031	rBV2	1264120	2005576	59.03%	3.210%
79	14.045	2031	2033	2036	rVV	1346209	1073920	31.61%	1.719%
80	14.121	2044	2046	2049	rVV	148651	135363	3.98%	0.217%
81	14.186	2051	2057	2060	rVV7	88421	215685	6.35%	0.345%
82	14.245	2063	2067	2069	rVV2	105110	111215	3.27%	0.178%
83	14.404	2089	2094	2096	rVV	377698	476418	14.02%	0.762%
84	14.433	2096	2099	2102	rVV	253202	269976	7.95%	0.432%
85	14.480	2102	2107	2108	rVV4	138670	231248	6.81%	0.370%
86	14.527	2112	2115	2117	rVV	189935	197458	5.81%	0.316%
87	14.892	2174	2177	2181	rVB2	109624	130554	3.84%	0.209%
88	15.062	2199	2206	2209	rBV	834881	1403885	41.32%	2.247%
89	15.168	2220	2224	2227	rVB	115546	131677	3.88%	0.211%
90	15.362	2252	2257	2263	rVB	576970	738986	21.75%	1.183%
91	15.427	2263	2268	2272	rBV	747977	888824	26.16%	1.422%
92	15.486	2273	2278	2281	rBV	478079	630283	18.55%	1.009%
93	15.521	2281	2284	2291	rVB2	218464	324616	9.56%	0.519%
94	15.927	2347	2353	2356	rBV5	50043	119402	3.51%	0.191%
95	16.804	2500	2502	2516	rVB4	53302	168530	4.96%	0.270%
96	16.974	2523	2531	2538	rBV	340528	686795	20.22%	1.099%
97	17.203	2566	2570	2576	rVB2	63450	108629	3.20%	0.174%
98	17.421	2600	2607	2616	rVB	289541	604837	17.80%	0.968%
99	17.662	2643	2648	2659	rVB3	56178	155386	4.57%	0.249%
100	19.133	2892	2898	2910	rVB3	47544	137888	4.06%	0.221%

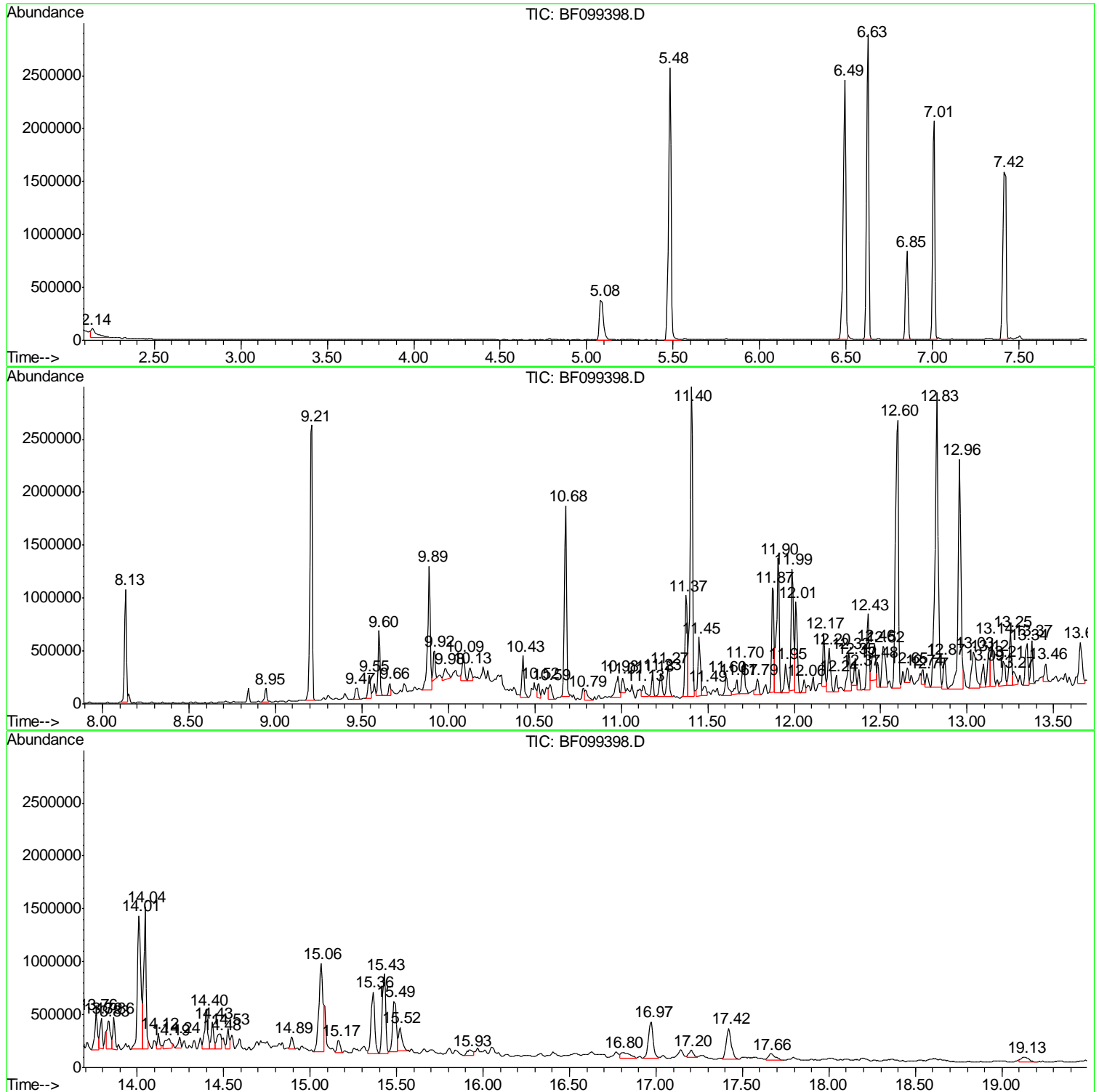
Sum of corrected areas: 62488433

Data Path : \\74.0.250.170\SVOASRV\HPCHEM1\BNA F\DATA\BF101217\
 Data File : BF099398.D
 Acq On : 12 Oct 2017 16:50
 Operator : SJ/JU
 Sample : I5637-01
 Misc :
 ALS Vial : 3 Sample Multiplier: 1

Instrument :
 BNA_F
 ClientSampled :
 B-18(0-10)COMP

Quant Method : Z:\HPCHEM1\BNA F\METHODS\8270-BF092317.M
 Quant Title : ASP BNA STANDARDS FOR 5 POINT CALIBRATION

TIC Library : C:\DATABASE\NIST11.L
 TIC Integration Parameters: LSCINT.P



Data Path : \\74.0.250.170\SVOASRV\HPCHEM1\BNA F\DATA\BF101217\
 Data File : BF099398.D
 Acq On : 12 Oct 2017 16:50
 Operator : SJ/JU
 Sample : I5637-01
 Misc :
 ALS Vial : 3 Sample Multiplier: 1

Instrument :
 BNA_F
 ClientSampleId :
 B-18(0-10)COMP

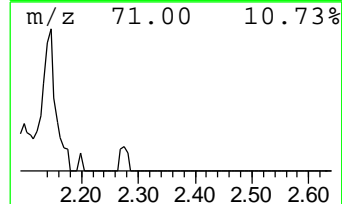
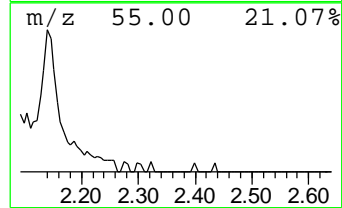
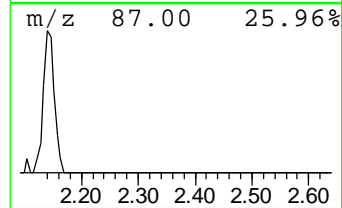
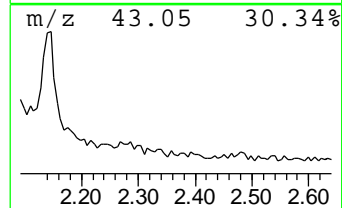
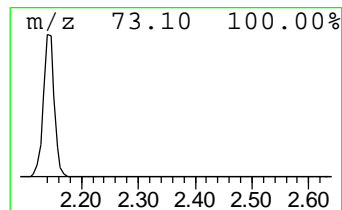
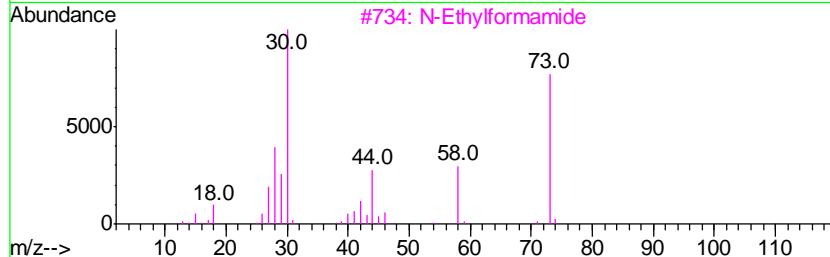
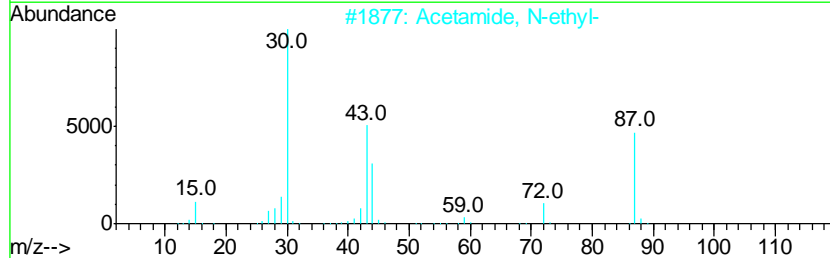
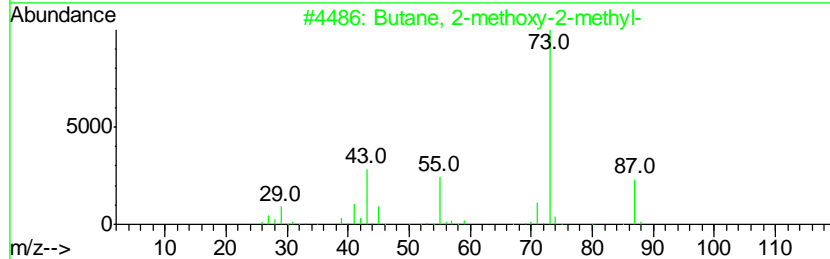
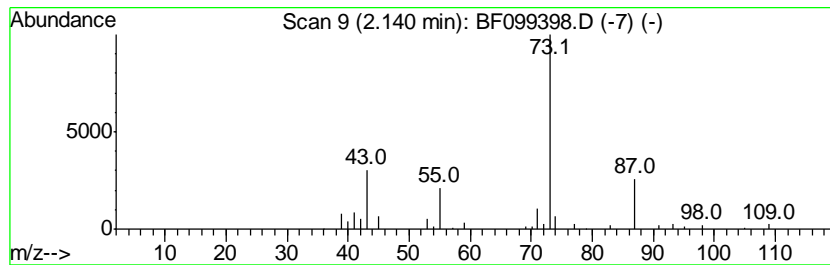
Quant Method : Z:\HPCHEM1\BNA F\METHODS\8270-BF092317.M
 Quant Title : ASP BNA STANDARDS FOR 5 POINT CALIBRATION

TIC Library : C:\DATABASE\NIST11.L
 TIC Integration Parameters: LSCINT.P

 Peak Number 1 Butane, 2-methoxy-2-methyl- Concentration Rank 18

R.T.	EstConc	Area	Relative to ISTD	R.T.
2.14	5.47 ng	184410	1,4-Dichlorobenzene-d4	6.85

Hit#	of	Tentative ID	MW	MolForm	CAS#	Qual
1	5	Butane, 2-methoxy-2-methyl-	102	C6H14O	000994-05-8	56
2		Acetamide, N-ethyl-	87	C4H9NO	000625-50-3	9
3		N-Ethylformamide	73	C3H7NO	000627-45-2	9
4		Isopropyl 5,11-dihydroxy-3,7,11-...	314	C18H34O4	1000223-34-1	9
5		2,5-Dimethyl-4-hydroxy-3-hexanone	144	C8H16O2	000815-77-0	9



Data Path : \\74.0.250.170\SVOASRV\HPCHEM1\BNA F\DATA\BF101217\
 Data File : BF099398.D
 Acq On : 12 Oct 2017 16:50
 Operator : SJ/JU
 Sample : I5637-01
 Misc :
 ALS Vial : 3 Sample Multiplier: 1

Instrument :
 BNA_F
 ClientSampleId :
 B-18(0-10)COMP

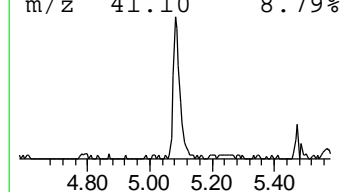
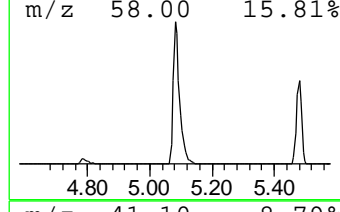
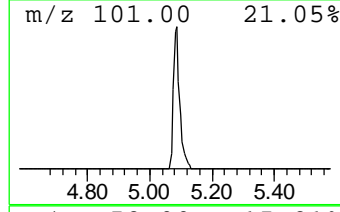
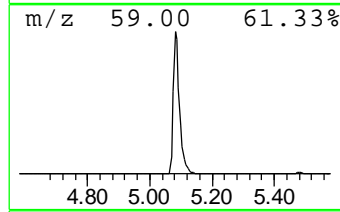
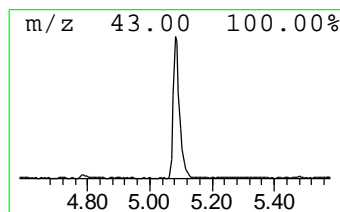
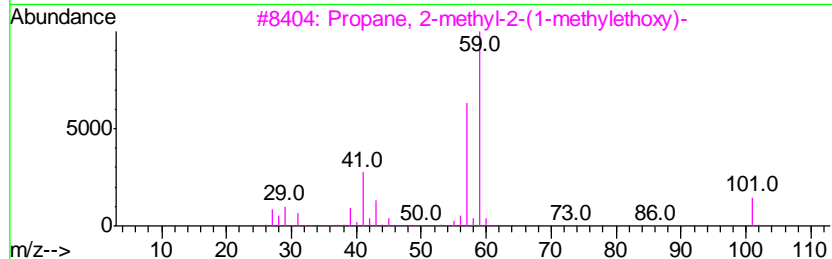
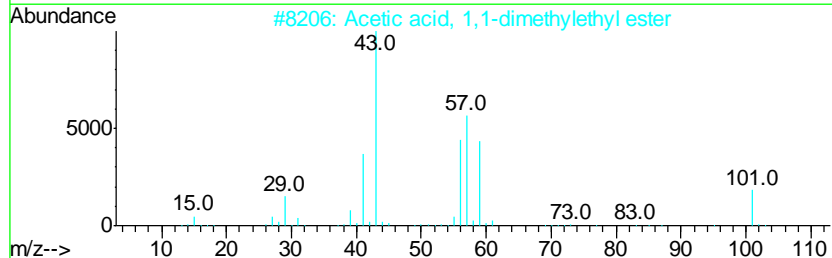
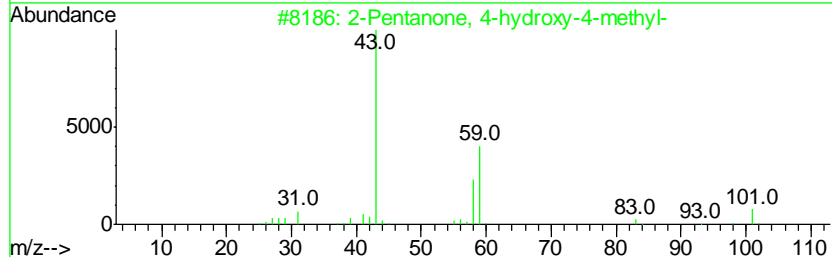
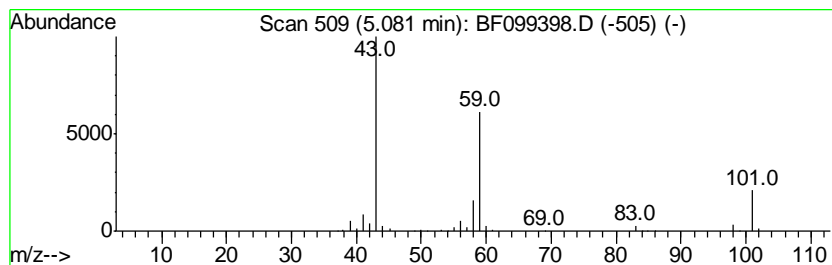
Quant Method : Z:\HPCHEM1\BNA F\METHODS\8270-BF092317.M
 Quant Title : ASP BNA STANDARDS FOR 5 POINT CALIBRATION

TIC Library : C:\DATABASE\NIST11.L
 TIC Integration Parameters: LSCINT.P

 Peak Number 2 2-Pentanone, 4-hydroxy-4-me... Concentration Rank 7

R.T.	EstConc	Area	Relative to ISTD	R.T.
5.08	16.09 ng	541907	1,4-Dichlorobenzene-d4	6.85

Hit#	of	Tentative ID	MW	MolForm	CAS#	Qual
1	5	2-Pentanone, 4-hydroxy-4-methyl-	116	C6H12O2	000123-42-2	56
2		Acetic acid, 1,1-dimethylethyl e...	116	C6H12O2	000540-88-5	50
3		Propane, 2-methyl-2-(1-methyleth...	116	C7H16O	017348-59-3	42
4		3-Hexanol	102	C6H14O	000623-37-0	28
5		Acetic acid, cyano-, 1,1-dimethy...	141	C7H11NO2	001116-98-9	23



Data Path : \\74.0.250.170\SVOASRV\HPCHEM1\BNA F\DATA\BF101217\
 Data File : BF099398.D
 Acq On : 12 Oct 2017 16:50
 Operator : SJ/JU
 Sample : I5637-01
 Misc :
 ALS Vial : 3 Sample Multiplier: 1

Instrument :
 BNA_F
 ClientSampleId :
 B-18(0-10)COMP

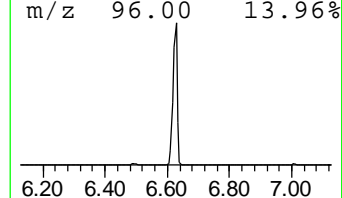
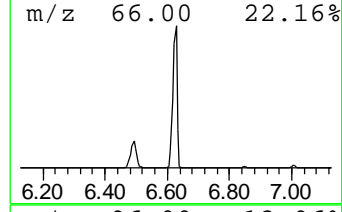
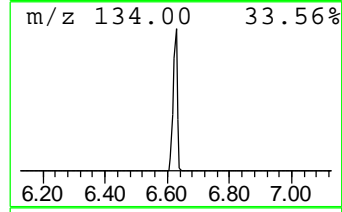
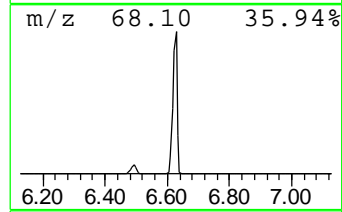
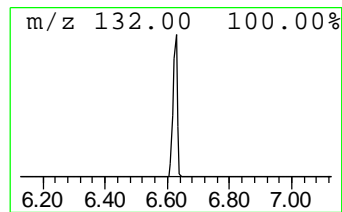
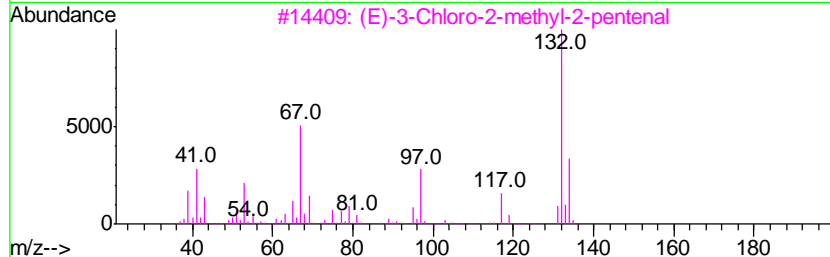
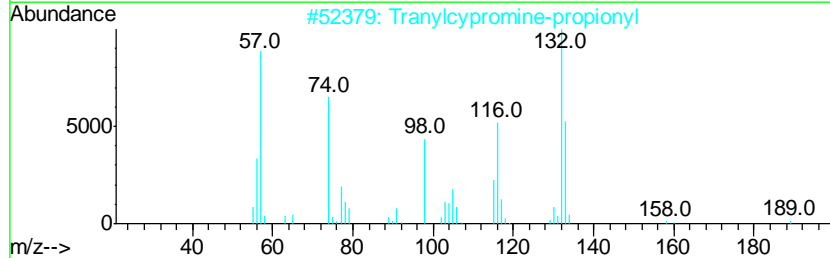
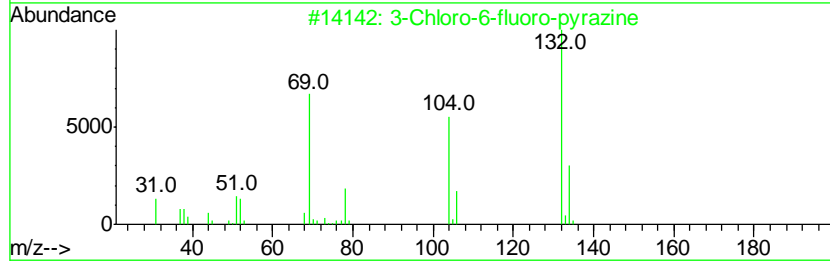
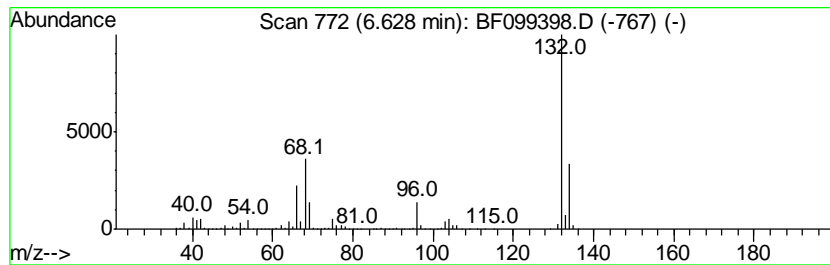
Quant Method : Z:\HPCHEM1\BNA F\METHODS\8270-BF092317.M
 Quant Title : ASP BNA STANDARDS FOR 5 POINT CALIBRATION

TIC Library : C:\DATABASE\NIST11.L
 TIC Integration Parameters: LSCINT.P

 Peak Number 3 unknown6.63 Concentration Rank 1

R.T.	EstConc	Area	Relative to ISTD	R.T.
6.63	82.68 ng	2785240	1,4-Dichlorobenzene-d4	6.85

Hit#	of	Tentative ID	MW	MolForm	CAS#	Qual
1	5	3-Chloro-6-fluoro-pyrazine	132	C4H2ClFN2	1000146-10-7	38
2		Tranlycypromine-propionyl	189	C12H15NO	1000123-86-3	12
3		(E)-3-Chloro-2-methyl-2-pentenal	132	C6H9ClO	031357-76-3	12
4		4-Chloro-2-fluoro-pyrimidine	132	C4H2ClFN2	051422-00-5	9
5		5-Fluoro-2-chloropyrimidine	132	C4H2ClFN2	062802-42-0	9



Data Path : \\74.0.250.170\SVOASRV\HPCHEM1\BNA F\DATA\BF101217\
 Data File : BF099398.D
 Acq On : 12 Oct 2017 16:50
 Operator : SJ/JU
 Sample : I5637-01
 Misc :
 ALS Vial : 3 Sample Multiplier: 1

Instrument :
 BNA_F
 ClientSampleId :
 B-18(0-10)COMP

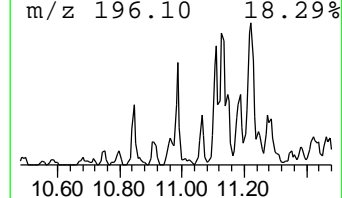
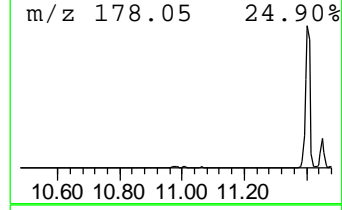
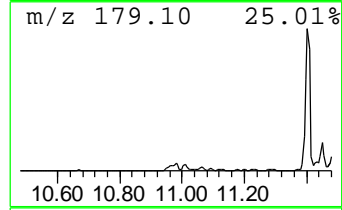
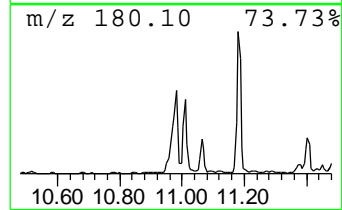
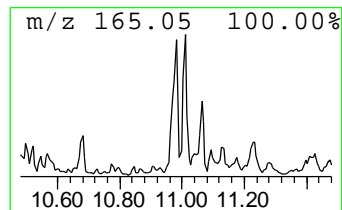
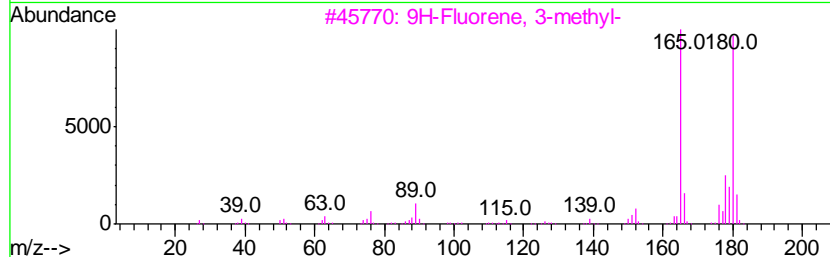
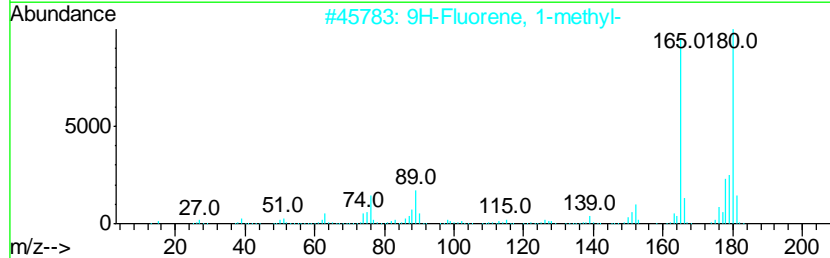
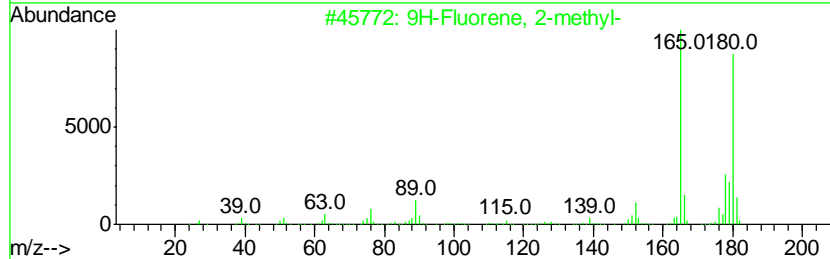
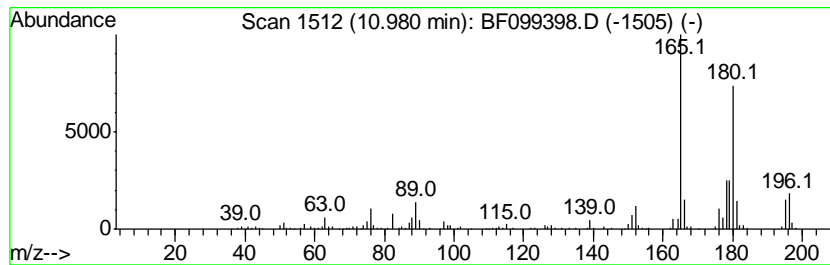
Quant Method : Z:\HPCHEM1\BNA F\METHODS\8270-BF092317.M
 Quant Title : ASP BNA STANDARDS FOR 5 POINT CALIBRATION

TIC Library : C:\DATABASE\NIST11.L
 TIC Integration Parameters: LSCINT.P

 Peak Number 5 9H-Fluorene, 2-methyl- Concentration Rank 16

R.T.	EstConc	Area	Relative to ISTD	R.T.
10.98	6.03 ng	300733	Phenanthrene-d10	11.37

Hit#	of	Tentative ID	MW	MolForm	CAS#	Qual
1	5	9H-Fluorene, 2-methyl-	180	C14H12	001430-97-3	98
2		9H-Fluorene, 1-methyl-	180	C14H12	001730-37-6	97
3		9H-Fluorene, 3-methyl-	180	C14H12	002523-39-9	96
4		9H-Fluorene, 4-methyl-	180	C14H12	001556-99-6	93
5		9H-Fluorene, 9-methyl-	180	C14H12	002523-37-7	93



Data Path : \\74.0.250.170\SVOASRV\HPCHEM1\BNA F\DATA\BF101217\
 Data File : BF099398.D
 Acq On : 12 Oct 2017 16:50
 Operator : SJ/JU
 Sample : I5637-01
 Misc :
 ALS Vial : 3 Sample Multiplier: 1

Instrument :
 BNA_F
 ClientSampleID :
 B-18(0-10)COMP

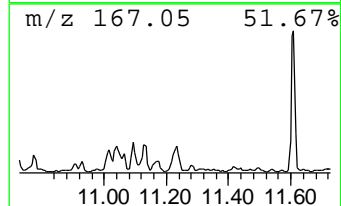
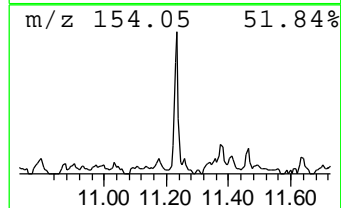
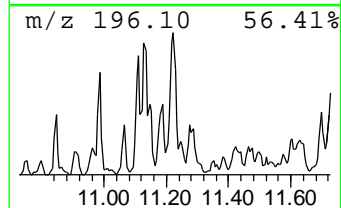
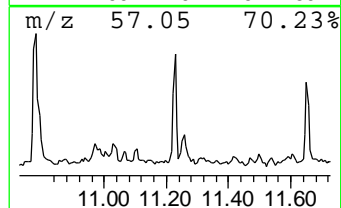
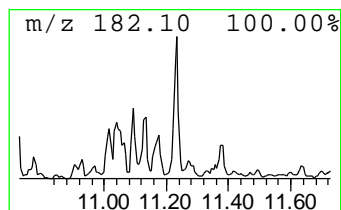
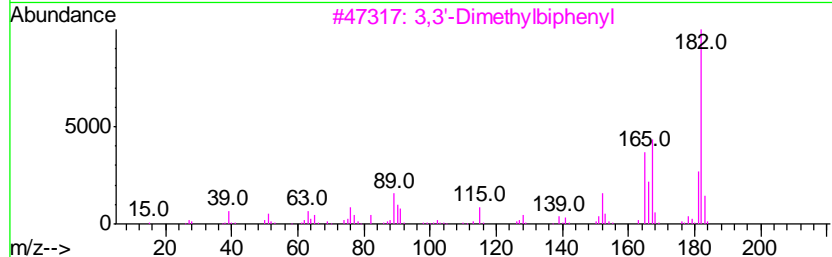
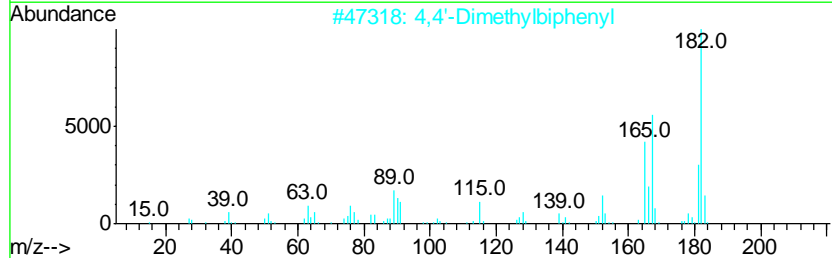
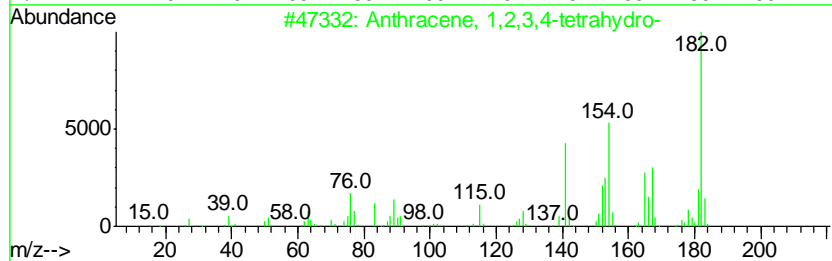
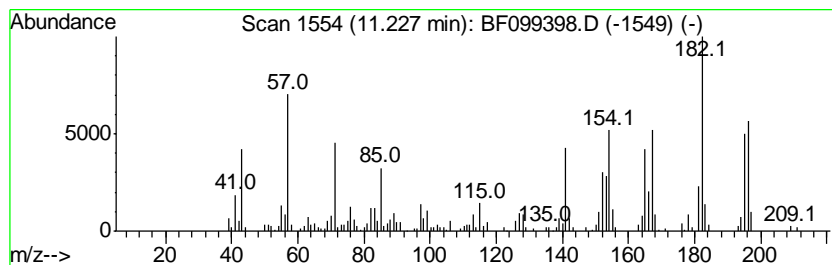
Quant Method : Z:\HPCHEM1\BNA F\METHODS\8270-BF092317.M
 Quant Title : ASP BNA STANDARDS FOR 5 POINT CALIBRATION

TIC Library : C:\DATABASE\NIST11.L
 TIC Integration Parameters: LSCINT.P

 Peak Number 6 Anthracene, 1,2,3,4-tetrahy... Concentration Rank 19

R.T.	EstConc	Area	Relative to ISTD	R.T.
11.23	5.42 ng	270466	Phenanthrene-d10	11.37

Hit#	of	Tentative ID	MW	MolForm	CAS#	Qual
1	5	Anthracene, 1,2,3,4-tetrahydro-	182	C14H14	002141-42-6	83
2		4,4'-Dimethylbiphenyl	182	C14H14	000613-33-2	55
3		3,3'-Dimethylbiphenyl	182	C14H14	000612-75-9	55
4		Phenanthrene, 1,2,3,4-tetrahydro-	182	C14H14	001013-08-7	49
5		1,1'-Biphenyl, 3,4'-dimethyl-	182	C14H14	007383-90-6	45



Data Path : \\74.0.250.170\SVOASRV\HPCHEM1\BNA F\DATA\BF101217\
 Data File : BF099398.D
 Acq On : 12 Oct 2017 16:50
 Operator : SJ/JU
 Sample : I5637-01
 Misc :
 ALS Vial : 3 Sample Multiplier: 1

Instrument :
 BNA_F
 ClientSampleId :
 B-18(0-10)COMP

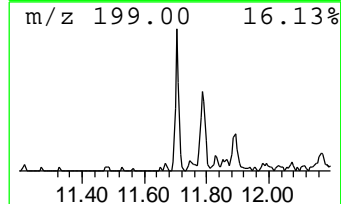
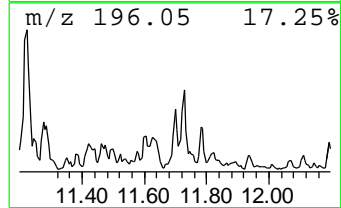
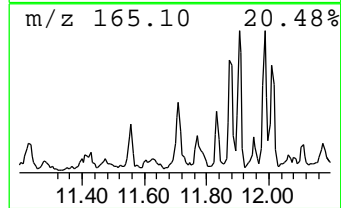
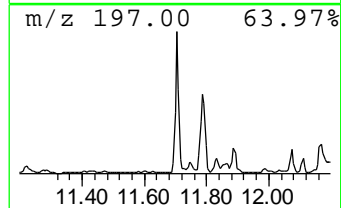
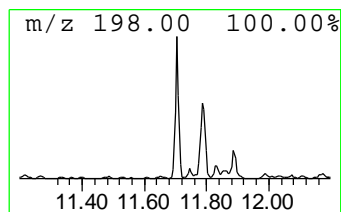
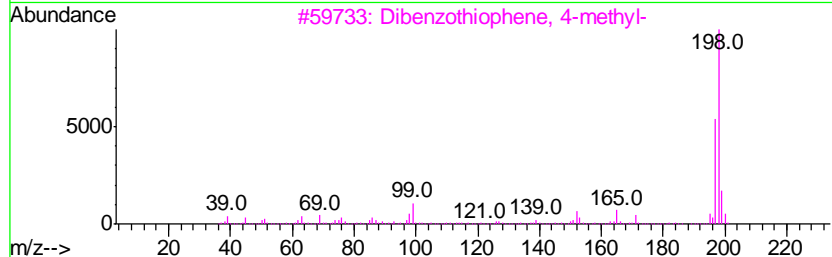
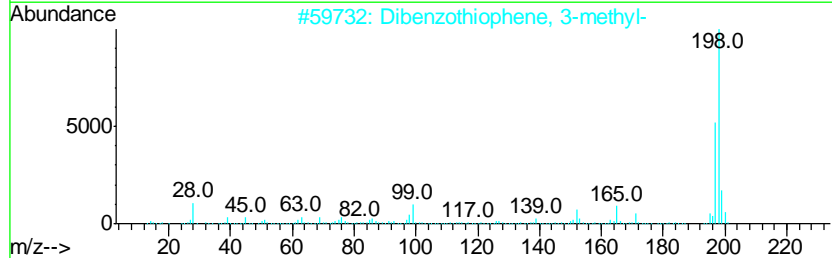
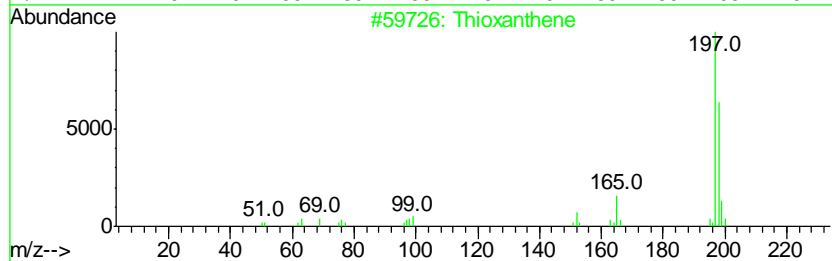
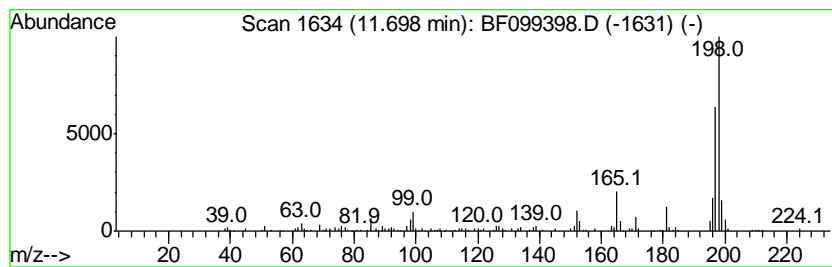
Quant Method : Z:\HPCHEM1\BNA F\METHODS\8270-BF092317.M
 Quant Title : ASP BNA STANDARDS FOR 5 POINT CALIBRATION

TIC Library : C:\DATABASE\NIST11.L
 TIC Integration Parameters: LSCINT.P

 Peak Number 7 Thioxanthene Concentration Rank 15

R.T.	EstConc	Area	Relative to ISTD	R.T.
11.70	6.16 ng	307110	Phenanthrene-d10	11.37

Hit#	of	Tentative ID	MW	MolForm	CAS#	Qual
1	5	Thioxanthene	198	C13H10S	000261-31-4	93
2		Dibenzothiophene, 3-methyl-	198	C13H10S	016587-52-3	93
3		Dibenzothiophene, 4-methyl-	198	C13H10S	007372-88-5	92
4		1-Methyldibenzothiophene	198	C13H10S	031317-07-4	90
5		Benzene, 1,1'-(1-fluoro-1,2-ethe...	198	C14H11F	000671-19-2	72



Data Path : \\74.0.250.170\SVOASRV\HPCHEM1\BNA F\DATA\BF101217\
 Data File : BF099398.D
 Acq On : 12 Oct 2017 16:50
 Operator : SJ/JU
 Sample : I5637-01
 Misc :
 ALS Vial : 3 Sample Multiplier: 1

Instrument :
 BNA_F
 ClientSampleId :
 B-18(0-10)COMP

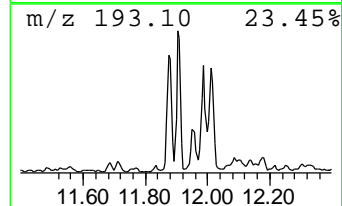
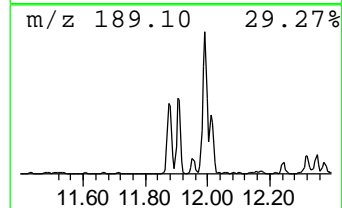
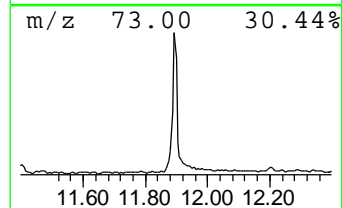
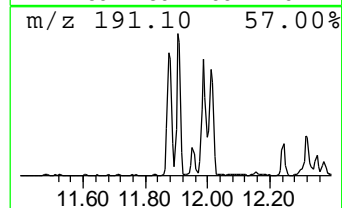
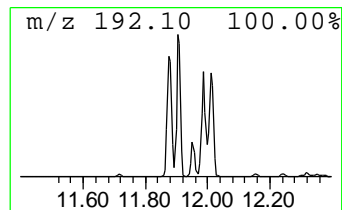
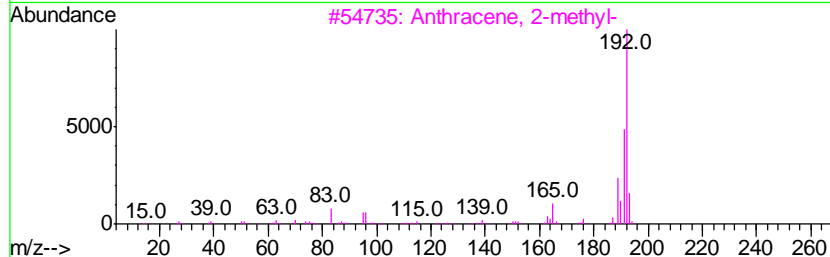
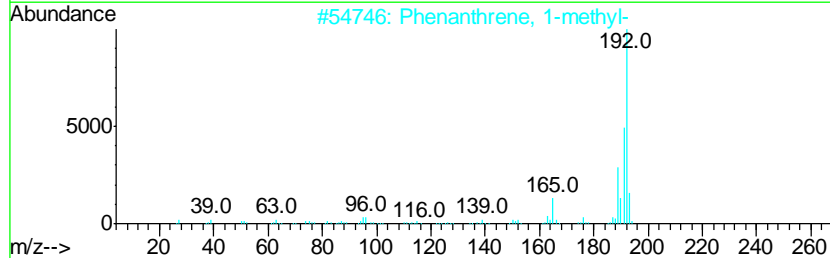
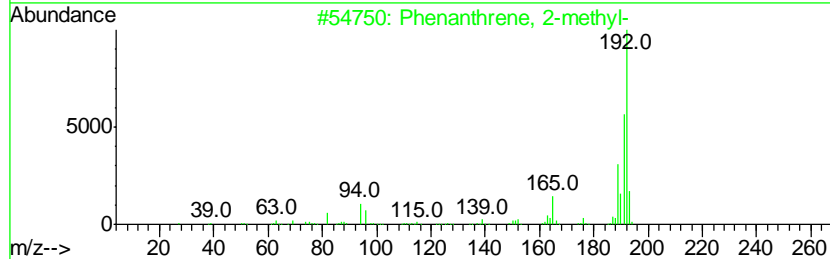
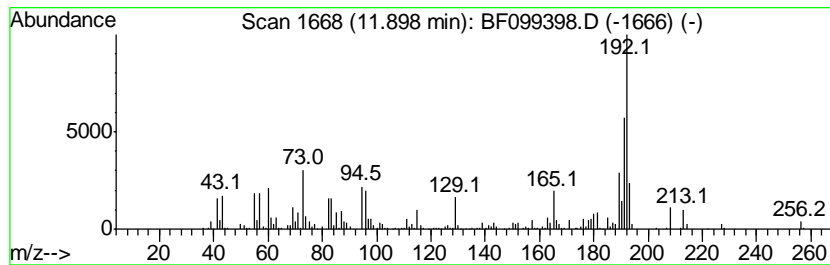
Quant Method : Z:\HPCHEM1\BNA F\METHODS\8270-BF092317.M
 Quant Title : ASP BNA STANDARDS FOR 5 POINT CALIBRATION

TIC Library : C:\DATABASE\NIST11.L
 TIC Integration Parameters: LSCINT.P

 Peak Number 9 Phenanthrene, 2-methyl- Concentration Rank 4

R.T.	EstConc	Area	Relative to ISTD	R.T.
11.90	26.08 ng	1301210	Phenanthrene-d10	11.37

Hit#	of	Tentative ID	MW	MolForm	CAS#	Qual
1	5	Phenanthrene, 2-methyl-	192	C15H12	002531-84-2	98
2		Phenanthrene, 1-methyl-	192	C15H12	000832-69-9	96
3		Anthracene, 2-methyl-	192	C15H12	000613-12-7	96
4		1H-Cyclopropa[1]phenanthrene, 1a, ...	192	C15H12	000949-41-7	96
5		Anthracene, 9-methyl-	192	C15H12	000779-02-2	95



Data Path : \\74.0.250.170\SVOASRV\HPCHEM1\BNA F\DATA\BF101217\
 Data File : BF099398.D
 Acq On : 12 Oct 2017 16:50
 Operator : SJ/JU
 Sample : I5637-01
 Misc :
 ALS Vial : 3 Sample Multiplier: 1

Instrument :
 BNA_F
 ClientSampleId :
 B-18(0-10)COMP

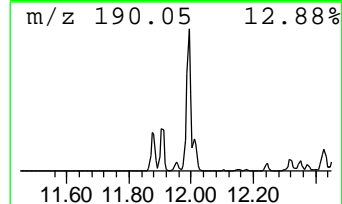
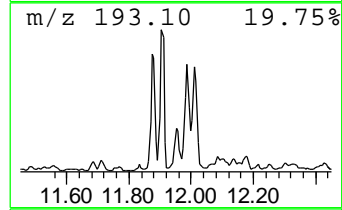
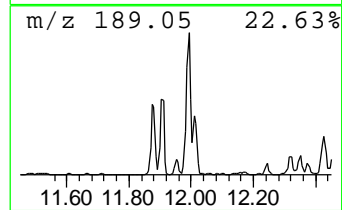
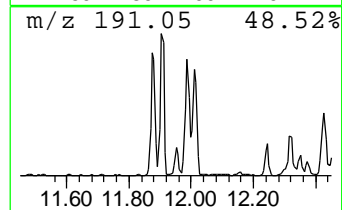
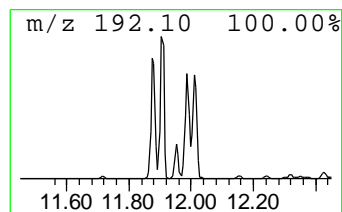
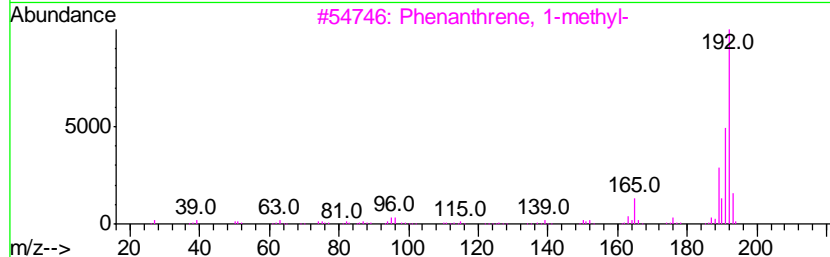
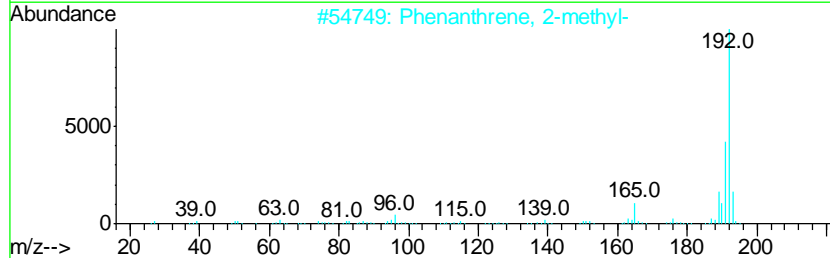
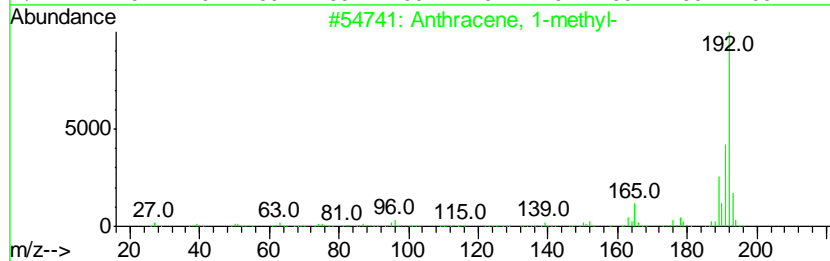
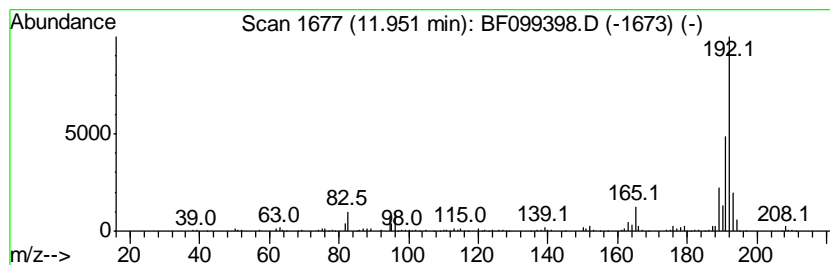
Quant Method : Z:\HPCHEM1\BNA F\METHODS\8270-BF092317.M
 Quant Title : ASP BNA STANDARDS FOR 5 POINT CALIBRATION

TIC Library : C:\DATABASE\NIST11.L
 TIC Integration Parameters: LSCINT.P

 Peak Number 10 Anthracene, 1-methyl- Concentration Rank 20

R.T.	EstConc	Area	Relative to ISTD	R.T.
11.95	5.39 ng	268830	Phenanthrene-d10	11.37

Hit#	of	Tentative ID	MW	MolForm	CAS#	Qual
1	5	Anthracene, 1-methyl-	192	C15H12	000610-48-0	97
2		Phenanthrene, 2-methyl-	192	C15H12	002531-84-2	96
3		Phenanthrene, 1-methyl-	192	C15H12	000832-69-9	96
4		Anthracene, 9-methyl-	192	C15H12	000779-02-2	95
5		1H-Cyclopropa[1]phenanthrene, 1a, ...	192	C15H12	000949-41-7	94



Data Path : \\74.0.250.170\SVOASRV\HPCHEM1\BNA F\DATA\BF101217\
 Data File : BF099398.D
 Acq On : 12 Oct 2017 16:50
 Operator : SJ/JU
 Sample : I5637-01
 Misc :
 ALS Vial : 3 Sample Multiplier: 1

Instrument :
 BNA_F
 ClientSampleID :
 B-18(0-10)COMP

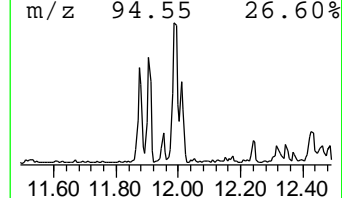
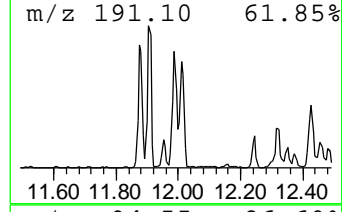
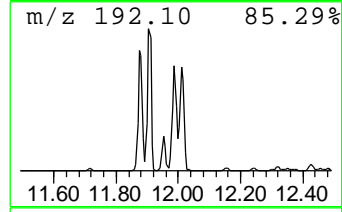
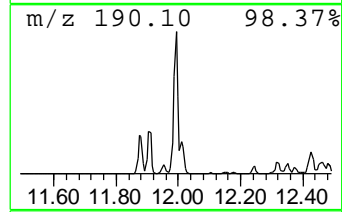
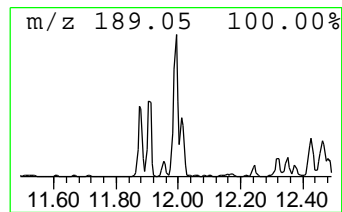
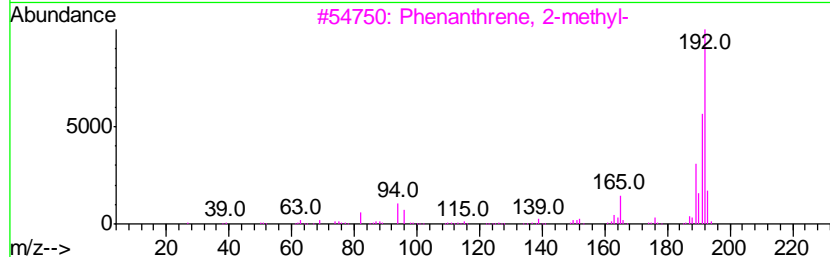
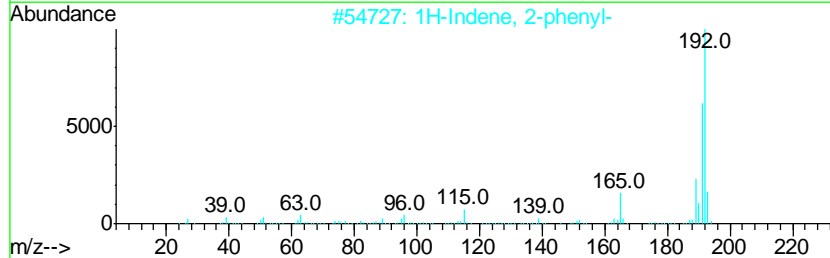
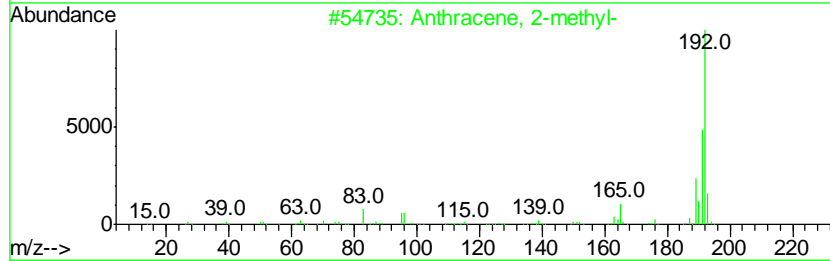
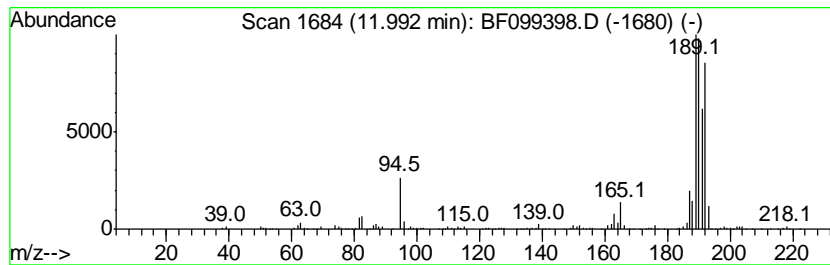
Quant Method : Z:\HPCHEM1\BNA F\METHODS\8270-BF092317.M
 Quant Title : ASP BNA STANDARDS FOR 5 POINT CALIBRATION

TIC Library : C:\DATABASE\NIST11.L
 TIC Integration Parameters: LSCINT.P

 Peak Number 11 Anthracene, 2-methyl- Concentration Rank 3

R.T.	EstConc	Area	Relative to ISTD	R.T.
11.99	26.22 ng	1308080	Phenanthrene-d10	11.37

Hit#	of	Tentative ID	MW	MolForm	CAS#	Qual
1	5	Anthracene, 2-methyl-	192	C15H12	000613-12-7	60
2		1H-Indene, 2-phenyl-	192	C15H12	004505-48-0	60
3		Phenanthrene, 2-methyl-	192	C15H12	002531-84-2	60
4		Phenanthrene, 1-methyl-	192	C15H12	000832-69-9	60
5		1H-Cyclopropa[1]phenanthrene, 1a, ...	192	C15H12	000949-41-7	60



Data Path : \\74.0.250.170\SVOASRV\HPCHEM1\BNA F\DATA\BF101217\
 Data File : BF099398.D
 Acq On : 12 Oct 2017 16:50
 Operator : SJ/JU
 Sample : I5637-01
 Misc :
 ALS Vial : 3 Sample Multiplier: 1

Instrument :
 BNA_F
 ClientSampleId :
 B-18(0-10)COMP

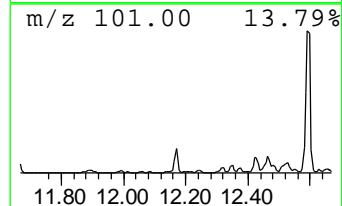
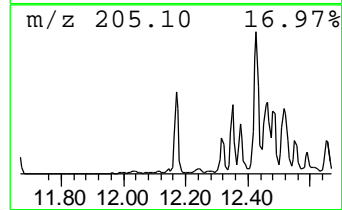
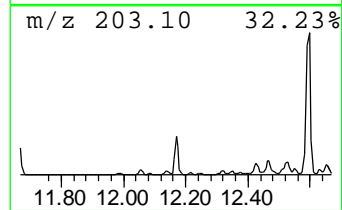
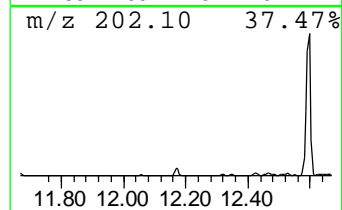
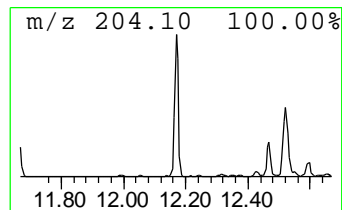
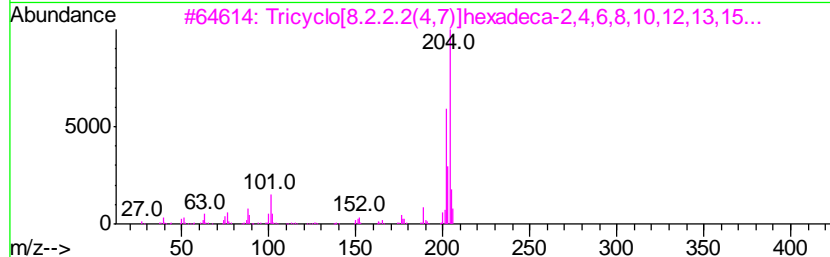
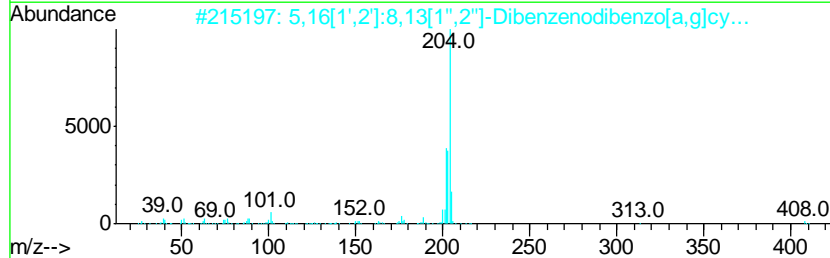
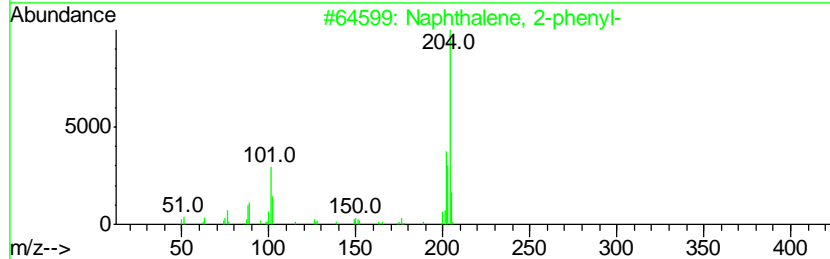
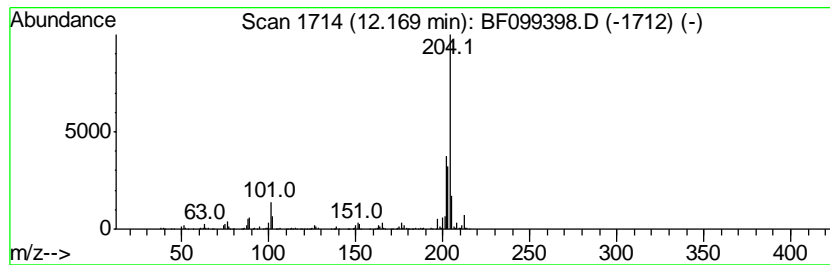
Quant Method : Z:\HPCHEM1\BNA F\METHODS\8270-BF092317.M
 Quant Title : ASP BNA STANDARDS FOR 5 POINT CALIBRATION

TIC Library : C:\DATABASE\NIST11.L
 TIC Integration Parameters: LSCINT.P

 Peak Number 13 Naphthalene, 2-phenyl- Concentration Rank 12

R.T.	EstConc	Area	Relative to ISTD	R.T.
12.17	8.62 ng	430185	Phenanthrene-d10	11.37

Hit#	of	Tentative ID	MW	MolForm	CAS#	Qual
1	5	Naphthalene, 2-phenyl-	204	C16H12	000612-94-2	90
2		5,16[1',2']:8,13[1'',2'']-Dibenz...	408	C32H24	005672-97-9	86
3		Tricyclo[8.2.2.2(4,7)]hexadeca-2...	204	C16H12	006572-60-7	72
4		Naphthalene, 1-phenyl-	204	C16H12	000605-02-7	70
5		6-Cyanophenanthridine	204	C14H8N2	002176-28-5	53



Data Path : \\74.0.250.170\SVOASRV\HPCHEM1\BNA F\DATA\BF101217\
 Data File : BF099398.D
 Acq On : 12 Oct 2017 16:50
 Operator : SJ/JU
 Sample : I5637-01
 Misc :
 ALS Vial : 3 Sample Multiplier: 1

Instrument :
 BNA_F
 ClientSampleId :
 B-18(0-10)COMP

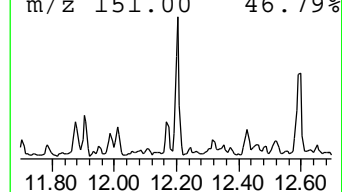
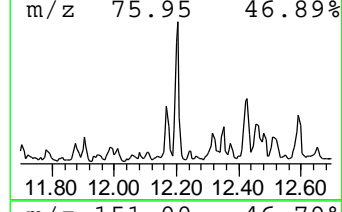
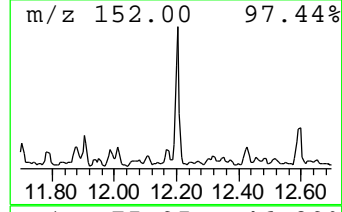
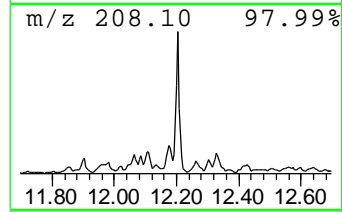
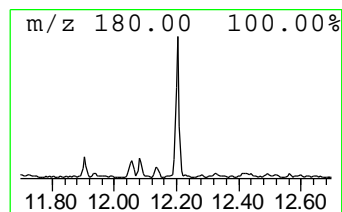
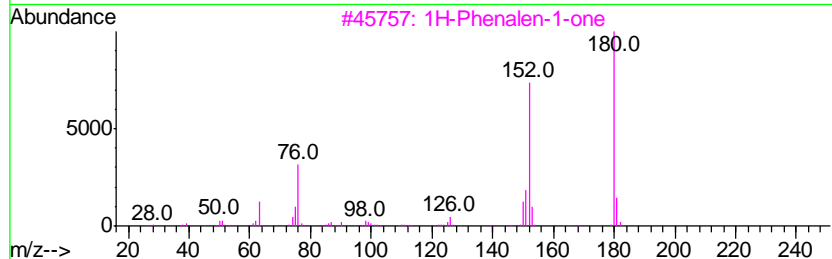
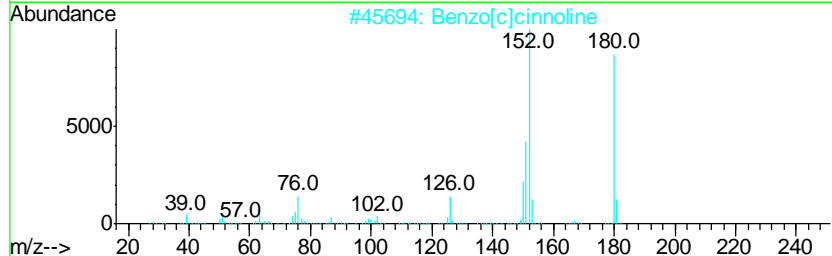
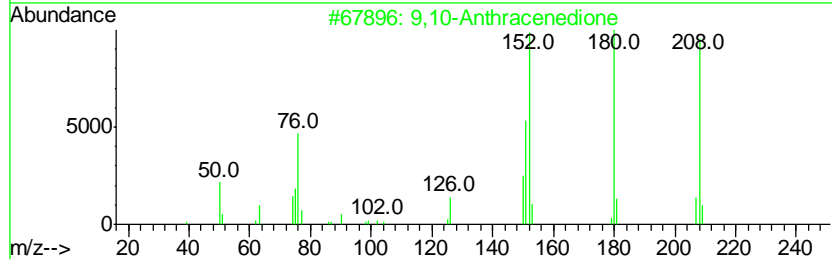
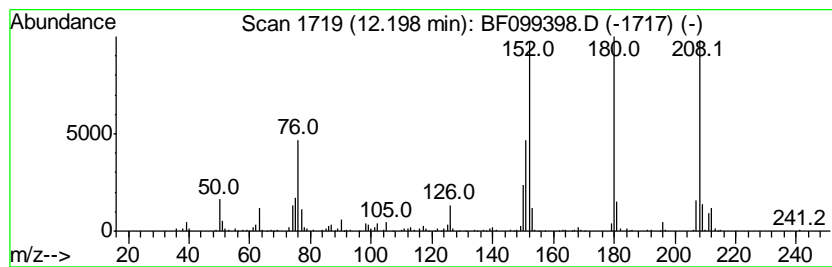
Quant Method : Z:\HPCHEM1\BNA F\METHODS\8270-BF092317.M
 Quant Title : ASP BNA STANDARDS FOR 5 POINT CALIBRATION

TIC Library : C:\DATABASE\NIST11.L
 TIC Integration Parameters: LSCINT.P

 Peak Number 14 9,10-Anthracenedione Concentration Rank 14

R.T.	EstConc	Area	Relative to ISTD	R.T.
12.20	7.76 ng	387039	Phenanthrene-d10	11.37

Hit#	of	Tentative ID	MW	MolForm	CAS#	Qual
1	5	9,10-Anthracenedione	208	C14H8O2	000084-65-1	99
2		Benzo[c]cinnoline	180	C12H8N2	000230-17-1	83
3		1H-Phenalen-1-one	180	C13H8O	000548-39-0	55
4		9,10-Phenanthrenedione	208	C14H8O2	000084-11-7	53
5		1,4-Anthracenedione	208	C14H8O2	000635-12-1	43



Data Path : \\74.0.250.170\SVOASRV\HPCHEM1\BNA F\DATA\BF101217\
 Data File : BF099398.D
 Acq On : 12 Oct 2017 16:50
 Operator : SJ/JU
 Sample : I5637-01
 Misc :
 ALS Vial : 3 Sample Multiplier: 1

Instrument :
 BNA_F
 ClientSampleID :
 B-18(0-10)COMP

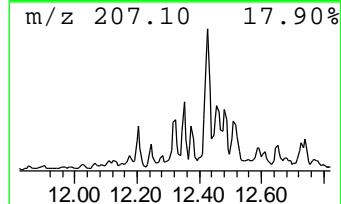
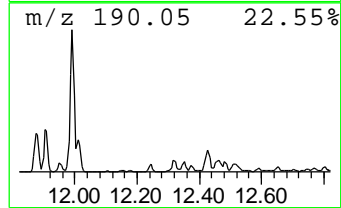
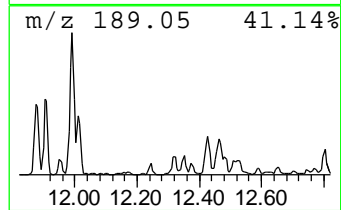
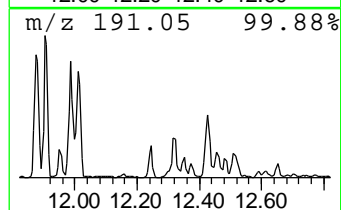
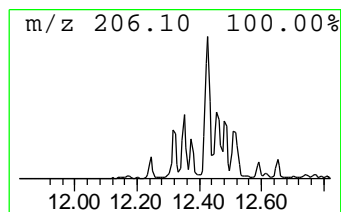
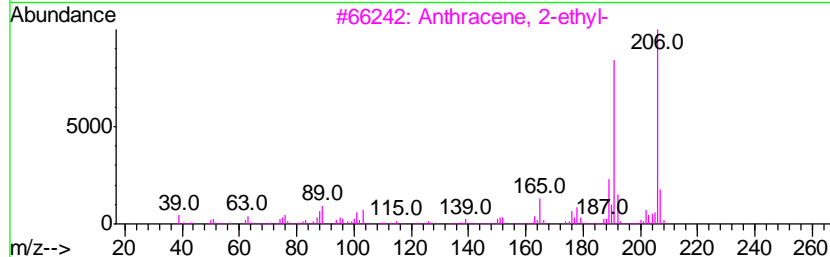
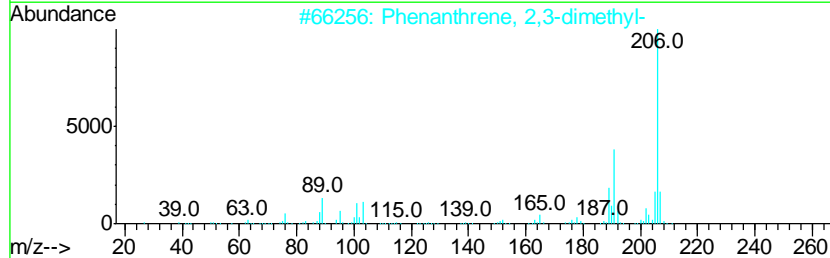
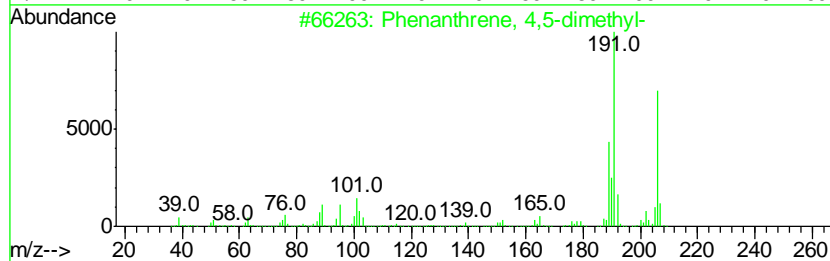
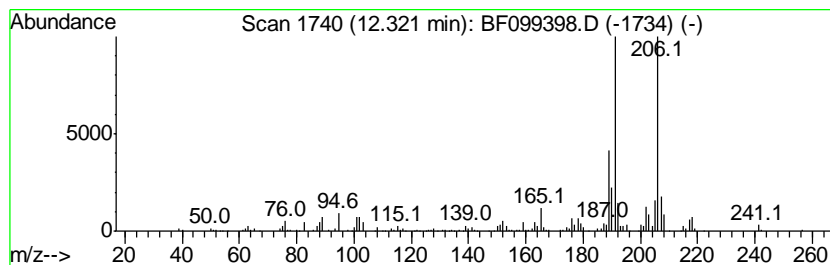
Quant Method : Z:\HPCHEM1\BNA F\METHODS\8270-BF092317.M
 Quant Title : ASP BNA STANDARDS FOR 5 POINT CALIBRATION

TIC Library : C:\DATABASE\NIST11.L
 TIC Integration Parameters: LSCINT.P

 Peak Number 15 Phenanthrene, 4,5-dimethyl- Concentration Rank 11

R.T.	EstConc	Area	Relative to ISTD	R.T.
12.32	9.26 ng	462139	Phenanthrene-d10	11.37

Hit#	of	Tentative ID	MW	MolForm	CAS#	Qual
1	5	Phenanthrene, 4,5-dimethyl-	206	C16H14	003674-69-9	95
2		Phenanthrene, 2,3-dimethyl-	206	C16H14	003674-65-5	93
3		Anthracene, 2-ethyl-	206	C16H14	052251-71-5	91
4		Anthracene, 1,4-dimethyl-	206	C16H14	000781-92-0	86
5		Phenanthrene, 9-ethyl-	206	C16H14	003674-75-7	81



Data Path : \\74.0.250.170\SVOASRV\HPCHEM1\BNA F\DATA\BF101217\
 Data File : BF099398.D
 Acq On : 12 Oct 2017 16:50
 Operator : SJ/JU
 Sample : I5637-01
 Misc :
 ALS Vial : 3 Sample Multiplier: 1

Instrument :
 BNA_F
 ClientSampleID :
 B-18(0-10)COMP

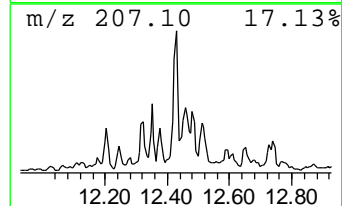
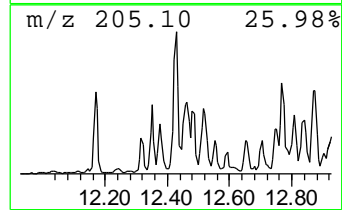
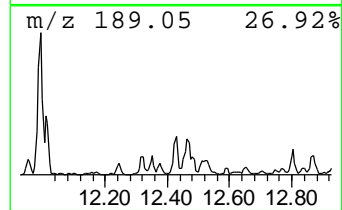
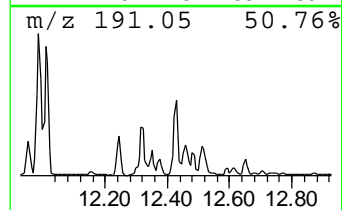
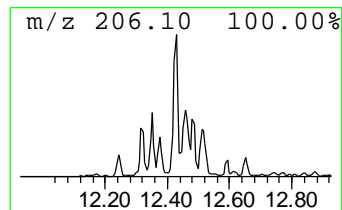
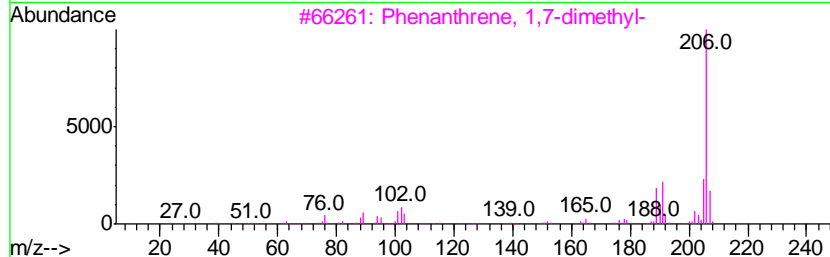
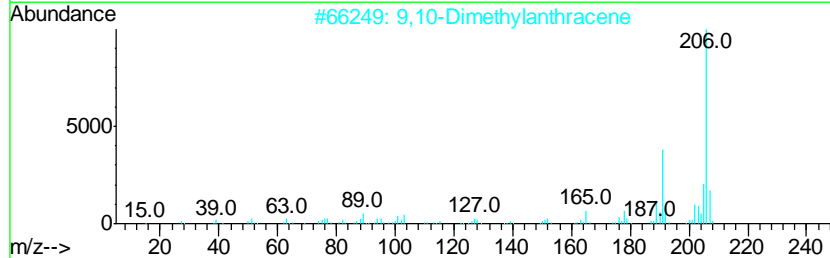
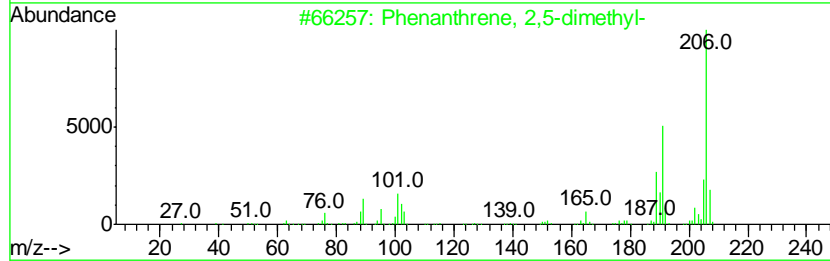
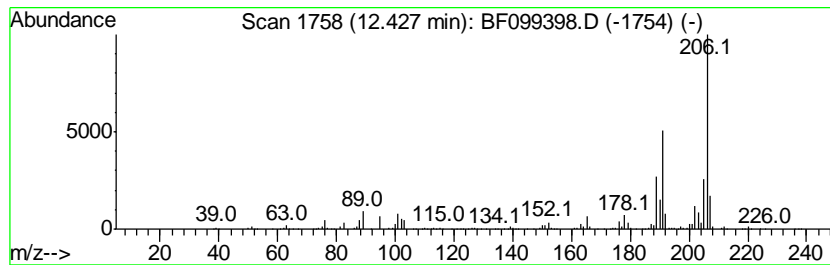
Quant Method : Z:\HPCHEM1\BNA F\METHODS\8270-BF092317.M
 Quant Title : ASP BNA STANDARDS FOR 5 POINT CALIBRATION

TIC Library : C:\DATABASE\NIST11.L
 TIC Integration Parameters: LSCINT.P

 Peak Number 16 Phenanthrene, 2,5-dimethyl- Concentration Rank 8

R.T.	EstConc	Area	Relative to ISTD	R.T.
12.43	14.82 ng	739346	Phenanthrene-d10	11.37

Hit#	of	Tentative ID	MW	MolForm	CAS#	Qual
1	5	Phenanthrene, 2,5-dimethyl-	206	C16H14	003674-66-6	97
2		9,10-Dimethylantracene	206	C16H14	000781-43-1	91
3		Phenanthrene, 1,7-dimethyl-	206	C16H14	000483-87-4	89
4		Phenanthrene, 2,3-dimethyl-	206	C16H14	003674-65-5	87
5		1,3-Diphenyl-3-methylcyclopropene	206	C16H14	086544-79-8	81



Data Path : \\74.0.250.170\SVOASRV\HPCHEM1\BNA F\DATA\BF101217\
 Data File : BF099398.D
 Acq On : 12 Oct 2017 16:50
 Operator : SJ/JU
 Sample : I5637-01
 Misc :
 ALS Vial : 3 Sample Multiplier: 1

Instrument :
 BNA_F
 ClientSampleId :
 B-18(0-10)COMP

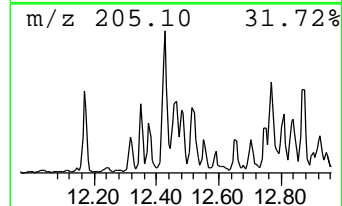
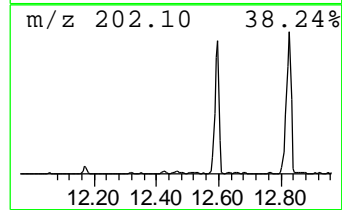
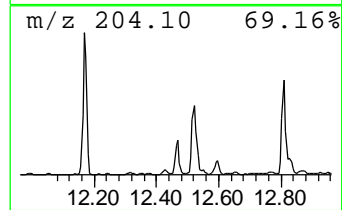
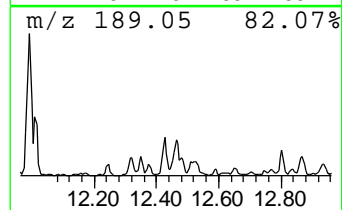
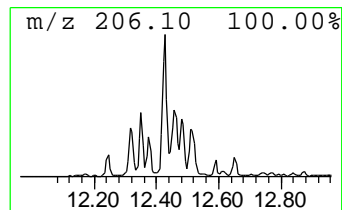
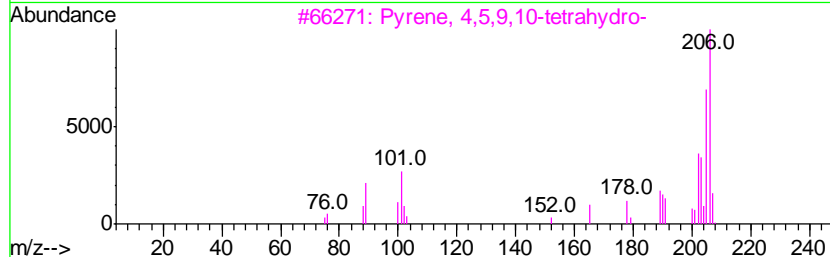
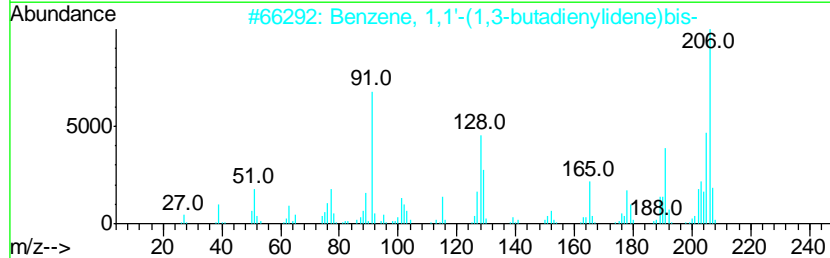
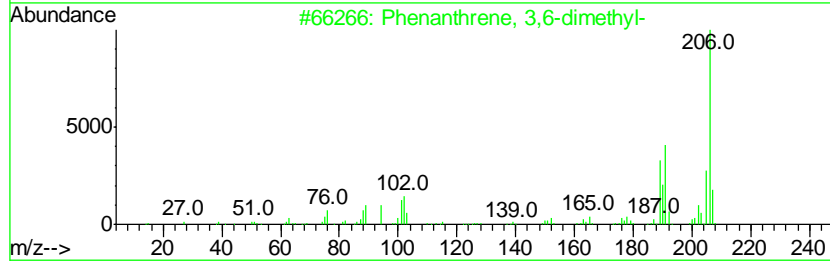
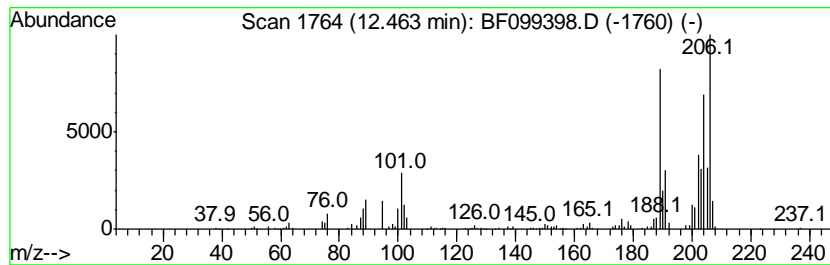
Quant Method : Z:\HPCHEM1\BNA F\METHODS\8270-BF092317.M
 Quant Title : ASP BNA STANDARDS FOR 5 POINT CALIBRATION

TIC Library : C:\DATABASE\NIST11.L
 TIC Integration Parameters: LSCINT.P

 Peak Number 17 Phenanthrene, 3,6-dimethyl- Concentration Rank 13

R.T.	EstConc	Area	Relative to ISTD	R.T.
12.46	8.57 ng	427562	Phenanthrene-d10	11.37

Hit#	of	Tentative ID	MW	MolForm	CAS#	Qual
1	5	Phenanthrene, 3,6-dimethyl-	206	C16H14	001576-67-6	64
2		Benzene, 1,1'-(1,3-butadienylidene...	206	C16H14	004165-81-5	41
3		Pyrene, 4,5,9,10-tetrahydro-	206	C16H14	000781-17-9	38
4		Phenanthrene, 2,5-dimethyl-	206	C16H14	003674-66-6	38
5		5-Methyl-2-(p-tolylimino)-1,3-th...	206	C11H14N2S	070446-87-6	35



Data Path : \\74.0.250.170\SVOASRV\HPCHEM1\BNA F\DATA\BF101217\
 Data File : BF099398.D
 Acq On : 12 Oct 2017 16:50
 Operator : SJ/JU
 Sample : I5637-01
 Misc :
 ALS Vial : 3 Sample Multiplier: 1

Instrument :
 BNA_F
 ClientSampleId :
 B-18(0-10)COMP

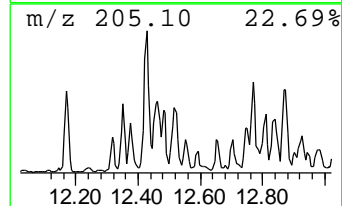
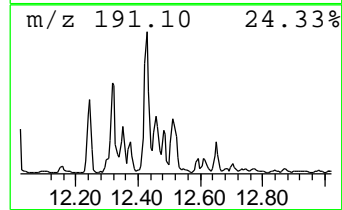
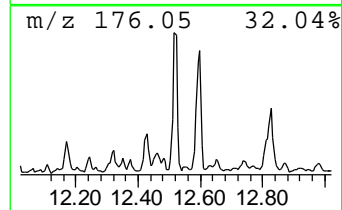
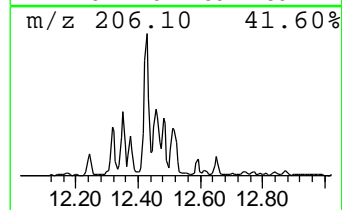
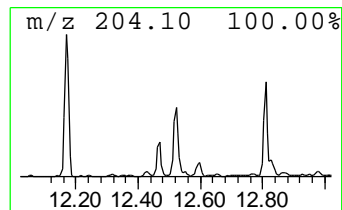
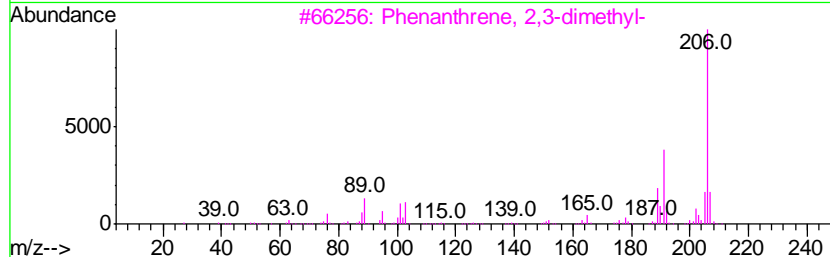
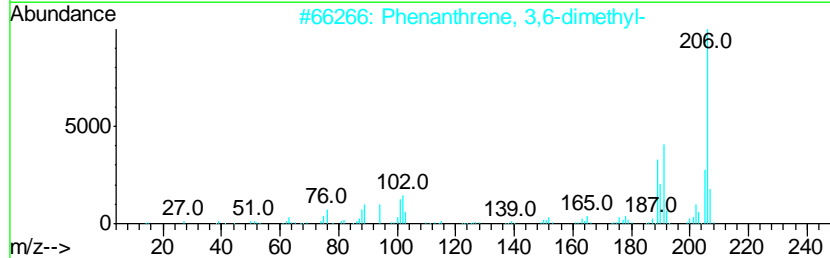
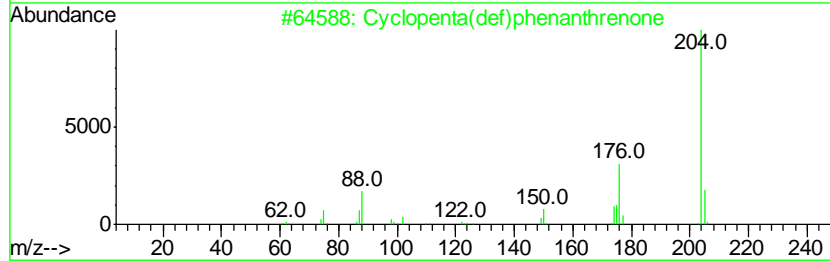
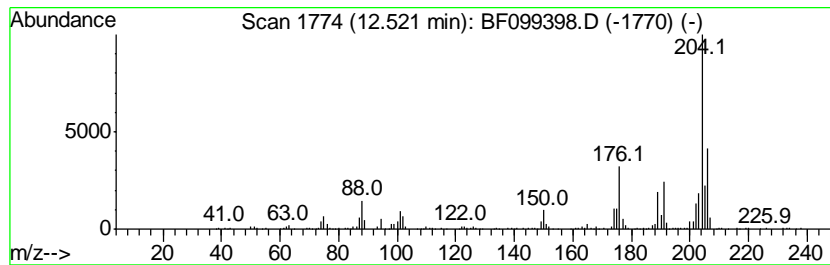
Quant Method : Z:\HPCHEM1\BNA F\METHODS\8270-BF092317.M
 Quant Title : ASP BNA STANDARDS FOR 5 POINT CALIBRATION

TIC Library : C:\DATABASE\NIST11.L
 TIC Integration Parameters: LSCINT.P

 Peak Number 18 Cyclopenta(def)phenanthrenone Concentration Rank 10

R.T.	EstConc	Area	Relative to ISTD	R.T.
12.52	10.40 ng	518648	Phenanthrene-d10	11.37

Hit#	of	Tentative ID	MW	MolForm	CAS#	Qual
1	5	Cyclopenta(def)phenanthrenone	204	C15H8O	005737-13-3	94
2		Phenanthrene, 3,6-dimethyl-	206	C16H14	001576-67-6	89
3		Phenanthrene, 2,3-dimethyl-	206	C16H14	003674-65-5	50
4		[14]Annulene, 1,6:8,13-bis(metha...	206	C16H14	085385-68-8	50
5		1H-Indene, 2-methyl-3-phenyl-	206	C16H14	035099-60-6	45



Data Path : \\74.0.250.170\SVOASRV\HPCHEM1\BNA F\DATA\BF101217\
 Data File : BF099398.D
 Acq On : 12 Oct 2017 16:50
 Operator : SJ/JU
 Sample : I5637-01
 Misc :
 ALS Vial : 3 Sample Multiplier: 1

Instrument :
 BNA_F
 ClientSampleId :
 B-18(0-10)COMP

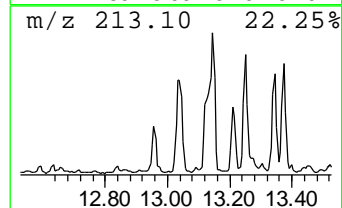
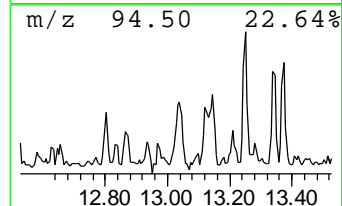
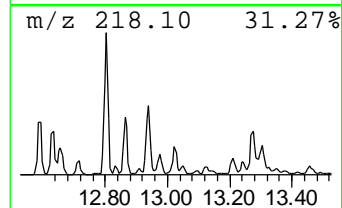
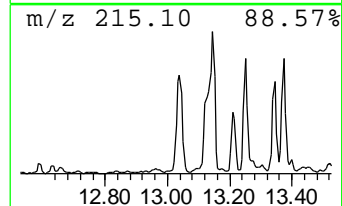
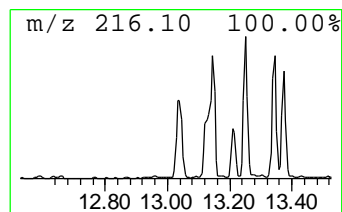
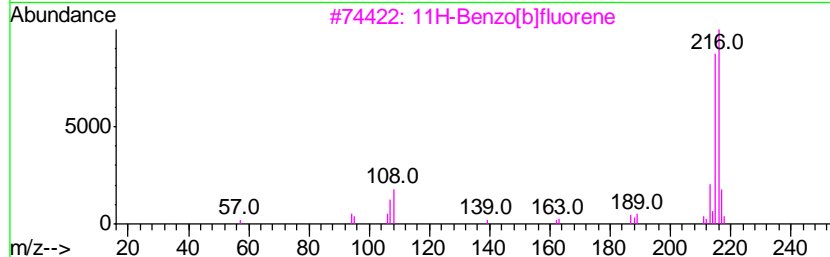
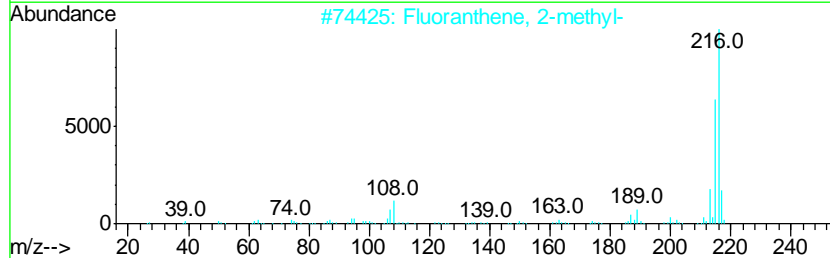
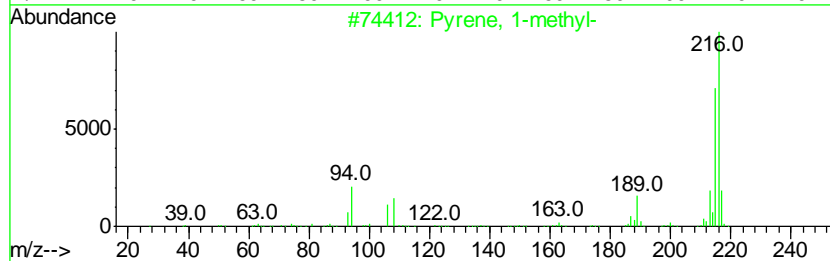
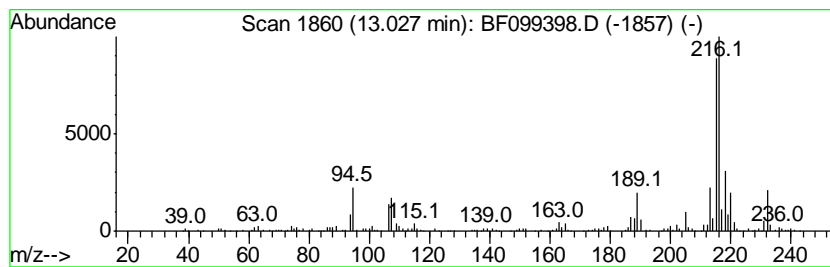
Quant Method : Z:\HPCHEM1\BNA F\METHODS\8270-BF092317.M
 Quant Title : ASP BNA STANDARDS FOR 5 POINT CALIBRATION

TIC Library : C:\DATABASE\NIST11.L
 TIC Integration Parameters: LSCINT.P

 Peak Number 19 Pyrene, 1-methyl- Concentration Rank 17

R.T.	EstConc	Area	Relative to ISTD	R.T.
13.03	5.85 ng	586214	Chrysene-d12	14.02

Hit#	of	Tentative ID	MW	MolForm	CAS#	Qual
1	5	Pyrene, 1-methyl-	216	C17H12	002381-21-7	95
2		Fluoranthene, 2-methyl-	216	C17H12	033543-31-6	92
3		11H-Benzo[b]fluorene	216	C17H12	000243-17-4	90
4		11H-Benzo[a]fluorene	216	C17H12	000238-84-6	87
5		Pyrene, 2-methyl-	216	C17H12	003442-78-2	86



Data Path : \\74.0.250.170\SVOASRV\HPCHEM1\BNA F\DATA\BF101217\
 Data File : BF099398.D
 Acq On : 12 Oct 2017 16:50
 Operator : SJ/JU
 Sample : I5637-01
 Misc :
 ALS Vial : 3 Sample Multiplier: 1

Instrument :
 BNA_F
 ClientSampleID :
 B-18(0-10)COMP

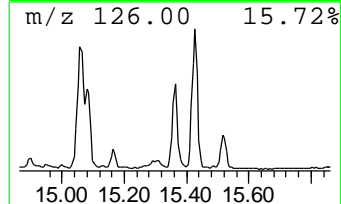
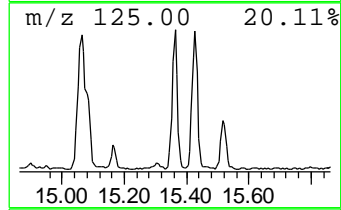
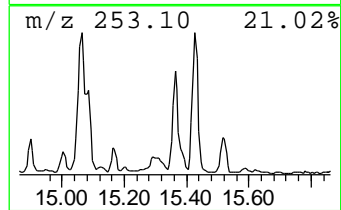
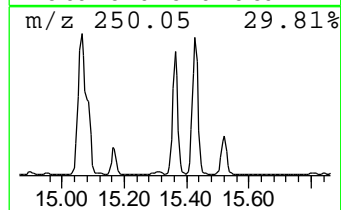
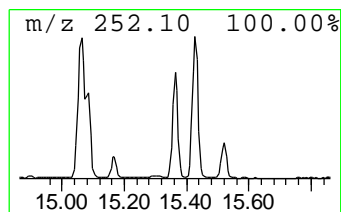
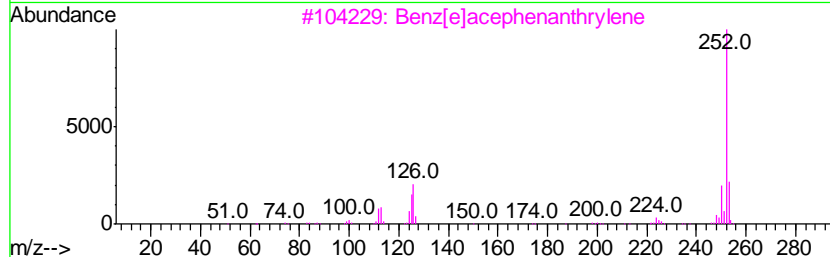
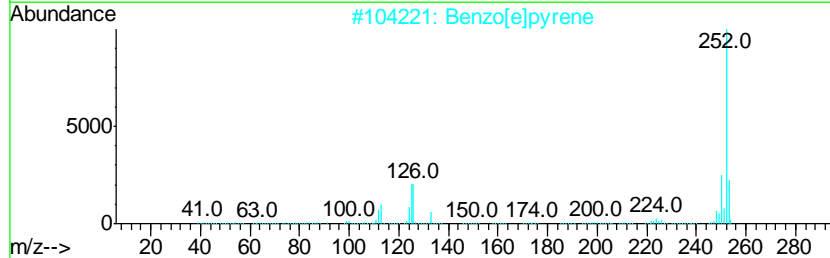
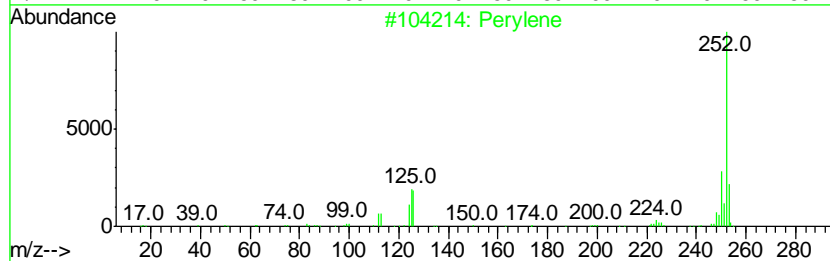
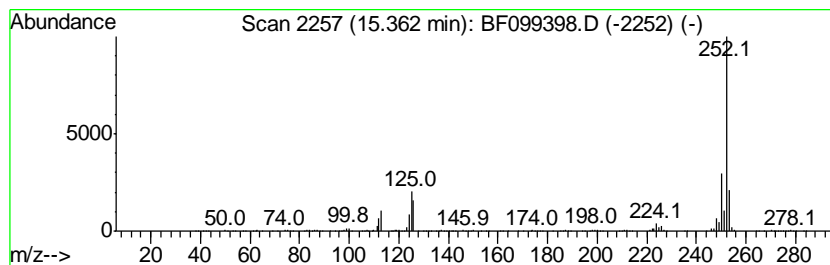
Quant Method : Z:\HPCHEM1\BNA F\METHODS\8270-BF092317.M
 Quant Title : ASP BNA STANDARDS FOR 5 POINT CALIBRATION

TIC Library : C:\DATABASE\NIST11.L
 TIC Integration Parameters: LSCINT.P

 Peak Number 20 Perylene Concentration Rank 5

R.T.	EstConc	Area	Relative to ISTD	R.T.
15.36	23.45 ng	738986	Perylene-d12	15.49

Hit#	of	Tentative ID	MW	MolForm	CAS#	Qual
1	5	Perylene	252	C20H12	000198-55-0	99
2		Benzo[e]pyrene	252	C20H12	000192-97-2	98
3		Benz[e]acephenanthrylene	252	C20H12	000205-99-2	96
4		Benzo[i]fluoranthene	252	C20H12	000205-82-3	96
5		Benzo[k]fluoranthene	252	C20H12	000207-08-9	93



Data Path : \\74.0.250.170\SVOASRV\HPCHEM1\BNA_F\DATA\BF101217\
 Data File : BF099398.D
 Acq On : 12 Oct 2017 16:50
 Operator : SJ/JU
 Sample : I5637-01
 Misc :
 ALS Vial : 3 Sample Multiplier: 1

Instrument :
 BNA_F
 ClientSampleId :
 B-18(0-10)COMP

Quant Method : Z:\HPCHEM1\BNA_F\METHODS\8270-BF092317.M
 Quant Title : ASP BNA STANDARDS FOR 5 POINT CALIBRATION

TIC Library : C:\DATABASE\NIST11.L
 TIC Integration Parameters: LSCINT.P

TIC Top Hit name	RT	EstConc	Units	Response	--Internal Standard--			
					#	RT	Resp	Conc
Butane, 2-methoxy...	2.14	5.5	ng	184410	1	6.85	673728	20.0
2-Pentanone, 4-hy...	5.08	16.1	ng	541907	1	6.85	673728	20.0
unknown6.63	6.63	82.7	ng	2785240	1	6.85	673728	20.0
9H-Fluorene, 2-me...	10.98	6.0	ng	300733	4	11.37	997834	20.0
Anthracene, 1,2,3...	11.23	5.4	ng	270466	4	11.37	997834	20.0
Thioxanthene	11.70	6.2	ng	307110	4	11.37	997834	20.0
Phenanthrene, 2-m...	11.90	26.1	ng	1301210	4	11.37	997834	20.0
Anthracene, 1-met...	11.95	5.4	ng	268830	4	11.37	997834	20.0
Anthracene, 2-met...	11.99	26.2	ng	1308080	4	11.37	997834	20.0
Naphthalene, 2-ph...	12.17	8.6	ng	430185	4	11.37	997834	20.0
9,10-Anthracenedione	12.20	7.8	ng	387039	4	11.37	997834	20.0
Phenanthrene, 4,5...	12.32	9.3	ng	462139	4	11.37	997834	20.0
Phenanthrene, 2,5...	12.43	14.8	ng	739346	4	11.37	997834	20.0
Phenanthrene, 3,6...	12.46	8.6	ng	427562	4	11.37	997834	20.0
Cyclopenta(def)ph...	12.52	10.4	ng	518648	4	11.37	997834	20.0
Pyrene, 1-methyl-	13.03	5.8	ng	586214	5	14.02	2005580	20.0
Perylene	15.36	23.4	ng	738986	6	15.49	630283	20.0