

Data Path : Z:\svoasrv\HPCHEM1\BNA_F\Data\BF101322\
 Data File : BF130651.D
 Acq On : 13 Oct 2022 17:22
 Operator : CG\JU
 Sample : N5130-01
 Misc :
 ALS Vial : 11 Sample Multiplier: 1

Instrument :
 BNA_F
 ClientSampleId :
 557-E-1

Integration Parameters: rteint.p
 Integrator: RTE
 Smoothing : ON Filtering: 5
 Sampling : 1 Min Area: 3 % of largest Peak
 Start Thrs: 0.2 Max Peaks: 100
 Stop Thrs : 0 Peak Location: TOP

If leading or trailing edge < 100 prefer < Baseline drop else tangent >
 Peak separation: 5

Method : Z:\svoasrv\HPCHEM1\BNA_F\Methods\8270-BF101122.M
 Title : ASP BNA STANDARDS FOR 5 POINT CALIBRATION

Signal : TIC: BF130651.D\data.ms

peak #	R.T. min	first scan	max scan	last scan	PK TY	peak height	corr. area	corr. % max.	% of total
1	4.752	450	453	465	rVB	152041	191119	5.85%	1.144%
2	5.187	524	527	550	rBV	1113838	1081018	33.10%	6.473%
3	6.228	701	704	719	rBV	717540	674027	20.64%	4.036%
4	6.587	761	765	772	rBV	550218	466782	14.29%	2.795%
5	7.157	857	862	865	rBV	1615923	1608174	49.25%	9.630%
6	7.787	966	969	979	rBV	233214	297239	9.10%	1.780%
7	7.869	979	983	988	rVB	749426	633881	19.41%	3.796%
8	8.945	1161	1166	1169	rBV	3501571	3265582	100.00%	19.555%
9	9.069	1183	1187	1205	rVB	129566	135009	4.13%	0.808%
10	9.345	1230	1234	1237	rBV	1112260	856738	26.24%	5.130%
11	9.616	1276	1280	1283	rBV	892283	718386	22.00%	4.302%
12	10.404	1410	1414	1417	rBV	2402805	2118855	64.88%	12.688%
13	11.092	1528	1531	1535	rBV	926270	731840	22.41%	4.382%
14	11.163	1540	1543	1547	rVB2	53209	46129	1.41%	0.276%
15	11.498	1595	1600	1604	rBV	55246	42247	1.29%	0.253%
16	12.286	1731	1734	1738	rVB	42321	34182	1.05%	0.205%
17	12.680	1796	1801	1804	rBV	3152205	2954779	90.48%	17.694%
18	13.722	1975	1978	1990	rVB	482236	438716	13.43%	2.627%
19	15.098	2208	2212	2222	rBV	357077	404576	12.39%	2.423%

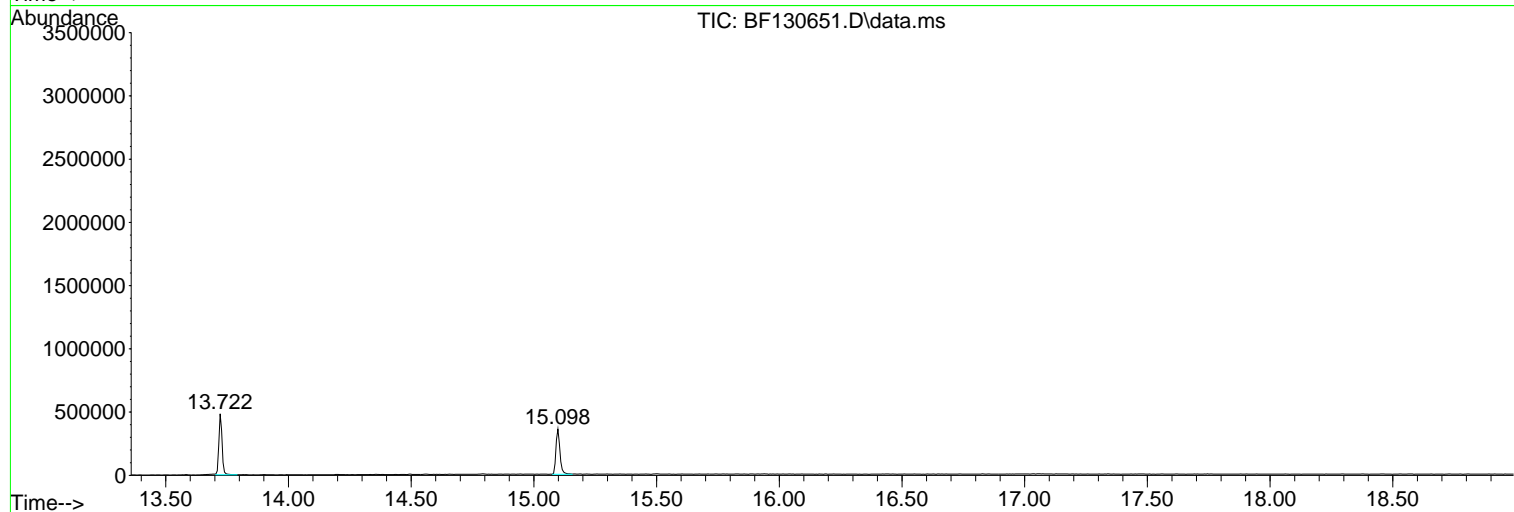
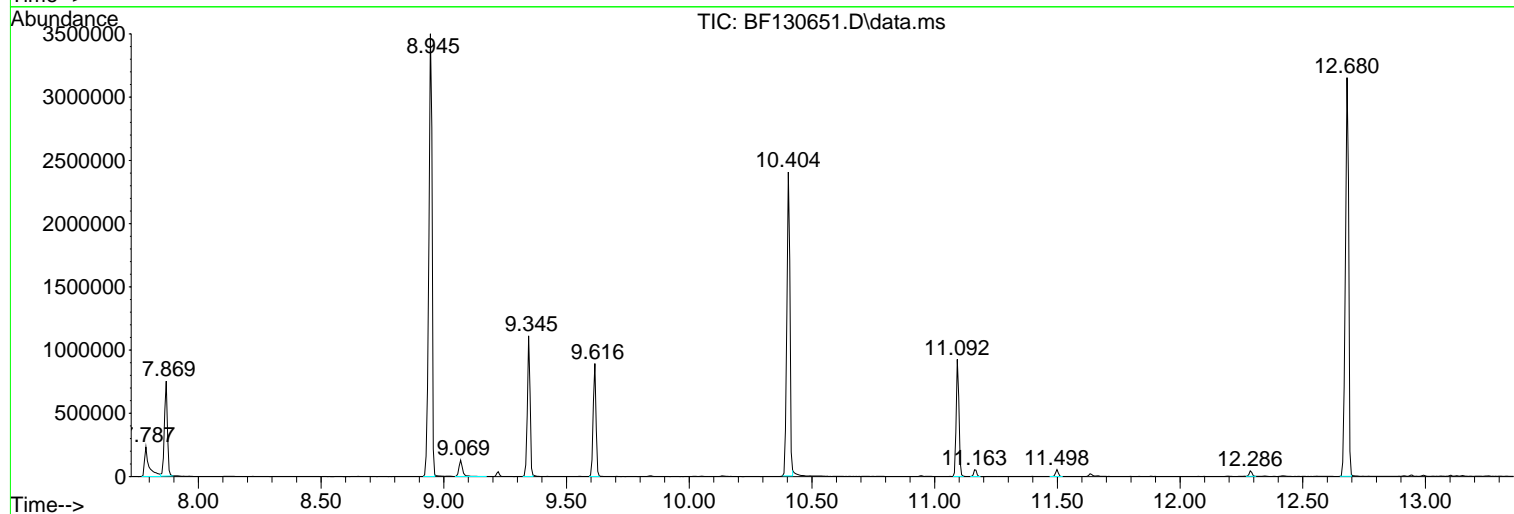
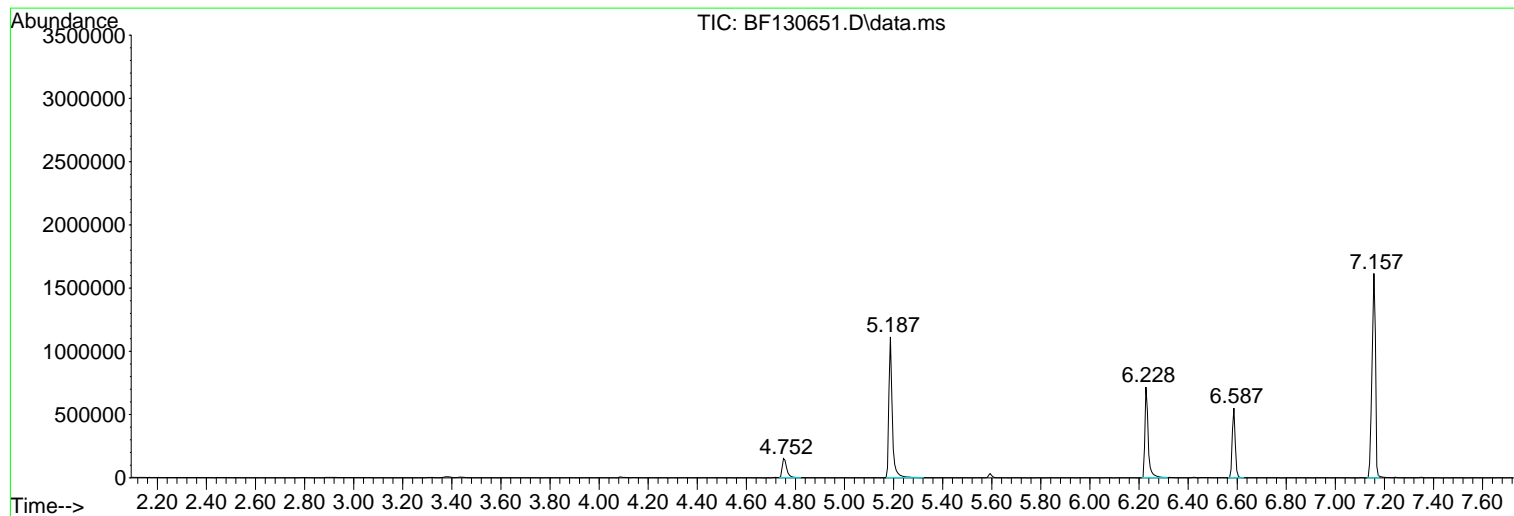
Sum of corrected areas: 16699279

Data Path : Z:\svoasrv\HPCHEM1\BNA_F\Data\BF101322\
Data File : BF130651.D
Acq On : 13 Oct 2022 17:22
Operator : CG\JU
Sample : N5130-01
Misc :
ALS Vial : 11 Sample Multiplier: 1

Instrument :
BNA_F
ClientSampleId :
557-E-1

Quant Method : Z:\svoasrv\HPCHEM1\BNA_F\Methods\8270-BF101122.M
Quant Title : ASP BNA STANDARDS FOR 5 POINT CALIBRATION

TIC Library : C:\Database\NIST20.L
TIC Integration Parameters: LSCINT.P



Data Path : Z:\svoasrv\HPCHEM1\BNA_F\Data\BF101322\
 Data File : BF130651.D
 Acq On : 13 Oct 2022 17:22
 Operator : CG\JU
 Sample : N5130-01
 Misc :
 ALS Vial : 11 Sample Multiplier: 1

Instrument :
 BNA_F
 ClientSampleId :
 557-E-1

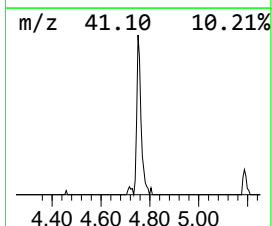
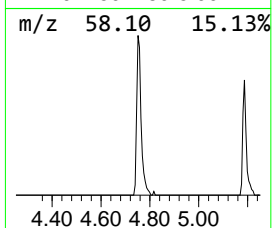
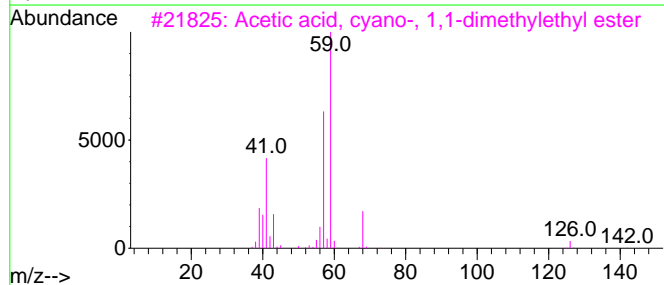
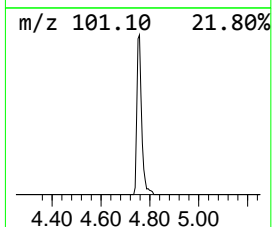
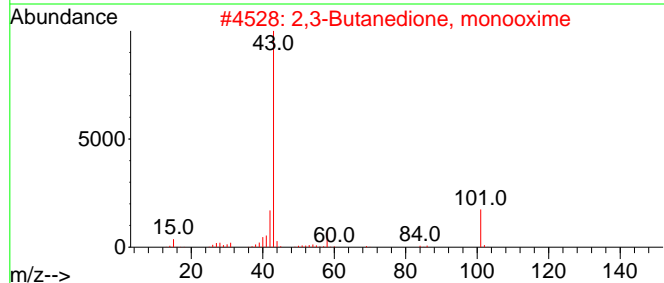
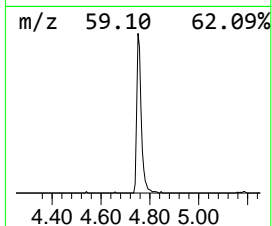
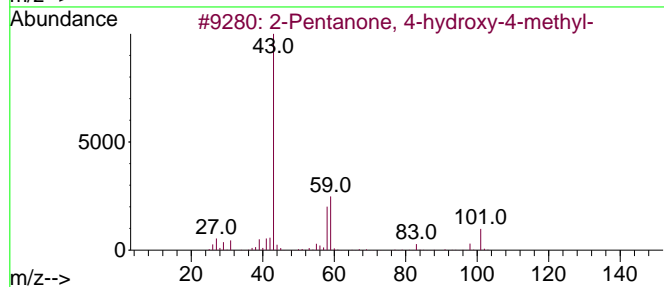
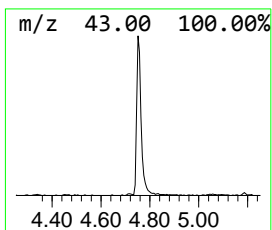
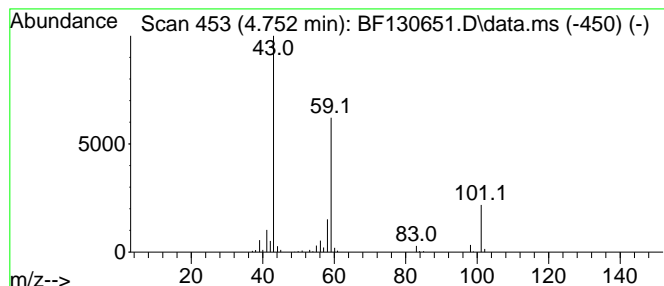
Quant Method : Z:\svoasrv\HPCHEM1\BNA_F\Methods\8270-BF101122.M
 Quant Title : ASP BNA STANDARDS FOR 5 POINT CALIBRATION

TIC Library : C:\Database\NIST20.L
 TIC Integration Parameters: LSCINT.P

 Peak Number 1 2-Pentanone, 4-hydroxy-4-me... Concentration Rank 2

R.T.	EstConc	Area	Relative to ISTD	R.T.
4.752	8.19 ng	191119	1,4-Dichlorobenzene-d4	6.587

Hit#	of 5	Tentative ID	MW	MolForm	CAS#	Qual
1		2-Pentanone, 4-hydroxy-4-methyl-	116	C6H12O2	000123-42-2	56
2		2,3-Butanedione, monooxime	101	C4H7NO2	000057-71-6	25
3		Acetic acid, cyano-, 1,1-dimethyl...	141	C7H11NO2	001116-98-9	23
4		1-Propen-2-ol, acetate	100	C5H8O2	000108-22-5	10
5		Butane, 1-ethoxy-	102	C6H14O	000628-81-9	9



Data Path : Z:\svoasrv\HPCHEM1\BNA_F\Data\BF101322\
 Data File : BF130651.D
 Acq On : 13 Oct 2022 17:22
 Operator : CG\JU
 Sample : N5130-01
 Misc :
 ALS Vial : 11 Sample Multiplier: 1

Instrument :
 BNA_F
 ClientSampleId :
 557-E-1

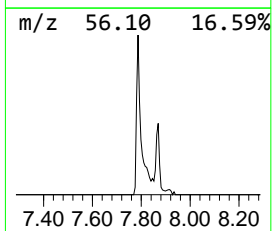
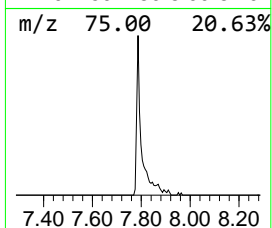
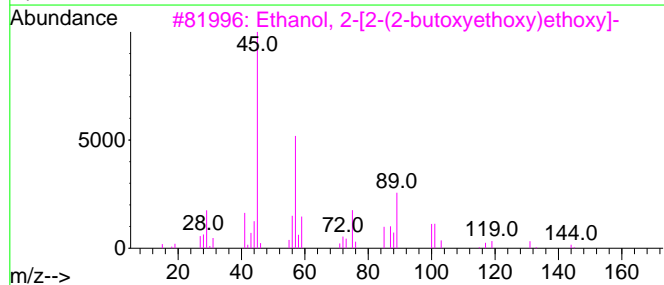
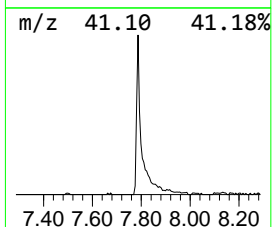
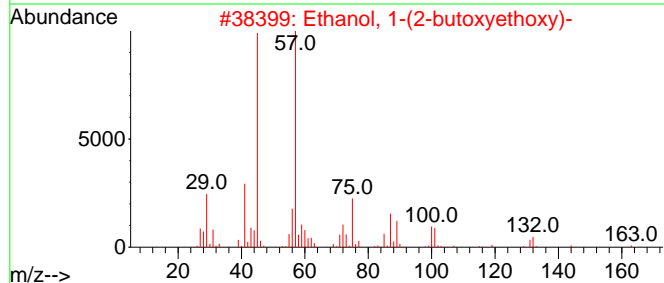
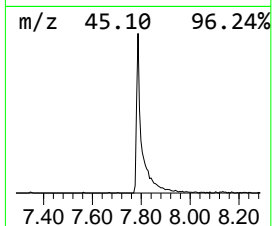
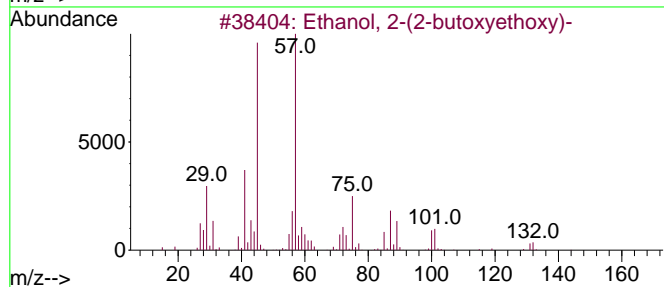
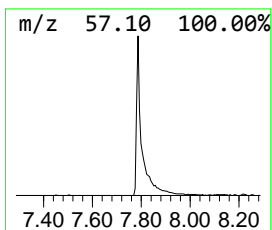
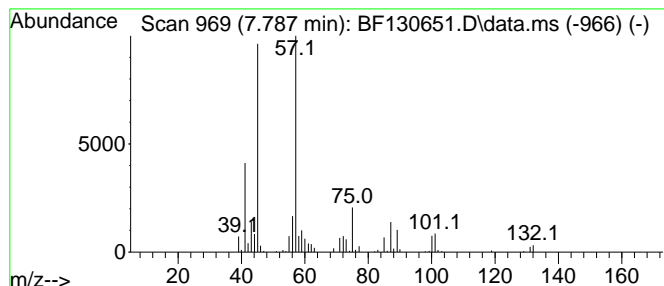
Quant Method : Z:\svoasrv\HPCHEM1\BNA_F\Methods\8270-BF101122.M
 Quant Title : ASP BNA STANDARDS FOR 5 POINT CALIBRATION

TIC Library : C:\Database\NIST20.L
 TIC Integration Parameters: LSCINT.P

 Peak Number 2 Ethanol, 2-(2-butoxyethoxy)- Concentration Rank 1

R.T.	EstConc	Area	Relative to ISTD	R.T.
7.787	9.38 ng	297239	Naphthalene-d8	7.869

Hit#	of	5	Tentative ID	MW	MolForm	CAS#	Qual
1			Ethanol, 2-(2-butoxyethoxy)-	162	C8H18O3	000112-34-5	91
2			Ethanol, 1-(2-butoxyethoxy)-	162	C8H18O3	054446-78-5	90
3			Ethanol, 2-[2-(2-butoxyethoxy)et...]	206	C10H22O4	000143-22-6	64
4			Ethanol, 2-[2-(2-methylpropoxy)e...]	162	C8H18O3	018912-80-6	64
5			Ethylene glycol monoisobutyl ether	118	C6H14O2	004439-24-1	64



Data Path : Z:\svoasrv\HPCHEM1\BNA_F\Data\BF101322\
 Data File : BF130651.D
 Acq On : 13 Oct 2022 17:22
 Operator : CG\JU
 Sample : N5130-01
 Misc :
 ALS Vial : 11 Sample Multiplier: 1

Instrument :
 BNA_F
 ClientSampleId :
 557-E-1

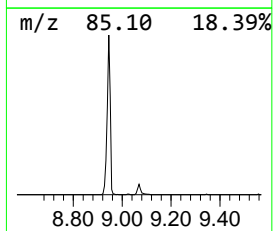
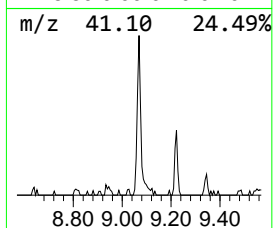
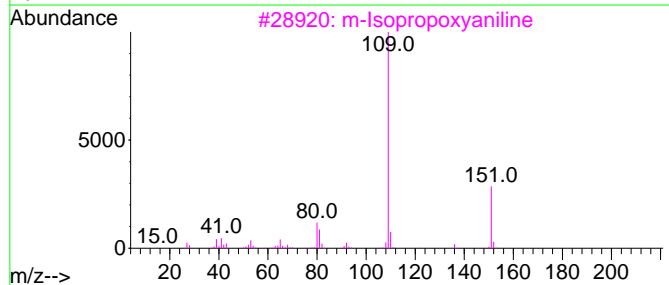
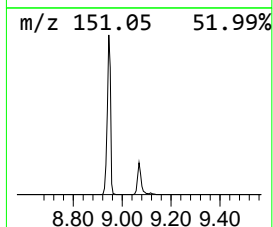
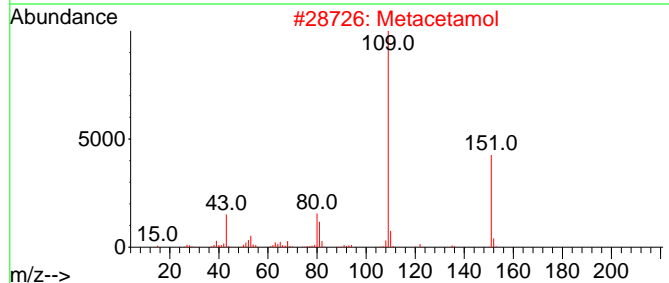
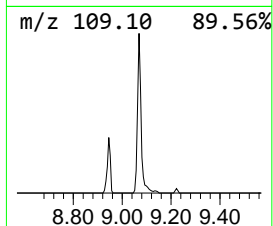
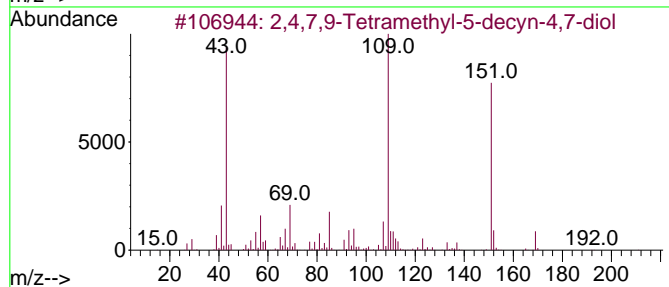
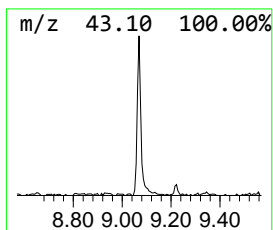
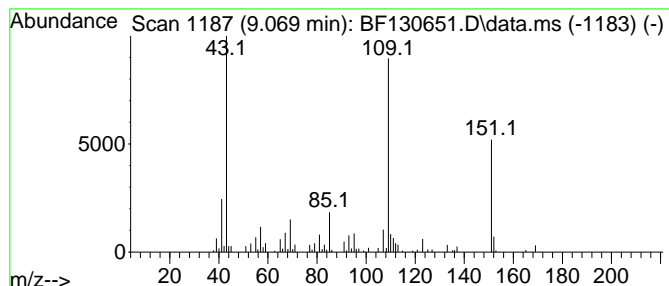
Quant Method : Z:\svoasrv\HPCHEM1\BNA_F\Methods\8270-BF101122.M
 Quant Title : ASP BNA STANDARDS FOR 5 POINT CALIBRATION

TIC Library : C:\Database\NIST20.L
 TIC Integration Parameters: LSCINT.P

 Peak Number 3 2,4,7,9-Tetramethyl-5-decyn... Concentration Rank 3

R.T.	EstConc	Area	Relative to ISTD	R.T.
9.069	3.76 ng	135009	Acenaphthene-d10	9.616

Hit#	of 5	Tentative ID	MW	MolForm	CAS#	Qual
1		2,4,7,9-Tetramethyl-5-decyn-4,7-...	226	C14H26O2	000126-86-3	91
2		Metacetamol	151	C8H9NO2	000621-42-1	59
3		m-Isopropoxyaniline	151	C9H13NO	041406-00-2	59
4		N-(4-tert-Butoxyphenyl)acetamide	207	C12H17NO2	002109-73-1	59
5		Acetaminophen	151	C8H9NO2	000103-90-2	59



Data Path : Z:\svoasrv\HPCHEM1\BNA_F\Data\BF101322\
Data File : BF130651.D
Acq On : 13 Oct 2022 17:22
Operator : CG\JU
Sample : N5130-01
Misc :
ALS Vial : 11 Sample Multiplier: 1

Instrument :
BNA_F
ClientSampleId :
557-E-1

Quant Method : Z:\svoasrv\HPCHEM1\BNA_F\Methods\8270-BF101122.M
Quant Title : ASP BNA STANDARDS FOR 5 POINT CALIBRATION

TIC Library : C:\Database\NIST20.L
TIC Integration Parameters: LSCINT.P

TIC Top Hit name	RT	EstConc	Units	Response	--Internal Standard--			
					#	RT	Resp	Conc
2-Pentanone, 4-...	4.752	8.2	ng	191119	1	6.587	466782	20.0
Ethanol, 2-(2-b...	7.787	9.4	ng	297239	2	7.869	633881	20.0
2,4,7,9-Tetrame...	9.069	3.8	ng	135009	3	9.616	718386	20.0