

Data Path : Z:\HPCHEM1\BNA F\DATA\BF101416\
 Data File : BF090582.D
 Acq On : 15 Oct 2016 3:05
 Operator : UM/SJ
 Sample : PB94073BL
 Misc :
 ALS Vial : 21 Sample Multiplier: 1

Instrument :
 BNA_F
 ClientSampleId :
 PB94073BL

Quant Time: Oct 15 04:47:42 2016
 Quant Method : Z:\HPCHEM1\BNA F\METHODS\8270-BF101316.M
 Quant Title : ASP BNA STANDARDS FOR 5 POINT CALIBRATION
 QLast Update : Fri Oct 14 12:44:45 2016
 Response via : Initial Calibration

Internal Standards	R.T.	QIon	Response	Conc	Units	Dev(Min)
1) 1,4-Dichlorobenzene-d4	6.92	152	194600	20.00	ng	0.00
21) Naphthalene-d8	8.20	136	768279	20.00	ng	-0.01
38) Acenaphthene-d10	9.96	164	400380	20.00	ng	-0.01
63) Phenanthrene-d10	11.45	188	599064	20.00	ng	-0.01
75) Chrysene-d12	14.09	240	359233	20.00	ng	-0.01
86) Perylene-d12	15.55	264	337714	20.00	ng	-0.01
System Monitoring Compounds						
5) 2-Fluorophenol	5.53	112	1721189	162.15	ng	0.00
7) Phenol-d6	6.55	99	2195130	139.17	ng	0.00
23) Nitrobenzene-d5	7.48	82	1480958	107.08	ng	-0.01
41) 2,4,6-Tribromophenol	10.76	330	471527	132.10	ng	0.00
44) 2-Fluorobiphenyl	9.29	172	2344076	96.47	ng	0.00
78) Terphenyl-d14	13.05	244	2043406	132.44	ng	0.00

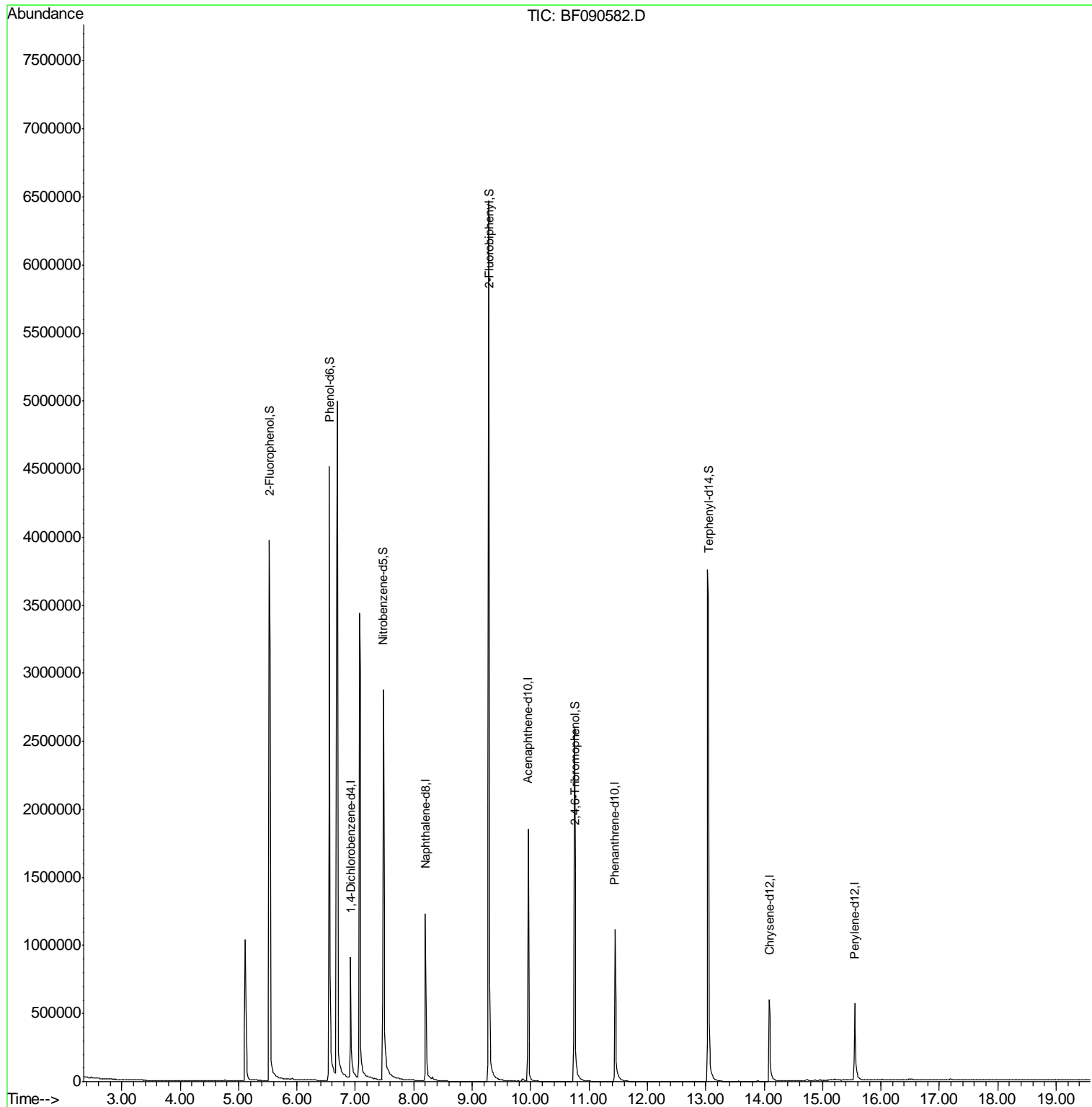
Target Compounds Qvalue

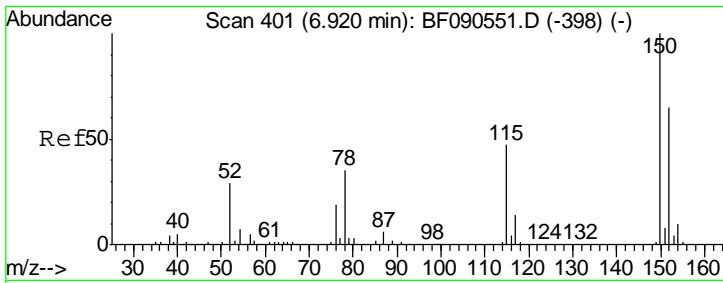
(#) = qualifier out of range (m) = manual integration (+) = signals summed

Data Path : Z:\HPCHEM1\BNA F\DATA\BF101416\
 Data File : BF090582.D
 Acq On : 15 Oct 2016 3:05
 Operator : UM/SJ
 Sample : PB94073BL
 Misc :
 ALS Vial : 21 Sample Multiplier: 1

Instrument :
 BNA_F
 ClientSampleId :
 PB94073BL

Quant Time: Oct 15 04:47:42 2016
 Quant Method : Z:\HPCHEM1\BNA F\METHODS\8270-BF101316.M
 Quant Title : ASP BNA STANDARDS FOR 5 POINT CALIBRATION
 QLast Update : Fri Oct 14 12:44:45 2016
 Response via : Initial Calibration

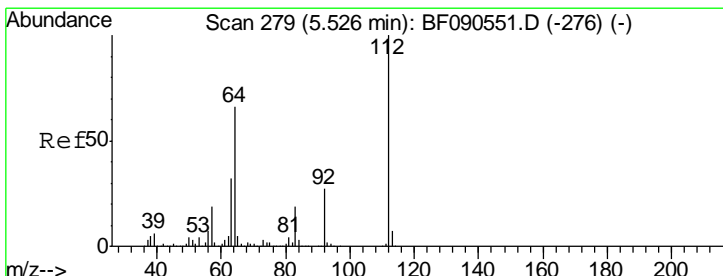
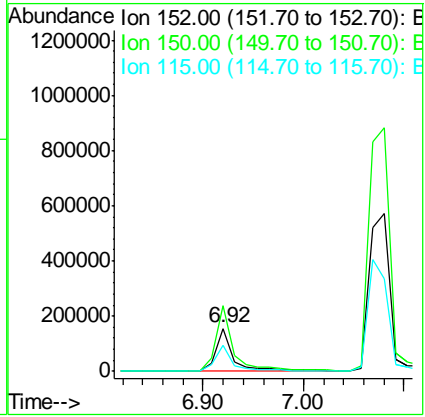
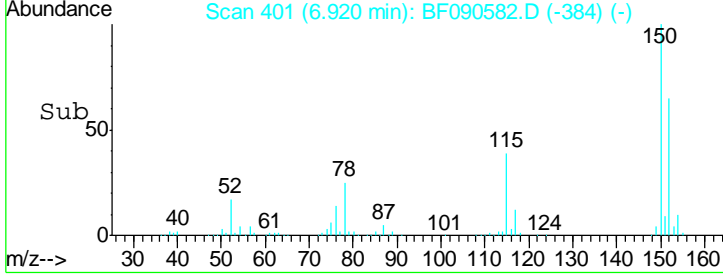
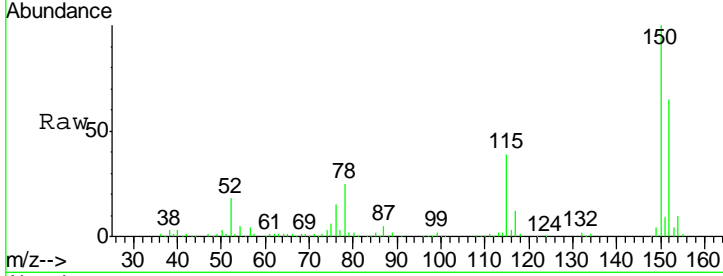




#1
 1,4-Dichlorobenzene-d4
 Concen: 20.00 ng
 RT: 6.92 min Scan# 401
 Delta R.T. -0.00 min
 Lab File: BF090582.D
 Acq: 15 Oct 2016 3:05

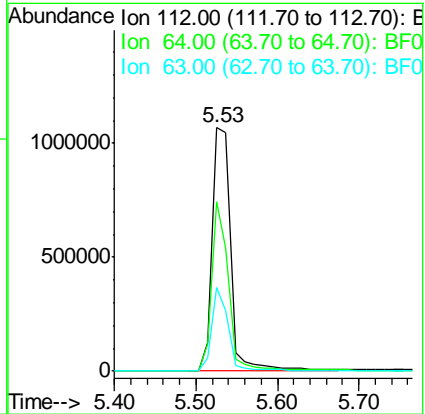
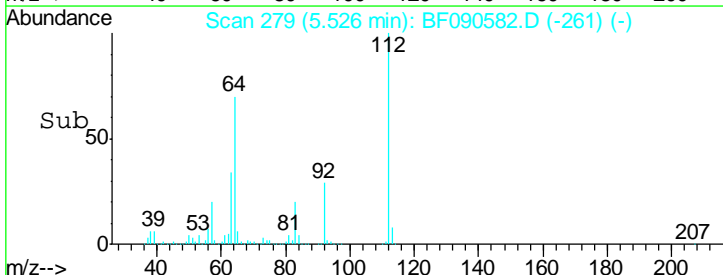
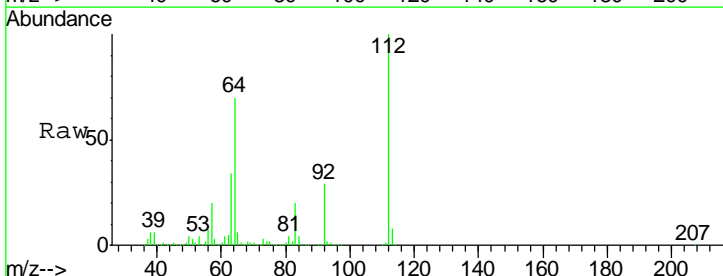
Instrument :
 BNA_F
ClientSampled :
 PB94073BL

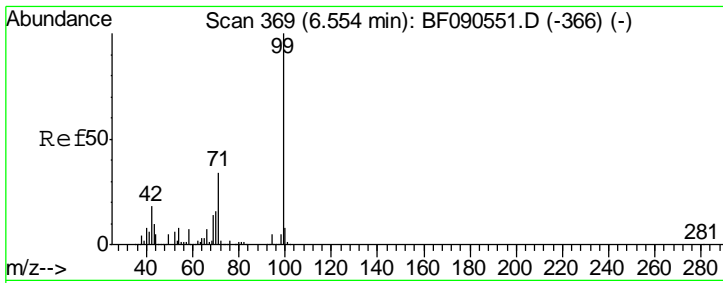
Tgt Ion	Resp	Lower	Upper
152	194600		
150	154.6	127.2	190.8
115	60.9	58.6	88.0



#5
 2-Fluorophenol
 Concen: 162.15 ng
 RT: 5.53 min Scan# 279
 Delta R.T. 0.00 min
 Lab File: BF090582.D
 Acq: 15 Oct 2016 3:05

Tgt Ion	Resp	Lower	Upper
112	1721189		
64	69.5	52.6	78.8
63	34.3	26.0	39.0



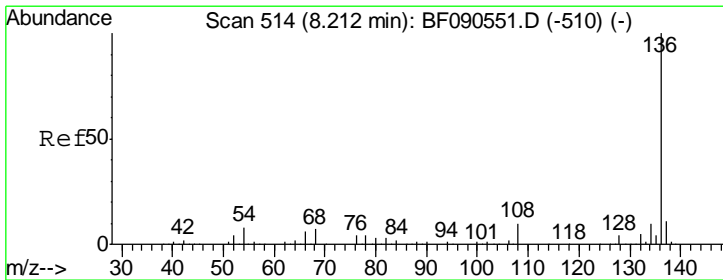
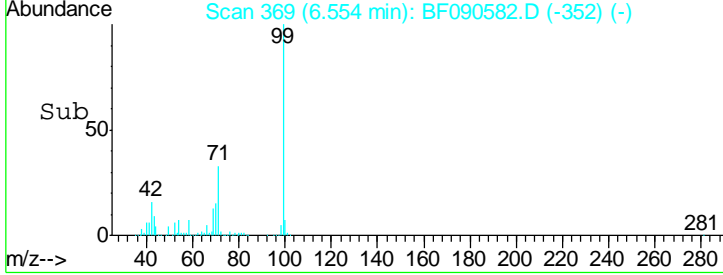
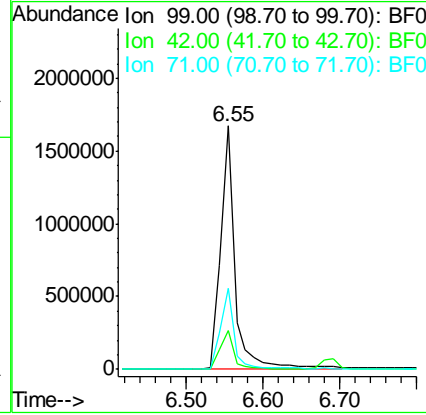
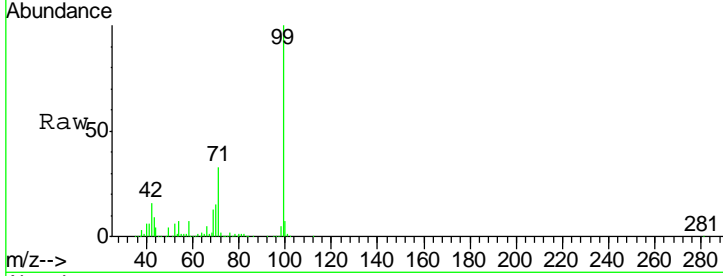


#7
 Phenol-d6
 Concen: 139.17 ng
 RT: 6.55 min Scan# 369
 Delta R.T. -0.00 min
 Lab File: BF090582.D
 Acq: 15 Oct 2016 3:05

Instrument :
 BNA_F
 ClientSampled :
 PB94073BL

Tgt Ion: 99 Resp: 2195130

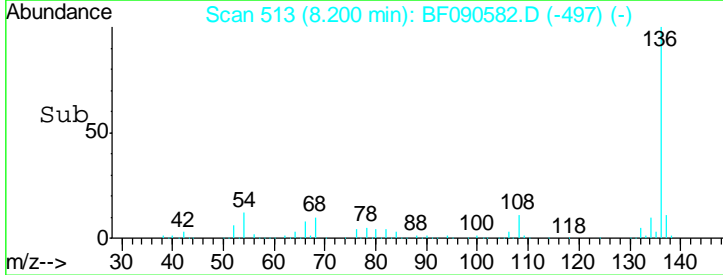
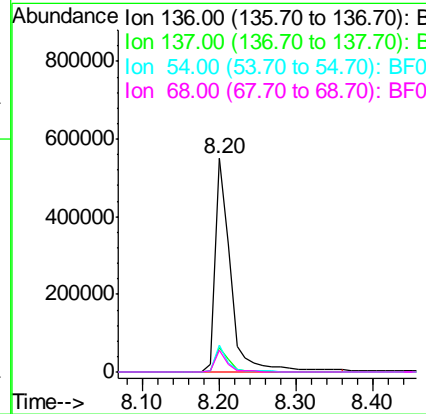
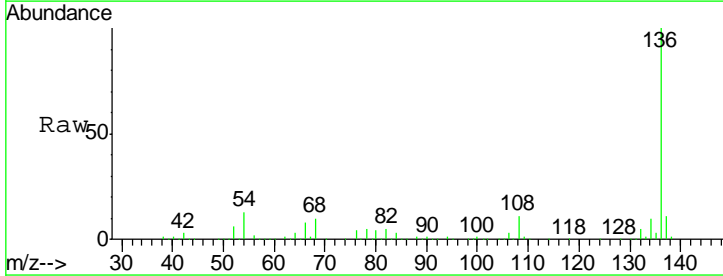
Ion	Ratio	Lower	Upper
99	100		
42	16.0	14.7	22.1
71	33.2	27.6	41.4

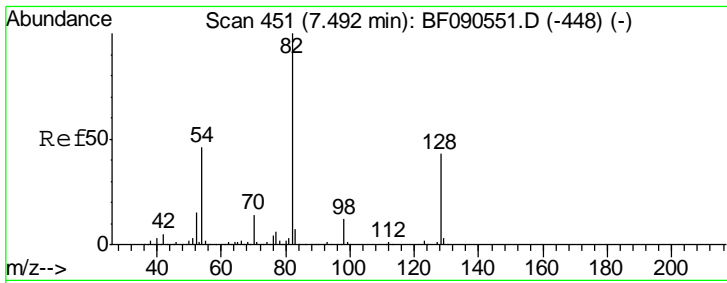


#21
 Naphthalene-d8
 Concen: 20.00 ng
 RT: 8.20 min Scan# 513
 Delta R.T. -0.01 min
 Lab File: BF090582.D
 Acq: 15 Oct 2016 3:05

Tgt Ion: 136 Resp: 768279

Ion	Ratio	Lower	Upper
136	100		
137	11.3	8.8	13.2
54	12.6	6.8	10.2#
68	10.0	6.0	9.0#

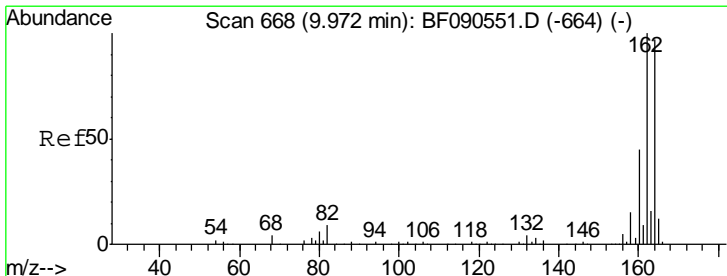
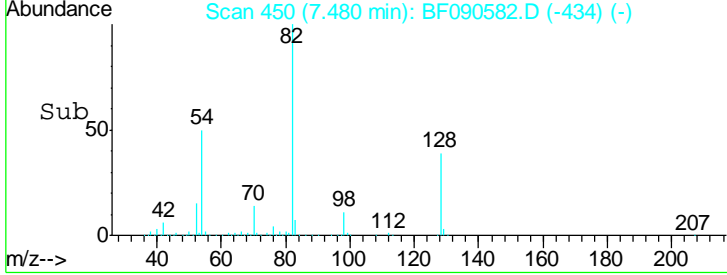
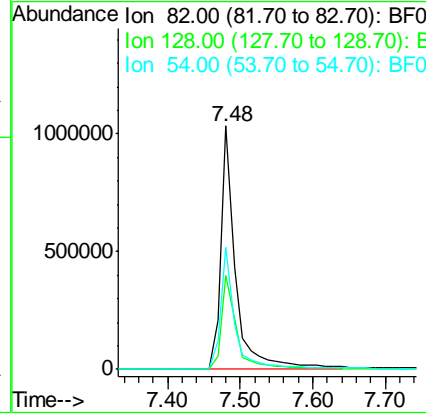
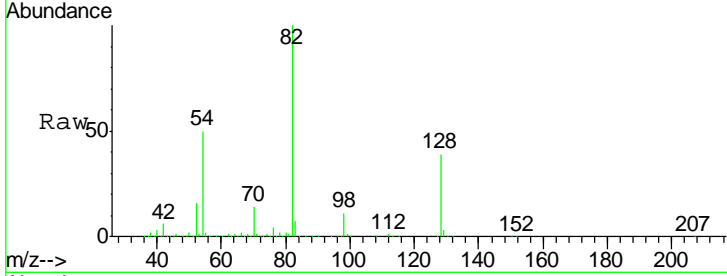




#23
 Nitrobenzene-d5
 Concen: 107.08 ng
 RT: 7.48 min Scan# 450
 Delta R.T. -0.01 min
 Lab File: BF090582.D
 Acq: 15 Oct 2016 3:05

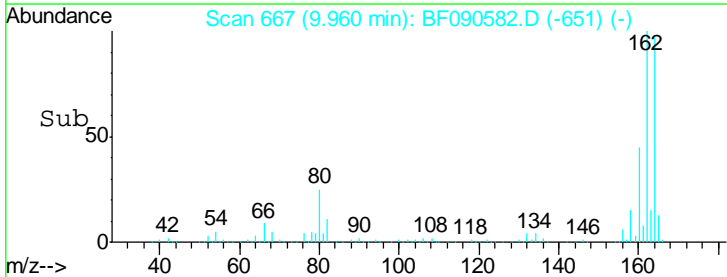
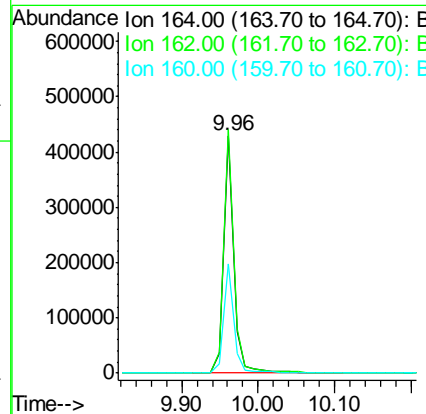
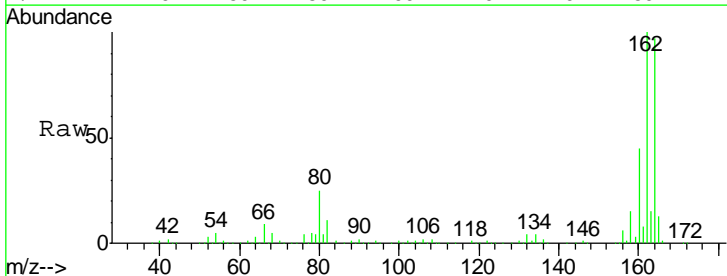
Instrument :
 BNA_F
ClientSampled :
 PB94073BL

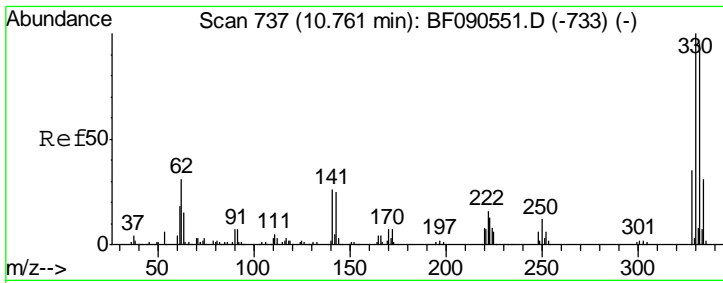
Tgt Ion	Resp	Lower	Upper
82	1480958		
128	38.7	34.3	51.5
54	50.2	37.0	55.6



#38
 Acenaphthene-d10
 Concen: 20.00 ng
 RT: 9.96 min Scan# 667
 Delta R.T. -0.01 min
 Lab File: BF090582.D
 Acq: 15 Oct 2016 3:05

Tgt Ion	Resp	Lower	Upper
164	400380		
162	102.6	82.2	123.4
160	46.0	36.6	55.0

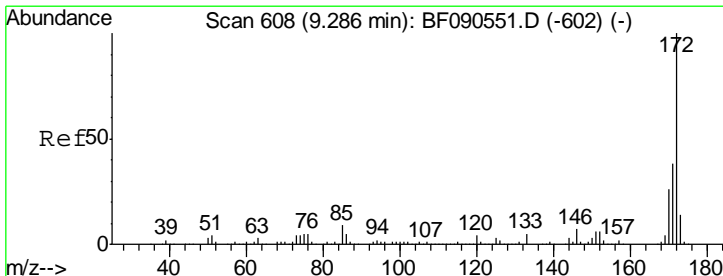
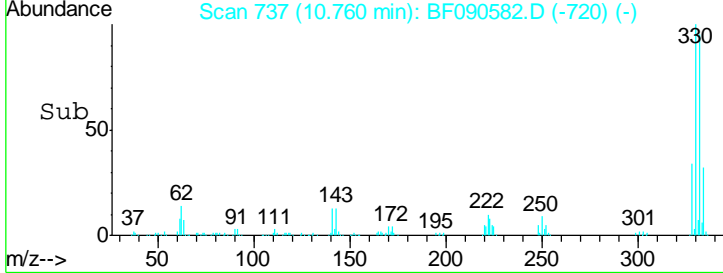
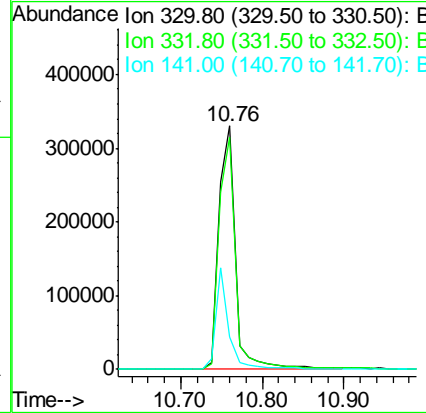
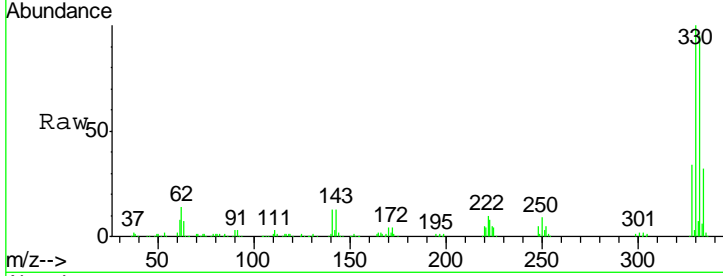




#41
 2,4,6-Tribromophenol
 Concen: 132.10 ng
 RT: 10.76 min Scan# 737
 Delta R.T. -0.00 min
 Lab File: BF090582.D
 Acq: 15 Oct 2016 3:05

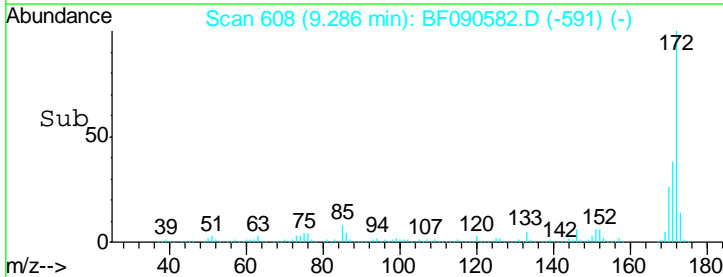
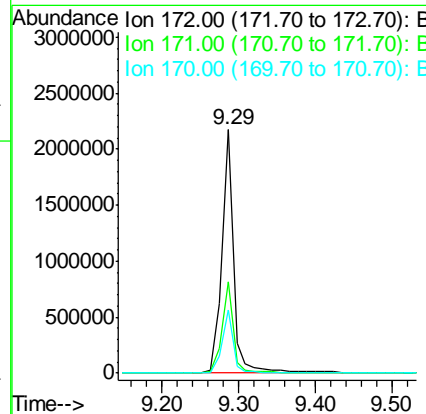
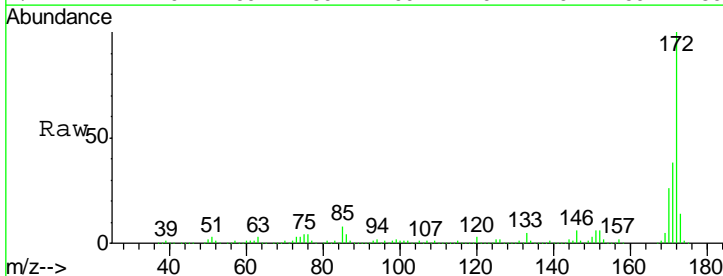
Instrument :
 BNA_F
 ClientSampleID :
 PB94073BL

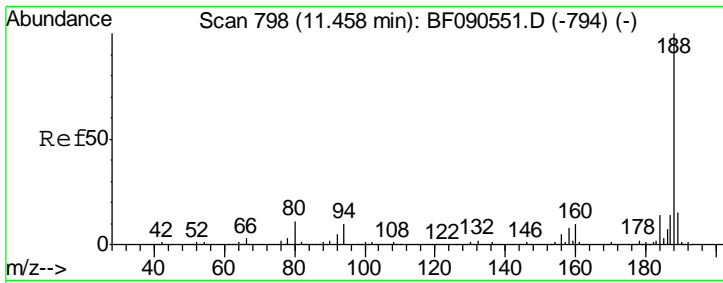
Tgt Ion	Resp	Lower	Upper
330	471527		
332	100	76.2	114.2
141	33.4	31.4	47.2



#44
 2-Fluorobiphenyl
 Concen: 96.47 ng
 RT: 9.29 min Scan# 608
 Delta R.T. -0.00 min
 Lab File: BF090582.D
 Acq: 15 Oct 2016 3:05

Tgt Ion	Resp	Lower	Upper
172	2344076		
171	100	30.1	45.1
170	37.6	20.6	30.8

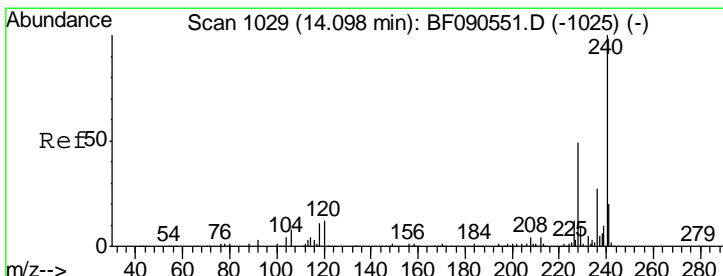
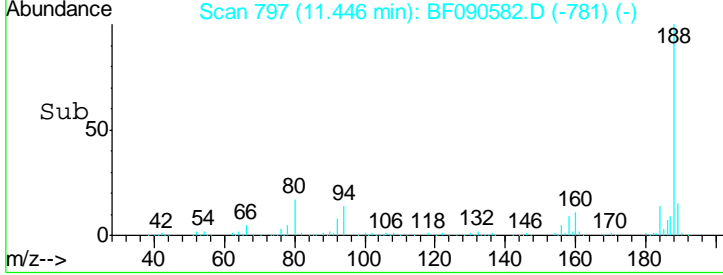
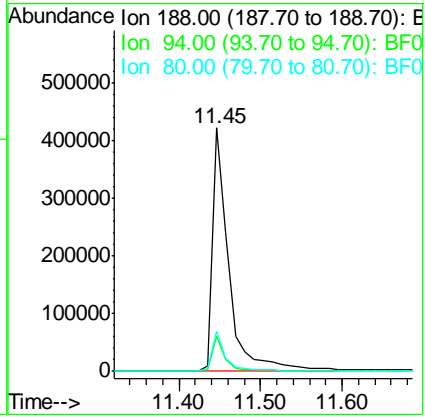
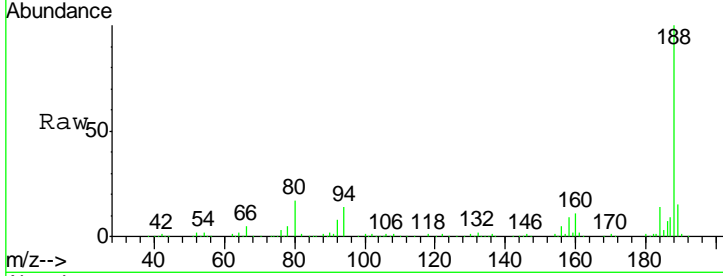




#63
 Phenanthrene-d10
 Concen: 20.00 ng
 RT: 11.45 min Scan# 797
 Delta R.T. -0.01 min
 Lab File: BF090582.D
 Acq: 15 Oct 2016 3:05

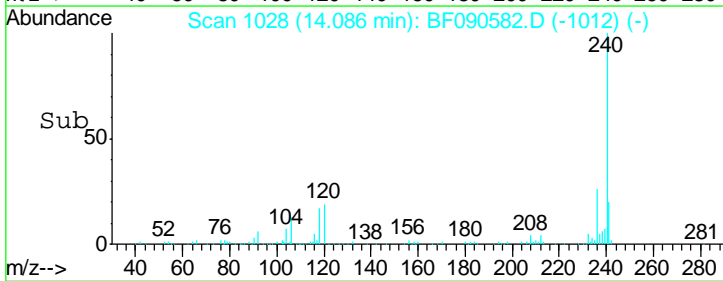
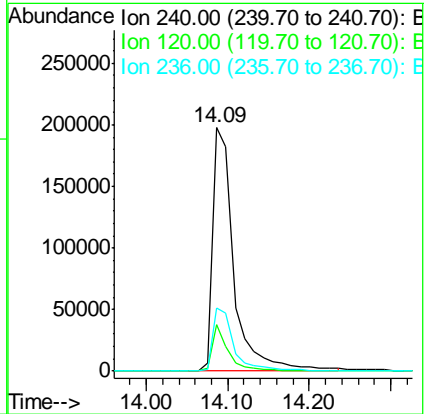
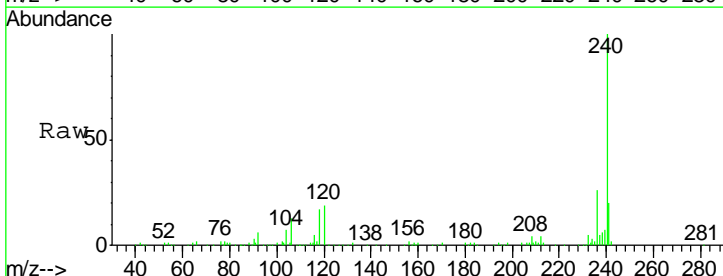
Instrument :
 BNA_F
ClientSampled :
 PB94073BL

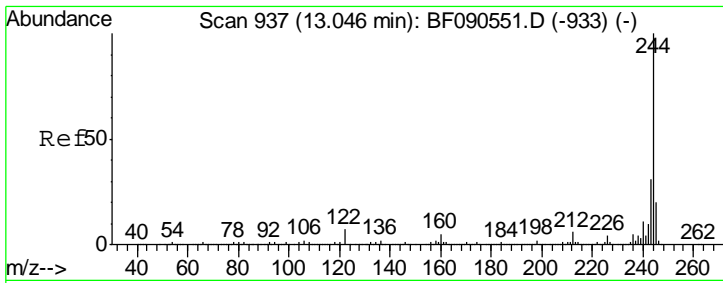
Tgt Ion	Resp	Lower	Upper
188	100		
94	14.3	7.7	11.5#
80	16.6	8.6	12.8#



#75
 Chrysene-d12
 Concen: 20.00 ng
 RT: 14.09 min Scan# 1028
 Delta R.T. -0.01 min
 Lab File: BF090582.D
 Acq: 15 Oct 2016 3:05

Tgt Ion	Resp	Lower	Upper
240	100		
120	19.3	9.8	14.8#
236	26.1	21.7	32.5



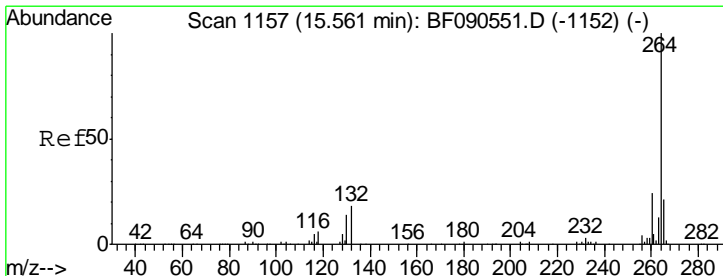
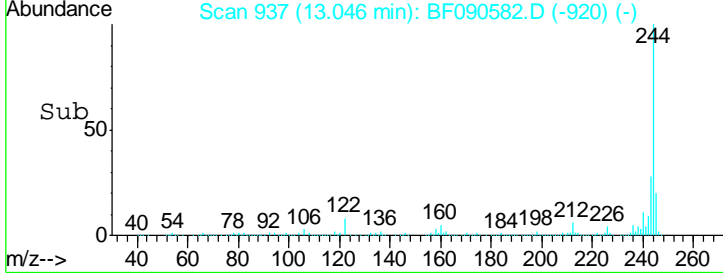
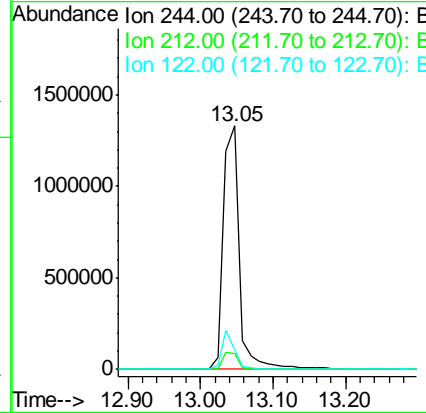
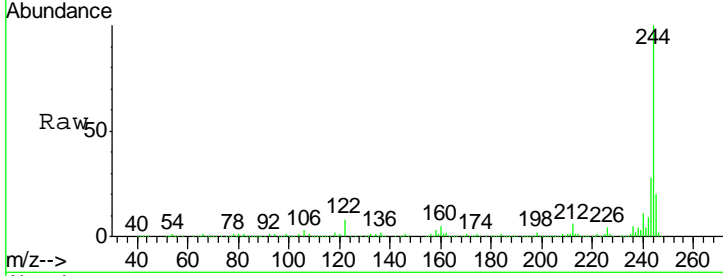


#78
 Terphenyl-d14
 Concen: 132.44 ng
 RT: 13.05 min Scan# 937
 Delta R.T. -0.00 min
 Lab File: BF090582.D
 Acq: 15 Oct 2016 3:05

Instrument :
 BNA_F
ClientSampled :
 PB94073BL

Tgt Ion: 244 Resp: 2043406

Ion	Ratio	Lower	Upper
244	100		
212	6.4	5.0	7.4
122	8.0	5.6	8.4



#86
 Perylene-d12
 Concen: 20.00 ng
 RT: 15.55 min Scan# 1156
 Delta R.T. -0.01 min
 Lab File: BF090582.D
 Acq: 15 Oct 2016 3:05

Tgt Ion: 264 Resp: 337714

Ion	Ratio	Lower	Upper
264	100		
260	24.4	19.3	28.9
265	21.9	16.7	25.1

