

Data Path : Z:\HPCHEM1\BNA F\DATA\BF101416\  
 Data File : BF090575.D  
 Acq On : 14 Oct 2016 17:56  
 Operator : UM/SJ  
 Sample : H5244-01  
 Misc :  
 ALS Vial : 17 Sample Multiplier: 1

Instrument :  
 BNA\_F  
 ClientSampleId :  
 TS-WSG-16121-11

Integration Parameters: rteint.p  
 Integrator: RTE  
 Smoothing : ON  
 Sampling : 1  
 Start Thrs: 0.2  
 Stop Thrs : 0

Filtering: 5  
 Min Area: 3 % of largest Peak  
 Max Peaks: 100  
 Peak Location: TOP

If leading or trailing edge < 100 prefer < Baseline drop else tangent >  
 Peak separation: 5

Method : Z:\HPCHEM1\BNA F\METHODS\8270-BF101316.M  
 Title : ASP BNA STANDARDS FOR 5 POINT CALIBRATION

Signal : TIC

peak #	R.T. min	first scan	max scan	last scan	PK TY	peak height	corr. area	corr. % max.	% of total
1	3.926	135	139	142	rBV	4233468	7277255	100.00%	8.214%
2	5.103	239	242	252	rBV	782096	1107406	15.22%	1.250%
3	5.526	276	279	281	rBV	3783320	3721151	51.13%	4.200%
4	6.189	335	337	340	rBV	1367000	1270046	17.45%	1.434%
5	6.360	349	352	354	rBV	121644	144165	1.98%	0.163%
6	6.554	366	369	373	rBV	2784140	4040471	55.52%	4.561%
7	6.612	373	374	378	rVB	420374	505605	6.95%	0.571%
8	6.680	378	380	383	rBV	3123106	4007841	55.07%	4.524%
9	6.920	399	401	405	rBV	917232	1130690	15.54%	1.276%
10	7.000	405	408	409	rVB2	54323	98281	1.35%	0.111%
11	7.034	409	411	412	rBV	862677	688710	9.46%	0.777%
12	7.069	412	414	417	rVB	2524277	2826034	38.83%	3.190%
13	7.332	434	437	446	rVB	89236	237361	3.26%	0.268%
14	7.480	446	450	464	rBV	2204820	3010449	41.37%	3.398%
15	7.903	483	487	488	rBV	62294	80367	1.10%	0.091%
16	8.200	511	513	516	rBV	1374613	1589634	21.84%	1.794%
17	8.246	516	517	522	rVB2	94427	140922	1.94%	0.159%
18	9.286	605	608	610	rBV	2928240	3629263	49.87%	4.097%
19	9.343	612	613	616	rVV3	97194	139257	1.91%	0.157%
20	9.412	616	619	620	rVV	140660	183535	2.52%	0.207%
21	9.618	636	637	639	rVB	331731	255318	3.51%	0.288%
22	9.675	639	642	644	rBV	757637	683979	9.40%	0.772%
23	9.892	657	661	664	rVB3	80235	189844	2.61%	0.214%
24	9.960	664	667	669	rBV	2054747	1969533	27.06%	2.223%
25	10.086	675	678	679	rBV	394768	436133	5.99%	0.492%
26	10.109	679	680	685	rVV2	110828	180007	2.47%	0.203%
27	10.223	688	690	694	rVB3	39095	87889	1.21%	0.099%
28	10.395	703	705	706	rVB	106693	81936	1.13%	0.092%
29	10.429	706	708	710	rBV	190366	177053	2.43%	0.200%
30	10.475	710	712	714	rVB	113316	110022	1.51%	0.124%
31	10.749	732	736	738	rBV	2159247	2475713	34.02%	2.795%
32	10.783	738	739	741	rVV	408318	414333	5.69%	0.468%
33	10.829	741	743	744	rVV2	54664	88468	1.22%	0.100%
34	10.863	744	746	751	rVB3	174137	292608	4.02%	0.330%

Data Path : Z:\HPCHEM1\BNA F\DATA\BF101416\  
 Data File : BF090575.D  
 Acq On : 14 Oct 2016 17:56  
 Operator : UM/SJ  
 Sample : H5244-01  
 Misc :  
 ALS Vial : 17 Sample Multiplier: 1

Instrument :  
 BNA\_F  
 ClientSampleId :  
 TS-WSG-16121-11

Integration Parameters: rteint.p  
 Integrator: RTE  
 Smoothing : ON  
 Sampling : 1  
 Start Thrs: 0.2  
 Stop Thrs : 0

Filtering: 5  
 Min Area: 3 % of largest Peak  
 Max Peaks: 100  
 Peak Location: TOP

If leading or trailing edge < 100 prefer < Baseline drop else tangent >  
 Peak separation: 5

Method : Z:\HPCHEM1\BNA F\METHODS\8270-BF101316.M  
 Title : ASP BNA STANDARDS FOR 5 POINT CALIBRATION

35	10.978	753	756	757	rBV2	239772	258526	3.55%	0.292%
36	11.035	759	761	764	rVV4	39019	92595	1.27%	0.105%
37	11.321	784	786	790	rVB2	53951	107929	1.48%	0.122%
38	11.446	795	797	801	rBV	1330002	1593105	21.89%	1.798%
39	11.503	801	802	806	rVV	184075	210638	2.89%	0.238%
40	11.675	815	817	819	rBV	120704	167062	2.30%	0.189%
41	11.904	834	837	839	rVB2	53598	77563	1.07%	0.088%
42	11.984	842	844	845	rBV	111115	123273	1.69%	0.139%
43	12.018	845	847	849	rVB2	70125	99347	1.37%	0.112%
44	12.155	854	859	860	rBV4	65187	140314	1.93%	0.158%
45	12.201	860	863	864	rBV	178550	246939	3.39%	0.279%
46	12.235	864	866	867	rVB2	168479	208940	2.87%	0.236%
47	12.338	871	875	877	rBV2	1510195	1612063	22.15%	1.820%
48	12.395	877	880	882	rVB2	371636	382493	5.26%	0.432%
49	12.464	884	886	887	rBV2	86376	79750	1.10%	0.090%
50	12.532	889	892	895	rVB3	447493	719719	9.89%	0.812%
51	12.612	895	899	901	rBV4	88251	198686	2.73%	0.224%
52	12.704	901	907	908	rBV2	670613	793749	10.91%	0.896%
53	12.726	908	909	910	rVV	232937	238761	3.28%	0.270%
54	12.761	910	912	913	rVV	691784	942519	12.95%	1.064%
55	12.829	913	918	921	rVV4	817922	3727603	51.22%	4.208%
56	12.921	925	926	928	rVV3	181178	212605	2.92%	0.240%
57	13.001	931	933	935	rVV	1556888	1655898	22.75%	1.869%
58	13.035	935	936	941	rVV	2691815	2991217	41.10%	3.376%
59	13.138	944	945	947	rVB2	165952	165875	2.28%	0.187%
60	13.207	947	951	955	rBV4	407602	899635	12.36%	1.015%
61	13.275	955	957	958	rVV2	89654	132107	1.82%	0.149%
62	13.309	958	960	961	rVV	106827	149239	2.05%	0.168%
63	13.344	961	963	965	rVB	563743	545491	7.50%	0.616%
64	13.469	970	974	975	rBV2	348650	765349	10.52%	0.864%
65	13.538	977	980	983	rBV2	477586	828472	11.38%	0.935%
66	13.652	985	990	991	rBV3	193342	399338	5.49%	0.451%
67	13.687	991	993	996	rBV	2438641	2610482	35.87%	2.947%
68	13.732	996	997	1001	rVB3	287253	284270	3.91%	0.321%
69	13.847	1001	1007	1010	rBV4	805994	1648356	22.65%	1.861%
70	13.915	1010	1013	1014	rVV2	822195	1092227	15.01%	1.233%
71	13.961	1014	1017	1021	rVV3	1043600	1852908	25.46%	2.092%

Data Path : Z:\HPCHEM1\BNA F\DATA\BF101416\  
 Data File : BF090575.D  
 Acq On : 14 Oct 2016 17:56  
 Operator : UM/SJ  
 Sample : H5244-01  
 Misc :  
 ALS Vial : 17 Sample Multiplier: 1

Instrument :  
 BNA\_F  
 ClientSampleId :  
 TS-WSG-16121-11

Integration Parameters: rteint.p  
 Integrator: RTE  
 Smoothing : ON  
 Sampling : 1  
 Start Thrs: 0.2  
 Stop Thrs : 0

Filtering: 5  
 Min Area: 3 % of largest Peak  
 Max Peaks: 100  
 Peak Location: TOP

If leading or trailing edge < 100 prefer < Baseline drop else tangent >  
 Peak separation: 5

Method : Z:\HPCHEM1\BNA F\METHODS\8270-BF101316.M  
 Title : ASP BNA STANDARDS FOR 5 POINT CALIBRATION

72	14.098	1024	1029	1033	rVV2	781993	1984688	27.27%	2.240%
73	14.189	1034	1037	1041	rVV2	138649	293958	4.04%	0.332%
74	14.258	1041	1043	1049	rVB	1059647	1746502	24.00%	1.971%
75	14.578	1067	1071	1075	rBV3	571974	1210905	16.64%	1.367%
76	14.647	1075	1077	1080	rVB	524893	520897	7.16%	0.588%
77	14.944	1101	1103	1107	rVB	159293	225971	3.11%	0.255%
78	15.012	1107	1109	1113	rVB	95694	127907	1.76%	0.144%
79	15.207	1124	1126	1127	rBV	346082	417884	5.74%	0.472%
80	15.230	1127	1128	1136	rVB	727995	1282503	17.62%	1.448%
81	15.561	1154	1157	1161	rBV	573239	996084	13.69%	1.124%
82	15.790	1174	1177	1183	rVB	83106	141040	1.94%	0.159%
83	16.018	1194	1197	1199	rBV	283678	453412	6.23%	0.512%
84	16.075	1199	1202	1206	rVB	605536	1073760	14.76%	1.212%
85	16.258	1215	1218	1224	rVB3	93833	317865	4.37%	0.359%
86	16.578	1244	1246	1250	rVB3	62850	112968	1.55%	0.128%
87	16.681	1252	1255	1260	rVB2	97444	244263	3.36%	0.276%
88	17.047	1284	1287	1290	rBV2	64161	129599	1.78%	0.146%
89	17.115	1290	1293	1296	rVB	61935	137289	1.89%	0.155%
90	17.195	1296	1300	1306	rBV3	113772	387248	5.32%	0.437%
91	17.596	1331	1335	1340	rBV2	276568	826156	11.35%	0.933%
92	17.813	1351	1354	1358	rVB	131053	283105	3.89%	0.320%
93	17.927	1360	1364	1367	rVV4	100414	301743	4.15%	0.341%
94	18.053	1370	1375	1381	rVV2	595149	1942187	26.69%	2.192%
95	18.156	1381	1384	1390	rVB3	164893	495072	6.80%	0.559%
96	18.396	1401	1405	1414	rBV4	123672	449968	6.18%	0.508%
97	18.613	1420	1424	1426	rBV	129055	331043	4.55%	0.374%
98	18.658	1426	1428	1433	rVB	138636	336656	4.63%	0.380%
99	19.150	1468	1471	1478	rVB4	45822	145175	1.99%	0.164%
100	19.481	1497	1500	1505	rVB3	51572	149024	2.05%	0.168%

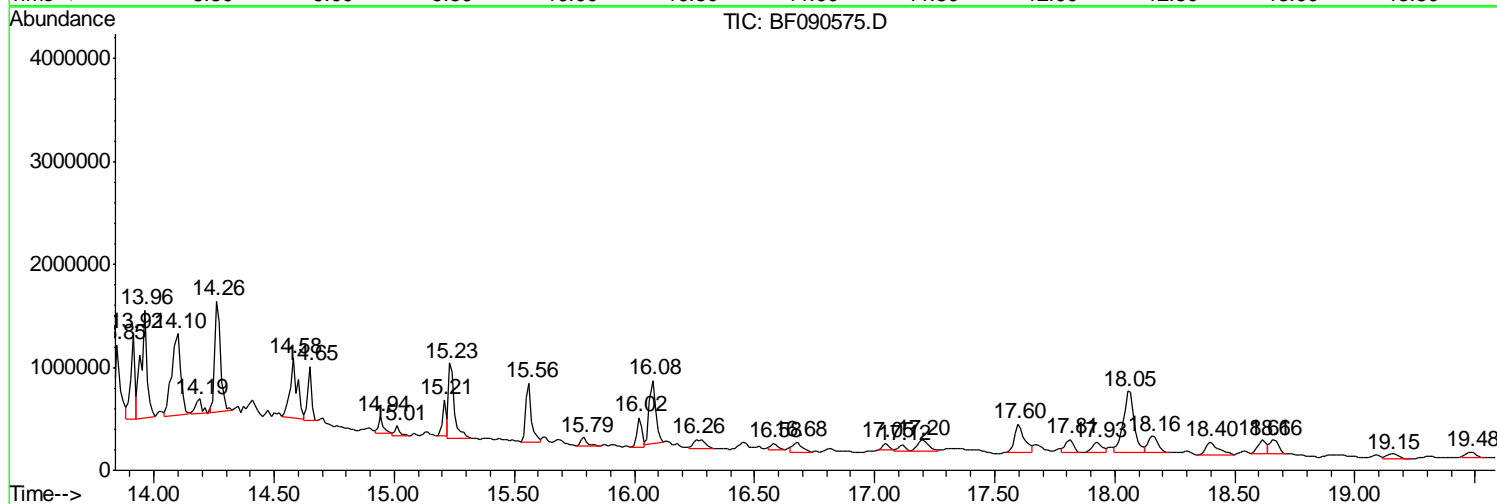
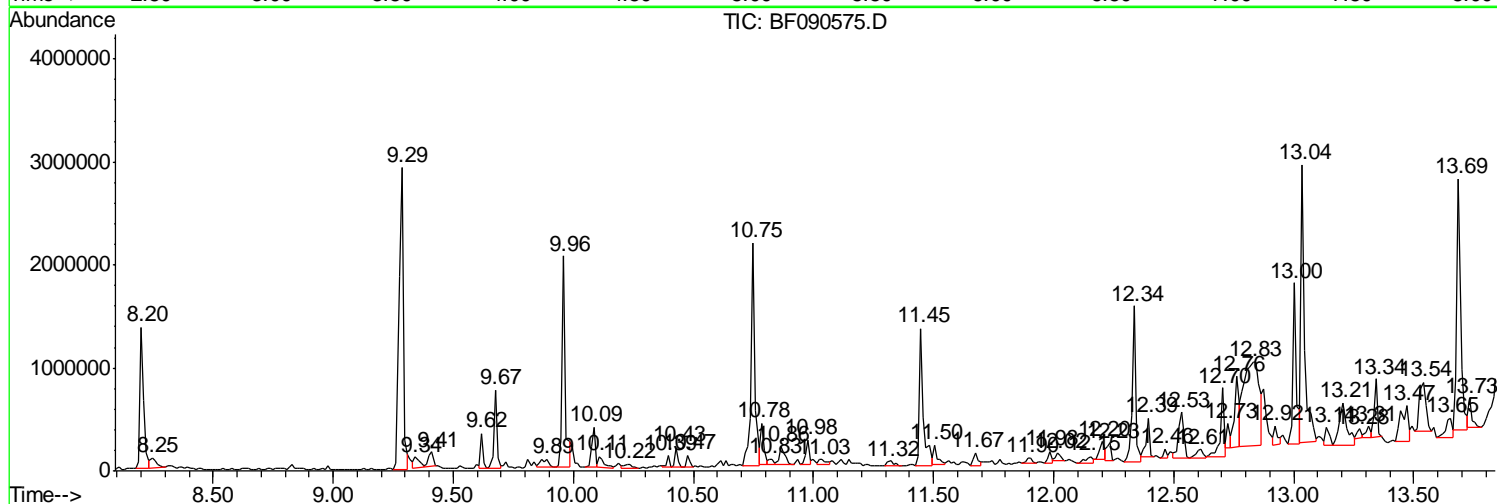
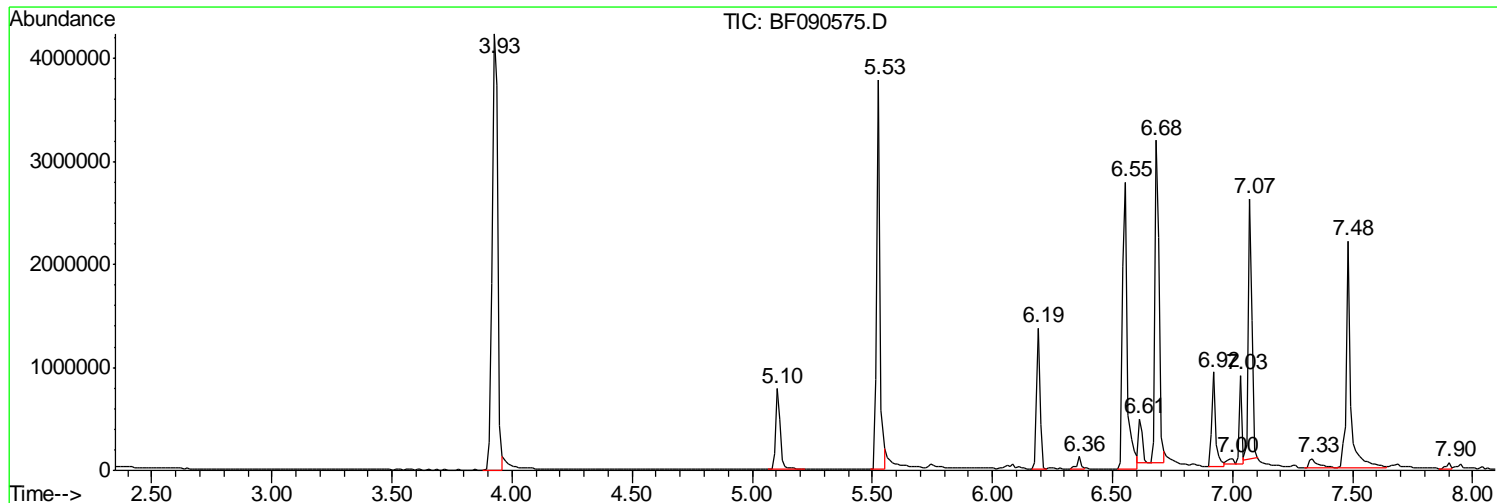
Sum of corrected areas: 88591194

Data Path : Z:\HPCHEM1\BNA F\DATA\BF101416\  
 Data File : BF090575.D  
 Acq On : 14 Oct 2016 17:56  
 Operator : UM/SJ  
 Sample : H5244-01  
 Misc :  
 ALS Vial : 17 Sample Multiplier: 1

**Instrument :**  
 BNA\_F  
**Client Sampled :**  
 TS-WSG-16121-11

Quant Method : Z:\HPCHEM1\BNA F\METHODS\8270-BF101316.M  
 Quant Title : ASP BNA STANDARDS FOR 5 POINT CALIBRATION

TIC Library : C:\DATABASE\NIST11.L  
 TIC Integration Parameters: LSCINT.P



Data Path : Z:\HPCHEM1\BNA F\DATA\BF101416\  
 Data File : BF090575.D  
 Acq On : 14 Oct 2016 17:56  
 Operator : UM/SJ  
 Sample : H5244-01  
 Misc :  
 ALS Vial : 17 Sample Multiplier: 1

Instrument :  
 BNA\_F  
 ClientSampleID :  
 TS-WSG-16121-11

Quant Method : Z:\HPCHEM1\BNA F\METHODS\8270-BF101316.M  
 Quant Title : ASP BNA STANDARDS FOR 5 POINT CALIBRATION

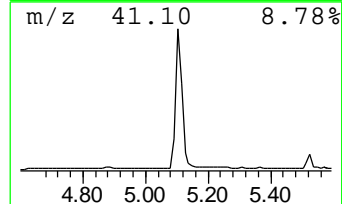
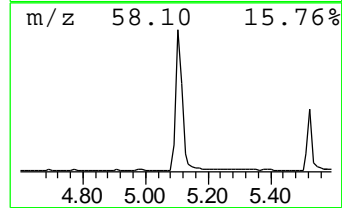
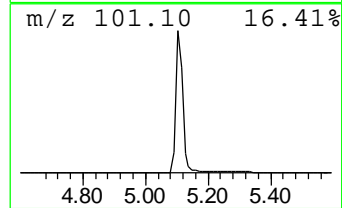
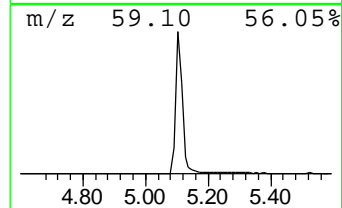
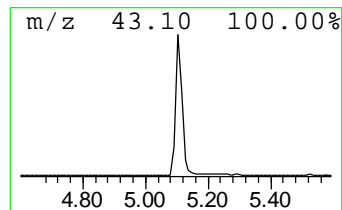
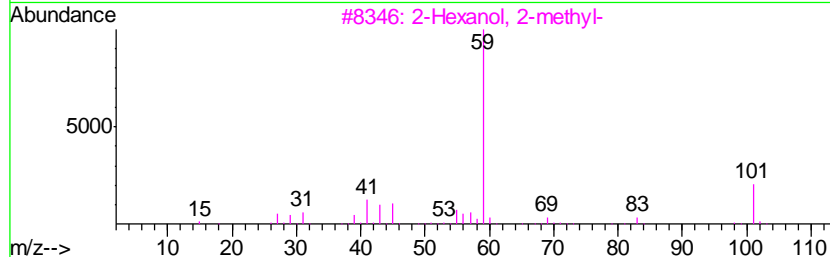
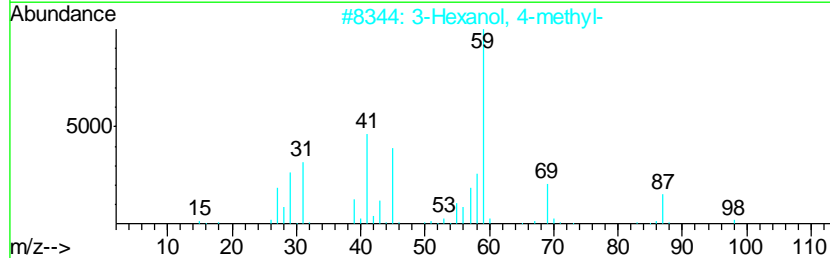
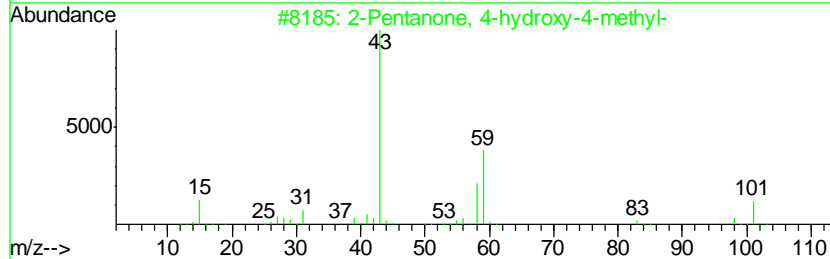
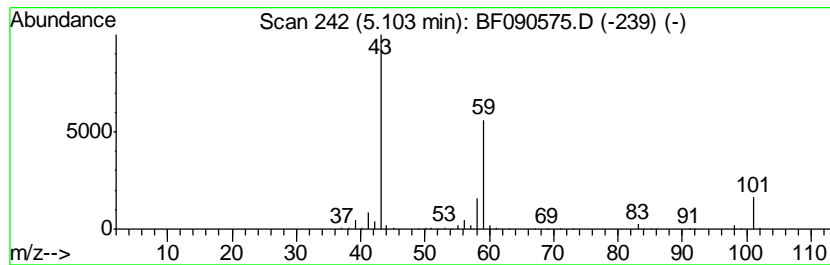
TIC Library : C:\DATABASE\NIST11.L  
 TIC Integration Parameters: LSCINT.P

\*\*\*\*\*  
 Peak Number 2 2-Pentanone, 4-hydroxy-4-me... Concentration Rank 11

R.T.	EstConc	Area	Relative to ISTD	R.T.
5.10	19.59 ng	1107410	1,4-Dichlorobenzene-d4	6.92

Hit#	of	Tentative ID	MW	MolForm	CAS#	Qual
1	5	2-Pentanone, 4-hydroxy-4-methyl-	116	C6H12O2	000123-42-2	50
2		3-Hexanol, 4-methyl-	116	C7H16O	000615-29-2	33
3		2-Hexanol, 2-methyl-	116	C7H16O	000625-23-0	33
4		Propane, 2-methyl-2-(1-methyleth...	116	C7H16O	017348-59-3	33
5		Acetic acid, cyano-, 1,1-dimethy...	141	C7H11NO2	001116-98-9	23



Data Path : Z:\HPCHEM1\BNA F\DATA\BF101416\  
 Data File : BF090575.D  
 Acq On : 14 Oct 2016 17:56  
 Operator : UM/SJ  
 Sample : H5244-01  
 Misc :  
 ALS Vial : 17 Sample Multiplier: 1

Instrument :  
 BNA\_F  
 ClientSampled :  
 TS-WSG-16121-11

Quant Method : Z:\HPCHEM1\BNA F\METHODS\8270-BF101316.M  
 Quant Title : ASP BNA STANDARDS FOR 5 POINT CALIBRATION

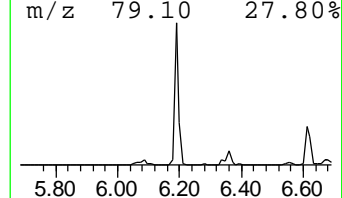
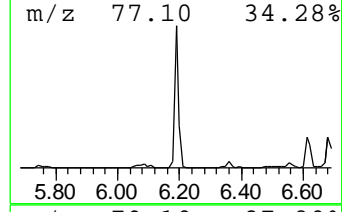
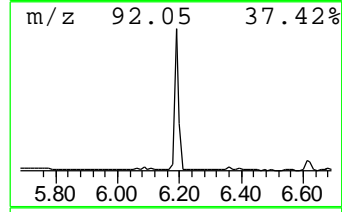
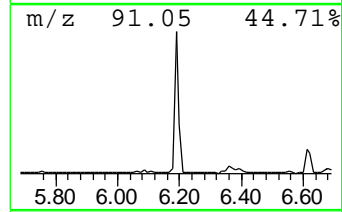
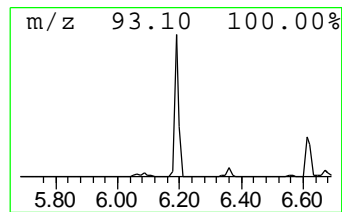
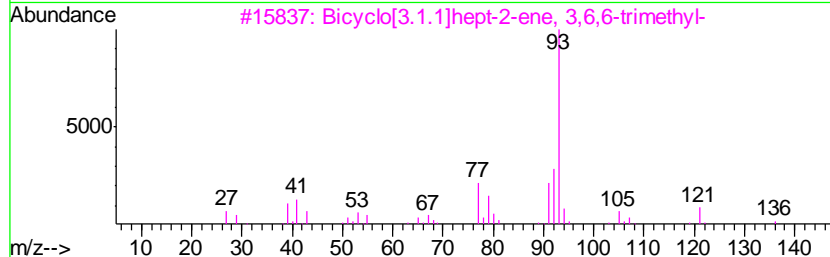
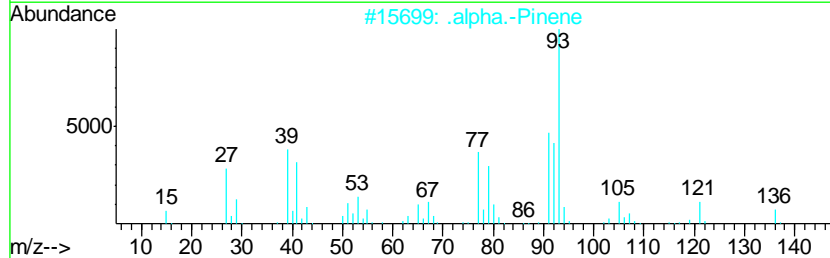
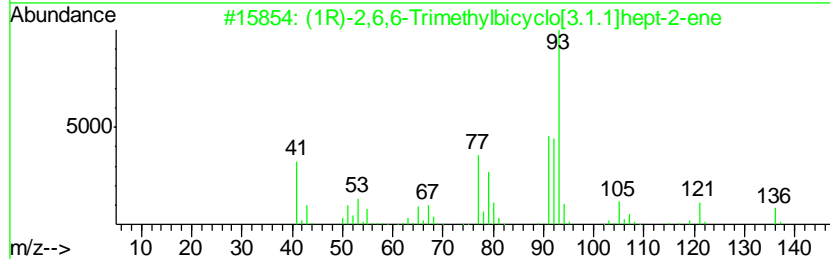
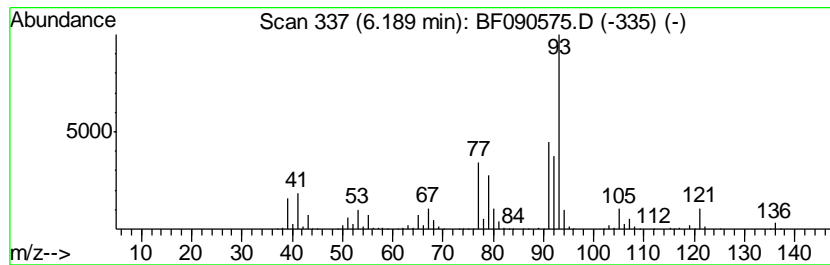
TIC Library : C:\DATABASE\NIST11.L  
 TIC Integration Parameters: LSCINT.P

\*\*\*\*\*  
 Peak Number 3 (1R)-2,6,6-Trimethylbicyclo... Concentration Rank 8

R.T.	EstConc	Area	Relative to ISTD	R.T.
6.19	22.47 ng	1270050	1,4-Dichlorobenzene-d4	6.92

Hit#	of	Tentative ID	MW	MolForm	CAS#	Qual
1	5	(1R)-2,6,6-Trimethylbicyclo[3.1.1]hept-2-ene	136	C10H16	007785-70-8	95
2		.alpha.-Pinene	136	C10H16	000080-56-8	95
3		Bicyclo[3.1.1]hept-2-ene, 3,6,6-trimethyl-	136	C10H16	004889-83-2	91
4		3-Carene	136	C10H16	013466-78-9	90
5		(+)-3-Carene	136	C10H16	000498-15-7	90



Data Path : Z:\HPCHEM1\BNA F\DATA\BF101416\  
 Data File : BF090575.D  
 Acq On : 14 Oct 2016 17:56  
 Operator : UM/SJ  
 Sample : H5244-01  
 Misc :  
 ALS Vial : 17 Sample Multiplier: 1

Instrument :  
 BNA\_F  
 ClientSampled :  
 TS-WSG-16121-11

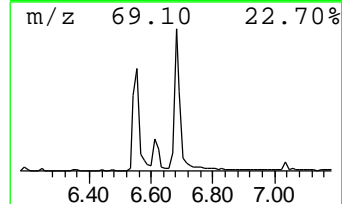
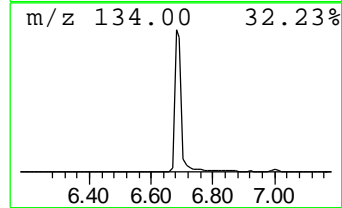
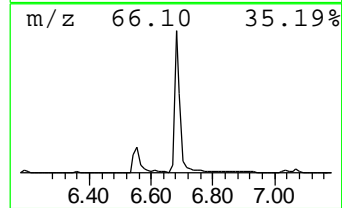
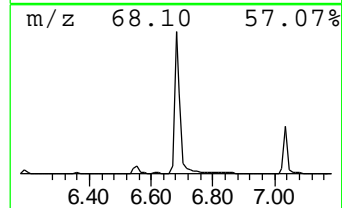
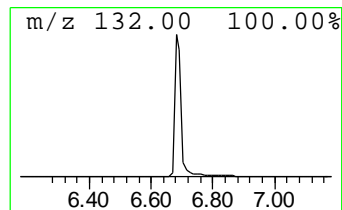
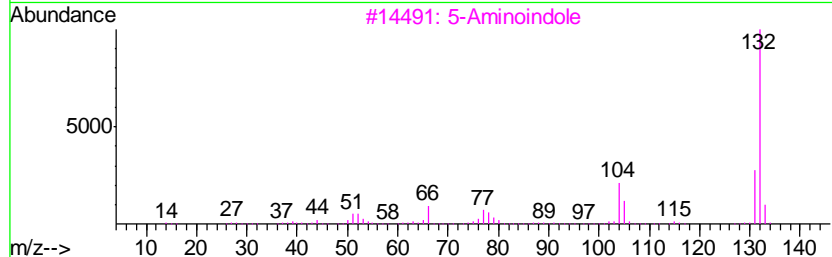
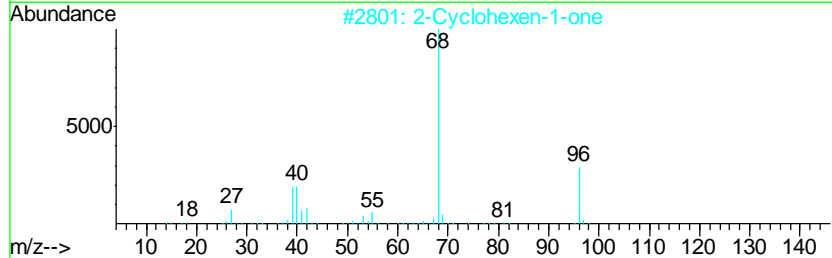
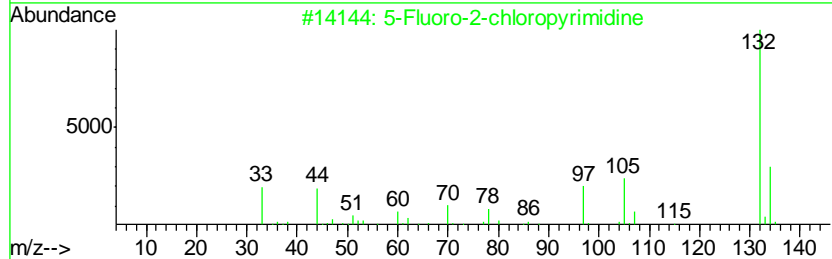
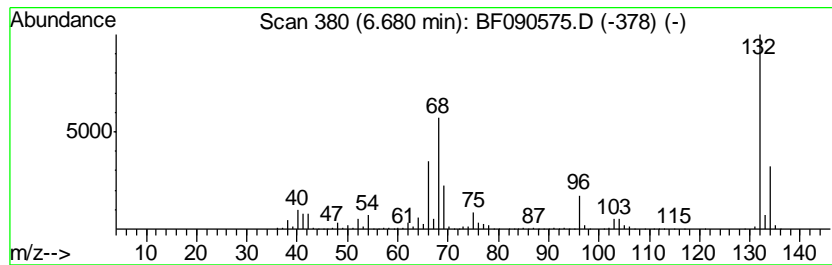
Quant Method : Z:\HPCHEM1\BNA F\METHODS\8270-BF101316.M  
 Quant Title : ASP BNA STANDARDS FOR 5 POINT CALIBRATION

TIC Library : C:\DATABASE\NIST11.L  
 TIC Integration Parameters: LSCINT.P

\*\*\*\*\*  
 Peak Number 4 unknown6.68 Concentration Rank 2

R.T.	EstConc	Area	Relative to ISTD	R.T.
6.68	70.89 ng	4007840	1,4-Dichlorobenzene-d4	6.92

Hit#	of	Tentative ID	MW	MolForm	CAS#	Qual
1	5	5-Fluoro-2-chloropyrimidine	132	C4H2ClFN2	062802-42-0	12
2		2-Cyclohexen-1-one	96	C6H8O	000930-68-7	11
3		5-Aminoindole	132	C8H8N2	005192-03-0	10
4		(E)-3-Chloro-2-methyl-2-pentenal	132	C6H9ClO	031357-76-3	9
5		2H-Cyclopenta[d]pyridazine, 2-me...	132	C8H8N2	022291-85-6	9



Data Path : Z:\HPCHEM1\BNA F\DATA\BF101416\  
 Data File : BF090575.D  
 Acq On : 14 Oct 2016 17:56  
 Operator : UM/SJ  
 Sample : H5244-01  
 Misc :  
 ALS Vial : 17 Sample Multiplier: 1

Instrument :  
 BNA\_F  
 ClientSampled :  
 TS-WSG-16121-11

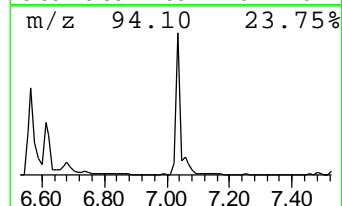
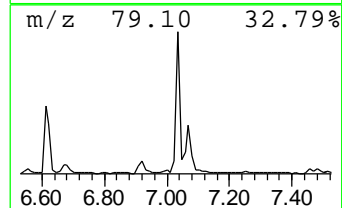
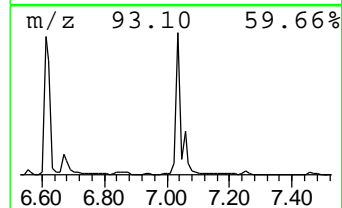
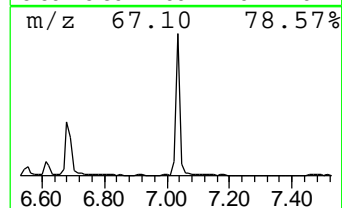
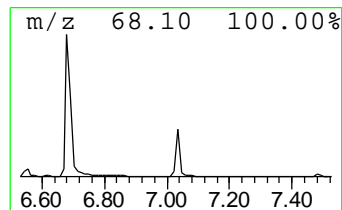
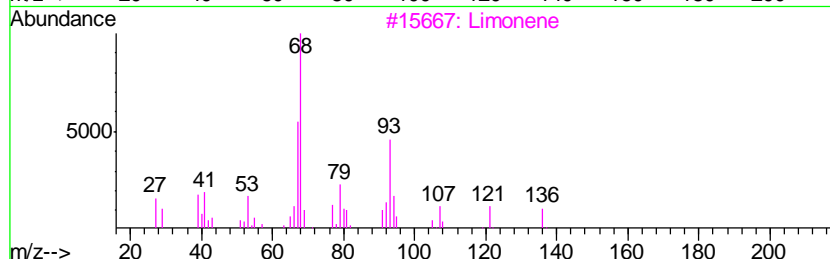
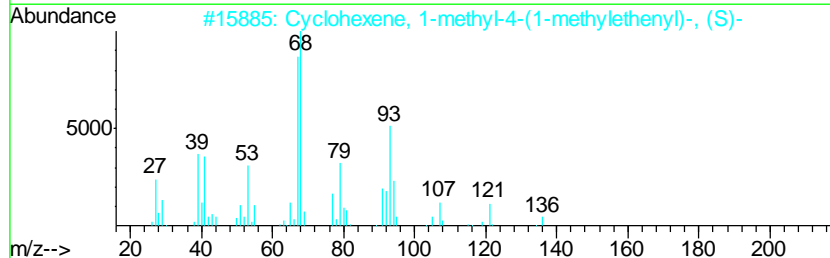
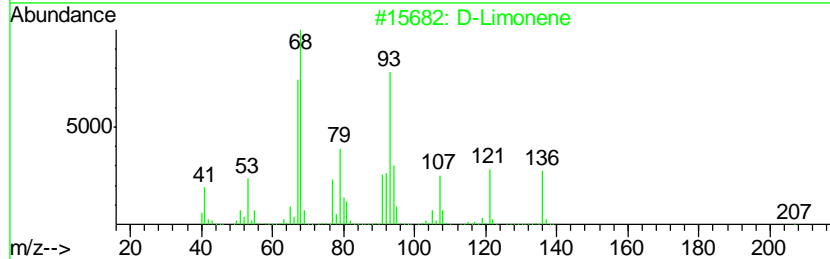
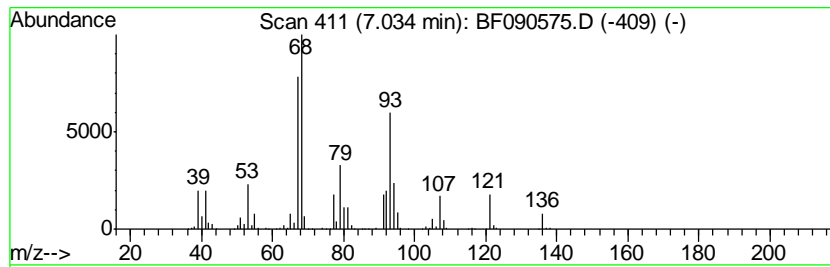
Quant Method : Z:\HPCHEM1\BNA F\METHODS\8270-BF101316.M  
 Quant Title : ASP BNA STANDARDS FOR 5 POINT CALIBRATION

TIC Library : C:\DATABASE\NIST11.L  
 TIC Integration Parameters: LSCINT.P

\*\*\*\*\*  
 Peak Number 5 D-Limonene Concentration Rank 17

R.T.	EstConc	Area	Relative to ISTD	R.T.
7.03	12.18 ng	688710	1,4-Dichlorobenzene-d4	6.92

Hit#	of	Tentative ID	MW	MolForm	CAS#	Qual
1	5	D-Limonene	136	C10H16	005989-27-5	97
2		Cyclohexene, 1-methyl-4-(1-methy...	136	C10H16	005989-54-8	94
3		Limonene	136	C10H16	000138-86-3	90
4		Cyclohexene, 4-ethenyl-1,4-dimet...	136	C10H16	001743-61-9	89
5		Cyclohexene, 1-methyl-5-(1-methy...	136	C10H16	013898-73-2	83





Data Path : Z:\HPCHEM1\BNA F\DATA\BF101416\  
 Data File : BF090575.D  
 Acq On : 14 Oct 2016 17:56  
 Operator : UM/SJ  
 Sample : H5244-01  
 Misc :  
 ALS Vial : 17 Sample Multiplier: 1

Instrument :  
 BNA\_F  
 ClientSampled :  
 TS-WSG-16121-11

Quant Method : Z:\HPCHEM1\BNA F\METHODS\8270-BF101316.M  
 Quant Title : ASP BNA STANDARDS FOR 5 POINT CALIBRATION

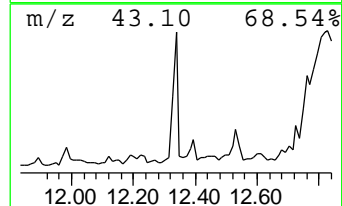
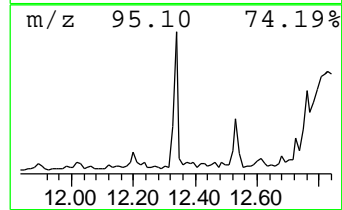
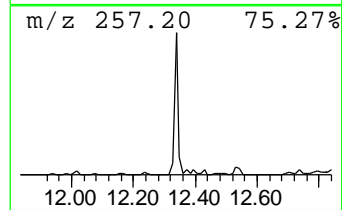
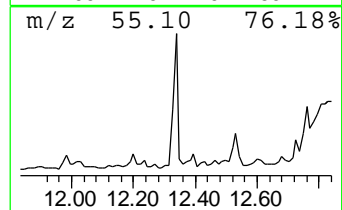
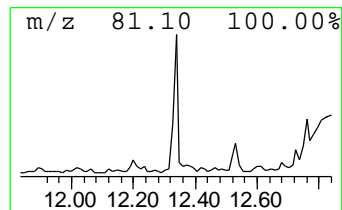
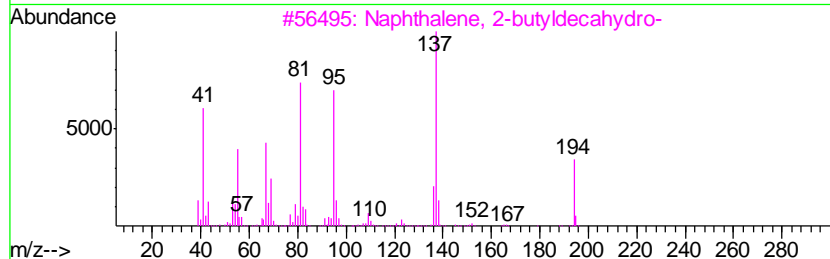
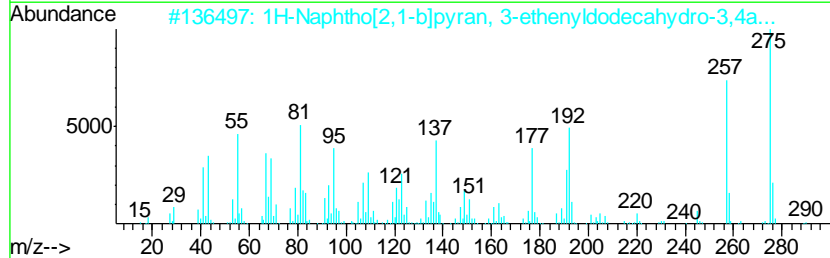
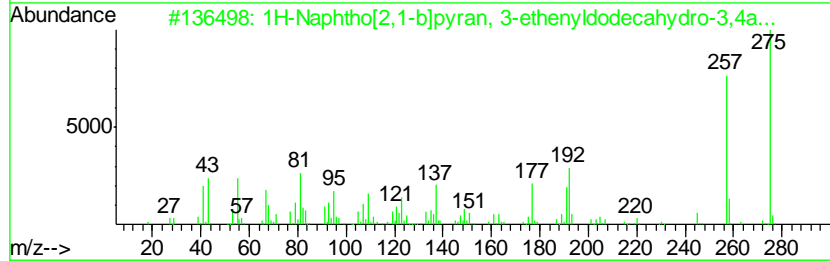
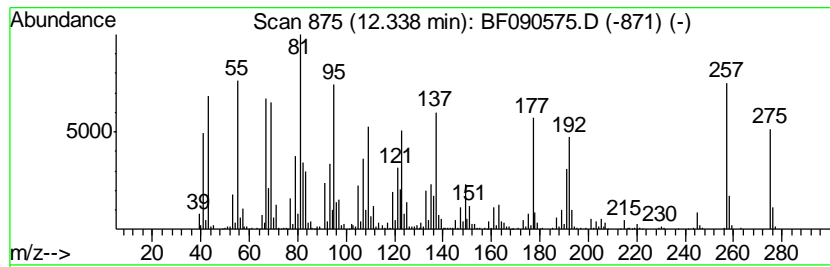
TIC Library : C:\DATABASE\NIST11.L  
 TIC Integration Parameters: LSCINT.P

\*\*\*\*\*  
 Peak Number 7 1H-Naphtho[2,1-b]pyran, 3-e... Concentration Rank 10

R.T.	EstConc	Area	Relative to ISTD	R.T.
12.34	20.24 ng	1612060	Phenanthrene-d10	11.45

Hit#	of	Tentative ID	MW	MolForm	CAS#	Qual
1	5	1H-Naphtho[2,1-b]pyran, 3-etheny...	290	C20H34O	001227-93-6	58
2		1H-Naphtho[2,1-b]pyran, 3-etheny...	290	C20H34O	000596-84-9	53
3		Naphthalene, 2-butyldecahydro-	194	C14H26	006305-52-8	42
4		7-Tetradecyne	194	C14H26	035216-11-6	30
5		3-Iodomethyl-3,6,6-trimethyl-cyc...	264	C10H17I	1000193-08-2	27



Data Path : Z:\HPCHEM1\BNA F\DATA\BF101416\  
 Data File : BF090575.D  
 Acq On : 14 Oct 2016 17:56  
 Operator : UM/SJ  
 Sample : H5244-01  
 Misc :  
 ALS Vial : 17 Sample Multiplier: 1

Instrument :  
 BNA\_F  
 ClientSampleId :  
 TS-WSG-16121-11

Quant Method : Z:\HPCHEM1\BNA F\METHODS\8270-BF101316.M  
 Quant Title : ASP BNA STANDARDS FOR 5 POINT CALIBRATION

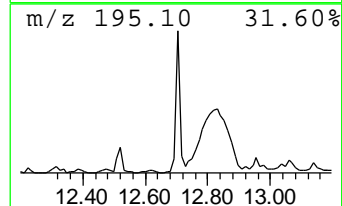
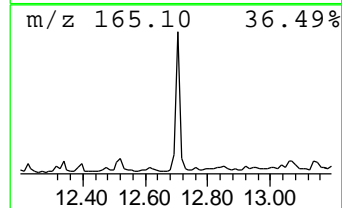
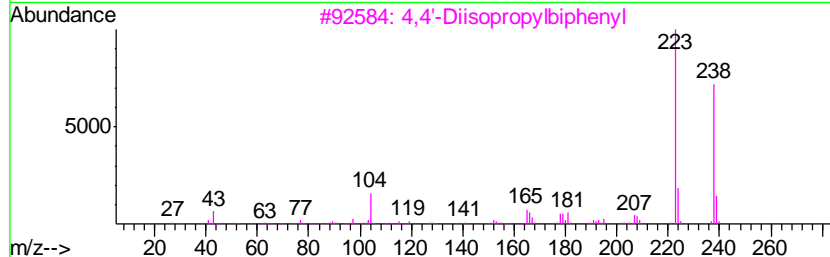
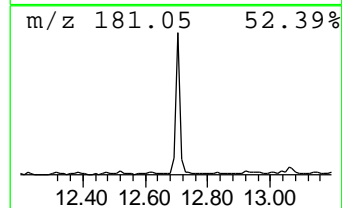
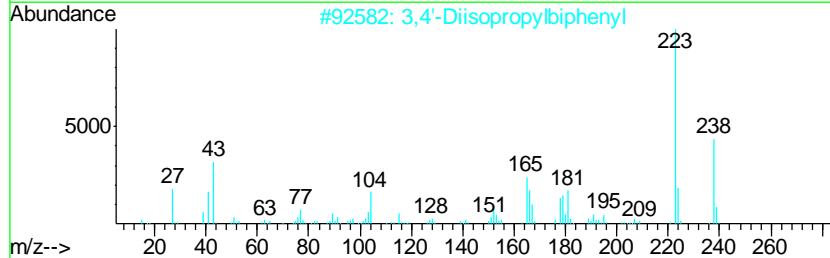
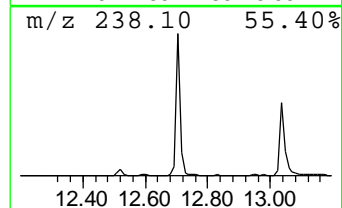
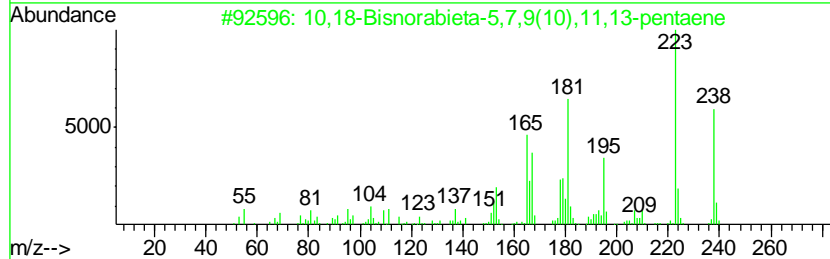
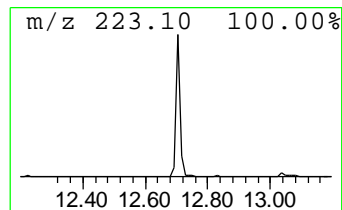
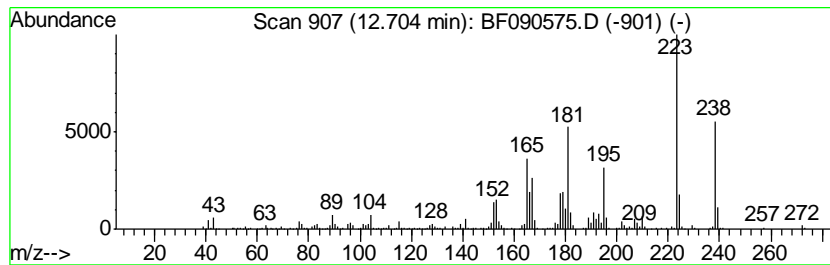
TIC Library : C:\DATABASE\NIST11.L  
 TIC Integration Parameters: LSCINT.P

\*\*\*\*\*  
 Peak Number 8 10,18-Bisnorabieta-5,7,9(10... Concentration Rank 20

R.T.	EstConc	Area	Relative to ISTD	R.T.
12.70	9.96 ng	793749	Phenanthrene-d10	11.45

Hit#	of	Tentative ID	MW	MolForm	CAS#	Qual
1	5	10,18-Bisnorabieta-5,7,9(10),11,...	238	C18H22	006566-19-4	99
2		3,4'-Diisopropylbiphenyl	238	C18H22	061434-46-6	70
3		4,4'-Diisopropylbiphenyl	238	C18H22	018970-30-4	60
4		Anthracene, 1,4-dimethoxy-	238	C16H14O2	013076-29-4	58
5		2-Propenoic acid, 3-(3,4,5-trime...	238	C12H14O5	000090-50-6	47



Data Path : Z:\HPCHEM1\BNA F\DATA\BF101416\  
 Data File : BF090575.D  
 Acq On : 14 Oct 2016 17:56  
 Operator : UM/SJ  
 Sample : H5244-01  
 Misc :  
 ALS Vial : 17 Sample Multiplier: 1

Instrument :  
 BNA\_F  
 ClientSampled :  
 TS-WSG-16121-11

Quant Method : Z:\HPCHEM1\BNA F\METHODS\8270-BF101316.M  
 Quant Title : ASP BNA STANDARDS FOR 5 POINT CALIBRATION

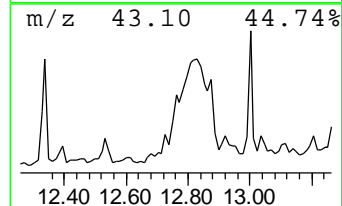
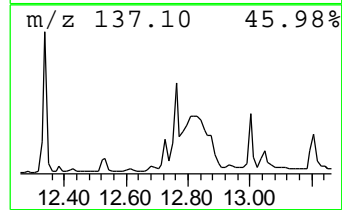
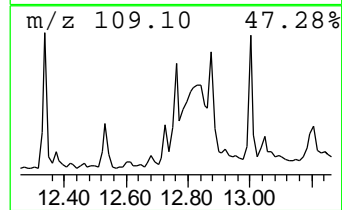
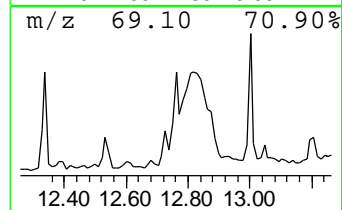
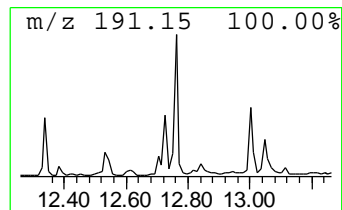
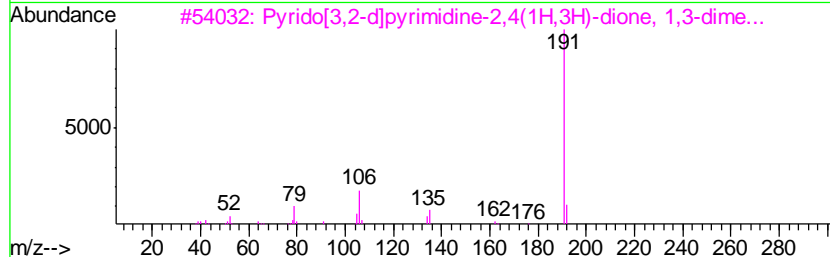
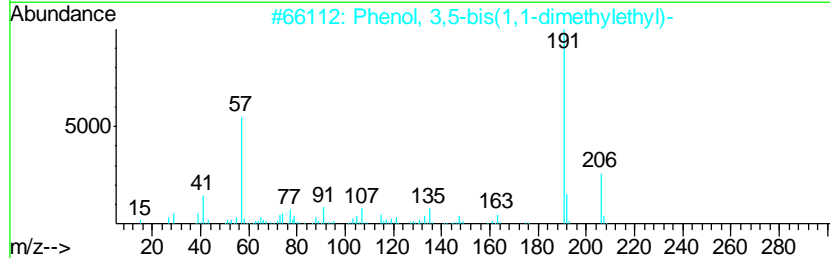
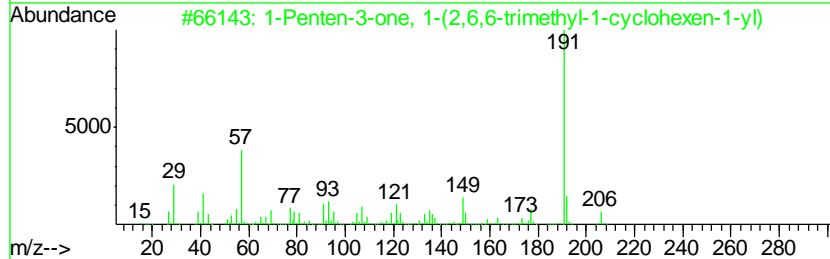
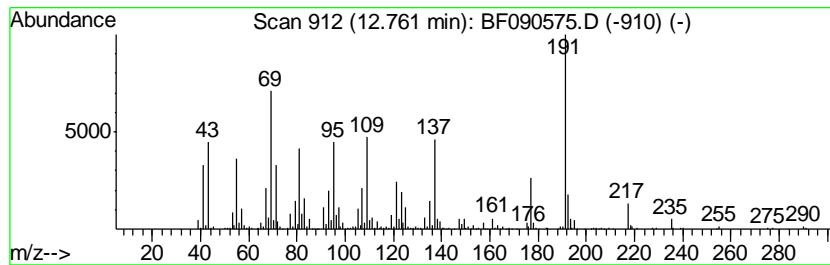
TIC Library : C:\DATABASE\NIST11.L  
 TIC Integration Parameters: LSCINT.P

\*\*\*\*\*  
 Peak Number 9 unknown12.76 Concentration Rank 18

R.T.	EstConc	Area	Relative to ISTD	R.T.
12.76	11.83 ng	942519	Phenanthrene-d10	11.45

Hit#	of	Tentative ID	MW	MolForm	CAS#	Qual
1	5	1-Penten-3-one, 1-(2,6,6-trimeth...	206	C14H22O	000127-43-5	32
2		Phenol, 3,5-bis(1,1-dimethylethyl)-	206	C14H22O	001138-52-9	27
3		Pyrido[3,2-d]pyrimidine-2,4(1H,3...	191	C9H9N3O2	024410-25-1	22
4		5-(p-Aminophenyl)-2-thiazolamine	191	C9H9N3S	090349-87-4	22
5		Dithiocarbaminic acid, N-cyano-,...	290	C14H14N2OS2	274691-67-7	22



Data Path : Z:\HPCHEM1\BNA F\DATA\BF101416\  
 Data File : BF090575.D  
 Acq On : 14 Oct 2016 17:56  
 Operator : UM/SJ  
 Sample : H5244-01  
 Misc :  
 ALS Vial : 17 Sample Multiplier: 1

Instrument :  
 BNA\_F  
 ClientSampled :  
 TS-WSG-16121-11

Quant Method : Z:\HPCHEM1\BNA F\METHODS\8270-BF101316.M  
 Quant Title : ASP BNA STANDARDS FOR 5 POINT CALIBRATION

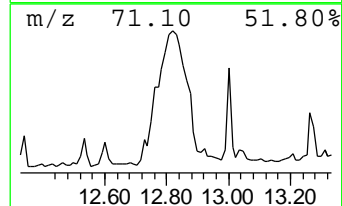
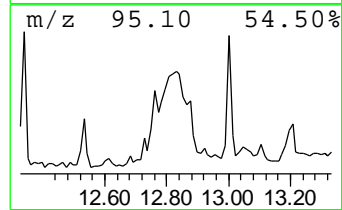
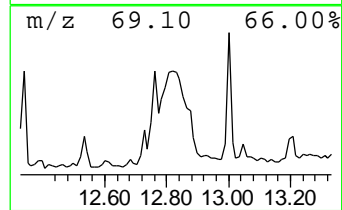
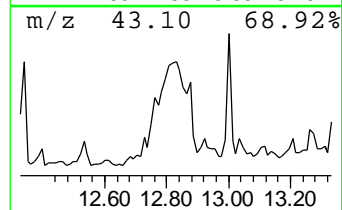
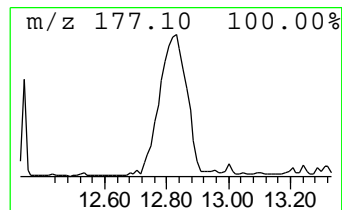
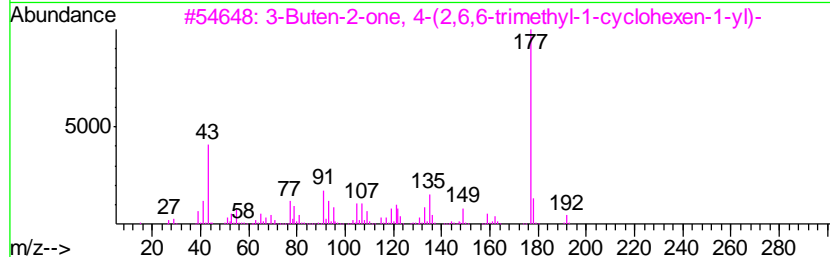
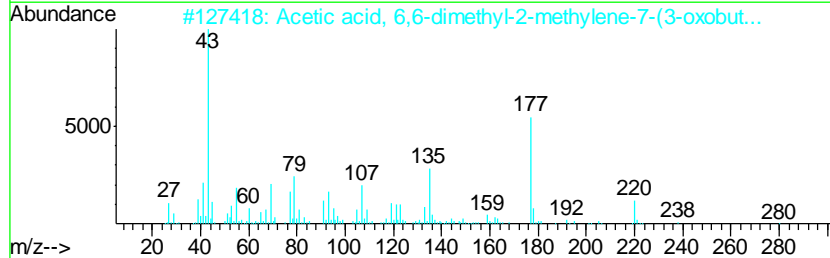
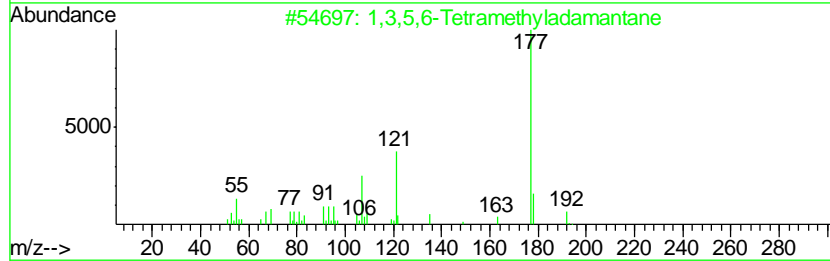
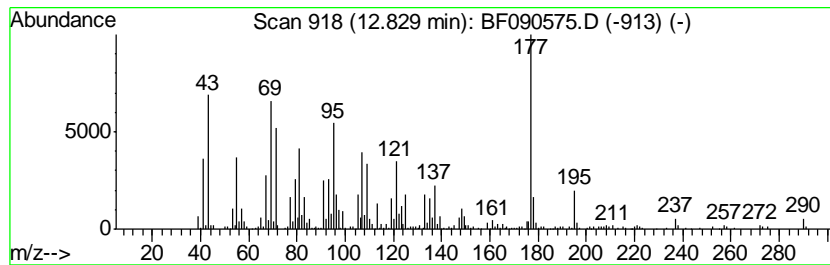
TIC Library : C:\DATABASE\NIST11.L  
 TIC Integration Parameters: LSCINT.P

\*\*\*\*\*  
 Peak Number 10 unknown12.83 Concentration Rank 5

R.T.	EstConc	Area	Relative to ISTD	R.T.
12.83	37.56 ng	3727600	Chrysene-d12	14.10

Hit#	of	Tentative ID	MW	MolForm	CAS#	Qual
1	5	1,3,5,6-Tetramethyladamantane	192	C14H24	034694-70-7	38
2		Acetic acid, 6,6-dimethyl-2-meth...	280	C16H24O4	1000186-15-5	32
3		3-Buten-2-one, 4-(2,6,6-trimethy...	192	C13H20O	014901-07-6	32
4		trans-.beta.-Ionone	192	C13H20O	000079-77-6	32
5		Isophthalic acid, ethyl 3-methyl...	264	C15H20O4	1000344-71-7	27



Data Path : Z:\HPCHEM1\BNA F\DATA\BF101416\  
 Data File : BF090575.D  
 Acq On : 14 Oct 2016 17:56  
 Operator : UM/SJ  
 Sample : H5244-01  
 Misc :  
 ALS Vial : 17 Sample Multiplier: 1

Instrument :  
 BNA\_F  
 ClientSampleId :  
 TS-WSG-16121-11

Quant Method : Z:\HPCHEM1\BNA F\METHODS\8270-BF101316.M  
 Quant Title : ASP BNA STANDARDS FOR 5 POINT CALIBRATION

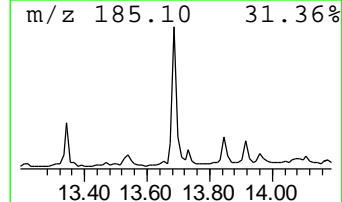
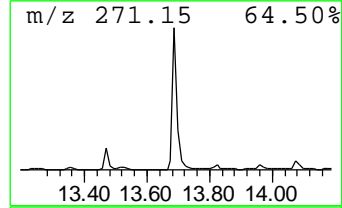
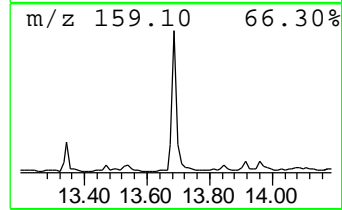
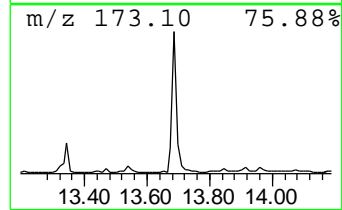
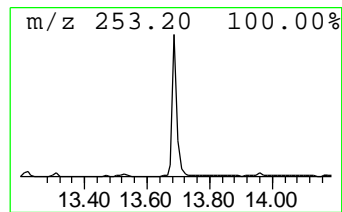
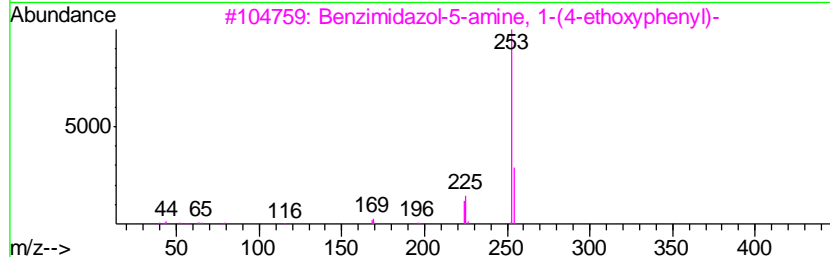
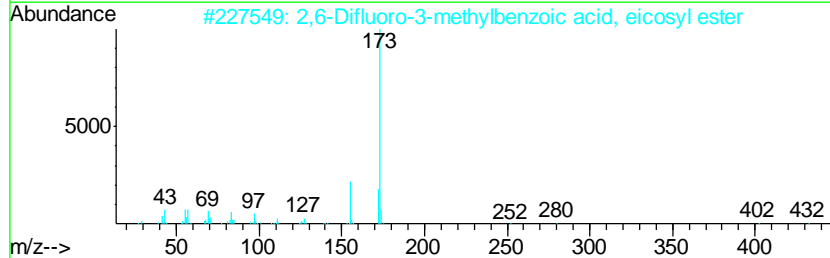
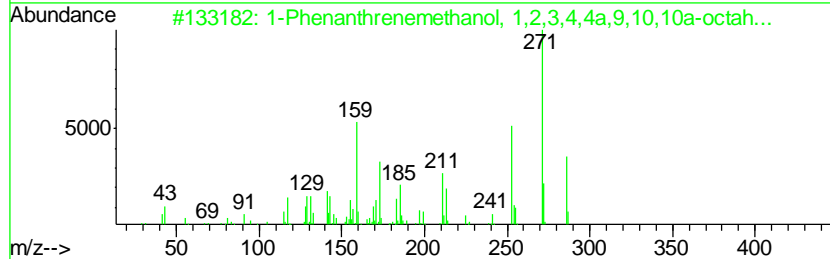
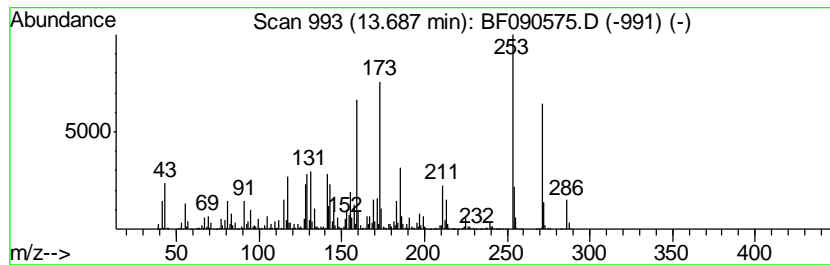
TIC Library : C:\DATABASE\NIST11.L  
 TIC Integration Parameters: LSCINT.P

\*\*\*\*\*  
 Peak Number 11 unknown13.69 Concentration Rank 6

R.T.	EstConc	Area	Relative to ISTD	R.T.
13.69	26.31 ng	2610480	Chrysene-d12	14.10

Hit#	of	Tentative ID	MW	MolForm	CAS#	Qual
1	5	1-Phenanthrenemethanol, 1,2,3,4,...	286	C20H30O	024035-43-6	30
2		2,6-Difluoro-3-methylbenzoic aci...	452	C28H46F2O2	1000338-85-7	14
3		Benzimidazol-5-amine, 1-(4-ethox...	253	C15H15N3O	007104-62-3	14
4		2(5H)-Furanone, 5-(phenylimino)-	173	C10H7NO2	019990-26-2	11
5		2(1H)-Quinolinone, 4,8-dimethyl-	173	C11H11NO	1000351-64-0	11



Data Path : Z:\HPCHEM1\BNA F\DATA\BF101416\  
 Data File : BF090575.D  
 Acq On : 14 Oct 2016 17:56  
 Operator : UM/SJ  
 Sample : H5244-01  
 Misc :  
 ALS Vial : 17 Sample Multiplier: 1

Instrument :  
 BNA\_F  
 ClientSampleId :  
 TS-WSG-16121-11

Quant Method : Z:\HPCHEM1\BNA F\METHODS\8270-BF101316.M  
 Quant Title : ASP BNA STANDARDS FOR 5 POINT CALIBRATION

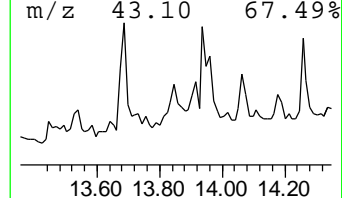
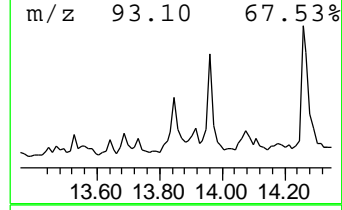
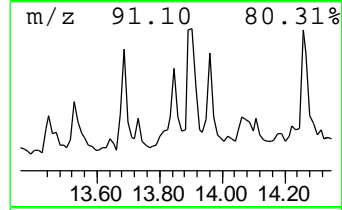
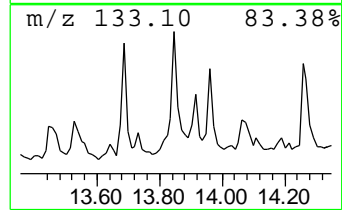
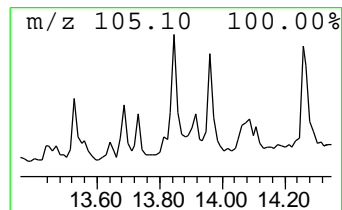
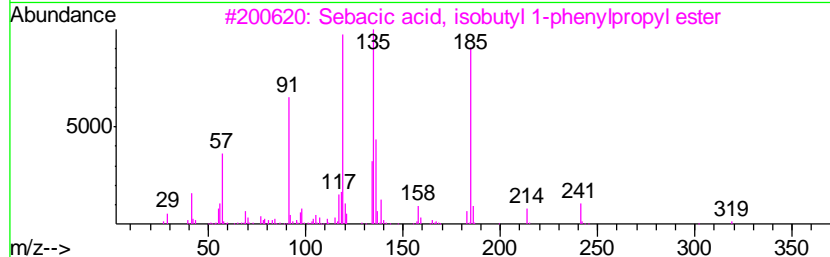
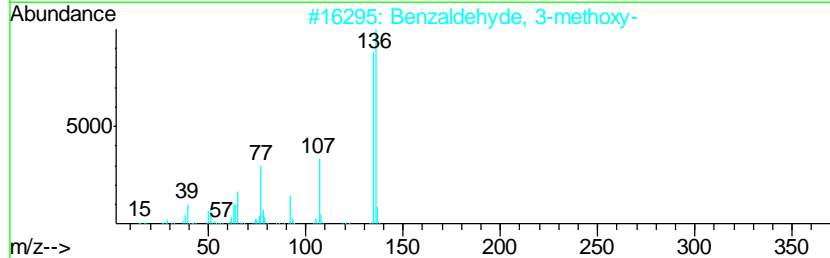
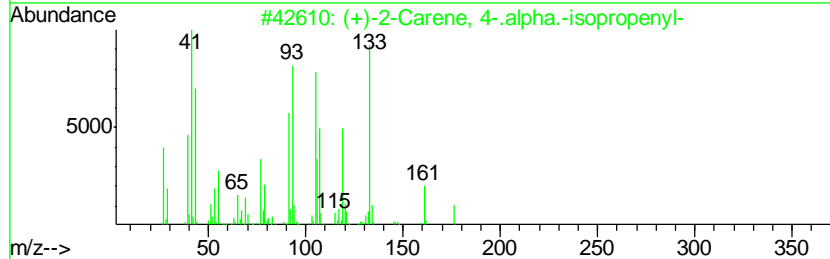
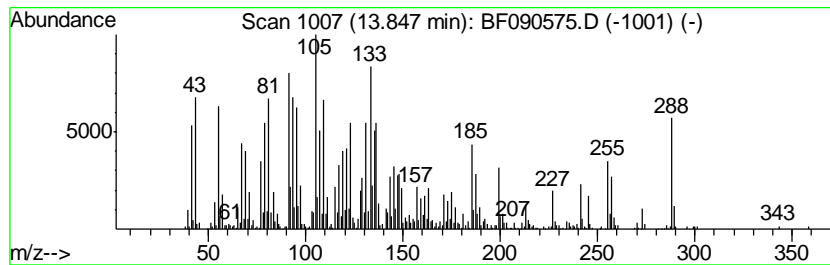
TIC Library : C:\DATABASE\NIST11.L  
 TIC Integration Parameters: LSCINT.P

\*\*\*\*\*  
 Peak Number 12 unknown13.85 Concentration Rank 14

R.T.	EstConc	Area	Relative to ISTD	R.T.
13.85	16.61 ng	1648360	Chrysene-d12	14.10

Hit#	of	Tentative ID	MW	MolForm	CAS#	Qual
1	5	(+)-2-Carene, 4-.alpha.-isopropenyl-	176	C13H20	1000151-26-0	38
2		Benzaldehyde, 3-methoxy-	136	C8H8O2	000591-31-1	25
3		Sebacic acid, isobutyl 1-phenylpropyl ester	376	C23H36O4	1000354-98-6	14
4		2-Ethyl-5-n-butylphenol	178	C12H18O	072386-21-1	14
5		10,10-Dimethyl-2,6-dimethylenebicyclo[2.2.1]heptane	220	C15H24O	019431-80-2	14



Data Path : Z:\HPCHEM1\BNA F\DATA\BF101416\  
 Data File : BF090575.D  
 Acq On : 14 Oct 2016 17:56  
 Operator : UM/SJ  
 Sample : H5244-01  
 Misc :  
 ALS Vial : 17 Sample Multiplier: 1

Instrument :  
 BNA\_F  
 ClientSampleId :  
 TS-WSG-16121-11

Quant Method : Z:\HPCHEM1\BNA F\METHODS\8270-BF101316.M  
 Quant Title : ASP BNA STANDARDS FOR 5 POINT CALIBRATION

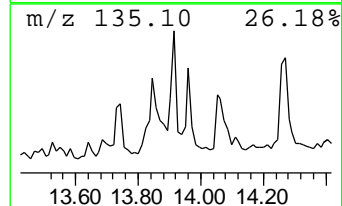
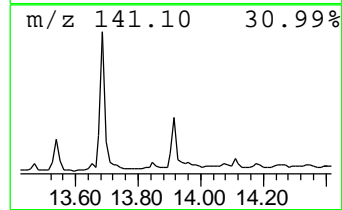
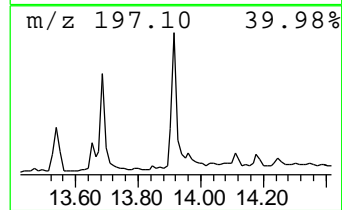
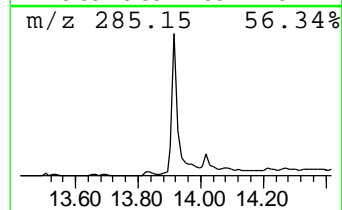
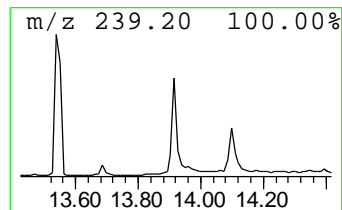
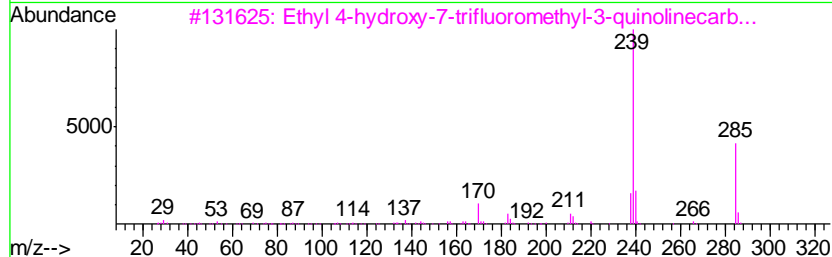
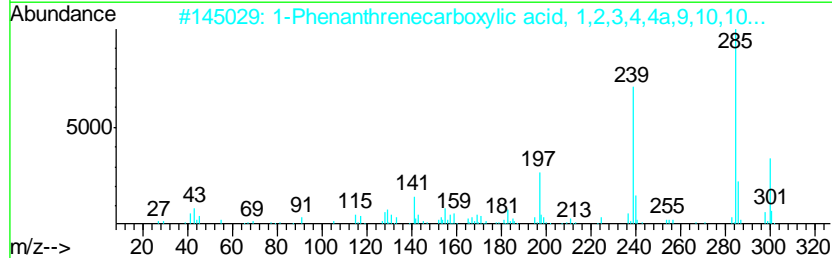
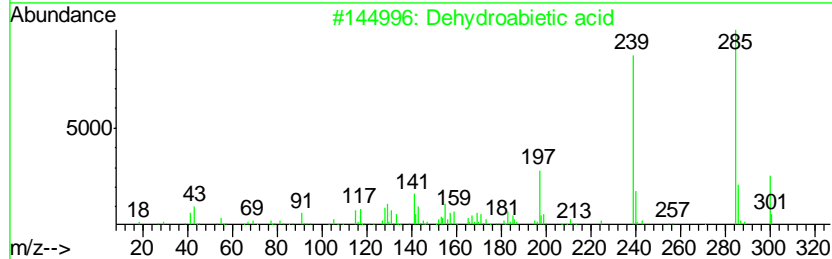
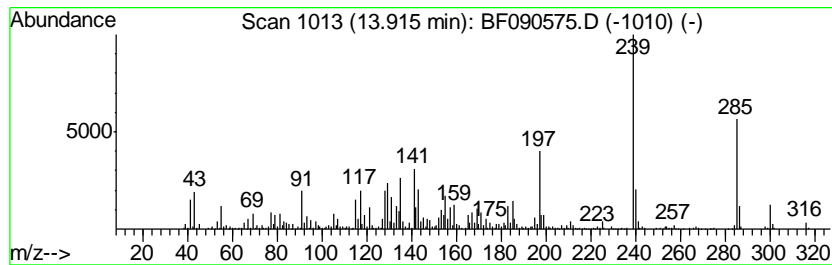
TIC Library : C:\DATABASE\NIST11.L  
 TIC Integration Parameters: LSCINT.P

\*\*\*\*\*  
 Peak Number 13 Dehydroabietic acid Concentration Rank 19

R.T.	EstConc	Area	Relative to ISTD	R.T.
13.92	11.01 ng	1092230	Chrysene-d12	14.10

Hit#	of	Tentative ID	MW	MolForm	CAS#	Qual
1	5	Dehydroabietic acid	300	C20H28O2	001740-19-8	99
2		1-Phenanthrenecarboxylic acid, 1...	300	C20H28O2	005155-70-4	50
3		Ethyl 4-hydroxy-7-trifluoromethy...	285	C13H10F3NO3	000391-02-6	43
4		2-Phenyl-4-(propen-1-yl)-pyrimid...	239	C14H13N3O	1000287-21-7	38
5		2-Ethylidene-hydrazono-3-methyl-...	239	C10H10ClN3S	1000148-08-4	38



Data Path : Z:\HPCHEM1\BNA F\DATA\BF101416\  
 Data File : BF090575.D  
 Acq On : 14 Oct 2016 17:56  
 Operator : UM/SJ  
 Sample : H5244-01  
 Misc :  
 ALS Vial : 17 Sample Multiplier: 1

Instrument :  
 BNA\_F  
 ClientSampled :  
 TS-WSG-16121-11

Quant Method : Z:\HPCHEM1\BNA F\METHODS\8270-BF101316.M  
 Quant Title : ASP BNA STANDARDS FOR 5 POINT CALIBRATION

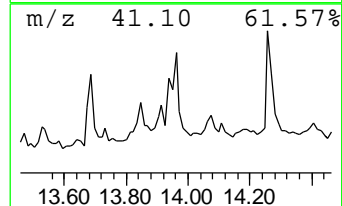
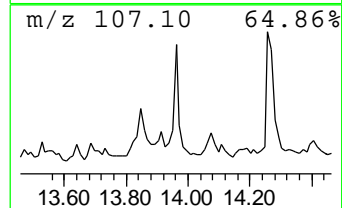
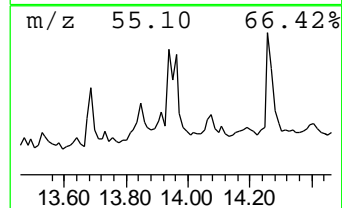
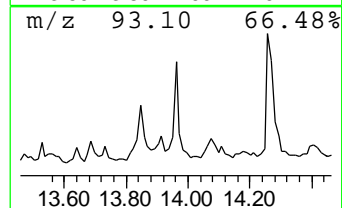
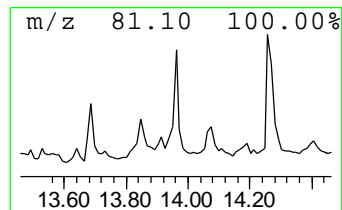
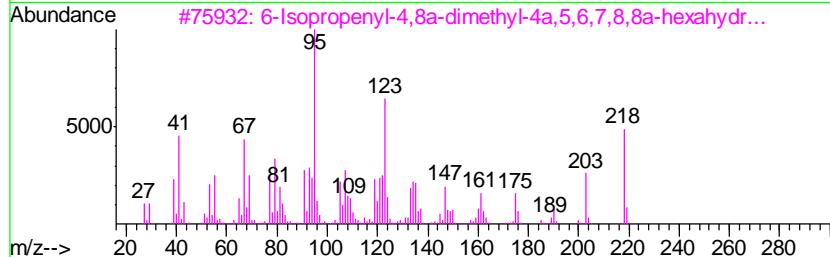
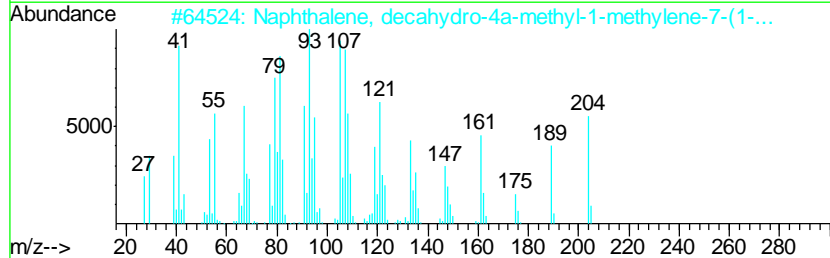
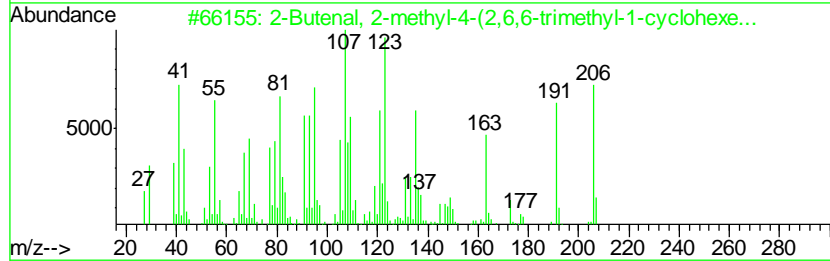
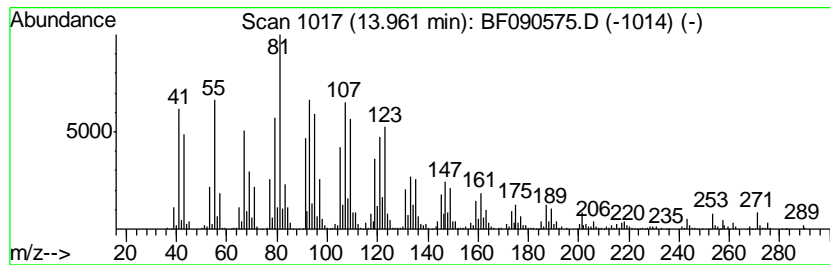
TIC Library : C:\DATABASE\NIST11.L  
 TIC Integration Parameters: LSCINT.P

\*\*\*\*\*  
 Peak Number 14 unknown13.96 Concentration Rank 12

R.T.	EstConc	Area	Relative to ISTD	R.T.
13.96	18.67 ng	1852910	Chrysene-d12	14.10

Hit#	of	Tentative ID	MW	MolForm	CAS#	Qual
1	5	2-Butenal, 2-methyl-4-(2,6,6-tri...	206	C14H22O	003155-71-3	43
2		Naphthalene, decahydro-4a-methyl...	204	C15H24	017066-67-0	38
3		6-Isopropenyl-4,8a-dimethyl-4a,5...	218	C15H22O	086917-79-5	38
4		Imidazole-2-hydrazone-1-carboxyl...	154	C5H6N4O2	1000126-42-2	27
5		Cyclohexane, 1-ethenyl-1-methyl-...	204	C15H24	110823-68-2	27





Data Path : Z:\HPCHEM1\BNA F\DATA\BF101416\  
 Data File : BF090575.D  
 Acq On : 14 Oct 2016 17:56  
 Operator : UM/SJ  
 Sample : H5244-01  
 Misc :  
 ALS Vial : 17 Sample Multiplier: 1

Instrument :  
 BNA\_F  
 ClientSampleId :  
 TS-WSG-16121-11

Quant Method : Z:\HPCHEM1\BNA F\METHODS\8270-BF101316.M  
 Quant Title : ASP BNA STANDARDS FOR 5 POINT CALIBRATION

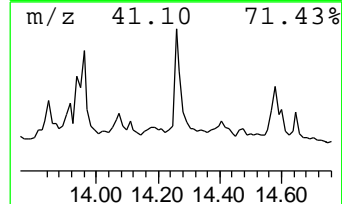
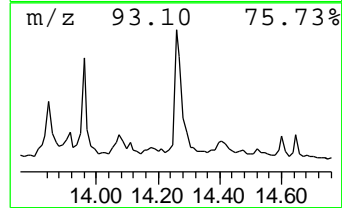
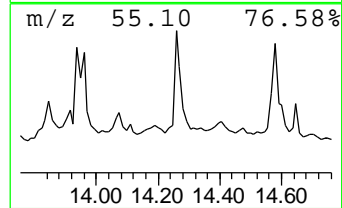
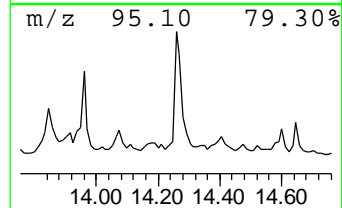
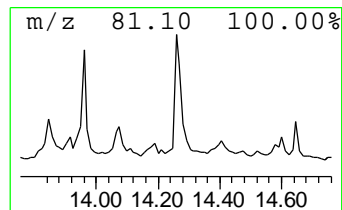
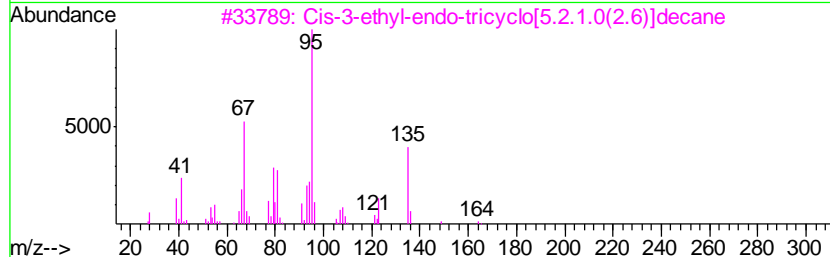
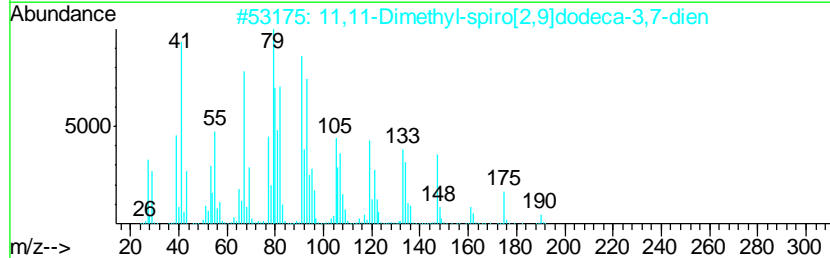
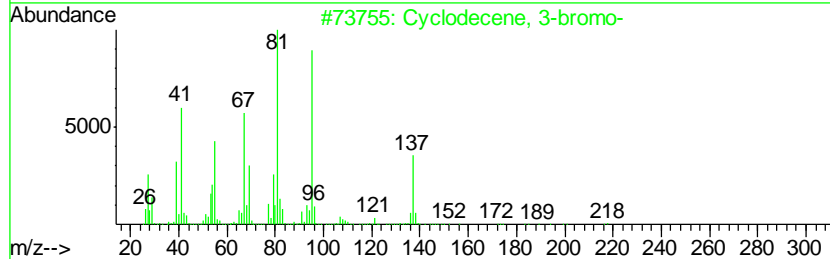
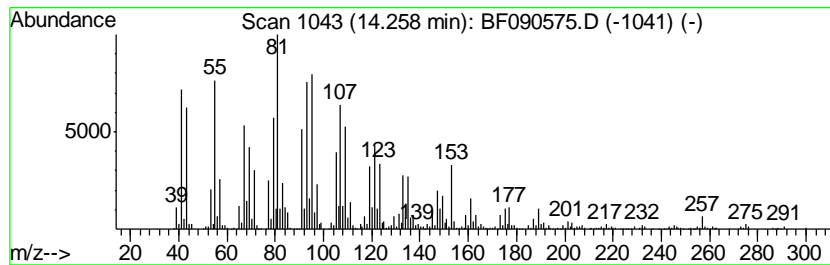
TIC Library : C:\DATABASE\NIST11.L  
 TIC Integration Parameters: LSCINT.P

\*\*\*\*\*  
 Peak Number 15 unknown14.26 Concentration Rank 13

R.T.	EstConc	Area	Relative to ISTD	R.T.
14.26	17.60 ng	1746500	Chrysene-d12	14.10

Hit#	of	Tentative ID	MW	MolForm	CAS#	Qual
1	5	Cyclodecene, 3-bromo-	216	C10H17Br	056325-56-5	42
2		11,11-Dimethyl-spiro[2,9]dodeca-...	190	C14H22	1000062-28-4	41
3		Cis-3-ethyl-endo-tricyclo[5.2.1....	164	C12H20	1000215-29-1	25
4		Bicyclo[4.3.0]nonane, 7-methylen...	204	C15H24	1000156-11-9	18
5		.alpha.-Santalol	220	C15H24O	000115-71-9	18



Data Path : Z:\HPCHEM1\BNA F\DATA\BF101416\  
 Data File : BF090575.D  
 Acq On : 14 Oct 2016 17:56  
 Operator : UM/SJ  
 Sample : H5244-01  
 Misc :  
 ALS Vial : 17 Sample Multiplier: 1

Instrument :  
 BNA\_F  
 ClientSampled :  
 TS-WSG-16121-11

Quant Method : Z:\HPCHEM1\BNA F\METHODS\8270-BF101316.M  
 Quant Title : ASP BNA STANDARDS FOR 5 POINT CALIBRATION

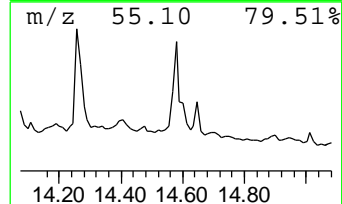
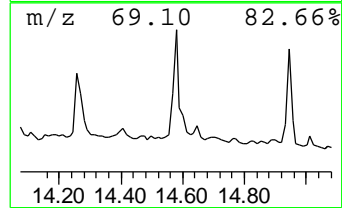
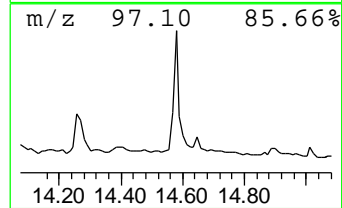
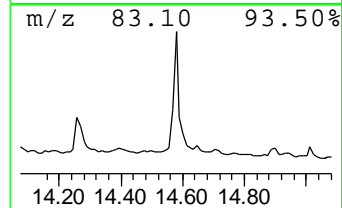
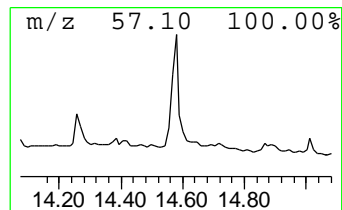
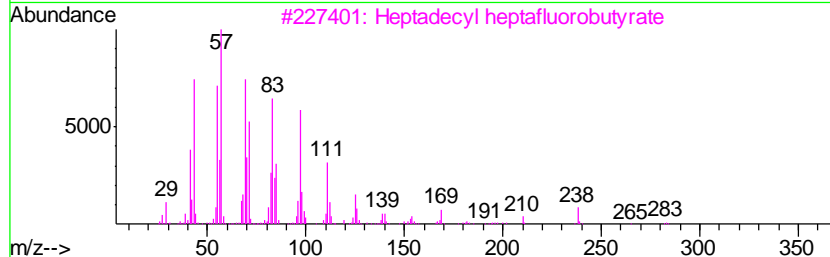
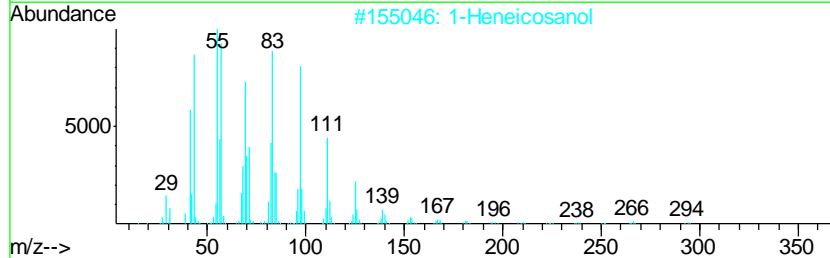
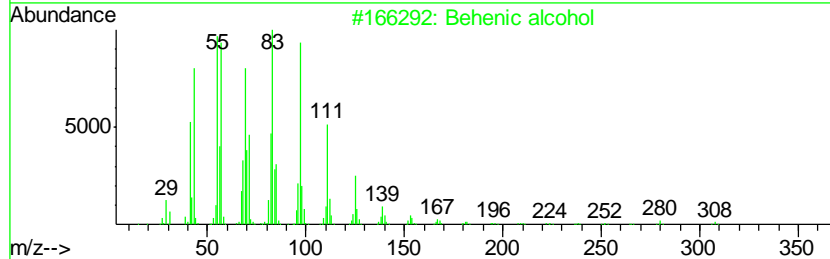
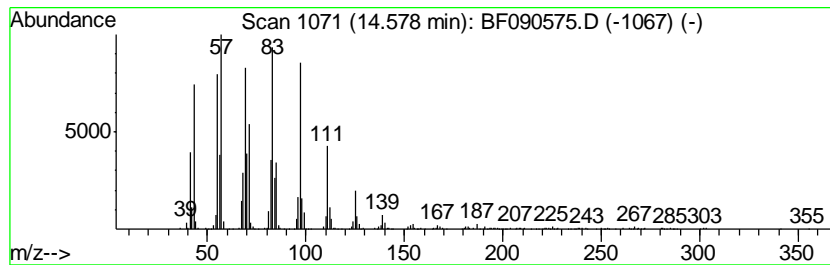
TIC Library : C:\DATABASE\NIST11.L  
 TIC Integration Parameters: LSCINT.P

\*\*\*\*\*  
 Peak Number 16 Behenic alcohol Concentration Rank 16

R.T.	EstConc	Area	Relative to ISTD	R.T.
14.58	12.20 ng	1210910	Chrysene-d12	14.10

Hit#	of	Tentative ID	MW	MolForm	CAS#	Qual
1	5	Behenic alcohol	326	C22H46O	000661-19-8	94
2		1-Heneicosanol	312	C21H44O	015594-90-8	91
3		Heptadecyl heptafluorobutyrate	452	C21H35F7O2	959085-66-6	91
4		3-Eicosene, (E)-	280	C20H40	074685-33-9	91
5		n-Nonadecanol-1	284	C19H40O	001454-84-8	90



Data Path : Z:\HPCHEM1\BNA F\DATA\BF101416\  
 Data File : BF090575.D  
 Acq On : 14 Oct 2016 17:56  
 Operator : UM/SJ  
 Sample : H5244-01  
 Misc :  
 ALS Vial : 17 Sample Multiplier: 1

Instrument :  
 BNA\_F  
 ClientSampled :  
 TS-WSG-16121-11

Quant Method : Z:\HPCHEM1\BNA F\METHODS\8270-BF101316.M  
 Quant Title : ASP BNA STANDARDS FOR 5 POINT CALIBRATION

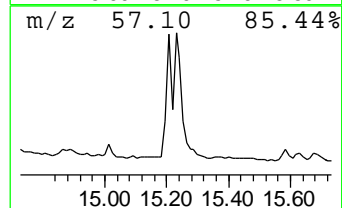
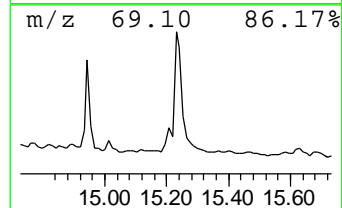
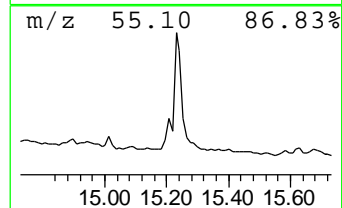
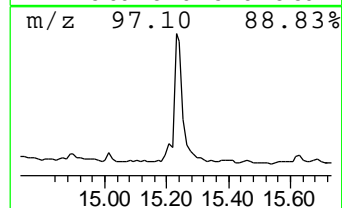
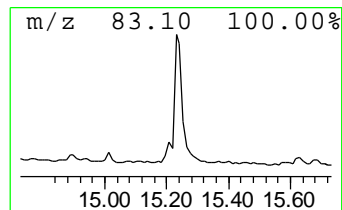
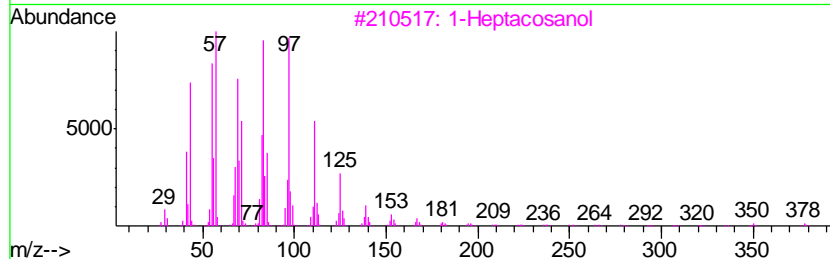
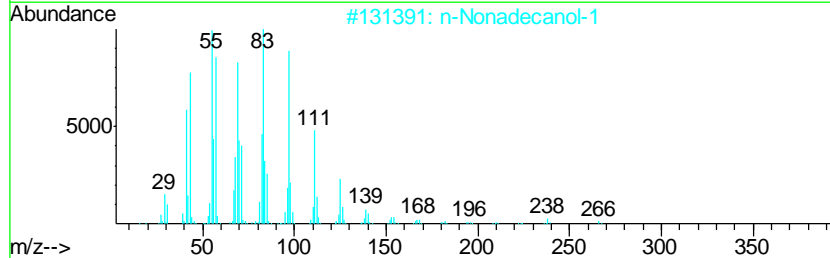
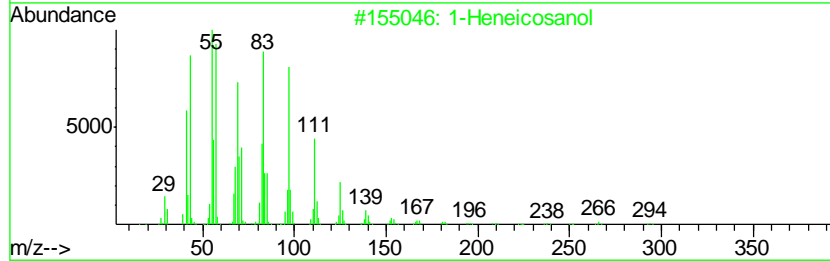
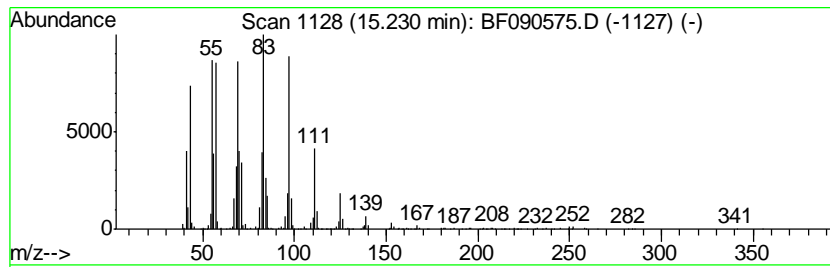
TIC Library : C:\DATABASE\NIST11.L  
 TIC Integration Parameters: LSCINT.P

\*\*\*\*\*  
 Peak Number 17 1-Heneicosanol Concentration Rank 7

R.T.	EstConc	Area	Relative to ISTD	R.T.
15.23	25.75 ng	1282500	Perylene-d12	15.56

Hit#	of	Tentative ID	MW	MolForm	CAS#	Qual
1	5	1-Heneicosanol	312	C21H44O	015594-90-8	94
2		n-Nonadecanol-1	284	C19H40O	001454-84-8	91
3		1-Heptacosanol	396	C27H56O	002004-39-9	90
4		n-Tetracosanol-1	354	C24H50O	000506-51-4	90
5		n-Heptadecanol-1	256	C17H36O	001454-85-9	87



Data Path : Z:\HPCHEM1\BNA F\DATA\BF101416\  
 Data File : BF090575.D  
 Acq On : 14 Oct 2016 17:56  
 Operator : UM/SJ  
 Sample : H5244-01  
 Misc :  
 ALS Vial : 17 Sample Multiplier: 1

Instrument :  
 BNA\_F  
 ClientSampled :  
 TS-WSG-16121-11

Quant Method : Z:\HPCHEM1\BNA F\METHODS\8270-BF101316.M  
 Quant Title : ASP BNA STANDARDS FOR 5 POINT CALIBRATION

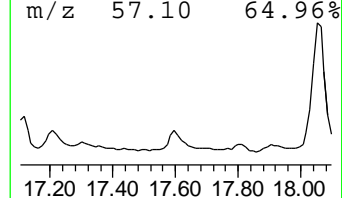
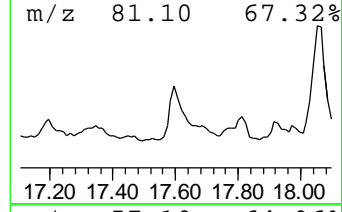
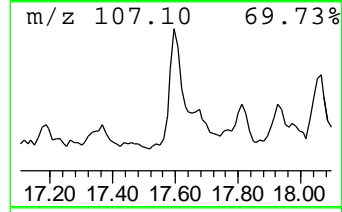
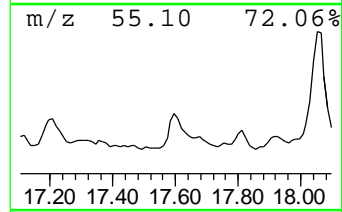
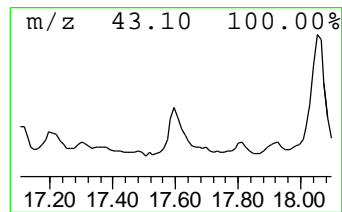
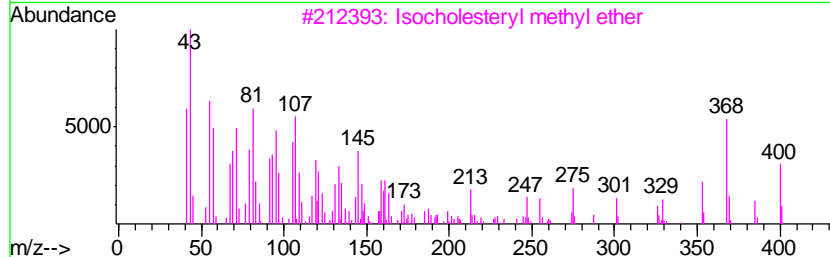
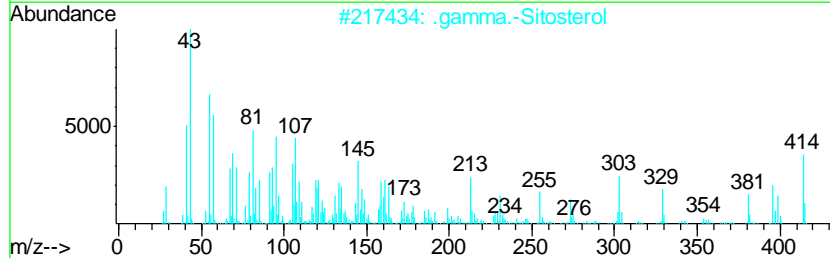
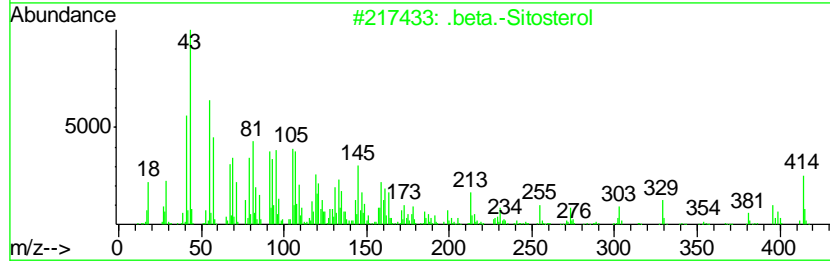
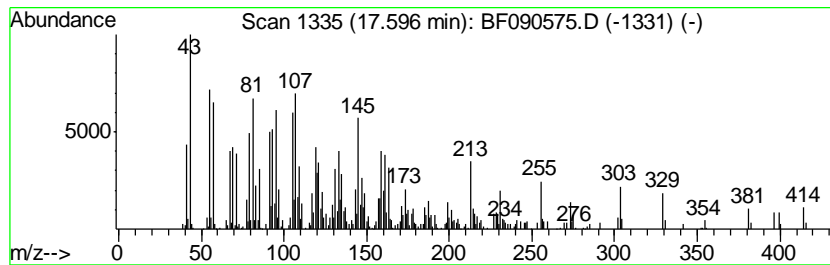
TIC Library : C:\DATABASE\NIST11.L  
 TIC Integration Parameters: LSCINT.P

\*\*\*\*\*  
 Peak Number 19 .beta.-Sitosterol Concentration Rank 15

R.T.	EstConc	Area	Relative to ISTD	R.T.
17.60	16.59 ng	826156	Perylene-d12	15.56

Hit#	of	Tentative ID	MW	MolForm	CAS#	Qual
1	5	.beta.-Sitosterol	414	C29H50O	000083-46-5	99
2		.gamma.-Sitosterol	414	C29H50O	000083-47-6	96
3		Isocholesteryl methyl ether	400	C28H48O	029944-53-4	80
4		Ergost-5-en-3-ol, (3.beta.)-	400	C28H48O	004651-51-8	68
5		5-Cholestene-3-ol, 24-methyl-	400	C28H48O	1000214-17-4	62



Data Path : Z:\HPCHEM1\BNA F\DATA\BF101416\  
 Data File : BF090575.D  
 Acq On : 14 Oct 2016 17:56  
 Operator : UM/SJ  
 Sample : H5244-01  
 Misc :  
 ALS Vial : 17 Sample Multiplier: 1

Instrument :  
 BNA\_F  
 ClientSampleId :  
 TS-WSG-16121-11

Quant Method : Z:\HPCHEM1\BNA F\METHODS\8270-BF101316.M  
 Quant Title : ASP BNA STANDARDS FOR 5 POINT CALIBRATION

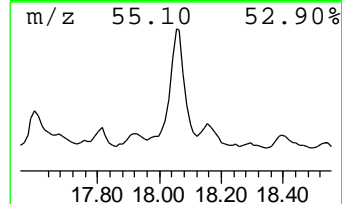
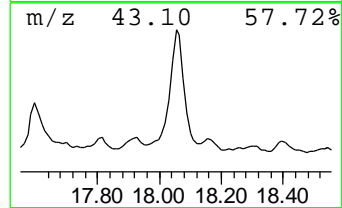
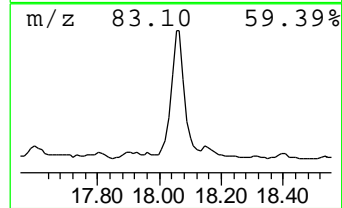
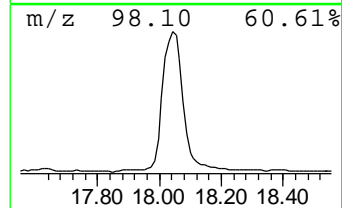
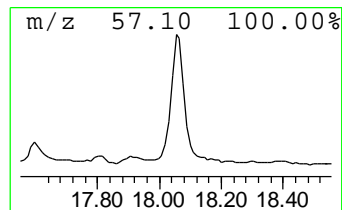
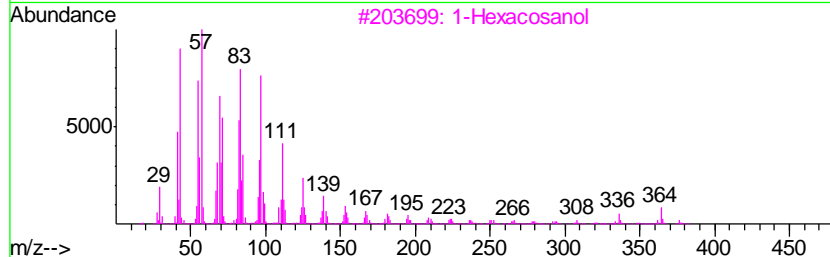
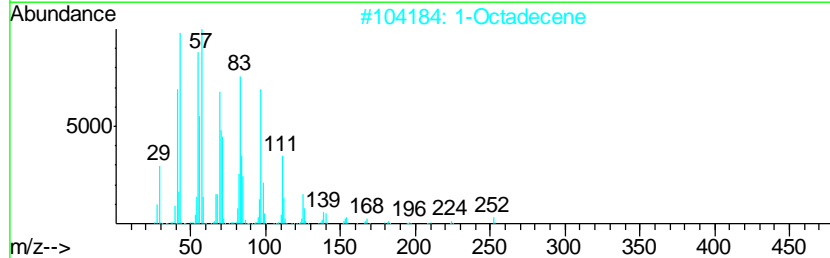
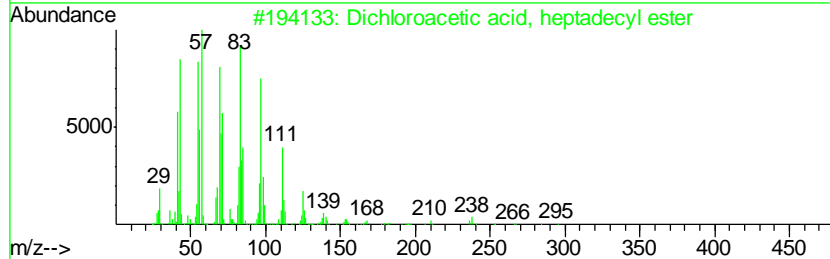
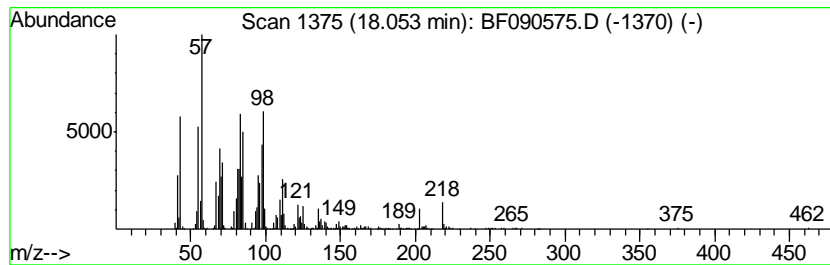
TIC Library : C:\DATABASE\NIST11.L  
 TIC Integration Parameters: LSCINT.P

\*\*\*\*\*  
 Peak Number 20 unknown18.05 Concentration Rank 4

R.T.	EstConc	Area	Relative to ISTD	R.T.
18.05	39.00 ng	1942190	Perylene-d12	15.56

Hit#	of	Tentative ID	MW	MolForm	CAS#	Qual
1	5	Dichloroacetic acid, heptadecyl ...	366	C19H36Cl2O2	1000282-98-2	49
2		1-Octadecene	252	C18H36	000112-88-9	46
3		1-Hexacosanol	382	C26H54O	000506-52-5	46
4		n-Tetracosanol-1	354	C24H50O	000506-51-4	45
5		9-Methyl-Z-10-tetradecen-1-ol ac...	268	C17H32O2	1000130-99-4	45



Data Path : Z:\HPCHEM1\BNA\_F\DATA\BF101416\  
 Data File : BF090575.D  
 Acq On : 14 Oct 2016 17:56  
 Operator : UM/SJ  
 Sample : H5244-01  
 Misc :  
 ALS Vial : 17 Sample Multiplier: 1

Instrument :  
 BNA\_F  
 ClientSampleId :  
 TS-WSG-16121-11

Quant Method : Z:\HPCHEM1\BNA\_F\METHODS\8270-BF101316.M  
 Quant Title : ASP BNA STANDARDS FOR 5 POINT CALIBRATION

TIC Library : C:\DATABASE\NIST11.L  
 TIC Integration Parameters: LSCINT.P

TIC Top Hit name	RT	EstConc	Units	Response	--Internal Standard--			
					#	RT	Resp	Conc
2-Pentanone, 4-hy...	5.10	19.6	ng	1107410	1	6.92	1130690	20.0
(1R)-2,6,6-Trimet...	6.19	22.5	ng	1270050	1	6.92	1130690	20.0
unknown6.68	6.68	70.9	ng	4007840	1	6.92	1130690	20.0
D-Limonene	7.03	12.2	ng	688710	1	6.92	1130690	20.0
1H-Naphtho[2,1-b]...	12.34	20.2	ng	1612060	4	11.45	1593110	20.0
10,18-Bisnorabiet...	12.70	10.0	ng	793749	4	11.45	1593110	20.0
unknown12.76	12.76	11.8	ng	942519	4	11.45	1593110	20.0
unknown12.83	12.83	37.6	ng	3727600	5	14.10	1984690	20.0
unknown13.69	13.69	26.3	ng	2610480	5	14.10	1984690	20.0
unknown13.85	13.85	16.6	ng	1648360	5	14.10	1984690	20.0
Dehydroabietic acid	13.92	11.0	ng	1092230	5	14.10	1984690	20.0
unknown13.96	13.96	18.7	ng	1852910	5	14.10	1984690	20.0
unknown14.26	14.26	17.6	ng	1746500	5	14.10	1984690	20.0
Behenic alcohol	14.58	12.2	ng	1210910	5	14.10	1984690	20.0
1-Heneicosanol	15.23	25.8	ng	1282500	6	15.56	996084	20.0
.beta.-Sitosterol	17.60	16.6	ng	826156	6	15.56	996084	20.0
unknown18.05	18.05	39.0	ng	1942190	6	15.56	996084	20.0