

Data Path : Z:\SVOASRV\HPCHEM1\BNA F\DATA\BF101419\
 Data File : BF117407.D
 Acq On : 14 Oct 2019 19:20
 Operator : JU
 Sample : K5323-08
 Misc :
 ALS Vial : 14 Sample Multiplier: 1

Instrument :
 BNA_F
 ClientSampleId :

Quant Time: Oct 15 02:07:48 2019
 Quant Method : Z:\SVOASRV\HPCHEM1\BNA F\METHODS\8270-BF101419.M
 Quant Title : ASP BNA STANDARDS FOR 5 POINT CALIBRATION
 QLast Update : Mon Oct 14 19:03:29 2019
 Response via : Initial Calibration

Internal Standards	R.T.	QIon	Response	Conc	Units	Dev(Min)
1) 1,4-Dichlorobenzene-d4	6.79	152	39725	20.00	ng	0.00
21) Naphthalene-d8	8.07	136	157904	20.00	ng	0.00
39) Acenaphthene-d10	9.82	164	82367	20.00	ng	0.00
64) Phenanthrene-d10	11.31	188	142505	20.00	ng	0.00
76) Chrysene-d12	13.96	240	121215	20.00	ng	0.00
87) Perylene-d12	15.41	264	126914	20.00	ng	0.00

System Monitoring Compounds	R.T.	QIon	Response	Conc	Units	Dev(Min)
5) 2-Fluorophenol	5.43	112	353617	136.96	ng	0.01
7) Phenol-d6	6.44	99	452531	132.10	ng	0.00
23) Nitrobenzene-d5	7.36	82	297171	95.40	ng	0.00
42) 2,4,6-Tribromophenol	10.62	330	107942	161.02	ng	0.00
45) 2-Fluorobiphenyl	9.15	172	553002	97.88	ng	0.00
79) Terphenyl-d14	12.90	244	617605	83.06	ng	0.00

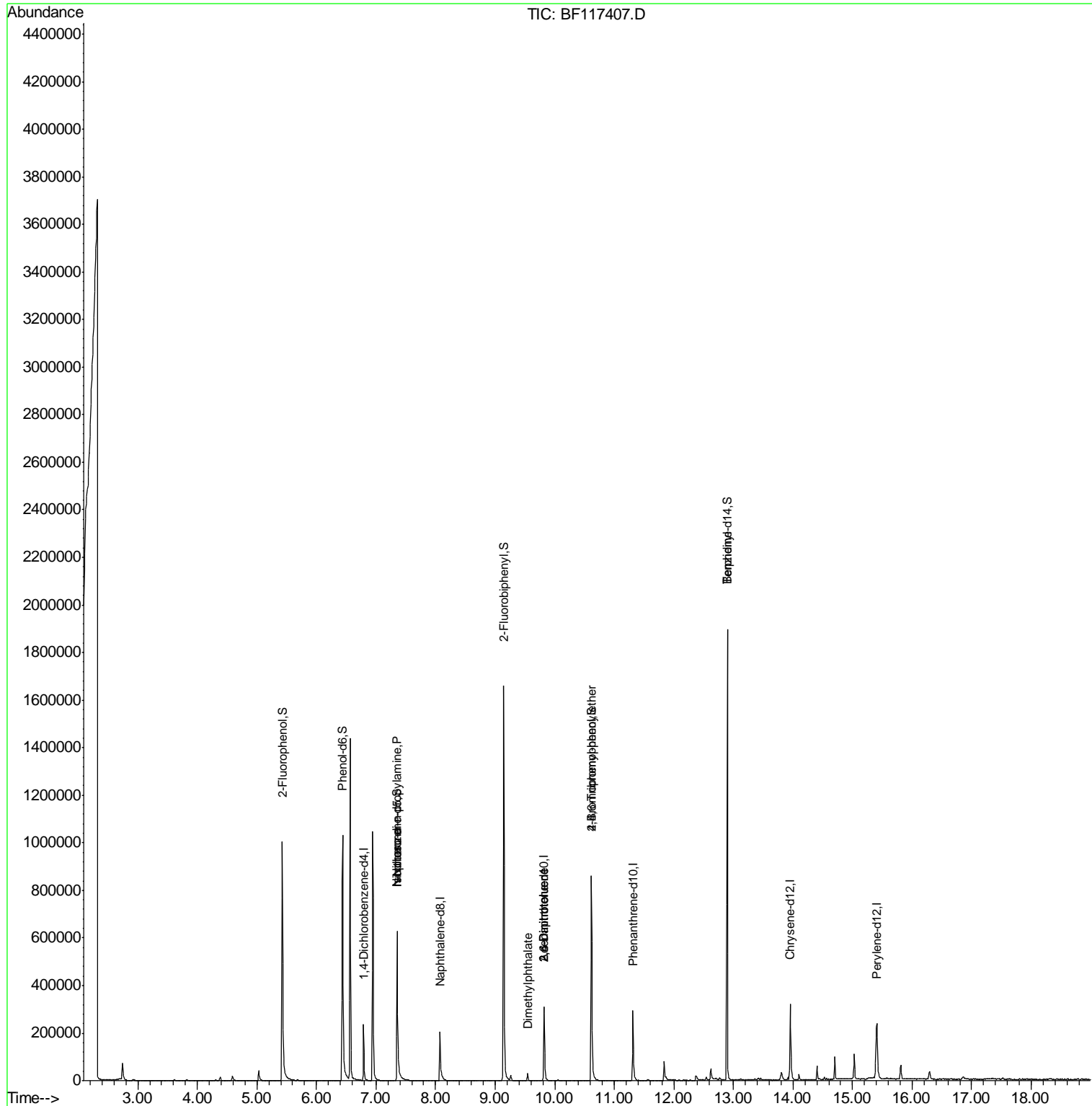
Target Compounds	R.T.	QIon	Response	Conc	Units	Qvalue
9) Benzaldehyde	6.43	77	473	Below Cal		# 1
19) n-Nitroso-di-n-propylamine	7.36	70	37951	17.375	ng	# 75
25) Isophorone	7.36	82	297169	53.553	ng	# 67
50) Dimethylphthalate	9.55	163	17068	2.885	ng	99
51) 2,6-Dinitrotoluene	9.82	165	10124	8.142	ng	# 21
57) 2,4-Dinitrotoluene	9.82	165	10124	6.171	ng	# 12
67) 4-Bromophenyl-phenylether	10.62	248	6611	4.230	ng	# 1
77) Benzidine	12.90	184	8358	2.788	ng	95

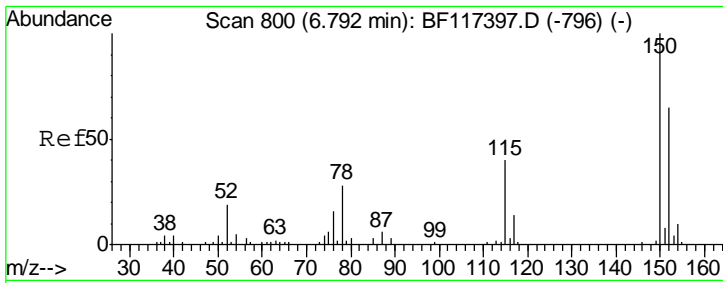
(#) = qualifier out of range (m) = manual integration (+) = signals summed

Data Path : Z:\SVOASRV\HPCHEM1\BNA F\DATA\BF101419\
 Data File : BF117407.D
 Acq On : 14 Oct 2019 19:20
 Operator : JU
 Sample : K5323-08
 Misc :
 ALS Vial : 14 Sample Multiplier: 1

Instrument :
 BNA_F
 ClientSampleId :

Quant Time: Oct 15 02:07:48 2019
 Quant Method : Z:\SVOASRV\HPCHEM1\BNA F\METHODS\8270-BF101419.M
 Quant Title : ASP BNA STANDARDS FOR 5 POINT CALIBRATION
 QLast Update : Mon Oct 14 19:03:29 2019
 Response via : Initial Calibration

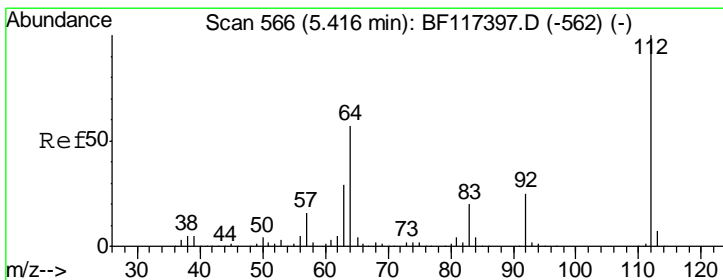
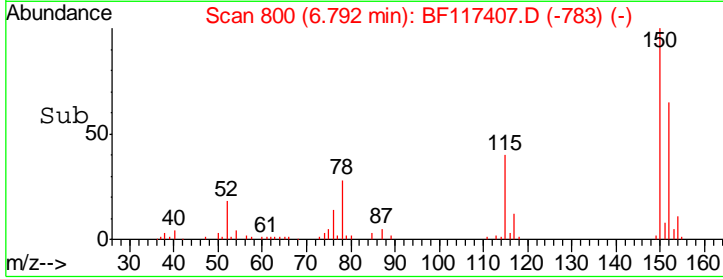
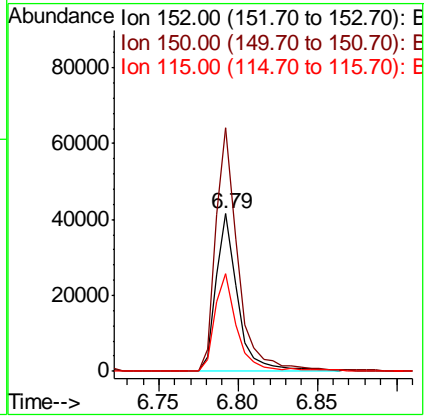
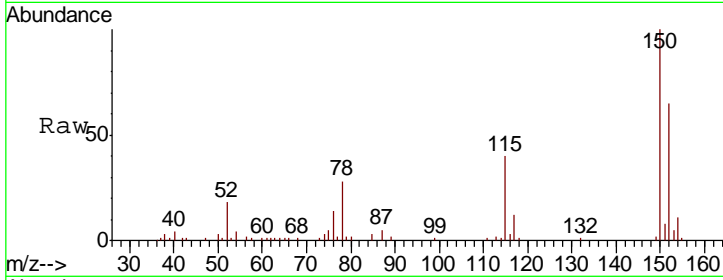




#1
 1,4-Dichlorobenzene-d4
 Concen: 20.000 ng
 RT: 6.79 min Scan# 800
 Delta R.T. 0.00 min
 Lab File: BF117407.D
 Acq: 14 Oct 2019 19:20

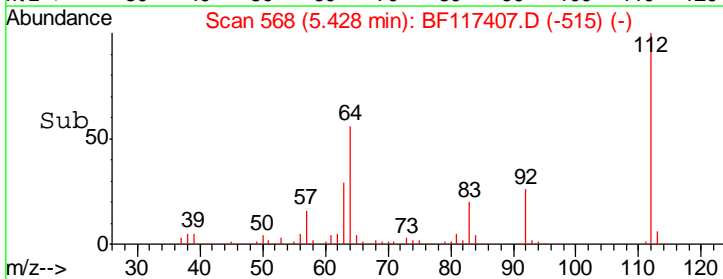
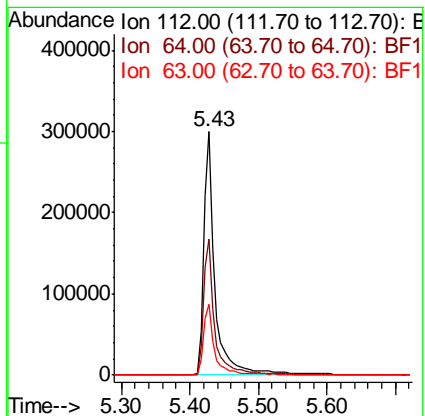
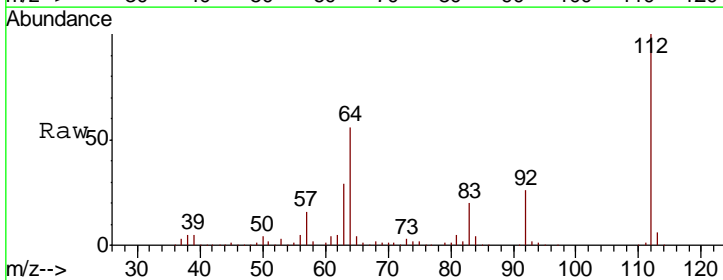
Instrument :
 BNA_F
 ClientSampled :

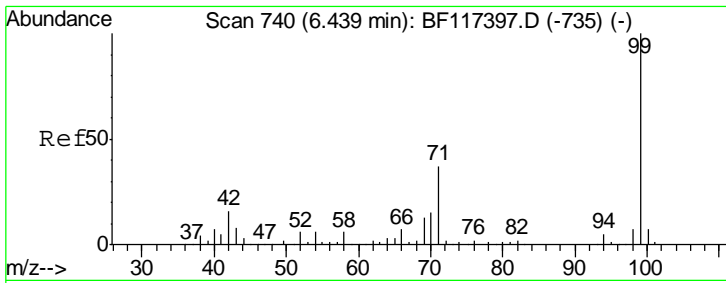
Tgt Ion	Resp	Lower	Upper
152	39725		
150	154.4	122.7	184.1
115	61.8	48.6	73.0



#5
 2-Fluorophenol
 Concen: 136.963 ng
 RT: 5.43 min Scan# 568
 Delta R.T. 0.01 min
 Lab File: BF117407.D
 Acq: 14 Oct 2019 19:20

Tgt Ion	Resp	Lower	Upper
112	353617		
64	56.1	45.2	67.8
63	29.3	23.4	35.2

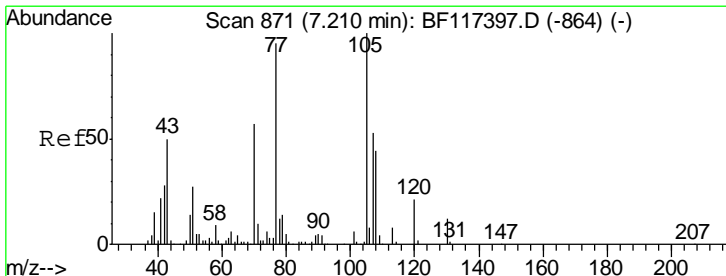
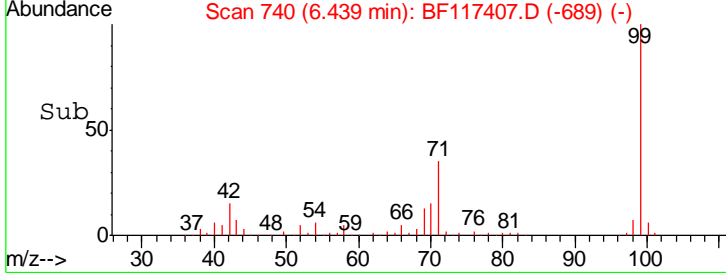
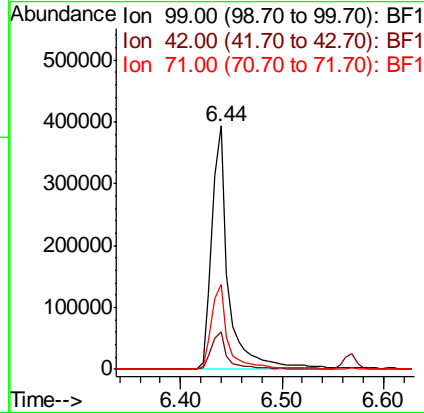
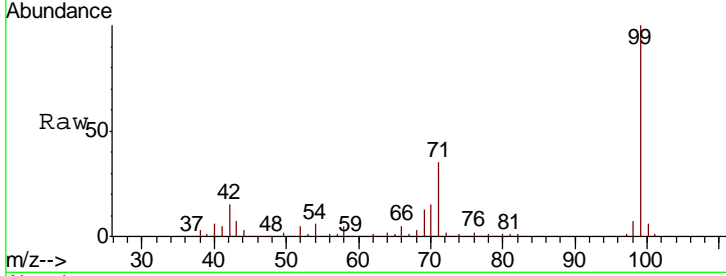




#7
 Phenol-d6
 Concen: 132.102 ng
 RT: 6.44 min Scan# 740
 Delta R.T. 0.00 min
 Lab File: BF117407.D
 Acq: 14 Oct 2019 19:20

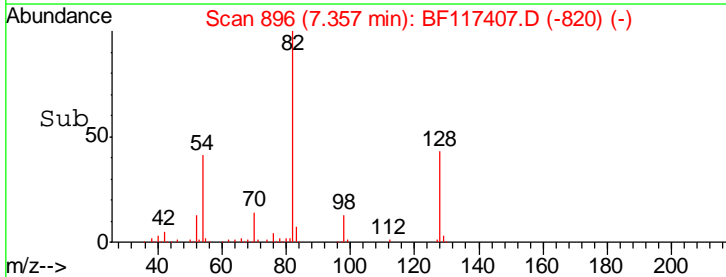
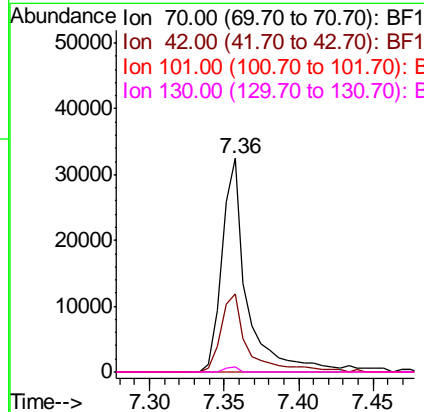
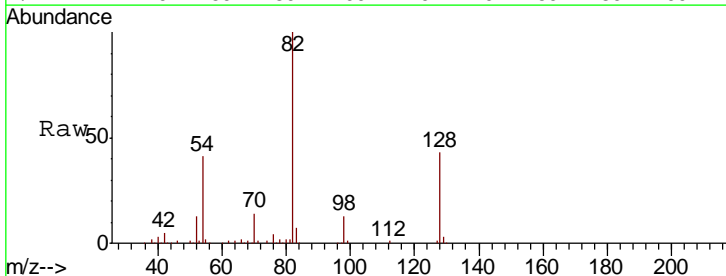
Instrument :
 BNA_F
 ClientSampled :

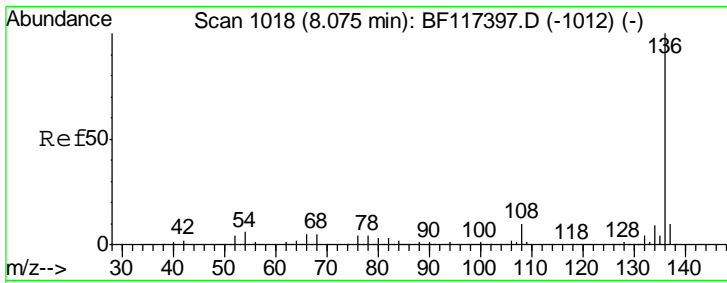
Tgt Ion	Resp	Lower	Upper
99	452531		
99	100		
42	15.3	12.5	18.7
71	35.1	29.2	43.8



#19
 n-Nitroso-di-n-propylamine
 Concen: 17.375 ng
 RT: 7.36 min Scan# 896
 Delta R.T. 0.15 min
 Lab File: BF117407.D
 Acq: 14 Oct 2019 19:20

Tgt Ion	Resp	Lower	Upper
70	37951		
70	100		
42	36.7	39.8	59.8#
101	0.0	8.1	12.1#
130	2.2	16.4	24.6#



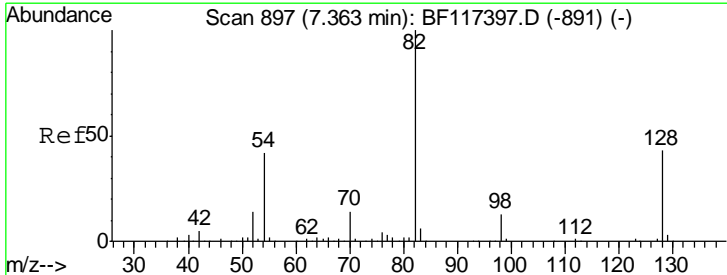
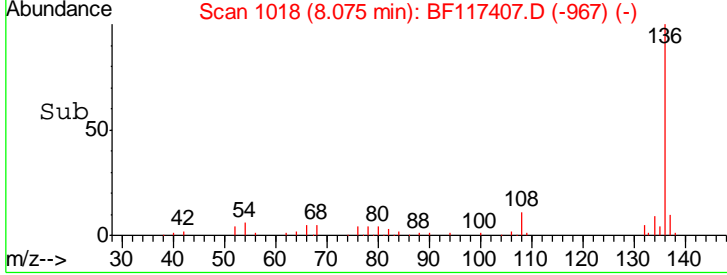
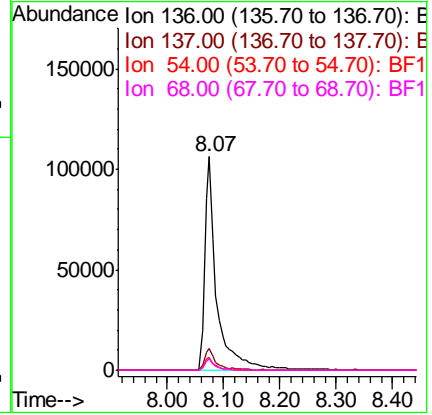
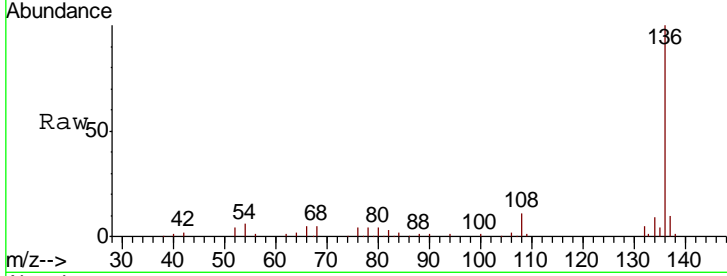


#21
 Naphthalene-d8
 Concen: 20.000 ng
 RT: 8.07 min Scan# 1018
 Delta R.T. 0.00 min
 Lab File: BF117407.D
 Acq: 14 Oct 2019 19:20

Instrument :
 BNA_F
 ClientSampled :

Tgt Ion: 136 Resp: 157904

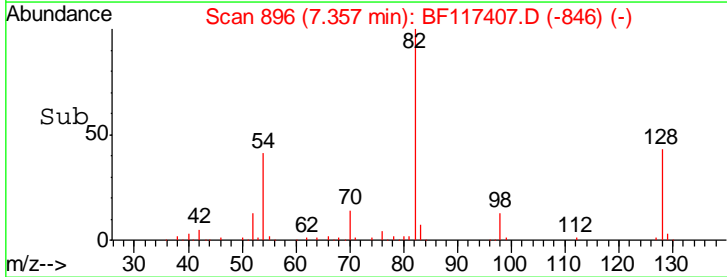
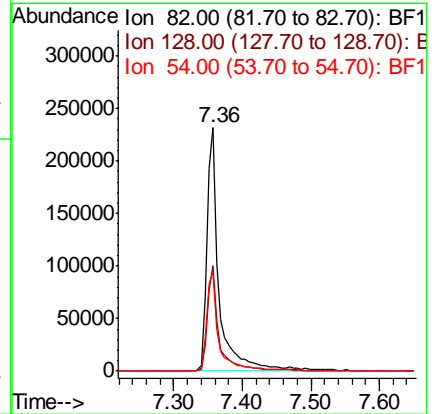
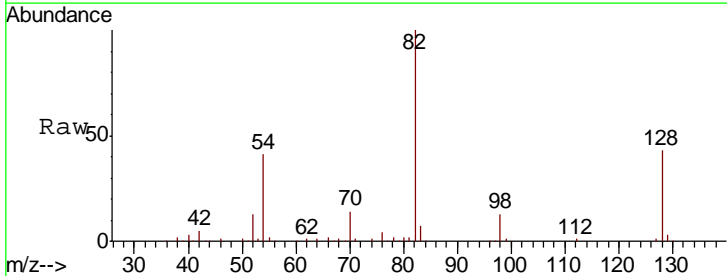
Ion	Ratio	Lower	Upper
136	100		
137	10.5	8.4	12.6
54	6.3	4.6	6.8
68	5.2	3.8	5.8

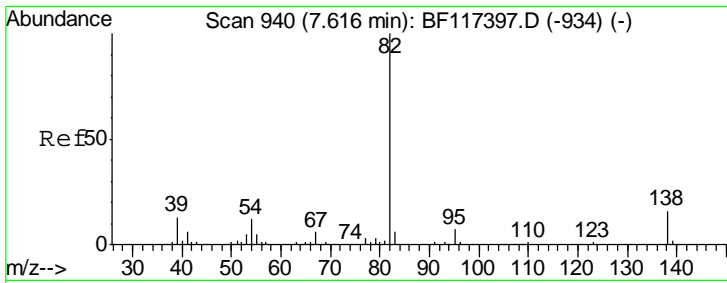


#23
 Nitrobenzene-d5
 Concen: 95.398 ng
 RT: 7.36 min Scan# 896
 Delta R.T. -0.01 min
 Lab File: BF117407.D
 Acq: 14 Oct 2019 19:20

Tgt Ion: 82 Resp: 297171

Ion	Ratio	Lower	Upper
82	100		
128	43.2	34.1	51.1
54	40.8	33.3	49.9

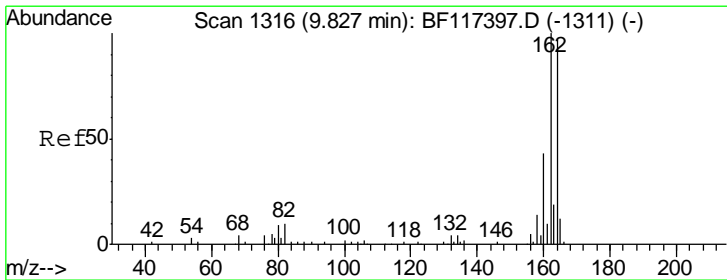
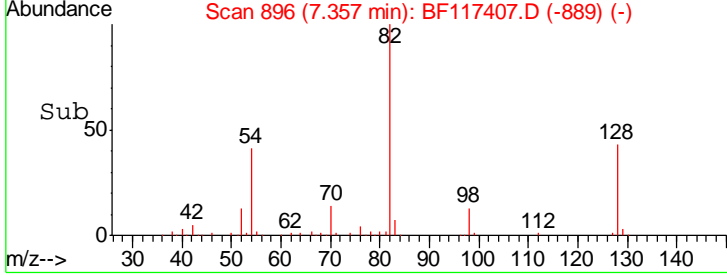
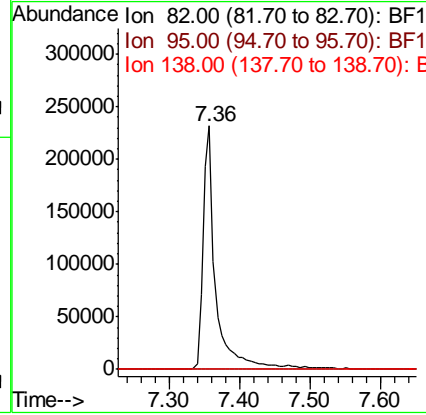
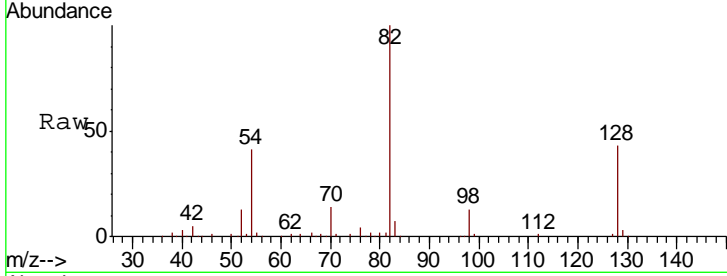




#25
 Isophorone
 Concen: 53.553 ng
 RT: 7.36 min Scan# 896
 Delta R.T. -0.26 min
 Lab File: BF117407.D
 Acq: 14 Oct 2019 19:20

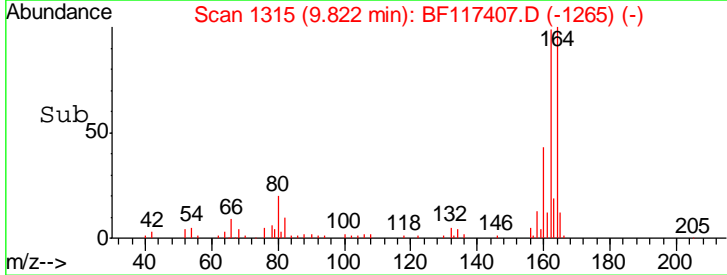
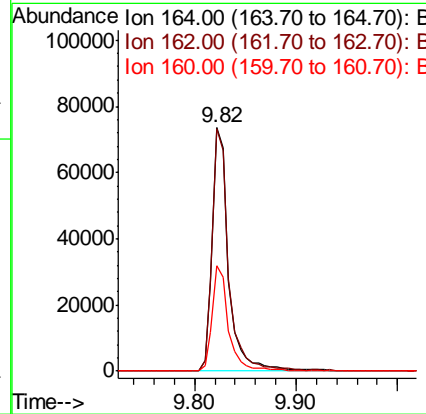
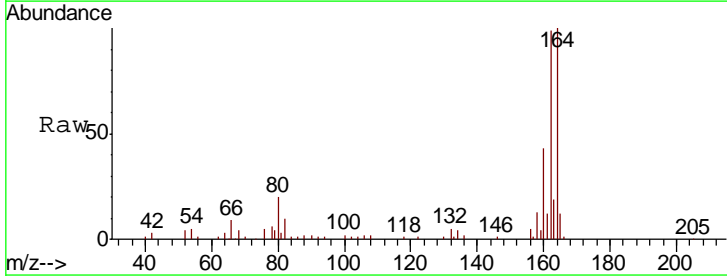
Instrument :
 BNA_F
 ClientSampled :

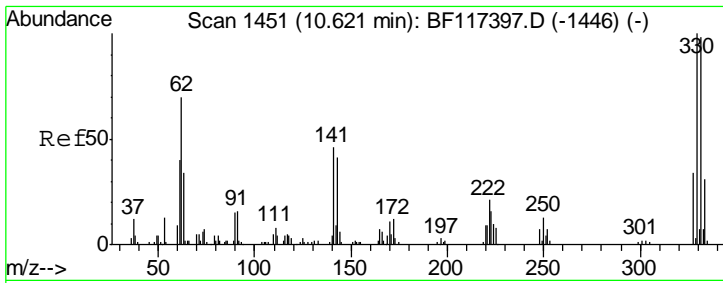
Tgt Ion	Resp	Lower	Upper
82	100		
95	0.0	5.4	8.0#
138	0.0	13.0	19.4#



#39
 Acenaphthene-d10
 Concen: 20.000 ng
 RT: 9.82 min Scan# 1315
 Delta R.T. -0.01 min
 Lab File: BF117407.D
 Acq: 14 Oct 2019 19:20

Tgt Ion	Resp	Lower	Upper
164	100		
162	99.4	82.4	123.6
160	43.5	35.4	53.0

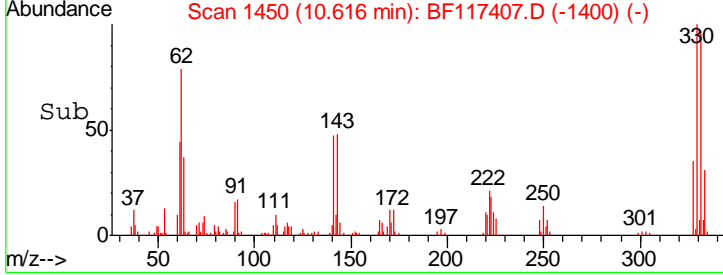
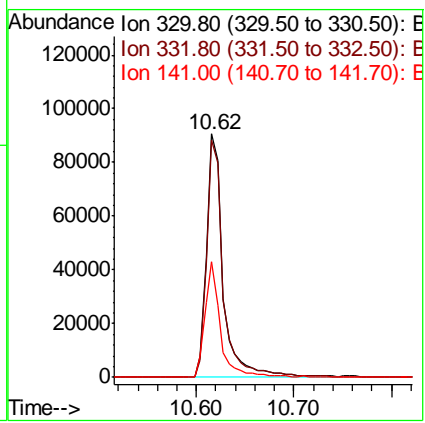
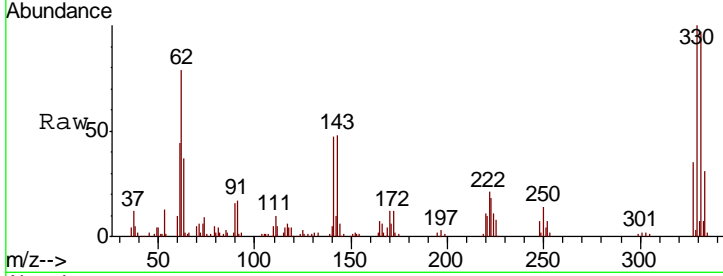




#42
 2,4,6-Tribromophenol
 Concen: 161.022 ng
 RT: 10.62 min Scan# 1450
 Delta R.T. -0.01 min
 Lab File: BF117407.D
 Acq: 14 Oct 2019 19:20

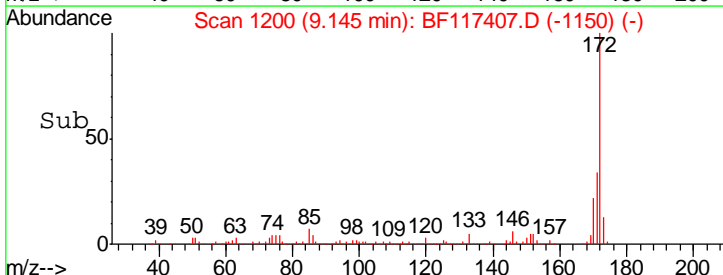
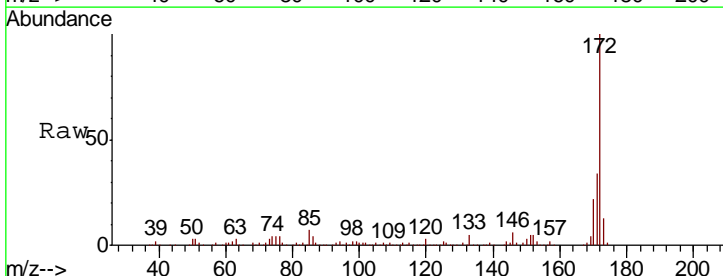
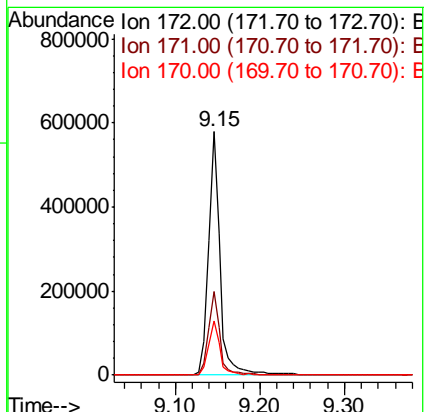
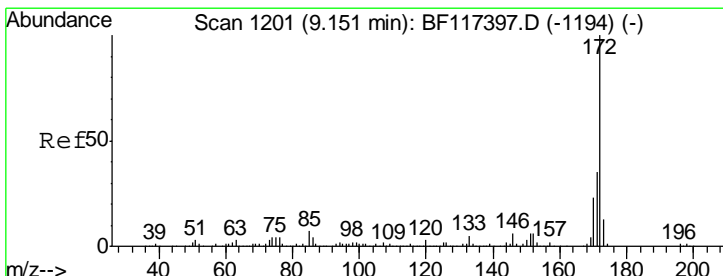
Instrument :
 BNA_F
 ClientSampled :

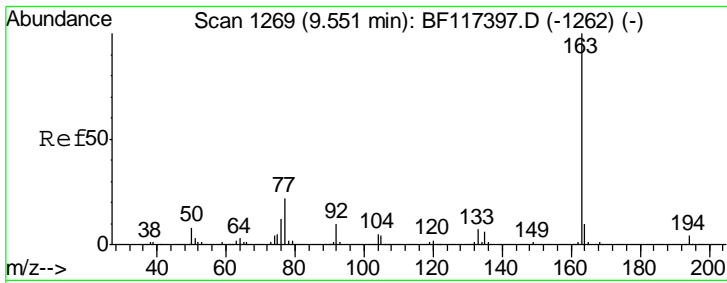
Tgt Ion	Resp	Lower	Upper
330	107942		
332	97.3	75.0	112.6
141	44.0	34.2	51.4



#45
 2-Fluorobiphenyl
 Concen: 97.880 ng
 RT: 9.15 min Scan# 1200
 Delta R.T. -0.01 min
 Lab File: BF117407.D
 Acq: 14 Oct 2019 19:20

Tgt Ion	Resp	Lower	Upper
172	553002		
171	34.1	28.2	42.2
170	22.4	18.2	27.2

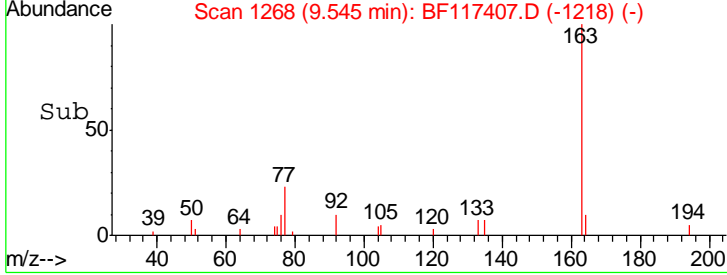
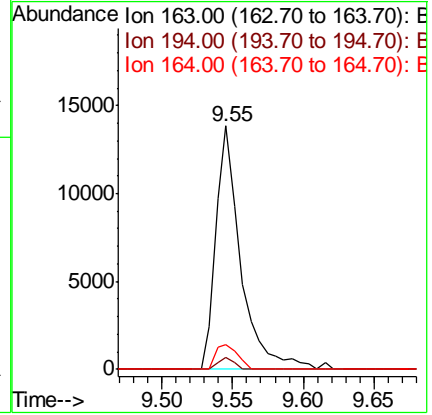
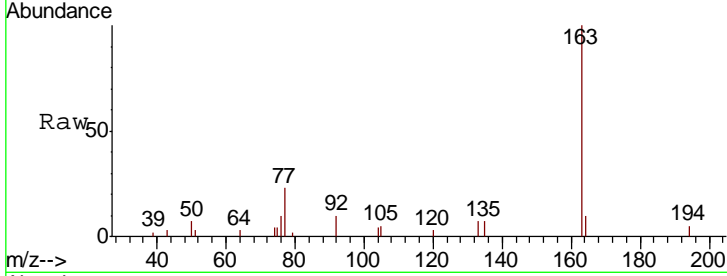




#50
 Dimethylphthalate
 Concen: 2.885 ng
 RT: 9.55 min Scan# 1268
 Delta R.T. -0.01 min
 Lab File: BF117407.D
 Acq: 14 Oct 2019 19:20

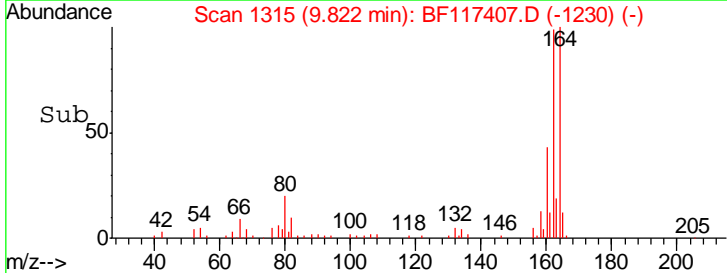
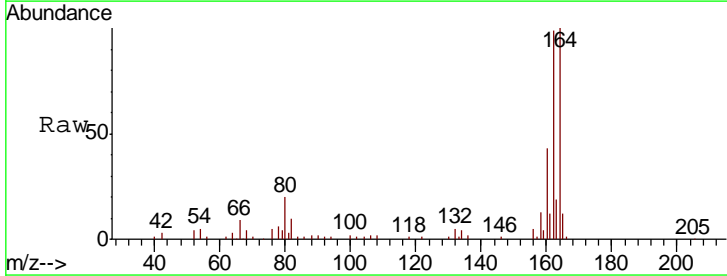
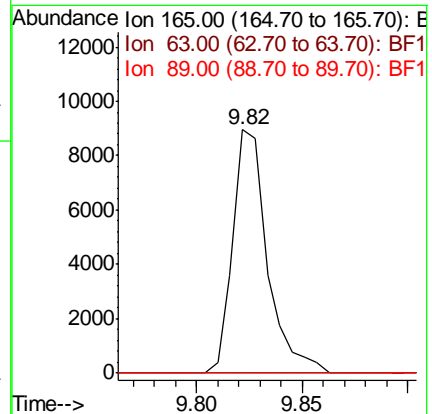
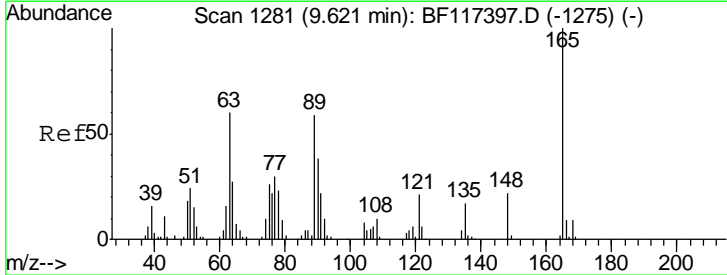
Instrument :
 BNA_F
 ClientSampled :

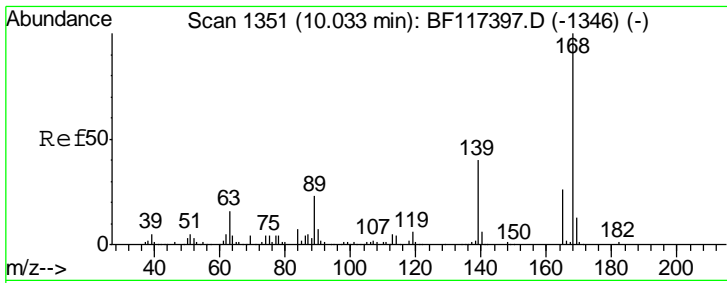
Tgt Ion	Resp	Lower	Upper
163	17068		
194	4.6	3.1	4.7
164	10.4	8.0	12.0



#51
 2,6-Dinitrotoluene
 Concen: 8.142 ng
 RT: 9.82 min Scan# 1315
 Delta R.T. 0.20 min
 Lab File: BF117407.D
 Acq: 14 Oct 2019 19:20

Tgt Ion	Resp	Lower	Upper
165	10124		
63	0.0	47.8	71.6#
89	0.0	47.4	71.0#

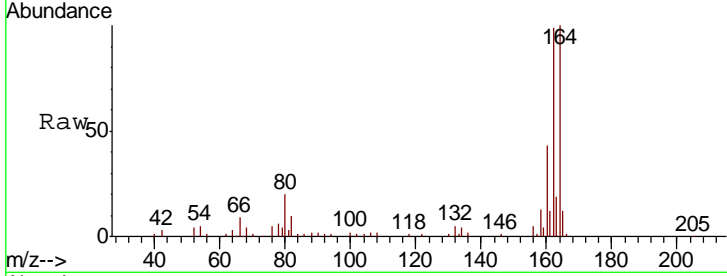




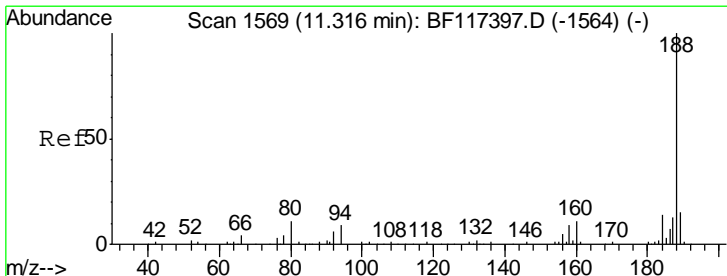
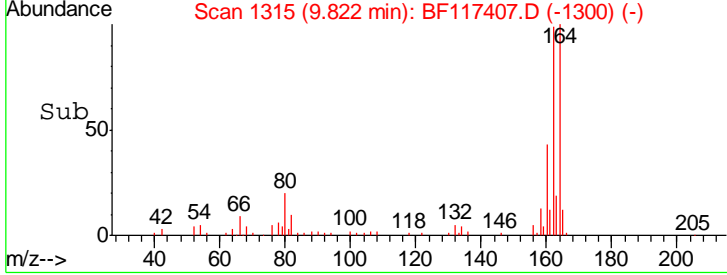
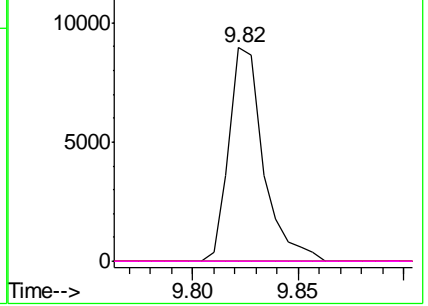
#57
 2,4-Dinitrotoluene
 Concen: 6.171 ng
 RT: 9.82 min Scan# 1315
 Delta R.T. -0.21 min
 Lab File: BF117407.D
 Acq: 14 Oct 2019 19:20

Instrument :
 BNA_F
 ClientSampled :

Tgt Ion	Resp	Lower	Upper
165	10124		
63	0.0	51.0	76.4#
89	0.0	70.7	106.1#
182	0.0	2.1	3.1#

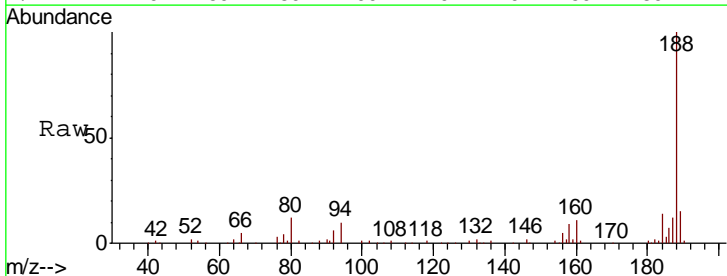


Abundance Ion 165.00 (164.70 to 165.70): E
 Ion 63.00 (62.70 to 63.70): BF1
 Ion 89.00 (88.70 to 89.70): BF1
 Ion 182.00 (181.70 to 182.70): E

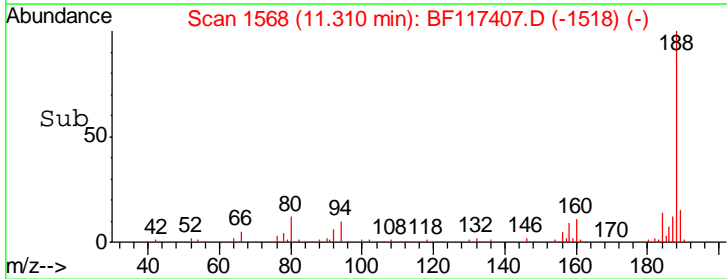
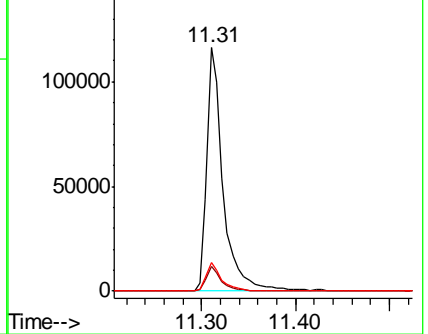


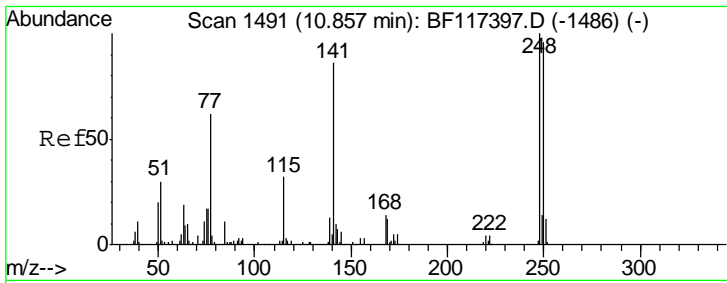
#64
 Phenanthrene-d10
 Concen: 20.000 ng
 RT: 11.31 min Scan# 1568
 Delta R.T. -0.01 min
 Lab File: BF117407.D
 Acq: 14 Oct 2019 19:20

Tgt Ion	Resp	Lower	Upper
188	142505		
94	10.2	7.5	11.3
80	11.5	8.7	13.1



Abundance Ion 188.00 (187.70 to 188.70): E
 Ion 94.00 (93.70 to 94.70): BF1
 Ion 80.00 (79.70 to 80.70): BF1

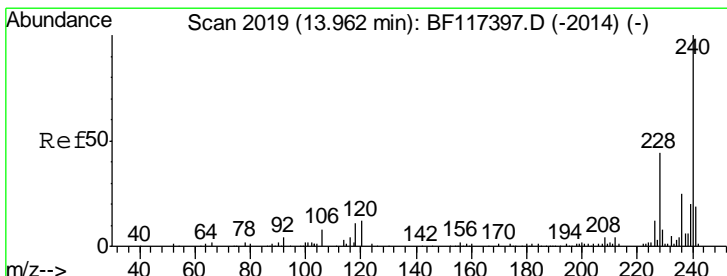
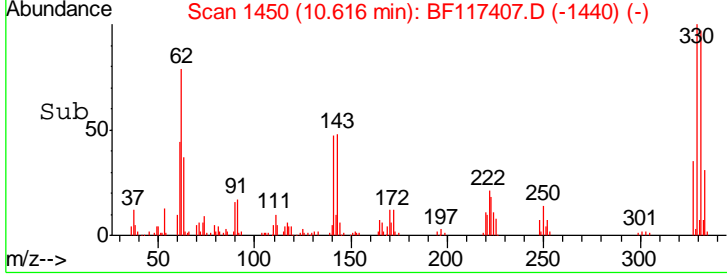
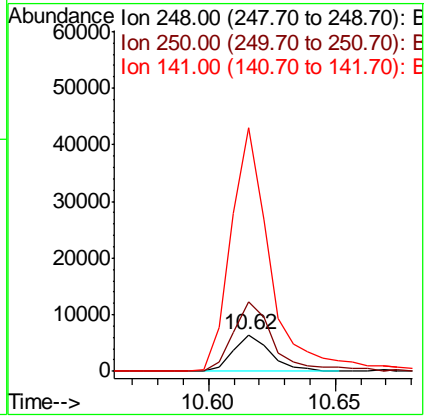
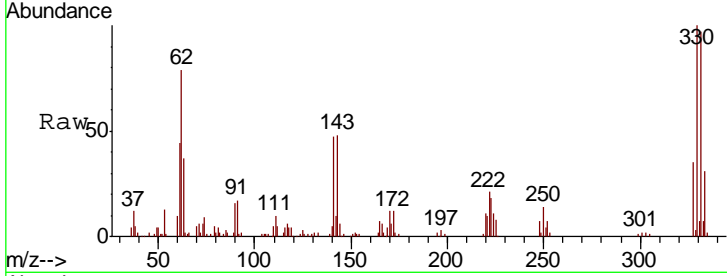




#67
 4-Bromophenyl-phenylether
 Concen: 4.230 ng
 RT: 10.62 min Scan# 1450
 Delta R.T. -0.24 min
 Lab File: BF117407.D
 Acq: 14 Oct 2019 19:20

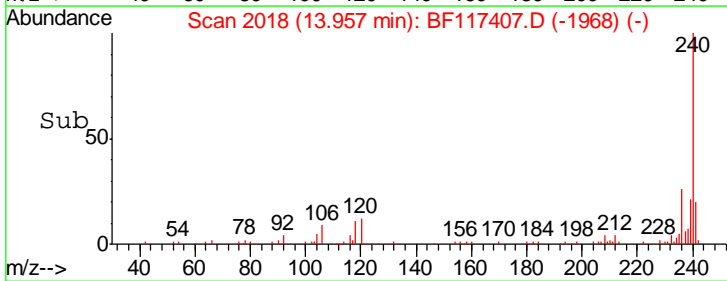
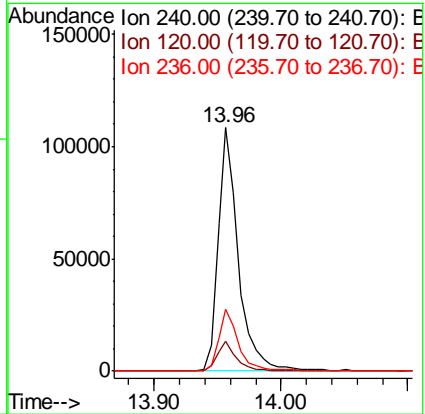
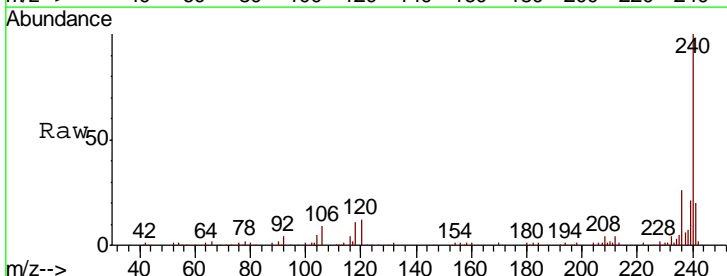
Instrument :
 BNA_F
 ClientSampled :

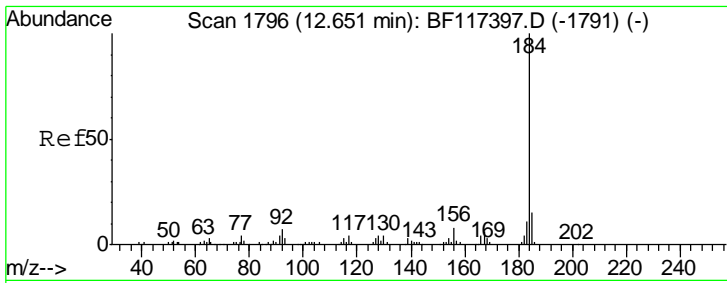
Tgt Ion	Resp	Lower	Upper
248	6611		
248	100		
250	191.5	77.1	115.7#
141	667.5	69.1	103.7#



#76
 Chrysene-d12
 Concen: 20.000 ng
 RT: 13.96 min Scan# 2018
 Delta R.T. -0.01 min
 Lab File: BF117407.D
 Acq: 14 Oct 2019 19:20

Tgt Ion	Resp	Lower	Upper
240	121215		
240	100		
120	12.4	9.4	14.0
236	25.5	19.8	29.6

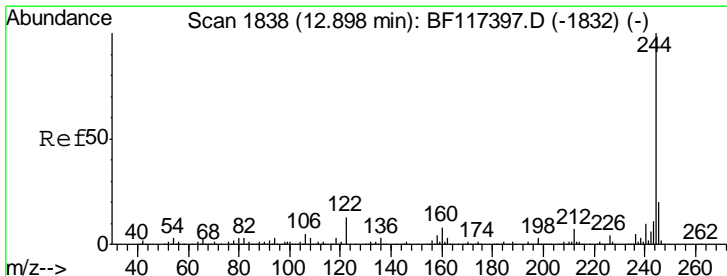
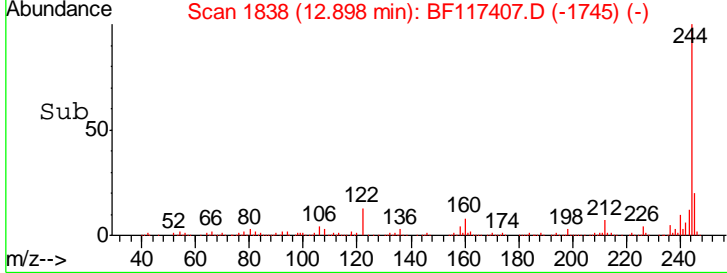
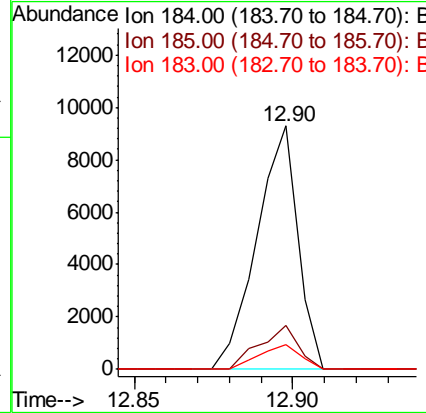
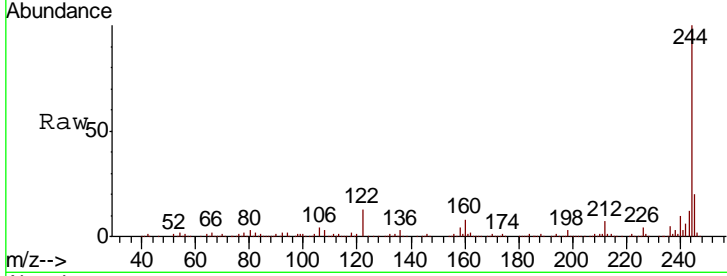




#77
Benzidine
Concen: 2.788 ng
RT: 12.90 min Scan# 1838
Delta R.T. 0.25 min
Lab File: BF117407.D
Acq: 14 Oct 2019 19:20

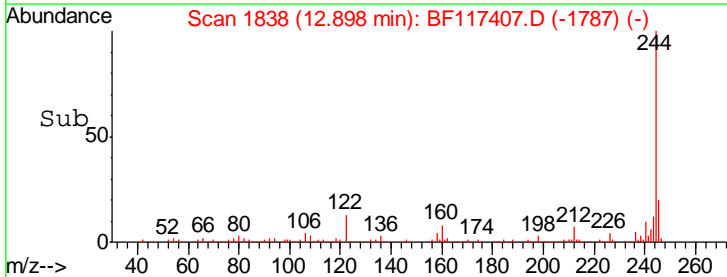
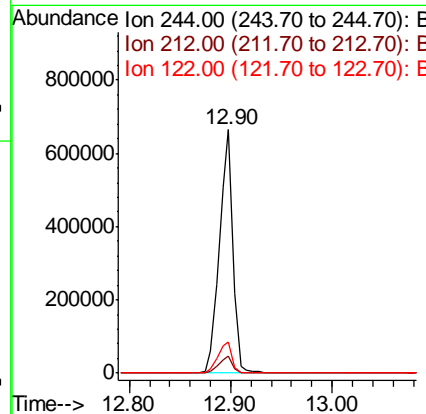
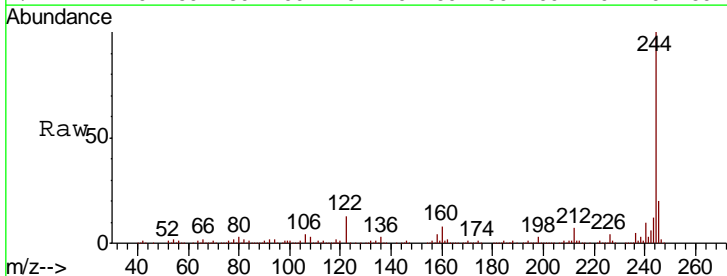
Instrument :
BNA_F
ClientSampled :

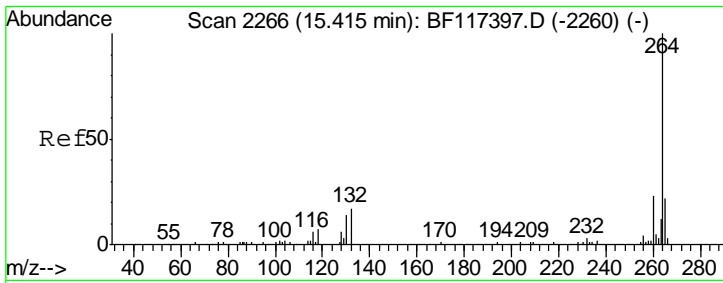
Tgt Ion	Resp	Lower	Upper
184	100		
185	17.9	12.2	18.2
183	10.3	8.9	13.3



#79
Terphenyl-d14
Concen: 83.059 ng
RT: 12.90 min Scan# 1838
Delta R.T. 0.00 min
Lab File: BF117407.D
Acq: 14 Oct 2019 19:20

Tgt Ion	Resp	Lower	Upper
244	100		
212	7.1	5.7	8.5
122	12.9	10.7	16.1





#87
 Perylene-d12
 Concen: 20.000 ng
 RT: 15.41 min Scan# 2265
 Delta R.T. -0.01 min
 Lab File: BF117407.D
 Acq: 14 Oct 2019 19:20

Instrument :
 BNA_F
 ClientSampled :

Tot Ion	Ion	Ratio	Lower	Upper
264	100			
260	21.8	18.6	27.8	
265	20.8	17.4	26.0	

