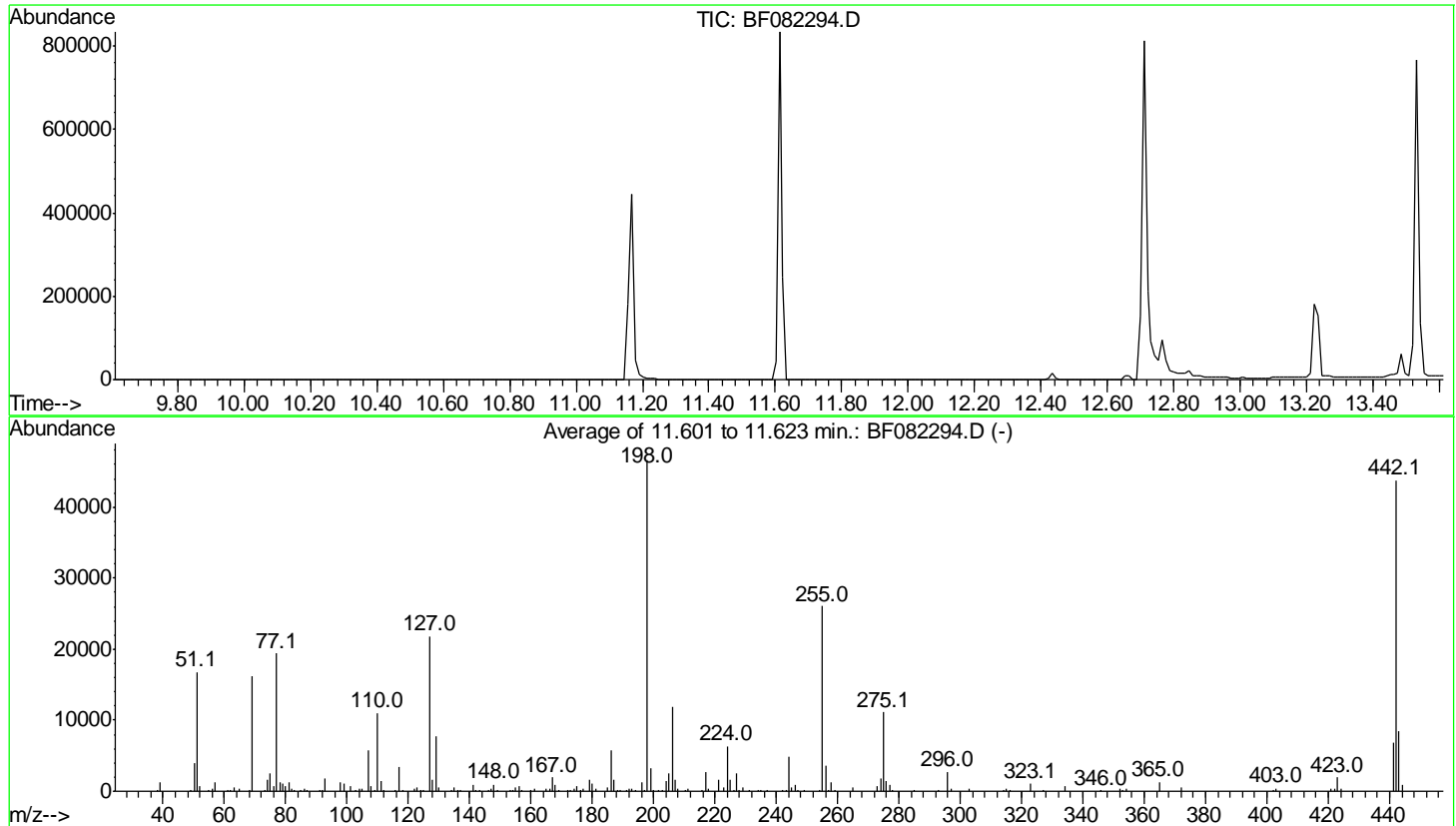


Data Path : Z:\HPCHEM1\BNA_F\DATA\BF101615\
 Data File : BF082294.D
 Acq On : 15 Oct 2015 7:40
 Operator : UM/IZ
 Sample : DFTPP
 Misc :
 ALS Vial : 1 Sample Multiplier: 1

Instrument :
 BNA_F
 ClientSampleId :
 DFTPP

Integration File: rteint.p

Method : Z:\HPCHEM1\BNA_F\METHODS\8270-BF101015.M
 Title : ASP BNA STANDARDS FOR 5 POINT CALIBRATION
 Last Update : Mon Oct 12 01:46:21 2015



AutoFind: Scans 828, 829, 830; Background Corrected with Scan 825

| Target Mass | Rel. to Mass | Lower Limit% | Upper Limit% | Rel. Abn% | Raw Abn | Result Pass/Fail |
|-------------|--------------|--------------|--------------|-----------|---------|------------------|
| 51 | 198 | 10 | 80 | 36.1 | 16823 | PASS |
| 68 | 69 | 0.00 | 2 | 1.2 | 194 | PASS |
| 69 | 198 | 0.00 | 100 | 34.6 | 16141 | PASS |
| 70 | 69 | 0.00 | 2 | 0.0 | 0 | PASS |
| 127 | 198 | 10 | 80 | 46.9 | 21846 | PASS |
| 197 | 198 | 0.00 | 2 | 0.4 | 186 | PASS |
| 198 | 198 | 100 | 100 | 100.0 | 46624 | PASS |
| 199 | 198 | 5 | 9 | 6.9 | 3229 | PASS |
| 275 | 198 | 10 | 60 | 23.8 | 11108 | PASS |
| 365 | 198 | 1 | 100 | 2.8 | 1314 | PASS |
| 441 | 442 | 0.01 | 24 | 15.5 | 6790 | PASS |
| 442 | 198 | 50 | 100 | 93.9 | 43768 | PASS |
| 443 | 442 | 15 | 24 | 19.2 | 8397 | PASS |