

Data Path : Z:\HPCHEM1\BNA F\DATA\BF101717\  
 Data File : BF099592.D  
 Acq On : 17 Oct 2017 20:23  
 Operator : SJ/JU  
 Sample : I5822-08  
 Misc :  
 ALS Vial : 13 Sample Multiplier: 1

Instrument :  
 BNA\_F  
 ClientSampleId :

Quant Time: Oct 17 22:54:00 2017  
 Quant Method : Z:\HPCHEM1\BNA F\METHODS\8270-BF092317.M  
 Quant Title : ASP BNA STANDARDS FOR 5 POINT CALIBRATION  
 QLast Update : Tue Oct 17 17:32:20 2017  
 Response via : Initial Calibration

| Internal Standards        | R.T.  | QIon | Response | Conc  | Units | Dev(Min) |
|---------------------------|-------|------|----------|-------|-------|----------|
| 1) 1,4-Dichlorobenzene-d4 | 6.83  | 152  | 105660   | 20.00 | ng    | 0.00     |
| 21) Naphthalene-d8        | 8.10  | 136  | 427692   | 20.00 | ng    | 0.00     |
| 38) Acenaphthene-d10      | 9.86  | 164  | 184448   | 20.00 | ng    | 0.00     |
| 63) Phenanthrene-d10      | 11.35 | 188  | 236940   | 20.00 | ng    | 0.00     |
| 75) Chrysene-d12          | 14.00 | 240  | 184730   | 20.00 | ng    | 0.00     |
| 86) Perylene-d12          | 15.46 | 264  | 173360   | 20.00 | ng    | 0.01     |

## System Monitoring Compounds

|                          |       |     |         |       |    |      |
|--------------------------|-------|-----|---------|-------|----|------|
| 5) 2-Fluorophenol        | 5.45  | 112 | 245913  | 37.05 | ng | 0.00 |
| 7) Phenol-d6             | 6.46  | 99  | 180205  | 22.01 | ng | 0.00 |
| 23) Nitrobenzene-d5      | 7.39  | 82  | 613777  | 92.03 | ng | 0.00 |
| 41) 2,4,6-Tribromophenol | 10.66 | 330 | 106818  | 70.77 | ng | 0.00 |
| 44) 2-Fluorobiphenyl     | 9.19  | 172 | 1095386 | 99.14 | ng | 0.00 |
| 78) Terphenyl-d14        | 12.94 | 244 | 601182  | 74.01 | ng | 0.00 |

## Target Compounds

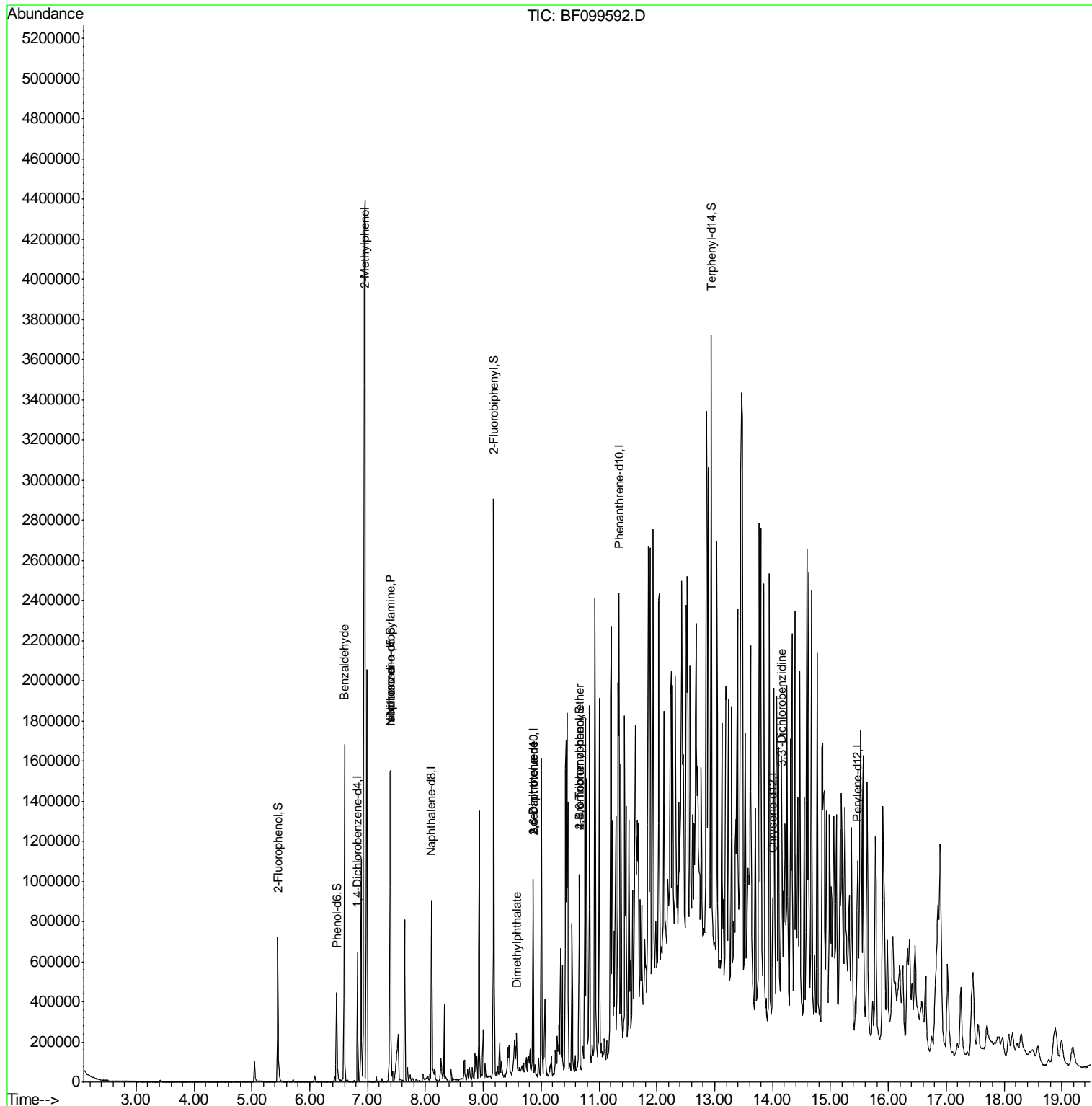
| Target Compounds               | R.T.  | QIon | Response | Conc  | Units | Qvalue |
|--------------------------------|-------|------|----------|-------|-------|--------|
| 9) Benzaldehyde                | 6.60  | 77   | 9653     | 2.03  | ng    | 87     |
| 17) 2-Methylphenol             | 6.95  | 107  | 207902   | 33.80 | ng    | # 1    |
| 19) n-Nitroso-di-n-propylamine | 7.39  | 70   | 78953    | 15.10 | ng    | # 71   |
| 25) Isophorone                 | 7.39  | 82   | 613772   | 44.51 | ng    | # 64   |
| 49) Dimethylphthalate          | 9.57  | 163  | 63648    | 4.57  | ng    | 98     |
| 50) 2,6-Dinitrotoluene         | 9.86  | 165  | 22912    | 7.56  | ng    | # 26   |
| 56) 2,4-Dinitrotoluene         | 9.86  | 165  | 22912    | 5.83  | ng    | # 24   |
| 66) 4-Bromophenyl-phenylether  | 10.66 | 248  | 7194     | 3.10  | ng    | # 1    |
| 81) 3,3'-Dichlorobenzidine     | 14.14 | 252  | 16065    | 3.92  | ng    | # 32   |

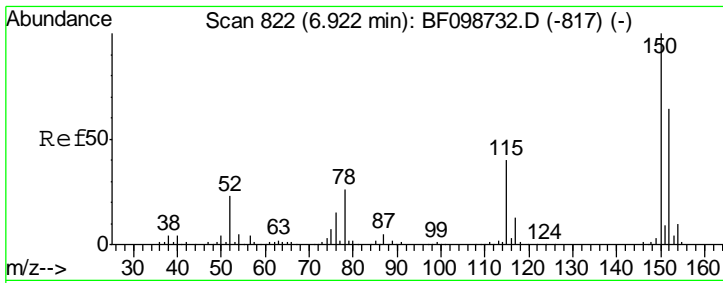
(#) = qualifier out of range (m) = manual integration (+) = signals summed

Data Path : Z:\HPCHEM1\BNA F\DATA\BF101717\  
 Data File : BF099592.D  
 Acq On : 17 Oct 2017 20:23  
 Operator : SJ/JU  
 Sample : I5822-08  
 Misc :  
 ALS Vial : 13 Sample Multiplier: 1

Instrument :  
 BNA\_F  
 Client Sampled :

Quant Time: Oct 17 22:54:00 2017  
 Quant Method : Z:\HPCHEM1\BNA F\METHODS\8270-BF092317.M  
 Quant Title : ASP BNA STANDARDS FOR 5 POINT CALIBRATION  
 QLast Update : Tue Oct 17 17:32:20 2017  
 Response via : Initial Calibration

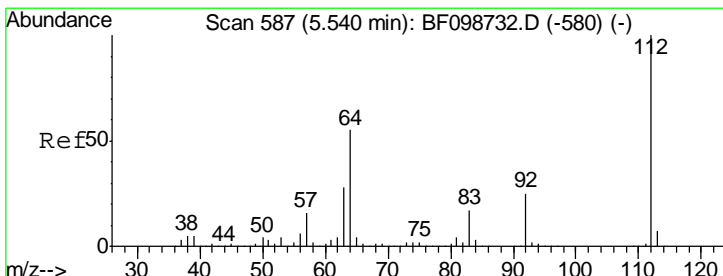
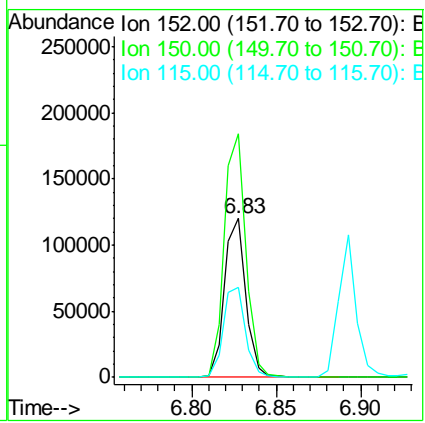
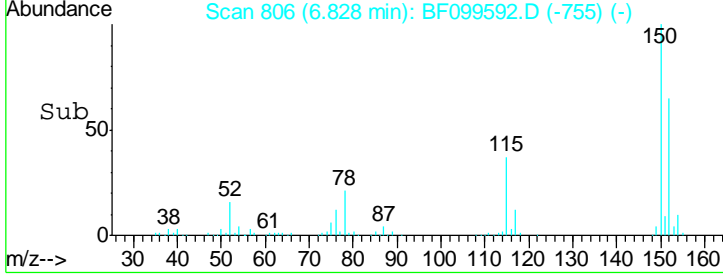
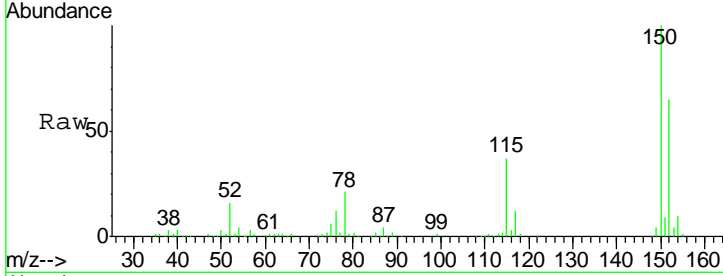




#1  
 1,4-Dichlorobenzene-d4  
 Concen: 20.00 ng  
 RT: 6.83 min Scan# 806  
 Delta R.T. -0.00 min  
 Lab File: BF099592.D  
 Acq: 17 Oct 2017 20:23

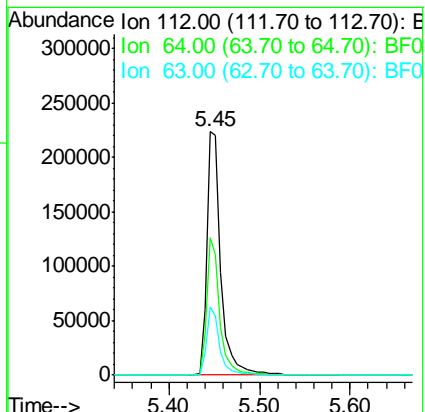
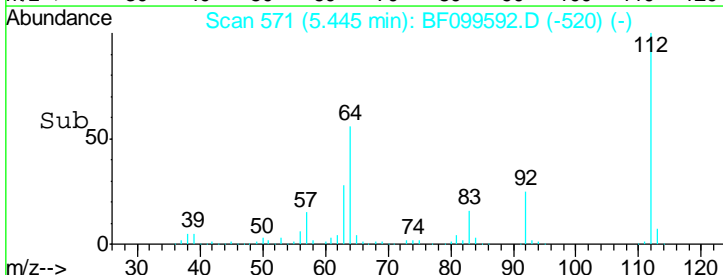
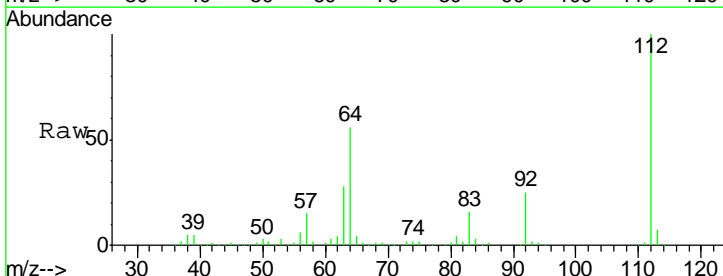
Instrument :  
 BNA\_F  
 ClientSampled :

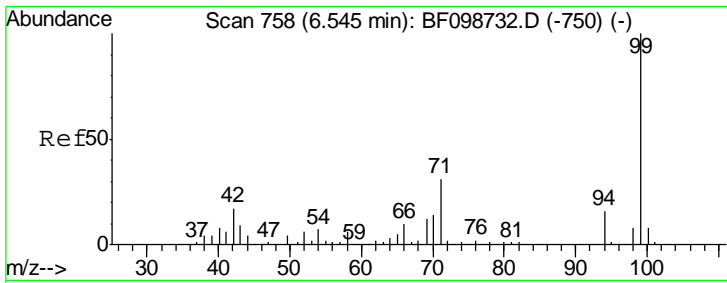
| Tgt Ion | Resp   | Lower | Upper |
|---------|--------|-------|-------|
| 152     | 105660 |       |       |
| 150     | 153.4  | 124.6 | 186.8 |
| 115     | 56.4   | 50.1  | 75.1  |



#5  
 2-Fluorophenol  
 Concen: 37.05 ng  
 RT: 5.45 min Scan# 571  
 Delta R.T. -0.00 min  
 Lab File: BF099592.D  
 Acq: 17 Oct 2017 20:23

| Tgt Ion | Resp   | Lower | Upper |
|---------|--------|-------|-------|
| 112     | 245913 |       |       |
| 64      | 56.3   | 47.9  | 71.9  |
| 63      | 27.8   | 23.7  | 35.5  |

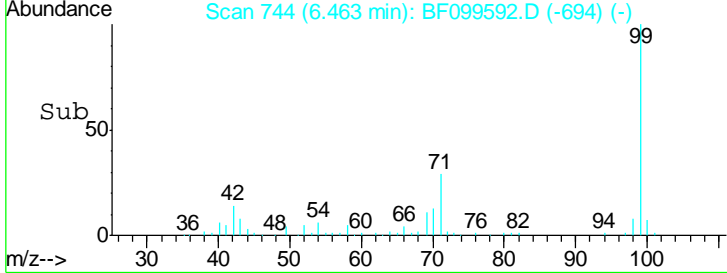
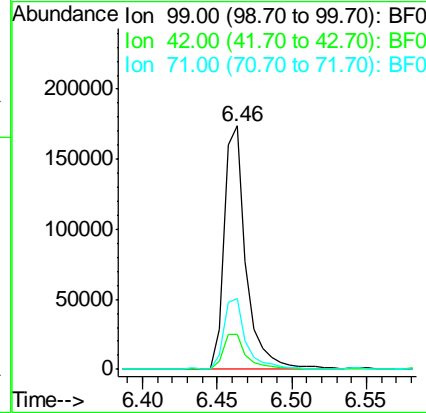
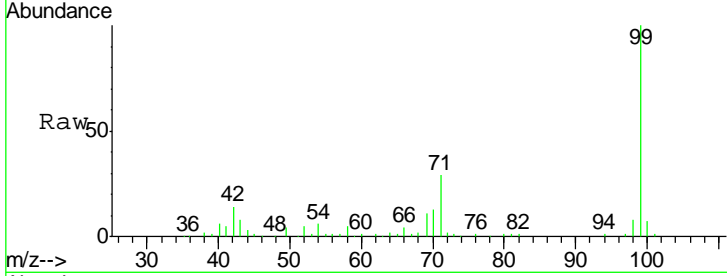




#7  
 Phenol-d6  
 Concen: 22.01 ng  
 RT: 6.46 min Scan# 744  
 Delta R.T. -0.01 min  
 Lab File: BF099592.D  
 Acq: 17 Oct 2017 20:23

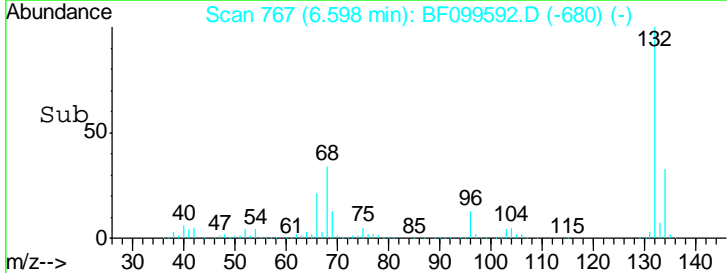
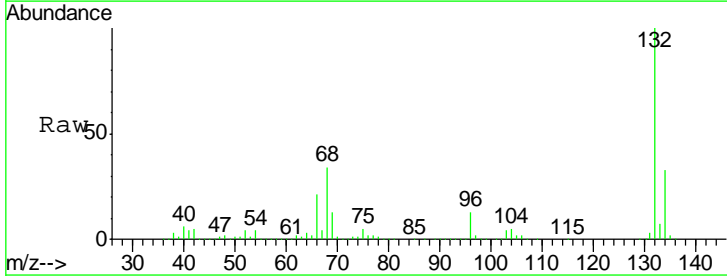
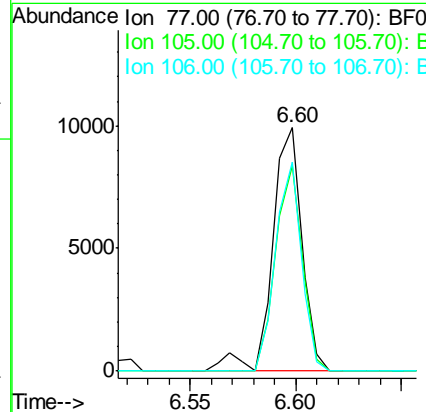
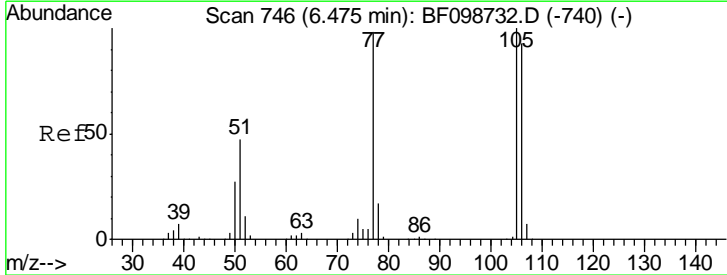
Instrument :  
 BNA\_F  
 ClientSampled :

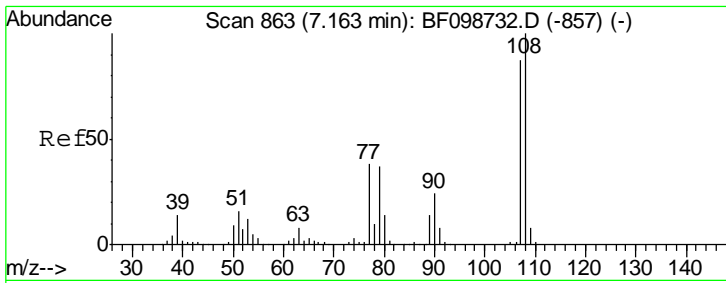
| Tgt Ion | Resp   | Lower | Upper |
|---------|--------|-------|-------|
| 99      | 180205 |       |       |
| 42      | 14.1   | 14.5  | 21.7# |
| 71      | 29.3   | 25.4  | 38.0  |



#9  
 Benzaldehyde  
 Concen: 2.03 ng  
 RT: 6.60 min Scan# 767  
 Delta R.T. 0.21 min  
 Lab File: BF099592.D  
 Acq: 17 Oct 2017 20:23

| Tgt Ion | Resp | Lower | Upper |
|---------|------|-------|-------|
| 77      | 9653 |       |       |
| 105     | 84.2 | 81.1  | 121.1 |
| 106     | 85.7 | 74.5  | 114.5 |

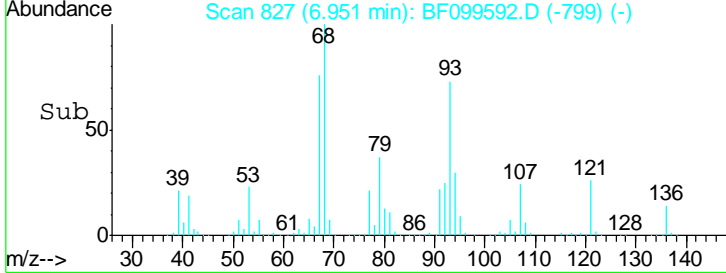
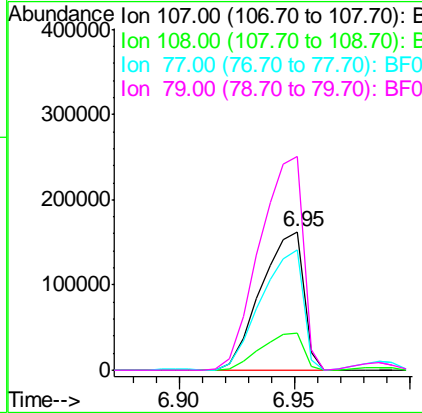
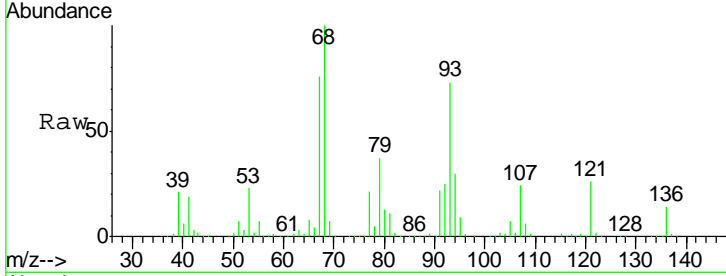




#17  
 2-Methylphenol  
 Concen: 33.80 ng  
 RT: 6.95 min Scan# 827  
 Delta R.T. -0.14 min  
 Lab File: BF099592.D  
 Acq: 17 Oct 2017 20:23

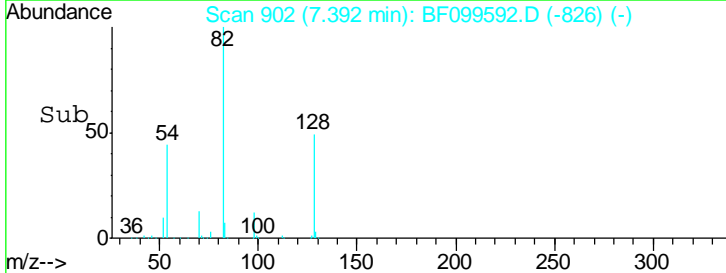
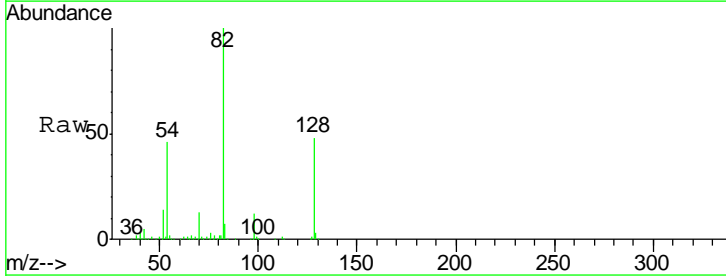
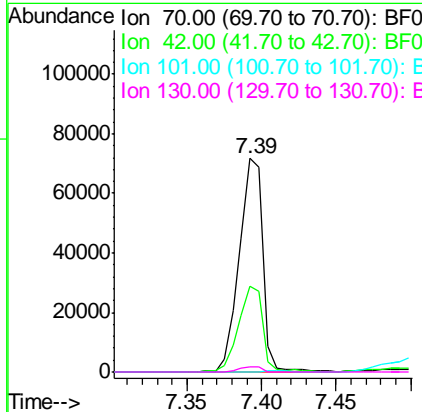
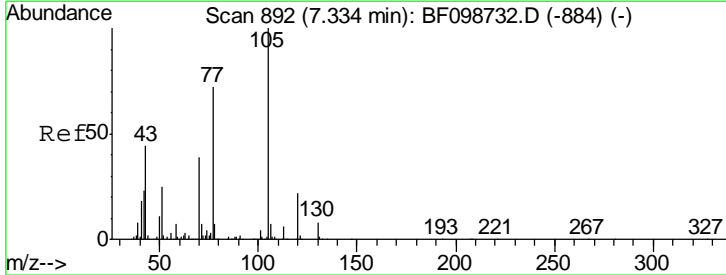
Instrument :  
 BNA\_F  
 ClientSampled :

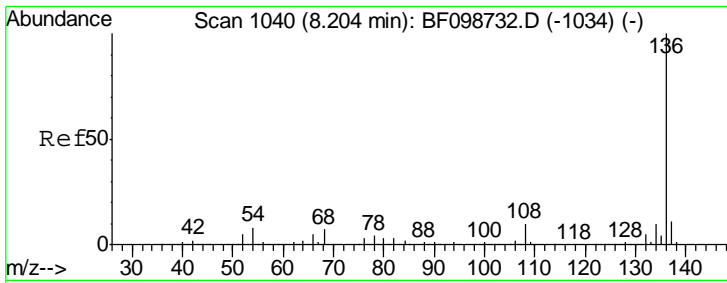
| Tgt Ion | Resp  | Lower | Upper  |
|---------|-------|-------|--------|
| 107     | 100   |       |        |
| 108     | 26.5  | 91.7  | 137.5# |
| 77      | 86.7  | 33.8  | 50.8#  |
| 79      | 154.1 | 33.8  | 50.8#  |



#19  
 n-Nitroso-di-n-propylamine  
 Concen: 15.10 ng  
 RT: 7.39 min Scan# 902  
 Delta R.T. 0.15 min  
 Lab File: BF099592.D  
 Acq: 17 Oct 2017 20:23

| Tgt Ion | Resp | Lower | Upper |
|---------|------|-------|-------|
| 70      | 100  |       |       |
| 42      | 40.4 | 47.5  | 71.3# |
| 101     | 0.0  | 7.4   | 11.2# |
| 130     | 2.3  | 16.6  | 25.0# |



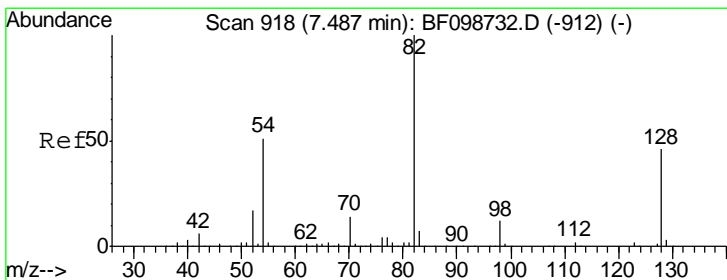
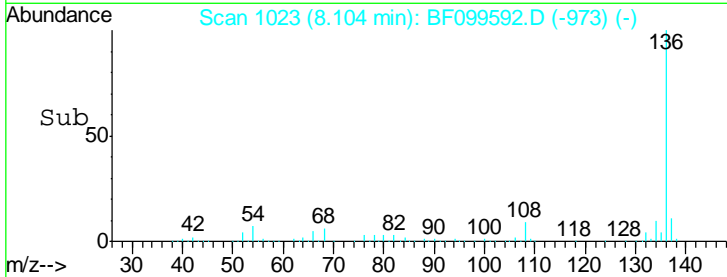
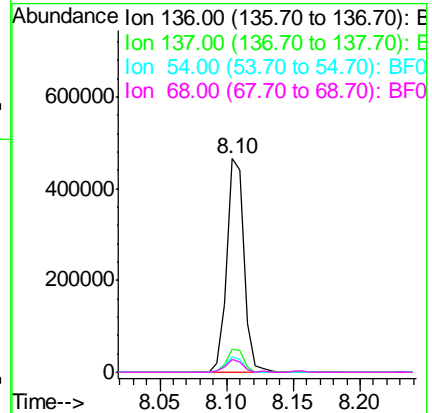
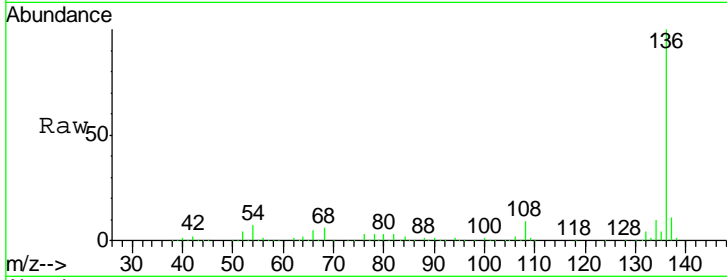


#21  
 Naphthalene-d8  
 Concen: 20.00 ng  
 RT: 8.10 min Scan# 1023  
 Delta R.T. -0.01 min  
 Lab File: BF099592.D  
 Acq: 17 Oct 2017 20:23

Instrument :  
 BNA\_F  
 ClientSampled :

Tgt Ion: 136 Resp: 427692

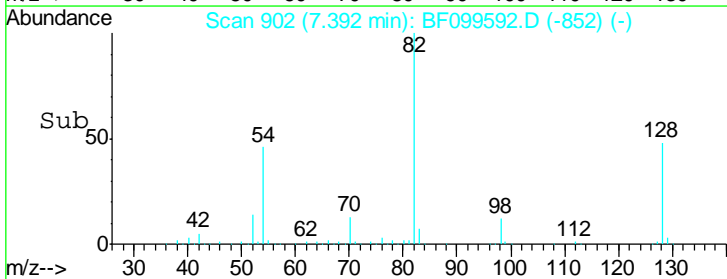
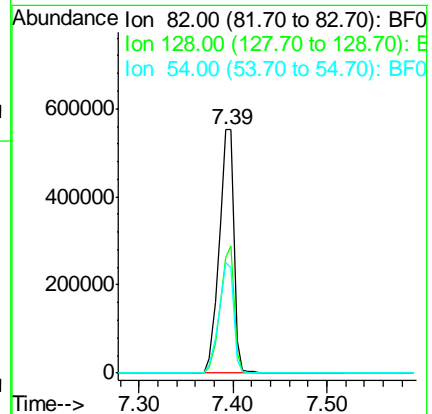
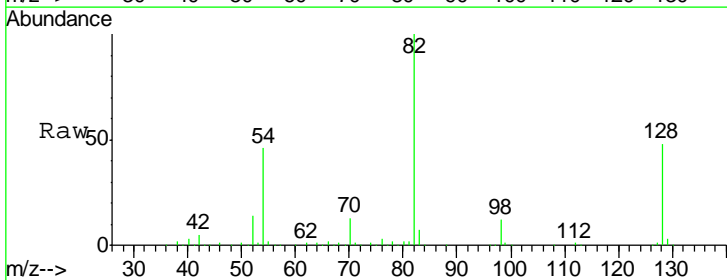
| Ion | Ratio | Lower | Upper |
|-----|-------|-------|-------|
| 136 | 100   |       |       |
| 137 | 11.1  | 8.9   | 13.3  |
| 54  | 7.3   | 6.6   | 9.8   |
| 68  | 6.1   | 5.0   | 7.4   |

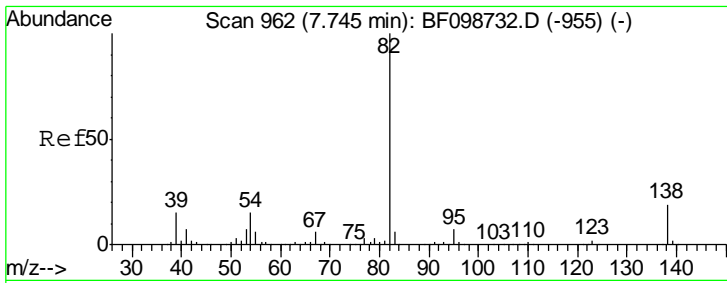


#23  
 Nitrobenzene-d5  
 Concen: 92.03 ng  
 RT: 7.39 min Scan# 902  
 Delta R.T. -0.01 min  
 Lab File: BF099592.D  
 Acq: 17 Oct 2017 20:23

Tgt Ion: 82 Resp: 613777

| Ion | Ratio | Lower | Upper |
|-----|-------|-------|-------|
| 82  | 100   |       |       |
| 128 | 47.5  | 36.1  | 54.1  |
| 54  | 45.6  | 41.4  | 62.2  |

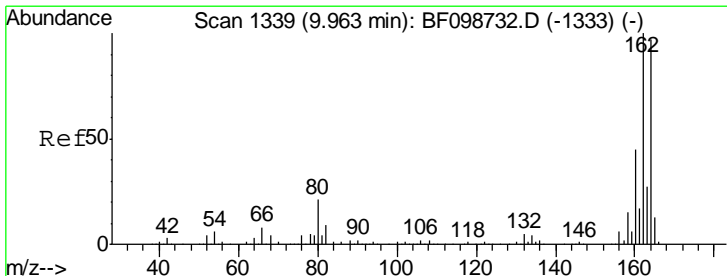
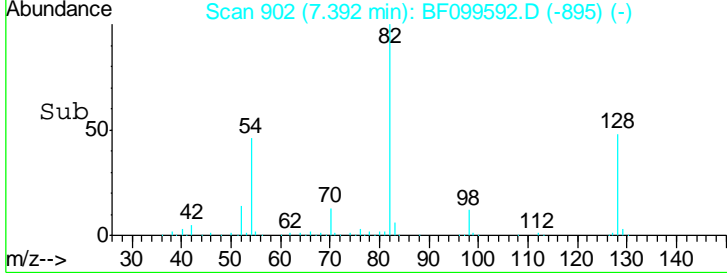
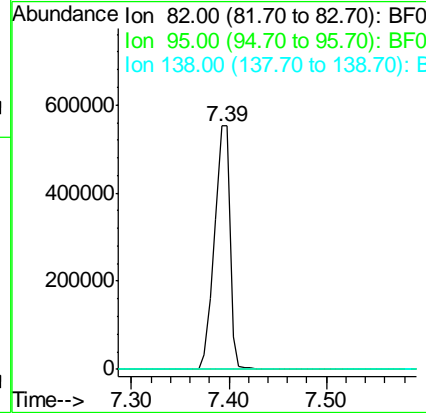
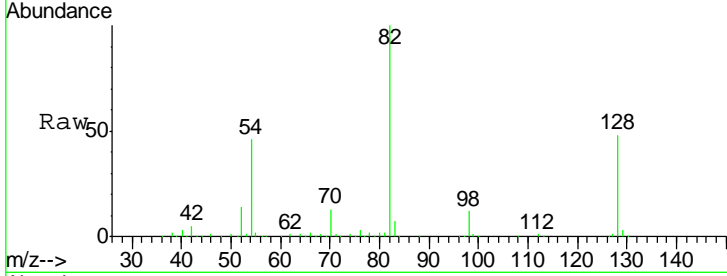




#25  
 Isophorone  
 Concen: 44.51 ng  
 RT: 7.39 min Scan# 902  
 Delta R.T. -0.26 min  
 Lab File: BF099592.D  
 Acq: 17 Oct 2017 20:23

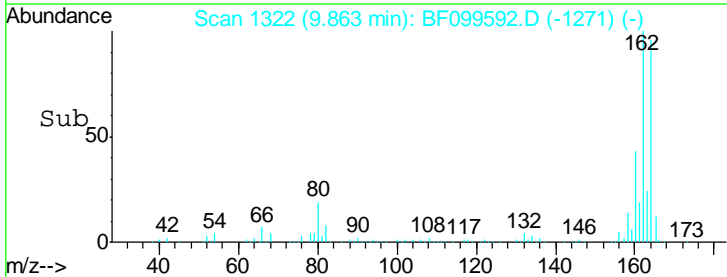
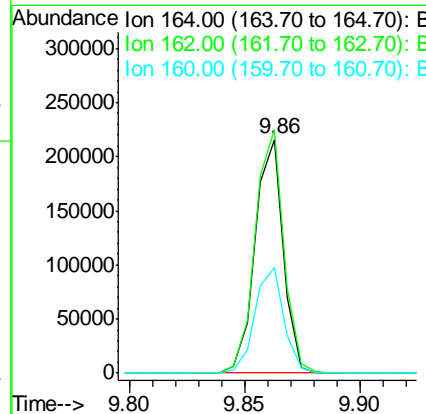
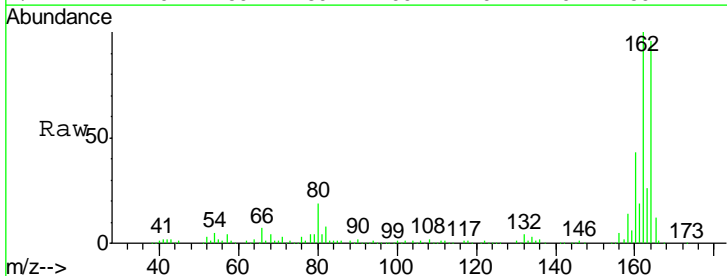
Instrument :  
 BNA\_F  
 ClientSampled :

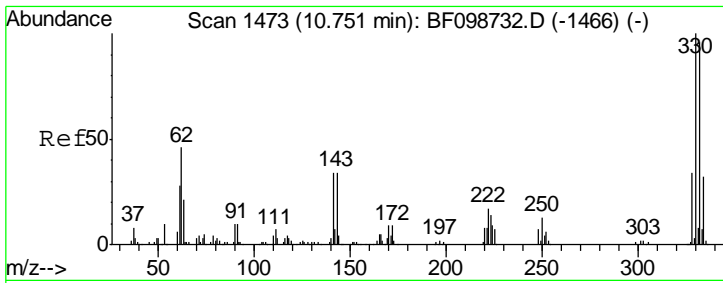
| Tgt Ion | Resp | Lower | Upper |
|---------|------|-------|-------|
| 82      | 100  |       |       |
| 95      | 0.0  | 5.2   | 7.8#  |
| 138     | 0.0  | 14.9  | 22.3# |



#38  
 Acenaphthene-d10  
 Concen: 20.00 ng  
 RT: 9.86 min Scan# 1322  
 Delta R.T. -0.00 min  
 Lab File: BF099592.D  
 Acq: 17 Oct 2017 20:23

| Tgt Ion | Resp  | Lower | Upper |
|---------|-------|-------|-------|
| 164     | 100   |       |       |
| 162     | 104.1 | 86.1  | 129.1 |
| 160     | 45.0  | 38.3  | 57.5  |

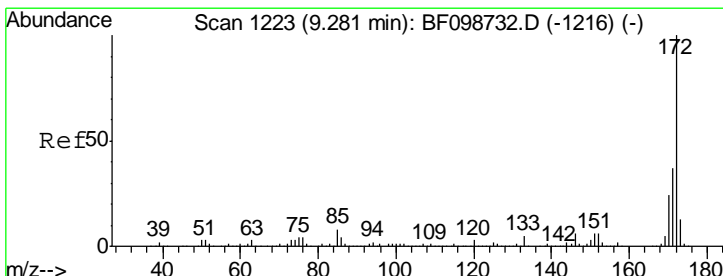
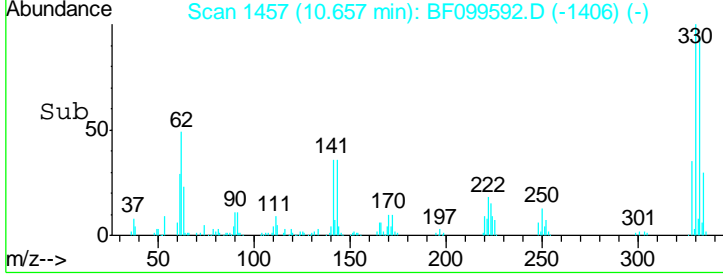
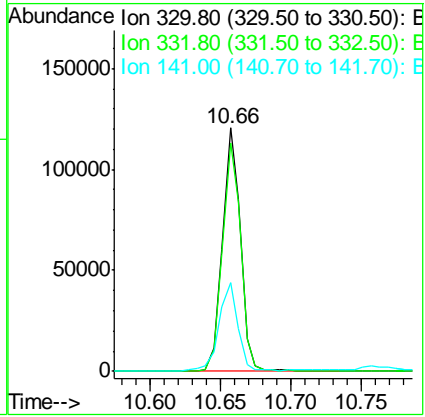
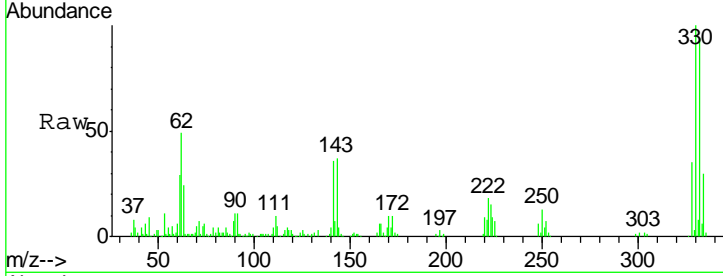




#41  
 2,4,6-Tribromophenol  
 Concen: 70.77 ng  
 RT: 10.66 min Scan# 1457  
 Delta R.T. -0.00 min  
 Lab File: BF099592.D  
 Acq: 17 Oct 2017 20:23

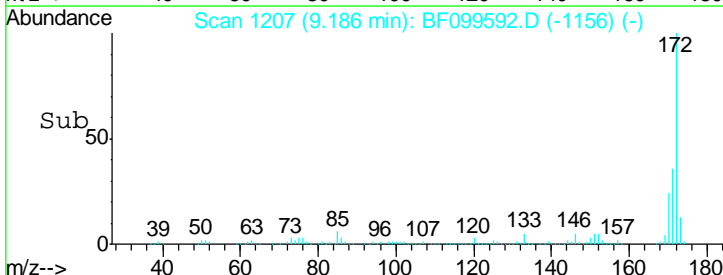
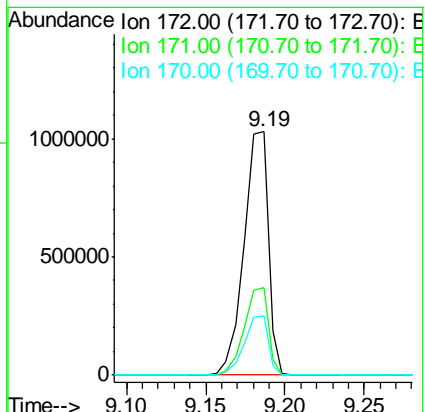
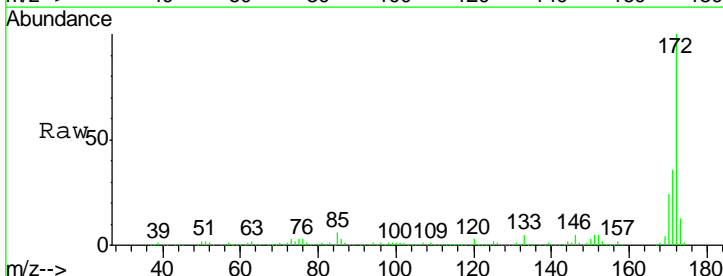
Instrument :  
 BNA\_F  
 ClientSampled :

| Tgt Ion | Resp   | Lower | Upper |
|---------|--------|-------|-------|
| 330     | 106818 |       |       |
| 332     | 95.5   | 77.0  | 115.6 |
| 141     | 39.0   | 29.9  | 44.9  |

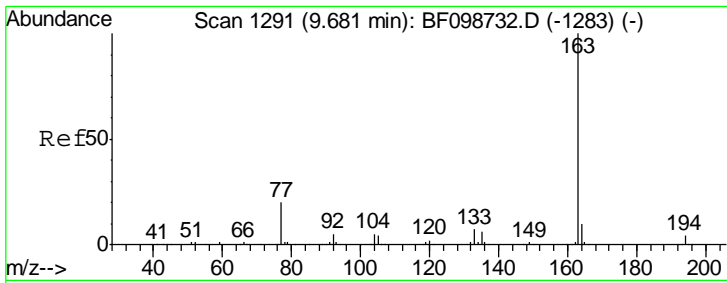


#44  
 2-Fluorobiphenyl  
 Concen: 99.14 ng  
 RT: 9.19 min Scan# 1207  
 Delta R.T. -0.00 min  
 Lab File: BF099592.D  
 Acq: 17 Oct 2017 20:23

| Tgt Ion | Resp    | Lower | Upper |
|---------|---------|-------|-------|
| 172     | 1095386 |       |       |
| 171     | 36.1    | 29.7  | 44.5  |
| 170     | 24.1    | 19.6  | 29.4  |



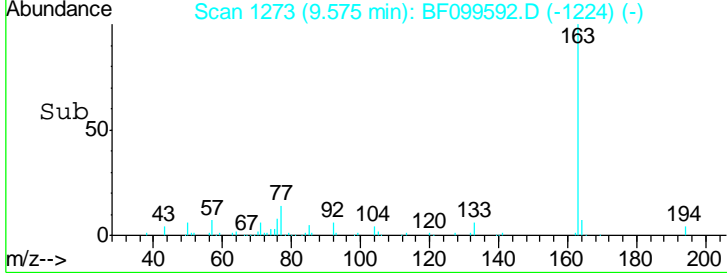
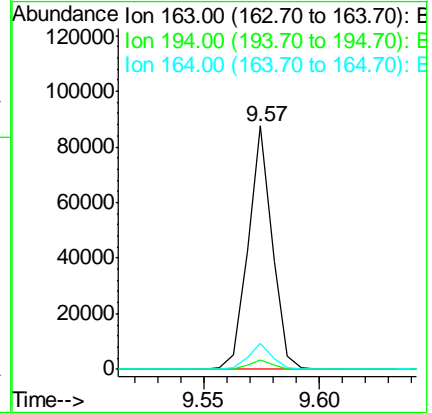
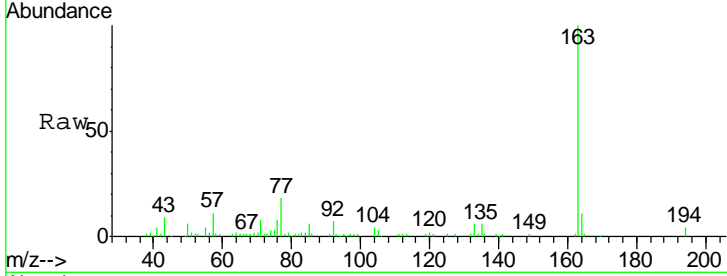




#49  
 Dimethylphthalate  
 Concen: 4.57 ng  
 RT: 9.57 min Scan# 1273  
 Delta R.T. -0.01 min  
 Lab File: BF099592.D  
 Acq: 17 Oct 2017 20:23

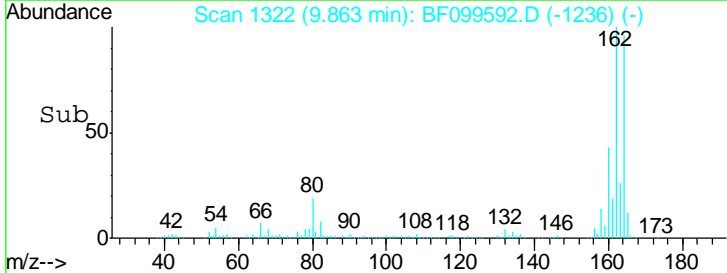
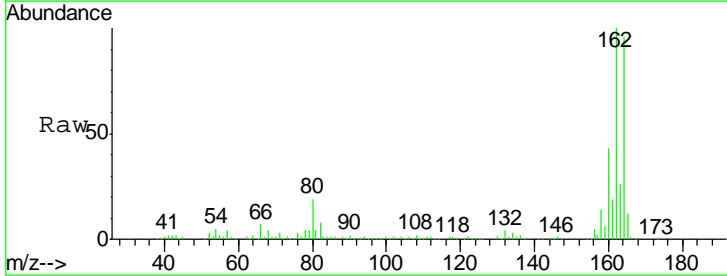
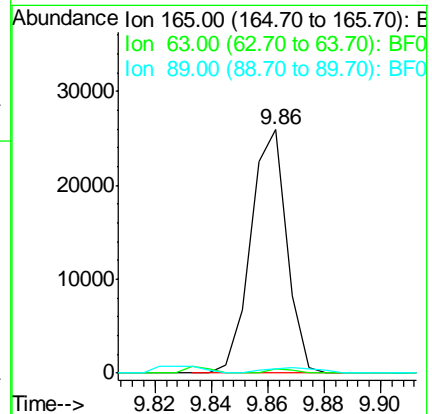
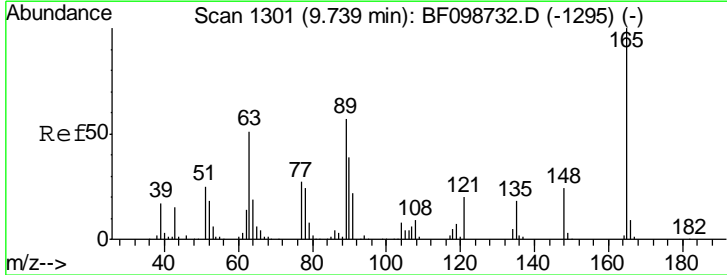
Instrument :  
 BNA\_F  
 ClientSampled :

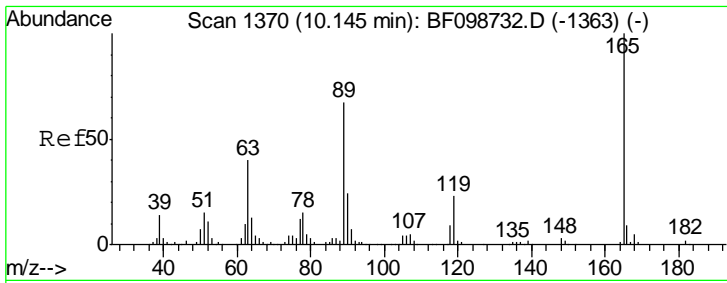
| Tgt Ion | Resp | Lower | Upper |
|---------|------|-------|-------|
| 163     | 100  |       |       |
| 194     | 3.8  | 2.7   | 4.1   |
| 164     | 10.8 | 8.2   | 12.2  |



#50  
 2,6-Dinitrotoluene  
 Concen: 7.56 ng  
 RT: 9.86 min Scan# 1322  
 Delta R.T. 0.21 min  
 Lab File: BF099592.D  
 Acq: 17 Oct 2017 20:23

| Tgt Ion | Resp | Lower | Upper |
|---------|------|-------|-------|
| 165     | 100  |       |       |
| 63      | 1.7  | 44.7  | 67.1# |
| 89      | 1.9  | 44.0  | 66.0# |

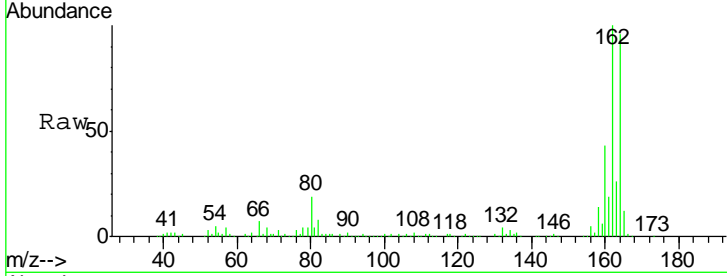




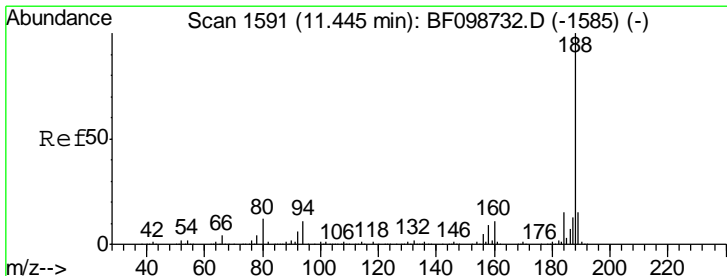
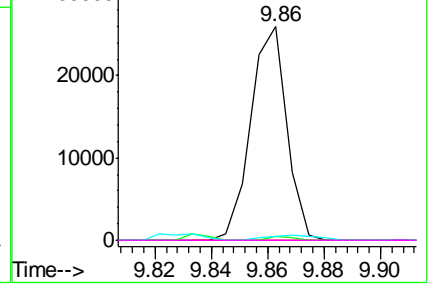
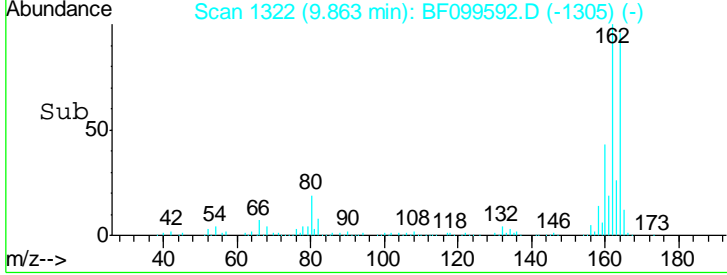
#56  
 2,4-Dinitrotoluene  
 Concen: 5.83 ng  
 RT: 9.86 min Scan# 1322  
 Delta R.T. -0.20 min  
 Lab File: BF099592.D  
 Acq: 17 Oct 2017 20:23

Instrument :  
 BNA\_F  
 ClientSampled :

| Tgt Ion | Resp  | Lower | Upper |
|---------|-------|-------|-------|
| 165     | 22912 |       |       |
| 63      | 1.7   | 36.4  | 54.6# |
| 89      | 1.9   | 57.8  | 86.6# |
| 182     | 0.0   | 1.6   | 2.4#  |

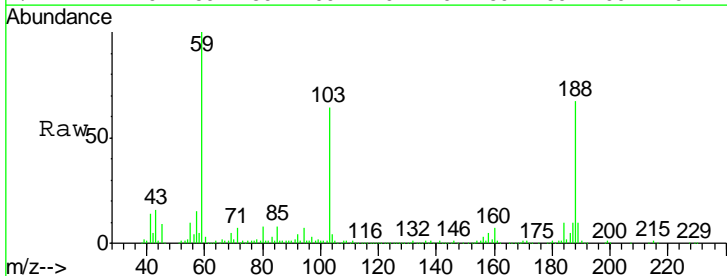


Abundance Ion 165.00 (164.70 to 165.70): E  
 Ion 63.00 (62.70 to 63.70): BF0  
 Ion 89.00 (88.70 to 89.70): BF0  
 Ion 182.00 (181.70 to 182.70): E

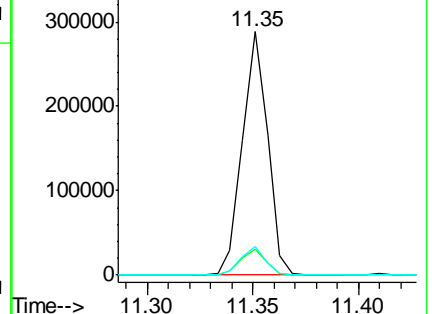
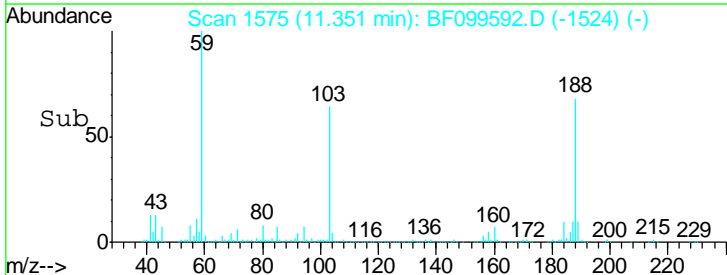


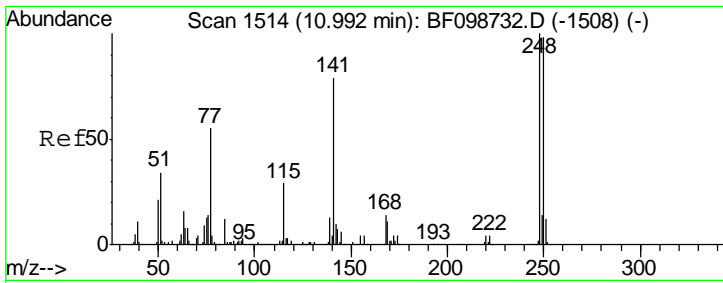
#63  
 Phenanthrene-d10  
 Concen: 20.00 ng  
 RT: 11.35 min Scan# 1575  
 Delta R.T. -0.00 min  
 Lab File: BF099592.D  
 Acq: 17 Oct 2017 20:23

| Tgt Ion | Resp   | Lower | Upper |
|---------|--------|-------|-------|
| 188     | 236940 |       |       |
| 94      | 10.8   | 8.5   | 12.7  |
| 80      | 11.6   | 9.2   | 13.8  |



Abundance Ion 188.00 (187.70 to 188.70): E  
 Ion 94.00 (93.70 to 94.70): BF0  
 Ion 80.00 (79.70 to 80.70): BF0

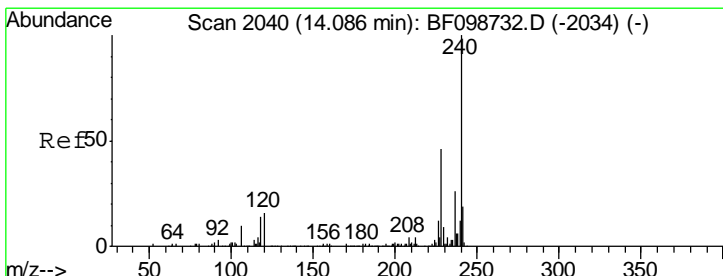
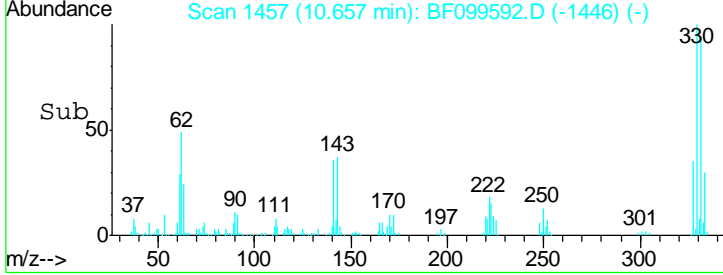
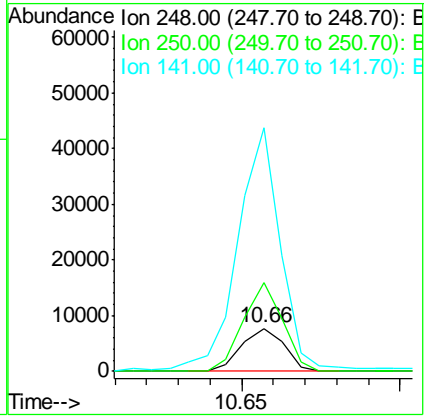
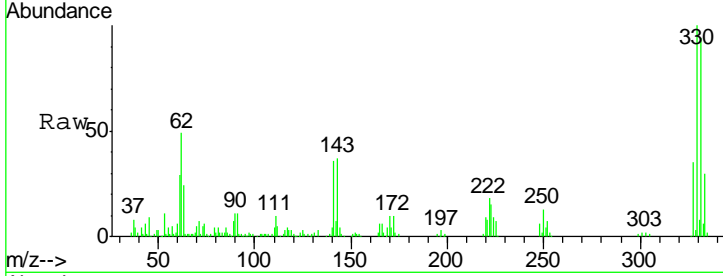




#66  
 4-Bromophenyl-phenylether  
 Concen: 3.10 ng  
 RT: 10.66 min Scan# 1457  
 Delta R.T. -0.24 min  
 Lab File: BF099592.D  
 Acq: 17 Oct 2017 20:23

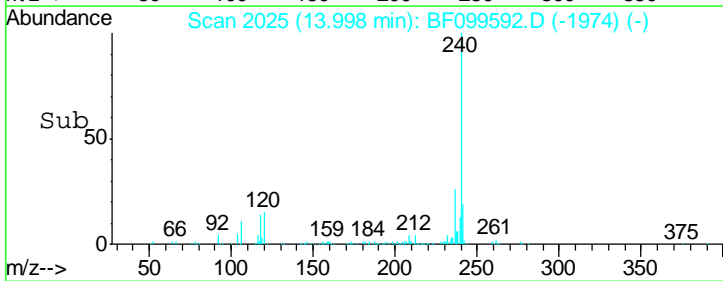
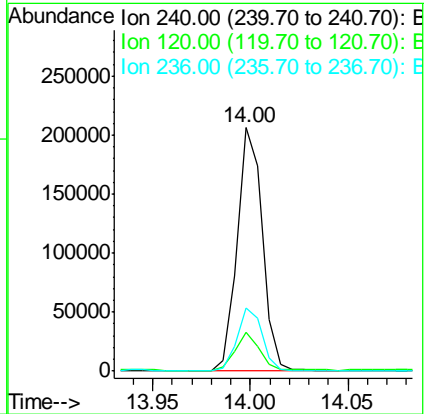
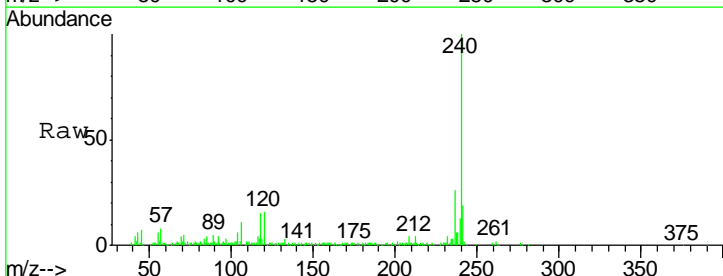
Instrument :  
 BNA\_F  
 ClientSampled :

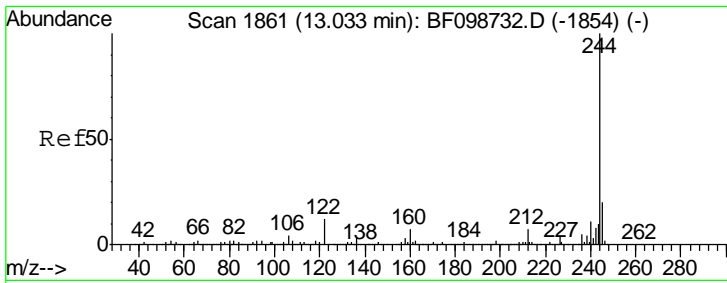
| Tgt Ion | Resp  | Lower | Upper  |
|---------|-------|-------|--------|
| 248     | 7194  |       |        |
| 250     | 206.9 | 76.9  | 115.3# |
| 141     | 567.6 | 74.4  | 111.6# |



#75  
 Chrysene-d12  
 Concen: 20.00 ng  
 RT: 14.00 min Scan# 2025  
 Delta R.T. -0.00 min  
 Lab File: BF099592.D  
 Acq: 17 Oct 2017 20:23

| Tgt Ion | Resp   | Lower | Upper |
|---------|--------|-------|-------|
| 240     | 184730 |       |       |
| 120     | 15.7   | 9.5   | 14.3# |
| 236     | 26.2   | 20.7  | 31.1  |

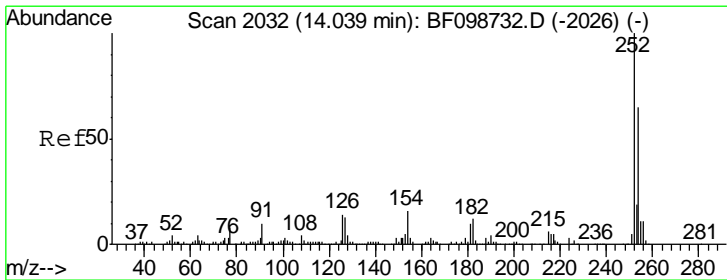
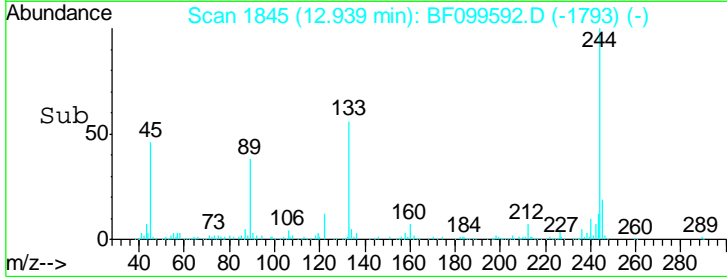
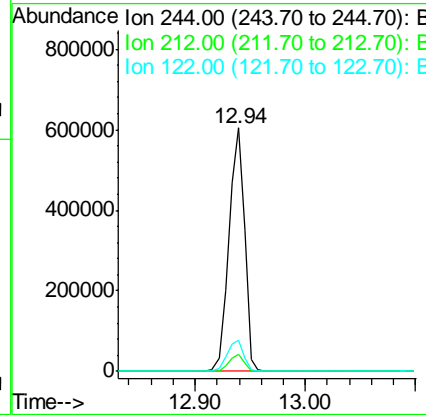
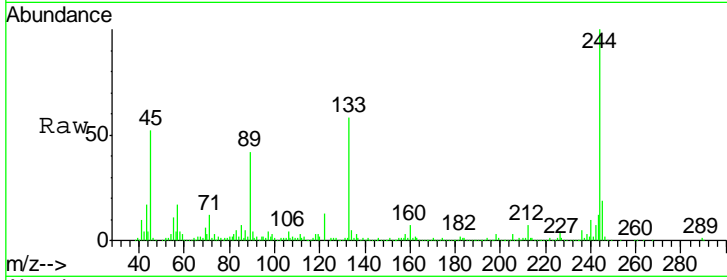




#78  
 Terphenyl-d14  
 Concen: 74.01 ng  
 RT: 12.94 min Scan# 1845  
 Delta R.T. 0.01 min  
 Lab File: BF099592.D  
 Acq: 17 Oct 2017 20:23

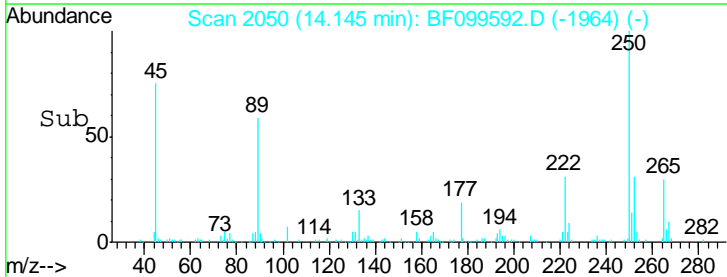
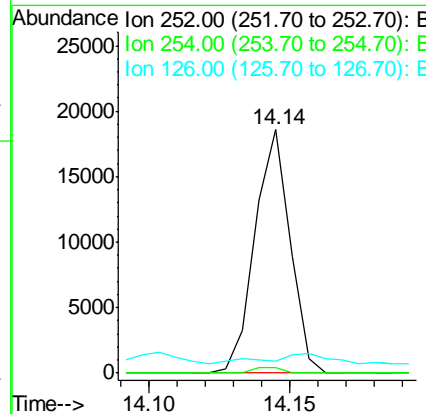
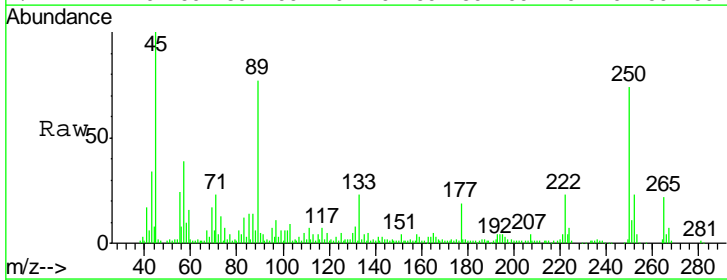
Instrument :  
 BNA\_F  
 ClientSampled :

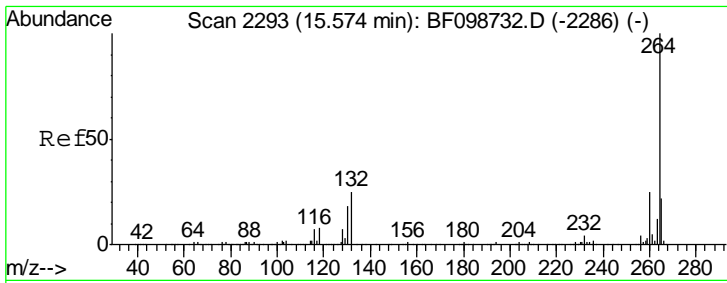
| Tgt Ion | Resp   | Lower | Upper |
|---------|--------|-------|-------|
| 244     | 601182 |       |       |
| 212     | 6.9    | 5.4   | 8.0   |
| 122     | 12.6   | 11.0  | 16.4  |



#81  
 3,3'-Dichlorobenzidine  
 Concen: 3.92 ng  
 RT: 14.14 min Scan# 2050  
 Delta R.T. 0.21 min  
 Lab File: BF099592.D  
 Acq: 17 Oct 2017 20:23

| Tgt Ion | Resp  | Lower | Upper |
|---------|-------|-------|-------|
| 252     | 16065 |       |       |
| 254     | 2.0   | 50.4  | 75.6# |
| 126     | 5.1   | 11.3  | 16.9# |





#86  
 Perylene-d12  
 Concen: 20.00 ng  
 RT: 15.46 min Scan# 2274  
 Delta R.T. 0.01 min  
 Lab File: BF099592.D  
 Acq: 17 Oct 2017 20:23

Instrument :  
 BNA\_F  
 ClientSampled :

| Tot Ion | Ion  | Ratio | Lower | Upper |
|---------|------|-------|-------|-------|
| 264     | 100  |       |       |       |
| 260     | 24.2 | 19.2  | 28.8  |       |
| 265     | 22.1 | 17.5  | 26.3  |       |

