

Data Path : Z:\HPCHEM1\BNA F\Data\BF101817\
 Data File : BF099655.D
 Acq On : 19 Oct 2017 9:39
 Operator : SJ/JU
 Sample : I5935-06
 Misc :
 ALS Vial : 36 Sample Multiplier: 1

Instrument :
 BNA_F
 ClientSampleId :
 CL-02-101617-B

Quant Time: Oct 19 10:29:11 2017
 Quant Method : Z:\HPCHEM1\BNA F\METHODS\8270-BF092317.M
 Quant Title : ASP BNA STANDARDS FOR 5 POINT CALIBRATION
 QLast Update : Thu Oct 05 17:20:48 2017
 Response via : Initial Calibration

| Internal Standards | R.T. | QIon | Response | Conc | Units | Dev(Min) |
|---------------------------|--------|------|----------|-------|-------|----------|
| 1) 1,4-Dichlorobenzene-d4 | 6.828 | 152 | 88306 | 20.00 | ng | -0.04 |
| 21) Naphthalene-d8 | 8.110 | 136 | 314668 | 20.00 | ng | -0.04 |
| 38) Acenaphthene-d10 | 9.863 | 164 | 111406 | 20.00 | ng | -0.04 |
| 63) Phenanthrene-d10 | 11.351 | 188 | 179087 | 20.00 | ng | -0.04 |
| 75) Chrysene-d12 | 13.992 | 240 | 187342 | 20.00 | ng | -0.04 |
| 86) Perylene-d12 | 15.456 | 264 | 147052 | 20.00 | ng | -0.05 |

System Monitoring Compounds

| | | | | | | |
|--------------------------|--------|-----|--------|--------|----|-------|
| 5) 2-Fluorophenol | 5.475 | 112 | 732966 | 132.13 | ng | 0.00 |
| 7) Phenol-d6 | 6.475 | 99 | 776572 | 113.48 | ng | -0.02 |
| 23) Nitrobenzene-d5 | 7.398 | 82 | 513767 | 104.71 | ng | -0.04 |
| 41) 2,4,6-Tribromophenol | 10.657 | 330 | 136880 | 150.15 | ng | -0.04 |
| 44) 2-Fluorobiphenyl | 9.180 | 172 | 856951 | 128.41 | ng | -0.05 |
| 78) Terphenyl-d14 | 12.933 | 244 | 691080 | 83.89 | ng | -0.04 |

Target Compounds

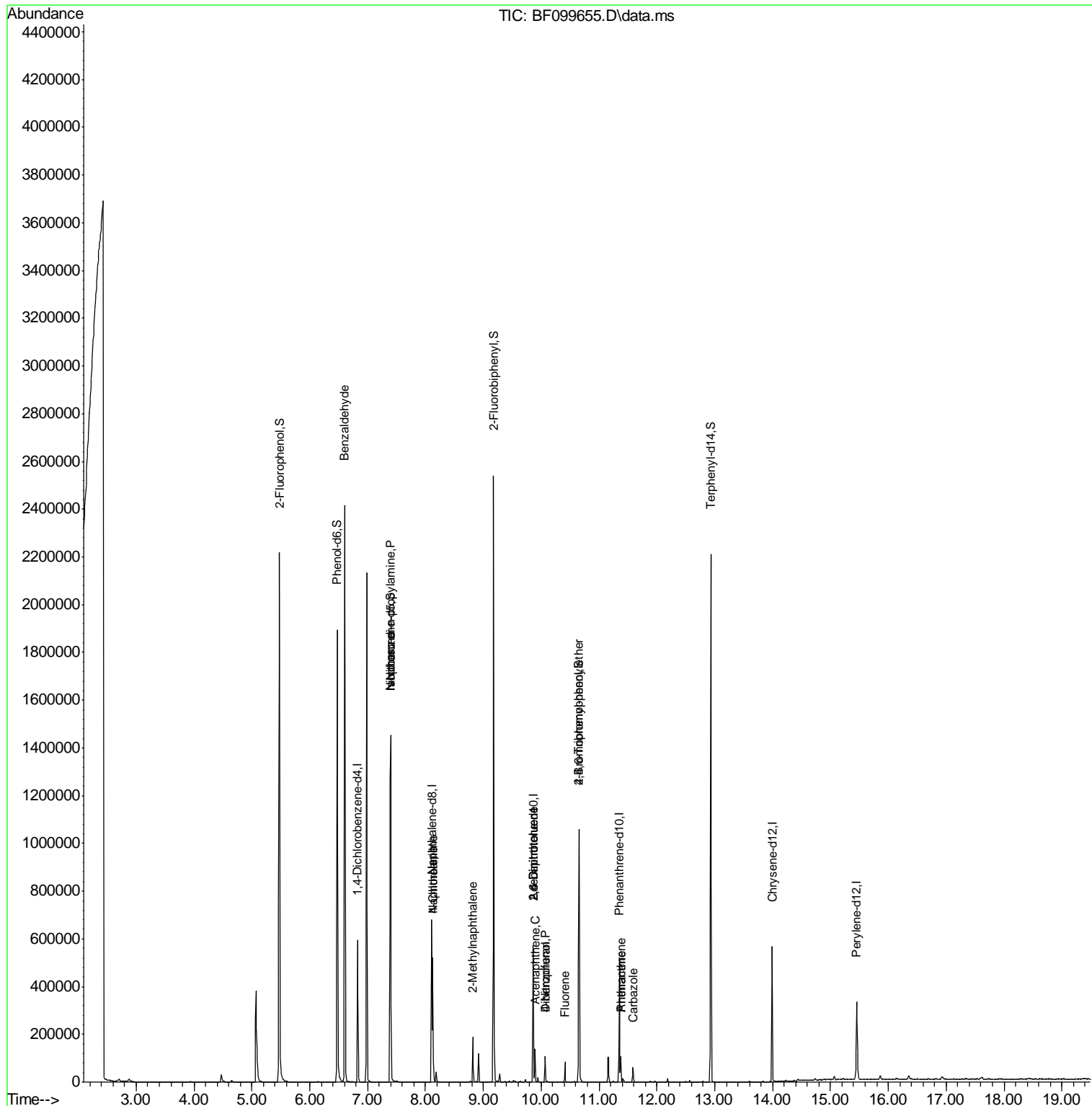
| Target Compounds | R.T. | QIon | Response | Conc | Units | Qvalue |
|-------------------------------|--------|------|----------|-------|-------|--------|
| 9) Benzaldehyde | 6.604 | 77 | 13921 | 3.51 | ng | 91 |
| 19) n-Nitroso-di-n-propyla... | 7.398 | 70 | 63816 | 14.61 | ng | # 71 |
| 25) Isophorone | 7.398 | 82 | 513764 | 50.64 | ng | # 64 |
| 31) Naphthalene | 8.127 | 128 | 226349 | 15.32 | ng | 98 |
| 33) 4-Chloroaniline | 8.127 | 127 | 28618 | 4.64 | ng | # 30 |
| 37) 2-Methylnaphthalene | 8.822 | 142 | 53756 | 5.60 | ng | 96 |
| 50) 2,6-Dinitrotoluene | 9.863 | 165 | 14587 | 7.97 | ng | # 24 |
| 51) Acenaphthene | 9.892 | 154 | 28668 | 4.11 | ng | 97 |
| 54) Dibenzofuran | 10.069 | 168 | 44133 | 4.75 | ng | 97 |
| 55) 4-Nitrophenol | 10.069 | 139 | 15918 | 8.82 | ng | # 9 |
| 56) 2,4-Dinitrotoluene | 9.863 | 165 | 14587 | 6.14 | ng | # 21 |
| 57) Fluorene | 10.410 | 166 | 23066 | 3.09 | ng | 99 |
| 66) 4-Bromophenyl-phenylether | 10.657 | 248 | 9059 | 5.17 | ng | # 1 |
| 70) Phenanthrene | 11.374 | 178 | 41145 | 4.29 | ng | 98 |
| 71) Anthracene | 11.374 | 178 | 41145 | 4.19 | ng | 99 |
| 72) Carbazole | 11.586 | 167 | 26004 | 2.71 | ng | 95 |

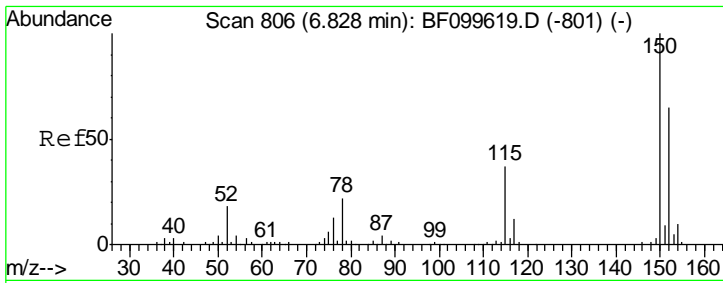
(#) = qualifier out of range (m) = manual integration (+) = signals summed

Data Path : Z:\HPCHEM1\BNA F\Data\BF101817\
 Data File : BF099655.D
 Acq On : 19 Oct 2017 9:39
 Operator : SJ/JU
 Sample : I5935-06
 Misc :
 ALS Vial : 36 Sample Multiplier: 1

Instrument :
 BNA_F
 ClientSampleID :
 CL-02-101617-B

Quant Time: Oct 19 10:29:11 2017
 Quant Method : Z:\HPCHEM1\BNA F\METHODS\8270-BF092317.M
 Quant Title : ASP BNA STANDARDS FOR 5 POINT CALIBRATION
 QLast Update : Thu Oct 05 17:20:48 2017
 Response via : Initial Calibration

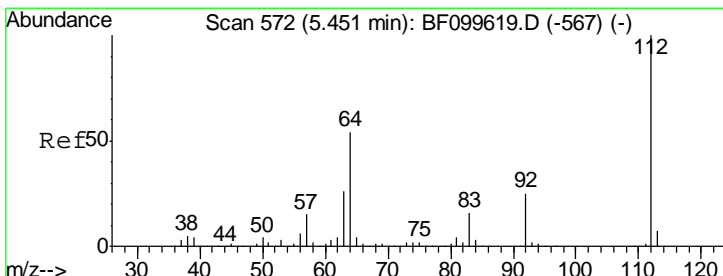
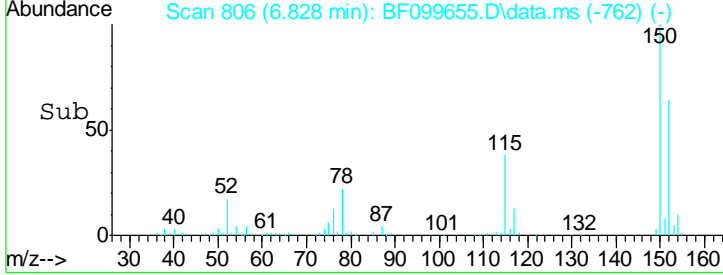
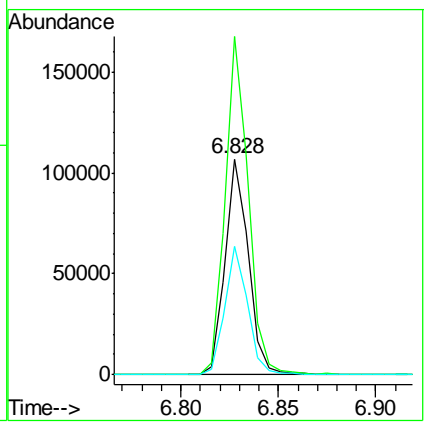
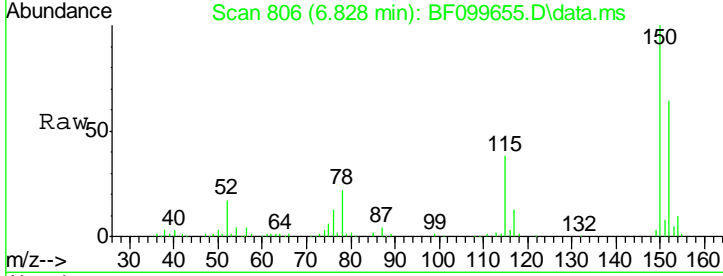




#1
 1,4-Dichlorobenzene-d4
 Concen: 20.00 ng
 RT: 6.828 min Scan# 80
 Delta R.T. -0.041 min
 Lab File: BF099655.D
 Acq: 19 Oct 2017 9:39

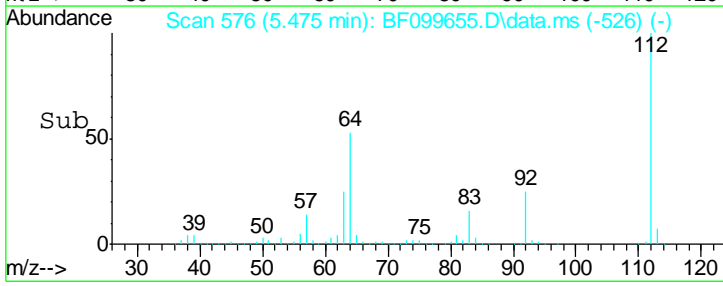
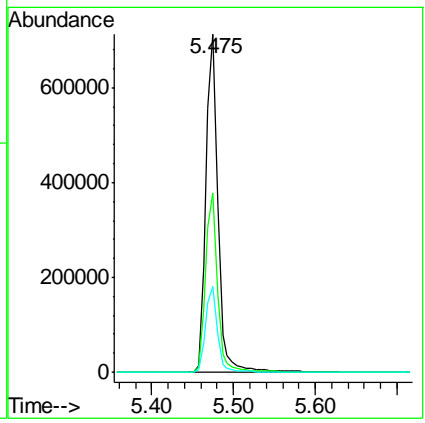
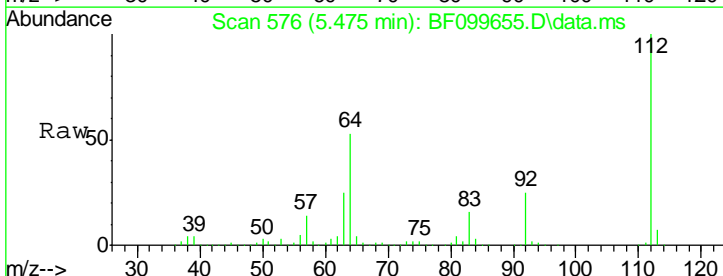
Instrument :
 BNA_F
ClientSampled :
 CL-02-101617-B

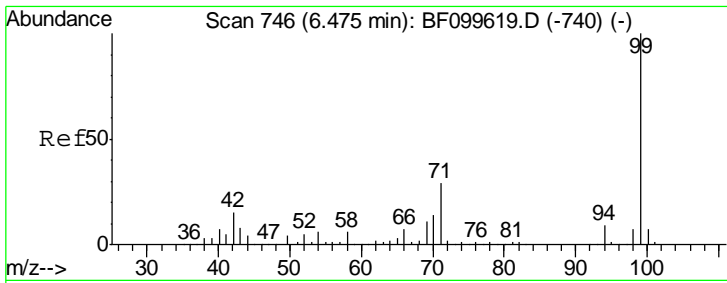
| Tgt Ion | Resp | Lower | Upper |
|---------|-------|-------|-------|
| 152 | 100 | | |
| 150 | 156.8 | 124.6 | 186.8 |
| 115 | 59.6 | 50.1 | 75.1 |



#5
 2-Fluorophenol
 Concen: 132.13 ng
 RT: 5.475 min Scan# 576
 Delta R.T. -0.006 min
 Lab File: BF099655.D
 Acq: 19 Oct 2017 9:39

| Tgt Ion | Resp | Lower | Upper |
|---------|------|-------|-------|
| 112 | 100 | | |
| 64 | 53.0 | 47.9 | 71.9 |
| 63 | 25.4 | 23.7 | 35.5 |

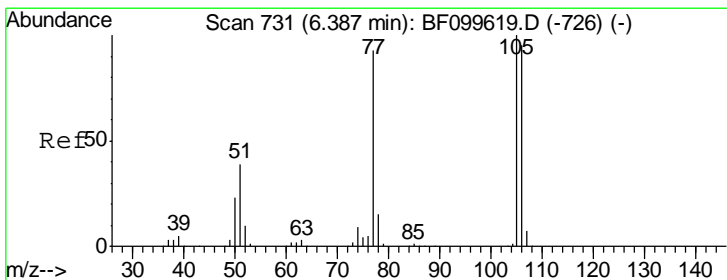
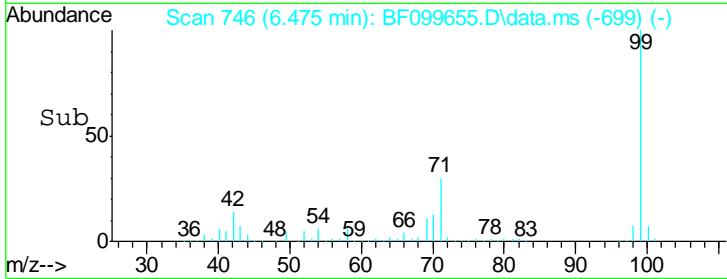
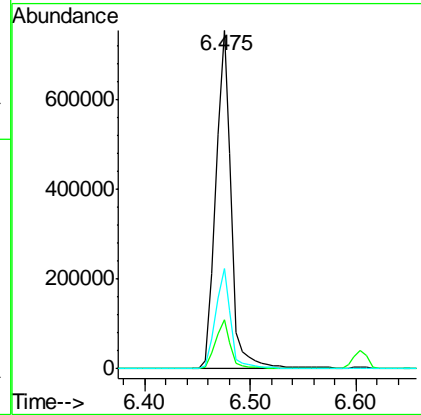
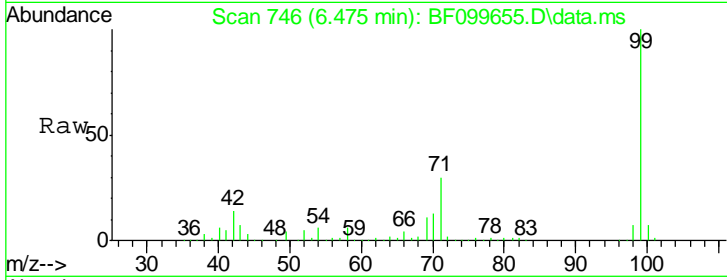




#7
 Phenol-d6
 Concen: 113.48 ng
 RT: 6.475 min Scan# 74
 Delta R.T. -0.024 min
 Lab File: BF099655.D
 Acq: 19 Oct 2017 9:39

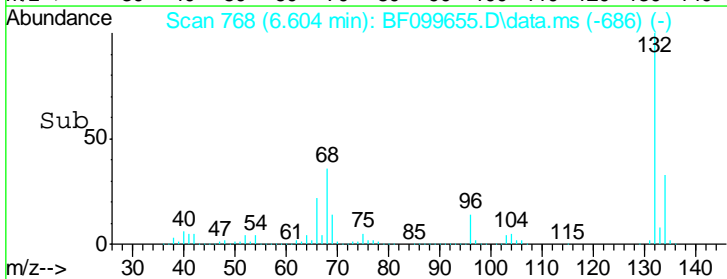
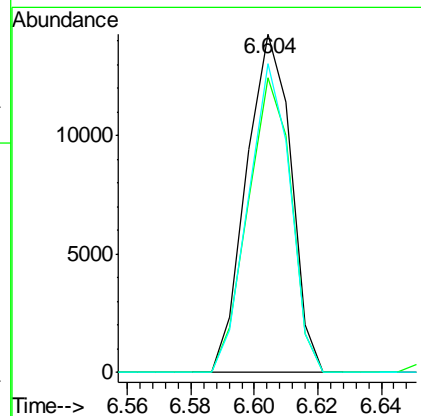
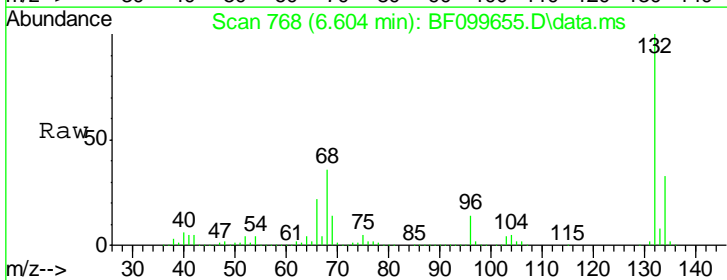
Instrument :
 BNA_F
 ClientSampled :
 CL-02-101617-B

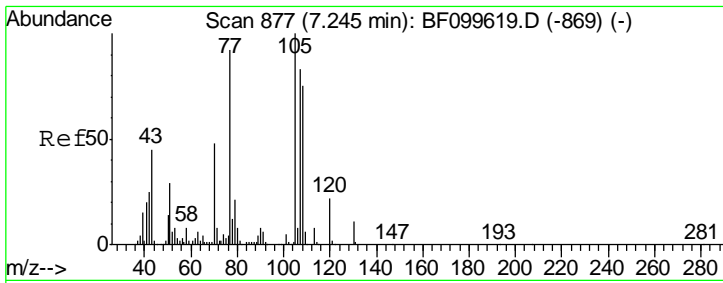
| Tgt Ion | Resp | Lower | Upper |
|---------|--------|-------|-------|
| 99 | 776572 | | |
| 42 | 14.5 | 14.5 | 21.7# |
| 71 | 29.6 | 25.4 | 38.0 |



#9
 Benzaldehyde
 Concen: 3.51 ng
 RT: 6.604 min Scan# 768
 Delta R.T. 0.182 min
 Lab File: BF099655.D
 Acq: 19 Oct 2017 9:39

| Tgt Ion | Resp | Lower | Upper |
|---------|-------|-------|-------|
| 77 | 13921 | | |
| 105 | 87.2 | 81.1 | 121.1 |
| 106 | 91.4 | 74.5 | 114.5 |

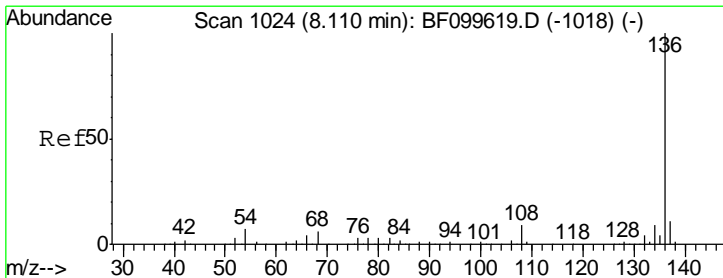
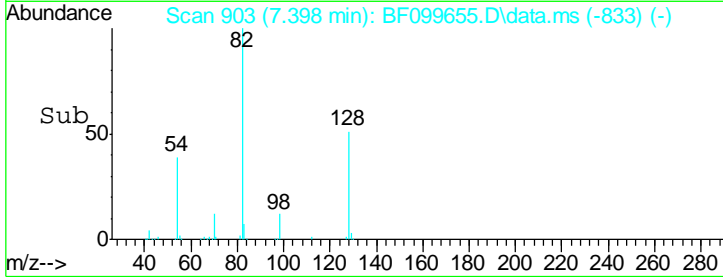
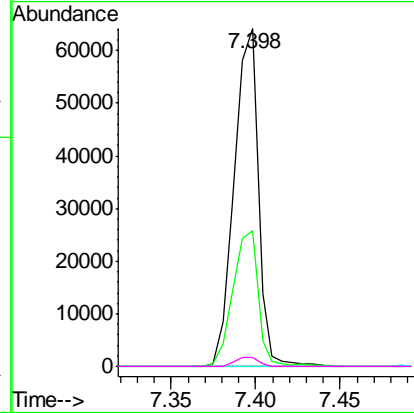
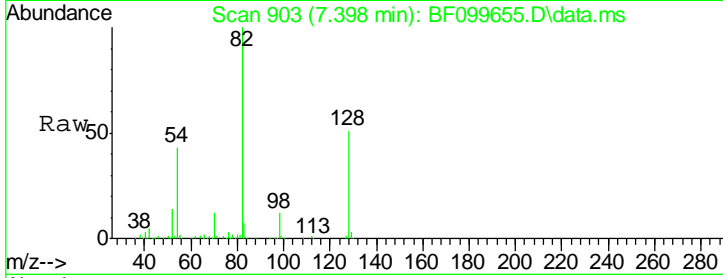




#19
 n-Nitroso-di-n-propylamine
 Concen: 14.61 ng
 RT: 7.398 min Scan# 90
 Delta R.T. 0.112 min
 Lab File: BF099655.D
 Acq: 19 Oct 2017 9:39

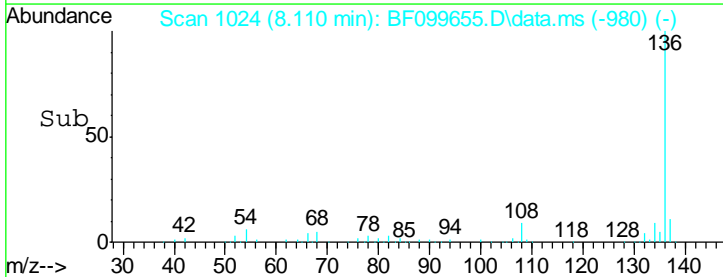
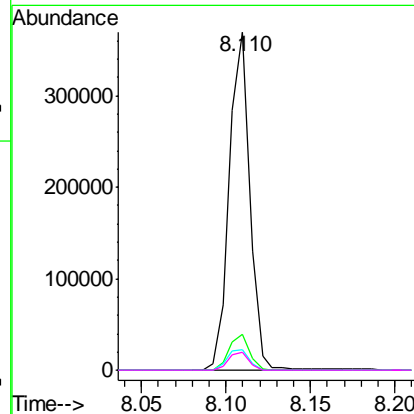
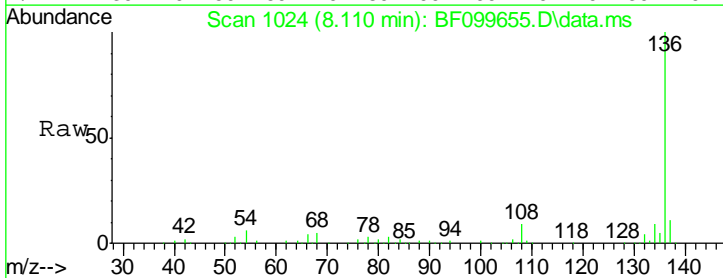
Instrument :
 BNA_F
 ClientSampleId :
 CL-02-101617-B

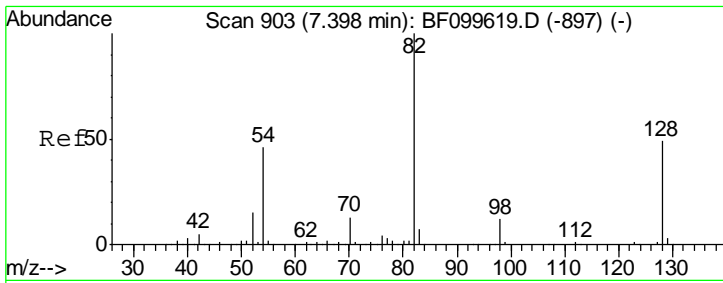
| Tgt Ion | Resp | Lower | Upper |
|---------|-------|-------|-------|
| 70 | 63816 | | |
| 70 | 100 | | |
| 42 | 40.3 | 47.5 | 71.3# |
| 101 | 0.0 | 7.4 | 11.2# |
| 130 | 2.5 | 16.6 | 25.0# |



#21
 Naphthalene-d8
 Concen: 20.00 ng
 RT: 8.110 min Scan# 1024
 Delta R.T. -0.041 min
 Lab File: BF099655.D
 Acq: 19 Oct 2017 9:39

| Tgt Ion | Resp | Lower | Upper |
|---------|--------|-------|-------|
| 136 | 314668 | | |
| 136 | 100 | | |
| 137 | 10.6 | 8.9 | 13.3 |
| 54 | 6.3 | 6.6 | 9.8# |
| 68 | 5.3 | 5.0 | 7.4 |

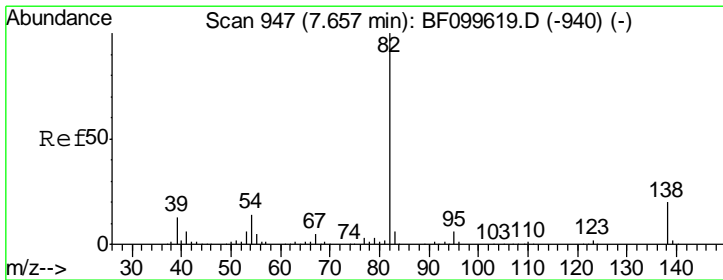
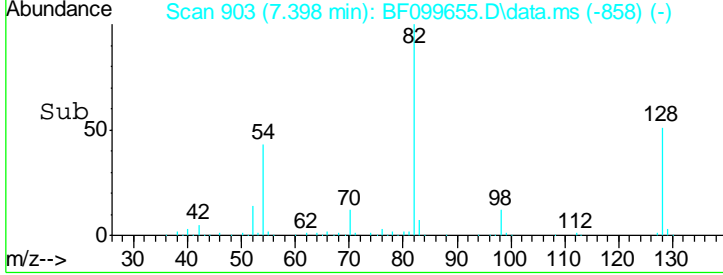
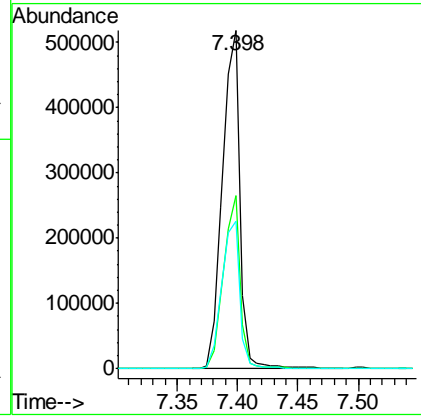
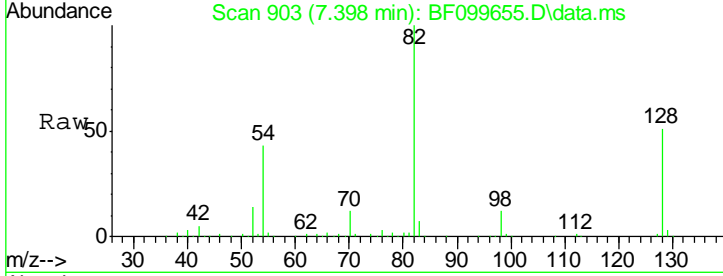




#23
 Nitrobenzene-d5
 Concen: 104.71 ng
 RT: 7.398 min Scan# 90
 Delta R.T. -0.035 min
 Lab File: BF099655.D
 Acq: 19 Oct 2017 9:39

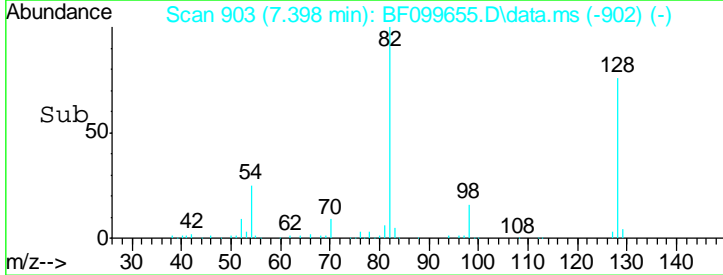
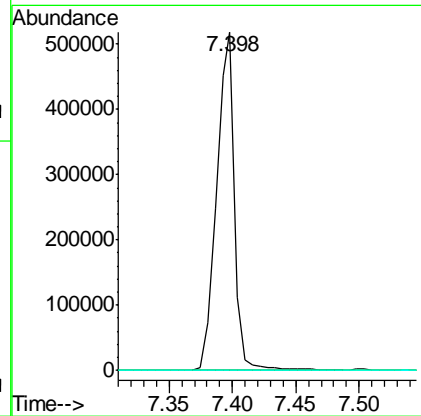
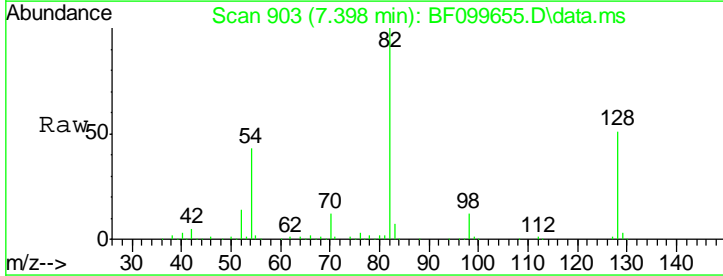
Instrument :
 BNA_F
 ClientSampled :
 CL-02-101617-B

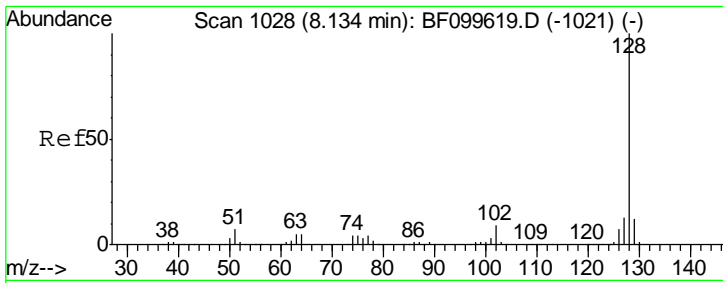
| Tgt Ion | Resp | Lower | Upper |
|---------|------|-------|-------|
| 82 | 100 | | |
| 128 | 51.2 | 36.1 | 54.1 |
| 54 | 43.5 | 41.4 | 62.2 |



#25
 Isophorone
 Concen: 50.64 ng
 RT: 7.398 min Scan# 903
 Delta R.T. -0.294 min
 Lab File: BF099655.D
 Acq: 19 Oct 2017 9:39

| Tgt Ion | Resp | Lower | Upper |
|---------|------|-------|-------|
| 82 | 100 | | |
| 95 | 0.0 | 5.2 | 7.8# |
| 138 | 0.0 | 14.9 | 22.3# |



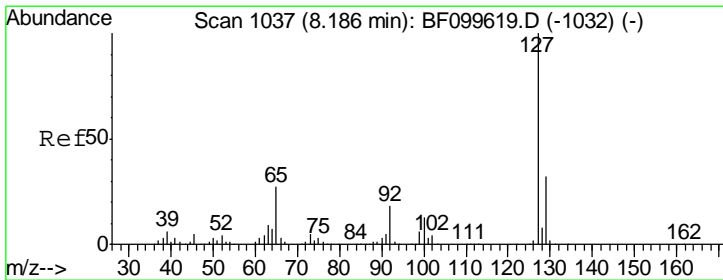
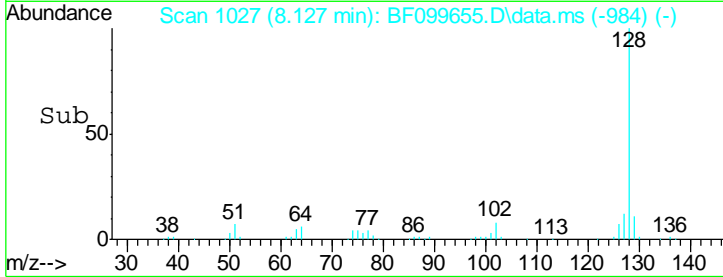
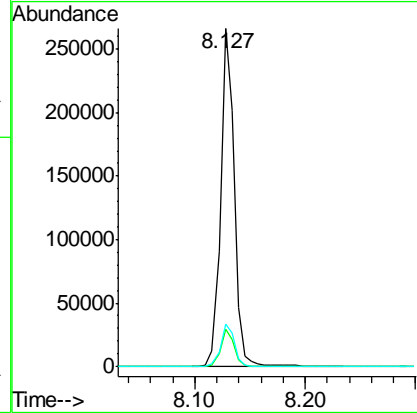
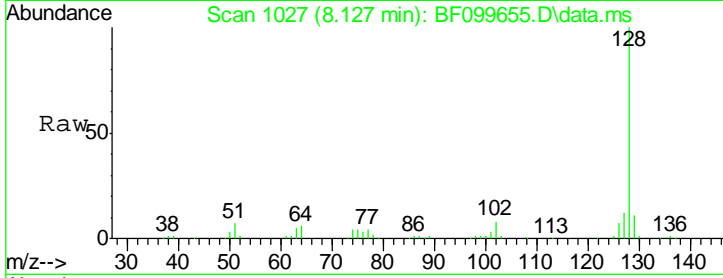


#31
 Naphthalene
 Concen: 15.32 ng
 RT: 8.127 min Scan# 1027
 Delta R.T. -0.047 min
 Lab File: BF099655.D
 Acq: 19 Oct 2017 9:39

Instrument :
 BNA_F
 ClientSampleId :
 CL-02-101617-B

Tgt Ion: 128 Resp: 226349

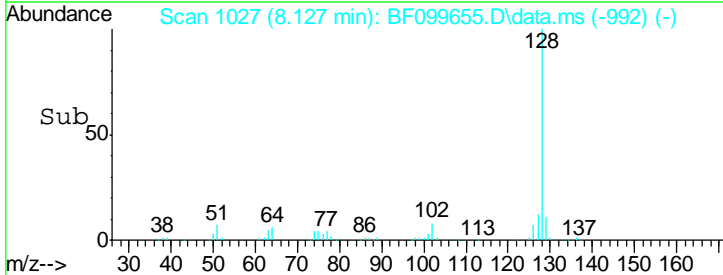
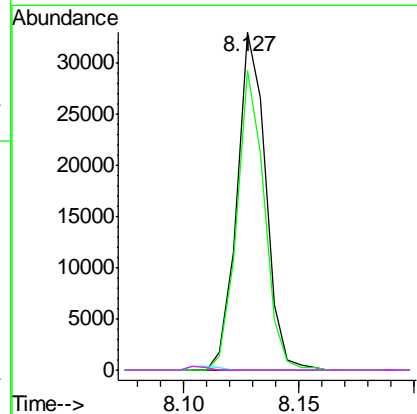
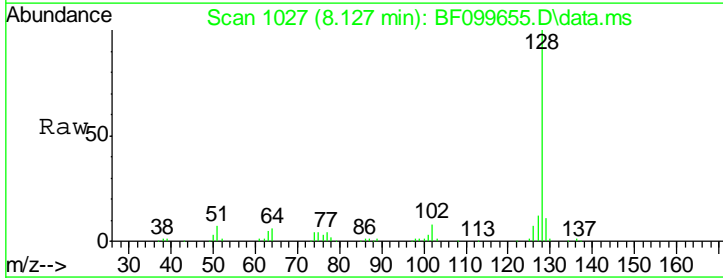
| Ion | Ratio | Lower | Upper |
|-----|-------|-------|-------|
| 128 | 100 | | |
| 129 | 11.0 | 8.8 | 13.2 |
| 127 | 12.4 | 10.9 | 16.3 |

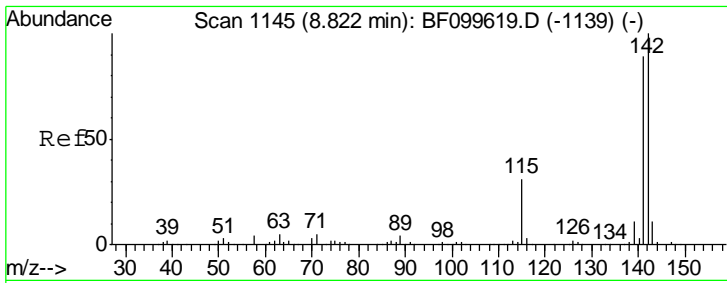


#33
 4-Chloroaniline
 Concen: 4.64 ng
 RT: 8.127 min Scan# 1027
 Delta R.T. -0.094 min
 Lab File: BF099655.D
 Acq: 19 Oct 2017 9:39

Tgt Ion: 127 Resp: 28618

| Ion | Ratio | Lower | Upper |
|-----|-------|-------|-------|
| 127 | 100 | | |
| 129 | 88.6 | 25.9 | 38.9# |
| 65 | 0.0 | 25.0 | 37.4# |
| 92 | 0.0 | 15.2 | 22.8# |

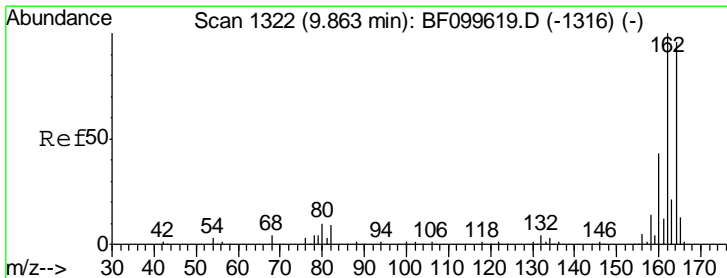
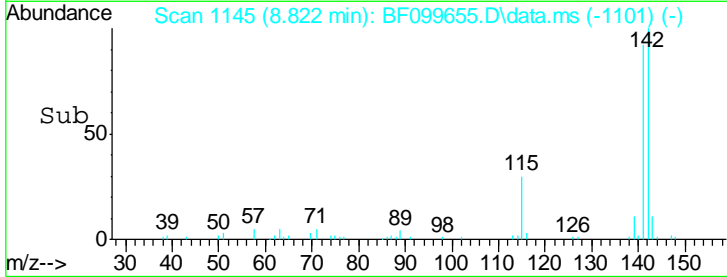
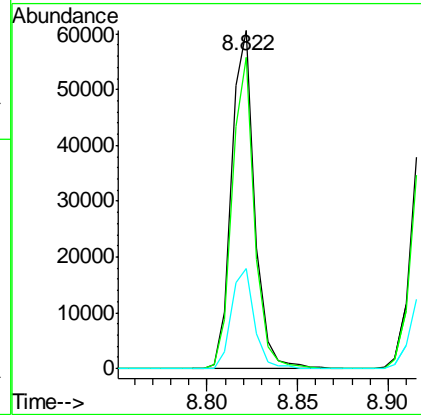
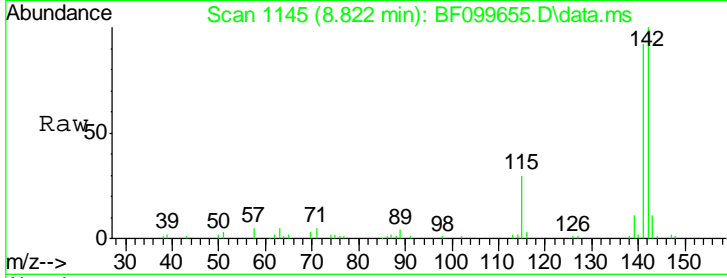




#37
 2-Methylnaphthalene
 Concen: 5.60 ng
 RT: 8.822 min Scan# 11
 Delta R.T. -0.041 min
 Lab File: BF099655.D
 Acq: 19 Oct 2017 9:39

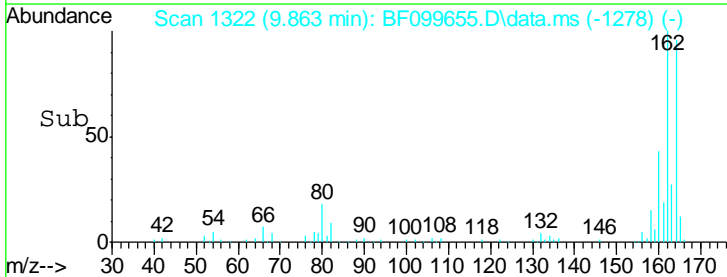
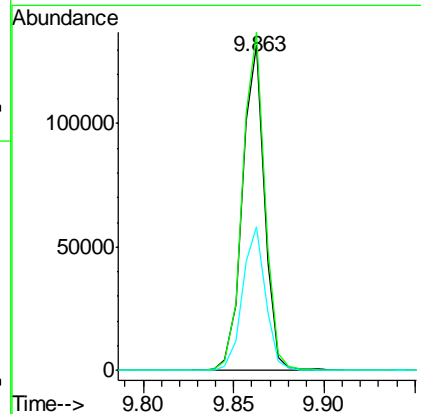
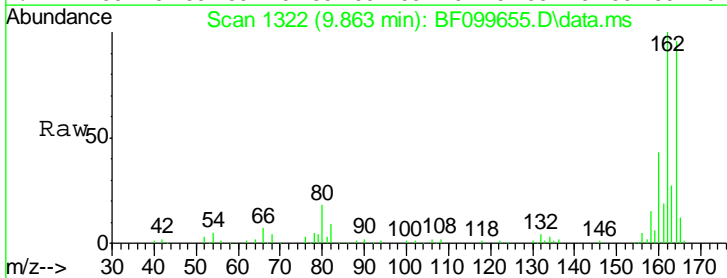
Instrument :
 BNA_F
 ClientSampled :
 CL-02-101617-B

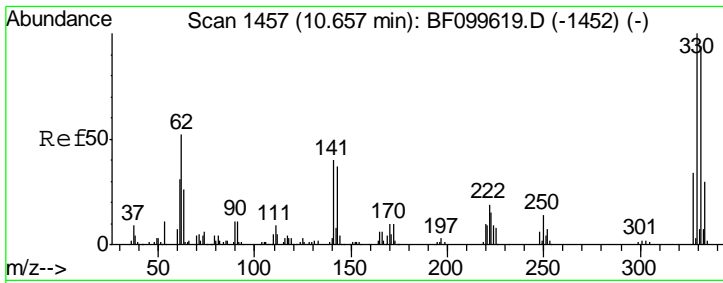
| Tgt Ion | Resp | Lower | Upper |
|---------|-------|-------|-------|
| 142 | 53756 | | |
| 141 | 92.2 | 70.8 | 106.2 |
| 115 | 29.7 | 26.1 | 39.1 |



#38
 Acenaphthene-d10
 Concen: 20.00 ng
 RT: 9.863 min Scan# 1322
 Delta R.T. -0.041 min
 Lab File: BF099655.D
 Acq: 19 Oct 2017 9:39

| Tgt Ion | Resp | Lower | Upper |
|---------|--------|-------|-------|
| 164 | 111406 | | |
| 162 | 104.0 | 86.1 | 129.1 |
| 160 | 44.2 | 38.3 | 57.5 |

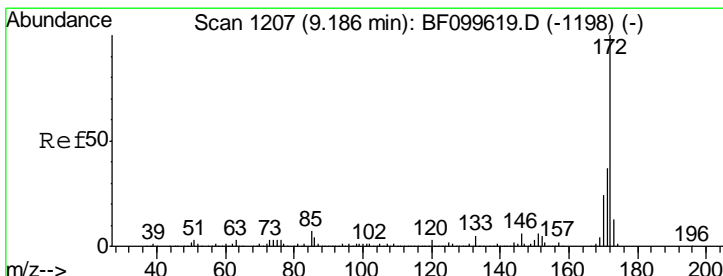
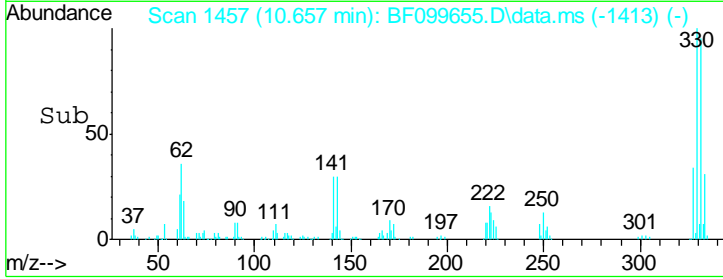
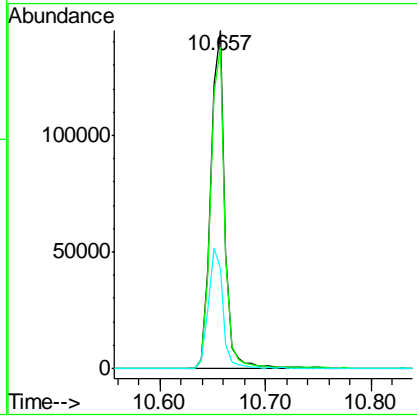
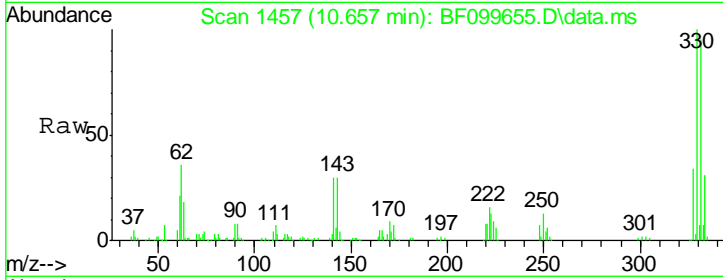




#41
 2,4,6-Tribromophenol
 Concen: 150.15 ng
 RT: 10.657 min Scan# 14
 Delta R.T. -0.041 min
 Lab File: BF099655.D
 Acq: 19 Oct 2017 9:39

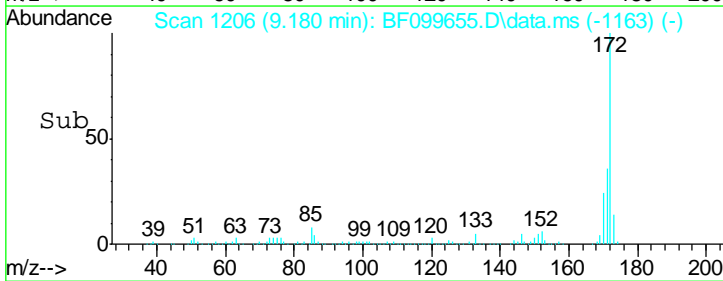
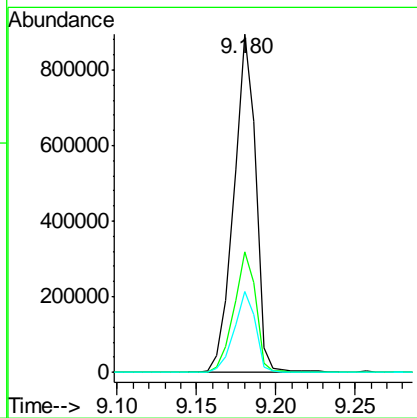
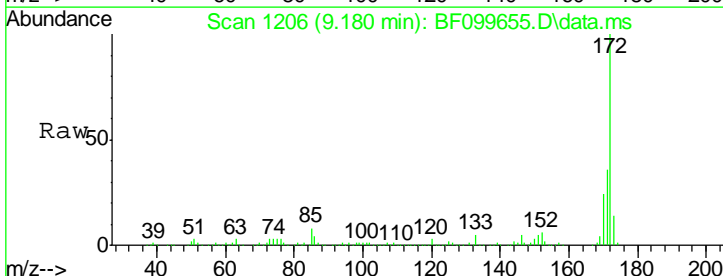
Instrument :
 BNA_F
 ClientSampled :
 CL-02-101617-B

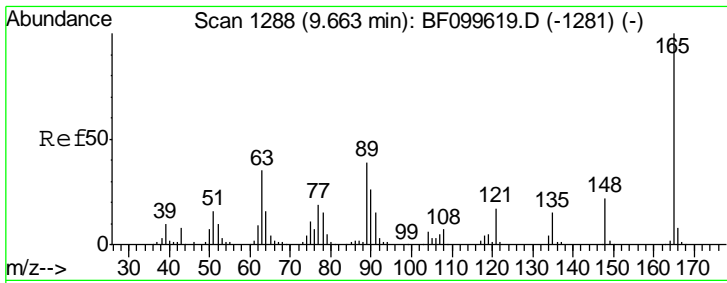
| Tgt Ion | Resp | Lower | Upper |
|---------|------|-------|-------|
| 330 | 100 | | |
| 332 | 95.7 | 77.0 | 115.6 |
| 141 | 36.2 | 29.9 | 44.9 |



#44
 2-Fluorobiphenyl
 Concen: 128.41 ng
 RT: 9.180 min Scan# 1206
 Delta R.T. -0.047 min
 Lab File: BF099655.D
 Acq: 19 Oct 2017 9:39

| Tgt Ion | Resp | Lower | Upper |
|---------|------|-------|-------|
| 172 | 100 | | |
| 171 | 35.8 | 29.7 | 44.5 |
| 170 | 23.7 | 19.6 | 29.4 |

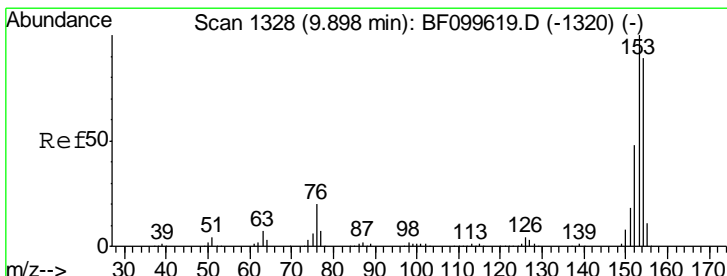
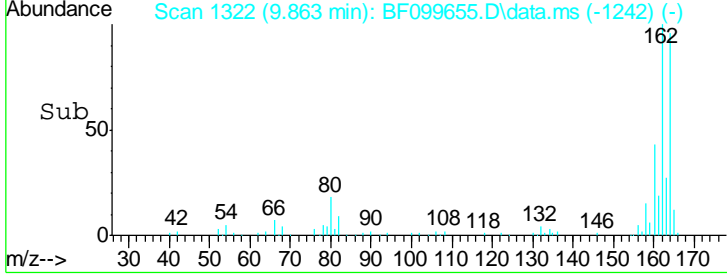
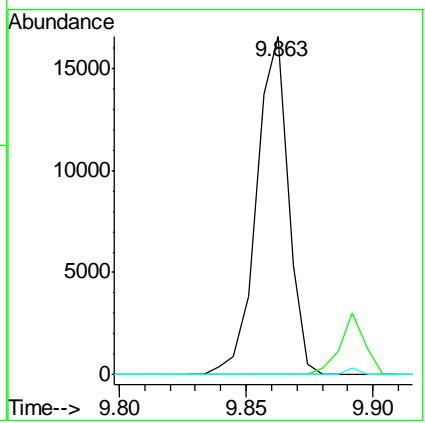
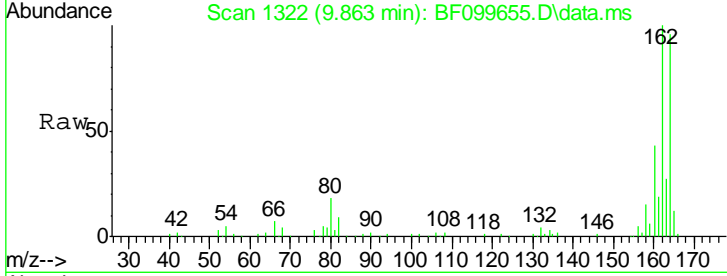




#50
 2,6-Dinitrotoluene
 Concen: 7.97 ng
 RT: 9.863 min Scan# 13
 Delta R.T. 0.170 min
 Lab File: BF099655.D
 Acq: 19 Oct 2017 9:39

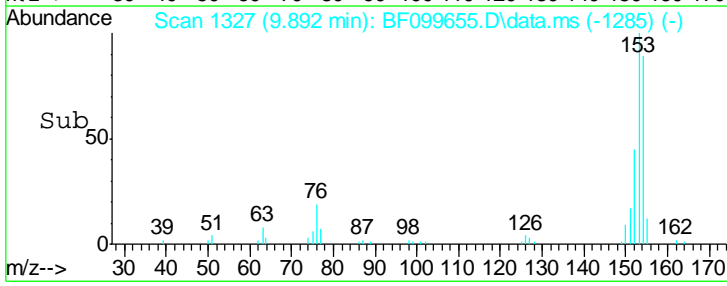
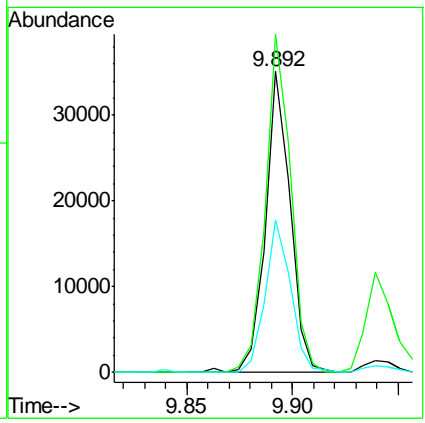
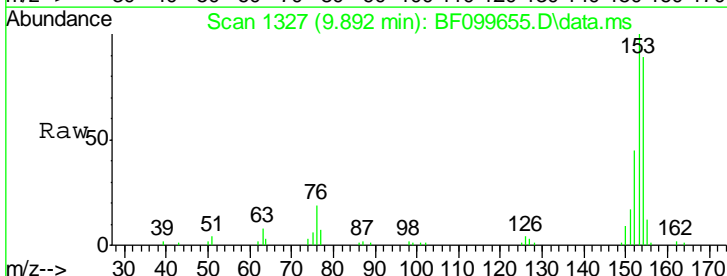
Instrument :
 BNA_F
 ClientSampled :
 CL-02-101617-B

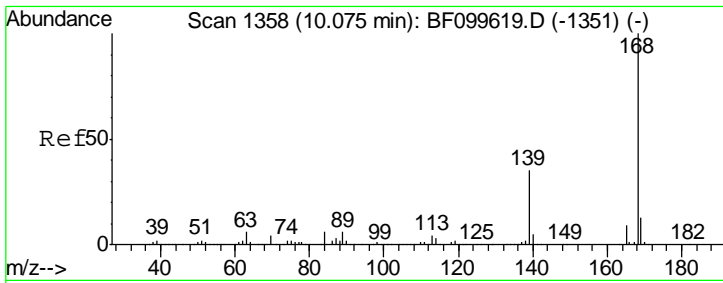
| Tgt Ion | Resp | Lower | Upper |
|---------|------|-------|-------|
| 165 | 100 | | |
| 63 | 0.0 | 44.7 | 67.1# |
| 89 | 0.0 | 44.0 | 66.0# |



#51
 Acenaphthene
 Concen: 4.11 ng
 RT: 9.892 min Scan# 1327
 Delta R.T. -0.053 min
 Lab File: BF099655.D
 Acq: 19 Oct 2017 9:39

| Tgt Ion | Resp | Lower | Upper |
|---------|-------|-------|-------|
| 154 | 100 | | |
| 153 | 112.5 | 91.2 | 136.8 |
| 152 | 50.9 | 43.8 | 65.8 |

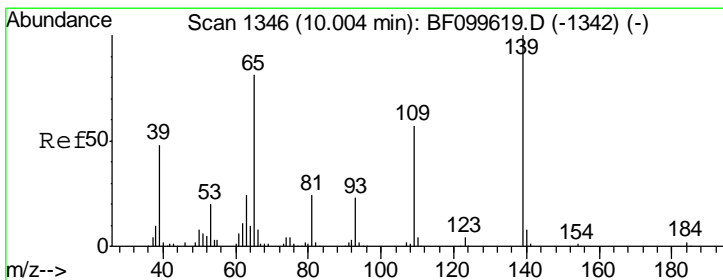
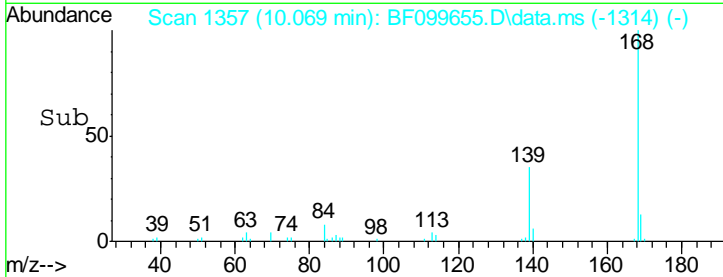
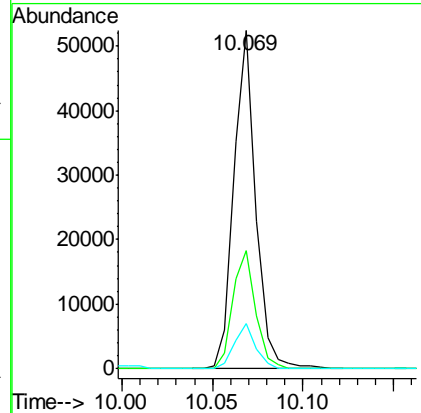
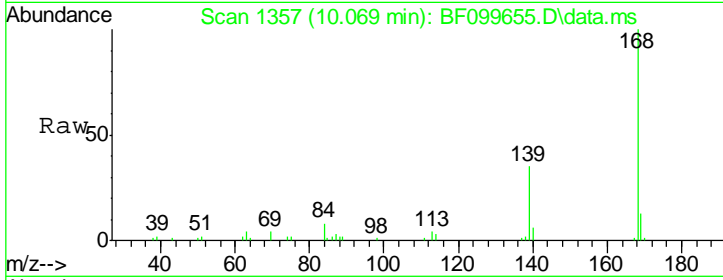




#54
 Dibenzofuran
 Concen: 4.75 ng
 RT: 10.069 min Scan# 1357
 Delta R.T. -0.047 min
 Lab File: BF099655.D
 Acq: 19 Oct 2017 9:39

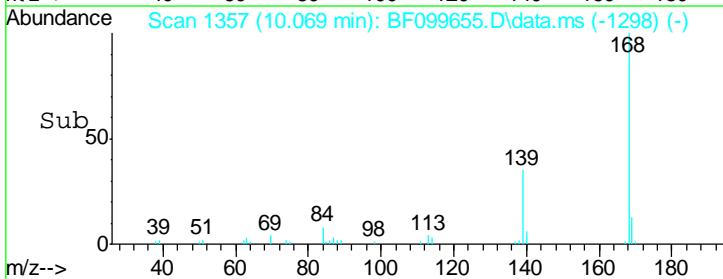
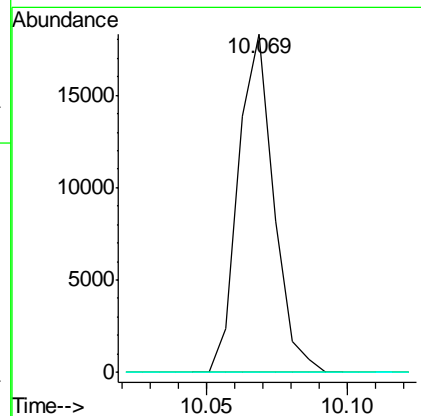
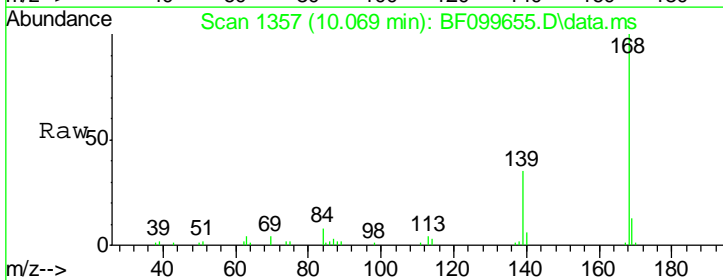
Instrument :
 BNA_F
 ClientSampleId :
 CL-02-101617-B

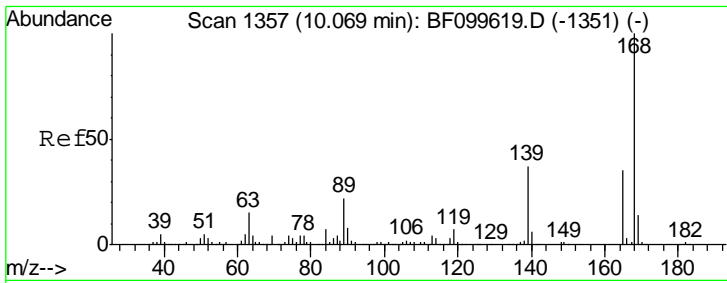
| Tgt Ion | Resp | Lower | Upper |
|---------|-------|-------|-------|
| 168 | 44133 | | |
| 139 | 100 | 30.1 | 45.1 |
| 169 | 13.4 | 10.9 | 16.3 |



#55
 4-Nitrophenol
 Concen: 8.82 ng
 RT: 10.069 min Scan# 1357
 Delta R.T. 0.047 min
 Lab File: BF099655.D
 Acq: 19 Oct 2017 9:39

| Tgt Ion | Resp | Lower | Upper |
|---------|-------|-------|--------|
| 139 | 15918 | | |
| 109 | 100 | 48.4 | 88.4# |
| 65 | 0.0 | 72.6 | 112.6# |

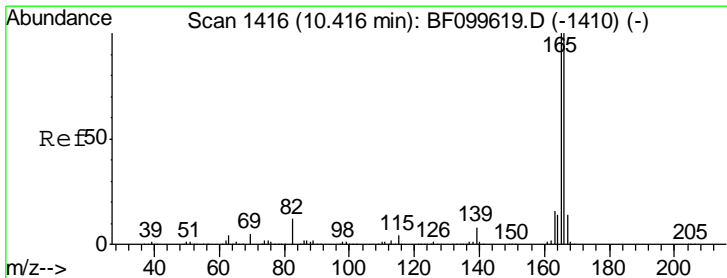
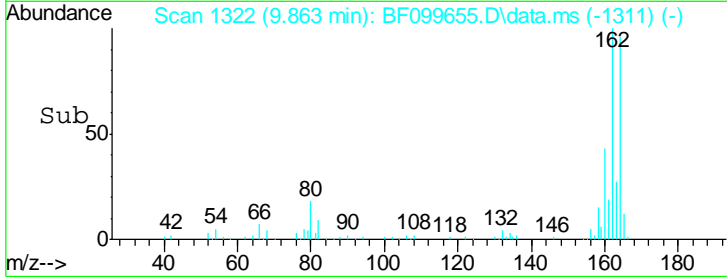
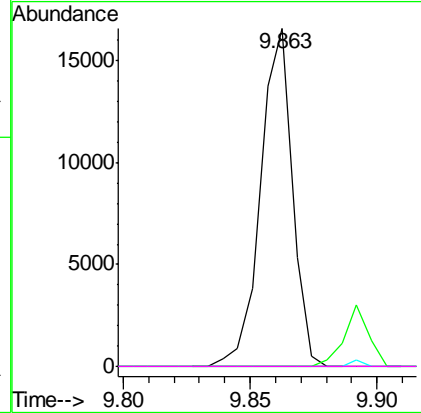
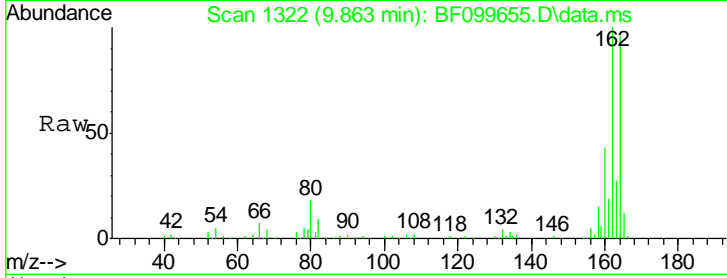




#56
 2,4-Dinitrotoluene
 Concen: 6.14 ng
 RT: 9.863 min Scan# 13
 Delta R.T. -0.235 min
 Lab File: BF099655.D
 Acq: 19 Oct 2017 9:39

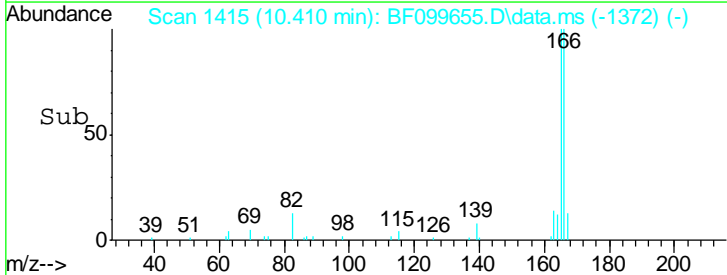
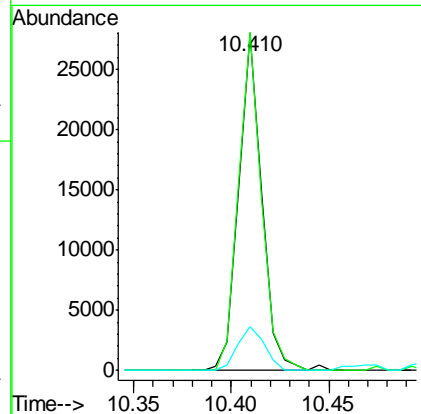
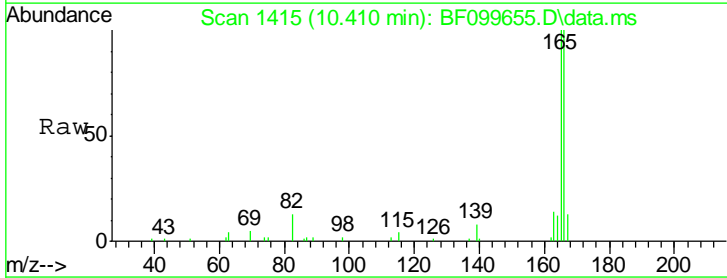
Instrument :
 BNA_F
 ClientSampled :
 CL-02-101617-B

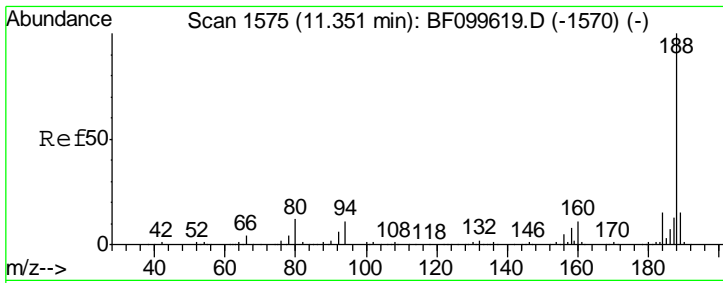
| Tgt Ion | Ratio | Lower | Upper |
|---------|-------|-------|-------|
| 165 | 100 | | |
| 63 | 0.0 | 36.4 | 54.6# |
| 89 | 0.0 | 57.8 | 86.6# |
| 182 | 0.0 | 1.6 | 2.4# |



#57
 Fluorene
 Concen: 3.09 ng
 RT: 10.410 min Scan# 1415
 Delta R.T. -0.047 min
 Lab File: BF099655.D
 Acq: 19 Oct 2017 9:39

| Tgt Ion | Ratio | Lower | Upper |
|---------|-------|-------|-------|
| 166 | 100 | | |
| 165 | 100.3 | 79.8 | 119.8 |
| 167 | 12.9 | 10.6 | 16.0 |

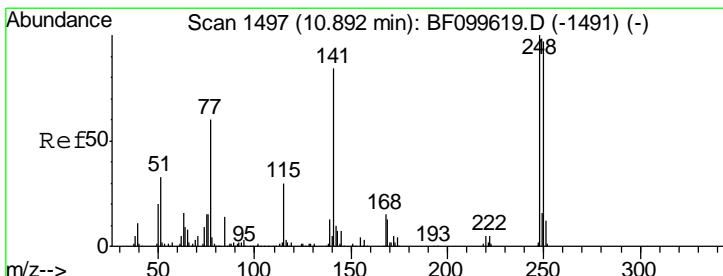
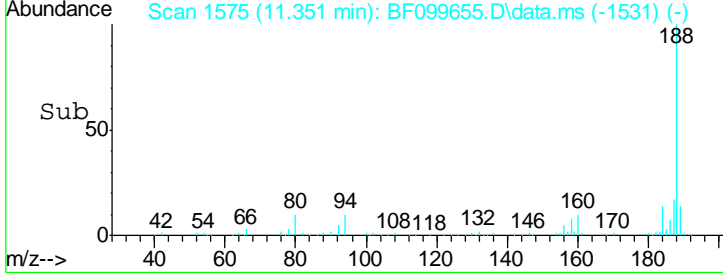
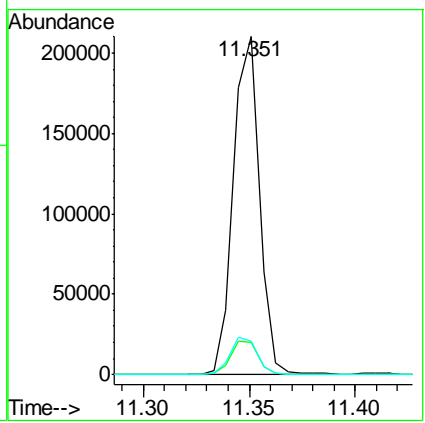
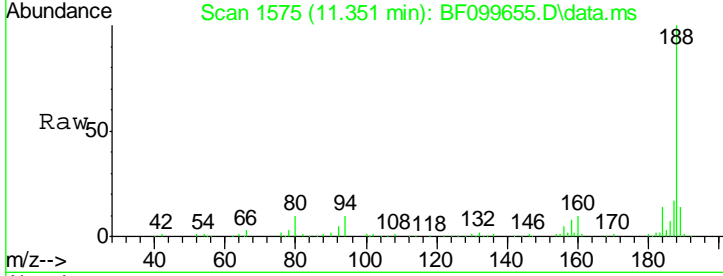




#63
 Phenanthrene-d10
 Concen: 20.00 ng
 RT: 11.351 min Scan# 15
 Delta R.T. -0.041 min
 Lab File: BF099655.D
 Acq: 19 Oct 2017 9:39

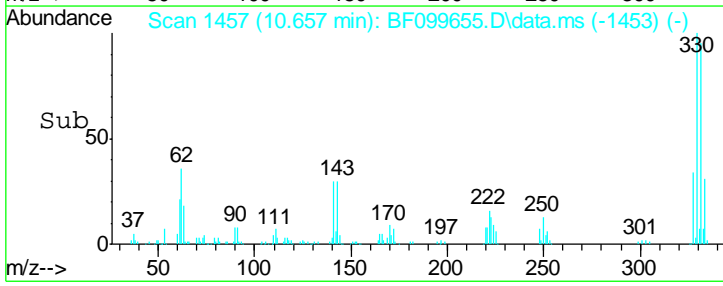
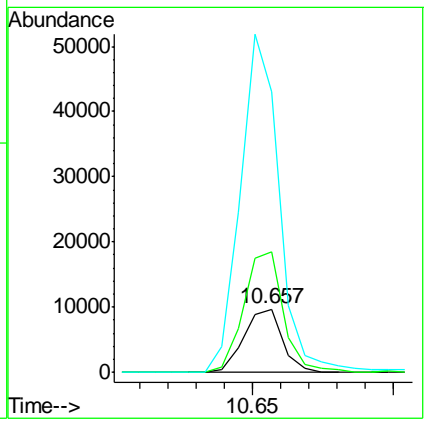
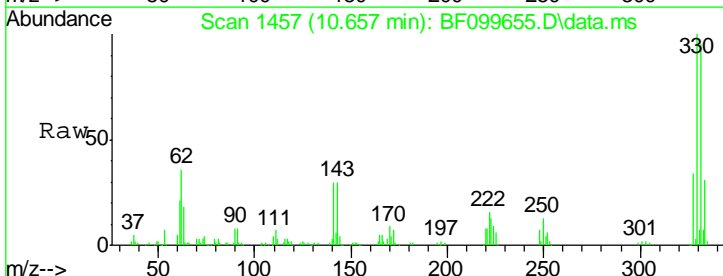
Instrument :
 BNA_F
 ClientSampled :
 CL-02-101617-B

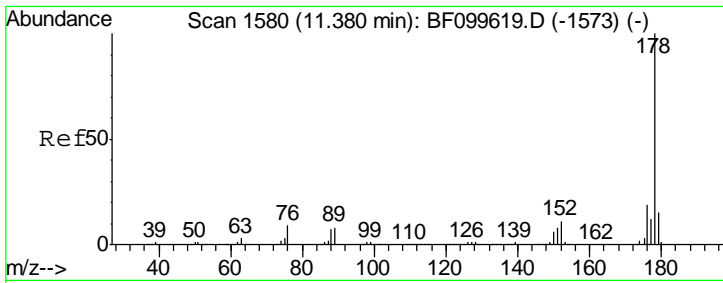
| Tgt Ion | Resp | Lower | Upper |
|---------|--------|-------|-------|
| 188 | 179087 | | |
| 94 | 9.6 | 8.5 | 12.7 |
| 80 | 10.0 | 9.2 | 13.8 |



#66
 4-Bromophenyl-phenylether
 Concen: 5.17 ng
 RT: 10.657 min Scan# 1457
 Delta R.T. -0.277 min
 Lab File: BF099655.D
 Acq: 19 Oct 2017 9:39

| Tgt Ion | Resp | Lower | Upper |
|---------|-------|-------|--------|
| 248 | 9059 | | |
| 250 | 190.5 | 76.9 | 115.3# |
| 141 | 445.3 | 74.4 | 111.6# |

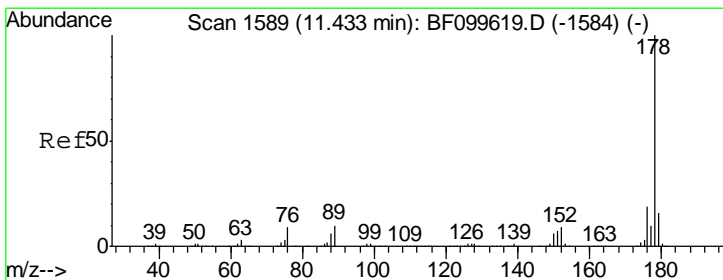
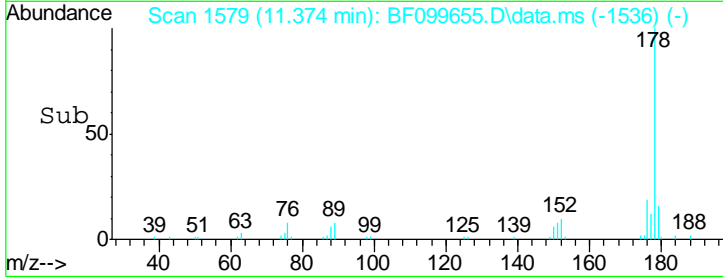
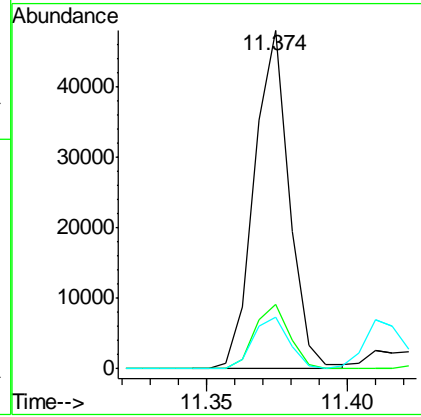
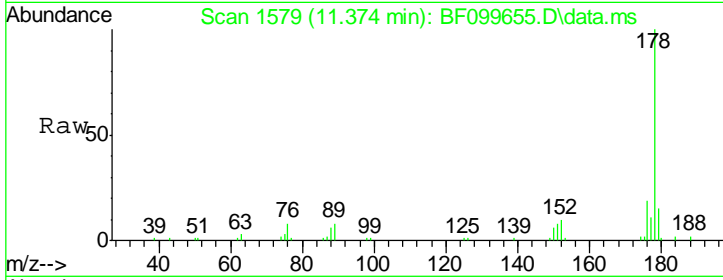




#70
 Phenanthrene
 Concen: 4.29 ng
 RT: 11.374 min Scan# 1579
 Delta R.T. -0.047 min
 Lab File: BF099655.D
 Acq: 19 Oct 2017 9:39

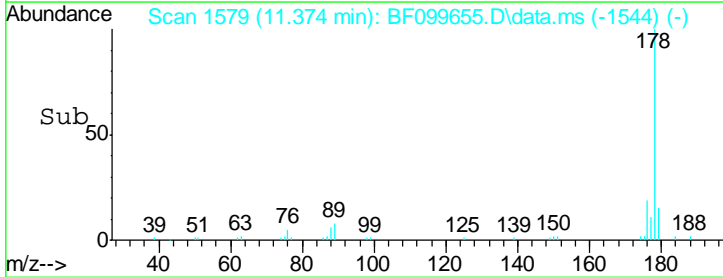
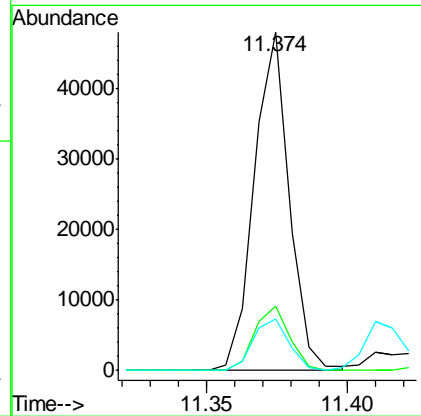
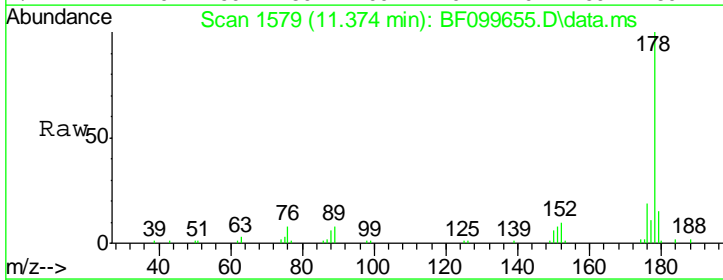
Instrument :
 BNA_F
 ClientSampled :
 CL-02-101617-B

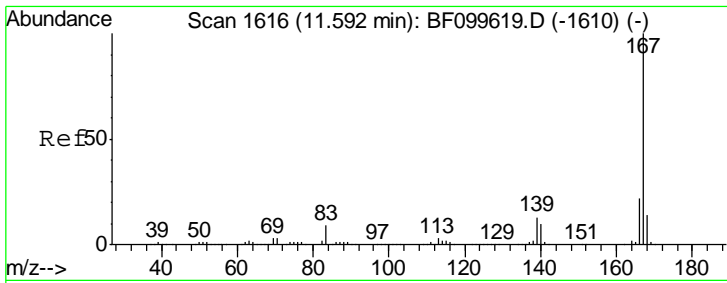
| Tgt Ion | Resp | Lower | Upper |
|---------|-------|-------|-------|
| 178 | 41145 | | |
| 176 | 19.2 | 15.8 | 23.8 |
| 179 | 15.4 | 13.0 | 19.6 |



#71
 Anthracene
 Concen: 4.19 ng
 RT: 11.374 min Scan# 1579
 Delta R.T. -0.094 min
 Lab File: BF099655.D
 Acq: 19 Oct 2017 9:39

| Tgt Ion | Resp | Lower | Upper |
|---------|-------|-------|-------|
| 178 | 41145 | | |
| 176 | 19.2 | 15.4 | 23.2 |
| 179 | 15.4 | 12.6 | 19.0 |

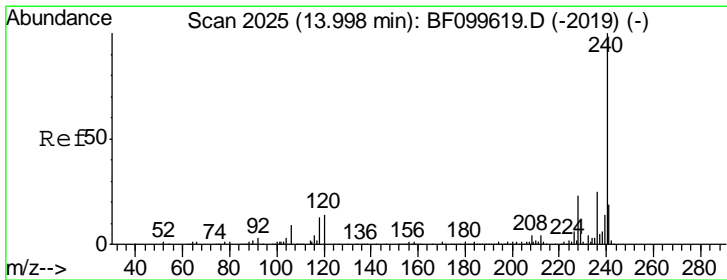
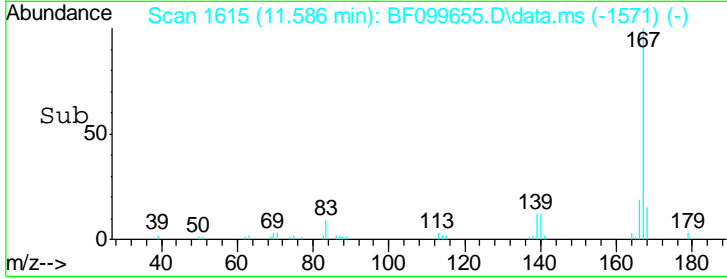
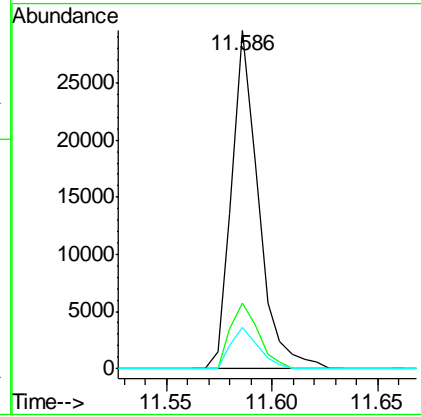
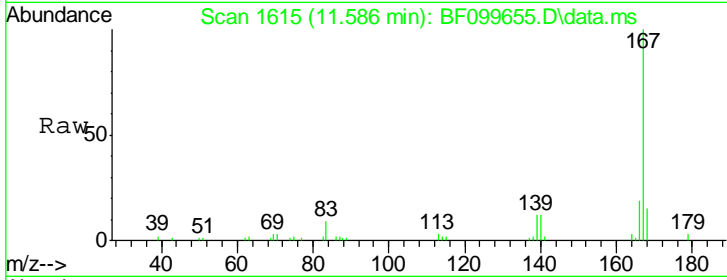




#72
 Carbazole
 Concen: 2.71 ng
 RT: 11.586 min Scan# 16
 Delta R.T. -0.041 min
 Lab File: BF099655.D
 Acq: 19 Oct 2017 9:39

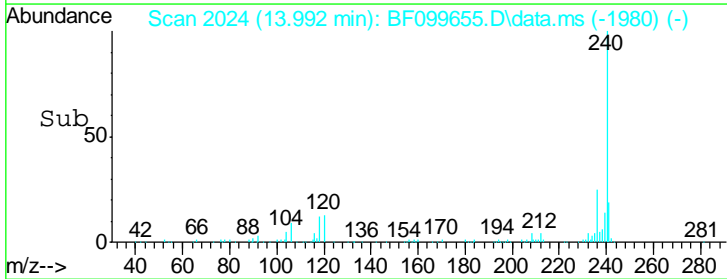
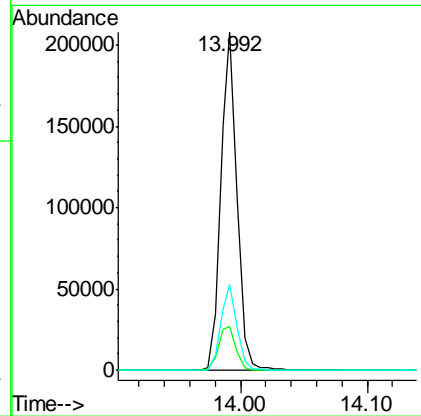
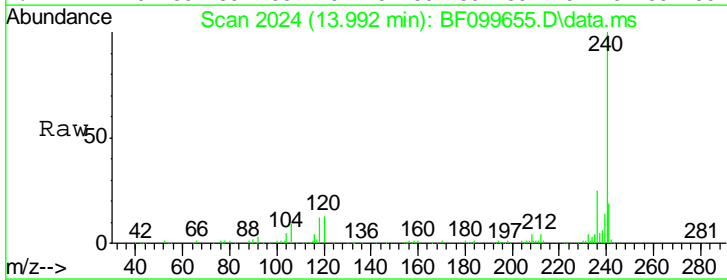
Instrument :
 BNA_F
 ClientSampleId :
 CL-02-101617-B

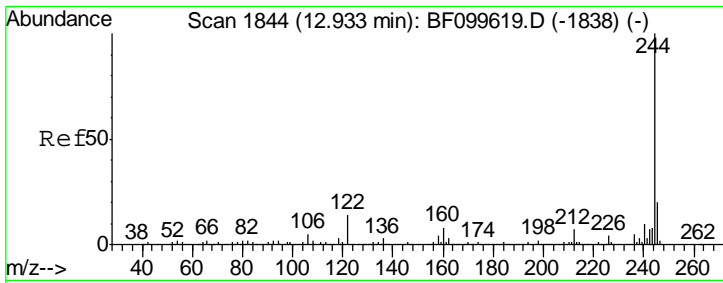
| Tgt Ion | Resp | Lower | Upper |
|---------|-------|-------|-------|
| 167 | 26004 | | |
| 166 | 19.3 | 17.6 | 26.4 |
| 139 | 12.2 | 10.9 | 16.3 |



#75
 Chrysene-d12
 Concen: 20.00 ng
 RT: 13.992 min Scan# 2024
 Delta R.T. -0.041 min
 Lab File: BF099655.D
 Acq: 19 Oct 2017 9:39

| Tgt Ion | Resp | Lower | Upper |
|---------|--------|-------|-------|
| 240 | 187342 | | |
| 120 | 13.0 | 9.5 | 14.3 |
| 236 | 25.2 | 20.7 | 31.1 |

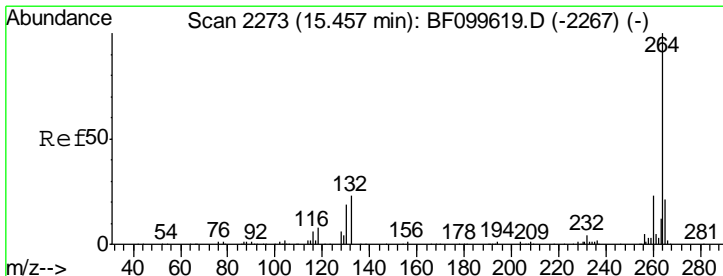
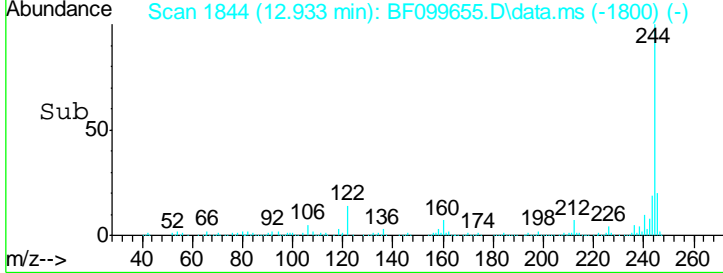
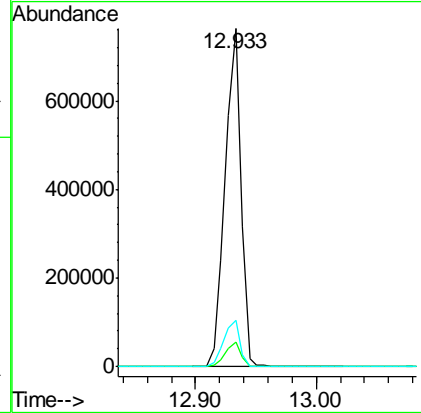
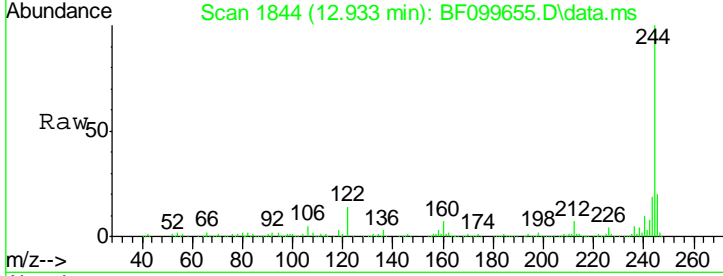




#78
 Terphenyl-d14
 Concen: 83.89 ng
 RT: 12.933 min Scan# 18
 Delta R.T. -0.041 min
 Lab File: BF099655.D
 Acq: 19 Oct 2017 9:39

Instrument :
 BNA_F
 ClientSampled :
 CL-02-101617-B

| Tgt Ion | Ratio | Lower | Upper |
|---------|-------|-------|-------|
| 244 | 100 | | |
| 212 | 7.3 | 5.4 | 8.0 |
| 122 | 13.5 | 11.0 | 16.4 |



#86
 Perylene-d12
 Concen: 20.00 ng
 RT: 15.456 min Scan# 2273
 Delta R.T. -0.047 min
 Lab File: BF099655.D
 Acq: 19 Oct 2017 9:39

| Tgt Ion | Ratio | Lower | Upper |
|---------|-------|-------|-------|
| 264 | 100 | | |
| 260 | 22.1 | 19.2 | 28.8 |
| 265 | 20.4 | 17.5 | 26.3 |

