

Data Path : Z:\svoasrv\HPCHEM1\BNA F\Data\BF101818\  
 Data File : BF109970.D  
 Acq On : 18 Oct 2018 20:31  
 Operator : JU/SJ  
 Sample : J5571-01  
 Misc :  
 ALS Vial : 7 Sample Multiplier: 1

Instrument :  
 BNA\_F  
 ClientSampleId :  
 MW-1

Integration Parameters: rteint.p  
 Integrator: RTE  
 Smoothing : ON  
 Sampling : 1  
 Start Thrs: 0.2  
 Stop Thrs : 0

Filtering: 5  
 Min Area: 3 % of largest Peak  
 Max Peaks: 100  
 Peak Location: TOP

If leading or trailing edge < 100 prefer < Baseline drop else tangent >  
 Peak separation: 5

Method : Z:\SVOASRV\HPCHEM1\BNA F\METHODS\8270-BF101518.M  
 Title : ASP BNA STANDARDS FOR 5 POINT CALIBRATION

Signal : TIC

peak #	R.T. min	first scan	max scan	last scan	PK TY	peak height	corr. area	corr. % max.	% of total
1	2.122	3	6	12	rVB	841370	1121678	17.83%	1.014%
2	2.322	34	40	50	rVB	1790703	2392036	38.02%	2.161%
3	5.592	591	596	599	rBV	2504862	2355352	37.44%	2.128%
4	6.434	736	739	743	rVB	372541	335141	5.33%	0.303%
5	6.586	760	765	769	rBV2	1818824	1910028	30.36%	1.726%
6	6.745	786	792	795	rBV	4210222	4402427	69.97%	3.978%
7	6.975	826	831	834	rBV	1719981	1440705	22.90%	1.302%
8	7.133	850	858	860	rBV	4723268	4516075	71.78%	4.081%
9	7.157	860	862	865	rVV	1136938	879428	13.98%	0.795%
10	7.216	869	872	875	rVB	375848	302187	4.80%	0.273%
11	7.286	881	884	887	rBV2	258850	305077	4.85%	0.276%
12	7.504	912	921	923	rBV	1244528	1445535	22.98%	1.306%
13	7.539	923	927	930	rVV2	4219301	4502967	71.57%	4.069%
14	7.604	936	938	941	rVV3	349176	383683	6.10%	0.347%
15	7.657	944	947	950	rVV2	419231	401351	6.38%	0.363%
16	7.739	954	961	964	rVB	1157270	1095499	17.41%	0.990%
17	7.898	986	988	991	rBV2	323954	361032	5.74%	0.326%
18	7.928	991	993	998	rVB3	445350	558957	8.88%	0.505%
19	7.992	998	1004	1006	rBV	1201675	1288284	20.48%	1.164%
20	8.016	1006	1008	1012	rVB3	291054	272542	4.33%	0.246%
21	8.092	1019	1021	1024	rVB	288951	250765	3.99%	0.227%
22	8.198	1033	1039	1041	rVV4	430932	595358	9.46%	0.538%
23	8.257	1043	1049	1051	rVV2	2118823	2645345	42.04%	2.390%
24	8.275	1051	1052	1055	rVV	1045202	900498	14.31%	0.814%
25	8.298	1055	1056	1060	rVB	670448	466880	7.42%	0.422%
26	8.369	1064	1068	1072	rVB2	358931	357543	5.68%	0.323%
27	8.451	1080	1082	1085	rVV	589510	575101	9.14%	0.520%
28	8.504	1086	1091	1093	rVV2	1178203	1444930	22.97%	1.306%
29	8.533	1093	1096	1099	rVB3	355054	391061	6.22%	0.353%
30	8.639	1105	1114	1117	rBV3	1157737	1998255	31.76%	1.806%
31	8.675	1117	1120	1123	rVV3	554439	722011	11.48%	0.652%
32	8.722	1126	1128	1132	rVV2	686256	781508	12.42%	0.706%
33	8.763	1132	1135	1140	rVB3	807328	860653	13.68%	0.778%
34	8.816	1140	1144	1146	rBV2	426996	523318	8.32%	0.473%

Data Path : Z:\svoasrv\HPCHEM1\BNA F\Data\BF101818\  
 Data File : BF109970.D  
 Acq On : 18 Oct 2018 20:31  
 Operator : JU/SJ  
 Sample : J5571-01  
 Misc :  
 ALS Vial : 7 Sample Multiplier: 1

Instrument :  
 BNA\_F  
 ClientSampleId :  
 MW-1

Integration Parameters: rteint.p  
 Integrator: RTE  
 Smoothing : ON  
 Sampling : 1  
 Start Thrs: 0.2  
 Stop Thrs : 0

Filtering: 5  
 Min Area: 3 % of largest Peak  
 Max Peaks: 100  
 Peak Location: TOP

If leading or trailing edge < 100 prefer < Baseline drop else tangent >  
 Peak separation: 5

Method : Z:\SVOASRV\HPCHEM1\BNA F\METHODS\8270-BF101518.M  
 Title : ASP BNA STANDARDS FOR 5 POINT CALIBRATION

35	8.916	1157	1161	1165	rVB3	714298	796195	12.65%	0.719%
36	8.975	1165	1171	1174	rBV	1559144	1928531	30.65%	1.743%
37	9.010	1174	1177	1179	rBV2	592082	534528	8.50%	0.483%
38	9.039	1179	1182	1185	rBV3	834265	1042851	16.57%	0.942%
39	9.075	1185	1188	1191	rVB	2829968	2681530	42.62%	2.423%
40	9.116	1191	1195	1198	rBV3	750473	895988	14.24%	0.810%
41	9.157	1198	1202	1207	rBV5	547897	938840	14.92%	0.848%
42	9.198	1207	1209	1211	rBV2	335001	277506	4.41%	0.251%
43	9.239	1211	1216	1222	rBV4	443375	900643	14.31%	0.814%
44	9.333	1228	1232	1235	rVB	5826387	6291722	100.00%	5.685%
45	9.369	1235	1238	1239	rBV	563687	535363	8.51%	0.484%
46	9.422	1243	1247	1248	rBV4	295550	346290	5.50%	0.313%
47	9.480	1253	1257	1259	rBV4	539330	633101	10.06%	0.572%
48	9.504	1259	1261	1264	rVB3	577224	519543	8.26%	0.469%
49	9.545	1264	1268	1269	rBV2	571899	711657	11.31%	0.643%
50	9.604	1274	1278	1283	rVV4	1007535	2236273	35.54%	2.021%
51	9.645	1283	1285	1287	rVV2	823325	964209	15.33%	0.871%
52	9.675	1287	1290	1293	rVV2	1990248	3067339	48.75%	2.772%
53	9.727	1297	1299	1305	rVV2	932150	1438648	22.87%	1.300%
54	9.774	1305	1307	1308	rVV	547672	488165	7.76%	0.441%
55	9.792	1308	1310	1315	rVV2	1401197	1725092	27.42%	1.559%
56	9.874	1318	1324	1327	rVV	1527386	1711396	27.20%	1.546%
57	9.916	1329	1331	1335	rVB5	470738	528656	8.40%	0.478%
58	9.969	1337	1340	1342	rVV3	493405	578226	9.19%	0.522%
59	9.998	1343	1345	1346	rVV	491968	445232	7.08%	0.402%
60	10.022	1346	1349	1352	rVV	2311355	2176766	34.60%	1.967%
61	10.051	1352	1354	1358	rVV3	747930	997452	15.85%	0.901%
62	10.086	1358	1360	1362	rVV2	421180	388208	6.17%	0.351%
63	10.116	1362	1365	1370	rVB3	592223	770837	12.25%	0.697%
64	10.216	1380	1382	1386	rBV2	501295	565762	8.99%	0.511%
65	10.257	1387	1389	1392	rVB2	399176	319476	5.08%	0.289%
66	10.292	1392	1395	1399	rBV4	289117	365919	5.82%	0.331%
67	10.339	1399	1403	1405	rVV2	774500	1006980	16.00%	0.910%
68	10.363	1405	1407	1408	rVV	335721	288273	4.58%	0.260%
69	10.380	1408	1410	1413	rVV4	860136	966282	15.36%	0.873%
70	10.416	1414	1416	1419	rVV3	599953	724137	11.51%	0.654%
71	10.451	1419	1422	1426	rVB5	653502	906687	14.41%	0.819%

Data Path : Z:\svoasrv\HPCHEM1\BNA F\Data\BF101818\  
 Data File : BF109970.D  
 Acq On : 18 Oct 2018 20:31  
 Operator : JU/SJ  
 Sample : J5571-01  
 Misc :  
 ALS Vial : 7 Sample Multiplier: 1

Instrument :  
 BNA\_F  
 ClientSampleId :  
 MW-1

Integration Parameters: rteint.p  
 Integrator: RTE  
 Smoothing : ON Filtering: 5  
 Sampling : 1 Min Area: 3 % of largest Peak  
 Start Thrs: 0.2 Max Peaks: 100  
 Stop Thrs : 0 Peak Location: TOP

If leading or trailing edge < 100 prefer < Baseline drop else tangent >  
 Peak separation: 5

Method : Z:\SVOASRV\HPCHEM1\BNA F\METHODS\8270-BF101518.M  
 Title : ASP BNA STANDARDS FOR 5 POINT CALIBRATION

72	10.569	1439	1442	1444	rBV2	394418	343010	5.45%	0.310%
73	10.598	1444	1447	1451	rVV3	504139	732505	11.64%	0.662%
74	10.633	1451	1453	1458	rVB2	632294	698086	11.10%	0.631%
75	10.710	1464	1466	1469	rBV4	227380	304752	4.84%	0.275%
76	10.780	1474	1478	1480	rBV2	933778	1103365	17.54%	0.997%
77	10.816	1480	1484	1487	rVB	3133813	3143975	49.97%	2.841%
78	10.939	1502	1505	1510	rBV3	770638	812418	12.91%	0.734%
79	10.986	1510	1513	1515	rBV	452109	425501	6.76%	0.384%
80	11.051	1521	1524	1526	rVB2	441749	382008	6.07%	0.345%
81	11.204	1547	1550	1554	rBV2	547194	603486	9.59%	0.545%
82	11.439	1587	1590	1592	rBV	308851	268227	4.26%	0.242%
83	11.516	1600	1603	1605	rVV	1688659	1437514	22.85%	1.299%
84	11.539	1605	1607	1614	rVB5	206470	321605	5.11%	0.291%
85	11.627	1619	1622	1626	rVB	617290	551065	8.76%	0.498%
86	11.898	1665	1668	1673	rVB2	1227922	1270358	20.19%	1.148%
87	12.039	1689	1692	1696	rBV2	1278651	1026112	16.31%	0.927%
88	12.127	1704	1707	1709	rVB2	259931	252697	4.02%	0.228%
89	12.274	1729	1732	1740	rVB5	360765	601381	9.56%	0.543%
90	12.463	1762	1764	1769	rVB2	221402	276942	4.40%	0.250%
91	12.815	1821	1824	1829	rVB	810467	699349	11.12%	0.632%
92	13.098	1868	1872	1875	rBV	4707772	4470094	71.05%	4.039%
93	14.157	2048	2052	2055	rBV	1259370	1104767	17.56%	0.998%
94	14.604	2124	2128	2135	rVB	329000	316087	5.02%	0.286%
95	14.921	2178	2182	2188	rVB	496986	545946	8.68%	0.493%
96	15.004	2193	2196	2205	rVB	269998	303003	4.82%	0.274%
97	15.280	2238	2243	2252	rVB	690768	844894	13.43%	0.763%
98	15.680	2305	2311	2319	rBV2	1533216	2080341	33.06%	1.880%
99	16.151	2384	2391	2397	rBV	495457	819131	13.02%	0.740%
100	16.692	2476	2483	2493	rVB	232615	455960	7.25%	0.412%

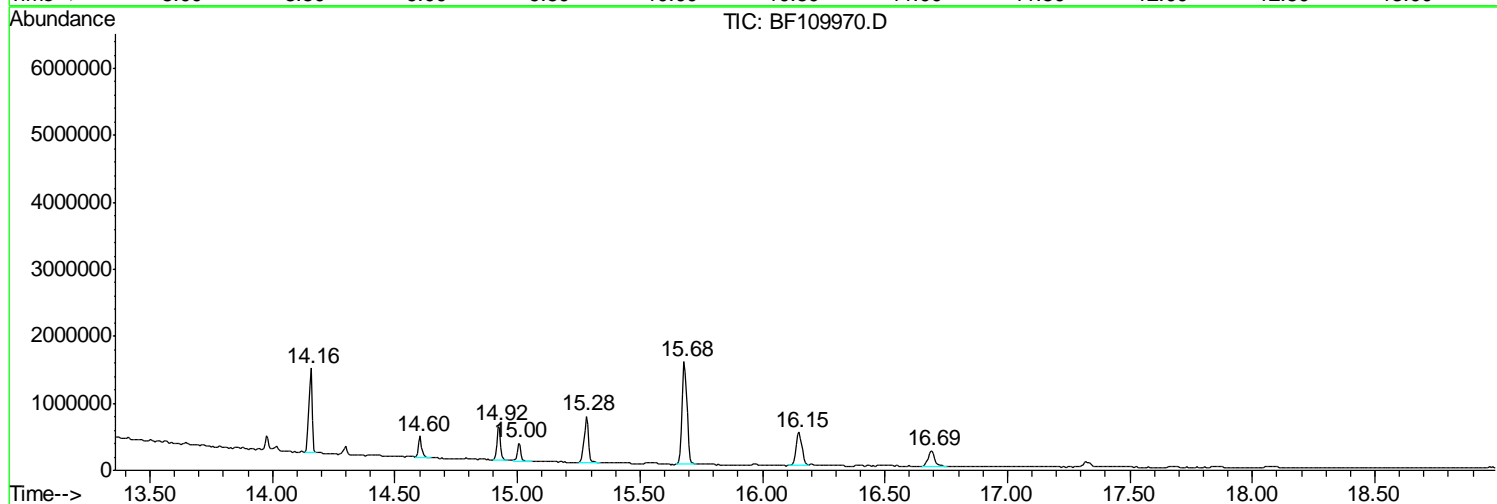
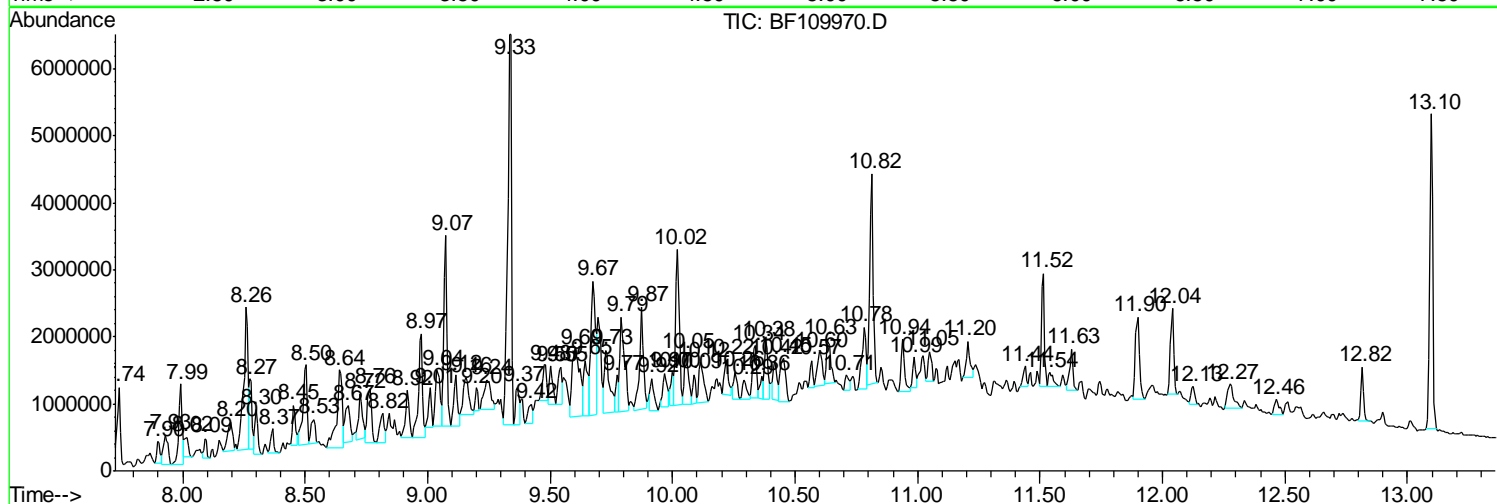
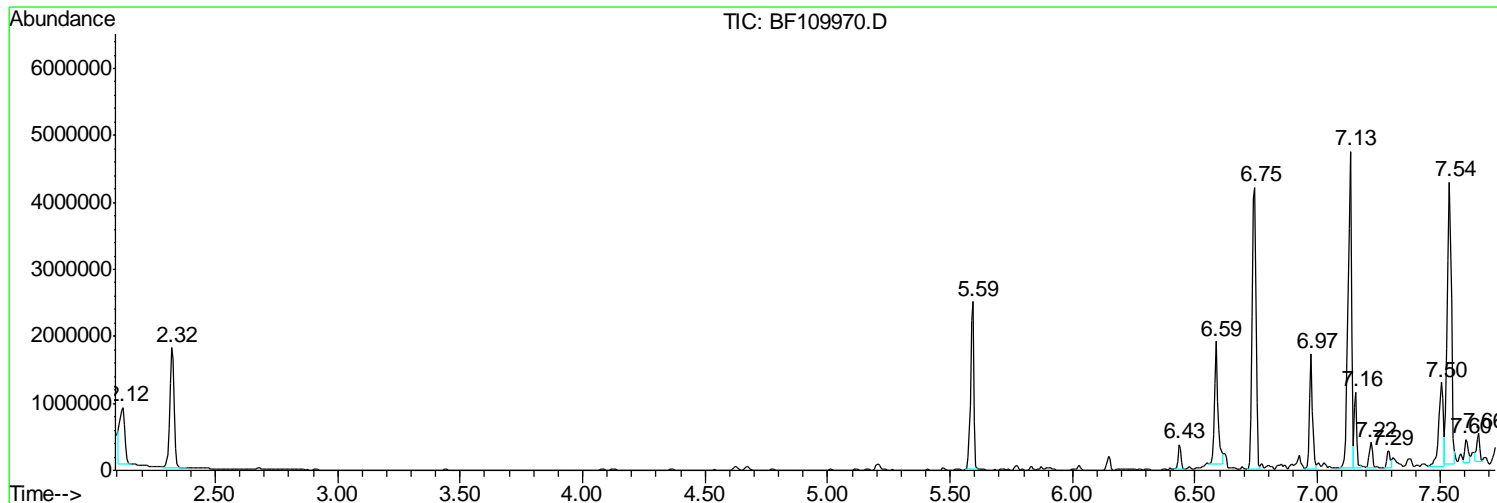
Sum of corrected areas: 110672092

Data Path : Z:\svoasrv\HPCHEM1\BNA F\Data\BF101818\  
 Data File : BF109970.D  
 Acq On : 18 Oct 2018 20:31  
 Operator : JU/SJ  
 Sample : J5571-01  
 Misc :  
 ALS Vial : 7 Sample Multiplier: 1

Instrument :  
 BNA\_F  
 ClientSampled :  
 MW-1

Quant Method : Z:\SVOASRV\HPCHEM1\BNA F\METHODS\8270-BF101518.M  
 Quant Title : ASP BNA STANDARDS FOR 5 POINT CALIBRATION

TIC Library : C:\DATABASE\NIST11.L  
 TIC Integration Parameters: LSCINT.P



Data Path : Z:\svoasrv\HPCHEM1\BNA F\Data\BF101818\  
 Data File : BF109970.D  
 Acq On : 18 Oct 2018 20:31  
 Operator : JU/SJ  
 Sample : J5571-01  
 Misc :  
 ALS Vial : 7 Sample Multiplier: 1

Instrument :  
 BNA\_F  
 ClientSampled :  
 MW-1

Quant Method : Z:\SVOASRV\HPCHEM1\BNA F\METHODS\8270-BF101518.M  
 Quant Title : ASP BNA STANDARDS FOR 5 POINT CALIBRATION

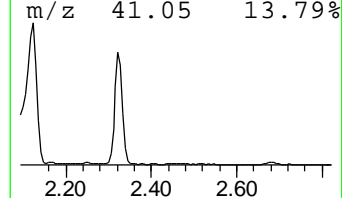
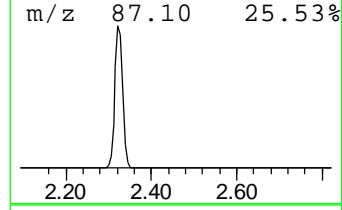
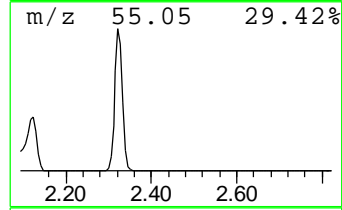
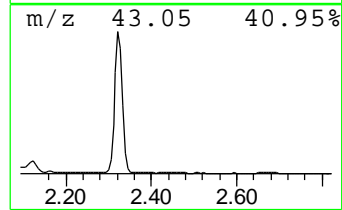
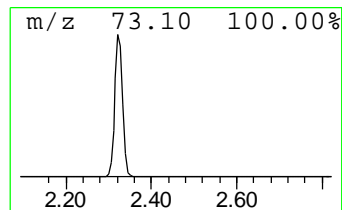
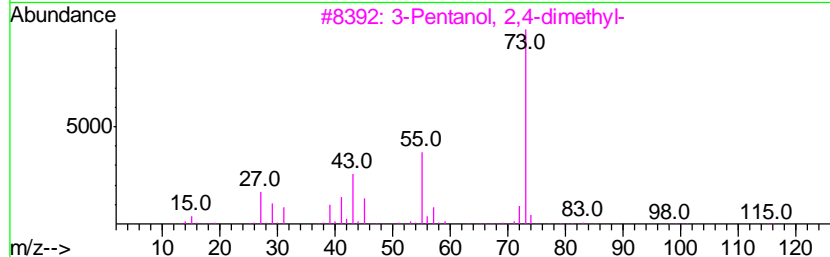
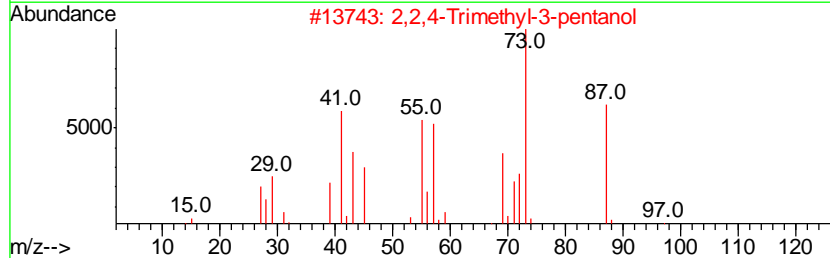
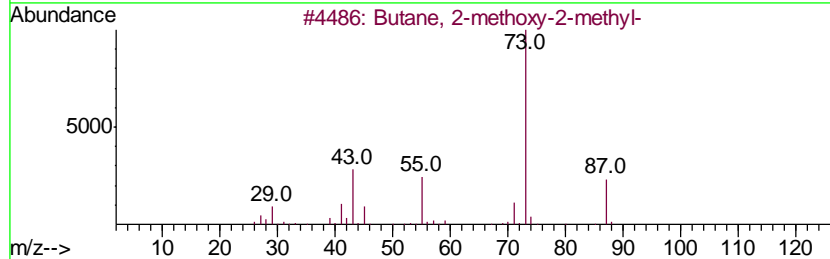
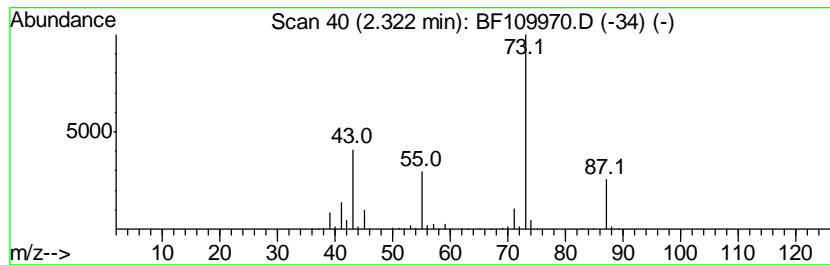
TIC Library : C:\DATABASE\NIST11.L  
 TIC Integration Parameters: LSCINT.P

\*\*\*\*\*  
 Peak Number 2 Butane, 2-methoxy-2-methyl- Concentration Rank 3

R.T.	EstConc	Area	Relative to ISTD	R.T.
2.32	33.21 ng	2392040	1,4-Dichlorobenzene-d4	6.97

Hit#	of	Tentative ID	MW	MolForm	CAS#	Qual
1	5	Butane, 2-methoxy-2-methyl-	102	C6H14O	000994-05-8	83
2		2,2,4-Trimethyl-3-pentanol	130	C8H18O	005162-48-1	39
3		3-Pentanol, 2,4-dimethyl-	116	C7H16O	000600-36-2	37
4		Acetamide, N-ethyl-	87	C4H9NO	000625-50-3	27
5		1,3-Dioxolane, 2-methyl-	88	C4H8O2	000497-26-7	25



Data Path : Z:\svoasrv\HPCHEM1\BNA F\Data\BF101818\  
 Data File : BF109970.D  
 Acq On : 18 Oct 2018 20:31  
 Operator : JU/SJ  
 Sample : J5571-01  
 Misc :  
 ALS Vial : 7 Sample Multiplier: 1

Instrument :  
 BNA\_F  
 ClientSampled :  
 MW-1

Quant Method : Z:\SVOASRV\HPCHEM1\BNA F\METHODS\8270-BF101518.M  
 Quant Title : ASP BNA STANDARDS FOR 5 POINT CALIBRATION

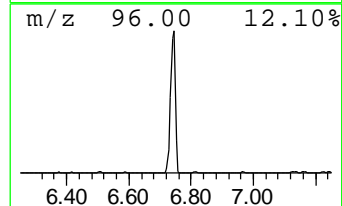
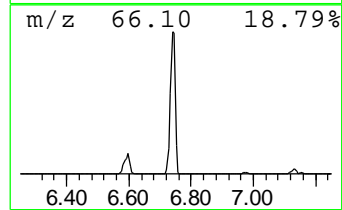
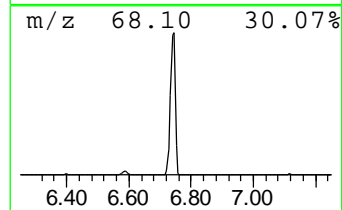
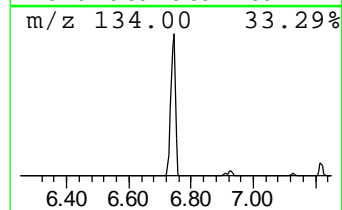
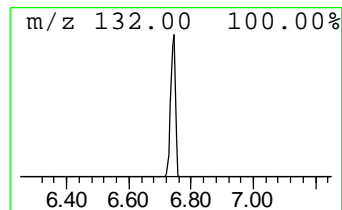
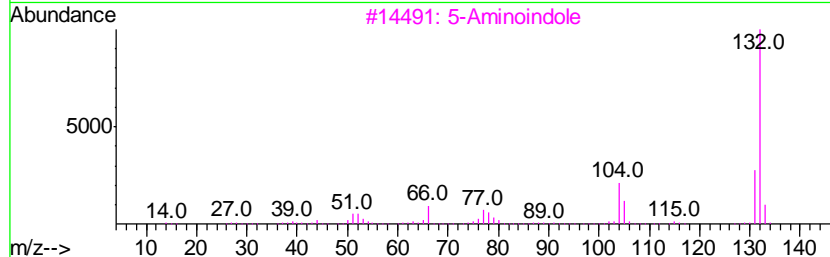
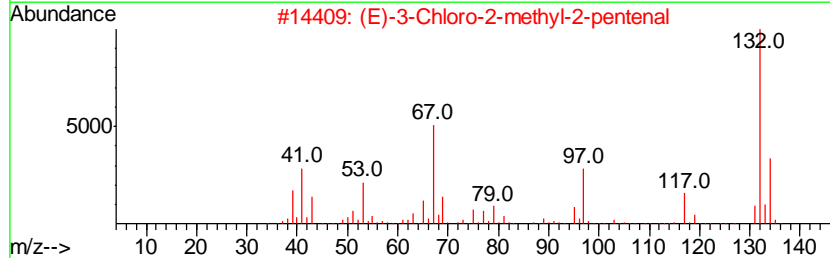
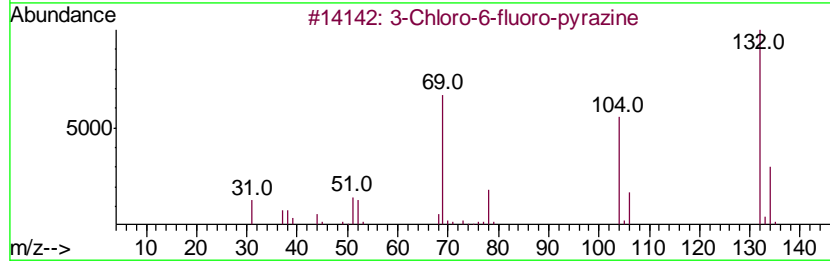
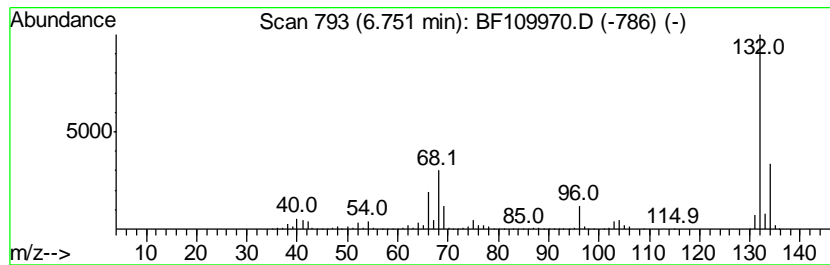
TIC Library : C:\DATABASE\NIST11.L  
 TIC Integration Parameters: LSCINT.P

\*\*\*\*\*  
 Peak Number 3 unknown6.75 Concentration Rank 2

R.T.	EstConc	Area	Relative to ISTD	R.T.
6.75	61.11 ng	4402430	1,4-Dichlorobenzene-d4	6.97

Hit#	of	Tentative ID	MW	MolForm	CAS#	Qual
1	5	3-Chloro-6-fluoro-pyrazine	132	C4H2ClFN2	1000146-10-7	27
2		(E)-3-Chloro-2-methyl-2-pentenal	132	C6H9ClO	031357-76-3	17
3		5-Aminoindole	132	C8H8N2	005192-03-0	12
4		Bicyclo[4.2.0]octa-1,3,5-triene,...	132	C10H12	028749-81-7	9
5		5-Fluoro-2-chloropyrimidine	132	C4H2ClFN2	062802-42-0	9



Data Path : Z:\svoasrv\HPCHEM1\BNA F\Data\BF101818\  
 Data File : BF109970.D  
 Acq On : 18 Oct 2018 20:31  
 Operator : JU/SJ  
 Sample : J5571-01  
 Misc :  
 ALS Vial : 7 Sample Multiplier: 1

Instrument :  
 BNA\_F  
 ClientSampleID :  
 MW-1

Quant Method : Z:\SVOASRV\HPCHEM1\BNA F\METHODS\8270-BF101518.M  
 Quant Title : ASP BNA STANDARDS FOR 5 POINT CALIBRATION

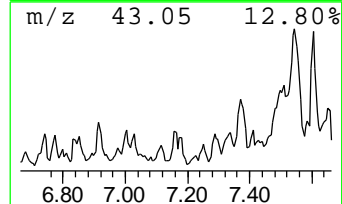
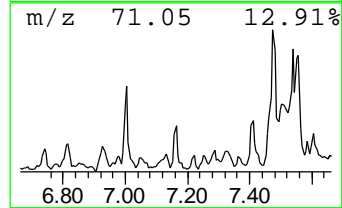
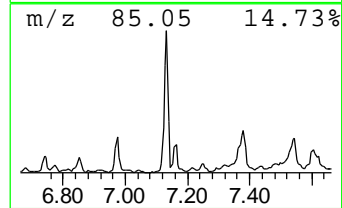
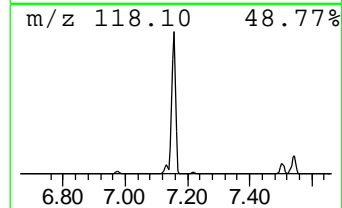
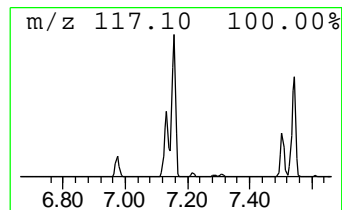
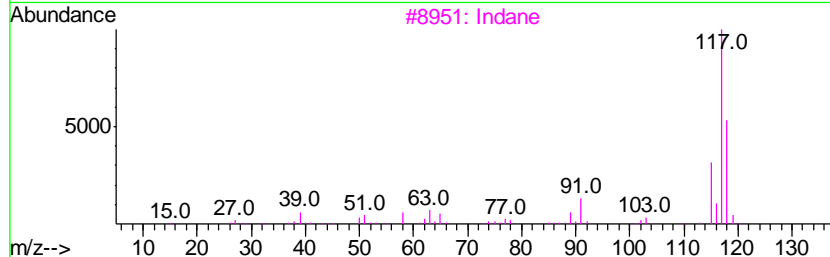
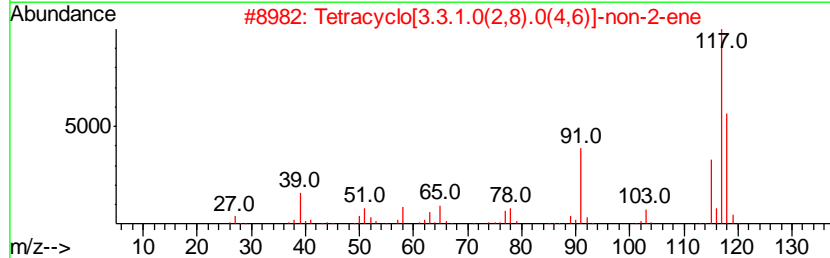
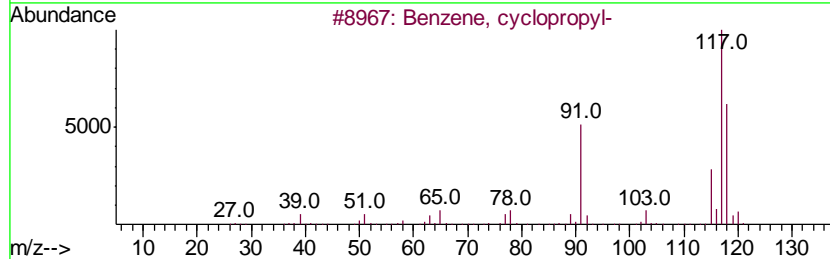
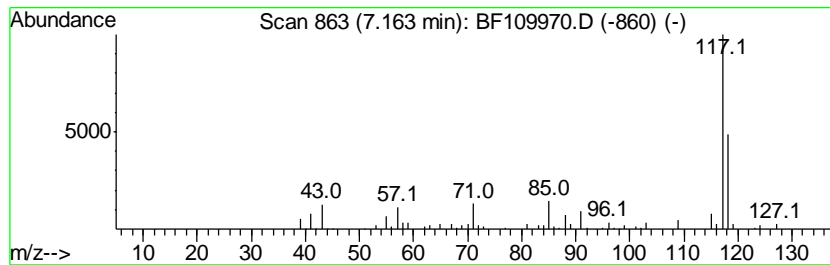
TIC Library : C:\DATABASE\NIST11.L  
 TIC Integration Parameters: LSCINT.P

\*\*\*\*\*  
 Peak Number 5 Benzene, cyclopropyl- Concentration Rank 12

R.T.	EstConc	Area	Relative to ISTD	R.T.
7.16	12.21 ng	879428	1,4-Dichlorobenzene-d4	6.97

Hit#	of	Tentative ID	MW	MolForm	CAS#	Qual
1	5	Benzene, cyclopropyl-	118	C9H10	000873-49-4	80
2		Tetracyclo[3.3.1.0(2,8).0(4,6)]-	118	C9H10	1000191-13-7	80
3		Indane	118	C9H10	000496-11-7	64
4		trans-Cinnamyl bromide	196	C9H9Br	026146-77-0	53
5		Benzene, 1,1'-(1-ethenyl-1,3-pro...	222	C17H18	061141-97-7	50



Data Path : Z:\svoasrv\HPCHEM1\BNA F\Data\BF101818\  
 Data File : BF109970.D  
 Acq On : 18 Oct 2018 20:31  
 Operator : JU/SJ  
 Sample : J5571-01  
 Misc :  
 ALS Vial : 7 Sample Multiplier: 1

Instrument :  
 BNA\_F  
 ClientSampleId :  
 MW-1

Quant Method : Z:\SVOASRV\HPCHEM1\BNA F\METHODS\8270-BF101518.M  
 Quant Title : ASP BNA STANDARDS FOR 5 POINT CALIBRATION

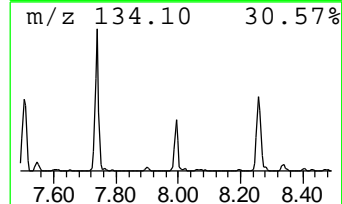
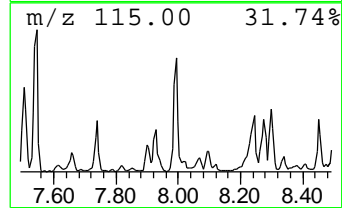
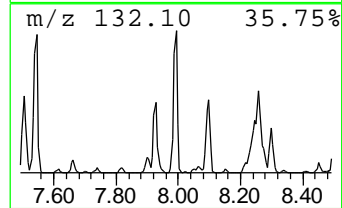
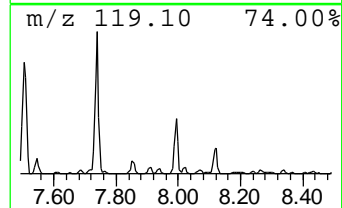
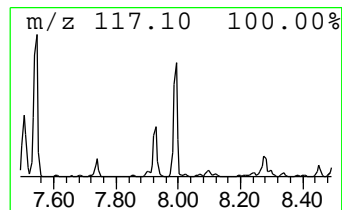
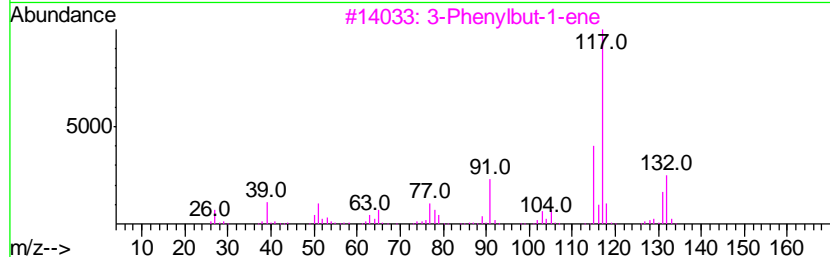
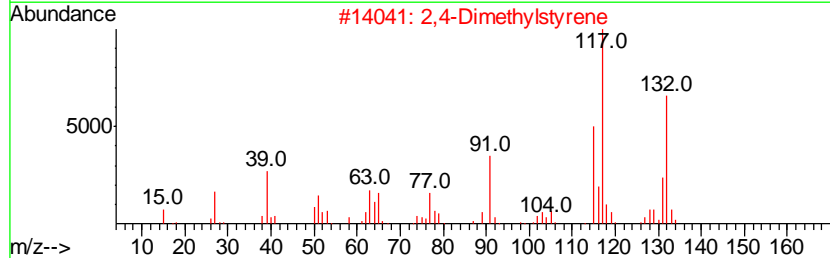
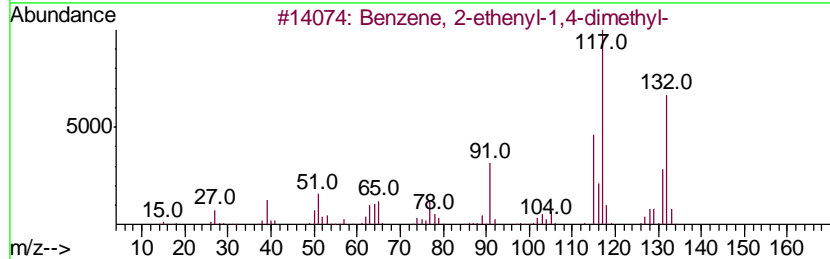
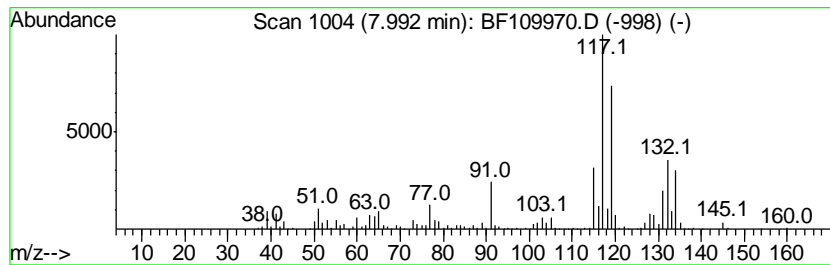
TIC Library : C:\DATABASE\NIST11.L  
 TIC Integration Parameters: LSCINT.P

\*\*\*\*\*  
 Peak Number 6 Benzene, 2-ethenyl-1,4-dime... Concentration Rank 15

R.T.	EstConc	Area	Relative to ISTD	R.T.
7.99	9.74 ng	1288280	Napthalene-d8	8.26

Hit#	of	Tentative ID	MW	MolForm	CAS#	Qual
1	5	Benzene, 2-ethenyl-1,4-dimethyl-	132	C10H12	002039-89-6	89
2		2,4-Dimethylstyrene	132	C10H12	002234-20-0	83
3		3-Phenylbut-1-ene	132	C10H12	000934-10-1	60
4		1H-Indene, 2,3-dihydro-5-methyl-	132	C10H12	000874-35-1	60
5		1-Phenyl-1-butene	132	C10H12	000824-90-8	55





Data Path : Z:\svoasrv\HPCHEM1\BNA F\Data\BF101818\  
 Data File : BF109970.D  
 Acq On : 18 Oct 2018 20:31  
 Operator : JU/SJ  
 Sample : J5571-01  
 Misc :  
 ALS Vial : 7 Sample Multiplier: 1

Instrument :  
 BNA\_F  
 ClientSampled :  
 MW-1

Quant Method : Z:\SVOASRV\HPCHEM1\BNA F\METHODS\8270-BF101518.M  
 Quant Title : ASP BNA STANDARDS FOR 5 POINT CALIBRATION

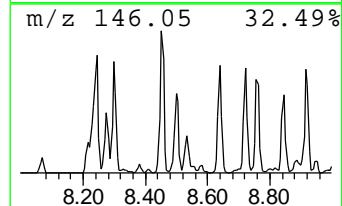
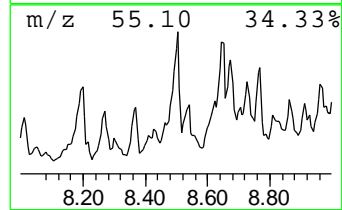
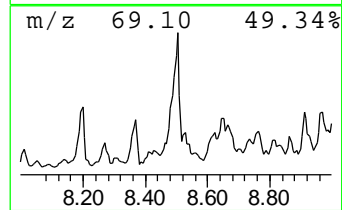
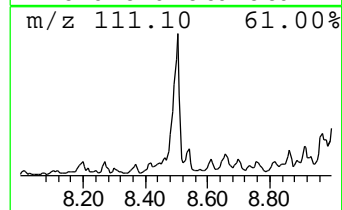
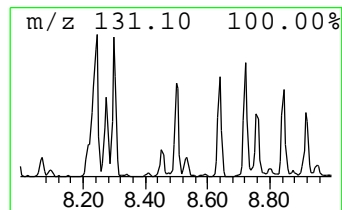
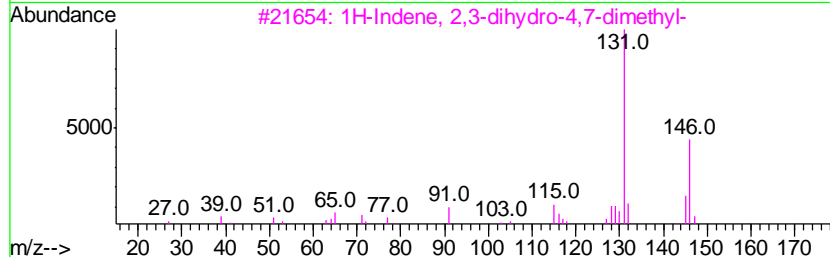
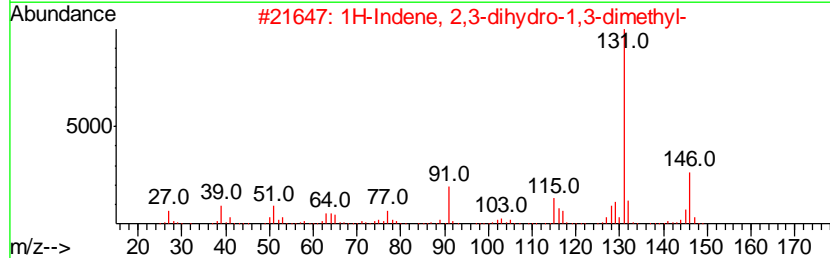
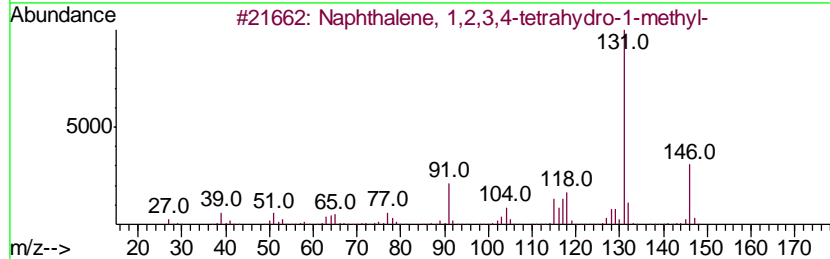
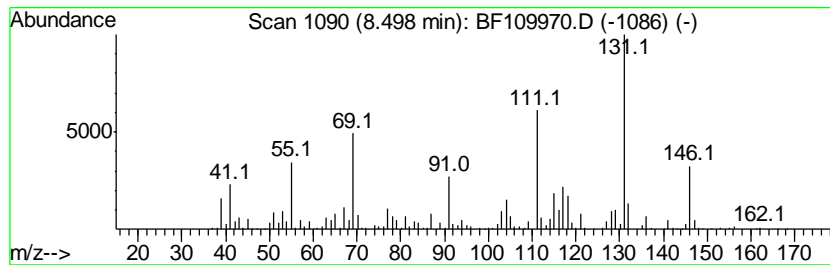
TIC Library : C:\DATABASE\NIST11.L  
 TIC Integration Parameters: LSCINT.P

\*\*\*\*\*  
 Peak Number 7 Naphthalene, 1,2,3,4-tetra... Concentration Rank 14

R.T.	EstConc	Area	Relative to ISTD	R.T.
8.50	10.92 ng	1444930	Naphthalene-d8	8.26

Hit#	of	Tentative ID	MW	MolForm	CAS#	Qual
1	5	Naphthalene, 1,2,3,4-tetrahydro-...	146	C11H14	001559-81-5	78
2		1H-Indene, 2,3-dihydro-1,3-dimet...	146	C11H14	004175-53-5	55
3		1H-Indene, 2,3-dihydro-4,7-dimet...	146	C11H14	006682-71-9	55
4		1H-Indene, 2,3-dihydro-1,6-dimet...	146	C11H14	017059-48-2	49
5		Benzene, 1-methyl-2-(1-methyl-2-...	146	C11H14	097664-19-2	45



Data Path : Z:\svoasrv\HPCHEM1\BNA F\Data\BF101818\  
 Data File : BF109970.D  
 Acq On : 18 Oct 2018 20:31  
 Operator : JU/SJ  
 Sample : J5571-01  
 Misc :  
 ALS Vial : 7 Sample Multiplier: 1

Instrument :  
 BNA\_F  
 ClientSampled :  
 MW-1

Quant Method : Z:\SVOASRV\HPCHEM1\BNA F\METHODS\8270-BF101518.M  
 Quant Title : ASP BNA STANDARDS FOR 5 POINT CALIBRATION

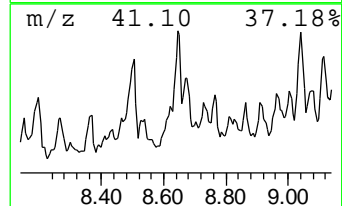
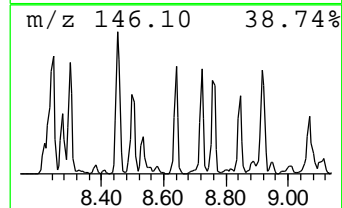
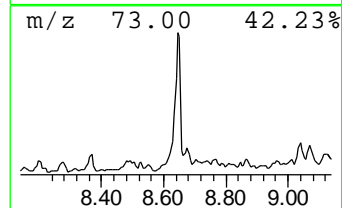
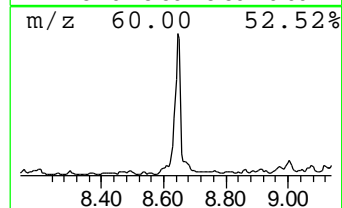
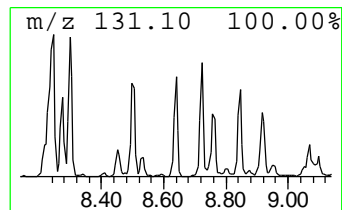
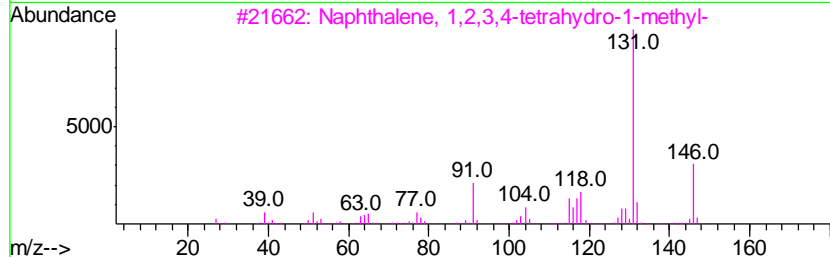
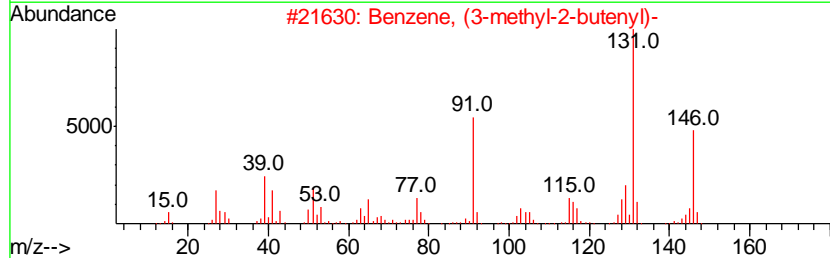
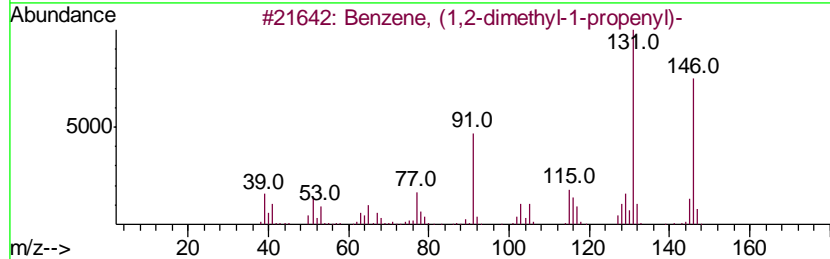
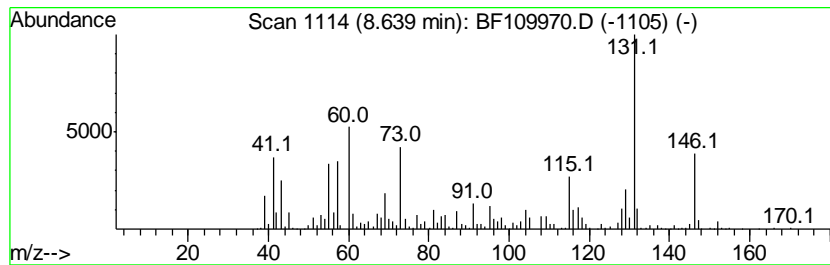
TIC Library : C:\DATABASE\NIST11.L  
 TIC Integration Parameters: LSCINT.P

\*\*\*\*\*  
 Peak Number 8 Benzene, (1,2-dimethyl-1-pr... Concentration Rank 10

R.T.	EstConc	Area	Relative to ISTD	R.T.
8.64	15.11 ng	1998260	Naphthalene-d8	8.26

Hit#	of	Tentative ID	MW	MolForm	CAS#	Qual
1	5	Benzene, (1,2-dimethyl-1-propenyl)-	146	C11H14	000769-57-3	86
2		Benzene, (3-methyl-2-butenyl)-	146	C11H14	004489-84-3	76
3		Naphthalene, 1,2,3,4-tetrahydro-...	146	C11H14	001559-81-5	70
4		Benzene, (1-methyl-1-butenyl)-	146	C11H14	053172-84-2	64
5		1H-Indene, 2,3-dihydro-4,7-dimet...	146	C11H14	006682-71-9	64



Data Path : Z:\svoasrv\HPCHEM1\BNA F\Data\BF101818\  
 Data File : BF109970.D  
 Acq On : 18 Oct 2018 20:31  
 Operator : JU/SJ  
 Sample : J5571-01  
 Misc :  
 ALS Vial : 7 Sample Multiplier: 1

Instrument :  
 BNA\_F  
 ClientSampled :  
 MW-1

Quant Method : Z:\SVOASRV\HPCHEM1\BNA F\METHODS\8270-BF101518.M  
 Quant Title : ASP BNA STANDARDS FOR 5 POINT CALIBRATION

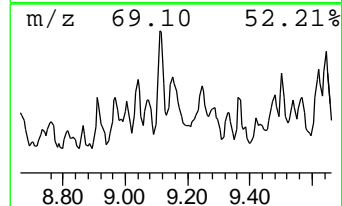
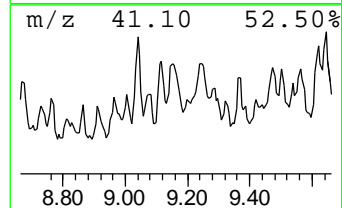
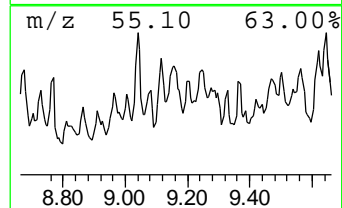
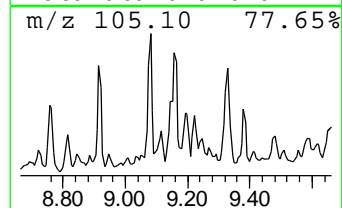
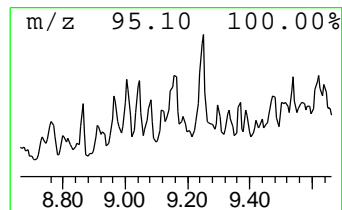
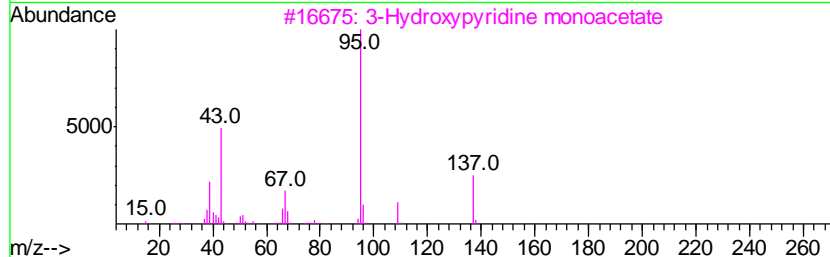
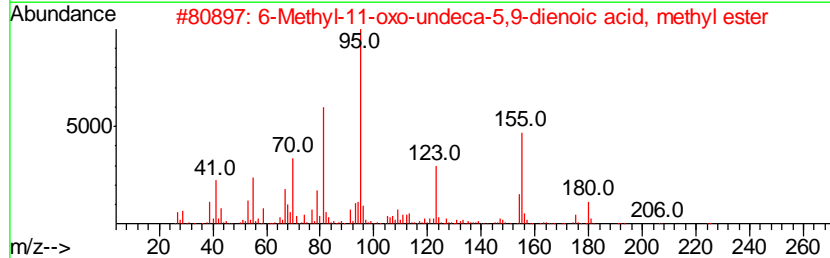
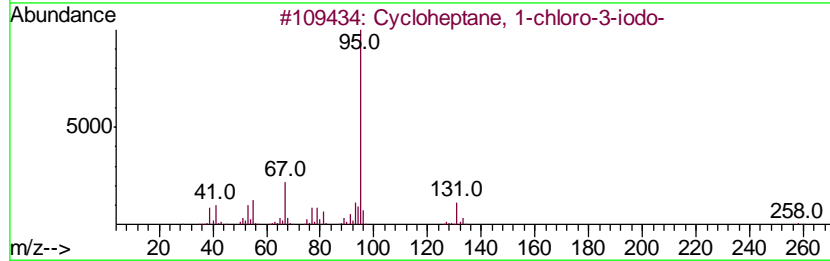
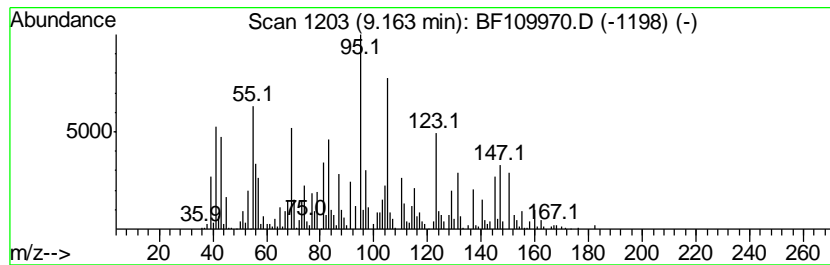
TIC Library : C:\DATABASE\NIST11.L  
 TIC Integration Parameters: LSCINT.P

\*\*\*\*\*  
 Peak Number 9 unknown9.16 Concentration Rank 20

R.T.	EstConc	Area	Relative to ISTD	R.T.
9.16	8.63 ng	938840	Acenaphthene-d10	10.02

Hit#	of	Tentative ID	MW	MolForm	CAS#	Qual
1	5	Cycloheptane, 1-chloro-3-iodo-	258	C7H12ClI	1000337-09-8	22
2		6-Methyl-11-oxo-undeca-5,9-dieno...	224	C13H20O3	1000185-10-4	14
3		3-Hydroxypyridine monoacetate	137	C7H7NO2	017747-43-2	11
4		4-Methyl-1,3-heptadiene	110	C8H14	017603-57-5	11
5		trans-3,5-Dimethylcyclohexene	110	C8H14	056021-63-7	11



Data Path : Z:\svoasrv\HPCHEM1\BNA F\Data\BF101818\  
 Data File : BF109970.D  
 Acq On : 18 Oct 2018 20:31  
 Operator : JU/SJ  
 Sample : J5571-01  
 Misc :  
 ALS Vial : 7 Sample Multiplier: 1

Instrument :  
 BNA\_F  
 ClientSampled :  
 MW-1

Quant Method : Z:\SVOASRV\HPCHEM1\BNA F\METHODS\8270-BF101518.M  
 Quant Title : ASP BNA STANDARDS FOR 5 POINT CALIBRATION

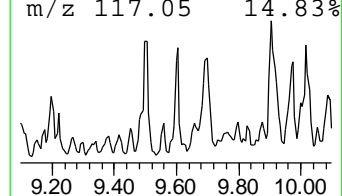
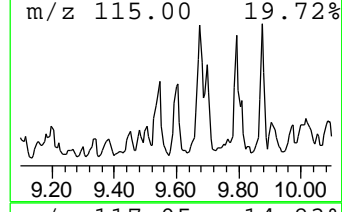
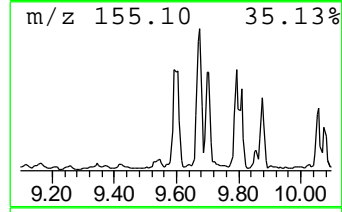
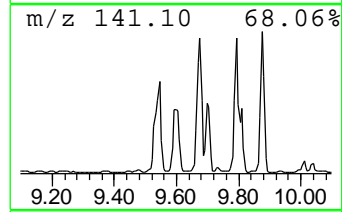
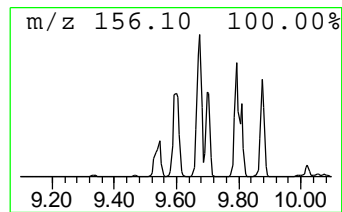
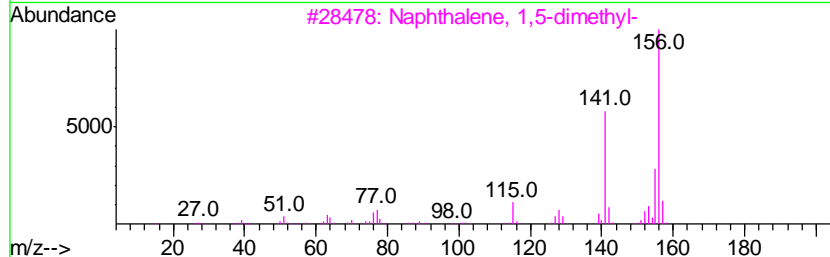
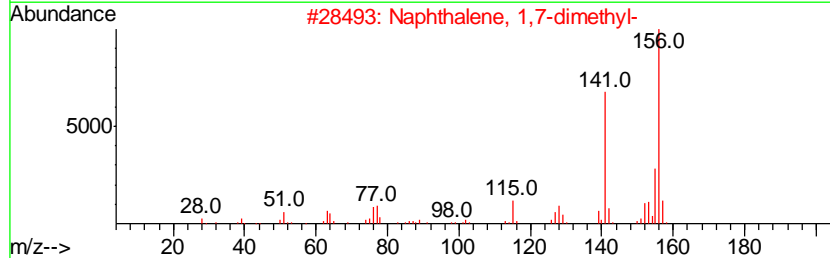
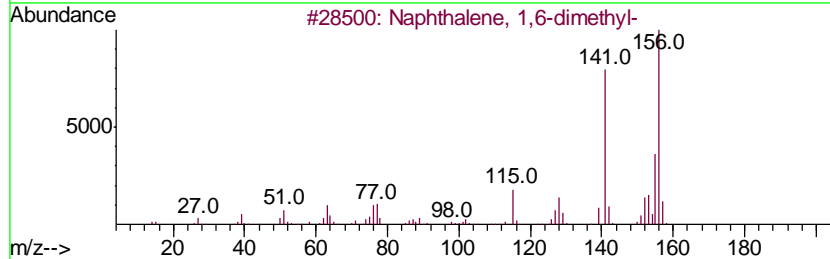
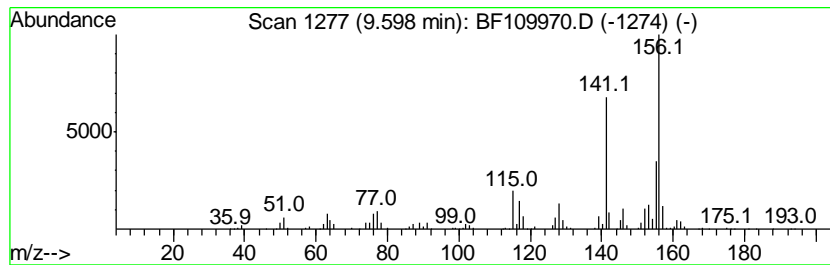
TIC Library : C:\DATABASE\NIST11.L  
 TIC Integration Parameters: LSCINT.P

\*\*\*\*\*  
 Peak Number 10 Naphthalene, 1,7-dimethyl- Concentration Rank 5

R.T.	EstConc	Area	Relative to ISTD	R.T.
9.60	20.55 ng	2236270	Acenaphthene-d10	10.02

Hit#	of	Tentative ID	MW	MolForm	CAS#	Qual
1	5	Naphthalene, 1,6-dimethyl-	156	C12H12	000575-43-9	96
2		Naphthalene, 1,7-dimethyl-	156	C12H12	000575-37-1	96
3		Naphthalene, 1,5-dimethyl-	156	C12H12	000571-61-9	96
4		Naphthalene, 2,7-dimethyl-	156	C12H12	000582-16-1	95
5		Naphthalene, 1,3-dimethyl-	156	C12H12	000575-41-7	95



Data Path : Z:\svoasrv\HPCHEM1\BNA F\Data\BF101818\  
 Data File : BF109970.D  
 Acq On : 18 Oct 2018 20:31  
 Operator : JU/SJ  
 Sample : J5571-01  
 Misc :  
 ALS Vial : 7 Sample Multiplier: 1

Instrument :  
 BNA\_F  
 ClientSampled :  
 MW-1

Quant Method : Z:\SVOASRV\HPCHEM1\BNA F\METHODS\8270-BF101518.M  
 Quant Title : ASP BNA STANDARDS FOR 5 POINT CALIBRATION

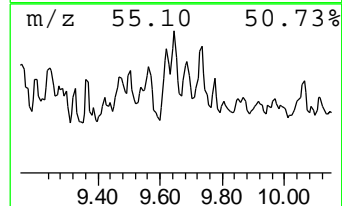
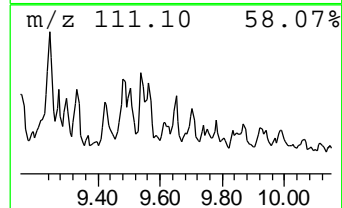
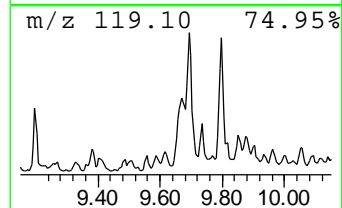
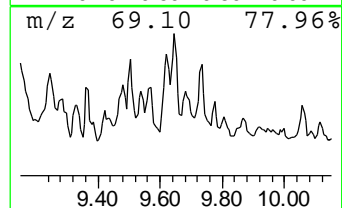
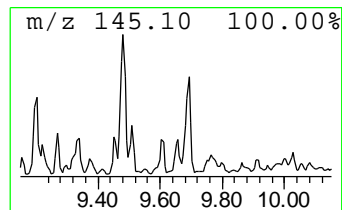
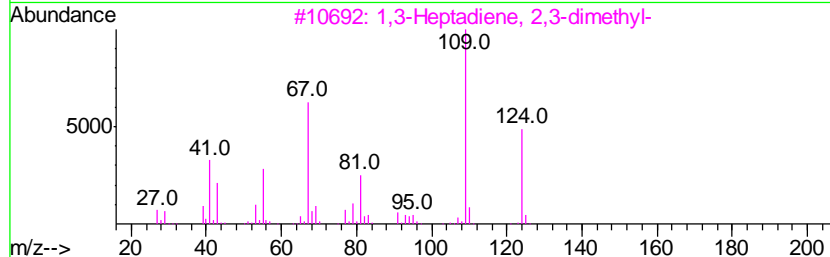
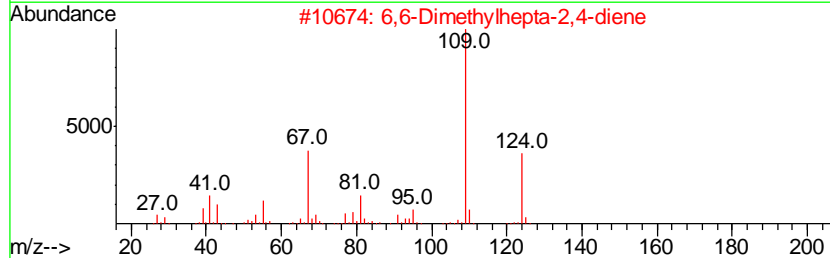
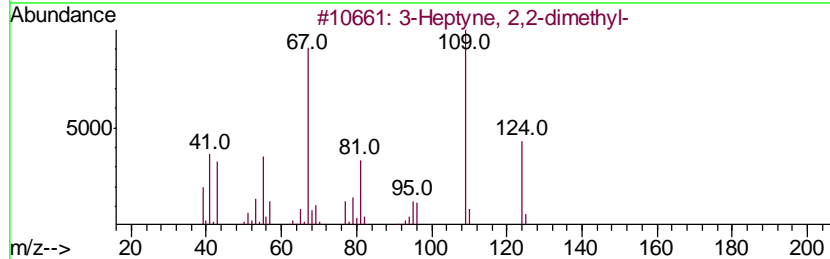
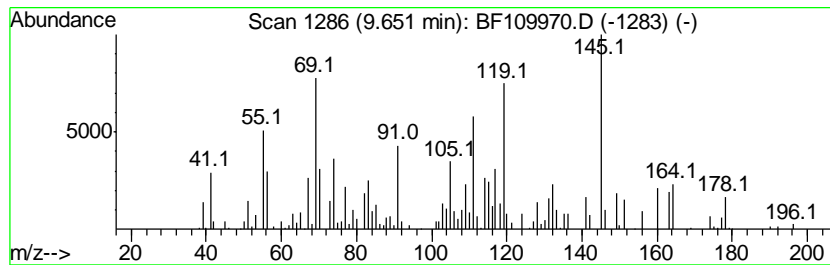
TIC Library : C:\DATABASE\NIST11.L  
 TIC Integration Parameters: LSCINT.P

\*\*\*\*\*  
 Peak Number 11 3-Heptyne, 2,2-dimethyl- Concentration Rank 19

R.T.	EstConc	Area	Relative to ISTD	R.T.
9.65	8.86 ng	964209	Acenaphthene-d10	10.02

Hit#	of	Tentative ID	MW	MolForm	CAS#	Qual
1	5	3-Heptyne, 2,2-dimethyl-	124	C9H16	029022-29-5	76
2		6,6-Dimethylhepta-2,4-diene	124	C9H16	1000195-03-3	62
3		1,3-Heptadiene, 2,3-dimethyl-	124	C9H16	074779-65-0	59
4		1,2,4,4-Tetramethylcyclopentene	124	C9H16	065378-76-9	58
5		2,4-Heptadiene, 2,6-dimethyl-	124	C9H16	004634-87-1	58



Data Path : Z:\svoasrv\HPCHEM1\BNA F\Data\BF101818\  
 Data File : BF109970.D  
 Acq On : 18 Oct 2018 20:31  
 Operator : JU/SJ  
 Sample : J5571-01  
 Misc :  
 ALS Vial : 7 Sample Multiplier: 1

Instrument :  
 BNA\_F  
 ClientSampled :  
 MW-1

Quant Method : Z:\SVOASRV\HPCHEM1\BNA F\METHODS\8270-BF101518.M  
 Quant Title : ASP BNA STANDARDS FOR 5 POINT CALIBRATION

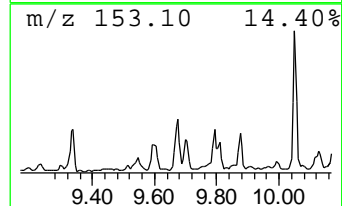
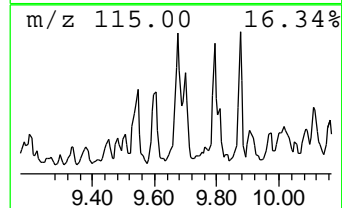
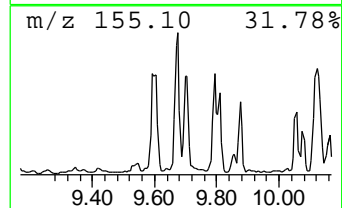
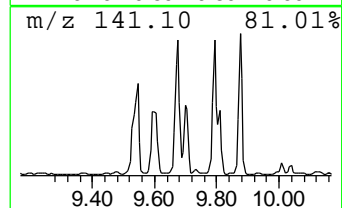
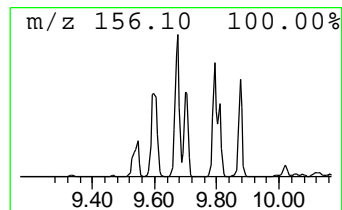
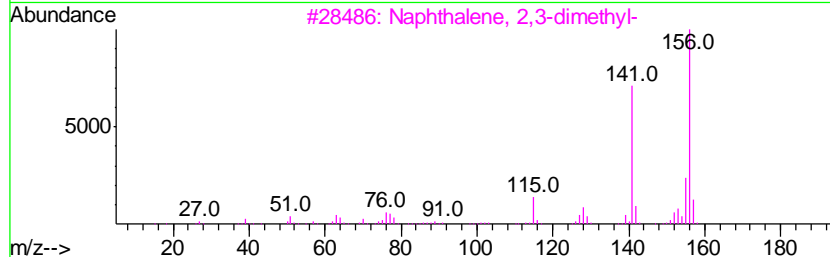
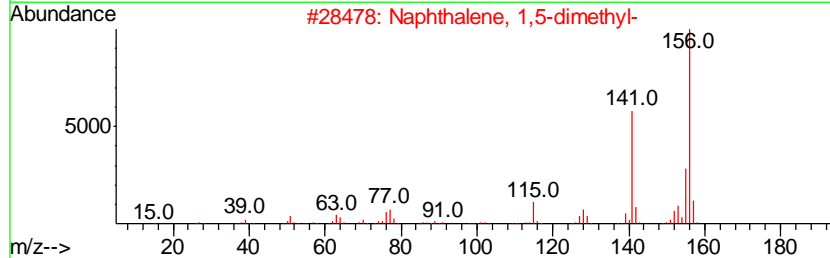
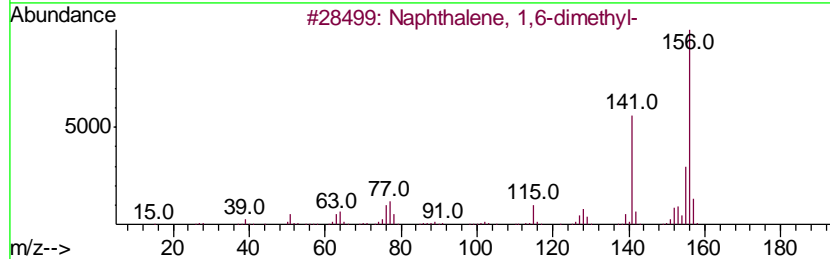
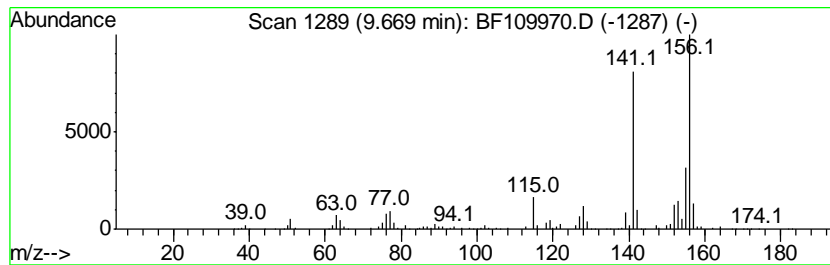
TIC Library : C:\DATABASE\NIST11.L  
 TIC Integration Parameters: LSCINT.P

\*\*\*\*\*  
 Peak Number 12 Naphthalene, 1,6-dimethyl- Concentration Rank 4

R.T.	EstConc	Area	Relative to ISTD	R.T.
9.67	28.18 ng	3067340	Acenaphthene-d10	10.02

Hit#	of	Tentative ID	MW	MolForm	CAS#	Qual
1	5	Naphthalene, 1,6-dimethyl-	156	C12H12	000575-43-9	97
2		Naphthalene, 1,5-dimethyl-	156	C12H12	000571-61-9	97
3		Naphthalene, 2,3-dimethyl-	156	C12H12	000581-40-8	97
4		Naphthalene, 1,4-dimethyl-	156	C12H12	000571-58-4	96
5		Naphthalene, 1,3-dimethyl-	156	C12H12	000575-41-7	96



Data Path : Z:\svoasrv\HPCHEM1\BNA F\Data\BF101818\  
 Data File : BF109970.D  
 Acq On : 18 Oct 2018 20:31  
 Operator : JU/SJ  
 Sample : J5571-01  
 Misc :  
 ALS Vial : 7 Sample Multiplier: 1

Instrument :  
 BNA\_F  
 ClientSampled :  
 MW-1

Quant Method : Z:\SVOASRV\HPCHEM1\BNA F\METHODS\8270-BF101518.M  
 Quant Title : ASP BNA STANDARDS FOR 5 POINT CALIBRATION

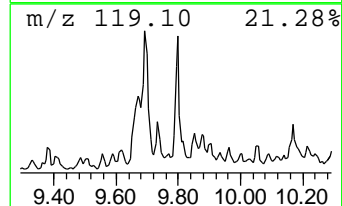
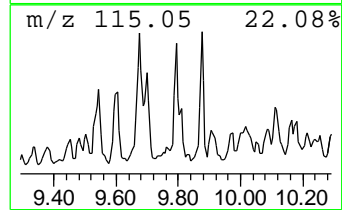
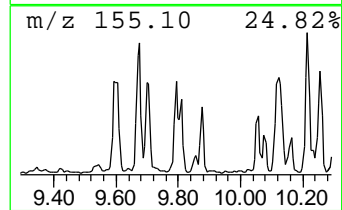
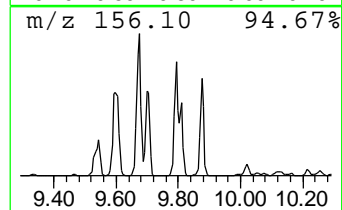
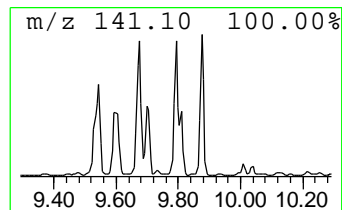
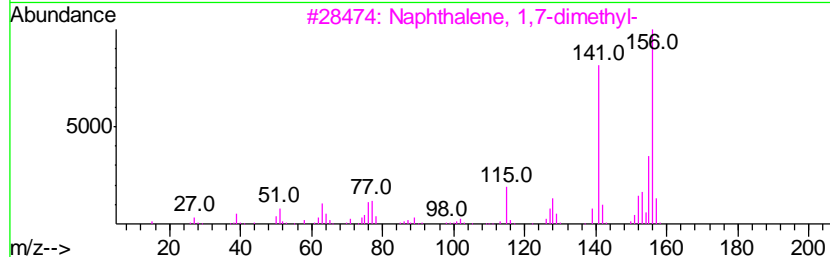
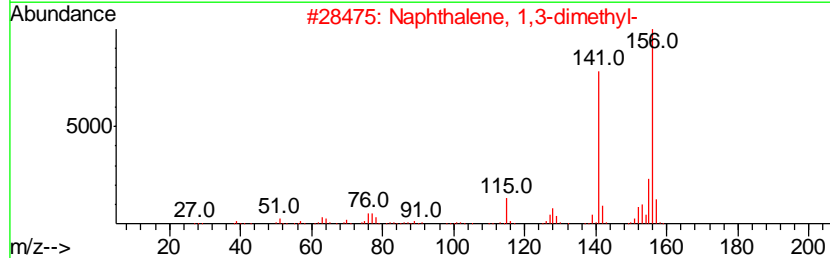
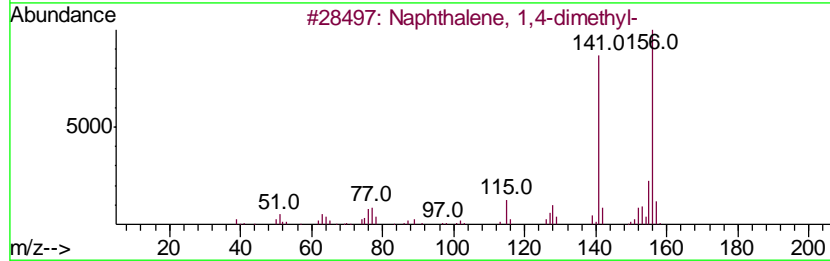
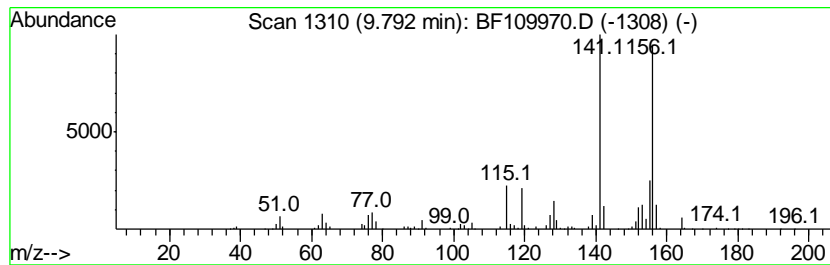
TIC Library : C:\DATABASE\NIST11.L  
 TIC Integration Parameters: LSCINT.P

\*\*\*\*\*  
 Peak Number 13 Naphthalene, 1,4-dimethyl- Concentration Rank 7

R.T.	EstConc	Area	Relative to ISTD	R.T.
9.79	15.85 ng	1725090	Acenaphthene-d10	10.02

Hit#	of	Tentative ID	MW	MolForm	CAS#	Qual
1	5	Naphthalene, 1,4-dimethyl-	156	C12H12	000571-58-4	96
2		Naphthalene, 1,3-dimethyl-	156	C12H12	000575-41-7	96
3		Naphthalene, 1,7-dimethyl-	156	C12H12	000575-37-1	96
4		Naphthalene, 2,3-dimethyl-	156	C12H12	000581-40-8	95
5		Naphthalene, 1,5-dimethyl-	156	C12H12	000571-61-9	95



Data Path : Z:\svoasrv\HPCHEM1\BNA F\Data\BF101818\  
 Data File : BF109970.D  
 Acq On : 18 Oct 2018 20:31  
 Operator : JU/SJ  
 Sample : J5571-01  
 Misc :  
 ALS Vial : 7 Sample Multiplier: 1

Instrument :  
 BNA\_F  
 ClientSampled :  
 MW-1

Quant Method : Z:\SVOASRV\HPCHEM1\BNA F\METHODS\8270-BF101518.M  
 Quant Title : ASP BNA STANDARDS FOR 5 POINT CALIBRATION

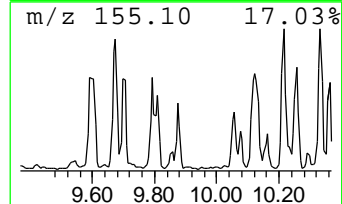
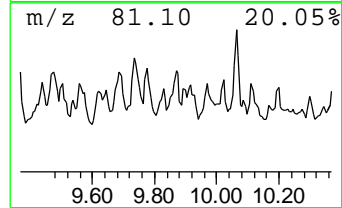
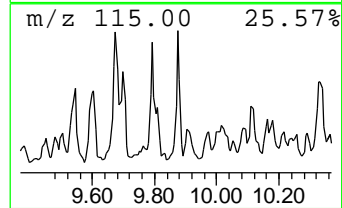
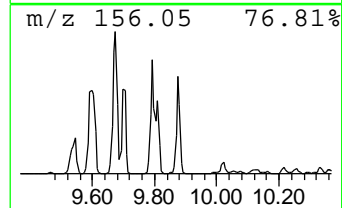
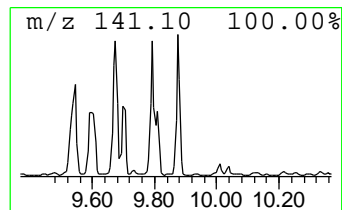
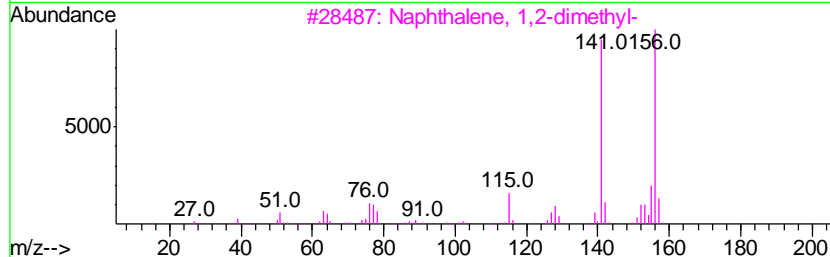
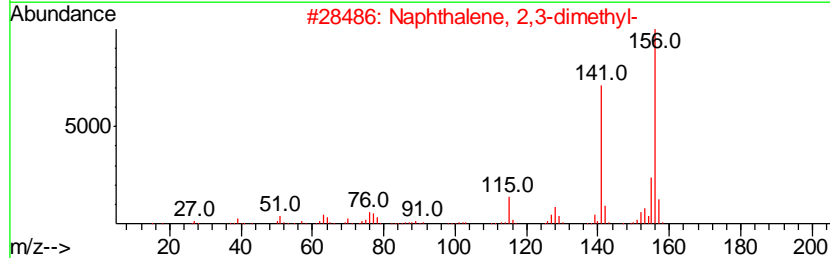
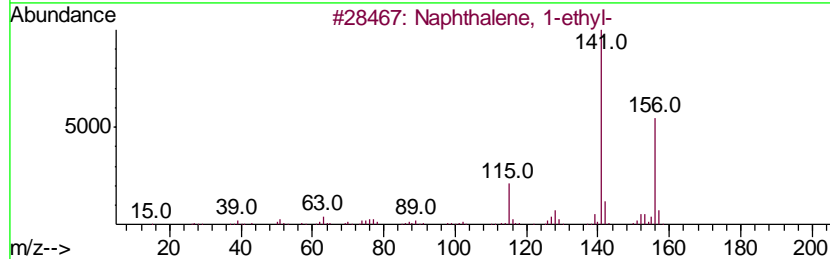
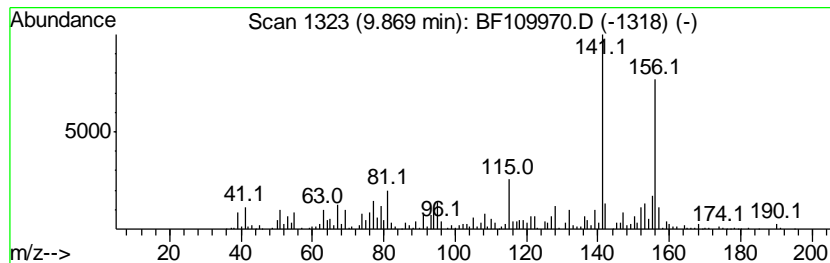
TIC Library : C:\DATABASE\NIST11.L  
 TIC Integration Parameters: LSCINT.P

\*\*\*\*\*  
 Peak Number 14 Naphthalene, 1-ethyl- Concentration Rank 8

R.T.	EstConc	Area	Relative to ISTD	R.T.
9.87	15.72 ng	1711400	Acenaphthene-d10	10.02

Hit#	of	Tentative ID	MW	MolForm	CAS#	Qual
1	5	Naphthalene, 1-ethyl-	156	C12H12	001127-76-0	95
2		Naphthalene, 2,3-dimethyl-	156	C12H12	000581-40-8	94
3		Naphthalene, 1,2-dimethyl-	156	C12H12	000573-98-8	93
4		Naphthalene, 1,3-dimethyl-	156	C12H12	000575-41-7	93
5		Naphthalene, 1,4-dimethyl-	156	C12H12	000571-58-4	93





Data Path : Z:\svoasrv\HPCHEM1\BNA F\Data\BF101818\  
 Data File : BF109970.D  
 Acq On : 18 Oct 2018 20:31  
 Operator : JU/SJ  
 Sample : J5571-01  
 Misc :  
 ALS Vial : 7 Sample Multiplier: 1

Instrument :  
 BNA\_F  
 ClientSampled :  
 MW-1

Quant Method : Z:\SVOASRV\HPCHEM1\BNA F\METHODS\8270-BF101518.M  
 Quant Title : ASP BNA STANDARDS FOR 5 POINT CALIBRATION

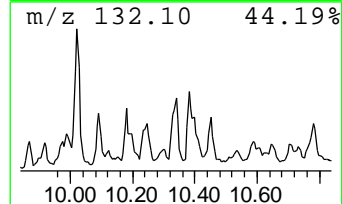
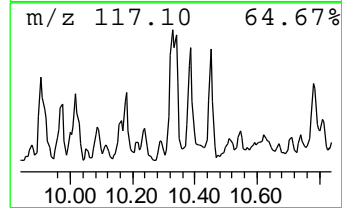
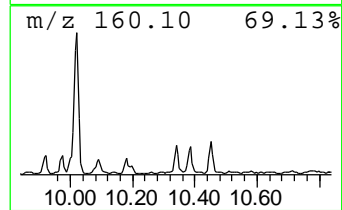
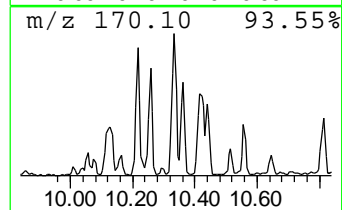
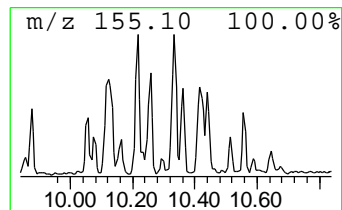
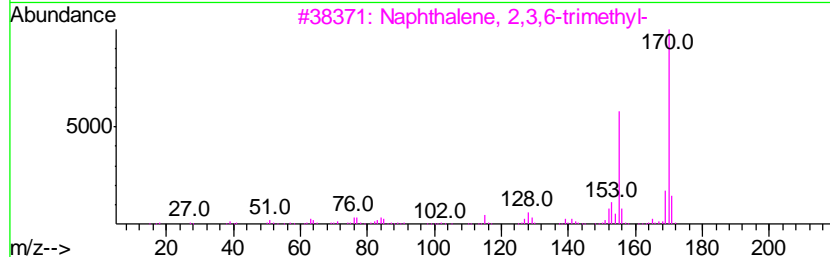
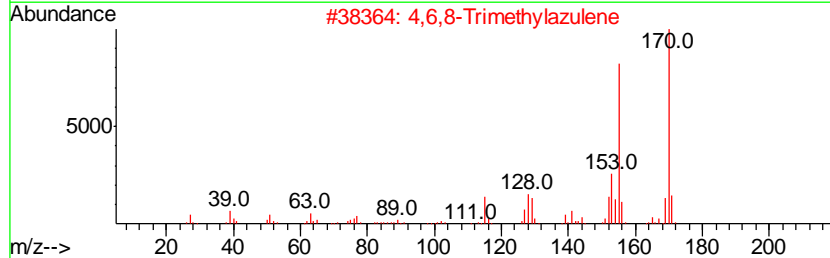
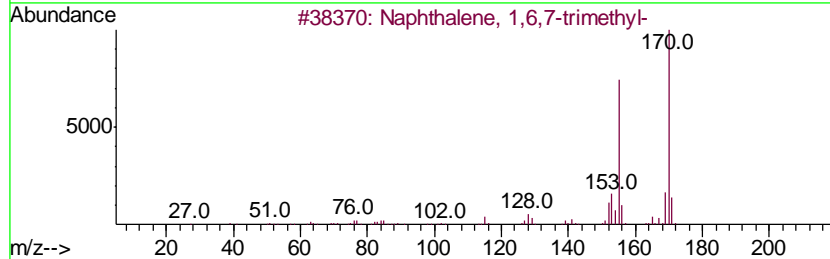
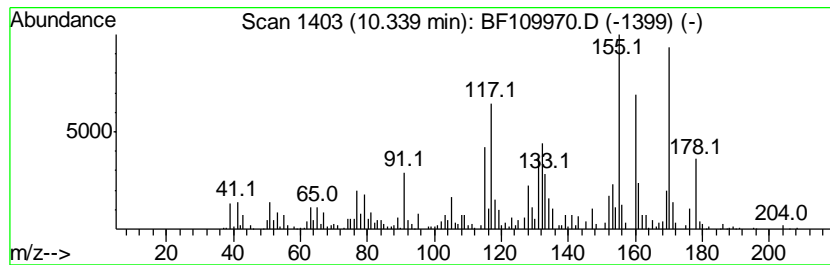
TIC Library : C:\DATABASE\NIST11.L  
 TIC Integration Parameters: LSCINT.P

\*\*\*\*\*  
 Peak Number 15 Naphthalene, 1,6,7-trimethyl- Concentration Rank 17

R.T.	EstConc	Area	Relative to ISTD	R.T.
10.34	9.25 ng	1006980	Acenaphthene-d10	10.02

Hit#	of	Tentative ID	MW	MolForm	CAS#	Qual
1	5	Naphthalene, 1,6,7-trimethyl-	170	C13H14	002245-38-7	95
2		4,6,8-Trimethylazulene	170	C13H14	000941-81-1	95
3		Naphthalene, 2,3,6-trimethyl-	170	C13H14	000829-26-5	91
4		Naphthalene, 1,4,6-trimethyl-	170	C13H14	002131-42-2	89
5		Naphthalene, 1,4,5-trimethyl-	170	C13H14	002131-41-1	70



Data Path : Z:\svoasrv\HPCHEM1\BNA F\Data\BF101818\  
 Data File : BF109970.D  
 Acq On : 18 Oct 2018 20:31  
 Operator : JU/SJ  
 Sample : J5571-01  
 Misc :  
 ALS Vial : 7 Sample Multiplier: 1

Instrument :  
 BNA\_F  
 ClientSampled :  
 MW-1

Quant Method : Z:\SVOASRV\HPCHEM1\BNA F\METHODS\8270-BF101518.M  
 Quant Title : ASP BNA STANDARDS FOR 5 POINT CALIBRATION

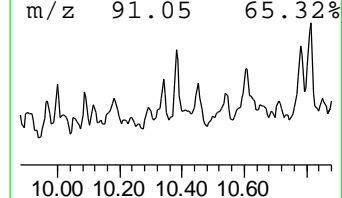
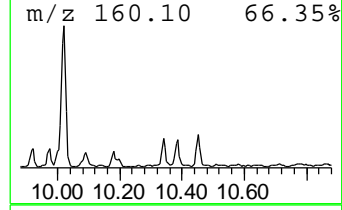
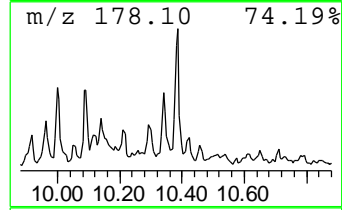
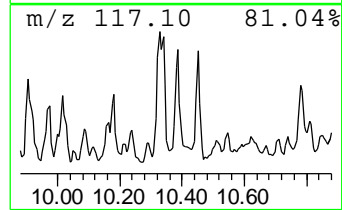
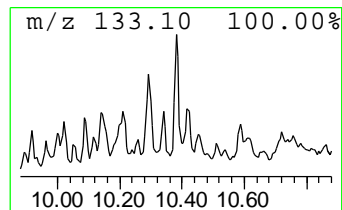
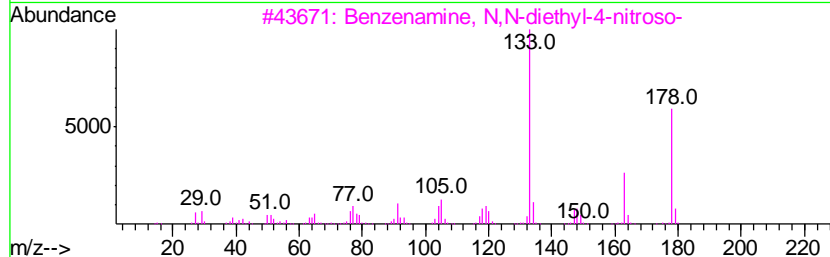
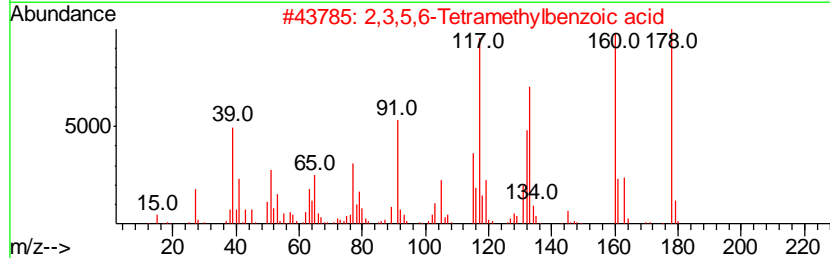
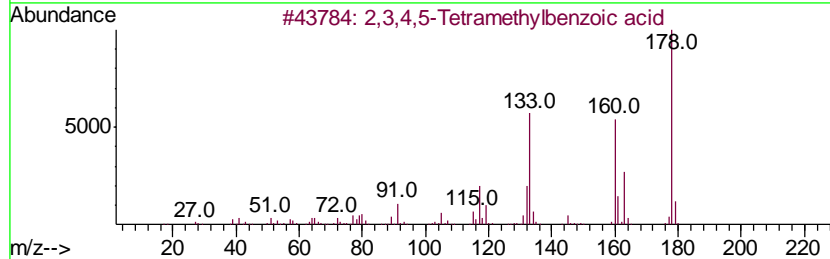
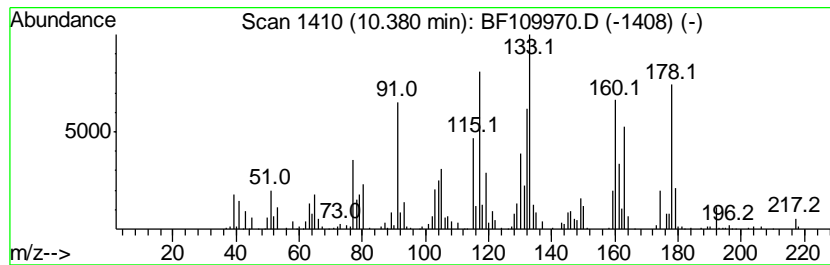
TIC Library : C:\DATABASE\NIST11.L  
 TIC Integration Parameters: LSCINT.P

\*\*\*\*\*  
 Peak Number 16 unknown10.38 Concentration Rank 18

R.T.	EstConc	Area	Relative to ISTD	R.T.
10.38	8.88 ng	966282	Acenaphthene-d10	10.02

Hit#	of	Tentative ID	MW	MolForm	CAS#	Qual
1	5	2,3,4,5-Tetramethylbenzoic acid	178	C11H14O2	002529-39-7	49
2		2,3,5,6-Tetramethylbenzoic acid	178	C11H14O2	002604-45-7	49
3		Benzenamine, N,N-diethyl-4-nitroso-	178	C10H14N2O	000120-22-9	42
4		Ethyl 2,4-dimethylbenzoate	178	C11H14O2	033499-42-2	38
5		Benzene, 1-methyl-4-(1-methyleth...	132	C10H12	001195-32-0	25



Data Path : Z:\svoasrv\HPCHEM1\BNA F\Data\BF101818\  
 Data File : BF109970.D  
 Acq On : 18 Oct 2018 20:31  
 Operator : JU/SJ  
 Sample : J5571-01  
 Misc :  
 ALS Vial : 7 Sample Multiplier: 1

Instrument :  
 BNA\_F  
 ClientSampled :  
 MW-1

Quant Method : Z:\SVOASRV\HPCHEM1\BNA F\METHODS\8270-BF101518.M  
 Quant Title : ASP BNA STANDARDS FOR 5 POINT CALIBRATION

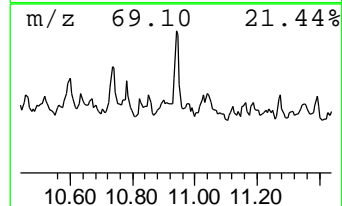
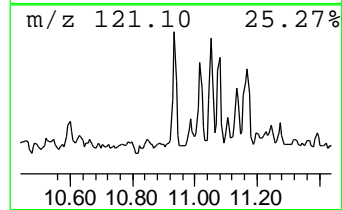
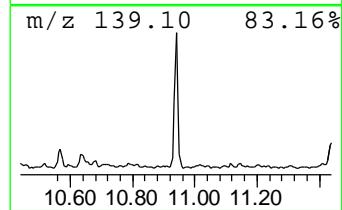
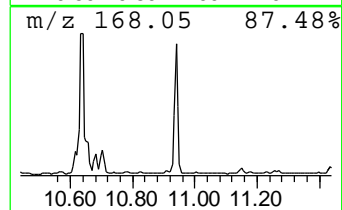
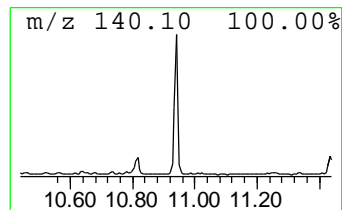
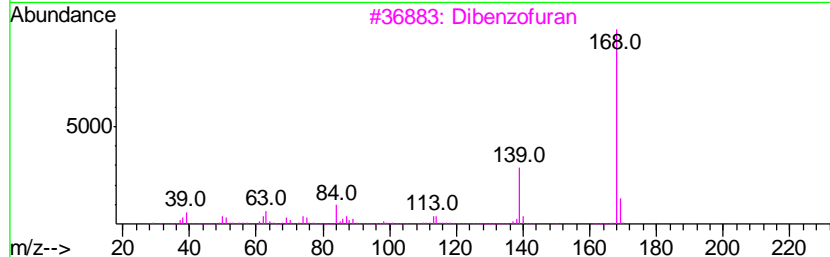
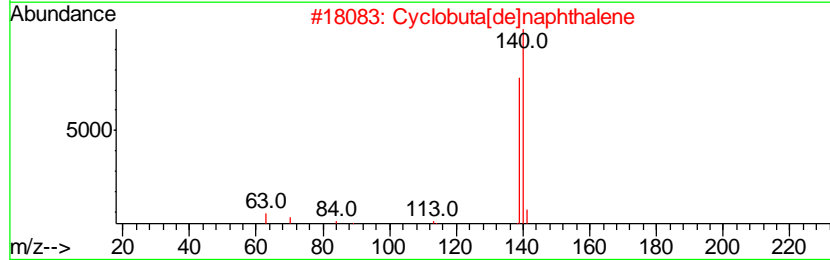
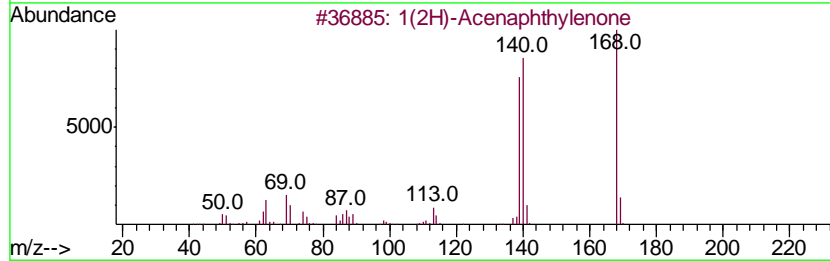
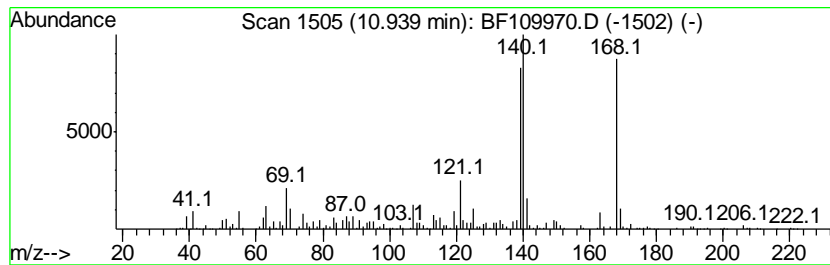
TIC Library : C:\DATABASE\NIST11.L  
 TIC Integration Parameters: LSCINT.P

\*\*\*\*\*  
 Peak Number 17 1(2H)-Acenaphthylenone Concentration Rank 13

R.T.	EstConc	Area	Relative to ISTD	R.T.
10.94	11.30 ng	812418	Phenanthrene-d10	11.52

Hit#	of	Tentative ID	MW	MolForm	CAS#	Qual
1	5	1(2H)-Acenaphthylenone	168	C12H8O	002235-15-6	94
2		Cyclobuta[de]naphthalene	140	C11H8	024973-91-9	55
3		Dibenzofuran	168	C12H8O	000132-64-9	53
4		3,6-Diethyl-1,2-dihydro-1,2,4,5-...	140	C6H12N4	068614-65-3	47
5		7(4H)-Benzothiazolone, 2-amino-5...	168	C7H8N2OS	017583-10-7	47



Data Path : Z:\svoasrv\HPCHEM1\BNA F\Data\BF101818\  
 Data File : BF109970.D  
 Acq On : 18 Oct 2018 20:31  
 Operator : JU/SJ  
 Sample : J5571-01  
 Misc :  
 ALS Vial : 7 Sample Multiplier: 1

Instrument :  
 BNA\_F  
 ClientSampled :  
 MW-1

Quant Method : Z:\SVOASRV\HPCHEM1\BNA F\METHODS\8270-BF101518.M  
 Quant Title : ASP BNA STANDARDS FOR 5 POINT CALIBRATION

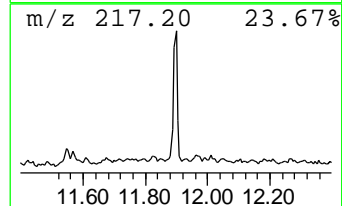
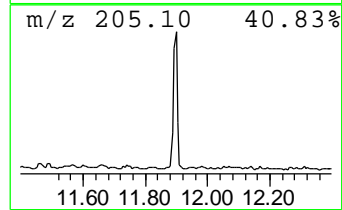
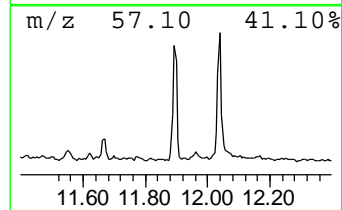
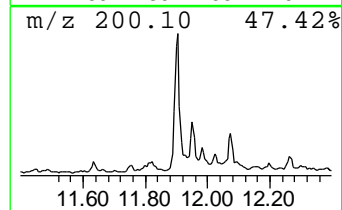
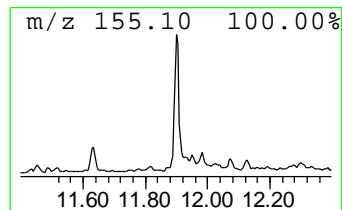
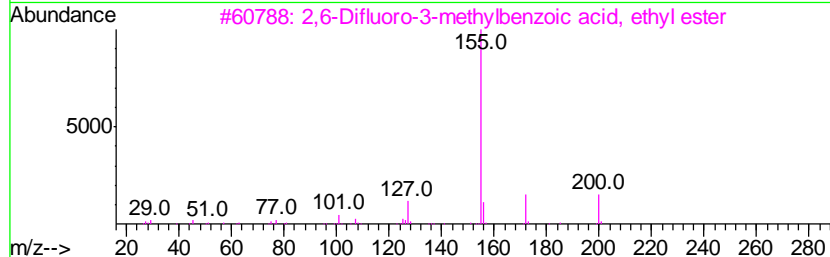
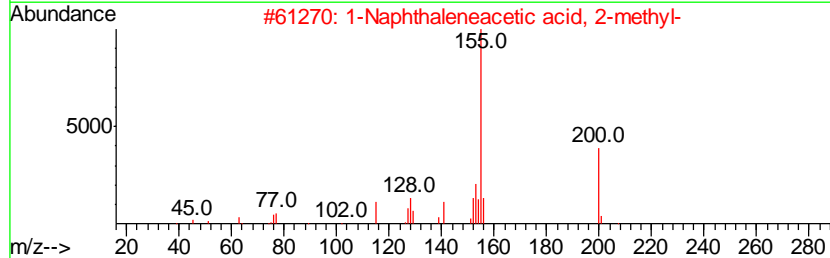
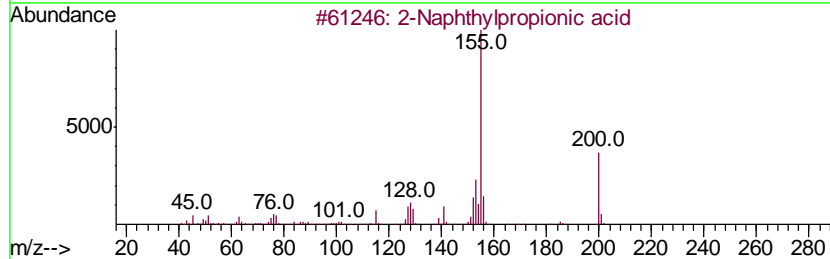
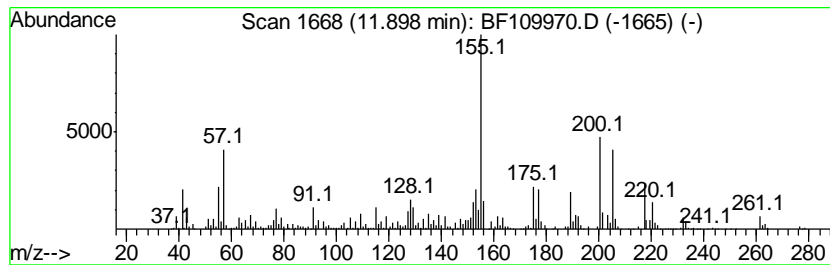
TIC Library : C:\DATABASE\NIST11.L  
 TIC Integration Parameters: LSCINT.P

\*\*\*\*\*  
 Peak Number 18 2-Naphthylpropionic acid Concentration Rank 6

R.T.	EstConc	Area	Relative to ISTD	R.T.
11.90	17.67 ng	1270360	Phenanthrene-d10	11.52

Hit#	of	Tentative ID	MW	MolForm	CAS#	Qual
1	5	2-Naphthylpropionic acid	200	C13H12O2	1000129-24-1	90
2		1-Naphthaleneacetic acid, 2-methyl-	200	C13H12O2	000085-08-5	70
3		2,6-Difluoro-3-methylbenzoic aci...	200	C10H10F2O2	1000338-83-8	45
4		Benzeneacetic acid, 2-fluoro-4-h...	200	C9H9FO4	140146-47-0	43
5		Benzeneacetic acid, 3-fluoro-4-h...	200	C9H9FO4	114669-81-7	38



Data Path : Z:\svoasrv\HPCHEM1\BNA F\Data\BF101818\  
 Data File : BF109970.D  
 Acq On : 18 Oct 2018 20:31  
 Operator : JU/SJ  
 Sample : J5571-01  
 Misc :  
 ALS Vial : 7 Sample Multiplier: 1

Instrument :  
 BNA\_F  
 ClientSampleID :  
 MW-1

Quant Method : Z:\SVOASRV\HPCHEM1\BNA F\METHODS\8270-BF101518.M  
 Quant Title : ASP BNA STANDARDS FOR 5 POINT CALIBRATION

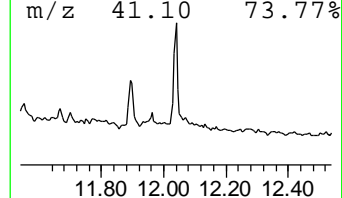
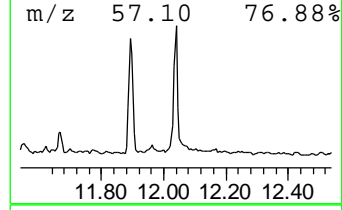
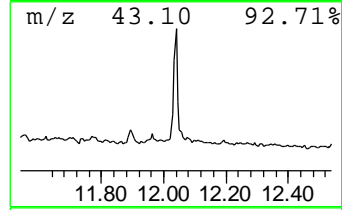
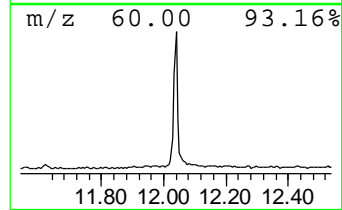
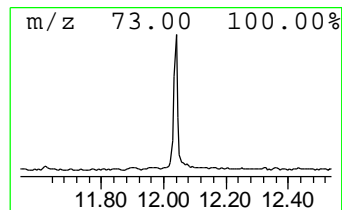
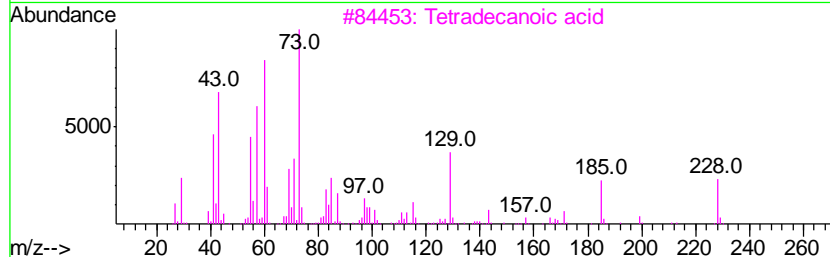
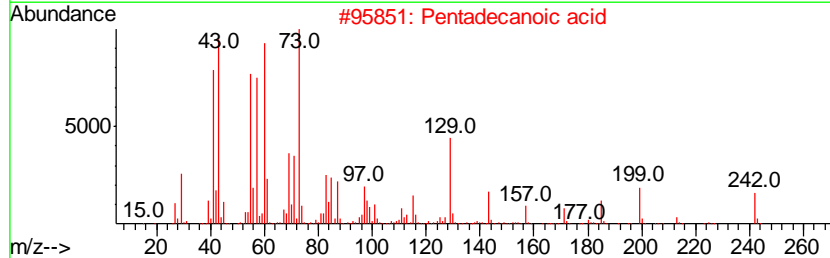
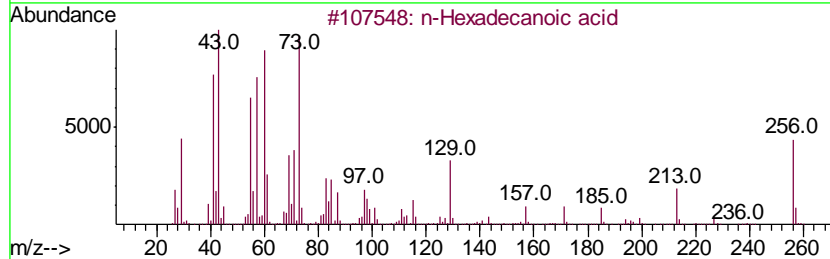
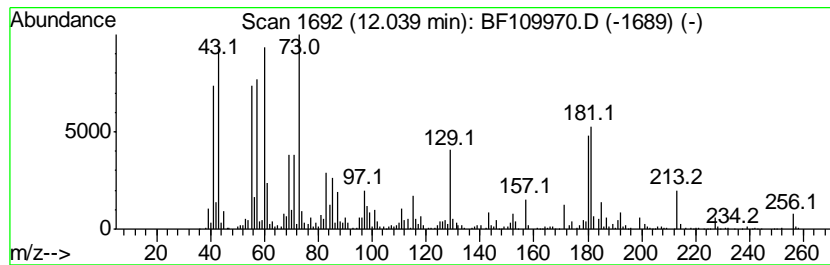
TIC Library : C:\DATABASE\NIST11.L  
 TIC Integration Parameters: LSCINT.P

\*\*\*\*\*  
 Peak Number 19 n-Hexadecanoic acid Concentration Rank 11

R.T.	EstConc	Area	Relative to ISTD	R.T.
12.04	14.28 ng	1026110	Phenanthrene-d10	11.52

Hit#	of	Tentative ID	MW	MolForm	CAS#	Qual
1	5	n-Hexadecanoic acid	256	C16H32O2	000057-10-3	98
2		Pentadecanoic acid	242	C15H30O2	001002-84-2	83
3		Tetradecanoic acid	228	C14H28O2	000544-63-8	58
4		Tridecanoic acid	214	C13H26O2	000638-53-9	58
5		3-Methylcarbazole	181	C13H11N	004630-20-0	53



Data Path : Z:\svoasrv\HPCHEM1\BNA F\Data\BF101818\  
 Data File : BF109970.D  
 Acq On : 18 Oct 2018 20:31  
 Operator : JU/SJ  
 Sample : J5571-01  
 Misc :  
 ALS Vial : 7 Sample Multiplier: 1

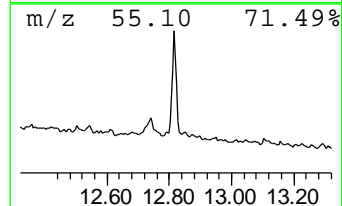
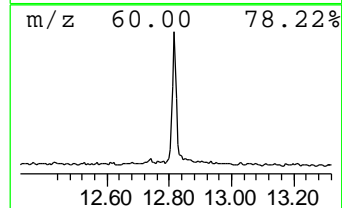
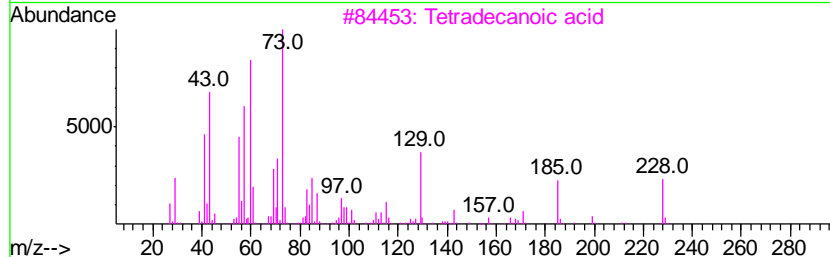
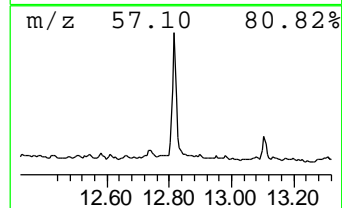
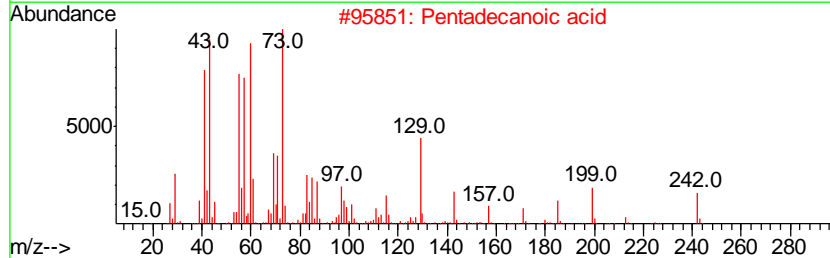
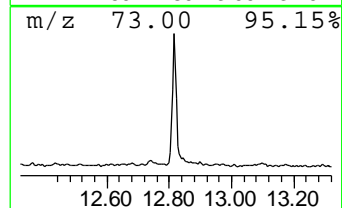
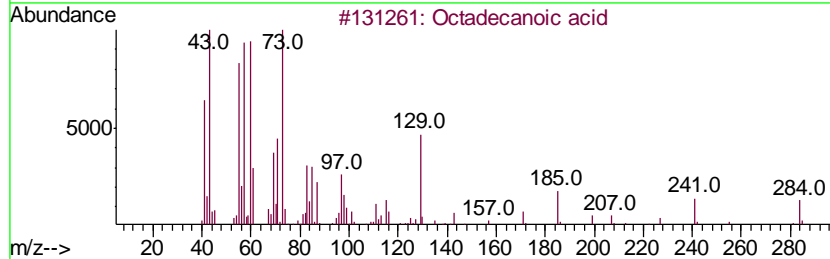
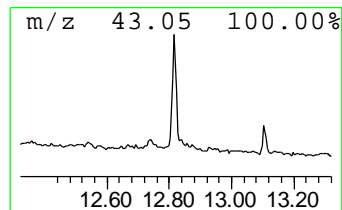
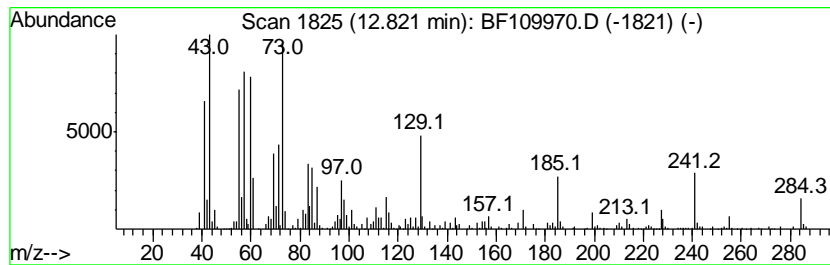
Instrument :  
 BNA\_F  
 ClientSampled :  
 MW-1

Quant Method : Z:\SVOASRV\HPCHEM1\BNA F\METHODS\8270-BF101518.M  
 Quant Title : ASP BNA STANDARDS FOR 5 POINT CALIBRATION

TIC Library : C:\DATABASE\NIST11.L  
 TIC Integration Parameters: LSCINT.P

\*\*\*\*\*  
 Peak Number 20 Octadecanoic acid Concentration Rank 16

R.T.	EstConc	Area	Relative to ISTD	R.T.		
12.82	9.73 ng	699349	Phenanthrene-d10	11.52		
Hit# of	5	Tentative ID	MW	MolForm	CAS#	Qual
1		Octadecanoic acid	284	C18H36O2	000057-11-4	99
2		Pentadecanoic acid	242	C15H30O2	001002-84-2	91
3		Tetradecanoic acid	228	C14H28O2	000544-63-8	83
4		n-Hexadecanoic acid	256	C16H32O2	000057-10-3	80
5		Tridecanoic acid	214	C13H26O2	000638-53-9	70



Data Path : Z:\svoasrv\HPCHEM1\BNA\_F\Data\BF101818\  
 Data File : BF109970.D  
 Acq On : 18 Oct 2018 20:31  
 Operator : JU/SJ  
 Sample : J5571-01  
 Misc :  
 ALS Vial : 7 Sample Multiplier: 1

Instrument :  
 BNA\_F  
 ClientSampleId :  
 MW-1

Quant Method : Z:\SVOASRV\HPCHEM1\BNA\_F\METHODS\8270-BF101518.M  
 Quant Title : ASP BNA STANDARDS FOR 5 POINT CALIBRATION

TIC Library : C:\DATABASE\NIST11.L  
 TIC Integration Parameters: LSCINT.P

TIC Top Hit name	RT	EstConc	Units	Response	--Internal Standard--			
					#	RT	Resp	Conc
Butane, 2-methoxy...	2.32	33.2	ng	2392040	1	6.97	1440710	20.0
unknown6.75	6.75	61.1	ng	4402430	1	6.97	1440710	20.0
Benzene, cyclopro...	7.16	12.2	ng	879428	1	6.97	1440710	20.0
Benzene, 2-etheny...	7.99	9.7	ng	1288280	2	8.26	2645350	20.0
Naphthalene, 1,2,...	8.50	10.9	ng	1444930	2	8.26	2645350	20.0
Benzene, (1,2-dim...	8.64	15.1	ng	1998260	2	8.26	2645350	20.0
unknown9.16	9.16	8.6	ng	938840	3	10.02	2176770	20.0
Naphthalene, 1,7-...	9.60	20.6	ng	2236270	3	10.02	2176770	20.0
3-Heptyne, 2,2-di...	9.65	8.9	ng	964209	3	10.02	2176770	20.0
Naphthalene, 1,6-...	9.67	28.2	ng	3067340	3	10.02	2176770	20.0
Naphthalene, 1,4-...	9.79	15.9	ng	1725090	3	10.02	2176770	20.0
Naphthalene, 1-et...	9.87	15.7	ng	1711400	3	10.02	2176770	20.0
Naphthalene, 1,6,...	10.34	9.3	ng	1006980	3	10.02	2176770	20.0
unknown10.38	10.38	8.9	ng	966282	3	10.02	2176770	20.0
1(2H)-Acenaphthyl...	10.94	11.3	ng	812418	4	11.52	1437510	20.0
2-Naphthylpropion...	11.90	17.7	ng	1270360	4	11.52	1437510	20.0
n-Hexadecanoic acid	12.04	14.3	ng	1026110	4	11.52	1437510	20.0
Octadecanoic acid	12.82	9.7	ng	699349	4	11.52	1437510	20.0