

Data Path : U:\HPCHEM1\BNA F\DATA\BF101915\
 Data File : BF082364.D
 Acq On : 19 Oct 2015 19:21
 Operator : UM/IZ
 Sample : G3918-03RE
 Misc :
 ALS Vial : 14 Sample Multiplier: 1

Instrument :
 BNA_F
 ClientSampleId :
 WC100215-LRE

Quant Time: Oct 20 12:30:29 2015
 Quant Method : Z:\HPCHEM1\BNA F\METHODS\8270-BF101015.M
 Quant Title : ASP BNA STANDARDS FOR 5 POINT CALIBRATION
 QLast Update : Tue Oct 20 01:57:16 2015
 Response via : Initial Calibration

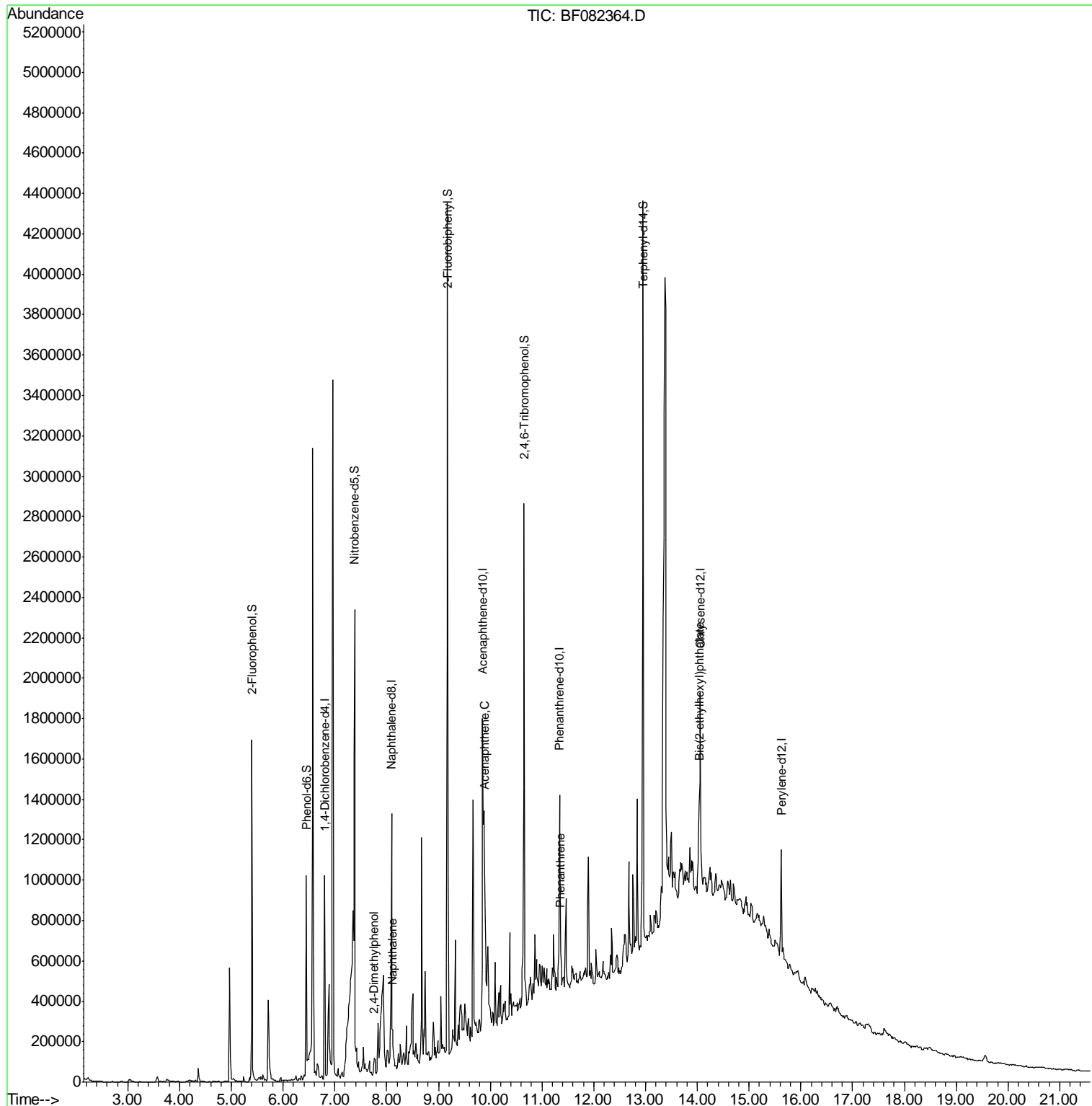
Internal Standards	R.T.	QIon	Response	Conc	Units	Dev(Min)
1) 1,4-Dichlorobenzene-d4	6.80	152	153808	20.00	ng	0.00
21) Naphthalene-d8	8.09	136	598589	20.00	ng	0.00
38) Acenaphthene-d10	9.85	164	289540	20.00	ng	0.00
63) Phenanthrene-d10	11.34	188	507684	20.00	ng	-0.01
75) Chrysene-d12	14.06	240	401061	20.00	ng	-0.03
86) Perylene-d12	15.62	264	329811	20.00	ng	-0.05
System Monitoring Compounds						
5) 2-Fluorophenol	5.39	112	535862	70.31	ng	0.00
7) Phenol-d6	6.45	99	457527	46.13	ng	0.00
23) Nitrobenzene-d5	7.38	82	1047605	117.53	ng	0.00
41) 2,4,6-Tribromophenol	10.65	330	347334	127.92	ng	0.00
44) 2-Fluorobiphenyl	9.18	172	1739603	99.64	ng	0.00
78) Terphenyl-d14	12.95	244	1513196	99.98	ng	0.00
Target Compounds						
27) 2,4-Dimethylphenol	7.76	122	18046	2.33	ng	93
31) Naphthalene	8.11	128	63526	2.45	ng	99
51) Acenaphthene	9.89	154	35904	2.21	ng	99
70) Phenanthrene	11.36	178	70827	2.85	ng	94
83) Bis(2-ethylhexyl)phthalate	14.04	149	213330	13.77	ng	# 99

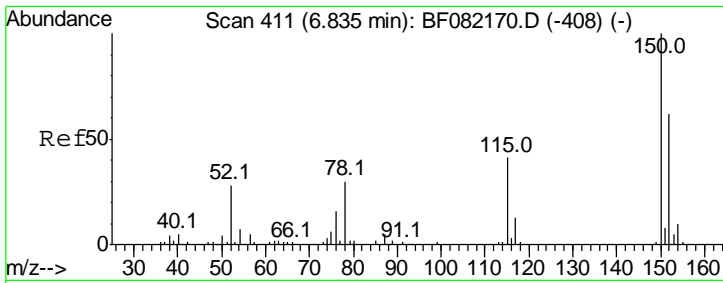
(#) = qualifier out of range (m) = manual integration (+) = signals summed

Data Path : U:\HPCHEM1\BNA F\DATA\BF101915\
 Data File : BF082364.D
 Acq On : 19 Oct 2015 19:21
 Operator : UM/IZ
 Sample : G3918-03RE
 Misc :
 ALS Vial : 14 Sample Multiplier: 1

Instrument :
 BNA_F
 ClientSampled :
 WC100215-LRE

Quant Time: Oct 20 12:30:29 2015
 Quant Method : Z:\HPCHEM1\BNA F\METHODS\8270-BF101015.M
 Quant Title : ASP BNA STANDARDS FOR 5 POINT CALIBRATION
 QLast Update : Tue Oct 20 01:57:16 2015
 Response via : Initial Calibration



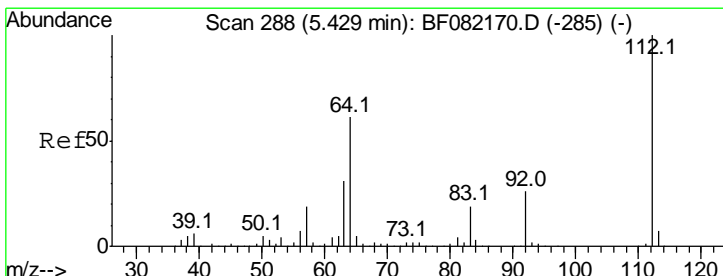
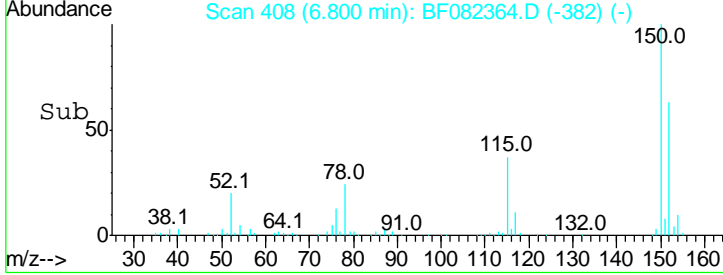
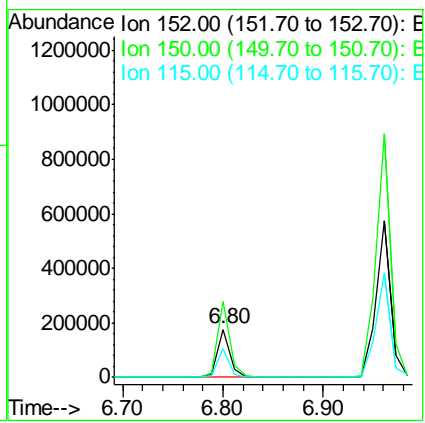
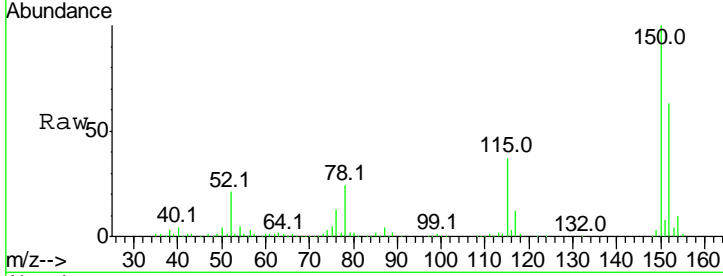


#1
 1,4-Dichlorobenzene-d4
 Concen: 20.00 ng
 RT: 6.80 min Scan# 408
 Delta R.T. 0.00 min
 Lab File: BF082364.D
 Acq: 19 Oct 2015 19:21

Instrument :
 BNA_F
ClientSampleId :
 WC100215-LRE

Tgt Ion:152 Resp: 153808

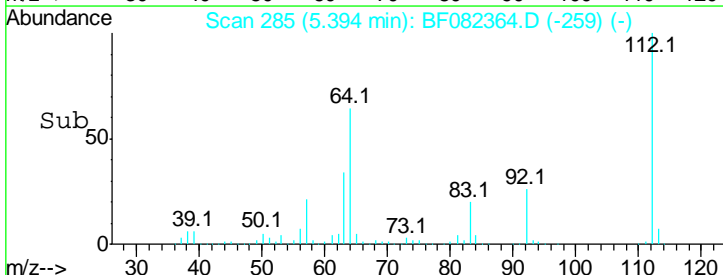
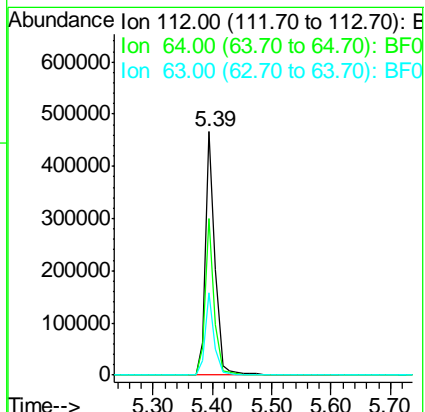
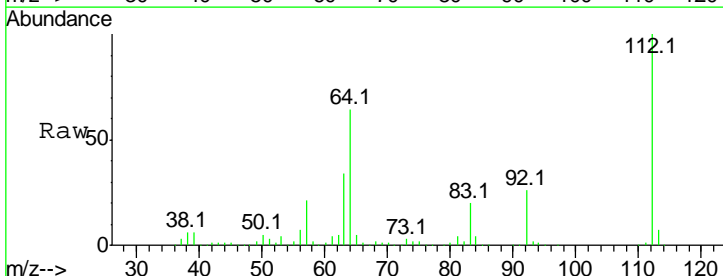
Ion	Ratio	Lower	Upper
152	100		
150	159.3	129.0	193.4
115	58.5	52.1	78.1

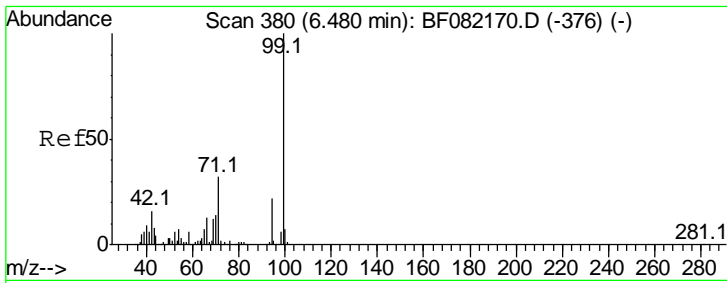


#5
 2-Fluorophenol
 Concen: 70.31 ng
 RT: 5.39 min Scan# 285
 Delta R.T. 0.00 min
 Lab File: BF082364.D
 Acq: 19 Oct 2015 19:21

Tgt Ion:112 Resp: 535862

Ion	Ratio	Lower	Upper
112	100		
64	64.1	48.6	73.0
63	34.0	25.1	37.7

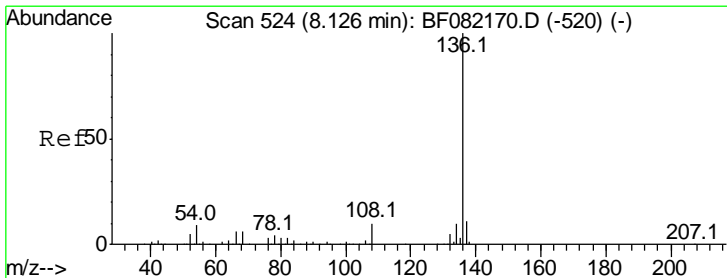
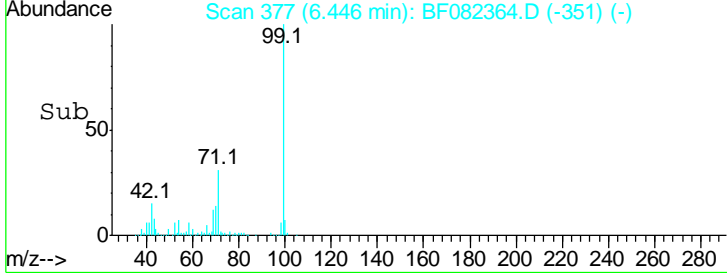
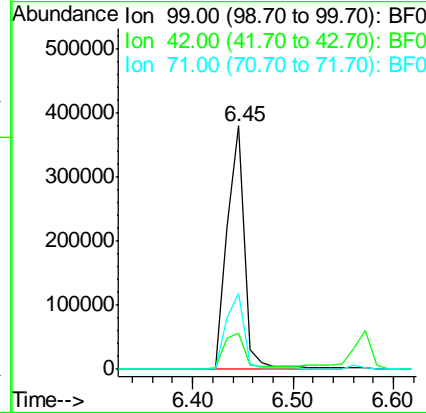
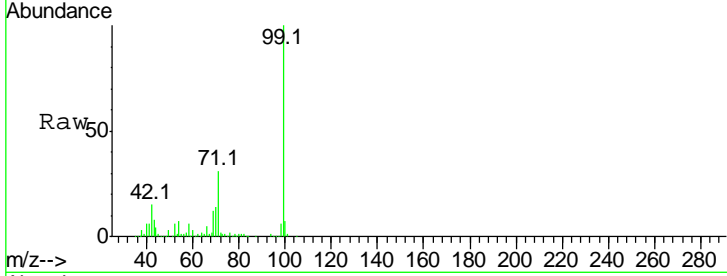




#7
 Phenol-d6
 Concen: 46.13 ng
 RT: 6.45 min Scan# 377
 Delta R.T. 0.00 min
 Lab File: BF082364.D
 Acq: 19 Oct 2015 19:21

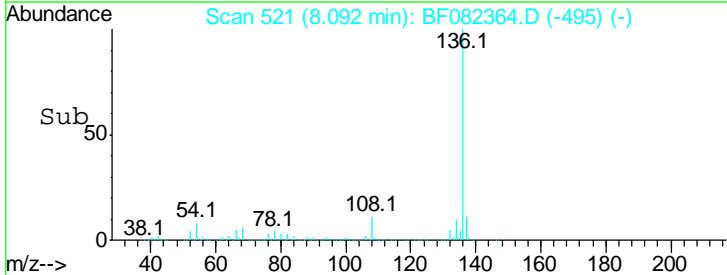
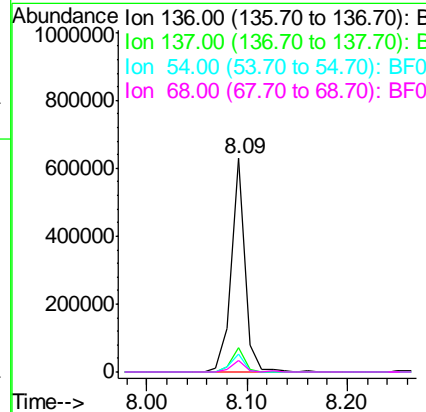
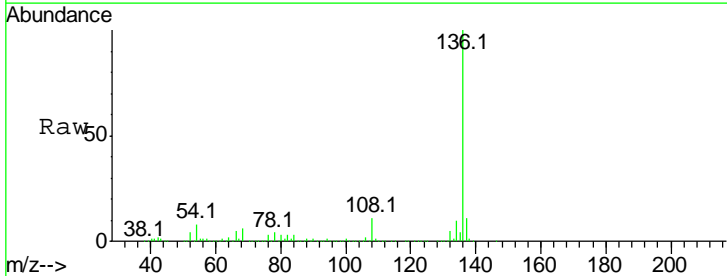
Instrument :
 BNA_F
 ClientSampled :
 WC100215-LRE

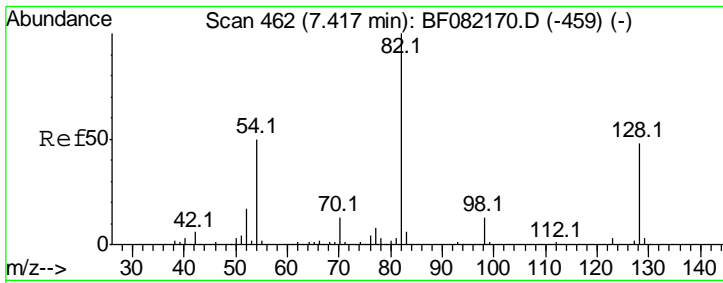
Tgt Ion	Resp	Lower	Upper
99	100		
42	15.0	13.2	19.8
71	31.0	25.6	38.4



#21
 Naphthalene-d8
 Concen: 20.00 ng
 RT: 8.09 min Scan# 521
 Delta R.T. 0.00 min
 Lab File: BF082364.D
 Acq: 19 Oct 2015 19:21

Tgt Ion	Resp	Lower	Upper
136	100		
137	11.4	9.0	13.6
54	8.3	7.5	11.3
68	5.6	4.6	7.0

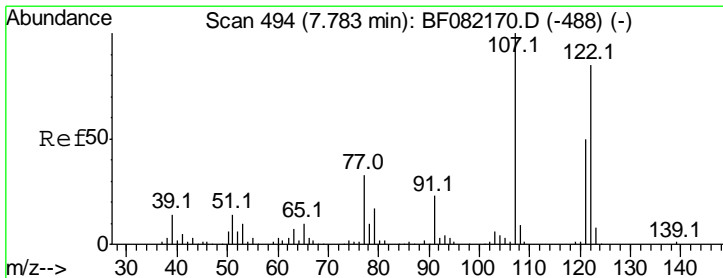
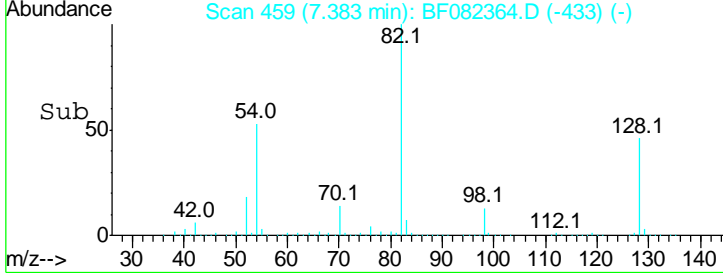
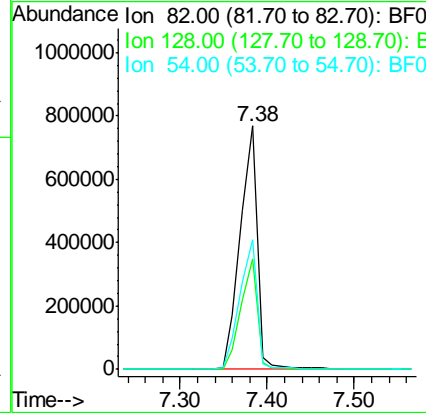
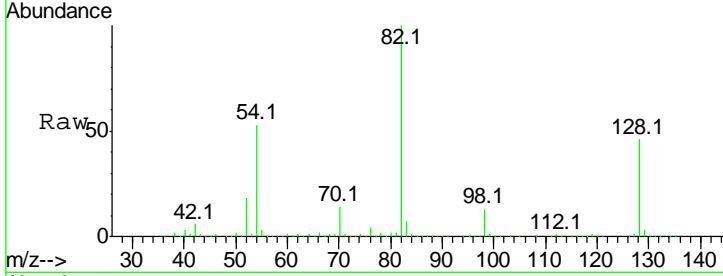




#23
 Nitrobenzene-d5
 Concen: 117.53 ng
 RT: 7.38 min Scan# 459
 Delta R.T. 0.00 min
 Lab File: BF082364.D
 Acq: 19 Oct 2015 19:21

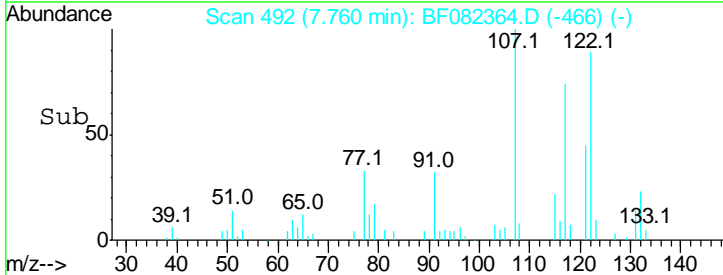
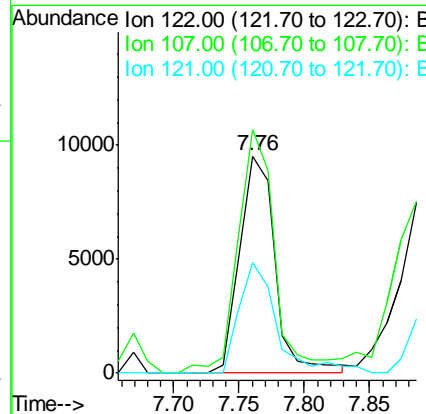
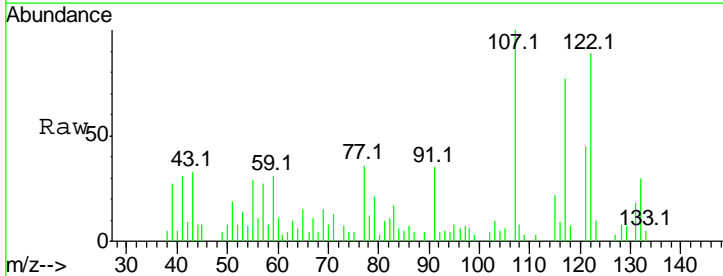
Instrument :
 BNA_F
ClientSampleId :
 WC100215-LRE

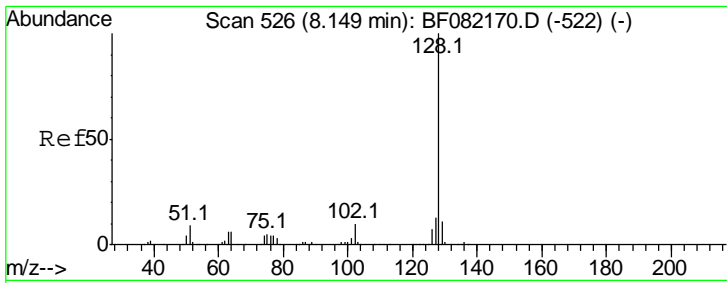
Tgt Ion	Resp	Lower	Upper
82	1047605		
128	45.6	38.7	58.1
54	53.5	40.1	60.1



#27
 2,4-Dimethylphenol
 Concen: 2.33 ng
 RT: 7.76 min Scan# 492
 Delta R.T. 0.00 min
 Lab File: BF082364.D
 Acq: 19 Oct 2015 19:21

Tgt Ion	Resp	Lower	Upper
122	18046		
107	112.3	94.0	141.0
121	50.8	46.8	70.2

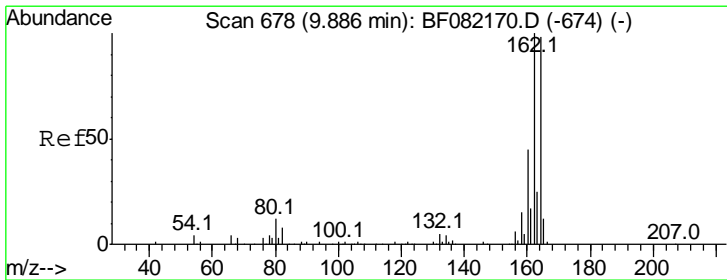
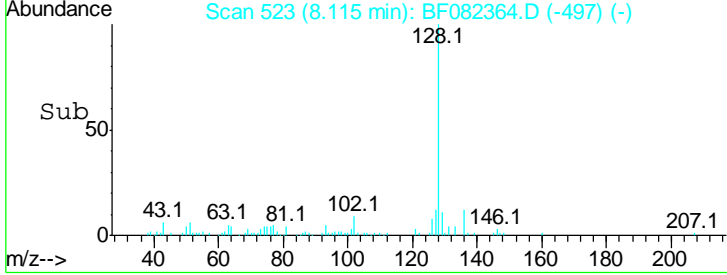
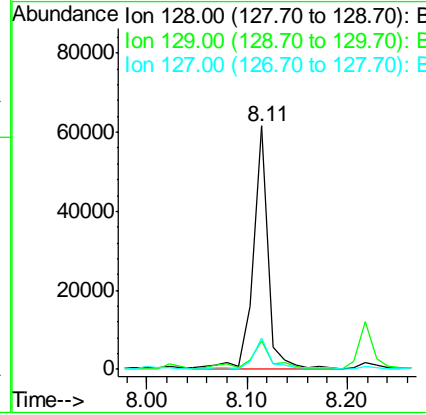
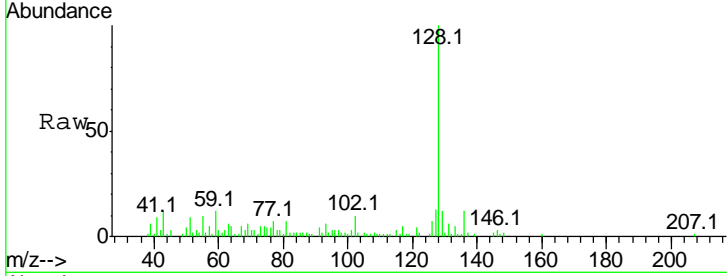




#31
 Naphthalene
 Concen: 2.45 ng
 RT: 8.11 min Scan# 523
 Delta R.T. 0.00 min
 Lab File: BF082364.D
 Acq: 19 Oct 2015 19:21

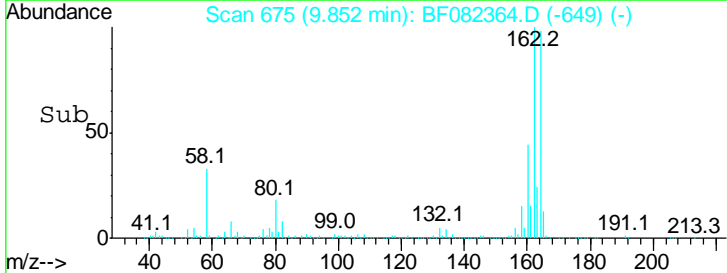
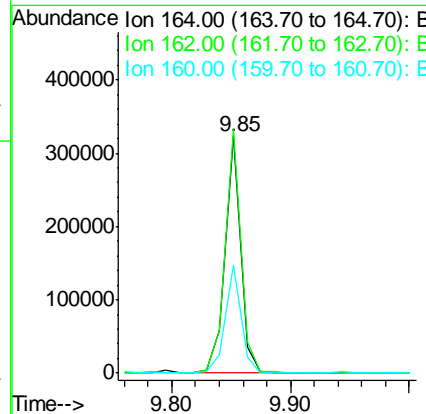
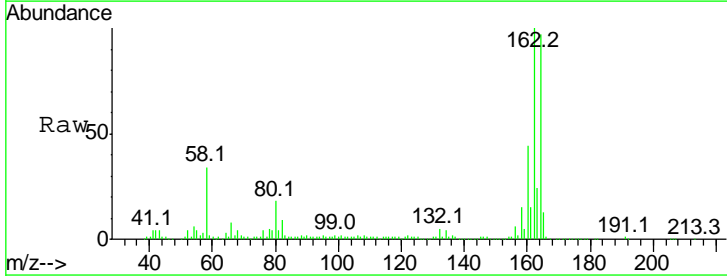
Instrument :
 BNA_F
 ClientSampleId :
 WC100215-LRE

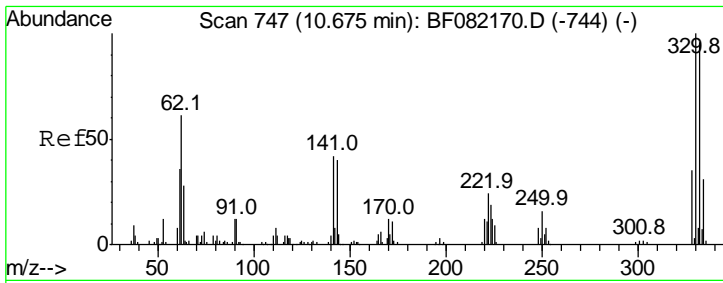
Tgt Ion	Resp	Lower	Upper
128	63526		
129	11.6	9.1	13.7
127	12.7	10.7	16.1



#38
 Acenaphthene-d10
 Concen: 20.00 ng
 RT: 9.85 min Scan# 675
 Delta R.T. 0.00 min
 Lab File: BF082364.D
 Acq: 19 Oct 2015 19:21

Tgt Ion	Resp	Lower	Upper
164	289540		
162	102.8	81.6	122.4
160	45.4	36.4	54.6

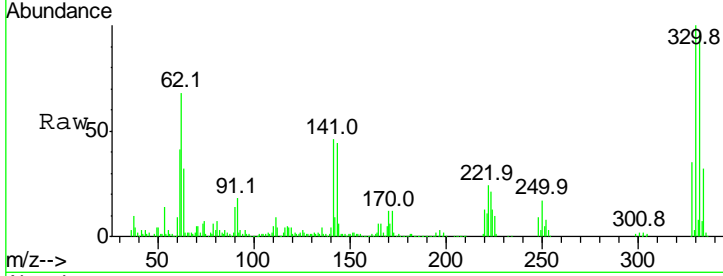




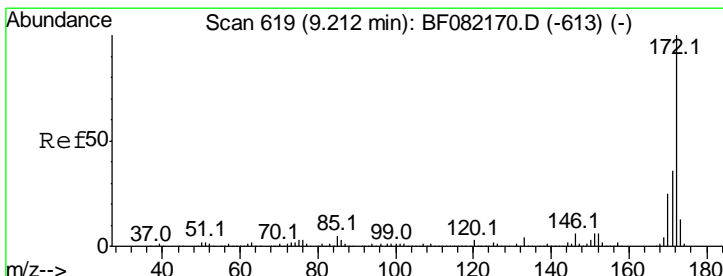
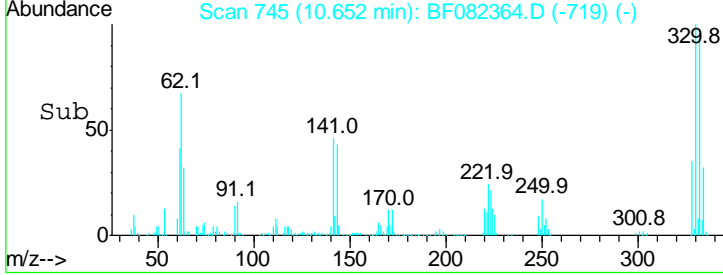
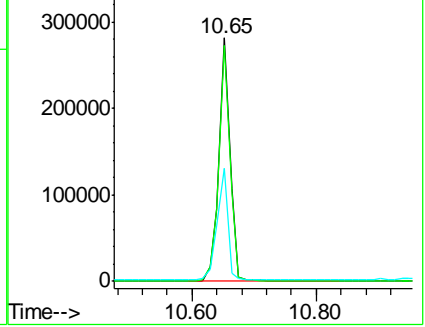
#41
 2,4,6-Tribromophenol
 Concen: 127.92 ng
 RT: 10.65 min Scan# 745
 Delta R.T. 0.00 min
 Lab File: BF082364.D
 Acq: 19 Oct 2015 19:21

Instrument :
 BNA_F
ClientSampled :
 WC100215-LRE

Tgt Ion	Resp	Lower	Upper
330	100		
332	97.0	77.1	115.7
141	43.0	29.8	44.8

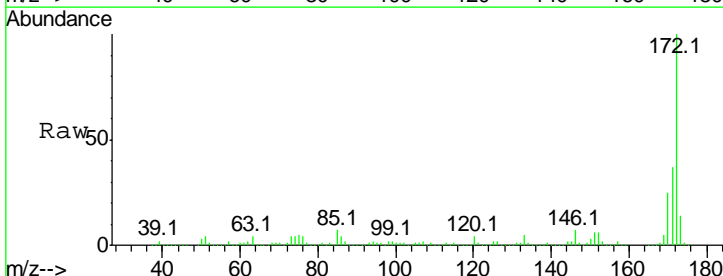


Abundance Ion 329.80 (329.50 to 330.50): E
 Ion 331.80 (331.50 to 332.50): E
 Ion 141.00 (140.70 to 141.70): E

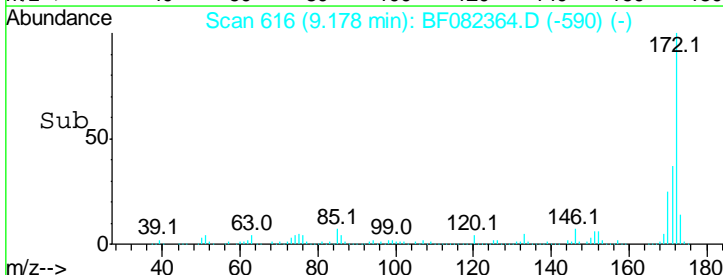
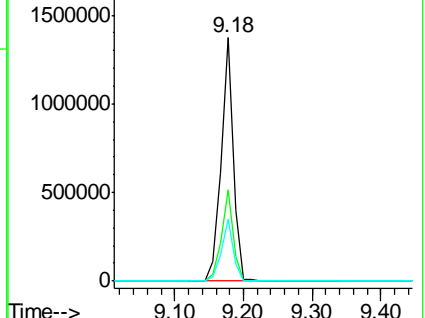


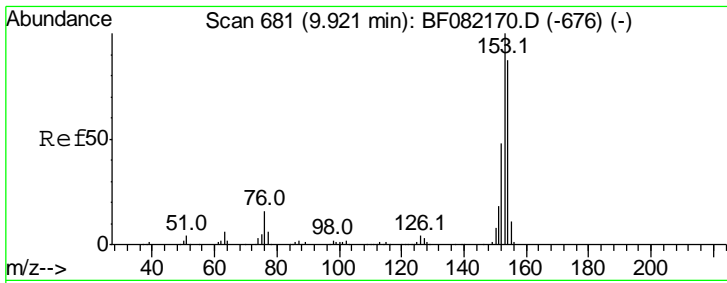
#44
 2-Fluorobiphenyl
 Concen: 99.64 ng
 RT: 9.18 min Scan# 616
 Delta R.T. 0.00 min
 Lab File: BF082364.D
 Acq: 19 Oct 2015 19:21

Tgt Ion	Resp	Lower	Upper
172	100		
171	37.5	28.6	42.8
170	25.2	19.7	29.5



Abundance Ion 172.00 (171.70 to 172.70): E
 Ion 171.00 (170.70 to 171.70): E
 Ion 170.00 (169.70 to 170.70): E

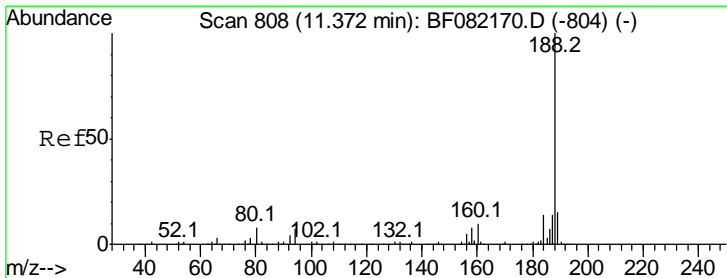
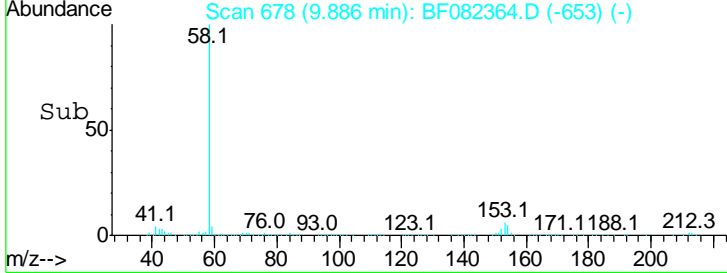
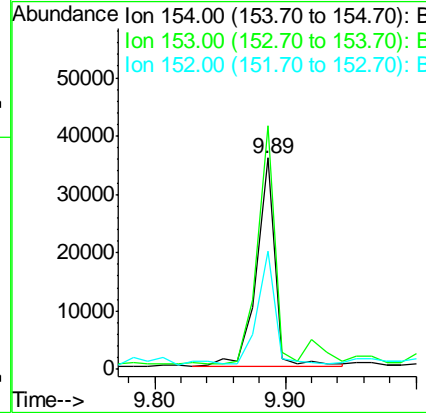
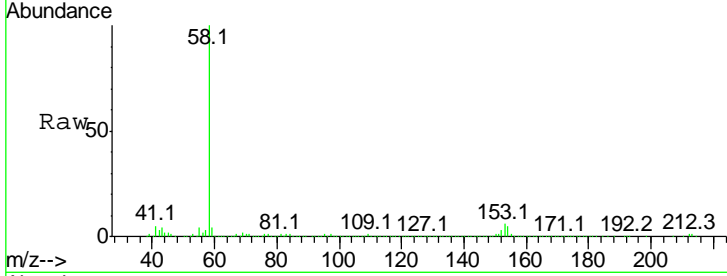




#51
 Acenaphthene
 Concen: 2.21 ng
 RT: 9.89 min Scan# 678
 Delta R.T. -0.01 min
 Lab File: BF082364.D
 Acq: 19 Oct 2015 19:21

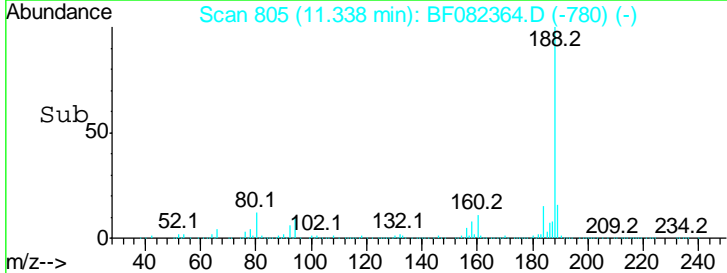
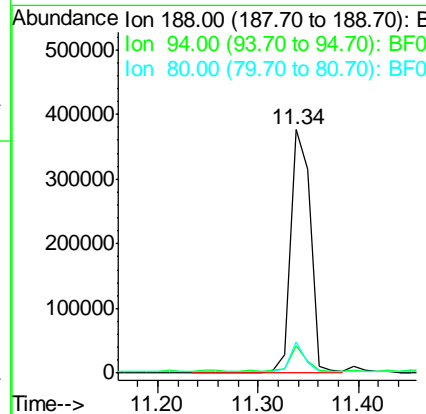
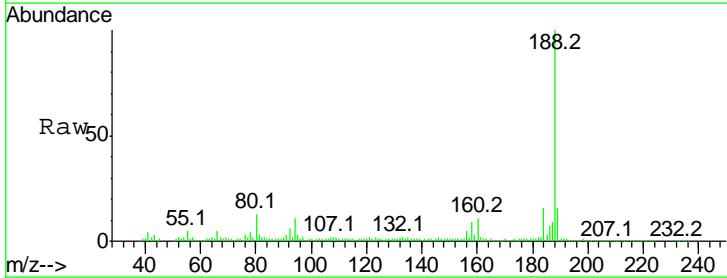
Instrument :
 BNA_F
 ClientSampled :
 WC100215-LRE

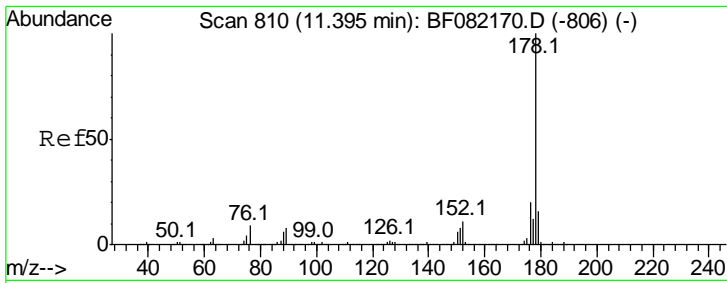
Tgt Ion	Resp	Lower	Upper
154	35904		
154	100		
153	115.2	91.4	137.2
152	56.0	44.3	66.5



#63
 Phenanthrene-d10
 Concen: 20.00 ng
 RT: 11.34 min Scan# 805
 Delta R.T. -0.01 min
 Lab File: BF082364.D
 Acq: 19 Oct 2015 19:21

Tgt Ion	Resp	Lower	Upper
188	507684		
188	100		
94	11.3	5.8	8.6#
80	12.8	6.4	9.6#

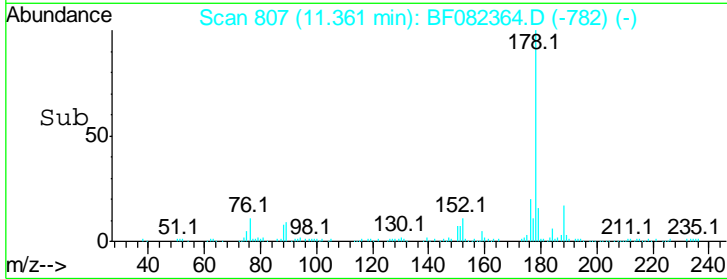
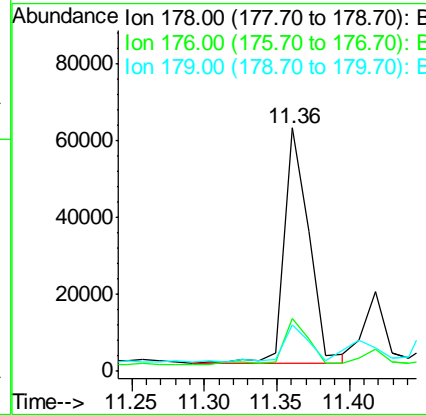
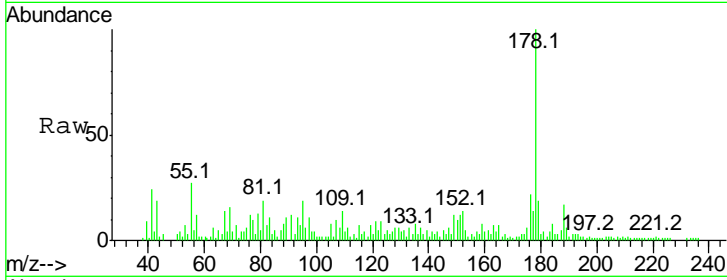




#70
 Phenanthrene
 Concen: 2.85 ng
 RT: 11.36 min Scan# 807
 Delta R.T. -0.01 min
 Lab File: BF082364.D
 Acq: 19 Oct 2015 19:21

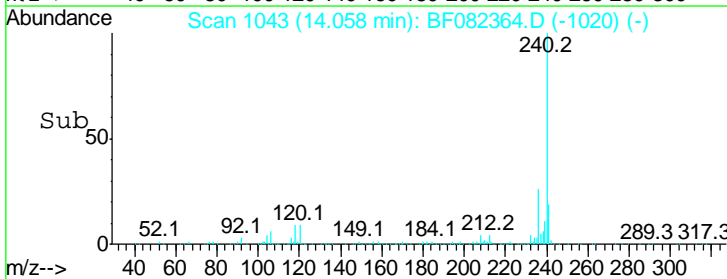
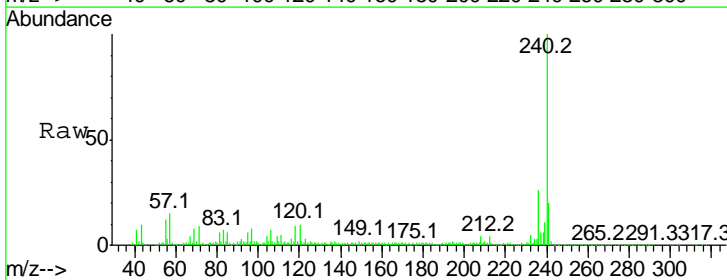
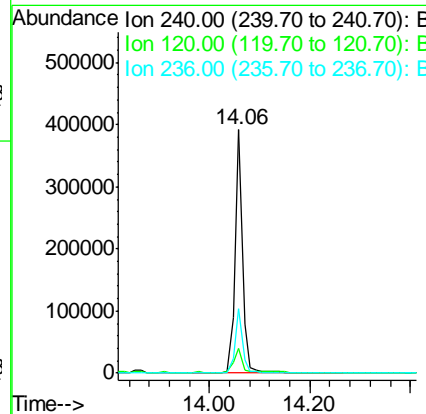
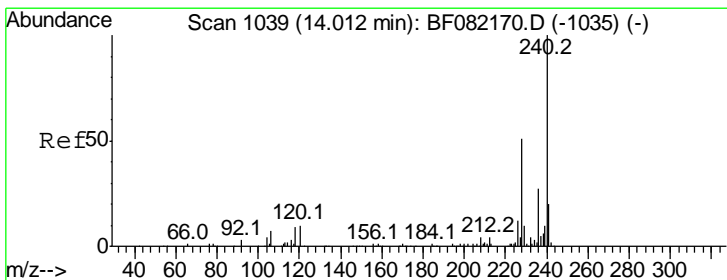
Instrument :
 BNA_F
 ClientSampled :
 WC100215-LRE

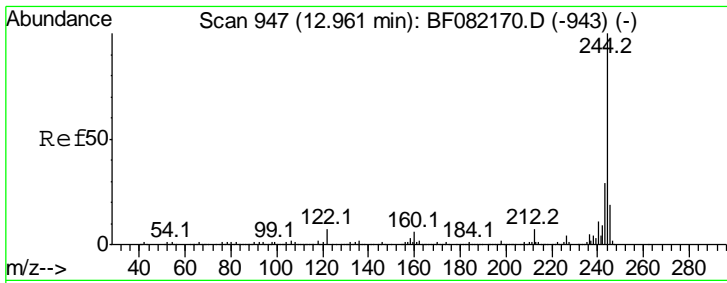
Tgt Ion	Resp	Lower	Upper
178	100		
176	21.9	16.0	24.0
179	18.9	12.6	19.0



#75
 Chrysene-d12
 Concen: 20.00 ng
 RT: 14.06 min Scan# 1043
 Delta R.T. -0.03 min
 Lab File: BF082364.D
 Acq: 19 Oct 2015 19:21

Tgt Ion	Resp	Lower	Upper
240	100		
120	9.9	8.1	12.1
236	26.4	21.3	31.9



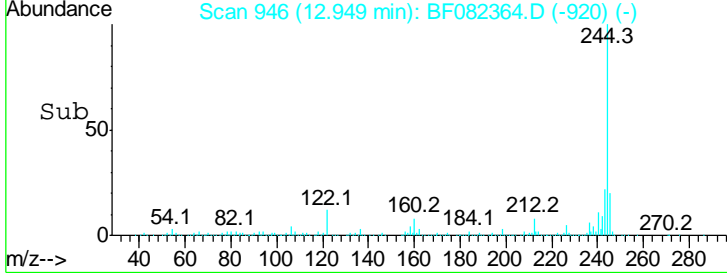
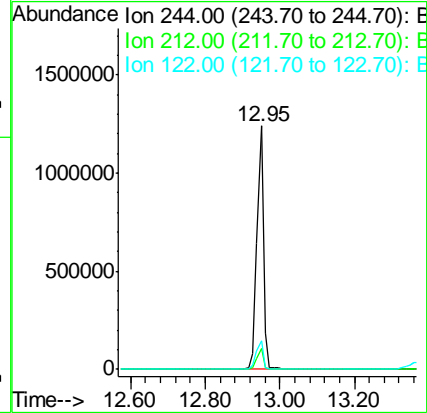
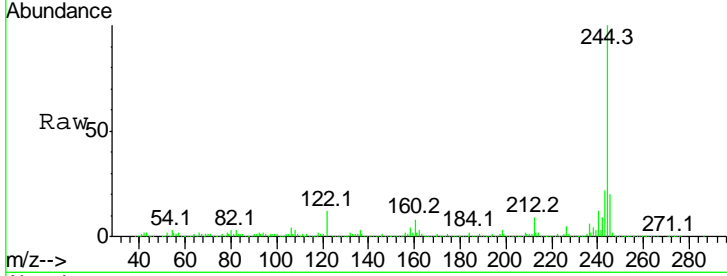


#78
 Terphenyl-d14
 Concen: 99.98 ng
 RT: 12.95 min Scan# 946
 Delta R.T. 0.00 min
 Lab File: BF082364.D
 Acq: 19 Oct 2015 19:21

Instrument :
 BNA_F
ClientSampled :
 WC100215-LRE

Tgt Ion: 244 Resp: 1513196

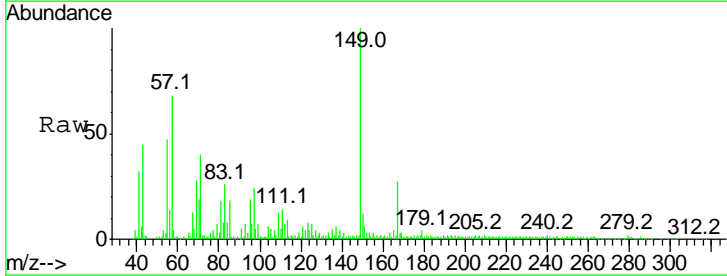
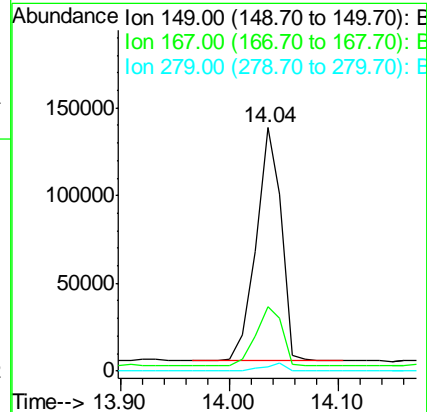
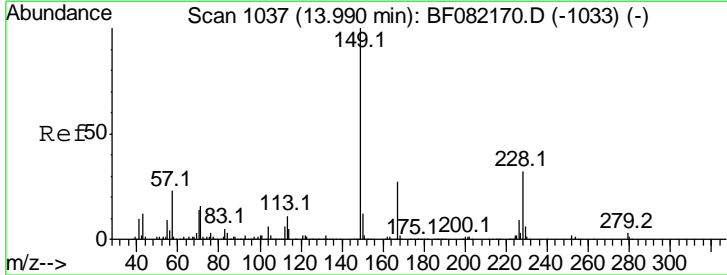
Ion	Ratio	Lower	Upper
244	100		
212	8.6	5.8	8.6
122	11.9	5.9	8.9#

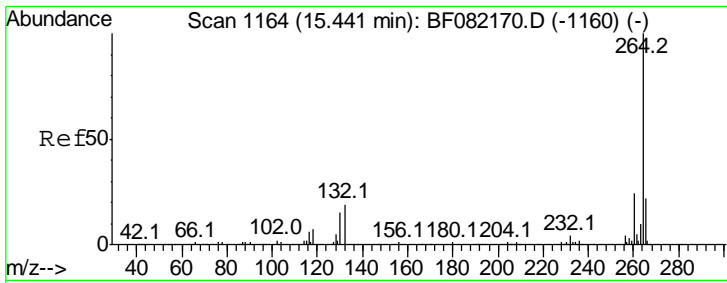


#83
 Bis(2-ethylhexyl)phthalate
 Concen: 13.77 ng
 RT: 14.04 min Scan# 1041
 Delta R.T. -0.03 min
 Lab File: BF082364.D
 Acq: 19 Oct 2015 19:21

Tgt Ion: 149 Resp: 213330

Ion	Ratio	Lower	Upper
149	100		
167	26.5	21.3	31.9
279	1.9	2.6	4.0#





#86
 Perylene-d12
 Concen: 20.00 ng
 RT: 15.62 min Scan# 1180
 Delta R.T. -0.05 min
 Lab File: BF082364.D
 Acq: 19 Oct 2015 19:21

Instrument :
 BNA_F
 ClientSampleId :
 WC100215-LRE

Tot Ion: 264 Resp: 329811

Ion	Ratio	Lower	Upper
264	100		
260	24.0	19.0	28.6
265	20.7	17.3	25.9

