

Data Path : Z:\HPCHEM1\BNA F\DATA\BF101916\  
 Data File : BF090653.D  
 Acq On : 19 Oct 2016 17:47  
 Operator : UM/SJ  
 Sample : H5296-03  
 Misc :  
 ALS Vial : 12 Sample Multiplier: 1

Instrument :  
 BNA\_F  
 ClientSampleId :  
 OWL-C5-GW

Integration Parameters: rteint.p  
 Integrator: RTE  
 Smoothing : ON  
 Sampling : 1  
 Start Thrs: 0.2  
 Stop Thrs : 0

Filtering: 5  
 Min Area: 3 % of largest Peak  
 Max Peaks: 100  
 Peak Location: TOP

If leading or trailing edge < 100 prefer < Baseline drop else tangent >  
 Peak separation: 5

Method : Z:\HPCHEM1\BNA F\METHODS\8270-BF101316.M  
 Title : ASP BNA STANDARDS FOR 5 POINT CALIBRATION

Signal : TIC

peak #	R.T. min	first scan	max scan	last scan	PK TY	peak height	corr. area	corr. % max.	% of total
1	5.057	236	238	247	rBV	419546	611744	8.89%	0.995%
2	5.492	273	276	278	rBV	2332508	2607821	37.91%	4.241%
3	6.520	363	366	368	rBV	1265026	1581160	22.98%	2.571%
4	6.657	375	378	380	rBV	4330562	4928424	71.64%	8.014%
5	6.886	395	398	409	rBV	1393400	1442528	20.97%	2.346%
6	7.046	409	412	413	rVV	3986785	4529320	65.84%	7.365%
7	7.069	413	414	416	rVV	607073	506390	7.36%	0.823%
8	7.137	418	420	424	rVV	106454	138876	2.02%	0.226%
9	7.229	424	428	430	rVB	102451	105522	1.53%	0.172%
10	7.446	442	447	450	rBV2	2500497	3838163	55.79%	6.241%
11	7.526	453	454	457	rVV2	99084	196375	2.85%	0.319%
12	7.572	457	458	460	rVV	65252	93823	1.36%	0.153%
13	7.663	462	466	467	rVB2	126202	189139	2.75%	0.308%
14	7.823	477	480	481	rBV	165898	206938	3.01%	0.337%
15	7.915	485	488	489	rBV	275430	371288	5.40%	0.604%
16	7.983	492	494	498	rVB3	43490	76915	1.12%	0.125%
17	8.075	500	502	504	rBV2	71732	112941	1.64%	0.184%
18	8.166	508	510	514	rVV	1484658	2467206	35.86%	4.012%
19	8.223	514	515	516	rVV	178049	133171	1.94%	0.217%
20	8.258	516	518	520	rVB2	76754	85927	1.25%	0.140%
21	8.372	525	528	530	rBV	462722	502071	7.30%	0.816%
22	8.418	530	532	534	rBV	462872	442341	6.43%	0.719%
23	8.555	542	544	547	rVB	298050	293738	4.27%	0.478%
24	8.646	549	552	553	rBV	271939	333441	4.85%	0.542%
25	8.680	553	555	558	rVB3	107738	143912	2.09%	0.234%
26	8.738	558	560	561	rVB	108835	122452	1.78%	0.199%
27	8.760	561	562	564	rBV2	182051	191419	2.78%	0.311%
28	8.806	564	566	567	rBV2	66746	109298	1.59%	0.178%
29	8.829	567	568	570	rVB2	178961	179296	2.61%	0.292%
30	9.000	580	583	584	rBV	226676	289604	4.21%	0.471%
31	9.069	587	589	591	rBV3	70183	185528	2.70%	0.302%
32	9.115	591	593	597	rVB3	132811	205705	2.99%	0.335%
33	9.206	597	601	602	rBV3	94958	203137	2.95%	0.330%
34	9.252	602	605	607	rBV	6402790	6192086	90.00%	10.069%

Data Path : Z:\HPCHEM1\BNA F\DATA\BF101916\  
 Data File : BF090653.D  
 Acq On : 19 Oct 2016 17:47  
 Operator : UM/SJ  
 Sample : H5296-03  
 Misc :  
 ALS Vial : 12 Sample Multiplier: 1

Instrument :  
 BNA\_F  
 ClientSampleId :  
 OWL-C5-GW

Integration Parameters: rteint.p  
 Integrator: RTE  
 Smoothing : ON  
 Sampling : 1  
 Start Thrs: 0.2  
 Stop Thrs : 0

Filtering: 5  
 Min Area: 3 % of largest Peak  
 Max Peaks: 100  
 Peak Location: TOP

If leading or trailing edge < 100 prefer < Baseline drop else tangent >  
 Peak separation: 5

Method : Z:\HPCHEM1\BNA F\METHODS\8270-BF101316.M  
 Title : ASP BNA STANDARDS FOR 5 POINT CALIBRATION

35	9.355	612	614	616	rVV	82754	159422	2.32%	0.259%
36	9.400	616	618	625	rVB	274159	500805	7.28%	0.814%
37	9.515	625	628	630	rBV3	82272	213129	3.10%	0.347%
38	9.606	630	636	637	rVV4	147279	483341	7.03%	0.786%
39	9.640	637	639	643	rVV	387417	546529	7.94%	0.889%
40	9.709	643	645	649	rVB3	144768	369897	5.38%	0.602%
41	9.789	649	652	654	rBV3	55239	88134	1.28%	0.143%
42	9.835	654	656	662	rBV6	62875	206292	3.00%	0.335%
43	9.926	662	664	666	rVV	2525774	2479816	36.05%	4.033%
44	9.961	666	667	670	rVV2	112322	125429	1.82%	0.204%
45	10.006	670	671	675	rVB3	112119	228430	3.32%	0.371%
46	10.132	680	682	685	rBV3	142091	190296	2.77%	0.309%
47	10.246	689	692	698	rBV2	423493	704774	10.24%	1.146%
48	10.361	698	702	706	rVB4	132172	307173	4.46%	0.500%
49	10.429	706	708	710	rBV2	90754	175029	2.54%	0.285%
50	10.475	710	712	714	rBV	113607	133993	1.95%	0.218%
51	10.543	716	718	720	rVB	487840	424714	6.17%	0.691%
52	10.726	731	734	737	rBV3	3143118	4801205	69.79%	7.807%
53	10.772	737	738	742	rVV	546407	504101	7.33%	0.820%
54	10.841	742	744	748	rVB	343852	460296	6.69%	0.749%
55	11.058	761	763	765	rBV2	154361	194091	2.82%	0.316%
56	11.115	766	768	771	rVB2	80992	142461	2.07%	0.232%
57	11.321	784	786	790	rVB3	124847	165457	2.40%	0.269%
58	11.412	792	794	797	rVV2	1955415	2261718	32.87%	3.678%
59	11.469	797	799	801	rVV	113262	157424	2.29%	0.256%
60	11.526	803	804	810	rVB3	130240	215886	3.14%	0.351%
61	11.949	839	841	843	rBV	171884	171839	2.50%	0.279%
62	12.029	846	848	850	rVB	66891	69726	1.01%	0.113%
63	12.178	859	861	864	rVV2	150604	221596	3.22%	0.360%
64	12.235	864	866	868	rVB	64810	69390	1.01%	0.113%
65	12.372	876	878	883	rVB3	61865	154950	2.25%	0.252%
66	12.464	883	886	890	rBV	133210	211491	3.07%	0.344%
67	12.555	892	894	896	rBV	50746	80101	1.16%	0.130%
68	13.012	931	934	936	rBV	5018878	6879752	100.00%	11.187%
69	13.904	1010	1012	1018	rVB2	70885	125002	1.82%	0.203%
70	14.052	1023	1025	1028	rBV	1780377	2009510	29.21%	3.268%
71	15.504	1149	1152	1166	rVB	1170892	1644637	23.91%	2.674%

Data Path : Z:\HPCHEM1\BNA\_F\DATA\BF101916\  
Data File : BF090653.D  
Acq On : 19 Oct 2016 17:47  
Operator : UM/SJ  
Sample : H5296-03  
Misc :  
ALS Vial : 12 Sample Multiplier: 1

Instrument :  
BNA\_F  
ClientSampleId :  
OWL-C5-GW

Integration Parameters: rteint.p  
Integrator: RTE  
Smoothing : ON Filtering: 5  
Sampling : 1 Min Area: 3 % of largest Peak  
Start Thrs: 0.2 Max Peaks: 100  
Stop Thrs : 0 Peak Location: TOP

If leading or trailing edge < 100 prefer < Baseline drop else tangent >  
Peak separation: 5

Method : Z:\HPCHEM1\BNA\_F\METHODS\8270-BF101316.M  
Title : ASP BNA STANDARDS FOR 5 POINT CALIBRATION

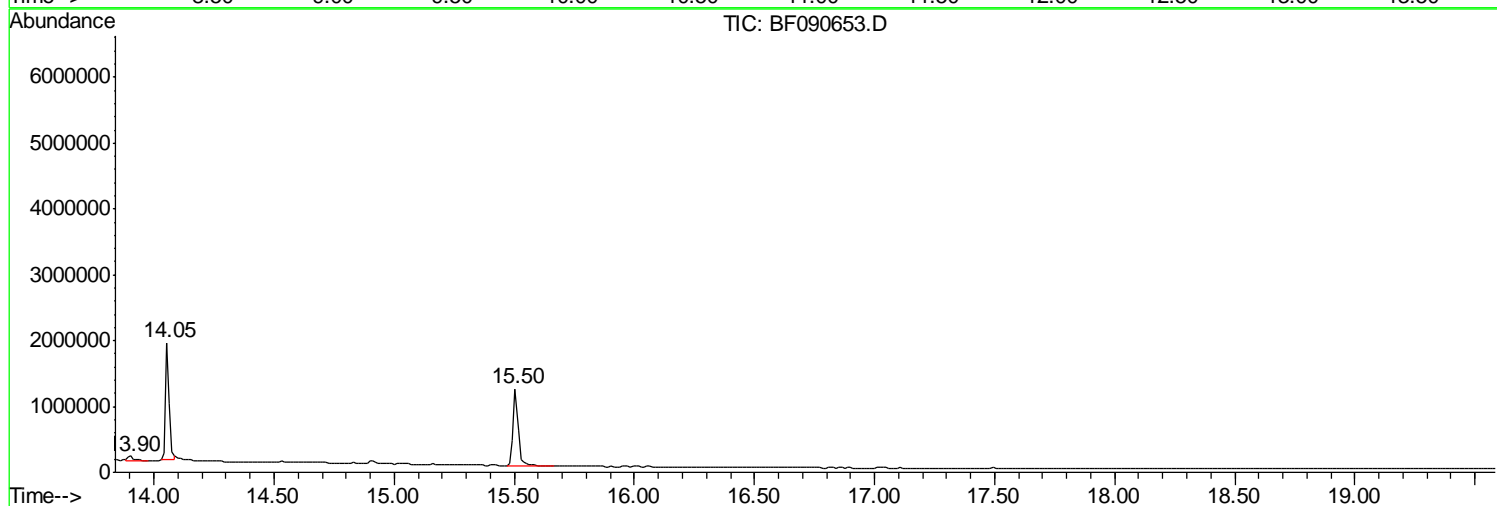
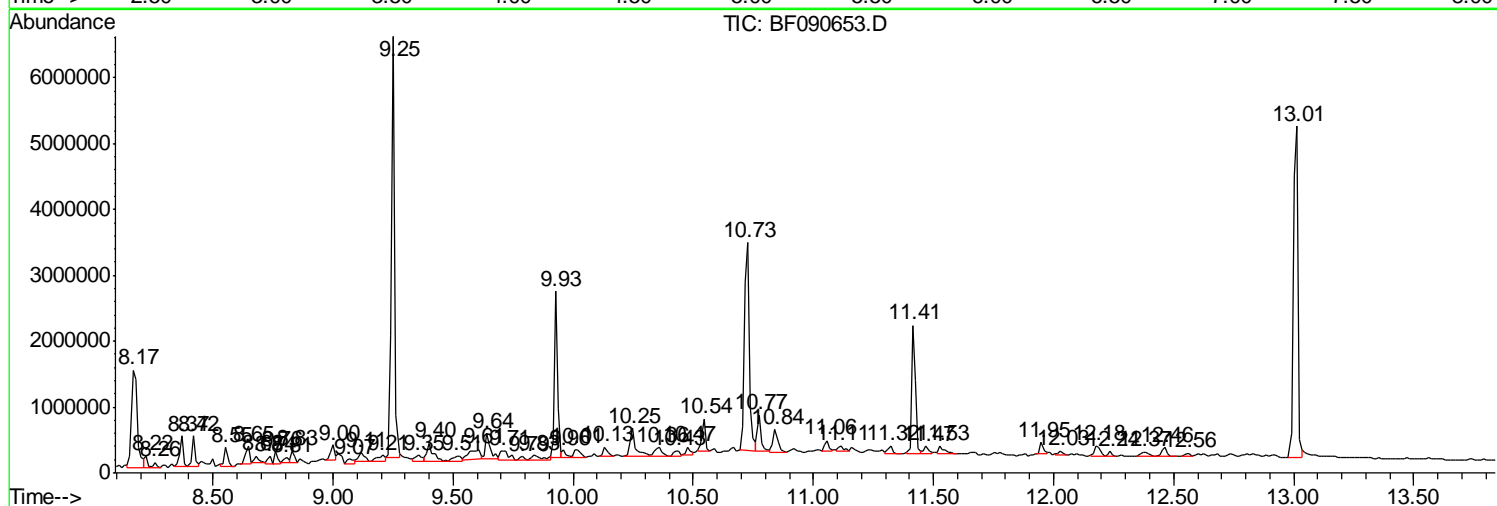
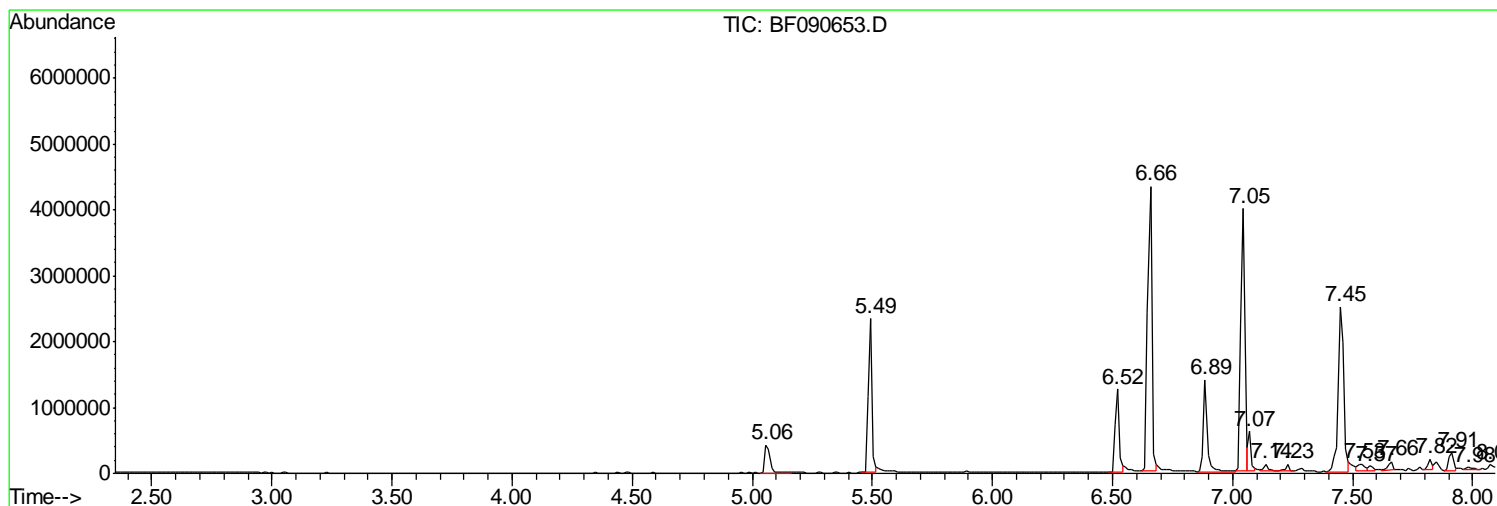
Sum of corrected areas: 61495535

Data Path : Z:\HPCHEM1\BNA F\DATA\BF101916\  
 Data File : BF090653.D  
 Acq On : 19 Oct 2016 17:47  
 Operator : UM/SJ  
 Sample : H5296-03  
 Misc :  
 ALS Vial : 12 Sample Multiplier: 1

Instrument :  
 BNA\_F  
 Client Sampled :  
 OWL-C5-GW

Quant Method : Z:\HPCHEM1\BNA F\METHODS\8270-BF101316.M  
 Quant Title : ASP BNA STANDARDS FOR 5 POINT CALIBRATION

TIC Library : C:\DATABASE\NIST11.L  
 TIC Integration Parameters: LSCINT.P



Data Path : Z:\HPCHEM1\BNA F\DATA\BF101916\  
 Data File : BF090653.D  
 Acq On : 19 Oct 2016 17:47  
 Operator : UM/SJ  
 Sample : H5296-03  
 Misc :  
 ALS Vial : 12 Sample Multiplier: 1

Instrument :  
 BNA\_F  
 ClientSampled :  
 OWL-C5-GW

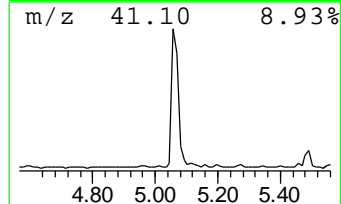
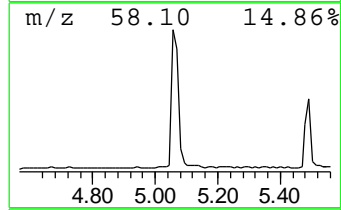
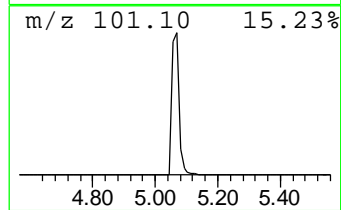
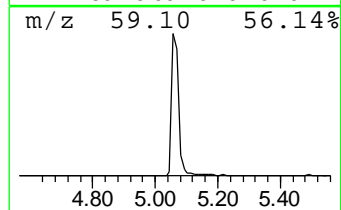
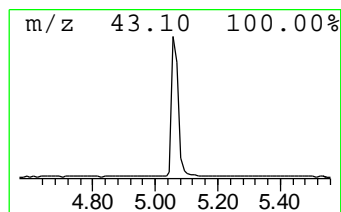
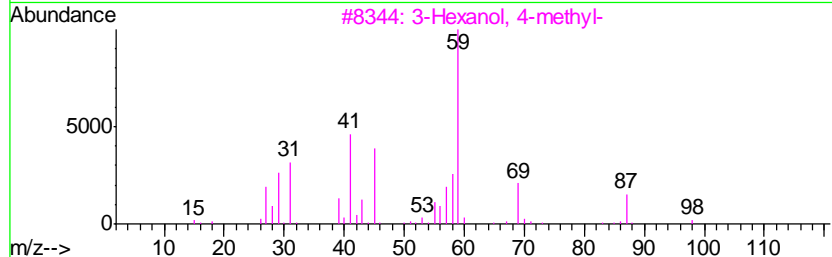
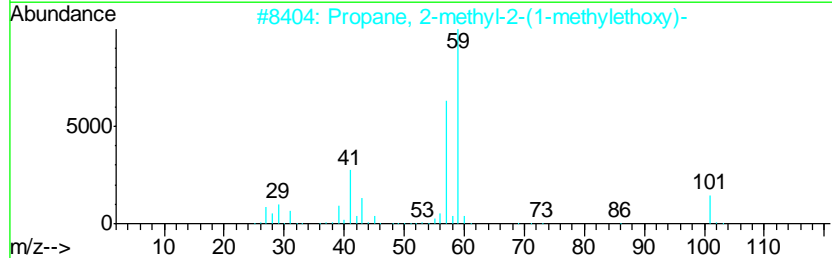
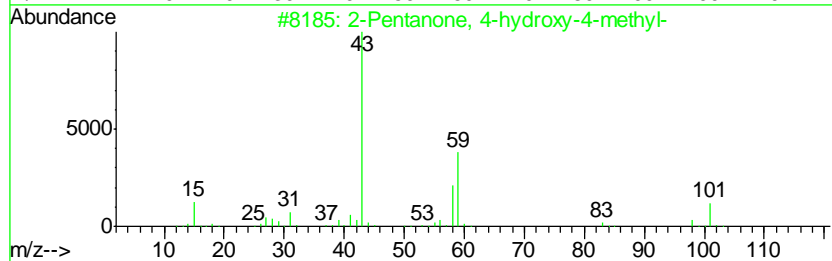
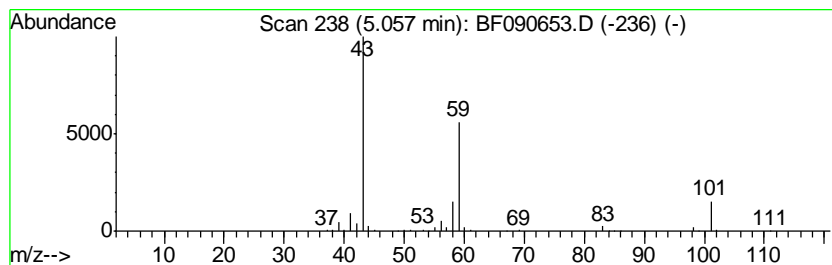
Quant Method : Z:\HPCHEM1\BNA F\METHODS\8270-BF101316.M  
 Quant Title : ASP BNA STANDARDS FOR 5 POINT CALIBRATION

TIC Library : C:\DATABASE\NIST11.L  
 TIC Integration Parameters: LSCINT.P

\*\*\*\*\*  
 Peak Number 1 2-Pentanone, 4-hydroxy-4-me... Concentration Rank 3

R.T.	EstConc	Area	Relative to ISTD	R.T.
5.06	8.48 ng	611744	1,4-Dichlorobenzene-d4	6.89

Hit#	of	Tentative ID	MW	MolForm	CAS#	Qual
1	5	2-Pentanone, 4-hydroxy-4-methyl-	116	C6H12O2	000123-42-2	59
2		Propane, 2-methyl-2-(1-methyleth...	116	C7H16O	017348-59-3	42
3		3-Hexanol, 4-methyl-	116	C7H16O	000615-29-2	33
4		2-Hexanol, 2-methyl-	116	C7H16O	000625-23-0	33
5		Acetic acid, cyano-, 1,1-dimethy...	141	C7H11NO2	001116-98-9	25



Data Path : Z:\HPCHEM1\BNA F\DATA\BF101916\  
 Data File : BF090653.D  
 Acq On : 19 Oct 2016 17:47  
 Operator : UM/SJ  
 Sample : H5296-03  
 Misc :  
 ALS Vial : 12 Sample Multiplier: 1

Instrument :  
 BNA\_F  
 ClientSampleID :  
 OWL-C5-GW

Quant Method : Z:\HPCHEM1\BNA F\METHODS\8270-BF101316.M  
 Quant Title : ASP BNA STANDARDS FOR 5 POINT CALIBRATION

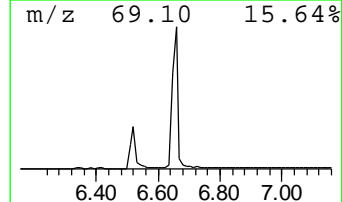
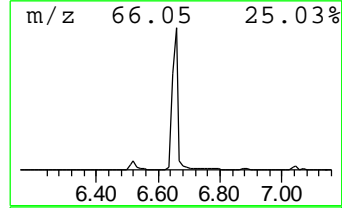
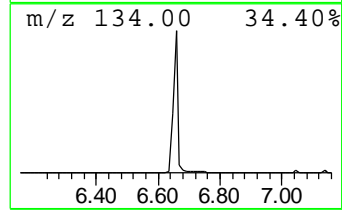
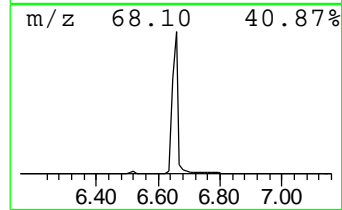
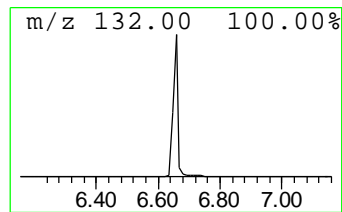
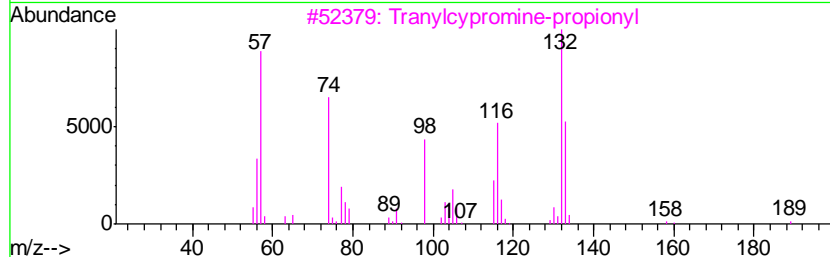
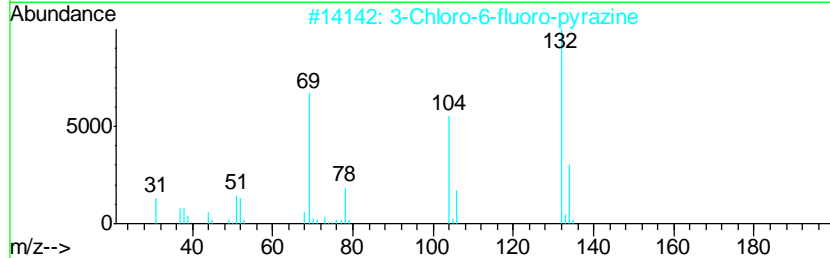
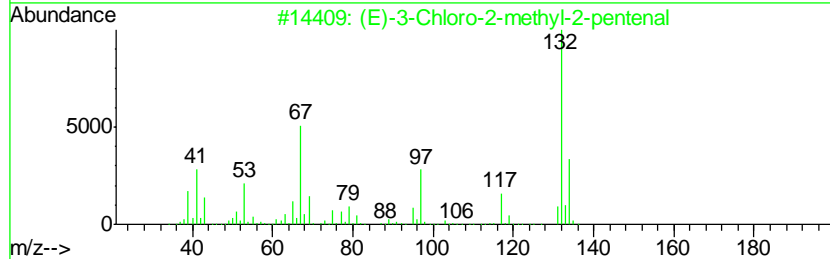
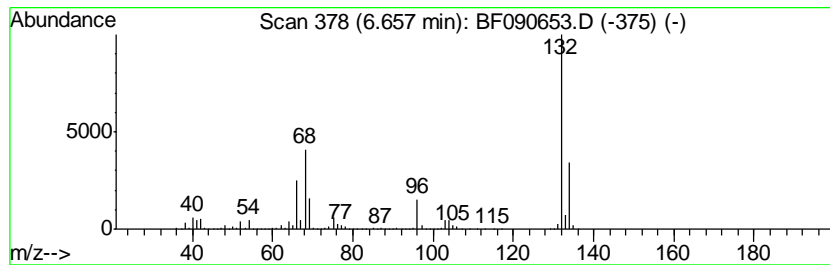
TIC Library : C:\DATABASE\NIST11.L  
 TIC Integration Parameters: LSCINT.P

\*\*\*\*\*  
 Peak Number 2 unknown6.66 Concentration Rank 1

R.T.	EstConc	Area	Relative to ISTD	R.T.
6.66	68.33 ng	4928420	1,4-Dichlorobenzene-d4	6.89

Hit#	of	Tentative ID	MW	MolForm	CAS#	Qual
1	5	(E)-3-Chloro-2-methyl-2-pentenal	132	C6H9ClO	031357-76-3	17
2		3-Chloro-6-fluoro-pyrazine	132	C4H2ClFN2	1000146-10-7	16
3		Tranlycypromine-propionyl	189	C12H15NO	1000123-86-3	10
4		2H-Cyclopenta[d]pyridazine, 2-me...	132	C8H8N2	022291-85-6	9
5		5-Fluoro-2-chloropyrimidine	132	C4H2ClFN2	062802-42-0	9



Data Path : Z:\HPCHEM1\BNA F\DATA\BF101916\  
 Data File : BF090653.D  
 Acq On : 19 Oct 2016 17:47  
 Operator : UM/SJ  
 Sample : H5296-03  
 Misc :  
 ALS Vial : 12 Sample Multiplier: 1

Instrument :  
 BNA\_F  
 ClientSampleID :  
 OWL-C5-GW

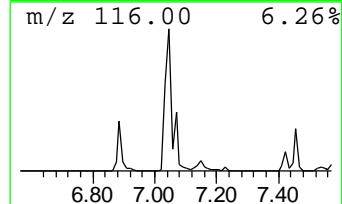
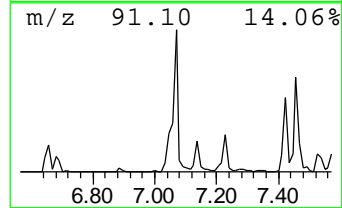
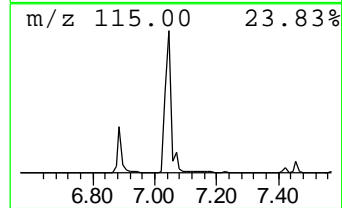
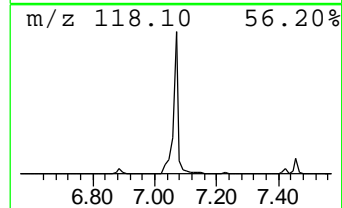
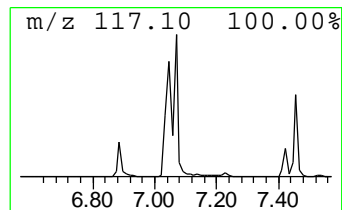
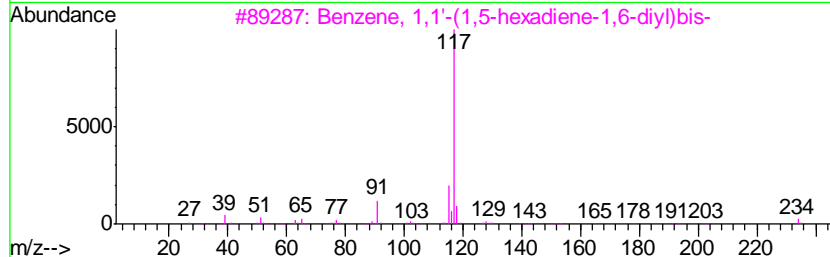
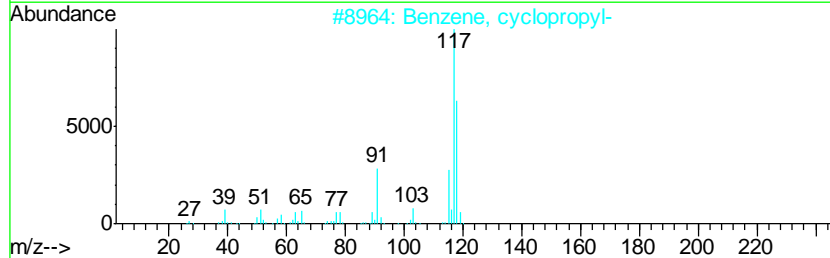
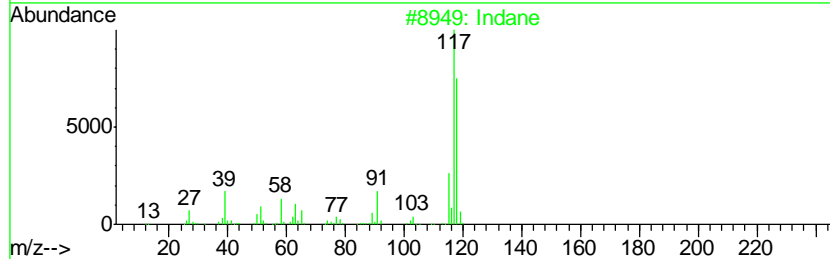
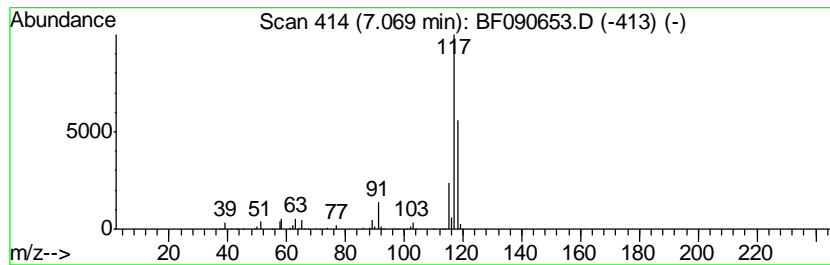
Quant Method : Z:\HPCHEM1\BNA F\METHODS\8270-BF101316.M  
 Quant Title : ASP BNA STANDARDS FOR 5 POINT CALIBRATION

TIC Library : C:\DATABASE\NIST11.L  
 TIC Integration Parameters: LSCINT.P

\*\*\*\*\*  
 Peak Number 4 Indane Concentration Rank 4

R.T.	EstConc	Area	Relative to ISTD	R.T.
7.07	7.02 ng	506390	1,4-Dichlorobenzene-d4	6.89

Hit#	of	Tentative ID	MW	MolForm	CAS#	Qual
1	5	Indane	118	C9H10	000496-11-7	87
2		Benzene, cyclopropyl-	118	C9H10	000873-49-4	72
3		Benzene, 1,1'-(1,5-hexadiene-1,6...	234	C18H18	004439-45-6	59
4		Benzene, 1-propenyl-	118	C9H10	000637-50-3	50
5		Benzene, 2-propenyl-	118	C9H10	000300-57-2	47



Data Path : Z:\HPCHEM1\BNA F\DATA\BF101916\  
 Data File : BF090653.D  
 Acq On : 19 Oct 2016 17:47  
 Operator : UM/SJ  
 Sample : H5296-03  
 Misc :  
 ALS Vial : 12 Sample Multiplier: 1

Instrument :  
 BNA\_F  
 ClientSampleID :  
 OWL-C5-GW

Quant Method : Z:\HPCHEM1\BNA F\METHODS\8270-BF101316.M  
 Quant Title : ASP BNA STANDARDS FOR 5 POINT CALIBRATION

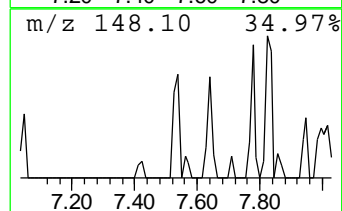
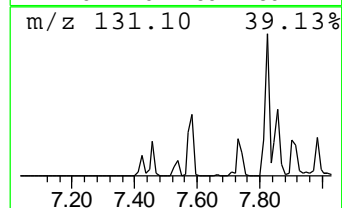
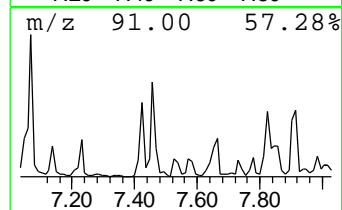
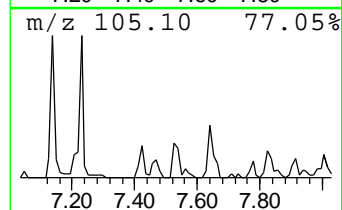
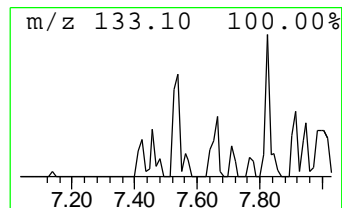
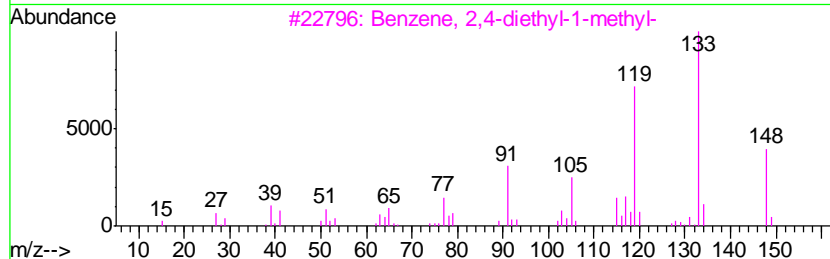
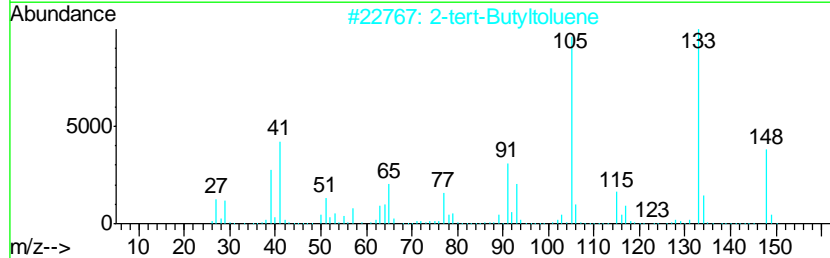
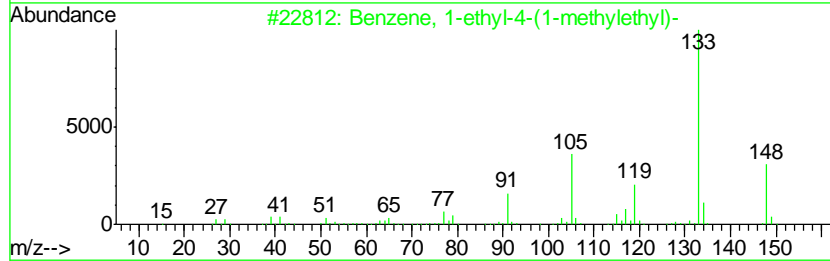
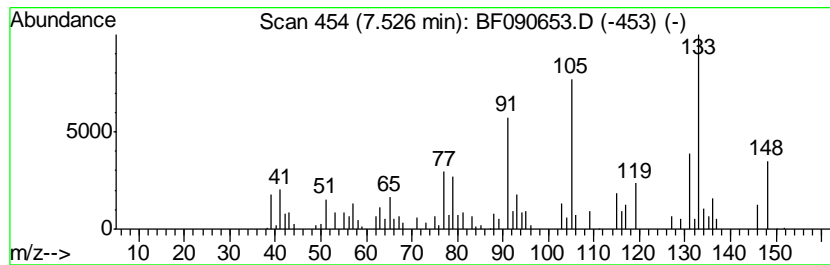
TIC Library : C:\DATABASE\NIST11.L  
 TIC Integration Parameters: LSCINT.P

\*\*\*\*\*  
 Peak Number 5 Benzene, 1-ethyl-4-(1-methyl... Concentration Rank 13

R.T.	EstConc	Area	Relative to ISTD	R.T.
7.53	2.72 ng	196375	1,4-Dichlorobenzene-d4	6.89

Hit#	of	Tentative ID	MW	MolForm	CAS#	Qual
1	5	Benzene, 1-ethyl-4-(1-methylethyl)-	148	C11H16	004218-48-8	64
2		2-tert-Butyltoluene	148	C11H16	001074-92-6	55
3		Benzene, 2,4-diethyl-1-methyl-	148	C11H16	001758-85-6	53
4		Benzaldehyde, 4-(1-methylethyl)-	148	C10H12O	000122-03-2	53
5		Benzene, 1-ethyl-3-(1-methylethyl)-	148	C11H16	004920-99-4	52





Data Path : Z:\HPCHEM1\BNA F\DATA\BF101916\  
 Data File : BF090653.D  
 Acq On : 19 Oct 2016 17:47  
 Operator : UM/SJ  
 Sample : H5296-03  
 Misc :  
 ALS Vial : 12 Sample Multiplier: 1

Instrument :  
 BNA\_F  
 ClientSampleID :  
 OWL-C5-GW

Quant Method : Z:\HPCHEM1\BNA F\METHODS\8270-BF101316.M  
 Quant Title : ASP BNA STANDARDS FOR 5 POINT CALIBRATION

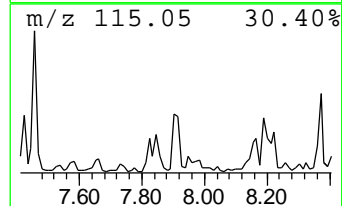
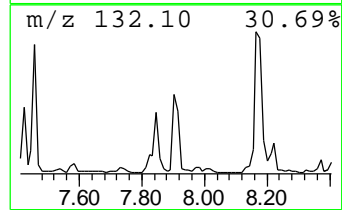
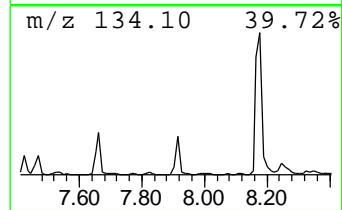
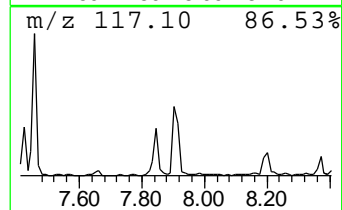
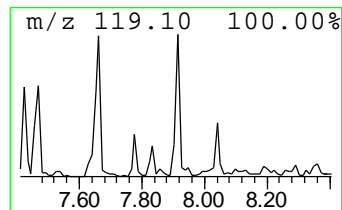
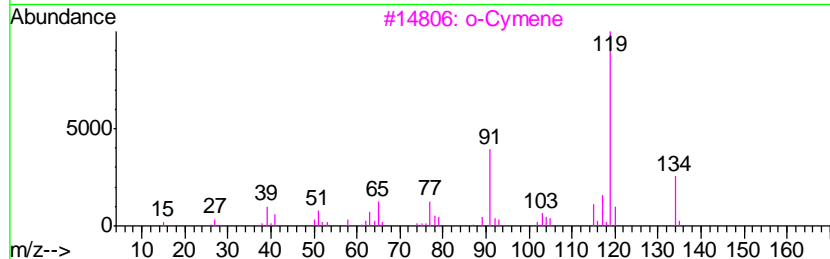
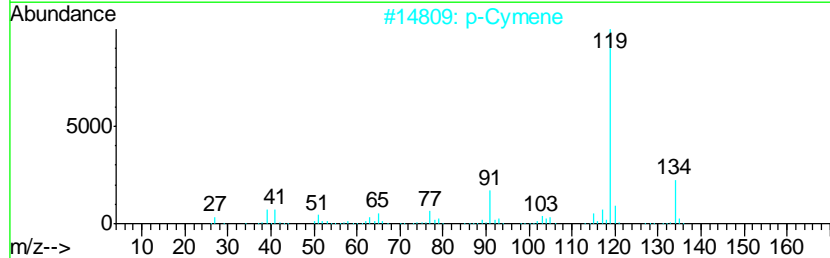
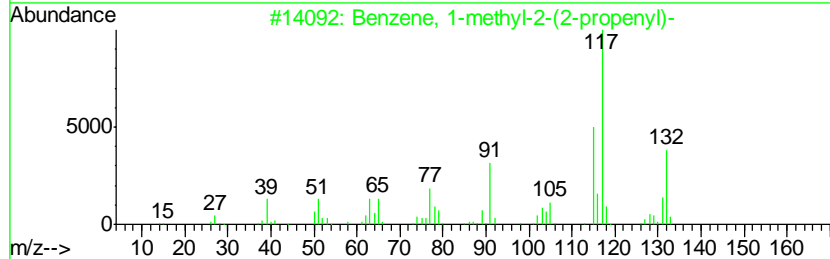
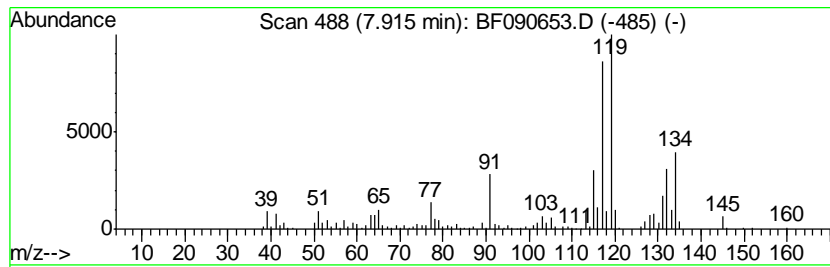
TIC Library : C:\DATABASE\NIST11.L  
 TIC Integration Parameters: LSCINT.P

\*\*\*\*\*  
 Peak Number 6 Benzene, 1-methyl-2-(2-prop... Concentration Rank 11

R.T.	EstConc	Area	Relative to ISTD	R.T.
7.91	3.01 ng	371288	Napthalene-d8	8.18

Hit#	of	Tentative ID	MW	MolForm	CAS#	Qual
1	5	Benzene, 1-methyl-2-(2-propenyl)-	132	C10H12	001587-04-8	64
2		p-Cymene	134	C10H14	000099-87-6	50
3		o-Cymene	134	C10H14	000527-84-4	50
4		Benzene, 2-butenyl-	132	C10H12	001560-06-1	50
5		Benzene, 1,2,3,5-tetramethyl-	134	C10H14	000527-53-7	50



Data Path : Z:\HPCHEM1\BNA F\DATA\BF101916\  
 Data File : BF090653.D  
 Acq On : 19 Oct 2016 17:47  
 Operator : UM/SJ  
 Sample : H5296-03  
 Misc :  
 ALS Vial : 12 Sample Multiplier: 1

Instrument :  
 BNA\_F  
 ClientSampleID :  
 OWL-C5-GW

Quant Method : Z:\HPCHEM1\BNA F\METHODS\8270-BF101316.M  
 Quant Title : ASP BNA STANDARDS FOR 5 POINT CALIBRATION

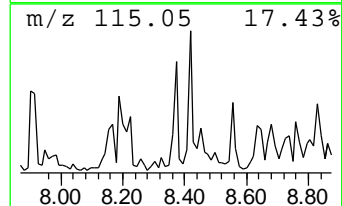
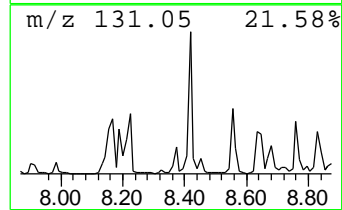
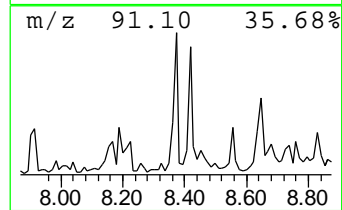
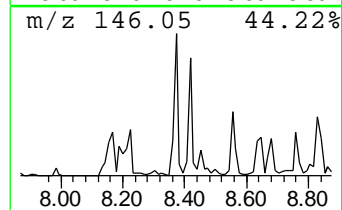
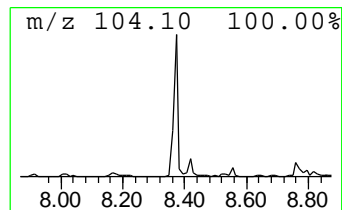
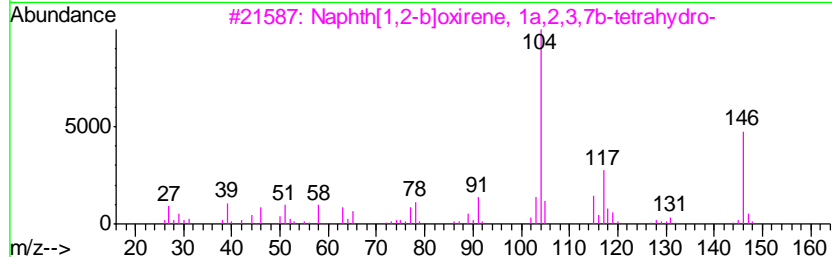
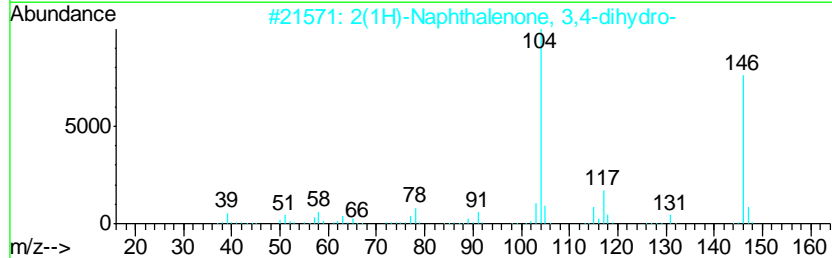
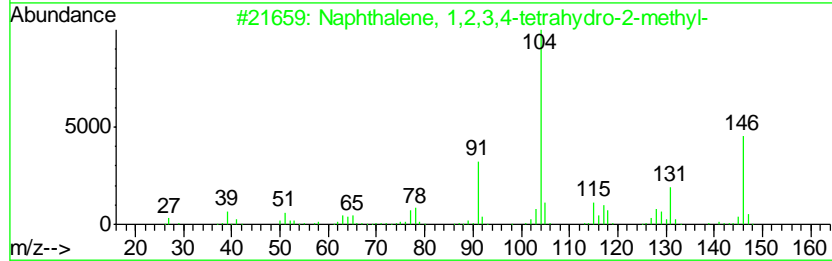
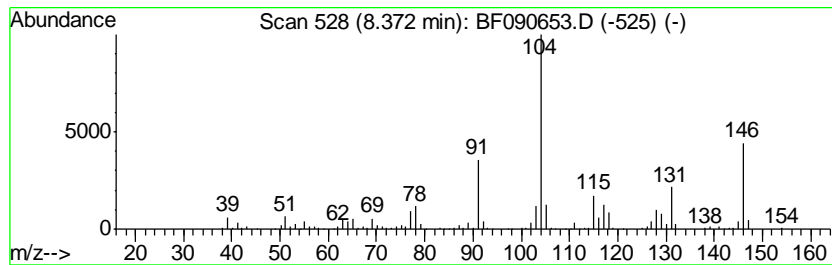
TIC Library : C:\DATABASE\NIST11.L  
 TIC Integration Parameters: LSCINT.P

\*\*\*\*\*  
 Peak Number 7 Naphthalene, 1,2,3,4-tetra... Concentration Rank 7

R.T.	EstConc	Area	Relative to ISTD	R.T.
8.37	4.07 ng	502071	Naphthalene-d8	8.18

Hit#	of	Tentative ID	MW	MolForm	CAS#	Qual
1	5	Naphthalene, 1,2,3,4-tetrahydro-...	146	C11H14	003877-19-8	96
2		2(1H)-Naphthalenone, 3,4-dihydro-	146	C10H10O	000530-93-8	64
3		Naphth[1,2-b]oxirene, 1a,2,3,7b-...	146	C10H10O	002461-34-9	58
4		7-Azabicyclo[4.2.2]deca-2,4,9-tr...	147	C9H9NO	017198-06-0	45
5		Benzoic acid, 2-phenylethyl ester	226	C15H14O2	000094-47-3	35



Data Path : Z:\HPCHEM1\BNA F\DATA\BF101916\  
 Data File : BF090653.D  
 Acq On : 19 Oct 2016 17:47  
 Operator : UM/SJ  
 Sample : H5296-03  
 Misc :  
 ALS Vial : 12 Sample Multiplier: 1

Instrument :  
 BNA\_F  
 ClientSampleID :  
 OWL-C5-GW

Quant Method : Z:\HPCHEM1\BNA F\METHODS\8270-BF101316.M  
 Quant Title : ASP BNA STANDARDS FOR 5 POINT CALIBRATION

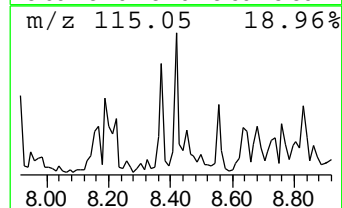
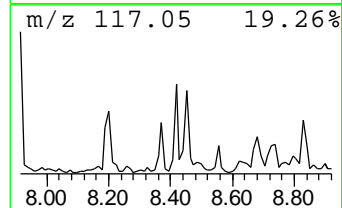
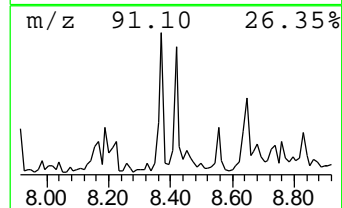
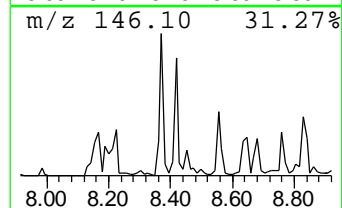
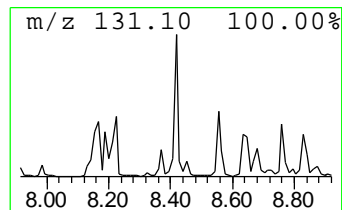
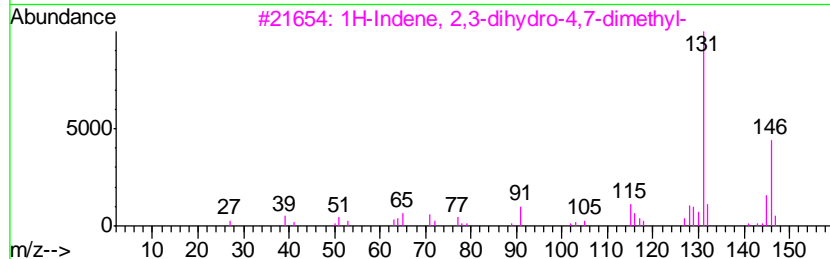
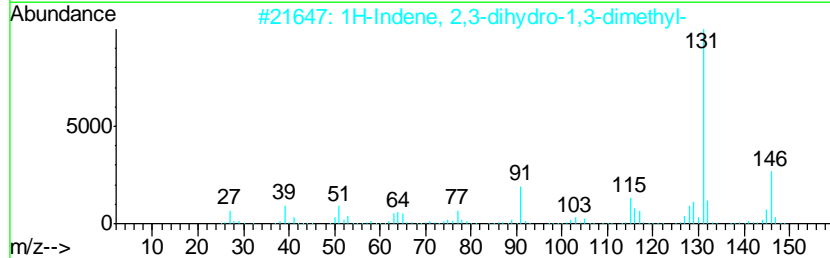
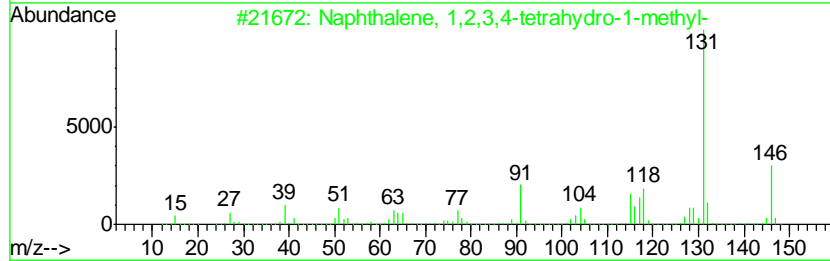
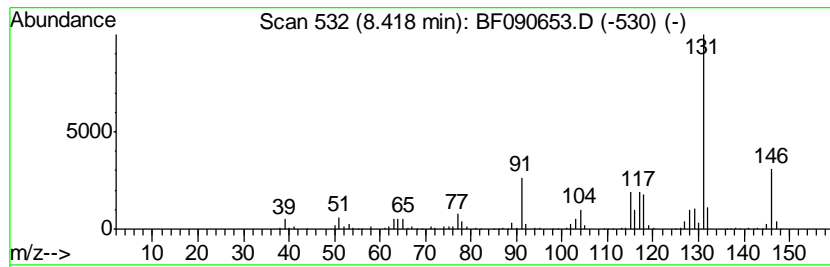
TIC Library : C:\DATABASE\NIST11.L  
 TIC Integration Parameters: LSCINT.P

\*\*\*\*\*  
 Peak Number 8 Naphthalene, 1,2,3,4-tetra... Concentration Rank 9

R.T.	EstConc	Area	Relative to ISTD	R.T.
8.42	3.59 ng	442341	Naphthalene-d8	8.18

Hit#	of	Tentative ID	MW	MolForm	CAS#	Qual
1	5	Naphthalene, 1,2,3,4-tetrahydro-...	146	C11H14	001559-81-5	96
2		1H-Indene, 2,3-dihydro-1,3-dimet...	146	C11H14	004175-53-5	81
3		1H-Indene, 2,3-dihydro-4,7-dimet...	146	C11H14	006682-71-9	81
4		2,2-Dimethylindene, 2,3-dihydro-	146	C11H14	020836-11-7	81
5		1H-Indene, 2,3-dihydro-1,6-dimet...	146	C11H14	017059-48-2	81



Data Path : Z:\HPCHEM1\BNA F\DATA\BF101916\  
 Data File : BF090653.D  
 Acq On : 19 Oct 2016 17:47  
 Operator : UM/SJ  
 Sample : H5296-03  
 Misc :  
 ALS Vial : 12 Sample Multiplier: 1

Instrument :  
 BNA\_F  
 ClientSampleID :  
 OWL-C5-GW

Quant Method : Z:\HPCHEM1\BNA F\METHODS\8270-BF101316.M  
 Quant Title : ASP BNA STANDARDS FOR 5 POINT CALIBRATION

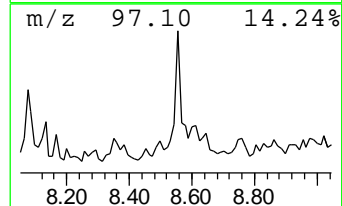
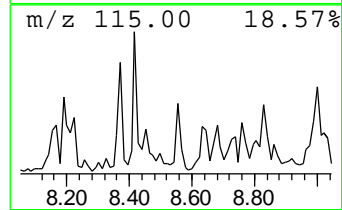
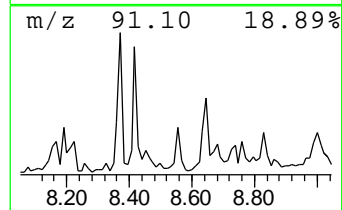
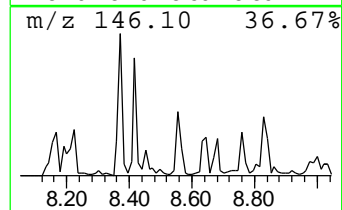
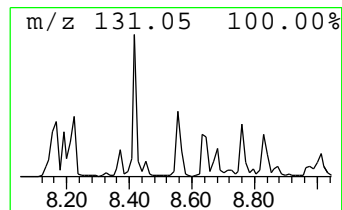
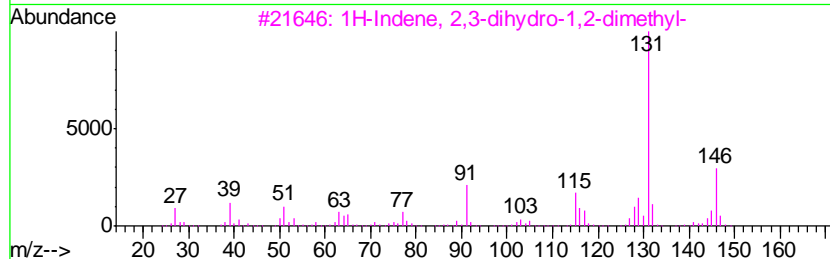
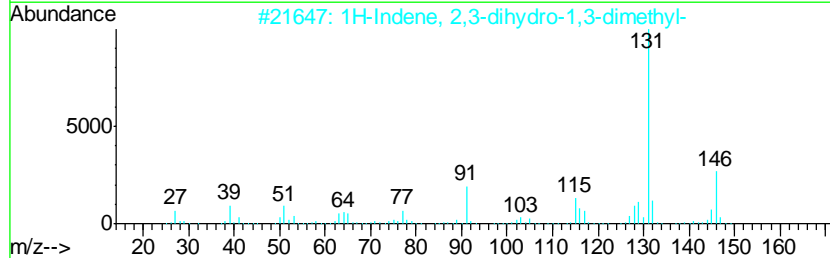
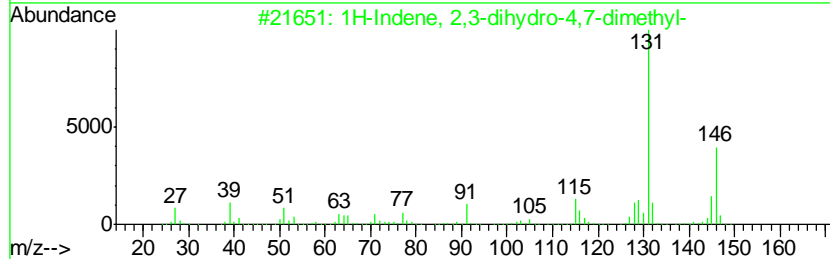
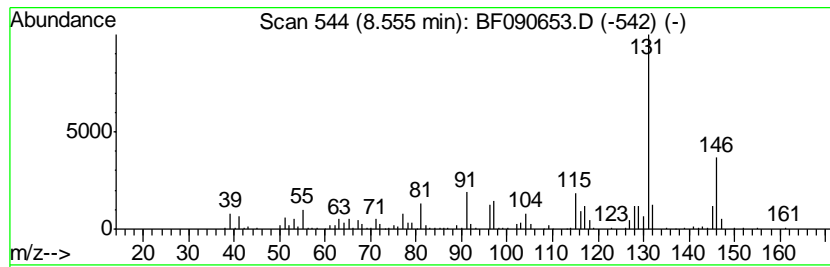
TIC Library : C:\DATABASE\NIST11.L  
 TIC Integration Parameters: LSCINT.P

\*\*\*\*\*  
 Peak Number 9 1H-Indene, 2,3-dihydro-4,7-... Concentration Rank 16

R.T.	EstConc	Area	Relative to ISTD	R.T.
8.55	2.38 ng	293738	Naphthalene-d8	8.18

Hit#	of	Tentative ID	MW	MolForm	CAS#	Qual
1	5	1H-Indene, 2,3-dihydro-4,7-dimet...	146	C11H14	006682-71-9	93
2		1H-Indene, 2,3-dihydro-1,3-dimet...	146	C11H14	004175-53-5	91
3		1H-Indene, 2,3-dihydro-1,2-dimet...	146	C11H14	017057-82-8	91
4		Naphthalene, 1,2,3,4-tetrahydro-...	146	C11H14	001559-81-5	87
5		Naphthalene, 1,2,3,4-tetrahydro-...	146	C11H14	002809-64-5	87



Data Path : Z:\HPCHEM1\BNA F\DATA\BF101916\  
 Data File : BF090653.D  
 Acq On : 19 Oct 2016 17:47  
 Operator : UM/SJ  
 Sample : H5296-03  
 Misc :  
 ALS Vial : 12 Sample Multiplier: 1

Instrument :  
 BNA\_F  
 ClientSampleID :  
 OWL-C5-GW

Quant Method : Z:\HPCHEM1\BNA F\METHODS\8270-BF101316.M  
 Quant Title : ASP BNA STANDARDS FOR 5 POINT CALIBRATION

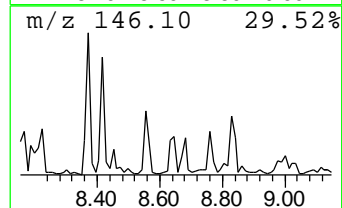
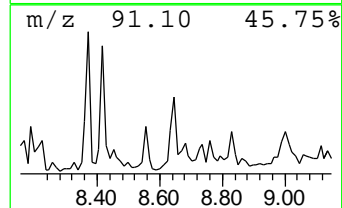
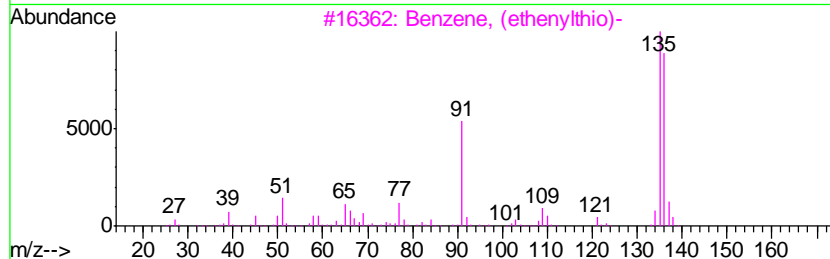
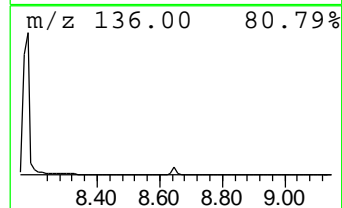
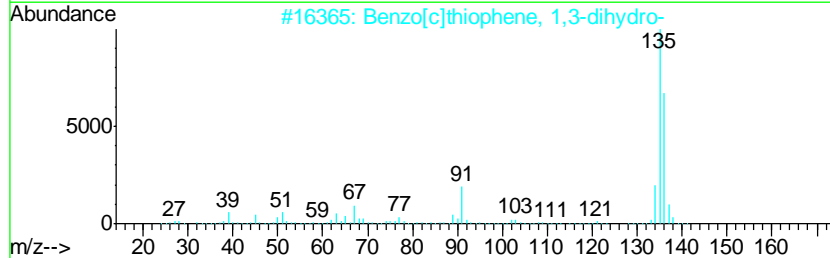
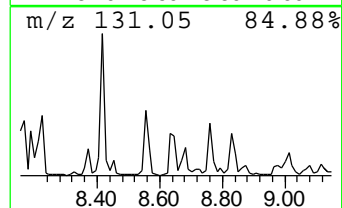
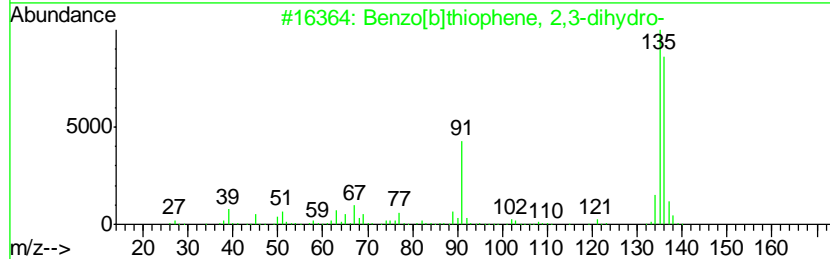
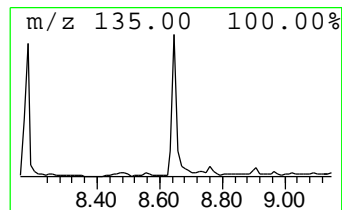
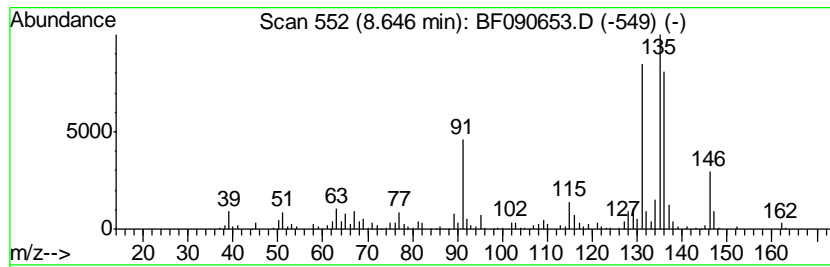
TIC Library : C:\DATABASE\NIST11.L  
 TIC Integration Parameters: LSCINT.P

\*\*\*\*\*  
 Peak Number 10 Benzo[b]thiophene, 2,3-dihy... Concentration Rank 14

R.T.	EstConc	Area	Relative to ISTD	R.T.
8.65	2.70 ng	333441	Napthalene-d8	8.18

Hit#	of	Tentative ID	MW	MolForm	CAS#	Qual
1	5	Benzo[b]thiophene, 2,3-dihydro-	136	C8H8S	004565-32-6	91
2		Benzo[c]thiophene, 1,3-dihydro-	136	C8H8S	002471-92-3	55
3		Benzene, (ethenylthio)-	136	C8H8S	001822-73-7	49
4		1H-Indene, 2,3-dihydro-1,2-dimet...	146	C11H14	017057-82-8	42
5		1H-Indene, 2,3-dihydro-4,7-dimet...	146	C11H14	006682-71-9	42



Data Path : Z:\HPCHEM1\BNA F\DATA\BF101916\  
 Data File : BF090653.D  
 Acq On : 19 Oct 2016 17:47  
 Operator : UM/SJ  
 Sample : H5296-03  
 Misc :  
 ALS Vial : 12 Sample Multiplier: 1

Instrument :  
 BNA\_F  
 ClientSampleID :  
 OWL-C5-GW

Quant Method : Z:\HPCHEM1\BNA F\METHODS\8270-BF101316.M  
 Quant Title : ASP BNA STANDARDS FOR 5 POINT CALIBRATION

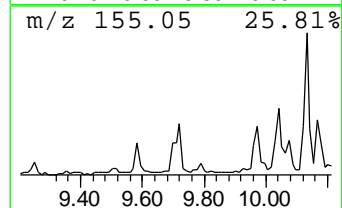
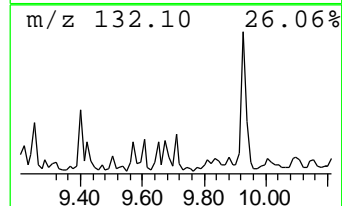
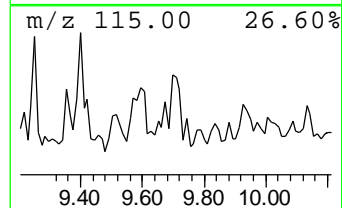
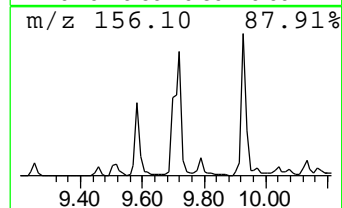
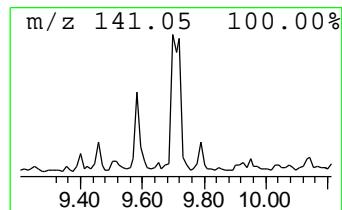
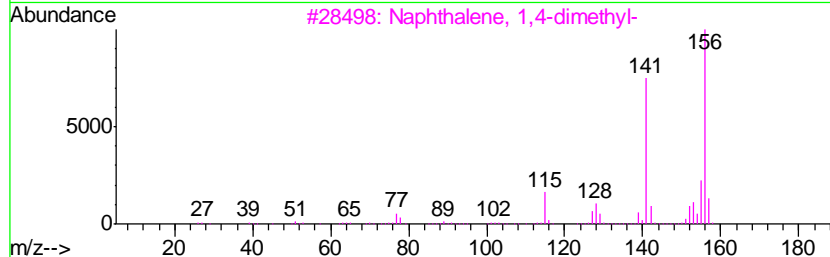
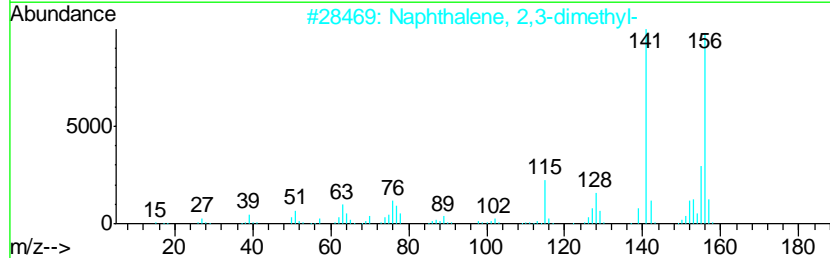
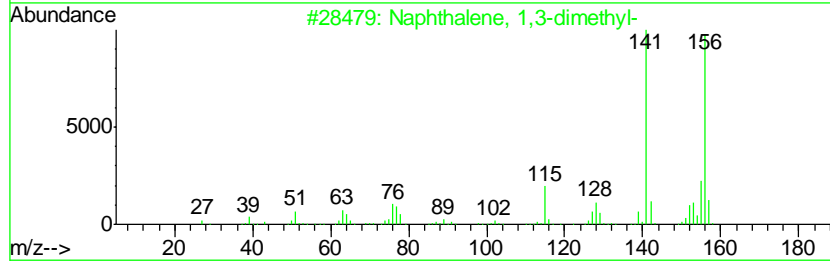
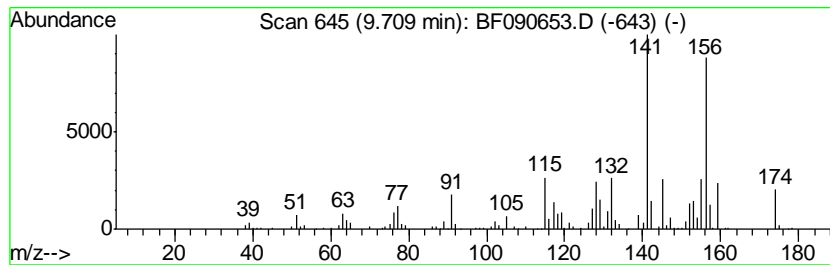
TIC Library : C:\DATABASE\NIST11.L  
 TIC Integration Parameters: LSCINT.P

\*\*\*\*\*  
 Peak Number 13 Naphthalene, 1,3-dimethyl- Concentration Rank 12

R.T.	EstConc	Area	Relative to ISTD	R.T.
9.71	2.98 ng	369897	Acenaphthene-d10	9.93

Hit#	of	Tentative ID	MW	MolForm	CAS#	Qual
1	5	Naphthalene, 1,3-dimethyl-	156	C12H12	000575-41-7	95
2		Naphthalene, 2,3-dimethyl-	156	C12H12	000581-40-8	95
3		Naphthalene, 1,4-dimethyl-	156	C12H12	000571-58-4	94
4		Naphthalene, 2,6-dimethyl-	156	C12H12	000581-42-0	93
5		Naphthalene, 1,7-dimethyl-	156	C12H12	000575-37-1	93



Data Path : Z:\HPCHEM1\BNA F\DATA\BF101916\  
 Data File : BF090653.D  
 Acq On : 19 Oct 2016 17:47  
 Operator : UM/SJ  
 Sample : H5296-03  
 Misc :  
 ALS Vial : 12 Sample Multiplier: 1

Instrument :  
 BNA\_F  
 ClientSampleID :  
 OWL-C5-GW

Quant Method : Z:\HPCHEM1\BNA F\METHODS\8270-BF101316.M  
 Quant Title : ASP BNA STANDARDS FOR 5 POINT CALIBRATION

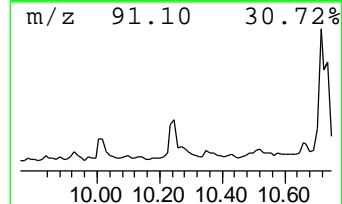
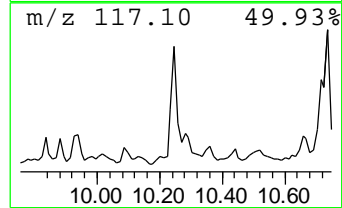
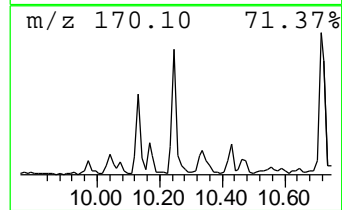
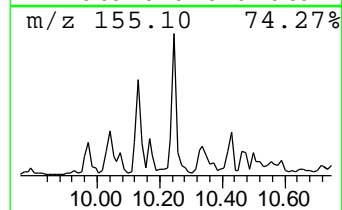
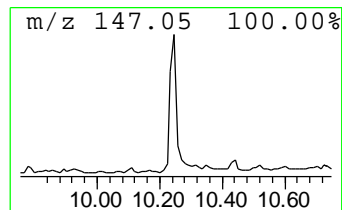
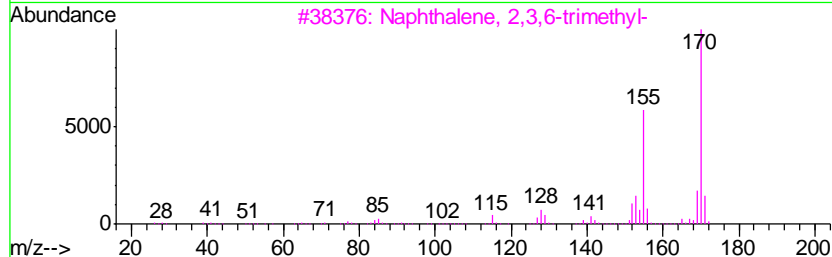
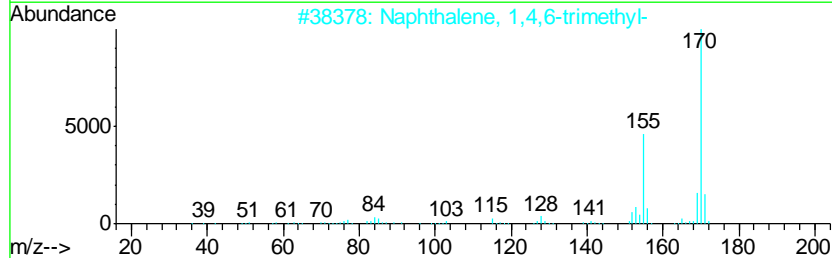
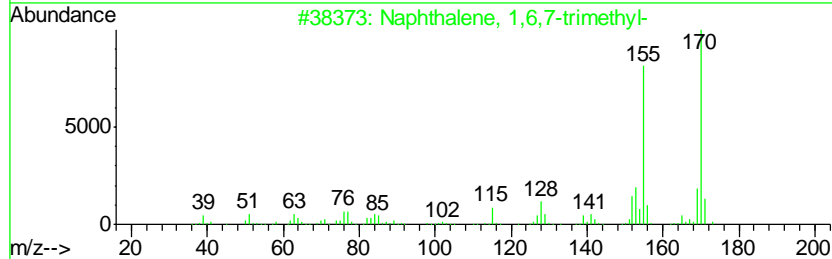
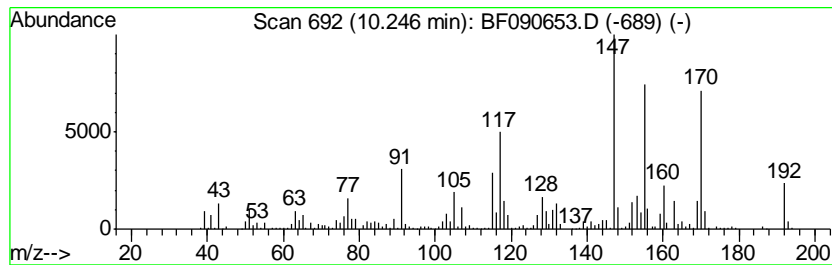
TIC Library : C:\DATABASE\NIST11.L  
 TIC Integration Parameters: LSCINT.P

\*\*\*\*\*  
 Peak Number 14 Naphthalene, 1,6,7-trimethyl- Concentration Rank 5

R.T.	EstConc	Area	Relative to ISTD	R.T.
10.25	5.68 ng	704774	Acenaphthene-d10	9.93

Hit#	of	Tentative ID	MW	MolForm	CAS#	Qual
1	5	Naphthalene, 1,6,7-trimethyl-	170	C13H14	002245-38-7	94
2		Naphthalene, 1,4,6-trimethyl-	170	C13H14	002131-42-2	89
3		Naphthalene, 2,3,6-trimethyl-	170	C13H14	000829-26-5	87
4		4,6,8-Trimethylazulene	170	C13H14	000941-81-1	74
5		Naphthalene, 1,4,5-trimethyl-	170	C13H14	002131-41-1	62



Data Path : Z:\HPCHEM1\BNA F\DATA\BF101916\  
 Data File : BF090653.D  
 Acq On : 19 Oct 2016 17:47  
 Operator : UM/SJ  
 Sample : H5296-03  
 Misc :  
 ALS Vial : 12 Sample Multiplier: 1

Instrument :  
 BNA\_F  
 ClientSampleID :  
 OWL-C5-GW

Quant Method : Z:\HPCHEM1\BNA F\METHODS\8270-BF101316.M  
 Quant Title : ASP BNA STANDARDS FOR 5 POINT CALIBRATION

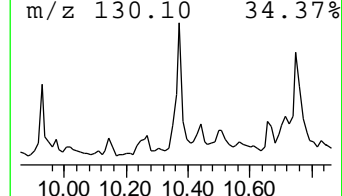
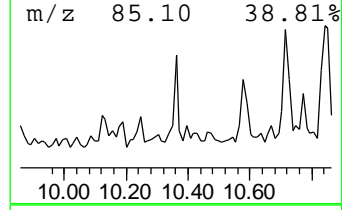
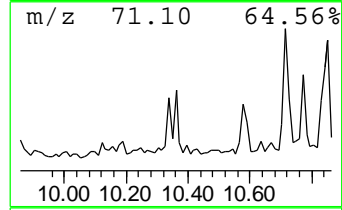
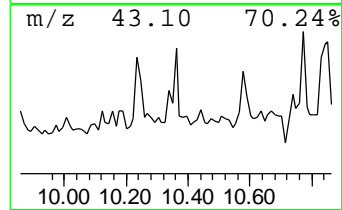
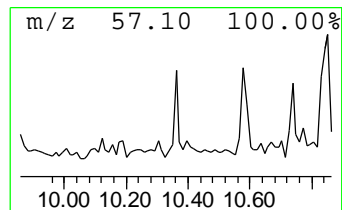
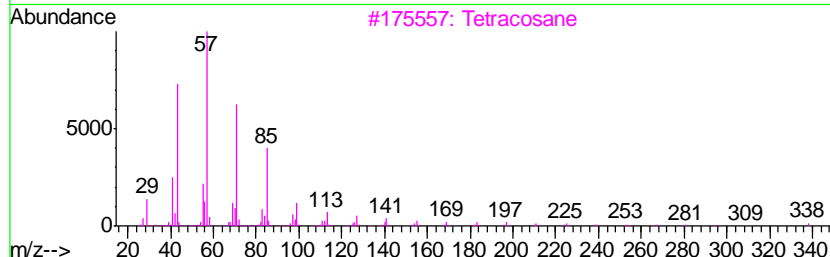
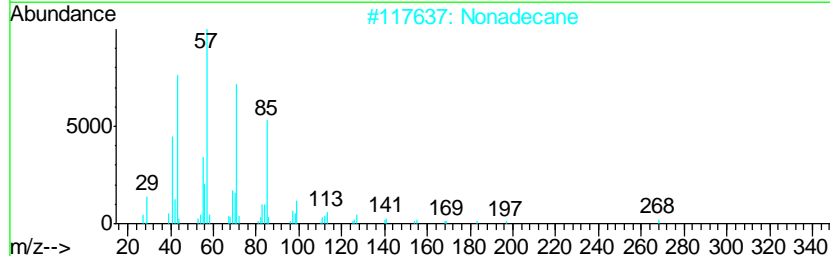
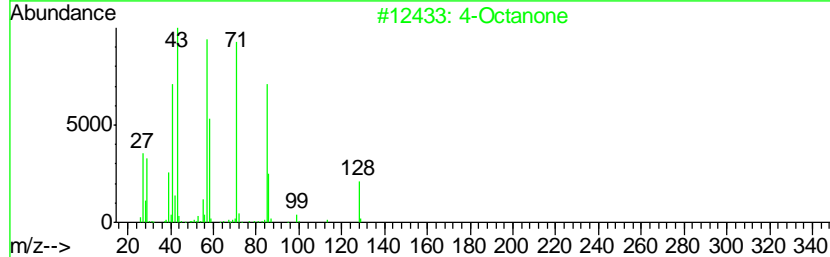
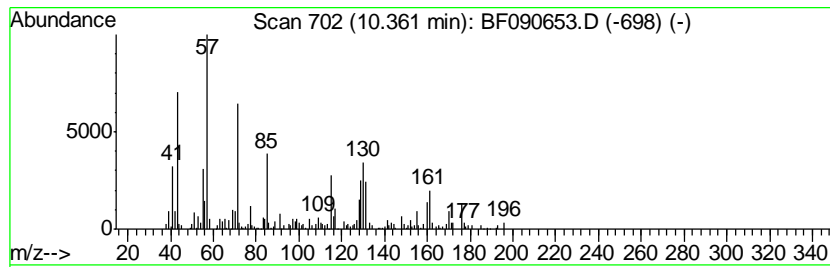
TIC Library : C:\DATABASE\NIST11.L  
 TIC Integration Parameters: LSCINT.P

\*\*\*\*\*  
 Peak Number 15 unknown10.36 Concentration Rank 15

R.T.	EstConc	Area	Relative to ISTD	R.T.
10.36	2.48 ng	307173	Acenaphthene-d10	9.93

Hit#	of	Tentative ID	MW	MolForm	CAS#	Qual
1	5	4-Octanone	128	C8H16O	000589-63-9	38
2		Nonadecane	268	C19H40	000629-92-5	30
3		Tetracosane	338	C24H50	000646-31-1	30
4		Heptacosane	380	C27H56	000593-49-7	30
5		Octadecane	254	C18H38	000593-45-3	30





Data Path : Z:\HPCHEM1\BNA F\DATA\BF101916\  
 Data File : BF090653.D  
 Acq On : 19 Oct 2016 17:47  
 Operator : UM/SJ  
 Sample : H5296-03  
 Misc :  
 ALS Vial : 12 Sample Multiplier: 1

Instrument :  
 BNA\_F  
 ClientSampleID :  
 OWL-C5-GW

Quant Method : Z:\HPCHEM1\BNA F\METHODS\8270-BF101316.M  
 Quant Title : ASP BNA STANDARDS FOR 5 POINT CALIBRATION

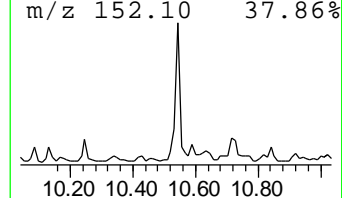
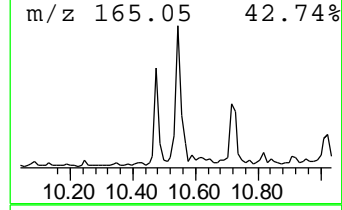
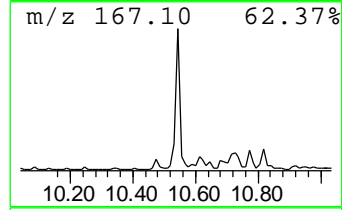
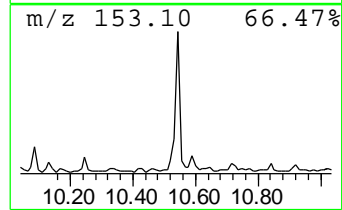
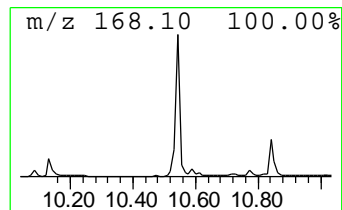
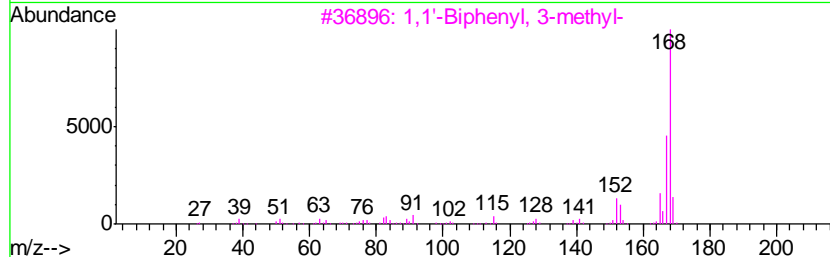
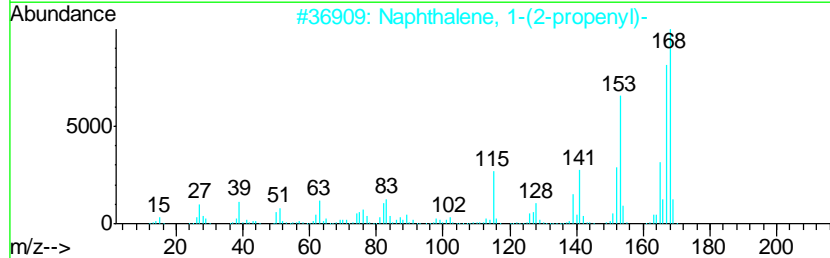
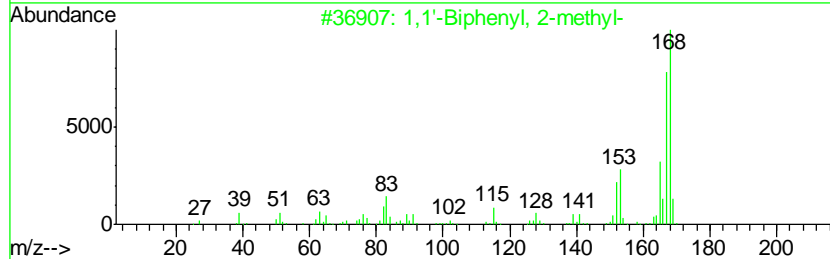
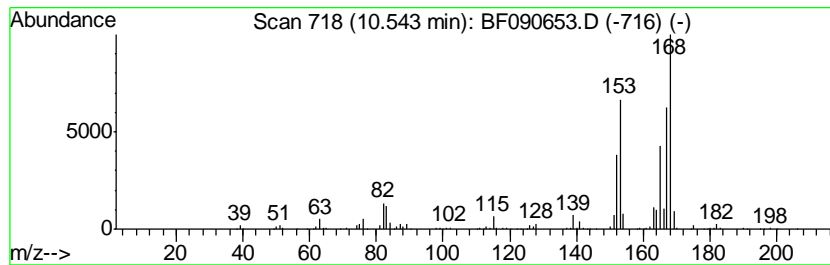
TIC Library : C:\DATABASE\NIST11.L  
 TIC Integration Parameters: LSCINT.P

\*\*\*\*\*  
 Peak Number 16 1,1'-Biphenyl, 2-methyl- Concentration Rank 10

R.T.	EstConc	Area	Relative to ISTD	R.T.
10.54	3.43 ng	424714	Acenaphthene-d10	9.93

Hit#	of	Tentative ID	MW	MolForm	CAS#	Qual
1	5	1,1'-Biphenyl, 2-methyl-	168	C13H12	000643-58-3	74
2		Naphthalene, 1-(2-propenyl)-	168	C13H12	002489-86-3	72
3		1,1'-Biphenyl, 3-methyl-	168	C13H12	000643-93-6	53
4		1,1-Diphenyl-2-propanol	212	C15H16O	029338-49-6	50
5		Benzene, [1-(2,4-cyclopentadien-...	168	C13H12	002320-32-3	50



Data Path : Z:\HPCHEM1\BNA F\DATA\BF101916\  
 Data File : BF090653.D  
 Acq On : 19 Oct 2016 17:47  
 Operator : UM/SJ  
 Sample : H5296-03  
 Misc :  
 ALS Vial : 12 Sample Multiplier: 1

Instrument :  
 BNA\_F  
 ClientSampleID :  
 OWL-C5-GW

Quant Method : Z:\HPCHEM1\BNA F\METHODS\8270-BF101316.M  
 Quant Title : ASP BNA STANDARDS FOR 5 POINT CALIBRATION

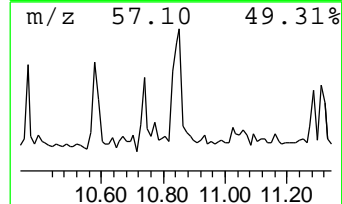
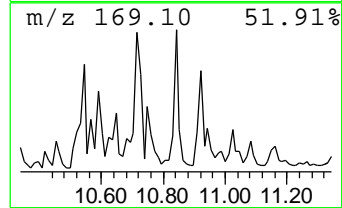
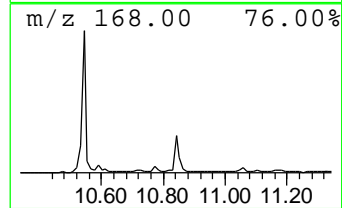
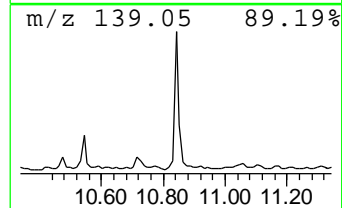
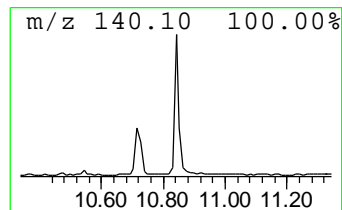
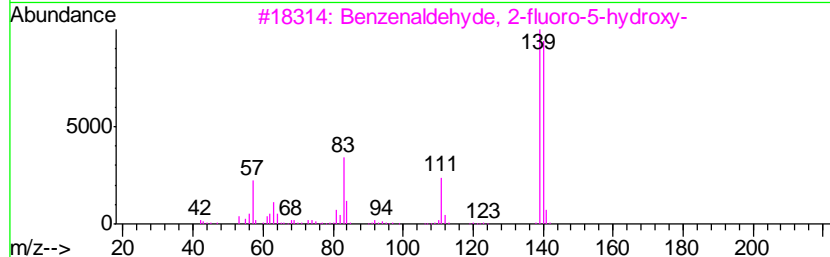
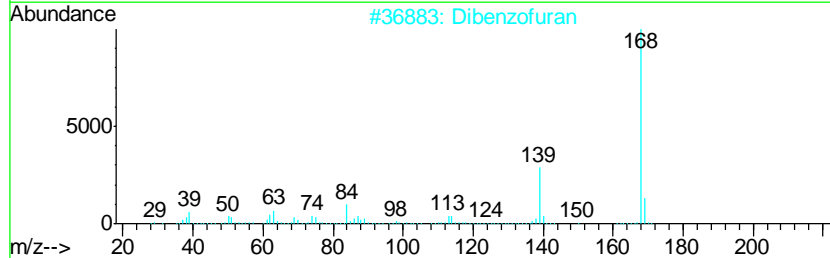
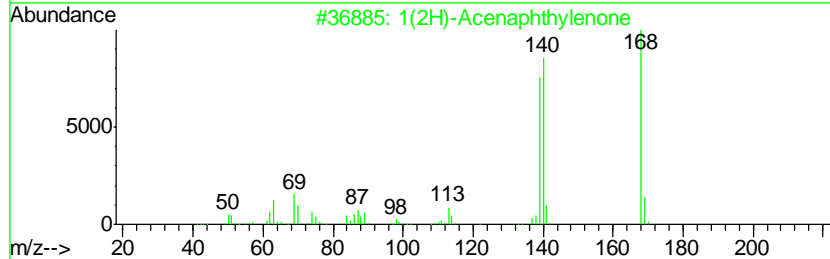
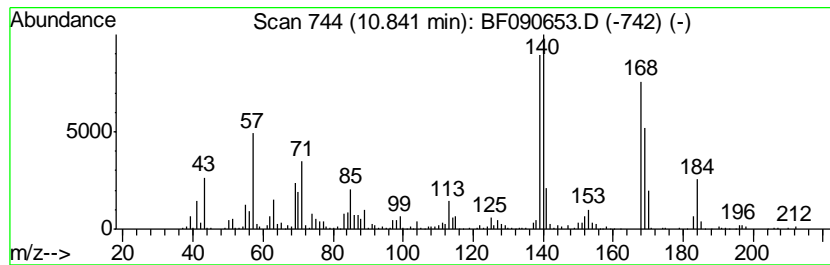
TIC Library : C:\DATABASE\NIST11.L  
 TIC Integration Parameters: LSCINT.P

\*\*\*\*\*  
 Peak Number 17 1(2H)-Acenaphthylenone Concentration Rank 6

R.T.	EstConc	Area	Relative to ISTD	R.T.
10.84	4.07 ng	460296	Phenanthrene-d10	11.41

Hit#	of	Tentative ID	MW	MolForm	CAS#	Qual
1	5	1(2H)-Acenaphthylenone	168	C12H8O	002235-15-6	64
2		Dibenzofuran	168	C12H8O	000132-64-9	38
3		Benzenaldehyde, 2-fluoro-5-hydroxy-	140	C7H5FO2	103438-84-2	27
4		6-Hydroxy-1-naphthalenecarbonitrile	169	C11H7NO	1000326-74-7	27
5		4H-Pyran-4-one, 2-ethyl-3-hydroxy-	140	C7H8O3	004940-11-8	27



Data Path : Z:\HPCHEM1\BNA\_F\DATA\BF101916\  
 Data File : BF090653.D  
 Acq On : 19 Oct 2016 17:47  
 Operator : UM/SJ  
 Sample : H5296-03  
 Misc :  
 ALS Vial : 12 Sample Multiplier: 1

Instrument :  
 BNA\_F  
 ClientSampleId :  
 OWL-C5-GW

Quant Method : Z:\HPCHEM1\BNA\_F\METHODS\8270-BF101316.M  
 Quant Title : ASP BNA STANDARDS FOR 5 POINT CALIBRATION

TIC Library : C:\DATABASE\NIST11.L  
 TIC Integration Parameters: LSCINT.P

TIC Top Hit name	RT	EstConc	Units	Response	--Internal Standard--			
					#	RT	Resp	Conc
2-Pentanone, 4-hy...	5.06	8.5	ng	611744	1	6.89	1442530	20.0
unknown6.66	6.66	68.3	ng	4928420	1	6.89	1442530	20.0
Indane	7.07	7.0	ng	506390	1	6.89	1442530	20.0
Benzene, 1-ethyl-...	7.53	2.7	ng	196375	1	6.89	1442530	20.0
Benzene, 1-methyl...	7.91	3.0	ng	371288	2	8.18	2467210	20.0
Naphthalene, 1,2,...	8.37	4.1	ng	502071	2	8.18	2467210	20.0
Naphthalene, 1,2,...	8.42	3.6	ng	442341	2	8.18	2467210	20.0
1H-Indene, 2,3-di...	8.55	2.4	ng	293738	2	8.18	2467210	20.0
Benzo[b]thiophene...	8.65	2.7	ng	333441	2	8.18	2467210	20.0
Naphthalene, 1,3-...	9.71	3.0	ng	369897	3	9.93	2479820	20.0
Naphthalene, 1,6,...	10.25	5.7	ng	704774	3	9.93	2479820	20.0
unknown10.36	10.36	2.5	ng	307173	3	9.93	2479820	20.0
1,1'-Biphenyl, 2-...	10.54	3.4	ng	424714	3	9.93	2479820	20.0
1(2H)-Acenaphthyl...	10.84	4.1	ng	460296	4	11.41	2261720	20.0