

Data Path : Z:\HPCHEM1\BNA F\DATA\BF102117\
 Data File : BF099740.D
 Acq On : 21 Oct 2017 20:58
 Operator : SJ/JU
 Sample : I6040-01
 Misc :
 ALS Vial : 21 Sample Multiplier: 1

Instrument :
 BNA_F
 ClientSampled :
 MW-1

Manual Integrations
 APPROVED

Sohil
 10/23/2017 3:31:31 PM

Quant Time: Oct 23 13:22:24 2017
 Quant Method : Z:\HPCHEM1\BNA F\METHODS\8270-BF092317.M
 Quant Title : ASP BNA STANDARDS FOR 5 POINT CALIBRATION
 QLast Update : Fri Oct 20 13:11:43 2017
 Response via : Initial Calibration

Internal Standards	R.T.	QIon	Response	Conc	Units	Dev(Min)
1) 1,4-Dichlorobenzene-d4	6.82	152	71907m	20.00	ng	0.00
21) Naphthalene-d8	8.13	136	111411m	20.00	ng	0.03
38) Acenaphthene-d10	9.96	164	46895m	20.00	ng	0.11
63) Phenanthrene-d10	11.44	188	45029m	20.00	ng	0.09
75) Chrysene-d12	14.01	240	143517	20.00	ng	0.02
86) Perylene-d12	15.45	264	168491	20.00	ng	0.01
System Monitoring Compounds						
5) 2-Fluorophenol	5.43	112	292787	64.82	ng	0.00
7) Phenol-d6	6.46	99	203748	36.56	ng	0.00
23) Nitrobenzene-d5	7.39	82	139019m	80.02	ng	0.00
41) 2,4,6-Tribromophenol	10.76	330	30888	80.49	ng	0.11
44) 2-Fluorobiphenyl	9.27	172	203149	72.32	ng	0.09
78) Terphenyl-d14	12.97	244	298728	47.34	ng	0.05
Target Compounds						
31) Naphthalene	8.17	128	317083m	60.598	ng	Qvalue
70) Phenanthrene	11.47	178	685451m	284.387	ng	
77) Pyrene	12.86	202	360027m	32.898	ng	
83) Bis(2-ethylhexyl)phthalate	13.95	149	25642m	3.621	ng	

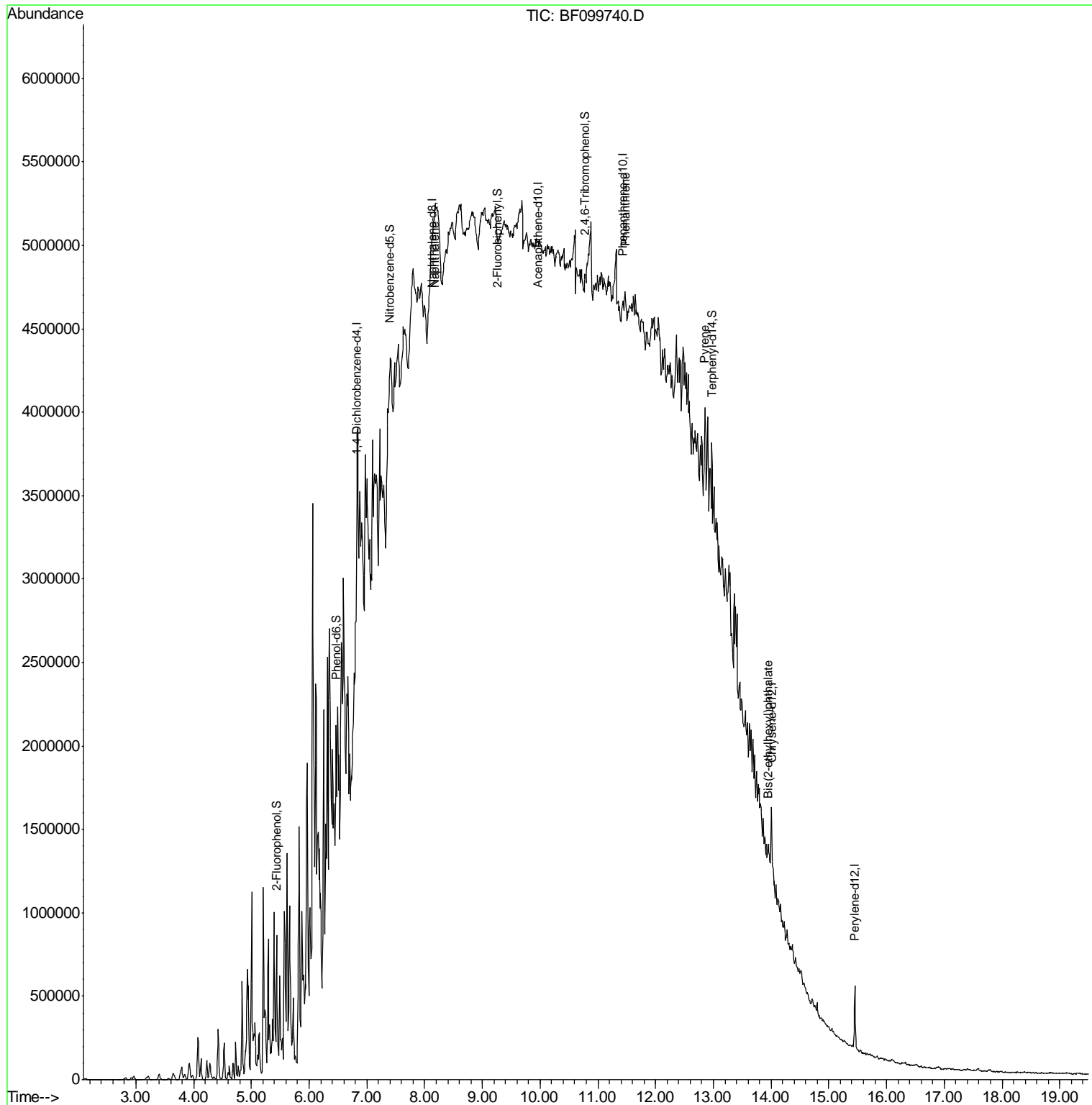
(#) = qualifier out of range (m) = manual integration (+) = signals summed

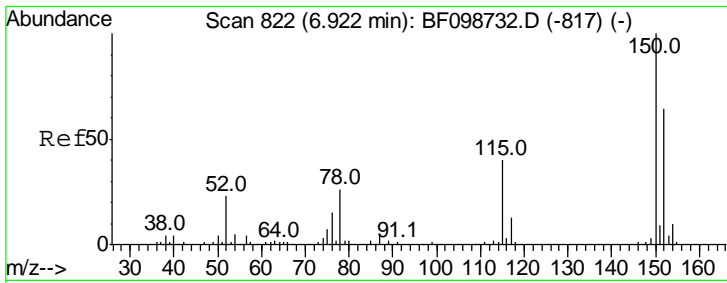
Data Path : Z:\HPCHEM1\BNA F\DATA\BF102117\
 Data File : BF099740.D
 Acq On : 21 Oct 2017 20:58
 Operator : SJ/JU
 Sample : I6040-01
 Misc :
 ALS Vial : 21 Sample Multiplier: 1

Instrument :
 BNA_F
 Client Sampled :
 MW-1

Quant Time: Oct 23 13:22:24 2017
 Quant Method : Z:\HPCHEM1\BNA F\METHODS\8270-BF092317.M
 Quant Title : ASP BNA STANDARDS FOR 5 POINT CALIBRATION
 QLast Update : Fri Oct 20 13:11:43 2017
 Response via : Initial Calibration

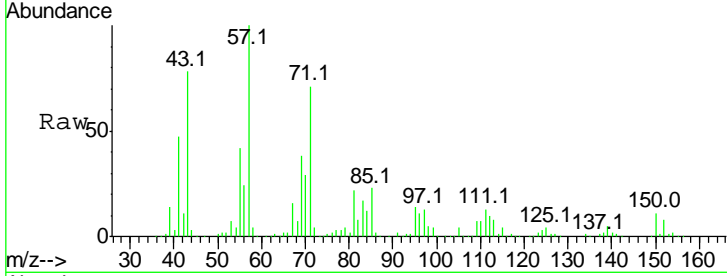
Manual Integrations
APPROVED
 Sohil
 10/23/2017 3:31:31 PM





#1
 1,4-Dichlorobenzene-d4
 Concen: 20.000 ng/ml
 RT: 6.82 min Scan# 805
 Delta R.T. -0.00 min
 Lab File: BF099740.D
 Acq: 21 Oct 2017 20:58

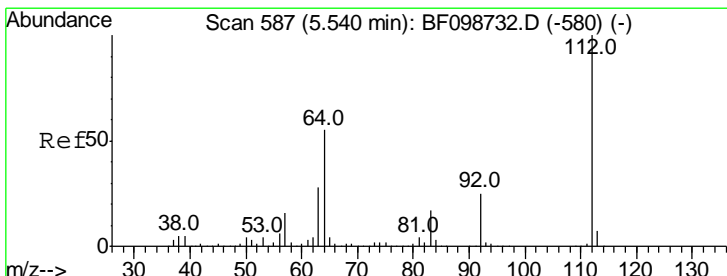
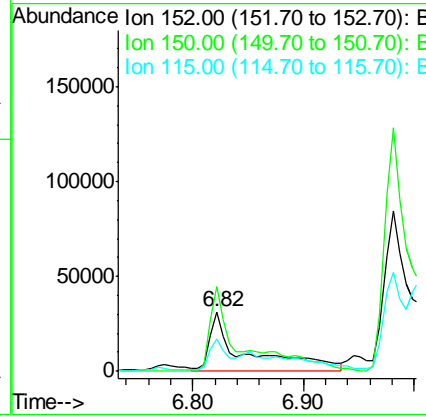
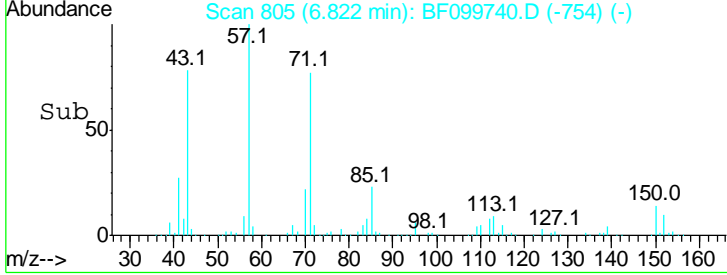
Instrument :
 BNA_F
 ClientSampled :
 MW-1



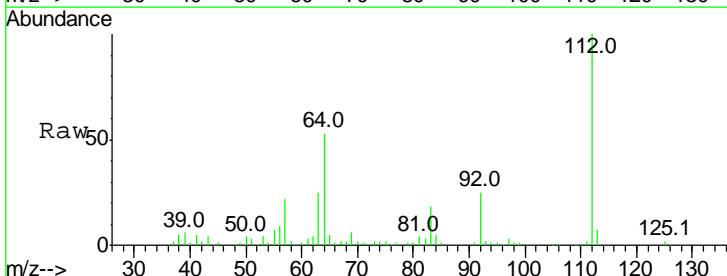
Tgt Ion: 152 Resp: 71907

Ion	Ratio	Lower	Upper
152	100		
150	142.0	124.6	186.8
115	54.0	50.1	75.1

Manual Integrations
APPROVED
 Sohil
 10/23/2017 3:31:31 PM

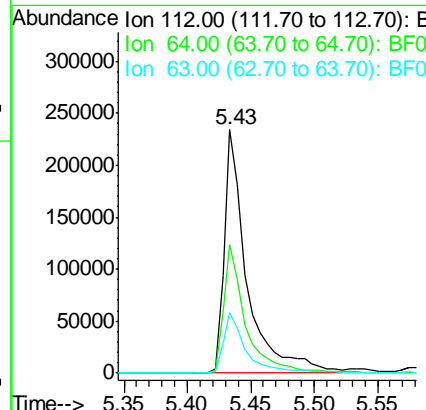
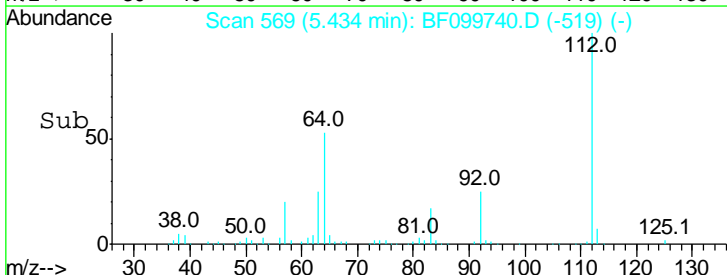


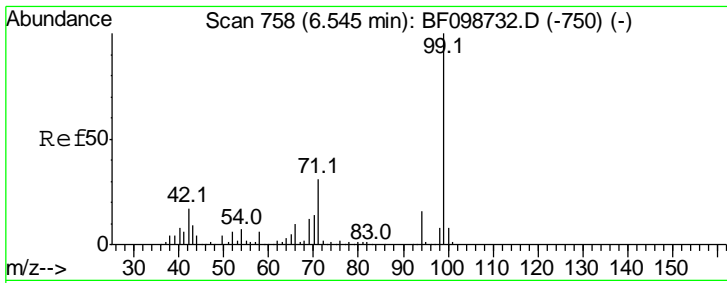
#5
 2-Fluorophenol
 Concen: 64.818 ng/ml
 RT: 5.43 min Scan# 569
 Delta R.T. -0.01 min
 Lab File: BF099740.D
 Acq: 21 Oct 2017 20:58



Tgt Ion: 112 Resp: 292787

Ion	Ratio	Lower	Upper
112	100		
64	52.8	47.9	71.9
63	25.0	23.7	35.5





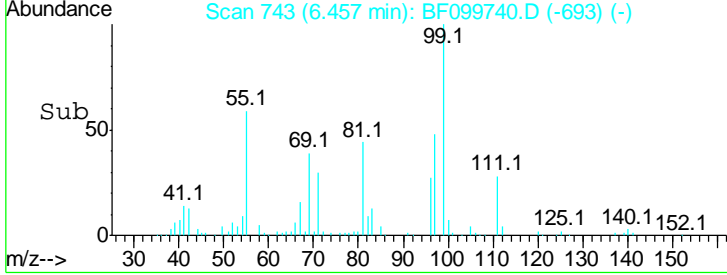
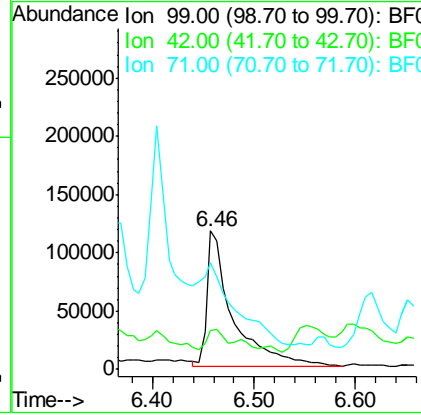
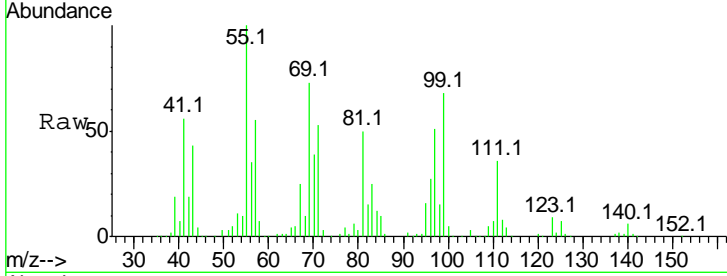
#7
 Phenol-d6
 Concen: 36.564 ng
 RT: 6.46 min Scan# 743
 Delta R.T. -0.01 min
 Lab File: BF099740.D
 Acq: 21 Oct 2017 20:58

Instrument :
 BNA_F
ClientSampled :
 MW-1

Tgt Ion	Resp	Lower	Upper
99	100		
42	28.5	14.5	21.7#
71	77.7	25.4	38.0#

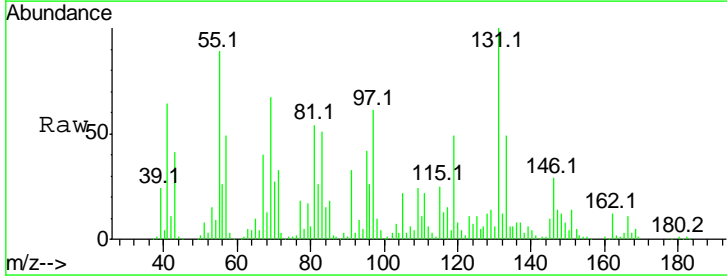
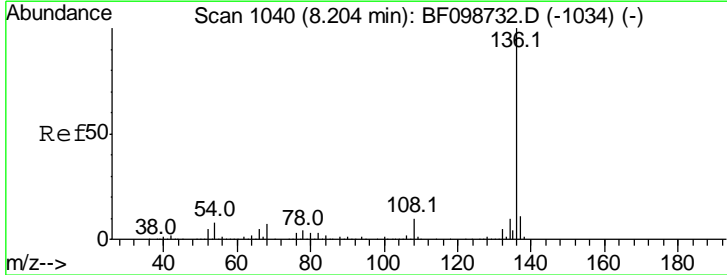
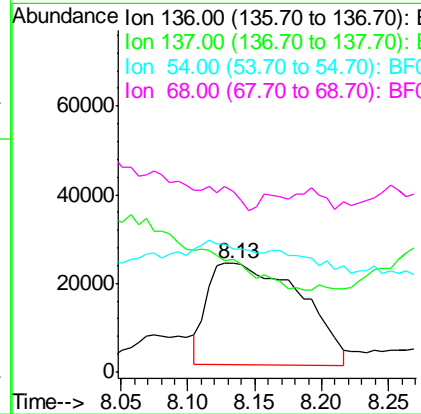
Manual Integrations
APPROVED

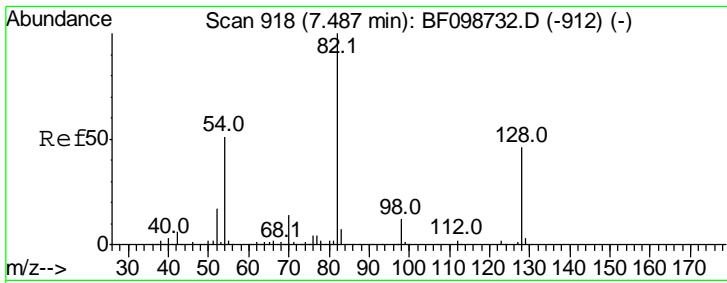
Sohil
 10/23/2017 3:31:31 PM



#21
 Naphthalene-d8
 Concen: 20.000 ng m
 RT: 8.13 min Scan# 1028
 Delta R.T. 0.03 min
 Lab File: BF099740.D
 Acq: 21 Oct 2017 20:58

Tgt Ion	Resp	Lower	Upper
136	100		
137	104.1	8.9	13.3#
54	113.0	6.6	9.8#
68	166.4	5.0	7.4#





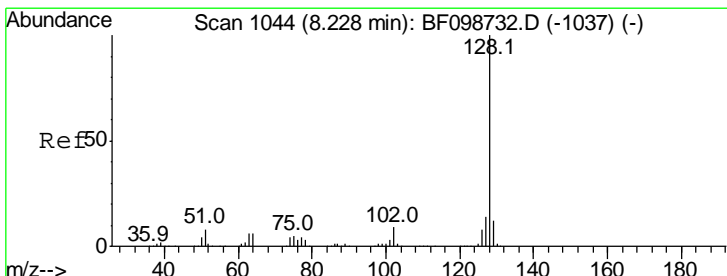
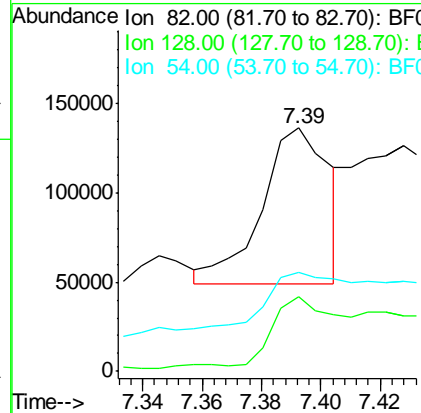
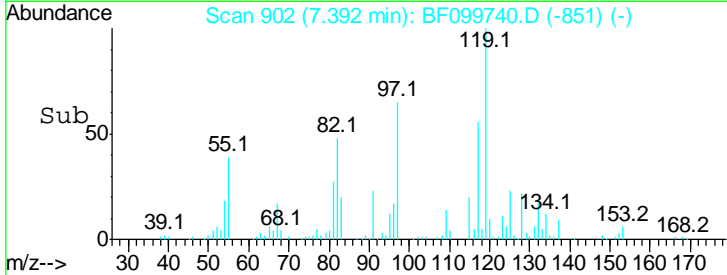
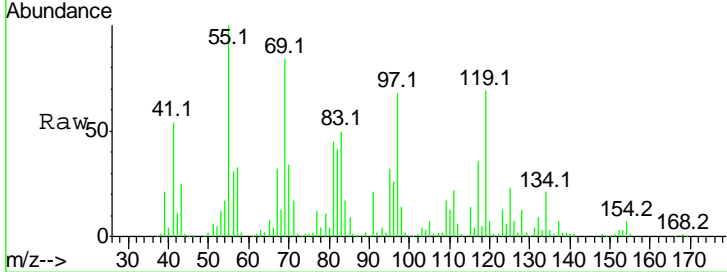
#23
 Nitrobenzene-d5
 Concen: 80.022 ng m
 RT: 7.39 min Scan# 902
 Delta R.T. -0.00 min
 Lab File: BF099740.D
 Acq: 21 Oct 2017 20:58

Instrument :
 BNA_F
 ClientSampled :
 MW-1

Tgt Ion	Resp	Lower	Upper
82	100		
128	30.9	36.1	54.1#
54	40.7	41.4	62.2#

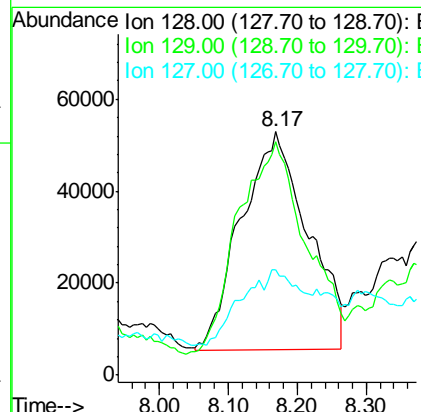
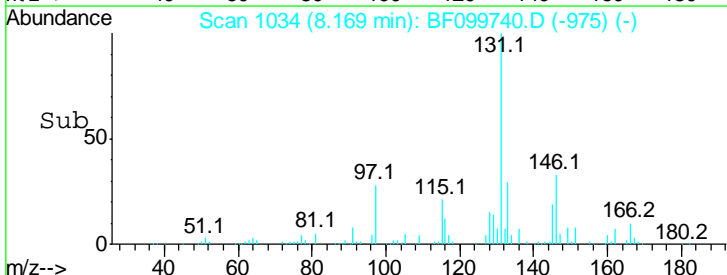
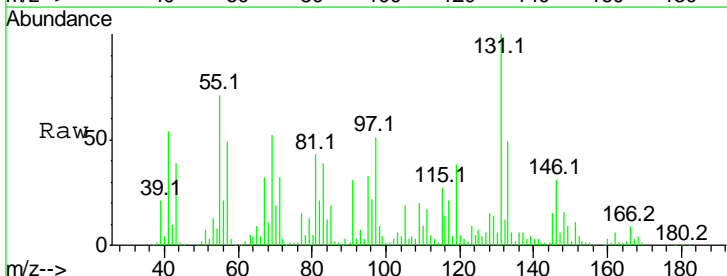
Manual Integrations
 APPROVED

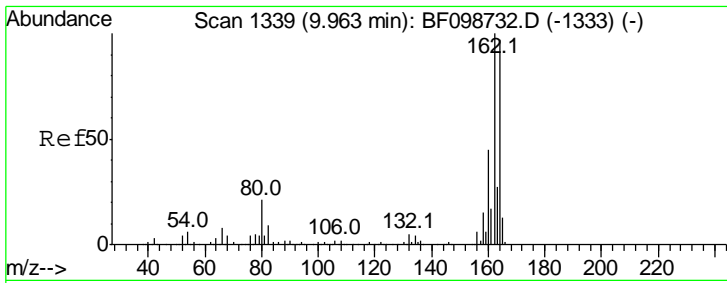
Sohil
 10/23/2017 3:31:31 PM



#31
 Naphthalene
 Concen: 60.598 ng m
 RT: 8.17 min Scan# 1034
 Delta R.T. 0.05 min
 Lab File: BF099740.D
 Acq: 21 Oct 2017 20:58

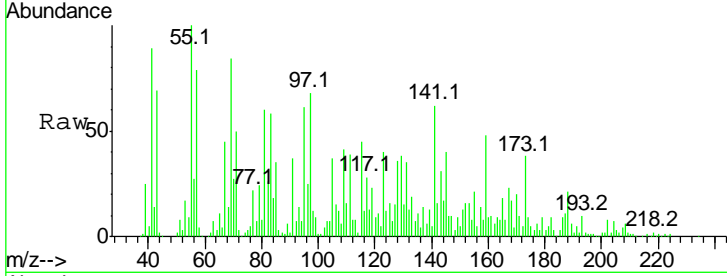
Tgt Ion	Resp	Lower	Upper
128	100		
129	96.0	8.8	13.2#
127	43.2	10.9	16.3#





#38
 Acenaphthene-d10
 Concen: 20.000 ng
 RT: 9.96 min Scan# 1339
 Delta R.T. 0.11 min
 Lab File: BF099740.D
 Acq: 21 Oct 2017 20:58

Instrument :
 BNA_F
ClientSampled :
 MW-1

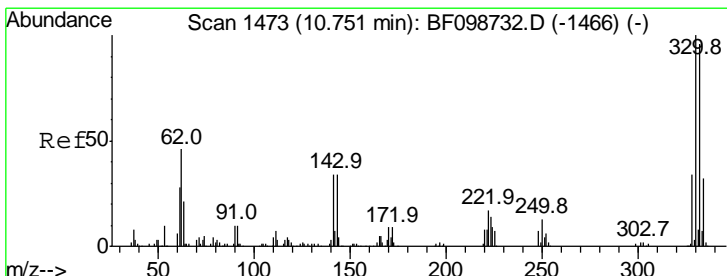
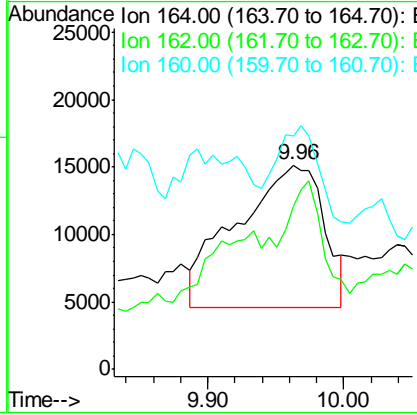
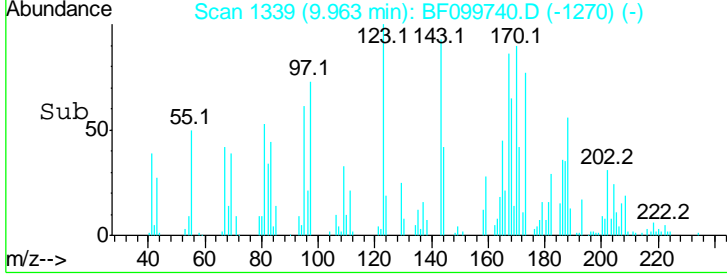


Tgt Ion: 164 Resp: 46895

Ion	Ratio	Lower	Upper
164	100		
162	79.5	86.1	129.1#
160	113.9	38.3	57.5#

Manual Integrations
APPROVED

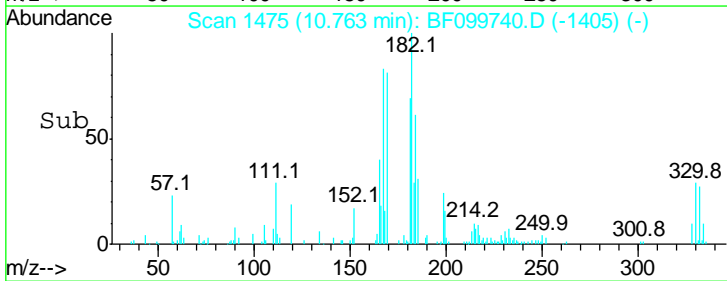
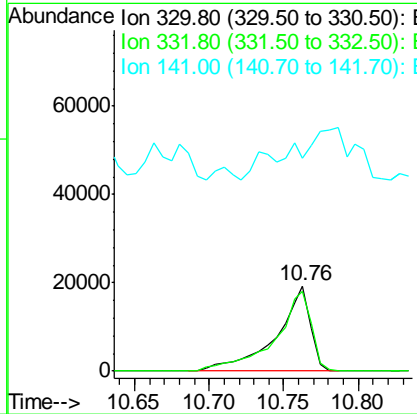
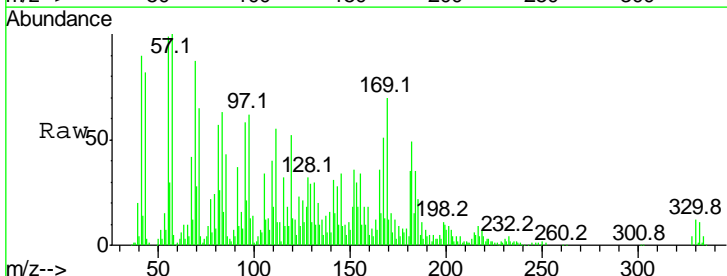
Sohil
 10/23/2017 3:31:31 PM

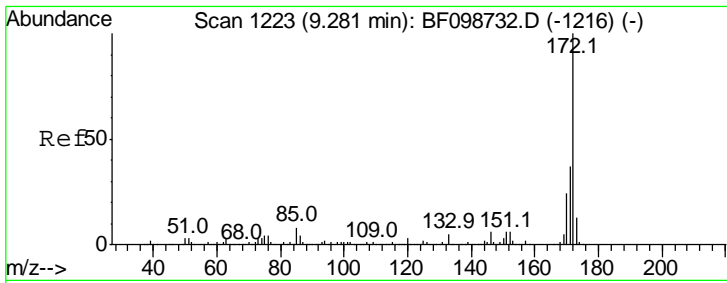


#41
 2,4,6-Tribromophenol
 Concen: 80.494 ng
 RT: 10.76 min Scan# 1475
 Delta R.T. 0.11 min
 Lab File: BF099740.D
 Acq: 21 Oct 2017 20:58

Tgt Ion: 330 Resp: 30888

Ion	Ratio	Lower	Upper
330	100		
332	98.4	77.0	115.6
141	0.0	29.9	44.9#





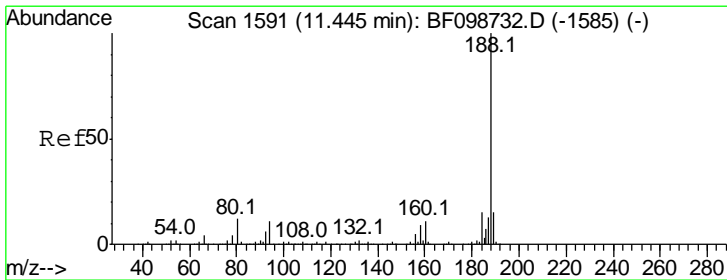
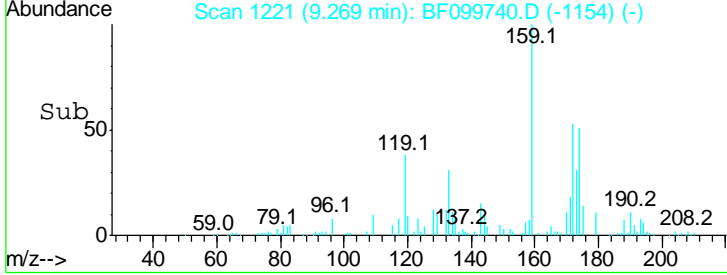
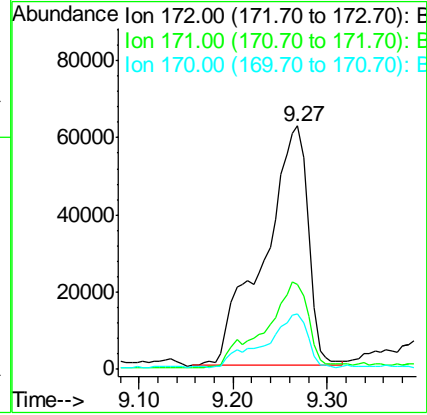
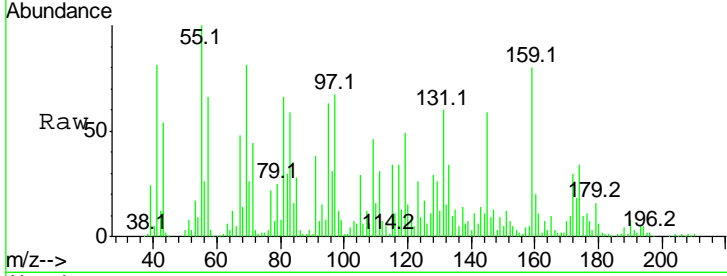
#44
 2-Fluorobiphenyl
 Concen: 72.319 ng
 RT: 9.27 min Scan# 1221
 Delta R.T. 0.09 min
 Lab File: BF099740.D
 Acq: 21 Oct 2017 20:58

Instrument :
 BNA_F
 ClientSampled :
 MW-1

Tgt Ion	Resp	Lower	Upper
172	100		
171	34.7	29.7	44.5
170	22.6	19.6	29.4

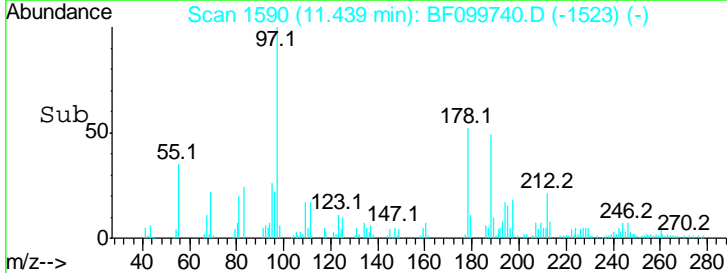
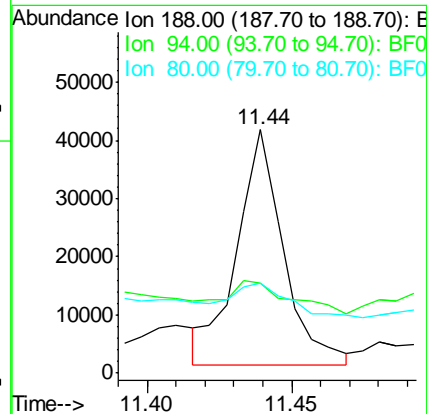
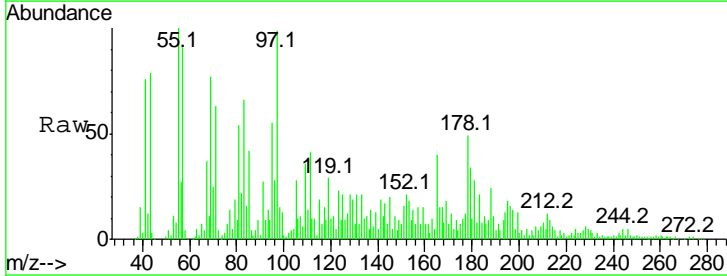
Manual Integrations
 APPROVED

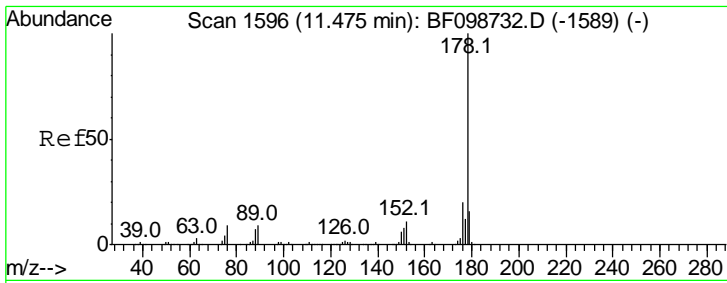
Sohil
 10/23/2017 3:31:31 PM



#63
 Phenanthrene-d10
 Concen: 20.000 ng m
 RT: 11.44 min Scan# 1590
 Delta R.T. 0.09 min
 Lab File: BF099740.D
 Acq: 21 Oct 2017 20:58

Tgt Ion	Resp	Lower	Upper
188	100		
94	37.0	8.5	12.7#
80	37.1	9.2	13.8#



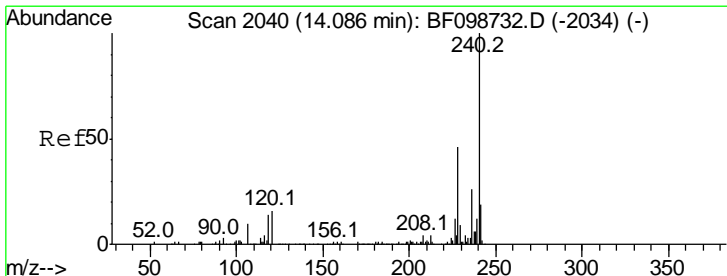
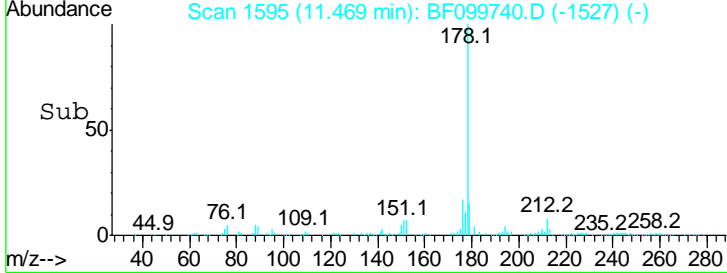
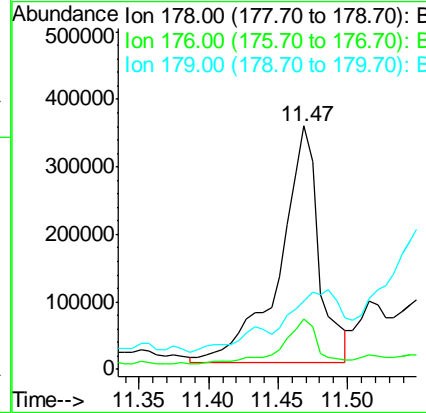
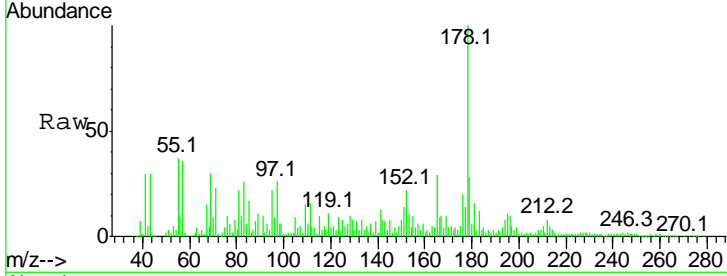


#70
 Phenanthrene
 Concen: 284.387 ng m
 RT: 11.47 min Scan# 1595
 Delta R.T. 0.10 min
 Lab File: BF099740.D
 Acq: 21 Oct 2017 20:58

Instrument :
 BNA_F
 ClientSampled :
 MW-1

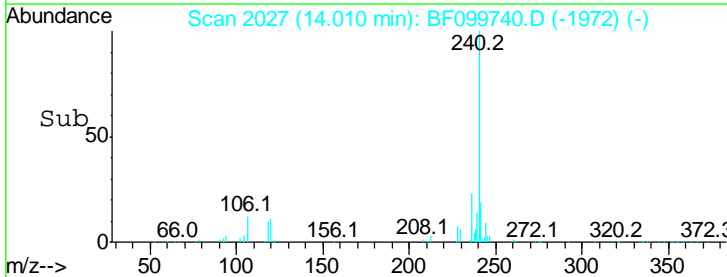
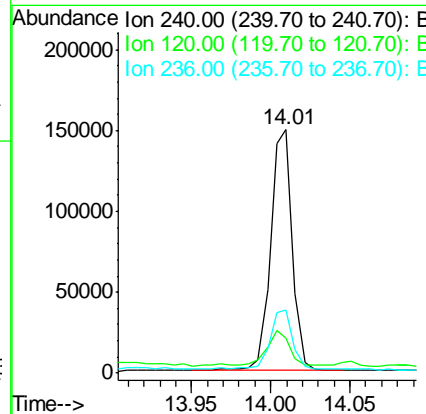
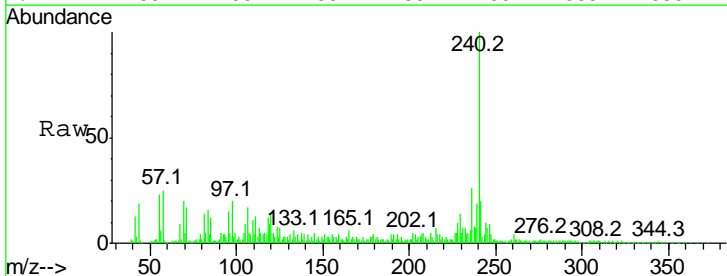
Tgt Ion	Resp	Lower	Upper
178	100		
176	20.5	15.8	23.8
179	28.2	13.0	19.6#

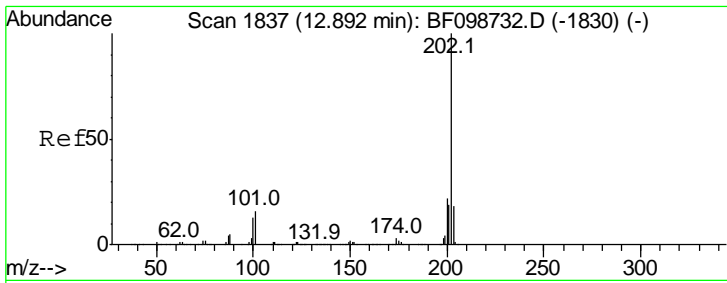
Manual Integrations
 APPROVED
 Sohil
 10/23/2017 3:31:31 PM



#75
 Chrysene-d12
 Concen: 20.000 ng
 RT: 14.01 min Scan# 2027
 Delta R.T. 0.02 min
 Lab File: BF099740.D
 Acq: 21 Oct 2017 20:58

Tgt Ion	Resp	Lower	Upper
240	100		
120	14.5	9.5	14.3#
236	26.2	20.7	31.1



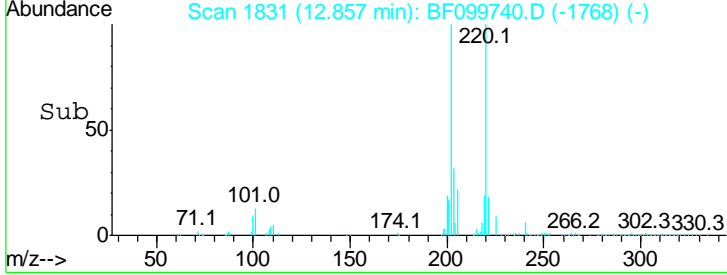
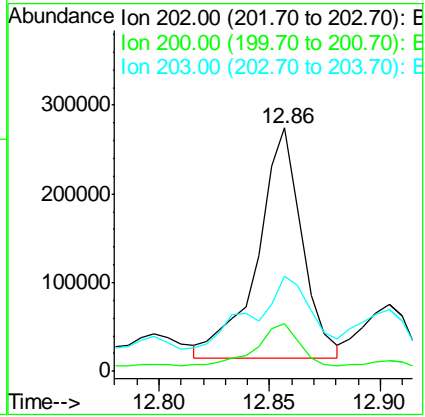
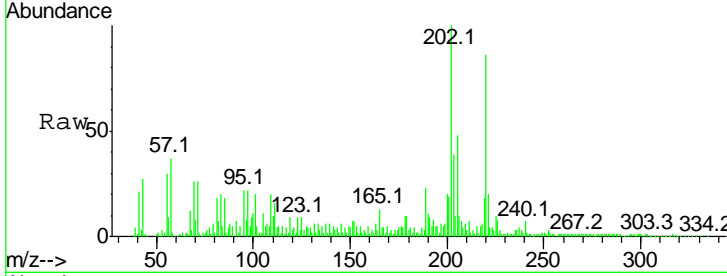


#77
 Pyrene
 Concen: 32.898 ng m
 RT: 12.86 min Scan# 1831
 Delta R.T. 0.07 min
 Lab File: BF099740.D
 Acq: 21 Oct 2017 20:58

Instrument :
 BNA_F
 ClientSampled :
 MW-1

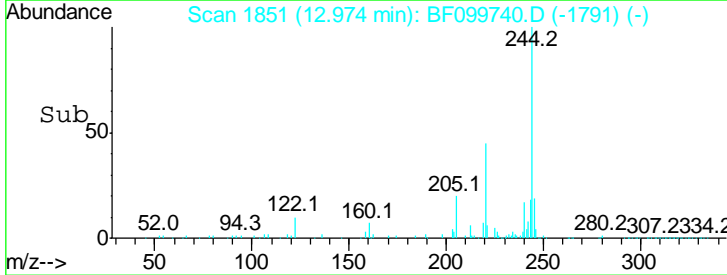
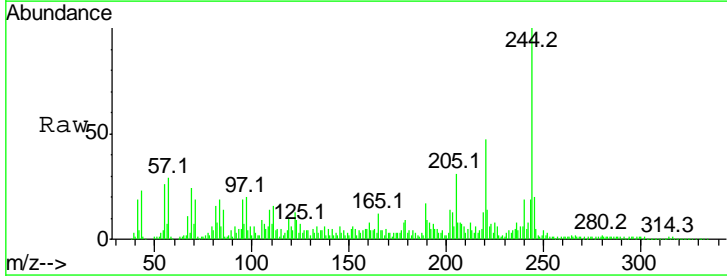
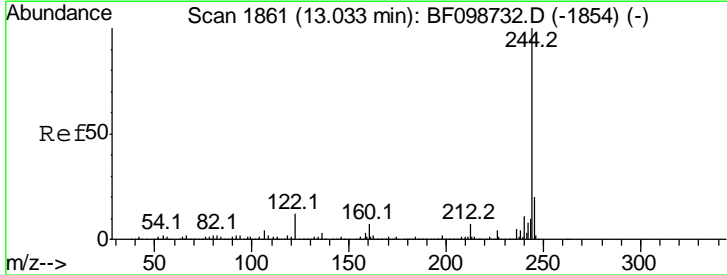
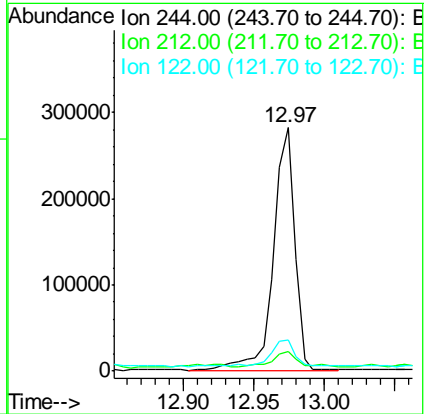
Tgt Ion	Ratio	Lower	Upper
202	100		
200	19.7	17.4	26.2
203	39.1	14.3	21.5#

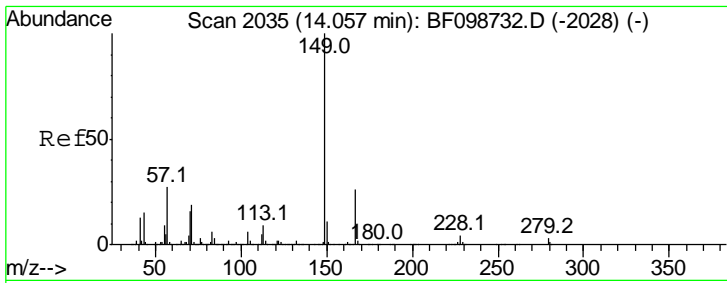
Manual Integrations
APPROVED
 Sohil
 10/23/2017 3:31:31 PM



#78
 Terphenyl-d14
 Concen: 47.337 ng
 RT: 12.97 min Scan# 1851
 Delta R.T. 0.05 min
 Lab File: BF099740.D
 Acq: 21 Oct 2017 20:58

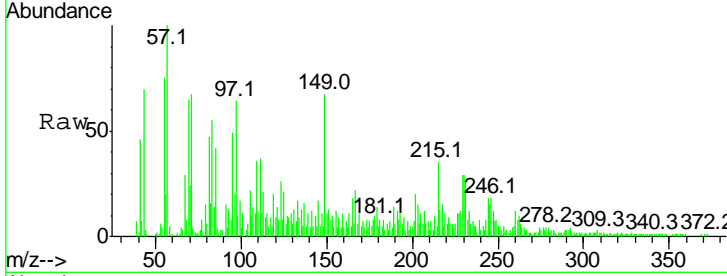
Tgt Ion	Ratio	Lower	Upper
244	100		
212	7.8	5.4	8.0
122	12.9	11.0	16.4





#83
 Bis(2-ethylhexyl)phthalate
 Concen: 3.621 ng/ml
 RT: 13.95 min Scan# 2017
 Delta R.T. 0.01 min
 Lab File: BF099740.D
 Acq: 21 Oct 2017 20:58

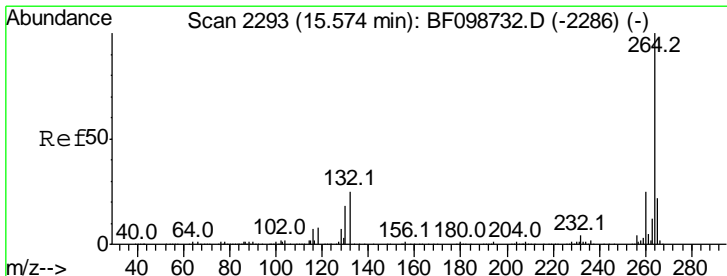
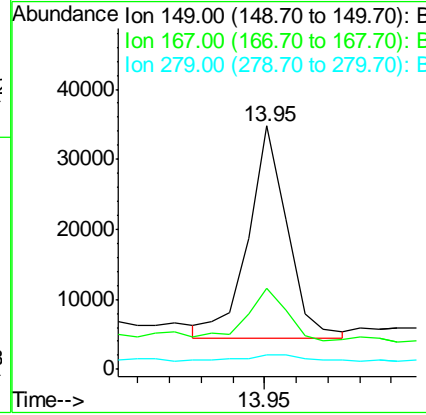
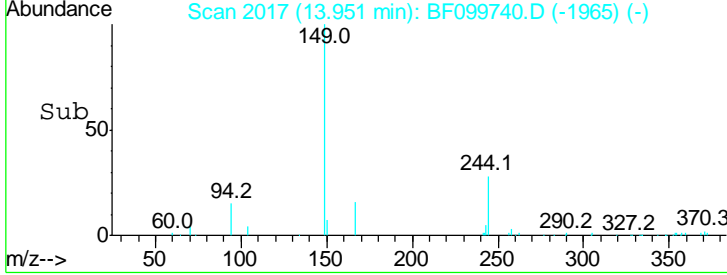
Instrument :
 BNA_F
 ClientSampled :
 MW-1



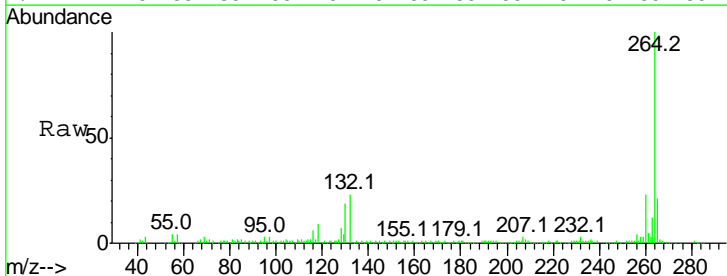
Tgt Ion: 149 Resp: 25642

Ion	Ratio	Lower	Upper
149	100		
167	33.2	21.3	31.9#
279	5.9	3.0	4.4#

Manual Integrations
 APPROVED
 Sohil
 10/23/2017 3:31:31 PM



#86
 Perylene-d12
 Concen: 20.000 ng
 RT: 15.45 min Scan# 2272
 Delta R.T. 0.01 min
 Lab File: BF099740.D
 Acq: 21 Oct 2017 20:58



Tgt Ion: 264 Resp: 168491

Ion	Ratio	Lower	Upper
264	100		
260	23.2	19.2	28.8
265	20.9	17.5	26.3

